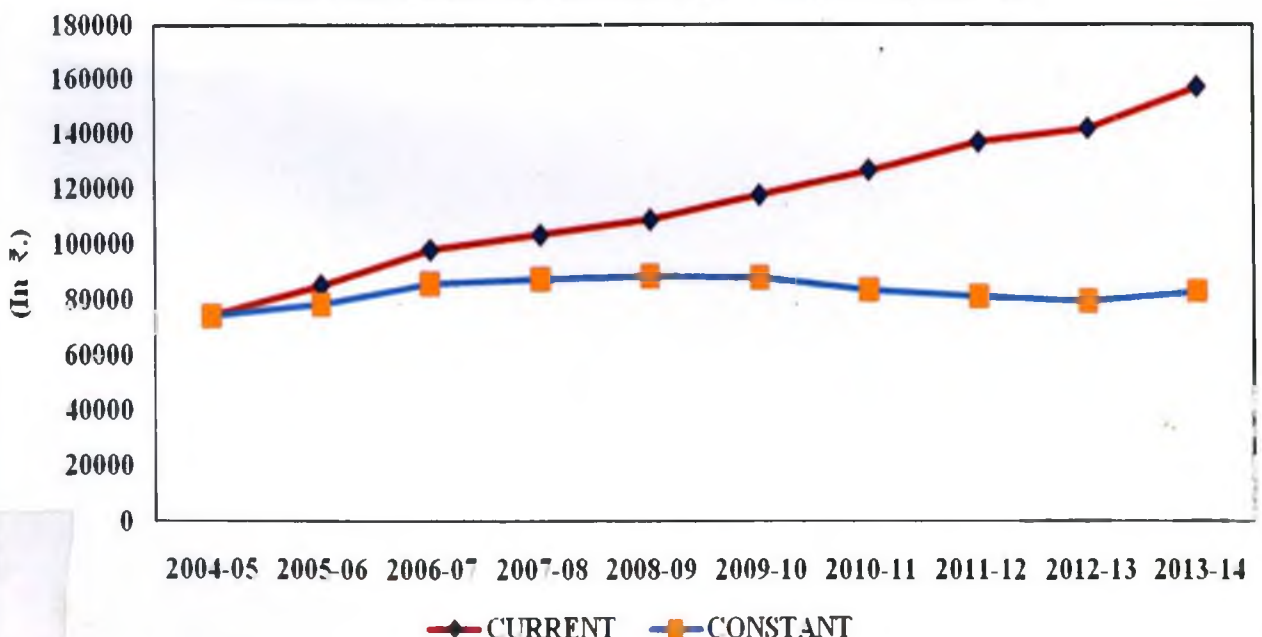


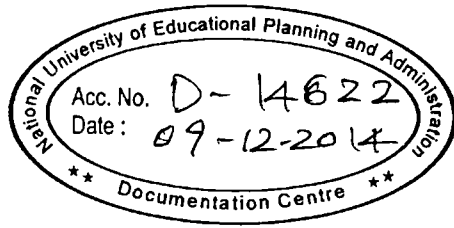


**STATE DOMESTIC PRODUCT
AND
PER CAPITA INCOME
AT
CURRENT & CONSTANT
PRICES FOR THE YEAR
2004-05 TO 2013-14
(BASE YEAR = 2004-05)
OF
UNION TERRITORY CHANDIGARH**

**Comparison of Per Capita Income at Current and
Constant Prices from 2004-05 to 2013-14**



**DIRECTORATE OF ECONOMICS & STATISTICS,
UNION TERRITORY, CHANDIGARH**



FOREWORD

The State Domestic product and Per Capita Income in respect of UT Chandigarh is being prepared annually both at Current and Constant Prices. The UT Chandigarh has prepared these estimates on the basis of methodology adopted by the National Accounts Division, Central Statistical Organisation, Government of India. It is a barometer to measure the changes in the level of the economic performance of the State/UT and standard of living of the people. The present SDP estimates are 14th in the series.

2. I appreciate the efforts made by the staff of the Directorate of Economics & Statistics, UT Chandigarh in bringing out these results .

3. My thanks are due to the officers of the National Accounts Division, Central Statistical Organisation, Government of India for providing valuable guidance.

4. Hope that this publication will be useful to the Policy makers, Planners and Research Scholars.

Dated: August, 2014
Place: CHANDIGARH



SARVJIT SINGH, IAS
FINANCE SECRETARY-CUM-
SECRETARY STATISTICS,
CHANDIGARH ADMINISTRATION

NUEPA DC



D14622

P R E F A C E

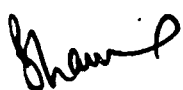
The State Income measures the changes in the level of economic performance of the Nation or State/UTs. It also serves as a useful framework for analysing the basic economic problems of the State and thus helps the planners in evolving suitable guidelines for economic policies for improving the standard of living of the people. The State Domestic Product estimates commonly known as State Income are prepared in accordance with the methodology and guidelines provided by National Accounts Division, Central Statistical Organisation, Government of India.

2. The present booklet "The Estimates of GSDP/NSDP and Per Capita Income from 2004-05 to 2013-14" contains data pertaining to the respective years.

3. This is the 14th publication brought out by this Directorate on State Domestic Product. This booklet contains sector-wise estimates of GSDP, NSDP and PCI of UT, Chandigarh and its related aggregates at current and constant prices. The standard methodology evolved by the Central Statistical Organisation with suitable modification wherever necessary have been followed.

4. Suggestions for improvement of the coverage and contents of this publication would be most welcome.

Dated: August, 2014
Place: CHANDIGARH


BHAWNA GARG, IAS,
SPECIAL SECRETARY FINANCE
CUM-DIRECTOR, DES,
UT, CHANDIGARH

Sl. No.	CONTENTS	PAGE
1	2	3
A.	STATE DOMESTIC PRODUCT	
	INTRODUCTION	1-5
	ANALYSIS OF ECONOMIC GROWTH OF CHANDIGARH	5-12
B	STATISTICAL TABLES	
1.	Movement of GSDP/NSDP and Per Capita Income at Factor Cost and their indices in Chandigarh.	15
2.	Gross State Domestic Product by Economic Activity at Factor Costs by Industry of Origin at Current Prices.	16
3.	Percentage change over previous year in GSDP at Current Prices.	17
4.	Percentage Distribution of GSDP by Economic Activity at Current Prices.	18
5.	Gross State Domestic Product by Economic Activity at Factor Costs by Industry of Origin at Constant Prices.	19
6.	Percentage change over previous year in GSDP at Constant Prices.	20
7.	Percentage Distribution of GSDP by Economic Activity at Constant Prices.	21
8.	Net State Domestic Product at Factor Costs by industry of origin by Economic Activity at Current Prices.	22
9.	Percentage change over previous year in NSDP at Current Prices.	23
10.	Percentage Distribution of NSDP by Economic Activity at Current Prices.	24
11.	Net State Domestic Product by Economic Activity at Factor Costs by Industry of origin at Constant Prices.	25
12.	Percentage change over previous year in NSDP at Constant Prices.	26
13.	Percentage Distribution of NSDP by Economic Activity at Constant Prices.	27

Abbreviation used in this booklet

R=Revised

P = Provisional

Q= Quick

A = Advance

STATE DOMESTIC PRODUCT

(BASE YEAR 2004-05)

1. INTRODUCTION

Estimates of State Domestic Product are regarded as the most important single economic indicators to measure the economic development of a State. The Per Capita Income is used to determine both the absolute and relative performance of the economy of the State. It is regarded as an important tool to measure regional disparities. The indicator of Per Capita Income is now frequently used in India by policy maker like the Planning Commission and the Finance Commission for allocation of a part of Plan resources and distribution of proceeds of Union excise and additional excise duties to different States.

STATE DOMESTIC PRODUCT (SDP)

The State Domestic Product is defined as a measure in monetary terms of the volume of all goods and services produced within the boundaries of the State during a given period of time, accounted without duplication. This covers all the goods and services produced within the State. Thus the 'goods' cover all possible items produced, for example, agricultural crops, livestock and livestock products, fish, forest products, mineral products, manufacturing of various consumer items for consumption, machinery, transport equipment, defence equipment and construction of buildings, roads, dams, bridges etc. Similarly, the 'services' cover a wide spectrum including medical and educational services, sanitary services, Government services etc. all goods and services produced during the period have to be included whether they are marketed i.e. exchanged for money or bartered or produced for own use. Another important feature of the measure is that it is an unduplicated value of output or in other words only the value added at each stage of processing is taken into account while measuring the total.

GROSS STATE DOMESTIC PRODUCE (GSDP), NET STATE DOMESTIC PRODUCT (NSDP) AND PER CAPITA INCOME (PCI)

State Domestic Product as such is Gross State Domestic Product (GSDP). Fixed Capital Assets i.e. Plants & Machinery and Equipments are employed to produce goods. A part of these Fixed Capital Assets is used in the process of production which is known as Consumption of Fixed Capital (CFC) or Depreciation. Thus consumption of fixed capital is defined as that part of gross product which is required to replace the fixed capital used in the process of production during the period of account. This flow is based on the concept of the expected economic life of individual assets and is designed to cover the expected loss in value terms due to obsolescence

and the normal amount of accidental damage which is not made good by repair as well as normal wear and tear. It is estimated from the value of fixed assets and information on the age of various type of assets. The estimates of CFC for all sectors of the economy are supplied by CSO after preparing the same at the National Level and allocated to the States. This CFC is deducted from GSDP to obtain Net State Domestic Product (NSDP).

STATE DOMESTIC PRODUCT AT CURRENT AND CONSTANT PRICES

The estimates of SDP at current prices are obtained by evaluating the product at prices prevailing during the accounting year. The estimates of SDP at current prices do not reveal actual economic growth as they contain the combined effect of :-

- i) changes in the volume of goods and services
- ii) changes in the prices. The effect of changes in the prices is eliminated by evaluating the goods and services at the prices prevailing at certain fixed period known as base year. The estimates, thus, obtained are known as State Domestic Product (SDP) at constant prices.

HOW STATE DOMESTIC PRODUCT (SDP) IS CALCULATED

The economy has been divided into thirteen sectors for the purpose of calculation of SDP. These thirteen sectors have further been classified in three broad sectors as under:-

- | | | | |
|------|-----------|-----|---|
| I. | Primary | 1. | Agriculture |
| | | 2. | Forestry |
| | | 3. | Fishing |
| | | 4. | Mining & Quarrying |
| II. | Secondary | 5. | Manufacturing |
| | | 5.1 | Registered |
| | | 5.2 | Un-registered |
| | | 6. | Construction |
| | | 7. | Electricity, Gas and Water Supply |
| III. | Tertiary | 8. | Trade, Hotel and Restaurants |
| | | 9. | Transport, Storage and Communication |
| | | 10. | Banking and Insurance |
| | | 11. | Real Estate, Ownership of Dwellings,
Legal & Business Services |

12. Public Administration

13. Other Services.

Estimates of State Domestic Product can be conceptually prepared by adopting two approaches viz. income originating and income accruing. In the first approach, the measurement corresponds to income originating to the factors of production physically located within the geographical boundaries of a States/UTs and represent net value of goods & services produced within the States/UTs. The second approach relates to the income accruing to the normal residents of a States/UTs. Since this measures the income that becomes available to the residents of a States/UTs, it provides a better measure of the welfare of the residents of the State. But due to non-availability of data on inter-state income flows, compilation of estimates of income accruing concept is not possible at present. The estimates that are presently being compiled by the State Statistical Bureau refer to the Net Domestic Product at factor cost, originating within the geographical boundaries of the respective States irrespective of the fact whether factors of production are owned by persons living inside or outside the State and are appropriately called State Domestic Product.

Theoretically, SDP can be measured by any one of the three alternative approaches viz. production, income and expenditure approach. Depending upon the availability of data, different approaches are used to measure SDP of different sectors.

- (i) Production approach is followed in respect of Agriculture including Animal Husbandry, Forestry and Logging, Fishing, Mining and Quarrying & Registered Manufacturing.
- (ii) Income approach is followed in respect of Un-registered Manufacturing, Transport, Storage and Communication, Real Estate, Ownership of Dwellings, Legal & Business Services, Trade, Hotel and Restaurants, Public Administration and Defence, Electricity, Water Supply and Other Services.
- (iii) Expenditure approach is followed in respect of Construction Sector only.

The different States/UTs prepare estimates of Net Domestic product by Industry of origin by following the same classification of the sectors for which estimates are prepared at the National level.

SUPRA REGIONAL SECTOR:

However, there are certain activities which are managed by the Central government and are not confined to the boundaries of States/UTs. The sectors like Railways, Communication, Banking & Insurance and Central government administration where the activities are spread over to number of States/UTs, it is not possible to procure independent estimates at State Level in respect of these sectors. These are known as supra-regional sectors and States/UTs level estimates for these sectors are prepared by allocation of the national estimates on the basis of data on gross earning, gross expenditure, wages and salaries, employment and other relevant indicators. The estimates for these sectors are prepared by the CSO and supplied to State Statistical Bureaus (SSBs) to suitably incorporate in their state income estimates

FINANCIAL INTERMEDIATION SERVICES INDIRECTLY MEASURED (FISIM)

The banking enterprises render services to their customers in the form of maintaining their accounts and advising them on financial matters. In return for these services, customers are charged a nominal amount which is substantially smaller than the expenses of the enterprises. On the other hand, the banks provide loans and advances and the returns on such transactions are much higher than the payments made to depositors. The net returns accruing to banks is large enough to meet their expenses and to earn a profit. If the financial enterprises are treated like any other productive enterprise, their income in the production account would only be limited to the charges made on customers which would mean that the banks would have a negative operating surplus and most likely negative value addition. To circumvent this difficulty, an imputed income equivalent to interest and dividend receipt of banking and financial enterprises net of interest paid to depositors is defined as Financial Intermediation Services Indirectly Measured (FISIM) (income earned in return for services rendered) and is entered as a receipt item in the output of the financial enterprises. The output of the financial enterprises, thus, includes interest received which was paid by the producing industries. As the interest paid by the Industries is already accounted for in the GDP of the respective industries, its inclusion in the GDP of banking industry amounts to duplication. To avoid this duplication, FISIM is allocated to the user industries as intermediate input and thereby the GDP of the industries is reduced.

In the 1980-81 series of the National Accounts statistics, FISIM was being allocated to only few organized segments of user industries and final consumers. In the new series, FISIM has been allocated to user industries in line with the recommendations of the 1993

System of National Accounts (1993 SNA). The Industries to which FISIM has been allocated are agriculture, livestock, mining and quarrying, manufacturing (registered and unregistered), electricity, gas, transport, construction, storage, trade, hotels & restaurants, business services. This has necessitated the State-wise/industry-wise allocation of FISIM to get unduplicated estimates of the SDP. As the banking and insurance sector is a supra regional sector, i.e. extending beyond State boundaries or separated beyond States the states/UTs wise estimates of the FISIM are estimated by the National Accounts Division (NAD) of the CSO and are supplied to States/UTs. The National estimates of FISIM in respect of user industries are first allocated to different States in the state-wise ratios of the banking and insurance GDP (already prepared by CSO). The estimates of the State FISIM (supplied by CSO) are distributed to different user industries within the States/UTs in proportion to the respective sectoral GSDP.

ANALYSIS OF ECONOMIC GROWTH OF CHANDIGARH

Under the present series, the estimates of Gross/Net State Domestic Product at current and constant prices with base year 2004-05 have been prepared from 2004-05 to 2011-12 on the basis of latest available data. Whereas Quick and advanced Estimates for 2012-13 and 2013-14 respectively have been projected by using the data available as well as trends. The SDP estimates prepared earlier have also been improved as the revised data in respect of almost all the sectors was made available by the concerned data suppliers.

GROWTH OF ECONOMY

The growth of economy of UT Chandigarh has been analysed in the following paragraphs.

1. Gross State Domestic Product (GSDP):

The estimates of Gross State Domestic Product (GSDP) for all the sectors of the economy have been prepared by the Directorate of Economics & Statistics. In the GSDP the aggregate includes as part of the value of current output, the value of capital services consumed in the production of output. The estimates of Net State Domestic Product (NSDP) are arrived at by subtracting Consumption of Fixed Capital (CFC) from GSDP estimates. The estimates of Consumption of Fixed Capital (CFC) are provided by the Central Statistical Organisation (CSO) at current and constant prices based on national level. The estimates of Gross State Domestic

Product GSDP both at current and constant (2004-05) prices are given as under:-

Table – I COMPOSITION OF GSDP FROM 2004-05 to 2013-14

COMPOSITION OF GSDP FROM 2004-05 TO 2013-14 AT CURRENT PRICES								
(₹. In Lakh)								
Year	Primary	% age of col. (2) to Col. (8)	Secondary	% age of col. (4) to Col. (8)	Tertiary	% age of col. (6) to Col. (8)	Total GSDP	Total %age
1	2	3	4	5	6	7	8	9
2004-05	7709	0.91	145195	17.07	697500	82.02	850404	100.00
2005-06	8413	0.83	169749	16.67	840387	82.50	1018549	100.00
2006-07	9379	0.76	244057	19.88	974172	79.36	1227608	100.00
2007-08	9749	0.71	270050	19.76	1087052	79.53	1366851	100.00
2008-09	10437	0.68	206117	13.44	1316829	85.88	1533383	100.00
2009-10	11055	0.63	261954	14.90	1484648	84.47	1757657	100.00
2010-11	11305	0.56	266984	13.34	1723098	86.10	2001387	100.00
2011-12(P)	10317	0.45	307672	13.48	1964595	86.07	2282584	100.00
2012-13(Q)	10718	0.43	307164	12.26	2186760	87.31	2504642	100.00
2013-14 (A)	11629	0.40	326147	11.22	2569774	88.38	2907550	100.00

Composition of GSDP at Current Prices

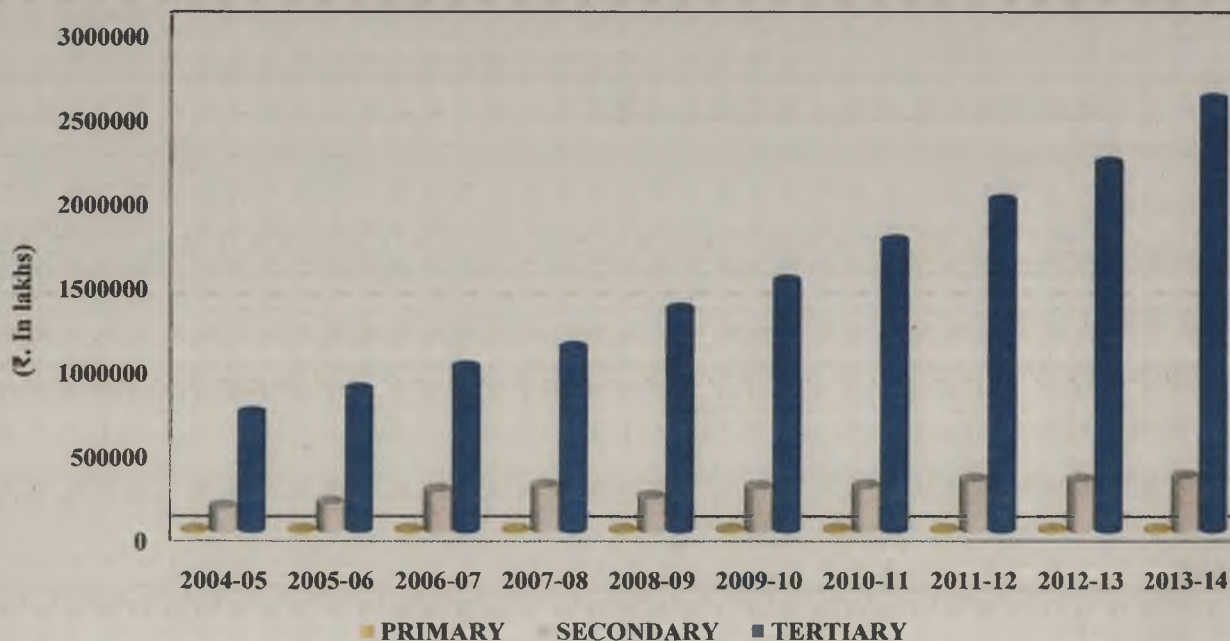


Table 2 COMPOSITION OF GSDP FROM 2004-05 TO 2013-14

**COMPOSITION OF GSDP FROM 2004-05 TO 2013-14 AT CONSTANT PRICES
(₹. In Lakh)**

Year	Primary	% age of col. (2) to Col. (8)	Secondary	%age of col. (4) to Col.(8)	Tertiary	% age of col. (6) to Col. (8)	Total GSDP	Total %age
1	2	3	4	5	6	7	8	9
2004-05	7709	0.91	145195	17.07	697500	82.02	850404	100.00
2005-06	7909	0.84	155685	16.54	777739	82.62	941333	100.00
2006-07	7952	0.74	211203	19.56	860344	79.70	1079499	100.00
2007-08	8001	0.69	219328	18.94	930725	80.37	1158054	100.00
2008-09	8522	0.68	158504	12.66	1084882	86.66	1251908	100.00
2009-10	7413	0.56	192856	14.60	1120299	84.84	1320568	100.00
2010-11	6921	0.52	181518	13.61	1145341	85.87	1333780	100.00
2011-12(P)	5808	0.42	190027	13.78	1182839	85.80	1378674	100.00
2012-13(Q)	5299	0.37	190547	13.32	1234987	86.31	1430833	100.00
2013-14 (A)	5268	0.34	192588	12.28	1370927	87.38	1568783	100.00

Composition of GSDP at Constant Prices

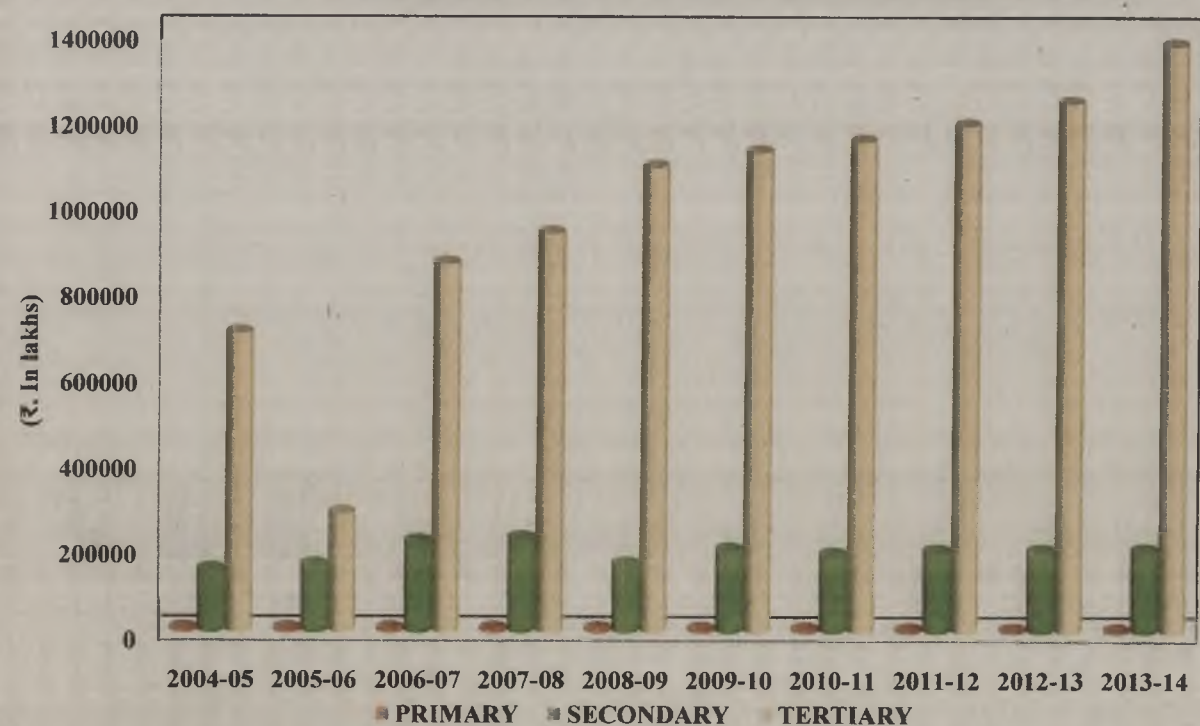


Table No 3

GROWTH RATE OVER THE BASE YEAR OF GSDP FROM 2004-05 TO 2013-14 AT CURRENT AND CONSTANT PRICES.						
(₹. In Lakh)						
AT CURRENT PRICES				AT CONSTANT PRICES		
Year	GSDP	%age change over the base year	%age change over the previous year	GSDP	%age change over the base year	%age change over the previous year
1	2	3	4	5	6	7
2004-05	850404	Base year	Base year	850404	Base year	Base year
2005-06	1018549	19.77	19.77	941333	10.69	10.69
2006-07	1227608	44.36	20.52	1079499	26.94	14.68
2007-08	1366851	60.73	11.34	1158054	36.18	7.28
2008-09	1533383	80.31	12.18	1251908	47.21	8.10
2009-10	1757657	106.68	14.63	1320568	55.29	5.48
2010-11	2001387	135.35	13.87	1333780	56.84	1.00
2011-12(P)	2282584	168.41	14.05	1378674	62.12	3.37
2012-13(Q)	2504642	194.52	9.73	1430833	68.25	3.78
2013-14 (A)	2907550	241.90	16.09	1568783	84.48	9.64

At current prices, the GSDP increased steadily from ₹.850404 Lakhs in 2004-05 to ₹.2907550 lakhs in 2013-14 (A) and at constant prices increased from ₹.850404 lakhs to ₹.1568782 lakhs from 2004-05 to 2013-14 (A). It revealed that the growth of GSDP at current prices from 2004-05 to 2013-14 (A) was 241.90% and at constant prices it was 84.48% respectively. However annual increase for 2013-14 (A) was 16.09% and 9.64% over the previous year at current and constant prices respectively.

2. NET STATE DOMESTIC PRODUCT (NSDP):

The Directorate of Economics & Statistics, UT. Chandigarh has compiled the State Domestic Product in the New Series as per the guidelines of CSO, New Delhi. The NSDP both at current and Constant prices is as under:-

Table No. 4

COMPOSITION OF NSDP FROM 2004-05 TO 2013-14 AT CURRENT PRICES (₹. In Lakh)								
Year	Primary	%age of col. (2) to Col. (8)	Secondary	%age of col. (4) to Col. (8)	Tertiary	%age of col. (6) to Col. (8)	Total NSDP	Total Percentage
1	2	3	4	5	6	7	8	9
2004-05	7430	0.98	130139	17.10	623446	81.92	761015	100.00
2005-06	8105	0.88	154324	16.81	755491	82.30	917920	100.00
2006-07	9022	0.81	223204	20.16	875174	79.03	1107400	100.00
2007-08	9331	0.76	246792	20.02	976544	79.22	1232667	100.00
2008-09	9934	0.72	187999	13.68	1176581	85.60	1374514	100.00
2009-10	10484	0.67	238621	15.16	1324843	84.17	1573948	100.00
2010-11	10732	0.60	247157	13.82	1530420	85.58	1788309	100.00
2011-12(P)	9797	0.48	287088	14.17	1728979	85.35	2025864	100.00
2012-13(Q)	10197	0.46	283917	12.91	1905731	86.63	2199845	100.00
2013-14 (A)	11062	0.43	301479	11.83	2236344	87.74	2548885	100.00

Composition of NSDP at Current Prices

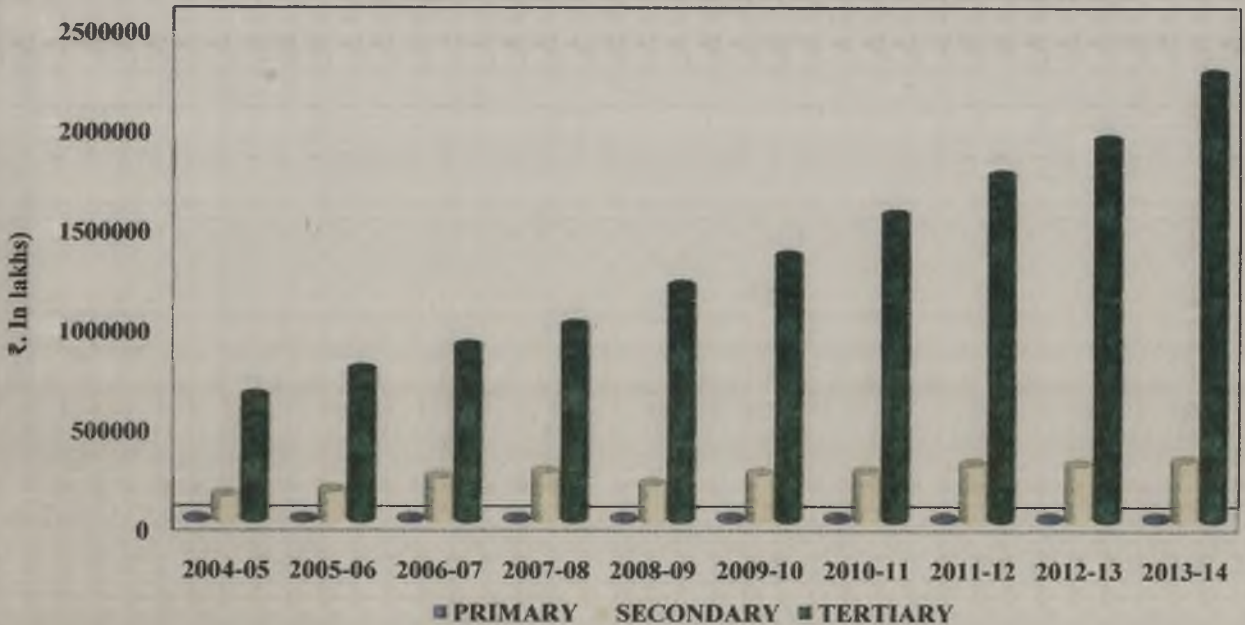
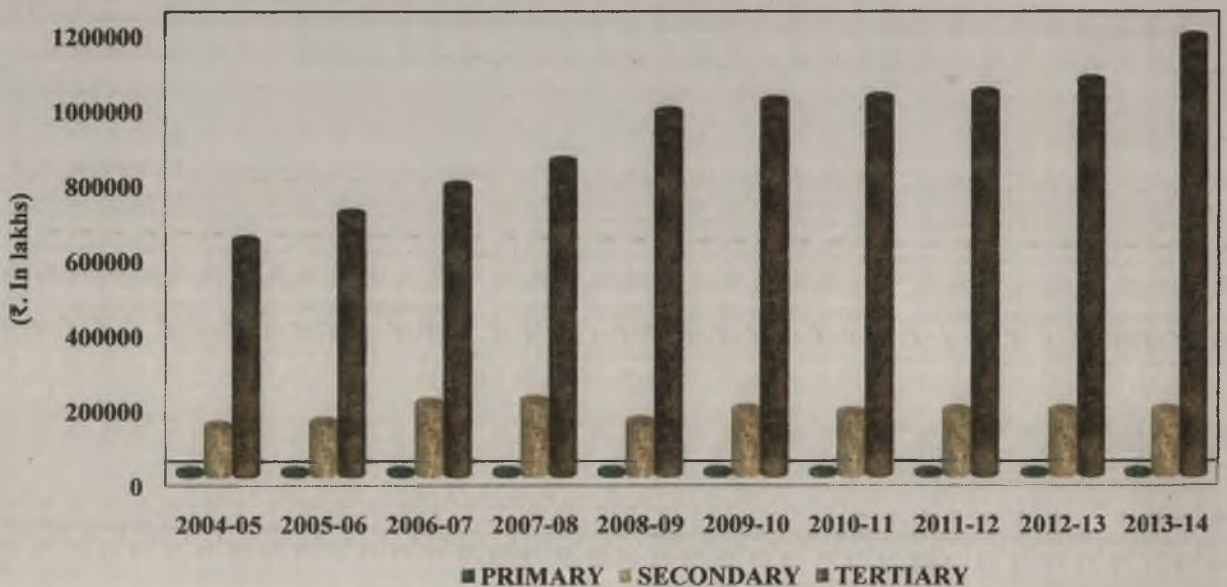


Table No. 5

COMPOSITION OF NSDP FROM 2004-05 TO 2013-14 AT CONSTANT PRICES
(₹. In Lakh)

Year	Primary	%age of col. (2) to Col. (8)	Secondary	%age of col. (4) to Col. (8)	Tertiary	%age of col. (6) to Col. (8)	Total NSDP	Total %age
1	2	3	4	5	6	7	8	9
2004-05	7430	0.98	130139	17.10	623446	81.92	761015	100.00
2005-06	7614	0.90	140732	16.67	695862	82.43	844208	100.00
2006-07	7630	0.79	191621	19.78	769725	79.43	968976	100.00
2007-08	7647	0.73	198086	19.04	834731	80.23	1040464	100.00
2008-09	8146	0.73	143425	12.82	967166	86.45	1118737	100.00
2009-10	7096	0.60	174076	14.79	995571	84.60	1176743	100.00
2010-11	6602	0.56	165797	14.09	1004070	85.35	1176469	100.00
2011-12(P)	5539	0.46	171641	14.36	1018671	85.18	1195851	100.00
2012-13(Q)	5067	0.41	170929	13.93	1050880	85.66	1226876	100.00
2013-14 (A)	5037	0.37	172545	12.83	1167050	86.80	1344632	100.00

Composition of NSDP at Constant Prices



The illustration on page no. (9 & 10) clearly indicates that the contribution of Primary Sector towards NSDP has started declining since 2004-05 both in absolute as well as in relative terms both under current and constant prices. (The reason are physical as well as economic. Land-use has been diverted from agricultural after acquisition/development).

Table No. 6

PERCENTAGE GROWTH RATE OVER THE BASE YEAR OF NSDP FROM 2004-05 TO 2013-14 AT CURRENT AND CONSTANT PRICES						
(₹. In Lakh)						
AT CURRENT PRICES				AT CONSTANT PRICES		
Year	NSDP	%age change over the base year	%age change over the previous year	NSDP	%age change over the base year	%age change over the previous year
1	2	3	4	5	6	7
2004-05	761015	Base Year	Base Year	761015	Base Year	Base Year
2005-06	917920	20.62	20.62	844208	10.93	10.93
2006-07	1107400	45.52	20.64	968976	27.33	14.78
2007-08	1232667	61.98	11.31	1040464	36.72	7.38
2008-09	1374514	80.62	11.51	1118737	47.00	7.52
2009-10	1573948	106.82	14.51	1176743	54.63	5.18
2010-11	1788309	134.99	13.62	1176469	54.59	-0.02
2011-12(P)	2025864	166.20	13.28	1195851	57.14	1.65
2012-13(Q)	2199845	189.07	8.59	1226876	61.22	2.59
2013-14 (A)	2548885	234.93	15.87	1344632	76.69	9.60

A comparison of NSDP at current and constant prices revealed that from 2004-05 to 2013-14 (A) the growth was 234.93% at current prices and whereas it was only 76.69% at constant prices. However annual increase during 2013-14(A) was 15.87% and 9.60% over the previous year at current and constant prices respectively.

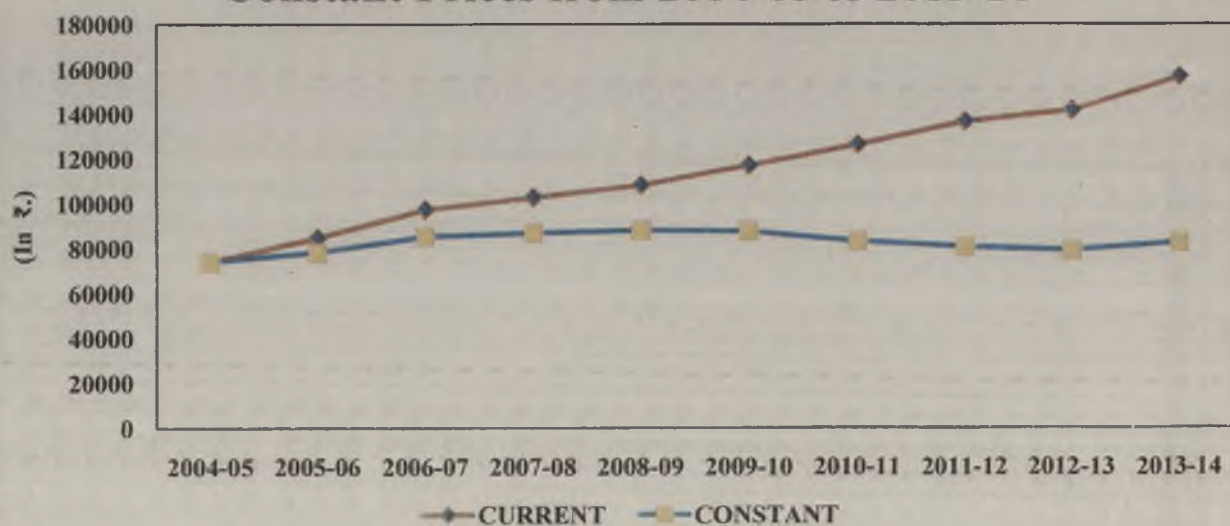
3. PER CAPITA INCOME (PCI):

The per Capita Income (PCI) both at current and constant prices for the year 2004-05 to 2013-14 (A) was derived out by dividing the NSDP at Current and Constant prices by the estimated population of that year respectively:-

Table No. 7

PER CAPITA INCOME OF THE U.T. OF CHANDIGARH BOTH AT CURRENT AND CONSTANT PRICES FROM 2004-05 TO 2013-14						
AT CURRENT PRICES				AT CONSTANT PRICES		
Year	PER CAPITA INCOME	%age change over the base year	%age change over the previous year	PER CAPITA INCOME	%age change over the base year	%age change over the previous year
1	2	3	4	5	6	7
2004-05	74173	Base Year	Base Year	74173	Base Year	Base Year
2005-06	84993	14.59	14.59	78167	5.38	5.38
2006-07	97568	31.54	14.80	85372	15.10	9.22
2007-08	102980	38.84	5.55	86923	17.19	1.82
2008-09	108486	46.26	5.35	88298	19.02	1.58
2009-10	117371	58.24	8.19	87751	23.95	-0.62
2010-11	126651	70.75	7.91	83319	12.33	-5.05
2011-12(P)	136883	84.55	8.08	80801	8.94	-3.02
2012-13(Q)	141926	91.34	3.68	79153	6.71	-2.03
2013-14 (A)	156951	111.60	10.59	82798	11.63	4.61

Comparison of Per Capita Income at Current and Constant Prices from 2004-05 to 2013-14



Per Capita Income has increased from Rs.74173 to ₹.156951 from 2004-05 to 2013-14 (A) at Current Prices representing an increase of 111.60% from the base year and at Constant Prices has increased from ₹.74173 to ₹.82798 representing an increase of 11.63 %. However annual increase for 2013-14(A) was 10.59% and 4.61% over the previous year at current and constant prices respectively.

STATISTICAL TABLES

TABLE NO.1											
Movement of GSDP/NSDP and Per Capita Income at Factor Cost and their Indices in U.T. Chandigarh.											
(Base Year 2004-05)											
Sr.No.	ITEM	2004-05	2005-06	2006-07	2007-08	2008-09	2009-10	2010-11 (R)	2011-12 (P)	2012-13 (Q)	2013-14 (A)
F	2	3	4	5	6	7	8	9	10	11	12
1	GROSS STATE DOMESTIC PRODUCT (GSDP)										
1.1	At Current Prices (₹. Lakh)	850404	1018549	1227608	1366851	1533383	1757657	2001387	2282584	2504642	2907550
1.2	AT 2004-05 Prices (₹. Lakh)	850404	941333	1079499	1158054	1251908	1320568	1333780	1378674	1430833	1568783
2	INDEX NUMBER OF GSDP										
2.1	At Current Prices	100.00	119.77	144.36	160.73	180.31	206.68	235.35	268.41	294.52	341.90
2.2	At 2004-05 Prices	100.00	110.69	126.94	136.18	147.21	155.29	156.84	162.12	168.25	184.48
3	NET STATE DOMESTIC PRODUCT (NSDP)										
3.1	At Current Prices (₹. Lakh)	761015	917920	1107400	1232667	1374514	1573948	1788309	2025864	2199845	2548885
3.2	AT 2004-05 Prices (₹. Lakh)	761015	844208	968976	1040464	1118737	1176743	1176469	1195851	1226876	1344632
4	INDEX NUMBER OF NSDP										
4.1	At Current Prices	100.00	120.62	145.52	161.98	180.62	206.82	234.99	266.21	289.07	334.93
4.2	At 2004-05 Prices	100.00	110.93	127.33	136.72	147.01	154.63	154.59	157.14	161.22	176.69
5	PER CAPITA INCOME (₹.)										
5.1	At Current Prices	74173	84993	97568	102980	108486	117371	126651	136883	141926	156951
5.2	At 2004-05 Prices	74173	78167	85372	86923	88298	87751	83319	80801	79153	82798
6	INDEX NUMBER OF PER CAPITA INCOME										
6.1	At Current Prices	100.00	114.59	131.54	138.84	146.26	158.24	170.75	184.55	191.34	211.60
6.2	At 2004-05 Prices	100.00	105.39	115.10	117.19	119.04	118.31	112.33	108.94	106.71	111.63
7	POPULATION (LAKH)	10.26	10.80	11.35	11.97	12.67	13.41	14.12	14.80	15.50	16.24

Abbreviation used for

R: Revised

P: Provisional

Q: Quick

A: Advance

TABLE NO.2											
GROSS STATE DOMESTIC PRODUCT BY ECONOMIC ACTIVITY AT FACTOR COSTS BY INDUSTRY OF ORIGIN AT CURRENT PRICES. (Base Year=2004-05)											
(₹. In lakhs)											
SL.NO.	ITEM	2004-05	2005-06	2006-07	2007-08	2008-09	2009-10	2010-11 (R)	2011-12 (P)	2012-13 (Q)	2013-14 (A)
1	2	3	4	5	6	7	8	9	10	11	12
1	AGRICULTURE	7042	7724	8537	8832	9622	10220	10359	9237	9795	10693
2	FORESTRY & LOGGING	617	623	723	782	673	686	732	866	871	881
3	FISHING	49	65	118	134	141	136	170	214	52	55
4	MINING & QUARRING	1	1	1	1	1	13	44	0	0	0
	SUB-TOTAL:PRIMARY (1 to 4)	7709	8413	9379	9749	10437	11055	11305	10317	10718	11629
5	MANUFACTURING (5.1 + 5.2)	56067	58578	74492	86610	88873	107602	115826	126120	131059	133967
5.1	REGISTERED	22595	20213	29440	34977	33502	47748	44490	47192	48169	47340
5.2	UN-REGISTERED	33472	38365	45052	51633	55371	59854	71336	78928	82890	86627
6	CONSTRUCTION	78131	99190	157172	168928	102352	132402	129623	157257	149416	162214
7	ELECTRICITY, GAS & WATER SUPPLY	10997	11981	12393	14512	14892	21949	21535	24295	26689	29966
	SUB-TOTAL:SECONDARY(5 to 7)	145195	169749	244057	270050	206117	261954	266984	307672	307164	326147
8	TRANSPORT,STORAGE & COMMUNICATION (8.1+ 8.2+ 8.3+ 8.4)	55214	57454	59625	64225	71683	86163	96018	111309	132532	153279
8.1	RAILWAYS	470	580	695	781	791	1101	1024	880	992	1118
8.2	TRANSPORT BY OTHER MEANS	24183	27303	30743	33117	35691	42612	47640	59508	70784	80104
8.3	STORAGE	67	71	85	103	121	204	244	297	346	403
8.4	COMMUNICATION	30494	29500	28102	30224	35080	42246	47110	50624	60410	71654
9	TRADE , HOTEL & RESTAURANT	239250	319624	376282	437088	482309	500324	589734	681314	718333	902236
	SUB-TOTAL:TRANSPORT, COMMUNICATION & TRADE	294464	377078	435907	501313	553992	586487	685752	792623	850865	1055515
10	BANKING & INSURANCE	97126	105343	129630	145231	201191	254110	293011	305448	349890	400798
11	REAL ESTATE, OWNER -SHIP OF DWELLING & BUSINESS SERVICES	164952	197665	226802	256589	301318	349448	428428	517214	584072	662580
	SUB-TOTAL: FINANCE & REAL ESTATE (10 + 11)	262078	303008	356432	401820	502509	603558	721439	822662	933962	1063378
12	PUBLIC ADMINISTRATION	69475	75975	86166	79686	145791	143563	145409	171843	197453	215108
13	OTHER SERVICES	71483	84326	95667	104233	114537	151040	170498	177467	204480	235773
	SUB- TOTAL: COMMUNITY & PERSONAL SERVICES	140958	160301	181833	183919	260328	294603	315907	349310	401933	450881
14	SUB-TOTAL - TERTIARY (8 to 13)	697500	840387	974172	1087052	1316829	1484648	1723098	1964595	2186760	2569774
15	TOTAL: GROSS STATE DOMESTIC PRODUCTS	850404	1018549	1227608	1366851	1533383	1757657	2001387	2282584	2504642	2907550

TABLE NO.3

PERCENTAGE CHANGE OVER PREVIOUS YEAR IN GSDP AT CURRENT PRICES.

SL.NO.	ITEM	2004-05	2005-06	2006-07	2007-08	2008-09	2009-10	2010-11 (R)	2011-12 (P)	2012-13 (Q)	2013-14 (A)
1	2	3	4	5	6	7	8	9	10	11	12
1	AGRICULTURE		9.68	10.53	3.46	8.94	6.21	1.36	-10.83	6.04	9.17
2	FORESTRY & LOGGING		0.97	16.05	8.16	-13.94	1.93	6.71	18.31	0.58	1.15
3	FISHING		32.65	81.54	13.56	5.22	-3.55	25.00	25.88	-75.70	5.77
4	MINING & QUARRING		0.00	0.00	0.00	0.00	1200.00	238.46	-100.00	0.00	0.00
	SUB-TOTAL:PRIMARY (1 to 4)		9.13	11.48	3.94	7.06	5.92	2.26	-8.74	3.89	8.50
5	MANUFACTURING (5.1 + 5.2)		4.48	27.17	16.27	2.61	21.07	7.64	8.89	3.92	2.22
5.1	REGISTERED		-10.54	45.65	18.81	-4.22	42.52	-6.82	6.07	2.07	-1.72
5.2	UN-REGISTERED		14.62	17.43	14.61	7.24	8.10	19.18	10.64	5.02	4.51
6	CONSTRUCTION		26.95	58.46	7.48	-39.41	29.36	-2.10	21.32	-4.99	8.57
7	ELECTRICITY,GAS & WATER SUPPLY		8.95	3.44	17.10	2.62	47.39	-1.89	12.82	9.85	12.28
	SUB-TOTAL:SECONDARY(5 to 7)		16.91	43.78	10.65	-23.67	27.09	1.92	15.24	-0.17	6.18
8	TRANSPORT,STORAGE & COMMUNICATION (8.1+ 8.2+ 8.3+ 8.4)		4.06	3.78	7.71	11.61	20.20	11.44	15.93	19.07	15.65
8.1	RAILWAYS		23.40	19.83	12.37	1.28	39.19	-6.99	-14.06	12.73	12.70
8.2	TRANSPORT BY OTHER MEANS		12.90	12.60	7.72	7.77	19.39	11.80	24.91	18.95	13.17
8.3	STORAGE		5.97	19.72	21.18	17.48	68.60	19.61	21.72	16.50	16.47
8.4	COMMUNICATION		-3.26	-4.74	7.55	16.07	20.43	11.51	7.46	19.33	18.61
9	TRADE , HOTEL & RESTAURANT		33.59	17.73	16.16	10.35	3.74	17.87	15.53	5.43	25.60
	SUB-TOTAL:TRANSPORT, COMMUNICATION & TRADE		28.06	15.60	15.00	10.51	5.87	16.93	15.58	7.35	24.05
10	BANKING & INSURANCE		8.46	23.06	12.04	38.53	26.30	15.31	4.24	14.55	14.55
11	REAL ESTATE, OWNER -SHIP OF DWELLING & BUSINESS SERVICES		19.83	14.74	13.13	17.43	15.97	22.60	20.72	12.93	13.44
	SUB-TOTAL: FINANCE & REAL ESTATE (10 + 11)		15.62	17.63	12.73	25.06	20.11	19.53	14.03	13.53	13.86
12	PUBLIC ADMINISTRATION		9.36	13.41	-7.52	82.96	-1.53	1.29	18.18	14.90	8.94
13	OTHER SERVICES		17.97	13.45	8.95	9.89	31.87	12.88	4.09	15.22	15.30
	SUB- TOTAL: COMMUNITY & PERSONAL SERVICES		13.72	13.43	1.15	41.54	13.17	7.23	10.57	15.06	12.18
14	SUB-TOTAL -TERTIARY (8 to 13)		20.49	15.92	11.59	21.14	12.74	16.06	14.02	11.31	17.52
15	TOTAL: GROSS STATE DOMESTIC PRODUCTS		19.77	20.53	11.34	12.18	14.63	13.87	14.05	9.73	16.09

TABLE NO.4											
PERCENTAGE DISTRIBUTION OF GSDP BY ECONOMIC ACTIVITY AT CURRENT PRICES.											
SL.NO.	ITEM	2004-05	2005-06	2006-07	2007-08	2008-09	2009-10	2010-11 (R)	2011-12 (P)	2012-13 (Q)	2013-14 (A)
1	2	3	4	5	6	7	8	9	10	11	12
1	AGRICULTURE	0.83	0.76	0.70	0.65	0.63	0.58	0.52	0.40	0.39	0.37
2	FORESTRY & LOGGING	0.07	0.06	0.06	0.06	0.04	0.04	0.04	0.04	0.03	0.03
3	FISHING	0.01	0.01	0.01	0.01	0.01	0.01	0.01	0.01	0.00	0.00
4	MINING & QUARRING	0.00	0.00	0.00	0.00	0.00	0.00	0.00	0.00	0.00	0.00
	SUB-TOTAL:PRIMARY (1 to 4)	0.91	0.83	0.76	0.71	0.68	0.63	0.56	0.45	0.43	0.40
5	MANUFACTURING (5.1 + 5.2)	6.59	5.75	6.07	6.34	5.80	6.12	5.79	5.53	5.23	4.61
5.1	REGISTERED	2.66	1.98	2.40	2.56	2.18	2.72	2.22	2.07	1.92	1.63
5.2	UN-REGISTERED	3.94	3.77	3.67	3.78	3.61	3.41	3.56	3.46	3.31	2.98
6	CONSTRUCTION	9.19	9.74	12.80	12.36	6.67	7.53	6.48	6.89	5.97	5.58
7	ELECTRICITY,GAS & WATER SUPPLY	1.29	1.18	1.01	1.06	0.97	1.25	1.08	1.06	1.07	1.03
	SUB-TOTAL:SECONDARY(5 to 7)	17.07	16.67	19.88	19.76	13.44	14.90	13.34	13.48	12.26	11.22
8	TRANSPORT,STORAGE & COMMUNICATION (8.1+ 8.2+ 8.3+ 8.4)	6.49	5.64	4.86	4.70	4.67	4.90	4.80	4.88	5.29	5.27
8.1	RAILWAYS	0.06	0.06	0.06	0.06	0.05	0.06	0.05	0.04	0.04	0.04
8.2	TRANSPORT BY OTHER MEANS	2.84	2.68	2.50	2.42	2.33	2.42	2.38	2.61	2.83	2.76
8.3	STORAGE	0.01	0.01	0.01	0.01	0.01	0.01	0.01	0.01	0.01	0.01
8.4	COMMUNICATION	3.59	2.90	2.29	2.21	2.29	2.40	2.35	2.22	2.41	2.46
9	TRADE , HOTEL & RESTAURANT	28.13	31.38	30.65	31.98	31.45	28.47	29.47	29.85	28.68	31.03
	SUB-TOTAL:TRANSPORT, COMMUNICATION & TRADE	34.63	37.02	35.51	36.68	36.13	33.37	34.26	34.72	33.97	36.30
10	BANKING & INSURANCE	11.42	10.34	10.56	10.63	13.12	14.46	14.64	13.38	13.97	13.78
11	REAL ESTATE, OWNER -SHIP OF DWELLING & BUSINESS SERVICES	19.40	19.41	18.48	18.77	19.65	19.88	21.41	22.66	23.32	22.79
	SUB-TOTAL: FINANCE & REAL ESTATE (10 + 11)	30.82	29.75	29.03	29.40	32.77	34.34	36.05	36.04	37.29	36.57
12	PUBLIC ADMINISTRATION	8.17	7.46	7.02	5.83	9.51	8.17	7.27	7.53	7.88	7.40
13	OTHER SERVICES	8.41	8.28	7.79	7.63	7.47	8.59	8.52	7.77	8.16	8.11
	SUB- TOTAL: COMMUNITY & PERSONAL SERVICES	16.58	15.74	14.81	13.46	16.98	16.76	15.78	15.30	16.05	15.51
14	SUB-TOTAL -TERTIARY (8 to 13)	82.02	82.51	79.36	79.53	85.88	84.47	86.10	86.07	87.31	88.38
15	TOTAL: GROSS STATE DOMESTIC PRODUCTS	100.00	100.00	100.00	100.00	100.00	100.00	100.00	100.00	100.00	100.00

TABLE NO.5											
GROSS STATE DOMESTIC PRODUCT BY ECONOMIC ACTIVITY AT FACTOR COSTS BY INDUSTRY OF ORIGIN AT CONSTANT PRICES. (Base Year=2004-05)											
(₹. In lakhs)											
Sl..NO.	ITEM	2004-05	2005-06	2006-07	2007-08	2008-09	2009-10	2010-11 (R)	2011-12 (P)	2012-13 (Q)	2013-14 (A)
1	2	3	4	5	6	7	8	9	10	11	12
1	AGRICULTURE	7042	7294	7256	7276	7742	6610	6368	5245	4867	4854
2	FORESTRY & LOGGING	617	555	596	616	659	681	420	446	406	385
3	FISHING	49	59	99	108	120	114	103	117	26	29
4	MINING & QUARRING	1	1	1	1	1	8	30	0	0	0
	SUB-TOTAL:PRIMARY (1 to 4)	7709	7909	7952	8001	8522	7413	6921	5808	5299	5268
5	MANUFACTURING (5.1 + 5.2)	56067	51902	63601	71018	71365	84704	85562	84032	82732	83009
5.1	REGISTERED	22595	15110	22424	25306	25997	37644	34340	31288	30302	29585
5.2	UN-REGISTERED	33472	36792	41177	45712	45368	47060	51222	52744	52430	53424
6	CONSTRUCTION	78131	92711	136794	136088	73571	90713	81435	89710	90016	90920
7	ELECTRICITY,GAS & WATER SUPPLY	10997	11072	10808	12222	13568	17439	14521	16285	17799	18659
	SUB-TOTAL:SECONDARY(5 to 7)	145195	155685	211203	219328	158504	192856	181518	190027	190547	192588
8	TRANSPORT,STORAGE & COMMUNICATION (8.1+ 8.2+ 8.3+ 8.4)	55214	58710	63695	70951	78773	87928	92728	103835	110736	122260
8.1	RAILWAYS	470	591	647	685	686	852	853	715	718	719
8.2	TRANSPORT BY OTHER MEANS	24183	24423	25415	26057	25694	27772	27220	30565	32896	34370
8.3	STORAGE	67	71	85	103	112	138	148	162	173	186
8.4	COMMUNICATION	30494	33625	37548	44106	52281	59166	64507	72393	76949	86985
9	TRADE , HOTEL & RESTAURANT	239250	284652	310403	343898	377199	334261	338524	350483	335256	394057
	SUB-TOTAL:TRANSPORT, COMMUNICATION & TRADE	294464	343362	374098	414849	455972	422189	431252	454318	445992	516317
10	BANKING & INSURANCE	97126	113417	142687	161271	214054	271134	290299	291266	326979	367070
11	REAL ESTATE, OWNERSHIP OF DWELLING & BUSINESS SERVICES	164952	177683	192640	209037	224379	232013	239246	253778	269672	289071
	SUB-TOTAL: FINANCE & REAL ESTATE (10 + 11)	262078	291100	335327	370308	438433	503147	529545	545044	596651	656141
12	PUBLIC ADMINISTRATION	69475	68403	72421	64113	108427	97463	88148	93576	98588	99210
13	OTHER SERVICES	71483	74874	78498	81455	82050	97500	96396	89901	93756	99259
	SUB- TOTAL: COMMUNITY & PERSONAL SERVICES	140958	143277	150919	145568	190477	194963	184544	183477	192344	198469
14	SUB-TOTAL -TERTIARY (8 to 13)	697500	777739	860344	930725	1084882	1120299	1145341	1182839	1234987	1370927
15	TOTAL: GROSS STATE DOMESTIC PRODUCTS	850404	941333	1079499	1158054	1251908	1320568	1333780	1378674	1430833	1568783

TABLE NO.6											
PERCENTAGE CHANGE OVER PREVIOUS YEAR IN GSDP AT CONSTANT PRICES.											
SL.NO.	ITEM	2004-05	2005-06	2006-07	2007-08	2008-09	2009-10	2010-11 (R)	2011-12 (P)	2012-13 (Q)	2013-14 (A)
1	2	3	4	5	6	7	8	9	10	11	12
1	AGRICULTURE		3.58	-0.52	0.28	6.40	-14.62	-3.66	-17.64	-7.21	-0.27
2	FORESTRY & LOGGING		-10.05	7.39	3.36	6.98	3.34	-38.33	6.19	-8.97	-5.17
3	FISHING		20.41	67.80	9.09	11.11	-5.00	-9.65	13.59	-77.78	11.54
4	MINING & QUARRING		0.00	0.00	0.00	0.00	700.00	275.00	-100.00	0.00	0.00
	SUB-TOTAL:PRIMARY (1 to 4)		2.59	0.54	0.62	6.51	-13.01	-6.64	-16.08	-8.76	-0.59
5	MANUFACTURING (5.1 + 5.2)		-7.43	22.54	11.66	0.49	18.69	1.01	-1.79	-1.55	0.33
5.1	REGISTERED		-33.13	48.41	12.85	2.73	44.80	-8.78	-8.89	-3.15	-2.37
5.2	UN-REGISTERED		9.92	11.92	11.01	-0.75	3.73	8.84	2.97	-0.60	1.90
6	CONSTRUCTION		18.66	47.55	-0.52	-45.94	23.30	-10.23	10.16	0.34	1.00
7	ELECTRICITY,GAS & WATER SUPPLY		0.68	-2.38	13.08	11.01	28.53	-16.73	12.15	9.30	4.83
	SUB-TOTAL:SECONDARY(5 to 7)		7.22	35.66	3.85	-27.73	21.67	-5.88	4.69	0.27	1.07
8	TRANSPORT,STORAGE & COMMUNICATION (8.1+ 8.2+ 8.3+ 8.4)		6.33	8.49	11.39	11.02	11.62	5.46	11.98	6.65	10.41
8.1	RAILWAYS		25.74	9.48	5.87	0.15	24.20	0.12	-16.18	0.42	0.14
8.2	TRANSPORT BY OTHER MEANS		0.99	4.06	2.53	-1.39	8.09	-1.99	12.29	7.63	4.48
8.3	STORAGE		5.97	19.72	21.18	8.74	23.21	7.25	9.46	6.79	7.51
8.4	COMMUNICATION		10.27	11.67	17.47	18.53	13.17	9.03	12.23	6.29	13.04
9	TRADE , HOTEL & RESTAURANT		18.98	9.05	10.79	9.68	-11.38	1.28	3.53	-4.34	17.54
	SUB-TOTAL:TRANSPORT, COMMUNICATION & TRADE		16.61	8.95	10.89	9.91	-7.41	2.15	5.35	-1.83	15.77
10	BANKING & INSURANCE		16.77	25.81	13.02	32.73	26.67	7.07	0.33	12.26	12.26
11	REAL ESTATE, OWNER -SHIP OF DWELLING & BUSINESS SERVICES		7.72	8.42	8.51	7.34	3.40	3.12	6.07	6.26	7.19
	SUB-TOTAL: FINANCE & REAL ESTATE (10 + 11)		11.07	15.19	10.43	18.40	14.76	5.25	2.93	9.47	9.97
12	PUBLIC ADMINISTRATION		-1.54	5.87	-11.47	69.12	-10.11	-9.56	6.16	5.36	0.63
13	OTHER SERVICES		4.74	4.84	3.77	0.73	18.83	-1.13	-6.74	4.29	5.87
	SUB- TOTAL: COMMUNITY & PERSONAL SERVICES		1.65	5.33	-3.55	30.85	2.36	-5.34	-0.58	4.83	3.18
14	SUB-TOTAL -TERTIARY (8 to 13)		11.50	10.62	8.18	16.56	3.26	2.24	3.27	4.41	11.01
15	TOTAL: GROSS STATE DOMESTIC PRODUCTS		10.69	14.68	7.28	8.10	5.48	1.00	3.37	3.78	9.64

TABLE NO.7

PERCENTAGE DISTRIBUTION OF GSDP BY ECONOMIC ACTIVITY AT CONSTANT PRICES.

SL.NO.	ITEM	2004-05	2005-06	2006-07	2007-08	2008-09	2009-10	2010-11 (R)	2011-12 (P)	2012-13 (Q)	2013-14 (A)
1	2	3	4	5	6	7	8	9	10	11	12
1	AGRICULTURE	0.83	0.77	0.67	0.63	0.62	0.50	0.48	0.38	0.34	0.31
2	FORESTRY & LOGGING	0.07	0.06	0.06	0.05	0.05	0.05	0.03	0.03	0.03	0.02
3	FISHING	0.01	0.01	0.01	0.01	0.01	0.01	0.01	0.01	0.00	0.00
4	MINING & QUARRING	0.00	0.00	0.00	0.00	0.00	0.00	0.00	0.00	0.00	0.00
	SUB-TOTAL:PRIMARY (1 to 4)	0.91	0.84	0.74	0.69	0.68	0.56	0.52	0.42	0.37	0.34
5	MANUFACTURING (5.1 + 5.2)	6.59	5.51	5.89	6.13	5.70	6.41	6.42	6.10	5.78	5.29
5.1	REGISTERED	2.66	1.61	2.08	2.19	2.08	2.85	2.57	2.27	2.12	1.89
5.2	UN-REGISTERED	3.94	3.91	3.81	3.95	3.62	3.56	3.84	3.83	3.66	3.41
6	CONSTRUCTION	9.19	9.85	12.67	11.75	5.88	6.87	6.11	6.51	6.29	5.80
7	ELECTRICITY,GAS & WATER SUPPLY	1.29	1.18	1.00	1.06	1.08	1.32	1.09	1.18	1.24	1.19
	SUB-TOTAL:SECONDARY (5 to 7)	17.07	16.54	19.56	18.94	12.66	14.60	13.61	13.78	13.32	12.28
8	TRANSPORT,STORAGE & COMMUNICATION (8.1+ 8.2+ 8.3+ 8.4)	6.49	6.24	5.90	6.13	6.29	6.66	6.95	7.53	7.74	7.79
8.1	RAILWAYS	0.06	0.06	0.06	0.06	0.05	0.06	0.06	0.05	0.05	0.05
8.2	TRANSPORT BY OTHER MEANS	2.84	2.59	2.35	2.25	2.05	2.10	2.04	2.22	2.30	2.19
8.3	STORAGE	0.01	0.01	0.01	0.01	0.01	0.01	0.01	0.01	0.01	0.01
8.4	COMMUNICATION	3.59	3.57	3.48	3.81	4.18	4.48	4.84	5.25	5.38	5.54
9	TRADE , HOTEL & RESTAURANT	28.13	30.24	28.75	29.70	30.13	25.31	25.38	25.42	23.43	25.12
	SUB-TOTAL:TRANSPORT, COMMUNICATION & TRADE	34.63	36.48	34.65	35.82	36.42	31.97	32.33	32.95	31.17	32.91
10	BANKING & INSURANCE	11.42	12.05	13.22	13.93	17.10	20.53	21.77	21.13	22.85	23.40
11	REAL ESTATE, OWNER -SHIP OF DWELLING & BUSINESS SERVICES	19.40	18.88	17.85	18.05	17.92	17.57	17.94	18.41	18.85	18.43
	SUB-TOTAL: FINANCE & REAL ESTATE (10 + 11)	30.82	30.92	31.06	31.98	35.02	38.10	39.70	39.53	41.70	41.82
12	PUBLIC ADMINISTRATION	8.17	7.27	6.71	5.54	8.66	7.38	6.61	6.79	6.89	6.32
13	OTHER SERVICES	8.41	7.95	7.27	7.03	6.55	7.38	7.23	6.52	6.55	6.33
	SUB- TOTAL: COMMUNITY & PERSONAL SERVICES	16.58	15.22	13.98	12.57	15.21	14.76	13.84	13.31	13.44	12.65
14	SUB-TOTAL -TERTIARY (8 to 13)	82.02	82.62	79.70	80.37	86.66	84.83	85.87	85.80	86.31	87.39
15	TOTAL: GROSS STATE DOMESTIC PRODUCTS	100.00	100.00	100.00	100.00	100.00	100.00	100.00	100.00	100.00	100.00

TABLE NO.8											
NET STATE DOMESTIC PRODUCT AT FACTOR COSTS BY INDUSTRY OF ORIGIN BY ECONOMIC ACTIVITY AT CURRENT PRICES. (Base Year=2004-05)											
(₹. In lakhs)											
SL.NO.	ITEM	2004-05	2005-06	2006-07	2007-08	2008-09	2009-10	2010-11 (R)	2011-12 (P)	2012-13 (Q)	2013-14 (A)
1	2	3	4	5	6	7	8	9	10	11	12
1	AGRICULTURE	6777	7432	8203	8441	9196	9693	9825	8761	9290	10142
2	FORESTRY & LOGGING	609	615	715	773	616	653	725	856	863	873
3	FISHING	43	57	103	116	121	128	145	180	44	47
4	MINING & QUARRING	1	1	1	1	1	10	37	0	0	0
	SUB-TOTAL:PRIMARY (1 to 4)	7430	8105	9022	9331	9934	10484	10732	9797	10197	11062
5	MANUFACTURING (5.1 + 5.2)	48974	52207	65148	77899	80154	99725	107997	117286	120842	123856
5.1	REGISTERED	15989	14389	20717	26930	25535	40729	37595	39388	39032	38358
5.2	UN-REGISTERED	32985	37818	44431	50969	54619	58996	70402	77898	81810	85498
6	CONSTRUCTION	74756	94873	150260	160017	97921	125410	123822	149958	141636	153767
7	ELECTRICITY,GAS & WATER SUPPLY	6409	7244	7796	8876	9924	13486	15338	19844	21439	23856
	SUB-TOTAL:SECONDARY (5 to 7)	130139	154324	223204	246792	187999	238621	247157	287088	283917	301479
8	TRANSPORT,STORAGE & COMMUNICATION (8.1+ 8.2+ 8.3+ 8.4)	42087	43534	45343	48762	52797	63291	68651	72375	89687	103898
8.1	RAILWAYS	331	394	476	573	542	777	688	592	668	752
8.2	TRANSPORT BY OTHER MEANS	16195	18504	21140	23019	23587	28520	29620	33954	44022	49818
8.3	STORAGE	57	58	69	81	91	157	188	197	240	241
8.4	COMMUNICATION	25504	24578	23658	25089	28577	33837	38155	37632	44757	53087
9	TRADE, HOTEL & RESTAURANT	218021	294153	345323	398828	434524	445543	521982	594010	599632	753146
	SUB-TOTAL:TRANSPORT, COMMUNICATION & TRADE	260108	337687	390666	447590	487321	508834	590633	666385	689319	857044
10	BANKING & INSURANCE	95423	103464	127380	142807	198001	250118	288775	301033	344993	395198
11	REAL ESTATE, OWNER -SHIP OF DWELLING & BUSINESS SERVICES	152973	184140	211116	238100	278906	323318	397429	482338	543693	616774
	SUB-TOTAL: FINANCE & REAL ESTATE (10 + 11)	248396	287604	338496	380907	476907	573436	686204	783371	888686	1011972
12	PUBLIC ADMINISTRATION	55924	60817	67970	63728	122091	120684	118426	144497	165840	180668
13	OTHER SERVICES	59018	69383	78042	84319	90262	121889	135157	134726	161886	186660
	SUB- TOTAL: COMMUNITY & PERSONAL SERVICES	114942	130200	146012	148047	212353	242573	253583	279223	327726	367328
14	SUB-TOTAL -TERTIARY (8 to 13)	623446	755491	875174	976544	1176581	1324843	1530420	1728979	1905731	2236344
15	TOTAL: NET STATE DOMESTIC PRODUCTS	761015	917920	1107400	1232667	1374514	1573948	1788309	2025864	2199845	2548885
16	POPULATION (In lakh)	10.26	10.80	11.35	11.97	12.67	13.41	14.12	14.80	15.50	16.24
17	PER CAPITA INCOME (₹.)	74173	84993	97568	102980	108486	117371	126651	136883	141926	156951

TABLE NO.9											
PERCENTAGE CHANGE OVER PREVIOUS YEAR IN NSDP AT CURRENT PRICES.											
SL.NO.	ITEM	2004-05	2005-06	2006-07	2007-08	2008-09	2009-10	2010-11 (R)	2011-12 (P)	2012-13 (Q)	2013-14 (A)
1	2	3	4	5	6	7	8	9	10	11	12
1	AGRICULTURE		9.67	10.37	2.90	8.94	5.40	1.36	-10.83	6.04	9.17
2	FORESTRY & LOGGING		0.99	16.26	8.11	-20.31	6.01	11.03	18.07	0.82	1.16
3	FISHING		32.56	80.70	12.62	4.31	5.79	13.28	24.14	-75.56	6.82
4	MINING & QUARRING		0.00	0.00	0.00	0.00	900.00	270.00	-100.00	0.00	#DIV/0!
	SUB-TOTAL:PRIMARY (1 to 4)		9.08	11.31	3.42	6.46	5.54	2.37	-8.71	4.08	8.48
5	MANUFACTURING (5.1 + 5.2)		6.60	24.79	19.57	2.89	24.42	8.29	8.60	3.03	2.49
5.1	REGISTERED		-10.01	43.98	29.99	-5.18	59.50	-7.69	4.77	-0.90	-1.73
5.2	UN-REGISTERED		14.65	17.49	14.71	7.16	8.01	19.33	10.65	5.02	4.51
6	CONSTRUCTION		26.91	58.38	6.49	-38.81	28.07	-1.27	21.11	-5.55	8.56
7	ELECTRICITY,GAS & WATER SUPPLY		13.03	7.62	13.85	11.81	35.89	13.73	29.38	8.04	11.27
	SUB-TOTAL:SECONDARY(5 to 7)		18.58	44.63	10.57	-23.82	26.93	3.58	16.16	-1.10	6.19
8	TRANSPORT,STORAGE & COMMUNICATION (8.1+ 8.2+ 8.3+ 8.4)		3.44	4.16	7.54	8.27	19.88	8.47	5.42	23.92	15.85
8.1	RAILWAYS		19.03	20.81	20.38	-5.41	43.36	-11.45	-13.95	12.84	12.57
8.2	TRANSPORT BY OTHER MEANS		14.26	14.25	8.89	2.47	20.91	3.86	14.63	29.65	13.17
8.3	STORAGE		1.75	18.97	17.39	12.35	72.53	19.75	4.79	21.83	0.42
8.4	COMMUNICATION		-3.63	-3.74	6.05	13.90	18.41	12.76	-1.37	18.93	18.61
9	TRADE , HOTEL & RESTAURANT		34.92	17.40	15.49	8.95	2.54	17.16	13.80	0.95	25.60
	SUB-TOTAL:TRANSPORT, COMMUNICATION & TRADE		29.83	15.69	14.57	8.88	4.41	16.08	12.83	3.44	24.33
10	BANKING & INSURANCE		8.43	23.12	12.11	38.65	26.32	15.46	4.24	14.60	14.55
11	REAL ESTATE, OWNER -SHIP OF DWELLING & BUSINESS SERVICES		20.37	14.65	12.78	17.14	15.92	22.92	21.36	12.72	13.44
	SUB-TOTAL: FINANCE & REAL ESTATE (10 + 11)		15.78	17.70	12.53	25.20	20.24	19.67	14.16	13.44	13.87
12	PUBLIC ADMINISTRATION		8.75	11.76	-6.24	91.58	-1.15	-1.87	22.01	14.77	8.94
13	OTHER SERVICES		17.56	12.48	8.04	7.05	35.04	10.89	-0.32	20.16	15.30
	SUB- TOTAL: COMMUNITY & PERSONAL SERVICES		13.27	12.14	1.39	43.44	14.23	4.54	10.11	17.37	12.08
14	SUB-TOTAL -TERTIARY (8 to 13)		21.18	15.84	11.58	20.48	12.60	15.52	12.97	10.22	17.35
15	TOTAL: NET STATE DOMESTIC PRODUCTS		20.62	20.64	11.31	11.51	14.51	13.62	13.28	8.59	15.87

TABLE NO.10											
PERCENTAGE DISTRIBUTION OF NSDP BY ECONOMIC ACTIVITY AT CURRENT PRICES.											
SL.NO.	ITEM	2004-05	2005-06	2006-07	2007-08	2008-09	2009-10	2010-11 (R)	2011-12 (P)	2012-13 (Q)	2013-14 (A)
1	2	3	4	5	6	7	8	9	10	11	12
1	AGRICULTURE	0.89	0.81	0.74	0.68	0.67	0.62	0.55	0.43	0.42	0.40
2	FORESTRY & LOGGING	0.08	0.07	0.06	0.06	0.04	0.04	0.04	0.04	0.04	0.03
3	FISHING	0.01	0.01	0.01	0.01	0.01	0.01	0.01	0.01	0.00	0.00
4	MINING & QUARRING	0.00	0.00	0.00	0.00	0.00	0.00	0.00	0.00	0.00	0.00
	SUB-TOTAL:PRIMARY (1 to 4)	0.98	0.88	0.81	0.76	0.72	0.67	0.60	0.48	0.46	0.43
5	MANUFACTURING (5.1 + 5.2)	6.44	5.69	5.88	6.32	5.83	6.34	6.04	5.79	5.49	4.86
5.1	REGISTERED	2.10	1.57	1.87	2.18	1.86	2.59	2.10	1.94	1.77	1.50
5.2	UN-REGISTERED	4.33	4.12	4.01	4.13	3.97	3.75	3.94	3.85	3.72	3.35
6	CONSTRUCTION	9.82	10.34	13.57	12.98	7.12	7.97	6.92	7.40	6.44	6.03
7	ELECTRICITY,GAS & WATER SUPPLY	0.84	0.79	0.70	0.72	0.72	0.86	0.86	0.98	0.97	0.94
	SUB-TOTAL:SECONDARY(5 to 7)	17.10	16.81	20.16	20.02	13.68	15.16	13.82	14.17	12.91	11.83
8	TRANSPORT,STORAGE & COMMUNICATION (8.1+ 8.2+ 8.3+ 8.4)	5.53	4.74	4.09	3.96	3.84	4.02	3.84	3.57	4.08	4.08
8.1	RAILWAYS	0.04	0.04	0.04	0.05	0.04	0.05	0.04	0.03	0.03	0.03
8.2	TRANSPORT BY OTHER MEANS	2.13	2.02	1.91	1.87	1.72	1.81	1.66	1.68	2.00	1.95
8.3	STORAGE	0.01	0.01	0.01	0.01	0.01	0.01	0.01	0.01	0.01	0.01
8.4	COMMUNICATION	3.35	2.68	2.14	2.04	2.08	2.15	2.13	1.86	2.03	2.08
9	TRADE , HOTEL & RESTAURANT	28.65	32.05	31.18	32.35	31.61	28.31	29.19	29.32	27.26	29.55
	SUB-TOTAL:TRANSPORT, COMMUNICATION & TRADE	34.18	36.79	35.28	36.31	35.45	32.33	33.03	32.89	31.33	33.62
10	BANKING & INSURANCE	12.54	11.27	11.50	11.59	14.41	15.89	16.15	14.86	15.68	15.50
11	REAL ESTATE, OWNER -SHIP OF DWELLING & BUSINESS SERVICES	20.10	20.06	19.06	19.32	20.29	20.54	22.22	23.81	24.72	24.20
	SUB-TOTAL: FINANCE & REAL ESTATE (10 + 11)	32.64	31.33	30.57	30.90	34.70	36.43	38.37	38.67	40.40	39.70
12	PUBLIC ADMINISTRATION	7.35	6.63	6.14	5.17	8.88	7.67	6.62	7.13	7.54	7.09
13	OTHER SERVICES	7.76	7.56	7.05	6.84	6.57	7.74	7.56	6.65	7.36	7.32
	SUB- TOTAL: COMMUNITY & PERSONAL SERVICES	15.10	14.18	13.19	12.01	15.45	15.41	14.18	13.78	14.90	14.41
14	SUB-TOTAL -TERTIARY (8 to 13)	81.92	82.30	79.03	79.22	85.60	84.17	85.58	85.35	86.63	87.74
15	TOTAL: NET STATE DOMESTIC PRODUCTS	100.00	100.00	100.00	100.00	100.00	100.00	100.00	100.00	100.00	100.00

TABLE NO.11											
NET STATE DOMESTIC PRODUCT (NSDP) BY ECONOMIC ACTIVITY AT FACTOR COSTS BY INDUSTRY OF ORIGIN AT CONSTANT PRICES.											
(Base Year= 2004-05)											
(₹. In lakhs)											
SL.NO.	ITEM	2004-05	2005-06	2006-07	2007-08	2008-09	2009-10	2010-11 (R)	2011-12 (P)	2012-13 (Q)	2013-14 (A)
1	2	3	4	5	6	7	8	9	10	11	12
1	AGRICULTURE	6777	7015	6956	6945	7390	6309	6078	5006	4645	4633
2	FORESTRY & LOGGING	609	547	588	609	652	670	415	440	401	380
3	FISHING	43	51	85	92	103	110	84	93	21	24
4	MINING & QUARRING	1	1	1	1	1	7	25	0	0	0
	SUB-TOTAL:PRIMARY (1 to 4)	7430	7614	7630	7647	8146	7096	6602	5539	5067	5037
5	MANUFACTURING (5.1 + 5.2)	48974	45743	54862	63112	63837	78122	79253	77186	75106	75479
5.1	REGISTERED	15989	9475	14254	17987	19106	31765	28763	25216	23461	22860
5.2	UN-REGISTERED	32985	36268	40608	45125	44731	46357	50490	51970	51645	52619
6	CONSTRUCTION	74756	88534	130315	127972	70812	85849	76802	84114	84401	85248
7	ELECTRICITY,GAS & WATER SUPPLY	6409	6455	6444	7002	8776	10105	9742	10341	11422	11818
	SUB-TOTAL:SECONDARY(5 to 7)	130139	140732	191621	198086	143425	174076	165797	171641	170929	172545
8	TRANSPORT,STORAGE & COMMUNICATION (8.1+ 8.2+ 8.3+ 8.4)	42087	45249	50321	56924	62308	68534	71090	74025	79282	88461
8.1	RAILWAYS	331	409	443	505	489	635	595	499	501	503
8.2	TRANSPORT BY OTHER MEANS	16195	15872	16332	16775	14943	15320	12522	10456	12662	13229
8.3	STORAGE	57	58	69	81	80	88	109	135	141	146
8.4	COMMUNICATION	25504	28910	33477	39563	46796	52491	57864	62935	65978	74583
9	TRADE, HOTEL & RESTAURANT	218021	260023	282120	310893	339739	291875	288969	290566	258697	304070
	SUB-TOTAL:TRANSPORT, COMMUNICATION & TRADE	260108	305272	332441	367817	402047	360409	360059	364591	337979	392531
10	BANKING & INSURANCE	95423	111605	140592	159082	211314	267830	286935	287891	323383	363033
11	REAL ESTATE, OWNER -SHIP OF DWELLING & BUSINESS SERVICES	152973	164593	178554	193708	207358	213004	218231	231781	245917	263607
	SUB-TOTAL: FINANCE & REAL ESTATE (10 + 11)	248396	276198	319146	352790	418672	480834	505166	519672	569300	626640
12	PUBLIC ADMINISTRATION	55924	53943	55896	50294	85057	80177	69203	75519	79244	79744
13	OTHER SERVICES	59018	60449	62242	63830	61390	74151	69642	58889	64357	68135
	SUB- TOTAL: COMMUNITY & PERSONAL SERVICES	114942	114392	118138	114124	146447	154328	138845	134408	143601	147879
14	SUB-TOTAL -TERTIARY (8 to 13)	623446	695862	769725	834731	967166	995571	1004070	1018671	1050880	1167050
15	TOTAL: NET STATE DOMESTIC PRODUCTS	761015	844208	968976	1040464	1118737	1176743	1176469	1195851	1226876	1344632
16	POPULATION (In lakh)	10.26	10.80	11.35	11.97	12.67	13.41	14.12	14.80	15.50	16.24
17	PER CAPITA INCOME (₹.)	74173	78167	85372	86923	88298	87751	83319	80801	79153	82798

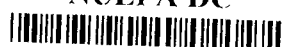
TABLE NO.12											
PERCENTAGE CHANGE OVER PREVIOUS YEAR IN NSDP AT CONSTANT PRICES.											
SL.NO.	ITEM	2004-05	2005-06	2006-07	2007-08	2008-09	2009-10	2010-11 (R)	2011-12 (P)	2012-13 (Q)	2013-14 (A)
1	2	3	4	5	6	7	8	9	10	11	12
1	AGRICULTURE		3.51	-0.84	-0.16	6.41	-14.63	-3.66	-17.64	-21	-0.26
2	FORESTRY & LOGGING		-10.18	7.50	3.57	7.06	2.76	-38.06	6.02	-86	-5.24
3	FISHING		18.60	66.67	8.24	11.96	6.80	-23.64	10.71	-7.42	14.29
4	MINING & QUARRING		0.00	0.00	0.00	0.00	600.00	257.14	-100.00	00	0.00
	SUB-TOTAL:PRIMARY (1 to 4)		2.48	0.21	0.22	6.53	-12.89	-6.96	-16.10	-52	-0.59
5	MANUFACTURING (5.1 + 5.2)		-6.60	19.94	15.04	1.15	22.38	1.45	-2.61	-69	0.50
5.1	REGISTERED		-40.74	50.44	26.19	6.22	66.26	-9.45	-12.33	-96	-2.56
5.2	UN-REGISTERED		9.95	11.97	11.12	-0.87	3.64	8.92	2.93	-63	1.89
6	CONSTRUCTION		18.43	47.19	-1.80	-44.67	21.24	-10.54	9.52	34	1.00
7	ELECTRICITY,GAS & WATER SUPPLY		0.72	-0.17	8.66	25.34	15.14	-3.59	6.15	145	3.47
	SUB-TOTAL:SECONDARY(5 to 7)		8.14	36.16	3.37	-27.59	21.37	-4.76	3.52	-41	0.95
8	TRANSPORT,STORAGE & COMMUNICATION (8.1+ 8.2+ 8.3+ 8.4)		7.51	11.21	13.12	9.46	9.99	3.73	4.13	710	11.58
8.1	RAILWAYS		23.56	8.31	14.00	-3.17	29.86	-6.30	-16.13	40	0.40
8.2	TRANSPORT BY OTHER MEANS		-1.99	2.90	2.71	-10.92	2.52	-18.26	-16.50	2.10	4.48
8.3	STORAGE		1.75	18.97	17.39	-1.23	10.00	23.86	23.85	44	3.55
8.4	COMMUNICATION		13.35	15.80	18.18	18.28	12.17	10.24	8.76	84	13.04
9	TRADE , HOTEL & RESTAURANT		19.27	8.50	10.20	9.28	-14.09	-1.00	0.55	-0.97	17.54
	SUB-TOTAL:TRANSPORT, COMMUNICATION & TRADE		17.36	8.90	10.64	9.31	-10.36	-0.10	1.26	-30	16.14
10	BANKING & INSURANCE		16.96	25.97	13.15	32.83	26.75	7.13	0.33	133	12.26
11	REAL ESTATE, OWNER -SHIP OF DWELLING & BUSINESS SERVICES		7.60	8.48	8.49	7.05	2.72	2.45	6.21	10	7.19
	SUB-TOTAL: FINANCE & REAL ESTATE (10 + 11)		11.19	15.55	10.54	18.67	14.85	5.06	2.87	55	10.07
12	PUBLIC ADMINISTRATION		-3.54	3.62	-10.02	69.12	-5.74	-13.69	9.13	93	0.63
13	OTHER SERVICES		2.42	2.97	2.55	-3.82	20.79	-6.08	-15.44	29	5.87
	SUB- TOTAL: COMMUNITY & PERSONAL SERVICES		-0.48	3.27	-3.40	28.32	5.38	-10.03	-3.20	84	2.98
14	SUB-TOTAL -TERTIARY (8 to 13)		11.62	10.61	8.45	15.87	2.94	0.85	1.45	216	11.05
15	TOTAL: NET STATE DOMESTIC PRODUCTS		10.93	14.78	7.38	7.52	5.18	-0.02	1.65	259	9.60

TABLE NO.13

PERCENTAGE DISTRIBUTION OF NSDP BY ECONOMIC ACTIVITY AT CONSTANT PRICES.

SL.NO.	ITEM	2004-05	2005-06	2006-07	2007-08	2008-09	2009-10	2010-11 (R)	2011-12 (P)	2012-13 (Q)	2013-14 (A)
1	2	3	4	5	6	7	8	9	10	11	12
1	AGRICULTURE	0.89	0.83	0.72	0.67	0.66	0.54	0.52	0.42	0.38	0.34
2	FORESTRY & LOGGING	0.08	0.06	0.06	0.06	0.06	0.06	0.04	0.04	0.03	0.03
3	FISHING	0.01	0.01	0.01	0.01	0.01	0.01	0.01	0.01	0.00	0.00
4	MINING & QUARRIES	0.00	0.00	0.00	0.00	0.00	0.00	0.00	0.00	0.00	0.00
	SUB-TOTAL: PRIMARY (1 to 4)	0.98	0.90	0.79	0.73	0.73	0.60	0.56	0.46	0.41	0.37
5	MANUFACTURING (5.1 + 5.2)	6.44	5.42	5.66	6.07	5.71	6.64	6.74	6.45	6.12	5.61
5.1	REGISTERED	2.10	1.12	1.47	1.73	1.71	2.70	2.44	2.11	1.91	1.70
5.2	UN-REGISTERED	4.33	4.30	4.19	4.34	4.00	3.94	4.29	4.35	4.21	3.91
6	CONSTRUCTION	9.82	10.49	13.45	12.30	6.33	7.30	6.53	7.03	6.88	6.34
7	ELECTRICITY, GAS & WATER SUPPLY	0.84	0.76	0.67	0.67	0.78	0.86	0.83	0.86	0.93	0.88
	SUB-TOTAL: SECONDARY (5 to 7)	17.10	16.67	19.78	19.04	12.82	14.79	14.09	14.35	13.93	12.83
8	TRANSPORT, STORAGE & COMMUNICATION (8.1+ 8.2+ 8.3+ 8.4)	5.53	5.36	5.19	5.47	5.51	5.82	6.04	6.19	6.46	6.58
8.1	RAILWAYS	0.04	0.05	0.05	0.05	0.04	0.05	0.05	0.04	0.04	0.04
8.2	TRANSPORT BY OTHER MEANS	2.13	1.88	1.69	1.61	1.34	1.30	1.06	0.87	1.03	0.98
8.3	STORAGE	0.01	0.01	0.01	0.01	0.01	0.01	0.01	0.01	0.01	0.01
8.4	COMMUNICATION	3.35	3.42	3.45	3.80	4.18	4.46	4.92	5.26	5.38	5.55
9	TRADE, HOTEL & RESTAURANT	28.65	30.80	29.12	29.88	30.37	24.80	24.56	24.30	21.09	22.61
	SUB-TOTAL: TRANSPORT, COMMUNICATION & TRADE	34.18	36.16	34.31	35.35	35.94	30.63	30.61	30.49	27.55	29.19
10	BANKING & INSURANCE	12.54	13.22	14.51	15.29	18.89	22.76	24.39	24.07	26.36	27.00
11	REAL ESTATE, OWNERSHIP OF DWELLING & BUSINESS SERVICES	20.10	19.50	18.43	18.62	18.54	18.10	18.55	19.38	20.04	19.60
	SUB-TOTAL: FINANCE & REAL ESTATE (10+ 11)	32.64	32.72	32.94	33.91	37.42	40.86	42.94	43.46	46.40	46.60
12	PUBLIC ADMINISTRATION	7.35	6.39	5.77	4.83	7.60	6.81	5.88	6.32	6.46	5.93
13	OTHER SERVICES	7.76	7.16	6.42	6.13	5.49	6.30	5.92	4.92	5.25	5.07
	SUB-TOTAL: COMMUNITY & PERSONAL SERVICES	15.10	13.55	12.19	10.97	13.09	13.11	11.80	11.24	11.70	11.00
14	SUB-TOTAL - TERTIARY (8 to 13)	81.92	82.43	79.44	80.23	86.45	84.60	85.35	85.18	85.65	86.79
15	TOTAL: NET STATE DOMESTIC PRODUCT	100.00	100.00	100.00	100.00	100.00	100.00	100.00	100.00	100.00	100.00

NUEPA DC



D14622

