

**NATIONAL PROGRAMME OF MID  
DAY MEAL IN SCHOOLS (MDM)**

**ANNUAL WORK PLAN AND  
BUDGET**

**2008-09**

**STATE – MAHARASHTRA**

**SCHOOL EDUCATION AND SPORT  
DEPARTMENT  
GOVERNMENT OF MAHARASHTRA**

**National Programme of  
Mid-day Meal in Schools (MDM)**

**Annual Work Plan and Budget**

**2008-09**

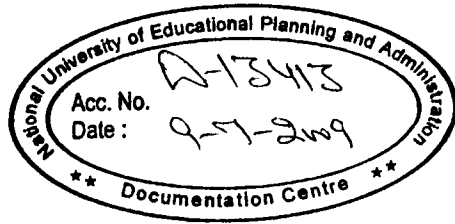
**STATE- MAHARASHTRA**

**School Education & Sport Department  
Government of Maharashtra.**

NUEPA DC



D13413



# Mid Day Meal Scheme

## Annual Work Plan and Budget 2008-09

### **1. Introduction:**

#### **1.1 Brief history, objectives and rationale of the Mid- Day Meal Programme.**

Malnutrition is widely prevalent in India among growing children. Some details in regard to measure nutritional deficiencies and their incidences among children of elementary school-going age group cannot be neglected. Malnutrition not only merely gives rise to morbidity and mortality, but also prevents a child from developing in a fully functional adult. It adversely affects education in the following ways:

- i) A Malnourished child is less likely to attend school regularly.
- ii) Even if such a child does attend school, he/she finds it difficult to concentrate on and participate in teaching-learning activities well enough. He/She therefore tends to drop out, inter alia, because of the inability to cope.
- iii) Even if the child does not actually drop out, her attainment levels tend to be low.

Programme of providing Mid-Day Meal in Schools is designed to help in UEE in following ways:

- i) By improving enrolment and regularity of attendance.
- ii) By reducing drop-outs and
- iii) By improving children's level of learning and self-esteem.

National Programme of Nutritional Support to Primary Education (commonly known as the Mid-Day Meal Scheme) was launched as a Centrally-Sponsored Scheme on 15<sup>th</sup> August, 1995. Its objective was to boost 'universalisation of primary education' by increasing enrolment, retention and attendance and simultaneously impacting on nutrition of students in primary classes.

It is being implemented in Maharashtra from the year 1995-96 onwards. However, the nature of scheme changed after the decision of Hon. Supreme Court in Writ Petition No. 196/2001, wherein instead of dry rice the cooked meal was to be given to children for all working days of the school. In 2002, the scheme was implemented in 15 tribal district of Maharashtra, however, the scope of implementation was extended to all district of Maharashtra in January 2003. The scheme implemented for children in Std I to V in Government schools, schools run by local bodies, Government aided private schools and students enrolled in Education Guarantee Scheme Centre i.e, Vastishalas and Alternative and Innovative Education Centres i.e. Mahatma Phule Education Gurantee Scheme Centres.

As per Government of India Guidelines, Mid-day Meal Scheme is extended by Govt. of Maharashtra to cover children in upper primary ( VI-VIII) classes in 43 educationally backward block in 10 districts of Maharashtra state from 1 January 2008.

## **1.2 Demographic profile of Maharashtra State:**

Sr.No.	Particulars	Details
1	Area (2001 census)	307713 sq.km.
2	Population (2001 census)	9.69 crores
3	Urban Population	5.58 crores
4	Rural Population	4.11 crores
5	No.of Districts	33
6	No.of Tahasils	353
7	Municipal Corporations	22
8	No.of Municipal Councils	222
9	No.of villages	43711
10	No.of Schools- i. Primary ii.Secondary	69330 20339
11	No.of students- i. Primary ii. Secondary	116.88 lakhs 110.63 lakhs

## **1.3 Social and Economic Indicators in Maharashtra State: (Sample survey -2006)**

Sr.No.	Particulars	Details Sample survey-2006
1	Literacy rates	State -77 % , Mumbai-87 %
2	Health indicators (IMR,MMR) (per 1000)	IMR-35 MMR-26 birth rate-18.5, death rate-6.7
3	Sex ratio (per 1000 males)	rural-959, urban -874
4	Poverty ratio	16.2 %

## **1.4 Nutrition status, including data on malnutrition, anaemia, Vitamin A, other micro-nutrient deficiencies, etc.**

### 1.5 School data, including:

- (i) number of Primary schools, Upper Primary schools, High schools (Government, EGS and AIE Centres),
- (ii) Enrollment (by category, gender for each stage),
- (iii) drop-outs (by category, gender for each stage)

i) School Data in Maharashtra State:

Sr. No.	Particulars(MDM)	Primary ( I-V)		Upper Primary (VI-VIII)	
		Schools	Enrollment	Schools	Enrollment
1	No. of Govt.Schools	59020	5927624	21722	1597034
2	No. of Govt. aided Schools	13312	2618112	12349	2674270
3	No. of EGS.Schools	5777	131093	542	7927
4	No. of AIE Schools	5475	168233	1086	33232
5	Total	83584	8845062	35699	4312463

(ii) Enrollment –a) For I st to V Class

Sr. No	Particulars		Details	
1	Gender wise	Primary Upper Primary	Boys- 4608277 Boys- 2246793	Girls-4236765 Girls-2065670
2	Category wise	Primary Upper Primary	SC-1296686 SC-632207	ST-1061407 ST-517496

(iii) Drop-outs(classwise) (2002-03)-(In percentage)

Sr.No.	Particulars	1	2	3	4	5	VIII	X
1	Gender- Boys	0	6%	8	15	13	31	50
	Girls	0	8	8	15	14	36	55
2	Catagorywise- SC	0	8	10	15	15	37	56
	ST	0	12	19	28	34	61	74

2. Description and assessment of the programme implemented in the current year (2007-08) with reference to:

**2.1 Calorific/ protein value of the mid day meal provided along with menu prescribed.**

Sr.No.	Particulars	Details	
1	Proteins	Primary	12 gms.
		Upper	20 gms.
		Primary	
2	Calories	Primary	450 cal
		Upper	700 cal
		Primary	



**2.2 Regularity and wholesomeness of mid day meals served to children; reasons for programme interruptions, if any.**

Every school day Mid-Day Meal ( Khichdi of 100 gms, rice) is being served to eligible school children, there are no interruptions in mid-day meals.

**2.3 Number of children (class, category and gender wise) who participated in the programme, separately for Primary and Upper Primary in EBBs.**

School Data in Maharashtra State:

Sr. No	Partculars (MDM)	Primary		Upper Primary in EBBs	
		Schools	Enrolment	Schools	Enrollment
1	No.of Govt. Schools	58789	5631243	2100	128499
2	No. of Govt. aided Schools	12415	2296299	955	165522
3	No.of EGS. Schools	4567	41124	218	2103
4	No. of AIE Schools	3971	163815	429	8001

Enrolment-

Sr.No.	Particulars	Details
1	Gender wise -Primary Upper Primary	Boys-4237023 Girls-3895458 *
2	Category wise- Primary Upper Primary	SC-1192222 ST-975898 *

\* Scheme is implemented from Jan 2008 for upper primary classes so for month of Sept 2007 information regarding student availing MDM is nil.

**2.4 Foodgrains management, including adequacy of allocation, timeliness of lifting, transportation and distribution, and suitability of storage at different levels.**

Food and civil supply Dept. has made arrangement of transportation through Dist. Supply Officers and Tahasildar with the help of transport contractors to the Ration Shops. Foodgrains are directly taken by School Headmaster from nearby ration shop. Register is maintained at the school level showing details about the quantity of rice used every day.

The storage of foodgrains is made at schools only.

**2.5 Central Assistance received and utilized towards (a) cookingcosts, (b) kitchen shed construction, (c) procurement of kitchen devices, (d)management, monitoring and evaluation, (e) transport subsidy.**

(Rs. In lakhs)

Sr. No.	Particulars	Received	Utilized
a	Cooking cost	25328.30	10778.73
b	Kitchen shed	NIL	-
c	Procurement of kitchen devices	1126.60	-
d	Management, Monitoring & Evaluation	423.94	
e	Transport Subsidy	-	-

**2.6 State budget provisions and expenditure in 2007-08  
towards Dec 2007**

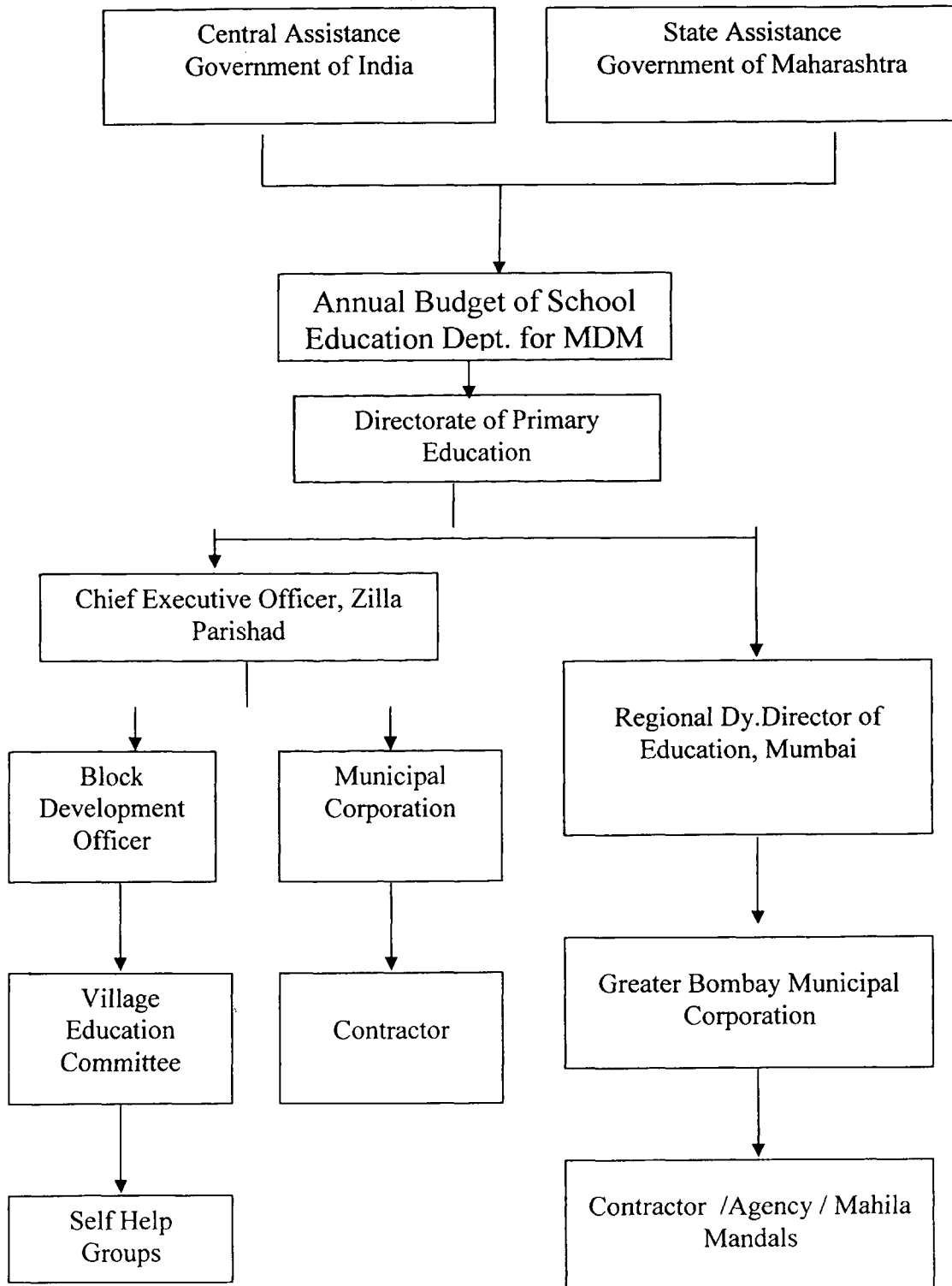
- (a) reimbursement of Central Assistance
- (b) State contribution

(Rs. In lakhs)

Sr.No.	Particulars	Provision	Expenditure
1	Central Govt. assistance	26878.84	10778.73
2	State contribution	12656.68	3592.91

2.7 System for release of funds provided under cooking costs (Central and State)

2.7) *Flow of funds*



**2.8 System for procuring cooking ingredients (fuel, condiments, oil, etc.), Commodities, which are centrally purchased and supplied to schools or locally purchased at school level and rate of cooking cost per child per day provided at school level:**

The cooking ingredients like fuel, condiments, oil etc. are procured by cooking agency of school under supervision of village Education Committee (VEC)

**2.9 System for cooking, serving and supervising mid day meals in the school:**

Cooking Agencies for e.g. Mahila self-groups, Needy Mahilas or N.O.G.s are engaged in cooking & serving of MDM. Members of Village Education Committee are supervise the quality of food.

Mother parents have been asked to supervise the quality of food everyday. The meal is served to students in presence of teacher/ member & village Education Committee. Ingredients are not centrally purchased in state.

**2.10 Status of construction of kitchen sheds from (i) funds released under the Mid Day Meal Scheme, and (ii) funds from other development programmes, such as SGRY, BRGF, etc. Details of activities through convergence with other developmental programmes in provision of drinking water, toilets etc:**

i) Funds released under the Mid-day meal programme – Central Government released Rs.11050.20 lakhs in February 07 for construction of kitchen sheds. The work of construction of kichen shed was assigned to Maharashtra Prathmik Shikshan Parishad (MPSP) a statutory body and total amount was handover to them.

ii) Funds from other development programmes such as SGRY, BRGF etc.

Funds are made available from 'Sarva Shiksha Abhiyan' under which SSA proposed new school buildings have been planned with kitchen sheds.

**2.11 Status of procurement of kitchen devices from (i) funds released under the Mid Day Meal Programme (ii) other sources:**

i) Funds released under the Mid-day meal programme – Central Government released Rs.1126.60 lakhs for procurements of kitchen devices.

(ii) other sources- Nil

**2.12 Capacity building and training conducted for different categories of persons involved in the Mid Day Meal Programme under programmes of SSA, DIETs, etc.:**

The training module has not been developed so far.

**2.13 Management Information System at School, Village/ Gram Panchayat, Block, District and State level:**

It was instructed to all concern authorities to constitute Steering cum monitoring Committees vide Government resolution dated 31.5.2005.

A State level committee

i) Chief Secretary

Chairman

ii) Deputy Secretary School Education Dept.

Member Secretary

B District level Committee

i) District Collector

Chairman

ii) Chief Executive Officer, Zilla Parishad

Vice Chairman

iii) Education Officer (Primary)

Member Secretary

C Block level committee	
i) Sub-Divisional Officer	Chairman
ii)Block Education Officer	Member Secretary
D Directorate leve committee	
i) Director of Primary Education	Chairman
ii)Dy. Director of Primary Education	Member Secretary
E Municipal Corporation level committee	
i) Commissioner	Chairman
ii)Education Officer (Mun.Corp.)	Member Secretary
F Village level committee	
i)Sarpanch/ Chairman VEC	Chairman
ii)Headmaster	Member Secretary

Note : In each Committee, representatives from Food & Civil Supply Department & experts in nutrition are included.

**2.14 Systems to ensure transparency and openness in all aspects of programme implementation, including inter alia, foodgrains management, ingredients procurement, cooking and serving, appointment of cooking staff, construction of kitchen sheds, procurement of cooking devices**

- i) Superintendent (Mid-day Meal Scheme) is appointed at block level & Municipal corporation level to supervise the MDM programme
- ii) Regular weekly menu is displayed on notice board.
- iii) Regular meetings of Mid-day meal is taken by the VEC at school level.
- iv) Mothers parents are involved in, supervision of cooked meal & supervision of adequate pulses & vegetables.

- v) Stock register & expenditure register are maintained by school and open for inspection.

### **2.15 Measures taken to rectify**

- a) Inter-District low and uneven utilization of food grains and cooking cost.
- b) Intra-District mismatch in utilization of food grains and cooking cost.

Actually at inter-District or intra District there is no low and uneven utilization of food grains and cooking cost. In the state, uneven or low utilization was noticed due to incorrect information collected from school level to block level.

- c) Delay in delivering cooking cost of school level.

Grants received from central Government are converted in Grant-in-aid of state. Then released to Directorate thereafter CEO of Zilla Parishad. It requires time CEO withdraw this amount from Government treasury and transfer to Block level Then distributed at concerned village Education committee. Hence there is delay in delivering cooking cost.

### **2.16 Overall assessment of the manner in which implementation of the programme is contributing to the programme objectives and an analysis of strengths and weaknesses of the programme implementation.**

The scheme is popular all over the State and particularly in rural and tribal areas. The students are developing better eating habits. The parents are also satisfied with quantity & quality of food that as available to their children. Since the scheme has been totally decentralized, the community participation has increased. Mother's involvement in supervision of cooked meal is helping children to participate in this programme. This scheme has helped retain children in the school for the entire day . Mid



day meal scheme is implemented with full decentralization at village & school level. VEC is fully authorized to implement the Mid-day meal scheme at school level.

Funds are provided to VEC and is authorized to expend.

### **2.17 Impact of Mid Day Meal Scheme such as increase in enrollment, attendance, retention, learning level etc., reduction in drop-out, increase in nutritional status etc.**

Evaluation carried out by in YASHADA in one District of Maharashtra shows that there is increase in attendance and decrease in Drop Out rate.

### **2.18 Details of Evaluation studies conducted and summary of its findings.**

Evaluation studies was carried out by yashda pune & Directorate of Economics and Statistics Government of Maharashtra. The reports from YASHADA for Amaravati District is received and copy of reports was already submitted to Government of India.

Summary of its finding are:

- i) Attendance of students increased.
- ii) Drop out rate decreased
- iii) Decrease in illness
- iv) Malnutrition has also decreased
- v) Good habits have been increased
- vi) Concentration of students is increased.

## **2.19 Brief write up on best practices followed in the State.**

According to Evaluation report good habits incorporated in students, poor house holds had started sending their children's to school regularly, as the children got good food regularly. Students of all casts and gender sat together and take meal without discrimination.

## **2.20 Instances of unhygienic food served, children falling ill, sub-standard supplies, diversion/misuse of resources, social discrimination and safety measures adopted to avoid recurrence of such incidents.**

The Mid-day meal scheme is individual beneficiaries Scheme. Near about 82 lakh students are taking benefit of this scheme. Scheme is decentralized. There is possibility of few incidents like unhygienic food served, children falling ill etc.

Instructions have been given to concern authority implementing agencies to take precautionary measure to avoid such type of incidents.

## **2.21 Extent of involvement of NGOs and Civic Body Organizations (CBOs)/PRIs.**

Mid day meal scheme is implemented by VEC at village level Municipal Corporation & council at Urban level by Ward Education committee & Private Aided Schools by Management Committee of schools are responsible for implementation. They appoints agencies like SHG, Mahila Mandal, needy women or NGOs. So there is full involvement of Panchyat Raj Institutions at various levels. In Maharashtra few Municipal Corporation assigned work of cooking to NGOs like ISKON etc.

**2.22 Status of School Health Programme with special focus on provision of micro-nutrients, Vitamin-A, de-worming medicine, Iron and Folic acid, Zinc and recording of height, weight etc.,.**

School health programme is implemented for Ist to IVth class students in Maharashtra. Under this programme medical check up of the students examined and Primary treatment was given for minor illness and referral services were provided for major illness. Under Mid-day meal scheme there is no separate programme carried out for students.

**2.23 Steps taken to strengthen the monitoring mechanism in the Village, Block, District and State level and status of constitution of SMCs at these levels Details of such meetings.**

To strengthen monitoring Village, Block, District and State Steering-cum-Monitoring Committees have been constituted at each level.

**2.24 Arrangement for departmental inspections to MDM centres and percentage of schools inspected and summary of findings and remedial measures.**

For Departmental Inspection of Mid day Meal Scheme instructions have been given to all District Education Officers and their inspection staff.

**2.25 Note on action taken on the findings of national level review meeting held at New Delhi on 9-10<sup>th</sup> oct 2007**

**2.26 Feedback/comments in respect of report of Monitoring Institutions designated for you State/UT to monitor implementation of MDM and action taken thereon.**

Table - 1  
Annual Work Plan and Budget 2008-09  
[Mid-Day Meal Scheme]

Table-1

**GENERAL INFORMATION-2007-08**

State: Maharashtra

1. No. of children availing Mid-Day Meal as on 30.9.2007

	SC	ST	OBC	Minority	Others	Total
(1)	(2)	(2)	(3)	(4)	(5)	(6)
Boys	621148	508443*		*	3107432	4237023
Girls	571074	467455*		*	2856929	3895458
Total	1192222	975898			5964361	8132481

\* Boys and Girls of OBC and minority students included in others students col.

2. Staff (Cook/helper/others) employed under Mid Day Meal Scheme \*

	SC	ST	OBC	Minority	Others	Total
(1)	(2)	(2)	(3)	(4)	(5)	(6)
Male	0	0	0	0	0	0
Female	0	0	0	0	0	0
Total	0	0	0	0	0	0

\* Note cooks helpers are not employed by Government of Maharashtra. So information required in above table is nil

3. Salary paid to Staff (Cook/helper/others) employed under Mid Day Meal Scheme

Staff	Average Monthly Salary	Remarks/basis/norms for appointment and payment of wages
Cook	0	0
Helper	0	0
Others	0	0

Note cooks and helpers are appointed by concerned VEC, like SHG, needy women etc. cooking assistance @ Rs.2/- per day per students given to concerned implementing agency.

4. Break-up of nutrition content and cost of meal per child per day as per State Nutrition/Expenditure Norm including Central Assistance & State contribution (unit cost).

A. Primary

Sl. No.	Food item	Quantity (in gms)	Cost of Qty Recommended (in Rs.)	Calories	Protein content (in gms)
(1)	(2)	(2)	(3)	(4)	(5)
1	Foodgrains (Rice)	100	Supplied free	340	8
2	Pulses	20		70	5
3	Vegetables ( in leafy)	50	1.05	25	0
4	Oil & fat	5	0.4	45	0
5	Salt & Condiments	0	0.1	0	0
6	Fuel	0	0.26	0	0
7	Labour & other administrative charge	0	0.19	0	0
8	any other items	0	0	0	0
	<b>Total</b>		2.00	480	13

B. Upper Primary

Sl. No.	Food item	Quantity (in gms)	Cost of Qty Recommended (in Rs.)	Calories	Protein content (in gms)
(1)	(2)	(2)	(3)	(4)	(5)
1	Foodgrains (Rice)	150	Supplied free	510	12
2	Pulses	30		105	8
3	Vegetables ( in leafy)	80	1.65	40	0
4	Oil & fat	5	0.4	45	0
5	Salt & Condiments	0	0.1	0	0
6	Fuel	0	0.26	0	0
7	Labour & other administrative charge	0	0.09	0	0
8	any other items	0	0	0	0
	<b>Total</b>		2.5	700	20

Table-2  
Annual Work Plan and Budget 2008-09  
[MID-DAY MEAL SCHEME]

Table-2

Proforma for Furnishing Details of Provisions made in the State Budget 2008-09  
State : Maharashtra

(Rs. In lakh)

1) **Cooking Cost : Primary - I-V**

Year	Allocations in State/UT Budget			Total Expenditure
	Central Assistance (Reimbursement)	State Contribution	Total	
1	2	3	4	5
2005-06	7919.95	9142.74	17062.69	21938.75*
2006-07	20032.34	9764.19	29796.53	28285.36
2007-08	25328.3	8771.32	34099.62	45546
2008-09	26837.19	9708.28	36545.47	Not Applicable

\*Exces of expenditure was incurred from last years unspent balance

2) **Cooking Cost : Upper Primary**

Year	Allocations in State/UT Budget			Total Expenditure
	Central Assistance (Reimbursement)	State Contribution	Total	
1	2	3	4	5
2007-08	1068.91	267.23	1336.14	0
2008-09	17445.47	4361.37	21806.84	Not Applicable

3) **Cost of meal per child per day, as per State Expenditure Norm including Central Assistance & State contribution (Unit Cost). [Excluding Cost of Foodgrains]**

Year	Primary	Upper Primary
2005-06	1.30	---
2006-07	1.60	---
2007-08	2.23	
2008-09	2.39	

4) **Construction of Kitchen-cum-Stores**

Year	Provision in the State Budget			Expenditure
	Central assistance (Re-imburement)	State Contribution if any including through convergence	Total	
2006-07	11050.20	0	11050.20	0
2007-08	0	0	0	(Expenditure as on 31.12.07)
2008-09	0	0	0	Not Applicable

5) **Procurement of Kitchen Devices**

Year	Provision in the State Budget			Expenditure
	Central assistance (Re-imburement)	State Contribution if any including through convergence	Total	
2006-07	995.91	0	995.91	771.66
2007-08	1126.60	0	1126.60	0
2008-09	0	0	0	0

(Signature)  
Secretary of Nodal Department  
Government Of Maharashtra

Table-3

Table-3

**Annual Work Plan and Budget 2008-09**  
**[Mid-Day Meal Scheme]**

**District wise information on number of Institutions under MDM Scheme for Primary Stage (Classes I-V)**

State: Maharashtra

(As on 30th Sep., 2007)

S.No.	Name of District	No. of Institutions					No. of Institutions regularly serving MDM					Diff. Between (7) -(12)
		Classes I-V (Govt+LB)	Classes I-V (GA)	EGS Centres	AIE Centres	Total (col 3+4+5+6)	Classes I-V (Govt+LB)	Classes I-V (GA)	EGS Centres	AIE Centres	Total (col.8+9+10+11)	
1	2	3	4	5	6	7	8	9	10	11	12	13
1	Ahmadnagar	3088	609	189	142	4028	3088	609	189	142	4028	0
2	Akola	993	264	9	39	1305	993	246	10	39	1288	17
3	Amaravati	1703	469	23	42	2237	1697	464	23	42	2226	11
4	Aurangabad	1587	473	70	667	2797	1580	434	54	667	2735	62
5	Beed	1915	445	102	567	3029	1914	445	102	567	3028	1
6	Bhandara	771	259	31	39	1100	771	202	31	35	1039	61
7	Buldhana	1469	262	0	108	1839	1446	231	0	108	1785	54
8	Chandrapur	1701	63	111	33	1908	1699	63	100	27	1889	19
9	Dhule	1020	451	220	40	1731	1020	451	200	40	1711	20
10	Gadchiroli	1336	175	36	254	1801	1327	143	13	141	1624	177
11	Gondia	870	177	185	26	1258	870	170	162	26	1228	30
12	Hingoli	782	98	93	152	1125	780	89	83	121	1073	52
13	Jalgaon	1819	580	210	45	2654	1819	580	210	45	2654	0
14	Jalana	1226	203	520	155	2104	1209	202	510	147	2068	36
15	Kolhapur	1951	507	176	35	2669	1951	507	161	35	2654	15
16	Latur	1219	630	73	2	1924	1216	567	57	2	1842	82
17	Mumbai	1220	427	0	496	2143	1220	326	0	26	1572	571
18	Nagpur	1821	850	3	73	2747	1821	850	3	73	2747	0
19	Nanded	1867	611	77	313	2868	1867	585	22	289	2763	105
20	Nandurbar	1236	199	1055	368	2858	1191	199	828	9	2227	631
21	Nashik	2752	496	598	471	4317	2752	412	327	230	3721	596
22	Osmanabad	1017	261	70	36	1384	978	239	12	35	1264	120
23	Parbhani	1029	258	259	81	1627	1011	258	65	35	1369	258
24	Pune	3883	824	279	298	5284	3845	785	116	97	4843	441
25	Raigad	2594	260	323	29	3206	2594	240	291	29	3154	52
26	Ratnagiri	2701	199	91	5	2996	2701	196	91	5	2993	3
27	Sangali	1641	509	106	10	2266	1638	509	106	10	2263	3
28	Satara	2536	435	33	172	3176	2536	435	33	172	3176	0
29	Sindhudurgh	1450	148	28	1	1627	1449	148	28	1	1626	1
30	Solapur	2716	780	195	178	3869	2716	676	195	178	3765	104
31	Thane	3339	717	382	445	4883	3339	670	321	445	4775	108
32	Wardha	961	220	27	4	1212	961	220	27	4	1212	0
33	washim	808	176	81	0	1065	808	176	80	0	1064	1
34	Yeotmal	1999	277	122	149	2547	1982	88	117	149	2336	211
	Total	59020	13312	5777	5475	83584	58789	12415	4567	3971	79742	3842

Reasons for the difference in col. 13

All Govt., Local Bodies and Govt.aided Schools are fully participated in this scheme except few private schools of Mumbai Corporation. EGS & AIE Centers are not reporting correct information.

Date: \_\_\_\_\_

(Signature)  
Secretary of the Nodal Department  
Government Of Maharashtra

**Table-3A**  
**Annual Work Plan and Budget 2008-09**  
**[Mid-Day Meal Scheme]**

**Table-3A**

**District wise Information on number of Institutions under MDM Scheme for Upper Primary Stage (Classes VI-VIII)**  
**In Educationally Backward Blocks (EBBs)**

State: Maharashtra

(As on 31st Jan. 2008)

S.No.	Name of District	No. of Institutions (in EBBs)					No. of Institutions regularly serving MDM ( in EBBs)					Diff. Between (7) -(12)
		(Govt+LB)	(GA)	EGS Centres	AIE Centres	Total (col 3+4+5+6)	(Govt+LB)	(GA)	EGS Centres	AIE Centres	Total (col.8+9+10+11)	
1	2	3	4	5	6	7	8	9	10	11	12	13
1	Nandurbar	163	161	0	0	324	163	161	0	0	324	0
2	Gagchorili	163	36	0	0	199	100	20	0	0	120	79
3	Nanded	285	82	0	0	367	140	14	0	0	154	213
4	Hingoli	68	24	0	0	92	68	24	0	0	92	0
5	Parbhani	457	205	0	0	662	365	164	0	0	529	133
6	Jalna	498	185	0	0	683	390	104	0	0	494	189
7	Nashik	175	65	0	0	240	170	70	0	0	240	0
8	Thane	257	110	0	0	367	235	28	0	0	263	104
9	Beed	139	63	0	0	202	139	63	0	0	202	0
10	Kolhapur	51	8	0	0	59	20	3	0	0	23	36
	<b>Total</b>	<b>2256</b>	<b>939</b>	<b>0</b>	<b>0</b>	<b>3195</b>	<b>1790</b>	<b>651</b>	<b>0</b>	<b>0</b>	<b>2441</b>	<b>754</b>

- i) No of actual school working days during 1.1.2008 to 31.1.2008  
ii) No. of days mid-day meal served during 1.1.2008 to 31.1.2008

SCHOOL	EGS	AIE
24	24	24
24	24	24

Reasons for the difference in col. 13

Scheme was implemented to EBBs from 1st January 2008 in all EBB districts vide Gov. of Maharashtra s.G.R. no shapoa 2007/(221/07)/prashi-4 Dtd29/12/2007

Date: \_\_\_\_\_

(Signature)  
Secretary of the Nodal Department  
Government Of Maharashtra

Table-3B  
Annual Work Plan and Budget 2008-09  
[Mid-Day Meal Scheme]

Table-3B

District wise information on number of Institutions under MDM Scheme for Upper Primary Stage (Classes VI-VIII)

State: Maharashtra

(As on 30th, Sep., 2007)

S.No.	Name of District	No. of Institutions having upper primary classes <u>WITHOUT</u> primary classes (classes I-V) attached to them					No. of Institutions having upper primary classes <u>WITH</u> primary classes (classes I-V) attached to them					Total (col 7+12)
		(Govt+LB)	(GA)	EGS Centres	AIE Centres	Total (col 3+4+5+6)	(Govt+LB)	(GA)	EGS Centres	AIE Centres	Total (col 8+9+10+11)	
1	2	3	4	5	6	7	8	9	10	11	12	13
1	Ahmadnagar	0	0	0	0	0	503	609	0	0	1112	1112
2	Akola	0	133	0	0	133	359	303	0	0	662	795
3	Amaravati	5	127	0	0	132	1703	469	61	5	2238	2370
4	Aurangabad	0	0	0	0	0	56	408	0		464	464
5	Beed	6	71	0	0	77	1557	235	753	7	2552	2629
6	Bhandara	1	0	0	0	1	771	259	31	39	1100	1101
7	Buldhana	0	0	0	0	0	519	249	0	0	768	768
8	Chandrapur	1	824	0	0	825	4	581	112	62	759	1584
9	Dhule	0	0	0	0	0	1094	376	222	15	1707	1707
10	Gadchiroli	10	180	0	0	190	1337	67	0	0	1404	1594
11	Gondia	29	184	0	0	213	1020	59	0	0	1079	1292
12	Hingoli	0	3	0	0	3	783	89	81	34	987	990
13	Jalgaon	0	0	0	0	0	418	451	18	15	902	902
14	Jalana	0	74	0	0	74	512	136	0	47	695	769
15	Kolhapur	0	284	0	0	284	971	490	0	0	1461	1745
16	Latur	1	87	0	0	88	1219	630	73	2	1924	2012
17	Mumbai	0	0	0	0	0	1220	427	0	496	2143	2143
18	Nagpur	2	108	0	0	110	1821	850	3	73	2747	2857
19	Nanded	10	57	0	0	67	741	529	0	0	1270	1337
20	Nandurbar	0	0	0	0	0	152	163	0	556	871	871
21	Nashik	0	0	0	0	0	662	476	0	0	1138	1138
22	Osmanabad	5	50	0	0	55	509	131	0	0	640	695
23	Parbhani	5	50	0	0	55	498	229	59	38	824	879
24	Pune	0	185	0	0	185	866	362	0	0	1228	1413
25	Raigad	3	55	0	0	58	668	234	296	46	1244	1302
26	Ratnagiri	0	57	0	0	57	998	189	0	0	1187	1244
27	Sangali	0	98	0	0	98	534	570	106	10	1220	1318
28	Satara	0	0	0	0	0	727	511	0	3	1241	1241
29	Sindhudurgh	0	7	0	0	7	544	123	28	1	698	703
30	Solapur	6	177	0	0	183	849	615	0	0	1464	1647
31	Thane	6	460	0	0	466	1714	199	0	0	1913	2379
32	Wardha	0	34	0	0	34	958	231	26	4	1219	1253
33	washim	0	222	0	0	222	808	397	0	81	1286	1508
34	Yeotmal	7	170	0	0	177	2062	376	0	0	2438	2615
	Total	97	3697	0	0	3794	29157	12023	1869	1534	44583	48377

Date: \_\_\_\_\_

(Signature)  
Secretary of the Nodal Department  
Government Of Maharashtra



**Table-4**  
**Annual Work Plan and Budget 2008-09**  
**[Mid-Day Meal Scheme]**

**Table-4**

**District-wise Information on Enrolment and Children availing MDM for 2007-08 for Primary Stage (Classes I - V)**

**State: Maharashtra** **(As on 30th Sep., 2007)**

S.No.	Name of District	Total Enrolment				No. of children availing MDM*			
		Classes I-V (Govt+LB+GA)	EGS Centres	AIE Centres	Total (col 3+4+5)	Classes I-V (Govt+LB+GA)	EGS Centres	AIE Centres	Total (col.7+8+9)
1	2	3	4	5	6	7	8	9	10
1	Ahmadnagar	403914	3857	2882	410653	397855	7621	92	405568
2	Akola	155344	356	955	156655	123532	68	1025	124625
3	Amaravati	249026	272	793	250091	213091	273	1061	214425
4	Aurangabad	321345	3497	15655	340497	309605	3100	14911	327616
5	Beed	257530	1930	11067	270527	242764	232	13850	256846
6	Bhandara	102183	387	223	102793	94404	2898	0	97302
7	Buldhana	254108	0	2896	257004	201544	0	1620	203164
8	Chandrapur	163113	1576	675	165364	162371	914	1526	164811
9	Dhule	184396	5012	877	190285	176970	355	5326	182651
10	Gadchiroli	99342	527	4500	104369	81586	288	2326	84200
11	Gondia	98712	3277	1036	103025	95625	0	2768	98393
12	Hingoli	121639	1773	1555	124967	103242	1496	1494	106232
13	Jalgaon	375976	5942	924	382842	370205	5064	0	375269
14	Jalana	184897	10031	3820	198748	159488	2423	9055	170966
15	Kolhapur	306514	3194	650	310358	281911	237	2536	284684
16	Latur	268084	1721	12	269817	216368	100	1353	217821
17	Mumbai	587734	0	9986	597720	524350	0	0	524350
18	Nagpur	319131	40	1156	320327	266862	128	1400	268390
19	Nanded	328384	1667	7085	337136	306038	475	6808	313321
20	Nandurbar	130410	24490	7288	162188	124419	0	14690	139109
21	Nashik	341176	14896	61822	417894	376104	0	40972	417076
22	Osmanbad	152698	1416	679	154793	151372	42	841	152255
23	Parbhani	193457	7977	1371	202805	171060	597	1883	173540
24	Pune	577882	6403	5713	589998	566485	1476	1286	569247
25	Raigad	194475	7253	450	202178	181960	863	6427	189250
26	Ratnagiri	149253	1361	96	150710	135639	1265	37	136941
27	Sangali	247038	2722	200	249960	217329	160	2362	219851
28	Satara	234784	365	2866	238015	211305	928	1874	214107
29	Sindhudurgh	71656	393	8	72057	70916	15	378	71309
30	Solapur	423362	3547	5735	432644	399129	1671	10637	411437
31	Thane	559144	10779	10252	580175	549609	4936	11578	566123
32	Wardha	100140	459	69	100668	90126	483	69	90678
33	washim	125398	1167	0	126565	111889	1261	0	113150
34	Yeotmal	263491	2806	4937	271234	242389	1755	3630	247774
	<b>Total</b>	<b>8545736</b>	<b>131093</b>	<b>168233</b>	<b>8845062</b>	<b>7927542</b>	<b>41124</b>	<b>163815</b>	<b>8132481</b>

District wise aggregation of actual no. of children availing MDM based on school level MDM attendance register maintained.

A: Govt Aided Schools

- i) No of actual school working days during 1.4.2007 to 31.12.2007:  
ii) No. of days mid-day meal served during 1.4.2007 to 31.12.2007:

SCHOOL	EGS	AIE
162	162	162
162	162	162

ite: \_\_\_\_\_

(Signature)  
Secretary of the Nodal Department  
Government Of Maharashtra

**Table-4A**  
**Annual Work Plan and Budget 2008-09**  
**[Mid-Day Meal Scheme]**

**Table-4A**

District-wise information on Enrolment and Children availing MDM for 2008-09 for Upper Primary Stage (Classes VI-VIII)

State: Maharashtra

S.No.	Name of District	Total Enrolment as on 30.9.07				No. of children likely to avail MDM in 2008-09			
		Classes VI -VIII (Govt+LB+GA)	EGS Centres	AIE Centres	Total (col 3+4+5)	Classes VI -VIII (Govt+LB+GA)	EGS Centres	AIE Centres	Total (col.7+8+9)
1	2	3	4	5	6	7	8	9	10
1	Ahmadnagar	218410	0	0	218410	200806	0	0	200806
2	Akola	81419	0	0	81419	74857	0	0	74857
3	Amaravati	132927	32	0	132959	122213	29	0	122243
4	Aurangabad	171551	0	0	171551	157724	0	0	157724
5	Beed	133080	56	0	133136	122354	51	0	122405
6	Bhandara	55202	0	0	55202	50753	0	0	50753
7	Buldhana	127054	0	1448	128502	116813	0	1331	118145
8	Chandrapur	103481	0	0	103481	95140	0	0	95140
9	Dhule	134247	0	951	135198	123427	0	874	124301
10	Gadchiroli	49671	664	2250	52585	45668	610	2069	48347
11	Gondia	49443	1639	518	51600	45458	1507	476	47441
12	Hingoli	47615	171	887	48673	43777	157	816	44750
13	Jalgaon	163964	414	233	164611	150749	381	214	151343
14	Jalana	87136	0	270	87406	80113	0	248	80361
15	Kolhapur	185450	0	0	185450	170503	0	0	170503
16	Latur	140942	0	33	140975	129582	0	30	129612
17	Mumbai	213792	0	0	213792	196560	0	0	196560
18	Nagpur	155932	0	0	155932	143364	0	0	143364
19	Nanded	156935	0	0	156935	144286	0	0	144286
20	Nandurbar	50289	0	7959	58248	46236	0	7318	53553
21	Nashik	145430	1175	0	146605	133708	1080	0	134789
22	Osmanbad	76349	710	340	77399	70195	653	313	71161
23	Parbhani	85873	1028	6828	93729	78952	945	6278	86174
24	Pune	311236	148	0	311384	286150	136	0	286286
25	Raigad	100745	0	0	100745	92625	0	0	92625
26	Ratnagiri	89266	0	0	89266	82071	0	0	82071
27	Sangali	137790	0	0	137790	126684	0	0	126684
28	Satara	147563	36	0	147599	135669	33	0	135703
29	Sindhudurgh	41310	0	0	41310	37980	0	0	37980
30	Solapur	210150	6	9011	219167	193212	6	8285	201502
31	Thane	229755	0	0	229755	211237	0	0	211237
32	Wardha	50071	230	35	50336	46035	211	32	46279
33	Washim	55480	215	0	55695	51008	198	0	51206
34	Yeotmal	131746	1403	2469	135618	121127	1290	2270	124687
	<b>Total</b>	<b>4271304</b>	<b>7927</b>	<b>33232</b>	<b>4312463</b>	<b>3927037</b>	<b>7288</b>	<b>30554</b>	<b>3964878</b>

Date: \_\_\_\_\_

(Signature)  
Secretary of the Nodal Department  
Government Of Maharashtra

Table-5  
**Annual Work Plan and Budget 2008-09**  
 [Mid-Day Meal Scheme]  
For Primary Stage (Classes I-V)

Table-5

State: Maharashtra

I. Anticipated Working Days for Schools & EGS Centres between April, 2008 & March, 2009

S. No.	Month	Total No. of Days in the month	Deduct Holidays				Anticipated No. of Working Days (3-8)	Remarks	
			Vacation Days	Holidays outside Vacation period		Total Holidays (4+7)			
				Sundays	Other School Holidays				Total
1	2	3	4	5	6	7	8	9	10
1	April,08	30	0	4	2	6	6	24	
2	May,08	31	28	0	1	1	29	2	
3	June,08	30	8	3	0	3	11	19	
4	July,08	31	0	4	0	4	4	27	
5	August,08	31	0	5	3	8	8	23	
6	September,08	30	0	4	4	8	8	22	
7	October,08	31	12	3	2	5	17	14	
8	November,08	30	8	4	1	5	13	17	
9	December,08	31	0	4	2	6	6	25	
10	January,09	31	0	4	2	6	6	25	
11	February,09	28	0	4	1	5	5	23	
12	March,09	31	0	5	3	8	8	23	
	<b>Total</b>	<b>365</b>	<b>56</b>	<b>44</b>	<b>21</b>	<b>65</b>	<b>121</b>	<b>244</b>	

II. Anticipated No. of average Working Days per AIE Centre between April, 2008 and March, 2009.

Date: \_\_\_\_\_

(Signature)  
 Secretary of the Nodal Department  
 Government Of Maharashtra

Table-5A  
Annual Work Plan and Budget 2008-09

Table-5A

[Mid-Day Meal Scheme]

For Upper Primary Stage (Classes VI-VIII)

State: Maharashtra

I. Anticipated Working Days for Schools & EGS Centres between April, 2008 & March, 2009

S. No.	Month	Total No. of Days in the month	Deduct Holidays				Anticipated No. of Working Days (3-8)	Remarks	
			Vacation Days	Holidays outside Vacation period		Total Holidays (4+7)			
				Sundays	Other School Holidays				Total
1	2	3	4	5	6	7	8	9	10
1	April,08	30	0	4	2	6	6	24	
2	May,08	31	28	0	1	1	29	2	
3	June,08	30	8	3	0	3	11	19	
4	July,08	31	0	4	0	4	4	27	
5	August,08	31	0	5	3	8	8	23	
6	September,08	30	0	4	4	8	8	22	
7	October,08	31	12	3	2	5	17	14	
8	November,08	30	8	4	1	5	13	17	
9	December,08	31	0	4	2	6	6	25	
10	January,09	31	0	4	2	6	6	25	
11	February,09	28	0	4	1	5	5	23	
12	March,09	31	0	5	3	8	8	23	
	<b>Total</b>	365	56	44	21	65	121	244	

II. Anticipated No. of average Working Days per AIE Centre between April, 2008 and March, 2009.

Date: \_\_\_\_\_

(Signature)  
Secretary of the Nodal Department  
Government Of Maharashtra

**Table-6**  
**Annual Work Plan and Budget 2008-09**  
**[Mid-Day Meal Scheme]**

**District-wise information on Lifting and Utilization of foodgrains at school level during 2007-08 )**  
**for Primary Stage (Classes I-V For the period 1.4.2007 to 31.12.2007**

**State: Maharashtra**

**[Qty in MTs]**

S.No.	Name of District	Rice					
		Allocation for the year 2007-08	Opening Balance as on 1.4.2007	Lifted by schools	Aggregate quantity Consumed at School level	Balance* (Stock in hand) as on 31.12.2007 [col.4+5-6]	% Consumption (% of 6 on 3)
1	2	3	4	5	6	7	8
1	Ahmadnagar	8858.83	181.14	5681.46	4962.19	900.41	56.01
2	Akola	2834.57	136.83	2253.87	2041.91	348.79	72.04
3	Amaravati	5133.81	308.52	3776.65	3395.88	689.29	66.15
4	Aurangabad	5435.23	303.95	3422.54	3023.41	703.08	55.63
5	Beed	5237.56	424.95	4082.03	3369.29	1137.69	64.33
6	Bhandara	2305.12	111.80	1538.42	1408.38	241.84	61.10
7	Buldhana	5099.71	248.00	3156.17	2858.03	546.14	56.04
8	Chandrapur	3930.01	0.00	2318.91	2211.41	107.50	56.27
9	Dhule	3540.57	53.17	2131.50	1930.77	253.90	54.53
10	Gadchiroli	1027.66	267.32	1290.50	1002.81	555.01	97.58
11	Gondia	2444.66	1.26	1102.93	1104.19	0.00	45.17
12	Hingoli	2631.99	90.64	1530.39	1567.1	53.93	59.54
13	Jalgaon	8224.46	105.07	5216.32	4601.53	719.86	55.95
14	Jalana	3764.71	91.05	2542.31	2323.04	310.32	61.71
15	Kolhapur	6588.38	579.82	5191.69	3884.22	1887.29	58.96
16	Latur	4767.27	171.70	3394.08	3087.9	477.88	64.77
17	Mumbai	10901.15	0.00	5866.42	5866.42	0.00	53.81
18	Nagpur	5125.85	295.40	3879.46	3662.23	512.63	71.45
19	Nanded	7181.64	211.37	3446.41	3042.25	615.53	42.36
20	Nandurbar	3211.89	516.70	2755.92	2066.56	1206.06	64.34
21	Nashik	11656.66	485.01	9580.45	8596.6	1468.86	73.75
22	Osmanbad	3678.40	817.68	2927.57	2504.43	1240.82	68.08
23	Parbhani	3777.29	635.20	3450.59	2889.8	1195.99	76.50
24	Pune	11770.90	501.37	8219.04	7902.41	818.00	67.14
25	Raigad	4776.99	194.80	2588.72	2036.88	746.64	42.64
26	Ratnagiri	3686.25	15.82	1955.73	1902.19	69.36	51.60
27	Sangali	4794.09	218.15	3281.94	2939.18	560.91	61.31
28	Satara	5184.01	183.39	3448.85	2940.14	692.10	56.72
29	Sindhudurgh	1597.42	69.19	959.80	871.84	157.15	54.58
30	Solapur	7779.40	303.15	5938.04	4708.08	1533.11	60.52
31	Thane	12500.95	470.56	7636.97	6634	1473.53	53.07
32	Wardha	2302.72	23.57	1462.78	1391.17	95.18	60.41
33	washim	2307.25	157.48	1624.23	1377.74	403.97	59.71
34	Yeotmal	6064.65	50.50	3380.46	3015.68	415.28	49.73
	<b>Total</b>	<b>180122.05</b>	<b>7957.24</b>	<b>120764.59</b>	<b>107409.71</b>	<b>21312.12</b>	<b>59.63</b>

\*: includes unspent balance at State, District & Block levels as on 31.12.07

Date: \_\_\_\_\_

(Signature)  
Secretary of the Nodal Department  
Government Of Maharashtra

**Table-6**  
**Annual Work Plan and Budget 2008-09**  
**[Mid-Day Meal Scheme]**

**District-wise information on Lifting and Utilization of foodgrains at school level during 2007-08 )**  
**for Primary Stage (Classes I-V For the period 1.4.2007 to 31.12.2007**

**State: Maharashtra**

**[Qty in MTs]**

S.No.	Name of District	Rice					
		Allocation for the year 2007-08	Opening Balance as on 1.4.2007	Lifted by schools	Aggregate quantity Consumed at School level	Balance* (Stock in hand) as on 31.12.2007 [col.4+5-6]	% Consumption (% of 6 on 3)
1	2	3	4	5	6	7	8
1	Ahmadnagar	8858.83	181.14	5681.46	4962.19	900.41	56.01
2	Akola	2834.57	136.83	2253.87	2041.91	348.79	72.04
3	Amaravati	5133.81	308.52	3776.65	3395.88	689.29	66.15
4	Aurangabad	5435.23	303.95	3422.54	3023.41	703.08	55.63
5	Beed	5237.56	424.95	4082.03	3369.29	1137.69	64.33
6	Bhandara	2305.12	111.80	1538.42	1408.38	241.84	61.10
7	Buldhana	5099.71	248.00	3156.17	2858.03	546.14	56.04
8	Chandrapur	3930.01	0.00	2318.91	2211.41	107.50	56.27
9	Dhule	3540.57	53.17	2131.50	1930.77	253.90	54.53
10	Gadchiroli	1027.66	267.32	1290.50	1002.81	555.01	97.58
11	Gondia	2444.66	1.26	1102.93	1104.19	0.00	45.17
12	Hingoli	2631.99	90.64	1530.39	1567.1	53.93	59.54
13	Jalgaon	8224.46	105.07	5216.32	4601.53	719.86	55.95
14	Jalana	3764.71	91.05	2542.31	2323.04	310.32	61.71
15	Kolhapur	6588.38	579.82	5191.69	3884.22	1887.29	58.96
16	Latur	4767.27	171.70	3394.08	3087.9	477.88	64.77
17	Mumbai	10901.15	0.00	5866.42	5866.42	0.00	53.81
18	Nagpur	5125.85	295.40	3879.46	3662.23	512.63	71.45
19	Nanded	7181.64	211.37	3446.41	3042.25	615.53	42.36
20	Nandurbar	3211.89	516.70	2755.92	2066.56	1206.06	64.34
21	Nashik	11656.66	485.01	9580.45	8596.6	1468.86	73.75
22	Osmanbad	3678.40	817.68	2927.57	2504.43	1240.82	68.08
23	Parbhani	3777.29	635.20	3450.59	2889.8	1195.99	76.50
24	Pune	11770.90	501.37	8219.04	7902.41	818.00	67.14
25	Raigad	4776.99	194.80	2588.72	2036.88	746.64	42.64
26	Ratnagiri	3686.25	15.82	1955.73	1902.19	69.36	51.60
27	Sangali	4794.09	218.15	3281.94	2939.18	560.91	61.31
28	Satara	5184.01	183.39	3448.85	2940.14	692.10	56.72
29	Sindhudurgh	1597.42	69.19	959.80	871.84	157.15	54.58
30	Solapur	7779.40	303.15	5938.04	4708.08	1533.11	60.52
31	Thane	12500.95	470.56	7636.97	6634	1473.53	53.07
32	Wardha	2302.72	23.57	1462.78	1391.17	95.18	60.41
33	washim	2307.25	157.48	1624.23	1377.74	403.97	59.71
34	Yeotmal	6064.65	50.50	3380.46	3015.68	415.28	49.73
	<b>Total</b>	<b>180122.05</b>	<b>7957.24</b>	<b>120764.59</b>	<b>107409.71</b>	<b>21312.12</b>	<b>59.63</b>

\*: includes unspent balance at State, District & Block levels as on 31.12.07

Date: \_\_\_\_\_

(Signature)  
Secretary of the Nodal Department  
Government Of Maharashtra

**Table-6A**  
Annual Work Plan and Budget 2008-09  
[Mid-Day Meal Scheme]

Table-6A

District-wise information on Lifting and Utilization of foodgrains at school level during 2007-08 for Upper Primary Stage (Classes VI-VIII) in Educational Backward Blocks (EBBs)

For the period 1.1.2008 to 31.1.2008

State: Maharashtra

S.No.	Name of District	Rice					Wheat				
		Allocation for the year 2007-08	Lifted	Aggregate quantity Consumed at School level	Balance* (Stock in hand) as on 31.12.2007 [col.4-5]	% Consumption (% of 5 on 3)	Allocation for the year 2007-08	Lifted	Aggregate quantity Consumed at School level	Balance* (Stock in hand) as on 31.12.2007 [col.9-10]	% Consumption (% of 10 on 8)
1	2	3	4	5	6	7	8	9	10	11	12
1	Nandurbar	882.84	294	285	9	32.28					
2	Gagchorili	353.93	120	65.72	54.28	18.57					
3	Nanded	396.26	31.28	24.39	6.89	6.16					
4	Hingoli	224.24	42.23	34.76	7.47	15.50					
5	Parbhani	2178.12	326.72	294.05	32.67	13.50					
6	Jalna	1549.77	144.34	125.51	18.83	8.10					
7	Nashik	434.51	74.54	69.13	5.41	15.91					
8	Thane	1363.09	47.73	40.9	6.83	3.00					
9	Beed	591.47	87.25	66.75	20.5	11.29					
10	Kolhapur	42.63	6.33	5.86	0.47	13.75					
	Total	8016.86	1174.42	1012.07	162.35	12.62					

Not applicable

\*: includes unspent balance at State, District & Block levels as on 31.1.08

Note: Scheme was implemented to EBBs from 1st January 2008 in all EBB districts vide Govt. of Maharashtra s G.R. no shapoa 2007/(221/07)/prashi-4 Dated 29/12/2007, Hence rice was not lifted and consumed during the period 1.10.07 to 31.12.07

Date: \_\_\_\_\_

(Signature)  
Secretary of the Nodal Department  
Government Of Maharashtra

**Table-7**  
**Annual Work Plan and Budget 2008-09**  
**[Mid-Day Meal Scheme]**

**Table-7**

District-wise information on Cooking Assistance released and Utilised\* during 2007-08 for Primary Stage (Classes I - V)  
**(For the period 1.4.2007 to 31.12.2007)**

**State: Maharashtra**

**[In Rs.]**

S.No.	Name of District	Allocation for 2007-08 (Note: 1)	Opening Balance* as on 1.4.2007 (Note: 1)	Cooking assistance received (Note: 1)	Utilisation* of Cooking assistance at school level (Note:1)	Unspent Balance as on 31.12.07 [Col. 5-6] (Note:1 & 2)	% Utilisation (% of 6 on 3)
1	2	3	4	5	6	7	8
1	Ahmadnagar	161787647	0	81031000	81031000	0	50.08
2	Akola	62367638	0	26080000	26080000	0	41.82
3	Amaravati	103927109	3040000	43459000	43459000	0	41.82
4	Aurangabad	134809810	6969000	56373000	56373000	0	41.82
5	Beed	106576161	9387000	44567000	44567000	0	41.82
6	Bhandara	41786148	0	17474000	17474000	0	41.82
7	Buldhana	101493283	1795000	42441000	42441000	0	41.82
8	Chandrapur	69397420	0	29020000	29020000	0	41.82
9	Dhule	71722251	0	29992000	6175000	23817000	8.61
10	Gadchiroli	41058330	2470000	17169000	17169000	0	41.82
11	Gondia	44634629	1601000	18665000	18665000	0	41.82
12	Hingoli	50867088	10346000	21271000	21271000	0	41.82
13	Jalgaon	151518820	8520000	63361000	63361000	0	41.82
14	Jalana	78087796	2431000	32654000	32654000	0	41.82
15	Kolhapur	126440497	15464000	52874000	52874000	0	41.82
16	Latur	106671334	797000	44607000	44607000	0	41.82
17	Mumbai	240831519	0	111149000	68400000	42749000	28.40
18	Nagpur	131247727	5898000	54884000	54884000	0	41.82
19	Nanded	137528761	10372000	57512000	57512000	0	41.82
20	Nandurbar	63472200	805000	26542000	26542000	0	41.82
21	Nashik	201139574	320000	84111000	84111000	0	41.82
22	Osmanbad	61203051	0	25593000	25593000	0	41.82
23	Parbhani	82316485	1957000	34422000	34422000	0	41.82
24	Pune	231451631	6315000	96786000	96786000	0	41.82
25	Raigad	83141056	4506000	34767000	34767000	0	41.82
26	Ratnagiri	62388175	1868000	26089000	26089000	0	41.82
27	Sangali	96200313	540000	40228000	40228000	0	41.82
28	Satara	96866920	947000	40507000	40507000	0	41.82
29	Sindhudurgh	28972919	448000	12116000	12116000	0	41.82
30	Solapur	162184137	4528000	67821000	67821000	0	41.82
31	Thane	230567034	2129000	96416000	96416000	0	41.82
32	Wardha	39754734	1093000	16624000	16624000	0	41.82
33	washim	49539009	1106000	20716000	20716000	0	41.82
34	Yeotmal	107116794	0	44791000	44791000	0	41.82
	State Govt.	0	98527000	0	0	0	0.00
<b>Total</b>		<b>3559068000</b>	<b>204179000</b>	<b>1512112000</b>	<b>1445546000</b>	<b>66566000</b>	<b>40.62</b>

\* Note: Grants issued to district by State Govt. from GRANT-IN-AID budget. After end of financial year i.e. on 1st April unspent grants has been lapsed. So unspent grants are not taken in to account at # Bills are pending at concerned districts treasury and passed in the month of January 2008

Date: \_\_\_\_\_

(Signature)

Secretary of the Nodal Department  
Government Of Maharashtra



**Table-7A**  
**Annual Work Plan and Budget 2008-09**  
**[Mid-Day Meal Scheme]**

**Table-7A**

District-wise information on Cooking Assistance released and utilised\* during 2007-08 for Upper Primary Stage (Classes VI - VIII) in  
 Educationally Backward Blocks (EBBs)

(For the period 1.10.2007 to 31.12.2007)

State: Maharashtra

[Rs. in Lakh]

S.No.	Name of District	Allocation for 2007-08 [Note : 1]	Cooking assistance received [Note : 1]	Utilisation* of Cooking assistance at school level [Note : 1]	Unspent balance as on 31.12.07 [Col.4-5] (Note:1 & 2)	% Utilisation (% of 5 on 3)
1	2	3	4	5	6	7
1	Nandurbar	147.14	0	0	0	0
2	Gagchorili	58.99	0	0	0	0
3	Nanded	66.04	0	0	0	0
4	Hingoli	37.37	0	0	0	0
5	Parbhani	363.02	0	0	0	0
6	Jalna	258.3	0	0	0	0
7	Nashik	72.41	0	0	0	0
8	Thane	227.19	0	0	0	0
9	Beed	98.58	0	0	0	0
10	Kolhapur	7.1	0	0	0	0
total		1336.14	0	0	0	0

Note: Scheme was implemented to EBBs from 1st January 2008 in all EBB districts vide Gov. of Maharashtra s.G.R. no shapoa 2007/(221/07)/prashi-4 Dtd29/12/2007 so amount of cooking assistance was not released to districts up to Dec.07

Date: \_\_\_\_\_

(Signature)

Secretary of the Nodal Department  
 Government Of Maharashtra

**Table-8**  
**Annual Work Plan and Budget 2008-09**  
**[Mid-Day Meal Scheme]**  
**Kitchen Shed Construction**  
**Achievement during 2007-08 [out of MDMS funds]**

**Table-8**

State: Maharashtra

As on 31.12.2007

Sl. No.	District	Allocation* Physical			Allocation* Financial (Rs. in Lakh)			Completed (C)		In progress (IP)		Total (C+IP) Achievement		Yet to be started		Achievement as % of allocation	
		2006-07	2007-08	Total	2006-07	2007-08	Total	Physical	Financial (Rs. in lakh)	Physical	Financial (Rs. in lakh)	Physical [col. 9+11]	Financial (Rs. in lakh.) [col. 13]	Physical [col. 5-13]	Financial (Rs. in lakh) [col. 8-14]	Physical [% of 13 on 5]	Financial [% of 14 on 8]
1	2	3	4	5	6	7	8	9	10	11	12	13	14	15	16	17	18
1	Ahmadnagar	874	0	874	524.40	0	524.40	0	0	874	524.40	874	524.40	874	524.40	100	100
2	Akola		0	0	0.00	0	0.00	0	0	0	0.00	0	0.00	0	0.00	0	0
3	Amaravati	336	0	336	201.60	0	201.60	0	0	336	201.60	336	201.60	336	201.60	100	100
4	Aurangabad	1447	0	1447	868.20	0	868.20	0	0	1447	868.20	1447	868.20	1447	868.20	100	100
5	Beed	1199	0	1199	719.40	0	719.40	0	0	1199	719.40	1199	719.40	1199	719.40	100	100
6	Bhandara		0	0	0.00	0	0.00	0	0	0	0.00	0	0.00	0	0.00	0	0
7	Buldhana	276	0	276	165.60	0	165.60	0	0	276	165.60	276	165.60	276	165.60	100	100
8	Chandrapur	573	0	573	343.80	0	343.80	0	0	573	343.80	573	343.80	573	343.80	100	100
9	Dhule	594	0	594	356.40	0	356.40	0	0	594	356.40	594	356.40	594	356.40	100	100
10	Gadchiroli	1204	0	1204	722.40	0	722.40	0	0	1204	722.40	1204	722.40	1204	722.40	100	100
11	Gondia		0	0	0.00	0	0.00	0	0	0	0.00	0	0.00	0	0.00	0	0
12	Hingoli	187	0	187	112.20	0	112.20	0	0	187	112.20	187	112.20	187	112.20	100	100
13	Jalgaon		0	0	0.00	0	0.00	0	0	0	0.00	0	0.00	0	0.00	0	0
14	Jalana	590	0	590	354.00	0	354.00	0	0	590	354.00	590	354.00	590	354.00	100	100
15	Kolhapur	286	0	286	171.60	0	171.60	0	0	286	171.60	286	171.60	286	171.60	100	100
16	Latur	618	0	618	370.80	0	370.80	0	0	618	370.80	618	370.80	618	370.80	100	100
17	Mumbai		0	0	0.00	0	0.00	0	0	0	0.00	0	0.00	0	0.00	0	0
18	Nagpur	223	0	223	133.80	0	133.80	0	0	223	133.80	223	133.80	223	133.80	100	100
19	Nanded	1588	0	1588	952.80	0	952.80	0	0	1588	952.80	1588	952.80	1588	952.80	100	100
20	Nandurbar	1063	0	1063	637.80	0	637.80	0	0	1063	637.80	1063	637.80	1063	637.80	100	100
21	Nashik	1168	0	1168	700.80	0	700.80	0	0	1168	700.80	1168	700.80	1168	700.80	100	100
22	Osmanbad	616	0	616	369.60	0	369.60	0	0	616	369.60	616	369.60	616	369.60	100	100
23	Parbhani	895	0	895	537.00	0	537.00	0	0	895	537.00	895	537.00	895	537.00	100	100
24	Pune	134	0	134	80.40	0	80.40	0	0	134	80.40	134	80.40	134	80.40	100	100
25	Raigad	141	0	141	84.60	0	84.60	0	0	141	84.60	141	84.60	141	84.60	100	100
26	Ratnagiri		0	0	0.00	0	0.00	0	0	0	0.00	0	0.00	0	0.00	0	0
27	Sangali	545	0	545	327.00	0	327.00	0	0	545	327.00	545	327.00	545	327.00	100	100
28	Satara	224	0	224	134.40	0	134.40	0	0	224	134.40	224	134.40	224	134.40	100	100
29	Sindhudurgh		0	0	0.00	0	0.00	0	0	0	0.00	0	0.00	0	0.00	0	0
30	Solapur	1240	0	1240	744.00	0	744.00	0	0	1240	744.00	1240	744.00	1240	744.00	100	100
31	Thane	1642	0	1642	985.20	0	985.20	0	0	1642	985.20	1642	985.20	1642	985.20	100	100
32	Wardha		0	0	0.00	0	0.00	0	0	0	0.00	0	0.00	0	0.00	0	0
33	washim	237	0	237	142.20	0	142.20	0	0	237	142.20	237	142.20	237	142.20	100	100
34	Yeotmal	517	0	517	310.20	0	310.20	0	0	517	310.20	517	310.20	517	310.20	100	100
	Total	18417	0	18417	11050.20	0	11050.20	0	0	18417	11050.20	18417	11050.20	18417	11050.20	100	100

Date: \_\_\_\_\_

(Signature)  
 Secretary of the Nodal Department  
 Government Of Maharashtra

**Table-8A**  
**Annual Work Plan and Budget 2008-09**  
**[Mid-Day Meal Scheme]**  
**Kitchen Shed Construction**  
**Achievement during 2007-08 [Through Convergence]**

**Table-8A**

State: Maharashtra

As on 31.12.2007

Sl. No.	District	Allocation Physical			Allocation Financial (Rs. in Lakh)			Completed (C)		In progress (IP)		Total (C+IP) Achievement		Yet to be started		Achievement as % of allocation	
		2006-07	2007-08	Total	2006-07	2007-08	Total	Physical	Financial (Rs. in lakh)	Physical	Financial (Rs. in lakh)	Physical [col. 9+11]	Financial (Rs. in lakh.) [col. 10+12]	Physical [col. 5-13]	Financial (Rs. in lakh)	Physical [% of 13 on 5]	Financial [% of 14 on 8]
1	2	3	4	5	6	7	8	9	10	11	12	13	14	15	16	17	18
1	Ahmadnagar	0	0	0	0.00	0.00	0.00	0	0.00	0	0.00	0	0.00	0	0	0	0
2	Akola	0	0	0	0.00	0.00	0.00	0	0.00	0	0.00	0	0.00	0	0	0	0
3	Amaravati	0	0	0	0.00	0.00	0.00	0	0.00	0	0.00	0	0.00	0	0	0	0
4	Aurangabad	0	0	0	0.00	0.00	0.00	0	0.00	0	0.00	0	0.00	0	0	0	0
5	Beed	0	0	0	0.00	0.00	0.00	0	0.00	0	0.00	0	0.00	0	0	0	0
6	Bhandara	0	0	0	0.00	0.00	0.00	0	0.00	0	0.00	0	0.00	0	0	0	0
7	Buldhana	0	0	0	0.00	0.00	0.00	0	0.00	0	0.00	0	0.00	0	0	0	0
8	Chandrapur	0	0	0	0.00	0.00	0.00	0	0.00	0	0.00	0	0.00	0	0	0	0
9	Dhule	0	0	0	0.00	0.00	0.00	0	0.00	0	0.00	0	0.00	0	0	0	0
10	Gadchiroli	50	256	306	37.50	228.00	265.50	50	37.50	256	228.00	306	265.50	0	0	100	100
11	Gondia	0	0	0	0.00	0.00	0.00	0	0.00	0	0.00	0	0.00	0	0	0	0
12	Hingoli	0	0	0	0.00	0.00	0.00	0	0.00	0	0.00	0	0.00	0	0	0	0
13	Jalgaon	0	0	0	0.00	0.00	0.00	0	0.00	0	0.00	0	0.00	0	0	0	0
14	Jalana	62	0	62	55.80	0.00	55.80	61	54.90	1	0.90	62	55.80	0	0	100	100
15	Kolhapur	0	0	0	0.00	0.00	0.00	0	0.00	0	0.00	0	0.00	0	0	0	0
16	Latur	37	0	37	15.75	0.00	15.75	35	14.85	2	0.90	37	15.75	0	0	100	100
17	Mumbai	0	0	0	0.00	0.00	0.00	0	0.00	0	0.00	0	0.00	0	0	0	0
18	Nagpur	0	0	0	0.00	0.00	0.00	0	0.00	0	0.00	0	0.00	0	0	0	0
19	Nanded	0	0	0	0.00	0.00	0.00	0	0.00	0	0.00	0	0.00	0	0	0	0
20	Nandurbar	93	0	93	44.70	0.00	44.70	0	0.00	93	44.70	93	44.70	0	0	100	100
21	Nashik	65	0	65	52.65	0.00	52.65	65	52.65	0	0.00	65	52.65	0	0	100	100
22	Osmanbad	0	0	0	0.00	0.00	0.00	0	0.00	0	0.00	0	0.00	0	0	0	0
23	Parbhani	0	0	0	0.00	0.00	0.00	0	0.00	0	0.00	0	0.00	0	0	0	0
24	Pune	0	0	0	0.00	0.00	0.00	0	0.00	0	0.00	0	0.00	0	0	0	0
25	Raigad	0	0	0	0.00	0.00	0.00	0	0.00	0	0.00	0	0.00	0	0	0	0
26	Ratnagiri	0	0	0	0.00	0.00	0.00	0	0.00	0	0.00	0	0.00	0	0	0	0
27	Sangali	0	0	0	0.00	0.00	0.00	0	0.00	0	0.00	0	0.00	0	0	0	0
28	Satara	0	0	0	0.00	0.00	0.00	0	0.00	0	0.00	0	0.00	0	0	0	0
29	Sindhudurgh	0	0	0	0.00	0.00	0.00	0	0.00	0	0.00	0	0.00	0	0	0	0
30	Solapur	0	0	0	0.00	0.00	0.00	0	0.00	0	0.00	0	0.00	0	0	0	0
31	Thane	0	0	0	0.00	0.00	0.00	0	0.00	0	0.00	0	0.00	0	0	0	0
32	Wardha	0	0	0	0.00	0.00	0.00	0	0.00	0	0.00	0	0.00	0	0	0	0
33	washim	0	250	250	0.00	150.00	150.00	250	150.00	0	0.00	250	150.00	0	0	100	100
34	Yeotmal	0	107	107	0.00	40.00	40.00	0	0.00	107	40.00	107	40.00	0	0	100	100
		0	0	0	0.00	0.00	0.00	0	0.00	0	0.00	0	0.00	0	0	0	0
<b>Total</b>		<b>307</b>	<b>613</b>	<b>920</b>	<b>206.40</b>	<b>418.00</b>	<b>624.40</b>	<b>461</b>	<b>309.90</b>	<b>459</b>	<b>314.50</b>	<b>920</b>	<b>624.40</b>	<b>0</b>	<b>0</b>	<b>100</b>	<b>100</b>

(Signature)

Secretary of the Nodal Department  
Government Of Maharashtra

**Table-9**  
**Annual Work Plan and Budget 2008-09**  
**[Mid-Day Meal Scheme]**  
**Kitchen Devices Procurement**  
**Achievement during 2007-08 [Out of MDM Funds]**

**Table-9**

State: Maharashtra

As on 31.12.2007

Sl. No.	District	Allocation* Physical			Allocation* Financial (Rs. in Lakh)			Completed (C)		In progress (IP)		Total (C+IP) Achievement		Yet to be started		Achievement as % of allocation	
		2006-07	2007-08	Total	2006-07	2007-08	Total	Physical	Financial (Rs. in lakh)	Physical	Financial (Rs. in lakh)	Physical [col. 9+11]	Financial (Rs. in lakh.) [col. 10+12]	Physical [col. 5-13]	Financial (Rs. in lakh) [col. 8-14]	Physical [% of 13 on 5]	Financial [% of 14 on 8]
1	2	3	4	5	6	7	8	9	10	11	12	13	14	15	16	17	18
1	Ahmadnagar	1561	1154	2715	78.05	57.70	135.75	0	0.00	0.00	0.00	0	0	2715	135.75	0.00	0.00
2	Akola	155	394	549	7.73	19.70	27.43	135	6.72	0.00	0.00	135	6.72	414	20.71	24.59	24.50
3	Amaravati	860	683	1543	43.3	34.15	77.45	866	43.26	0.00	0.00	866	43.26	677	34.19	56.12	55.86
4	Aurangabad	226	649	875	11.29	32.45	43.74	0	0.00	0.00	0.00	0	0	875	43.74	0.00	0.00
5	Beed	266	742	1008	13.31	37.10	50.41	266	13.30	0.00	0.00	266	13.3	742	37.11	26.39	26.38
6	Bhandara	118	332	450	5.91	16.60	22.51	119	5.91	0.00	0.00	119	5.91	331	16.6	26.44	26.25
7	Buldhana	218	551	769	10.89	27.55	38.44	16	0.80	0.00	0.00	16	0.8	753	37.64	2.08	2.08
8	Chandrapur	880	600	1480	44	30.00	74.00	880	43.74	0.00	0.00	880	43.74	600	30.28	59.46	59.11
9	Dhule	585	469	1054	29.23	23.45	52.68	585	29.22	0.00	0.00	585	29.22	469	23.46	55.50	55.47
10	Gadchiroli	661	481	1142	33.05	24.05	57.10	634	31.70	0.00	0.00	634	31.7	508	25.4	55.52	55.52
11	Gondia	505	333	838	25.23	16.65	41.88	569	24.94	0.00	0.00	569	24.94	269	16.94	67.90	59.55
12	Hingoli	117	278	395	5.84	13.90	19.74	117	5.84	0.00	0.00	117	5.84	278	13.9	29.62	29.58
13	Jalgaon	894	831	1725	44.7	41.55	86.25	894	44.70	0.00	0.00	894	44.7	831	41.55	51.83	51.83
14	Jalana	184	454	638	9.19	22.70	31.89	0	0.00	0.00	0.00	0	0	638	31.89	0.00	0.00
15	Kolhapur	281	803	1084	14.04	40.15	54.19	281	14.03	0.00	0.00	281	14.03	803	40.16	25.92	25.89
16	Latur	188	593	781	9.42	29.65	39.07	206	9.42	0.00	0.00	206	9.42	575	29.65	26.38	24.11
17	Mumbai	0	0	0	0	0.00	0	0	0.00	0.00	0.00	0	0	0	0	0.00	0.00
18	Nagpur	917	852	1769	45.83	42.60	88.43	838	41.76	0.00	0.00	838	41.76	931	46.67	47.37	47.22
19	Nanded	1050	809	1859	52.48	40.45	92.93	869	41.01	0.00	0.00	869	41.01	990	51.92	46.75	44.13
20	Nandurbar	598	457	1055	29.87	22.85	52.72	0	0.00	0.00	0.00	0	0	1055	52.72	0.00	0.00
21	Nashik	1533	1111	2644	76.62	55.55	132.17	1532	76.60	0.00	0.00	1532	76.6	1112	55.57	57.94	57.96
22	Osmanbad	151	404	555	7.54	20.20	27.74	151	7.55	0.00	0.00	151	7.55	404	20.19	27.21	27.22
23	Parbhani	157	409	566	7.87	20.45	28.32	130	6.99	0.00	0.00	130	6.99	436	21.33	22.97	24.68
24	Pune	1935	1490	3425	96.72	74.50	171.22	2307	96.72	0.00	0.00	2307	96.72	1118	74.5	67.36	56.49
25	Raigad	1301	905	2206	65.05	45.25	110.30	1300	53.38	0.00	0.00	1300	53.38	906	56.92	58.93	48.40
26	Ratnagiri	405	914	1319	20.24	45.70	65.94	405	20.24	0.00	0.00	405	20.24	914	45.7	30.71	30.69
27	Sangali	244	673	917	12.19	33.65	45.84	244	12.18	0.00	0.00	244	12.18	673	33.66	26.61	26.57
28	Satara	378	944	1322	18.88	47.20	66.08	378	18.85	0.00	0.00	378	18.85	944	47.23	28.59	28.53
29	Sindhudurgh	221	517	738	11.02	25.85	36.87	221	11.02	0.00	0.00	221	11.02	517	25.85	29.95	29.89
30	Solapur	372	1145	1517	18.6	57.25	75.85	372	18.60	0.00	0.00	372	18.6	1145	57.25	24.52	24.52
31	Thane	1696	1149	2845	84.77	57.45	142.22	2969	84.80	0.00	0.00	2969	84.8	-124	57.42	104.36	59.63
32	Wardha	144	376	520	7.19	18.80	25.99	57	2.55	0.00	0.00	57	2.55	463	23.44	10.96	9.81
33	washim	117	306	423	5.84	15.30	21.14	117	5.84	0.00	0.00	117	5.84	306	15.3	27.66	27.63
34	Yeotmal	1001	724	1725	50.02	36.20	86.22	0	0.00	0.00	0.00	0	0	1725	86.22	0.00	0.00
<b>Total</b>		<b>19919</b>	<b>22532</b>	<b>42451</b>	<b>995.91</b>	<b>1126.60</b>	<b>2122.51</b>	<b>17458</b>	<b>771.67</b>	<b>0.00</b>	<b>0.00</b>	<b>17458</b>	<b>771.67</b>	<b>24993</b>	<b>1350.84</b>	<b>41.13</b>	<b>36.36</b>

Date: \_\_\_\_\_

(Signature)  
 Secretary of the Nodal Department  
 Government Of Maharashtra

**Table-9A**  
**Annual Work Plan and Budget 2008-09**  
**[Mid-Day Meal Scheme]**  
**Kitchen Devices Procurement**  
**Achievement during 2007-08 [Through Convergence]**

State: Maharashtra

Sl. No.	District	Allocation Physical			Allocation Financial (Rs. in Lakh)			Completed (C)		In progress (IP)		Total (C+IP) Achievement		Yet to be started		Achievement as % of allocation:		
		2006-07	2007-08	Total	2006-07	2007-08	Total	Physical	Financial (Rs. in lakh)	Physical	Financial (Rs. in lakh)	Physical [col. 9+11]	Financial (Rs. in lakh.) [col. 10+12]	Physical [col. 5-13]	Financial (Rs. in lakh) [col. 8-14]	Physical [% of 13 on 5]	Financial [% of 14 on 8]	
																		3
1	Ahmadnagar																	
2	Akola																	
3	Amaravati																	
4	Aurangabad																	
5	Beed																	
6	Bhandara																	
7	Buldhana																	
8	Chandrapur																	
9	Dhule																	
10	Gadchiroli																	
11	Gondia																	
12	Hingoli																	
13	Jalgaon																	
14	Jalana																	
15	Kothapur																	
16	Latur																	
17	Mumbai																	
18	Nagpur																	
19	Nanded																	
20	Nandurbar																	
21	Nashik																	
22	Osmanbad																	
23	Parbhani																	
24	Pune																	
25	Raigad																	
26	Ratnagiri																	
27	Sangli																	
28	Satara																	
29	Sindhudurg																	
30	Solapur																	
31	Thane																	
32	Wardha																	
33	Washim																	
34	Yerwade																	
Total																		

Note: Required information regarding construction of Kitchen Devices through convergence is nil.

Date: \_\_\_\_\_

(Signature)  
 Secretary of the Nodal Department  
 Government Of Maharashtra

Table-10  
Annual Work Plan and Budget 2008-09  
[Mid-Day Meal Scheme]

Table-10

Requirement of Central Assistance towards Foodgrains, Cooking Assistance & Transport Assistance for 2008-09 for Primary Stage (Classes I-V)

State: Maharashtra

S.No.	Name of District	No. of children availing MDM* as on 30.9.07 (Please also refer to Table-4)				Anticipated No. of working days			Requirement of Foodgrains (In MTs)			Requirement of Cooking Assistance (Rs. in lakh) [Note:2]	Requirement of Transport Assistance (Rs. in lakhs) [Note:3]
		Classes I - V (Govt+LB +GA)	EGS Centres	AIE Centres	Total (col. 3+4+5)	Classes I - V (Govt+L B+GA)	EGS Centres	AIE Centres	Total [Note:1]	Rice	Wheat		
1	2	3	4	5	6	7	8	9	10	11	12	13	14
1	Ahmadnagar	397855	7621	92	405568	220	220	220	8922.50	8922.50	0	1338.37	66.92
2	Akola	123532	68	1025	124625	220	220	220	2741.75	2741.75	0	411.26	20.56
3	Amaravati	213091	273	1061	214425	220	220	220	4717.35	4717.35	0	707.60	35.38
4	Aurangabad	309605	3100	14911	327616	220	220	220	7207.55	7207.55	0	1081.13	54.06
5	Beed	242764	232	13850	256846	220	220	220	5650.61	5650.61	0	847.59	42.38
6	Bhandara	94404	2898	0	97302	220	220	220	2140.64	2140.64	0	321.10	16.05
7	Buldhana	201544	0	1620	203164	220	220	220	4469.61	4469.61	0	670.44	33.52
8	Chandrapur	162371	914	1526	164811	220	220	220	3625.84	3625.84	0	543.88	27.19
9	Dhule	176970	355	5326	182651	220	220	220	4018.32	4018.32	0	602.75	30.14
10	Gadchiroli	81586	288	2326	84200	220	220	220	1852.40	1852.40	0	277.86	13.89
11	Gondia	95625	0	2768	98393	220	220	220	2164.65	2164.65	0	324.70	16.23
12	Hingoli	103242	1496	1494	106232	220	220	220	2337.10	2337.10	0	350.57	17.53
13	Jalgaon	370205	5064	0	375269	220	220	220	8255.92	8255.92	0	1238.39	61.92
14	Jalana	159488	2423	9055	170966	220	220	220	3761.25	3761.25	0	564.19	28.21
15	Kolhapur	281911	237	2536	284684	220	220	220	6263.05	6263.05	0	939.46	46.97
16	Latur	216368	100	1353	217821	220	220	220	4792.06	4792.06	0	718.81	35.94
17	Mumbai	524350	0	0	524350	220	220	220	11535.70	11535.70	0	1730.36	86.52
18	Nagpur	266862	128	1400	268390	220	220	220	5904.58	5904.58	0	885.69	44.28
19	Nanded	306038	475	6808	313321	220	220	220	6893.06	6893.06	0	1033.96	51.70
20	Nandurbar	124419	0	14690	139109	220	220	220	3060.40	3060.40	0	459.06	22.95
21	Nashik	376104	0	40972	417076	220	220	220	9175.67	9175.67	0	1376.35	68.82
22	Osmanabad	151372	42	841	152255	220	220	220	3349.61	3349.61	0	502.44	25.12
23	Parbhani	171060	597	1883	173540	220	220	220	3817.88	3817.88	0	572.68	28.63
24	Pune	566485	1476	1286	569247	220	220	220	12523.43	12523.43	0	1878.52	93.93
25	Raigad	181960	863	6427	189250	220	220	220	4163.50	4163.50	0	624.53	31.23
26	Ratnagiri	135639	1265	37	136941	220	220	220	3012.70	3012.70	0	451.91	22.60
27	Sangali	217329	160	2362	219851	220	220	220	4836.72	4836.72	0	725.51	36.28
28	Satara	211305	928	1874	214107	220	220	220	4710.35	4710.35	0	706.55	35.33
29	Sindhudurgh	70916	15	378	71309	220	220	220	1568.80	1568.80	0	235.32	11.77
30	Solapur	399129	1671	10637	411437	220	220	220	9051.61	9051.61	0	1357.74	67.89
31	Thane	549609	4936	11578	566123	220	220	220	12454.71	12454.71	0	1868.21	93.41
32	Wardha	90126	483	69	90678	220	220	220	1994.92	1994.92	0	299.24	14.96
33	washim	111889	1261	0	113150	220	220	220	2489.30	2489.30	0	373.40	18.67
34	Yeotmal	242389	1755	3630	247774	220	220	220	5451.03	5451.03	0	817.65	40.88
	Total	7927542	41124	163815	8132481	220	220	220	178914.58	#####	0	26837.19	1341.86

Date: \_\_\_\_\_

(Signature)  
Secretary of the Nodal Department  
Government Of Maharashtra

**Table-10A**  
Annual Work Plan and Budget 2008-09  
[Mid-Day Meal Scheme]

Table-10A

Requirement of Central Assistance towards Foodgrains, Cooking Assistance & Transport Assistance for 2008-09 for Upper Primary Stage (Classes VI-VIII)  
State: Maharashtra

S.No.	Name of District	No. of children likely to avail MDM in 2008-09 (Please also refer to Table-4A)				Anticipated No. of working days			Requirement of Foodgrains (In MTs)			Requirement of Cooking Assistance (Rs. in lakh) [Note:2]	Requirement of Transport Assistance (Rs. in lakhs) [Note:3]
		(Govt+LB+GA)	EGS Centres	AIE Centres	Total (col. 3+4+5)	(Govt+LB+GA)	EGS Centres	AIE Centres	Total [Note:1]	Rice	Wheat		
1	2	3	4	5	6	7	8	9	10	11	12	13	14
1	Ahmadnagar	200806	0	0	200806	220	220	220	6626.60	6626.60	0	883.55	49.70
2	Akola	74857	0	0	74857	220	220	220	2470.27	2470.27	0	329.37	18.53
3	Amaravati	122213	29	0	122243	220	220	220	4034.00	4034.00	0	537.87	30.26
4	Aurangabad	157724	0	0	157724	220	220	220	5204.89	5204.89	0	693.99	39.04
5	Beed	122354	51	0	122405	220	220	220	4039.37	4039.37	0	538.58	30.30
6	Bhandara	50753	0	0	50753	220	220	220	1674.84	1674.84	0	223.31	12.56
7	Buldhana	116813	0	1331	118145	220	220	220	3898.78	3898.78	0	519.84	29.24
8	Chandrapur	95140	0	0	95140	220	220	220	3139.63	3139.63	0	418.62	23.55
9	Dhule	123427	0	874	124301	220	220	220	4101.93	4101.93	0	546.92	30.76
10	Gadchiroli	45668	610	2069	48347	220	220	220	1595.44	1595.44	0	212.73	11.97
11	Gondia	45458	1507	476	47441	220	220	220	1565.55	1565.55	0	208.74	11.74
12	Hingoli	43777	157	816	44750	220	220	220	1476.75	1476.75	0	196.90	11.08
13	Jalgaon	150749	381	214	151343	220	220	220	4994.33	4994.33	0	665.91	37.46
14	Jalana	80113	0	248	80361	220	220	220	2651.92	2651.92	0	353.59	19.89
15	Kolhapur	170503	0	0	170503	220	220	220	5626.59	5626.59	0	750.21	42.20
16	Latur	129582	0	30	129612	220	220	220	4277.21	4277.21	0	570.29	32.08
17	Mumbai	196560	0	0	196560	220	220	220	6486.49	6486.49	0	864.87	48.65
18	Nagpur	143364	0	0	143364	220	220	220	4731.01	4731.01	0	630.80	35.48
19	Nanded	144286	0	0	144286	220	220	220	4761.44	4761.44	0	634.86	35.71
20	Nandurbar	46236	0	7318	53553	220	220	220	1767.26	1767.26	0	235.63	13.25
21	Nashik	133708	1080	0	134789	220	220	220	4448.03	4448.03	0	593.07	33.36
22	Osmanabad	70195	653	313	71161	220	220	220	2348.30	2348.30	0	313.11	17.61
23	Parbhani	78952	945	6278	86174	220	220	220	2843.76	2843.76	0	379.17	21.33
24	Pune	286150	136	0	286286	220	220	220	9447.45	9447.45	0	1259.66	70.86
25	Raigad	92625	0	0	92625	220	220	220	3056.62	3056.62	0	407.55	22.92
26	Ratnagiri	82071	0	0	82071	220	220	220	2708.35	2708.35	0	361.11	20.31
27	Sangali	126684	0	0	126684	220	220	220	4180.58	4180.58	0	557.41	31.35
28	Satara	135669	33	0	135703	220	220	220	4478.18	4478.18	0	597.09	33.59
29	Sindhudurgh	37980	0	0	37980	220	220	220	1253.35	1253.35	0	167.11	9.40
30	Solapur	193212	6	8285	201502	220	220	220	6649.57	6649.57	0	886.61	49.87
31	Thane	211237	0	0	211237	220	220	220	6970.81	6970.81	0	929.44	52.28
32	Wardha	46035	211	32	46279	220	220	220	1527.20	1527.20	0	203.63	11.45
33	washim	51008	198	0	51206	220	220	220	1689.80	1689.80	0	225.31	12.67
34	Yeotmal	121127	1290	2270	124687	220	220	220	4114.68	4114.68	0	548.62	30.86
<b>Total</b>		<b>3927037</b>	<b>7288</b>	<b>30554</b>	<b>3964878</b>	<b>220</b>	<b>220</b>	<b>220</b>	<b>130840.99</b>	<b>130840.99</b>	<b>0</b>	<b>17445.47</b>	<b>981.31</b>

Date: \_\_\_\_\_

(Signature)  
Secretary of the Nodal Department  
Government Of Maharashtra

Table-11  
Annual Work Plan and Budget 2008-09  
[Mid-Day Meal Scheme]

Table-11

Kitchen Shed Construction during 2008-09 in Primary Schools (Govt and Local Body only)

**State: Maharashtra**

Sl. No.	Districts	Total No. of Govt. + Local Body Schools as on 1.4.2006 (Classes I - V)	No. of schools requiring Kitchen shed [Note:1]	No. of Kitchen sheds sanctioned during 2006-07 & 2007-08	Balance requirement of Kitchen Sheds (Col 4-5)	Proposal for construction of Kitchen sheds during 2008-09			
						Out of MDMS		By Convergence with other	
						Physical )	Financial (in Rs. in lakh)	Physi cal	Financial (in Rs. in
1	2	3	4	5	6	7	8	9	10
1	Ahmadnagar	3122	3122	874	2248	2248	1348.80	0	0
2	Akola	1031	1031	0	1031	1031	618.60	0	0
3	Amaravati	1732	1722	336	1386	1386	831.60	0	0
4	Aurangabad	1506	1247	1447	-200	0	0.00	0	0
5	Beed	1902	1210	1199	11	11	6.60	0	0
6	Bhandara	788	788	0	788	788	472.80	0	0
7	Buldhana	1452	1452	276	1176	1176	705.60	0	0
8	Chandrapur	1760	1760	573	1187	1187	712.20	0	0
9	Dhule	1169	1169	594	575	575	345.00	0	0
10	Gadchiroli	1322	1304	1204	100	0	0.00	0	0
11	Gondia	1009	1009	0	1009	1009	605.40	0	0
12	Hingoli	778	230	187	43	43	25.80	0	0
13	Jalgaon	1788	1781	0	1781	1781	1068.60	0	0
14	Jalana	1225	705	590	115	53	31.80	0	0
15	Kolhapur	2005	1916	286	1630	1630	978.00	0	0
16	Latur	1256	1109	618	491	454	272.40	0	0
17	Mumbai	1246	1246	0	1246	1246	747.60	0	0
18	Nagpur	1833	1833	223	1610	1610	966.00	0	0
19	Nanded	2099	2097	1588	509	509	305.40	0	0
20	Nandurbar	1195	1195	1063	132	39	23.40	0	0
21	Nashik	3065	2985	1168	1817	1752	1051.20	0	0
22	Osmanbad	1006	737	616	121	121	72.60	0	0
23	Parbhani	1049	1049	895	154	154	92.40	0	0
24	Pune	3870	3727	134	3593	3593	2155.80	0	0
25	Raigad	2602	2602	141	2461	2461	1476.60	0	0
26	Ratnagiri	2699	2699	0	2699	2699	1619.40	0	0
27	Sangali	1625	1615	545	1070	1070	642.00	0	0
28	Satara	2517	2488	224	2264	2264	1358.40	0	0
29	Sindhudurgh	1470	1470	0	1470	1470	882.00	0	0
30	Solapur	2649	2555	1240	1315	1315	789.00	0	0
31	Thane	3391	3391	1642	1749	1749	1049.40	0	0
32	Wardha	958	958	0	958	958	574.80	0	0
33	washim	779	775	237	538	288	172.80	0	0
34	Yeotmal	2001	1992	517	1475	1368	820.80	0	0
Total		59899	56969	18417	38552	38038	22822.80	0	0

Date: \_\_\_\_\_

(Signature)  
Secretary of the Nodal Department  
Government Of Maharashtra



Table-11A  
Annual Work Plan and Budget 2008-09  
[Mid-Day Meal Scheme]

Table-11A

Kitchen Shed Construction during 2008-09 for Upper Primary Stage (Govt and Local Body only)\*

State: Maharashtra

As on 31.12.2007

Sl. No.	Districts	Total No. of School having Upper Primary classes WITHOUT primary section attached to them	No. of schools out of column 3 requiring Kitcher'sheds to be constructed	Proposal for construction of Kitchen sheds during 2008-09			
				Out of MDMS		By Convergence with other development programme	
				Physical )	Financial (in Rs. in lakh)	Physical	Financial (in Rs. in lakh)
1	2	3	4	5	6	7	8
1	Ahmadnagar	0	0	0	0.00	0	0
2	Akola	0	0	0	0.00	0	0
3	Amaravati	5	5	5	3.00	0	0
4	Aurangabad	0	0	0	0.00	0	0
5	Bead	6	6	6	3.60	0	0
6	Bhandara	1	1	1	0.60	0	0
7	Buldhana	0	0	0	0.00	0	0
8	Chandrapur	1	1	1	0.60	0	0
9	Dhule	0	0	0	0.00	0	0
10	Gadchiroli	10	10	10	6.00	0	0
11	Gondia	29	29	29	17.40	0	0
12	Hingoli	0	0	0	0.00	0	0
13	Jalgaon	0	0	0	0.00	0	0
14	Jalana	0	0	0	0.00	0	0
15	Kolhapur	0	0	0	0.00	0	0
16	Latur	1	1	1	0.60	0	0
17	Mumbai	0	0	0	0.00	0	0
18	Nagpur	2	2	2	1.20	0	0
19	Nanded	10	10	10	6.00	0	0
20	Nandurbar	0	0	0	0.00	0	0
21	Nashik	0	0	0	0.00	0	0
22	Osmanbad	5	5	5	3.00	0	0
23	Parbhani	5	5	5	3.00	0	0
24	Pune	0	0	0	0.00	0	0
25	Raigad	3	3	3	1.80	0	0
26	Ratnagiri	0	0	0	0.00	0	0
27	Sangali	0	0	0	0.00	0	0
28	Satara	0	0	0	0.00	0	0
29	Sindhudurgh	0	0	0	0.00	0	0
30	Solapur	6	6	6	3.60	0	0
31	Thane	6	6	6	3.60	0	0
32	Wardha	0	0	0	0.00	0	0
33	washim	0	0	0	0.00	0	0
34	Yeotmal	7	7	7	4.20	0	0
Total		97	97	97	58.20	0	0

Provisional

ate: \_\_\_\_\_

(Signature)  
Secretary of the Nodal Department  
Government Of Maharashtra

Annual Work Plan and Budget 2008-09  
[Mid-Day Meal Scheme]  
Kitchen Devices Procurement during 2008-09 for Primary Stage

State: Maharashtra

(As on 31.12.07)

Sl. No.	Districts	Total No. of Govt. + Local Body Schools (Classes I - V)	No. of schools requiring Kitchen devices as on 1.4.2006	No. of schools for which Kitchen Devices sanctioned during 2006-07 & 2007-08	Balance requirement of Kitchen Devices (Col 4-5)	Proposal for procurement of Kitchen devices during 2008-09			
						Out of MDMS		By Convergence with other development programme	
						Physical	Financial (in Rs. in lakh)	Physical	Financial (in Rs. in lakh)
1	2	3	4	5	6	7	8	9	10
1	Ahmadnagar	3088	3088	2715	373	373	18.65	0	0
2	Akola	993	993	549	444	444	22.20	0	0
3	Amaravati	1703	1703	1543	160	160	8.00	0	0
4	Aurangabad	1587	1587	875	712	712	35.60	0	0
5	Beed	1915	1915	1008	907	907	45.35	0	0
6	Bhandara	771	771	450	321	321	16.05	0	0
7	Buldhana	1469	1469	769	700	700	35.00	0	0
8	Chandrapur	1701	1701	1480	221	221	11.05	0	0
9	Dhule	1020	1020	1054	-34	0	0.00	0	0
10	Gadchiroli	1336	1336	1142	194	194	9.70	0	0
11	Gondia	870	870	838	32	32	1.60	0	0
12	Hingoli	782	782	395	387	387	19.35	0	0
13	Jalgaon	1819	1819	1725	94	94	4.70	0	0
14	Jalana	1226	1226	638	588	588	29.40	0	0
15	Kolhapur	1951	1951	1084	867	867	43.35	0	0
16	Latur	1219	1219	781	438	438	21.90	0	0
17	Mumbai	1220	1220	0	0	0	0.00	0	0
18	Nagpur	1821	1821	1769	52	52	2.60	0	0
19	Nanded	1867	1867	1859	8	8	0.40	0	0
20	Nandurbar	1236	1236	1055	181	181	9.05	0	0
21	Nashik	2752	2752	2644	108	108	5.40	0	0
22	Osmanbad	1017	1017	555	462	462	23.10	0	0
23	Parbhani	1029	1029	566	463	463	23.15	0	0
24	Pune	3883	3883	3425	458	458	22.90	0	0
25	Raigad	2594	2594	2206	388	388	19.40	0	0
26	Ratnagiri	2701	2701	1319	1382	1382	69.10	0	0
27	Sangali	1641	1641	917	724	724	36.20	0	0
28	Satara	2536	2536	1322	1214	1214	60.70	0	0
29	Sindhudurgh	1450	1450	738	712	712	35.60	0	0
30	Solapur	2716	2716	1517	1199	1199	59.95	0	0
31	Thane	3339	3339	2845	494	494	24.70	0	0
32	Wardha	961	961	520	441	441	22.05	0	0
33	washim	808	808	423	385	385	19.25	0	0
34	Yeotmal	1999	1999	1725	274	274	13.70	0	0
Total		59020	59020	42451	16569	16569	828.45	0	0

Date: \_\_\_\_\_

(Signature)  
Secretary of the Nodal Department  
Government Of Maharashtra

Table-12A  
Annual Work Plan and Budget 2008-09  
(Mid-Day Meal Scheme)

Table-12A

Kitchen devices procurement during 2008-09 for Upper Primary Stage (Govt and Local Body only)

Date: Maharashtra

As on 31.12.2007

Sl. No.	Districts	Total No. of Schools having Upper Primary classes WITHOUT primary section attached to them (Govt. + Local Body Schools)	No. of school out of column 3 requiring Kitchen devices	Proposal for procurement of Kitchen devices during 2008-09			
				Out of MDMS		By Convergence with other development programme	
				Physical )	Financial (in Rs. in lakh)	Physical	Financial (in Rs. in lakh)
1	2	3	4	5	6	7	8
1	Ahmadnagar	0	0	0	0.00	0	0
2	Akola	0	0	0	0.00	0	0
3	Amaravati	5	5	5	0.25	0	0
4	Aurangabad	0	0	0	0.00	0	0
5	Beed	6	6	6	0.30	0	0
6	Bhandara	1	1	1	0.05	0	0
7	Buldhana	0	0	0	0.00	0	0
8	Chandrapur	1	1	1	0.05	0	0
9	Dhule	0	0	0	0.00	0	0
10	Gadchiroli	10	10	10	0.50	0	0
11	Gondia	29	29	29	1.45	0	0
12	Hingoli	0	0	0	0.00	0	0
13	Jalgaon	0	0	0	0.00	0	0
14	Jalana	0	0	0	0.00	0	0
15	Kolhapur	0	0	0	0.00	0	0
16	Latur	1	1	1	0.05	0	0
17	Mumbai	0	0	0	0.00	0	0
18	Nagpur	2	2	2	0.10	0	0
19	Nanded	10	10	10	0.50	0	0
20	Nandurbar	0	0	0	0.00	0	0
21	Nashik	0	0	0	0.00	0	0
22	Osmanbad	5	5	5	0.25	0	0
23	Parbhani	5	5	5	0.25	0	0
24	Pune	0	0	0	0.00	0	0
25	Raigad	3	3	3	0.15	0	0
26	Ratnagiri	0	0	0	0.00	0	0
27	Sangli	0	0	0	0.00	0	0
28	Satara	0	0	0	0.00	0	0
29	Sindhudurgh	0	0	0	0.00	0	0
30	Solapur	6	6	6	0.30	0	0
31	Thane	6	6	6	0.30	0	0
32	Wardha	0	0	0	0.00	0	0
33	washim	0	0	0	0.00	0	0
34	Yeotmal	7	7	7	0.35	0	0
Total		97	97	97	4.85	0	0

Date: \_\_\_\_\_

(Signature)  
Secretary of the Nodal Department  
Government Of Maharashtra

Table-13  
Annual Work Plan and Budget 2008-09  
[Mid-Day Meal Scheme]

Table-13

Assistance for Management Monitoring and Evaluation 2008-09 for Primary + Upper Primary Stage

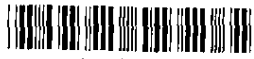
State: Maharashtra

(In Rs.)

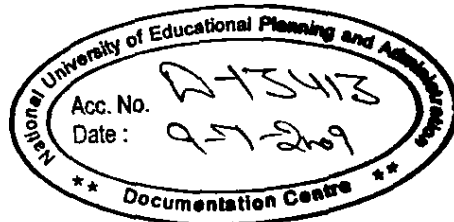
1	2 Activities (Please list item-wise details as far as possible)	2007-08 (1.4.2007 to 31.12.2007)					2008-09				12 Remarks
		3 Allocated	4 Average Unit Cost	5 Phy	6 Expenditure (4) x (5)	7 Unspent balance on 31.12.2007 (Col 3-6)	8 Allocation entitled (Note:1)	9 Average unit cost	10 Phy	11 Fin (9) x (10)	
I	School Level Expenses	334.75					50% of MME funds eligible to State Rs.74689000				
	i) Form & Stationery		200	71573	0	14314600		600	71573	43748300	
	ii) Weighting machine & height Recorder		700	27372	0	19160400		700	44201	30940700	
	iii) Replacement/repair/maintenance of cooking device, utensils, weighing machines etc.,		0	0	0	0		0	0	0	
	Sub Total		900	98945	0	33475000		1300	115774	74689000	
II	Management, Supervision, Training and Internal Monitoring:	234.33					35% of MME funds eligible to State Rs.52282000			0	
	i) Staff salary		10000	43	0	4350310		10000	351	35107260	
	ii) Transport & Conveyance		10000	403	0	4050000		10000	403	4050000	
	iii) Other Incidentals expenses		20000	403	0	8060000		20000	403	8060000	
	iv) Furniture, hardware and consumables etc: Computer		34690	201	0	6972690		34690	185	5064740	
	Sub Total	74690	1050	0	23433000	74690	1342	52282000			
III	External Monitoring & Evaluation (please specify item wise)	100.43	0	30	0	10043000	15% of MME funds eligible to State Rs.22407000	0		22407000	
	Grand Total	669.51	75590	100025	0	66951000	149378000	75990	117116	149378000	

NUEPA DC

Date: \_\_\_\_\_



D13413



(Signature)

Secretary of the Nodal Department  
Government Of Maharashtra