

SARVA SHIKSHA ABHIYAN

DISTRICT ELEMENTARY EDUCATION PLAN

**ANNUAL WORK PLAN & BUDGET
2003-2004**

MADURAI DISTRICT

TAMILNADU

**SARVA SHIKSHA ABHIYAN
DISTRICT ELEMENTARY EDUCATION PLAN
MADURAI DISTRICT
ANNUAL WORK PLAN & BUDGET 2003 - 2004**

Chapter I- Plan Overview		Page
1.1	Introduction	1
1.2	Planning Process	2
1.3	General Profile	3
1.4	Educational Profile	5
1.4.1	Access	7
1.4.2	Enrolment - GER & NER	8
1.4.2.1	Boys & Girls	10
1.4.2.2	SC/ST Children	11
1.4.2.3	Disabled Children	12
1.4.3	Completion Rate	13
1.4.4	Attendance Rate	17
1.4.5	Transition Rate	18
1.4.6	Teacher Pupil Ratio	19
1.4.7	Achievement Level	20
1.5	Early Childhood Care and Education	21
1.6	Out of School Children	22
1.7	Special Focus Group	24
1.8	VECs, CRCs, BRCs	25
1.9	Infrastructure	26
1.9.1	Block Resource Centres	26
1.9.2	Cluster Resource Centres	27
1.9.3	Three Classrooms	27
1.9.4	Two Classrooms	27
1.9.5	Toilets	27
1.9.6	Drinking Water Facilities	28
1.10	District Project Office	28

LIBRARY & DOCUMENTATION SECTION

National Institute of Educational
Planning and Administration.

17-B, Ansari Road, Connaught Place,

New Delhi - 110016

DOC, No.

Date

D-12167

DS-12-2003

Chapter II – Progress Review		Page
2.1	Introduction	29
2.2	Progress in ACCESS	29
2.2.1	Opening of Primary Schools	30
2.2.2	Upper Primary Schools	31
2.2.3	EGS Centres	31
2.3	Progress in ENROLMENT	31
2.3.1	Boys & Girls	32
2.3.2	SC/ST	32
2.3.3	Disabled	33
2.4	Progress in COMPLETION	33
2.5	Retention	35
2.6.	Transition	35
2.7.	Attendance	35
2.8.	Pupil's Achievement	36
2.9.	Enrolment and Mainstreaming of out of School children	36
2.9.1	Bridge Courses/Transit Camps	36
2.9.2	Residential Schools	36
2.9.3	Identity Card	37
2.10	Appointment of Teachers	38
2.11	Programmes for Disabled	38
2.12	Programmes for SC/ST	38
2.13	Programmes for Girls	38
2.14	Early Childhood Care and Education	39
2.15	Functioning of Village Education Committees	39
2.16	Activities in Cluster Resource Centres	40
2.17	Programmes in Block Resource Centres	40
2.18	Research, Evaluation and Monitoring	40
2.19	Improving Infrastructure	41
2.19.1	Construction of Block Resource Centres	41
2.19.2	Construction of Cluster Resource Centres	41
2.19.3	Construction of Three Classrooms	41
2.19.4	Construction of Two Classrooms	42
2.19.5	Provision of Toilet Facilities	42
2.19.6	Provision of Drinking Water Facilities	42
2.20	Maintenance and Repairs	42
2.21	Programmes for Quality Improvement	42

2.21.1	Capacity building for Project Staff	42
2.21.2.	Training to Teachers	43
2.21.3	Orientation to VEC Members	43
2.21.4	Provision of TLM, TLE, School Grant	44
2.21.5	Curriculum Revision – VI Standard Textbook	44
2.21.6	Innovation – Computer Literacy, Vocational Skill Development Skills	44
2.22	Project Management	45
2.22.1	Establishment of MIS	45
2.22.2	Implementation of DISE	45
2.22.3	Appointment of Project Staff	45
2.23	Convergence with Ongoing Schemes	46
2.24	Issues and Strategies	47
2.24.1	Access	48
2.24.2	Enrolment and Retention	48
2.24.3	Enrolment of Out of School Children	49
2.24.4	Quality Issues	49
2.24.5	Special Focus Groups	50
2.24.6	Monitoring and Supervision	52
2.24.7	Improving School Infrastructure	53
2.24.8	Community Participation and Mobilisation	54
2.24.9	Research and Evaluation	54
Chapter III – Activities and Budget		
3.1	Primary Schools	56
3.2	Upper Primary Schools	56
3.3	Alternative and Innovative Education	57
3.4	Special Focus Groups	57
3.5	Village Education Committee	58
3.6	Cluster Resource Centres	58
3.7	Block Resource Centres	58
3.8	Research, Evaluation and Monitoring	59
3.9	Civil Construction Works	60
3.10	Maintenance and Repair Works	60
3.11	Management	61
3.12	Training	61
3.13	Innovation	64
3.14	Procurement Plan	64
3.15	Budget and Activities	66
3.16	Implementation Schedule	76

List of Tables		
Table No	TITLE	Page
1	Population	3
2	SC/ST Population	4
3	Literacy Rate	4
4	Education Profile	6
5	Access	7
6	Enrolment - GER & NER	8
7	Enrolment - GER & NER (SC/ST)	9
8	Enrolment - Boys & Girls	10
9	Enrolment - SC/ST Children	11
10	Disabled Children	12
11	CR, RR and DR - Social Groupwise	13
12	CR, RR and DR - Primary	15
13	CR, RR and DR - Upper Primary	16
14	Attendance Rate	17
15	Transition Rate	18
16	Teacher - Pupil Ratio	19
17	Achievement Level	20
18	ECCE Centre and Children	21
19	Out of School Children (All)	22
20	Out of School Children (SC/ST)	23
21	Special Focus Groups	24
22	VECs ,CRCs,BRCs	25
23	Infrastructure	26
24	Progress Review	30
25	Progress in NER	32
26	Progress in CR, CR, RR (Primary)	33
27	Progress in CR, CR, RR (Upper Primary)	34
28	Progress in Civil Works	60
29	Training Schedule	62

List of Annexures		
S.No	Title	Page
I	Gradewise Enrolment - Primary	77
	SC Enrolemt - Primary	78
	ST Enrolment - Primary	79
	Gradewise Enrolment - Upper Primary	80
	SC Enrolemt - Upper Primary	81
	ST Enrolment - Upper Primary	82
II	Population and School age Population 2002 - 03	83
III	Selected Educational Indicators	84
IV	List of New Primary schools 2003 - 04	85
V	List of schools to be Upgraded 2003-04.	86
VI	Glimpses of SSA Progress 2002 - 03.	87

CHAPTER – I

PLAN OVERVIEW

1.1 Introduction:

Sarva Shiksha Abhiyan is an effort to provide Universal Elementary Education by ensuring community-ownership of the school system. It is a response to the demand for quality education. It was launched in Madurai District in 2001-2002. It is an attempt to provide an opportunity for improving human capabilities towards achieving socio-economic development of all sections of people. It provides a wide convergent frame work for implementation of various interventions through effective decentralization. The SSA is a demand based approach to planning. Habitation is the unit for formulating district plan. The perspective plan for the period from 2001 – 2007 and annual plan for 2001-02 and 2002 - 2003 got approved in September 2002. The Annual Plan and Budget for 2003-04 has three chapters namely Plan Overview, Progress Review and Activities & Budget.

1.2 Planning Process:

The preparatory work on AWP & B for 2003 – 2004 was started in the month of January 2003 in order to ensure participatory planning process at all levels.

A one day workshop was conducted to all District Programme Co-ordinator, Additional District Programme Co-ordinator and Assistant District Programme Co-ordinator on 16.3.2003 in Chennai under the Chair – Person of State Education Secretary. All the Directors of Education Department gave their valuable the suggestions to prepare the AWP & B for 2003 – 2004.

The State level core – planning team memeber conducted one day orientaion to the DPC, Addl.DPC, ADPC, DIET faculties , Statistical Officer and BRC Supervisors on 18.03.2003 at Madurai. District team members from 5 Southern Districts had partcipated in the orientation. Further orientation on plan preparation was given to all BRC Supervisors, AEEOs and Teacher- Educators of all the blocks on 20.03.2003.

Demands were received from schools through the Village Education Committees and consolidated at the block level by the Block Education Committee. Based on the proposals of the BECs, AWP&B for 2003 -04 was consolidated at the district level.

Moreover, the district planning team visited one BRC and ECCE centre at Kottampatti block. The team also visited the In- service Training centre at Melur and discussed with the participants the actual training needs of teachers at the block level. The team also visited VEC at Thirumogur and received informations about difficulties in conducting the VEC. The team also visited the two class room building construction site at Ammapatti Village and CRC building site at Othakkadai on 21.03.2003. The district team had discussions with VEC Presidents about the progress of construction works and merits of community ownership in the construction of buildings.

Three days state level workshop from 27-03-2003 to 29-03-2003 was conducted at Gandhigram Deemed University at Gandhigram under the chairmanship of SPD. A broad out look of AWP & B for 2003-04 was discussed. Specialists in the field of IED, innovation skilled training and action research were invited to deliver guest lectures. On 29.03.2003, the Special Secretary, Education Department, Chennai threw a light on SSA objectives and to prepare the AWP & B for 2003 – 2004.

Again a state level workshop for all district level team was conducted for the purpose of finalization of AWP & Budget at SPO, Chennai from 7th April 2003 to 10th April 2003 by the State Project Director. The Education Secretary to Government of Tamilnadu attended the workshop on 10th April and stressed the need to achieve the goals of SSA .

1.3 General Profile:

Madurai is called the "**Temple City**" of South India. Madurai district is located between 9° 30 North latitude and 77°33'00 of East longitude. It is bounded by Dindigul District in the North, Sivagangai District in the East, Virudhunagar District in the South and Theni District in the West. The total area of the district is 3741.73 Sq. Km

Population

The total Population is 25,62,279 of which (12,95,387 are Males and 12,66,892 are Females)

Table - 1

Male	Female	Total
12,95,387	12,66,892	25,62,279

Source: Provisional Census of India 2001.

SC and ST Population

Table - 2

As per the 2001 Census, 308953 are SCs and 10671 are STs.

Community	Male	Female	Total
SC	156638	152315	308953
ST	5519	5152	10671

Source: Provisional Census of India 2001.

Literacy Rate

The following table Provides Literacy status of Madurai District.

Table - 3

Area	Male		Female		Total	
	1991	2001	1991	2001	1991	2001
Tamilnadu	73.75	83.33	51.33	64.55	62.66	73.47
Madurai	79.93	87.24	57.90	69.93	69.08	78.65

Source: Census of India 1991 & 2001.

The Literacy rate of Madurai District (78.65%) exceeds the average literacy rate of the state (74%). The male literacy rate is higher than the female literacy rate in the District.

Developmental and Administrative Units

Number of Blocks	13
Taluks	7
Corporation	1
Municipalities	3
Town Panchayats	15
Habitations	1704

1.4 Educational Profile

There are 174 Pre- Primary schools, 1037 Primary and 424 Upper-Primary schools in Madurai District. There are 15 Block Resource centres to provide training and on job support to Elementary school teachers. The District Institute of Education and Training is located at T. Kallupatti. The Arts and Science Colleges functioning in Madurai are 13. In addition to that 4 Engineering Colleges and 2 Medical Colleges are also functioning in Madurai. Among them one is Allopathic and another one is Homeopathic. There are 2 Universities, one for General Education and another for Agriculture. The status of Education in Madurai District is presented in the following table.

Table - 4

S.No.	Block	No. of Schools		No. of Teachers		No. of Students	
		Pri.	Up.Pri	Pri.	Up.Pri	Pri.	Up.Pri
1.	Madurai East	88	32	367	305	28025	13278
2.	Madurai West	78	36	327	414	31511	15450
3.	Alanganallur	59	18	204	152	10823	5373
4.	Chellampatti	93	20	315	84	9913	4056
5.	Kallikudi	57	13	182	80	7837	3102
6.	Kottampatti	86	18	246	128	10290	4823
7.	Melur	92	30	280	216	17787	8981
8.	Sedapatti	80	19	248	292	11747	5901
9.	T. Kallupatti	55	24	183	142	8557	4315
10.	Tirumangalam	90	24	345	200	15059	8226
11.	Thirupparankundram	141	141	1349	1774	104712	57260
12.	Usilampatti	61	24	260	225	11966	5960
13.	T. Vadipatti	57	25	225	216	13273	6387
	Total	1037	424	4531	4228	281500	143112

Source: DISE 2002

A total of 1461 primary and upper primary schools are functioning in Madurai District. Of them 1037 are primary and 424 are upper primary. There are 1116 Government schools 311 aided schools and 34 un -aided schools. The number of schools in Government sector is higher than the private sector.

1.4.1 ACCESS

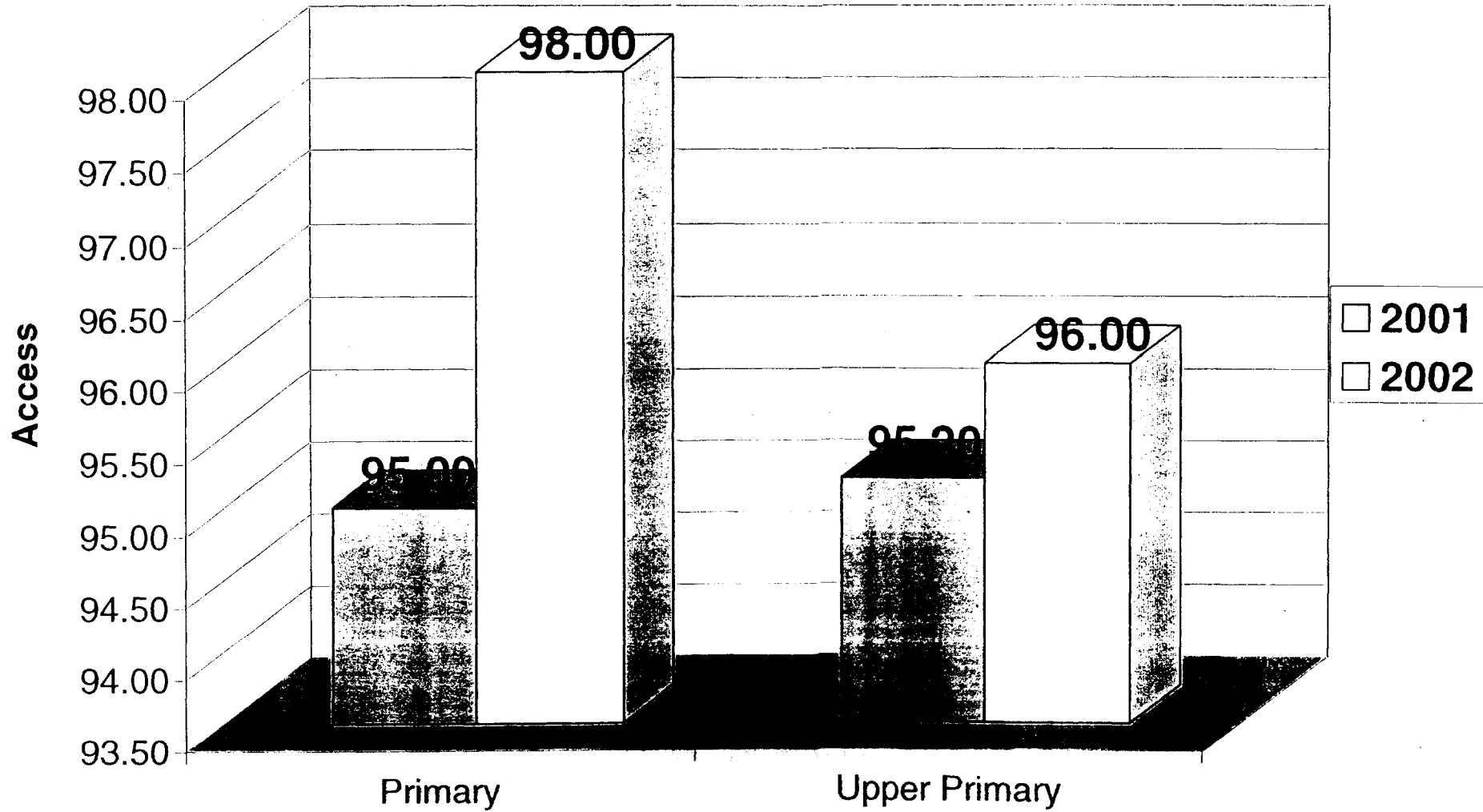
The number of habitations provided with Primary schools and Upper Primary schools and habitations unserved with schooling facility are given in the table below.

Table - 5
Number of Habitations with / without Schooling Facilities
2002 -2003.

S.No	Block	Total Number of Habitations with Block	Number of Habitations					
			Primary			Upper Primary		
			With Primary	Without Primary	GAR for Primary %	With Upper Primary	Without Upper Primary	GAR for Upper Primary %
1.	Madurai East	151	145	6	96	143	8	95
2.	Madurai West	161	160	1	100	156	5	97
3.	Alanganallur	118	117	1	100	118	0	100
4.	Chellampatti	161	161	0	100	159	2	99
5.	Kallikudi	77	77	0	100	72	5	93
6.	Kottampatti	151	151	0	100	144	7	95
7.	Melur	183	183	0	100	170	13	93
8.	Sedapatti	119	118	1	100	116	3	97
9.	T. Kallupatti	109	108	1	100	109	0	100
10.	Tirumangalam	157	143	14	92	154	3	98
11.	Thirupparankundram	132	124	8	95	114	18	87
12.	Usilampatti	109	107	2	93	105	4	97
13.	T. Vadipatti	76	0	0	100	76	0	100
	Total	1704	1670	34	98	1636	68	96

There are 1704 habitations in the District of which 1670 and 1636 habitations have Schooling access to Primary and Upper Primary respectively. 34 habitations are without Primary schooling facilities and 68 habitations has no access to Upper Primary Schools. Thirumangalam Block has more number of (14) habitations in Primary and Thiruparankundram Block with 18 habitations are without schooling access. 9 Blocks have achieved 100% access in Primary and 3 Blocks have achieved 100% access in Upper Primary. The average GAR for Primary is 98% and for Upper Primary is 96% .

Progress in Access



1.4.2 Enrolment - GER and NER - 2002 - 2003.

The blockwise, genderwise and stagewise GER and NER are given in the following table.

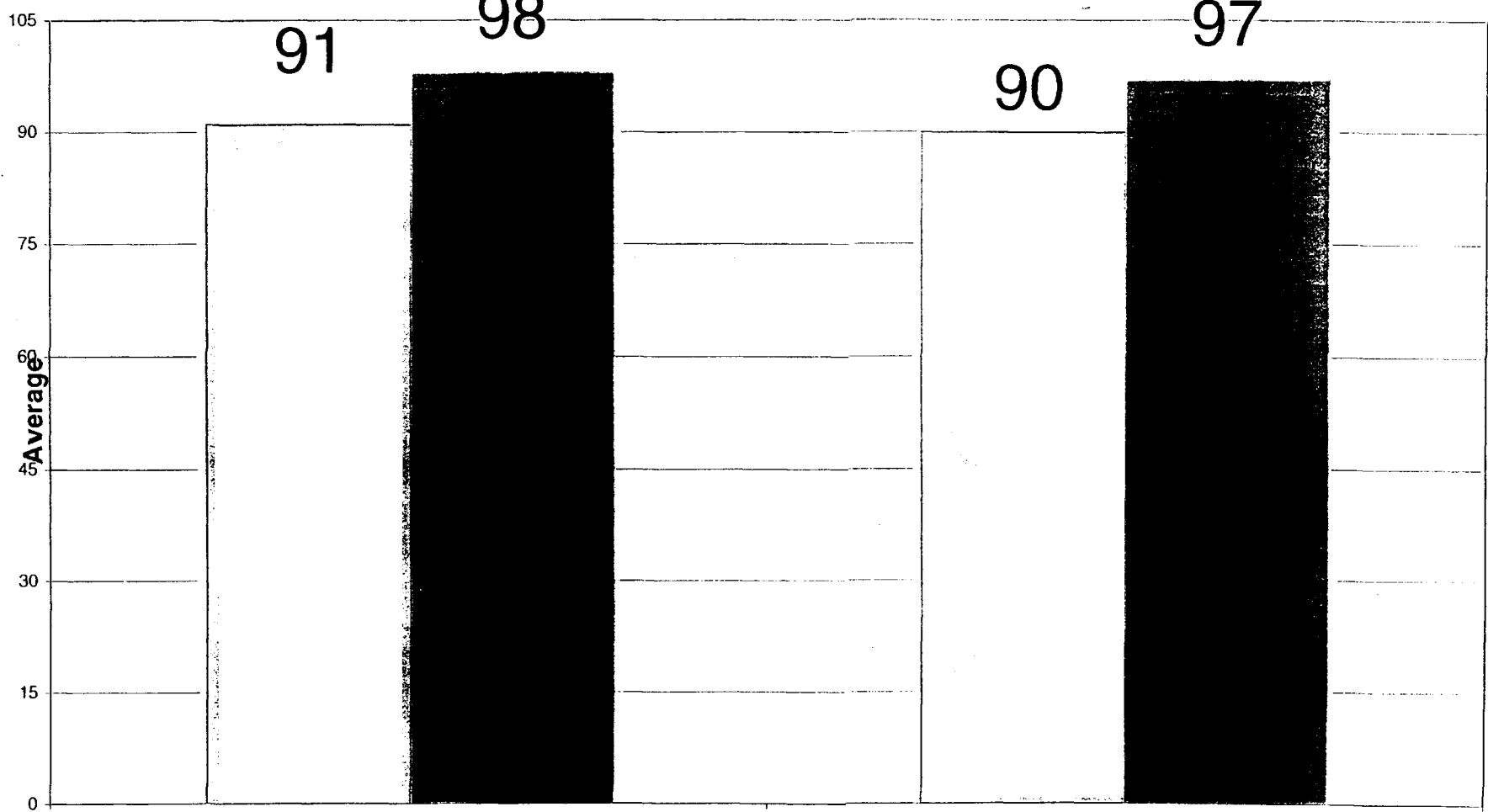
Table - 6

S.No	Block	Primary						Upper Primary					
		GER			NER			GER			NER		
		B	G	T	B	G	T	B	G	T	B	G	T
1.	Madurai East	103	102	102	98	98	98	105	104	104	97	97	97
2.	Madurai West	120	122	121	99	97	98	110	114	112	96	97	96
3.	Alanganallur	105	103	104	98	97	98	107	105	106	92	98	95
4.	Chellampatti	102	102	102	99	99	99	104	106	105	97	97	97
5.	Kallikudi	110	112	111	94	92	93	106	104	105	90	88	89
6.	Kottampatti	107	102	104	97	97	97	110	105	107	99	97	98
7.	Melur	123	117	120	98	97	97	104	110	107	97	97	97
8.	Sedapatti	110	110	110	97	97	97	115	117	116	96	96	96
9.	T. Kallupatti	125	131	128	99	99	99	110	112	111	98	98	98
10.	Tirumangalam	104	100	105	99	99	99	102	104	103	98	98	98
11.	Thirupparankundram	120	126	123	97	96	96	106	108	107	98	97	97
12.	Usilampatti	120	116	118	99	99	99	110	114	107	98	99	99
13.	T. Vadipatti	120	114	117	99	99	99	112	108	110	98	98	98
	District Average	113	112	113	98	97	98	107	108	108	96	97	97

Source: Updated Household Survey 2002

The district average NER in Primary is 98% as against 97% in upper primary. The NER of boys is higher in primary than girls by 1% . The NER is lowest both in primary and upper primary in Kallikudi block. The NER is 99% in Usilampatti and Tirupparankundram blocks in primary schools. In upper primary schools the highest NER is registered in Usilampatti block as 99%. The GER is 113% in primary schools while it is 108% in upper primary schools.

Progress in NER



Primary

Upper Primary

□ 2001
■ 2002

Table - 7
Enrolment - GER and NER - (SC / ST).
2002 - 2003.

S. No	Block	Soc Group	Primary						Upper Primary					
			GER			NER			GER			NER		
			B	G	T	B	G	T	B	G	T	B	G	T
1.	Madurai East	SC	101	102	101	97	95	96	103	101	102	96	94	95
		ST	100	100	100	97	97	97	104	102	103	98	99	98
2.	Madurai West	SC	109	108	109	98	96	97	106	104	105	94	96	95
		ST	108	110	108	94	94	94	107	105	106	93	93	93
3.	Alanganallur	SC	102	101	102	96	96	96	104	102	103	95	95	95
		ST	102	102	102	100	100	100	103	103	103	100	100	100
4.	Chellampatti	SC	109	108	109	98	96	97	106	108	107	98	98	98
		ST	0	0	0	0	0	0	0	0	0	0	0	0
5.	Kallikudi	SC	105	104	105	98	98	98	108	104	106	91	89	90
		ST	100	100	100	100	100	100	100	100	100	100	100	100
6.	Kottampatti	SC	104	103	104	98	98	98	108	110	109	95	95	95
		ST	105	107	105	100	100	100	107	109	108	100	100	100
7.	Melur	SC	116	115	116	99	99	99	108	106	107	98	98	98
		ST	104	105	104	100	100	100	107	107	107	100	100	100
8.	Sedapatti	SC	106	107	106	98	98	98	104	102	106	98	96	97
		ST	104	104	104	100	100	100	101	102	101	100	100	100
9.	T. Kallupatti	SC	111	112	111	99	99	99	107	105	106	97	95	96
		ST	104	105	109	100	100	100	102	102	102	100	100	100
10.	Thirumangalam	SC	103	104	103	99	99	99	101	105	103	98	98	98
		ST	104	105	104	100	100	100	103	107	105	100	100	100
11.	Thirupparan kundram	SC	108	110	108	98	98	98	102	104	103	99	99	99
		ST	105	104	105	99	99	99	104	110	107	96	96	96
12.	Usilampatti	SC	108	106	108	99	99	99	107	109	108	99	99	99
		ST	106	106	106	100	100	100	102	101	102	100	100	100
13.	T. Vadipatti	SC	112	100	112	99	99	99	106	104	105	98	98	98
		ST	106	107	106	100	100	100	102	103	102	97	95	96
	Average	SC	108	107	107	98	98	98	105	105	105	97	97	97
		ST	104	105	104	99	99	99	104	104	104	99	99	99

Source: Updated Household Survey 2002

The average NER is 98% in the case of Scheduled caste while it is 99% in the case of Scheduled tribes. The average NER in upper primary is 99% for ST's and 97% for SC's. There is no gender gap in respect of SC both in Primary and Upper Primary.

1.4.2.1 Boys and Girls

The Genderwise enrolment in Primary and Upper Primary are given in the following table.

Table - 8

Enrolment - 2002 - 2003.

S. No	Block	Primary			Upper Primary		
		B	G	Total	B	G	Total
1.	Madurai East	14264	13761	28025	6645	6633	13278
2.	Madurai West	16478	15033	31511	7977	7473	15450
3.	Alanganallur	5659	5164	10823	2781	2592	5373
4.	Chellampatti	5440	4473	9913	2339	1717	4056
5.	Kallikudi	4094	3743	7837	1843	1259	3102
6.	Kottampatti	5248	5042	10290	2505	2318	4823
7.	Melur	9147	8640	17787	4742	4239	8981
8.	Sedapatti	6350	5397	11747	3286	2615	5901
9.	T. Kallupatti	4448	4109	8557	2531	1784	4315
10.	Thirumangalam	8098	6961	15059	4445	3781	8226
11.	Thirupparankundram	53673	51039	104712	29252	28008	57260
12.	Usilampatti	6603	5363	11966	3155	2805	5960
13.	T. Vadipatti	7001	6272	13273	3419	2968	6387
	Total	146503	134997	281500	74920	68192	143112

Source: DISE - 2002.

The total enrolment in Primary is 2.82 lakhs children and Upper Primary is 1.43 lakhs. Enrolment is more in primary schools than in upper primary schools. Enrolment of Boys is higher than girls both in Primary and Upper Primary in Tirupparankundram block has the highest number of students in primary and upper primary. The students strength is low in T. Kallupatti block in Primary schools. In upper Primary section the strength is low in Kallikudi block. The student strength is low in Kallikudi block.

1.4.2.2 SC/ ST Children

The enrolment of SC/ST children in Primary and Upper Primary schools are given in the following table.

Table - 9
Enrolment of SC and ST Children
2002 - 2003.

S. No	Block	Primary						Upper Primary					
		SC			ST			SC			ST		
		B	G	T	B	G	T	B	G	T	B	G	T
1.	Madurai East	3058	2884	5942	70	72	142	1406	1212	2618	11	8	19
2.	Madurai West	2938	2861	5799	28	22	50	1301	1328	2629	31	27	58
3.	Alanganallur	1426	1308	2734	57	59	116	607	593	1200	59	62	121
4.	Chellampatti	1067	937	2004	0	0	0	381	307	688	0	0	0
5.	Kallikudi	792	814	1606	1	1	2	317	229	546	118	114	232
6.	Kottampatti	931	865	1796	59	59	118	430	425	855	82	99	181
7.	Melur	1936	1842	3778	10	8	18	967	895	1862	2	5	7
8.	Sedapatti	1794	1526	3320	3	17	20	834	214	1048	3	0	3
9.	T. Kallupatti	1201	1134	2335	46	43	89	661	409	1070	82	47	129
10.	Thirumangalam	1599	1403	3002	13	10	23	856	793	1649	74	53	127
11.	Thirupparan -kundram	6725	6248	12973	384	328	712	3249	3077	6326	165	159	324
12.	Usilampatti	1100	943	2043	4	8	12	456	484	940	4	6	10
13.	T. Vadipatti	1869	1741	3610	65	41	106	940	790	1730	13	64	77
	Total	26436	24506	50942	740	668	1408	12405	11156	23561	644	644	1288

Source: DISE 2002

The above tables shows that there are 74503 Scheduled Caste children in the system. The total ST children from I - VIII are 2696. There is no Tribal Children in Chellampatti block. The scheduled caste and Tribal children are more in Tirupparankundram block. The number of Scheduled caste children is less in Kallikudi block both in Primary and Upper Primary schools. Tribal children are higher in Tirupparankundram block than any other block when compared to other blocks. Boys are more than girls in both the social group.

1.4.2.3 Disabled Children

The enrolment of disabled children in the formal schools are given as follows.

Table - 10
Enrolment of Disabled Children.
2002 - 2003.

S.No	Block	Disabled Children (6-10 Years)	Enrolment in Primary	Disabled Children (11-13 Years)	Enrolment in Upper Primary
1.	Madurai East	91	91	74	74
2.	Madurai West	113	113	183	183
3.	Alanganallur	63	63	8	8
4.	Chellampatti	25	25	10	10
5.	Kallikudi	35	35	10	10
6.	Kottampatti	25	25	10	10
7.	Melur	71	71	88	88
8.	Sedapatti	37	37	27	27
9.	T. Kallupatti	18	18	15	15
10.	Thirumangalam	28	28	0	0
11.	Thirupparankundram	283	283	168	168
12.	Usilampatti	75	75	28	28
13.	T. Vadipatti	52	52	29	29
	District Total	916	916	650	650

Source: DISE - 2002.

The total disabled children in the age group 6 - 13 is 1566. The number of children with various types of disability is more (916) in the age group 6 - 10 than 10 - 13 age group (650). Thirupparankundram and Madurai West have the highest enrolment of disabled children while T.Kallupatti and Alanganallur block have the lowest enrolment of disabled children. All the identified disabled children have been enrolled in the formal schools.

The table below shows the CR RR and DR by social groups

Table - 11
CR, RR and DR - Primary and Upper Primary
2002 - 2003.

S.No	Block	Social Group	Primary			Upper Primary		
			CR	RR	DR	CR	RR	DR
1	Madurai East	ALL	53	30	17	68	15	17
		SC	70	20	10	68	20	12
		ST	-	-	-	100	-	-
2	Madurai West	ALL	87	11	2	84	13	3
		SC	84	15	1	81	16	3
		ST	89	8	3	87	9	4
3	Alanganallur	ALL	56	27	17	67	18	15
		SC	54	28	18	76	14	10
		ST	52	48	-	-	-	-
4	Chellampatti	ALL	59	30	11	71	13	16
		SC	58	32	10	67	15	18
		ST	-	-	-	-	-	-
5	Kallikudi	ALL	67	22	11	73	17	10
		SC	62	23	15	62	10	28
		ST	-	-	-	-	-	-
6	Kottampatti	ALL	62	27	11	63	21	16
		SC	58	42	-	58	28	14
		ST	-	-	-	-	-	-
7	Melur	ALL	88	10	2	65	28	7
		SC	85	8	7	63	30	7
		ST	-	-	-	-	-	-
8	Sedapatti	ALL	62	26	12	58	23	19
		SC	61	25	14	64	21	15
		ST	61	25	14	64	21	15
9	T.Kallupatty	ALL	72	23	5	79	12	9
		SC	70	27	3	77	19	4
		ST	-	-	-	-	-	-
10	Thirumangalam	ALL	78	10	12	74	14	12
		SC	64	20	16	58	19	23
		ST	-	-	-	-	-	-
11	Thirupprankundram	ALL	80	10	10	77	13	10
		SC	61	19	20	64	22	14
		ST	65	16	19	72	17	11
12	Usilampatti	ALL	88	11	1	88	9	3
		SC	96	3	1	98	1	1
		ST	-	-	-	-	-	-
13	T.Vadipatti	ALL	70	20	10	73	20	7
		SC	66	23	11	68	25	7
		ST	57	43	-	100	-	-
	District Average	ALL	71	19	10	72	17	11
		SC	70	21	9	71	17	12
		ST	64	29	7	85	10	5

Source: Cohort Study- 2002.

The CR of all is 71% in Primary as against 70% and 64% of SC and ST respectively. The gap between all and SC is 1% in CR and 6% between SC and ST. The average RR for all in Primary is 19%. The highest rate of 29% is found in ST. The DR for all in Primary is 10% when compared to 9% of SC and 7% ST. In Upper Primary schools the average CR is 72% for all communities while it is 71% for SC and 85% for ST. The average RR is 17% for all while it is 17% for SC and 10% for ST. The average DR is 11%. The DR of SC is 12% while it is 5% for ST.

Table -12

CR RR and DR Primary 2002 - 2003.

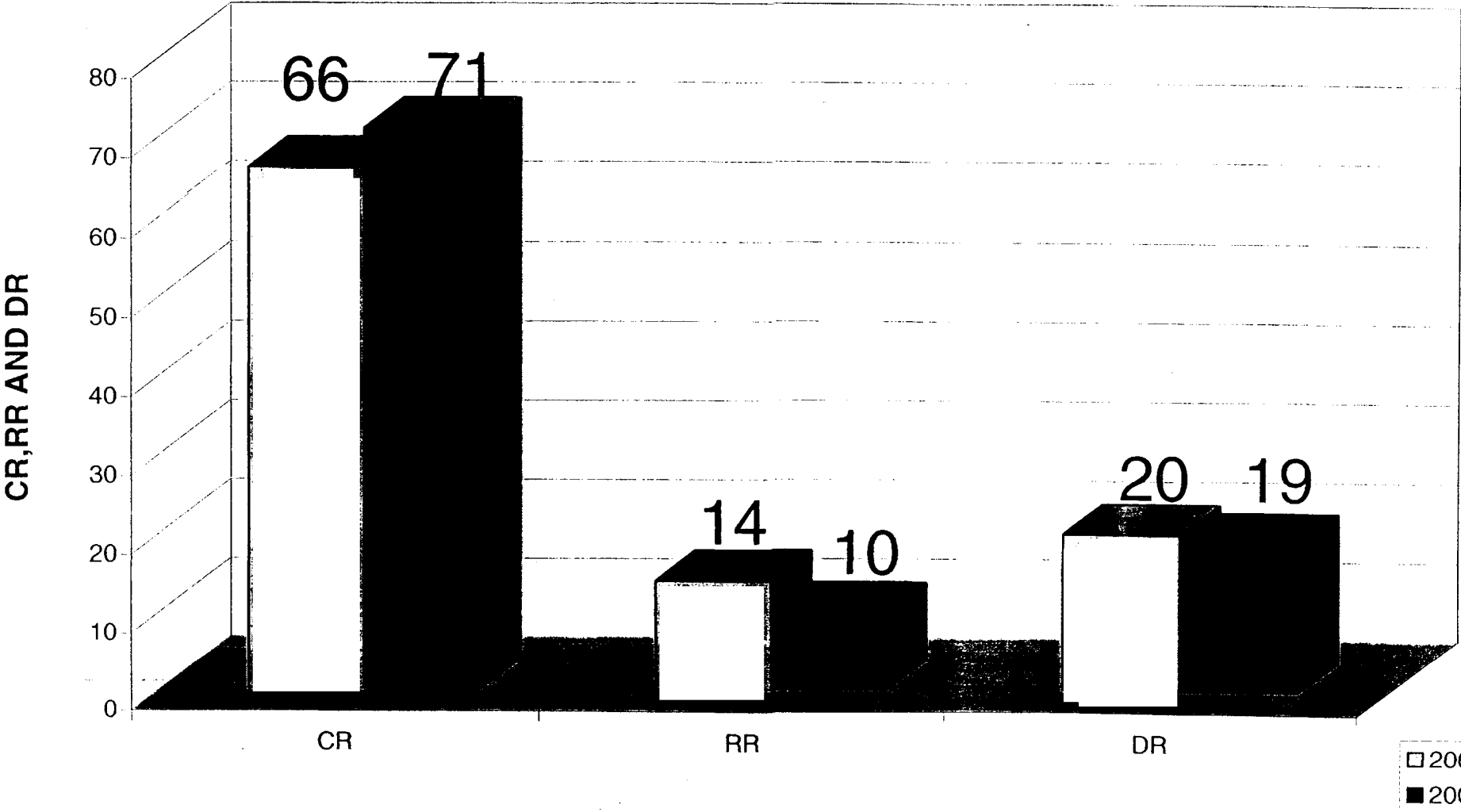
S.No	Block	CR			RR			DR		
		B	G	T	B	G	T	B	G	T
1	Madurai East	51	56	53	32	28	30	17	16	17
2	Madurai West	84	90	87	14	7	11	2	3	3
3	Alaganallur	54	58	56	28	25	27	18	17	17
4	Chellampatti	59	58	59	31	30	30	10	12	11
5	Kallikudi	65	69	67	25	19	22	10	12	11
6	Kottompatti	59	65	62	30	23	27	11	12	11
7	Melur	90	87	88	9	11	10	1	2	2
8	Sedapatti	62	62	62	27	25	26	11	13	12
9	T.Kallupatty	71	72	72	24	23	23	5	5	5
10	Thirumangalam	77	80	78	12	8	10	11	12	12
11	Thirupprankundram	79	81	80	11	10	10	10	9	10
12	Usilampatti	91	86	88	8	13	11	1	1	1
13	T.Vadipatti	70	69	70	21	20	20	9	11	10
	District Level	70	72	71	21	18	19	9	10	10

Source: Cohort Study 2002

The District level CR is 71% .The CR of girls (72%) is more than boys (70%) The Melur and Usilampatti Block of Madurai have the highest completion rate and the East Block of Madurai has the lowest in the Primary level.

The District level repetition is 19% . The repetition rate of boys (21%) is higher than girls(18%). The District level dropout rate is 10%. It is high in the East Block of Madurai and low in the Blocks of Melur, Thirumangalam, Thirupprankundram and Usilampatti in the Primary level.

Progress in Completion and Retention for Primary



Progress in Completion and Retention for Upper Primary

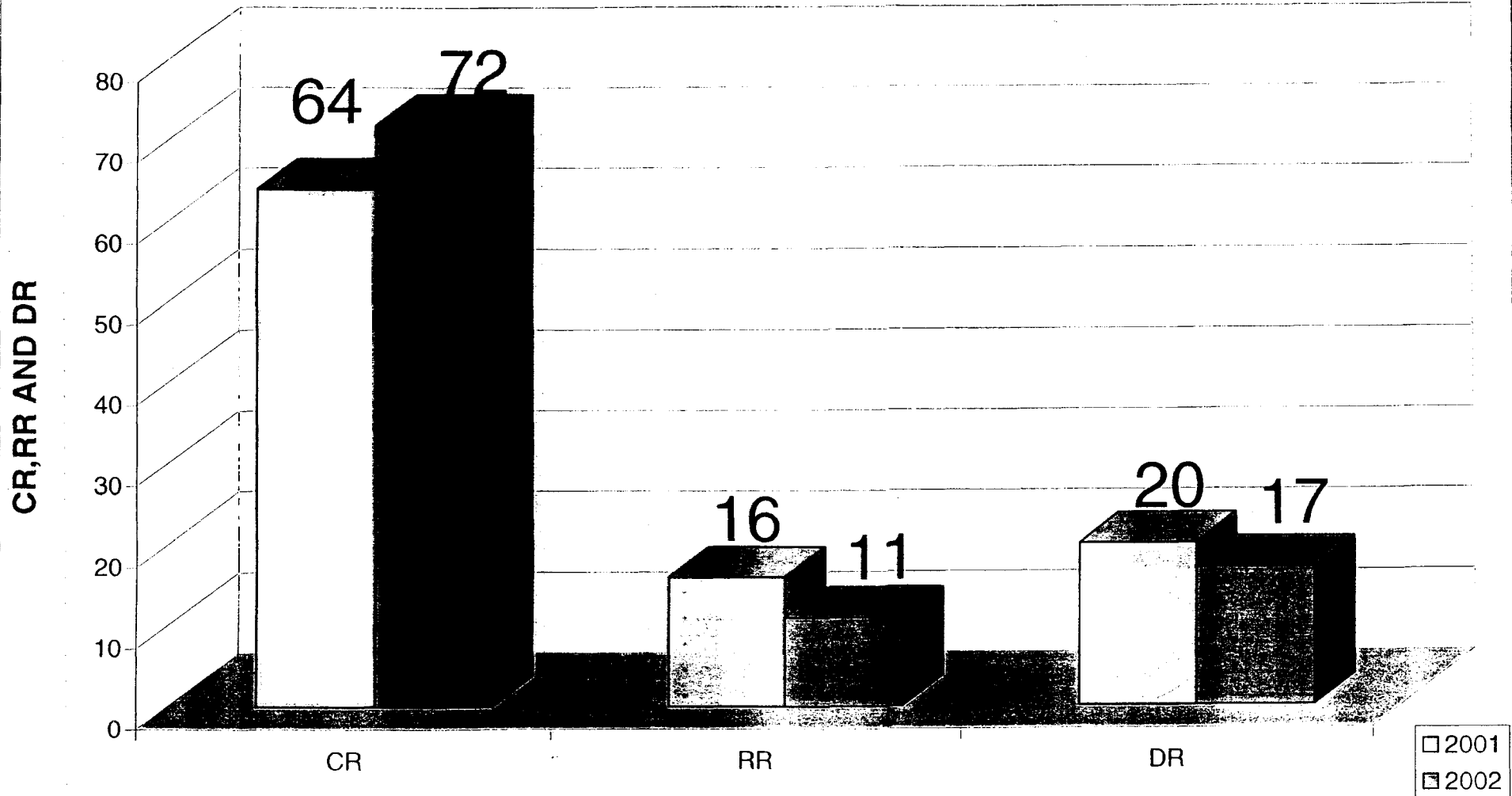


Table - 13
CR, RR and DR - Upper Primary 2002 - 2003

S.No	Block	CR			RR			DR		
		B	G	T	B	G	T	B	G	T
1	Madurai East	67	70	68	15	14	15	18	16	17
2	Madurai West	83	85	84	13	13	13	4	2	3
3	Alanganallur	66	68	67	17	19	18	17	13	15
4	Chellampatti	70	72	71	13	12	13	17	16	16
5	Kallikudi	71	75	73	20	14	17	9	11	10
6	Kottampatti	64	62	63	21	22	21	15	16	16
7	Melur	65	65	65	30	26	28	5	9	7
8	Sedapatti	61	55	58	25	22	23	14	23	19
9	T.Kallupatty	78	80	79	13	12	13	9	8	9
10	Thirumangalam	72	75	74	18	11	14	10	14	12
11	Thiruprankundram	76	77	77	13	12	13	10	11	10
12	Usilampatti	87	89	88	10	8	9	3	3	3
13	T.Vadipatti	70	76	73	23	17	20	7	7	7
	District Average	72	73	72	18	16	17	10	11	11

Source: Cohort 2003.

The district level CR in respect of Upper Primary school is 72%. The CR is 73% for girls when it is 72% for boys. The CR is low in Sedapatti block (58%). The District level RR is 17%. The CR of boys is 18% which is 1% higher than the girls. The highest RR is recorded in Melur Block (28%). The District level DR is 11% which is equal to the DR of girls. The DR of boys is 10%. The DR is high in Madurai East block(17%).

Attendance Rate - 2002 - 2003

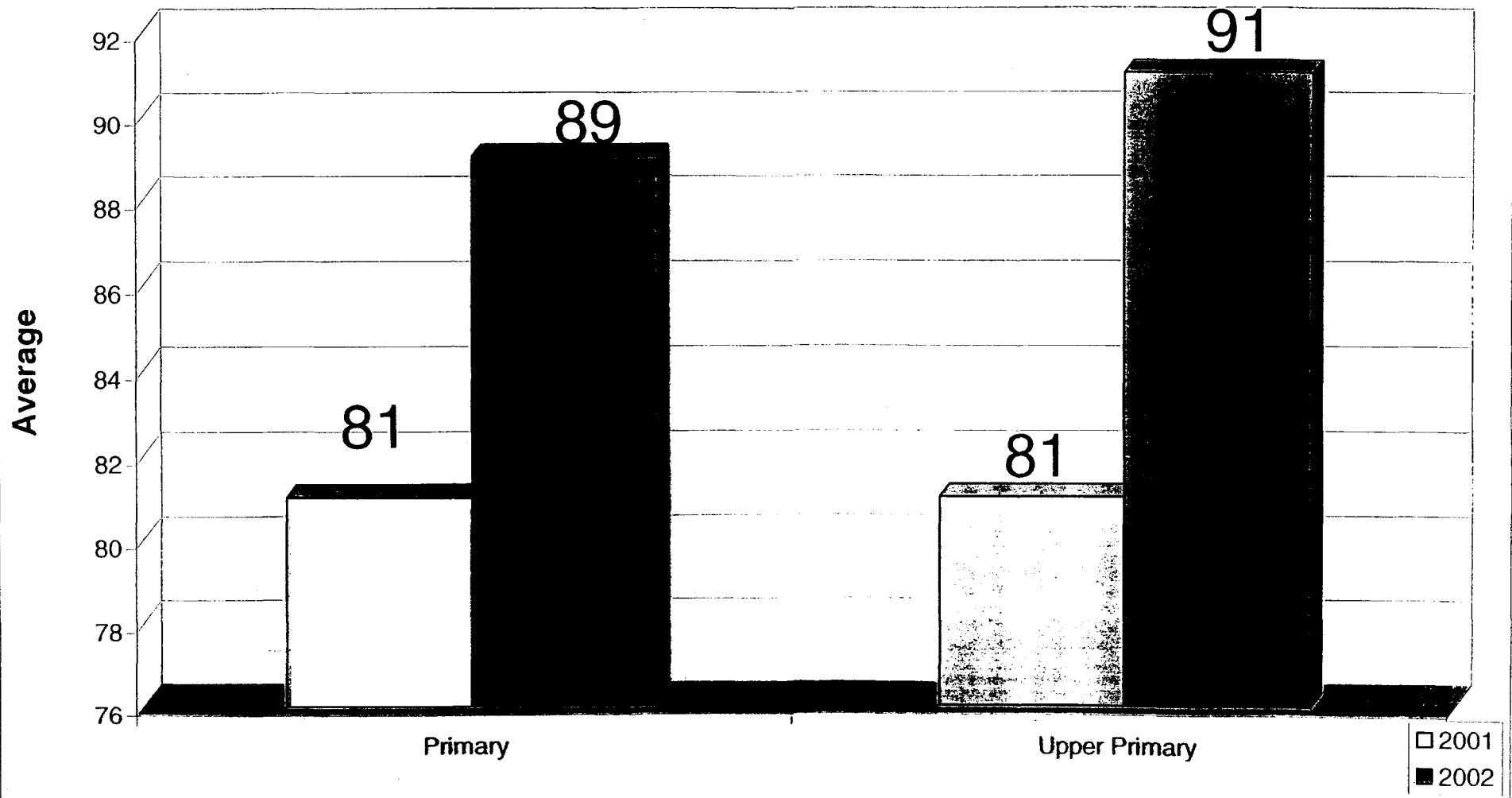
Table - 14

S. No	Block	Primary									Upper Primary								
		ALL			SC			ST			ALL			SC			ST		
		B	G	Av	B	G	Av	B	G	Av	B	G	Av	B	G	Av	B	G	Av
1.	Madurai East	88	92	90	90	94	92	-	-	-	90	88	89	88	84	86	99	-	99
2.	Madurai West	94	96	95	97	95	96	98	97	98	94	92	93	88	87	88	90	88	89
3.	Alanganallur	89	93	91	75	91	83	93	87	90	98	92	95	89	85	87	91	95	93
4.	Chellampatti	83	77	80	79	65	72	-	-	-	87	77	82	83	73	78	-	-	-
5.	Kallikudi	83	77	80	79	65	72	-	-	-	87	77	82	83	73	78	-	-	-
6.	Kottampatti	93	95	94	87	91	89	-	-	-	96	94	95	93	91	92	-	-	-
7.	Melur	85	90	87	80	85	83	-	-	-	98	97	98	81	85	83	-	-	-
8.	Sedapatti	95	96	95	94	93	94	96	95	96	98	97	98	96	95	96	97	95	96
9.	T.Kallupatti	95	93	94	90	91	91	-	-	-	93	92	93	90	89	90	-	-	-
10.	Thiumangalam	95	93	94	94	92	93	-	-	-	97	95	96	98	96	97	-	-	-
11.	Thiurppran kudram	85	87	86	86	90	88	88	86	87	88	88	88	88	87	88	88	88	88
12.	Uslampatti	85	93	89	73	75	74	96	94	95	95	97	96	90	94	92	-	-	-
13.	T.Vadipatti	84	90	87	74	78	76	80	76	78	82	86	84	70	68	69	74	70	72
	District Average	88	89	89	85	85	85	91	89	90	92	90	91	87	85	86	90	87	89

Source: DISE 2002.

The average AR for the District is 89% in Primary and 91% in Upper Primary. AR for boys is lower by 1% in Primary and higher by 2% in Upper Primary than girls. The average AR in respect of SC is 85% in Primary and 86% in Upper Primary. Among social group there is a gap of 4% between all and SC in Primary and 5 % between SC (85%) and ST (90%.)

ATTENDANCE RATE



Transition Rate - 2002 - 2003

Table - 15

S.No	Block	Transition Rate (V to VI)								
		ALL			SC			ST		
		B	G	T	B	G	T	B	G	T
1	Madurai East	99	97	98	97	96	96	-	-	-
2	Madurai West	99	98	99	97	96	97	95	97	96
3	Alanganallur	85	85	85	76	66	71	100	100	100
4	Chellampatti	93	83	88	81	63	72	-	-	-
5	Kallikudi	93	83	88	81	63	72	-	-	-
6	Kottompatti	99	97	98	98	96	97	-	-	-
7	Melur	86	79	83	90	92	91	-	-	-
8	Sedapatti	88	87	88	79	76	78	97	98	98
9	T.Kallupatty	95	93	94	92	90	91	-	-	-
10	Thirumangalam	93	94	94	90	92	91	-	-	-
11	Thirupprankundram	94	95	94	92	91	91	90	95	92
12	Usilampatti	98	99	98	96	94	95	-	-	-
13	T.Vadipatti	94	90	92	80	76	78	84	82	83
	District Average	94	91	93	88	84	86	93	93	93

Source: Micro Planning

The average transition rate in Madurai District is 93%. The highest transition rate is seen in the West Block of Madurai and the lowest transition rate is seen in Melur. The SC transition rate is high in the West Block of Madurai and low in the blocks of Chellampatti and Kallikudi. Alanganallur has the highest ST Transition rate and T.Vadipatti has the lowest SC Transition rate. Preparatory classes to upper primary schools can be arranged in Chellampatti, Kalligudi and Vadipatti blocks. The transition rate is equal in the case of all and STs.

TRANSITION RATE

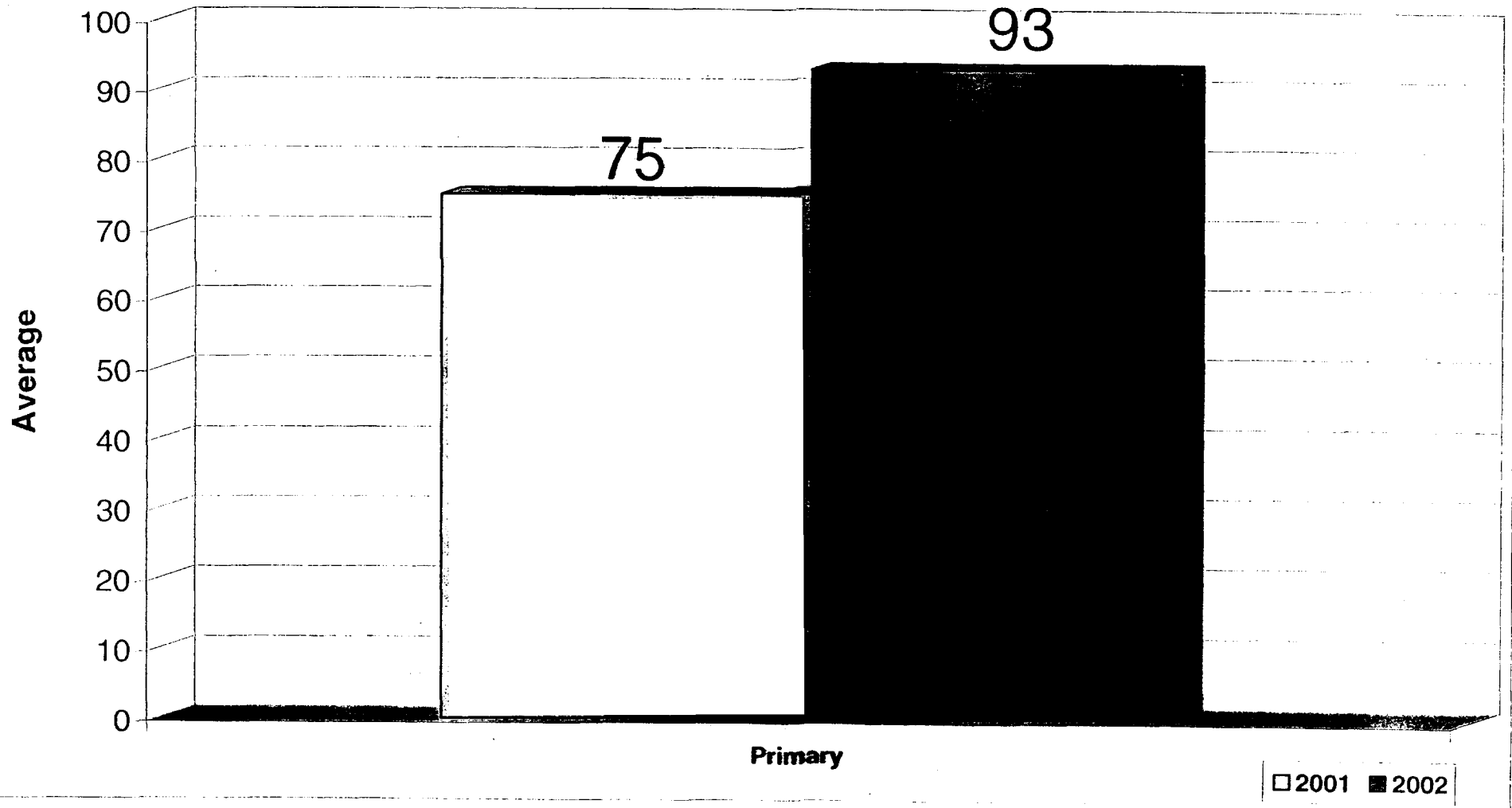


Table - 16

Teacher - Pupil Ratio - 2002 - 2003.

S.No	BLOCK	TPR	
		Primary	Upper Primary
1	Madurai East	38	36
2	Madurai West	41	42
3	Alanganallur	40	41
4	Chellampatti	31	39
5	Kallikudi	39	38
6	Kottampatti	37	38
7	Melur	39	37
8	Sedapatti	39	40
9	T.Kallupatty	35	40
10	Thirumangalam	39	34
11	Thirupprankundram	43	43
12	Usilampatti	36	33
13	T.Vadipatti	39	39
	District Average	40	40

Source: DISE 2002.

The District teacher people ratio in Primary and Upper primary schools is 1:40. Chellampatti block has the low TPR of 1:31. Thirupparankundram block has the high TPR of 1:43 in Primary schools. Similarly in upper primary, the TPR is high in the Thirupparankundram block.

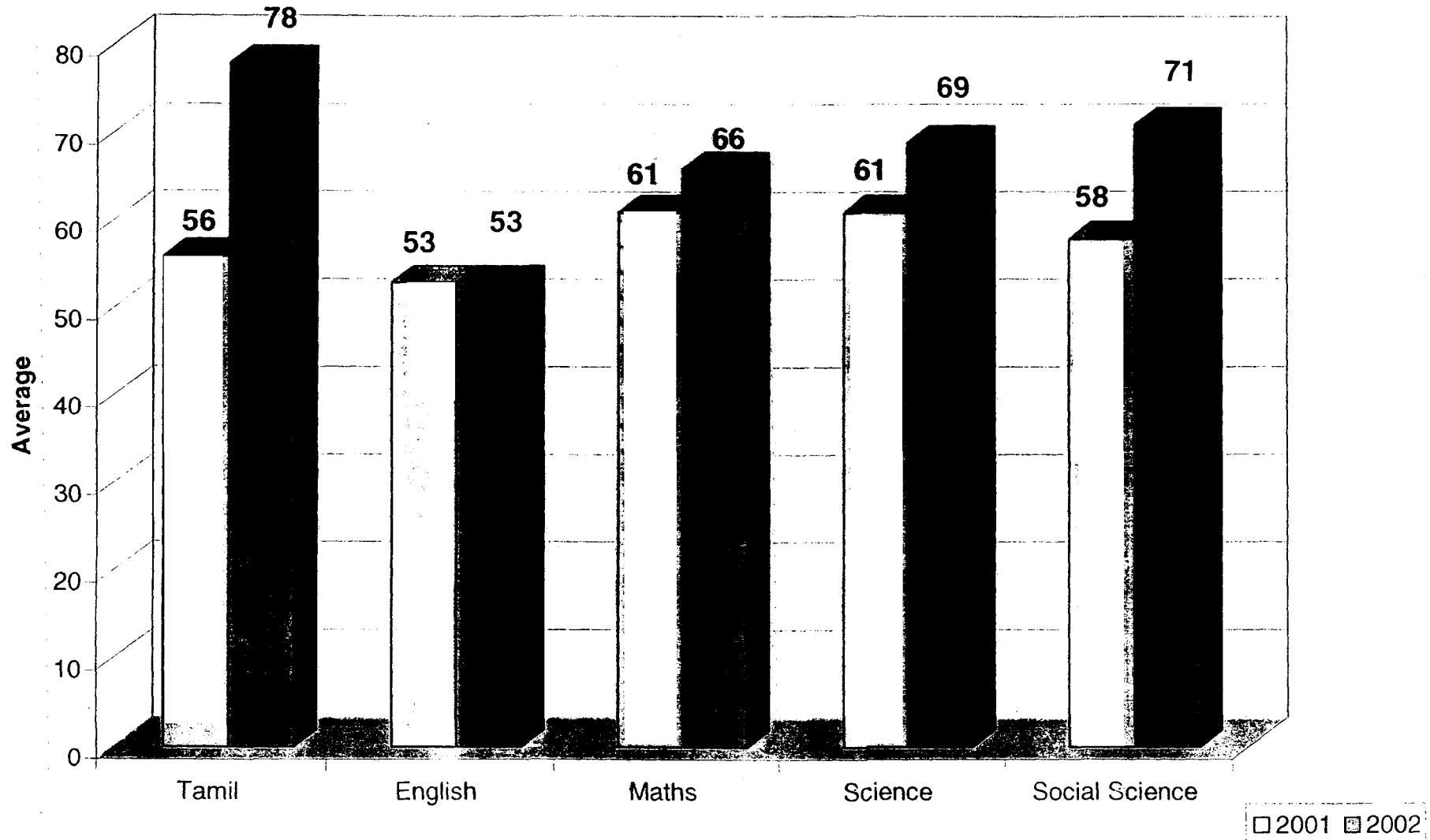
Table - 17
Achievement Level - 2002 -2003

S. No	Block	Subjects									
		Tamil		English		Maths		Science		Social Science	
		P	UP	P	UP	P	UP	P	UP	P	UP
1	Madurai East	86	85	47	51	75	59	78	65	77	67
2	Madurai West	65	63	56	49	60	53	64	63	58	56
3	Alanganallur	77	68	48	47	57	59	69	66	77	73
4	Chellampatti	75	65	42	46	48	49	50	52	53	54
5	Kallikudi	83	81	42	44	57	55	68	63	73	78
6	Kottampatti	68	70	41	45	70	75	67	70	73	63
7	Melur	67	60	42	45	64	60	59	55	50	62
8	Sedapatti	90	91	78	80	83	84	87	89	92	95
9	T.Kallupatty	80	82	45	47	55	50	60	62	69	73
10	Thirumangalam	80	82	45	48	75	78	80	76	85	80
11	Thirupprankundram	82	83	54	58	68	62	71	74	75	78
12	Usilampatti	70	72	75	74	74	80	72	76	71	76
13	T.Vadipatti	87	80	53	48	74	70	69	62	65	61
	AVERAGE	78	74	53	53	66	65	69	68	71	72

Source : DISE 2002.

The achievement level of students in Tamil is high compared to other subjects. The achievement level of students in Maths and Science is almost the same. The performance of the students is low in English, Maths and Science. The lowest achievement level is seen in English both in Primary and Upper Primary.

Achievement Level of Students in Primary



Achievement Level of Students in Upper Primary

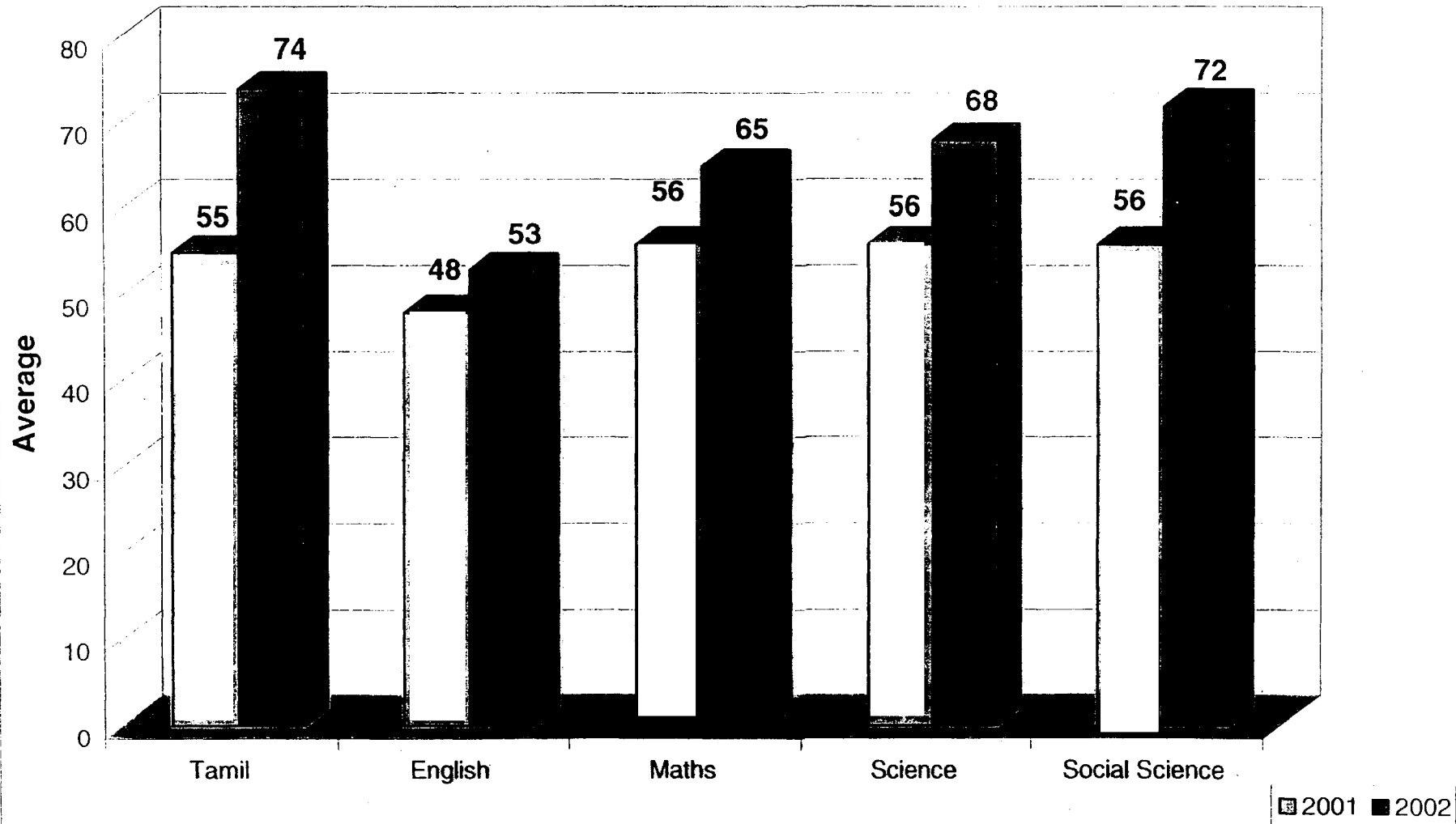


Table - 18

Number of ECCE Centres and Enrolment: 2002 - 2003.

S.No	Block	ICDS/TINP	Children Enrolled	Private/ Nursery	Children Enrolled
1	Madurai East	49	1587	15	2818
2	Madurai West	54	4096	70	2139
3	Alanganallur	78	8839	12	738
4	Chellampatti	135	5958	1	89
5	Kallikudi	45	1155	-	-
6	Kottampatti	88	1868	3	204
7	Melur	97	8841	-	-
8	Sedapatti	135	1760	3	614
9	T.Kallupatty	56	1563	1	246
10	Thirumangalam	130	2661	10	1401
11	Thirupparankundram	396	28369	89	7134
12	Usilampatti	119	2434	1	53
13	T.Vadipatti	123	7116	18	1269
	District Total	1505	76247	223	16705

Source : DISE 2002

There are 1505 ICDS Centres in which 76247 children are enrolled. There are 223 Private Nursery schools. The children enrolled in these schools are 16705. The number of Private Nursery schools is high in Thirupparankundram Block. There is no private nursery school in Kallikudi and Melur blocks.

Table - 19
Out of School Children - 2002 - 2003.

S. No	Block	6 - 10 Years						11 - 13 Years					
		Dropout			Never Enrolled			Dropout			Never Enrolled		
		B	G	T	B	G	T	B	G	T	B	G	T
1	Madurai East	293	251	544	148	197	345	285	289	574	140	139	279
2	Madurai West	215	164	379	198	181	379	142	122	264	271	295	566
3	Alanganallur	166	170	336	36	67	103	76	78	154	104	30	134
4	Chellampatti	257	266	523	28	56	447	194	641	15	10	25	
5	Kallikudi	81	182	263	121	54	175	255	345	600	111	74	185
6	Kottampatti	9	12	21	5	9	14	40	54	94	6	7	13
7	Melur	245	217	462	12	10	22	352	498	850	2	2	4
8	Sedapatti	311	398	709	170	151	321	338	565	903	282	297	579
9	T.Kallupatty	48	114	162	36	18	54	25	28	53	21	35	56
10	Thirumangalam	127	138	265	27	46	73	266	347	613	13	10	23
11	Thiruprankundram	1080	1284	2364	183	161	344	1434	1666	3100	310	301	611
12	Usilampatti	82	74	156	2	1	3	197	112	309	5	4	9
13	T.Vadipatti	97	79	176	4	2	6	113	107	230	12	10	22
	<i>District Total</i>	3011	3349	6360	970	925	1895	3970	4415	8385	1292	1214	2506

A total of 4145 children remain out of school. The number of dropout children are more (4035) than never enrolled (110). Thirupparankundram Block has the highest number of dropouts in both the age group (1286) and Kottampatti Block has the lowest number of the dropouts. Kallikudi Block has the highest Number of never enrolled while Madurai West and T.Kallupatty have no never enrolled. The dropouts are more in the age group 11-13. Never enrolled population is more in 11-13 age group. Girls outnumber boys in this age group. (11 - 13).

Table - 20

Enrolment and Out of School Children (SC and ST) 2002 - 2003

S. No	Block	Enrolment						Out of School Children					
		Primary			Upper Primary			6 - 10 Years			11- 13 years		
		SC	ST	T	SC	ST	T	SC	ST	T	SC	ST	T
1	Madurai East	5942	142	6084	2618	19	2637	207	-	207	191	-	191
2	Madurai West	5799	50	5849	2629	58	2687	138	-	138	148	-	148
3	Alanganallur	2734	116	2850	1200	121	1321	109	-	109	98	-	98
4	Chellampatti	2004	-	2004	688	-	688	229	-	229	211	-	211
5	Kallikudi	1606	2	1608	546	232	778	186	-	186	81	-	81
6	Kottampatti	1796	118	1914	855	181	1036	3	-	3	54	-	54
7	Melur	3778	18	3796	1862	7	1869	78	-	78	123	-	123
8	Sedapatti	3320	20	3340	1448	3	1451	223	-	223	211	-	211
9	T.Kallupatti	2335	89	2424	1070	129	1199	125	-	125	38	-	38
10	Thiumangalam	3002	23	3025	1649	127	1776	75	-	75	234	-	234
11	Thiurpran kundram	12973	712	13685	6326	324	6650	312	28	340	747	34	781
12	Usilampatti	2043	12	2055	940	10	950	37	-	37	66	-	66
13	T.Vadipatti	3610	106	3716	1730	77	1807	23	11	34	41	18	59
	District Total	50942	1408	52350	23561	1288	24849	1739	39	1778	2249	52	2301

Source: DISE - 2002.

The enrolment of SC is high in Thiruparankundram Block and low in Kallikudi and Usilampatti Blocks. Likewise the number of out of school children is high in Thirupparankundram and low in Kottampatti and Madurai East Block. There are 915 out of school children belonging to Scheduled caste and Tribe community. 45 out of school children are scheduled tribes. The total enrolment of scheduled tribe population is 1288.

1.7 Special Focus Group:

Education of Girls, SC, ST and disabled children are given special focus under SSA. The following table provides details of children of girls, SC, ST and disabled.

Table - 21

Focus Group	Schoolage Population (6 - 13)years	Enrolment	Out of School children
Girls	213092	203189	9903
SC	78491	74503	3988
ST	2787	2696	91
Disabled	1566	1566	0

Source : DISE 2002

There are 213092 school aged girls children. Among them 2,03,189 are enrolled in the formal schools. 9903 girls children are yet to be enrolled. The enrolment SC children in formal schools is 74,503. The school aged SC population is 78491. There are still 3988 school aged SC children to be enrolled in schools.

Among the 2787 school aged ST children 2696 children are enrolled in schools while 91 ST children are to be enrolled in schools in 2003 - 2004. There are 1566 disabled children in Madurai District. All the 1566 disabled children are enrolled in the regular schools for inclusive education.

1.8 VECs, CRCs, and BRCs

The blockwise status of VECs, CRCs, and its members are furnished in the given table.

Table - 22

VECs, CRCs, and BRCs – 2002 – 2003.

S.No	Block	CRC	Teachers	VEC	Members	BRC	Staff
1	Madurai East	14	668	120	1800	1	8
2	Madurai West	17	731	102	1530	1	8
3	Alanganallur	9	356	77	1155	1	8
4	Chellampatti	10	385	111	1443	1	8
5	Kallikudi	7	262	69	897	1	8
6	Kottompatti	8	301	103	1545	1	8
7	Melur	13	481	122	1952	1	8
8	Sedapatti	10	389	100	1500	1	8
9	T.Kallupatty	8	325	73	876	1	8
10	Thirumangalam	13	509	110	1630	1	8
11	Thirupprankundram	64	2643	161	1035	3	24
12	Usilampatti	10	485	86	1290	1	8
13	T.Vadipatti	12	226	81	1296	1	8
	District Total	195	7761	1315	17949	15	120

There are 195 CRCs and 1315 VECs functioning in Madurai District. A total 1315 are functioning in 1315 schools and 128 PTA all functioning especially in middle section of high and higher secondary schools. Thirupparankundram Block comprising of the North and South Blocks of Madurai has the highest number of cluster Resource centres and the highest number of teacher attached to it. Melur Block has the highest number of Village Education Committee and the VEC members. In Tiruppuramkundram one BRC and two upgraded cluster resource centres are functioning. The upgraded cluster resource centres are functioning in Madurai North and South ranges which form the major part of the corporation.

1.9 Infrastructure

The infrastructural requirements of Primary and Upper Primary schools are assessed through Microplanning - 2002. The requirements are given categorywise in the following table.

Table - 23.

Infrastructure need - 2003 - 2004.

S.No	Name of Block	BRC Building	CRC Building	Three Classroom	Two Classroom	Toilet facility	Drinki wate
1	Madurai East	-	12	21	25	45	25
2	Madurai West	1	16	3	12	28	9
3	Alanganallur	-	8	16	18	50	50
4	Chellampatti	-	9	6	10	32	13
5	Kallikudi	1	6	2	3	61	13
6	Kottampatti	1	8	22	15	20	5
7	Melur	-	12	3	24	81	24
8	Sedapatti	1	9	5	15	8	13
9	T.Kallupatty	1	7	3	3	10	10
10	Thirumangalam	1	12	13	16	83	73
11	Thiruprankundram	1	64	12	12	18	14
12	Usilampatti	-	9	7	30	43	30
13	T.Vadipatti	-	11	13	42	55	39
	District Total	7	183	126	225	534	318

Source : DISE- 2002.

1.9.1 Block Resource Centres:

SSA recognizes the critical and central role of teachers and advocates a focus on their development needs. Setting up BRC to cater to the training needs of the teachers are all designed to develop the human resources among teachers. There are 13 block resource centres and 2 upgraded cluster resource centres in Madurai District. Among them, 7 block resource centres require BRC buildings.

1.9.2 Cluster Resource Centres:

The Cluster resource centres are centres where few schools are clubbed together and teacher from those schools attend meetings in these clusters. The number of teacher in one cluster is around 40. These teachers will engage in practicing and discussing the problems faced by them in the class rooms. These CRCs will be provided with a single class room which can be used as a CRC and an additional class room. There are 195 cluster resource centres in Madurai District. Among them, 183 Cluster Resource centres require CRC buildings.

1.9.3 Three Class Rooms:

Under the civil construction work activities upgraded primary schools and upper primary sections of high and higher secondary schools will be provided with 3 class rooms. The teacher class room ratio is 1: 1. A Total of 126 Schools are in need of 3 class room building. The requirement of class room has been assessed based on existing class rooms and number of children in each section in a school.

1.9.4 Two Class Rooms:

SSA provides the construction of 2 class rooms to new primary schools and to schools where the acute requirement of additional class rooms is justified. A Total of 225 Schools are in need of 2 class room building. The requirement of class room has been assessed based on existing class rooms and number of children in each section in a school.

1.9.5 Toilets:

Sarva Shiksha Abhiyan works on a community based approach to planning with habitations. The requirement of the habitations where government schools are located will be provided toilet facilities. 534 toilets are require for Primary and Upper Primary schools in Madurai District.

1.9.6 Drinking Water Facility:

In providing infrastructure facilities to primary and upper primary schools top priority should be given to drinking water facility. The need should be assessed by the Village Education Committee and justified through micro planning. The drinking water facility require for schools is 318.

1.10 District Project Office:

The District Project Office is functioning with Chief Educational Officer of the District concerned as the District Programme Co-ordinator. He is looking after all the programmes implemented in the district, assisted by DEEO as Additional District Programme Co-ordinator. There is one Assistant the District Programme Co-ordinator in the cadre of higher secondary school Headmaster to assist the District Programme Co-ordinator in carrying out the project activities. The following posts were sanctioned to the District Project Office for the effective implementation of the Sarva Shiksha Abhiyan Programmes.

1. ADPC (Higher Secondary School Headmaster Cadre)
2. Statistical Officer(on deputation)
3. Media and Documentation Officer (Post Graduate Teacher Cadre - on deputation)
4. Training Officer (B.T. Cadre - on deputation)
5. Office Superintendent(on deputation)
6. Upgraded Superintendent(on deputation)
7. Assistant(on deputation)
8. Data Entry Operator (consolitated pay)
9. Civil Engineering Consultant -2 (consolitated pay)

The DPO has been strengthened by providing one Computer System, Internet facility, FAX etc. for effective planning, implementation and monitoring of project activities .

CHAPTER II

PROGRESS REVIEW

2.1 Introduction:

The status of elementary education has been elaborately presented in the first chapter, Based on the status, the problems and issues are identified. In order to achieve the goals of UEE, activities are evolved as major interventions to achieve the goals of SSA. Before carrying out the activities, target will be fixed for the next year. This chapter reviews the progress in the achievement of the target fixed for 2002-03.

2.2 Progress in Access:

There are 1704 habitations in Madurai District. The access rate was 98% in the case of primary schools while it was 96% for upper primary schools. It was 98% and 95.2% during 2001-02 for primary and upper primary schools. There are still 34 habitations to be provided with new formal primary schools to attain the goal of 100% access 68 habitations are to be provided with Upper Primary schooling facility.

In Primary schools, the GAR was 94% in 2000 - 01. It increased to 98% since 17 new primary schools were opened in 2001- 02. The GAR in 2002 - 03 is 98%. The status of GAR remain unchanged in 2001 -02 and 2002 -03 as no new Primary schools were opened in 2002 -03. In upper primary schools GAR was 95% in 2000-01. In 2002-03 the status of GAR is 96%. During 2000 -01 to 2002 - 03, 14 existing Primary Schools were upgraded.

Table -24
Progress Review In Access

S. No	Name of Blocks	Primary			Upper Primary		
		2000-01	2001-02	2002-03	2000-01	2001-02	2002-03
1	Madurai East	88	98	98	90	91	96
2	Madurai West	98	98	98	96	96	97
3	Alanganallur	95	98	98	100	100	100
4	Chellampatti	96	100	100	96	96	98
5	Kallikudi	100	100	100	86	86	88
6	Kottampatti	100	100	100	93	94	95
7	Melur	96	97	97	94	92	93
8	Sedapatti	86	87	87	96	96	97
9	T.Kallupatti	93	100	100	100	100	100
10	Thirumangalam	80	95	95	97	97	98
11	Thirupparankundram	95	97	97	93	93	94
12	Usilampatti	95	97	97	95	95	97
13	T.Vadipatti	100	100	100	100	100	100
	District Average	94	98	98	95	95.2	96

Source: School Mapping - 2001.

2.2.1 Opening of Primary Schools:

It was proposed to open 8 new Primary Schools during 2002 – 2003. The schools were sanctioned but not opened in 2002 – 2003. It is proposed to open these schools in 2003 – 2004. Two more schools are required for 2003- 2004. Hence a total of 10 new Primary schools are proposed to open in 2003 – 2004.

17 new primary schools were opened during the academic year 2001-02. It is proposed to open 10 more new primary schools in 2003-04. The access rate at present is 95.2%. The access rate will be 100% in 2003-04 after the opening of the new primary schools.

2.2.2 Upper Primary Schools:

4 existing primary school were up graded in 2001-02. The number of schools upgraded in 2002-03 was 10. After the take off of SSA scheme 14 primary schools were upgraded in Madurai District so far. The current access rate is 96%. It is proposed to upgrade 24 more existing primary schools in 2003-04 to achieve 100% access to upper primary schools.

2.2.3 Education Guarantee Scheme Centres:

It was proposed to open 30 EGS Centres Alternative schools in 2002-03 to serve the unserved habitations where the school age population is less than 20. These EGS centres are kept as spillover and it is proposed to start 16 EGS centres in 2003-2004.

2.3. Progress in Enrolment:

The Net Enrolment Rate at the beginning of project was 90% in Primary and 89% in Upper Primary. The NER was 91% in Primary schols and 90% in Upper Primary schools in 2001 - 02. The NER at present is 98% in Primary schools which is a 8% increase than the base year. The NER in Upper Primary is 97% which is 7% increase than the base year. The total school age children are 4,28,757 of which 4,24,622 children were enrolled in formal schools. The enrolled school age population in 2001-02 was 354808. There is 69814 increase in the enrolment during 2002-2003.

Table -25
Progress In NER

S. No	Name of Blocks	Primary			Upper Primary		
		2000-01	2001-02	2002-03	2000-01	2001-02	2002-03
1	Madurai East	90	91	98	91	92	97
2	Madurai West	91	91	98	95	95	96
3	Alanganallur	75	83	98	74	80	95
4	Chellampatti	96	96	99	94	94	97
5	Kallikudi	86	94	93	88	88	89
6	Kottampatti	96	96	97	94	95	98
7	Melur	96	96	97	95	95	97
8	Sedapatti	92	92	97	93	93	96
9	T.Kallupatti	90	90	99	94	94	98
10	Thirumangalam	84	85	99	84	88	98
11	Thirupparankundram	82	83	96	91	92	97
12	Usilampatti	93	93	99	76	80	99
13	T.Vadipatti	96	96	99	88	90	98
	District Average	90	91	98	89	90	97

Source: Updated Household Survey - 2002.

2.3.1. Boys and Girls:

The boys enrolled in 2002-03 is 2,21,423. The girls enrolled in 2002-03 is 2,03,189. there are 3981 boys and 4274 girls in the age group 6-10 are yet to be enrolled. 5262 boys and 5629 girls in 11-14 age group are yet to be enrolled.

2.3.2. Scheduled Caste and Tribes

There are 52350 SC/ST Children enrolled in Primary Schools and 24849 children in upper primary schools during 2002-03. 1778 children in 6-10 age group and 2301 children in 11-14 age group are yet to be enrolled.

2.3.3. Disabled Children:

There were 1322 disabled children enrolled in formal schools in 2001- 02. In 2002 - 03 1566 disabled children were identified and admitted schools to provide inclusive education. 244 new disabled children were identified in 2002-03 and all of them were enrolled in schools.

2.4. Progress in Completion:

Table - 26
Progress in CR, DR & RR (Primary)

S. No	Name of Block	2000 - 2001			2001 - 2002			2002 - 2003		
		CR	RR	DR	CR	RR	DR	CR	RR	DR
1	Madurai East	45	31	24	53	30	17	53	30	17
2	Madurai West	71	14	15	79	14	7	87	11	3
3	Alaganallur	47	29	24	55	28	17	56	27	17
4	Chellampatti	50	32	18	58	31	11	59	30	11
5	Kallikudi	50	22	28	57	23	20	67	22	11
6	Kottampatti	55	28	17	62	27	11	62	27	11
7	Melur	65	10	25	74	10	16	88	10	2
8	Sedapatti	48	29	23	55	28	17	62	26	12
9	T.Kallupatti	54	26	20	64	25	11	72	23	5
10	Thirumangalam	71	11	18	78	11	11	78	10	12
11	Thirupparankundram	65	12	23	71	11	18	80	10	10
12	Usilampatti	74	13	13	82	12	6	88	11	1
13	T.Vadipatti	63	22	15	70	22	8	70	20	10
	District Average	58	20	22	66	20	14	71	19	10

Source : Cohort Study - 2002.

Table - 27
Progress in CR, DR & RR (Upper Primary)

S. No	Name of Block	2000 - 2001			2001 - 2002			2002 - 2003		
		CR	RR	DR	CR	RR	DR	CR	RR	DR
1	Madurai East	56	20	24	64	17	19	68	15	17
2	Madurai West	62	23	15	70	20	10	84	13	03
3	Alaganallur	60	22	18	68	20	12	67	18	15
4	Chellampatti	50	20	30	60	16	24	71	13	16
5	Kallikudi	47	30	23	53	27	20	73	17	10
6	Kottampatti	55	20	25	63	17	20	63	21	16
7	Melur	48	32	20	53	30	17	65	28	07
8	Sedapatti	47	28	25	53	27	20	58	23	19
9	T.Kallupatti	71	19	10	78	12	10	79	13	08
10	Thirumangalam	57	21	22	63	18	19	74	14	12
11	Thirupparankundram	53	26	21	60	23	17	77	13	10
12	Usilampatti	63	21	16	72	18	10	88	09	03
13	T.Vadipatti	67	18	15	75	15	10	73	20	07
	District Average	56	23	21	64	20	16	72	17	11

Source : Cohort Study - 2002.

According to cohort study carried out for the period 97-98 to 2001-02 the completion rate in primary schools is 71% and in upper primary schools the rate is 72%. The status of completion rate in the year 2001-02 was 58% in the primary schools and 56% in the upper primary schools. There is a 13% increase over the previous year in the case of primary schools and 16% in the case of upper primary schools.

D-12167

05-12-2003

2.5. Retention:

The cohort study of 2002 result reveals that 10% of children are dropouts from primary schools and 11% of children from upper primary schools. The dropout status was 22% and 21% in primary and upper primary schools respectively during 2001-02. The dropout rate has been reduced to the level of 12% in primary and 10% in upper primary level.

2.5.1 Repetition Rate:

There is a decline in RR by 1% in Primary and 3% in Upper Primary. The repetition rate according to cohort study 2002 is 19% in the case of primary schools and 17% in the case of upper primary schools. During 2001-02, the RR was 20% and 23% in primary and upper primary schools respectively. The target is to reduce to 0% by the year 2006 - 07 in primary schools and 2009-10 in upper primary schools.

2.6. Transition Rate:

The Transition Rate was 76% in 2001-02. It was proposed to attain 80% during 2002-03. As 14 primary schools were upgraded as upper primary schools during the past two years to give more access to the transiting children, the Transition Rate has risen to 93% crossing the target of 80%. The transition rate of SC population is only 86% while it is 93% in the ST population.

2.7. Attendance Rate:

The Attendance Rate was 81% in primary and upper primary schools in 2001-02. It was targeted to enhance the attendance rate to 85% during the academic year (2002-03). The target has been achieved there by rising the A.R. to 86% in primary schools and 91% in upper primary schools. In the case of SC students AR is 85% in primary and 86% in upper primary during 2002 - 2003. The AR of the SC population is on par with other communities. There is an increase of 8% in Primary and 10% in Upper Primary.

2.8. Progress in Achievement Level:

The achievement level of students was assessed by the marks scored in the half-yearly examination of the year 2001-02. During 2001-02, the aggregate marks scored in primary level was 58% whereas it was 54% in upper primary schools. In 2002-03, the aggregate marks scored in the primary level is 67% in primary schools and 66% in upper primary schools. There is 9% increase in primary level and 12% increase in upper primary level.

2.9. Mainstreaming of out of School Children:

There are 19146 out of school children in Madurai District. Among them 14745 children are dropouts and 4401 children are never enrolled. In 2002-03, thirty Bridge Course Centres were started and 642 children have been enrolled. There were 22125 out of school children in 2000-01. Among them 17008 were drop outs and 5117 were never enrolled. Enrolment Awareness Programmes, Intensive involvement drives, Parent-Teacher Associations, and door-to-door canvassing enable to bring out of school children in to the system. It is planned to enrolled all the remaining out of school children 2003-04. A system called Child Tracking has been introduced to keep the record of out of school children in order to ensure enrollment of all out of school children in the system.

Among the 19146 dropouts, 117 Children are identified as Child labourers . It is planned to withdraw from works in co-ordination with the labour department and to enroll them in the Residential Bridge Course Camps.

Total of 19146 dropouts, 672 children are already enrolled in the AIE scheme. The remaining 18474 are yet to be enrolled in the following ways. In 2003 -04 8 Bridge Courses are started and 400 children are admitted in the scheme. The remaining 18104 children are to be enrolled in 764 AIE schemes. The following used to track the out of school children in Madurai District is placed below.

Regn. No. **Identity Card**
Never Enrolled/Dropout Child

District : **BRC :** **CRC :** **VEC :**

- 1) Name of the Child :
- 2) Father's/Guardian's Name :
- 3) Address :
- 4) Age :
- 5) Sex : Male/Female
- 6) Community : SC/ST/MBC/BC/Others
- 7) Religion : Hindu/Muslim/Christian/Others

page 2

- 8) Whether Disabled : Yes/No
- 9) Status of the child during enumeration : Dropout/ Never enrolled/Child labourer
- 10) Present Status : Admitted in School
- 11) Address of the School and class :

Signature : _____

BRC Supervisor : _____

Block : _____

2.10. Appointment of Teachers:

A total of 34 new secondary grade teachers posts were sanctioned under the SSA scheme to fill up in the newly opened 17 primary schools. Among the 34 posts, 17 secondary grade posts were upgraded as primary school head master posts. All the 34 posts were filled up.

18 teachers were sanctioned for upgraded schools (14). These teachers are in position.

2.11. Programmes for Special Focus Groups:

There were 1322 disabled children identified in 200-01. For the inclusive education of these children 3 popular non-governmental organizations are involved in. They are Sadhana Trust, M.S.Chellamuthu Trust and Leonard Trust. They have conducted awareness Camps about the inclusive education of the disabled. The special teachers were appointed by the NGOs to visit schools and to guide the disabled children for providing inclusive education. All the identified disabled children has been enrolled in the formal schools.

2.12. Programmes for SC/ST.:

The weaker children are identified and special coaching classes are started in 401 centres. 1284 teachers are engaged in special coaching classes. They guide these children in the evening hours for a maximum of one and half hours. The classes are conducted between 4.15 and 5.45 pm. The expected outcome of these coaching classes is to enhance the abilities of SC/ST children par with the other children. The beneficiaries are 25673 SC/ST children during 2002-03. A sum of Rs.10.978/- lakhs is spent for SC/ST coaching classes in 2002-03.

2.13. Programmes for Girls:

A special focus on the achievement levels of girls is emphasized. Special coaching classes are conducted for girls along with SC/ST children. Remedial classes are arranged by the Village Education Committees with the assistance of NGO's in Chellampatti, Usilampatti and Thirumangalam blocks. Toilet facilities are provided on priority basis to these schools where girls enrollment is pre-dominant.

2.14. Early Childhood Care and Education:

Since the age span covered under ECCE is from conception to 5 years, emphasis have been given to a child centered approach, play way activity based learning in place of formal methods of teaching and early introduction of the basic language skills. To provide conveyance between the school system and ECCE arrangement, the balwadi teachers are included in the village education committee. In some blocks, the BRC personnel attend the monthly meeting of Balwadi teachers and give on job support in the preparation of TLM for ECCE. School readiness programme to children of ECCE to bring them to formal schools.

2.15. Functioning of Village Education Committees:

There are 1315 Village Education Committees in Madurai. They conduct bi-weekly meeting and record the minutes. All the activities of the SSA scheme are routed through these VEC's. The proper utilization of funds allotted under various heads viz School Grant Teacher Grant, Repairs and Maintenance Grant and Civil works grant are supervised and monitored by the VECs. A joint account in the name of the VEC President and Secretary (Headmaster) is opened in banks and is being operated by the VEC. The VEC members help the administration to enroll the dropouts and mainstream. The VEC appoints volunteers for Bridge Courses and EGS centres. They provide accommodation free of cost to run the centres. They are maintaining the Village Education Register. They conduct micro- planning to assess the needs of schools. All the civil works except the BRC is undertaken by the VEC. The VEC mobilizes additional resources in addition to the financial resources sanctioned under SSA.

2.16. Cluster Resource Centres:

There are 195 Cluster Resource Centres in Madurai district. The CRC meetings are conducted in the first Saturday of every month. All the teachers including teachers working in the upper primary classes of high and higher secondary schools attend the meetings. There are 40 teachers in each CRC. The activities CRC meeting is pre - planned in such a way that all the 40 participants take part in the meeting. Some of the components included in the meeting are Approaches and Strategies to effective teaching, action Research, Model classroom teaching in languages, quiz programmes etc. These cluster resource centres are also provided with furnitures to the sum of Rs.10,000/-.

2.17. Block Resource Centres:

Block Resource Centres cater to the needs of teachers working in a particular block. A supervisor in the cadre of Headmaster and 7 Teacher Educators specialized in different subjects are appointed in 13 block resource centres and 2 upgraded cluster resource centres in Madurai North and Madurai South Ranges. Planning implementation , monitoring, training, SAP is done by BRC. Each Teacher -Educator, Supervisor, and AEE at block level adopt schools for over all improvement of schools.

2.18. Research, Evaluation and Monitoring:

It is proposed to carry out 1402 action researches with the help of the DIET. Preliminary works to this task is already taken up. Micro planning exercise is carried out in all the schools to asses the needs of the habitations and schools by the village education committees.

Regarding Evaluation and Monitoring every school has a notice board showing all the grants received by the school and other details. Community based monitoring of schools is ensured through the Village Education Committees.

Periodical review of SSA activities by the Assistant Elementary Educational officers at the block level is done every month. The

Headmasters are reviewed by the block level officers every month. Funds allotted to schools are audited. Periodically the block level activities are reviewed by the District Programme Co - ordinator every month. The performance of CRC & BRC is reviewed every month by the DPC. The DIET personnel visit Block Resource Centres and other in service training centres to give on job support. Above all, the District Collector who is also the Chairman of the SSA programme periodically reviews the works every month.

2.19 Improving Infrastructure:

2.19.1 Construction of Block Resource Centres

Six Block Resource Centre buildings were sanctioned during 2001-2003. A sum of Rs.36/- lakhs was sanctioned to carry out construction works. The construction of BRC buildings are taken up by the technical wing of PWD Department. The construction work have been started in all the 6 Block Resource Centres. Besides construction of BRC the AEE certify the quality of construction of school and CRC buildings.

2.19.2. Construction of Cluster Resource Centres:

There are 195 CRC in Madurai 12 CRC buildings were sanctioned in 2001-03. A sum of 24 lakhs was also sanctioned. Work has been started to construct all the 12 cluster resource centres. In order to enable the effective planning, implementation and monitoring of SSA, it is planned to construct one CRC building along with BRC to run the AEEO office along with BRC.

2.19.3. Construction of Three Class Rooms:

Sixteen 3 class rooms were allotted in 2001-02 and 2002-03 financial years. Construction of all the sixteen class rooms have already been started and one in various stages of progress.

2.19.4. Construction of Two Class Rooms:

Twenty nine 2 class rooms were sanctioned to Madurai during 2001-03. Construction of all the 29 class rooms have been taken up in the District. 10 two class rooms have been constructed and remaining are in progress. The VECs are entrusted with the construction work.

2.19.5. Toilets:

73 toilets were sanctioned during 2001—03. All the 73 toilettes have been taken up for construction with the involvement of VECs. Construction of 15 toilets have ben completed and the remaining are in progress

2.19.6. Drinking Water Facilities:

Drinking water facilities are provided to 68 schools. All the works are in progress as sanctioned by the SPO during 2001-2003.

2.20. Maintenance and Repairs:

A sum of Rs.55.1/- lakhs was allotted to carry out repairs and maintenance works for 1102 government schools and all the funds have been utilized for white washing, plastering works, flooring, roofing of tiled buildings and asbestos buildings, repairing of doors and windows and electrical items. The amount spent on repairs and maintenance is Rs.55.1 lakhs.

2.21. Programmes for Quality Improvement.

2.21.1 Capacity building for project staff:

The newly recruited Teacher - Educators of the Block Resource Centers had undergone 3 month School Attachment Programme. They were focused to the school atmosphere at the primary, upper primary high and higher secondary level. In each level, they had attachment programme for one week duration. A 5 day orientation was given to District Resource Group and Teacher Educator from 28.10.02 to 01.11.02 at Madurai. A 3 day orientation was given to Project staff on School Based Training and School Adoption Programme. All the BRC

supervisors were given SBT and SAP training. The BRC Supervisors in turn imparted training to the Teacher - Educators of all Block Resource Centres on School Based Training and SAP activities.

2.21.2 Training to Teachers:

- In service training for teachers handling 1 and 2 classes in content analysis and methodology was given. The duration of the training was 5 days. The beneficiaries of this training are 1063 primary teachers.
- In service training to teachers handling 3, 4 and 5 classes in content analysis and methodology was given to 1700 primary school teachers. The duration of the training programme was 5 days.
- In service training of 5 days duration was given to 797 teachers who are handling 7th and 8th classes.
- Five day orientation to 120 Teacher - educators in content analysis and methodology.
- Three day Resource Persons Training to AEEO, BRC Supervisor and 2 Teacher - Educators. The purpose of the training is capacity building of primary school Headmasters.
- Capacity building training of 3 days duration to 745 primary school Headmasters at the block level.
- A three day capacity building training was given to 417 upper primary school Headmasters by the DIET.
- A three day workshop on implementation of DISE for ADPC and SO at Myrada in Dharmapuri District.

2.21.3 Orientation to VEC Members:

A two day training to Block Resource persons was given by the DIET. The District Resource Group includes one AEEO and two teacher educators from each block. The District Resource Group conduct

training to 30 block resource persons who include selected primary headmasters and representatives of voluntary organizations. They inturn gave orientation to 3 members from each village education Committee 3945 village education Committee members were given a two day orientation. The participants are the VEC President, Secretary and one member of the committee. The orientation was given on the role and responsibilities of VEC member in the G.O.No 53, issued by the Government of Tamilnadu.

2.21.4 Provision of TLM, TLE and School Grant:

Teaching Learning materials grant was released to 7820 teachers. The unit cost is Rs 500 per teacher. School grant was released to 864 primary schools and 252 upper primary schools. The unit cost is Rs 2000/- per school. Teaching Learning equipments Grant was released to 17 newly opened primary schools. The unit cost is Rs 10,000/- per school. TLE is also released to 14 newly up graded upper primary schools. The unit cost is RS 50,000/- per school. TLM grant was utilized by the teachers to make low cost teaching aids. Teaching aids were prepared by the teachers as per the classroom needs. The school grant was used to replace non – functional equipments in the school such as furniture, water drums, almirahs, record boxes etc.

2.21.5 Curriculum Revision:

The state has taken up the revision of Curriculum suited to VI class children. The 6th class text books are to be revised and published as per the modifications made in the curriculum by the expert committee.

2.21.6 Innovation:

A syllabus to impart computer literacy training to upper primary children is designed. The target group is 6th class children. They will be imparted 40 hours computer training during April and May 2003. The

VII and VIII classes will be taken up in the forth coming years. Rs 50/- per child is allotted for Computer Literacy. One Computer is to be provided for two children. The classes will be conducted for 40 hours including one hour for evaluation.

2.22 Project Management:

2.22.1 Establishment of MIS

The Management Information System was established in DPO for collections, compilations and generating effective educational data base micro planning, implementation, monitoring and evaluating the project. MIS has been provided with one Statistical Officer on deputation to the DIS. One Data Entry Operator on consolidated Pay is also appointed in the DPO. Hardwares such as one Pentium, Laser Printer and Internet facilities have been provided.

2.22.2 Implementation of DISE:

The DISE has been implemented in all schools with effect from 30.09.2002. A one day orientation was given to all BRC supervisors and AEEOs about DISE. The AEEOs inturn gave orientation to all headmasters at the block level. The DISE forms were collected and the data have been processed for the use of Annual plan preparation for the year 2003-04. Similarly, Cohort study both for Primary and Upper Primary, opening of Village Education Register for all habitations have been done during 2002-03.

2.22.3

2.22.4 Appointment of Project Staff:

One Assistant District Programme Co-ordinator in the cadre of Higher Secondary School Headmaster has been appointed on deputation basis. The Media and Documentation Officer, Training Officer, a Statistical Officer, two Consulting Engineers and a Data Entry Operator are also appointed to equip the district project office. All the 13 BRC

and 2 upgraded CRC have been strengthened by appointing Supervisors and 7 Teacher -Educators to each block.

2.23 Convergence with the ongoing schemes:

Free Noon Meals Scheme:

The Chief Minister's noon meal scheme was started in 1982 to provide free noon meals to poor children. It is implemented by District Social Welfare Officer. 1,17,189 male and 1,16,694 female children are benefited by mid - day meal scheme.

Free distribution of school uniforms:

The Govt. of Tamilnadu distributes every year one set of uniform to all poor children who are enrolled under nutritious noon meals programme. 230683 children are provided with free uniforms during 2001-2002. Uniforms are yet to be distributed for 2002-2003 to increase enrolment and retention.

Free distribution of text books:

The Tamilnadu Text Book Corporation supplies text book of all subjects freely to all children up to std V. Poor students who are enrolled in the noon meals program in std VI to VIII are also supplied with free text books. During 2002-2003 the beneficiaries under this scheme are 152745 boys and 145721 girls.

Free distribution of slates:

The Department of Social Welfare supplies the students enrolled in Kallar Reclamation schools with slates of smaller size for the first 2-classes and big size for 3,4 and 5 classes.

Free distribution of bus pass:

Free distribution of bus pass upto class XII is an additional factor that increases the enrolment of students. The beneficiaries are 52235 in Upper Primary schools and 28245 in Primary schools.

Early childhood care centres:

TADCO plays a remarkable role in providing an annual stipend of Rs.1000/- per annum to the girl SC students who are studying in VI std and above.

MBC Scholarship:

A scholarship of Rs. 500/- to girls studying in III to VIII standards belonging to Piramalai Kallar community is being issued every year by the District Collector.

OBB Scheme:

It is a centrally sponsored scheme taken up in the District during 1990-1994 for the improvement of schools under this scheme, the following components were taken up

1. Provision of teachers to primary schools.
2. Construction of classrooms.
3. Provision of teaching learning materials to all Primary schools.

The salary given to teachers working under the OBB scheme is now subsumed into SSA scheme and salary to these teachers is drawn from the SSA head since November 2002.

Rural Talent Search Examinations Fund:

In Madurai District 166 students have been selected as eligible candidates for a stipend of Rs.1000/- per year till they complete XII class. These candidates are selected through a rural talent search examination. The eligibility to appear for this examination is a pass in VIII std.

2.24 Issues and Strategies:

The important components to be addressed under SSA for Universal Elementary Education are as follows:

1. Access
2. Enrolment and retention
3. Coverage of Out of School Children
4. Quality Issues
5. Coverage of Special Focus Group

6. Research, Monitoring and Evaluation Supervision
7. Improving School infrastructural facilities

2.24.1 Access:

There are 1704 habitations in Madurai District. 1670 Habitations have access to Primary Schools. There are still 34 unserved habitations. 1636 habitations have access to Upper Primary Schools. 68 habitations are yet to be served with Upper Primary Schooling facility. It is proposed to open 10 new formal Primary schools and to upgrade 24 existing Primary schools and to start 16 EGS centres to give 100% access to all school age children to ensure 100% enrolment.

2.24.2 Enrolment and Retention:

The Net enrolment rate is 98%. The remaining 2% School age Population has to be brought to Schools.

Regarding retention, the CR rate as per Cohort analysis – 2002 is 74% in Primary and 75% in Upper Primary Schools. It is proposed to conduct campaigns and awareness rallies including school committees, PTAs, VECs and self-help groups sensitizing the Community about the necessity of Elementary Education. The Repetition rate is 19% in Primary and 17% in Upper Primary schools. The dropout rate is 10% in Primary and 11% in Upper Primary. Strategies have been evolved to decrease the RR and DR rates.

- ❖ Convincing the parents and employers to relieve the child from work and admit them in schools.
- ❖ Upgrading 24 existing primary schools in 2003-04.
- ❖ Implementation of Child Tracking System.
- ❖ Encouragement of regular transition of pupils from 5th class to 6th class.
- ❖ Relieving the girl children from sibling care and helping them for their continuous education.

- ❖ Providing Computer Literacy to Upper Primary Children to retain them in the system.
- ❖ Providing useful vocational skill such as tailoring, Embroidery and toy making training to Upper Primary children.
- ❖ Remedial teaching classes to repeaters.
- ❖ Preparatory classes to V class children in summer holidays.
- ❖ Training to AEEOs and BRC Supervisors in office administration and management.

2.24.3 Coverage of Out of School Children:

There are 19146 Out of School Children in Madurai District. 4401 are never enrolled and the remaining are dropouts. Most of the dropouts are in 13+ age group. They are scattered in blocks like Chellampatti and Sedapatti. It is proposed to conduct special enrolment drives by the Village Education Committees to mainstream the out of school children. Moreover, 764 non residential bridge courses are proposed to start in the forthcoming year and 8 residential bridge courses are also planned to take up in the year 2003 -04. It is also decided to conduct short term bridge courses for 2046 age 14 and above children and permitting them to sit for VIII std common examinations straight away. 117 Child Labours are proposed to put up in residential bridge courses in consultation with Labour Department. Mobile teachers will be engaged to teach the out of school children who are scattered and less in numbers .

2.24.4 Quality Issues:

A Life oriented Education providing learners to realize the value of work, moral values and Education for life should be provided. Activity Based Teaching should be steered in the class room. Multigrade classroom conditions are one of the Major issues. There are 85% schools under Multigrade Classroom situations. are crowded in Upper Primary Schools. The performance of the student are poor in English, Mathematics and Science subject. Unfilled vacancies and rural mobility are also problems in connection with quality. It is proposed to take up

the following activities in the forth coming year to the improve the quality of Education.

- ❖ Training to 4176 primary teacher and 3942 Upper Primary teachers for improved classrooms practices in English, Maths, and Science for 20 days.
- ❖ Provisions of school grant to 1126 schools.
- ❖ Provision of Teacher grant to 8118 teachers.
- ❖ Provision of TLE to 10 new formal Primary school.
- ❖ Provision of TLE to 24 new Upper Primary schools.
- ❖ Provision of training to 195 CRC Coordinators.
- ❖ Provisions of TLM grant to 195 CRC centres.
- ❖ Provision of training to 15 BRC Supervisor and teacher educators.
- ❖ Provision of training to inspecting officers.
- ❖ Provision of five day training to volunteers of bridge course centres.
- ❖ Provision of TLM to AIE centres.
- ❖ Provision of equipments grant to the tune of Rs.100000 to BRC.
- ❖ Provision to provide inclusive education to 1566 disabled children.

2.24.5 Special Focus Groups:

Disabled Children

There are 1566 Disabled Children in Madurai District in the age group of 6 -13. To provide inclusive Education to these Children is a Major concern as the Universalisation of Elementary Education can not be achieved without providing Elementary Education to these children. All the 1566 disabled children have already been enrolled in the regular formal schools. The following strategies have been evolved give inclusive education.

1. A community – awareness training programme of one-day duration to all VEC's.

2. Conducting Block level medical camps in association with District disabled Rehabilitation officer to identify the disabled.
3. Capacity building training to teachers to handle the classes for disabled children.
4. Interactive workshops on the need to educate the disabled children of one-day duration to VEC members including Headmaster and Teacher – educators.
5. Establishing a TLM Resource Centre along with the BRCs.
6. Teaching the teachers as how to handle the equipments such as hearing aids, artificial limbs etc.
7. Preparation of TLM for IED.
8. Appointment of health educators.
9. Carrying out case studies.
10. Providing home-based education to acutely disabled.

Technical Mechanism :

1. Braille Method for the blind.
2. Sign language for the deaf.

Pre-Primary Education

There is a vast gap between the Pre-Primary Education and Primary Education. The system of Pre-Primary Education should also be strengthened to produce efficient and skilled students. It is essential to keep the ECCE activity – centered. There are 30 habitations unserved even with ECCE centres.

It is planned to provide nursery education as a part of Primary education in all Government schools. It is proposed to open 30 new ECE

centres. It is also proposed to provide 600 centres of the existing 1505 ICDS centres with play materials to the tune of Rs.1000/- per centre. The volunteers appointed in ECE centres will be provided 5 days training. A sum of Rs.2500/- will be spent per month for the proper running of the new ECE centres.

Girls Education

There are 203189 Girls students studying in classes I to VIII in Madurai District. There are Gender disparities in providing education to these Girls Students. To achieve the Goals of SSA all the Girl Students must be enrolled in Schools and they should be given Elementary Education upto VIII class.

It is proposed to impart toy making training to girl children studying in 8th class in Madurai West block as a pilot study programme. In future it will be expanded to other blocks also. It is also proposed to give embroidery and tailoring skill training to Upper Primary girl children as an Innovative Training Programme. It is proposed to impart toy making training to girl children studying in 8th class in Madurai West block as a pilot study programme. In future it will be expanded to other blocks also. It is also proposed to give embroidery and tailoring skill training to Upper Primary girl children as an Innovative Training Programme.

Education of SC/ST

The Education of SC/ST student is stressed in the frame Work of SSA. So it is a mandatory to offer Elementary Education to Scheduled Caste and Tribal Children. Strategies have to be devised to enroll them in Schools and retain them till they complete 8th Class. It is proposed to conduct special coaching classes to all SC/ST children. There are 74503 SC/ST children enrolled in the 1 to 8 classes of Madurai District.

2.24.6 Monitoring and Supervision:

In the Modern System of Education in the Elementary level an effective mechanism to monitor and supervise the functioning of Primary

and Upper Primary Schools is necessary. Without monitoring and supervision, the effective functioning of schools cannot be ensured. To provide on job support to the teachers and to carryout follow up activities on trainings given, monitoring is very important.

Evaluation of schools be based on performance through enrolment completion and achievement of the minimum level of learning. For promoting all round development of the child the entire process to promote teachers professional efficiency inside and outside the school should be improved DIET faculty, District Programme Co - ordinator, Additional District Programme Co - ordinator should take up academic monitoring and provide on job support and training to the teachers of primary, upper primary, high and higher secondary schools at the district level. At the Block level AEEOs, Supervisors and Block Resource Teachers will take up monitoring and assess the progress of various schools. Providing on job support to Primary, Upper Primary, High and Higher Secondary schools in all the way plays a vital role.

2.24.7 Improving School Infrastructural Facilities:

It is very important to provide infrastructural facilities to Schools. There is a lack of infrastructure facilities in schools. There are a huge number of Upper Primary Schools without Toilet facilities. In a single building, number of classes are being conducted. The class rooms are also over crowded in many schools, repairs and maintenance works are not taken up for a long time. Teaching Learning Equipment are insufficient in schools to keep the class room attractive.

It is estimated through micro planning that 225 two class room buildings and 126 three classroom buildings are required. Toilet facilities are required for 534 schools and drinking water facility to 318 schools. Repairs and Maintenance grant is proposed to disburse to 854 Primary and 262 Upper Primary schools to improve the infrastructural facilities while it is proposed to construct 15 three class rooms and 30

two class rooms. Moreover 60 drinking water and 100 toilet facilities will be provided to schools in 2003 – 04.

2.24.8 Community Participation and Mobilization:

1315 Village Education committees are functioning in Madurai District. There are 17949 members in 1315 VECs. These Village Education Committees are planning the annual work of the schools and implementing them. All school developmental activities are done in consultation of the VECs. Construction works are executed by the VECs.

2.24.9 Research and Evaluation:

Action Research is an essential Component of SSA which contributes towards quality education. Research can be carried out both in terms of education and character building. Regarding classroom situation, the major drawbacks such as learning disabilities and poor performance can be curbed through Action Research. Every teacher is expected to conduct action research and the findings are to be carried out in the classrooms.

A sum of Rs.1,500/- will be given to each school for conducting research activities. Proposals have been received from all the 1200 schools in terms of doing action research.

Area of Action Research:

The various areas of action research are listed out as follows:

- i) Learning disabilities in
 - a. Tamil
 - b. English
 - c. Maths
 - d. Science
 - e. Social Science
- ii) Ensuring regular attendance
- iii) Behavioural psychology
- iv) Identification of hard spots in classroom situation. And so on.

Supervision and Monitoring:

All the research activities will be monitored by a special task force. Officials of the District Project office are in the capacity of supervising the schools, Block Resource Centres and Cluster Resource Centres. AEEOs Supervisors and Teacher - Educators can supervise the schools in their respective blocks.

DIET can prepare an action plan and training programme for the system of supervising and monitoring activities.

CHAPTER – III

ACTIVITIES AND BUDGET

3.1 Primary Schools:

A total of 34 new teacher posts were sanctioned in 2001-02. Rs.29.380 lakhs was spent towards salary of these teachers up to 31.03.2003. School grant was released to 864 primary schools at the cost of Rs.17.820 lakhs. TLM grant was sanctioned to 3310 teachers which cost a sum of Rs.16.550 lakhs. Teaching Learning Equipments grant was sanctioned to 17 newly opened schools. The expenditure incurred for TLE is Rs.1.700 lakhs. The gross amount allotted was Rs. 80.320 lakhs. The total amount spent up to 31.03.2003 was Rs.64.910 lakhs.

The activities proposed for 2003-04 is to give salary to 64 teachers which include the teachers of the newly proposed 15 schools. School grant at the rate of Rs.2000/ is proposed for 864 primary schools and TLE for 15 new schools at the rate of Rs.10,000/-. TLM grant is proposed for 4164 primary school teachers. A sum of Rs.93,360lakhs is proposed for these activities under the head Primary Formal Education (PFE).

3.2 Upper Primary Schools:

In 2002-03, salary was given to 18 newly appointed teachers at the cost of Rs.12.600 lakhs. 252 upper primary schools were provided with a school grant of Rs.2000/- TLE grant was sanctioned to 14 upgraded upper primary schools at the rate Rs.50000 per school. TLM grant was released to 2830 upper primary teachers at the cost of Rs.14.150 lakhs. The amount allotted was 55.995 lakhs and spent up to 31.03.2003 was Rs.38.790 lakhs. It is proposed to give salary to 52 teachers including 20 new teachers for 2003-04. TLE grant to 20 upper primary schools which are expected to be upgraded in 2003-04. The unit cost is Rs.50,000/-.

School grant at the rate of Rs.2000/- is to be given to 262 upper primary schools and TLM grant to 3942 teachers working in these upper primary schools. The gross amount proposed is Rs.78.630 lakhs for 2003-04.

3.3 EGS and Alternative & Innovative Education:

It was proposed to conduct 30 EGS centres in 2002-03. A sum of Rs.6.335 lakhs was earmarked for 2002-03. 30 bridge courses were conducted and a sum of Rs.3.600 lakhs was spent towards Bridge courses.

It is proposed to open 30 alternative schools in unserved habitations and 8 residential bridge courses to mainstream 400 dropouts, 764 Non - Residential Bridge Courses (AIE centres) are also proposed to mainstream 18104 out of school children. The total cost estimated is Rs.179.725 lakhs for 2003-04.

3.4 Special Focus Groups:

In 2002-03 a sum of Rs.15 lakhs was earmarked for conducting coaching classes. Special coaching classes were conducted in 401 centre involving 1284 teachers. The beneficiaries are 25673 SC/ST children. A sum of Rs.11.000 lakhs was spent to conduct the special coaching classes. For the integrated education of the disabled Rs.3.200 lakhs was allotted. In which, Rs.3.200 lakhs was spent.

In 2003-04 it is proposed to provide IED to 1566 disabled at the cost of Rs.18.792 lakhs and to offer special coaching classes to 10000 SC/ST children and disabled. Proposals are made to the sum of Rs.20 lakhs to conduct special coaching class. It is proposed to conduct remedial coaching classes to 5000 poor performing and economically backward girl children. The expenditure estimated to this course is Rs.10 lakhs. The total expenditure incurred under this head is Rs.48.792 lakhs.

3.5 Village Education Committee:

In 2002-03, Rs.6.730 lakhs was allotted for the activities of Village Education Committee. A two days orientation to 3645 village education committee members was given in 2002-03. A sum of Rs.1.927 lakhs was spent to give orientation to Village Education Committee.

It is proposed to give meeting expenses to each Village Education Committee to conduct bi-monthly meetings. It is estimated to spent Rs.11.835 lakhs for this activity. A two day orientation to each Village Education Committee in 2003-04 at the cost of Rs.11.835 lakhs. The total cost estimated under this head is Rs.23.670 lakhs for 2003-04.

3.6 Cluster Resource Centres:

In 2002-03, Rs.8.085 lakhs was earmarked for conducting training and workshops in CRC and contingency and TLM grant. To conduct the cluster resource centre meeting in 195 centres, Rs.5.01 lakhs was spent up to 31.03.2003.

It is proposed to conduct workshops and meetings in CRCs to 8118 teachers. The expenditure incurred is Rs.19.315 lakhs. Sanction was accorded to start 165 cluster resource centre in 2001-02 and budget provisions were made accordingly. In 2002-03 an additional 30 Cluster Resource Centres were sanctioned. It is proposed in this budget to provide these 30 additional CRCs a furniture grant of Rs.10000/- each. The total cost for furniture grant is Rs.3 lakhs. The total expenditure expected under this head is Rs.19.315 lakhs.

3.7 Block Resource Centres:

The amount allotted for BRC in 2002-03 is Rs.111.93 lakhs. In which Rs.102.953 was spent as salary to BRC supervisor and teachers, contingency and travelling allowances.

It is proposed to get sanction for Rs.150 lakhs towards the salary of BRC supervisor and Teacher - Educators working in 13 BRCs and 2 upgraded CRCs. Contingency grant of Rs.1.875 Lakhs to be provided the 15 resource centres. To conduct workshops and meetings it is estimated to spend Rs.90000/-. It is proposed for the provisions TLM grant of Rs.75000/- to all the 15 centres. The unit cost is Rs.5000/- The TA and DA amount estimated for 15 centres is Rs.5 Lakhs . In addition to that, it is proposed to purchase a Computer, Science Equipment (On par with Higher Secondary laboratory) in Physics, Chemistry, Biological Sciences and Art Subjects at the cost of Rs.6 lakhs. The unit cost is one lakh in 6 centres. Total cost is Rs.164.525.

3.8 Research Evaluation and Monitoring:

In 2002-03 Rs.9.918 lakhs was sanctioned to carry out research activities in 1102 schools. To conduct DISE and cohort study funds were utilized under this head. Village information schedule and drop outs proforma were prepared and printed at the cost of Rs. 0.550 lakh.

It is proposed to conduct action researches in 1116 schools. The unit cost per one study is Rs.1500/-Rs 100 per school will be spent at the national level and Rs.900/- at the state level. The remaining Rs.500/- will be utilized at the district level. An estimated Rs.16.740 lakhs is proposed for 2003-04. In which, Rs.5.580 lakhs is proposed to spend at the district level.

3.9 Civil Construction Works:

During 2001-03 an estimated Rs.243.8 Lakhs was earmarked for civil construction works. All the works, proposed in the budget 2001-02 and 2002-03 is being utilized as shown in the following table.

Table -28
Progress in Civil Works.

(In Lakhs)

Items	2001 - 02		2002 - 03	
	Unit	Allotted amount	Unit	Allotted amount
Block Resource Centres	4	24.00	2	12.00
Cluster Resource Centres	4	8.00	8	16.00
Two class room buildings	21	63.00	8	24.00
Three class room buildings	3	13.50	13	58.50
Drinking water	47	7.05	21	3.15
Toilet	45	9.00	28	5.60
Total		124.55		119.25
Grand Total				243.8

It is proposed to construct 7 Block Resource Centres, 18 Cluster Resource Centres 15 three class rooms, 30 two class rooms, drinking water facilities to 60 schools and toilet facility to 100 schools. A sum of Rs.264.500 lakhs is required to carryout these construction works.

3.10 Maintenance and Repair Works:

It was proposed to provide repair and maintenance grant to 1102 school at a cost of Rs.55.1 lakhs. The unit cost is Rs.5000/-. The amount was fully utilized by 1102 schools. The amount spent was Rs.55.1 lakhs.. It is proposed to carry out repairs and maintenance works in 1116 schools in 2003-04. An estimated Rs.55.8 lakhs is required for this intervention.

3.11 Management:

The total outlay for management in 2002 - 03 was Rs.28.000 lakhs. This amount was utilized to give salary to the DPO staff, providing furniture and equipments to the DPO, purchasing books, periodicals and consumables, to maintain the equipments in the DPO, to give TA/DA, to the staff, to offer training to project staff and consultancy. The amount spent towards management cost is Rs.11.745 lakhs.

It is proposed to get sanction for Rs.26.8 lakhs under the management head. It is proposed to purchase a video-camera a colour television with VCD and a photo camera at the cost of Rs. 2 lakh for Media and Documentation. It is also decided to purchase a computer, a Laser Printer, a Xerox machine and an Air Conditioner for the MIS Centre. It is also proposed to appoint a Computer Programmer and additional Data Entry Operator to the MIS Office on consolidated pay. It requires an additional sum of Rs.2 lakhs.

3.12 Training:

The amount sanctioned for training activities in 2002-03 is Rs.43.595 lakhs which includes primary and upper primary trainings to provide 4265 teachers a total of Rs.10.715 lakhs was spent.

It is proposed to give training to 8118 primary and upper primary teachers. The duration of the training is 20 days per year. The amount estimated is Rs.113.652 lakhs for 2003-04. The training activities to be given are as follows:

NEED – BASED TRAINING SCHEDULE

Std I, II & III

S. No.	Types of Training	No. of days
1.	Capacity building training -- to introduce Maths & Science kit	2
2.	Preparation of TLM – for all subjects	2
3.	Identification of Hard spots, content analysis etc.	2
4.	Training to teachers on Institutional planning	2
5.	Child Psychology, Co-curricular, Extra curricular & Health education	2
6.	Methodology in teaching of Maths, Science, Social & Languages	5
7.	Training for multigrade teaching	2
8.	School adoption programmes & school based training	1
9.	Competency based continuous and comprehensive, innovative teaching – learning techniques	2

Std IV & V

S. No.	Types of Training	No. of days
1.	Capacity building training – to introduce Maths & Science kit	2
2.	Preparation of TLM – for all subjects	2
3.	Identification of Hard spots, content analysis etc.	2
4.	Training to teachers on Institutional planning	2
5.	Child Psychology, Co-curricular, Extra curricular & Health education	2
6.	Methodology in teaching of Maths, Science, Social & Languages	5
7.	Training for multigrade teaching	2
8.	School adoption programmes & school based training	1
9.	Techniques in language teaching	-
10.	Competency based continuous and comprehensive, innovative teaching – learning techniques	2

Std – VI

S. No.	Types of Training	No. of days
1.	Preparation of TLM – for all subjects	2
2.	Identification of Hard spots, content analysis etc.	2
3.	Training to teachers on Institutional planning	1
4.	Implementation of Computer Education	2
5.	Child Psychology, Co-curricular, Extra curricular Health education and Aids Education	3
6.	Methodology in teaching of Maths, Science, Social & Languages	3
7.	Training of Introduce new text book, preparation of question bank, latest evaluation techniques	5
8.	Techniques in language teaching	2

Std VII & VIII

S. No.	Types of Training	No. of days
1.	Preparation of TLM – for all subjects	2
2.	Identification of Hard Spots, content analysis etc.	2
3.	Training to Teachers on Institutional Planning	2
4.	Implementation of Computer Education	2
5.	Child Psychology, Co-curricular, Extra Curricular activities, Health Education and Aids Education	3
6.	Methodology in Teaching of Maths, Science, Social and Languages	3
7.	Handling of Teaching learning equipments (TLE) in upper primary sections	3
8.	Techniques in language teaching	3

3.13 Innovation:

A sum of Rs. 30 lakhs had been sanctioned for computer education in 2001 - 02. The above said amount was carried over the 2002-03. The amount sanctioned for 2002-03 is 15 lakhs for computer education. A sum of Rs.45 lakhs had to be spent for computer education in Rs.45 lakhs had to be spent for computer education in 2002-03. Implementation of computer literacy have already been started for 6th classes with the help of committed non-governmental organizations. In 2002-03, another 15 lakhs was sanctioned for the education of 7500 girl children. It is now being used for arts and craft education.

It is proposed to import computer literacy to seventh standard children in 2003-04 at a cost of 15 lakhs. In addition to that a 15 lakhs programme to give useful vocational skill development in tailoring and embroidering. Another 15 lakhs is sought to provide training to SC/ST girl children in fur toy making. It is also proposed to start 30 new early childhood education centres at a cost of Rs. 6 lakhs and to provide play materials to 600 of the 948 ICDS centres in Madurai District at a cost of Rs. 9 lakhs. The total amount required under the innovative programmes is Rs. 50 lakhs.

3.14 Pre-Project Activities:

A sum of Rs.5.6727 lakhs was sanctioned under in pre - project activity to devise an information board in 1059 government schools. Rs.150/- each to 1059 school were disbursed to keep the village education committee office and records. A lump sum Rs. 3000 each was given to have the telephone facility and E-mail at the DPO office. The total expenditure made under this head is Rs.5.6727 lakhs.

3.15 Procurement Plan:

For the procurement of raw material for civil construction works, teaching learning material and teaching learning equipments the village education committee is the competent authority. This does not include construction of BRC buildings. The technical using of the public works department will carry out BRC construction works.

Furniture to Cluster resource centre and Block resource centres will be purchased from TANSI. Orders will be placed only after getting quotations from firms. To procure equipments and furniture to DPO Office the district committee under the chairmanship of the collector will be consulted. After passing resolutions in the district committee equipments will be purchased under the guidance of the state project director.

Table A

S. No.	Maj. Act.	Activity Description	Madurai				
			2001-2002				
			Receipt		Exp.	Spill	
			Phy.	Fin.		Phy.	Fin.
1	PFE	Primary Schools					
i		No. of Schools					
ii		Salary of new teachers					
iii		Salary of addl. Teachers					
iv		School Grants					
v		Teachers Grants					
vi		TLE Grants	0	0		0	0
		Total		0.000			0.000
2	UPE	Upper Primary Schools					
i		No. of Schools					
ii		Salary of new teachers					
iii		Salary of addl. Teachers					
iv		School Grants					
v		Teachers Grants					
vi		TLE Grants	0.000	0.000		0.000	0.000
		Total		0			0
3	AIE	Alternative & Innovative Education					
i		EGS Centres (Unservd Habitations)					
ii		Bridge Courses/Transit Camps					
iii		Residential Camps					
		Total		0			0
4	SFG	Special Focus Groups					
i		Education of disabled	1022	4.171		1022	4.171
ii		Education of Girls					
iii		Education of SC/ST Children					
		Total		4.171			4.171
5	VEC	Village Education Committees					
i		Meetings					
ii		Training					
		Total		0			0
6	CRC	Cluster Resource Centres					
i		Workshops and Meetings					
ii		Furniture	165	16.5		165	16.5
iii		Contingency Grant					
iv		TLM Grant					
v		TLE Grant					
vi		Library Books					
vii		TA/DA					
		Total	165	16.5		165	16.5
7	BRC	Block Resource Centres					
i		Salary of Staff					
ii		Furniture	15	15		15	15
iv		Workshops and Meetings					
v		TLM Grant					
vi		Training Equipments					
vii		Library Books					
viii		TA/DA					
		Total	15.000	15.000		15.000	15.000
8	REM	Research, Evaluation & Monitoring					
9	CCW	Civil Construction Works					

S. No.	Maj. Act.	Activity Description	Madurai				
			2001-2002				
			Receipt		Exp.	Spill	
			Phy.	Fin.		Phy.	Fin.
i		Construction of BRCs	4	24		4	24
ii		Construction of CRCs	4	8		4	8
iii		Construction of two classroom	21	63		21	63
iv		Construction of three classroom	3	13.5		3	13.5
v		Drinking Water	47	7.05		47	7.05
vi		Toilets	45	9		45	9
		Total	124.000	124.550		124.000	124.550
10	MRW	Maintenance & Repair Works					
11	MGT	Management					
i		Salary of staff					
ii		Furniture and Equipment					
iii		Books and Periodicals					
iv		Maintenance of equipment					
v		Consumable and Stationery					
vi		Management Information System					
vii		Media and Documentation					
viii		Training to Project Staff					
ix		Consultancy					
x		Contingency					
xi		TA/DA					
		Total	0.000	0.000		0.000	0.000
12	TRG	Training					
i		Training to Teachers (Primary)					
ii		Training to Teachers (Middle)					
		Total	0.000	0.000		0.000	0.000
13	INO	Innovation					
i		Computer Education	2	30		2	30
ii		Edn. of Girls (Arts and Crafts)					
iii		Edn. of SC/ST Children (Arts and					
iv		Nursery Education					
		Total	2.000	30.000		2.000	30.000
		Grand Total		190.221			190.221

Table B

S. No.	Maj. Act.	Activity Description	Madurai						
			Receipt		Expenditure		Spillover		
			Phy	Fin	Phy	Fin	Phy	Fin	
1	PFE	Primary Schools							
i		No. of Schools							0.00
ii		Salary of new teachers	50	34.380	34	29.380			5.00
iii		Salary of addl. Teachers							0.00
iv		School Grants	977	19.540	864	17.280	113		2.26
v		Teachers Grants	4940	24.700	3310	16.550	1230		8.15
vi		TLE Grants	17	1.700	17	1.700			0.00
		Total	5984.000	80.320	4225.000	64.910	1343.000		15.41
2	UPE	Upper Primary Schools							
i		No. of Schools							0.00
ii		Salary of new teachers	18	12.600	18	12.600			0.00
iii		Salary of addl. Teachers							0.00
iv		School Grants	459	9.180	252	5.040	207		4.14
v		Teachers Grants	5443	27.215	2830	14.150	2613		13.06
vi		TLE Grants	14	7.000	14	7.000			0.00
		Total	5934.000	55.995	3114.000	38.790	2820.000		17.20
3	AIE	Alternative & Innovative Education							
i		EGS Centres (Unserved Habitations)	30	6.335	30	3.6	0		2.73
ii		Bridge Courses/Transit Camps							
iii		Residential Camps							0.00
		Total	30.000	6.335	30.000	3.600	0.000		2.73
4	SFG	Special Focus Groups							
i		Education of disabled	800	3.200	800	3.200			0.00
ii		Education of Girls	7500	15.000					15.00
iii		Education of SC/ST Children	7500	15.000	7500	11.000			4.00
		Total	15800.000	33.200	8300.000	14.200	0.000		19.00
5	VEC	Village Education Committees							
i		Meetings	1402	6.730	1402	1.927			4.80
ii		Training							0.00
		Total	1402.000	6.730	1402.000	1.927	0.000		4.80
6	CRC	Cluster Resource Centres							
i		Workshops and Meetings	165	2.31	195	5.01	0		-2.70
ii		Furniture							
iii		Contingency Grant	165	4.125					4.125
iv		TLM Grant	165	1.650					1.650
v		TLE Grant							0.000
vi		Library Books							0.000
vii		TA/DA							0.000
		Total	495.000	8.085	195.000	5.010	0.000		3.075
7	BRC	Block Resource Centres							
i		Salary of Staff	13	109.2	15	102.367	0		6.833
ii		Furniture							

S. No.	Maj. Act.	Activity Description	Madurai					
			Receipt		Expenditure		Spillover	
			Phy	Fin	Phy	Fin	Phy	Fin
iii		Contingency Grant	13	1.625	15	0.586		1.039
iv		Workshops and Meetings	13	0.455				0.455
v		TLM Grant	13	0.650				0.650
vi		Training Equipments						0.000
vii		Library Books						0.000
viii		TA/DA						0.000
		Total	52.000	111.930	30.000	102.953	0.000	8.977
8	REM	Research, Evaluation & Monitoring	1102	9.918	1102	0.550		9.368
9	CCW	Civil Construction Works						
i		Construction of BRCs	2	12.000			2	12.000
ii		Construction of CRCs	8	16.000	8	2.000		14.000
iii		Construction of two classroom	8	24.000	8	7.200		16.800
iv		Construction of three classroom	13	58.500	13	5.400		53.100
v		Drinking Water	21	3.150	21	0.300		2.850
vi		Toilets	28	5.600	28	0.600		5.000
		Total	80.000	119.250	78.000	15.500	2.000	103.750
10	MRW	Maintenance & Repair Works	1102	55.100	1102	55.100		0.000
11	MGT	Management						
i		Salary of staff	1	15.000	1	8.000		7.000
ii		Furniture and Equipment	1	1.000	1	1.000		0.000
iii		Books and Periodicals						0.000
v		Maintenance of equipment						0.000
v		Consumable and Stationery	1	0.250	1	0.250		0.000
vi		Management Information System	1	2.000	1	0.020		1.980
ii		Media and Documentation						0.000
iii		Training to Project Staff	1	1.000		0.410		0.590
x		Consultancy	1	2.500			1	2.500
xi		Contingency						0.000
		TA/DA	3	2.065		2.065		0.000
		Total	9.000	23.815	4.000	11.745	1.000	12.070
2	TRG	Training						
i		Training to Teachers (Primary)	1482	20.748	3508	8.731		12.017
i		Training to Teachers (Middle)	1632	22.847	757	1.984		20.863
		Total	3114.000	43.595	4265.000	10.715	0.000	32.880
3	INO	Innovation						
		Computer Education	1	15.000	1	0.002	1	14.998
i		Edn. of Girls (Arts and Crafts)						0.000
i		Edn. of SC/ST Children (Arts and Crafts)						0.000
ii		Nursery Education						0.000
		Total		15.000		0.002		14.998
		Grand Total		569.273		325.002		244.271

Table - C

S. No.	Maj. Act.	Activity Description	Madurai				2002-03 spillover
			2001-2002		Expenditure		
			Spillover Phy.	Fin.	Phy.	Fin.	
1	PFE	Primary Schools					
i		No. of Schools					0.000
ii		Salary of new teachers					5.000
iii		Salary of addl. Teachers					0.000
iv		School Grants					2.260
v		Teachers Grants					8.150
vi		TLE Grants	0	0	0	0	0.000
		Total		0.000		0.000	15.410
2	UPE	Upper Primary Schools					0.000
i		No. of Schools					0.000
ii		Salary of new teachers					0.000
iii		Salary of addl. Teachers					0.000
iv		School Grants					4.140
v		Teachers Grants					13.065
vi		TLE Grants	0.000	0.000	0.000	0.000	0.000
		Total		0		0	17.205
3	AIE	Alternative & Innovative E					0.000
i		EGS Centres (Unserved					2.735
ii		Bridge Courses/Transit Camp					0
iii		Residential Camps					0.000
		Total		0		0	2.735
4	SFG	Special Focus Groups					0.000
i		Education of disabled	1022	4.171	1022	4.171	0.000
ii		Education of Girls					15.000
iii		Education of SC/ST Children					4.000
		Total		4.171		4.171	19.000
5	VEC	Village Education Committ					0.000
i		Meetings					4.803
ii		Training					0.000
		Total		0		0	4.803
6	CRC	Cluster Resource Centres					0.000
i		Workshops and Meetings					-2.7
ii		Furniture	165	16.5	165	16.5	0.000
iii		Contingency Grant					4.125
iv		TLM Grant					1.650
v		TLE Grant					0.000
vi		Library Books					0.000
vii		TA/DA					0.000
		Total	165	16.5	165	16.5	3.075
7	BRC	Block Resource Centres					0.000
i		Salary of Staff					6.833
ii		Furniture	15	15	15	15	0.000
iv		Workshops and Meetings					0.455
v		TLM Grant					0.650
vi		Training Equipments					0.000
vii		Library Books					0.000
viii		TA/DA					0.000
		Total	15.000	15.000	15.000	15.000	8.977
8	REM	Research, Evaluation &					9.368
		Monitoring					
9	CCW	Civil Construction Works					0.000

i		Construction of BRCs	4	24	4	24	12.000
ii		Construction of CRCs	4	8	4	8	14.000
iii		Construction of two	21	63	21	63	16.800
iv		Construction of three	3	13.5	3	13.5	53.100
v		Drinking Water	47	7.05	47	7.05	2.850
vi		Toilets	45	9	45	9	5.000
		Total	124.000	124.550	124.000	124.550	103.750
10	MRW	Maintenance & Repair Works					0.000
11	MGT	Management					0.000
i		Salary of staff					7.000
ii		Furniture and Equipment					0.000
iii		Books and Periodicals					0.000
iv		Maintenance of equipment					0.000
v		Consumable and Stationery					0.000
vi		Management Information Sys					1.980
vii		Media and Documentation					0.000
viii		Training to Project Staff					0.590
ix		Consultancy					2.500
x		Contingency					0.000
xi		TA/DA					0.000
		Total	0.000	0.000	0.000	0.000	12.070
12	TRG	Training					0.000
i		Training to Teachers (Primar					12.017
ii		Training to Teachers (Middle					20.863
		Total	0.000	0.000	0.000	0.000	32.880
13	INO	Innovation					0.000
i		Computer Education	2	30	2	30	14.998
ii		Edn. of Girls (Arts and					0.000
iii		Edn. of SC/ST Children					0.000
iv		Nursery Education					0.000
		Total	2.000	30.000	2.000	30.000	14.998
		Grand Total		190.221		190.221	244.271

Sarva Shiksha Abhiyan, Tamilnadu

**Table D
Budget Estimate for 2003-2004**

S. No.	Maj. Act.	Activity Description	Unit Cost	Madurai	
				Phy.	Fin.
1	PFE	Primary Education			
i		No. of Schools		15	
ii		Salary of new teachers	0.840	64	53.760
iii		Salary of addl. teachers	0.840		
iv		School Grant	0.020	864	17.280
v		Teachers Grant	0.005	4164	20.820
vi		TLE Grant	0.100	15	1.500
		Total			93.360
2	UPE	Upper Primary Education			
i		No. of Schools		20	
ii		Salary of new teachers	0.840	52	43.680
iii		Salary of addl. teachers	0.840		
iv		School Grant	0.020	262	5.240
v		Teachers Grant	0.005	3942	19.710
vi		TLE Grant	0.500	20	10.000
		Total			78.630
3	AIE	Alternative & Innovative Education			
i		EGS Centres (Unserved Habitations)	0.211	30	6.338
ii		Bridge Courses/Transit Camps	0.211		161.395
iii		Residential Camps	0.030		12.000
		Total			179.733
4	SFG	Special Focus Group			
i		Education of disabled	0.012	1566	18.792
ii		Education of Girls	0.002	5000	10.000
iii		Education of SC/ST Children	0.002	10000	20.000
		Total			48.792
5	VEC	Village Education Committees		1315	
i		Meetings	0.018		11.835
ii		Training	0.009		11.835
		Total			23.670
6	CRC	Cluster Resource Centres		195	
i		Workshops and Meetings	0.002	195	3.900
ii		Furniture	0.100		3.000
iii		Contingency Grant	0.025		4.875
iv		TLM Grant	0.010		1.950
v		TLE Grant	0.250		5.000
vi		Library Books	0.100		0.200
vii		TA/DA	0.002		0.390
		Total			19.315
7	BRC	Block Resource Centres		16	
i		Salary of Staff	10.000		150.000
ii		Furniture	1.000		
iii		Contingency Grant	0.125		1.875
iv		Workshops and Meetings	0.005		0.900
v		TLM Grant	0.050		0.750
vi		Training Equipments	1.000		6.000
vii		Library Books	0.250		
viii		TA/DA	1.000		5.000
		Total			164.525

S. No.	Maj. Act.	Activity Description	Unit Cost	Madurai	
				Phy.	Fin.
8	REM	Research, Evaluation & Monitoring	0.015	1116	16.740
9	CCW	Civil Construction Works			
i		Construction of BRCs	6.000	7	42.000
ii		Construction of CRCs	2.000	18	36.000
iii		Construction of two classroom	3.000	30	90.000
iv		Construction of three classroom	4.500	15	67.500
v		Drinking Water	0.150	60	9.000
vi		Toilets	0.200	100	20.000
		Total			264.500
10	MRW	Maintenance & Repair Works	0.050	1116	55.800
11	MGT	Management			
i		Salary of staff	22.000		15.000
ii		Furniture and Equipment	3.000		3.000
iii		Books and Periodicals	0.500		0.500
iv		Maintenance of equipment	0.500		0.500
v		Consumable and Stationery	0.350		0.350
vi		Management Information System	2.000		2.000
vii		Media and Documentation	2.000		2.000
viii		Training to Project Staff	0.010		1.000
ix		Consultancy	2.500		2.500
x		Contingency	0.140		0.150
xi		TA/DA	1.000		1.000
		Total			28.000
12	TRG	Training			
i		Training to Teachers (Primary)	0.014	4176	58.464
ii		Training to Teachers (Upper Primary)	0.014	3942	55.188
		Total			113.652
13	INO	Innovation			
i		Computer Education	15.000		15.000
ii		Edn. of Girls (Arts and Craft)	15.000		15.000
iii		Edn. of SC/ST Children (Arts and Craft)	5.000		15.000
iv		Nursery Education	15.000		5.000
		Total			50.000
		Grand Total			1136.717

MADURAI DISTRICT

TAMIL NADU STATE

EXPENDITURE AS PER MAJOR INTERVENTIONS

TABLE - D

ABSTRACT

(in Lakhs)

S.NO	ActivityCode	Amount
1.	PFE	93.360
2.	UPE	78.630
3.	AIE	179.733
4.	SFG	48.792
5.	VEC	23.670
6.	CRC	19.315
7.	BRC	164.525
8.	REM	16.740
9.	CCW	264.500
10.	RMW	55.800
11.	MGT	28.800
12.	TRG	113.652
13.	INO	50.000
	TOTAL	1136.717

SSA

MADURAI DISTRICT

DISTRIBUTION OF TOTAL EXPENDITURE

FOR THE FINANCIAL YEAR 2003-2004

S.NO	MAJOR COMPONENTS	AMOUNT IN LAKHS	PERCENTAGE
1.	Management	28.800	2.44
2.	Civil works	320.300	29.11
3.	Quality	753.214	68.45
	Total	1136.717	100

Implementation Schedule for 2003-2004

S.No	Maj. Act.	Activity Distribution	1st Quarter	2nd Quarter	3rd Quarter	4th Quarter
1	PFE	Opening of New Schools	✓			
		Appointment of new teachers	✓			
		Appointment of addl. Teachers	✓			
		School Grants	✓			
		Teachers Grants	✓			
		TLE Grants	✓	✓		
2	UPE	Upgrading of Primary Schools	✓			
		Appointment of new teachers	✓			
		Appointment of addl. Teachers	✓			
		School Grants	✓			
		Teachers Grants	✓			
		TLE Grants (New & uncovered OBB schools)	✓	✓		
3	AIE	EGS Centres		✓	✓	✓
		Residential Camps		✓	✓	✓
		Bridge Courses		✓	✓	✓
4	SFG	Education of Disabled		✓	✓	✓
		Education of Girls		✓	✓	✓
		Education of SC/ ST Children		✓	✓	✓
5	CRC	Workshops and Meetings	✓	✓	✓	✓
		Furniture	✓			
		Contingency Grant	✓	✓	✓	✓
		TLM Grant	✓	✓	✓	✓
6	BRC	Salary of Staff	✓	✓	✓	✓
		Furniture	✓	✓		
		Contingency Grant	✓	✓	✓	✓
		Workshops and Meetings	✓	✓	✓	✓
		TLM Grant	✓	✓	✓	✓
		Training Equipments		✓		
7	REM	Research, Evaluation & Monitoring		✓	✓	✓
8	CCW	Construction of BRCs	✓	✓	✓	✓
		Construction of CRCs	✓	✓	✓	✓
		Construction of two Class room	✓	✓	✓	✓
		Construction of three Class room	✓	✓	✓	✓
		Drinking Water	✓	✓	✓	✓
		Toilets	✓	✓	✓	✓
9	MRW	Repair Works	✓	✓	✓	✓
10	MGT	Salary of Staff	✓	✓	✓	✓
		Furniture and Equipment	✓	✓		
		Books and Periodical		✓		
		Maintenance of Equipments	✓	✓	✓	✓
		Consumable and Stationery	✓	✓	✓	✓
		TA/DA	✓	✓	✓	✓
		Consultancy	✓	✓	✓	✓
		Contingency	✓	✓	✓	✓
		Training to CRC Staff		✓	✓	✓
		Training to BRC Staff		✓	✓	✓
11	TRG	Training to Teachers (Primary)		✓	✓	✓
		Training to Teachers (Middle)		✓	✓	✓
12	VEC	Training	✓			
13	INO	Computer Education	✓	✓	✓	✓
		Edn. of Girls - Inn. Programmes		✓	✓	✓
		Edn. Of SC/ST Children - Inn. Programmes		✓	✓	✓
		ECE (New Centres)		✓	✓	✓

ANNEXURE - 1

ALL STUDNETS ENROLMENT - PRIMARY

S.No	Block	I			ii			III			IV			V			GRAND TOTAL		
		B	G	T	B	G	T	B	G	T	B	G	T	B	G	T	B	G	T
1	Madurai East	3239	3065	6304	2921	2802	5723	2836	2739	5575	2733	2656	5389	2535	2499	5034	14264	13761	28025
2	Madurai West	3598	3422	7020	3380	3100	6480	3308	2853	6161	3213	2904	6117	2979	2754	5733	16478	15033	31511
3	Alanganallur	1329	1146	2475	1191	1136	2327	1078	1003	2081	1029	935	1964	1032	944	1976	5659	5164	10823
4	Chellampatti	1430	1185	2615	1067	876	1943	1003	822	1825	984	828	1812	956	762	1718	5440	4473	9913
5	Kallikudi	906	843	1749	765	729	1494	788	758	1546	813	708	1521	822	705	1527	4094	3743	7837
6	Kottampatti	1118	1013	2131	1081	1111	2192	1023	995	2018	1031	923	1954	995	1000	1995	5248	5042	10290
7	Melur	2016	1860	3876	1841	1708	3549	1790	1718	3508	1776	1718	3494	1724	1636	3360	9147	8640	17787
8	Sedapatti	1331	1164	2495	1295	1093	2388	1259	1087	2346	1288	1049	2337	1177	1004	2181	6350	5397	11747
9	T.Kallupatti	985	798	1783	888	833	1721	835	856	1691	854	775	1629	886	847	1733	4448	4109	8557
10	Thirumangalam	1672	1534	3206	1692	1407	3099	1559	1384	2943	1642	1378	3020	1533	1258	2791	8098	6961	15059
11	Thiruparankundram	12173	11168	23341	11110	10390	21500	10280	10147	20427	10233	9765	19998	9877	9569	19446	53673	51039	104712
12	Usilampatti	1532	1265	2797	1335	1084	2419	1306	1057	2363	1244	1010	2254	1186	947	2133	6603	5363	11966
13	T.Vadipatti	1576	1415	2991	1439	1271	2710	1435	1272	2707	1275	1131	2406	1276	1183	2459	7001	6272	13273
	District Total	32905	29878	62783	30005	27540	57545	28500	26691	55191	28115	25780	53895	26978	25108	52086	146503	134997	281500

Source: DISE-2002

Scheduled Caste Students Enrolment - Primary

S.No	Block	I			II			III			IV			V			GRAND TOTAL		
		B	G	T	B	G	T	B	G	T	B	G	T	B	G	T	B	G	T
1	Madurai East	744	700	1444	608	571	1179	627	582	1209	574	527	1101	505	504	1009	3058	2884	5942
2	Madurai West	623	634	1257	625	606	1231	622	528	1150	519	605	1124	549	488	1037	2938	2861	5799
3	Alanganallur	361	319	680	289	275	564	283	239	522	258	239	497	235	236	471	1426	1308	2734
4	Chellampatti	276	243	519	227	190	417	197	171	368	177	173	350	190	160	350	1067	937	2004
5	Kallikudi	185	190	375	149	160	309	135	162	297	152	150	302	171	152	323	792	814	1606
6	Kottampatti	202	187	389	184	218	402	189	152	341	196	151	347	160	157	317	931	865	1796
7	Melur	447	428	875	415	353	768	365	376	741	337	352	689	372	333	705	1936	1842	3778
8	Sedapatti	407	328	735	359	307	666	332	312	644	358	302	660	338	277	615	1794	1526	3320
9	T.Kallupatti	274	225	499	250	229	479	216	245	461	221	199	420	240	236	476	1201	1134	2335
10	Thirumangaiam	346	339	685	342	278	620	317	268	585	297	283	580	297	235	532	1599	1403	3002
11	Thiruparankundram	1616	1401	3017	1412	1272	2684	1250	1257	2507	1228	1167	2395	1219	1151	2370	6725	6248	12973
12	Usilampatti	262	242	504	230	216	446	223	179	402	204	158	362	181	148	329	1100	943	2043
13	T.Vadipatti	422	402	824	397	339	736	379	348	727	346	330	676	325	322	647	1869	1741	3610
	District Total	6165	5638	11803	5487	5014	10501	5135	4819	9954	4867	4636	9503	4782	4399	9181	26436	24506	50942

Source: DISE-2002

Schedule Tribe Students Enrolment - Primary

S.No	Block	I			II			III			IV			V			GRAND TOTAL		
		B	G	T	B	G	T	B	G	T	B	G	T	B	G	T	B	G	T
1	Madurai East	31	35	66	16	21	37	13	6	19	5	6	11	5	4	9	70	72	142
2	Madurai West	7	8	15	6	2	8	3	7	10	8	2	10	4	3	7	28	22	50
3	Alanganallur	8	11	19	15	9	24	10	13	23	13	8	21	11	18	29	57	59	116
4	Cheliampatti	0	0	0	0	0	0	0	0	0	0	0	0	0	0	0	0	0	0
5	Kallikudi	0	0	0	0	0	0	0	0	0	1	1	2	0	0	0	1	1	2
6	Kottampatti	6	14	20	14	15	29	17	9	26	10	13	23	12	8	20	59	59	118
7	Melur	2	5	7	3	1	4	2	1	3	1	0	1	2	1	3	10	8	18
8	Sedapatti	3	16	19	0	0	0	0	0	0	0	0	0	0	1	1	3	17	20
9	T.Kaliupatti	13	7	20	12	11	23	4	7	11	11	6	17	6	12	18	46	43	89
10	Thirumangalam	2	2	4	1	0	1	0	2	2	3	2	5	7	4	11	13	10	23
11	Thiruparankundram	130	79	209	69	54	123	53	67	120	66	65	131	66	63	129	384	328	712
12	Usilampatti	1	1	2	1	2	3	1	3	4	0	0	0	1	2	3	4	8	12
13	T.Vadipatti	18	20	38	8	3	11	22	4	26	14	10	24	3	4	7	65	41	106
	District Total	221	198	419	145	118	263	125	119	244	132	113	245	117	120	237	740	668	1408

Source: DISE-2002

All Students Enrolment – Upper Primary

S.No	Block	VI			VII			VIII			TOTAL		
		B	G	T	B	G	T	B	G	T	B	G	T
1	Madurai East	2431	2417	4848	2180	2166	4346	2034	2050	4084	6645	6633	13278
2	Madurai West	2970	2635	5605	2641	2551	5192	2366	2287	4653	7977	7473	15450
3	Alanganallur	1057	987	2044	921	895	1816	803	710	1513	2781	2592	5373
4	Chellampatti	893	615	1508	773	604	1377	673	498	1171	2339	1717	4056
5	Kallikudi	717	471	1188	577	459	1036	549	329	878	1843	1259	3102
6	Kottampatti	976	937	1913	798	783	1581	731	598	1329	2505	2318	4823
7	Melur	1830	1599	3429	1528	1399	2927	1384	1241	2625	4742	4239	8981
8	Sedapatti	1198	1006	2204	1108	912	2020	980	697	1677	3286	2615	5901
9	T.Kailupatti	917	778	1695	854	493	1347	760	513	1273	2531	1784	4315
10	Thirumangalam	1574	1370	2944	1488	1263	2751	1383	1148	2531	4445	3781	8226
11	Thiruparankundram	10538	9710	20248	9701	9458	19159	9013	8840	17853	29252	28008	57260
12	Usilampatti	1186	1015	2201	1051	962	2013	918	828	1746	3155	2805	5960
13	T.Vadipatti	1269	1127	2396	1111	1006	2117	1039	835	1874	3419	2968	6387
	District Total	27556	24667	52223	24731	22951	47682	22633	20574	43207	74920	68192	143112

Source: DISE-2002

Scheduled Caste Students Enrolment - Upper Primary

S.No	Block	VI			VII			VIII			TOTAL		
		B	G	T	B	G	T	B	G	T	B	G	T
1	Madurai East	564	518	1082	431	381	812	411	313	724	1406	1212	2618
2	Madurai West	519	437	956	407	548	955	375	343	718	1301	1328	2629
3	Alanganallur	249	232	481	195	196	391	163	165	328	607	593	1200
4	Chellampatti	138	105	243	128	109	237	115	93	208	381	307	688
5	Kallikudi	132	78	210	99	92	191	86	59	145	317	229	546
6	Kottampatti	164	173	337	130	150	280	136	102	238	430	425	855
7	Melur	378	336	714	312	303	615	277	256	533	967	895	1862
8	Sedapatti	313	220	533	273	233	506	248	161	409	834	614	1448
9	T.Kallupatti	246	185	431	211	124	335	204	100	304	661	409	1070
10	Thirumangalam	314	274	588	306	294	600	236	225	461	856	793	1649
11	Thiruparankundram	1193	1089	2282	1109	1064	2173	947	924	1871	3249	3077	6326
12	Usilampatti	163	199	362	142	144	286	151	141	292	456	484	940
13	T.Vadipatti	337	323	660	283	285	568	320	182	502	940	790	1730
	District Total	4710	4169	8879	4026	3923	7949	3669	3064	6733	12405	11156	23561

Source: DISE - 2002

Scheduled Tribe Students Enrolment - Upper Primary

S.No	Block	VI			VII			VIII			TOTAL		
		B	G	T	B	G	T	B	G	T	B	G	T
1	Madurai East	4	6	10	3	1	4	4	1	5	11	8	19
2	Madurai West	9	4	13	6	5	11	16	18	34	31	27	58
3	Alanganallur	13	21	34	22	15	37	24	26	50	59	62	121
4	Chellampatti	0	0	0	0	0	0	0	0	0	0	0	0
5	Kallikudi	47	48	95	35	41	76	36	25	61	118	114	232
6	Kottampatti	30	32	62	27	35	62	25	32	57	82	99	181
7	Melur	1	2	3	1	1	2	0	2	2	2	5	7
8	Sedapatti	2	0	2	0	0	0	1	0	1	3	0	3
9	T.Kallupatti	27	18	45	24	8	32	31	21	52	82	47	129
10	Thirumangalam	29	17	46	22	25	47	23	11	34	74	53	127
11	Thiruparankundram	66	67	133	53	45	98	46	47	93	165	159	324
12	Usilampatti	2	6	8	2	0	2	0	0	0	4	6	10
13	T.Vadipatti	4	18	22	5	19	24	4	27	31	13	64	77
	District Total	234	239	473	200	195	395	210	210	420	644	644	1288

Source: DISE - 2002

Annexure - 2
Population and Schoolage Population 2002 - 2003.

S. N o	Block	Population					School age Population					
		M	F	T	SC	ST	6 to 10			11 to 13		
							B	G	T	B	G	T
1	Madurai East	92036	82248	174284	23473	446	14705	14239	28944	7070	7061	14131
2	Madurai West	125696	121885	247581	21233	567	16891	15378	32269	8390	7890	16280
3	Alanganallur	49157	48506	97563	19394	1040	5861	5401	11262	2961	2700	5661
4	Chellampatti	46562	42847	89409	14023	356	5725	4767	10492	2801	1921	4722
5	Kallikudi	36681	35770	72451	11523	548	4296	3979	8275	2209	1678	3887
6	Kottampatti	52759	53210	105969	15313	566	5262	5063	10325	2551	2379	4930
7	Melur	72533	72601	145134	26014	366	9404	8867	18271	5096	4739	9835
8	Sedapatti	54638	54507	109145	25011	502	6831	5946	12777	3906	3474	7383
9	T.Kallupatti	37975	37233	75208	15487	492	4532	4232	8764	2577	1847	4424
10	Thirumangalam	61242	61538	122780	18927	1049	8252	7145	15397	4724	4138	8862
11	Thiruparankundram	583176	538317	1121493	82839	3397	54936	52463	107399	30996	29975	60971
12	Usilampatti	45492	43310	88802	12465	440	6687	5438	12125	3357	2921	6278
13	T.Vadippatti	56446	55914	112360	23251	902	7102	6353	13455	3544	3095	6639
	District Total	1314393	1247886	2562279	308953	10671	150484	139271	289755	80182	73821	154003

ANNEXURE - 3

SELECTED EDUCATIONAL INDICATORS

Madurai District

S.No	Indicators	Primary		Upper Primary	
		2001-02	2002-03	2001-02	2002-03
01	G.A.R	98	98	95.2	96
02	G.E.R	118	113	107	108
03	N.E.R	91	98	90	97
04	C.R	66	71	64	72
05	R.R	20	19	20	17
06	D.R	14	10	16	11
07	TPR	1:39	1:40	1:40	1:40
08	Attendance Rate	81	89	81	91

Annexure – 4

Proposed New Primary Schools during 2003 – 2004.

S.No	Name of the Block	Name of the Habitation	No. Of School age Children
1	Madurai East	1.Mundanayakam	73
2	Madurai West	2. Pattakuruchi	32
		3.Jhabethapuram	66
3	Alanganallur	4.Kumaram	46
4	Melur	5.Chokkilapatti	31
5	Sedapatti	6. Samathuvapuram	30
6	Thirumangalam	7. Muthkrishnapuram	37
		8. Meinendal	36
7	Thiruprankundram	9. Avaniyapuram Colony	31
8	Usilampatti	10. Kamarajarnagar	33

Source: School Mapping Exercise – 2003.

Annexure - 5.

Name of Primary schools to be Upgraded during 2003 - 04.

S.No	Name of the Block	Name of the Habitation	No. of School age Children
1	Madurai East	1.Mayandipatti	25
		2.Andarkottaram	40
2	Madurai West	3. Narayanapuram	70
		4. Thirumalpuram	82
3	Chellampatti	5.K. Chempatti	42
		6.Panamooppanpatti	38
4	Kallikudi	7. Thirumal	44
		8. Chinnaulagani	27
		9. Kurayur	41
5	Kottampatti	10. Pattur	25
		11. Manappatti	49
6	Melur	12. Vadakkuvalayapatti	33
		13. Arittapatti	30
7	Sedapatti	14. Palayur	42
8.	Thirumangalam	15. Alampatti	35
9	Thiruprunkundram	16. Parappathi	31
		17. Karuvelampatti	27
		18. Thenbalanji	39
		19. Chinnaodaipatti	29
		20. Madakulam	35
		21. Shenoy Nagar	30
		22. Melavasal	35
		23. Virakanur	47
		24. E. Nadupatti	30

Source : School Mapping - 2003.

LIBRARY & DOCUMENTATION CENTRE

National Institute of Educational

Planning and Administration.

17-B, Ansari Road, Daryaganj, New Delhi-110016

DOC, No.

Date 05-12-2003

**Glimpses of SSA Progress
2002 - 2003.**

Madurai District.

EDUCATION FOR ALL - MADURAI.



9. REGIONAL WORK SHOP ON A.W.P.& BUDGET
ON 18.3.03 MADURAI

EDUCATION FOR ALL - MADURAI.



10. REGIONAL WORK SHOP ON A.W.P. & BUDGET ON 18.3.03 MADURAI



VEC TRAINING THUMAKKUNDU
CHELLAMPATTI BLOCK



SBT & SAP SOUTHERN DIST.RESOURCE GROUP TRAINING.

EDUCATION FOR ALL - MADURAI.



3. VEC RESOURCE PERSONS' TRAINING
THIRUPARANKUNDRAM BLOCK



4. VEC RESOURCE PERSONS' TRAINING
MADURAI EAST BLOCK

EDUCATION FOR ALL - MADURAI.



5 - SC/ST SPECIAL CLASS GOING ON
MADURAI EAST BLOCK.



6. SC/ST SPECIAL CLASS GOING ON
VADIPATTI BLOCK

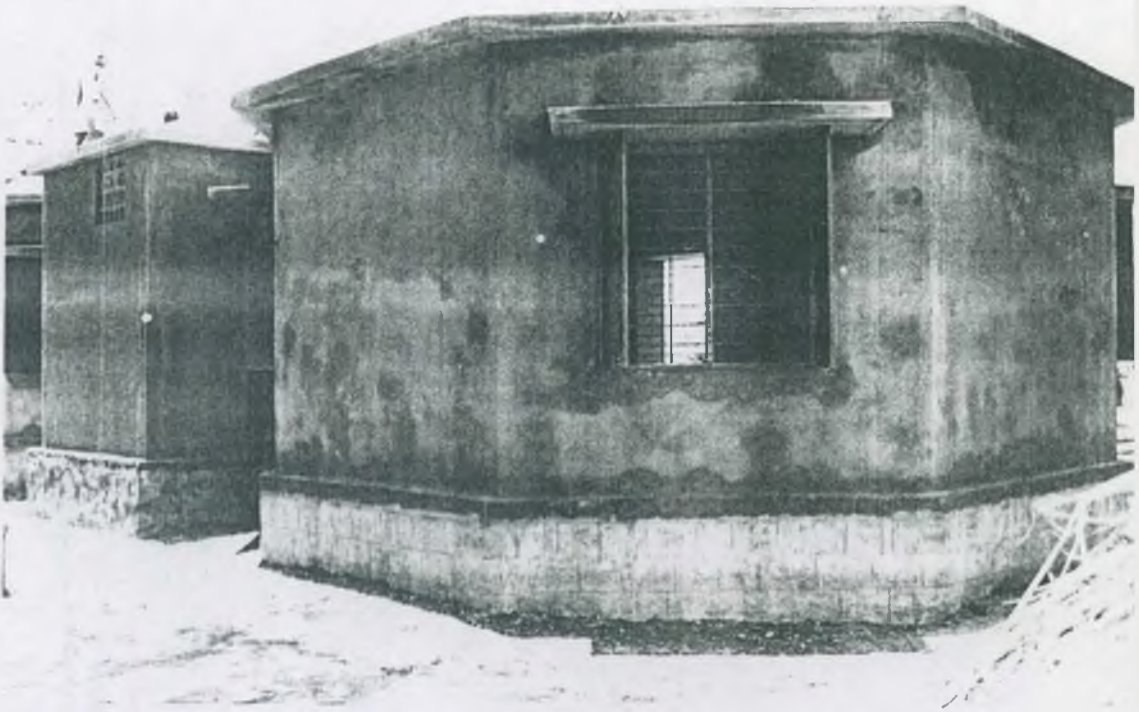


7. SC/ST SPECIAL CLASS INSPECTION
T. ANDIPATTI VADIPATTIN BLOCK.



8. SC/ST SPECIAL CLASS
KILANACHIKULAM - VADIPATTI BLOCK

EDUCATION FOR ALL - MADURAI.



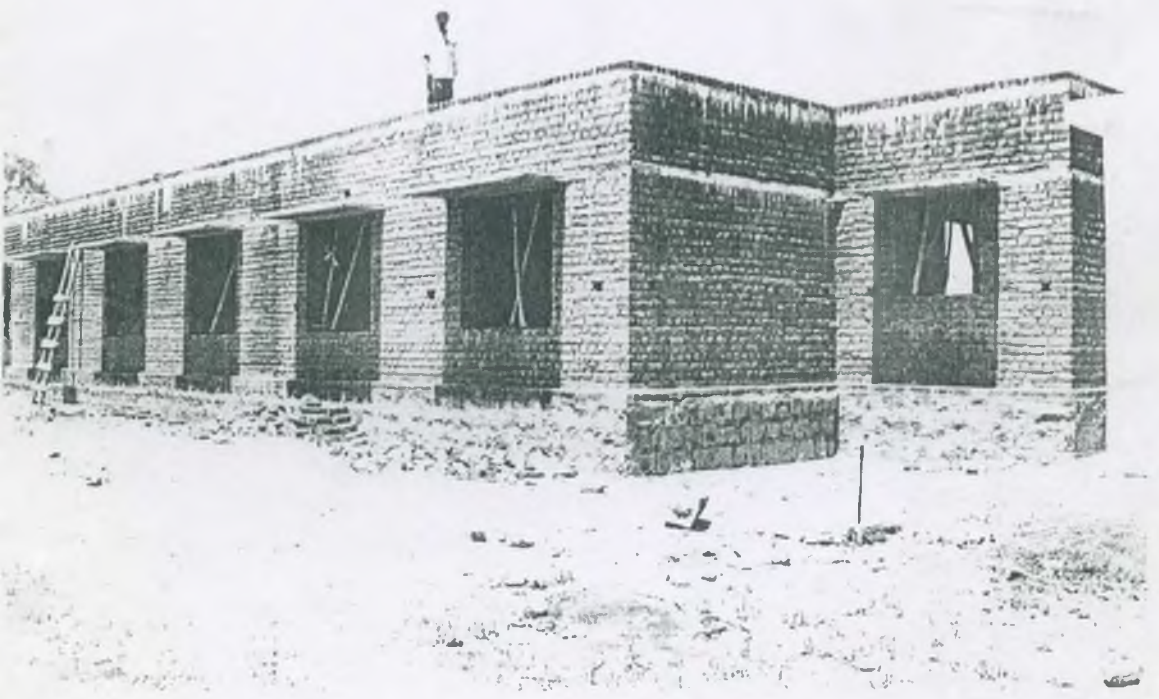
11. TWO CLASS ROOM BUILDING BACK VIEW
P.U.PS CHINNAPALAMEDU ALANGANALLUR BLOCK



14. TWO CLASS ROOM BUILDING FRONT VIEW
P.U.PS CHINNAPALAMEDU ALANGANALLUR BLOCK

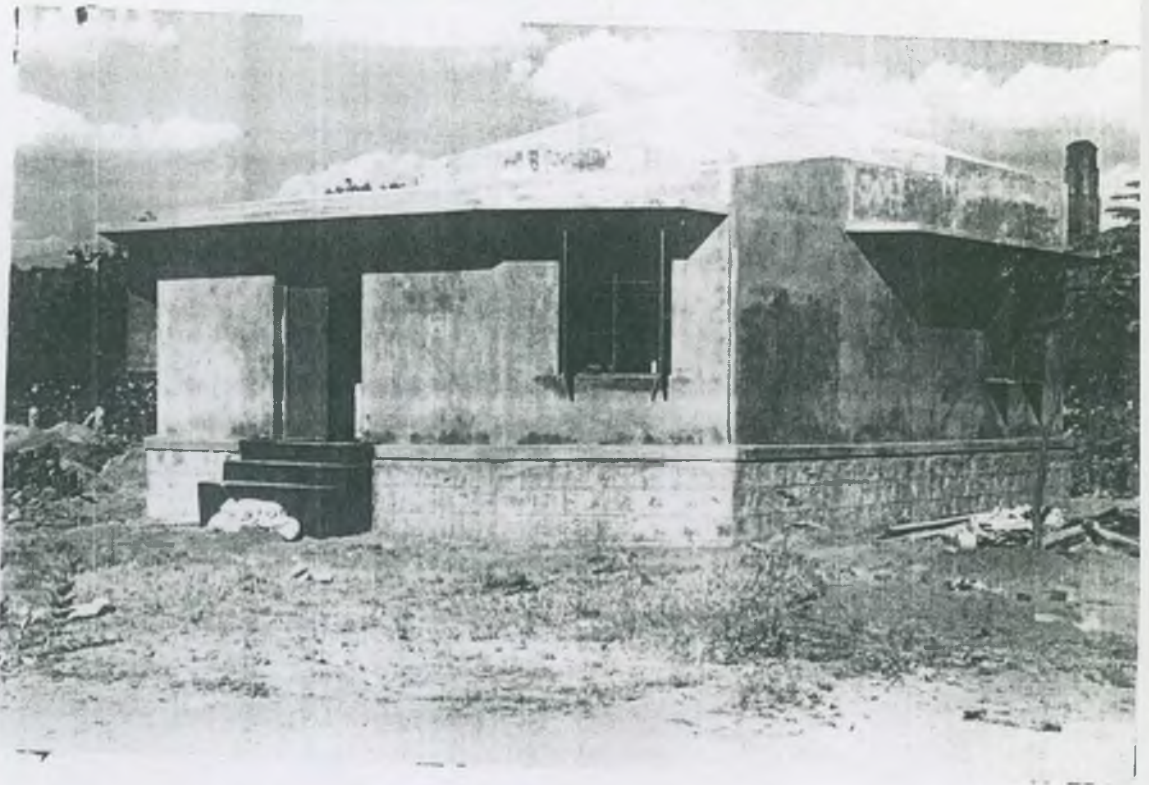


14. TWO CLASS ROOM BUILDING
P.U.PS PERIASEMMETTUPATTI USILAMPATI BLOCK

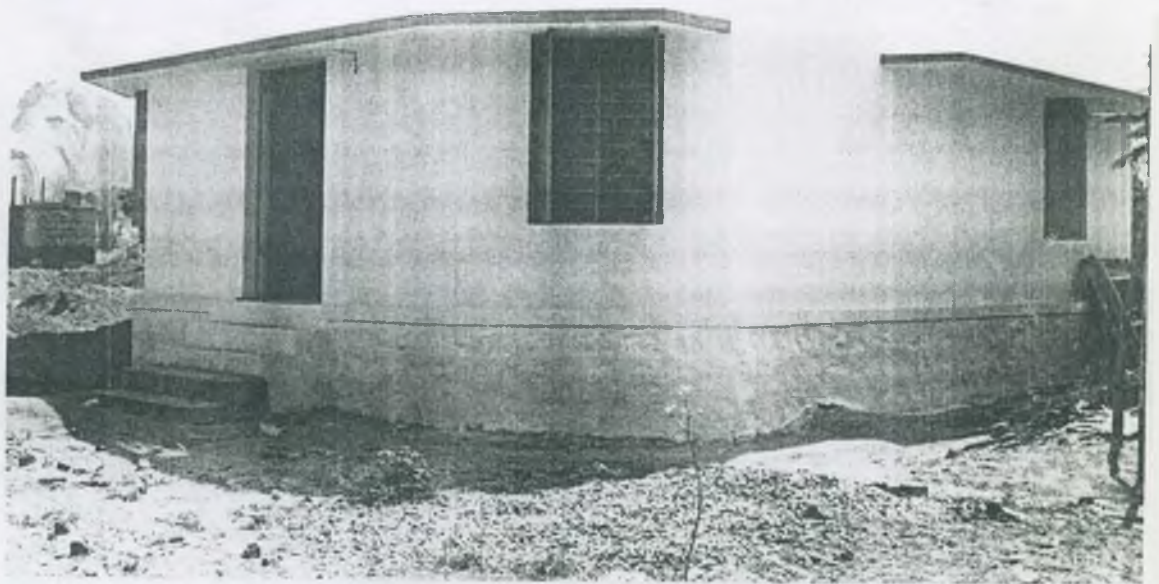


15. THREE CLASS ROOM BUILDING - BACK VIEW
GHSS PALAMEDU ALANGANALLUR BLOCK

EDUCATION FOR ALL - MADURAI.



1. CRC BUILDING UNDER CONSTRUCTION
OTHAKKADAI MADURAI EAST BLOCK.



2. COMPLETED CRC BUILDING
OTHAKKADAI MADURAI EAST BLOCK.

ABBREVIATIONS

AAEEO	-	Additional Assistant Elementary Educational Officer
ADPC	-	Assistant District Programme Co-ordinator
Addl. DPC	-	Additional District Programme Co-ordinator
ADS	-	Assistant Director of Statistics
AEEO	-	Assistant Elementary Educational Officer
AG	-	Accountant General
AIE	-	Alternative and Innovative Education
ALS	-	Alternate School
AWPB	-	Annual Work Plan and Budget
BC	-	Backward Class
BDO	-	Block Development Officer
BEC	-	Block Education Committee
BRC	-	Block Resource Centre
BRG	-	Block Resource Group
BT Assistant	-	Graduate Trained Teacher
CEO	-	Chief Educational Officer
CR	-	Completion Rate
CRC	-	Cluster Resource Centre
DAEO	-	District Adult Education Officer
DEC	-	District Education Committee
DEE	-	Director of Elementary Education
DEEO	-	District Elementary Educational Officer
DEEP	-	District Elementary Education Plan
DEO	-	District Educational Officer
DEP	-	Distance Education Programme
DIET	-	District Institute of Education and Training
DISE	-	District Information System of Education
DNF&AE	-	Director of Non Formal and Adult Education
DPC	-	District Programme Co-ordinator
DPEP	-	District Primary Education Programme

DPO	-	District Project Office
DR	-	Dropout Rate
DRG	-	District Resource Group
DSE	-	Director of School Education
DTERT	-	Directorate of Teacher Education, Research and Training
ECCE	-	Early Childhood Care and Education
ECE	-	Early Childhood Education
Ed.CIL.	-	Education Consultants India Limited
EGS	-	Education Guarantee Scheme
EMIS	-	Educational Management Information System
GAR	-	Gross Access Ratio
GER	-	Gross Enrolment Ratio
GO	-	Government Order
GOI	-	Government of India
GOTN	-	Government of Tamilnadu
GOVT.	-	Government
HM	-	Headmaster
ICDS	-	Integrated Child Development Scheme
IED	-	Integrated Education for the Disabled
KRP	-	Key Resource Person
MBC	-	Most Backward Class
MDO	-	Media and Documentation Officer
MHRD	-	Ministry of Human Resource Development
MIS	-	Management Information System
MLA	-	Member of Legislative Assembly
MLL	-	Minimum Levels of Learning
MP	-	Member of Parliament
NCERT	-	National Council of Educational Research and Training
NCTE	-	National Council of Teacher Education
NER	-	Net Enrolment Ratio
NGO	-	Non Governmental Organization

NIEPA	-	National Institute of Educational Planning and Administration
OA	-	Office Assistant
OBB	-	Operation Blackboard
PA	-	Personal Assistant
PG	-	Post Graduate Teacher
PMIS	-	Programme Management Information System
PMRY	-	Prime Minister's Rozgar Yojana
PRI	-	Panchayat Raj Institution
PTA	-	Parent Teacher Association
RR	-	Repetition Rate
SC	-	Scheduled Caste
SCERT	-	State Council of Education, Research and Training
SIEMAT	-	State Institute of Educational Management, Administration and Training
SPD	-	State Project Director
SPO	-	State Project Office
SRG	-	State Resource Group
SSA	-	Sarva Shiksha Abhiyan
ST	-	Scheduled Tribe
TA/DA	-	Travelling Allowance/Daily Allowance
TINP	-	Tamilnadu Integrated Nutrition Programme
TLE	-	Teaching Learning Equipment
TLM	-	Teaching Learning Material
TN	-	Tamilnadu
TPR	-	Teacher Pupil Ratio
TR	-	Transition Rate
TSG	-	Technical Support Group
TTO	-	Teacher Training Officer
UEE	-	Universalization of Elementary Education
VEC	-	Village Education Committee
WDO	-	Women Development Officer

NIEPA DC



D12167