

SARVA SHIKSHA ABHIYAN
DISTRICT ELEMENTARY EDUCATION PLAN

**ANNUAL WORK PLAN & BUDGET
2003 – 2004**

TIRUNELVELI DISTRICT
TAMIL NADU

DISTRICT ANNUAL WORK PLAN AND BUDGET

CHAPTER I – PLAN OVERVIEW

- 1.1 Introduction
- 1.2 Planning Process
- 1.3 General profile
- 1.4 Educational Profile
 - 1.4.1 Access
 - 1.4.2 Enrolment ~ GER & NER
 - 1.4.2.1 Boys & Girls
 - 1.4.2.2 SC/ST Children
 - 1.4.2.3 Disabled Children
 - 1.4.3 Completion Rate
 - 1.4.4 Repetition Rate
 - 1.4.5 Dropout Rate
 - 1.4.6 Transition Rate
 - 1.4.7 Teacher Pupil Ratio
- 1.5 Early Childhood Care and Education
- 1.6 Out of School Children
- 1.7 Special Focus Group
- 1.8 VECs, CRCs, BRCs
- 1.9 Infrastructure
 - 1.9.1 Block Resource Centres
 - 1.9.2 Cluster Resource Centres
 - 1.9.3 Three Classrooms
 - 1.9.4 Two Classrooms
 - 1.9.5 Toilets
 - 1.9.6 Drinking Water Facilities

1.10 District Project Office,

LIBRARY & DOCUMENTATION CENTRE

National Institute of Educational
Planning and Administration,

17-B, Jawahar Road, Marg,
New Delhi-110016

DOC. No. _____

D- 12180
05-12-2003

CHAPTER II – PROGRESS REVIEW

2.1 Introduction

2.2 Progress in ACCESS

2.2.1 Opening of Primary Schools

2.2.2 Upper Primary Schools

2.2.3 EGS Centres

2.3 Progress in ENROLMENT

2.3.1 Boys & Girls

2.3.2 SC/ST

2.3.3 Disabled

2.4 Progress in COMPLETION

2.5 Retention

2.6 Transition

2.7 Attendance

2.8 Pupil's Achievement

2.9 Mainstreaming out of School Children

2.9.1 Bridge Courses / Transit Camps

2.9.2 Residential Schools

2.10. Appointment of Teachers

2.11 Programmes for Disabled

2.12. Programmes for SC/ST

2.13 Programmes for Girls

2.14 Early Childhood Care and Education

2.15 Functioning of Village Education Committees

2.16 Activities in Cluster Resource Centre

2.17 Programmes in Block Resource Centre

2.18 Research, Evaluation and Monitoring

2.19 Improving Infrastructure

2.19.1 Construction of Block Resource Centre

2.19.2 Construction of Cluster Resource Centre

2.19.3 Construction of Three Classrooms

2.19.4 Construction of Two Classrooms

2.19.5 Provision of Toilet Facilities

2.19.6 Provision of Drinking Water Facilities

2.20 Maintenance and Repairs

2.21 Programmes for Quality Improvement

2.21.1 Capacity building for Project Staff

2.21.2 Training to Teachers

2.21.3 Orientation to VEC Members

2.21.4 Provision of TLM, TLE, School Grant

2.21.5 Curriculum Revision – VI Standard Textbook

2.21.6 Innovation – Computer Literacy, Vocational Skill
Development Skills

2.22 Project Management

2.22.1 Establishment of MIS

2.22.2 Implementation of DISE

2.22.3 Appointment of Project Staff

2.23 Convergence with ongoing Schemes

2.24 Issues and Strategies

2.24.1 Access

2.24.2 Enrolment

2.24.3 Completion Rate

2.24.4 Repetition Rate

2.24.5 Dropout Rate

2.24.6 Teacher Pupil Ratio

2.24.7 Completion, Repetition and Dropout Rate

2.24.8 Out of School Children

2.24.9 School Based Teaching

2.24.10 Special Focus Group

CHAPTER III – ACTIVITIES AND BUDGET

3.1 Primary Schools

3.2 Upper Primary Schools

3.3 Alternative and Innovative Education

3.4 Special Focus Group

3.5 Village Education Committee

3.6 Cluster Resource Centres

3.7 Block Resource Centres

3.8 Research, Evaluation and Monitoring

3.9 Civil Construction Works

3.10 Maintenance and Repair Works

3.11 Management

3.12 Training

3.13 Innovation

3.14 Procurement Plan

3.15 Implementation Schedule

ANNEXURE

Budget and Activities

Table – A

Table – B

Table – C

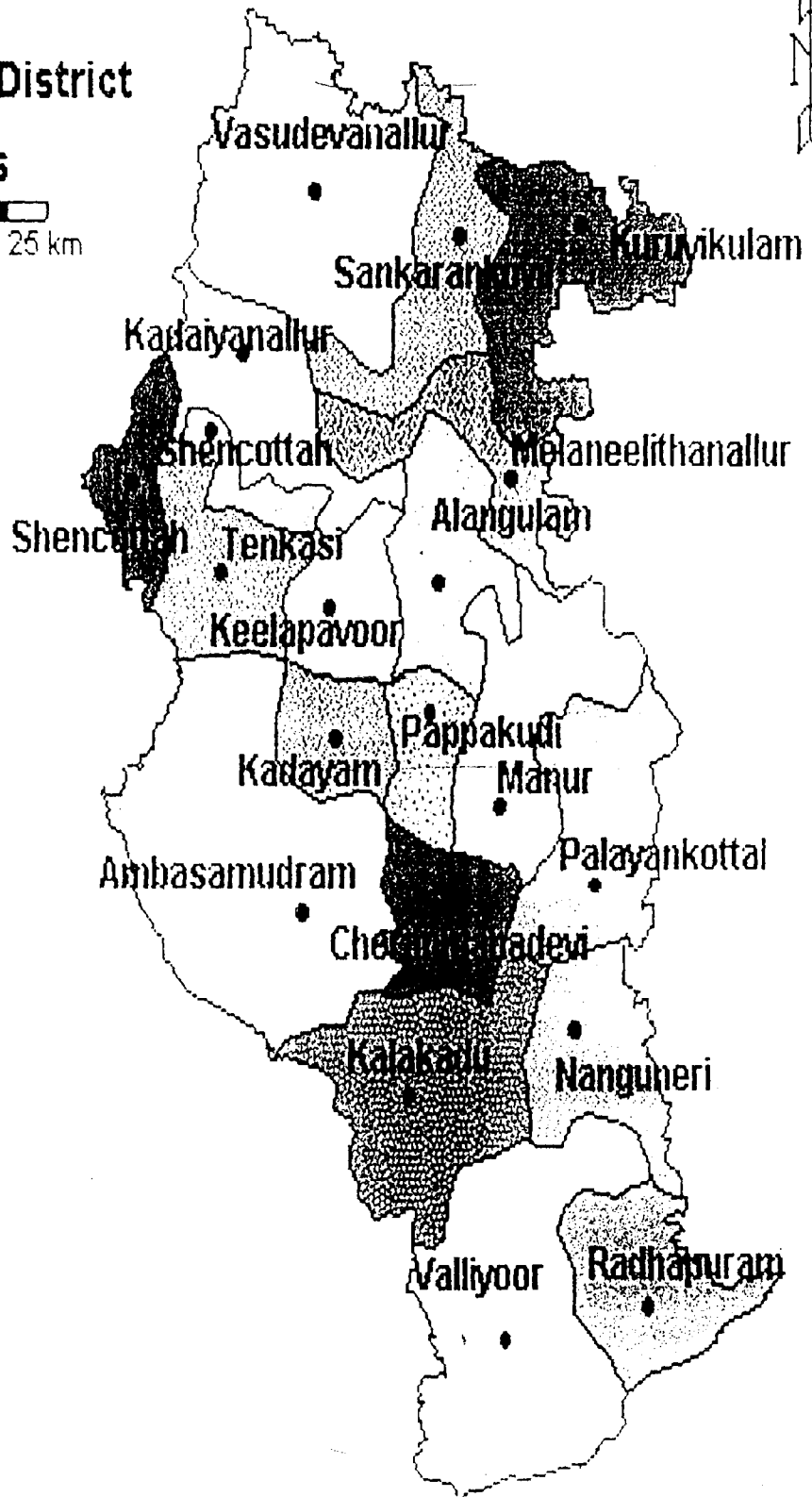
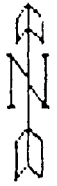
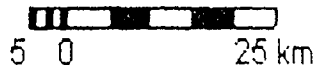
Table - D

Table Nos.	TABLES	Page Number
1	Number of Schools 2002-2003	14
2	Access Rate 2002-2003	15
3	Enrolment GER and NER 2002-2003	16
4	Number of Pupils 2002-2003	17
5	Enrolment SC/ST 2002-2003	18
6	Disabled Children 2002-2003	19
7	CR,RR and DR Primary 2002-2003	20
8	CR,RR and DR Upper Primary 2002-2003	21
9	Transition Rate 2002-2003	22
10	Teacher Pupil Ratio 2002-2003	23
11	Number of ECCE and Children 2002-2003	24
12	Special Coaching Classes for SC/ST 2002-03	25
13	Number of BRCs, CRCs and VECs	26
14	Blockwise Training – VEC	27
15	BRC, CRC Buildings	28
16	3CR, 2CR Buildings	29
17	Access Rate	32
18	Number of Schools 2001-02 & 2002-03	34
19	Enrolment 2001-2002	35
20	Enrolment 2002-2003	36
21	SC/ST 2002-2003	37
22	Enrolment GER & NER – Primary	38
23	Enrolment GER & NER Upper Primary	39

Table Nos.	TABLES	Page Number
24	Disabled Children 2002-2003	40
25	CR, RR & DR Primary 2002-2003	41
26	CR, RR & DR Upper Primary 2002-2003	42
27	Transition Rate 2001-2002	43
28	Transition Rate 2002-2003	44
29	Attendance Rate 2001-2002	45
30	Attendance Rate 2002-2003	46
31	Pupils Achievement Level 2001-2002	47
32	Pupils Achievement Level 2002-2003	48
33	Number of Primary Centres 2001-2002	53
34	Number of ECCE and Children 2002-2003	54
35	Number of CRC 2002-2003	56
36	Training	60
37	VEC Training	61
38	Incentives 2002-2003	65
39	Child Labour Schools	66

Tirunelveli District

Blocks



CHAPTER - I PLAN OVERVIEW

1.1 INTRODUCTION

Tirunelveli District is one of the educationally forward districts with a literacy rate of 77.00%.

The objectives of Sarva Shiksha Abhiyan

1. All children in school, Education Guarantee Centre, Alternative School' Back to School Camp by 2003.
2. All children complete 5 years of primary & Schooling by 2007.
3. All children complete 8 years of elementary schooling by 2010.
4. Focus on elementary education of satisfactory quality with enhance on education for life.
5. Bridging all gender and social category gaps at primary stage by 2007 and at elementary education by 2010.
6. Universal retention by 2010.

1.2. PLANNING–PROCESS:

For the success of every programme effective “planning” is highly essential. The programme of Sarva Shiksha Abhiyan enforces community participations and the quality in planning implementation and monitoring of its various activities.

1. The district level planning team is constituted with the following members.

i. CEO	-	1
ii. DEEO	-	1
iii ADPC	-	1
iv DIET	-	2
v. Block Resource Centre Supervisor	-	1
vi AEE0	-	1
vii Statistical officer	-	1

2. The district level core planning team is constituted as follows:
 - i. ADPC -1
 - ii. DIET Representative -2
 - iii. Statistical officer -1
3. Orientation training to ADPCs in preparation of AWP & B 2003- 04 was given on 07.03.2003 at Trichy.
4. One day workshop in preparation of AWP & B 2003-04 to district planning team was conducted on 16.03.2003 at Chennai.

The Secretary, Education Department Chennai, the chairperson of the workshop, all Directors, Joint Directors of Education Department participated in the workshop.

5. The state level core planning team members Thiru. N.Murugesan and Thiru.V.Expedith visited the district to consult Village Education Committee, Block Resource Centre, Cluster Resource Centre, DPO and other related bodies of Sarva Shiksha Abhiyan and NGO'S in relation with the preparation of AWP & B 2003-04 on 18.03.03.

The state level core planning team members visited the Block Resource Centre Palayamkottai urban and interacted with Block Resource Centre Supervisor and Teacher educators regarding the preparation of AWP & B 2003-04. They also visited the Cluster Resource Centre, which was going on in the TDTA Mary Ardon Middle School Palayamkottai. They interacted with the Cluster Resource Centre Co-ordinators and other member teachers.

6. The Headmasters of all schools conducted Village Education Committee meeting regarding the preparation of Annual work plan and school developmental activities during 17.03.03 to 21.03.03. The headmasters were asked to submit their plans to the Block Resource Centre concerned.
7. The Block level Education committee consolidated the Annual plans prepared by Village Education Committees on 24.03.03 and submitted the same to the DPC on 25.03.03.

8. The district core planning team visited Kadayanallur Village Education Committee training centre on 12.03.03. Village Education Committee members demanded for the filling up of vacant teacher posts and additional teacher posts to the needy schools.
9. The Village Education Committee Training Centre at PLWA Primary school, Vickramasingapuram was visited on 20.03.03. The Village Education Committee members demanded Infrastructure facilities given to Government Schools to be extended to aided schools.
10. The Cluster Resource Centre in vaishnava middle school, Sankarankovil was visited on 22.03.03. The coordinator and teachers requested the planning team to take all efforts to use suitable strategies to avoid transfer of students from normal schools to child labour schools.
11. Block Resource Centre, Palayamkottai Rural was visited on 26.03.03 and interacted with the supervisor and teacher educators regarding AWP & B 2003-04.
12. The district core planning team conducted a meeting with three NGOS namely Amar Seva Sangam, Aaikudi, Nava Jeevan Trust, Veeramanickapuram, Victory Trust, Ayalpatti, Sankarankovil regarding various types of disabled children available facilities to them and their enrolment in schools.
13. State level three days workshop on preparation and consolidation of AWP & B was conducted from 27.03.03 to 29.03.03 at Gandhigram Rural Institute, Gandhigram Dindigul district as a residential programme.
14. The district planning team has gone through the entire process of planning for the AWP & B 2003-04.
15. In this planning the following base-line works were used out for planning AWP & B.

- ❖ Household Survey
- ❖ Perspective Plan
- ❖ Census 2001
- ❖ DISE
- ❖ Cohort, Study 2002-03

1.3. GENERAL PROFILE

Tirunelveli district is one of the oldest districts in Tamil Nadu formed during English rule in the month of September 1790. This district lies between 8.5 degree and 9.5 degree of the Northern latitude and 77.05 degree and 78.25 degree of eastern longitude.

The district is bounded by Virudhunagar district in the North, Western ghats on the west, Kanyakumari district in the South and Thoothukudi district in the East. It is spread over an area of 6823 Sq.kms.

Revenue Set Up:

Revenue divisions	:	3
Village panchayats	:	425
Panchayat Union Blocks	:	19
Municipal towns	:	5
Corporation	:	1
Habitations	:	1952

Source: District Revenue office Tirunelveli: - 2001

Demographic Profile:

The data as per 2001

Population 1991			Population 2001			Growth	Sex Ratio	
M	F	T	M	F	T	Rate %	1991	2001
12,299,02	12,71,930	25,01,832	13,72,082	14,29,112	28,01,194	11.97	1,034	1,042

(Source: Govt. of India Professional Census 1991-2001)

The density of the population is 410.55 persons per sq. km of total population 28,01,194 in 6823 sq.kms. But of the said total population 28,01,194, 14,99,062 persons live in rural areas which is 53.52 % and 13,02,132 persons live in urban localities which is 46.48%

As per 2001 census SC and ST population of the district is given in the following table:

	2001 population			% population		
	M	F	T	M	F	T
SC	2,30,844	2,38,753	4,69,597	16.82%	16.70%	16.76%
ST	5061	4579	9640	0.37%	0.32%	0.34%

(Source: Govt of India provisional census 2001)

Literacy

Literacy Rate of Male Female SC/ST

	DISTRICT			STATE	NATIONA L
	ALL	SC	ST	ALL	ALL
M	85.89	51.48	48.47	82.33	75.85
F	68.50	31.97	30.62	64.55	54.36
ALL	76.97	41.50	39.54	73.47	65.38

(Source: Govt. of India provisional census 2001)

- The District average literacy rate is higher than the State and Nation
- The SC/ST literacy rate of Male is higher than Female literacy rate.
- The ST literacy rate of the district is lesser then SC literacy rate.

1.4 EDUCATIONAL PROFILE

The number of educational institutions is high to keep the district in a high literacy rate of 77.0%. Tirunelveli and Palayamkottai are considered to be the Oxford of south India with Xavier's and CSI Institutions with more than 100 Years of age.

Rev. Francis Xavier, Rev. Mary Ardon, Rev. Robert Corld well have served for the cause of education.

No. of Primary Schools	:	1527
No. of Middle Schools	:	389
No. of Higher Sec.Schools	:	149
No. of High Schools	:	116
No. of Matriculation Ht. Sec. Schools	:	110
District Institute of Education and		
Training	:	1
Teacher Training Schools	:	5

1.4.1. ACCESS

**Table - 1
Number of Schools - 2002-2003**

S.No	Block	Primary				Upper Primary			
		Govt	Aided	Unaided	Total	Govt	Aided	Unaided	Total
1	Alangulam	32	34		66	7	22	4	33
2	Ambasamudram	18	41		59	9	21	11	41
3	Cheranmahadevi	24	50		74	7	17	5	29
4	Kadayam	30	39		69	2	19	1	22
5	Kadayanallur	14	31	1	46	14	20	4	38
6	Kalakadu	25	38		63	7	22	5	34
7	Keelapavoor	35	36	1	72	12	29	1	42
8	Kurvikulam	46	57		103	14	16	2	32
9	Manur	67	39		106	12	8		20
10	Melaneelitha nallur	46	22	1	69	12	13		25
11	Nanguneri	58	78	1	137	16	21	5	42
12	Palayamkottai	46	50	1	97	11	24	4	39
13	Pappakudi	22	18		40	3	16	1	20
14	Radhapuram	33	56		89	3	46	3	52
15	Sankarankovil	45	39	2	86	12	19	7	38
16	Shenkottai	27	8		35	10	3	5	18
17	Tenkasi	20	36		56	9	24	11	44
18	Vallioor	26	61		87	11	42	11	64
19	Vasudevanallur	32	67	3	102	10	43	4	57
20	Tirunelveli ©	13	20		33	8	13	6	27
21	Palaymkottai ©	12	24	2	38	5	22	20	47
	District Total	671	844	12	1527	194	460	110	764

[Source: DISE 2002]

In this district there are 1,527 primary schools and the remaining 764 are upper primary schools. Out of 1,527 primary schools, there are 671 Government schools, 844 Aided schools and 12 Unaided schools. The upper primary level comprises of 194 Government middle schools, 460 Aided schools and 110 Unaided schools.

Table - 2
Access Rate - 2002 - 03

S.No	Block	Primary	Upper Primary
1	Alangulam	100	100
2	Ambasamudram	100	100
3	Cheranmahadevi	100	100
4	Kadayam	100	100
5	Kadayanallur	97	100
6	Kalakadu	100	100
7	Keelapavoor	100	100
8	Kurvikulam	100	100
9	Manur	100	99
10	Melaneelithanallur	100	100
11	Nanguneri	100	100
12	Palayamkottai	99	98.8
13	Pappakudi	100	100
14	Radhapuram	99	100
15	Sankarankovil	100	98.5
16	Shenkottai	100	100
17	Tenkasi	100	100
18	Vallioor	100	100
19	Vasudevanallur	98	98.5
20	Tirunelveli ©	100	100
21	Palaymkottai ©	100	100
	District	99.67	99.8

[Source: DISE 2002]

In primary level 2 blocks Kadayanallur and Vasudevanallur which as access rate 59 and 98. In the upper primary level, Sankarankovil block access rate is low.

1.4.2 Enrolment GER & NER

Table - 3
Enrolment – GER and NER - 2002-03

S. No	Block	Primary						Upper Primary					
		GER			NER			GER			NER		
		B	G	T	B	G	T	B	G	T	B	G	T
1	Alangulam	103	103	103	99	97	98	102	104	103	98	95	96
2	Ambasamudram	103	102	102	98	97	97	93	92	92	94	93	93
3	Cheranmahadevi	101	101	101	100	100	100	102	101	101	98	99	98
4	Kadayam	112	115	113	99	97	98	112	105	108	97	96	96
5	Kadayanallur	103	103	103	97	99	98	102	104	103	92	90	91
6	Kalakadu	101	100	100	99	99	99	99	95	97	86	82	84
7	Keelapavoor	101	100	100	99	99	99	99	95	97	86	82	84
8	Kurvikulam	104	104	104	99	99	99	104	104	104	97	95	96
9	Manur	102	103	103	98	96	97	101	106	104	97	96	96
10	Melaneelitha nallur	104	104	104	97	100	98	95	98	96	88	82	85
11	Nanguneri	104	103	103	99	99	99	102	103	102	90	94	97
12	Palayamkottai	105	100	102	98	98	98	90	97	93	87	86	86
13	Pappakudi	102	102	102	98	98	98	102	102	102	99	97	98
14	Radhapuram	102	101	102	98	99	99	98	97	97	87	84	85
15	Sankarankovil	101	101	101	97	96	96	108	110	109	93	93	93
16	Shenkottai	110	112	111	99	99	99	108	113	110	96	97	96
17	Tenkasi	103	107	105	98	98	98	91	91	91	95	96	95
18	Vallioor	99	99	99	98	98	98	99	99	99	97	97	97
19	Vasudevanallur	101	102	101	99	99	99	102	103	102	99	98	98
20	Tirunelveli ©	103	105	104	99	98	98	101	102	101	97	98	97
21	Palaymkottai ©	105	105	105	99	99	99	110	104	107	99	96	97
	District	103	103	103	99	99	99	101	101	101	939	92	93

[Source: DISE 2002]

The District GER and NER rate for primary level is 103 and 99 and in the upper primary level the GER & NER is 101 and 93 respectively.

1.4.2.1 Enrolment – Boys and Girls

Table - 4

Enrolment for 1-8 standard

S. No	Name of the Block	1 to 8std		Total
		Boys	Girls	
1	Alangulam	11393	10872	22265
2	Ambasamudram	9745	9737	19482
3	Cheranmahadevi	9746	9070	18816
4	Kadayam	8822	7813	16635
5	Kadayanallur	11478	11704	23182
6	Kalakadu	9860	9320	19180
7	Keelapavoor	13992	14141	28133
8	Kurvikulam	8667	7929	16596
9	Manur	18258	16714	34972
10	Melaneelithanallur	7570	6936	14506
11	Nanguneri	9601	8917	18518
12	Palayamkottai	27306	26990	54296
13	Pappakudi	6166	5723	11889
14	Radhapuram	11915	11779	23694
15	Sankarankovil	12492	11503	23995
16	Shenkottai	7264	7026	14290
17	Tenkasi	17078	15780	32858
18	Vallioor	13215	12981	26196
19	Vasudevanallur	18704	17829	36533
20	Tirunelveli ©			
21	Palaymkottai ©			
	District	233272	222764	456036

[Source: DISE 2002]

There are 4,56,036 children in 1st to 8th std.

1.4.2.2 Schedule Caste and Scheduled Tribe Children

Table – 5

Enrolment of SC/ST 2002-2003

S. No	Block	Enrolment					
		Primary			Upper Primary		
		SC	ST	Total	SC	ST	Total
1	Alangulam	2321	385	2706	1262	1	1263
2	Ambasamudram	2805	84	2889	1343	26	1369
3	Cheranmahadevi	2773	100	2873	1156	118	1274
4	Kadayam	2348	2	2350	1145	3	1148
5	Kadayanallur	3600	27	3627	1828	6	1834
6	Kalakadu	2865	111	2976	1252	30	1282
7	Keelapavoor	2564	7	2571	1167	754	1921
8	Kurvikulam	4634	52	4686	2359	2	2361
9	Manur	6089	181	6270	4192	103	4295
10	Melaneelithanallur	1833	90	1923	868	1	869
11	Nanguneri	2961	30	2991	1219	1	1220
12	Palayamkottai	7255	197	7452	4983	69	5052
13	Pappakudi	1559	2	1561	677		677
14	Radhapuram	2851	132	2983	1358	58	1416
15	Sankarankovil	5664	41	5705	2553	15	2568
16	Shenkottai	2540	107	2647	1366	28	1394
17	Tenkasi	5079	56	5135	2417	232	2649
18	Vallioor	3273	108	3381	1278	37	1315
19	Vasudevanallur	7396	132	7528	2843	32	2875
20	Tirunelveli ©	Included in Manur					
21	Palaymkottai ©	Included in Palayamkottai					
	District Total	70410	1844	72254	35266	1516	36782

[Source: DISE - 2002]

The block wise total SC/ST children in age group 5+ to 13+ for both primary and upper primary level is 1,09,036 for the year 2002-03. Out of these children 1,05,676 SC children were enrolled in both primary and upper primary schools. There were 3,360 ST children enrolled in the last academic year.

1.4.2.3. Disabled Children

The block wise particulars of disabled children for the year 2002-03 is given below.

Table - 6

Disabled Children - 2002-03

S.No	Block	Disabled Children (6-10 Years)	Enrolment in Primary	Disabled Children (11-13 Years)	Enrolment in Upper Primary
1	Alangulam	35	32	4	4
2	Ambasamudram	70	70	70	70
3	Cheranmahadevi	45	45	79	79
4	Kadayam	61	47	119	89
5	Kadayanallur	128	120	57	52
6	Kalakadu	103	70	102	56
7	Keelapavoor	31	31	41	39
8	Kurvikulam	60	50	46	40
9	Manur	41	39	4	4
10	Melaneelithanallur	52	52	27	27
11	Nanguneri	97	93	39	34
12	Palayamkottai	85	60	58	58
13	Pappakudi	103	98	71	67
14	Radhapuram	59	54	25	22
15	Sankarankovil	53	53	23	23
16	Shenkottai	71	71	46	46
17	Tenkasi	84	12	79	14
18	Vallioor	81	81	28	28
19	Vasudevanallur	65	65	70	70
20	Tirunelveli ©	30	30	45	45
21	Palaymcottai ©	111	13	56	7
	District Total	1,465	1,186	1,089	874

[Source: DISE - 2002]

During the year 2002-03, In primary level, 1,465 disabled children in age group 6-10 years and 1,089 children in the age group 11-13 years were identified. Among them 1,186 were enrolled in primary schools and 874 children in upper primary schools. There were 1,465 disabled children in the age group 6-10 years. Out of which 1,186 were enrolled in the primary level. 1,089 disabled children were there in the age group 11-13 years, out of which 874 were enrolled in upper primary. Out of 2,554 disabled children 2,060 disabled children were enrolled in the regular stream in 2002-03.

1.4.3. Completion Rate:

1.4.4 Repetition Rate:

1.4.5 Drop out Rate:

Table - 7
CR, RR, and DR - Primary - 2002-03

S.No	Block	CR			RR			DR		
		B	G	T	B	G	T	B	G	T
1	Alangulam	56	56	56	38	34	36	10	6	8
2	Ambasamudram	99	95	97	3	3	3	0	0	0
3	Cheranmahadevi	70	76	73	12	20	16	6	4	5
4	Kadayam	66	72	69	31	21	26	5	6	6
5	Kadayanallur	57	61	59	35	30	33	9	8	9
6	Kalakadu	64	31	47	37	29	33	5	3	4
7	Keelapavoor	68	68	68	30	22	26	6	6	6
8	Kurvikulam	58	64	61	30	26	28	10	12	11
9	Manur	62	70	66	32	23	28	6	7	7
10	Melaneelithanallur	58	70	64	26	22	24	12	12	12
11	Nanguneri	73	82	78	22	13	18	5	5	5
12	Palayamkottai	72	72	72	24	22	23	6	4	5
13	Pappakudi	78	88	83	17	15	16	11	1	6
14	Radhapuram	72	64	68	36	24	30	2	1	1
15	Sankarankovil	76	86	81	10	8	9	15	5	10
16	Shenkottai	71	77	74	11	7	9	19	16	17
17	Tenkasi	66	80	73	26	18	22	6	4	5
18	Vallioor	65	68	66	30	27	28	6	6	6
19	Vasudevanallur	62	61	63	34	30	32	4	6	5
20	Tirunelveli ©	68	76	72	22	20	21	6	8	7
21	Palaymkottai ©	78	68	73	20	10	15	12	12	12
	District Average	68	72	70	26	20	23	7	7	7

[Source: Co-hort – 2002]

The CR, RR and DR of this district for primary 70%, 23% and 7% respectively. The Ambasamudram block has the highest CR rate of 97% and Kalakadu has the lowest rate of 47%. Ambasamudram where RR was 3% and Alangulam gives the highest rate of 36%.

Table - 8
CR,RR and DR - Upper Primary - 2002-03

S.No	Block	CR			RR			DR		
		B	G	T	B	G	T	B	G	T
1	Alangulam	68	72	70	18	14	16	14	14	14
2	Ambasamudram	94	93	94	8	4	6	1	0	1
3	Cheranmahadevi	62	64	63	20	12	16	16	26	21
4	Kadayam	66	72	69	25	24	25	9	4	7
5	Kadayanallur	60	69	64	24	18	21	16	14	15
6	Kalakadu	64	84	74	12	12	12	15	9	12
7	Keelapavoor	70	66	68	31	32	31	1	1	1
8	Kurvikulam	68	66	67	16	12	14	20	18	19
9	Manur	61	71	66	23	11	17	16	18	17
10	Melancelithanallur	74	64	69	18	12	15	16	16	16
11	Nanguneri	67	69	68	21	21	21	12	10	11
12	Palayamkottai	72	72	72	24	22	23	6	4	5
13	Pappakudi	94	75	84	15	15	15	1	1	1
14	Radhapuram	73	65	69	36	25	31	1	0	0
15	Sankarankovil	77	89	83	7	7	7	17	3	10
16	Shenkottai	97	63	80	10	7	8	14	9	11
17	Tenkasi	84	81	83	14	16	15	3	2	3
18	Vallioor	91	80	85	14	8	11	4	4	4
19	Vasudevanallur	65	68	67	24	21	23	10	12	11
20	Tirunelveli ©	86	91	89	6	7	7	8	2	5
21	Palaymkottai ©	97	68	83	6	5	6	13	11	12
	District	76	73	75	18	15	16	10	8	9

Source: DISE, 2002

The district average for upper primary of CR, DR and RR are 75, 16 and 9 respectively. The highest CR is 94 in Ambasamudram and the lowest CR is 63 in Cheranmahadevi. The highest RR is 31 in Keelapavoor and DR is 12 in Palayamkottai urban. Regarding DR the highest rate is recorded in Manur 17 and the lowest rate in Radhapuram 0.4.

1.4.6. Transition rate:

Table - 9
Transition Rate - 2002-03

S. No	Block	Transition Rate (V to VI)								
		All			SC			ST		
		B	G	T	B	G	T	B	G	T
1	Alangulam	78	76	77	65	69	67	-	-	-
2	Ambasamudram	98	97	97.5	93	92	92.5	93	91	92
3	Cheranmahadevi	98	96	97	94	91	92.5	88	85	86.5
4	Kadayam	84	76	80	78	70	74	-	-	-
5	Kadayanallur	95	88	91.5	64	71	67.5	50	-	50
6	Kalakadu	100	100	100	100	100	100	100	100	100
7	Keelapavoor	92	94	93	95	96	95.5	-	-	-
8	Kurvikulam	94	93	93.5	80	75	77.5	-	-	-
9	Manur	89	97.5	93.25	98	99	98.5	-	-	-
10	Melaneelithanallur	98	98	98	97	95	96	-	-	-
11	Nanguneri	92	96	94	95	93	94	90	85	87.5
12	Palayamkottai	85	82	83.5	78	75	76.5	50	50	50
13	Pappakudi	44	46	45	36	37	36.5	-	-	-
14	Radhapuram	100	100	100	100	100	100	100	100	100
15	Sankarankovil	85	87	86	82	84	83	-	75	75
16	Shenkottai	99	98	98.5	92	94	93	93	88	90.5
17	Tenkasi	98	99	98.5	78	75	76.5	46	48	47
18	Vallioor	87	88	87.5	92	95	93.5	91	92	91.5
19	Vasudevanallur	90	98	94	94	91	92.5	94	88	91
20	Tirunelveli ©	100	100	100	100	100	100	100	100	100
21	Palaymkottai ©	99	98	98.5	98	95	96.5	98	95	96.5
	District	91	91	91	86	86	86	84	84	84

[Source: DISE - 2002]

The transition rate for the year 2002-03 for the district is 91. For SC students the rate is 86 and for ST students the rate is 83.

1.4.7. Teacher Pupil Ratio:

Table – 10
Teacher Pupil Ratio – 2002-03

S.No	Block	TPR	
		Primary	Upper Primary
1	Alangulam	1:42	1:59
2	Ambasamudram	1:38	1:36
3	Cheranmahadevi	1:36	1:41
4	Kadayam	1:36	1:40
5	Kadayanallur	1:43	1:39
6	Kalakadu	1:28	1:41
7	Keelapavoor	1:43	1:46
8	Kurvikulam	1:29	1:32
9	Manur	1:37	1:35
10	Melaneelithanallur	1:36	1:41
11	Nanguneri	1:36	1:26
12	Palayamkottai	1:47	1:26
13	Pappakudi	1:35	1:53
14	Radhapuram	1:32	1:44
15	Sankarankovil	1:39	1:40
16	Shenkottai	1:63	1:48
17	Tenkasi	1:44	1:50
18	Vallioor	1:33	1:32
19	Vasudevanallur	1:40	1:32
20	Tirunelveli ©	1:38	1:39
21	Palaymkottai ©	1:36	1:30
	District	1:40	1:36

Source: DISE, 2002

The district average of the teacher pupil ratio is 40 at the Primary level and 36 at the upper primary level. The highest ratio is 63 in Shenkottai and the lowest is 28 in Kalakadu at primary and in upper primary the highest is 59 in Alangulam and the lowest is 26 in Nanguneri and Palayamkottai rural.

1.5 EARLY CHILD CARE AND EDUCATION:

Table - 11

Number of ECCE and Children - 2002-03

S.No	Block	ICDS Centres	Children	TINP Centres	Children	Others LKG/UKG	Children
1	Alangulam	44	805	63			
2	Ambasamudram			59	2,073	25	1,674
3	Cheranmahadevi			56	1,221	7	540
4	Kadayam	40	1,610	63	4,562	3	601
5	Kadayanallur			45	3,634	13	372
6	Kalakadu			31	5,123	8	908
7	Keelapavoor	61	2,154			4	240
8	Kurvikulam	57	1,552	82	4,899	5	325
9	Manur			76	1,039	48	1,431
10	Melaneelithanallur	68	1,585	68	630	11	509
11	Nanguneri	49	1,535			3	151
12	Palayamkottai			52	4,460	38	1,615
13	Pappakudi			14	826		
14	Radhapuram			48	1,767	16	565
15	Sankarankovil			30	836		
16	Shenkottai	36	1,010	39	921	17	346
17	Tenkasi	51	896	17	628	15	
18	Vallioor	61	2,230	20	5,797	8	1,203
19	Vasudevanallur			75	2,342	20	839
20	Tirunelveli ©	45	1,435			6	115
21	Palaymkottai ©	50	1,540			54	3,000
	District Total	562	16,352	838	40,758	301	14,434

[Source: DISE, 2002]

The table shows the institutions for providing Education for Early Child Care and Education. In 562 Integrated Child Development Centres totally 16,352 Children are enrolled . In 838 TINP Centres, totally 40,758 Children are enrolled and 14,434 children are enrolled in LKG/UKG classes.

1.6.OUT OF SCHOOL CHILDREN

As per Household survey out of school children in our district is 21223. out of this 2733 were enrolled in formal schools, and 1080 were enrolled in Bridge courses in year 2002-03. Still there are 17410 out of school children in our district.

1.7. SPECIAL FOCUS GROUP.

Table - 12
Special Coaching Classes For SC/ST & Disabled 2002-03

SL. NO	NAME OF THE BLCOK	NO OF CENTRES	NO OF BENEFICIARIES			IED CHILDREN
			BOYS	GIRLS	TOTAL	
1	Alangulam	37	786	708	1,494	16
2	Ambasamudram	53	1,057	1,172	2,229	9
3	Cheranmahadevi	37	893	891	1,784	
4	Kadayam	30	788	711	1,499	
5	Kadayanallur	26	1,038	896	1,934	
6	Kalakadu	23	678	649	1,327	
7	Keelapavoor	21	546	483	1,029	
8	Kurvikulam	64	1,885	1,543	3,428	60
9	Manur	29	918	738	1,656	
10	Melaneelithanallur	18	817	738	1,555	
11	Nanguneri	34	627	694	1,321	
12	Papakudi	18	486	481	967	25
13	Palayamkottai	32	828	887	1,715	
14	Radhapuram	11	342	324	666	
15	Sankarankovil	61	2,547	2,342	4,889	8
16	Shenkottai	12	220	232	452	6
17	Tenkasi	39	1,721	1,489	3,210	12
18	Valliur	34	856	787	1,643	11
19	Vasudevanallur	49	1,678	1,623	3,301	
20	Tirunelveli ©	11	427	445	872	
21	Palaymkottai ©	29	860	794	1,654	
	TOTAL	668	19,998	18,627	38,625	147

Source: DISE, 2002

38,625 SC/ST children are studying in 668 centres, among them are 147 IED children. According to census report literacy rate of SC/ST is 40%. To improve the literacy rate, Special coaching classes are conducted in 668 centres. Total no. of beneficiaries is 38,625.

1.8 VECS, CRCS & BRCS:

The following table shows that there are 1,179 village Education Committees (VECs), 275 Cluster Resource Centres (CRCs) and 21 Block Resource Centres (BRCs) to carry out the objectives and activities of SSA.

Table - 13
No. of BRCs, CRCs and VECs.

No. of BRCs, CRCs and VECs				
S.No	Name of the Block	No. of BRC	No. of CRC	No. of VEC
1	Alangulam	1	13	35
2	Ambasamudram	1	14	27
3	Cheranmahadevi	1	13	97
4	Kadayam	1	12	31
5	Kadayanallur	1	15	77
6	Kalakadu	1	13	33
7	Keelapavoor	1	16	40
8	Kurvikulam	1	11	104
9	Manur	1	11	87
10	Melaneelithanallur	1	9	94
11	Nanguneri	1	13	67
12	Palayamkottai	1	14	54
13	Pappakudi	1	7	41
14	Radhapuram	1	15	36
15	Sankarankovil	1	13	112
16	Shenkottai	1	6	30
17	Tenkasi	1	14	50
18	Vallioor	1	18	30
19	Vasudevanallur	1	21	104
20	Tirunelveli ©	1	11	15
21	Palaymcottai ©	1	16	15
	District Total	21	275	1,179

[Source: DISE – 2002]

Village Education Committee:

Total No. of members in the Village Education Committee in the district is 16,932. Out of which 3,665 members were given VEC training.

Table - 14**Number of VEC Members – Training.**

S.No	Name of the Block	Total No. of Members	Number of members given training.
1	Alangulam	445	49
2	Ambasamudram	395	82
3	Cheranmahadevi	1376	190
4	Kadayam	465	99
5	Kadayanallur	1155	262
6	Kalakadu	410	189
7	Keelapavoor	577	75
8	Kurvikulam	1410	110
9	Manur	905	205
10	Melaneelithanallur	1410	261
11	Nanguneri	1002	203
12	Palayamkottai	810	129
13	Pappakudi	533	117
14	Radhapuram	468	85
15	Sankarankovil	1904	568
16	Shenkottai	457	73
17	Tenkasi	750	303
18	Vallioor	450	102
19	Vasudevanallur	1560	427
20	Tirunelveli ©	225	64
21	Palaymkottai ©	225	72
	District Total	16932	3665

[Source: DISE – 2002]

1.9 INFRA STRUCTURE

In Tirunelveli district there are 21 BRCs and 275 CRCs are functioning. The following table shows that the no. of 2 ClassRooms, 3ClassRooms, CRC buildings, and BRC buildings.

Table – 15
BRC, CRC Buildings

S. No	Block	BRC	CRC
1	Alangulam		
2	Ambasamudram	Ambasamudram	Ambasamudram
3	Cheranmahadevi		Pirancheri
4	Kadayam		Vadamalaipatti, Kalyanipuram, Pottalpurur
5	Kadayanallur		
6	Kalakadu		Eruvadi (Central)
7	Keelapavoor	Pavoor chatram	Pavoorchatram
8	Kurvikulam		
9	Manur		Nadukallu
10	Nanguneri		
11	Melaneclithanallur		
12	Pappakudi		Ananthanadar patti
13	Palayamkottai		
14	Radhapuram	Radhapuram	Radhapuram
15	Sankarankovil	Sankarankovil	Sankarankovil
16	Shenkottai		
17	Tenkasi	Tenkasi	Tenkasi
18	Vallioor	Vallioor	Vallioor
19	Vasudevanallur		Mullikulam, Ullar

[Source: DISE – 2002]

Table – 16
3CR, 2CR Buildings

S. No	Block	3CR	2CR
1	Alangulam	Nettoor	Alangulam,Nettoor
2	Ambasamudram		
3	Cheranmahadevi		Cheranmahadevi
4	Kadayam		Kelayapillaiyoor
5	Kadayanallur	Anaikulam, Punnaiapuram	Kasidharmam, Velayuthapuram, Poigai
6	Kalakadu		Eruvadi
7	Keelapavoor	Sivagurunatha puram	
8	Kurvikulam		Kammappatti. Araichipatti.
9	Manur		Subbaiapuram, Nellai thiruthu, Nallammalpuram-2, Gandhinagar, Narasinganallur, Nadukallur
10	Nanguneri	Moolaikaraipatti, Koonthagulam, Parappadi, Thalpathi samudram(Keezhur)	Ariakulam, Ayarkulam, Kadambankulam
11	Melaneelithanallur	Thirumalapuram, Vellapaneri, Cherathamaram, Vellalankulam	Periakovilankulam, Pandiapuram, Dhuraisamipuram
12	Pappakudi	Maruthamputhur	Ariyanayagipuram, Melakutha panchan
13	Palayamkottai	Sengulam, Seevalperi	Ponnakudi, Piranthankulam
14	Radhapuram	Seelathikulam	Vadivammanpatti, Pannaiarkulam
15	Sankarankovil	Karivalamvantha nallur	Veerasigamani, Veppankulam, Gandhinagar
16	Shenkottai	Kacheri Compound, Sambavar vadakarai, Puliarai	
17	Tenkasi	KarisaI Kudiiruppu	Melaharam, Chitrambalam, Vedampudur
18	Vallioor		Madanpillai dharmam
19	Vasudevanallur	Thenmalai	Kalaingar Nagar

[Source:DISE – 2002]

1.9.1 Block Resource Centres:

The Building for 6 BRCs are under construction at Ambasamudram, Pavorchatram, Radhapuram, Sankarankovil, Tenkasi and Vallioor at the cost of Rs.6 Lakhs each.

1.9.2 Cluster Resource Centre:

The building for 15 CRCs are under Construction at Ambasamudram, Vadamalaipatti, Kalyanipuram, Eruvadi (Central), Pottalpurur, Pavorchatram Radhapuram, Sankarankovil, Ananthanadar patti, Tenkasi, Vallioor, Mullikulam, Ullar, Pirancheri and Nadukkallur.

1.9.3 Three Class Rooms:

The Construction of 22 three Class room works are under progress at various stages.

1.9.4 Two Class Rooms:

In the district 37 two class room works are under construction as noted in the table. There are 6 BRC, 22 Three Classrooms, 37 Two Classrooms, 15 CRC construction works are under progress.

1.9.5 Toilets :

In the district, it is proposed to construct 67 toilets and out of this 17 toilets are under construction. The funds allotted for 15 toilets are changed for the construction of One two class room at Kammalankulam at Palayamkottai rural block.

1.9.6 Drinking Water Facilities:

The drinking water facility is given to 60 Schools, are under progress.

1.10. DISTRICT PROJECT OFFICE:

The district project office has the following staffing pattern.

The Chief Educational Officer is the District Programme Co-ordinator and the District Elementary Educational Officer is the Additional District Programme Co-ordinator and both of them are serving as Ex-officio members. One Assistant District Programme Co-ordinator in the cadre of Higher Secondary School Headmaster is working, one Media and documentation officer in P.G/BT cadre on deputation, One Training Officer in High School Headmaster / P.G Assistant on deputation, One Accountant on deputation, One Data Entry Operator, Two Civil consultants for civil works posts are there. Under the heading Non-Teaching staff One Superintendent on deputation, Assistants on deputation, Office Assistant on consolidated pay are there.

CHAPTER II

PROGRESS REVIEW

2.1 Introduction:

The Sarva Shiksha Abhiyan scheme in the district is functioning from the year 2001-02. During the year 2002-03, so many improvement schemes under Sarva Shiksha Abhiyan are being carried out. This Chapter explains the various programmes formulated under the scheme in the year 2002-03.

2.2 Progress in ACCESS

Access:

The access rate of this district is shown in the table.

Table - 17
Access Rate

S.No	Block	2001-2002		2002-2003	
		Primary	Upper Primary	Primary	Upper Primary
1	Alangulam	100	100	100	100
2	Ambasamudram	100	100	100	100
3	Cheranmahadevi	100	100	100	100
4	Kadayam	100	100	100	100
5	Kadayanallur	100	100	97	100
6	Kalakadu	100	100	100	100
7	Keelapavoor	100	100	100	100
8	Kurvikulam	100	100	100	100
9	Manur	100	100	100	100
10	Melaneelithanallur	100	100	100	100
11	Nanguneri	100	100	100	100
12	Palayamkottai	100	100	99	98.8
13	Pappakudi	100	100	100	100
14	Radhapuram	100	100	99	100
15	Sankarankovil	100	100	100	98.5
16	Shenkottai	100	100	100	100
17	Tenkasi	100	100	100	100
18	Vallioor	100	100	100	100
19	Vasudevanallur	100	100	98	98.5
20	Tirunelveli ©	Included in Manur		100	100
21	Palaymkottai ©	Included in Palayamkottai		100	100
	District	99.20	99	99.67	99.80

The access rates are high as 99.2% and 99% for primary and upper primary respectively, during 2001-02. For 2002-03, the rates are 99.67 and 99.8 for primary and upper primary section and this increase is due to the opening of 6 primary schools and 2 upper primary schools.

Out of 1952 habitations of this district 1945 habitations are served with schools. The access rate is 99% for primary schools. After the implementation of SSA scheme, Six primary schools and Four EGS Centres are opened in the following habitations:-

Primary Schools:

- | | | |
|---------------------|---|---------------------|
| 1. Samathuvapuram | - | Palayamkottai Rural |
| 2. Annanagar | - | Vallioor |
| 3. Ayupkanpuram | - | Manur |
| 4. Pappankulam | - | Manur |
| 5. Kelaiyapillayoor | - | Kadayam |
| 6. Iyanoor | - | Keelapavoor |

EGS Centres:

- | | | |
|------------------|---|----------------|
| 1. Marugalthalai | - | Palayamkottai |
| 2. Pudugramam | - | Palayamkottai |
| 3. Koonthangulam | - | Radhapuram |
| 4. Rathinagiri | - | Vasudevanallur |

Regarding Upper Primary Schools, during 2001-02, 1945 habitations are provided with Upper primary schools. After the project implementation, 2 primary schools were upgraded to cover 3 habitations as detailed below:-

- | | | |
|-------------------|---|---------------------|
| 1. Sengulam | - | Palayamkottai Rural |
| 2. Piranthankulam | - | Palayamkottai Rural |

2.2.1. Opening of Primary Schools:

In 2001-02, the total No. of Primary schools is 1509(Govt+Aided), where as in 2002-03, the figure comes to 1,515.

Table - 18
Number of Schools – 2001-2002 and 2002-03

S. No	Block	2001-02								2002-03							
		Primary				Upper Primary				Primary				Upper Primary			
		Govt	Aided	Unaided	Total	Govt	Aided	Unaided	Total	Govt	Aided	Unaided	Total	Govt	Aided	Unaided	Total
1	Alangulam	32	34		66	7	22	4	33	32	34		66	7	22	4	33
2	Ambasamudra	18	41		59	9	21	11	41	18	41		59	9	21	11	41
3	Cheranmahad	24	50		74	7	17	5	29	24	50		74	7	17	5	29
4	Kadayam	29	39		68	2	19	1	22	30	39		69	2	19	1	22
5	Kadayanallur	14	31	1	46	14	20	4	38	14	31	1	46	14	20	4	38
6	Kalakadu	25	38		63	7	22	5	34	25	38		63	7	22	5	34
7	Keelapavoor	34	36	1	71	12	29	1	42	35	36	1	72	12	29	1	42
8	Kurvikulam	46	57		103	14	16	2	32	46	57		103	14	16	2	32
9	Manur	65	39		104	12	8		20	67	39		106	12	8		20
10	Melaneelithan	46	22	1	69	12	13		25	46	22	1	69	12	13		25
11	Nanguneri	58	78	1	137	16	21	5	42	58	78	1	137	16	21	5	42
12	Palayamkottai	45	50	1	98	9	24	4	37	46	50	1	97	11	24	4	39
13	Pappakudi	22	18		40	3	16	1	20	22	18		40	3	16	1	20
14	Radhapuram	33	56		89	3	46	3	52	33	56		89	3	46	3	52
15	Sankarankovil	45	39	2	86	12	19	7	38	45	39	2	86	12	19	7	38
16	Shenkottai	27	8		35	10	3	5	18	27	8		35	10	3	5	18
17	Tenkasi	20	36		56	9	24	11	44	20	36		56	9	24	11	44
18	Vallioor	25	61		86	11	42	11	64	26	61		87	11	42	11	64
19	Vasudeva	32	67	3	102	10	43	4	57	32	67	3	102	10	43	4	57
20	nallur Tirunelveli ©	13	20		33	8	13	6	27	13	20		33	8	13	6	27
21	Palayamkottai	12	24	2	38	5	22	20	47	12	24	2	38	5	22	20	47
	District Total	665	844	12	1521	192	460	110	762	671	844	12	1527	194	460	110	764

The above table shows the increase in no. of schools for the year 2001-02 and 2002-03. There are 665 Government Primary schools in the year 2001-02 and 6 more primary schools have increased in the year 2002-03. The same is found in the upper primary level too. Two schools have been upgraded in Palayamkottai Rural in the year 2002-03.

2.2.2 Upper Primary Schools:

Regarding upper primary, In 2001-02 the total No. of upper primary schools is 479 (Govt + Aided) where as in 2002-03 the figure comes to 654.

2.2.3 EGS Centres:

- | | | |
|------------------|---|----------------|
| 1. Marugalthalai | - | Palayamkottai |
| 2. Pudugramam | - | Palayamkottai |
| 3. Koonthangulam | - | Radhapuram |
| 4. Rathinagiri | - | Vasudevanallur |

2.3.PROGRESS IN ENROLMENT:

2.3.1. Progress in Enrolment - Boys and Girls

Table-19
Enrolment 2001-2002

S. No	Name of the Block	I to VIII Standard		Total
		Boys	Girls	
				20928
1	Alangulam	10709	10219	18312
2	Ambasamudram	9160	9152	17686
3	Cheranmahadevi	9161	8525	15636
4	Kadayam	8292	7344	21790
5	Kadayanallur	10789	11001	18028
6	Kalakadu	9268	8760	26444
7	Keelapavoor	13152	13292	15594
8	Kurvikulam	8142	7452	32873
9	Manur	17162	15711	13634
10	Melaneelithanallur	7115	6519	17405
11	Nanguneri	9024	8381	51037
12	Palayamkottai	25667	25370	11125
13	Pappakudi	5796	5329	22202
14	Radhapuram	11200	11002	22554
15	Sankarankovil	11742	10812	13410
16	Shenkottai	6806	6604	30886
17	Tenkasi	16053	14833	24427
18	Vallioor	12425	12002	34340
19	Vasudevanallur	17581	16759	20928
20	Tirunelveli ©	Included in Mannur		
21	Palaymkottai ©	Included in Palayamkottai		
	District Total	219244	209067	428311

[Source household survey]

Table-20

Enrolment 2002-2003

S. No	Name of the Block	I to VIII Standard		Total
		Boys	Girls	
1	Alangulam	11393	10872	22265
2	Ambasamudram	9745	9737	19482
3	Cheranmahadevi	9746	9070	18816
4	Kadayam	8822	7813	16635
5	Kadayanallur	11478	11704	23182
6	Kalakadu	9860	9320	19180
7	Keelapavoor	13992	14141	28133
8	Kurvikulam	8667	7929	16596
9	Manur	18258	16714	34972
10	Melaneelithanallur	7570	6936	14506
11	Nanguneri	9601	8917	18518
12	Palayamkottai	27306	26990	54296
13	Pappakudi	6166	5723	11889
14	Radhapuram	11915	11779	23694
15	Sankarankovil	12492	11503	23995
16	Shenkottai	7264	7026	14290
17	Tenkasi	17078	15780	32858
18	Vallioor	13215	12981	26196
19	Vasudevanallur	18704	17829	36533
20	Tirunelveli ©			
21	Palaymkottai ©			
	District Total	233272	222764	456036

[Source DISE – 2002]

Enrollment in 2001-02 and 2002-03 is shown in the table. It shows there is a substantial increase in enrollment.

2.3.2. Progress in Enrolment – SC/ST (Boys-Girls)

Table-21

SC and ST Children – 2002-03

S.No	Block	Enrolment					
		Primary			Upper Primary		
		SC	ST	Total	SC	ST	Total
1	Alangulam	2321		2321	1262	1	1263
2	Ambasamudram	2982	84	3066	1343	26	1369
3	Cheranmahadevi	2773	100	2873	2004	118	2122
4	Kadayam	2348	2	2350	1145	3	1148
5	Kadayanallur	3600	27	3627	3288	6	3294
6	Kalakadu	2865	111	2976	1251	30	1281
7	Keelapavoor	2564	7	2571	1767	754	2521
8	Kurvikulam	4634	52	4686	2359	2	2361
9	Manur	6089	81	6170	4192	103	4295
10	Melaneelithanallur	2833	90	2923	1808	1	1809
11	Nanguneri	2961	30	2991	1219	1	1220
12	Palayamkottai	7255	197	7452	4983	69	5052
13	Pappakudi	1559	2	1561	677		677
14	Radhapuram	2026	132	2158	1358	58	1416
15	Sankarankovil	5664	41	5705	2553	15	2568
16	Shenkottai	3695	107	3802	1366	28	1394
17	Tenkasi	5079	56	5135	3524	232	3756
18	Vallioor	3273	108	3381	1278	37	1315
19	Vasudevanallur	7396	132	7528	2843	32	2875
20	Tirunelveli ©	Included in Manur					
21	Palaymkottai ©	Included in Palayamkottai					
	District Total	71917	1359	73276	40220	1516	41736

[Source DISE -2002]

In primary 73,276 and in Upper primary 41,736 SC/ST children of age group 5+ to 13+ and enrolled in the academic year 2002-03.

PROGRESS IN ENROLMENT

NET ENROLMENT RATIO:

The table shows the NER for Primary and Upper Primary Schools. As for as the Primary schools are concerned the NER for boys is 96.6 for the year 2001-02 and for the year 2002-03 it is 97.56 and this shows a positive trend. The NER for Girls is 96.8 for the year 2001-02 and for the year 2002-03 it is 97.5.

Table – 22
Enrolment - GER and NER - Primary

S.No	Block	Primary 2001-02						Primary 2002-03					
		GER			NER			GER			NER		
		B	G	T	B	G	T	B	G	T	B	G	T
1	Alangulam	105.2	104.8	105	97	9	97	103	10	103	97	97	9
2	Ambasamudram	104.7	103.5	104.08	99.2	99.3	99.3	103	102.	102.75	98.5	94	96.
3	Cheranmahadevi	106	104.9	105.48	98	9	97.5	101	10	101	100	100	10
4	Kadayam	110.6	103.2	106.88	85	8	85.5	112.2	115.0	113.63	99	97	9
5	Kadayanallur	103.2	103.5	103.32	97	9	96.5	103.17	103.	103.29	97	96	96.
6	Kalakadu	105.5	104.1	104.8	98	9	98	101	10	100.5	99	99	9
7	Keelapavoor	104.7	103.9	104.29	99	9	99	101	10	100.5	99	99	9
8	Kurvikulam	105.6	105.9	105.72	99	99.	99.1	104.5	10	104.25	99.5	99.1	99.
9	Manur	105.2	104.4	104.79	98.3	95.5	96.9	102.5	103.	103	98	96	9
10	Melaneelitha nallur	104.4	104.6	104.49	97.7	94.	96.1	104.4	104.	104.45	97.7	94.5	96.
11	Nanguneri	105.6	105.7	105.68	91	97.	94.4	104	103.	103.75	95	97	9
12	Palayamkottai	104.5	104	104.29	96.4	97.1	96.8	105	10	102.5	90	86	8
13	Pappakudi	106.2	104.3	105.29	80	8	81	102	10	102	98.5	98.5	98.
14	Radhapuram	104.9	104.4	104.64	96.8	97.	97.1	102.6	101.	102.2	98.6	99.7	99.
15	Sankarankovil	104.9	105	104.96	99	9	99	101	10	101	93	93	9
16	Shenkottai	105.6	106.7	106.14	96	9	96	110	11	111	99	99	9
17	Tenkasi	105.6	105.3	105.43	92	9	94	103	10	105	95	98	96.
18	Vallioor	104.3	103.2	103.74	99	9	99	99	9	99	98	98	9
19	Vasudevanallur	105.5	105.1	105.3	90.9	92.1	91.5	101	10	101.5	99	99	9
20	Tirunelveli ©	105.8	102.2	104	98	9	98	103	10	104	99	98	98.
21	Palaym kottai ©	105.2	104.9	105.06	98	9	98	105	10	105	99	99	9
	District	105	105	105	97	96	97	103	103	103	98	97	98

[Source Co-hort 2002]

Table -23

Enrolment – GER and NER – Upper primary

S. No	Block	Upper Primary – 2001-02						Upper Primary – 2002-03					
		GER			NER			GER			NER		
		B	G	T	B	G	T	B	G	T	B	G	T
1	Alangulam	105	104	105	94	96	95	102	104	103	98	95	96.5
2	Ambasamudr	95	96	96	90	91	91	93	92	92.5	94	93	93.5
3	Cheranmahad	89	96	93	94	96	95	102	101	101.5	98	99	98.5
4	Kadayam	102	101	102	92	94	93	112	105	108.5	97	96	96.5
5	Kadayanallur	89	96	93	94	96	95	102.5	104	103.25	92	90	91
6	Kalakadu	102	98	100	84	80	82	99	95	97	86	82	84
7	Keelapavoor	112	104	108	90	88	89	99	95	97	86	82	84
8	Kurvikulam	101	99	100	95	96	96	104.7	104.5	104.6	97.5	95	96.25
9	Manur	102	103	103	96	96	96	101.5	106.5	104	97	96.5	96.75
10	Melaneelitha nallur	95	98	97	90	94	92	95	98	96.5	88	82	85
11	Nanguneri	102	103	103	88	82	85	102	103	102.5	90.3	94.1	92.2
12	Palayamkotta	92	94	93	96	92	94	90	97	93.5	87	86	86.5
13	Pappakudi	92	96	94	86	87	87	102	102.5	102.25	99.3	97.4	98.35
14	Radhapuram	97	95	96	80	82	81	98.5	97	97.75	87	84	85.5
15	Sankarankovi	94	96	95	93	90	92	108	110	109	93	93	93
16	Shenkottai	105	104	105	92	90	91	108	113	110.5	96	97	96.5
17	Tenkasi	92	91	92	92	90	91	91	91	91	95	96	95.5
18	Vallioor	90	97	94	96	94	95	99	99	99	97	97	97
19	Vasudevanall	97	99	98	88	90	89	102	103	102.5	99	98	98.5
20	Tirunelveli ©	92	96	94	88	90	89	101	102	101.5	97	98	97.5
21	Palaymkottai ©	111	105	108	98	94	96	110	104	107	99	96	97.5
	District	98	96	97	90	90	90	101	101	101	94	93	93.5

[Source Household survey]

In the case of upper Primary Schools, the GER for boys in the year 2001-02 is 98 and it is increased to 101 in the year 2002-03. Also for girls the rate is 96 in the year 2001-02 and it is 101 in the year 2002-03. So naturally the total value is increased from 97 during the year 2001-02 to 101 during the year 2002-03. This is a negative trend in repetition rate as it is increasing and it is against to the objectives of SSA. Effective use of TLM should be followed in the coming years.

2.3.3. Disabled children:

Table-24
Disabled Children - 2002-03

Sl No	Name of the Block	2001 - 02				2002-03			
		Disabled Children (6-10 Years)	Enrolment in Primary	Disabled Children (11-13Years)	Enrolment in Upper Primary	Disabled Children (6-10 Years)	Enrolment in Primary	Disabled Children (11-13Years)	Enrolment in Upper Primary
1	Alangulam	14	14	16	16	35	32	4	4
2	Ambasamudram	75	75	26	26	70	70	70	70
3	Cheranmahadevi	13	13	14	14	45	45	79	79
4	Kadayam	38	38	24	24	61	47	119	89
5	Kadayanallur	22	22	22	22	128	120	57	52
6	Kalakadu	10	10	3	3	103	70	102	56
7	Keelapavoor	57	57	52	52	31	31	41	39
8	Kurvikulam	11	11	7	7	60	50	46	40
9	Manur	9	9	9	9	41	39	4	4
10	Melaneelithanallur	78	76	39	39	52	52	27	27
11	Nanguneri	60	60	19	19	97	93	39	34
12	Palayamkottai	62	42	41	41	85	60	59	59
13	Papakudi	2	2	-	0	103	98	71	67
14	Radhapuram	11	11	16	16	59	54	25	22
15	Sankarankovil	25	25	15	15	53	53	23	23
16	Shenkottai	-	0	-	0	71	71	46	46
17	Tenkasi	48	48	20	20	84	12	79	14
18	Vallur	25	25	13	13	81	81	28	28
19	Vasudevanallur	150	150	110	99	65	65	70	70
20	Tirunelveli ©	99	93	51	51	30	30	45	45
21	Palaymcottai ©		0		0	111	13	56	7
TOTAL		809	781	497	486	1465	1186	1089	874

[Source DISE -2002]

All possible facilities are provided to the disabled children. Disabled children are specially focused in SSA. Disabled children in the age group 6-10 years and 11-13 are found out and enrolled in regular schools. They are given equal opportunities as other children usually get in the primary level.

The above table shows a comparative study of disabled children for the last academic year and this academic year. The rate of enrolment of disabled children is higher than that of the previous year which shows that the identified disabled children are enrolled properly.

In upper primary level, 874 children were enrolled out of 1,089 Measures should be taken for the remaining 215 children to get them enrolled.

2.4 PROGRESS IN COMPLETION

The completion rate for the year 2001-02 in the district is 60, the repetition rate is 25 and the dropout rate is 15. In the year 2002-03, the completion rate is 73, repetition rate is 15, and the dropout rate is 12 for primary schools.

For Upper primary schools for the year 2002-03, the completion rate is 82, repetition rate is 6 and dropout rate is 12. These better results are due to the improvement of Sarva Shiksha Abhiyan schemes.

Table - 25
CR, RR, and DR – Primary - 2002-03

S. No	Block	CR			RR			DR		
		B	G	T	B	G	T	B	G	T
1	Alangulam	56	56	56	38	34	36	10	6	8
2	Ambasamudram	99.04	94.64	96.84	3.46	2.54	3	0.14	0.18	0.16
3	Cheranmahadevi	70	76	73	12	20	16	6	4	5
4	Kadayam	65.50	71.70	68.60	30.50	20.60	25.55	5.10	6	5.55
5	Kadayanallur	57	61	59	35	30	32.50	9	8	8.50
6	Kalakadu	63.60	30.80	47.20	37.46	28.98	33.22	5	3.36	4.18
7	Keelapavoor	68	68	68	30	22	26	6	6	6
8	Kurvikulam	58	64	61	30	26	28	10	12	11
9	Manur	62	70	66	32	23	27.50	6	7	6.50
10	Melaneelithanallur	58	70	64	26	22	24	12	12	12
11	Nanguneri	73.12	82.16	77.64	22.14	13.14	17.64	4.74	4.70	4.72
12	Palayamkottai	72	72	72	24	22	23	6	4	5
13	Pappakudi	77.50	88.24	82.87	16.78	14.90	15.84	11.38	1.20	6.29
14	Radhapuram	72.34	64.28	68.31	36.42	24.30	30.36	1.56	1.04	1.30
15	Sankarankovil	76	86	81	9.60	8.40	9	15	5	10
16	Shenkottai	70.60	76.92	73.76	11.22	7.02	9.12	18.62	15.62	17.12
17	Tenkasi	66	80	73	26	18	22	6	4	5
18	Vallioor	64.50	67.50	66	29.50	26.50	28	6	6	6
19	Vasudevanallur	61.60	64	62.80	34.20	30	32.10	4.20	6	5.10
20	Tirunelveli ©	68	76	72	22	20	21	6	8	7
21	Palayamkottai ©	78	68	73	20	10	15	12	12	12
	District	68	72	70	26	20	23	7	7	7

[Source:Cohort 2002]

Table - 26
CR,RR and DR - Upper Primary - 2002-03

S.No	Block	CR			RR			DR		
		B	G	T	B	G	T	B	G	T
1	Alangulam	68	72	70	18	14	16	14	14	14
2	Ambasamudram	94.46	92.62	93.54	7.86	4	5.93	0.64	0.42	0.53
3	Cheranmahadevi	62	64	63	20	12	16	16	26	21
4	Kadayam	66	71.7	68.85	25	24	24.5	9	4.3	6.65
5	Kadayanallur	59.8	69	64.4	24	18	21	16	14	15
6	Kalakadu	64	84	74	12	12	12	15	9	12
7	Keelapavoor	70	66	68	31.12	31.6	31.36	0.56	0.72	0.64
8	Kurvikulam	68	66	67	16	12	14	20	18	19
9	Manur	61	71	66	23	11	17	16	18	17
10	Melaneelithanallur	74	64	69	18	12	15	16	16	16
11	Nanguneri	66.72	68.78	67.75	21.14	21.12	21.13	12.14	10.1	11.12
12	Palayamkottai	72	72	72	24	22	23	6	4	5
13	Pappakudi	93.78	74.74	84.26	14.78	14.78	14.78	0.82	1.1	0.96
14	Radhapuram	73.4	64.6	69	36	25.2	30.6	0.56	0.24	0.4
15	Sankarankovil	77	89	83	7	7	7	16.8	3.2	10
16	Shenkottai	97.2	63.08	80.14	10.46	6.52	8.49	14.24	8.5	11.37
17	Tenkasi	84	81	82.5	14.2	15.8	15	3	2	2.5
18	Vallioor	91.24	79.5	85.37	13.5	8.02	10.76	4.24	3.5	3.87
19	Vasudevanallur	65	68	66.5	24	21	22.5	10	12	11
20	Tirunelveli ©	86	91	88.5	6	7	6.5	8	2	5
21	Palayamkottai ©	97.36	67.76	82.56	6.24	5.46	5.85	12.62	10.66	11.64
	District	76	73	74.5	18	15	16	10	8	9

[Source Cohort 2002]

2.5 Retention

As the data given above the retention rate for the year 2001-02 for primary school is 85%. In the year 2002-03, for primary schools the retention rate is 88 and the retention rate for upper primary is 94. There is a substantial increase in the retention rate.

Dropout Rate:

From the above table the Dropout rate is 9 in the year 2002-03. It is 15% in the year 2001-02.

2.6 Transition Rate:

Table -27
Transition Rate - 2001-2002

S.No	Block	V to VI					
		ALL		SC		ST	
		B	G	B	G	B	G
1	Alangulam	78	76	65	69	64	65
2	Ambasamudram	79	74	69	66	69	69
3	Cheranmahadevi	75	78	68	69	65	69
4	Kadayam	80	74	69	70	68	64
5	Kadayanallur	79	76	70	65	69	67
6	Kalakadu	75	74	69	70	68	69
7	Keelapavoor	77	78	70	69	-	-
8	Kurvikulam	75	77	65	69	70	69
9	Manur	79	80	71	70	-	-
10	Melaneelithanallur	77	72	69	70	-	-
11	Nanguneri	78	74	68	71	69	68
12	Papakudi	79	75	70	69	68	69
13	Palayamkottai	84	82	70	71	-	-
14	Radhapuram	79	80	70	69	69	68
15	Sankarankovil	56	56	73	32	-	-
16	Shenkottai	77	76	69	70	71	72
17	Tenkasi	80	77	70	71	69	68
18	Valliur	79	78	69	70	69	68
19	Vasudevanallur	77	78	70	69	68	69
20	Tirunelveli ©	84	80	70	71	71	69
21	Palayamkottai©	80	78	69	72	69	68
District		78	76	69	68	66	65

For the year 2001-02, for all communities the transition rate for boys is 77.5, for girls is 75.8 and totally 76.5. For SC boys the Transition rate is 69.2 and SC girls the rate is 67.7 and so total figure is 68.5. For ST boys the Transition rate is 68.5, for girls the rate is 68.3 and so total figure comes to 68.3.

Table – 28
Transition Rate – 2002-03

S. No	Block	Transition Rate (V to VI)								
		All			SC			ST		
		B	G	T	B	G	T	B	G	T
1	Alangulam	78	76	77	65	69	67	-	-	-
2	Ambasamudram	98	97	97.5	93	92	92.5	93	91	92
3	Cheranmahadevi	98	96	97	94	91	92.5	88	85	86.5
4	Kadayam	84	76	80	78	70	74	-	-	-
5	Kadayanallur	95	88	91.5	64	71	67.5	50		50
6	Kalakadu	100	100	100	100	100	100	100	100	100
7	Keelapavoor	92	94	93	95	96	95.5	-	-	-
8	Kurvikulam	94	93	93.5	80	75	77.5	-	-	-
9	Manur	89	97.5	93.25	98	99	98.5	-	-	-
10	Melaneelithanallur	98	98	98	97	95	96	-	-	-
11	Nanguneri	92	96	94	95	93	94	90	85	87.5
12	Palayamkottai	85	82	83.5	78	75	76.5	50	50	50
13	Pappakudi	44	46	45	36	37	36.5	-	-	-
14	Radhapuram	100	100	100	100	100	100	100	100	100
15	Sankarankovil	85	87	86	82	84	83	-	75	75
16	Shenkottai	99	98	98.5	92	94	93	93	88	90.5
17	Tenkasi	98	99	98.5	78	75	76.5	46	48	47
18	Vallioor	87	88	87.5	92	95	93.5	91	92	91.5
19	Vasudevanallur	90	98	94	94	91	92.5	94	88	91
20	Tirunelveli ©	100	100	100	100	100	100	100	100	100
21	Palaymcottai ©	99	98	98.5	98	95	96.5	98	95	96.5
	District	91	91	91	86	86	86	84	84	84

[Source DISE -2002]

For the year 2002-03 the transition rate for all community boys is 91, for girls the rate is 91 and totally the figure comes to 91%. The transition rate for SC boys is 86, for girls is 86 and the total figure comes to 86. The Transition rate for ST boys is 84 and for girls is 84 and totally the figure is 84. From the above description the Transition rate is substantially increased.

2.7 Attendance

Table -29

Attendance rate 2001 - 2002

SI No	Name of the Block	Attendance Rate											
		Primary						Upper Primary					
		ALL		SC		ST		ALL		SC		ST	
		B	G	B	G	B	G	B	G	B	G	B	G
1	Alangulam	94	96	92	96	75	82	84	82	85	80	88	89
2	Ambasamudram	95	95	96	94	84	88	88	86	87	84	90	90
3	Cheranmahadevi	94	94	95	94	90	92	82	83	82	84	92	94
4	Kadayam	94	92	94	96	88	90	89	88	89	90	95	90
5	Kadayanallur	90	90	96	96	90	92	94	93	92	94	92	90
6	Kalakadu	90	92	92	90	90	90	82	80	90	85	88	90
7	Kcelapavoor	95	94	93	92	-	-	94	90	90	80	-	-
8	Kurvikulam	96	94	96	92	85	86	92	91	93	90	90	92
9	Manur	91	90	92	89	-	-	90	90	88	87	-	-
10	Melaneelithanallur	90	89	88	85	-	-	90	88	88	86	-	-
11	Nanguneri	88	86	85	85	84	88	90	88	91	92	94	96
12	Papakudi	90	92	90	94	90	95	92	90	90	90	96	97
13	Palayamkottai	94	96	94	95	94	93	94	94	95	90	90	90
14	Radhapuram	92	94	92	96	92	90	92	94	92	94	88	86
15	Sankarankovil	93	90	93	92	90	95	95	90	95	92	85	90
16	Shenkottai	96	94	95	94	92	93	95	93	96	92	90	92
17	Tenkasi	93	94	92	96	92	92	93	94	93	92	92	90
18	Valliur	92	92	92	92	90	90	94	94	90	80	98	94
19	Vasudevanallur	96	93	90	91	90	90	96	95	75	85	94	94
20	Tirunelveli ©	96	96	95	93	88	80	96	96	95	96	93	92
21	Palaymkottai ©	96	96	94	96	90	90	96	95	96	94	95	96
	District	93	93	93	92	90	91	91	91	91	90	91	90

Source : Perspective Plan 2001-2010

Table -30
Attendance Rate - 2002-03

S. No	Block	Primary									Upper Primary								
		All			SC			ST			All			SC			ST		
		B	G	Ave	B	G	Av	B	G	Ave	B	G	Ave	B	G	Ave	B	G	Ave
1	Alangulam	92	90	91	85	80	82.5	-	-	-	95	90	92.5	90	80	85	-	-	-
2	Ambasamu dram	99	95	97	93	98	95.5	99	98	98.5	99	98	98.5	96	94	95	98	97	97.5
3	Cheranmahadevi	97	98	97.5	98	98	98	90	88	89	95	93	94	92	90	91	92	96	94
4	Kadayam	96	99	97.5	94	96	95	-	-	-	94	97	95.5	93	95	94	-	-	-
5	Kadayanallur	93	97	95	86	88	87	80	82	81	93	97	95	89	91	90	80	82	81
6	Kalakadu	95	91	93	92	92	92	93	91	92	95	91	93	94	92	93	91	93	92
7	Keelapavoor	99	98	98.5	97	96	96.5	75	65	70	98	98	98	97	96	96.5	-	-	-
8	Kurvikulam	85	95	90	83	87	85	-	-	-	90	96	93	86	98	92	-	-	-
9	Manur	99	98	98.5	99	97	98	-	-	-	99	99	99	98	97	97.5	-	-	-
10	Melaneelithanallur	98	99	98.5	98	99	98.5	-	-	-	99	99	99	99	98	98.5	-	-	-
11	Nanguneri	85	90	87.5	86	85	85.5	87	86	86.5	90	86	88	88	85	86.5	90	95	92.5
12	Palayamkottai	94	95	94.5	90	92	91	88	86	87	90	94	92	88	85	86.5	-	87	87
13	Pappakudi	96	94	95	92	90	91	-	-	-	96	94	95	88	90	89	-	-	-
14	Radhapuram	95	95	95	93	82	87.5	70	78	74	98	94	96	98	96	97	-	-	-
15	Sankaran kovil	95	95	95	93	82	87.5	70	78	74	98	94	96	98	96	97	100	100	100
16	Shenkottai	93	81	87	92	94	93	93	92	92.5	94	94	94	98	96	97	94	93	93.5
17	Tenkasi	94	95	94.5	90	92	91	88	86	87	90	94	92	88	85	86.5	-	87	87
18	Vallhoor	92	94	93	89	87	88	88	94	91	95	94	94.5	90	92	91	93	95	94
19	Vasudevannallur	86	89	87.5	84	90	87	82	84	83	88	92	90	86	95	90.5	97	95	96
20	Tirunelveli	95	98	96.5	99	99	99	-	-	-	98	96	97	95	96	95.5	-	-	-
21	Palayamkottai ©	88	94	91	89	93	91	76	90	83	86	92	89	84	90	87	76	84	80
	District	94	94	94	92	91	91	84	86	85	94	94	94	92	92	92	91	92	91.5

[Source DISE -2002]

The average attendance rate for the year 2001-02 in the primary level is 93% and the same in the upper primary level is 91%. The same 94% of attendance is found in the primary level in the year 2002-03 and 3% increased attendance rate is found in the upper primary level in the year 2002-03.

2.8 Pupils Achievement

Table - 31
Pupil's achievement level- 2001-2002

			Tamil	English	Maths	Science	Social Science
Primary	All	Boys	68.5	65	69.2	68.4	65
		Girls	67.4	66	68.4	67.3	62
	SC	Boys	52.8	51.5	60.5	51.4	49
		Girls	53.5	50.5	58.2	50.5	52.1
	ST	Boys	51	50	58	51.5	51
		Girls	52	50.5	51	52	51.5
Upper Primary	All	Boys	65	64.5	62	67	68
		Girls	64.5	65	63.6	66	68.5
	SC	Boys	60	60.2	61	65	65
		Girls	59	60.4	60	64.6	62.8
	ST	Boys	48	52.1	54	52.8	55.5
		Girls	47	50.1	54.5	50.8	56.5
[Source : Perspective Plan 2001-2010]							

In the primary level the total achievement rate for the year 2002-03 in all the subjects except English has been increased. The percentage of English decreases from 65% to 59%. in the year 2002-03. The highest achievement rate is found in Tamil as 75% in the year 2002-03.

Table - 32

Achievement Level - 2002-03

S.No	Block		Subjects				
			Tamil	English	Maths	Science	Social Science
1	Alangulam	Primary	88	42	52	65	62
		Upper Primary	90	47	63	70	67
2	Ambasamudram	Primary	81	53	72	61	67
		Upper Primary	71	49	68	69	62
3	Cheranmahadevi	Primary	70	62	69	63	62
		Upper Primary	72	60	70	69	68
4	Kadayam	Primary	72	68	89	88	87
		Upper Primary	70	65	86	87	85
5	Kadayanallur	Primary	58	30	32	40	42
		Upper Primary	71	56	80	76	72
6	Kalakadu	Primary	70	35	45	65	75
		Upper Primary	75	40	50	70	80
7	Keelapavoor	Primary	58	51	59	63	60
		Upper Primary	53	44	53	55	55
8	Kurvikulam	Primary	55	58	64	60	62
		Upper Primary	63	45	60	55	53
9	Manur	Primary	65	49	52	43	47
		Upper Primary	67	51	54	45	49
10	Melameelitha nallur	Primary	54	52	60	59	58
		Upper Primary	49	42	49	60	48
11	Nanguneri	Primary	75	65	78	70	75
		Upper Primary	85	83	84	90	91
12	Palayamkottai	Primary	70	55	65	68	68
		Upper Primary	68	45	62	65	62
13	Pappakudi	Primary	94	49	56	58	53
		Upper Primary	96	94	64	59	67
14	Radhapuram	Primary	78	64	79	71	75
		Upper Primary	82	72	86	89	91
15	Sankarankovil	Primary	64	54	51	48	57
		Upper Primary	65	57	59	62	61
16	Shenkottai	Primary	80	81	73	78	70
		Upper Primary	63	93	88	71	57
17	Tenkasi	Primary	97	76	82	94	89
		Upper Primary	89	72	86	91	92
18	Vallioor	Primary	96	88	89	91	92
		Upper Primary	99	94	95	98	98
19	Vasudevanallur	Primary	83	54	79	72	71
		Upper Primary	82	56	80	69	68
20	Tirunelveli ©	Primary	61	59	65	66	62
		Upper Primary	63	57	74	73	71
21	Palaymcottai ©	Primary	98	97	97	98	99
		Upper Primary	97	90	91	96	98
District		Primary	75	59	67	68	68
		Upper Primary	75	62	72	72	71

[Source : DISE - 2002]

The highest achievement rate for the upper primary level for the year 2001-02 is found in Social Science. The highest achievement rate of 75% is found in Tamil in the year 2002-03. An increase of nearly 10% of achievement rate is seen the year 2002-03.

2.9. Main Streaming out of school children

As per house hold survey the total no. of out of school children is 21,223. Out of this 10% of the population is migrated to other districts. 20% of the people have completed 14 years of age. Out of 21,223 children 1080 were admitted both in EGS children and Bridge courses in the year 2002-03, still there are 17410 out of school children in our district.

Those who are enrolled is non formal education (Bridge course and residential camps) and completed the age of 13+ will be given a short-term course to appear for the ESLC examination directly.

2.9.1 & 2.9.2 Bridge Course /Transit Camps/Residential Schools

In the year 2002-03, 82 bridge course centres and EGS centres are formed to accommodate 1,080 out of school children through out the district.

There are 17,410 school age children are yet to be admitted in regular or non formal (bridge course or EGS) centres. Never enrolled Dropout/ Children's are given Identity Card to locate their place of study. Residential and Transit camps are not started in the year 2002-2003.

Identity Card
Never Enrolled/Dropout Children

District:

Block:

Habitation:

1. Name of the Child : _____
2. Father's/Guardian's Name : _____
3. Address : _____
4. Age : _____
5. Sex : Male/Female
6. Community : SC/ST/MBC/BC/Others
7. Religion : Hindu/Muslim/Christian/Others
8. Whether Disabled : Yes/No
9. Status of the child during enumeration : Dropout/Never enrolled/Child labourer
10. Present Status : Admitted in School
11. Address of the School and Class : _____

Signature : _____

BRC Supervisor : _____

Block : _____

2.10 Appointment of teachers:

In the year 2001-02, 5 primary schools are opened and 10 teachers are appointed. In the year 2002-03, 1 Primary school and 2 Middle schools are opened and so 10 teachers are appointed.

2.11 Pogrammes for Disabled

In the year 2002-03 for the enrolment of disabled students in regular schools, 3 NGO's are assigned the work. They conducted surveys, awareness programmes, medical camps. They imparted training to BRC supervisors and teachers to handle disabled children.

There are 2061 disabled children who are enrolled in regular schools in the year 2002-03.

The following activities are conducted during the academic year 2002-2003.

Community Capacity Building:

Community Capacity Buildings are conducted to disable children, Volunteers, VEC's, BRT's and School Teachers.

In-service training are given to the special Educators to impart knowledge about the latest innovations in the field of special Education. The Resource persons from special Education Colleges and Rehabilitation Institutions will be assigned to carry out such training. Also, there will be a provision for peer group orientation. Because, disabled students learn many things from their classmates.

Orientation & Awareness :

- ❖ Public meeting
- ❖ Street play
- ❖ Child rally
- ❖ Cultural march
- ❖ Awareness posters/charts

Project Team's capacity building:

For the real victory of any project, capacity building is important. Then ably, we can reach the goal of IED. So, the project team can get guidance and training from external support.

Rehabilitation Intervention :

- ❖ Medical assessment
- ❖ Aids & appliances, referral service
- ❖ Surgeon
- ❖ Home based training & treatment

Resource Unit Support:

In every BRC, we need resource materials like, Brailers, Abacus, Speech kit, Low vision kit and other formats (medical certificate, Bus pass form, Scholarship, etc) to give systematic teaching to disabled students.

Monitoring Evaluation and Documentation:

In IED, a periodical monitoring and evaluation activities will be done by local resource person or an expert from out side. All the activities of IED will be documented by means of records, photos, press clippings, invitations, etc.

2.12 PROGRAMMES FOR SC/ST:

In the year 2002-03, 38,665 SC and ST students are given special coaching from III std to VIII std. The coaching classes are conducted for a period of not less than one hour per day either before or after the commencement or closure of the school works. The regular teachers are employed to look after these children and they are paid Rs.10/- per child as honorarium.

2.13 PROGRAMMES FOR GIRLS:

The Completion rate, Repetition rate and Transition rate are in a lower level regarding the girls especially in SC and ST community. So they are given special attention. In 2002-03, 18,627 girl children are given special coaching. Due to this, their Completion rate, Repetition rate and Transition rate have gone up.

2.14 Early Childhood Care and Education

Table -33
Number of Pre Primary Centres (Balwadis and Anganwadies) 2001-02

Sl. No	Name of the Block	Number of Habitations							
		Integrated Child Development Centres	Enrolment			T.I.N.P	Enrolment		
			Boys	Girls	Total		Boys	Girls	Total
1	Alangulam	44	680	640	1320	63	910	980	1890
2	Ambasamudram	24	380	392	792	69	976	936	1912
3	Cheranmahadevi	44	705	608	1313	54	854	871	1725
4	Kadayam	80	172	1410	3130	63	897	967	1864
5	Kadayanallur	31	620	465	1085	14	408	304	712
6	Kalakadu	31	590	480	1070	51	749	813	1562
7	Keelapavoor	61	930	942	1872	69	1028	1013	2041
8	Kurvikulam	57	1150	1130	2280	83	790	890	1680
9	Manur	51	782	730	1512	71	792	818	1610
10	Melaneelithanallur	69	985	1060	2045	65	674	722	1396
11	Nanguneri	49	720	722	1442	72	963	927	1890
12	Papakudi	23	505	495	700	37	707	512	1219
13	Palayankottai	22	405	465	870	38	572	568	1140
14	Radhapuram	28	435	440	875	48	701	659	1360
15	Sankarankovil	128	1860	1980	3840	128	1294	1318	2612
16	Shenkottai	36	574	541	1115	-	-	-	-
17	Tenkasi	79	1060	1170	2230	14	275	385	660
18	Valliur	50	1182	1221	2403	70	1004	1110	2114
19	Vasudevanallur	60	1210	1250	2460	60	1174	1198	2372
20	Tirunelveli ©	51	760	770	1530	-	-	-	-
21	Palaymkottai ©	55	820	830	1650	-	-	-	-
Total		1073	16525	17741	35534	169	14768	14991	29759

[Source : DISE-2002]

Table - 34
Number of ECCE and Children - 2002-03

S.No	Block	ICDS Centres	Children	TINP Centres	Children	Others LKG/UKG	Children
1	Alangulam	44	805	63			
2	Ambasamudram			59	2073	25	1674
3	Cheranmahadevi			56	1221	7	540
4	Kadayam	40	1610	63	4562	3	601
5	Kadayanallur			45	3634	13	372
6	Kalakadu			31	5123	8	908
7	Keelapavoor	61	2154			4	240
8	Kurvikulam	57	1552	82	4899	5	325
9	Manur			76	1039	48	1431
10	Melaneelithanallur	68	1585	68	630	11	509
11	Nanguneri	49	1535			3	151
12	Palayamkottai			52	4460	38	1615
13	Pappakudi			14	826		
14	Radhapuram			48	1767	16	565
15	Sankarankovil			30	836		
16	Shenkottai	36	1010	39	921	17	346
17	Tenkasi	51	896	17	628	15	
18	Vallioor	61	2230	20	5797	8	1203
19	Vasudevanallur			75	2342	20	839
20	Tirunelveli ©	45	1435			6	115
21	Palaymkottai ©	50	1540			54	3000
	District Total	562	16352	838	40758	301	14434

[Source Perspective Plan-2002]

In 2001-02, the total no of ICDC is 1073, TINP centres is 144, and in total enrolment in ICDC is 17741, In TINP centres 29759 children are accommodated.

In 2002-03 in ICDC, the no of children admitted in TINP Centres there are 57110 Children.

2.15 Functioning of Village Education Committees:

In the year 2002-03 all primary and upper primary school owned by the government had Village Education Committee meetings that were conducted twice in a month. They are suggesting ideas to Improve the quality of education and fulfil the objectives of Sarva Shiksha Abhiyan. They are monitoring the civil works and giving valuable suggestions. The panchayat president is the president of the VEC and the Headmaster is the member Secretary and they are holding the joint bank account to meet the needs of TLM,TLE and School maintenance grants etc. All the grants are released by means of cheques from the DPO.

2.16. Activities in Cluster Resource Centres:

Cluster Resource Centre is a teacher empowerment centre. The teachers will meet in any one of the Saturdays in a month. In Cluster Resource Centres, 40 teachers from 8 to 10 schools are assembling to discuss the issues and sharing the experiences for improving the quality of elementary education. There are 275 centres functioning in Tirunelveli District.

Table -35

No of Cluster Centres 2002-03

Sl.No.	Name of the Block	No. of Cluster Centre
1	Alangulam	13
2	Ambasamudram	14
3	Cheranmahadevi	13
4	Kadayam	12
5	Kadayanallur	15
6	Kalakadu	13
7	Keelapavoor	16
8	Kurvikulam	11
9	Manur	11
10	Melaneelithanallur	9
11	Nanguneri	13
12	Papakudi	7
13	Palayamkottai	14
14	Radhapuram	15
15	Sankarankovil	13
16	Shenkottai	6
17	Tenkasi	14
18	Valliur	18
19	Vasudevanallur	21
20	Tirunelveli ©	11
21	Palaymkottai ©	16
Total		275

2.17 Programmes in Block Resource Centres:

The block resource centre is a mini DIET to import quality education in the block level.

There are 21 BRCs in the district. They have their office in government high and higher secondary schools in block headquarters.

The BRC consists of one supervisor and 7 teacher educators. They are assessing the felt needs of the practicing teachers and school infrastructure facilities. They are monitoring the civil works, Class-room activities. They are assisting the teachers in their day-to-day practices. They are conducting the co-hort studies and ranking the school using educational indicators. The schools which have low performance will be given special treatment to achieve the objectives of Sarva Shiksha Abhiyan.

2.18 Research, Evaluation and Monitoring:

During the year 2002-03, teacher educators of the BRCs are asked to observe the schools under school adoption programme(SAP).

Co-hort studies are conducted to identity the poor performance in teaching- learning process.

State Project Directorate is conducting review meeting in the implementation and improvement in the scheme activities, once in a month with the ADPC of all districts. Zonal review meetings are conducted by the SPD with DPC, Additional DPC and ADPCs.

The DPC is conducting monthly review with the BRC Supervisors and AEEOs, also the BRC supervisors are conducting monthly review meeting with the teacher educators.

2.19 Improving Infrastructure

2.19.1 Construction of Block Resource Centres

In 2001-02, two block resource centres and 2002-03 four block resource centres are under construction as detailed below.

1. Ambasamudram
2. Tenkasi
3. Keelapavoor
4. Valliyoor
5. Radhapuram
6. Sankarankovil

2.19.2 CONSTRUCTION OF CLUSTER RESOURCE CENTRES

In the District the construction of CRC is going on as shown in the table. The total no. comes to 15.

2.19.3 CONSTRUCTION OF THREE CLASSROOMS

In the year 2002-03, 22 three classroom construction work are going on. They are mostly in middle schools. The location of class rooms is shown in the table.

2.19.4 CONSTRUCTION OF TWO CLASSROOM

In 2002-03, 37 two class room work is going on. They are mostly accommodated in primary schools as shown in the table.

2.19.5 PROVISION OF TOILET FACILITIES

For the year 2002-03, 67 toilets are under construction.

2.19.6 PROVISION OF DRINKING WATER FACILITIES

Provision of Drinking water is given to 60 schools.

2.20 MAINTENANCE AND REPAIR Work

During the year 2002-03, 801 Government primary and middle schools are given maintenance grant. While washing, Color washing and Painting work, flooring are carried out in most of the schools. In some of the schools plastering for inclusive of 1:5:10 cement concrete using 1½" jelly and repair work for doors and windows and furniture fittings for doors and windows are going on. In some schools roof repairing works are carried out.

2.21 Programmes for Quality Improvement

2.21.1 Capacity building for Project Staff

The Teacher Educators were given three months school attachment programme to have a thorough knowledge in Child Psychology.

Five days orientation programme had given on SBT and SAP for BRC supervisors and ADPC's and in-turn, they gave training to teacher educators.

Five days orientation training was given to the BRC supervisors and teacher educators in the DIET, Munanjipatti.

The CRC Co-ordinators were given one day orientation programme as how to make effective use of CRC's for the children.

2.21.2. Training to Teachers:

For the preparation of TLM, 25 experienced and enthusiastic school teachers were selected and they were given 5 days orientation.

Multi-grade teaching training for teachers handling standard I - III was given by the BRC teacher educators. Five days training in content and methodology was given to standard IV - VIII teachers.

No. of beneficiaries are shown in the table.

Table-36
Training

Sl. No	Name of the Block	TLM Training	I-VIII standard content & Methodology					Total
			I Batch	II Batch	III Batch	IV Batch	V Batch	
1	Alangulam	25	25	29	56	51	56	242
2	Ambasamudram	25	38	67	55	111	100	396
3	Cheranmahadevi	25	29	64	61	50	52	281
4	Kadayam	25	56	36	34	30	32	213
5	Kadayanallur	25	30	58	64	61	62	300
6	Kalakadu	25	31	63	50	45	48	262
7	Keelapavoor	25	30	74	54	48	50	281
8	Kurvikulam	25	29	60	54	21	25	214
9	Manur	25	29	40	45	35	38	212
10	Melaneelithanallur	25	37	57	43	38	40	240
11	Nanguneri	25	32	29	38	59	60	243
12	Papakudi	25	30	39	41	60	62	257
13	Palayamkottai	25	31	64	41	33	35	229
14	Radhapuram	25	30	29	56	51	52	243
15	Sankarankovil	25	35	80	49	63	65	317
16	Shenkottai	25	29	33	45	35	40	207
17	Tenkasi	25	31	58	60	53	55	282
18	Vallioor	25	29	60	57	46	50	267
19	Vasudevanallur	25	31	55	78	67	60	316
20	Tirunelveli ©	25		44	62	63	60	254
21	Palayamkottai ©	25	31	54	56	42	50	258
	Total	525	643	1093	1099	1062	1092	5514

2.21.3 Orientation to VEC members:

Two days orientation training is given to 3 members of each VEC.

Table-37

VEC Training

S.No	Name of the Block	Total No. of Members	Member given training
1	Alangulam	445	49
2	Ambasamudram	395	82
3	Cheranmahadevi	1376	190
4	Kadayam	465	99
5	Kadayanallur	1155	262
6	Kalakadu	410	189
7	Keelapavoor	577	75
8	Kurvikulam	1410	110
9	Manur	905	205
10	Melaneelithanallur	1410	261
11	Nanguneri	1002	203
12	Palayamkottai	810	129
13	Pappakudi	533	117
14	Radhapuram	468	85
15	Sankarankovil	1904	568
16	Shenkottai	457	73
17	Tenkasi	750	303
18	Vallioor	450	102
19	Vasudevanallur	1560	427
20	Tirunelveli ©	225	64
21	Palaymkottai ©	225	72
	District Total	16932	3665

This table shows the total number of VEC members and trained VEC members. Other untrained members will be trained in the year 2003-04.

2.21.4. Provision of TLM, TLE and School Grant:

In the year 2002-03, TLM grant was given to 10061 teachers working in primary and middle schools.

TLE grant was given to 6 primary schools and 2 middle schools.

The no. of schools benefited under school grant scheme is 750. Rs.500/- is given to each teachers for preparing the teaching materials. The TLE grant of Rs.10,000/- is for primary schools and the same for the middle school is Rs. 50,000/-.

The district expert committee is formed and they have prepared a list of teaching learning equipments.

The VEC is instructed to purchase the TLE as per government norms.

2.21.5 Curriculum Revision – VI std Text Book:

The curriculum for standard VI class is revised and the preparation of new text book is going on. The experts appointed to review the curriculum and content text book is doing their work for maintaining the quality.

2.21.6 Innovation:

Computer Literacy, Vocational Skill Development:

For standard VI student computer classes are started. These are the basic level programmes in computer literacy. The courses are commenced from April 2003 and it will go upto the end of June 2003.

Vocational skill development programmes are formulated exclusively for girl students in order to earn while they are learning and after finishing their formal education. Arts and Craft teacher, Electricians, Tailoring Instructors etc. are the teachers for imparting the following vocational skill development activities.

1. Production of Soap, Perfumes, Shampoos, Ink etc
2. Garment making
3. Wire handicrafts work
4. Toy making
5. Preparation of ornaments
6. Beauty parlour Training
7. Repairing of domestic appliances
8. Training in fine arts
9. First aid training
10. Preparation of nutritious food
11. Making kitchen garden and its maintenance.

2.22. Project Management:

2.22.1 Establishment of MIS

One Data entry operator is appointed under the establishment of MIS of the DPO office.

2.22.2 Implementation of DISE

DISE forms are printed and distributed to the schools. The filled up DISE forms are collected and compiled. Block wise enrolment, no. of teachers, no. of schools, no. of classrooms and such school informations are collected and compiled in the DPO Office.

2.22.3. Appointment of Project Staff:

One ADPC, 21 BRC supervisors with 7 Teacher Educators in each blocks are appointed under the Sarva Shiksha Abhiyan scheme.

One Statistical Officer, One Superintendent, One Desk Superintendent, Two Assistant, Two Civil Consultants, One Data entry Operator are working.

2.23 Convergence with on going schemes:

There are seven important schemes which help for the enrolment of children in schools. They function in the following ways:

- a. Enrolment increases due to the Noon-Meal Scheme.
- b. SC/ST children are benefited by the Incentive scheme.
- c. Distribution of Free Uniforms, Text Books and Bus Pass encourages children to come to school.
- d. Health Scheme support the poor children with free medicines and treatments.
- e. Local Area Development Scheme increases the infrastructure facilities of the school.

1. Incentive Schemes:

SC/ST and MBC students are awarded scholarships, children of beedi workers are awarded special scholarships. An amount of Rs.1000/- is awarded to the children of workers who are working in most unclean areas like sweepers and scavengers. Girl children of beedi workers are awarded at the rate of Re. 1/- for the days they attended the schools. Also an amount of Rs.300/- is awarded to the children of beedi workers who scored above 60% marks in their SSLC exams.

2. Nutritious Noon-Meal Scheme:

Chief Minister's Nutritious Noon-Meal scheme was started in 1982. Because of this the enrolment, retention etc have been increased.

3. Free Distribution of Uniforms:

Free Uniforms are provided by the government to all the students studying in standard I to VIII under the Noon-Meal scheme Programme.

4. Free Distribution of Text Books:

The Tamil Nadu Text Books Corporation supplies free text books to all the children upto standard V without any discrimination for all the subjects.

5. Free Distribution of Bus pass:

The enrolment is increased around palayamkottai, Tirunelveli city and other Municipal Towns like Tenkasi, Puliangudi, Sankarankovil and Kadayanallur due to the distribution of free bus pass.

6. Health Scheme:

All the school children are blessed with medical check-ups once in every year. Free medicines and treatments are given by the health and medical departments. Primary Health Centres are functioning in all the major villages to look into these activities.

The teachers are advised to maintain a check register for the health habits of their wards.

7. M.P, M.L.A's Local Area Development Schemes:

From the area development scheme funds, the MPs, MLAs liberally release funds for improving the infrastructure facilities of the schools. This will help to a great extent in reducing the drop out rate.

9. Linkage with Non Governmental Organisations:

The NGOs are running Pre- Primary and Vocational schools. This will help to improve the access and enrolment.

The following table shows the details of the students benefited by the above schemes.

Table-438

INCENTIVES - 2002-03

Sl No	Name of the Block	Free Text Books	Free Uniforms	Free Noon Meals	Attendance Scholarship (Only Girls)
1	Alangulam	12311	9324	9324	47
2	Ambasamudram	10797	7099	7099	119
3	Cheranmahadevi	10066	7703	7703	35
4	Kadayam	9534	6730	6730	25
5	Kadayanallur	14229	9337	9337	186
6	Kalakadu	11113	8541	8541	55
7	Keelapavoor	17228	13373	13373	96
8	Kurvikulam	9953	8784	8784	38
9	Manur	20752	22066	22066	843
10	Melaneelithanallur	9280	8745	8745	27
11	Nanguneri	11869	10046	10046	74
12	Palayamkottai	27963	15627	15627	411
13	Papakudi	8133	6605	6605	81
14	Radhapuram	14197	11722	11722	52
15	Sankarankovil	15281	11833	11833	182
16	Shenkottai	7763	6079	6079	87
50	Tenkasi	17162	11351	11351	162
18	Valliur	16757	12688	12688	224
19	Vasudevanallur	21963	15594	15594	225
20	Tirunelveli ©	Included in Manur			
21	Palaymkottai ©	Included in Palayamkottai			
	Total	266351	203247	203247	2969

[Source: DISE 2002]

10. Child labour schools:

In this district Ministry of labour and welfare is running 50 schools for child labour.

Table – 39

Child Labour Schools

Sl.No	Name of Blocks	No of child Labour Schools	No. of Children Studying		Total
			Male	Female	
1	Keela Pavor	3	80	68	148
2	Alankulam	3	75	70	145
3	Pappakudi	8	195	1787	382
4	Manur	4	96	88	184
5	Palayamkottai	3	78	68	146
6	Ambasamudram	5	130	115	245
7	Shencottai	1	28	20	48
8	Kadayanallur	3	76	70	146
9	Nangunari	2	47	44	91
10	Melaneelithanallur	1	26	23	49
11	Sankarankovil	4	98	90	188
12	Tenkasi	2	56	42	98
13	Kadayam	2	54	42	96
14	Cheranmahadevi	3	80	60	146
15	Vasudavanallur	3	82	60	142
Total		50	1201	1053	2254

(Source Ministry of labour)

Each child labour school has a strength of 50 students ,each student is given a scholarship of Rs.100/.

2.24 Issues and Strategies

2.24.1 Access:

The access ratio of the district for primary school for 2001-02 is 99.2% and the rate for upper primary school is 99%. After providing 6 primary schools and 2 upper primary schools during the year 2002-03, the GER for primary schools is 99.67 and that for upper primary is 99.8. To achieve 100% access it is proposed to start 6 primary schools and 6 upper primary schools in the unserved habitations.

2.24.2 Enrolment:

The NER for primary schools for the year 2001-02 is 98% and the same for upper primary schools is 90% respectively. For the year 2002-03 the NER for primary school is 98.5% and the value for upper primary is 93%. So there is substantial increase in primary and upper primary schools. This is because of the implementation of Sarva Shiksha Abhiyan programme.

2.24.3 Completion Rate:

The completion rate both for primary and upper primary schools for the year 2001-02 is 60%. For the year 2002-03, the Completion rate for primary schools is 70% and the rate for upper primary schools is 75%.

There is 10% increase in Completion rate regarding primary schools and 15% increase in Completion rate in the case of upper primary schools.

2.24.4 Repetition Rate

For the academic year 2001-02 the Repetition rate is 25% both for primary and upper primary schools. For the year 2002-03 the Repetition rate for primary is 23% and the value for upper primary school is 16% respectively. There is a substantial decrease in Repetition rate.

2.24.5 Dropout Rate:

For the year 2001-02, the value is 15% both for primary and upper primary schools. For the year 2002-03, the value is 7% for primary and 9% for upper primary schools.

The indicators Completion rate, Repetition Rate and Dropout rate, schools show that there is an improvement due to the implementation of the Sarva Shiksha Abhiyan Scheme.

2.24.6 Teacher Pupil Ratio - Primary schools

Regarding primary schools in Tirunelveli district, the district average is 1:40 for the year 2002-03. But in Kalakadu the ratio is 1:28 and in Senkottai ratio is 1:63.

For those schools in which the Teacher Pupil Ratio is more than 1:40, Additional Teachers will be appointed.

STRATEGIES TO BE IMPLEMENTED: Suitable transfer of teachers should be implemented in order to accommodate the objectives of SSA and follow the rules and regulations of Tamilnadu Government so as to reach the Teacher Pupil Ratio of 1:40.

UPPER PRIMARY SCHOOLS:

The TPR values in Alangulam is 1:59 for the year 2002-03 . In Pappakudi it is 1:53 for the year 2002-03. In Sengottai it is 1:48 and in Tenkasi it is 1:50 for the year 2002-03 and these four blocks needs more teachers.

STRATEGIES TO BE IMPLEMENTED:

Necessary steps will be taken to transfer or appoint new teachers for these schools so as to fulfill the government norms, ie 1:40.

2.24.7 Completion, Repetition and Dropout Rate:

The main objective of Sarva Shiksha Abhiyan is to make 100% Completion rate and to nullify the repetition and dropout rate. But the actual status is not so.

So in order to reach for goals of Sarva Shiksha Abhiyan the following are the strategies to be implemented. One of the important objectives of SSA is to impart QUALITY EDUCATION . To improve the quality of education, teachers are taking much efforts throughout the district.

Taking the completion rate into account, a sudden change can be seen in this year and the difference of 10% is seen higher than the last year's performance. This shows the quality in education has been increased to some extent. The achievement level of girls has been increased gradually. The increased completion rate shows general awareness towards education, and students thirst for knowledge and interest in particular. This shows the positive approach of both the students as well as their parents towards education. The completion rate for the year 2001-2002 is 60 and the completion rate for this year i.e 2002-2003 is 70.

The difference between these groups is around 10%which points out the positive approach and this gives the confidence that 100% completion rate would be attained soon.

As per the norms of SSA, the average completion rate should be at the maximum level of 100% as well, where as repetition rate and dropout rate should be decreased gradually till it becomes nil. Similar difference is clearly found out from the table.

Taking the repetition rate of 2001-02 for primary schools with the rate of the year 2002-03 is around 2%. The level of the repeaters has been reduced. Two percentage of decrease for one year shows a very good performance.

An overall survey can be taken throughout the district on the basis of the measures taken to reduce the RR, which may be very helpful for further decrease of this level in the years to come, so as to reach our goal early.

Focusing on the sixth important objectives of SSA, individual care and attention should be given in each and every step to make the child complete her studies within five years from the enrolment. The dropout rate of boys in the year 2001-02 was 15.41, but it is 4.18 in 2002-03. This is achieved because of more than 2/3 of the total number of the boys were given special attention. It is similar to female children also. In the previous year the dropout rate of female children was 13.86. Now it is reduced to 6.32% and it shows that half of the total number of children were given special attention. As the scheme stresses education for girl children, this difference gives some sort of consolation to everyone.

To have a view of both the tables, the overall achievement in the district shows a very good improvement in the completion rate and other rates to meet the needs of the prescribed norms. In the year 2001-2002 the achievement rate of the children in Kalakkadu block was 51% and now the achievement rate is 62.60% for the year 2002-2003. A very good progress is seen. To attain 100% of completion, Ambasamudram block in Tirunelveli district can be selected as a model to follow. The block shows 96.84%. It stands top among 21 blocks.

STRATEGIES TO BE IMPLEMENTED:

1. To attain 100% of completion it has been suggested that the syllabus may be revised to meet the suitability, of ability of the children.
2. Maximum utilisation of ABT cards /activity cards may be stressed.
3. Proper in-service training to the teachers may be conducted.
4. The resources at BRC level may be enriched.
5. Special coaching classes are to be conducted for the children of special focus group.

2.24 ISSUES AND STRATEGIES:

Enrolment:

In this district the net enrolment ratio is 97.28 and 93.34 for primary and Upper Primary respectively. Access is not a constrain in this district for the shortage of Enrolment. To attain the objectives of SSA the NER should be taken to 100% . In order to raise 2.72% and 6.66% enrolment in Primary / Upper primary the following strategies are suggested.

1. Enrolment mela
2. Parents awareness Campaign
3. Training for VEC members.
4. Assistance of NGO's and village youths.
5. ECCE centers and Primary schools should be increased to enhance the enrolment

Dropout students:

In this district the dropout rate is 7 and 9 for Primary and Upper primary schools respectively. DR of girls is lesser than boys, both in primary and Upper primary schools.

Strategies :

1. Periodic in-service trainings to teachers both in content and methodology.
2. Joyful learning activities should be strengthened.

Repetition Rate:

In this district the repetition rate is 23 and 16 for primary and upper primary school respectively.

1. Periodic in-service trainings to teachers both in content and methodology.
2. Special coaching for SC/ST students and slow learners.
3. Joyful learning activities.

2.24.8 Out of School Children:**Issues**

The total no of school children as per house hold survey is 21,223. In this 1080 students are enrolled during the year 2002-03.

So the remaining students will be enrolled in 2003-04.

Strategies

In the year 2003-04 676 bridge courses and 10 residential camp and one EGS centre will serve for the purpose of mainstreaming the out of school children.

For those who have completed the age of 14, will be given 3 months short term condensed course and asked to appear for the ESLC examination.

2.24.9 SCHOOL BASED TEACHING

It is decided to give SBT for the schools which need improvement in performance and effectiveness.

SBT is given

1. To develop the skill of teaching effectively
2. To guide the teacher adopting activity based teaching
3. To rectify the hardships of the teacher
4. To implement the training of the teachers which they get while in service
5. To lead them to fulfill the expectation of the society
6. To train the VEC& to make them involve in the development of the school.

STRATEGIES TO BE IMPLEMENTED

1. With the help of well-planned lesson plan, the teacher can teach effectively.
2. Performing the activities such as self-study, collective teaching and activity based teaching
3. Hard spots may be identified at the beginning of the academic year can be clarified immediately
4. Use of well planned TLM and TLE would help the teachers to teach confidently.

2.24.10 Special Focus Group

Issues

Special Focus Group comprises girls, SC/ST and Disabled children. Their enrolment, retention, dropout, transition rate are the great problems to attain the goals of Sarva Shiksha Abhiyan.

Strategies

So special admission melas, awareness campaign to parents and women, etc will be conducted.

SC/ST and girl children will be given one and half an hour coaching class daily after the school hours in the evening. Regular teachers working in the school will take care of them and a separate attendance is maintained. The teachers who conduct the class will be paid Rs.10/- per pupil for a month, periodical tests will be conducted and their progress is monitored. In this district there are 668 coaching centres with 38665 students.

CHAPTER – III

ACTIVITIES AND BUDGETING

3.1 PRIMARY SCHOOLS

The access ratio of the district for primary school for 2001-02 is 99.2%.

After Providing 6 primary schools during the year 2002-03 ,the GAR for primary school is 99.67%. To achieve the objectives of SSA it is proposed to start 6 primary schools in the following unserved habitations during the year 2003-04.

Block	Habitations
1.Kadayanallur	1. Shenbaganallur
	2. Meenakshipuram
	3. Samathuvapuram
2.Palayamkottai Rural	4. Pudu gramam
3.Radhapuram	5. Kothankulam
4.Vasudevanallur	6. Ratnapuri

During the year 2003-04 the budget allotment regarding primary schools is as follows;-

1.The salary of 24 new teachers is	20.16 lakhs
2.School grant for 657 schools is	13.140 lakhs
3.Teacher grant for 5014 teachers is	25.070 lakhs
4.TLE grant for 6 schools is	0.600 lakhs

And so totally the budget allotment for primary schools is Rs. 58.976 lakhs.

3.2 UPPER PRIMARY SCHOOL

The access rate of the district for upper primary school for 2001-02 is 99%. After providing 2 upper primary schools during the year 2002-03 , the GAR for upper primary schools is 99.8%. To achieve 100% access it is proposed to start 6 upper primary schools in the following unserved habitations.

Block	Habitations
1.Manur	1. Kalakudi
2.Palayamkottai Rural	2. Kuthukkal
3.Sankarankovil	3. Veerirupu
	4. Irumankulam
4.Vasudevanallur	5. Kudalur
	6.Arukankulam

For the year 2003-04 the budget provision is as follows:

1.	The salary of 16 new teachers is	13.440 lakhs
2.	The salary of 20 addl. new teachers is	16.800 lakhs
3.	The school grants for 220 schools is	4.400 lakhs
4.	Teachers grants for 5504 teachers is	27.520 lakhs
5.	TLE grant for 6 school is	3.000 lakhs

The total provision for upper primary schools is Rs.65.160 lakhs.

3.3 ALTERNATIVE AND INNOVATIVE EDUCATION

In the year 2003-04 the budget allotment for 4 EGS centre is Rs.0.845 lakhs, for 676 bridge courses/ transit camps the allotment is Rs.142.805 lakhs and for 10 residential camps the provision is Rs 15.000 lakhs.

So totally, the Budget Allotment is Rs.158.650 lakhs

3.4 SPECIAL FOCUS GROUPS

For the year 2003-04 the budget allotment for special focus group is as detailed below:

1.Education for 2554 disabled children	Rs 30.648 lakhs
2.Education for 7500 girls	Rs 15.000 lakhs
3.Education of 20000 sc/st children	Rs 40.000 lakhs

So total expenditure is Rs 85.648 lakhs.

3.5 VILLAGE EDUCATION COMMITTEE

The budget allotment for 900 for VECs is Rs.10.611 lakhs. To train 900 VECs the allotment is Rs.10.611 lakhs, so totally the expenditure comes to Rs 21.220 lakhs for the year 2003-04.

3.6 CLUSTER RESOURCE CENTRES

For giving training for 10,500 teachers in Cluster Resource centres the allotment is totally Rs 21.000 lakhs for the year 2003-04.

3.7 BLOCK RESOURCE CENTRES

For the year 2003-04 the budget allotment is as follows:

- | | |
|---|-------------------|
| 1 The salary of staff for 21 centres is | Rs. 210.000 lakhs |
| 2 The contingent grant for 21 centres is | Rs. 2.625 lakhs |
| 3 For conducting workshop and Meetings in
21 centres | Rs. 0.105 lakhs |
| 4 For workshops and meetings | Rs. 1.050 lakhs |
| 5 TA/DA for 21 centres | Rs. 21.000 lakhs |

So the total layout is **Rs. 234.780 lakhs.**

3.8 RESEARCH EVALUATION AND MONITORING

Survey will be conducted to find out Non enrolled and Dropout children in the age group of 5+ to 13+ in all the habitations with the help of N.S.S N.C.C, JRC and SCOUT volunteers in all High and Higher secondary school levels. There are 1,952 habitations in this district. So Rs.5.00 lakhs is absolutely necessary for this survey.

It is decided to Conduct base line assessment survey, (pre-test) for the standard I and standard V students during June - 2003.

The same students will be given post –test during the month of April 2004 to know the impact of the training given to the teachers.

For the research evaluation and monitoring the total expenditure allotment is 11.250 lakhs.

3.9 CIVIL CONSTRUCTION WORKS

For the year 2003-2004 the following are the details of the expenditures:

1. For the construction of 3 BRCs the allotment is Rs. 18 lakhs,
2. For the constructions of 15 CRCs the allotment is Rs. 30 lakhs.
3. To construct 25 two class rooms the provision is Rs. 75 lakhs.
4. To construct 6 three class rooms the provision is Rs. 27 lakhs.

5. To provide drinking water facilities in 20 schools the provision is Rs. 3.000 lakhs.
- 6 To construct 20 toilets the allotment is Rs. 4.000 lakhs.

So the total allotment for civil construction work is Rs.157 lakhs.

There are a few places like Sundara Bhavanam at Papanasam where students of Scouts and JRC come for training throughout the year. Students from other districts also come and stay here. The training is conducted for four or five days for each batch of about 200 students. The facilities are not sufficient especially, the facilities of drinking water and toilet. To cater to the needs of such boys and girls of the age group 10 to 14 additional facilities are to be provided. A requisition has been received from the secretary. So it is proposed to provide toilet and drinking water facilities to this centre.

Similarly if such requirement is needed, such applications are also to be considered.

3.10 Maintenance and Repair works.

For the year 2003-04 the total allotment for maintenance and repair works to carry out in 77 schools is Rs.43.850 lakhs.

3.11 Management:

Under this head the budget provision of Rs.43.640 lakhs is there. The break up for Management is as follows.(Rs. in lakhs)

1.	Salary of staff	Rs 22.000
2.	Furniture and equipment	Rs 3.000
3.	Books and periodicals	Rs 0.500
4.	Maintenance of equipment	Rs 0.500
5.	Consumable and stationary	Rs 0.350
6.	Management information system	-
7.	Media and documentation	Rs 2.000
8.	TA/DA	Rs 1.000
9.	Consultancy	Rs 2.500
10.	Contingency	Rs 0.140
11.	Training to 400 Project staff	Rs 4.000

Total expenture is 37.990 lakhs.

3.12 Training:

For the year 2003-04 , the total allotment of Rs.140.196 lakhs is distributed as given below:

1.Training to 5014 primary teachers	Rs 70.196 lakhs
2.Training to 5000 upper primary teachers	Rs 70.00 lakhs

3.13 Innovation

i. It has been decided to conduct bridge course in June 2003 for standard VI students in English, Mathematics and Science subjects. For this is a separate syllabus in a condensed form which will be framed by the BRTs.

ii. School Readiness Programmes

School readiness programme is planned for the children of 3+ before the entry of primary schools. The target group is the children who are not benefited by the ICDS centres.

For the year 2003-04 the total allotment of **Rs 50.000 Lakhs** is distributed as detailed below.

For the Computer education the allotments is Rs.15,000 Lakhs. For the education of girls for imparting training useful Vocational Arts and Crafts activities the allotment is Rs.15.000 Lakhs. For the education of SC/ST children to give useful training in Vocational Arts and Crafts activities Rs.5.000 Lakhs is allotted. For the Nursery Education the provision is Rs.15.000 Lakhs.

Totally the budget allotment required for Tirunelveli district of TamilNadu State is Rs.1085.710 Lakhs.

3.14 PROCUREMENT PLAN

For the purchase of TLE, the VEC is empowered to do the work. They will follow the normal government norms. For the purchase of furnitures BRCs and CRCs, collect 3 quotations from the government run organizations and orders will be placed for the least quoted organisation.

BRC building will be constructed by the Executive Engineer, P.W.D Technical Education Division of the Tamilnadu government by calling open tenders.

For the construction of 2 class rooms and 3 class-rooms and CRC buildings, toilets, drinking water, VEC is empowered for the execution of the work.

3.15 IMPLEMENTATION SCHEDULE FOR 2003-2004

S. No	Maj. Act	Activity Description	Ist Quarter	2 nd Quarter	3rd Quarter	4th Quarter
1	PFE	Opening of new schools	* * *			
		Appointment of new teachers	* * *			
		Appointment of additional Teachers	* * *			
		School Grants	* * *			
		Teachers Grants	* * *			
		TLE Grants	* * *			
2	UPE	Upgrading Primary Schools	* * *			
		Appointment of new teachers	* * *			
		Appointment of additional Teachers	* * *			
		School Grants	* * *			
		Teachers Grants	* * *			
		TLE Grants(New & uncovered OBB Schools)	* * *			
3	AIE	EGS Centres	✓	* * *	* * *	* * *
		Residential Camps	✓	* * *	* * *	* * *
		Bridge Courses	✓	* * *	* * *	* * *
4	SFG	Education of disabled		* * *	* * *	* * *
		Education of Girls		* * *	* * *	* * *
		Education of SC/ST		* * *	* * *	* * *
5	CRC	Workshops and Meetings	* * *	* * *	* * *	* * *
		Furniture	* * *			
		Contingency Grant	* * *	* * *	* * *	* * *
		TLM Grant	* * *	* * *	* * *	* * *
6	BRC	Salary of Staff	* * *	* * *	* * *	* * *
		Furniture	* * *	* * *		
		Contingency Grant	* * *	* * *	* * *	* * *
		Workshops and Meetings	* * *	* * *	* * *	* * *
		TLM Grant	* * *		* * *	
		Training Equipments		* * *		
7	REM	Research Evaluation and Monitoring		* * *	* * *	* * *
S.	Maj.	Activity Description	Ist	2nd	3rd	4th

No	Act		Quarter	Quarter	Quarter	Quarter
8	CCW	Construction of BRCs	***	***	***	***
		Construction of CRCs	***	***	***	***
		Construction of two classroom	***	***	***	***
		Construction of three classroom	***	***	***	***
		Drinking Water	***	***	***	***
		Toilets	***	***	***	***
9	MRW	Repairs	***	***	***	***
10	MGT	Salary of Staff	***	***	***	***
		Furniture and Equipment	***	***		
		Books and Periodicals		***		
		Maintenance of equipment	***	***	***	***
		Consumable and Stationery	***	***	***	***
		TA/DA	***	***	***	***
		Consultancy	***	***	***	***
		Contingency	***	***	***	***
		Training of CRC Staff		***		***
		Training of BRC Staff	***	***		***
11	TRG	Training to Teachers(Primary)		***	***	***
		Training to Teachers (Middle)		***	***	***
12	VEC	Training of VEC members	***			
13	INO	Computer Education		***	***	***
		Edn.of Girls - Inn Programmes		***	***	***
		Edn of SC/ST Children - Inn. Programmes		***	***	***
		ECE(New Centres)		***	***	***

Table A

S. No.	Maj. Act.	Activity Description	Thirunelveli				
			2001-2002				
			Receipt		Exp.	Spill	
Phy.	Fin.	Phy.	Fin.				
1	PFE	Primary Schools					
i		No. of Schools					
ii		Salary of new teachers	10	8.400		10	8.400
iii		Salary of addl. Teachers					
iv		School Grants					
v		Teachers Grants					
vi		TLE Grants	134	13.4		134	13.4
		Total		21.800			21.800
2	UPE	Upper Primary Schools					
i		No. of Schools					
ii		Salary of new teachers	2	1.680			1.680
iii		Salary of addl. Teachers					
iv		School Grants					
v		Teachers Grants					
vi		TLE Grants	16.000	8.000		0.000	8.000
		Total		9.68			9.68
3	AIE	Alternative & Innovative Educatio					
i		EGS Centres (Unservd Habitations)					
ii		Bridge Courses/Transit Camps					
iii		Residential Camps					
		Total		0			0
4	SFG	Special Focus Groups					
i		Education of disabled	1837	22.040			22.040
ii		Education of Girls					
iii		Education of SC/ST Children					
		Total		22.04			22.04
5	VEC	Village Education Committees					
i		Meetings					
ii		Training					
		Total		0			0
6	CRC	Cluster Resource Centres					
i		Workshops and Meetings					
ii		Furniture	192	19.200		192	19.200
iii		Contingency Grant	192	4.800		192	4.800
iv		TLM Grant					
v		TLE Grant					
vi		Library Books					
vii		TA/DA					
		Total	384	24		384	24
7	BRC	Block Resource Centres					
i		Salary of Staff	2	29.717			
ii		Furniture	63	29.717		0	29.717
iv		Workshops and Meetings					
v		TLM Grant					
vi		Training Equipments					
vii		Library Books					
viii		TA/DA					
		Total	63.000	29.717		0.000	29.717
8	REM	Research, Evaluation & Monitoring					
9	CCW	Civil Construction Works					

S. No.	Maj. Act.	Activity Description	Thirunelveli				
			2001-2002				
			Receipt		Exp.	Spill	
			Phy.	Fin.		Phy.	Fin.
i		Construction of BRCs	4	24.000		4	24.000
ii		Construction of CRCs	4	8.000		4	8.000
iii		Construction of two classroom	9	27.000		9	27.000
iv		Construction of three classroom	6	27.000		6	27.000
v		Drinking Water	17	2.550		17	2.550
vi		Toilets	22	4.400		22	4.400
		Total	62.000	92.950		62.000	92.950
10	MRW	Maintenance & Repair Works					
11	MGT	Management					
i		Salary of staff					
ii		Furniture and Equipment					
iii		Books and Periodicals					
iv		Maintenance of equipment					
v		Consumable and Stationery					
vi		Management Information System					
vii		Media and Documentation					
viii		Training to Project Staff					
ix		Consultancy					
x		Contingency					
xi		TA/DA					
		Total	0.000	0.000		0.000	0.000
12	TRG	Training					
i		Training to Teachers (Primary)					
ii		Training to Teachers (Middle)					
		Total	0.000	0.000		0.000	0.000
13	INO	Innovation					
i		Computer Education		0.030			0.030
ii		Edn. of Girls (Arts and Crafts)					
iii		Edn. of SC/ST Children (Arts and					
iv		Nursery Education					
		Total	0.000	0.030		0.000	0.030
		Grand Total		200.217			200.217

Table B

S. No.	Maj. Act.	Activity Description	Thirunelveli						
			Receipt		Expenditure		Spillover		
			Phy	Fin	Phy	Fin	Phy	Fin	
1	PFE	Primary Schools							
i		No. of Schools	6						0.000
ii		Salary of new teachers	12	10.080	12	10.080			0.000
iii		Salary of addl. Teachers							0.000
iv		School Grants	1471	29.420	651	13.020			16.400
v		Teachers Grants	8024	40.120	5135	25.675			14.445
vi		TLE Grants			6	0.600			-0.600
		Total	9513.000	79.620	5804.000	49.375	0.000		30.245
2	UPE	Upper Primary Schools							
i		No. of Schools							0.000
ii		Salary of new teachers	6	4.200	6	4.200			0.000
iii		Salary of addl. Teachers							0.000
iv		School Grants	516	10.320	99	1.980			8.340
v		Teachers Grants	6092	30.460	4926	24.620			5.840
vi		TLE Grants	2	1.000	2	1.000			0.000
		Total	6616.000	45.980	5033.000	31.800	0.000		14.180
3	AIE	Alternative & Innovative Education							
i		EGS Centres (Unserved Habitations)	4	0.845	4	0.845		0	0
ii		Bridge Courses/Transit Camps							
iii		Residential Camps							0.000
		Total	4.000	0.845	4.000	0.845	0.000		0.000
4	SFG	Special Focus Groups							
i		Education of disabled	3000	12.000					12.000
ii		Education of Girls							0.000
iii		Education of SC/ST Children							0.000
		Total	3000.000	12.000	0.000	0.000	0.000		12.000
5	VEC	Village Education Committees							
i		Meetings	2121	10.181	750	3.600			6.58
ii		Training			750	3.600			-3.60
		Total	2121.000	10.181	1500.000	7.200	0.000		2.98
6	CRC	Cluster Resource Centres							
i		Workshops and Meetings	192	2.688	0	3.598		0	-0.9
ii		Furniture							
iii		Contingency Grant	192	4.800					4.80
iv		TLM Grant	192	1.920					1.92
v		TLE Grant							0.00
vi		Library Books							0.00
vii		TA/DA							0.00
		Total	576.000	9.408	0.000	3.598	0.000		5.8
7	BRC	Block Resource Centres							
i		Salary of Staff	19	159.6	19	159.6		0	
ii		Furniture							

S. No.	Maj. Act.	Activity Description	In millions					
			Receipt		Expenditure		Spillover	
			Phy	Fin	Phy	Fin	Phy	Fin
iii		Contingency Grant	19	2.375	19	2.375		0.000
iv		Workshops and Meetings	19	0.665	19	0.665		0.000
v		TLM Grant	19	0.950	19	0.950		0.000
vi		Training Equipments						0.000
vii		Library Books						0.000
viii		TA/DA						0.000
		Total	76.000	163.590	76.000	163.590	0.000	0.000
8	REM	Research, Evaluation & Monitoring	801	7.209		0.239		6.970
9	CCW	Civil Construction Works				100.525		
i		Construction of BRCs	2	12.000		6.000		6.000
ii		Construction of CRCs	11	22.000		11.000		11.000
iii		Construction of two classroom	34	102.200		47.300		54.900
iv		Construction of three classroom	16	72.000		36.000		36.000
v		Drinking Water	3	0.450		0.225		0.225
vi		Toilets						0.000
		Total	66.000	208.650	0.000	100.525	0.000	108.125
10	MRW	Maintenance & Repair Works	801	40.050	801	40.050		0.000
11	MGT	Management						
i		Salary of staff		20.879		5.820		15.059
ii		Furniture and Equipment						0.000
iii		Books and Periodicals						0.000
iv		Maintenance of equipment						0.000
v		Consumable and Stationery						0.000
vi		Management Information System						0.000
vii		Media and Documentation						0.000
viii		Training to Project Staff						0.000
ix		Consultancy						0.000
x		Contingency						0.000
xi		TA/DA						0.000
		Total	0.000	20.879	0.000	5.820	0.000	15.059
12	TRG	Training						
i		Training to Teachers (Primary)	2407	33.701	2407	33.701		0.000
ii		Training to Teachers (Middle)	1827	25.572	1827	25.572		0.000
		Total	4234.000	59.273	4234.000	59.273	0.000	0.000
13	INO	Innovation						
i		Computer Education	0	15.000				15.000
ii		Edn. of Girls (Arts and Crafts)	7500	15.000				15.000
iii		Edn. of SC/ST Children (Arts and Crafts)	7500	15.000	7500	15.000		0.000
iv		Nursery Education						0.000
		Total		45.000		15.000		30.000
		Grand Total		702.685		477.315		225.370

Table - C

S. No.	Maj. Act.	Activity Description	Thirunelveli				2002-03 spillover
			2001-2002		Expenditure		
			Spillover Phy.	Fin.	Phy.	Fin.	
1	PFE	Primary Schools					
i		No. of Schools					0.000
ii		Salary of new teachers	10	8.400	10	8.400	0.000
iii		Salary of addl. Teachers					0.000
iv		School Grants					16.400
v		Teachers Grants					14.445
vi		TLE Grants	134	13.4	134	13.4	-0.600
		Total		21.800		21.800	30.245
2	UPE	Upper Primary Schools					0.000
i		No. of Schools					0.000
ii		Salary of new teachers	2	1.680		1.680	0.000
iii		Salary of addl. Teachers					0.000
iv		School Grants					8.340
v		Teachers Grants					5.840
vi		TLE Grants	16.000	8.000	0.000	8.000	0.000
		Total		9.68		9.68	14.180
3	AIE	Alternative & Innovative E					0.000
i		EGS Centres (Unserved					0
ii		Bridge Courses/Transit Camp					0
iii		Residential Camps					0.000
		Total		0		0	0.000
4	SFG	Special Focus Groups					0.000
i		Education of disabled	1837	22.040		22.040	12.000
ii		Education of Girls					0.000
iii		Education of SC/ST Children					0.000
		Total		22.04		22.04	12.000
5	VEC	Village Education Committ					0.000
i		Meetings					6.581
ii		Training					-3.600
		Total		0		0	2.981
6	CRC	Cluster Resource Centres					0.000
i		Workshops and Meetings					-0.91
ii		Furniture	192	19.200	192	19.200	0.000
iii		Contingency Grant	192	4.800	192	4.800	4.800
iv		TLM Grant					1.920
v		TLE Grant					0.000
vi		Library Books					0.000
vii		TA/DA					0.000
		Total	384	24	384	24	5.810
7	BRC	Block Resource Centres					0.000
i		Salary of Staff					0
ii		Furniture	63	29.717	0	29.717	0.000
iv		Workshops and Meetings					0.000
v		TLM Grant					0.000
vi		Training Equipments					0.000
vii		Library Books					0.000
viii		TA/DA					0.000
		Total	63.000	29.717	0.000	29.717	0.000
8	REM	Research, Evaluation &					6.970
		Monitoring					
9	CCW	Civil Construction Works					0.000

i		Construction of BRCs	4	24.000	4	24.000	6.000
ii		Construction of CRCs	4	8.000	4	8.000	11.000
iii		Construction of two	9	27.000	9	27.000	54.900
iv		Construction of three	6	27.000	6	27.000	36.000
v		Drinking Water	17	2.550	17	2.550	0.225
vi		Toilets	22	4.400	22	4.400	0.000
		Total	62.000	92.950	62.000	92.950	108.125
10	MRW	Maintenance & Repair Works					0.000
11	MGT	Management					0.000
i		Salary of staff					15.059
ii		Furniture and Equipment					0.000
iii		Books and Periodicals					0.000
iv		Maintenance of equipment					0.000
v		Consumable and Stationery					0.000
vi		Management Information Sys					0.000
vii		Media and Documentation					0.000
viii		Training to Project Staff					0.000
ix		Consultancy					0.000
x		Contingency					0.000
xi		TA/DA					0.000
		Total	0.000	0.000	0.000	0.000	15.059
12	TRG	Training					0.000
i		Training to Teachers (Primary)					0.000
ii		Training to Teachers (Middle)					0.000
		Total	0.000	0.000	0.000	0.000	0.000
13	INO	Innovation					0.000
i		Computer Education		0.030		0.030	15.000
ii		Edn. of Girls (Arts and					15.000
iii		Edn. of SC/ST Children					0.000
iv		Nursery Education					0.000
		Total	0.000	0.030	0.000	0.030	30.000
		Grand Total		200.217		200.217	225.370

Sarva Shiksha Abhiyan, Tamilnadu

**Table D
Budget Estimate for 2003-2004**

S. No.	Maj. Act.	Activity Description	Unit Cost	Thirunelveli	
				Phy.	Fin.
1	PFE	Primary Education			
i		No. of Schools		6	
ii		Salary of new teachers	0.840	24	20.160
iii		Salary of addl. teachers	0.840		
iv		School Grant	0.020	657	13.140
v		Teachers Grant	0.005	5014	25.070
vi		TLE Grant	0.100	6	0.600
		Total			58.970
2	UPE	Upper Primary Education			
i		No. of Schools		6	
ii		Salary of new teachers	0.840	16	13.440
iii		Salary of addl. teachers	0.840	20	16.800
iv		School Grant	0.020	220	4.400
v		Teachers Grant	0.005	5504	27.520
vi		TLE Grant	0.500	6	3.000
		Total			65.160
3	AIE	Alternative & Innovative Education			
i		EGS Centres (Unservd Habitations)	0.211	4	0.845
ii		Bridge Courses/Transit Camps	0.211	676	142.805
iii		Residential Camps	0.030		15.000
		Total			158.650
4	SFG	Special Focus Group			
i		Education of disabled	0.012	2554	30.648
ii		Education of Girls	0.002	7500	15.000
iii		Education of SC/ST Children	0.002	20000	40.000
		Total			85.648
5	VEC	Village Education Committees		1179	
i		Meetings	0.018		10.611
ii		Training	0.009		10.611
		Total			21.222
6	CRC	Cluster Resource Centres		192	
i		Workshops and Meetings	0.002		21.000
ii		Furniture	0.100		
iii		Contingency Grant	0.025		
iv		TLM Grant	0.010		
v		TLE Grant	0.250		
vi		Library Books	0.100		
vii		TA/DA	0.002		
		Total			21.000
7	BRC	Block Resource Centres		21	
i		Salary of Staff	10.000		210.000
ii		Furniture	1.000		
iii		Contingency Grant	0.125		2.625
iv		Workshops and Meetings	0.005		0.105
v		TLM Grant	0.050		1.050
vi		Training Equipments	1.000		
vii		Library Books	0.250		
viii		TA/DA	1.000		21.000
		Total			234.780

S. No.	Maj. Act.	Activity Description	Unit Cost	Thirunelveli	
				Phy.	Fin.
8	REM	Research, Evaluation & Monitoring	0.015	750	11.250
9	CCW	Civil Construction Works			
i		Construction of BRCs	6.000	3	18.000
ii		Construction of CRCs	2.000	15	30.000
iii		Construction of two classroom	3.000	25	75.000
iv		Construction of three classroom	4.500	6	27.000
v		Drinking Water	0.150	20	3.000
vi		Toilets	0.200	20	4.000
		Total			157.000
10	MRW	Maintenance & Repair Works	0.050	877	43.850
11	MGT	Management			
i		Salary of staff	22.000		22.000
ii		Furniture and Equipment	3.000		3.000
iii		Books and Periodicals	0.500		0.500
iv		Maintenance of equipment	0.500		0.500
v		Consumable and Stationery	0.350		0.350
vi		Management Information System	2.000		2.000
vii		Media and Documentation	2.000		2.000
viii		Training to Project Staff	0.010		4.000
ix		Consultancy	2.500		2.500
x		Contingency	0.140		0.140
xi		TA/DA	1.000		1.000
		Total			37.990
12	TRG	Training			
i		Training to Teachers (Primary)	0.014	5014	70.196
ii		Training to Teachers (Upper Primary)	0.014	5000	70.000
		Total			140.196
13	INO	Innovation			
i		Computer Education	15.000		15.000
ii		Edn. of Girls (Arts and Craft)	15.000		15.000
iii		Edn. of SC/ST Children (Arts and Craft)	5.000		5.000
iv		Nursery Education	15.000		15.000
		Total			50.000
		Grand Total			1085.716

ABTRACT 2003 2004.

MAJOR ACTIVITY WISE BUDGET

Sl.No	Major Activity	Amount in Lakhs
1	PFE	58.970
2	UPE	65.160
3	AIE	158.850
4	SFG	85.648
5	VEC	24.300
6	CRC	21.000
7	BRC	234.780
8	REM	11.250
9	CCW	157.000
10	MRW	43.800
11	MGT	37.490
12	TRG	140.196
13	INO	50.000
		1044.350

MAJOR COMPONENT WISE BUDGET

Component	Amount in Lakhs	Percentage
MGT	33.40	3.20
CCW	157.00	15.03
QUALITY	863.14	81.77
TOTAL	1044.35	100.00

TABLE

Building Requirement for 2003 - 2004.

BRC, CRC, 2 CR, 3 CR, Toilet & Drinking water.

Sl.No	BLOCK	BRC	CRC	3 CR	2 CR	TOILET	D W
1	Alangulam	1	1				
2	Ambasamudram				2	1	1
3	Cheranmahadevi	1	1		2	1	1
4	Kadayam		1		1		
5	Kadayanallur		1		3	3	3
6	Kalakadu		1				
7	Keelapavoor				2	2	2
8	Kurvikulam	1	1				
9	Manur		1	1		1	1
10	Melaneelithanallur		1				
11	Nanguneri		1				
12	Palayamkottai(Rural)		1	1	2	2	2
13	Pappakudi		1		1		
14	Radhapuram				1	1	1
15	Sankarankovil			2		2	2
16	Shenkottai		1		2		
17	Tenkasi				1		
18	Vallioor				1	2	2
19	Vasudevanallur		1	2	2	3	3
20	Tirunelveli ©		1		3	1	1
21	Palaymkottai ©		1		2	1	1
	District Total	3	15	6	25	20	20

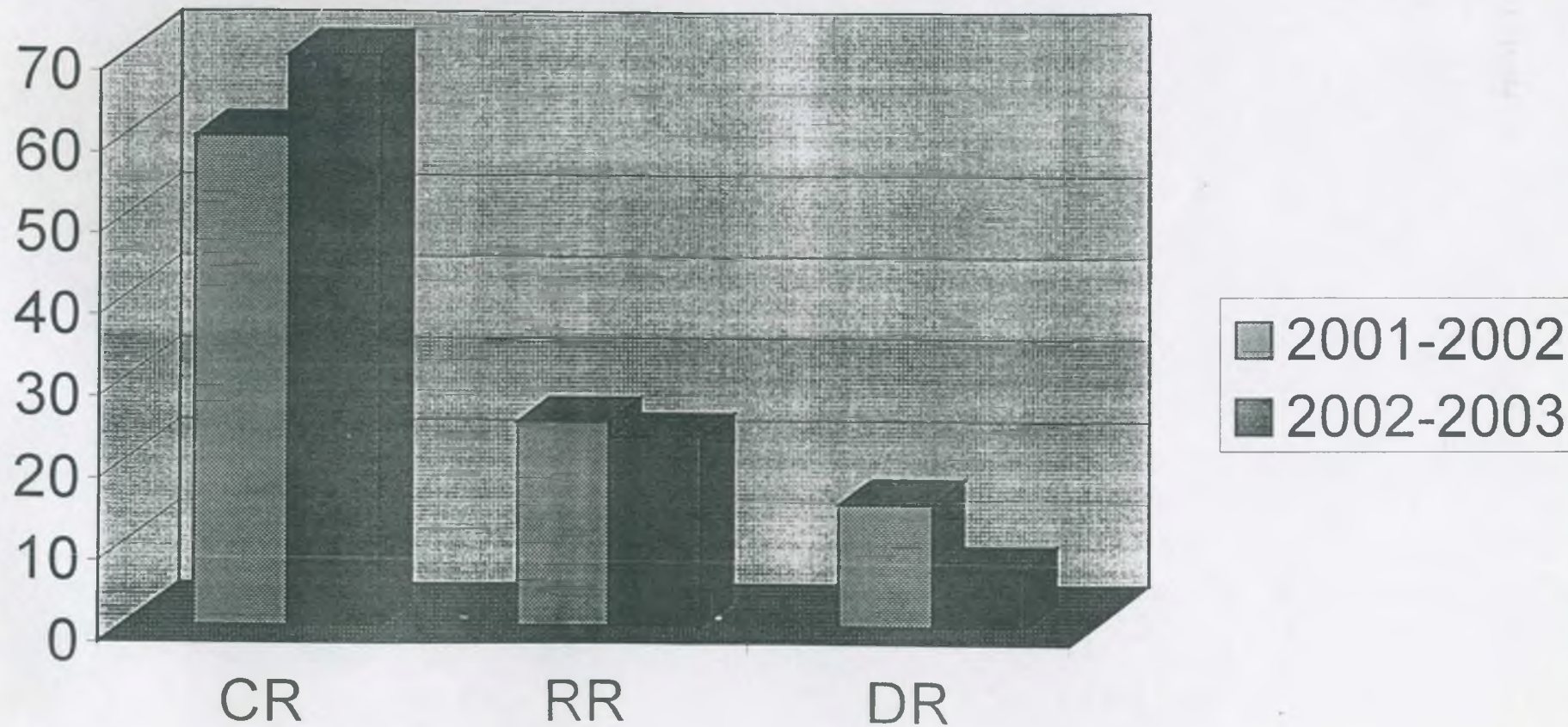
Buildings Requirement for the Year 2003 - 2004.

Block Resource Centers

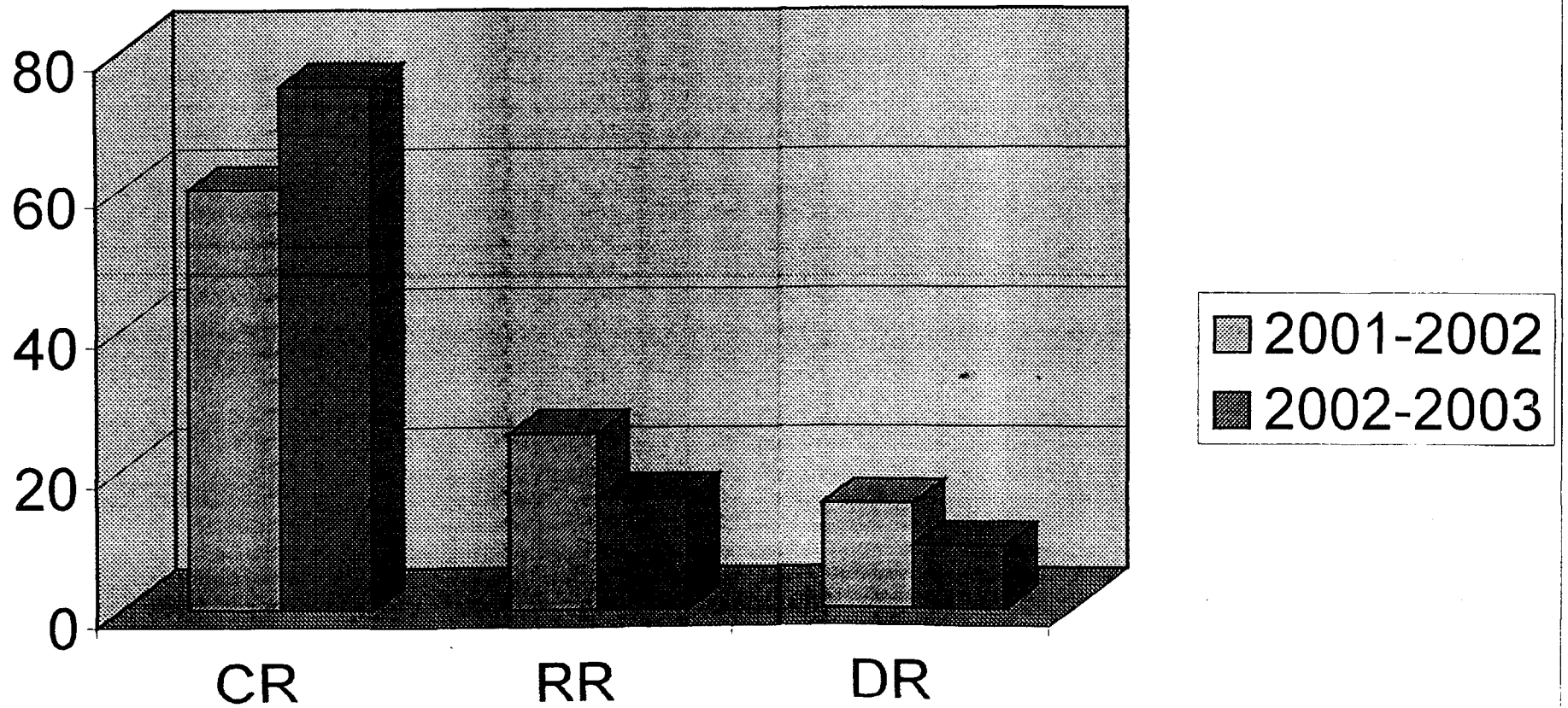
SI.No	Block
1	Alangulam
2	Cheranmahadevi
3	Kuruvikulam
II Cluster Resource Centers	
1	Alangulam
2	Cheranmahadevi
3	Kuruvikulam
4	Kadayanallur
5	Kalakkadu
6	Kadayam
7	Mannur
8	Melannelithanallur
9	Nanguneri
10	Palayamkottai Rural
11	Pappakudi
12	Senkottai
13	Vasudevanallur
14	Thirunelveli
15	Palayamkottai Urban

3 Classrooms		
Sl.No	Block	Village Name
1	Manur	Kalakudi
2	Palayamkottai R	Kuthukal
3	Sankarankoil	Veeriruppu
4		Irumankualam
5	Vasudevanallur	Kudalur
6		Arugankulam
2 Classrooms		
1	Ambasamudram	Vikramasingapuram
2		Mudapalam
3	Cheranmahadevi	Veeravanallur
4		Pottal
5	Kadayam	Pottalpurur
6	Kadayanallur	Shembaganallur
7		Meenachipuram
8		Samathuvapuram
9	Keelapavour	Keelapavour
10		Iyanur
11	Palayamkottai (R)	Pudhugrammam
12		Chathiram Kudiyuruppu
13	Pappakudi	Pallakal Podhukudi
14	Radhapuram	Kothankulam.
15	Shenkottai	Shenkottai
16		Sambavarvadakarai
17	Thenkasi	Thenkasi
18	Valliyoor	Annanagar
19	Vasudhevanallur	Rathinapuri
20		Nelkattumseval
21	Thirunelveli	Thirunelvelli
22		Sindhupoondhurai
23		Raghuman Nagar
24	Palayamkottai (U)	Melapalayam
25		Hameempuram

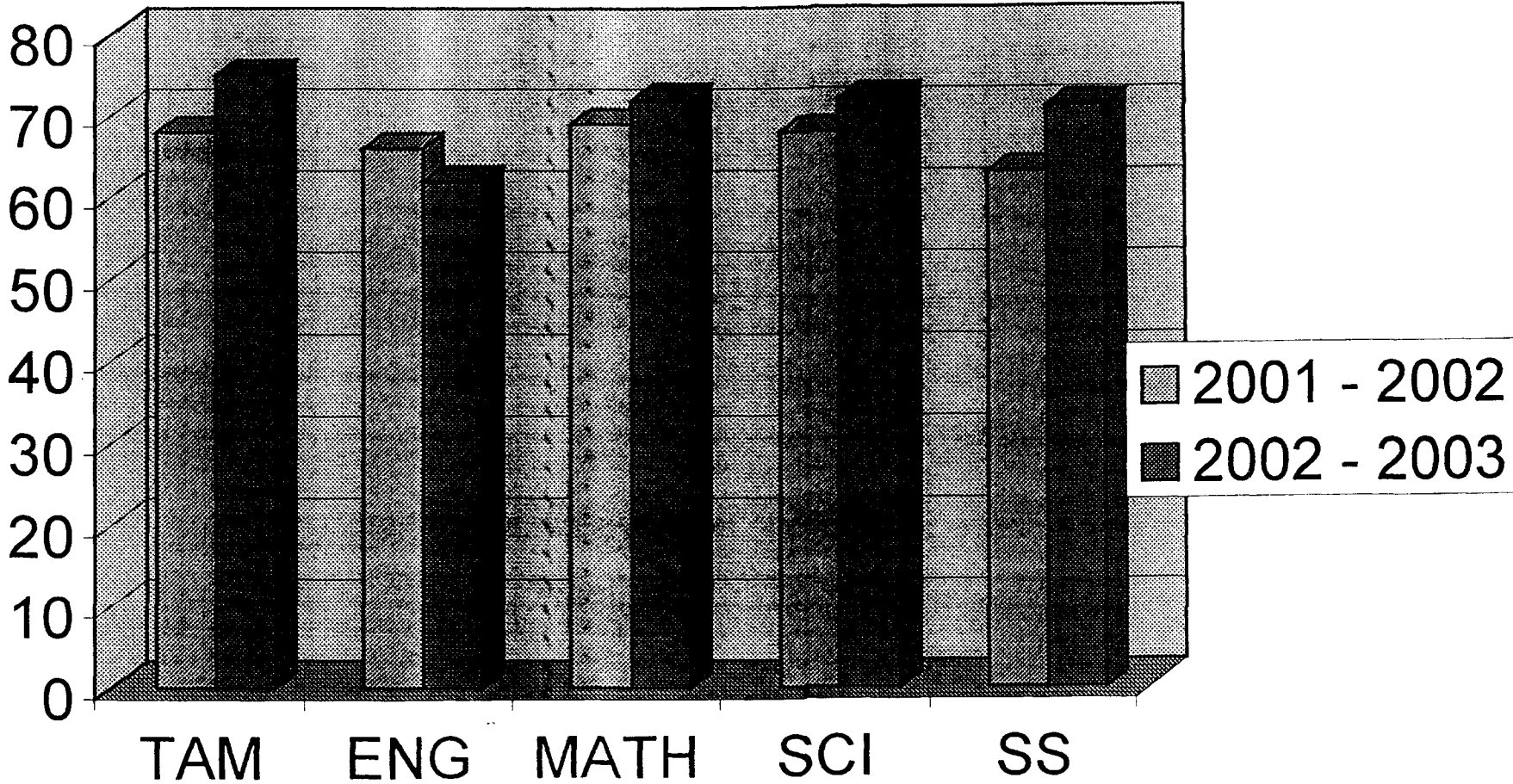
COMPARISON OF CR,RR&DR PRIMARY



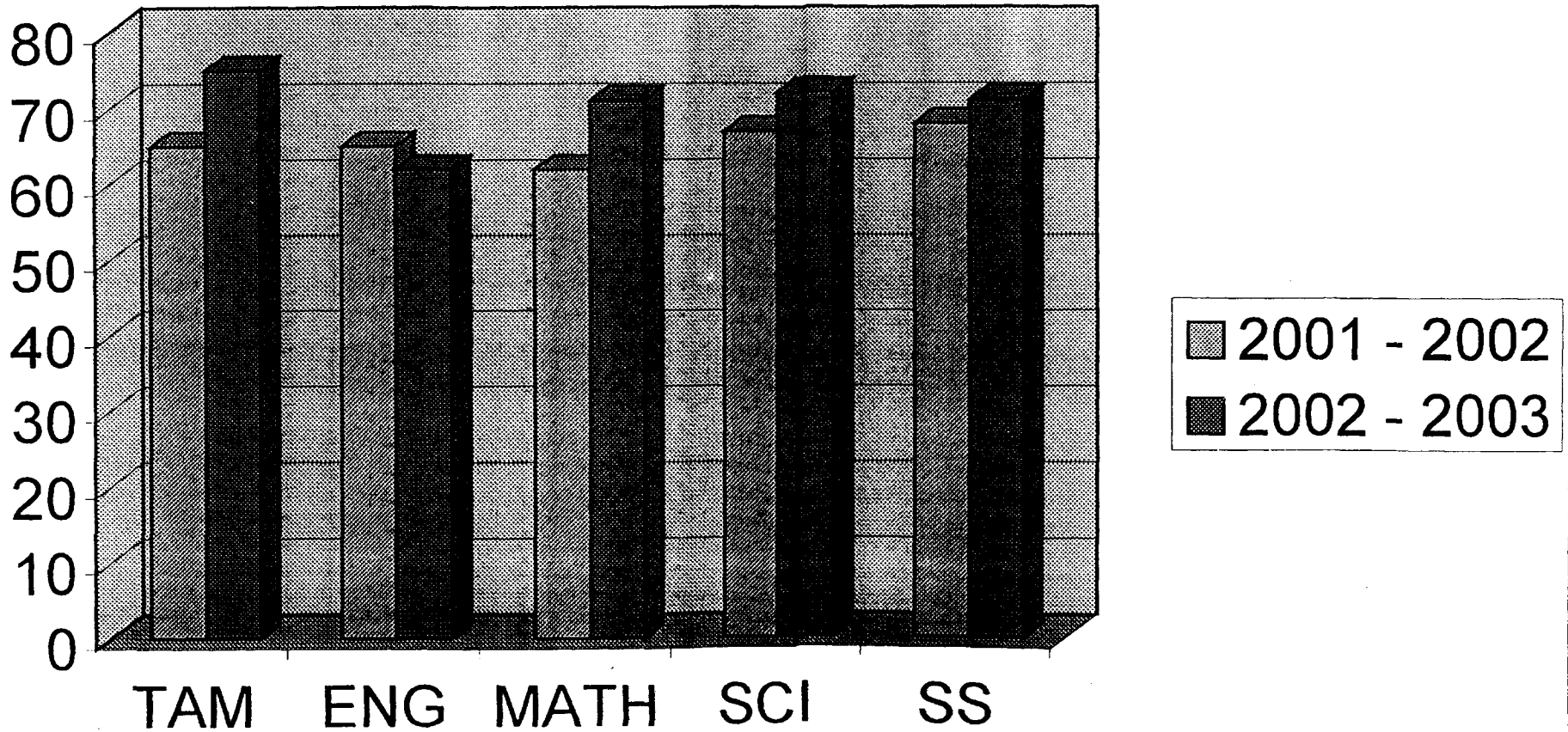
COMPARISON OF CR,RR & DR UPPER PRIMARY



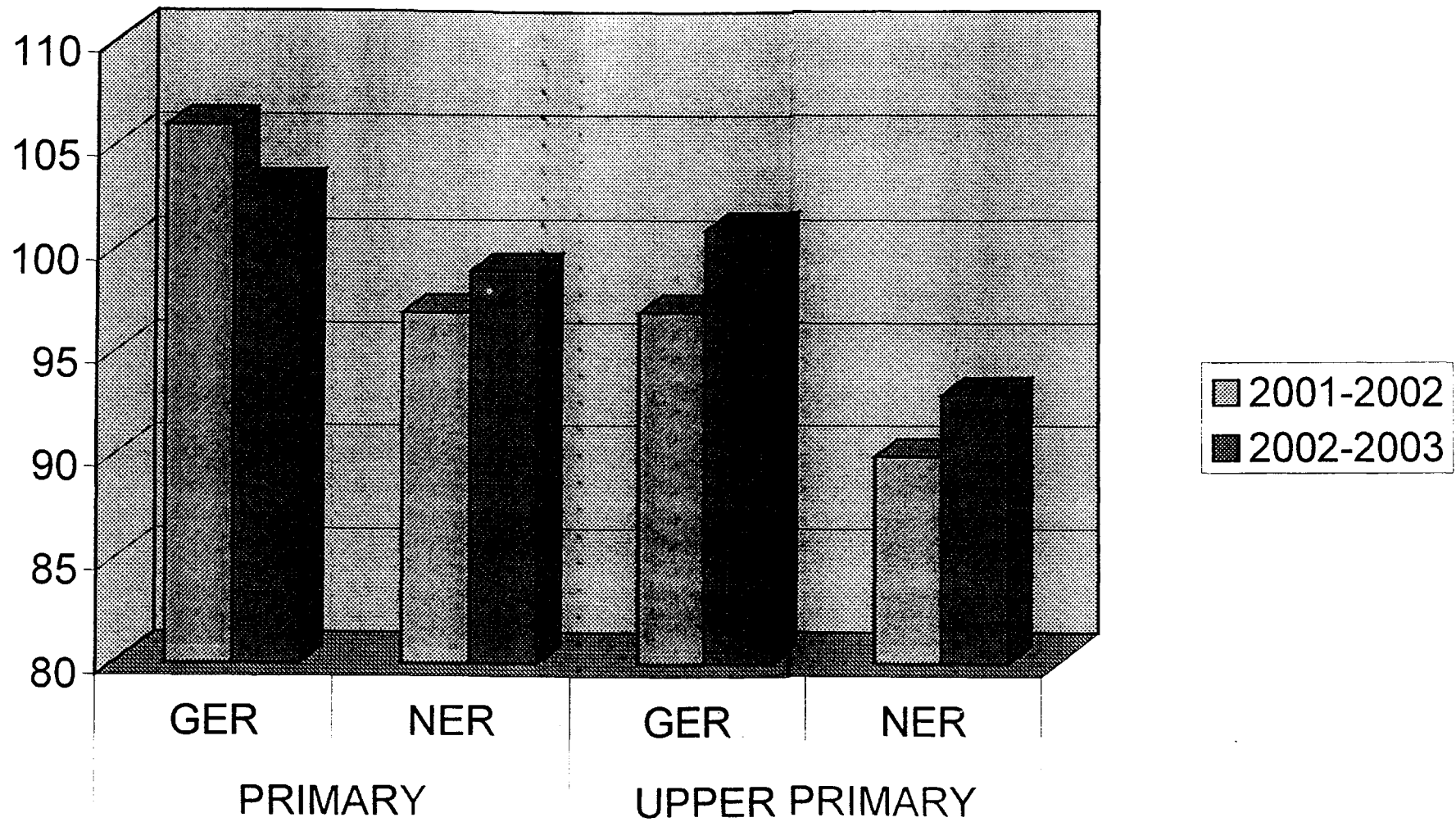
COMARISON OF ACHIEVEMENT LEVEL PRIMARY



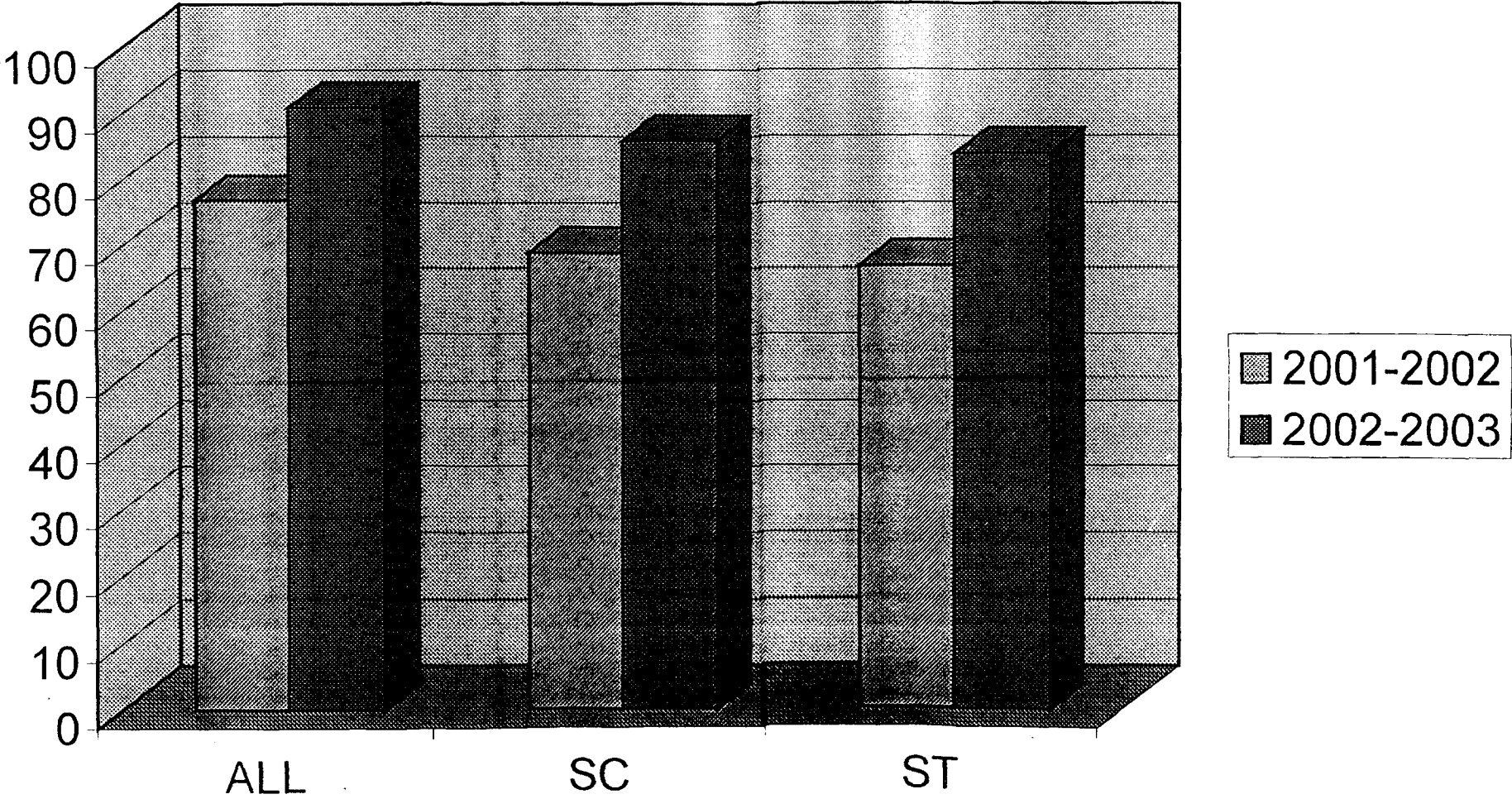
COMPARISON OF ACHIVEMENT LEVEL UPPER PRIMARY



COPARISON OF GER & NER PRIMARY - UPPERY PRIMARY



COPARISON OF TRANSITION RATE



ABBREVIATIONS

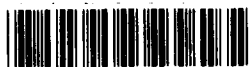
DPC	District Programme Co-ordinator
Addl. DPC	Additional District Programme Co-ordinator
ADPC	Assistant District Programme Co-ordinator
AEEO	Assistant Elementary Education Officer
AIE	Alternative and Innovative Education
AWP&B	Annual Work Plan and Budget
BRC	Block Resource Centre
CCW	Civil Construction Works
CEO	Chief Educational Officer
CR	Completion Rate
CRC	Cluster Resource Centre
DEEO	District Elementary Educational Officer
DIET	District Institution of Education and Training
DISE	District Information System for Education
DPO	District Project Office
DR	Dropout Rate
ECCE	Early Child Care and Education
EGS	Education Guarantee Scheme
GER	Gross Enrolment Ratio
ICDS	Integrated Child Development Centres
IED	Integrated Education for Disabled
INO	Innovation
MGT	Management
MIS	Management Information System
MRW	Maintenance and Repair Works
NER	Net Enrolment Ratio
NGO	Non Government Organisation
PFE	Primary Formal Education
REM	Research Evaluation and Monitoring
RR	Repetition Rate
SFG	Special Focus Group
SSA	Sarva Shiksha Abhiyan
TINP	Tamilnadu Integrated Nutritious Programme
TLE	Teaching Learning Equipment
TLM	Teaching Learning Material
TPR	Teacher Pupil Ratio
TRG	Training
UPE	Upper Primary Education
VEC	Village Education Committee
2CR	2 Class Rooms
3CR	3 Class Rooms

LIBRARY & DOCUMENTATION CENTRE

National Institute of Educational
Planning and Administration,
17-B, Connaught Place Marg,
New Delhi-110 016

DOC, No..... D-12180
Date..... 05.12.2003

NIEPA DC



D12180