

SARVA SHIKSHA ABHIYAN

DISTRICT ELEMENTARY EDUCATION PLAN

**ANNUAL WORK PLAN & BUDGET
2003-2004**

**KANCHIPURAM DISTRICT
TAMILNADU**

SARVA SHIKSHA ABHIYAN

KANCHIPURAM DISTRICT

ANNUAL WORK PLAN & BUDGET 2003-2004

CONTENTS

	PAGE NUMBER
CHAPTER I - PLAN OVERVIEW	1
1.1. INTRODUCTION	
1.2. PLANNING PROCESS	
1.3. GENERAL PROFILE	
1.4. EDUCATIONAL PROFILE	
1.4.1. ACCESS	
1.4.2. ENROLMENT - GER & NER	
1.4.2.1 BOYS & GIRLS	
1.4.2.2 SC/ST CHILDREN	
1.4.2.3 DISABLED CHILDREN	
1.4.3. COMPLETION RATE	
1.4.4. REPETITION RATE	
1.4.5. DROPOUT RATE	
1.4.6. TRANSITION RATE	
1.4.7. TEACHER PUPIL RATIO	
1.5. EARLY CHILDHOOD CARE AND EDUCATION	
1.6. OUT OF SCHOOL CHILDREN	
1.7. SPECIAL FOCUS GROUP	
1.8. VECs, CRCs, BRCs	

Director
District Office of Education
Kanchipuram
Tamil Nadu
D-1263
DOC, No. 05-12-2003
Date

- 1.9. INFRASTRUCTURE
 - 1.9.1 BLOCK RESOURCE CENTRES
 - 1.9.2 CLUSTER RESOURCE CENTRES
 - 1.9.3 THREE CLASSROOMS
 - 1.9.4 TWO CLASSROOMS
 - 1.9.5 TOILETS
 - 1.9.6 DRINKING WATER FACILITIES
- 1.10. DISTRICT PROJECT OFFICE

- 2.1. INTRODUCTION**
- 2.2. PROGRESS IN ACCESS**
 - 2.2.1 OPENING OF PRIMARY SCHOOLS
 - 2.2.2 UPPER PRIMARY SCHOOLS
 - 2.2.3 EGS CENTRES
- 2.3. PROGRESS IN ENROLMENT**
 - 2.3.1. BOYS & GIRLS
 - 2.3.2. SC/ST
 - 2.3.3. DISABLED
- 2.4. PROGRESS IN COMPLETION**
- 2.5. RETENTION**
- 2.6. TRANSITION**
- 2.7. ATTENDANCE**
- 2.8. PUPILS' ACHIEVMENT**
- 2.9. IDENTIFYING OUT-OF-SCHOOL CHILDREN**

- 2.17. PROGRAMMES IN BLOCK RESOURCE CENTRES
- 2.18. RESEARCH, EVALUATION AND MONITORING
- 2.19. IMPROVING INFRASTRUCTURE
 - 2.19.1. CONSTRUCTION OF BLOCK RESOURCE CENTRES
 - 2.19.2. CONSTRUCTION OF CLUSTER RESOURCE CENTRES
 - 2.19.3. CONSTRUCTION OF THREE CLASSROOMS
 - 2.19.4. CONSTRUCTION OF TWO CLASSROOMS
 - 2.19.5. PROVISION OF TOILET FACILITIES
 - 2.19.6. PROVISION OF TOILET & DRINKING WATER FACILITIES
- 2.20. MAINTENANCE AND REPAIRS
- 2.21. PROGRAMMES FOR QUALITY IMPROVEMENT
 - 2.21.1. CAPACITY BUILDING FOR PROJECT STAFF
 - 2.21.2. TRAINING TO TEACHERS
 - 2.21.3. ORIENTATION TO VEC MEMBERS
 - 2.21.4. PROVISION OF TLM, TLE, SCHOOL GRANT
 - 2.21.5. CURRICULUM REVISION - VI STANDARD TEXTBOOK
 - 2.21.6. INNOVATION
- 2.22. PROJECT MANAGEMENT
 - 2.22.1. ESTABLISHMENT OF MIS
 - 2.22.2. IMPLEMENTATION OF DISE
 - 2.22.3. APPOINTMENT OF PROJECT STAFF
- 2.23. CONVERGENCE WITH ONGOING SCHEMES
- 2.24. ISSUES AND STRATEGIES

- 3.1. PRIMARY SCHOOLS
- 3.2. UPPER PRIMARY SCHOOLS
- 3.3. ALTERNATIVE AND INNOVATIVE EDUCATION
- 3.4. SPECIAL FOCUS GROUPS
- 3.5. VILLAGE EDUCATION COMMITTEE
- 3.6. CLUSTER RESOURCE CENTRES
- 3.7. BLOCK RESOURCE CENTRES
- 3.8. RESEARCH, EVALUATION AND MONITORING
- 3.9. CIVIL CONSTRUCTION WORKS
- 3.10. MAINTENANCE AND REPAIR WORKS
- 3.11. MANAGEMENT
- 3.12. TRAINING
- 3.13. INNOVATION
- 3.14. PROCUREMENT PLAN
- 3.15. IMPLEMENTATION SCHEDULE

List of Tables

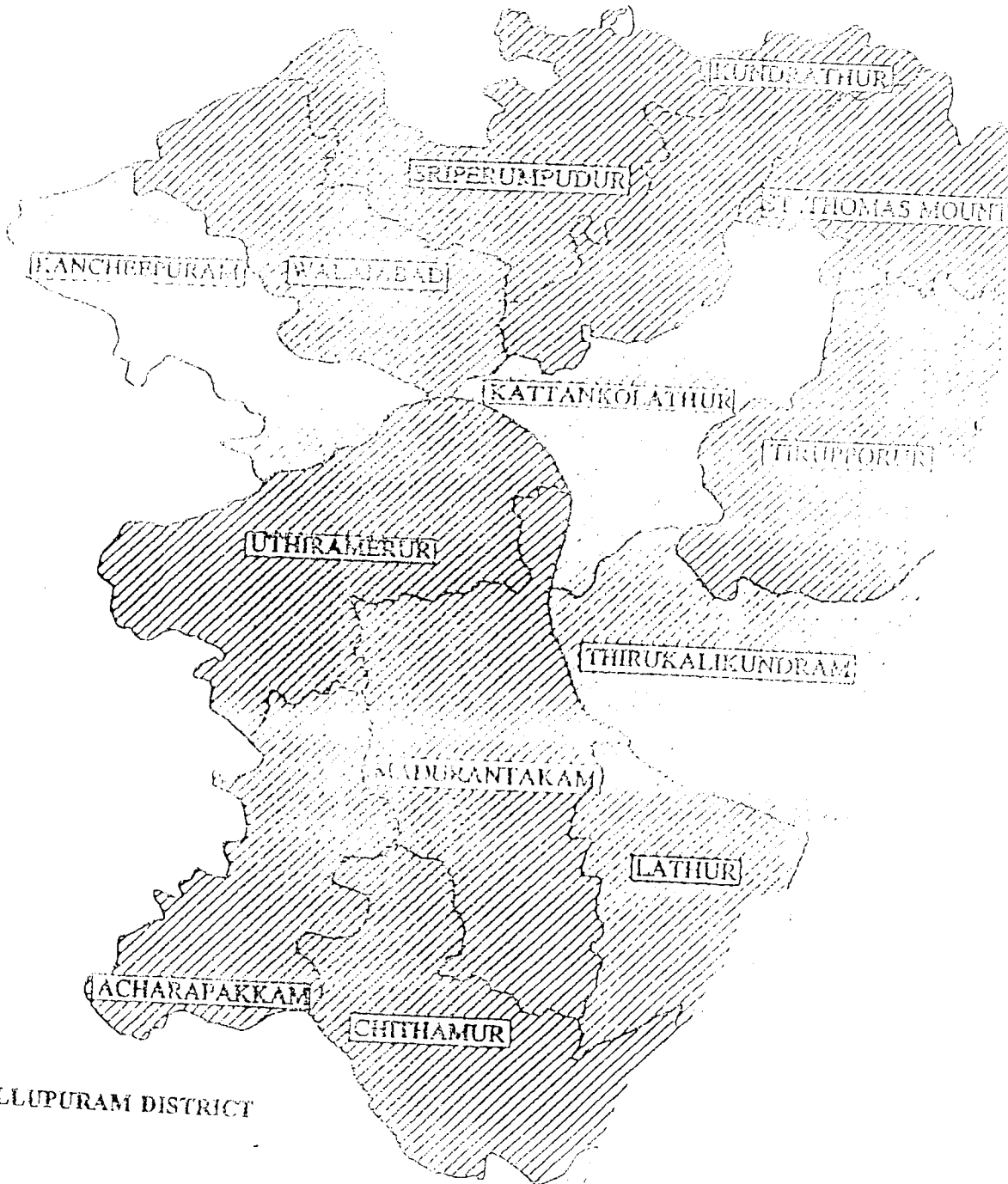
Table No.	Items	Page
1.	Number of Schools 2002 – 2003	8
2.	Number of Teachers	9
2a.	Teacher Pupil Ratio 2002 – 2003	21
3.	Number of pupils 2002 – 2003	12
4.	Access Rate 2002 – 2003	31
5.	Enrolment GER and NER 2002 - 2003	13
6.	Out of School children 2002 - 2003	23
7.	SC and ST children 2002 –2003	25
8.	Disabled children 2002 - 2003	15
9.	CR, RR and DR - Primary 2002 - 2003	16
10.	CR, RR and DR - Upper Primary 2002 - 2003	17
11.	CR, RR, DR - Primary and Upper primary 2002 - 2003	19
12.	Transition Rate 2002 –2003	20
13.	Achievement Level 2002 – 2003	40
14.	Number of Teachers Need Training 2002 - 2003	55
15.	Number of CRCs and VECs 2002 - 2003	26
16.	Number of ECCE and Children 2002 - 2003	46
17.	Schools Requiring Classroom Facilities 2002 - 2003	50
18.	Schools Requiring Toilet & Drinking Water Facilities 2002 - 2003	52

LIST OF ANNEXURES

1. Table A - Activitywise Budget & Expenditure – 2001-2002
2. Table B - Activitywise Budget & Expenditure – 2002-2003
3. Table C - Spillover Activities of 2001-2002 & 2002-2003
4. Table D - Budget Estimate for 2003-2004
5. Implementation Schedule for 2003-2004

KANCHEEPURAM DISTRICT

THIRUVALLUR I



CHAPTER I

PLAN OVERVIEW

1.1. INTRODUCTION

Sarva Shiksha Abhiyan is an effort to universalize elementary education. It is a response to the demand for quality basic education all over the country. It has a clear time frame from 2001 to 2010, for achieving the goal of "Education For All ". It intends to provide the society an opportunity for promoting social justice, by giving education.

Sarva Shiksha Abhiyan has the following six objectives -

- All children in school by 2003.
- All children complete five years of primary schooling by 2007.
- All children complete eight years of elementary schooling by 2010.
- Focus on elementary education of satisfactory quality with emphasis on education for life.
- Bridging all gender and social category gaps.
- Universal retention by 2010.

The SSA programme with the above objectives, attempts to provide an opportunity for improving human capabilities to all children through community- owned quality education in a mission mode.

1.2. PLANNING PROCESS

Unlike the other schemes the planning for this scheme emerges from the grass root level, hence it is called micro planning. The teachers and the villagers at the village level prepared the Village Elementary Education Plan. It contained the general and educational profile of the village, their needs and their plan for development. It formed the base for the preparation of the Block Elementary Education Plan and then the District Elementary Education Plan. This is the plan for the entire period i.e., from 2001 to 2010 and is known as the Perspective Plan.

A Planning Team was constituted for the preparation of the Annual Work Plan and Budget for the year 2003 - 2004.

Thiru. R. Pitchai District Programme Co-ordinator & Chief Educational officer	-	Chairman
Thiru. K. Ramanujam District Additional Programme Co-ordinator & District Elementary Education officer	-	Vice Chairman.
Thiru. M. Alphonse Assistant District Programme Co-ordinator	-	Member.
Thiru C.S. Venkatesan BRC - Supervisor, Kanchipuram	-	Member.
Thiru C. Chockalingam Statistical officer	-	Member
Thiru C. Selvaraju Senior Lecturer, DIET, Kaliyampoondi.	-	Member
Thiru S. Muthurangan Lecturer, DIET, Kaliyampoondi.	-	Member

Keeping the Perspective Plan as the basis, the Annual Work Plan and Budget for the year 2003 - 2004 is prepared. To make the plan document effective and meaningful the district level planners were given a lot of input by way of training at various levels. A one-day workshop for ADPCs was organized at Madurai, on this process on 7-3-03. Another one-day seminar was organized at Chennai. DPC, Addl. DPC, ADPC and DIET staff members attended the seminar. An exhaustive discussion with the VECs, CRCs, BRCs and the DPO was conducted by the State Level Core Planning Team on the preparation of the Annual Plan. Moreover, discussions were held at Block level and in turn a District level discussion with Block Supervisors and Assistant Elementary Educational Officers, was conducted to identify problems, issues and needs of the blocks in the district, to be addressed in the plan.

A three - day workshop was conducted at Gandhigram Rural University from 27th to 29th March, 2003. Experts in various fields came to that workshop and gave valuable ideas on Integrated Education of the Disabled, Development of Vocational skills in children, Empowerment of teachers in the field of Research in Education and the avenues of improving quality in education. These ideas were very much useful in the preparation of the annual work plan with useful and meaningful strategies and interventions to achieve "Education For All". After an elaborate discussion, the annual plan was consolidated.

The final draft of the Annual Work Plan was prepared by the Planning Team from 1.4.2003 to 4.4.2003 at the District Institute of Education and Training at Kaliyampondi.

The preparation of the Budget for the Annual Plan 2003-2004 was carried out in the workshop conducted at the State Project Directorate, Chennai, from 7.4.2003 to 10.4.2003. The Planning Team took utmost care in listing out the activities for the year, taking into account the various educational needs of the district.

1.3. GENERAL PROFILE

Kanchipuram has been described as “Mokshapuri”. It is “ The Religious Capital” of South India. It is one of the seven sacred pilgrim centres of India .It is the second holiest place in India next only to Varanasi. It has inherited a rich legacy of culture. Being the capital city of Kanchipuram District, it plays a key role in promoting Tourism, Silk Industry, Agriculture, Education and Economy of Tamil Nadu at large.

Kanchipuram District lies between 11⁰ and 12⁰ of North latitude and between 75⁰.28’ and 78⁰.50’ of East longitude on the globe. The district is bounded by the Bay of Bengal in the East, in the North by Chennai, in the West by Vellore and Thiruvannamalai Districts and in the South by Villupuram District. The district is well linked by roads to different cities of the state and to Arakkonam and Chennai by rail. As the international airport is located in Meenambakkam, the district is accessible to different countries of the world by Air. The transport facilities give easy access to schools.

Population in the rural area is higher than the urban. Males out-number the Females in this district. The SC / ST population is 23% of the total population. The district population is as follows.

Total Population			SC			ST		
Male	Female	Total	Male	Female	Total	Male	Female	Total
1455302	1414618	2869920	320166	211215	531381	14431	14012	28443

Source : Census – 2001

Rural - 16, 93,252

Urban - 11, 76,668

There are 6, 52,254 houses in 1214 villages, 6 municipalities and 28 town panchayats. The total population is 28, 69,920.

Kanchipuram district is basically an agriculture district. A large number of people are agriculture labourers. Weaving is another important work in this district. The following list shows the avocation details of this district.

Total workers	:	9,38,904
Male workers	:	6,65,386
Female workers	:	2,73,518
Rural workers	:	5,86,533
Urban workers	:	3,52,371
Cultivators	:	1, 62,140
Agricultural labourers	:	2, 96,212
Household Industry	:	39,571
Other workers	:	3, 94,777

The collector heads the district administration and his office is at Kanchipuram.

There are 3 Revenue Divisions in this district.

1. Kanchipuram
2. Chengalpattu
3. Madurantakam

There are 8 Revenue Taluks in this district

- 1.Kanchipuram
- 2.Uthiramerur
- 3.Sriperumbudur
- 4.Tambaram
- 5.Chengalpattu
- 6.Thirukalukundram
- 7.Madurantakam
- 8.Cheyyur.

There are 13 Panchayat Unions in this district.

- 1.Acharapakkam
- 2.Chithamur
- 3.St. Thomas Mount
4. Kattankolathur
- 5.Thirukalukundram
- 6.Madurantakam
- 7.Lathur
- 8.Thirupporur.
- 9.Kanchipuram
- 10.Walajabad
- 11.Uthiramerur
- 12.Sriperumbudur
- 13.Kundrathur.

1.4. EDUCATIONAL PROFILE

The literacy rate in Kanchipuram district is 77.82%. The male literates form 84.82% whereas the literacy rate of females is 70.61%.

S.No.	Particulars	Male	Female	Total
1	Population	1455302	1414618	2869920
2	Literate	1234387	998861	2233248
3.	Literacy Rate	84.82	70.61	77.82

Source: Census India 2001.

This district has 28 Professional Colleges. There is a Government medical college at Chengalpattu. Madras Institute of Technology is an engineering college under Anna University. There are 23 Arts and Science colleges, of which one is a Govt. College. In addition to these institutions , there is a deemed university called Sri Sankara Viswa

Vidyalaya at Enathur near Kanchipuram.. It offers courses in Arts, Science, Medicine and Computer.

Recently, Govt. of Tamil Nadu has established District Institute of Education and Training (DIET) at Kaliyampoondi. This institute provides refresher training to school teachers besides giving regular pre-service training to secondary grade teacher trainees.

Kanchipuram is one of the most important districts in Tamil Nadu . A Chief Educational Office and Two District Educational Offices are functioning in this district. Kanchipuram and Chengalpattu are the two educational districts catering to the educational needs of people in the 3 revenue divisions of Kanchipuram, Chengalpattu and Madurantakam. There is a District Elementary Education Office for this District at Kanchipuram to supervise all activities connected with elementary education.

The following table shows the present position of elementary education in this district.

Table – 1
Number of Schools 2002-2003

Sl. No	Block	Primary				Upper Primary			
		Govt.	Aided	Unaided	Total	Govt.	Aided	Unaided	Total
1	Kanchipuram	71	10	15	96	21	7	1	29
2	Walajabad	71	10	1	82	20	6	1	27
3	Uthiramerur	106	7	18	131	9	2	1	12
4	Sriperumbudur	81	7	1	89	14	2	0	16
5	Kundrathur	67	4	5	76	14	2	0	16
6	Thiruporur	63	14	1	78	15	1	0	16
7	Kattankolathur	67	13	10	90	19	2	2	23
8	Thirukallukundram	79	2	3	84	19	3	0	22
9	St. Thomas Mount	53	23	23	99	22	26	5	53
10	Acharapakkam	72	7	3	82	14	1	0	15
11	Madurantakam	89	17	7	113	15	6	0	21
12	Lathur	44	8	2	54	13	1	2	16
13	Chithamur	76	0	7	83	8	0	1	9
	Total	939	122	96	1157	203	59	13	275

Source : DISE 2002-2003

Number of Primary Schools	-	1061
Number of Upper Primary Schools	-	262
Number of High & Higher Secondary Schools	-	222
Total	-	1545

Table – 2

Number of Teachers

Sl. No	Block	Primary				Upper Primary			
		Govt.	Aided	Unaided	Total	Govt.	Aided	Unaided	Total
1	Kanchipuram	415	134	38	587	234	123	110	467
2	Walajabad	272	52	23	347	249	16	14	279
3	Uthiramerur	276	39	147	462	210	17	46	273
4	Sriperumbudur	269	36	29	334	131	43	14	188
5	Kumdrathur	376	34	46	456	156	24	38	218
6	Thiruporur	229	66	30	325	167	13	42	222
7	Kattankolathur	343	134	97	574	264	91	115	470
8	Thirukallukundram	273	88	76	437	168	25	58	251
9	St. Thomas Mount	738	308	282	1328	320	350	382	1052
10	Acharapakkam	296	10	41	347	115	41	13	169
11	Madurantakam	321	98	46	465	189	56	13	258
12	Lathur	144	49	20	213	113	23	11	147
13	Chithamur	205	4	62	271	124	0	18	142
	Total	4157	1052	937	6146	2440	822	874	4136

Source : DISE 2002-2003

Last year, the number of primary schools teachers was 5183. Now this is 5209.

Last year the middle level teachers were 3236. This is 3262 now.

The difference is due to the some new appointments.

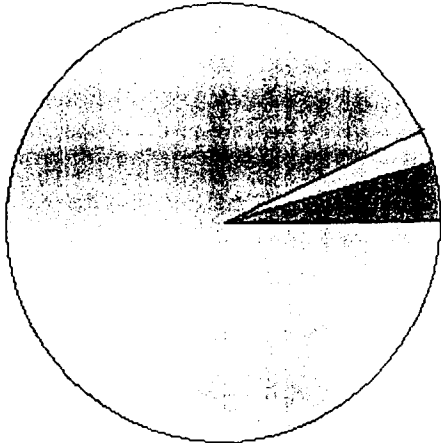
Table - 1 & 2
(Consolidated Table)

Sl. No	Block	Number of schools Govt./Aided					Teachers Govt./Aided			Students Govt./Aided		
		Prim-ary	Upper Primary	HIS	HSS	Total	Prim-ary	Upper Primary	Total	All	SC	ST
1	Kanchipuram	81	28	14	11	134	549	357	906	46826	8836	1535
2	Walajabad	81	26	7	7	121	324	265	589	21529	9034	384
3	Uthiramerur	113	11	12	6	142	315	227	542	22167	7749	892
4	Sriperumbudur	88	16	9	3	116	305	174	479	19039	9058	263
5	Kundrathur	71	16	8	4	99	410	180	590	30537	14089	787
6	Thiruporur	77	16	5	7	105	295	180	475	24610	12377	450
7	Kattankolathur	80	21	12	14	127	477	355	832	49954	17179	1421
8	Thirukallukundram	81	22	3	7	113	361	193	554	27386	9044	548
9	St. Thomas Mount	76	48	23	24	171	1046	670	1716	144675	38659	2636
10	Acharapakkam	79	15	4	6	104	306	156	462	18613	8585	323
11	Madurantakam	106	21	15	4	146	419	245	664	25702	13478	475
12	Lathur	52	14	5	3	74	193	136	329	14458	7562	195
13	Chithamur	76	8	4	5	93	209	124	333	17945	9685	404
	Total	1061	262	121	101	1545	5209	3262	8471	463441	165335	10313

Source : DISE 2002 – 2003

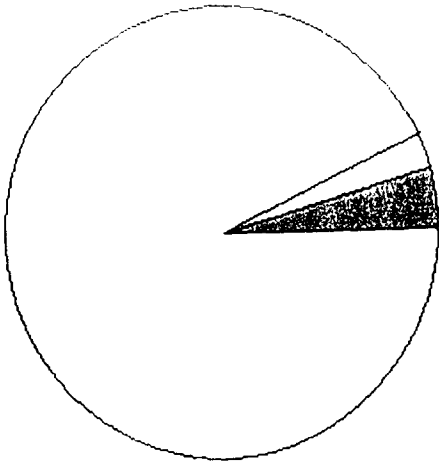
There are 1061 primary schools, 262 upper primary schools, 121 high schools and 101 higher secondary schools in this district. Total number of schools offering elementary education is 1545. Total number of teachers serving in these schools is 8471, out of them 5209 teachers are serving in primary and 3262 are in upper primary. There are 463441 children studying in standards I to VIII in this district, out of them 165335 are children from SC and 10313 are from ST communities.

ACCESS



PRIMARY SCHOOLS

- 99.5 % in 2001
- 0.3 % in 2002
- 0.2% needed in 2003



UPPER PRIMARY SCHOOLS

- 99% in 2001
- 0.8% in 2002
- 0.2% needed in 2003

1.4.1. ACCESS

The Access Rate of the blocks in this district is as follows

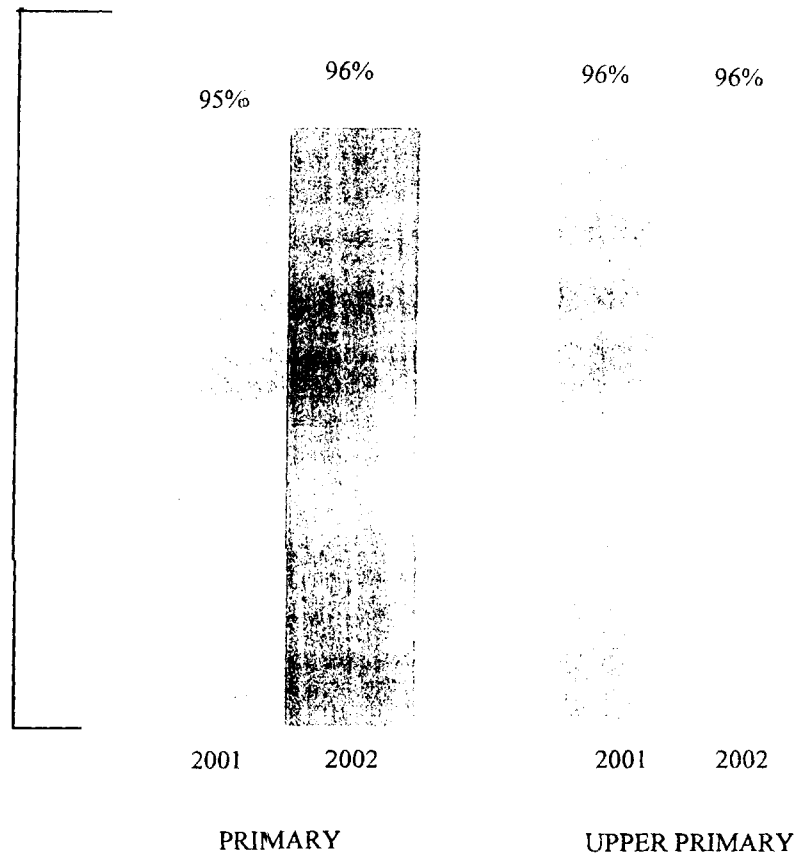
Access Rate in 2001 - 2002

Sl. No	Block	Total No. of habitations	Habitations with Primary	Access Rate	Habitations without Primary	Habitations with Upper Primary	Access Rate	Habitations without Upper primary
1	Kanchipuram	276	276	100		276	100	
2	Walajabad	241	241	100		241	100	
3	Uthiramerur	347	347	100		344	99	3
4	Sriperumbudur	206	202	98	4	200	97	6
5	Kundrathur	260	255	98	5	252	97	8
6	Thiruponur	253	249	98	4	247	98	6
7	Kattankolathur	210	210	100		210	100	
8	Thirukallukundram	280	277	99	3	278	99	2
9	St. Thomas Mount	253	253	100		253	100	
10	Acharapakkam	269	296	100		267	99	2
11	Madurantakam	311	311	100		311	100	
12	Lathur	226	226	100		221	98	5
13	Chithamur	213	213	100		213	100	
	<i>Total</i>	3345	3329	99.5	16	3313	99	32

Source : DISE 2001-2002

Access Rate in this district varies from 98% to 100% in various blocks. The average access rate in primary was 99.5% in 2001. After opening 8 primary schools in 2002 Access Rate increased to 99.8. Now it has been planned to open 7 primary schools in 2003 to make the Access Rate 99.97%. Access Rate in upper primary was 99% in 2001. During 2001-2002 16 primary schools were upgraded into upper primary schools, and hence the Access Rate became 99.8.% in upper primary. This year it has been planned to upgrade 27 primary schools into upper primary.

NET ENROLMENT RATE



1.4.2. ENROLMENT - GER AND NER

The details of enrolment in schools in this district are as follows:

Table - 3
Number of Pupils 2002 - 2003

Sl. No	Block	Primary				Upper Primary			
		Govt.	Aided	Unaided	Total	Govt.	Aided	Unaided	Total
1	Kanchipuram	15475	6185	8233	29893	8196	5881	2856	16933
2	Walajabad	11266	2073	551	13890	6831	621	187	7639
3	Uthiramerur	10574	1405	2291	14270	6348	803	746	7897
4	Sriperumbudur	9915	1489	723	12127	5258	1352	302	6912
5	Kundrathur	15685	2100	1752	19537	9488	896	616	11000
6	Thiruporur	11267	3392	1083	15742	7302	159	1407	8868
7	Kattankolathur	15573	6393	7624	29590	10246	7299	2819	20364
8	Thirukallukundram	13692	1675	1715	17082	7555	1721	1028	10304
9	St. Thomas Mount	39708	17854	31709	89271	13558	9306	32540	55404
10	Acharapakkam	9110	772	1157	11039	7017	183	374	7574
11	Madurantakam	11200	4167	1049	16416	5625	3460	201	9286
12	Lathur	6758	1886	783	9427	3378	1222	431	5031
13	Chittamur	10373	105	1320	11798	5610	0	537	6147
	Total	180596	49496	59990	290082	96412	32903	44044	173359

Source : DISE 2002 - 2003

Last year enrolment was 397326. This year enrolment is 463441. The increase in enrolment is due to intensive enrolment drives and various efforts made to enroll the out of school children in this district.

Table - 5

GER, NER in Primary and Upper Primary

Sl. No	Block	Primary						Upper Primary						Primary		Upper Primary	
		GER			NER			GER			NER			GER	NER	GER	NER
		B	G	T	B	G	T	B	G	T	B	G	T	SC/ST	SC/ST	SC/ST	SC/ST
1	Kanchipuram	103	103	103.0	96	95	95.5	99	99	99.0	94	93	93.5	103.0	95.5	99.0	93.5
2	Walajabad	100	100	100.0	96	94	95.0	98	97	97.5	97	98	97.5	100.0	95.0	97.5	97.5
3	Uthiramerur	100	100	100.0	98	97	97.5	97	96	96.5	98	99	98.5	100.0	97.5	96.5	98.5
4	Sriperumbudur	102	101	101.5	96	95	95.5	98	97	97.5	98	97	97.5	101.5	95.5	97.5	97.5
5	Kundrathur	103	102	102.5	94	93	93.5	97	96	96.5	96	95	95.5	102.5	93.5	96.5	95.5
6	Thiruporur	102	102	102.0	98	97	97.5	98	97	97.5	99	98	98.5	102.0	97.5	97.5	98.5
7	Kattankolathur	102	101	101.5	95	95	95.0	98	98	98.0	95	94	94.5	101.5	95.0	98.0	94.5
8	Thirukallukundram	102	102	102.0	96	95	95.5	99	98	98.5	97	96	96.5	102.0	95.5	98.5	96.5
9	St. Thomas Mount	100	100	100.0	96	95	95.5	99	99	99.0	98	99	98.5	100.0	95.5	99.0	98.5
10	Acharapakkam	102	101	101.5	91	90	90.5	97	96	96.5	90	89	89.5	101.5	90.5	96.5	89.5
11	Madurantakam	104	103	103.5	94	93	93.5	96	95	95.5	96	95	95.5	103.5	93.5	95.5	95.5
12	Lathur	103	103	103.0	93	93	93.0	98	97	97.5	95	94	94.5	103.0	93.0	97.5	94.5
13	Chithamur	104	103	103.5	92	89	90.5	95	94	94.5	91	90	90.5	103.5	90.5	94.5	90.5
	<i>Average</i>	<i>102</i>	<i>102</i>	<i>102</i>	<i>95</i>	<i>94</i>	<i>95</i>	<i>98</i>	<i>97</i>	<i>97</i>	<i>96</i>	<i>95</i>	<i>96</i>	<i>102</i>	<i>95</i>	<i>97</i>	<i>96</i>

Source : DISE 2002-2003

Net Enrolment in the year 2000-2001 was 95% in the Primary and 96% in the Upper Primary Levels. As far as Primary Education is concerned the NER is 97.5. in Uthiramerur and Thiruporur Blocks. In Acharapakkam and Chithamur this rate is 90.5.

In the Upper Primary Level, average NER of the District is 96%. It is as high as 98.5% in Uthiramerur, Thiruporur and St. Thomas Mount Blocks. The lowest level of enrolment in upper primary is 89.5% in Acharapakkam Block.

Strenuous efforts have been taken to reach 100% enrolment both in Primary and Upper Primary Levels.

1.4.2.1 BOYS & GIRLS

In Kanchipuram District Enrolment of boys is 1% more than that of girls, both in primary and Upper Primary Levels. However 100% enrolment of both boys and girls is our ultimate aim. Education for girls still remains an unwanted activity in the society. Moreover girls are stopped from going to schools, to employ them in various job like house keeping, baby-sitting and cooking. Awareness is being created in the society, to enroll all school-age children, both boys and girls, in schools.

1.4.2.2. SC/ST CHILDREN

Due to various socio-economic reasons children of scheduled castes and scheduled tribes were not able to receive proper education. Under SSA, these children are brought into the Special Focus Group. Special attention is given to the enrolment of these children and so 1, 75,648 children of these communities are in school. At present the GER of SC/ST children is 102% and the NER is 95% in the primary level. In the upper primary the GER is 97 and the NER is 96%. In order to enroll all SC/ST children in schools, the State government has given fee concessions, free text books, note books and uniforms. It has been planned to introduce useful arts and crafts education for SC/ST children through SSA under innovative education activities.

1.4.2.3. DISABLED CHILDREN

The hard core in the never enrolled is the population of the disabled children. Hence they are brought under Special Focus Group. There are some schools in this district exclusively for disabled children.

1. Government High School for Deaf and Dumb, Orikkai.
2. Government High School for Deaf and Dumb, Tambram.
3. Prabavathi Jaya praksh Seva Kendra Higher Secondary school Guduvancheri.
4. Integrated High School, Pallavakkam.

There are several non-governmental organizations who are rendering excellent service in educating disabled children in this district. Eleven Non-governmental Organizations have been entrusted with the responsibility of enrolling the disabled children in this district. The number of disabled children in the blocks is given below:

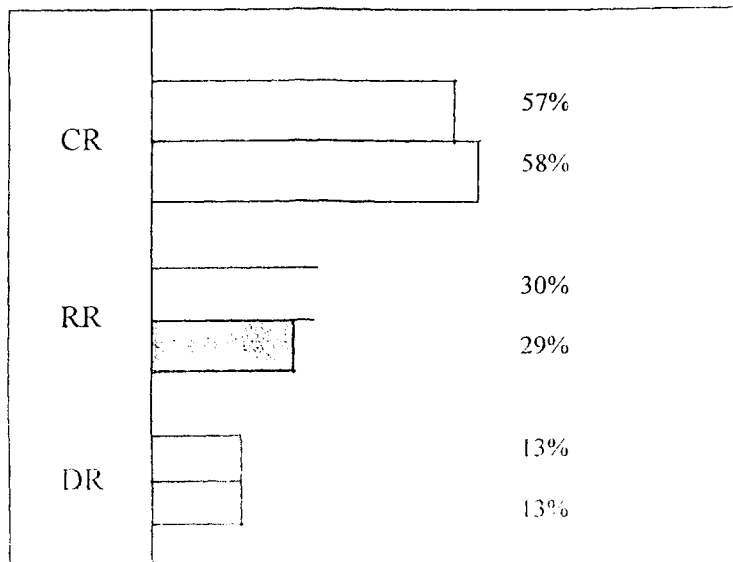
Table – 8

Block Wise Details of IED Children

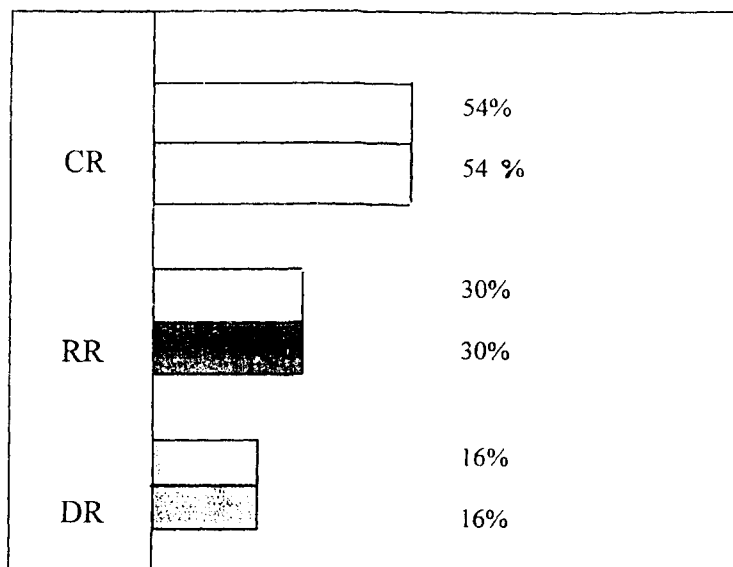
Sl.No	Name of Block	Total no of IED Children
1	Kanchipuram	242
2	Walajabad	258
3	Uthiramerur	213
4	Sriperumbudur	234
5	Kundrathur	28
6	Thiruporur	52
7	Kattankolathur	205
8	Thirukallukundram	142
9	St. Thomas mount	292
10	Madurantakam	45
11	Acharapakkam	132

**COMPARISON OF CR, RR & DR
BETWEEN 2001-2002 & 2002-2003**

PRIMARY



UPPER PRIMARY



Data received through DISE show that there are 2622 disabled children in this district. However only 2165 disabled children come under the schools addressed through SSA. The remaining 457 children are in unrecognised schools.

1.4.3. COMPLETION RATE

There are three important indicators in the educational system. They are Completion Rate, Repetition Rate and Dropout Rate. Completion Rate shows the number of children completing the course out of the total number of children enrolled. At Primary Level, Completion Rate is 72 in Kanchipuram Block, which is the highest in the district. In Thirukalukundram and St. Thomas Mount, Completion Rate is 47%, which is the lowest. In all the blocks, except Lathur, Completion Rate of girls is higher than that of boys.

Table - 9

CR, RR and DR - Primary - 2002 - 2003

Sl. No	Block	CR			RR			DR		
		B	G	T	B	G	T	B	G	T
1	Kanchipuram	70	74	72	21	17	19	9	9	9
2	Walajabad	58	62	60	28	22	25	14	16	15
3	Uthiramerur	63	67	65	32	28	30	5	5	5
4	Sriperumbudur	53	56	55	28	29	28	19	15	17
5	Kundrathur	58	67	62	28	18	23	14	15	15
6	Thiruporur	55	62	58	45	38	42	-	-	-
7	Kattankolathur	51	57	54	32	25	28	17	18	18
8	Thirukallukundram	45	50	47	38	30	34	17	20	19
9	St. Thomas Mount	45	50	47	25	19	22	30	31	31
10	Acharapakkam	57	61	59	31	29	30	12	10	11
11	Madurantakam	51	53	52	29	32	30	20	15	18
12	Lathur	60	58	59	36	36	36	4	6	5
13	Chithamur	61	66	63	26	28	27	13	6	10
	<i>Average</i>	<i>56</i>	<i>60</i>	<i>58</i>	<i>31</i>	<i>27</i>	<i>29</i>	<i>13</i>	<i>13</i>	<i>13</i>

Source : DISE 2002 - 2003

At the Primary Level Completion Rate has increased from 57% to 58%, Repetition Rate has decreased from 30% to 29% and Drop out Rate remained same at 13%.

Table - 10
CR, RR and DR - Upper Primary - 2002 - 2003

Sl. No	Block	CR			RR			DR		
		B	G	T	B	G	T	B	G	T
1	Kanchipuram	68	76	72	17	13	15	15	11	13
2	Walajabad	41	45	43	39	33	36	20	22	21
3	Uthiramerur	74	78	76	13	9	11	13	13	13
4	Sriperumbudur	38	46	42	39	31	35	23	23	23
5	Kundrathur	46	50	48	32	30	31	22	20	21
6	Thiruporur	71	85	78	27	14	20	2	1	2
7	Kattankolathur	38	46	42	37	33	35	25	21	23
8	Thirukallukundram	42	44	43	47	43	45	11	13	12
9	St. Thomas Mount	40	44	42	30	28	30	30	28	28
10	Acharapakkam	44	48	46	38	34	36	18	18	18
11	Madurantakam	43	47	45	37	41	39	20	12	16
12	Lathur	72	76	74	19	17	18	9	7	8
13	Chittamur	49	53	51	40	36	38	11	11	11
	Total	51	57	54	32	28	30	17	15	16

Source : DISE 2002 - 2003

Completion Rate is the highest in Thiruporur as 78% in the Upper Primary. It is the lowest in Sriperumbudur, Kattankolathur and St. Thomas Mount as 42%. Completion Rate of Girls in the Upper Primary is comparatively higher in the district than that of boys.

The Completion Rate in Upper Primary was 54%. Repetition Rate was 30% and Dropout Rate was 16% during 2000-2001.

All these rates have remained the same during 2002 – 2003.

1.4.3. REPETITION RATE

Repetition Rate shows the number of children fail in a class and study the same class within the period the cohort study. Repetition Rate was 30% during the year 2001-2002. It has decreased by one percent in primary level and has remained the same in the upper primary level.

Repetition Rate of boys are comparatively higher than that of girls. In primary it is 31%, 27% for boys, girls respectively. Likewise Boys show 32% repetition and girls 28% with an average of 30% in the upper primary level.

1.4.5. DROPOUT RATE

During the course of study many children leave the school without completing their course. These children come under dropouts. The Dropout Rate in primary is 13% and in upper primary it is 16%.

In the primary, Drop-out Rate of boys is 13%. Drop-out Rate for Girls is also 13%. In the upper primary, Drop-out Rate of Boys is 17% and that of girls is 15% with a district average as 16%.

Table - 11
CR, RR and DR - Primary and Upper Primary - 2002 - 2003

Sl.No	Block		Primary			Upper Primary		
			CR	RR	DR	CR	RR	DR
1.	Kanchipuram	All	72	19	9	72	15	13
		SC	74	18	8	82	13	5
		ST	61	25	14	76	15	9
2.	Walajabad	All	60	25	15	43	36	21
		SC	48	33	18	52	30	18
		ST	42	36	22	48	30	22
3.	Uthiramerur	All	65	30	5	76	11	13
		SC	63	31	6	70	16	14
		ST	72	15	13	59	17	24
4.	Sriperumbudur	All	55	28	17	42	35	23
		SC	55	32	13	48	33	19
		ST	29	34	37	32	33	35
5.	Kundrathur	All	62	23	15	48	31	21
		SC	60	36	14	54	23	23
		ST	39	20	41	46	26	28
6.	Thiruporur	All	58	42	-	78	20	2
		SC	56	44	-	78	19	3
		ST	75	25	-	92	8	-
7.	Kattankolathur	All	54	28	18	42	35	23
		SC	52	34	14	48	30	22
		ST	38	21	41	43	29	28
8.	Thirukallukundram	All	47	34	19	43	45	12
		SC	45	45	10	45	30	25
		ST	35	45	20	38	38	24
9.	St. Thomas Mount	All	47	22	31	42	30	28
		SC	49	28	23	51	28	21
		ST	43	29	28	48	26	26
10.	Acharapakkam	All	59	30	11	46	36	18
		SC	55	37	8	58	32	10
		ST	67	27	6	65	25	10
11.	Madurantakam	All	52	30	18	45	39	16
		SC	47	42	11	49	36	15
		ST	37	28	35	39	24	37
12.	Lathur	All	59	36	5	74	18	8
		SC	56	41	3	74	20	7
		ST	37	43	20	92	3	5
13.	Chittamur	All	63	27	10	51	38	11
		SC	51	39	10	49	37	14
		ST	42	28	30	45	27	28

Source : DISE 2002 - 2003

The above table shows that there is an overall increase in Completion Rate and a Considerable decrease in Repetition and Dropout Rates.

Completion Rate of SC children is 55% in primary and 58% in upper primary.

The ST children show 47% completion rate in primary and 56% in upper primary.

34% of SC children repeat in primary level. Repeaters in ST children are 29%. In the upper primary 27% of SC and 23% of ST children are the repeaters.

Drop-out Rate of SC children in the primary is 11% and in the upper primary it is 15%. In the case of ST children it is 24% in primary and 21% in upper primary.

1.4.6. TRANSITION RATE

Table 1.10 State wise number of children joining higher classes after completing

Sl. No.	District	Primary							Upper Primary	
		2002	2003	2004	2005	2006	2007	2008	2009	2010
									ST	T
									G	T
									74	76
									75	78
									76	76
									78	80
									79	80
6	Thirupporur	94	95	95	84	76	80	79	73	76
7	Kattankolathur	97	94	95	81	85	83	82	76	79
8	Thirukallukundram	95	95	95	80	76	78	81	75	78
9	St. Thomas Mount	97	96	96	82	82	82	82	78	80
10	Acharapakkam	92	94	93	79	77	78	83	77	80
11	Madurantakam	96	95	96	80	78	79	81	75	78
12	Lathur	96	94	95	82	78	80	82	74	78
13	Chittamur	93	96	95	79	81	80	79	73	76
	Average	95	95	95	78	82	80	81	75	78

Source : DISE 2002 - 2003

Transition Rate varies from 93 to 96. The lowest Transition Rate is found in Uthiramerur. The highest rate is found in Walajabad and St. Thomas Mount blocks.

1.4.7. TEACHER PUPIL RATIO

Table - 2a

Teacher Pupil Ratio - 2002 - 2003

Sl.No	Block	TPR	
		Primary	Upper Primary
1	Kanchipuram	33.03	40.26
2	Walajabad	35.11	39.87
3	Uthiramerur	29.35	34.10
4	Sriperumbudur	35.48	41.12
5	Kundrathur	39.24	45.31
6	Thiruporur	37.97	47.97
7	Kattankolathur	45.33	40.16
8	Thirukallukundram	38.27	44.97
9	St. Thomas Mount	46.16	53.98
10	Acharapakkam	33.67	41.27
11	Madurantakam	33.88	41.39
12	Lathur	45.40	49.01
13	Chithamur	38.77	47.35
	District Average	37.82	47.24

Source : DISE 2002 - 2003

The Teacher Pupil Ratio in this district for Primary is 1:38 and for Upper Primary it is 1:47.

Teacher Pupil Ratio is low in urban area, whereas it is high in the rural.

1.5. EARLY CHILDHOOD CARE AND EDUCATION

Sarva Shiksha Abhiyan scheme aims at the age group of 0-14. Children of pre-school age need a lot of care, since they are going to be admitted in the regular schools at the age of 5+. Hence the early childhood care and education is an important activity in this scheme. There are 1613 centres in this district with 69,208 children.

According to the strength of these children the following additional need is identified

Sl.No	Block	Additional Need of ECCE Centres
1.	Kanchipuram	10
2.	Sriperumbudur	10
3.	Uthiramerur	8
4.	Walajabad	10
5.	Kundrathur	7
6.	Kattankolathur	8
7.	St. Thomas Mount	10
8.	Thirukalikundram	9
9.	Thiruporur	6
10.	Madurantakam	8
11.	Acharapakkam	6
12.	Chithamur	6
13.	Lathur	7
	Total	105

These Additional centres will cater to the needs of the children. Funds are to be provided for the opening and continuing of these centres. Play materials are to be given. Training to ECCE Workers is also planned. DIET shall develop training packages for ECCE workers.

This year 50 new centres will be opened through SSA scheme. The remaining centres will be opened through convergence.

1.6. OUT OF SCHOOL CHILDREN

Table - 6

Out of School Children - 2002 - 2003

Sl. No	Block	6 - 10 years						11 - 13 years						Grand Total
		Dropout			Never Enrolled			Dropout			Never Enrolled			
		B	G	T	B	G	T	B	G	T	B	G	T	
1	Kanchipuram	109	133	242	18	22	40	226	338	564	38	57	95	941
2	Walajabad	25	10	35	7	10	17	30	51	81	20	21	41	174
3	Uthiramerur	23	34	57	4	5	9	54	79	133	8	11	19	218
4	Sriperumbudur	35	64	99	8	10	18	106	124	230	15	25	40	387
5	Kundrathur	36	52	88	8	11	19	81	122	203	12	28	40	350
6	Thiruporur	4	6	10	3	4	7	10	16	26	7	12	19	62
7	Kattankolathur	20	34	54	12	14	26	37	88	125	12	48	60	265
8	Thirukallukundram	16	25	41	3	4	7	39	58	97	6	10	16	161
9	St. Thomas Mount	42	64	106	8	12	20	101	148	249	19	28	47	422
10	Acharapakkam	4	6	10	3	5	8	9	13	22	8	10	18	58
11	Madurantakam	14	24	38	6	9	15	36	53	89	15	20	35	177
12	Lathur	7	10	17	5	7	12	16	23	39	11	15	26	94
13	Chithamur	9	13	22	7	9	16	20	29	49	15	22	37	124
	Total	344	475	819	92	122	214	765	1142	1907	186	307	493	3433

Source : DISE 2002 - 2003

Total number of out-of-school children was calculated through DISE 2001 and House Hold Survey, at the time of preparation of the Perspective Plan. It was 20,925. Hence strenuous efforts were taken to enroll these children in schools, most of them have been schooled. Moreover 8830 children in this list were found to be over-aged for admission into elementary education. 8662 children were admitted into primary and upper primary classes. The remaining children amount to 3433. Hence these children are found scattered and 1723 are child labourers, it has been decided to appoint Mobile Teachers in some areas in Thiruporur, St. Thomas Mount, Sriperumbudur and Chithamur Blocks where the children are employed as quarry and brick kiln workers. In Kanchipuram children involved in silk industry have been admitted into Nilavoli Schools.

In order to streamline the activities for the out of school children, Identity Cards are being issued. Since the 8830 over-aged children have no chance to be educated in any system of education, it has been decided to prepare them for VIII Standard Examination through the BRCs and with the help of Voluntary Organizations.

1.7. SPECIAL FOCUS GROUP

Education of Girls, SC/ST and Disabled children comes under Special Focus Group in the SSA scheme.

One of the main objective in SSA is to bridge the gaps in the society. To address the problems, separate allocation of funds are available in the scheme. In this plan the district requirements are included. Special Coaching Classes are conducted for girls, SC and ST pupils.

Table - 7

SC and ST Children - 2002 - 2003

Sl. No	Block	Enrolment						Out of School Children					
		Primary			Upper Primary			6 - 10 years			11 - 13 years		
		SC	ST	Total	SC	ST	Total	SC	ST	Total	SC	ST	Total
1	Kanchipuram	5652	1392	7044	3184	143	3327	56	6	62	131	13	144
2	Walajabad	5700	329	6029	3334	55	3389	15	-	15	36	-	36
3	Uthiramerur	5341	494	5835	2408	398	2806	19	2	21	45	2	47
4	Sriperumbudur	5664	194	5858	3394	69	3463	33	-	33	94	-	94
5	Kundrathur	8813	711	9524	5276	76	5352	30	3	33	86	4	90
6	Thiruporur	7721	335	8056	4656	115	4771	4	-	4	8	-	8
7	Kattankolathur	10645	978	11623	6534	443	6977	24	2	26	65	3	68
8	Thirukallukundram	5614	453	6067	3430	95	3525	15	-	15	36	1	37
9	St. Thomas Mount	24019	1948	25967	14640	688	15328	40	3	43	105	6	111
10	Acharapakkam	4963	272	5235	3622	51	3673	6	-	6	10	-	10
11	Madurantakam	8779	399	9178	4699	76	4775	17	-	17	45	3	48
12	Lathur	4840	189	5029	2722	6	2728	9	-	9	26	-	26
13	Chithamur	6347	367	6714	3338	37	3375	13	-	13	27	2	29
	Total	104098	8061	112159	61237	2252	63489	281	16	297	714	34	748

Source: DISE 2002 - 2003

Total number of SC and ST children enrolled in the Primary is 1,12,159 and in the Upper Primary is 63,489. Moreover, out-of-school children belonging to SC/ST in the primary is 297 and in the upper primary is 748.

In order to bring these children in to the main stream, it is planned to introduce useful vocations, and arts and craft activities.

1.8. VECs, CRCs, BRCs

The following table shows the number of VECs, CRCs and BRCs in the blocks.

Table - 15

Sl. No	Block	No. of BRC	Total No. of Teachers	No. of CRCs existing	No. of CRCs required	Total No. of CRCs	No. of VECs
1	Kancheepuram	1	906	20	3	23	101
2	Walajabad	1	589	12	2	14	107
3	Uthiramerur	1	542	12	1	13	114
4	Sriperumbudur	1	479	12	0	12	116
5	Kundrathur	1	590	14	1	15	99
6	Thiruporur	1	475	10	2	12	92
7	Kattankolathur	1	832	20	1	21	126
8	Thirukalikundram	1	554	11	3	14	113
9	St. Thomas Mount	1	1716	39	4	43	97
10	Madurantakam	1	462	9	2	11	94
11	Acharapakkam	1	664	16	0	16	111
12	Chithamur	1	329	8	0	8	78
13	Lathur	1	333	8	0	8	97
	Total	13	8471	191	19	210	1345

Source : DISE 2002-2003

Out of 1545 schools, only 1345 schools have VECs. The remaining schools have only PTAs. There are 191 CRCs in this district. Since there 8471 teachers, the CRCs could be increased into 210. Block Resource Teacher Educators have been given necessary training to function as teacher trainers. There are 13 BRCs in this district. All the members of the VECs are given training through the BRCs to orient them to the scheme. After this training, they are able to mobilise the community to enroll all children in schools. Problems of Dropouts, Non-enrolled and Disabled could be solved only through VECs.

1.9. INFRASTRUCTURE

Enrolment, Retention and Quality Education could be ensured in schools by providing proper Infrastructure. Civil Construction Work is a major activity in SSA to address the needs of infrastructure.

1.9.1. BLOCK RESOURCE CENTRES

There are 13 Blocks in this District. Each Block has a Block Resource Centre. To start with the programme, these centres have been housed in High and Higher Secondary Schools with enough accommodation. During the year 2002 - 2003 construction of one Block Resource Centre is taken up in Kattankolathur Block. The work is entrusted with the Tamil Nadu Public Works Department - Civil Wing. Buildings for other BRCs will be constructed in the subsequent years.

1.9.2. CLUSTER RESOURCE CENTRES

There are 191 CRCs in this district. These centres are also functioning in the available buildings in Primary, Upper Primary and High Schools. During the year 2002 - 2003, 15 CRCs are constructed. Buildings for the other centres will be constructed in due course.

1.9.3. THREE CLASS ROOMS

There is a great need for class room buildings in the schools of Kanchipuram District, a high attention is paid on this activity. It has been assessed that there is a need for the construction of 408 three class room buildings as per the Perspective Plan. During the years 2001-2002 and 2002-2003, 45 three class room buildings have been taken up for construction. This year it has been planned to construct 30 Three class room buildings.

1.9.4. TWO CLASS ROOMS

It has been found out that there is a need for 988 Two class room buildings in this district. During 2001-2002 and 2002 - 2003, 43 two class room buildings have been taken up for construction. For 2003-2004, it has been planned to construct 38 Two class room buildings.

1.9.5. TOILETS

Construction of toilets is an important activity in the development of infrastructure of a school. The district administration has taken keen interest in this aspect and has sanctioned toilet buildings through Rajiv Gandhi Water Mission. Hence only 55 toilets were constructed through SSA.

1.9.6. DRINKING WATER FACILITIES

The Pre-project assessment has shown that nearly 840 schools need Drinking Water Facility. However during the year 2001-2002 and 2002-2003, 11 schools have been provided with drinking water facilities. Several schools in this district have improved Drinking Water Facilities through 'Swajaldhara', a scheme of Government of India.

1.10. DISTRICT PROJECT OFFICE

All the activities under SSA-Scheme are implemented in the district by the District Project Office. The chief Educational Officer apart from his regular administrative work, functions as the District Programme Co-ordinator of the scheme. Accordingly the District Elementary Education Officer is the Additional District Programme Co-ordinator. There is an Assistant District Programme Co-ordinator in the cadre of a Higher

Secondary School Headmaster. A Statistical Officer is appointed on deputation. There is a Media Documentation Officer and a Training and Women Development Officer.

There is a Superintendent, an Accountant and an Assistant in the Office. Moreover there are two Civil Engineering Consultants and a Computer Programmer in the District Project Office.

The District Project Office is responsible for planning and execution of the SSA activities. The Perspective Plan was prepared by the DPO at the beginning of the programme. Every year an Annual Work Plan and Budget was also prepared. Funds received from the State Project Office are properly sanctioned to the VECs, CRCs and BRCs. Proper accounts are maintained by the District Project Office.

CHAPTER II

PROGRESS REVIEW

2.1 INTRODUCTION

SSA - Scheme aims at Education For All, within a well-defined time frame of 10years, through certain specific objectives. Before the implementation of the scheme, the status of education in this district was assessed through pre-project activities. It has been planned to overcome the hurdles in educating the masses, like lack of schools, infrastructure and teacher competence, through a list of activities. Though the scheme spreads over 10 years, the objectives are very specific and they need to be addressed within the fixed time. The scheme started in the year 2001. However funds began to flow only in 2002. In spite of a short period of implementation, there is a remarkable progress in the scheme.

2.2. PROGRESS IN ACCESS

According to the policy of the Government, there must be a primary school in a habitation with 300 population within a radius of 1km. Moreover there must be an upper primary school for every two primary schools. Assessment for need of schools was done through exercises like school mapping. Census 2001 was the base data for this purpose. Providing enough schools and making an easy access to the children is the first activity in the SSA-scheme.

Kanchipuram District has already succeeded in providing 99% access in 4 blocks and 100% in 9 blocks.

The general access rate of Primary Education in this district is 99.5%. This is 99% for Upper Primary Education. In order to achieve 100% enrolment of all school age children, access rate should be 100% in all the 13 blocks in this district.

Table - 4
Access Rate - 2002 - 2003

Sl.No	Block	Primary	Upper Primary
1	Kanchipuram	98	99
2	Walajabad	99	99
3	Uthiramerur	100	98
4	Sriperumbudur	98	98
5	Kundrathur	98	99
6	Thiruporur	98	98
7	Kattankolathur	98	98
8	Thirukallukundram	100	100
9	St. Thomas Mount	100	100
10	Acharapakkam	99	99
11	Madurantakam	99	99
12	Lathur	100	99
13	Chithamur	100	99
	<i>District Average</i>	<i>99</i>	<i>99</i>

Source : DISE 2002 - 2003

The number of habitations in 2001 are 3345. Out of which 3329 have been served with Primary and 3313 served with Upper Primary Schools.

Sl. No	Name of the Block	Total No. of habitations	New Habitations requiring Primary schools	Habitations requiring Upper Primary Schools
1	Kancheepuram	276	2	1
2	Walajabad	241	1	1
3	Uthiramerur	347	-	4
4	Sriperumbudur	206	2	9
5	Kundrathur	260	2	1
6	Thiruporur	253	3	2
7	Kattankolathur	210	4	5
8	Thirukalikundram	280	-	-
9	St. Thomas Mount	253	-	-
10	Madurantakam	311	1	2
11	Acharapakkam	269	2	1
12	Chithamur	213	-	1
13	Lathur	226	-	-
	Total	3345	17	27

2.2.1. OPENING OF PRIMARY SCHOOLS

Under the scheme of "Education For All" 5 new primary schools were opened in 2001 - 2002 and 8 schools were opened in 2002 - 2003. Due to the emergence of new habitations and a swell in population caused by mobilization of people in and around urban and semi-urban areas, there is a necessity to open some more schools. Hence 7 primary schools are to be started to cater to the needs of the new habitations. This will help the unenrolled children to get their education in the nearby schools. The names of the habitations are hereunder. There are 17 habitations which need new primary schools.

Sl.No.	Habitations	Block
1.	1. Asiriyar Nagar	Kanchipuram
	2. New Kidiyiruppu (Valathottam Panchayat)	Kanchipuram
2.	3. Bhakthavatchalam Nagar	Sriperumbudur
	4. Kannanthangal	Sriperumbudur
3.	5. Bharathi nagar	Walajabad
4.	6. Srinivasapuram	Kundrathur
	7. Indira Nagar (Kirugampakkam Panchayat)	Kundrathur
5.	8. Senthamangalam	Kattankolathur
	9. Annal Ambedhkar Nagar (Mannivakkam Pt)	Kattankolathur
	10. Puthur	Kattankolathur
	11. Kothikkanthangal	Kattankolathur
6.	12. Vadapathi	Thiruporur
	13. Amaiyampattu	Thiruporur
	14. Kazhipathur	Thiruporur
7.	15. Vilanganoor	Madurantakam
8.	16. Munnakulam	Acharapakkam
	17. Vedanthangal	Acharapakkam

However only 7 new primary schools are going to be opened during 2003-2004.

The following list shows the names of habitations for opening new primary schools.

Sl.No.	Habitations	Block
1.	Asiriyar Nagar	Kanchipuram
2.	Bhakthavatchalam Nagar	Sriperumbudur
3.	Bharathi nagar	Walajabad
4.	Annal Ambedhkar Nagar (Mannivakkam Pt)	Kattankolathur
5.	Amaiampattu	Thiruporur
6.	Vilanganoor	Madurantakam
7.	Vcdanhangal	Acharapakkam

2.2.2. UPPER PRIMARY SCHOOLS

Sl. No	Block	Upper Primary Schools			High School			Higher Secondary Schools			Total
		Govt.	Aided	Total	Govt.	Aided	Total	Govt.	Aided	Total	
1	Kanchipuram	21	7	28	9	5	14	8	3	11	53
2	Walajabad	20	6	26	7	0	7	6	1	7	40
3	Uthiramerur	9	2	11	9	3	12	6	0	6	29
4	Sriperumbudur	14	2	16	7	2	9	3	0	3	28
5	Kundrathur	14	2	16	7	1	8	4	0	4	28
6	Thiruporur	15	1	16	5	0	5	6	1	7	28
7	Kattankolathur	19	2	21	10	2	12	7	5	14	47
8	Thirukallukundram	19	3	22	2	1	3	7	0	7	32
9	St. Thomas Mount	22	26	48	16	7	23	11	13	24	95
10	Acharapakkam	14	1	15	4	0	4	6	0	6	25
11	Madurantakam	15	6	21	8	7	15	2	2	4	40
12	Lathur	13	1	14	3	2	5	2	1	3	22
13	Chittamur	8	0	8	4	0	4	5	0	4	17
	Total	203	59	262	91	30	121	73	28	101	484

D-12163
05-12-2003

Five primary schools were upgraded into upper primary schools in 2001-2002 under SSA-scheme. Another 16 schools were also upgraded into upper primary schools in 2002-2003. However the need for more upper primary schools emerges every year. Hence 27 schools have been identified for Upgradation during 2003-2004.

Upgradation of Primary Schools in 2003 - 2004

Sl.No	Name of the Block	Name of the Panchayat	Name of the Village
1	Kanchipuram	1. Sirukaveripakkam	1. Sirukaveripakkam
2	Walajabad	2. Koothirambakkam	2. Koothirambakkam
3	Uthiramerur	3. Thiruvandavar 4. Malayankulam 5. Uthiramerur (T.P) 6. Karuveppanpoondi	3. Thiruvandavar 4. Malayankulam 5. Vadanallur 6. Karuveppanpoondi
4	Sriperumbudur	7. Mevalurkuppam 8. Pillaipakkam 9. Vengadu 10. Thirumangalam 11. Podavur 12. Ayakolathoor 13. Eraiyur 14. Govt. Employess Quarters 15. Sunguvatchatram	7. Mevalurkuppam 8. Pillaipakkam 9. Vengadu 10. Thirumangalam 11. Podavur 12. Ayakolathoor 13. Eraiyur 14. Govt. Employess Quarters 15. Sunguvatchatram
5.	Thiruporur	16. Melaiyur 17. Kovalam	16. Melaiyur 17. Kovalam
6.	Kattankolathur	18. Nandhivaram 19. Reddipalayam 20. Perumattunalloor 21. Pattaravakkam 22. Nallampakkam	18. Kooduvanjeri (T.P) 19. Reddipalayam 20. Perumattunalloor 21. Pattaravakkam 22. Nallampakkam
7.	Acharapakkam	23. Seethapuram	23. Seethapuram
8.	Kundrathur	24. Natrampattu	24. Natrampattu
9.	Lathur	25. Periyavazhikkadu 26. Koovathoor (ADW)	25. Periyavazhikkadu 26. Koovathoor
10.	Chittamur	27. Idaikkazhinadu	27. Idaikkazhinadu

2.2.2. EGS CENTRES

There are 3433 dropouts / never enrolled children in this district. Most of them are child labourers and belong to heterogeneous groups in age and class. These children are overaged for those classes to which they could be admitted in schools. To address the problem of enrolment of these children, it has been planned to start bridge courses.

Hence Bridge Course will help them to get their content in a condensed period of time. The ultimate aim of this course is to main stream the dropouts.

The period of the course will be 2 months to 6 months. One Education Volunteer will be appointed by the VEC concerned. Academic training will be given to the EVs by the DIET. Training modules will be prepared by the DIET. 64 Bridge Courses have been planned and funds have been allocated in the Budget for this year.

Out of the 17 Habitations identified with the need for new primary schools, only 7 are going to be provided with formal primary schools. The remaining 10 listed below are going to be provided with EGS Centres. These centres will meet with the educational needs of the children in these places. If they are viable for two years, they will be converted into formal primary schools.

Sl.No.	Habitations	Block
1.	New Kidiyiruppu (Valathottam Panchayat)	Kancheepuram
2.	Kannanthangal	Sriperumbudur
3.	Srinivasapuram	Kundrathur
4.	Indira Nagar (Kirugampakkam Panchayat)	Kundrathur
5.	Senthamangalam	Kattankolathur
6.	Puthur	Kattankolathur
7.	Kothikkanthangal	Kattankolathur

8.	Vadapathi	Thiruporur
9.	Kazhipathur	Thiruporur
10.	Munnakulam	Acharapakkam

2.2.4. PROGRESS IN ENROLMENT

The first and foremost objective in SSA is the enrolment of all school-age children in schools by 2003. In order to achieve this, various strategies were followed. At the beginning of the academic year Enrolment campaigns were organized through processions, rallies and cultural fetes.

The Village Education Committee is entrusted with the work of door-to-door campaigns to bring children into schools. In this district, Village Education Registers were given to the VECs. An exhaustive enumeration of all children from 0-5 and 6-14 age groups were done and recorded in the VER. Children in the 6-14 age group were divided into three categories i.e., children in schools, drop-outs and never enrolled. There after children under the categories of drop-outs and never enrolled became special targets for enrolment.

A remarkable raise in enrolment is observed through these efforts. The previous enrolment was 3, 97,326. Now it has become 4, 63,441. However there are 3433 Out-of-school children still to be brought into formal schools or any kind of alternative schools.

2.3.1. BOYS AND GIRLS

Enrolment Rate between boys and girls shows only 1% difference. In the primary level the NER of boys is 95% and that of girls is 94%. In the upper primary level the NER of boys is 96% and the NER of girls is 95%.

2.3.2. SC/ST

SC/ST children come under Special Focus Group in the SSA activities. Enrolment of SC/ST children is on par with that of others in this district. Net Enrolment Rate of these children in primary is 95% and in the upper primary it is 96%. Special Coaching Classes are conducted in the evenings, to bring up the achievement level of these children.

2.3.3. DISABLED

Disabled children are in a sizable number among the out - of - school children. Since it needs an elaborate exercise, the job of enrolling and educating the disabled through integration has been entrusted with the 11 NGOs in this district.

Census of disabled children was taken in all the blocks.

The special educators are appointed in the following blocks.

1. Kanchipuram
2. Sriperumbudur
3. Walajabad
4. Kundrathur
5. Madurantakam.

The BRC - Supervisors and the Block Teacher Educators in all the 13 Blocks were trained by the SPASTN on the Integrated Education of the Disabled. The NGOs for IED have done door - to - door visits. They have conducted awareness Programmes for the Headmasters and teachers on the need to educate the disabled. Moreover the parents of the disabled are also educated through counseling to give their children proper education.

2.4. PROGRESS IN COMPLETION

Completion Rate in primary during the period of preparation of Perspective Plan was 57%. It has been raised to 58% after the implementation of this programme for one year. Same way the repetition rate was reduced to 29% while the dropout rate stood at 13%.

2.5. RETENTION

The Last objective in SSA is "to retain the children in schools". In Kanchipuram district, dropout rate stands at 13%. Efforts are being taken to reduce this rate in this year.

2.6. TRANSITION

The transition rate in primary is now 95%. This is due to the implementation of SSA in this district. Efforts are being taken to raise this to 100%. Transition Rate for SC in this stage is 80% while it is 78% for ST.

2.7. ATTENDANCE

Attendance Rate is now high as 75%. Due to the use of TLM, the class room situation is now improved. Monthly Reports submitted by the BRC Supervisors contain average attendance rate for the respective blocks. District attendance rate is calculated from these monthly reports.

2.8. PUPILS ACHIEVEMENT

Half yearly examination marks of students from 5 schools in each block are collected at random and consolidated. From the above consolidation the achievement level of pupils is arrived. The analysis shows that the Achievement level in Tamil and Social Science is higher than that of Science, Maths and English.

Table - 13

Achievement level - 2002 - 2003

Sl. No	Name of the Block	Tamil		English		Maths		Science		Social Science	
		Pri.	Mid.	Pri.	Mid.	Pri.	Mid.	Pri.	Mid.	Pri.	Mid.
1	Kanchipuram	64	62	51	53	54	51	58	63	62	62
2	Walajabad	61	63	51	51	53	56	64	62	61	63
3	Uthiramerur	59	60	48	49	51	58	57	61	62	58
4	Sriperumbudur	64	61	50	48	49	52	63	58	63	65
5	Kundrathur	60	60	49	52	54	49	62	57	62	64
6	Thiruporur	58	59	50	50	53	53	59	65	56	59
7	Kattankolathur	61	62	50	54	52	50	60	64	59	60
8	Thirukallukundram	58	56	51	45	47	48	56	61	66	61
9	St. Thomas Mount	59	58	49	55	49	54	55	64	65	62
10	Acharapakkam	60	59	50	53	52	53	58	59	67	64
11	Madurantakam	59	62	50	52	48	55	64	63	62	65
12	Lathur	58	60	48	51	47	52	62	64	58	62
13	Chithamur	59	58	49	50	41	46	62	65	63	61
	<i>Average</i>	60	60	52	51	50	52	60	62	62	62

Source : DISE 2002-2003

2.9. MAINSTREAMING OUT OF SCHOOL CHILDREN

At the time of preparation of Perspective Plan, the dropout was 20,925. Strenuous efforts were taken to enroll these children in schools. Most of them were enrolled in primary and upper primary classes. The remaining eligible students are 3433 only. New schools and AIE centres will be started during this year to address the problem in this area.

2.9.1. BRIDGE COURSE/TRANSIT CAMPUS

64 Bridge Courses are planned to be started in this plan year to reduce the dropouts in this district. Identity card to every dropout children is being issued by the Supervisors concerned in the prescribed form.

2.9.2. RESIDENTIAL SCHOOLS

This activity is not done in this district during this year.

2.10. APPOINTMENT OF TEACHERS

Five primary schools in the year 2001-2002 and eight primary schools in the year 2002-2003 have been started. 13 Head masters and 13 new teachers were appointed.

In the year 2001 - 2002 five primary schools were upgraded into upper primary. This number was Sixteen in the year 2002-2003. Hence 36 additional teachers have been appointed in the new upper primary schools.

TLE grant was released to the new primary and upper primary schools.

2.11. PROGRAMMES FOR DISABLED

Block Wise Details of IED Children

Sl.No	Name of Block	Total no of IED Children
1	Kanchipuram	242
2	Walajabad	258
3	Uthiramerur	213
4	Sriperumbudur	234
5	Kundrathur	28
6	Thiruporur	52
7	Kattankolathur	205
8	Thirukallukundram	142
9	St. Thomas mount	292
10	Madurantakam	45
11	Acharapakkam	132
12	Chittamur	157
13	Lathur	165
	Total	2165

557 disabled children are to be admitted in the schools.

The Inclusive Education Programme has a basic aim to enroll all the disabled children of 6-14 age group in the mainstream of education. Government of India in the year 2001 has declared education for all children in the age group of 6-14 year as their fundamental right. Children with disability are no exemption to this right. Also, persons with Disability envisages the rights of children to access rehabilitative services and educate themselves under Disability Act 1995. The Act also facilitates to access education in a barrier-free environment.

The programme was first started on 15 Nov.2002 initially to cover six months period with 9 types of activities and the specifics among them are awareness programme, medical assessment, training to the parents, community and teachers, appointment of Special Educators etc.,

The preparation of this Plan & Budget was based on the suggestions of Resource groups, representation NGOs from various fields of disabilities.

The 412 blocks of Tamilnadu spread around 29 districts with the support and involvement of 62 NGOs who have the experience and commitment to execute the planned activities. Having completed the first phase, this second phase of activities is based on the actual experience of all the NGOs of all the districts. And the planned activities are as follows:

- Community Capacity Building.
- Orientation and Awareness
- Project Team's Capacity Building.
- Rehabilitation Intervention.
- Resource units support.
- Monitoring, Evaluation and Documentation.

The allotment in the budget for a child is Rs. 1200/- per year.

Disabled children are in a sizable number among the out - of - school children. Since it needs an elaborate exercise, the job of enrolling and educating the disabled through integration has been entrusted with the following NGOs in this district.

NGOs For Implementation of IED

Sl. No	Block	Name of the NGO
1.	Kanchipuram	Vidyaprakasam, Kanchipuram
2.	Sriperumbudur	Vidyaprakasam, Kanchipuram
3.	Uthiramerur	Udhayam
4.	Walajabad	Kilottivakkam Gramasangam
5.	Kundrathur	Kilottivakkam Gramasangam
6.	Kattankolathur	ACDS.
7.	St. Thomas Mount	SPASTN, Taramani.
8.	Thirukalikundram	Dhan Foundation
9.	Thiruporur	Mass Action Trust
10.	Madurantakam	Mahatma Gandhi
11.	Acharapakkam	BWDA
12.	Chittamur	DGSEA
13.	Lathur	DGSEA

Census of disabled children was taken in all the blocks.

The special educators are appointed in the following blocks.

1. Kanchipuram
2. Sriperumbudur
3. Walajabad
4. Kundrathur
5. Madurantakam.

The BRC - Supervisors and the Block Resource Teacher Educators in all the 13 Blocks were trained by the SPASTN on the Integrated Education of the Disabled. The NGOs for IED have done door - to - door visits. They have conducted awareness Programmes for the Headmasters and teachers on the need to educate the disabled. Moreover the parents of the disabled are also educated through counseling to give their children proper education.

2.12. PROGRAMMES FOR SC/ST

Special Coaching classes have been conducted last year. Teachers conducted these special classes after school hours, for a duration of one hour everyday. Unlike the regular class rooms, these special classes helped students to interact with the teachers and also enabled them to clarify their doubts. Last year 7500 SC/ST children were benefitted by this scheme. This year 23198 children are going to get benefit under this scheme.

2.13. PROGRAMMES FOR GIRLS

Hence education of girls needs top priority under SSA, coaching class have been arranged for them to make them better in their studies. Last year 7500 girls have been benefitted under this scheme. This year 24380 are going to get Special Coaching under this scheme.

2.14. EARLY CHILDHOOD CARE AND EDUCATION

Children in the age group of 0-5 are the target group for future admissions in primary schools. If they are prepared properly, all of them could be admitted in the schools. Thus 100% enrolment of eligible children becomes very easy. Last year, data were collected regarding Early Childhood care and education. 105 places in 13 Blocks are identified to start new Early Childhood Care and Education centres in this district. This programme is now implemented under the activity "Innovation-Nursery-Education".

Table - 16

Number of ECCE and Children - 2002 - 2003

Sl.No	Block	ICDS Centers	Children	TINP Centers	Children	Others LKG/UKG	Children
1	Kanchipuram	138	5912	-	-	16	1045
2	Walajabad	123	5276	-	-	4	186
3	Uthiramerur	155	6653	-	-	5	597
4	Sriperumbudur	120	5147	-	-	2	150
5	Kundrathur	106	4546	-	-	5	380
6	Thiruporur	108	4631	-	-	6	520
7	Kattankolathur	128	5492	-	-	35	4310
8	Thirukallukundram	120	5147	-	-	11	2565
9	St. Thomas Mount	164	7040	-	-	72	9887
10	Acharapakkam	113	4846	-	-	27	790
11	Madurantakam	148	6352	-	-	8	609
12	Lathur	84	3600	-	-	5	126
13	Chittamur	106	4546	-	-	6	135
	<i>Total</i>	<i>1613</i>	<i>69208</i>	<i>-</i>	<i>-</i>	<i>202</i>	<i>21300</i>

Source : DISE 2002-2003

2.15. FUNCTIONING OF VILLAGE EDUCATION COMMITTEES

Village Education Committees is the root level structure in the implementing body of this scheme. All funds flow only through Village Education Committees concerned. Village Education Committee meets twice in a month to discuss the agenda on SSA scheme in connection with their school. In Kanchipuram district all members of the VECs were trained. Village Education Register is being maintained by the VEC and enrolment is the main thing to watch by the members. All efforts are taken by the VECs to get 100% enrolment in their schools. Minutes of the meeting are recorded. A copy of it is sent to the BRCs concerned.

2.16. PROGRAMMES IN CLUSTER RESOURCE CENTRE

Detailed guidelines have been given as to how CRC meetings are to be held to promote the quality of classroom processes. Each CRC has the participation of 40 teachers. In Kancheepuram District, there are 8471 teachers working in Primary and Upper Primary schools. 191 CRCs are functioning now. 19 more centers are to be opened. Depending on the local context, CRC centers function either on 1st or 3rd week of every month.

The Main activities of the CRC are detailed below:

- ❖ Innovative strategies in Teaching and Learning process.
- ❖ Identifying hard spots
- ❖ Demonstration classes by Resource persons and Group Discussion
- ❖ Language Development
- ❖ Language (ELT) experts activities
- ❖ Discussion on important articles from Educational journals
- ❖ New Approach in Assessment and Evaluation.

- ❖ Dissemination of Action Research findings.
- ❖ Sharing of classroom experiences
- ❖ Quiz programs for practicing teachers in Maths, Science, Social Science and literature.

CRC coordinators document the processes of CRC meetings. The documents are available at every BRC for reference DIET faculty members intends to monitor the impact of CRC meetings in the classroom processes.

2.16. PROGRAMMES IN BLOCK RESOURCE CENTRES

There are 13 BRCs in this district. All BRCs are functioning under a Supervisor with Seven BRTes in different faculties. The following activities are done at the Block Resource Centre.

1. Teachers Training.
2. Pre-project Activity
3. Analysing Data
4. Supervision, Monitoring and Evaluation on works done in the schools under this scheme.
5. Convergences.
6. Strengthening and support his structure of VECs and CRCs.

2.18. RESEARCH, EVALUATION AND MONITORING

Various topics were given to take Action Research in the scheme. Training to deal with this activity was given to all BRC personnel in this district. Some major areas are found. The following topics are the scheme specific areas.

1. Training to teachers - Area - Impact - Change in attitudes.
2. Project administration.
3. Convergence for getting a good marketing.
4. Achievement level of the students in this scheme.
5. Enrolment problems.
6. Innovative activities, special reference to Special Focus Group.
7. Impact of infrastructure facilities on Quality education.

The District Collector being the Chairman of the District Level Committee of SSA, conducts review meetings every week. Activities under various components are analysed and necessary strategies are evolved to address the problems faced in the scheme implementation in these meetings.

The Joint Director of Elementary Education is the officer to monitor the SSA Activities in Kanchipuram District. This Joint Director visits the district and conducts Review Meetings every month to assess the progress of the scheme.

This year DISE activity has been taken under this sub heading. During the year 2003-2004, more activities will be taken under this heading. Central Appraisal Team and World Bank team have visited and monitored the implementation of these scheme activities in this district.

2.19. IMPROVING INFRASTRUCTURE

Enrolment, Retention and Quality Education could be ensured in schools by providing proper Infrastructure. Civil Construction Work is a major activity in SSA to address the needs of infrastructure.

Table - 17

Schools requiring classroom facilities - 2002 - 2003

Sl.No	Block	Three Classroom	Two Classroom
1	Kanchipuram	5	9
2	Walajabad	5	9
3	Uthiramerur	4	8
4	Sriperumbudur	5	9
5	Kandrathur	4	8
6	Thiruporur	4	8
7	Kattankolathur	4	8
8	Thirukallukundram	4	8
9	St. Thomas Mount	7	11
10	Acharapakkam	5	9
11	Madurantakam	5	9
12	Lathur	4	8
13	Chittamur	4	8
	Total	60	112
	Block Average	5	9

Source : DISE 2002-2003

2.19.1. CONSTRUCTION OF BLOCK RESOURCE CENTRES

One building was allotted during last year. Kattankolathur Block was selected for the construction of this building. This year 8 BRC buildings are included in the budget.

2.19.2. CONSTRUCTION OF CLUSTER RESOURCE CENTRES

Last year 15 CRC buildings were constructed. This year 30 CRCs are to be provided with its building. Necessary allocation of funds is provided in the budget for the year 2003-2004.

2.19.3. CONSTRUCTION OF THREE CLASS ROOMS

Last year 45 three class rooms have been started for construction. This year this number is 30. The rural schools will be given preference in selection.

2.19.4. CONSTRUCTION OF TWO CLASS ROOMS

It has been found out that there is a need for 988 Two class room buildings in this district. During 2001-2002 and 2002 - 2003, 43 two class room buildings have been taken up for construction.

This year 38 two class room buildings are included in the budget.

2.19.5. PROVISION OF TOILET FACILITIES

Construction of toilets is an important activity in the development of infrastructure of a school. The district administration has taken keen interest in this aspect and has sanctioned toilet buildings through Rajiv Gandhi Water Mission. Hence only 55 toilets were constructed through SSA.

2.19.6. PROVISION OF DRINKING WATER FACILITIES

In this district 200 schools need drinking water facility. Eleven schools been sanctioned this facility last year. This year 68 schools are identified for giving thus facility. Rural schools will be given first preference.

Table - 18

Schools requiring Toilet & Drinking Water facilities - 2002 - 2003

Sl.No	Block	Primary		Upper Primary	
		Toilet	Drinking Water	Toilet	Drinking Water
1	Kanchipuram	70	55	18	4
2	Walajabad	70	50	12	4
3	Uthiramerur	95	50	15	4
4	Sriperumbudur	70	47	11	4
5	Kundrathur	60	40	12	4
6	Thiruporur	60	40	11	4
7	Kattankolathur	60	42	12	4
8	Thirukallukundram	70	45	11	3
9	St. Thomas Mount	50	30	13	4
10	Acharapakkam	70	40	11	4
11	Madurantakam	75	45	11	3
12	Lathur	40	20	11	4
13	Chittamur	70	50	12	4
	Total	860	150	160	50

Source : DISE 2002-2003

Budget for Amenities are provided in the AWP & Budget.

2.20. MAINTENANCE AND REPAIR

In this district there are 1301 Government institutions which need this fund. Last year all the amount of Rs.6.400 was released to 1288 schools which were eligible then. This fund has been utilized for maintaining the school building.

2.21. PROGRAMMES FOR QUALITY IMPROVEMENT

SSA Scheme has an important objective to focus on elementary education of satisfactory quality with emphasis on education for life. Hence there are various interventions for this purpose. The following are the headings under which allotments are made to improve quality in education:-

- * Salary of teachers
- * School Grants
- * Teacher Grants
- * TLE Grants

In the Budget for the years 2001-2002 and 2002-2003 a sum of Rupees 185.96 lakhs has been allotted for this purpose.

2.21.1. CAPACITY BUILDING FOR PROJECT STAFF

Everyday classroom activities must be happy and congenial. Teachers must be competent to manage the class room situation and to transact teaching learning activities fruitfully. In order to achieve this goal, training for teachers have been planned. This training is meant for imparting teaching methodology and making attitudinal change. After the training a teacher could discharge his / her duty in a confident manner. Hence trainings are called "Capacity Building Training". Resource persons in various fields are inducted in these training programmes. Most of the training schedules are prepared by the DIET, Kaliyampoondi.

School Adoption Programme is a new concept in which schools have been assessed on their performance by the BRTEs. The low performing schools have been identified and selected for adoption. Each BRTE is allotted with 5 schools. They have been asked to find out local specific academic issues and report back to BRC. Lesson plans will be prepared in consultation with BRC Supervisor and then BRTE will apply the well thought network plan in the target school. This will be implemented in the current academic year. School Adoption and School Based trainings are the most important activities in SSA. A special training was given to all BRC personnel on School Adoption and SBT.

In this district 13 Block Resource Centres have been formed to impart in service training to teachers. The BRC Supervisor is appointed in the cadre of High school headmaster. There are 7 Block Resource Teachers Educators in each Block. They underwent three months hands-on training in primary and middle schools under school Attachment Programme. BRTE s are now aware of the school climate and do know the constraints preventing effectiveness in schools. They got clear ideas on their roles and responsibilities.

Another important strategy in teacher training is the school Based Training. The BRTEs go to schools and visit classes. They identify hard spots in the content areas for each teacher. Subsequently the BRTEs evolve various techniques and clear the hard spots through their own teaching in the class room with proper lesson plan and necessary teaching learning materials. In this process, the BRTEs are very careful in avoiding any kind of problems and prejudices among the teachers.

DIET is involved in formulating all the training activities in this scheme.

A training schedule is prepared by the DIET for the year 2003-04.

Training is planned as follows

- a) For New teachers 30 days
- b) For other teachers 20 days
- c) For EVs 40 days

A training calendar has been evolved in consultation with the DIET . The programme will be announced well in advance so as to get the maximum benefit of this activity.

2.21.2. TRAINING TO TEACHERS

Different training to teachers are planned. Every teacher will have 20 training days in a year. School Based Training and School Adoption Programme also come under this activity. SBT will help the teachers to have their training in the school itself.

Teachers are willing to have their training at their working spot.

The teacher's educators have identified the hard spots to start SBT Programmes.

Table - 14

Number of Teachers need Training - 2002 - 2003

Sl. No	Block	Primary			Upper Primary			Grant Total
		Govt.	Aided	Total	Govt.	Aided	Total	
1	Kanchipuram	100	13	113	275	61	336	449
2	Walajabad	80	10	90	150	85	235	325
3	Uthiramerur	100	69	169	105	6	111	280
4	Sriperumbudur	50	9	59	58	1	59	118
5	Kundrathur	204	0	204	86	0	86	290
6	Thiruporur	120	27	147	107	0	107	254
7	Kattankolathur	143	20	263	291	31	322	585
8	Thirukallukundram	73	0	73	79	1	80	153
9	St. Thomas Mount	493	203	696	457	110	567	1263
10	Acharapakkam	164	1	165	52	20	72	237
11	Madurantakam	117	65	182	65	22	87	269
12	Lathur	0	0	0	12	0	12	12
13	Chittampur	167	0	167	34	0	34	201
	Total	1811	517	2328	1771	337	2108	4436

Source : DISE 2002-2003

There are 8471 teachers working in this district. Out of them 4436 were given training so 50% of them were trained through BRC.

This table shows that 50% of the present teachers were given training at BRCs in their block.

Sl. No	Month	Name of the Training	Objectives	No of days	Target population	Resource person	Venue
1.	May-03	Action Research	To familiarize BRTEs with the techniques of Action Research and equip them to guide	4 4	All BRTEs All BRTEs	DIET faculty	DIET, Kaliyam poondi
2.	Jun-03	Action Research	To enable teachers to confront academic issues and find locally reitable solutions	6 x 3 = 18 days (6 - cycles)	Practicing teachers & upper primary 8600 teachers in 172 batches (2 batches in a Block at a time)	BRTEs, on the training support by DIET team	Respective Block
3.	Jun-03	Content & Methodology	To enable educational volunteers to carryout their job with proficiency	5 days	All Educational volunteers	DIET Faculty	DIET, Kaliyam poondi
4.	Jul - 03	Content & Methodology English	To enable BRTEs to master methods of Teaching English and demonstrate how content clarity can be arrived at	5 days	All BRTEs	DIET faculty	DIET, Kaliyam poondi
5.	July & Aug- First Week 2003	Content & Methodology English	To facilitate martesy of teaching methods & content	Four cycles 3 x 4 = 12 days	5269 Primary teachers (50 in each batch 2 batches in a block at a time)	DIET faculty	DIET, Kaliyam poondi

Sl. No	Month	Name of the Training	Objectives	No of days	Target population	Resource person	Venue
6.	Aug II Week	Mathematics	To equip BRTes, with content and mathematics methods in VI-VIII	2 days	All BRTes	DIET faculty	DIET, Kaliyam poondi
7.	Aug III Week	Mathematics	Practicing teachers	3 x 3 = 9 days (3 cycles)	3331 Upper Primary 5 in each batch 2 batches at a time in a block	BRTes	Respective Block
8.	Sep - 03	Evaluation	To Sharpen the proficiency of teachers educators in evaluation techniques.	5 days	All BRTes	DIET faculty	DIET, Kaliyam poondi
9.	Oct - 03	Evaluation	To enhance the competence of teachers in CCE	6 days 6 x 6 (Six days)	8600 Teachers	8600 Primary & Upper primary teachers in 172 batches (2 batches in a block at a time)	Respective Block
10.	Nov - 03	TLM workshop	To equip BRTes to make TLM all subjects	5 days	All BRTes	DIET Faculty & Special Resource persons	Respective Block
11	Jan - 03	TLM Workshop	To equip BRTes to make TLM all subjects	5 days (6 cycles)	8600 Primary & Upper primary teachers in 172 batches (2 batches in a block at a time)	BRTes	Respective Block

2.21.3. ORIENTATION TO VEC MEMBERS

A training to VEC members has been given in the year 2002-2003.

An extensive training to all the members of the VECs in this district was given during the months of August and September 2002.

The Training was comprised with the formation, function of VEC and responsibility of VEC members for the cause of education. A Handbook on SSA was also given to all the VEC presidents.

Enthusiastic NGO volunteers and dedicated teachers were selected to form the core team for VEC training and they were trained in DIET Kaliyampoondi. The focus of the training was on the role of a VEC Chairman and the VEC members. Special thrust was given to sensitizing the self-help group members in assisting schools to mainstream the dropouts back to schools. The core team members in turn gave training to VEC members in the blocks. The training was given to all the VECs in two phases. A VEC Training module was drafted by DIET faculty for this purpose.

Orientation training to VEC members are planned during this year. A provision for meeting this expenditure is provided made in the budget of this year.

2.21.4. PROVISION OF TLM, TLE, SCHOOL GRANT

TLM grant of Rs.500 is given to a teacher to prepare the teaching learning material for his/her class room teaching.

Last year this grant was given to all eligible teachers and they spent it for the purpose of CRCs have contributed their share by giving suggestions and exposures to new techniques in preparing TLM.

TLE is one time grant for Primary schools and each school is granted Rs. 10000. TLE Grant for upper primary school is Rs. 50000.

During 2001-2002 and 2002-2003 13 primary schools and 21 upper primary schools have been given with the TLE grant under this scheme.

School grant is an amount of Rs.2000 per year to a school to purchase some important articles helpful either to teachers or pupils.

This year 1539 schools got this grant. The total amount in this area was Rs.30.78 lakhs. Many schools bought iron furniture's like chairs, tables and almirahs.

This year also, necessary provisions are made in the budget to utilize this fund for the schools.

2.22. PROJECT MANAGEMENT

All the activities under SSA-Scheme are implemented in the district by the District Project Office. The chief Educational Officer apart from his regular administrative work, functions as the District Programme Co-ordinator of the scheme. Accordingly the District Elementary Education Officer is the Additional District Programme Co-ordinator. There is an Assistant District Programme Co-ordinator in the cadre of a Higher Secondary School Headmaster. A Statistical Officer is appointed on deputation. There is a Media Documentation Officer and a Training and Women Development Officer. There is a Superintendent, an Accountant and an Assistant in the Office. Moreover there are two Civil Engineering Consultants and a Computer Programmer in the District Project Office.

2.22.1. ESTABLISHMENT OF MIS

Transparency is the main thing in this scheme. It is observed in all aspects of implementation. The funds always flow through the VECs concerned. The matter will be discussed in the meeting of VEC and the scheme is used to be executed by the VEC members and general public.

Every transaction of money will be displayed on the notice board of the school.

News regarding the schemes and photos are flashed in the dailies. As the Collector is the Chairman, matters in connection with this scheme are usually flashed through the Public Relation Officers.

2.22.2. IMPLEMENTATION OF DISE

A statistics on district information of school education has been taken as on 1.9.2002.

DISE forms were supplied to all the schools in this district and information collected.

These informations have been compiled and computerized. These data help to draft the district annual plan in a better way.

Most of the statistical points in this plan document has been taken from DISE 2002- 2003.

2.22.3. APPOINTMENT OF PROJECT STAFF

The District Project Office is housed in the Chief Educational Office, Kanchipuram. The Chief Educational Officer is the District Programme Co-ordinator. The District Elementary Education Officer is the Additional District Programme Co-ordinator. They look after the scheme apart from their regular duties. A Higher

Secondary School Headmaster has been appointed on deputation as Assistant District Programme Co-ordinator for the implementation of the scheme. There is a superintendent, Accountant, Statistical Officer, two Civil Consultants and a Computer Programmer, in the district office. There is a Media Documentation Officer and Training and Woman Development Officer in the office.

Block Resource Centre is another important office for the implementation of the scheme. There are 13 BRCs in this district. A Block Supervisor in the cadre of a High School Headmaster is appointed on deputation in the Block. Moreover there are seven Block Resource Teacher Educators in each Block for various subjects. They are appointed through the Teacher Requirement Board. Altogether there are 91 Block Resource Teacher Educators in this district. Block Resource Centre is responsible for conduction training programmes for teachers moreover they collect various data, compile them and prepare consolidated statements to be sent to the DPO.

2.23. CONVERGENCE WITH ONGOING SCHEMES

Sarva Shiksha Abhiyan is to provide useful and relevant elementary education for all children in the 6 to 14 age group by 2010. There is also another goal to bridge social, regional and genders gaps. Moreover it realizes the importance of Early Childhood Care and Education. Hence apart from Educational Department there is a need to converge and link the services of various Government Departments to the successful launch of this scheme. There is a comprehensive approach by the Government of Tamil Nadu to promote education in the state.

The District Collector plays an important role in converging all Departments in this district with the Education Department, to promote SSA activities. Moreover Education Committees at the District, Block and Village levels have representatives from various fields.

The Government has introduced a lot of incentive schemes to attract children towards educational institutions. These schemes have been supported by various departments other than Education Department. Noon meal is provided to the children both on working days and holidays. Very poor children take meals in the schools on holidays. Uniforms bring students of various communal, social and economic status together. They help children view one another as fellow human beings. Teachers also treat every child equal. So, the State Government takes considerable pain to stitch and issue uniform to primary school children. DEEO and AEEOs monitor the issuance of uniforms in all the primary schools. Tamilnadu Government issues free text books to students from I standard to VIII standard. The text books are issued to the Headmasters of the respective schools in the beginning of the academic year. The state Government do not want students to drop out because of their parent's inability to provide them note books. So, the State provides free note books also up to VIII Standard. Tamilnadu Government, in an unprecedented move, has issued free bus passes to students from I standard to XII to travel in Government buses. This free student travel concession has enabled students in Kanchipuram district to travel to the nearest village and town and reap the benefits of free and compulsory education.

CHAPTER III

ACTIVITIES AND BUDGET

3.1. PRIMARY SCHOOLS

In order to reach 100% in the access rate for primary schools, it has been planned to open 10 schools in this district. Total budget allocation for Primary Formal Education is Rs. 112.345 lakhs. This includes Salary for teachers, School Grants, Teachers Grants and Grants for Teaching Learning Equipments.

3.2. UPPER PRIMARY SCHOOLS

Since Kanchipuram district is adjacent to Chennai, the State capital, several habitations have swelled considerably leading to the need for upgradation of primary schools into upper primary schools. During 2003 - 2004 it has been planned to upgrade 25 primary schools into upper primary schools. This requires Rs. 120.105 lakhs to be spent on salary and grant for the schools and teachers. Teaching Learning Equipments for the newly upgraded schools during this year will also be bought at a cost of Rs. 50000 each. Total cost is Rs. 12.5 lakhs under this activity.

3.3. ALTERNATIVE AND INNOVATIVE EDUCATION

Though there is a need for opening 17 primary schools, only 7 primary schools are going to be opened during the plan year. Hence it is planned to start 2 EGS Centres in the habitations which need primary schools with a budget of Rs. 0.423 lakhs. Moreover there is a plan to start 64 Bridge Courses and Transmit Camps with an allocation of Rs. 13.504 lakhs, to address the needs of the out-of-school children.

Special Focus Group. A sum of Rs.121.136 lakhs have been provided under this head with a break-up of Rs. 25.980 lakhs for the Education of the disabled, Rs. 48.760 lakhs for the Education of Girls and Rs.46.396 lakhs for the Education of the SC/ST children.

3.5. VILLAGE EDUCATION COMMITTEE

Since the Village Education Committees play a vital role in the implementation of the SSA-scheme Rs.2.574 lakhs have been earmarked for Meetings and Rs.4.761 lakhs have been provided for the Training of the VECs.

3.6. CLUSTER RESOURCE CENTRES

Rs. 24.030 lakhs have been allocated for the various activities under the heading Cluster Resource Centres in this budget. Out of which Rs.5.040 lakhs will be spent on workshops and meetings, Rs. 5.250 lakhs and Rs.2.100 lakhs are going to be spent on contingency and TLM grants respectively. 50 CRCs will be provided with furniture during the plan year. There is a plan to make sanctions for buying library books for 16 CRCs with the sanction of Rs.1.600 lakhs. Moreover Rs. 5.040 lakhs have been allotted for TA/DA to the CRCs in this budget. Only CRCs located in rural areas will be given first preference for the sanction of furniture and library books..

3.7. BLOCK RESOURCE CENTERS

There is a budget allocation of Rs.162.175 lakhs under the activities of Block Resource Centres. The various Sub-activities and the allocation of funds are as detailed below:-

Salary of Staff	-	Rs. 130.000 lakhs
Contingency Grant	-	Rs. 1.625 "
Workshops and Meetings	-	Rs. 0.650 "
TLM Grant	-	Rs. 0.650 "
Training Equipments	-	Rs. 13.000 "
Library Books	-	Rs. 3.250 "
TA/DA	-	Rs. 13.000 "

Since BRCs are the important centres of training for the teachers, the provision for purchasing necessary Training Equipments and needed Library Books is made in this budget.

3.8. RESEARCH, EVALUATION AND MONITORING

An amount of Rs.23.175 lakhs has been allotted for Research, Evaluation and Monitoring activities in this budget. Research activities will reach to the grass root level of all primary and upper primary schools. Evaluation and monitoring will be carried out by various internal and external agencies.

3.9. CIVIL CONSTRUCTION WORKS

Civil Construction Work is another major activity in the SSA-scheme. Rs. 378.550 lakhs have been provided for this activity in this budget. It has been planned to construct 8 BRCs with Rs.48 lakhs, 30 CRCs with 60 lakhs, 38 two class room buildings with Rs.114 lakhs and 30 three class room buildings with Rs.135 lakhs. There is a provision of Rs.7.950 lakhs for providing Drinking Water facilities in 53 schools and Rs.13.600 lakhs for the construction of toilets in 68 schools.

3.10. MAINTENANCE AND REPAIR WORKS

Maintenance and repair works during the year 2003 - 2004 can be carried out in 1301 schools in this district with a sum of Rs.65.050 lakhs provided in the budget.

3.11. MANAGEMENT

Various expenses of the District Project Office will be made with the allocation of Rs.39 lakhs in the annual budget. Provisions are specially made for the development of Management Information System with Rs. 5 lakhs and Media and Documentation with Rs.3 lakhs this year. There is a provision of Rs. 3 lakhs for the purchase of necessary furniture and equipments for the DPO within the budget for the management.

3.12. TRAINING

Hence training to teachers is an important activity, a total sum of Rs.119.168 lakhs have been allotted for this purpose. Out of the above sum Rs. 73.122 lakhs will be spent on Training to primary teachers and Rs. 43.046 lakhs will be spent on training to teachers of the Upper Primary.

3.13. INNOVATION

Apart from various regular activities in schools, several innovative activities will be included in the schools to attract more children, to retain them and to make them feel comfortable and happy in the class rooms to complete their education satisfactorily. Rs.50 lakhs under various heads like, Computer Education, useful Vocational Activities, Arts and Craft Activities and Nursery Education have been allotted for this purpose.

3.14. PROCUREMENT PLAN

All procurements under the SSA scheme are done following the well established norms and the rules and regulations of the Government of India and Tamil Nadu State. The Village Education Committees are functioning as the hub of SSA activities. Hence all financial sanctions are made to the VECs. The committees follow the rules and buy things as per norms. Purchases exceeding Rs. 500 are decided through competitive quotations. Preference for the purchase of furniture is given to Government Organizations like TANSI. Civil Construction Works are done by the Village Community. Since the estimate for the construction of BRCs is Rs.6 lakhs, it is entrusted with the civil wing of PWD to fulfill Tender Transparency Act.

3.15. IMPLEMENTATION SCHEDULE

There is a well-planned Implementation schedule, enclosed with this Annual Work Plan and Budget. The whole plan year is divided into four quarters. Various sub-activities under the major activities are spread over the period of one year. It will help the Project Staff to carry out the activities with ease and precision.

Director & ...
Director of Technical Education
...
D-12163
05-12-2003

Table A

S. No.	Maj. Act.	Activity Description	Kancheepuram				
			2001-2002				
			Receipt		Exp.	Spill	
Phy.	Fin.	Phy.	Fin.				
1	PFE	Primary Schools					
i		No. of Schools	5			5	
ii		Salary of new teachers	10	3.36		10	3.36
iii		Salary of addl. Teachers					
iv		School Grants					
v		Teachers Grants					
vi		TLE Grants	5	0.5		5	0.5
		Total		3.860			3.860
2	UPE	Upper Primary Schools					
i		No. of Schools					
ii		Salary of new teachers	5	1.4		5	1.4
iii		Salary of addl. Teachers					
iv		School Grants					
v		Teachers Grants					
vi		TLE Grants	10.000	2.500		5.000	2.500
		Total		3.9			3.9
3	AIE	Alternative & Innovative Educatio					
i		EGS Centres (Unserved Habitations)					
ii		Bridge Courses/Transit Camps					
iii		Residential Camps					
		Total	0	0			0
4	SFG	Special Focus Groups					
i		Education of disabled	2633	32.64		2633	32.64
ii		Education of Girls					
iii		Education of SC/ST Children					
		Total		32.64			32.64
5	VEC	Village Education Committees					
i		Meetings					
ii		Training					
		Total		0			0
6	CRC	Cluster Resource Centres					
i		Workshops and Meetings					
ii		Furniture	128	12.8		128	12.8
iii		Contingency Grant	128	3.2		128	3.2
iv		TLM Grant					
v		TLE Grant					
vi		Library Books					
vii		TA/DA					
		Total	256	16		256	16
7	BRC	Block Resource Centres					
i		Salary of Staff					
ii		Furniture	13	13		13	13
iv		Workshops and Meetings					
v		TLM Grant					
vi		Training Equipments					
vii		Library Books					
viii		TA/DA					
		Total	13.000	13.000		13.000	13.000
8	REM	Research, Evaluation & Monitoring					
9	CCW	Civil Construction Works					

S. No.	Maj. Act.	Activity Description	Kancheepuram				
			2001-2002				
			Receipt		Exp.	Spill	
Phy.	Fin.	Phy.	Fin.				
i		Construction of BRCs					
ii		Construction of CRCs					
iii		Construction of two classroom	14	42.000		14	42.000
iv		Construction of three classroom	11	49.500		11	49.500
v		Drinking Water	11	1.650		11	1.650
vi		Toilets	10	2.000		10	2.000
		Total	46.000	95.150		46.000	95.150
10	MRW	Maintenance & Repair Works					
11	MGT	Management					
i		Salary of staff					
ii		Furniture and Equipment					
iii		Books and Periodicals					
iv		Maintenance of equipment					
v		Consumable and Stationery					
vi		Management Information System					
vii		Media and Documentation					
viii		Training to Project Staff					
ix		Consultancy					
x		Contingency					
xi		TA/DA					
		Total	0.000	0.000		0.000	0.000
12	TRG	Training					
i		Training to Teachers (Primary)					
ii		Training to Teachers (Middle)					
		Total	0.000	0.000		0.000	0.000
13	INO	Innovation					
i		Computer Education	1	19.750		1	19.750
ii		Edn. of Girls (Arts and Crafts)					
iii		Edn. of SC/ST Children (Arts and					
iv		Nursery Education					
		Total	1.000	19.750		1.000	19.750
		Grand Total		184.300			184.300

Table B

S. No.	Maj. Act.	Activity Description	Kancheepuram						
			Receipt		Expenditure		Spillover		
			Phy	Fin	Phy	Fin	Phy	Fin	
1	PFE	Primary Schools							
i		No. of Schools	8						0.0
ii		Salary of new teachers	22	13.440	26	13.440			0.0
iii		Salary of addl. Teachers							0.0
iv		School Grants	1071	21.420	893	17.860			3.5
v		Teachers Grants	4487	22.435	363	18.015			4.4
vi		TLE Grants	6	0.600	8	0.800			-0.2
		Total	5594.000	57.895	1290.000	50.115	0.000	0.000	7.7
2	UPE	Upper Primary Schools							
i		No. of Schools	16						0.00
ii		Salary of new teachers	20	12.600	26	12.600			0.00
iii		Salary of addl. Teachers							0.00
iv		School Grants	468	9.360	393	7.860			1.50
v		Teachers Grants	4245	21.225	3670	18.350			2.87
vi		TLE Grants	10	5.000	16	8.000			-3.00
		Total	4759.000	48.185	4105.000	46.810	0.000	0.000	1.37
3	AIE	Alternative & Innovative Education							
i		EGS Centres (Unservd Habitations)	2	0.422	0	0	0	0	0.422
ii		Bridge Courses/Transit Camps							
iii		Residential Camps							0.000
		Total	2.000	0.422	0.000	0.000	0.000	0.000	0.422
4	SFG	Special Focus Groups							
i		Education of disabled	9980	39.920	9980	3.250			36.670
ii		Education of Girls							0.000
iii		Education of SC/ST Children							0.000
		Total	9980.000	39.920	9980.000	3.250	0.000	0.000	36.670
5	VEC	Village Education Committees							
i		Meetings							0.000
ii		Training	1529	7.339	1305	9.991			-2.652
		Total	1529.000	7.339	1305.000	9.991	0.000	0.000	-2.652
6	CRC	Cluster Resource Centres							
i		Workshops and Meetings	128	1.792	0	0	0	0	1.792
ii		Furniture							
iii		Contingency Grant	128	3.200	191	5.873			-2.673
iv		TLM Grant	128	1.280					1.280
v		TLE Grant							0.000
vi		Library Books							0.000
vii		TA/DA							0.000
		Total	384.000	6.272	191.000	5.873	0.000	0.000	0.399
7	BRC	Block Resource Centres							
i		Salary of Staff	13	109.2	13	85.183	0	0	24.017
ii		Furniture							

S. No.	Maj. Act.	Activity Description	Receipt		Kancheepuram Expenditure		Spillover	
			Phy	Fin	Phy	Fin	Phy	Fin
iii		Contingency Grant	13	1.625	13	1.625		0.000
iv		Workshops and Meetings	13	0.455				0.455
v		TLM Grant	13	0.650	13	0.650		0.000
vi		Training Equipments						0.000
vii		Library Books						0.000
viii		TA/DA						0.000
		Total	52.000	111.930	39.000	87.458	0.000	24.472
8	REM	Research, Evaluation & Monitoring	1316	11.840	1316	0.334		11.506
9	CCW	Civil Construction Works						
i		Construction of BRCs	1	6.000	1	2.000		4.000
ii		Construction of CRCs	15	30.000	15	7.600		22.400
iii		Construction of two classroom	28	84.000	28	22.850		61.150
iv		Construction of three classroom	35	157.500	35	86.000		71.500
v		Drinking Water	10	1.500	10	1.500		0.000
vi		Toilets	30	6.000	30	6.000		0.000
		Total	119.000	285.000	119.000	125.950	0.000	159.050
10	MRW	Maintenance & Repair Works	1316	65.800	1288	64.400		1.400
11	MGT	Management						
i		Salary of staff	1	20.556	1	17.604		2.952
ii		Furniture and Equipment						0.000
iii		Books and Periodicals						0.000
iv		Maintenance of equipment						0.000
v		Consumable and Stationery						0.000
vi		Management Information System						0.000
vii		Media and Documentation						0.000
viii		Training to Project Staff		0.005				0.005
ix		Consultancy						0.000
x		Contingency						0.000
xi		TA/DA						0.000
		Total	1.000	20.561	1.000	17.604	0.000	2.957
12	TRG	Training						
i		Training to Teachers (Primary)	1346	18.845	3001	5.952		12.893
ii		Training to Teachers (Middle)	1273	17.815	1109	0.406		17.409
		Total	2619.000	36.660	4110.000	6.358	0.000	30.302
13	INO	Innovation						
i		Computer Education	1	15.000	1	0.065		14.935
ii		Edn. of Girls (Arts and Crafts)	7500	15.000	7500	3.000		12.000
iii		Edn. of SC/ST Children (Arts and Crafts)	7500	15.000	7500	3.000		12.000
iv		Nursery Education						0.000
		Total		45.000		6.065		38.935
		Grand Total		736.824		424.208		312.616

Table - C

S. No.	Maj. Act.	Activity Description	Kancheepuram 2001-2002				2002-03 spillover
			Spillover		Expenditure		
			Phy.	Fin.	Phy.	Fin.	
1	PFE	Primary Schools					
i		No. of Schools	5		5		0.000
ii		Salary of new teachers	10	3.36	10	3.36	0.000
iii		Salary of addl. Teachers					0.000
iv		School Grants					3.560
v		Teachers Grants					4.420
vi		TLE Grants	5	0.5	5	0.5	-0.200
		Total		3.860		3.860	7.780
2	UPE	Upper Primary Schools					0.000
i		No. of Schools					0.000
ii		Salary of new teachers	5	1.4	5	1.4	0.000
iii		Salary of addl. Teachers					0.000
iv		School Grants					1.500
v		Teachers Grants					2.875
vi		TLE Grants	10.000	2.500	5.000	2.500	-3.000
		Total		3.9		3.9	1.375
3	AIE	Alternative & Innovative E					0.000
i		EGS Centres (Unserved					0.422
ii		Bridge Courses/Transit Camp					0
iii		Residential Camps					0.000
		Total	0	0		0	0.422
4	SFG	Special Focus Groups					0.000
i		Education of disabled	2633	32.64	2633	32.64	36.670
ii		Education of Girls					0.000
iii		Education of SC/ST Children					0.000
		Total		32.64		32.64	36.670
5	VEC	Village Education Committ					0.000
i		Meetings					0.000
ii		Training					-2.652
		Total		0		0	-2.652
6	CRC	Cluster Resource Centres					0.000
i		Workshops and Meetings					1.792
ii		Furniture	128	12.8	128	12.8	0.000
iii		Contingency Grant	128	3.2	128	3.2	-2.673
iv		TLM Grant					1.280
v		TLE Grant					0.000
vi		Library Books					0.000
vii		TA/DA					0.000
		Total	256	16	256	16	0.399
7	BRC	Block Resource Centres					0.000
i		Salary of Staff					24.017
ii		Furniture	13	13	13	13	0.000
iv		Workshops and Meetings					0.455
v		TLM Grant					0.000
vi		Training Equipments					0.000
vii		Library Books					0.000
viii		TA/DA					0.000
		Total	13.000	13.000	13.000	13.000	24.472
8	REM	Research, Evaluation &					11.506
		Monitoring					
9	CCW	Civil Construction Works					0.000

i		Construction of BRCs					4.000
ii		Construction of CRCs					22.400
iii		Construction of two	14	42.000	14	42.000	61.150
iv		Construction of three	11	49.500	11	49.500	71.500
v		Drinking Water	11	1.650	11	1.650	0.000
vi		Toilets	10	2.000	10	2.000	0.000
		Total	46.000	95.150	46.000	95.150	159.050
10	MRW	Maintenance & Repair Works					1.400
11	MGT	Management					0.000
i		Salary of staff					2.952
ii		Furniture and Equipment					0.000
iii		Books and Periodicals					0.000
iv		Maintenance of equipment					0.000
v		Consumable and Stationery					0.000
vi		Management Information Sys					0.000
vii		Media and Documentation					0.000
viii		Training to Project Staff					0.005
ix		Consultancy					0.000
x		Contingency					0.000
xi		TA/DA					0.000
		Total	0.000	0.000	0.000	0.000	2.957
12	TRG	Training					0.000
i		Training to Teachers (Primary)					12.893
ii		Training to Teachers (Middle)					17.409
		Total	0.000	0.000	0.000	0.000	30.302
13	INO	Innovation					0.000
i		Computer Education	1	19.750	1	19.750	14.935
ii		Edn. of Girls (Arts and					12.000
iii		Edn. of SC/ST Children					12.000
iv		Nursery Education					0.000
		Total	1.000	19.750	1.000	19.750	38.935
		Grand Total		184.300		184.300	312.616

Sarva Shiksha Abhiyan, Tamilnadu

**Table D
Budget Estimate for 2003-2004**

S. No.	Maj. Act.	Activity Description	Unit Cost	Kancheepuram	
				Phy.	Fin.
1	PFE	Primary Education			
i		No. of Schools		10	
ii		Salary of new teachers	0.840	46	38.640
iii		Salary of addl. teachers	0.840	30	25.200
iv		School Grant	0.020	1068	21.360
v		Teachers Grant	0.005	5223	26.115
vi		TLE Grant	0.100	10	1.000
		Total			112.315
2	UPE	Upper Primary Education			
i		No. of Schools		25	
ii		Salary of new teachers	0.840	72	60.480
iii		Salary of addl. teachers	0.840	25	21.000
iv		School Grant	0.020	484	9.680
v		Teachers Grant	0.005	3289	16.445
vi		TLE Grant	0.500	25	12.500
		Total			120.105
3	AIE	Alternative & Innovative Education			
i		EGS Centres (Unservd Habitations)	0.211	2	0.423
ii		Bridge Courses/Transit Camps	0.211	64	13.504
iii		Residential Camps	0.030		0.000
		Total			13.927
4	SFG	Special Focus Group			
i		Education of disabled	0.012	2165	25.980
ii		Education of Girls	0.002	24380	48.760
iii		Education of SC/ST Children	0.002	23198	46.396
		Total			121.136
5	VEC	Village Education Committees		1345	
i		Meetings	0.018		12.165
ii		Training	0.009		12.105
		Total			24.210
6	CRC	Cluster Resource Centres		210	
i		Workshops and Meetings	0.002		5.040
ii		Furniture	0.100		5.000
iii		Contingency Grant	0.025		5.250
iv		TLM Grant	0.010		2.100
v		TLE Grant	0.250		
vi		Library Books	0.100		6.600
vii		TA/DA	0.002		0.040
		Total			24.030
7	BRC	Block Resource Centres		13	
i		Salary of Staff	10.000		130.000
ii		Furniture	1.000		
iii		Contingency Grant	0.125		1.625
iv		Workshops and Meetings	0.005		0.650
v		TLM Grant	0.050		0.650
vi		Training Equipments	1.000		13.000
vii		Library Books	0.250		3.250
viii		TA/DA	1.000		13.000
		Total			162.175

S. No.	Maj. Act.	Activity Description	Unit Cost	Kancheepuram	
				Phy.	Fin.
8	REM	Research, Evaluation & Monitoring	0.015	1545	33.175
9	CCW	Civil Construction Works			
i		Construction of BRCs	6.000	8	48.000
ii		Construction of CRCs	2.000	30	60.000
iii		Construction of two classroom	3.000	38	114.000
iv		Construction of three classroom	4.500	30	135.000
v		Drinking Water	0.150	53	7.950
vi		Toilets	0.200	68	13.600
		Total			378.550
10	MRW	Maintenance & Repair Works	0.050	1301	65.050
11	MGT	Management			
i		Salary of staff	22.000		22.000
ii		Furniture and Equipment	3.000		3.000
iii		Books and Periodicals	0.500		0.500
iv		Maintenance of equipment	0.500		1.000
v		Consumable and Stationery	0.350		0.350
vi		Management Information System	2.000		2.000
vii		Media and Documentation	2.000		2.000
viii		Training to Project Staff	0.010		1.000
ix		Consultancy	2.500		2.500
x		Contingency	0.140		0.150
xi		TA/DA	1.000		1.000
		Total			35.500
12	TRG	Training			
i		Training to Teachers (Primary)	0.014	5223	73.122
ii		Training to Teachers (Upper Primary)	0.014	3289	46.046
		Total			119.168
13	INO	Innovation			
i		Computer Education	15.000		15.000
ii		Edn. of Girls (Arts and Craft)	15.000		15.000
iii		Edn. of SC/ST Children (Arts and Craft)	5.000		5.000
iv		Nursery Education	15.000		15.000
		Total			50.000
		Grand Total			1249.341

Implementation Schedule for 2003 -2004

Sl. No	Maj. Act.	Activity Description	1st Quarter	2nd Quarter	3rd Quarter	4th Quarter
1	PFE	Opening of New Schools	***			
		Appointment of New Teachers	***			
		Appointment of Addl. Teachers	***			
		School Grants	***			
		Teachers Grants	***			
		TLE Grants	***			
2	UPE	Upgrading of Primary Schools	***			
		Appointment of New Teachers	***			
		Appointment of Addl. Teachers	***			
		School Grants	***			
		Teachers Grants	***			
		TLE Grants	***			
3	AIE	Alternative Schools	***	***	***	***
		Residential Camps	***	***	***	***
		Bridge courses	***	***	***	***
4	SFG	Education of disabled		***	***	***
		Education of Girls		***	***	***
		Education of SC/ST		***	***	***
5	CRC	Workshops and Meetings	***	***	***	***
		Furniture	***			
		Contingency Grant	***	***	***	***
		TLM grant	***	***	***	***
6	BRC	Salary of Staff	***	***	***	***
		Furniture	***	***		
		Contingency	***	***	***	***
		Workshops and Meetings	***	***	***	***
		TLM Grant	***		***	
		Training Equipments		***		

D-12163
05-13-2003

Sl. No	Maj. Act.	Activity Description	1st Quarter	2nd Quarter	3rd Quarter	4th Quarter
7	REM	Research and Evaluation Programme		***	***	***
8	CCW	Construction of BRCs	***	***	***	***
		Construction of CRCs	***	***	***	***
		Construction of 2 CR	***	***	***	***
		Construction of 3 CR	***	***	***	***
		Drinking Water	***	***	***	***
		Toilets	***	***	***	***
9	RMW	Repairs	***	***	***	***
10	MGT	Salary of staff	***	***	***	***
		Furniture and Equipment	***	***		
		Books and periodicals	***	***	***	***
		Maintenance of Equipment	***	***	***	***
		Consumables and stationery	***	***	***	***
		TA/DA	***	***	***	***
		Consultancy	***	***	***	***
		Contingency	***	***	***	***
		Training to CRC Staff		***		***
		Training to BRC Staff	***	***		
11	TRG	Training to Teachers (Primary)		***	***	***
		Training to Teachers (Middle)		***	***	***
12	VEC	Training to VEC Members	***			
13	INO	Computer Education		***	***	***
		Education of Girls - Innovative Programmes		***	***	***
		Education of SC/ST - Innovative Programmes		***	***	***
		ECE (New Centers)		***	***	***