

SARVA SHIKSHA ABHIYAN
DISTRICT ELEMENTARY EDUCATION PLAN

ANNUAL WORK PLAN & BUDGET
2003-2004

NIEPA DC



012170

PERAMBALUR DISTRICT
TAMIL NADU

LIBRARY & DOCUMENTATION CENTRE

National Institute of Educational
Planning and Administration.

17-B, W. Anand Marg.

New Delhi-110016

DOC, No. D-12170

Date 05-12-2003

CONTENT

S.No	Title	Page No.
Chapter I – Plan Overview		
1.	1.1 Introduction	1
2.	1.2 Planning Process	1
3.	1.3 General Profile	4
4.	1.4 Educational Profile	5
5.	1.5 Early Childhood Care and Education	18
6.	1.6 Out of School Children	19
7.	1.7 Special Focus Group	20
8.	1.8 VECs, CRCs, BRCs	23
9.	1.9 Infrastructure	24
10.	1.10 District Project Office	27
Chapter II – Progress Review		
11.	2.1 Introduction	28
12.	2.2 Progress in ACCESS	28
13.	2.3 Progress in ENROLMENT	30
14.	2.4 Progress in COMPLETION	33
15.	2.5 Retention	33
16.	2.6 Transition	34
17.	2.7 Attendance	35
18.	2.8 Pupils' Achievement	36
19.	2.9 Mainstreaming out of school children	37
20.	2.10 Appointment of Teachers	37
21.	2.11 Programmes for Disabled	37
22.	2.12 Programmes for SC/ST	39
23.	2.13 Programmes for Girls	39
24.	2.14 Early Childhood Care and Education	39
25.	2.15 Functioning of Village Education Committees	40
26.	2.16 Activities in Cluster Resource Centres	40
27.	2.17 Programmes in Block Resource Centres	41
28.	2.18 Research, Evaluation and Monitoring	42

29.	2.19	Improving Infrastructure	43
30.	2.20	Maintenance and Repairs	44
31.	2.21	Programmes for Quality Improvement	45
32.	2.22	Project Management	50
33.	2.23	Convergence with Ongoing Schemes	51
34.	2.24	Issues and Strategies	53
		Chapter III – Activities and Budget	57
35.		Budget Summary	68

List of Tables

S.No	Table Name	Page No
1.1	Schools - Managementwise	6
1.2	Teachers - Managementwise	7
1.3	Enrolment of Children	8
1.4	Access	9
1.5	GER & NER	10
1.6	GER & NER - SC	11
1.7	GER & NER - ST	12
1.8	GER - Disabled	13
1.9	NER - Disabled	14
1.10	CR, RR and DR - Primary	15
1.11	CR, RR and DR - Upper Primary	16
1.12	Transition Rate - V to VI std	17
1.13	Teacher - Pupil Ratio	18
1.14	ECCE Centres and Children	19
1.15	Out of School Children	20
1.16	Disabled Children	21
1.17	SC/ST Children	22
1.18	BRC, CRCs and VECS	23
1.19	Requirements of Additional Buildings	24
1.20	Toilets and Drinking Water facilities	25
1.21	Schools requiring Major and Minor repairs	26
2.1	Access Rate	28
2.2	Enrolment NER - Boys and Girls	30
2.3	NER - SC	31
2.4	Progress in Enrolment - Disabled	32
2.5	CR, RR & DR	33
2.6	Transition Rate	34
2.7	Attendance Rate	35
2.8	Achievement Level - Primary and Upper Primary	36

List of Annexures

List of Primary schools to be opened

List of schools to be Upgraded

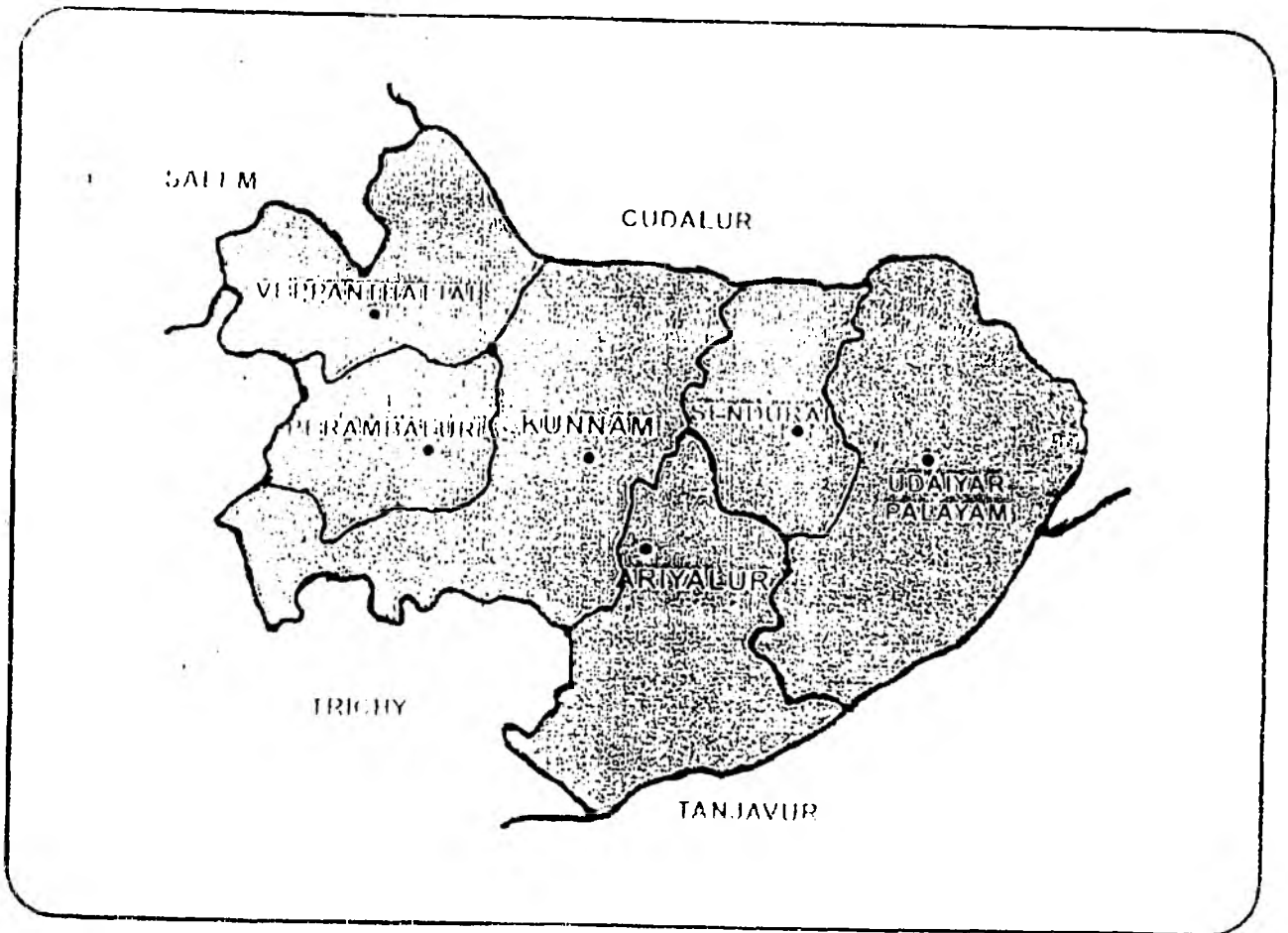
List of EGS centres

List of Residential Camps

Implementation Schedule 2003-04

Abbreviation

PERAMBALUR DISTRICT



CHAPTER – I

PLAN OVERVIEW

1.1 Introduction :

"Education For All" movement has been introduced and started functioning in this district since 2001. Perambalur is economically and educationally a backward district. The literacy rate of this district is 62.79%. Real education should fulfil the individual needs and it should give guarantee for one's life. The aim of education is to create the feeling of National Integration. In spite of sincere and strenuous steps taken to achieve the ultimate goal of Universalization of elementary education, it still remains a distant dream due to various social factors.

Following the breakthrough of DPEP which was already implemented in this District, SSA has taken initiative with the specified objectives. In order to fulfil the objectives, several activities are planned in this budget proposals under different major components. It contains the following chapters.

1. Plan Overview
2. Progress Review
3. Activities And Budget

1.2. Planning Process

Constitution of Planning Team:

In order to prepare the Annual Work Plan proposals for 2003-2004, a district level planning team was constituted with the composition of 11 members.

List of Planning team members

1. Chief Educational Officer cum District Programme Co-ordinator.
2. District Elementary Educational Officer & Additional District Programme Co-ordinator.
3. District Educational Officer, Perambalur.
4. Assistant District Programme Co-ordinator

5. Media & Documentation Officer
6. Statistical Officer
7. Faculty members from DIET Keelapalur--2
8. Supervisor – Sendurai Block
9. Asst. Ele. Educational Officer, Alathur
10. One Teacher Educator from Veppur Block

Capacity building for the Planning team members:

Necessary orientations have been given to the District Planning team members by the State Planning team.

To begin with, one day orientation in connection with the preparation of AWP & B for 2003-2004 was conducted to all the Assistant District Programme Co-ordinators at KAP Visvanatham Higher Secondary School Trichy on 7.3.2003. The State Project Director chaired the workshop and gave vivid and elaborate instructions about the preparation of plan proposals. Then at the district level, a one day workshop was conducted on 13.3.2003 at BRC Perambalur for Supervisors and AEEOs and instructions were given on the preparation of Annual Work plan and Budget. Again a one day workshop was conducted to the district planning team members at the conference Hall Text book society, Chennai on 16.3.2003 which was attended by DPC, Addl.DPC ,ADPC and the two faculty members from DIET.

Necessary instructional materials were supplied for the preparation of the Plan proposals. The Secretary School Education Department , the State Project Director, Directors and Joint Directors of Education departments have attended the meeting. The Secretary has advised the members to take much care in preparing the Annual work Plan proposals for 2003-2004. The district team members held consultations with the Collector, VEC Presidents, Members and Headmasters, Parents, NGOs and Elected Body members on 17.3.2003 and received valuable suggestions in connection with the preparation of AWP & B 2003-2004.

Again one day workshop was conducted for Trichy, Perambalur, Karur and Nammakkal district planning team members by the state planning team members at Seva Sangam Girls Higher Secondary School, Trichy on

18.3.2003 wherein necessary Tables for data entry with clear instructions were issued. A follow-up one day meeting was conducted for all supervisors of Block Resource centres and AEEOs/AEEOs to give similar instructions as how to prepare the block level Annual work Plan proposals for 2003-2004.

Based on the instructions given by the district planning team, they in turn conducted the meeting for the Headmasters at blocks on 19.3.2003 wherein the Headmasters were asked to conduct the meeting for VECs at grassroots level. Accordingly, the school level VEC meetings were conducted to analyze the problems and issues of the school functioning. The important needs were listed out at the meeting and they were consolidated and finalised to incorporate the same in to the Block level Plan proposals.

The needs and emerging issues which were identified and reported in the Block proposals were discussed at the district level meeting on 21.3.2003. The important and genuine needs were incorporated in to the district AWP & B Proposals. A three day workshop was conducted at Dindigul Gandhigram Rural University for writing the draft proposal from 27.3.2003 to 29.3.2003.

External Experts from Universities and colleges, reputed NGOs, Educationalists participated in the workshop. Discussions on strategies for Out of school children, SFG, Training and Research Evaluation and Monitoring were held.

Data Collection :

A one-day meeting was conducted on 29.11.2002 to the BRC Supervisors and AEEOs/AEEOs in connection with data collection through DISE and Cohort formats. The Data Capture Formats were distributed with instructions to collect and scrutinize the data collected from schools.

The block level officers like supervisors and AEEOs in turn conducted one day training programme for the Headmasters of Primary and Upper Primary Schools on 9.12.2002 & 10.12.2002 respectively. The DISE and cohort formats were distributed to the Headmasters to make necessary entries. The Data Capture Formats were received by the supervisor for scrutiny. The supervisors and Teacher Educators have shared the formats and scrutinized each item of entry in the formats. After completing all the

process, they submitted the above formats to the District Programme Co-ordinator. The computer programmer at the district project office completed the various data which formed the basis for preparing the AWP &B for 2003-2004.

1.3 General Profile:

District background:

Perambalur district was recently carved from the Trichirappalli district. Education For All movement was launched in this district with the objective of providing Elementary education to all the children up to the age of 14 years. Another major focus of the massive programme is to bridge the gender and social gap between any two parameters. The ultimate aim of EFA is to retain all the school age children in schools by 2010.

Location:

Perambalur district is situated in the Central part of Tamilnadu. Mostly it receives rainfall from northeast monsoon and it receives poor and scattered rainfall from southwest monsoon since it is located in the rain shadow region.

Boundaries:

In the North the river Vellar flows from West to East and it demarcates the two district i.e. Cuddalore and Perambalur. Coleroon the famous river flows in the south and South west of Perambalur District. It promotes the groundwater levels of that locality. Thanjavur District lies in the East and Pachaimalai hill terrains are situated in the West of Perambalur District.

Area:

The agricultural lands in the district are predominantly dry in nature, except in a few pockets near the river vellar and coleroon. Mostly dry crops are cultivated. Since majority of the people are in the villages, their only sources of income is from agricultural operation.

Area:

Area in Sq.feet.	... 3691
Persons in Sq.Km.	... 292

Economic Condition:

In general the economic condition of the people is not satisfactory. Since rainfall is the only source of irrigation, agricultural operations become gambling at the time of poor as well as unwanted heavy rainfall. Owing to the above factors nearly 35% of the people are below the poverty line and it ultimately affects the educational developments of the people.

Significant features having Educational implications:

Nearly 25% of the district population is from Scheduled caste and Scheduled tribes. Most of the people are landless labourers who are engaged in daily wages. Since they lead a life of hand to mouth, they are not in a position to concentrate on the educational improvements of their wards. People in the eastern part of the district are engaged in weaving and it also affects the educational activities of their children to some extent. The heavy floods in certain pockets like Pachaimalai terrains and area inbetween Colroon and Marudayar affects the access of the school going children.

Population:

The total population of the district is 11,81,029. This comprises 5,88,411 (49.82%) male and 5,92,588 (50.17%) female. Of the total population, 1,43,454 (24.37%) is SC male and 1,42,026 (23.96%) female. ST male population is 12,991 (1.09%) and the female is 6,259 (1.10%).

Literacy Rate:

The total number of literates is 7,71,120 (62.79%). Of them the male literates are 4,58,890 (77.98%) and the female literates are 3,12,230 (52.68%). The total number of SC literates are 1,69,037 (59.84%) and the ST literates are 6,838 (52.63%).

1.4. Education Profile**Management wise distribution of Schools**

The following table shows the total of Schools under different management in the district. As such the total number of schools are 1026. But in the previous year it was only 994 because the recognized matriculation schools were not taken into account.

Table 1.1**Particulars of Schools – Management wise**

S.N o	Block	Primary				Upper Primary			
		Govt	Aided	Unaided	Total	Govt	Aided	Unaided	Total
1	T.palur	71	3	0	74	18	4	0	22
2	Veppur	57	15	0	72	26	4	4	34
3	Veppanthattai	52	12	2	66	23	8	7	38
4	Perambalur	43	9	0	52	21	6	3	30
5	Sendurai	64	5	3	72	19	5	0	24
6	Alathur	54	3	0	57	26	4	3	33
7	Ariyalur	72	6	3	81	23	6	5	34
8	Andimadam	56	8	6	70	23	4	3	30
9	Jayankondam	93	12	5	110	18	5	4	27
10	Thirumanur	65	8	4	77	20	3	0	23
	Total	627	81	23	731	217	49	29	295

Source: DISE 2002 – 03

Here Govt schools in Primary includes Panchayat Union Schools and Adi Diravida Welfare School. The total number of these schools are 627. The Govt schools under Upper Primary include Panchayat Union Middle schools, Govt High and Higher Secondary Schools and Adi Diravida Welfare High and Higher Secondary Schools. The total of these schools are 217. There are 130 Aided schools and 52 unaided schools. In Primary a large number of unaided schools are found in Andimadam Block and Veppanthattai Block. In Upper Primary, Highest number of aided schools are found in Veppur Block and next comes Veppanthattai and Jayankondam. As for Upper Primary a large number of aided schools are found in Veppanthattai Block.

Teachers –Managementwise & Categorywise

The Table below shows the total number of teachers working in Primary and Upper Primary institutions under different managements. Sanctioned posts are given in the table. Actual position may vary from block to block due to vacancies.

Table 1.2**Particulars of Teachers-Management wise**

S. No	Block	Primary				Upper Primary			
		Govt	Aided	Unaided	Total	Govt	Aided	Unaided	Total
1	T.palur	268	7	0	275	50	13	0	63
2	Veppur	281	53	0	334	80	27	22	129
3	Veppanthattai	309	50	0	359	120	30	25	175
4	Perambalur	252	70	0	322	120	24	19	163
5	Sendurai	250	31	12	293	80	17	0	97
6	Alathur	279	8	0	287	92	15	27	134
7	Ariyalur	282	49	8	339	85	22	39	146
8	Andimadam	292	43	18	353	120	16	11	152
9	Jayankondam	351	71	19	441	102	21	28	151
10	Thirumanur	282	35	13	330	95	12	0	107
	Total	2846	417	70	3333	944	197	171	1317

Source: DISE 2002-03

The total number of teachers in both Primary and Upper Primary are 4404, of which 3263 are in Primary and 1141 are in Upper Primary. In Primary, Jayankondam Block has the highest number of teachers. Next comes Andimadam block. As for Upper Primary, the highest no.of teachers are found in Veppanthattai block and it is due to the existence of more number of aided and unaided schools in the block. Next comes Perambalur block. The teachers in unrecognised schools are not taken into account

Enrolment - Primary - Upper Primary

The details of school going children in classes 1-8 under different managements schools are given in this table. The total no.of enrolment in primary is 126651 and 68123 children in Upper primary. More than 11,000 children are studying in unaided schools.

Table 1.3**Enrolment of Children Primary – Upper Primary**

S. No	Block	Primary				Upper Primary			
		Govt	Aided	Unaided	Total	Govt	Aided	Unaided	Total
1	T.palur	9112	835	0	9947	4655	641	0	5296
2	Veppur	9943	3517	355	13815	6174	858	709	7741
3	Veppanthattai	9010	3822	1104	13936	5578	2036	960	8574
4	Perambalur	7753	4006	0	11759	4380	2597	513	7490
5	Sendurai	8342	2202	658	11202	4416	1053	0	5469
6	Alathur	8371	742	423	9536	4102	524	101	4727
7	Ariyalur	9692	2764	2219	14675	4090	2680	950	7720
8	Andimadam	10216	1958	900	13074	4903	1664	197	6764
9	Jayankondam	11961	3875	1554	17390	5944	1751	457	8152
10	Thirumanur	9368	1354	595	11317	5266	924	0	6190
	Total	93768	25075	7808	126651	49508	14728	3887	68123

Source: DISE 2002-03

Of the ten blocks in the district, Jayankondam records the highest enrolment. Next comes Ariyalur. The highest enrolment of children in unaided schools is found in Ariyalur Block having 2219 and next comes Jayankondam block.

In the case of Upper Primary the highest enrolment is seen in Veppanthattai block. Next comes Jayankondam block having 8152 children. On the whole 194774 children are enrolled as per DISE 2002.

1.4.1 Access

In view of attaining Universal Elementary Education cent percent enrolment of all children in schools either formal or alternative, government or private is a prerequisite. Therefore watching the demand and supply of educational facilities is a continuous process.

Table 1.4**Particular of Access**

S.No	Block	Habitations	Served with primary Schools	GAR	Served with Upper primary Schools GAR	GAR
1	T.palur	108	106	98.15	108	100.00
2	Veppur	94	94	100.00	88	93.61
3	Veppanthattai	85	80	95.29	81	95.29
4	Perambalur	74	72	97.29	70	97.22
5	Sendurai	104	104	100.00	96	92.30
6	Alathur	85	83	97.64	82	96.47
7	Ariyalur	120	120	100.00	118	98.33
8	Andimadam	106	106	100.00	106	100.00
9	Jayankondam	158	157	99.36	152	96.20
10	Thirumanur	94	91	100.00	92	97.87
	TOTAL	1028	1016	99.21	993	96.60

Source: DISE 2002-03

Out of 1028 habitations 1016 habitation have been provided with access. The district GAR is 99.21%. The highest GAR of 100% is seen in Veppur, Sendurai, Ariyalur, Andimadam and Thirumanur Blocks. The lowest GAR of 95.29% is seen in Veppanthattai Block. The remaining four blocks are having more than 97% of Access. In the case of Upper Primary, 100% GAR is found in T.Palur and Andimadam blocks. The lowest GAR is found in Sendurai Block.

1.4.2 Enrolment - GER and NER - 2002-03

The Gross and Net enrolment ratios are the most commonly used indicators for measuring the progress towards Universal enrolment. Both the indicators use the same denominator i.e., the size of the population in the school going age group 5-10, and 11-13 for Primary and Upper Primary respectively. The total enrolment is taken for the calculation of GER and the age specific population is taken for the calculation of NER.

Table -1.5**Particulars of Enrolment - GER & NER**

The Table below gives the Blockwise, Genderwise, GER and NER of Primary and Upper Primary.

Block	Primary						Upper Primary					
	GER			NER			GER			NER		
	B	G	T	B	G	T	B	G	T	B	G	T
T.palur	95	96	96	91	92	92	97	96	96	84	86	85
Veppur	95	97	96	91	92	91	98	97	97	85	84	84
Veppanthattai	104	103	104	93	93	93	95	98	96	87	86	86
Perambalur	100	102	101	93	94	94	97	97	97	83	89	86
Sendurai	95	98	96	89	90	89	97	96	96	84	90	87
Alathur	102	96	99	92	92	92	92	92	92	84	87	86
Ariyalur	108	106	107	94	96	95	92	93	92	85	87	86
Andimadam	95	96	95	95	89	92	94	96	95	85	86	86
Jayankondam	110	111	111	97	97	97	95	97	96	86	90	88
Thirumanur	91	97	94	83	86	85	95	93	94	84	86	85
Total	100	100	100	92	92	92	95	96	95	85	87	86

Source : DISE 2002-03

The district GER for Primary is 99.82%. Among ten blocks , the highest GER is found in Jayankondam block. The lowest GER is recorded in Thirumanur block. The GER for girls is higher than the boys. In almost all the blocks except Alathur, the GER for girls is higher than the boys.

As regards Upper Primary, the district GER is 95.38%. The highest GER is found in Veppur block and the lowest is seen in Alathur block. Out of ten blocks, the GER for girls is more than boys in five blocks and vice-versa in the remaining five blocks.

Net Enrolment Rate:**Primary:**

The district NER for Primary is 94.50%. The highest NER is in T.Palur block and the lowest is seen in Thirumanur block. Except Thirumanur and Alathur block, all the eight blocks register more NER for girls than boys.

Upper Primary:

The NER for the district is 78.31%. The highest NER for Upper Primary is seen in Ariyalur block and lowest NER is found in Thirumanur block. The last five blocks in the Table are having more NER for girls than boys and first five blocks are having more NER for boys than girls.

Particulars of GER & NER – SC

The Table below gives the Blockwise GER and NER for SC children.

Table : 1.6

Block	Primary						Upper Primary					
	GER			NER			GER			NER		
	B	G	T	B	G	T	B	G	T	B	G	T
T.palur	96	96	98	86	84	81	97	99	98	82	81	75
Veppur	95	95	85	83	82	75	84	86	85	75	75	74
Veppanthattai	96	92	92	81	82	75	90	93	92	75	73	76
Perambalur	83	80	91	81	80	76	93	90	92	78	74	81
Sendurai	97	99	96	87	82	81	95	97	96	81	80	72
Alathur	91	90	96	88	87	72	93	97	95	71	73	85
Ariyalur	91	95	91	82	83	85	91	91	91	83	87	84
Andimadam	89	86	88	82	81	83	87	89	88	83	84	84
Jayankondam	98	96	86	71	75	83	87	86	87	84	83	84
Thirumanur	90	88	82	82	81	81	82	83	87	80	83	82
Total	92	91	90	83	82	79	90	91	91	79	79	79

Source : DISE 2002-03

Primary:

The GER of the district is 90%. The highest GER is found in T.Palur block. The lowest GER is seen in Thirumanur block.

The NER of the district is 79%. The highest NER of 85% for SC is seen in Ariyalur block and the lowest NER is seen in Alathur block.

Upper Primary:

The GER of the district is 91%. The highest GER of 98% is found in T.Palur block and the lowest GER is seen in Veppur block.

The NER of the district is 73%. The highest NER is seen in Sendurai block and the lowest NER is found in Thirumanur block.

Particulars of GER & NER - ST

Blockwise GER and NER of ST children are given in the following Table.

Table : 1.7

Block	Primary						Upper Primary :					
	GER			NER			GER			NER		
	B	G	T	B	G	T	B	G	T	B	G	T
T.palur	83	90	87	62	94	78	90	90	90	72	74	73
Veppur	78	86	82	78	77	78	85	80	83	78	75	77
Veppanthattai	81	76	79	65	69	67	80	75	78	77	77	77
Perambalur	71	75	73	74	71	72	79	85	82	72	75	74
Sendurai	82	88	85	76	73	75	82	86	84	75	88	82
Alathur	77	72	75	74	72	73	71	73	72	66	63	65
Ariyalur	72	76	74	87	88	88	84	85	85	67	76	72
Andimadam	85	88	87	77	85	81	76	77	77	76	70	73
Jayankondam	85	83	84	76	74	75	79	75	77	74	77	76
Thirumanur	78	79	79	72	74	73	89	89	89	66	55	61
Total	79	81	80	77	79	79	82	82	82	72	73	73

Source : DISE 2002-03

Primary

The district GER is 80%.The highest GER is in T.palur block and the lowest GER is found in Perambalur block.

The district NER is 79%. The highest NER is found in Ariyalur block and the lowest NER is found in Veppanthattai block.

Upper Primary

The GER is 82% for the district as whole. The highest GER is found in T.Palur block and the lowest is found in Andimadam and Jayankondam blocks.

Particulars of GER - IED

The Table below gives the Blockwise and Genderwise GER of Primary and Upper Primary for Disabled Children.

Table 1.8

Block Name	Primary			Upper Primary		
	GER			GER		
	B	G	T	B	G	T
T.palur	82	83	83	79	82	81
Veppur	81	84	83	78	81	80
Veppanthattai	84	85	85	75	74	75
Perambalur	91	92	92	89	91	90
Sendurai	77	79	78	85	84	85
Alathur	89	92	91	82	81	82
Ariyalur	84	87	86	83	85	84
Andimadam	78	75	77	77	76	77
Jayankondam	76	79	78	72	71	72
Thirumanur	81	80	81	79	77	78
Total	82	84	83	80	80	80

Source : DISE 2002-03

Primary:

The GER of the district is 83%. The highest GER is seen in Perambalur block and the lowest GER is found in Andimadam block.

Upper Primary:

The GER of the district is 80%. The highest GER is found in Perambalur block and the lowest GER is found in Jayankondam block

Particulars of Disabled – NER

The Table below gives the Blockwise, Genderwise NER of Primary and Upper Primary for the Disabled Children.

Table 1.9

Block Name	Primary			Upper Primary		
	NER			NER		
	B	G	T	B	G	T
T.palur	75	76	76	74	73	74
Veppur	78	81	80	75	76	76
Veppanthattai	81	80	81	73	72	73
Perambalur	79	81	80	75	77	76
Sendurai	76	75	76	73	72	73
Alathur	82	87	85	78	79	79
Ariyalur	82	85	84	81	82	82
Andimadam	76	73	75	73	74	74
Jayankondam	75	74	75	70	70	70
Thirumanur	79	78	79	77	75	76
Total	78	79	79	75	76	75

Source : DISE 2002-03

Primary:

The NER of the district is 79%.The highest NER is found in Alathur block and the lowest is found in Andimadam and Jayankondam block.

Upper Primary:

The NER of the district is 75%.The highest NER of 90% is found in Perambalur block and the lowest is found in Jayankondam block.

1.4.3 CR, RR and DR – Primary – Upper primary

In many of the states including Tamilnadu, the school education system is characterized by low internal efficiency. It is due to high dropout and repetition rates. These phenomena not only lead to wastage of precious time of the pupils who stay in the education system without learning much but also leads to the wastage of public resources.

In order to measure the internal efficiency of the education system, one of the most reliable methods is the Cohort Study. It measures the above three indicators for the set of children who were admitted in a particular year over a period of five years for primary and three years for upper primary.

Particulars of CR,RR and DR – Primary –2002-03

Blockwise and Genderwise CR, RR and DR of Primary are given in the following Table.

Table : 1:10

Block	CR			RR			DR		
	B	G	T	B	G	T	B	G	T
T.Palur	63.58	65.34	64.46	27.37	26.21	26.79	9.05	8.45	8.75
Veppur	62.35	64.15	63.25	27.37	26.21	26.79	10.28	9.64	9.96
Veppanthattai	62.14	67.87	65.01	28.17	24.00	26.09	9.69	8.13	8.91
Perambalur	64.84	63.06	63.95	25.74	28.38	27.06	9.42	8.56	8.99
Sendurai	68.19	67.32	67.75	25.18	25.57	25.38	6.63	7.10	6.87
Alathur	57.66	67.25	62.45	37.23	26.18	31.70	5.11	6.58	5.84
Ariyalur	57.73	61.08	59.40	30.85	27.26	29.06	11.42	11.66	11.54
Andimadam	64.20	70.51	67.36	26.69	20.81	23.75	9.12	8.68	8.90
Jayankondam	58.87	60.10	59.48	30.67	29.31	29.99	10.46	10.59	10.53
Thirumanur	65.15	70.21	67.68	28.31	25.43	26.87	6.54	4.36	5.45
Total	62.47	65.69	64.08	28.76	25.94	27.35	8.77	8.37	8.57

Source : Cohort Study –1997-98

Completion Rate:

The district CR is 63.41%. The highest completion rate is seen in Sendurai block. The lowest CR is found in Jayankondam block. The CR is higher in the case of girls than that of boys.

Dropout Rate:

The DR of the district is 9.29%. The highest DR is seen in Jayankondam block. The DR is very low in Perambalur block. The DR for boys is more than the girls.

Repetition Rate:

The district average RR is 27.35%. The highest RR of 31.70% is seen in Alathur Block and the lowest RR is in Andimadam Block. The RR of boys is higher than that of girls.

CR,RR and DR – Upper Primary –2002-03

The following Table gives the Blockwise and Genderwise CR, RR and DR of Upper Primary.

Table : 1:11

Block	CR			RR			DR		
	B	G	T	B	G	T	B	G	T
T.Palur	71.92	73.76	72.84	17.97	15.43	16.70	10.11	10.81	10.46
Veppur	70.31	70.41	70.36	14.37	15.41	14.89	15.32	14.18	14.75
Veppanthattai	70.47	72.07	71.27	15.08	14.20	14.64	14.45	13.73	14.09
Perambalur	70.43	72.76	71.60	14.49	15.24	14.87	15.08	12.00	13.54
Sendurai	72.35	73.62	72.99	15.32	15.46	15.39	12.33	10.92	11.63
Alathur	70.26	71.73	71.00	18.84	18.35	18.60	10.90	9.92	10.41
Ariyalur	70.49	70.10	70.30	19.16	18.15	18.66	10.35	11.75	11.05
Andimadam	72.22	70.23	71.23	18.96	20.19	19.58	8.82	9.58	9.20
Jayankondam	73.64	76.87	75.26	16.40	15.04	15.72	9.96	8.09	9.03
Thirumanur	71.05	72.76	71.91	18.67	13.83	16.25	10.28	13.41	11.85
Total	71.31	72.43	71.87	16.93	16.13	16.53	11.76	11.44	11.60

Source : Cohort Study –1997-98

Completion Rate:

The CR of the district is 71.87%. The CR of girls is higher than that of boys. Jayankondam Block has the highest CR (75.26%).

Repetition Rate:

The RR of the District is 16.53%. The RR of girls is lower than the boys. The highest RR is seen in Andimadam Block and the lowest RR is in Veppanthattai Block.

Dropout Rate:

The District DR is 11.6%. The DR for boys is higher than the girls. The highest DR is found in Veppur Block and the lowest DR is seen in Jayankondam Block.

1.4.6 Transition Rate:

The transition means the movement of children from one grade to another after completion. The TR is calculated through DISE 2002. The TR of the V std students to VI std is taken for calculation.

Transition Rate 2002-2003

Transition Rate (V to VI std)

The Following Table gives the Blockwise, Genderwise and Communitywise Transition Rate.

Table 1: 12

Block	Transition Rate 2002-2003								
	All			SC			ST		
	B	G	T	B	G	T	B	G	T
T.Palur	97.1	90.7	93.7	95.5	100.4	98.0	90.9	83.3	86.2
Veppur	97.0	97.0	97.0	78.4	90.8	84.1	80.0	60.0	70.0
Veppanthattai	95.5	96.5	96.0	98.1	94.9	96.6	89.3	95.5	92.0
Perambalur	97.8	98.5	98.1	72.1	72.3	72.2	81.8	50.0	76.9
Sendurai	98.6	98.9	98.7	96.7	106.3	101.0	78.6	80.0	78.9
Alathur	96.5	97.5	97.0	97.5	101.7	99.8	60.0	66.7	62.5
Ariyalur	96.4	97.4	96.9	92.6	98.5	95.4	71.4	85.7	78.6
Andimadam	93.9	97.1	95.5	78.0	74.1	76.0	52.1	38.8	46.7
Jayankondam	95.8	97.1	96.5	97.0	95.9	96.4	89.3	90.5	89.8
Thirumanur	98.0	98.9	98.4	95.7	95.1	95.4	80.0	71.4	75.0
Total	96.7	97.0	96.8	90.2	93.0	91.5	77.3	72.2	75.7

Source : DISE 2002-2003

Transition Rate:

The TR of the district is 96.7%. The highest TR is seen in Sendurai block and the lowest TR is found in T.Palur block. As for boys, the highest TR is seen in Sendurai block and the lowest TR is in Andimadam block. As regards girls, the highest TR is seen in Sendurai and Thirumanur blocks.

As for SC children, the TR of the district is 91.48%. The highest TR is found in Sendurai block and the lowest TR is seen in Andimadam block.

1.4.7. Teacher Pupil Ratio

Blockwise Teacher Pupil Ratio is given in the following Table.

Table 1.13

	Primary			Upper Primary		
	Teacher	Pupil	TPR	Teacher	Pupil	TPR
T.Palur	252	9947	1:39	85	5296	1:62
Veppur	322	13460	1:42	109	7032	1:65
Veppanthattai	353	12832	1:43	146	7614	1:52
Perambalur	322	11759	1:37	142	6977	1:49
Sendurai	251	10544	1:42	81	5469	1:68
Alathur	259	9113	1:35	83	4626	1:56
Ariyalur	302	12454	1:41	96	6779	1:71
Andimadam	299	12174	1:41	126	6577	1:52
Jayankondam	408	15836	1:39	118	7695	1:65
Thirumanur	272	10722	1:39	193	6190	1:32
Total	3040	118843	1:39	1051	64236	1:62

Source : DISE 2002-03

The TPR of the district in Primary is 1:39. The highest TPR is found in Veppanthattai block and the lowest is found in Alathur block.

In Upper primary, the TPR of the district is 1:62. The highest TPR of 1:71 is found in Ariyalur block due to more number of vacancies and the lowest is found in Thirumanur block.

1.5 Early Childhood Care and Education.

Early childhood care education centres are the feeder institutions for the primary schools

ECCE Centres and Children

Blockwise ECCE Centres with Children are given in the following Table.

Table.1.14

Block	ICDS Centre	Children	TNIP Centres	Children	Other LKG/UKG	Children
T.Palur	-	-	52	2200		
Veppur	-	-	58	3732		
Veppanthattai	-	-	57	2671		
Perambalur	-	-	45	1625		
Sendurai	-	-	61	1510		
Alathur	-	-	45	1605		
Ariyalur	-	-	58	1835		
Andimadam	-	-	64	1549		
Jayankondam	-	-	51	1846		
Thirumanur	-	-	44	1882		
Total			535	20455		

Source : Social Welfare -2002-03

In the District as a whole 535 ECCE centres are functioning at present and 20445 children are getting the benefits. Andimadam Block has the highest number of centres with 1549 children.

1.6 Out of School Children:

This Table shows the total number of Out of school children comprising of never enrolled and dropout children. Providing education to these children are the most challenging task because, the school age population is scattered in remote habitations.

Out of school children 2002-03

The following Table gives Blockwise and Genderwise Dropout and Never Enrolled Children.

Table -1.15

Block	6-10 Years						11-13 Years					
	Dropout			Never Enrolled			Dropout			Never Enrolled		
	B	G	T	B	G	T	B	G	T	B	G	T
T.palur	130	144	274	130	144	274	211	261	472	57	87	144
Veppur	58	63	121	195	203	398	434	467	901	81	139	220
Veppanthattai	47	41	88	209	197	406	422	465	887	92	120	212
Perambalur	29	18	47	181	157	338	258	254	512	65	75	140
Sepulur	10	66	169	325	239	564	436	471	907	2	1	3
Alathur	11	32	71	202	190	392	365	411	776	1	1	2
Aryalur	3	15	38	137	159	296	339	374	713	1	1	2
Andhankottai	29	25	54	130	114	244	281	268	549	1	1	2
Jayankottai	7	13	20	120	9	129	161	171	332	1	1	2
Thirumanur	37	47	84	188	161	349	406	411	817	1	1	2
Total	469	410	915	1773	1683	3161	3198	3198	7593	151	151	301

Source: MoE, 2002-03

As per the Perspective Plan 2001-2002, the total number of dropout children in the age group 6-10 was 915, and never enrolled children in the same age group. The total number of dropout children in the age group 11-13 was 7593 and the never enrolled children in same age group was 151.

1.7 Special Focus Group

Disabled children:

Providing inclusive education to the disabled children is one of the most important activities under SSA. Unless these children are provided with the integrated education, the aim of universal enrolment can not be achieved.

Disabled children -2002-03

Blockwise and Agewise Schoolage Population and Enrolment of Disabled Children are given in the following Table.

Table : 1:16

S.No	Block	Disable Children (6-11 years)	Enrolment in Primary	Disable Children (11-13 years)	Enrolment in Upper Primary
1	T.Palur	171	148	24	18
2	Veppur	204	158	61	47
3	Veppanthattai	274	201	72	50
4	Perambalur	255	200	108	81
5	Sendurai	141	125	53	43
6	Alathur	218	195	72	50
7	Ariyalur	159	139	87	63
8	Andimadam	184	154	56	46
9	Jayankondam	364	334	81	64
10	Thirumanur	212	190	57	41
	Total	2182	1844	671	503

Source : DISE 2002-2003

As per DISE 2002, the total number of Disabled Children in the age group 5-13 is 2853, out of which 2347 children have been enrolled in schools. The non enrolment is due to total disability. The highest no.of disabled children are found in Jayankondam block.

As for Upper Primary, the highest no.of school age disabled children are found in Perambalur block.

SC and ST children:

One of the Six objectives of SSA is to Bridge the gender gap and reduce the gender and spatial disparity to zero percent. SC/ST children are from the depressed sections of the society. In order to reduce the social disparity to zero percent, special coaching classes are conducted for the SC/ST children.

SC and ST children-2002-03

Blockwise and Genderwise SC/ST children are given in the following Table.

Table -1.17

Block	Primary				Upper Primary			
	SC		ST		SC		ST	
	B	G	B	G	B	G	B	G
T.Palur	1366	1379	112	109	676	643	28	30
Veppur	2966	2850	18	6	1596	1399	17	13
Veppanthattai	2354	2258	110	96	1441	1252	80	56
Perambalur	2122	2079	25	33	1312	1415	19	8
Sendurai	1870	1832	153	163	915	742	32	15
Alathur	1451	1251	26	17	708	758	1	0
Ariyalur	1948	1885	95	89	882	865	3	8
Andimadam	1322	1259	168	170	689	766	177	138
Jayankondam	2435	2392	296	248	961	1084	90	50
Thirumanur	1322	1201	116	115	664	684	19	26
Total	19153	18386	1099	1029	9844	9608	466	344

Source : DISE 2002-03

Veppur block has the highest number of SC/ST children in Primary classes. Next comes Jayankondam block. The minimum of the above children are found in Alathur block. The total number of SC/ST children in Primary are 39667. Regarding Upper Primary the total number of the above children are 20262. Among the ten blocks, Veppur has the highest number of SC/ST children. The lowest no.of children are found in T.Palur block.

Education of the Girls:

The enrolment of girl children is not a problem as far as primary sections are concerned. But in the case of Upper Primary, some of the grown up girl children after puberty could not attend the schools. Domestic works and sibling care activities affect the educational pursuits of the girls children to some extent. In some minority community also, they hesitate to send the girl children to school after attaining the age.

1.8 VEC s, CRCs and BRCs

CRC is the cluster level institution established for improving the teacher empowerment. VEC is the grass-roots level institution established in each school and the VEC members are monitoring the overall functioning of the schools.

BRC, CRCs and VECs

The following Table gives the Blockwise CRCs and VECs.

Table 1: 18

Name of the BRC	CRC	Teacher	VEC	Member
T.Palur	9	338	96	1440
Veppur	13	441	102	1530
Veppanthattai	11	509	95	1425
Perambalur	12	466	79	1185
Sendurai	10	378	93	1395
Alathur	10	394	87	1305
Ariyalur	12	438	107	1605
Andimadam	11	471	91	1365
Jayankondam	15	454	128	1920
Thirumanur	11	424	96	1440
Total	114	4404	974	14610

Source : VIS (DISE) 2002-2003

The total number of CRCs in the District is 114. These CRCs accommodate 4404 teachers. Total number of VECs are 974.

The VEC is constituted in each school having 15 members including the president. Totally 14610 members are there in all VECs.

1.9 Infrastructure facilities:

Infrastructure facilities like construction of additional classroom buildings, toilet and drinking water in needy places help to improve the Access Enrolment and Retention.

Schools Requiring Classroom Facilities – 2002-2003

Requirment of Additional Classrooms

The following Table gives the Blockwise requirment of Two classroom and Three classroom facilities.

Table . 1.19

Block	Three Classroom	Two Classroom
T.Palur	3	5
Veppur	7	4
Veppanthattai	12	5
Perambalur	9	7
Sendurai	5	3
Alathur	6	4
Ariyalur	5	7
Andimadam	8	8
Jayankondam	5	9
Thirumanur	12	11
Total	72	63

Source : DISE 2002-03

For the entire District, 63 two class room buildings and 72 three class room buildings are needed as per DISE. Thirumanur Block requires more number of additional class room buildings than the other blocks. Next in the order comes Veppanthattai which requires 17 buildings.

Toilet and Drinking Water facilities- 2002-03

Provision of toilet and drinking water facilities have also comes under civil works. These facilities help the children especially the grown up children to retain them in the educational system.

Requirement of Toilet and Drinking water facilities

Blockwise requirement of Toilet and Drinking water facilities are given in the following Table.

Table 1.20

Block	Primary		Upper Primary	
	Toilets	Drinking Water	Toilets	Drinking Water
T.Palur	33	33	15	15
Veppur	47	47	23	23
Veppanthattai	43	43	15	15
Perambalur	16	16	12	12
Sendurai	35	35	13	13
Alathur	25	25	18	18
Ariyalur	34	34	15	15
Andimadam	21	21	13	13
Jayankondam	64	64	15	15
Thirumanur	29	29	13	13
Total	347	347	152	152

Source : DISE -2002-03

Wherever the provision of toilet is given the water facilities should also be provided. Otherwise the toilets cannot be used properly. 347 toilets are needed for the primary schools. For upper primary schools, 152 Toilets are to

be provided. Jayankondam Block requires the highest number of Toilets and perambalur block has the lowest requirement because it has already been covered under total sanitation programme. In upper primary, Veppur requires the maximum number of Toilets (23).

Maintenance and Repairs – 2002-03

This Table shows the no.of schools requiring major and minor repairs. Only minor repair provision is made under SSA. The above facility will also help the children to retain them in schools.

Schools requiring major and minor repairs

The following Table gives the Blockwise requirement of major and minor repairs for Primary and Upper Primary.

Table. 1. 21

Block	Primary		Upper Primary	
	Minor Repairs	Major Repairs	Minor Repairs	Major Repairs
T.Palur	53	21	9	10
Veppur	24	8	18	13
Veppanthattai	37	11	19	12
Perambalur	38	15	20	5
Sendurai	46	8	21	7
Alathur	36	12	17	6
Ariyalur	59	3	19	12
Andimadam	47	17	9	9
Jayankondam	59	21	17	7
Thirumanur	46	14	17	7
Total	445	130	166	88

Source : DISE 2002-03

In primary 445 schools require minor repairs and 130 schools require major repairs. More number of buildings require minor repair in Ariyalur and

Jayankondam blocks. Regarding upper primary 166 schools require minor repair and 81 schools require major repairs. 21 schools in Sendurai block require minor repairs and the other blocks require lesser number of schools.

1.10 District Project Office.

In order to manage the programme of activities worked out in the Annual Work Plan and Budget , the District Project Office has been established at the district headquarter . The Chief Educational Officer is acting as the District programme coordinator. To receive better cooperation from the primary level, the District Elementary Educational Officer has been appointed to act as Addl. District Programme coordinator. In order to assist the above officers one Assistant District Programme Co-ordinator in the cadre of Higher Secondary School Headmaster has been appointed on full-time basis. MDO/WDO, TTO, Statistical Officer, Computer Programmer, Civil Consultant, Superintend and etc., were also appointed.

Since Perambalur is a DPEP District, there is a well established District Project Office with all infrastructure facilities.

CHAPTER II

PROGRESS OVERVIEW

2.1 Introduction

Right from the introduction of Sarva Shiksha Abhiyan, several strategies have been planned and implemented to attain the specified objectives of SSA. The progress of various activities has been reviewed to know whether the implementation of programmes in right direction.

The review of the programmes helps to take remedial action in future and it also helps to prioritise the activities to be given special attention. The constraints and hurdles that curtail the progress of activities may also be avoided in future. This chapter deals with progress under all major components and reason for spillover

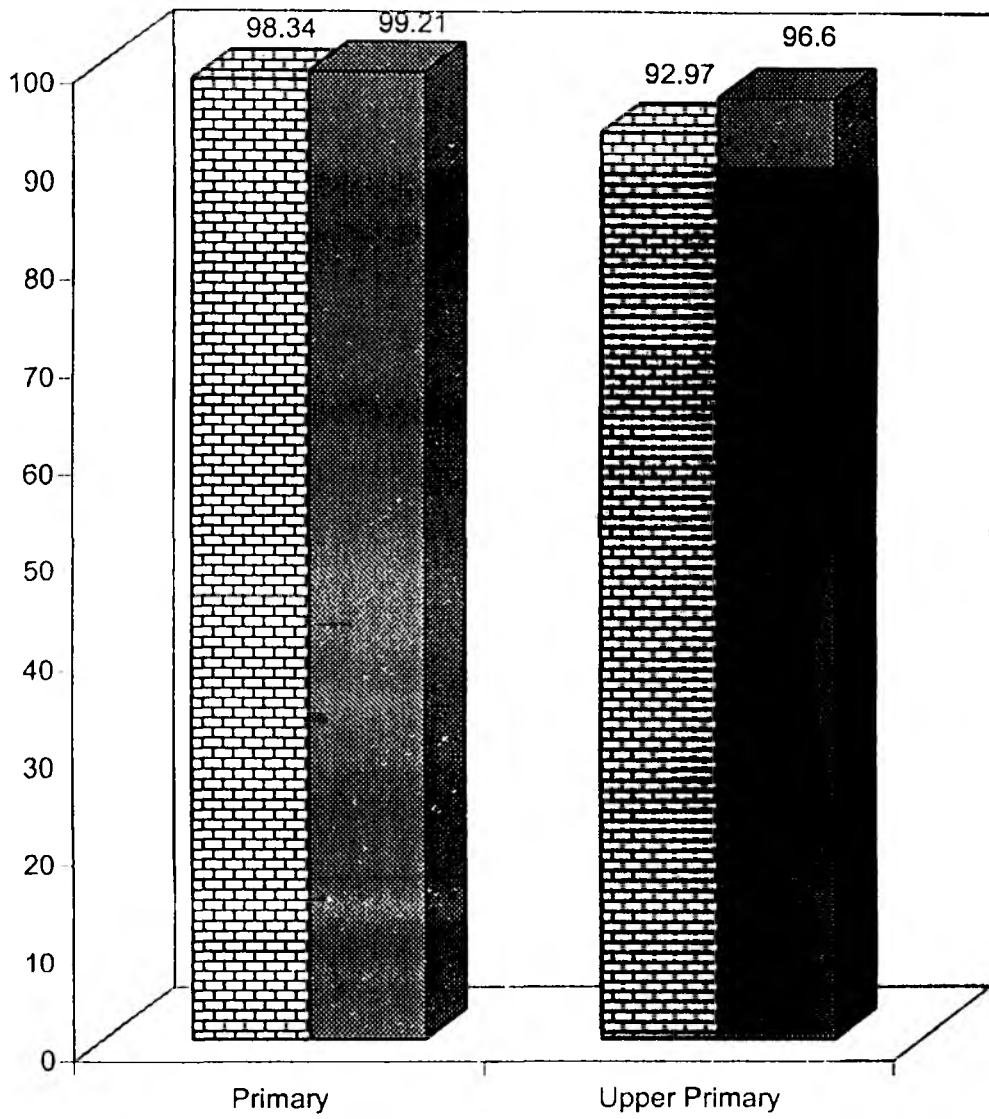
2.2 Progress in Access

The Blockwise Progress in Access Rate for Primary and Upper Primary is given in the following Table.

Table 2.1
Access Rate

Block	Primary		Upper Primary	
	2001-02	2002-03	2001-02	2002-03
T.Palur	98.15	98.15	97.22	100.00
Veppur	98.94	100.00	87.23	93.61
Veppanthattai	92.94	95.29	87.06	92.94
Perambalur	100.00	97.29	88.89	97.22
Sendurai	96.15	100.00	85.58	92.30
Alathur	100.00	97.64	92.77	96.47
Ariyalur	98.33	100.00	91.67	98.33
Andimadam	98.11	100.00	95.28	100.00
Jayankondam	96.84	99.36	92.41	96.20
Thirumanur	100.00	100.00	95.74	97.87
Total	98.34	99.21	92.97	96.60

PROGRESS IN ACCESS



▨ 2001-2002 ■ 2002-2003

2.2.1 Opening of Primary schools

Of the 1028 habitations, 1016 habitations have been served with the primary schooling facility. The GAR for 2001-02 was 98.34%. This has been enhanced to 99.2% during 2002-03 registering an increase by 1%. To achieve maximum GAR of 100%, 5 new primary schools and 5 EGS centres are proposed in the current Budget.

2.2.2 Upper Primary schools

As far as Upper primary education is concerned, out of 1028 habitations, 993 have been served with upper primary schooling facilities. The GAR for 2001-02 was 92.97% resulting in an increase of 96.60%. This has been enhanced 3.5%. In order to achieve 100% GAR, 20 primary schools are proposed to be upgraded as middle schools.

2.2.3 Opening of EGS Centres

There are certain habitations which do not have the prescribed minimum strength for opening the new primary schools. To provide primary education facility to the children in these habitations, ten EGS schools (day schools) are proposed under EGS.

2.3 Progress in Enrolment

2.3.1 Enrolment - NER Boys & Girls

The following Table gives the Blockwise and Genderwise NER for Primary and Upper Primary.

Table 2.2
Enrolment - NER Boys & Girls

Block	Primary						Upper Primary					
	NER			NER			NER			NER		
	2001-02			2002-03			2001-02			2002-03		
	B	G	T	B	G	T	B	G	T	B	G	T
T.Palur	74	75	74	91	91	92	74	74	74	84	86	85
Veppur	68	70	69	91	92	92	71	72	71	85	84	84
Veppanthattai	75	75	75	93	93	93	79	78	79	87	87	86
Perambalur	76	75	75	93	94	94	75	71	73	83	89	86
Sendurai	73	74	74	89	90	89	69	63	66	84	90	87
Alathur	72	73	73	92	92	92	75	72	74	84	87	86
Ariyalur	74	76	74	94	95	95	73	73	73	85	87	86
Andimadam	69	72	70	95	89	92	76	79	78	85	86	86
Jayankondam	82	83	83	97	97	97	65	68	68	86	90	98
Thirumanur	70	72	71	83	86	85	61	68	64	84	86	85
Total	73	74	74	92	92	92	71	73	72	85	87	86

Source : DISE 2001-02 & 2002-03

Net Enrolment Rate - Primary

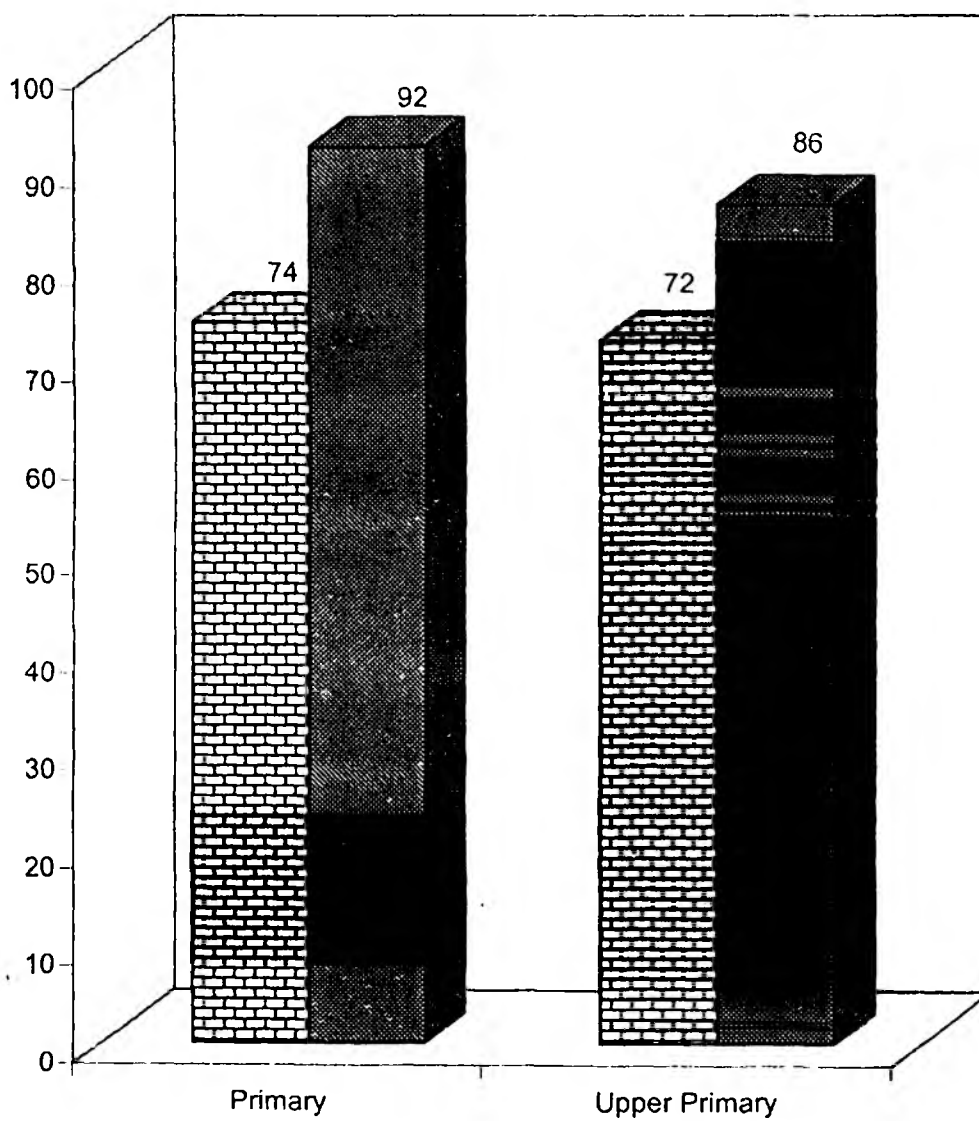
The NER of Primary Education for 2001-2002 was 74% and the same has been raised to 92% in 2002-03. All blocks have invariably registered an increasing trend in NER for 2002-03.

Net Enrolment Rate - Upper Primary

The District NER for 2001-02 was 72% and during 2002-03 it has been enhanced to 86%. Nearly 14% increase in NER has been registered.

To achieve 100% NER in both Primary and Upper Primary, attractive and effective classroom atmosphere will be created in schools. The effective monitoring and supervision are also equally important to improve the NER. The teachers will be motivated to undertake Action-Research Activities so that they can analyze the problems and issues which are faced in the classroom.

PROGRESS IN ENROLLMENT- MER



▣ 2001-2002 ▣ 2002-2003

2.3.2 GER & NER - SC

Table 2.3
Net Enrolment Rate - SC

	Primary				upper Primary			
	2001-02		2002-03		2001-02		2002-03	
	B	G	B	G	B	G	B	G
T.palur	76	72	77	73	72	71	74	73
Veppur	68	69	70	71	75	75	78	79
Veppanthattai	79	75	80	76	67	71	69	73
Perambalur	78	74	80	76	78	74	82	76
Sendurai	69	68	72	73	69	63	71	66
Alathur	87	87	89	88	66	62	70	68
Ariyalur	71	71	75	74	73	77	75	79
Andimadam	67	71	70	72	77	79	78	80
Jayankondam	71	75	73	77	84	83	85	84
Thirumanur	69	80	72	83	65	69	67	71
Total	74	74	76	76	73	72	75	75

Source: DISE -2002-03

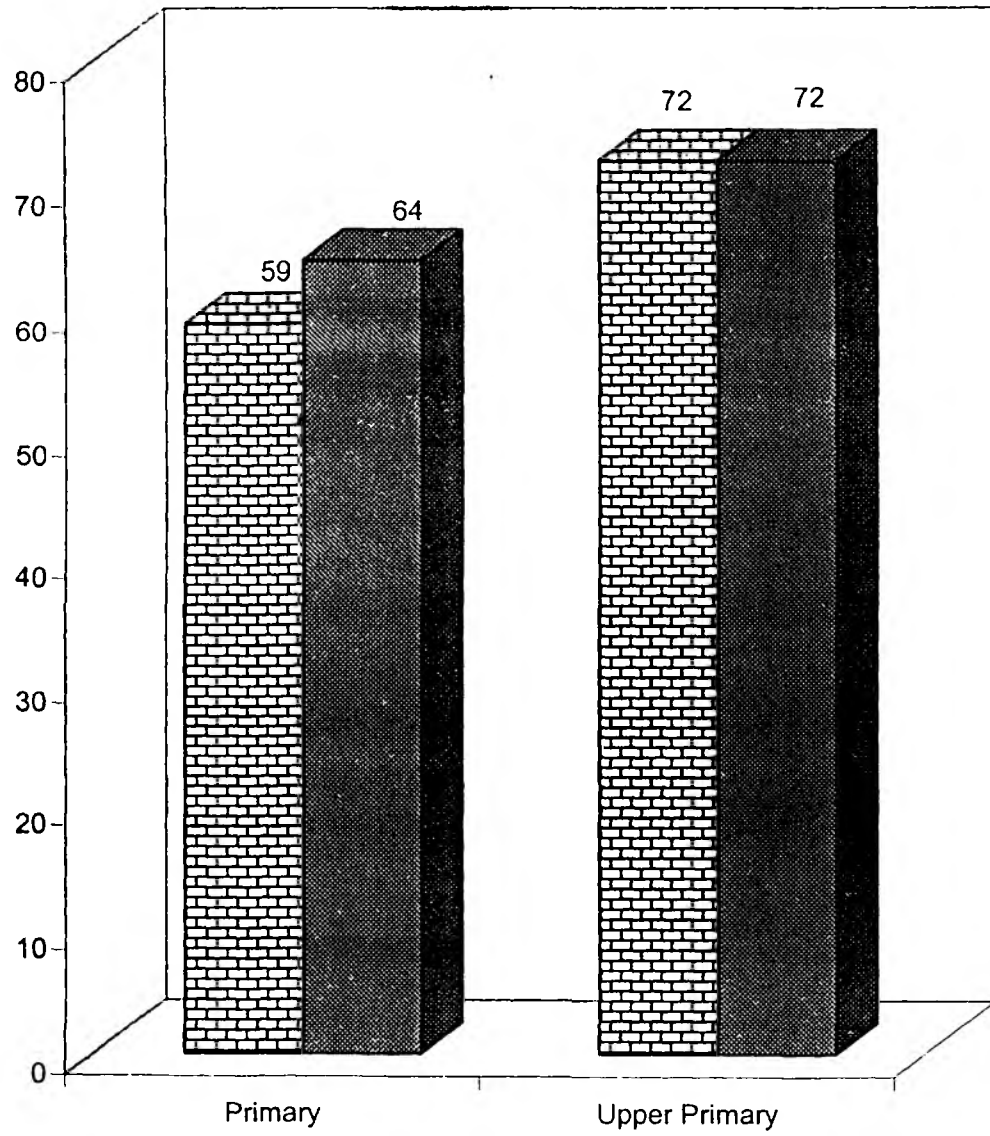
Primary:

The NER of SC (for both boys and girls) for 2001-02 was 74%. This has been raised to 76% during 2002-03 registering an increase of two percent. The highest progress in NER is seen in Sendurai and Ariyalur blocks. The lowest progress in NER is recorded in T.Palur and Veppanthattai blocks.

Upper Primary

As for boys, The NER of SC in 2001-02 was 73% and it has been enhanced to 75% during 2002-03. As regards girls, the progress of NER is 3%. (from 72% to 75%).

PROGRESS IN COMPLETION



2000-2001 2001-2002

2.4 Progress in Completion

The following Table gives Blockwise CR, RR and DR of Primary and Upper Primary Schools.

Table 2.5
CR, RR & DR - 2001-02 & 2002-03

Block	Primary						Upper Primary					
	CR		RR		DR		CR		RR		DR	
	01-02	02-03	01-02	02-03	01-02	02-03	01-02	02-03	01-02	02-03	01-02	02-03
T.Palur	58	64	26	27	16	9	71	73	15	17	14	10
Veppur	59	63	30	27	11	10	63	70	22	15	14	15
Veppanthattai	60	65	30	26	10	9	73	71	14	15	13	14
Perambalur	64	64	27	27	10	9	75	72	14	15	12	14
Sendurai	63	68	23	25	14	7	72	73	13	15	15	12
Alathur	61	62	28	32	11	6	69	71	19	19	12	10
Ariyalur	57	59	28	29	15	12	74	70	13	19	12	11
Andumadam	59	67	28	21	13	9	70	71	15	20	16	9
Jayankondam	50	59	30	30	20	11	77	75	13	16	10	9
Thirumanur	60	68	29	27	11	5	72	72	16	16	12	12
Total	59	64	28	27	13	9	72	72	15	17	13	12

Source : Cohort Study (97 - 98 to 2001 -02)

Primary Education:

Completion Rate:

CR for the District for 2001-02 was 59%. It has been increased to 64% during 2002-03. The trend in CR is positive in all the blocks. The highest CR for primary is seen in Sendurai Block (68%). The highest positive difference is seen in Jayankondam Block (9%).

2.5 Retention

Repetition Rate:

The RR for the District for 2001-02 was 28% and it has been slightly decreased to 27%. Negative trend of RR is found in T-Palur, Alathur, Sendurai and Ariyalur Blocks.

Dropout Rate:

The district DR for 2001-02 was 13% and now it has been reduced to 9%. Positive trend of DR is prevailing in all the blocks.

Upper Primary Education:

There is no difference recorded in Completion Rate between 2001-02 and 2002-03. As for **RR**, there is a slight increase from 15% to 17%. As for **DR** positive trend prevails in 2002-03 when compared with previous **DR** of 13%. Negative trend of **DR** prevails in Veppur, Veppanthattai and Perambalur Block. It is due to the high percentage of SC / ST population.

2.6 Transition

The following Table gives the Blockwise and Genderwise Transition Rate of children from V to VI std.

Table 2.6
Transition Rate 2002-03

Block	2001-02			2002-03		
	B	G	T	B	G	T
T.Palur	95	96	96	97	91	94
Veppur	98	95	97	97	97	97
Veppanthattai	100	99	100	96	97	96
Perambalur	102	102	102	98	99	98
Sendurai	94	96	95	99	99	99
Alathur	95	102	99	97	98	97
Ariyalur	104	103	104	96	98	97
Andimadam	93	97	95	94	97	96
Jayankondam	92	94	93	96	97	97
Thirumanur	97	98	98	98	99	98
Total	97	98	98	97	98	98

Source : DISE 2002-2003

The district average of TR for both boys and girls during 2001-02 and 2002-03 remains the same, though there is a declining trend noticed in a few blocks.

2.7 Attendance

The following Table gives Attendance Rate of Primary and Upper Primary.

Table 2.7
Attendance Rate 2001 - 02 to 2002 - 03

Block	Primary		Upper Primary	
	2001-02	2002-03	2001-02	2002-03
T.Palur	97	96	88	85
Veppur	95	96	80	84
Veppanthattai	95	95	83	85
Perambalur	93	96	79	90
Sendurai	90	96	84	87
Alathur	96	95	84	81
Ariyalur	92	92	89	86
Andimadam	94	90	88	85
Jayankondam	90	93	83	90
Thirumanur	95	94	83	92
Total	91	94	86	86

Source : Monthly Return - Sep- 2001 & 2002

The Attendance Rate in primary has raised from 91% to 94%. There is no progress observed in upper primary Attendance Rate. Negative trend is seen in T-Palur, Alathur and Ariyalur Blocks.

LIBRARY & DOCUMENTATION CENTRE
National Institute of Education
Planning and Administration
17-B, Sri Aurobindo Marg,
New Delhi-110016
DOC, No. D-12170
Date 05-12-2003

2.8 Pupils' Achievement

This Table indicates the academic achievement of children in different subjects in both Primary and Upper Primary. The attainment of highest achievement fulfils the SSA objectives of providing satisfactory quality education.

Table 2: 8

Particulars of Achievement level - Primary & Upper primary

Block		Tamil	English	Maths	Science	Social Science
T.Palur	PFE	69	48.	54	63	58
	UPE	64	46	70	62	68
Veppur	PFE	65	47	55	65	54
	UPE	58	46	70	62	68
Veppanthattai	PFE	69	48	59	68	57
	UPE	68	53	59	61	59
Perambalur	PFE	66	49	58	71	68
	UPE	66	57	68	57	61
Sendurai	PFE	64	46	56	52	58
	UPE	54	49	63	53	56
Alathur	PFE	62	45	55	64	61
	UPE	59	43	65	58	51
Ariyalur	PFE	68	52	64	70	54
	UPE	63	46	67	61	54
Andimadam	PFE	67	44	63	63	57
	UPE	58	48	62	55	51
Jayankondam	PFE	68	46	64	68	55
	UPE	63	43	60	57	53
Thirumanur	PFE	68	49	56	63	58
	UPE	65	47	62	60	55
Total	PFE	66	47	58	65	58
	UPE	62	48	64	59	58

Source : Half Yearly Exam 2002-Dec.

In Primary, the highest percentage of 66% achievement is found in Tamil and the next comes Science (65%). The lowest achievement of 47.4% is seen in English language. Almost all the blocks have more than 60% achievement in Tamil. As far as English is concerned, Ariyalur block alone has more than 50% achievement. In Science, Perambalur block has the highest achievement of 71%. In Social Science also, Perambalur has got the highest percent of achievement.

As far as Upper primary education is concerned, the students in VI, VII & VIII Std have secured more marks in English and maths. In subjects like Tamil and Science, they have secured low scores in Tamil, Science and Social Science.

2.9 Mainstreaming Out of school children

The total number of out of school children as per the perspective plan was 13550. Of these children 2791 were re-enrolled in schools during 2002-2003. In the same year 700 children were provided education in bridge courses. For the remaining 11059 children, 1924 were crossed the age of 14 and they will be given special treatment under bridge course for 3 months for the direct appearance 8th std. common examination. 250 children will be given education under EGS and 300 children will be covered under 6 months Residential Camps. The balance 8585 out of school children will be covered under 343 bridge courses which will be 6 months duration.

Identification cards will be issued to all the out of school children. The card includes Registration Number, District, Block, CRC & Village code numbers. This will also help to ensure their admission in either formal school or Alternative centres.

2.10 Appointment of Teachers

To improve the access, 7 new primary schools were opened during 2002-03. for which 14 new teachers were appointed at the rate of 2 teachers per schools. Similarly 22 primary schools were upgraded into middle schools, for which 22 teachers were appointed. For 2003-04 opening of 5 new primary schools and for upgradation of 20 primary schools into middle schools are proposed in this budget. New teachers will be appointed at the rate 2 teachers for primary and 1 teacher for upgraded Middle school.

2.11 Programmes for the Disabled

All activities for the disabled children have been entrusted with the NGO. The NGO allotted for the district has appointed the special teachers to

look after the disabled children. The works of the special teachers have been periodically reviewed by the District Programme Co-ordinator.

Under DPEP the following aids and appliances were supplied by the NGO to the disabled children during 2002-03.

Spectacles - 63, Tricycle - 10, Ear mode - 105

In addition to the above, the District Rehabilitation department have also supplied the following aids.

Tricycle - 14, Hearing aid - 17, Solar battery - 5

Awareness campaign and eye camps were conducted in the selected Blocks under DPEP. Training on IED programme was given to the teachers who handled the disabled children. Speech therapy centre with all materials has been established at Perambalur Block. There is a proposal to extend the same facility.

The following activities are proposed for IED programme under SSA.

1. Community awareness programme
2. Capacity building to teachers and volunteers
3. Providing psychological support
4. Free medical camp
5. TLM and use to attain near normaly

The successful completion of primary education of the disabled children were analyzed taking the annual examination result of 2001-02. Of the 1075 children appeared for the annual examination 984 children have gone through the above exam successfully. As such 91.53% of the disabled children have passed the primary education. As per DISE and survey by the special teachers 2182 disabled children have been identified as school age children in age group 5-10 of whom 1844 have been enrolled and are now studying in primary classes. As far as upper primary education is concerned, 671 children lave been identified as school age children in the age group 11-13 of whom 503 are in the regular stream of education. The reason for non-enrolment of the remaining disabled

children is due to total disability. They will be enrolled either in formal schools or in special schools by means of creating awareness and counseling the parents.

2.12 Programmes for SC/ST

SC/ST children are from the deprived section of the community. They are mostly first generation learners and they cannot compete with the other social groups of children. Nearly 20,810 SC/ST children under DPEP and 18,220 children under SSA were given the above coaching class facility. The target for 2003-04 is 22,800 SC/ST children in primary (3rd std to 5th std) and 18,200 in upper primary sections (6th std to 8th std). The teachers handling SC/ST special coaching classes are given 2 days orientation once in a year. The honorarium of Rs.10 is paid per child per month based on the average attendance.

2.13 Programmes for Girls

Education of Girls is the primary focus in Sarva Shiksha Abhiyan. Maximum efforts are made to mainstream gender concerns in all the activities in SSA. Mobilisation at the habitation upgradation of primary in to upper primary incentives likes free noon meal, Text book, uniforms, scholarship, etc., will all taken to account. All the activities under girls education programme will be decided in terms of its gender focus. SSA recognises the need for special attention to bring the out of girl children to school. Provision of girls education will have to be situated in the local context and the programmes will be designed to suit the special needs of the above children. In order to bring the academic achievement of girls on par with the boys, remedial classes are proposed for 7500 girls children.

2.14 Early Childhood Care and Education

535 ECCE centres are functioning in the district to cater to the needs of the 20455 children in 3-5 age group. There are habitations which do not have the above facilities. Under DPEP a two day orientation was given to the child welfare organizers every year. DPEP has also planned to provide

play materials at Rs.1000 per centre. Accordingly the above play materials have been supplied to all 535 centres during 2002-03.

2.15 Functioning of Village Education Committees

Before the introduction of DPEP, PTA was the only grass-roots level structure, which is supporting the school education system. Right from the beginning of DPEP, VEC has been introduced which is supposed to be the grass-roots level structure. This structure has been further strengthened under SSA.

Village Education Committees are in place in all schools. It consists of 15 members headed by Panchayat President. Fortnightly meetings are conducted to review the progress of SSA activities in Schools and also to analyze the problems and issues at every stage of implementation. Fund flow is transparent with joint operation of both the Headmaster and the VEC president.

All the Civil works sanctioned for 2001-2002 and 2002-2003 have been executed under community participation. The sense of ownership of schools created among the VEC members by means of orientation and meetings.

Two days orientation was given to the VEC members in March 2003 where in clear exposure was given about their roles and responsibilities. They were also given opportunities to share their experiences with one another. Community awareness programmes will also be conducted in schools involving the VEC to create awareness among the illiterate parents. Better report will be developed between schools and community by means of involving VEC in school function.

2.16 Activities in Cluster Resource Centres

The Cluster Resource Centres have been organised clubbing some schools so that each CRC can accommodate 30 to 40 teachers. As such 114 CRCs are functioning at present. The Senior most Middle school Headmasters of the clubbed schools is acting as the CRC Co-ordinator. The next senior Headmaster is acting as the Addl.Co-ordinator. The above co-

ordinators were given two days training as how to conduct and organise CRC meetings and VEC orientation programme during 2002-03.

Monthly meetings are conducted on Saturdays wherein teachers took active participation. Discussions and demonstrations on model lesson and TLM preparation will certainly improve the teaching skills of the teachers.

In 114 CRCs 4404 teachers are attending for monthly meetings. A sum of Rs. 10/- per teacher is given as honorarium for attending the meetings.

2.17 Programmes in Block Resource Centres

Block Resource Centres have been established in each block head quarter provided with all infrastructure facilities. One supervisor and seven Teacher educators posts were sanctioned under SSA. BRCs play vital role in implementing and monitoring the SSA Programmes at different levels. One of the most important functions of BRC is to provide various in-service training programmes to the teachers and Head masters working in both primary and upper primary schools. The capacities of the BRCs personnel have been built by the State project functionaries and DIET faculty members then and there. In addition their capacity on school mapping and research evaluation monitoring activities should also be built.

Data collection and scrutiny have been done for the preparation of cluster and block level plans which in turn help to prepare the District Annual Work Plan and Budget Proposals.

The BRC personnel are implementing the School Adoption Programme and School Based Teaching for which they have been already trained by district resource team members. All BRCs are provided with TLM Grant of Rupees 10,000 per year and TLE Grant of Rupees 1 lakh as one time Grant to prepare TLM materials and to purchase the TLE.

School Based Training:

School Based Training should be given all schools. Before that preliminary visit should be made to assess the needs of the teachers. Based on the needs the training programmes should be carried out in schools with TLM kit box. They are expected to teach the competency which are difficult to

the teachers. After a break of three weeks time the impact of programme should be studied. Based on the assessment the above programme may be revised according to the needs.

School Adoption Programme:

The schools in each Block should be assigned ranks on the basis of cohort completion and achievement scores. The schools below 50% of merit should be equally shared and adopted by the BRC personnel. The low performance schools adopted should be visited frequently to provide onsite academic help to the teachers. The views of the teachers may also be recorded for further academic improvement.

Monitoring:

The BRC personnel used to visit the CRC meetings held on Saturdays. They monitor the entire CRC activities from the beginning to the end. Proper motivation is given to the teachers to take active participation and interaction over the functioning of CRC. The Alternative and Innovative Education Programme like Alternative day school for the never enrolled children and Bridge courses for both never enrolled and dropout children have been organised and monitored by the BRCs personnel. They also fix the SC/ST special coaching classes wherever possible having the strength of 20 children. And make effective supervision over the functioning of the same. On the whole, the BRCs are the most effective institution at the Block which implement and monitor all the SSA programmes. These institutions help to fulfill all the objectives of SSA programmes.

2.18 Research, Evaluation and Monitoring

The capacity of the BRC Personnel should be built in such a way that they can undertake research activity to study the impact of various SSA programmes. Each and every school has been allotted a sum of Rs.1500/-per year out of which a sum of Rs.100/- per school will be spent by the National council for Education and Rs.900/- per school will be spent by the State Project Directorate. The remaining amount of Rs.500/- per school will be spent by the District Project Officer. The teachers will be encouraged to do some small activities like study the causes of dropout, seasonal migration,

irregular attendance, low-level attainment in subject like English and Mathematics. etc., out of the sanctioned amount for the previous year Rs. 5 lakhs was spent for monitoring and evaluation purpose.

The BRC Personnel may be encouraged to undertake the following research activities.

1. Impact on SC/ST special coaching classes.
2. A small study about training programmes.
3. A study on the functioning of VEC in the implementation of SSA programmes.
4. A study on the impact of Alternative schooling centers.
5. A study on assessing the training needs of the teachers

Monitoring and Supervision:

Three tier committees were constituted under SSA specifying the duties and responsibilities. The following are the committees.

1. District Education committee headed by District Collector.
2. Block Education Committee headed by the Chairman.
3. Village Education Committee headed by Panchayat President.

The above committees are shouldering the responsibilities of the over all functioning of the SSA programmes. Fund flow is transparent at all levels. Monthly meetings are conducted for the above committee to review the progress of programmes. The problems and issues have also been discussed and solved. Apart from the above committees, the District Project staff and the BRC personnel are also monitoring and supervising the SSA activities.

2.19 Improving Infrastructure:

Providing Infrastructure facilities needs special attention. Because it promotes the Access and Retention of the School going children. The infrastructure facilities like additional classroom, toilets and drinking water facilities are provided to every year to the needy schools which are identified through DISE.

2.19.1 Construction of Buildings for BRCs:

Being a DPEP district, all the BRC buildings were already constructed through PWD. No more building is needed.

2.19.2 Construction of Buildings for CRCs:

There are 114 CRCs functioning at present. The buildings for the above CRCs are proposed in a phased manner. As such 20 CRC buildings are proposed in the current Budget at the estimated cost of Rs.2.00 lakhs. No provision was made for 2002-2003.

2.19.3 Construction of Three classrooms

32 three classroom buildings were sanctioned for 2002-2003. All these construction works were undertaken by the community. Almost all the works are nearing completion at present. Based on the needs and prioritisation, 50 three class room buildings are proposed the current Budget at @ Rs.4.50 lakhs each.

2.19.4 Construction of Two classroom

Only 8 two class room buildings were sanctioned 2002-2003. The construction of all the works are in progress and nearing completion. The works are carried over by the community construction. For the year 2003-2004, 10 two class room buildings are proposed for 2003-04 (Rs. 3.00 lakh each).

2.19.5 Provision of Toilet facilities

60 Toilets were sanctioned during 2002-2003. Of these works, 5 works were completed and the remaining works are nearing completion. Further 75 toilets are proposed for 2003-2004 in needy schools at Rs.20,000/- each.

2.19.6 Provision of Drinking Water facilities

70 drinking water provisions were made the year 2002-2003. Out of these 4 works have been completed and the remaining works will be completed the near future. Under drinking water facilities 100 works are proposed in the current Budget at Rs.15,000/-each.

2.20 Maintenance and Repairs

The above grant was given to 840 schools for the year 2002-2003 excluding private management schools. The same grant will be given to all

schools except private management for 2003-2004 at Rs.5,000/-each. The above amount will be utilized for doing the mainor repairs like reparing the floor, roof, window, cross wall, white washing etc.

2.21 Programmes for Quality improvement

Training Programmes:

It is one of the major components meant for qualitative improvement of education. The quality of education can be improved only through improving the quality of teachers. In the previous budget, it was planed to give various in-service training to teachers at various levels. But due to crowded activity and various reasons the training programmes were imparted to teachers only the month of February and March 2003. One third of the teachers have got the training on content and methodology. The Headmasters of all the institutions were given administrative training to create awareness in performing their duties and responsibilities.

Being a DPEP district, the training expenses for the primary teacher for 2002-03 were booked under DPEP. In the case of upper primary 853 teachers were given training during 2002-03.

2.21.1 Capacity building for Projects Staff

School Based Training (SBT) and School Adoption Programme (SAP) were given to BRC personnel. At the time of school visits they are expected to go with the TLM kit-box to take model lesson so that they can provide onsite academic help to teachers in the classroom. moreover, a five-day training on content and methodology was also given to BRC personnel at DIET . Another 3 days training was given to the BRC personnel regarding the school administration.

2.21.2 Training to teachers

Inservice Training to teachers is intended to improve the teacher competency and enable the teacher to become effective facilitate of the classroom transaction. During 2002-03 five-day training were given to 853 teachers on content and methodology in upper primary sections.

The following training programmes are charted out during 2003-2004.

1. TLM workshop for the teachers. (1 to 8 stds)
2. Training in content and methodology
3. Special training for English language
4. Training in continuous and comprehensive evaluation.
5. Training on DISE and Cohort.
6. Training to teachers handling disabled children.
7. Training to Alternative School (EGS) Instructors.
8. Training to teachers handling SC/ST Special coaching classes.
9. Training on non scholastic subjects
10. Training to teachers on Multi Grade Teaching Methodology
11. Training to teachers on Activity Based Teaching Methodology

The above training activities will be implemented in cascade model covering 10-12 days in a month. The remaining working days will be spent for monitoring and supervision of the SSA programmes.

2.21.3 Orientation to VEC members

In order to strengthen the functions of VEC members, 2 days orientation is given to expose their duties and responsibilities. 4835 members were given opportunity to share their experiences among one another during 2002-03. The BRCs personnel provide the above training who in turn received the Resource Person Training at DIET. During 2002-2003 the above orientation was given for one day only. For 2003-2004 the above 2 days orientation will be given to the selected VEC members twice in a year.

2.21.4 Provision of TLM, TLE and School Grants

Teaching Learning Material Grant:

The TLM grant was given to teachers working in all schools except unrecognized and unaided schools. 3107 primary schools teachers and 1015 teachers working in Middle sections of Middle, High and Higher Secondary Schools received the TLM grant for 2002-03. For 2003-04, 3040 teachers for primary and 1071 teachers for upper primary will be provided with the TLM grant. The above grant for primary teachers will be provided under DPEP.

Workshop for the preparation and use of teaching learning materials is proposed during the current budget.

Teaching Learning Equipment Grant:

It was originally planned to provide TLE grant to 218 schools having middle sections. But later instructions were issued to provide the above grant only to the newly opened primary schools and upgraded schools. As such 7 primary schools @ Rs.10,000 and 22 upgraded schools at Rs. 50,000 received the above grant during 2002-03.

For 2003-04 it is proposed to provide TLE grant for newly opened Primary and upgraded middle schools. As such 5 new primary schools and 20 upgraded middle schools will be covered the above scheme. Expert committee was constituted at the State and District to levels a comprehensive list of equipments to be purchased under TLE was prepared and supplied.

Infrastructure grant

In order to improve the infrastructural facility, the infrastructure grant was provided to 723 primary schools and 108 upper primary schools for 2002-03. The above grant was not provided to the private management schools. The amount of Rs.2000 per school may be spent on purchase of furniture, black-board painting and for doing some minor repairs.

The same grant will be provided to the eligible schools for 2003-04. It is proposed to provides the grant to 644 primary schools and 204 upper primary sections having middle, High, Higher secondary schools. As far as primary schools are concerned the above grant will be booked under DPEP.

2.21.5 Curriculum Revision – VI Std

The Curriculum Revision for VI std is being undertaken at the state-level. New Textbooks for all subjects of VI std will be developed when the revision gets completed.

2.21.6 Innovation – Computer Literacy, Vocational Skill Development and Early Childhood Care and Education.

Innovation

The following are the activities taken up for execution under Innovation

1. Computer Literacy
2. Useful vocational skill development activities
3. Early childhood care education

Computer Literacy

Computer occupies an important place in the modern life. In the current budget it is proposed to provide basic computer education to 30,000 students studying in VI & VII Standards at the rate of Rs. 50 per child.

The following are the objective of the programme

- ✧ To make the student familiarize with the basic and operational features of the computer.
- ✧ To create interest among children in learning through computer by games and interactive activities.
- ✧ To make the children learn subjects through computer – language, mathematics, science and social science.

- ☆ To impart training to teachers to facilitate the children to learn through computer.
- ☆ To impart training to district and block level project officials on computer feature in order to enable them to monitor and inspect computer literacy programmes.

The children in VI std will study first level of training programme. The students will be allowed to handle 40 hours duration to learn different subject through computer. Since the mode of delivery is entirely a different one, the students will certainly learn the subjects easily and quickly.

The district level resource committee will be contributed with the consultation of the District Collector. The committee will finally decide about the agency through which the computer programme is to be implemented.

The required school teachers will be given training to help the children in learning through computer. The selected Supervisors and Teacher Educators at blocks will also be given computer training to monitor the functioning of the programme.

Useful Vocational Skills Development Activities.

It is highly essential to develop vocational skills among girl children of 6-8 classes along with academic stream of education . This activity will be useful in their future career. The following skills development activities will be taken up during 2003-04.

1. Preparation of Cleaning Powder
2. Preparation of Face Powder
3. Preparation of Agarpathy
4. Preparation of Washing soap
5. Preparation of Ink

Resource Team:

A resource team will be formed involving the experts in the filed of preparing the above materials. The resource group shall consists of four members. This R.Ps will provide training to the selected teachers at the rate

of two teachers per CRC. From the CRC 228 teachers will be trained and in turn they will provide the same training to the other teachers in schools.

The district as a whole 7500 children will be given the opportunity to develop the above vocational skills. These skills may help the children earning while learning. Rs. 200/- per child is allotted in the budget from which the expense of purchasing the raw materials and training programme will be met the BRC personnel will monitor the functioning of the above programme.

Innovation Programme for SC/ST Children

Under Innovation, vocational skill development activity will also be taken for the SC/ST children. The activities under Arts and Crafts will be given. Training will be given on Tailoring and embroidery. The resource experts will be identified who in turn will provide Training to the SC/ST children. 5000 SC/ST students will be covered under the above programme.

Early Childhood Care and Education

ECCE centres are the feeder institution for the formal primary schools. The above centres are run by the Social Welfare Department. At present 535 ECCE centres are functioning in the district.

Under Innovation, it is proposed to open Pre-Primary Education Centres in habitations where the ECCE Centres are not located. Total need of new ECCE centres are 157. For 2003-04, 40 Pre-Primary Education Centres are proposed. The centres will be attached with the Primary schools. So that the Headmaster of the concerned school will monitor the programme. Since the age group covered under Pre-Primary Education is 3-5 years. Emphasis has been given a child centred approach, playway and activity-based learning in place of formal methods.

Teachers for the above 40 centres will be appointed providing monthly salary of Rs. 2500/- as consolidated pay. Training Programmes will also be given to the above teachers along with the ECCE workers.

2.22. Project Management

2.22.1 Establishment of MIS

Under DPEP, the Management Information System has been established with two computer system and one Programmer. Considering the

present work load of the project, two more Computers are to be supplied with the Data entry Operator. The system is highly helpful to generate the various Data collected through DISE.

2.22.2. Implementation DISE

District Information System of Education is part and parcel of the SSA programme. All the informations relating to Education system are collected through DISE forms. It provides authenticated Data for the preparation of not only for the Annul Work Plan Budget but also for all other purposes. The data capture form are designed in such a way that it contains all the informations regarding enrolment, infrastructure, teachers and all other educational indicators.

2.22.3 Appointment of Project Staff

In order to implement and monitor various activities under SSA, the District Project Office has been established at the District Headquarter with all infrastructure facilities. Being the DPEP districts the District Project Office has already been well established with the following posts.

District Programme Co-ordinator, Addl. District Programme Co-ordinator, Asst. District Programme Co-ordinator, Media and Documentation Officer, Women Development Officer, Statistical Officer, Superintendent -2, Assistant - 2, Typist, Driver, Office Assistant, Civil consultant, Programmer.

2.23 Convergence with Ongoing Schemes

The following are the ongoing schemes implemented by the Tamil Nadu Government.

1. Supply of free noon-meal
2. supply of free uniform
3. supply of free textbooks
4. supply of free bus pass
5. provision of free scholarship for girls belonging to SC/ST and MBC

Free Noon meal:

The nutrition noon meal is given to all children irrespect of caste and creed. It helps the children to come to school and retain them in the educational system till they complete the prescribed standards.

Free Uniform:

Free uniform are supplied to the children from all community who take noon-meal. The above incentive schemes attracts the children to attend the school and complete both primary and upper primary education.

Free Textbooks:

Free text books are given to all children in primary and middle classes. This scheme actually reduce the burden of the poor parents. It helps to improve the quality of the children in their academic achievement.

Free Bus Pass:

Free bus pass is also given to the students to seek admission in schools other than their native places. This actually helps the children in continuing education. If the above facilities are not provided, some of the poor children may not have the chance of continuing their higher education.

Free Scholarship:

Free scholarship is given to the female children who belong to SC/ST and MBC. Rs.500 per child is given to the children in III, IV, V standards and Rs.1000 is given for those who are studying in VI standards in different type of schools.

Convergence with Other Departments:

In order to promote quality and improve infrastructure facilities, the linkage with the other various departments is highly essential for the successful implementation of the SSA programme. Seminars and meetings are conducted to the receive the whole hearted co-operation for the successful implementation of the above programme. SSA has close link with the following departments.

- Health Department
- Social Welfare Department
- Adhi Diravida Welfare Department
- Public Works Department
- Rehabilitation Department
- Rural Development Department
- Revenue Department
- TWAD – Board etc.

The above departments provide assistance to improve the following facilities.

- (1) Infrastructure Facilities like Additional class rooms, Toilets, Drinking Water, Furniture, Electricity etc.
- (2) Children's health.
- (3) Assistance to the Disabled Children.

2.24 Issues and strategies

The problems and issues on various major components have been delt with specific strategies.

2.24.1. Access:

The present Access rate was 99.21%for primary and 96.70% for Upper Primary. Some unserved habitations do not fulfil the prescribed norms for opening the new schools. Alternative schools under EGS shall be opened in these school less habitations where the strength of the school age children is less than 20. For Upper Primary, the access will be raised to 100% by means of upgradation of Primary Schools into Middle schools.

2.24.2. Enrolment:

The first and the foremost objective of SSA is to enrol all the school age children in schools by 2003. In spite of implementation of DPEP for about five years in this district, Universal enrolment is still out of reach. The dropout and the totally disabled children are the major hurdles in attaining the universal enrolment. In order to tackle the problem of child labour, special study was conducted to identify the children who are engaged in child labour . As such 95 children have been identified and the same has been reported to the commissioner of child labour. The strategies of intensive enrolment drive and door to door canvassing will be conducted with the help of VEC and Self Help Group.

Further intensive enrolment drive will be undertaken in habitations where the enrolment is low with the help of VEC and Self Help Groups and on the spot admission will also be done to complete the enrolment.

2.24.3.Dropout:

Another critical problem is dropout. Eventhough the TN Govt. provide immense facilities for the school going children like free noon meal, free books, free dress ,free bus pass, scholarship etc., certain portion of children are away from schools. The dropout is due to child labour, migrant families, child labouring care activities, domestic works etc. These children should be relieved from the above clutches and re-admitted in schools. As per the cohort study result, 9.52% of dropout is seen in primary and 12.61% is seen in Upper primary. The ultimate aim of SSA is to reduce dropout to zero percent. To fulfill the above target, bridge courses are proposed to cover all the out of school children. Residential camps will also be proposed for the scattered out of school children.

2.24.4. Repetition:

As per the cohort study, 27% of children are found to be repeaters. The high Repetition Rate may be due to ineffective and unattractive classroom transactions. Along with several training programmes to teachers, their attitudes and behaviors should also be changed towards accountability. Above all effective monitoring and supervision is highly essential to make the teachers more conscious in their duties.

2.24.5 Education of the Girls:

The enrolment of girl children is not an issue as far as primary sections are concerned. But in the case of middle section, some of the grown up girl children after puberty could not attend the schools. Domestic works and child labouring care activities affect the educational activities of the girls children to some extent. In some minority community they hesitate to send the girls children to school after attaining the age. Community awareness programme will be conducted for the parents.

2.24.6 SC/ST Children:

Being the first generation learners, academic achievement of SC/ST is not on a par with the other social groups of children. Owing to this, the above children are either dropped out or repeating the same classes. Special coaching classes for SC/ST children are conducted for one hour in the evening after school hours. Necessary awareness will also be created to the parents of SC/ST children about the importance of education for their upliftment in life.

2.24.7. Classroom Activities:

It is purely meant for quality aspect in order to make the classroom activities purposeful, the teaching learning materials grant is given to all teachers in schools irrespective of management. In addition, Teaching Learning Equipment grant @10000/- and @ 50000/- are provided to primary and Upper Primary schools respectively to make the children understand the competencies easily by means of learning by doing. Simultaneously the teachers are given several need based training to make better use of the above grant.

2.24.8. Pedagogical Renewal:

One of the important objectives of SSA is to provide satisfactory quality Education. The quality of Education depends on the quality of teachers. Hence, the competency of teachers have been improved by means of various in-service training programmes. Teacher empowerment activities have also been under taken through CRCs. Since 80% of schools are in multigrade situations, the teachers are to be given need-based training. The BRC personnel play a vital role in building the capacity of the teachers.

2.24.9. Achievement:

One of the major objectives of SSA is to provide satisfactory quality education. This is possible only through the qualitative achievement of children in the classroom. The problem in attaining the maximum quality of education is the lack of undertaking the continuous comprehensive

evaluation. By means of assessing the achievement level of the children through evaluation. The teachers can do remedial teaching to improve the slow learners. School adoption programme may also help to improve the low performing schools.

2.24.10. Disabled Children:

Total disability is one of the problems in enrolling the disabled children. They need special attention and sympathetic treatment from the teachers as well as the peer group of children. The total disabled children may be enrolled in special schools. Free medical camp should also be conducted to cater to the needs of the individuals. Aids and appliances are to be supplied to all total disabled children where there is need to continue their education.

CHAPTER – III

ACTIVITIES AND BUDGET

3.1 Primary Schools

To improve Access, seven new primary schools were opened during 2002-03 and ~~ten~~ schools are proposed. Hence salary for 24 teachers are claimed. TLE grant of ~~10~~ schools @ Rs. 50,000/- Total financial outlay of the intervention is Rs. ~~37.960~~ lakhs.

3.2 Upper Primary Schools

In order to improve maximum Access, 22 schools were upgraded for 2002-03, and 20 upgradation of schools are proposed for 2003-04. Salary for 64 teachers are claimed. The school grant of Rs. 2000 for 224 school, Teacher grant @ Rs. 500/- for 1071 teachers and TLE grant @ Rs. 50,000 for 20 schools. An amount of Rs. 73.595 lakhs has been year mark .

3.3 Alternative and Innovation Education

To provide inclusive education for all the outof school Children ~~ten~~ EGS centres, 358+77 Bridge courses and 6 residential camps are proposed. Budget for this activity is Rs. ~~109.650~~ lakhs.

3.4 Special Focus Groups

This is one of the most important intervention in SSA. 1847 disabled children will be covered @ Rs. 1200/- 20,000 girl children will be provided vocational skill development activity @ Rs. 200 per child. 41,000 SC/ST children will be given special coaching class @ Rs. 200/- per child. The total cost of this programme is Rs. 144.164 lakhs.

3.5 Village Education Committee

VEC is the structure at grass-roots level. Fortnightly meetings and Orientation Programmes are proposed. The expenses for 967 schools and training expenses for VEC members. The estimated cost of this programme is Rs. 17.532 lakhs.

3.6 Cluster Resource Centre

Workshops and meeting will be provided to 114 CRCs @ Rs. 1800. Furniture for 16 CRC @ Rs. 10,000/-, contingency grant @ Rs. 2500, TLM grant @ Rs. 1000 and TLE grant @ Rs. 25,000/-. Total budget is Rs. 16.056 lakhs.

3.7 Block Resource Centre

BRCs play vital role in implementing all the SSA programmes. Expenses for salary, contingency grant, workshops and meetings, TLM grant, Training equipment and DA/TA are booked in this intervention. The budget out lay is Rs. 91.600 lakhs.

3.8 Research, Evaluation and Monitoring

Effective monitoring and supervising is very important to assess the impact of the programmes. 734 schools are proposed @ Rs. 1500 per year. The estimated cost is @ Rs. 11.010 lakhs.

3.9 Civil Construction Works

Provision of infrastructure facilities help to improve Access, Enrolment and Retention. The construction of 20 CRC building @ Rs. 2 lakhs, 10 two classroom buildings @ Rs. 3 lakhs, 50 three classroom buildings @ Rs. 4.5 lakhs, 100 drinking water @ Rs. 15,000/- and 75 toilets @ Rs. 20,000/- are proposed. Total cost is Rs. 325.00 lakhs.

3.10 Maintenance and Repair Works

The above grant will be provided to 840 schools @ Rs. 5000 per year. The total budget is Rs. 42.00 lakhs.

3.11 Management

Salary for project staff for 9 months, furniture and equipment @ Rs. 3.00 lakhs, Books and periodicals @ Rs. 50,000, maintenance and equipment @ Rs. 50,000, stationary @ Rs. 35,000, MIS @ Rs. 2.00 lakhs, MED @ Rs. 2.00 lakhs and DA/TA @ Rs. 1.00 lakh are proposed in the budget. The budget out lay for this activity is Rs. 29.250 lakhs.

3.12 Training

This programme is highly essential to improve the quality of teachers 2100 primary teachers and 900 upper primary teachers will be given training for 2003-04. The cost of this programme is Rs. 42.00 lakhs.

3.13 Innovation

Under INO the following four activities will be undertaken

1. Computer literacy @ Rs. 15.00 lakhs.
2. Education of girls @ Rs. 15.00 lakhs.
3. Education of SC/ST children @ Rs. 10.00 lakhs.
4. Pre-Primary Education (ECCE) centres @ Rs. 10.00 lakhs.

Total budget is Rs. 50.00 lakhs.

Grand total of the budget for 2003-04 is **Rs. 969.817 lakhs.**

Table A

S. No.	Maj. Act.	Activity Description	Perambalur 2001-2002				
			Receipt		Exp.	Spill	
			Phy.	Fin.		Phy.	Fin.
1	PFE	Primary Schools					
i		No. of Schools					
ii		Salary of new teachers					
iii		Salary of addl. Teachers					
iv		School Grants					
v		Teachers Grants					
vi		TLE Grants	0	0		0	0
		Total		0.000			0.000
2	UPE	Upper Primary Schools					
i		No. of Schools					
ii		Salary of new teachers					
iii		Salary of addl. Teachers					
iv		School Grants					
v		Teachers Grants					
vi		TLE Grants	22.000	11.000		22.000	11.000
		Total		11.000			11
3	AIE	Alternative & Innovative Educatio					
i		EGS Centres (Unservd Habitations)					
ii		Bridge Courses/Transit Camps					
iii		Residential Camps					
		Total		0			0
4	SFG	Special Focus Groups					
i		Education of disabled					
ii		Education of Girls					
iii		Education of SC/ST Children					
		Total		0		0	0
5	VEC	Village Education Committees					
i		Meetings					
ii		Training					
		Total		0			0
6	CRC	Cluster Resource Centres					
i		Workshops and Meetings					
ii		Furniture					
iii		Contingency Grant					
iv		TLM Grant					
v		TLE Grant					
vi		Library Books					
vii		TA/DA					
		Total	0	0		0	0
7	BRC	Block Resource Centres					
i		Salary of Staff					
ii		Furniture	0	0		0	0
iv		Workshops and Meetings					
v		TLM Grant					
vi		Training Equipments					
vii		Library Books					
viii		TA/DA					
		Total	0.000	0.000		0.000	0.000
8	REM	Research, Evaluation & Monitoring					
9	CCW	Civil Construction Works					

S. No.	Maj. Act.	Activity Description	Perambalur				
			2001-2002				
			Receipt		Exp.	Spill	
Phy.	Fin.	Phy.	Fin.				
i		Construction of BRCs					
ii		Construction of CRCs					
iii		Construction of two classroom					
iv		Construction of three classroom	4	18.000		4	18.000
v		Drinking Water	32	4.800		32	4.800
vi		Toilets	16	3.200		16	3.200
		Total	52.000	26.000		52.000	26.000
10	MRW	Maintenance & Repair Works					
11	MGT	Management					
i		Salary of staff					
ii		Furniture and Equipment					
iii		Books and Periodicals					
iv		Maintenance of equipment					
v		Consumable and Stationery					
vi		Management Information System					
vii		Media and Documentation					
viii		Training to Project Staff					
ix		Consultancy					
x		Contingency					
xi		TA/DA					
		Total	0.000	0.000		0.000	0.000
12	TRG	Training					
i		Training to Teachers (Primary)					
ii		Training to Teachers (Middle)	2200	3.000		2200	3.000
		Total	2200.000	3.000		2200.000	3.000
13	INO	Innovation					
i		Computer Education					
ii		Edn. of Girls (Arts and Crafts)					
iii		Edn. of SC/ST Children (Arts and					
iv		Nursery Education					
		Total	0.000	0.000		0.000	0.000
		Grand Total		40.000			40.000

Table B

S. No.	Maj. Act.	Activity Description	Perambalur						
			Receipt		Expenditure		Spillover		
			Phy	Fin	Phy	Fin	Phy	Fin	
1	PFE	Primary Schools							
i		No. of Schools	7						
ii		Salary of new teachers	14	5.880	14	5.880			
iii		Salary of addl. Teachers							
iv		School Grants							
v		Teachers Grants							
vi		TLE Grants	7	0.700	7	0.700			
		Total	28	6.580	21	6.580			
2	UPE	Upper Primary Schools							
i		No. of Schools	22						
ii		Salary of new teachers		0.000	22	9.759			-9.759
iii		Salary of addl. Teachers	213	89.460			213	89.460	
iv		School Grants	354	7.680	204	4.080			3.600
v		Teachers Grants	2848	14.240	1051	5.255			8.985
vi		TLE Grants							0.000
		Total	3437	111.380	1277	19.094	213	89.460	92.286
3	AIE	Alternative & Innovative Education							
i		EGS Centres (Unservd Habitations)	10	2.112	10	2.112			
ii		Bridge Courses/Transit Camps							
i		EGS Centres (Unservd Habitations)	10	2.112	10	2.112			0.000
ii		Bridge Courses/Transit Camps							0.000
iii		Residential Camps							0.000
		Total	10	2.112	10	2.112			0.000
4	SFG	Special Focus Groups							
i		Education of disabled	1500	6.000			1500	6.000	
ii		Education of Girls							0.000
iii		Education of SC/ST Children							0.000
		Total	1500	6.000			1500	6.000	
5	VEC	Village Education Committees							
i		Meetings							0.000
ii		Training	967	4.642	967	4.642			0.000
		Total	967	4.642	967	4.642			0.000
6	CRC	Cluster Resource Centres							
i		Workshops and Meetings	107	1.498	107	1.498			
ii		Furniture							
i		Workshops and Meetings	107	1.498	107	1.498			
ii		Furniture							
iii		Contingency Grant	107	2.675	107	2.675			
iv		TLM Grant	107	1.070	107	1.070			
v		TLE Grant							
vi		Library Books							
vii		TA/DA							
		Total	321	5.243	321	5.243			0.000

S. No.	Maj. Act.	Activity Description	Perambalur						
			Receipt		Expenditure		Spillover		
			Phy	Fin	Phy	Fin	Phy	Fin	
7	BRC	Block Resource Centres							
i		Salary of Staff							
ii		Furniture							
i		Salary of Staff							
ii		Furniture							
iii		Contingency Grant							
iv		Workshops and Meetings							
v		TLM Grant							
vi		Training Equipments							
vii		Library Books							
viii		TA/DA							
		Total		0.000		0.000			0.000
8	REM	Research, Evaluation & Monitoring		8.865		5.089			3.776
9	CCW	Civil Construction Works							
i		Construction of BRCs							0.000
ii		Construction of CRCs							0.000
iii		Construction of two classroom	7	21.000	7	21.000			0.000
iv		Construction of three classroom	28	126.000	28	126.000			0.000
v		Drinking Water	50	7.500	50	7.500			0.000
vi		Toilets	50	10.000	50	10.000			0.000
		Total		164.500		164.500			0.000
10	MRW	Maintenance & Repair Works	985	49.250	840	42.000			7.250
11	MGT	Management							
i		Salary of staff							
ii		Furniture and Equipment							
iii		Books and Periodicals							
iv		Maintenance of equipment							
v		Consumable and Stationery							
vi		Management Information System							
vii		Media and Documentation							
viii		Training to Project Staff							
ix		Consultancy							
x		Contingency							
xi		TA/DA	294	1.449	294	1.449			
		Total	294	1.449	294	1.449			0.000
12	TRG	Training							
i		Training to Teachers (Primary)							0.000
ii		Training to Teachers (Middle)	853	11.948	853	2.973			8.975
		Total	853	11.948	853	2.973			8.975
13	INO	Innovation							
i		Computer Education	30000	15.000	30000	2.000			13.000
ii		Edn. of Girls (Arts and Crafts)	7500	15.000					15.000
iii		Edn. of SC/ST Children (Arts and Crafts)	1	15.000	19400	7.724			7.276
iv		Nursery Education							0.000
		Total		45.000		9.724			35.276
		Grand Total		416.969		263.406			153.563

Table - C

S. No.	Maj. Act.	Activity Description	Perambalur 2001-2002				2002-03 spillover
			Spillover		Expenditure		
			Phy.	Fin.	Phy.	Fin.	
1	PFE	Primary Schools					
i		No. of Schools					0.000
ii		Salary of new teachers					0.000
iii		Salary of addl. Teachers					0.000
iv		School Grants					0.000
v		Teachers Grants					0.000
vi		TLE Grants	0	0	0	0	0.000
		Total		0.000		0.000	0.000
2	UPE	Upper Primary Schools					0.000
i		No. of Schools					0.000
ii		Salary of new teachers					-9.759
iii		Salary of addl. Teachers					89.460
iv		School Grants					3.600
v		Teachers Grants					8.985
vi		TLE Grants	22.000	11.000	22.000	11.000	0.000
		Total		11.000		11	92.286
3	AIE	Alternative & Innovative E					0.000
i		EGS Centres (Unservd)					0
ii		Bridge Courses/Transit Camp					0
iii		Residential Camps					0.000
		Total		0		0	0.000
4	SFG	Special Focus Groups					0.000
i		Education of disabled					6.000
ii		Education of Girls					0.000
iii		Education of SC/ST Children					0.000
		Total		0	0	0	6.000
5	VEC	Village Education Committ					0.000
i		Meetings					0.000
ii		Training					0.000
		Total		0		0	0.000
6	CRC	Cluster Resource Centres					0.000
i		Workshops and Meetings					0
ii		Furniture					0.000
iii		Contingency Grant					0.000
iv		TLM Grant					0.000
v		TLE Grant					0.000
vi		Library Books					0.000
vii		TA/DA					0.000
		Total	0	0	0	0	0.000
7	BRC	Block Resource Centres					0.000
i		Salary of Staff					0
ii		Furniture	0	0	0	0	0.000
iv		Workshops and Meetings					0.000
v		TLM Grant					0.000
vi		Training Equipments					0.000
vii		Library Books					0.000
viii		TA/DA					0.000
		Total	0.000	0.000	0.000	0.000	0.000
8	REM	Research, Evaluation & Monitoring					3.776
9	CCW	Civil Construction Works					0.000

i		Construction of BRCs					0.000
ii		Construction of CRCs					0.000
iii		Construction of two					0.000
iv		Construction of three	4	18.000	4	18.000	0.000
v		Drinking Water	32	4.800	32	4.800	0.000
vi		Toilets	16	3.200	16	3.200	0.000
		Total	52.000	26.000	52.000	26.000	0.000
10	MRW	Maintenance & Repair Works					7.250
11	MGT	Management					0.000
i		Salary of staff					0.000
ii		Furniture and Equipment					0.000
iii		Books and Periodicals					0.000
iv		Maintenance of equipment					0.000
v		Consumable and Stationery					0.000
vi		Management Information Sys					0.000
vii		Media and Documentation					0.000
viii		Training to Project Staff					0.000
ix		Consultancy					0.000
x		Contingency					0.000
xi		T/DA					0.000
		Total	0.000	0.000	0.000	0.000	0.000
12	TRG	Training					0.000
i		Training to Teachers (Primar					0.000
ii		Training to Teachers (Middle	2200	3.000	2200	3.000	8.975
		Total	2200.000	3.000	2200.000	3.000	8.975
13	INO	Innovation					0.000
i		Computer Education					13.000
ii		Edn. of Girls (Arts and					15.000
iii		Edn. of SC/ST Children					7.276
iv		Nursery Education					0.000
		Total	0.000	0.000	0.000	0.000	35.276
		Grand Total		40.000		40.000	153.563

Sarva Shiksha Abhiyan, Tamilnadu

**Table D
Budget Estimate for 2003-2004**

S. No.	Maj. Act.	Activity Description	Unit Cost	Perambalur	
				Phy.	Fin.
1	PFE	Primary Education			
i		No. of Schools		10	
ii		Salary of new teachers	0.840	44	36.960
iii		Salary of addl. teachers	0.840		
iv		School Grant	0.020		
v		Teachers Grant	0.005		
vi		TLE Grant	0.100	10	1.000
		Total			37.960
2	UPE	Upper Primary Education			
i		No. of Schools		20	
ii		Salary of new teachers	0.840	64	53.760
iii		Salary of addl. teachers	0.840	0	0.000
iv		School Grant	0.020	224	4.480
v		Teachers Grant	0.005	1071	5.355
vi		TLE Grant	0.500	20	10.000
		Total			73.595
3	AIE	Alternative & Innovative Education			
i		EGS Centres (Unservd Habitations)	0.211	10	2.113
ii		Bridge Courses/Transit Camps	0.211		98.537
iii		Residential Camps	0.030		9.000
		Total			109.650
4	SFG	Special Focus Group			
i		Education of disabled	0.012	1847	22.164
ii		Education of Girls	0.002	20000	40.000
iii		Education of SC/ST Children	0.002	41000	82.000
		Total			144.164
5	VEC	Village Education Committees		974	
i		Meetings	0.018		8.766
ii		Training	0.009		8.766
		Total			17.532
6	CRC	Cluster Resource Centres		114	
i		Workshops and Meetings	0.002		2.736
ii		Furniture	0.100		1.600
iii		Contingency Grant	0.025		2.850
iv		TLM Grant	0.010		1.370
v		TLE Grant	0.250		7.500
vi		Library Books	0.100		
vii		TA/DA	0.002		
		Total			16.056
7	BRC	Block Resource Centres		10	
i		Salary of Staff	10.000		75.500
ii		Furniture	1.000		
iii		Contingency Grant	0.125		1.250
iv		Workshops and Meetings	0.005		0.600
v		TLM Grant	0.050		0.500
vi		Training Equipments	1.000		10.000
vii		Library Books	0.250		
viii		TA/DA	1.000		3.750
		Total			91.600

S. No.	Maj. Act.	Activity Description	Unit Cost	Perambalur	
				Phy.	Fin.
8	REM	Research, Evaluation & Monitoring	0.015	734	11.010
9	CCW	Civil Construction Works			
i		Construction of BRCs	6.000		
ii		Construction of CRCs	2.000	20	40.000
iii		Construction of two classroom	3.000	10	30.000
iv		Construction of three classroom	4.500	50	225.000
v		Drinking Water	0.150	100	15.000
vi		Toilets	0.200	75	15.000
		Total			325.000
10	MRW	Maintenance & Repair Works	0.050	840	42.000
11	MGT	Management			
i		Salary of staff	22.000		16.500
ii		Furniture and Equipment	3.000		3.000
iii		Books and Periodicals	0.500		0.500
iv		Maintenance of equipment	0.500		0.500
v		Consumable and Stationery	0.350		0.350
vi		Management Information System	2.000		2.000
vii		Media and Documentation	2.000		2.000
viii		Training to Project Staff	0.010		0.750
ix		Consultancy	2.500		2.500
x		Contingency	0.140		0.150
xi		TA/DA	1.000		1.000
		Total			29.250
12	TRG	Training			
i		Training to Teachers (Primary)	0.014	2100	29.400
ii		Training to Teachers (Upper Primary)	0.014	900	12.600
		Total			42.000
13	INO	Innovation			
i		Computer Education	15.000		15.000
ii		Edn. of Girls (Arts and Craft)	15.000		15.000
iii		Edn. of SC/ST Children (Arts and Craft)	5.000		10.000
iv		Nursery Education	15.000		10.000
		Total			50.000
		Grand Total			989.817

BUDGET SUMMARY

Sl. No	Activity	Budget	Percentage
1	Civil Construction Works	325.000	33.30
2	Management	29.250	2.60
3	Quality	625.976	64.10
	Total	980.226	100.00

LIST OF PRIMARY SCHOOLS TO BE OPENED

Name of the Block	Name of the Habitation
1) Veppanthattai	Pillayarpalayam
2) Perambalur	Samathuvapuram
3) Andimadam	Therkunatham
4) Alathur	Varisaipatti
5) Thirumanur	Annimangalam

LIST OF SCHOOLS TO BE UPGRADED – PERAMBALUR DISTRICT

<u>Block</u>	<u>School Name</u>
T.Palur	1. P.U.P.School.Sathambadi 2. P.U.P.School Cholamadevi 3. P.U.P.School Edankanni
Veppur	1. P.U.P.School Murukkangudi 2. P.U.P.School Odhiyam
Veppanthattai	1. P.U.P.School Periyammalayam-East
Peraumbalur	1. P.U.P.School Aranarai 2. P.U.P.School Thiruppeyar
Sendurai	1. P.U.P.School Vanjinapuram
Alathur	1. P.U.P.School Nattarmangalam 2. P.U.P.School Thimmur 3. P.U.P.School Makkaikulam
Ariyalur	1. P.U.P.School Tamaraikulam
Jayankondam	1. P.U.P.School Devemangalam-south 2. P.U.P.School Meikavalputhur 3. P.U.P.School Vanavanallur 4. P.U.P.School Pudukhavadi
Thirumanur	1. P.U.P.School Alagiyamanavalan 2. P.U.P.School Angianur 3. P.U.P.School Kallur

LIST OF EGS CENTRES (UNSERVED HABITATIONS)

<u>Block</u>	<u>Habitation</u>
Veppanthattai	1. Arasadikadu 2. Ayyarkuttai
Perambalur	1. M.G.R.Nagar
Alathur	1. Malayappanagar
Thirumanur	1. Kumaramangalam

LIST OF RESIDENTIAL CAMPS

<u>Block</u>	<u>Centre</u>
1. Thirumanur	Thirumanur
2. Perambalur	Perambalur
3. Sendurai	Sendurai
4. Andimadam	Andimadam
5. T.Palur	T.Palur
6. Jayankondam	Jayankondam

Annexure :1

Implementation Schedule for 2003-2004

(Rs. in Lakhs)

S. No.	Maj. Act.	Sub Act.	Activity Description	1st Quarter	2nd Quarter	3rd Quarter	4th Quarter
1	PFE		No. of Schools	...			
		A3	Salary of new teachers	...			
		A4	Salary of addl. Teachers	...			
		G1	School Grants	...			
		G2	Teachers Grants	...			
		G3	TLE Grants	...			
2	UPE		No. of Schools	...			
		A5	Salary of new teachers	...			
		A6	Salary of addl. Teachers	...			
		G4	School Grants	...			
		G5	Teachers Grants	...			
		G6	TLE Grants (New & uncovered OBB School)	...			
3	AIE	A7	Alternative Schools/Salary - EGS Centres	
		P1	Residential Camps	
		P2	Bridge courses	
4	SFG	S3	Education of disabled	
		S1	Education of Girls	
		S2	Education of SC/ST	
5	CRC	W	Workshops and Meetings
			Contingency Grant	...			
		G8	TLM Grant
6	BRC		Salary of staff
			Furniture	...			
			Contingency Grant
			Workshops and Meetings
			TLM Grant
			Training Equipments		...		
7	REM		Research and Evaluation	
8	CCW	C1	Construction of BRCs	
		C2	Construction of CRCs
		C3	Construction of two classroom
		C4	Construction of three classroom
		C5	Drinking Water
		C6	Toilets

Implementation Schedule for 2003-2004

(Rs. in Lak)

S. No.	Maj. Act.	Sub Act.	Activity Description	1st Quarter	2nd Quarter	3rd Quarter	4th Quarter
9	RMW		Repairs
10	MGT	A1	Salary of staff		
		E	Furniture and Equipment		
		B	Books and Periodicals	
		M	Maintenance of Equipment
		O	Consumables and stationery
		K	T/DA
		J	Consultancy
			Contingency
			Training to CRC Staff	
			Training to BRC Staff	
11	TRG	11	Training to Teachers (Primary)	
		12	Training to Teachers (Middle)	
12	VEC		Training to VEC Members	...			
13	INO	11	Computer Education
		12	Education of Girls-Innovation programme
		13	Education of SC/ST Innovation Programmes
			ECE(New Centres)	

Identity Card
Never Enrolled/Dropout Children

District :

Block :

Habitation :

- 1) Name of the Child :
- 2) Father's/Guardian's Name :
- 3) Address :
- 4) Age :
- 5) Sex : Male/Female
- 6) Community : SC/ST/MBC/BC/Others
- 7) Religion : Hindu/Muslim/Christian/Others

page 2

- 8) Whether Disabled : Yes/No
- 9) Status of the child during enumeration : Dropout/Never enrolled/Child labourer
- 10) Present Status : Admitted in School
- 11) Address of the School and class :

Signature : _____

BRC Supervisor : _____

Block : _____

Abbreviations

AAEEO	Additional Assistant Elementary Educational Officer
ABT	Activity Based Teaching
ADPC	Assistant District Programme Coordinator
AEEEO	Assistant Elementary Educational Officer
AIE	Alternative Innovative Education
ALS	Alternative School
AIS	Alternative Innovative Scheme
AR	Action Research
AV	Audio – Visual
AWP&B	Annual Work Plan & Budget
BC	Backward Class
BRC	Block Resource Centre
BRG	Block Resource Group
BQMC	Block Level Quality and Monitoring Committee
CEO	Chief Educational Officer
CJ	Cost of Journey
CRC	Cluster Resource Centre
CR	Completion Rate
DA	Daily Allowance
DD	Deputy Director
DEEO	District Elementary Educational Officer
DEO	District Educational Officer
DEP	Distance Education Programme
DEEP	District Elementary Education Programme
DIET	District Institute of Education and Training
DISE	District Information for School Education
DPC	District Programme Coordinator
DPEP	District Primary Education Programme
DR	Dropout Rate
DRDA	District Rural Development Agency
DRG	District Resource Group
ECCE	Early Childhood Care Education

EFC	Estimated Financial Cost
EFA	Education For All
EGS	Education Guarantee Scheme
EMIS	Education Management Information System
EREM	Evaluation Research and Educational Monitoring
FAO	Finance and Accounts Officer
GAR	Gross Access Ratio
GER	Gross Enrolment Ratio
HM	Headmaster
HI	Hearing Impaired
HS	High School
HSS	Higher Secondary School
IC	Incidental Charge
ICDS	Integrated Child Development Scheme
IED	Integrated Education for Disabled
INO	Innovation
JD	Joint Director
KRP	Key Resource Person
LD	Learning Disability
LR	Literacy Rate
MBC	Most Backward Class
MDO	Media Documentation Officer
MED	Media
MGT	Management, Multigrade Teaching
MGTT	Multigrade Teaching Technique
MIS	Management Information System
MLL	Minimum Level of Learning
MR	Mentally Retarded, Monthly Return
MRP	Master Resource Person
MS	Middle School
NCERT	National Council for Educational Research and Training
NER	Net Enrolment Ratio
NFE	Non - Formal Education
NGO	Non - Government Organization
OA	Office Assistant

OI	Orthopedic Impairment
OPE	Out of Packet Expense
PFE	Primary Formal Education
PTA	Parent Teacher Association
PWD	Public Works Department
RP	Resource Person
RR	Repetition Rate
SBT	School Based Teaching
SC	Scheduled Caste
SDP	School Development Plan
SPG	Special Focus Group
SIEMAT	State Institute of Educational Management and Training
SIM	Self Instructional Material
SO	Statistical Officer, Spill Over
SPD	State Project Director
SSA	Sarva Shiksha Abhiyan
ST	Scheduled Tribe
TA	Travelling Allowance
TFM	Task Force Member
TINP	Tamilnadu Integrated Nutrition Programme
TLM	Teaching Learning Material
TLE	Teaching Learning Equipment
TPR	Teacher Pupil Ratio
UEE	Universalisation of Elementary Education
UPE	Upper Primary Education
VLC	Village Level Committee
VEC	Village Education Committee
VI	Visually Impaired
WDO	Women Development Officer

LIBRARY & DOCUMENTATION CENTRE

National Institute of Educational
Planning and Administration.

17-B, Anand Bhawan Marg,

New Delhi-110016

DOC, No.

Date

D-12170

05-12-2003

78

NIEPA DC



D12170