



SARVA SHIKSHA ABHIYAN

DISTRICT ELEMENTARY EDUCATION PLAN

**ANNUAL WORK PLAN & BUDGET
2003-2004**

NIEPA DC



D12081

**THIRUVALLUR DISTRICT
TAMILNADU**

LIBRARY & DOCUMENTATION CENTER

National Institute of Educational
Planning and Administration.

17-B, Sri Aurobindo Marg,

New Delhi-110016 D-12081

DOC, No
Date 19-11-2003 .

INDEX

Sl. No.	Chapters	Page No
1	PLAN OVERVIEW	1
2	PROGRESS RIVIEW	30
3	ACTIVITIES AND BUDGET	74

LIST OF CONTENTS

List of Contents

Chapter 1 - Plan Overview

- 1.1 Introduction
- 1.2 Planning process
- 1.3 General Profile
- 1.4 Educational Profile
 - 1.4.1 Access
 - 1.4.2 Enrolment - GER & NER
 - 1.4.2.1 Boys & Girls
 - 1.4.2.2 SC/ST children
 - 1.4.2.3 Disabled children
 - 1.4.3 Completion rate
 - 1.4.4 Repetition rate
 - 1.4.5 Drop out rate
 - 1.4.6 Transition rate
 - 1.4.7 Teacher pupil ratio
- 1.5 Early childhood Care and Education
- 1.6 Out of school Children
- 1.7 Special Focus Group
- 1.8 VECs, CRCs, BRCs
- 1.9 Infrastructure
 - 1.9.1 Block resource Centre
 - 1.9.2 Cluster resource Centre
 - 1.9.3 Three classrooms
 - 1.9.4 Two classrooms
 - 1.9.5 Toilets
 - 1.9.6 Drinking water Facilities
- 1.10 District project office

Chapter II - Progress Review

- 2.1 Introduction**
- 2.2 Progress in ACCESS**
 - 2.2.1 Opening of Primary schools
 - 2.2.2 Upper Primary schools
 - 2.2.3 EGS centres
- 2.3 Progress in ENROLMENT**
 - 2.3.1 Boys & Girls
 - 2.3.2 SC/ST
 - 2.3.3 Disabled
- 2.4 Progress in COMPLETION**
- 2.5 Retention**
- 2.6 Transition**
- 2.7 Attendance**
- 2.8 Pupils' achievement**
- 2.9 Mainstreaming out of school children**
 - 2.9.1 Bridge courses/Transit camps
 - 2.9.2 Residential Schools
- 2.10 Appointment of Teachers**
- 2.11 Programmes for Disabled**
- 2.12 Programmes for SC/ST**
- 2.13 Programmes for Girls**
- 2.14 Early childhood Care and Education**
- 2.15 Functioning of Village Education Committees**
- 2.16 Activities in Cluster Resource Centres**
- 2.17 Programmes in Block Resource Centres**
- 2.18 Research, Evaluation and Monitoring**
- 2.19 Improving Infrastructure**
 - 2.19.1 Construction of Block Resource Centre
 - 2.19.2 Construction of Cluster Resource Centre

2.19.3 Construction of Three classrooms

2.19.4 Construction of Two classrooms

2.19.5 Provision of Toilet Facilities

2.19.6 Provision of Drinking water facilities.

2.20. Maintenance and Repairs

2.21. Programmes for Quality Improvement

2.21.1 Capacity building for Project Staff

2.21.2 Training to Teachers

2.21.3 Orientation to VEC Members

2.21.4 Provision of TLM, TLE, School Grant

2.21.5 Curriculum Revision - VI Standard Textbook.

2.21.6 Innovation - Computer literacy, Vocational skill Development Skills

2.22 Project Management

2.22.1 Establishment of MIS

2.22.2 Implementation of DISE

2.22.3 Appointment of Project Staff

2.23 Convergence with ongoing schemes

2.24 Issues and Strategies

2.24.1 Access and Enrolment

2.24.2 Out of School children

2.24.3 Quality Issue

2.24.4 Special Focus Group

Chapter III - Activities and Budget

- 3.1 Primary schools**
- 3.2 Upper Primary schools**
- 3.3 Alternative and Innovation Education**
- 3.4 Special Focus Group**
- 3.5 Village Education Committee**
- 3.6 Cluster Resource Centres**
- 3.7 Block Resource Centres**
- 3.8 Research, Evaluation and Monitoring**
- 3.9 Civil Construction works**
- 3.10 Maintenance and Repair works**
- 3.11 Management**
- 3.12 Training**
- 3.13 Innovation**
- 3.14 Procurement Plan**
- 3.15 Implementation schedule**

LIST OF TABLES

List of Tables
Chapter I

Sl. No	Table Name	Page No.
1.1	Preparation of Annual work plan and Budget for 2003-2004 under SSA Schedule of Work	2
1.2.	Population	4
1.3.	Block wise number of Habitations and Households	5
1.4.	Details of villages habitation, existing Primary schools and need of New primary schools	6
1.5.	Details of villages habitation, existing Middle schools and need of New Upper primary schools	7
1.6.	Education Institution -Management wise	8
1.7.	Enrolment position in Thiruvallur District	9
1.8.	GER in Primary & Upper primary sections in 2002-03	10
1.9.	NER in Primary & Upper primary sections in 2002-03	11
1.10.	Enrolment in Block wise - SC/ST Students	12
1.11.	No. of disabled children enrolled	13
1.12.	CR - Primary and Upper Primary sections 2002-03	14
1.13.	RR - Primary and Upper Primary sections 2002-03	15
1.14.	DR - Primary and Upper Primary sections 2002-03	16
1.15.	Transition Rate - 2002-03	17
1.16.	Teacher pupil ratio - primary and Upper Primary sections 2002-03	18
1.17.	Number of ECCE children 2002-03	19
1.18.	Number of Out of school children	20
1.19.	Block wise SC/ST children enrolled in Special coaching class	22
1.20.	Number of Disabled Children Enrolled	23
1.21.	Number of VEC centres and Members 2002-03	24
1.22.	Number of CRC Centres and Teachers 2002-03	25
1.23	Number of BRC centres and Members 2002-03	26
1.24	District Project Office - Staff position	29

List of Tables

Chapter II

Sl. No	Table Name	Page No.
2.1	Access rate 2001-02 & 2002-03	31
2.2	Name of New primary schools to be opened 2003-04	32
2.3	Name of newly to be upgraded schools 2003-04	32
2.4	Number of Children admitted in EGS/ Bridge course in 2002-03	33
2.5	Number of children to be enrolled in Bridge courses	34
2.6	Grade wise enrolment - All category	35
2.7	Grade wise enrolment - SC Students	36
2.8	Grade wise enrolment - ST Students	37
2.9	Block wise disabled children Enrolment during the year 2001-2002	39
2.10	Block wise disabled children Enrolment during the year 2002-2003	40
2.11	Educational Indicators - CR - 2001-02 & 2002-03	41
2.12	Educational Indicators - Retention	42
2.13	Transition Rate 2001-02	43
2.14	Transition Rate 2002-03	44
2.15	Attendance Rate 2001-02 & 2002-03	45
2.16	Pupils achievement -2001-02	46
2.17	Pupils achievement 2002-03	47

Sl. No	Table Name	Page No.
2.18	Out of School children - Drop out 2001-2002	48
2.19	Out of School children - Never Enrolled 2001-2002	49
2.20	Out of school children - block wise in 6-14 age group in 2002-2003	50
2.21	Bridge course, Transit camps - 2002-03 and 2003-2004	52
2.22	Medical camp for IED children	54
2.23	SC/ST children beneficiaries in Special coaching classes during 2002-03	55
2.24	Number of ECCE centres and Children 2002-03	56
2.25	Particulars of construction of BRC buildings 2002-03 and 2003-04	59
2.26	VI standard children - Details of Computer literary activities	65
2.27	Staff position of District Project office	68
2.28	Particulars of Noon meal, Free text Book, and Free bus pass beneficiaries	69
2.29	Particulars of beneficiaries of the Drinking water facilities provided by Tamilnadu water and Drainage Board	70
2.30	Provision of school building and additional classrooms through M.L.A. fund of the Tamilnadu Government	60
2.31	Member of Parliament- fund - Beneficiaries	71

List of Tables

Chapter III

Sl. No	Table Name	Page No.
3.1	Block wise - Particulars new Primary schools proposed in 2003-04	74
3.2	Name of the schools to be upgraded in 2003-04	75
3.3	Particulars of Bridge Courses, Residential camps and Transit schools proposed during 2003-04	76

LIST OF ANNEXURES

List of Annexure

Table A - Activity wise Budget, Receipt and Expenditure 2001-02

Table B - Activity wise Budget, Receipt and Expenditure 2002-03

Table C - Spillover Activities of 2001-2002 and 2002-2003

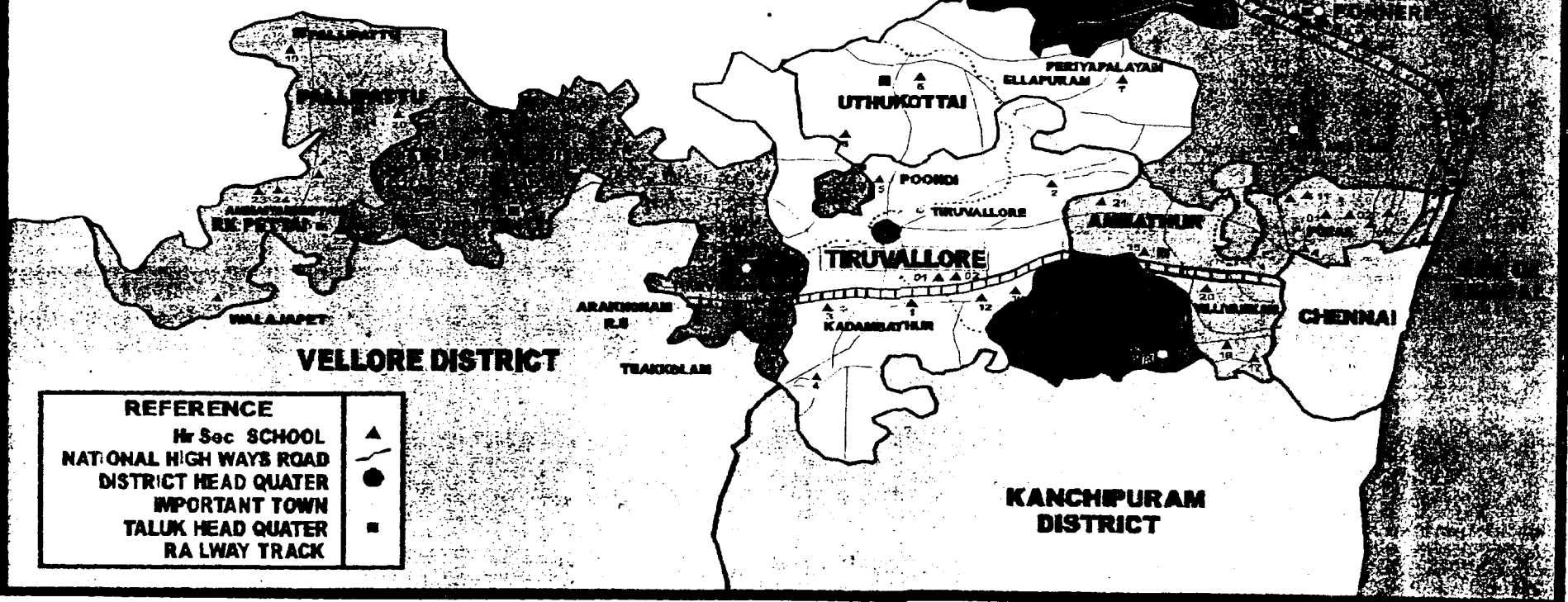
Table D - Budget Estimate for 2003-2004

TIRUVALLORE DISTRICT

(NOT TO SCALE)



ANDHRA PRADESH



VELLORE DISTRICT

CHENNAI

KANCHIPURAM DISTRICT

REFERENCE	
▲	Hr Sec SCHOOL
—	NATIONAL HIGHWAYS ROAD
●	DISTRICT HEAD QUATER
■	IMPORTANT TOWN
□	TALUK HEAD QUATER
—	RA LWAY TRACK

CHAPTER I

PLAN OVERVIEW

Chapter I

Plan Overview

1.1 Introduction

Universalisation of Primary education and eradication of illiteracy have been the two main goals of the National planners since the dawn of freedom. A new intervention to achieve it was launched a couple of years ago and it is called “Sarva Shiksha Abhiyan”. It is a scheme with a time frame of ten years from 2001 and set six goals and with excellent basic features such as involving the local community to plug its gaps, to achieve the universalisation of primary education. As the scheme has a ten year of time frame a perspective plan for 10 years was prepared in 2001 besides preparing an annual work plan and budget for every year to march towards the set goals. The implementation of the plan when reviewed, it shows the scheme is on the right direction and there is a very good progress in each and every aspect of it.

1.2 Planning Process :-

The State level meeting of Assistant District Programme Co-ordinators were convened by the State Project Director and guidelines were given to them in formulating the annual plan and budget activities for 2003-04.

There was a state level workshop at Headquarters on 16.3.2003 and it was well attended by all the directors of school education department. Under the chairmanship of education secretary immediately after the State level meeting joint director (personnel) convened the meeting of Assistant District Programme co-ordinator, Block Resource Supervisors, assistant Educational Officers and Additional Assistant Elementary Educational Officers and gave guidance and counseling on planning process. Then under the chairmanship of District Collector, District level meeting was convened on 25.03.03 to discuss the annual work plan Budget. Each core team of State level took charge of 4 or 5 districts and visited the districts and explained the district core team officers how to prepare the annual work plan and budget activities. The district core team was formed. The members of team are Assistant District Programme Co-ordinator, Statistical Officer, Poondi Block Resource Supervisor and Puzhal Assistant Educational Officer and two faculties of Planning and management branch, Tirur DIET. These members work

under the guidance of District Programme Co-ordinator / Chief Educations Officer. The district core team visited VEC, CRC and BRC and formulated school level plan. The Block Resource Centres were involved and their services were utilised in formulating the plan. Finally what was planned and designed in district was discussed at Gandhigram workshop conducted from 27th to 29th March under the leadership of most revered State Project Director. The State Project Director gave an excellent over all touch to the annual plan and budget of each and every district of this state. The Valedictory Address of the Special Secretary Education department, government of Tamilnadu in the workshop about the activities to be followed in the preparation of annual plan work and Budget was a gem in the crown. Accordingly the annual plan work and budget was prepared. The annual work plan and budget of every district was reviewed by the State project Director for four days from 7.4.2003 to 10.04.2003. Omissions and commissions were pointed out and rectified and the suggestions of the director and education secretary to Government of Tamilnadu have been taken into account. The exercise of planning has been properly guided and done and it yielded a derived result.

Table 1.1
Preparation of Annual Work Plan and Budget for 2003-04 under SSA
Schedule of Work

Month and Date	Activities
03.03.2003 & 04.03.2003	Orientation to State Project Office Planning Team Members
07.03.2003	Orientation to ADPCs in preparation of AWP & B 2003-04
16.03.2003	One day workshop for DPC and Additional DPC
17.03.2003 to 22.03.2003	Visit of State Level Core Planning Team to districts - Constructions at schools, VECs, CRCs, BRCs, DPOs, other related departments & NGOs. Meeting with Collectors.
27.03.2003 to 29.03.2003	Workshop on preparation of AWP & B for 2003-04 Consolidation of District Plan.
07.04.2003 to 10.04.2003	Preparation and Appraisal of District Level Draft Plan in the State Level workshop.
16.04.2003	Finalization & submission of District AWP & B for 2003-04 to SPO.

1.3 General Profile of the District

Thiruvallur district was carved out of the erstwhile chinglepat district just six years ago. It came into existence on 1st jan 1997. In ancient times it was ruled by Pallavas and Cholas and this district reflects the cultural heritage of the rulers even today.

One can see the spiritual spirit of those empire translated in the form of famous architectural valuable temples at Thiruvalangadu and Thirumullaivoil.

Besides those temples, there are various temples at Tiruttani and Periya Palayam which speak a lot of volumes of ethical, spiritual and moral values of the people of this district.

The fort at “Pulicat” is a reminiscent of the Dutch who wanted to establish their rule in this part of this area. Poondi reservoir and Puzhal lake which are the main sources of drinking water supply to the people of Chennai city is in this district.

Physical features

The District is adjacent to Chennai, the capital city of Tamilnadu. The total area of this district is 3424 sq m. It has three revenue divisions with eight taluks comprising 14 panchayat unions. There are six Municipalities and 19 Town Panchayats and 823 villages.

Name of Panchayat Unions

- | | |
|----------------------------|-------------------------------|
| 1. Thiruvallur (at) Ekkadu | 8. Puzhal |
| 2. Gummidipoondi | 9. R.K.Pet |
| 3. Kadambathur | 10. Sholavaram |
| 4. Minjur | 11. Tiruttani |
| 5. Pallipat | 12. Thiruvalangadu |
| 6. Poonamalle | 13. Ellapuram |
| 7. Poondi | 14. Villivakkam (at) Ambathur |

Name of Municipalities

1. Thiruvallur
2. Avadi
3. Ambathur
4. Madavaram
5. Kathivakkam
6. Thiruvotriyur

Demographic profile.

Population :- Based upon the 2001 census it has the total population of 2738866 and out of which 13,90292 are males and 1348574 are females. The population density of the district is 800 per sq m.

**Table 1.2.
Title - Population**

SI No	Particulars	1991			2001		
		Male	Female	Total	Male	Female	Total
1	Total Population	11,44,043	10,94,540	22,38,583	13,90,292	13,48,574	27,38,866
2	Literacy rate %	77.03	54.90	66.22	84.62	68.23	76.54

(Source : census 2001)

The literacy rate of this district is 76.54%. For 1000 males, there are 970 females. This district occupies the 9th position in the state with regard to population.

46% of the population of this district depends upon agriculture and its allied activities for their livelihood.

1.4 Education profile

It is a pride to have number of professional institutions and liberal arts degree colleges spread over this district besides a university exclusively for medical sciences.

There are 3056 habitations and 469577 households. Approximately during 2001-2002 there was 97.3% of the school age population had the access to primary schools within a walking distance of 1.00km and 98.13% have to Upper primary schools. During 2002-2003 there is 99.7% school age population has the access to primary schools and 99% have to Upper Primary schools.

Table 1.3
Block wise Number of Habitations and Households.

SI. NO	Name of Blocks	Total No. of Habitation in the Block	Number of Households
1	Thiruvallur	218	21,792
2	Gummidipondi	229	34,513
3	Kadambathur	220	22,791
4	Minjur	384	30,219
5	Pallipet	232	20,098
6	Poondamalli	149	53,977
7	Poondi	253	21,203
8	Puzhal	167	50,404
9	R.K.Pet	247	18,669
10	Solavaram	223	27,291
11	Thiruttani	140	21,792
12	Thiruvalangadu	166	10,374
13	Ellapuram	217	27,004
14	Villivakam	211	1,01,377
Total		3056	4,69,577

(Source : Household survey 2001)

Table 1. 4

DETAILS OF VILLAGES HABITATION, EXISTING PRIMARY SCHOOLS AND NEED OF NEW PRIMARY SCHOOLS

Sl. NO	Block	Total No. of Habitation	Total No. of Existing primary schools	No. of Habitation covered by existing primary School	No. of new primary Schools to be opened	No. of Habitation covered by new primary Schools	No. of Habitation Not yet covered
1	Thiruvallur	218	76	218	0	0	Nil
2	Gummidipoondi	229	126	227	2	2	Nil
3	Kadambathur	220	83	220	0	0	Nil
4	Minjur	384	144	379	2	5	Nil
5	Pallipat	232	96	232	0	0	Nil
6	Poonamallee	149	81	149	0	0	Nil
7	Poondi	253	97	250	2	3	Nil
8	Puzhal	167	77	167	0	0	Nil
9	R.K. Pet	247	95	247	0	0	Nil
10	Sozhavaram	223	76	223	0	0	Nil
11	Tiruttani	140	96	140	0	0	Nil
12	Thiruvalangadu	166	94	166	0	0	Nil
13	Ellapuram	217	99	217	0	0	Nil
14	Villivakkam	211	98	211	0	0	Nil
	Total	3056	1336	3046	6	10	Nil

(Source : Census, 2001)

By opening of 6 Primary schools 100% access will be achieved.

Table 1.5
DETAILS OF VILLAGES HABITATION, EXISTING MIDDLE SCHOOLS, NEED
OF NEW UPPER PRIMARY SCHOOLS

Sl. NO	Range	Total No. of Habitations	Total No. of Existing Middle schools	No. of Habitation covered by existing middle, high & Hr. Sec. Schools	No. of new middle Schools to be opened	No. of Habitations covered by new middle Schools	No. of Habitation Not yet to be covered
1	Thiruvailur	218	21	218	0	0	Nil
2	Gummidipoondi	229	14	225	3	4	Nil
3	Kadabathur	220	17	223	0	0	Nil
4	Minijur	384	20	382	1	2	Nil
5	Pallipattu	232	10	230	1	2	Nil
6	Poonamallee	149	19	144	3	5	Nil
7	Poondi	253	10	246	4	6	Nil
8	Puzhal	167	12	167	0	0	Nil
9	R.K. Pet	247	8	245	1	2	Nil
10	Sozhavaram	223	11	222	1	1	Nil
11	Tiruttani	140	11	136	1	2	Nil
12	Thiruvallangadu	166	7	166	0	0	Nil
13	Ellapuram	217	11	212	4	5	Nil
14	Villivakkam	211	18	209	2	2	Nil
	Total	3056	189	3025	21	31	Nil

(Source : Census, 2001)

1.4.1 Access

The district has 403549 school age population. Out of it boys are 205748 and girls are 197801. The access rate of this district was 97.3% in 2001. After the opening of 32 primary schools and Upgrading of 6 Primary schools into Upper Primary during 2001-02 and three primary and 17 Upgrading of Primary into upper primary during 2002-03 there is a considerable increase in access rate and the present rate is 99.7%. It has been planned to open six primary and Upgrading 21 Primary into Upper Primary during 2003-04 in order to achieve 100% access rate.

There are 1705 number of schools in this district. Out of which 1163 are primary, 225 are upper primary; 155 are high schools and 162 are higher secondary schools.

Table 1.6
Education Institution - Management wise and Teachers Position Block wise

Sl. No	Type/Management	Primary	Middle	Pri. & UP & High & HSS	Up & High & Hss	Total
1.	Department of Education	0	0	2	139	141
2.	Social welfare department	41	8	0	9	58
3.	Local body	959	168	0	6	1133
4.	Aided Minority and Non-minority	133	30	1	31	195
5.	Unaided [Self Finance]	30	19	120	9	178
Total		1163	225	123	194	1705

(Source : DISE 2002-2003, Thiruvallur District)

Teachers position in 2002-03

S. No.	Block	Primary				Upper Primary			
		Govt.	Aided	Unaided	Total	Govt.	Aided	Unaided	Total
1	Thiruvallur	130	54	14	198	202	52	142	396
2	Poondi	165	44	0	209	102	8	4	114
3	Kadambathur	158	32	0	190	143	43	66	252
4	Ellapuram	199	17	7	223	128	6	64	198
5	Poonamallee	237	77	15	329	244	170	453	867
6	Minjur	265	19	51	335	182	39	157	378
7	Shozhavaram	146	5	15	166	114	11	138	263
8	Gummidipoondi	259	37	39	335	162	21	50	233
9	Villivakkam	330	90	38	458	344	127	726	1197
10	Puzhal	207	128	22	357	263	87	195	545
11	Tiruttani	198	21	24	243	125	34	70	229
12	Thiruvalangadu	180	28	0	208	97	0	0	97
13	Pallipat	214	23	0	237	113	45	0	158
14	R.K.Pet	210	20	0	230	99	22	0	121
Total		2898	595	225	3718	2318	665	2065	5048

(Source : DISE 2002-2003, Thiruvallur District)

There are 3493 Teachers working in Government and Aided Primary Schools and 2983 are working in Government and Aided Upper Primary schools.

1.4.2 Enrolment - GER and NER

The district had 92% enrolment in respect of primary and 78% in respect of Upper primary (including middle sections in High and Higher Secondary schools) as per household survey 2001. The enrolment is as given in the following table. The table gives the block wise detailed figure. The present enrolment rate is 97% for primary and 84% for Upper primary.

Table 1.7
Enrolment position in Thiruvallur district

S. No.	Block	Sex	Primary				Upper Primary			
			Govt.	Aided	Unaided	Total	Govt.	Aided	Unaided	Total
1	Thiruvallur	B	3803	1357	1671	6831	2425	1729	865	5019
		G	3771	1364	1502	6637	2623	1318	634	4575
2	Poondi	B	3502	790	223	4515	1929	222	88	2239
		G	3673	818	157	4648	1739	194	58	1991
3	Kadambathur	B	4095	890	732	5717	2496	878	275	3649
		G	3929	900	545	5374	2430	765	208	3403
4	Ellapuram	B	4755	465	773	5993	2824	354	286	3464
		G	4896	446	502	5844	2853	373	219	3445
5	Poonamallee	B	6085	3496	5037	14618	4683	1837	3122	9642
		G	6254	3416	4345	14015	3847	3620	2311	9778
6	Minjur	B	6906	719	2026	9651	3723	1142	966	5831
		G	7122	856	1651	9629	3877	1175	615	5667
7	Shozhavaram	B	4351	406	1673	6430	3060	199	749	4008
		G	4309	424	1303	6036	2910	202	613	3725
8	Gummidipoondi	B	6578	1096	1040	8714	4289	236	346	4871
		G	6710	1138	755	8603	3930	387	215	4532
9	Villivakkam	B	10273	3685	9256	23214	5709	3248	5208	14165
		G	10618	3669	7995	22282	6934	2516	4027	13477
10	Puzhal	B	6320	3699	2175	12194	6327	1887	857	9071
		G	6327	4184	1835	12346	5714	2367	941	9022
11	Tiruttani	B	3891	819	917	5627	2120	513	280	2913
		G	3977	726	685	5388	2179	352	218	2749
12	Thiruvallangadu	B	3440	475	0	3915	1844	0	0	1844
		G	3352	431	0	3783	1738	0	0	1738
13	Pallipat	B	4190	1085	0	5275	2326	463	0	2789
		G	4081	1085	0	5166	2011	382	0	2393
14	R.K.Pet	B	4279	684	0	4963	2292	238	0	2530
		G	4198	621	0	4819	2076	243	0	2319
Total		B	72468	19666	25523	117657	46047	12946	13042	72035
		G	73217	20078	21275	114570	44861	13894	10059	68814

(Source : DISE 2002-2003, Thiruvallur)

24186 (boys-12951 and 11235 girls) have been enrolled in unrecognized schools). Villivakkam Block registers the maximum enrolment both in primary and Upper Primary and it is followed by Poonamallee Block. Thiruvallangadu records the lowest enrollment.

Table 1.8

GER - in Primary and Upper Primary Sections in 2002-03

S. No.	Block	GER					
		Primary			Upper Primary		
		B	G	T	B	G	T
1	Thiruvallur	109%	107%	108%	107%	106%	107%
2	Poondi	110%	106%	108%	108%	104%	106%
3	Kadambathur	109%	107%	108%	108%	106%	107%
4	Ellapuram	109%	108%	109%	104%	106%	105%
5	Poonamallee	112%	107%	110%	110%	112%	111%
6	Minjur	107%	109%	108%	108%	104%	106%
7	Shozhavaram	103%	105%	104%	104%	102%	103%
8	Gummidipoondi	107%	105%	106%	106%	108%	107%
9	Villivakkam	110%	118%	114%	104%	108%	106%
10	Puzhal	109%	111%	110%	106%	108%	107%
11	Tiruttani	110%	108%	109%	110%	112%	111%
12	Thiruvalangadu	112%	124%	118%	106%	108%	107%
13	Pallipat	110%	112%	111%	108%	106%	107%
14	R.K.Pet	102%	104%	103%	104%	106%	105%
	District Average	109%	109%	109%	107%	107%	107%

(Source : DISE 2002-03, Thiruvallur District)

the district average of GER is 109% in Primary whereas 107% is in Upper Primary. Thiruvalangadu ranks top into 118% in Primary and Poonamallee and Tiruttani have the highest Percentage of GER 111% in Upper Primary.

Table 1.9
NER - in Primary and Upper Primary Sections in 2002-03

S. No.	Block	NER					
		Primary			Upper Primary		
		B	G	T	B	G	T
1	Thiruvallur	97%	98%	98%	86%	88%	87%
2	Poondi	95%	95%	95%	83%	81%	82%
3	Kadambathur	95%	98%	97%	86%	83%	85%
4	Ellapuram	96%	96%	96%	84%	85%	85%
5	Poonamallee	100%	99%	100%	85%	81%	83%
6	Minjur	96%	95%	96%	86%	82%	84%
7	Shozhavaram	95%	95%	95%	81%	88%	85%
8	Gummidipoondi	99%	97%	98%	85%	83%	84%
9	Villivakkam	98%	98%	98%	82%	92%	87%
10	Puzhal	97%	97%	97%	83%	84%	84%
11	Tiruttani	99%	96%	98%	84%	83%	84%
12	Thiruvalangadu	96%	93%	95%	83%	84%	84%
13	Pallipat	97%	96%	97%	84%	80%	82%
14	R.K.Pet	99%	98%	99%	83%	85%	84%
	District Average	97%	97%	97%	84%	84%	84%

(Source : DISE 2002-03, Thiruvallur District)

District NER is 97% in Primary with respect to Upper primary Poonamallee block register the highest rate of 100%. Poondi and Thiruvalangadu have the least percentage of 95%. With regard to Upper Primary the district has 84%. Almost all the blocks sail in the same boat.

1.4.2.1 Boys and Girls :-

117657 boys and 114570 girls were enrolled during 2002-03 in Primary schools whereas 72035 Boys and 68814 girls were enrolled in Middle schools. This figure includes the enrolment of 12951 Boys and 11235 Girls in Unrecognized schools.

1.4.2.2 SC/ST Children :-

Enrollment is the most important component in the "Education for All" movement. It should be paid more attention and light must be thrown upon it. As per the goals laid down all school age children must be enrolled. Enrollment occupies the highest priority in this scheme. There fore awareness campaigns are periodically conducted in all the habitations of this district. Village education Committees have contributed their might in these campaigns and it has paid a rich dividend. In certain areas door to door campaign is also being done. Special drive has been given to enroll all the under privileged and down trodden children. Special focus is being laid upon for the enrolment of girl children.

Table 1.10
Enrolment in Block wise - SC/ST Students

S. No.	Block	Sex	Enrolment					
			Primary			Upper Primary		
			SC	ST	Total	SC	ST	Total
1	Thiruvallur	B	3307	234	3541	2183	78	2261
		G	3127	210	3337	2137	66	2203
2	Poondi	B	2257	219	2476	1095	49	1144
		G	2240	218	2458	1001	30	1031
3	Kadambathur	B	2379	187	2566	1592	42	1634
		G	2267	180	2447	1506	54	1560
4	Ellapuram	B	2471	194	2665	1429	52	1481
		G	2378	193	2571	1468	60	1528
5	Poonamallee	B	5062	501	5563	3305	274	3579
		G	4940	474	5414	3311	222	3533
6	Minjur	B	4114	322	4436	2650	65	2715
		G	4001	307	4308	2553	86	2639
7	Shozhavaram	B	2313	231	2544	1373	67	1440
		G	2171	183	2354	1204	52	1256
8	Gummidipoondi	B	2929	305	3234	1560	78	1638
		G	2679	322	3001	1434	68	1502
9	Villivakkam	B	6237	578	6815	3587	188	3775
		G	6213	521	6734	3597	158	3755
10	Puzhal	B	4233	287	4520	3225	47	3272
		G	4162	284	4446	3180	47	3227
11	Tiruttani	B	1325	285	1610	751	84	835
		G	1359	264	1623	688	77	765
12	Thiruvallangadu	B	1462	271	1733	742	38	780
		G	1426	264	1690	676	25	701
13	Pallipat	B	1406	228	1634	668	50	718
		G	1423	217	1640	678	38	716
14	R.K.Pet	B	1323	52	1375	609	25	634
		G	1238	56	1294	588	14	602
	District Total	B	40818	3894	44712	24769	1137	25906
		G	39624	3693	43317	24021	997	25018

(Source : DISE 2001-02, 2002-2003, Thiruvallur)

The special drive for the enrolment of SC/ST children has yielded a desired result. The enrolment is more in 2002-03 and it is an encouraging factor. The additional enrolment in this special category in 2002-03 shows the efforts taken under the SSA scheme and these type of efforts shall be continued in the forth coming years and accordingly provision will be made in the Budget.

1.4.2.3 Disabled Children :-

The following table talks about the disabled boys and girls of Primary and Upper Primary schools enrolled in schools. In order to pay a special attention to these children, a specially trained teacher is appointed in Block Resource Centre. He/she identified the children, and then medical assessment camp was conducted block wise respectively. The specially trained teacher with the assistants of SPASTIC society of Tamilnadu is making arrangements to get the necessary appliances for these pupils in order to over come the nature of physical disability, so as to enable them to concentrate on studies.

Table 1.11
No. of Disabled children Enrolled

Sl. No.	Block	Sex	Primary				Upper primary			
			Govt	Aided	Unaided	Total	Govt	Aided	Unaided	Total
1	Thiruvallur	B	33	12	1	46	40	4	0	44
		G	22	14	3	39	30	7	0	37
2	Poondi	B	19	4	1	24	12	0	0	12
		G	19	4	0	23	4	0	0	4
3	Kadambathur	B	35	7	1	43	22	3	0	25
		G	18	4	0	22	12	8	0	20
4	Ellapuram	B	43	2	0	45	21	2	0	23
		G	28	4	0	32	9	0	0	9
5	Poonamallee	B	59	13	10	82	23	15	1	39
		G	20	8	10	38	17	8	0	25
6	Minjur	B	51	7	0	58	28	7	0	35
		G	30	5	0	35	16	3	0	19
7	Shozhavaram	B	40	1	3	44	23	1	1	25
		G	29	1	2	32	23	1	2	26
8	Gummidipoondi	B	49	6	1	56	68	2	0	70
		G	39	3	0	42	56	5	0	61
9	Villivakkam	B	52	32	3	87	38	11	2	51
		G	41	13	2	56	25	7	1	33
10	Puzhal	B	47	24	0	71	24	12	3	39
		G	36	25	3	64	18	19	0	37
11	Tiruttani	B	42	7	0	49	31	1	1	33
		G	38	5	2	45	24	2	0	26
12	Thiruvalangadu	B	27	4	0	31	22	0	0	22
		G	15	1	0	16	18	0	0	18
13	Pallipat	B	33	8	0	41	21	2	0	23
		G	18	10	0	28	13	1	0	14
14	R.K.Pet	B	23	4	0	27	43	1	0	44
		G	18	1	0	19	25	1	0	26
	District Total	B	553	131	20	704	416	61	8	485
		G	371	98	22	491	290	62	3	355

(Source : DISE 2002-2003, Thiruvallur)

The district registered the enrolment of 1195 disabled children in primary and 840 in Upper Primary. Villivakkam, Puzhal and Poonamallee blocks have the highest number of children in Primary. Gummidipoondi records more number of children and Poondi has the least number of children in Upper primary. Out of the above children 1153 in primary and 829 in Upper primary are covered by Government and Aided Schools.

1.4.3 Completion Rate

Table 1.12
CR - Primary and Upper Primary Sections -2002-03

S. No.	Block	Primary			Upper Primary		
		B	G	T	B	G	T
1	Thiruvallur	65%	67%	66%	52%	55%	54%
2	Poondi	62%	61%	62%	56%	57%	57%
3	Kadambathur	68%	69%	69%	57%	54%	56%
4	Ellapuram	66%	69%	68%	51%	53%	52%
5	Poonamallee	60%	56%	58%	54%	56%	55%
6	Minjur	62%	63%	63%	50%	57%	54%
7	Shozhavaram	64%	63%	64%	56%	52%	54%
8	Gummidipoondi	67%	66%	67%	52%	54%	53%
9	Villivakkam	66%	65%	66%	51%	53%	52%
10	Puzhal	63%	60%	62%	52%	54%	53%
11	Tiruttani	66%	64%	65%	49%	51%	50%
12	Thiruvalangadu	62%	60%	61%	50%	52%	51%
13	Pallipat	60%	59%	60%	49%	55%	52%
14	R.K.Pet	63%	62%	63%	50%	52%	51%
	District Average	64%	63%	63.5%	52%	54%	53%

(Source : DISE 2002-2003, Thiruvallur)

The above table illustrates the completion rate. Kadambathur and Ellapuram blocks have the Highest percentage of Completion rate, whereas Poonamallee has got only 58% of Completion Rate. Steps are taken to improve it.

The completion rate in Upper Primary School is almost the same in all the block of this district. Tiruttani blocks registers the lowest Completion Rate of 50% and Poondi Block the highest 57%..

1.4.4 Repetition Rate

Table 1.13
Educational Indicators (Block wise)

RR - Primary and Upper Primary Sections -2002-03

S. No.	Block	Primary			Upper Primary		
		B	G	T	B	G	T
1	Thiruvallur	23%	19%	21%	28%	28%	28%
2	Poondi	20%	24%	22%	26%	24%	25%
3	Kadambathur	15%	16%	16%	26%	27%	27%
4	Ellapuram	25%	22%	24%	28%	29%	28%
5	Poonamallee	33%	29%	31%	26%	26%	26%
6	Minjur	33%	32%	33%	38%	26%	32%
7	Shozhavaram	24%	20%	22%	28%	28%	28%
8	Gummidipoondi	22%	18%	20%	29%	30%	30%
9	Villivakkam	21%	20%	21%	28%	28%	28%
10	Puzhal	24%	28%	26%	27%	28%	28%
11	Tiruttani	19%	23%	21%	29%	29%	29%
12	Thiruvalangadu	26%	22%	24%	29%	30%	29%
13	Pallipat	34%	32%	33%	28%	30%	29%
14	R.K.Pet	25%	18%	22%	29%	30%	29%
	District Average	25%	23%	24%	29%	28%	28%

(Source : DISE 2002-2003, Thiruvallur)

The average repetition rate is 24% with regard to Primary schools. The Highest percentage of Repetition rate is seen in Minjur and Pallipat blocks of this district. Kadambathur Block registers the lowest Repetition rate of 16% and it is followed by R.K.Pet Block. Steps are taken to decrease the Repetition rate Special coaching classes are given to the slow learners in order to decrease it. The average Repetition rate of this District is 28% in Upper Primary schools. The Highest percentage of Repetition rate is seen in Minjur Block and it is followed by Gummidipoondi. The lowest repetition rate of 25% is seen in Poondi block. Various measures have been taken with the assistance of village education committee to decrease the repetition rate.

1.4.5 Drop out Rate :-

Table 1.14
Educational Indicators (Block wise)

DR - Primary and Upper Primary Sections -2002-03

S. No.	Block	Primary			Upper Primary		
		B	G	T	B	G	T
1	Thiruvallur	16%	10%	13%	20%	20%	20%
2	Poondi	12%	20%	16%	18%	20%	19%
3	Kadambathur	16%	14%	15%	21%	19%	20%
4	Ellapuram	10%	6%	8%	20%	18%	19%
5	Poonamallee	10%	12%	11%	18%	20%	19%
6	Minjur	5%	3%	4%	16%	20%	18%
7	Shozhavaram	10%	20%	15%	19%	21%	20%
8	Gummidipoondi	10%	16%	13%	21%	19%	20%
9	Villivakkam	14%	22%	18%	18%	12%	15%
10	Puzhal	10%	14%	12%	18%	20%	19%
11	Tiruttani	8%	20%	14%	17%	19%	18%
12	Thiruvallangadu	10%	20%	15%	18%	16%	17%
13	Pallipat	5%	9%	7%	20%	18%	19%
14	R.K.Pet	10%	20%	15%	18%	16%	17%
	District Average	10%	15%	12.5%	19%	18%	19%

(Source : DISE 2002-2003, Thiruvallur)

The District average of Drop out rate is 12.5% in Primary schools. It is worthwhile to note that Minjur Block registers the lowest drop out rate of 4% and it is 7% in Pallipat Block. In other blocks have a double digits percentage of Drop out rate in Primary schools. Most of the Drop outs of taken to Bridge course structures.

The District Average of Upper primary drop out rate is 19%. All the blocks of this district register 15 to 20% of Drop out rate with regard to Upper Primary schools. The drop outs are taken care of and steps have been taken to enroll them in Bridge course Structures and it is in progress.

1.4.6 Transition Rate :-

Table 1.15

Transition Rate - 2002-03

S. No.	Block	Transition Rate (V to VI)								
		ALL			SC			ST		
		B	G	T	B	G	T	B	G	T
1	Thiruvallur	84%	79%	82%	81%	79%	80%	91%	87%	89%
2	Poondi	93%	87%	90%	91%	94%	93%	84%	83%	84%
3	Kadambathur	96%	94%	95%	86%	88%	87%	82%	84%	83%
4	Ellapuram	78%	94%	86%	92%	68%	80%	68%	40%	54%
5	Poonamallee	80%	90%	85%	75%	85%	80%	90%	80%	85%
6	Minjur	98%	94%	96%	90%	95%	93%	78%	76%	77%
7	Shozhavaram	86%	92%	89%	78%	82%	80%	72%	75%	74%
8	Gummidipoondi	92%	87%	90%	87%	83%	85%	78%	74%	76%
9	Villivakkam	86%	92%	89%	95%	90%	93%	88%	92%	90%
10	Puzhal	99%	98%	99%	96%	90%	93%	95%	92%	94%
11	Tiruttani	94%	96%	95%	95%	93%	94%	80%	84%	82%
12	Thiruvallangadu	86%	92%	89%	78%	82%	80%	72%	75%	74%
13	Pallipat	95%	93%	94%	94%	92%	93%	82%	80%	81%
14	R.K.Pet	92%	86%	89%	84%	74%	79%	65%	60%	63%
	District Average	90%	91%	90.5%	87%	85%	86%	80%	77%	79%

(Source : DISE 2002-2003, Thiruvallur)

The District average of Transition rate is 90% and it is 86% with regard to SC children and it is 79% in respect of ST children.

1.4.7 Teacher Pupil Ratio :-

Table 1.16

Teacher Pupil Ratio - Primary and Upper Primary Sections -2002-03

S. No.	Block	TPR	
		Primary	Upper Primary
1	Thiruvallur	01:32	01:46
2	Poondi	01:31	01:56
3	Kadambathur	01:33	01:55
4	Ellapuram	01:34	01:65
5	Poonamallee	01:45	01:42
6	Minjur	01:36	01:53
7	Shozhavaram	01:36	01:69
8	Gummidipoondi	01:37	01:63
9	Villivakkam	01:49	01:44
10	Puzhal	01:45	01:50
11	Tiruttani	01:32	01:47
12	Thiruvalangadu	01:29	01:44
13	Pallipat	01:35	01:44
14	R.K.Pet	01:33	01:53
	District Average	01:36	01:52

(Source : DISE 2002-2003, Thiruvallur)

The above table talks about the teacher pupil ratio in this district. The district average of Teacher Pupil ratio in respect of Primary schools is 1:36 in 2002-03 and it is 1:52 in respects of Upper Primary schools.

1.5 Early Childhood Care and Education

There are 1503 ICDS centres and it covers 67298 children. These children are taken care of by the Anganwadies and Balwadies. These centres provide nutritious food to these children and the children are given a kind of pre-primary school training. It is proposed to supply play materials in the forth coming years. There are about 17015 children in LKG and UKG classes. It has been planned to give a training to those people who man the centres. These centres shall pave the way for the smooth transition of the children into formal schools. this is feeding category for the primary schools.

Table 1.17
Number of ECCE and Children - 2002-03

S. No.	Block	ICDS Centres	Children	Others LKG/UKG	Children
1	Thiruvallur	75	2180	9	1198
2	Poondi	92	5208		0
3	Kadambathur	85	2405		
4	Ellapuram	91	2242	19	1391
5	Poonamallee	140	3945	28	2008
6	Minjur	135	8867	0	0
7	Shozhavaram	88	1971	11	1560
8	Gummidipoondi	119	3411	7	322
9	Villivakkam	156	13258	104	8391
10	Puzhal	173	6425		
11	Tiruttani	91	2240	10	695
12	Thiruvalangadu	93	2550	13	534
13	Pallipat	69	7516	8	782
14	R.K.Pet	96	5080	4	134
	District Total	1503	67298	213	17015

(Source : DISE 2002-2003, Thiruvallur)

Villivakkam block records the highest number of children in ICDS centres. The lowest figure is seen in Thiruvallur. Though Puzhal has the highest number of 173 centres but the children enrolled are only 6425.

1.6 Out of school children

As per the perspective plan the number of out of school children is 16523. out of which 5236 children have already been enrolled as per DISE 2002. The remaining 11287 children are to be provided education under alternative and innovative education programme. At present 43 Bridge courses are having an enrollment of 870 children. So during 2003-2004 education must be provided for 10417 children. Hence 421 Bridge courses and 2 Residential camps have been planned during 2003-2004, and necessary Budget permission has been maid in the annual plan.

Table 1.18
No of Out of School children Block wise

S. No.	Block	DO	NE	Total
1	Thiruvallur	55	275	330
2	Poondi	123	618	741
3	Kadambathur	122	608	730
4	Ellapuram	168	836	1004
5	Poonamallee	104	516	620
6	Minjur	181	961	1142
7	Shozhavaram	57	282	339
8	Gummidipoondi	221	1109	1330
9	Villivakkam	268	1341	1609
10	Puzhal	68	344	412
11	Tiruttani	93	466	559
12	Thiruvalangadu	51	255	306
13	Pallipat	236	1180	1416
14	R.K.Pet	125	624	749
	District Total	1872	9415	11287

(Source : DISE 2002-2003, Thiruvallur)

Villivakkam block records the highest number of drop-outs and never-enrolled. Thiruvalangadu records the least number.

1.7 Special Focus Group

The special focus group needs special attention. It is one of the aims of SSA scheme to bring the SFG on par into the other children. so various have been taken for the upliftment of children. During the three day workshop for the preparation of Annual work plan and Budget for the year 2003-04 from 26th to 29th March 2003 , held at Ganthigram rural Deemed University Dr. Sarojini regional Director of “Action Aid”, (Non Government Organization) gave a clear idea how the IED children should be dealt with. She talked elaborately about the various methods and designs that may be used to bring this pupils on par with regular children in their studies. Her ideas are taken into and activities accordingly planned in the Budget Preparation. The efforts enunciated under the scheme though yielded the desired results to some extent, the expected result has not been achieved as there is a group of children who come under the special focus group need special attention and support to bring them on par with the normal children of formal institutions.

The special focus group comprises girl children and SC/ST children besides disabled pupils. The SC/ST pupils and girls are given special coaching for one hour daily either before the commencement of the class or after the school hours. The regular teachers employed in the schools take care of them and a separate attendance is maintained for the pupils and the teacher who conducts the classes is paid Rs.10/- for each student for a month. Periodical tests are conducted and their progress is monitored. The spastic society of Tamilnadu through “Actions aid” is the agency (NGO) involved to take care of the disabled children of this district. It has appointed specially trained teachers for all blocks and they have identified the disabled children by conducting medical assessment camps.

The following table indicates SC/ST girls children enrolled in special coaching classes block wise.

Table 1.19
Block wise SC/ST Children enrolled in Special coaching class

Sl.No	Block	SC/ST Students		Total
		Boys	Girls	
1	Thiruvallur	4049	3850	7899
2	Poondi	939	954	1893
3	Kadambathur	1482	1220	2702
4	Ellapuram	301	278	579
5	Poonamallee	3608	3159	6767
6	Minjur	1975	1557	3532
7	Shozhavaram	814	1194	2008
8	Gummidipoondi	2606	714	3320
9	Villivakkam	4079	4143	8222
10	Puzhal	1824	1715	3539
11	Tiruttani	871	810	1681
12	Thiruvallangadu	756	774	1530
13	Pallipat	2001	1828	3829
14	R.K.Pet	514	430	944
Total		25819	22626	48445

(Source : DISE 2002-2003, Thiruvallur)

The children indicated in the above table are actually studying in the regular schools of the respective blocks. Though they are in regular schools, they need special attention, and their progress is not upto the level due to various social factors. In order to bring them on par with other children in studies, the special coaching classes are conducted and they are given individual special attention. The progress of these pupils is taken care of by the teachers of their schools. And even periodical test are conducted in special coaching classes also. The special coaching class contributes to their betterment in studies.

Table 1.20
No. of Disabled children Enrolled

Sl. No.	Block	Sex	Primary				Upper primary			
			Govt	Aided	Unaided	Total	Govt	Aided	Unaided	Total
1	Thiruvallur	B	33	12	1	46	40	4	0	44
		G	22	14	3	39	30	7	0	37
2	Poondi	B	19	4	1	24	12	0	0	12
		G	19	4	0	23	4	0	0	4
3	Kadambathur	B	35	7	1	43	22	3	0	25
		G	18	4	0	22	12	8	0	20
4	Ellapuram	B	43	2	0	45	21	2	0	23
		G	28	4	0	32	9	0	0	9
5	Poonamallec	B	59	13	10	82	23	15	1	39
		G	20	8	10	38	17	8	0	25
6	Minjur	B	51	7	0	58	28	7	0	35
		G	30	5	0	35	16	3	0	19
7	Shozhavaram	B	40	1	3	44	23	1	1	25
		G	29	1	2	32	23	1	2	26
8	Gummidipoondi	B	49	6	1	56	68	2	0	70
		G	39	3	0	42	56	5	0	61
9	Villivakkam	B	52	32	3	87	38	11	2	51
		G	41	13	2	56	25	7	1	33
10	Puzhal	B	47	24	0	71	24	12	3	39
		G	36	25	3	64	18	19	0	37
11	Tiruttani	B	42	7	0	49	31	1	1	33
		G	38	5	2	45	24	2	0	26
12	Thiruvalangadu	B	27	4	0	31	22	0	0	22
		G	15	1	0	16	18	0	0	18
13	Pallipat	B	33	8	0	41	21	2	0	23
		G	18	10	0	28	13	1	0	14
14	R.K.Pet	B	23	4	0	27	43	1	0	44
		G	18	1	0	19	25	1	0	26
District Total		B	553	131	20	704	416	61	8	485
		G	371	98	22	491	290	62	3	355

(Source : DISE 2002-2003, Thiruvallur)

The above table talks about the disabled boys and girls of Primary and Upper Primary schools enrolled in schools. In order to pay a special attention to these children, a specially trained teacher is appointed in Block Resource Centre. He/she visited the schools and then medical assessment camp was conducted block wise respectively. The specially trained teacher with the assistants of SPASTIC society of Tamilnadu is making arrangements to get the necessary appliances for these pupils in order to over come the nature of physical handicapness, so as to enable them to concentrate on studies.

1.8 VECs, CRCs, BRCs :-

Village Educational Committee : village education consists fifteen members. The village president is the chairman of the committee and the headmaster is the member secretary. It is the committee that functions at the grass-root level to implement the set goals of the SSA scheme. The committee meets twice in a month. It discusses the various activities and issues related to schools. The discussion and the deliberations are recorded in the “Minutes Book” and if there are fresh resolutions passed in the meeting it is also recorded and approved by the members. In addition, the president and the headmaster take stock of the position and decide how the maintenance and repair grants can be used for the betterment of maintaining the infrastructure facilities. The SSA scheme has given ample opportunities to the local community to get it involved in every aspect of the functioning of the institution. Community based monitoring with full transparency is ensured by the committee. Institutional capacity building for quality education is also taken care of by VEC. VEC plays a vital role at the grass root level.

Table 1.21
Number of VEC Centres and Members 2002-03

S. No.	Block	VEC	Members
1	Thiruvallur	87	1305
2	Poondi	108	1620
3	Kadambathur	97	1455
4	Ellapuram	110	1650
5	Poonamallee	101	1515
6	Minjur	160	2400
7	Shozhavaram	82	1230
8	Gummidipoondi	140	2100
9	Villivakkam	124	1860
10	Puzhal	95	1425
11	Tiruttani	105	1575
12	Thiruvalangadu	103	1545
13	Pallipat	107	1605
14	R.K.Pet	108	1620
	District Total	1527	22905

(Source : DISE 2002-2003, Thiruvallur)

Cluster Resource Centre :-

There are 157 cluster resource centres in the district. These centres are the “profession empowerment body” at the cluster level. The meeting of the cluster resource centre is held once a month on a particular Saturday. The senior most middle school headmaster is the co-ordinator and the headmaster of the school where the meeting is held is the assistant co-ordinator. Each cluster has 40 to 50 teachers. The meeting has light scheduled programme. Minute by minute plan is designed and carried out for the professional empowerment of teachers. “Hot spots” identified by the teachers are taken for discussion and they are cleared by the teachers under the guidance of supervisor or teacher educators of the block concerned. Effective use of teaching / learning materials and equipments is explained. Model learns and teaching practices find an important place in the programme. At the request of the co-ordinator, experts visit the centres and their services are utilized. Demonstration lessons are given by them for the professional development of teachers. In fact to say the centres are a boon to the teaching community.

Table 1.22
Number of CRC Centres and Teachers 2002-03

S. No.	Block	CRC	Teachers
1	Thiruvallur	10	442
2	Poondi	7	327
3	Kadambathur	11	410
4	Ellapuram	10	429
5	Poonamallee	18	708
6	Minjur	12	498
7	Shozhavaram	7	279
8	Gummidipoondi	12	479
9	Villivakkam	21	891
10	Puzhal	16	734
11	Tiruttani	9	397
12	Thiruvalangadu	7	305
13	Pallipat	9	395
14	R.K.Pet	8	351
	District Total	157	6645

(Source : DISE 2002-2003, Thiruvallur)

Block Resource Centres : -

BRC monitors and evaluations the programme of the SSA scheme. Thiruvallur district has 14 block resource centres. Each centre has a supervisor in the cadre of a high school headmaster and seven teacher educators in the cadre of B.T. Assistants. The centres are mini “DIETs” at the block level. The supervisor and the teacher educators take care of and extend a helping hand to the teaching community and local community to achieve training programme to the teachers and VECs are done by the BRCs. The centre plays a vital role in enrolment, quality education, special focus group children, girls education etc. in addition, the staff members visit the schools and find out selected schools and “School adoption programme is carried out by them. School based training and activity based teaching are taken care of. The teacher educators visit the cluster resource centres regularly and demonstration lessons are given by them. They participate in the village education committee meetings and give the members useful suggestions. Bridge Courses, Transit camps and Residential camps are visited and monitored by them. Above all, “action research” is done at the block resource centres.

Table 1.23
Number of BRC Centres and Members 2002-03

S. No.	Block	BRC	Supervisor	Teacher Educators
1	Thiruvallur	1	1	7
2	Poondi	1	1	7
3	Kadambathur	1	1	7
4	Ellapuram	1	1	7
5	Poonamallee	1	1	7
6	Minjur	1	1	7
7	Shozhavaram	1	1	7
8	Gummidipoondi	1	1	7
9	Villivakkam	1	1	7
10	Puzhal	1	1	7
11	Tiruttani	1	1	7
12	Thiruvalangadu	1	1	7
13	Pallipat	1	1	7
14	R.K.Pet	1	1	7
	District Total	14	14	98

(Source : DISE 2002-2003, Thiruvallur)

1.9 Infrastructure :-

Infrastructure contributes to quality education. Provision of this facility to all the structures like BRC, CRC and schools is one of the goals of SSA Scheme. The SSA scheme aims to provide infrastructure like three class rooms, two class rooms, drinking water facilities and toilet facilities to all schools in a phased manner. These facilities are provided on priority basis. By the end of 2010 all schools will have been equipped with all infrastructure facilities to ensure quality education. The scheme took off in 2001-02. during this period two class room buildings were constructed for nine primary schools, three buildings for three schools. Drinking water facilities were provided for 120 schools and toilet facilities for seventy five schools. During 2002-03, to house the office of the five Block resource centres and CRC construction was started and it is on progress. The construction of two class room buildings for 28 schools, and three class rooms for 33 schools started. Besides these, sixty one schools got water facilities and toilet facilities were extended to sixty three schools. It is proposed to extend these facilities to other institution in a phased manner and provision in the budget has been made in this year also.

1.9.1 Block Resource Centre :-

There are 14 block resource centres in the district. These centres are supposed to be housed in separate buildings. The buildings will have separate office for the centres and exclusively a lecture hall for trainings to be conducted for teachers. During 2002-03 buildings were constructed for five centres. They are Thiruvallur, Thiruvallur, Ellapuram, Pallipat and Minjur. The remaining Blocks will have their buildings constructed during 2003-04 and for which budget provision has been made. Infrastructure facilities contribute for smooth functioning of the block resource centres.

1.9.2 Cluster Resource Centres :-

There are 157 Cluster Resource Centres in this district. These centres started functioning in particular schools when the scheme was launched. It is but a essential to have separate buildings for the functioning of the cluster Resource Centres and they must equipped to the maximum extent. As teachers assemble in these centres and transact the business of discussion of the "Hot Spots" in subjects, it is essential to have separate building of their own. Hence it was planned and 5 building were allotted last year. On priority basis construction of buildings for the other centres is taken up. It has been planned to construct buildings for the other centres in a phased manner.

1.9.3 Three class rooms :-

In order to ensure quality education, provision for infrastructure to all institutions in phased manner has been made in "SSA scheme". As a part of it when the scheme took off in 2001-02, three schools were provided with three classroom buildings. During 2002-03, thirty three schools got it. It has been proposed to build three class room building for thirty schools.

1.9.4 Two classrooms :-

Two class room buildings were constructed for nine primary schools in 2001-02. Twenty eight schools got in 2002-03. it is proposed to build two class room building for thirty schools in this year 2003-04.

1.9.5 Toilets :-

During 2001-02 toilet facilities were provided for seventy five schools. Sixty three schools got toilet facilities in 2002-03. It is proposed to construct toilets for ninety schools in 2003-04.

1.9.6 Drinking water facilities :-

Drinking water facilities were provided to 120 schools in 2001-02 and sixty one schools got this facility during 2002-03. it is proposed to provide this facility for 75 schools in 2003-04.

1.10. District Project Office

District project office is housed in the office of the Chief Educational Officer concerned. The Chief Educational Officer is the District Programme Co-ordinator he is assisted by the District Elementary Educational Officer who is the additional District Programme Co-ordinator. There is an Assistant District Programme Co-ordinator in the cadre of a Higher Secondary school Headmaster. One Media and Documentation Officer and Training Officer assist the assistant District Programme Co-ordinator. The following table states these staffing pattern in the District Project Office..

Table 1.24

District Project Office - Staff Position

Sl. No	Designation	No. of Posts Sanctioned
1	District Programme Co-ordinator	Chief Educational Officer
2	Additional District Programme Co-ordinator	District Elementary Educational Officer
3	Assistant District Programme Co-ordinator	1
4	Statistical Officer	1
5	Media and Documentation Officer / Women development officer	1
6	Training Officer	1
7	Superintendent	1
7	Accounts officer	1
8	Assistants	2
9	Civil Consultants	2
10	MIS Data Entry Operator	1
11	Office Assistant	1
Total		14

* ♀ * ♀ * ♀ * ♀ *

CHAPTER II

PROGRESS RIVIEW

CHAPTER II

PROGRESS REVIEW

2.1 Introduction

The most important aspects of “Sarva Shiksha Abhiyan” scheme are

- 1) Access
- 2) Enrolment and retention
- 3) Quality issues
- 4) Out of school children - Special Focus Group
- 5) Monitoring and Evaluation and
- 6) Provision of infrastructure facilities

The micro planning conducted in the habitations of the 14 blocks of this district has clearly showed the above mentioned issues. There is a continuous progress in all the above said aspects. Progress is reviewed periodically and monitored. Everything is in the right track and directed towards the right direction to achieve the goals of SSA scheme.

2.2 Progress in Access: -

“Sarva Shiksha Abhiyan ” aims at 100% access. There are 3056 habitations and 477657 households in this district. The district has 403549 school-age population children. Of course all habitations are served by Primary schools. Last year 41 habitations got new primary schools. But still there are certain habitations to be served by Primary schools. The access rate of this district was 97% in 2001-02 and 99.7% in 2002-03. The access rate is on increase. So there has been a continuous progress in access rate after the implementation of the scheme. It is planned to open 6 more primary schools and Upgrade 21 Primary schools into Upper Primary to achieve 100% access. Provision has been made in the budget to meet out the expenditure for the opening of new schools and Upgrading of primary schools.

Table 2.1

Access Rate 2001-02 & 2002-03

S. No. 1	Block	AR	
		2001-02	2002-03
1	Thiruvallur	93%	100%
2	Poondi	98%	99%
3	Kadambathur	98%	100%
4	Ellapuram	97%	99%
5	Poonamallee	98%	98%
6	Minjur	97%	99%
7	Shozhavaram	98%	99.5%
8	Gummidipoondi	97%	99%
9	Villivakkam	100%	100%
10	Puzhal	94%	100%
11	Tiruttani	89%	100%
12	Thiruvalangadu	100%	100.0%
13	Pallipat	98%	99%
14	R.K.Pet	100%	100.0%
	District Average	97%	99.7%

(Source : DISE 2001-02, 2002-2003, Thiruvallur)

Most of the Blocks have achieved 100% access with regard to Primary where as it is not so with Upper Primary. Efforts are taken to achieve 100% access.

2.2.1 Opening of Primary schools :-

Almost all habitations in this district are served with primary schools and this contributes to enrolment. If one looks at the number of habitations served by schools, it is quite amazing. Till the end of the last academic year 35 primary schools were opened. It has been proposed to open six new primary schools in this district to achieve 100% access. The following table shows the name of primary schools to be opened in 2003-04.

Access

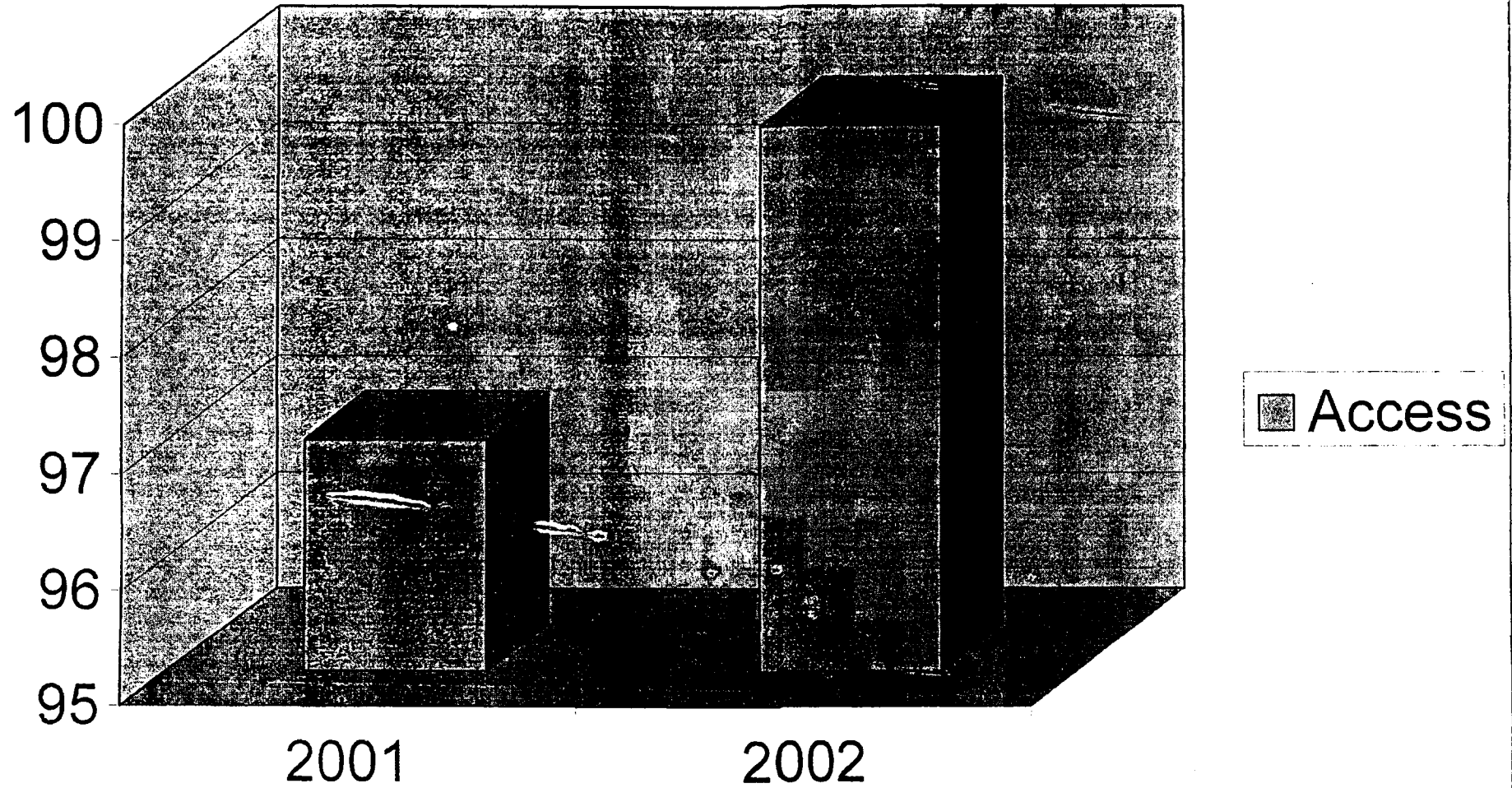


Table 2.2
Name of new Primary schools to be opened 2003-04.

Sl. No	Block	Name of Primary school
1	Gummidipoondi	1. Chegal soolai medu 2. Salai nagar
2.	Minjur	3. Keelkappam 4. Chinna Mangodu kuppam
3.	Poondi	5. Mel vilagam 6. Upparapalayam

2.2.2 Upper Primary schools : -

During the last two academic years 23 Primary schools were upgraded into Upper Primary. Now it is proposed to upgrade 21 Primary into Upper Primary schools. So there is a progress in the upgrading of primary schools that contribute to access rate. The following table shows the upgrading of schools in 2003-04.

Table 2.3
Name of newly to be upgraded schools 2003-04

Sl. No	Block	Primary into Upper Primary schools
1.	Gummidipoondi	1. Nochikuppam 2. Kannambakkam 3. Pathirivedu
2.	Minjur	4. Ennore-44
3.	Pallipat	5. Pandravedu
4.	Poonamallee	6. Sundara sholavaram 7. Sembarampakkam 8. Goodapakkam
5.	Poondi	9. Manjakuppam 10. Ramathandalam 11. Sathurangapet 12. Mamandur
6.	R.K.Pet	13. C.G.N.Kandigai
7.	Sholavaram	14. Palaya Erumaivetti Palayam
8.	Thiruttani	15. V.K.R.Puram
9.	Ellapuram	16. Karani 17. Athangi Kavanur 18. Thamaraipakkam 19. Sulameni
10.	Villivakkam	20. Mutha puthupet 21. Karambakkam

2.2.3 EGS Centres - Bridge Courses, Transit camps and Residential camps :-

Till last year 43 Bridge course centres were opened and 870 children were brought into the structure. To cover the remaining children of 10417 it is proposed to open 421 Bridge courses and 2 Residential camps. Residential camps will be started in Poonamallee and R.K.Pet Blocks.

Table 2.4
No. of children admitted in EGS/ Bridge course in 2002-03.

Sl. No	Block	No. of Teachers	No. of Children enrolled
1	Thiruvallur	8	115
2	Poondi	2	33
3	Kadambathur	1	21
4	Ellapuram	11	219
5	Poonamallee	1	14
6	Minjur	2	40
7	Shozhavaram	2	38
8	Gummidipoondi	3	97
9	Villivakkam	4	99
10	Tiruttani	3	65
11	Thiruvalangadu	1	20
12	Pallipat	1	25
13	R.K.Pet	4	84
Total		43	870

(Source : DISE 2002-2003, Thiruvallur)

Out of 11287 out of school children 870 have been brought into Bridge courses that include the never enrolled and drop outs. 43 teachers have been appointed to coach the children and suitable syllabus has been designed and these pupils shall be brought into the regular stream of education.

Table 2.5

Number of Children to be enrolled in Bridge Courses

Sl. No	Block	Never Enrolled and Drop out children	No. of Children enrolled	No. of children to be enrolled	No. of Bridge courses to be open	Residential camps
1	Thiruvallur	330	115	215	6	
2	Poondi	741	33	708	32	
3	Kadambathur	730	21	709	33	
4	Ellapuram	1004	219	785	36	
5	Poonamallee	620	14	606	23	1
6	Minjur	1142	40	1102	40	
7	Shozhavaram	339	38	301	18	
8	Gummidipoondi	1330	97	1233	42	
9	Villivakkam	1609	99	1510	55	
10	Puzhal	412	0	412	19	
11	Tiruttani	559	65	494	23	
12	Thiruvalangadu	306	20	286	12	
13	Pallipat	1416	25	1391	52	
14	R.K.Pet	749	84	665	30	1
Total		11287	870	10417	421	2

(Source : DISE 2002-2003, Thiruvallur)

Mobile teachers shall be appointed and these teachers will cover the pupils who have not been already covered. In order to cover those remaining 10417 children it is proposed to open 421 Bridge courses and 2 Residential camps. Those who completed have the age of 14 will be given three months condensed Bridge course and will be sent to write VIII standard Examination directly.

2.3 Progress in Enrolment :-

2.3.1 Boys and Girls

Enrollment is the most important component in the "Education for All" movement. It should be paid more attention and light must be thrown upon it. As per the goals laid down all school age children must be enrolled. Enrollment occupies the highest priority in this scheme. There fore awareness campaigns are periodically conducted in all the habitations of this district. Village education Committees have contributed their might in these campaigns and it has paid a rich dividend. In certain areas door to door campaign is also being done.

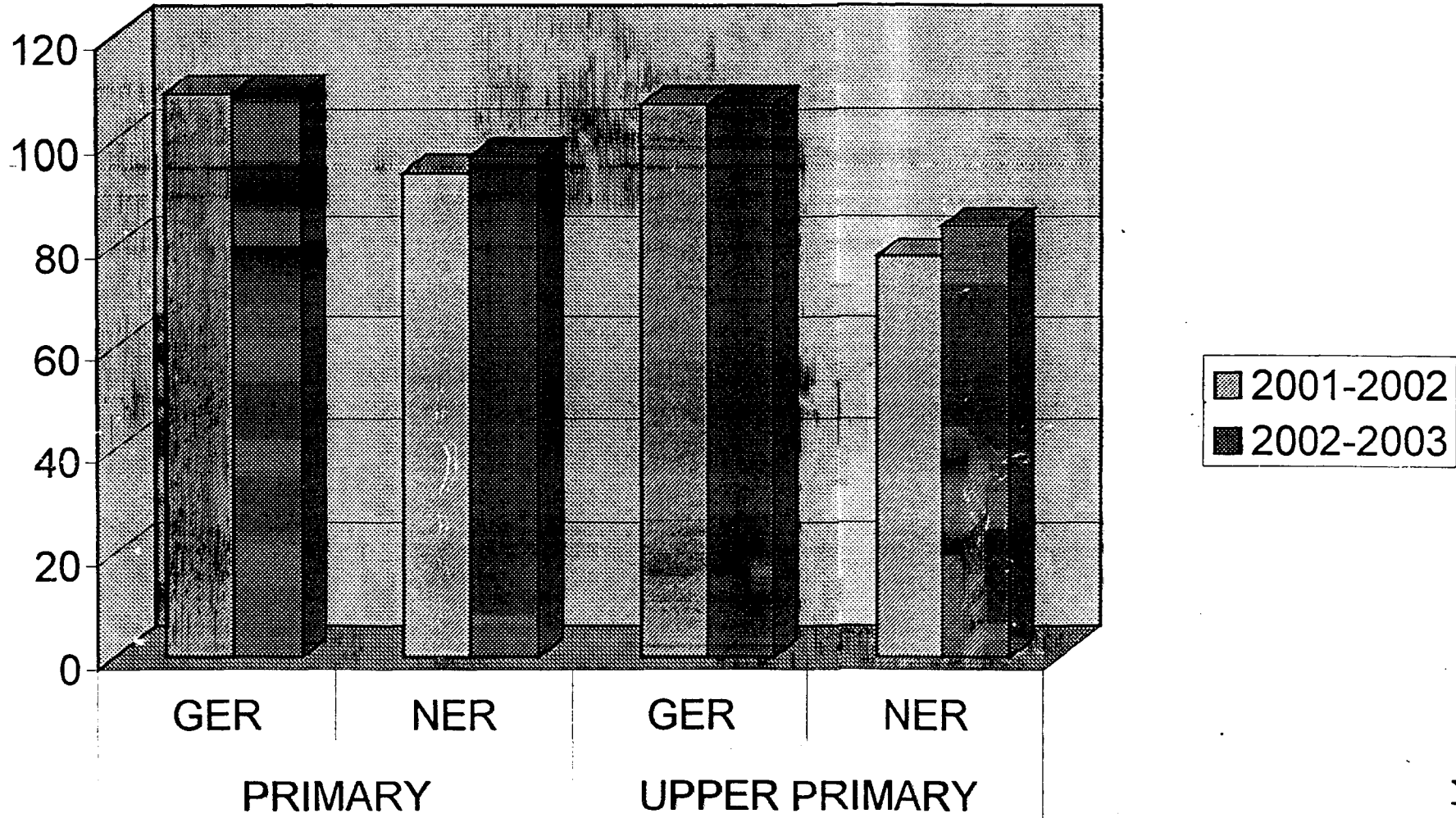
Table 2.6
Grade wise Enrolment - All Category

Grade	All Category					
	2001-02			2002-03		
	B	G	T	B	G	T
I	19064	18999	38063	24486	23534	48020
II	18459	18990	37449	22907	22221	45128
III	18855	19305	38160	23457	22978	46435
IV	18822	19219	38041	23718	23222	46940
V	19338	19316	38654	23089	22615	45704
VI	20541	19186	39727	26164	24674	50838
VII	19564	15573	35137	23995	23043	47038
VIII	19270	14865	34135	21876	21097	42973
Total	153913	145453	299366	189692	183384	373076

(Source : DISE 2001-02, 2002-2003, Thiruvallur)

If a comparison is made between 2001-02 and 2002-03, it is very easy to understand the additional enrolment done in 2002-03 class wise in all blocks of District.

COPARISON OF GER & NER PRIMARY - UPPERY PRIMARY



JIBHANT & SUBRAMANIAM VENIS
 National Institute of Educational
 Planning and Administration,
 17-B, Sri Aurbindo Marg,
 New Delhi-110016
 DOC, No.....
 D-12081
 19/11/2003

2.3.2 SC/ST children

Special drive has been given to enroll all the under privileged and down trodden children. This drive has proved a rich dividend. It is quite amazing to note the additional number of children enrolled in 2003-04. The following tables show the enrollment of SC/ST students grade wise.

Table 2.7

Grade wise SC children Enrolment during the year 2002-2003

Grade	SC					
	2001 - 02			2002 - 03		
	B	G	T	B	G	T
I	7685	7418	15103	8330	7869	16199
II	7450	7319	14769	7736	7728	15464
III	7595	7537	15132	8264	7919	16183
IV	7653	7672	15325	8262	8133	16395
V	8070	7673	15325	8226	7975	16201
VI	3304	3127	6431	9106	8770	17876
VII	2879	2672	5551	8236	7967	16203
VIII	2433	2319	4752	7427	7284	14711
Total	47069	45737	92806	65587	63645	129232

(Source : DISE 2001-02, 2002-2003, Thiruvallur)

Table 2.8

Grade wise ST children Enrolment during the year 2002-2003

Grade	ST					
	2001 - 02			2002 - 03		
	B	G	T	B	G	T
I	795	804	1599	1091	1037	2128
II	694	734	1428	824	813	1637
III	656	625	1281	738	681	1419
IV	633	549	1182	703	647	1350
V	492	499	991	538	515	1053
VI	113	134	247	420	372	792
VII	98	139	237	393	323	716
VIII	107	165	272	324	302	626
Total	3588	3649	7237	5031	4690	9721

(Source : DISE 2001-02, 2002-2003, Thiruvallur)

The enrollment is more in 2002-03 and it is an encouraging factor. The additional enrolment in this special category in 2002-03 shows the efforts taken under the SSA scheme and these types of efforts shall be continued in the forth-coming years and accordingly provision will be made in the budget.

2.3.3 Disabled Children

The inclusive education programme has a basic aim to enroll all the disabled children in the main stream of education. Government of India in the year 2001 has declared education for Children in the age group of 6-14 years as their fundamental right. Children with disability are no exemption to this right. Also persons with disability, act 1995 envisages the rights of children to access rehabilitation services and educate them. The Act also facilitates to access education in a barrier-free environment.

The programme was first started on 15 November 2002 initially to cover period of six months period with 9 types of activities, and the specifics among them are

1. Awareness programme
2. Medical assessment,
3. Training to the parents
4. Community and teachers appointment of special educators etc.

The preparation of this plan and Budget was based on the suggestions of Revenue groups, representation NGOs from various fields of disabilities. The 412 blocks of Tamilnadu spread around 29 districts with the support and involvement by 62 NGOs who have the experience and commitment to execute the planned activities. Having completed the first phase, this second phase of activities is based on the actual experience of all the NGOs of all the districts. And the planned activities are as follows:

- Community capacity building
- Orientation and awareness
- Project Team's capacity Building
- Rehabilitation Intervention (assessment aids and appliances referral, surgery etc)

The following table shows the number of Boys and girls enrolled in Primary and Upper primary schools of this district.

Table 2.9

Block wise disabled children Enrolment during the year
2001-2002

Sl. No	Name of the Block	Enrolment of disabled children 2001-02								
		I	II	III	IV	V	VI	VII	VIII	Total
1	Thiruvallur	18	4	3	2	2	6	3	9	47
2	Pondi	6	4	6	3	5	2	2	6	34
3	Kadambathur	6	6	6	6	6	6	4	2	42
4	Elapuram	2	4	1	2	2	2	2	1	16
5	Ponamallee	2	3	2	7	2	2	2	4	24
6	Mnjur	12	4	6	2	5	7	6	4	46
7	Sezhavaram	2	2	2	2	6	4	3	2	23
8	Gummidi Poondi	16	12	1	6	4	6	8	7	60
9	Vilivakkam	6	6	7	6	2	6	3	10	46
10	Puzhal	6	2	3	4	2	5	2	7	31
11	Tiuttani	5	6	1	2	6	4	9	10	43
12	Thruvalangadu	4	6	7	1	2	2	4	1	27
13	Palipat	4	6	4	4	12	10	6	4	50
14	R.K.Pet	3	7	2	6	4	5	6	9	42
Total		92	72	51	53	60	67	60	76	531

(Source : DISE 2001-02, Thiruvallur)

Table 2.10
Block wise disabled children Enrolment during the year
2002-2003

Sl. No	Name of the Block	Enrolment of disabled children 2002-03								
		I	II	III	IV	V	VI	VII	VIII	Total
1	Thiruvallur	14	12	12	27	20	52	16	13	166
2	Poondi	11	7	9	8	12	8	4	4	63
3	Kadambathur	12	8	13	16	16	15	12	18	110
4	Ellapuram	22	7	17	19	12	9	14	9	109
5	Poonamallee	18	22	27	24	29	18	22	24	184
6	Minjur	16	17	12	30	18	20	18	16	147
7	Sozhavaram	17	12	10	22	15	16	20	15	127
8	Gummidi Poondi	18	17	23	19	21	54	40	37	229
9	Villivakkam	24	28	35	26	30	37	29	18	227
10	Puzhal	20	22	27	33	33	29	26	21	211
11	Tiruttani	14	16	22	24	18	26	17	16	153
12	Thiruvalangadu	10	7	10	10	10	13	21	6	87
13	Pallipat	9	9	19	15	17	19	11	7	106
14	R.K.Pet	2	8	13	2	21	24	27	19	116
Total		207	192	249	275	272	340	277	223	2035

(Source : DISE 2002-2003, Thiruvallur)

There is an increase in the enrolment of disabled children in this district. The disability has been identified by conducting medical assessment camps and steps are taken to provide the necessary appliances. The special teachers appointed in the Block Resource Centres take care of them and assistance is provided with the help of SPASTIC society of Tamilnadu. Includes the 53 disabled children studying in unaided schools.

2.4 Progress in COMPLETION

The completion rate of this district is 63.5% at present in primary schools. There is an upward trend in the completion rate. The increase of 11% is an encouraging factor. The district has 8% of increase in completion rate in upper primary schools. It is quite encouraging. The provision of infrastructure facilities seems to have contributed for the increase in the completion rate. The academic support given under the scheme to teachers is also one of the factors for the increase.

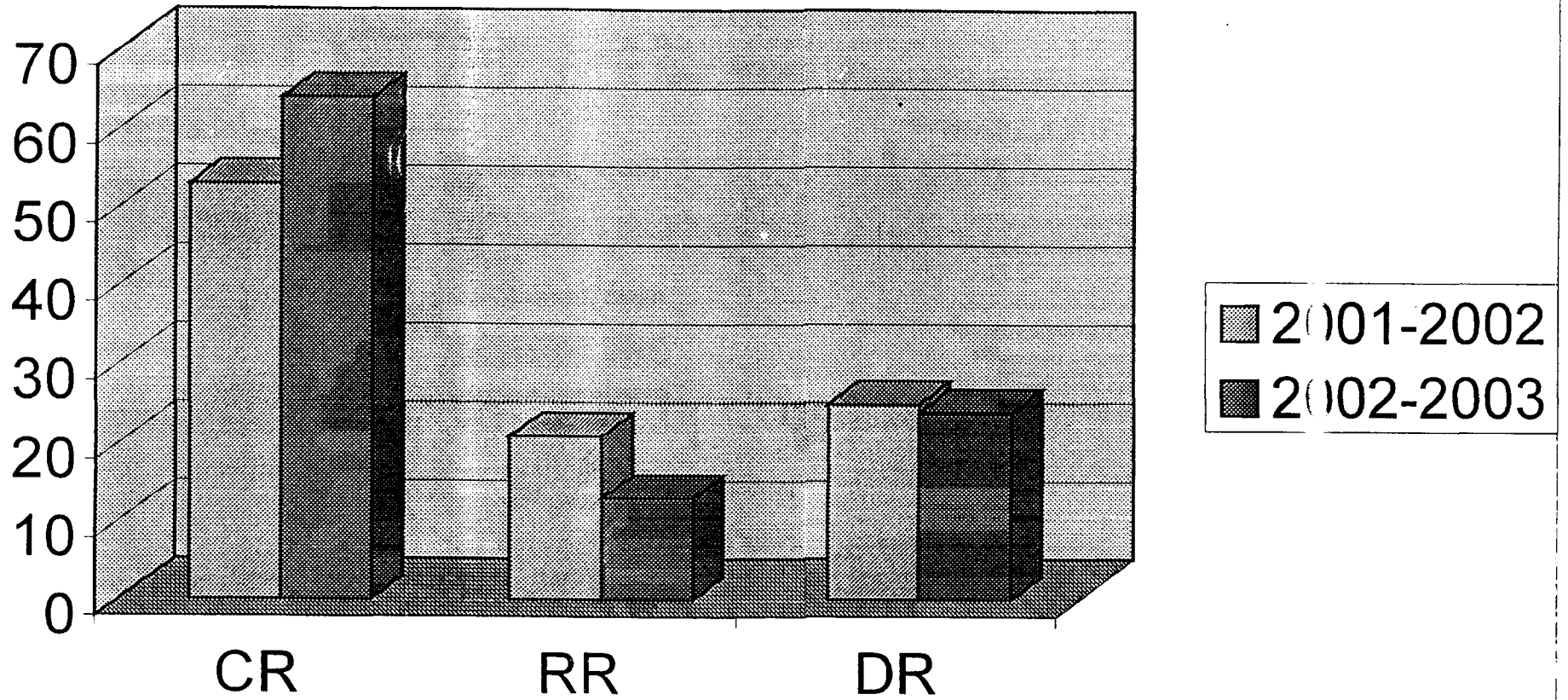
Table 2.11
Educational Indicators - CR

Sl. No	Block	CR - Primary						CR - Upper Primary					
		2001 - 02			2002 - 03			2001 - 02			2002 - 03		
		B	G	T	B	G	T	B	G	T	B	G	T
1	Thiruvallur	54	56	55%	65%	67%	66%	44	44	44%	52%	55%	54%
2	Poondi	53	49	51%	62%	61%	62%	47	45	46%	56%	57%	57%
3	Kadambathur	65	65	65%	68%	69%	69%	48	46	47%	57%	54%	56%
4	Ellapuram	56	52	54%	66%	69%	68%	42	44	43%	51%	53%	52%
5	Poonamallee	49	45	47%	60%	56%	58%	45	45	45%	54%	56%	55%
6	Minjur	48	42	45%	62%	63%	63%	42	48	45%	50%	57%	54%
7	Shozhavaram	55	51	53%	64%	63%	64%	47	43	45%	56%	52%	54%
8	Gummidipoondi	57	55	56%	67%	66%	67%	43	43	43%	52%	54%	53%
9	Villivakkam	63	59	61%	66%	65%	66%	45	44	45%	51%	53%	52%
10	Puzhal	53	49	51%	63%	60%	62%	45	46	46%	52%	54%	53%
11	Tiruttani	56	52	54%	66%	64%	65%	42	44	43%	49%	51%	50%
12	Thiruvalangadu	54	50	52%	62%	60%	61%	43	45	44%	50%	52%	51%
13	Pallipat	47	43	45%	60%	59%	60%	42	47	45%	49%	55%	52%
14	R.K.Pet	54	50	52%	63%	62%	63%	44	46	45%	50%	52%	51%
District Average		55%	51%	53%	64%	63%	63.5%	44%	45%	45%	52%	54%	53%

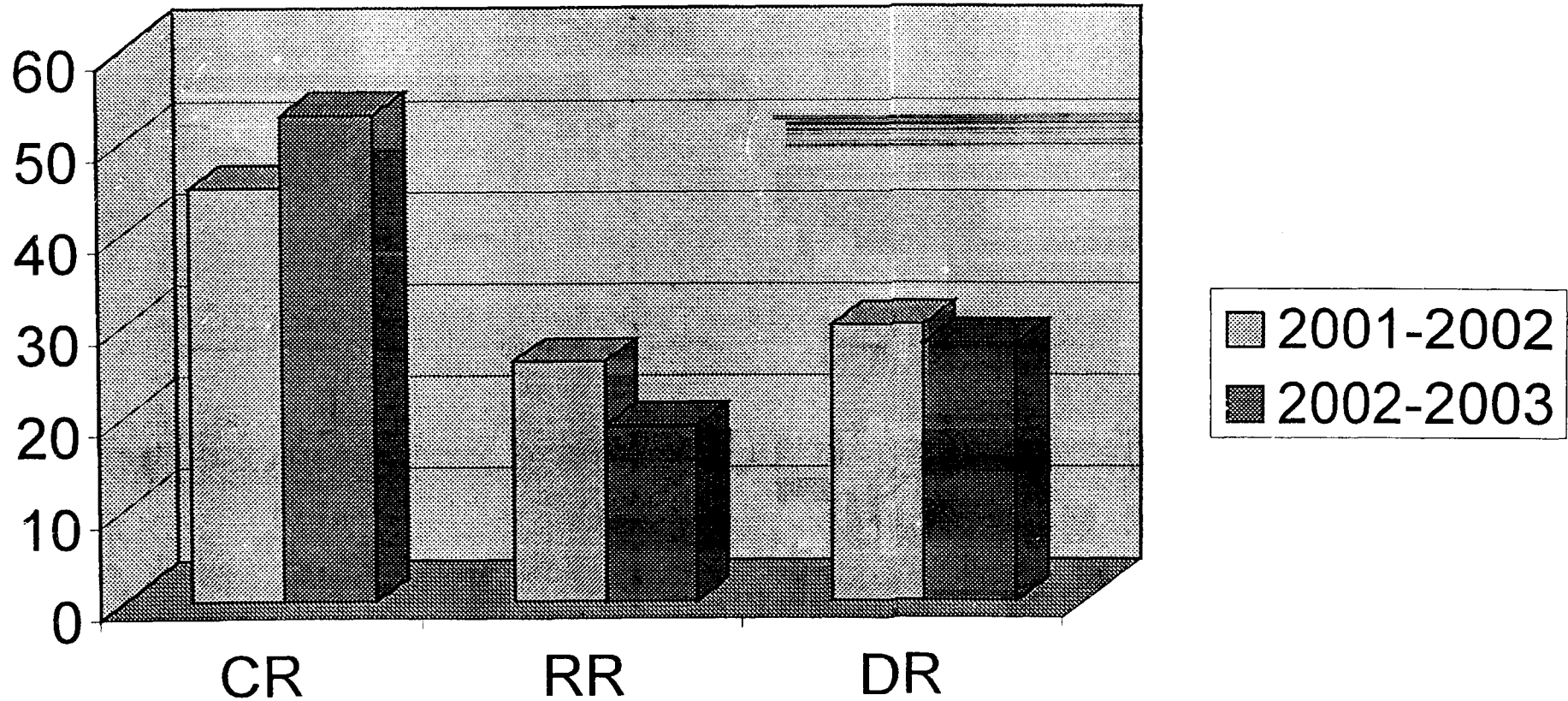
(Source : DISE 2001-02, 2002-2003, Thiruvallur)

The above table shows the progress in completion rate. Both in primary and Upper primary schools. In all blocks there is a upward trend in Completion Rate. The upward trend shall be kept alive for the forth-coming years also.

COMPARISON OF CR,RR&DR PRIMARY



COMPARISON OF CR,RR & DR UPPER PRIMARY



2.5 Retention

The 6th objective of the SSA scheme is Retention. It is also an important goal of the scheme. The children enrolled should be retained in the schools till they finish V standard in 2007 and VIII standard in 2010. It is ensured to have universal retention by 2010.

Table 2.12
Educational Indicators - Retention

S. No.	Block	Primary			Upper Primary		
		B	G	T	B	G	T
1	Thiruvallur	88%	86%	87%	80%	83%	82%
2	Poondi	82%	85%	84%	82%	81%	82%
3	Kadambathur	83%	85%	84%	83%	81%	82%
4	Ellapuram	91%	91%	91%	79%	82%	80%
5	Poonamallee	93%	85%	89%	80%	82%	81%
6	Minjur	95%	95%	95%	88%	83%	85%
7	Shozhavaram	88%	83%	86%	84%	80%	82%
8	Gummidipoondi	89%	84%	87%	81%	84%	83%
9	Villivakkam	87%	85%	86%	79%	81%	80%
10	Puzhal	87%	88%	88%	79%	82%	81%
11	Tiruttani	85%	87%	86%	78%	80%	79%
12	Thiruvalangadu	88%	82%	85%	79%	82%	80%
13	Pallipat	94%	91%	93%	77%	85%	81%
14	R.K.Pet	88%	80%	84%	79%	82%	80%
	District Average	88%	86%	87%	81%	82%	81%

(Source : DISE 2002-03, Thiruvallur District)

The district registers the 87% in Primary and 81% in Upper Primary. Hence the Dropout rate is 13% and 19% respectively for Primary and Upper Primary.

2.5 Transition Rate

Transition rate says about the movement of boys and girls from Primary to Upper Primary and Upper Primary to High schools. If the promotion rate is higher in every class, there shall be a increase in the transition rate also. The district average of Transition rate is 90% in respect of Boys and 91% in respect of girls. But it is not the case with SC/ST children. It is lower than in the general category. The transition rate of ST children is lower than the general and SC categories. The transition rate of last year when compared with this year there is a progress in it. The following table illustrates the above said points.

Table 2.13
Transition rate 2001-02

Sl. No	Name of the Block	Transition rate					
		V to VI					
		ALL		SC		ST	
1	Thiruvallur	96%	97%	98%	97%	98%	96%
2	Gummidi Poondi	98%	94%	98%	96%	98%	96%
3	Kadambathur	96%	99%	96%	99%	98%	97%
4	Minjur	97%	92%	90%	97%	98%	96%
5	Pallipat	90%	94%	94%	89%	98%	94%
6	Poonamallee	96%	99%	97%	88%	96%	94%
7	Poondi	98%	99%	96%	86%	94%	93%
8	Puzhal	99%	98%	96%	90%	95%	92%
9	R.K.Pet	94%	92%	94%	91%	96%	90%
10	Sozhavaram	98%	97%	94%	92%	94%	96%
11	Tiruttani	99%	96%	93%	94%	96%	92%
12	Thiruvalangadu	92%	89%	97%	89%	97%	96%
13	Ellapuram	94%	95%	96%	86%	96%	92%
14	Villivakkam	99%	99%	99%	96%	97%	96%
Total		96%	96%	96%	92%	97%	94%

(Source : DISE 2001-2002, Thiruvallur)

Table 2.14

Transition rate 2002-03

S. No.	Block	Transition Rate (V to VI)								
		ALL			SC			ST		
		B	G	T	B	G	T	B	G	T
1	Thiruvallur	84%	79%	82%	81%	79%	80%	91%	87%	89%
2	Poondi	93%	87%	90%	91%	94%	93%	84%	83%	84%
3	Kadambathur	96%	94%	95%	86%	88%	87%	82%	84%	83%
4	Ellapuram	78%	94%	86%	92%	68%	80%	68%	40%	54%
5	Poonamallee	80%	90%	85%	75%	85%	80%	90%	80%	85%
6	Minjur	98%	94%	96%	90%	95%	93%	78%	76%	77%
7	Shozhavaram	86%	92%	89%	78%	82%	80%	72%	75%	74%
8	Gummidipoondi	92%	87%	90%	87%	83%	85%	78%	74%	76%
9	Villivakkam	86%	92%	89%	95%	90%	93%	88%	92%	90%
10	Puzhal	99%	98%	99%	96%	90%	93%	95%	92%	94%
11	Tiruttani	94%	96%	95%	95%	93%	94%	80%	84%	82%
12	Thiruvalangadu	86%	92%	89%	78%	82%	80%	72%	75%	74%
13	Pallipat	95%	93%	94%	94%	92%	93%	82%	80%	81%
14	R.K.Pet	92%	86%	89%	84%	74%	79%	65%	60%	63%
	District Average	90%	91%	90.5%	87%	85%	86%	80%	77%	79%

(Source : DISE 2002-2003, Thiruvallur)

Puzhal block records the highest Transition rate of 99%. Whereas Thiruvallur records the lowest 82%.

2.7 Attendance rate

There is a progress in attendance rate in all Primary and Upper primary schools of this district due to the efforts taken by the teachers and the BRC personnel. The BRC personnel assist the teachers and suggest the members of the village education committee to take care of the children attending the schools regularly. The VEC members also play a role to see the children attend the schools.

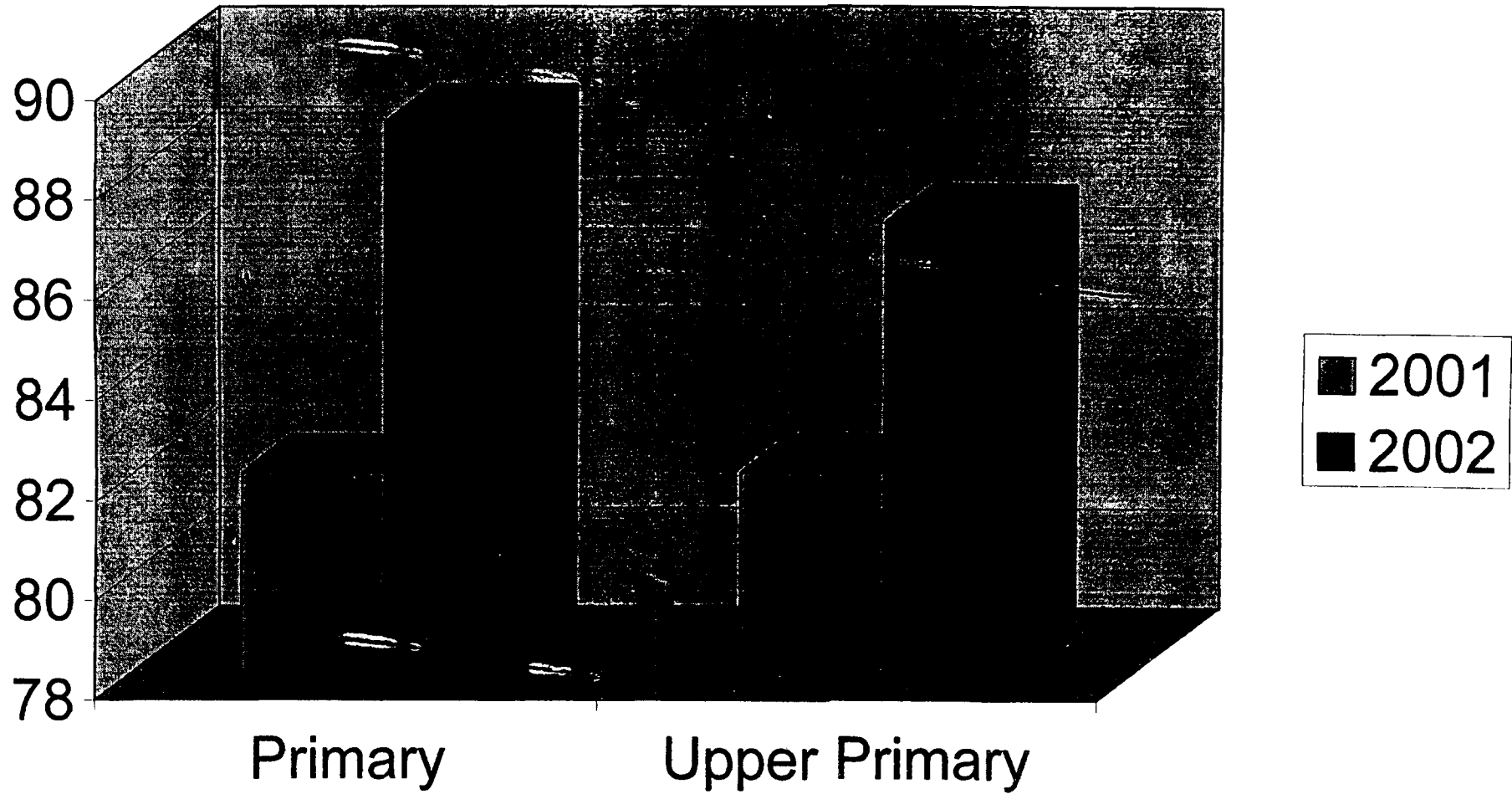
Table 2.15
Educational Indicators - Attendance Rate

Sl. No	Block	Attendance Rate- Primary						Attendance Rate - Upper Primary					
		2001 - 02			2002 - 03			2001 - 02			2002 - 03		
		B	G	T	B	G	T	B	G	T	B	G	T
1	Thiruvallur	86	87	87%	94%	92%	93%	81	80	81%	96%	94%	95%
2	Poondi	78	80	79%	92%	89%	91%	79	79	79%	95%	91%	93%
3	Kadambathur	86	85	86%	80%	90%	85%	88	86	87%	88%	92%	90%
4	Ellapuram	80	81	81%	89%	91%	90%	80	81	81%	85%	89%	87%
5	Poonamallee	86	86	86%	80%	90%	85%	78	78	78%	75%	85%	80%
6	Minjur	86	78	82%	95%	90%	93%	78	76	77%	78%	82%	80%
7	Shozhavaram	76	79	78%	94%	87%	91%	86	84	85%	94%	89%	92%
8	Gummidipoondi	82	86	84%	78%	84%	81%	80	78	79%	88%	92%	90%
9	Villivakkam	89	90	90%	88%	94%	91%	86	90	88%	90%	92%	91%
10	Puzhal	76	81	79%	90%	91%	91%	86	84	85%	93%	93%	93%
11	Tiruttani	79	80	80%	88%	90%	89%	81	76	79%	75%	79%	77%
12	Thiruvalangadu	72	79	76%	87%	97%	92%	86	86	86%	86%	84%	85%
13	Pallipat	84	86	85%	90%	88%	89%	80	84	82%	77%	76%	77%
14	R.K.Pet	74	79	77%	84%	82%	83%	84	86	85%	80%	78%	79%
District Average		81%	83%	82%	88%	90%	89%	82%	82%	82%	86%	87%	87%

(Source : DISE 2001-02, 2002-2003, Thiruvallur)

The comparison of the two tables of 2001-02 and 2002-03 shows an upward trend in attendance rate. The difference in the indicator is a clear picture of the improvement and it is an encouraging factor.

Attendance Rate



2.8 Pupils' Achievement

The achievement talks about the performance of the children in the learning process. The children are measured in terms of the test they undertake. In certain institutions continuous assessments and comprehensive evaluation is taken up to assess the performance. But anyhow children are measured in terms of this test only. The comparison of the performance of the students shows the upward trend in the learning process. It is all due to the efforts taken by the teachers. The teachers after they were supplied the teaching learning material and equipments their performance seemed to have an increase. It has resulted and reflected in the achievement of the children. The following table shows the progress in the achievement level of the pupils

Table 2.16
Pupils Achievement - 2001-02

S. No.	Block		Subjects				
			Tamil	English	Maths	Science	Social Science
1	Thiruvallur	Primary	71%	55%	68%	64%	64%
		Upper Primary	67%	53%	57%	58%	61%
2	Poondi	Primary	65%	55%	61%	53%	60%
		Upper Primary	53%	46%	52%	60%	65%
3	Kadambathur	Primary	54%	40%	47%	59%	63%
		Upper Primary	50%	40%	59%	53%	64%
4	Ellapuram	Primary	51%	33%	51%	50%	47%
		Upper Primary	49%	27%	50%	46%	48%
5	Poonamallee	Primary	54%	50%	54%	56%	58%
		Upper Primary	51%	47%	53%	53%	55%
6	Minjur	Primary	61%	45%	59%	50%	60%
		Upper Primary	50%	44%	54%	52%	62%
7	Shozhavaram	Primary	54%	41%	44%	40%	48%
		Upper Primary	34%	37%	40%	40%	36%
8	Gummidipoondi	Primary	50%	46%	57%	54%	37%
		Upper Primary	54%	35%	50%	46%	50%
9	Villivakkam	Primary	56%	52%	54%	57%	60%
		Upper Primary	42%	41%	44%	41%	42%
10	Puzhal	Primary	74%	47%	64%	68%	68%
		Upper Primary	70%	48%	62%	50%	63%
11	Tiruttani	Primary	71%	54%	72%	71%	68%
		Upper Primary	79%	60%	66%	62%	67%
12	Thiruvalangadu	Primary	52%	49%	57%	54%	54%
		Upper Primary	57%	44%	49%	47%	54%
13	Pallipat	Primary	76%	50%	67%	68%	69%
		Upper Primary	80%	55%	64%	63%	61%
14	R.K.Pet	Primary	52%	50%	51%	52%	50%
		Upper Primary	54%	56%	60%	63%	60%
	District Average	Primary	60%	48%	58%	57%	58%
		Upper Primary	56%	45%	54%	52%	56%

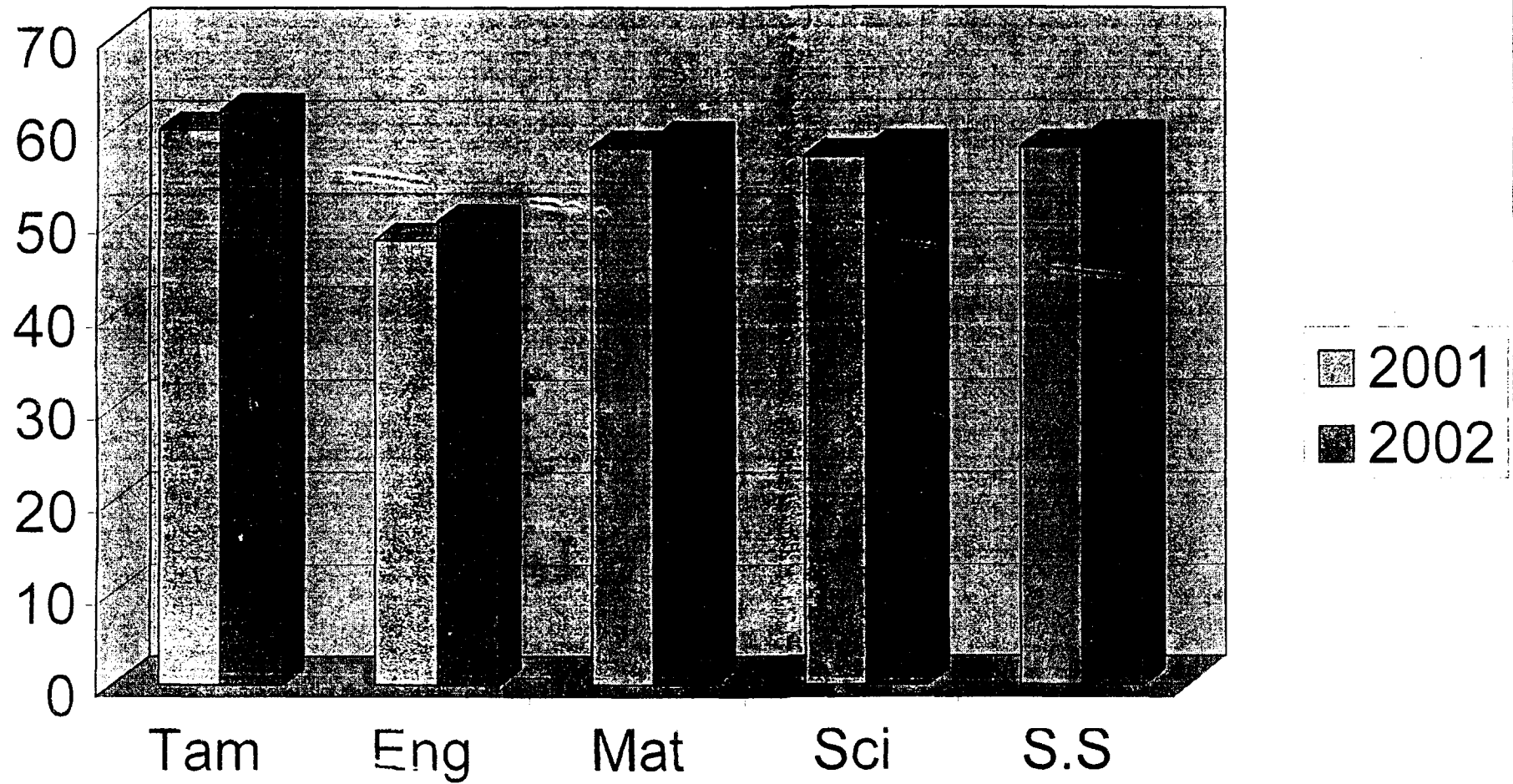
Table 2.17
Pupils Achievement - 2002-03

S. No.	Block		Subjects				
			Tamil	English	Maths	Science	Social Science
1	Thiruvallur	Primary	74%	59%	69%	65%	66%
		Upper Primary	69%	56%	59%	60%	62%
2	Poondi	Primary	67%	58%	63%	54%	61%
		Upper Primary	54%	47%	53%	62%	66%
3	Kadambathur	Primary	56%	42%	49%	60%	64%
		Upper Primary	52%	41%	60%	54%	65%
4	Ellapuram	Primary	53%	35%	52%	52%	48%
		Upper Primary	51%	30%	51%	48%	49%
5	Poonamallee	Primary	56%	51%	55%	57%	59%
		Upper Primary	52%	49%	50%	54%	56%
6	Minjur	Primary	63%	47%	58%	51%	61%
		Upper Primary	51%	45%	55%	53%	64%
7	Shozhavaram	Primary	56%	41%	45%	41%	50%
		Upper Primary	37%	38%	41%	41%	38%
8	Gummidipoondi	Primary	52%	48%	58%	56%	39%
		Upper Primary	57%	37%	51%	48%	52%
9	Villivakkam	Primary	57%	56%	59%	59%	62%
		Upper Primary	44%	43%	45%	44%	44%
10	Puzhal	Primary	76%	48%	65%	68%	70%
		Upper Primary	72%	50%	63%	52%	65%
11	Tiruttani	Primary	75%	56%	73%	75%	70%
		Upper Primary	80%	62%	68%	64%	69%
12	Thiruvallangadu	Primary	54%	51%	59%	56%	55%
		Upper Primary	58%	45%	50%	48%	55%
13	Pallipat	Primary	77%	52%	68%	70%	70%
		Upper Primary	82%	57%	65%	65%	62%
14	R.K.Pet	Primary	54%	52%	52%	54%	52%
		Upper Primary	56%	57%	62%	65%	63%
	District Average	Primary	62%	50%	59%	58%	59%
		Upper Primary	58%	47%	55%	54%	58%

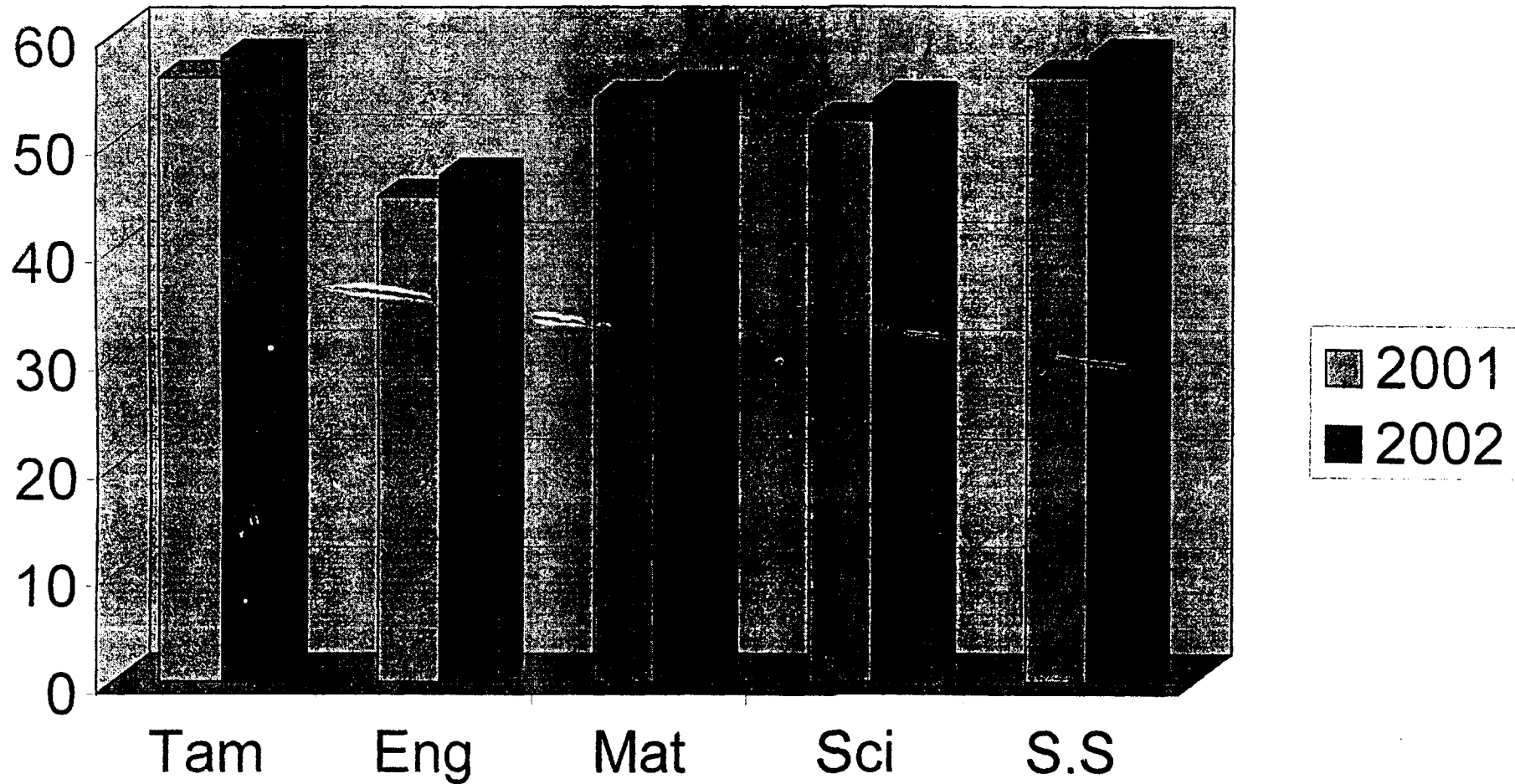
(Source : DISE 2002-2003, Thiruvallur)

Pupil's achievement in English subject is very low comparing with other subjects. Steps have to be taken to improve the achieve level of the students for English Subject.

Achievement - Primary



Achievement - Upper primary



2.9 Mainstreaming Out of school children

As per 2001 household survey there were 16523 out of school children.

Table 2.18
Out of school Children - Drop out - 2001-02

Name of the Block	No. of dropped out children in the age group													Total (5+ to 12+)
	5+ to 9+						10+ to 12+							
	ALL		SC		ST		AL L		SC		ST			
	B	G	B	G	B	G	B	G	B	G	I	G		
Thiruvallur	50	41	7	6	3	2	143	61	19	9	4	2	295	
Poondi	41	32	13	4	2	2	74	137	12	14	2	1	284	
Kadambathur	20	21	12	4	2	2	94	106	13	12	2	1	241	
Ellapuram	32	33	13	14	4	3	109	134	18	19	2	1	308	
Poonamallee	84	76	16	15	2	2	236	195	32	30	11	3	591	
Minjur	47	38	14	12	1	2	170	123	19	17	1	6	378	
Sozhavaram	49	51	14	14	2	3	143	135	20	13	4	1	378	
Gummidipoondi	106	97	20	12	4	3	229	281	27	26	6	4	713	
Villivakkam	143	165	19	29	3	0	289	250	41	39	9	6	847	
Puzhal	70	78	15	14	3	2	198	172	26	27	11	9	518	
Tiruttani	53	78	16	15	2	1	143	218	21	18	4	1	492	
Thiruvallangadu	33	33	12	12	2	1	54	67	9	12	2	1	187	
Pallipat	44	61	15	16	2	2	149	254	15	16	5	2	508	
R.K.Pet	39	52	14	13	2	2	110	153	17	16	6	2	354	
Total	811	856	200	180	34	27	2141	2286	289	268	71	40	6094	

(Source : DISE 2001-02, Thiruvallur)

Table 2.19

Out of school Children - Never Enrolled - 2001-02

Name of the Block	No. of never enrolled children in the age group												Grand Total	
	5+ to 9+						10+ to 12+							Total (5+ to 14+)
	ALL		SC		ST		ALL		SC		ST			
	B	G	B	G	B	G	B	G	B	G	B	G		
Thiruvallur	190	204	21	26	2	4	39	61	2	3	1	1	494	789
Poondi	161	173	18	16	2	3	60	74	2	2	1	1	468	752
Kadambathur	160	143	18	18	3	6	58	74	7	8	2	2	435	676
Ellapuram	198	172	21	20	4	4	52	62	1	3	0	2	484	792
Poonamallee	422	378	41	42	5	6	117	113	16	17	1	2	1030	1621
Minjur	295	345	29	36	6	6	114	104	16	14	2	2	858	1236
Sozhavaram	328	304	16	24	4	4	92	115	6	7	2	2	839	1217
Gummidipoondi	420	423	52	49	4	8	100	145	11	14	2	2	1088	1801
Villivakkam	673	700	70	94	7	9	173	190	21	26	6	4	1736	2583
Puzhal	462	482	52	53	5	5	124	124	16	14	2	2	1192	1710
Tiruttani	257	261	21	27	4	4	93	158	10	16	2	2	769	1261
Thiruvallangadu	51	55	9	12	2	1	17	27	2	3	2	2	150	337
Pallipat	145	146	15	16	2	2	47	82	6	8	1	1	420	928
R.K.Pet	168	179	15	15	2	3	70	49	6	5	1	1	466	820
Total	3930	3965	398	448	52	65	1156	1378	122	140	25	26	10429	16523

(Source : DISE 2001-02, Thiruvallur)

The recent survey illustrates the decrease in number because of the exclusion of children who have crossed the 14 years and due to the enrollment of 5+ and + children besides the large scale of migratory population. There are 11287 out of schoolchildren in this district. 43 Bridge course centres are functioning at present. 870 students are already enrolled in the Bridge course structures. Because it is a heterogeneous group a different type of syllabus was framed and accordingly they are taught. These children shall be tested and according to their performance effort will be taken to admit them in the regular stream of education. An individual profile has been prepared and given to each individual of out of school children. This year it is proposed to open 421 Bridge course centers and 2 Residential camps to accommodate the out of school children.

Table 2.20
Out of School children - Block wise in 6-14 age group in
2002-03

S. No.	Block	DO	NE	Total
1	Thiruvallur	55	275	330
2	Poondi	123	618	741
3	Kadambathur	122	608	730
4	Ellapuram	168	836	1004
5	Poonamallee	104	516	620
6	Minjur	181	961	1142
7	Shozhavaram	57	282	339
8	Gummidipoondi	221	1109	1330
9	Villivakkam	268	1341	1609
10	Puzhal	68	344	412
11	Tiruttani	93	466	559
12	Thiruvalangadu	51	255	306
13	Pallipat	236	1180	1416
14	R.K.Pet	125	624	749
	District Total	1872	9415	11287

(Source : DISE 2002-2003, Thiruvallur)

**Identity Card
Never Enrolled / Dropout Children**

District :

Block :

Habitation :

- 1) Name of the Child :
2) Father's / Guardian's Name :
3) Address :
4) Age :
5) Sex : Male / Female
6) Community : SC / ST / MBC / BC / Others
7) Religion : Hindu / Muslim / Christian / Others

- 8) Whether Disabled : Yes / No
9) Status of the child during enumeration : Dropout / Never Enrolled / Child Labour
10) Present Status : Admitted in School
11) Address of the school and class :

Signature: -----

BRC Supervisor: -----

Block: -----

2.9.1. Bridge Course / Transit camps

The children who cannot be enrolled in regular formal education must be brought into the fold of alternative education. Bridge courses and transit camps and schools play an important role with regard to the children who are not in formal schools. These non-formal structures in the education process are a boon to the out of school children. There is flexibility in timings of instruction and syllabus. The flexibility helps the children in all aspects. It is proposed to open 421 bridge courses and two residential camps. It will accommodate all the children and in course of time they will be admitted in regular schools. The following table shows number of bridge courses to be opened.

Table 2.21
Bridge course, Transit camps - 2002-03 and 2003-04

Sl. No	Block	Never Enrolled and Drop out children	No. of Children enrolled	No. of children to be enrolled	No. of Bridge courses to be opened	Residential camps
1	Thiruvallur	330	115	215	6	
2	Poondi	741	33	708	32	
3	Kadambathur	730	21	709	33	
4	Ellapuram	1004	219	785	36	
5	Poonamallee	620	14	606	23	1
6	Minjur	1142	40	1102	40	
7	Shozhavaram	339	38	301	18	
8	Gummidipoondi	1330	97	1233	42	
9	Villivakkam	1609	99	1510	55	
10	Puzhal	412	0	412	19	
11	Tiruttani	559	65	494	23	
12	Thiruvalangadu	306	20	286	12	
13	Pallipat	1416	25	1391	52	
14	R.K.Pet	749	84	665	30	1
Total		11287	870	10417	421	2

(Source : DISE 2002-2003, Thiruvallur District)

2.9.2 Residential camps: -

There are school age children who cannot be days scholars due to the poor parentage and poverty. So it is but essential to accommodate them Residential camps which provide them food and shelter. The children so enrolled in these of schools stay in the school and attend the classes. In a way it promotes community learning and adjustments to the environment. The district does not have any residential school at present. It is proposed to open two residential camps at Poonamallee and R.K.Pet blocks.

2.10 Appointment of teachers

There are 1527 schools in this district. 6476 teachers are working in these schools. There is no need to have additional teacher in Primary and Upper Primary schools of this district. On the contrary middle section of the high schools and Higher secondary schools have more number of pupils. So there is need for appointments of teachers.

2.11 Programmes for Disabled.

There are about 2035 disabled children in this district. As result of the medical assessment camps done so far in various blocks of this district, the nature of the disability of every child has been already found out. It is proposed to have medical assessment camps in all the blocks in the forth-coming year. Immediately after assessment, Identity cards shall be supplied to all the disabled children. Medical appliances will be provided to all of them. The specially trained teacher educator appointed will visit all the schools where the children are enrolled, will lend his/her academic support. There is progress in all aspects of the activities design exclusively for the disabled children. The following table shows the number of disabled children who underwent the medical assessment' programme last year.

Table 2.22

Medical camp for IED children

Sl. No	Block	Date	MR	CP	VI	HI & SD	OH	MD	Total
1.	Ellapuram	4.2.03	18	26	0	0	45	0	89
2.	Poondi	26.2.03	18	19	0	27	43	0	107
3.	Poonamallee	27.2.03	25	0	32	17	67	0	141
4.	Pallipat	28.2.03	30	0	17	55	77	0	179
5.	R.K.Pet	06.3.03	38	35	50	52	79	7	261
6.	Thiruvalangadu	10.3.03	23	6	30	58	37	0	154
7.	Tiruttani	12.3.03	0	8	18	30	37	0	93
8	Thiruvallur	19.3.03	22	0	40	47	51	0	160
9.	Puzhal	20.3.03	10	0	30	35	28	0	103
10.	Ellapuram	15.3.03	0	0	23	43	0	0	66
11.	Kadambathur	21.3.03	21	63	35	39	0	0	158
Total			205	157	275	403	464	7	1511

2.12 Programme for SC/ST

A special drive will be given to enroll all the school age SC/ST population children. It is proposed to conduct awareness programme exclusively for these children village education committee members will involved in this programme. All the members of the VEC will be educated and this suggestion of the members will be taken in account for enrolling all the SC/ST children. Special coaching class will be conducted after the school hours exclusively for them. Last year 48445 pupils were given special coaching classes. This year it will be more and that shall be progress to cover all the children. The following table gives the beneficiaries during the last year.

Table 2.23
SC/ST Children beneficiaries in Special Coaching classes during 2002-03

Sl.No	Block	SC/ST Students		Total
		Boys	Girls	
1	Thiruvallur	4049	3850	7899
2	Poondi	939	954	1893
3	Kadambathur	1482	1220	2702
4	Ellapuram	301	278	579
5	Poonamallee	3608	3159	6767
6	Minjur	1975	1557	3532
7	Shozhavaram	814	1194	2008
8	Gummidipoondi	2606	714	3320
9	Villivakkam	4079	4143	8222
10	Puzhal	1824	1715	3539
11	Tiruttani	871	810	1681
12	Thiruvallangadu	756	774	1530
13	Pallipat	2001	1828	3829
14	R.K.Pet	514	430	944
Total		25819	22626	48445

(Source : DISE 2002-2003, Thiruvallur)

Villivakkam block records the highest number of 8222 followed by Thiruvallur block of 7899. Ellapuram block records the least number of 579.

2.13 Programme for Girls

It has been designed to focus attention on the girls who are not covered under any scheme. These girls shall be provided free Text books and note books and slow learners will be identified. These slow learners will be given special coaching in all subjects to bring them on par with the other students. And tests shall be conducted to monitor their progress in studies. Individual attention will be paid to them. Separate tutorial classes for every 15 students will be conducted. Teachers of the same schools will be incharge of these tutorial classes. Doubts and difficult concepts in mathematics and science shall be cleared in these classes. These shall be reviewed periodically with the last year programmes. A special attention will be thrown in to the all aspects of the programme meant for girls.

2.14 Early Childhood Care and Education

The SSA scheme aims at enrolling all the school age population. It is one of the most important goals of this scheme. ICDS centres are the catchment areas. So it has been decided to concentrate and the children already enrolled early childhood care centres. It is proposed to take care of these children. As these children brought into the fold of formal education light must be thrown upon them while they are in these centres. Various proposals are in anvil to provide play materials so as to make the children prepare for the enrolment of regular schools. There are 1503 centres. These centres cover 67298 children. Nutritious food is given to these children. The matrons in charge of these children will be given a special training.

Table 2.24
Number of ECCE centres and Children 2002-03

S. No.	Block	ICDS Centres	Children	Others LKG/UKG	Children
1	Thiruvallur	75	2180	9	1198
2	Poondi	92	5208	0	0
3	Kadambathur	85	2405	0	0
4	Ellapuram	91	2242	19	1391
5	Poonamallee	140	3945	28	2008
6	Minjur	135	8867	0	0
7	Shozhavaram	88	1971	11	1560
8	Gummidipoondi	119	3411	7	322
9	Villivakkam	156	13258	104	8391
10	Puzhal	173	6425		
11	Tiruttani	91	2240	10	695
12	Thiruvalangadu	93	2550	13	534
13	Pallipat	69	7516	8	782
14	R.K.Pet	96	5080	4	134
	District Total	1503	67298	213	17015

(Source : DISE 2002-2003, Thiruvallur)

2.15 Functioning of Village Education Committee

The village education committees meet twice in a month and suggest ways and means for the institutions. Block resource Teacher educators regularly attend the meeting of the village education committee. Teacher educators review the functioning of the village education committees and assist them and help hand is extended to them also. There are 1376 village education committees functioning in this district. The supervisor and Teacher educators of the block concerned also review the involvement of these members in the construction of civil works periodically.

2.16 Activities in Cluster Resource Centres: -

The Cluster Resource centres are the Profession empowerment body of the teachers. Discussion of Hot spots finds the most important place in CRC meetings. The meeting of the cluster resource centres is held once a month on a particular Saturday from 10am to 1pm. The effective use of teaching learning materials and equipments is also explained. Model lessons and teaching practices find a place in the programme. At the request of the co-ordinators experts are drawn from various departments attend the centres and give guest lectures on various topics useful for them. The centres are a boon to the teaching community. The supervisor and teacher educators of the block concerned regularly review the activities of the centres and suggest measures for improvements.

2.17 Programmes in Block Resource Centres: -

The Block resource centres are the mini “DIETs” at the Block level. The centres take care of the training programme to the teachers and VEC members. The centre plays a vital role in enrolment quality education, special focus group children and girls education etc. School based training and the school adoption programmes are done by the BRCs. The teacher educators visit the cluster resource centres regularly. Participation in VEC meetings is the one of the most important function of the BRCs. Bridge course, transit camps and residential camps are visited and monitored by them. As action research taken by certain teacher educators. The function of the staff members of the block resource centres is periodically reviewed by the district programme co-ordinator and Assistant district programme co-ordinator. Progress in their functioning is taken care of by these authorities.

2.18 Research, Evaluation and Monitoring

After the implementation of this “Education for All” movement, a number of surveys and studies on various issues have been conducted. These surveys have helped to evaluate the trend to achieve the objectives laid down in a particular period of time.

Surveys like household survey and cohort studies have revealed the actual school age population and enrolment. Teacher educators of block resource centres took up school based training and activity based training for teachers of schools besides school adoption programme activities. Research studies have been taken up to see whether the resource of funds for the purchase of TLMs and Toilet and Drinking water facilities have contributed to quality education.

These studies have been evaluated periodically and it seems it has got its own impact on various aspects.

District Programme co-ordinator, Block Education Committee and Village Education Committee are the monitoring agencies. They monitor the activities regularly and provide their suggestion for further improvement in these activities.

2.19 Improving Infrastructures

There is a consistent improvement in the building of infrastructure. Improvement in infrastructure facilities contributes to the efficient functioning of Block resource centres and Cluster resource centres. It contributes to quality education.

2.19.1 Construction of Block Resource Centre: -

The block resource centres function at the block level to achieve the goals laid down in the SSA scheme. All the staff members contribute their might in achieving the goals. As a part of this construction work is on progress to house the centres. There are 14 centres functioning at the blocks. When the scheme was launched the centres were housed in the campuses of high schools or the higher secondary schools located at the block Head quarters. Last year construction of buildings for 5 centres began and it is almost in the finishing stage. The remaining 9 blocks will have their own building in 2003-04.

Table 2.25

Particulars of construction of BRC Buildings 2002-03 and 2003-04.

2002-03	2003-04
1. Thiruvallangadu 2. Thiruvallur 3. Pallipat 4. Minjur 5. Ellapuram	1. Poondi 2. Kadambathur 3. Poonamallee 4. Sholavaram 5. Gummidipoondi 6. Villivakkam 7. Puzhal 8. Tiruttani 9. R.K.Pet

2.19.2 Construction of Cluster Resource Centre: -

Cluster resource centre must have their own building and equipments for efficient functioning. There are 157 centres in this district. Last year five buildings were constructed to house five centres. In 2003-04 it is proposed to construct buildings for 25 centres. The remaining centres will get their own buildings in a phased manner. Efforts are taken and budget provision are likely to be made in the forth-coming years.

2.19.3 Construction of Three classrooms: -

Right from the day of the launching of the SSA programme all the schools started getting three or two classrooms in a phased manner. Accordingly during 2001-2002 3 schools got Three-classroom facility and during 2002-03 33 schools got Three-classroom facility. There is a progress in providing three classrooms. Provision of buildings contributes to quality education. It is planned to construct three-classroom building for 30 schools in the forth-coming year.

2.19.4 Construction of Two classrooms

It is proposed to construct two classrooms buildings for 30 schools during 2003-04. It was 28 primary schools got two classrooms during 2002-2003. 9 schools got two classroom buildings in 2001-2002. The comparison of the construction of buildings shows the progress in civil works with regard to schools.

2.19.5 Provision of Toilet facilities: -

Toilet facilities were provided to 75 schools in 2001-2002. It was 63 schools got toilet facilities during 2002-2003. It is proposed to provide toilet facilities for 90 schools in 2003-2004. There is a progress in providing toilet facilities in a phased manner.

2.19.6 Provision of Drinking Water facilities: -

120 schools were provided with drinking water facilities in 2001-2002 and it was 61 in 2002-2003. Water facilities shall be provided to 75 schools in the forthcoming year. There is a progress in extending the facilities.

2.20 Maintenance and Repairs: -

The component maintenance and repairs deals with the repairing of windows and doors, flooring, plastering, white washing, black board, electrification, repairing of terrace etc. During the last year 2002-2003 schools numbering 1296 got grants to the tune of Rs.64.800 lakhs. The grants were utilized for the purpose meant for it. It is proposed to spend Rs.66.600 lakhs and for which provision has been made in the budget.

2.21 Programmes for Quality Improvement: -

There are various programmes for the improvement of quality education. It is one of the most important goals of the SSA scheme. The various programmes are

1. Capacity Building for Project Staff
2. Training to Teachers
3. Orientation to VEC members
4. Provision of TLM, TLE, School Grant
5. Curriculum Revision - VI standard textbook and
6. Innovation - computer literacy, vocational skill development for 6th to 8th standard girls.

2.21.1 Capacity Building for Project Staff: -

It is essential to build the capacity of the staff members of the Project. It is one of the aims of the SSA scheme. As a part of it a three-month school attachment programme was given to the Block resource teacher educators. They were exposed to functioning of the schools of their blocks concerned. It was followed by five-day orientation programme. In addition to it school based training and school activity programmes were given to them. The teacher educators seem to have better equipped after the number of trainings undergone by them. These training and exposure have built their capacity to face the challenges.

2.21.2 Training to Teachers: -

Dr. Thangasamy, Professor in Lakshmi College of Education, Gandhigram gave a useful lecture on training to teachers. He talked about the various techniques to be followed while training the Practicing teachers of schools besides the designs and methods to be adopted in training Programmes. His ideas are taken in the activities proposed in the Budget.

The teachers employed in primary and middle schools and middle sections of high and Higher secondary schools of all management have been given training on “content and methodology” in order to equip them and to build their capacity to face the challenges in the teaching / learning process. In addition to these capacity building training the headmasters of primary, middle, High and Higher Secondary schools were given training on “Administration and Management”.

The Training aimed at enhancing the teaching abilities of the teacher including the use of TLM. The training helped the teachers to equip themselves in difficult areas of teaching viz., Mathematics, grammar and Spoken English. It helped to shed their inhibitions and to come forward to air their opinions and clear any doubts before their colleagues. It also helped to open their eyes to innovative teaching methods with a scientific attitude. It helped the teachers to understand better the ways and means of multi-grade teaching in I to V level.

The training given to Headmasters helped them to improve their administrative skills. It helped them to understand the humanistic approach towards teachers and students and effectively manage the multiple problems faced by them everyday in the schools.

The teachers though understand the important of TLMs, find it difficult to prepare them effectively at low cost. Hence, the training given by the DIET faculties at the block level to the Primary class teachers helped them greatly to get new ideas in the preparation of TLMs to teach the various competencies.

Apart from these trainings given at block level, the Block Resource Teacher Educators go to the schools that have low completion rate and study the school atmosphere very carefully. If there are any “Hot Spots”, training is given by the Block Resource Teacher Educators to the teachers for four days. This provides a chance for the teachers to clear their doubts in subjects without fear of being ridiculed by their friends. This aims at improvement in education standard.

Every Block Resource Teacher Educators adopts a particular low-performance school in the block and devotes one day per week, to the improvement of the school in all aspects. The Block Resource Teacher Educators concentrate on the slow learners and help the teachers to bring them on par with the average students. The Block resource Teacher Educators strives to make the school “a model school” in all aspects.

After the implementation of SSA programme a number of base line surveys have been conducted to identify the needs to develop the quality in Primary education.

In 2002-03 the following training programmes were conducted.

- Training for Village Education Committees
- Training for BRTs to build up their capacity
- Methodology and competence based training for teachers I to III, IV & V, and VII and VIII classes
- Training for Headmasters in academic and administration enhancement.

During the academic year 2003-04 the following inservice training programmes are proposed

1) It has been identified that teachers find difficulty in preparation of TLM especially in 3 dimension mode. So, it has been planned to give 5 day workshop training for teachers in the preparation of TLM. By identifying suitable TLM for the 663 competencies from I to V class, the following is planned.

Duration : 5 days
 Participants : Teachers from I to V standard
 Total : 3493

2) Action Research

The teachers have to be enlightened to solve their problems in teaching the children. So, the teachers are given opportunities to do "Action research". Guidance and counseling have to be given to the teachers. A three day workshop can be conducted in action research area.

Duration : 3 Days
 Participants : All the teachers of I to VIII Standard
 Cost of training
 Including KRP, RP Training: $6476 \times 3 \times 70 = \text{Rs.}13,59,960$

3) Teachers feel it difficult to operate and handle the science kit and mathematics kit. So a 5 day training to be conducted for the benefit of the teachers.

Duration : 5 Days
 Participants : All the teachers of I to V
 Cost of Training
 (including KRP, RP and module preparation) : $3493 \times 5 \times 70 = 12,22,550$

4) Training in Evaluation technique and approach to the teachers for 2 days

Duration : 2 Days
 Participants : All the teachers of I to VIII
 Cost of Training
 (including KRP, RP and module preparation) : $6476 \times 2 \times 70 = 9,06,640$

- 5) School based training(SBT) with low completion rate for some selected schools.
A 3 day training to the Block Resource Teachers to be given.

Duration	: 3 Days
Participants	: All the Block Resource Centre Personnel
Cost of Training (including KRP, RP AND module preparation)	: 112 X 70 X 3 = 23,520

- 6) The efficiency of the teachers is to be improved through various in service programmes. It has been identified by baseline study and teachers sampling study that there is a dire need for training exclusively for teachers who teach English.
- 7) Language related workshop both in Tamil and English can be conducted for 3 days to improve the efficiency of teachers.

2.21.3 Orientation to VEC members: -

As it was felt that VEC members must have been given orientation training for the proper functioning of the village education committee, a two-day training programme was conducted for three members drawn from each village education committee. The training was given by the co-ordinators of the cluster resource centres with the assistance of block resource teacher educators, supervisors, AEE0/AEEO and DIET faculty members. It is proposed to give such a kind of two-day orientation training for all the VEC members this year also.

2.21.4 Provision of TLM, TLE, School Grant: -

Last year Rs.17.500 lakhs were released to 3500 primary teachers and Upper Primary teachers numbering 2919 got the grant to the tune of Rs.14.590 lakhs to prepare and use Teaching Learning Materials. 35 primary schools and 23 Upper primary schools got the grant for Teaching Learning Equipment to the tune of Rs.3.500 lakhs and 11.500 lakhs respectively. One Thousand Primary schools and 331 Upper primary schools got the school grant to the value of Rs.20.000 lakhs and Rs.6.620 lakhs respectively. The release of these grants helped the teachers to fulfill the needs of the schools both for the academic and infrastructures activities. It has given a new lease of life for the teaching community to face the challenges in the process of teaching. It has contributed indirectly for increase in enrolment and retention and directly for quality education.

2.21.5 Curriculum Revision - VI standard Textbook: -

The Government of Tamilnadu has revised the curriculum and syllabus for standard VI. The revision will take effect from 2003-2004 accordingly new text books are under preparations. In order to cope with the syllabus it is proposed to give training in content and methodology exclusively for the teachers handling VI standard so as to enable them to equip them to face the classroom. The SSA scheme always goes hand in glove with new challenges.

2.21.6 Innovation - Computer literacy, vocational skill development: -

Innovation activities are on the move. Innovation activities are there in the field of computer literacy. Steps have been taken in the field of innovative activities and approximately 42691 pupils of VI standard shall be brought to the computer table. The work is on progress.

The following table shows block wise figure of VI standard children to be exposed to computers.

Table 2.26
VI standard children - Details of computer literary activities

Sl. No	Block	6th std		
		Boys	Girls	Total
1	Thiruvallur	1525	1352	2877
2	Poondi	751	690	1441
3	Kadambathur	1204	1161	2365
4	Ellapuram	1162	1263	2425
5	Poonamallee	2382	2704	5086
6	Minjur	1712	1822	3534
7	Shozhavaram	1245	1163	2408
8	Gummidipoondi	1640	1597	3237
9	Villivakkam	3432	3318	6750
10	Puzhal	3001	2881	5882
11	Tiruttani	930	880	1810
12	Thiruvalangadu	715	665	1380
13	Pallipat	1014	867	1881
14	R.K.Pet	889	813	1702
Grand Total		21602	21176	42778

(Source : DISE 2002-2003, Thiruvallur)

Second and third level of computer literacy has been proposed for standard VII and VIII standard children in the forth coming academic years. These children shall be given exposure to computer literacy during 2003-04 and 2004-05.

Vocational Education Exposure to girls :-

Dr. Appusamy an industrialist of Tirupur gave an excellent talk with regard to Vocational Education for VI, VII and VIII children at Gandhigram workshop held from 26th to 29th March 2003. He explained in detail how the children especially the girls could be given vocational type of education along with their regular curriculum. He stress the Point that the vocational education must be taken up according to the needs of the area where the children are studying. His idea is taken into account in the preparation of Annul work plan and Budget of 2003-04.

There are 14 blocks in this district. The blocks R.K.Pet and Pallipat, where weaving is the major vocation of the people, the children studying in the schools of these two blocks are already aware of the weaving industry. Hence it has been proposed to pay a little more attention to the girls of VI, VII and VIII standards to provide more exposure to “weaving” so as to enable them know the nuances of this, as a part of their curriculum. This type of exposure shall benefit the girls to develop useful vocational activities while they grow up and it might fetch income to them.

Poonamallee and Villivakkam are urban blocks. There are plenty of export garment factories. The garment factories employ a number of women in their activities. Taking this into account, it has been decided to bring the girls students of those blocks to give professional training in “Tailoring”. As it is found in survey, Poondi and Kadambathur blocks girls are also interested in “Tailoring”. A plan has been devised and proposed to bring them to this fold of vocational training. With regard to the girls students of other blocks a survey shall be conducted and vocational training shall be taken up in the forth-coming academic year.

2.22 Project Management: -

2.22.1 Establishment of MIS

The MIS is an important component of Planning and Implementation of Sarva Shiksha Abhiyan Programmes. The DPO shall be set up at District level and take up the following programmes.

- Basic information like infrastructure facilities, TLM, furniture, equipment etc., in the Primary and Upper Primary schools.
- Total children in the age group of 5-14, Name-wise.
- Name wise particulars of children who are in school and out of school.
- Teacher information.
- Pupil achievement in various school subjects for Primary and Upper Primary schools.
- Enrolment, retention and actual completion rates.
- School pupil ratio, Classroom pupil ratio, Teacher pupil ratio.
- Progress in terms of perfect activities.
- Progress in terms of SSA objectives, quantitative data and analysis.
- Updating of available data base (family survey) as a result of initiatives of SSA.

2.22.2 Implementation of DISE: -

There is a necessity to collect correct information and data regarding all schools. So a method was designed and it resulted in formulating a right type of prescribed Proforma. It is called District information system for education Proforma and these were distributed to all the schools of this district through block resource centres. The supervisor, Assistant Educational officers and teacher educators assisted all the headmasters of the school concerned to fill the forms with right type of data. The district data has been collected and compiled and kept into the office of the district programme co-ordinator. All the information are as on 30.9.2002.

2.22.3 Appointment of Project Staff: -

District project office was established for the implementation of the SSA scheme last year.

Table 2.27
Staff position of District Project Office

Sl. No	Designation	No. of Posts Sanctioned
1	District Programme Co-ordinator	Chief Educational Officer
2	Additional District Programme Co-ordinator	District Elementary Educational Officer
3	Assistant District Programme Co-ordinator	1
4	Statistical Officer	1
5	Media and Documentation Officer / Women development officer	1
6	Training Officer	1
7	Superintendent	1
7	Accounts officer	1
8	Assistants	2
9	Civil Consultants	2
10	MIS Data Entry Operator	1
11	Office Assistant	1
Total		14

There are 14 blocks in the district. Each block has a supervisor and 7 teacher educators. The teacher educators were recruited through Teacher Recruitment Board.

2.23 Convergence: -

In order to bring all the school age children into the regular stream of education a number of schemes have in vogue in Tamilnadu. They are "Noon Meal, Free text Book, Free Uniforms and Free Bus Pass and free cycle scheme for SC/ST Girls of XI and XII standard.

The following table shows the number of beneficiaries (Block wise) under these schemes.

Table 2.28
Particulars of Noon meal, Free text Book, and Free Bus Pass

Sl. No	Block	Noon Meal	Text Book	Bus Pass
1	Thiruvallur	8600	10050	19
2	Poondi	8853	8911	56
3	Kadambathur	7787	9009	62
4	Ellapuram	9213	10423	79
5	Poonamallee	11971	18499	370
6	Minjur	13371	21756	1333
7	Shozhavaram	7847	9954	185
8	Gummidipoondi	20428	15254	110
9	Villivakkam	19482	26730	1265
10	Puzhal	14496	20631	882
11	Tiruttani	8642	9290	78
12	Thiruvalangadu	7023	7613	91
13	Pallipat	8823	10376	2
14	R.K.Pet	9488	10660	40
Total		156024	189156	4572

(Source : DISE 2002-2003, Thiruvallur)

Building up the infrastructure facilities such as providing sufficient number of class rooms and providing toilet and drinking water facilities also contribute to quality education. Members of the parliament and assembly of this district have provided such facilities to the schools.

The following table shows the facilities provided by the MPs and MLAs in the infrastructure development of schools under local area development schemes.

Provision of Drinking Water facilities by Tamilnadu Water and Drainage Board has been provided by with 1000 Litres capacity R.C. tank for the following schools.

Table 2.29
Particulars of beneficiaries of the Drinking Water facilities provided by Tamilnadu Water and Drainage Board

Year	Elementary	Middle	High	Higher Secondary
2001 -02	78	38	37	44
2002- 03	455	55	5	--

In addition to the infrastructure facilities provided in SSA Scheme, the members of Parliament and Assembly of Tamilnadu extended their help in providing additional classrooms and other facilities through their local area fund scheme.

Table 2.30
Provision of school building and Additional Class rooms through M.L.A. fund of the Tamil Government.

Sl. No	Constituency	Elementary	Middle	High	Higher secondary
1	Villivakkam	4	-	-	1
2	Thiruvallangadu	2	-	-	
3	Thiruvallur	5	-	-	-
4	Gummidipoondi	-	-	8	
5	Pallipat	2	1	1	-

Table 2.31
Member of Parliament - fund
Beneficiaries

Sl. No	Name of the MP	Constituency	Beneficiaries
1	A. Krishna Swamy	Sriperumbudur	Guruvoyal Pattabiram Mitenamalle Poonamallee Kadambathur Poondi Sholavaram
2	Thiru Cho.Ramasamy	Rajya Sabha	Pallipat Pothaturpet Villivakkam Puzhal
3	Thiru Jegath Ratchagan	Arokonam	Tiruttani Pallpet R.K.Pet Pothaturept
4	Thiru Shanmugam	Rajya Shaba	Tiruttani Minjur Thiruvallur

2.24 Issues and Strategies: -

The issues involved are Access, Enrolment and Retention, out of school children, Quality issues, Coverage of special focus group, Monitoring and supervisions and improving school infrastructure facilities.

These issues are tackled by adopting suitable strategies. Action has been taken to attain 100% access to primary education. A number of schools have been opened within a walking distance of 1 km and new schools are proposed to all habitations. Besides these bridge-courses, transit schools and residential camps have been functioning and certain structures are proposed for 2003-04.

With regard to enrolment, special drive is given and awareness programme is regularly conducted. Door to door campaign is also done. Care is taken for retention. Special coaching class are conducted. Children are provided with noon-meal, free Bus pass, Uniforms and free cycles for SC/ST Girls of Standard XI.

Compromise cannot be made in quality issues. Teachers are periodically given in service training to improve their competence in teaching. In addition, each teacher is given Rs.500/- to prepare and use of teaching -learning materials to be more effective in classrooms. Infrastructure facilities contribute more to quality issues. So on priority basis schools are provided with additional two or three classrooms besides providing toilet and water facilities.

Light is thrown upon special focus group. SC/ST children are given special coaching classes after the school hours. Disabled children are taken care of by the specially trained teacher. Medical assessment is done and necessary help is extended to these pupils.

The District Programme Co-ordinator, Additional District Programme Co-ordinator and Assistant District Programme Co-ordinator do Monitoring and supervision. Supervisor and teacher educators of the Block Resource Centre do the monitoring and supervision at the block level. Block level committee and village education committee reviews every thing periodically.

2.24.1 Access and Enrolment: -

Opening of 6 Primary schools is proposed to achieve 100% access rate for Primary education. It is proposed to upgrade 21 Primary schools into Upper Primary schools for 100% access. Awareness programme shall be conducted for enrolment. Door to door campaign may be taken up a special drive for SC/ST children is on the anvil.

2.24.2 Out of School children: -

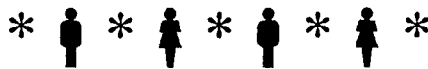
There are 11287 out of school children. They will be enrolled in the new proposed Bridge course structures and transit camps and schools according to the need of the local environment. Coordination is sought from the various departments such as Revenue, Labor, social welfare and VEC etc. to tackle the issue. It is hoped the goal will be achieved.

2.24.3 Quality Issue: -

Quantity has been achieved to the maximum extent. Quality is still an issue and it should be ensured for the betterment of the future. In order to have quality education teaching learning material grants were released and teachers were given freedom to prepare the materials. Academic freedom is also extending to the teachers. It seems there is an improvement to enhance the quality. It is a flip in the field of education.

2.24.4 Special Focus Group: -

Special Focus Group comprises SC/ST children, Girls students, street children and disabled children. This group needs special attention because the gap is seemed between this group and normal ones. In order to bridge the gap focus thrown upon it. SC/ST children are given special coaching classes. Girls students are paid individual attention and there is seem special instructions and life orientated skills are talk to them. The street children are also taken care of and rehabilitation programme for them is exclusively designed.



CHAPTER III

ACTIVITIES AND BUDGET

CHAPTER III

ACTIVITIES AND BUDGET

3.1 Primary Schools :-

A budget provision of Rs. 117.745 lakhs has been proposed for various activities in this year 2003-04. The activities shall be carried out carefully according to the plan and proposals.

The district has 3056 habitations and 469577 house holds. Almost all the habitations are served with primary schools and the access rate of this district is 99.7%. In order to achieve 100% access rate it is proposed to open six primary schools and for which a budget provision of Rs.107.065 lakhs is made. This amount of money will be made use of for the payment of salary of new teachers to be appointed in the new proposed schools besides providing them grants for the preparation of teaching learning materials and equipments. It covers the release of funds for the provision of school grants.

Table 3.1
Block wise - particulars new Primary schools proposed in 2003-04

Sl. No	Block	Name of Primary school
1	Gummidipoondi	1. Chegal soolai medu 2. Salai nagar
2.	Minjur	3. Keelkappam 4. Chinna Mangodu kuppam
3.	Poondi	5. Mel vilagam 6. Uppara palayam

The above table indicates the number of primary schools proposed in various blocks. There is a necessacity for opening of two primary schools in Gummidipoondi and Poondi Blocks to achieve 100% access in Thiruvallur District.

3.2 Upper Primary Schools :-

There is a dare need to upgrade 21 Primary schools into Upper Primary schools. So, it is proposed to upgrade 21 Primary schools and for which a provision of Rs.93.375 lakhs is made in the budget proposals of this year. This proposals amount of money will be utilized for the payment of salaries of the new teachers and for the preparation of teaching learning materials and equipments and there is a provision for the release of school grants.

Tabl 3.2
Name of the schools to be upgraded in 2003-04

Sl. No	Block	Primary into Upper Primary schools
1.	Gummidipoondi	1. Nochikuppam 2. Kannambakkam 3. Pathirivedu
2.	Minjur	4. Ennore-44
3.	Pallipat	5. Pandravedu
4.	Poonamallee	6. Sundara sholavaram 7. Sembarampakkam 8. Goodapakkam
5.	Poondi	9. Manjakuppam 10. Ramathandalam 11. Sathurangapet 12. Mamandur
6.	R.K.Pet	13. C.G.N.Kandigai
7.	Sholavaram	14. Palaya Erumaivetti Palayam
8.	Thiruttani	15. V.K.R.Puram
9.	Ellapuram	16. Karani 17. Athangi Kavanur 18. Thamaraipakkam 19. Sulameni
10.	Villivakkam	20. Mutha puthupet 21. Karambakkam

The above table will give a clear picture of the new upgrading of schools block wise.

3.3 Alternative and Innovative Education : -

Efforts have been made to bring all the children of all habitations into the fold of regular stream of education after the launch of "Sarva Shiksha Abhiyan" scheme. It has yielded desired results. But still there are certain pockets in certain habitations that have school-age children who are not enrolled in regular stream of education viz. formal schools. So these children should not be left out and they must be brought to the fold of education. There comes AIE to extend a helping hand to these children. In order to cover these school-age children it is proposed to open 421 Bridge courses and two Residential camps. This year budget proposals provide ample opportunities for these activities and a provision of Rs.90.179 lakhs have been made. These schools are mainly for out of school children covering never enrolled and drop outs.

Table 3.3
Particulars of Bridge Courses and Residential Camps Proposed during 2003-04.

Sl. No	Block	Never Enrolled and Drop out children	No. of Children enrolled	No. of children to be enrolled	No. of Bridge courses to be open	Residential camps
1	Thiruvallur	330	115	215	6	
2	Poondi	741	33	708	32	
3	Kadambathur	730	21	709	33	
4	Ellapuram	1004	219	785	36	
5	Poonamallee	620	14	606	23	1
6	Minjur	1142	40	1102	40	
7	Shozhavaram	339	38	301	18	
8	Gummidipoondi	1330	97	1233	42	
9	Villivakkam	1609	99	1510	55	
10	Puzhal	412	0	412	19	
11	Tiruttani	559	65	494	23	
12	Thiruvallangadu	306	20	286	12	
13	Pallipat	1416	25	1391	52	
14	R.K.Pet	749	84	665	30	1
Total		1287	870	10417	421	2

(Source : DISE 2002-2003, Thiruvallur District)

3.4 Special Focus Group : -

Disabled children, girl children and SC/ST children are given special attention to bring them on par with other category of children not only in studies but also in other activities. The inclusive education programme has a basic aim to enroll all the disabled children. This specific programme with activities such as awareness programme, medical assessment, training to the parents, community and teachers appointment of special educators etc. It has been in vogue in this district and for its continuation, provision in budget has been made. As in previous years SC/ST children shall be given special coaching classes in studies, besides special exposure of vocational arts and crafts to girls. A budget provision of Rs.38.784 lakhs is made in this year.

3.5 Village Education Committee : -

There are 1527 Village education committees in this district. The committee consists of 15 members, Village President as chairman and the Headmaster as member secretary. These committees play a vital role to achieve the objectives of the Sarva Shiksha Abhiyan scheme. These committees meet twice in a month and discuss the problems related to educational institutions and find solution for the problems, the minutes and deliberations of the meetings are recorded and a copy of it is sent to the supervisor of the block concerned. A budget provision of Rs. 27.486 lakhs is proposed for this year and this amount of money shall be made in for the regular meetings of every month and for the proposed training of its members.

3.6 Cluster Resource Centres : -

One hundred and fifty seven centres have been functioning since the implementation of "Sarva Shiksha Abhiyan" scheme. The centres meet once a month. These centres are called "Teacher empowering centres". Each centre has tentatively 40 to 50 teachers. The centres have tight scheduled programmes of various activities of educational aspects. The teachers are provided refreshments. To meet out the expenditure for these activities Rs.11.327 lakhs is proposed in this budget.

3.7 Block Resource Centres :-

There are 14 Block Resource Centres in this district. Each block has a supervisor besides seven teacher educators. Rs. ~~158.40~~ lakhs are proposed in this year budget. This year budget provision is mainly for the workshops and meeting and payment of salary of teacher educators.

3.8 Research Evaluation and Monitoring :-

It is necessary to have a systematic and refined technique of research to achieve the goal of "Quality Education". The teachers have to be enlightened to solve their problems in teaching process. So the teachers are given opportunities to do action research under the guidance of teacher-educators and DIET faculty members. Such a research paves the way for improving the process that is to be carried and for the success of this programme. These research activities cover the analysis of achievement tests conducted at school level and evaluation tests conducted at the DIETs also. A provision of Rs.22.905 lakhs are proposed in this budget to carry out the programmes under this caption.

3.9 Civil Construction works :-

During this 2003-04, it has been planned to provide building facilities for 9 block resource centres and 25 cluster resource centres. Two class rooms for Thirty schools and Three classrooms for Thirty schools shall be provided. Seventy five schools will get water facilities and ninety will get toilet facilities. Rs ~~358.25~~ lakhs have been proposed to build these structures in this budget, as these facilities contribute to quality education.

3.10 Maintenance and Repair Works :-

The proposed allocation in this year 2003-04 budget for maintenance and repair works Rs.66.600 lakhs. This amount of money will be spent for repairing and maintenance of works of all 1332 schools in this district. Each school shall be provided Rs.5000/- for repair works.

3.11 Management :-

Management cost involves salary of staff members of the District Project Office, consumable and stationary, media and documentation, consultancy, contingency, maintenance of equipments, training to project staff etc. Rs. ~~34.99~~ 32.99 lakhs have been proposed in this budget to meet out the expenditure.

32.99

3.12 Training :-

Rs.90.664 lakhs earmarked in this budget exclusively for training purpose. Various types of training for 3493 Primary and 2983 Upper Primary school teachers are designed to make the teachers equip themselves to face the challenges in the teaching learning process and to provide quality education. It shall be made use of, to build their capacity.

3.13 Innovation :-

Innovative activities have been planned and proposed in this annual plan and budget and for which Rs.50/- lakhs are proposed and allotted. Innovative activities include exposure to computer and its related activities for all VI, VII and VIII standard pupil in various levels. Useful vocational activities related to Arts crafts exclusively for girls are planned in the annual work plan and budget. Light shall be thrown upon nursery education besides Arts and craft activities for SC/ST children.

As a whole the activities envisaged in this budget shall certainly help the targeted goals to be achieved in this scheme.

3.14 Procurement Plan

Procurement is an important aspect of project implementation. It is a critical element in project implementations and unless it is carried out efficiently and promptly, the full benefits of the project cannot be realized. Good procurement practices cannot assure that the SSA will achieve its developmental goals. But it will definitely enhance the development effectiveness.

Grants are released to procure Teaching Learning Materials and Equipments by the District Programme co-ordinator. Each teacher gets Rs.500/- to prepare Teacher Learning Materials. Rs.10,000/- is released to procure teaching learning equipments and for which the district committee has been formed as per the directions of the State Project Director. With regard to the furniture regular practice is followed. Three quotations are called from various Government organizations for the purchase of furniture. The lowest quotation is taken into account and thereby the purchase shall be made. With regard to the construction of building for Block Resource centres transparency tender Act is followed and it is entrusted to the Public works Departments since the cost of it exceeds more than five lakhs. VEC takes care of the construction of Two classroom, Three classroom, CRC buildings, Toilet and Drinking water facilities and technical advice is extended to them by the civil consultants employed in the office of the District Project Office.

3.15 Implementation Schedule: -

The opening of new Primary schools and Upgrading of Primary schools into Upper Primary schools and appointment of new teachers for new schools and release of TLM, TLE and School Grants will over by the end of the first quarter. The remaining activities shall spread over to the other three quarters according to the schedule enclosed.

* * * * *

Implementation Schedule for 2003-2004

S. No.	Maj. Act.	Activity Description	1st Quarter	2nd Quarter	3rd Quarter	4th Quarter
1	PFE	No. of Schools	***			
		Salary of new teachers	***			
		Salary of addl. Teachers	***			
		School Grants	***			
		Teachers Grants	***			
		TLE Grants	***			
2	UPE	No. of Schools	***			
		Salary of new teachers	***			
		Salary of addl. Teachers	***			
		School Grants	***			
		Teachers Grants	***			
3	AIE	TLE Grants	***			
		EGS centres	***	***	***	***
		Residential camps	***	***	***	***
		Bridgecourses	***	***	***	***
4	SFG	Education of disabled		***	***	***
		Education of Girls		***	***	***
		Education of SC/ST		***	***	***
5	CRC	Workshops and Meetings	***	***	***	***
		Furniture	***			
		Contingency Grant	***	***	***	***
		TLM Grant	***	***	***	***
		Salary of staff	***	***	***	***
		Furniture	***	***		
6	BRC	Contingency Grant	***	***	***	***
		Workshops and Meetings	***	***	***	***
		TLM Grant	***		***	
		Training Equipment		***		
		Research and Evaluation Programme		***	***	***
		Construction of BRCs	***	***	***	***
8	CCW	Construction of CRCs	***	***	***	***
		Construction of two classroom	***	***	***	***
		Construction of three classroom	***	***	***	***
		Drinking Water	***	***	***	***
		Toilets	***	***	***	***
		Repairs	***	***	***	***
		Salary of staff	***	***	***	***
9	MRW	Furniture & Equipment	***	***		
		Books and Periodicals		***		
		Maintenance of equipments	***	***	***	***
		Consumables and stationery	***	***	***	***
		TA/DA	***	***	***	***
		Consultancy	***	***	***	***
		Contingency	***	***	***	***
		Training to BRC Staff	***	***		***
		Training to CRC Staff		***		***
		Training to Teachers (Primary)		***	***	***
		Training to Teachers (Middle)		***	***	***
11	TRG	Training to VEC members	***			
		Computer Education		***	***	***
12	VEC	Edn. of Girls - inn programmes		***	***	***
		Edn. of SC/ST Children - inn prog,		***	***	***
13	INO	ECE (New centres)		***	***	***

Sl.No	Block	BRC	CRC	Three Classroom	Two classroom	Toilet	Drinking water
1	Thiruvallur		1	2	2	5	7
2	Gummidipondi	1	2	2	4	6	7
3	Kadambathur	1	2	2	1	5	6
4	Minjur		1	3	4	7	7
5	Pallipet	1	3	2	3	5	6
6	Poondamalli		1	2	1	5	6
7	Poondi	1	2	2	1	5	6
8	Puzhal	1	2	2	3	6	7
9	R.K.Pet	1	3	2	2	5	7
10	Solavaram	1	2	2	2	5	6
11	Thiruttani	1	2	2	2	5	6
12	Thiruvalangadu		1	3	2	6	7
13	Ellapuram		1	2	2	5	6
14	Villivakam	1	2	2	1	5	6
		9	25	30	30	75	90

LIBRARY & DOCUMENTATION CENTRE
 National Institute of Educational
 Planning and Administration.
 17-B, Ansari Road Marg,
 New Delhi-110016 D-12081
 DOC. No. 19-11-2003
 Date

Table A

S. No.	Maj. Act.	Activity Description	Thiruvallur				
			2001-2002				
			Receipt		Exp.	Spill	
Phy.	Fin.	Phy.	Fin.				
1	PFE	Primary Schools					
i		No. of Schools					
ii		Salary of new teachers	64	20.396		64	20.396
iii		Salary of addl. Teachers					
iv		School Grants					
v		Teachers Grants					
vi		TLE Grants	32	3.2		32	3.2
		Total		23.596			23.596
2	UPE	Upper Primary Schools					
i		No. of Schools					
ii		Salary of new teachers	6	3.000		6	3.000
iii		Salary of addl. Teachers					
iv		School Grants					
v		Teachers Grants					
vi		TLE Grants	6.000	3.000		6.000	3.000
		Total		6			6
3	AIE	Alternative & Innovative Educatio					
i		EGS Centres (Unserved Habitations)					
ii		Bridge Courses/Transit Camps					
iii		Residential Camps					
		Total		0		0	0
4	SFG	Special Focus Groups					
i		Education of disabled		15.833			15.833
ii		Education of Girls					
iii		Education of SC/ST Children					
		Total		15.833			15.833
5	VEC	Village Education Committees					
i		Meetings					
ii		Training					
		Total		0			0
6	CRC	Cluster Resource Centres					
i		Workshops and Meetings	133	3.334		133	3.334
ii		Furniture	133	13.300		133	13.300
iii		Contingency Grant					
iv		TLM Grant					
v		TLE Grant					
vi		Library Books					
vii		TA/DA					
		Total	266	16.634		266	16.634
7	BRC	Block Resource Centres					
i		Salary of Staff					
ii		Furniture	28	20.79		0	20.79
iv		Workshops and Meetings					
v		TLM Grant					
vi		Training Equipments					
vii		Library Books					
viii		TA/DA					
		Total	28.000	20.790		0.000	20.790
8	REM	Research, Evaluation & Monitoring					
9	CCW	Civil Construction Works					

S. No.	Maj. Act.	Activity Description	Thiruvallur				
			2001-2002				
			Receipt		Exp.	Spill	
			Phy.	Fin.		Phy.	Fin.
i		Construction of BRCs					
ii		Construction of CRCs					
iii		Construction of two classroom	9	27.000		9	27.000
iv		Construction of three classroom	3	13.500		3	13.500
v		Drinking Water	120	18.000		120	18.000
vi		Toilets	75	15.000		75	15.000
		Total	207.000	73.500		207.000	73.500
10	MRW	Maintenance & Repair Works					
11	MGT	Management					
i		Salary of staff					
ii		Furniture and Equipment					
iii		Books and Periodicals					
iv		Maintenance of equipment					
v		Consumable and Stationery					
vi		Management Information System					
vii		Media and Documentation					
viii		Training to Project Staff					
ix		Consultancy					
x		Contingency					
xi		TA/DA					
		Total	0.000	0.000		0.000	0.000
12	TRG	Training					
i		Training to Teachers (Primary)					
ii		Training to Teachers (Middle)					
		Total	0.000	0.000		0.000	0.000
13	INO	Innovation					
i		Computer Education					
ii		Edn. of Girls (Arts and Crafts)					
iii		Edn. of SC/ST Children (Arts and					
iv		Nursery Education					
		Total	0.000	0.000		0.000	0.000
		Grand Total		156.353			156.353

Table B

S. No.	Maj. Act.	Activity Description	Thiruvallur						
			Receipt		Expenditure		Spillover		
			Phy	Fin	Phy	Fin	Phy	Fin	
1	PFE	Primary Schools							
i		No. of Schools							0.000
ii		Salary of new teachers	82	61.320	70	16.950			44.370
iii		Salary of addl. Teachers							0.000
iv		School Grants	1111	22.220	1000	20.000			2.220
v		Teachers Grants	4486	22.430	3500	17.500			4.930
vi		TLE Grants	9	0.900	3	0.300			0.600
		Total	5688.000	106.870	4573.000	54.750	0.000		52.120
2	UPE	Upper Primary Schools							
i		No. of Schools							0.000
ii		Salary of new teachers	50	26.040	29	12.937			13.103
iii		Salary of addl. Teachers							0.000
iv		School Grants	381	7.620	331	6.620			1.000
v		Teachers Grants	3160	15.800	2919	14.595			1.205
vi		TLE Grants	38	19.000	17	8.500			10.500
		Total	3629.000	68.460	3296.000	42.652	0.000		25.808
3	AIE	Alternative & Innovative Education							
i		EGS Centres (Unserved Habitations)	10	2.112	0	0	0	0	2.112
ii		Bridge Courses/Transit Camps							
iii		Residential Camps							0.000
		Total	10.000	2.112	0.000	0.000	0.000	0.000	2.112
4	SFG	Special Focus Groups							
i		Education of disabled	750	3.000					3.000
ii		Education of Girls							0.000
iii		Education of SC/ST Children							0.000
		Total	750.000	3.000	0.000	0.000	0.000	0.000	3.000
5	VEC	Village Education Committees							
i		Meetings							0.000
ii		Training	1498	7.190	1498	3.000			4.190
		Total	1498.000	7.190	1498.000	3.000	0.000		4.190
6	CRC	Cluster Resource Centres							
i		Workshops and Meetings	133	1.862	133	1.862	0	0	
ii		Furniture							
iii		Contingency Grant	133	3.325	133	0.828			2.497
iv		TLM Grant		1.330					1.330
v		TLE Grant							0.000
vi		Library Books							0.000
vii		TA/DA							0.000
		Total	266.000	6.517	266.000	2.690	0.000		3.827
7	BRC	Block Resource Centres							
		Salary of Staff	14	117.6	14	89.686	0		27.914
		Furniture							

S. No.	Maj. Act.	Activity Description	Thiruvallur					
			Receipt		Expenditure		Spillover	
			Phy	Fin	Phy	Fin	Phy	Fin
iii		Contingency Grant	14	1.750	14	1.750		0.000
iv		Workshops and Meetings	14	0.490				0.490
v		TLM Grant	14	0.7				0.700
vi		Training Equipments						0.000
vii		Library Books						0.000
viii		TA/DA						0.000
		Total	56.000	120.540	28.000	91.436	0.000	29.104
8	REM	Research, Evaluation & Monitoring	1340	12.060		3.610		8.450
9	CCW	Civil Construction Works						
i		Construction of BRCs	5	30.000	5	20.000		10.000
ii		Construction of CRCs	5	10.000	5	5.000		5.000
iii		Construction of two classroom	28	84.000	28	23.250		60.750
iv		Construction of three classroom	33	148.500	33	49.000		99.500
v		Drinking Water	61	9.150	48	8.700		0.450
vi		Toilets	63	12.600	51	12.270		0.330
		Total		294.250		118.220	0.000	176.030
10	MRW	Maintenance & Repair Works	1340	67.000	1296	64.800		2.200
11	MGT	Management						
i		Salary of staff	1	15.000	1	6.396		8.604
ii		Furniture and Equipment	1	2.000				2.000
iii		Books and Periodicals		0.500				0.500
iv		Maintenance of equipment	1	0.500		0.245		0.255
v		Consumable and Stationery	1	0.250				0.250
vi		Management Information System	1	2.000		0.390		1.610
vii		Media and Documentation	1	1				1.000
viii		Training to Project Staff	1	1.000		0.291		0.709
ix		Consultancy	1	2.500				2.500
x		Contingency		0.150		0.150		0.000
xi		TA/DA		1.911				1.911
		Total	8.000	26.811		7.472		19.339
12	TRG	Training						
i		Training to Teachers (Primary)	1346	18.841		6.006		12.835
ii		Training to Teachers (Middle)	947	13.258		3.770		9.488
		Total	2293.000	32.099		9.776		22.323
13	INO	Innovation						
i		Computer Education	1	15.000				15.000
ii		Edn. of Girls (Arts and Crafts)	1	15.000				15.000
iii		Edn. of SC/ST Children (Arts and Crafts)	1	15.000				15.000
iv		Nursery Education						0.000
		Total		45.000		0.000		45.000
		Grand Total		791.909		398.406		393.503

Table - C

S. No.	Maj. Act.	Activity Description	Thiruvallur				2002-03 spillover
			2001-2002				
			Spillover		Expenditure		
			Phy.	Fin.	Phy.	Fin.	
1	PFE	Primary Schools					
i		No. of Schools					0.000
ii		Salary of new teachers	64	20.396	64	20.396	44.370
iii		Salary of addl. Teachers					0.000
iv		School Grants					2.220
v		Teachers Grants					4.930
vi		TLE Grants	32	3.2	32	3.2	0.600
		Total		23.596		23.596	52.120
2	UPE	Upper Primary Schools					0.000
i		No. of Schools					0.000
ii		Salary of new teachers	6	3.000	6	3.000	13.103
iii		Salary of addl. Teachers					0.000
iv		School Grants					1.000
v		Teachers Grants					1.205
vi		TLE Grants	6.000	3.000	6.000	3.000	10.500
		Total		6		6	25.808
3	AIE	Alternative & Innovative Educatio					0.000
i		EGS Centres (Unservd Habitations)					2.112
ii		Bridge Courses/Transit Camps					0
iii		Residential Camps					0.000
		Total		0		0	2.112
4	SFG	Special Focus Groups					0.000
i		Education of disabled		15.833		15.833	3.000
ii		Education of Girls					0.000
iii		Education of SC/ST Children					0.000
		Total		15.833		15.833	3.000
5	VEC	Village Education Committees					0.000
i		Meetings					0.000
ii		Training					4.190
		Total		0		0	4.190
6	CRC	Cluster Resource Centres					0.000
i		Workshops and Meetings	133	3.334	133	3.334	0
ii		Furniture	133	13.300	133	13.300	0.000
iii		Contingency Grant					2.497
iv		TLM Grant					1.330
v		TLE Grant					0.000
vi		Library Books					0.000
vii		TA/DA					0.000
		Total	266	16.634	266	16.634	3.827
7	BRC	Block Resource Centres					0.000
i		Salary of Staff					27.914
ii		Furniture	28	20.79	0	20.79	0.000
iv		Workshops and Meetings					0.490
v		TLM Grant					0.700
vi		Training Equipments					0.000
vii		Library Books					0.000
viii		TA/DA					0.000
		Total	28.000	20.790	0.000	20.790	29.104
8	REM	Research, Evaluation & Monitoring					8.450

S. No.	Maj. Act.	Activity Description	Thiruvallur				2002-03 spillover
			2001-2002				
			Spillover		Expenditure		
			Phy.	Fin.	Phy.	Fin.	
9	CCW	Civil Construction Works					0.000
i		Construction of BRCs					10.000
ii		Construction of CRCs					5.000
iii		Construction of two classroom	9	27.000	9	27.000	60.750
iv		Construction of three classroom	3	13.500	3	13.500	99.500
v		Drinking Water	120	18.000	120	18.000	0.450
vi		Toilets	75	15.000	75	15.000	0.330
		Total	207.000	73.500	207.000	73.500	176.030
10	MRW	Maintenance & Repair Works					2.200
11	MGT	Management					0.000
i		Salary of staff					8.604
ii		Furniture and Equipment					2.000
iii		Books and Periodicals					0.500
iv		Maintenance of equipment					0.255
v		Consumable and Stationery					0.250
vi		Management Information System					1.610
vii		Media and Documentation					1.000
viii		Training to Project Staff					0.709
ix		Consultancy					2.500
x		Contingency					0.000
xi		TA/DA					1.911
		Total	0.000	0.000	0.000	0.000	19.339
12	TRG	Training					0.000
i		Training to Teachers (Primary)					12.835
ii		Training to Teachers (Middle)					9.488
		Total	0.000	0.000	0.000	0.000	22.323
13	INO	Innovation					0.000
i		Computer Education					15.000
ii		Edn. of Girls (Arts and Crafts)					15.000
iii		Edn. of SC/ST Children (Arts and					15.000
iv		Nursery Education					0.000
		Total	0.000	0.000	0.000	0.000	45.000
		Grand Total		156.353		156.353	393.503

NIEPA DC



D12081

Sarva Shiksha Abhiyan, Tamilnadu

**Table D
Budget Estimate for 2003-2004**

S. No.	Maj. Act.	Activity Description	Unit Cost	Thiruvallur	
				Phy.	Fin.
1	PFE	Primary Education			
i		No. of Schools		12	
ii		Salary of new teachers	0.840	94	78.960
iii		Salary of addl. teachers	0.840		
iv		School Grant	0.020	1006	20.120
v		Teachers Grant	0.005	3493	17.465
vi		TLE Grant	0.100	12	1.200
		Total			117.745
2	UPE	Upper Primary Education			
i		No. of Schools		21	
ii		Salary of new teachers	0.840	73	61.320
iii		Salary of addl. teachers	0.840		
iv		School Grant	0.020	332	6.640
v		Teachers Grant	0.005	2983	14.915
vi		TLE Grant	0.500	21	10.500
		Total			93.375
3	AIE	Alternative & Innovative Education			
i		EGS Centres (Unservd Habitations)	0.211		
ii		Bridge Courses/Transit Camps	0.211		87.179
iii		Residential Camps	0.030	3	3.600
		Total			90.779
4	SFG	Special Focus Group			
i		Education of disabled	0.012	1982	23.784
ii		Education of Girls	0.002		
iii		Education of SC/ST Children	0.002	7500	15.000
		Total			38.784
5	VEC	Village Education Committees		1527	
i		Meetings	0.018		13.743
ii		Training	0.009		13.743
		Total			27.486
6	CRC	Cluster Resource Centres		157	
i		Workshops and Meetings	0.002		3.768
ii		Furniture	0.100		
iii		Contingency Grant	0.025		3.925
iv		TLM Grant	0.010		1.570
v		TLE Grant	0.250		1.250
vi		Library Books	0.100		0.500
vii		TA/DA	0.002		0.314
		Total			11.327
7	BRC	Block Resource Centres		14	
i		Salary of Staff	10.000		140.000
ii		Furniture	1.000		
iii		Contingency Grant	0.125		1.750
iv		Workshops and Meetings	0.005		0.700
v		TLM Grant	0.050		0.700
vi		Training Equipments	1.000		0.000
vii		Library Books	0.250		1.250
viii		TA/DA	1.000		14.000
		Total			158.400

S. No.	Maj. Act.	Activity Description	Unit Cost	Thiruvallur	
				Phy.	Fin.
8	REM	Research, Evaluation & Monitoring	0.015	1527	22.905
9	CCW	Civil Construction Works			
i		Construction of BRCs	6.000	9	54.000
ii		Construction of CRCs	2.000	25	50.000
iii		Construction of two classroom	3.000	30	90.000
iv		Construction of three classroom	4.500	30	135.000
v		Drinking Water	0.150	75	11.250
vi		Toilets	0.200	90	18.000
		Total			358.250
10	MRW	Maintenance & Repair Works	0.050	1332	66.500
11	MGT	Management			
i		Salary of staff	22.000		22.000
ii		Furniture and Equipment	3.000		3.000
iii		Books and Periodicals	0.500		0.500
iv		Maintenance of equipment	0.500		0.500
v		Consumable and Stationery	0.350		0.350
vi		Management Information System	2.000		2.000
vii		Media and Documentation	2.000		2.000
viii		Training to Project Staff	0.010		1.000
ix		Consultancy	2.500		2.500
x		Contingency	0.140		0.140
xi		TA/DA	1.000		1.000
		Total			34.990
12	TRG	Training			
i		Training to Teachers (Primary)	0.014	3493	48.902
ii		Training to Teachers (Upper Primary)	0.014	2983	41.762
		Total			90.664
13	INO	Innovation			
i		Computer Education	15.000		15.000
ii		Edn. of Girls (Arts and Craft)	15.000		15.000
iii		Edn. of SC/ST Children (Arts and Craft)	5.000		5.000
iv		Nursery Education	15.000		15.000
		Total			50.000
		Grand Total			1161.505