



SARVA SHIKSHA ABHIYAN

DISTRICT ELEMENTARY EDUCATION PLAN

**ANNUAL WORK PLAN & BUDGET
2003-2004**

NIEPA DC



D12183

**VILLUPURAM DISTRICT
TAMILNADU**

ROBERT S. GARDNER

Medical Care

Check

12-12-2003

No.

000,000

Date

D. 12183

05-12-2003

SI. No.	CONTENT	Page No.
	Chapter I - PLAN OVERVIEW	1 - 28
1	1.1 Introduction	1
2	1.2 Planning Process	1
3	1.3 General Profile	3
4	1.4 Educational Profile	5
5	1.4.1 Access	6
6	1.4.2 Enrolment- GER NER	9
7	1.4.3-6 CR, RR, DR and TR	14 - 17
8	1.4.7 Teacher Pupil Ratio	18
9	1.5 Early Childhood Care & Education	19
10	1.6 Out of School Children	20
11	1.7 Special Focus Group	22
12	1.8 VECs, CRCs, BRCs	25
13	1.9 Infrastructure	26
14	1.10 District Project Office	28
	Chapter II - PROGRESS REVIEW	29 - 70
15	2.1 Introduction	29
16	2.2 Progress in ACCESS	29
17	2.3 Progress in ENROLMENT	33
18	2.4 Progress in COMPLETION	37
19	2.5 Progress in RETENTION	38
20	2.6 Progress in TRANSITION	39
21	2.7 Progress in ATTENDANCE	40
22	2.8 Progress in PUPIL'S ACHIEVEMENT	41
23	2.9 Mainstreaming Out of School Children	44
24	2.10 Appointment of Teachers	48
25	2.11 Programmes for Disabled	48
26	2.12 Programmes for SC/ST	48
27	2.13 Programmes for Girls	49
28	2.14 Early Childhood Care & Education	49
29	2.15 Functioning of Village Education Committee	49
30	2.16 Activities in Cluster Resource Centres	50
31	2.17 Programmes in Block Resource Centres	50
32	2.18 Research, Evaluation and Monitoring	51

33	2.19	Improving Infrastructure	56
34	2.20	Maintenance and Repair	57
35	2.21	Programmes for Quality Improvement	58
36	2.22	Project Management	65
37	2.23	Convergence with Ongoing Schemes	66
38	2.24	Issues and Strategies	68
		Chapter III - ACTIVITIES AND BUDGET	71 - 82
39	3.1	Primary Schools	71
40	3.2	Upper Primary Schools	71
41	3.3	Alternative and Innovative Education	72
42	3.4	Special Focus Group	72
43	3.5	Village Education Committee	74
44	3.6	Cluster Resource Centres	74
45	3.7	Block Resource Centres	75
46	3.8	Research, Evaluation and Monitoring	75
47	3.9	Civil Construction Works	76
48	3.10	Maintenance and Repair Works	76
49	3.11	Management	76
50	3.12	Training	77
51	3.13	Innovation	78
52	3.14	Procurement Plan	79
53	3.15	Implementation Schedule	80
54		Activities and Budget	
55	Annexure -I	List of Schools in need of 3 Classroom	
56	Annexure -II	List of Schools in need of 2 Classroom	
57	Annexure -III	Out of School Children I D Card	

List of Tables

Table No.	Name of the Tables	Page No.
1	Revenue Administrative System	3
2	Population	4
3	District Literacy Level	4
4	SC/ST Literacy Level	4
5	Number of Schools, Teachers & Students	5
6	Blockwise Access Rate	6
7	Blockwise Gradewise Enrolment 2002-03 (All)-Primary	7
8	Blockwise Gradewise Enrolment 2002-03 (All)-Upp. Primary	8
9	Blockwise Enrolment - GER&NER2002-03 (All)- Primary	9
10	Blockwise Enrolment - GER&NER2002-03 (All)-Upp. Primary	10
11	Enrolment of Boys and Girls 2002-2003	11
12	SC Population and Enrolment 2002-2003	11
13	ST Population and Enrolment 2002-2003	11
14	Blockwise Enrolment of SC/ST 2002-2003	12
15	Disabled Children & Enrolment 2002-2003	13
16	CR, RR and DR -2002-2003 (Primary)	15
17	CR, RR and DR -2002-2003 (Upp. Primary)	16
18	Blockwise Transition Rate 2002-2003.	17
19	Teacher Pupil Ratio 2002-2003	18
20	Number of ECCE Centres and Children 2002-2003	19
21	Out of School Children (House Hold Survey 2001)	20
22	Out of School Children and Enrolment(House. Hold Survey 2001)	21
23	Girls Gradewise Enrolment	22
24	Blockwise No. of BRCs, CRCs and VECs- 2002-2003	25
25	District Level GAR	29
26	Number of Schools	29
27	District Level GER & NER	34
28	Year wise comparison of SC/ST enrolment	35
29	GER/NER Comparison of SC/ST	35
30	No.of SC/ST Students in special coaching class	35
31	Incentives to Disabled Children	37
32	Completion Rate	37
33	Comparision of Transition Rate	39
34	Attendance Rate of Primary and Upper primary	40
35	Attendance Rate comparision	41
36	Achievement level Primary level	42
37	Achievement level Upper Primary level	43
38	Achievement level Comparison	44
39	EGS School	45
40	Number of EGS centres and Volunteers	46
41	Tentative Training Schedule for 2003-04	61-62
42	Number students getting incentives	67

Chapter I - PLAN OVERVIEW

1.1. Introduction :

“Teaching the poor is holier than any other,” the words of Bharathi the great poet of Tamilnadu. His words emphasise the desirability of basic education. Far from merely desirable, it has become a great need of Independent India to have complete literacy of the masses.

Following on the footsteps of the DPEP, SSA has taken root all over the country, with the sole aim of providing the masses with quality basic Elementary Education. After a thorough study on Perspective Plan of the whole programme upto the year 2010, two Annual Work Plan and Budgets have been prepared so far. Keeping the objectives of Sarva Shiksha Abhiyan in mind the third Annual Work Plan Budget for the year 2003-2004 is prepared. This plan document includes the Chapters Plan Overview, Progress Review and Activities & Budget.

1.2. Planning Process

The process by which the plan is made is as important as the plan itself. Annual Work Plan Budgeting is a continuous process. To examine the needs of school, the status of the district with respect to key indicators such as Access, Enrollment, Achievement level and other SSA interventions District Planning Committee has been constituted.

DPC, Additional DPC, ADPC, AEEO, Statistical Officer, Training Officer, Two BRC supervisors, and two DIET faculty members are the members of this committee. This committee collected all data from Gross root level on SSA intervention and with the help of guidelines and orientation given by State Level Planning Team.

Since, it is a participatory process suggestions made by VEC members are given priority while preparing this plan. For this District Committee interacted with VEC members on 27th December 2002, 3rd January 2003 and collected all information given by VEC members.

The committee has integrated and incorporated all available information with reference to the following.

1. Data collected from DISE and Village Information Schedule.
2. Data collected from COHORT
3. School Development Plan.
4. Block Level Plans.
5. Suggestions given by State Level Planning Committee.
6. Suggestions made by AEEOs and BRC Supervisors in the regular Monthly Review Meetings conducted by DPC and Joint Director.

The role of State Level Planning Committee :

State Project Director and his team gave orientation to all ADPCs in preparation of Annual Work Plan and Budget 2003 -04 at Trichy on 7.3.03 One day work shop for preparation of Annual Work Plan and Budget 2003 -04 under SSA was held at Chennai on 16.3.03. All Directors of Education Department shared their views on successful implementation of SSA. Tamilnadu state Education Secretary interacted with all other district Officials on district issues and suggested ways and means for mainstreaming the out of school children in regular schools.

Consultancy with State Level Committee :

On 20th January 2003 Joint Director met with District Planning Committee members and analyzed the data collected in Vilupuram District. They discussed various interventions to be implemented under SSA in the forth coming year. The Planning Committee members consulted CRC coordinators BRC personnel, AEEOs, NGOs and Officials of Social Welfare Department.

On March 13th 2003, District Collector as the District Chairman of SSA conducted all BDOs meeting to assess the needs of infra facilities to schools, such as school buildings, toilets, drinking water and teachers for school.

Three days workshop from 27th to 29th March 2003 on preparation of Annual Work Plan and Budget for 2003 – 2004 was conducted at Gandhigram. IED programmes and Innovation programmes were highlighted by the experts in the field.

Four days work shop from 7th to 10th April was held at State Project Office, Chennai. Budget provision was given to 13 activities, planned for this year. After finalising the draft of AWP & B for the year 2003-2004, the plan document was submitted to the State Project Director on 16th April 2003 at Chennai.

1.3. General Profile :

1.3.1. Area and Status :

Viluppuram District sprawls an area of 7222 sq.km. having a beautiful coastal area , the Bay of Bengal in the East.

The Kalrayan Hills in the District has thick Tribal Population. 45.5% of the population is below poverty line. The socio-economic status of the school children is mediocre. Natural barriers such as hills, valleys affecting educational facilities are in the Kalrayan Hills and coastal areas in Vanur and Marakkanam blocks.

The table given below shows the Administrative System of Viluppuram District.

Table No. 1 **Revenue Administrative System**

Taluks	Blocks	Municipality	Panchayats	Villages	Habitations
8	22	2	1104	1490	2806

Source : Census 2001

1.3. 2. Population :

The following table shows the male ,female population and sex ratio in the district.

Table No. 2 **Population**

Male	Female	Total
1484573	1459344	2943917

Source : Census 2001

Sex Ratio	969 / 1000 males	983 / 1000 males
	Census 1991	& Census 2001

Population density of the district is 406/sq.km.

1. 3. 3. District Literacy level :

Table No. 3 **District Literacy Level**

Census (year)	Male	Female	Overall
1991	60.92%	35.38%	48.36%
2001	76.02%	53.16%	64.68%

Source : National Census 1991 & 2001

While comparing 1991 and 2001 Census, District Literacy level is increased. There is remarkable increase of 17% in the Female Literacy level evident from this table.

1. 3. 4. SC/ST Literacy Level :

Table No. 4 **SC/ST Literacy Level**

SC			ST		
Male	Female	All	Male	Female	All
17.31%	17.16%	17.23%	15.49%	13.25%	14.37%

Source : Census 2001

Generally Literacy level of ST is lower than SC community. Comparatively Female literacy level both in SC and ST populations is less than Male literacy level.

1.4. Educatoinal Profile

Table No. 5 Number of Schools, Teachers and Students

Sl. No	Name of the Block	Number of Schools		Number of Teachers		Number of Students	
		Primary	Upper Pr.	Primary	Upper Pr.	Primary	Upper Pr.
1	MELMALAYANUR	98	32	268	213	12642	7263
2	GINGEE	92	39	324	288	18149	9671
3	VALLAM	89	21	217	121	9962	5033
4	OLAKKUR	84	40	276	332	17367	11454
5	MAILAM	63	30	209	215	10905	6675
6	MARKKANAM	89	29	267	182	15119	8907
7	VANUR	90	34	244	223	11761	7530
8	KANAI	76	27	266	175	14034	7476
9	VIKKARAVANDI	63	32	202	214	11797	7466
10	KOLIYANUR	79	29	260	236	12464	6294
11	KANDAMANGALAM	83	22	236	161	10177	5157
12	MUGAIYUR	96	36	338	265	20158	9380
13	TIRUKOILUR	68	21	266	213	16446	8094
14	TIRUVENNAINALLUR	65	29	194	179	13395	6602
15	SANKRAPURAM	74	33	293	235	16182	10072
16	RISHIVANDIYAM	80	18	245	98	14696	5712
17	KALLAKURICHI	98	50	266	469	24713	9999
18	CHINNA SALEM	74	35	275	274	15302	9670
19	THIYAGADURGAM	69	24	190	146	11561	6721
20	ULUNDURPET	93	30	266	232	18210	9140
21	TIRUNAVVALUR	83	28	214	127	13325	5088
22	VILUPPURAM	17	31	113	369	12165	9092
DISTRICT TOTAL		1723	670	5429	4967	320530	172496

Source . DISE 2002-03

The district is having 1723 primary schools(Govt.-1454, aided-226, unaided-43) 670 upper primary schools of middle, high, higher secondary and matric schools under the management of Government-474, aided-109 and unaided-87.

There are 10396 teachers are working under various schools of various management. The male teachers are 4890, female teachers 5526 and large number of vacancies are there in this district.

163066 boys and 157464 girls are studying in the primary sections. 90523 boys 81973 girls are studying in the upper primary sections under various managements including other (Rly.) management.

1.4.1. Access

Table No. 6

Block wise Access Rate - 2002 - 2003

S. No.	Name of the Block	Total No. of Habitations	No. of Habitations		GAR Primary	No. of Habitations		GAR Upper Primary
			served by Primary schools	not served by Primary schools		served by Upper Primary schools	not served by Upper Primary schools	
1	MELMALAYANUR	179	179		100	177	2	98.11
2	GINGEE	152	152		100	148	4	96.15
3	VALLAM	123	123		100	120	3	96.38
4	OLAKKUR	123	123		100	123		100
5	MAILAM	87	87		100	85	2	96.88
6	MARKKANAM	187	187		100	184	3	97.25
7	VANUR	108	107	1	99.15	104	4	96.39
8	KANAI	90	90		100	85	5	93.42
9	VIKKARAVANDI	81	81		100	81		100
10	KOLIYANUR	108	104	4	98.23	106	2	96.98
11	KANDAMANGALAM	159	159		100	156	3	97.09
12	MUGAIYUR	121	121		99.31	119	2	95.84
13	TIRUKOILUR	94	94		100	90	4	95.65
14	TIRUVENNAINALLUR	98	98		100	98		100
15	SANKRAPURAM	97	97		100	97		100
16	RISHIVANDIYAM	96	96		100	91	5	92.95
17	KALLAKURICHI	108	108		100	106	2	98.02
18	CHINNA SALEM	115	115		100	110	5	94.74
19	THIYAGADURGAM	81	81		100	74	7	90.41
20	ULUNDURPET	188	188		100	184	4	96.66
21	TIRUNAVALAR	189	187	2	99.38	188	1	98.88
22	VILUPPURAM	52	52		100	52		100
23	KALRAYAN HILLS	170	167	3	98.24	160	10	94.23
DISTRICT TOTAL		2806	2796	10	99.42	2738	68	97.32

Source : DISE 2002-03 & VIS 2002-03

Providing 100% access to school going children is our ultimate aim. To increase enrollment and to cover all types of out of school children school mapping exercise was done and the eligible habitations for opening primary schools and middle schools are identified. Access Rate for primary is nearing to 100 (i.e) 99.42 whereas in upper primary there is in need of opening middle schools in Villupuram district.

Total Number of habitations in Viluppuram districts : 2806

Total Number of habitations served by Primary schools : 2796

As per matrix out of 10 habitations not served by primary school number of eligible habitations are identified to open primary schools are 7

Total number of habitations served by upper primary schools : 2738

As per matrix out of 68 habitations not served by upper primary school number of eligible habitations for opening Middle schools are 58

Access Rate for primary : 99.40 (2002-03)

Access Rate for upper Primary : 97.30 (2002-03)

1.4.2.Enrollment Primary

Table No. 7

Block wise Grade wise Enrollment 2002 - 03 (ALL) Primary

S. No.	Block	Class I			Class II			Class III			Class IV			Class V		
		B	G	T	B	G	T	B	G	T	B	G	T	B	G	T
1	MELMALAYANUR	1237	1195	2432	1157	1195	2352	1304	1315	2619	1284	1310	2594	1357	1288	2645
2	GINGEE	1907	1708	3615	1697	1720	3417	1774	1777	3551	1944	1836	3780	1942	1844	3786
3	VALLAM	935	993	1928	932	927	1859	968	1013	1981	1076	1056	2132	1058	1004	2062
4	OLAKKUR	1647	1705	3352	1673	1757	3430	1653	1792	3445	1784	1778	3562	1818	1760	3578
5	MAILAM	1115	1164	2279	1061	1002	2063	1061	1104	2165	1153	1102	2255	1088	1055	2143
6	MARKKANAM	1506	1476	2982	1431	1427	2858	1536	1491	3027	1547	1593	3140	1566	1546	3112
7	VANUR	1111	1123	2234	1124	1195	2319	1170	1194	2364	1215	1259	2474	1198	1172	2370
8	KANAI	1425	1380	2805	1375	1333	2708	1411	1384	2795	1539	1427	2966	1422	1338	2760
9	VIKKARAVANDI	1226	1185	2411	1115	1094	2209	1145	1195	2340	1163	1185	2348	1249	1240	2489
10	KOLIYANUR	1304	1325	2629	1135	1191	2326	1289	1272	2561	1257	1268	2525	1207	1216	2423
11	KANDAMANGALAM	1081	1053	2134	929	996	1925	984	948	1932	1015	1072	2087	1007	1092	2099
12	MUGAIYUR	1956	1941	3897	1976	1986	3962	2110	2016	4126	2153	2103	4256	1984	1933	3917
13	TIRUKOILUR	1762	1668	3430	1656	1557	3213	1731	1599	3330	1741	1610	3351	1642	1480	3122
14	TIRUVENAINALLUR	1400	1325	2725	1338	1267	2605	1420	1350	2770	1430	1322	2752	1337	1206	2543
15	SANKARAPURAM	1665	1604	3269	1651	1561	3212	1559	1531	3090	1670	1625	3295	1706	1610	3316
16	RISHIVANDIYAM	1531	1427	2958	1416	1425	2841	1560	1487	3047	1561	1524	3085	1378	1387	2765
17	KALLAKURICHI	2934	2565	5499	2585	2266	4851	2523	2306	4829	2524	2334	4858	2502	2174	4676
18	CHINNA SALEM	1616	1585	3201	1449	1425	2874	1501	1475	2976	1588	1515	3103	1632	1516	3148
19	THIYAGADURGAM	1235	1189	2424	1081	1104	2185	1130	1099	2229	1233	1205	2438	1128	1157	2285
20	ULUNDURPET	2026	1957	3983	1914	1709	3623	2006	1817	3823	1816	1675	3491	1777	1513	3290
21	TIRUNAVVALUR	1401	1376	2777	1282	1230	2512	1450	1384	2834	1412	1326	2738	1231	1233	2464
22	VILUPPURAM	1317	1112	2429	1243	1203	2448	1249	1137	2386	1370	1151	2521	1271	1112	2383
TOTAL		33337	32056	65393	31220	30570	61790	32534	31686	64220	33475	32276	65751	32500	30876	63376

Source : DISE 2002 - 2003

While analysing Gradewise Enrollment Gender Parity is maintained in Primary. In Standard II & V enrollment of girls is decreased comparing with other standards.

1.4.2. Enrollement Upper Primary

Table No. 8 Block wise Grade wise Enrollment 2002 - 03 (ALL)Upper priamry

S. No.	Block	Class VI			Class VII			Class VIII		
		B	G	T	B	G	T	B	G	T
1	MELMALAYANUR	1293	1262	2555	1248	1223	2471	1126	1111	2237
2	GINGEE	1762	1604	3366	1736	1607	3343	1542	1420	2962
3	VALLAM	870	889	1759	885	816	1701	814	759	1573
4	OLAKKUR	2130	2081	4211	1965	1831	3796	1774	1673	3447
5	MAILAM	1246	1211	2457	1085	1100	2185	1053	980	2033
6	MARKKANAM	1602	1604	3206	1522	1452	2974	1350	1377	2727
7	VANUR	1309	1302	2611	1297	1293	2590	1194	1135	2329
8	KANAI	1500	1336	2836	1293	1221	2514	1093	1033	2126
9	VIKKARAVANDI	1401	1324	2725	1250	1200	2450	1155	1136	2291
10	KOLIYANUR	1158	1194	2352	1030	1099	2129	924	889	1813
11	KANDAMANGALAM	850	874	1724	944	888	1832	781	820	1601
12	MUGAIYUR	1846	1617	3463	1705	1409	3114	1456	1347	2803
13	TIRUKOILUR	1706	1427	3133	1383	1285	2668	1196	1097	2293
14	TIRUVENNAINALLUR	1449	1303	2752	1131	1012	2143	934	773	1707
15	SANKARAPURAM	1990	1803	3793	1857	1655	3512	1490	1277	2767
16	RISHIVANDIYAM	1311	1085	2396	967	872	1839	744	733	1477
17	KALLAKURICHI	2153	1817	3970	1786	1425	3211	1605	1213	2818
18	CHINNA SALEM	1795	1551	3346	1797	1513	3310	1645	1369	3014
19	THIYAGADURGAM	1292	1194	2486	1310	986	2296	1084	855	1939
20	ULUNDURPET	1983	1613	3596	1755	1237	2992	1439	1113	2552
21	TIRUNAVVALUR	1134	1016	2150	923	708	1631	732	575	1307
22	VILUPPURAM	1698	1394	3092	1603	1524	3127	1442	1431	2873
TOTAL		33478	30501	63979	30472	27356	57828	26573	24116	50689

Source: DISE 2002 - 2003

In Upper primary there is a gradual decrease of Enrollment from VI - VIII in all blocks.

1.4.2a. Enrollment GER and NER

Table No. 9 Block wise Enrolment - GER and NER - 2002 - 2003 Primary

S. No	Block	GER						NER					
		All		SC		ST		All		SC		ST	
		B	G	B	G	B	G	B	G	B	G	B	G
1	MELMALAYANUR	103	102	102	106	100	104	97	96	97	94	95	96
2	GINGEE	103	102	91	89	100	97	99	99	89	87	95	94
3	VALLAM	101	101	89	92	98	97	98	98	87	90	95	93
4	OLAKKUR	102	101	104	103	99	97	99	98	99	98	97	95
5	MAILAM	103	103	82	84	99	101	97	97	80	82	97	97
6	MARKKANAM	104	104	89	96	92	90	98	98	87	94	90	89
7	VANUR	103	103	94	94	97	95	97	97	93	93	96	94
8	KANAI	102	102	101	98	99	98	98	98	99	98	96	95
9	VIKKARAVANDI	102	102	96	98	97	94	98	97	94	95	95	93
10	KOLIYANUR	102	104	104	105	100	102	99	99	99	99	97	95
11	KANDAMANGALAM	102	101	96	98	100	100	98	99	95	97	99	99
12	MUGAIYUR	101	102	89	81	93	92	88	83	87	80	91	91
13	TIRUKOILUR	103	102	101	101	99	96	93	96	99	98	95	93
14	TIRUVENNAINALLUR	104	103	93	86	97	95	94	94	92	85	95	94
15	SANKARAPURAM	102	102	100	101	105	99	98	98	98	99	98	94
16	RISHIVANDIYAM	105	103	95	96	100	99	97	97	93	94	98	97
17	KALLAKURICHI	103	103	105	105	104	104	98	98	99	98	99	99
18	CHINNA SALEM	102	102	104	101	98	97	99	99	99	98	95	93
19	THIYAGADURGAM	102	102	92	95	100	100	95	95	91	93	95	94
20	ULUNDURPET	104	104	96	88	105	76	88	87	94	86	95	92
21	TIRUNAVVALUR	105	105	89	92	100	100	97	94	87	90	97	95
22	VILUPPURAM	105	105	105	104	105	103	99	99	99	98	98	96
DISTRICT AVERAGE		103	103	97	94	99	99	97	97	96	93	98	96

Source : DISE 2002-03

From this table it is understood that there is no gender gap both in GER and NER in primary enrollment. There is a problem in the enrollment of SC girls in Ulundurpet block because GER 88 and NER 86. Even SC girls enrollment is also affected in Ulundurpet. Regarding SC boys and girls enrollment, the following blocks need special treatment as they show low GER around 85-90

1. Vallam
2. Mailam
3. Marakkanam
4. Mugaiyur
5. Tirunavalur

1.4.2b. Enrollment GER and NER

Table No. 10 Block wise Enrolment - GER and NER - 2002 - 2003 Upper Primary

S. No	Block	GER						NER					
		All		SC		ST		All		SC		ST	
		B	G	B	G	B	G	B	G	B	G	B	G
1	MELMALAYANUR	108	107	103	105	55	105	98	97	99	98	53	97
2	GINGEE	106	103	78	83	56	53	99	99	75	79	52	49
3	VALLAM	103	103	68	68	105	104	98	98	62	62	100	100
4	OLAKKUR	114	109	114	109	97	80	99	99	99	99	94	73
5	MAILAM	103	102	90	90	109	63	98	97	81	81	100	59
6	MARKKANAM	106	106	76	79	48	67	99	98	68	71	44	61
7	VANUR	108	109	91	100	44	68	99	99	87	98	41	65
8	KANAI	108	108	105	108	70	80	98	97	94	98	63	73
9	VIKKARAVANDI	110	108	86	79	92	42	99	99	84	75	87	40
10	KOLIYANUR	105	106	97	101	85	94	99	99	87	91	85	94
11	KANDAMANGALAM	105	105	89	94	0	0	99	98	81	90	0	0
12	MUGAIYUR	107	106	73	71	56	67	99	98	66	64	51	60
13	TIRUKOILUR	107	106	102	106	83	112	93	86	92	96	74	100
14	TIRUVENNAINALLUR	107	104	74	64	52	67	95	93	71	62	42	57
15	SANKARAPURAM	107	102	104	97	105	107	98	98	93	87	100	100
16	RISHIVANDIYAM	105	104	76	75	47	69	98	96	72	71	42	64
17	KALLAKURICHI	106	106	96	94	110	98	98	97	94	88	96	91
18	CHINNA SALEM	107	106	107	105	103	102	99	99	100	100	100	99
19	THIYAGADURGAM	104	108	105	90	106	100	99	98	94	81	99	100
20	ULUNDURPET	107	106	99	87	83	47	90	84	89	78	75	47
21	TIRUNAVVALUR	112	109	59	57	102	101	98	96	55	52	97	95
22	VILUPPURAM	110	110	106	104	105	107	100	99	100	100	100	100
DISTRICT AVERAGE		107	106	91	90	94	83	98	97	85	83	79	77

Table shows that there is 1% difference between boys and girls in GER and NER at district level. Vallam, Gingee, Vikravandi, Mugaiyur, Tiruvonnainallur, Rishivandiyam and Tirunavalur need special attention in enrolling SC students in upper primary classes.

GER for ST girls is 83 at district level. There is 11% gap between boys and girls in GER. It is a great concern. Special activity is planned to improve GER. But in NER of ST, 2% gender gap is recorded. Special programme is necessary to enroll ST girls in upper primary.

1.4.2.1. Enrollment of boys and girls 2002-2003

This table shows the enrollment of Boys and Girls in the year 2002-2003

Table No. 11 **Enrollment of boys and girls 2002-2003**

Age Group	Population		Enrollment		Percentage of enrollment		Total percentage
	B	G	B	G	B	G	
6- 10	165164	159146	163066	157464	98.7%	98.9 %	98.8 %
11-13	98815	92079	90523	81973	91.6%	89%	90.3%
Total	515204		493026		95.7%		95.7%

Source : DISE & VIS 2002-03

In primary the enrollment of boys and girls is equal. 98.8% of boys and girls are enrolled in the age group of 6 – 10. In upper primary the boys enrollment is 91.6% whereas girls enrollment is 89%. In the age group of 11 – 13.

1.4.2.2. SC/ST Population & Enrollment 2002-2003

Table No. 12 **SC Population & Enrollment 2002-2003**

Age Group	Population		Enrollment		Percentage (%)	
	B	G	B	G	B	G
6 – 10	58101	57788	56489	54600	97	94
11 – 13	33699	31045	30670	27938	91	90
Total	91800	88833	87159	82538	94	92

Source : VIS of DISE 2002-03

At district level 94% of SC boys and 92% of girls are enrolled in primary and upper primary. 3% difference is evident in the enrollment of 6 – 10 years age group.

Table No. 13 **ST Population & Enrollment**

Age Group	Population		Enrollment		Percentage (%)	
	B	G	B	G	B	G
6 – 10	4620	4099	4578	4065	99	99
11 – 13	1589	1283	1486	1065	94	83
Total	6209	5382	6064	5130	97	91

Source : VIS of DISE 2002-03

In upper primary ST girls enrollment is 83% at district level. The gap between boys and girls enrollment in upper primary is 11%. This is a major concern. Comparatively quantity of ST population is less than SC population in this district.

Table No. 14

Block wise Enrollment of SC/ST 2002 - 2003

S. No.	Block	Enrolment					
		Primary			Upper Primary		
		SC	ST	Total	SC	ST	Total
1	MELMALAYANUR	2769	265	3034	1676	82	1758
2	GINGEE	5274	620	5894	2768	157	2925
3	VALLAM	3360	322	3682	1500	250	1750
4	OLAKKUR	5683	395	6078	3710	112	3822
5	MAILAM	4343	235	4578	2625	36	2661
6	MARKKANAM	6206	297	6503	3729	53	3782
7	VANUR	4999	224	5223	3194	43	3237
8	KANAI	4244	293	4537	2382	95	2477
9	VIKKARAVANDI	4598	152	4750	2787	57	2844
10	KOLIYANUR	4463	110	4573	2267	33	2300
11	KANDAMANGALAM	4820	22	4842	2427	4	2431
12	MUGAIYUR	7002	305	7307	3004	98	3102
13	TIRUKOILUR	5662	282	5944	2616	46	2662
14	TIRUVENNAINALLUR	5542	153	5695	2476	11	2487
15	SANKARAPURAM	5036	264	5300	3047	192	3239
16	RISHIVANDIYAM	5700	40	5740	2301	25	2326
17	KALLAKURICHI	6939	4098	11037	2916	854	3770
18	CHINNA SALEM	5917	187	6104	3617	67	3684
19	THIYAGADURGAM	5378	60	5438	2944	18	2962
20	ULUNDURPET	6068	56	6124	3097	17	3114
21	TIRUNAVALLUR	4763	159	4922	1568	235	1803
22	VILUPPURAM	2323	104	2427	1959	41	2000
DISTRICT TOTAL		111089	8643	119732	58608	2551	61159

Source : DISE 2002-03

ST enrollment in Kallakurichi block is high because Tribal populated Kalrayan Hills is included in Kallakurichi block.

Total number of SC children enrolled : **169697**

Total number of ST children enrolled : **11194**

Table No. 15

1.4.2.3.Disabled Children - 2002 - 2003

S. No.	Block	Disabled Children (6 - 10 years)	Enrolment in Primary	Disabled Children (11 - 13 years)	Enrolment in Upper Primary
1	MELMALAYANUR	91	83	49	46
2	GINGEE	142	137	56	51
3	VALLAM	86	81	33	28
4	OLAKKUR	89	85	70	67
5	MAILAM	46	41	33	28
6	MARKKANAM	59	56	37	32
7	VANUR	87	84	66	62
8	KANAI	55	49	53	48
9	VIKKARAVANDI	86	80	47	44
10	KOLIYANUR	81	76	46	42
11	KANDAMANGALAM	94	89	48	43
12	MUGAIYUR	122	117	106	102
13	TIRUKOILUR	87	82	92	88
14	TIRUVENNAINALLUR	79	74	31	27
15	SANKARAPURAM	95	88	63	59
16	RISHIVANDIYAM	85	77	43	39
17	KALLAKURICHI	135	129	47	43
18	CHINNA SALEM	50	46	51	47
19	THIYAGADURGAM	62	58	61	57
20	ULUNDURPET	116	111	32	29
21	TIRUNAVVALUR	109	101	34	31
22	VILUPPURAM	61	55	0	46
	DISTRICT TOTAL	1917	1799	1098	1059

Source : DISE 2002- 03

To attain 100% NER, Enrolling Disable children in formal schools is the holiest one. In Viluppuram district disabled children were identified and efforts were taken to enroll them in schools. This table shows that out of 1971 in the age group of 6-10 years 1799 are enrolled and in the age group of 11-13 years 1059 disabled children are enrolled.

NGO Clark school has appointed 6 special teachers to take care of disabled children in the following blocks.

1.Olakkur 2.Vikaravandi 3.Koliyanur 4.Kandamangalam 5.Ulundurpet 6.Tirunavalur

1.4.3. Completion Rate :Primary

This table shows 70.50 the higher rate of CR for girls. District Average is 69. The highest CR 88 is found in Vanur block. The lowest CR is recorded in Ulundurpet block. There is a major concern in the blocks where CR is less than District Average. Kanai, Tirukoilur and Tirunavalur blocks are lagging behind in CR. (Vide Table No. 16)

Completion Rate : Upper primary

District Average 70.73 The highest Completion Rate is in Viluppuram block. The lowest Completion Rate is in Tirunavalur block. Completion Rate of girls is higher than boys. (Vide Table No. 17)

1.4.4. Repetition Rate : Primary

Repetition Rate is a negative indicator. It should be reduced to zero. But the District Average is 21. The lowest RR is found in Viluppuram where as the highest RR is recorded in Gingee. Repetition Rate of girls is less than boys. The higher RR is seen in the following blocks. 1.Gingee (34) 2. Vallam (31) 3. Melmalayanur (31) 4. Marakkanam (30) (Vide Table No. 16)

Repetition Rate : Upper primary

District Repetition Rate is 16. The lowest Repetition Rate is in Viluppuram. More number of repeaters are found in Olakkur(21), Kanai(22), Kandamangalam(20), Tiruvennainallur(24) and Tirunavalur(33) blocks. (Vide Table No. 17)

1.4.5. Dropout Rate : Primary

District Average of DR is 10. The lowest DR is recorded in Vallam block. Whereas the highest DR is found in Tirunavalur (26). Dropout Rate of girls is less than boys. Dropout Rate should be brought down to zero by 2010. There is a major concern in the following blocks regarding Dropout. 1. Kalrayan Hills (22) 2. Ulundurpet (21.7) 3. Tirunavalur (26) (Vide Table No. 16)

Dropout Rate : Upper primary

In upper primary Dropout Rate of boys and girls is equal. Though there is minimum of Dropout Rate in Viluppuram, higher Dropout Rate is evident in Mailam, Koliyanur, Tirukoilur, Tiruvennainallur, Rishivandiyam, Tiyagadurgam and Ulundurpet blocks. There is a severe DR 25 is recorded in Ulundurpet block. (Vide Table No. 17)

Tabel No. 16

CR, RR and DR - Primary - 2002 - 2003

S. No.	Block	CR			RR			DR		
		B	G	T	B	G	T	B	G	T
1	MELMALAYANUR	63.80	66.00	64.94	32.40	29.70	31.03	3.80	4.30	4.03
2	GINGEE	60.00	62.00	61.00	35.00	34.00	34.00	5.00	4.00	5.00
3	VALLAM	66.00	67.00	67.00	32.00	30.00	31.00	2.00	3.00	2.00
4	OLAKKUR	65.00	76.00	71.00	27.00	20.00	23.00	8.00	4.00	6.00
5	MAILAM	67.00	72.00	69.50	23.00	19.00	21.00	10.00	9.00	9.50
6	MARKKANAM	64.00	68.00	66.00	32.00	28.00	30.00	4.00	4.00	4.00
7	VANUR	88.30	88.90	88.40	9.20	7.40	8.50	2.50	3.70	3.20
8	KANAI	59.63	58.31	59.20	30.17	30.18	30.30	10.20	11.51	10.50
9	VIKKARAVANDI	71.00	73.00	72.00	17.00	21.00	19.00	12.00	6.00	9.00
10	KOLIYANUR	70.40	76.60	73.50	23.20	18.80	21.00	6.40	4.60	5.50
11	KANDAMANGALAM	70.00	75.00	73.00	21.00	17.00	19.00	9.00	8.00	8.00
12	MUGAIYUR	78.30	75.60	76.95	16.70	19.60	18.15	5.00	4.80	4.90
13	TIRUKOILUR	58.00	60.00	59.00	29.00	29.00	29.00	13.00	11.00	12.00
14	TIRUVENNAINALLUR	59.00	69.00	64.00	28.00	18.00	23.00	13.00	13.00	13.00
15	SANKARAPURAM	70.00	75.00	72.00	19.00	12.00	16.00	11.00	13.00	12.00
16	RISHIVANDIYAM	67.00	71.00	69.00	15.00	15.00	15.00	18.00	14.00	16.00
17	KALLAKURICHI	64.00	67.00	66.00	25.00	23.00	24.00	11.00	10.00	10.00
18	CHINNA SALEM	76.00	74.00	75.00	12.00	18.00	15.00	12.00	8.00	10.00
19	THIYAGADURGAM	64.00	65.00	65.00	21.00	19.00	20.00	15.00	16.00	15.00
20	KALRAYAN HILLS	66.50	72.50	69.50	5.50	11.50	8.50	28.00	16.00	22.00
21	ULUNDURPET	51.00	55.20	53.10	25.60	24.80	25.20	23.40	20.00	21.70
22	TIRUNAVVALUR	58.00	60.00	59.00	15.00	15.00	15.00	27.00	25.00	26.00
23	TINDIVANAM	70.00	77.00	74.00	20.00	16.00	18.00	10.00	7.00	8.00
24	VILUPPURAM	87.80	88.00	88.00	6.90	7.00	7.00	5.30	5.00	5.00
DISTRICT AVERAGE		67.28	70.50	69.00	21.69	20.12	20.90	11.03	9.37	10.10

Source : COHORT 2002 - 03

COHORT Analysis – Primary

Internal efficiency of school is mainly determined by the Indicators such as Completion Rate, Repetition Rate and Dropout Rate. COHORT study is one of the techniques to assess the school performance and adopt schools to improve its efficiency. The COHORT study has been done for both primary and upper primary for the period of 1998 - 99 to 2002 - 03.

Table No. 17 CR, RR and DR - Upper Primary - 2002 - 2003

S. No.	Block	CR			RR			DR		
		B	G	T	B	G	T	B	G	T
1	MELMALAYANUR	72.80	73.20	73.99	14.90	13.23	14.12	12.30	13.57	12.89
2	GINGEE	75.00	70.00	72.00	15.00	18.00	17.00	10.00	12.00	11.00
3	VALLAM	67.00	74.00	71.00	21.00	17.00	19.00	12.00	9.00	10.00
4	OLAKKUR	62.00	66.00	64.00	22.00	21.00	21.00	16.00	13.00	15.00
5	MAILAM	65.00	69.00	67.00	17.00	13.00	15.00	18.00	18.00	18.00
6	MARKKANAM	68.00	74.00	71.00	15.00	14.00	14.00	17.00	12.00	15.00
7	VANUR	83.50	86.00	84.80	12.20	11.10	11.70	4.30	2.80	3.50
8	KANAI	68.50	69.70	69.10	22.20	20.80	21.50	9.30	9.50	9.40
9	VIKKARAVANDI	70.00	76.00	73.00	20.00	16.00	18.00	10.00	8.00	9.00
10	KOLIYANUR	66.00	68.00	67.00	17.00	15.00	16.00	17.00	17.00	17.00
11	KANDAMANGALAM	64.00	70.00	68.00	21.00	20.00	20.00	15.00	10.00	12.00
12	MUGAIYUR	78.30	75.60	76.95	16.70	19.60	18.15	5.00	4.80	4.90
13	TIRUKOILUR	64.00	74.00	69.00	12.00	12.00	12.00	24.00	14.00	19.00
14	TIRUVENNAINALLUR	59.00	54.00	57.00	21.00	27.00	24.00	20.00	19.00	19.00
15	SANKARAPURAM	76.00	68.00	73.00	13.00	9.00	11.00	11.00	23.00	16.00
16	RISHIVANDIYAM	65.00	57.00	61.00	18.00	20.00	19.00	17.00	23.00	20.00
17	KALLAKURICHI	79.00	78.00	79.00	10.00	10.00	10.00	11.00	12.00	11.00
18	CHINNA SALEM	77.00	79.00	78.00	11.00	13.00	12.00	12.00	8.00	10.00
19	THIYAGADURGAM	69.00	68.00	68.00	7.00	19.00	13.00	24.00	13.00	19.00
20	KALRAYAN HILLS	68.00	70.00	69.00	22.00	10.00	16.00	10.00	20.00	15.00
21	ULUNDURPET	59.70	60.00	59.90	16.60	13.20	15.00	24.10	26.40	25.10
22	TIRUNAVALLUR	52.00	54.00	53.00	37.00	30.00	33.00	11.00	16.00	14.00
23	TINDIVANAM	77.00	80.00	79.00	10.00	6.00	8.00	13.00	14.00	13.00
24	VILUPPURAM	93.70	94.60	93.70	5.10	3.20	4.10	1.80	2.20	2.00
DISTRICT AVERAGE		69.98	71.17	70.73	16.53	15.46	15.94	13.53	13.34	13.30

Source: COHORT study 2002-03

1.4.6. Transition Rate

Table No. 18 Block wise Transition Rate - 2002 - 2003

S. No.	Block	Transition Rate (V to VI)								
		ALL			SC			ST		
		B	G	T	B	G	T	B	G	T
1	MELMALAYANUR	88.18	84.87	86.52	84.19	78.68	81.43	81.49	76.88	79.18
2	GINGEE	70.09	67.87	68.98	70.16	60.81	65.48	71.60	58.01	64.80
3	VALLAM	71.79	76.80	74.29	65.75	68.55	67.15	67.55	65.85	66.70
4	OLAKKUR	80.60	76.73	78.67	74.25	70.72	72.48	72.54	68.27	70.40
5	MAILAM	89.34	90.77	90.05	87.94	82.85	83.39	84.39	78.25	81.32
6	MARKKANAM	83.74	83.91	83.82	81.78	78.61	79.89	78.11	76.21	77.46
7	VANUR	87.01	88.91	87.96	77.65	76.98	77.31	76.57	76.69	77.63
8	KANAI	88.75	88.91	88.83	82.43	83.40	82.91	83.24	81.34	82.29
9	VIKKARAVANDI	97.65	87.88	92.76	96.79	96.46	91.12	89.07	86.91	87.99
10	KOLIYANUR	61.10	60.08	60.09	73.19	74.94	74.06	71.91	74.49	73.20
11	KANDAMANGALAM	77.85	80.68	79.26	85.63	80.69	83.16	83.65	79.60	81.62
12	MUGAIYUR	85.03	84.66	84.84	84.16	85.81	84.98	81.46	81.85	81.65
13	TIRUKOILUR	96.57	98.77	97.67	88.64	91.47	90.05	84.68	87.41	86.04
14	TIRUVENNAINALLUR	71.12	73.99	72.55	70.17	65.89	68.03	67.19	64.32	65.75
15	SANKARAPURAM	90.63	81.87	86.25	85.63	78.45	82.04	83.65	75.48	79.56
16	RISHIVANDIYAM	75.05	71.81	73.43	73.11	65.69	69.40	71.13	66.59	68.86
17	KALLAKURICHI	68.77	60.02	64.40	63.94	57.45	62.69	64.97	55.74	60.35
18	CHINNA SALEM	90.56	90.79	90.67	89.10	85.47	87.28	86.43	84.57	85.50
19	THIYAGADURGAM	73.59	86.52	80.06	72.52	77.89	75.20	72.25	76.13	74.19
20	ULUNDURPET	95.18	86.06	90.62	87.34	78.75	83.04	84.37	80.43	82.40
21	TIRUNAVVALUR	65.54	62.58	64.06	63.15	58.96	61.05	61.53	56.98	59.25
22	VILUPPURAM	97.79	95.85	96.82	91.61	91.82	91.71	90.19	88.21	89.20
DISTRICT AVERAGE		81.47	79.87	80.67	78.41	77.63	78.15	74.67	75.11	76.15

Source : DISE 2002 - 03

This table shows the Transition Rate of 80.6% for the district. The children who have passed Vth Standard and number of children enrolled in VI th standard are taken into account. 2% difference between SC & ST is found in Transition Rate. Comparing SC and all 2% difference is recorded.

1.4.7. Teacher Pupil Ratio - 2002 - 03

Table No. 19 Teacher Pupil Ratio - 2002 - 03

S. No	Block	TPR	
		Primary	Upper Primary
1	MELMALAYANUR	37.54	59.04
2	GINGEE	39.57	62.39
3	VALLAM	36.63	60.63
4	OLAKKUR	43.83	64.34
5	MAILAM	36.40	52.97
6	MARKKANAM	43.28	75.48
7	VANUR	34.43	51.93
8	KANAI	40.14	66.15
9	VIKKARAVANDI	39.03	66.66
10	KOLIYANUR	31.15	45.60
11	KANDAMANGALAM	32.69	49.58
12	MUGAIYUR	45.99	60.90
13	TIRUKOILUR	47.52	64.23
14	TIRUVENNAINALLUR	47.36	58.42
15	SANKARAPURAM	39.10	83.23
16	RISHIVANDIYAM	50.71	84.00
17	KALLAKURICHI	50.03	51.27
18	CHINNA SALEM	42.27	58.96
19	THIYAGADURGAM	43.95	80.01
20	ULUNDURPET	49.06	78.79
21	TIRUNAVAILUR	45.78	64.40
22	VILUPPURAM	32.43	76.40
DISTRICT AVERAGE		49.49	63.32

Source : DISE 2002- 03

District Average of TPR in primary is 1:49. Normally TPR is 1:40 as per GOMS No. 525 of Government of Tamilnadu. Here it is higher than the state norm. Due to unfilled vacancies and increase of enrollment TPR is high in primary schools.

In upper primary district TPR is 1:63. It is really high. By appointment of additional teachers and filling the existing vacancies TPR in upper primary could be reduced.

Rishivandiyam block shows the highest TPR in the district i.e. 51 in primary and 84 in upper primary. It needs more concentration.

1.5. Early Childhood Care and Education

Table No. 20 Number of ECCE Centres and Children 2002-03

S.No	Block	WBA ICDS III TINP Centres	3 - 5 age group Children			Others LKG/UKG children			Proposed ICDS Centres for 2003-04
			Boys	Girls	Total	Boys	Girls	Total	
1	MELMALAYANUR	91	1602	1709	3311	298	254	552	10
2	GINGEE	99	1417	945	2362	46	39	85	4
3	VALLAM	84	1727	1153	2880	20	24	44	12
4	OLAKKUR	95	1740	1256	2996	255	204	459	10
5	MAILAM	77	1353	902	2255	103	98	201	5
6	MARKKANAM	74	1849	1232	3081	107	82	189	12
7	VANUR	106	2302	1534	3836	109	119	228	4
8	KANAI	70	1440	960	2400	250	182	432	11
9	VIKKARAVANDI	61	1302	868	2170	145	120	265	3
10	KOLIYANUR	77	1705	1134	2839	41	46	87	9
11	KANDAMANGALAM	67	1257	838	2095	35	24	59	8
12	MUGAIYUR	97	2130	1420	3550	298	211	509	13
13	TIRUKOILUR	70	1950	1300	3250	210	190	400	14
14	TIRUVENNAINALLUR	69	1908	1272	3180	40	30	70	23
15	SANKARAPURAM	89	1938	1292	3230	220	140	360	15
16	RISHIVANDIYAM	85	1395	930	2325	42	29	71	4
17	KALLAKURICHI	136	2700	2049	4749	39	35	74	4
18	CHINNA SALEM	79	2137	1424	3561	125	97	222	4
19	THIYAGADURGAM	58	1287	858	2145	48	37	85	2
20	ULUNDURPET	76	2193	1462	3655	446	412	858	10
21	TIRUNAVVALUR	67	1806	1204	3010	258	223	481	6
22	VILUPPURAM	28	548	386	934	71	54	125	0
DISTRICT TOTAL		1755	37686	26128	63814	3206	2650	5856	183

Source : Report of DPNO, ICDS, Viluppuram

In the age group of 3 - 5 years 63814 children are enrolled in 1755 ICDS/TINP ECCE centres. These are pre-primary centres. It is proposed by social welfare department to open 183 new ICDS centres in the year 2003-2004. ECCE workers are already trained by BRC.

1.6 Out of School Children

In the year 2001, door to door House Hold Survey was done to find out the total number of Out of School Children in the age group of 6 – 10 and 11 – 13 years in Viluppuram district. The number of Dropout and Never Enrolled Children were identified and tabulated in the table given below.

Table No. 21 **Out of School Children 2001**

Type	6 – 10 Age group						11 – 13 Age group						TOTAL
	All		SC		ST		ALL		SC		ST		
	B	G	B	G	B	G	B	G	B	G	B	G	
Dropout	2166	1944	368	330	238	214	2304	2036	529	422	307	260	8450
Never Enrolled	8463	9527	1439	1620	931	1048	8601	9619	1531	1689	1023	1094	36210
TOTAL	10629	11471	1807	1950	1169	1262	10905	11655	2060	2111	1330	1354	44660

Source : House Hold Survey year 2001

After having done House Hold survey in 2001, the enrollment in two academic years of 2001-02 & 2002-03 had been over. The latest status of out of school children is found out from VIS 2002-03 and given below. Totally 2.6% of school age population remains out of school children.

Total school age population in 6-14 years	:	515204
Total enrollment in recognized schools	:	493026
Number children enrolled in unrecognized schools	:	8614
Net number of out of school children	:	13564
Number of children covered in EGS	:	6651
Number of children uncovered by EGS including Migration	:	6913

Strategies for enrolling 6913 out of school children is discussed in Chapter - II

Table No. 22 Out of School Children / Enrollment

Population age group 6 - 10	Enrolled in EGS	Population age group 11 - 13	Enrolled in EGS	Total out of school children	Total enrollment in EGS	To be enrolled
6718	4104	6846	2547	13564	6651	6913

Source : DISE & VIS 2002 - 2003

Profile of Out of School Children is maintained in all BRCs. Each Out of School Child is given Identity Card for future reference. New interventions are suggested to mainstream the Out of School Children. They are EGS/ AIE/ BC / TC.

EGS centres are 4 hrs. day time schools. They are opened in school less Habitations. AIE centres work for 3 to 4 hrs. They are opened for dropouts in the habitations served by schools.

For street children and deprived children Residential Camps are planned to start.

Bridge course and Transit Camps are other interventions established to mainstream the out of school children. All Government incentives will be given to children studying in EGS centres. Duration for BC and TC is two months periods.

Syllabus for EGS centres is prepared by DIET. Education Volunteers are appointed by VEC president after getting approval from DPC as per SSA norms.

Training to Education Volunteers is given in the concerned BRC.

TLM, learning records attendance registers and other equipment are supplied through VEC. Test conducted at end of the course. Students Academic level is evaluated by the marks scored. A team comprising of BRC Supervisor, AEEO and Headmaster near by centre would inspect the records. They would give course completion Certificate on the basis of this Certificate children would be enrolled in formal schools in the standard for when they are qualified

I.7. Special Focus Group

There are three areas to be focused specially in Villupuram district.

1. Girls Education
2. SC/ST children Education
3. Integrated Education for Disabled

Table No. 23 Girls Grade wise Enrollment

Class	I	II	III	IV	V	Total
Enrollment	32056	30570	31686	32276	30876	157464
Class	VI	VII	VIII			Total
Enrollment	30501	27356	24116			81973

Source : DISE 2002 - 2003

Total enrollment of girls from I to VIII : 239437
Total Enrollment of SC girls in I to VIII : 82538
Total enrollment of ST girls in I to VIII : 5130
SC/ST children :

In order to remove the gender parity between SC/ST boys and girls the programme of Special coaching classes are conducted in 2199 centres.

Special Coaching Classes :

Total Enrollment of SC/ST Students in
primary level coaching classes : 42651
Total Enrollment of SC/ST students in
upper primary level coaching classes : 13968

Integrated Education for Disabled :

The Inclusive Education Programme has a basic aim to enroll all the disabled children of 6 – 14 age group in the mainstream of education. Government of India in the year 2001 has declared Education For All children in the age group of 6-14 years as their fundamental right. Children with disability are no exemption to this right. Also, persons with Disability Act 1995 envisage the right of children to access rehabilitative services and educate themselves. The Act also facilitates to access education in a barrier-free environment.

The programme was first started on 15 November 2002 initially to cover six months period with 9 types of activities and the specifics among them are Awareness Programme, Medical Assessment, Training to the parents, Community and Teachers appointment of Special Educators etc.

The preparation of this Plan and Budget was based on the suggestions of Resource group, representation NGOs from various fields of disabilities. State Project Director, Chennai has nominated Clark school in Viluppuram district to undertake all activities for IED. For this the following activities were planned.

- Community Capacity Building
- Orientation and Awareness
- Project Team's capacity Building
- Rehabilitation Intervention (assessment, aids & appliances, referral, surgery etc.)
- Resource Unit's support
- Monitoring, Evaluation and Documentation

Community Capacity Building :

We are planning to conduct training for capacity building to parents of CWD, Volunteers, VECs, BRT's and school teachers. Incentives trainings, will be given to the special educators to import knowledge about the latest innovations in the field of special Education. The Resource persons from special education collages and Rehabilitation Institutions will be assigned to carry out such training. Also, there will be a provision for peer group orientation because, disabled students learn many things from their classmets.

Orientation and Awareness :

- Public meeting
- Street paly
- Child rally
- Cultural march
- Awareness posters / charts

Project Team's Capacity Building :

For, the real victory of any project, capacity building is important. Then only, we can reach the goal of IED. So the project team should possess and training from external support.

Rehabilitation Intervention:

- Medical assessment
- Aids & appliances, related services
- Surgery
- Home based training & treatment

Resource Unit Support :

In every BRC, we need resource materials like, Brailers, Abacus, speech kit, low vision Kit and other formats (medical certificate, bus pass form, scholarship, etc) to give systematic teaching to disabled students.

Monitoring, Evaluating and Documentation :

In IED, a periodical monitoring and evaluation activities will be done by local resource person or an expert from out side. All the activities and IED will be documented by means of records, photos, press clippings, invitations, etc.

Statistical Points for Implementation of IED Programme in Viluppuram district.

Number of special teachers appointed	-	6
Number of IED blocks selected	-	6
Total number of disabled children identified	-	3015
Total number of disabled children enrolled	-	2858

1.8. Number of BRCs, CRCs and VECs - 2002 - 2003

Table No. 24 Number of BRCs, CRCs and VECs - 2002 - 2003

S. No.	BRC	CRC	VEC	Members
1	MELMALAYANUR	11	109	981
2	GINGEE	14	122	1586
3	VALLAM	9	90	1235
4	OLAKKUR	15	82	1074
5	MAILAM	8	93	1009
6	MARKKANAM	11	113	1469
7	VANUR	11	119	1026
8	KANAI	11	99	1116
9	VIKKARAVANDI	9	92	1167
10	KOLIYANUR	11	101	1402
11	KANDAMANGALAM	10	99	1287
12	MUGAIYUR	16	128	2162
13	TIRUKOILUR	11	82	991
14	TIRUVENNAINALLUR	9	91	1005
15	SANKARAPURAM	10	90	1170
16	RISHIVANDIYAM	10	96	1415
17	KALLAKURICHI	14	95	1425
18	CHINNA SALEM	12	90	1170
19	THIYAGADURGAM	8	91	1059
20	ULUNDURPET	12	106	1380
21	TIRUNAVALLUR	10	102	1326
22	VILUPPURAM	6	25	288
DISTRICT TOTAL		238	2115	26743

Source : Report of DPO, Viluppuram

BRCs, CRCs and VECs are the interventions created in SSA to enroll all children by 2003 and for universal retention by 2010. 22 BRCs and 238 CRCs are functioning in Viluppuam district. 2115 VECs formed in schools are functioning now.

1.9. Infrastructure :

Community participation should be the only means of undertaking any civil work in improvement of school facilities. Viluppuram being DPEP implemented district experiment in community participation under DPEP has been successful and encouraging. A sense of ownership is created by the participation of community in all civil work activities. Achieving objectives of SSA would be possible by 2010 if a sense of ownership of school is created in the community.

1.9.1. Block Resource Centre

22 BRC building were constructed under DPEP. Each BRC is equipped with 43 chairs, 3 tables, 3 almiras, OHP, TV, VCR. Toilet and water facilities are provided BRC is fully equipped training centre.

1.9.2. Cluster Resource Centre

Totally 238 CRCs are formed in Viluppuram district. In DPEP 190 CRCs were established. Each CRC was provided with 10 steel benches, 3 'S' type chairs, one table. In DPEP newly created 48 CRCs are in need of furniture. No building were constructed for CRCs.

1.9.3. Three Classrooms

Total number of upper primary Government schools	:	474
Number of pucca building available (DISE 2002-03)	:	595
In the year 2001-02 number of 3 class room constructed	:	2
Demand received from VEC for constructing three classrooms as per eligible strength of children for 2002 -03	:	199
(list of schools annexed)		
Proposed to open new middle schools in 2003-04	:	58
Building is constructed under community participation.		

It is the unique feature of **SSA**

1.9.4. Two class rooms

Total number of Government primary schools	:	1454
As per DISE 2002 pucca building available	:	1316
In 2002-03 number of 2 class room constructed	:	44
Demand received from VEC in need of two class room as per eligible strength of children (list of Schools annexed)	:	86
Proposed to open new primary school	:	7

It is planned to construct building under community participation.

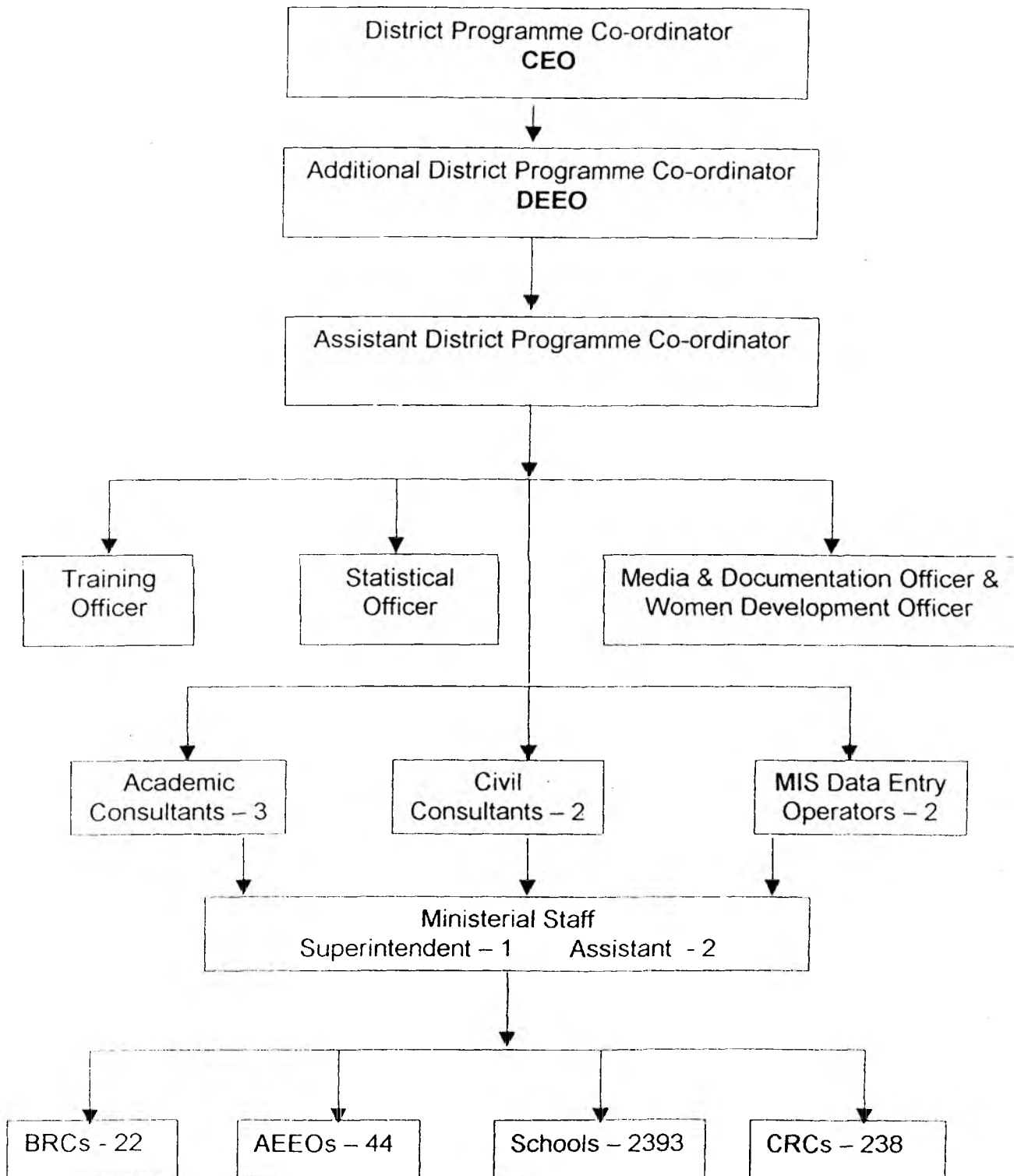
1.9.5. Toilets

Total number of primary and upper primary schools	:	1928
As per DISE number of schools in need of toilets	:	1700
Demand from VEC for toilets	:	144
Toilets constructed in 2001-02	:	8
Toilets constructed in 2002-03	:	54
Toilets facilities proposed to give in newly opened primary & upper primary	:	65

1.9.6. Drinking Water

As per DISE number of schools in need of drinking water	:	204
In 2001-02 & 2002-03 drinking water facilities given	:	64

1.10. District Project Office :



District Project Officer is supervising and monitoring BRC/CRC project activities and civil works. Fund flows to BRC through DPO. DPC conducts review meeting for project staff to assess the work done in scheme activities.

Chapter II

Progress Overview

2.1 Introduction :

The plan activities for the year 2002-03 was reviewed in chapter I. In this chapter the progress made in the major interventions and other activities is analyzed with relevant data collected from Gross root level. Increasing access, coverage of special Focus Groups, quality issues, improvement of school facilities and other civil works, community based monitoring, supervision and Implementations are discussed in detail. Importance is given to innovative activities and Research, Evaluation and Monitoring.

2.2 Progress in Access

Providing 100% access to school going children is the success of SSA scheme. The first milestone in the process of universalisation of elementary education is enrollment of all children in the age group of 6 – 14 by the year 2003. It can be achieved by improving school facilities.

Table No. 25 **District Level GAR**

Year	No. of Habitations	Habitations served by primary school	Habitations served by upper primary	Access rate of primary	Access rate of upper primary
2001-02	2806	2775	2720	98.9	96.94
2002-03	2806	2796	2738	99.42	97.32

Source : VIS 2002-03

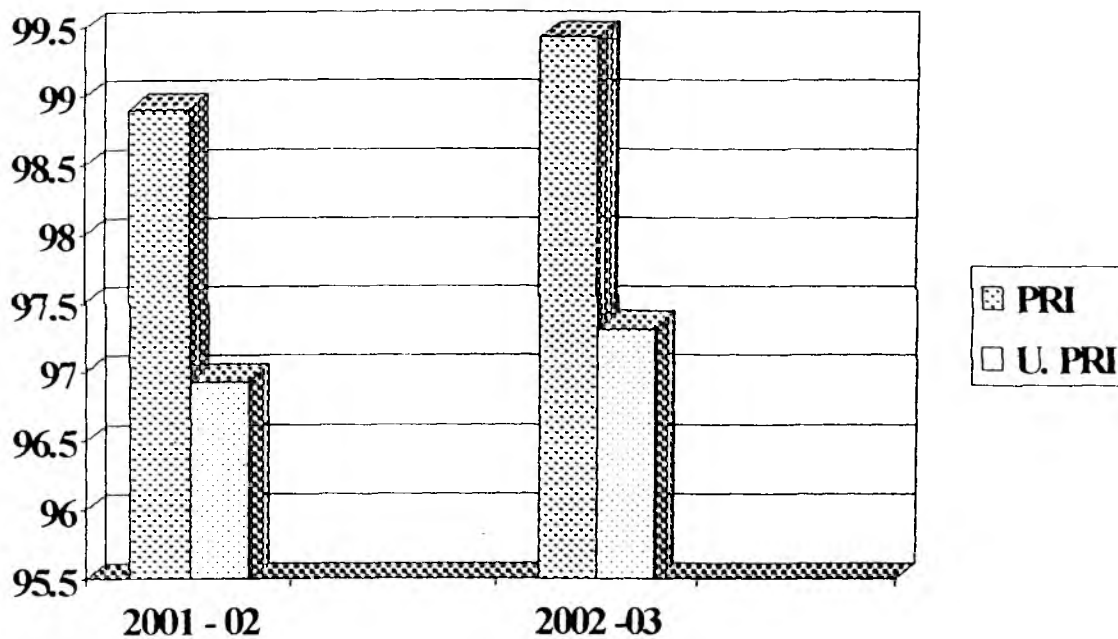
In the year 2001-02 in Viluppuram district 10 new primary schools and 47 middle schools were opened. One percent of Access Rate for primary and upper primary has been increased in the year 2002-03. It is evident from the increase of schools given in the table.

Table No. 26 **Number of Schools**

Year	Primary	Upper primary	Total
2001-02	1723	597	2320
2002-03	1723	670	2393

Source : DISE 2001-02 & 2002-03

GAR - COMPARISON – 2001-02 & 2002-03 (PRIMARY AND UPPER PRIMARY)



The GAR is increased to 99.42 from 98.9 in Primary and 97.32 from 96.94 in Upper Primary. By opening 7 Primary school and 58 Middle schools the GAR reach 100% in 2003-04

100% GAR in primary is provided in 17 blocks out of 22 in Viluppuram district. Remaining 5 blocks namely Vanur, Koliyanur, Tirunavalur and Kalrayan Hills (included in Kallakurichi) would reach 100% Access Rate by opening new schools.

In Mugaiyur block EGS centres are provided so that 100% access is available in that block.

But in upper primary 100% GAR is achieved in Olakkur, Vikravandi, Sankarapuram, Tiruvonnainallur and Viluppuram. Remaining 17 blocks need primary schools to reach 100% GAR. It is encouraging one to see 97% GAR at district level in upper primary.

2.2.1. Opening of Primary Schools :

It is proposed to open 9 primary schools in the year 2003-04 efforts are being taken to get proposals from VEC and submit to the Government of Tamilnadu.

List of eligible habitations to open primary schools is given below.

List of Eligible Habitations to open Primary Schools

S. No.	Block	S. No.	Revenue Village	Schoolless Habitation
1	Vanur	1	Komadipattu	Komadipattu
2	Koliyanur	2	Virathikuppam	Indra Nagar (W)
		3	Thiruvamathur	Sananthope
3	Kallakurichi (K.H)	4	Kudaram	Kudaram
		5	Erukkampattu	Erukkampattu
		6	Pacherry	Pacherry
4	Tirunavalur	7	Elavathadi	Elavathadi (Periamaranodai)

2.2.2. Upper Primary :

To raise the current rate of Access 97% to 100% it is proposed to open 45 middle schools in the eligible habitations in the year 2003-04. For this school mapping was exercised. Government of Tamilnadu is supporting SSA scheme to open new schools.

List of eligible habitations to open upper primary schools in Viluppuram district is given below.

List of Eligible Habitation to open Upper Primary Schools

Sl. No.	Block	Sl. No.	Revenue Village	Sl. No.	Schoolless Habitation
1	Melmalayanur	1	Eyyil	1	Eyyil
		2	Thorapadi	2	Thorapadi
2	Gingee	3	Anjanchery	3	Anjanchery
		4	Sirunapoondi	4	Seramur
		5	Thachampattu	5	Thachampattu
		6	Karai	6	Karai
3	Vallam	7	Aviyur	7	Aviyur
		8	Perumbugai	8	Perumbugai
		9	Thalavalapattu	9	Thalavalapattu
4	Mailam	10	Agoor	10	Agoor
		11	Peramandur	11	Perappanthangal
5	Marakkanam	12	Athur	12	Athur
		13	Vittalapuram	13	Vittalapuram
		14	Kattalai	14	Kattalai
6	Vanur	15	Kottakuppam	15	Periyamudaliochavadi
		16	Nesal	16	Nesal (Kodur)
		17	Katrampakkam	17	Katrampakkam
		18	Perumbakkam	18	Perumbakkam
7	Kanai	19	Anumanthapuram	19	Adangunam
		20	Odaianatham	20	Odaianatham
		21	Semmedu	21	Semmedu
		22	Se.Kunnathur	22	Se.Kunnathur
		23	Velleripattu	23	Velleripattu
8	Kolliyanur	24	Kallapattu	24	Kallapattu
		25	Kondangi	25	Kondangi
9	Kandamangalam	26	Vadavambalam	26	Vadavambalam
		27	V.Budhur	27	V.Budhur
		28	Thirumangalam	28	Thirumangalam

10	Mugaiyur	29	Arasankuppam	29	Arasankuppam (Vasantha)
		30	Thirumalaipattu	30	Thirumalaipattu (Vadakanai thayanur)
11	Tirukoilur	31	Athandamaruthur	31	Athandamaruthur
		32	Mudhalur	32	Mudhalur
		33	Madampoondi	33	Madampoondi
		34	Keezhathazhanur	34	Keezhathazhanur
12	Rishivandhiyam	35	Endal	35	Endal
		36	Arkavadi	36	Arkavadi
		37	Palayasiruvagur	37	Palayasiruvagur
		38	Prividayampet	38	Prividayampet
		39	Anthiyal	39	Anthiyal
13	Kallakurich	40	Kattanandal	40	Kattanandal
		41	Ka.Alambalam	41	Ka.Alambalam
14	Chinna Salem	42	Kadathur	42	Kadathur
		43	Keezhkuppam	43	Keezhkuppam
		44	Pethasamudram	44	Pethasamudram
		45	Ammakulathur	45	Ammakulathur
		46	Pethanur	46	Pethanur
15	Thiyagadurgam	47	Vadathorasalur	47	Vadathorasalur
		48	Prithivimangalam	48	Prithivimangalam (colony)
		49	Erainji	49	Erainji
		50	Kottaiyur	50	Kottaiyur
		51	Eyyanur	51	Eyyanur
		52	Vilakkur	52	Vilakkur
		53	Chinnamambattu	53	Chinnamambattu
16	Ulundurpet	54	Anganur	54	Anganur
		55	Periyakurukkai	55	Periyakurukkai
		56	Pallavadi	56	Pallavadi
		57	Kunjaram	57	Kunjaram (H)
17	Thirunavalur	58	Kallamedu	58	Kallamedu

Source : School mapping

2.2.3. EGS Centres :

Norms are fixed by Government of Tamilnadu to open any kind of new school. If norms do not permit, we can't open new schools in the habitations. In such condition, if the habitation has sufficient number of population EGS centres can be opened to provide schooling facilities in schooles habitation.

In the year 10 EGS daytime schools are opened in Kalrayan Hills, Tirunavalur, Chinnasalem, Ulundurpet, and Sankarapuram. Instructors for these centres are appointed by VEC president and are functioning with 202 children.

2.3. Progress in Enrollment :

Enrolling all school age children in schools by 2003 is our urgent and ultimate aim in this year. For this we are giving various interventions to motivate the parents to enroll their children.

2.3.1. Year wise Comparison of Enrollment

Age Group	School Age Population		Enrollment	
	2001 - 02	2002-03	2001 - 02	2002 - 03
6 - 10	* 394702	+ 324310	298146 75.53 %	320530 98.8%
11 - 13	* 220328	+ 190894	162845 73.91%	172496 90.3%
Total	* 615030	+ 515114	460991 74.95%	493026 95.7%

* Source : Perspective Plan (Projected Population)

+ Source : Population derived from VIS of DISE 2002-03

Enrollment Source : DISE 2001-02 & DISE 2002-03

Since the projected population is too high, current year (2002-2003) population derived from VIS of DISE has been taken into account for all calculations.

While comparing current year and previous year enrollment, 23% in primary and 16% in primary is increased. Over all there is an increase

of 21% in enrollment in this year. Provision is given to enroll 6651 out of school children in EGS centres.

Table No. 27 District Level year wise GER and NER

Year	GER			GER			NER			NER		
	Primary			Upper primary			Primary			Upper primary		
	B	G	T	B	G	T	B	G	T	B	G	T
2001-02	97	97	97	98	96	97	78	73	75.5	70	74	72
2002-03	103	103	103	107	106	106.5	97	97	97	98	97	97.5

Source : DISE 2001-02

In this year GER in primary is raised to 6%.

GER of boys and girls in upper primary is higher than primary

There is a tremendous increase in NER for all

In primary girls NER is higher than boys

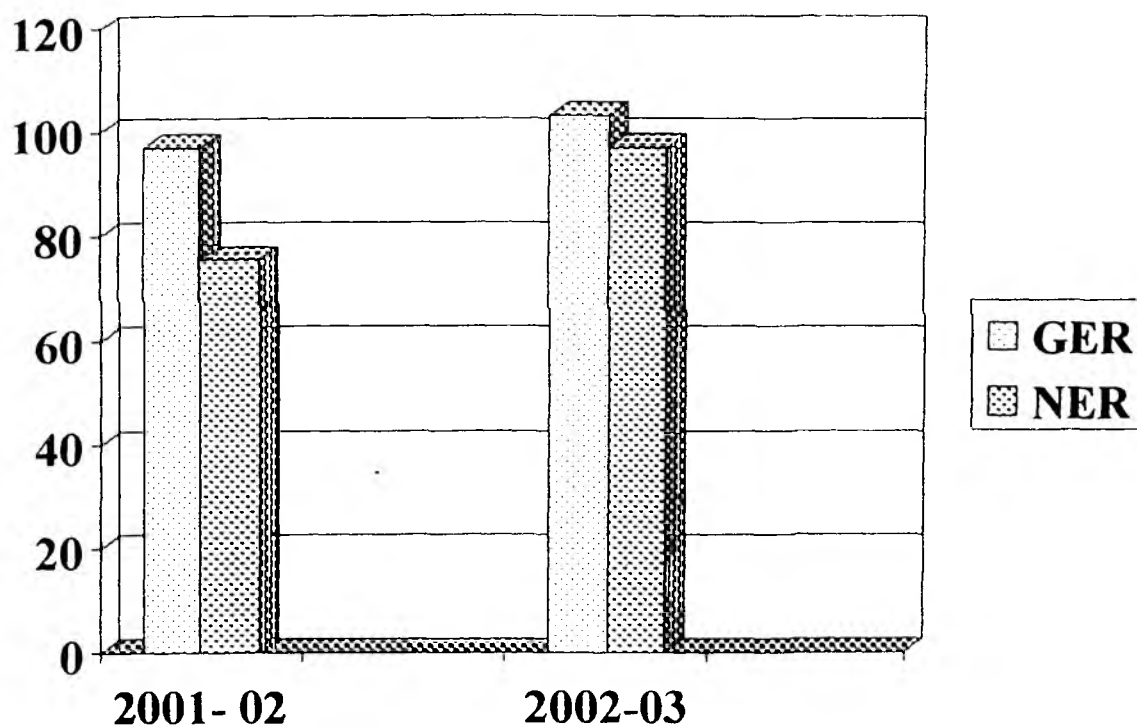
In upper primary boys NER is higher than girls

No wide gender gap is found both in GER and NER

Strategies adopted to increase enrollment

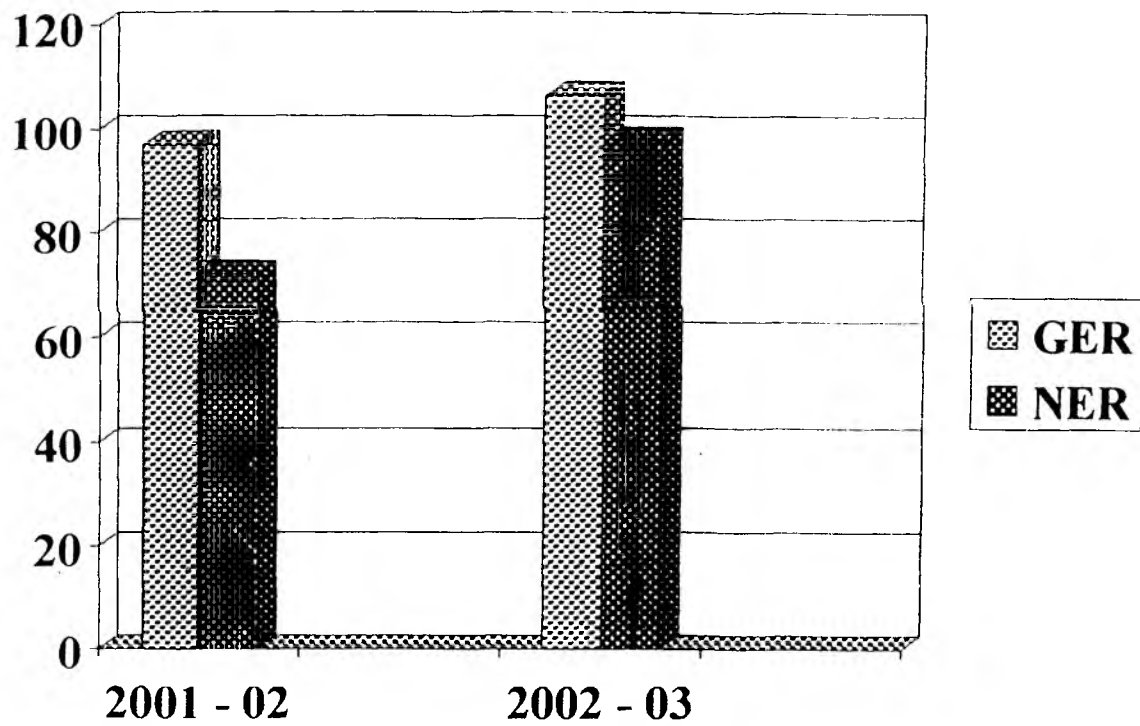
- Infra facilities in school have been developed. On going schemes of Government of Tamilnadu such as free noon meal, free books, uniforms, bus pass etc. help to improve enrollment
- Effective use of TLE and TLM by teachers and training given to teachers attract the students.
- Awareness created by DPEP and SSA motivated parents
- Continuous efforts taken by BRC AEEOs, VEC and Headmasters by meeting parents and conducting school functions play a vital role to increase enrollment
- It is targeted for 100% enrollment in June/July 2003

GER AND NER - PRIMARY



The GER and NER show a considerable increase i.e. GER from 97 to 103, NER 75.5. To 97 in Primary

GER AND NER – UPPER PRIMARY



In Upper primary GER and NER have increased remarkably GER increased from 97 to 106.5 and NER increased from 72 to 97.5

2.3.2 Enrollment of SC/ST Children

SC/ST population is spread all over 22 blocks in Viluppuram district. But the quantity of SC population is more than ST.

Table No. 28 **Year wise comparison**

Year	Primary			Upper primary		
	SC	ST	Total	SC	ST	Total
2001-02	82739	9447	92186	56785	1533	58318
2002-03	111089	8643	119732	58608	2551	61159

Source : DISE 2001-02 & 2002-03

While comparing 2001-02 and 2002-03 years, the progress in the enrollment of SC/ST children is increased.

Table No. 29 **GER /NER comparison of SC/ST**

Category	Year	GER			GER			NER			NER		
		Primary			Upper primary			Primary			Upper primary		
		B	G	T	B	G	T	B	G	T	B	G	T
SC	2001-02	88	89	88.5	97	95	96	72	78	75	77	80	78
	2002-03	97	94	95.5	91	90	90.5	96	93	96.5	85	83	84
ST	2001-02	82	80	81	71	71	71	69	75	72	80	78	79
	2002-03	99	99	99	94	83	88.5	98	96	97	79	77	78

Source : DISE 2001-02 & 2002-03

Comparing two years progress except GER in upper primary for SC enrollment all other indicators show the increasing trend.

In ST enrollment there is systematic increase in GER and NER.

Table No. 30 **SC/ST students studying in special coaching classes**

Year	Enrolled	No. of Centres
2001-02	22000 girls only III, IV, V standard	1100
2002-03	56619 boys & girls from III to VIII standard	2199

Source : DPO Viluppuram

Comparatively more number of SC/ST students are enrolled and given special coaching in 2002-03. This year it is planned to enroll 50% of SC/ST boys and girls in special coaching classes.

Strategies initiated to increase SC/ST enrollment.

- Awarding scholarship to SC/ST students
- Conducting special coaching classes to SC/ST boys and girls
- Involving VEC members in enrolling SC/ST pupils
- Infra facilities developed by DPEP and SSA.

2.3.3 Disabled

Clark School, Chennai is co-ordinating SSA Viluppuram in enrolling Disabled children in regular schools. Six special teachers are appointed.

Disabled Children Identified	Enrolled	
	6 – 10 age group	1917
11 – 13 age group	1098	1059
Total	3015	2758

Source : DISE 2002 – 03

Strategies to enroll and retain disabled children in schools.

- Giving training at BRC for the teachers handling IED children.
- Conducting awareness campaigns to create awareness to parents
- Conducting Health camps to identify the nature of disability
- Giving Home Based teaching to disabled children by special teachers.
- Supply of aids and appliances to IED children with the help of DRO office Viluppuram.
- Awarding scholarship, identity card, giving aids and appliances through DPEP and SSA.

Table No. **31 Incentives given to Disabled Children in 2002-03**

Type of incentive	Given by DRO	Given by DPEP/SSA
Scholarship	1213	75
Tricycle	57	2
ID cards	1417	179
Hearing aids	43	0
Glass	168	107
Caliper	94	18
Crutches	106	1
Boot	84	2
Stick	12	0
Artificial leg	0	1

Efforts are taken continuously to identify the disabled children and enroll them in schools.

2.4. Progress in Completion

COHORT study was done to find out the number of students completed five years of schooling in upper primary. So far 4 COHORT studies were undertaken. The last study was conducted for the period of 1997-98 to 2001-02.

The last two years completion rate is compared.

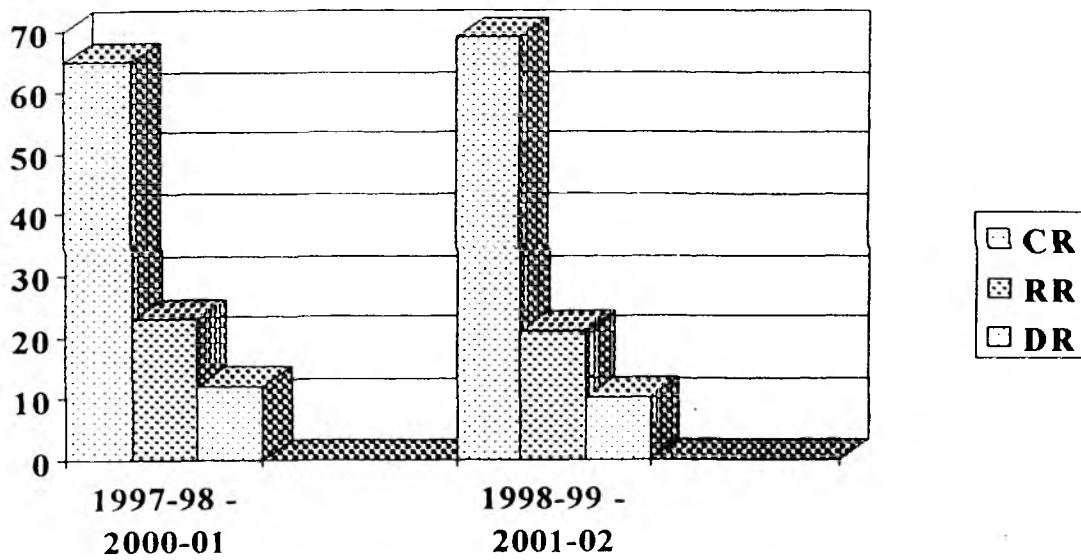
Table No. **32 Completion Rate**

Year	CR			CR		
	Primary			Upper primary		
	B	G	T	B	G	T
2001-02	64	66	65	70	68	69
2002-03	67	71	69	70	71	70

Source : COHORT study 2001-02

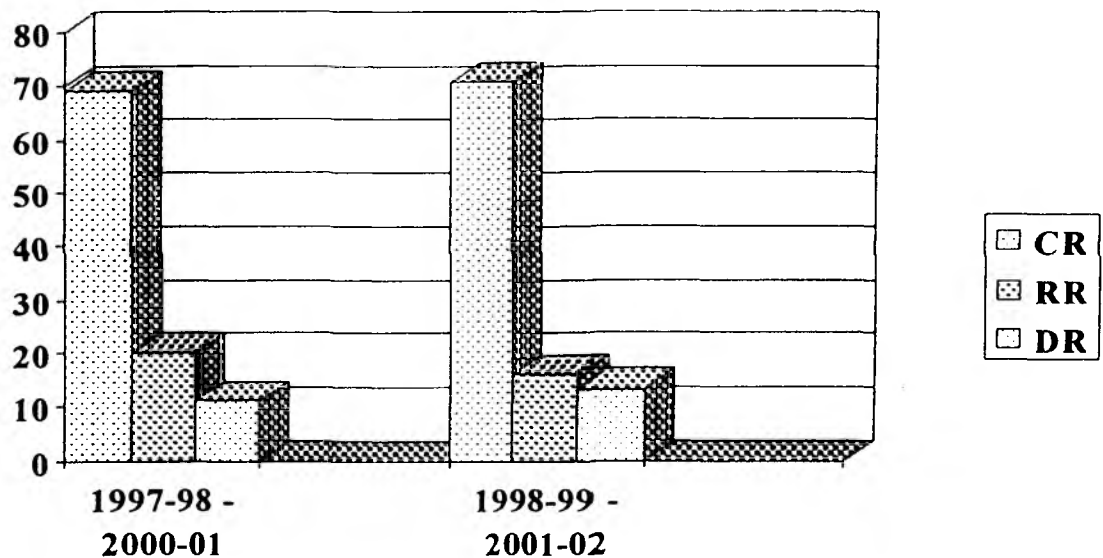
There is no wide gap between boys and girls in completion rate. In this year 2003-04 it is targeted to reach from 69 to 80 in primary and 70 to 80 in upper primary.

COHORT ANALYSIS - PRIMARY COMPARISON OF CR, RR & DR



In CR, RR & DR there is an improvement from last year.
CR - from 65 to 69. RR - from 23 to 21. DR - from 12 to 10

COHORT ANALYSIS – UPPER PRIMARY COMPARISON OF CR, RR & DR



In the COHORT Analysis of 2001-02 CR & RR have improved but Dropout Rate has been increased by 2%. More concentration will be paid.

Strategies to increase completion rate are suggested below.

- Making class room neat and clean using school and infra grant
- Meeting parents once in a month
- Involving VEC members in school development programmes
- Giving practice to students how to answer questions – coaching them.
- Giving training to teachers on evaluation method
- Preparing blue print of question paper and developing capacity building to prepare questions

This year DIET would play important role in giving training to teachers on the following areas.

- ABT method
- Research and Evaluation
- Teaching English, Maths and Science
- Workshop on making TLM
- Teachers Hand book preparation

2.5 Retention Rate :

We are marching towards universal retention by 2010. children enrolled in 2003 should complete eight years of elementary schooling by 2010. In primary schools completion rate is 69 where as in upper primary is 70. By reducing dropout rate year by year. 100% retention is possible when this district achieves 100% completion, 0% dropout rate and 0% repetition rate. Interventions are given accordingly for universal retention in this district.

2.6. Progress in Transition

Transition Rate is one of the indicators to find out the number of students transit from Vth standard. With this data we can find out the trend of Vth passed students.

Table No. 33 **Year wise Comparison**

Year	Transition Rate					
	All		SC		ST	
	B	G	B	G	B	G
2001-02	95	95	89	90	86	87
2002-03	81	80	78	78	75	76

Source : DISE 2001-2002

Current year Transition Rate is less than last year's Transition Rate. The reason for this may be due to more number of failures and long absenteeism in class V. But special attention is needed to increase the transition rate. Anyhow for the year 2003-04 TR is targeted around 90%.

Table No. 35 District level comparison - Attendance Rate

Year	Primary						Upper primary					
	All		SC		ST		All		SC		ST	
	B	G	B	G	B	G	B	G	B	G	B	G
2001-02	91	87	85	82	83	80	88	84	85	82	84	81
2002-03	92	92	90	90	78	79	92	91	83	88	67	71

General attendance rate is moving upward in this year. The rate of attendance of ST boys and girls is decreasing. This is a major concern here. Attendance rate of SC boys is less than girls.

Attendance Rate normally is high in Viluppuram district. This is because of existing programmes implemented by Department of Elementary Education and the impact created by DPEP and SSA scheme.

2.8. Pupil's Achievement :

Achievement Rate is related to quality of education. 61% of SSA budget is allotted to improve quality in education. Achievement level of students vary from subject to subject. This is the indicator by which training needs can be assessed.

Table No . 36

Block wise Achievement Rate - Primary level

S. No.	Block	Subjects														
		Tamil			English			Maths			Science			Social Science		
		B	G	T	B	G	T	B	G	T	B	G	T	B	G	T
1	MELMALAYANUR	51	53	52	51	53	52	60	57	58.5	55	54	54.5	54	55	54.5
2	GINGEE	50	60	55	46	57	51.5	55	67	61	58	67	62.5	52	61	56.5
3	VALLAM	53	52	52.5	49	48	48.5	56	55	55.5	56	59	57.5	53	53	53.5
4	OLAKKUR	56	53	54.5	57	48	52.5	58	51	54.5	53	56	54.5	47	48	47.5
5	MAILAM	58	60	59	51	56	53.5	59	61	60	57	60	58.5	57	59	58
6	MARKKANAM	44	53	48.5	48	49	48.5	54	55	54.5	53	50	51.5	45	43	44
7	VANUR	57	53	55	43	40	41.5	60	61	60.5	62	63.5	62.8	67	65	66
8	KANAI	50	54	52	48	50	49	68	60	64	58	60	59	52	50	51
9	VIKKARAVANDI	55	58	56.5	53	53	53	53.5	59	56.3	56.5	59	57.8	55	56.5	55.5
10	KOLIYANUR	57	59	58	49	52	50.5	59	59	59	55	59	57	56	58	57
11	KANDAMANGALAM	64	66	65	59	61	60	68	69	68.5	66	67	66.5	64	65	64.5
12	MUGAIYUR	86	84	85	60	64	62	80	76	78	75	75	75	73	71	72
13	TIRUKOILUR	55	56	55.5	52	52	52	58	58	58	56	58	57	56	56	56
14	TIRUVENNAINALLUR	60	62	61	54	51	52.5	58	56	57	59	60	59.5	56	58	57
15	SANKARAPURAM	54	61	57.5	52	56	54	62	64	63	58	61	59.5	55	58	56.5
16	RISHIVANDIYAM	78	82	80	64	76	70	81	89	85	82	88	85	80	84	82
17	KALLAKURICHI	53	54	53.5	51	52	51.5	57	58	57.5	55	56	55.5	56	56	56
18	CHINNA SALEM	56	57	56.5	59	55	57	65	62	63.5	62	63	62.5	60	60	60
19	THIYAGADURGAM	53	51	52	42	44	43	57	54	55.5	41	42	41.5	57	59	58
20	ULUNDURPET	56	56	56	54	56	55	63	59	61	57	53	55	57	57	57
21	TIRUNAVVALUR	51	52	51.5	49	46	47.5	55	53	54	54	55	54.5	51	52	51.5
22	VILUPPURAM	63	65	64	57	61	59	66	66	66	60	63	61.5	65	67	66
	DISTRICT AVERAGE			58			53			62			60			58

Source : 2002-03 Half-yearly examination mark list

Achievement level shows the efficiency level of the school. In primary level students Achievement level in Maths and Science is higher than Tamil, English and Social Science. Totally girls performance in all subjects is better than boys. In primary level we have to concentrate in English.

Table No. 37

Block wise Achievement Rate - Upper Primary level

S. No.	Block	Subjects														
		Tamil			English			Maths			Science			Social Science		
		B	G	T	B	G	T	B	G	T	B	G	T	B	G	T
1	MELMALAYANUR	40	42	41	42	42	42	46	43	45	43	43	43	38	43	40
2	GINGEE	53	50	52	48	49	49	48	54	51	49	47	48	54	53	54
3	VALLAM	39	40	39.5	42	43	42.5	42	41	41.5	45	44	44.5	48	45	47
4	OLAKKUR	54	52	53	52	46	49	61	54	57	46	52	49	53	52	52.5
5	MAILAM	41	45	43	44	47	45	46	43	44	48	48	48	50	49	49.5
6	MARKKANAM	41	44	42.5	40	41	40.5	43	42	42.5	42	42	42	43	43	43
7	VANUR	53	51	52	49	49	49	57	58	57.5	60	59	59.5	50	50	50
8	KANAI	50	56	53	40	44	42	78	60	69	64	50	57	44	40	42
9	VIKKARAVANDI	39	41	40	41	41	41	39	39	39	43	45	44	48	48	48
10	KOLIYANUR	40	41	40.5	42	42	42	45	48	47	49	52	51	49	52	51
11	KANDAMANGALAM	38	41	40	40	43	42	41	43	42	43	44	43.5	45	47	46
12	MUGAIYUR	80	78	79	60	58	59	77	75	76	69	75	72	69	69	69
13	TIRUKOILUR	47	41	44	50	42	46	46	48	47	51	43	47	49	45	47
14	TIRUVENNAINALLUR	43	44	44	42	37	40	43	44	44	42	40	41	45	42	44
15	SANKARAPURAM	43	43	43	45	43	44	40	40	40	46	43	44.5	47	46	46.5
16	RISHIVANDIYAM	74	76	75	59	63	61	84	80	82	79	77	78	71	73	72
17	KALLAKURICHI	44	49	46.5	44	46	45	45	46	45.5	48	50	49	50	49	49.5
18	CHINNA SALEM	42	43	42.5	44	41	42.5	41	41	41	47	44	45.5	46	49	47.5
19	THIYAGADURGAM	43	41	42	43	46	44.5	44	46	45	45	46	45.5	47	49	48
20	ULUNDURPET	42	40	41	42	38	40	38	34	36	38	38	38	39	35	37
21	TIRUNAVAILUR	40	41	40.5	40	35	38	39	39	39	39	37	38	39	40	39.5
22	VILUPPURAM	45	51	48	44	50	47	45	46	45.5	48	51	49	49	51	50
	DISTRICT AVERAGE			47.50			46.80			51.18			49.09			48.95

Source : 2002-03 Half-yearly examination mark list

While analysing the achievement level of upper primary students, their level is less than primary. Except Maths achievement in English, Tamil, Science and Social Science is more or less equal.

Table No. 38

District Achievement Level Comparison

Year	Primary					Upper primary				
	T	E	M	S	SS	T	E	M	S	SS
2001-02	59	50	67	59	60	49	39	39	50	46
2002-03	58	53	62	60	58	48	47	51	49	49

Source : Achievement test

Achievement level in Maths and Social Science in primary is higher than upper primary. In upper primary language achievement level is less than primary.

Achievement level is targeted in the year 2003-04 for language 60% in upper primary and for other subjects 70%.

So far as primary schools are concerned target for language is fixed for 70%.

2.9 Main streaming out of School Children

Topmost priority is given for main streaming out of school children in this year plan because we have to achieve the objective of all children in school by 2003. It is targeted to mainstream 13564 Never enrolled and dropout children before July 2003. For this purpose interventions such as EGS school, AIE centres, Bridge course and Transit Camps are established. Provide schooling facilities to the out of school children. In the year 2003-2004, budget provision is given to start the following centres under Education Guarantee Scheme (EGS).

AIE Centres	: 250
EGS Schools	: 10
Residential Camp	: 2

In Viluppuram District, we have started 10 EGS Schools, in school less habitations at Kalrayan Hills according to the demand form VEC members.

Generally EGS School can function with a minimum number of 25 students. But it is relaxed to 15 in Hill areas.

Duration of EGS school is 4 hours a day convenient to the learners. It will run for 2 to 4 months. The VEC has provided accommodation to run this school in their habitation.

The list of EGS Schools running from 1st March 2003 is given below.

Table No. 39 BLOCKWISE LIST OF EGS SCHOOLS

Sl. No	Name of the Block	C.N	Name of the centers	No of Students			Name of the Instructor
				M	F	Total	
1	Kallakurichi	1	Kundiyanatham	8	12	20	T.Selvi
		2	Sundakapadi	17	3	20	T.Jayalakshmi
2	Thirunavalur	3	Elavathadi	9	15	24	K.Elumalai
3	Chinna Salem	4	Thirukkundram	10	10	20	K.Chellammal
4	Ulundurpet	5	Pallainthungal	5	15	20	S.Ganthimathi
5	Sankarapuram	6	Vadapalapattu	18	7	25	S.Sivagami
		7	Koodaram	7	12	19	L.Alagazen
		8	Kalliparai	11	7	18	C.Thangarasu
		9	Povasambathu	4	11	15	C.Vengatesan
		10	Pudur	12	9	21	T.Eswaran
	Total			101	101	202	

2.9.1. Bridge Course :

23 BCs are started. It is conducted at school, convenient to the nearer. Out of School Children from nearby habitations are brought to this course. Duration of BC is 2 to 3 months with 3 to 4 hours a day. Minimum number of strength of students would be 20-25.

Transit Camp :

Works for 3 to 4 hours a day. Since the students are scattered in different habitations 85 Transit Camps are opened. The teachers moves from one TC centre to another camp. Duration is 3 to 4 hours a day. It will run for 2 to 3 months. 85 TCs are opened so far.

AIE Centres :

AIE centres are opened for dropout children in the age group of 6 to 13 years in habitations though it is served by school. This centre will run for 2 to 4 months with the duration of working hours 3 to 4 either in the morning or evening according to the convenient time of learners. Total centres so far opened is 215.

Table No. 40 **Number of EGS centres and Volunteers blockwise.**

Sl. No.	Name of the block	No. of EGS Centres opened			No. of Children enrolled	No. of Volunteers appointed
		AIE	BC	TC		
1	MELMALAYANUR	1			21	1
2	GINGEE		1		26	1
3	VALLAM	2		3	70	5
4	OLAKKUR	2		3	69	4
5	MAILAM	3	6	-	85	7
6	MARKKANAM	2	1	4	119	7
7	VANUR			1	10	1
8	KANAI	5		15	289	16
9	VIKKARAVANDI	1		5	99	6
10	KOLIYANUR	2		4	120	6
11	KANDAMANGALAM	1		1	59	2
12	MUGAIYUR	28		13	684	41
13	TIRUKOILUR	10		7	423	10
14	T.V.NALLUR	25		4	742	25
15	SANKARAPURAM	35			688	35
16	RISHIVANDIYAM	12			282	12
17	KALLAKURICHI	21			386	21
18	CHINNA SALEM	3	3	1	122	5
19	THIYAGADURGAM	10			251	10
20	ULUNDURPET	40		15	1614	55
21	TIRUNAVVALUR	11	12	9	478	24
22	VILUPPURAM	1			14	1
	TOTAL	215	23	85	6651	295

- 295 Education Volunteers (Instructors) are appointed locally by VEC president.
- Training for 295 instructors was given at BRC during last week of February 2003
- All centres are functioning from 1st March 2003
- To mainstream the Out of School Children a committee has been appointed under the Head of Panchayat President to monitor the functioning of the centres and to operate the accounts for the school.
- An agreement is drawn by the VEC committee and the volunteers to extend their support to mainstream the Out of School Children in regular schools after improving the academic level of learners

2.9.2. Residential Camps :

It is proposed to start Residential Camp one at Malliampadi and another at Mottampatty. These habitations are situated at Kalrayan Hills. This camp will cover the out of school children of Tribal population.

Strategies for enrolling 6913 remaining out of school children as discussed in Chapter – I.

- Identity Card to all out of school children is given and the format of identity card is annexed.
- 11 – 13 age group out of 6913 will be identified and enrolled in EGS centres.
- Special intensive coaching will be given in 2 to 6 months to them to appear in VIIIth standard examination directly.
- Other age group children will be admitted in formal schools after given eligible coaching through EGS.
- Migrated families are expected to return back at the end of May 2003 for agricultural operations.

Enrolling out of school children in Viluppuram district is a major concern. Enrolling all school age children in 2003 is our target. This could be achieved by continuous watch over out of school children.

All BRC personnel and AEEOs are instructed to meet the parents of out of school children individually and to mainstream them with the help of VEC members.

2.10. Appointment of Teachers

In Viluppuram district 20 teachers were appointed for 10 newly opened primary schools and 47 teachers for 47 newly opened middle schools in the year 2002-03.

It is proposed to appoint 14 teachers for 7 newly opened primary schools and 58 teachers for the middle schools going to be opened in the year 2003-04.

In addition, 47 teachers are to be appointed in 47 middle schools upgraded last year.

To improve the quality of education teachers are appointed by SSA scheme.

2.11. Programmes for Disabled

For enrollment and retention of disabled children in schools the following programmes are planned to implement in the year 2003-04.

- Orientation and Awareness programme to parents and community
- Conducting Block wise Medical Assessment Camp
- Training to parents and teachers
- Capacity building for project team
- Home based training and treatment

2.12. Programmes for SC/ST

The educational development of children belonging to the Scheduled Castes and Scheduled Tribes is a special focus in the Sarva Shiksha Abhiyan. Some specific interventions are given below.

- Giving special teaching support as per need in special coaching classes
- Engagement of community organizers from SC/ST communities
- Setting up alternative schools facilities and using community teachers.

2.13. Programmes for Girls

Education of girls is the primary focus in SSA. Efforts are made to mainstream gender concerns in all activities of SSA.

It is planned to conduct special Evening classes for girls those who are economically and socially backward. 20000 girls belonging to other caste (non SC/ST) would be benefited by this programme.

Conducting special camps, and bridge courses for girls and setting up of special AIE for girls are some of the interventions to promote girls education.

2.14. Early Childhood Care and Education

To take care of early childhood education SSA has prepared programmes to strengthen ECCE centres. Normally school readiness is prepared in these centres. Voluntary agencies, Non-Governmental agencies and social welfare department are conducting ECCE centres. Balvadi teachers are engaged to take care of health and education of 3 – 5 age group children.

To strengthen ECCE centres the following are planned.

- Giving training to Balvadi teachers for two days per year
- Proposed to provide TLM and play materials for children
- To link the ECCE workers with the headmasters of primary schools to improve the enrollment.

2.15. Functioning of Village Education Committee

Since community based monitoring system is emerged from SSA, 2115 VECs are formed in all schools and begin to function.

VEC at school level meets twice in a month and discuss school problems. Twice in a year VEC members are given training on how to involve in SSA activities in schools. School building and other infra facilities are given only by the demand raised by VEC. All school buildings are constructed by community participation.

Ownership on school is developed by operating accounts of school grant , TLM, TLE grant by VEC president and headmaster of the concerned school.

2.16. Activities in Cluster Resource Centres

In Viluppuram district 238 CRCs are created.

CRC Staff : Co-ordinator and Assistant Co-ordinator are nominated in CRC in the cadre of Middle school Headmaster according to seniority.

Activities in CRCs

- Finding strategies to improve enrollment
- Updating Census and Village Education Registers in schools
- Model class conducting
- TLM preparation
- Locating Hard spots in subjects
- Sharing teaching experience
- Filling of DISE and COHORT forms
- Doing Research and Evaluation in class room activities
- Conducting VEC meeting and exhibition at CRC level
- Inviting other department experts to help teachers to solve problems related education
- Preparation of School Development Plan.

2.17. Programmes in Block Resource Centres

In Viluppuram district 22 BRCs are formed and functional now. Each BRC has a large role in the preparation of perspective and Annual Plans.

Staff Pattern :

One Supervisor in the cadre of High school HM and seven Teacher Educators in the cadre of Graduate teacher are appointed.

The role of BRC in the implementation of SSA programme

- For Quality Education
- Giving training to teachers, ECCE worker, VEC members
- Giving TLM, School Grant, TLE to schools and teachers and maintaining accounts
- Conducting awareness campaigns in schools conducted by DPC
- Attending monthly review meeting and submitting report of schools academic development
- Supervising schools, ECCE centres, and Civil works
- Monitoring CRC activities
- Implementing school based Training and school Adoption programme
- Linkage with other department work
- Preparing Block level Annual Plan
- Implementing Annual Work Plan activities in the block.

2.18. Research, Evaluation and Monitoring (REM)

Research – Its purpose

The execution of the project gives ample scope for research. This research is not for the sake of research, whereby the resultant finding will be left in the corners for library racks for the delight of moths and silverfish. Research here has a specific purpose. It is directly linked to the specifically stated objectives of the project. Here, research is not an end in itself, but it is just a tool to find out the effectiveness or fruitfulness of the various activities under taken for the implementation of the project.

The Subject of Research :

Research may be done on the following areas :

1. The functioning and effectiveness of the AIE
2. The attitude of the instructors of AIE towards their contribution to the project
3. The fluctuations in the dropout rates
4. Ascertainment of complete enrollment
5. Innovations in 100% retention
6. Local – specific needs of the schools
7. Out of the way contributions of teachers towards the project
8. Improving the work ethics of teachers
9. Defects in teaching-learning activities
10. Causes of peculiarities in pupils
11. Measures for the better involvement of VEC in school activities
12. Case studies of the contributions of BRC Teacher Educators.

This is not an exhausted list of research areas, but only exemplary.

Research Agencies :

The faculty members of the DIET, teacher Educators of the BRC's teachers of primary and upper primary classes may undertake research work. The teachers and teacher educators should be given research orientation training. And the aspect has been taken care of in the research proposals.

Research Procedures and Ends :

Research are to be conducted as usual with objective, effective and effective tools. Research tools may be developed a new as per the need of the context with the help of DIET faculties, or already standardized tools may be used appropriately.

Researches should be conducted periodically with regular intervals or at the end of a specific period as the situation warrants.

The research findings should be publicized and there are good platforms for this in the form of journals on education and of association publications.

Evaluation

Research and Evaluation are closed linked to each other. They are almost like the two sides of a coin. Because without some kind of study or research nothing can be evaluated. Both research and evaluation require some specific tool and objectivity on the part of those who undertake the activity. Evaluation is generally more effective and reliable when it is on the basis continuous on period assessment rather than at the end of a process or scheme. Unlike research, evaluation does not bother about the 'why' or the 'how' of a process, but only the 'what' (the net result) of a process. It is through evaluation that the success or otherwise of a project can be ascertained; that the defects, if any, in implementation can be found out and remedial measures taken; that progress can be realized and measured and that future planning can be visualized and executed.

At the district level evaluation is done by the DPC and his team and the evaluation branch faculty members of the DIET; and at the block level by the supervisor and the teacher educators.

The success of the feeding is in the eating. The net result of the whole project depends upon the achievement of the pupils at all levels. The teacher educators and the DIET teachers may undertake studies to evaluate the achievement levels of the pupils, their actual progress and their desired or expected progress, the professional competency of the elementary level teachers, the effectiveness of AIE, EGS and VEC.

The result of the evaluation should be made available to the DPC and his team for their appraisal. Evaluation done by the elementary level teachers may not be reliable sometimes, then it becomes mandatory for the Head Masters of the schools to vouch safe for the validity of the examinations conducted periodically by the teachers. The teacher educators (and even the Head Masters of the schools concerned) may have their own methods of evaluation. DIET teachers also may undertake the work of evaluation along with the teacher educators or independently.

The evaluation may well be discrete; it must never be a hindrance to the teaching – learning process which is the essence of the whole project. There should be periodical evaluation, probably on a monthly basis. Too much or too often may once again prove to be hindrances.

Periodical reports may be based on objective and surprise visits to schools, by formal or even informal conversations with the pupils and teachers, members of VEC, parents of school children, Headmasters and so on. These reports should be prepared by the BRC and the DIET faculty members and submitted to the DPC.

Case studies may also under taken of VEC activities and contributions, AIE centres and instructors, success stories of teachers, headmasters and schools of even entire blocks or education districts and at the grass root level, viz., the school children themselves.

Of all the subjects detailed here, it is the VEC that has practically proved to be most shirk, uncooperative, elusive and unproductive – obviously owing to political reasons. To tackle the uncaring attitude of the VECs, an innovative scheme of prizes or rewards may be arranged. The most dutiful and fruitful VEC in a block may be given a memento, a cup or a shield for its achievement in one academic year. The cup/shield may best be a challenge cup/shield. This will better motivate the VEC members and create a healthy competitive spirits among VECs.

Apart from surprise visits, tests, chats with teachers, pupils, parents and VEC members, some standardized or improvised tools such as questionnaires, opinionnaires, interviews, etc. may be used for evaluation of the progress of the various activities undertaken for the project.

Broad-minded research and careful monitoring will facilitate ease of evaluation.

Monitoring

The effective implementation of a project depends on the effectiveness of monitoring should go side-by-side. Monitoring makes the project successful.

Who will monitor :

Monitoring of the State Project will be done by SPO with some additional functionaries to be the additional work load at the state level. In the district level, the monitoring will be undertaken by three tier management structure and its functionaries. The various programmes components are to be monitored for their progress against the goals and objectives put forth, periodically. Studies in progress can also be conducted in various aspects. Whole components will be shared among the functionaries and district level committees under the District Collector.

In the block, the functionaries like BRC Supervisors, AEEOs, AAEEOs and Teacher Educators are to look after the whole affair against the propositions specified from time to time.

In the school level, the VEC should be aware of the project and cooperate with the school teacher in the effective implement of the project. The effective monitoring system will definitely bring cent percent success of SSA.

How and When to monitor?

Entrusted and supervisory officials will periodically visit the institution to guide and counsel them then and then.

In service training and periodical get together will be conducted to assess the progress and necessary rectifications and suggestions will be given further.

Review meetings should be conducted, periodically / monthly, with specific formats to assess the progress against the different components of SSA.

The DPO will make surprise visits to learn of the trends and developments and the findings will be reported for further action. State Project Director and Joint Directors will review the affairs every month by enquires and by verification of records from Head Quarters.

Once in a year, a audit and pursue the whole affair will be conducted by Audit and Account using of State Project Office.

Audit and Accountant General, Chennai will verify the progress of the components and expenditures against the specified SSA objectives. In depth review mission and its stipulated studies will assess the aptness and progress of the inputs and performance periodically.

Educational Research Evaluation and Monitoring wing of SIEMAT will conduct Action Research, formal arches and components wise progress study researches, etc. The officials and functionaries should take the wholesome responsibilities in monitoring to make the EFA Project a great success.

2.19. Improving Infra Structure

Improving infrastructure in schools assure 100% enrollment and attendance of students. By providing toilets we can retain girls in school hours. Attractive class rooms motivate children's learning efficiency.

2.19.1. Construction of Block Resource Centres

22 BRCs in this District have separate buildings established under DPEP. The staff pattern is 1 + 7. In SSA number of teachers attending training programme is more due to inclusion of upper primary teachers. It is proposed in the year 2003-04 to improve the following facilities.

1. Providing additional furniture and equipment
2. Undertaking repairing works of furniture
3. Giving TLM grant
4. Providing training equipments including computers
5. Making communicating facilities
6. Supply of library books

2.19.2. Construction of Cluster Resource Centre.

In DPEP 190 CRCs were established with furniture facilities. In SSA 48 additional new CRSs are formed. Totally 238 CRCs are functioning.

So far no building was constructed to CRC. It is proposed to supply furniture to 48 CRCs. Giving priority to rural area CRCs it is planned to construct building for 80 CRCs in this year.

2.19.3. Construction of Three Class Room

As per DISE number of eligible schools to construct three class rooms is 199. In this year it is planned to construct 80 class rooms in the needy schools. In the 2001-02, 2 three class rooms were constructed. Name of list of schools to be given building in the year 2003-04 is annexed.

2.19.4. Construction of Two Class Room

As per DISE need of two class rooms in primary schools is 86. In the year 2003-04 it is planned to construct 60 class rooms. All school buildings, toilets and other civil works will be constructed under the community participation. So far 44 two class rooms are constructed. List of schools to be constructed two class rooms in 2003-04 is annexed.

2.19.5. Provision of Toilet Facilities

In primary and upper primary schools toilet facilities are given by various agencies. Feeling the importance of toilet facilities in schools SSA is providing toilet facilities year by year according to the demand of VEC. So far 62 toilets are constructed. This year 60 toilet facilities to the needy schools are proposed to give.

2.19.6. Provision of Drinking Water Facilities

As per DISE 204 schools without drinking water facilities are identified. In this year for 50 schools drinking water facilities are going to be given.

2.20. Maintenance and Repair

To reach the first milestone of enrolling all by 2003, better atmosphere in schools and attractive class rooms are necessary. To maintain this school grant Rs. 5000/- is given to all Government schools.

Expenditure on repair works such as floor repairing, repairing of door and window, white washing, erecting display board, repairing the existing toilets can be met with this amount. In 2002-03 number of schools benefited by this grant is 1894. In the year 2003-04 it is proposed to sanction school grant to 1935 schools.

2.21. Programme for Quality Improvement

Quality issues in elementary improvement will revolve around the quality of infrastructure, teacher motivation, in-service training, curriculum revision, participatory management of elementary education with community support, TLM, monitoring and supervision.

2.21.1 Capacity building for project Staff

The success of a project depends upon the capacity building of the project staff.

Three month school attachment programme was given to newly appointed Teacher Educators in BRC. By observing class room activities and seeing all records in school, they understood the system of school administration .

Five days orientation programme was conducted to explain SSA interventions, objectives and role of BRC and CRC in the scheme.

School based training was given to all DPO and BRC personnel. This is a new approach of training by which trainer and trainee face the problems and solve in the class room itself. It is school specific and need based.

School Adoption Programme :

The Government schools of a block are ranked by grading with indicators. Three indicators such as NER, AR (Achievement Rate), completion rate are taken as basic factors to select adopted schools. Five schools are allotted to each BRC official. They have to visit and observe for the full day (prayer to prayer) according to their report, follow up action will be taken to develop the efficiency of school.

2.21.2. Training to Teachers

Training to teachers is interrelated with the quality of education. Training is given according to the needs of teacher. BRC is a training centre where teachers, ECCE workers and headmasters are given. Training in different areas. DIET plays an important role in preparing resource persons, training modules and teachers hand book. 20 days are allotted in SSA for teachers training. Capacity building of teachers is developed through training.

In the year 2002-03 the following trainings to teachers were given.

1. Play way methods and joyful learning to ECCE workers
2. Teachers handling SC/ST evening classes
3. Collection of data from DISE and COHORT training
4. English booster training for primary and upper primary school teachers
5. Content and methodology training to teachers handling I – VIIIth standards.

Capacity Building

BRC supervisors, AEEOs and teacher educators were trained in DIET as resource persons in the following.

1. Content and methodology
2. Orientation to VEC members
3. School administration

In the year 2003-04 it is proposed to give training to teachers in the following topics.

1. Content and methodology
2. Research and evaluation
3. Health and yoga
4. Sports and Games
5. Arts and Crafts
6. Language skill – English grammar
7. To find hard spot
8. IED
9. Implementation of DISE and COHORT
10. Administration
11. Basic computer education
12. Improving special focus group
13. Multi grade teaching
14. Activity based teaching

In the year 2003-04 it is planned to give 20 days training for all the teachers in various component activities. A detailed Training schedule for the year 2003-2004 given with tentative duration and Date.

In addition to Teachers, Training is also given to VEC members, ECCE workers, AIE instructors DPO staff, BRC Staff, AEEO & AAEEOS.

Table No. 41 **Tentative Training Schedule for 2003-2004**

Name of the Training	Duration	Month
Training to VEC Members	2 days	May - 2003
Training to AEEOs and Supervisors	2 days	May - 2003
Training to AIE Instructors	2 days	May - 2003
Training to ECCE Workers	2 days	May - 2003
Resource person to BRC personnel	5 days	June - 2003
Training to Teacher on MGT	3 days	June- 2003
Training to BRC on SAP	1 Day	June- 2003
Training to teachers on SBT	3 days	June- 2003
Training to teachers on ABT	3 days	June- 2003
Training to AIE Instructors	2 days	June- 2003
Training to HMs on SDP	1 day	July - 2003
Training to teachers handling Maths I, II std	3 days	July - 2003
Training to teachers handling Maths III,IV, V std	3 days	July - 2003
Training to teachers handling Maths in Upper Primary	3 days	July - 2003
TLM workshop for Primary Teachers	3 days	Aug - 2003
Training to AIE Instructors	2 days	Aug - 2003
TLM Workshop for Primary Teachers	3 days	Aug - 2003
Training to Primary teachers handling English	3 days	Aug - 2003

Name of the Training	Duration	Month
Training to Upper Primary teachers handling English	3 days	Aug – 2003
Training to HMs EMIS	1 day	Aug – 2003
Training to Primary teachers on Scholastic subjects	2 days	Sep – 2003
Training to Upper Primary teachers on Scholastic subjects	2 days	Sep – 2003
Training to AIE Instructors	2 days	Sep – 2003
Training to Primary teachers handling Science	3 days	Sep – 2003
Training to Upper Primary teachers handling Science	3 days	Sep – 2003
Training to teachers on IED both Primary and Upper Primary	2 days	Sep – 2003
Training to Primary teachers handling Social Science	3 days	Oct – 2003
Training to Upper Primary teachers handling Social Science	3 days	Oct – 2003
Training to AIE Instructors	2 days	Oct – 2003
Training to Primary teachers handling Science	3 days	Oct – 2003
Training to AIE Instructors	2 days	Oct – 2003

2.21.3 Orientation To VEC Members

SSA is taking effort to universalize elementary education by Community ownership. Village Education Committee is the basic and powerful structure in SSA. VEC plays an important role of activities in improving enrolment, assessing the development of school, time to time visit, inspection, discussions in meetings, taking steps to achieve the needs of school improvement.

As VEC is the basic structure in schools it is necessary that VEC members should know all about their duties and responsibilities in the SSA scheme.

So it is decided to give a two days orientation training to VEC members, On the scheme activities in order to make them fully involved in schools.

There is a remarkable improvement in the activities of VEC members after orientation. In 2003-2004 it is planned to conduct orientation training to all VEC members twice in a year.

2.21.4. Provision of TLM, TLE, School Grant

To focus on elementary education of satisfactory quality with emphasis as education for life provision of TLM, TLE, school Grant is essential.

In the year 2003-04 provision is made in the budget to give TLM grant to 6472 primary school teachers and 2856 upper primary school teachers. TLE grant for 7 new primary schools and 58 new middle schools would be given in this year.

2.21.5. Curriculum Revision - VI Standard Text Book

Curriculum would be revised as per the needs of children. Government of Tamilnadu announced curriculum change in VIth standard text book. Preparation of text book for standard VI is going on.

2.21.6. Innovation – Computer Literacy

Innovative activities make the students think and make the classes live. It is decided to launch the Computer Literacy Programme for 6th standard students in this year.

Syllabus for VIth standard is framed. 10 hours for Demonstration and 30 hours for Practical periods are allotted. A teacher in a school will be trained in this programme. Efforts are taken to implement this programme during April 2003 with the help of private dedicated agency.

Syllabus Prescribed for VI Standard in Computer Literacy Programme

Unit - I : Computer Concepts

Objective : The students must be able to identify the parts of a computer and tell their use.

Unit - II : MS - Windows

Objective : The students must be able to work independently on the Windows based machine.

Unit - III : Draw

Objective : The students must be able to draw and colour Geometric shapes.

Unit - IV : Educational Games

Unit - V : WWW

Objective : The students must be able to search on the World Wide Web.

Unit - VI : Word Processing

Objective : The students must be able to write a short report using the word processor.

Unit - VII : Other Subjects

Tamil, English, Maths, Science, Social Science

Unit - VIII : Evaluation

Vocational Skill Development :

Naturally each child has any kind of skill to lead his/her life. Even in the primary or upper primary level, there is a need of exposure of skill owned by children. They must know that education develops skill and this skill helps them to enjoy their life.

We can develop the skills embeded in children through an innovative vocational skill development programme.

Vocational Skill Development Skills :

- Dancing
- Eloquence, Acting, Gardening
- Singing
- Playing musical instruments
- Spoken English
- Book binding
- Making Designs – Painting
- Making Toys
- House keeping
- Manure preparation
- Catering skill
- Playing Games – Yoga, Karate
- Knitting & Embroidery with locally available material

Strategies to Implement Vocational Skill Development Programme :

- Identification of skilled working teachers in schools
- Volunteers with special skills could help the teachers
- Identification of students having special skills in each school
- Creating vocational centres in schools with the minimum of 20 students
- Skilled teacher will be trained by experts and they will be appointed in centres as Resource Person
- Honorarium would be fixed as per SSA norms

Vocational skill development classes will be organised only after school hours in the evening.

2.22. Project Management

Management is an important structure for the successful implementation of project activities. Project management includes the establishment of District Project Office and Block Resource Centres.

DPO controls all district level activities through BRC.

2.22.1 Establishment Of MIS

Management information system plays a vital role in project activities such as collection of Data, Compilation, feeding and Generating the results. On basis of the result scheme activities are implemented.

Since Viluppuram District has 22 blocks, workload is heavy in MIS. One data entry operator is appointed for MS activities. One more computer programmer and two more systems are needed for better implementation of the scheme activities.

2.22.2 Implementation Of DISE

DISE plays very important role in SSA scheme. It is national level recognized Tool. It gives many important reports about the education system. Scheme implementation is carried out based on the result and report of DISE. Information generated from DISE such as number of schools category wise, management wise, size wise, condition of classrooms, enrollment management wise, category wise, repeaters details, children incentives is useful to incorporate in Annual Work Plan and Budget.

2.22.3. Appointment Of Project Staff

In district project office the following posts are vacant. In this year proposal to fillup the posts are sent to State Project Office.

- | | | |
|-------------------------|---|---|
| 1. Academic consultants | - | 3 |
| 2. Civil consultants | - | 1 |

2.23. Convergence with Ongoing Schemes :

Government of Tamilnadu is the pioneer state of India to improve primary Education by implementing free Noon meal scheme, free supply of text books, uniforms, and bus pass, providing Hostel facilities to special focused groups.

The existing on going scheme of Tamilnadu help to increase the enrollment, attendance and retention of pupils in schools.

Table No. 42 Number of Students Getting Incentives – Primary

Type of Incentive	SC Students		SC Students		OBC Students		General Students		Total	
	B	G	B	G	B	G	B	G	B	G
Free Text Books	55095	54119	4224	356	85702	86084	4628	4825	149649	148593
Free Stationary	23372	22315	2024	155	3722	3396	762	739	29880	28003
Free Uniforms	49191	47518	4048	344	68159	66213	4454	4584	125852	121755
Attendance Scholarship	373	2659	18	16	282	1600	2	4	675	4424

Source : DISE 2002 - 2003

Forest Department :

Forest Department adopts schools to improve infra structure facilities. Saplings are supplied to schools and children were encouraged to grow plants and trees in school campus.

District Rehabilitation Office (DRO) :

With the assistance of DRO, aids and appliances are given to disabled children.

Social Welfare Department ::

Strengthening of ECCE centres is possible only by having linkage with social welfare department.

Health Department :

Doctors attend in IED, Medical camps. They also conduct camps at schools for periodical medical check-up for students. Proper medical treatment for the diseases like Leprosy, Tuberculosis, Elephantiasis are given to children.

DANIDA :

They provide Toilet facilities to schools with the support of the Village Education Committee.

NGOs :

Awareness campaigns are conducted by NGOs to enroll children in schools. Lion and Rotary clubs participate in school activities and school functions. They encourage HM and Teachers to increase enrollment and to conduct sports day, literary Competition programmes. Students are motivated to take part in extra curricular activities.

2.24. Issues and Strategies :**2.24.1. Issue :**

Inconvenience to collect data from schools in Kalrayan Hills due to lack of transport facilities, man power and improving monitoring system to assess the activities of SSA.

There are 48 schools in Vellimalai block which covers the Kalrayan Hills. 39 Government Tribal Residential schools are functioning there. All schools are under the control of ADW department since there is no BRC in Kalrayan Hills. It is very difficult to collect information and data regarding implementation of SSA activities. There is no agency for SSA in the Hills.

Strategy to Overcome this Issue :

- Construction of CRC building at Serapattu village.
- Appointing 5 Teacher Educators exclusively for hills schools or Teacher Educators from nearby blocks i.e Kallakurichi, Sankarapuram and Chinna Salem can be deputed.
- BRC can work temporarily in CRC at Serapattu or at any centre spot of Hills.
- Linkage with other department in Hills should be strengthened by Teacher Educators.
- Kallakurichi BRC Supervisor should co-ordinate the work of Teacher Educator appointed exclusively for Hills.

2.24.2. Issue :

Poor response of attendance of VEC members in VEC meetings. Village Educational Committees are formed and functioning in all schools. When the HM arranges VEC meeting in schools, VEC members participation is not to the satisfactory level. Though they attend the meeting response is poor. But they know that schools are benefited by SSA scheme academically and financially.

Strategy to Overcome this Issue :

- The Headmaster should explain to VEC members why SSA scheme.
- They must be aware of their role in SSA activities.
- Organising meeting at their convenient day
- Creating Cardial relationship between Headmaster and VEC
- Giving recognition to VEC members in school functions
- Appreciation of best VEC in CRC level function
- Giving independency to VEC members to speak school problems

2.24.3. Issue :

Out of 22 blocks, Ulundurpet block shows the poorest performance in Viluppuram district in Completion Rate (51), Repetition Rate (22), Dropout Rate (22) and Girls enrollment in primary classes.

Strategies to Improve Ulundurpet block are suggested.

- Checking census report of schools by AEEOs and BRC during May.
- Maintaining Village Education Registers properly in school.
- Implementing schools based training for teachers and school Adoption Programme in correct schedule.
- Meeting parents individually to reduce dropout
- Giving need based training to teachers
- Using Evaluation Technique to assess pupils performance.
- Discussing school efficiency indicators at CRC completion rate and reducing Dropout Rate
- Strengthening monitoring system by AEEOs and BRC officials.

2.24.4 Issue :

Less Training impact of teachers in class room transaction. In BRC teachers are given training according to their needs. Input of training is good. But 75% of teachers response is upto the mark. TLM is properly used in training innovative ideas on solving class room problems evolve during training session.

While visiting schools, some of the teachers do not use either TLM or teaching methodology as trained as in BRC. This is the observation of visiting officers. This is the issue relating to quality of education.

Strategies suggested to increase Quality of Education by training impact.

- New approach of school based training in schools can be exercised and Evaluation of training impact can be studied on the spot.
- Training impact can be studied by DIET faculty members and BRC personnel

Useful suggestions would be given to teachers immediately. Researchers and teachers must work together to find out strategies to improve pupils efficiency.

CHAPTER – III

Activities and Budget

3.1. Primary Schools (PFE) :

Salary for new teachers : Primary Education is the basic education. 100% access is to be provided by making all habitations served by primary schools. Access in 2002-2003 is 99.42. To make it 100% 9 more primary schools is proposed to open. Two teachers per school are appointed. In SSA last year 2002-2003, 20 teachers are appointed and in 2003-2004 18 more teachers are to be appointed. Budget provision is **Rs. 31.920 lakhs** as salary for 34 new teachers.

School Grant : To develop the infra structure facilities **Rs.2000/-** per school is given as school grant. In this budget **Rs.29.220 lakhs** are allotted as school grant for 1461 primary school. Last year it was given to 1454 schools.

TLM Grant : Teaching Aids must be used during teaching for effective and lively-hood classroom transaction. These teaching learning materials may be hand made / purchased sometimes as per the need of the subject and class taught. For this purpose all teachers handling classes I – VIII were given **Rs.500/-** each as TLM Grant. In 2003-2004 budget is providing **Rs.32.360 lakhs** for 6472 primary school teachers including the primary teachers of upper primary schools. This grant is given to Aided school teachers also.

TLE : Permanent Science and other subject teaching aids are Teaching Learning Equipment. To purchase these equipments **Rs.10000/-** is given as one time grant to newly opened primary schools. In this year 2003-04, 9 primary schools are proposed to open and **Rs. 9.000 lakhs** is budgeted as TLE Grant.

3.2 Upper Primary Schools (UPE)

Salary of new teachers : All the Grants are given for upper primary schools like primary schools. It covers Middle School, High and Higher secondary Schools having classes VI – VIII standard.

100% access is given in upper primary education by upgrading **45** schools in the district. This will fulfill the 3rd objective of SSA.

Last year 47 schools are upgraded for which 47 teachers are appointed, in this year also 58 teachers are to be appointed. Total number of teachers newly appointed in Upper primary schools are 152 (47+47+58). The budgeted amount as salary for them is **Rs.127.680 lakhs**.

School Grant : For 474 upper primary schools the infra grant is estimated **Rs. 9.480 lakhs @ Rs.2000/-** each. Newly upgraded schools will be granted from the fund allotted to them under PFE.

Teacher Grants : As PFE the upper primary teachers are also given **Rs.500/-** each as TLM Grant. In this budget 2003-2004 a total amount of **Rs. 14.280 lakhs** is estimated to 2856 teachers excluding the primary teachers of middle school.

TLE : Teachers Learning Equipment Grant : This grant is given to newly upgraded schools and schools not covered under OBB scheme as one time grant. **Rs. 29.000 lakhs** is allotted in this budget 2003-2004 for 58 newly upgraded schools only.

3.3. Alternative and Innovative Education (AIE)

EGS Centres: In SSA 2003-2004 is the year of activity for Out of School children to enroll them in school by 2003. As Kalrayan Hills is the district specific area having more number of Tribal population. There are 170 habitations scattered served by 46 school in total. By school mapping, 3 eligible habitations are identified as eligible to open primary schools. From remaining habitations 10 were identified as ineligible to open regular school and planned to provide EGS / AIE centres. The amount estimated to 10 EGS centres is **Rs. 2.110 lakhs** for 202 children. More habitations having scattered minimum number of children in the Hill area. For them 2 Residential Schools are proposed to open at Malliampadi and Mottampatty for 80 children. The estimated amount is **Rs. 2.400 lakhs**. In total 13282 excluding EGS and Residential Camp out of school children will be covered under 250 EGS/AIE continuously at the cost of **Rs.56.11645 lakhs**.

3.4. Special Focus Group (SFG)

Disabled children, girl children and SC/ST children are the weaker section of the society, need special care in education to equillise them with others. Hence they are the Special Focus Group.

Education of Disabled :

In the district 3015 disabled children were identified, out of which 2858 children were enrolled in schools. Remaining children are having accute disability. They need more special care to make them enrolled in schools. Steps are being taken to enroil all of them in 2003-2004. Such as medical camp, creating awareness to their parent and enroll them in school. All the needed help and guidlines is planned to provide and make them educated. Special teachers are appointed giving training to them, training to teachers handling the IED children.

It is planned to spend **Rs.1200/-** per child and **Rs. 36.1800 lakhs** is estimated in the Budget to 3015 children.

Education of Girls :

Female literacy is always lower than male. To remove this difference and make all girls children educated, it is planned to select 20,000 girls children from educationally and financially weaker section for special coaching classes this year. It is also planned to teach them in hard subjects such as English and in Maths also.

The estimation for the above expenditure @ **Rs. 10/-** per child for 10 months the budgeted amount is **Rs. 20.000 lakhs.**

Education of SC/ST :

Viluppuram district having SC/ST children of 119732 at primary level and 61159 at upper primary level. Out of 180881 SC/ST children, we have selected 50000., of low performance, socio, economically and educationally weak among them and planned to focus more attention. Special coaching classes are to be conducted for them. After school hours daily 1 hour special coaching in hard subjects. Pre test, mid-term test and post test will be conducted for the assessment of their performance to compare with other children. Better improvement is noted in the last year activity.

In this year 2003-2004 for 47000 children an amount of **Rs. 47.000 lakhs** is estimated in the budget.

3.5. Village Education Committee (VEC)

There are 2270 VEC / PTA in the district. In the scheme SSA, VEC is given the primary importance and make it to act a very prime role. Community owned system is the slogan of SSA i.e. ownership.

VEC Meeting : Monthly two VEC meetings are conducted. As refreshment expenditure **Rs. 40.860 lakhs** of amount is estimated in the budget.

Training : To create awareness of the scheme and make them to know about their duties in the activities like enrollment, improvement of the school by periodical / often monitoring, inspection, it is planned to give them training on the scheme activities for two days at CRC level. As the training expenditure an amount of **Rs. 20.430 lakhs** is estimated in the budget.

3.6. Cluster Resource Centre (CRC)

Next / equal to VEC, CRC is also an important basic educational structure in SSA. It is called in other way as teacher self empowerment body. It is the place where teachers share their academic experiences, problems, issues and find solutions by the discussion made among them.

There are 238 CRCs in the district. In this year 2003-2004, 48 new CRCs are formed in addition to 190 CRCs formed in DPEP. For all the activities the expenditure amount of **Rs.93.263 lakhs** is estimated in the budget. The breakup activities and the amount allotted are as follows for 238 CRCs.

Workshops and meetings	-	5.712 lakhs
Meeting arrangements	-	9.209 lakhs
Furniture (for newly created 48 CRCs)	-	4.800 lakhs
Contingency grant	-	5.950 lakhs
TLM Grant	-	2.380 lakhs
TLE Grant	-	59.500 lakhs
TA/DA at CRC level	-	5.712 lakhs

3.7. Block Resource Centre (BRC)

BRCs are the next higher level structure of CRCs at block level. In our district 22 BRCs are there. The estimated amount in the budget for the activities of 22 BRCs is **Rs. 280.170 lakhs**. The breakup of expenditure as follows.

Salary of Staff in BRC having

1 – Supervisor and 7 – Teacher Educators : **220.000 lakhs**

To purchase additional furniture and

to repair the furniture already there supplied in DPEP : **5.500 lakhs**

3 Teacher Educators are increased in each BRC in addition to 4 in DPEP. Some of the furniture are to be repaired or replaced.

Contingency Grant @ **Rs.12500** to all BRC : **2.750 lakhs**

Workshop and meetings expenditure : **1.320 lakhs**

TLM Grant @ **Rs. 5000/-** each : **1.100 lakhs**

Training Equipments including Phone installation

and Computer to all BRCs each **1.000 lakhs** : **22.000 lakhs**

Library books : **5.500 lakhs**

TA/DA **Rs. 1.000 lakhs** each : **22.000 lakhs**

3.8. Research, Evaluation and Monitoring (REM)

Under this activities each school is given **Rs. 1500** out of which **Rs. 100/-** is allotted to central level of expenditure and **Rs. 400/-** to state level expenditure and **Rs. 1000/-** at district level expenditure. It includes all kinds of activities under Research, Evaluation and Monitoring such as EMIS, school mapping, micro planning, updating House Hold data, TA/DA to monitoring team, appraisal, supervision MIS class room observation etc.

The amount budgeted for 2270 schools is **Rs. 34.050 lakhs**.

3.9. Civil Construction Work (CCW)/

In the budget 33% is allotted to civil work. Six type of Civil Construction Works are there. Total estimated amount is **Rs. 719.500 lakhs.**

1. **BRC** : In all 22 Blocks. BRCs are already established in separate building constructed under DPEP
2. **CRC** : Under DPEP CRCs are not having separate building. in 2003-2004 it is planned to construct 80 CRCs and the amount estimated is **Rs.160.000 lakhs.**

As Viluppuram is backward district, there are more number of Government schools, out of which 75% are not having sufficient building facilities and Drinking water & Toilet facilities also. So it is planned to allot more to Civil works as under 60 two class rooms for **Rs. 180.000 lakhs**, 80 three class room for **Rs. 360.000 lakhs**, 50 Drinking Water facilities for **Rs. 7.500 lakhs**, 60 Toilets facilities for **Rs.12.000 lakhs.**

3.10. Maintenance and Repair Works (MRW)

To improve and maintain the conditions of the class room, each school is given **Rs. 5000/-** as maintenance grant for all the 1935 Government schools. The total estimated amount is **Rs. 96.750 lakhs.**

3.11. Management (MGT)

In the total budget the management cost is 6%. The total estimation of management in the budget is **Rs. 47.810 lakhs.** The breakup figure are as under

Salary of Staff	:	22.000 lakhs
Furniture and Equipment	:	3.000 lakhs
Books and Periodicals	:	0.500 lakhs
Maintenance of Equipments	:	1.000 lakhs
Consumable and Stationary	:	0.500 lakhs
Management and Information System	:	5.000 lakhs
Media Documentation	:	3.000 lakhs
Vehicle maintenance and fuel	:	1.000 lakhs

Under Media and Documentation monthly periodical magazine carrying activities like News, letter printing & publication to all school (2 copy per school) and to other related departments.

- Conducting awareness campaigns
- Press meet arrangement expenditure
- Audio & Video converge of important scheme activities at school / VEC, CRC, BRC and DPO level
- Wall painting, erection of SSA Information Board in highways and different common places like bus stand, Railway Station, etc.
- Conducting Educational Cultural Programme and SSA scheme propaganda activities by expert groups of teachers, artists.
- Flashing the highlights of scheme activities through photos, pamphlets, attractive wall posters, slides in Cinema theaters, stickers etc.

TA/DA to the academic staff for their attending the meeting, inspection, supervision & visit of schools at various levels. The estimation is **Rs. 2.000 lakhs** which includes TA/DA to CEO, DEEO, DEO, AEEO, AAEO and DIET staff for their visit of scheme activities.

Consultancy :

It is proposed to appoint three consultant for the scheme activities like SC/ST, EGS, AIE centres, inspection of TLM, purchase and its use. For salary and TA/DA **Rs. 2.500 lakhs** is estimated in the budget.

Contingency :

Expenditure on EB, Sweeper, purchase of day to day useful things like, tumbler, Jug, water tub, maintenance of suit and all other miscellaneous expenditure come under this category. The expenditure is estimated **Rs. 0.750 lakhs** in the budget.

Training to project Staff :

In SSA it is proposed to give training to all project staff in DPO, BRC and CRC. The estimated amount in the budget is **Rs. 6.560 lakhs**.

3.12. Training

Capacity building is one of the most important component in Education on teachers side. Training is given to teachers in various aspects such as Content, SBT, ABT, MGT language skill, IED training by special teachers, evaluation training, etc.

It is planned to give 20 days training each under various above said aspects. The budget amount @ **Rs. 1400** (20 days x Rs. 70/-). Total estimated amount is **Rs. 90.608 lakhs** to 6472 primary schools teacher and **Rs. 39.984 lakhs** for 2856 upper primary school teachers. Total amount allotted under training head is **Rs. 130.592 lakhs**.

3.13. Innovation (INO)

In SSA it is planned to conduct some useful innovative activity to create awareness and prosperous future among children. Some of the activities are,

1. Basic computer Education to VI -- VIII Standard children. In 2002-2003 for VI th Standard children were being started to teach the basic Computer knowledge under the Innovation activity. It will continued as in 2003-2004 to VI & VII standard, in 2004-2005 to VI, VII & VIII standard and continued such as.
2. Another 2 innovative activity is teaching for girls and for SC/ST children on useful vocational Arts and Crafts activities like music, dance, garmenting, palm leaves material work, toys making in wood, preparation of ink, book binding, origami, etc.
3. Another important activity under innovation is Nursery Education. Pre-primary child should be treated as most important component to give better enrollment in primary education.

For all the four above activities the estimation of budget is **Rs. 50 lakhs** as under.

Computer Education to VI, VII & VIII	-	15.000 lakhs
Useful vocational Arts and Crafts Activities and Education for Girls	-	15.000 lakhs
Useful vocational Arts and Crafts Activities and Education for SC/ST	-	15.000 lakhs
Nursery Education	-	5.000 lakhs
Total	-	50.000 lakhs

Total budget amt. for the year 2003-2004 is **Rs. 1948.51145 lakhs**

The percentage of expenditure in three components are

Sl. No.	Name of the Component	Amount	Percentage (%)
1	Quality	1181.20145	60.5
2	Civil	719.50000	37
3	Management	47.81000	2.5
	Total	1948.51145	100

3.14. Procurement Plan

SSA fulfill all the needs of the school for the Universalisation of Elementary Education. All the needed facilities are made fulfill, to all schools. In other levels as CRC, BRC, DPO are also made fully established structure under SSA.

In DPO, BRC and CRC, all the needs like furniture, stationary, equipments and other expenditures on contingency are to be procured.

At school level, Lab equipments, infra-facilities and Civil work construction are the needs to be procured. For all above needs a procurement procedure is there to follow.

A District level Committee under the Chairmanship of collector is formed. CEO as DPC of SSA is the member secretary of the Committee who will finalise the procedure with concurrence of Chairman and the Committee members.

All the procurements are liable to check and inspect by the District level Committee. Civil works are given to VEC, TLE grant given to school is to purchase Lab articles. The Quality and the cost of articles is inspected by District Level Com. After the approval of DLC & VEC only TLE Grant can be used to procure Lab materials.

Likewise procurement of furniture, and other needs to BRC, DPO also follow the procurement procedure.

Totally in all procurement, transparency is maintained. Community ownership and Transparency in Procurement is the primary Slogan in SSA.

Arrangement for decentralization adopted by the Village / School based body may make a resolution regarding the best way of procurement.

3.15. Implementation Schedule

S. No.	Maj. Act.	Activity Description	Ist Quarter	2nd Quarter	3rd Quarter	4th Quarter
1	PFE	Opening of new schools	***			
		Appointment of new teachers	***			
		Appointment of addl. Teachers	***			
		School Grants	***			
		Teachers Grants	***			
		TLE Grants	***			
2	UPE	Upgrading of Primary schools	***			
		Appointment of new teachers	***			
		Appointment of addl. Teachers	***			
		School Grants	***			
		Teachers Grants	***			
		TLE Grants (New & Uncovered OBB schools)	***			
3	AIE	EGS Centres		***	***	***
		Residential Camps		***	***	***
		Bridge courses		***	***	***
4	SFG	Education of disabled		***	***	***
		Education of Girls		***	***	***
		Education of SC/ST		***	***	***
5	CRC	Workshops and Meetings	***	***	***	***
		Furniture	***			
		Contingency Grant	***	***	***	***
		TLM Grant	***	***	***	***
6	BRC	Salary of Staff	***	***	***	***
		Furniture	***	***		
		Contingency Grant	***	***	***	***
		Workshops and Meetings	***	***	***	***

		TLM Grant	***		***	
		Training Equipments		***		
7	REM	Research and Evaluation Programme.		***	***	***
8	CCW	Construction of BRCs	***	***	***	***
		Construction of CRSs	***	***	***	***
		Construction of two classroom	***	***	***	***
		Construction of three classroom	***	***	***	***
		Drinking Water	***	***	***	***
		Toilets	***	***	***	***
9	MRW	Repairs	***	***	***	***
10	MGT	Salary of staff	***	***	***	***
		Furniture and Equipment	***	***		
		Books and Periodicals		***		
		Maintenance of equipment	***	***	***	***
		Consumable and Stationery	***	***	***	***
		T.A/D.A	***	***	***	***
		Consultancy	***	***	***	***
		Contingency	***	***	***	***
		Training to CRC staff	***	***		
		Training to BRC staff	***	***		
11	TRG	Training to Teachers(Primary)		***	***	***
		Training to Teachers (Middle)		***	***	***
12	VEC	Training to VEC Members	***			
13	INO	Computer Education		***	***	***
		Education of Girls - Inn. Programmes		***	***	***
		Education of SC./ST - Inn. Programmes		***	***	***
		ECE (New Centers)		***	***	***

Table A

S. No.	Maj. Act.	Activity Description	Villupuram 2001-2002				
			Receipt		Exp.	Spill	
			Phy.	Fin.		Phy.	Fin.
1	PFE	Primary Schools					
i		No. of Schools					
ii		Salary of new teachers					
iii		Salary of addl. Teachers					
iv		School Grants					
v		Teachers Grants					
vi		TLE Grants	0	0		0	0
		Total		0.000			0.000
2	UPE	Upper Primary Schools					
i		No. of Schools					
ii		Salary of new teachers					
iii		Salary of addl. Teachers					
iv		School Grants					
v		Teachers Grants					
vi		TLE Grants	264.000	7.200		264.000	7.200
		Total		7.200			7.200
3	AIE	Alternative & Innovative Education					
i		EGS Centres (Unserved Habitations)					
ii		Bridge Courses/Transit Camps					
iii		Residential Camps					
		Total		0			0
4	SFG	Special Focus Groups					
i		Education of disabled					
ii		Education of Girls					
iii		Education of SC/ST Children					
		Total		0			0
5	VEC	Village Education Committees					
i		Meetings					
ii		Training					
		Total		0			0
6	CRC	Cluster Resource Centres					
i		Workshops and Meetings					
ii		Furniture					
iii		Contingency Grant					
iv		TLM Grant					
v		TLE Grant					
vi		Library Books					
vii		TA/DA					
		Total	0	0		0	0
7	BRC	Block Resource Centres					
i		Salary of Staff					
ii		Furniture	0	0		0	0
iv		Workshops and Meetings					
v		TLM Grant					
vi		Training Equipments					
vii		Library Books					
viii		TA/DA					
		Total	0.000	0.000		0.000	0.000
8	REM	Research, Evaluation & Monitoring					
9	CCW	Civil Construction Works					

S. No.	Maj. Act.	Activity Description	Villupuram				
			2001-2002				
			Receipt		Exp.	Spill	
Phy.	Fin.	Phy.	Fin.				
i		Construction of BRCs					
ii		Construction of CRCs					
iii		Construction of two classroom	2	9.000		2.000	9.000
iv		Construction of three classroom				0.000	0.000
v		Drinking Water	16	2.400		16.000	2.400
vi		Toilets	8	1.600		8.000	1.600
		Total		13.000		26.000	13.000
10	MRW	Maintenance & Repair Works					
11	MGT	Management					
i		Salary of staff					
ii		Furniture and Equipment					
iii		Books and Periodicals					
iv		Maintenance of equipment					
v		Consumable and Stationery					
vi		Management Information System					
vii		Media and Documentation					
viii		Training to Project Staff					
ix		Consultancy					
x		Contingency					
xi		TA/DA					
		Total	0.000	0.000		0.000	0.000
12	TRG	Training					
i		Training to Teachers (Primary)					
ii		Training to Teachers (Middle)					
		Total	0.000	0.000		0.000	0.000
13	INO	Innovation					
i		Computer Education					
ii		Edn. of Girls (Arts and Crafts)					
iii		Edn. of SC/ST Children (Arts and					
iv		Nursery Education					
		Total					
		Grand Total		20.200			20.200

Table B

S. No.	Maj. Act.	Activity Description	Receipt		Villupuram Expenditure		Spillover	
			Phy	Fin	Phy	Fin	Phy	Fin
1	PFE	Primary Schools						
		No. of Schools						0.00
ii		Salary of new teachers	368	154.560		14.561		139.99
iii		Salary of addl. Teachers						0.00
iv		School Grants						0.00
		Teachers Grants						0.00
vi		TLE Grants	184	18.400		1.000		17.40
		Total	552.000	172.960	0.000	15.561	0.000	157.39
	UPE	Upper Primary Schools						
i		No. of Schools						0.00
ii		Salary of new teachers	86	36.120		22.871		13.24
iii		Salary of addl. Teachers						0.00
iv		School Grants	519	10.380		4.000		6.38
v		Teachers Grants	4514	22.570		7.070		15.50
vi		TLE Grants	86	43.000		23.500		19.50
		Total	5205.000	112.070	0.000	57.441	0.000	54.62
3	AIE	Alternative & Innovative Education						
i		EGS Centres (Unservd Habitations)	10	2.112	0	1.21073	0	0.90127
		Bridge Courses/Transit Camps						
iii		Residential Camps						0.000
		Total	10.000	2.112	0.000	1.211	0.000	0.90
	SFG	Special Focus Groups						
		Education of disabled	2089	8.356				8.356
ii		Education of Girls						0.000
iii		Education of SC/ST Children						0.000
		Total	2089.000	8.356	0.000	0.000	0.000	8.356
5	VEC	Village Education Committees						
i		Meetings						0.000
		Training	2226	10.685		0.811		9.874
		Total	2226.000	10.685	0.000	0.811	0.000	9.874
6	CRC	Cluster Resource Centres						
		Workshops and Meetings	252	3.528	0	2.17996	0	1.34804
		Furniture						
iii		Contingency Grant	252	6.300				6.300
iv		TLM Grant	252	2.520				2.520
		TLE Grant						0.000
v		Library Books						0.000
vii		TA/DA						0.000
		Total	756.000	12.348	0.000	2.180	0.000	10.168
7	BRC	Block Resource Centres						
i		Salary of Staff	0	0	0	0	0	0
ii		Furniture						

S. No.	Maj. Act.	Activity Description	Villupuram					
			Receipt		Expenditure		Spillover	
			Phy	Fin	Phy	Fin	Phy	Fin
iii		Contingency Grant						0.000
iv		Workshops and Meetings						0.000
		TLM Grant						0.000
v		Training Equipments						0.000
vi		Library Books						0.000
vii		TA/DA						0.000
		Total	0.000	0.000	0.000	0.000	0.000	0.000
8	REM	Research, Evaluation & Monitoring	2134	19.206		0.137		19.069
9	CCW	Civil Construction Works						
		Construction of BRCs						0.000
ii		Construction of CRCs						0.000
iii		Construction of two classroom	44	132.000		125.000		7.000
iv		Construction of three classroom						0.000
		Drinking Water	48	7.200		7.200		0.000
vi		Toilets	54	10.800		10.800		0.000
		Total	146.000	150.000	0.000	143.000	0.000	7.000
10	MRW	Maintenance & Repair Works	2134	106.700		94.800		11.900
11	MGT	Management						
		Salary of staff		1.054		1.054		0.000
		Furniture and Equipment						0.000
i		Books and Periodicals						0.000
v		Maintenance of equipment						0.000
		Consumable and Stationery						0.000
		Management Information System		0.245		0.245		0.000
ii		Media and Documentation		0.418		0.418		0.000
ii		Training to Project Staff		1.151				1.151
		Consultancy		0.387				0.387
		Contingency		0.049		0.387		-0.338
		TA/DA				0.049		-0.049
		Total	0.000	3.304	0.000	2.152	0.000	1.152
	TRG	Training						
		Training to Teachers (Primary)						0.000
		Training to Teachers (Middle)	1353	18.945		18.945		0.000
		Total	1353.000	18.945	0.000	18.945	0.000	0.000
	INO	Innovation						
		Computer Education		15.000				15.000
		Edn. of Girls (Arts and Crafts)		15.000				15.000
		Edn. of SC/ST Children (Arts and Crafts)		15.000				15.000
		Nursery Education						0.000
		Total		45.000		0.000		45.000
		Grand Total		661.686		336.239		325.447

Table - C

S. No.	Maj. Act.	Activity Description	Villupuram				2002-03 spillover
			2001-2002				
			Spillover		Expenditure		
Phy.	Fin.	Phy.	Fin.				
1	PFE	Primary Schools					
i		No. of Schools					0.000
ii		Salary of new teachers					139.999
iii		Salary of addl. Teachers					0.000
iv		School Grants					0.000
v		Teachers Grants					0.000
vi		TLE Grants	0	0	0	0	17.400
		Total		0.000		0.000	157.399
2	UPE	Upper Primary Schools					0.000
i		No. of Schools					0.000
ii		Salary of new teachers					13.249
iii		Salary of addl. Teachers					0.000
iv		School Grants					6.380
v		Teachers Grants					15.500
vi		TLE Grants	264.000	7.200	264.000	7.200	19.500
		Total		7.200		7.200	54.629
3	AIE	Alternative & Innovative Educatio					0.000
i		EGS Centres (Unservd Habitations)					0.90127
ii		Bridge Courses/Transit Camps					0
iii		Residential Camps					0.000
		Total		0		0	0.901
4	SFG	Special Focus Groups					0.000
i		Education of disabled					8.356
ii		Education of Girls					0.000
iii		Education of SC/ST Children					0.000
		Total		0		0	8.356
5	VEC	Village Education Committees					0.000
i		Meetings					0.000
ii		Training					9.874
		Total		0		0	9.874
6	CRC	Cluster Resource Centres					0.000
i		Workshops and Meetings					1.34804
ii		Furniture					0.000
iii		Contingency Grant					6.300
iv		TLM Grant					2.520
v		TLE Grant					0.000
vi		Library Books					0.000
vii		TA/DA					0.000
		Total	0	0	0	0	10.168
7	BRC	Block Resource Centres					0.000
i		Salary of Staff					0
ii		Furniture	0	0	0	0	0.000
iv		Workshops and Meetings					0.000
v		TLM Grant					0.000
vi		Training Equipments					0.000
vii		Library Books					0.000
viii		TA/DA					0.000
		Total	0.000	0.000	0.000	0.000	0.000
8	REM	Research, Evaluation & Monitoring					19.069

S. No.	Maj. Act.	Activity Description	Villupuram				2002-03 spillover
			2001-2002				
			Spillover		Expenditure		
			Phy.	Fin.	Phy.	Fin.	
9	CCW	Civil Construction Works					0.000
i		Construction of BRCs					0.000
ii		Construction of CRCs					0.000
iii		Construction of two classroom	2	9.000	2.000	9.000	7.000
iv		Construction of three classroom			0.000	0.000	0.000
v		Drinking Water	16	2.400	16.000	2.400	0.000
vi		Toilets	8	1.600	8.000	1.600	0.000
		Total		13.000	26.000	13.000	7.000
10	MRW	Maintenance & Repair Works					11.900
11	MGT	Management					0.000
i		Salary of staff					0.000
ii		Furniture and Equipment					0.000
iii		Books and Periodicals					0.000
iv		Maintenance of equipment					0.000
v		Consumable and Stationery					0.000
vi		Management Information System					0.000
vii		Media and Documentation					0.000
viii		Training to Project Staff					1.151
ix		Consultancy					0.387
x		Contingency					-0.338
xi		TA/DA					-0.049
		Total	0.000	0.000	0.000	0.000	1.152
12	TRG	Training					0.000
i		Training to Teachers (Primary)					0.000
ii		Training to Teachers (Middle)					0.000
		Total	0.000	0.000	0.000	0.000	0.000
13	INO	Innovation					0.000
i		Computer Education					15.000
ii		Edn. of Girls (Arts and Crafts)					15.000
iii		Edn. of SC/ST Children (Arts and					15.000
iv		Nursery Education					0.000
		Total					45.000
		Grand Total		20.200		20.200	325.447

Sarva Shiksha Abhiyan, Tamilnadu

**Table D
Budget Estimate for 2003-2004**

S. No.	Maj. Act.	Activity Description	Unit Cost	Villupuram	
				Phy.	Fin.
1	PFE	Primary Education			
i		No. of Schools		9	
ii		Salary of new teachers	0.840	38	31.920
iii		Salary of addl. teachers	0.840		
iv		School Grant	0.020	1461	29.220
v		Teachers Grant	0.005	6472	32.360
vi		TLE Grant	0.100	9	0.900
		Total			94.400
2	UPE	Upper Primary Education			
i		No. of Schools		45	
ii		Salary of new teachers	0.840	139	116.760
iii		Salary of addl. teachers	0.840		
iv		School Grant	0.020	474	9.480
v		Teachers Grant	0.005	2856	14.280
vi		TLE Grant	0.500	45	22.500
		Total			163.020
3	AIE	Alternative & Innovative Education			
i		EGS Centres (Unserved Habitations)	0.211	10	2.113
ii		Bridge Courses/Transit Camps	0.211		56.116
iii		Residential Camps	0.030		2.400
		Total			60.629
4	SFG	Special Focus Group			
i		Education of disabled	0.012	3015	36.180
ii		Education of Girls	0.002	10000	20.000
iii		Education of SC/ST Children	0.002	23500	47.000
		Total			103.180
5	VEC	Village Education Committees		2115	
i		Meetings	0.018		19.035
ii		Training	0.009		19.035
		Total			38.070
6	CRC	Cluster Resource Centres		238	
i		Workshops and Meetings	0.002		6.920
ii		Furniture	0.100		4.800
iii		Contingency Grant	0.025		5.950
iv		TLM Grant	0.010		2.380
v		TLE Grant	0.250		59.500
vi		Library Books	0.100		10.000
vii		TA/DA	0.002		5.712
		Total			95.262
7	BRC	Block Resource Centres		22	
i		Salary of Staff	10.000		220.000
ii		Furniture	1.000		6.000
iii		Contingency Grant	0.125		2.750
iv		Workshops and Meetings	0.005		1.320
v		TLM Grant	0.050		1.100
vi		Training Equipments	1.000		22.000
vii		Library Books	0.250		5.500
viii		TA/DA	1.000		22.000
		Total			280.670

S. No.	Maj. Act.	Activity Description	Unit Cost	Villupuram	
				Phy.	Fin.
8	REM	Research, Evaluation & Monitoring	0.015	2270	34.050
9	CCW	Civil Construction Works			
i		Construction of BRCs	6.000		
ii		Construction of CRCs	2.000	80	160.000
iii		Construction of two classroom	3.000	60	180.000
iv		Construction of three classroom	4.500	80	360.000
v		Drinking Water	0.150	50	7.500
vi		Toilets	0.200	60	12.000
		Total			719.500
10	MRW	Maintenance & Repair Works	0.050	1935	96.750
11	MGT	Management			
i		Salary of staff	22.000		22.000
ii		Furniture and Equipment	3.000		3.000
iii		Books and Periodicals	0.500		0.500
iv		Maintenance of equipment	0.500		1.000
v		Consumable and Stationery	0.350		0.350
vi		Management Information System	2.000		2.000
vii		Media and Documentation	2.000		2.000
viii		Training to Project Staff	0.010		6.560
ix		Consultancy	2.500		2.500
x		Contingency	0.140		1.750
xi		TA/DA	1.000		1.000
		Total			42.660
12	TRG	Training			
i		Training to Teachers (Primary)	0.014	6472	90.608
ii		Training to Teachers (Upper Primary)	0.014	2856	39.984
		Total			130.592
13	INO	Innovation			
i		Computer Education	15.000		15.000
ii		Edn. of Girls (Arts and Craft)	15.000		15.000
iii		Edn. of SC/ST Children (Arts and Craft)	5.000		15.000
iv		Nursery Education	15.000		5.000
		Total			50.000
		Grand Total			1908.783

ANNEXURE - I

**List of Schools needed Class room facilities
3 Class room**

Sl.No.	Blockwise	Name of the School
	CHINNA SALEM Block	38 PUMS PANDUR
1	PUMSVENKATTAMMA PETTAI	39 GHSS KALA MARUDUR
2	PUMS ERIYUR	KOLIANUR Block
3	PUMS KALLANATHAM	40 PUMS POYYAPPAKKAM
4	PUMS MATTIGAI KURICHI	41 ADW HS KAPPUR
5	PUMS NAMASIVAYAPURAM(ADW)	42 GHS VIRATTIKUPPAM
6	PUMSVETTIPERUMAL AGARAM	43 GHS KOLIANUR
7	PUMS ELAVADI	44 GHS MARAGADAPURAM
8	PUMS PAITHANTHURAI	VILLUPURAM Block
9	GHSS KACHIRAPPALAYAM(G)	45 GHSS KEELPERUMBAKKAM
10	GHSS KACHIRAPPALAYAM (B)	46 GHSS VILLUPURAM(G)
11	GHSS VADAKKANANTHANGAL(B)	VIKRAVANDI Block
	KALLAKURICHI Block	47 PUMS MELAKONDAI
12	PUMS EMAPPEAR	48 PUMS KUTHAMPOONDI
13	PUMS PUKKIRAVARI	49 PUMS KUNDALAPULIYUR
14	PUMS THENKEERANUR	50 PUMS AASUR
15	PUMS MALAIKKOTTALAM	51 GHS MUNDIYAMBAKKAM
16	PUMS THATCHUR KATTUKOTTAKAI	52 GHS SINTHAMANI
17	PUMS THANDALAI PERUVANGUR	53 GHS E MANDAGAPPATTU
18	GHSS KALLAKURICHI(B)	54 GHSS S V PALAYAM
	RISHIVANDHIYAM Block	55 GHSS PANAYAPURAM
19	PUMS JAMBADAI	56 GHSS THUMBUR
20	PUMS LA. KUDALUR	KANDAMANGALAM Block
21	PUMS ILAYANARKUPPAM	57 PUMS V MATHUR
22	PUMS SEERPANANDAL	58 PUMS PALLI THENNAL
23	GHS SITHERIPATTU	59 PUMS NAVAMAL MARUDUR
24	GHS SIRPATHANALLUR	60 ADW MS RAMBAKKAM
25	GHS KIZPADI	61 GHS KUMALAM
	SANKARAPURAM Block	62 GHS RAMBAKKAM
26	PUMS SEMBARAMPATTU	63 GHSS SITHALAMPATTU
27	PUMS VADASIRUVALLUR	64 GHSS VAZHUDAVUR
28	PUMS PAVALAM	THIYAGADURUGAM Block
29	PUMS RANGAPPANUR	65 PUMS PALAYANGAL
30	GHS ARASAMPATTU	66 PUMS MUDIYANUR
31	GHSS DEVAPANDALAM(G)	67 PUMS PORASAKKURICHI
32	GHSS PUDUPATTU	68 PUMS PALLAGACHERRY
33	GHSS S V PALAYAM	69 PUMS VELAKURICHI
	TIRUNAVAILUR Block	70 GHS S OGAIYUR
34	PUMS NAINARKUPPAM	71 GHS KOOTHAKUDI
35	PUMS KORATTUR	72 ADW HS KUDIYANALLUR
36	PUMS KILAPPALAYAM	73 GHSS NAGALUR
37	PUMS ILUPPAIYUR	74 PUMS KOOVADU

SII.No.	Blockwise	Name of the School	
75	PUMS KATTU EDAYARPALAYAM	117	GHS ANNAMANGALAM
76	PUMS AANANGUR VADAKURUMBUR	118	GHS NALLANPILLAI PETRAL
77	PUMS M KUNNATHUR	119	GHS SATHIAMANGALAM
78	PUMS PU KILLANUR	120	GHSS ANANDHAPURAM(B)
79	PUMS PINNALAVADI	121	GHSS GINGEE (B)
80	PUMS ADHAIYUR		MELMALAIYANUR Block
81	GHS AASANUR	122	PUMS ETHAPPATTU (HINDU)
82	GHS KILIYUR	123	PUMS MELACHERRY
83	GHSS ULUNDURPET	124	PUMS PERIYA NOLAMBAI
84	GHSS ULUNDURPET (G)	125	PUMS THAZHANGUNAM
85	GHSS ELAVANASUR	126	PUMS NOTCHALUR
	TIRUVENNAINALLUR Block	127	GHS KAPLAMPADI
86	PUMS T KULATHUR	128	GHS KOTTAPPOONDI
87	PUMS PENNAIVALAM	129	GHS MELASEVALAMPADI
88	PUMS PAAVANTHUR	130	GHSS PERUVALUR
89	PUMS SEMMAR	131	GHSS MELMALAIYANUR
90	GHS MANAKKUPPAM	132	GHSS SEVALAPURAI
91	GHS AANATHUR	133	GHSS ANNAMANGALAM (G)
92	GHS SARAVANAPPAKKAM	134	GHSS AVALURPETTAI (G)
93	GHS SIRUMADURAI	135	GHSS AVALURPETTAI (B)
	KANAI Block		MARAKKANAM Block
94	PUMS ADHANUR	136	PUMS ALAPPAKKAM
95	PUMS VENGANTHUR	137	PUMS KIZ EDAYALAM
96	PUMS SIRUVALAI	138	PUMS ANNAMPUTHUR
97	PUMS KOZHIPPATTU	139	PUMS THEN KALAVAI
98	PUMS NALLAPALAYAM	140	PUMS MOLOCHUR
99	GHS ATHIYUR THIRUKKAI	141	PUMS KOVADI
100	GHS KARUVATCHI	142	PUMS BRAMMADESAM
101	GHS PERUMBNACKAM	143	PUMS KANTHADU
	VALLAM Block	144	GHS NAGAR
102	PUMS KURINJIPPAI	145	GHS MUDALIYARKUPPAM
103	PUMS MELATHIPPAKKAM	146	GHS NADUKKUPPAM
104	PUMS MEL SEVUR	147	GHS KOONIMEDU
105	GHS VEERANAMUR	148	GHSS MARAKKANAM
106	GHS KALLAPULIYUR	149	GHSS ANUMANDHAI
107	GHS NEGANUR	150	ADW HSS SINGANOOR
108	GHS THAIYUR		MUGAIYUR Block
109	GHSS MEL OLAKKUR	151	PUMS OTHIYATHUR
	GINGEE Block	152	PUMS OTTAMPATTU
110	PUMS KATTU SITHAMUR	153	PUMS ARUNAPURAM
111	PUMS GINGEE	154	PUMS JAMBAI
112	PUMS THADAGAM	155	PUMS KODUKKUPATTU
113	PUMS PAKKAM	156	PUMS DEVANUR
114	PUMS ODHIYATHUR	157	PUMS CHENNAKUNAM
115	GHS DEVADANAMPETTAI	158	PUMS PAIYUR
116	GHS MAZHAVANTHANGAL	159	PUMS S PILRAMPATTU

SI.No.	Blockwise Name of the School		
160	GHS ALAMBADI		OLAKKUR Block
161	GHS ARCOT	182	PUMS KIL POOTHERI
162	GHS VEERAPANDI	183	PUMS A PAKKAM
163	GHSS MANALURPETTAI	184	GHS AVANIPUR
	TIRUKOILUR Block	185	GHS OONGUR
164	PUMS VENGUR	186	GHS THADHAPURAM
165	PUMS SOZHAVANDIPURAM	187	GHSS VELLIMEDUPETTAI
166	PUMS POOVANUR	188	GHSS OLAKKUR
167	PUMS THIMMACHUR		VANUR Block
168	PUMS THAGADI	189	PUMS SIRUVAI
169	GHS PONNIYANDAL	190	PUMS THENKODIPAKKAM
170	GHS THIRUPALAPANDAL	191	PUMS POOTHURAI
	MAILAM Block	192	PUMS KONJUMANGALAM
171	PUMS MAILAM	193	PUMS ULAGAPURAM
172	PUMS MELPERADIKUPPAM	194	GHS THIRUVAKKARAI
173	PUMS KOOTERIPATTU	195	GHS KILIANUR
174	PUMS KATTU SIVIRI	196	GHS KAZHU PERUMBAKKAM
175	PUMS PERMANDUR	197	ADW HSS KONDHAMUR
176	GHS AAKUR	198	GHSS PUDUKKUPPAM
177	GHS KOLLAR	199	GHSS KARASANUR
178	GHS NEDIMOZHIANUR		
179	GHS VEEDUR		
180	GHS THAZHUDHALI		
181	GHSS RETTANAI		

ANNEXURE - II

List of Schools needed 2 Class room facilities

Sl.No.	Name of the School	Sl.No.	Name of the School
	CHINNASALEM Block	44	PUES PUDUR
1	PUES NAGAKUPPAM	45	PUES T KULATHUR
2	PUES ELIYATHUR	46	PUES T EDAYAR
3	PUES AMMAKALATHUR		KANAI Block
4	PUES PANDIYANKUPPAM	47	PUES KEDAR
5	PUES PAKKAMBADI	48	PUES SE. KUNNATHUR
6	PUES THOTTIYAM	49	PUES ATHIYUR THIRUKKAI
7	PUES BETHA SAMATHURAM		VALLAM Block
	KALLAKURICHI Block	50	PUES MAHADEVIMANGALAM
8	PUES PARIKKAM	51	PUES AVIYUR
9	PUES PITCHANATHAM	52	PUES MELKALAVAI
10	PUES MELUR		GINGEE Block
11	PUES SOMANDARKUDI	53	PUES SIRUVALLIKUPPAM
	RISHIVANDIYAM Block	54	PUES KARAI
12	PUES ODIYANDAL		MELMALAIYANUR Block
13	PUES AVIRIYUR	55	PUES PARITHIPURAM
14	PUES VENGALAM	56	PUES THEPPIRAMPATTU
15	PUES NAGALKIUDI	57	PUES MELSEVALAMPADI
16	PUES ARUMBARAMPATTU	58	PUES MAMANANDAL
17	PUES PERAL	59	PUES KOTTAMBOONDI
18	PUES VADAMAMANDUR	60	PUES KOVIL PURAIYUR
19	PUES PERIYAKOLLIYUR		MARAKKANAM Block
	SANKARAPURAM Block	61	PUES KUPPAM
20	PUES PORUVALUR	62	PUES SIRUVADI
21	PUES KOSAPPADI	63	PUES ADAVALLI KOOTHAN
	TIRUNAVVALUR Block		MUGAIYUR Block
22	PUES KORATTUR	64	PUES KOTHANDAPANIPURAM
23	PUES SENGURICHI	65	PUES MURUKKAMPADI
24	PUES GANDHINAGAR	66	PUES PALLICHANDAL
25	PUES MALLIGA	67	PUES AADUR KOLAPPAKKAM
	VIKRAVANDI Block	68	PUES KULA DEEPA MANGALAM
26	PUES THIRUNANDHIPURAM		TIRUKOILUR Block
27	ADW ES V SALAI	69	PUES THULAMPOONDI
28	PUES MUTTATHUR	70	PUES AMMANKOLLAIMEDU
29	PUES T PUDUPALAYAM	71	PUES SETTITHANGAL
	KANDAMANGALAM Block	72	PUES SENGANANGKOLLA
30	PUES MUTRAMPATTU		MAILAM Block
31	PUES SIRUVANTHADU	73	PUES VEMPOONDI
32	PUES MITTA MANDAGAPPATTU	74	PUES ALAGRAMAM COLONY
	THIYAGADURUGAM Block	75	PUES ALAGRAMAM
33	PUES VILAKKUR COLONY	76	PUES AATHIKUPPAM
34	PUES VIRUGAVUR		OLAKKUR Block
	ULUNDURPET Block	77	PUES MANGALAM
35	PUES PARAMESWARIMANGALAM	78	ADWES PANKOLATHUR
36	PUES T THAKKA	79	ADW ES MELPAKKAM
37	PUES S MALAIYANUR	80	PUES POTHANANTHAL
38	PUES M KUNNATHUR	81	PUES NOLAMBUR
39	PUES PUGAIATTI		VANUR Block
40	PUES KATTUCHELLUR	82	PUES PUDUR
41	PUES SIKKADU	83	ADW ES PULICHAPALLAM
	TIRUVENNAINALLUR Block	84	PUES ELAVAMPATTU
42	PUES AAMUR KUDIIRUPPU	85	PUES KODUR
43	PUES GRAMAM KUDIIRUPPU	86	PUES ERAIYUR

Regn. No. **Identity Card**
Never Enrolled/Dropout Child

District : **BRC :** **CRC :** **VEC :**

- 1) Name of the Child :
- 2) Father's/Guardian's Name :
- 3) Address :
- 4) Age :
- 5) Sex : Male/Female
- 6) Community : SC/S'T/MBC/BC/Others
- 7) Religion : Hindu/Muslim/Christian/Others

page 2

- 8) Whether Disabled : Yes/No
- 9) Status of the child during enumeration : Dropout/Never enrolled/Child labourer
- 10) Present Status : Admitted in School
- 11) Address of the School and class :

Signature : -----

BRC Supervisor : -----

Block : -----

ABBREVIATIONS

1. AO - Administrative Officer
2. AAEEEO - Additional Assistant Elementary Educational Officer
3. ABT - Activity Based Training
4. AEEO - Assistant Elementary Educational Officer
5. ADPC - Assistant District Programme Co-ordinator
6. AIE - Alternative Innovative Education
7. AR - Attendance Rate
8. AWPB - Annual Work Plan and Budget
9. BC - Bridge Course
10. BRC - Block Resource Centre
11. BRG - Block Resource Group
12. CR - Completion Rate
13. CRC - Cluster Resource Centre
14. CRG - Cluster Resource Group
15. DD - Deputy Director
16. DEE - Director of Elementary Education
17. DEEO - District Elementary Educational Officer
18. DEEP - District Elementary Education Plan
19. DEP - Distance Educational Programme
20. DIET - District Institute of Education and Training
21. DISE - District Information of School Education
22. DPC - District Programme Coordinator
23. DPEP - District Primary Educational Programme
24. DPO - District Project Officer / Office
25. DR - Dropout Rate
26. DRG - District Resource Group
27. DTE - Diploma in Teacher Education
28. DTERT - Directorate of Teacher Education, Research and Training
29. ECE - Early Childhood Education
30. ECCE - Early Childhood Care and Education
31. EFA - Education For All
32. EGS - Education Guarantee Scheme
33. EMIS - Educational Management Information System
34. FAO - Finance and Accounts Officer
35. GAR - Gross Access Ratio
36. GER - Gross Enrollment Ratio
37. HI - Hearing Impairment
38. ICDS - Integrated Child Development Scheme
39. IED - Integrated Education for Disabled

40. JD - Joint Director
41. KRP - Key Resource Persons
42. LD - Learning Disability
43. MDO - Media and Documentation Officer
44. MED - Medical Documentation
45. MGT - Multi Grade Teaching
46. Mgt - Management
47. MR - Mentally Retarded
48. MRP - Master Resource Persons
49. MTA - Mother Teacher Association
50. MIS - Management Information System
51. NER - Net Enrollment Ratio
52. NFE - Non Formal Education
53. NGO - Non Governmental Organisation
54. OI - Orthopedic Impairment
55. PFE - Primary Formal Education
56. PMIS - Project Management Information System
57. PRA - Participatory Rural Appraisal
58. PTA - Parent Teacher Association
59. SAP - School Adoption Programme
60. SBT - School Based Training
61. SCC - Special Coaching Classes
62. SO - Statistical Officer
63. SPD - State Project Director
64. SPO - State Project Office
65. SSA - Sarva Shiksha Abhiyan
66. TC - Transit Camp
67. TNIP - Tamilnadu Integrated Nutritious Programme
68. TLM - Teaching Learning Materials
69. TPR - Teacher Pupil Ratio
70. TR - Transition Rate
71. TriE - Tribal Education
72. TTO - Teacher Training Offier
73. UEE - Universalisation of Elementary Education
74. UPE - Universalisation of Primary Education
75. VEC - Village Education Committee
76. VLC - Village Level Committee
77. VI - Visually Impairment
78. WDO - Women Development Officer
79. WDP - Women Development Programme

LIBRARY & DOCUMENTATION CENTRE
National Institute of Educational Planning and Research.
17-B, Connaught Place Marg,
New Delhi-110016 D-12183
DOC, No
Date 05-12-2009

