

SARVA SHIKSHA ABHIYAN

UDUPI DISTRICT

District Elementary Education Plan under SSA 2001-2010



CONTENTS

1. *District Profile : Background*
2. *District Profile : Education*
3. *District Profile : General*
4. *Process of Projection*
5. *Strateges, Issues, Problems - Primary School*
6. *Goals and objectives of S.S.A*
7. *Programme Component*
8. *Annextures*
9. *Budget Estimate - Chapter & Interventione wise*
10. *Justification for the budget estimate*
11. *Annual Plan of 2001-2002*

1. District Profile :Background

District Background

Udupi is the land of many pilgrimage places. It is 400 Km away from state capital and 415 k.m from Goa. It consists of coastal belt, Plain land and semi malnad area. The legend shows it is the land of "Parshuram Shrasti"

The district has its own border i.e south by Dakshina Kannada, North by Uttarakannada, East by Shimoga and chikmangalore. It has three revenue block, one revenue subdivision, 5 educational blocks. It has situated in 74 degree longitude and 17 degree latitude. The total area is 3575 square k.m.

The climate conditions is according to seasons. There is heavy rain during mansoon and hot-test during summer. (March - May) The pupil also who depends upon Agriculture family become absentee.

The rule of Vijayanagar, Bhootala Pandya, Jains in sooral of Kokkarne shows their glory. There are many sceneries, They are Maravanthe, St. Mary's Island, Kotachadri hills. Sri Krishna Temple at Udupi, Mookambika temple at Kollur, Statue of Gomateshwar at Karkal are some noted places.

We specially noted Yakshagana, Kambala, Nagadarshna, Daivadarshan, Cock fighting, Panarata, Dakkebali, which are some traditional rituals and recreations. The socio Economic conditions at the district depends upon cultivation. Paddy, Coconut, Arecnut, Sugarcane, grounnut, Vegetables are grown in this area. There are many rivers flowing during rainy and dry during summer. There is no proper irrigation. Varahi is a good project to be proposed and run which may helpful in future.

There are 883 primary schools, 186 High schools, 63 PUC. 18 first grade college, 2 Medical, 2 Engineere, 1 Law and 3 Training Colleges. The Industries are very less compared to other. Only one Industrial area at Manipal.

The district gave birth to many Literates (Late. Shivaram Karanth, Gulvadi Venkatrao, Kavi Muddanna), Kirtanakaras(Achutadas, keshavadas), Jadugars (Shankar, Prahlad Acharya), Journal-ist (Late Vaddarshe Raghuram Shetty, Santhoshkumar Gulwadi), Pravachanakaras (Bannanje Govindacharya), Politicians (Veerappamoily(Ex C.M), Oscar Fernandes, Late T.A. Pai, George Fernandes, Late justic K.S. Hegde, Late Yadthare Manjayya Shetty), Film and Drama(Shyam Benegal, Late Sunil Shetty, Vinaya Prasad, Sadashiv Brahmavar, Satyabhama), Co-operativist (Molahalli

Shivarao), Yakshagana (Malpe Samugas, Haradi Rama & Kustaganiga, M.M. Hegde, Vandar Basava) and other Luminaries.

Udupi is noted for Hotel Management, Banking System (Corporation, Karnataka, Syndicate, lord Krishna, Vijaya Bank), Medical (K.M.C), Insurance etc. The main occupation is Agriculture, Fishing, and Animal husbandary.

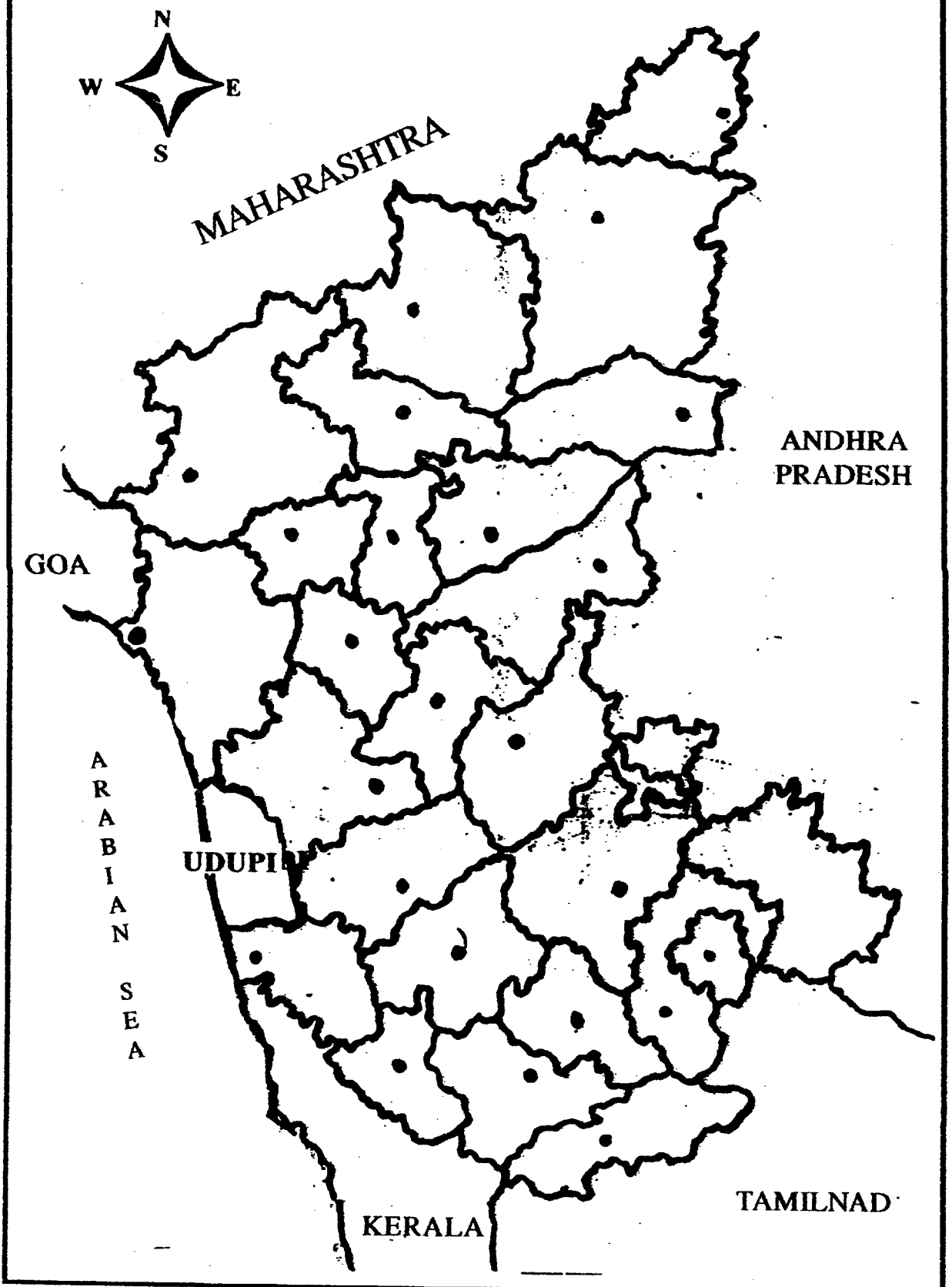
The Administration set up is in good condition. Grama Panchayat at Village level, Taluk Panchayat in Taluk Level, Zilla Panchayat at District level. All are elected bodies. It consists 3 Taluks of Kundapura, Karkala & Udupi. There are 5 educational blocks of Byndoor, Kundapura, Karkala, Udupi(South)& Udupi (North).

The tiles factory, Beedi manufacture, Cashew factory and Soft drink factories give employment to rural especially men, girls and womens. The major industries is explosive factory at Karkal and Sugar factory ar Brahmavar. There is proper transport & communication system which helps people in lote.

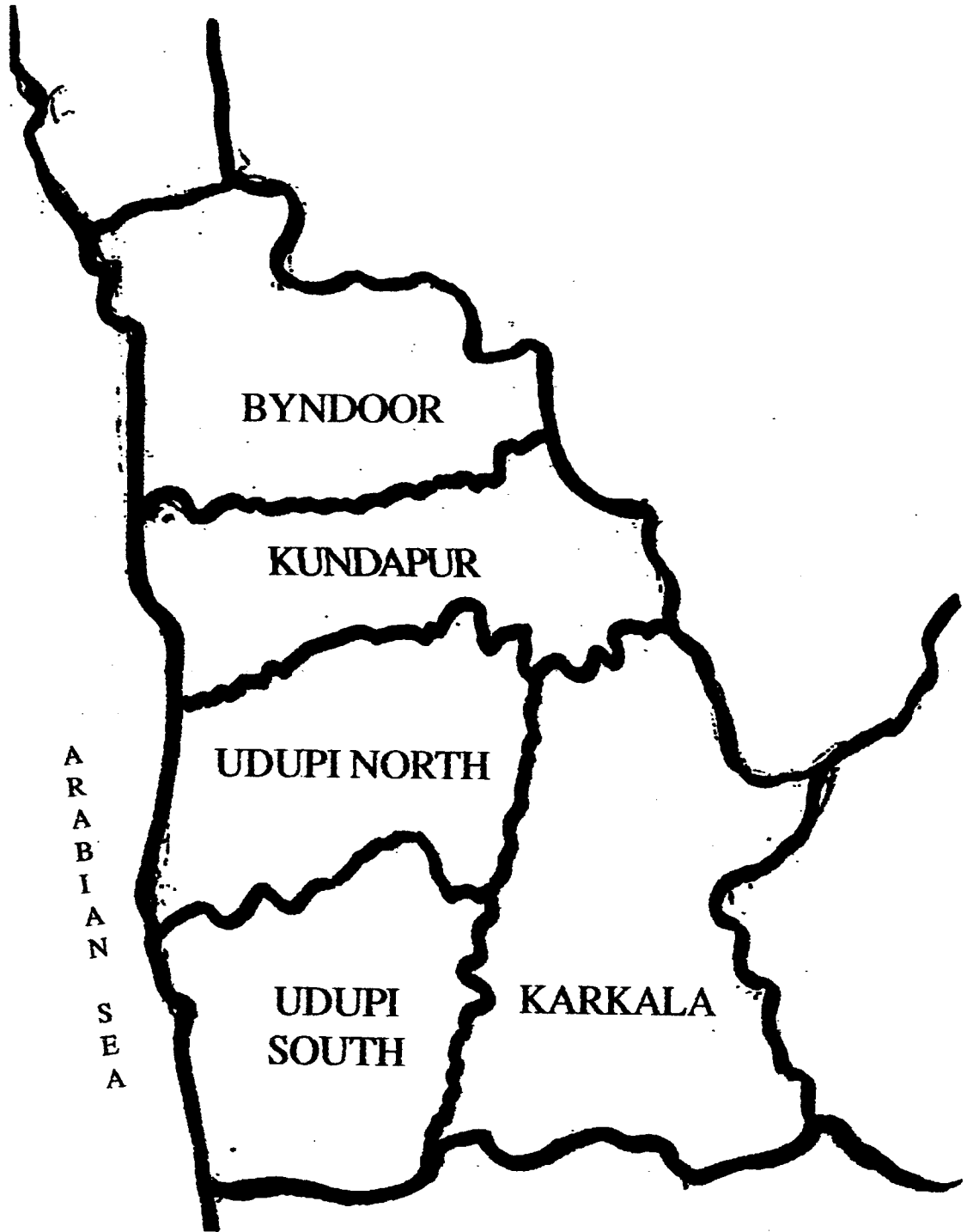
There are many peoples of disadvantages group such as Koraga, Kudubi, Marathi, Bhovi, Malekudiya, Panar & Gouda(Herur, Alur Kenji in Byndoor). There are many relegious community such as Hindus, Muslims, Christians & Jains. The major communities are Billava, Mogaveera, Bunt alias Nadava, Devadiga, Sheregar, Achar, Muslim & Christian. They have their own belief, traditions, custames and culture.

Howe ever all in one or other way established schools and gave importance to primary education along with the help of the Govt.

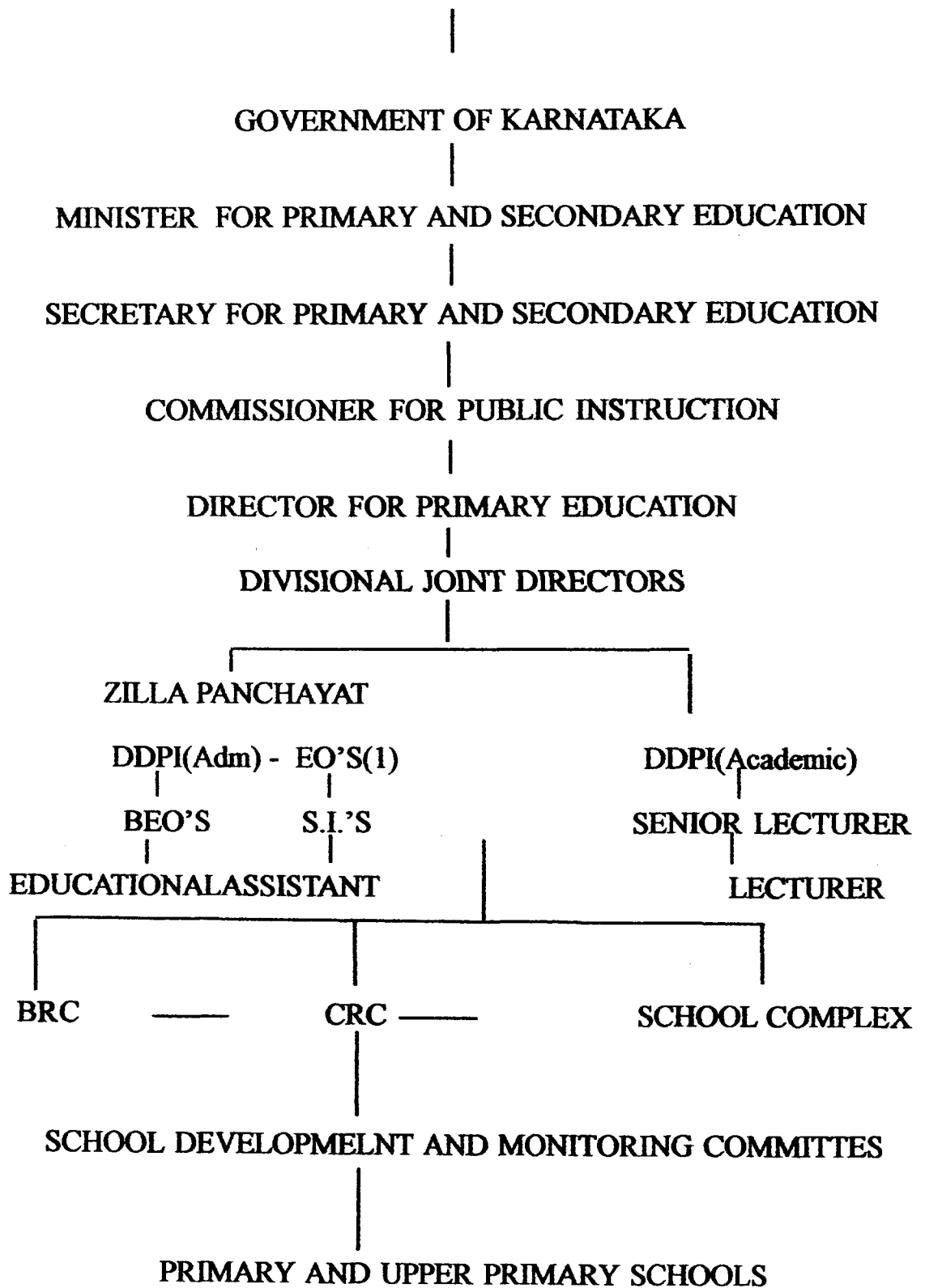
KARNATAKA MAP SHOWING THE COVERED DISTRICT UNDER SSA



**DISTRICT MAP SHOWING THE
BLOCKS IN UDUPI DISTRICT.**



MANAGEMENT STRUCTURE OF PRIMARY EDUCATION.



2. District Profile : Education

District Profile - Education

1. Literary rate(2001 Census)

Male	Female	Total
88.58	66.64	74.47

2. Enrolment

a) Class	1-5	1,18,549
b) Class	6-8	69,863

3. Gross Enrolment ratio:

a) Class	1-5	1,11,676
b) Class	6-8	63,234

4. Drop out rate

a) Class	1-5	10.47%
b) Class	6-8	8.57%

5. Teacher Pupil ratio : 1 : 34

6. No. of Primary Schools per 1000 population : 2

7. No. of Single Teacher School : 10

8. Pupil classroom ratio : 1:0:34

9. Teacher Classroom ratio : 1:0:60

10. Boy- girl ratio:

	Boys	Girls	Ratio
Govt.	49061	47178	1:0:96
Aided	28338	29727	1:1:05
Unaided	6656	6787	1:1:02

11. No. of Habitants : 244
 12. Per Child expenditure : Rs.3,200.00
 13. Drop out ratio:

Class	Boy	Girl	Total
1-4	0.46	0.42	0.88
5-6	0.35	0.37	0.72
1-7	0.41	0.40	0.81

14. No. of Anganavadi : 1027

Govt. Primary School LPS+UPS (1-8Class)

Enrolment				Attendance		
Class	Boys	Girls	Total	Boys	Girls	Total
1	5095	6024	11,119	4065	5611	9676
2	6814	5786	12,600	6310	5419	11729
3.	6597	7060	13657	6417	6584	13001
4.	8501	7361	15862	8518	6053	14571
5.	6898	7803	14701	7258	7343	14601
Total 1-5	33905	34034	67939	31668	31910	63578
6.	8863	7466	16329	6975	6903	13878
7.	6293	5678	11971	6308	5490	11798
Total 6-7	15158	13144	28300	13283	12393	25676
Total 1-7	49063	47178	96239	44951	44303	89254
8.	4439	4466	8895	3828	4412	8240
Total 6-8	19587	17610	37195	17113	16805	33916
Total 1-8	53492	52184	105676	48779	48715	97494
1-5	33905	34034	67939	32568	31010	63578
6-8	19587	17610	37195	17113	16805	33916
1-7	49063	47178	96239	44951	44303	89254
1-8	53492	52184	105676	48779	48715	97494

The Statistics of the Primary School (1-5) shows that girls are more in enrolment but less in attendance. The students enrolment and attendance in 6-8 shows both girls and boys less in attendance. The total strength of enrolment from 1-8 shows that the boys and girls are somehow decrease and school leaving children are more. We take up and Dakalathi Andolana, Chinnara Angala to go back and rejoin the school.

Blockwise Education Facility
Particular of Primary Schools and Teacher's

Block Name Working	Total No. of Primary Schools				Total No. of Primary Teachers			
	Govt.	Aided	Unaided	Total	Govt.	Aided	Unaided	Total
Byndoor & Kundapur	302	38	14	354	1311	241	184	1736
Udupi(S)	57	85	12	154	338	429	162	929
Udupi(N)	94	80	6	180	494	458	78	1030
Karkala	135	45	5	185	562	223	64	849
Total	588	248	37	873	2705	1351	488	4544

Particular of L.P.S and U.P.S. in Udupi District

Sl.NO.	Taluk	Govt			Aided			Unaided			Total
		L.P.S	H.P.S	Total	L.P.S	H.P.S	Total	L.P.S	H.P	Total	
1	Kundapur & Byndoor	150	152	302	1	37	38	—	14	14	354
2	Karkal	62	73	135	—	45	45	—	5	5	185
3	Udupi North	37	57	94	—	80	80	—	6	6	180
4	Udupi South	5	52	57	2	83	85	—	12	12	154
Grand Total		254	334	588	3	245	248	—	37	37	883

School and Teachers Position
Primary School (1-8) and Pupil- Teacher Ratio.

Block	School			Teacher			Pupil	Ratio
	Govt.	Aided	T	Govt	Aided	T		
Byndoor	197	13	210	791	126	917	29846	37.73
Karkal	136	45	181	551	242	793	14810	33.00
Kundapur	127	25	152	577	179	756	20460	35.45
Udupi (N)	95	78	173	486	416	902	9835	30.40
Udupi(S)	57	83	140	334	422	756	18179	29.44
Total	612	244	856	2739	1385	4124		

The undivided Management are having 37 Schools and 488 Teachers in Number.

Dhakaalathi Andolan Pragathi

Block	Statistics 5-10Years	Admited Child	Leave child in middle	Rejoined child	Total Admission
Karkala	6835	6676	136	110	6656
Kundapura	6847	6487	136	400	6751
Udupi(n)	5649	5190	459	234	4965
Udupi(s)	4034	4034	273	130	3891
Total	23365	22387	1004	874	22257

The difference between Statistics collected some children remained outside.
The step was taken through Chinnara Angala to rejoin the children.

Lower and Upper primary schools (including Govt., Aided & Unaided)

Block	Govt			Aided			Unaided			TOTAL
	LPS	HPS	Total	LPS	HPS	Total	LPS	HPS	Total	
Kundapura & Byndoor	150	152	302	1	37	38	–	14	14	354
Karkala	62	73	135	–	45	45	–	5	5	185
Udupi North	37	57	94	–	80	80	–	6	6	180
Udupi South	5	52	57	2	83	85	–	12	12	154
Total	254	334	588	3	245	248	–	37	37	883

The above table shows that the Govt primary schools are more compared to aided and unaided LPS and HPS. Udupi needs infrastructures to the schools and up gradation.

Schooling Facilities In Rural Area In The District

Taluk Name	No. of Habitations without school	Location	Distance
Byndoor	Nil	Nil	--
Kundapura	02	Rural	1-2 Kms
Karkala	11	Rural	More than 2
Udupi North	02	Rural	0.5- 1 Kms
Udupi South	Nil	Nil	--
Total	15	--	--

It is clear from the above table that Rural Habitations are served with the lower primary school within an average distance of 1 KM These rural habitations have a population more than 200.

There are 254 Govt. Lower Primary Schools and 334 Govt. Higher primary School in the District. There is a relatively a small percentage of private sector in respect of Lower schools. In the district only 3 Aided lower primary schools are run by Private management. There are 245 Aided Higher Primary schools and 37 unaided higher primary schools bringing the total number of schools to 883.

Enrolment from class 1 - 8

Std.	Enrolment				Attendance			
	Govt	Aided	Unaided	Total	Govt	Aided	Unaided	Total
1	11119	7510	1826	20455	7912	6835	1826	16573
2	12600	7589	2096	22285	11633	6987	1959	20579
3	13657	7627	1997	23281	13001	6979	1860	21840
4	15862	8531	2255	26648	14504	7622	1955	25871
5	14701	9670	2157	26528	14722	9182	1967	25871
Total	67939	40927	10331	119197	61772	37605	9567	108944

6	16329	9907	2139	28375	13852	8833	1998	24733
7	14565	9574	1918	26057	11906	8495	1783	22184
8	8895	8774	1996	19665	9054	9237	1807	20098
Total	39789	28255	6053	74097	34812	26615	5588	67015
Gr Total	107728	69182	16384	193294	96584	64220	15155	175959

The enrolment rises from year to year and retention is somehow slight in deference. The Govt, schemes changes the mind of the parent and sent people to the school because of special incentives.

Drop out Rate

Group	Boys		Girls		Total	
1 to 4th	7089	15.23%	2610	5.66%	9699	0.47%
	46548		46121		92669	
5 to 7th	3073	7.28%	2123	5.44%	5176	6.39%
	41962		38998		80960	
1 to 7th	10142	11.46%	7733	5.56%	14875	8.57%
	88510		85113		173629	

The drop out rate is less in primary school because of Mid day meals, Free books & Uniforms. The total ratio 1-7 shows 8.57. The measure is taken to readmit by Chinnarangalla.

Literacy Rate - Taluk Wise

Block No.	Taluk	Male	%	Female	%	Total	Total %
1	Kundapur	106506	65.21	91124	40.38	197630	56.20
2	Byndoor						
3	Udupi South	176619	75.28	166755	63.86	343374	69.26
4	Udupi North						
5	Karkala	62410	70.25	62481	61.13	124891	65.50
Total		345535	71.04	320360	58.07	665895	64.15

Aided Primary School LPS +UPS(1-8)

Enrolment				Attendance		
Class	Boys	Girls	Total	Boys	Girls	Total
1	4165	3345	7510	3607	3233	6840
2	3908	3651	7559	3592	3503	7095
3	2285	4494	6779	3301	4326	7627
4	4267	4264	8531	3667	4144	7811
5	5301	4459	9760	4995	4217	9212
Total 1-5	20066	20213	40279	19192	19423	38615
6	4525	5382	9907	3784	5167	8951
7	3747	4132	7879	3676	4108	7784
Total 6-7	8272	9514	17786	7460	9275	16735
Total 1-7	28338	29727	58065	26652	28698	55350
8	3944	4830	8777	3380	4722	8102
Total 6-8	12216	14344	27560	10840	13997	24837
Total 1-8	32282	34557	66839	30032	33420	63452

Enrolment				Attendance		
Class	Boys	Girls	Total	Boys	Girls	Total
1-5	20066	20213	40279	19192	19423	38615
6-8	12216	14344	27560	10840	13997	24837
1-7	28338	29727	58065	26652	28698	55350
1-8	32282	34557	66839	30032	33420	63452

The aided Primary data shows that the attendance is less to the Enrolment. This is same in 6-8, 1-7 and 1-8.

Un-Aided Primary School (LPS & UPS)(1-8)

Enrolement				Attendance		
Class	Boys	Girls	Total	Boys	Girls	Total
1	808	1018	1826	805	981	1786
2	1024	1072	2096	939	1015	1954
3	975	1022	1997	885	975	1860
4	1231	1024	2255	1053	947	2000
5	1221	936	2157	997	886	1883
Total 1-5	5259	5072	10331	4679	4804	9483
6	1140	999	2139	1006	928	1934
7	277	716	993	195	552	751
Total 6-7	1397	1715	3112	1205	1480	2685
Total 1-7	6658	6787	13443	5884	6284	12168
8	1116	880	1996	987	809	1796
Total 1-8	7774	7667	15439	6871	7093	13964
Total 6-8	2513	2595	5108	2192	2289	4481

The unaided schools run by the management without any grant. The majority of them are in English Medium and oblige to the Govt to introduce Kannada as the first language. The strength is very low compare to Govt and aided schools.

Enrolment				Attendance		
Class	Boys	Girls	Total	Boys	Girls	Total
1-5	5259	5072	10331	4671	4804	9483
6-8	2513	2595	5108	2192	2289	4481
1-7	6658	6787	13443	5884	6284	12168
1-8	7774	7667	15439	6879	7093	13964

The Statistics shows that boys are more in 1-5 but girls are more in 8th standard.

Consolidation Data of Govt./Aided/Unaided School

	Govt.	Aided	Unaided	Total
Boys	53492	32282	7774	93548
Girls	52184	34557	7667	94408
Total	105676	66839	15441	187956

The number in Govt. School are more because of special incentives by the Government free book, bag, uniform, midday meals, Scholarship, hostels etc.

Boys & Girls Ratio in Primary Schools.

Std.	Enrolment			Attendance		
	Govt.	Aided	Unaided	Govt.	Aided	Unaided
1	5095:6024	4165:3345	808:1018	4065:5611	3607:3233	805:981
2	6814:5786	3938:3651	1024:1072	6310:5419	3592:3503	939:1015
3	6597:7060	3133:4494	975:1022	6417:6584	2653:4326	885:975
4	8501:7361	4267:4264	1231:1024	7618:6953	3667:4144	1053:947
5	6898:7803	5211:4459	1221:936	7258:7343	5025:4217	997:886
6	8863:7466	4525:5382	1140:999	6975:6903	3754:5167	1006:928
7	8394:6174	4713:4861	1000:918	6308:5490	3676:4108	199:552
8	4439:4466	3944:4830	1116:880	3828:4410	3380:4722	987:809
	55601:52140	33896:35286	85150:7869	48779:48713	29354:33420	6871:9093

The Ratio shows that the boys and girls are unequal in ratio. The girls are less in unaided. The step to be taken under S.S.A. to improve both enrolment and retention.

STATUS OF LITERACY

Catagory	1991	2001
Male	83.58%	86.59%
Female	66.64%	74.02%
Total	74.47%	79.87%
Rural	71.98%	77.80%
Rural Male	81.65%	85.00%
Rural Female	63.98%	71.70%
Urban	83.07%	89.30%
Urban Male	89.65%	93.50%
Urban Female	76.59%	85.30%

LITERACY RATE -TALUK WISE.

B. No	Taluk	Male	%	Female	%	Total	Total%
1	Kundapur						
2	Byndoor	106506	65.21	91124	40.38	197630	56.20
3	Udupi (S)						
4	Udupi(N)	176619	75.28	166755	63.86	343374	69.26
5	Karkala	62410	70.55	62481	61.13	124891	65.50
	Total	345535	71.04	320360	58.07	665895	64.15

The literacy rate in Kundapura Taluk is very low compare to other Tq. So new Byndoor Block was opened to view on educational scenario. But we need more improvement.

Drop- Out Rate.

Std.	Boys	Percentage	Girls	Percentage	Total	Percentage
1-4	7089 46548	15.23	2610 46121	5.66	9699 92669	10.47
5-7	3053 41962	7.28	2123 38998	5.44	5176 80960	6.39 6.39
1-7	10142 88510	11.46	7733 85113	5.56	14875 173629	8.57

The drop out rate of boys are higher compare to girls. The boys went outside to work for the Family needs, i.e. to hotel work, labour work or cooly.

Estimated No. of Drop- Out Children

Class (1 to 8)	SC			ST			OBC		
	Male	Female	Total	Male	Female	Total	Male	Female	Total
1	10	6	16	7	9	16	26	25	51
2	9	5	14	8	5	13	25	19	44
3	10	8	18	4	7	11	17	19	36
4	9	5	14	8	6	14	21	24	45
5	9	11	20	9	8	17	16	23	39
6	5	9	14	11	8	19	16	19	35
7	7	6	13	8	4	12	15	12	27
8	6	7	13	8	5	13	12	11	23
Total	65	57	122	63	52	115	148	152	300

Class (1 to 8)	Minority			Others			Total		
	Male	Female	Total	Male	Female	Total	Male	Female	Total
1	15	12	27	52	37	89	110	89	199
2	15	13	28	43	31	74	100	73	173
3	15	13	28	48	25	73	94	72	166
4	13	16	29	41	21	62	92	72	164
5	13	13	26	29	16	45	76	71	147
6	13	14	27	28	20	48	73	70	143
7	10	13	23	32	18	50	72	53	125
8	11	8	19	31	17	48	68	48	116
Total	105	102	207	304	185	489	685	548	1233

The drop out pupils are listed from SC, ST, OBC, Minority and others in General.

Status of Literacy

Literacy Rate

Category	1991	2001
Male	83.58	86.59
Female	66.64	74.02
Total	74.47%	79.87%

The Status of literacy shows that in 2001 the ratio is fare better than 1991 census. The female literacy goes up. It is a good symptom of acheving girls literacy

Rural Area

	1991	2001
Male	81.65	85.0
Female	63.98	71.70
Total	71.98%	77.80%

The rural population in literacy is not behind compare to the urban. The female literacy goes up above 7%.

Urban Area

Male	89.65	93.50
Female	76.59	85.30
Total	83.07%	89.30%

Females are not fur behind in Literacy rate. Udupi wants 100% Literacy to fulfil the end of VEE.

SC & ST Child data.

Category	Age group	Male	Female	Total
ST	0-5	2170	2080	4250
ST	5-14	4165	4021	8186
SC	0-5	2726	2744	9720
SC	5-14	9626	9171	18797

Makkala Sameeksha of 2001 shows the schedule caste and scheduled tribes Have enough in number of Education facilities in special enrolment drives are essential .

Position of Teachers

Block	Sanctioned	Working	Vacant
Byndoor	929	791	138
Karkal	648	551	97
Kundapur	678	577	101
Udupi(N)	521	486	35
Udupi(S)	372	334	38
Total	3148	2739	409

The State Govt. announced to recruit new teachers to the needy schools. Some teachers were appointed previously under BB i.e 331. Remaining teachers filled up according to the strength of the pupil. Among 141 is backlog allotted to SC & ST only

Recruitment position from last 3

Sl.No.	Year	No's Recruited
1	98-99	124
2	99-2000	Nil
3	2001-01	296

Only 124 Teachers were recruited duties 98-99. The back-log of the post to be filled up from SC and ST. The step is taken from the Govt. to fulfil the needy post.

Children and list of OBB Teachers.

Block	Children	OBB Teachers
Byndoor	29846	80
Karkal	18179	73
Kundapur	20460	70
Udupi(n)	14810	55
Udupi(s)	9835	53
Total	93130	331

The OBB scheme is a boon to the Primary School. It provides all infrastructure facilities including Teachers. We facilitate infrastructure other than OBB Schools.

Schooling Facility Available and Needy.

	Toilet	Water	Compound	Room
Byndoor	A/N 40+135	A/N 81+94	A/N 48+127	A/N 810+96
Karkala	48+87	40+95	61+74	729+84
Kundapura	54+81	72+63	75+60	720+76
Udupi(N)	54+43	60+34	62+34	408+77
Udupi(S)	35+22	51+16	13+44	68+63
	231+368	304+302	259+337	3335+396

(A=Available) N=Needy)

The School needs infrastructure of Toilet(368), drinking water facility (302) Compound to the school building(337), rooms(396). It includes under the perspective Plan .

Schooling facilities in Rural area.

Block	No. of Habitations	Location	Distance in Kundapur Without school
Byndoor	4	Rural	1-2
Karkal	11	Rural	1-3
Kundapura	02	Rural	1-2
Udupi(N)	0	Rural	0-1
Udupi(S)	Nil	Nil	Nil
Total	17		

The School proposed made for the habitants without schooling facilities with a Kur or more.

School Facilities

Minority (Urdu)

Wing	Govt.	Non.Govt.	Total
LPS	2	Nil	2
HPS	20	2	22
	22	2	2

The minority institution suffered a lot and to be in closed position. The strength of the pupil is lessened in recent years. Majority of them going to Masjid early morning school.

List of BRC and CRC proposed.

Block	BRC	CRC
Byndoor	1+5(2+3)	30
Karkal	1+5(2+3)	25
Kundapur	1+5(2+3)	25
Udupi(N)	1+5(2+3)	20
Udupi(S)	1+5(2+3)	15
	5 cents	115

The cluster Resource centre and Block Resource centres (having 1 co-ordinator +5 Block Resource persous . i.e 2 from High School and 3 from Primary School. The CRC has one C.R.P's to two village Panchyath or every 50 teachers.

Details of Schooling facilities

BLOCK	<i>No. of Schools with Toilet facility</i>	<i>No. of Schools without Toilet facility</i>	<i>No. of Schools with Water facility</i>	<i>No. of Schools without Water facility</i>	<i>No. of Schools having Compound</i>	<i>No. of Schools without having Compound</i>	<i>No. of Rooms existing</i>	<i>No. of Additional Rooms Required</i>
Byndoor	40	135	81	94	48	127	810	96
Kundapur	54	81	72	63	75	60	720	16
Karkala	48	87	40	95	61	74	729	24
Udupi North	51	43	60	34	62	32	488	17
Udupi South	35	22	51	6	13	44	468	13
Total	228	368	304	292	259	337	3215	166

From the above data Udupi District primary school needs 268 toilet facilities, 292 Water facilities, 337 Compound and 166 Additional Rooms.

The importance was given to girls child by special incentives such as free books, uniform, attendance, Scholar ship

There are 332 disabled child in our district. A school was opened in Moodubage by Private voluntary organisation.

MAKKALA SAMEEKSHA 2001

Block	Age Group	SC			ST			OBC			Minority			Others			Total		
		M	F	T	M	F	T	M	F	T	M	F	T	M	F	T	M	F	T
Kundapura	0-5	812	911	1753	794	722	1516	2136	2201	4337	1407	1446	2853	10466	10241	20707	15645	15521	31166
Byndoor	6-14	1931	1817	3748	1473	1332	2805	5609	5400	11009	2628	2461	5089	23014	21777	44791	34655	32787	67442
Karkala	0-5	761	690	1451	510	459	969	186	197	383	437	440	877	5955	5624	11599	7849	7410	15259
	6-14	1388	1271	2659	944	927	1871	408	365	773	935	794	1729	12435	12135	24570	16110	15492	31602
Udupi (N)	0-5	640	682	1322	565	578	1143	1686	1588	3274	644	601	1245	9612	9160	18772	13147	12609	25756
	6-14	1160	1120	2280	1105	1179	2284	3259	3127	6386	1203	1075	2278	18826	18130	36956	25553	24631	50184
Udupi (S)	0-5	483	461	944	301	322	623	732	723	1455	1436	1388	2824	6603	6547	13150	9555	9441	18996
	6-14	1020	969	1989	643	583	1226	1511	1374	2885	3009	2814	5823	14192	13217	27409	20375	18957	39332

Total Child Population 0-5 91,177 Male-46196 Female 44981
 6-14 1,88,560 Male- 96693 Female 91867
2,79,737

0-14 Child Population (Jan -2001)

	0-1		1-2		2-3		3-4		4-5	
	M	F	M	F	M	F	M	F	M	F
Kun	2902	2792	2538	2676	2687	2604	2818	2873	3293	3130
Kar	1523	1442	1420	1311	1451	1888	1557	1502	1896	1707
U(S)	1555	1515	1519	1544	1447	1479	1652	1702	1939	1820
U(N)	1196	1089	1771	1841	1923	1950	2084	2084	2638	8853
Totla	7176	6838	7248	7372	7508	7421	8111	8161	9766	8853

	5-6		6-7		7-8		8-9		9-10	
	M	F	M	F	M	F	M	F	M	F
Kun	2703	2556	3181	2892	3038	2971	3364	3195	3937	3666
Kar	1931	1301	1523	1583	1771	1644	1813	1734	1914	1812
U(S)	1621	1495	1638	1576	1767	1637	1884	1839	2062	1928
U(N)	1785	1668	1932	1821	2016	1923	2099	2012	2147	2050
Totla	7500	7020	8274	7872	8592	8175	9160	8780	10060	9456

	10-11		11-12		12-13		13-14		
	M	F	M	F	M	F	M	F	
Kun	4212	4003	4039	3914	4053	3931	3500	3198	
Kar	1989	2055	1961	1875	2038	1926	1730	1609	
U(S)	2177	2022	2013	1872	2075	1909	2010	1823	
U(N)	12165	2096	2215	2131	2230	2219	2237	2210	
Totla	10543	10176	10226	9792	10396	9985	9477	8840	

SC
15961

ST
12425

Girls Child
1,18,744

3. District Profile : General

District Profile- General

1. Geographical Area	:	3575 Sq km.
2. No. of Revenue Block	:	3
3. Revenue Sub Division	:	1
4. No. of Education Block	:	5
5. Total Cultivated land	:	100179 Hector
6. Total irrigated land	:	34250 Hector
7. Main Income source	:	Agriculture, fishing, cashew
8. Main Industries	:	Tiles, Cashew, Soft drinks, Explosive factory.
9. Per capital Income	:	6589
10. Dominant Population group	:	Billava, Mogaveera, Bunt, Devadiga, Brahmins, Christians, Muslim.
11. Major crops	:	Paddy
12. No. of Hospitals	:	Govt. 65, Private 53.
13. No. of Municipality	:	City:1 Town 3
14. No. of Rivers	:	07
15. No. of Gram Panchayat	:	146
16. Major Tribes	:	Kudubi, Marathi, Malekudia Bhovi, Koraga.
17. No. of LPS	:	257, Govt. 254

18. No. of UPS	:	616, Govt.	334
19. No. of High Schools	:	186	
20. No. of Junior College	:	63	
21. No. of Colleges(Grade1)	:	19	
23. No. of Medical Colleges	:	02	
24. No. of Poly Technic	:	02	
25. Child Population	:	0-5	91177
		6-14	2,79737

POPULATION OF THE DISTRICT

1991 Census

Group	Kundapura			Karkala			Udupi			Grand Total
	Male	Female	Total	Male	Female	Total	Male	Female	Total	
S.C	9259	9713	18972	7033	7024	14057	12664	12891	25555	58584
S.T	5835	5786	11621	4558	4794	9352	10122	10259	20381	41354
Total	15094	15499	30593	11591	11818	23409	22786	23150	45936	99938
Others	148237	172843	321080	76859	90392	167251	211842	237988	449830	938161
Grand Total	163331	188347	351673	88450	102210	190660	234648	261138	495766	1038099

Population Situation of the district shows that the percentage of the growth rate come down to 6.88 in 2001 from 9.42 in 1991. Density of population increase from 268 per Sq KM in 1991 to 286 per Sq Km in 2001. The sex ratio which has dumped from 1134 to 1127 females per 1000 males. The total Population of Udupi district is 1109494 which 521541 are males and 587953 are females. 0-6 years population in the district is 108778 in which 55647 are males and 53131 are females. The district ranks 24 in the state in terms of population 2.10% of the state population live in the district. The district ranks first in the sex ratio and eleventh in the population density. Udupi district has a better literacy rate which has increased from 74.47% in 1991 to 79.877% in 2001. The literacy percentage of males is 86.59% whereas the females are 74.02%.

District Population 2001 Census.

	Male	Female	Total
Urban	96235	99497	1,95,732
Rural	4,25,306	4,88,456	9,13,762
	5,21,541	5,37,953	11,09,494

Blockwise Population below 0-6 Years.

	Male	Female	Total
Karkal	10,959	10376	21335
Kundapur	20821	19909	40730
Udupi	23867	22846	46713
	55647	53131	1,08,778

Population of the District.

Year	Male	Female	Total	Growth
1991	4,86,409	5,51,690	10,38,099	9.42
2001	5,21,541	5,37,953	11,09,494	6.88

Population of SC & ST in District.

Group	Male	Female	Total
SC	28956	29628	58584
ST	20515	20835	41350
	49471	50463	99934

Taluk wise Population 2001 census

	Male	Female	Total
Karkal	96733	1,07,838	2,04,571
Kundapur	1,74,463	2,02,909	3,77,372
Udupi	2,50,345	2,77,206	5,27,551
	5,21,541	5,37,953	11,09,434

The population of the Male is higher than female i.e. 1000:1027. The growth rate is 6.88 which is very lesse in the Nation.

TABLE SHOWING THE POPULATION GROWTH IN THE DISTRICT.

SNo.	Year	Population			SC			ST			Growth Rate
		Male	Female	Total	Male	Female	Total	Male	Female	Total	
1	1991	486409	551690	1038009	28956	29628	58584	20515	20839	41354	9.42
2	2001	521541	587953	1109494	—	—	—	—	—	—	6.88

DISTRICT PRIMARY EDUCATION PROFILE

STATUS OF LITERACY.

Category	Male	Female	Total	Rural	Rural Male	Rural Female	Urban	Urban Male	Urban Female
1991	83.58	66.64	74.47	71.98	81.68	63.98	83.07	89.65	76.59
2001	86.59	74.02	79.87	77.80	85.00	71.70	89.30	93.50	85.30

The literacy shows that the rural female and urban female are unequal in % but they are still step up in ratio and %.

POPULATION OF THE DISTRICT

Groups	Kundapura			Karkala			Udupi			Grand Total
	Male	Female	Total	Male	Female	Total	Male	Female	Total	
S.C.	9259	9713	18972	7033	7024	14057	12664	12891	25555	58584
S.T.	5835	5786	11621	4558	4794	9352	10122	10259	20381	41354
Total	15094	15499	30593	11591	11818	23409	22786	23150	45936	99938
Others	148237	172843	321080	76859	90392	167251	211842	237988	449830	938161
Grand Total	163331	188347	351673	88450	102210	190660	234628	261138	495766	1038099

Population situation of the district shows that the percentage of the growth rate come down to 6.88 in 2001 from 9.42 to in 1991. Density of population increase from 268 per Sq KM in 1991 to 286 per Sq Km in 2001. The sex ratio which has dumped from 1134 to 1127 females per 1000 males. The total population of Udupi District is 1109494 which 521541 are males and 587953 females. 0-6 years population in the district is 108778 in which 55647 are males and 53131 are females. The district ranks 24 in the state in terms of population 2.10% of the state population line in the district. The district ranks first in the sex ratio and eleventh in the population density. Udupi district has a better literacy rate which has increased from 74.47% in 1991 to 79.877% in 2001. The literacy percentage of males is 86.59% whereas the females are 74.02%.

INCOME AND RESOURCE OF THE DISTRICT

Main income resources of the district

1	Agriculture
2	Fishing
3	Banking
4	Industries
5	Animal Husbandary
6	Sericulture
7	Bussiness
8	Transfort and Communication

Agriculture depends upon the rains. No proper irrigation Fishing is another income area. Now it has gone down.

Main Industries of the District

1	Hotel
2	Beedi Factories
3	Cashew Factories
4	Wood & Car[entry
5	Canning
6	Medical & Engineering
7	Textile
8	Mining
9	Tiles Factories

Our Hotel Industries earn lot through out the Nation and World. Our district suffered lot because of low income and poverty. Cashew earned Foreign Exchange Business. Tile factory suffered from timber and shortage of power supply. The Beedi called as small scall Industry give job to rural and urban girls and women section. Cashew also give job to unemployed girls.

Health Department

Taluk	General Hospital	Pry. HealthCenter	Pry.HealthUnit	Mobile Unit
Karkal	1	13	4	Nil
Kundapura	2	18	5	Nil
Udupi	1	24	Nil	1
	4	57	9	1

Health Department works against polio, Leprosy, TB, Malariya, Palaria, Aids, Etc. The growth of population is very less composed to whole Nation i.e. 6.88% . It shows that effected family planning. Manipal K.M.C. Hospital is well known in private Sector. Govt. District Hospital at Ajjarakadu in Udupi is the main Hospital. There are 53 private Hospitals.

Youth Service Department.

Taluk	Yuvaka Mandala	Yuvathi Mandali	Taluk Youth Centre
Karkal	97	23	1
Kundapur	132	29	1
Udupi	49	29	1
	278	71	3

Youth Service Department arrayed sports, Yuvajanamela, cultural activities at district, Taluk, Hobli and grameena level. The Headquoters is at car street Udupi.

Social Welfare Department.

Hostel for School going Children

	SC		ST		Ashram Shale
	Boys	Girls	Boys	Girls	
Kundapura	3	1	1	Nil	3
Udupi	5	4	Nil	1	1
Karkal	3	2	Nil	Nil	3
	11	7	1	1	7

One Morarji Desai School was established at Brahmavara in 1999. More hostel Facilities needs in Udupi for SC, ST, Backward and focus on girls are essential. 39

Backward Class and Community

Taluk	Govt.Hostel		Aided Hostel		Unaided
	Boys	Girls	Boys	Girls	
Karkal	1	2	2	Nil	2
Kundapur	6	2	Nil	Nil	2
Udupi	5	2	1	Nil	Nil
	12	6	3	0	4

Backward class and backward community needs more hostels for girls. The hostels are less in number. The separate department is there in Udupi.

Child and woman welfare Department.

Taluk	Anganawadi	Sthri Shakthi	Total No.Go's
Karkal	189	400	1
Kundapur	343	700	3
Udupi	495	900	1
	1027	2000	5

The Assistant Director for woman and child welfare works well and having 72 step up activities us Balika Yojana , Scholarship for girls attendence, Computer education etc. According to statistics of Anganawadi 69,597 children between the age of 0-6.

People Representatives 2001

Taluk	MLA	MP	ZP	TP	VP	Municipal
Karkal	1	—	5	17	431	1
Kundapur	2	—	9	33	833	1
Udupi	3	—	10	38	973	1
	6	1	24	88	2237	3

Udupi has 2 members of parliament one is Rajya Sabha i.e. Oscar Fernandies, one is Lok Sabha i.e. Vinaykumar Sorake. There are 6 M.L.A's i.e. Gopal Poojary,(Byndoor), Srinivas Shetty(Kundapura), Jayaprakash Hegde(Brahmavara), Sabhapathi(Udupi), Vasanth Salian (Kapu), Gopal Bhandari(Karkal), ZP (24), TP(88) members.

Talukwise Literacy

Taluk	Male	%	Female	%	Total	%
Karkala	74463	87.5	74965	76.9	149578	78.6
Kundapur	129943	84.6	125017	68.3	254960	75.7
Udupi	198869	87.80	195898	77.0	394767	82.1
Total	403425	86.48	395880	74.07	799305	78.8

There is a need for further expansion of Literacy to achieve the goal. The rural remote are needs Literacy.

UDUPI DISTRICT DEMOGRAFIC STATUS

Sl.no	Taluk	POPULATION			
		MALE	FEMALE	TOTAL	SEX RATIO
1	Kundapura	163331	188342	351673	1153
2	Karkala	88450	102210	190660	1156
3	Udupi	234628	261138	495766	1113

Udupi through small in area but density is 290 per km. The urban and coastal belt having density population.

The district is charectoraised by normal developments and satisfactory Educational facilities.

EDUCATIONAL FACILITIES OF THE DISTRICT.

BLOCK	POPULATION	NO.OF PRIMARY SCHOOLS	NO.OF PRIMARY SCHOOLS PER 1000
Kundapura	351673	354	10.07
Karkala	190660	185	9.69
Udupi	495766	334	6.74

On an average there are 10 schools per 10000 populations.

Lok Siksha Continuing Education

Taluk	CE	NEC	Total
Karkala	223	25	248
Kundapura	158	18	176
Udupi	223	25	248
	507	57	564

The Lok Shikshan has worked in Udupi as a wing for developing Literacy. It awakes the elders to mobilise towards Universalisation.

There are 20.13% illiterates in the district. But still disparity of 12.57% lies between male and female literacy rates; 11.50% disparity between rural and urban literacy rates.

STATUS OF LITERACY

Catagory	1991	2001
Male	83.58%	86.59%
Female	66.64%	74.02%
Total	74.47%	79.87%
Rural	71.98%	77.80%
Rural Male	81.65%	85.00%
Rural Female	63.98%	71.70%
Urban	83.07%	89.30%
Urban Male	89.65%	93.50%
Urban Female	76.59%	85.30%

Literacy Scenario

Udupi is considered to be an advanced district in literacy rates. It ranks Third in the state with 79.87% literates. It is behind Dakshina Kannada, Bangalore. There are 20.13% illiterates in the district. But still disparity of 12.57% lies between male and female literacy rates; 11.50% disparity between rural and urban literacy rates.

DISTRICT PROFILE (GENERAL)

Taluk	Area in Sq. KMS	No. of Revenue Blocks	No. of Educational Blocks	Total Cultivated land in Hectors	No. of irrigatd Lands	No. of Anganavadies	No. of Habitations without School	No. of Habitations	Single Teacher School
Kundapur	1559	3	2	11924	11924	343	Nil	95	48
Karkala	1091	2	1	22417	7919	189	Nil	59	11
Udupi	925	4	2	35038	13501	495	Nil	105	4
Total	3575	9	5	1002246	3334	1027	Nil	259	63

We are having three Revenue blocks having five education blocks. The irrigated lands were less and no proper job opportunity in our district.

We need job oriented education system. I.e. Computer, Software, ITI, Diploma, Polytechnic and self employment education system.

4. Process of Projection

PROCESS OF PROJECT FORMATION

The commissioner of public Instruction has organised three days workshop on Sarva Shiksha Abhiyana on 14th, 15th and 1st of December 2000 at Bangalore in which DDPI, Nodal officer and DIET faculty were participated.

In our District Makkala Sameekshe all children between the age group of 0-14 have been enumerated. School going children and out of school children in the age of 0- 14 have been identified in the district. Disabled children in the age group 0 - 14 have also been identified. Habitations with and without schooling facilities have been identified and listed. These enumeration figures have been consolidated at Habitation level. Grama panchayath level, block level and state level.

Several work shops have been organised by the CPI's Office in January 2001 in which training was given to prepare the pre-project plan under SSA. And the pre-project plan has already been prepared on 16.5.2001. One workshop was conducted in Bangalore to prepare work plan for pre-project activities. To create awareness among people many programmes like workshop, training programme and micro-planning, awareness programme etc. were organised throughout the district. People were enlightened about the importance of education and the detailed project report was prepared. Meetings of the elected representatives at village level, taluk level and district level have been held. All the teachers, anganawadi workers' SDMC members and NOOs were involved in collecting necessary information during makkala sameekshe.

Two days workshop was conducted at NIPCID, Bangalore to prepare DEEP perspective plan on 29th and 30th of June, 2001. All the BEOs and BRC coordinators were given training on 3.7.2001. All the headmasters of the LPS, HPS and government high school were given two days' training between 12.7.2001 and 20-7.3001 in all the blocks. Booklets were prepared regarding SSA and distributed to all the schools. One day work shop was conducted at the district level for all the ZP members on 23.7.2001. All the educational co-ordinators were given training at DIET, Mangalore on 25.7.2001. All the BEOs and BRC co-ordinators

were trained regarding the preparation of DEEP. One district level planning committee was formed. The committee members worked continuously and prepared the plan. In "Samudhayadhattha Shaale" programme in all the primary schools which is held on 8.8.2001 grama sabhas were held in which requirements of the schools were identified and resolutions were made. On the basis of these resolutions habitation plans were prepared. These habitation plans were consolidated at village level, grama panchayath level, block level and district level involving community leaders. Entire information has been computerised. All the BEOs have identified the habitations without schooling facilities. They also identified the LPS to be upgraded to 6th standard and have also identified Cluster Resource Centres and BRGs etc. After these the draft plan was prepared. The Commissioner of Public Instruction convened a meeting to review the draft plan and suggestions were given to improve the plan. It was decided to open 34 LPS and upgrade 68 LPS to 6th standard in the district. It was also decided to establish five BRCs and 115 CRCs.

Data Sources

Data collected during the makkala sameeksha was used as base to cross check and validate the data gathered from other sources. The major source of the data for project formulation were the following.

- * Census reports
- * Statistical gazetteers
- * All India Educational Surveys
- * Information mentioned in the office of the DDPs and BEOs.
- * District reports and gazetteers.
- * NIC unit and CPI's office(planning unit)
- * Data gathered in the workshops
- * Human development in Karaataka.

District Resource Group.

1. Smt. Motamma
Minister for woman and child welfare
Govt. of Karnataka and District Minister,
Udupi. President
2. Sri. Oscar Fernandes
M.P. Rajyasabha. Member
3. Sri. Vinaya Kumar Sorke
M.P.Loksabha Member
4. Smt. Sarasu Bangera
President
Zilla Panchayat, Udupi. Member
5. Sri. Raju Devadiga
Vice President
Zilla Panchayat, Udupi. Member
6. Sri. Bhujanga Shetty
President
Educational Committee,
Zilla Panchayat, Udupi. Vice President
7. Gaurav Gupta
Deputy Commissioner, Udupi. Advisor
8. Sri. Sundar Naik
Chief Secretary,
Zilla Panchayat, Udupi. Member
9. Sri. Krishnamoorthy,
Principal,
C.T.E. Mangalore. Member
10. Smt. Diana Prabhu
D.D.P.I, Udupi. Member Secretary

11. Sri. Bhasker Shetty T.
Educational Officer,
D.D.P.I Office, Udupi. Nodal Officer
- 12. Block Educational Officers**
1. Sri. Mahidas, B.E.O. Udupi North Member
2. Sri. Nagendra Madhyastha, B.E.O. Udupi south Member
3. Sri. Vivekananda.L. Garag , B.E.O. ,Kundapura. Member
4. Sri.H.Veeranna, B.E.O. Karkala. Member
5. Sri. Ishwar Naik, B.E.O, Byndoor. Member
- 13. Subject Inspectors**
1. Sri. Devadas Upadhya Member
2. Sri. Seetharam Adiga Member
3. Sri. Beera Moideen Member
14. Dr. Raghavendra Rao, D.H.O. Udupi. Member
15. Sri.Vasanthraj Shetty,
Social Welfare Officer, Udupi. Member
16. Smt. Gartrude Vegus,
Asst. Director for woman and child
Welfare, Udupi. Member
17. Sri.A.C.Thunga,
Rtd. Principal,
Bhandarkar's college, Kundapura. Member
18. Sri. Gururaj Rao
Rtd. Lecturer, DIET, Mangalore. Member.

19. Sri. Damodar Aithal
Press Reporter, Udupi. Member
20. Smt. Sarala Kanchan
President,
Woman Organisation. Member
21. N.G.O'S
1. Jnanadeep Dharmasthal Member
 2. Namma Bhoom, Hattiangadi. Member
 3. Spoorthi Kedor. Member
 4. Ashika, Koteshwara Member
 5. Koraga Sangha, Kundapura. Member
22. Sri. K.N. Chandrashekar Shetty,
President,
Pry School Teacher's Association, Udupi. Member
23. Primary School Teachers (1 from each Block)
1. Byndoor Vis Vishwanath Shetty,
G.H.S. Navunda.
 2. Karkala Yogish Kini
G.H.P.S. Palipakyara.
 3. Kundapura G.Mohammed Rafique
G.M.H.P.S. Voderhobli.
 4. Udupi North Smt. Jayalaxmi
G.H.P.S. Brahmavar.
 5. Udupi South Somshekar
G.H.P.S. Hanumanthnagar
 6. All the MLA's and ZP members honarary invitees

District Planning Team.

1. Smt. Diana Prabhu,
D.D.P.I, Udupi. Project Officer
2. Sri. Krishnamoorthy
Principal,
C.T.E, Mangalore. Asst. Project Officer
3. Sri. T.Bhasker Shetty,
Educational Officer,
D.D.P.I's Office, Udupi. Asst. Project Officer
4. Sri. Vasanth Shetty
Sr. Lecturer,
C.T.E.Manglore. Asst. Project Officer

District Implimentation Committee

1. President
Zilla Panchayat,
Udupi. Sarasu.D.Bangera
2. President,
E.S.C, Udupi. Bhujanga Shetty
3. Cheef E.O. Sunder Naik
4. Principal CTE
Manglore. K.Krishnamurthy
5. D.D.P.I. Diana.P.Prabu
6. E.O. Bhasker Shetty

Block Resource Group

- | | |
|--|------------------|
| 1. M.L.A. / M.L.C | Hon. President |
| 2. President, Taluk Panchayath | President |
| 3. Vice President T.P. | Member |
| 4. Presiden, Edn. Committee T.P. | Member |
| 5. Executive Officer T.P. | Member |
| 6. B.E.O | Member Secretary |
| 7. B.R.C. | Member |
| 8. Taluk Medical Officer | Member |
| 9. Taluk Social Welfare Officer | Member |
| 10. Taluk Labour Officer | Member |
| 11. Taluk C.D.P.O. | Member |
| 12. Pesident, woman Organisation | Member |
| 13. Educationist (2) | Member |
| 14. Mass Media/Press Reporter | Member |
| 15. President Taluk Teachers Association | Member |
| 16. N.G.O'S | Member |
| 17. President, Taluk Primary Association | Member |

Block Level Implementation Committee

- | | | |
|----|---------------------------|------------------|
| 1. | Block Educational Officer | President |
| 2. | B.R.C. Co-ordinator | Member Secretary |
| 3. | B.R.P'S | Member |
| 4. | Educational Co-ordinator | Member |

Village Resource Group

- | | | |
|----|------------------------------|------------------|
| 1. | President, Village Panchayat | Hon. President |
| 2. | Vice-President. V.P. | Member |
| 3. | President S.D.M.C. | President |
| 4. | H.M. of the school | Member Secretary |
| 5. | N.G.O'S | Member |
| 6. | Elected T.P./Z.P. Member | Member |
| 7. | Educationist | Member |

V.E.C./Habitation Level Implimentation Committee.

- | | | |
|----|--------------------------|------------------|
| 1. | B.R.C. Co-ordinator | President |
| 2. | B.R.P. | Member |
| 3. | Educational Co-ordinator | Member |
| 4. | C.R.C | Member |
| 5. | President SDMC | Member |
| 6. | H.M. of the School | Member Secretary |

5. Strategies, Issues, Problems - Primary

STRATEGY, ISSUES AND PROBLEMES

I A Improve access by

- * Ensuring enrolment of all children in the 5+ age group in class I.
- * Ensuring availability of schooling (either through formal or non-formal systems of education) to 100% of the children in the 6-14 age group.
- * Improving access to primary schooling for girls and SC/ST children.
- * Opening new schools in school less village/hamlets habitation.
- * Upgrading LPS up to class V to ensure that all children get opportunity for education up to class V in accordance with with all India partner.

B Improve accesses to unreached

- * Open new school under DEEP and new schools under state sector.
- * Starting class VI in LPS in DEEP.
- * To initiate alternative system of schooling in primary education in centres.
- * To strengthen the existing anganawadi system by extending to the working hours to coincide with primary school timings.

II To improve overall enrolment rates to classes 1-5 to almost 100%.

- * To ensure enrolment of all children in the 5+ age group in class I.
- * To reduce drop out rate between classes 1-5 from the existing level to less than 5%.
- * To reduce SC/ST drop out rate between classes 1-5 to less than 5%.
- * To reduce the girls' drop out rate to less than 5%.

III To improve achievement levels of children

- * To improve the classroom environment.
- * To provide opportunity for regular training of teachers to improve teacher competencies by opening 100 CRS and 5 BRCs.
- * To provide good quality teaching learning materials and supplementary reading material for classroom transaction.

IV Quality Improvement

1. Introduction of good quality teaching learning material for classroom transaction.

The key to universalisation of primary education and improvement in quality of education lies in making learning by children and facility of learning by teachers spontaneous, joyful and exciting ventures. The process of curriculum transaction aimed at rote learning of facts and memorisation of information and characterised by monotony and other authoritarianism need to be transformed in to an interactive participatory interesting and enjoyable process materials created constitute an important component of this process.

The materials which will be complex will be activity based and child centred enabling them to learn from their environment and constructed according to the tried and tested principles of learning from the simple to difficult and from the known to the unknown.. The materials will be competency based leading to specific learning outcomes. Assessment of learning outcomes will be a part of the learning process without creating either unnecessary fear in the minds of the children nor creating additional burden for the teacher. These materials will be developed at the state level. Production cost will however be met out of the district budget. The materials will be provided in Kannada and Urdu languages. The district will take the responsibility for ensuring that the materials created for children for teachers will reach all children and teachers in time, so that no part of the academic year is not lost due to untimely supply of teaching learning materials.

2. Teachers' Guide

Teachers will be provided with the special teacher edition of the activity cum workbook which will contain introductions and activity based teaching-learning transaction. Kannada, Urdu teachers teaching classes I - 5 will be provided with teacher guides @ Rs. 100/- per teacher during 2nd and 4th year of the project.

3. Supplementary Reading Materials

In addition to providing equipment and play materials, it is proposed to provide supplementary materials to all government schools @ Rs.200/- per school. This will be supplied in the 2nd year of the project.

4. Establishing Mathematics Centres.

A special grant will be introduced to focus on mathematics learning. This is because most children develop a fear of mathematics at a very young age, and often teachers will also have negative attitude towards mathematics. The emphasis in mathematics teaching is generally on rote learning, but not on the understanding of concepts. The lack of concept clarity and a focus on the end result rather than on the process in the system of evaluation, awarding of marks results in dependence among children about their abilities to handle mathematics.

It is therefore proposed to open mathematics centre in the BRCs and the CRCs in the district. These mathematics centres will provide for lively interaction through individual and group games and puzzles eventually contributing to improve teaching learning transaction and greater conceptual clarity. A typical mathematics centre will contain approximately 100 mathematics materials./worksheets to simplify the teaching of numbers, number related operations, shapes, size, distance measurement, times, decimals, fractions. The mathematics centre will contain a variety of card games, models made out of rubber, wood, cardboard, games using plastic or wooden counter, marbles, glass beads, which encourage children to touch, feel, sort out, rearrange and enable them to understand mathematical concepts better. An orientation and training programme will also be conducted at the mathematics centre to enable teachers to replicate mathematics materials in their own schools by using available material locally.

5. Establishing Science Centres

Science Centres will also be set up at the BRCs and CRCs to promote science learning. This will be done with the help of Kanataka State Council of Science and Technology and KRVP.

6. Training

The critical role of training in universalising primary education can hardly be overstated. The competence, motivation and commitment of the various sectors determine the outcome of the programmes. The training will not be a one time event, but will be seen as an on-going continuous process.

The training will cover the following categories of people.

- * Teachers in the lower primary schools
- * The headmasters of lower and upper primary schools
- * BRC.CRC faculty
- * NFE instructors
- * Anganawadi workers
- * Village teacher motivators
- * SDMC member, member of ZP and Taluk Panchayath

The training programmes will be specified to different groups. However all training programmes will be guided by the DEEP vision of child centred, activity based teaching learning and it will be participatory, but not lecture oriented. They will be experiential building upon the knowledge base of the trainees. They will be process oriented, rather than content based. Training programmes will therefore include among others:

- * Vision of child centred, activity based classroom
- * Children learning process
- * Low children learning discrimination
- * Attitude towards teachers, their problems, difficulties in the multigrade context
- * SDMC and Community involvement in creating support systems for the school and teachers.

Alternate/non formal education for out of school children and children those who are unable to attend school regularly, especially girls and SC/ST children.

7. Teachers' Training Institutions

Only Teachers training Institutions are there in Udupi . No DIET is established . The proposal is sent from DSERT. The DIET and CTE's are entrusted with the responsibility of developing the policies and programmes for school education in the district.

8. Block Resource Centres

BRCs are set up in 5 blocks of Udupi district in order to provide inservice teacher training on an on going and regular basis. The BRCs which are set up with one Co-ordinator and 5 faculty members are a mix of persons with primary and high school teaching experience. The BRC staff will be oriented to work as a team with the comprehensive approach to the whole training moving away from the conventional approach of individuals conducting signal compartmentalised sessions during the training.

BRCs provide a home for the teachers' training. DEEP will therefore can take up construction of BRCs. The BRCs are to be equipped for residential training with provisions for training aids, equipment, media material. The facilities available in existing Gurubhavanas will be utilised for the progiammes.

9. Cluster Resource Centres

CRCs will be set up for a group of 50 teachers. InUdupi district 100 CRCs are to be set up. Constructions arc proposed for 100 CRCs. Until then they will be housed in existing HPSs.

CRCs are envisaged in order to provide technical support to teachers on a day-to-day basis. This is based on past experience which reveals that for successful reform in the teacher education system, it is essential that there should be regular and systematic follow up and interaction with teachers in schools. The CRCs, therefore will be an institutional mechanism for enforcing inservice training at the Block level largely through peer group interaction.

All teachers will assemble once in a month at the CRCs for a full day interaction and sharing of experience. The training day will have four major components.

1. **Feedback:** sessions for teachers to share experiences and ideas on successful classroom teaching methods.
2. **Planning session** for the next month(competency wise) for each subject in the curriculum. This will include planning for teaching and for ongoing evaluation for each child.
3. **Preparing low cost aids** from locally available resource material for the next month teaching.
4. **Skill development** for handling teaching of reading, writing, mathematics and other hard spots.

In addition to the monthly interactive session with teachers, the CRCs Samyojaka will also address the following.

- * **Improve the teaching skills** of teachers through pedagogic support and economic counseling during visits to the schools. The CRGs Samyojaka will visit each school in the cluster at least once in a month.
- * **Organise demonstration lessons** with the help of DIET/BRC faculty and resource institutions in the area.
- * **Provide support** to NFH Centres in the area.
- * **Work towards establishing a close** between the SDMC and the school.
- * **Organise training** of SDMC members in the cluster.
- * **Undertake periodic visits** to the school for pedagogic guidance of teachers and oversee the functioning of the school with reference to enrolment, attendance and achievement.
- * **Collect, maintain and disseminate educational data** for the cluster, use the data collected to facilitate reflection and analysis among teachers and SDMC members on the state of primary education in that area with a view to universalising primary education in the area.

In view of the enormity of the task a co-ordinator will be appointed to each CRC who will be drawn from the cadre of experienced primary school teachers. CRCs will be formed in existing higher primary schools.

Inter linkage among Resource Institutes

It is necessary to spell out the system of inter linkage among the resource institutions. The CRC co-ordinators will visit the schools regularly. The CRCs will provide a forum for the teachers to exchange their views and share their experiences. The BRCs will conduct teacher training programmes. Similarly the DIET faculty from Mangalore DIET would participate in the training programmes organised by the BRCs. DIET would also provide a forum for the BRC faculty to share their experience. Besides other NGOs working in the area would also be involved in the teacher training programmes.

V. Capacity Building

SDMC Constitution and Training

Udupi District has approximately 592 SDMCs. They are formed as per the instructions from the department. SDMC will be constituted in the first year of the project. The process will build upon the effort to create cadres of people interested in education, initiated in as part of the course of the literacy programme. In this programme Jana Andolana committees were constituted in every village through a process of intensive interaction between government officials at various levels and the people. The interaction took the form of village level meeting in which government officials mingled with the voluntary activists in the village. In DPER an attempt will be made to revitalise these Jana andolana committees and formalise them into SDMCs.

Systematic programmes for the training of SDMC members will be taken up in the district. For this material created by SPO, entitled Narma Oora Shaale hege irali as well as the training module, grama shikshana samithi tarabethi kaipidi will be used. The four day training module starts with enabling members to reflect upon their problems in the village- introduce to the concept of micro planning and proceeds to the reflection and analysis of school problems and possible local solutions to school programmes which could facilitate universalisation of primary education at the village. The training also focuses on equality issues for SC/ST children and

girls. In addition, the SDMC are unable to understand their rules and responsibilities and the use of Annual School Improvement Fund of Rs.2000/- for primary schooling in the village. The Government ordered to form SDMC according to the counselling of MLA from the parents list.

Management Information Systems(MIS)

A sound MIS at the district level is extremely important to place and implement and monitor the implementation of various programmes, components and the desired results of the programmes. Information of various types related to the programmes, personnel, finance, time scheduling and implementation of different programme components, continuous evaluation of progress of implementation, mid course correction, action research undertaken etc. For establishing such a management system at the district level additional infrastructural facilities including personnel are required. Proposal for personnel like MIS in charge research assistants, data entry operator, peons are already shown up personnel for district management. In addition to the general furniture and equipment, the following facilities are proposed specially for MIS at the district head quarters. It may be noted that the DDPT's Office already possessed a computer, computer room with A/C.

It is necessary to computerise at primary level as the present system of data collection is time consuming and does not yield reliable and accurate data in time for effective education planning and decision making. To begin with, the following aspects will be covered by MIS.

- Regular school statistics - the formats that are already developed at the state level for collection of educational data by the districts will be used.
- Project scheduling, implementation/monitoring of outcomes software will be developed for scheduling the project activities, their implementation and monitoring of various inputs.
- Evaluation/assessment studies - MIS will provide these necessary background information to undertake such studies.

6. Goals and objectives

Goals and Objectives

The overall goal of the project is to achieve UEB within the specified period of five years through mobilisation of local resources and organisation.

General Objectives

- * All children in schools, Education Guarantee Centre, Alternate School, Back to School Camp by 2003.
- * All children complete five years of primary schooling by 2007.
- * Focus on elementary education of satisfactory quality with emphasis on education for life.
- * Bridge all gender and social category gaps at primary stage by 2007 and at elementary education level by 2010.
- * Universal retention by 2010.

Specific Goals

- * To improve access to primary schooling to serve the unserved disadvantaged groups.
- * To improve access to primary schooling especially for girls, SC and ST students.
- * To improve the quality of schooling facilities offered in respect of infrastructure
- * To provide alternative system of comparable standard out of school and disadvantaged group children where ever necessary.
- * To improve participation and school effectiveness by teacher empowerment and local community involvement.
- * To build local level capacity to manage primary education at the district block and village level.

7. Programme Component

Programme Component

(Existing Programme of the State Government)

A large number of incentives have been given by the state governments to promote access, retention and achievement in primary education. Some of these are described below.

Construction of Classrooms

As a part of the state government policy to provide one classroom to each class, construction of classrooms has been taken up in the district. The state government provides rupees 40,000 per classroom as its share to the Dept of Education. The remaining amount is mobilised through local contributions/JRY/EAS.

Recruitment of Primary School Teachers

The state government has a programme to provide one teacher per class. As a part of this programme Udupi district has completed recruitment of teachers in the last four years as a current record of recruitment during or sanctioned vacant posts of teachers have been filled except the retirement vacancies which occurred recently.

Distribution of Free Uniforms

The scheme under the title Vidya Vikas has been in existence. Initially envisaged as a programme to provide welfare to the children of SC/ST families it is now extended to all children in classes I - 4 with a view to increasing retention of children in the school.

Supply of Textbooks

Like uniform textbooks were initially given only to SC/ST children. Now the scheme is available for all the children of classes I - 8.

Supply of School Bags

In order to improve retention level of girls in classes 5 - 8, particularly among the SC/ST a new scheme of providing school bags and note books is introduced. Under this scheme note books and bags are supplied to SC/ST girl students.

Midday Meals

The scheme for providing midday meals was first introduced in the state in 1963 with the assistance from CARE. In addition the state had an energy food programme. CARE assistance was gradually nutrition support for primary education in 1995-96. Under this scheme, children studying in rural govt school and aided institutions whose attendance is not below 80% are covered. Each child gets three kilograms of rice if his/her attendance is 80% and above.

Scholarship

Metric and pre-metric scholarships are being given to students belonging to SC/ST/OBC and minority communities studying in 1-7 standard through social welfare and backward class and minority department. Attendance scholarship for girls in rural schools who attend 80% of classes are also being given. Hostel facilities are available to students belonging to SC/ST/OBC studying in 5-7 standards. These hostels are being run by social welfare and backward classes and minority department.

OBB Scheme

Operation Black Board Scheme helps a lot in order to improve a primary schools by giving two teachers in minimum and give additional inputs for the around development of the children below 14 years. It helps the literacy ratio.

Chaithanya

Chaithanya is a new programme which analys how to involve the pupil in the main stream and shows a new kind of teaching i.e, Nuli - Kuli. The teacher shows is talents in way of teaching.

Samudayadatta Shale

It attracts the community towards school and school towards the community. The familiarity between Teacher - Pupil, Teachers - Parents, Teacher - Elected representatives and helps to know minute details of the school and the village.

Text Book Review

The text book review shows the way to deal with the lesson by teacher and the people to learn better according to new syllabus.

SCHOLAR SHIPS MSTRIBOTEB TO S.C & S.T STUDENTS
2000 -2001(1st TO 10th)

S.C

MALE	FEMALE	TOTAL	TOTAL AMOUNT
5044	7211	12255	14.03(lakhs)

S.T

MALE	FEMALE	TOTAL	TOTAL AMOUNT
3504	5410	8914	8.6(lakhs)

The Scholar ship for the people helps lot i.e, Beedi, Military, Merit, Low income, SC & ST, Girls attendance for rural,etc, attracts the child towards the school.

EMIS Survey

The Education Management and Information System was made to note for the children and future possible demands and infrastructures needed for the scholl.

Ma - Beti (Parent Association)

The view on Girls education Ma - Beti sammelan offenly made to attract the girl child to the school.

Baseline Assessment

A baseline Assessment was to assess note on the exixting structure and understand capacity of the pupil amd condition of the school.

SDMC

SDMC is a school developing and management community. There are 9 members belongs to the student of the school. They are selected among the parents meeting. It includes nominated members and other resourse persons. The preseident of the SDMC is the preseident of the school committee and Head Master of the school is the secretary. All the sourses of money and others comes to the joint account of these two and made plan and work with the help of others.

8. Annextures

1. UNIT COST OF THE ACTIVITY

1. New school building	3.60 lakhs.
2. EGS/AIE to regular School	Rs. 10,000/- per year.
3. School grant	LPS Rs.2000, UPS 2000/- per year.
4. Teacher's grant	Rs. 500/- per year.
5. Teacher's Trainy	Rs. 70/- per day.
6. Incentive for child(SC,ST & all Girls)	Rs. 150/- per year.
7. Training to Personality	Rs. 30/- per day.
8. Disalded child grant	Rs. 1200/- per year.
9. Research grant	Rs. 1500/- per school.
10. CRC –	Building 2 lakh, furniture 10,000 ,Pycountingency2,500/-
11. BRC –	Build 6 lakh, 1 lakh furniture, 12,500/- Py countingency
12. Repair	RS.5000/- PER School.
13. Aditonal rooms	1.5 lakhs.
14. Toilet, Boys and Girls	70,000/-.
15. Compound	Rs. 100000/-
16. Electricity	Rs. 10,000/-
17. TLM	Rs. 5,000/-
18. Drinking water	Rs. 60,000/-
19. Library	Rs. 50000/-
20. Sports	Rs. 5,000/-
21. Furniture	Rs. 50,000/-
22. AV Aids	Rs. 100000/-

2. LIST OF NEW SCHOOL.

Karkal	Byndoor	Kundapur	Udupi(N)	Udupi(S)
1.Raghavendrapur	1. Alur	1. Siddapura	1.Althar	1.Bairaje
2. Kadiyakallu	2. Hosur(Kadoli)	2. Shedimane	2.Baikadi Gandinagar	2.Shivapur
3. Ayyappanagar	3. hemmakki	3. Maddamaki		3. Ermal(S)
4. Bairalbetu	4. Yojananagar			4. Ermal(N)
5. Pijandadka	5. Trasi(Hospete)			5. Malpe
6.Mavinakatte				6. Shirva
7. Boralgudda				7. Hejamadi
8. Nellikatte				8. Hejamadi(Kodi)
9. Jatkan				9. Nandikur
10. Kadthale				10. Mulur
11. Giliyaru				11. Manipura
12. Ragihaklu				12. Santhurkopl

The habitations are 200 and above.

3. LIST OF UP GRADED SCHOOL

	Karkal	Byndoor	Kundapur	Udupi(N)	Udupi(S)
1.	Thundagedde	Nil	Nil	Nil	Nil
2.	Punarkere				
4.	Puchibettu				
5.	Muttipadi.				
5.	Gundaje				
6.	Dadabettu				

4. List of BRC - 5

1.	Kundapura	-	1
2.	Byndoor	-	1
3.	Karkal	-	1
4.	Udupi North	-	1
5.	Udupi South	-	1
		-	<u>5</u>

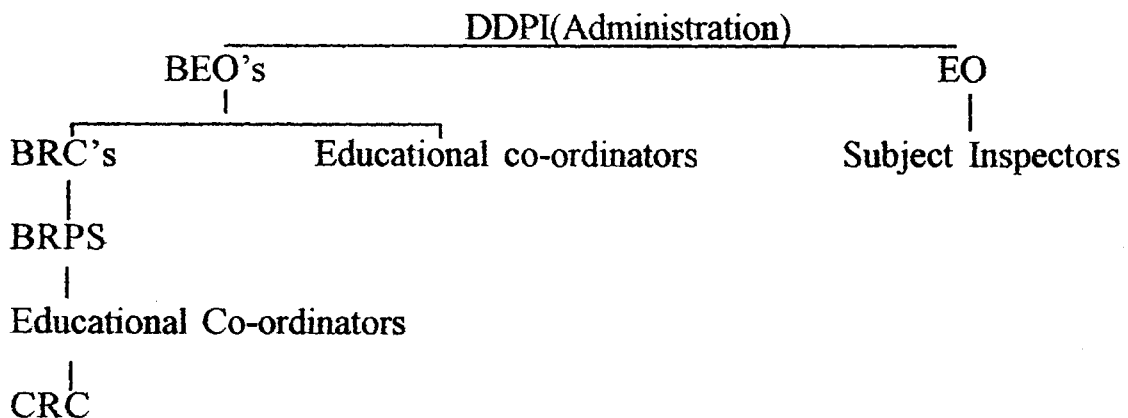
5. List of CRC – 115

1.	Kundapur	-	25
2.	Byndoor	-	30
3.	Karkal	-	25
4.	Udupi North	-	20
5.	Udupi South	-	15
		-	<u>115</u>

6. E.G.S/ AIES/MOBILE Centre

Nil

7. SSA Management Structure.



8. Existing Pay scale as per Management

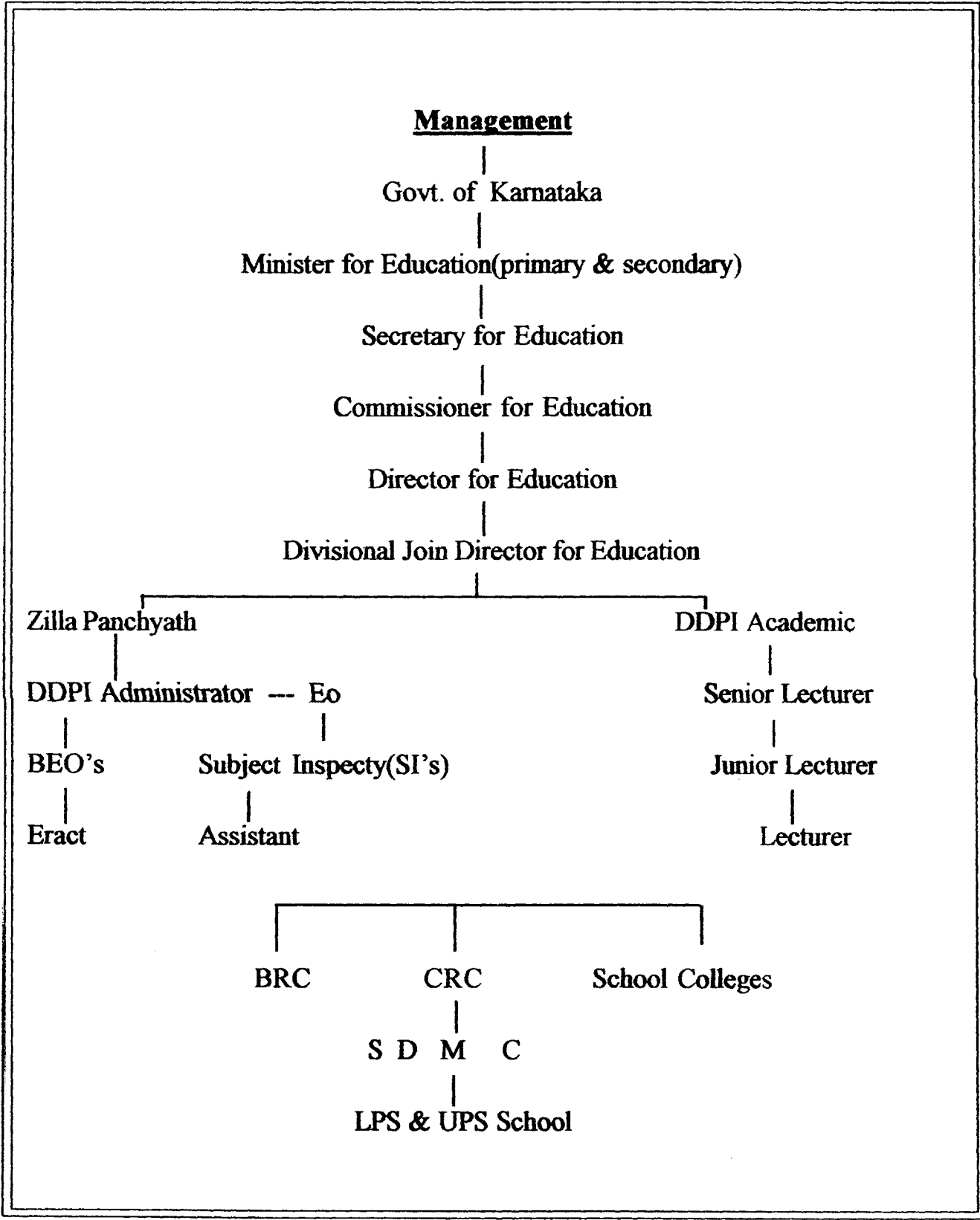
Project Officer	7400 – 13120
Account Superintendent	5200 – 9500
BRC	6000 – 11200
CRC	4575 – 8400
Clerk	3850 – 7050

9. List of Voluntary Organisation

1. Jnanadeep Dharmasthala
2. Nammabhoomi Hattiangadi
3. Spoorthi Kedor
4. Ashika Koteshwara
5. Koraga Sangha, Kundapura
6. Jaycees/Jayceerites
7. Rotary / Rotract
8. Lions/Lioness
9. Yuvaka/Yuvathi Mandal

10. List of Intervention Taken

1. Chinnara Angala
2. EMIS Survey
3. Chaitanya
4. Text book review
5. Samudayadatta shale
6. Incentives
7. New school
8. Upgradation
9. Enrolment
10. Retention
11. Capacity building
12. S.S.A.office
13. B.R.C
14. C.R.C
15. Makkala Sameekshe
16. Baseline Assessment



**9. Budget Estimaste 2001-10
Chapter and Intervention wise**

JUSTIFICATION

BUILDINGS :

District needs 34 new schools as per S.S.A. norms along with new buildings. Number of buildings are very old and are of more than 50 years old, which were built by mud walls. According to P.W.D. code, they have already lost the life span. Every year 4-5 buildings are collapsing due to heavy rainfall and high humidity. These buildings require immediate requirement of replacement by new construction. These aspects are taken into consideration in the proposal of new rooms.

REPAIRS :

Generally these school buildings are constructed by using tiled roof. Due to heavy rainfall and humidity in the atmosphere, after every monsoon the buildings require annual maintenance like repairs of windows, plastering, white washing and replacement of roof materials. Unless these repairs are done classes cannot be conducted especially in the rainy season. And it is a regular feature during monsoon western wind flow is very fast and minimum protection is very essential to run the classes. Therefore, regular repairs (normal and special) is very much essential in this region.

TOILET :

Large number of schools do not have toilet facilities in this district. Therefore, it is proposed to have separate toilet and urinals for both boys and girls.

T.L.M :

Mere teaching and reading of books without using teaching aids, the learning method is devoid of practical understanding (rather bookish knowledge). To overcome this, providing certain live models pertaining to biology (like heart, brain, eye and other specimens) are very essential. The schools in the district do not have any such models to create a knowledgefull learning atmosphere, the children need such learning aids.

COMPOUNDS :

Land is very costly in this district compared to other parts of the state. Protection of school buildings and premises is very essential from the point of view of hygiene and encroachment. Here we have taken 8 + 1 rooms for construction of compound-wall with a total length of 60 meters and width of 8 meters. Atleast Rs. 1000/- for running-meter is needed in construction of compound wall. The proposal made in this project has taken all these points into consideration.

ELECTRICITY :

Electrification is proposed as per norms of S.S.A. to all schools covered under this project.

SPORTS MATERIALS :

The proposal is for one time furnishing of sports materials in every two years. Those games which are very much played in this region (i.e.: cricket, football, throw ball, volley ball, tennyquite, badminton) considered for giving materials. The minimum requirement is proposed.

A.V. AIDS :

To keep with the pace in the advanced information technology, it is proposed to have overhead projector, slide show projector, V.C.R, T.V, sound system, camera in all schools as per norms of the S.S.A.

LABORATORY :

As said in T.L.M. laboratory is a very important part in improving knowledge of the students in Upper Primary Schools. To establish a laboratory it requires a building, shelf's, almera and necessary materials. It also needs regular supply of chemicals, biological materials and other necessary materials every year. While proposing the unit cost, these points are taken into consideration.

LIBRARY :

The easiest way of making pupil knowledgeable is by encouraging the reading habit. So, library plays a very key role in educating students. Providing quality books, small stories, magazines, news papers is considered in proposing unit cost here. It also requires, some minimum storing materials like shelf's and almera's.

DRINKING WATER :

The drilling cost of borewell on an average is Rs. 50,000/- in this district. Putting of hand pumps; needs extra cost. So, a unit cost of Rs. 60,000/- is proposed. Drinking water supply schemes are proposed to all eligible schools.

PLAY GROUNDS :

The shape of the land in this district is undulated, as most of the part is in hilly region except the coastal region with about 3 km's width. The most of schools have vast land in their premises. To level these grounds as play grounds a higher unit cost is essential.

Budget Estimate of Udupi SSA 2001-2010

A) New School for schoolless Habitation

1.	Building	122.40
2.	T. Salary	355.005
3.	Furniture	68.00
4.	TLM	17.00
5.	T. Grant	2.55
6.	S. Grant	5.44
7.	Repairs	3.57
8.	Add Room	153.00
9.	White Board	2.55

729.515

B) EGS / AIES 2001-10

NIL

C) Inputs for Existing Primary School (1-5)

1.	Building	504.00
2.	T. Salary	992.49
3.	Furniture	131.50
4.	TLM	131.50
5.	T. Grant	7.47
6.	S. Grant	47.34
7.	Repairs	355.50
8.	Add Room	394.50
9.	Compound	263.00
10.	Water	157.80
11.	Toilet	184.10
12.	Electricity	26.30
13.	Play Ground	52.60
14.	B B	19.72
15.	Sports Material	52.60
16.	Library	144.65

Total 3303.07

D) Up-Gradation of Existing Pry School +6+7+8

1.	Building	Nil
2.	T. Salary	139.94
3.	Furniture	10.50
4.	TLM	7.00
5.	T. Grant	0.95
6.	S. Grant	0.152
7.	Repairs	0.525
8.	Add Room	21.00
9.	Compound	7.00
10.	Water	4.20
11.	Toilet	4.09
12.	Electricity	1.40
13.	AV aids	8.40
13.	Play Ground	1.40
14.	White. B	0.33
15.	Sports Material	2.80
16.	Library	4.55
18.	R. Grant	0.88
19.	Lab	7.70
Total		229.27

E) Inputs for UPS

1.	Building	644.40
2.	T. Salary	3418.70
3.	Furniture	244.00
4.	TLM	246.75
5.	T. Grant	3.298
6.	S. Grant	79.92
7.	Repairs	444.15
8.	Add Room	1287.00
9.	Compound	329.00
10.	Water	197.40
11.	Toilet	177.10
12.	Electricity	32.90
13.	AV aids	329.00
14.	Play Ground	65.80
15.	WB	39.48
16.	Sports Material	148.05
17.	Library	493.50
18.	R. Grant	44.46
19.	Lab	131.60
Total		8379.50

F) Enrolment

1.	Updation Record	106.56
2.	Special Drives	53.28
3.	Campaign	53.28
4.	Samudayadatta Shaale	266.40
5.	Bridge course	53.28

Total 535.50

G) Retention

1.	Incentives TB	1316.16
2.	Trainings	565.838
3.	Supervision	36.00

Total 1917.998

H) Capacity Building

1.	Community Leaders	6.03
2.	SDMC	15.996
3.	G.P. Members	7.314
4.	Z.P. Members	0.65
5.	T.P. Members	1.30
6.	Block Level Officer	0.65
7.	BRC/CRC	0.65
8.	HM Office School	3.25
9.	District Faculty	1.30
Total		37.14

I) BRC (5 Blocks)

1.	Building	30.00
2.	Furniture	5.00
3.	Contingency	5.67
4.	Library	4.50
5.	Equipment	15.00
6.	Maintainance	5.25
7.	Staff Salary	311.25
Total		376.85

J) C.R.C (5 Blocks)

1.	Building	230.00
2.	Furniture	11.50
3.	Contingency	25.875
4.	Library	46.00
5.	Equipment	17.00
6.	Maintainance	103.50
7.	Staff Salary	687.57
Total		1121.445

K) S.S.A Office

1.	Vehicals	10.00
2.	Fuel & Maintenance	18.00
3.	Computer With Internets Modem , Ups	5.00
4.	Xerox	2.00
5.	Fax & Telephone	0.50
6.	Furniture	3.00
7.	Ele. Cyclostyle Machine	0.50
8.	Project Activity	450.00
9.	Office Maintanance	13.50
10.	Colour Printer	0.14
11.	Air Condition	0.65
12.	Vacume cleaner	0.07
13.	Electronic Type Writer	0.35
14.	Digital Video Camara	0.40
15.	Calour T.V	0.20
16.	VCD	0.20
17.	OHP	0.20
18.	PA System	0.18
19.	Scientific Calculater	0.04
20.	Generator	0.50
21.	Building Rent	18.00
22.	Computer Training	0.20

23. PRO	14.22
24. APRO	22.74
25. JE	11.37
26. PCO	10.62
27. DEO	10.62
28. FDA(Computer Knowledge)	22.74
29. STENO	10.62
30. GROUP D	16.71
31. DRIVER	5.27
TOTAL	647.62

SSA TOTAL ESTIMATE

A.	NEW SCHOOL	729.51
B.	EGS/AIES	NIL
C.	INPUTS FOR Pri	3303.07
D.	INPUTS FOR UPGRADE	229.27
E.	INPUTS FOR UPS	8379.50
F.	ENROLEMENT	535.50
G.	RETENTION	1917.998
H.	CAPACITY BUILDING	37.125
I.	BRC	376.85
J.	CRC	121.44
K.	SSA STRUCTURE	647.62
L.	Gr	1414.20
	TOTAL	18692.098

S.S.A UDUPI 2001-10 Intervention wise

SL	Area	Build	Room	Fur	TLM	Lib	Lab	Water	Toilet	Electric	Comp	Salary	S. Grant	T. G	R. Grant	Contcy	Repairs	Play g	Sport Item	W.B	Others	Total
1.	New /BOS/AS/ Mobile School	122.40	153.00	68.00	17.00	Nil	Nil	Nil	Nil	Nil	80.00	355.005	5.44	2.55	Nil	Nil	3.57	6.80	10.70	2.55	Nil	826.515
2.	Inputs for Existing Primary School (1-5)	504.00	394.50	131.50	131.50	144.65	Nil	157.80	184.10	26.30	263.00	992.49	47.34	7.47	Nil	Nil	355.50	52.60	52.60	9.72	Nil	3303.07
3.	Upgradation of Pri School +6+7+8	Nil	21.00	10.50	4.00	4.55	7.70	4.20	4.90	1.40	7.00	10.50	1.52	0.95	0.88	Nil	5.25	1.40	2.80	0.33		229.27
4.	Inputs for Upper Primary School 1-8	644.40	1287.00	244.00	246.75	493.50	131.60	197.40	177.10	32.90	329.00	3418.70	79.92	3.298	44.46	Nil	444.15	65.80	148.05	39.48		8379.50
5.	BRC Establishment	30.00	--	5.00	--	4.50	--	--	--	--	--	311.25	--	--	--	5.67	5.25	--	--	--	15.00	376.85
6.	CRC Establishment	230.00	--	11.50	--	46.00	--	--	--	--	--	687.57				25.875	103.50	--	--		17.00	1121.445

7.	ENROLEMENT	Drives	Bridge Course	Awareness Project	Updation Record	Project activity	School assesment	Health card	Progress card	Others	Total
		53.28	53.28	166.40	106.56	450.00	36.00	24.75	24.75	104.49	611.51

8.	Teachers Training	20 Days	60 Days	30 Days	8 Days	Total
		378.35	13.608	173.88		565.83

9.	Retention	Free Text Book	Free Uniform	Midday Meal	Free School Bag	Free reimberance	Physical Disabled	Total
		1316.16	1188.90	47.16	475.56	10.57	35.86	3074.21

10.	SSA Office	veh	fuel	Compu	Xero Pho	Fax&	Fur	Cyclo	Project	Maint	Printer	Ac	VCleaner	Typ	Camera	TV	VCr	OHP	Mik	Calcu	GenT	RenT	C.Tr	Rent	Salar	Total
		10.00	18.00	5.00	2.00	0.50	3.00	0.50	450.00	13.50	0.14	0.65	0.07	0.35	0.40	0.20	0.20	0.20	0.18	0.04	0.05	18.00	0.20	18.00	124.91	647.62

10. Justification for the Budget Estimate

2001-2002

Intervention wise Justification

1. Building:

Our District proposed 34 new schools with other facility. New building for LPS and UPS is to be constructed. Most of them are very old (40-100 year), unconditional & partly damaged. It is because of heavy rainfalls and wind.

2. Repairs:

We propose repair for every school building. The damages on roof, tiles, reapers, sucking water (wall) during mansoon.

3. Toilet:

We propose toilet for both girls and boys most of the schools are not having suitable toilets.

4. TLM:

We propose for TLM for proper situational effective teaching and its techniques. i.e. charts, globes, kits, Biological specimens etc.

5. Compound:

Almost every building needs compound. It is very sensitive in our area to guard the building and precious school land. We propose Rs. 1000/per meter

6. Electricity:

We propose to remove old bad wires of the school which is very dangerous in some established schools. We need fans during hot summer and light, during clouds mansoon.

7. Sports Material:

We propose for encouraging classroom pupils in the field of sports. We are far behind in sports and games and its material both for boys and girls in LPS and UPS i.e. Cricket, football, throwball,

tennis, volleyball etc.

8. **A.V. Aids:**

We need overhead projector, VCR, TV, Screen board, Camera, Sound system for the school for better information system. So we propose it.

9. **White Board:**

We use white Board of costing Rs. 1500/- it is necessary. We follow old pattern of Black board and lime piece. It is not in good condition. It does not reflect the words and meter. It looks So propose for white board.

10. **Laboratory:**

We need Laboratory in every UPS. The materials are very costly. We need separate cell and Almera to keep it properly. So we need more money during the establishment period. We propose less amount after that regularly. i.e. 5000/-

11. **Library:**

The pupil wanted to improve knowledge through j.... weekly and monthly magazines, Small story books etc. We need separate cell and Almera to keep up materials.

12. **Drinking Water:**

We need drinking water to almost all primary and upper primary schools. The old well has no ground water resources. So we need fresh water system and depth of the well.

13. **Play Ground:**

We are h... lands at hills, Plain, Slopes and UPS. The levels, maintains in proper system is essential. So we propose amount in this regard

14. **Additional Rooms:**

The students need a report room for each class. The people of Udupi is sensitive and ready to allow a Doddy School or looks like cowshed. So we want more room.

15. **New Building:**

We propose new building because many of them are very old & not in good condition. Every year three or four buildings are fall down. It is the usual complaint in our district.

We propose every items and costings according to the interventions of SSA. We discuss and prepare with community partnership of representatives and officials as best as possible.

11. Budget Estimate 2001-2002

UDUPI SSA BUDGET ESTIMATE OF 2001 - 2002

A.	NEW SCHOOL	148.41
B.	EGS/AIES	NIL
C.	INPUTS FOR Pri	681.81
D.	INPUTS FOR UPGRADE	NIL
E.	INPUTS FOR UPS	1553.10
F.	QUALITY IMPROVEMENT	4.45
G.	RETENTION	150.22
H.	QUALITY TEACHERS TRAIN ING	59.18
I.	BRC	46.17
J.	CRC	319.22
K.	SSA OFFICE	16.87

29666:

2989.43 lakhs.

We propose building for the next year new school to start first standard new building for some UPS for 8th standard in next year. new room for both LPS, UPS and upgraded school. It is because we are ready for the next academic year starts from June 2002. We propose salary for only 5 months in this year which is very needful. The Budget is for 5 months.

S.S.A UDUPI 2001-02 Intervention wise

SL	Area	Build	Room	Pur	TLM	Lib	Lab	Water	Toilet	Electric	Comp	Salary	S. Grant	T. G	R. Grant	Contey	Repairs	Play g	Sport Item	W.B	Others	Total
1.	New /EGS/AS/ Mobile School	122.40	--	17.00	8.50	--	--	--	--	--	--	--	--	--	--	--	--	--	--	0.51	--	148.41
2.	Inputs for Existing Primary School (1-5)	126.00	94.50	50.00	--	55.00	--	55.20	92.05	16.10	63.00	41.50	5.26	0.83	----	----	39.50	20.00	13.15	19.72	--	691.81
3.	Upgradation of Pri School +6+7+8	--	--	--	--	--	--	--	--	--	--	--	--	--	--	--	--	--	--	--	--	--
4.	Inputs for Upper Primary School 1-8	104.40	300.00	164.51	82.25	164.50	164.50	80.40	105.00	54.30	29.00	--	8.88	-----	4.94	--	49.35	5.8	16.45	39.48	--	1553.10
5.	BRC Establishment	30.00	--	5.00	--	2.50	--	---	---	---	---	13.02	--	---	---	0.65	--	---	-----	---	---	46.17
6.	CRC Establishment	230.00	--	11.50	--	--	--	--	--	--	--	28.75	---	---	---	2.90	--	---	--	--	22.10	319.22

7. Quality improvement

School
assessment

4.45

8. Teachers Training	20 Days	60 days	30 days	Total
	38.35	1.51	19.32	59.18

9. Retention	Free text book	Physical Disabled	Total
	146.24	3.98	150.22

10. SSA Office	Compu	Xerox Pho	FBX &	Fur	Cyclo	salary	total
	5.00	2.00	0.50	3.00	50	05.87	16.87

2001 - 2002 Annual Budget Grand total

: 2989.43 lakhs.