

# SARVA SHIKSHA ABHIYANA

KARNATAKA

---

**CHIKMAGALUR DISTRICT DEEP  
PERSPECTIVE PLAN FOR  
2001 -2010**

---



CHIKMAGALUR ZILLA SARVA SHIKSHA ABHIYANA SAMITHI  
CHIKMAGALUR - 577 101

## PREFACE

The "DEEP" perspective plan of Chikmagalur District has been prepared as per norms and provisions laid down in Sarva shiksha Abhiyan programme being launched by Ministry of Human Resource Development, New Delhi.

Since Sarva Shiksha Abhiyana is a novel programme launched by the Govt of India in collaboration with Govt. of Karnataka to tackle the issues and problems relating to access, enrolment, retention and attainment of children up to 14 years, sincere effort has been made in the plan for causing not only quantitative expansion of elementary education by way of opening of new schools, construction of new and additional buildings, Water & sanitary facilities, compounds, provision of teaching learning materials but also qualitative expansion by way of increasing retention, learning input to teachers and bridging the gender & social gaps that exists in the educational sector in this district by involving panchayath raj institutions & local community.

I extend thanks to all those who have assisted us in preparing the 'DEEP' perspective plan of Chikmagalur district for Rs. 199.74Crores.

M.CHANDRASHEKHARAIHAH  
Deputy Director of Public Instruction  
CHIKMAGALUR

# CONTENTS

• DISTRICT IMPLEMENTATION COMMITTEE	02
• DISTRICT RESOURCE GROUP	04
• DISTRICT PLANING TEAM	06
• KARNATAKA MAP SHOWING THE DISTRICTS UNDER SSA	07
• DISTRICT MAP SHOWING THE BLOCKS IN THE DISTRICT	08
<b>II CHAPTER - I</b>	
1. BACKGROUND OF THE DISTRICT	09
2. DISTRICT PROFILE IN GENERAL	11
3. DISTRICT EDUCATION PROFILE	12
4. MANAGEMENT STRUCTURE OF PRIMARY EDUCATION	14
<b>III CHAPTER - II</b>	
EDUCATIONAL BACKGROUND OF THE DISTRICT	15
.PROJECTION OF GER,NER, & RR	21
ACHIEVEMENT LEVEL	28
CAPACITY BUILDING	29
STATUS OF GIRLS EDUCATION	30
EDUCATION OF DISABLED CHILDREN IN THE DISTRICT.	30

IV CHAPTER – III

PLANNING & PROCESS 3

v chapter - - - iv

issues & problems in the primary education. . 3

VI CHAPTER – VI

GOALS & OBJECTIVES 4

VII CHAPTER – VII

• STARTUP COSTS & PROGRAMME COMPONENTS 4

VIII ANNEXURES

••• UNIT COST FOR ALL THE ACTIVITIES AND 46

••• LIST OF NEW SCHOOLS PROPOSED 50

••• LIST OF UPGRADED SCHOOLS PROPOSED 54

••• LIST OF BRCs PROPOSED 63

••• LIST OF CRCs PROPOSED 64

••• LIST OF HABITATIONS WHERE NEW CENTRES PROPOSED TO START

65

SSSA MANAGEMENT STRUCTURE AT DISTRICT/ CLUSTER LEVEL

69

•• EXISTING PAY SCALES WITH ALLOWANCES OF THE DISTRICTS PER  
MANAGEMENT STRUCTURE

•• LIST OF VOLUNTARY ORGANISATIONS WORKING IN THE  
DISTRICT 75

•• LIST SPECIAL INTERVENTIONS (S & SGO) FOR UNRATED 76

THE DISTRICT FOR UNIVERSALIZATION OF EDUCATION.

**DISTRICT SARVA SHIKSHA ABHIYANA  
RESOURCE GROUP**

- |   |                     |
|---|---------------------|
| 1. SRI. M . CHANDRASHEKARAI AH<br>D.D.P.I CHKNAGALUR          | PRESIDENT           |
| 2. SRI. R.T. DESAI<br>PRINCIPAL, DIET, CHIKMAGALUR            | MEMBER              |
| 3. SRI. S. DODDAMALAPPA<br>E.O, D.D.P.I'S OFFICE, CHIKMAGALUR | MEMBER<br>SECRETARY |
| 4. SRI. K.N JAYANNA<br>S.I, D.D.P.I'S OFFICE, CHIKMAGALUR     | MEMBER              |
| 5. SRI. B.R. KUMARA SWAMY<br>B.E.O, CHIKMAGALUR               | MEMBER              |
| 6. SRI. B.N. KRISHNAMURTHY<br>B.E.O, MUDIGERE                 | MEMBER              |
| 7. SRI. T. NAGARAJAPPA<br>B.E.O, KADUR                        | MEMBER              |
| 8. SRI. SOMASHANKARAI AH<br>B.E.O, BIRUR                      | MEMBER              |
| 9. SRI. P. NINGAPPA<br>B.E.O, TARIKELE                        | MEMBER              |
| 10. SRI. RANGANUTHAIAH<br>B.E.O, N.R. PUJA                    | MEMBER              |
| 11. SRI. K.S. MAN<br>B.E.O, KOPPA                             | MEMBER              |
| 12. SRI. G.S. PRABHUSWAMY<br>B.E.O, SRINGRI                   | MEMBER              |

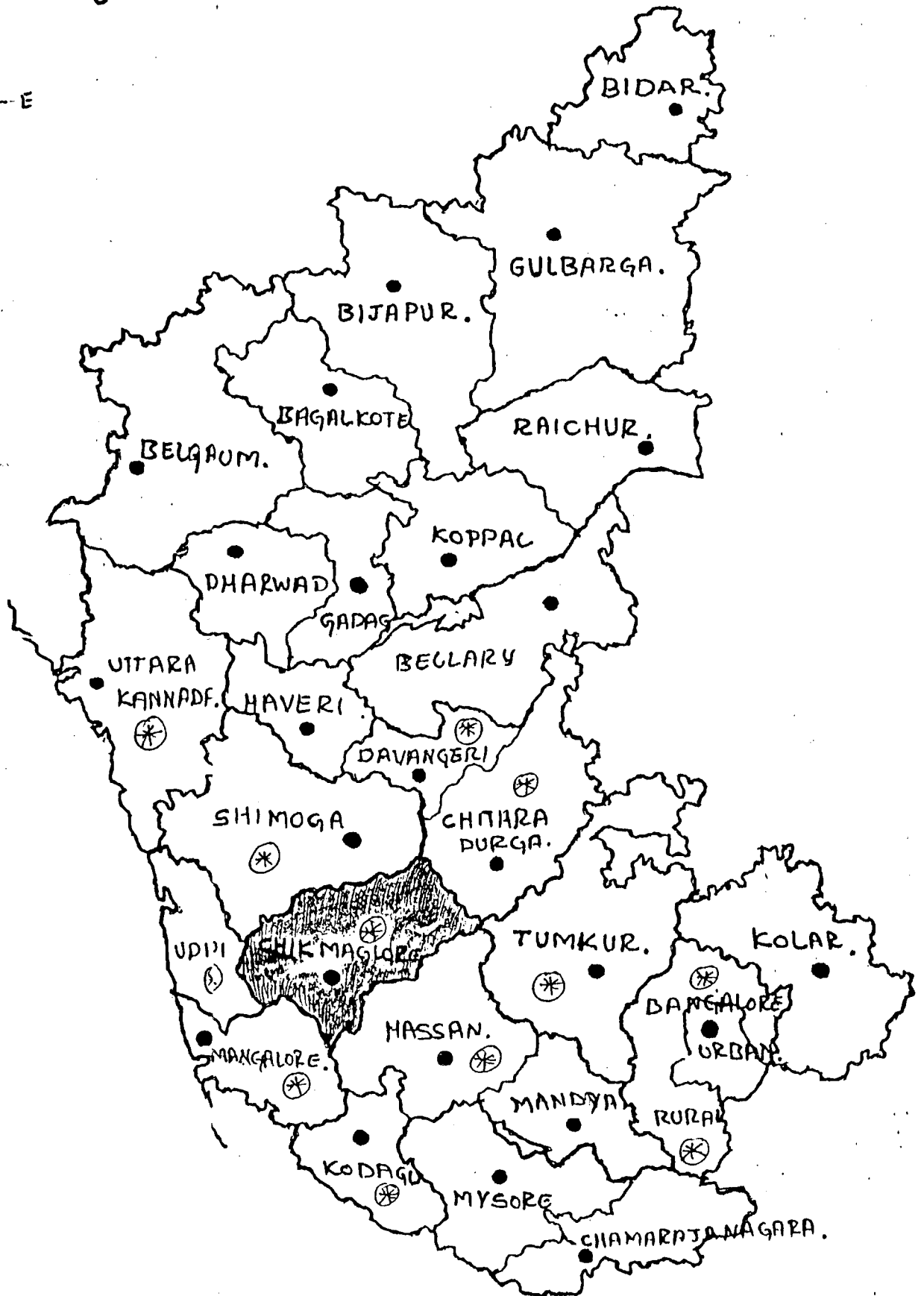
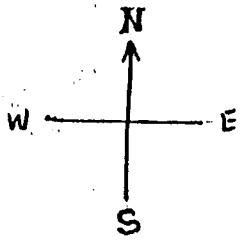
13. SRI. N.G BASAVARAJU SENIOR LECTURER,DIET, CHIKMAGALUR	MEMBER
14. SRI. G.B. RAJAPPA SENIOR LECTURER, DIET, CHIKMAGALUR	MEMBER
15. SRI. B.REVANNA BRC, CHIKMAGALUR	MEMBER
16. SRI. M.H.THIMMAIAH BRC, KADUR	MEMBER
17. SRI. C.R.PARAMESHWARAPPA BRC, TARIKERE	MEMBER
18. SRI. B. RUDRA SWAMY BRC, N.R.PURA	MEMBER
19. SRI.B.L. SHARASHCHANDRA BRC, SRINGERI	MEMBER
20. SRI.T.R. RUDRAPPA BRC, MUDIGERE	MEMBER
23. SMT. RADHA SUNDARESH SOCIAL WORKER, CHIKMAGALUR	MEMBER
24. SRI. ABDUL MAJID PRESIDENT, DIST. PRI TEA. ASSN, CHIKMAGALUR	MEMBER
25. SRI. DHRUVA NARAYAN ADVOCATE,& SECRETARY, DIST,LITERACY COMMITTEE	MEMBER
26. SRI.RADHAKRISHNA CHIKMAGALUR	MEMBER
27. SRI. B.H.PENNAIAH RETD. TEACHER, TARIKERE	MEMBER

## DISTRICT PLANNING TEAM

1. M. Charlashekaraiah : Ex -officio District Project  
Co-ordinator & DDPI,  
Chikmagalur
2. R. T. Deai : Principal,  
DIET, Chikmagalur
3. S. Doddmallappa : Ex-officio Assistant Project  
Co-ordinator &  
E.O.o/o.The DDPI,  
Chikmagalur
4. N.G. Basvaraju : Programme Officer  
Senior Lecturer, P&M  
DIET, Chikmagalur
5. T.S.Tharmani  
H.M, GH, ANOOR & : Member  
Dist.ComProgr.Chikmagalur
6. A.M. Appiah : Member  
BRP. Chikmagalur
7. K. G. Nelakantappa : Member  
A.M. GH, Thalihalla
8. Manjunta Reddy : Member  
A.M. GH, Mugtihalli
9. G. K. Srekanth : Member  
FDA, BE Office,  
Chikmagalur
10. C. P. Krihne Gowda : Member  
A.M. GHS, Mugtihalli

# KARNATAKA STATE

Map Showing Districts.

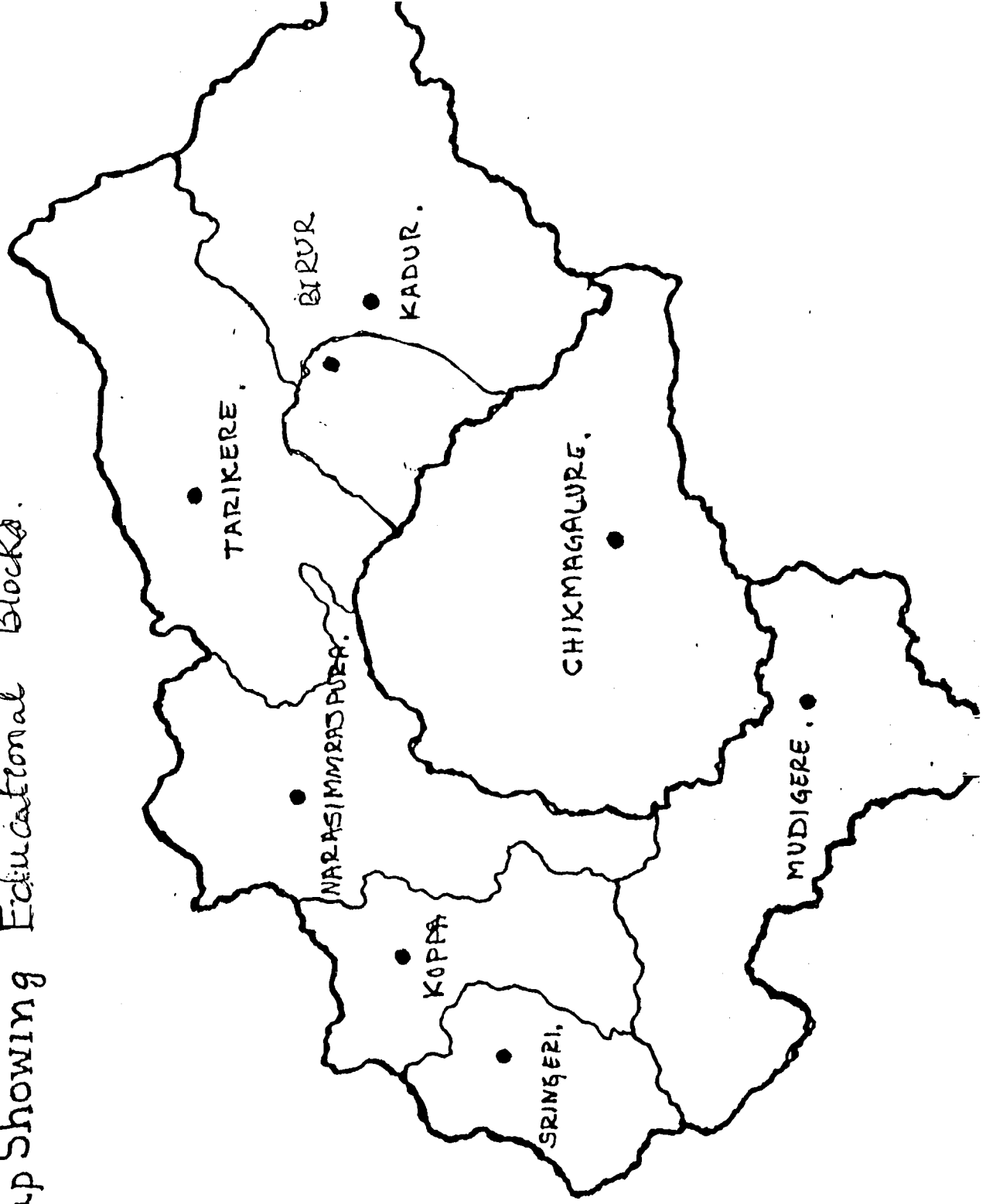


(\*) — Districts under SSA programme.



# CHIKMAGALUR DISTRICT

Map Showing Educational Blocks.



# Chapter 1

## DISTRICT BACKGROUND

CHIKMAGALUR district is one of the 6 districts, which constitutes the Malnad area of Karnataka State. It is situated on the Western ridge occupying 3.8% of the total area of the state. The district is sparsely populated and it contains only 2.27% of the total population of the state. The density of population per sq.kms is 141 persons which is below the state average of 235 persons per sq.kms. It ranks 23rd in the state in terms of population.

1. Location : The district lies between 12 15 and 13 54 north latitude and between 75.5 and 76 longitude. It is bounded on the north by Shimoga district, on the east by Chitradurga and Tumkur dists. On the South by Hassan dist. and on the west by South Canara & Udipi dists.
2. Physical Feature : Major portion of the dist consists of mountain region of the western gats. Some of the loftiest peaks between Himalayas and Nilgiris are located in the dist. The district may be described as predominantly high land area with a small exception in the east. The Eastern parts of Kadur and Tarikere features the maidan area. Bababudan range which is the loftiest range of Karnataka table land is situated in the center of Chikmagalur district. The highest point in the district is Mullayanagiri which rises to 1926 meters above sea level. The mountain area is rich in forest wealth while the plains contain rich agricultural fields which receive good rain fall.
3. Area : The area of the district is 7201 kms. In terms of area it occupies 11<sup>th</sup> position among the 27 districts of the state.
4. Administrative arrangements : The district is divided into 7 revenue taluks viz., Chikmagalur, Kadur, Koppa, Mudigere, Sringeri, Narasimharajapura and Tarikere. Similarly there are eight educational blocks, Birur is newly created block.
5. Climate and Rairfall : The districts enjoys essentially a tropical climate. The cold season is from December to February, which has clear bright weather. It is followed by hot season from March to may. The period from June to September constitute the South West monsoon season. October and November may be termed as post monsoon or retreating monsoon season.

and November may be termed as post monsoon or retreating monsoon season.

The average annual rain fall in the district is 1925 (1901 – 1970) mm. Actual rain fall in 1996 was 1624 mm Heavy and continuous rainfall begins in June and lasts till September .Koppa, Mudigere & Sringeri register the heaviest rains.

6. Rivers : - The principal rivers in the district are Tunga, Bhadra, Hemavathi, Velavavthi and Yagachi

7. SOIL : - The district has mainly three types of soils viz., laterite in malnad belt, edloamy & sandy soils in transitional belt and red & black soils in the dry belt. Based on the situation and rain fall pattern, chemical character of soil also changes from acidic to alkaline respectively.

8. Land use : Based on the prevailing soil pattern and agro – climatic conditions, the plantation crops are grown in Malnad belt, cereals, vegetables and commercial crops in transitional belt and millets and horticultural crops in dry belt.

9. Forest resources : Almost 25% of the gross geographical area is covered by 5 types of forests viz., Evergreen, semi-evergreen, moist deciduous, dry deciduous and Thorny forest depending upon the suitable belt. Important forest revenue from Sandal wood, hard wood and soft wood apart from the minor forest produce such as Bamboo, Cane, Tamarind, Honey wax and Resins.

10. Mineral Resources : The chief mineral wealth is from iron ore deposits ( Kudremukh Iron project) The other available minerals are copper asbestos and kaoline, Further, traces of other mineral like Gold, Mica, Bauxite, Chromite, Graphite, manganese, Soapstone etc., are also found to exist.

Apart from the above all the available latest basic statistical information of Chikmagalur dst. are furnished in the table form which may be of immense use.

11. Historical Background : The Chikmagalur district has its own historic and cultural background. According to legends a king by name Rukmangada of Sakharayapattana had gifted the area of Chikmagalur to his youngest daughter. In kannada Chikka mean youngest and daughter means magalur therefore, this place came to be known as CHIKMAGALUR which means youngest daughters place and which over a period of time came to be called as CHIKMAGALUR

## DISTRICT PROFILE IN GENERAL

1. Area of the district in kms. : 7201 kms.
2. No of revenue blocks : 07
3. No of Educational blocks : 08
4. No of Grama Panchayaths : 228
5. Total Population of the district. : 11,39,104

1		1981	1991	2001
A	Male	4,66,918	5,14,526	5,74,275
B	Females	4,44,851	5,02,757	5,64,829
C	SC	1,64,149	1,95,852	2,15,437
D	ST	15,350	26,534	29,187
E	Total		10,17,283	11,39,104
F	Growth rate	23.77%	14.6%	11.98%
G	Birthrate		22%	22.3%
H	Death rate		8%	8%

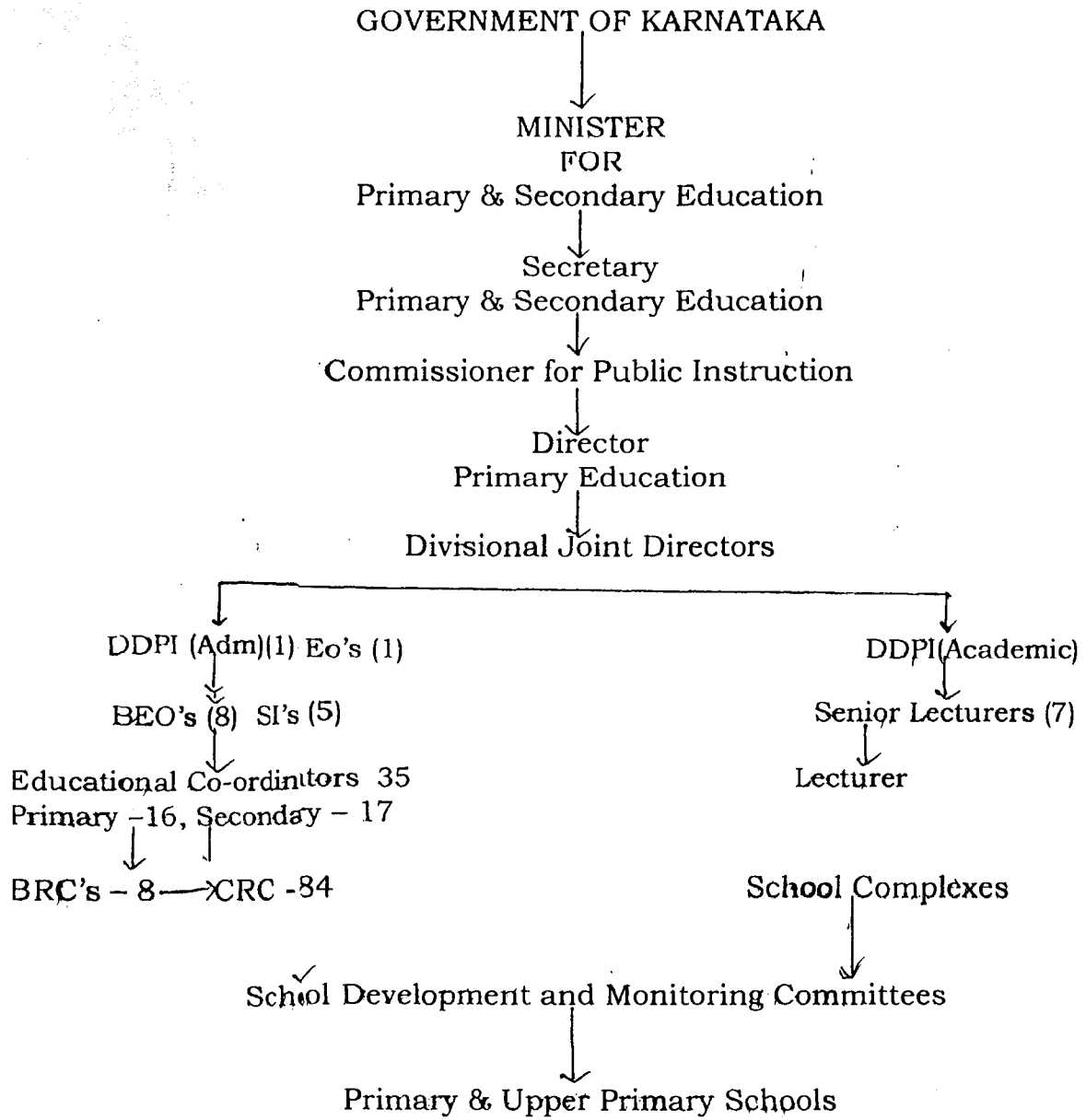
6. Total cultivated land : 3.29,842 hectares
7. Total irrigated land : 27783 Hectares
8. Per capita income : Rs. 13,275-00
9. No of Hospitals : 83
10. Dominant Population group : Lingayath, Vokkaliga
11. Major occupation of the District : Agriculture
12. Major Industries : Kudremukh Iron Ore Company
13. Major Crops : Coffee, Paddy, Coconut, Areca

## DISTRICT EDUCATIONAL PROFILE

	1981	1991	2001
1. Literacy rate			
a) Male	52.57	70.56	80.68
b) Female	33.97	51.31	64.47
c) SC	18.00	28.90	39.80
d) ST	20.55	33.27	42.84
e) Total	43.50	61.05	72.63
2. Number of anganwadis and Primary Education Centre			1181
3. Number of Lower Primary Schools			826
4 Number of Upper Primary Schools			633
5. Number of High Schools			250
6. Number of Pre University Colleges			40
7. Number of First Grade Colleges			13
8 Number of Engineering Collegs			01
9. Number of Medical Colleges			01
10 Number of Polytechnic Colleges			03
11 Child Population			
a) 6-11 age group			1,20,135
b) b) 11-14 age group			60,569
12 Enrolment			
a) Class 1 to 5			1,20,199
b) Class 6 to 8			65,342
13. Gross Enrolment Ratio			
a) Class 1to 5			100.05
b) Class 6 to 8			107.95
14 Drop out Rate			
a) Class 1 to 5			10.86
b) Class 6 to 8			7.52

15 Number of Teachers a) Male b) Female c) Male Female ratio		5534 3392 2142 1.58: 1
16 Teacher pupil Ratio		1:29
17. Number of primary school per '000 population		1: 1.65
18. Number of Single Teacher Schools		157-137
19 Pupil Class room ratio		21:1
20. Teacher Class room ratio		1.21: 1
21 BoyGirl ratio a) In Population b) In enrolment c) In Attendance d) In Completion rate e) Average achievement at f) V & g) VII		1.03 :1 1.04:1 1.05:1 1.05:1  95% 92.3% 94.9%
22 Per child expenditure at primary level		Rs. 4,000/ stage (I to V)

# MANAGEMENT STRUCTURE OF PRIMARY EDUCATION



## Chapter - II

# EDUCATIONAL BACKGROUND OF THE DISTRICT

### I DISTRICT PRIMARY EDUCATION PROFILE

The Literacy rate of the district of the 7 blocks as per 1991 census is given below. & the Birur is the new Block.

Sl	Name of the Block	Men	Women	Total %
1.	Chikmagalur	71.89	53.64	63.93
2.	Kadur	68.42	42.47	57.09
3.	Koppa	74.63	58.36	63.44
4.	Mudigere	66.54	48.69	57.72
5.	Narasimharajapura	72.35	58.38	65.34
6.	Sringeri	80.22	66.01	73.04
7.	Tarikere	70.45	50.13	60.44
	Total	72.07	53.95	63.00

### NO. OF ANGANWADI CENTRES AND NO. OF ANGANWADI WORKERS IN THE DISTRICT.

Sl. no.	Name of the blocks	No. of Anganwadies	No. of Anganwadi workers
1.	Chikmagalur	300	300
2.	Kadur	259	259
3.	Tarikere	236	235
4.	N.R. Pura	68	68
5.	Koppa	100	99
6	Sringeri	91	90
7	Mudigere	124	124
8	Birur		
	Total	1178	1176



## Government primary schools of the district.

The details of the schools in the district of each block is shown in the table given below.

Sl.	Name of the Block	L PS	HPS	Total
1	Chikmagalur	223	130	353
2	Kadur	126	113	239
3	Tarikere	113	104	217
4	Mudigere	90	64	154
5	Koppa	80	65	145
6	NR Pura	58	47	105
7	Sringeri	42	34	76
8	Birur	94	76	170
	Total	826	633	1459

The details of the Government schools the district is shown in the table below.

	Name of The Block	Lower Primary	Higher Primary	HighSchools	Total
1	Chikmagalur	223	130	17	270
2	Kadur	126	113	10	249
3	Tarikere	113	104	13	130
4	Mudigere	90	64	12	166
5	Koppa	80	65	09	154
6	NR Pura	58	47	07	112
7	Sringeri	42	34	05	81
8	Birur	94	76	10	180
	Total	826	633	83	1542

The details of the schools the district is shown in the table below.

Name of the Taluk	Lower Primary				Higher Primary				HighSchools			
	Govt.	Aided	Unaided	Total	Govt.	Aided	Unaided	Total	Govt.	Aided	Unaided	Total
1 Chikmagalur	223	01	17	241	130	07	20	157	17	21	32	70
2 Kadur	126	-	-	126	113	03	06	122	10	39	18	67
3 Tarikere	113	08	15	136	104	02	13	119	13	17	13	43
4 Mudigere	90	-	05	95	64	03	07	44	12	04	08	24
5 Koppa	80	-	03	83	65	04	04	73	09	06	02	17
6 NR Pura	58	-	02	60	47	02	06	55	07	03	05	15
7 Sringeri	42	-	01	43	34	-	02	36	05	02	03	10
8 Birur	94	-	-	94	76	-	-	76	10	-	-	-
Total	826	09	43	878	633	21	58	682	83	92	81	256

#### No of Habitations without school within a kilometre

Sl No.	Name of the Taluk	No of habitation Without school
1	Chikmagalur	47
2	Kadur	35
3	Koppa	834
4	Mudigere	33
5	Narasimharajapura	130
6	Sringeri	--
7	Tarikere	06
	Total	1085

## No.o` Single Teacher schools in the district

Sl No.	Name of the taluk	No of Schools
1	Chikmagalur	37
2	Kadur	32
3	Koppa	06
4	Mudigere	28
5	Narasimharajapura	02
6	Sringeri	02
7	Tarikere	18
8	Birur	32
	Total	157

## Information about Govt. school teacher pupil ratio in the district

Sl	Taluku	Govt. LPS			Govt. HPS		
		Teac's	Stut's	Ratio	Teac's	Stut's	Ratio
1	Chikmagalur	403	8673	21.52	822	25660	31.21
2	Kadur	365	8480	23.23	950	20404	21.47
3	Koppa	149	1513	10.15	367	9874	26.90
4	Mudigere	292	4014	13.74	391	11435	29.24
5	NR Pura	99	1520	15.35	289	6039	20.89
6	Sringeri	87	583	6.70	207	3421	6.52
7	Tarikere	291	9347	32.12	822	36215	44.05
	Total	1686	34130	20.24	3848	1,1304	29.37

Teacher pupil Ratio = 1 : 24

**Information about Aided school teacher and pupil ratio in the dist.**

Sl No.	Taluks	Aided LPS			Aided HPS		
		No of Teachers	No of Students	Ratio	No of Teachers	No of Students	Ratio
1	Chikmagalur	12	469	39.08	90	4959	55.00
2	Kadur	--	--	--	21	1241	59.09
3	Koppa	--	--	--	33	1775	53.78
4	Mudigere	--	--	--	28	1527	54.53
5	NR Pura	--	--	--	15	943	62.86
6	Sringeri	--	--	--	--	--	--
7	Tarikere	--	--	--	11	750	68.18
	<b>Total</b>	<b>12</b>	<b>469</b>	<b>39.08</b>	<b>198</b>	<b>11,195</b>	<b>58.25</b>

Teacher pupil Ratio = 1 : 49

**Information about Unaided school teacher and pupil Ratio in the District.**

Sl no.	Taluks	Unaided LPS			Unaided HPS		
		No of Teachers	No of Students	Ratio.	No of Teachers	No of Students	Ratio
1	Chikmagalur	44	256	05.80	260	7310	28.11
2	Kadur	--	--	--	42	2022	48.14
3	Koppa	06	66	11.00	34	610	17.94
4	Mudigere	30	231	07.70	27	1466	54.29
5	NR Pura	--	--	--	40	859	21.40
6	Sringeri	01	29	29.00	18	476	26.44
7	Tarikere	30	755	25.16	34	1970	57.94
	<b>Total</b>	<b>111</b>	<b>1337</b>	<b>12.04</b>	<b>455</b>	<b>14713</b>	<b>32.33</b>

Ratio of Students per Teacher = 22 :1

## Enrolment and attendance from class I to VII standard

Sl. no.	Taluku	Enrolment				Attendance			
		SC	ST	Others	Total	SC	ST	Others	Total
1	Chikmagalur	9373	1098	22930	33401	8710	998	20740	30448
2	Kadur	6548	541	21795	28884	6102	490	19948	26540
3	Koppa	2259	758	8372	11389	1931	602	6749	9282
4	Mudigere	4317	1339	9793	15449	3995	1029	7814	12838
5	NR Pura	1138	315	6106	7559	904	282	4282	5468
6	Sringeri	463	358	3182	4003	351	296	2840	3487
7	Tarikere	7921	1251	36390	45562	7103	942	33290	41335
	Total	32019	5660	108568	146247	29096	4639	95663	129398

Children out of School 16,849

### DROPOUT CHILDREN IN THE DISTRICT

Standard	Boys	Girls	Total
I to IV	1144	1279	2423
V to VII	2039	2081	4120
Total (I to VII)	3183	3360	6543

### TEACHER VACANCY POSITION IN THE DISTRICT.

Sl No.	Name of the Block	No of vacancy
1	Chikmagalur	104
2	Koppa	72
3	Sringeri	36
4	NR pura	30
5	Mudigere	79
6	Kadur	68
7	Tarikere	76
	Total	465

## School building position in the district.

Sl no.	Name of the Block	No of Class rooms	Buildingless Schools	Rooms required	Buildings repaired
1	Chikmagalur	1123	19	57	125
2	Tarikeri	180	4	169	223
3	Mudige	1019	21	49	118
4	Koppa	504	3	19	65
5	Sringeri	346	-	9	34
6	NR Pur	416	1	15	32
7	Kadur	1180	4	169	22
		4768	52	487	524

## Enrolment & Retention :

Project enrolment for the future 8 years :

Gross Enrolment Ratio (GER) :

With the bass compound growth rate population

Compound Growth Rate : CGR :  $[(P_n/P_o)^{1/n} - 1] \times 100$

$$R = [(11,39,104/10,17,283)^{1/10} - 1] \times 100$$

$$r = 0.011 \times 100, r = 1.1$$

$P_n$  = population of 2001 of Chikmagalur district

$P_o$  = population of 1991 of Chikmagalur district

GER : Class 1 to 5 enrolment 1,20,199

Projection of GE (Gross Enrolment)

$r = 1.1$

2001	1,20,199
2002	1,32,219
2003	1,45,440
2004	1,59,985
2005	1,75,983
2006	1,93,582
2007	2,12,940
2008	2,34,234

2009	2,57,657
2010	2,83,423

NER : Class 1 to 5 enrolment 1,07,076

Projection of NE (Net Enrolment)

r= 1.1

2001	1,07,076
2002	1,17,784
2003	1,29,562
2004	1,42,518
2005	1,56,770
2006	1,72,447
2007	1,89,692
2008	2,08,661
2009	2,29,527
2010	2,52,480

GER : Class 6 to 8 enrolment 65,342

Projection of GE (Gross Enrolment)

r= 1.1

2001	65,342
2002	71,876
2003	79,064
2004	86,970
2005	95,667
2006	1,05,234
2007	1,15,757,
2008	1,27,333
2009	1,40,066
2010	1,54,073

NER : Class 6 to 8 enrolment 55,657

Projection of NE (Gross Enrolment)

r= 1.1

2001	55,657
2002	61,223
2003	67,345
2004	74,079
2005	81,487
2006	89,636
2007	98,600
2008	1,08,460
2009	1,19,306
2010	1,31,236

Retention rate

$$\begin{aligned}
 & \text{pass 1 to 5 class} \\
 1) \text{Promotion rate} &= \frac{\text{enrolment grade 1 to 5}}{\text{enrolment grade 1 to 5}} \times 100 \\
 &= \frac{1,07,076}{1,20,199} \times 100 = 89.1\%
 \end{aligned}$$

Projection of Enrolment in the year 2001-2010 & passes in 1-5 standards

Year	Enrolment	Promotion(89.1%)	%
2001	1,20,199	1,07,076	89.1
2002	1,32,219	1,24,947	94.5
2003	1,45,440	1,40,786	96.8
2004	1,59,985	1,58,225	98.9
2005	1,75,983	1,75,983	100
2006	1,93,582	1,93,582	100
2007	2,12,940	2,1,940	100
2008	2,34,234	2,34,234	100
2009	2,57,657	2,57,657	100
2010	2,83,423	2,83,423	100



Promotion rate will be increased from 89.1 % to 100 % during the year 2001-2002 to 2005 - 2006

Pass 6 to 8

$$2) \text{ Promotion Rate} = \frac{\text{Enrolment grade 6 to 8}}{65,342} \times 100$$

$$= \frac{55,657}{65,342} \times 100 = 85.18\%$$

**PROJECTION OF ENROLEMENT AND PASSES FROM THE YEAR 2001 TO 2010 IN 6 - 8 STANDARD**

Year	Enrolement	Passes	%
2001	65,342	55,657	85.18
2002	71,876	64,113	89.2
2003	79,064	73,134	92.5
2004	86,970	84,100	96.7
2005	95,667	95,667	100
2006	1,05,234	1,05,234	100
2007	1,15,757	1,15,757	100
2008	1,27,333	1,27,333	100
2009	1,40,066	1,40,066	100
2010	1,54,073	1,54,073	100

Passing rate will be increased from 85.18% to 100% from 2001 - 2002 to 2005 to 2006

$$\text{REPITITION RATE} = \frac{\text{Rt 1 to 5}}{\text{En 1 to 5}} \times 100$$

$$= \frac{10,700 \times 100}{1,20,199} = 8.88\%$$

PROJECTION OF REPITITION FROM 2001 TO 2010  
In 1-5 standards

YEAR	ENROLEMENT	REPITITION (8.88% )	%
2001	12019	10700	8.88
2002	13229	5289	4.00
2003	14544	4654	3.20
2004	15995	1760	1.10
2005	17598	NIL	0.00
2006	19358	NIL	0.00
2007	21294	NIL	0.00
2008	23423	NIL	0.00
2009	25765	NIL	0.00
2010	28342	NIL	0.00

Repetition raete wil be reduced from 8.88% to 0.00% during the year 2001-2002 to 2005 =200€.

R 6 to 8

REPITITION RATE =----- x 100

En 6 to 8

5565

----- x 100 =8.52% ,

65342

PROJECTION OF REPITITION  
FROM 2001 TO 2010(6 TO 8 CLASS)

YEAR	ENROLMENT	REPITITION (8.52%)	%
2001	65342	5565	8.52
2002	71876	4959	6.9

2003	79064	4665	5.9
2004	86970	2870	3.3
2005	95667	Nil	0.00
2006	105234	Nil	0.00
2007	115757	Nil	0.00
2008	127333	Nil	0.00
2009	140066	Nil	0.00
2010	154073	Nil	0.00

Repetition rate reduced from 8.52 to 0.00% from 2001 - 02 to 2005-2006

$$\begin{aligned}
 & \frac{T}{D \text{ 1 to 5}} \\
 3 ) \text{ Dropout rate} &= \frac{\text{-----}}{\text{-----}} \times 100 \\
 & \frac{N}{E \text{ 1 to 5}} \\
 & \frac{2423}{120199} \\
 & = \text{-----} \times 100 = 2.02\%
 \end{aligned}$$

**PROJECTION DROP OUT  
FROM 2001 TO 2010 CLASS 1 to 5**

YEAR	ENROLEMENT	DROPOUT(2.02%)	%
2001	120199	2423	2.02
2002	132219	2063	1.56
2003	145440	Nil	0.0
2004	159985	Nil	0.0
2005	175983	Nil	0.0
2006	193582	Nil	0.0
2007	212940	Nil	0.0
2008	234234	Nil	0.0
2009	257657	Nil	0.0
2010	283423	Nil	0.0

Dropout rate will be reduced from 2.02 % to 0% during the year 2001 – 2002 to 2003-2004.

$$4) \text{ Dropout rate} = \frac{\text{Dt 6 to 8}}{\text{En 6 to 8}} \times 100$$

$$= \frac{4120}{65342} \times 100 = 6.3\%$$

PROJECTION OF  
DROPOUT FROM 2001 TO 2010(6 TO 8 CLASS)

YEAR	ENROLMENT	DROPOUT (6.3%)	%
2001	65342	4120	6.3
2002	71876	2803	3.9
2003	79064	1265	1.6
2004	86970	Nil	0.00
2005	95667	Nil	0.00
2006	105234	Nil	0.00
2007	115757	Nil	0.00
2008	127333	Nil	0.00
2009	140066	Nil	0.00
2010	154073	Nil	0.00

Dropout rate will be reduced from 6.3% to 0.00 during 2001-2002 to 2003-2004

GER

CLASS 1 TO 8 (r=1.1 %)

$$\text{GER} = \frac{\text{T E 1 TO 8 class}}{\text{T P 6 to 14 years}} \times 100$$

$$\frac{1,85,541}{1,80,662} \times 100 = 102.7 \%$$

GER from 2001 to 2010 class 1 to 8 ( rate 1.1 %)

YEAR	ENROLMENT
2001	1,85,541
2002	2,04,095
2003	2,24,505
2004	2,46,955
2005	2,71,651
2006	2,98,816
2007	3,28,697
2008	3,61,567
2009	3,97,724
2010	4,37,496

NER from 2001 to 2010 class 1 to 8

YEAR	ENROLMENT
2001	1,62,733
2002	1,79,006
2003	1,96,907
2004	2,16,598
2005	2,38,257
2006	2,62,083
2007	2,88,291
2008	3,17,121
2009	3,48,833
2010	3,83,716

## Teachers position for the past three years

Sl no	Year	Kannada	Urdu	Hindi	Tamil	Physical Edn	Sch. Mother	Total
1	1996-97	395	25	06	09	43	07	485
2	1997-98	766	45	06	-	75	-	892
3	1998-99	213	10	-	-	-	-	223

Under OBB scheme more number of teachers were recruited and another 223 teachers were recruited during 1998-99. During 1999-2000 no recruitment was made. Hence there is a reduction in the number of teachers due to the rationalisation of teachers through shifting of vacancies to needy schools, recruitment was not made.

### ACHIEVEMENT LEVEL:

In the Sarva shiksha Abhiyana , DIET faculty is conducting the Base line survey for II, IV & VII STD. Students. Base line assessment test is being conducted on the basis of random selection in maths and language subjects, for students of II , IV & VII standards, on the syllabus covered in respective classes in the previous year.

The objective of this baseline assessment is to know the competencies attained by children in different subjects viz language maths and science & there by know the quality of attainment of children at different levels. This will also help us to formulate new training programmes for teachers.

### CAPACITY BUILDING :

The Dist. Educational administration will facilitate the process of decentralized arrangements for capacity building up of teachers in the following manner.

- 1 Teacher / community participation in material preparation
2. Association of local artisans / workmen in school activities
3. Content orientation and motivational training for teachers
4. Continuous assessment of students for alround development
5. Facility to child – to - child learning

The existing supervisory and monitoring system viz., BRC's & CRC's will be geared up and they will function under the guidance of DIET's. The selection of personnel for BRC's & CRC's will be done by a specially constituted committee has already been completed and for CRC's selection will be made from among the teachers. The teacher as resource person could interact with pedagogy experts & other teacher educators to develop useful learning approach for children. Efforts to recognize the unique learning needs of children must be made. The diversity of learning environment and learning approaches should be encouraged to the teachers by training for community leaders, for SDMC members, Grama panchayath members from BEO's & BRC's for CRC's & Head Master of School by DIET.

#### STATUS OF GIRLS EDUCATION IN THE DISTRICT

The number of girls enrolled in schools is 88171 of age group of 5-14 Chikmagalur district . Moreover the government has given more interest towards girls education. So pre-metric and post-metric hostels have been opened for girls separately. There is free boarding and lodging facilities available purely for girls.

During the year 2001-2002 1280 girls students and have received 5 lakhs as attendance scholarships, through women and Child development department. Nearly 88,171 girls students are enrolled in schools including primary and upper primary schools.

Government has reserved 50% of the primary school teacher posts for ladies in teacher recruitment. Indirectly it encourages girls education. 17 girl students received Rs.8,900 as handicapped encouragement scholarship. 17 girl students received Rs.39,000 as Sankasta parishthithi scholarship.

Likewise so many incentives have been given by the state and central governments for girls education.

## EDUCATION OF DISABLED CHILDREN IN THE DISTRICT

Some voluntary organizations like Rotary & Lion's are providing the facilities for education of disabled children. 'Ashakiran School' is being run for the blind children. Hundred pupils are studying in this institution. So many donors and contributors are donating in the form of money and things to this school. For physically handicapped and mentally retarded children schools are being run by two institutions viz., Mountain view school and Malnad education society. 13 disabled children have been sanctioned 92,900 rupees as handicapped encouragement scholarship during the year 2001-2002 through Child & Women Development Department in the District.

DIET has conducted <sup>IED</sup> ~~IE~~ training program for specially selected primary school teacher of this district. So for 163 Teachers have undergone this training. These teachers will give attention to the children with disability in the school.



# Chapter 3

## Planning Process

### a) State level training :

Training at state level to all the Deputy Directors of Public Instruction of the Districts to enlighten them about the salient features of Sarva Shiksha Abhiyana was conducted. This training was also given to the Principals of DIET along with the Educational Officers of DDPI's Office, Senior Lecturers of DIET (P&M). They have been trained with regard to the preparation of project plan within a stipulated time.

### b) District level Training

Training programme for the district planning team was conducted at district level. Awareness training programmes were also conducted to the elected members, BECs all BRCs & CRCs and heads of the Schools in the District.

### c) Formulation of SDMC's for every school

Hitherto all Govt. Schools had betterment committees to look into the development of schools. From the year 2001-02, the SBC's have been dispensed with. To make parents participation more viable, school development & monitoring committees (SDMC) have come into existence. From among the parents, nine members for SDMC were selected for all schools. Ex-officio members & nominated members were picked up according to norms prescribed by Govt. The SDMC's have already been formed in all the primary & high schools of the district. Before this the Head masters of primary & High schools were given two days training and exposure towards Sarva shiksha abhiyana was made. The SDMCs have been vested with certain responsibilities and powers to improve the physical conditions & academic achievements of the school.

### d) Samudayadatta shaale : Since last year, a unique programme was undertaken to mobilize the community participation in the development of the Govt schools. As a first step samudayadatta shaale was introduced in all

Govt primary schools. Further it is extended to High schools also this year. For primary schools Samudayadatta shale will be five times during this academic year whereas for high schools, it will be three times. The first Samudayadatta shale was on 08-08-2001 for primary schools and 10-08-2001 for high schools.

The main objectives of the Samudayadatta shaale are :-

- 1 Universalisation of Elementary Education
- 2 To bring back the dropped out and out of the school children to school
- 3 To improve the relation between school and community
- 4 To make sure that all the Govt sponsored schemes reach the beneficiaries well in time
- 5 To motivate people to adopt schools and so on.

During Samudayadatta shaale the parents will be given an opportunity to look into the answer scripts of their wards and to go through the progress reports. While watching the cultural programme by children the parents will know about the latent talent of their children. The interaction between teachers and parents in particular and community at large will help to improve the academic attainment and to get basic needs of the school to be met. During Samudaya datta shaale, a high school teacher for primary and a lecturer for high schools will be the reviewer, in the real sense a guide to teachers as he will be a permanent visitor to a particular school for the whole academic year.

### Habitation plan :

Habitation plan is the important aspect in SSA programme, for this information and statistics collected from habitation level. So in this plan all parents, people representatives and S D M C members have been involved in this process.

During the Samudayadatta shale programme community joined together in school premises and discussed about school facility. Likewise in the SSA programme, from every village information was collected about the facilities of infrastructure of those schools.

For every LPS & HPS schools information collected individually. Those informations are water facility, toilet, compound & other facilities. Afterwards Block level and district figures are consolidated.

In Samudayadatta shale programmes important discussin about progress of the school in all respect were discussed.

It helps to improve tha SSA programme in a progressive way.

### Microplanning :

Microplanning survey deals detailed study about every habitation level. This survey identified the educational facility of the every village.

This survey shows total number of the school going children, and out of children nformation.

In this plan enumerator visited to house to house and colected informaton in detail.

Micro plan deals about total norms of that school and school facility etc.

### House to House survey:

On 18 , 19,& 20 th of Jan 2001 house hold survey has been taken up through out the district on the basis of this census ,it came to know that , these are 17971 children of 5 to 14 age group in this district. Out of these 8305 children of age 5 to 6 being taken admission in regular schools. Remaing 9666 children of age 6 to 14 are found not attending school or left out from schools.

### Chinnara Angala :

Those 9666 children who are not attended or left out from school are being taken in to consideration. Effots are being made to bring them in to main stream through chinnara angala. Steps were being taken to bring 1305 children during the year 2001-02. Remaining children are proposed to bring in to the main stream during 2002-03.

## Base line assesment survey:

To asses the quality of primary education in the district base line assement survey has been aken up through out the district . For this purpose 3 persons of the DIET have been trained at the state level for 5 days from 06-08-2001 to 10-08-2001. DIET of this district has taken up survey to study the quality of primary education . This programme is being taken up in the month of Aug & Sept 2001.

## Chaithanya Training :

8 BRC's are working in the district to train the teachers under the leadership of DIET. To improve the teaching effectiveness. These BRC's are working towards capacity building of teachers.

In preparing District Elementary Education plan (DEEP) a lot of ground work was undertaken First of all the statistical information were obtained from special educational survey of 0-14 years of age group children conducted during January 2001. The number. of dropouts & out of school children was taker into consideration. In view of this, environment building has already been taken up through pamphlets brochures wall posters & slides in cinema houses. The head masters of all the schools were exposed to the SSA programme. Meetings were held regularly to all BEOs, BRCs & CRCs exposing them ir to the details of SSA and with regrard to the implementation strategies. Awareness about SSA to parents and community of all the schools was given through samudaya datta shaale programme. In fact the basic information required for preparation of habitation and village plans were obtained through community participation in this programme.

✓ The DIET of the district is conducting Base line survey to know the present achievement level of children studying in 2<sup>nd</sup> , 4<sup>th</sup> & 7<sup>th</sup> standards in schools selected at random. To achieve UEE in the district targets are set as detailed below :

1. Opening up of EGS centre in schoolless habitations where the population is below 200.
2. Opening up of new primary schools in schoolless habitations.
3. Upgrading of certain existing primary schools.
4. Giving additional inputs to the existing primary & Upper primary schools
5. Strengthening of BRCs & CRCs of the district.

In order to achieve the targets set under DEEP from 2001-2002 to 2009-2010 we have determined to start 47 EGS centres during 2002 - 03 in schoolless habitations of the district having a population below 200 and children eligible to attend school numbering 15. Further, habitations with a population of 200 & above but having no schooling facility within a radius of 1 km. New schools are proposed with all necessary infrastructure such as school building, drinking water, toilet, electricity facilities opening up of new schools in schoolless habitations will be taken up in a phased manner. Certain lower primary schools which have sufficient no. of children for higher stds. in coming years will be upgraded to upper primary level. For this new additional rooms, additional teachers, drinking water, toilet, electricity, teaching learning materials will have to be provided. It is envisaged to give additional inputs as mentioned above to the existing primary & upper primary schools of the district. The BRCs & CRCs of the district will be strengthened to train & monitor the academic level of teachers & students.

## CHAPTER – 4

### ISSUES & PROBLEMS IN THE PRIMARY EDUCATION

Pertaining to Access, enrolment retention and achievement

It is observed that through census, enrolment is properly made But the retention of the enrolled children is not satisfactory. This is due to factors like (1) Poverty (2) Parents illiteracy (3) Communication problem (4) Lack of educational awareness among the parents (5) Child labour (6) Migrations of the parents.

The Issues and Problems cited above are being addressed through effective community involvement are listed as follows,

#### ACCESS:

Under access the interventions like opening of new schools in school less habitations, upgradation of existing LPS, providing teachers to New schools and upgraded schools, providing of TLM to the schools not covered so far under any of the schemes, providing facilities like Toilets, Drinking water, Electricity, play ground, etc., all these facilities have to be met through SSA.

These interventions are classified as infrastructure related, Management related.

The country has made impressive achievement in the elementary education sector. But the flip side is that out of the 200 million children. In the age group of 6-14 years, 59 million are not attending schools of this 35 million are girls and 24 million are boys. There are problems relating to dropout rate, low level of learning achievement and low participation of girls, tribals and other disadvantaged groups. There are still atleast one lakh habitation in the country without schooling. Facility within a kilometer. Coupled with it are various systemic issues like inadequate school infrastructure, poorly functioning schools, high teacher absenteeism, large number of teacher vacancies, poor quality of education and inadequate funds.

In short, the country is yet to achieve the elusive goal of universalisation of Elementary education (UEE), which means 100 percent enrolment and retention of children with schooling facilities in all habitations. It is to fill up this gap that the government has launched the Sarva Shiksha Abhiyan.

The central and the state governments will together implement the SSA in partnership with local governments and the community. To signify the national priority on elementary education, a National Sarva Shiksha Abhiyan Mission is being established with the Prime Minister as the Chairperson and Union Minister of Human Resource Development as the Vice Chairperson. States have been requested to establish state level implementation societies for UEE. Under the chairmanship of Chief Minister, Education Ministers. This has already been done in many states.

Sarva Shiksha Abhiyan will not disturb existing structure in states and districts but would only try to bring convergence in all these efforts. Efforts will be made to ensure that there is fundamental decentralization down to the school level in order to improve community participation. Besides recognizing Panchayats' tribal council in scheduled areas, including the gram sabha, the states would be encouraged to enlarge the accountability framework by involving NGOs, teachers' activities, women's organization etc.,

The programme will have a community based monitoring system. The education management information system (EMIS) will correlate school level data with community based information from micro planning and survey. Besides this every school will have a notice board showing all the grants received by the school and other details.

#### **Teacher Absentism / Shortage of teachers.**

Schools are situated even in the remote corners of the villages/hilly places. So most of the teachers due to lack of residence, absent themselves from school work, frequently.

#### **Shortage of buildings, class rooms and repairs.**

Though the class rooms are constructed under OBB schemes there is shortage of rooms and even school buildings.

#### **Water/ toilet facility:**

Majority of the schools do not have toilet and water facilities. Only 20% of schools have water and toilet facilities.

**Involvement of SDMC's and community in school management.**

There are 1459 SDMCs in the district. A few training programmes have also been conducted to the members regarding school management.

Primary education occupies a significant place in the educational system in developing country. It is at this stage that the child starts going to a formal institution. The education which he receives here serves as the basis for his physical, mental, emotional, intellectual and social development.

As per Article 45 of the constitution, as follows. : The state should have provided for free and compulsory education for all children upto the age of 14 years by 1960. The direction of the constitution has not been fulfilled and the reason for the failure are well-known. The progress of universal compulsory elementary education envisages three things, viz., 1 Universal provision of educational facilities, 2 Universal enrolment & 3 Universal Retention and 4 Universal attainment of pupils in schools.

Apart from being a constitutional obligation, the provision of universal elementary education is crucial for spreading mass literacy and indispensable first step towards the provision of equality of opportunities to all the citizens.

It has not been possible to achieve universal education for all children upto 14 years. For every three children enrolled in primary and middle schools, one child is left out over 80% of the children is not enrolled so far are not confined to 12 states. 64 % of the children who are enrolled in Class I leave by the time they complete Class V. Only 19 out of the every 100 children enrolled in Class I in this country during 1970-71, reached class IX during 1978-79.

The vast majority who are leaving schools are the children of the weaker sections like SC, ST, agricultural labourers and slum-dwellers, 2/3<sup>rd</sup> of non enrolled children are girls. According to the fourth educational survey (1978) the enrolment of the SC & ST's Children in class I to VIII was 199.68 lakhs and 49.54 lakhs



respectively representing 60.10% and 49.99% respectively of the total SC & ST in 6-14 age group population.

## ENROLMENT AND RETENTION

Analysis of the enrolment data from the base year and present status reveals the problems.

**TABLE**  
**Gross enrollment Rate All India**  
**(1984-85 to 1990-91)**

Year	Apparent Admission Rate			Gross Admission rate (Total)
	Boys	Girls	Total	
1984-85	145.75	106.88	126.77	132.35
1985-86	154.19	113.00	134.10	140.58
1986-87	132.34	102.91	118.00	123.45
1987-88	133.83	104.10	119.35	124.89
1988-89	140.80	106.10	123.90	133.73
1989-90	123.70	96.60	110.50	112.65
1990-91	137.00	108.20	123.00	128.98

Children below 6 years and above 14 years have been enrolled in 1-8 std. Std. Hence the gross enrollment rate exceeds 100% as shown in the table above.

### ENROLMENT RELATED, RETENTION RELATED, SC, ST, GIRL CHILD RELATED ISSUES:

Universalisation of primary Education is still an unfinished task an unrealized dream and unfulfilled constitutional directive. A high percentage of population belonging to scheduled castes, Scheduled tribes, backward classes are still socially underprivileged or deprived among whom the number of drop outs, failures and even un-enrolled is too high. This mainly due to their social, economic and psychological handicap on one hand and irrelevance, aversions and unsuitability of the educational system and academic programs on the other hand.

#### ACHIEVEMENT:

The analysis of the base line assessment study and the out comes of the people contact program will reveal the achievement issue. These issues will be classified as text book related, curriculum related, methodology related.

#### CURRICULUM:

This is based on the needs, interests and abilities of the child in relation to his level of development. In fact child centered curriculum is the answer of the naturalist. Individual differences are recognized experience of child should form the central core of the curriculum.

#### METHODOLOGY:

Play is the natural mode of self expression, play way is stressed. Learning should be through the joys, spontaneous creative activity of play. The method of discovery is stressed, excursion, fieldtrips and practical experiments are highly commended.

#### TEXT BOOK:

The text book is the all and end of all instruction, according to one philosophical school. The text book is the assistant teacher in print. Whatever is stressed by the author in his lesson is based on his philosophical attitudes. Facts are distorted in terms of his prejudice and preconceived notions based on his philosophy. Text book recitation is different from socialized recitation or discussion techniques in the classroom work.

#### CAPACITY BUILDING:

Broadly speaking education is equated with experience. The whole environment can be called as an educative force which contributes to social change and progress but each society has developed institutions for purpose of cultural transmission. The school is a formal institution setup by society for conserving tradition. Usually it is customary to classify agencies as either formal or non formal, Formal agencies are setup deliberately for the specific purpose of providing education to the younger generation. The school, the church, the museum, art galleries are

Examples of formal organized education institutions. There are group organizations which provides casual education apart from their legitimate social functions. The family, the playgroup, the community may be included in this category. The cinema, TV, radio, the theater and the press can be classified as commercial organization. Which also render an

educational service by promoting proper interests. Other non commercial agencies also are in the field such as the scout movement, youth clubs, NSS, NCC and other social service organizations. These are more or less voluntary agencies.

#### COMMUNITY:

The community is an important agency of education. The community cannot take any direct interest in the education of these individuals as the home does. It functions mainly through the medium of social and community life. It socializes the individuals effectively. Apart from this with nonformal education the community can also function directly as an educational agency by starting maintaining and encouraging different formal and nonformal agencies of education.

The community and the school work together as effective agents of education.

The community place as a vital agency of education. Any education scheme should be related to the practical life needs of the people. The need based curriculum is the order of the day.

The modern school can thus be regarded as a vital community center.

It can organize a number of community programmes. Such as

- (1) of community living on the school campus and
- (2) of community development and national reconstruction. Social useful productive work (SUPW) has been approved as a healthy community activity and project at all levels by making it compulsory for students.

## CHAPTER – 5

# GOALS & OBJECTIVES

Objectives and goals of Sarva Shiksha Abhiyana are

- All children in school, education guarantee centre, alternate school, back to school campus by 2003.
- All children complete 5 years of primary schooling by 2007.
- All complete 8 years of schooling by 2010.
- Focus on elementary education of satisfactory quality with emphasis on education for life
- Bridge all gender and social category gaps at primary stage by 2007 and at elementary level by 2010.
- Universal retention by 2010.

There are some problems pertaining to access, enrolment, retention etc.,

**ACCESS :** There are some <sup>problems.</sup> ~~scarcity~~ in access of primary education system. 90% of the schools are not equipped with drinking water, play ground, buildings, toilet & electricity facilities. For the lack of facilities schools have in failed to attract children to schools. Lack of Laboratory & Library facilities and sports things also responsible for failure to attract children to the school premises.

**ENROLMENT :** Labourers are floating from one place to another place at the time of coffee picking season. They move from one place to another for want of job. So the children also move with their families. Poverty is the main cause in searching different jobs for lively hood . The children too follow the same. Thus these children cannot be enrolled at all.

RETENTION : Our social system is not conducive for with to retention of students in school. Family & personal problems are mainly responsible for dropouts of the children from the schools.

CAPACITY BUILDING : Public have lack of awareness about the importance of education. Awareness should be developed in the public. Community leaders should be invited to all school functions. By doing so their attention can be drawn towards the importance of school in the education of their children.

## CHAPTER – 6

### STRATEGIES & PROGRAMME COMPONENT

#### ACCESS :

1 In the district the schooling facilities are as follows :

Schooling facilities in about 90% of habitations are available. Most of the schools have buildings. A few schools require additional rooms to accommodate the children attending the schools. Most of the schools in the district do not have electricity, toilets, drinking water & compounds. Some schools buildings are in need of repairs too. Schooling facility is being provided in any habitation having a population of 300 & above. Habitations with a population of 200 will have to be covered with EGS with in 15 children. This is in par with the existing state policy of the providing school. Upgradation of existing primary to upper primary level where the students in class V exceeds 15 has to be made. During the last 5 years single teacher schools were provided with an additional post of teacher. Teaching learning materials were provided through OBB scheme.

**RETENTION :** Retention is the most important aspect in educational institution. For effective retention, the basic facilities of the school is very much needed. Karnataka Govt. has launched many incentive schemes to school going children. They are free text books, free uniforms & free bags etc., Government giving scholarships for girls education through Child & Women Development Department. Free & Compulsory education facilities is provided by Govt. to every child. Hostel facilities are also being provided by the govt. to socially & economically background children. The schooling facility is given to every habitation village in within a kilometer distance. This helps the students to attend school regularly, mid-day meal facility has been be given to school children to enable the regular attendance in the school . The Government has thought of the providing facilities like drinking water, toilet facility, sufficient class rooms & teachers. Laboratory & Library facilities have been provided. In the similar way Government of Karnataka has taken several of the steps to improve the retention of the school going children.

# Annexures

## ANNEXURE - 1 Unit cost for all the activities under works

SL NO	CHAPTERS AND INTERVENTIONS	UNIT COSTS
I	<b>ACCESS</b>	
1.	<b>Establishment of New Schools in Schoolless habitations</b>	
a.	Building with compound, Drinking water, Toilet, Electricity facility	3.6 1.5
b.	Teacher	
c.	Furniture	0.2
d.	Teaching Learning Material	0.2
e.	School Gran LPS HPS	0.02 0.027
f.	Teachers Saary	0.6
g.	Teachers grant	0.005
2.	<b>Additional inputs for existing Primary schools</b>	
a.	Building with compound, Drinking water, Toilet, Electricity facility	
b.	Additional Rooms	1.5
c.	Compound	0.5
d.	Drinking Waer & Toilet facility	0.25 0.5
e.	Electricity	0.1
f.	Repairs	0.05
g.	Furniture	0.1
h.	Teaching Learning materials	0.1
i.	Additional Tachers Teachers Salary	- -
3.	<b>EGS Centre in School less habitations</b>	
a.	Education vounteers	1000/ month
b.	Teaching Learning materials	2000/

b.	Teaching Learning materials	2000/ center
c.	Building Grant	500/ center
d.	Training for volunteers	1225/ volu-r for 10 days
	Total	
4.	<b>Upgradation of existing Primary Schools</b>	
a.	Additional Rooms	1.5/ room
b.	Compound	0.5/ school
c.	Drinking Water & Toile facility	0.25 0.5
d.	Electricity	0.1/ school
e.	Repairs	0.05/ school
f.	Furniture	0.1/school
g.	Teaching Learning materials	0.1/ school
h.	Additional Teachers	-
	Teachers Salary	0.6
5.	<b>Additional inputs for existing Upper Primary Schools</b>	
a.	Additional Rooms	1.50
b.	Compound	0.5
c.	Drinking Water & Toile facility	0.25 0.5
d.	Electricity	0.1
e.	Repairs	0.05
f.	Furniture	0.1
g.	Teaching Learning materials	0.1
h.	Additional Teachers	-
	Teachers Salary	-
<b>II</b>	<b>ENROLMENT</b>	
a.	Updation of village education records	3 D microplan Rs 3000
b.	Special enrolment drives	Rs 1000/ G P



c.	Bridge course for mainstreaming out of school children	Chin-Ang Rs15000
d.	Awareness Campaigns and Community mobilisation programmes	Ma-Beti Rs6000
III	RETENTION	
1.	INCENTIVES	
a.	Free Text Books	150/ set
b.	Free Uniforms	250/ set
c.	MidDay Meals(cooked food)	-
d.	Free School Bags (for SC/ST girls)	100/ bag
e.	Fee reimbursement for girls	-
2.	TEACHER TRAININGS	
a.	20 days in-service training for all teachers	70X20 D=1400
b.	60 days refresher course for untrained teachers	70X60 D= 4200
c.	30 days training for freshly recruited teachers	70x30 D= 2100
IV	CAPACITY BUILDING	
1.	TRAINING	
a.	For Community leaders	30x2 d=60
b.	For SDMC members	30x2D=60
c.	For Grama Panchayath Members	30x2D=60
d.	Zilla Panchayath Members	30x2= 60
e.	Block level officers and BRC's	100x7=700
f.	CRCs and school H M'S	70x10=700
g.	DIE7 Faculty	100x7=700
h.	C R 2 monthly meet for L P S teachers	30x8=240
2.	ESTABLISHMENT OF BRC'S	
a.	Building	6.0

b.	Furniture	0.5
c.	Equipment	0.5
d.	Library	0.2
e.	Appointment of staff (1BRC+ 5 BRP'S)	-
f.	Salary for BRC staff and maintenance	-
3.	<b>ESTABLISHMENT OF CRC'S</b>	
a.	Building	2
b.	Furniture	0.1
c.	Equipment	0.15
d.	Library	0.1
e.	Appointment of CRC	-
f.	Salary and Maintenance	0.6
V.	<b>ESTABLISHMENT OF DISTRICT LEVEL SSA OFFICE</b>	-
1.	Purchase of Vehicles district SSA office	
2.	Appointment of drivers and maintenance of vehicles	1
3.	Strengthening of district level office	1
a.	Purchase of computers	0.5
b.	Purchase of XEROX Machine	0.6
c.	Fax and Telephone	0.53
d.	Furniture	0.25
e.	Others	0.05
f.	Appointment of officers and other staff	
g.	Salary and Maintenance	

Annexure 2

**LIST OF NEW SCHOOLS PROPOSED**

**1.Establishment of LPS**

81% Villages above 200 population have lower primary school within a radius of one kilometer. Where as 29% of the villages having population above 200 and don't have primary schooling facility within a radius of one kilometer are now proposed to be served with LPS in a phased manner, 83 villages served with LPS out of 1022 villages.

**ESTABLISHMENT OF LOWER PRIMARY SCHOOLS IN SCHOOLLESS HABITATION 2001-02**

No new schools will be established in this year.

**ESTABLISHMENT OF LOWER PRIMARY SCHOOLS IN SCHOOLLESS HABITATION 2002-03**

Sl. No	Name of the taluk	Name of the village	Total population	No. of children	No. of required Teachers	No. of rooms Required
1	Muligere	Anidibba	225	18	1	1
2	Muligere	Merthikhan	222	20	1	1
3	Muligere	Dinnekere	264	17	1	1
4	Muligere	Bijuvally	350	24	1	1
5	Muligere	Kalikatte	240	20	1	1
6	Muligere	Mavinakatte	270	60	1	1
7	Birar	Iyanahalli	421	21	1	1
8	Birar	Kurumakki estate	390	22	1	1
9	Kacur	Hirenullur Kaval	209	15	1	1
10	Tarkere	Vaddaradibba	216	20	1	1
11	Tarkere	Galihally cross	500	20	1	1
12	Tarkere	Arasikere colony	300	20	1	1
13	Tarkere	Banajarhatti	276	20	1	1
14	Tarkere	Vaddarahatti	250	20	1	1
15	Tarkere	Kotecamp	600	20	1	1
16	Tarkere	Rajanahalli	350	20	1	1
17	N.R pura	Indiranagara(Iluvalli)	200	20	1	1
18	N.R pura	Hirebisu	200	20	1	1
19	Chikmaalur	Kalenahalli	869	15	1	1
20	Chikmagalur	Harekallahalli	870	16	1	1
21	Chikmagalur	Guddadhare	807	18	1	1
	TOTAL	-	-	-	21	21

**ESTABLISHMENT OF LOWER PRIMARY SCHOOLS IN SCHOOLLESS  
HABITATION 2003-04**

Sl. No	Name of the taluk	Name of the village	Total population	No. of children	No. of required Teachers	No. of rooms Required
1	Mudigere	Dinnekere(urdu)	225	18	1	1
2	Mudigere	Muranebail	240	20	1	1
3	Mudigere	Chegu	316	19	1	1
4	BIUR	Rajajinagara	350	20	1	1
5	Birur	Ropeline	300	19	1	1
6	Taikere	Karadipura	200	21	1	1
7	KO'PA	Megur	200	20	1	1
8	KADUR	Boragondanahalli	240	16	1	1
9	Chkmagalur	Channamata	587	50	1	1
10	Chkmagalur	Chikka kalasapura	741	60	1	1
	TOTAL	-	-	-	10	10

**ESTABLISHMENT OF LOWER PRIMARY SCHOOLS IN SCHOOLLESS  
HABITATION 2004-05**

Sl. No	Name of the taluk	Name of the village	Total population	No. of children	No. of required Teachers	No. of rooms Required
1	Mudigere	Balehalli	278	21	1	1
2	Mudigere	Neranki	262	21	1	1
3	Mudigere	Kajjehalli	316	19	1	1
4	Tarkere	Koppadahalli	449	25	1	1
5	Sriringeri	Thoraganagade	200	25	1	1
6	Sriringeri	Matholigate	259	28	1	1
7	Sriringeri	Magaluhosakoppa	200	26	1	1
8	Koppa	Hirekere	200	20	1	1
9	Birur	Ambedkarnagara	300	23	1	1
10	Birur	Maskalmaradiestate	290	21	1	1
11	Kacur	Chikkenahalli	206	18	1	1
12	Kacur	Thotadamane	221	21	1	1
13	Chkmagalur	Kunamakki	733	20	1	1
14	Chkmagalur	Payagondanahalli	720	58	1	1
	TOTAL				14	14

**ESTABLISHMENT OF LOWER PRIMARY SCHOOLS IN SCHOOLLESS  
HABITATION 2005-06**

Sl. No	Name of the taluk	Name of the village	Total population	No. of children	No. of required Teachers	No. of rooms Required
1	Mudigere	Yelliru road	235	25	1	1
2	Mudigere	Gumminakhan	290	25	1	1
3	Tarikere	Thamatadahalli	210	25	1	1
4	Tarikere	Thadaga colony	368	25	1	1
5	Sringeri	Kunchebail estate	200	29	1	1
6	Sringeri	Hanumanthanagara	200	30	1	1
7	Birur	Shanthinagara	340	26	1	1
8	Birur	Brahmasamudra	320	23	1	1
9	Kadur	Dommarahalli	213	15	1	1
10	Kadur	Karchalli	210	20	1	1
11	Kadur	Sankekerchalli	204	17	1	1
12	Chikmagalur	Yerehalli	702	68	1	1
13	Chikmagalur	Kannenahalli	500	53	1	1
<b>TOTAL</b>					<b>13</b>	<b>13</b>

**ESTABLISHMENT OF LOWER PRIMARY SCHOOLS IN SCHOOLLESS  
HABITATION 2006-07**

Sl. No	Name of the taluk	Name of the village	Total population	No. of children	No. of required Teachers	No. of rooms Required
1	Mudigere	Hanthurgudde	221	16	1	1
2	Mudigere	Byrapura estate	218	19	1	1
3	Tarikere	Sevalalnagara	225	15	1	1
4	Sringeri	Kaimane	200	28	1	1
5	Sringeri	Shankarapura	200	26	1	1
6	Birur	Sampigekhan esate	280	25	1	1
7	Birur	Hunusebail	270	29	1	1
8	Kadur	G. bommanahalli	208	16	1	1
9	Kadur	Y.basavanahalli	210	18	1	1
10	Chikmagalur	Daragune	509	49	1	1
11	Chikmagalur	Karehalli	405	38	1	1
<b>TOTAL</b>					<b>11</b>	<b>11</b>

ESTABLISHMENT OF LOWER PRIMARY SCHOOLS IN SCHOOLLESS  
HABITATION 2007-08

Sl. No	Name of the taluk	Name of the village	Total population	No. of children	No. of required Teachers	No. of rooms Required
1	Mudigere	Jedicool	271	18	1	1
2	Mudigere	Subash nagara	375	25	1	1
3	Birur	Chikkalagatta	240	23	1	1
4	Birur	Lakkenahalli	225	21	1	1
5	Birur	Handijogihalli	245	22	1	1
6	Birur	Devarahalli	210	18	1	1
7	Birur	MRCP Colony	283	24	1	1
8	Birur	Hebballi Thandya	312	28	1	1
9	Sringeri	Ganapathikatte	200	29	1	1
10	Kadur	Keremelanahalli	212	17	1	1
11	Kadur	Anvar colony	213	16	1	1
12	Kadur	Mugalikattigate	207	18	1	1
13	Kadur	Dasarahatti	202	16	1	1
14	Chikmagalur	Byragadde	411	16	1	1
	Total				14	14

ANNEXURE - 3

LIST OF UPGRADED SCHOOLS PROPOSED

Upgradation of LPS to HPS

16% of the total LPS's in the district will be upgraded to HPS to fulfill the need in a phased manner (133 LPS's will be upgraded out of 826 LPS)

UPGRADATION OF EXISTING PRIMARY SCHOOLS  
2001-2002

Sl.No	Name of the taluk	Name of the school	No. of Rooms required	Required Amount	No. of teachers required	Required Amount
1	Kadur	-	-	-	-	-
2	Birur	-	-	-	-	-
3	Tarikere	-	-	-	-	-
4	Sringeri	-	-	-	-	-
5	Mudigere	-	-	-	-	-
6	N.R.Pura	-	-	-	-	-
7	Koppa	-	-	-	-	-
8	Chikmagalur	-	-	-	-	-

UPGRADATION OF ~~PRESENT~~ ~~LOWER~~ PRIMARY SCHOOLS  
EXISTING  
2002-2003

Sl.No	Name of the taluk	Name of the school	No. of Rooms required	Required Amount In lakhs	No. of teachers required	Required Amount In lakhs
1	Kadur	M.Chomanahalli	3	3.3	2	1.163
		Ambedkar nagara	3	3.3	2	1.163
		Sanehalli	3	3.3	2	1.163
		Total	9	9.9	6	3.489
2	Birur	Kallathipura	1	1.2	1	0.7
		Gonagilakatte	1	1.2	1	0.7
		Manjihalli	1	1.2	1	0.7
		Total	3	3.6	3	2.10
3	Tarikere	K. hosur	2	2.40	2	1.17
		Kodi camp(Urdu)	-	-	-	-
		K. Gollarahalli	1	1.20	1	0.58
		Begur thandya	2	2.40	2	1.17
		Billahalli (Urdu)	2	2.40	1	0.58
		Nandi pura	1	1.20	2	1.17
		R. Indiranagara	2	2.40	2	1.17
		Total	10	12	10	5.84
4	Sringeri	Kalkategrama merinasi	1	1.65	1	0.792
		Total	1	1.65	1	0.742
5	Mudigere	Tha.nude	1	1.22	1	0.60
		Kelaguru	1	1.20	1	0.65
		Total	2	2.42	2	1.25
6	N.R.Pura	B. Kanaburu	1	1.32	1	0.64
		Total	1	1.32	1	0.64
7	Koppa	-	-	-	-	
8	Chikmagalur	Shankrapura	3	4.5	3	1.8
		Thamilcolony	3	4.5	3	1.8
		Shanthi nagar	3	4.5	3	1.8
		Nettekere halli	3	4.5	3	1.8
		Kattethimanahalli	3	4.5	3	1.8
		Chikkgowja	3	4.5	3	1.8
		Sante maidhana	3	4.5	3	1.8
		Total	21	31.5	21	12.6
Grand Total			47	51.39	44	26.661



UPGRADATION OF EXISTING PRIMARY SCHOOLS  
IN 2003-2004

Sl.No	Name of the taluk	Name of the school	No. of Rooms required	Required Amount	No. of teachers required	Required Amount
1	Kadur	Mmelana halli	3	3.63	2	1.2785
		B.basavanahalli	3	3.63	2	1.2785
		Guchenahalli	3	3.63	2	1.2785
		Total	9	10.89	6	2.84
2	Birur Valaya	B.K. Hosur	1	1.20	1	0.70
		Doddabulkkasagara	1	1.20	1	0.70
		Klathipura	1	1.20	1	0.70
		Gonagelaikatte	1	1.20	1	0.70
		Machihally	1	1.20	1	0.70
		Total	5	6.00	5	5.60
3	Tarikere	Garyamarade	2	2.60	2	1.17
		A. Rangapura	2	2.60	2	1.17
		mundregullara hatti	2	2.60	2	1.17
		yare halli tandya	2	2.60	3	1.75
		ranjigere	3	3.90	3	1.75
		L. indira nagara	4	5.20	2	1.17
		Total	15	19.50	14	8.18
4	Sringeri	Tanikodu grama				
		Sunkada makke	1	1.80	1	0.864
		k. moligrama	1	1.80	1	0.864
		kunturu	1	1.80	1	0.864
		kalktigrاما menase				
Total	3	5.40	3	2.59		
5	Mudigere	Banahalli	3	3.90	2	2.10
		Total	3	3.90	2	2.10
6	N.R pura	Mahalgodu				
		Magundigrama	3	4.35	4	2.81
		Byrapura				
Total	3	4.35	4	2.81		
7	Koppa	-	-	-	-	-
8	Chikmagalur	M.M.D. Halli	3	4.5	3	1.8
		Market Rasthe	3	4.5	3	1.8
		Kurubarahalli	3	4.5	3	1.8
		Total	9	13.5	9	5.4
Grand Total			47	63.54	43	30.52

UPGRADATION OF EXISTING PRIMARY SCHOOLS  
2004-2005

Sl.No	Name of the taluk	Name of the school	No. of Rooms required	Required Amount	No. of teachers required	Required Amount
1	Kadur	Hosanagara Colony	3	3.99	2	1.4085
		Urdu	3	3.99	2	1.4085
		Rahamathnagar				
		Total	6	7.98	4	2.82
2	Birurvalaya	Helawara Colony	1	1.2	1	0.70
		Y. Rangenahally	1	1.2	1	0.70
		B.K Hosuru	1	1.2	1	1.40
		Doddabukkasagara	1	1.2	1	1.40
		Total	4	4.8	4	4.20
3	Tarikere	Arasinagatta	3	4.20	2	1.17
4	Sringeri	-	-	-	-	-
5	Mudigere	Kannehalli	1	1.40	1	0.75
		Kuve	2	2.80	2	1.5
6	N.R Pura	B.Kanaburu	2	2.20	4	6.18
		Mahalgodu	1	1.10	2	
		Bairapura	1	1.10	2	
7	Koppa	-	-	-	-	-
8	Chikmagalur	Naraganahalli	3	4.5	3	1.8
		Dasarahalli Kaimara	3	4.5	3	1.8
		Giddenahalli	3	4.5	3	1.8
		Total	9	13.5	9	5.4
		GRAND TOTAL	29	39.08	30	32.02

**UPGRADATION OF EXISTING PRIMARY SCHOOLS  
2005-2006**

Sl.No	Name of the taluk	Name of the school	No. of Rooms required	Required Amount	No. of teachers required	Required Amount
1	Kidur	Kallapura	3	4.39	2	1.5485
		B. vaddarahatti	3	4.39	2	1.5485
		Total	6	8.78	4	3.10
2	Brur	Doddagatta	1	1.2	1	.70
		N.G. Koppa	1	1.2	1	.70
		Bolanahalli thandya	1	1.2	1	.70
		Helavala colony	1	1.2	1	1.40
		Y. rangenahalli	1	1.2	1	1.40
		Total	5	6	5	4.90
3	Trikere	Nagappa colony	4	6	4	2.33
4	Singeri	Hanchinakudige grama	1	2.10	1	1.008
		K.mouligrama	1	2.10	1	1.008
		kunthuru	1	2.10	1	1.008
		Kallattigrama Menase				
		Total	2	4.20	2	2.02
5	Mudigere	Sabbali coloni	1	1.50	1	.80
		Anachoor	3	4.50	3	2.40
		Total;	4	6	4	3.2
6	NR.Pura	B.Kanabur	5	7.97		-
		Mahalgodu			--	
		Bairapura				
7	Koppa	-	-	-	-	-
8	Chickmagalur	N.M.D.C.	3	4.5	3	1.8
		Ujjinihosapet	3	4.5	3	1.8
		Total	6	9	6	3.6
		GRAND TOTAL	33	50.05	26	20.16

UPGRADATION OF PRESENT LOWER PRIMARY SCHOOLS  
2006-2007

Sl.No	Name of the taluk	Name of the school	No. of Rooms required	Required Amount	No. of teachers required	Required Amount
1	KADUR	Mattihally	3	4.82	2	1.6985
		B.M.Koppalu	3	4.82	2	1.6985
2	Birur	Shivapura	1	1.2	1	0.70
		B.Gollarahatti	1	1.2	1	0.70
		Doddaghatta	1	1.2	1	1.40
		N.G.Koppalu	1	1.2	1	1.40
3	Tarikere	Station Duglapura	3	4.8	2	1.17
		Huchanahatti	2	3.2	2	1.17
		Gurupura	2	3.2	2	1.17
4	Sringeri	Kavadi	1	2.25	1	1.08
		Hagguradi	1	2.25	1	1.08
		Hanchana koodige	1	2.25	-	-
5	Mudigere	Koollu bylu	3	4.8	3	2.40
6	N.R.Pura	-	-	-	-	-
7	Koppa	-	-	-	-	-
8	Chikmagalur	Gallpet	3	4.5	3	1.8
		Kumaragiri	3	4.5	3	1.8
TOTAL			29	46.19	25	19.2697

UPGRADATION OF PRESENT LOWER PRIMARY SCHOOLS  
2007-2008

Sl.No	Name of the taluk	Name of the school	No. of Rooms required	Required Amount	No. of teachers required	Required Amount
1	Kadur	Murthihallu	3	5.3	2	1.865
		Parichanahally	3	5.3	2	1.865
2	Brur	Shivapura	1	1.2	1	1.40
		Gollarahatti	1	1.2	1	1.40
3	Tarikere	-	-	-	-	-
4	Singeri	Kawadi	1	2.4	-	-
		Hagguradi	1	2.4	-	-
5	Midigere	Meguru	2	3.40	2	1.70
6	N.R.Pura	-	-	-	-	-
7	Koppa	-	-	-	-	-
8	Chikamagalur	Kamenahally	3	4.5	3	1.8
	Toal		15	25.70	11	10.03

**UPGRADATION OF PRESENT LOWER PRIMARY SCHOOLS  
2008-2009**

Sl.No	Name of the taluk	Name of the school	No. of Rooms required	Required Amount	No. of teachers required	Required Amount
1	Kadur	Hiregarje	3	5.83	2	2.4085
2	Birur	-	-	-	-	-
3	Tarikere	-	-	-	-	-
4	Sringeri	Kavadi	1	2.55	1	2.448
		Hagguradi	1	2.55	1	2.448
		Hanchinakudige	1	2.55	1	2.448
		K.mouli	1	2.55	1	2.448
		Thanikodu	1	2.55	1	2.448
		Kalkatte	1	2.55	1	2.448
5	Mudigere	Uggehali	2	3.60	2	1.80
6	N.R.Pura	-	-	-	-	-
7	Koppa	-	-	-	-	-
8	Chikamagalur	Thoranamavu	3	4.5	3	1.8
		<b>TOTAL</b>	<b>14</b>	<b>29.23</b>	<b>13</b>	<b>20.70</b>

**UPGRADATION OF EXISTING LOWER PRIMARY SCHOOLS  
2009-2010**

Sl.No	Name of the taluk	Name of the school	No. of Rooms required	Required Amount	No. of teachers required	Required Amount (in lakhs)
1	Kadur	-	-	-	-	-
2	Birur range	-	-	-	-	-
3	Charikere	-	-	-	-	-
4	Cheringere	Kavadi grama kavadi	1	2.70	-	-
		Hgguradi grama	1	2.70	-	-
		Handinkoodige harur	1	2.70	-	-
		K.Mouli grama kunthur	1	2.70	-	-
		Thanikodi grama	1	2.70	-	-
		Sunkadamakki	1	2.70	-	-
		Kalkatte grama , Menase	1	2.70	-	-
		Total	6	16.20	-	-
5	Mudigere	Thirugala grama	3	5.70	3	3.00
6	Ch.R.Pura	-	-	-	-	-
7	Choppa	-	-	-	-	-
		Grand total	9	21.9	3	3.00

Annexure - 4

LIST OF BRC'S PROPOSED:

The proposed BRC's are shown in the table given below

SL NO	NAME OF THE BLOCK
1	CHIKMAGALUR
2	KADUR
3	BIRUR
4	TARIKERE
5	NR PURA
6	KOPPA
7	SRINGERI
8	MUDIGERE



Annexure - 5

LIST OF C.R.C'S PROPOSED

SLNO	NAME OF BLOCK	NO OF CRC'
1	Birur	10
2	Chikamagalur	12
3	Kadur	12
4	Koppa	12
5	Mudigere	09
6	N,R.pura	09
7	Sringere	05
6	Tarikere	15

ANNEXURE - 6

3.4.3% of schoolless habitation having below 200 population and the pupil strength below 15 will be served with 47 E.G.S. centres during 2002-03.

EGS OF KADUR TALUK FROM 2001-2010

SL. NO.	YEAR	TOTAL POPULATION IN THE VILLAGE	TOTAL NO OF CHILDREN	NO OF VOLUNTEERS	SALARY	ROOM RENT	COST OF LEARNING MATERIALS	REMARKS (EXPENSE TO CHILDREN)
1	2001-02	EGS SCHOOLS WILL NOT BE OPENED IN THIS YEAR						
2	2002-03	118	141	12	1,44,000	72,000	12,000	14100
3	2003-04			12	1,44,000	72,000	12,000	14100
4	2004-05			12	1,44,000	72,000	12,000	14100
5	2005-06			12	1,44,000	72,000	12,000	14100
6	2006-07			12	1,44,000	72,000	12,000	14100
7	2007-08							
8	2008-09							
9	2009-10							
	TOTAL							

EGS OF OF MUDIGERE TALUK FROM 2001-2010

SL. NO.	YEAR	TOTAL POPULATION IN THE VILLAGE	TOTAL NO OF CHILDREN	NO OF VOLUNTEERS	SALARY	ROOM RENT	COST OF LEARNING MATERIALS	REMARKS (EXPENSE TO CHILDREN)
	2001-02	2496	173	7	84,000	42,000	7,000	17,3000
	2002-03			7	84,000	42,000	7,000	17,3000
	2003-04			7	84,000	42,000	7,000	17,3000
	2004-05			7	84,000	42,000	7,000	17,3000
	2005-06			7	84,000	42,000	7,000	17,3000
	2006-07							
	2007-08							
	2008-09							
	2009-10							
	TOTAL			40	231000	40000	40000	112800

EGS OF BIRUR RANGE FROM 2001-2010

SL. NO.	YEAR	TOTAL POPULATION IN THE VILLAGE	TOTAL NO OF CHILDRENS	NO OF VOLUNTEERS	SALARY	ROOM RENT	COST OF LEARNING MATERIALS	REMARKS (EXPENCE TO CHILDREN)
1	2001-02	EGS SCHOOLS WILL NOT BE OPENED IN THIS YEAR						
2	2002-03	1082	85	4	48,000	24,000	4,000	8,500
3	2003-04			4	48,000	24,000	4,000	8,500
4	2004-05			4	48,000	24,000	4,000	8,500
5	2005-06			4	48,000	24,000	4,000	8,500
6	2006-07			4	48,000	24,000	4,000	8,500
7	2007-08							
8	2008-09							
9	2009-10							
	TOTAL							

EGS OF N.R. PURA TALUK FROM 2001-2010

YEAR	TOTAL POPULATION IN THE VILLAGE	TOTAL NO OF CHILDREN	NO OF VOLUNTEERS	SALARY	ROOM RENT	COST OF LEARNING MATERIALS	REMARKS (EXPENCE TO CHILDREN)
2001-02	EGS SCHOOLS WILL NOT BE OPENED IN THIS YEAR						
2002-03	365	20	2	24,000	12,000	2,000	2,000
2003-04			2	24,000	12,000	2,000	2,000
2004-05			2	24,000	12,000	2,000	2,000
2005-06			2	24,000	12,000	2,000	2,000
2006-07			2	24,000	12,000	2,000	2,000
2007-08							
2008-09							
2009-10							
TOTAL							

EGS OF TARIKERE TALUK FROM 2001-2010

YEAR	TOTAL POPULATION IN THE VILLAGE	TOTAL NO OF CHILDREN	NO OF VOLUNTEERS	SALARY	ROOM RENT	COST OF LEARNING MATERIALS	REMARKS (EXPENCE TO CHILDREN)
2001-02	1067	35	3	36,000	18,000	3,000	3,500
2002-03			3	36,000	18,000	3,000	3,500
2003-04			3	36,000	18,000	3,000	3,500
2004-05			3	36,000	18,000	3,000	3,500
2005-06			3	36,000	18,000	3,000	3,500
2006-07							
2007-08							
2008-09							
2009-10							
TOTAL			-				

VIDYA CHETANA - Koppa

S L N O	NAME OF THE VILLAGE	HOBLI	NAME OF THE GRAMA PANCHAYATH	TOTAL NO OF POPULATION IN THE VILLAGE	NO OF CHILDREN	NO OF VOLUNTEERS	SALARY	RENT FOR BUILDING	COST OF LEARNING MATERIALS	REMARKS (EXPENCES ON CHILDRENS)
1	HIERUR	JAYAPURA	HIERUR	-	35	01	21000	-		AMOUNT CALCULATED FOR EACH STUDENT RS 600 /PER ANNUM
2	KOLLUR	JAYAPURA	JAYAPURA	-	14	1	8400	-		
3	HARANDUR	KASABA	HARANDUR	-	10	1	6000	-		
4	YADADAMBI	HARIHARA PURA	HARIHARAPURA	-	12	1	7200			
5	BILAGADDE	HARIHARA PURA	KYANAVALLI	-	11	1	6600	-		
6	NARASIPUR A	KASABA	NARASIPURA	-	9	1	5400	-		
7	MEEGUR	JAYAPURA	MEEGUR	-	16	1	9600	-		
8	BYARADEVARU	JAYAPURA	GUDDETHOTA	-	10	1	6000			
9	KALLUGUDE	JAYAPURA	HATTIKODUGGE	-	9	1	5400			
10	HAREEGADDE	JAYAPURA	HAREEGADDE	-	11	01	6600			
	TOTAL				137	10	82200			

**EGS OF CHIKMAGALUR TALUK FROM 2001-2010**

SL. NO.	YEAR	TOTAL POPULATION IN THE VILLAGE	TOTAL NO OF CHILDREN	NO OF VOLUNTEERS	SALARY	ROOM RENT	COST OF LEARNING MATERIALS	REMARKS (EXPENCE TO CHILDREN)
1	2001-02	EGS SCHOOLS WILL NOT BE OPENED IN THIS YEAR						
2	2002-03	262	335	15	1,80,000	90,000	15,000	33,500
3	2003-04			15	1,80,000	90,000	15,000	33,500
4	2004-05			15	1,80,000	90,000	15,000	33,500
5	2005-06			15	1,80,000	90,000	15,000	33,500
6	2006-07			15	1,80,000	90,000	15,000	33,500
7	2007-08							
8	2008-09							
9	2009-10							
	TOTAL							

**EGS OF SRINGERI TALUK FROM 2001-2010**

YEAR	TOTAL POPULATION IN THE VILLAGE	TOTAL NO OF CHILDREN	NO OF VOLUNTEERS	SALARY	ROOM RENT	COST OF LEARNING MATERIALS	REMARKS (EXPENCE TO CHILDREN)
2001-02	EGS SCHOOLS WILL NOT BE OPENED IN THIS YEAR						
2002-03	483	28	4	48,000	24,000	4,000	2,800
2003-04			4	48,000	24,000	4,000	2,800
2004-05			4	48,000	24,000	4,000	2,800
2005-06			4	48,000	24,000	4,000	2,800
2006-07			4	48,000	24,000	4,000	2,800
2007-08							
2008-09							
2009-10							
TOTAL							

**ANNEXURE – 7**  
**SARVA SHIKSHA ABHIYANA MANAGEMENT**  
**STRUCTURE AT DISTRICT LEVEL**

1) Deputy Project Officer : 1 'A' Grade ( 1 Post)

Scale of Pay 7400-13,600

Minimum pay Rs. 7,400 x 12 = 88,800-00

DA 45% of pay 3330 x 12 = 36,960-00

HRA 7.5% of pay 555 x 12 = 6,660-00

TOTAL 1,32,420

2) Assistant Project Co-ordinator ; 2 'B' Grade (2 posts)

Scale of Pay 6000-11,200

Minimum pay Rs. 6000 x 12 x 2 = 1,44,000-00

DA 45% of pay 2700 x 12 x 2 = 64,800-00

HRA 7.5% of pay 450 x 12 x 2 = 10,800-00

TOTAL 2,10,600-00

3 Account Superintendent : 1

Scale of Pay 4150-7800

Minimum pay Rs. 4100 x 12 = 49,200-00

DA 45% of pay 1845 x 12 = 22,140-00

HRA 7.5% of pay 311 x 12 = 3732-00

TOTAL 75,072-00

4. Junior Engineer : 1

Scale of Pay 4575-8400

Minimum pay Rs. 4575 x 12 = 54,900-00

DA 45% of pay 2059 x 12 = 24,700-00

HRA 7.5% of pay 343 x 12 = 4116-00

TOTAL 83,716-00

5) Computer Data Entry Officer ; 1

Scale of Pay : 3850-7050

Minimum pay Rs. 3850 x 12 = 46,200-00

DA 45% of pay 1733 x 12 = 20,796-00

HRA 7.5% of pay 289 x 12 = 3,468-00

TOTAL 70,464-00

6) First Division Assistant : 2 posts

Scale of Pay : 3850-7050

Minimum pay Rs. 3850 x 12 x 2 = 98,400-00

DA 45% of pay 1733 x 12 x 2 = 41,592-00



## BRC MANAGEMENT STRUCTURE AT TALUK LEVEL

1. No of BRC's in the District 8

1. Cost of BRC Building Construction

@ Rs.6,00,000 X 8 = Rs. 48,00,000

2. BRC Co-ordinators : 8

Scale of pay 6000-11,200

Minimum pay	Rs. 6000 x 12 x 8	=5,76,000-00
DA 45% of pay	2700 x 12 x 8	= 2,59,200-00
HRA 7.5% of pay	450 x 12 x 8	= 3434,200-00
<b>TOTAL =</b>		<b>8,78,340-00</b>

3. BRP (Primary Section) : 3 posts x 8 BRC = 24 posts

Scale of pay 3300-7800

Minimum pay	Rs. 3300 x 12 x 24	= 9,50,4300
DA 45% of pay	1485 x 12 x 24	= 34,27,600-00
HRA 7.5% of pay	248 x 12 x 24	= 71,34234-00
<b>TOTAL</b>		<b>1,449,424</b>

4 BRP (High School Cader) 2 x 8 = 16

Scale of pay 4575-8400

Minimum pay	Rs. 4575 x 12 x 16	= 8,78,340-00
DA 45% of pay	2059 x 12 x 16	= 3,49,534-00
HRA 7.5% of pay	343 x 12 x 16	= 65,856-00
<b>TOTAL</b>		<b>13,39,584-00</b>

5 First Division Assistant : 1 post x 8 BRC's

Scale of pay : 3850-7050

Minimum pay	Rs. 3850 x 12	= 46,200-00
DA 45% of pay	1733 x 12	= 20,796-00
HRA 7.5% of pay	289 x 12	= 3,468-00
<b>TOTAL</b>		<b>70,464-00 x 8</b>
		<b>= 5,63,712-00</b>

7) GROUP D' SERVANT : 1 POST X 8

Scale of Pay : 2500-3850

Minimum pay	Rs. 2500 x 12	= 30,000-00
DA 45% of pay	1125 x 12	= 13,500-00
HRA 7.5% of pay	188 x 12	= 2,256-00
<b>TOTAL</b>		<b>45,756-00</b>
		<b>x 8 Post = Rs. 3,66,048-00</b>



GRAND TOTAL Rs. 93,97,168-00

7 ) Furniture Cost

@ Rs. 50,000/- x 8 BRC's = 4,00,000 - 00/-

Gross Rs. 97,97,168-00

8) Library & Equipments

@ Rs. 40,000/- x 8 Rs 3,20,000-00/-

Gross Total Rs. 1.01. 17, 168-00/-

ANNEXURE – 8

Habitation out of 1085 will be served with E.G.S. center.

E G S CHIKMAGALUR

Name of the village	No of children	No of volunteers
Kerehakku	12	01
Aldur a k colony	12	01
Puttenahali	13	01
Hunasehalli	11	01
Chandravalli	10	01
Karegadde	13	01
Arige	10	01
Kaske	10	01
Shankar falls	12	01
Harlagadde	14	01
Lakshmi khaan etate	13	01
Gunigadde	11	01
Harnahalli	10	01
Huluvale	12	01
Mavinahalli	10	01

E G S KADUR

Sl no	Name of the village	No's of children	No's of volunteers
1	Anwar colony	09	01
2	Boragidanahalli	12	01
3	Marulahalli	08	01
4	Keremeahalli	08	01
5	Chikkerahalli	10	01
6	9-th malikallu(yngati)	08	01
7	Y.Basavanahalli	08	01
8	Dombahalli	12	01
9	Karehali	10	01
10	G. Bomnanahalli	12	01
11	Thotadamane	14	01
12	Santhelerehalli	07	01

### E G S BIRUR

SLNO	Name of the village	No's of children	No's of volunteers
1	Jadakanakatte	10	01
2	Hiriyangala	10	01
3	Islampura	10	01
4	Kabballi thandya	12	01

### E G S MUDIGERE

Sl. No	Name of the village	No's of children	No's of volunteers
1	Naduvina madkal	12	01
2	Uduse	10	01
3	K. thalagur	13	01
4	Hanthur gudde	12	01
5	Kajjehalli	14	01
6	Japavathy	12	01
7	Kalascshwara	12	01

### E G S TARIKERE

Si. No	Name of the village	No's of children	No's of volunteers
1	Upparabeeranahalli	12	01
2	Guddadahalli	10	01
3	H.Rangapura	06	01

### E G S SRINGERI

Sl. No	Name of the village	No of children	No of volunteers
1	Kigga masige	10	01
2	Menase masige	07	01
3	Kochavalli(bettagere)	06	01
4	Halandur	05	01

### E G S NARASIMHARAJAPURA

Sl. No	Name of the village	No's of children	No's of volunteers
1	Lal bagh estate(nandigave)	10	01
2	Karkeshwara	10	01

## ANNEXURE – 9

### LIST OF VOLUNTARY ORGANISATIONS WORKING FOR EDUCATION IN THE DISTRICT.

B.G.V.S , LIONS CLUB, ROTARY, SHAKTHI KENDRA, AND ASHAKIRAN are the voluntary organizations which have been established in our district. These voluntary organizations have been contributing their immense service to the educational institutions.

The above organizations have contributed in the form of money, materials, and human resources for school developments. They have been conducting some teachers orientation programmes and quiz , debates, pick and speak , science exhibition for school going children. They are giving awards to meritorious students who get the highest marks in the examinations at various levels . Besides these organisations some religious mutt have also contributed their immense service by opening schools colleges engineering college etc., the important religious institutions are Rambhapuri mutt, Sirigere mutt, and Adichunchchanagiri mutt , Sringeri mutt, etc.,

## Annexure – 10

List special intervention so far undertaken in the district for universalization of elementary education.

**CHINNARA ANGALA :** Chinnara Angala is a novel program brought out to bring the dropout children to the main streams. 60 days training program given to 786 children off the district and admitted to various classes in the formal schools.

**KALAJATHA:** It is a capacity building of the community level and its mobilisation. It creates awareness about elementary education. The main approach and strategy in the program will be on the creation of a people's movement to view education as an instrument of change.

This program was conducted in 81 villages of Koppa Taluk of our district.

**CHAITANYA:**

It is a text oriented programme leading to development of student in all respects. It is a competency based activity, oriented teaching technique.

**CHINNARA MELA:**

Chinnara Mela is a child centered learning Programme. students learn about different activities like story telling, songs, riddles. Maths corner games and EVS corner. Chinnara Mela were conducted 12 clusters.

**TEACHERS GRANT:**

It is a long standing complaint that the teachers do not have the resources to create interesting low COST MATERIALS TO IMPROVE CLASS ROOMS PRACTICE. It includes charts, papers, stationery, beads, sketch pens, crayons, marbles ect., All These materials can be put to use in a variety of ways for teaching.

**CLUSTERS LEVEL MEETING:**

Cluster level meeting were held in this block shared their experiences, difficulties and to discuss about their problems.

Blockwise details of existing schooling facilities for 2003-04

S l n o	Taluk	No of Schools		Required Rooms		Teaching Learning materials		Compoun d		Water facility		Toilet Facility		Electri city	
		HPS	LPS	HPS	LPS	HPS	LPS	HPS	LPS	HPS	LPS	HPS	LPS	HPS	LPS
1	Tarlkere	120	47	12	28	40	-	30	-	40	-	58	19	20	-
2	Birur	23	16	6	16	18	7	17	8	18	6	13	13	13	11
3	Mudigere	18	12	11	8	18	12	18	12	18	12	18	12	18	12
4	Sringere	21	22	-	5	5	5	5	6	5	6	10	10	5	2
5	Koppa	12	65	2	20	3	8	10	8	11	7	9	21	12	-
6	Kadur	15	15	4	22	15	15	15	15	15	15	15	15	15	12
7	Chikmag alur	12	07	12	25	14	7	18	7	25	19	8	7	24	6
8	NR Pura	9	7	2	8	1	4	5	4	5	4	7	6	7	3

Blockwise details of existing schooling facilities for 2004-05

SS l n o	Taluk	No of Schools		Required Rooms		Teaching Learning materials		Compound		Water facility		Toilet Facility		Electri city	
		HPS	LPS	HPS	LPS	HPS	LPS	HPS	LPS	HP S	LPS	HPS	LPS	HPS	LPS
11	Tarikere	58	61	3	18	18	13	7	13	7	13	3	17	30	-
22	Birur	21	17	5	12	17	10	17	17	18	-	18	9	15	15
33	Mudigere	14	13	8	9	14	12	14	11	14	11	14	11	14	11
44	Sringere	20	27	-	3	5	5	5	6	5	6	10	10	5	2
55	Koppa	10	65	-	21	01	9	4	5	9	4	1	18	2	-
66	Kadur	18	15	2	23	18	12	18	9	18	14	18	15	18	7
77	Chikmag alur	18	7	18	20	5	6	23	9	23	9	10	7	18	7
88	NR Pura	6	8	2	8	-	6	5	4	5	4	6	6	6	3

Blockwise details of existing schooling facilities for 2005-06

Sl no	Taluk	No of Schools		Required Rooms		Teaching Learning materials		Compound		Water facility		Toilet Facility		Electri city	
		HPS	LPS	HPS	LPS	HPS	LPS	HPS	LPS	HP S	LPS	HPS	LPS	HPS	LPS
1	Tarikere	47	61	8	12	2	8	1	29	20	-	20	-	16	14
2	Birur	20	18	5	14	17	10	15	10	15	9	16	6	14	7
3	Mudigere	20	10	4	10	20	10	20	10	20	10	20	10	20	10
4	Sringere	23	23	-	-	5	2	5	5	5	3	5	3	5	5
5	Koppa	10	65	-	11	1	18	3	-	9	-	9	-	6	-
6	Kadur	18	20	6	19	18	20	18	16	18	15	18	19	18	7
7	Chikmag alur	11	13	11	13	2	6	4	10	10	6	8	11	40	6
8	NR Pura	6	7	2	8	6	6	2	7	5	4	5	4	6	3

Blockwise details of existing schooling facilities for 2006-07

Sl no	Taluk	No of Schools		Required Rooms		Teaching Learning materials		Compoud		Water facility		Toilet Facility		Electri city	
		HPS	LPS	HPS	LPS	HPS	LPS	HPS	LPS	HPS	LPS	HPS	LPS	HPS	LPS
1	Tarikere	47	12	6	4	2	8	20	-	20	-	20	-	10	-
2	Birur	17	12	6	9	15	8	12	5	10	9	10	4	15	3
3	Mudigere	20	6	11	4	20	6	20	6	20	6	20	6	20	6
4	Sringere	13	15	-	-	5	-	5	5	5	-	5	-	5	-
5	Koppa	10	65	-	-	10	-	4	-	9	-	9	-	10	-
6	Kadur	18	12	8	8	18	12	18	12	18	-	18	12	18	7
7	Chikmag alur	5	11	5	11	5	20	4	7	15	7	23	6	30	20
8	NR Pura	6	7	2	8	6	6	6	7	5	4	5	4	6	3

Blockwise details of existing schooling facilities for 2007-08

S l n o	Taluk	No of Schools		Required Rooms		Teaching Learning materials		Compound		Water facility		Toilet Facility		Electri city	
		HPS	LPS	HPS	LPS	HPS	LPS	HPS	LPS	HPS	LPS	HPS	LPS	HPS	LPS
1	Tarikere	27	13	4	6	1	7	15	-	2	-	2	-	5	-
2	Birur	16	11	2	7	7	4	9	5	10	7	10	6	10	4
3	Mudigere	8	5	1	5	8	4	8	4	8	4	8	4	8	4
4	Sringere	15	21	-	-	5	-	5	5	5	-	5	-	3	-
5	Koppa	9	65	-	-	4	-	1	-	7	-	7	-	8	-
6	Kadur	18	12	9	9	18	12	18	12	18	12	18	12	18	9
7	Chikmagalur	7	10	7	10	5	6	2	7	10	6	19	3	42	10
8	NR Pura	6	6	2	8	6	6	5	5	5	3	6	3	6	3

Blockwise details of existing schooling facilities for 2008-09

S l n o	Taluk	No of Schools		Required Rooms		Teaching Learning materials		Compound		Water facility		Toilet Facility		Electri city	
		HPS	LPS	HPS	LPS	HPS	LPS	HPS	LPS	HPS	LPS	HPS	LPS	HPS	LPS
1	Tarikere	31	01	11	01	5	-	10	-	-	-	-	-	5	-
2	Birur	16	12	3	2	7	8	9	11	10	2	10	8	6	5
3	Mudigere	8	6	1	5	8	6	8	6	8	6	8	6	8	6
4	Sringere	20	-	-	-	5	-	5	-	6	-	6	-	-	-
5	Koppa	-	65	-	-	-	-	-	-	-	-	-	-	-	-
6	Kadur	18	13	9	8	18	13	18	13	18	13	18	13	18	8
7	Chikmagalur	8	10	8	10	6	6	2	7	3	6	15	3	21	5
8	NR Pura	6	6	-	8	5	6	5	5	5	5	5	3	5	2



Blockwise details of existing schooling facilities for 2001-02

S l n o	Taluk	No of Schools		Required Rooms		Teaching Learning materials		Compound		Water facility		Toilet Facility		Electri city	
		HPS	LPS	HPS	LPS	HPS	LPS	HPS	LPS	HPS	LPS	HPS	LPS	HPS	LPS
1	Tarikere	91	59	11	09	21	29	29	01	28	02	28	02	15	5
2	Birur		07		02	6	7	4	3	-	2	-	2	-	7
3	Mudigere	5	14	4	4	5	14	4	14	5	14	5	14	5	14
4	Sringere	21	14	3	3	7	7	2	-	2	2	2	2	-	2
5	Koppa	-	-	-	-	-	-	-	-	-	-	-	-	-	-
6	Kadur	5	5	3	7	5	5	5	5	5	5	5	5	4	5
7	Chikmagalur	-	51	30	-	7	-	6	-	21	-	15	-	6	-
8	NR Pura	3	3	3	1	3	3	2	-	3	-	3	-	1	3

Blockwise details of existing schooling facilities for 2002-03

S l n o	Taluk	No of Schools		Required Rooms		Teaching Learning materials		Compoud		Water facility		Toilet Facility		Electri city	
		HPS	LPS	HPS	LPS	HPS	LPS	HPS	LPS	HPS	LPS	HPS	LPS	HPS	LPS
1	Tarikere	33	7	33	7	21	39	20	10	9	41	9	41	-	20
2	Birur	11	22	2	5	6	19	4	16	3	17	4	17	2	18
3	Mudigere	16	16	13	13	16	16	14	16	16	-	16	16	16	16
4	Sringere	23	19	4	-	10	15	5	5	4	5	4	5	2	5
5	Koppa	65	15	25	7	8	11	18	6	10	11	10	13	10	13
6	Kadur	19	18	17	3	19	18	19	18	14	18	15	18	19	18
7	Chikmagalur	7	20	25	3	5	8	4	14	6	22	11	34	6	25
8	NR Pura	6	6	8	2	6	6	5	-	4	5	4	5	3	6

Blockwise details of existing schooling facilities for 2009-10

S l n o	Taluk	No of Schools		Required Rooms		Teaching Learning materials		Compound		Water facility		Toilet Facility		Electri city	
		HPS	LPS	HPS	LPS	HPS	LPS	HPS	LPS	HP S	LPS	HPS	LPS	HPS	LPS
1	Tarikere	17	1	6	1	4	-	3	-	-	-	-	-	4	-
2	Birur	9	12	-	2	-	8	5	12	4	4	4	11	2	4
3	Mudigere	-	7	-	-	-	7	-	7	-	7	-	7	-	7
4	Sriingere	9	17	-	-	5	-	5	-	-	-	-	-	-	-
5	Koppa	-	65	-	-	-	-	-	-	-	-	-	-	-	-
6	Kadur	-	-	-	-	-	-	-	-	-	-	-	-	-	-
7	Chikmagalur	9	10	9	10	5	6	2	1	9	15	20	8	35	6
8	NR Pura	8	7	-	2	7	2	6	6	7	2	7	2	7	2

# INTERVENTIONWISE AND YEARWISE BUDGET ESTIMATES OF CHIKMAGALUR DISTRICT FOR THE DISTRICT ELEMENTARY EDUCATION PLAN UNDER S S A

**ACCESS:** There are 1085 habitations which do not have primary schooling facility . out of these habitations 83 habitations have a population of more Than 200 and children of the age group 5 to 7 are more than 15. These habitations are not having a school with in a radius of 1 K M. Hence In a phased manner starting from 2002-03 to 2007-08. 83 new schools will be established with all infrastructure. *Rs in Lakhs .*

S L O	CHAPTERS AND INTERVENTIONS	UNIT COSTS	2001-02		2002-03		2003-04		2004-05		2005-06		2006-07		2007-08		2008-09		2009-10		
			P	F	P	F	P	F	P	F	P	F	P	F	P	F	P	F	P	F	
I	<b>ACCESS</b>																				
1.	Establishment of New Schools in Schoolless habitations																				
a.	Building with compound, Drinking water, Toilet, Electricity facility	3.6	-	-	21	75.60	10	36.00	14	50.40	13	46.80	11	43.56	14	55.44					
b.	Teacher				21	-	10	-	14	-	13	-	11	-	14	-	-	-	-	-	
	Furniture	0.2	-	-	21	4.2	10	2.0	14	2.8	13	2.6	11	2.42	11	2.42	3	0.66	-	-	
c.																					
d.	Teaching Learning Material	0.2	-	-	21	4.2	10	2.0	14	2.8	13	2.6	11	2.42	11	2.42	3	0.66	-	-	
e.	School Grant	LPS HPS	0.02 0.027	826 633	16.52 17.09	847 633	16.94 17.09	851 633	17.02 17.09	871 633	17.42 17.09	884 633	17.68 17.09	895 633	17.9 17.09	906 633	18.12 17.09	909 633	18.18 17.09	909 633	
f.	Teachers Salary	0.6	-	-	21	12.6	31	18.60	45	27.00	58	34.80	69	45.54	83	54.78	83	54.78	83	54.78	
g.	Teachers grant	0.005	-	-	21	0.1	44	0.22	68	0.34	95	0.47	120	0.6	142	0.71	160	0.8	166	0.83	
	<b>TOTAL</b>				33.61	-	130.73	-	92.93	-	117.85	-	122.04	-	129.53	-	150.98	-	92.17	-	90.88

JUSTIFICATION: 1) In Schools grant & Teacher grant after 2002-03 new schools and teachers are added every year.  
2) In Schools grant & Teacher grant after 2002-03 upgradation of schools is also considered.  
3) 2006-07 and after unit cost raised by 10%

## **ADDITIONAL INPUTS FOR EXISTING PRIMARY SCHOOLS:**

**ADDITIONAL ROOMS:** There are 826 primary schools in the district . Out of these schools 481 schools are having 2 rooms and 345 schools have single class rooms. Hence 345 additional rooms are proposed to be constructed during 2002-03 to 2009-10. Every school is provided with 2 teachers and every teacher should have one class room. There fore 345 schools have to be provided with 345 additional rooms. Also the number of children in the Schools is in upward trend.

**COMPOUND:** In all 799 schools do not have compound. Only 27 schools have compound viz 97% do not have compound. Compounds are necessary to all existing schools to safegaurd the building and other proper To avoid encroachment and for the safety of children. So it is proposed to construct compound to the remaining 799 existing primary schools.

**DRINKING WATER** : 736 schools do not have drinking water facility. Drinking water is an essential thing for a school. In some areas to fetch water children have to go a long distance. So borewells have to be digged in these schools.

**TOILET FACILITIES** : There is no toilet facilities in all most all the existing primary schools . Hence it is a must & most of the schools Are situated in residential areas. Do cultivate good habit of using toilets and keep the premises clean.

**ELECTRICITY** : Existing primary schools are denied of the use of elecricity . In scientifically advanced age to exhibit and conduct Experiments electricity is needed. In malnad areas during mansoon and winter, there will be less light. Hence ~~Providing of~~ electricity is being provided.

**REPAIRS** : Almost all schools are in the need of repairs. Hence every school building has to be repaired.

**FURNITURE** : For the existing primary schools furniture is a must. Every school has to be equiped to the minimum in the Benches, tables and chairs.

**TEACHING LEARNING MATERIALS:** Learning to become interesting the teacher has to use learning material of good quality.

**ADDITIONAL TEACHER:** Schools require additional teachers due to increase in the enrollment of children every year. Teachers hwill have to be provided to these schools. Hence 321 additional teachers have to be appointed in phased manner.

2.	Additional inputs for existing Primary schools																			
a.	Building with compound, Drinking water, Toilet, Electricity facility																			
b.	Additional Rooms	1.5	-	-	133	199.50	60	90.0	52	78.0	50	75.00	59	97.35	27	44.55	32	52.80	15	24.75
c.	Compound	0.5	--	-	152	76.00	138	69.0	118	58.00	93	37.50	109	54.50	82	41.00	69	34.50	38	19.00
d.	Drinking Water & Toilet facility	0.25	-	16	214	53.50	95	23.75	97	24.25	102	25.50	89	22.25	63	15.75	53	13.25	23	5.75
		0.5	-	-	207	103.50	121	60.50	91	45.50	114	57.00	75	47.50	74	37.00	60	30.00	30	15.00
e.	Electricity	0.1	-	-	178	17.80	120	12.00	117	11.70	110	11.00	99	9.90	82	8.20	65	6.50	24	2.40
f.	Repairs	0.05	75	3.75	103	5.15	118	5.90	93	4.65	108	5.40	103	5.15	84	4.20	88	4.40	35	1.75
g.	Furniture	0.1	83	8.30	144	14.40	130	13.00	93	9.30	96	9.60	94	9.40	67	6.70	71	7.10	38	3.80
h.	Teaching Learning materials	0.1	78	7.80	134	13.40	115	11.50	91	9.10	97	9.70	76	7.60	48	4.80	56	5.60	22	2.20
i.	Additional Teachers	-	-	-	63	-	52	-	35	-	35	-	36	-	22	-	29	-	-	-
	Teachers Salary	0.60	-	-	112	67.20	164	98.40	199	119.40	234	140.40	270	163.62	292	176.95	221	194.53	221	194.53
	TOTAL	-	-	19.85	-	579.85	-	384.05	-	359.90	-	371.10	-	417.27	-	339.15	-	348.68	-	269.18

3.	EGS Centres in School less habitations																		
a.	Education volunteers	1000/ month	-	-	47	5.64	47	5.64	47	5.64	47	5.64	47	5.64	-	-	-	-	-
b.	Teaching Learning materials	2000/ center	-	-	47	0.94	47	0.94	47	0.94	47	0.94	47	0.94	-	-	-	-	-
c.	Building Grant	500/ center	-	-	47	2.82	47	2.82	47	2.82	47	2.82	47	2.82	-	-	-	-	-
d.	Training for volunteers	1225/ volu-r for 10 days	-	-	47	0.57	47	0.57	47	0.57	47	0.57	47	0.57	-	-	-	-	-
	Total					9.977	-	9.977	-	9.977	-	9.977	-	9.977					

JUSTIFICATION: Altogether 47 school less habitations with a population of 200 and no. of school going children below 15 have been considered for EGS during 2002-03 upto 2006-07.

## UPGRADATION OF PRIMARY SCHOOLS:

Certain school in the district, have to be upgraded gradually, to facilitate the children to continue their studies in Same schools. These schools are located in such places where there are no UPS with in a radius of 3 K M. There fore these schools have to be upgraded. These schools have to be provided with infrastructure such as additional rooms, compound, drinking water, & electricity. Repairs to buildings, furniture, TLM & appointment of additional teachers.

4.	Upgradation of existing Primary Schools																			
a.	Additional Rooms	1.5/ room	-	-	47	70.50	47	70.50	29	43.50	31	46.50	29	43.50	15	22.50	14	21.00	9	13.50
b.	Compound	0.5/ school	-	-	23	11.50	24	12.00	15	7.50	18	9.00	15	7.50	8	4.00	9	4.50	7	3.50
c.	Drinking Water & Toilet facility	0.25 0.5	-	-	23 23	5.75 11.50	24 24	6.00 12.00	15 15	3.75 7.50	18 18	4.50 9.00	15 15	3.75 7.50	8 8	2.00 4.00	9 9	2.25 4.50	7 7	1.75 3.50
d.	Electricity	0.1/ school	-	-	23	2.30	24	2.40	15	1.50	18	1.80	15	1.50	8	0.80	9	0.90	7	0.70
e.	Repairs	0.05/ school	-	-	23	1.15	24	1.20	15	0.75	18	0.90	15	0.75	8	0.40	9	0.45	7	0.35
f.	Furniture	0.1/sc hool	-	-	23	2.30	24	2.40	15	1.50	18	1.80	15	1.50	8	0.80	9	0.90	7	0.70
g.	Teaching Learning materials	0.1/ school	-	-	23	2.30	24	2.40	15	1.50	18	1.80	15	1.50	8	0.80	9	0.90	7	0.70
h.	Additional Teachers	-	-	-	44	-	43	-	30	-	26	-	25	-	11	-	13	-	3	-
	Teachers Salary	0.60	-	-	44	26.40	87	52.20	117	70.20	143	94.38	168	110.88	179	118.14	192	126.72	195	128.70
	TOTAL	-	-	-	-	133.70	-	161.10	-	137.70	-	169.68	-	178.38	-	153.44	-	162.12	-	153.40

JUSTIFICATION : Teachers salary from 2005-06 increased by 10% for every year.

## ADDITIONAL INPUTS FOR EXISTING UPPER PRIMARY SCHOOLS:

Many UPS are without necessary facilities. Additional rooms, teachers, compound, drinking water, toilet facility, electricity, repairs, furniture, TLM, have to be provided. To streamline UPS these facilities have to be provided.

5.	Additional inputs for existing Upper Primary Schools																			
a.	Additional Rooms	1.50	-	-	175	262.50	131	196.50	114	171	88	132	42	63.00	43	61.50	30	42.00	22	33.00
b.	Compound	0.5	-	-	147	73.50	66	33.00	75	37.50	89	44.50	48	24.00	51	25.50	43	21.50	38	19.00
c.	Drinking Water & Toilet facility	0.25	-	-	146	36.50	66	16.50	66	16.50	51	12.75	40	10.00	36	9.00	28	7.00	11	2.75
		0.5	-	-	141	70.50	71	35.50	71	35.50	55	27.50	41	20.50	33	16.50	29	14.50	17	8.50
d.	Electricity	0.1	-	-	110	11.00	63	6.30	39	3.90	51	5.10	28	2.80	28	2.80	25	2.60	20	2.00
e.	Repairs	0.05	63	3.15	96	4.80	84	4.20	84	4.20	83	4.15	70	3.50	63	3.15	65	3.25	52	2.60
f.	Furniture	0.1	57	5.70	100	10.00	110	11	103	10.30	93	9.30	53	5.30	49	4.90	44	4.40	22	2.20
g.	Teaching Learning materials	0.1	63	6.30	93	9.30	90	9	88	8.80	74	7.40	54	5.40	47	4.70	43	4.30	27	2.70
h.	Additional Teachers	-	33	-	39	-	40	-	34	-	25	-	20	-	14	-	10	-	1	-
	Teachers Salary	0.60	-	-	105	63.00	112	67.20	146	87.60	171	112.86	191	126.06	205	135.30	215	141.90	216	142.56
	<b>TOTAL</b>	-	-	15.15	-	541.10	-	379.20	-	375.30	-	355.56	-	260.56	-	263.35	-	241.45	-	215.31

JUSTIFICATION : 1) Teachers salary from 2005-06 increased by 10% for every year.

2) Drinking water and toilet need of schools varies, hence given separately



II ENROLMENT																				
a.	Updation of village education records	3 D microp lan Rs 3000	-	-	861	25.83	86	2.58	86	2.58	86	2.58	86	2.58	86	2.58	86	2.58	86	2.58
b.	Special enrolment drives	Rs 1000/ GP	-	-	322	3.22	322	3.22	322	3.22	322	3.22	322	3.22	322	3.22	322	3.22	322	3.22
c.	Bridge course for mainstreaming out of school children	Chin-Ang Rs 15000	-	-	82	12.30	33	4.95	27	4.35	25	3.75	16	2.40	13	1.95	10	1.50	6	0.90
d.	Awareness Campaigns and Community mobilisation programmes	Ma-Beti Rs 6000	-	-	84	5.04	58	3.48	58	3.48	24	1.44	24	1.44	24	1.44	-	-	-	-
Total					46.39	-	14.24	-	13.63	-	10.99	-	9.64	-	9.19	-	7.30	-	6.70	

JUSTIFICATION : 1) Micro plan for 3 days in each vilage in the district - Unit cost Rs. 3,000

2) Enrolment drives for each grama panchayath - Unit cost Rs.3,000/-

3) Chinnara Angala for each centres - Unit cost Rs. 15,000/-

4) Ma-Beti one day programme for girl child at CRC's level - Unit cost Rs. 6,000/- for each programme for 200 members (mother)

III	RETENTION																		
1.	INCENTIVES																		
a.	Free Text Books	150/ set	1.62	243	1.77	265.50	1.93	289.5	2.11	316.50	231	693	2.51	753	2.73	819	2.97	891	3.23
b.	Free Uniforms	250/ set	1.30	325	1.40	350	1.50	375	1.60	400	1.80	540	1.9	570	2.0	600	2.2	660	2.4
c.	Mid Day Meals(cooked food)	-	-	-	-	-	-	-	-	-	-	-	-	-	-	-	-	-	-
d.	Free School Bags (for SC/ST girls)	100/ bag	0.09	9	0.10	10	0.11	11	0.114	11.40	0.123	12.30	0.133	13.3	0.144	14.4	0.156	15.6	0.17
e.	Fee reimbursement for girls	-	-	-	-	-	-	-	-	-	-	-	-	-	-	-	-	-	-
	<b>Total</b>			577	-	625.50	-	675.50	-	727.90	-	1245.3	-	1336.3	-	1443.40	-	1566.60	-

JUSTIFICATION : 1) Text books each set estimated for Rs. 150

2) Uniform each set estimated for Rs. 250 from 2005-06 onwards unit cost at Rs. 300/- school bags Rs. 100/-

2.	TEACHER TRAININGS																			
a.	20 days in-service training for all teachers	70x10 D=700	1214	8.50	1214	8.50	1214	8.50	1214	8.50	1214	8.50	1214	8.50	1214	8.50	1214	8.50	-	-
b.	60 days refresher course for untrained teachers	70x60 D=4200	49	20.58	49	20.58	49	20.58	49	20.58	-	-	-	-	-	-	-	-	-	-
c.	30 days training for freshly recruited teachers	70x30 D=2100	-	-	188	3.94	189	3.96	206	4.32	271	5.69	308	6.46	337	7.07	379	7.95	401	8.00
	<b>Total</b>			29.08	-	33.02	-	33.04	-	33.40	-	14.19	-	14.96	-	15.57	-	16.45	-	8.00

IV	CAPACITY BUILDING																		
1.	TRAINING																		
a.	For Community leaders	30x2 d=60	788 9	4.733	5100	3.06	5100	3.06	5100	3.06	5100	3.06	510 0	3.06	4901	2.94	4900	2.94	4900
b.	For SDMC members	30x2D =60	300 0	1.8	-	-	-	-	3000	1.8	-	-	-	-	3747	2.25	-	-	-
c.	For Grama Panchayath Members	30x2D =60	682	0.409	663	0.397	633	0.379	613	0.367	563	0.337	563	0.337	563	0.337	563	0.337	120
d.	Zilla Panchayath Members	30x2= 60	30	0.018	30	0.018	30	0.018	30	0.018	30	0.018	30	0.018	30	0.018	30	0.018	30
e.	Block level officers and BRC's	100x7 =700	56	0.39	56	0.39	56	0.39	56	0.39	56	0.39	56	0.39	56	0.39	56	0.39	56
f.	CRC's and school H M'S	70x10 =700	148 4	10.4	1484	10.4	1484	10.4	1484	10.4	1484	10.4	148 4	10.4	1484	10.4	1484	10.4	1484
g.	DIET Faculty	100x7 =700	30	0.21	30	0.21	30	0.21	30	0.21	30	0.21	30	0.21	30	0.21	30	0.21	30
h.	C R C monthly meet for L P S teachers	30x8= 240	385 6	9.25	3856	9.25	3856	9.25	3856	9.25	3856	9.25	385 6	9.25	3856	9.25	3856	9.25	3856
	Total	-	-	27.21	-	23.72	-	23.72	-	25.49	-	23.66	-	23.66	-	25.79	-	23.54	-

JUSTIFICATION : 1) Under Capacity Building head monthly meet of LPS teachers at CRC level has been included for the purpose of sharing experiences and preparation of monthly program of work & preparation of TLM.

2.	ESTABLISHMENT OF BRC'S																			
a.	Building	6.00	-	-	8	48.00	-	-	-	-	-	-	-	-	-	-	-	-	-	-
b.	Furniture	0.5	8	4	8	-	-	-	-	-	-	-	-	-	-	-	-	-	-	-
c.	Equipment	0.5	8	4	8	-	-	-	-	-	-	-	-	-	-	-	-	-	-	-
d.	Library	0.2	8	1.6	8	-	-	-	-	-	-	-	-	-	-	-	-	-	-	-
e.	Appointment of staff (1BRC+ 5 BRP'S)	-	64	-	-	-	-	-	-	-	-	-	-	-	-	-	-	-	-	-
f.	Salary for BRC staff and maintenance	-	64	34.7	64	68.4	64	68.4	64	68.4	64	72.24	64	72.24	64	72.24	64	72.24	64	72.24
	Total			44.3		116.4	-	68.4	-	68.4	-	72.24	-	72.24	-	72.24	-	72.24	-	72.24

JUSTIFICATION : 1) Under Salary component of BRC's contingency grant @ 1250/- per 6 months per BRC is taken into account.

3.	ESTABLISHMENT OF CRC'S																			
a.	Building	2.00	-	-	84	168	-	-	-	-	=	=	=	=	=	=	=	=	=	=
b.	Furniture	0.10	-	-	84	8.40	-	-	-	-	-	-	-	-	-	-	-	-	-	-
c.	Equipment	0.15	-	-	84	12.6	-	-	-	-	-	-	-	-	-	-	-	-	-	-
d.	Library	0.10	-	-	84	8.40	-	-	-	-	-	-	-	-	-	-	-	-	-	-
e.	Appointment of CRC	-	84	-	-															
f.	Salary and Maintenance	0.60	84	32.53	84	62.96	84	62.96	84	62.96	84	69.26	84	69.26	84	69.26	84	69.26	84	69.26
	Total			32.53	-	260.36	-	62.96	-	62.96	-	69.26	-	69.26	-	69.26	-	69.26	-	69.26

JUSTIFICATION : 1) Under Salary component of CRC's contingency grant @ 1250/- per 6 months per CRC is taken into account.

V.	ESTABLISHMENT OF DISTRICT LEVEL SSA OFFICE	-																		
1.	Purchase of Vehicles district SSA office																			
2.	Appointment of drivers and maintenance of vehicles	1.00	-	1	-	1	-	1	-	1	-	1	-	1	-	1	-	1	-	1
3.	Strengthening of district level office	1.00	-	1.00	-	-	-	-	-	-	-	-	-	-	-	-	-	-	-	
a.	Purchase of computers	0.50	-	0.50	-	-	-	-	-	-	-	-	-	-	-	-	-	-	-	
b.	Purchase of XEROX Machine	0.60	-	0.60	-	-	-	-	-	-	-	-	-	-	-	-	-	-	-	
c.	Fax and Telephone	0.53	-	0.53	-	-	-	-	-	-	-	-	-	-	-	-	-	-	-	
d.	Furniture	0.25	-	0.25	-	-	-	-	-	-	-	-	-	-	-	-	-	-	-	
e.	Others	0.05	-	0.05	-	0.05	-	0.05	-	0.05	-	0.05	-	0.05	-	0.05	-	0.05	-	0.05
f.	Appointment of officers and other staff		9.00																	
g.	Salary and Maintenance		9.00	4.5	-	8.53	-	9.37	-	10.32	-	11.35	-	12.49	-	13.73	-	15.1	-	16.61
	TOTAL			8.43		9.58	-	10.42	-	11.37	-	12.40	-	13.54	-	14.78	-	16.15	-	17.66
	GRAND TOTAL			786.71	-	2510.32	-	1915.54	-	1943.88	-	2476.40	-	2535.32	-	2557.15	-	2615.96	-	2632.33

GRAND TOTAL = Rs. 199.74 CRORES.