

SARVA SHIKSHA ABHIYAN

DISTRICT ELEMENTARY EDUCATION PLAN

TUMKUR DISTRICT(SOUTH)

PERSPECTIVE PLAN
FOR 2001-2010



DEPUTY DIRECTOR OF PUBLIC INSTRUCTION
TUMKUR(SOUTH)

P R E F A C E

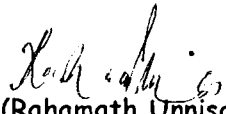
"Education is the birth right of every child of the day" which many a child could not achieve till this day. Five decades have passed since independence and ninth five year plan is coming to an end. UNESCO at world level conference has thoroughly discussed in achieving the goal of giving education to all. This aspect has never left untouched even in SAARC summit. The Govt. of India has taken several tasks spending crores of rupees in educating the children joining hands with state government under NEP, OBB and DPEP schemes. Thirteen districts in the states were not much benefited as that of the DPEP districts. Considering the dropout ratio of 6 to 14 age group, the Central government under the Ministry of Human Resource Development has blessed with SARVA SHIKSHA ABHIYAN, a revolutionary movement for a thorough "back to school campaign". This scheme is totally a movement of the community to realise the need for quality education to the children irrespective of social barriers.

The nation is very seriously concerned and has ear-marked Rs.6,00,000 crores for this purpose. The school-less villages & habitations will be provided with new schools comprising all infra structure. Provision is also made in upgrading need based primary schools and in establishing new schools in school-less habitations.

The S.S.A. community is grateful to the Hon'ble Chief Minister of Karnataka for his deep concern about this project. The Hon. Education Minister for his keenness in implementing this project, the Education Secretary & Commissioner for Public Instruction for guidance in this project. The district is highly indebted to the Deputy Commissioner, Tumkur District and the Chief Executive Officer, Zilla Panchayath, for extending their co-operation and timely guidance to the department of Public Instruction, Tumkur.

The B.E.O's of the district & their staff who have co-operated not only in further furnishing the relevant information. By sitting over night to compile this information, the Principal, Nodal Officer & the faculty of DIET, B.R.C's & C.R.C.'s, Educational Co-ordinators & S.D.M.C. Members who have extended full co-operation. The office staff have all co-operated by working outside the stipulated office hours. I thank each and every one of them.

I express my deep pleasure when this project finds its application in this district and reaches the un-reached. It was my long cherished desire that each child of 6 to 14 age of our Country should be enriched with the qualitative activity oriented and joyful learning.


(Rahamath Unnisa)
D.D.P.I., (Admn)
Tumkur Dist (South)

SARVA SHIKSHA ABHIYAN
DISTRICT IMPLEMENTATION COMMITTEE

<i>Sl. No.</i>	<i>Designation of the Committee</i>	<i>Address</i>
1.	Hon. President	Sri. T.B. Jayachandra, District Minister & Agri. Minister, Govt. of Karnataka.
2.	Co-Hon. President	Sri. Dr. G. Parameshwar, Higher Education Minister, Govt. of Karnataka.
3.	President	Smt. Dakshyani Ashwath, President, Zilla Panchayat, Tumkur.
4.	Vice - President	Sri. Jampayya, Sthayi Samiti, President.
5.	Secretary	Sri. Dyaberi, Chief Executive Officer, Zilla Panchayat, Tumkur.
6.	Member Secretary	Smt. Rahamath Unnisa, D.D.P.I., Tumkur (South)
7.	Member Secretary	Sri. S.Surya Narayan, D.D.P.I., Madhugiri, Tumkur (North).
8.	Member (Interested in Education)	Sri. Narasimha Jeeyar, Rtd. Superintendent Govt T.T.I., Tumkur.
9.	Member	Sri. Abdul Salam Beig, Rtd. Senior Assistant Director.
10.	Member (Community Representative who involved in Edn.)	Sri. SrinivasRotarian, Director, Maruthi Education Society.
11.	Member (Community Representative who involved in Edn.)	Sri. Shivaram Rao, Rtd. Teacher, Madhugiri.
12.	Member (Woman interested in Edn.)	Smt. Jeevaratna, Commissioner, Bharat Scouts & Guides.
13.	Member	Smt. Parvatamma, W/o Venkataranga Reddy, I.D.Hally, Madhugiri Taluk.
14.	Member	Sri. Ramayya, President, District Level primary School, Teacher's Association.
15.	Member	Sri. Hucchachar, Secretary, Dist. Saksharatha Committee.
16.	Member (Representative of SC / ST)	Sri Puttahanumantharayappa, Madhugiri.

SARVA SHIKSHA ABHIYAN

DEEP DISTRICT RESOURCE GROUP

<i>Sl. No.</i>		<i>Designation</i>
1.	Chairman	Smt. Rahamath Unnisa, Deputy Director of Public Instruction, Tumkur South.
2.	Members	Sri. S. K. Kallaiahyanavar, Principal, D.I.E.T., Tumkur.
3.	Member Secretary	Sri. S. Najeebulla Khan, Senior Lecturer, D.I.E.T., Tumkur.
4.	Members	Sri. Ashwathaiah, Senior Lecturer, D.I.E.T., Tumkur.
5.	Members	1) Sri. Prabhakar, B.E.O., Gubbi. 2) Sri. Appajaiah, B.E.O., Kunigal. 3) Sri. Rajashekar, B.E.O., Tiptur. 4) Sri. Ramanjaneya, B.E.O., Tumkur. 5) Sri. Palakshiaha, B.E.O., Turuvekere. 6) Sri. Maranayak, B.E.O., C.N.Hally.

<i>Sl. No.</i>		<i>Designation</i>
6.	Members	<p>1) Sri. Shivanna, Block Resource Co-ordinator, Gubbi.</p> <p>2) Sri. Rangaswamy.D., Block Resource Co-ordinator, Kunigal</p> <p>3) Sri. Manmohan, Block Resource Co-ordinator, Tiptur.</p> <p>4) Smt. Alimunnisa, Block Resource Co-ordinator, Tumkur.</p> <p>5) Sri. Somashekar, Block Resource Co-ordinator, Turuvekere.</p> <p>6) Sri. Bairappa, Block Resource Co-ordinator, C.N.Hally.</p>
7.	Members	Sri. U.I. Khalil Ahmed Sharif , Senior Lecturer, D.I.E.T., Tumkur.
8.	Members	<p>1) Ro. Vishwanath Chairman, Rotary, Tumkur.</p> <p>2) Sri Abdul Aziz, Deputy Manager, S.B.I., Tumkur.</p>
9.	Woman member interested in Education.	<p>1) Mrs. Jeevaratna, Scout Officer,</p> <p>2) Mrs. Shashimukhi Devi, Retd. Education Officer</p>
10.	Members	Sri. G. Ramaiah , President, Dist.Primary School Association, Tumkur
11.	Members	Sri. Hucchachar , Secretary, Dist. Saksharatha Committee.
12.	Representatives of SC/ST interested in Education	<p>Sri.Puttahanumantharayappa.</p> <p>Madhugiri</p> <p>Smt. Parvathamma Venkataranga Reddy</p> <p>I.D.Hally, Madhugiri taluk.</p>

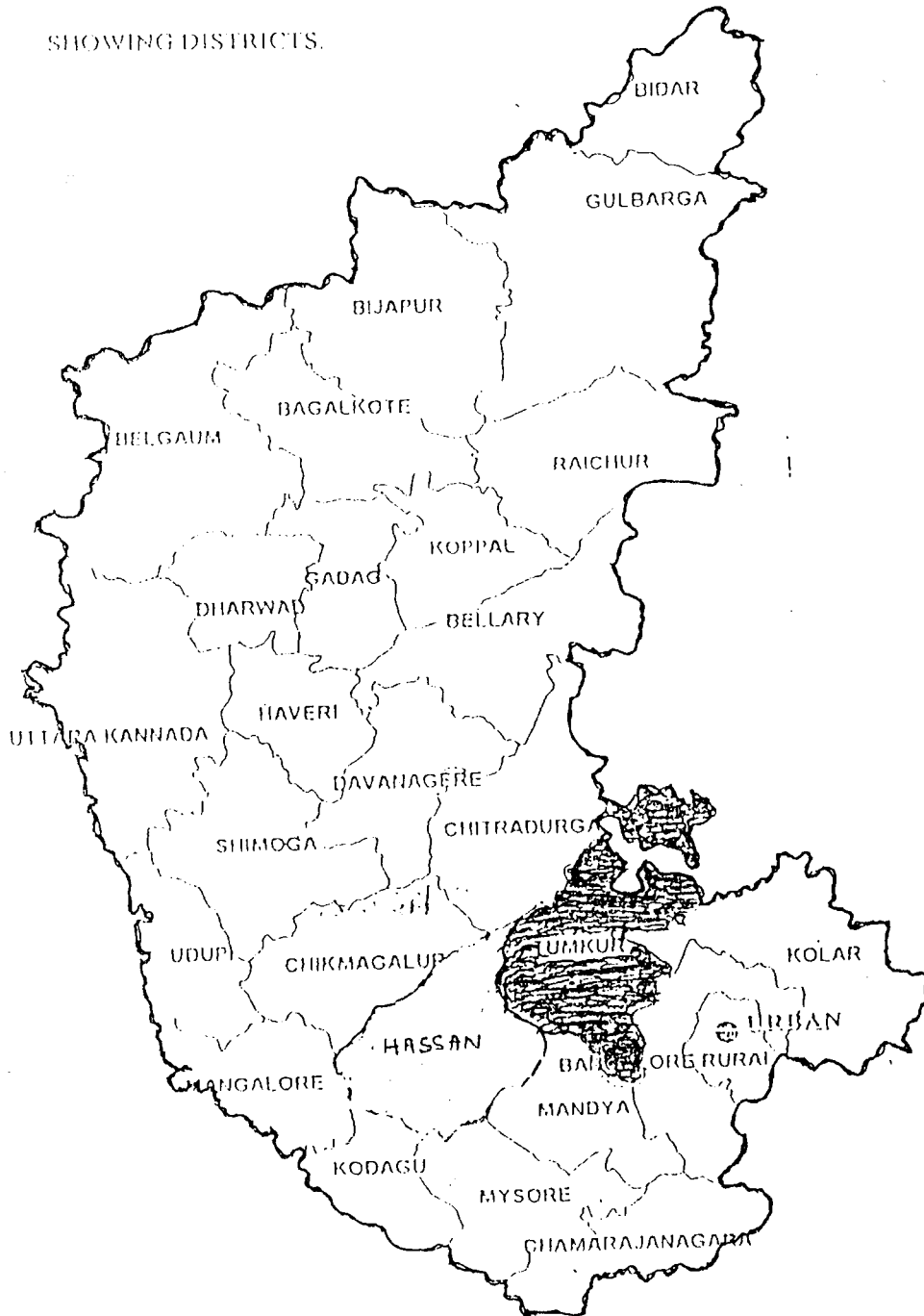
SARVA SHIKSHA ABHIYAN**TUMKUR DISTRICT PLANNING COMMITTEE**

- 1) **Smt. Rahamath Unnisa**, Chairman, D.D.P.I., (Admn.)
- 2) **Sri. Kallayanavar**, Principal & Ex-Office, D.D.P.I. (Dev.)
- 3) **Sri. S. Najeebulla Khan** Dist. Project Officer.
- 4) **Sri. Aswathaiah**, Senior Lecturer, D.I.E.T., Tumkur.
- 5) **Sri. Maranayak**, B.E.O., C.N.Halli .
- 6) **Sri. Prabhakar**, B.E.O., Gubbi.
- 7) **Sri. Appajaiah**, B.E.O., Kunigal.
- 8) **Sri. Rajashekar**, B.E.O., Tiptur.
- 9) **Sri. Ramanjineya**, B.E.O., Tumkur.
- 10) **Sri. Palakshaiah**, B.E.O., Turuvekere.
- 11) **Sri. Byrappa**, B.R.C., C.N.Halli.
- 12) **Sri. C. Shivanna**, B.R.C., Gubbi.
- 13) **Sri. D.Rangaswamy**, B.R.C., Kunigal.
- 14) **Sri. Manamohan**, B.R.C., Tiptur.
- 15) **Smt. Aleem Unnisa**, B.R.C., Tumkur.
- 16) **Sri. Somashekhar**, B.R.C., Turuvekere.
- 17) **Sri. K.G. Omkara Murthy**, Assistant.
- 18) **Sri. Narayanappa**, Assistant.

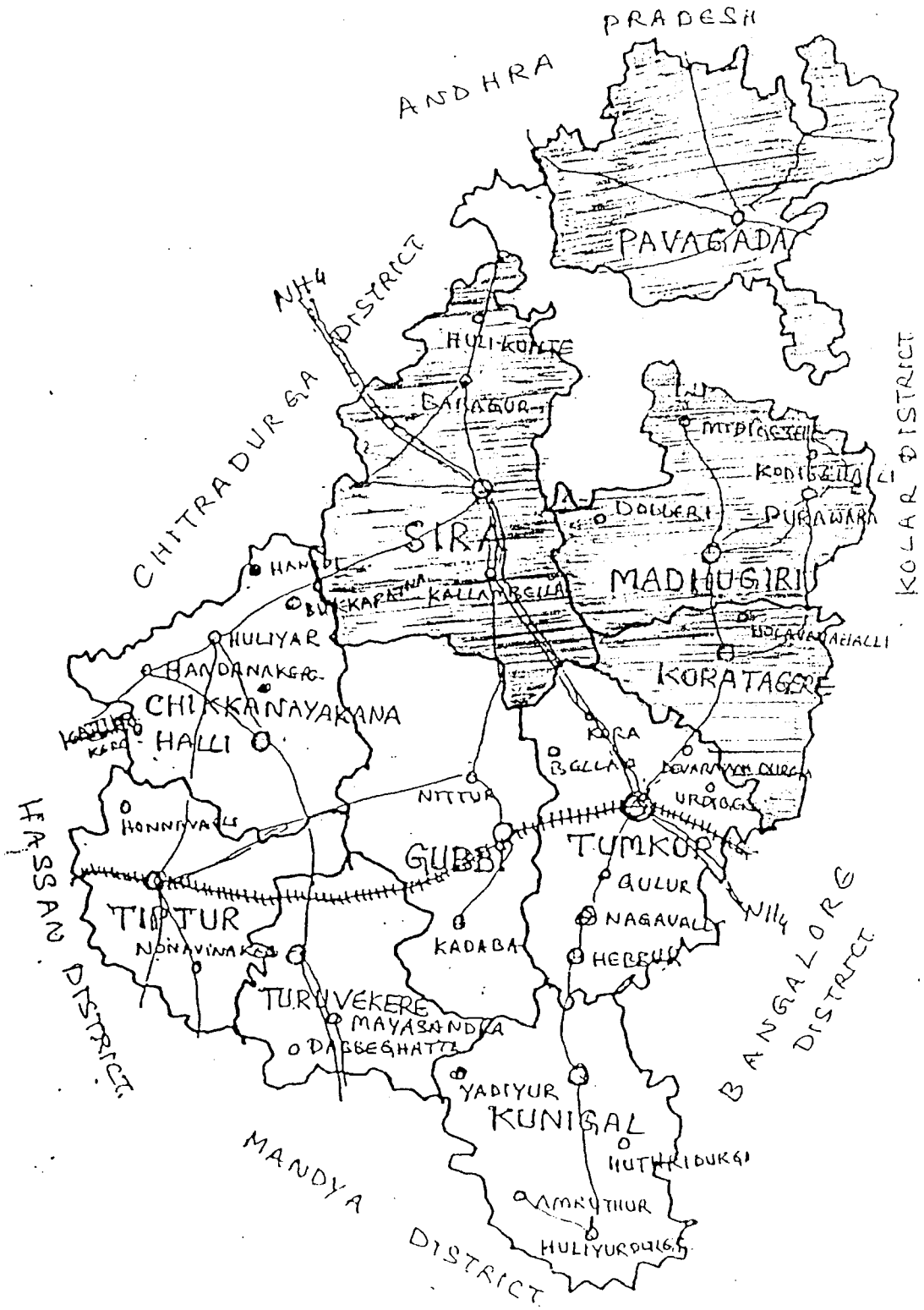
KARNATAKA STATE



SHOWING DISTRICTS.



MAP OF TUMKUR DISTRICT SOUTH



SARVA SHIKSHA ABHIYAN

C O N T E N T

<i>Sl. No.</i>	<i>Chapter</i>	<i>Page Nos.</i>
1.	DISTRICT BACK GROUND	
1.1	District Profile in General	
1.2	District Education Profile	
1.3	Management Structure of Primary Education.	
2.	EDUCATIONAL BACKGROUND OF THE DISTRICT	
2.1	Blockwise Educational Facilities	
2.2	All kinds of Educational Facilities	
2.3	Enrollment & Retention	
2.4	Projection of GER, NER & RR Growths	
2.5	Teacher's Position	
2.6	Facilities available in Schools	
2.7	Other Activities	
2.8.	Achievement Level	
2.9	Capacity Building	
2.10	Details of Intervention	
2.11	Status of Girls Education	
2.12	Education for disabled children	
3.	PROCESS OF PROJECT FORMATION	
3.1	District Level	
3.2	District Core Team DRG, BRG	
3.3	Process of Survey	
3.4	Samudayadatta Shale	
3.5	Other Processes	
4.	ISSUES & PROBLEMS IN PRIMARY EDUCATION	
4.1	Access	
4.2	Enrolment & Retention	
4.3	Achievement	
4.4	Capacity Building	

Sl. No.	Chapter	Page Nos.
5.	GOALS & OBJECTIVES	
5.1	Access	
5.2	Enrolment	
5.3	Retention	
5.4	Quality Improvement	
5.5	Capacity Building – General & Specific	
6.	STRATEGIES & PROGRAMME COMPONENTS	
6.1	Access	
6.2	Enrolment	
6.3	Retention	
6.4	Quality Improvement	
6.5	Capacity Building	
7.	ANNEXURES	
8.	BUDGET ESTIMATES	

* * * * *

SARVA SHIKSHA ABHIYAN

District Profile in General

1. Area of District in Sq. Kms : 10.596
2. No. of Revenue Blocks : 06 Blocks
3. No. of Educational Blocks : 06 Blocks
4. No. of Gram Panchayats : 321
5. Total Population of the District : 2579516 (Table Enclosed)
6. Total Cultivated Land : 52.62 %
7. Per Capita Income : 9,011
8. No. of Hospitals : 148 (inclusive of Allopathic, Ayurvedic, Private & P.H.C.s)
9. Dominant Population Group : Vokkaligas - I
Lingayats - II
10. Main Occupation : Agriculture
11. Major Industries of District : 1) H.M.T.
2) Ammasandra Cement Factory
3) Wipro &
4) Raising to Majority is T.V.S.
12. Major Crops of District : Ragi, Paddy, Jowar, along with Cereals, Moong Cowgram, Toordal, Beans, Soyabean, along with Rich crops of Coconut, Areca & Plantains.

SARVA SHIKSHA ABHIYAN

Tumkur District – South

(Educational District out of 10 Blocks)

Sl. No	Revenue Blocks in the District	Sl. No.	Educational Blocks in the district
1.	CHIKKANAYAKANAHALLY	1.	CHIKKANAYAKANAHALLY
2.	GUBBI	2.	GUBBI
3.	KUNIGAL	3.	KUNIGAL
4.	TIPTUR	4.	TIPTUR
5.	TUMKUR	5.	TUMKUR
6.	TURUVEKERE	6.	TURUVEKERE

N.B. :- Out of 10 blocks in the Revenue district of Tumkur 6 blocks are provided to Tumkur district South on Educational Division owing to the increase in number of institutions and managerial problem. The entire district is divided into 2 educational blocks. (1) Tumkur South with 06 blocks as said above and (2) Tumkur North with 04 blocks naming (a) Koratagere (b) Madhugiri (c) Sira & (d) Pavagada .

SARVA SHIKSHA ABHIYAN

Statement Showing Grampanchayat's Hoblies, Town & Village Habitation

Sl. No.	Name of the Taluk	Area in Sq. Km.	No. of Hoblies	No. of Grama Panchayat	No. of Habitation Villages	Town Municipal's
1.	C. N. HALLY	1.113	5	28	226	1
2.	GUBBI	1.221	6	33	325	1
3.	KUNIGAL	981	6	36	291	1
4.	TIPTUR	785	4	28	222	1
5.	TUMKUR	1.026	6	39	360	1
6.	TURUVEKERE	778	4	26	228	1
	TOTAL	5.904	31	190	1652	6

SARVA SHIKSHA ABHIYAN

Health Profile Of Tumkur South District

Sl. No.	Taluk	Allopathic Hospital		Ayurvedic Hospital		Private Hospitals		Primary Health Centres	
		Numbers	Beds	Numbers	Beds	Numbers	Beds	Numbers	Beds
1.	C.N. HALLY	0	0	2	6	4	26	15	74
2.	GUBBI	0	0	5	5	--	--	18	82
3.	KUNIGAL	0	0	1	--	--	--	18	80
4.	TIPTUR	1	50	6	10	12	112	12	46
5.	TUMKUR	1	325	3	--	19	348	13	60
6.	TURUVEKERE	0	0	2	--	5	38	12	76
	TOTAL	2	375	19	21	40	524	88	418

SARVA SHIKSHA ABHIYAN

Agriculture Profile Of Tumkur South District

<i>Sl. No.</i>	<i>Taluks</i>	<i>Paddy</i>	<i>Ragi</i>	<i>Jowar</i>	<i>Maize</i>	<i>Wheat</i>	<i>Total</i>
1.	C.N. HALLY	1105	25711	1490	55	--	28361
2.	GUBBI	5246	33578	49	406	--	39279
3.	KUNIGAL	11286	31123	45	140	--	42594
4.	TIPTUR	2126	20372	735	--	3	23236
5.	TUMKUR	7084	30108	519	198	--	37909
6.	TURUVEKERE	2383	24145	359	31	--	26918

SARVA SHIKSHA ABHIYAN

Industries Profile Of Tumkur South District

<i>Sl. No.</i>	<i>Taluks</i>	<i>Cloth</i>	<i>Chemical</i>	<i>Engineering</i>	<i>Others</i>	<i>Total</i>	<i>No. of Employees</i>
1.	C.N. HALLY	--	--	--	12	12	450
2.	GUBBI	--	2	--	2	4	130
3.	KUNIGAL	--	3	--	11	14	710
4.	TIPTUR	--	2	--	23	25	910
5.	TUMKUR	--	6	60	103	169	9560
6.	TURUVEKERE	--	--	--	2	2	1509

SARVA SHIKSHA ABHIYAN

Statement Showing Animal Husbandry Details

Sl. No.	Name of the Taluk	Cattle	Buffaloes	Sheep	Goats	Pigs	Total
1.	C. N. HALLY	65224	20415	95831	28310	2054	211834
2.	GUBBI	69656	22388	71123	32330	734	196231
3.	KUNIGAL	72282	31796	88908	60510	759	254255
4.	TIPTUR	53546	17175	50570	20865	825	142981
5.	TUMKUR	81558	24395	55039	42578	801	204371
6.	TURUVEKERE	46711	24517	60226	27929	1146	160529
	TOTAL	388977	140686	421697	212522	6319	1170201

TUMKUR DISTRICT PROFILE

'TUMKUR' the name arises from "Tumbe" plants grown heavily all over the region. Tumkur is one of the progressing district of Karnataka. It is situated in the South-east region of the state between 12°-45' to 14° - 20' north latitudes and 76°-20' to 77°-31' east longitudes. The geographical boundaries of the district are Ananthapura district of Andhra pradesh to the north, Kolar district to the east, Bangalore Rural District to the south, Mandya and Hassan districts to the west. The total area of the district is 10,596 sq.kms. It is also 2700 ft above the sea level.

Out of 10,64,755 hectares of geographical land 52.63% of land is under cultivation. Out of entire geographic land 6.23% of area is a wasteland. Land beyond cultivation is 6.34%. Forest area is 4.22% remaining land is 30.58 %. These utilitarian aspects are viewed from geographical statistics of the district for the year 1994-95.

The district has dry climate relying on monsoon rains. The average rainfall is 550 MM. with lesser forest area. Eucalyptus and Banyan trees are commonly found in these regions. Round the year people below poverty line rely on wood for home fuel. The dry climate of the district with three seasons round the year always protects the human life without any extremities in temperature, which hardly varies between 38°C to 30.9°C. This moderate healthy climate lays a very good impact in the process of learning. Any season hardly bars the child from schooling. This balanced climate has attracted many

immigrants from North and South parts of the nation. The blessing of water is only through advent of monsoon and there are no live rivers in the district. Recently the Government has blessed the people of Tumkur with Hemavathi river waters by digging a channel across Hassan district. Major parts of the district usually faces drought.

Natural Resources :- The District has no bounty forests and rivers full of water round the year. As there is lesser forest area having trees like Banyan, Tamarind, Honne, Teak, Neem, Jackfruit, Eucalyptus, Sandal, Bamboo, Shikakai climbers and Thorny bushes of Lautana etc. Owing to the hobby of hunting the wild animals and birds have also become instinct. There are hardly some deers, peacocks, maina, cranes under protection of wild life. These naturally placed scenarios inspire the educational values more than seeing things on television screen. Tumkur hilly regions have more granites and lesser quartz. In some areas granite quarries have also taken a strong foot hold in extraction and supply including exports. Major part of the district has red soil and lesser area has black soil as in Chikkanayakana hilly region. The soil is fertile and helpful in growing plantation like Coconut, Areca, Plantains etc.

Mineralic deposits like Manganese, Lime stone, Iron ore, Quartz, Corundum, Silver sand, Dolomite, Soap stone, Clay and granite are found in distributive areas of the district. Amongst 38 mines (1995) in the district 11 are iron ore, 6 manganese, 9 lime stone, 3 clay, 6 quartz and 3 soap stone.

Chikkanayakanahally shares a major part of deposits which amounts to the formation of the Diamond Cement Factory, Ammasandra & the intake labourers got the benefit of getting their children admitted into the factory school with a good infra-structure. The same has become a boon to the surrounding village children of scarcely populated habitations, to get themselves enrolled in the institution. The chain formation started from the mother earth through its resources finally made men to achieve their intended ultimatum of educating their children in a good school.

The district is divided into ten revenue blocks. Recently owing to the expansion of educational institutions in the district it has been divided into two educational districts (1) Tumkur South District consisting 6 taluks Chikkanayakanahally, Gubbi, Kunigal, Tiptur, Tumkur & Turuvekere. (2) Tumkur North District with 4 taluks Kortagere, Madhugiri, Pavagada & Sira as blocks. All together ten revenue blocks are divided six and four to each educational district.

There are 321 gram panchayats in the entire revenue district with 8 Municipal towns and 2 CMCs .

POPULATION OF THE DISTRICT

As per 2001 census the population of Male is 10,50,297 and Female is 10,22,539 with a total of 20,72,836 in Rural area and in Urban 2,61,644 Male and 2,45,036 Female and total 5,06,680. In total the population both rural and urban is 25,79,516. During 1991 census

SARVA SHIKSHA ABHIYAN

Growth Of Population Decade Wise From 1901 To 2001

<i>Year</i>	<i>Total Population of Karnataka</i>	<i>Growth Rate (%)</i>	<i>Total Population Tumkur Dist.</i>	<i>Growth Rate</i>	<i>District Rate in State</i>
1901	13054754	--	671953	--	5.14
1911	13525251	3.47	739276	9.10	5.46
1921	13377566	1.10	776971	4083	5.80
1931	14632992	8.57	863221	9.99	5.89
1941	16255368	9.98	655809	9.68	5.87
1951	16401656	16.21	1151362	16.98	5.93
1961	23586772	17.74	1367409	15.79	5.79
1971	29299014	19.49	1627721	15.99	5.55
1981	37135714	21.10	1977854	17.70	5.32
1991	44807000	17.12	2305819	14.22	5.14
2001	--	--	2579516	11.86	--

the population of Tumkur district was 23,05,819. There is a variation of 2,73,697.

As per annexure - A enclosed it is clearly visible that the population growth is slowly decreasing since 1971 census from 17.59 % to 10.61%. This shows awareness developed amongst the masses of the district in giving Justice to their children. Density of population is 218 per 1 Square kilometer. It is lesser than that of state density in population which is 235 per sq. km.

LITERACY RATE

Tumkur district has achieved a gradual rise in its literacy rate as seen in the table enclosed. Annexure - (2) during 1971 literacy of Male & Female was 29.40 % by 1981 it was 36.92 %, by 1991 it was 54.48% and now by 2001 census 8,93,235 (76.88%) Male and 6,43,497 (57.17%) Female have shown literacy achievement and total literates are 15,37,332 in the district achieving 67.18% of literacy.

As per the literacy rate shown above along with enclosed Annexure it is clearly disclosed that literacy amongst females is lesser comparatively in all the decades since 1971. Literacy rate amongst SC/ST Community is also less though it is showing some improvement but is very less amongst females of this community. It is very essential that these females be made to learn in Alternative Innovative Education System. The colonial areas are traced out and AIES be established.

The net per capita income on current rates as per 1997 - 98 is Rs.9,011/- . The number of Govt. Hospitals in the revenue district are 04 and every taluk block and hobli block has a PHC which are 30 in number and 57 private hospitals / nursing homes comprising totally 1,157 beds. This facility has to be extended with still more medical care in rural areas which will diminish the ill sector of humans which incidentally helps the poor in regaining their health to send their children to schools instead of child labour.

The dominant population in the District is Vokkaligas, the actual cultivators. Second stands the Lingayat community, the remaining groups share the minority numbers. The major occupation of the District is Agriculture, 658056 Hectares of land is on cultivation, 112235 Hectares of land is irrigated land from various water sources. The major crops of the District are Paddy, Ragi, Jowar. The dicot plants grown are Tour dal, Beans, Cowgram and Horsegram.

The Major industries of the District HMT and the Diamond Cement Factory at Ammasandra. Along with these factories that have entered into major production are WIPRO and TVSE. These with so many minor industries existing on high ways and Industrial estates have created opportunities for thousands of locals in gaining employment. It is also a venue attracting illiterate and drop outs towards education .

CHAPTER – 2**EDUCATION BACKGROUND OF THE DISTRICT**

(Status review of the District)

As for the block wise educational facilities available in the district are enclosed in tabular form we see the literacy rate in the district begins with a good number in 1st Standard and goes firmly upto 4th Std., with lesser number of dropouts and in 5th Standard it takes a steep turn under the age of 14 we find the number raising with an approximate percentage of 23 %. Most of the rural children though facilitated with opening of institutions in a range of 1 to 1.5 kms with an existing strength of 20 & above children at the age of 11 & 12 becomes a constraint amongst girls to remain a dropout with an attainment of adolescence. The recent census of January 2001 with proformas consisting 6A-SC community, 6B-ST community, 6C-Group-I, 6D-Others, 6E-Totally All & 6F-Muslims is enclosed along with for reference to have the know-hows of non-school going and dropouts between the age group of 5 - 14 . These tables also show the age group of children between 0 to 5 accounted in the district. The table has projected 4,25,979 as total number of children between the age group of 5 to 14 out of which 3,81,516 are under school. Remaining 44,463 are non-school going and dropouts. Amongst 2,10,756 children between the age group of 0 to 5 is the access for future enrolment into the main stream annually. It is also essential to go for EGS & AIE System to be implemented in several child labour areas which are very hard bounded. We find such zones in urban sectors in the limits of Municipality & Corporations. For a contrast study the child population

of 1991 census is also enclosed here with for GVR, NER & RR growth with the present status.

Teachers Position :- In the primary sector of the district for the past 1 decade the teacher position in the Govt., institutions has shown greater scarcity and has halted several rural children in becoming dropouts betained and non-school going children owing the pressure of work upon the lesser number of teachers in multi-class schooling system. As far the books concerned to the 1st Std and onwards have shown languages and core subjects to be taught by a single teacher from 1st to 4th Standard. The evaluation of teaching learning process has given out the tough strategy of achievement by the pupils. The bond of interaction along with assignments and teaching, testing procedure have weakened the child's further education. This deficiency has given an awareness in the department to recruit more number of teachers for lessening the burden. The Pupil-Teacher ratio fixed as 1:40 is a norm holds good only in big institutions having good number of sections. It get. It gets flopped in rural areas for having lesser number of children in various classes which never fulfils the norm of ratio fixed as 1:40. Now after declaring primary schooling as 1 - 5. The minimum number of school teachers per school with a minimum number of 20 & above pupils is also a problem. We cannot declare such habitations with lesser number of children in the institution as unavailable.

As for the facilities available in the existing Govt. primary schools the physical infrastructure is not very much attractive and is not laying a good impact on education. This includes the school

building with a classes constructed with insufficient light and aeration and the uneasy seating arrangement on the open floor has added to unhygienic schooling. The area of classroom also exhibited the tight seating along with space for teacher's movement and keeping school furniture which chokes the learning system.

Children of rural area do not have toilet facilities in 90 % of the schools. Recently under GRY & NABARD Schemes construction of toilet to upper primary school is taken up with an estimation of Rs.50,000 per each institution to a maximum of 130 schools. This will not fulfil the need for healthy toilet system in villages. Drinking water is also very essential for the children during schooling hours. Supply of portable water to the schools through a pipe line from a nearest cistern and atleast from a nearby borewell is a must. This quenches the rate of thirst amongst the children during learning. Electricity is also an essential need in upper primary as well lower primary schools. Recent schemes of Samudayadatta Shala Programme or even the other community participating programmes demand lighting during sunset. The estimated cost may amounts to Rs.5,000 for an LPS and Rs.10,000 for an UPS. Teaching, learning materials have been supplied long before during operation blackboard implementation programme and have proved 75 % waste connected to the recent curriculum provided to the children. Thus keeping hopes of getting suitable teaching-learning material the schools of Tumkur district have decided to gain the right material for lab equipments, library, maths kit, maps & charts and the sports kit including the music set. Inclusion of reference material into the library will abridge the teachers to gain the caliber needed for teaching-learning activity. The broken furniture and

insufficiency of cupboards has a made a puzzle for storing material in institution till disbursal among the pupils. Most of the institutions do not have seating facility for upper standards hardly 4 – 5 de^{sk}s for 7th standard pupils are insufficient to hold a strength of 30 – 40. Whereas classes below the ^{rank} of 7th hardly have some planks and benches. These very benches & planks are a punishment to the pupils throughout the day for holding their bags and books on their laps. Otherwise the loss of material and carelessness creeps in. To avoid this absurd scene of shooting trouble to the learner, it is obvious that desks be provided to almost 92 % of the institutions comprising both lower & upper primary.

Activities conducted in the district on UEE :- The district has imparted several activities in keeping a thrust in upringing universalisation of elementary education. The teachers are given sufficient training through Chaitanya programme, Dattaka Yojana, Samudayadatta Shala programme have played an important role in making the community to assess the achievement level of their children and to send the dropouts into the institutions which are providing good educational culture amongst the pupils.

Achievement Level :- The District Institute of Education & Training has taken the task of baseline assessment to analyse the achievement level of pupils in 2nd, 4th & 7th standard by providing the test material of previous learnt classes. As the base line survey is carried out still with just the completion of training to the supervision staff no analysis has been carried out either to and further details will be collected in future.

Accounting the calibre of teachers preparedness and the execution in teaching the committee has come to the conclusion of upraising them to gain required knowledge and expression to make the teaching-learning system much effective. For this act the current year of 2001-2002 is very much utilised and will continue the training on the need based hard core areas. The supervisory and monitory staff in the name of education coordinators and block level officers have also been sufficiently given directions to lay an impact on supervision and healthy guidance. To act as the resource units every block will hold the block level resource committee with one B-Grade officer as BRC and 5 sub-ordinate officials as block resource persons. Their selections are made in ad-hoc formats. Consequently for every 50 numbering teachers a cluster resource centre is established with one officer-in-charge in the grade of a secondary school assistant. This set of arrangement has to be established permanently for abridging the need in the schooling system.

Details of Intervention so far undertaken in the district for Universalisation of Primary Education :- The Centre & the State have taken many more tasks in attracting the masses between the age group of 6 - 14 in enrolling themselves into the main stream of schools. Provision of free books in primary as well as in upper primary for girls, provision of free uniforms in Vidya Vikasa Yojana Scheme in lower primary & extended for girls and boys of upper primary for SC/ST communities. Provision of school bags and 3 kilos of rice for every 80 % of attendance per month to a child is also there in the current system. Along with these interventions scholarship & fee exemptions are also

being provided to the children which has attracted both the parents as well the children to enter into the arena of learning.

Status of Girls education in the District :- The district is giving much prominence in implementing all the interventions provided by the govt., to the schooling of girls. The aforesaid interventions are common and special provisions like rural scholarships, bags, books & uniforms are given in attracting them to join the main stream of education.

Education of Disabled Children in the District :- The district has several schools having disabled children enrolled in the main stream of learning and training is imparted to the teachers who are dealing with such classes. Scholarships amounting to Rs.1,200/- is provided to each disabled child p.a. for its incurring expenditure.

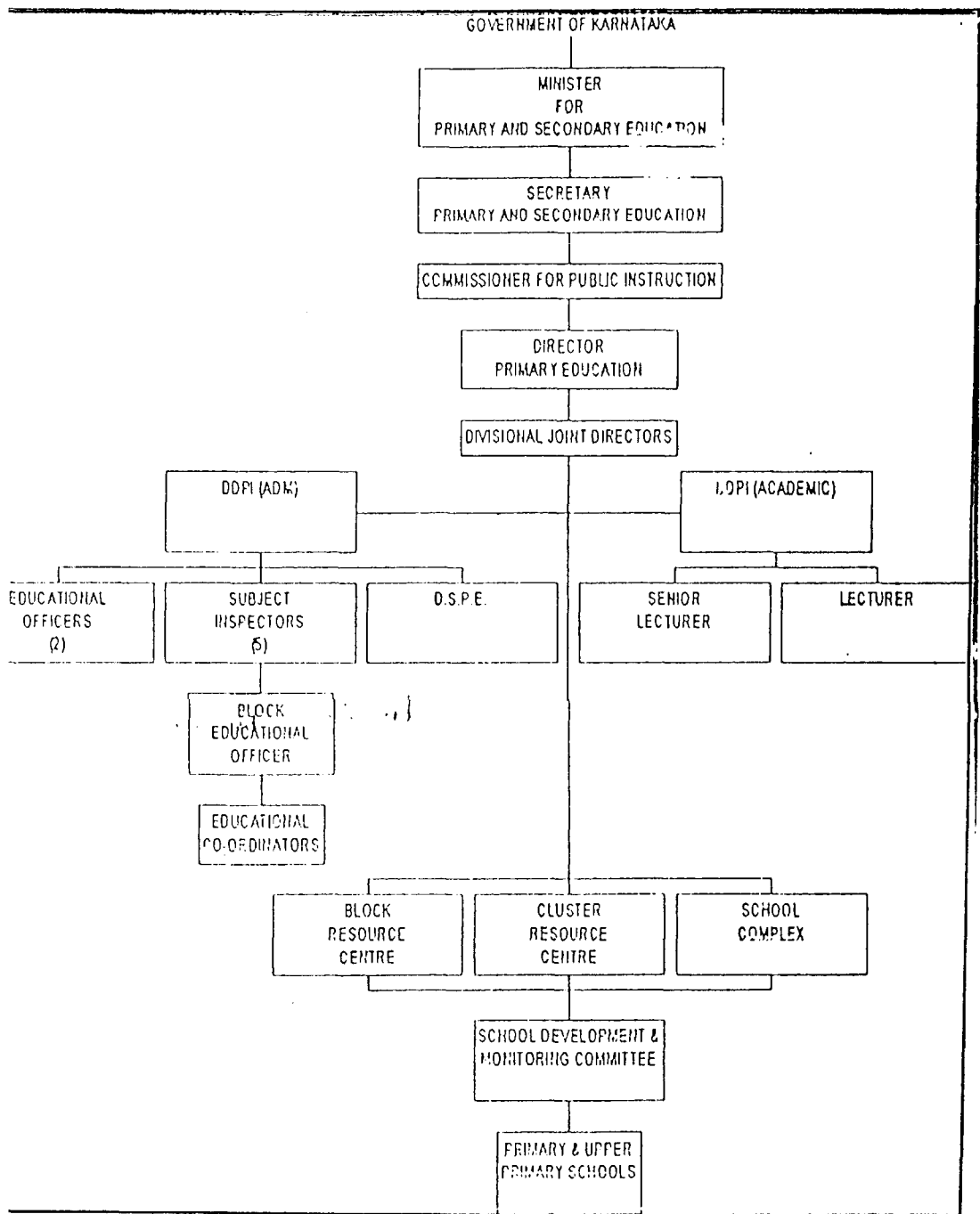
SARVA SHIKSHA ABHIYAN, TUMKUR DISTRICT SOUTH

STATUS OF ELEMENTARY EDUCATION IN TERMS OF AVAILABILITY AND REQUIREMENT PERCENTAGE

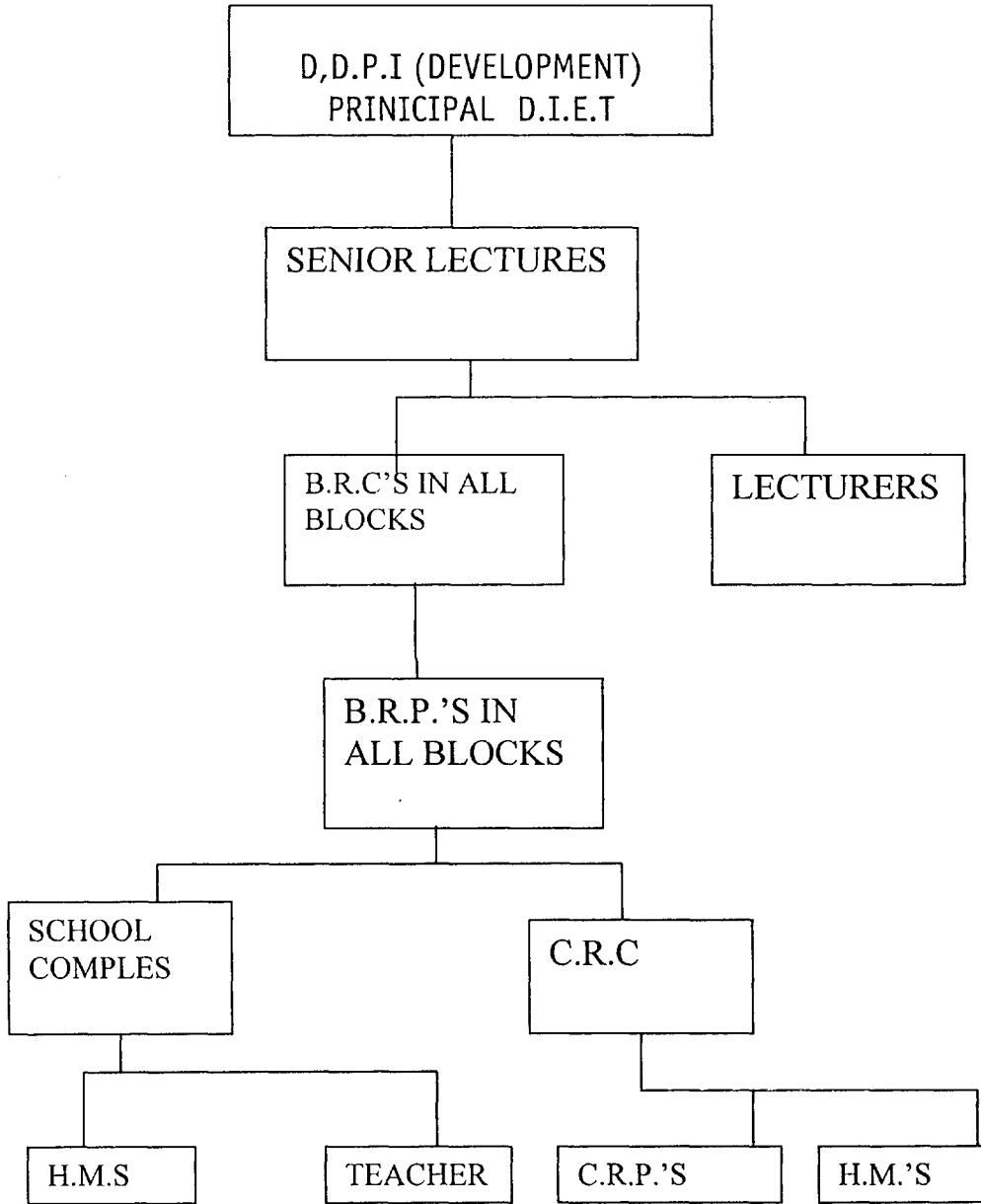
SL. NO				
1.	Number of Primary and Upper Primary Schools established since 1993-94 upto 2001-02	PS + UPS = Total 143 + 297 = 440	Total Existing Coverage of Schools in percentage 2266	19.41%
2.	Buildingless Schools	75	2271	4.57% Coverage
3.	Availability & Requirement of class rooms in perpective plan	Existing 6063 Requirement 2817 = 8880	Existing 68.27%	Requirement 31.73%
4.	Compounds	827 PS + 709 UPS = 1536	Existing 10.36%	Requirement 89.64%
5.	Toilets	779 + 710 = 1689	25.46%	74.54%
6.	Drinking water	1019 + 710 = 1729	23.69%	76.31%
7.	Electricity	1179 + 715 = 1894	16.41%	83.59%
8.	Repairs	1242 + 870 = 2112	6.8%	93.2%
9.	Furniture	1388 + 868 = 2256	0.44%	99.56%
10.	TL Material Non OBB OBB	675 + 162 = 837 705 + 706 = 1411	60.31% 35.89%	33.35% 64.11%
11.	Additional Teachers	422 + 2132 = 2554	76.18%	26.17%

D.D.P.I
Tumkur South
TUMKUR

MANAGEMENT STRUCTURE OF PRIMARY EDUCATION



MONITORING SYSTEM



DISTRICT EDUCATION PROFILE

The Tumkur revenue district has shown a gradual hike in its literacy rates in the past 3 decades. During 1981 48.24 % of Male & 25.14 % of Female became literates. Amongst SC / ST 31.30 % Male & 10.94 % Female achieved it. During 1991 66.49 % Male & 41.93 % Female have become literates. Out of these 45.24 % Male & 24.61 % Female amongst SC / ST gained literacy. During 2001 the latest census have shown 76.88 % of Male & 57.17 % of Female as literates which amounts to 61.18 % of literacy.

The number of Anganwadis & Pre-primary

Education Centres of the South District	1,471 (6 blocks)
The number of lower primary schools	1,388
The number of single teacher schools	258
The number of Upper primary schools	878 (6 blocks)
The number of high schools	Govt.- 87, Aided -168 &Unaided- 90.
The number of P.U. Colleges	Govt-27, Pvt. - 42.
The number of TCH Colleges	06
The number of Engineering Colleges	04
The number of Pharmacy Colleges	03
The number of Medical Colleges	01
The number of Law Colleges	02
The number of Polytechnic Colleges	07
The number of I.T.I.s	10
The number of B.Ed. Colleges	05

CHAPTER - 3**PROCESS OF PROJECT FORMUALATION****State Level Training :**

The state office has conducted several training programmes in upbringing the district officers including the Nodal Officer and connected faculty in going through the frame work of Sarva Shiksha Abhiyan and in gaining the know-hows in preparing the perspective and the annual plan. It has also taken the task of giving training in analysing the dropouts through cohort analysis. The district institute of education training planning & management one senior lecturer and 2 additional staff along with district nodal officer are trained in base line assessment workshop conducted for a span of 5 days from 06.08.2001 to 10.08.2001 through D.P.E.P. Administrative Officer. Along with the above trainings the execution for pre-plan project activities as per the need of the area is also directed from the state upon the released budget to the district. The amount so far released is shared in the activities by both the educational districts Tumkur North (Madhugiri) & Tumkur South District Level Training :

The district office Deputy Director have taken the task of forming district level implementation committee and district resource committee and have conducted mobilisation workshops and training by giving sufficient material on Sarva Shiksha Abhiyan in the form of pamphlets, brochures and translated material along with. The elected representatives along with the implementation committee has

approved the pre-project activity plan with that stage wise execution as per schedule was taken up. The block education officers and the block resource coordinators along with block resource persons and educational coordinators were called several times in imparting training on Sarva Shiksha Abhiyan. An educational tour was also conducted to D.P.E.P. district, Mysore in learning the implementation made practically in the field of education by taking certain sample institutions for visit and attended grama sabha organised to evaluate the execution made in subsiding the dropouts in that area. The outcome of the tour along with samples conducted have been discussed thoroughly and allocation was released for mobilisation activity.

The district core team district resource group & block resource group have visited the villages in their concerned blocks and have interviewed the parents, community leaders, teachers, others and other departmental personal and have discussed various issues connected to the dropouts and have reasoned out majority of the commitment is because of poverty and venued towards the child labour. In door-to-door survey during the month January 2001 parents including the community leaders have given sufficient assistance in conducting the census work. Hardly 0.1 % of erratum might have crept in and has been solicited for rectification during E.M.I.S. Survey.

Habitation plans are printed at the district level work shop as per the need of the localities in the district through the advisory district resource group. These habitation plans have given a lot of information in finding the lacuna for incurring the dropouts and has also helped in finding the remedy to subside the dropout ratio.

Samudayadatta Shale :

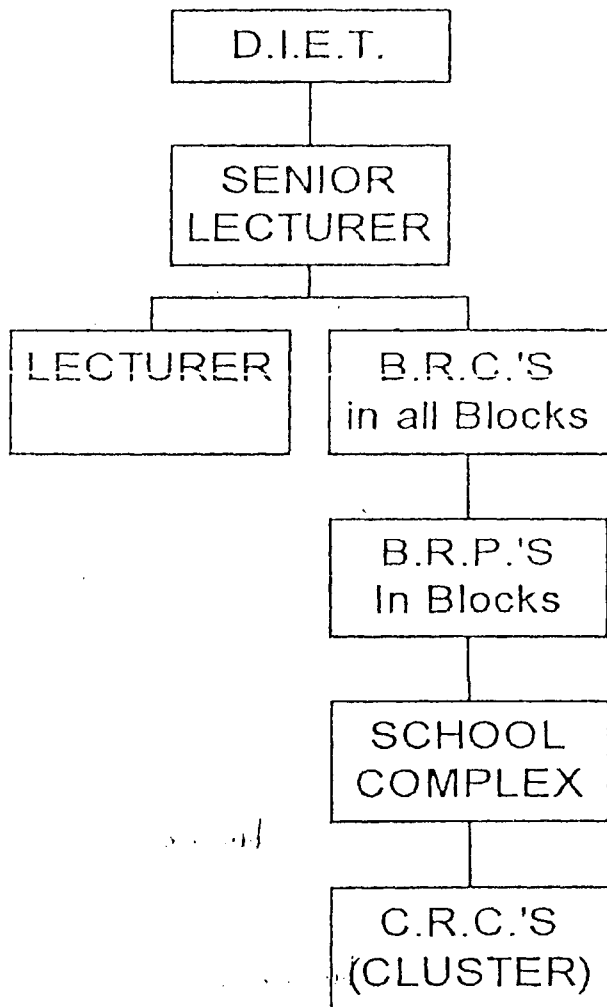
Totally 3,450 primary and upper primary schools have been involved in Samudayadatta Shale programme. An ideal proforma was made for visiting and getting the outcome of this programme. For primary schools a high school teacher was made a nodal officer to visit during the last 5 programmes in visualising the committee coordination and community participation in sharing the experience out of the evaluation of their children in the tests & examinations conducted in the current year. A joyous participation in gaining the vision of cultural programmes by the children was also witnessed by the parents. It has created a bond between the school and community. This awareness has helped the institution children in subsiding their dropouts.

Minchu Sanchara Tanda :

A special team organised by the Deputy Director of Tumkur District for visiting the institutions uninformed, to witness the duties executed by the teachers as per the scheduled time table in schools. This has created a great awareness amongst the teaching staff to remain ever vigilant and to stick on to their duties without negligence and ignorance. All educational Officers of the concerned blocks along with their subject experts team in all the 6 subjects will visit the Primary Schools, Upper Primary Schools & High School on given route map by the DDPI on the same date. The teacher's presence, along with

their lesson plans, yearly plans, valued answer scripts, valued home assignment books, copy writing books, exercises etc., will be checked thoroughly. Teacher pupil ratio, learning teaching activity will be observed. A 30 inspection report by all the concerned officials with a given format will be followed up by the concerned BEO of the Taluka. The defaulter will be punished on the spot (with LWA holding up of increment etc.,) This type of Task Force was launched during the month of September 2000 which has shown its progress in educational field and is of its own kind in the whole of Karnataka.

TRAINING AGENCIES IN THE DISTRICT



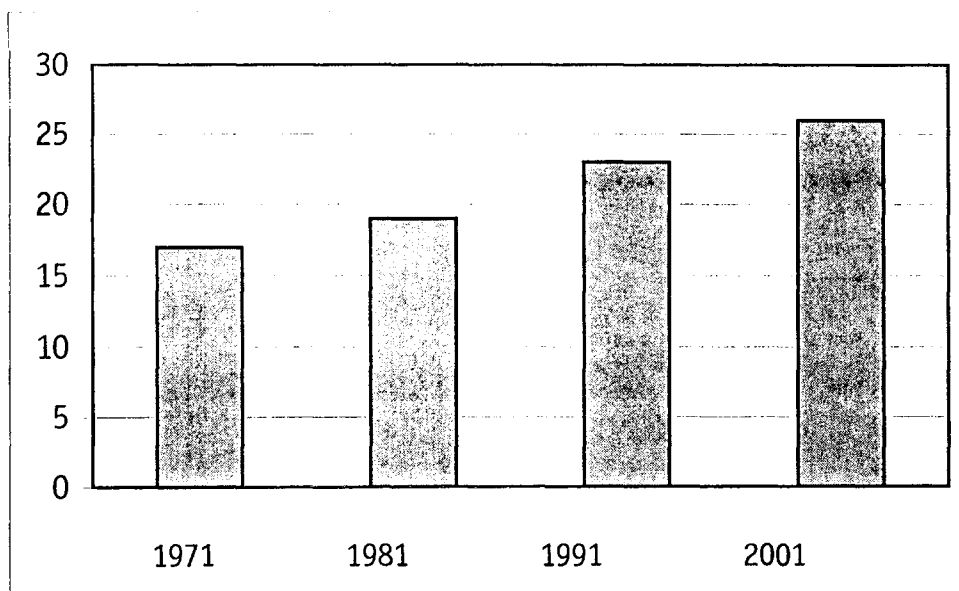
Requirements :-

1. B.R.C.'s should be permanent
2. Infra-structure facilities to B.R.C.'s--office training hall
3. Salary and others claims of B.R.C.'s

SARVA SHIKSHA ABHIYAN

Population Growth in Four Decades of Tumkur District
showing the hike between 1971 to 2001

Population in
lakhs



SARVA SHIKSHA ABHIYAN

Tumkur Dist - South

CHILD POPULATION & Gross Enrolment Ratio

Cate gory	Child Populatio n 6-11 Yrs	Enroll- ment Class 1-5	G.E.R	Child Population 11-14 Yrs	Enroll- ment Class 6-8	G.E.R.
SC						
B	12453	12928	103.81	7750	7196	92.85
G	12064	12434	103.06	7173	6635	92.49
T	24517	25362	103.43	14923	13865	92.67
ST						
B	3645	3721	102.08	2381	2238	93.99
G	3607	3821	105.93	2346	2174	92.66
T	7252	7542	103.99	4727	4412	93.33
MINORITIES						
B	11933	12305	103.11	6208	5153	83.00
G	11513	12185	105.83	6199	5502	88.75
T	23446	24490	104.47	12407	10655	85.87
OTHERS						
B	48643	50968	104.77	30785	29292	95.15
G	46283	49694	107.36	34607	33663	97.27
T	94926	100662	106.04	65392	62995	96.27
GRAND TOTAL						
B	76674	79922	104.23	47124	44279	93.96
G	73467	78134	106.35	50325	47974	95.32
T	150141	158056	105.27	97449	92253	94.66

The above table shows the GER of all the caste in the age group of 6-11 & class I-V is more than 100 % .

SARVA SHIKSHA ABHIYAN

Tumkur Dist – South

NET ENROLMENT RATIO

Category	Child Population 6-11 Yrs	Enroll- ment Class 1-5	N.E.R	Child Population 11-14 Yrs	Enroll- ment Class 6-8	N.E.R
SC						
B	12453	12134	97.43	7750	7196	92.85
G	12064	11304	93.70	7173	6635	92.49
T	24517	23438	95.59	14923	13865	92.67
ST						
B	3645	2906	79.72	2381	2238	93.99
G	3607	3385	93.84	2346	2174	92.66
T	7252	6291	86.74	4727	4412	93.33
MINORITIES						
B	11933	11236	94.15	6208	5153	83.00
G	11513	11067	96.12	6199	5102	82.30
T	23446	22303	95.13	12407	10255	82.65
OTHERS						
B	48643	44892	92.28	30785	29292	95.15
G	46283	42709	92.27	34607	33663	97.27
T	94926	87601	92.28	65392	62995	96.27
GRAND TOTAL						
B	76674	71168	93.36	47124	43879	93.11
G	73467	68465	94.38	50325	47574	94.58
T	150141	139633	93.86	97449	91453	93.84

Overall Dropouts :- (Non-School going Children & Dropouts)

As per Child census of January 2001

Total No. of 5-14 age group children	S.C.	S.T.	Muslims
425979	87608	33725	40262
Non school going & Dropouts	11761	3956	4993
Percentage	13.42%	11.72%	12.4%

Teacher Pupil Ratio :-

Primary School	Upper Primary School
1 : 43.54	1 : 16.42

No. of Pry. Schools per 1000 population : 2.56 Schools

Teacher Class Room Ratio : 1 : 0.78

Pupil Class Room Ratio : 43.44 : 1

Boy Girl Ratio :

0 - 14 Age Group : Boys 26.38 : Girls 26.02 = 26.20

In Enrolment : 89.72 : 89.39

Average Achievement at Class 7th Std : District Level Public Exam. results.

Boys : 23795 Girls : 21412 = 45207

89.20 : 91.63 = 90.33 %

Per Child expenditure at primary level per annum : Rs. 5,874 /-

SARVA SHIKSHA ABHIYAN TUMKUR DISTRICT SOUTH

Number of Schools, Teachers and classwise Enrolment of Children for ten years for GER & NER Classwise enrolment of Children since 1992 to 2001

YEAR	No. of schools		No. of Teachers		1		2		3		4		5		Total		6		7		8		TOTAL	
	PS	UPS	PS	UPS	B	G	B	G	B	G	B	G	B	G	B	G	B	G	B	G	B	G	B	G
92-93	1246	585	1612	2595	18198	17579	17375	16082	16379	15496	15729	13381	14726	12912	82407	75450	13513	11679	11189	11821	1461	1149	26163	24649
93-94	1267	634	2262	2945	16122	16447	15951	14949	17003	16492	16161	15182	14190	12844	79427	75914	11899	10922	10454	9571	1684	1386	24027	21879
94-95	1278	682	2290	3210	17737	16820	16580	16212	15687	14609	15911	15272	15780	13765	81695	76678	13281	12691	12727	11480	1894	1848	27902	26019
95-96	1306	722	2354	3861	17842	17257	17345	16478	15481	15487	14990	14398	13874	12984	79532	76604	13321	11498	11384	10325	1748	1597	26453	23420
96-97	1321	723	2410	3574	17452	16621	16947	16225	15422	14947	14358	13996	14280	13568	79459	75357	13460	11559	12845	10200	1927	1672	28232	23431
97-98	1321	750	2541	3687	16436	15898	15589	15409	15805	15432	14462	14554	13403	12966	75895	74259	13221	12839	12083	11296	1758	1642	27062	25777
98-99	1349	826	2669	4557	18838	17877	15581	14798	15116	15008	15037	14798	13900	13835	78472	76316	13248	12633	13109	11662	2412	2017	8769	27312
99-2000	1362	836	2474	4755	15935	15375	16336	15961	15405	14237	15035	14844	12707	12617	75418	73034	13239	12499	13195	11941	5712	5222	31246	29662
00-01	1380	846	2444	4547	13883	13421	13827	13564	14464	14013	14944	12460	12908	12696	70026	66154	11996	11937	12524	12397	4155	3204	28675	27538
01-02	1389	882	2938	6360	14796	14129	13016	12820	13443	13006	13904	13152	13187	12140	68346	65247	11556	11259	12277	12361	3741	3411	27574	27031

Co-Hart Analysis – The analysis made in the said table above as shown the drop out rate of boys from Ist Standard to Vth from 1992-93 to 1996-97 with a fall from 18198 to 14280 with 3918 children dropping out as they reach 5th standard, the rate is 19.3%. Simultaneously during the same years the girls drop out rate from 1st to 5th is 22.81%. From 1997-98 upto current year the drop out rate of boys is 19.76% and of girls is 23.63%. During 6th to 8th std the drop out rate of boys is shown as 71.74% and of girls 72.70%. This pseudo drop is because of children admitted after 7th public exams into the nearest private high schools which is not accounted in government institutions.

INTERVENTIONS UNDERTAKEN FOR U.E.E.

Education is essential in bringing out the best in man. The Government of Karnataka has introduced many attractive programmes and taken up several tasks towards achieving U.E.E.

Though a movement towards compulsory elementary education has begun with significant results, we are yet to achieve 100% enrolment at elementary education.

Compulsory Elementary Education

Serious efforts are made to incorporate the following aspects in its attempt to achieve compulsory Elementary Education for all.

1. To create awareness and a sense of need among the local community.
2. Periodic and continuous assessment of current trends.
3. To evolve goals and to bring them within set time slots in the current decade.
4. To lay greater stress on improving the quality of education at the elementary level.

In an effort to supplement the measures toward achieving U. E.E. many pre-primary education centres, Nursery schools, Anganawadi centres have been set up in many places in the district.

It is very important to work towards retaining such children in school who have been already admitted. Arrangements have been made to bring all the children under the specific age group 6-14 years within census and to have them admitted to schools compulsorily. A special effort is made in case of girls and children belonging to S.C. and S.T. category for compulsory enrolment.

**INTERVENTIONS & YEARWISE BUDGET ESTIMATES OF TUMKUR SOUTH DISTRICT
FOR THE DISTRICT ELEMENTARY EDUCATION PLAN UNDER SSA.**

Sl. No.	Chapters & Interventions	Unit Costs	2001-02		2002-03		2003-04		2004-05		2005-06		2006-07		2007-08		2008-09		2009-10		Grand Total		
			Phy	Fin	Phy	Fin	Phy	Fin	Phy	Fin	Phy	Fin	Phy	Fin	Phy	Fin	Phy	Fin	Phy	Fin			
I.	ACCISS																						
1.	<i>Establishment of New Schools in Schoolless habitations.</i>																						
a.	Building with Compound Drinking Water, toilet & Electricity facility	3.6			18	64.8																64.8	
b.	Teacher Salary		36	10.44	36	20.89	36	20.89	36	20.89	36	20.89	36	20.89	36	20.89	36	20.89	36	20.89	36	20.89	177.59
c.	Furniture	0.2	18	3.6																		3.6	
d.	Teaching Learning Material	0.1	18	1.8																		1.8	
e.	School grant	0.02	18	0.36	18	0.36	18	0.36	18	0.36	18	0.36	18	0.36	18	0.36	18	0.36	18	0.36	18	0.36	3.24
f.	Teachers Salary																						
g.	Teachers grant	0.005	36	0.18	36	0.18	36	0.18	36	0.18	36	0.18	36	0.18	36	0.18	36	0.18	36	0.18	36	0.18	1.62
2.	<i>Additional inputs for existing Pry. Schools</i>																						
a.	Building with Compound, Drinking Water, toilet & Electricity facility			--	98	352.8																352.8	
b.	Additional Rooms 658	1.5	--	--	285	427.5	194	291.0	179	268.5												987.00	
c.	Compound 827		--	--	370	50.56	257	34.62	200	33.03												181.21	
d.	Drinking Water 1019		--	--	464	94.76	365	58.67	220	36.79												177.26	

35

Sl. No.	Chapters & Interventions	Unit Costs	2001-02		2002-03		2003-04		2004-05		2005-06		2006-07		2007-08		2008-09		2009-10		Grand Total
			Phy	Fin	Phy	Fin	Phy	Fin	Phy	Fin	Phy	Fin	Phy	Fin	Phy	Fin	Phy	Fin	Phy	Fin	
e.	Toilet Facility 979		--	--	493	61.67	268	33.17	218	26.13											121.06
f.	Repairs 1242		1242	62.10	1242	62.10	1242	62.10	1242	62.1	1242	62.10	1242	62.1	1242	62.10	1242	62.1	1242	62.10	558.90
g.	Furniture 1388		1388	220.94	--	--	--	--	--	--	--	--	--	--	--	--	--	--	--	--	220.94
h.	Electricity 1179		--	--	518	23.26	404	18.70	257	12.03	--	--	--	--	--	--	--	--	--	--	54.44
i.	Teacher grant 2348	0.005	2538	12.69	2538	12.69	2538	12.69	2538	12.69	2538	12.69	2538	12.69	2538	12.69	2538	12.69	2538	12.69	114.21
j.	Teaching Learning Materials .OBB & NON-OBB		1380	123.88	--	--	--	--	--	--	-	--	-	-	-	-	-	-	-	-	123.88
K	School grants 1388	0.02	1388	27.76	1388	27.76	1388	27.36	1388	27.76	1388	27.36	1388	27.36	1388	27.36	1388	27.36	1388	27.36	249.84
l.	Additional Teachers 422		422	122.57	422	245.14	422	245.14	422	245.14	422	245.14	422	245.14	422	245.14	422	245.14	422	245.14	1998.99
M	Electricity charges 1179	0.0075	1179	4.42	1179	10.61	1179	10.61	1179	10.61	1179	10.61	1179	10.61	1179	10.61	1179	10.61	1179	10.61	89.308
3.	<i>EGS Centres in Schoolless Habitations</i>																				
a.	Education Volunteers																				
b.	Teaching Learning Materials																				
c.	Building Grant																				
4.	<i>Upgradation of Existing Pvy. Schools</i>																				
a.	Additional Rooms 279	1.5	--	--	9	13.5	6	9.0	12	15.0											41.0
b.	Compound																				
c.	Drinking Water & Toilet Facility																				
d.	Electricity																				

36

Sl. No.	Chapters & Interventions	Unit Costs	2001-02		2002-03		2003-04		2004-05		2005-06		2006-07		2007-08		2008-09		2009-10		Grand Total	
			Phy	Fin	Phy	Fin	Phy	Fin	Phy	Fin	Phy	Fin	Phy	Fin	Phy	Fin	Phy	Fin	Phy	Fin		
e.	Repairs																					
f.	Furniture																					
g.	Teaching Learning Materials																					
h.	Additional Teachers		--	--	5	2.9	10	5.8	18	11.66	18	11.66	18	11.66	18	11.66	18	11.66	18	11.66	78.576	
s.	<i>Additional Inputs for Existing Upper Pry. Schools</i>																					
a.	Additional Rooms 2114		--	--	859	1288.50	697	1040.50	558	837											3171.00	
b.	Compound	709	--	--	338	94.75	238	70.75	133	36.90											202.40	
c.	Teachers Grant	.005	4769	23.845	4769	23.845	4769	23.845	4769	23.845	4769	23.845	4769	23.845	4769	23.845	4769	27.845	4769	23.845	214.605	
d.	School Grants	.02	878	16.236	878	16.236	878	16.236	878	16.236	878	16.236	878	16.236	878	16.236	878	16.236	878	16.236	146.124	
e.	Drinking Water & Toilet Facility 710		--	--	364	182	195	103	151	78											355.00	
f.	Electricity 715		--	--	331	27.51	222	18.92	163	14.27											60.70	
g.	Repairs 870	0.1	870	43.5	870	43.5	870	43.5	870	43.5	870	43.5	870	43.5	870	43.5	870	43.5	870	43.5	391.15	
h.	Furniture ,OBB 706 + NON OBB 162 0.5 & less		868	292.80																	292.80	
i.	Teaching Learning Materials 868																					
j.	Additional Teachers				3311	1924.22	3311	1924.22	3311	1924.22	3311	1924.22	3311	1924.22	3311	1924.22	3311	1924.22	3311	1924.22	12853.92	
k.	Hindi Teachers				878	510.3	878	510.3	878	510.3	878	510.3	878	510.3	878	510.3	878	510.3	878	510.3	4082.4	
l.	Physical Education Teachers				301	174.9	301	174.9	301	174.9	301	174.9	309	174.9	309	174.9	309	174.9	309	174.9	1399.2	
m.	Electricity charges 715	.001	715	3.575	715	8.58	715	8.58	715	8.58	715	8.58	715	8.58	715	8.58	715	8.58	715	8.58	77.22	
II.	ENROLMENT																					
a.	Updation of village education records.																					

Sl. No.	Chapters & Interventions	Unit Costs	2001 - 02		2002-03		2003-04		2004-05		2005-06		2006-07		2007-08		2008-09		2009-10		Grand Total		
			Phy	Fin	Phy	Fin	Phy	Fin	Phy	Fin	Phy	Fin	Phy	Fin	Phy	Fin	Phy	Fin	Phy	Fin			
b.	60 days refresher course for untrained teachers																						
c.	30 days training for freshly recruited teachers 2630		3311		3311	46.354																46.354	
d.	Scholarship for IED Children																						
IV.	CAPACITY BUILDING																						
<i>1.</i>	<i>Training</i>																						
a.	For Community Leaders																						
b.	For SDMC Members																						
c.	For Grama Panchayath Members																						
d.	Zilla Panchayath / Taluk Panchayath Members.		18216	10.92																		10.92	
e.	Block Level Officers & BRCs		240	0.36																		0.36	
f.	C.R.C.'s & H.M.'s		24441	12.557																		12.557	
g.	DIET faculty	73	73	0.095																		0.095	
<i>2.</i>	<i>Establishment of BRCs</i>																						
a.	Building		6	36																		36.0	
b.	Furniture		06	6.0																		6.0	
c.	Equipment		6	13.62																		13.62	
d.	Library																						
e.	Appointment of Staff (IBRC + 5 BRP's) C.G.		6	825	06	1.65	06	1.65	06	1.65	06	1.65	06	1.65	06	1.65	06	1.65	06	1.65	06	1.65	14.025
f.	Salary for BRC Staff & Maintenance		6	15.05	06	30.11	6	30.11	6	30.11	6	30.11	6	30.11	6	30.11	6	30.11	6	30.11	6	30.11	255.95

39

Sl. No.	Chapters & Interventions	Unit Costs	2001 - 02		2002-03		2003-04		2004-05		2005-06		2006-07		2007-08		2008-09		2009-10		Grand Total		
			Phy	Fin	Phy	Fin	Phy	Fin	Phy	Fin	Phy	Fin	Phy	Fin	Phy	Fin	Phy	Fin	Phy	Fin			
3.	<i>Establishment of CRC's</i>																						
a.	<i>Building</i>	2	140	280																		280.00	
b.	<i>C.G</i>	.02 5	140	3.5	140	3.5	140	3.5	140	3.5	140	3.5	140	3.5	140	3.5	140	3.5	140	3.5	140	3.5	31.50
C.	<i>Salary</i>		140	33.9	140	81.36	140	81.36	140	81.36	140	81.36	140	81.36	140	81.36	140	81.36	140	81.36	140	81.36	684.80
d.	<i>Furniture</i>	0.1 0	140	14																		14.00	
4. (a)	<i>Salary of D.P.O., A.P.O., Accountant, F.D.A., Mis-incharge Technical Consultant, Computer Programmer, 'D' group</i>			3.60		7.20		7.20		7.20		7.20		7.20		7.20		7.20		7.20		7.20	61.20
(b)	<i>C.G.</i>	1	1	1.25	1	1.25	1	1.25	1	1.25	1	1.25	1	1.25	1	1.25	1	1.25	1	1.25	1	1.25	11.25
(c)	<i>Hired vehicle maintenance</i>	0.1 5	1	0.75	1	1.80	1	1.80	1	1.80	1	1.80	1	1.80	1	1.80	1	1.80	1	1.80	1	1.80	15.15
(d)	<i>Equipment</i>	1	--	--	1	6.45																	6.45
(e)	<i>Building</i>																						
	TOTAL																						31461.511

ABSTRACT (Perspective Plan) From 2001 - 2010

Recurring	23380.802
Non-Recurring	8080.709
TOTAL	31461.511

SARVA SHIKSHA ABHIYAN
Block wise existing Schools/Teachers,Class rooms in the District

Sl.No	Name of the Block	Existing School		No of Theacher Working		Non Existing Class Rooms
		Primary	Ups	Primary	Ups	
1	C.N.Halli	193	122	386	902	870
2	Gubbi	228	184	479	1338	906
3	Kunigal	282	137	542	1002	1087
4	Tiptur	177	104	433	747	896
5	Tumkur	300	220	676	1669	1411
6	Turuvekere	209	115	422	702	893
Total		1389	882	2938	6360	6063

Rahmath unnisa
DDPI TUMKUR(SOUTH)
KARNATAKA

SARVA SHIKSHA ABHIYAN
Attendance Blockwise

Sl.No	Name of the Blocks	Primary Schools			Upper Prymary Schools			Upper Prymary Schools Both pty and ups		
		Boys	Girls	Total	Boys	Girls	Total	Boys	Girls	Total
1	C.N.Halli	8904	8540	17374	3241	3150	6391	12145	11690	23765
2	Gubbi	11962	12443	24405	4432	4607	9039	16394	17050	33444
3	Kunigal	11400	10925	22325	4206	4213	8419	15606	15138	30744
4	Tiptur	7746	7483	15229	2945	2954	5899	10691	10437	21128
5	Tumkur	19494	18599	38093	15251	13772	29023	34745	32371	67116
6	Turuvekere	9066	8476	17542	3204	3199	6403	12270	11675	23945
Total		68592	66376	134968	33279	31895	65174	101871	98271	200142

Rahmath unnisa
DDPI TUMKUR(SOUTH)
KARNATAKA

SARVA SHIKSHA ABHIYAN

Table Showing Educational Statistics of Govt. Schools

Sl. No.	Name of the Block	Anganawadi	Pry. Schools	U. P. S.	H.S.	G. J. C.
1.	C. N. HALY	222	193	122	12	3
2.	GUBBI	226	228	184	19	4
3.	KUNIGAL	220	285	137	20	7
4.	TIPTUR	231	173	104	12	4
5.	TUMKUR	408	302	216	15	5
6.	TURUVEKERE	164	207	115	09	3
	TOTAL	1471	1388	878	87	26

SARVA SHIKSHA ABHIYAN

Table Showing Educational Statistics of Aided Schools

Sl. No.	Name of the Block	Anganawadi	Pry. Schools	U. P. S.	H.S.	G. J. C.
1.	C. N. HALLY	--	--	6	29	3
2.	GUBBI	--	4	8	24	3
3.	KUNIGAL	--	--	10	17	1
4.	TIPTUR	--	--	5	23	5
5.	TUMKUR	--	2	16	52	9
6.	TURUVEKERE	--	--	4	23	4
	TOTAL		6	49	168	25

SARVA SHIKSHA ABHIYAN
ACCESS-I(a): Establishment of new primary schools in schoolless Habitations
school buildings

Primary Schools Year Wise

Sl.No	Name of the Block	No. of Schools in habitations	Unit cost per each building	Total Cost Lakhs	2001-02	2002-03	2003-04	2004-05	2005-06	2006-07	2007-08	2008-09	2009-10	Total Schools/ Cost In	
						Physical / Financial	Physical / Financial	Physical / Financial	Physical / Financial	Physical / Financial	Physical / Financial	Physical / Financial			
1	C.N.Halli	6	3.6	21.6	0	6	21.6							6	21.6
2	Gubbi	3	3.6	10.8	0	3	10.8							3	10.8
3	Kunigal	1	3.6	3.6	0	1	3.6							1	3.6
4	Tiptur	2	3.6	7.2	0	2	7.2							2	7.2
5	Tumkur	3	3.6	10.8	0	3	10.8							3	10.8
6	Turuvekere	3	3.6	10.8	0	3	10.8							3	10.8
			3.6											18	64.8
Total		18		64.8	0	18	64.8							18	64.8

Rahmath unnisa
DDPI TUMKUR(SOUTH)
KARNATAKA

SH

SARVA SHIKSHA ABHIYAN					
ACCESS - 1(a) List of establishment of new primary Schools in Schoolless Habitations					
Sl.No	Name of the Blocks	Name of the Habitation	population	No of children Age group 6-11	Site Yes/No
1	C.N.Halli	1.Godekere gate	400	16	Yes
		2.hanumadasanahalli	475	18	Yes
		3.BabuJagaJeeva Nagar	500	22	Yes
		4.kasavegollarahatti	300	15	Yes
		5.Avalagere Hatti	500	20	Yes
		6.Uppinakanahatti	450	16	Yes
2	Gubbi	1.Budden sab palya	252	21	Yes
		2.Unaganalana hatty	317	23	Yes
		3.Hunasemarada Palya	213	21	Yes
3	Kunigai	1.Gollara Hatti (RayaganaHalli)	315	21	Yes
4	Tiptur	Kothagere Hobli			
		Madenoor Gollara Hatty	350	22	Yes
5	Tumkur	K.M. Gollara hatti	350	16	Yes
		1.PaliHatti	250	21	Yes
		2.gangasandra	345	25	Yes
6	Turuvekere	3.Budamaranahatti	369	23	Yes
		1Banasandra vaddaraHatti	240	18	Yes
		2.Mugulur GollaraHatti	280	21	Yes
		3.Ayurhalli GollaraHatti	250	24	Yes

Total No Of Schools Required=18

As per the district analysis made in the presence of BEOs & BRCs along with Educational Co-ordinators of 6 blocks a total no., of 18 primary schools are to be established in the district. The norms taken for the new establishments is the population or the habitation which is above 200 & the range of more than 1 k.m. from the nearest primary school existing. It has also shown the access of 6 - 11 age group children above 15 as shown in the table beside. Considering the availability of site through communities primary schools exhaustively upto 2010 are presented in the list under Sarva Shiksha Abhiyan.

Rahmath unnisa
DDPI
TUMKUR(SOUTH)

SARVA SHIKSHA ABHIYAN
ACCESS-I(b):Teachers required for newly established primary schools
With Budget requirement.Year wise

Sl.No	Name of the Block	No. of Schools	Teachers in habo tations	Salary In Lakhs Per Year	For 8.5 Yrs in Lakhs	2001-02		2002-03		2003-04		2004-05		2005-06		2006-07		2007-08		2008-09		2009-10		Total	
						Physical / Financial Lakhs	Physical / Financial Lakhs	Physical / Financial Lakhs	Physical / Financial Lakhs	Physical / Financial Lakhs	Physical / Financial Lakhs	Physical / Financial Lakhs	Physical / Financial Lakhs	Physical / Financial Lakhs	Physical / Financial Lakhs	Physical / Financial Lakhs	Physical / Financial Lakhs	Physical / Financial Lakhs	Physical / Financial Lakhs	Physical / Financial Lakhs	Physical / Financial Lakhs	Physical / Financial Lakhs	Physical / Financial Lakhs	Physical / Financial Lakhs	Physical / Financial Lakhs
1	C.N.Halli	6	12	6.97	59.27	12	3.48	12	6.97	12	6.96	12	6.97	12	6.97	12	6.97	12	6.97	12	6.97	12	6.97	12	59.27
2	Gubbi	3	6	3.48	29.58	6	1.74	6	3.48	6	3.48	6	3.48	6	3.48	6	3.48	6	3.48	6	3.48	6	3.48	6	29.58
3	Kunigal	1	2	1.16	9.86	2	0.58	2	1.16	2	1.16	2	1.16	2	1.16	2	1.16	2	1.16	2	1.16	2	1.16	2	9.86
4	Tiptur	2	4	2.32	19.72	4	1.16	4	2.32	4	2.32	4	2.32	4	2.32	4	2.32	4	2.32	4	2.32	4	2.32	4	19.72
5	Tumkur	3	6	3.48	29.58	6	1.74	6	3.48	6	3.48	6	3.48	6	3.48	6	3.48	6	3.48	6	3.48	6	3.48	6	29.58
6	Turuvekere	3	6	3.48	29.58	6	1.74	6	3.48	6	3.48	6	3.48	6	3.48	6	3.48	6	3.48	6	3.48	6	3.48	6	29.58
Total		18	36	20.89	177.59	36	10.5	36	20.9	36	20.9	36	20.9	36	20.9	36	20.9	36	20.9	36	20.9	36	20.9	36	177.6

Note:-Salary per teacher per month in gross Rs.4843/- which includes Basic pay,D.A, H.R.A, And Medical allowance.

Rahmath unnisa
DDPI TUMKUR(SOUTH)
KARNATAKA

47

Furniture is a must for the newly established primary schools specially in rural areas. Soon after the recruitment of the teachers during the current year 2001-02 except the civil works to be undertaken the rest of the elements required for the infrastructure will be provided at the cost of Rs.20, 000 /- per primary school this amounts to Rs.3.6 lakhs which will be induced by the end of the current year. Annexure ACCESS-I(c) is enclosed for further details.

SARVA SHIKSHA ABHIYAN
ACCESS-I(c):Furniture required for newly established primary schools
With Budget requirement.Year wise

Sl.No	Name of the Block	No.of Schools in habo tations	Unit Cost Financial in Lakhs	Total Cost in lakhs	2001-02	2002-03	2003-04	2004-05	2005-06	2006-07	2007-08	2008-09	2009-10	Total	
					Physical / Financial Lakhs	Physical / Financial Lakhs	Physical / Financial Lakhs	Physical / Financial Lakhs	Physical / Financial Lakhs	Physical / Financial Lakhs	Physical / Financial Lakhs	Physical / Financial Lakhs	Physical / Financial Lakhs	Physical / Financial Lakhs	Physical / Financial Lakhs
1	C.N.Halli	6	0.2	1.2	6	1.2								6	1.2
2	Gubbi	3	0.2	0.6	3	0.6								3	0.6
3	Kunigal	1	0.2	0.2	1	0.2								1	0.2
4	Tiptur	2	0.2	0.4	2	0.4								2	0.4
5	Tumkur	3	0.2	0.6	3	0.6								3	0.6
6	Turuvekere	3	0.2	0.6	3	0.6								3	0.6
Total		18		3.6	18	3.6								18	3.6

Note: Per school @ Twenty Thousand.

Rahmath unnisa
DDPI TUMKUR(SOUTH)
KARNATAKA

SARVA SHIKSHA ABHIYAN

ACCESS 2(l) Additional Inputs for Existing LOWER PRIMARY SCHOOLS

PRIMARY SCHOOLS YEAR WISE (SCHOOL GRANTS)

Sl. No.	Name of the Block	No. of Schools	Annual Grant	Total Cost in lakhs	2001-02	2002-03	2003-04	2004-05	2005-06	2006-07	2007-08	2008-09	2009-10	Total Cost in Lakhs
1	C.N. HALLY	193	0.02	3.86	3.86	3.86	3.86	3.86	3.86	3.86	3.86	3.86	3.86	34.74
2	GUBBI	228	0.02	4.56	4.56	4.56	4.56	4.56	4.56	4.56	4.56	4.56	4.56	41.04
3	KUNIGAL	285	0.02	5.70	5.70	5.70	5.70	5.70	5.70	5.70	5.70	5.70	5.70	51.30
4	TIPTUR	173	0.02	3.46	3.46	3.46	3.46	3.46	3.46	3.46	3.46	3.46	3.46	31.14
5	TUMKUR	302	0.02	6.04	6.04	6.04	6.04	6.04	6.04	6.04	6.04	6.04	6.04	54.36
6	TURUVEKERE	207	0.02	4.14	4.14	4.14	4.14	4.14	4.14	4.14	4.14	4.14	4.14	37.26
	TOTAL	1388	0.02	27.76	27.76	27.76	27.76	27.76	27.76	27.76	27.76	27.76	27.76	249.84

A total number of 1388 primary schools existing in 6 blocks require a sum of Rs. 2,000 p.a. as the school grants to fulfill the annual needs in teaching - learning process which was not provided so far through the State norms and is now demanded through SSA to equip the institution with instantanious needs. The SDMCs also contribute along with the school grants for a successful achievement of elementary education. Thus a sum of Rs. 249.84 lakhs is estimated as a provision for 9 years.

SCHOOL GRANTS:

A sum of rupees 2000/- as per the norms of SSA is drawn in the budget from 2001-10 for a total duration of nine years where though the beginning is made during the current year after the closure of half year grants connected to school will suffice the need of the newly established primary school in the form of an incentive. For 18 schools the total sum amounts to 3.24 lakhs. So far in Tumkur District no primary school under universalization of elementary education is provided with school grants. SSA has become a boon in blessing the district with this provisio. Table ACCESS -I (d) is enclosed for reference in perspective years of DEEP.

SARVA SHIKSHA ABHIYAN
ACCESS-I(e):School Grant required for newly established primary
schools With Budget requirment.Year wise

Sl.No	Name of the Block	No.of Schools Inhabitations	Unit Cost In Lakhs Per Year	For 9 Yrs in lakhs	2001-02	2002-03	2003-04	2004-05	2005-06	2006-07	2007-08	2008-09	2009-10	Total	
														Unit	Cost
1	C.N.Halli	6	0.02	1.08	0.12	0.12	0.12	0.12	0.12	0.12	0.12	0.12	0.12	6	1.80
2	Gubbi	3	0.02	0.54	0.06	0.06	0.06	0.06	0.06	0.06	0.06	0.06	0.06	3	0.54
3	Kunigal	1	0.02	0.18	0.02	0.02	0.02	0.02	0.02	0.02	0.02	0.02	0.02	1	0.18
4	Tiptur	2	0.04	0.36	0.04	0.04	0.04	0.04	0.04	0.04	0.04	0.04	0.04	2	0.04
5	Tumkur	3	0.02	0.54	0.06	0.06	0.06	0.06	0.06	0.06	0.06	0.06	0.06	3	0.54
6	Turuvekere	3	0.02	0.54	0.06	0.06	0.06	0.06	0.06	0.06	0.06	0.06	0.06	3	0.54
Total		18		3.24	0.36	0.36	0.36	0.36	0.36	0.36	0.36	0.36	0.36	18	3.24

Rahmath unnisa
DDPI TUMKUR(SOUTH)
KARNATAKA

TEACHERS GRANT:

A unit cost of Rs.500/- per annum per teacher for newly established primary schools is also marked in the budget for the interaction learning system connected to the latest curriculum under minimum acquisition of concepts. This perspective grant acts as an incentive in the learning system for any innovative free momentum amongst the pedagogy. The handy sum fulfils the minimum need of a classroom teacher in creating a bond between the school and the pupils. As per the table ACCESS-I (e) perspective allocation is shown for 36 teachers to a duration of 9 years with a total sum of rupees 1.62 lakhs.

SARVA SHIKSHA ABHIYAN
ACCESS-I(g): Teachers Grant required for newly established primary
schools With Budget requirement. Year wise
(Unit cost per Teacher Rs.500/- per Annum)

54

Sl.No	Name of the Block	No.of Schools in habo tations	No.of Teachers/Unit Cost (Lakhs)	For 9 Yrs in lakhs	2001-02	2002-03	2003-04	2004-05	2005-06	2006-07	2008-09	2009-10	Total Lakhs
1	C.N.Halli	6	12	0.06	0.54	0.06	0.06	0.06	0.06	0.06	0.06	0.06	0.54
2	Gubbi	3	6	0.03	0.27	0.03	0.03	0.03	0.03	0.03	0.03	0.03	0.27
3	Kunigal	1	2	0.010	0.09	0.01	0.01	0.01	0.01	0.01	0.01	0.01	0.09
4	Tiptur	2	4	0.020	0.18	0.02	0.02	0.02	0.02	0.02	0.02	0.02	0.18
6	Tumkur	3	6	0.03	0.27	0.03	0.03	0.03	0.03	0.03	0.03	0.03	0.27
6	Turuvekere	3	6	00.03	0.27	0.03	0.03	0.03	0.03	0.03	0.03	0.03	0.27
Total		18	36		1.62	0.18	0.18	0.18	0.18	0.18	0.18	0.18	1.62

Rahmath unnisa
DDPI TUMKUR(SOUTH)
KARNATAKA

There is no exemptions after establishing the new primary school during the year 2001-02 for which teaching learning material becomes the dire need.

Rs. 10,000 for each institution in non recurring budget for the year 2001-02 is shown in the table ACCESS-I(f). The TLM will be sorted as per the need of the curriculum by taking the assistance of experienced teachers and the SDMC members of the habitations where new schools are established. Availability of site for the construction of school building will also be obtained without causing much delay for the construction work of 2002-03.

SARVA SHIKSHA ABHIYAN
ACCESS-I(d):Teaching Learning Material required for newly established
primary schools With Budget requirement.Year wise

Sl.No	Name of the Block	No.of Schools Inhabo tations	Unit Cost Lakhs	Total Cost In Lakhs	2001-02		2002-03	2003-04	2004-05	2005-06	2006-07	2007-08	2008-09	2009-10	Total	
													Unit	Cost		
1	C.N.Halli	6	0.1	0.6	6	0.6									6	0.6
2	Gubbi	3	0.1	0.3	3	0.3									3	0.3
3	Kunigal	1	0.1	0.1	1	0.1									1	0.1
4	Tiptur	2	0.1	0.2	2	0.2									2	0.2
5	Tumkur	3	0.1	0.3	3	0.3									3	0.3
6	Turuvekere	3	0.1	0.3	3	0.3									3	0.3
Total		18	0.1	1.8	18	1.8									18	1.8

Rahmath unnisa
DDPI TUMKUR(SOUTH)
KARNATAKA

ADDITIONAL INPUTS FOR EXISTING PRIMARY SCHOOLS:

Out of six blocks of the district since a long time 98 primary schools could not achieve own buildings. Out of these approximately 30% are established in municipal limits in rented buildings they didn't possess sites of their own owing to the density thicket of the population in town limits the communities are taking initiation in providing sites for the future constructions. For continuing the transactions to achieve a site for the government primary schools irrespective of regional linguistic media considerations are seen in making provision of the sites. A unit cost of rupees of 3.3 lakhs is marked for the year 2002-03 for all the 98 schools with an optimistic hope in solving this inconsistency table ACCESS-II is enclosed here with showing the details block wise with a total sum of rupees 352.8 lakhs.

ADDITIONAL ROOMS FOR EXISTING PRIMARY SCHOOL BUILDINGS:

Since a long time many primary schools did not possess sufficient class rooms on par with the number of teachers in each school. SSA has given a greater assistance in boosting universalisation of elementary education by developing saturated infra structure to satisfy the needs of rural schools. The total number of class rooms to be constructed are 658 out of six blocks at the unit cost of rupees 1.5 lakhs per each room as shown under the estimates of NABARD scheme. Under the said scheme 13 classrooms per each blocks are listed on priority basis in the recent project submitted through the Zilla Panchayat through the state government. The total 658 rooms are distributed in the perspective years of DEEP between 2002-05 with a total estimate of 987.0 lakhs.

SARVA SHIKSHA ABHIYAN
ACCESS-II: Additional inputs for existing pry schools
2(a):Building with compound,Drinking water,Toilet & Electricity

59

Sl.No	No. of Blocks	Name of New Building Physical / Unit (Lakhs)		2001-02	2002-03		2003-04	2004-05	2005-06	2006-07	2007-08	2008-09	2009-10	Total	
														Physical /	Unit(Lakhs)
1	C.N.Halli	11	39.6		11	39.6								11	39.6
2	Gubbi	34	122.2		34	122.4								34	122.4
3	Kunlgal	5	18.0		5	18.0								5	18
4	Tiptur	7	25.2		7	25.2								7	25.2
5	Tumkur	34	122.4		34	122.4								34	122.4
6	Turuvekere	7	25.2		7	25.2								7	25.2
Total		98	352.8		98	352.8								98	352.8

Rahmath unnisa
DDPI TUMKUR(SOUTH)
KARNATAKA

SARVA SHIKSHA ABHIYAN
ACCESS-II(b): Additional Rooms for existing pry school Buildings
(Distributive for perspective years)

Sl.No	No. of Blocks	Rooms	Unit Cost (Lakh)	Watt Cost (Lakh)	2001-02	2002-03		2003-04		2004-05		2005-06	2006-07	2007-08	2008-09	2009-10	Total	Unit (Lakha)
						Rooms	Cost	Rooms	Cost	Rooms	Cost							
1	C.N.Halii	58	1.5	87		30	45	22	33	20	30						58	87
2	Gubbi	150	1.5	225		80	12	35	52.5	35	52.5						150	225
3	Kunigal	102	1.5	153		40	60	30	45	32	48						102	153
4	Tiptur	60	1.5	90		25	37.5	20	30	15	22.5						60	90
5	Tumkur	206	1.5	309		80	120	64	96	62	93						206	309
6	Turuvekere	82	1.5	123		30	45	27	40.5	25	37.5						82	123
Total		658	9.0	987		285	319.5	194	291	179	268.5						658	987

Rahmath unnisa
DDPI TUMKUR(SOUTH)
KARNATAKA

COMPOUNDS FOR PRIMARY SCHOOLS:

A total number of 755 primary schools are listed out from all the six blocks distributively on the need basis with the independent approximate assessment to safe guard the jurisdiction of the institution from illegal encroachment or from tress passing in the school premises. The cost of erecting the fence regionically varies from a minimum of Rs.10,000 to a maximum of Rs.30,000/-. Erection of compound to the school premises has varieties including barbed fencing to larger areas, granite slab erection to medium and feasible units, cement and mortar erection for the institution placed in the central part of village. The needs are specified under the habitation levels as per the survey of habitations by education coordinators and visiting officers of the blocks. A total sum of rupees 118.21 lakhs is marked in the budget of DEEP based on the reports obtained from blocks. Table ACCESS II(c) is enclosed along with for a spread out reference.

SARVA SHIKSHA ABHIYAN
ACCESS-II(c): Compounds For Primary Schools
(Distributive for perspective years)

Sl.No	No. of Blocks	No.Of Compounds	Unit Cost	Total Cost	2001-02	2002-03		2003-04		2004-05		2005-06	2006-07	2007-08	2008-09	2009-10	Total	
																	Unit	Cost
1	C.N.Halli	165		30.21		65	8.0	55	7.50	45	14.71						165	30.21
2	Gubbi	160		19.2		89	9.6	40	4.80	40	4.80						160	19.2
3	Kunigal	172		29.15		80	13.65	60	10.10	32	5.40						172	29.15
4	Tiptur	125		15.72		60	7.5	40	5.2	25	3.02						125	15.62
5	Tumkur	140		16.62		60	9.0	42	4.62	38	3.0						140	16.62
6	Turuvekere	65		7.31		25	2.81	20	2.40	20	2.10						65	7.31
Total	4	827		118.21		370	50.56	257	34.62	200	33.03						827	118.21

Rahmath unnisa
DDPI TUMKUR(SOUTH)
KARNATAKA

DRINKING WATER FOR THE PRIMARY SCHOOLS:

A total number of 1009 primary schools mostly located in rural areas with 46% away from village housing do not have potable water facility to the inmates. Normal circumstances of the day in the institutions demands the young souls to quench their thirst out of the days tiredness. The timidity, shydom, and fear are some of the frequent sequences witnessed amongst the small children who dart back from asking for a glass of water are satisfied by providing natural water free from pollution. Thus parents and community are at an appeal to teachers for providing good water to their children. SSA is again a bless from center to facilitate the thirsty children whose sufferings under circumstances of this kind have also caused dropouts amongst some of the reasons traced so far. Table ACCESS-II(d) enclosed along with shows the details of spreadout in the perspective years of DEEP from 2002-05 with an estimated cost of rupees 177.26lakhs which is also reasonable estimate made in support of SDMC(school development and monitoring committee) of the institutions. Drinking water could be supplied in various assorted ways on the situational basis inclusive of a hand bore in the premises with community assistance, a tap connection from a near by cistern or through a fresh connection from a near by tank.

SARVA SHIKSHA ABHIYAN
ACCESS-II(d):Drinking water For Primary Schools
(Distributive for perspective years)

Sl.No	No. of Blocks	No.Of Schools	Total Cost	2001-02		2002-03		2003-04		2004-05		2005-06	2006-07	2007-08	2008-09	2009-10	Total Unit	Total Cost
1	C.N.Halli	151	27.32		70	12.66	60	10.85	21	3.81							151	27.32
2	Gubbi	180	33.0		90	16.50	45	8.25	45	8.25							180	33
3	Kunigal	227	51.49		108	24.49	80	18.14	39	8.86							227	51.49
4	Tiptur	124	22.32		60	10.80	40	7.20	24	4.32							124	22.32
5	Tumkur	250	30.2		96	11.52	83	9.96	71	8.52							250	30
6	Turuvekere	87	13.13		40	6.03	27	4.07	20	3.03							87	13.13
Total		1019	177.26		464	94.76	365	58.47	220	36.79							1019	177.26

A total number of 1009 primary schools mostly located in rural areas with 46 % away from village housing do not have potable water facility to the inmates. Normal circumstances of the day in the institutions demands the young souls to quench their thirst out of the days tiredness. The timidity, shydome, and fear are some of the frequent sequences witnessed amongst the small children who dart back from asking for a glass of water to their children. S.S.A. is again a bless from center to facilitate the thirsty children whose sufferings under circumstances of this king have also caused dropouts amongst some of the reasons traced so far. Table ACCESS-II(d) enclosed along with the shows the details of spreadout in the perspective years of DEEP from 2002-05 with an estimated cost of rupees 175.26 lakhs which is also reasonable estimate made in support of SDMC (school development & monitoring committee) of the institutions. Drinking water could supplied in various assorted ways on the situational basis inclusive of a hand bore in the premises with community assistance, a tap connection from a near by cistern or through a fresh connection from a near by tank.

Rahmath unnisa
DDPI TUMKUR(SOUTH)
KARNATAKA

64

TOILET FACILITY FOR PRIMARY SCHOOLS:

An estimated number of 979 primary schools from all the six blocks of the district do not have the toilet facility which is very much essential to create the hygienic atmosphere in the young minds and so also to keep the village tidy and clean. Usage of systemic toilets is a practice developed amongst the children of primary age which gets continued in the growing generation and so also in their homes. Toilet facility provision also helps the female teachers who are normally placed in all the institutions of the district keeping in view of all these factors the BRG and the DRG have come to the conclusion of placing the need into the perspective DEEP budget. Table ACCESS-II(e) is enclosed for the reference with an estimate of 121.05 lakhs for 979 primary schools.

SARVA SHIKSHA ABHIYAN
ACCESS-II(e): Toilet Facility for Pirmary Schools
(Distributive for perspective years)

Sl.No	Name of the Blocks	No.Of Schools	Total Cost Lakhs													Total Unit	Cost
				2001-02	2002-03		2003-04		2004-05		2005-06	2006-07	2007-08	2008-09	2009-10		
1	C.N.Halli	110	11.0		60	6.0	30	3.0	20	2.0	0	0	0	0	0	110	11.0
2	Gubbi	180	18.0		100	10.0	40	4.0	40	4.0	0	0	0	0	0	180	18
3	Kunigal	262	37.99		140	20.30	80	11.60	42	6.0	0	0	0	0	0	262	37.99
4	Tiptur	174	17.40		60	6.0	55	5.50	59	5.90	0	0	0	0	0	174	17.4
5	Tumkur	128	17.92		58	8.12	38	5.32	32	4.48	0	0	0	0	0	128	17.92
6	Turuvekere	125	18.75		75	11.25	25	3.75	25	3.75	0	0	0	0	0	125	18.75
Total		979	121.06		493	61.67	268	33.17	218	26.13	0	0	0	0	0	979	121.06

An estimated number of 979 primary schools from all the six blocks of the district do not have the toilet facility which is very much essential to create the hygienic atmosphere in the young minds and so also to keep the village tidy & clean. Usage of systemic toilets is a practice developed amongst the children of primary age which gets continued in the growing generation and so also in their homes. Toilet facility provision also helps the female teachers who are normally palced in all the institutions of the district keeping in view of all these factors the BRG & the DRG have come to the conclusion of placing the need into the perspective DEEP budget. Table ACCESS-II(e) is enclosed for the reference with an estimate of Rs. 121.06 lakhs for 979 primary schools.

Rahmath unnisa
DDPI TUMKUR(SOUTH)
KARNATAKA

SARVA SHIKSHA ABHIYAN
ACCESS-II(h):Electricity For Primary Schools
(Distributive for perspective years)

Sl.No	Name of the Blocks	No.Of Schools	Total Cost Lakhs	Perspective Years												Total	
				2001-02	2002-03		2003-04		2004-05		2005-06	2006-07	2007-08	2008-09	2009-10	Unit	Cost
1	C.N.Halli	189	6.94	0	89	3.29	60	2.22	40	1.43	0	0	0	0	0	189	6.96
2	Gubbi	210	9.48	0	80	3.16	80	3.61	50	2.26	0	0	0	0	0	210	9.48
3	Kunigal	268	10.16	0	148	5.61	82	3.11	38	1.44	0	0	0	0	0	268	10.16
4	Tiptur	101	6.06	0	35	2.10	36	2.16	30	1.80	0	0	0	0	0	101	6.06
5	Tumkur	286	14.30	0	86	4.30	116	5.80	84	4.20	0	0	0	0	0	286	14.3
6	Turuvekere	125	7.5	0	80	4.80	30	1.80	15	0.90	0	0	0	0	0	125	7.5
Total		1179	54.44	0	518	23.26	404	18.70	257	12.03	0	0	0	0	0	1179	54.44

Tumkur district being nearest to Bangalore with a passing N.H. No. 4 & 2 State High ways has plenty of industries coming up sooner in the current & future years. The matured Panchayat raj system in all the villages demand power acquisition in every house of the village. The days have gone spending nights under dark shade an hours break of power supply causes uneasiness during the hours of crisis specially for the children those who are the new entrants into the primary schools their little time of the dest demands them to go for a peaceful study and completion of assignments of the day. Power break brings a lashing sequence in the next days class this disappointing incident has also become a cause for dropouts from schooling. Most of the villagers as per the latest trend of community gathering under Samudaya Dutta Shala programmes to find out the stage of their child's learning & evaluation need sufficient lighting in school buildings. Many routine programmes of the year also require electrification including some of the experiments to be conducted and shown to the pupils during teaching learning process. Keeping in view of the circumstances above the blocks have demanded electrification 1179 primary schools of the district with a total cost of Rs. 54.44 lakhs in the future years to go upto 2005 as such table ACCESS-II (H) is enclosed reference.

Rahmath unnisa
DDPI TUMKUR(SOUTH)
KARNATAKA

**SARVA SHIKSHA ABHIYAN
ACCESS-II(f) Primary School Building Repairs**

Sl.No	Name of the Schools	Total Cost in Lakhs	2001-02	2002-03		2003-04	2004-05	2005-06	2006-07	2007-08	2008-09	2009-10	Total Unit	Cost in lakhs
1	C.N.HALLI	178	8.90	178	8.90	8.9	8.90	8.9	8.90	8.90	8.90	8.90	178	80.10
2.	GUBBI	210	10.50	210	10.50	10.50	10.50	10.50	10.50	10.50	10.50	10.50	210	105.00
3.	KUNIGAL	250	12.50	250	12.50	12.50	12.50	12.50	12.50	12.50	12.50	12.50	250	112.50
4.	TIPTUR	177	80.85	177	8.85	8.85	8.85	8.85	8.85	8.85	8.85	8.85	177	79.65
5.	TUMKUR	284	14.20	284	14.20	14.20	14.20	14.20	14.20	14.20	14.20	14.20	284	127.80
6.	TURUVEKERE	143	7.15	143	7.15	7.15	7.15	7.15	7.15	7.15	7.15	7.15	143	64.35
	TOTAL	1242	62.10	1242	62.10	62.10	62.10	62.10	62.10	62.10	62.10	62.10	1242	558.90

The neat & tidy building structure of a primary school normally attracts any villager to make it a resting place during vacation thus creating one or the other kind of mischief to play with the building for the anxious intruder which finally results in creating a damaging sequence in the personal usage by the tended intruder. It has become a routine for the school teachers to make an appeal with the community soon after returning from summer vacation for a minor / major repair of the school building. As such annual repair keeps the building safe and tidy avoiding still more disruption in future. Out of six blocks of the district 1242 primary schools need repair at least in a frequency of 8 years from 2002-10. The estimated cost on approximation is shown in Rs. 558.90 lakhs. Table ACCESS-II(f) is enclosed for reference.

**Rahmath unnisa
DDPI TUMKUR(SOUTH)
KARNATAKA**

SARVA SHIKSHA ABHIYAN
ACCESS-II(g):Furniture to Primary Schools

Sl.No	Name of the Blocks	No.Of Schools	Total Cost Lakhs	2001-02		2002-03	2003-04	2004-05	2005-06	2006-07	2007-08	2008-09	2009-10	Total Unit	Total Cost
1	C.N.Halli	193	32.81	193	32.8	0	0	0	0	0	0	0	0	193	32.80
2	Gubbi	228	36.48	228	36.48	0	0	0	0	0	0	0	0	228	36.48
3	Kunigal	281	46.36	281	43.36	0	0	0	0	0	0	0	0	281	46.36
4	Tiptur	177	28.32	177	28.32	0	0	0	0	0	0	0	0	177	28.32
5	Tumkur	302	48.93	302	48.93	0	0	0	0	0	0	0	0	302	48.93
6	Turuvekere	207	31.05	207	31.05	0	0	0	0	0	0	0	0	207	31.05
Total		1388	223.95	1388	220.94	0	0	0	0	0	0	0	0	1388	223.95

Out of 6 blocks a total number of 1388 primary schools do not have needed furniture for a right schooling atmosphere. Children in their tender age are burdened with heavy bag of books on their laps for the whole best part of the day causing severe punishment to the tender laps. Congested seating have been made so far on the deficit number of planks provided under various suggestive schemes in the department. The best adjudged way of providing seating to the children under latest active learning system of NALI-KALI is to provide thick carpets and bania desks for keeping their books safely and also to write easily without harming themselves. An estimated cost of Rs. 223.95 is marked in the budget of DEEP which is shown in table ACCESS - II (g) for further reference.

Rahmath unnisa
DDPI TUMKUR(SOUTH)
KARNATAKA

SARVA SHIKSHA ABHIYAN
ACCESS-II(j): Teaching Learning Materials to Primary Schools

Sl.No	Name of the Blocks	No.Of Schools OBB	Total Cost Lakhs	Non OBB School	Total Cost Lakhs	Total Cost Lakhs	2001-02	2002-03	2003-04	2004-05	2005-06	2006-07	2007-08	2008-09	2009-10	Total Unit	Cost lakhs
1	C.N.Halli	147	11.76	46	4.60	16.36	193	16.36	0	0	0	0	0	0	0	193	16.36
2	Gubbi	49	3.92	171	17.10	21.02	220	21.02	0	0	0	0	0	0	0	220	21.02
3	Kunigal	30	2.40	251	25.10	27.50	281	27.50	0	0	0	0	0	0	0	281	27.5
4	Tiptur	141	11.28	36	3.60	14.88	177	14.88	0	0	0	0	0	0	0	177	14.88
5	Tumkur	196	15.68	106	10.60	26.26	302	26.26	0	0	0	0	0	0	0	302	26.26
6	Turuvekere	142	11.36	65	6.50	17.86	207	17.86	0	0	0	0	0	0	0	207	17.86
Total		705	56.40	675	67.72	123.88	1380	123.88	0	0	0	0	0	0	0	1380	123.88

A total no., of 705 schools under OBB have also been incorporated with the demand of teaching - learning materials under primary schools. As it has been assessed in the previous supplies hardly 30 % of the materials are under usage and the remaining are outdated and perished ones Taking this into consideration for the latest curriculum TLM is a must to abridge the education of primary children. So a demand of Rs. 56.40 lakhs is placed as an assessment. There are 675 Non-OBB primary schools which are never supplied with TLM hither to connected to the latest curriculum. The calculated amount @ 10,000/ each is 67.72 lakhs which is also a dire need for the primary school children.

Rahmath unnisa
DDPI
TUMKUR(SOUTH)
KARNATAKA

SARVA SHIKSHA ABHIYAN
ACCESS-II(k):Additional Teachers
(Distributive for perspective years)

Sl.No	Name of the Blocks	No.Of Additional Teachers	Salary For a Month	Total Salary For 8.5 Years(lakhs)	01-02	02-03	03-04	04-05	05-06	06-07	07-08	08-09	09-10	Total Salary (Lakhs)	
					Lakhs	Lakhs	Lakhs	Lakhs	Lakhs	Lakhs	Lakhs	Lakhs	Lakhs	Unit	Salary
1	C.N.Halli	54	4843	266.75	15.69	31.38	31.38	31.38	31.38	31.38	31.38	31.38	31.38	54	266.75
2	Gubbi	103	4843	423.30	29.88	59.76	59.76	59.76	59.76	59.76	59.76	59.76	59.76	103	423.30
3	Kunigal	80	4843	395.15	23.25	46.49	46.49	46.49	46.49	46.49	46.49	46.49	46.49	80	395.15
4	Tiptur	71	4843	350.73	20.63	41.262	41.262	41.262	41.262	41.262	41.262	41.262	41.262	71	350.73
5	Tumkur	90	4843	444.59	26.15	52.30	52.30	52.30	52.30	52.30	52.30	52.30	52.30	90	444.59
6	Turuvekere	24	4843	118.56	6.97	13.95	13.95	13.95	13.95	13.95	13.95	13.95	13.95	24	118.56
Total		422	29058	1998.99	122.57	245.14	245.14	245.14	245.14	245.14	245.14	245.14	245.14	422	1998.99

A total number of 422 additional teachers vacancy is listed from all the 6 blocks of the district for primary schools between 2001-10 to fulfill the norms of the dept., to have the placement of at least 2 teachers per primary school to cover one to fifth classes irrespective of the minimum strength in the institution. The annual minimum gross salary projected in the budget is Rs. 4843/- per teacher per month constituting to a sum of Rs. 245.14 lakhs for a span of 8 year 6 months till 2010. Table ACCESS - II(k) is enclosed for reference & action.

Rahmath unnisa
DDPI
TUMKUR(SOUTH)

**SARVA SHIKSHA ABHIYAN
I ACCESS 2 (i)
2. Additional inputs for lower primary schools(Existing)
TEACHER GRANT(Rs 500/- per year)**

Sl.No	Name of the Block	No of Teachers	Grant per teacher per Year (Rs 500/- per)	Total grant for 1 year in Lakhs	Total grant for 9 years in lakhs
1	C.N.Halli	386	0.005	1.93	17.37
2	Gubbi	353	0.005	1.765	15.885
3	Kunigal	506	0.005	2.53	22.77
4	Tiptur	279	0.005	1.395	12.555
5	Tumkur	676	0.005	3.442	30.984
6	Turuvekere	338	0.005	1.69	15.21
	Total	2538	0.005	12.69	114.21

A total no., of 1388 primary school teachers existing do require a sum of Rs. 500 per teacher per year as teacher grant for the maintainance of teaching-learning system in a sound manner by inculcating various methods in developing low cost & no cost materials. As per the curriculum by the concerned which finally lays an emphasis in tapping the creativity amongst the primary children. The immediate needs for the current action of teacher grant acts as on SOS in the system of elementary education. Thus an amount of 62.40 lakhs is estimated for a span of 9 years.

Rahmath unnisa
DDPI TUMKUR(SOUTH)
KARNATAKA

ACCESS: 2. X

SARVA SHIKSHA ABHIYAN
ADDITIONAL INPUTS FOR EXISTING LOWER PRIMARY SCHOOLS

PRIMARY SCHOOLS YEAR WISE

(SCHOOL GRANT)

Sl. No.	Name of the Block	No. of Schools	Annual Grant	Total cost in lakhs	2001-02	2002-03	2003-04	2004-05	2005-06	2006-07	2007-08	2008-09	2009-10	TOTAL Cost in lakhs
1	C.N.HALLI	193	0.02	3.86	3.86	3.86	3.86	3.86	3.86	3.86	3.86	3.86	3.86	34.74
2.	GUBBI	228	0.02	4.56	4.56	4.56	4.56	4.56	4.56	4.56	4.56	4.56	4.56	41.04
3.	KUNIGAL	282	0.02	5.64	5.64	5.64	5.64	5.64	5.64	5.64	5.64	5.64	5.64	50.76
4.	TIPTUR	177	0.02	3.54	3.54	3.54	3.54	3.54	3.54	3.54	3.54	3.54	3.54	31.86
5.	TUMKUR	300	0.02	6.00	6.00	6.00	6.00	6.00	6.00	6.00	6.00	6.00	6.00	54.00
6.	TURUVEKERE	206	0.02	4.12	4.12	4.12	4.12	4.12	4.12	4.12	4.12	4.12	4.12	37.08
	TOTAL	1386	0.02	27.22	27.22	27.22	27.22	27.22	27.22	27.22	27.22	27.22	27.22	249.48

114

SARVA SHIKSHA ABHIYAN
ACCESS-III:EGS. Centers in school less habitations

Sl.No	Name of the Blocks	No.Of EGS Centers	Cost	2001-02	2002-03	2003-04	2004-05	2005-06	2006-07	2007-08	2008-09	2009-10	Total
1	C.N.Halli	Nil					Not Required						
2	Gubbi	Nil					Not Required						
3	Kunlgal	Nil					Not Required						
4	Tiptur	Nil					Not Required						
5	Tumkur	Nil					Not Required						
6	Turuvekere	Nil					Not Required						
Total													

Note:- As per information collected from all the six blocks, the BRC, BRPS and educational co-ordinators opined not to have EGS centers other than "Chinnara Angala" centers

Under community mobilization programme of SSA a clear awareness venue of EGS & AIE is shown amongst the government officials and non government bodies. The provision made under these guarantee & innovative schemes have not erupted interest in the community. Community believes only in the expertised bless of a teacher than of a volunteer. The taste of Chinnara Angala has created a zeal amongst the parents to gain more faith in the bridge courses conducted to justify their child's potentiality on par with the age in rejoining the main stream of the institution thus rejecting the new sequence of EGS & AIE from all the blocks of the district.

Rahmath unnisa
DDPI TUMKUR(SOUTH)
KARNATAKA

SARVA SHIKSHA ABHIYAN

List of Upgraded Schools

<i>Sl. No.</i>	<i>Name of the Blocks</i>	<i>Name of the School</i>
1.	C. N. HALI	Kurubara Hally
2.	GUBBI	--- Nil ---
3.	KUNIGAL	--- Nil ---
4.	TIPTUR	1) Bovi Colony, Tiptur. 2) K. Lakkihally.
5.	TUMKUR	1) N.R. Colony, Tumkur 2) Palihatti 3) ULPS, Hegde Colony
6.	TURUVEKERE	--

SARVA SHIKSHA ABHIYAN
ACCESS-4 Upgradation of existing primary schools 4(a) Additional Rooms

Sl.No	Name of the Blocks	No.of School	Additi- onal rooms	Total Cost Lakhs	2001-02	2002-03	2003-04	2004-05	2005 -06	2006- 07	2007-08	2008 -09	2009 -10	Total Unit	Cost in lakhs		
1	C.N.HALLI	1	2	3.0	0	2	3.0	1	1.5	2	3.0	0	0	0	0	5	7.5
2.	GUBBI	0	0	0	0	0	0	0	0	0	0	0	0	0	0	0	0
3.	KUNIGAL	0	0	0	0	0	0	0	0	0	0	0	0	0	0	0	0
4.	TIPTUR	2	5	7.5	0	3	4.5	2	3.0	0	0	0	0	0	0	5	7.5
5.	TUMKUR	2	4	6.0	0	3	4.5	2	3.0	1	1.5	0	0	0	0	10	15.0
6.	TURUVEKERE	0	0	0	0	0	0	0	0	0	0	0	0	0	0	0	0
	TOTAL	5	11	16.5	0	10	12.0	6	7.5	3	7.5	0	0	0	0	28	37.5

Rahmathunnisa
DDPI TUMKUR(SOUTH)
KARNATAKA

SARVA SHIKSHA BHIYAN
ACCESS-4 Upgradation of existing primary schools
4(h) Additional Teachers

Sl.No	Name of the Blocks	No.Of Schools	Additional Teachers	2002-03		2003-04		2004-05		2005-06		2008-09		2009-10		Total Unit	Cost Lakhs
				2001-02	Trs/Cost Lakhs	Trs/Cost Lakhs	Trs/Cost Lakhs	Trs/Cost Lakhs	Trs/Cost Lakhs	Trs/Cost Lakhs	Trs/Cost Lakhs						
1	C.N.Halli	1	1	0	1 0.58	2 1.16	4 2.622	4 2.622	4 2.622	4 2.622	4 2.622	4 2.622	4 2.622	27	17.472		
2	Gubbi	0	0	0	0 0	0 0	0 0	0 0	0 0	0 0	0 0	0 0	0 0	0	0	0	0
3	Kunigal	0	0	0	0 0	0 0	0 0	0 0	0 0	0 0	0 0	0 0	0 0	0	0	0	0
4	Tiptur	2	2	0	2 1.16	4 2.32	6 3.78	6 3.78	6 3.78	6 3.78	6 3.78	6 3.78	6 3.78	42	26.16		
5	Tumkur	2	2	0	2 1.16	4 2.32	8 5.244	8 5.244	8 5.244	8 5.244	8 5.244	8 5.244	8 5.244	54	34.94		
6	Turuvekere	0	0	0	0 0	0 0	0 0	0 0	0 0	0 0	0 0	0 0	0 0	0	0	0	0
Total		5	5	0	5 2.9	10 5.8	18 11.66	18 11.66	18 11.66	18 11.66	18 11.66	18 11.66	18 11.66	123	78.576		(Lakhs)

78

Rahmath unnisa
DDPI TUMKUR(SOUTH)
KARNATAKA

ADDITIONAL INPUTS FOR EXISTING UPPER PRIMARY SCHOOLS:

As per constitutional article 45 providing right of the child between the age group of 6 to 14 to achieve free education of choice inclusive of linguistic media for a compulsory primary education for 10 years, and NEP 1986 have added a greater compellation to this age group in gaining education. The age group 6-14 under UEE comprises the child to go with minimum 8 years of learning where 1-5th in primary and 6th -8th in upper primary school. In Karnataka state the national trend of uniformal education is recently stepping in for the formation of 8th standard in upper primary also the act of this inclusion is a natural demand for additional inputs in the existing upper primary schools of 1st - 7th standard. The six blocks of the district have shown the access to 8th standard considering a minimum of 2 teachers of both arts and science faculty along with the physical development of the infra structure with at least 2 rooms per upper primary school. The total number of additional rooms placed in the list with an estimated cost of Rs.1.5 lakhs to total number of 2114 rooms with a total cost of Rs.3171.0 lakhs. This is distributed in the perspective years of DEEP upto 2005 shown in table ACCESS-V(a) for needy reference.

SARVA SHIKSHA ABHIYAN
ACCESS-5 Additional inputs for existing upper primary schools
5(a) Additional Rooms

08

Sl.No	Name of the Blocks	No of Additional Rooms	Total Cost Lakh	2001-02	2002-03		2003-04		2004-05		2005-06	2006-07	2007-08	2008-09	2009-10	Total	
					rooms/	Cost Lakhs	rooms/	Cost Lakhs	rooms/	Cost Lakhs						Unit	Cost Lakhs
1	C.N.Halli	221	331.50	0	120	180.00	60	90.00	41	61.50	0	0	0	0	0	221	331.50
2	Gubbi	461	691.50	0	200	300.00	140	210.00	121	181.50	0	0	0	0	0	461	691.50
3	Kunigal	160	240.00	0	90	135.00	40	60.00	30	45.00	0	0	0	0	0	160	240.00
4	Tiptur	240	360.00	0	89	133.50	90	135.00	61	91.50	0	0	0	0	0	240	360.00
5	Tumkur	651	976.50	0	200	300.00	222	333.00	229	343.50	0	0	0	0	0	651	976.50
6	Turuvekere	381	571.50	0	160	240.00	145	217.50	76	114.00	0	0	0	0	0	381	571.50
Total		2114	3171.00	0	859	1288.50	697	1040.50	558	837.00	0	0	0	0	0	2114	3171.00 (Lakhs)

Rahmath unnisa
DDPI TUMKUR(SOUTH)
KARNATAKA

ADDITIONAL INPUTS FOR EXISTING UPPER PRIMARY SCHOOLS

B. Compounds.

A total number of 709 upper primary schools from six blocks of the district do not have school compounds to safe guard their premises. It is very much essential to avoid enchroachment and to safe guard the existence of school building in the region. The healthy atmosphere allows children for a free activity in sports and cultural programmes and also in keeping the decoram of the school with various plantation and designing. An estimated cost of Rs. 202.40 lakhs is marked in the DEEP perspective planning expecting the completion of work by 2005.

SARVA SHIKSHA ABHIYAN
ACCESS-5 Additional inputs for existing upper primary schools
5(b) Compounds

82

Sl.No	Name of the Blocks	Total No of Compounds	Total Cost Lakh	2001-02	2002-03		2003-04		2004-05		2005-06	2006-07	2007-08	2008-09	2009-10	Total	
					Units / Cost Lakhs	rooms/Cost Lakhs	rooms/Cost Lakhs	rooms/Cost Lakhs	Unit	Cost Lakhs							
1	C.N.Halli	89	31.15	0	40	14.00	30	10.50	19	6.65	0	0	0	0	0	89	31.15
2	Gubbi	160	34.00	0	80	17.00	40	8.50	40	8.50	0	0	0	0	0	160	34.00
3	Kunigal	105	17.85	0	60	10.20	30	5.10	15	2.55	0	0	0	0	0	105	17.85
4	Tiptur	97	29.10	0	35	10.50	33	9.90	29	8.70	0	0	0	0	0	97	29.10
5	Tumkur	200	70.00	0	93	32.55	87	30.45	20	7.0	0	0	0	0	0	200	70.00
6	Turuvekere	58	20.30	0	30	10.50	18	6.30	10	3.5	0	0	0	0	0	58	20.30
Total		709	202.40	0	338	94.75	238	70.75	133	36.90	0	0	0	0	0	709	202.40 (Lakhs)

Note:- Average cost per each in the district as per calculation is 0.29 lakhs

Rahmath unnisa
DDPI TUMKUR(SOUTH)
KARNATAKA

TEACHER GRANT IN EXISTING UPPER PRIMARY SCHOOLS:

A total number of 4769 teachers are working in upper primary schools existing in six blocks of the district have not been provided hither to with school grant of Rs.500/- per annum. This rate is concluded as per norms for a period of 9 years which amounts to 214.605 lakhs as enclosed in Table ACCESS-V teachers grant.

SARVA SHIKSHA ABHIYAN
I.ACCESS:5.Additional inputs for existing upper primary schools
Teacher Grants

Sl.No	Name of the Block	No.Of Teacher	Unit Cost per school per Year	Unit Cost for 9 Years
1	C.N.Halli	598	0.005	2.99 26.91
2	Gubbi	809	0.005	4.045 36.405
3	Kunigal	658	0.005	3.29 29.61
4	Tiptur	512	0.005	2.56 23.04
5	Tumkur	1669	0.005	8.345 75.105
6	Turuvekere	523	0.005	2.615 23.535
Total		4769		23.845 214.605

Rahmath unnisa
DDPI TUMKUR(SOUTH)
KARNATAKA

SCHOOL GRANTS FOR EXISTING UPPER PRIMARY SCHOOLS

A total number of 878 from all the six taluks with a sum of Rs. 2000/- per school per annum is marked in DEEP perspective planning to a period of 9 years accruing to a total estimate Rs.146.124lakhs as per table ACCESS-V school grants is enclosed along with reference and action.

SARVA SHIKSHA ABHIYAN
I.ACCESS:5(d).Additional inputs for existing upper primary schools
School Grants

Sl.No	Name of the Block	No.Of Schools	Unit Cost per school per Year	Unit Cost for 9 Years	Total cost for 9 years
1	C.N.Halli	122	0.02	2.196	19.764
2	Gubbi	184	0.02	3.312	29.808
3	Kunigal	137	0.02	2.466	22.194
4	Tiptur	104	0.02	1.872	16.848
5	Tumkur	216	0.02	4.32	38.88
6	Turuvekere	115	0.02	2.070	18.63
Total		878		16.236	146.124

Rahmath unnisa
DDPI TUMKUR(SOUTH)
KARNATAKA

DRINKING WATER AND TOILET FACILITY FOR UPPER PRIMARY SCHOOLS(ADDITIONAL INPUTS):

A total number of 713 upper primary schools are listed in blocks with an estimated cost of Rs.50,000/- per each school in constructing a Toilet with compartments and providing drinking water facility to the growing children in upper primary schools. As said in the primary school reports the basic hygienic practice to implement in the lives of upper primary children. Toilets are a must to answer the Nature's call during the schooling hours. It facilitates the girls entering the age of adolescence for their practices of life and providing independence. Teachers are also facilitated by these provisions. The incapacitated institutions so far seen denied with this facility have barred the educating girls specially of SC/ST along with other minorities in continuing their education to upper stages. This is also a major cause for heavy drop outs of girls in their speedy career of education. The sudden halt of their ambition to continue their education because of the natural age of puberty becomes a curse on the community which finally seals the fate of a female for future education keeping this in view immediate erection of toilets and facilitating with drinking water be taken on top priority in the district. A total cost of Rs.3630 lakhs is marked in the budget shown in table ACCESS-V(c) of the DEEP perspective.

SARVA SHIKSHA ABHIYAN
ACCESS-5 Additional inputs for existing upper primary schools
5(e) Drinking water and Toilet facility

Sl.No	Name of the Blocks	Unit	Total Cost Lakh	2002-03		2003-04		2004-05		2005-06	2006-07	2007-08	2008-09	2009-1	Total	
				2001-02	Units / Cost Lakhs	rooms/Cost Lakhs	rooms/Cost Lakhs	rooms/Cost Lakhs	Unit						Cost Lakhs	
1	C.N.Halli	98	49.00	0	50 25.00	35 17.50	13 6.50	0	0	0	0	0	0	0	98	49.00
2	Gubbi	180	90.00	0	90 45.00	45 22.50	45 22.50	0	0	0	0	0	0	0	180	90.00
3	Kunigal	108	54.00	0	60 30.00	25 12.50	23 11.50	0	0	0	0	0	0	0	108	54.00
4	Tiptur	64	32.00	0	24 12.00	20 10.00	20 10.00	0	0	0	0	0	0	0	64	32.00
5	Tumkur	170	85	0	100 50.00	35 17.50	35 17.50	0	0	0	0	0	0	0	170	85.00
6	Turuvekere	90	45.00	0	20 10.00	35 17.5	15 7.5	0	0	0	0	0	0	0	90	45.00
Total		710	355.00	0	364 182.00	195 103.00	151 78.00	0	0	0	0	0	0	0	710	363 (Lakhs)

Note:-Averags cost per each institution is Rs 0.50/- Lakhs

Rahmath unnisa
DDPI TUMKUR(SOUTH)
KARNATAKA

PROVISION OF ELECTRICITY FOR EXISTING UPPER PRIMARY SCHOOLS:

A total number of 715 upper primary schools do not have electricity connection in the district as said in primary education paras it is the dire need for an institution of an upper primary to gain electric power in the building in fixing the teaching learning materials on par with latest curriculum and providing sufficient lighting during cloudy atmosphere in the class room and is also necessary for conducting an institutional programs of several kinds which adds to the creativity nature of the child. Denial of this provision has certainly drawn back the child from institution in making itself a dropouts. Thus keeping many streamline disadvantages for having no electricity in the school immediate execution avoids still more drop outs. A total sum of Rs. 60.7 is marked in the budget of DEEP for reference and action.

SARVA SHIKSHA ABHIYAN
ACCESS-5 Additional inputs for existing upper primary schools
5(f) Electricity

06

Sl.No	Name of the Blocks	Unit	Total Cost Lakh	2001-02	2002-03		2003-04		2004-05		2005-06	2006-07	2007-08	2008-09	2009-10	Total	
					Units / Cost Lakhs	rooms/Cost Lakhs	rooms/Cost Lakhs	rooms/Cost Lakhs	Unit	Cost Lakhs							
1	C.N.Halli	97	7037	0	50	3.80	30	2.28	17	1.29	0	0	0	0	0	97	7037
2	Gubbi	160	12.80	0	70	5.60	50	4.00	40	3.20	0	0	0	0	0	160	12.80
3	Kunigal	104	7.90	0	65	4.94	30	2.28	9	0.68	0	0	0	0	0	104	7.90
4	Tiptur	64	6.40	0	24	2.40	20	2.00	20	2.00	0	0	0	0	0	64	6.40
5	Tumkur	202	19.19	0	73	6.93	66	6.28	63	5.98	0	0	0	0	0	202	19.19
6	Turuvekere	88	7.04	0	48	3.80	26	2.08	14	1.12	0	0	0	0	0	88	7.04
Total		715	60.70	0	331	27.51	222	18.92	163	14.27	0	0	0	0	0	715	60.70 (Lakhs)

Note:-Average cost worked out per each school is 0.085/- Lakhs

Rahmath unnisa
DDPI TUMKUR(SOUTH)
KARNATAKA

REPAIRS OF EXISTING UPPER PRIMARY SCHOOLS:

A total number of 870 upper primary schools need non recurring repairs in various sequences as explained before in various stages which is being calculated in blocks estimating the sum of rupees 87.0 lakhs as a need in the current years budget. Table ACCESSV(e) is enclosed for reference and further action.

SARVA SHIKSHA ABHIYAN
ACCESS-5 Additional inputs for existing upper primary schools
5(g): Repairs

Sl.No	Name of the Blocks	Unit	Total Cost Lakh	2001-02 Units / Cost Lakhs	2002-03 Units / Cost Lakhs	2003-04 rooms/Cost Lakhs	2004-05 rooms/Cost Lakhs	2005-06	2006-07	2007-08	2008-09	2009-1	Total Unit	Total Cost Lakhs
1	C.N.Halli	122	12.20	122 6.1	6.1	6.1 12.2	6.1	6.1	6.1	6.1	6.1	6.1	122	54.90
2	Gubbi	184	18.40	184 9.2	9.2	9.2 18.4	9.2	9.2	9.2	9.2	9.2	9.2	184	82.8
3	Kunigal	125	12.50	125 6.25	6.25	6.25 12.5	6.25	6.25	6.25	6.25	6.25	6.25	125	56.25
4	Tiptur	104	10.40	104 5.2	5.2	5.2 10.4	5.2	5.2	5.2	5.2	5.2	5.2	104	46.8
5	Tumkur	220	22.00	220 11.00	11	11 22	11.0	11	11	11	11	11	220	99.00
6	Turuvekere	115	11.50	115 5.75	5.75	5.75	5.75	5.75	5.75	5.75	5.75	5.75	115	51.75
Total		870	87.00	870 43.5	43.5	43.5	43.5	43.5	43.5	43.5	43.5	43.5	870	391.50 (Lakhs)

Note:-Average cost worked out per each school is 0.1/- Lakhs

Rahmath unnisa
DDPI TUMKUR(SOUTH)
KARNATAKA

FURNITURE FOR EXISTING UPPER PRIMARY SCHOOLS:

It is an act of desistance in providing unusual seating of benches and other wise floor to the growing generation with dreaming colourful ambitions of learning. The inconsistency in giving a free atmosphere darts back the child to go as a drop out. A total number of 131 upper primary schools under Non OBB are not provided with the minimum requirement of furniture both to the learner and the learner immediate supply acts as a fruitful incentive to the children in keeping them in free and happy moods. Along with these a total number of 706 upper primary schools under OBB have also been provided with insufficient nominal furniture which is half paralysed in the form of dead stock. The blocks have noticed the chowking atmosphere with insufficient furniture in government schools creating a scene of obscenity on par with the private schools with minimum requirement of seating. Thus it is again a demand from OBB school to satisfy the minimum need to a total estimate of 292.50 lakhs of rupees as per the table ACCESSV(f) enclosed for reference and action.

SARVA SHIKSHA ABHIYAN
ACCESS-5 Additional inputs for existing upper primary schools
5(h):Furniture Teaching Learning Materials

Si.No	Name of the Blocks	OBB	Total Cost Lakh	Non OBB	Cost in Lakhs	Total Cost Lakh	2001-02 Units / Cost Lakhs	2002-10	Total Unit	Cost Lakhs
1	C.N.Halli	122	36.60	0	0	36.60	122 36.60	0	122	36.60
2	Gubbi	112	33.60	72	36.0	69.60	184 69.60	0	184	69.60
3	Kunigal	105	31.50	32	16.0	47.50	137 47.50	0	137	47.50
4	Tiptur	97	29.10	07	3.50	32.60	104 32.60	0	104	32.60
5	Tumkur	155	46.5	20	25.50	72.00	206 72.00	0	206	72.00
6	Turuvekere	115	34.50	0	0	34.50	115 34.50	0	115	34.50
Total		706	271.80	131	81.00	292.80	868 292.80	0	868	292.80 (Lakhs)

Note:-Average cost worked out per each school is 0.33/- Lakhs.
For Non OBB 0.5/- Lakhs per school.
For OBB schools 0.3/- Lakhs per each school.

Rahmath unnisa
DDPI TUMKUR(SOUTH)
KARNATAKA

hb

ADDITIONAL TEACHERS IN EXISTING UPPER PRIMARY SCHOOLS

Keeping in view of the age 14 it is already discussed in implementing the national policy in the state including 8th standard in upper primary schools. The district is no exemption in following the implementation of policy. Thus a total number of science and arts graduate teachers required in the district are 1612 along with the additional primary school teachers of 520 in maintaining the minimum number of 4+1 teachers irrespective of minimum strength in upper primary schools. The total salary in both the scales and details shown in table ACCESS-V(h) additional teachers. A sum of estimated cost Rs. 12853.92 is placed before along with DEEP for reference and further action.

SARVA SHIKSHA ABHIYAN

ACCESS-5 Additional inputs for existing upper primary schools 5(f):Additional Teachers.

Sl.No	Name of the Blocks	Additional Teachers	Salary per Year	Total Salary for	Total Salary for 8.5 years	2001-02 6 Months	2002-03	2003-04	2004-05	2005-06	2006-0	2007-08	2008-0	2009-1	Total
1	C.N.Halli	Graduates }244	178.16	224.65	1909.525		224.65	224.65	224.65	224.65	224.65	224.65	224.65	224.65	1797.20
		Pry School} 80	46.49												
2	Gubbi	Graduates }368	268.66	415.58	3532.43		415.58	415.58	415.58	415.58	415.58	415.58	415.58	415.58	3324.64
		Pry School} 159	146.92												
3	Kunigal	Graduates }274	200.74	251.774	2140.079		251.374	251.374	251.374	251.374	251.374	251.374	251.374	251.37	2014.192
		Pry School} 89	51.7												
4	Tiptur	Graduates }208	151.8816	244.326	2076.771		244.326	244.326	244.326	244.326	244.326	244.326	244.326	244.33	1954.608
		Pry School} 159	92.4444												
5	Tumkur	Graduates }388	283.30	46.66	2521.61		296.66	296.66	296.66	296.66	296.66	296.66	296.66	296.66	2373.28
		Pry School} 23	13.36												
6	Turuvekere	Graduates }130	167.94	173.75	1476.875		173.75	173.75	173.75	173.75	173.75	173.75	173.75	173.75	1390.000
		Pry School} 10	5.81												
Total		Graduates }1612		1606.74	13657.29		1606.74	1606.74	1606.74	1606.74	1606.74	1606.74	1606.74	1606.7	12853.92
		Pry School} 520													

Keeping in view of the age 14 it is already discussed in implementing the national policy in the state including 8th sta upper primary schools. The district is no exemption in following the implementation policy. Thus a total number of science and arts graduate teachers required in the district are 1612 alongwith the additional primary school t

SARVA SHIKSHA ABHIYAN
2 ENROLMENT
2(b) Special Enrolment drives
(Unit cost per School is Rs 500/-)

Sl.No	Name of the Blocks	No.Of Schools	Unit Cost Per School (Lakhs)	Total Cost (Lakhs)	2001-02 6 Months
1	C.N.Halli	315	0.005	1.575	.1.575
2	Gubbi	412	0.005	2.06	2.06
3	Kunigal	422	0.005	.2.11	.2.11
4	Tiptur	277	0.005	1.385	.1.385
5	Tumkur	518	0.005	2.59	2.59
6	Turuvekere	322	0.005	1.61	1.61
Total		0.2266	13.5	11.33	.11.33

It is clearly seen in the community mobilization activity in the district in creating the awareness in masses to avoid the drop outs and to avert the non school going children in joining the main stream of education i.e regular schooling keeping the situation in hot touch for a firm enrolment of all children by june 2002 not leaving even a single house hold within the ge group of 6-14 from its right to become a literate. Making it successful venture a sum of Rs. 500/- is allocated in the budget for each school in conducting sports activities (Rs.200) cultural activities (Rs. 200) and Prabhath fery (Rs. 100) in the village at school and village level specially for drop outs and non school going children of the jurisdiction. The total cost estimated during the current of 2001-02 for a direction of six months 11.33 lakhs shown in table 2 (b) enrolment .

Note:1.Sports activities Rs500/-
2.Cultural programmes Rs200/-
3.Prabhath Pheri etc.. Rs100/-
Total Rs500/-

Rahmath unnisa
DDPI TUMKUR(SOUTH)
KARNATAKA

SARVA SHIKSHA ABHIYAN

Statement showing details of Children who are through Chinnara Angala continuing in School as on 31.07.2001

<i>Sl. No.</i>	<i>Taluks</i>	<i>No. of Children admitted to School</i>	<i>No. of Children continuing in School</i>
1.	C.N. HALLI	154	154
2.	GUBBI	234	234
3.	KUNIGAL	217	217
4.	TIPTUR	169	169
5.	TUMKUR	317	317
6.	TURUVEKERE	135	135
	TOTAL	1226	1226

A total number of 44,463 children between the age group of 5 -14 are witnessed in the recent child census conducted all over the district as clearly shown the non school going and drop out children all over. A bridge course programme conducted for a span of sixty days in summer vocation keeping a target of 2534 children from all the ten blocks of the district. An achievement of 84% is witnessed by the efforts shown by teachers and volunteers in 94 centres admitting more than 2000 children to the main stream of schooling after the bridge course the incentive has attracted the poor masses in sending their starving children to attend the bridge course. The teachers and volunteers who worked under the programme have encouraged the community for going for still more bridge course programme to reduce the drop outs in the district. Thus six blocks of the South district have marked 65 new centres again for a period of six months with a cost of Rs. 8.45 lakhs for the year 2001-02. Table 2 enrolment is enclosed along with for reference and action.

AWARENESS CAMPAIGNS AND COMMUNITY MOBILIZATION PROGRAMMES:

The pre project activities of SSA are prone towards conducting community mobilization and awareness campaign programmes which are initiating the masses. More involvement of community in the form of Grama Sabha school based activities special featured activities for the drop outs of the area along with the wall paintings will accrue to a unit cost of Rs.1000/- per each school habitation for a total number of 22~~66~~ schools with an estimated cost of 22.6~~66~~ lakhs for the year 2001-02. Table is enclosed 2(d) Enrolement.

SARVA SHIKSHA ABHIYAN
2 ENROLMENT
2(d)Awareness Campaigns and Community
Mobilisation Programmes

Sl.No	Name of the Blocks	No.Of Schools	Unit Cost Per Schools (Lakhs)	2001-02	
				Unit	Cost
1	C.N.Halli	315	0.01	315	3.15
2	Gubbi	412	0.01	412	4.12
3	Kunigal	422	0.01	422	4.22
4	Tiptur	277	0.01	277	2.77
5	Tumkur	518	0.01	518	5.18
6	Turuvekere	322	0.01	322	3.22
Total		2266		2266	22.66

Rahmath unnisa
DDPI
TUMKUR(SOUTH)
KARNATAKA

FIRST AID KIT FOR PRIMARY SCHOOLS:

A total number of 1388 primary schools is provided with an allocation of 500/- per annum as unit cost in providing first aid kit to the school as a recurring allocation which costs to an estimated sum of 62.46 lakhs for 9 years. Table enclosed here under.

First aid kits for upper primary school with a unit cost of Rs1000/- per school per year is also recommended to 878 schools of the district with an estimated cost of 79.02 lakhs for 9 years which is much needed in giving health care to the said age group of children in bringing UEE a success.

**SARVA SHIKSHA ABHIYAN
3 RETENTION
3g : FIRST AID KIT For primary schools**

Sl.No	Name of the Block	Schools Units	Unit Cost Rs 500/- Per Annum	Total Cost for one Year	Total Cost for 9 Years
1	C.N.Halli	193	0.005	0.965	8.685
2	Gubbi	228	0.005	1.14	10.26
3	Kunigal	285	0.005	1.425	12.825
4	Tiptur	173	0.005	0.865	7.785
5	Tumkur	302	0.005	1.51	13.59
6	Turuvekere	207	0.005	1.035	9.315
Total		1388		6.94	62.46

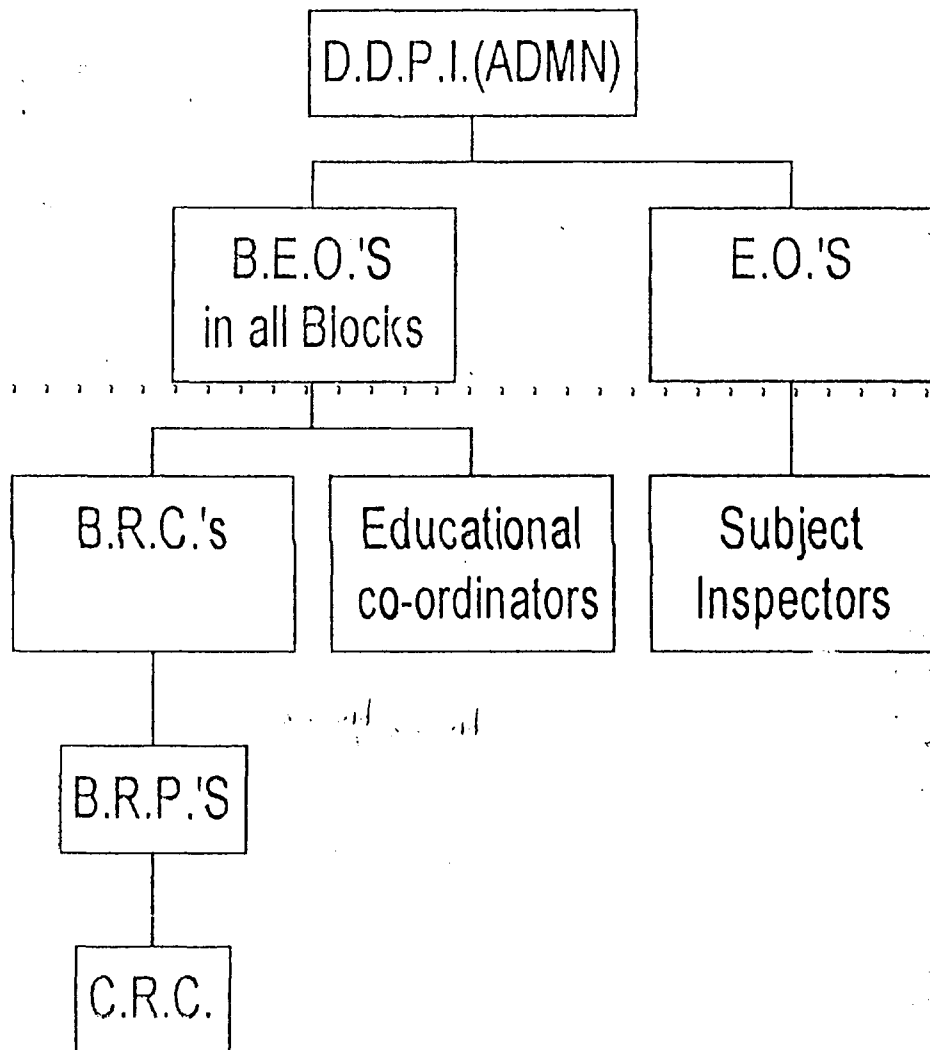
Rahmath unnisa
DDPI
TUMKUR(SOUTH)
KARNATAKA

**SARVA SHIKSHA ABHIYAN
3 RETENTION
FIRST AID KIT For Upper primary schools
(Unit cost Rs1000/- per year per ups)**

Sl.No	Name of the Block	Schools Units	Unit Cost per School Rs 1000/- per year	Cost for one Year Lakhs	Total Cost for 9 Years
1	C.N.Halli	122	0.01	1.22	10.98
2	Gubbi	0.184	0.01	1.84	16.56
3	Kunigal	137	0.01	1.37	12.33
4	Tiptur	104	0.01	1.04	9.36
5	Tumkur	216	0.01	2.16	19.44
6	Turuvekere	115	0.01	1.15	10.35
Total		878		8.78	79.02

Rahmath unnisa
DDPI
TUMKUR(SOUTH)
KARNATAKA

SUPERVISORY SYSTEM



SARVA SHIKSHA ABHIYAN

ACCESS 2(M) Additional Inputs for Existing Primary Schools Text Books & Work Note Books

Taluks	No. of Students	Unit Cost	2001-02 cost in lakhs	2002-03	2003-04	2004-05	2005-06	2006-07	2007-08	2008-09	2009-10	Total Cost in Lakhs
C.N. HALLY	17374	0.00100	1.737	1.737	1.737	1.737	1.737	1.737	1.737	1.737	1.737	15.633
GUBBI	24405	0.00100	2.440	2.440	2.440	2.440	2.440	2.440	2.440	2.440	2.440	21.960
KUNIGAL	22325	0.00100	2.232	2.232	2.232	2.232	2.232	2.232	2.232	2.232	2.232	20.088
TIPTUR	15229	0.00100	1.523	1.523	1.523	1.523	1.523	1.523	1.523	1.523	1.523	13.707
TUMKUR	38093	0.00100	3.809	3.809	3.809	3.809	3.809	3.809	3.809	3.809	3.809	34.281
TURUVEKERE	17542	0.00100	1.754	1.754	1.754	1.754	1.754	1.754	1.754	1.754	1.754	15.786
TOTAL	134968		13.495	13.495	13.495	13.495	13.495	13.495	13.495	13.495	13.495	121.455

As per the state norms the text books are supplied through State Ex-chequere since a long time & to the Primary Children note books in the form of work books are a must to complete their unit notes for which every subject do require a minimum of 100 page note book costing around Rs.10/- & a minimum of 6 note books along with 4 assignment and test books with a total of 10 books costing around Rs. 100/- is the demand of a community for a free & convenient education for the Primary Children whose parents hardly afford the needs well in time. Thus leaving the amount of text book purchase the entire amount of Rs. 100/- is shown as a need with a confirmation of total number of children studying in 6 blocks with that of the assessment of Rs. 121.455 lakhs upto 2010.

SARVA SHIKSHA ABHIYAN

ACCESS 5(K) Additional Inputs for Existing U.P.S. Text Books & Work Note Books

Taluks	No. of Students	Unit Cost @ Rs.150/set	2001-02 cost in lakhs	2002-03	2003-04	2004-05	2005-06	2006-07	2007-08	2008-09	2009-10	Total Cost in Lakhs
C.N. HALLY	6391	0.00150	0.959	0.959	0.959	0.959	0.959	0.959	0.959	0.959	0.959	8.631
GUBBI	9039	0.00150	1.355	1.355	1.355	1.355	1.355	1.355	1.355	1.355	1.355	12.195
KUNIGAL	8419	0.00150	1.262	1.262	1.262	1.262	1.262	1.262	1.262	1.262	1.262	11.358
TIPTUR	5899	0.00150	0.884	0.884	0.884	0.884	0.884	0.884	0.884	0.884	0.884	7.956
TUMKUR	29023	0.00150	4.353	4.353	4.353	4.353	4.353	4.353	4.353	4.353	4.353	39.177
TURUVEKERE	6403	0.00150	0.960	0.960	0.960	0.960	0.960	0.960	0.960	0.960	0.960	8.64
TOTAL	65174		9.773	9.773	9.773	9.773	9.773	9.773	9.773	9.773	9.773	87.957

A total no., of 65174 pupils studying in Upper Primary Schools are supplied with required text books for 3 languages & 3 core subjects under State Ex-Chequere as an incentive to educate the Upper Primary minimising the burden of parents. As per the norms of SSA Rs. 150/- is the provision for both texts & work book purchase. The requisite number of note books for upper primary children is 6 of 200 pages as work books 6 of 100 pages as of assignment books & 3 un-ruled books of 100 pages for bifurcated core subjects like Geometry, Bio-Science & Geography. This much of supply will approximately is the cost of Rs. 150/- which the parents will not afford in time to help children for timely learning. To satisfy the needs of the children more than leaving food & other incentives, writing material will stand on priority basis considering this aspect a sum of Rs. 87.957 lakhs is estimated for sanctioning.

Leave Reserve Vacancy**At the rate of Rs. 100/working day/annum upto 2010**

2%

<i>Sl. No.</i>	<i>Taluks</i>	<i>Earned Leave</i>
1.	C.N. HALLI	4.40 Lakhs
2.	GUBBI	5.06 Lakhs
3.	KUNIGAL	6.82 Lakhs
4.	TIPTUR	3.96 Lakhs
5.	TUMKUR	10.34 Lakhs
6.	TURUVEKERE	3.74 Lakhs
	TOTAL	34.32 Lakhs

SARVA SHIKSHA ABHIYAN
3 RETENTION
Education of disabled children in the district.
(2001 to 2010)

Sl.No	Name of the Block	No of IED Children	Unit Cost per annum Lakhs	Total cost per Year	Total Cost for 9 years (lakhs)
1	C.N.Halli	42	0.012	0.504	4.536
2	Gubbi	141	0.012	1.692	15.228
3	Kunigal	109	0.012	1.308	11.772
4	Tiptur	120	0.012	1.440	12.96
5	Tumkur	50	0.012	0.6	5.4
6	Turuvekere	26	0.012	0.31	2.808
Total		488		5.854	52.708

Rahmath unnisa
DDPI
TUMKUR(SOUTH)

SARVA SHIKSHA ABHIYAN
4 Capacity Building
Training for Community Leaders(N.G.O's)
(8 VolunTERS per Village Rs 30/- per day for 2 days)

SI.No	Name of the Block	No of Schools	No of VolunTERS	Unit cost per volunTERS for 2 Days	Total Cost in Lakha
1	C.N.Halli	315	2520	Rs 60	1.51
2	Gubbi	412	3320	Rs 60	1.99
3	Kunigal	422	3352	Rs 60	2.01
4	Tiptur	277	2248	Rs 60	1.35
5	Tumkur	518	4184	Rs 60	2.51
6	Turuvekere	322	2592	Rs 60	1.55
Total		2266	18216		10.92

112

Rahmath unnisa
DDPI
TUMKUR(SOUTH)
KARNATAKA

SARVA SHIKSHA ABHIYAN
4CAPACITY BUILDING
Training for Block Level Govt Officers
(40 officials for 2 days at Rs 70/- per day)

SI.No	Name of the Block	No of Govt officials	Total Cost For 2 days in lakhs
1	C.N.Halli	40	0.06
2	Gubbi	40	0.06
3	Kunigal	40	0.06
4	Tiptur	40	0.06
5	Tumkur	40	0.06
6	Turuvekere	40	0.06
Total		240	0.36

Rahmath unnisa
DDPI
TUMKUR(SOUTH)
KARNATAKA

SARVA SHIKSHA ABHIYAN
 4CAPACITY BUILDING
 Training for CRC's and Head masters
 (@ Rs50/- per Day for 2 days)

Sl.No	Name of the Block	No of CRC's And H.M's	Total Cost In Lakhs
1	C.N.Halli	347	0.347
2	Gubbi	438	0.44
3	Kunigal	450	0.45
4	Tiptur	302	0.302
5	Tumkur	559	0.60
6	Turuvekere	345	0.35
Total		2441	12.557

-Rahmath unnisa
 -DDPI
 -TUMKUR(SOUTH)
 -KARNATAKA

SARVA SHIKSHA ABHIYAN

Number of Teachers trained in Chaithanya Programme

<i>Sl. No.</i>	<i>Name of the Block</i>	<i>Total No. of Teachers</i>	<i>No. of Teachers Trained</i>	<i>No. of teachers to be trained</i>
1.	C.N. HALLI	961	637	343
2.	GUBBI	10150	709	441
3.	KUNIGAL	1101	665	436
4.	TIPTUR	744	597	147
5.	TUMKUR	1834	696	1138
6.	TURUVEKERE	860	726	134
	TOTAL	6650	4030	2669

SHIKSHA ABHIYAN
District Level and DIET Faculty training

SI.No	Perticulars	No of Officials	No of days	Unit Cost Per day	Total Cost For 2Days	C.G	Total Cost In Lakhs
1	DIET Faculty Training	23	2	Rs70/-	Rs3220/-	Rs260/-	0.035
2	District Level Training(DPO) BRC'c and BRP's)	40	2	Rs70/-	Rs5600/-	Rs400/-	0.06
Total		73	4		Rs8820/-	Rs660/-	0.095

Rahmath unnisa
DDPI
TUMKUR(SOUTH)
KARNATAKA

Existing salary for BRC, BRP & other establishment at block level

Sl. No	Name of the establishment	Per month	6 months	1 year	Salary for 8 1/2	Total salary (lakhs)	Per block	For 6 blocks
1	BRC	8774	52644	105288	894948	8.950	8.95	53.7
2 a	BRP	6085	36510	73020	620670	12.413	12.413	74.478
	Secondary	6085	36510	73020	620670			
					1241340			
b	BRP	4843	29058	58116	523044	16.291	16.291	97.746
	Primary	4843	29058	58116	523044			
		4843	29058	58116	523044			
					1629132			
3	F.D.A 1	3850	23100	46200	392700	3.927	3.927	9.927
4	Group D	2500	15000	30000	255000	2.550	2.550	15.3
	additional inputs	--	--	--	--	--	10.685	64.11
	Total	41823	250938	501876		44.13	54.816	328.896

Additional Inputs to BRC's (in each block)

1. Furniture Rs 1 lakh
2. Contingency Rs. 12500 x 9 years = 112500
3. Buildings Rs. 6 lakh
4. Computer Purchases Rs. 0.75 lakh
5. Xerox machine Rs. 1.25 lakh
6. Telephone booking Rs. 0.02 lakh
7. Telephone Maintenance Rs. 0.25 lakh (0.25)
8. Telephone Maintenance Rs. 0.29 lakh
- Total Rs. 10.685 lakh

For 6 blocks = 10.685 x 6 = 64.11 lakh.

SARVA SHIKSHA ABHIYAN

List of C.R.C.'s Proposed

<i>Sl. No.</i>	<i>Name of the Block</i>	<i>No. of the C.R.C's Proposed</i>
1.	C.N. HALLI	18
2.	GUBBI	23
3.	KUNIGAL	20
4.	TIPTUR	21
5.	TUMKUR	37
6.	TURUVEKERE	21
	TOTAL	140

SARVA SHIKSHA ABHIYAN

List of B.R.C.'s Proposed

<i>Sl. No.</i>	<i>Name of the Block</i>	<i>No. of the B.R.C's Proposed</i>	<i>Name of the B.R.C.</i>
1.	C.N. HALLI	1	Sri. Byrappa
2.	GUBBI	1	Sri. C. Shivanna
3.	KUNIGAL	1	Sri. D. Ranga Swamy
4.	TIPTUR	1	Sri. Manamohan
5.	TUMKUR	1	Smt. Allem Unnisa
6.	TURUVEKERE	1	Sri. Somashekhar

Existing salaries of CRC's at cluster level

Sl. No	Name of the block	No. of teachers	No. of CRC's (1CRC /50 teachers)	Salary /CRC/Month	Salary /CRC/6months	Salary/CRC /Year	Salary/CRC 8 1/2 years	Total salary for CRC's/year	Total salary for CRC's /8 1/2 Yr
1	C.N.Halli	1288	18	4843	29058	58116	493986	10.46	88917
2	Gubbi	1817	23	4843	29058	58116	493986	13.06	113616
3	Kunigal	1544	20	4843	29058	58116	493986	11.63	98797
4	Tiptur	1180	21	4843	29058	58116	493986	12.304	103737
5	Tumkur	2345	37	4843	29058	58116	493986	21.02	182774
6	Turvekere	1124	21	4843	29058	58116	493986	12.304	103737
	Total		140		1.743	3.49		81.59	691.578
	CRC's Buildings for 6 blocks at 2.0 lakh / CRC								280.00 971.578

SARVA SHIKSHA ABHIYAN

Existing Pay Scales with Allowances for all the Posts as per Management Structure, Tumkur Dist – South

Sl. No.	Name of the Post	Existing Pay Scales	Allowances		
			DA	Med.	HRA
1.	Deputy Director of Public Instruction	9580 – 14200	43 %	--	7.5 %
2.	Dy. Project Co-ordinator	7400 – 13120	43 %	--	7.5 %
3.	Asst. Project Co-ordinator	3850 – 7050	43 %	--	7.5 %
4.	First Division Asst.	3850 – 7050	43 %	--	7.5 %
5.	Technical Consultant Accountant	4575 – 8400	43 %	Rs. 25	7.5 %
6.	MIS Incharge	4575 – 8400	43 %	Rs. 25	7.5 %
7.	Group 'D'	2500 – 3850	43 %	Rs. 25	7.5 %
BLOCK LEVEL					
1.	Block Education Officer	7400 – 13120	43 %	--	3 %
2.	Block Resource Co-ordinator	60000-11200	43 %	--	3 %
3.	Block Resource Persons (Secondary)	4575 – 8400	43 %	Rs. 25	3 %
4.	Block Resource Persons (Primary)	3300 – 6300	43 %	Rs. 25	3 %
5.	First Division Asst.	3850 – 7050	43 %	Rs. 25	3 %
6.	Cluster Resource Co-ordinator	3300 – 6300	43 %	Rs. 25	3 %
7.	Group 'D'	2500 – 3850	43 %	Rs. 25	3 %

SARVA SHIKSHA ABHIYAN

Existing Pay Scales with Allowances for all the Posts as per Management Structure, Tumkur Dist – South

Sl. No.	Name of the Post	Existing Pay Scales	Allowances		
			DA	Med.	HRA
1.	Deputy Director of Public Instruction	9580 - 14200	43 %	--	7.5 %
2.	Dy. Project Co-ordinator	7400 - 13120	43 %	--	7.5 %
3.	Asst. Project Co-ordinator	3850 - 7050	43 %	--	7.5 %
4.	First Division Asst.	3850 - 7050	43 %	--	7.5 %
5.	Accountant	4575 - 8400	43 %	Rs. 25	7.5 %
6.	MIS Incharge	4575 - 8400	43 %	Rs. 25	7.5 %
6a	TECHNICAL CONSULTANT				
7.	Group 'D'	2500 - 3850	43 %	Rs. 25	7.5 %
BLOCK LEVEL					
1.	Block Education Officer	7400 - 13120	43 %	--	3 %
2.	Block Resource Co-ordinator	60000-11200	43 %	--	3 %
3.	Block Resource Persons (Secondary)	4575 - 8400	43 %	Rs. 25	3 %
4.	Block Resource Persons (Primary)	3300 - 6300	43 %	Rs. 25	3 %
5.	First Division Asst.	3850 - 7050	43 %	Rs. 25	3 %
6.	Cluster Resource Co-ordinator	3300 - 6300	43 %	Rs. 25	3 %
7.	Group 'D'	2500 - 3850	43 %	Rs. 25	3 %

SARVA SHIKSHA ABHIYAN
DISTRICT LEVEL ESTABLISHMENT OF PROJECT OFFICE, TUMKUR DISTRICT SOUTH

SL.No.	PARTICULARS	UNIT	COST/SALARY(I N LAKHS) FOR 6 MONTHS	SALARY -FOR 1 -YEAR	SALARY FOR 8 YEARS	TOTAL
1.	D.P.O.A.P.O, Accountant FDA, Technical Consultant, MIS in charge, Computer Programmer, "D" Group Sevant	1	3.6	7.20	57.60	61.20
2.	C.G	1	1.25	1.25	10.00	11.25
3.	Hired Vehicle	1	0.75	1.80	14.40	15.15
4.	Buildings	1			15.00	15.00
5.	Equipment	1	6.45			6.45
	TOTAL					109.05

The District Office Establishment under Sarva Shiksha Abhiyan require , the salary for the entire staff shown in the table along with the previous table showing the scales has been assessed as 7.20 lacs per annum with a total for 8 and half years, 61.20 lakhs. The contingency per year is claimed as 1.25 lakhs per annum for span of 9 years 11.25 lakhs is estimated. Instead of buying a new vehicle the District Implementation Committee has suggested for a hired vehicle with a cost of Rs.15,000/- per month till the completion of 2010. This estimate is 15.15 lakhs. The building, apart from DDPI's office has become essential for conducting meetings and training at District Level and as there is a site provision in the heart of the city, the committee has suggested for an additional erection at the cost of Rs.15.00 lakhs. Lastly the total equipments as listed in the previous table requires a sum of Rs.6.45 lakhs with an overall budget of Rs.109.05 lakhs for the DPO till 2010.

**LIST OF VOLUNTARY ORGANISATIONS IN THE
DISTRICT.**

CHIKKANAYAKANAHALLY:

1. Rotary Club, Chikkanayakanahally,
2. Inner Wheel Club, C.N.Hally
3. Birds Club, Chikkanayakanahally.
4. Theosophical Society
Chikkanayakanahally.
5. Arya Vysya Mandali.

GUBBI:

1. Rotary Club
2. Lions Club
3. Mahila Seva Samaj
4. Channabasaveswara
Youth Club

KUNIGAL:

1. Dalitha Sangharsha Samithi.
2. Kannada Sahithya Parishath.
3. Arya Vyshya Mandali (Vasavi)
4. Rajkumar Abhimani Sangha
5. Tigers Club

TIPTUR:

1. Tycoons
2. Jamayat - E -Islamiya.
3. Lions Club
4. Rotary Club
5. Theosophical Society.

TUMKUR

1. Rotary Club
2. Lions Club
3. Vignana Sangha
4. Dalitha Sangharsha Samithi
5. Sharada Mahila Sangha
6. Mathru Mandali.

TURUVEKERE

1. Lions Club
2. Rajasthan Varthakara
Sangha.
3. Arya Vyshya Sangha
4. Rajkumar Abhimanigala
Sangha
5. Surabhi

UNIT COST OF ACTIVITY

1. Upgradation of EGS to regular school TLM + Rs. 10000/School
2. TLE for UPS at Rs. 50000 / school (uncovered schools)
3. School grant -Rs. 2000 / year (primary & upper primary school)
4. Teacher grant - Rs. 500 / year (primary & upper primary school)
5. Teacher training -Rs. 70 / day
6. Training of community leaders -Rs. 30/ per day(Eight persons for two days)
7. Provision for disabled children -Rs. 1200 / per child.
8. Research, supervision, up Rs. 1500 / per schools /year.
9. BRC/ CRC building – construction Rs. 6 lakhs and Rs. 2 lakhs for CRC
10. Provision for furniture for BRC's & CRC's BRC- 1 lakh CRC – Rs.10000
11. C.G. Rs. 12500 / for each BRC and Rs. 2500 / for each CRC .

CHAPTER - 4**ISSUES & PROBLEMS IN PRIMARY EDUCATION**

Various problems in primary education system have been discussed in the above pages under the following heads :

Access : Under access some of the interventions have been incorporated :

1) Opening of new schools in school-less habitations.

Tumkur South district has ascertained to open 20 new primary schools providing a minimum of 2 teachers and 2 class rooms for a strength of 20 & above pupils in the concerned habitations. At the same time provision of teaching- learning materials at the rate of Rs. 10,000 per each institution which has not been covered so far in any of the schemes will also be provided. Toilets, Drinking water, Electricity, Playground & Furniture will also be provided on justification equivalent to the number of pupils analysed till 2010. The information said above is collected through the B.E.O.'s office after having careful processing by them on the need base.

In lower primary schools both existing and new set ups, a minimum of three rooms is felt very much essential for running the institution in healthy atmosphere. Keeping this in view the existing 1150 schools need a additional room which is accounted to the construction of 1150 rooms in the perspective years of plan.

As the upper primary schools having 6th to 8th standard in future a minimum of two graduate trained teachers is a must to handle 8th standard in fulfilling the need of curriculum. This need paves way

for either promotion or further recruitment. On the basis of graduated primary school teachers it has come to the notice of the committee that there are more number of Arts graduates with less number of trained amongst them. This leads to the justification for recruiting Science graduates to compensate the academic need. Tumkur district with five blocks on hand has 722 upper primary schools requiring two teachers for each amounts to the need of 1444 teachers.

2) Enrolment & Retention :

The data enclosed in connection to the enrolment and retention since 1991 shows the heavy dropout ratio and has sequentially subsided till 2001 to the extent of proposed data. It is clear that after computerisation of the recent child census, information shows that there is a retention of 87.93% of male and 87.82% of female children in 1st to 5th classes .

Retention related to SC/ST shows a gradual upliftment from 1981 census showing 31.30% male literate and 10.94% female. During 1991 census on par with the decade 10% of rise is seen in male and females which is 45.24% male and 24.61% female. The recent census have also shown the very less percentage of progress amongst the girl education including SC/ST.

ACHIEVEMENT :-

The base line survey is under progress with the assistance of District Institute of Educational Training where a set of officers along with Supervision & Monitoring Staff is taken up and related training is given to them in the State Headquarters. The provision of materials to

the executives is also supplemented and in a short span by the end of 2nd Week of September the work will be completed. Analysis will be taken by the midst of September and on the basis of results action will be tressed as per the norms S.S.A.

SPECIAL FACTORS :

Factors connected to the existing system of education in the institutions of Primary & Upper Primary is totally exposed in connection to the needs to develop both the physical infrastructure as well the capacity building amongst the teachers specially in languages apart from mother tongue and core subjects of Mathematics, Science & Social Science. Pupils all round development is also essential for their future need and continuing education. For this programmes like cultural, sports & basic technical skills are to be provided in the institutions. S.S.A. is the hope for fulfilling the issues in the perspective plan with future needs in annual works.

CHAPTER – 5**GOALS AND OBJECTIVES**

The goals and objectives as stated in the frame work of "SARVA SHIKSHA ABHIYAN" purely holds good to Tumkur District on the components of Access, Enrolment, Retention, Quality Improvement and capacity building. The main objectives are listed hereunder:-

1. Access :-

General Objective : To provide total facilities required to schools for the improvement of quality education in the district.

Specific Objectives :

- 1) To provide good building compound and other physical infrastructural facilities.
- 2) To provide required number of trained teachers to impart quality education.
- 3) To supply teaching learning materials adequately.

2. Enrolment :-

Objective : To bring back the out of school children to the formal or non-formal schooling by 2002.

- 1) Conducting bridge course of Chinnara Angala during 2001-02 for the identified children in child census of January 2001.
- 2) Enrolling the bridge course children into the formal schools for the year 2002.

3. Retention :-

Objective : To maintain cent percent retention in all schools. Category & Sex wise.

- 1) To provide Central & State Incentives to the children.
- 2) To maintain community relation through programs like Samudayadatta Shala.
- 3) To establish good rapport between children & teachers.

4. **Quality Improvement (Achievement) :-**

Objective : To provide quality education to all children at all levels in Primary Education in all places of the district.

- 1) To maintain the capacity amongst the teachers in aspects of knowledge, understanding, application & skills through refresher trainings in needy subjects.
- 2) To provide facilities to rural schools on par with urban schools.
- 3) To provide teaching learning materials during the commencement of the year for a study learning program.
- 4) To encourage primary and upper primary teachers in innovative research programmes like action research and application.

5. **Capacity Building :-**

Objective : To involve all agencies to develop capacity amongst community and pedagogy.

- 1) By organising workshops, seminars, discussions on academic problems of education.
- 2) To involve all agencies to train teachers to take experimental pilot projects for successful future implementations.

CHAPTER – 6**STRATEGIES & PROGRAMME COMPONENT****1. Access :**

As per the access shown previously with the statistical statement of population of 2001 along with the availability of children in all the primary & upper primary schools of the district under 6 blocks, the State has made a provision for establishing new primary schools in a schoolless habitation having 200 population with a child strength of 15 & above in a kms distance from the very existing school. Keeping this in view under S.S.A. 16 schools are nominated for establishing during the year 2002- 2003 .

The list of schools to be upgraded is also shown in the table along with the places of blocks. In connected to this the teacher deployment & re-deployment will be done as per the norms laid in the State Government. A time schedule for program implementation of S.S.A. is during the annual plan is enclosed along with.

Facilities :

Facilities in addition for on the need base to new schools and upgradation schools and for existing schools is worked out which is to be provided in the perspective plan along with annual plan.

Achievement :

The base line survey is under the progress and the assessment is yet to be done related to subjects as per norms by the co-operation of DIET, Tumkur District.

- 1) To provide Central & State Incentives to the children.
- 2) To maintain community relation through programs like Samudayadatta Shala.
- 3) To establish good rapport between children & teachers.

4. **Quality Improvement (Achievement) :-**

Objective : To provide quality education to all children at all levels in Primary Education in all places of the district.

- 1) To maintain the capacity amongst the teachers in aspects of knowledge, understanding, application & skills through refresher trainings in needy subjects.
- 2) To provide facilities to rural schools on par with urban schools.
- 3) To provide teaching learning materials during the commencement of the year for a study learning program.
- 4) To encourage primary and upper primary teachers in innovative research programmes like action research and application.

5. **Capacity Building :-**

Objective : To involve all agencies to develop capacity amongst community and pedagogy.

- 1) By organising workshops, seminars, discussions on academic problems of education.
- 2) To involve all agencies to train teachers to take experimental pilot projects for successful future implementations.

CHAPTER – 6**STRATEGIES & PROGRAMME COMPONENT****1. Access :**

As per the access shown previously with the statistical statement of population of 2001 along with the availability of children in all the primary & upper primary schools of the district under 6 blocks, the State has made a provision for establishing new primary schools in a schoolless habitation having 200 population with a child strength of 15 & above in a kms distance from the very existing school. Keeping this in view under S.S.A. 16 schools are nominated for establishing during the year 2002- 2003 .

The list of schools to be upgraded is also shown in the table along with the places of blocks. In connected to this the teacher deployment & re-deployment will be done as per the norms laid in the State Government. A time schedule for program implementation of S.S.A. is during the annual plan is enclosed along with.

Facilities :

Facilities in addition for on the need base to new schools and upgradation schools and for existing schools is worked out which is to be provided in the perspective plan along with annual plan.

Achievement :

The base line survey is under the progress and the assessment is yet to be done related to subjects as per norms by the co-operation of DIET, Tumkur District.

BIBLIOGRAPHY

1. Karnataka Gazetteer.
2. Census of India 1991.
3. Tumkur District Statistical Information 1999-2000.
4. Educational Statistics Birds View.
5. CPE -2001 -January.
6. DDPI Office Records.
7. DIET Office Records.
8. BEO and BRC Office Records.
9. Local Resources.

SARVA SHIKSHA ABHIYAN-KARNATAKA

TUMKUR SOUTH
TUMKUR



DISTRICT ELEMENTARY EDUCATION PLAN

ANNUAL WORK PLAN

2001-2002

**SARVA SHIKSHA ABHIYAN SAMITHI
TUMKUR SOUTH DISTRICT**

S.K.Kalliahyanavara
Principal & Ex-off
Deputy Director of Public Instruction (Dev) DIET
Tumkur
Ph No -272929

Rahamath unissa
Deputy Director of Public Instruction (Adm)
Tumkur(south)
Ph No (office)-278444
(Res) -272466

S.Najeebulla khan
Nodal Officer

SARVA SHIKHSA ABHIYAN

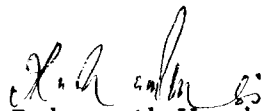
Tumkur District - South.

Annual Work Plan for the year 2001 -2002

Tumkur South District is provided with 6 Educational Blocks comprising Chikkanayakanhalli, Gubbi, Kunigal, Tiptur, Tumkur and Turuvekere. Amongst 13 districts of the state SSA provision is extended to Tumkur District between a future decade upto 2010. The district literacy shows many lower communities gaining lesser education but more of dropouts has paved way for gaining the assistance of Sarva Shiksha Abhiyan through Central Government. The Commissioner for Public Instruction is kind enough in getting 13 districts of the state introduced into the scheme in the interest of the dropouts and non-school going children which is witnessed as 44,463 as per the latest child census of January 2001.

There are several drawbacks in developing the infrastructure of the institutions in universalisation of Elementary Education between the age group of 6 - 14 children. SSA has extended a greater helping hand in developing the direly needed infrastructure inclusive of class rooms, teachers, teaching learning materials, establishment of new primary schools in needy habitations, providing toilet & drinking water facility so also much stress upon the dropout SC / ST girls and in helping the physically handicapped children to achieve education with various attractive interventions laid in the norms of the frame work of SSA. It has never given an exemption to the primary and upper primary faculty along with community members in their capacity building trainings. The wider range of exposure with the norms of SSA covering the whole human tendency is very much praised by all humans of Tumkur District.

The inspiration so developed inviting the district the project a perspective plan of 10 years with an Annual work plan of Tumkur District - South to the State Office. I am very much grateful to both the Center & State in blessing this district under Sarva Shiksha Abhiyan.


Rahamath Unnisa
DDPI, Tumkur (South).

SARVA SHIKSHA ABHIYAN**DEEP****PROVISIONAL INPUTS SHOWN UNDER ANNUAL WORK****PLAN OF S.S.A. FOR TUMKUR SOUTH DISTRICT**

The following are the provisions listed under the Annual Work Plan, S.S.A. for the year 2001 - 2002 for the accruing span of 06 months from Oct. 2001 to 31st March 2002.

In Lakhs.

Sl. No	Activity	Recurring	Non-Recurring	Total
1.	Establishment of New Primary Schools under the norms off S.S.A. with	10.986	5.4	16.386
2.	Additional Inputs for Primary Schools	167.44	406.92	574.36
3.	Additional Inputs for Existing Upper Primary Schools	43.656	571.70	615.356
4.	Enrolment drives of 6-114 age group children in the district	--	59.34	59.34
5.	Retention of the schooling children with incentives & Imn.Res.	104.612	--	104.612
6.	20 DAYS TRAINING	--	157.669	157.669
7.	Capacity building amongst different strategies	--	23.932	23.932
8.	Establishment of B.R.C.'s & B.R.P.'s in the district including buildings	15.882	55.62	71.502
9.	Salary for C.R.C.'s & Building in 140 centres	37.4	280.0	317.4
10.	Establishment of District Project Office in Tumkur South including building	5.3	6.45	11.75
	GRAND TOTAL	385.276	1567.031	1952.167

SARVA SHIKSHA ABHIYAN

ADDITIONAL INPUTS FOR NEW SCHOOLS

Requirements for newly established schools of Tumkur District South

* * *

As there is only provision of site for newly establishing school buildings there is also a need under recurring and non-recurring expenditure to be incurred. Hence it is calculated and mentioned in the table above.

Expenditure under recurring is Rs. 9.766 lakhs will include salary of new teachers, school grant and teacher grants.

Under non-recurring budget purchase of furniture and teaching learning materials is obvious for entrants into the new schools Rs. 4.8 lakhs is estimated under it.

SARVA SHIKSHA ABHIYAN

Annual Work Plan 2001 - 2002

Recurring (For newly established schools)

Sl. No.	Activities	Unit	Total Cost	Break up					
				Oct	Nov	Dec	Jan	Feb	Mar
1.	Teacher Salary (Newly Established Schools)	36	10.446	1.741	1.741	1.741	1.741	1.741	1.741
2.	School grant	18	0.36	--	--	--	0.36	--	--
3.	Teachers grant	36	0.18	--	--	--	0.18	--	--
TOTAL			10.986	1.741	1.741	1.741	2.281	1.741	1.741

Non-Recurring (For newly established schools)

Sl. No.	Activities	Unit	Total Cost	Break up					
				Oct	Nov	Dec	Jan	Feb	Mar
1.	Furniture	18	3.6	--	--	--	3.6	--	--
2.	Teaching Learning Materials	18	1.8	--	1.8	--	--	--	--
TOTAL			5.4	--	1.8	--	3.6	--	--

ABSTRACT

	<i>Oct</i>	<i>Nov</i>	<i>Dec</i>	<i>Jan</i>	<i>Feb</i>	<i>Mar</i>	<i>Total</i>
Recurring	1.741	1.741	1.741	2.281	1.741	1.741	10.986
Non-Recurring	--	1.8	--	3.6	--	--	5.4
					TOTAL		16.386

SARVA SHIKSHA ABHIYAN

ADDITIONAL INPUTS FOR EXISTING PRIMARY SCHOOLS

Considering all the six blocks of the district as for 2938 primary teachers do not have the facility of teacher grants annually. As per norms a sum of Rs.500/- released will enrich the dynamicity of teacher flexible and is costed to Rs. 14.69 lakhs for the current year, school grant of Rs. 17.64 lakh is also a provision made which hither to is not availed by the schools under state sector.

Under non-recurring needs 1242 primary schools need repair at the cost of Rs. 5,000/- per each school in resetting of doors, windows, surface plastering and various patch works including walls, roof and finally white wash of the building by taking the assistance of SDMCs and Community of the institution by passing a resolution under this aspect. Need to purchase furniture and teaching learning materials will also be resolved by the community, immediately after consideration. A total sum of Rs. 393.43 lakhs is staged.

SARVA SHIKSHA ABHIYAN Additional Inputs for Existing Primary Schools

Recurring

Sl. No.	Activities	Total No.	Unit	Total Cost	Break up						
					Oct	Nov	Dec	Jan	Feb	Mar	Total
1.	Teacher Grant	2538	0.005	12.64	--	--	--	12.69	--	--	12.69
2.	School grant	1388	0.02	27.76	--	--	--	27.76	--	--	27.76
3.	Additional Teachers salary	422	--	122.57	20.43	20.43	20.43	20.43	20.43	20.43	122.57
4.	Electricity Charges	1179	0.0075	4.42	--	--	--	--	--	--	4.42
	TOTAL			167.44	20.43	20.43	20.43	60.88	20.43	20.43	167.44

Non Recurring

Sl.No.	Activities	Total Nos.	Unit	Total Cost	Break up						
					Oct	Nov	Dec	Jan	Feb	Mar	Total
1.	Repair	1242		66.1	10.35	10.35	10.35	10.35	10.35	10.35	62.1
2.	Furniture	1388		220.94	--	--	--	220.94	--	--	220.94
3.	Teaching Learning Materials	1380		123.80	--	123.88	--	--	--	--	123.88
	TOTAL			406.92	10.35	134.23	10.35	231.29	10.35	10.35	406.92

ABSTRACT

Recurring **167.44.**

Non recurring **406.92**

Total **574.36**

SARVA SHIKSHA ABHIYAN

ADDITIONAL INPUTS FOR EXISTING PRIMARY SCHOOLS

A total number of 6380 teachers from 882 Upper Primary Schools are existing in 6 blocks of the district. A sum of Rs. 31.8 lakhs of teachers grant and Rs. 17.64 school grants is the need of the current year and salary of Rs. 803.37 lakhs for new recruiting 2132 teachers as additional requirement is also estimated month wise for the current year. The requirement of additional teachers is on the basis of upgrading Upper Primary Schools from 6th to 8th classes. As such it is obvious to take a minimum of 2 teachers (1 Science graduate and 1 Arts graduate) per UPS, along with required primary teachers included in 2132 as a whole.

Under non-recurring budget shown for supply of teaching learning materials for 882 schools of Rs. 178.15 lakhs and repairs for UPS 870 schools at the rate of Rs. 10,000/- per each institution is justified on the current price index by the local communities as the need for various kinds of repairs existing in the school buildings, Door & Window repairs, re-janueating the shutters, Floor plastering, walls & Roof patch work, black board painting and white wash is a must for almost upper primary schools. The little provision of 10 % made under ZP funds annually has shown little effects and could not suffice the need of the buildings.

Furniture to the existing UPS is a must though supplied under OBB it has shown greater insufficiency hence the need is earmarked for consideration.

SARVA SHIKSHA ABHIYAN
Additional Inputs for Existing U. P. S.

Recurring

Sl. No.	Activities	Total Nos.	Unit	Total Cost	Break up					
					Oct	Nov	Dec	Jan	Feb	Mar
1.	Teacher grants	4769	0.005	23.845	--	--	--	23.845	--	--
2.	School grants	878	0.02	16.236	--	--	--	16.236	--	--
3.	Electrical Charges	715	0.001	3.575	0.596	0.596	0.596	0.596	0.596	0.596
	TOTAL			43.656	0.596	0.596	0.596	0.596	0.596	0.596

Non-Recurring

Sl. No.	Activities	Total Nos.	Unit	Total Cost	Break up					
					Oct	Nov	Dec	Jan	Feb	Mar
1.	Teaching Learning Materials	868		191.9	--	191.9	--	--	--	--
2.	Repairs			87.0	14.5	14.5	14.5	14.5	14.5	14.5
3.	Furniture	868		292.8	--	--	--	292.8	--	--
	TOTAL			571.7	14.5	206.4	14.5	307.3	14.5	14.5

ABSTRACT

Recurring	43.656
Non- Recurring	571.700
TOTAL	615.356

11/10

SARVA SHIKSHA ABHIYAN

ENROLMENT

As for the pre-project activities are concerned all the 6 blocks of the district are given sufficient directions in going ahead with mobilization activities. To carry-out with boosting tasks like Special Enrolment drives in 2271 schooling habitations along with schoolless habitations attached will certainly check the non-school going and drop out ratio of the district. The estimated cost for this task is Rs. 11.355 lakhs for the current year.

Bridge course of Chinnara Angala has become a leverage system in upbringing the learning position of the delinked children from education. The course is extended to a span of 6 months and further upto drawal into mainstream during June 2002 in 65 centres of 6 blocks costing Rs. 25.350 lakhs. This task will encourage the down trodden masses in sending their educationally denied children to achieve their right.

Awareness Campaign :

A sum of Rs. 1,000/- per school is estimated. Under this current years Annual Plan which will be properly utilized for conducting sports, cultural activities and other attractive programmes under SSA to drop out and non-school going children with the help of community and school children. A total cost of Rs. 2.71 lakhs is estimated for consideration and action.

SARVA SHIKSHA ABHIYAN

Enrolment

Non - Recurring

Sl. No.	Activities	Total No.	Total Cost	Break up					
				Oct	Nov	Dec	Jan	Feb	Mar
1.	Special Enrolment Drives	2266	11.33	1.890	1.890	1.890	1.890	1.890	1.890
2.	Bridge Course for Main Stream	65	25.350	4.225	4.225	4.225	4.225	4.225	4.225
3.	Awareness Campaign	2216	22.66	3.778	3.778	3.778	3.778	3.778	3.778
	TOTAL		59.34	9.893	9.893	9.893	9.893	9.893	9.893

142

SARVA SHIKSHA ABHIYAN

RETENTIONS

- a) Supervision & monitoring in primary schools for a total number of schools 2277 requires Rs. 34.155 lakhs for the current year which is very much essential in evaluating the teaching learning process along with monitoring in the field limits. Thus the supervision process gets fulfilled in keeping the system on the deck for neat settings.. Retained teachers will be given optimum prominence in dealingj with this work to lay impact out of deep experience.
- b) First Aid :- As for First Aid Kit is concerned the department of human health could not supply sufficient drugs and aid materials to the school children. Though frequent health education camps for limited number of teachers are conducted they have shown 25 % of effect in improving the hygenic conditions of children.

It is the sequential need to be fulfilled to achieve majority of retention of children in schools by giving immediate health aid through first aid kits. Thus; a total cost of Rs. 500/- per primary school and Rs. 1,000/- per upper primary school is estimated to strengthen the retention strategy in Tumkur district South.

SARVA SHIKSHA ABHIYAN
ANNUAL WORK PLAN OF TUMKUR DISTRICT SOUTH
Retention -Recurring

Sl. No.	Activities	Unit	Total Cost	Break up					
				Oct	Nov	Dec	Jan	Feb	Mar
1.	Supervision & Monitoring 2266		33.99	5.665	5.665	5.665	5.665	5.665	5.665
2.	First Aid for LPS 2266		15.72	--	15.72	--	--	--	--
3.	First Aid UPS	878	8.78	--	--	--	8.78	--	--
4.	Text book & Work Note book UPS	Rs.150	9.773	--	9.773	--	--	--	--
5.	Text Book & work note book PS	Rs.100	13.495	--	13.495	--	--	--	--
6.	Ed. Disabled Children	0.12	5.854	--	5.854	--	--	-	--
7.	Leave Reserve v.allowance	2%	2.0	--	0.4	0.4	0.4	0.4	0.4
7.	Innovation & Research Work	6	15.00		3.0	3.0	3.0	3.0	3.0
	TOTAL		104.612	5.665	53.907	9.065	17.845	9.065	9.065

Note for Sl No. 7 As for Tumkur district south is concerned though there are very less tribal nomads in rural sectors with an approximation of 0.002% of the total population in six blocks are still under floating sequence. Special tasks will be initiated on the experimental basis through innovation in educating their children of 6 to 14 age group. Adding to this base need 13.42% of S.C. non- school going children and dropouts, 12.4% of muslim children, 11.72% S.T.children also be brought back to the main stream of education. Various reasons connected to the poverty of parents and the attentively generating child needs innovative steps to subside denial of rights of education. Moreover measures to be taken in admitting 3 to 6 age group children to nursery and pre primary education is also demanding the innovative needs to attract the young souls and parents with colourful, joyous, nurishing learning thus lessening the burden of the Government to go for alternative systems of education. To root out the rigidity laid upon the girl child with various problems affecting her education innovation is a must for S.C. S.T. and minority girls to bring them back into the mainstream of schooling. Considering the said factors a sum of Rs. 15 lakhs per anum will serve as a reserve for innovation and research for various problems in the district for current year.

SARVA SHIKSHA ABHIYAN

TRAINING

In keep-fit activities, training for primary teachers is a must to built their capacity to become a teacher.

As per the curriculum set for the current year and further 2 years ahead it is the dine need of the year to conduct severe training in the language and core subject areas of primary and upper primary levels. DIETs and CTEs are to be activated in the breathless task of training the teachers by keeping secondary subject teachers as Resource groups which helps in enriching their knowledge as well keeping a vigilant vision in clarifying the needs of primary teachers giving a half to further blames on primary education. Thus within the current year or a little extensively upto the closure of summer vacation teachers be taken prominently for the training in the form of work-shop to gain practical experience rather sitting passively to listen and appreciate the training.

Alike the said task a period of 30 days will be utilized for recruited teachers for fulfilling the needs in making a ready teacher. Totally a sum of Rs. 155.027 lakhs is estimated in the set table for the said action.

SARVA SHIKSHA ABHIYAN

Training

Non - Recurring

Sl. No.	Activities	Unit	Total Cost	Break up					
				Oct	Nov	Dec	Jan	Feb	Mar
1.	20 days Training	7307	102.298	17.04	17.04	17.04	17.04	17.04	17.04
	TOTAL		157.669	26.27	26.27	26.27	26.27	25.83	25.83

Abstract

Non-Recurring

157.669

SARVA SHIKSHA ABHIYAN

CAPACITY BUILDING

Awareness in community has become the demand of the day to bring back the children of 6 to 14 age group into the main stream. Thus a sum of Rs. 10.92 lakhs for training Non. Govt. Officials, Rs. 0.36 for Block Level Officers Training, Rs. 12.557 for CRCs & HMs Training is estimated to have a full-fledged awareness in the district.

SARVA SHIKSHA ABHIYAN

Capacity Building

Non - Recurring

Sl. No.	Activities	Total No.	Total Cost	Break up					
				Oct	Nov	Dec	Jan	Feb	Mar
1.	Training for N.G.O.'s	18216	10.92	1.82	1.82	1.82	1.82	1.82	1.82
2.	Block Level Govt. Officers	240	0.36	0.06	0.06	0.06	0.06	0.06	0.06
3.	DIET Faculty	73	0.095						0.095
3.	C.R.C.'s & H.M.'s	2441	12.557	2.09	2.09	2.09	2.09	2.09	2.09
	TOTAL		23.932	3.97	3.97	3.97	3.97	3.97	4.065

SARVA SHIKSHA ABHIYAN

ESTABLISHMENT OF BRCs IN BLOCKS OF THE DISTRICT

A total number of 8 members establishment is essential to run a Block resource centre in each block of the district and table of Annual expenditure calculated is enclosed herewith showing the recurring salary expenditure, current contingency and non-recurring expenditure of gaining the needs of the office which includes furniture, computer, xerox machine, building of Rs.6.00 lakhs each and a telephone for immediate communication including the maintenance which overall works out to grand total of Rs.76.487 lakhs for the existing year.

A overhead projector is essential to promote the training effectively through BRC at Taluka level, likewise rest of the materials demanded are the most necessary equipments for running the Office smoothly. The estimate is projected for kind consideration.

SARVA SHIKSHA ABHIYAN

Establishment of B.R.C.'s, B.R.P.'s & Staff

Recurring

Sl. No.	Activities	Unit	Total Cost	Break up					
				Oct	Nov	Dec	Jan	Feb	Mar
1.	Salary	48	15.057	2.51	2.51	2.51	2.51	2.51	2.51
2.	Contingency including telephone	6	0.825	0.14	0.14	0.14	0.14	0.14	0.114
	TOTAL		15.882	2.65	2.65	2.65	2.65	2.65	2.65

Non-Recurring

Sl. No.	Activities	Unit	Total Cost	Break up					
				Oct	Nov	Dec	Jan	Feb	Mar
1.	Furniture	6	6.0	--		--	6.0	--	--
2.	Computer	6	4.5	--	--		4.5	--	--
3.	Xerox Machine	6	7.5	--	--	--	7.5	--	--
4.	Building	6	36.0		36.0	--	--	--	--
5.	Over Head Projector	6	1.50				1.50		
5.	Telephone	6	0.12		0.12	--	--	--	--
	TOTAL		55.60		36.12		19.5	--	--

ABSTRACT

Recurring 15.882
 Non recurring 55.62
 71.502

SARVA SHIKSHA ABHIYAN

CLUSTER RESOURCE CENTRE

Out of 6 blocks of the District 140 clusters are identified and needs of salary, contingency, buildings are estimated for this current year to popularise and activate the new establishments in the district for the purpose of DEEP on Sarva Shiksha Abhiyan with an estimated cost of Rs.324.18 lakhs.

As per the discussion with appraisal team as there are 1200 and above teachers in some taluks, the number of CRC'S will raise proportionately so is the need shown in 6 Blocks of the District as 140. This is very essential.

SARVA SHIKSHA ABHIYAN

ANNUAL WORK PLAN FOR 2001-02, TUMKUR DISTRICT SOUTH

C.R.C. Salary

Recurring

Sl. No.	Activities	Total Nos.	Total Cost	Break up					
				Oct	Nov	Dec	Jan	Feb	Mar
1.	C.R.C.'s Salary	140	33.90	5.65	5.65	5.65	5.65	5.65	5.65
2.	Contingency	140	3.50	--	--	--	3.50	--	--
	TOTAL		37.4	5.65	5.65	5.65	9.15	5.65	5.65

Non-Recurring

Sl. No.	Activities	Unit	Total Cost	Break up					
				Oct	Nov	Dec	Jan	Feb	Mar
1.	Buildings	140	280.0	46.66	46.66	46.66	46.66	46.66	46.67

TOTAL - Recurring Rs. 37.4
Non-Recurring Rs.280.00
Grand total Rs.317.40 lakhs

SARVA SHIKSHA ABHIYAN

Strengthening ESTABLISHMENT OF DPO'S OFFICE IN THE TUMKUR DISTRICT

SOUTH

Tumkur District with 6 Blocks in hand needs a distinguished DPO'S Office in the heart of the town with a present site in M.G.Road, Tumkur with a cost of Rs.15.00 lakhs and establishment of DPO staff with a vehicle and Office needs for a clear fixing under recurring and non-recurring estimate as marked in the table with a total amount of Rs.53.51 lakhs for the current year to go.

To carryout the technical works analytically, a technical consultant is very much essential for civil works attached to the DPO'S office. For the current year a hired vehicle worksout as a substitute in lieu of purchase of new vehicle during perspective years to come.

Need of furniture and building to strengthen DDPI'S Office to conduct meetings and trainings at district level is essential.

The execution of Annual Plan will be conducted through the District Implementation Committee and to the satisfaction of base communities under the Secretaryship of Chief Executive Office, Zilla Panchayath and the Deputy Director of Public Instructions.

SARVA SHIKSHA ABHIYAN
Annual District Level Establishment of Project Office
Recurring

Sl. No.	Activities	Unit	Total Cost	Break up					
				Oct	Nov	Dec	Jan	Feb	Mar
1.	Salary of D.P.O., A.P.O., , MIS-in charge Accountant, F.D.A., Technical Consultant Computer Programmer, 'D' group	1	3.3		0.66	0.66	0.66	0.66	0.66
2.	Contingency	1	1.25	--	0.25	0.25	0.25	0.25	0.25
3.	Vehicle hire by D.Dy.P.O	1	0.75	0.15	0.15	0.15	0.15	0.15	0.15
	TOTAL		5.3	1.06	1.06	1.06	1.06	1.06	1.06

Non-Recurring

Sl. No.	Activities	Unit	Total Cost	Break up					
				Oct	Nov	Dec	Jan	Feb	Mar
1.	Computer	1	1.25	--		--	1.25	--	--
2.	Xerox	1	1.25	--		--	1.25	--	--
3.	Telephone		0.05		--	--	0.05	--	--
4.	Fax		0.20	--		--	0.20	--	--
5.	Colour T.V.		0.50	--		--	0.50	--	--
6.	V.C.R.		0.20	--		--	0.20	--	--
7.	Camera (still)		0.25			--	0.25	--	--
8.	OVER HEAD PROJECTOR		0.25				0.25		
8.	Furniture		2.50			--	2.50	--	--
	TOTAL		6.45			--	6.45	--	--

ABSTRACT

Recurring	5.30 lakhs
Non-Recurring	<u>6.45 lakhs</u>
	<u>11.75 lakhs</u>



