

**GOVERNMENT OF KARNATAKA  
ZILLA PANCHAYATH, SHIMOGA  
DEPUTY DIRECTOR OF PUBLIC INSTRUCTION,  
SHIMOGA**

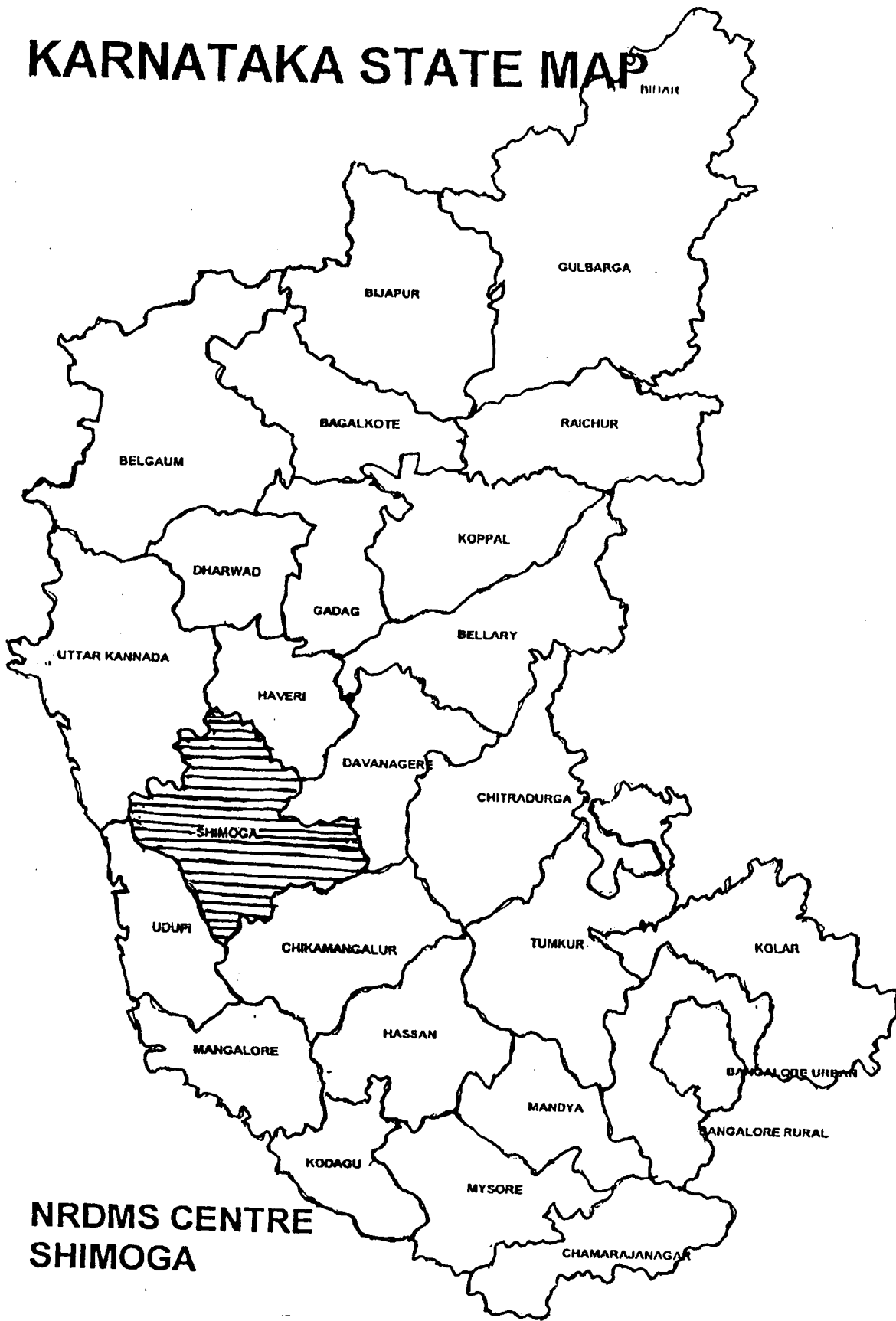
# **" SARVA SHIKSHA ABHIYAN "**

**DISTRICT ELEMENTARY EDUCATION  
PLAN  
DEEP  
ANNUAL WORK PROGRAMME AND  
BUDGET 2001-02**

# **SHIMOGA DISTRICT**

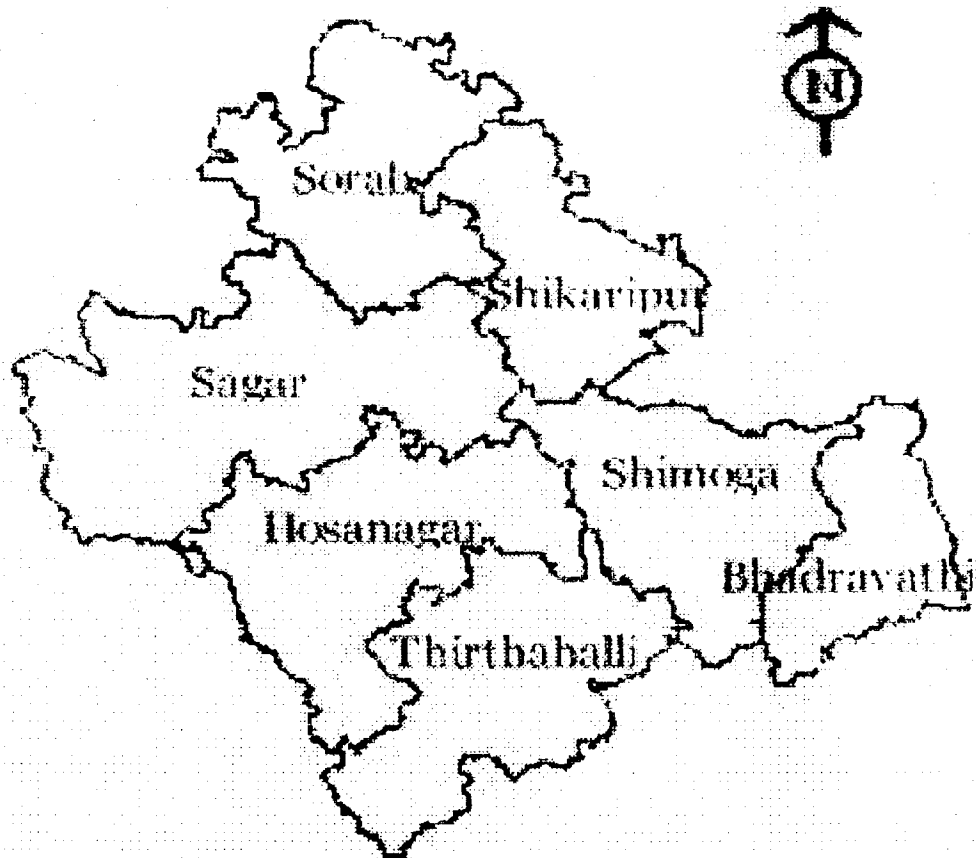
**KARNATAKA STATE**

# KARNATAKA STATE MAP



**NRDMS CENTRE  
SHIMOGA**

# SHIMOGA DISTRICT MAP



# CONTENTS

I.	FORE WORD	i
II.	ACKNOWLEDGEMENT	iii
III.	DISTRICT SSA EXECUTIVE COMMITTEE	iv
IV.	DISTRICT RESOURCE GROUP	viii
V.	PLANNING TEAM	ix
.		
1.	INTRODUCTION - DISTRICT BACK GROUND	1-12
2.	DISTRICT EDUCATION PROFILE	13-41
3.	PLANNING PROCESS	42-57
4.	PROBLEMS AND ISSUES	58-67
5.	GOALS AND OBJECTIVES	68-75
6.	STATEGES AND PROGRAMMES	76-97
7.	MANAGEMENT STRUCTURE	98-99
8.	SPECIAL FOCUS GROUP	100-111
9.	ANNEXURES	112-134
10.	COSTING TABLE	135-143
11.	ANNUAL WORK PROGRAMME AND BUDGET	1-13



## **FOREWORD**

District Elementary Education Plan – DEEP for Shimoga District is prepared under “Sarva Shiksha Abhiyana” Programme. A perspective plan for 2001 to 2010 and the annual work programme and Budget is prepared with the help of teachers, and community leaders. Community participation is given prime importance while preparing this plan. In the beginning, elementary education plans were prepared at the habitation level. Each habitation has prepared an elementary education plan of its own with the participation of the community, parents, elected representatives and teachers. The habitation plans were consolidated at the cluster level, at the Block level and finally at the District level. At each level, the planning teams, Resource groups and implementation committees were constituted and the plans are finalized after thorough discussions. These plans are the result of hearty co-operation and the fullest participation of the community. Information was collected at all levels and compiled to get meaningful educational indicators. This plan is an outcome of efforts of the community, experts, elected representatives, teachers, parents, and various non-governmental organizations.

In this plan, the situational analysis is made to know the background of the district, Diagnostic analysis is made to analyse the educational scenario which is prevailing in the District. Community is mobilized to participate in the planning process. Thorough discussions were made to identify the educational needs of the habitations, Blocks and the Districts. After identifying the needs, the problems and issues of universalisation of Elementary Education are discussed. Targets for different levels for different years are fixed and objectives are stated. Strategies and Programmes are evolved to achieve the objectives. Costing is done for all these activities and Programme. An implementation programme is derived for one year.

Various aspects of universal access, enrollment, retention and Achievement are treated on top priority in this plan. The perspective plan and the annual plan thus prepared is submitted to the office of the commissioner for public instruction for review. The state level team reviewed the plan and gave suggestions for improvement. The plan is revised according to the guidelines given by the state level team. Series of discussions were held with the state level team of resource persons and the plan was revised accordingly.

The revised plan was presented before the appraisal team consisting the experts from NIEPA and NCERT New Delhi. Discussions were held with the appraisal team and the observations made by the team were noted.

Finally the plan was revised according to the observations made by the National level appraisal team and the plan was finalised. The District implementation Committee extends its hearty congratulations to all those who have participated in the planning process.

**Kagodu Thimmappa,  
Chairman,  
District Implementation Committee,  
Shimoga.**

## A C K N O W L E D G E M E N T S

The District implementation committee of “Sarva Shiksh Abhiyana”, Shimoga District extends its hearty acknowledgements to all those who have participated in preparing the District Elementary Education Plan-DEEP.

At the outset the committee extends its thanks to the commissioner for public instruction in Karnataka, Bangalore for his valuable guidance and encouragement in preparing this plan.

It brings me immense pleasure to thank the chairman and the District in charge minister Sri.Kagodu Thimmappa who was the source of inspiration and a guiding force who played a very important role in bringing out the plans at different levels. It is my duty to thank the Zilla Panchayath president, Vice President, all MLA's and MLC's of the District, and all elected representations of different panchayath Raj, Institutions. My thanks to the Deputy Commissioner Shimoga and the Chief Executive Officer, Shimoga Zilla Panchayath.

It is a very good opportunity for me to thank the entire community which has shown an enormous interest and participation in the preparation of this plan.

I thank all the departments in the district who have co-operated in providing data and information to prepare this plan. I thank all the teachers, and officers of the department of Public Instruction for their selfless effort and hard work in preparing this plan. I thank every one who has participated in the planning process.

Shimoga  
5.08.2001

K.GANGAPPA GOWDA  
Deputy Director for Public Instruction,  
Shimoga

## **S.S.A.DISTRICT IMPLEMENTATION COMMITTEE**

1. Sri. **KAGODU THIMMAPPA** **HON'BLE PRESIDENT**  
MINISTER FOR SOCIAL WELFARE  
AND DISTRICT MINISTER,  
GOVERNMENT OF KARNATAKA.
2. Sri. **J.PAKKIRAPPA,** **MEMBER PRESIDENT,**  
PRESIDENT Z.P. SHIMOGA
3. Sri. **P.GANESHAN, I.A.S.** **MEMBER**  
DEPUTY COMMISSIONER,  
SHIMOGA.
4. Sri. **G.L.CHANDRASHEKARAI AH I.A.S.** **MEMBER**  
CHIEF EXECUTIVE OFFICER  
Z.P.SHIMOGA
5. Sri.**KAGODUANNAJI** **MEMBER**  
CHAIRMAN HEALTH AND  
EDN.STANDING COMMITTEE  
Z.P.SHIMOGA.
6. Sri. **SURESH KUMAR** **MEMBER**  
PRESIDENT, CITY MUNICIPALITY
7. Smt. **ROHINI NAGARAJ** **MEMBER**  
MEMBER, HEALTH AND  
EDN. STANDING COMMITTEE  
Z.P.SHIMOGA.
8. Smt. **GEETHA MALLIKARJUNA** **MEMBER**  
MEMBER, HEALTH AND  
EDN.STANDING COMMITTEE  
Z.P.SHIMOGA.
9. Smt. **SAROJAMMA** **MEMBER**  
PRESIDENT,  
TALUK PANCHAYATH, SHIMOGA.



10. Sri. A. S. CHANDRASHEKAR,  
SECRETARY,  
DIST. LITERACY COMMITTEE,  
SHIMOGA. MEMBER
11. Smt. SHANTHA NAIK, NGO.  
BASAVANAGUDI, SHIMOGA. MEMBER
12. Smt. S.RAO,  
ALL INDIA COUNCIL MEMBER,  
F.P.A.I. SHIMOGA. MEMBER
13. Sri. C.V.RAGHAVENDRA RAO,  
EDUCATIONIST,  
VINOANGAR, SHIMOGA. MEMBER
14. Sri. A.S.HANUMAN,  
EDUCATIONIST  
BASAVANAGUDI, SHIMOGA MEMBER
15. Sri. J.NEELAKANTAPPA  
PRESIDENT,  
DIST. PRIMARY SCHOOLS  
TEACHERS ASSOCIATION  
SHIMOGA. MEMBER
16. Sri. Y.K.TIMMARASAIH  
WRITER AND PRESIDENT  
RATHABEEDHI ROAD, THIRTHAHALLI. MEMBER
17. Smt. JNANAKSHI  
HEAD MISTRESS,  
M.P.M.HIGHER SCHOOL,  
PAPER TOWN, BADHRVATHI MEMBER
18. Sri. PRAMODH , PRESIDENT  
GRAMAPANCHAYATH SAMPEKATTE  
HOSANAGAR TALUK. MEMBER

19. Smt. NOOR JAHAN  
HEAD MISTRESS,  
GOVT LOWER PRIMARY SCHOOL,  
SAVAIPALYA, SHIMOGA. MEMBER
20. Sri. SUBHASHCHANDRA STANIK,  
STATE AWARD TEACHER ,  
HEAD MASTER,  
GOVT HIGHER PRIMARY SCHOOL,  
HAREESHI, SORAB TALUK, MEMBER
21. Sri. KRISHNAPPA  
RETD. HEAD MASTER,  
BALEKOPPA, SHIMOGA TALUK. MEMBER
22. Sri. RAMAPPA  
RETD HEAD MASTER,  
SUNNADHAKOPPA, SHIKARIPURA MEMBER
23. PRESIDENT, S.D.M.C  
GOVT URDU HIGHER PRIMARY SCHOOL  
TANK MOHALLA, SHIMOGA MEMBER
24. PRESIDENT, S.D.M.C  
HIGHER PRIMARY SCHOOL  
MATTHUR, SHIMOGA MEMBER
25. PRINCIPAL,  
DIET, SHIMOGA MEMBER
26. DISTRICT ADULT EDUCATION OFFICER,  
SHIMOGA. MEMBER
27. DISTRICT HEALTH OFFICER  
SHIMOGA DISTRICT MEMBER
28. ASSISTANT DIRECTOR  
WOMEN AND CHILD DEVELOPMENT DEPT.  
SHIMOGA MEMBER
29. DISTRICT SOCIAL WELFARE OFFICER  
SOCIAL WELFARE DEPT. MEMBER

30. Sri. K. GANGAPPA GOWDA, MEMBER SECRETARY  
DDPI, SHIMOGA

31. Sri. G. BHEEMANNA, MEMBER  
EDUCATION OFFICER,  
CO-ORDINATOR,  
DISTRICT ELEMENTARY EDUCATION PROJECT  
SHIMOGA.

\*\*\*\*\*



## DISTRICT RESOURCE GROUP

1. *Sri. K.GANGAPPA GOWDA*  
*DDPI SHIMOGA* *PRESIDENT*
2. *PRINCIPAL OF DIET SHIMOGA* *MEMBER*
3. *Sri. G.BHEEMANNA*  
*CO-ORDINATOR DEEP* *MEMBER*
4. *Sri. G.GURUMURTHY*  
*SUBJECT INSPECTOR* *MEMBER*
5. *Sri. S.L.CHAVAN*  
*BEO BHADRAVATHI* *MEMBER*
6. *Smt. CHANDRAMMA G.P.*  
*BEO SHIMOGA* *MEMBER*
7. *Sri. MOHAN KUMAR*  
*BEO SHIKARIPURA* *MEMBER*
8. *Sri. K.MURIGEPPA*  
*BEO HOSANAGARA* *MEMBER*
9. *Sri.ABDUL WAJID KHAJI*  
*BEO THIRTHAHALLI* *MEMBER*
10. *Smt. H.M.PREMA*  
*BEO SORAB* *MEMBER*
11. *Sri. K.RAMASHETTY*  
*BEO SAGAR* *MEMBER*
12. *SEVEN BRC'S FROM SEVEN BLOCKS* *MEMBERS*
13. *SENIOR LECTURER PLANNING & ADMN. DIET* *MEMBERS*
14. *Sri. A.S.CHANDRASHEKAR*  
*SECRETART DIST.LITERACY COMMITTEE* *MEMBERS*
15. *Sri. J.NEELAKANTAPPA*  
*PRESIDENT, DIST. PRY.SCHOOL TEACHERS ASSO.* *MEMBERS*
16. *N.G.O'S AND OTHERS* *MEMBERS*

## **DISTRICT PLANNING TEAM**

1. DDPI OF THE DISTRICT : GANGAPPA GOWDA .K.  
Ex-Officio, District Project  
Coordinator.
2. EDUCATION OFFICER : G.BHEEMANNA,  
Ex Officio,  
Assistant Project  
Co coordinator.
3. PRINCIPAL OF THE DIET : Member.
4. SENIOR LECTURER  
INCHARGE DRU IN DIET : B.N.RAMACHANDRA  
Member.
5. ALL BLOCK EDUCATIONAL  
OFFICERS IN THE DISTRICT : Members
6. EDUCATIONISTS IN THE  
DISTRICT :1) A.S.HANUMAN  
Educationist, Shimoga  
2) Smt. VIJAYASRIDHAR  
Near Lakshmi talkies, Shimoga
7. N G O WORKING FOR  
EDUCATION : 1) Family Planning  
Association of India, Shimoga.  
: 2) Samudaya Vijnana Kendra  
Shedthikere, Sagar taluk.
8. PRESIDENT OF DISTRICT  
PRIMARY SCHOOL  
TEACHERS ASSOCIATION : .J. NEELAKANTAPPA  
: Member
9. REPRESENTITIVES OF  
WOMEN ORGANISATION  
WORKING FOR EDUCATION  
AND CHILD WELFARE : President, Inner Wheel Club  
: Shimoga.  
: Member

**CHAPTER - - I**

# **INTRODUCTION**



**DISTRICT BACKGROUND**

## CHAPTER I INTRODUCTION- DISTRICT BACKGROUND

Shimoga is one of 27 districts of Karnataka, situated in south-western part of the state. Shimoga district with an area of 8465 Sq. Kms, is situated between 13° 27' and 14°39' North-latitude and between 74°38' and 74° 4' , East longitude. It is bounded on the east by Davanagere district, on the south by the Chickmagalur district, on the west by the Udupi and North-Canara districts and on the north by Haveri and Davanagere districts.

By and large the district consists of a mountainous terrain except the area on the eastern side, where there is an abrupt but striking transition from Malnad and Maidan. If a line is drawn from Shikaripur to Gajanur, the western region will fall in the Malnad area and the Eastern portion in the maidan. The western region is mountainous and is clothed with dense tropical forests, stimulated by heavy rainfall. The scattered houses, the rice and sugarcane fields and the areca nut, coconut and spice gardens are all in the valleys. The bamboo forest has beauty of its own. This whole region is replete with every natural beauty finally crowned by the scenic beauty of the world famous Jogfalls/Gerusoppa falls. The highest points in the western peaks are the Kodachadri Parvatha, (4,411 ft above sea level) Govardhanagiri and Chandraguthi, (2,794 ft above sea level)

The western region consists of an opine country which looks quite tame as compared with the beautiful wooded regions of the west. But the existence of several lakes and tanks makes the region quite attractive to the eye.

In between the far-western and eastern regions, lies the semi-malnad region with moderate rainfall and the country through mountainous is not very woody.

The interior of the District is crossed at the central water shed by a chain of mountains running from Alavadi to Talaguppa through Ikkeri. On the east are two lines of low, stony hilly stretching from the south of Bhadravathi to the frontier, one following the course of the Tungabhadra northwards, the other crossing that river near Holehonnur and passing near Shikaripura. The area round about Nagar and Kavalegdurga is also full of forests.

The Principle Rivers of the district are the Sharavathi and Tungabhadra.

The river Sharavathi takes its birth at Ambuthirtha in Thirthahalli taluk, unites with Haridravathi, on the right traverses a length of about 102 kms in a hilly terrain taking a north-westerly course before descending down a magnificent vertical drop of about 300 mts. forming the world famous Jogfalls. This Jogfalls is a famous tourist resort in India, the importance of which has further increased with the taking up of the Mahathma Gandhi Hydel project and the Sharavathi Hydel project in which electricity is generated at the cheapest cost in Asia. From Jog the river enters the north-canara district and finally flows into the Arabian sea near Honnavara.





The river Tunga takes a northeasterly course and joins the river Bhadra at Kudli. From the point of confluence of the united streams the river Tungabhadra takes a northerly course receiving on the left bank the river Kumadvathi and on the right river Haridra and enters the Davanagere district. Several streams rise between the Kodachadri Parvatha and Kavaledurga and flow west and southwest, before joining the sea near Kundapur. The river Varada also, which later on becomes a tributary of Tungabhadra, flows through the northern extreme of the district.

The major reservoirs of the district are Bhadra reservoir project at Lakkavally, Tunga Anicut at Gajanur, Sharavathi Hydel project at Linganamakki, Anjanapura reservoir in Shikaripur taluk and Mani Hydel project near Masthikatte in Hosanagar taluk. Sharavathi and Mani Hydel projects are used exclusively for generating electricity. These two projects are meeting most of the power needs of the state. Bhadra reservoir project is a multi purpose project in which the water is used for irrigation, fisheries and power generation. Tunga anicut is purely used for the purpose of irrigation.

These are wide patches of Dharwad schist's underline by granites and genesis of different series most chlorite, from these basic chlorite schist's these are gradation to the acidic, gritty schist's in which scales and wisps of chloride occur in subordinate quantities. The chief minerals found in the district are iron ore, manganese ore and limestone of the total area of about 8465 sq kms, nearly 30% of the land is covered by the forests. The forests along the western boundary of the district are thickly wooded by evergreen trees, but the evergreen forest is very rare now a day and usually found in Sharavathi Tale Race area. The evergreen forests gradually merge in the

deciduous forests of the center and the south. The more valuable species of the ghats are ebony, bhogi, devdar, nagasampige surahonne, hebbalasu, balagi etc. The deciduous forests contains teak, rose wood, honne, matti etc., Sandal wood grows in abundance in Sorab and Sagar Taluks.

In the western forests in Shimoga and Shikaripur taluks, particularly in Shettihally sanctuary bairons are common and elephants are occasionally met with. In Sakrebyle near Gajanur some elephants are seen. There is a lion and tiger safari at Tavarekoppa in Shimoga taluk. Sambar, chital etc., are also commonly seen in the wooden parts of the district.

The climate in the district is temperate, the thermometer scarcely rising above 40 Celsius. The relative humidity ranges from 65% in February to about 89% in August and September.

The average rainfall is about 182.7 cms. extending over the months from June to September with occasional showers in October. The rainfall shows a marked decline as we go eastwards from the west. In the extreme west Agumbe records highest rainfall in south India. So it is called the "Chirapunji" of south India.

The year can be divided in to three seasons.

1. The four wet months – June to September.
2. Five cool and dry months – October to February
3. Three warm months – March to May.

Shimoga is famous for several tourist spots. The world famous Jogfalls attracts tourists from all over the world and gives a magnificent scene during rainy seasons. Agumbe is a beautiful 'Sun-set-viewing spot', from which the beautiful scenery of the sunset can be seen when the clouds are clear. Keladi, Ikkeri in Sagar taluk. Udutadi and Balligave in Shikaripura taluk Ambuthirtha and Mrugavadhe in Thirthahally taluk, Gudavi and Mandagadde bird sanctuaries in Sorab and Thirthahally taluks respectively, Bidanur fort in Hosanagar taluk, Kudli-sangam in Shimoga taluk, the famous old Narasimhaswamy temple of Hoysala style of Bhadravathi are a few tourist places to be mentioned. 'Kavishyla' is a place in Thirthahally taluk in which the famous poet laureate Kuvempu was born and bred and had gained inspirations for his famous literary works is a place for tourists and interested academicians.

The geographical conditions, the seasons and the climate have a larger effect on primary education. In the western part of the district where hills, the streams and the forests are more the accessibility for primary education is very less. The habitations are situated in the far off places scattered in the woody and hilly areas, the habitations below 100 population are more and it is not economically viable to open primary schools as the number of children is very less. The children of tender age cannot move from place to place to get primary education, especially during rainy seasons, the heavy rains for three months causes inconvenience to children to attend the schools. It is very difficult to make transportation facilities in these areas.

The district is divided into seven taluks, forty hoblies and 257 grampanchayaths with two revenue divisions one in Shimoga and another in Sagar. The habitat ional details are shown in the table enclosed.

### GENERAL INFORMATION

Sl. No	Name of the Taluk	No. of habitations with population	No. of habitations without population	Total Habitations	Towns	Hoblis	Sub Divisions	Municipalities	Grama Panchayaths	Town Panchayaths	No. of taluk Z.P. members
1	Bhadravathi	229	07	236	01	06	-	01	38	-	05
2	Hosanagara	1441	05	1446	01	04	-	01	29	-	03
3	Sagar	1176	05	1181	02	06	01	01	35	01	04
4	Shikaripura	175	22	197	02	05	-	01	43	01	04
5	Shimoga	258	24	282	01	08	01	01	35	-	04
6	Sorab	415	38	453	01	06	-	01	39	-	04
7	Thirthahalli	1482	02	1484	01	05	-	01	38	-	03
<b>Total</b>		5176	103	5279	09	40	02	07	257	02	27

Source: District Statistical Office, Shimoga.

**Population situation:** Population of the district shows a gradual decrease over the decades. Percentage decadal growth rate has come down to 12.90 in 2001 from 15.11 in 1991. But the population density has increased from 171 per sq. Km in 1991 to 193 per sq. km in 2001. There is a desirable growth in sex ratio which has risen from 964 to 977 females per 1000 males. The total population of Shimoga district is 16,39,595 in which 8,29,365 are males and 8,10,230

females. 0-6 years population in the district is 1,98,763 in which 1,01,473 are males and 97,290 are females. The district ranks sixteenth in the state in terms of population. 3.11% of the state population live in the district. The district ranks tenth in the sex ratio and nineteenth in the population density. Shimoga district has a better literacy rate which has increased from 61.5% in 1991 to 74.86% in 2001. It is 7% above the state average. The literacy percentage of males is 82.32% whereas the females are 67.24%. More women are illiterates in the district. There is a need to take necessary steps to educate women in order to bring down the disparities. The rural and urban disparity is also very much, more concentration is to be given to educate rural mass.

**PERCENTAGE OF DECADAL VARIATION IN POPULATION  
SINCE 1901**

DECADE	VARIATION
1901-11	-4.10
1911-21	-3.59
1921-31	+3.05
1931-41	+4.43
1941-51	+24.91
1951-61	+60.31
1961-71	+29.57
1971-81	+27.59
1981-91	+15.11
1991-01	+12.90

Source: District Statistical Office, Shimoga.

TABLE SHOWING THE POPULATION GROWTH IN THE DISTRICT

Year	Population			SC			ST			Growth rate
	Male	Female	Total	Male	Female	Total	Male	Female	Total	
1971	5,15,118	4,73,626	9,88,744	66,520	61,121	1,27,641	3,524	3,274	6,798	-
1981	12,61,582	6,48,877	6,12,705	94,641	88,939	1,83,580	9,966	9,369	19,335	-
1991	7,39,561	7,12,698	14,52,259	1,21,274	1,15,252	2,36,526	16,873	16,075	32,948	15.11
2001	8,29,365	8,10,230	16,39,595	-	-	-	-	-	-	12.90

Source: District Statistical Office, Shimoga

STATUS OF LITERACY

Category	1961	1971	1981	1991	2001
Male	38.75	46.56	55.37	71.2%	82.32%
Female	18.22	28.49	37.14	51.4%	67.24%
Total	29.15	37.90	46.51	61.5%	74.86%
Rural	24.09	31.74	40.40	55.41%	52.60%
Rural Male	33.83	40.66	50.18	66.38%	73.42%
Rural Female	13.11	22.15	30.06	44.24%	49.30%
Urban	43.49	55.51	62.36	77.59%	86.45%
Urban Male	49.54	62.43	68.72	84.23%	93.14%
Urban Female	32.93	47.83	55.53	71.35%	83.2%

Source: District Adult Education Office, Shimoga.

**ECONOMIC CONDITIONS:-** 25.56% of the population in the district are below poverty line. The district ranks seventh in the state. Dependence ratio of each family is 2.38 per worker Percapita income at 1993-94 level is 7724/- per year. Major occupations in the district and the people depending on these occupations are as follows.

SL.NO.	Livelihood Classifications	Percentage to total workers
1.	Cultivators	38.6
2.	Agriculture labours	31.8
3.	Live stock, etc..	3.5
4.	Mining and quarrying	0.2
5.	Manufacturing Processing serving and repairs a)Hosehold industries. b)Other industries.	2.8 6.1
6.	Construction work	2.2
7.	Transport and communication	2.4
8.	Trade and commerce	6.1
9.	Others	6.3
	Total	100.0

Source: Human Resource Development book.

About 70% of the population depend on cultivation of lands and agricultural Labour work. There is every possibility of these people involving their children in agricultural works Children engage themselves in cotton picking, processing

areca-nut , grazing cattles, sowing seeds, harvesting crops etc., in their respective seasons. Such children have to drop-out of the school inevitably. More affected are girls. They have to assist their mothers in household works and rearing younger ones.

### ***Cultural and literary background:-***

Shimoga has a rich cultural heritage. Many cultural groups have participated in Dasara and Republic parades. "Neenasam" at Heggodu in Sagar Taluk is famous for it's theatrical activities at the international level. The mentor of this institution, Sri.K.V.Subbanna has been awarded Magsesse an international award for his outstanding work in this field of Literary stalwarts have emerged from this district. Poet laurette Kuvempu is from this district. Great literary personalities like Dr.U.R Ananthamurthy, P.Lankesh, Dr.G.S.Shivarudrappa and Dr.H.M Naik are all from this district. Two literary giants Kuvempu and Dr.U.R.Ananthamurthy were awarded the "Jnanapeeta" award.

Another person Sri.Devangi Prafulla Chandra is a progressive farmer from the district. He is awarded Krishi Pandit Award at the national level and many awards at the international awards. He is known for his innovative practices in farming.

Shimoga is famous for its socialist movement under the Stewardship of sri. Shanthaveri Gopala gowda. Many active socialists like Sri. J.H. Patel, Sri.S.Bangarappa, Sri.Kagodu Thimmappa and Sri Konandur Lingappa had participated actively in socialist movement. Shimoga district has produced three Chief Ministers Sri. Kadidal Manjappa, Sri. S.Bangarappa and Sri. J.H.Patel.



Thus, Shimoga is very rich in natural resources, literary and cultural heritage. It is always a trendsetter in many fields. It is politically strong, educationally sensitive and still requires improvement in imparting qualitative primary education in order to achieve the goals of universalisation of primary education.

### **DISTRICT PROFILE IN GENERAL**

1.Area of the District in sq.Kms: 8465 sq kms.

2.No. of Revenue Blocks : 07

3.No. of Educational Blocks : 07

4.No.of Gram Panchayats : 257

5.No.of city Municipalities : 09

6.No.of Town Panchayas : 09

7.No.of Habitations : 5176

**8. Total Population of the district**

<b>Population details</b>	<b>1981</b>	<b>1991</b>	<b>2001</b>
a.Male	648877	739561	829365
b.Female	612705	712698	810230
c.S.C	183580	236526	297438
d.S.T	19335	32948	41862
Total	1261582	1452259	1639595
f.Growth Rate	27.59	15.11	12.90
g.Birth Rate	39.95	25.34	21.46
h.Death Rate	12.36	10.23	8.56

Source: District Statistical Office, Shimoga.

9. Total cultivated land : 248134 Hectares
- 10.Total irrigated land : 128733 Hectares
- 11.No.of Hospitals :130 Govt. 44 Private
- 12.Dominant population : Agriculture dependent
- 13.Major occupation : Land cultivation
- 14.Major Industries : VISL and MPM
- 15.Major Crops : Paddy, Maize, Cotton, Arecanut,  
Sugarcane, Spices, Coconut, Banana.

## CHAPTER – II

# DISTRICT EDUCATION PROFILE

## CHAPTER-II

### EDUCATIONAL BACKGROUND OF THE DISTRICT

#### 2.1.Literacy Scenario.

Shimoga is considered to be an advanced district in literacy rates. It ranks sixth in the state with 74.86% literates. It is behind Dakshina Kannada, Bangalore, Udupi, Uttarakannada, and Kodagu. There are 25.14% illiterates in the district. But still disparity of 15.08% lies between male and female literacy rates; 18% disparity between rural and urban literacy rates.

#### STATUS OF LITERACY

Category	1961	1971	1981	1991	2001
Male	38.75	46.56	55.37	71.2%	82.32%
Female	18.22	28.49	37.14	51.4%	67.24%
Total	29.15	37.90	46.51	61.5%	74.86%
Rural total	24.09	31.74	40.40	55.41	52.60%
Rural Male	33.83	40.66	50.18	66.38%	73.42%
Rural Female	13.11	22.15	30.06	44.24%	49.30%
Urban total	43.49	55.51	62.36	77.79 %	86.45%
Urban Male	49.54	62.43	68.72	84.23%	93.14%
Urban Female	32.93	47.83	55.53	71.35%	83.2%

**Source: District adult education office, Shimoga**

## LITERACY RATES BLOCK WISE AS ON 1991.

Sl. No.	Block	Urban		Rural		Total	
		Male	Female	Male	Female	Male	Female
1	Bhadravathi	85.18	70.04	60.85	40.57	72.34	54.39
2	Ilosanagara	92.12	80.08	71.13	49.30	72.73	51.48
3	Sagar	88.58	96.65	62.00	47.05	76.97	55.90
4	Shikairpura	76.25	62.89	63.26	40.31	65.97	44.99
5	Shimoga	84.70	73.65	62.44	42.66	74.78	59.57
6	Sorab	84.80	72.00	70.53	46.40	71.26	47.68
7	Thirthahalli	91.82	81.02	76.26	58.59	77.88	60.73
	TOTAL	84.23	71.35	66.38	44.24	71.20	51.40

Source: District adult education office, Shimoga

There are some slums, tribal areas, Thandas, and a few rural parts where literacy rates are less and more attention is required to improve the literacy rates. More programmes are to be planned for such areas for universal access, ENROLLMENT, retention and achievement.

## 2.2 SCHOOLLESS HABITATIONS:

In the recent few years there is an expansion of educational facilities in the district by opening new schools, followed by creation of additional posts, and recruitment of teachers. In pursuance of policy of the Government, all villages and habitations with minimum of 200 population are covered with Primary Schools in the District. But due to increase in population, and creation of new habitations, there are certain habitations without schools. Now there is a need to open new Primary Schools in these habitations.

### 2.3 Educational facilities available:

#### BLOCK WISE EDUCATIONAL INSTITUTIONS IN THE DISTRICT.

TALUK	PRIMARY SCHOOLS	HIGH SCHOOLS	JUNIOR COLLEGES	POLYTECHNIQUE	ENGINEERING COLLEGES	MEDICAL COLLEGES AYURVEDIC	DENTAL COLLEGES	AGRICULTURAL COLLEGES	FIRST GRADE COLLEGES
Bhadravathi	340	64	10	2	-	1	-	-	2
Hosanagara	233	23	8	-	-	-	-	-	1
Sagar	329	28	7	1	-	-	-	-	2
Shikaripura	256	38	6	-	-	-	-	-	1
Shimoga	398	79	9	3	1	1	1	1	5
Sorab	335	30	3	1	-	-	-	-	1
Thirthahalli	271	23	5	1	-	-	-	-	1
<b>Total</b>	<b>2162</b>	<b>285</b>	<b>48</b>	<b>8</b>	<b>1</b>	<b>2</b>	<b>1</b>	<b>1</b>	<b>13</b>

Source: District Statistical Office, Shimoga.

Table showing the number of LPS and HPS in the district.

Sl No	Blocks	LPS			HPS			TOTAL			Grand Total
		Govt.	Aided	Unaided	Govt.	Aided	Unaided	Govt	Aided	Unaided	
1	Bhadravathi	133	5	30	129	13	30	262	18	60	340
2	Hosanagara	126	0	3	98	1	5	224	1	8	233
3	Sagar	185	0	9	117	4	14	302	4	23	329
4	Shikaripura	113	0	18	111	4	10	224	4	28	256
5	Shimoga	145	2	19	158	17	57	303	19	76	398
6	Sorab	193	0	5	121	2	14	314	2	19	335
7	Thirthahalli	146	0	8	112	2	3	258	2	11	271
<b>Total</b>		<b>1041</b>	<b>7</b>	<b>92</b>	<b>846</b>	<b>43</b>	<b>133</b>	<b>1887</b>	<b>50</b>	<b>225</b>	<b>2162</b>

There are 2162 primary schools. These schools include upper primary schools also. Accessibility for schooling is better in maidan areas, where each child is having a primary school within a distance of one kilometer. But in Malnad Blocks like Thirthahalli, Sagar, Sorab, Hosanagar and a few parts in Shimoga where habitations are scattered and small, the children have to walk more than one kilometer to reach a Primary School. In such places new schools maybe started in center places and transportation facility be provided for children to come to schools. Mobile schools may also be thought of in such areas. In cities like Shimoga and Bhadravathi where child labors are more, Alternative and innovative schooling facilities may be provided.

The drop-out rate at the transitional level from lower Primary School to Higher Primary School is more when compared to the drop-out rate at each class. The drop-out rate of the district at LPS level is 14.77% and at the HPS level it is 15.34%. Because of the non-availability of upper Primary Schools, near to their residences, children drop out of the school after they complete LPS. Especially girls do not want to go to other villages to continue their upper Primary education. So, there is a need to upgrade several LPS into HPS to provide access for schooling.

#### **2.4 Growth of Primary Schools:**

<b>YEAR</b>	<b>GOVT.</b>	<b>PRIVATE</b>	<b>TOTAL</b>
1968-69	1826	21	1847
1980-81	1954	30	1984
1986-87	2085	85	2170
1993-94	2132	159	2291
1996-97	2173	270	2444
1997-98	2283	302	2585
1999-2000	1887	275	2162

**Source: DDPI OFFICE, Shimoga.**

The above figures show that the number of Primary Schools have increased since 1968. However from 1993-94 onwards there is a significant increase in the number of schools, according to the increased demand on the basis of child population. Still there are 159 habitations without Primary Schools. New schools should be opened in some habitations where the child population between 6-14 years of age is above 20. In some other small habitations, where population is less than 100, Alternative and Innovative schooling facilities are to be provided or transportation facilities are to be provided for children to increase the accessibility.

### 2.5: Enrollment and Retention:

#### ENROLLMENT IN PRIMARY SCHOOLS:

YEAR	BOYS	GIRLS	TOTAL	GIRLS %
1966-67	95897	73622	169519	43.43
1977-78	134968	105664	240632	43.91
1980-81	133138	102989	236127	43.62
1986-87	146991	126588	273579	46.27
1993-94	175581	155749	331330	47.00
1997-98	163206	162419	325625	49.88
1999-2000	130166	119241	249407	47.80
Annual Growth rate: upto 1997-98	2.26 %	3.89 %	2.97 %	

Source: DDPI OFFICE, Shimoga.





Schools according to number of rooms																
Sl. No	BLOCKS	No. of Rooms													Total Rooms	Average per school
		0	1	2	3	4	5	6	7	8	9	10	11	12 & above		
1	Bhadravathi	14	26	71	38	20	25	22	13	13	4	6	3	7	1027	3.91
2	Hosanagara	4	22	51	36	42	24	17	14	3	3	2	2	1	720	3.1
3	Sagar	3	73	118	25	28	14	17	8	4	2	3	2	8	951	3.97
4	Shikaripura	4	22	62	82	30	24	20	6	6	5	5	3	4	898	3.97
5	Shimoga	13	23	71	29	24	34	26	48	13	2	7	3	7	1337	4.38
6	Sorab	11	54	112	18	7	9	22	16	5	4	2	3	3	814	2.59
7	Thirthahalli	9	36	82	18	21	31	19	12	13	9	7	5	1	1013	3.85
<b>Total</b>		<b>58</b>	<b>256</b>	<b>567</b>	<b>246</b>	<b>172</b>	<b>161</b>	<b>143</b>	<b>117</b>	<b>57</b>	<b>29</b>	<b>32</b>	<b>21</b>	<b>31</b>	<b>6760</b>	<b>3.58</b>

Sl.No.	Year	Availability of teachers	Percentage of availability	Requirement of teachers	Percentage of requirement
1	1993-94	3694	92.30	308	7.7
2	1994-95	3694	92.30	308	7.7
3	1995-96	3694	85.05	649	14.95
4	1996-97	4002	71.63	1585	28.37
5	1997-98	4651	96.05	191	3.95
6	1998-99	6236	93.9	405	6.1
7	1999-00	6427	85.3	1100	14.7
8	2000-01	6832	86.1	1100	13.9
9	2001-02	6832	70.59	2330	29.41

Sudden increase in the requirement of teachers for 2001-02 is due to restructuring of LPS from 1 to 4 classes as 1 to 5<sup>th</sup> during the year 2001-02 and also adding one more teacher to all single teachers school. The number of teacher required for LPS is 638. There is a proposal to include 8<sup>th</sup> standard to the elementary school from the year 2002-03 and hence 1692 graduate trained teachers required to the higher primary schools.

**CLASSWISE ENROLLMENT OF PRIMARY SCHOOLS IN THE DISTRICT  
FOR THE YEAR 2000-2001  
GENERAL -ALL GOVT.AIDED, UNAIDED**

No	Taluk	I std.			II std.			III std.			IV std.		
		Boys	Girls	Total	Boys	Girls	Total	Boys	Girls	Total	Boys	Girls	Total
1	Dhadrnvathi	4776	3608	8384	4816	3437	8253	4370	3478	6869	4675	3337	6012
2	Hosanagar	2087	1048	3135	2070	997	3067	2035	1130	3165	1000	1025	2025
3	Sagar	2134	1887	4021	2101	1949	4050	2520	1218	3738	1940	1870	3810
4	Shikaripur	3219	3394	6613	3933	3530	7463	2687	3512	6199	2918	3243	6161
5	Shimoga	5474	5358	10832	5383	4270	9661	5243	4551	9794	5167	4320	9487
6	Sorab	2271	850	3121	1497	2215	3712	2457	2170	4627	1029	1904	2933
7	Thirthahalli	1359	1065	2424	1174	1268	2442	1343	1268	2611	1261	1150	2411
	Total	21320	17210	38530	20974	17666	38648	20655	17327	37003	17990	16849	32839

Sl. No	Taluk	V Std.			VI Std.			VII Std.		
		Boys	Girls	Total	Boys	Girls	Total	Boys	Girls	Total
1	Bhadravathi	5230	3849	8359	3630	3372	7002	1905	3394	5299
2	Hosanagar	1252	1091	2343	1228	1167	2395	1038	994	2032
3	Sagar	2427	2069	4496	2818	1885	4703	2635	1915	4550
4	Slukaripur	3206	2263	5471	2705	2786	5491	2522	2599	5121
5	Shimoga	5397	4061	9458	5313	4090	9403	4936	3695	8631
6	Sorab	2081	1817	3898	1633	1663	3296	1577	1591	3168
7	Thirthahalli	1390	1011	2401	1327	1127	2454	1247	1168	2415
	Total	20983	16161	36426	18654	16090	34744	15860	15356	31216

Source: DDPI OFFICE, Shimoga.

## 2.6 GROSS ENROLLMENT RATIO : (2001-2002)

CATE GORY	5-11 CHILD POPULATION	1-5 CLASS ENROLLMENT	GER	5-14 POPULATION	1-8 CLASS ENROLLMENT	GER
SC B	17302	19844	114.69	25669	28356	110.47
G	16304	17050	104.58	23948	23808	99.42
T	33606	36894	109.78	49615	52164	105.14
ST B	3753	3811	101.55	5635	5458	96.86
G	3505	3518	100.37	5224	5004	95.79
T	7258	7329	100.98	10859	10462	96.34
OTHERS B	62475	62973	100.80	96246	98438	102.28
G	59860	63860	106.68	91726	97122	105.88
T	122335	126833	103.68	187972	195560	104.04
ALL B	83530	86638	103.72	127550	132252	103.69
G	79669	84428	105.97	120898	125934	104.17
T	163199	171066	104.82	248448	258186	103.92

**Source:** DDPI OFFICE, Shimoga.

The enrollment position is to be improved by conducting surveys and identifying the children who are not enrolled and enrolling them to the near by schools.

Retention rate is also low and the drop out rate is as high as 28.4% is an alarming figure. Certain schemes are to be derived in order to encourage children to stay in their schools and continue their education. There is a constant increase in the enrollment of children every year. The annual growth rate of enrollment is 2.97%. It is a good indication of better enrollment.



**special Enrollment drive to attract more children to school**

**2.7 : Retention Rate - Cohort Chart.**

YEAR	CATE GORY	CLASS							
		1	2	3	4	5	6	7	8
2001-02	SC	8187	7478	7742	8897	7580	7472	5757	5041
	ST	1515	1358	1496	1357	1603	1279	1484	1492
	ALL	37192	36008	36245	32975	33210	31980	32548	24402
2000-01	SC	10703	9473	8973	9103	7466	7315	5415	12400
	ST	1721	1775	1498	1563	1360	1961	1976	1219
	ALL	38531	38648	37003	32600	31721	32744	30216	22973
1999- 00	SC	11109	10374	8990	9844	7766	7525	8595	12725
	ST	1605	1704	1678	1669	2160	1758	1884	1240
	ALL	38164	37615	37912	32839	30040	30464	29621	23618
1998-99	SC	9577	8614	8414	7422	6086	5660	4520	2898
	ST	1886	1790	1912	1638	1502	1146	1106	1116
	ALL	38687	37267	37990	32011	32995	30455	29584	21647
1997-98	SC	10507	9714	8514	8422	7086	6021	4513	2898
	ST	1744	1216	1242	1147	1887	1393	1214	1311
	ALL	38565	37727	37363	32958	31652	31836	29325	25142
1996-97	SC	9864	7116	7351	7346	6081	5325	4276	1009
	ST	1849	1724	1858	1602	1449	1112	1784	840
	ALL	38562	37631	37119	32439	32868	30360	27994	21715
1995-96	SC	7653	8042	7621	7253	5964	5026	4029	2986
	ST	1945	2894	2836	2563	2414	2014	1845	914
	ALL	38445	37816	34314	33471	32519	30312	27154	21176

SOURCE: DDPI OFFICE, SHIMOGA

**RETENTION RATES AND DROP-OUT RATES AT DIFFERENT LEVELS**

<b>LEVEL</b>	<b>CATEGORY</b>	<b>RETENTION RATE</b>	<b>DROPOUT RATES</b>
1 to 4	SC	92.89	7.11
	ST	71.95	28.05
	ALL	85.23	14.77
1 to 5	SC	72.18	27.82
	ST	91.91	8.09
	ALL	86.11	13.89
1 to 7	SC	75.22	24.78
	ST	76.29	23.71
	ALL	84.66	15.34
5 to 8	SC	82.83	17.17
	ST	82.79	17.21
	ALL	73.96	26.04

The Retention rate among ST is very low when compare to SC and ALL students. There is a decrease of Retention Rate when the students move from 4<sup>th</sup> standard to 5<sup>th</sup>. The Retention Rate is very low in 5<sup>th</sup> to 8<sup>th</sup> standard level. The Retention Rate has gone to 82.83% among SC 82.79% among ST and 73.96% for all students. Perhaps this is due to more failures in 7<sup>th</sup> Std. Public Examinations. The dropouts are more when students move from 5<sup>th</sup> to 8<sup>th</sup> standard. More attention is to be given to bring down the dropout rates among ST in all the levels. More action have to be taken and more programmes are to be implemented to bring down the dropouts rates at 7<sup>th</sup> standard level.

ENROLLMENT AND ATTENDANCE - AS IN JUNE 2001.

CLASS	ENROLLMENT								ATTENDANCE							
	TOTAL				GIRLS				TOTAL				GIRLS			
	G	A	UA	TOTAL	G	A	UA	TOTAL	G	A	UA	TOTAL	G	A	UA	TOTAL
1	27971	2639	6582	37192	14143	1575	2907	18625	27271	2363	6382	36016	13443	1381	2507	17331
2	27239	2576	6193	36008	12755	1335	2433	16523	25167	2256	5229	32652	11766	1167	2133	15066
3	27888	2546	5811	36245	12414	1377	2337	16128	27588	2226	5567	35381	11836	1158	2007	15001
4	27018	2587	3370	32975	11277	1300	2123	14700	24873	2352	5496	32721	12012	1077	1811	14900
TOTAL 1-4	110116	10348	21956	142420	50589	5587	9800	65976	104899	9197	22674	136770	49057	4783	8458	62298
5	<del>25585</del>	<del>2585</del>	<del>6060</del>	<del>33210</del>	<del>13247</del>	<del>1547</del>	<del>2787</del>	<del>17581</del>	<del>24185</del>	<del>2325</del>	<del>5113</del>	<del>31623</del>	<del>12084</del>	<del>1277</del>	<del>2487</del>	<del>15848</del>
6	23947	2527	5506	31980	11994	1532	2629	16155	23447	2162	5270	30879	12882	1342	2410	16434
7	24791	2449	5308	32548	12443	1423	2152	16018	24591	2288	5988	32867	12333	1164	2042	15539
TOTAL 5-7	74323	7541	15874	97738	37684	4502	7568	49754	72223	6775	16371	95369	37099	3783	6939	47821
TOTAL 1-7	184439	17889	37830	240158	88273	10089	17368	115730	177122	15972	39045	232139	86156	8586	15397	110119
8	10500	4216	6586	21402	5415	2972	3005	11392	10100	7336	5786	23222	4422	1392	2605	8419
9	9955	7215	6173	23343	1597	3580	2885	8062	9455	6680	5703	21838	4782	1850	2505	9137
10	8343	6799	5819	20961	4137	3292	2645	10074	8052	6499	5721	20272	4292	2992	2145	9429
TOTAL 8-10	28798	18230	18678	65706	11149	9844	8535	29528	27607	20515	17210	65332	13496	6234	7255	26985

**NOTE: G=GOVERNMENT**

**A= AIDED**

**U= UNAIDED**

ATTENDANCE RATE

GIRLS ONLY	1-4	96%	5-7	97.57%	1-7	96.66%
	1-4	94.42%	5-7	96.11%	1-7	95.15%

**2.8: Teacher's Position:**

There is a constant increase in creation of new teacher's posts and recruitment of new teachers in the past few years. As a policy of the Government, a minimum of two teachers are provided to each L.P.S. and four teachers are provided to each H.P.S.

There has been massive recruitment of teachers for the last 4 years. The details are given in the table.

**Recruitment of Teachers over the years.**

Sl.No.	YEAR	No. RECRUITMENT
1	1995	308
2	1996	649
3	1997	1585
4	1998	191
5	1999	405
TOTAL		3138

In the recent past new primary schools were opened with single teachers. They continue to be single teacher schools. There is a need to appoint one more teacher to each of such schools.

**2.9. TALUKWISE NUMBER OF SINGLE TEACHER SCHOOLS IN  
THE DISTRICT. 2000-2001**

Sl.No.	NAME OF THE TALUK	No. OF SINGLE TEACHER SCHOOLS
1	Bhadravathi	24
2	Shimoga	48
3	Sagar	25
4	Shikaripura	38
5	Sorab	18
6	Thirthahalli	19
7	Hosanagar	19
TOTAL		191

In the recent past, several Lower Primary Schools are upgraded into upper Primary Schools. Such schools do not have minimum four teachers. Such schools need additional teachers. New posts are to be created in such schools.

The vacancies occurred due to retirement, death and promotion of teachers. In the next eight years, the additional requirement of teachers in the district will be 2846. New posts are to be created and recruitment is to be made to these posts and the existing vacancies.



## 2.10 TALUKWISE TEACHER INFORMATION

Sl.No.	Name of the Block	No. of posts Sanctioned (teachers)	Actual No. of teachers working	No. of Vacancies
1	Bhadravathi	1185	1097	88
2	Hosanagar	678	621	55
3	Sagar	981	906	75
4	Shikaripura	905	860	45
5	Shimoga	1318	1269	49
6	Sorab	925	889	36
7	Thirthahalli	840	758	82
	Total	6832	6400	432
			MALE	FEMALE
			3662	2738

Note: The teachers of Aided, Unaided schools are not reflected here.

### 2.11: Facilities available in schools:

Available classroom per school ratio comes to 4:1. Available class rooms per teacher ratio is 5:4 Though the no. of classrooms seems to be in a reasonable level, uneven distribution of classrooms in different schools of the district causes inconvenience to provide accommodations to children in schools. In some schools the number of rooms is more than the requirement, but in some schools additional classroom construction is required. In recent past effort has been made to construct new classrooms to provide facilitation for children in schools. One of the major interventions in providing access to Primary education, massive programmes have been taken to construct classrooms under various schemes.

## 2. BUILDINGLESS SCHOOLS IN TERMS OF PERCENTAGE.

Sl.No.	Block	BUILDINGLESS SCHOOLS																	
		1993-94		1994-95		1995-96		1996-97		1997-98		1998-99		1999-00		2000-01		2001-02	
		No.	%	No.	%	No.	%	No.	%	No.	%	No.	%	No.	%	No.	%	No.	%
1	BHADRAVATHI	23	8.7	20	7.6	18	6.8	16	6.1	15	5.72	14	5.3	14	5.3	14	5.3	11/262	4.1
2	HOSANAGARA	24	9.95	19	7.8	16	6.63	13	5.3	12	4.97	10	4.1	9	3.7	4	1.6	4/241	1.6
3	SAGAR	20	6.5	18	5.9	17	5.5	13	4.2	10	3.27	8	2.6	6	1.9	3	0.98	3/305	0.98
4	SHIKARIPURA	23	10.4	20	9	16	7.2	14	6.3	11	4.97	9	4.07	7	3.1	4	1.8	4/221	1.8
5	SHIMOGA	25	8.1	22	7.2	21	6.8	20	6.5	18	5.9	17	5.57	17	5.5	17	5.5	17/305	5.5
6	SCRAB	34	10.8	32	10.1	26	8.2	18	5.7	17	5.4	14	4.45	13	4.1	11	3.5	11/314	3.5
7	THIRTHAHALLI	35	13.3	29	11.02	24	9.1	16	6.08	15	5.7	12	4.56	11	4.1	9	3.4	9/263	3.4
TOTAL		184	9.6	160	8.3	138	7.2	110	5.75	98	5.12	84	4.39	77	4	59	3.08	59/1911	3.08

**CLASS ROOMS CONSTRUCTED:**

Sl.No.	YEAR	STATE SECTOR		OBB		TOTAL	
		ROOMS	AMOUNT	ROOMS	AMOUNT	ROOMS	AMOUNT
1	87-88	-	-	110	30.58	110	30.58
2	88-89	-	-	79	28.58	79	28.58
3	89-90	-	-	385	48.00	385	48.00
4	91-92	-	-	407	186.30	407	186.30
5	93-94	484	152.60	-	-	484	152.60
6	94-95	334	50.00	82	39.80	416	89.80
7	95-96	343	92.50	-	-	343	92.50
8	96-97	316	160.00	-	-	316	160.00
9	97-98	300	139.50	-	-	300	139.50
10	98-99	148	106.50	118	129.80	266	263.30
11	99-2000	19	10.80	-	-	19	10.80
12	2000-01	9	9.90	-	-	9	9.90
<b>TOTAL</b>		<b>1953</b>	<b>721.81</b>	<b>1181</b>	<b>461.06</b>	<b>3134</b>	<b>1182.87</b>

Source: DDPI Office Shimoga.

Keeping in view the additional requirement due to opening up of new schools. Up gradation of LPS to UPS, and additional of Eighth Standard to upper Primary schools and added enrollment requires construction of new rooms in the coming years. The following table shows the required number of rooms to be constructed in the district up to 2010.

**2.12 ADDITIONAL ROOMS REQUIREMENTS:**

TALUK NAME	NEW SCHOOLS	ROOMS FOR BUII.DINGLESS SCHOOLS	ADDITIONAL ROOMS FOR EXISTING LPS	ADDITIONAL ROOMS FOR EXISTING HPS	TOTAL
BHADRAVATHI	10	22	80	280	392
HOSANAGARA	18	8	51	143	220
SAGAR	50	6	15	219	290
SHIKARIPURA	12	8	22	240	282
SHIMOGA	26	34	135	426	621
SORAB	8	22	60	194	284
THRITHAHALLI	14	18	41	224	297
<b>TOTAL</b>	<b>138</b>	<b>118</b>	<b>404</b>	<b>1726</b>	<b>2386</b>

Many classrooms are not in good condition and require major and minor repairs. Timely repairs will help to get better facilities regarding classrooms.

**2.13 Ancillary Facilities:** Manse schools do not have ancillary facilities. Facilities for drinking water toilets, electricity, compound walls, playground and school gardens are to be given more importance. Grown up girls and boys of the higher primary section may decide to stay out of schools due to lack of toilet and water facilities. Providing these facilities will certainly help to improve the retention rate and achievement level.

**ANALYSIS OF THE EXISING FACILITIES:****A. Additional Rooms:-**

SL. No.	Block	TOTAL No. OF SCHOOLS		ROOMS AVAILABLE		ADDITIONAL ROOMS REQUIRED	
		LPS	HPS	LPS	HPS	LPS	HPS
1	BHADRAVATHI	133	129	258	769	63	280
2	HOSANAGARA	126	98	210	517	48	91
3	SAGAR	185	117	305	642	72	222
4	SHIKARIPURA	113	111	222	732	74	161
5	SHIMOGA	145	158	261	996	135	426
6	SORAB	193	121	311	595	78	194
7	THRITHAHALLI	146	112	225	788	41	234
<b>TOTAL</b>		<b>1041</b>	<b>846</b>	<b>1792</b>	<b>5039</b>	<b>512</b>	<b>1608</b>
		<b>1887</b>		<b>6831</b>		<b>2120</b>	

**B. Additional teachers:**

Sl. No.	Block	TEACHERS POSTS SANCTIONED		<u>ADDITIONAL TEACHERS REQUIRED</u>		
		LPS	HPS	PRIMARY	HPS	GRADUATE
1	BHADRAVATHI	570	615	44	0	258
2	HOSANAGARA	211	467	46	28	196
3	SAGAR	313	668	39	50	234
4	SHIKARIPURA	223	682	53	38	222
5	SHIMOGA	308	1010	183	65	316
6	SORAB	328	597	65	27	242
7	THRITHAHALLI	270	570	0	0	224
<b>TOTAL</b>		<b>2223</b>	<b>4609</b>	<b>430</b>	<b>208</b>	<b>1692</b>

**C. WATER FACILITY**

SL. No.	BLOCK	WATER FACILITY AVAILABLE		WATER FACILITIES REQUIRED	
		LPS	HPS	LPS	HPS
1	BHADRAVATHI	10	54	112	73
2	HOSANAGARA	32	46	94	52
3	SAGAR	31	43	154	75
4	SHIKARIPURA	6	22	105	91
5	SHIMOGA	20	76	130	82
6	SORAB	28	41	154	80
7	THRITHAHALLI	11	7	135	105
<b>TOTAL</b>		<b>138</b>	<b>289</b>	<b>884</b>	<b>558</b>

**D. TOILET FACILITY.**

SL. No.	BLOCK	TOILET FACILITY AVAILABLE		TOILET FACILITIES REQUIRED	
		LPS	HPS	LPS	HPS
1	BHADRAVATHI	10	54	112	73
2	HOSANAGARA	1	26	125	69
3	SAGAR	18	38	167	79
4	SHIKARIPURA	6	22	105	91
5	SHIMOGA	27	76	130	82
6	SORAB	0	19	186	102
7	THIRITHAHALLI	11	7	135	105
<b>TOTAL</b>		<b>73</b>	<b>242</b>	<b>960</b>	<b>601</b>

**E. COMPOUND:**

SL. No.	BLOCK	COMPOUND AVAILABLE		COMPOUND REQUIRED	
		LPS	HPS	LPS	HPS
1	BHADRAVATHI	9	27	113	102
2	HOSANAGARA	2	5	124	93
3	SAGAR	7	21	178	97
4	SHIKARIPURA	10	18	101	95
5	SHIMOGA	4	54	130	104
6	SORAB	6	20	178	101
7	THRITHAHALLI	11	7	135	105
<b>TOTAL</b>		<b>49</b>	<b>228</b>	<b>959</b>	<b>697</b>

**F. ELECTRICITY:**

SL. No.	BLOCK	ELECTRICITY FACILITY AVAILABLE		ELECTRICITY FACILITY REQUIRED	
		LPS	IIPS	LPS	IIPS
1	BHADRAVATHI	13	25	109	104
2	HOSANAGARA	29	82	96	16
3	SAGAR	40	65	144	53
4	SHIKARIPURA	4	49	97	64
5	SHIMOGA	27	110	91	67
6	SORAB	12	60	74	61
7	THRITHAHALLI	46	57	100	55
<b>TOTAL</b>		<b>171</b>	<b>448</b>	<b>711</b>	<b>420</b>

**G. TEACHING LEARNING MATERIALS:-**

SL. No.	BLOCK	TEACHING LEARNING MATERIALS AVAILABLE		TEACHING LEARNING MATERIALS REQUIRED	
		LPS	HPS	LPS	HPS
1	BHADRAVATHI	0	103	133	26
2	HOSANAGARA	30	45	96	53
3	SAGAR	18	43	167	75
4	SHIKARIPURA	3	108	110	3
5	SHIMOGA	25	145	158	0
6	SORAB	0	120	186	0
7	THRITHAHALLI	6	107	140	5
<b>TOTAL</b>		<b>82</b>	<b>671</b>	<b>990</b>	<b>162</b>

**H. FURNITURE:-**

SL. No.	BLOCK	FURNITURE AVAILABLE		FURNITURE REQUIRED	
		LPS	HPS	LPS	HPS
1	BHADRAVATHI	Insufficient		133	129
2	HOSANAGARA	42	48	84	50
3	SAGAR	92	60	93	57
4	SHIKARIPURA	2	2	111	109
5	SHIMOGA	45	78	100	80
6	SORAB	Insufficient		186	121
7	THRITHAHALLI	11	8	135	104
<b>TOTAL</b>		<b>390</b>	<b>196</b>	<b>842</b>	<b>650</b>

**2.14 Furniture** : Available facilities for furniture is insufficient when compared to the total requirement. The following table shows the block-wise requirements of furniture to children and teachers.



**2.15 Teaching learning materials** : New Teaching-Learning materials are required to cater to the needs of revised curriculum and improved methods of teaching. The existing teaching-learning materials in schools are either outdated or mutilated. They need replacement. Hence it is desirable to equip the schools with new innovative teaching-learning materials in order to provide qualitative primary education. More opportunities should be given to the teachers to prepare their own teaching-learning materials. For this purpose necessary resources should be provided through expertise and finance. Training programmes should be conducted to strengthen the skills of teachers in preparing teaching learning materials.

**2.16 Programmes for UEE** : Several programmes have been conducted in the district for improving access, enrollment, retention and achievement level. During 1997-98 a survey of habitations was conducted, school mapping was done and a schoolless habitation list was prepared. Access for schooling was provided by opening a lower primary school in a school less habitation where child population of 6-11 years age group was more than 15. Under various schemes the classrooms were constructed, furniture was provided new teachers were recruited and teaching-learning materials were supplied. Special enrollment drives were conducted every year and a positive result was obtained by enrolling more children to primary schools who were out of schools for various reasons. Special incentive schemes provided by the State government like distribution of free text-books, uniforms, school bags, mid-day meals, Note-books and scholarships were provided to students at appropriate times to improve the retention rate. Teachers were trained by DIET through SOPT in order to strengthen the skills of the teachers in delivering qualitative education in classrooms. School-complexes were established and strengthened to decentralize academic supervision and guidance BRCs were

established in each taluk and an innovative programmed called “**Chaithanya**” was given to all teachers who were engaged in teaching lower classes. CRCs were established for every 2 Grama Panchayaths and some academic exercises were given to teachers. ‘Chinnara-Angala’ Programme was conducted to the out of school children who were indentified during the children survey conducted in January 2001. 1750 children were brought into the mainstream by attracting and admitting them to different classes through this programme.

### **2.17 Capacity Building :**

#### **a) Existing supervisory and monitoring system:**

Primary education in the district is supervised and monitored by the Deputy Director of Public Instruction (Administration) Teachers recruitment, transfers, re-deployment, promotions and other administrative matters, academic guidance and quality improvement matters are being looked by the DDPI. At the Block-level, Block-Education officer is in charge of Primary Education. Academic guidance, supervision, administration and monitoring the programmes is done by BEO's. The Educational coordinators at the Hobli level assist the BEO in supervision and monitoring.

**b) Training Agencies:** At the district level DIET is the prime agency for training primary schools under the stewardship of DDPI(Development) and the principal DIET provides various training programmes and meets majority of training needs of teachers. At the block-level BRc's are established and they have taken charge of training primary school teachers in an innovative approach. One cluster for 2 Grama panchayaths was established and the teachers get together at the cluster level and discuss many academic matters. School complexes were established in order to train primary school teachers. A few powers are delegated to school complexes to decentralize monitoring and supervision of primary schools.

At the school level SDMc's are established to monitor the development and academic activities of the schools. Parents were involved in the formation of SDMC's. Community participation in primary education is ensured by a novel programme called "Samudayadatta Shale" which has generated an enthusiastic response from the community.



Children engaged in learning through activities in "Chinnara Angala Bridge Course" Programme in HPS Melinahanasavadi, Shimoga Taluk.

YEAR	CLASSWISE PROMOTION RATE						
	I	II	III	IV	V	VI	VII
1995-96	98.00	99.84	95.11	97.63	91.00	95.84	96.92
1996-97	97.46	98.88	95.64	91.45	92.81	96.58	93.94
1997-98	99.19	98.56	98.31	98.31	96.06	98.84	91.79
1998-99	99.07	97.18	97.06	97.67	97.86	96.10	90.72
1999-00	99.73	98.59	97.90	99.28	97.61	96.86	76.53
2000-01	98.91	99.31	95.12	96.26	98.41	98.41	70.73

SOURCE: DDPI's Office Statistics Unit formula used:

**REPETITION RATE**

YEAR	REPETITION RATE (Class wise )						
	I	II	III	IV	V	VI	VII
1996-97	1.96	0.16	3.12	2.16	5.60	3.84	3.32
1997-98	2.20	1.01	3.64	3.72	6.35	3.14	6.18
1998-99	0.40	1.31	1.25	1.20	3.19	0.92	6.53
1999-00	0.58	2.19	2.31	2.13	2.02	3.10	8.51
2000-01	0.20	1.21	1.81	0.61	1.95	2.92	20.29
2001-02	1.67	0.60	3.97	3.08	1.09	1.12	26.32

SOURCE: DDPI's Office Statistics Unit formula used:

**ADMISSION RATE**

1996-97	98.72
1997-98	99.85
1998-99	98.57
1999-2000	98.53
2000-01	98.68
2001-2002	99.64

SOURCE: DDPI's OFFICE STASTICS UNIT.

YEAR	TRANSITION RATE	
	IV O V	VII TO VIII
1995-96	94.39	93.38
1996-97	95.90	97.43
1997-98	97.85	96.68
1998-99	96.61	95.80
1999-2000	98.23	95.58
2000-01	94.76	92.32
2001-2002	96.31	93.45

SOURCE: DDPI's OFFICE STATISTICS UNIT.

Year	% of increase	Projected Child population (age wise)								
		0 - 1	1 - 2	2 - 3	3 - 4	4 - 5	5 - 6	6 - 7	7 - 8	8 - 9
2000-01	1.2%	26598	26221	27518	29453	32567	24980	28251	27410	30450
2001-02	1.2%	26917	26598	26221	27518	29453	32567	24980	28251	27410
2002-03	1.2%	27240	26917	26598	26221	27518	29453	32567	24980	28251
2003-04	1.1%	27540	27240	26917	26598	26221	27518	29453	32567	24980
2004-05	1.1%	27847	27540	27240	26917	26598	26221	27518	29453	32567
2005-06	1.1%	28153	27847	27540	27240	26917	26598	26221	27518	29453
2006-07	1.0%	28462	28153	27847	27540	27240	26917	26598	26221	27518
2007-08	1.0%	28746	28462	28153	27847	27540	27240	26917	26598	26221
2008-09	1.0%	29033	28746	28462	28153	27847	27540	27240	26917	26598
2009-10	0.9%	29294	29033	28746	28462	28153	27847	27540	27240	26917

SOURCE: DDPI's OFFICE STATISTICS UNIT.

Year	% of increase	Child population (age wise)				
		9-10	10-11	11-12	12-13	13-14
2000-01	1.2%	31608	32426	31293	30191	29928
2001-02	1.2%	30450	31608	32426	31293	30191
2002-03	1.2%	27410	30450	31608	32426	31293
2003-04	1.1%	28251	27410	30450	31608	32426
2004-05	1.1%	24980	28251	27410	30450	31608
2005-06	1.1%	32567	24980	28251	27410	30450
2006-07	1.0%	29453	32567	24980	28251	27410
2007-08	1.0%	27518	29453	32567	24980	28251
2008-09	1.0%	26221	27518	29453	32567	24980
2009-10	0.9%	26598	26221	27518	29453	32567

SOURCE: DDPI's OFFICE STATISTICS UNIT.

YEAR	ANNUAL INCREASE	PROJECTED ENROLLMENT UPTO 2009-10								
		I	II	III	IV	V	VI	VII	VIII	TOTAL
2000-01	-	38530	38648	37003	32839	36426	34744	31216	23343	272749
2001-02	-	37192	38008	36245	32975	33210	31980	32548	24402	266560
2002-03	1.2%	37638	38464	36680	33371	33608	32363	32938	24694	289758
2003-04	1.2%	38090	38926	37120	33771	34011	32751	33333	24991	272993
2004-05	1.1%	38547	39393	37528	34142	34385	33111	33699	25265	276070
2005-06	1.1%	39010	39826	37941	34517	34763	33475	34069	25543	279144
2006-07	1.1%	39439	40264	38358	34896	35145	33843	34443	25823	282211
2007-08	1.0%	39873	40707	38742	35244	35496	34181	34788	26085	285116
2008-09	1.0%	40271	41114	39129	35596	35850	34522	35135	26343	287960
2009-10	1.0%	40674	41525	39520	35951	36208	34867	35487	26606	290838

SOURCE: DDPI's OFFICE STATISTICS UNIT.

## **CHAPTER – III**

### **PROCESS OF PROJECT FORMULATION:**

**CHAPTER- III**  
**PROCESS OF PROJECT FORMULATION:**

While preparing the District Elementary Education plan, as a first step the District Implementation committee under the chairmanship of the District In-charge Minister **Sri. Kagodu Thimmappa**, is constituted. The committee is as follows:-

**“ DISTRICT SARVA SHIKSHA ABHIYANA ”**  
**EXECUTIVE COMMITTEE**

- |   |                          |
|---|--------------------------|
| 1. <b>Sri. KAGODU THIMMAPP</b><br>MINISTER FOR SOCIAL WELFARE<br>AND DISTRICT MINISTER.<br>GOVERNMENT OF KARNATAKA. | <b>HON'BLE PRESIDENT</b> |
| 2. <b>Sri. J.PAKKIRAPPA,</b><br>PRESIDENT,<br>PRESIDENT Z.P. SHIMOGA  | <b>MEMBER</b>            |
| 3. <b>Sri. P.GANESHAN, I.A.S.</b><br>DEPUTY COMMISSIONER,<br>SHIMOGA.   | <b>MEMBER</b>            |
| 4. <b>Sri. G.L.CHANDRASHEKARAI AH I.A.S.</b><br>CHIEF EXECUTIVE OFFICER<br>Z.P.SHIMOGA                              | <b>MEMBER</b>            |
| 5. <b>Sri.KAGODU ANNAPPA,</b><br>CHAIRMAN, HEALTH AND<br>EDN.STANDING COMMITTEE<br>Z.P.SHIMOGA.                     | <b>MEMBER</b>            |
| 6. <b>Sri. SURESH KUMAR</b><br>PRESIDENT, CITY MUNICIPALITY   | <b>MEMBER</b>            |
| 7. <b>Smt. ROHINI NAGARAJ</b><br>MEMBER, HEALTH AND<br>EDN. STANDING COMMITTEE<br>Z.P.SHIMOGA.                      | <b>MEMBER</b>            |



8. Smt. GEETHA MALLIKARJUNA  
MEMBER, HEALTH AND  
EDN.STANDING COMMITTEE  
Z.P.SHIMOGA. MEMBER
9. Smt. SAROJAMMA  
PRESIDENT,  
TALUK PANCHAYATH, SHIMOGA. MEMBER
10. Sri.A..S.CHANDRASHEKAR,  
SECRETARY,  
DIST. LITERACY COMMITTEE.  
SHIMOGA. MEMBER
11. Smt. SHANTHA NAIK. NGO.  
BASAVANAGUDI, SHIMOGA. MEMBER
12. Smt. S.RAO.  
ALL INDIA COUNCIL MEMBER,  
F.P.A.I.SHIMOGA. MEMBER
13. Sri. C.V.RAGHAVENDRA RAO,  
EDUCATIONIST,  
VINOBANGAR, SHIMOGA. MEMBER
14. Sri. A.S.HANUMAN,  
EDUCATIONIST  
BASAVANAGUDI, SHIMOGA. MEMBER
15. Sri. J.NEELAKANTAPPA  
PRESIDENT,  
DIST. PRIMARY SCHOOLS  
TEACHERS ASSOCIATION  
SHIMOGA. MEMBER
16. Sri. Y.K.TIMMARASIAH  
WRITER AND PRESIDENT  
RATHABEEDHI ROAD, THIRTHAHALLI. MEMBER

- |   |        |
|---|--------|
| 17. Smt. JNANAKSHI<br>HEAD MISTRESS,<br>M.P.M.HIGHER SCHOOL,<br>PAPER TOWN,BADHRAVATHI  | MEMBER |
| 18. Sri. PRAMODH , PRESIDENT<br>GRAMAPANCHAYATH SAMPEKATTE<br>HOSANAGAR TALUK.  | MEMBER |
| 19. Smt. NOOR JAHAN<br>HEAD MISTRESS,<br>GOVT LOWER PRIMARY SCHOOL,<br>SAVAIPALYA, SHIMOGA  | MEMBER |
| 20. Sri. SUBHASHCHANDRA STANIK,<br>STATE AWARD TEACHER ,<br>HEAD MASTER,<br>GOVT HIGHER PRIMARY SCHOOL,<br>HAREESHI, SORAB TALUK. | MEMBER |
| 21. Sri. KRISHNAPPA,<br>RETD. HEAD MASTER,<br>BALEKOPPA, SHIMOGA TALUK.   | MEMBER |
| 22. Sri. RAMAPPA,<br>RETD HEAD MASTER,<br>SUNNADHAKOPPA, SHIKARIPURA  | MEMBER |
| 23. PRESIDENT, S.D.M.C<br>GOVT URDU HIGHER PRIMARY SCHOOL<br>TANK MOHALLA, SHIMOGA  | MEMBER |
| 24. PRESIDENT, S.D.M.C<br>HIGHER PRIMARY SCHOOL<br>MATTHUR, SHIMOGA   | MEMBER |
| 25. PRINCIPAL,<br>DIET, SHIMOGA   | MEMBER |
| 26. DISTRICT ADULT EDUCATION OFFICER,<br>SHIMOGA.   | MEMBER |

27. DISTRICT HEALTH OFFICER, SHIMOGA DISTRICT. MEMBER
28. ASSISTANT DIRECTOR, WOMEN AND CHILD DEVELOPMENT DEPT. SHIMOGA. MEMBER
29. DISTRICT SOCIAL WELFARE OFFICER SOCIAL WELFARE DEPT. MEMBER
30. Sri. K. GANGAPPA GOWDA, DDPI, SHIMOGA MEMBER SECRETARY
31. Sri. G. BHEEMANNA, EDUCATION OFFICER, CO-ORDINATOR, DISTRICT ELEMENTARY EDUCATION PROJECT SHIMOGA. MEMBER

\*\*\*\*\*

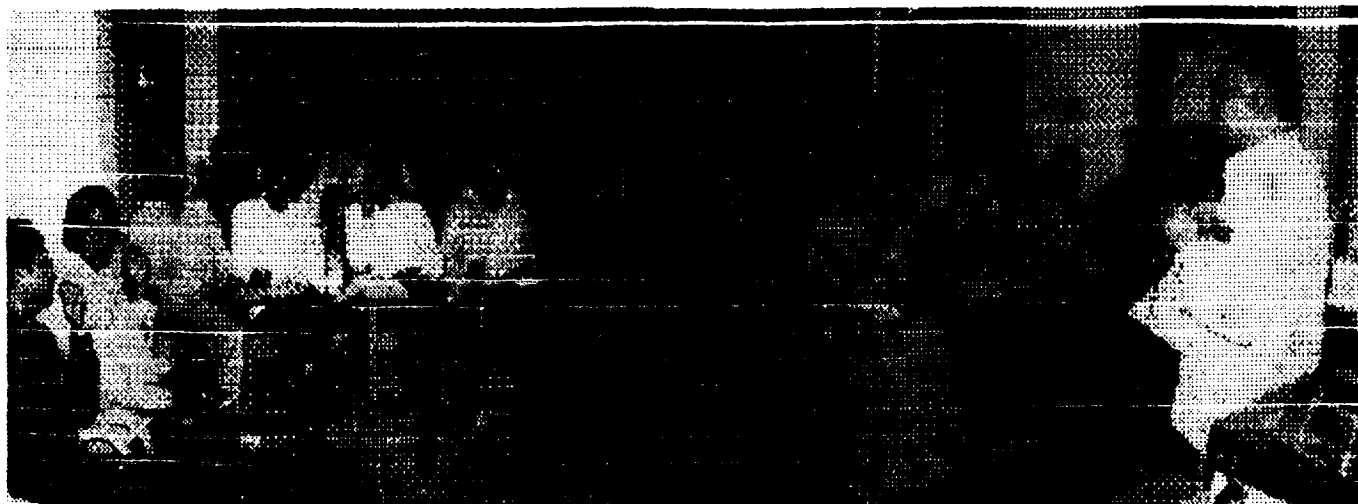


District Planning Team Meeting.

Planning process involved many exercises. For the preparation of the perspective plan for Shimoga District upto 2010, a District planning, Team was constituted. The district planning team is as follows.

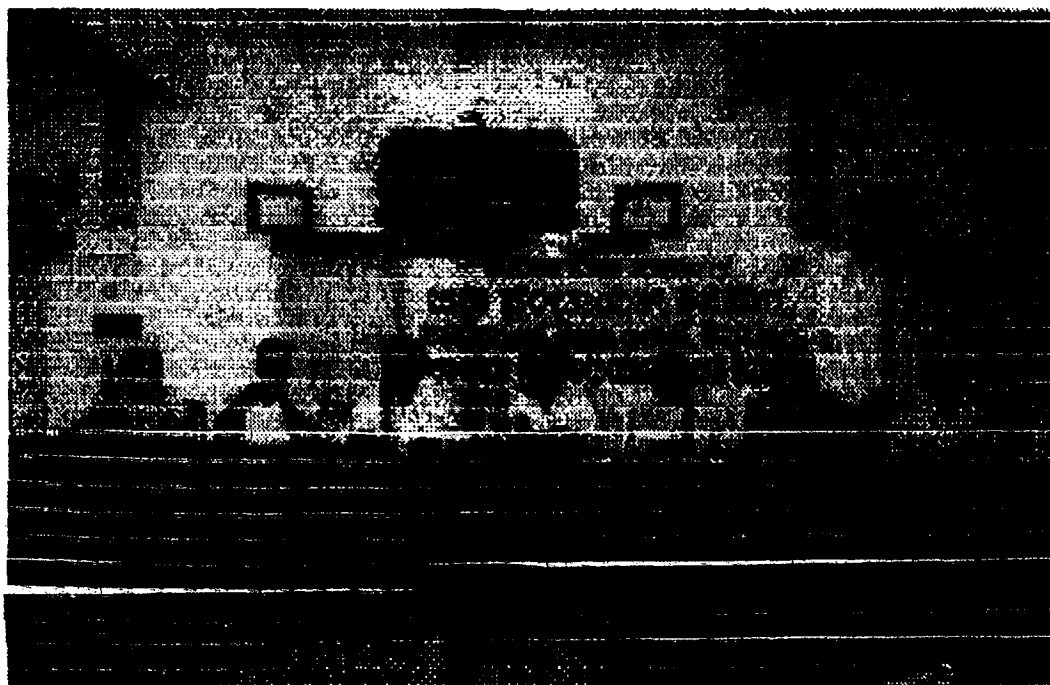
**DISTRICT PLANNING TEAM**

- |   |   |
|---|---|
| 1. DDPI OF THE DISTRICT   | : GANGAPPA GOWDA .K.<br>Ex-Officio, District Project<br>Co-ordinator.   |
| 2. EDUCATION OFFICER  | : G.BHEEMANNA,<br>Ex Officio,<br>Assistant Project<br>Co coordinator.   |
| 3. PRINCIPAL OF THE DIET  | : Member.   |
| 4. SENIOR LECTURER<br>INCHARGE DRU IN DIET  | : B.N.RAMACHANDRA<br>Member.  |
| 5. A.I. BLOCK EDUCATIONAL<br>OFFICERS IN THE DISTRICT                                     | : Members   |
| 6. EDUCATIONISTS IN THE<br>DISTRICT   | : 1) A.S.HANUMAN<br>Educationist, Shimoga<br>2) Smt. VIJAYASRIDHAR<br>Near Lakshmi talkies, Shimoga                 |
| 7. N G O WORKING FOR<br>EDUCATION   | : 1) Family Planning<br>Association of India, Shimoga.<br>: 2) Samudaya Vijnana Kendra<br>Shedthikere, Sagar taluk. |
| 8. PRESIDENT OF DISTRICT<br>PRIMARY SCHOOL<br>TEACHERS ASSOCIATION                        | : J. NEELAKANTAPPA<br>: Member  |
| 9. REPRESENTITIVES OF<br>WOMEN ORGANISATION<br>WORKING FOR EDUCATION<br>AND CHILD WELFARE | : President, Inner Wheel Club<br>: Shimoga.<br>: Member   |



**DISRICT PLANNING TEAM WITH BRC AND EDN.CO-ORDINATORS AT WORK**

**Pre-Project proposal:** A pre-project proposal was prepared by the District Planning Team in the month of January-2001. The pre-project proposal proposed for community mobilization and environment building programmes, micro-planning activities at the Habitation level, Training Programmes, Preparation of plans at Block level and District-level, strengthening of schools, Awareness Training of functionaries at different levels and finalization of the District Elementary Education.



**District Committee discussing the Pre-project activities in the first meeting held on 29.5.2001**

At the first instance after the approval of the pre-project proposal, the District implementing committee in its meeting held on 15.6.2001 under the chairmanship of the district-in-charge Minister discussed many salient features of SSA. The Deputy Director of Public Instructions explained the objectives of the "Sarva Shiksha Abhiyana."



Nodal Officer Sri. G. Bheemanna, interacting with the District Planning Team.

The district committee met for the second time on 15.06.2001 under the chairmanship of the District in charge Minister, The DDPI briefed the meeting about the background, need, objectives, importance and implementation strategies of the SSA. He explained the arrangements made for conducting the pre-project activities. The District Committee approved the allotments made for different pre-project activities. The District Minister directed the Nodal Officer to mobilize the community and involve the entire community in the planning process as the achievement of the universalization of Elementary Education depends upon the quality and the extent of the community participation in planning, implementation and monitoring of its various aspects. He also said that until and unless the community owns the educational aspects of the children the universalisation of Elementary Education could not be realized in its true spirit. He continued to say that decentralization without community participation, we cannot achieve the goals of universalisation.



**DDPI Sri. K.Gangappa Gowda, presenting DEEP draft to the District committee**

On 29.06.2001 and 30.6.2001 a State Level Training Programme was arranged by the commissioner for Public Instruction in Nipced, Bangalore to the DDPI's DIET Principals, Nodel officer of the District, Unit Head of P & M in DIET, Secretaries of Saksharatha Smithies and a Resource Person from the District. An extensive training was given on the planning techniques. A common guidelines were given to the District Team. For the preparation of District Elementary Education Plan – DEEP.

Based on the guidelines given at the State-level a training was arranged at the District –Level on 11.07.2001 at DIET, the Block-Level Resource Groups and Block-Level Planning Teams. All the BEO's, BRC Co-coordinators, Educational Co-coordinators and BRC Resource persons participated in the training. A Common guidelines were given to the Block Level Teams, to prepare Habitation – Level plans, cluster-level plans and block-level plans. Strategies were evolved to encourage community to participate in the planning process.



**District Nodal Officer, with former DDPI Sri. M.Nataraj explaining the objectives of the S.S.A programmes to the District Executive Committee on 29.05.2001.**

A meeting of the District Level Planning team was held at B.R.P. on 03.08.2001. Educational materials and formats were distributed to all the blocks to prepare habitational plans and Block level plans. Progress was reviewed and guidance was given to all B.E.O's and BRC Co-coordinators for the preparation of TEEP.



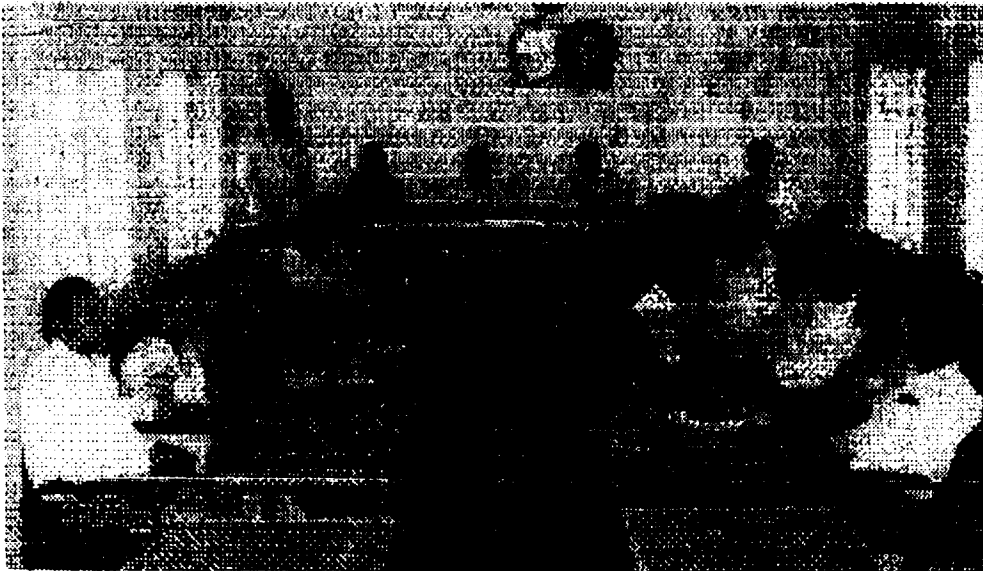
**Engaged in the preparation of TEEP**

In B.E.O's meetings, discussions were held several times regarding preparation of Block level plans and habitational level plans.



At the Block levels, the Block-level Implementation Teams were constituted.

1. Taluk-Panchayath President-Chairman
2. Chairman of the Social Justice Committee of TPS-Vice-Chairman
3. Block-Education Officer –Member Secretary
4. BRC Co-Coordinator –Member
5. Child-Development Project Officer
6. Taluk Social Welfare Officer –Member
7. Taluk-Medical Officer –Member
8. A volunteer from any NGO –Member
9. The Educationists –Member
10. President of the Taluk Primary School Teacher's Association –Member



**Discussion at Bhadravathi Block level .S.S.A. implementation Committee**

At the Block-Level the implementation committee meetings were held and discussed about the pre-project activities to be taken up in order to prepare the Habitation level plans, Cluster level plans and Block-Level Plans.

Block-Level Planning Teams were constituted to prepare the Block-Level Plans and to give Training to the functionaries at Habitational Level. The Block- Level Planning Team consists of the following persons.

1. Block-Education Officer –Chairman
2. BRC Co-ordinator –Member Secretary
3. Senior Lecturer from DIET –Member
4. One Educationist Member
5. One Active CRC Co-ordinator –Member
6. BRC Resource Person Member
7. Educational Co-ordinators – Member
8. Three Active Primary School Teachers –Members

The Block-Level Planning Teams met several times to discuss various methods of training, collection of information, preparation of habitation plans, consolidation at cluster levels and finalizing the Block-Level Plans.

A service of training programmes were held at the Block-Level to the Head-Masters of all Primary Schools and cluster level resource persons.

In these trainings the formation of Habitation level implementation Committees and resource groups, involvement of SDMC's and Community, Collection of information at the grass-root-level, community mobilization programmes and preparation of Habitation level plans were discussed. Constitution at the cluster level was discussed with the cluster-level resource persons. A series of training Programmes were conducted at the cluster level to all the teachers of primary schools to equip them in the planning process.

At the habitational levels, habitational implementation and resource committees were formed with the following category of members

- 1.Chairman of Gram-Panchayath
- 2.Elected Gram-Panchayath Members
- 3.SDMC Chairman and Members
- 4.Representitives of Voluntary Organisation -Members
- 5.Two Interested persons in Education – Members
- 6.Community leaders –Members
- 7.Teachers of the school – Members
- 8.Head-Masters of the Schools Member-Secretary

Training for Habitational-Level Teams were held in each habitation and the planning process at the habitational levels were discussed. Community mobilization programmes were taken Mass-Media campaigns were held and wide publicity was given to wall-writings, posters, banners and pomp lets. Wide publicity was given through Radio,News papers and Local-Media. Community representatives were involved to school to discuss the various Educational needs of the community and the school. Situational analysis was made by considering the existing facilities in the school. Requirements of the schools were identified. Educational needs of the community in terms of access, enrolment, retention and achievement level were identified.



**Campaign through writing slogans on walls.**

New primary schools were proposed in school-less habitations, where the population is above 200. Alternative arrangements like providing transportation facilities to children providing mobile schools where it is economically unviable to propose a regular school. Necessary information and data was collected at all levels from various departments. Based on the information and the data available in the school a diagnostic analysis was made, needs were identified and the entire plans at the habitation level were prepared with the help of all teachers, community leaders Elected representatives. SDMC members and representatives from voluntary organizations. Gram sabhas were called on 08-08-2001 in all the habitations during Samudayadatta Shale programmes. The habitation level plans were presented in the Gramasabha and a thorough discussion was made in each habitations. The opinions and the suggestions of the community and elected members were incorporated in the plans and habitation plan was presented to the respective Grama-Panchayats for their approval. The approved habitat ional plans were then presented to the cluster level resource persons for consolidation at CRC level.

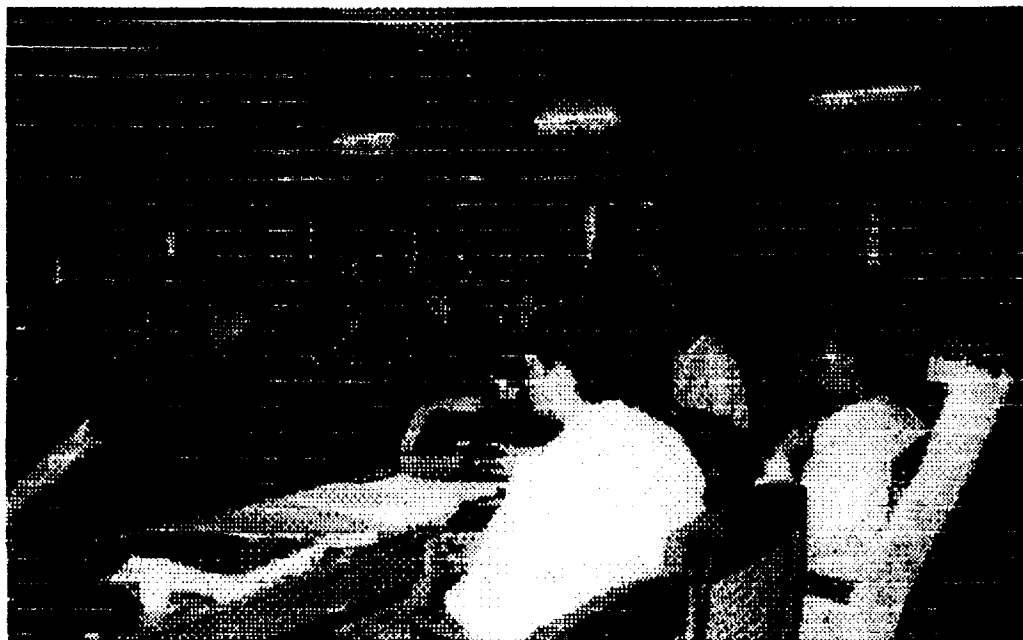


**“Samudayadatta shale” discussion with the community regarding educational needs of the habitation.**

At cluster level also with the involvement of the community and the cluster level planning team, Cluster level plans were prepared and finalised, based on the information supplied from the habitaion levels. Then the habitational level plans and the cluster level plans and the cluster level plans were submitted to the Block-Level. At the Block-Level Each habitat ional plans and the cluster level plans were consolidated and an entire plan for the Block-Level was finalized with he involvement of Taluk level elected representatives, community leaders, representatives of he voluntary organizations, educationists and the Block-Level planning team. The ideas, opinions and suggestions from these sectors were incorporated in the Block-Level Plans were placed in the Block-Level implementation committee meetings and an approval was taken after through discussions. The Block-Level Plans were placed in the Taluk- Panchayath General Body Meetings, discussions were made and approvals were taken by the respective Taluk-Panchayaths. Then the Block- Level Plans were submitted to the Level-Level. Wide publicity was given at the Block- Level also.

At the District Level the Block-Level Plans were consolidated. Information and data were collected from various departments. The indicators were derived and meaningful information was included in the Plan-Plan. A situational analysis at the District-Level was made and he District-Level needs for UEE were identified on the basis of habitation level plans and Block-Level Plans. Based on the identified needs the Educational problems and issues of he District were identified at the Level. Targets were fixed, goals and objectives were evolved for universalisation of Elementary Education at the District Level. After a thorough discussion with the community representatives, Elected representatives, NGOs, Educationalists and the District-Level Planning. Team various strategies and programmers were evolved, costing exercise was done on the basis of norms of SSA. The

complete plan was placed in the District-Level-Implementation committee and a thorough discussion was made on 24.08.2001.



**District Executive Committee Meeting.**

The plan was finalized after incorporating the ideas, opinions and suggestions of the District Implementation committee. After taking the approval of the ZP and the District-In-Charge Minister, the District-Elementary Education plan-DEEP 2001-2010 was finalized. The perspective plan for the next nine years and the Annual work programme for 2001-02 were prepared and submitted to the State-Level for further action.

## CHAPTER – IV

# ISSUES AND PROBLEMS IN PRIMARY EDUCATION

## CHAPTER IV ISSUES AND PROBLEMS IN PRIMARY EDUCATION

Primary Education scenario is reasonably good in the district at present. Efforts have been made to universalisation of Primary education. Though there is improvement in the overall situation of Primary education, there are problems which are to be addressed in the field. There are important issues also which are to be considered.

**Access:-** In the recent past, in 1997, a survey had been conducted and school mapping was done. School less habitations were identified. New primary schools were opened wherever there are 15 children of 6-11 years age group. Almost all habitations with a population of 200 were served with a primary school. But due to the increase in population and creation of new habitations especially at the outskirts of cities like Shimoga and Bhadravathi where new extensions were created, there is a need for opening of new Primary schools. During the children survey done in January 2001, such school less habitations were identified and now there is a need to open new primary schools in these habitations. We have identified 65 such habitations in the District and 65 new primary schools are to be opened to provide access for schooling to children of these areas.

Shimoga has a diversified climatic and topographical conditions with more than half of the district is covered by malnad area.



Blocks like Thirthahalli, Sagar, Sorab and Hosanagar are completely malnad taluks whereas part of Shimoga and Shikaripura taluks is also malnad area. These areas are covered with thick forests hilly areas with small and big streams flowing throughout characterized by heavy rain fall during three months of the year. Due to the forest coverage and non availability of plain lands the habitations are scattered in four malnad taluks. There are small habitations with total population of about 15-20 are also existing. In some places two or three houses make a habitation. Usually people in these taluks make their habitations in their horticultural gardens surrounded by thick forests. In taluks like Thirthahalli, Sagar, Sorab and Hosanagar, there are thousands of such habitations where it is practically impossible to open new primary schools, because child population is less, and sometimes it is less than five. But if the schooling facility is not provided to these children, they never have an access for schooling and will be educationally deprived. In such places, children have to walk more than three kilometers to reach the nearby primary school. It is very difficult for young children to walk through thick forests, and shabby roads, sometimes crossing small streams is very difficult. Especially during rainy seasons, children cannot move out of their houses to reach the school in such conditions. These children are forced to remain out of school. For such places, alternate arrangements are to be made to provide access for schooling. For this purpose, transportation facilities are to be provided so that each child in such places move safely from home to school and school to home. The planning team, keeping all these things in its view,

after discussing this with the community has proposed 15 such places to provide transportation facility to school going children.

There are places where the parents move out of their villages and habitations for earning their livelihood. Though they have made their permanent establishments in these villages they temporarily move out of their habitations seeking labour for a temporary period, for business, and for various other reasons and come back after a few months. While going out, they take their children also. The children are forced to go with their parents because there is no body to look after them. They miss schooling for this temporary period and lose interest in attending the school and remain as school drop-outs. For such children residential schools will be a better solution, as the children can stay in these residential school during their parents absence and continue their education. So, we have proposed 5 such residential schools in the district to provide access to Primary education.

In some cases, labours from other places come to this district for doing construction work, canal work, agriculture work. They come with their children and move from one place to the other to many work places. These children are deprived of primary education. In Shimoga, labours have come for digging Upper Tunga Canal, digging for laying Telephone wire, construction of MC. Gann Hospital building, etc., They stay here over the years and they do not care for the education of their children because they do not have easy access to schools as they do not want to adhere to rules and

regulations of school admissions. For such children we have proposed seven mobile schools so that the school along with the teacher move with these children.

There are certain places where the tribal people live in thandas, do not encourage their daughters to go to school. Especially where the thanda is having only a Lower Primary school, and they have to move more than 2 kms to reach a Higher Primary school, they force their daughters to drop out of the school. Due to some social pressures, and superstitious beliefs, and inconvenience to go to school, they permanently terminate themselves out of school and they are deprived of their education. We have identified 27 such Lower Primary Schools, where the strength is more than 80 and the nearest Higher Primary School is above 2 kms distance. Upgradation of these schools helps children of these places to continue their education, at least up to eighth standard.

There are certain places like slums and garages in urban areas where children are forced to work in many places. Because of financial conditions of their homes, they are forced to work in workshops, canteens, industries, shops, markets, etc., For such children, Alternative and Innovative schooling facilities are to be provided. Six such centers are proposed in this plan.



Sri. H. Vishwanatha, Hon'ble Minister for Primary and Secondary Education, interacting with children attending "chinnara angala" a Bridge Course programme organized for school drop-out children.

### **ENROLLMENT AND RETENTION:**

ENROLLMENT and retention scenario in the district is reasonably good. The ENROLLMENT ratios are nearer to 100%. But the retention rate is low as the drop-out rate is high. There is a need to address this issue of retention problem through various programmes.

The Government of Karnataka has been implementing several incentive schemes like distribution of free textbooks, free uniforms, free school bags, free notebooks, distribution of 3 kg rice per month on the basis of attendance, scholarships and other incentives. These programmes have proved fruitful as

the ENROLLMENT and retention rates have increased substantially. These programmes are to be continued in future also. However it is reasonable to enhance the quantity of uniforms from one set to two sets, and facility of giving school bags and note books to all children from 1 to 8 classes.

**Issues related to Children with special needs:**

In addition to these incentives, there is a need to have some more programmes. Usually the drop-out rate is high among girls, in general and among S.C/S.T/OBC/minorities, and handicapped(children with special needs) in particular. Several Programmes like conducting mass ENROLLMENT campaigns, updating of village education registers by conducting periodical surveys, conducting bridge courses for mainstreaming out of school children. Awareness campaigns and community mobilization programmes are proposed in order to bring awareness among public regarding education of their children. Training programmes for SDMC members, community leaders and elected representatives have been proposed.

**Additional inputs for existing upper primary schools:- Infrastructure related issues:**

In recent times efforts have been made to provide all facilities to primary schools by constructing new classrooms, compounds, providing electricity facility, drinking water facilities and school gardening facilities. Some rooms required major and minor repairs, continuous maintenance of classrooms and school buildings is needed. There are certain schools which are newly started, do not have their own buildings. In some schools because of up gradation and expansion, demand for more classrooms increased and there is a need to

construct more classrooms There are 59 building less schools in the district. They should get the required school building as soon as possible, so 59 new school buildings with all facilities are proposed in this plan. The additional requirements for classrooms is 2120. Every year 280 rooms are required in different existing schools. So we have proposed the construction of 97 new classrooms every year. Some schools do not have compounds, drinking water, Electricity, toilets and furniture. Such schools should be provided all these facilities in order to improve the infrastructure in schools. All the Higher Primary schools are supplied with Teaching-Learning materials. But updation of these materials is required due to revision of curriculum and improved methods of teaching for this purpose a Teacher-Grant at the rate of Rs. 500-00 per teacher per year is proposed in this plan, for contingency expenditure every primary school needs money.

**Teacher related issues:**

The quality of teachers is a major concern in the field of education. Sometimes these teachers are outdated and do not keep pace with the changing pattern of the education system. They require massive training to strengthen their capacities and improve the skills of teaching. Entire educational system depends upon the quality of teachers and their transactions in the classrooms. The success of any project depends on the capacity of teachers for delivery the quality goods to the students in the form of teaching learning process. The success of any programme depends on the interest and enthusiasm of the teachers showing for implementation There is a dire

necessity to equip our teachers by improving their knowledge, by strengthening their skills and by the best way to reach the objectives and to make sustained efforts to achieve the objectives any system will not work. That is why many programmes for strengthening the quality of teachers are needed.

There is a typical situation in Shimoga where in the existing system a HPS teachers classes from 1 to 7 and LPS 1 to 5. Hither to the LPS was having only 1 to 4 classes. In the changed pattern a LPS teacher had to teach 3 languages which includes mother tongue, English , Hindi or regional language for which they are not accustomed to. Many teachers do not know how to teach English and Hindi. Such teachers need additional training in this area. From next year 8 std will be added to H P schools and the existing teachers have to teach higher class for which they are not competent. Finally the sufferers will be the students and the community. For delivering teaching – learning activities in higher primary schools at least 2 trained graduates, one Science and one Arts should be recruited, proposed to face this challenge is given in this plan. In some schools the teacher-pupil ratio is very high and in some schools it is very low. Redeployment of teachers is necessary to balance the ratio between the teacher and the pupils, In spite of all these exercises, there is a shortage of teachers. There are single teacher schools, there are higher primary schools with only one or two teachers. Additional requirement of new teachers will solve this problem a great extent.

**Community related issues:**

Community participation in Primary Education is a prime importance. In some villages the community participation is more and in some villages is very less. Both of these conditions pose problems. There is a need for balance between the community and the school to improve quality of Primary Education. In this district the three tier-panchayat Raj system is working. Most of the elected members are new to this system and they need proper orientation for better participation. The new SDMCs are formed and these new members also need orientation. For this purpose some training programmes are proposed in this plan. All these problems and issues related to Universalisation of Elementary Education are considered in this plan.



## CHAPTER-V

# GOALS AND OBJECTIVES

**CHAPTER-V****Goals and Objectives:-****Access:-**

**Objective 1 :-** To establish 65 new schools in school less habitations in the district by 2002-03

- i) Construction of 65 new buildings by the year 2002-03 with compounds , drinking water, toilets, electricity etc.
- ii) Recruitment of 130 new teachers by 2002-03 to the newly sanctioned schools.
- iii) Providing adequate furniture to 65 new schools by the year 2002-03.
- iv) Providing teaching – learning materials to 65 new schools by 2002-03.

**Objective 2 :-**

To provide additional inputs for existing Lower primary schools:-

- i)To construct new school buildings with compound, water, toilets, for 59 building less schools in the district by 2002-03
- ii)To construct 2120 additional classrooms in the district by 2010.
- iii)To construct compound walls to 1656 existing schools by 2010.
- IV)To provide drinking water facility to 1442 schools in the district by 2010.
- V)To provide electricity facility to 1131 schools in the district by 2010.

VI) To maintain and repair 1887 schools annually.

VII) To provide furniture to 1492 existing schools by 2010.

IX) To provide Teacher grant of Rs.500/= each annually to 6832 teachers in the teachers.

X) To provide school grant to 2013 schools every year.

**Objective 3:-**

To provide Alternative and Innovative schooling system to the areas where dropout rate is more.

i) To open 11 Alternative and Innovative schooling centers by 2002-03 in places where there are more out of school children.

ii) To identify 11 education volunteers to take case of these Alternative and Innovative centers by 2002-03

iii) To provide teaching learning materials and building grant to these 11 Alternative and Innovative centers.

IV) To provide training to 11 education volunteers by 2002-03.

**Objective 4 :-**

To upgrade 27 existing Lower Primary Schools to Higher Primary Schools by 2002-03.

i) To provide additional rooms with compound, furniture, drinking water, toilets and electricity in a phased manner from 2002-03 to 2007-08.

ii) To provide teaching learning materials to 17 upgraded schools by 2002-03.

iii) To recruit 51 additional teachers in a phased manner from 2002-03 to 2004 to 05.

### **Enrollment:-**

#### **Objective 5 :-**

To enroll 2,68,438 children of 6-14 years of age group by 2002-03

- i) To identify all the children of 6-14 years age group in the district by conducting periodic surveys.
- ii) To update village education registers by using the data obtained by surveys.
- iii) To conduct special enrolment drives in all the habitations every year to enroll all children to schools.
- iv) To conduct 50 bridge courses by 2002-03 to mainstreaming about 4500 out of school children.
- v) To conduct awareness campaigns and community mobilizations every year.

### **III RETENTION:-**

#### **Objective 6:-**

To make all children of 6-11 age group in the district complete five years of schooling by 2007.

- i) To provide maximum facilities in schools to attract children.
- ii) To continue the incentive schemes sponsored by the State Government to retain children in schools.
- iii) To enhance the incentive schemes to all the children irrespective of caste, sex and class.

#### **Objective 7:-**

To provide in service training to all teachers in a period of five years.

- i) To provide 20 days in service training about 6541 teachers by the year 2006-07.

- ii) To provide 30 days induction training to 638 newly recruited primary teachers and 1692 graduate teachers.
- iii) To provide 60 days training to 27 untrained teachers.

#### **IV. CAPACITY BUILDING:-**

**Objective 8 :-**To provide training to all the functionaries at the habitation level, block level and District level.

- i) To provide two days training to about 18825 community leaders in a phased manner by selecting 8 community leaders from each habitation.
- ii) To provide two days training to 2083 Gram Panchayath members once in five years.
- iii) To provide two days training to 70 Taluk Panchayath and Zilla Panchayath members once in five years.
- iv) To provide training to 104 Block Level Officers and BRC's in the District every year.
- v) To provide training to 2000 Head masters and CRC's in the District every year.
- vi) To provide training to 25 DIET faculty every year.
- vii) To provide 2 days training to 10387 SDMC members.

#### **Objective 9:-**

To establish seven Block Resource Centers in all the blocks to provide academic resources teachers.

- i) To construct 7 buildings for BRC's by 2002-03
- ii) To provide furniture to 7 BRC's by 2002-03

iii) To provide equipment to 7 BRC's by 2002-03

iv) To provide library facility to 7 BRC's by 2002-03.

v) To appoint one co-ordinator and five resource persons to each BRC by 2002-03.

vi) To provide maintenance cost to 7 BRC's every year.

**Objective 10:-**

To establish 148 cluster level Resource Centers to provide academic resources to teachers at the cluster level.

i) To construct 148 buildings for 148 CRC's by 2002-03.

ii) To provide furniture to all the 148 CRC's by 2002-03.

iii) To provide equipment to all the 148 CRC's by 2002-03.

iv) To provide library books to all the 148 CRC's by 2002-03.

v) To provide maintenance cost to all the 148 CRC's every year.

vi) To appoint one Resource person to each CRC by 2001-02.

vii) To promote at least 350 teachers every year to conduct action research programmes in different schools.

VIII) To take up a Block level research project at each Block by 2002-03.

**Establishment of District level SSA office:-**

**Objective 11:-**

To establish a District level SSA office to monitor and supervise the programmes under SSA in the District.

i) To provide a vehicle hiring charge to the District level SSA office to help movement of officers throughout the District.

- ii) To provide allowance to driver and maintenance cost to the vehicle.
- iii) To strengthen the District level SSA office by providing furniture, computers, Xerox machine, Fax and Telephone facilities.
- iv) To appoint one Deputy co-ordinator and two Assistant co-ordinators and office staff to strengthen SSA office.

**Objective 12 :-**

Strengthening of DIET for providing quality education for teachers.

**Additional Requirements:- to improve retention**

**Objective 13 :-**To provide additional requirements depending upon the needs to strengthen the activities of Universalisation of Elementary Education.

- i) To keep a pool of reserve teachers in each block by taking retired teachers to make stop gap arrangements when the Vacancies arise due to promotion, death or retirement.
- ii) To observe Samudayattha shale programme in each school five times a year.
- iii) To distribute progress cards to students regularly.
- iv) To make periodic Health check-ups and maintain Health Records of students.
- v) To conduct school evaluation programme for each school every year.
- vi) To make system evaluation every year.
- vii) To make baseline assessment to assess the average achievement level of children.

- viii) To provide for Teacher assessment once in 5 years.
- ix) To provide for school gardening in every school.
- x) To provide for sports materials to each school.
- xi) To level playgrounds in needy schools.
- xii) To provide Flag-Poles and Flag-posts to needy schools.
- xiii) To provide library books to each school.
  - xiv) To provide transportation facilities to children living in hilly and forest areas.
  - xv) To provide workbooks to all students.



CHAPTER – VI

**STRATEGIES AND  
PROGRAMMES**

## CHAPTER – VI

**STRATEGIES AND PROGRAMMES****I Access:****Strategy I:**

Establishment of new schools in school less habitations.

**Need:** There are 69 school less habitations in the district. Out of these habitations, the following habitations have a population of 200. New primary schools are to be opened in these habitations to provide access for primary education.

**Table:** Table showing the number of school less habitations where new primary schools are to be established.

Sl. No	BLOCK	Total habitations	School less habitations with 200 population	Percentage of schoolless habitations
1.	Bhadravathi	195 + city	5	3.27
2.	Hosanagar	1441	9	4.46
3.	Sagar	1176	25	10.50
4.	Shikaripur	175	6	3.43
5.	Shimoga	222 + city	13	5.86
6.	Sorab	415	4	1.31
7.	Thirthahalli	1482	7	2.83
	<b>TOTAL</b>	<b>5176</b>	<b>69</b>	<b>4.47</b>

**Programme : 1**

To construct new buildings with two classrooms, corridor, compound, drinking water and toilet facilities to each of these schools by the year 2002-03. Total No. of buildings to be constructed –65 x 2–130 Rooms.

**Programme 2 :**

To recruit two teachers to each school in order to teach classes from 1 to 5.

Total No. of teachers to be recruited–65 x 2–130.

**Programme :3**

To provide furniture worth Rs.40,000/= to each school to facilitate students and teachers to teach and learn comfortably in the school. Each school should be provide with the following furniture.

1. 2 tables for two teachers
2. 2 chairs for 2 teachers
3. one almirah for storage purpose
4. Small desks for students at the rate of one desk for 5 students.

**Programme :4**

To provide Teaching learning materials to teachers and students at the cost of Rs.25,000/= Per school to cater to the needs of revised curriculum and Text books.

**Programme :5**

To provide for school grant of Rs.2000/= Per each school per year to make contingency expenditure and for maintenace of schools.

**Programme :6**

To provide for teachers grant of Rs.500/= Per teacher per year to spend for preparing their own innovative teaching learning materials and use them in regular teaching learning process.

**Strategy II :**

To provide additional inputs for existing lower primary schools.

**Need :1**

The existing Lower Primary Schools in the District are 1041

Proposed schools for up gradation in this plan are 27

Remaining Lower Primary Schools to which additional inputs are required are--

In these schools 59 schools are building less schools. These schools are to be provided with new school building with corridor, compound, electricity, water and toilets.

Block wise number of building less schools is given below.

Sl.No	Block	Total schools	Building less Schools.	Percentage of building less schools
1.	Bhadravathi	262	11	3.31
2.	Hosanagar	224	4	1.72
3.	Sagar	302	3	0.90
4.	Shikaripur	224	4	1.56
5.	Shimoga	303	17	4.59
6.	Sorab	314	11	3.45
7.	Thirthahalli	258	9	3.32
	<b>TOTAL</b>	<b>1887</b>	<b>59</b>	<b>2.79</b>

**Need : 2**

There are lower primary schools with only one room. The number of such schools having only one room each are 59. These schools are to be provided with one additional room and all other ancillary facilities like compound, water, toilet and electricity.

Block wise distribution of such schools is as follows.

**A. Additional Rooms:-**

Sl. No.	Block	TOTAL No.OF SCHOOLS		ROOMS AVAILABLE		ADDITIONAL ROOMS REQUIRED	
		LPS	HPS	LPS	HPS	LPS	HPS
1	BHADRAVATHI	133	129	258	769	63	280
2	HOSANAGARA	126	98	210	517	48	91
3	SAGAR	185	117	305	642	72	222
4	SHIKARIPURA	113	111	222	732	74	161
5	SHIMOGA	145	158	261	996	135	426
6	SORAB	193	121	311	595	78	194
7	TIIRTHAHALLI	146	112	225	788	41	234
TOTAL		1041	846	1792	5039	512	1608
		1887		6831		2120	

Need :3 There are 885 Lower Primary Schools with rooms but without ancillary facilities like compound, drinking water, toilets and electricity.

These facilities are to be provided to these schools.

Block wise distribution of such schools is as follows.:

### C. WATER FACILITY

SL. No.	BLOCK	WATER FACILITY AVAILABLE		WATER FACILITIES REQUIRED	
		LPS	IPS	LPS	IPS
1	BHADRAVATHI	10	54	112	73
2	HOSANAGARA	32	46	94	52
3	SAGAR	31	43	154	75
4	SHIKARIPURA	6	22	105	91
5	SHIMOGA	20	76	130	82
6	SORAB	28	41	154	80
7	THRITHAHALLI	11	7	135	105
TOTAL		138	289	884	558

### D. TOILET FACILITY.

SL. No.	BLOCK	TOILET FACILITY AVAILABLE		TOILET FACILITIES REQUIRED	
		LPS	HPS	LPS	HPS
1	BHADRAVATHI	10	54	112	73
2	HOSANAGARA	1	26	125	69
3	SAGAR	18	38	167	79
4	SHIKARIPURA	6	22	105	91
5	SHIMOGA	27	76	130	82
6	SORAB	0	19	186	102
7	THRITHAHALLI	11	7	135	105
TOTAL		73	242	960	601

**E. COMPOUND:**

SL. No.	BLOCK	COMPOUND AVAILABLE		COMPOUND REQUIRED	
		LPS	HPS	LPS	HPS
1	BHADRAVATHI	9	27	113	102
2	HOSANAGARA	2	5	124	93
3	SAGAR	7	21	178	97
4	SHIKARIPURA	10	18	101	95
5	SHIMOGA	4	54	130	104
6	SORAB	6	20	178	101
7	THRITHAHALLI	11	7	135	105
<b>TOTAL</b>		<b>49</b>	<b>228</b>	<b>959</b>	<b>697</b>

**F. ELECTRICITY:**

SL. No.	BLOCK	ELECTRICITY FACILITY AVAILABLE		ELECTRICITY FACILITY REQUIRED	
		LPS	HPS	LPS	HPS
1	BHADRAVATHI	13	25	109	104
2	HOSANAGARA	29	82	96	16
3	SAGAR	40	65	144	53
4	SHIKARIPURA	4	49	97	64
5	SHIMOGA	27	110	91	67
6	SORAB	12	60	74	61
7	THRITHAHALLI	46	57	100	55
<b>TOTAL</b>		<b>171</b>	<b>448</b>	<b>711</b>	<b>420</b>

**G. TEACHING LEARNING MATERIALS:-**

SL. No.	BLOCK	TEACHING LEARNING MATERIALS AVAILABLE		TEACHING LEARNING MATERIALS REQUIRED	
		LPS	HPS	LPS	HPS
1	BHADRAVATHI	0	103	133	26
2	HOSANAGARA	30	45	96	53
3	SAGAR	18	43	167	75
4	SHIKARIPURA	3	108	110	3
5	SIIMOOGA	25	145	158	0
6	SORAB	0	120	186	0
7	THRITHAHALLI	6	107	140	5
TOTAL		82	671	990	162

**Need 4:** There are 885 Lower Primary Schools in the district which have two rooms and one or two facilities. Other facilities are to be given to these schools. The total requirement of the district is as follows.

**Need 5:** All the school buildings require annual repairs and maintenance. Schools are to be made attractive by painting figures, letters and maps on the wall and a learning environment is to be created in all schools. For this purpose Rs.5000/= Per school per year is necessary for all existing LPS in the district.

**Need 6:** Lower Primary Schools need a minimum furniture of two tables, two chairs, small desks for children and almirah for storage facilities. 810 Needy schools are identified in the district and these schools are to be



provided with necessary furniture. The following table gives the block wise requirement of furniture.

#### H. FURNITURE:-

SL. No.	BLOCK	FURNITURE AVAILABLE		FURNITURE REQUIRED	
		LPS	HPS	LPS	HPS
1	BHADRAVATHI	Insufficient		133	129
2	HOSANAGARA	42	48	84	50
3	SAGAR	92	60	93	57
4	SHIKARIPURA	2	2	111	109
5	SHIMOGA	45	78	100	80
6	SORAB	Insufficient		186	121
7	THRITHAHALLI	11	8	135	104
<b>TOTAL</b>		<b>390</b>	<b>196</b>	<b>842</b>	<b>650</b>

#### Programme : 1

To construct new buildings with two classrooms, corridor, compound, drinking water, and toilet facilities to 59 LPS which have no building. The construction to be undertaken by the year 2002-03.

Total cost will be  $4.00 \times 59 = \text{Rs. } 236 \text{ Lakhs.}$

#### Programme : 2

To construct one additional classroom to each of schools which have only one room. There are 257 LPS in the District with only one room. All the schools will be covered in a phased manner by the year 2008-09. 5% of annual escalation of cost is considered.

**Programme 3:**

To construct compounds to 959 LPS in the District which do not have compounds. Construction would be taken in a phased manner so that all the will be covered by the year 2008-09. 5% of annual escalation of cost is considered.

**Programme 4:**

To provide drinking water facilities to 884 LPS in the district. This facility may be provided by digging new borewells, or getting connections from the existing borewells, or getting water connection from the existing water supply systems. For this purpose Rs.50,000/= for each school is planned.

**Parogramme 5:**

Every school needs power supply either to use modern teaching learning materials, or to lift water from borewells. For this purpose each school should be connected by power supply. For this purpose Rs.15000/= For each school is planned.

**Programme 6:**

For annual maintenance an repairs, each school require Rs.5000/= every year. So, it is proposed to provide Rs.5000/= every year to each school for annual maintenance and repairs, painting and beautification of schools.

**Programme 7:**

To provide Teaching learning materials to teachers and students at the cost of Rs 25000/= Per school to cater to the needs of revised curriculum and Text books.

**Programme 8:**

There is a need for recruiting 430 more additional teachers to the LPS in the district. As 5<sup>th</sup> standard is added to LPS, there is a need to have at least two teachers in each lower primary schools. So, 430 additional teachers are to be recruited in the district.

**Programme 9:**

To provide for school grant of Rs. 2000/- Per school per year to make contingency expenditures and for maintenance of schools.

**Programme 10:**

To provide for teachers grant of Rs. 500/- per teacher per year to spend for preparing their own innovative teaching learning materials and use them in regular teaching learning process.

**Strategy III :**

To open EGS centers/AIS centers in habitations with less than 200 population and not served by school or where the dropout rate is high due to forced child labour.

**Need 1:**

There are 1102 School less habitations in the District within 200 population. Regular school cannot be opened here because children of 6-14 years age group are not more. EGS centers may be opened here if the EGS centers may be opened here if the community comes forward to run the centers.

**Need 2:**

There are certain places like city slums and garage areas where child labour is prevailing and absenteeism from school is more, AIS centers are to be opened. Such 11 centers are identified for opening AIS centers.

**Programme :1** To open 11 AIS centers in the district by giving Rs. 1000/= honorarium per month to education volunteers, providing them with teaching learning materials, providing a rented building.

**Programme 2:** Conducting training for education volunteers in the district once in a year.

**Strategy IV :**

To upgrade existing Lower Primary schools to Higher Primary schools to provide higher primary schooling facility to children where the nearest HPS is beyond 2 Kms.

**Need:** There are 27 LPS in the District with more number of children studying in the fifth standard. These children have to walk more than 2 Kms to reach a HPS in order to continue their education. Most of the children,

Particularly girls do not want to walk this distance. So they drop out of the schools. If such LPS are upgraded, there is every possibility of these children continuing their education. Following tables gives the Block-

Wise distribution of LPS to be upgraded to HPS.

Sl.No	Block	Total LPS	No.of LPS to be upgraded to HPS.	Percentage of LPS to be upgraded
1.	Bhadravathi	119	4	3.36
2.	Hosanagar	126	5	3.97
3.	Sagar	167	1	0.60
4.	Shikaripur	112	0	0.00
5.	Shimoga	141	10	7.09
6.	Sorab	187	2	1.07
7.	Thirthahalli	131	5	3.82
	<b>TOTAL</b>	<b>983</b>	<b>27</b>	<b>2.75</b>

**Programme (1):**

To construct additional rooms for 27 LPS which are to be upgraded at the rate of 27 rooms for sixth standard in 2002-03, 27 rooms for seventh standard in 2003-04 and 27 rooms for eighth standard in 2004-05.

**Programme (2):**

To provide ancillary facilities like compound, drinking water, toilet, electricity to each of such school.

**Programme (3):**

To provide furniture and teaching learning materials to all these 27 schools.

**Programme (4):**

To recruit additional teachers as the classes growth. 27 Primary teachers to be recruited in 2002-03, 27 graduate teacher to be recruited in 2004-03, 27 graduate teachers to be recruited in 2003-04 and 27 graduate teachers to be recruited in 2004-05.

**Strategy V**

- To Provide additional inputs for existing upper Primary Schools in the District.

**Need :** There are upper Primary Schools which require additional inputs.

The following table gives the details of requirements.

SL No.	Requirements	Number Required
1	Additional Rooms	1608
2	Compound	697
3	Drinking water	558
4	Electricity	420
5	Repairs	846
6	Furniture	162
7	T.L.M.	650
8	School grant	846
9	Additional Teachers a) Primary Cadre b) Graduate teachers	208 1692

Source: DDPI Office, Shimoga.

**Programme:-** To provide the above mentioned additional inputs to the upper primary schools in the District in a Phased manner.

## **II. ENROLLMENT:-**

### **Strategy. VI:**

To conduct a survey of each habitation every year to identify children of 6-14 age group and to make 100% enrolment among these children.

**Need:** There is a need to have a survey every year to know the children who usually do not enroll and stay out of school.

### **Programme- (1):**

To conduct a survey of 6-14 years age group children to know the following

1. the total child population of 6-14 years in each habitation
2. the children who are enrolled in schools
3. the children who have not enrolled in schools
4. the children who have dropped out of schools.

After conducting survey each school will enter the information in the village education register and update the village education records every year.

### **Programme (2):**

To conduct special enrolment drives by organizing special Jatha, meet the parents, compulsory enrolment, Prabath Fairies, Joint counseling mothers and daughters.

**Programme (3):**

To conduct awareness campaigns and community mobilization Programmes through SDMC and through elected representatives.

**Programme (4):**

To conduct special bridge courses in areas where the learning disability and drop-out rate is more to improve the perception capacity of each child and to develop interest towards learning. These programmes help to attract children to enroll in schools.

These Programmes will be held in all the habitations of the district.

**III RETENTION:**

**Strategy:** To provide incentive schemes to children to attract them towards schools and help them to stay in schools.

**Need:** Some students drop out of schools due to many reasons. Poverty is the main reason. Children are forced to leave the school and work in work places. They become the source of income to their parents. These parents cannot spend on their children's education. So some incentive schemes like distribution of free textbooks, free uniforms, mid-day meals, free schoolbags, and fee reimbursement for girls which are ongoing schemes of the State Government to be continued in future also. These schemes certainly help to reduce the drop-out rate.

The other reason for children dropping out of school is unattractive teaching by teachers. These teachers are to be trained in improving their



skills in teaching. In service training for all teachers, at least once in five years is a necessity.

**Programme (1):**

To conduct 20 days training programmes to 6832 in service teachers once in five years.

**Programme (2):**

To conduct 60 days training Programme to 27 teachers who are not having pre-service training.

**Programme (3):**

To conduct 30 days training programme to 638 newly recruited teachers.

**IV CAPACITY BUILDING:**

**Strategy:** (1) To provide training programmes to community leaders, for SDMC members, for Gram Panchayath, Taluk Panchayath and Zilla Panchayath members, block level officers and BRC's, CRC members and HM's, and DIET faculty to build capacities in their respective areas in order to utilize their services in the universalisation of Elementary Education.

**Need :** (1) Community leaders influence parents who do not enroll their children to schools. They influence for motivating parents to send their children regularly to schools. These community leaders are to be trained regularly.

**Need: (2)**

SDMC members in each school take active part in regular functioning of the school and its development. They monitor and supervise the work in the school. But they are not aware of certain things while monitoring the school activities. So, they need training in this area to facilitate qualitative improvement of schools.

**Need: (3)**

Gram Panchayath members are the elected members at the gross root level and they have a good number of followers in villages. They can influence people regarding universalisation of elementary education. Their participation is needed in this areas. So training is to be given to them to appraise them of their involvement in universalisation of elementary education programmes.

**Need: (4)** Taluk Panchayath and Zilla Panchayath members are in the Panchayath Raj bodies which release funds for developmental activities of schools. They can influence at higher levels to implement many programmes of U.E.E. They need training to know various schemes and programmes of U.E.E.

**Need: (5)** Block level officers and BRC's play an important role in supervising, monitoring and guiding teachers regularly. Training for such functionaries is necessary. BRC staff requires training in developing new skills of teaching.

**Need:** (6) Headmasters and cluster level Resource Persons play an important role in conducting activities of U.E.E. They guide and supervise all the activities of teachers at the school level. Their capacities are to be increased by giving them periodic trainings.

**Need:** (7) DIET faculty is the key team in planning, monitoring, conducting training, revision of curriculum, analysis of textbooks, preparation of learning materials, evaluation, base line assessment and developing teaching learning materials in the district. They generate all innovative activities in the field of elementary education. So, DIET faculty needs training in all these areas regularly.

**Programme:**

1. To conduct training programmes for 9464 community leaders in the district
2. To conduct training programmes for 10487 SDMC members in the district
3. To conduct training programmes for 2083 Gram Panchayath members
4. To conduct training Programmes for 140 TPs/ZP members in the District
5. To conduct training Programmes for BEO's, co-ordinator, BRC's CRC's HM's and DIET faculty.

**Strategy (2)** : To establish BRC's at each block.

There is a need to Provide academic resources to teachers at the Block level. Teachers need regular training in improving their skills of teaching, preparation of teaching learning materials, evaluation and improvement of learning situations in schools. Teachers should get all these resources by easy approach and at their reach. So, there is a need to establish such a resource center at each block.

**Programme:**

To establish seven BRC's, one in each block by providing them with well equipped building furnished by furniture, equipment, library, resource materials and staff.

**Strategy (3)** : To establish CRC's at the cluster level at the rate of one CRC for 50 teachers.

**Need** : Teachers in each area should get continuous support to get resources and training whenever they need. They should be able to enter the resource center easily and get whatever they want to implement the Programmes of UEE and to deliver quality education.

**Programme:** To establish 248 CRC/s in the district at the rate of one CRC for 50 teachers with well equipped and furnished building, cluster Resource Person, library, and resource materials.

**Strategy (4)** : To conduct research programmes at school levels, Block levels and district level to find solutions to local specific problems.

**Need** : Problems in the field of education in the district are plenty and they are locally specific sometimes they are specific to a particular class room, set of children, particular situation, to a particular teacher, village specific, Block specific and District specific. These problems are to be solved at the specific levels only. So, research programmes at different levels are necessary.

**Programme:**

1. To conduct at least 50 Action Research Programmes in each block every year.
2. To take up Block level research projects in each block. Seven research projects are to be taken.
3. To take up one research project at the District level.

**V. Establishment of District level SSA office:**

**Strategy:** To establish a district level SSA office to provide guidance and resources at the District level and to monitor and supervise SSA activities in the district.

**Programme:** To establish a district level SSA office which is well equipped with a vehicle, computers, Xerox machines, Fax and Telephone and staffed with the following personnel.

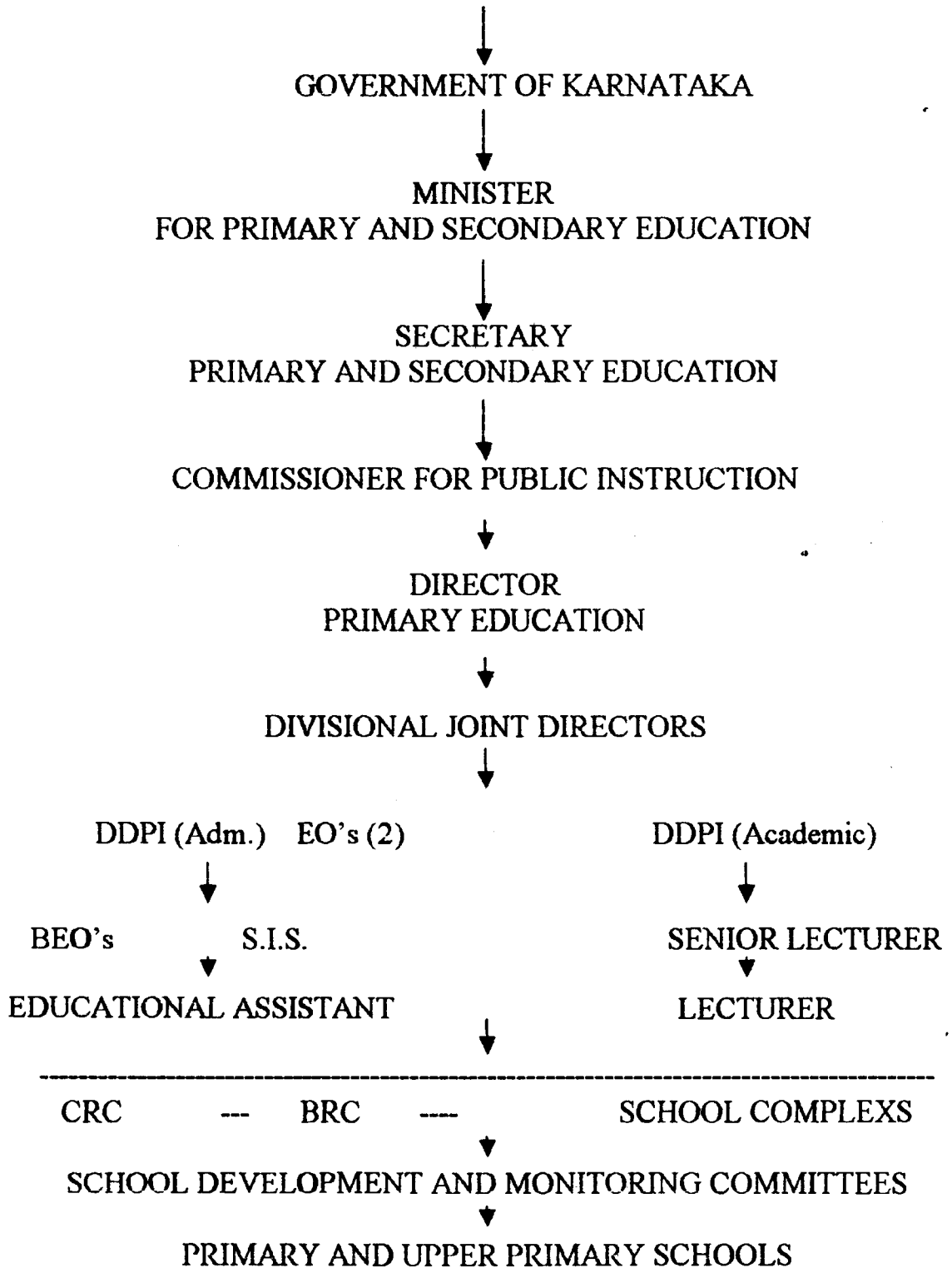
1. Deputy Co-ordinating officer SSA-one
2. Assistant Co-ordinating officer-SSA-two
3. Office Superintendent – one
4. First Division Assistant – Two
5. Typist – cum- Technician – one
6. Junior Engineer – one
7. D – group employcc – one

CHAPTER-VII

MANAGEMENT  
STRUCTURE OF  
PRIMARY EDUCATION.

**CHAPTER-VII**

**MANAGEMENT STRUCTURE OF PRIMARY EDUCATION.**





## CHAPTER VIII

# SPECIAL FOCUS GROUPS

### 8.1. Special groups identified:

A few groups of the community have special needs. Because of several reasons they are deprived of educational facilities. These groups are girls, scheduled castes, scheduled tribes, minorities, handicapped, and backward classes. Enrolment rate is low and drop-out rate is high among these groups. The child population of 6-14 years age group is as follows.

The table shows that more children are dropping out of schools because of poverty, language problem, social and emotional adjustment problems, unattractive school environment, social pressures and family pressures. These children need special attention. Special focus is to be given to such children.

#### ENROLLMENT AND ATTENDANCE OF SCHEDULE CASTE CHILDREN

CL ASS	ENROLMENT								ATTENDANCE							
	TOTAL				GIRLS				TOTAL				GIRLS			
	G	A	UA	T	G	A	UA	T	G	A	UA	T	G	A	UA	T
1	7001	452	744	8187	2808	234	528	3568	6821	418	791	8028	2887	179	389	3245
2	8097	780	801	7478	2858	292	320	3381	5988	374	510	6872	2791	140	322	3253
3	8689	595	458	7742	2988	280	247	3503	6514	317	418	7247	2788	180	208	3158
4	7188	588	1180	8897	2989	188	187	3355	5187	288	480	5825	2825	133	140	3088
1-4																
T	28988	2388	2883	32314	11882	888	1280	13807	24880	1488	2177	28072	11071	812	1088	12782
5	8213	598	788	7580	2781	231	221	3243	5840	384	482	6718	4230	174	337	4741
6	8048	682	742	7472	2308	195	208	2710	4643	481	430	5534	4187	182	330	4858
7	4782	584	411	5757	2107	177	178	2480	3208	283	298	3737	3828	118	108	4148
T																
5-7	17023	1884	1822	20808	7207	803	803	8413	13888	1118	1180	15887	12323	452	773	13548
T																
1-7	43878	4258	4885	53123	18858	1488	1883	22220	38178	2523	3357	44059	23384	1084	1842	28300
8	1408	834	688	3041	585	488	505	1588	1230	613	808	2448	545	358	230	1133
9	1135	885	758	2778	447	588	358	1374	1000	848	851	2498	510	470	130	1110
10	10838	688	884	12411	801	351	417	1588	733	888	712	2141	314	283	180	787
T																
8-10	13382	2508	2341	18231	1843	1407	1281	4531	2883	2157	1888	7088	1388	1121	550	3040

**MINORITIES**

class	Urdu				Marati				Tamil				Telugu			
	enrolment		attendance		enrolment		attendance		enrolment		attendance		enrolment		attendance	
	total	Girls	total	girls	total	girls	total	girls	total	girls	total	girls	total	girls	total	girls
1	3950	2359	3850	2284					299	115	255	95	16	12	14	8
2	4036	2251	3936	2176					303	151	275	140	31	14	28	11
3	3999	1979	3899	1904					294	199	233	175	17	12	14	9
4	3851	2950	3751	2892					275	107	251	98	19	9	15	7
T 1-4	15836	12809	15436	9256					1171	572	1014	508	83	47	71	35
5	3041	1790	2941	1715					251	112	231	83	20	11	14	9
6	2335	1230	2235	1155					262	131	213	125	22	14	18	10
7	2145	1297	2225	1222					201	78	198	68	14	8	10	6
T 5-7	7521	4317	7401	4092					714	321	642	276	56	33	42	25
T 1-7	23357	17126	22837	13348					1885	893	1656	784	139	80	113	60
8	897	467	797	2284												
9	699	433	768	2176												
10	446	327	346	1904												
T 8-10	2042	1227	1911	6364												

Source: DDPI's Office, Shimoga.

## **Special problems faced by Children of special groups**

### **8.2 : Scheduled castes and scheduled Tribes.**

1. Poverty force to work in work places
2. Illiterate parents
3. unhealthy family atmosphere
4. Rejection by upper class people – Untouchables
5. Hesitation to move with the mainstream.
6. Ignorance about available facilities
7. Exploitation by education and employed persons belonging to their own group.
8. Exploitation by the community
9. Encouragement for child labour.
10. Unplanned families with more problems.

### **8.2.2 : Girls :**

1. Poverty
2. Illiterate parents
3. Social Practices
4. Superstitious beliefs
5. Difficulty in marrying educated girls
6. Family Problems.
7. Rearing younger children
8. Child labour
9. Lack of access to schooling
10. Ignorance about available facilities.

**8.2.3 : - Other Backward classes:**

1. Economic Backwardness
2. Using children as a means for earning
3. Ignorance of facilities
4. Encouragement for child labour
5. Negligence towards education of their children
6. Confusion in identifying backwardness and utilization of facilities by powerful people.
7. Lack of opportunities for vocational education
8. Education which is not helpful for life.
9. Unplanned families
10. Social pressures to remain out of school.

**8.2.4: Minorities:**

1. Language problems
2. Lack of schooling facilities and access
3. Lack of residential schools
4. Lack of facilities to continue their higher education in the same medium
5. Social insecurity
6. Lack of co-ordination between majorities and minorities
7. Religious factionism
8. Social and emotional maladjustment.

### **8.2.5 : Handicapped :**

1. Reluctance to Join mainstream.
2. Ill-treatment by others
3. Conveyance Problems
4. Lack of social and emotional adjustment
5. Lack of special facilities.
6. Maladjustment with general system of education.
7. Problems in identification of handicapped.
8. Lack of knowledge about facilities.
9. Lack of special arrangements in general schools
10. Lack of special schools.
11. Dearth of trained personnel
12. Dearth of Teaching learning materials suited to such children.

### **8.2.6: Slow learners – Backwardness in learning :**

1. Uneasiness faced in homes and school due to backwardness in learning.
2. Rejection of such children by parents, teachers and peers
3. Separatist feeling in school and home.
4. Lack of opportunities for learning
5. Lack of training to teachers in dealing with children with learning disabilities.
6. Unnecessary burden of curriculum
7. Uninteresting school environment.
8. Unattractive teaching.
9. Common teaching along with normal children
10. Teaching without activities and not based on competencies.
11. Lack of suitable teaching learning materials.

12. Lack of contacts and understanding between teachers and parents.
13. Lack of community participation
14. Lack of understanding between teachers and students.
15. Lack of training for teachers.
16. Lack of educational guidance and counseling.
17. Lack of Planning educational activities for such children.
18. Lack of special schools.

### **8.3 : Steps to be taken to bring these children back to school :**

#### **: Scheduled castes and Scheduled Tribes :**

1. Conducting surveys to identify these children and to update village Education Register.
2. Analyzing the reasons for these children remaining out of school
3. Creating awareness among their parents to send their children to school.
4. Providing incentives to the children who attend the schools.
5. Withdrawing incentives and denying benefit schemes to the parents who do not send their children to school.
6. Conducting enrolment campaigns.
7. Conducting awareness sessions and training programmes to SDMC members and community leaders.
8. Adoption of the poorest children by the advanced people of the same community.
9. Educated youth and well-to-do families of the same communities should strive hard to educate children of their own community.
10. Confidence building sessions are to be conducted to encourage parents to send their children to schools.

11. Mass media campaigns to educate people regarding the benefits available for the education of their children.
12. Those who are in better positions should be grouped together to mobilize resources to help these children.
13. Imposition of severe punishment to the persons who encourage child labour
14. Creation of better environment in their homes.
15. Opportunities should be provided to bring them to the mainstream of education.

### **8.3.2 : GIRLS :**

1. Periodic surveys are to be conducted to identify out of school girl children and to update village Education Register.
2. Training to community leaders and SDMC members.
3. Training to teachers.
4. Training to mothers to send their girl children to schools.
5. Conducting Maa-Beti Sammelanas
6. Girl child adoption programme to be encouraged.
7. Attaching baby sitting centers to Primary schools.
8. Addition of vocational elements in the curriculum and revision of curriculum to suit the needs of girls.
9. Care should be taken to see that all incentive programmes for girls reach them completely.
10. Educating parents regarding importance of girl's education in the society.
11. Providing more access for schooling by opening new schools or upgrading LPS to HPS where need arises.
12. Providing awareness campaigns to ensure social security.



Training for teachers on gender sensitization.

13. Formation of women teachers forum at the block level to work for education of girls.

### **8.3.3 : Other Backward Classes :**

1. Conducting periodic survey to identify such children who are socially and economically backward to update village education register.
2. Encouraging teachers to keep regular contact with parents regarding the education of their children.
3. Total utilization of incentive programmes provided for these children.
4. Denying the social welfare schemes to the parents who do not send their children to school.
5. Conducting training to teachers community leaders, SDMC members, regarding motivating parents to send their children to schools.
6. Child adoption programmes to be encouraged.
7. Discouraging child labour practices by imposing punishment to those who encourage child labour practices.
8. Revision of curriculum according to the special needs of these children.
9. Proper training should be given to teachers to practice activity based and competency based teaching.
10. Mass awareness campaigns and enrolment campaigns to be conducted.

### MINORITIES

class	Urdu				Marati				Tamil				Telugu			
	enrolment		attendance		enrolment		attendance		enrolment		attendance		enrolment		attendance	
	total	Girls	total	girls	total	girls	total	girls	total	girls	total	girls	total	girls	total	girls
1	3950	2359	3850	2284					299	115	255	95	16	12	14	8
2	4036	2251	3936	2176					303	151	275	140	31	14	28	11
3	3999	1979	3899	1904					294	199	233	175	17	12	14	9
4	3851	2950	3751	2892					275	107	251	98	19	9	15	7
T 1-4	15836	12609	15436	9256					1171	572	1014	508	83	47	71	35
5	3041	1790	2941	1715					251	112	231	83	20	11	14	9
6	2335	1230	2235	1155					262	131	213	125	22	14	18	10
7	2145	1297	2225	1222					201	78	198	68	14	8	10	6
T 5-7	7521	4317	7401	4092					714	321	642	276	56	33	42	25
T 1-7	23357	17126	22837	13348					1885	893	1656	784	139	10	113	60
8	897	467	797	2284												
9	699	433	768	2176												
10	446	327	346	1904												
T 8-10	2042	1227	1911	6364												

Source: DDPI's Office, Shimoga.

1. Conducting periodic survey to identify children who are out of school among minorities.
2. Providing access for schooling to learn in their own mother tongue.
3. Ensuring social security.
4. Opportunities should be provided to make them mingle with majority children.
5. Sufficient teaching – learning materials should be prepared to make teaching more effective.
6. Training should be given to teachers for better teaching.
7. Competitions among minority schools to encourage better achievement among minority children.
8. Training for community leaders, SDMC members and parents to create awareness to send their children to schools.
9. All incentive schemes should be honestly implemented.

#### **8.3.5 : Handicapped Children :**

1. Conducting periodic medical check-ups to identify children with different disabilities.
2. Estimating the percentage of their disability.
3. Taking up diagnostic and curative measures to help them to develop completely.
4. Providing necessary aids and equipments like spectacles, hearing aids, wheel chairs, and others to the needy children.
5. Teachers should be trained in integrated education for the disabled.
6. Helping teachers to develop skills in dealing with such children who have special needs.
7. Revision of curriculum to suit to the needs of such children.

8. Referring severely handicapped children to special schools for the disabled.
9. Each Block should have one such special schools for different disabilities.
10. Encouragements should be given to enhance learning abilities of children.
11. Awareness sessions are to be conducted to parents regarding education of disabled children.
12. Scholarships and other incentive schemes should be properly implemented.
13. Children with learning deficiencies and learning disabilities to be identified and special programmes for revision of curriculum. and training teachers to carryout teaching activity for such children.
14. Instead of showing mere sympathy, positive steps should be taken to help these children.

# **A N N E X U R E S**

1. LIST OF NEW SCHOOLS PROPOSED.
2. LIST OF UPGRADED SCHOOLS PROPOSED
3. LIST OF BRC'S PROPOSED
4. LIST OF CRC'S PROPOSED
5. LIST OF HABITATIONS WHERE EGS / AIS CENTRES PROPOSED.
6. SSA MANAGEMENT STRUCTURE AT DISTRICT LEVEL.
7. LIST OF VOLUNTARY ORGANISATIONS WORKING FOR EDUCATION IN THE DISTRICT.
8. LIST SPECIAL INTERVENTIONS SO FAR UNDERTAKEN IN THE DISTRICT FOR UNIVERSALISATION OF ELEMENTARY EDUCATION.

**List of New schools proposed.**

- 1) Gundur, Shimoga Taluk
- 2) Marathi Camp, Shimoga Taluk
- 3) Halkuni Marati Camp,
- 4) Halehonnapura
- 5) Ambedkar Nagar
- 6) Bharathi Nagar
- 7) Kolehal
- 8) Mary Maha Extension, Millaghatta
- 9) Malvagoppa Thanda2
- 10)Manjunatha Camp, Purale
- 11)Jyothi Nagar
- 12)Hakkipikki Camp
- 13)Agasavalli Bhovi Colony
- 14)Halenanjapura, Bhadravathi Taluk
- 15)Shivapura, Bhadravathi Taluk
- 16)Ranganathapura
- 17)Hanumanthapura Matti camp
- 18)Siddarahalli
- 19)Baruve, Hosanagara
- 20)Balageri
- 21)Vinayakanagara, Rippanpete
- 22)Hiriyogi
- 23)Belandur
- 24)Mavinasara
- 25)Gandarahalli

- 26) Bettamallappa
- 27) Neralagi
- 28) Byarali, Thirthahalli Taluk
- 29) Kolunde
- 30) Jaddinagadde
- 31) C.K.Road, Malur
- 32) Jaragal
- 33) Vatagaru
- 34) Nitturu
- 35) Kadettinahalli, Shikaripura Taluk
- 36) Sadapura
- 37) Hariharapura
- 38) Dasanapura
- 39) Bhadrapura, Shiralakoppa Road,
- 40) Kanasogi
- 41) Kanakeri, Sorab Taluk
- 42) Mangapura
- 43) Kalkoppa
- 44) Hirale
- 45) Madasanakoppa   sagar taluk
- 46) Harnahalli
- 47) Tangalavadi
- 48) Masagunda colony
- 49) Gourihalla
- 50) Talagere

- 51) Islapura
- 52) Tumbe
- 53) Marukatte
- 54) Dabbanadakoppa
- 55) Girivada
- 56) Kanaki
- 57) Ikkeri
- 58) Shettisara
- 59) Chonikoppa
- 60) Hosakoppa
- 61) Kelaginagulugulu
- 62) Marikatte
- 63) Biligaru
- 64) Turame
- 65) Chigalemane
- 66) Kanthe
- 67) Badabudu
- 68) Herala
- 69) Subhashnagar(urdu)



**LIST OF UPGRADED SCHOOLS**

- 1) LPS Rattehalli, Shimoga Taluk
- 2) LPS Ramenakoppa, Shimoga Taluk
- 3) LPS Agasavalli Hosur
- 4) LPS Chamundipura
- 5) LPS Kashipura
- 6) LPS Sheshadripuram
- 7) LPS Gajanur Agrahara Camp
- 8) LPS Tunganagara
- 9) LPS Channamumbapura
- 10) LPS Bommanakatte
- 11) LPS Sanklipura, Bhadravathi taluk
- 12) LPS Kurubara Vitalapura
- 13) LPS Bhagavathikere
- 14) LPS Kommaranahalli
- 15) LPS Hosuru, Thirhahalli Taluk
- 16) LPS Mallanduru
- 17) LPS Horanebailu
- 18) LPS Sannekoppa
- 19) LPS Nellisaracamp
- 20) LPS Karcatti, Hosanagara Taluk
- 21) LPS Hiremathi
- 22) LPS Kolavalli
- 23) LPS Anegadde Road
- 24) LPS Haniya 25) LPS Guddekoppa, Sorab Taluk
- 26) LPS Hosahalli. 27) LPS Sagar Taluk

## **LIST OF BLOCK RESOURCE CENTERS**

- 1) BRC BHADRAVATHI
- 2) BRC HOSANAGARA
- 3) BRC SAGAR
- 4) BRC SIIKARIPURA
- 5) BRC SHIMOGA
- 6) BRC SORAB
- 7) BRC THIRTHAHALLI

**LIST OF CRC's IN SHIMOGA TALUK**

- 1) CHANNAMUMBAPURA
- 2) HOLALUR
- 3) MELINAHANASAVADI
- 4) HARNAHALLI
- 5) DEVAKATIKOPPA
- 6) CIORADI
- 7) KUMSI
- 8) AYANUR
- 9) SIRIGERE
- 10) BOMMANAKATTE
- 11) GADIKOPPA CAMP
- 12) HOSAHALLI
- 13) MALALIKOPPA
- 14) MANDENAKOPPA
- 15) MALAVAGOPPA
- 16) HASUDI
- 17) PILLANGERE
- 18) RAVINDRANAGARA
- 19) MAIN B.H.ROAD

20) MILLAGHATTA

21) MANDAGATTA

22) K.R.PURAM

23) UMBLEBYLU

24) GURUPURA

25) URDU CIRCLE – I

26) URDU CIRCLE – II

## **LIST OF CRC'S IN BHADRAVATHI TALUK**

- 1) SYDARAKALLAHALLI
- 2) ANAVERI
- 3) MANGOTE
- 4) AGARADAHALLI
- 5) ARHATOLALU
- 6) NAGATIBELAGALU
- 7) HOLEHONNUR
- 8) ARAKERE
- 9) KUDLIGERE
- 10)ARALIHALLI
- 11)BILIKI
- 12)ANTHARAGANGE
- 13)YAREHALLI
- 14)BARANDUR
- 15)HIRIYUR
- 16)TAVARAGATTA
- 17)ARAI.KOPPA
- 18)HALENAGARA URDU
- 19)DONABAGATTA URDU

20)ARALIHALLI URDU

21)HOLEHONNUR URDU

22)PAPER TOWN TAMIL

## **LIST OF CRC'S IN THIRTHAHALLI TALUK**

- 1) MHPS THIRTHAHALLI
- 2) KAIMARA
- 3) KONDLUR
- 4) ARAGA
- 5) GUDDEKOPPA
- 6) DYAMALAPURA
- 7) BAVIKAISARU
- 8) KONANDUR TOWN
- 9) ARALASURALI
- 10) MEGARAVAJJI
- 11) GUDDEKERI
- 12) CHIKKALUR
- 13) KUDUMALLIGE
- 14) MALUR
- 15) KANNANGI
- 16) MANDAGADDE
- 17) TUDUR
- 18) KATTEHAKKALU
- 19) DEVANGI
- 20) HAROGOLIGE

## **LIST OF CRC'S IN SHIKARIPURA TALUK**

- 1) HITHLA
- 2) SALUR
- 3) HOSUR
- 4) ESURU-2
- 5) BEGUR
- 6) MARAVALLI
- 7) NELAVAGILU
- 8) KAPPANAHALLI
- 9) AMBARAGOPPA
- 10)HIREJAMBUR
- 11)KARNALLI
- 12)BILIKI
- 13)TOGARSI
- 14)HARIGI
- 15)BALLIGAVI
- 16)SHIRALAKOPPA
- 17)SHIRALAKOPPA GIRLS
- 18)HAROGOPPA
- 19)SHIKARIPURA SOPPINAKERI



20)SHIKARIPURA BOYS

21)SHIKARIPURA TOWN

22)URDU SHIKARIPURA

23)URDU GIRLS SHIKARIPURA

24)URDU HITHLA

## **LIST OF CRC'S IN HOSANAGARA TALUK**

- 1) DOMBEKOPPA
- 2) H.MALAVALLI
- 3) MULUGUDDE
- 4) BENAVALLI
- 5) KEREHALLI
- 6) SIDDAGIRI
- 7) HULIGADDE
- 8) KALASA
- 9) GORAGODU
- 10) KATTINAHOLF
- 11) BASAVANABYANA
- 12) KEELANDUR
- 13) SULADAMAKKI
- 14) KAVARI
- 15) BELEHALLI
- 16) HOSANAGARA TOWN

## **LIST OF CRC'S IN SAGAR TALUK**

- 1) YADEHALLI
- 2) ANANDAPURAM
- 3) GOWTHAMAPURA
- 4) GENASINAKUNI
- 5) YADAJIGALAMANE
- 6) HONNESARA
- 7) BARUR
- 8) TYAGARTHI
- 9) BANUKULI
- 10) KANALE
- 11) HIRENALLUR
- 12) KELADI
- 13) SHIRAVANTHE
- 14) ULLUR
- 15) TALAGUPPA
- 16) TUMARI
- 17) BYAKODU
- 18) M.C.HALLI
- 19) KARGAL

20) BELALAMAKKI

21) SANNAMANE BADAVANE

22) HOSUR

**LIST OF CRC'S IN SORAB TALUK**

- 1) ANDIGE
- 2) CHANNAPURA
- 3) TALIBAILU
- 4) BAIREKOPPA
- 5) TALAKALAKOPPA
- 6) TANDIGE
- 7) HOLEJOLADAGUDDE
- 8) MANGALURU
- 9) KASARAGUPPA
- 10) BILAVAGODU
- 11) ANAJI
- 12) SHAMANAHALLI
- 13) SHANKARIKOPPA
- 14) TUMARIKOPPA
- 15) HURULIKOPPA
- 16) TIMMAPURA
- 17) HUNASAVALLI
- 18) H.M. VADDIGERE
- 19) BILAGI
- 20) KUPPAGADDE

**NO. OF EGS / AIS CENTERS**

1. NEW MANDLI SHIMOGA
2. MILLAGATTA, SHIMOGA
3. GOPALA, SHIMOGA.
4. TANK MOHALLA, SHIMOGA
5. LASHKAR MOHALLA, SHIMOGA.
6. MADARIPALYA, SHIMOGA
7. BHADRAVATHI
8. HOSANAGARA
9. SAGAR
10. SHIKARIPURA
11. SORAB

## **VOLUNTARY ORGANISATIONS**

- 1) Family Planning Association of India, Shimoga
- 2) S.M.S.S. Church Compound, Shimoga
- 3) Jain Navayuvaka Mandala, Savathlal, Gandhi Bazar, Shimoga
- 4) Lions Club Shimoga
- 5) Rotary Club (Central) Shimoga
- 6) Rotary Club (Mid town) Shimoga
- 7) Rotary Club, Shimoga
- 8) Rotary Club (North) Shimoga
- 9) Roary Club (East) Shimoga
- 10)Malnad Jaccess, Shimoga
- 11)Prathibha Ranga, Shimoga
- 12) Nirmala Seva Kendra, Shimoga.
- 13) Inner Wheel Club, Shimoga
- 14) Friend Center, Shimoga
- 15) Chember of Commerce, Shimoga
- 16) Vasavi Yuvaka Sangha, Shimoga
- 17) Jain Milan Association, Shimoga
- 18) Friend Center, (Ladies Wing) Shimoga
- 19) Mathru Mandali, Shimoga
- 20) Gayathri Mahila, Brhamana Mandali, Shimoga
- 21) Prakruthi Mahila, Shimoga
- 22) Bahusara Kshatriya, Mahila Sangha
- 23) Mandara Mahila Samaja, Shimoga.

- 24) Vasavi Mahila Samaja, Shimoga
- 25) Mamcos, Shimoga
- 26) Hotel Owners Association, Shimoga.
- 27) Vishweshwaraiah Education Trust, Bhadravathi
- 28) Center for folklore survey of India Bhadravathi
- 29) Prghna Mahila Vedike, Old Town Bhadravathi
- 30) Rotary Club, Shikaripura.
- 31) Samudaya Vijnana Kendra, Shedthikere, Sagar Taluk.
- 32) Lions Club, Thirthahalli.



**LIST OF INTERVENTIONS FOR UNIVERSALISATION OF  
PRIMARY EDUCATION.**

- 1) SPECIAL ENROLMENT CAMPAIGN
- 2) SAMUDAYADATTA SHALE PROGRAMME
- 3) CHINNARA ANGALA- BRIDGE COURSE
- 4) COMMUNITY MOBILISATION THROUGH MULTIMEDIA APPROACH.
- 5) GRAMASABHAS
- 6) INCENTIVE PROGRAMMES
  - A) FREE TEXT BOOKS FOR ALL CHILDREN STUDYING IN GOVT. PRIMARY SCHOOLS UP TO 7<sup>TH</sup> STANDARD AND GIRLS STUDYING FROM 8<sup>TH</sup> TO 10<sup>TH</sup>.
  - B) FREE UNIFORMS FOR ALL CHILDREN UP TO 4<sup>TH</sup> STANDARD GIRLS STUDYING FROM 5<sup>TH</sup> TO 8<sup>TH</sup> STANDARD.
  - C) UNDER MID-DAY MEALS SCHEME EVERY CHILD STUDYING IN 1<sup>ST</sup> STANDARD 5<sup>TH</sup> STANDARDS IN GOVT. AND AIDED PRIMARY SCHOOLS IS GIVEN 3 K.G. RICE PER MONTH IF THE ATTENDANCE IS MORE THAN 80%.

**SC / ST / GIRLS**

Table showing the S.C. / S.T /GIRLS (others) children enrolled in I to VIII standards who are eligible for free text books, uniforms and Mid-day meals.

Category	I	II	III	IV	V	VI	VII	VIII	Total
S.C	3350	3373	3060	3000	3244	2905	2627	1206	22765
S.T.	618	595	630	1002	638	603	548	350	4984
OTHERS GIRLS	10368	10460	9218	9592	10201	9476	9504	5675	74494
TOTAL	14336	14428	12908	13594	14083	12984	12679	7231	102243

The above table shows the scheduled castes, Scheduled Tribes and Girl children studying in class I to class 8. These children are eligible to get free textbooks, free uniforms, midday meals and free school bags, girls are eligible to get fee reimbursement. Proposals are made for this in the perspective plan.

**EXISTING RATES FOR FREE UNIFORMS: -****BOYS DRESS ( Per one Set) - GIRLS DRESS ( Per one set)**

Class	Rate	Class	Rate
1	14.08	1	81.34
2	14.08	2	81.34
3	80.90	3	92.66
4	80.90	4	92.61
5	91.18	5	102.56
6	91.18	6	102.56
7	91.18	7	102.56
8	101.36	8	100.76

For Uniforms	:	Rs. 92.03	lakhs
Text Books	:	Rs. 82.45	lakhs
Mid- day meals	:	Rs. 92.02	lakhs
School bags	:	Rs. 132.92	lakhs
Fee reimbursement	:	Rs. 13.95	lakhs

**COST OF WORKBOOKS FOR DIFFERENT CLASSES:**

<b>Sl.No.</b>	<b>CLASS</b>	<b>PAGES</b>	<b>SUBJECTS</b>	<b>STRENGTH</b>	<b>COST</b>	<b>AMOUNT</b>
<b>1</b>	<b>I</b>	<b>100</b>	<b>3</b>	<b>38530</b>	<b>0.0003</b>	<b>11.559</b>
<b>2</b>	<b>II</b>	<b>100</b>	<b>3</b>	<b>38648</b>	<b>0.0003</b>	<b>11.5944</b>
<b>3</b>	<b>III</b>	<b>100</b>	<b>3</b>	<b>37003</b>	<b>0.0003</b>	<b>11.1009</b>
<b>4</b>	<b>IV</b>	<b>100</b>	<b>3</b>	<b>32839</b>	<b>0.0003</b>	<b>9.8517</b>
<b>5</b>	<b>V</b>	<b>200</b>	<b>6</b>	<b>36426</b>	<b>0.0012</b>	<b>43.7112</b>
<b>6</b>	<b>VI</b>	<b>200</b>	<b>6</b>	<b>34744</b>	<b>0.0012</b>	<b>41.6928</b>
<b>7</b>	<b>VII</b>	<b>200</b>	<b>6</b>	<b>31216</b>	<b>0.0012</b>	<b>37.4592</b>
				<b>249406</b>	<b>0.0048</b>	<b>166.9692</b>

**C O S T I N G**

**A  
B  
L  
E  
S**

INTERVENTIONS WISE AND YEARWISE BUDGET ESTIMATES OF SHIMOGA DISTRICT ELEMENTARY

EDUCATION PLAN DEEP 2001-2010 UNDER S.S.A

Sl No	Chapters and Interventi	Unit costs in lakh	2001-02		2002-03		2003-04		2004-05		2005-06		2006-07		2007-08		2008-09		2009-10		TOTAL	
			P	F	P	F	P	F	P	F	P	F	P	F	P	F	P	F	P	F	P	F
<b>I ACCESS</b>																						
1	Establishment of New Schools in School less habitations																					
a	Building with compound Water, toilet, electricity	4			65	260															69	260.00
b	Teachers				130		130		130		130		130		130		130		130		130	0.00
c	Furniture	0.4			65	26.00															65	26.00
d	Teaching/Learning mate	0.26			65	16.26															65	16.25
e	School grant	0.02			65	1.30	65	1.30	65	1.30	65	1.30	65	1.30	65	1.30	65	1.30	65	1.30	65	10.40
f	Teachers salary	0.05x12			130	78.00	130	81.9	130	85.99	130	90.29	130	94.81	130	99.55	130	104.53	130	109.16	130	744.23
g	Teachers grant	0.005			130	0.65	130	0.65	130	0.65	130	0.65	130	0.65	130	0.65	130	0.65	130	0.65	130	5.20
					392.2		83.85		87.94		92.24		96.76		101.5		106.48		111.11		1062.09	
<b>II Additional in puts for existing Lr Pry. Schools</b>																						
a	Building with compound Water, toilet, electricity	4	59	239.00																	59	239.00
b	Addl. rooms	1.5			80	120	80	120	80	126	80	126.00	80	132.3	80	132.3	32	55.54	-	-	512	812.14
c	Compound	1	64	64.00	130	130.00	130	136.5	130	143.00	130	150.50	130	158.00	130	165.5	105	141.75	-	-	885	1069.25
d	Drinking water	0.5	116	58.00	125	62.50	125	65	125	68.25	125	71.66	125	75.25	125	79.05	94	61.1	-	-	960	540.80
e	Electricity	0.15	16	2.40	79	11.85	120	18.9	120	20	120	21.00	120	22.1	120	23.03	16	3.2	-	-	736	122.48
f	Repairs	0.05	1041	52.05	1041	52.05	1041	52.05	1041	52.05	1041	52.05	1041	52.05	1041	52.05	1041	52.05	1041	52.05	1041	488.45
g	Fumtrue	0.4	32	12.80	120	48.00	120	48.00	120	48.00	120	48.00	120	48.00	120	48.00	90	36.00			810	336.80
h	Teaching, learning mate	0.25	82	20.50	120	30.00	120	30	120	30	120	30.00	120	30	120	30	88	22	-	-	808	222.50
i	Additional teachers	0.05x12	191	57.30	430	258.00	438	270.9	430	284.4	430	298.60	430	313.53	430	329.21	430	345.67	430	362.95	645	2520.58
j	Teacher grant	0.005	2223	11.115	2223	11.12	2223	11.115	2223	11.115	2223	11.115	2223	11.115	2223	11.115	2223	11.115	2223	11.115	2223	100.04
k	School grant	0.02	1041	20.82	1041	20.82	1041	20.82	1041	20.82	1041	20.82	1041	20.82	1041	20.82	1041	20.82	1041	20.82	1041	187.38
			534.99		744.335		773.285		803.636		829.735		863.165		891.075		949.245		986.335		6636.395	

136

**INTERVENTIONS WISE AND YEARWISE BUDGET ESTIMATES OF SHIMOGA DISTRICT ELEMENTARY  
EDUCATION PLAN DEEP 2001-2010 UNDER S.S.A**

Sl No.	CHAPTERS AND INTERVENTIONS	UNIT COSTS IN LAKHS	2001-2002		2002-2003		2003-2004		2004-2005		2005-2006		2006-2007		2007-2008		2008-2009		2009-2010		TOTAL			
			P	F	P	F	P	F	P	F	P	F	P	F	P	F	P	F	P	F	P	F		
<b>3 EGB/MS CENTERS IN SCHOOLLESS HABITATIONS</b>																								
A	EDUCATION VOLUNTEERS	0.01 X 12			11	1.32	11	1.32	11	1.32	11	1.32	11	1.32	11	1.32	11	1.32	11	1.32	11	10.56		
B	TEACHING LEARNING MATERILS	0.025			11	0.275																0.28		
C	BUILDING GRANT	0.01 X 12			11	1.32	11	1.32	11	1.32	11	1.32	11	1.32	11	1.32	11	1.32	11	1.32	11	10.56		
D	TRAINING FOR VOLUNTEERS	0.01225			11	0.01225	11	0.01225	11	0.01225	11	0.01225	11	0.01225	11	0.01225	11	0.01225	11	0.01225	11	0.10		
					2.92725		2.65225		2.65225		2.65225		2.65225		2.65225		2.65225		2.65225		21.493			
<b>4 UPGRADATION OF EXISTING LOWER PRIMARY SCHOOLS</b>																								
A	ADDITIONAL ROOMS	1.80			27	48.60	27	42.6	27	44.8												81	127.80	
B	COMPOUND	1.00			27	27.00																27	27.00	
C	DRINKING WATER (TOILET)	0.5			27	13.50																27	13.50	
D	ELECTRICITY	0.15			27	4.05																27	4.05	
E	REPAIRS	0.05			27	1.35	27	1.35	27	1.35	27	1.35	27	1.35	27	1.35	27	1.35	27	1.35	27	1.35	10.80	
F	FURNITURE	0.40			27	10.80																27	10.80	
G	TEACHING LEARNING MATERILS	0.50			27	13.50																27	13.50	
H	ADDITIONAL TEACHERS	0.05X12			27	16.20	54	34.02	81	53.46	81	55.89	81	58.32	81	61.56	81	63.99	81	66.42	81	409.86		
I	TEACHER GRANT	0.005	27	0.135	27	0.135	54	0.270	81	0.405	81	0.405	81	0.405	81	0.405	81	0.405	81	0.405	81	0.405	81	2.97
J	SCHOOL GRANT	0.002	27	0.54	27	0.54	27	0.54	27	0.54	27	0.54	27	0.54	27	0.54	27	0.54	27	0.54	27	0.54	27	4.98
			0.88		127.58		78.88		100.36		58.19		60.62		63.86		66.29		68.72		624.94			
<b>5 ADDITIONAL INPUTS FOR EXISTING UPPER PRIMARY SCHOOLS (HPS)</b>																								
A	ADDITIONAL ROOMS	1.50	228	339.00	132	198.00	250	393.75	250	413.44	250	434.11	250	455.82	250	478.61						1608	2712.73	
B	COMPOUND	1.00	111	111.00	86	86.00	100	105.00	100	110.00	100	115.00	100	120.00	100	125.00						697	772.00	
C	DRINKING WATER (TOILET)	0.50	12	6.00	89	44.50	100	50.00	100	50.00	100	50.00	100	50.00	100	50.00						801	300.50	
D	ELECTRICITY	0.16	79	10.50	70	10.50	70	10.50	70	10.50	70	10.50	70	10.50								420	63.00	
E	REPAIRS	0.05	846	42.30	846	42.30	846	42.30	846	42.30	846	42.30	846	42.30	846	42.30	846	42.30	846	42.30	846	42.30	873	380.70
F	FURNITURE	0.06			100	60.00	100	60.00	100	60.00	100	60.00	100	60.00	100	60.00	50	30.00				650	390.00	
G	TEACHING LEARNING MATERILS	0.50			162	81.00																162	81.00	

137

INTERVENTIONS WISE AND YEARWISE BUDGET ESTIMATES OF SHIMOGA DISTRICT ELEMENTARY

EDUCATION PLAN DEEP 2001-2010 UNDER S.S.A

II ADDITIONAL TEACHERS																						
1) PRIMARY	0.05X12			208	124.8	208	131.04	208	137.59	208	144.47	208	151.69	208	159.27	208	167.23	208	175.59	208	1191.68	
2) GRADUATE TEACHERS	0.07X12			1692	1421.28	1692	1492.34	1692	1566.96	1692	1645.29	1692	1727.55	1692	1813.92	1692	1904.61	1692	1999.84	1692	13571.78	
TEACHER GRANT	0.005	6832	34.16	6832	34.16	6832	34.16	6832	34.16	6832	34.16	6832	34.16	6832	34.16	6832	34.16	6832	34.16	6832	307.44	
SCHOOL GRANT	0.32	846	16.92	846	16.92	846	16.92	846	16.92	846	16.92	846	16.92	846	16.92	846	16.92	846	16.92	846	152.28	
		559.88		2119.46		2336.01		2441.86		2552.75		2668.94		2780.18		2195.22		2288.81		19823.11		
III ENROLLMENT																						
A UPDATION OF VILLAGE EDUCATION RECORDS		0.006	1911	9.66	1911	9.66	1911	9.66	1911	9.66	1911	9.56	1811	9.56	1911	9.56	1911	9.56	1911	9.56	1911	86.04
B SPECIAL ENROLLMENT DRIVE		0.005	1911	9.56	1911	9.56	1911	9.56	1911	9.56	1911	9.56	1911	9.56	1911	9.56	1911	9.56	1911	9.56	1911	86.04
C BRIDGE COURSE OF MAINSTREAMING-OUT OF SCHOOL CHILDREN		0.21	50	10.05	50	10.5	50	10.5	50	10.5	50	10.5	50	10.5	50	10.5	50	10.5	50	10.5	456	94.05
D AWARENESS CAMPAIGNS AND COMMUNITY MOBILISATION PROGRAMMES		0.01	1911	19.11	1911	19.11	1911	19.11	1911	19.11	1911	19.11	1911	19.11	1911	19.11	1911	19.11	1911	19.11	1911	171.99
		48.28		48.73		48.73		48.73		48.73		48.73		48.73		48.73		48.73		48.73		438.12
IV RETENTION																						
1 INCENTIVES																						
A FREE TEXT BOOKS				102243	82.45	102243	82.45	102243	82.45	102243	82.45	102243	82.45	102243	82.45	102243	82.45	102243	82.45	102243	82.45	659.8
B FREE UNIFORMS				102243	92.03	102243	92.03	102243	92.03	102243	92.03	102243	92.03	102243	92.03	102243	92.03	102243	92.03	102243	92.03	736.24
C MIDDAY MEALS				102243	92.02	102243	92.02	102243	92.02	102243	92.02	102243	92.02	102243	92.02	102243	92.02	102243	92.02	102243	92.02	736.16
D FREE SCHOOL BAGS				102243	132.92	102243	132.92	102243	132.92	102243	132.92	102243	132.92	102243	132.92	102243	132.92	102243	132.92	102243	132.92	1063.36
E FREE REIMBURSEMENT FOR GIRLS				34856	13.95	34856	13.95	34856	13.95	34856	13.95	34856	13.95	34856	13.95	34856	13.95	34856	13.95	34856	13.95	111.6
F FREE WORK BOOKS				249406	166.9692	249406	166.969	249406	166.969	249406	166.9692	249406	166.9692	249406	166.969	249406	166.9692	249406	166.9692	249406	166.9692	1335.7536
		580.3392		413.37		413.37		413.37		413.37		413.37		413.37		413.37		413.37		413.37		3306.96
2 TEACHERS TRAININGS																						
A 20 DAYS IN-SERVICE TEACHERS		0.014	541	7.57	1200	16.8	1200	16.8	1200	16.8	1200	16.8	1200	16.8							6541	91.57
B 60 DAYS TRAINING TO UNTRAINED TEACHERS		0.042		27	1.13																27	1.13
C 30 DAYS TRAINING TO FRESHLY APPOINTED TEACHERS		0.021		360	7.56	360	7.56	360	7.56	360	7.56	360	7.56	77	1.62						1877	39.42
		7.57		25.40		24.36		24.36		24.36		24.36		1.62		0		0		0		132.12

138

**INTERVENTIONS WISE AND YEARWISE BUDGET ESTIMATES OF SHIMOGA DISTRICT ELEMENTARY  
EDUCATION PLAN DEEP 2001-2010 UNDER S. S. A**

PAGE: 139

Sl. No.	CHAPTERS AND INTERVENTIONS	UNIT COSTS IN LAKHS	2001-2002		2002-2003		2003-2004		2004-2005		2005-2006		2006-2007		2007-2008		2008-2009		2009-2010		TOTAL	
			P	F	P	F	P	F	P	F	P	F	P	F	P	F	P	F	P	F	P	F

**IV CAPACITY BUILDING**

**1 TRAINING**

A	FOR COMMUNITY LEADERS	0.0006	465	0.279	3000	1.8	3000	1.8	3000	1.8	3165	1.899	3165	1.899	3165	1.899	3165	1.899	3165	1.899		15.174	
B	FOR SDMC MEMBERS	0.0006	487	0.2922	3300	1.99	3300	1.99	3300	1.99	3500	2.1	3500	2.1	3500	2.1	3500	2.1	3500	2.1	3500	2.1	16.7322
C	FOR GP MEMBERS	0.0006	83	0.0498	500	0.3	500	0.3	500	0.3	500	0.3	694	0.4164	694	0.4164	694	0.4164	694	0.4164	694	0.4164	2.9154
D	ZP/TP MEMBERS	0.0006	70	0.042	70	0.042									70	0.042	70	0.042	70	0.042	70	0.042	0.21
E	BLOCK LEVEL OFFICERS A	0.0006	104	0.0624	104	0.0624	104	0.0624	104	0.0624	104	0.0624	104	0.0624	104	0.0624	104	0.0624	104	0.0624	104	0.0624	0.5616
F	CRC AND SCHOOL HMs	0.0006	2000	1.2	2000	1.2	2000	1.2	2000	1.2	2000	1.2	2000	1.2	2000	1.2	2000	1.2	2000	1.2	2000	1.2	10.8
G	DIET AND FACULTY	0.0006	25	0.015	25	0.015	25	0.015	25	0.015	25	0.015	25	0.015	25	0.015	25	0.015	25	0.015	25	0.015	0.135
			1.8404		5.3994		6.3574		5.3574		5.5764		5.8928		5.7348		5.7348		5.7348		5.7348		46.5282

**2 ESTABLISHMENT OF BRC'S**

A	BUILDING	6			7	42																	42.00
B	FURNITURE	1			7	7																	7.88
C	EQUIPMENT	0.5			7	3.5																	3.50
D	LIBRARY	0.5			7	3.5																	3.50
E	APPOINTMENT OF STAFF	0.44x12			7	36.96	7	36.81	7	40.76	7	42.79	7	44.99	7	47.58	7	49.54	7	52.02			353.44
F	MAINTANANCE	0.125			7	0.875	7	0.875	7	0.875	7	0.875	7	0.875	7	0.875	7	0.875	7	0.875	7	0.875	7.00
			0		93.835		39.685		41.625		43.685		45.865		48.455		50.415		52.895				416.44

**3 ESTABLISHMENT OF CRC'S**

A	BUILDING	2			148	296																	296
B	FURNITURE	0.1			148	14.8																	14.8
C	EQUIPMENT	0.1			148	14.8																	14.8
D	LIBRARY	0.1			148	14.8																	14.8
E	MAINTANANCE	0.025			148	3.7	148	3.7	148	3.7	148	3.7	148	3.7	148	3.7	148	3.7	148	3.7	148	3.7	29.6
F	APPOINTMENT OF CRC'S	0.055x12			148	97.68	148	102.58	148	107.71	148	113.1	148	118.76	148	124.7	148	130.94	148	137.49			932.96
<b>4 RESEARCH PROJECTS</b>																							
A	ACTION RESEARCH	0.015			350	5.25	350	5.25	350	5.25	350	5.25	350	5.25	350	5.25	350	5.25	350	5.25	350	5.25	42
B	BLOCK LEVEL RESEARCH	15			7	105																	105
C	DISTRICT LEVEL RESEARCH	50			1	50																	50
			0		602.03		111.53		116.68		122.06		127.71		133.65		139.89		146.44				1499.96

139



**INTERVENTIONS WISE AND YEARWISE BUDGET ESTIMATES OF SHIMOGA DISTRICT ELEMENTARY  
EDUCATION PLAN DEEP 2001-2010 UNDER S.S.A**

PAGE: 140

Sl. No	Chapters and Interventions	Units costs in lakhs	2001-02		2002-03		2003-04		2004-05		2005-06		2006-07		2007-08		2008-09		2009-10		TOTAL		
			P	F	P	F	P	F	P	F	P	F	P	F	P	F	P	F	P	F	P	F	
V	Establishment of District Level SSA Office																						
1	Hire of Vehicles to District SSA Office	1.80	1	1.80	1	1.80	1	1.80	1	1.80	1	1.80	1	1.80	1	1.80	1	1.80	1	1.80	9	16.20	
																					0	0.00	
2	Strengthening of District Level Office.																					0.00	
																						0.00	
a	Purchase of Computers	1.00	2	2.00																	2	2.00	
b	Xerox machine	1.25	1	1.00																	1	1.00	
c	Fax and telephone	0.25	1	0.25	1	0.05	1	0.06	1	0.07	1	0.08	1	0.09	1	0.10	1	0.11	1	0.12	9	0.93	
d	Furniture	0.50	1	0.50																	1	0.50	
e	Others (Repairs of existing building).	1.00	1	1.00																	1	1.00	
																					0	0.00	
f	Appointment of Officers and other staff.																					0.00	
																						0.00	
1	Deputy Co-ordinating Officer - SSA	1.80	1	0.90	1	1.80	1	1.80	1	2.00	1	2.10	1	2.20	1	2.30	1	2.40	1	2.50	9	18.10	
																						0.00	
2	Assistant Co-ordinating Officer - SSA	1.44	2	1.44	2	2.88	2	3.00	2	3.10	2	3.20	2	3.30	2	3.40	2	3.50	2	3.60	18	27.42	
																						0.00	
3	Office Superintendent.	.78x12	1	0.47	1	0.94	1	0.99	1	1.04	1	1.09	1	1.14	1	1.19	1	1.24	1	1.29	9	9.39	
4	F.D.A 2	0.58x12	2	0.70	2	1.38	2	1.45	2	1.52	2	1.60	2	1.67	2	1.75	2	1.82	2	1.90	18	13.79	
5	Typist cum Technician	0.50x12	1	0.30	1	0.60	1	0.63	1	0.66	1	0.69	1	0.72	1	0.75	1	0.78	1	0.81	9	5.94	
6	Junior Engineer	0.78x12	1	0.47	1	0.94	1	0.99	1	1.04	1	1.09	1	1.14	1	1.19	1	1.24	1	1.29	9	9.39	
7	D group employee	0.38x12	1	0.23	1	0.46	1	0.48	1	0.50	1	0.53	1	0.56	1	0.59	1	0.62	1	0.65	9	4.62	
			11.06		10.85		11.20		11.73		12.18		12.62		13.07		13.51		13.96		110.28		

071

**INTERVENTIONS WISE AND YEARWISE BUDGET ESTIMATES OF SHIMOGA DISTRICT ELEMENTARY  
EDUCATION PLAN DEEP 2001-2010 UNDER S.S.A**

PAGE: 141

Sl. No.	Chapters and Interventions	Units costs in lakhs	2001-02		2002-03		2003-04		2004-05		2005-06		2006-07		2007-08		2008-09		2009-10		TOTAL	
			P	F	P	F	P	F	P	F	P	F	P	F	P	F	P	F	P	F	P	F
<b>VI</b>	<b>ADDITIONAL REQUIREMENTS</b>																					
1	Transportation facility to children in hilly forest areas	0.25*12			15	45	15	47	15	48	15	51	15	53	15	55	15	57	15	59		416.00
2	Appointment of Reserve Teachers.	0.03*12			105	37.8	105	37.8	105	37.8	105	37.8	105	37.8	105	37.8	105	37.8	105	37.8		302.40
3	Baseline assessment	0.006			350	1.75	350	1.75	350	1.75	350	1.75	350	1.75	350	1.75	350	1.75	350	1.75		14.00
4	Teacher evaluation	0.0001			824	0.0824	824	0.0824	824	0.0824	824	0.0824	824	0.0824	824	0.0824	824	0.0824	824	0.0824		0.66
5	School evaluation	0.005			1900	8.5	1900	8.5	1900	8.5	1900	8.5	1900	8.5	1900	8.5	1900	8.5	1900	8.5		76.00
6	System evaluation	0.005			1900	8.5	1900	8.5	1900	8.5	1900	8.5	1900	8.5	1900	8.5	1900	8.5	1900	8.5		76.00
7	Progress cards	0.00003			240158	7.2	240158	7.2	240158	7.2	240158	7.2	240158	7.2	240158	7.2	240158	7.2	240158	7.2		67.60
8	Health check up	0.00002			240158	4.8	240158	4.8	240158	4.8	240158	4.8	240158	4.8	240158	4.8	240158	4.8	240158	4.8		38.40
9	Health cards	0.00001			240158	2.4	240158	2.4	240158	2.4	240158	2.4	240158	2.4	240158	2.4	240158	2.4	240158	2.4		19.20
10	Samudayadatha Shale	0.01*4			1888	75.52	1888	75.52	1888	75.52	1888	75.52	1888	75.52	1888	75.52	1888	75.52	1888	75.52		604.16
11	Sports Materials																					
	a. HPS	0.015			873	13.095						873	13.095									26.19
	b. LPS	0.01			1044	10.44						1044	10.44									20.88
12	Library books.																					
	a. HPS	0.1			873	87.3						873	87.3									174.60
	b. LPS	0.05			1044	52.2						1044	52.2									104.40
1.3	Scholarship for Handicap	0.12	587	70.44	587	70.44	587	70.44	587	70.44	587	70.44	587	70.44	587	70.44	587	70.44	587	70.44		633.96
				70.44		427.0274		265.992		267.992		269.9924		435.0274		273.992		275.9924		277.9924		2564.4482

171

**INTERVENTIONS WISE AND YEARWISE BUDGET ESTIMATES OF SHMOGA DISTRICT ELEMENTARY  
EDUCATION PLAN DEEP 2001-2010 UNDER S.S.A**

Sl No	Chapters and Interventions	Units costs in lakhs	2001-02		2002-03		2003-04		2004-05		2005-06		2006-07		2007-08		2008-09		2009-10		TOTAL	
			P	F	P	F	P	F	P	F	P	F	P	F	P	F	P	F	P	F	P	F
<b>I Infrastructure development for DIET</b>																						
a	old building repairs	0.05	12	0.60																		0.60
b	borewell @ pumpset	0.5			1	0.50																0.50
<b>II Information technology development</b>																						
a	Computers	0.8			5	3.00			3	2.00			3	2.00								7.00
b	Fax and Modem	1.5			1	1.50																1.50
<b>IV Equipments</b>																						
a	Lab equipments	0.75	1	0.75	1	0.75	1	0.75	1	0.75	1	0.75	1	0.75	1	0.75	1	0.75	1	0.75		6.75
b	Library Books	0.5	1	0.50	1	0.50	1	0.50	1	0.50	1	0.50	1	0.50	1	0.50	1	0.50	1	0.50		4.50
c	Desk	0.02			50	1.00	50	1.00					50	1.00								3.00
d	Almirahs	0.08			5	0.40			5	0.40			5	0.40			5	0.40				1.60
e	Chairs	0.01			50	0.50			50	0.50			50	0.50			50	0.50				2.00
f	Sports materials	0.15			1	0.15					1	0.15			1	0.15						0.45
<b>V Other facilities</b>																						
a	Toilets	0.05			20	1.00																1.00
b	Lecturers for Urdu Sec.	1	5	5.00	5	5.25	5	5.50	5	5.80	5	4.10	5	6.40	5	6.80	5	7.10	5	7.50		55.45
c	furniture for lecturers	0.45	1	0.45					1	0.45			1	0.45								1.35
			7.30		14.55		7.75		10.40		7.50		12.00		8.20		9.25		8.75		85.70	

142

## ABSTRACT OF ALL COSTING TABLES

### INTERVENTIONS WISE AND YEARWISE BUDGET ESTIMATES OF SHIMOGA DISTRICT ELEMENTARY EDUCATION PLAN DEEP 2001-2010 UNDER S.S.A

PAGE: 143.

Sl. No.	Chapters and Interventions	Unit costs in lakh	2001-02		2002-03		2003-04		2004-05		2005-06		2006-07		2007-08		2008-09		2009-10		TOTAL	
			P	F	P	F	P	F	P	F	P	F	P	F	P	F	P	F	P	F	P	F
			<b>I ACCESS</b>																			
1	Establishment of New Schools in School less habitations			382.2		83.85		87.94		92.24		96.76		101.5		106.48		111.11				1062.08
2	Additional in puts for existing Lr Pry. Schools		534.99		744.335		773.285		803.635		829.735		863.165		891.075		749.245		446.935			6636.395
3	EGS/AIS CENTERS IN SCHOOLLESS HABITATIONS			2.92725		2.85225		2.65225		2.65225		2.65225		2.65225		2.65225		2.65225		2.65225		21.493
4	UPGRADATION OF EXISTING LOWER PRIMARY SCHOOLS		0.675		127.575		78.88		100.355		58.185		80.615		83.855		86.285		68.715			624.94
5	ADDITIONAL INPUTS FOR EXISTING UPPER PRIMARY SCHOOLS (HPS)		559.88		2119.46		2338.01		2441.88		2552.75		2668.94		2780.18		2195.22		2268.81			19823.11
<b>II ENROLLMENT</b>																						
			48.28		48.73		48.73		48.73		48.73		48.73		48.73		48.73		48.73		48.73	438.12
<b>III RETENTION</b>																						
1	INCENTIVES			580.339		413.37		413.37		413.37		413.37		413.37		413.37		413.37		413.37		3326.96
2	TEACHERS TRAININGS		7.57		25.49		24.36		24.36		24.36		24.36		1.82		0					132.12
<b>IV CAPACITY BUILDING</b>																						
1	TRAINING		1.9404		5.3994		5.3574		5.3574		5.5784		5.8928		5.7348		5.7348		5.7348		5.7348	46.5282
2	ESTABLISHMENT OF BRC'S		0		93.835		39.885		41.825		43.665		45.885		48.455		50.415		52.895			416.44
3	ESTABLISHMENT OF CRC'S		0		602.03		111.53		116.66		122.05		127.71		133.65		139.89		146.44			1499.96
V	Establishment of District Level SSA Office		11.06		10.85		11.3		11.73		12.18		12.62		13.07		13.51		13.96			110.28
VI	ADDITIONAL REQUIREMENTS		70.44		427.027		265.992		267.992		269.992		435.027		273.992		275.992		277.992			2564.4492
I	Infrastructure development for DIET		7.50		14.55		7.75		10.40		7.50		12.00		8.20		8.25		8.75			85.7
<b>GROSS TOTAL</b>			1242.1		5184.748		4202.55		4378.67		4482.988		4817.507		4786.08		4078.774		3866.094			36868.575

571

**GOVERNMENT OF KARNATAKA  
ZILLA PANCHAYATH, SHIMOGA  
DEPUTY DIRECTOR OF PUBLIC INSTRUCTION,  
SHIMOGA**

# **" SARVA SHIKSHA ABHIYAN "**

**DISTRICT ELEMENTARY EDUCATION  
PLAN  
DEEP  
ANNUAL WORK PROGRAMME AND  
BUDGET 2001-02**

# **SHIMOGA DISTRICT**

**KARNATAKA STATE**

**SARVA SHIKSHA ABHIYAN****SHIMOGA DISTRICT KARNATAKA****ANNUAL WORK PROGRAMME AND BUDGET – 2001-02****INTRODUCTION**

As a part of perspective plan for 2001 to 2010 of District Elementary Education project DEEP-Shimoga District, Annual work Programme and Budget for the year 2001-02 is prepared.

The perspective plan is based on the local needs of the District which are to be addressed stage by stage over a period of nine years. The District specific problems and issues are identified, defined and analyzed to arrive at specific targets which are to be achieved by the end of the year 2010 in order to achieve Universalisation of Elementary Education.

The targets are distributed for nine years on the basis of needs. Certain strategies and programmes are evolved to fulfill the needs and achieve the targets.

But there are certain needs which are to be addressed immediately. They are to be implemented in the year 2001-02 in order to achieve the goals of UEE. In order to enroll all the children between 6 to 14 years by the year 2002-03, schooling facilities are to be provided to give better access for schooling. Hence this annual work programme and budget for the year 2001-02.

As the time is very short, these programmes are to be implemented on top priority. This plan is prepared to fulfill the immediate specific needs of the District.

## **PROGRAMMES FOR THE YEAR 2001-02**

Based on the immediate needs of the District, the following programmes are planned for the year 2001-02

### **1. Additional Inputs for existing lower Primary Schools**

- 1.1 There are 59 building less schools in the District construction of building with compound, water toilet and electricity facilities to these 59 schools is to be taken up this year.
- 1.2 Compound walls are to be constructed to 64 Lower Primary schools to protect the property of the school and to provide better facility to children.
- 1.3 Drinking water and toilet facility is to be provided to 116 primary schools this year as they do not have any facility.
- 1.4 Electricity facility is to be provided to 16 Primary schools this year.
- 1.5 Immediate repairs are to be made to 104 primary schools this year.
- 1.6 Furniture for 32 schools and TLM for 82 schools is to be provided this year.
- 1.7 There are 191 single teacher schools in the district. Additional teacher is to be provided to each school to make minimum two teacher as per the norms of SSA. So, 191 teachers are to be recruited this year.
- 1.8 Teacher grant for 2223 teacher at the rate of Rs.500 per teacher is to be provided to encourage them to prepare their own teaching aids.
- 1.9 School grant for 1041 lower primary schools is to be provided for miscellaneous and contingent expenditures.

## **2. Upgradation of existing Lower Primary Schools**

2.1 There are 27 Lower Primary Schools to be upgraded as upper Primary Schools. Teacher grant for 27 teachers who are not included in regular LPS, at the rate of Rs.500/- per teacher is to be given this year.

2.2 School grant for 27 schools at the rate of Rs.2000/- per school is to be provided this year. These 27 schools are not included with LPS.

## **3. Additional inputs for existing Upper Primary Schools:**

3.1 Additional rooms: There are 226 Upper Primary schools which need additional rooms immediately. So construction of 226 additional rooms is planned for this year.

3.2 Compound walls are to be constructed to 111 upper Primary schools this year.

3.3 Drinking water and toilet facilities are to be provided 12 schools this year

3.4 Electricity is to be provided to 70 Upper Primary schools this year.

3.5 Repairs of 846 school buildings is to be taken up this year.

3.6 Teacher grant for 6832 teachers at the rate of Rs. 500/= per teacher is to be given this year.

3.7 School grant is to be provided for 846 schools at the rate of Rs. 2000/= this year.



**4.ENROLLMENT :-**

- 4.1 Village educational records are to be updated in 1911 villages this year.
- 4.2 Special enrollment drive is to be conducted in 1911 villages this year.
- 4.3 Bridge courses are to be conducted for out of school children in 50 centers in 50 Gram Panchayaths where the percentage of drop outs is more. 50 such programmes are planned this year.

Awareness campaigns and community mobilization programmes are to be conducted in 1911 villages

**5.RETENTION :-**

- 5.1 20 Days inservice training is planned for teacher this year

**6.CAPACITY BUILDING :-**

- 6.1 Training for 465 community leaders is planned this year
- 6.2 Training for 487 SDMC members for awareness development is planned for this year
- 6.3 Awareness training for 83 Gram Panchayath members is planned for this year
- 6.4 Awareness training for 70 Zilla panchayath and Taluk Panchayath members is planned for this year
- 6.5 Training for 104 Block level officers is planned for this year
- 6.6 Training for 2000 Headmasters and duster level resource persons is planned for this year

6.7 Training for 25 faculty of DIET is planned for this year.

### **7. ESTABLISHMENT OF DISTRICT LEVEL SSA OFFICE**

- 7.1 Hire of vehicle to District level SSA office is planned to monitor and supervise the SSA programmes in the District.
- 7.2 Two computers, one Xerox machine, one Fax and Telephone, sufficient furniture is to be purchased this year to equip the district level SSA office.
- 7.3 Rupees One Lakh is planned to repair the existing old building for SSA office.

### **8. INFRASTRUCTURE DEVELOPMENT FOR DIET**

- 8.1 Rs.60,000/- is provided for repair of existing old DIET for building.
- 8.2 Provisions are made to purchase lab equipments and library books this year.
- 8.3 Provisions are made to purchase furniture this year.

**ANNUAL WORK PROGRAMME AND BUDGET FOR 2001-2002 UNDER DEEP S.S.A. SHIMOGA DISTRICT.**

SL No	Chapters and Interventions	Unit costs in lakh	2001-02		APRIL 2001	MAY 2001	JUNE 2001	JULY 2001	AUG. 2001	SEPT 2001	OCT. 2001	NOV. 2001	DEC. 2001	JAN. 2002	FEB 2002	MAR 2002
			P	F												
<b>I ACCESS</b>																
1	Establishment of New Schools in School less habitations															
a	Building with compound Water,toilet,electricity	4														
b	Teachers															
c	Furniture	0.4														
d	Teaching/Learning material	0.25														
e	School grant	0.02														
f	Teachers salary	0.05x12														
g	Teachers grant	0.005														
<b>II Additional in puts for existing Lr Pry.Schools</b>																
a	Building with compound Water,toilet,electricity	4	58	236.00										✓	✓	✓
b	Addl.rooms	1.5														
c	Compund	1	64	64.00										✓	✓	✓
d	Drinking water	0.5	116	58.00										✓	✓	✓
e	Electricity	0.15	16	2.40										✓	✓	✓
f	Repairs	0.05	1041	52.05										✓	✓	✓
g	Furntirue	0.4	32	12.80											✓	✓
h	Teaching,learning material	0.25	82	20.50									✓		✓	✓
i	Additional teachers	0.05X12	191	57.30							✓	✓	✓	✓	✓	✓
j	Teacher grant	0.005	2223	11.115							✓	✓	✓			
k	School grant	0.02	1041	20.82									✓			
			534.985													

6

**INTERVENTIONS WISE AND YEARWISE BUDGET ESTIMATES OF SHIMOGA DISTRICT ELEMENTARY**

Sl. No.	CHAPTERS AND INTERVENTIONS	UNIT COSTS IN LAKHS	2001-2002		APRIL 2001	MAY 2001	JUNE 2001	JULY 2001	AUG 2001	SEPT 2001	OCT. 2001	NOV. 2001	DEC. 2001	JAN. 2002	FEB 2002	MAR 2002
			P	F												
<b>3 EGS/AIS CENTERS IN SCHOOLLESS HABITATIONS</b>																
A	EDUCATION VOLUNTEERS	0.01. X 12														
B	TEACHING LEARNING MATERILS	0.025														
C	BUILDING GRANT	0.01 X 12														
D	TRAINING FOR VOLUNTEERS	0.01225														
<b>4 UPGRADATION OF EXISTING LOWER PRIMARY SCHOOLS</b>																
A	ADDITIONAL ROOMS	1.50														
B	COMPOUND	1.00														
C	DRINKING WATER (TOILET	0.5														
D	ELECTRICITY	0.15														
E	REPAIRS	0.05														
F	FURNITURE	0.40														
G	TEACHING LEARNING MATERILS	0.50														
H	ADDITIONAL TEACHERS	0.05X12														
I	TEACHER GRANT	0.005	27	0.135											✓	
J	SCHOOL GRANT	0.002	27	0.54											✓	
				0.68												

7

## INTERVENTIONS WISE AND YEARWISE BUDGET ESTIMATES OF SHIMOGA DISTRICT ELEMENTARY

Sl. No.	CHAPTERS AND INTERVENTIONS	UNIT COSTS IN LAKHS	2001-2002		APRIL 2001	MAY 2001	JUNE 2001	JULY 2001	AUG. 2001	SEPT 2001	OCT. 2001	NOV. 2001	DEC. 2001	JAN. 2002	FEB 2002	MAR 2002
			P	F												
<b>5</b> ADDITIONAL INPUTS FOR EXISTING UPPER PRIMARY SCHOOLS (HPS)																
A	ADDITIONAL ROOMS	1.50	226	339.00										✓	✓	✓
B	COMPOUND	1.00	111	111.00										✓	✓	✓
C	DRINKING WATER (TOILET	0.50	12	6.00										✓	✓	✓
D	ELECTRICITY	0.15	70	10.50										✓	✓	✓
E	REPAIRS	0.05	846	42.30										✓	✓	✓
F	FURNITURE	0.06														
G	TEACHING LEARNING MATERILS	0.50														
H	ADDITIONAL TEACHERS															
	1) PRIMARY	0.05X12														
	2) GRADUATE TEACHERS	0.07X12														
I	TEACHER GRANT	0.005	6832	34.16											✓	
J	SCHOOL GRANT	0.02	846	16.92											✓	
			559.88													
<b>II ENROLLMENT</b>																
A	UPDATION OF VILLAGE EDUCATION RECORDS	0.005	1911	9.56									✓			
B	SPECIAL ENROLMENT DRIVE	0.005	1911	9.56									✓			
C	BRIDGE COURSE OF MAINSTREA-MINGOUT OF SCHOOL CHILDREN	0.21	50	10.05									✓			
D	AWARENESS CAMPAIGNS AND COMMUNITY MOBILISATION PROGRAMMES	0.01	1911	19.11									✓	✓	✓	
			48.28													



## INTERVENTIONS WISE AND YEARWISE BUDGET ESTIMATES OF SHIMOGA DISTRICT ELEMENTARY

Sl. No.	CHAPTERS AND INTERVENTIONS	UNIT COSTS IN LAKHS	2001-2002		APRIL 2001	MAY 2001	JUNE 2001	JULY 2001	AUG. 2001	SEPT 2001	OCT. 2001	NOV. 2001	DEC. 2001	JAN. 2002	FEB 2002	MAR 2002
			P	F												
<b>2 ESTABLISHMENT OF BRC'S</b>																
A	BUILDING	8														
B	FURNITURE	1														
C	EQUIPMENT	0.5														
D	LIBRARY	0.5														
E	APPOINTMENT OF STAFF	0.44x12														
F	MAINTANANCE	0.125														
<b>3 ESTABLISHMENT OF CRC'S</b>																
A	BUILDING	2														
B	FURNITURE	0.1														
C	EQUIPMENT	0.1														
D	LIBRARY	0.1														
E	MAINTANANCE	0.025														
F	APPOINTMENT OF CRC'S	0.055x12														
<b>4 RESEARCH PROJECTS</b>																
A	ACTION RESEARCH	0.015														
B	BLOCK LEVEL RESEARCH	15														
C	DISTRICT LEVEL RESEARCH	50														
<b>V</b>	Establishment of District Level SSA Office															
1	Hire of Vehicles to District SSA Office	1.80	1	1.80							✓	✓	✓	✓	✓	✓

## INTERVENTIONS WISE AND YEARWISE BUDGET ESTIMATES OF SHIMOGA DISTRICT ELEMENTARY

Sl. No.	CHAPTERS AND INTERVENTIONS	UNIT COSTS IN LAKHS	2001-2002		APRIL 2001	MAY 2001	JUNE 2001	JULY 2001	AUG. 2001	SEPT 2001	OCT. 2001	NOV. 2001	DEC. 2001	JAN. 2002	FEB 2002	MAR 2002
			P	F												
2	Strengthening of District Level Office.															
a	Purchase of Computers	1.00	2	2.00								✓				
b	Xerox machine	1.25	1	1.00								✓				
c	Fax and telephone	0.25	1	0.25								✓				
d	Furniture	0.50	1	0.50								✓				
e	Others (Repairs of existing building).	1.00	1	1.00								✓				
f	Appointment of Officers and other staff.															
1	Deputy Co-ordinating Officer - SSA	1.80	1	0.90								✓				
2	Assistant Co-ordinating Officer - SSA	1.44	2	1.44								✓				
3	Office Superintendent.	.78x12	1	0.47								✓				
4	F.D.A 2	0.58x12	2	0.70								✓				
5	Typist cum Technician	0.50x12	1	0.30								✓				
6	Junior Engineer	0.78x12	1	0.47								✓				
7	D group employee	0.38x12	1	0.23								✓				



INTERVENTIONS WISE AND YEARWISE BUDGET ESTIMATES OF SHIMOGA DISTRICT ELEMENTARY

SL No	Chapters and Interventions	Units costs in lakhs	2001-02		APRIL 2001	MAY 2001	JUNE 2001	JULY 2001	AUG. 2001	SEPT 2001	OCT. 2001	NOV. 2001	DEC. 2001	JAN. 2002	FEB 2002	MAR 2002
			P	F												
<b>VI ADDITIONAL REQUIREMENTS</b>																
1	Transportation facility to children in hilly forest areas.	0.25*12														
2	Appointment of Reserve Teachers.	0.03*12														
3	Baseline assessment	0.005														
4	Teacher evaluation	0.0001														
5	School evaluation	0.005														
6	System evaluation	0.005														
7	Progress cards	0.00003														
8	Health check up	0.00002														
9	Health cards	0.00001														
10	Samudayadatha Shale	0.01*4														
11	Sports Materials															
	a. HPS	0.015														
	b. LPS	0.01														
12	Library books.															
	a. HPS	0.1														
	b. LPS	0.05														
13	Scholarship for Handicap	0.12	587	70.44												

12

**INTERVENTIONS WISE AND YEARWISE BUDGET ESTIMATES OF SHIMOGA DISTRICT ELEMENTARY**

SL No	Chapters and Interventions	Units costs in lakhs	2001-02		APRIL 2001	MAY 2001	JUNE 2001	JULY 2001	AUG. 2001	SEPT 2001	OCT. 2001	NOV. 2001	DEC. 2001	JAN. 2002	FEB 2002	MAR 2002
			P	F												
<b>I Infrastructure development for DIET</b>																
a	old building repairs	0.05	12	0.60									✓			
b	borewell @ pumpset	0.5														
<b>II Information technology development</b>																
a	Computers	0.6														
b	Fax and Modem	1.5														
<b>IV Equipments</b>																
a	Lab equipments	0.75	1	0.75											✓	
b	Library Books	0.5	1	0.50											✓	
c	Desk	0.02														
d	Almirahs	0.08														
e	Chairs	0.01														
f	Sports materials	0.15														
<b>V Other facilities</b>																
a	Toilets	0.05														
b	Lecturers for Urdu Sec.	1	5	5.00											✓	
c	furniture for lecturers	0.45	1	0.45											✓	
<b>GRAND TOTAL</b>			<b>1243.13</b>		<b>(Rs. in Lakhs)</b>											