

**Punjab Education Department**

**DISTRICTWISE**

**EDUCATIONAL STATISTICS**



**1987-88**

NIEPA DC



D08135

5455  
370.212  
PUN-D

issued by

**DIRECTOR OF PUBLIC INSTRUCTION (SCHOOLS) PUNJAB  
(STATISTICAL SECTION)**

**CHANDIGARH**



- 5455  
370.212  
PUN - D

LIBRARY & DOCUMENTATION CENTRE  
National Institute of Educational  
Planning and Administration  
17-B, Sri Aurobindo Marg.,  
New Delhi-110016  
DOC, No. D-8135  
Date 21-7-84

General Information

Sr. No.	Item of Information	Unit	Reference	
			Magnitude	Year
1	2	3	4	5
1.	Area of the State	Sq.kms	50362	1981
2.	Population			
	(i) Male	(In Lakhs)	89.37	1981
	(ii) Female	(In Lakhs)	78.51	1981
	Total (i & ii)	(In Lakhs)	167.88	1981
	(iii) In Rural	(In Lakhs)	121.41	1981
	(v) In Urban	(In Lakhs)	46.47	1981
	(v) Percentage of Urban population to the total population of the state	(Percentage)	27.68	1981
3.	Population of Scheduled Castes			
	(a) Male	(In Lakhs)	24.16	1981
	(b) Female	(In Lakhs)	20.95	1981
	Total (a & b)	(In Lakhs)	45.11	1981
	(c) Percentage of S.C. population to the total population in the state		26.87	1981
4.	Decennial growth rate of population		23.89	1981
5.	Sex Ratio			
	(No. of Females per 100 males	(Number)	879	1981
6.	Density of population per Sq.km.	(Number)	333	1981
7.	Literacy Rate			
	a) Male	(Percentage)	47.16	1981

(ii)

1	2	3	4	5
	(b) Female	(Percentage)	33.69	1981 81
	(c) All persons	(Percentage)	40.86	1981 31
8.	Literacy in India	(Percentage)	36.23	1981 31
9.	No. of villages			
	(a) Inhabited	(Number)	12342	1981 81
	(b) Un-inhabited	(Number)	453	1981 81
	Total (a & b)	(Number)	12795	1981 81
10.	Number of Universities for General Education.	(Number)	2	1987-88 88
11.	Number of Arts, Science and Commerce Colleges. (Govt. and Non Govt.)	(Number)	170	1987-88 88
12.	Number of fulfilled Institution (Govt. and Non Govt. (Recog.)			
	(a) Pre-Primary Schools	(Number)	2	1987-88-88
	(b) Primary Schools	(Number)	12322	1987-98-98
	(c) Middle Schools	(Number)	1395	1987-88-88
	(d) High Schools	(Number)	2406	1987-88-88
	(e) Senior Secondary Schools (10+2)	(Number)	324	1987-88-88
13.	Enrolment in Arts, Science and Commerce Colleges. (Govt. & Non Govt.) (In Lakhs)		1.43	1987-87-88
14.	Enrolment in Schools for General Education (Govt. & Non Govt. (Recognised)			
	(a) Pre-Primary Class	(In Lakhs)	0.13	1987-87-88
	(b) Classes I to V	(In Lakhs)	20.30	1987-87-88
	(c) Classes VI to VIII	(In Lakhs)	7.75	1987-87-88
	(d) Classes IX to X	(In Lakhs)	3.31	1987-87-88
	(e) Classes 10+1 & 10+2	(In Lakhs)	0.68	1987-87-88
15.	Teachers in Arts, Science and Commerce Colleges (Govt. & Non Govt.)	(Number)	5633	1987-87-88

1	2	3	4	5
15.	Teachers in Schools at (Govt. & Non Govt. (Recog.)			
	Stage-wise			
(a)	Pre-Primary stage	(Number)	445	1987-88
(b)	Primary stage	(Number)	50958	1987-88
(c)	Middle Stage	(Number)	31213	1987-88
(d)	High/Sr.Sec. 10+2 Stage	(Number)	20817	1987-88
17.	Average Population Served per Section.			
(i)	Primary Section	(Number)	1512	1987-88
(ii)	Middle Section	(Number)	4690	1987-88
(iii)	High/Sr.Sec.(10+2) Section	(Number)	7086	1987-88
18.	Availability on Educational Facilities with in the radius of: —			
1.	Primary. Every village has facility for Primary Section.			
2.	Middle	(In kms)	1.97	1987-88
3.	High/Sr.Sec.(10+2)	(In kms)	2.42	1987-88
19.	Teacher Pupil Ratio at (Govt. & Non Govt. (Recog.)			
1.	Primary stage (I to V)	(Ratio)	1.40	1987-88
2.	Middle Stage (VI to VIII)	(Ratio)	1.24	1987-88
3.	High/Sr.Sec. (10+2) Stage (IX to XII)	(Ratio)	1.19	1987-88
20.	Cost per pupil in Govt. & Non Govt.(Recog.) Schools.			
1.	Primary Schools	(Rs.)	449	1986-87
2.	Middle Schools	(Rs.)	1060	1986-87
3.	High Schools	(Rs.)	986	1986-87
4.	Sr.Sec. (10+2) Schools	(Rs.)	975	1986-87



---

*With best Compliments from :*

**PRITAM SINGH BHUPAL**

**Director of Public Instruction (Schools), Punjab,  
Chandigarh.**

---

## CONTENTS

<i>Subject</i>	<i>Page</i>
General Information	.. i—iii
<b>PART I—School Education</b>	
Table—1. Availability of Educational Facilities in Punjab	.. 1
Table—2. Average Population served per section in Punjab by Districts	.. 1
Table—3. Number of Institutions imparting Pre-Primary, Primary, Middle, High and Senior Secondary (10+2 Education)	.. 2—8
Table—4. Number of Institutions imparting Pre-Primary, Primary, Middle, High and Senior Secondary (10+2) Education in Rural Areas	.. 9—17
Table—5. Number of Institutions imparting Pre-Primary, Primary, Middle, High and Senior Secondary (10+2) Education in Rural and Urban Areas	.. 18-19
Table—6. Number of Sections imparting Pre-Primary, Primary, Middle and High/Senior Secondary (10+2) Education	.. 20—25
Table—7. Total Enrolment by type of institutions	.. 26—33
Table—8. Total Enrolment by type of institutions in Rural Areas	.. 34-35
Table—9. Percentage of Enrolment in Rural Areas to the total Enrolment in Schools	.. 36
Table—10. Enrolment by classes (Pre-Primary to 10+2 Pattern)	.. 37—45
Table—11. Enrolment by stages	.. 46—51
Table—12. Classwise Enrolment in Schools, percentage to total at the stage and girls for every 100 boys	.. 52
Table—13. Percentage of waste in Primary and Middle classes	.. 53
Table—14. Proportion of students on rolls at different stages	.. 54
Table—15. Total Enrolment of Scheduled Castes/Scheduled Tribes by classes (Pre-Primary to 10+2 Pattern)	.. 55—63



<i>Subject</i>	<i>Page</i>
Table—16. Total Enrolment of Scheduled Castes/Scheduled Tribes by stages and percentage Enrolment of Scheduled Castes/Scheduled Tribes to the total	.. 64—66
Table—17. Total Enrolment of Scheduled Castes/Scheduled Tribes and percentage to total Enrolment (Classes Pre-Primary to 10+2 Pattern)	.. 67
Table—18. Classwise Enrolment of Scheduled Castes/Scheduled Tribes and percentage to total Enrolment	.. 68
Table—19. Number of teachers (working strength) by type of schools and percentage of trained teachers	.. 69—74
Table—20. Number of teachers (working strength) by stages of Education and average number of pupils per teacher	.. 75—78
Table—21. Categorywise number of teachers (working strength) in the Central Govt. Schools	.. 79—81
Table—22. Categorywise number of teachers (working strength) in the State Govt. Schools	.. 82-83
Table—23. Categorywise number of teachers (working strength) in the non-Govt. (Recogn.) Schools	.. 84-85
Table—24. Number of teachers by sex and percentage of women teachers to the total	.. 86—88
Table—25. Average annual cost per student	.. 89
<b>PART II—Higher Education</b>	
Table—26. Number of Universities and College	.. 91—94
Table—27. Number of Colleges in Rural Areas	.. 95-96
Table—28. Number of students in Universities/Teaching Departments and Colleges	.. 97—101
Table—29. Number of students receiving general education	.. 102-103
Table—30. Number of teachers and average number of pupils per teacher	.. 104-105

---

**PART — I**  
**School Education**

---



TABLE No. 1

Availability of Educational Facilities in Punjab Distance in kms (Radius)

District	*Primary	Middle	High/Sr.Sec.(10 2)
1 Amritsar	—	1.85	2.28
2 Bathinda	—	2.47	3.04
3 Faridkot	—	2.23	2.64
4 Ferozepur	—	2.47	3.33
5 Gurdaspur	—	1.81	2.31
6 Hoshiarpur	—	1.83	2.27
7 Jalandhar	—	1.50	1.83
8 Kapurthala	—	1.79	2.29
9 Ludhiana	—	1.67	1.96
10 Patiala	—	2.04	2.54
11 Ropar	—	1.77	2.14
12 Sangrur	—	2.23	2.66
Punjab	—	1.97	2.42

\*Every village in the State of Punjab has a facility for Primary Education.

TABLE No.— 2

Average Population served per section in Punjab by District as on 30-9-1987 Govt. &amp; Non-Govt. (Recognised) Section and Mid-year Projected Population of Punjab.

District	Mid-year projected Population 1987-88	Primary Section	Middle Sections	High/Sr.Sec (102)Section
1	2	3	4	5
1 Amritsar	24,55,810	1,638	5,214	7,896
2 Bathinda	15,28,017	2,287	5,287	8,000
3 Faridkot	16,58,045	2,144	4,505	6,352
4 Ferozepur	15,15,162	1,280	4,935	9,018
5 Gurdaspur	17,34,355	1,265	4,998	8,142
6 Hoshiarpur	13,88,835	955	3,763	5,786
7 Jalandhar	19,46,711	1,608	4,055	6,008
8 Kapurthala	6,37,632	1,270	3,936	6,440
9 Ludhiana	21,39,672	1,994	4,885	6,686
10 Patiala	18,59,450	1,414	5,282	8,227
11 Ropar	8,53,293	968	4,024	5,884
12 Sangrur	16,15,169	1,886	4,939	7,022
Punjab	19332151	1512	4690	7086

Source : —Statistical Abstract, 1988 (Economic and Statistical Organisation.)

TABLE NO. 3.1

Number of Fulfilled Pre-Primary Schools as on 30-9-87.

District	Central Govt.			State Govt.			Non Govt.(Recog.)			Grand Total		
	Boys	Girls	Total	Boys	Girls	Total	Boys	Girls	Total	Boys	Girls	Total
1	2	3	4	5	6	7	8	9	10	11	12	13
1 Amritsar	—	—	—	—	—	—	—	—	—	—	—	—
2 Bhatinda	—	—	—	—	—	—	—	—	—	—	—	—
3 Faridkot	—	—	—	—	—	—	—	—	—	—	—	—
4 Ferozepur	—	—	—	1	—	1	—	—	—	1	—	1
5 Gurdaspur	—	—	—	—	—	—	—	—	—	—	—	—
6 Hoshiarpur	—	—	—	—	—	—	—	—	—	—	—	—
7 Jalandhar	—	—	—	—	—	—	—	—	—	—	—	—
8 Kapurthala	—	—	—	—	—	—	—	—	—	—	—	—
9 Ludhiana	—	—	—	—	—	—	—	—	—	—	—	—
10 Patiala	—	—	—	—	—	—	—	—	—	—	—	—
11 Ropar	—	—	—	—	—	—	—	—	—	—	—	—
12 Sangrur	—	—	—	1	—	1	—	—	—	1	—	1
Punjab	—	—	—	2	—	2	—	—	—	2	—	2

# PRIMARY SCHOOLS

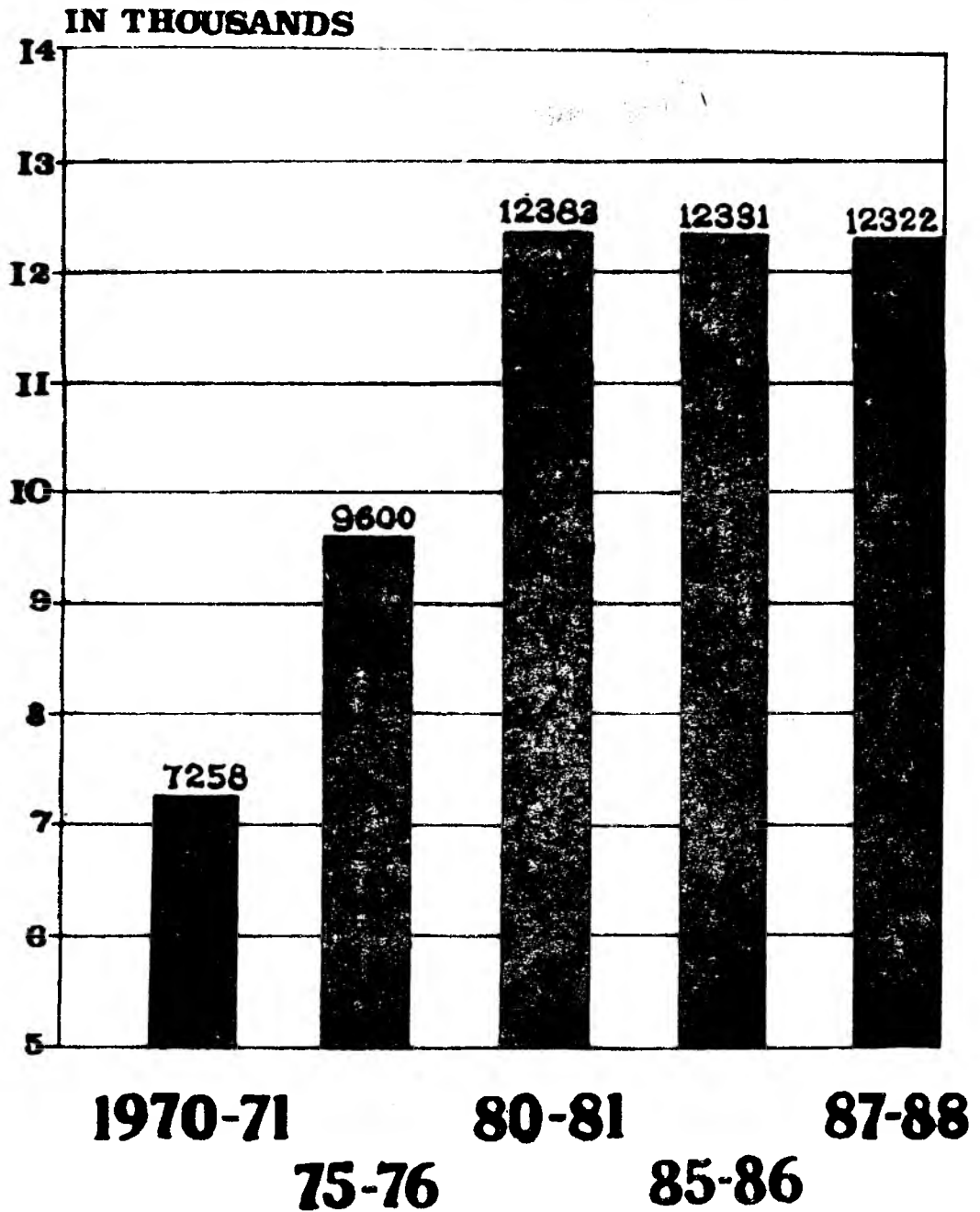


Table No. 3.2

Number of Fulledged Primary/Junior Basic Schools As on 30-9-87

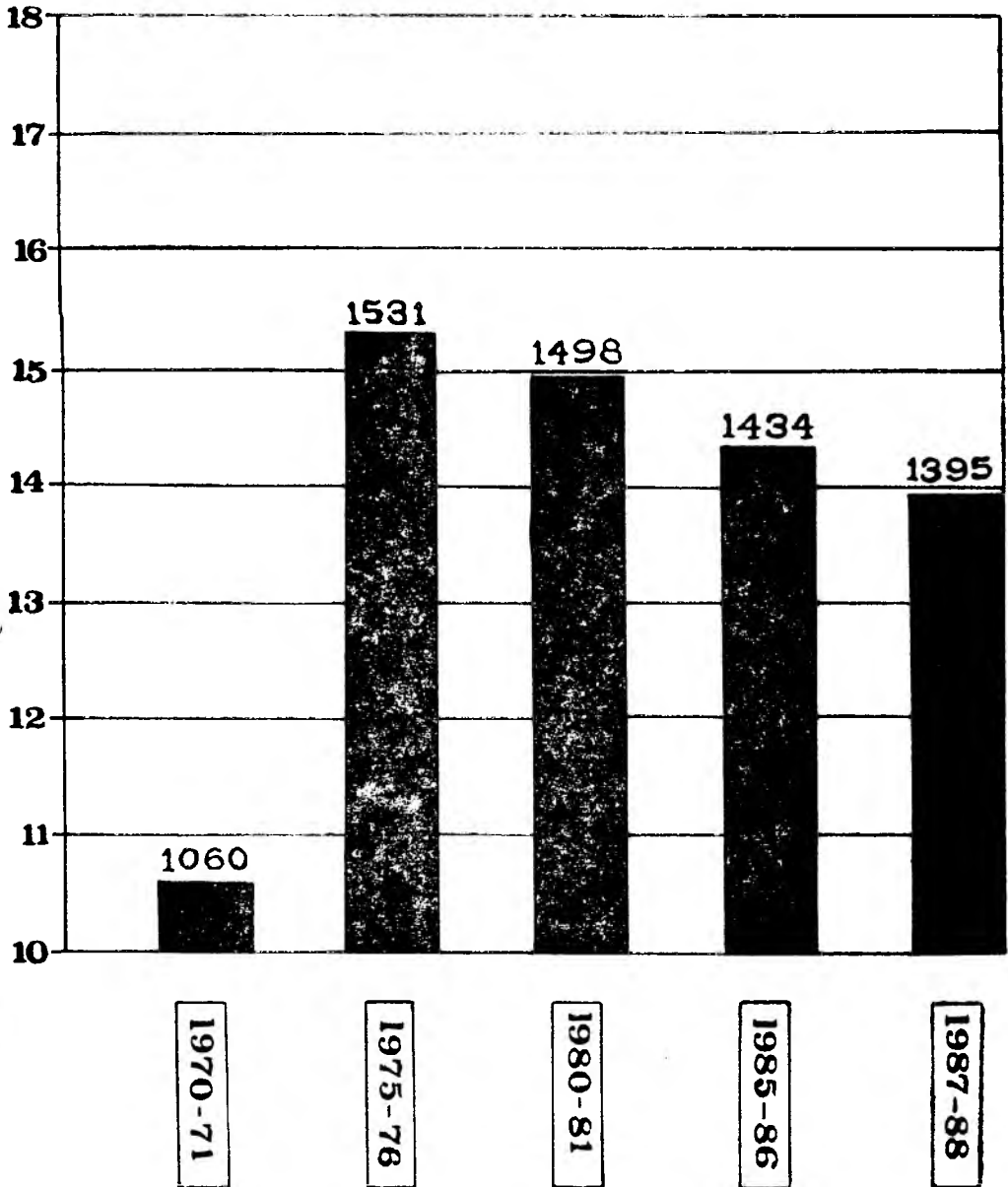
District	Central Govt.			State Govt.			Non-Govt. (Recog.)			Grand Total		
	Boys	Girls	Total	Boys	Girls	Total	Boys	Girls	Total	Boys	Girls	Total
1	2	3	4	5	6	7	8	9	10	11	12	13
1. Amritsar	3	—	3	1,310	41	1,351	80	6	86	1,393	47	1,440
2. Bhatinda	2	—	2	624	—	624	8	—	8	634	—	634
3. Faridkot	—	—	—	725	3	728	6	1	7	731	4	735
4. Ferozepur	—	—	—	1,102	9	1,111	21	5	26	1,123	14	1,137
5. Gurdaspur	1	—	1	1,291	24	1,315	11	1	12	1,303	25	1,328
6. Hoshiarpur	—	—	—	1,420	4	1,424	2	—	2	1,422	4	1,426
7. Jalandhar	—	—	—	1,114	42	1,156	19	1	20	1,133	43	1,176
8. Kapurthala	—	—	—	483	3	486	—	—	—	483	3	486
9. Ludhiana	—	—	—	986	19	1,005	10	—	10	996	19	1,015
10. Patiala	1	—	1	1,268	—	1,268	2	—	2	1,271	—	1,271
11. Ropar	2	—	2	837	4	841	2	—	2	841	4	845
12. Sangrur	1	—	1	826	1	827	1	—	1	828	1	829
Punjab	10	—	10	11,986	150	12,136	162	14	176	12,158	164	12,322





# MIDDLE SCHOOLS

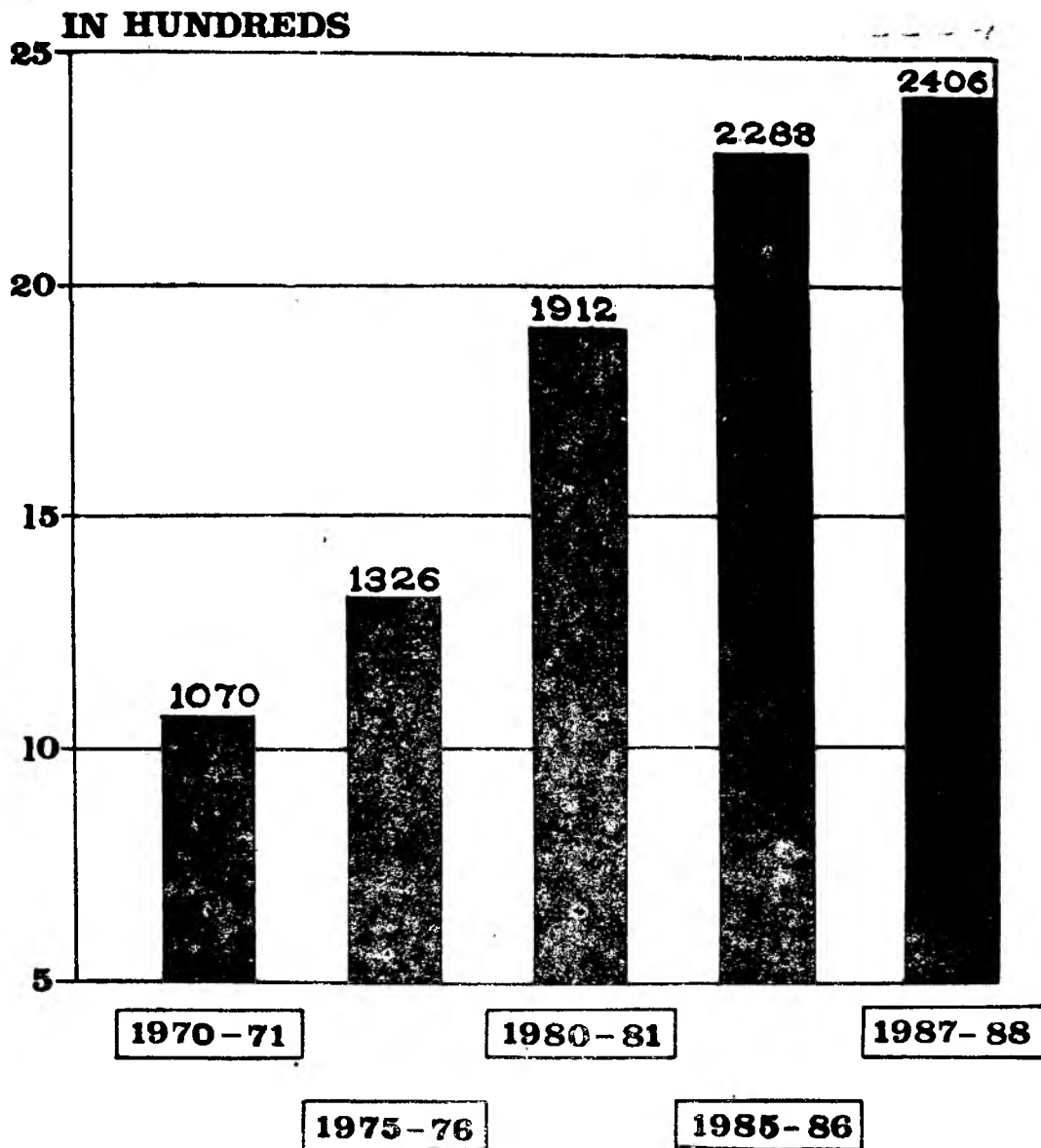
IN HUNDREDS



**Table No. 3.3**  
**Number of Middle/Senior Basic Schools As on 30-9-87**

District	Central Govt.			State Govt.			Non-Govt. (Recog.)			Grand Total		
	Boys	Girls	Total	Boys	Girls	Total	Boys	Girls	Total	Boys	Girls	Total
1	2	3	4	5	6	7	8	9	10	11	12	13
1. Amritsar	—	—	—	136	6	142	16	2	18	152	8	160
2. Bhatinda	1	—	1	89	2	91	6	—	6	96	2	98
3. Faridkot	—	—	—	98	4	102	4	1	5	102	5	107
4. Ferozepur	—	—	—	113	5	118	16	5	21	129	10	139
5. Gurdaspur	—	—	—	111	6	117	14	3	17	125	9	134
6. Hoshiarpur	—	—	—	119	2	121	7	1	8	126	3	129
7. Jalandhar	1	—	1	146	4	150	4	1	5	151	5	156
8. Kapurthala	—	—	—	60	2	62	3	—	3	63	2	65
9. Ludhiana	1	—	1	106	3	109	7	1	8	114	4	118
10. Patiala	—	—	—	119	3	122	2	1	3	121	4	125
11. Ropar	1	—	1	59	—	59	7	—	7	67	—	67
12. Sangrur	—	—	—	96	—	96	1	—	1	97	—	97
Punjab	4	—	4	1,252	37	1,289	87	15	102	1,343	52	1,395

# HIGH SCHOOLS



**Table No. 3.4**

Number of High Schools as on 30-9-87

District	Central Govt.			State Govt.			Non Govt. (Recog.)			Grand Total		
	Boys	Girls	Total	Boys	Girls	Total	Boys	Girls	Total	Boys	Girls	Total
1	2	3	4	5	6	7	8	9	10	11	12	13
1. Amritsar	1	—	1	184	34	218	29	16	45	214	50	264
2. Bhatinda	1	—	1	141	16	157	13	5	18	155	21	176
3. Faridkot	1	—	1	194	19	213	14	5	19	209	24	233
4. Ferozepur	—	—	—	119	10	129	13	5	18	132	15	147
5. Gurdaspur	4	—	4	140	12	152	20	10	30	164	22	186
6. Hoshiarpur	—	—	—	165	7	172	27	9	36	192	16	208
7. Jalandhar	2	—	2	181	42	223	39	19	58	222	61	283
8. Kapurthala	—	—	—	67	6	73	10	5	15	77	11	88
9. Ludhiana	2	—	2	203	30	233	40	14	54	245	44	289
10. Patiala	—	—	—	159	9	168	14	8	22	173	17	190
11. Ropar	—	—	—	92	9	101	18	7	25	110	16	126
12. Sangrur	1	—	1	181	9	190	19	6	25	201	15	216
Punjab	12	—	12	1,826	203	2,029	256	109	365	2,094	312	2,406

**Table No. 3.5**

Number of Senior Secondary Schools As on 30-9-87

District	Central Govt.			State Govt.			Non-Govt. (Recog.)			Grand Total		
	Boys	Girls	Total	Boys	Girls	Total	Boys	Girls	Total	Boys	Girls	Total
1	2	3	4	5	6	7	8	9	10	11	12	13
1. Amritsar	1	—	1	17	6	23	19	4	23	37	10	47
2. Bhatinda	2	—	2	5	2	7	6	—	6	13	2	15
3. Faridkot	—	—	—	9	4	13	10	5	15	19	9	28
4. Ferozepur	1	—	1	8	2	10	7	3	10	16	5	21
5. Gurdaspur	1	—	1	10	2	12	12	2	14	23	4	27
6. Hoshiarpur	—	—	—	15	3	18	13	1	14	28	4	32
7. Jalandhar	3	—	3	15	2	17	16	6	22	34	8	42
8. Kapurthala	1	—	1	5	2	7	2	1	3	8	3	11
9. Ludhiana	1	—	1	10	3	13	11	6	17	22	9	31
10. Patiala	1	—	1	13	6	19	14	3	17	28	9	37
11. Ropar	2	—	2	4	1	5	12	—	12	18	1	19
12. Sangrur	—	—	—	8	3	11	3	—	3	11	3	14
Total	13	—	13	119	36	155	125	31	156	257	67	324

**Table No. 4.1**

No. of fulfilled Pre-Primary Schools in Rural Areas As on 30-9-87

District	Central Govt.			State Govt.			Non-Govt. (Recog.)			Grand Total		
	Boys	Girls	Total	Boys	Girls	Total	Boys	Girls	Total	Boys	Girls	Total
1	2	3	4	5	6	7	8	9	10	11	12	13
1. Amritsar	—	—	—	—	—	—	—	—	—	—	—	—
2. Bhatinda	—	—	—	—	—	—	—	—	—	—	—	—
3. Faridkot	—	—	—	—	—	—	—	—	—	—	—	—
4. Ferozepur	—	—	—	—	—	—	—	—	—	—	—	—
5. Gurdaspur	—	—	—	—	—	—	—	—	—	—	—	—
6. Hoshiarpur	—	—	—	—	—	—	—	—	—	—	—	—
7. Jalandhar	—	—	—	—	—	—	—	—	—	—	—	—
8. Kapurthala	—	—	—	—	—	—	—	—	—	—	—	—
9. Ludhiana	—	—	—	—	—	—	—	—	—	—	—	—
10. Patiala	—	—	—	—	—	—	—	—	—	—	—	—
11. Ropar	—	—	—	—	—	—	—	—	—	—	—	—
12. Sangrur	—	—	—	1	—	1	—	—	—	1	—	1
<b>Punjab</b>	—	—	—	1	—	1	—	—	—	1	—	1

**Table**  
Number of Fulledged Primary/Junior

District	Central Govt.			State Govt.-		
	Boys	Girls	Total	Boys	Girls	Total
1	2	3	4	5	6	7
1. Amritsar	—	—	—	1,213	31	1,244
2. Bhatinda	—	—	—	576	—	576
3. Faridkot	—	—	—	661	—	661
4. Ferozepur	—	—	—	1,063	2	1,065
5. Gurdaspur	—	—	—	1,242	19	1,261
6. Hoshiarpur	—	—	—	1,377	2	1,379
7. Jalandhar	—	—	—	1,016	24	1,040
8. Kapurthala	—	—	—	473	2	475
9. Ludhiana	—	—	—	859	14	873
10. Patiala	—	—	—	1,176	—	1,176
11. Ropar	1	—	1	808	3	811
12. Sangrur	—	—	—	742	1	743
<b>Punjab</b>	<b>1</b>	<b>—</b>	<b>1</b>	<b>11,206</b>	<b>98</b>	<b>11,304</b>

## No. 4.2

## Basic Schools in Rural Areas As on 30-9-87

Non-Govt. (Recog.)			Grand Total		
Boys	Girls	Total	Boys	Girls	Total
8	9	10	11	12	13
—	—	—	1,213	31	1,244
—	—	—	576	—	576
—	—	—	661	—	661
1	—	1	1,064	2	1,066
3	—	3	1,245	19	1,264
1	—	1	1,378	2	1,380
—	—	—	1,016	24	1,040
—	—	—	473	2	475
2	—	2	861	14	875
—	—	—	1,176	—	1,176
—	—	—	809	3	812
—	—	—	742	1	743
7	—	7	11,214	98	11,312



**Table**  
**Number of Middle/Senior Basic**

District	Central Govt.			State Govt		
	Boys	Girls	Total	Boys	Girls	Total
1	2	3	4	5	6	7
1. Amritsar	—	—	—	125	5	130
2. Bhatinda	—	—	—	87	2	89
3. Faridkot	—	—	—	97	4	101
4. Ferozepur	—	—	—	112	5	117
5. Gurdaspur	—	—	—	107	6	113
6. Hoshiarpur	—	—	—	118	2	120
7. Jalandhar	—	—	—	136	4	140
8. Kapurthala	—	—	—	60	2	62
9. Ludhiana	1	—	1	94	3	97
10. Patiala	—	—	—	116	2	118
11. Ropar	1	—	1	58	—	58
12. Sangrur	—	—	—	94	—	94
<b>Punjab</b>	<b>2</b>	<b>—</b>	<b>2</b>	<b>1,204</b>	<b>35</b>	<b>1,239</b>

## No. 4.3

## Schools in Rural Areas As on 30-9-87

Non-Govt. (Recog.)			Grand Total		
Boys	Girls	Total	Boys	Girls	Total
8	9	10	11	12	13
—	—	—	125	5	130
1	—	1	88	2	90
—	—	—	97	4	101
2	1	3	114	6	120
4	—	4	111	6	117
4	1	5	122	3	125
1	1	2	137	5	142
2	—	2	62	2	64
—	—	—	95	3	98
—	—	—	116	2	118
—	—	—	59	—	59
—	—	—	94	—	94
14	3	17	1,220	38	1,258

**Table**  
Number of High Schools in

District	Central Govt.			State Govt.		
	Boys	Girls	Total	Boys	Girls	Total
1	2	3	4	5	6	7
1. Amritsar	—	—	—	169	23	192
2. Bhatinda	1	—	1	130	8	138
3. Faridkot	—	—	—	185	14	199
4. Ferozepur	—	—	—	113	4	117
5. Gurdaspur	2	—	2	135	7	142
6. Hoshiarpur	—	—	—	163	4	167
7. Jalandhar	—	—	—	169	25	194
8. Kapurthala	—	—	—	65	5	70
9. Ludhiana	2	—	2	186	19	205
10. Patiala	—	—	—	149	1	150
11. Ropar	—	—	—	90	6	96
12. Sangrur	1	—	1	172	1	173
<b>Punjab</b>	<b>6</b>	<b>—</b>	<b>6</b>	<b>1,726</b>	<b>117</b>	<b>1,843</b>

## No. 4.4

## Rural Areas as on 30-9-87

Non Govt. (Recog.)			Grand Total		
Boys	Girls	Total	Boys	Girls	Total
8	9	10	11	12	13
11	1	12	180	24	204
2	—	2	133	8	141
3	1	4	188	15	203
—	—	—	113	4	117
8	—	8	145	6	151
21	1	22	184	5	189
14	—	14	183	25	208
4	2	6	69	7	76
13	4	17	201	23	224
—	—	—	149	1	150
8	1	9	98	7	105
2	—	2	175	1	176
86	10	96	1,818	126	1,944

Table

## Number of Senior Secondary (10+2) Schools

District	Central Govt.			State Govt.		
	Boys	Girls	Total	Boys	Girls	Total
1	2	3	4	5	6	7
1. Amritsar	—	—	—	11	1	12
2. Bhatinda	—	—	—	5	—	5
3. Faridkot	—	—	—	8	1	9
4. Ferozepur	1	—	1	5	—	5
5. Gurdaspur	—	—	—	4	—	4
6. Hoshiarpur	—	—	—	12	2	14
7. Jalandhar	—	—	—	8	—	8
8. Kapurthala	—	—	—	4	—	4
9. Ludhiana	1	—	1	5	1	6
10. Patiala	—	—	—	6	—	6
11. Ropar	—	—	—	3	—	3
12. Sangrur	—	—	—	6	—	6
Punjab	2	—	2	77	5	82

## No. 4.5

in Rural Areas on 30-9-87

Non-Govt. (Recogn.)			Grand Total		
Boys	Girls	Total	Boys	Girls	Total
8	9	10	11	12	13
3	—	3	14	1	15
1	—	1	6	—	6
2	1	3	10	2	12
1	—	1	7	—	7
—	—	—	4	—	4
5	—	5	17	2	19
4	—	4	12	—	12
—	—	—	4	—	4
1	—	1	7	1	8
—	—	—	6	—	6
5	—	5	8	—	8
—	—	—	6	—	6
22	1	23	101	6	107

Table

Number of Institutions imparting Pre-Primary, Primary, Middle, High and Senior Govt. and Non-

District	Pre-Primary Schools			Primary Schools		
	Rural	Urban	Total	Rural	Urban	Total
1	2	3	4	5	6	7
1. Amritsar	—	—	—	1,244	196	1,440
2. Bhatinda	—	—	—	576	58	634
3. Faridkot	—	1	1	661	74	735
4. Ferozepur	—	—	—	1,066	71	1,137
5. Gurdaspur	—	—	—	1,264	64	1,328
6. Hoshiarpur	—	—	—	1,380	46	1,426
7. Jalandhar	—	—	—	1,040	136	1,176
8. Kapurthala	—	—	—	475	11	486
9. Ludhiana	—	—	—	875	140	1,015
10. Patiala	—	—	—	1,176	95	1,271
11. Ropar	—	—	—	812	33	845
12. Sangrur	1	—	1	743	86	829
Punjab	1	1	2	11,312	1,010	12,322

## No. 5

Secondary (10+2) Education in Rural and Urban areas as on 30-9-1987 in Govt. (Recog.) Schools

Middle Schools			High Schools			Sr. Sec. 10+2 Schools		
Rural	Urban	Total	Rural	Urban	Total	Rural	Urban	Total
8	9	10	11	12	13	14	15	16
130	30	160	204	60	264	15	32	47
90	8	98	141	35	176	6	9	15
101	6	107	203	30	233	12	16	28
120	19	139	117	30	147	7	14	21
117	17	134	151	35	186	4	23	27
125	4	129	189	19	208	19	13	32
142	14	156	208	75	283	12	30	42
64	1	65	76	12	88	4	7	11
98	20	118	224	65	289	8	23	31
118	7	125	150	40	190	6	31	37
59	8	67	105	21	126	8	11	19
94	3	97	176	40	216	6	8	14
1,258	137	1,395	1,944	462	2,406	107	217	324



Table

## Number of Sections Imparting Pre-

District	Central Govt.			State Govt.		
	Boys	Girls	Total	Boys	Girls	Total
1	2	3	4	5	6	7
1. Amritsar	1	—	1	—	—	—
2. Bhindra	—	—	—	—	—	—
3. Faridkot	—	—	—	1	—	1
4. Ferozepur	—	—	—	1	—	1
5. Gurdaspur	—	—	—	—	—	—
6. Hoshiarpur	—	—	—	—	—	—
7. Jalandhar	1	—	1	—	—	—
8. Kapurthala	—	—	—	—	—	—
9. Ludhiana	—	—	—	—	—	—
10. Patiala	—	—	—	3	—	3
11. Rupnagar	1	—	1	1	—	1
12. Sangrur	—	—	—	1	—	1
Punjab	3	—	3	7	—	7

## No. 6.1

Primary Education, as on 30-9-87

Non-Govt. (Recog.)			Grand Total		
Boys	Girls	Total	Boys	Girls	Total
8	9	10	11	12	13
8	3	11	9	3	12
—	—	—	—	—	—
—	—	—	1	—	1
13	—	13	14	—	14
—	—	—	—	—	—
2	—	2	2	—	2
8	1	9	9	1	10
—	—	—	—	—	—
11	—	11	11	—	11
5	—	5	8	—	8
10	—	10	12	—	12
1	—	1	2	—	2
58	4	62	68	4	72

**Table**  
**Number of Sections Imparting Primary**

District	Central Govt.			State Govt.		
	Boys	Girls	Total	Boys	Girls	Total
1	2	3	4	5	6	7
1. Amritsar	5	—	5	1,310	41	1,351
2. Bhatinda	6	—	6	624	—	624
3. Faridkot	1	—	1	725	3	728
4. Ferozepur	1	—	1	1,103	9	1,112
5. Gurdaspur	6	—	6	1,291	24	1,315
6. Hoshiarpur	—	—	—	1,422	4	1,426
7. Jalandhar	6	—	6	1,114	43	1,157
8. Kapurthala	—	—	—	483	3	486
9. Ludhiana	3	—	3	990	19	1,009
10. Patiala	2	—	2	1,271	—	1,271
11. Ropar	4	—	4	838	4	842
12. Sangur	2	—	2	826	1	827
<b>Punjab</b>	<b>36</b>	<b>—</b>	<b>36</b>	<b>11,997</b>	<b>151</b>	<b>12,148</b>

## No. 6.2

Education as on 30-9-87

Non-Govt. (Recog.)			Grand Total		
Boys	Girls	Total	Boys	Girls	Total
8	9	10	11	12	13
120	23	143	1,435	64	1,499
33	5	38	663	5	668
32	14	44	758	15	773
59	11	70	1,163	20	1,183
47	3	50	1,344	27	1,371
23	4	27	1,445	8	1,453
36	11	47	1,156	54	1,210
15	1	16	498	4	502
57	4	61	1,050	23	1,073
34	8	42	1,307	8	1,315
35	—	35	877	4	881
22	5	27	850	6	856
513	87	600	12,546	238	12,784

Table No. 6.3

Number of Sections Imparting Middle Education as on 30-9-87.

District	Central Govt.			State Govt.			Non-Govt. (Recog.)			Grand Total		
	Boys	Girls	Total	Boys	Girls	Total	Boys	Girls	Total	Boys	Girls	Total
1	2	3	4	5	6	7	8	9	10	11	12	13
1. Amritsar	2	—	2	337	46	383	64	22	86	403	68	471
2. Bhatinda	4	—	4	235	20	255	25	5	30	264	25	289
3. Faridkot	1	—	1	301	27	328	28	11	39	330	38	368
4. Ferozepur	1	—	1	240	7	257	41	8	49	282	25	307
5. Gurdaspur	5	—	5	261	20	281	47	14	61	313	14	347
6. Hoshiarpur	—	—	—	299	12	311	47	11	58	346	23	369
7. Jalandhar	6	—	6	342	47	389	58	27	85	406	74	480
8. Kapurthala	1	—	1	132	10	142	14	5	19	147	15	162
9. Ludhiana	4	—	4	319	36	355	58	21	79	381	57	438
10. Patiala	1	—	1	291	18	309	33	9	42	325	27	352
11. Ropar	3	—	3	155	10	165	38	6	44	196	16	212
12. Sangrur	1	—	1	285	12	297	23	6	29	309	18	327
Punjab	29	—	29	3,197	275	3,472	476	145	621	3,702	420	4,122

Table No. 6.4

Number of Sections Imparting High/Senior Secondary (10+2) Education as on 30-9-87.

Districts	Central Govt.			State Govt.			Non-Govt. (Recog.)			Grand Total		
	Boys	Girls	Total	Boys	Girls	Total	Boys	Girls	Total	Boys	Girls	Total
1. Amritsar	2	—	2	201	40	241	48	20	68	251	60	311
2. Bhatinda	3	—	3	146	18	164	19	5	24	168	23	191
3. Faridkot	1	—	1	203	23	226	24	10	34	228	33	261
4. Ferozepur	1	—	1	127	12	139	20	8	28	148	20	168
5. Gurdaspur	5	—	5	150	14	164	33	11	44	188	25	213
6. Hoshiarpur	—	—	—	180	10	190	40	10	50	220	20	240
7. Jalandhar	5	—	5	196	43	239	55	25	80	256	68	324
8. Kapurthala	1	—	1	72	8	80	12	6	18	85	14	99
9. Ludhiana	3	—	3	213	33	246	51	20	71	267	53	320
10. Patiala	1	—	1	172	15	187	27	11	38	200	26	226
11. Ropar	2	—	2	96	10	106	30	7	37	128	17	145
12. Sangrur	1	—	1	189	12	201	22	6	28	212	18	230
Punjab	25	—	25	1,945	238	2,183	387	139	520	2,351	377	2,728

Total enrolment in pre-primary schools as on 30-9-87

Table No. 1.1

Table No. 7.1

Total Enrolment in pre-primary schools as on 30-9-87.

District	Central Govt.			State Govt.			Non-Govt. (Recog.)			Grand Total		
	Boys	Girls	Total	Boys	Girls	Total	Boys	Girls	Total	Boys	Girls	Total
1	2	3	4	5	6	7	8	9	10	11	12	13
1. Amritsar	—	—	—	—	—	—	—	—	—	—	—	—
2. Bhatinda	—	—	—	—	—	—	—	—	—	—	—	—
3. Faridkot	—	—	—	58	38	96	—	—	—	58	38	96
4. Ferozepur	—	—	—	—	—	—	—	—	—	—	—	—
5. Gurdaspur	—	—	—	—	—	—	—	—	—	—	—	—
6. Hoshiarpur	—	—	—	—	—	—	—	—	—	—	—	—
7. Jalandhar	—	—	—	—	—	—	—	—	—	—	—	—
8. Kapurthala	—	—	—	—	—	—	—	—	—	—	—	—
9. Ludhiana	—	—	—	—	—	—	—	—	—	—	—	—
10. Patiala	—	—	—	—	—	—	—	—	—	—	—	—
11. Ropar	—	—	—	—	—	—	—	—	—	—	—	—
12. Sangrur	—	—	—	20	5	25	—	—	—	20	5	25
Punjab	—	—	—	78	43	121	—	—	—	78	43	121

Table No. 7.2

Total Enrolment in fulfilled Primary/Junior Basic Schools as on 30th September, 1987

District	Central Govt.			State Govt.			Non-Govt. (Recog.)			Grand Total		
	Boys	Girls	Total	Boys	Girls	Total	Boys	Girls	Total	Boys	Girls	Total
1	2	3	4	5	6	7	8	9	10	11	12	13
1. Amritsar	51	56	107	1,29,546	1,09,420	2,38,966	17,141	13,931	31,072	1,46,738	1,23,407	2,70,145
2. Bhatinda	33	22	55	72,508	56,492	1,29,000	637	470	1,107	73,178	56,984	1,30,162
3. Faridkot	—	—	—	97,265	77,526	1,74,791	1,261	1,049	2,310	98,526	78,575	1,77,101
4. Ferozepur	—	—	—	77,385	59,860	1,37,245	9,326	7,943	17,269	86,711	67,803	1,54,514
5. Gurdaspur	39	38	77	82,663	74,991	1,57,654	7,681	6,224	13,905	90,383	81,253	1,71,636
6. Hoshiarpur	—	—	—	78,061	73,317	1,51,378	124	152	276	78,185	73,469	1,51,654
7. Jalandhar	—	—	—	89,705	80,310	1,70,015	3,196	3,761	6,957	92,901	84,071	1,76,972
8. Kapurthala	—	—	—	28,467	25,483	53,950	—	—	—	28,467	25,483	53,950
9. Ludhiana	—	—	—	90,470	79,277	1,69,747	1,544	1,241	2,785	92,014	80,518	1,72,532
10. Patiala	17	14	31	93,737	78,857	1,72,594	133	64	197	93,887	78,935	1,72,822
11. Ropar	462	382	844	42,350	37,952	80,302	302	264	566	43,114	38,598	81,712
12. Sangrur	36	23	59	77,776	61,529	1,39,305	109	76	185	77,921	61,628	1,39,549
Punjab	638	535	1,173	9,59,933	8,15,014	17,74,947	41,454	35,175	76,629	10,02,025	8,50,724	18,52,749



**Table**  
Total Enrolment in full fledged Middle/

District	Central Govt.			State Govt.		
	Boys	Girls	Total	Boys	Girls	Total
1	2	3	4	5	6	7
1. Amritsar	—	—	—	7,469	5,662	1,331
2. Bhatinda	216	161	377	4,907	2,922	7,829
3. Faridkot	—	—	—	5,663	3,456	9,119
4. Ferozepur	—	—	—	6,878	3,370	10,248
5. Gurdaspur	—	—	—	9,051	6,889	15,940
6. Hoshiarpur	—	—	—	5,994	4,986	10,980
7. Jalandhar	260	170	430	9,817	7,685	17,502
8. Kapurthala	—	—	—	2,894	2,524	5,418
9. Ludhiana	48	19	67	6,910	5,433	12,343
10. Patiala	—	—	—	7,697	4,598	12,295
11. Ropar	156	130	286	3,849	2,416	6,265
12. Sangrur	—	—	—	4,939	2,474	7,413
<b>Punjab</b>	<b>680</b>	<b>480</b>	<b>1,160</b>	<b>76,068</b>	<b>52,415</b>	<b>1,28,483</b>

## No. 7.3

Senior Basic Schools as on 30th September, 1987

Non-Govt. (Recog.)			Grand Total		
Boys	Girls	Total	Boys	Girls	Total
8	9	10	11	12	13
4,506	3,813	8,319	11,975	9,475	21,450
1,218	850	2,068	6,341	3,933	10,274
841	632	1,473	6,504	4,088	10,592
5,246	4,570	9,816	12,124	7,940	20,064
3,520	3,000	6,520	12,571	9,889	22,460
700	1,198	1,898	6,694	6,184	12,878
937	988	1,925	11,014	8,843	19,857
221	224	445	3,115	2,748	5,863
2,065	1,805	3,870	9,028	7,257	16,280
654	690	1,344	8,351	5,288	13,639
1,520	1,250	2,770	5,528	3,796	9,321
142	100	242	5,081	2,574	7,655
21,570	19,120	40,690	98,318	72,015	1,70,333

**Table**  
**Total Enrolment in fulfilled High**

District	Central Govt.			State Govt.	
	Boys	Girls	Total	Boys	Girls
1	2	3	4	5	6
1. Amritsar	576	395	971	37,604	24,349
2. Bhatinda	369	242	611	27,007	14,353
3. Faridkot	224	139	363	30,118	19,324
4. Ferozepur	—	—	—	22,816	12,326
5. Gurdaspur	1,532	1,170	2,702	37,860	25,964
6. Hoshiarpur	—	—	—	34,737	27,095
7. Jalandhar	1,176	870	2,046	35,850	34,921
8. Kapurthala	—	—	—	12,582	9,865
9. Ludhiana	610	391	1,001	38,003	35,809
10. Patiala	—	—	—	36,173	23,413
11. Ropar	—	—	—	21,694	15,454
12. Sangrur	332	263	595	32,277	19,236
<b>Punjab</b>	<b>4,819</b>	<b>3,470</b>	<b>8,289</b>	<b>3,66,721</b>	<b>2,62,109</b>

## No. 7.4

Schools as on 30th September, 1987

Total	Non-Govt. (Recog.)			Grand Total		
	Boys	Girls	Total	Boys	Girls	Total
7	8	9	10	11	12	13
61,953	13,460	18,321	31,781	51,640	43,065	94,705
41,360	9,825	8,700	18,525	37,201	23,295	60,496
49,442	6,015	7,610	13,625	36,357	27,073	63,430
35,142	10,606	7,860	18,466	33,422	20,186	53,608
63,824	9,529	8,349	17,878	48,921	35,483	84,404
61,832	8,299	7,723	16,022	43,036	34,818	77,854
70,771	17,925	17,520	35,445	54,951	53,311	1,08,262
22,447	4,673	4,523	9,196	17,255	14,388	31,643
73,812	21,944	20,299	42,243	60,557	56,499	1,17,056
59,586	7,472	6,920	14,392	43,645	30,333	73,978
37,148	6,587	6,925	13,512	28,281	22,379	50,660
51,513	12,262	9,046	21,308	44,871	28,545	73,416
6,28,830	1,28,597	1,23,796	2,52,393	5,00,137	3,89,375	8,89,512

TABLE  
Total Enrolment in fulfilled Senior

District	Central Govt.			State Govt.	
	Boys	Girls	Total	Boys	Girls
1	2	3	4	5	6
1. Amritsar	841	631	1,472	10,493	9,814
2. Bhatinda	1,270	964	2,234	1,203	3,366
3. Faridkot	—	—	—	4,097	5,452
4. Ferozepur	812	521	1,333	4,425	2,550
5. Gurdaspur	910	680	1,590	8,233	4,781
6. Hoshiarpur	—	—	—	10,551	6,543
7. Jalandhar	1,920	1,235	3,155	6,515	3,768
8. Kapurthala	615	9	624	2,481	2,615
9. Ludhiana	730	518	1,248	7,046	4,044
10. Patiala	740	500	1,240	10,531	10,290
11. Ropar	1,394	1,184	2,578	2,269	1,866
12. Sangrur	—	—	—	3,836	4,189
<b>Punjab</b>	<b>9,232</b>	<b>6,242</b>	<b>15,474</b>	<b>71,680</b>	<b>59,278</b>

No. 7-5

Secondary (10+2) Schools as on 30-9-87

Govt.	Non-Govt. (Recog.)			Grand Total		
Total	Boys	Girls	Total	Boys	Girls	Total
7-	8	9	10	11	12	13
20,307	19,613	6,108	25,721	30,947	16,553	47,500
4,569	5,815	1,612	7,427	8,288	5,942	14,230
9,549	10,201	4,560	14,761	14,298	10,012	24,310
6,975	2,743	2,811	5,554	7,980	5,882	13,862
13,014	6,763	3,572	10,335	15,906	9,033	24,939
17,094	8,593	3,612	12,205	19,144	10,155	29,299
10,283	18,187	5,986	24,173	26,622	10,989	37,611
15,096	1,765	1,031	2,796	4,861	3,655	8,516
11,090	15,382	9,912	25,294	23,158	14,474	37,632
20,821	12,146	5,571	17,717	23,417	16,361	39,778
4,135	8,076	2,364	10,440	11,739	5,414	17,153
8,025	1,737	717	2,454	5,573	4,906	10,479
1,30,958	1,11,021	47,856	1,58,877	1,91,933	1,13,376	3,05,309

TABLE

Total Enrolment in Govt. and Non Govt.

District	In Primary Schools			In Middle	
	Boys	Girls	Total	Boys	Girls
1	2	3	4	5	6
1. Amritsar	1,19,524	92,728	2,12,252	8,465	5,997
2. Bhatinda	61,932	47,940	1,09,872	5,011	2,998
3. Faridkot	86,543	66,180	1,52,723	4,253	2,812
4. Ferozepur	70,282	54,550	1,24,832	7,040	3,377
5. Gurdaspur	76,648	68,842	1,45,490	8,665	6,519
6. Hoshiarpur	77,086	72,247	1,49,333	6,100	5,578
7. Jalandhar	77,599	67,376	1,44,975	9,625	7,854
8. Kapurthala	26,196	24,020	50,216	3,061	2,689
9. Ludhiana	73,911	64,370	1,38,281	6,096	4,664
10. Patiala	82,772	67,534	1,50,306	7,351	4,251
11. Ropar	38,950	34,880	73,830	3,792	2,404
12. Sangrur	68,607	53,063	1,21,670	4,811	2,430
Punjab	8,60,050	7,13,730	15,73,780	74,270	51,573

No. 8.1

(Recog.) Scoools in Rural Areas as on 30-9-87

Schools	In High Schools			In Sr. Sec. (10+2) Schools		
	Total	Boys	Girls	Total	Boys	Girls
7	8	9	10	11	12	13
14,462	33,909	19,030	52,939	5,914	1,411	7,325
8,009	22,830	11,399	34,229	1,505	796	2,301
7,065	25,635	16,538	42,173	5,255	3,617	8,872
10,417	18,400	8,376	26,776	1,407	333	1,740
15,184	38,575	22,249	60,824	596	303	899
11,678	38,030	27,323	65,353	10,458	6,534	16,992
17,479	33,362	29,611	62,973	6,046	1,477	7,523
5,750	12,288	9,732	22,020	1,424	366	1,790
10,760	36,891	30,607	67,498	2,775	1,387	4,162
11,602	31,650	16,713	48,363	2,958	1,729	4,687
6,196	23,793	15,652	39,445	3,757	855	4,612
7,241	28,005	15,166	43,171	2,020	971	2,991
1,25,843	3,43,368	2,22,396	5,65,764	44,115	19,779	63,894

LIBRARY &amp; DOCUMENTATION CENTRE

National Institute of Educational  
Planning and Administration.

17-B, Sri Aurobindo Marg,

New Delhi-110016

DCC. No. ....

Date .....

D-8135

21/7/94



TABLE No. 9

Percentage of Enrolment in Rural Areas to the total Enrolment in Schools  
as on 30-9-87

District	Primary Schools	Middle Schools	High Schools	St. Sec. (10+2) Schools
1	2	3	4	5
1. Amritsar	78.56	67.42	55.90	15.42
2. Bhatinda	84.41	77.95	56.58	16.17
3. Faridkot	86.23	66.70	66.49	36.49
4. Ferozepur	80.79	51.92	49.95	12.55
5. Gurdaspur	84.77	67.60	72.06	3.60
6. Hoshiarpur	98.47	90.68	83.94	57.99
7. Jalandhar	81.92	88.02	58.17	20.00
8. Kapurthala	93.08	98.07	69.59	21.02
9. Ludhiana	80.15	66.09	57.66	11.06
10. Patiala	86.97	85.06	65.37	11.78
11, Ropar	90.35	66.47	77.86	26.89
12. Sangrur	87.19	94.59	58.80	28.54
Punjab	84.73	73.88	63.60	20.93

TABLE NO. 10

---

TABLE

Total Enrolment by classes (Pre-Primary to 10+2 Pattern) in Govt. and

District	Pre-Primary			1st Class		
	Boys	Girls	Total	Boys	Girls	Total
1	2	3	4	5	6	7
1. Amritsar ..	1,012	1,129	2,141	33,741	29,659	63,400
2. Bhatinda ..	—	—	—	27,467	22,283	49,750
3. Faridkot ..	58	38	96	23,634	17,381	41,015
4. Ferozepur ..	1,357	980	2,337	21,079	17,831	38,910
5. Gurdaspur ..	—	—	—	23,033	20,425	43,458
6. Hoshiarpur ..	105	75	180	16,883	17,129	34,012
7. Jalandhar ..	961	402	1,363	20,640	19,171	39,811
8. Kapurthala ..	—	—	—	6,084	5,572	11,656
9. Ludhiana ..	1,622	1,757	3,379	24,125	21,559	45,684
10. Patiala ..	799	612	1,411	28,857	25,277	54,134
11. Ropar ..	864	715	1,579	9,788	8,809	18,597
12. Sangrur ..	177	216	393	26,276	20,791	47,067
Punjab ..	6,955	5,924	12,879	2,61,607	2,25,887	4,87,494
In Govt. Institutions	569	387	956	2,29,541	1,97,381	4,26,922

No. 10

Non-Govt. (Recognised) Schools as on 30th September, 1987.

IIrd Class			IIIrd Class		
Boys	Girls	Total	Boys	Girls	Total
8	9	10	11	12	13
35,241	29,991	65,232	35,217	30,065	65,282
18,291	13,562	31,853	13,945	10,645	24,590
30,892	25,122	56,014	22,558	17,630	40,188
24,490	19,474	43,964	20,224	15,737	35,961
18,907	17,718	36,625	20,178	18,052	38,230
17,391	16,588	33,979	17,143	15,938	33,081
21,988	20,827	42,815	22,083	19,606	41,689
6,862	6,131	12,993	6,628	5,892	12,520
22,539	19,783	42,322	21,948	19,239	41,187
20,925	18,019	38,944	19,034	16,078	35,112
10,717	9,560	20,277	10,103	9,301	19,404
18,685	14,620	33,305	14,842	11,899	26,741
2,46,928	2,11,395	4,58,323	2,23,903	1,90,082	4,13,985
2,20,529	1,89,598	4,10,127	2,00,139	1,69,797	3,69,936

TABLE

Total Enrolment by classes (Pre-Primary to 10+2 Pattern) in

District	IVth Class			Vth Class		
	Boys	Girls	Total	Boys	Girls	Total
1	14	15	16	17	18	19
1. Amritsar ..	30,623	25,869	56,492	22,436	18,540	40,976
2. Bhatinda ..	11,867	9,118	20,985	10,876	8,029	18,905
3. Ferozkot ..	18,017	13,677	31,694	11,793	11,231	23,024
4. Ferozepur ..	17,256	12,710	29,966	12,742	9,531	22,273
5. Gurdaspur ..	19,182	16,786	35,968	16,583	14,298	30,881
6. Hoshiarpur ..	16,060	13,839	29,899	14,034	12,870	26,904
7. Jalandhar ..	21,204	18,899	40,103	19,448	15,981	35,429
8. Kapurthala ..	6,111	5,477	11,588	5,200	4,637	9,837
9. Ludhiana ..	19,831	17,020	36,851	17,016	14,859	31,875
10. Patiala ..	17,793	14,304	32,097	15,750	12,424	28,174
11. Roopar ..	9,402	8,122	17,524	8,160	6,909	15,069
12. Sangrur ..	13,573	10,228	23,801	11,439	9,005	20,444
<b>Punjab ..</b>	<b>2,00,919</b>	<b>1,66,049</b>	<b>3,66,968</b>	<b>1,65,477</b>	<b>1,38,314</b>	<b>3,03,791</b>
In Govt. Institutions	1,77,168	1,46,539	3,23,707	1,42,574	1,19,311	2,61,885

## No. 10—(Contd.)

Schools as on 30th September, 1987.

VIth Class			VIIIth Class		
Boys	Girls	Total	Boys	Girls	Total
20	21	22	23	24	25
17,754	15,441	33,195	16,285	12,124	28,409
11,292	7,181	18,473	9,212	5,807	15,019
13,197	8,489	21,686	11,839	8,271	20,110
11,466	7,161	18,627	9,233	5,843	15,076
16,473	12,372	28,845	14,794	10,915	25,709
15,770	12,466	28,236	14,532	11,288	25,820
19,918	16,197	36,115	17,561	14,422	31,983
5,450	4,487	9,937	4,794	4,143	8,937
18,830	14,747	33,577	16,509	14,064	30,573
16,306	10,988	27,294	13,734	9,117	22,851
9,522	6,998	16,520	8,542	5,914	14,456
13,332	8,110	21,442	10,728	7,149	17,877
1,69,310	1,24,637	2,93,947	1,47,763	1,09,057	2,56,820
1,36,561	1,00,699	2,37,260	1,16,330	86,142	2,02,472

TABLE NO.

Total Enrolment by classes (Pre-Primary to

District	VIIIth Class		
	Boys	Girls	Total
1	26	27	28
1. Amritsar ..	15,513	10,625	26,138
2. Bhatinda ..	8,618	4,994	13,612
3. Faridkot ..	9,696	6,948	16,644
4. Ferozepur ..	8,093	4,615	12,708
5. Gurdaspur ..	13,934	9,756	23,690
6. Hoshiarpur ..	12,311	9,482	21,793
7. Jalandhar ..	14,701	11,671	26,372
8. Kapurthala ..	4,752	3,787	8,539
9. Ludhiana ..	13,873	12,506	26,379
10. Patiala ..	12,728	8,058	20,786
11. Ropar ..	7,868	5,234	13,102
12. Sangrur ..	9,218	5,782	15,000
Punjab ..	1,31,305	93,458	2,24,763
In Govt. Institutions ..	99,710	72,303	1,72,013

10— (Contd.)

10 +2 Pattern) In Schools as on 30th September, 1987.

IXth Class			Xth Class		
Boys	Girls	Total	Boys	Girls	Total
29	30	31	32	33	34
12,404	8,852	21,256	11,785	7,890	19,675
6,711	3,965	10,676	5,676	3,732	9,408
6,712	4,527	11,239	4,372	3,844	8,216
6,454	3,730	10,184	5,820	3,100	8,920
9,832	6,203	16,035	8,988	6,523	15,511
8,671	6,091	14,762	9,227	6,355	15,582
12,091	9,749	21,840	9,489	7,671	17,160
3,702	2,776	6,478	3,054	2,495	5,549
12,577	10,735	23,312	10,608	9,658	20,266
10,698	7,627	18,325	8,680	5,383	14,063
6,396	4,059	10,455	5,376	3,617	8,993
7,804	4,669	12,473	6,148	4,209	10,357
1,04,052	72,983	1,77,035	89,223	64,477	1,53,700
76,130	54,616	1,30,746	63,855	47,242	1,11,097



TABLE NO.

(Total Enrolment by Classes as (Pre-Primary to 10+2)

District	First Year		
	Boys	Girls	Total
1. Amritsar ..	6,228	1,567	7,795
2. Bhatinda ..	722	555	1,277
3. Faridkot ..	1,665	1,377	3,042
4. Ferozepur ..	1,414	825	2,239
5. Gurdaspur ..	3,056	1,380	4,436
6. Hoshiarpur ..	3,245	1,626	4,871
7. Jalandhar ..	3,408	1,439	4,847
8. Kapurthala ..	800	580	1,380
9. Ludhiana ..	3,796	1,980	5,776
10. Patiala ..	2,713	2,014	4,727
11. Ropar ..	1,265	608	1,873
12. Sangrur ..	833	684	1,517
<b>Punjab ..</b>	<b>29,145</b>	<b>14,635</b>	<b>43,780</b>
<b>In Govt. Institutions ..</b>	<b>17,053</b>	<b>9,937</b>	<b>26,990</b>

10 (Contd.)

Pattern) in Schools as on 30th September, 1987

Second Year			Grand Total		
Boys	Girls	Total	Boys	Girls	Total
3,061	748	3,809	2,41,300	1,92,500	4,33,800
331	283	614	1,25,008	90,154	2,15,162
1,310	1,251	2,561	1,55,743	1,19,786	2,75,529
609	274	883	1,40,237	1,01,811	2,42,048
2,821	1,230	4,051	1,67,781	1,35,658	3,03,439
1,687	879	2,566	1,47,059	1,24,626	2,71,685
1,996	1,179	3,175	1,85,488	1,57,214	3,42,702
261	297	558	53,698	46,274	99,972
1,478	841	2,319	1,84,752	1,58,748	3,43,500
1,283	1,016	2,299	1,69,300	1,30,917	3,00,217
656	341	997	88,659	70,187	1,58,846
411	296	707	1,33,466	97,658	2,31,124
15,904	8,635	24,539	17,92,491	14,25,533	32,18,024
9,690	5,634	15,324	14,89,849	11,99,586	26,89,435

TABLE NO. 11.1

Total Enrolment by stages in Government and Non-Govt. (Recognised) Schools as on 30th September, 1987.

District	Pre Primary Stage		
	Boys	Girls	Total
1. Amritsar	1,012	1,129	2,141
2. Bhatinda	—	—	—
3. Faridkot	58	38	96
4. Ferozepur	1,357	980	2,337
5. Gurdaspur	—	—	—
6. Hoshiarpur	105	75	180
7. Jalandhar	961	402	1,363
8. Kapurthala	—	—	—
9. Ludhiana	1,622	1,751	3,379
10. Patiala	799	612	1,411
11. Ropar	864	715	1,579
12. Sangrur	177	216	393
Punjab	6,955	5,924	12,879
In Government Institutions	569	387	956

# ENROLMENT

AGE GROUP 6-11

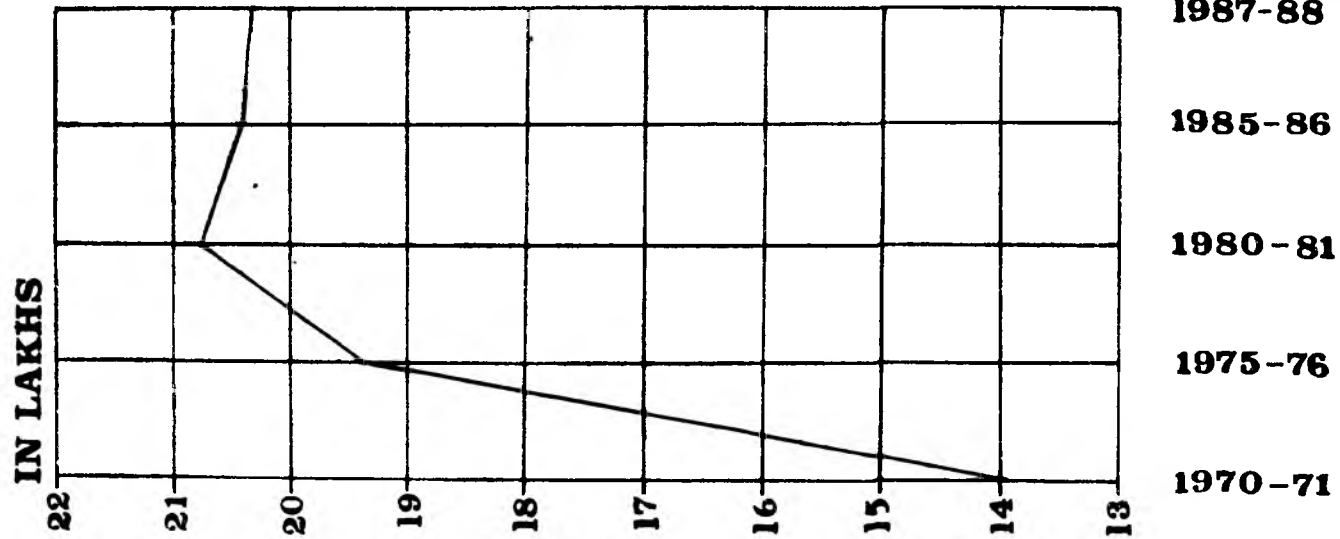


TABLE NO. 11 · 2

Total Enrolment by stages in Government and Non Government (Recognised) Schools as on 30th September, 1987

District	Primary stage Class (I to V)			Percentage of Girls to total Enrolment
	Boys	Girls	Total	
1. Amritsar	1,57,258	1,34,124	2,91,382	46·03
2. Bhatinda	82,446	63,637	1,46,083	43·56
3. Faridkot	1,06,894	85,041	1,91,935	44·31
3. Ferozepur	95,791	75,283	1,71,074	44·01
5. Gurdaspur	97,883	87,279	1,85,162	47·14
6. Hoshiarpur	81,511	76,364	1,57,875	48·37
7. Jalandhar	1,05,363	94,484	1,99,847	47·28
8. Kapurthala	30,885	27,709	58,594	47·29
9. Ludhiana	1,05,459	92,460	1,97,919	46·72
10. Patiala	1,02,359	86,102	1,88,461	45·69
11. Ropar	48,170	42,701	90,871	46·99
12. Sangrur	84,815	66,543	1,51,358	43·96
Punjab	10,98,834	9,31,727	20,30,561	45·88
In Government Institutions	9,69,951	8,22,626	17,92,577	45·89

# ***ENROLMENT.***

**AGE GROUP 11-14**

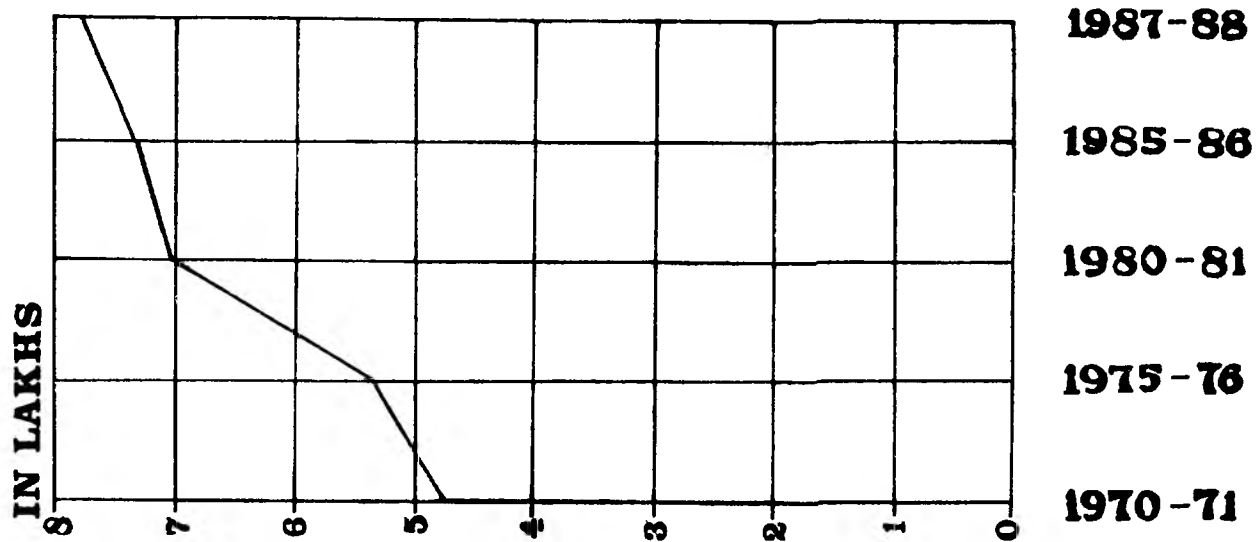


TABLE No. 11·3

Total Enrolment by stages in Schools as on 30th September, 1987.

	Middle Stage Class (VI - VIII)			Percentage of Girls to Total Enrolment
	Boys	Girls	Total	
1· Amritsar	49,552	38,190	87,742	43·53
2· Bhatinda	29,122	17,982	47,104	38·18
3· Faridkot	34,732	23,708	58,440	40·57
4· Ferozepur	28,792	17,619	46,411	37·46
5· Gurdaspur	45,201	33,043	78,244	42·23
6· Hoshiapur	42,613	33,236	75,849	43·82
7· Jalandhar	52,180	42,290	94,470	44·77
8· Kapurthala	14,996	12,417	27,413	45·30
9· Ludhiana	49,212	41,317	90,529	45·64
10· Patiala	42,768	28,163	70,931	39·70
11· Ropar	25,932	18,146	44,078	41·17
12· Sangrur	33,278	21,041	54,319	38·74
Punjab	4,48,378	3,27,152	7,75,530	42·18
In Govt. Institution	3,52,601	2,59,144	6,11,745	42·36

# **ENROLMENT**

## **AGE GROUP 14-17**

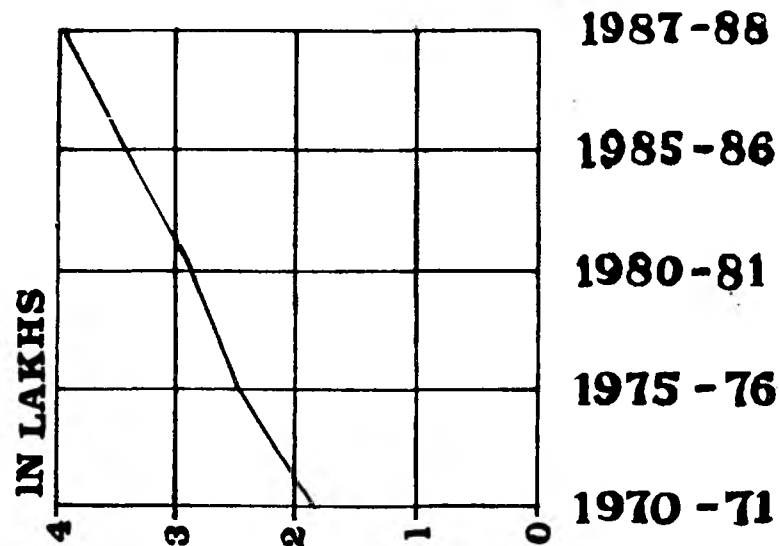




Table No. 11-4

Total Enrolment by stages in Schools as on 30th September, 1987

District	High/ Sr. Secondary Stage (Class IX, X, 10+1 and 10+2)			Percentage of Girls to Total Enrolment
	Boys	Girls	Total	
1. Amritsar	33,478	19,057	52,535	36.27
2. Bhatinda	13,440	8,535	21,975	38.84
3. Faridkot	14,059	10,999	25,058	43.89
4. Ferozepur	14,297	7,929	22,226	35.67
5. Gurdaspur	24,697	15,336	40,033	38.31
6. Hoshiarpur	22,830	14,951	37,781	39.57
7. Jalandhar	26,984	20,038	47,022	42.61
8. Kapurthala	7,817	6,148	13,965	44.02
9. Ludhiana	28,459	23,214	51,673	44.92
10. Patiala	23,374	16,040	39,414	40.70
11. Ropar	13,693	8,625	22,318	38.65
12. Sangrur	15,196	9,858	25,054	39.35
13. Punjab	2,38,324	1,60,730	3,99,054	40.28
In Govt. Institutions	1,66,728	1,17,429	2,84,157	41.33

TABLE NO. 12

Classwise Enrolment in Govt. and Non Govt. (Recognised) Schools,  
Percentage to total at the Stage and Girls for every hundred boys,  
As on 30th September, 1987

	Enrolment			Percentage to total at the stage	Number of Girls for every 100 boys
	Boys	Girls	Total		
Pre-Primary	.. 6,955	5,924	12,879	100.00	85
Ist	.. 2,61,607	2,25,887	4,87,494	24.01	86
IIInd	.. 2,46,928	2,11,395	4,58,323	22.57	85
IIIrd	.. 2,23,903	1,90,082	4,13,985	20.39	84
IVth	.. 2,00,919	1,66,049	3,66,968	18.07	82
Vth	.. 1,65,477	1,38,314	3,03,791	14.96	83
<b>Total Primary Stage</b>	.. 10,98,834	9,31,727	20,30,561	100.00	84
VIth	.. 1,69,310	1,24,637	2,93,947	37.90	73
VIIth	.. 1,47,763	1,09,057	2,56,820	33.12	73
VIIIth	.. 1,31,305	93,458	2,24,763	28.98	71
<b>Total Middle Stage</b>	.. 4,48,378	3,27,152	7,75,530	100.00	72
IXth	.. 1,04,052	72,983	1,77,035	44.36	70
Xth	.. 89,223	64,477	1,53,700	38.52	72
X+I	.. 29,145	14,635	43,780	10.97	50
X+2	.. 15,904	8,635	24,539	6.15	54
<b>Total High/Sr. Sec. 10+2 Stage</b>	2,38,324	1,60,730	3,99,054	100.00	67
<b>Grand Total</b>	.. 17,92,491	14,25,533	32,18,024	100.00	80

TABLE NO. 13

Percentage of wastage in Primary and Middle classes

Classes	1982-83	1983-84	1984-85	1985-86	1986-87	1987-88
Ist ..	4,98,180 (100.00)	4,84,285 (100.00)	4,49,312 (100.00)	4,73,391 (100.00)	4,44,090 (100.00)	4,87,494 (100.00)
IIInd ..	—	4,52,581 (9.15)	4,79,483 (0.99)	4,69,126 ( )	4,59,675 (2.90)	4,58,323 ( )
IIIrd ..	—	—	4,15,019 (16.69)	4,27,005 (11.83)	4,15,986 (7.42)	4,13,985 (12.55)
IVth ..	—	—	—	3,71,599 (25.41)	3,74,892 (22.59)	3,66,968 (18.33)
Vth ..	—	—	—	—	3,01,954 (39.39)	3,03,791 (37.27)
VIth ..	—	2,77,459 (100.00)	2,72,579 (100.00)	2,79,443 (100.00)	2,87,662 (100.00)	2,93,947 (100.00)
VIIth ..	—	—	2,34,181 (15.60)	2,41,283 (11.48)	2,47,649 (11.38)	2,56,820 (10.72)
VIIIth ..	—	—	—	2,14,827 (22.57)	2,19,252 (19.56)	2,24,763 (19.57)

Note :— Figures in Parenthesis indicate Percentage of wastage.

**Table No. 14**

Proportion of students on rolls at different stages as on 30th September, 1987

Percentage of students at stages					
District	Pre-Primary Stage	Primary Stage (Class I to V)	Middle Stage (Class VI to VIII)	High/Hr. Sec. (10+2) (Stage IX to XII)	Total
1	2	3	4	5	6
1. Amritsar	0.49	67.17	20.23	12.11	100.00
2. Bhatinda	—	67.90	21.89	10.21	100.00
3. Faridkot	0.03	69.66	21.21	9.10	100.00
4. Ferozepur	0.97	70.68	19.17	9.18	100.00
5. Gurdaspur	—	61.02	25.79	13.19	100.00
6. Hoshiarpur	0.07	58.11	27.92	13.90	100.00
7. Jalandhar	0.40	58.31	27.57	13.72	100.00
8. Kapurthala	—	58.61	27.42	13.97	100.00
9. Ludhiana	0.98	57.63	26.35	15.04	100.00
10. Patiala	0.47	69.77	23.63	13.13	100.00
11. Ropar	0.99	57.21	27.75	14.05	100.00
12. Sangrur	0.17	65.49	23.50	10.84	100.00
<b>Punjab</b>	<b>0.40</b>	<b>63.10</b>	<b>24.10</b>	<b>12.40</b>	<b>100.00</b>

---

**TABLE NO. 15**

---



TABLE NO.

## Total Enrolment of Scheduled Castes/Scheduled Tribes

District	Pre-Primary			Ist Class		
	Boys	Girls	Total	Boys	Girls	Total
1. Amritsar ..	35	28	63	12,411	10,078	22,489
2. Bhatinda ..	..	..	..	9,673	7,175	16,848
3. Faridkot ..	..	..	..	8,624	7,498	16,122
4. Ferozepur ..	7	6	13	5,850	4,182	10,032
5. Gurdaspur ..	..	..	..	7,617	6,697	14,314
6. Hoshiarpur ..	..	..	..	7,077	6,567	13,644
7. Jalandhar ..	12	6	18	9,591	8,308	17,899
8. Kapurthala ..	..	..	..	2,521	2,167	4,688
9. Ludhiana ..	..	..	..	9,952	8,179	18,131
10. Patiala ..	1	..	1	9,377	7,590	16,967
11. Ropar ..	28	26	54	3,169	2,835	6,004
12. Sangrur ..	1	..	1	8,440	5,914	14,354
Punjab ..	84	66	150	94,302	77,190	1,71,492
In Govt. Institutions	40	22	62	90,154	73,972	1,64,126

by classes (Pre-Primary to 10+2 Pattern) As on 30th September, 1987

IInd Class			IIIrd Class		
Boys	Girls	Total	Boys	Girls	Total
12,651	10,087	22,738	12,867	9,949	22,816
5,068	3,004	8,072	3,557	2,016	5,573
9,750	8,406	18,156	8,143	5,391	13,534
6,492	4,548	11,040	4,995	3,299	8,294
6,165	4,987	11,152	6,244	4,957	11,201
7,119	6,503	13,622	7,096	6,311	13,407
11,409	7,784	19,193	11,049	8,644	19,693
2,716	2,392	5,108	2,700	2,237	4,937
8,828	7,252	16,080	8,210	6,666	14,876
6,103	4,604	10,707	5,234	3,656	8,890
3,581	3,121	6,702	3,275	2,867	6,142
5,149	3,232	8,381	3,805	2,407	6,212
85,031	65,920	1,50,951	77,175	58,400	1,35,575
81,961	63,558	1,45,519	74,356	56,256	1,30,612

TABLE  
Enrolment of Scheduled Castes/Scheduled

District	IVth Class		
	Boys	Girls	Total
1. Amritsar	10,564	7,884	18,448
2. Bhatinda	2,744	1,481	4,225
3. Faridkot	4,289	3,720	8,009
4. Ferozepur	3,634	2,366	6,000
5. Gurdaspur	5,725	4,464	10,189
6. Hoshiarpur	6,559	5,614	12,173
7. Jalandhar	10,765	8,755	19,520
8. Kapurthala	2,481	1,938	4,419
9. Ludhiana	7,324	5,581	12,905
10. Patiala	4,562	3,053	7,615
11. Roopar	2,893	2,290	5,183
12. Sangur	3,397	1,855	5,252
<b>Punjab</b>	<b>64,937</b>	<b>49,001</b>	<b>1,13,938</b>
<b>In Govt. Institutions</b>	<b>62,148</b>	<b>47,249</b>	<b>1,09,397</b>



No. 15

Tribes by Classes (Pre-Primary to XII) as on 30-9-1987

Vth Class			VIth Class		
Boys	Girls	Total	Boys	Girls	Total
6,960	4,690	11,650	3,806	1,841	5,647
2,173	1,054	3,227	2,068	714	2,782
3,547	2,529	6,076	1,780	795	2,575
2,274	1,261	3,535	1,461	545	2,006
4,406	3,395	7,801	4,168	2,591	6,759
5,540	4,645	10,185	5,443	4,206	9,649
8,476	7,003	15,479	7,076	5,615	12,691
1,963	1,596	3,559	1,727	1,160	2,887
5,683	4,555	10,238	5,595	3,793	9,388
3,764	2,206	5,970	3,302	1,683	4,985
2,275	1,707	3,982	2,371	1,545	3,916
2,592	1,379	3,971	2,671	1,000	3,671
49,653	36,020	85,673	41,468	25,488	66,956
47,255	34,343	81,598	35,682	22,187	57,869

Table

Enrolment of Scheduled Castes/Scheduled Tribes by

VIIIth Class			
District	Boys	Girls	Total
1. Amritsar	2,968	1,549	4,517
2. Bhatinda	1,525	510	2,035
3. Faridkot	1,515	883	2,398
4. Ferozepur	1,118	396	1,514
5. Gurdaspur	3,791	2,133	5,924
6. Hoshiarpur	4,985	3,910	8,895
7. Jalandhar	6,430	4,785	11,215
8. Kapurthala	1,420	990	2,410
9. Ludhiana	4,302	2,664	6,966
10. Patiala	2,536	1,256	3,792
11. Ropar	2,050	1,171	3,221
12. Sangrur	2,163	752	2,915
<b>Punjab</b>	<b>34,803</b>	<b>20,999</b>	<b>55,802</b>
<b>In Govt. Institutions</b>	<b>29,546</b>	<b>18,096</b>	<b>47,642</b>

No. 15—(contd.)

classes (Pre-Primary to XII) as on 30-9-1987.

VIIIth Class			IXth Class		
Boys	Girls	Total	Boys	Girls	Total
2,403	1,590	3,993	1,568	844	2,412
1,410	401	1,811	1,022	345	1,367
1,583	566	2,149	1,344	467	1,811
977	320	1,297	672	224	896
3,183	1,698	4,881	2,191	882	3,073
4,189	3,047	7,236	2,010	1,147	3,157
5,277	3,116	8,393	3,441	2,156	5,597
1,271	842	2,113	836	496	1,332
3,202	2,291	5,493	2,631	1,680	4,311
2,236	989	3,225	1,708	727	2,435
1,764	933	2,697	1,288	643	1,931
1,750	542	2,292	1,427	451	1,878
29,245	16,335	45,580	20,138	10,062	30,200
24,288	13,801	38,089	16,476	8,377	24,853

Table

## Enrolment of Scheduled Castes/Scheduled Tribes by

District	Xth Class			10+2 Pattern First year		
	Boys	Girls	Total	Boys	Girls	Total
1	2	3	4	5	6	7
1. Amritsar	1,654	884	2,538	829	213	1,042
2. Bhatinda	732	305	1,037	57	27	84
3. Faridkot	414	221	635	262	178	440
4. Ferozepur	624	176	800	126	30	156
5. Gurdaspur	1,531	690	2,221	715	312	1,027
6. Hoshiarpur	2,750	1,685	4,435	614	285	899
7. Jalandhar	2,906	1,628	4,534	604	189	793
8. Kapurthala	664	418	1,082	111	95	206
9. Ludhiana	1,904	1,243	3,147	410	110	520
10. Patiala	1,163	505	1,668	203	146	349
11. Ropar	1,084	538	1,622	179	57	236
12. Sangrur	1,063	362	1,425	105	35	140
Punjab	16,489	8,655	25,144	4,215	1,677	5,892
In Govt. Institutions	13,341	7,149	20,490	2,848	1,241	4,089

No. 15— Concl'd.

classes (Pre-primary to XII) as on 30-9-87

10+2 Pattern Second Year			Grand Total		
Boys	Girls	Total	Boys	Girls	Total
8	9	10	11	12	13
385	89	474	69,101	49,726	1,18,827
29	5	34	30,058	17,037	47,095
244	172	416	41,495	30,826	72,321
106	18	124	28,336	17,371	45,707
563	260	823	46,299	33,066	79,365
269	115	384	53,651	44,035	97,686
436	65	501	77,472	58,054	1,35,526
39	41	80	18,499	14,372	32,821
150	38	188	58,191	44,052	1,02,243
76	39	115	40,265	26,454	66,719
82	20	102	24,039	17,753	41,792
65	14	79	32,628	17,943	50,571
2,444	876	3,320	5,19,984	3,70,689	8,90,673
1,597	660	2,257	4,79,712	3,46,911	8,26,623

TABLE

Total Enrolment of Scheduled Castes/Scheduled

District	Pre-Primary Stage			Primary Stage (I—V)		
	Boys	Girls	Total	Boys	Girls	Total
1	2	3	4	5	6	7
1. Amritsar	35	28	63	55,453	42,688	98,141
2. Bhatinda	—	—	—	23,215	14,730	37,945
3. Faridkot	—	—	—	34,353	27,544	61,897
4. Ferozepur	7	6	13	23,245	15,656	38,901
5. Gurdaspur	—	—	—	30,157	24,500	54,657
6. Hoshiarpur	—	—	—	33,391	29,640	63,031
7. Jalandhar	12	6	18	51,290	40,494	91,784
8. Kapurthala	—	—	—	12,381	10,330	22,711
9. Ludhiana	—	—	—	39,997	32,233	72,230
10. Patiala	1	—	1	29,040	21,109	50,149
11. Ropar	28	26	54	15,193	12,820	28,013
12. Sangrur	1	—	1	23,383	14,787	38,170
<b>Punjab</b>	<b>84</b>	<b>66</b>	<b>150</b>	<b>3,71,098</b>	<b>2,86,531</b>	<b>6,57,629</b>
<b>In Govt. Institutions</b>	<b>40</b>	<b>22</b>	<b>62</b>	<b>3,55,874</b>	<b>2,75,378</b>	<b>6,31,252</b>

## NO. 16.1

Tribes by Stages as on 30th September, 1987

Percentage Enrolment of S. C./S.T. to total Enrolment	Middle Stage (VI—VIII)			Percentage Enrolment of S.C./S.T. to total Enrolment
	Boys	Girls	Total	
8	9	10	11	12
33.68	9,177	4,980	14,157	16.13
25.97	5,003	1,625	6,628	14.07
32.25	4,878	2,244	7,122	12.19
22.74	3,556	1,261	4,817	10.38
29.52	11,142	6,422	17,564	22.45
39.92	14,617	11,163	25,780	33.99
45.93	18,783	13,516	32,299	34.19
38.76	4,418	2,992	7,410	27.03
36.49	13,099	8,748	21,847	24.13
26.61	8,074	3,928	12,002	16.92
30.83	6,185	3,649	9,834	22.31
25.22	6,584	2,294	8,878	16.34
32.39	1,05,516	62,822	1,68,338	21.71
35.21	89,516	54,084	1,43,600	23.47

**Table No. 16.2**

**Total Enrolment of Scheduled Castes/Scheduled Tribes by stages and percentages to the total Enrolment as on 30.9.1987**

District	High/Sr. Sec. (10+2) stage (Class IX, X, 10+1 and 10+2)			Percentage Enrolment of S.C./S.T. to the total Enrolment
	Boys	Girls	Total	
1. Amritsar	4436	2030	6466	12.31
2. Bhatinda	1840	682	2522	11.48
3. Faridkot	2264	1038	3302	13.18
4. Ferozepur	1528	448	1976	8.89
5. Gurdaspur	5000	2144	7144	17.85
6. Hoshiarpur	5643	3232	8875	23.49
7. Jalandhar	7387	4038	11425	24.30
8. Kapurthala	1650	1050	2700	19.33
9. Ludhiana	5095	3071	8166	15.80
10. Patiala	3150	1417	4567	11.59
11. Ropar	2633	1258	3891	17.43
12. Sangrur	2660	862	3522	14.06
Punjab	43286	21270	64556	16.18
In Govt. Institutions	34262	17427	51689	18.19



**Table No. 17**

**Total Enrolment of Scheduled Castes/Scheduled Tribes and Percentage to the total Enrolment.**  
as on 30.9.1987

District	Classes Primary to 10+2 Pattern			Percentage Enrolment of S.C./S.T. to total Enrolment
	Boys	Girls	Total	
1. Amritsar	69101	49726	118827	27.39
2. Bhatinda	30058	17037	47095	21.89
3. Faridkot	41495	30826	72321	26.25
4. Ferozepur	28336	17371	45707	18.88
5. Gurdaspur	46299	33066	79365	26.16
6. Hoshiarpur	53651	44035	97686	35.96
7. Jalandhar	77472	58054	135526	39.55
8. Kapurthala	18449	14372	32821	32.83
9. Ludhiana	58191	44052	102243	29.77
10. Patiala	40265	26454	66719	22.22
11. Ropar	24039	17753	41792	26.31
12. Sangrur	32628	17943	50571	21.88
Punjab	519984	370689	890673	27.68
In Govt. Institutions	479692	346911	826603	30.74

**Table No. 18**

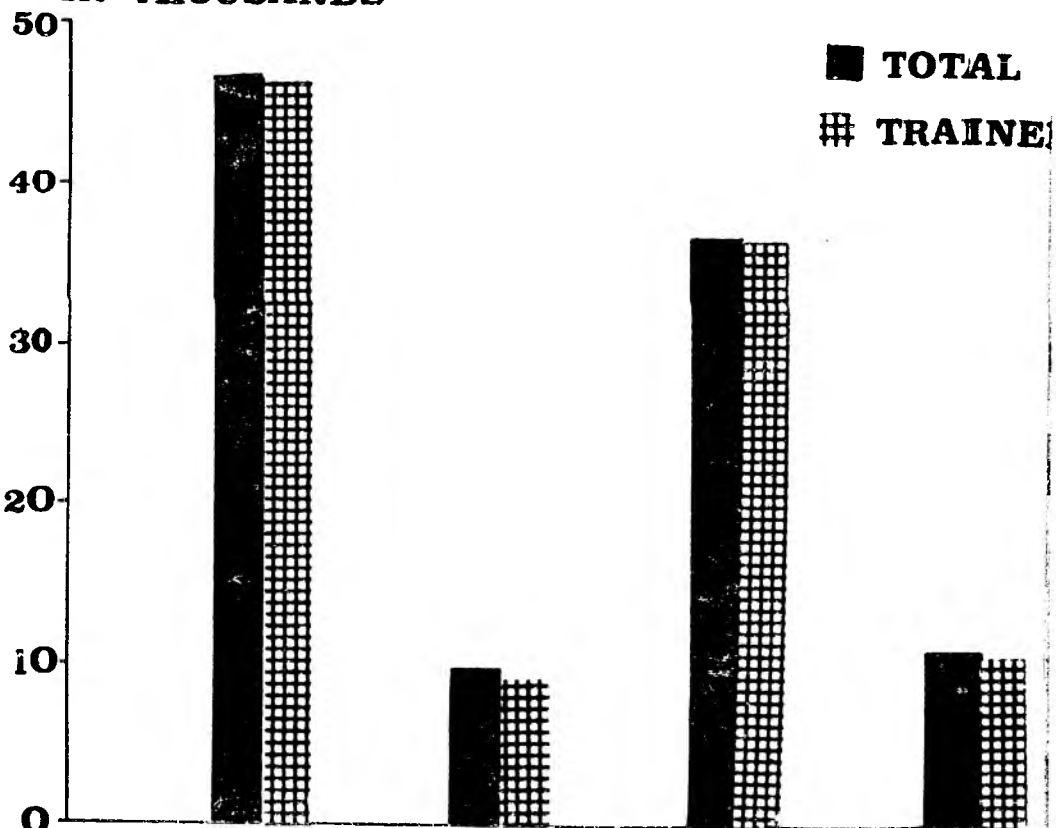
**Classwise Enrolment of Scheduled Castes/Scheduled Tribes and Percentage to the total Enrolment  
As on 30.9.1987**

Class	Enrolment			Percentage of S.C./S.T. to total Enrolment of the class
	Boys	Girls	Total	
<b>Pre-Primary</b>	84	66	150	—
Ist	94302	77190	171492	26.08
IInd	85031	65920	150951	22.95
IIIrd	77175	58400	135575	20.62
IVth	64937	49001	113938	17.32
Vth	49653	36020	85673	13.03
<b>Total Primary Stage I to V</b>	<b>371098</b>	<b>286531</b>	<b>657629</b>	<b>100.00</b>
VIth	41468	25488	66956	39.77
VIIth	34803	20999	55802	33.15
VIIIth	29245	16335	45580	27.08
<b>Total Middle * Stage VI to VIII</b>	<b>105516</b>	<b>62822</b>	<b>168338</b>	<b>100.00</b>
IXth	20138	10062	30200	46.78
Xth	16489	8655	25144	38.95
XIth	4215	1677	5892	9.13
XIIth	2444	876	3320	5.14
<b>Total High/Sr. Sec. 10+2</b>	<b>43286</b>	<b>21270</b>	<b>64556</b>	<b>100.00</b>
<b>Grand Total</b>	<b>519984</b>	<b>370689</b>	<b>890673</b>	<b>—</b>



# SCHOOLWISE TEACHERS

IN THOUSANDS



PRIMARY

MIDDLE

HIGH

SR. SEC

PERCENTAGE  
OF  
TRAINED TEACHERS 99.35  
TO  
TOTAL TEACHERS

97.84

99.27

99.56

**Table No. 19**

Number of Teachers in Schools for General Education as on 30-9-1987

Working strength and Percentage of trained teachers

District	Pre-Primary Schools.			Total
	Central Govt.	State Govt.	Non-Govt. (Recognised)	
1. Amritsar	—	—	—	—
2. Bhatinda	—	—	—	—
3. Faridkot	—	4	—	4
4. Ferozepur	—	—	—	—
5. Gurdaspur	—	—	—	—
6. Hoshiarpur	—	—	—	—
7. Jalandhar	—	—	—	—
8. Kapurthala	—	—	—	—
9. Ludhiana	—	—	—	—
10. Patiala	—	—	—	—
11. Ropar	—	—	—	—
12. Sangrur	—	1	—	1
<b>Punjab</b>	—	<b>5</b>	—	<b>5</b>

Table

## Number of Teachers in Schools for General Education

District	Primary Schools			Total
	Central Govt.	State Govt.	Non-Govt. (Recog.)	
1. Amritsar	3	5,839	590	6,432
2. Bhatinda	2	2,845	20	2,867
3. Faridkot	—	3,859	57	3,916
4. Ferozepur	—	3,143	193	3,336
5. Gurdaspur	5	4,633	58	4,696
6. Hoshiarpur	—	4,529	8	4,537
7. Jalandhar	—	4,594	126	4,720
8. Kapurthala	—	1,626	—	1,626
9. Ludhiana	—	4,520	77	4,597
10. Patiala	1	4,295	9	4,305
11. Ropar	33	2,385	22	2,440
12. Sangrur	1	3,294	5	3,300
Punjab	45	45,562	1,165	46,772

No. 19—(Contd.)

(As on 30th September, 1987) Working strength and percentage of trained teachers

Middle Schools			
Central Govt.	State Govt.	Non-Govt. (Recog.)	Total
—	968	232	1,200
10	522	82	614
—	529	64	593
—	713	310	1,023
—	758	204	962
—	848	80	928
12	957	46	1,015
—	360	15	375
11	665	128	804
—	941	50	991
13	415	89	517
—	558	8	566
46	8,234	1,308	9,588

Table

## Number of Teachers in Schools for General Education

High Schools				
District	Central Govt.	State Govt.	Non-Govt. (Recog.)	Total
1. Amritsar	35	3,056	863	3,954
2. Bhatinda	24	2,031	497	2,552
3. Faridkot	16	2,845	400	3,261
4. Ferozepur	—	1,658	521	2,179
5. Gurdaspur	75	2,408	511	2,994
6. Hoshiarpur	—	2,608	468	3,076
7. Jalandhar	67	2,978	1,117	4,162
8. Kapurthala	—	1,014	270	1,284
9. Ludhiana	51	3,201	1,390	4,642
10. Patiala	—	2,554	425	2,979
11. Ropar	—	1,741	429	2,170
12. Sangrur	39	2,635	548	3,222
Punjab	307	2,8729	7,439	36,475



## No. 19—contd.

(as on 30th September, 1987) Working strength and percentage of trained teachers

Sr. Secondary (10+2) Schools			
Central Govt.	State Govt.	Non-Govt. (Rocog.)	Total
67	887	564	1,518
90	210	209	509
—	495	353	848
62	307	204	573
53	400	274	727
—	654	392	1,046
163	519	628	1,310
35	251	103	389
66	513	656	1,235
57	789	450	1,296
84	199	378	661
—	398	83	481
677	5,622	4,294	10,593

TABLE No. 19 (contd.)  
Percentage of Trained Teachers

District	Primary Schools	Middle Schools	High Schools	Sr. Sec. (10+2) Schools
1. Amritsar	96.44	98.67	99.24	100.00
2. Bhatinda	100.00	100.00	100.00	100.00
3. Faridkot	100.00	100.00	100.00	100.00
4. Ferozepur	98.98	96.09	97.34	99.12
5. Gurdaspur	99.79	91.79	98.63	99.72
6. Hoshiapur	99.96	99.25	99.64	99.04
7. Jalandhar	100.00	100.00	100.00	100.00
8. Kapurthala	100.00	99.47	99.61	100.00
9. Ludhiana	99.87	97.01	99.33	99.51
10. Patiala	99.91	99.50	98.56	99.54
11. Ropar	99.30	93.42	99.91	97.28
12. Sangrur	99.97	100.00	98.63	100.00
Punjab	99.35	97.84	99.27	99.56

TABLE NO. 20

Number of Teachers at Pre-Primary Stage and Average number of pupils per Teacher  
(working Strength) as on 30.9.87

District	Centrrl Govt.	State Govt.	Non-Govt. (Recog.)	Total	Average number of pupils per teacher at pre-primery stage
1. Amritsar	15	—	41	56	38
2. Bhatinda	—	—	—	—	—
3. Faridkot	—	4	—	4	24
4. Ferozepur	—	3	61	64	36
5. Gurdaspur	—	—	—	—	—
6. Hoshiarpur	—	—	6	6	30
7. Jalandhar	13	—	104	117	11
8. Kapurthala	—	—	—	—	—
9. Ludhiana	—	—	110	110	31
10. Patiala	—	5	24	29	48
11. Ropar	2	2	45	49	32
12. Sangrur	—	1	9	10	39
Punjab	30	15	400	445	28

TABLE NO. 20 (Contd.)

Number of Teachers at Primery stage and Average number of Pupils per Teacher  
(working Strength) as on 30.9.87.

District	Central Govt.	State Govt.	Non Govt. (Recog.)	Total	Average Number of Pupils per Teacher at Primary stage.
1. Amritsar	44	5,839	1,030	6,913	42
2. Bhatinda	47	2,845	333	3,225	45
3. Faridkot	9	3,859	346	4,214	45
4. Ferozepur	24	3,149	569	3,742	46
5. Gurdaspur	47	4,633	349	5,029	36
6. Hoshiarpur	—	4,551	124	4,675	33
7. Jalandhar	90	4,611	523	5,224	38
8. Kapurthala	—	1,626	107	1,733	33
9. Ludhiana	55	4,578	675	5,308	37
10. Patiala	11	4,323	305	4,639	40
11. Ropar	50	2,295	262	2,707	32
12. Sangrur	13	3,394	242	3,549	42
Punjab	390	45703	4865	50958	40



# AVERAGE NUMBER OF PUPILS PER TEACHER

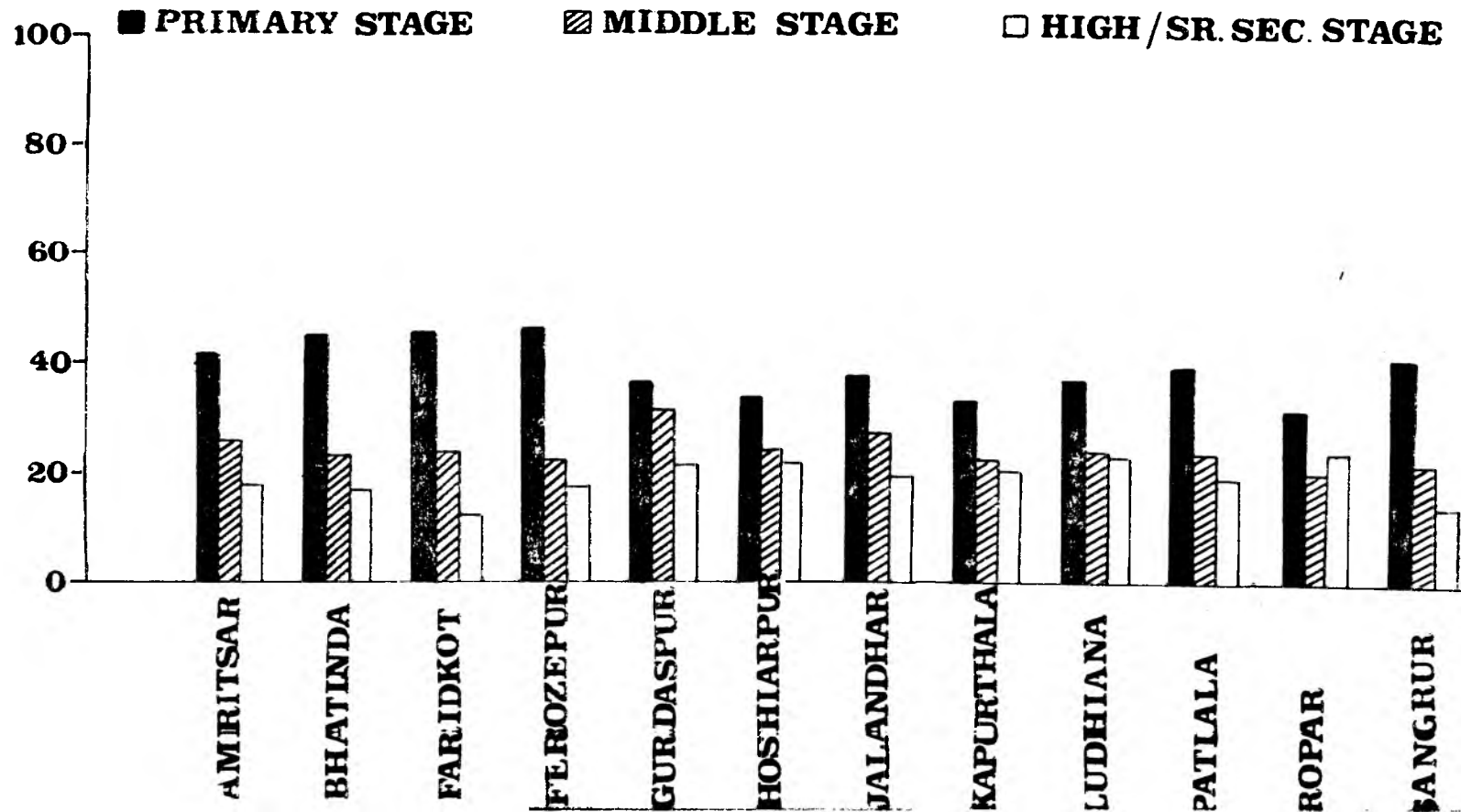


TABLE NO. 20 (Contd.)

Number of Teachers at Middle Stage and average number of pupils per Teacher  
(working Strength) as on 30.9.87

District	Central Govt.	State Govt.	Non Govt. (Recog.)	Total	Average number of pupil per Teacher at middle stage.
1. Amritsar	23	2,751	478	3,252	26
2. Bhatinda	32	1,708	286	2,026	23
3. Faridkot	3	2,198	254	2,455	23
4. Ferozepur	24	1,694	379	2,097	22
5. Gurdaspur	42	2,075	405	2,522	31
6. Hoshiarpur	—	2,650	482	3,132	24
7. Jalandhar	72	2,672	685	3,429	27
8. Kapurthala	15	1,065	154	1,231	22
9. Ludhiana	51	2,531	824	3,633	24
10. Patiala	18	2,531	324	2,873	24
11. Ropar	42	1,737	346	2,125	20
12. Sangrur	15	2,208	215	2,438	22
Punjab	337	26,047	4,829	3,1213	24

**Table No. 20 (Concl.)**

Number of Teachers at High/Ser. Sec: (10+2) stage and Average number of Pupils per Teacher  
(working strength) as on 30-9-87.

District	Central Govt.	State Govt.	Non Govt. (Recog.)	Total	Average number of students per teacher at High/Sr. Sec. stage
1. Amritsar	23	2,160	700	2,883	18
2. Bhatinda	47	1,055	189	1,291	17
3. Faridkot	4	1,671	274	1,949	12
4. Ferozepur	14	975	219	1,208	18
5. Gurdaspur	44	1,491	293	1,828	21
6. Hoshiarpur	—	1,438	336	1,774	21
7. Jalandhar	67	1,765	605	2,437	19
8. Kapurthala	20	560	130	710	20
9. Ludhiana	22	1,563	642	2,227	23
10. Patiala	29	1,720	281	2,030	19
11. Ropar	36	606	265	907	24
12. Sangrur	12	1,383	178	1,573	15
<b>Punjab</b>	<b>318</b>	<b>16,387</b>	<b>4,112</b>	<b>20,817</b>	<b>19</b>



---

**TABLE NO. 21**

---

Table No.

## Number of Teachers Category-wise in Central Govt. Schools

District	Principals	V. Principals	Headmasters/ Headmistresses	Lecturers	Masters/ Mistresses
1. Amritsar	2	—	—	10	35
2. Bhatinda	4	—	1	17	38
3. Faridkot	1	—	—	—	6
4. Ferozepur	1	—	—	13	16
5. Gurdaspur	5	—	—	14	61
6. Hoshiarpur	—	—	—	—	—
7. Jalandhar	6	—	—	32	171
8. Kapurthala	1	—	1	—	24
9. Ludhiana	4	—	—	16	54
10. Patiala	1	1	1	7	19
11. Ropar	2	2	1	26	47
12. Sangrur	1	—	—	6	7
Punjab	28	3	4	141	478

.21

(working Strength) as on 30-9-87.

C&V	CHT	HT	JBT	Others	Totals
15	—	—	43	—	105
14	—	—	52	—	126
—	—	—	9	—	16
8	—	—	24	—	62
8	—	—	40	5	133
—	—	—	—	—	—
12	—	—	21	—	242
9	—	—	—	—	35
9	—	—	45	—	128
4	—	—	20	5	58
16	—	—	32	—	130
7	—	—	13	6	40
102	—	—	303	16	1,075

Table No.

## Number of Teachers Category-wise in State Govt.

Districts	Principals	V. Principals	Headmasters Headmistresses	Lecturers	Masters/ Mistresses
1. Amritsar	13	—	193	206	2,771
2. Bhatinda	1	—	98	46	1,568
3. Faridkot	13	—	204	126	2,221
4. Ferozepur	4	—	108	70	1,581
5. Gurdaspur	9	—	152	102	2,096
6. Hoshiarpur	17	—	170	159	2,272
7. Jalandhar	14	—	212	182	2,341
8. Kapurthala	6	—	58	55	908
9. Ludhiana	11	—	225	166	2,463
10. Patiala	19	—	168	248	2,294
11. Ropar	5	—	100	57	1,334
12. Sangrur	11	—	158	103	1,929
Punjab	123	—	1,846	1,520	23,778

22

Schools (working strength) as on 30-9-87.

C&V	CHT	HT	JBT	Others	Total
1,585	143	875	4,840	124	10,750
1,005	63	361	2,425	41	5,608
1,207	78	421	3,372	90	7,732
848	122	521	2,507	60	5,821
1,106	181	840	3,629	84	8,199
1,375	161	854	3,549	82	8,639
1,564	128	801	3,697	109	9,048
552	60	288	1,282	42	3,251
1,413	100	634	3,800	87	8,899
1,438	150	697	3,468	97	8,579
781	104	506	1,791	62	4,740
1,329	92	487	2,732	45	6,886
14,203	1,382	7,285	37,092	923	88,152

**Table No.**

**Number of Teachers Categorywise in Non-Govt. (Recog.) Schools**

District	Principals	V. Principals	Headmasters/ Head mistresses	Lecturers	Masters/ Mistresses
1. Amritsar	22	—	45	80	616
2. Bhatinda	8	—	13	18	301
3. Faridkot	13	—	21	19	341
4. Ferozepur	19	—	11	4	525
5. Gurdaspur	14	—	32	33	354
6. Hoshiarpur	17	—	33	24	388
7. Jalandhar	29	—	51	57	708
8. Kapurthala	4	—	12	9	120
9. Ludhiana	16	2	58	34	1,163
10. Patiala	18	—	21	40	365
11. Ropar	16	3	20	15	466
12. Sangrur	3	—	25	5	192
<b>Punjab</b>	<b>179</b>	<b>5</b>	<b>342</b>	<b>338</b>	<b>5,539</b>

23.

(working strength) as on 30-9-87.

C&V	CHT	HT	JBT	Others	Total
246	—	—	1,240	—	2,249
126	—	—	342	—	808
176	—	—	304	—	874
159	—	—	510	—	1,228
216	—	—	398	—	1,047
235	—	—	251	—	948
416	—	—	656	—	1,917
67	—	—	169	7	388
362	—	—	616	—	2,251
123	—	—	367	—	934
168	—	—	230	—	918
134	—	—	285	—	644
2,428	—	—	5,368	7	14,206

**Table No.**  
**Number of Teachers (Sexwise) and percentage of Women Teachers**  
**As on**

District	Primary Schools			Middle Schools		
	Men	Women	Total	Men	Women	Total
1	2	3	4	5	6	7
1. Amritsar	2,719	3,713	6,432	630	570	1,200
2. Bhatinda	1,678	1,189	2,867	357	257	614
3. Faridkot	1,935	1,981	3,916	387	206	593
4. Ferozepur	1,564	1,772	3,336	545	478	1,023
5. Gurdaspur	2,322	2,374	4,696	586	376	962
6. Hoshiarpur	2,147	2,390	4,537	608	320	928
7. Jalandhar	1,899	2,821	4,720	519	496	1015
8. Kapurthala	840	786	1,626	234	141	375
9. Ludhiana	1,944	2,653	4,597	392	412	804
10. Patiala	1,715	2,590	4,305	594	397	991
11. Ropar	1,249	1,191	2,440	225	292	517
12. Sangrur	1,789	1,511	3,300	426	140	566
<b>Punjab</b>	<b>21,801</b>	<b>24,971</b>	<b>46,772</b>	<b>5,503</b>	<b>4,085</b>	<b>9,588</b>



24

in Government and Non-Govt. (Recog.) Schools (Working Strength).

30.9.1987

High Schools			Sr. Sec. (10+2) Schools		
Men	Women	Total	Men	Women	Total
8	9	10	11	12	13
2,046	1,908	3,954	860	658	1,518
1,468	1,054	2,552	247	262	509
2,110	1,151	3,261	387	461	848
1,277	902	2,179	262	311	573
1,953	1,041	2,994	438	289	727
2,124	952	3,076	741	305	1,046
2,123	2,039	4,162	729	581	1,310
768	516	1,284	188	201	389
2,088	2,554	4,642	670	565	1,235
1,510	1,469	2,979	558	738	1,296
1,069	1,101	2,170	342	319	661
2,183	1,039	3,222	293	188	481
20,719	15,756	36,475	5,715	4,878	10,593

TABLE NO. 24—(Concl'd.)

Number of Teachers (Sexwise) & Percentage of women Teachers in Government & Non-Government recognised Schools (working strength) as on 30th September, 1987.

Percentage of women teachers & total teachers				
	Primary Schools	Middle Schools	High Schools	Hr. Sec. (10+2) Schools
1. Amritsar	57.7	47.5	48.3	43.3
2. Bhatinda	41.5	41.9	41.3	51.5
3. Faridkot	50.6	34.7	35.3	54.4
4. Ferozepur	53.1	46.7	41.4	54.3
5. Gurdaspur	50.6	39.1	34.8	39.8
6. Hoshiarpur	52.7	34.5	31.0	29.2
7. Jalandhar	59.8	48.9	49.0	44.4
8. Kapurthala	48.3	37.6	40.2	51.7
9. Ludhiana	57.7	51.2	55.0	45.7
10. Patiala	60.2	40.1	49.3	56.9
11. Ropar	48.8	56.5	50.7	48.3
12. Sangrur	45.8	24.7	32.2	39.1
Punjab	53.4	42.6	43.2	46.0

TABLE NO. 25

Average Annual Cost per student during the year 1986-87 in Government and Non-Government (Recog.) Institutions

(Figures in Rupees)

District	Primary Schools	Middle Schools	High Schools	Sr. Sec. Schools (10+2)
1. Amritsar	395	798	564	642
2. Bhatinda	389	1043	1245	763
3. Faridkot	371	1595	1248	915
4. Ferozepur	374	942	1062	1063
5. Gurdaspur	482	789	901	902
6. Hoshiarpur	526	1163	822	976
7. Jalandhar	532	939	840	994
8. Kapurthala	493	1629	1110	1883
9. Ludhiana	481	1012	919	822
10. Patiala	452	1197	1376	1161
11. Ropar	553	1078	1152	1417
12. Sangrur	433	1601	1068	1216
Punjab	449	1060	986	975



---

**PART-II**  
**HIGHER EDUCATION**

---

TABLE NO. 26.1

## Number of Universities

(As on 30th September, 1987)

District	Number of Universities
1. Amritsar	1
2. Bhatinda	—
3. Faridkot	—
4. Ferozepur	—
5. Gurdaspur	—
6. Hoshiarpur	—
7. Jalandhar	—
8. Kapurthala	—
9. Ludhiana	1
10. Patiala	1
11. Ropar	1
12. Sangrur	—
Punjab	3

Table 26.2

Number of Arts, Science and Commerce Colleges including Home Science  
( As on 30th September, 1987)

District	State Govt.			Non-Govt.			Grand Total		
	Boys	Girls	Total	Boys	Girls	Total	Boys	Girls	Total
1. Amritsar	4	1	5	6	5	11	10	6	16
2. Bhatinda	1	—	1	5	3	8	6	3	9
3. Faridkot	4	—	4	7	5	12	11	5	16
4. Ferozepur	2	—	2	4	3	7	6	3	9
5. Gurdaspur	3	—	3	7	4	11	10	4	14
6. Hoshiarpur	4	—	4	9	—	9	13	—	13
7. Jaladhar	2	—	2	11	9	20	13	9	22
8. Kapurthala	2	—	2	7	4	11	9	4	13
9. Ludhiana	4	1	5	9	11	20	13	12	25
10. Patiala	5	2	7	6	—	6	11	2	13
11. Ropar	2	—	2	4	2	6	6	2	8
12. Sangrur	3	—	3	6	3	9	9	3	12
<b>Punjab</b>	<b>36</b>	<b>4</b>	<b>40</b>	<b>81</b>	<b>49</b>	<b>130</b>	<b>117</b>	<b>53</b>	<b>170</b>

Table 26.3

## Number of Teacher Training Colleges

(As on 30th September, 1987)

District	State Govt.			Non-Govt.			Grand Total		
	Boys	Girls	Total	Boys	Girls	Total	Boys	Girls	Total
1. Amritsar	—	—	—	1	1	2	1	1	2
2. Bhatinda	—	—	—	—	—	—	—	—	—
3. Faridkot	1	—	1	2	1	3	3	1	4
4. Ferozepur	—	—	—	1	1	2	1	1	2
5. Gurdaspur	—	—	—	—	—	—	—	—	—
6. Hoshiarpur	—	—	—	1	—	1	1	—	1
7. Jalandhar	1	—	1	2	—	2	3	—	3
8. Kapurthala	—	—	—	1	1	2	1	1	2
9. Ludhiana	—	—	—	1	2	3	1	2	3
10. Patiala	1	—	1	—	—	—	1	—	1
11. Ropar	—	—	—	—	—	—	—	—	—
12. Sangrur	—	—	—	—	—	—	—	—	—
Punjab	3	—	3	9	6	15	12	6	18



Table 27:1

## Number of Arts, Science and Commerce Colleges including Home Science Colleges in Rural Areas

(As on 30th September, 1987)

District	State Govt.			Non-Govt.			Grand Total		
	Boys	Girls	Total	Boys	Girls	Total	Boys	Girls	Total
1. Amritsar	3	—	3	3	1	4	6	1	7
2. Bhatinda	—	—	—	3	—	3	3	—	3
3. Faridkot	2	—	2	2	2	4	4	2	6
4. Ferozepur	1	—	1	—	—	—	1	—	1
5. Gurdaspur	2	—	2	3	—	3	5	—	5
6. Hoshiarpur	3	—	3	5	—	5	8	—	8
7. Jalandhar	1	—	1	3	2	5	4	2	6
8. Kapurthala	1	—	1	5	—	5	6	—	6
9. Ludhiana	2	—	2	6	2	8	8	2	10
10. Patiala	1	—	1	1	—	1	2	—	2
11. Ropar	—	—	—	3	1	4	3	1	4
12. Sangrur	—	—	—	4	—	4	4	—	4
Punjab	16	—	16	38	8	46	54	8	62

Table 27.2

## Number of Teacher Training Colleges in Rural Areas

(As on 30th September, 1987)

District	State Govt.			Non-Govt.			Grand Total		
	Boys	Girls	Total	Boys	Girls	Total	Boys	Girls	Total
1. Amritsar	—	—	—	—	—	—	—	—	—
2. Bhatinda	—	—	—	—	—	—	—	—	—
3. Faridkot	—	—	—	—	1	1	—	1	1
4. Ferozepur	—	—	—	—	—	—	—	—	—
5. Gurdaspur	—	—	—	—	—	—	—	—	—
6. Hoshiarpur	—	—	—	—	—	—	—	—	—
7. Jalandhar	—	—	—	—	—	—	—	—	—
8. Kapurthala	—	—	—	—	—	—	—	—	—
9. Ludhiana	—	—	—	1	1	2	1	1	2
10. Patiala	—	—	—	—	—	—	—	—	—
11. Ropar	—	—	—	—	—	—	—	—	—
12. Sangrur	—	—	—	—	—	—	—	—	—
Punjab	—	—	—	1	2	3	1	2	3

Table 28.1

## Enrolment in Universities/Teaching Departments

(As on 30th September, 1987)

District	Boys	Girls	Total
1. Amritsar	1,049	10,83	2,132
2. Bhatinda	—	—	—
3. Faridkot	—	—	—
4. Ferozepur	—	—	—
5. Gurdaspur	—	—	—
6. Hoshiarpur*	100	10	110
7. Jalandhar	—	—	—
8. Kapurthala	—	—	—
9. Ludhiana**	—	—	—
10. Patiala	1,170	925	2,095
11. Ropar	—	—	—
12. Sangrur	—	—	—
<b>Punjab</b>	<b>2,319</b>	<b>2,018</b>	<b>4,337</b>

\*V. V. R. I. Hoshiarpur is a Teaching Department of Panjab University, Chandigarh.

\*\*Constituent College.

## Enrolment in Arts, Science and Commerce

(As on 30th

District	State Govt.		
	Boys	Girls	Total
1. Amritsar	926	2,041	2,967
2. Bhatinda	1,715	664	2,379
3. Faridkot	2,611	784	3,455
4. Ferozepur	822	393	1,215
5. Gurdaspur	1,847	824	2,671
6. Hoshiarpur	2,661	1,846	4,507
7. Jalandhar	521	136	657
8. Kapurthala	1,028	317	1,345
9. Ludhiana	2,445	2,751	5,196
10. Patiala	3,420	2,775	6,195
11. Ropar	1,304	483	1,787
12. Sangrur	2,575	767	3,342
Punjab	21,935	13,781	35,716

28.2

Colleges including Home Science Colleges

September, 1987)

Non-Govt.			Grand Total		
Boys	Girls	Total	Boys	Girls	Total
6,129	4,721	10,850	7,055	6,762	13,817
3,105	1,589	4,694	4,820	2,253	7,073
3,518	2,272	5,790	6,189	3,056	9,245
2,546	2,273	4,819	3,368	2,666	6,034
5,277	3,240	8,517	7,124	4,064	11,188
4,792	2,015	6,807	7,453	3,861	11,314
15,653	13,498	29,151	16,174	13,634	29,808
3,533	2,825	6,358	4,561	3,142	7,703
7,953	11,200	19,153	10,398	13,951	24,349
3,471	1,123	4,594	6,891	3,898	10,789
1,689	965	2,654	2,993	1,448	4,441
3,017	1,417	4,434	5,592	2,184	7,776
60,683	47,138	1,07,821	82,618	60,919	1,43,537

**Table**  
**Enrolment in Teacher**  
**(As on 30th**

District	State Govt.		
	Boys	Girls	Total
1. Amritsar	—	—	—
2. Bhatinda	—	—	—
3. Faridkot	46	55	101
4. Ferozepur	—	—	—
5. Gurdaspur	—	—	—
6. Hoshiarpur	—	—	—
7. Jalandhar	56	126	182
8. Kapurthala	—	—	—
9. Ludhiana	—	—	—
10. Patiala	41	155	196
11. Ropar	—	—	—
12. Sangrur	—	—	—
<b>Punjab</b>	<b>143</b>	<b>336</b>	<b>479</b>

28.3

Training Colleges

September, 1987)

Non-Govt. (Recog.)			Grand Total		
Boys	Girls	Total	Boys	Girls	Total
58	293	351	58	293	351
—	—	—	—	—	—
142	318	460	188	373	561
102	341	443	102	341	443
—	—	—	—	—	—
82	311	393	82	311	393
101	158	259	157	284	441
91	247	338	91	247	338
118	503	621	118	503	621
—	—	—	41	155	196
—	—	—	—	—	—
—	—	—	—	—	—
694	2,171	2,865	837	2,507	3,344

Table 29.1 -  
 Number of Students receiving General Education  
 (As on 30th September, 1987)

Type of Course	Boys	Girls	Total	Percentage of the stream to the Total
<b>1. General Education 10+2 (Part I)</b>				
Arts	19,268	13,872	33,140	70.77
Science	6,996	2,963	9,959	21.27
Commerce	2,824	905	3,729	7.96
<b>Total</b>	<b>29,088</b>	<b>17,740</b>	<b>46,828</b>	<b>100.00</b>
<b>2. 10+2, Part II</b>				
Arts	8,268	7,670	15,938	69.08
Science	3,717	1,606	5,323	23.07
Commerce	1,220	591	1,811	7.85
<b>Total</b>	<b>13,205</b>	<b>9,867</b>	<b>23,072</b>	<b>100.00</b>



**Table 29.2**  
**Number of Students receiving General Education**  
**(As on 30th September, 1987)**

Type of Course	Boys	Girls	Total	Percentage of the stream to the Total
<b>2. Three Years Degree Course (Parts 2 and 3)</b>				
Arts	26,646	24,675	51,321	77.70
Science	5,059	3,548	8,607	13.03
Commerce	4,970	1,155	6,125	9.27
<b>Total</b>	<b>36,675</b>	<b>29,378</b>	<b>66,053</b>	<b>100.00</b>
<b>3. Post Graduate (Parts 1 and 2)</b>				
Arts	3,407	4,382	7,789	85.92
Science	541	608	1,149	12.67
Commerce	74	54	128	1.41
<b>Total</b>	<b>4,022</b>	<b>5,044</b>	<b>9,066</b>	<b>100.00</b>

*Note.*—With the introduction, of 10+9 pattern in Punjab, there was no admission in Part I during the year 1987-88. Hence decrease in Enrolment.

Table 29.3  
 Number of Students receiving General Education  
 (As on 30th September, 1987)

Type of Course	Boys	Girls	Total	Percentage of the stream to the Total
<b>4. M. Phil</b>				
Arts	124	248	372	72.66
Science	58	66	124	24.22
Commerce	12	4	16	03.12
<b>Total</b>	<b>194</b>	<b>318</b>	<b>512</b>	<b>100.00</b>
<b>5. Doctorate</b>				
Arts	50	36	86	39.09
Science	49	84	133	60.45
Commerce	1	—	1	0.46
<b>Total</b>	<b>100</b>	<b>120</b>	<b>220</b>	<b>100.00</b>

Table 30

Number of Teachers in Institutions for Higher Education and Number of Pupils per Teacher

(As on 30th September, 1987)

Type of Institution	Number of Teachers			Average number of pupils per teacher	
	Men	Women	Total		
1. University/Teaching Department	502	97	599	7	
2. College of Gen. Edu. Arts, Science and Commerce including Home Science	Govt.	1,116	638	1,754	20
	Non-Govt.	2,215	1,664	3,879	27
Total (2)	3,331	2,302	5,633	25	
3. Teacher Training Colleges	Govt.	44	22	66	7
	Non-Govt.	94	108	202	14
Total (3)	138	130	268	12	

105

NIEPA DC



D08135

35241 DPI—Govt. Press (U.T.) Chd.

LIBRARY & DOCUMENTATION CENTRE

National Institute of Educational

Planning and Administration.

17-B, Sri Aurobindo Marg,

New Delhi-110016

DOC. No

Date

D-8185

21/1/79