

# **MID DAY MEAL PROGRAMME**

**ANNUAL WORK PLAN AND BUDGET  
2008-09**

**STATE – PUNJAB**

# Mid-Day-Meal Programme Annual Work Plan and Budget

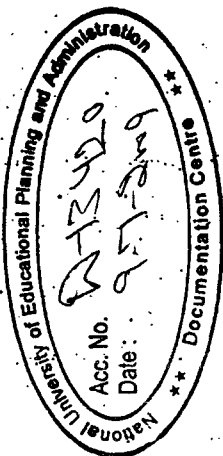
2008-09

## 1. Introduction:-

### Brief history objectives and rationale of Mid-Day-Meal Programme.

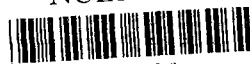
1.1 Education plays a vital and important role in fulfilling the basic needs of a common man viz. food, shelter and clothing. The main aim of Education is to prepare and develop the child physically, mentally and spiritually to lead a quality life. Education is a process through which a child is made capable to attain the necessary competencies and skills to face the challenges in life to survive, and to make struggle for existence. Four important factors are identified for achieving the goal of Education for all. These are Access to Education, Enrolment of children, and Retention of the enrolled children and Achievement. Mid Day Meal scheme is an effort to achieve and facilitate all the four above said objectives.

1.2 Various schemes were implemented in the primary education sector by the Government to reach the disadvantaged population. Access to Primary Education was universalized through flagship programmes of Govt. like Sarva Shiksha Abhiyan, however, despite this, a few children are still deprived of Primary Education due to inability of their parents to send them to schools because of their poor economical status. For these parents, sending their children to school means not only incurring extra financial burden but also depriving them of some



NUEPA DC

10



D13420

money which their children would have earned otherwise by doing labour. That being the attitude of these economically backward parents, one may, perhaps, to motivate the parents and children was to bring their children to school by providing food and nutritional needs.

- 1.3 Government of India, on Oct 2<sup>nd</sup> 1995, launched the scheme of National Programme of Nutritional Support to Primary Education also known as **Mid-Day-Meal Programme**. Under this scheme, students of Primary classes were to be provided wheat @ 3 kg per student per month (for 10 months in a year) subject to 80% attendance. Meanwhile, the apex court also intervened and vide its orders dated 28<sup>th</sup> November, 2001 the Supreme Court directed :-

*"1- We direct the State Government/Union Territories to implement the Mid-Day-Meal scheme by providing every child in every Government and Government Assisted primary schools with a prepared Mid-Day-Meal with minimum contents of 300 calories of energy and 8-12 grams of protein each day of school for a minimum of 200 days. Those Governments providing dry rations instead of cooked meals must within 3 months start providing cooked meals in all Government Aided primary schools in all half the districts of the state (in order of poverty) and must within a further period of 3 months extend the provisions of cooked meals to the remaining parts of the state.*

*2- We direct the Union of India and the FCI to ensure provision of fair average quality grain for the scheme on time. The State/Union Territories and the FCI are directed to do joint inspection of*

- children belonging to poor and down trodden sections of the society;
- b) To provide nutritious meal to the school going children to achieve the goal of Healthy mind in Healthy body;
  - c) To promote friendship and feelings of common brotherhood among the children belonging to different caste, colour and creed by providing meals to them together and also to increase their retention in schools.

## **1.2 Demographic Profile of the State**

**1.2.1 Geographical location :** Punjab is located in the northwestern corner of the India on 35 degree latitude and 74 degree longitude covering an area of 50362 sq. kms (2% the country's total geographical area), comprising mostly of plain and fertile soil. It is bounded on the north by the Indian state of Jammu and Kashmir, on the east by Himachal Pradesh and the Union territory of Chandigarh, on the south by Haryana and Rajasthan, and on the west, it shares a long border with Pakistan. The city of Chandigarh is the joint capital of Punjab and Haryana.

**1.2.2 Administrative setup :** Punjab is divided in 20 Administrative Districts, 72 Tehsils, 141 CD Blocks, 216 ED Blocks and 12711 Villages.

children belonging to poor and down trodden sections of the society;

- b) To provide nutritious meal to the school going children to achieve the goal of Healthy mind in Healthy body;
- c) To promote friendship and feelings of common brotherhood among the children belonging to different caste, colour and creed by providing meals to them together and also to increase their retention in schools.

## **1.2 Demographic Profile of the State**

**1.2.1 Geographical location :** Punjab is located in the northwestern corner of the India on 35 degree latitude and 74 degree longitude covering an area of 50362 sq. kms (2% the country's total geographical area), comprising mostly of plain and fertile soil. It is bounded on the north by the Indian state of Jammu and Kashmir, on the east by Himachal Pradesh and the Union territory of Chandigarh, on the south by Haryana and Rajasthan, and on the west, it shares a long border with Pakistan. The city of Chandigarh is the joint capital of Punjab and Haryana.

**1.2.2 Administrative setup :** Punjab is divided in 20 Administrative Districts, 72 Tehsils, 141 CD Blocks, 216 ED Blocks and 12711 Villages.



### BASIC ADMINISTRATIVE INDICATORS

Sr. No	Name of Districts	No. of Educational Blocks (if any)	No. of BRC/UBRCs	No. of CRCs	No. of villages/Wards*	No. of Panchayats
1	Amritsar	18	8	94	856	753
2	Barnala	3	3	21	219	144
3	Bathinda	6	8	41	411	306
4	Faridkot	5	2	27	230	181
5	Fatehgarh Sahib	6	5	47	510	420
6	Ferozepur	19	10	115	1367	1069
7	Gurdaspur	22	16	181	1659	1642
8	Hoshiarpur	19	10	148	1633	1336
9	Jalandhar	19	10	113	1205	912
10	Kapurthala	7	5	63	789	538
11	Ludhiana	19	12	112	1147	924
12	Mansa	5	5	34	242	242
13	Moga	6	5	40	329	349
14	Mohali	7	3	57	414/72	414/4/1
15	Muktsar	6	4	38	319	319
16	Nawanshaher	8	5	51	529	501
17	Patiala	14	8	115	1097	932
18	Ropar	8	5	60	685	601
19	Sangrur	11	9	77	573/188	573
20	Tarn Taran	8	8	65	552	538
	<b>Punjab</b>	<b>216</b>	<b>141</b>	<b>1499</b>	<b>13540</b>	<b>11496</b>

**1.3 Social and economic indicators in the State, including literacy rates, health indicators (IMR,MMR), sex ratio, poverty ratios etc.**

1.3.1 Punjab is predominantly rural (66%) State. It has a high concentration of Schedule Caste Population i.e 28.9%, which is one of the highest in the country. The literacy rate of Punjab is 69.65 (75.23 males; 63.36 females) which is slightly higher than the All India Average of 64.84. The rural female literacy is lower at 55.3%. The literacy rate for SC females is 48.2%. There is a considerable gap in literacy rates in Muslims, which is 51% for males and 43% for females, though Muslim population in the state is only 2% or so.

**1.4 Nutrition Status, including data on malnutrition, anaemia, Vitamin A, other micronutrient deficiencies etc.**

Specific study regarding nutrition status of students taking Mid-Day-Meal has not been carried out by the Department. However, Health Department of the state carries out medical check up of the children. Students deficient in nutrients are given micro nutrients such as vitamin A, iron folic acid, multi-vitamin, De-worming tablets etc. Medical aid is also given to low vision, and anaemic children. Students are referred to medical treatment in case, the need arises. Regular meeting are held under the chairmanship of the Principal Secretary Health and Family Welfare. Such last meeting was held on 26.2.2008. Decisions taken in this meeting are attached at Annexure 'A'.



**(ii) Enrolment Primary (classes I-V)**

Gender	Category					
	SC	S.T.	OBC	Minority	Others	Total
Boys	428770	230	118345	70	151150	698565
Girls	387376	246	106228	78	138469	632397
Total	816146	476	224573	148	289619	1330962

**(b) Enrolment Upper Primary (classes VI-VIII)**

Gender	Category					
	SC	S.T.	OBC	Minority	Others	Total
Boys	223643	-	90061	9066	139066	461836
Girls	202508	-	79423	8777	116305	407013
Total	426151	-	169484	17843	255371	868849

**(iii) Drop Outs****(a) Primary**

Gender	Category					
	SC	S.T.	OBC	Minority	Others	Total
Boys	23.3	---	---	---	---	23.3
Girls	23.0	---	---	---	---	23.0
Total	23.1	---	---	---	---	23.1

**(b) Upper Primary**

Gender	Category					
	SC	S.T.	OBC	Minority	Others	Total
Boys	30.1	---	---	---	---	30.1
Girls	29.4	---	---	---	---	29.4
Total	29.7	---	---	---	---	29.7

**2. Description and assessment of the Programme implemented in the current year (2007-08) with reference to:**

**2.1 Calorific/Protein value of the Mid-Day-Meal provided along with menu prescribed.**

Information is given in Table -1

**2.2 Regularity and wholesomeness of Mid-Day-Meal served to children, reasons for Programme interruptions, if any.**

The State Government to ensure that the scheme is implemented wholesomely and effectively, a three tier system has been defined in compliance with the directions given by Government of India. The Chief Secretary is the Chairman of the State Level Steering and Monitoring Committee; Deputy Commissioner is the Chairman of the District Level Steering and Monitoring Committee whereas the Sub Divisional Magistrates are the Chairmen of the Sub Divisional Steering and Monitoring Committee. In addition to it, there is a complete synergy between Department of School Education, Health Department, Department of Rural Water Supply and Sanitation and Department of Food and Civil Supplies, at the District and Block Level. SDMs get the schools inspected either themselves or through senior revenue officers with the objective to check the Mid Day Meal at regular intervals. The Department of Health collects the food samples of the cooked meal and take further necessary action after following the due procedure. The Department of Rural Water Supply and Sanitation collects the samples of water and also ensures potable quality of drinking water to the schools. Regular

meetings of the Sub Divisional Level and District Level Steering and Monitoring Committee are held in the State. In addition the State Level Steering and Monitoring Committee also meets at regular intervals to monitor the programme. The State Government has also constituted a "Core Group of Officers" under the chairmanship of Secretary, School Education to monitor and sort out the problems, if any, in smooth implementation of the scheme.

However, due to paucity of funds or due to non release of the same, at times, causes the main hurdles. Further, there is some resentment among teachers also to certain extent, though, with streamlining of the process, this is reducing over a period of time.

**2.3 Number of children (Class, category and gender wise) who participated in the Programme. Separately for Primary and Upper Primary in EBBs.**

a) No. of Children who participated in the Programme for Primary classes (I-V)

Gender	SC	ST	OBC	Minority	Others	Total
Boys	422773	230	114527	70	147800	685400
Girls	378571	246	100889	78	135095	614879
Total	801344	476	215416	148	282895	1300279

b) No. of children who participated in the Programme for Upper Primary classes (VI- VIII) (EBBs).

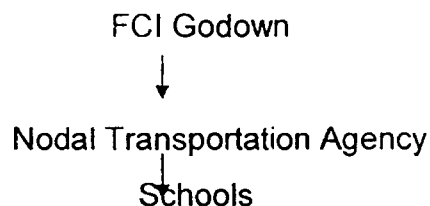
Gender	SC	S.T.	OBC	Minority	Others	Total
Boys	28387	-	13116	5006	12523	59032
Girls	22893	-	14301	4299	10943	52436
Total	51280	-	27417	9305	23466	111468

**2.4 Foodgrains management including adequacy of allocation timeliness of lifting, transportation and distribution and suitability of storage at different levels.**

2.4.1 The allotment of Food grains is done by Government of India as per the requirement of the districts and the State. The transportation agency namely Punjab State Civil Supplies Corporation (PUNSUP) has been identified as the nodal agency by the State Government to lift the foodgrains from the FCI godowns and send it to the schools. Deputy Commissioners / District Magistrates have been asked by the State Government to ensure that the quality of foodgrains lifted from FCI godowns is good. Regular meetings are held by the District Magistrates to monitor the quality of foodgrains wherein District Manager PUNSUP also participates in such meetings.

2.4.2 Punjab State Civil Supplies Corporation (PUNSUP) has prepared the route chart covering all the schools and supply of food grains is ensured regularly depending upon the consumption of the foodgrains in schools. At the school level, a local committee has been constituted in all the districts to receive the food grains. The school teacher is a Member Secretary of this committee and is responsible for the maintenance of the records. It is ensured by the Deputy Commissioners that the food grains delivered at the school are stored in appropriate storage bins, though, at some places such storage bins still remains to be provided. The directions have been issued separately by the Department of Rural Development to declare the expenditure incurred on such storage bins as valid expenditure.

2.4.3 The lifting and the distribution chart of the food grains is very simple and effective as evident from the below :-



**2.5. Central Assistance received and utilized towards :**

**(a) (i) Cooking Cost (Primary)**

An amount of Rs. 2356.89 lakhs has been sanctioned out of an amount of Rs.4631.20 lakhs approved by the Govt. of India towards Cooking Cost during 2007-08. An amount of Rs. 2315.60 has been sanctioned to the State Govt. as 1<sup>st</sup> installment. An amount of Rs. 2582.12 lakhs has been spent upto 31/12/07, over-all utilisation is 41.82 % as on 31/12/07. (Table 7)

**(ii) Cooking Cost (Upper Primary - EBBs)**

An amount of Rs 379.95 lakhs (Rs 315.30 lakhs central assistance and Rs 64.65 lakhs state share) was sanctioned and released during the year 2007-08. This amount remained unutilized upto 31/12/07 because the funds were drawn from the Treasury after 31/12/07. The Scheme was notified for operation with effect from 1.1.08 in the seven districts approved by Government of India (Table 7A).

**(b) (i) Kitchen Sheds construction (Primary )**

Govt. of India allowed the State Govt to carry forward the unspent balance of Rs.2742.59 lakhs available with the State Govt. of Punjab as on 31/3/07, (out of Central Assistance sanctioned during 2006-07) for construction of kitchen shed cum-stores in 4571 Primary Schools @ Rs.

60,000 per unit cost vide letter No. F.28-3/2006-Desk (MDM) dated 20/6/07. This amount was drawn from the Treasury and sent to the Deputy Commissioners on 8/12/07 for getting the work done through VEDCs upto 31/03/08. The construction of kitchen sheds is at the advanced stage (Table 8).

It would also be relevant to mention here that it was not possible to construct kitchen sheds @ Rs. 60,000/-. A reference was made to the Government of India by the State Government in this regard. However, on receipt of the clarification, all the Deputy Commissioners were accordingly advised by the State Government to take Rs. 60,000/- as a central assistance for construction of Kitchen Sheds and were advised to have a synergy with other centrally or State sponsored schemes vide letter dated 31.01.2008.

**(i) Kitchen Shed construction ( Upper Primary only in EBBs )**

An amount of Rs. 631.20 lakhs was received for the construction of the kitchen sheds in 1052 schools falling in 21 Educationally Backwards Blocks in seven districts during the year 2007-08. The Government of India released these funds vide their sanction dated 30/01/2008 and the same was processed by Mid Day Meal cell and Administrative Department. However, the State Finance Department cleared this case only during the fag end of the financial year and hence the funds could not be drawn from the treasury.

The State requests that the PAB may kindly consider to allow the State Government to carry forward the funds for the next financial year i.e. 2008-09.

**(c)(i) Procurement of kitchen devices (Primary)**

	<b>Connections.</b> (a) Primary (Classes I-V)		---	245.90	245.90	----	100	----	----	----
	(b) Upper Primary (Classes VI-VIII) (EBBs)			52.60	---	----	----	----	----	----
<b>3.</b>	<b>Construction of Kitchen Shed-cum- Store.</b> (a) Primary (Classes I- V)		---	2742.5 9	2742.5 9	----	100	---	---	---
	(b) Upper Primary (Classes VI-VIII) (EBBs)			631.20	---	----	----	----	----	----
<b>4.</b>	<b>Management Monitoring &amp; Evaluation (MME)</b> (a) Primary (Classes I- V)		---	114.76	75.20	---	100	---	---	---
	(b) Upper Primary (Classes VI-VIII) (EBBs)			8.00	8.00	---	100	---	---	---
	<b>Total</b>	<b>5500*</b>	----	<b>8688.9 5</b>	<b>7737.88</b>	<b>64.65</b>				

\*FD has made provision in the Revised Annual Plan Estimates to the tune of Rs. 10,207.91 lacs out of which a sum of Rs. 3530.27 lacs under Capital Content.

during 2006-07 vide letter No. 25(1a)/2007-Desk (MDM) dated 9/7/07. This amount has been drawn 8/11/07.

Similarly, Govt. of India vide letter No. 25(1A)/2007-Desk(MDM) dated 8.1.08 released the balance amount of Rs. 39.56 lakhs to Punjab Govt. under this component. This amount was released by the Finance Department only at the fag end of the financial year. Although the financial sanction was issued on 28.3.2008 by the Administrative Department, yet the bill was not passed by the treasury. The state requests that this unspent amount may kindly be allowed to be carried forward to the next financial year 2008-09.

**(ii) Management, Monitoring and Evaluation (Upper Primary EBBs)**

During the year 2007-08, an amount of Rs. 8 lakhs for this component has been drawn and is in the process of utilisation.



2.6. State budget provisions and expenditure in 2007-08 towards (a) reimbursement of Central Assistance (b) State Contribution

Budget Provisions (Rs. in lacs)	Revised Budget Estimates (Rs. in lacs)	Expenditure (Rs. in lacs)
5500 lacs for both Central Assistance and State Contributions for all components.	Rs. 10207.91 lacs for both Central Assistance and State contributions for all components (including Rs. 3530.27 lacs under capital content)	Rs. 7802.53 lacs for both Central Assistance and State contribution for all components (including Rs. 2988.49 lacs under capital content).

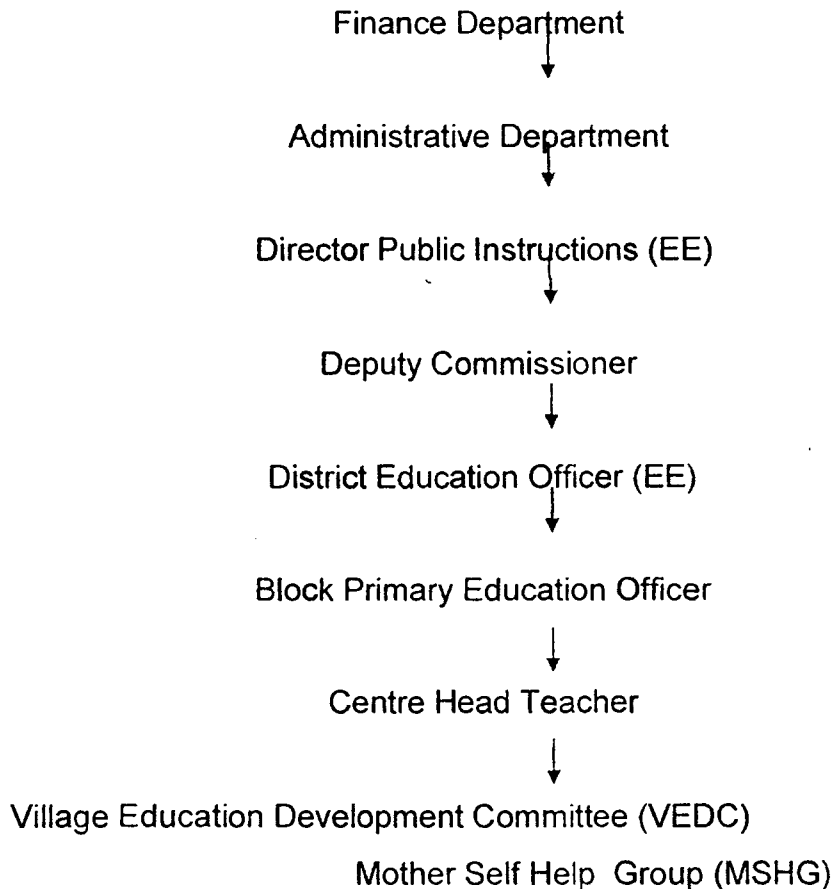
**Funds Position for 2007-08**  
(Mid-day-Meal Scheme in Punjab)

(Rs. in Lacs)

S. No.	Component	Outlay		Funds received from GOI	Expenditure 31/3/08		% age Expenditure		Funds not likely to be received from GOI	Remarks
		CS	SS		CS	SS	CS	SS		
1	2	3	4	5	6	7	8	9	10	11
1.	Cooking Cost									
	(a) Primary (Classes I-V)		--	4631.20	4350.89	---	94	---	---	---
	(b) Upper Primary (Classes VI-VIII) (EBBs)			315.30	315.30	64.65	100	100	---	---
2.	Kitchen Devices & Gas									

## 2.7 System for release of funds provided under Cooking Cost (Central and State)

Funds are sanctioned and released at the State level by Finance Department. Director Public Instructions (EE) draws the funds from the Treasury and funds are sent to the Deputy Commissioners through Bank Drafts. Deputy Commissioners release the funds to the implementing Agency at village level i.e. VEDC, MSHG etc. through Block Primary Education Officers/Central Head Teachers on the recommendations of the District Education Officers (EE).



2.8 System for procuring cooking ingredients (fuel, condiments, oil etc), commodities, which are centrally purchased and supplied to schools or locally

**purchased at school level and rate of cooking cost per child per day provided at school level.**

The cooking ingredients and other commodities are locally purchased at school level. The rate of cooking cost per child per day is as per the norms fixed by the Govt. of India:-

i)	Primary Classes (I-V)	@ Rs. 2.00 per child per school day
ii)	Upper Primary Classes (VI-VIII) EBBs	@ Rs. 2.50 per child per school day.

#### **2.9 System for cooking, serving and supervising Mid-Day-Meals in the school .**

(i) Cooks/MSHG's engaged by the Department/Village Panchayats/ VEDCs cook the meals. The detail of wages paid to the cooks is given in Table 1.

(ii) Mothers have been involved in the process of serving and supervising Mid-Day-Meal in the schools. MSHG's have been formed in all the schools.

#### **2.10 Status of construction of Kitchen sheds from i) Funds released under the Mid-Day-Meal Scheme**

During the year 2006-07, a sum of Rs. 1150.20 lacs for the construction of kitchen shed-cum-store was released by the Finance Department, however, funds were not released by the Treasury. Further, an amount of Rs. 1592.39 lacs was also not released by the Finance Department. The total unspent balance of Rs.2742.59 lacs (Rs. 1150.20 lacs plus Rs.1592.39 lacs) has been permitted by the Govt. of India to be carried over to the financial year 2007-08.

During the year 2007-08, a sum of Rs. 2742.59 lacs has been released. The total amount drawn from the Treasury has been sent to all the Deputy Commissioners for construction of Kitchen Sheds in 4571 Primary schools through Village Education Development Committees (VEDCs) for their completion by 31/3/08. The construction work in the schools is in progress and the same is likely to be over very soon.

- ii) **Funds from other development Programmes such as SGRY, BRGF etc. Detail of activities through convergence with other development Programmes in provision of drinking water, toilets etc.**

There is a complete synergy between the various Centrally Sponsored Schemes and the State Sponsored Schemes to implement this scheme at the grass root level. Under the SSA programme, kitchen sheds have been provided in all the schools, the building for which has been constructed. The Department of Rural Water Supply and Sanitation has been entrusted the responsibility of providing drinking water and sanitation facilities in the schools situated in the rural areas. The Department of Health carries out the medical check up and provides iron tablets etc. under the schemes of Health Department to the school children as a supplement to the Mid Day Meal scheme.

#### **2.11 Status of procurement of Kitchen devices from**

- i) **Funds released under the Mid-Day-Meal Programme**

During the year 2006-07, a sum of Rs. 217.37 lacs was sanctioned for Kitchen Devices and Gas Connections. The State Government released the funds to the Punjab State Civil Supplies Corporation (PUNSUP). Out of the

amount of Rs. 217.37 lacs, Rs.200 lacs were advanced to the above corporation for procurement of Kitchen Devices and for arranging release of Gas Connections. Gas Bhatties and Fire Extinguishers have been supplied by PUNSUP, to the Primary schools. However, action for getting the gas cylinders is being pursued.

Further, during the year 2006-07, an amount of Rs. 245.90 lacs sanctioned by the Government of India for kitchen devices could not be released by the State Finance Department due to late receipt of sanction from Govt. of India i.e. after 31/3/07. Thus, an unspent balance of Rs. 245.90 lacs has been allowed to be carried over to the financial year 2007-08 by the Govt. of India.

During the year 2007-08, this amount of Rs. 245.90 lacs for procurement of Kitchen Devices has been released to the Deputy Commissioners for arranging Kitchen Devices and Gas Connections in 4918 Primary schools.

#### **2.12 Capacity building and training conducted for different categories of persons involved in the Mid-Day-Meal Programme under programmes of SSA, DIETS etc.**

Regular training programmes are being conducted by Sarva Shiksha Abhiyan programme to all the teachers in the Primary and Upper Primary Schools. A module of Mid Day Meal programme addressing all the aspects of the scheme is an integral part of the training programmes. Further, the trainings are also organized on Mid Day Meal scheme through Edusat project of State government. Medical officers from the Health Department provide invaluable inputs on preventive health care particularly the disease relating to iron deficiency, eyes, ears etc. through Edusat as well as through regular training course run by the SSA. One BRP is specifically trained to monitor the

Mid Day Meal scheme under the SSA programme at BRC level so as to build the capacity at the grass root level.

In addition the State Government has also created the Mid Day Meal cell at the district level by appointing District Managers. The basic qualifications for the District Managers are that he should have an experience of working in the Department of Foodgrains or Finance.

### **2.13 Management Information System at School, Village/ Gram Panchayat, Block, District and State level**

2.13.1 Mid-Day-Meal Programme implementation is the overall responsibility of Committees constituted at school level. Teacher Incharge of Mid-Day-Meal Programme maintains the day to day record of the programme. There are only two registers to be maintained at school level. One register is for maintenance of funds (Cash Book) and second register is kept for other other details.

2.13.2 At the end of the month, every school submits its monthly report of stock register for foodgrains to the Centre Head Teacher which transmits it to the Block Primary Education Officer. Block Primary Education Officer compiles the reports received from various schools and communicates to the District Education Officer (EE), who in turn compiles the entire district report and sends to the State Mid-Day-Meal Cell. District Education Officers (EE) convene monthly meeting of Block Primary Education Officers.

2.13.3 Reports received from the various districts are compiled at State Mid-Day-Meal Cell and thereafter, analysis of the progress is done regularly. Monthly meetings of the District Education Officers (EE) are held under the Chairmanship of Director General School Education-cum-Special Secretary to Govt. of Punjab.

2.13.4 It is also apprised that Sarva Shiksha Abhiyan Authority Punjab has already taken a decision to transfer the funds electronically right up to the VEDC level in the State. The State Government intends to follow the same procedure in releasing the funds under the Mid Day Meal scheme also so that there is least obstruction / delay in making the funds available up to the executive agencies.

2.13.5 Further, the State Level Steering and Monitoring Committee is likely to consider and approve a proposal of the Department where by the non availability of funds for above period may not result in stopping the scheme all together. Deputy Commissioners may be asked to identify general stores by calling quotations or tenders from where the material required for preparing Mid Day Meal can be released to the schools even in the absence of funds at some fixed rates and all funds can be reimbursed to such general stores in due course of time. It is believed that such a measure would certainly add to the continuity of the Mid Day Meal by the school.

2.13.6 All block level officers in the Education Department are going to be connected through internet facilities. Monitoring of the Mid Day Meal scheme shall also be done through this network by asking the Block Primary Officers to put into the information relating to Mid Day Meal through internet.

2.13.7 Specific registers have been designed and are under preparation. The same shall be circulated to all the schools. It may also be relevant to mention here that these registers have been simplified in a manner so as to take not more than five minute for a school teacher to make the necessary entries into these registers.

**2.14 System to ensure transparency and openness in all aspects of Programme implementation including inter alia, foodgrains management, ingredients procurement, cooking and serving, appointment of cooking staff, construction of Kitchen sheds, Procurement of kitchen devices**

2.14.1 Punjab State Civil Supplies Corporation (PUNSUP) is responsible for the lifting of foodgrains from the Godowns of FCI. The foodgrains of Fair Average Quality are transported by the Punjab State Civil Supplies Corporation (PUNSUP) and delivered to the schools at their door step once in a month. The schools maintain records containing the necessary information such as number of children fed on each day, the type of food served. **24 Hours Helpline Number 0172-6541673 has been introduced in Sarva Shiksha Abhiyan Authority's office at Chandigarh for all complaints and suggestions.**

2.14.2 VEDCs/SHGs procure the ingredients locally as per their requirement. Cooking is done by Cooks/MSHGs and supervision is done by mothers in rotation. Cooks/MSHGs are engaged by the Department/Village Panchayats/ VEDCs.

2.14.3 Kitchen sheds-cum-stores are allotted to schools where the strength of the children is high. The Guidelines issued by the Government of India have been taken into account and these instructions have been circulated to the Deputy Commissioners who have been allocated funds for the construction of kitchen sheds through the VEDCs. Necessary care is taken to see that the kitchen sheds are completed keeping in view the rules and regulations.



2.14.4 On the cooking staff, it was apprised that the local level committees at the school level have been asked to arrange the cook at local level. Only women workers have been appointed as a cook in various schools. The payment is made to part time cooks out of the cooking cost. In case the number of students is large, the schools have been allowed to engage more than one cook.

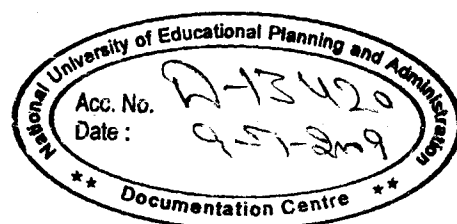
2.14.5 Kitchen sheds are being constructed in the districts. All the funds released by Government of India for the kitchen sheds have been released to the districts. As mentioned above, the kitchen sheds are under construction and shall be completed very soon.

2.14.6 Kitchen devices have been purchased except the gas connections. Funds were released by the State Government to Punjab State Civil Supplies (PUNSUP) in first phase whereas the funds were released to Deputy Commissioners in the second phase so as to expedite the procurement. It is learnt that the tenders have already been floated by the Deputy Commissioners and material shall be procured very soon.

#### **2.15 Measures taken to rectify**

- a) **Inter district low and uneven utilisation of foodgrains and cooking cost**
- b) **Inter district mismatch in utilisation of foodgrains and cooking cost**

It is apprised that the utilization of foodgrains and the cooking cost in all the districts is given in Table 6 & 7. Utilization of foodgrains has been the lowest in districts Mansa, Muktsar and Faridkot whereas it is highest in districts Jalandhar, Bhatinda, Moga and Amritsar. Inter-district difference in the utilization of the foodgrain and the



cooking cost across the districts is partially due to the fact that in some of the districts the scheme continued even though there were no funds available. The school teachers, at their own level, with the help of local Committees continued to run the scheme. Later on, the matter was also brought to the notice of the Govt by the Deputy Commissioners in a meeting chaired by chief Secretary and State Govt issued instructions that all such funds should be reimbursed after due verification. This is probably one of the reasons for this mis-match.

So far as the disparity in the utilization of foodgrain vis-a-vis cooking cost is concerned, the same is almost even as utilization of cooking cost is 41.82% as on 31.12.2007 whereas the utilization of foodgrain is 44.10% on the same date.

**c) Measures taken to rectify delay in delivering cooking cost at school level.**

Instructions have been issued at the Govt. level to the Deputy Commissioners that no time should be taken in releasing the cooking cost to the schools as soon as funds reach them. Meetings are held monthly with the District Education Officers (EE) at State level to review the position of cooking cost funds.

However, the State Government intends to revise the procedure and the funds would be transferred electronically right upto to VEDCs upto School level Committee once the proposal is formally approved by the State Level Steering and Monitoring Committee.

**2.16 Overall assessment of the manner in which implementation of the Programme is contributing to**

**the Programme objectives and an analysis of strengths and weaknesses of the Programme implementation**

**2.16.1** The programme of Mid-Day-Meal has already overcome the initial teething problems. Now, the people and all concerned are aware of the programme. It has been successful in breaking social inhibitions as children from different Caste, colour and creed sit together to eat the food.

**2.16.2** In order to implement the programme effectively, a State Mid-Day-Meal Cell has been created. A post of General Manager with posts of Manager (Finance and Accounts), Manager Foodgrains, Manager Community Support and Manager Food and Nutrition has been created for State Cell. Except the post of Manager Food and Nutrition, all the posts at Head quarters have been manned by retired persons having vast experience of foodgrains/ Finance and Accounts. One post of District Manager (MDM) was also created at each of the Districts in the office of District Education Officer (EE). These posts have also been filled up by retired persons having experience of foodgrains. One Computer Operator for each of the Managers has also been provided.

**2.16.3** Intensive on the spot checkings are being conducted regularly in all the districts on campaign basis without pre intimation to schools through District/Block level Officers. Where deficiencies are pointed out in the implementation of the programme; the concerned district authorities are called upon to explain.

**2.16.4** At the State Level, the implementation of the scheme is monitored by the State Level Steering and

Monitoring Committee which is chaired by the Chief Secretary himself. At the district level, the District Level Steering and Monitoring committee is headed by the Deputy Commissioner with other departmental officers as Members. At the Sub Divisional Level, the Committee is headed by the Sub Divisional Magistrate concerned with the officers of the Department of Education and others as Members.

The Mid Day Meal Cell constituted at the Head Office is responsible to monitor the implementation of the scheme on day to day basis. **Five Sub Divisional Magistrates are asked on daily basis to randomly inspect five schools and send their reports directly to the Director General School Education by fax.** The reports are compiled on daily basis by the Mid Day Meal Cell and after examining the same explanation of the officer concerned is called, in case, the need arises. It is further apprised that all the Sub Divisional Magistrates have inspected all the schools during the last quarter of the year 2007-08. Reports of the Sub Divisional Magistrates are enclosed to the report as Annexure K.

#### **2.17 Impact of Mid-Day-Meal Scheme such as increase in enrolment, attendance, retention, learning level etc. reduction in drop out, increase in nutritional status etc.**

It is strongly believed that the Mid Day Meal scheme has been able to improve the enrolment, attendance, retention and the learning level of the students in addition to improving the nutritional standards amongst the students. This is evident from the study of ASER which has been released by Mr Montek Singh Ahluwalia, Deputy Chairman, Planning Commission, Government of India on 16.1.2008. However, a separate study is being

conducted by the State Government whereby the Kurukshetra University – one of the agencies empanelled by Govt of India, submits its Report. It may also be relevant to mention that in a State like Punjab where almost 38% students are studying in private recognized / un-recognized schools, providing Mid Day Meal in Government Schools / EGS Centres has given a boost to most dis-advantageous section of the Society. In Government run institutions, Mid Day Meal is serving its intended objective very well. The impact of the scheme can be proved conversely as it is also strongly believed that in case the Mid Day Meal scheme is stopped, a significant increase in attendance which has been observed in the schools will go down, thus, justifying the continuation and implementation of the Mid Day Meal in the schools regularly.

**2.18 Details of evaluation studies and summary of its findings.**

An agency has been identified for external evaluation as per the Guidelines and Terms of Reference fixed by Government of India. A reference was made to all the 39 agencies identified by Government of India alongwith the Terms of Reference. The proposals received from the agencies were examined and the Kurukshetra University has been selected to conduct the external evaluation at a cost of Rs.12.35 lakhs. The Kurukshetra University shall submit its report within six months. The same shall be shared with Government of India in due course of time.

**2.19 Brief write up on best practices followed in the State:-**

The following best practices are followed in the schools :-

- (1) All students, irrespective of their caste, creed and religion take the Mid Day Meal and thus spread a

message of common brotherhood and also imbibe good traditions of the Indian Society amongst the students;

- (2) Participation of the women, particularly, the mothers in cooking and serving to the children / students is very good practice. It has also enforced the accountability of teachers towards society to impart quality education to students;
- (3) In some of the places, the students have been motivated to produce the vegetables by making use of available land in the schools effectively. This will not only make the school self-sustainable but would also inculcate the habit of self-reliance amongst the students;
- (4) The State Government is considering a proposal to introduce the system of centralized kitchen in two border districts of Ferozepur and Tam Taran as well as in district Nawanshahar. The decision has already been taken in principle and the process to select a reputed NGO / Volunteer agency in accordance with the directions given by the Government of India are underway.

**2.20 Instances of unhygienic food served, children falling ill, sub- standard supplies, diversion/ misuse of resources, social discrimination and safety measures adopted to avoid recurrence of such incidents.**

No such unfortunate and avoidable incident has fortunately ever come to the notice though there are un-substantiated reports coming in the media once in a while. All these reports are monitored in the Head Office on regular basis and it has generally been found that the reports were either vague or there was some lack of communication. It would

also be relevant to mention that regular meetings are held under the Chairmanship of Principal Secretary Health on checking the samples of the Mid Day Meal Scheme and also the quality of water being used in the schools. Regular health check ups are being done by the Health Department in the schools. A complete annual plan on health check up is prepared in advance for each district. This is reviewed in the District Level Steering and Monitoring Committee as well as is reviewed at State Level also. One senior officer from the Department of Education invariably attends the Monthly meetings of Civil Surgeons convened by the Department of Health to review the implementation of Mid Day Meal as one of the agenda items.

#### **2.21 Extent of involvement of N.G.Os and Civic Body Organizations (CBOs)/PRIs**

As appraised earlier, the State Government has decided in principle to take the help of NGO and the volunteer agencies to implement the Mid Day Meal scheme. Centralized kitchen shall be set up in three districts.

If this experiment succeed, the same shall be replicated in rest of the districts also in due course of time.

#### **2.22 Status of School Health Programme with special focus on provision of micro-nutrients, Vitamin-A, de-worming medicine, Iron and Folic acid, Zinc and recording of height, weight etc.**

2.22.1 The School Health Programme is picking up in the State. Govt. Doctors visit the schools to conduct Health Check up of the students under School Health Programme. Height Recorders have been provided in the Govt. Primary Schools. Weighing machines were provided in 2487 schools of border districts of Amritsar,

Tarn Taran, Ferozepur and Gurdaspur during the year 2006-07. Further, funds of Rs. 33.60 lacs for the supply of weighing machines to 7466 schools of all the Districts have been given to the Deputy Commissioners on 15/1/2008.

2.22.2 A quarterly meeting is held under the Chairmanship of the Principal Secretary Health, Government of Punjab, wherein Secretary School Education and other officers are also present. All the issues relating to checking of the Mid Day Meal scheme, quality of water, sanitation, health, check up, issues relating to fortifying the Mid Day Meal are discussed in detail. These matters are reviewed on monthly basis by the Department of Health as well as the Department of Education in the meetings of Civil Surgeon and the District Education Officers respectively. At the District level, the Civil Surgeon is a key Member of the District Level Steering & Monitoring Committee. Permanent Health Cards have been got printed by the State Government and all the history of a student / child is entered on the health card which is a part of the record of the student.

**2.23 Steps taken to strengthen the monitoring mechanism in the village, Block, District and State level and status of constitution of SMCs at these levels. Details of these meetings.**

Steering and Monitoring Committees, as appraised above, have already been constituted at State, District and Sub Divisional Level. These are headed by the Chief Secretary, Deputy Commissioner and the Sub Divisional Magistrate respectively. Director General School Education and the Director of Public Instruction (EE) monitor the implementation of these schemes on daily



basis at Head Office level. There is a State Level Mid Day Meal Cell headed by a General Manager Mid Day Meal Cell to assist the Director General School Education and the Director of Public Instruction (EE). One District Manager in Mid Day Meal is provided in each district to assist the District Education Officer / Deputy Commissioner and one B.R.P. assists the S.D.M. / Block Primary Education Officer at Block level to monitor the scheme. Regular monthly meetings are held on every 10<sup>th</sup> of month at the level of Director General School Education / Director of Public Instruction (EE) and monthly meetings are also held in the districts at the level of Deputy Commissioners.

A meeting of Core Group headed by Secretary School Education is held at State level and similarly, meeting at the level of Principal Secretary Health is held once in a quarter to address the issues relating to health and sanitation at the State level.

The Chief Secretary also reviews the implementation of the scheme in the meeting of all the Deputy Commissioners regularly. Meeting has already been held on 28<sup>th</sup> December, 2007. Minutes of the meeting are enclosed at Annexure C.

**2.24 Arrangement for departmental inspections to Mid-Day-Meal Centres and percentage of schools inspected and summary of findings and remedial measures.**

In addition to the monitoring system, as explained above, all the District Institutes of Education and Training have been entrusted the responsibility to ensure that all schools are covered by them with the objective to know the status of implementation of the Mid Day Meal

scheme. These reports are compiled at the level of Director, State Council of Educational Research and Training and follow up action is thereafter initiated by Director of Public Instruction (EE).

**2.25 Note on Action taken on the findings of National level review meeting held at New Delhi on 9-10<sup>th</sup> October 2007.**

The Action Taken Report on the findings of the National Level Review meetings held at New Delhi on 9-10 October, 2007 is enclosed herewith at Annexure L. It is further apprised that the Special Secretary School Education, Government of Punjab, attended the Conference held on 5-6 February, 2008 at Vigyan Bhawan (the minutes of this conference are still awaited).

**2.26 Feedback/Comments in respect of report of Monitoring Institutions designated for Punjab State to monitor implementation of MDM and action taken thereon.**

Punjab University was appointed as a monitoring institution by the Ministry of Human Resource Development, to monitor implementation of MDM Scheme in Punjab. The Monitoring Report, covering the 2<sup>nd</sup> half of 2006-07 for the districts of Roopnagar (Ropar) and Fatehgarh Sahib, was submitted by the monitoring institution, on the observations of which reply was sent to MHRD vide memo No. MDMC /2008/MFA/796 dated 25/1/2008 copy placed at Annexure M.

Table - 1  
Annual Work Plan and Budget 2008-09  
[Mid-Day Meal Scheme]  
GENERAL INFORMATION-2007-08

Table-1

State: Punjab

1. No. of children availing Mid-Day Meal as on 30.9.2007

	SC	ST	OBC	Minority	Others	Total
(1)	(2)	(2)	(3)	(4)	(5)	(6)
Boys	422773	230	114527	70	147800	685400
Girls	378571	246	100889	78	135095	614879
Total	801344	476	215416	148	282895	1300279

2. Staff (Cook/helper/others) employed under Mid Day Meal Scheme

	SC	ST	OBC	Minority	Others	Total
(1)	(2)	(2)	(3)	(4)	(5)	(6)
Male	114	4	122	50	48	338
Female	10758	15	3254	50	1492	15569
Total	10852	19	3374	100	1540	15907

In the Districts of Faridkot, Bathinda and Moga, Cooking is done by the MSHGs.

3. Salary paid to Staff (Cook/helper/others) employed under Mid Day Meal Scheme

Staff	Average Monthly Salary	Remarks/basis/norms for appointment and payment of wages
Cook	Rs. 900	Normally the Cooks and Helper are appointed by the VEDCs/MSHG. They are paid wages/labour charges @ Rs.0.40 Paise per student per school day.
Helper	Rs 600	
Others	Rs. 600	

4. Break-up of nutrition content and cost of meal per child per day as per State Nutrition/Expenditure Norm

A. Primary: (A) Dal & Chapati

Sl. No.	Food item	Quantity (in gms)	Cost of Qty Recommended (in Rs.)	Calories	Protein content (in gms)
(1)	(2)	(2)	(3)	(4)	(5)
1	Foodgrains (Wheat/Flour)	100	Supplied free	340	8
2	Pulses	20	0.5	70	5
3	Vegetables / Others	50	0.5	25	0
4	Oil & fat	5	0.25	45	0
5	Salt & Condiments	As per need	0.1	0	0
6	Fuel	0	0.2	0	0
7	Labour & other administrative charge	0	0.4	0	0
8	any other items	0	0	0	0
	<b>Total</b>		1.95 (say Rs. 2.00)	480	13

**B. Postik Chana Pulao/Nutritional Pulao**

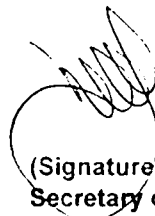
Sl. No.	Food item	Quantity (in gms)	Cost of Qty Recommended (in Rs.)	Calories	Protein content (in gms)
(1)	(2)	(2)	(3)	(4)	(5)
1	Rice	100	Supplied free	340	8
2	Pulses/Chana	20	0.5	70	5
3	Nutri / Others	50	0.5	25	0
4	Oil & fat	5	0.25	45	0
5	Salt & Condiments	As per need	0.1	0	0
6	Fuel	0	0.2	0	0
7	Labour & other administrative charge	0	0.4	0	0
8	any other items	0	0	0	0
<b>Total</b>			1.95 (say Rs. 2.00)	480	13

**C. Halwa/Sweet Rice**

Sl. No.	Food item	Quantity (in gms)	Cost of Qty Recommended (in Rs.)	Calories	Protein content (in gms)
(1)	(2)	(2)	(3)	(4)	(5)
1	Wheat/Flour/Rice	100	Supplied free	340	8
2	Groundnut	20	0.5	70	5
3	Sugar / Others	50	0.5	25	0
5	Oil/Fat	5	0.25	45	0
5	Condiments	As per need	0.1	0	0
6	Fuel	0	0.2	0	0
7	Labour & other administrative charge	0	0.4	0	0
8	any other items	0	0	0	0
<b>Total</b>			1.95 (say Rs. 2.00)	480	13

Note:- Amount of Rs. 0.5 paise is the amount that varies due to fluctuation of market rates of MDM ingredients

*hikra*

  
(Signature)

Secretary of the Nodal Department  
Government of Punjab \_\_\_\_\_

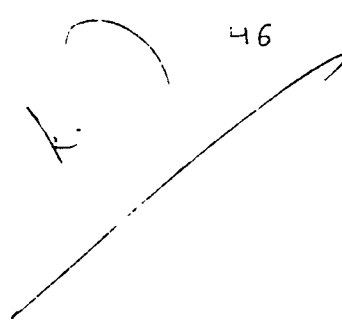
*K.* 46  


Table - 1  
Annual Work Plan and Budget 2008-09  
[Mid-Day Meal Scheme]

Table-1

**GENERAL INFORMATION-2007-08**

State: Punjab

B. Upper Primary: (1) Dal & chapati

Sl. No.	Food item	Quantity (in gms)	Cost of Qty Recommended (in Rs.)	Calories	Protein content (in gms)
(1)	(2)	(2)	(3)	(4)	(5)
1	Wheat/Flour	150	Supplied free	522	16.5
2	Pulses	30	0.75	104	7.2
3	Onion & Others	60	0.6	18	0.75
4	Oil & fat	7	0.4	63	0
5	Salt & Condiments	As per need	0.10 paise	0	0
6	Fuel	0	0.2	0	0
7	Labour & other administrative charge	0	0.4	0	0
<b>Total</b>			2.45 (say 2.50)	707	24.45

**II. Postik Chana Pulao/Nutritious Pulao**

Sl. No.	Food item	Quantity (in gms)	Cost of Qty Recommended (in Rs.)	Calories	Protein content (in gms)
(1)	(2)	(2)	(3)	(4)	(5)
1	Rice	150	Supplied free	517	10.2
2	Pulses/Chana	35	0.75	121	8.4
3	Seasonal Vegetables like	60	0.7	18	1.56
4	Oil & fat	7	0.35	63	0
5	Salt & Condiments	As per need	0.1	0	0
6	Fuel	0	0.2	0	0
7	Labour & other administrative charge	0	0.4	0	0
8	any other items	0	0	0	0
<b>Total</b>			2.5	719	20.16


**III. Sweet Rice**

Sl. No.	Food item	Quantity (in gms)	Cost of Qty Recommended (in Rs.)	Calories	Protein content (in gms)
(1)	(2)	(2)	(3)	(4)	(5)
1	Rice	150	Supplied free	510	12
2	Groundnut	30	1.05	105	7.8
3	Sugar	45	0.45	155	0.3
5	Oil/Ghee	5	0.25	45	0
5	Chhoti Illaichi	Small Quantity	0.25	0	0
6	Fuel, Labour & administ	0	0.5	0	0
<b>Total</b>			2.5	815	20.1

IV Postik Khichri

Sl. No.	Food item	Quantity (in gms)	Cost of Qty Recommended (in Rs.)	Calories	Protein content (in gms)
(1)	(2)	(2)	(3)	(4)	(5)
1	Rice	150	Supplied free	510	12
2	Moong Dal	20	0.9	65	4.4
3	Oil	7	0.35	63	0
4	Salt & Condiments	As per need	0.05		
5	Groundnut	20	0.7	70	5.2
6	Fuel, Labour & administ	0	0.5	0	0
	<b>Total</b>		2.5	708	21.6

Date: \_\_\_\_\_ *18/08/2018*

  
(Signature)  
Secretary of the Nodal Department  
Government of Punjab \_\_\_\_\_

48

Table-2  
Annual Work Plan and Budget 2008-09  
[MID-DAY MEAL SCHEME]

Table-2

Proforma for Furnishing Details of Provisions made in the State Budget 2008-09

State : Punjab

(Rs. In lakh)

1) Cooking Cost : Primary

Year	Allocations in State/UT Budget			Total Expenditure
	Central Assistance (Reimbursement)	State Contribution	Total	
1	2	3	4	5
2005-06	1309.86	Nil	1309.86	1309.86
2006-07	3929.41	1400		4100 {Rs.2700(cs)+Rs.1400(ss)}
2007-08	0	0	* 5500	2356.89 on 31/12/07
2008-09	0	0	*7564.55	Not Applicable

\* For Central Share and State Share for all components

2) Cooking Cost : Upper Primary

Year	Allocations in State/UT Budget			Total Expenditure
	Central Assistance (Reimbursement)	State Contribution	Total	
1	2	3	4	5
2007-08	0	0	* 5500	Nil
2008-09	0	0	*7564.55	Not Applicable

\* For Central Share and State Share for all components

3) Cost of meal per child per day, as per State Expenditure Norm including Central Assistance & State contribution (Unit Cost). [Excluding Cost of Foodgrains]

Year	Primary	Upper Primary
2005-06	Rs. 1.70/-	0
2006-07	Rs. 1.70/-	0
2007-08	Rs.2/-	Rs.2.50/-
2008-09	Rs.2/-	Rs.2.50/-

64

4) Construction of Kitchen-cum-Stores

Year	Provision in the State Budget			Expenditure
	Central assistance (Re-imburement)	State Contribution if any including through convergence	Total	
2006-07	1150.2	0	1150.2	Bill not passed by Treasury
2007-08	0	0	* 5500	2742.59 ( as on 31.12.07) Sent to the DCs on 8/12/07
2008-09	0	0	*7564.55	Not Applicable

\* For Central Share and State Share for all components

5) Procurement of Kitchen Devices

Year	Provision in the State Budget			Expenditure
	Central assistance (Re-imburement)	State Contribution if any including through convergence	Total	
2006-07	217.37	0	217.37	200
2007-08	0	0	* 5500	245.90 (as on 31.12.07) Sent to the DCs on 1/1/08
2008-09	0	0	*7564.55	Not Applicable

\* For Central Share and State Share for all components

50

*WBS*

(Signature)  
Secretary of the Nodal Department  
Government of Punjab



Table-3

## Annual Work Plan and Budget 2008-09 [Mid-Day Meal Scheme]

Table-3

District wise information on number of institutions under MDM Scheme for Primary Stage (Classes I-V)

State: Punjab

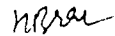
(As on 30th Sep., 2007)

S.No.	Name of District	No. of Institutions					No. of Institutions regularly serving MDM					Diff. Between (7)-(12)
		Classes I-V (Govt+LB)	Classes I-V (GA)	EGS Centres	AIE Centres	Total (col 3+4+5+6)	Classes I-V (Govt+LB)	Classes I-V (GA)	EGS Centres	AIE Centres	Total (col 8+9+10+11)	
1	2	3	4	5	6	7	8	9	10	11	12	13
1	Amritsar	841	27	83	53	1004	841	27	83	53	1004	0
2	Barnala	181	0	146	8	335	181	0	146	8	335	0
3	Bathinda	388	0	139	19	546	388	0	139	19	546	0
4	Faridkot	249	0	73	24	346	249	0	73	24	346	0
5	Fatehgarh Sahib	458	0	16	6	480	458	0	16	6	480	0
6	Ferozepur	1103	11	183	0	1297	1103	11	183	0	1297	0
7	Gurdaspur	1559	8	57	12	1636	1559	8	57	12	1636	0
8	Hoshiarpur	1284	2	33	35	1354	1284	2	33	35	1354	0
9	Jalandhar	985	11	70	44	1110	985	11	70	44	1110	0
10	Kapurthala	541	0	49	8	598	541	0	49	8	598	0
11	Ludhiana	1013	10	135	92	1250	1013	10	135	92	1250	0
12	Mansa	288	1	121	8	418	288	1	121	8	418	0
13	Moga	381	0	114	26	521	381	0	114	26	521	0
14	Muktsar	337	3	114	6	460	337	3	114	6	460	0
15	Nawanshaher	444	0	16	4	464	444	0	16	4	464	0
16	Patiala	1022	0	137	25	1184	1022	0	137	25	1184	0
17	Ropar	582	2	3	1	588	582	2	3	1	588	0
18	Sangrur	672	2	218	3	895	672	2	218	3	895	0
19	SAS Nagar	411	0	13	6	430	411	0	13	6	430	0
20	Tarn Taran	546	0	65	40	651	546	0	65	40	651	0
Total		13285	77	1785	420	15567	13285	77	1785	420	15567	0

Govt Government Schools  
LB Local Body Schools  
GA Govt Aided Schools

Reasons for the difference in col. 13

NIL



(Signature)  
Secretary of the Nodal Department  
Government of Punjab

**Table-3A**  
Annual Work Plan and Budget 2008-09  
[Mid-Day Meal Scheme]

Table-3A

District wise information on number of Institutions under MDM Scheme for Upper Primary Stage (Classes VI-VIII)

State:Punjab

(As on 31st Dec., 2007)

S.No.	Name of District	No. of Institutions (in EBBs)					No. of Institutions regularly serving MDM (in EBBs)					Diff. Between (7)-(12)
		(Govt+LB)	(GA)	EGS Centres	AIE Centres	Total (col 3+4+5+6)	(Govt+LB)	(GA)	EGS Centres	AIE Centres	Total (col.8+9+10+11)	
1	2	3	4	5	6	7	8	9	10	11	12	13
1	Bathinda	78	0	0	0	78	0	0	0	0	0	78
2	Ferozepur	496	0	0	0	496	0	0	0	0	0	496
3	Mansa	175	0	0	0	175	0	0	0	0	0	175
4	Muktsar	121	0	0	0	121	0	0	0	0	0	121
5	Patiala	21	0	0	0	21	0	0	0	0	0	21
6	Sangrur	123	0	0	0	123	0	0	0	0	0	123
7	Tarn Taran	38	0	0	0	38	0	0	0	0	0	38
Total		1052	0	0	0	1052	0	0	0	0	0	1052

Govt: Government Schools

LB: Local Body Schools

GA: Govt Aided Schools

- i) No of actual school working days during 1.10.2007 to 31.12.2007  
ii) No. of days mid-day meal served during 1.10.2007 to 31.12.2007

SCHOOL	EGS	AIE
60	-	-
NIL	-	-

Reasons for the difference in col. 13 The scheme was made operative w.e.f. from 1/1/08

Date: \_\_\_\_\_

*hbrac*

(Signature)  
Secretary of the Nodal Department  
Government of Punjab \_\_\_\_\_

**Table-3B**  
Annual Work Plan and Budget 2008-09  
[Mid-Day Meal Scheme]

**Table-3B**

District wise information on number of Institutions under MDM Scheme for Upper Primary Stage (Classes VI-VIII)

State: Punjab

(As on 30th, Sep., 2007)

S.No.	Name of District	No. of Institutions having upper primary classes <u>WITHOUT</u> primary classes (classes I-V) attached to them					No. of Institutions having upper primary classes <u>WITH</u> primary classes (classes I-V) attached to them					Total (col 7+12)
		(Govt+L B)	(GA)	EGS Centres	AIE Centres	Total (col 3+4+5+6)	(Govt+LB)	(GA)	EGS Centres	AIE Centres	Total (col 8+9+10+11)	
1	2	3	4	5	6	7	8	9	10	11	12	13
1	Amritsar	331	50	0	0	381	0	0	0	0	0	381
2	Barnala	115	0	0	0	115	0	0	0	0	0	115
3	Bathinda	248	13	0	0	261	0	0	0	0	0	261
4	Faridkot	154	8	0	0	162	0	0	0	0	0	162
5	Fatehgarh S	142	6	0	0	148	0	0	0	0	0	148
6	Ferozepur	367	16	0	0	383	0	0	0	0	0	383
7	Gurdaspur	484	40	0	0	524	0	0	0	0	0	524
8	Hoshiarpur	415	40	0	0	455	0	0	0	0	0	455
9	Jalandhar	431	53	0	0	484	0	0	0	0	0	484
10	Kapurthala	221	18	0	0	239	0	0	0	0	0	239
11	Ludhiana	515	48	0	0	563	0	0	0	0	0	563
12	Mansa	175	3	0	0	178	0	0	0	0	0	178
13	Moga	229	11	0	0	240	0	0	0	0	0	240
14	Muktsar	201	2	0	0	203	0	0	0	0	0	203
15	Nawanshaher	190	16	0	0	206	0	0	0	0	0	206
16	Patiala	322	27	0	0	349	0	0	0	0	0	349
17	<b>Ropar</b>	<b>168</b>	<b>26</b>	0	0	<b>194</b>	0	0	0	0	0	<b>194</b>
18	Sangrur	348	22	0	0	370	0	0	0	0	0	370
19	SAS Nagar	136	0	0	0	136	0	0	0	0	0	136
20	Tarn Taran	232	0	0	0	232	0	0	0	0	0	232
<b>Total</b>		<b>5424</b>	<b>399</b>	<b>0</b>	<b>0</b>	<b>5823</b>	<b>0</b>	<b>0</b>	<b>0</b>	<b>0</b>	<b>0</b>	<b>5823</b>

Govt: Government Schools  
LB: Local Body Schools  
GA: Govt Aided Schools

Date: \_\_\_\_\_

*M. K. Singh*

(Signature)  
Secretary of the Nodal Department  
Government of Punjab

**Table-3B**  
Annual Work Plan and Budget 2008-09  
[Mid-Day Meal Scheme]

Table-3B

District wise information on number of Institutions under MDM Scheme for Upper Primary Stage (Classes VI-VIII)

State: Punjab

(As on 30th, Sep., 2007)

S.No.	Name of District	No. of Institutions having upper primary classes <u>WITHOUT</u> primary classes (classes I-V) attached to them					No. of Institutions having upper primary classes <u>WITH</u> primary classes (classes I-V) attached to them					Total (col 7+12)
		(Govt+LB)	(GA)	EGS Centres	AIE Centres	Total (col 3+4+5+6)	(Govt+LB)	(GA)	EGS Centres	AIE Centres	Total (col 8+9+10+11)	
1	2	3	4	5	6	7	8	9	10	11	12	13
1	Amritsar	331	50	0	0	381	0	0	0	0	0	381
2	Barnala	115	0	0	0	115	0	0	0	0	0	115
3	Bathinda	248	13	0	0	261	0	0	0	0	0	261
4	Faridkot	154	8	0	0	162	0	0	0	0	0	162
5	Fatehgarh S	142	6	0	0	148	0	0	0	0	0	148
6	Ferozepur	367	16	0	0	383	0	0	0	0	0	383
7	Gurdaspur	484	40	0	0	524	0	0	0	0	0	524
8	Hoshiarpur	415	40	0	0	455	0	0	0	0	0	455
9	Jalandhar	431	53	0	0	484	0	0	0	0	0	484
10	Kapurthala	221	18	0	0	239	0	0	0	0	0	239
11	Ludhiana	515	48	0	0	563	0	0	0	0	0	563
12	Mansa	175	3	0	0	178	0	0	0	0	0	178
13	Moga	229	11	0	0	240	0	0	0	0	0	240
14	Muktsar	201	2	0	0	203	0	0	0	0	0	203
15	Nawanshaher	190	16	0	0	206	0	0	0	0	0	206
16	Patiala	322	27	0	0	349	0	0	0	0	0	349
17	Ropar	168	26	0	0	194	0	0	0	0	0	194
18	Sangrur	348	22	0	0	370	0	0	0	0	0	370
19	SAS Nagar	136	0	0	0	136	0	0	0	0	0	136
20	Tarn Taran	232	0	0	0	232	0	0	0	0	0	232
Total		5424	399	0	0	5823	0	0	0	0	0	5823

Govt: Government Schools  
LB: Local Body Schools  
GA: Govt Aided Schools

Date: \_\_\_\_\_

*M. K. Singh*

(Signature)  
Secretary of the Nodal Department  
Government of Punjab \_\_\_\_\_

**Table-4**  
**[Mid-Day Meal Scheme]**

Table-4

**District-wise information on Enrolment and Children availing MDM for 2007-08 for Primary Stage (Classes I - V)**  
(Only in MS-Excel Format)

State: Punjab

(As on 30th Sep., 2007)

S.No.	Name of District	Total Enrolment				No. of children availing MDM*			
		Classes I-V (Govt+LB+GA)	EGS Centres	AIE Centres	Total (col 3+4+5)	Classes I-V (Govt+LB+GA)	EGS Centres	AIE Centres	Total (col.7+8+9)
1	2	3	4	5	6	7	8	9	10
1	Amritsar	101633	2824	1791	106248	101633	2824	1791	106248
2	Barnala	28306	3930	220	32456	26996	3930	220	31146
3	Bathinda	62510	4078	672	67260	59399	4078	672	64149
4	Faridkot	36470	1758	677	38905	36470	1758	677	38905
5	Fatehgarh Sahib	30829	700	140	31669	29153	700	140	29993
6	Ferozepur	115335	8187	0	123522	115335	8187	0	123522
7	Gurdaspur	102911	1611	307	104829	102911	1611	307	104829
8	Hoshiarpur	80182	1662	1588	83432	79352	1662	1588	82602
9	Jalandhar	82752	2111	1567	86430	82752	2111	1567	86430
10	Kapurthala	39870	2146	389	42405	39870	2146	389	42405
11	Ludhiana	114812	5874	3436	124122	104244	5874	3436	113554
12	Mansa	46785	4658	279	51722	42746	4658	279	47683
13	Moga	57349	4036	766	62151	57349	4036	766	62151
14	Muktsar	62618	3276	152	66046	50622	3276	152	54050
15	Nawanshaher	32407	585	172	33164	31650	585	172	32407
16	Patiala	82800	4632	734	88166	77324	4632	734	82690
17	Ropar	35771	169	34	35974	34974	169	34	35177
18	Sangrur	75427	5367	99	80893	75427	5367	99	80893
19	SAS Nagar	30958	422	180	31560	27273	422	180	27875
20	Tarn Taran	60045	2535	1092	63672	49943	2535	1092	53570
Total		1279770	60561	14295	1354626	1225423	60561	14295	1300279

\* District wise aggregation of actual no. of children availing MDM based on school level MDM attendance register maintained.

Govt: Government Schools

LB: Local Body Schools

GA: Govt Aided Schools

- i) No of actual school working days during 1.4.2007 to 30.12.2007:  
ii) No. of days mid-day meal served during 1.4.2007 to 30.12.2007:

SCHOOL	EGS	AIE
169	169	169
169	169	169

(Signature)

Secretary of the Nodal Department  
Government of Punjab

**Table-4A**  
**Annual Work Plan and Budget 2008-09**  
**[Mid-Day Meal Scheme]**

Table-4A

District-wise information on Enrolment and Children availing MDM for 2008-09 for Upper Primary Stage (Classes VI-VIII)  
(Only in MS-Excel Format)

State: Punjab

S.No.	Name of District	Total Enrolment as on 30.9.07				No. of children likely to avail MDM in 2008-09			
		Classes VI -VIII (Govt+LB+GA)	EGS Centres	AIE Centres	Total (col 3+4+5)	Classes VI -VIII (Govt+LB+GA)	EGS Centres	AIE Centres	Total (col.7+8+9)
1	2	3	4	5	6	7	8	9	10
1	Amritsar	58149	0	0	58149	58149	0	0	58149
2	Barnala	20940	0	0	20940	20940	0	0	20940
3	Bathinda	44223	0	0	44223	44223	0	0	44223
4	Faridkot	20433	0	0	20433	20433	0	0	20433
5	Fatehgarh Sahib	22321	0	0	22321	22321	0	0	22321
6	Ferozepur	57488	0	0	57488	57488	0	0	57488
7	Gurdaspur	66468	0	0	66468	66468	0	0	66468
8	Hoshiarpur	69337	0	0	69337	69337	0	0	69337
9	Jalandhar	60406	0	0	60406	60406	0	0	60406
10	Kapurthala	27243	0	0	27243	27243	0	0	27243
11	Ludhiana	88041	0	0	88041	88041	0	0	88041
12	Mansa	28150	0	0	28150	28150	0	0	28150
13	Moga	44356	0	0	44356	44356	0	0	44356
14	Muktsar	25773	0	0	25773	25773	0	0	25773
15	Nawanshaher	26890	0	0	26890	26890	0	0	26890
16	Patiala	59558	0	0	59558	59558	0	0	59558
17	Ropar	29525	0	0	29525	29525	0	0	29525
18	Sangrur	58221	0	0	58221	58221	0	0	58221
19	SAS Nagar	26372	0	0	26372	26372	0	0	26372
20	Tarn Taran	34955	0	0	34955	34955	0	0	34955
Total		868849	0	0	868849	868849	0	0	868849

55

*Handwritten signature*

(Signature)  
**Secretary of the Nodal Department**  
**Government of Punjab**

**Table-5**  
**Annual Work Plan and Budget 2008-09**  
**[Mid-Day Meal Scheme]**  
**For Primary Stage (Classes I-V)**

Table-5

State: Punjab

**I. Anticipated Working Days for Schools & EGS Centres between April, 2008 & March, 2009**

S. No.	Month	Total No. of Days in the month	Deduct Holidays				Anticipated No. of Working Days (3-8)	Remarks	
			Vacation Days	Holidays outside Vacation period		Total Holidays (4+7)			
				Sundays	Other School Holidays				Total
1	2	3	4	5	6	7	8	9	10
1	April,08	30	0	4	3	7	7	23	
2	May,08	31	16	2	1	3	19	12	
3	June,08	30	30	0	0	0	30	0	
4	July,08	31	0	4	0	4	4	27	
5	August,08	31	0	5	1	6	6	25	
6	September,08	30	0	4	1	5	5	25	
7	October,08	31	0	4	4	8	8	23	
8	November,08	30	0	5	4	9	9	21	
9	December,08	31	7	3	0	3	10	21	
10	January,09	31	0	4	2	6	6	25	
11	February,09	28	0	4	2	6	6	22	
12	March,09	31	0	5	3	8	8	23	
	<b>Total</b>	<b>365</b>	<b>53</b>	<b>44</b>	<b>21</b>	<b>65</b>	<b>118</b>	<b>247</b>	

**II. Anticipated No. of average Working Days per AIE Centre between April, 2008 and March, 2009 = 247**

(Signature)  
 Secretary of the Nodal Department  
 Government of Punjab

95

*h/ra*

**Table-5A**  
**Annual Work Plan and Budget 2008-09**  
**[Mid-Day Meal Scheme]**  
**For Upper Primary Stage (Classes VI-VIII)**

Table-5A

State: Punjab

**I. Anticipated Working Days for Schools & EGS Centres between April, 2008 & March, 2009**

S. No.	Month	Total No. of Days in the month	Deduct Holidays				Anticipated No. of Working Days (3-8)	Remarks	
			Vacation Days	Holidays outside Vacation period		Total Holidays (4+7)			
				Sundays	Other School Holidays				Total
1	2	3	4	5	6	7	8	9	10
1	April,08	30	0	4	3	7	7	23	
2	May,08	31	16	2	1	3	19	12	
3	June,08	30	30	0	0	0	30	0	
4	July,08	31	0	4	0	4	4	27	
5	August,08	31	0	5	1	6	6	25	
6	September,08	30	0	4	1	5	5	25	
7	October,08	31	0	4	4	8	8	23	
8	November,08	30	0	5	4	9	9	21	
9	December,08	31	7	3	0	3	10	21	
10	January,09	31	0	4	2	6	6	25	
11	February,09	28	0	4	2	6	6	22	
12	March,09	31	0	5	3	8	8	23	
	<b>Total</b>	<b>365</b>	<b>53</b>	<b>44</b>	<b>21</b>	<b>67</b>	<b>118</b>	<b>247</b>	

II. Anticipated No. of average Working Days per AIE Centre between April, 2008 and March, 2009 = 247.

(Signature)

Secretary of the Nodal Department

57



Table - 6

Annual Work Plan &amp; Budget 2008-09

(Mid-Day-Meal Scheme)

District- wise information on Lifting and Utilizations of Food grains at School Level during 2007-08 for Primary Stage (Classes I-V)

(Only in MS-Excel Format)

For the period 1.4.2007 to 31.12.2007

State: Punjab

[Qty in MTs]

S.No.	Name of District	Rice						Wheat					
		Allocation for the year 2007-08	Opening Balance as on 1/4/07	Lifted	Aggregate quantity consumed at school level	Balance (Stock in hand) as on 31/12/07 [4+5-6]	% consumption on (% 6 on 3)	Allocation for the year 2007-08	Opening Balance as on 1/4/07	Lifted	Aggregate quantity consumed at school level	Balance (Stock in hand) as on 31/12/07 [10+11-12]	% consumption (% 12 on 9)
1	2	3	4	5	6	7.00	8	9	10	11	12	13	14
1	AMRITSAR	1285.53	83.7	586.90	670.60	0.00	52.17	1285.53	83.7	586.9	670.6	0.00	52.17
2	BARNALA	264.66	72.2	81.49	109.73	43.96	41.46	264.7	72.16	81.49	109.51	44.14	41.37
3	BATHINDA	751.57	0.14	65.40	26.05	39.49	3.47	595.98	156.99	518.40	441.62	233.77	74.10
4	FARIDKOT	430.20	nil	104.55	104.55	0.00	24.30	430.20	nil	104.55	104.55	0.00	24.30
5	FGSAHIB	327.49	37.48	207.23	176.68	68.03	53.95	332.37	32.6	213.1	175.57	70.13	52.82
6	FEROZEPUR	1128.4	32.22	702.63	409.45	325.40	36.29	1687.1	103.34	1082.83	708.6	477.57	42.00
7	GURDASPUR	1328.13	nil	785.01	668.10	116.91	50.30	1328.13	nil	784.99	667.98	117.01	50.29
8	HOSHIARPUR	968.2	13.3	419.81	397.71	35.40	41.08	969.5	11.99	419.82	395.5	36.31	40.79
9	JALANDHAR	724.16	13.46	518.56	428.86	103.16	59.22	712.79	88.18	561.71	528.31	121.58	74.12
10	KAPURTHALA	472.51	29.51	301.04	258.75	71.80	54.76	472.51	29.7	302.54	261.25	70.99	55.29
11	LUDHIANA	1473.53	333.02	476.38	445.35	364.05	30.22	1473.53	259.45	449.25	539.98	168.72	36.65
12	MANSA	615.05	nil	104.76	88.36	16.40	14.37	615.05	nil	98.43	74.25	24.18	12.07
13	MOGA	618.71	15.04	469.95	457.48	27.51	73.94	612.66	21.07	486.1	473.76	33.41	77.33
14	MOHALI	356.95	14.76	166.65	154.57	26.84	43.30	361.26	10.45	167.39	151.52	26.32	41.94
15	MUKTSAR	608.28	48.67	138.75	141.74	45.68	23.30	606.34	50.61	138.75	132.78	56.58	21.90
16	NAWANSHAHR	350.15	25.03	144.76	137.87	31.92	39.37	370.59	7.46	160.36	129.89	37.93	35.05
17	PATIALA	929.75	88.31	511.83	489.70	110.44	52.67	926.25	91.8	511.83	490.34	113.29	52.94
18	ROPAR	410.79	9.47	171.26	149.86	30.87	36.48	410.27	9.99	173.40	150.3	33.09	36.63
19	SANGRUR	706.91	185.12	194.54	218.71	130.95	30.94	667.69	194.37	194.94	254.53	134.78	38.12
20	TARN TARAN	667.21	64.99	396.32	459.35	1.96	66.84	689.73	62.47	395.78	457.45	0.80	66.32
	<b>Total</b>	<b>14438.18</b>	<b>1036.42</b>	<b>6547.82</b>	<b>5993.47</b>	<b>1590.77</b>	<b>41.50</b>	<b>14812.18</b>	<b>1286.83</b>	<b>7432.56</b>	<b>6918.29</b>	<b>1800.60</b>	<b>46.70</b>

Includes unspent balance at State; District & Block level as on 31/12/07

(Signature)  
Secretary of the Nodal Department  
Government of Punjab

Table - 6A

## Annual Work Plan &amp; Budget 2008-09

(Mid-Day-Meal Scheme)

District-wise information on Lifting and Utilizations of Food grains at School Level during 2007-08 for Upper Primary Stage (Classes VI-VIII) in

Educationally Backward Blocks (EBBs)

(Only in MS-Excel Format)

For the period 1.10.2007 to 31.12.2007

State: Punjab

[Qty in MTs]

S.No.	Name of District	Rice						Wheat					
		Allocation for the year 2007-08	Opening Balance as on 1/4/07	Lifted	Aggregate quantity consumed at school level	Balance (Stock in hand) as on 31/12/07 [4+5-6]	% consumption (% 6 on 3)	Allocation for the year 2007-08	Opening Balance as on 1/4/07	Lifted	Aggregate quantity consumed at school level	Balance (Stock in hand) as on 31/12/07 [10+11-12]	% consumption (% 12 on 9)
1	2	3	4	5	6	7.00	8	9	10	11	12	13	14
1	BATHINDA	140.04	0	0	0	0	0	140.04	0	0	0	0	0
2	FEROZEPUR	383.98	0	0	0	0	0	383.98	0	0	0	0	0
3	MANSA	285.54	0	0	0	0	0	285.54	0	0	0	0	0
4	MUKTSAR	141.43	0	0	0	0	0	141.43	0	0	0	0	0
5	PATIALA	17.33	0	0	0	0	0	17.33	0	0	0	0	0
6	SANGRUR	182.81	0	0	0	0	0	182.81	0	0	0	0	0
7	TARN TARAN	31.28	0	0	0	0	0	31.28	0	0	0	0	0
	<b>Total</b>	<b>1182.41</b>	<b>0</b>	<b>0</b>	<b>0</b>	<b>0</b>	<b>0</b>	<b>1182.41</b>	<b>0</b>	<b>0</b>	<b>0</b>	<b>0</b>	<b>0</b>

① includes unspent balance at State; District &amp; Block level as on 31/12/07

Note: The scheme could not be implemented upto 31.12.2007 due to non release of funds.

Date: \_\_\_\_\_

H/S

(Signature)

Secretary of the Nodal Department  
Government of Punjab \_\_\_\_\_

**Table-7**  
**Annual Work Plan and Budget 2008-09**  
**[Mid-Day Meal Scheme]**

Table-7

District-wise information on Cooking Assistance released and Utilised\* during 2007-08 for Primary Stage (Classes I - V)  
(Only in MS-Excel Format)

(For the period 1.4.2007 to 31.12.2007)

State: Punjab

[In Rs.]

S.No.	Name of District	Allocation for 2007-08 (Note: 1)	Opening Balance as on 1.4.2007 (Note: 1)	Cooking assistance received (Note: 1)	Utilisation* of Cooking assistance at school level (Note: 1)	Unspent Balance as on 31.12.07 [Col: 4+5-6] (Note: 1 & 2)	% Utilisation (% of 6 on 3)
1	2	3	4	5	6	7	8
1	AMRITSAR	51421040	-7516247	19626726	19626000	-7515521	38.17
2	BARNALA	13474560	800813	5143059	4354374	1589498	32.32
3	BATHINDA	30119320	76694	11496143	8607526	2965311	28.58
4	FARIDKOT	17207960	148705	6568049	3816550	2900204	22.18
5	FATEHGARH SAHIB	14598760	-5314458	5572152	6944930	-6687236	47.57
6	FEROZEPUR	56580920	181958	21596186	22361040	-582896	39.52
7	GURDASPUR	53125160	11193608	20277167	31470775	0	59.24
8	HOSHAIRPUR	39259440	2879232	14984807	15863730	2000309	40.41
9	JALANDHAR	32670000	1147996	12469704	18659030	-5041330	57.11
10	KAPURTHALA	18900200	125721	7213955	10137439	-2797763	53.64
11	LUDHIANA	58941080	1304000	22497026	15869178	7931848	26.92
12	MANSA	24602160	0	9390317	7069304	2321013	28.73
13	MOGA	25350160	1225891	9675819	18421568	-7519858	72.67
14	MUKTSAR	26278560	165957	10030177	6756384	3439750	25.71
15	NAWANSHEHR	15106080	703527	5765789	5012535	1456781	33.18
16	PATIALA	40722000	-1664233	15543046	13667244	211569	33.56
17	ROPAR	16810200	-3700063	6416230	5654904	-2938737	33.64
18	SANGRUR	37369200	0	14263326	9464600	4798726	25.33
19	SAS NAGAR	14868480	-2029939	5675102	5673760	-2028597	38.16
20	TARN TARAN	30088080	11297316	11484220	28781536	-6000000	95.66
	Total	617493360	11026478	235689000	258212407	-14496929	41.82

\* please refer para 4.4 of D.O. letter 14.1.2008 from JS(EE.1)

Note 1 Includes Central Assistance & State Contribution, both in terms of funds and monetary value of the commodities supplied by the

Note 2 Unspent balance is aggregate of unspent balances at District, Block, Village/Panchayat & School level.

*M. S. G.*

Secretary  
Government of Punjab

(Signature)

Secretary of the Nodal Department  
Government of Punjab

**Table-7A**  
Annual Work Plan and Budget 2008-09  
[Mid-Day Meal Scheme]

Table-7A

District-wise information on Cooking Assistance released and utilised\* during 2007-08 for Upper Primary Stage (Classes VI - VIII) in  
Educationally Backward Blocks (EBBs)

(Only in MS-Excel Format)

(For the period 1.10.2007 to 31.12.2007)

State: PUNJAB

[Rs. in Lakh]

S.No.	Name of District	Allocation for 2007-08 [Note : 1]	Cooking assistance received [Note : 1]	Utilisation* of Cooking assistance at school level [Note : 1]	Unspent balance as on 31.12.07 [Col.4-5] (Note:1 & 2)	% Utilisation (% of 5 on 3)
1	2	3	4	5	6	7
1	Bathinda	45	0	0	0	0
2	Ferozepur	123.39	0	0	0	0
3	Mansa	91.75	0	0	0	0
4	Muktsar	45.44	0	0	0	0
5	Patiala	5.57	0	0	0	0
6	Sangrur	58.75	0	0	0	0
7	Tarn Taran	10.05	0	0	0	0
	TOTAL	379.95	0	0	0	0

\* please refer para 4.4 of D.O. letter 14.1.2008 from JS(EE.1)

Note 1: Includes Central Assistance & State Contribution, both in terms of funds and monetary value of the commodities supplied by the State/UT

Note 2: Unspent balance is aggregate of unspent balances at District, Block, Village/Panchayat & School level.

Note: The scheme could not be implemented upto 31.12.2007 due to non release of funds.

*hbrae*

(Signature)  
Secretary of the Nodal Department  
Government of Punjab

**Table-8**  
**Annual Work Plan and Budget 2008-09**  
**[Mid-Day Meal Scheme]**  
**Kitchen Shed Construction**  
**Achievement during 2007-08 [out of MDMS funds]**

**Table-8**

State: Punjab

As on 31.12.2007

Sl. No.	District	Allocation* Physical			Allocation* Financial (Rs. in Lakh)			Completed (C)		In progress (IP)		Total (C+IP) Achievement		Yet to be started		Achievement as % of allocation	
		2006-07	2007-08	Total	2006-07	2007-08	Total	Physical	Financial (Rs. in lakh)	Physical	Financial (Rs. in lakh)	Physical [col. 9+11]	Financial (Rs. in lakh.) [col. 10+12]	Physical [col. 5-13]	Financial (Rs. in lakh) [col. 8-14]	Physical [% of 13 on 5]	Financial [% of 14 on 8]
1	2	3	4	5	6	7	8	9	10	11	12	13	14	15	16	17	18
1	AMRITSAR	0	229	229	0	137.4	137.4	0	Rs. 2742.59 lacs sent to all the DCs on 8/12/07	229	137.4	229	Rs. 2742.59 lacs sent to all the DCs on 8/12/07	0	0	0	Rs. 2742.59 lacs sent to all the DCs on 8/12/07
2	BARNALA	0	228	228	0	136.79	136.8	0		228	136.79	228		0	0	0	
3	BATHINDA	0	229	229	0	137.4	137.4	0		229	137.4	229		0	0	0	
4	FARIDKOT	0	229	229	0	137.4	137.4	0		229	137.4	229		0	0	0	
5	FATEHGARH S	0	228	228	0	136.8	136.8	0		228	136.8	228		0	0	0	
6	FEROZEPUR	0	229	229	0	137.4	137.4	0		229	137.4	229		0	0	0	
7	GURDASPUR	0	229	229	0	137.4	137.4	0		229	137.4	229		0	0	0	
8	HOSHAIRPUR	0	229	229	0	137.4	137.4	0		229	137.4	229		0	0	0	
9	JALANDHAR	0	229	229	0	137.4	137.4	0		229	137.4	229		0	0	0	
10	KAPURTHALA	0	228	228	0	136.8	136.8	0		228	136.8	228		0	0	0	
11	LUDHIANA	0	229	229	0	137.4	137.4	0		229	137.4	229		0	0	0	
12	MANSA	0	229	229	0	137.4	137.4	0		229	137.4	229		0	0	0	
13	MOGA	0	228	228	0	136.8	136.8	0		228	136.8	228		0	0	0	
14	MUKTSAR	0	228	228	0	136.8	136.8	0		228	136.8	228		0	0	0	
15	NAWANSHEHR	0	228	228	0	136.8	136.8	0		228	136.8	228		0	0	0	
16	PATIALA	0	229	229	0	137.4	137.4	0		229	137.4	229		0	0	0	
17	ROPAR	0	228	228	0	136.8	136.8	0		228	136.8	228		0	0	0	
18	SANGRUR	0	229	229	0	137.4	137.4	0		229	137.4	229		0	0	0	
19	SAS NAGRA	0	228	228	0	136.8	136.8	0		228	136.8	228		0	0	0	
20	TARN TARAN	0	228	228	0	136.8	136.8	0		228	136.8	228		0	0	0	
<b>Total</b>		<b>0</b>	<b>4571</b>	<b>4571</b>	<b>0</b>	<b>2742.59</b>	<b>2743</b>	<b>0</b>	<b>2742.59</b>	<b>4571</b>	<b>2742.59</b>	<b>4571</b>	<b>2742.59</b>	<b>0</b>	<b>0</b>	<b>0</b>	<b>2742.59</b>

\*: District-wise allocation made by State/UT out of Central Assistance provided for the purpose.

*hbrae*

(Signature)

Secretary of the Nodal Department  
 Government of Punjab

**Table-8A**  
**Annual Work Plan and Budget 2008-09**  
**[Mid-Day Meal Scheme]**  
**Kitchen Shed Construction**  
**Achievement during 2007-08 [Through Convergence]**

**Table-8A**

State: PUNJAB

As on 31.12.2007

Sl. No.	District	Allocation Physical			Allocation Financial (Rs. in Lakh)			Completed (C)		In progress (IP)		Total (C+IP) Achievement		Yet to be started		Achievement as % of allocation	
		2006-07	2007-08	Total	2006-07	2007-08	Total	Physical	Financial (Rs. in lakh)	Physical	Financial (Rs. in lakh)	Physical [col. 9+11]	Financial (Rs. in lakh.) [col. 10+12]	Physical [col. 5-13]	Financial (Rs. in lakh) [col. 8-14]	Physical [% of 13 on 5]	Financial [% of 14 on 8]
1	2	3	4	5	6	7	8	9	10	11	12	13	14	15	16	17	18
1	AMRITSAR																
2	BARNALA																
3	BATHINDA																
4	FARIDKOT																
5	FATEHGARH SAHIB																
6	FEROZEPUR																
7	GURDASPUR																
8	HOSHAIRPUR																
9	JALANDHAR																
10	KAPURTHALA																
11	LUDHIANA																
12	MANSA																
13	MOGA																
14	MUKTSAR																
15	NAWANSHEHR																
16	PATIALA																
17	ROPAR																
18	SANGRUR																
19	SAS NAGRA																
20	TARN TARAN																
	Total																

For providing kitchen sheds in new schools convergence is there with SSA. During previous years in 97 new primary schools kitchen sheds have been provided by GOI under SSA Plan. For year 2008-09 new schools will also be covered.

MSae

(Signature)  
 Secretary of the Nodal Department  
 Government of Punjab

53

**Table-9**  
**Annual Work Plan and Budget 2008-09**  
**[Mid-Day Meal Scheme]**  
**Kitchen Devices Procurement**  
**Achievement during 2007-08 [Out of MDM Funds]**

**Table-9**

State: Punjab

As on 31.12.2007

Sl. No.	District	Allocation* Physical			Allocation* Financial (Rs. in Lakh)			Completed (C)		In progress (IP)		Total (C+IP) Achievement		Yet to be started		Achievement as % of allocation	
		2006-07	2007-08	Total	2006-07	2007-08	Total	Phys ical	Financial (Rs. in lakh)	Physi cal	Financi al (Rs. in lakh)	Physical [col. 9+11]	Financi al (Rs. in lakh.) [col. 10+12]	Physica l [col. 5-13]	Financial (Rs. in lakh) [col. 8-14]	Physical [% of 13 on 5]	Financial [% of 14 on 8]
1	2	3	4	5	6	7	8	9	10	11	12	13	14	15	16	17	18
1	Amritsar	250	379	629		18.95		0		629		629		0	0	0	0
2	Barnala	67	109	176		5.45		0		176		176		0	0	0	0
3	Bathinda	250	99	349		4.95		0		349		349		0	0	0	0
4	Faridkot	220	0	220				0		220		220		0	0	0	0
5	Fatehgarh S.	250	214	464		10.7		0		464		464		0	0	0	0
6	Ferozepur	250	379	629		18.95		0		629		629		0	0	0	0
7	Gurdaspur	250	379	629		18.95		0		629		629		0	0	0	0
8	Hoshiarpur	250	379	629		18.95		0		629		629		0	0	0	0
9	Jalandhar	250	379	629		18.95		0		629		629		0	0	0	0
10	Kapurthala	250	275	525		13.75		0		525		525		0	0	0	0
11	Ludhiana	250	379	629		18.95		0		629		629		0	0	0	0
12	Mansa	249	23	272		1.15		0		272		272		0	0	0	0
13	Moga	250	89	339		4.45		0		339		339		0	0	0	0
14	Muktsar	250	55	305		2.75		0		305		305		0	0	0	0
15	Nawanshaher	250	189	439		9.45		0		439		439		0	0	0	0
16	Patiala	250	379	629		18.95		0		629		629		0	0	0	0
17	Ropar	159	379	538		18.95		0		638		638		0	0	0	0
18	Sangrur	183	379	562		18.95		0		562		562		0	0	0	0
19	SAS Nagar	250	164	414		8.2		0		414		414		0	0	0	0
20	Tarn Taran	250	290	540		14.5		0		540		540		0	0	0	0
	Total	4628	4918	9546	*217.37	**245.9	463.3	0	*217.37	9546	*463.27	9546	*463.27	0	0	0	0

\* District-wise allocation made by State/DT out of Central Assistance provided for the purpose.

\* An amount of Rs. 200 lacs was advanced to Punjab State Civil Supplies Corporation during the year 2006-07 for supply of Kitchen devices, Fire Extinguishers and release of Gas Connections. The Corporation has completed supply of Gas Bhatties and Fire Extinguishers to the schools. Gas Connections have yet to be got released.

\*\* Amount sent to the Deputy Commissioners on 1/1/08 for release of Gas Connections and arranging Kitchen Devices in 4918 schools.

(Signature)

Secretary of the Nodal Department  
Government of Punjab

M/2008

**Table-9A**  
**Annual Work Plan and Budget 2008-09**  
**[Mid-Day Meal Scheme]**  
**Kitchen Devices Procurement**  
**Achievement during 2007-08 [Through Convergence]**

**Table-9A**

State: Punjab

As on 31.12.2007

Sl. No.	District	Allocation Physical			Allocation Financial (Rs. in Lakh)			Completed (C)		In progress (IP)		Total (C+IP) Achievement		Yet to be started		Achievement as % of allocation	
		2006-07	2007-08	Total	2006-07	2007-08	Total	Physical	Financial (Rs. in lakh)	Physical	Financial (Rs. in lakh)	Physical [col. 9+11]	Financial (Rs. in lakh.) [col. 10+12]	Physical [col. 5-13]	Financial (Rs. in lakh) [col. 8-16]	Physical [% of 13 on 5]	Financial [% of 14 on 8]
1	2	3	4	5	6	7	8	9	10	11	12	13	14	15	16	17	18
1	Amritsar																
2	Barnala																
3	Bathinda																
4	Faridkot																
5	Fatehgarh S.																
6	Ferozepur																
7	Gurdaspur																
8	Hoshiarpur																
9	Jalandhar																
10	Kapurthala																
11	Ludhiana																
12	Mansa																
13	Moga																
14	Muktsar																
15	Nawanshaher																
16	Patiala																
17	Ropar																
18	Sangrur																
19	SAS Nagar																
20	Tarn Taran																
	Total																

Nil

(Signature)  
 Secretary of the Nodal Department

MPSae

65



**Table-10**  
Annual Work Plan and Budget 2008-09  
[Mid-Day Meal Scheme]

Table-10

**Requirement of Central Assistance towards Foodgrains, Cooking Assistance & Transport Assistance for 2008-09 for Primary Stage (Classes I-V)**  
(Only in MS-Excel Format)

State: Punjab

S.No.	Name of District	No. of children availing MDM* as on 30.9.07 (Please also refer to Table-4)				Anticipated No. of working days			Requirement of Foodgrains (in MTs)			Requirement of Cooking Assistance (Rs. in lakh) [Note:2]	Requirement of Transport Assistance (Rs. in lakhs) [Note:3]
		Classes I - V (Govt+LB+GA)	EGS Centres	AIE Centres	Total (col. 3+4+5)	Classes I - V (Govt+LB+GA)	EGS Centres	AIE Centres	Total [Note:1]	Rice	Wheat		
1	2	3	4	5	6	7	8	9	10	11	12	13	14
1	Amritsar	101633	2824	1791	106248	247	247	247	2623.14	1312.57	1312.57	524.85	19.67
2	Barnala	26996	3930	220	31146	247	247	247	788.18	385.09	385.09	153.85	5.73
3	Bathinda	59399	4078	672	64149	247	247	247	1588.8	795.4	795.4	316.88	11.91
4	Faridkot	36470	1758	677	38905	247	247	247	960.84	481.42	481.42	192.19	7.2
5	Fatehgarh Sahib	29153	700	140	29993	247	247	247	738.54	370.27	370.27	148.16	5.54
6	Ferozepur	115335	8187	0	123522	247	247	247	3050.4	1526.2	1526.2	610.2	22.88
7	Gurdaspur	102911	1611	307	104829	247	247	247	2588.56	1295.28	1295.28	517.85	19.41
8	Hoshiarpur	79352	1662	1588	82602	247	247	247	2040.2	1021.1	1021.1	408.05	15.3
9	Jalandhar	82752	2111	1567	86430	247	247	247	2134.1	1068.05	1068.05	426.95	16.01
10	Kapurthala	39870	2146	389	42405	247	247	247	1047.36	524.68	524.68	209.48	7.85
11	Ludhiana	104244	5874	3436	113554	247	247	247	2805.9	1403.95	1403.95	560.95	21.04
12	Mansa	42746	4658	279	47683	247	247	247	1178.2	590.1	590.1	235.55	8.84
13	Moga	57349	4036	766	62151	247	247	247	1536.34	789.17	789.17	307.03	11.52
14	Muktsar	50622	3278	152	54050	247	247	247	1336.26	669.13	669.13	267	10.02
15	Nawanshaher	31650	585	172	32407	247	247	247	800.28	401.14	401.14	160.1	6
16	Patiala	77324	4632	734	82690	247	247	247	2042.7	1022.35	1022.35	408.49	15.32
17	Ropar	34974	169	34	35177	247	247	247	869.44	435.72	435.72	173.77	6.52
18	Sangrur	75427	5367	99	80893	247	247	247	2000.7	1001.35	1001.35	399.69	15
19	SAS Nagar	27273	422	180	27875	247	247	247	689.13	345.565	345.565	137.7	5.17
20	Tarn Taran	49943	2535	1092	53570	247	247	247	1323.92	662.96	662.96	264.64	9.93
	Total	1225423	60561	14295	1300279				32123	16081.5	16081.5	6423.38	240.89

Govt: Government Schools

LB: Local Body Schools

GA: Govt Aided Schools

Note:1 [(3x7)+(4x8)+(5x9)]x0.0001 MTs

Note:2 [(3x7)+(4x8)+(5x9)]xRs.1.8 for NE States viz. Arunachal Pradesh, Assam, Manipur, Meghalaya, Mizoram, Nagaland, Sikkim & Tripura.  
[(3x7)+(4x8)+(5x9)]xRs. 1.5 for other States/UTs

Note:3 [col.10]x Rs. 1250 for Special Category States viz. Arunachal Pradesh, Assam, Manipur, Meghalaya, Mizoram, Nagaland, Tripura, Ultranchal, HP and J&K  
[col.10]x Rs. 750 for other States/UTs

*HR*

(Signature)  
Secretary of the Social Department  
Government of Punjab

**Table-10A**  
**Annual Work Plan and Budget 2008-09**  
**[Mid-Day Meal Scheme]**

**Table-10A**

**Requirement of Central Assistance towards Foodgrains, Cooking Assistance &  
Transport Assistance for 2008-09 for Upper Primary Stage (Classes VI-VIII)**

(Only in MS-Excel Format)

State: Punjab

S.No.	Name of District	No. of children likely to avail MDM in 2008-09 (Please also refer to Table-4A)				Anticipated No. of working days			Requirement of Foodgrains (in MTs)			Requirement of Cooking Assistance (Rs. in lakh) [Note:2]	Requirement of Transport Assistance (Rs. in lakhs) [Note:3]
		(Govt+L B+GA)	EGS Centres	AIE Centres	Total (col. 3+4+5)	(Govt+L B+GA)	EGS Centres	AIE Centres	Total [Note:1]	Rice	Wheat		
1	2	3	4	5	6	7	8	9	10	11	12	13	14
1	Amritsar	58149	0	0	58149	247	247	247	2154.42	1077.21	1077.21	359.07	16.15
2	Barnala	20940	0	0	20940	247	247	247	775.827	387.91	387.91	129.3	5.81
3	Bathinda	44223	0	0	44223	247	247	247	1638.462	819.231	819.231	273.08	12.28
4	Faridkot	20433	0	0	20433	247	247	247	757.0427	378.52	378.52	126.17	5.67
5	Fatehgarh S	22321	0	0	22321	247	247	247	826.9931	413.49	413.49	137.83	6.2
6	Ferozepur	57488	0	0	57488	247	247	247	2129.93	1064.96	1064.96	354.99	15.97
7	Gurdaspur	66468	0	0	66468	247	247	247	2462.639	1231.32	1231.32	410.44	18.46
8	Hoshiarpur	69337	0	0	69337	247	247	247	2568.936	1284.47	1284.47	428.16	19.27
9	Jalandhar	60406	0	0	60406	247	247	247	2238.042	1119.01	1119.01	373	16.78
10	Kapurthala	27243	0	0	27243	247	247	247	1009.353	504.68	504.68	168.22	7.57
11	Ludhiana	88041	0	0	88041	247	247	247	3261.919	1630.96	1630.96	543.65	24.46
12	Mansa	28150	0	0	28150	247	247	247	1042.958	521.48	521.48	173.83	7.82
13	Moga	44356	0	0	44356	247	247	247	1643.39	821.7	821.7	273.9	12.32
14	Muktsar	25773	0	0	25773	247	247	247	954.8897	477.44	477.44	159.15	7.16
15	Nawanshaher	26890	0	0	26890	247	247	247	996.2745	498.14	498.14	166.05	7.47
16	Patiala	59558	0	0	59558	247	247	247	2206.624	1103.3	1103.3	367.77	16.54
17	Ropar	29525	0	0	29525	247	247	247	1093.901	546.95	546.95	182.32	8.2
18	Sangrur	58221	0	0	58221	247	247	247	2157.088	1078.54	1078.54	359.51	16.18
19	SAS Nagar	26372	0	0	26372	247	247	247	977.0826	488.56	488.56	162.85	7.33
20	Tarn Taran	34955	0	0	34955	247	247	247	1295.083	647.56	647.56	215.85	9.71
	<b>Total</b>	<b>868849</b>	<b>0</b>	<b>0</b>	<b>868849</b>				<b>32190.86</b>	<b>16095.4</b>	<b>16095.43</b>	<b>5365.14</b>	<b>241.35</b>

LB: Local Body Schools

GA: Govt Aided Schools

Note [(3x7)+(4x8)+(5x9)]x0.00015 MTs ✓

Note [(3x7)+(4x8)+(5x9)]xRs.2.30 for NE States viz. Arunachal Pradesh, Assam, Manipur, Meghalaya, Mizoram, Nagaland, Sikkim & Tripura. ✓

[(3x7)+(4x8)+(5x9)]xRs. 2.00 for other States/UTs ✓

Note [col.10]x Rs. 1250 for Special Category States viz. Arunachal Pradesh, Assam, Manipur, Meghalaya, Mizoram, Nagaland, Sikkim, Tripura, Uttranchal, HP and J&K [col 10]x Rs. 750 for other States/UTs ✓

*Handwritten signature*

(Signature)

Secretary of the Nodal Department

**Table-11**  
**Annual Work Plan and Budget 2008-09**  
**[Mid-Day Meal Scheme]**  
**Kitchen Shed Construction during 2008-09 in Primary Schools (Govt and Local Body only)**  
**(Only in MS-Excel Format)**

Table-11

State: Punjab

S. No.	Districts	Total No. of Govt. + Local Body Schools as on 1.4.2006 (including branch Schools) Classes I - V	No. of schools requiring Kitchen shed [Note:1]	No. of Kitchen sheds sanctioned during 2006-07 & 2007-08	Balance requirement of Kitchen Sheds (Col 4-5)	Proposal for construction of Kitchen sheds during 2008-09			
						Out of MDMS		By Convergence with other development programme	
						Physical )	Financial (in Rs. in lakh)	Physical	Financial (in Rs. in lakh)
1	2	3	4	5	6	7	8	9	10
1	Amritsar	851	851	229	622	622	373.2	0	0
2	Barnala	178	178	228	* -50	*0	0	0	0
3	Bathinda	349	349	229	120	*111	66.6	0	0
4	Faridkot	220	220	229	* -9	*0	0	0	0
5	Fatehgarh S	464	464	228	236	236	141.6	0	0
6	Ferozepur	1075	1075	229	846	846	507.6	0	0
7	Gurdaspur	1548	1548	229	1319	1319	791.4	0	0
8	Hoshiarpur	1263	1263	229	1034	1034	620.4	0	0
9	Jalandhar	954	954	229	725	725	435	0	0
10	Kapurthala	525	525	228	297	297	178.2	0	0
11	Ludhiana	1011	1011	229	782	782	469.2	0	0
12	Mansa	272	272	229	43	43	25.8	0	0
13	Moga	339	339	228	111	111	66.6	0	0
14	Muktsar	305	305	228	77	77	46.2	0	0
15	Nawanshaher	439	439	228	211	211	126.6	0	0
16	Patiala	1009	1009	229	780	780	468	0	0
17	Ropar	583	583	228	355	355	213	0	0
18	Sangrur	682	682	229	453	*403	241.8	0	0
19	SAS Nagar	414	414	228	186	186	111.6	0	0
20	Tarn Taran	540	540	228	312	312	187.2	0	0
Total		13021	13021	4571	8450	8450	5070	0	0

**Note 1:** A copy of Statement showing district-wise requirement of Kitchen sheds as furnished by States/UTs during 2006-07 is enclosed herewith ready reference. This may please be kept in view filling column 4.

\* To be adjusted in Sangrur

\* To be adjusted in Bathinda.

(Signature)  
 Secretary of  
 Government of Punjab

*[Handwritten Signature]*  
 Director of Education

**Table-11A**  
**Annual Work Plan and Budget 2008-09**  
**[Mid-Day Meal Scheme]**

Table-11A

**Kitchen Shed Construction during 2008-09 for Upper Primary Stage (Govt and Local Body only)**

(Only in MS-Excel Format)

State: Punjab

As on 31.12.2007

Sl. No.	Districts	Total No. of School having Upper Primary classes WITHOUT primary section attached to them	No. of schools out of column 3 requiring Kitchen sheds to be constructed	Proposal for construction of Kitchen sheds during 2008-09			
				Out of MDMS		By Convergence with other development programme	
				Physical )	Financial (in Rs. in lakh)	Physical	Financial (in Rs. in
1	2	3	4	5	6	7	8
1	Amritsar	331	331	331	198.6	0	0
2	Barnala	115	115	115	69	0	0
3	Bathinda	248	248	248	148.8	0	0
4	Faridkot	154	154	154	92.4	0	0
5	Fatehgarh S	142	142	142	85.2	0	0
6	Ferozepur	367	367	367	220.2	0	0
7	Gurdaspur	484	484	484	290.4	0	0
8	Hoshiarpur	415	415	415	249	0	0
9	Jalandhar	431	431	431	258.6	0	0
10	Kapurthala	221	221	221	132.6	0	0
11	Ludhiana	515	515	515	309	0	0
12	Mansa	175	175	175	105	0	0
13	Moga	229	229	229	137.4	0	0
14	Muktsar	201	201	201	120.6	0	0
15	Nawanshaheer	190	190	190	114	0	0
16	Patiala	322	322	322	193.2	0	0
17	Ropar	168	168	168	100.8	0	0
18	Sangrur	348	348	348	208.8	0	0
19	SAS Nagar	136	136	136	81.6	0	0
20	Tarn Taran	232	232	232	139.2	0	0
	Total	5424	5424	5424	3254.4	0	0

69

*NRae*

*(Signature)*  
 Secretary of the Nodal Department  
 Government of Punjab

Table-12

**Table-12**

**Annual Work Plan and Budget 2008-09**  
**[Mid-Day Meal Scheme]**  
**Kitchen Devices Procurement during 2008-09 for Primary Stage**  
(Only in MS-Excel Format)

State:

(As on 31.12.07)

Sl. No.	Districts	Total No. of Govt. + Local Body Schools (Classes I - V)	No. of schools requiring Kitchen devices as on 1.4.2006	No. of schools for which Kitchen Devices sanctioned during 2006-07 & 2007-08	Balance requirement of Kitchen Devices (Col 4-5)	Proposal for procurement of Kitchen devices during 2008-09			
						Out of MDMS		By Convergence with other development programme	
						Physical	Financial (in Rs. in lakh)	Physical	Financial (in Rs. in lakh)
1	2	3	4	5	6	7	8	9	10
1	Amritsar	841	841	629	212	212	10.6	0	0
2	Barnala	181	181	176	5	5	0.25	0	0
3	Bathinda	388	388	349	39	39	1.95	0	0
4	Faridkot	249	249	220	29	29	1.45	0	0
5	Fatehgarh S	458	458	464	*-6	*-6	-0.3	0	0
6	Ferozepur	1103	1103	629	474	474	23.7	0	0
7	Gurdaspur	1559	1559	930	930	860	46.5	0	0
8	Hoshiarpur	1284	1284	629	655	655	32.75	0	0
9	Jalandhar	985	985	629	356	356	17.8	0	0
10	Kapurthala	541	541	525	16	16	0.8	0	0
11	Ludhiana	1013	1013	629	384	384	19.2	0	0
12	Mansa	288	288	272	16	16	0.8	0	0
13	Moga	381	381	339	42	42	2.1	0	0
14	Muktsar	337	337	305	32	32	1.6	0	0
15	Nawanshaheer	444	444	439	5	5	0.25	0	0
16	Patiala	1022	1022	629	393	393	19.65	0	0
17	Ropar	582	582	538	44	44	2.2	0	0
18	Sangrur	672	672	562	110	110	5.5	0	0
19	SAS Nagar	411	411	414	*-3	*-3	-0.15	0	0
20	Tarn Taran	546	546	540	6	6	0.3	0	0
	Total	13285	13285	8846	3633	3633	181.65	0	0

\* To be adjusted in other Districts.

H. Brae

(Signature)

Secretary of the Nodal Department  
Government of Punjab

**Table-12A**  
**Annual Work Plan and Budget 2008-09**  
**[Mid-Day Meal Scheme]**

**Table-12A**

Kitchen devices procurement during 2008-09 for Upper Primary Stage (Govt and Local Body only)  
 (Only in MS-Excel Format)

State: Punjab

As on 31.12.2007

Sl. No.	Districts	Total No. of Schools having Upper Primary classes WITHOUT primary section attached to them (Govt. + Local Body Schools)	No. of school out of column 3 requiring Kitchen devices	Proposal for procurement of Kitchen devices during 2008-09			
				Out of MDMS		By Convergence with other development programme	
				Physical )	Financial (in Rs. in lakh)	Physical	Financial (in Rs. in lakh)
1	2	3	4	5	6	7	8
1	Amritsar	331	331	331	16.55	0	0
2	Barnala	115	115	115	5.75	0	0
3	Bathinda	248	248	248	12.4	0	0
4	Faridkot	154	154	154	7.7	0	0
5	Fatehgarh S	142	142	142	7.1	0	0
6	Ferozepur	367	367	367	18.35	0	0
7	Gurdaspur	484	484	484	24.2	0	0
8	Hoshiarpur	415	415	415	20.75	0	0
9	Jalandhar	431	431	431	21.55	0	0
10	Kapurthala	221	221	221	11.05	0	0
11	Ludhiana	515	515	515	25.75	0	0
12	Mansa	175	175	175	8.75	0	0
13	Moga	229	229	229	11.45	0	0
14	Muktsar	201	201	201	10.05	0	0
15	Nawanshaheer	190	190	190	9.5	0	0
16	Patiala	322	322	322	16.1	0	0
17	Ropar	168	168	168	8.4	0	0
18	Sangrur	348	348	349	17.4	0	0
19	SAS Nagar	136	136	136	6.8	0	0
20	Tarn Taran	232	232	232	11.6	0	0
	Total	5424	5424	5425	271.2	0	0

71

*Muzra*  
 Director  
 (E.I. & S.I.)  
 Punjab Sahitya Akademi

(Signature)  
 Secretary of the Nodal Department  
 Government of Punjab

**Table-13**  
**Annual Work Plan and Budget 2008-09**  
**[Mid-Day Meal Scheme]**  
**Assistance for Management Monitoring and Evaluation 2008-09 for Primary + Upper Primary Stage**  
**(Only in MS -Excel Format)**

Table-13

State: Punjab

		2007-08 (1.4.2007 to 31.12.2007)					2008-09				
	Activities (Please list item-wise details as far as possible)	Allocated	Average Unit Cost	Phy	Expenditure (4) x (5)	Unspent balance on 31.12.2007 (Col 3-6)	Allocation entitled (Note:1)	Average unit cost	Phy	Fin (9) x (10)	Remarks
1	2	3	4	5	6	7	8	9	10	11	12
I	School Level Expenses						143.14 lacs 50% of MME funds eligible to State/UT				
	i)Form & Stationery	4,00,000	20,000	20	4,00,000						
	ii) Weighting machine & height Recorder	33,59,700	450	7466	33,59,700						
	iii) Replacement/repair/maintenance of cooking device, utensils, weighing machines etc.,										
	<b>Sub Total</b>	<b>37,59,700</b>			<b>37,59,700</b>	<b>0</b>					
II	Management, Supervision, Training and Internal Monitoring:						100.20 35% of MME funds eligible to State/UT				
	i) Staff salary				16,82,000						
	ii) Transport & Conveyance				63,700						
	iii) Other Incidentals expenses				26,000						
	iv) Furniture, hardware and consumables etc.				2,30,000						
	<b>Sub Total</b>	<b>26,32,000</b>			<b>20,01,700</b>	<b>6,30,300</b>					
III	External Monitoring & Evaluation (please specify item wise)						42.94 lacs 15% of MME funds eligible to State/UT				
		11,28,000				11,28,000					
	<b>Grand Total</b>	<b>75,19,700</b>					<b>*286.28 lacs</b>				

Note 1: Please refer para 6.4 of NP-NPSE Guidelines 2006 for working out total MME funds eligible to States/UTs.

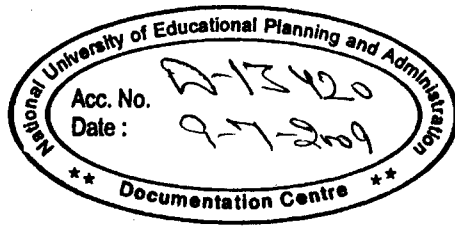
\* Rs. 152.63 lacs (Primary) + Rs. 133.65 (Upper Primary) = Rs. 286.28 lacs

(Signature)

Secretary of the Model District...

*Handwritten signature*

72



NUEPA DC



D13420