

7  
FOR REFERENCE ONLY

# EDUCATIONAL STATISTICS

DISTRICT-WISE

1976-77

(Vol. 5)

## MEGHALAYA



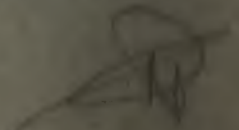
PLANNING, MONITORING AND STATISTICS DIVISION  
MINISTRY OF EDUCATION & CULTURE  
DEPARTMENT OF EDUCATION  
[GOVERNMENT OF INDIA]  
NEW DELHI

1980

FOR

54164  
370,212  
IND - E

## OUR LATEST PUBLICATIONS

1. Education Statistics—District-wise (For Various States) Nos. 1 to 4 (1970) and No. 1 (1971); 5, 7 (1972); 1, 2 (1973); 1 (1974).
  2. Growth In Higher Education—1966-67 to 1970-71.
  3. Results of Matriculation/ Higher Secondary Examination and Number of Job Seekers on Live Registers of Employment Exchanges.
  4. Schooling Facilities In Rural Areas of India.
  5. Employment Situation—1964-65 to 1969-70.
  6. Education in India Since Independence—A Statistical Review.
  7. Educational Statistics at a Glance—1974-75.
  8. Education in Universities in India—1967-68.
  9. State Educational Directorates and Inspectorates in India—1972-73.
  10. Indian Students Going Abroad and Foreign Students in India—1965-66 to 1974-75.
  11. Pay Scales of School Teachers in India—1977-78.
  12. Progress of Education of Scheduled Castes and Scheduled Tribes.
  13. Boards of Secondary Education in India—Results of High School and Higher Secondary Examinations—1975-76.
  14. Selected Information on School Education in India—1977-78.
  15. Expenditure on Education as shown in Central and State Annual Budgets—1977-78 to 1979-80.
  16. Selected Educational Statistics—1978-79.
  17. Educational Statistics—District-wise — 1976-77 (Vol. 4)
- 

FOR REFERENCE ONLY

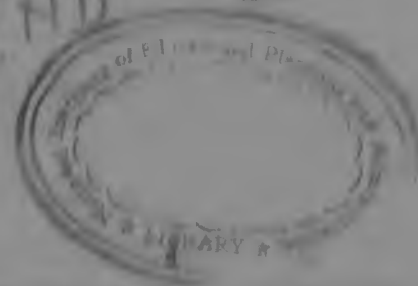
EDUCATIONAL STATISTICS  
DISTRICT - WISE  
1976-77  
(Vol. V)  
( M E G H A L A Y A )

PLANNING, MONITORING AND STATISTICS DIVISION  
MINISTRY OF EDUCATION AND CULTURE  
(DEPTT. OF EDUCATION)  
GOVERNMENT OF INDIA  
NEW DELHI  
1980.

— 54

370. :212

IND - E

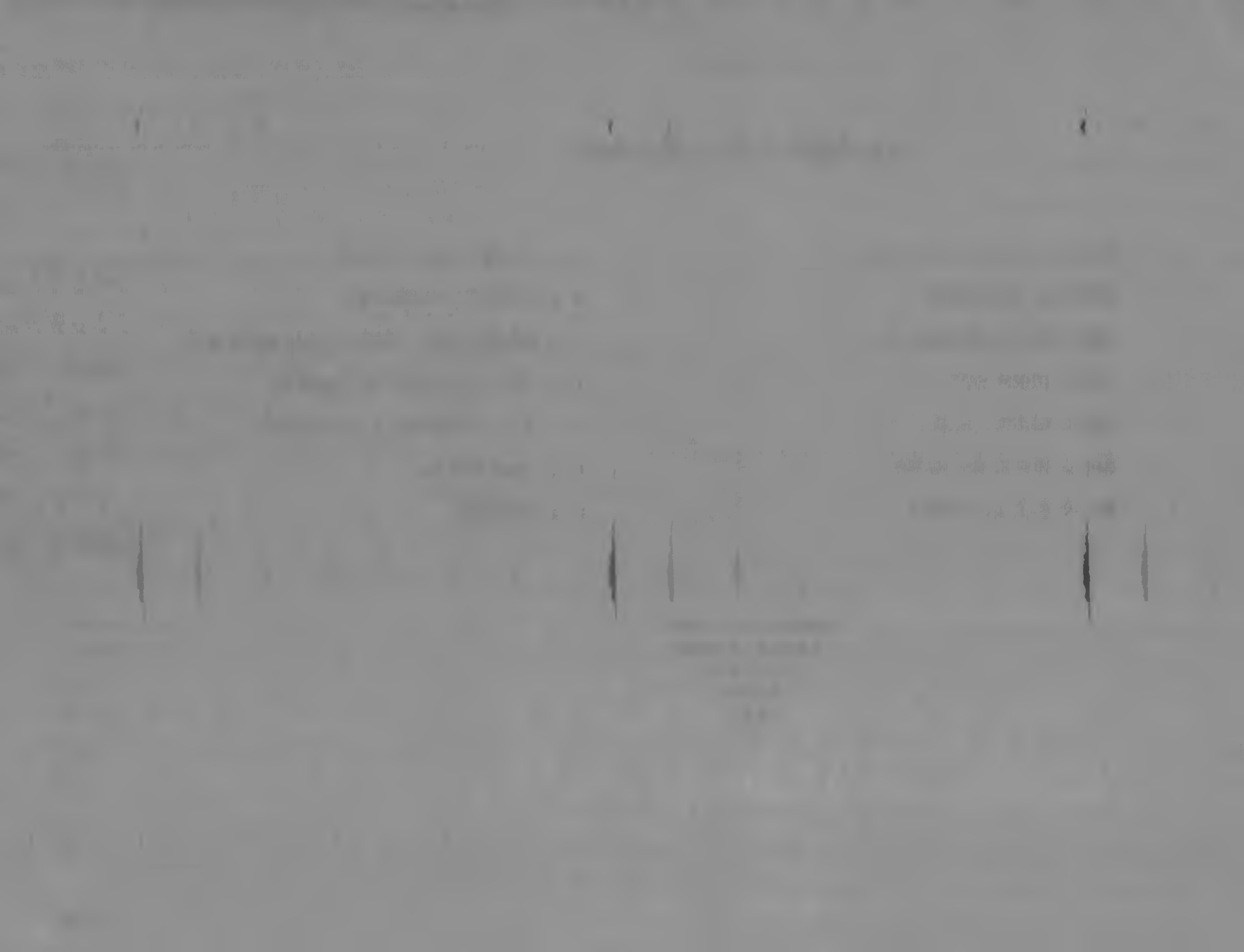


**Sub. National Systems Unit,**  
**National Institute of Educational**  
**Planning and Administration**  
**17-B, SriAurobindo Marg, New Delhi-110016**  
**DOC. No.....**  
**Date.....**

P R O J E C T     S T A F F

MISS P.S.SHANKUNTALA	: DEPUTY SECRETARY
SHRI S.C.SEDDEY	: DEPUTY DIRECTOR
SHRI R.C.SRIVASTAVA	: ASSISTANT EDUCATION OFFICER
MISS PREM SONI	: STATISTICAL ASSISTANT
SHRI GANGA RAM	: STATISTICAL ASSISTANT
MRS. HARBANS KAUR	: COMPUTOR.
SHRI SARDA SINGH	: TYPIST

\*\*\*\*\*  
\*\*\*\*\*  
\*\*\*\*\*  
\*\*\*\*\*  
\*\*\*  
\*



(1)

CONTENTS

P R E F A C E

I.	INTRODUCTION	1
II.	Area and Population.	2-5
III.	Literacy.	5
IV.	General View.	6-8
V.	Pre-Primary Education.	8
VI.	Primary Education.	8-11
VII.	Middle Education.	12-14
VIII.	High/Higher Secondary School Education.	15-17
IX.	Vocational/Professional/Special and Other (School) Education.	18
X.	Higher Education.	18-19

STATISTICAL STATEMENTS (1970-71-1976-77)

1.	Area and Population.	20
2.	Population in the Age-Group 6-11, 11-14, and 14-17.	21-22
3.	Statistics of Effective Literacy Rates, 1971.	n23
4.	General Summary of Educational Institutions, Pupils and Teachers.	24-26
5.	Statistics of Trained Teachers in School Education in 1976-77.	27
6.	Statistics of Expenditure on Educational Institutions.	28
7.	Extent of coverage of Scheduled Castes population in 1976-77.	29
8.	Extent of coverage of Scheduled Tribes population in 1976-77.	30
9.	Statistics of Pre-Primary Education.	31-32
10.		



10.	Statistics of Primary Schools and Teachers.	'33
11.	Statistics of Enrolment in classes I-V.	34-35
12.	Statistics of Enrolment of Scheduled Castes and Scheduled Tribes in classes I-V.	36-37
13.	Statistics of Expenditure on Primary Schools.	38-39
14.	Statistics of Middle Schools and Teachers.	40
15.	Statistics of Enrolment in classes VI-VIII.	41-42
16.	Statistics of Enrolment of Scheduled Castes and Scheduled Tribes in classes VI-VIII.	43-44
17.	Statistics of Expenditure on Middle Schools.	45-46
18.	Statistics of High/Higher Secondary Schools.	47
19.	Statistics of Enrolment in classes IX-XI.	48-49
20.	Statistics of Enrolment of Scheduled Castes and Scheduled Tribes in classes IX-XI.	50
21.	Statistics of Expenditure on High/Higher Secondary Schools.	51-52
22.	Statistics of Professional, Vocational, Special and Other (School) Education.	53-54
23.	Statistics of Institutions for Higher Education and Teachers.	55-56
24.	Statistics of Enrolment in Higher Education By type of Institutions, 1976-77.	57-58
25.	Statistics of Enrolment in Higher Education by type of Education, 1976-77.	59-60
26.	Statistics of Enrolment of Scheduled Castes and Scheduled Tribes in Higher Education.	61-62
27.	Statistics of Expenditure on Higher Education.	63-64

## PREFACE

This volume on District-wise Educational Statistics for the State of Meghalaya, is the fifth in the series of such volumes which will be brought out for all the States and Union Territories. The main aim is to highlight the inter-district variations in a State by giving educational data at district level with the help of some important indices such as enrolment ratio, percentages of trained teachers, per capita expenditure, teacher pupil ratio etc.

In order to ascertain whether the educational imbalances have widened or narrowed down with time, the data for the year 1976-77 has been analysed and compared with that for the year 1970-71.

I take this opportunity to express my appreciation of the co-operation received from the Director of Public Instruction, Meghalaya and the Project staff of the Planning, Monitoring and Statistics Division who have prepared this report.

As final figures of expenditure on education were not available only provisional figures of expenditure have been given throughout this publication.

New Delhi,

1980.

P.K.UMASHANKAR  
JOINT SECRETARY (PLANNING)  
DEPTT. OF EDUCATION



I N T R O D U C T I O N

Regional imbalances do exist in the field of Educational Development just as in urbanisation, industrialization, distribution of income and wealth etc. With a view to highlight the regional imbalances in the educational sector, the Ministry of Education and Culture brings out the publication "Educational Statistics : District-wise" quinquennially.

2. Volume of this nature was first published by the National Council of Educational Research and Training in 1960-61. Thereafter it was decided that such reviews will be brought out in respect of each State every five year by the Ministry Education and Culture. Accordingly, the reviews for the year 1965-66 were brought out by this Ministry.

3. For making inter-district comparisons possible, some important indices such as enrolment ratios, percentage of trained teachers and per capita expenditure on education have been worked out. These indices show wide range of variations between the districts and hence the need for formulating educational plans at the district-level.

II. AREA AND POPULATION

4. There were only two districts viz. Khasi Hills and Garo Hills in Meghalaya State in 1971. These two districts were subsequently re-organised into three districts with the formation of Jaintia Hills district. The total area of Meghalaya is 22,489 sq.km.

The area of the different districts, vary from 3,237 sq.km. (Jaintia Hills) to 11,168 sq.km. (Khasi Hills).

5. In 1971, total population of the State was 10.09 lakhs consisting of 5.20 lakh males and 4.89 lakh females. By 1977 the population of the State is estimated to have increased to 11.90 lakhs (5.98 lakh males and 5.92 lakh females). There is large variation in the distribution of population among the three districts. Khasi Hills and Garo Hills shared about 88.7% of the total population of the state and the remaining 11.3% by the Jaintia Hills, Details are Given in statment No.1.

6. The density of population per sq. km. for the State of Meghalaya increased from 45 in 1971 to 53 in 1977. The density of population vary from 41 in Jaintia Hills to 59 in Garo Hills. Table No.I gives the General view of the extent of variation in Area, population and density of population among the three districts.

TABLE NO. I : EXTENT OF VARIATION IN THE AREA, POPULATION AND DENSITY OF POPULATION

S.No.	District	Percentage Share of Area	Percentage Share of population in 1977	Density of population
1.	2.	3.	4.	5.
1.	Khasi Hills	49.7	48.5	52
2.	Jaintia Hills	14.4	11.3	41
3.	Garo Hills	35.9	40.2	59
	TOTAL	100.0	100.0	53

7. The total population of the State as well as population of different age groups for the year 1971 and 1977 given in the report are based on the revised population projections (as on 1st March of the year) available from the office of Registrar General of India. District-wise population in the age-groups 6-11, 11-14 and 14-17 have been based on the following formula:-

We assume that,

$$\frac{P_{6-11}}{P} = \frac{P_{6-11}^i}{P_i} = K$$

$$P_{6-11}^i = K P_i$$

where K is estimated from the equation,  $K = \frac{P_{6-11}}{P}$

$P_{6-11}$  = Denotes 6-11 age-group population of the State.

P = Total population of State.

$P_{6-11}^i$  = 6-11 age-group population of the district.

$P_i$  = Total population of the district.

To get the sex-wise break up of the total population in the various age groups of the district, first of all the girls population is estimated using the above equation with the only difference that in the above formula total population is replaced by the girls population. The boys enrolment is obtained by the residual method i.e.

Boys population in the age-group 6-11 =

Total population in the age-group 6-11 -

Girls population in the age-group 6-11

Similar formulae are used for estimating the district-wise population in the age-groups 11-14 & 14-17 years.

8. Of the total population of Meghalaya State in 1977, the population in the age-group 6-11 was 1.53 lakhs consisting of 75 thousand Boys and 78 thousand Girls. This formed 12.8% of the total population of the State.

9. The estimated population in the age-group 11-14 in 1977 was 85 thousands, consisting of 41 thousand boys and 44 thousand girls. The population in this age-group formed 7.2% of the total population.

10. Similarly, the population in the age-group 14-17 was 83 thousands, consisting of 40 thousand boys and 43 thousand girls. This formed 7.0% of the total population of the State.

11. Thus of the total population of 11.91 lakhs of the State Meghalaya, the school going population in the age-group 6-17 was 3.21 lakhs which consisted of 1.57 lakh boys and 1.64 lakh girls. The population in the age-group 6-17 accounted for 27.0% of the total population. District-wise details may be seen in Statement No.2

### III - LITERACY

12. According to the 1971 census, the effective literacy rate i.e, the number of literates per-hundred of the population excluding the population in the age-group 0-4 years in the State was 34.9. The literacy rates for males and females were 40.3 and 29.1 respectively. Among the districts the literacy rate was the highest in Khasi Hills (39.5) followed by Garo Hills (27.9). Statement No.3 summarises the position.

IV - GENERAL REVIEW

(a) INSTITUTIONS

13. The total number of Educational Institutions in the State increased from 3,017 in 1970-71 to 4,377 in 1976-77, indicating an increase of 45.1% during the period of 6 years. In 1976-77 Khasi Hills had the largest number of institutions (46.1%) followed by Garo Hills (42.7%) and Jaintia Hills (11.2%). The details are given in statement No.4.

(b) ENROLMENT

14. The total enrolment in all the recognised educational institutions in the state increased from 1.75 lakhs in 1970-71 to 2.71 lakhs in 1976-77, during the period of 6 years. This shows an average expenditure growth rate of 7.6% per annum of the total enrolment during the period under review. Khasi Hills accounted for 57.5% followed by Garo Hills (33.1%) and Jaintia Hills (9.4%). Table No.2 gives the percentage increase in the enrolment of boys & girls in different districts for the period 1970-71 to 1976-77.

TABLE NO.2 : PROGRESS OF ENROLMENT DURING 1971-77.

Sl. No.	District	ENROLMENT in 1976-77 as percentage of enrolment in 1970-71			Percentage of girls enrolment in 1970-77.
		Boys	Girls	Total	
1.	2.	3.	4.	5.	6.
1.	Khasi Hills	172	163	168	58.2
2.	Jaintia Hills	*			11.2
3.	Garo Hills	131	139	134	33.1
TOTAL:		155	155	155	48.0

\*Information of Jaintia Hills is included in the Khasi Hills for the year 1970-71



(c) TEACHERS

15. There were 5,422 teachers in the State in 1970-71 which increased to 9,595 in 1976-77. Among the Districts, Khasi Hills was having the highest share of teachers (52.0%), followed by Garo Hills (34.9%) and the lowest share was in Jaintia Hills (13.1%). Among the school teachers, the percentage of trained teachers was as low as 33.9% at the State level. Among the districts it varied from 49.2% in Jaintia Hills to 25.5% in Garo Hills. District-wise details are given in statements 4 and 5.

(d) EXPENDITURE:

16. The total Expenditure which was Rs.1.06 crores in 1970-71 increased to Rs.5.57 crores in 1976-77. Of the total expenditure in 1976-77, 70.4% was made in Khasi Hills, 20.5% in Garo Hills and 9.1% in Jaintia Hills. Expenditure per institution varied from Rs.19 thousands in Khasi Hills, to Rs.6 thousand in Garo Hills. Expenditure per head of population varied from Rs.67.8 in Khasi Hills to Rs.23.9 in Garo Hills. Details have been given in statement.6

(e) EXTENT OF COVERAGE OF S.C. AND ST.:

17. Of the total enrolment, 4,917 students belonged to Scheduled Castes which formed 1.8% of the total enrolment of the state whereas the population of Scheduled Castes was 0.38%. The co-efficient of equality, (or Extent of coverage) therefore, comes to about 473.7%. Similarly there were 2.34 lakhs of students belonging to Scheduled Tribes which formed 86.3% of the total enrolment, whereas the population of Scheduled Tribes is 79.9%. The co-efficient of equality (or Extent of Coverage) therefore, comes to about 108.0%. The co-efficient of equality in respect of Scheduled Tribes was the highest in Garo Hills (110.1%), followed by Khasi Hills (109.1%) and Jaintia Hills (103.5%). Statements No.7&8.

10. Co-efficient of Equality

10. The co-efficient of equality or extent of coverage is defined as:

$$\text{Co-efficient of equality} = \frac{\text{Percentage of Enrolment of S.C/S.T to total enrolment}}{\text{Percentage of Enrolment of S.C/S.T. to total population.}} \times 100$$

V - PRE-PRIMARY EDUCATION

19. The number of pre-primary schools in the State increased from 50 to 363 during the period of six years (1970-71 to 1976-77). The number of teachers increased from 62 in 1970-71 to 394 in 1976-77.

20. The total enrolment in these pre-primary schools was 5,922 (boys 3,021 and girls 2,901) in 1970-71 which increased to 17,313 (8,705 boys and 8,608 girls) in 1976-77, showing an average exponential growth rate of 19.6% per annum.

21. The total direct expenditure on pre-Primary schools which was 65 thousand in 1970-71 increased to 3.49 lakhs in 1976-77, showing five times increase during the period under consideration. The district-wise details may be seen in Statment No.9.

VI- PRIMARY EDUCATION

(a) INSTITUTIONS AND TEACHERS:

22. The number of primary schools increased from 2,528 in 1970-71 to 3,350 in 1976-77. This shows an increase of 32.5% in 6 years. In 1976-77, Garo Hills had the highest number of primary schools (1,528) and Jaintia Hills the lowest (394.).

23. The number of teachers increased from 3,668 in 1970-71 to 4,903 in 1976-77.

24. On an average there was a primary school for every 8.9 sq.kms in 1970-71. By 1976-77 a primary school was serving an area of 6.7 sq.kms.

25. The population served by a primary school was 399 in 1970-71. Some improvement has been noticed and on an average a primary school was available for a population of 355 in 1976-77. The average population served by a primary school varied from 313 in Garo Hills to 404 in Khasi Hills. The details are given in statement No.10.

(b) ENROLMENT:

26. The total enrolment in primary schools which was 1.33 lakhs in 1970-71 increased to 1.77 lakhs in 1976-77. The enrolment at the primary stage i.e. in classes I-V which stood at 137,017 (Boys 72,051 and Girls 64,966) in 1970-71 increased to 185,577 (97,947 Boys and 87,630 Girls) in 1976-77. This shows an average exponential growth rate of 5.2% per annum. The growth rate of enrolment of these classes was 5.2% in case of boys and 5.1% in case of girls.

27. The percentage of girls in total enrolment was 47.4 in 1970-71 which slightly decreased to 47.2 in 1976-77. Among the districts it varied from 55.1 in Jaintia hills to 45.3 in Garo Hills. Table No3 indicates the growth of enrolment in 1976-77 as compared to 1970-71 and the percentage of girls in the total enrolment during the period.

TABLE NO.3: PROGRESS OF ENROLMENT DURING 1971-77.

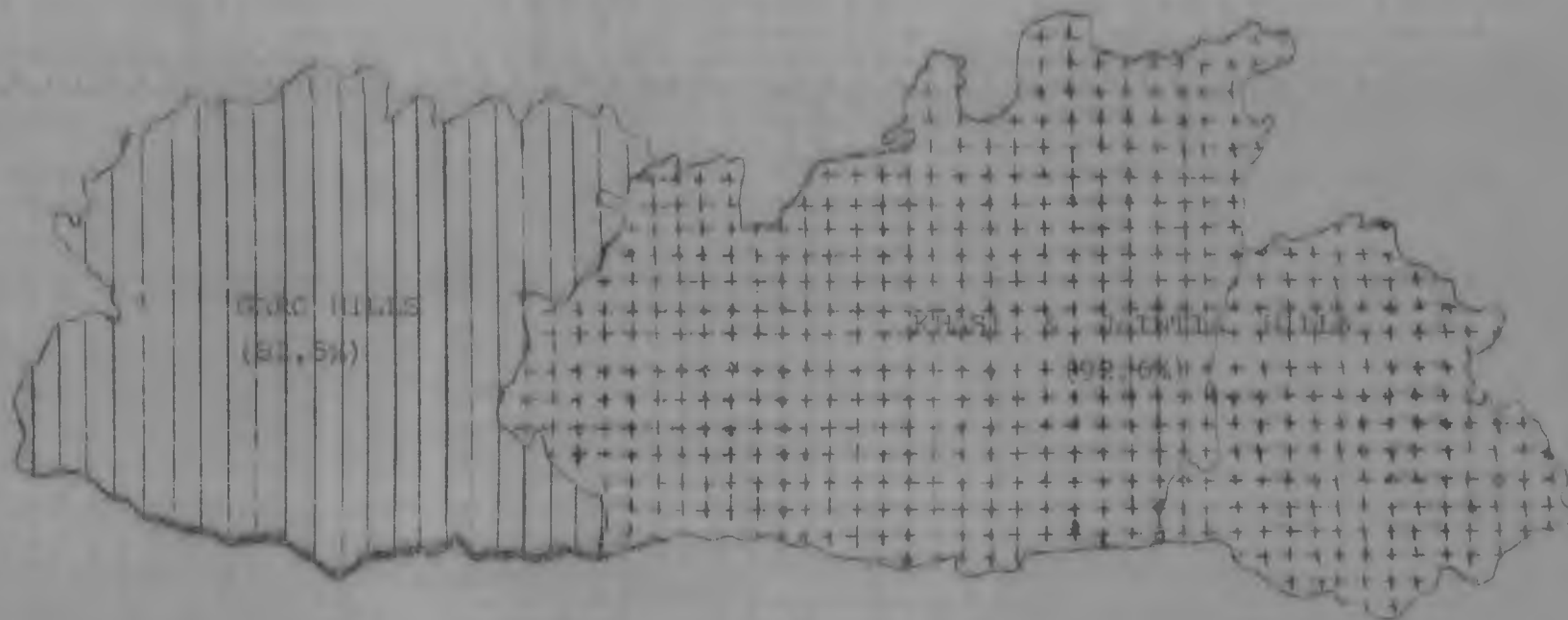
S.No.	District	Enrolment in 1976-77 as percentage of enrolment in 1970-71.			Percentage of girls in the enrolment in 1976
		Boys	Girls	Total	
1.	2.	3	4	5	6.
1.	Khasi Hills	149	141	145	46.9
2. *	Jaintia Hills				55.1
3.	Garo Hills	117	124	120	45.3
	Total	136	135	135	47.2

\* Information of Jaintia Hills is included in Khasi Hills for the 1970-71.

MICHIGAN

REFERENCE YEAR - 1970-71

PERCENTAGE OF TOTAL ENROLMENT IN CLASSES I-V  
TO POPULATION IN THE AGE GROUP 6-11





28. The enrolment ratio which was 97.5 in 1970-71 increased to 121.4 in 1976-77. There was an increase in the enrolment ratio in all the districts. In 1976-77, the enrolment ratio in respect of boys was 129.7 and in respect of girls it was 113.1 at the state level. The maximum enrolment ratio in respect of girls was achieved in the district of Khasi Hills where it was 130.8 and the same was as low as 90.9% in Garo Hills district. The details may be seen in statement No.11.

29. Of the total enrolment in classes I-V, 3,466 students belonged to Scheduled Castes in 1976-77 which formed 1.9% of the total enrolment. Similarly 1.6 lakhs students belonged to Scheduled Tribes which formed 88.1% of the total enrolment in a State, where Scheduled Tribes population is 79.9%. Thus co-efficient of equality (or extent of coverage) in respect of scheduled tribes at the primary stage is about 110.3%. Statement No.12 Summarises the position.

(c) EXPENDITURE :

30. The total expenditure on primary schools increased from Rs.55.78 lakhs in 1970-71 to Rs.113.94 lakhs in 1976-77 during the period under consideration. The expenditure increased in all the three districts. The increase in expenditure was the highest in case of Garo Hills.

31. The per capita expenditure on primary schools in the state in 1970-71 was Rs.5.5 and the same increased to Rs.9.6 in 1976-77. Among the districts, the per capita expenditure in primary schools in 1976-77 varied from Rs.14.68 in Jaintia Hills to Rs.8.0 in Khasi Hills.

32. The total expenditure on primary schools formed 52.9% of the total expenditure on education in the state in 1970-71. In 1976-77 this percentage decreased to 20.4%. The decrease occurred because of increasing priority being given to higher education. District wise details may be seen in statement No.13.

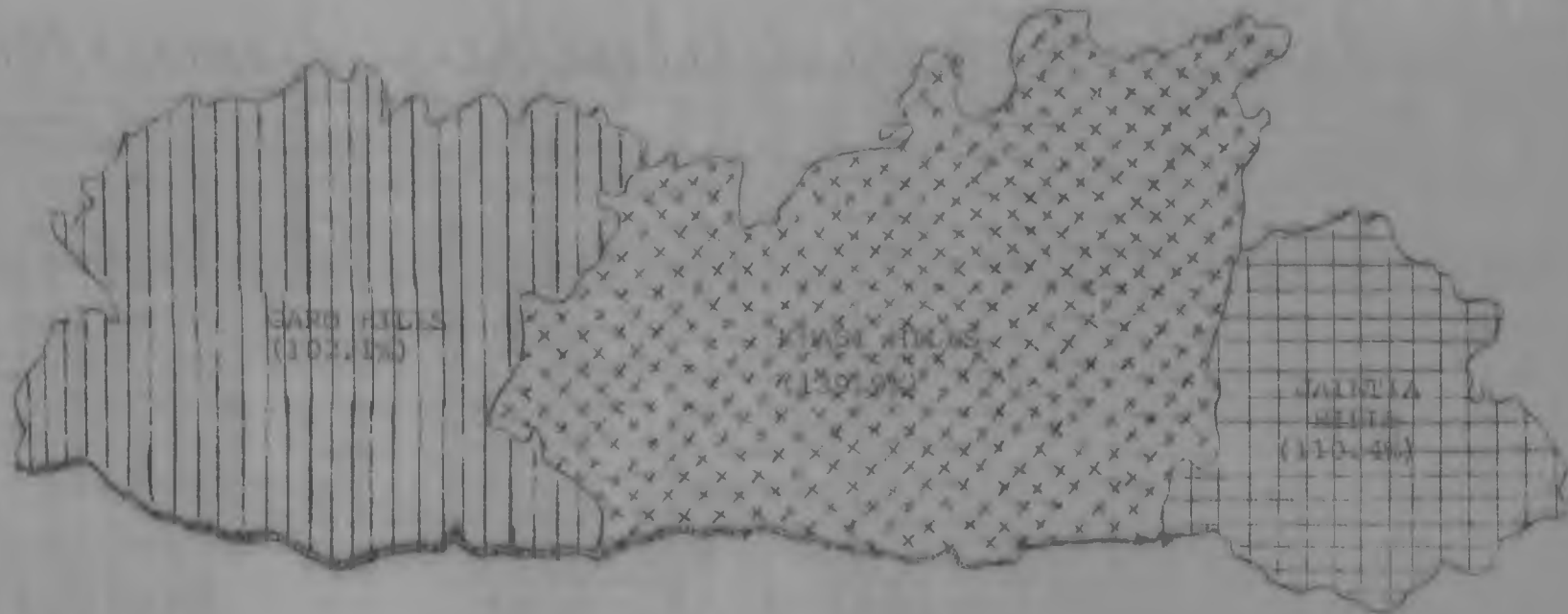
33. The average cost incurred per student in primary schools which was Rs.42.0 in 1970-71 increased to Rs.64.5 in 1976-77 at the state level. Among the three districts the cost per student in primary schools varied from Rs.48.4 in Khasi Hills to Rs.106.9 in Jaintia Hills in 1976-77. There is a negative correlation between the cost per student and the teacher pupil ratio. The cost per student is the highest where the teacher pupil ratio is the lowest. At the state level, teacher pupil ratio is 36 in 1976-77. Table No.4 summarises the position.

Table No.4 : EXPENDITURE ON PRIMARY SCHOOL- 1976-77

S.No.	District	Expenditure per head of population. (Rs.)	Exp. on Primary Schools as percentage to total	Cost per student in primary Sch.	Teacher pupil Ratio.
1.	Khasi Hills	8.0	11.8	48.4	46.
2.	Jaintia Hills	11.8	39.4	106.9	22
3.	Garo Hills	10.0	41.9	76.4	32
TOTAL:		9.6	20.5	64.5	36.

MEGHALAYA  
REFERENCE YEAR : 1976-77

PERCENTAGE OF TOTAL ENROLMENT IN CLASSES I - V TO  
TOTAL POPULATION IN THE AGE GROUP 6-11.







VIII- MIDDLE EDUCATION

(a) INSTITUTIONS AND TEACHERS :

34. The number of Middle schools in Meghalaya increased from 211 to 363 during the period 1970-71 to 1976-77. During the same period, number of teachers in the middle schools also increased from 41 to 1,764.

35. On an average there was a middle school for every 106.6 sq.km. in 1970-71 and for every 61.9 sq. km. in 1976-77. The average population served by a middle school was 4,784 in 1970-71 whereas a middle school was available for every 3,278 persons in 1976-77. The average population served by a middle school varied from 3,353 in Jaintia Hills to 3,254 in Garo Hills. Statment No.14 shows the district wise details.

(b) ENROLMENT :

36. The total enrolment in middle schools which was 17.5 thousand in 1970-71 increased to 27 thousand in 1976-77. The enrolment at the middle stage i.e., in classes VI-VIII increased from 17,525 (10,594 boys and 6,931 girls) in 1970-71 to 32,319 students (18,009 boys and 14,310 girls) in 1976-77 showing an average annual exponential growth rate of % during the period under consideration.

37. The percentage of girls in the total enrolment in 1970-71 was 39.5% which increased to 44.3% in 1976-77. Among the districts it varied from 56.2% in Jaintia Hills to 35.8% in Garo Hills in 1976-77. Table No.5 indicates the growth in the enrolment in 1976-77 as compared to 1970-71 and the percentage of girls in the total enrolment during 1976-77.

Contd/.....

TABLE NO.5 : PROGRESS OF ENROLMENT DURING 1971-77.

S.No.	District	Enrolment in 1976-77 as a percentage of enrolment in 1970-71.			Percentage of Girls in the enrolment in 1976-77.
		Boys	Girls	Total	
1.	2.	3.	4.	5.	6.
1.	* Khasi Hills	192	212	202	50.0
2.	Jaintia Hills*				56.3
3.	Garo Hills	153	197	166	35.0
TOTAL		170	206	184	44.3

\* Information of Jaintia Hills is included in the Khasi Hills for the year 1970-71.

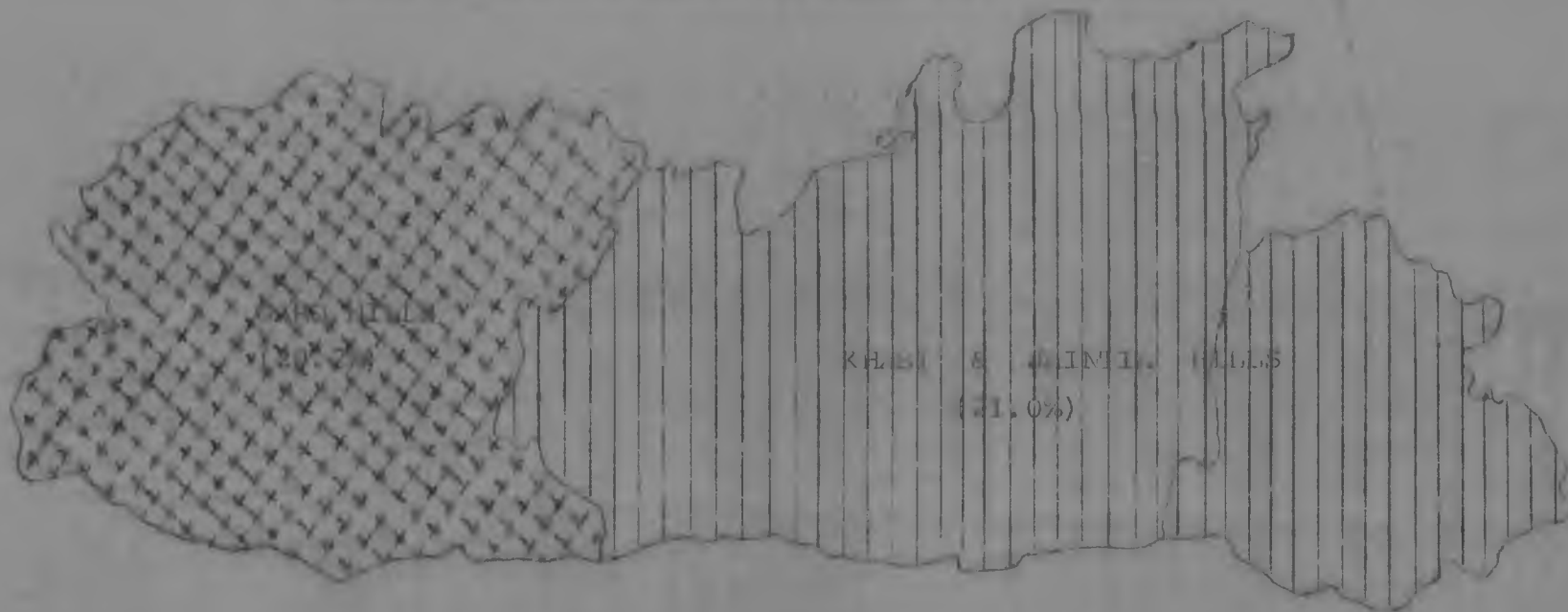
10. The enrolment ratio at the middle stage increased from 24.3 in 1970-71 to 37.8 in 1976-77. The improvement in the enrolment ratio was recorded in all the three districts. In 1976-77 while enrolment ratio in respect of boys was 43.6 the same was only 32.4 in respect of girls. The higher enrolment ratio in respect of girls was observed in Khasi Hills (37.3) and the lowest was in case of Jaintia Hills district (20.6%). The details may be seen in statement No.15.

39. In 1970-71 of the total enrolment in classes VI-VIII, 13,587 students belonged to scheduled castes and scheduled tribes <sup>forming</sup> 77.5% of the total enrolment. In 1976-77 only 522 scheduled castes students were studying at the middle stage. As far as Scheduled Tribes students are concerned there were 26,960 students at the middle stage <sup>forming</sup> 83.4% of the total enrolment in state inhabited by 79.9% scheduled tribes population. Thus the co-efficient of equality in respect of scheduled tribes at the middle stage is 104.4%. Statement No.16 shows district wise details.

MEGHALAYA

REFERENCE YEAR - 1970-71

PERCENTAGE OF TOTAL ENROLMENT IN CLASSES VI-VIII  
TO TOTAL POPULATION IN THE AGE GROUP 11-14.





(c) EXPENDITURE :

40. The total expenditure on middle schools increased from Rs.21.36 lakhs to Rs.56.9 lakhs during the period under consideration. District-wise details of expenditure have been given in Statement 17.

41. The total expenditure on middle schools formed 20.2% of the total expenditure on education in the state in 1970-71. By 1976-77 this percentage decreased to 10.2% due to increasing priority being given to higher education during the period under review.

42. The cost per student in middle schools has doubled during the period 1970-71 to 1976-77. Among the districts cost per student was the highest in Jaintia Hills (Rs.363.4) and the lowest in Garo Hills (Rs.180.6) in 1976-77. In case of Middle education also there is negative correlation between the cost per student and the teacher pupil ratio. The teacher pupil ratio is the lowest where cost per student is the highest. At the state level the teacher pupil ratio improved from 19 to 15 during the period under consideration. Table No.6 summarises the position.

TABLE NO. 6 EXPENDITURE OF MIDDLE SCHOOLS -1976-77.

S.No.	District	Expenditure per head of population.	Expenditure on middle schools as percentage to total exp.	Cost per student in Middle sch.	Teacher Pupil ratio.
1.	2.	3.	4.	5.	6.
1.	Khasi Hills	4.5	6.8	213.2	14
2.	Jaintia Hills	5.7	14.1	363.4	11
3.	Garo Hills	4.9	21.3	180.6	19
	(Total)	4.8	10.2	209.4	15.

VIII - HIGH/HIGHER SECONDARY EDUCATION

(a) INSTITUTIONS AND TEACHERS :

43. The number of High/Hr. Secondary Schools in Meghalaya state increased from 81 to 148 during the period under consideration, showing thereby an increase of 82.7%. The number of teachers which were 677 in 1970-71 increased to 1,735 in 1976-77.

44. On an average there was a high/higher secondary school for every 227.6 sq.kms. in 1970-71. By 1976-77 the situation improved and 9 High/Hr. Secondary schools served an area of 152.0 sq. kms

45. The average population served by a high/higher secondary school was 12,462 in 1970-71 whereas a high/higher secondary school was available for population of 8,040 in 1976-77. The average population served by a high/higher secondary school varied from 7,310 in Khasi Hills to 13,410 in Jaintia Hills. Statement No.18 summarises the position.

(b) ENROLMENT :

46. The enrolment in high/higher secondary schools which was 16,516 in 1970-71, increased to 34,870 in 1976-77. The enrolment at the secondary stage i.e. in classes IX-XI which was 8,407 (5,397 boys and 3,010 girls) in 1970-71 increased to 20,743 (12,334 boys and 8,409 girls) in 1976-77. This shows an average exponential growth rate of 16.2% per annum during the period. The growth rate of enrolment in these classes was 14.7% in case of boys and 18.7% in case of girls. Details are given in statement No.19.

47. The percentage of girls in total enrolment was 35.8% in 1970-71 which increased to 40.5% in 1976-77. Among the districts it varied from 53.8% in Jaintia Hills to 30.3% in Garo Hills in 1976-77. Table No.7 indicates the growth of enrolment in 1976-77 as compared to 1970-71 and the percentage of girls in the total enrolment during the period.

REGIONS

REFERENCE YEAR : 1976-77

PERCENTAGE OF TOTAL ENROLMENT IN CLASSES VI-VIII TO  
TOTAL POPULATION IN THE AGE GROUP 11-14.

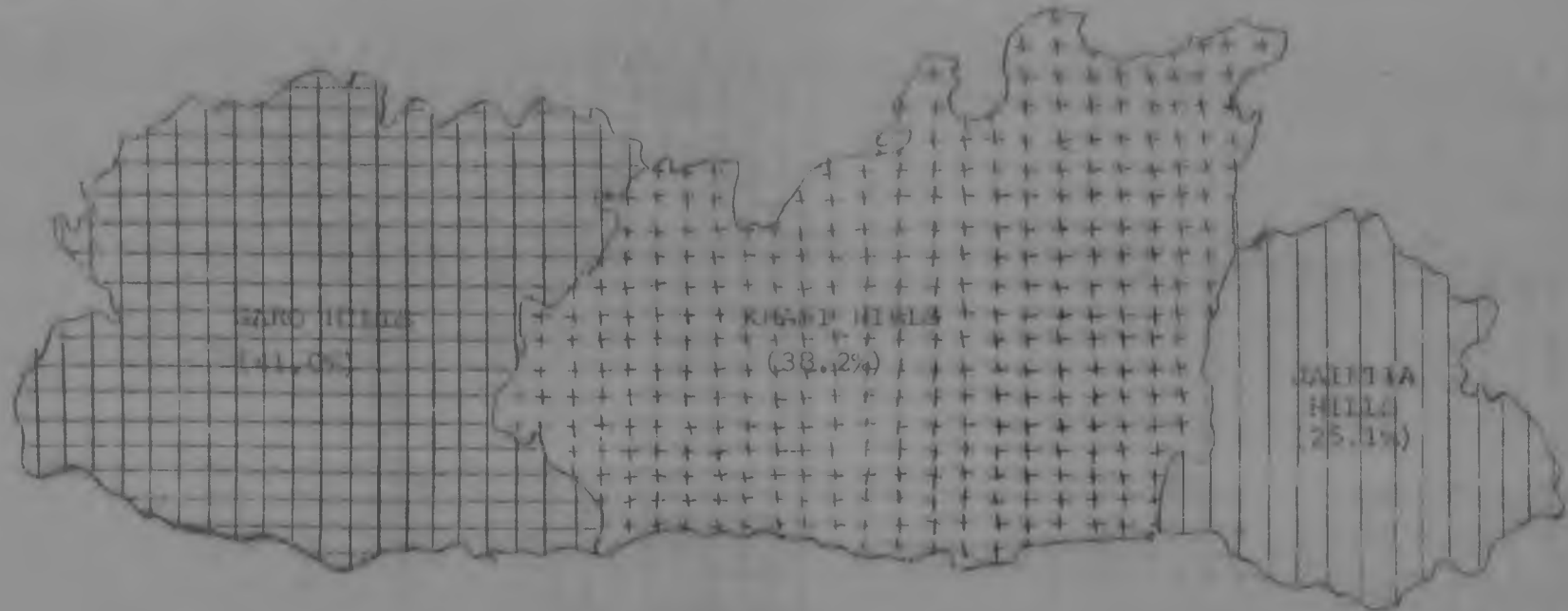






TABLE NO. 7 : PROGRESS OF ENROLMENT DURING 1971-77.

S.No.	District	Enrolment in 1976-77 as percentage of enrolment in 1970-71			Total	Percentage of girls in the enrolment in 1976-77
		Boys	Girls	Total		
1.	2.	3.	4.	5.	6.	
1.	Khasi Hills.	337	343	340	45.8	
2. *	Jaintia Hills				53.8	
3.	Garo Hills	162	199	170	30.3	
T.C.L.		229	279	247	40.5	

\* Information of Jaintia Hills is included in the Khasi Hills for the year 1970-71

48. The enrolment ratio increased from 13.0 to 25.1 during the period 1970-71 to 1976-77. There was an improvement in the enrolment ratio in all the districts. In 1976-77, while enrolment ratio in respect of boys was 30.6 in respect of girls it was only 19.8 at the state level. The highest enrolment ratio (25.7) in respect of girls was observed in the district of Khasi Hills, whereas the lowest was observed in Garo Hills (13.8). The details may be seen in statement No.19.

49. Of the total enrolment in classes IX-XI only 423 students belonged to Scheduled Castes in 1976-77 which formed 2.0% of the total enrolment.

The Scheduled Tribes enrolment was 16,453 in 1976-77 which formed 79.3% of the total enrolment of the state, whereas the scheduled tribes population was 79.9%. Thus co-efficient of equality in respect of scheduled tribes in High/Higher Secondary stages is 99.2%. Statement No.20. Summarises the position.

(c) EXPENDITURE :

50. The total expenditure on high/higher secondary schools increased by more than five times (from Rs. 21.74 lakhs in 1970-71 to Rs. 116.26 lakhs in 1976-77.). The increase was in all the districts, the highest being in Khasi Hills district.

51. The per-capita expenditure on High/Higher Secondary Schools in the state was 2.1 in 1970-71 and the same increased to Rs. 9.8 in 1976-77. Among the districts, the per capita expenditure varied from Rs. 5.3 in Garo Hills to Rs. 14.3 in Khasi Hills in 1976-77.

52. The total expenditure on high/higher secondary schools formed 20.0% of the total expenditure on education in the state in 1970-71. By 1976-77 this percentage increased to 21.3. District-wise details may be seen in statement No. 21.

53. The cost per student in high/higher secondary schools in 1970-71 was Rs. 131.7 which increased to Rs. 333.4 in 1976-77. Among the district the cost per student was the highest in Jaintia Hills (Rs. 365.1) and the lowest in Garo Hills (Rs. 281.9).

54. The teacher pupil ratio in 1970-71 was 24 at the state level which improved to 20 in 1976-77. Table No. 8 summarises the position.

Table No. 8 : EXPENDITURE ON HIGH/HIGHER SECONDARY SCHOOLS-1976-77

S.No.	District	Expenditure per head of population.	Expenditure on High/Higher Sec. Schools as a percentage of total exp.	Cost per Student in High/Higher Sec. Schools	Teacher (pupil Ratio)
1.	Khasi Hills	14.3	21.2	350.1	20
2.	Jaintia Hills	6.3	16.9	365.1	20
3.	Garo Hills	5.3	23.8	281.9	19
	TOTAL	9.8	21.3	333.4	20

MEOWALAYA

FEDERATION YEAR : 1970-71

PERCENTAGE OF TOTAL ENROLLMENT IN CLASSES IX-XI  
TO TOTAL POPULATION IN THE AGE GROUP 15-17.

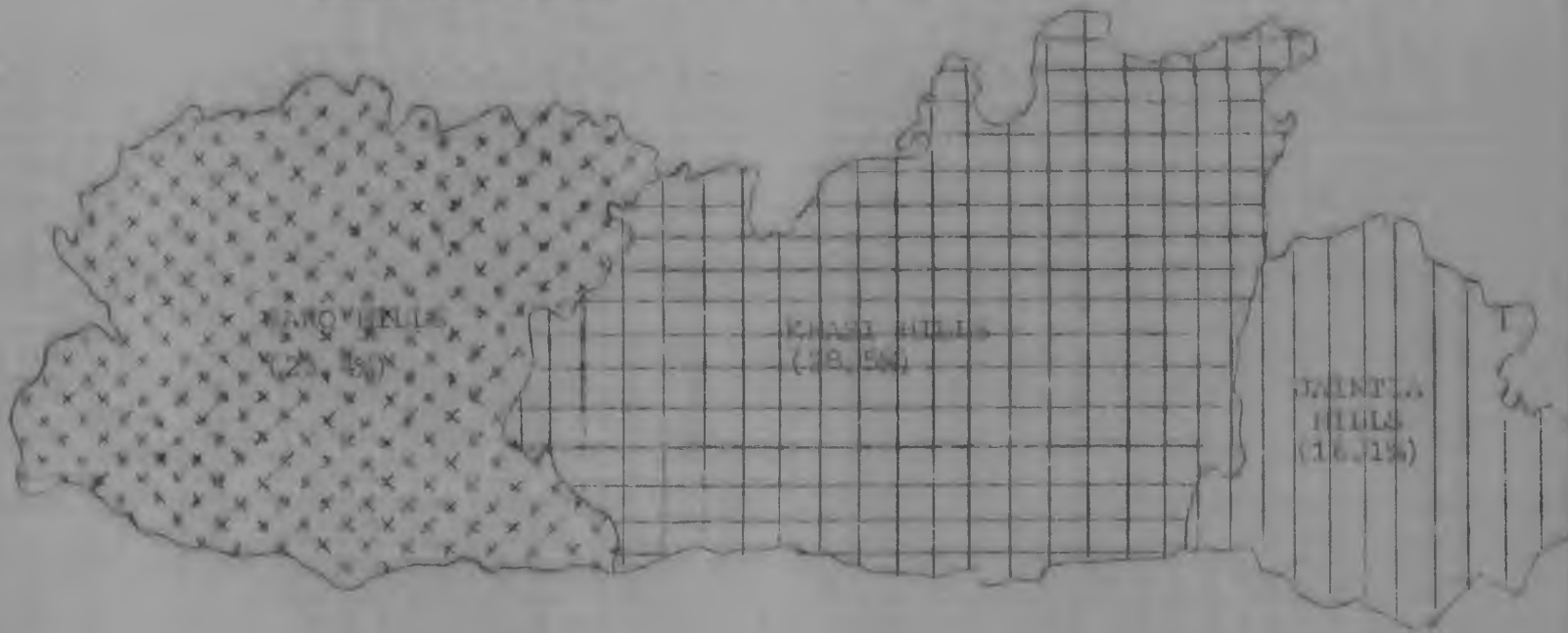




MEGHALAYA

REFERENCE YEAR : 1976-77

PERCENTAGE OF ENROLMENT IN CLASSES IX-XI TO  
TOTAL POPULATION IN THE AGE GROUP 14-17.





## IX PROFESSIONAL, VOCATIONAL, SPECIAL AND OTHER (SCHOOL) Education.

55. The number of schools for Vocational, Professional, Special and Other education decreased from 144 in 1970-71 to 132 in 1976-77. Of these 132 institutions, 108 were in Khasi Hills and 15 were in Jaintia Hills.

56. The total enrolment in Vocational classes also decreased from 6,153 (3,390 boys and 2,763 girls) in 1970-71 to 4,272 (2,589 boys and 1,683 girls) in 1976-77. But the number of teachers increased from 40 in 1970-71 to 226 in 1976-77.

57. The total expenditure on these institutions increased from Rs. 2.9 lakhs in 1970-71 to 23.7 lakhs in 1976-77. The details may be seen in statement No. 22.

X - HIGHER EDUCATION(a) INSTITUTIONS AND TEACHERS

58. The number of institutions for higher education which was only 3 in 1970-71 increased to 21 in 1976-77. Of the 21 institutions in 1976-77, 15 were affiliated institutions, 4 non-affiliated institutions below degree level, one Board of Intermediate Education and one University. Out of the 15 affiliated degree-level colleges, 13 were Arts, Science and Commerce (theology) colleges and these are spread over all the districts in the Khasi Hills having the largest number of colleges followed by Garo Hills and Jaintia Hills.

59. The total number of teachers also increased from 34 in 1970-71 to 573 in 1976-77.

(b) ENROLMENT :

60. The enrolment in higher education increased from 89 in 1970-71 to 11,217 in 1976-77 indicating an average exponential growth rate of 123.9% during this period of 6 years. Among the districts, Khasi Hills has the highest enrolment (10,145) and Jaintia Hills the minimum (33). Of the total enrolment of 11,217, general education accounted for 10,072 and professional education for 1,145. Details are given in statement No. 25.



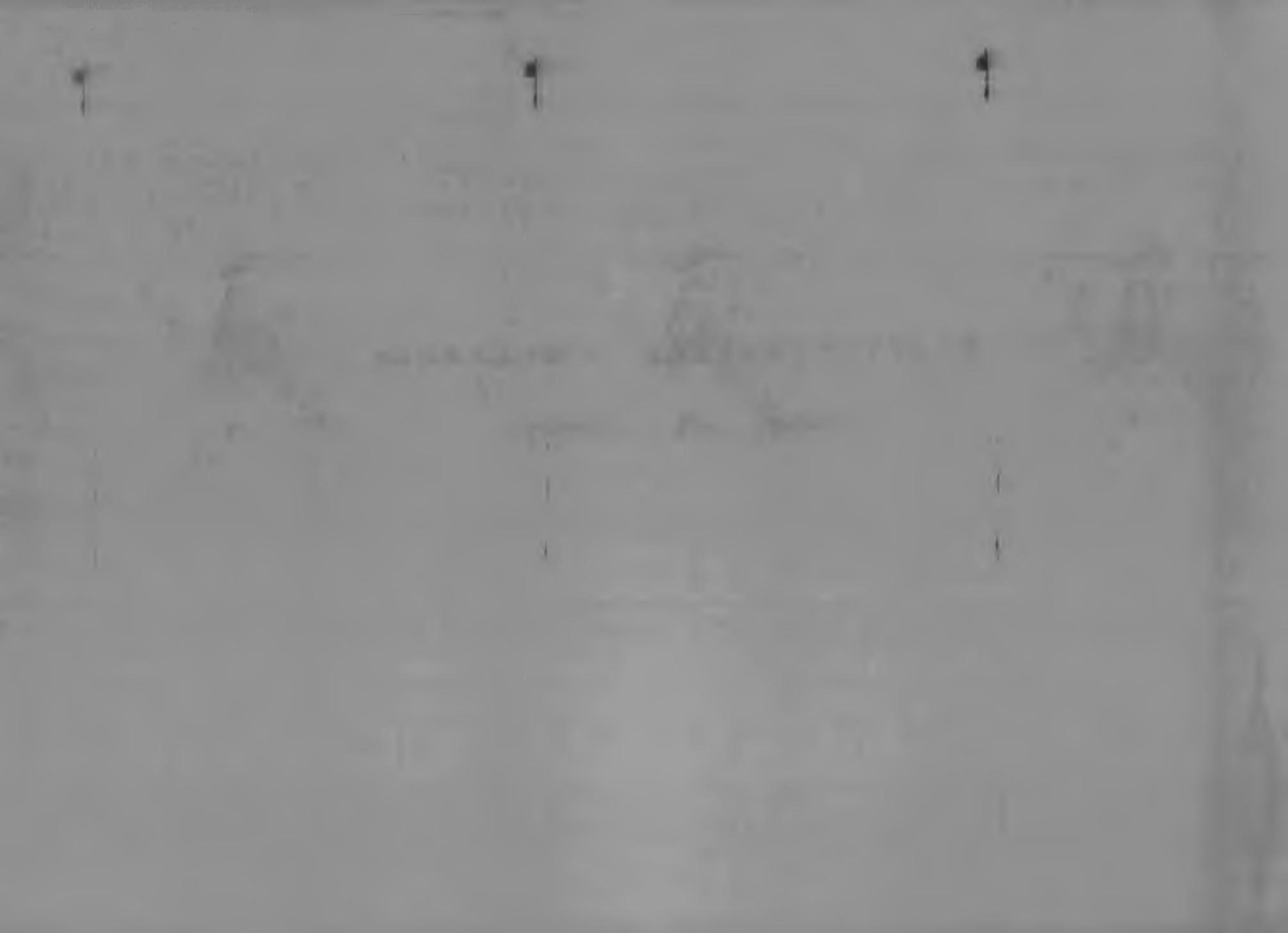
61. Of the total enrolment, 265 students belonged to scheduled castes which formed 2.3% of the total enrolment, where as scheduled tribes enrolment was 6,371 which formed 56.8% in the state where their share of population to the state is 79.9%. Thus the co-efficient of equality in respect of scheduled tribes is 71.1%. Statement No.26 summarises the position.

(c) EXPENDITURE :

62. The total expenditure on the institutions for higher education which was Rs. 3.06 lakhs in 1970-71 increased to Rs. 242.37 lakhs in 1976-77 showing a rapid growth of expenditure in higher education. In 1976-77 highest expenditure on higher education was incurred in Khasi Hill district, where it formed about 92% of the total expenditure on higher education in the state. The corresponding figures for 1970-71 was 78.2%. The abnormal increase in the expenditure for Khasi Hills district is because of the opening of a new university therein during the period under consideration.

STATISTICAL - STATEMENT

( 1970-71 and 1976-77 )



STATEMENT NO.1 : AREA AND POPULATION.

Sl. No.	Name of the District	Area in sq. km.		Population (in hundred's)						Density of population (per sq. km.)			
		1970-71		1977-77		1971		1977		1971		1977	
		1	2	3	4	5	6	7	8	9	10	11	12
1.	Khasi Hills	14,405	11,168	3,118	2,919	6,037	2,932	2,843	5,775	42	2	52	2
2.	Jaintia Hills	*	3,237	-	-	*	654	687	1,341	*	-	41	3
3.	Garo Hills	8,084	8,084	2,080	1,977	4,057	2,393	2,390	4,783	50	1	59	1
TOTAL:		22,489	22,489	5,198	4,896	10,094	5,979	5,920	11,899	45	-	53	-

\* Information of Jaintia Hills is included in the Khasi Hills for the year 1970-

STATEMENT NO.2 : POPULATION IN THE AGE GROUPS 6-11, 11-14 & 14-17

(In Hundred)

Sl. No.	Name of the District	Age Group (6-11)						Age Group (11-14)		
		1971			1977			1971		
		Boys	Girls	Total	Boys	Girls	Total	Boys	Girls	Total
1.	2.	3.	4.	5.	6.	7.	8.	9.	10.	11.
1.	Khasi Hills	42,5	41,6	84,1	36,9	37,2	74,1	21,6	21,5	43,1
2.	Jaintia Hills	-	-	*	8,3	9,0	17,3	-	-	*
3.	Garo Hills	28,4	28,1	56,5	30,2	31,3	61,5	14,5	14,6	29,1
TOTAL		70,9	69,7	140,6	75,4	77,5	1,52,9	36,1	36,1	72,2

\* Information of Jaintia Hills is included in the Khasi Hills for the year 1970-71.

CONTD/....

STATEMENT NO.2

POPULATION IN THE AGE GROUPS 6-11, 11-14 and 14-17 (Contd)

(In hundred's)

Sl. No.	Name of the District	Age Group (11-14)			Age Group (14-17)					
		1977			1971			1977		
		Boys	Girls	Total	Boys	Girls	Total	Boys	Girls	Total
1.	2.	12	13	14	15	16	17	18	19	20
1.	Khasi Hills	20,2	21,2	41,4	19,6	19,3	38,9	19,7	20,4	40,1
2.	Jaintia Hills	4,5	5,1	9,6	-	-	*	4,4	4,9	9,3
3.	Garo Hills	16,6	17,8	34,4	13,1	13,1	26,2	16,2	17,2	33,4
TOTAL :		41,3	44,1	85,4	32,7	34,4	65,1	40,3	42,5	82,8

\* Information of Jaintia Hills is included in the Khasi Hills for the year 1971.

S11CH

STATEMENT NO.3 : STATISTICS OF EFFECTIVE LITERACY RATE 1970-71.

Sl. No.	Name of the District	Total Population (in 00s) (excluding 0-4)			Total Literates (in 00s)			Literacy Rate (%) (excluding 0-4)		
		Men	Women	Total	Men	Women	Total	Men	Women	Total
1.	2.	3.	4.	5.	6.	7.	8.	9.	10.	11.
1.	Khasi Hills	2,641	2,446	5,087	1,153	8,5,8	2,01,1	43,7	35,1	39,5
2.	Jaintia Hills	-	-	*	*	*	*	*	*	*
3.	Garo Hills	1,74,3	1,655	3,39,8	61,3	33,6	9,49	35,2	20,3	27,9
	TOTAL	4,38,4	4,10,1	8,48,5	1,78,6	1,19,4	2,96,0	40,3	29,1	34,9

\* Information of Jaintia Hills is included in the Khasi Hills for the year, 1970-71.

## STATEMENT NO. 4.

GENERAL SUMMARY OF EDUCATIONAL INSTITUTIONS, PUPILS AND TEACHERS.

S.No.	Name of the District	Total No. of institutions		Total Enrolment			%age share		
		1970-71 %age share	1976-77 %age share	Boys	Girls	Total			
1.	2.	3.	4.	5.	6.	7.	8.	9.	10.
1.	Khasi Hills	1,560	51.7	2,018	46.1	55,238	52,950	10,8,188	61.8
2.	Jaintia Hills	--	*	490	11.2	-	-	--	
3.	Garo Hills	1,457	48.3	1,869	42.7	39,293	27,632	66,925	38.2
TOTAL :		3,017	100.0	4,377	100.0	94,531	80,582	1,75,113	100.0

\* Information of Jaintia Hills is included in the Khasi Hills for the year 1970-71.



STATEMENT NO. 4  
GENERAL SUMMARY OF EDUCATIONAL INSTITUTIONS, PUPILS AND TEACHERS. (CONTD)

S.No.	Name of the District	Total enrolment 1976-77			%age share	%age of girls in total enrolment.			
		Boys	Girls	Tot.		1970-71	1976-77	%age share	
1.	2.	11.	12.	13.	14.	15.	16.	17.	18.
1.	Khasi Hills	83,619	72,580	156,199	57.5	48.9	1	46.5	2
2.	Jaintia Hills	11,459	13,937	25,396	9.4	-	-	54.9	1
3.	Garo Hills	51,596	38,250	89,846	33.1	41.3	2	42.6	3
TOTAL		1,46,674	1,24,767	2,71,441	100.0	46.0	-	46.0	-

\* Information of Jaintia Hills is included in the Khasi Hills for the year 1970-71.

STATEMENT NO.4: GENERAL SUMMARY OF EDUCATIONAL INSTITUTIONS,  
PUPILS AND TEACHERS (CONTD)

S.No.	Name of the District	%ag of enrolment to total population				Teachers.			
		1970-71	Rank	1976-77	Rank	1970-71	%age	1976-77	%age
1.	Khasi Hills	17.9	1	27.0	1	3,091	57.0	4,989	52.0
2.	Jaintia Hills	-*-	-*-	19.9	2	-*-	-*-	1,250	13.1
3.	Garo Hills	16.5	2	18.8	3	2,331	43.0	3,352	34.9
TOTAL :		17.3	-	23.8	-	5,422	100.0	9,595	100

\* Information of Jaintia Hills is included in Khasi Hills for the year 1970-71.

STATEMENT NO. 5: STATISTICS OF TRAINED TEACHERS IN SCHOOL EDUCATION, 1979-77.

Sl. No.	Name of the District	TOTAL NO. of Teachers in School Education.			Trained Teachers		Untrained Teachers			% of Trained Teachers			
		Men	Women	Total	Men	Women	Total	Men	Women	Total			
		1.	2.	3.	4.	5.	6.	7.	8.	9.	10.	11.	12.
1.	Khasi Hills	2,475	1,072	4,347	828	737	1,565	1,647	1,135	2,782	33.5	39.4	36.0
2.	Jaintia Hills	495	704	1,199	237	353	590	288	351	609	47.9	50.1	49.2
3.	Garo Hills	2,669	581	3,250	732	97	829	1,937	484	2,421	27.4	16.7	25.5
TOTAL:		5,639	3,157	8,796	1,797	1,187	2,984	3,842	1,970	5,812	31.9	37.6	33.9

STATEMENT NO.6. : STATISTICS OF EXPENDITURE ON EDUCATIONAL INSTITUTIONS

S.No.	Name of the District	Total expenditure				Expenditure per Institution		Expenditure per head of Population.	
		1970-71		1976-77		1970-71	1976-77	1970-71	1976-77
		Rs.	%age share	Rs.	%age share	Rs.	Rs.	Rs.	Rs.
1.	2.	3.	4.	5.	6.	7.	8.	9.	10.
1.	Khasi Hills	57,14,795	54.2	3,91,74,131	70.4	3,669.3	19412.4	9.5	67.8
2.	Jaintia Hills	---	---	50,53,830	9.1	---	10313.9	---	36.7
3.	Garo Hills	48,35,967	45.8	1,14,35,887	20.5	3,319.1	6118.7	11.9	23.9
TOTAL:		105,50,762	100.0	5,56,63,848	100.0	3497.1	12717.4	10.5	46.7

\*. Information of Jaintia Hills is included in Khasi Hills for the year 1970-71.

STATEMENT NO. 7.

OF

EXTENT OF COVERAGE (CO-EFFICIENT OF EQUALITY) / SCHEDULED CASTES POPULATION, 1976-77  
 (coverage)

S. No.	Name of the District	Enrolment of S.C.			%age of S.C. Enrolment to total enrolment			%age of S.C. population to total population	Extent of (co-efficient of equality)
		Boys	Girls	Total	Boys	Girls	Total		
1.	2.	3.	4.	5.	6.	7.	8.	9.	10.
1.	Khasi Hills	1187	875	2,062	1.4	1.2	1.31	0.38	342.1
2.	Jaintia Hills	28	33	61	0.2	0.2	2	0.01	2000.0
3.	Garo Hills	1432	1,097	2,529	2.8	2.9	2.8	0.49	571.4
TOTAL:		2,854	2,063	4,917	1.9	1.7	1.8	0.38	473.7

STATEMENT NO. 8.

EXTENT OF COVERAGE (CO-EFFICIENT OF EQUALITY) OF SCHEDULED TRIBES POPULATION  
1976-77

S.No.	Name of the District	Enrolment of S.T.			%age of S.T. enrolment to total enrolment.			%age of S.T. population to total population.	Extent of coverage (Co-efficient of equality)
		Boys	Girls	Total	Boys	Girls	Total		
1.	2.	3.	4.	5.	6.	7.	8.	9.	10.
1.	Khasi Hills	68,942	61,969	1,30,911	82.4	85.4	83.8	76.8	109.1
2.	Jaintia Hills	11,035	13,766	24,801	96.3	98.8	97.6	94.3	103.5
3.	Garo Hills	44,958	33,690	78,648	87.1	87.6	87.5	79.5	110.1
TOTAL:		1,24,935	1,09,425	2,34,360	85.2	87.7	86.3	79.9	108.0

STATEMENT NO.9 : Statistics of Pre-Primary Education.

S.1. No.	Name of the district	No. of Pre-primary Schools.		Enrolment in Pre-Primary Schools				Enrolment in Pre-primary classes		
		1970-71	1976-77	1976-77		1970-71		Total		
				Boys	Girls	Boys	Girls			
1.	2.	3.	4.	5.	6.	7.	8.	9.		
1.	Khasi Hills	11	210	605		11,366	2,437	2,101	4,538	
2.	Jaintia Hills	*	30	*		1,734				
3.	Garo Hills	39	123	1,389		4,213	584	800	1,384	
<b>TOTAL:</b>		<b>50</b>	<b>363</b>	<b>1,994</b>		<b>17,313</b>	<b>3,021</b>	<b>2,901</b>	<b>5,922</b>	

\*Information of Jaintia Hills is included in the Khasi Hills for the year, 1970-71.

Cite/.....

STATEMENT NO. 9

## STATISTICS OF PRE-PRIMARY EDUCATION (Contd)

Sl. No.	Name of the district	Enrolment in Pre-Primary classes			Teachers in Pre-Primary Schools			
		1976-77		Total	1970-71	1976-77		
10.	11.	12.	13.		14.	15.	16.	
		Boys	Girls	Total	Total	Men	Women	Total
1.	Khasi Hills	5,784	5,582	11,366	17	84	151	235
2.	Jaintia Hills	805	929	1,734	4	5	33	38
3.	Garo Hills	2,116	2,097	4,213	45	1	120	121
TOTAL:		8,705	8,608	17,313	62	90	304	394

\* Information of Jaintia Hills is included in the Khasi Hills for the year 1970-71

BIRCH



STATEMENT NO.10: Statistics of Primary Schools and Teachers.

NAME of the District.	No. of Primary Schools		No. of Teachers				Area Served by a Primary School		Population Served by a Primary School				
	1970-71	1976-77	1970-71		1976-77		1970-71	1976-77	1970-71	Rank	1976-77	Rank	
			Total	Men	Women	Total	in sq. K.m.	Rank	in sq. K.m.	Rank	Rank	Rank	
Khasi Hills	1,251	1,428	4042	1,305	759	2,064	11.5	2	7.8	2	483	2	404
Jaintia Hills	*	394	*	348	516	864	*	-	8.2	3	*	-	340
Garo Hills	1,277	1,528	1626	1,712	263	1,975	6.3	1	5.3	1	318	1	313
TOTAL:	2,528	3,350	3668	3,365	1538	4,903	8.9	-	6.7	-	399	-	355

\* Information of Jaintia Hills is included in the Khasi Hills for the year 1970-

STATEMENT NO.11:

STATISTICS OF ENROLMENT IN CLASSES I-V

Name of the district.	Enrolment in classes I-V			%Age of enrolment in classes I-V to total population in the age group (6-11) 1970-71			Ranks 1970-71		
	Boys	Girls	Total	Boys	Girls	Total	Boys	Girls	Total
	2	3	4	5	6	7	8	9	10
1. Khasi Hills	42,720	41,954	84,674	100.5	100.8	100.7	2	1	1
2. Jaintia Hills	-	-	-	-	-	-	-	-	-
3. Garo Hills	29,331	23,012	52,343	103.3	81.9	92.6	1	2	2
<b>TOTAL:</b>	<b>72,051</b>	<b>64,966</b>	<b>1,37,017</b>	<b>101.6</b>	<b>93.2</b>	<b>97.5</b>			

\* Information of Jaintia Hills is included in the Khasi Hills for the year, 1970-71.

STATEMENT NO.11:

STATISTICS OF ENROLMENT IN CLASSES I-V (Contd.)

Name of the District.	Enrolment in Classes I-V			%age of Enrolment in classes I-V to total Population in the age group (6-11)			Rank		
	1976-77			1976-77			1976-77		
	Boys	Girls	Total	Boys	Girls	Total	Boys	Girls	Total
1.	11.	12.	13.	14.	15.	16.	17.	18.	19.
1. Khasi Hills	55,043	48,660	1,03,703	149.2	130.8	139.9	1	1	1
2. Jaintia Hills	8,577	10,528	19,105	103.3	116.9	110.4	3	2	2
3. Garo Hills	34,327	28,442	62,769	113.7	90.9	102.1	2	3	3
<b>TOTAL:</b>	<b>97,947</b>	<b>87,630</b>	<b>1,85,577</b>	<b>129.9</b>	<b>113.1</b>	<b>121.4</b>	<b>-</b>	<b>-</b>	<b>-</b>



STATEMENT NO.12:

STATISTICS OF ENROLMENT OF S.C. AND S.T. IN CLASSES I-V

Name of the District	Enrolment of S.C./S.T. children in classes I-V, 1970-71			Age of S.C./S.T. students to total enrolment in classes I-V, 1970-71		
	Boys	Girls	Total	Boys	Girls	Total
	2.	3.	4.	5.	6.	7.
Khasi Hills	38,361	39,010	78,371	92.1	93.0	92.6
Jaintia Hills	-	-	*	-	-	*
Jaro Hills	24,056	19,124	43,180	82.0	83.1	82.5
TOTAL:	63,417	58,134	1,21,551	88.0	89.5	88.7

\* Information of Jaintia Hills is included in the Khasi Hills for the Year 1970-71

STATEMENT NO.12: STATISTICS OF ENROLMENT OF S.C. AND S.T. IN CLASSES I-V (Contd.)

Name of the District	Enrolment of S.C. children in classes I-V			%age of S.C. students total Enrolment in classes I-V			Enrolment of S.T. children in classes I-V			%age of S.T. students to total enrolment in classes I-V		
	Boys	Girls	Total	Boys	Girls	Total	Boys	Girls	Total	Boys	Girls	Total
	1976-77			1976-77			1976-77			1976-77		
Khasi Hills	804	614	1,418	1.5	1.3	1.4	47,808	42,923	90,731	86.9	88.2	87.5
Jaintia Hills	-	-	-	-	-	-	8,220	10,422	18,642	95.8	99.0	97.6
Garo Hills	1,105	945	2,050	3.2	3.3	3.3	29,523	24,617	54,140	86.0	86.6	86.3
<b>TOTAL:</b>	<b>1,909</b>	<b>1,559</b>	<b>3,468</b>	<b>1.9</b>	<b>1.8</b>	<b>1.9</b>	<b>85,551</b>	<b>77,962</b>	<b>1,63513</b>	<b>87.3</b>	<b>89.0</b>	<b>88.1</b>

STATEMENT NO.13: STATISTICS OF EXPENDITURE ON PRIMARY SCHOOL.

Name of the District.	Expenditure on Primary Schools.		Expenditure per head population				Expenditure on Pr. Schools as % age to total expenditure				Enrolment in Primary Sch.	
	1970-71	1976-77	1970-71		1976-77		1970-71		1976-77		1970-71	1976-77
	Rs.	Rs.	Rs.	Rank	Rs.	Rank	%age	Rank	%age	Rank		
1. Khasi Hills	27,71,500	46,12,463	4.6	2	10.0	3	48.3	2	11.8	3	80,892	25,207
2. Jaintia Hills	*	19,89,054	*	-	14.0	1	*	-	39.4	2	*	18,615
3. Garo Hills	28,16,424	47,92,452	6.9	1	17.0	2	98.9	1	43.0	1	52,341	62,769
TOTAL:	55,77,932	1,13,93,969	6.5	-	9.6	-	52.9	-	40.5	-	1,32,893	1,76,591

\* Information of Jaintia Hills is included in the Khasi Hills for the year, 1970-71.

STATEMENT NO.13 STATISTICS OF EXPENDITURE ON PRIMARY SCHOOLS. (CONTD.)

Name of the District	Expenditure per student in Primary Schools				Pupil Teacher Ratio			
	1970-71		1976-77		1970-71		1976-77	
	Rs.	Rank	Rs.	Rank	1970-71	Rank	1976-77	Rank
14.	15.	16.	17.	18.	19.	20.	21.	
1. Khasi Hills	34.3	2	48.4	3	39	2	46	3
2. Jaintia Hills	-	-	106.9	1	-	-	22	1
3. Garo Hills	53.8	1	76.4	2	32	1	32	2
TOTAL:	42.0	-	64.5	-	36	-	36	-

\* Information of Jaintia Hills is included in the Khasi Hills for the year, 1970-71

STATEMENT NO.14. STATISTICS OF MIDDLE SCHOOLS AND TEACHERS.

District	No. of Middle Schools		No. of Teachers				Area served by a Middle School				Population served by a Middle Sch.				
	1970-71	1976-77	1970-71		1976-77		1970-71		1976-77		1970-71	Rank	1976-77		
			Total	Men	women	Total	In sq. k.m.	Rank	In sq. k.m.	Rank					
	1.	2.	3.	4.	5.	6.	7.	8.	9.	10.	11.	12.	13.	14.	15.
Hills	114	176	547	584	332	896	126.4	2	63.5	2	5,296	2	3,281	2	
Jaintia Hills		40	*	84	101	185	-	-	80.9	3	-	-	3,353	3	
Hills	97	147	394	569	114	683	83.3	1	55.0	1	4,182	1	3,254	1	
TOTAL:	211	363	941	1,217	547	1,764	106.6	-	61.9	-	4,784	-	3,278	-	

\* Information of Jaintia Hills is included in the Khasi Hills for the year 1970-71.



STATEMENT NO.15.

STATISTICS OF ENROLMENT IN CLASSES VI-VIII

Name of the District.	Enrolment in classes VI-VIII 1970-71			Age of enrolment in classes VI-VIII to total Population in the age group (11-14) 1970-71			Ranks 1970-71		
	Boys	Girls	Total	Boys	Girls	Total	Boys	Girls	Total
	1	2	3	4	5	6	7	8	9
1. Khasi Hills	4,669	4,368	9,037	21.6	20.3	21.0	2	1	2
2. Jaintia Hills	-	-	-	-	-	-	-	-	-
3. Garo Hills	5,925	2,563	8,488	40.9	17.6	29.2	1	2	1
<b>TOTAL:</b>	<b>10,594</b>	<b>6,931</b>	<b>17,525</b>	<b>29.3</b>	<b>19.2</b>	<b>24.3</b>	-	-	-

\* Information of Jaintia Hills is included in the Khasi Hills for the year, 1970-71

STATEMENT NO.15: STATISTICS OF ENROLMENT IN CLASSES VI-VIII (CONTD.)

Name of the District.	Enrolment in Classes VI-VIII			%age of Enrolment in classes VI-VIII to total population in the age group(11-14)			Ranks		
	1976-77			1976-77			1976-77		
	Boys	Girls	Total	Boys	Girls	Total	Boys	Girls	Total
Khasi Hills	7,905	7,903	15,808	39.1	37.3	38.2	2	1	2
Jaintia Hills	1,056	1,399	2,413	23.5	21.6	25.1	3	3	3
Garo Hills	9,048	5,050	14,098	54.5	28.4	41.0	1	2	1
<b>TOTAL:</b>	<b>18,009</b>	<b>14,310</b>	<b>32,319</b>	<b>43.6</b>	<b>32.4</b>	<b>37.8</b>	-	-	-

STATEMENT NO.16: STATISTICS OF ENROLMENT OF S.C. AND S.T. IN CLASSES VI-VIII

Name of the District	Enrolment of S.C./S.T. students in classes VI-VIII			%age of S.C./S.T. students to total enrolment in classes VI-VIII		
	1970-71			1970-71		
	Boys	Girls	Total	Boys	Girls	Total
1.	2.	3.	4.	5.	6.	7.
1. Khasi Hills	4,578	3,318	7,896	98.1	76.0	87.4
2. Jaintia Hills	-	-	*	-	-	-
3. Garo Hills	3,097	1,794	5,691	65.8	70.0	67.0
TOTAL:	8,475	5,112	13,587	80.0	73.8	77.5

\* Information of Jaintia Hills is included in the Khasi Hills for the year, 1970-71.

STATEMENT NO.16:

STATISTICS OF ENROLMENT OF S.C. AND S.T. IN CLASSES VI-VIII (CONTD.)

Name of the District	Enrolment of S.C. students in classes VI-VIII			Age of S.C. students to total enrolment in classes VI-VIII			Enrolment of S.T. students in classes VI-VIII			Age of S.T. students to total enrolment in classes VI-VIII		
	1976-77			1977-77			1976-77			1977-77		
	Boys	Girls	Total	Boys	Girls	Total	Boys	Girls	Total	Boys	Girls	Total
8.	9.	10.	11.	12.	13.	14.	15.	16.	17.	18.	19.	
Khasi Hills	141	81	222	1.0	1.0	1.4	5,750	6,116	11,866	72.7	77.4	75.0
Jaintia Hills	10	5	15	.9	.4	.6	1,013	1,334	2,347	95.9	98.3	97.3
Garo Hills	176	109	285	1.9	2.1	2.0	8,140	4,607	12,747	90.0	91.2	90.4
<b>TOTAL:</b>	<b>327</b>	<b>195</b>	<b>522</b>	<b>1.8</b>	<b>1.4</b>	<b>1.6</b>	<b>14,903</b>	<b>12,057</b>	<b>26,960</b>	<b>82.8</b>	<b>84.3</b>	<b>83.4</b>

STATEMENT NO.17: STATISTICS OF EXPENDITURE ON MIDDLE SCHOOLS

Name of the District.	Expenditure on Middle Schools		Expenditure per head of population				Expenditure on middle Schools as %age of total expenditure				Enrolment in middle schools	
	1970-71	1976-77	1970-71		1976-77		1970-71		1976-77		1970-71	1976-77
	Rs.	Rs.	Rs.	Rank	Rs.	Rank	Rs.	Rank	Rs.	Rank		
1.	2.	3.	4.	5.	6.	7.	8.	9.	10.	11.	12.	13.
1. Khasi Hills	11,92,812	26,04,957	2.0	2	4.5	3	20.9	1	6.6	3	9,670	12,220
2. Jaintia Hills	-*	7,63,796	-	-	5.7	1	*	-	15.1	2	-	2,102
3. Garo Hills	9,43,192	23,21,500	2.3	1	4.9	2	19.5	2	20.3	1	7,798	12,856
<b>TOTAL:</b>	<b>21,36,004</b>	<b>56,90,253</b>	<b>2.1</b>	<b>-</b>	<b>4.8</b>	<b>-</b>	<b>20.2</b>	<b>-</b>	<b>10.2</b>	<b>-</b>	<b>17,468</b>	<b>27,178</b>

\*Information of Jaintia Hills is included in the Khasi Hills for the year, 1970-71.

STATEMENT NO.17. STATISTICS OF EXPENDITURE OF MIDDLE SCHOOLS (CONTD.)

Name of the District.	Cost per student in middle schools				Pupil-Teacher Ratio			
	1970-71		1976-77		1970-71		1976-77	
	Rs.	Rank	Rs.	Rank		Rank		Rank
1.	14.	15.	16.	17.	18.	19.	20.	21.
1. Khasi Hills	123.4	1	213.2	2	18	1	14	2
2. Jaintia Hills	*	-	363.4	1	*	-	11	1
3. Garo Hills	121.0	2	180.6	3	20	2	19	3
TOTAL:	122.3	-	209.4	-	19	-	15	-

\* Information of Jaintia Hills is included in the Khasi Hills for the year, 1970-71.

STATEMENT NO.18

STATISTICS OF HIGH/HIGHER SECONDARY SCHOOLS AND TEACHERS.

Name of the District	No. of High/Hr. Sec. Schools.		No. of Teachers			Area served by a High/Hr. Sec. School:				Population served by a High/Hr. Sec. School:			
	1970-71	1976-77	1970-71		1976-77	1970-71		1976-77	1970-71	1976-77			
			Total	Men	Women	Tot. In sq. K.m	Rank	In Sq. K.m	Rank	1970-71	1976-77		
1.	2.	3.	4.	5.	6.	7.	8.	9.	10.	11.	12.	13.	14.
1. Khasi Hills	41	79	426	522	630	1,152	351.3	2	141.4	2	14,724	2	7,310
2. Jaintia Hills		10		58	54	112		-	323.7	3			13,410
3. Garo Hills	40	59	251	387	84	471	202.1	1	137.0	1	10,143	1	8,107
<b>TOTAL:</b>	<b>81</b>	<b>148</b>	<b>677</b>	<b>967</b>	<b>768</b>	<b>1,735</b>	<b>227.6</b>	<b>-</b>	<b>152.0</b>	<b>-</b>	<b>12,462</b>	<b>-</b>	<b>8,040</b>

\* Information of Jaintia Hills is included in the Khasi Hills for the year, 1970-71.

STATEMENT NO.19: STATISTICS OF ENROLMENT IN CLASSES IX-XI

Name of the District	Enrolment in classes IX-XI			%age of enrolment in classes IX-XI to total population in the age group (14-17)				Ranks		
	1970-71			1970-71				1970-71		
	Boys	Girls	Total	Boys	Girls	Total	Boys	Girls	Total	
1.	2.	3.	4.	5.	6.	7.	8.	9.	10.	
1. Khasi Hills	2,046	1,764	3,810	10.4	9.1	9.8	2	2	2	
2. Jaintia Hills	-	-	-	-	-	-	-	-	*	
3. Garo Hills	3,351	1,246	4,597	25.6	9.5	17.5	1	1	1	
<b>TOTAL:</b>	<b>5,397</b>	<b>3,010</b>	<b>8,407</b>	<b>16.5</b>	<b>9.3</b>	<b>13.0</b>	<b>-</b>	<b>-</b>	<b>-</b>	

\* Information of Jaintia Hills is included in the Khasi Hills for the year, 1970-71.



STATEMENT NO.19: STATISTICS OF ENROLMENT IN CLASSES IX-XI (CONTD.)

Name of the District	Enrolment in classes IX - XI			%age of enrolment in classes IX-XI to total population in the age group			Rank		
	Boys	Girls	Total	1976-77	1976-77	Total	Boys	Girls	Total
1. Khasi Hills	6,253	5,236	11,439	31.5	25.7	28.5	2	1	1
2. Jaintia Hills	693	806	1,499	15.8	16.4	16.1	3	2	3
3. Garo Hills	5,438	2,367	7,805	33.6	13.8	23.4	1	3	2
<b>TOTAL:</b>	<b>12,334</b>	<b>8,409</b>	<b>20,743</b>	<b>30.6</b>	<b>19.8</b>	<b>25.1</b>	-	-	-

STATEMENT NO. 20: STATISTICS OF ENROLMENT OF S.C. AND S.T. IN CLASSES IX-XI

No. of the District	Enrolment of S.C./S.T. students in classes IX-XI			%age of S.C./S.T. Students to total enrolment in classes IX-XI			Enrolment of S.C. Students in classes IX-XI		
	1970-71			1970-71			1970-71		
	Boys	Girls	Total	Boys	Girls	Total	Boys	Girls	Total
2.	3.	4.	5.	6.	7.	8.	9.	10.	
1. Khasi Hills	1,976	1,402	3,378	96.6	79.5	88.7	84	119	203
2. Jaintia Hills *	-	-	*	-	-	*	18	16	34
3. Garo Hills	2,341	1,006	3,347	69.9	80.7	72.8	145	41	186
<b>TOTAL:</b>	<b>4,317</b>	<b>2,408</b>	<b>6,725</b>	<b>80.0</b>	<b>80.0</b>	<b>80.0</b>	<b>247</b>	<b>176</b>	<b>423</b>

\* Information of Jaintia Hills is included in the Khasi Hills for the year, 1970-71.

STATEMENT NO. 21. EXPENDITURE ON HIGH/HR. SECONDARY SCHOOLS

Name of the District.	Expenditure on High/Hr. Sec. Schs.		Population		Expenditure per head of		Expenditure on High/Hr. Sec. Schools as %age to total Expenditure.				
	1970-71	1976-77	1970-71	Rank	1976-77	Rank	%age	1970-71	1976-77	Rank	
1.	Rs	Rs	Rs.	5	Rs.	6	7	8	9	10	11
1. Khasi Hills	13,43,881	82,36,092	2.2	1	14.3	1	22.5	1	21.0	2	
2. Jaintia Hills		8,39,644	*	-	6.3	2	-	-	16.6	3	
3. Garo Hills	8,30,469	25,50,085	2.0	2	5.3	3	17.2	2	22.3	1	
			2.1								
TOTAL:	21,74,350	1,16,25,821		-	9.8	-	20.6	-	21.3	-	

\* Information of Jaintia Hills is included in the Khasi Hills for the year, 1970-71.

STATEMENT NO.21 EXPENDITURE ON HIGH/HP.SEC. SCHOOLS (CONTD.)

Name of the District.	Enrolment in High/Hr.Sec. Schools.		Cost per student in High/Hr. Sec. Schools				Pupil Teacher Ratio.			
	1970-77		1970-71		1976-77		1970-71		1976-77	
	13	14	15	Rank	16	Rank	18	Rank	19	Rank
1. Khasi Hills	11,232	23,523	119.6	2	350.1	2	26	2	20	2
2. Jaintia Hills	- *	2,300	- *	-	365.1	1	-	-	20	2
3. Garo Hills	5,284	9,047	157.2	1	281.9	3	21	1	19	1
TOTAL:	16,516	34,870	131.7	-	333.4	-	24	-	20	-

\*Information of Jaintia Hills is included in the Khasi Hills for the year, 1970-71.

STATEMENT NO. 22: STATISTICS OF PROFESSIONAL, VOCATIONAL, SPECIAL AND OTHER (SCHOOL) EDUCATION.

Name of the District.	No. of Institution		Enrolment						S.C./S.T. students		
	1970-71	1976-77	1970-71			1976-77			1970-71		
			Boys	Girls	Total	Boys	Girls	Total	Boys	Girls	Total
1. Khasi Hills	141	108	3,317	2,752	6,069	2,317	1,421	3,738	3,317	2,752	6,069
2. Jaintia Hills	-	15	-	-	-	149	157	306	-	-	-
3. Garo Hills	3	9	73	14	84	123	105	228	73	49	77
TOTAL:	144	132	3,390	2,763	6,153	2,589	1,683	4,272	3,390	2,756	6,146

\* Information of Jaintia Hills is included in the Khasi Hills for the year, 1970-71.

STATEMENT NO. 22: STATISTICS OF PROFESSIONAL, VOCATIONAL, SPECIAL and OTHER  
(SCHOOLS) EDUCATION.

Name of the District	S.C. Students			S.I. Students			No. of Teachers			Expenditure		
	1976-77			1976-77			1970-71	1976-77		1970-71	1976-77	
	Boys	Girls	Total	Boys	Girls	Total	Total	Men	Women	Total In Rs.	In Rs.	
Khasi Hills	121	35	156	2,192	1,383	3,575	31	133	33	166	164341	1162547
Jaintia Hills	-	12	12	149	145	294	6	14	13	27	-	945576
Garro Hills	1	-	1	118	105	223	9	21	12	33	12,7458	259576
<b>TOTAL:</b>	<b>122</b>	<b>47</b>	<b>169</b>	<b>2,459</b>	<b>1,633</b>	<b>4,092</b>	<b>40</b>	<b>168</b>	<b>58</b>	<b>226</b>	<b>291799</b>	<b>2367699</b>

\* Information of Jaintia Hills is included in the Khasi Hills for the year, 1970-71.

STATEMENT NO. 22: STATISTICS OF INSTITUTIONS AND TEACHERS FOR HIGHER EDUCATION

No. of the District	Unl., Deemed Unl. Instt. of N.I & R. Is.	Affiliated Institution (Degree Level)							Total affiliated Instt.	
		Arts, Sc. & Comm. College	Agr. & Forestry college	Busi-ness Management	Edun. & Arch.	Engg. & Tech.	Law	Medicine		Others
1976-77										
Khasi Hills	1	10	-	5	-1	-	1	-	10	11
Jaintia Hills	-	1	-	-	-	-	-	-	-	1
Garo Hills	-	2	-	-	-	-	-	-	-	2
TOTAL:	1	13	-	5	-1	-	1	-	10	15

\* Information of Jaintia Hills is included in the Khasi Hills for the year, 1970-71.

STATEMENT NO.23: STATISTICS OF INSTITUTIONS AND TEACHERS FOR HIGHER EDUCATION (CONTD.)

Name of the District.	Non-Affiliated			Intermediate of Inter mediate Jr. colleges	Total			Teachers
	Degree	Below degree	of Inter mediate		1976-77	1970-71	1977-77	
1	12	13	14	15	16	17	18	19
1. Khasi Hills	-	3	1	-	17	2	476	28
2. Jaintia Hills	-	-	-	-	1	-	28	-
3. Garo Hills	-	1	-	-	3	1	69	4
-----								
TOTAL:	-	4	1	-	21	3	573	34
-----								

\* Information of Jaintia Hills is included in the Khasi Hills for the year, 1970-71



## STATEMENT NO.24:

## STATISTICS OF ENROLMENT OF HIGHER EDUCATION BY TYPE OF INSTITUTION.

Name of the District	Uni., Deemed Uni., Instt. of M.L. & R.Is.	Affiliated Institutions (Degree level)							Total (Affiliated)	
		Arts., Sc. & Comm. Colleges Theory	Agri. & Forestry College	Engg. & Techn. management	Law	Medicine	Oth-ers			
1.	2.	3.	4.	5.	6.	7.	8.	9.	10.	11.
Khasi Hills	499	8,575	-	-	259	-	607	-	-	9,441
Jaintia Hills	-	339	-	-	-	-	-	-	-	339
Jaro Hills	-	708	-	-	-	-	-	-	-	708
TOTAL:	499	9,622	-	-	259	-	607	-	-	10,488

\* Information of Jaintia Hills is included in the Khasi Hills for the year, 1970-71.

STATEMENT NO. 24:

STATISTICS OF ENROLLMENT OF HIGHER EDUCATION BY TYPE OF INSTITUTION.  
(CONTD.)

Name of the District.	Non-affiliated		Intermediate Pass-Degree Jr. College.	Grand Total
	Degree	Below Deg.		
	1976-77.			
Khasi Hills	-	205	-	10,145
Jaintia Hills	-	-	-	339
Garo Hills	-	-	-	733
<b>TOTAL:</b>				<b>11,217</b>

STATEMENT NO. 2B: STATISTICS OF ENROLMENT IN HIGHER EDUCATION BY TYPE OF EDUCATION, 1976-77.

Name of the District	General Education			Professional Education			Total		
	Boys	Girls	Total	Boys	Girls	Total	Boys	Girls	Total
1.	2.	3.	4.	5.	6.	7.	8.	9.	10.
Khasi Hills	5,521	3,504	9,025	846	274	1,120	6,367	3,778	10,145
Jaintia Hills	179	160	339	-	-	-	179	160	339
Garo Hills	524	184	708	20	5	25	708	189	897
TOTAL:	6,224	3,848	10,072	866	279	1,145	7,090	4,127	11,217

STATEMENT NO.25: STATISTICS OF ENROLMENT IN HIGHER EDUCATION BY TYPE OF EDUCATION  
1970-71 (Contd.)

Name of the District.	Enrolment		
	1970-71		
	Boys	Girls	Total
1.	11	12	13.
1. Khasi Hills	49	11	60
2. Jaintia Hills	-	-	-
3. Garo Hills	29	-	29
TOTAL:	78	11	89

\* Information of Jaintia Hills is included in the Khasi Hills pertaining to the year, 1970-71

STATEMENT NO.26:

STATISTICS OF ENROLMENT OF S.C. & S.T. IN HIGHER EDUCATION

Name of the District,	Enrolment of S.C./S.T. children in Higher Edn.			%age of S.C. & S.T. children to total enrolment in Hr. Edn.	Enrolment of S.C. children in Hr. Edn.		
	Boys	Girls	Total		Boys	Girls	Total
	1970-71			1970-71	1976-77		
1. Khasi Hills	2	11	40	66.70	196	53	242
2. Jaintia Hills	-	-	-	-	-	-	-
3. Garo Hills	29	-	29	100.0	11	0	16
<b>TOTAL:</b>	<b>58</b>	<b>11</b>	<b>69</b>	<b>77.5</b>	<b>207</b>	<b>58</b>	<b>265</b>

\* Information of Jaintia Hills is included in the Khasi Hills for the year, 1970-71.

STATEMENT NO. 26: STATISTICS OF ENROLMENT OF S.C. AND S.T. IN HIGHER EDUCATION  
(CONTD.)

Name of the District	%age of S.C. children to total enrolment in Hr. Edn.	Enrolment of S.T. Children to total enrolment in Higher Education.			%age of S.T. children to total enrolment in Higher Education.
		1976-77			
		Boys	Girls	Total	
1. Khasi Hills	2.5	3,277	2,290	5,567	54.9
2. Maitia Hills	0.0	179	160	339	100.0
3. Garo Hills	2.2	342	123	465	63.4
<b>TOTAL:</b>	<b>2.3</b>	<b>3,798</b>	<b>2,573</b>	<b>6,371</b>	<b>56.8</b>

\* The percentage of S.T. children in the total enrolment in higher education in the districts is as follows: Khasi Hills - 54.9, Maitia Hills - 100.0, Garo Hills - 63.4.

STATEMENT NO.27 : STATISTICS OF EXPENDITURE ON HIGHER EDUCATION

Name of the District	Univ., Deemed Univ., Instt. of N.I. & R.I.	Affiliated Institutions (Degree Level)							Total (Affiliated)			
		Art Sc. & Comm. colleges	Agri. & Forestry colleges	Busi- ness mana- gement	Law	Engg., Tech. & Arch.	Low	Medi- cine		Others		
		1976-77										
		1	2	3	4	5	6	7	8	9	10	11
Khasi Hills	1,12,41,020	100,82,823	-	-	-	2,63,554	-	1,22,916	-	-	-	10,4,69,293
Jaintia Hills	-	4,69,136	-	-	-	-	-	-	-	-	-	8,61,136
Garo Hills	-	8,48,561	-	-	-	-	-	-	-	-	-	8,48,561
<b>TOTAL:</b>	<b>1,12,41,020</b>	<b>11,400,520</b>	<b>-</b>	<b>-</b>	<b>-</b>	<b>2,63,554</b>	<b>-</b>	<b>1,22,916</b>	<b>-</b>	<b>-</b>	<b>-</b>	<b>1,17,86,990</b>

\* Information of Jaintia Hill is given in the Khasi Hills for year, 1970-71

STATEMENT NO.27 : STATISTICS OF EXPENDITURE ON HIGHER EDUCATION. (Contd.)

Name of the District	Non Affiliated		Board of Intermediate	Intermediate Pre-Degree Jr.colleges	Grand Total
	Degree	Below-Degree			
	1976-77				1976-77
	12	13	14	15	16
					17
Khasi Hills	-	5,81,365	-	-	22,29,1678 239297
Jaintia Hills	-	-	-	-	4,69,136
Garo Hills	-	1,77,922	4,49,377	-	14,75,860 66542
<b>TOTAL:</b>		<b>7,59,287</b>	<b>4,49,377</b>	-	<b>24,23,6674 305839</b>

\* The expenditure on higher education in the Jaintia Hills for the year, 1970-71.

Sub. National Systems Unit,  
National Institute of Educational  
Planning and Administration  
17-B, Sri Aurobindo Marg, New Delhi-110016  
DOC. No. 1000-1000-1000-1000-1000-1000

