

For Official Use Only

# EDUCATION AT A GLANCE

## 1976---77



सत्यमेव जयते

# MIZORAM

NIEPA DC



D01806

by the Education Directorate (Statistical & Educational  
Survey Unit) Mizoram, Aizawl.

54105  
370-212  
MIZ

## FOREWORD

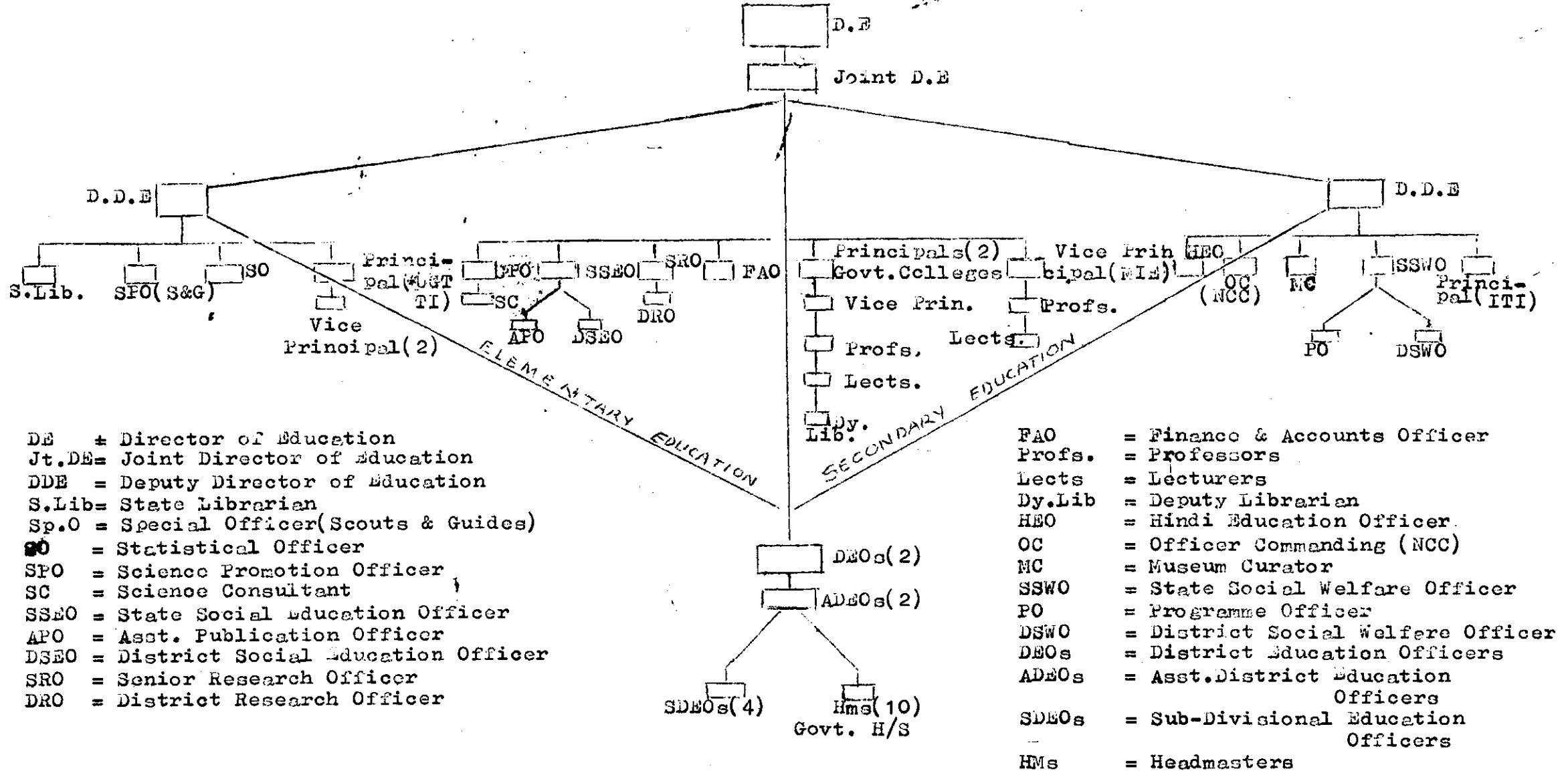
The present publication **Education At a Glance—1976—77** is the second in the series of the publications of Educational Statistics in Mizoram. Apart from the features of the previous one, a new feature containing charts and diagrams representing the development of Education in Mizoram has also been included. I hope this publication will be found useful.

Thanks are due to the Officer and staff of the Statistics Unit of the Directorate for the commendable work they have rendered to make the publication of this booklet possible. Every care has been taken to make the figures free from error. It is hoped that the data and charts contained in this publication are accurate and reliable. If there is any doubt about any figure, the matter may please be brought to the notice of the Department.

Dated Aizawl,  
the 12th. July, 1977.

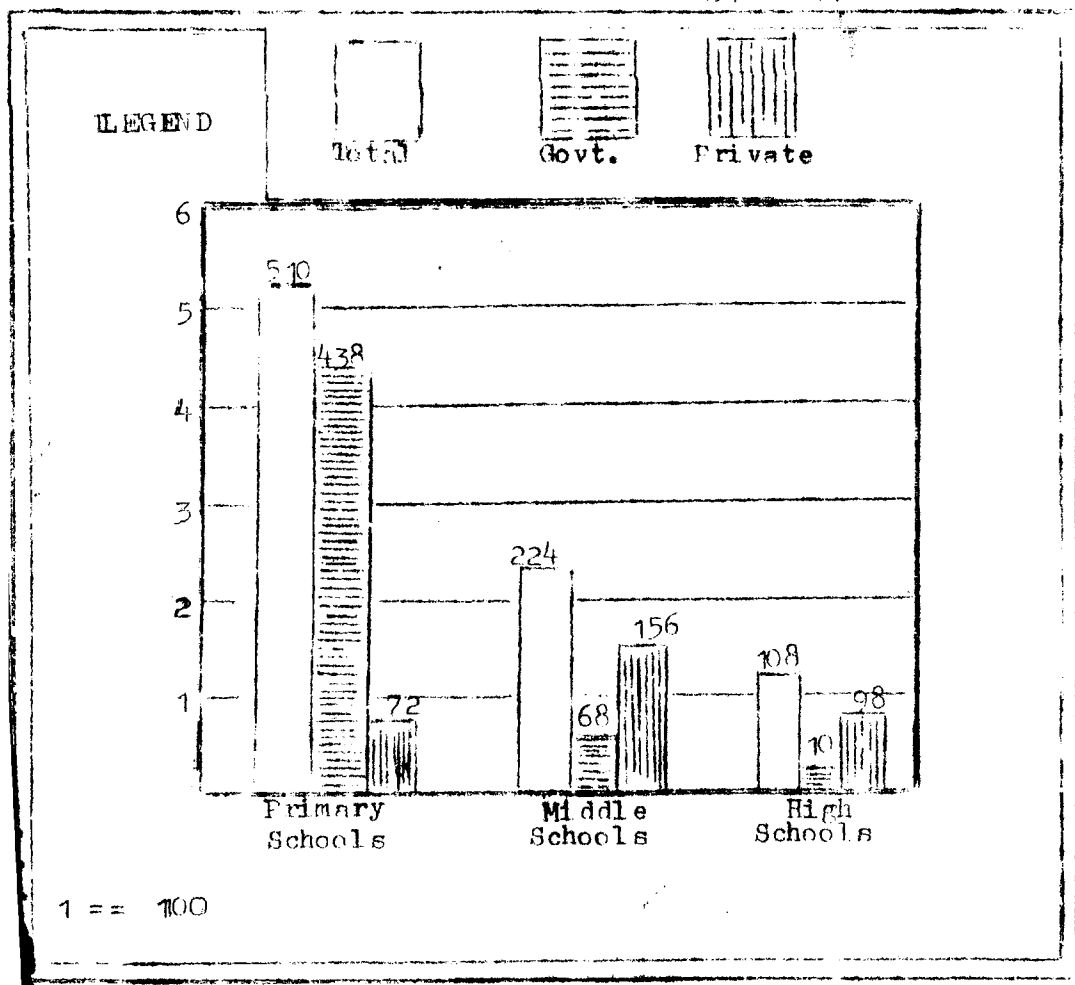
L.N. Tuanga,  
Director of Education,  
Mizoram, Aizawl.

ORGANISATION CHART OF EDUCATION DIRECTORATE [1977]



(Diagram No. 1)

NO OF INSTITUTIONS 1976 - 77

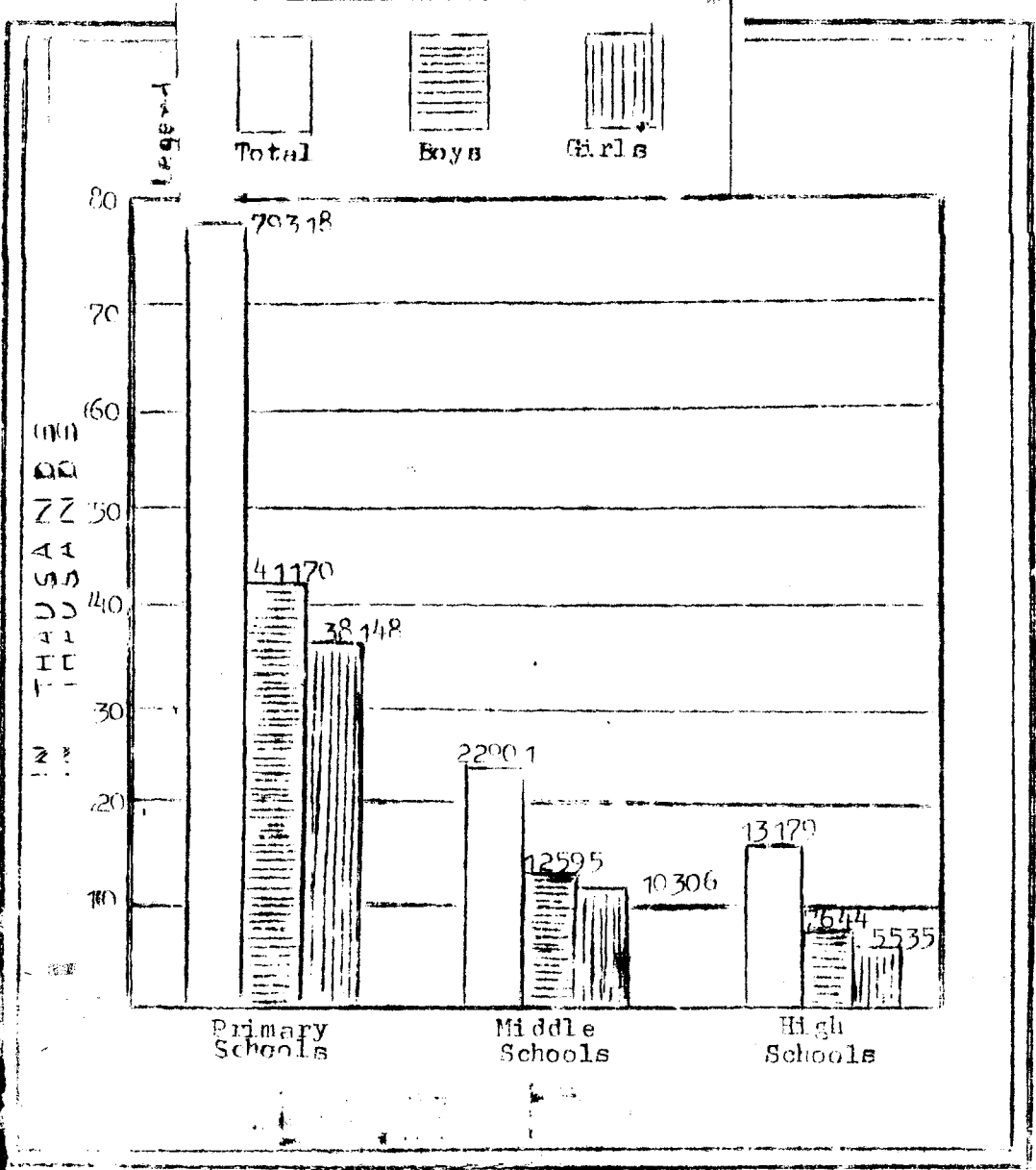




(Diagram No. 2)

ENROLMENT

1976 - 77



# I N D E X

Sl. No	Contents	Page No
1.	Organisation chart of Education Directorate	1
2.	Diagram No . 1	3
3.	Diagram No . 2	5
4.	1971 Census Figures At a Glance (Mizoram)	7
5.	Number of Institutions by management & Number of students and teachers in institutions.	8
6.	Number of Scheduled Castes and Scheduled Tribes students and teachers by type of institutions.	9
7.	Class—wise enrolment in General Education	10—11
8.	Number of Scheduled Castes and Scheduled Tribes in General (School) Education	12
9.	Number of Trained and Untrained Teachers in institutions for General (School) Education.	13
10.	Number of Institutions with enrolment in Rural Areas.	14
11	Examinations Results	15

## 1971 CENSUS FIGURES AT A GLANCE Mizoram

Source : 1971 Census

Population	:	Total Persons	332, 390
		Males	170, 824
		Females	161, 566
Decennial Growth Rate 1961-71	:		24. 93
Area in Sq Km	:		21, 087. 0
Density of Population per Sq. Km	:		16
Sex ratio (Number of Females per 1000 males)			946
Literacy rate		Persons	53. 79
		Males	60. 49
		Females	46. 71
Percentage of Scheduled Castes to total population		Persons	0. 02
		Males	0. 05
		Females	Negligible
Percentage of Scheduled Tribes to total population		Persons	94. 26
		Males	90. 75
		Females	97. 97
No. of occupied residential houses			50, 927
No. of villages		Total	230
		Inhabited	229
		Uninhabited	1
No. of towns			2



NUMBER OF INSTITUTIONS BY MANAGEMENT				TOTAL NUMBER OF STUDENTS AND TEACHERS IN INSTITUTIONS					
				As on 30th September 1976.					
Type of Institution	Govt.	Private Bodies Aided & Unaided	Total	TOTAL Number of Students			TOTAL Number of Teachers		
				Boys	Girls	Total	Men	Women	Total
<b>1 Colleges for general Edn.</b>									
(a) Degree level	1	3	4	1148	231	1379	64	5	69
(b) Below Degree level	-	2	2	618	299	917	11	1	12
<b>2 Schools for general Edn.</b>									
(a) High Schools	10	98	108	7739	5600	13339	560	89	649
(b) Middle Schools	68	156	224	12943	10632	23575	818	218	1036
(c) Primary Schools	438	72	510	42310	39398	81708	1265	746	2011
<b>3 Teachers Training Institute</b>									
(a) Degree level (MIE)	1	-	1	42	8	50	3	2	5
(b) Below Degree level (UGTTI & Hindi Trg)	3	-	3	176	82	258	24	9	33
<b>4 Vocational/Professional Inst.</b>									
(a) Industrial Trg. Institute	1	-	1	107	-	107	13	-	13
(b) Weaving School	2	-	2	1	29	30	2	2	4
(c) Nursing & Midwifery	1	1	2	-	86	86	8	8	16
(d) Section Assistant Trg.	1	-	1	35	-	35	3	-	3
(e) Forestry School	1	-	1	14	-	14	2	-	2
<b>TOTAL</b>	<b>527</b>	<b>332</b>	<b>859</b>	<b>65133</b>	<b>56365</b>	<b>121498</b>	<b>2773</b>	<b>1080</b>	<b>3853</b>

**NUMBER OF SCHEDULED CASTES AND SCHEDULED TRIBES**

**STUDENTS AND TEACHERS BY TYPE OF INSTITUTIONS**

Type of Institution	Scheduled Castes			Scheduled Tribes			Scheduled Castes & Scheduled Tribes Total			NUMBER OF TEACHERS BELONGING TO					
	Boys	Girls	Total	Boys	Girls	Total	Boys	Girls	Total	Scheduled Castes			Scheduled Tribes		
										Men	Women	Total	Men	Women	Total
<b>1 Colleges for general Edn.</b>															
(a) Degree level	11	2	13	1131	228	1359	1142	230	1372	-	-	-	40	4	44
(b) Below Degree level	5	4	9	591	293	884	596	297	893	-	-	-	9	1	10
<b>2 Schools for general Edn.</b>															
(a) High Schools	-	-	-	7691	5561	13252	7507	5402	12909	-	-	-	493	79	572
(b) Middle Schools	1	-	1	12899	10544	23443	7691	5561	13252	-	-	-	788	204	992
(c) Primary Schools	1	-	1	41976	39094	81070	41977	39094	81071	-	-	-	1259	744	2003
<b>3. Teachers Training Institute</b>															
(a) Degree level (MIE)	-	-	-	42	8	50	42	8	50	-	-	-	3	2	5
(b) Below Degree level (UGTTI & Hindi Trg)	1	2	3	175	80	255	176	82	258	-	-	-	21	8	29
<b>4 Vocational/Professional Inst.</b>															
(a) Industrial Trg. Institute	-	-	-	107	-	107	107	-	107	-	-	-	6	-	6
(b) Weaving School	-	-	-	1	29	30	1	29	30	-	-	-	1	2	3
(c) Nursing & Midwifery	-	-	-	-	86	86	-	86	86	-	-	-	8	8	16
(d) Section Assistant Trg.	-	-	-	34	-	34	34	-	34	-	-	-	2	-	2
(e) Forcstry School	-	-	-	14	-	14	14	-	14	-	-	-	2	-	2
<b>TOTAL</b>	<b>19</b>	<b>8</b>	<b>27</b>	<b>64561</b>	<b>55923</b>	<b>120584</b>	<b>64680</b>	<b>55931</b>	<b>120611</b>	-	-	-	<b>2632</b>	<b>1052</b>	<b>3684</b>

**CLASS-WISE ENROLMENT**  
IN GENERAL EDUCATION AS ON 30TH SEPTEMBER, 1976.

Name of Course/Class.	Boys	Girls	Total
<b>B.A. Pass &amp; Hons</b>			
I Year	210	36	246
II Year	126	32	158
Total	336	68	404
<b>P.U.C. (Arts)</b>			
I Year	622	255	877
II Year	488	194	682
Total	1110	449	1559
<b>P.U.C. (Science)</b>			
I Year	49	5	54
II Year	56	3	59
Total	105	8	113
<b>B. Th. (Bachelor of Theology) Degree level.</b>			
I Year	10	-	10
II Year	9	-	9
III Year	9	-	9
IV Year	3	-	3
Total	31	-	31
<b>G. Th (Graduate in Theology) Below Degree level.</b>			
I Year	2	-	2
II Year	1	-	1
III Year	-	-	-
IV Year	-	-	-
Total	3	-	3
<b>C. Lt. (Cert. of Layman Training) (Theology)</b>			
I Year Course	181	5	186

**CLASS—WISE ENROLMENT IN  
GENERAL EDUCATION AS ON 30TH SEPTEMBER, 1976.**

Name of Course / Class	Boys	Girls	Total
Pre-Primary	2035	2032	4067
Class : A	13766	12924	26690
B	7966	7591	15557
I	6808	6191	12999
II	6267	5788	12055
III	5468	4872	10340
IV	5113	4274	9387
V	4286	3694	7980
VI	3544	2664	6208
VII	2556	1896	4452
VIII	1893	1415	3308
IX	1715	1256	2971
X	1575	1033	2608
TOTAL PRE-PRIMARY & CLASS X	62992	55630	118622

**NUMBER OF SCHEDULED CASTES AND SCHEDULED TRIBES STUDENTS  
IN GENERAL (SCHOOL) EDUCATION**

Class	Scheduled Castes			Scheduled Tribes		
	Boys	Girls	Total	Boys	Girls	Total
Pre-Primary	—	—	—	2025	2021	4046
Class A	1	—	1	13658	12871	26529
B	—	—	—	7961	7454	15415
I	—	—	—	6732	6168	12900
II	—	—	—	6207	5754	11961
III	—	—	—	5393	4846	10239
IV	1	—	1	5092	4245	9337
V	—	—	—	4272	3563	7935
VI	—	—	—	3535	2636	6171
VII	—	—	—	2548	1890	4438
VIII	—	—	—	1882	1405	3287
IX	—	—	—	1702	1246	2948
X	—	—	—	1559	1020	2579
<b>TOTAL :-</b>	<b>2</b>	<b>—</b>	<b>2</b>	<b>62566</b>	<b>55199</b>	<b>117765</b>

**NUMBER OF TRAINED & UNTRAINED TEACHERS IN INSTITUTIONS  
FOR GENERAL SCHOOL EDUCATION**

Type of Institutions.	Trained			Untrained			TOTAL		
	Men	Women	Total	Men	Women	Total	Men	Women	Total
High School	95	18	113	465	71	536	560	89	649
Middle School	237	63	300	581	155	736	818	218	1036
Primary School	886	225	1111	379	521	900	1265	746	2011
<b>TOTAL</b>	<b>1218</b>	<b>306</b>	<b>1524</b>	<b>1425</b>	<b>747</b>	<b>2172</b>	<b>2643</b>	<b>1053</b>	<b>3696</b>

**NUMBER OF TRAINED & UNTRAINED TEACHERS BELONGING  
TO SCHEDULED TRIBES**

High School	67	13	80	426	66	492	493	79	572
Middle School	211	60	271	577	144	721	788	204	992
Primary School	883	225	1108	376	519	895	1259	744	2003
<b>TOTAL</b>	<b>1161</b>	<b>298</b>	<b>1459</b>	<b>1379</b>	<b>729</b>	<b>2108</b>	<b>2540</b>	<b>1027</b>	<b>3567</b>

Note : There is no trained nor untrained teacher belonging to Scheduled Caste.

## NUMBER OF INSTITUTIONS WITH ENROLMENT IN RURAL AREAS

Type of Institution	No. of Institution	ENROLMENT		
		Boys	Girls	Total
<b>1 Colleges for general Edn.</b>				
(a) Degree level	1	177	37	214
(b) Below Degree level	1	42	16	58
<b>2 Schools for general Edn.</b>				
(b) High Schools	93	5535	3558	9093
(b) Middle Schools	191	10482	8531	19013
(c) Primary Schools	448	32998	30137	63135
<b>3 Teachers Training Institute.</b>				
(a) Degree level (MIE)	-	-	-	-
(b) Below Degree level (UGTTI & Hindi Trg)	-	-	-	-
<b>4 Vocational/Professional Inst.</b>				
(a) Industrial Trg. Institute	-	-	-	-
(b) Weaving School	-	-	-	-
(c) Nursing & Midwifery	2	-	86	86
(d) Section Assistant Trg.	-	-	-	-
(e) Forestry School	-	-	-	-
<b>TOTAL</b>	<b>736</b>	<b>49234</b>	<b>42365</b>	<b>91599</b>

## EXAMINATION RESULTS

(Declared during the period of 1st. April 1976 to 31st. March 1977)

Name of Examination/Course	No appeared	No Passed	Pass P.C.
B.A. (Pass & Hons)	235	108	45.96
P.U. (Arts)	506	226	44.66
P.U. (Science)	36	6	16.66
H.S.L.C.	2247	788	35.06
Middle School Exam. (Class VI Std.)	5328	3669	68.86
Primary School Exam. (Class III Std.)	8785	7067	80.44
B.Ed	50	48	96.00
Teachers Training : Middle Section	74	73	98.65
Teachers Training : Primary Section	67	59	88.06
Intensive Hindi Teaching Cum Training	17	16	94.11
Section Assistant Training	32	26	81.25
Welder (I.T.I.)	7	7	100.00
Forestry	13	13	100.00
Handloom--Weaving	40	38	95.00
Nursing & Midwifery	17	10	58.82

—0—

Printed at the Everly Press Alzawl. C—500.

NIEPA DC



D01898

1896

Date... 30.11.84