



सत्यमेव जयते

**UNION TERRITORY
OF
DAMAN AND DIU**

**STATISTICAL DIARY
(2012-13)**

DEPARTMENT OF PLANNING AND STATISTICS
U.T. ADMINISTRATION OF DAMAN AND DIU
SECRETARIAT, DAMAN.

FOREWORD

The Department of Planning and Statistics is the Nodal Agency for co-ordination and promotion of Statistical activities in the UT of Daman and Diu. It is constantly endeavouring to collect, compile and disseminate statistical information to meet the needs of Planners. I am happy that the Department is bringing out its annual publication entitled "Statistical Diary 2012-13". The publication presents general information, population, development and financial statistics in different sectors of the Union Territory. It also contains socio-economic indicators which are essential for formation of social policy, decision making and for evaluation of the impact of various schemes being implemented by different Departments.

I am sure that the present publication would serve its purpose to Planners, Research Scholars and Academicians and all data users who are interested in the development progress of the economy of the Union Territory of Daman and Diu.



**(Gyanesh Bharti)
Finance Secretary &
Secretary (Planning & Statistics)**

P R E F A C E

The Department of Planning and Statistics has been bringing out Statistical Diary of U.T. of Daman and Diu every year. The main object of this Diary is to present up-to-date statistical data on various socio-economic aspects of the U.T. of Daman and Diu. It contains various kinds of Statistics such as Administrative Statistics, Population Statistics, Socio Economic Statistics, Developmental Statistics, Financial Statistics etc, pertaining to the financial year 2012-13.

It is hoped that this publication will be useful for Government Officers and employees, planners, policy makers, researchers and various agencies and will serve the purpose of a reference book of basic statistics about U.T. of Daman and Diu.

I place my gratitude to all concerned Government / Semi – Government Offices of Administration of Daman and Diu as well as Central Government, local bodies and other Organizations for their cooperation in providing requisite information for incorporation in the publication and I expect similar co-operation in future also.

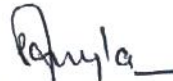
I express sincere thanks to our Secretary (Planning & Statistics), for his valuable guidance for preparation of this Diary.

I appreciate the work done by Research Assistant of Department of Planning and Statistics regarding co-ordination and supervision over preparation of this Diary.

The collection of data, compilation and data entry has been done by Smt. Agnes Rocha, Statistical Investigator of this Department. I acknowledge and appreciate her efforts rendered in bringing out the works presented in the Diary.

I am also thankful to all Staff of Department of Planning & Statistics, as well as Government Printing Press, Daman who were involved in preparation of this Diary.

Suggestions for improvement of the publication are most welcome.



(Dr. S. D. Bhardwaj)
Deputy Director
Planning & Statistics

INDEX

Sl. No.	PARTICULARS	PAGE No.
1.	MAPS OF DAMAN AND DIU	
1.1	Location Map of U.T. of Daman and Diu	(i)
1.2	Map of Daman District	(ii)
1.3	Map of Diu District	(iii)
2.	GENERAL INFORMATION	
2.1	Location	1
2.2	History	1
2.3	Geography	4
2.4	Climate	5
2.5	Administrative Set Up	6
2.6	Political Structure	6
3.	POPULATION STATISTICS	
	Area and Population	
3.1	Area	8
3.2	Population	8
3.3	Population Characteristics	8
3.3.1	Population trend	8
3.4	Population of Special Categories	10
3.5	Castewise Population of SC & ST	10
4.	Houses and Households	
4.1	Number of Census Houses	11
4.2	Uses of Census Houses	11
4.3	Households by possession of assets	12
5.	Population Distribution	
5.1	Village Wise Population	13
5.2	Ward Wise Population	14
5.3	Area wise Population by Religion	15
5.4	District wise Population by Religion	15
5.5	Population by Language	16
5.6	Population in Five Years Age Groups	17

(b)

Sl. No.	PARTICULARS	PAGE No.
6.	Literate Population	18
7.	Population of Workers and Non Workers	19
8.	Percentage Decadal variation in Population: 1901-2011	20
9.	Projected Population based on Census	21
10.	Information on Disability	22
11.	Information of elderly Population	25
(C)	SOCIO-ECONOMIC STATISTICS	
12.	Socio-Economic Development compared since inception	28
13.	Socio- Economic Indicators compared with DNH & India	34
14.	Socio- Economic Indicators compared with Gujarat & Maharashtra.	37
15.	State wise Area, Population and Literacy	38
16.	U.T. wise Area, Population & Literacy	39
17.	Human Development Index of selected Countries.	39
18.	Estimates of gross fixed capital formation	40
19.	Consumer Price Index	40
20.	Household Consumer Expenditure across socio-economic groups	41
(D)	DEVELOPMENT STATISTICS	
21.	Agriculture	42
22.	Animal Husbandry	57
23.	Banking	60
24.	Census and Surveys	61
25.	Civil Supply	62
26.	Communication	63
27.	Cooperation	64
28.	Education	65
29.	Employment	70
30.	Fire Service	73
31.	Fisheries	74
32.	Forests and Wildlife	75
33.	Health	76
34.	Housing	81
35.	Industry	82
36.	Final Report of 5 th Economic Census - 2005	84
37.	Police	86
38.	Prison	88
39.	Power	89
40.	Public Works Department	92

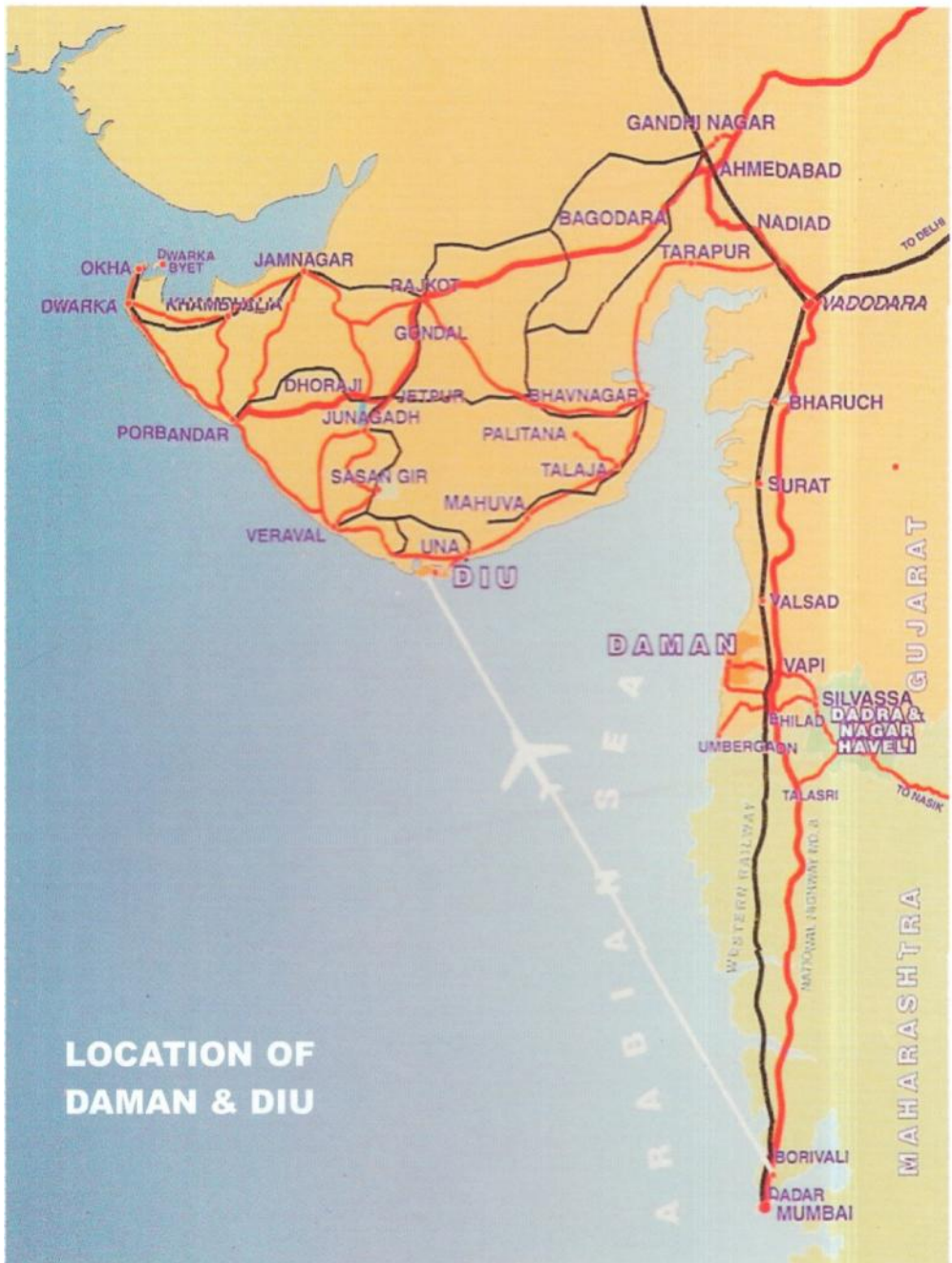
Sl. No.	PARTICULARS	PAGE No.
41.	Rural Development	
41.1	List of Village Panchayats and Villages	93
41.2	Village Amenities Directory	94
42.	Tourism	97
43.	Transport	101
44.	Water Supply	102
45.	Women and Children	104
(E)	POVERTY STATISTICS	
46.	Families Below Poverty Line(BPL)	105
	Houseless Population	106
(F)	FINANCIAL STATISTICS	
47.	Budget under Plan and Non Plan	
47.1	Allocation and Expenditure under Plan since inception	107
47.2	Allocation and Expenditure under Non Plan since inception	108
47.3	Proposed outlays & capital content for 12 th Five Year Plan (2012-17)	109
47.4	Proposed & approved for XI th Five Year Plan (2007-12)	110
47.5	Proposed Outlays for Annual Plan : 2012-13	111
47.6	Proposed Outlays for Annual Plan : 2013-14	112
48.	Revenue Receipts	
48.1	Year wise Revenue Receipts	113
48.2	Item wise Receipts during last five years	114
48.3	Balance from Current Revenue (BCR)	114
49.	Wages	115
50.	Tariff for Govt. Services	
50.1	Electricity tariffs	115
50.2	Agriculture tariffs	121
50.3	Water tariffs	122

(d)

(G)	MISCELLANEOUS INFORMATION	
51.	Lists of SC, ST and OBC.	124
52.	Reservation Quota for SC,ST and OBC in Govt. Service	126
53.	National and International Days	127
54.	National and International Weeks and Fortnights	129
55.	Higher Authorities of India	130
56.	Incumbency Charts of Higher Authorities in Administration of Daman and Diu	133
57.	Public Representatives of Daman and Diu	138
58.	Conversion Factors	141

(1) MAPS OF DAMAN & DIU

(i)



(A) GENERAL INFORMATION

2. GENERAL INFORMATION

2.1 LOCATION

U.T. of Daman and Diu comprises two districts namely Daman and Diu. Both Districts are situated on western coast of India at a distance of about 700 kms. Daman is the head Quarter of this U.T.

Daman is on main land near southern portion of Gujarat State. Vapi is the nearest Railway Station (13 kms) which is on Western Railway between Mumbai and Surat. Vapi is 167 kms from Mumbai Central and 95 kms from Surat.

Diu is an island near Una of Junagarh District in Gujarat State. Nearest Railway Station is Delwada at the distance of 9 kms from Diu. But important trains are linked with Veraval which is 90 kms from Diu. A portion of Diu District is on main land which is named as Ghoghla. A small part of Diu known as Simar is situated in Gujarat at a distance of 25 kms from Diu.

2.2 HISTORY

After Liberation on 19th December, 1961 from Portuguese Rule of more than four centuries, Daman and Diu became a part of the U.T. of Goa, Daman and Diu under Government of India. After delinking of Goa, which attained statehood, U.T. of Daman and Diu came into existence on 30th May, 1987.

Brief history of Daman and Diu Districts are furnished below as per District Census Hand Book of Census of India, 1981.

DAMAN DISTRICT:

The District of Daman is known to have formed part of the country known as Lata which was one of the seven divisions of the Aparant or Konkan Vishaya, between 2nd Century B.C. to 13th Century A.D. The Daman District is included in the intervening region and therefore must have formed part of the Mauryan empire at least at the time of Ashoka. After the Mauryan power was weakened, the district was under the rule of Satkarni I, the Satavahana ruler in the end of 2nd Century B.C. After that during the 1st Century A.D. the District of Daman seemed to have been ruled by Kshaharatas who were the provincial governors i.e. Kshatrapas under the Kushana emperors. During A.D. 125, Satkarni drove away the Kshaharatas and ruled the districts. But the Satavahana rule was shortlived. The Kshaharatas of Ujjain re-conquered the district by about A.D. 150 from the Satavahana ruler Satakarni and Daman District again passed under the rule of Kshaharatas of Ujjain till A.D. 249. After the Kshatrapas, the district was ruled by the Abhir Kings till A.D. 416.

After the rule of Abhir kings, the district was under the rule of Traikutakas during the 5th Century A.D. who were the feudatories of the Abhiras. By A.D. 500, the Traikutaka power seems to have been destroyed by the Vakataka king Harishena. The District then was under the power of the Kalachuris of Mahishmati King Krishnaraja and his successors till A.D. 609. King Mangales of Chalukyas of Badami routed out the last king Budharaja of Kalachuris by about A.D. 609. The Chalukyas of Badami ruled the district till A.D. 671 and their descendants known as Lata or Navasari Chalukyas ruled from Navasarika, modern Navasari, on the bank of the river Purna to the north of Daman. They ruled independently as feudatories of the Badami Chalukyas of the Deccan. In the next eight centuries, Daman came under the control of a large number of Hindu kings and chieftains.

Mahmud Shah Begada, Sultan of Gujarat, seems to have conquered fort Parnera on the river Par and port of Daman and levied tribute from Jagatshah in 1465. Naranshah who succeeded Jagatshah ruled from A.D. 1470 to 1500 and Dharmshah II from 1500 to 1531.

Daman was acquired by the Portuguese from the Shah of Gujarat. They noticed the port of Daman for the first time in 1523. They attacked it several times and finally obtained it in 1559 by means of a treaty with the Shah. Thereafter, it was under the rule of Portuguese till its liberation in 1961.

DIU DISTRICT :

The documented history of the District of Diu begins with the Maurya rule (c.322-220 B.C). Emperor Chandragupta Maurya had extended his supremacy over Saurashtra and had appointed Pushagupta as Governor of the province of Saurashtra with the Head-quarters in village Girnar near Junagadh. Yavanaraj Tushappa ruled over Saurashtra as Governor of Emperor Ashoka (c.273-237 B.C.). Emperor Ashoka had sent Yavana Thero named Dhammarakhito as evangelist to the western sea board including Diu. His grandson Samprati (c.229-220 B.C.) seems to have ruled over Saurashtra from Ujjain. He propagated Jainism and erected many Jain Temples. The Jain traditions from Diu seems to belong to this period.

The District seems to be under the rule of Indo-Greek kings Eukratides (c.171-150 B.C.), Meanandar (c.115 to 90 B.C.) and Appollodotes II of the 1st Century B.C. No historical information is available for the period of 150 years from the 1st Century B.C. to about A.D. 50. During the A.D. 1st Century , the district seems to have been ruled by Kshaharatas who had established their rule over western part of India including Saurashtra. For more than the next thousand years, Diu formed part of the kingdoms of dynasties that ruled over the western India including Gujarat.

The last king of the Vaja dynasty ruler of Somnath Patan ruled over Diu in the first decade of the fifteenth century. Thereafter, Diu came under the control of the Muslims Sultans of Gujarat who seem to have ruled Diu for the next one and a half centuries.

Early in 1535, the Portuguese Governor De Cunha had led his expedition for the capture of the town in Diu, but was defeated by the Sultan. However, around that period, the Gujarat Sultan Bahadur Shah's kingdom was overwhelmed by Mughal invasion. Pressed by Mughal king Humayun on one side and the Portuguese at the gates of Diu, Bahadur Shah entered into a treaty with Nuno da Cunha on October 25, 1535 who agreed to assist Bahadur Shah against his enemy by land and sea. In turn he received permission to construct a fortress at Diu and a site was granted for this purpose in the harbour. After the Mughal danger was receded, the Shah of Gujarat realized his mistake in allowing the Portuguese to construct the fort. Finally Diu was conquered by the Portuguese in 1546 who ruled there till 1961.

Source: Series 29: Goa, Daman and Diu, District Census Hand Book, Census of India, 1981.

2.3 GEOGRAPHY

Both the Districts of Daman and Diu are near Gujarat State separated by about 700 kms from one another.

DAMAN :

Daman District is situated nearly 200 kms north from Mumbai and is surrounded by Valsad District of Gujarat State in North, East and South. Daman Ganga River coming from Nasik passes through middle of Daman District dividing it into two parts namely Moti Daman and Nani Daman.

The District of Daman is situated on the western –coast of India between the parallels 20° - 27'- 58" and 20° - 22'- 00" of latitude north and between the meridians 72°-49'- 42" and 72° - 54'- 43" of longitude east of Greenwich. Its length from the extreme north to south measures 11 kms and width from east to west, measures 8 kms. The altitude is 12 metres above the sea level.

DIU :

Diu District is an inland on southern portion of Gujarat Peninsula. It is joined with Una District of Gujarat State by two bridges over a sea creek.

The District of Diu is situated between the parallels 20° -44'-34" and 20° -42'- 00" of latitude north and between the meridians 71° -00'-24" and 70° -52'-26" of longitude east of Greenwich. Its length from the extremes north and south, measures 4.6 kms and width from east to west measures 13.8 kms. The altitude is 6 metres above sea level. The topography is generally plain. The hillocks attain maximum height of 30 metres.

2.4 CLIMATE

Sr. No.	Particulars	Unit	Daman District	Diu District	Daman and Diu	
1.	Climate	--	Mild & Warm	Sultry	--	
2.	Temperature					
i)	Mean Maximum	Centigrade	31	37	---	
ii)	Mean Minimum	Centigrade	22	21	---	
3.	Annual Rainfall	Year				
		2008	MM	2032	1367	3399
		2009	MM	2318	1489	3807
		2010	MM	2436	1568	4004
		2011	MM	1969	900	2869
		2012	MM	1439	635	2074
4.	Humidity	% (between)	26-100	N.A.	26-100	
5.	Maximum Wind speed	Km/Hour	30	N.A.	30	

Source : Climate : Meteorological Office, Coast Guard, Daman, Central Water Comm., Daman.

2.5 ADMINISTRATIVE SET UP

Sr. No.	Particulars	Unit	Daman District	Diu District	Daman and Diu
(A)	ADMINISTRATIVE STRUCTURE				
1.	Districts	Nos.	1	1	2
2.	Talukas/Tahsils	Nos.	1	1	2
3.	Blocks	Nos.	1	1	2
4.	District Panchayat	Nos.	1	1	2
5.	Village Panchayats	Nos.	10	4	14
6.	Villages	Nos.	21	4	25
7.	Census Villages	Nos.	15	4	19
8.	Municipal Councils	Nos.	1	1	2
9.	Statutory Towns	Nos.	1	1	2
10.	Census Towns	Nos.	6	--	6
11.	Urban Wards	Nos.	15	13	28

2.6 POLITICAL STRUCTURE

Sr. No.	Particulars	Unit	Daman District	Diu District	Daman and Diu
1.	NO. OF SEATS				
a)	Parliament	Nos.	----- 1 -----		1
b)	Municipal Councils	Nos.	15	13	28
c)	District Panchayat	Nos.	22	12	34
d)	Village Panchayats	Nos.	53	24	77
2.	NO. OF POLLING STATIONS	Nos.	64	29	93
3.	NO. OF ELECTORS				
i)	Male	Nos.	30190	16417	46607
ii)	Female	Nos.	29378	18515	47893
	TOTAL	Nos.	59568	34932	94500
4.	LAST ELECTIONS HELD				
i)	Parliament	Date	---	---	30/04/09
ii)	Daman / Diu	"			----
	District Panchayats	"	27/07/13	27/07/13	
iii)	Daman / Diu	"			----
	Municipal Councils	"	23/1/11	17/6/12	

Source : Election Cell.

<p>2.7</p> <p>(i)</p> <p>1. The Administrator</p> <p>2. The Development Commissioner</p> <p>3. Finance Secretary</p> <p>4. The Inspector General of Police</p> <p>5. The Chief Conservator of Forests</p> <p>6. The Supdt. Engineer, PWD.</p> <p>Secretaries</p> <p>1. Social Welfare, Official Language, Labour, Industries & Revenue, Genr. Adm Prot. RD</p> <p>2. Education, Panchayat & Parliamentary Affairs, Rural Dev., Information Pub., Co-operation</p> <p>3. Law</p> <p>Special /Additional Secretaries</p> <p>1. Urban Development, Health</p> <p>2. Panchayat Raj Institutions, Rural Dev. Education</p> <p>Deputy Secretaries</p> <p>1. Information & Publicity & Rural Dev.</p> <p>2. Civil Supplies, Cooperative Socty. Revenue, Elections & IT</p> <p>3. Labour, Port, Art & Culture, Animal Husb., Fisheries, Ger. Admn. Protocol, Transport</p> <p>4. Development, Health & PWD, Social Welfare & PRI, Official Language</p> <p>5. Planning & Statistics</p> <p>6. Personnel, Home & Vigilance</p> <p>Joint Secretary</p> <p>Finance, Power & Taxation</p> <p>(ii)</p> <p>District Administration</p> <p>1. The Collector, Daman</p> <p>2. The Collector, Diu</p> <p>3. District Supdt. Of Police, Daman</p> <p>4. Supdt. Of Police, Daman (Crime &Traffic)</p> <p>5. Supdt. Of Police, Diu.</p> <p>6. Supdt. Of Police, Diu (Crime &Traffic)</p> <p>(iii)</p> <p>Managing Director</p> <p>Omnibus Ind. Dev. Corporation</p> <p>(iv)</p> <p>Commissioners</p> <p>Excise and Labour</p> <p>(v)</p> <p>Directors</p> <p>1. Panchayati Raj, Fisheries, Animal Husbandry, Veterinary Service</p> <p>2. Industry</p> <p>3. Accounts</p> <p>4. Medical & Health Services</p> <p>5. Agriculture</p>		<p>Shri Bhupinder S. Bhalla, IAS</p> <p>Shri Sandeep Kumar, IAS</p> <p>Shri Gyanesh Bharti, IAS</p> <p>Shri Rajesh Khurana, IPS</p> <p>Shri Yogesh, IFS</p> <p>Shri Sudheer Chavda</p> <p>Smt. Madhu K Garg, DANICS</p> <p>Shri. V.Abrahum, IAS</p> <p>Shri K.M. Vasave</p> <p>Smt. Madhu K Garg, DANICS</p> <p>Shri S.S. Sidhu, DANICS</p> <p>Smt. Snehalata Chand, DANICS</p> <p>Smt. Tapasya Chaudhary, DANICS</p> <p>Shri R.C Meena, DANICS</p> <p>Shri. R.K. Gaur, DANICS</p> <p>Dr. S.D. Bhardwaj</p> <p>Shri. B. S Thakur, DANICS</p> <p>Shri P. J. Bamania</p> <p>Shri. Vinod P. Kavle, IAS</p> <p>Shri. Ramesh Verma, IAS</p> <p>Shri. Atul Kumar Thakur, IPS</p> <p>Shri. Ishwarsingh, IPS</p> <p>Shri. Rajneesh Gupta.</p> <p>Shri. Ram Niwas Meena, IPS</p> <p>Shri. G.S. Meena, IAS</p> <p>Shri. Vinod P. Kavle, IAS</p> <p>Shri. P.S. Reddy, IAS</p> <p>Shri R.K. Sharma</p> <p>Shri P. J. Bamania</p> <p>Shri (Dr.) K.Y. Sultan</p> <p>Shri Debendra Dalai</p>
---------------------------------------------------------------------------------------------------------------------------------------------------------------------------------------------------------------------------------------------------------------------------------------------------------------------------------------------------------------------------------------------------------------------------------------------------------------------------------------------------------------------------------------------------------------------------------------------------------------------------------------------------------------------------------------------------------------------------------------------------------------------------------------------------------------------------------------------------------------------------------------------------------------------------------------------------------------------------------------------------------------------------------------------------------------------------------------------------------------------------------------------------------------------------------------------------------------------------------------------------------------------------------------------------------------------------------------------------------------------------------------------------------------------------------------------------------------------------------------------------------------------------------------------------------------------------------------------------------------------------------------------------------------------------------------------------------------------------------------------------------------------------------------------------------------------------------------------------------------------------	--	--------------------------------------------------------------------------------------------------------------------------------------------------------------------------------------------------------------------------------------------------------------------------------------------------------------------------------------------------------------------------------------------------------------------------------------------------------------------------------------------------------------------------------------------------------------------------------------------------------------------------------------------------------------------------------------------------------------------------------------------------------------------------------------------------------------------------------------------------------------------------------------------------------------------------------------------------------------------------------

(B) POPULATION STATISTICS

(B) POPULATION STATISTICS

3 AREA & POPULATION

Sr. No.	Particulars	Unit	Daman District	Diu District	Daman and Diu	%
3.1	AREA *					
	Rural	Sq.Kms.	35.14	22.24	57.38	51.23
	Urban	Sq.Kms.	36.86	17.76	54.62	48.77
	Total	Sq.Kms.	72.00	40.00	112.00	100.00
3.2	POPULATION					
	i) Rural	Nos.	32313	28083	60396	24.82
	ii) Urban	Nos.	158860	23991	182851	75.14
	Total	Nos.	191173	52074	243247	100.00
	iii) Males	Nos.	124659	25642	150301	61.78
	iv) Females	Nos.	66514	26432	92946	38.22
	Total	Nos.	191173	52074	243247	100.00
3.3	POPULATION CHARACTERISTICS					%
3.3.1	Population trend					Increase
	1961	Nos.	22390	14280	36670	--
	1971	Nos.	38739	23912	62651	70.85
	1981	Nos.	48560	30421	78981	26.07
	1991	Nos.	62101	39485	101586	28.62
	2001	Nos.	113989	44215	158204	55.73
	2011	Nos.	191173	52074	243247	53.75
3.3.2	Population Density					
	2001	Per sq.	1583	1105	1413	---
	2011	km.	2655	1302	2172	---
3.3.3	Census Houses					
	2001	Nos.	37007	16895	53902	---
	2011	Nos.	71679	18250	89929	---
3.3.4	Households					
	2001	Nos.	25127	9215	34342	---
	2011	Nos.	50376	10580	60956	---

Source : Population Census

Sr. No.	Particulars	Unit	Daman District	Diu District	Daman and Diu
3.3.5	Sex ratio trend				
	1961		1063	1357	1169
	1971		1031	1218	1099
	1981	No. of females per 1000 males	1017	1139	1062
	1991		913	1064	969
	2001		591	1118	710
	2011		534	1031	618
3.3.6	Child Population (0- 6 years)				
	2001				
	Male	Nos.	6830	3855	10685
	Female	Nos.	6194	3699	9893
	Total	Nos.	13024	7554	20578
	2011				
	Male	Nos.	10787	3357	14144
	Female	Nos.	9671	3119	12790
	Total	Nos.	20458	6476	26934
	Child Sex Ratio (0-6years)				
	2001		907	960	926
	2011		897	929	904

Source : Population Census

Child Population (0-6 years) 2001-2011



Daman & Diu	2001	2011	Variation (in %)
Persons	20,578	26,934	30.9
Males	10,685	14,144	32.4
Females	9,893	12,790	29.3

Sr. No.	Particulars	Daman District		Diu District		Daman and Diu	
3.4	<u>POPULATION OF SPECIAL CATEGORIES (2011 CENSUS)</u>	Nos.	%	Nos.	%	Nos.	%
i)	Scheduled Castes(SC)						
	2001						
	Total	3065	2.69	1773	4.01	4838	3.06
	Male	1627	--	871	--	2498	--
	Female	1438	--	902	--	2340	--
	2011						
	Total	4262	2.23	1862	3.57	6124	2.52
	Male	2224	1.78	927	3.62	3151	2.10
	Female	2038	3.06	935	3.53	2973	3.19
ii)	Scheduled Tribes (ST)						
	2001						
	Total	13881	12.18	116	0.26	13997	8.85
	Male	7128	--	62	--	7190	--
	Female	6753	--	54	--	6807	--
	2011						
	Total	15240	7.97	123	0.24	15363	6.31
	Male	7702	6.17	69	0.27	7771	5.17
	Female	7538	11.33	54	0.20	7592	8.16

Sr. No.	Year	Unit	Daman District	Diu District	Daman and Diu
3.5	<u>CASTEWISE POPULATION OF SC & ST (2001)</u>				
(a)	SCHEDULED CASTES (SC)				
	(i) Mahyavanshi	No.	2693	391	3084
	(ii) Bhangi	No.	191	1231	1422
	(iii) Generic Castes	No.	112	147	259
	(iv) Other Castes	No.	69	4	73
	TOTAL	No.	3065	1773	4838
(b)	SCHEDULED TRIBES (ST)				
	(i) Dubla	No.	10365	1	10366
	(ii) Dhodia	No.	1918	7	1925
	(iii) Varli	No.	1485	0	1485
	(iv) Nayaka	No.	113	0	113
	(v) Siddi	No.	0	108	108
	TOTAL	No.	13881	116	13997

Source: Population Census

4. HOUSES & HOUSE HOLDS (CENSUS 2011)

Sr. No.	Particulars	Unit	Daman and Diu	%
4.1	NUMBER OF CENSUS HOUSES- 2011			
1)	Occupied			
	Rural	Nos.	17210	--
	Urban	Nos.	58067	--
	Total	Nos.	75277	82.8
2)	Vacant			
	Rural	Nos.	2584	--
	Urban	Nos.	12068	--
	Total	Nos.	14652	17.2
3)	Total Census Houses			
	Rural	Nos.	19794	--
	Urban	Nos.	70135	--
	Total	Nos.	89929	100.00
4.2	USES OF CENSUS HOUSES			
	Residence	Nos.	59253	78.7
	Residence –cum-other use	Nos.	821	1.1
	Shop, Office	Nos.	6251	8.3
	Factory, Work shop etc.	Nos.	2014	2.7
	Place of Worship	Nos.	555	0.7
	Hotel, Lodge etc.	Nos.	488	0.6
	School, College etc	Nos.	221	0.3
	Hospital, Dispensary etc.	Nos.	146	0.2
	Other non residential use	Nos.	5359	7.1
	Occupied locked houses	Nos.	169	0.0
	Total	Nos.	75277	100.00

Source : Population Census

Sr. No.	Particulars	Unit	Daman and Diu	%
4.3	<u>HOUSEHOLDS BY POSSESSION OF ASSESTS -2011</u>			
1)	Number of households	Nos.	60381	100.00
2)	Availability of Assets			
i)	Radio Transistor	Nos.	12664	21.0
ii)	Television	Nos.	36838	61.0
iii)	Telephone	Nos.	52172	86.4
	Telephone-Landline only	Nos.	2494	4.1
	Telephone- Mobile only		45871	76.0
	Telephone- Mobile both		3807	6.3
	Computer/Laptop-with internet	Nos.	1684	2.8
	Comp./Laptop-without internet	Nos.	3914	6.5
iv)	Bicycle	Nos.	18381	30.4
v)	Scooter, Motor Cycle & Moped	Nos.	18987	31.4
vi)	Car, Jeep & Van	Nos.	3561	5.9
vii)	None of the specified assets	Nos.	4594	7.6

Source : Population Census

5. POPULATION DISTRIBUTION

Sr. No.	Name of Village	Unit	Total Population	SC		ST	
				No	%	No	%
5.1 VILLAGE WISE POPULATION							
a) <u>Daman District</u>							
1.	Bhamti	Nos.	939	286	30.5	539	57.4
2.	Bhimpore(CT)	Nos.	10936	202	1.8	1125	10.3
3.	Dabhel (CT)	Nos.	52578	475	0.9	308	0.6
4.	Damanwada	Nos.	1176	28	2.4	234	19.9
5.	Devapardi	Nos.	255	0	0.0	232	91.0
6.	Devka	Nos.	3461	64	1.8	602	17.4
7.	Dholar	Nos.	1184	5	0.4	77	6.5
8.	Dunetha (CT)	Nos.	12470	467	3.7	1294	10.4
9.	Jampore	Nos.	875	0	0.0	418	47.8
10.	Janivankad	Nos.	2063	173	8.4	76	3.7
11.	Kachigam (CT)	Nos.	18434	182	1.0	1080	5.9
12.	Kadaiya (CT)	Nos.	12717	198	1.6	432	3.4
13.	Magarwada	Nos.	6735	112	1.7	1795	26.7
14.	Marwad (CT)	Nos.	7443	235	3.2	634	8.5
15.	Nailapardi	Nos.	827	2	0.2	782	94.6
16.	Palhit	Nos.	345	38	11.0	133	38.6
17.	Pariari	Nos.	1891	235	12.4	1025	54.2
18.	Ringanwada	Nos.	4953	105	2.1	139	2.8
19.	Thanapardi	Nos.	1091	238	21.8	389	35.7
20.	Varkund	Nos.	5355	383	7.2	162	3.0
21.	Zari	Nos.	1163	5	0.4	1012	87.0
Total (Daman)		Nos.	146891	3433	2.3	12488	8.5
b) <u>Diu District</u>							
	1.Bucharwada	Nos.	6188	312	5.0	0	0.0
	2. Vanakbara	Nos.	9696	68	0.7	0	0.0
	3. Zolawadi	Nos.	4427	107	2.4	2	0.0
	4. Saudwadi	Nos.	7772	6	0.1	0	0.0
Total (Diu)		Nos.	28083	493	1.8	2	0.0

Source : Population Census 2011

(CT) Census town

Sr. No.	Ward No.	Unit	Daman District			Diu District		
			Total	SC	ST	Total	SC	ST
5.2 <u>WARD WISE POPULATION</u>								
	Ward No. 1	Nos.	2292	7	101	1456	633	0
	Ward No. 2	Nos.	2175	2	51	1742	328	68
	Ward No. 3	Nos.	3380	15	38	1366	10	0
	Ward No. 4	Nos.	3302	0	0	2457	20	5
	Ward No. 5	Nos.	2350	13	302	1703	4	0
	Ward No. 6	Nos.	2096	33	381	2209	154	3
	Ward No. 7	Nos.	1904	26	219	1763	46	23
	Ward No. 8	Nos.	2020	5	185	1944	151	13
	Ward No. 9	Nos.	1899	18	86	1885	4	0
	Ward No. 10	Nos.	2233	21	183	1856	8	0
	Ward No. 11	Nos.	2531	0	337	1837	0	0
	Ward No. 12	Nos.	2150	5	265	1901	6	9
	Ward No. 13	Nos.	1990	210	54	1872	5	0
	Ward No. 14	Nos.	5585	180	60	---	---	---
	Ward No. 15	Nos.	8375	294	490	---	---	---
	Total	Nos.	44282	829	2752	23991	1369	121

Source : Population Census 2011

5.3 AREAWISE POPULATION BY RELIGION

Sr. No.	Religion	Unit	Daman and Diu			%
			Rural	Urban	Total	
i)	Hindu	Nos.	95892	46009	141901	89.69
ii)	Muslim	Nos.	4148	8133	12281	7.76
iii)	Christian	Nos.	552	2810	3362	2.13
iv)	Jain	Nos.	56	212	268	0.17
v)	Sikh	Nos.	78	67	145	0.09
vi)	Buddhist	Nos.	116	10	126	0.08
vii)	Others	Nos.	13	90	103	0.07
viii)	Religion not stated	Nos.	1	17	18	0.01
Total		Nos.	100856	57348	158204	100.00

Source : Population Census 2001

5.4 DISTRICTWISE POPULATION BY RELIGION

Sr. No.	Religion	Daman		Diu	
		Number	%	Number	%
i)	Hindu	100666	88.31	41235	93.26
ii)	Muslim	9562	8.39	2719	6.15
iii)	Christian	3160	2.77	202	0.46
iv)	Jain	227	0.20	41	0.09
v)	Sikh	141	0.12	4	0.01
vi)	Buddhist	121	0.11	5	0.01
vii)	Others	103	0.09	0	0.00
viii)	Religion not stated	9	0.01	9	0.02
TOTAL		113989	100.00	44215	100.00

Source : Population Census 2001

Sr. No.	Particulars	Unit	Daman and Diu			
5.5 <u>POPULATION BY LANGUAGE</u>						
			1991		2001	
			Nos.	%	Nos.	%
1.	Gujarati	Nos.	92579	91.13	107090	67.69
2.	Hindi	Nos.	3645	3.59	30755	19.44
3.	Marathi	Nos.	1256	1.23	6754	4.27
4.	Others	Nos.	4106	4.05	13605	8.60
			101586	100.00	158204	100.00

Sources : Population Census

Sr. No.	Particulars	Unit	Daman and Diu	%
5.6	<u>POPULATION IN FIVE YEAR AGE GROUPS</u>			
	Age Groups			
	0-4	Nos.	19158	7.88
	5-9	Nos.	18506	7.61
	10-14	Nos.	17321	7.12
	15-19	Nos.	26314	10.82
	20-24	Nos.	38584	15.86
	25-29	Nos.	33181	13.64
	30-34	Nos.	24031	9.88
	35-39	Nos.	19550	8.04
	40-44	Nos.	13601	5.59
	45-49	Nos.	9618	3.95
	50-54	Nos.	6610	2.72
	55-59	Nos.	5056	2.08
	60-64	Nos.	4308	1.77
	65-69	Nos.	2753	1.13
	70-74	Nos.	2103	0.86
	75-79	Nos.	1067	0.44
	80 and above	Nos.	1130	0.46
	Age not stated	Nos.	356	0.15
	Total	Nos.	243247	100.00

Source : Population Census 2011

6. LITERATE POPULATION

Sr. No.	Particulars	Unit	Daman District	Diu District	Daman and Diu
6.1	Total Literates-2011				
	Total	Nos.	150348	38058	188406
	Male	Nos.	104316	20327	124643
	Female	Nos.	46032	17731	63763
6.2	Literacy Rate				
	Total	%	88.06	83.46	87.10
	Male	%	91.60	91.21	91.54
	Female	%	80.98	76.05	79.54
	Rural	%	79.79	60.51	75.83
	Urban	%	82.57	81.87	82.31
6.3	Literacy Trend				
	1961	%	21.70	25.11	23.02
	1971	%	40.10	34.10	37.38
	1981	%	52.10	44.01	49.15
	1991	%	75.34	64.46	71.20
	2001	%	80.65	71.38	78.18
	2011	%	88.06	83.46	87.10
6.4	Religion wise Literacy				
	Hindus	%	80.36	70.69	77.69
	Muslims	%	80.55	79.55	80.33
	Christians	%	88.19	88.95	88.23
	Sikhs	%	92.80	100.00	93.02
	Buddhists	%	83.81	100.00	84.40
	Jains	%	95.98	87.50	94.56
	Others	%	90.43	----	90.43
	Religion not stated	%	100.00	57.14	81.25
	Total	%	80.65	71.38	78.18
6.5	Literacy Rate for SCs -2001				
	Male	%	95.19	91.81	94.03
	Female	%	82.06	65.63	75.82
	Total	%	88.96	78.39	85.13
6.6	Literacy Rate for STs-2001				
	Male	%	74.11	87.50	74.23
	Female	%	51.74	72.55	51.93
	Total	%	63.27	80.37	63.42

Source : Population Census 2011

$$\text{Literacy Rate} = \frac{\text{Literate Population}}{\text{Total Population} - \text{Population upto 6 years}} \times 100$$

7. POPULATION OF WORKERS AND NON-WORKERS (2011)

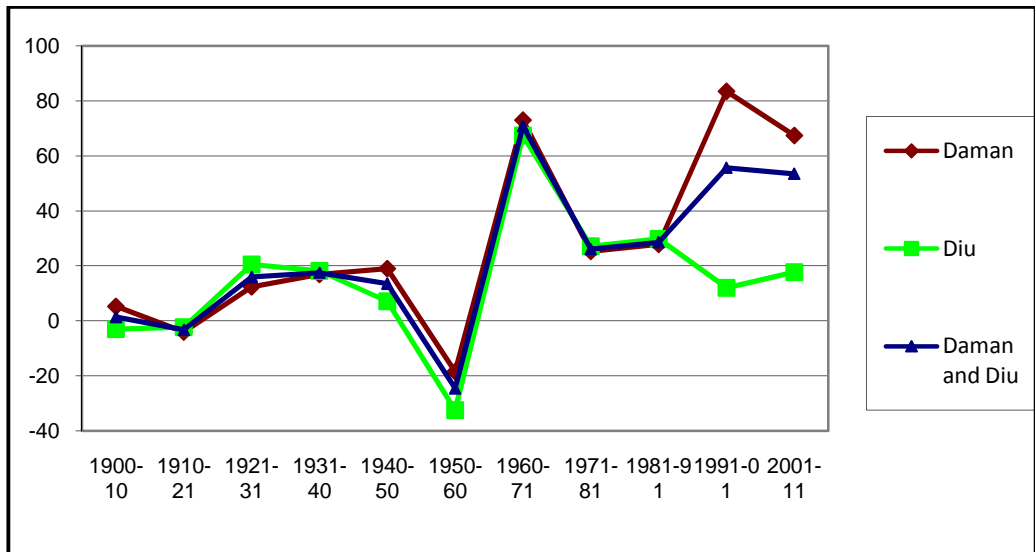
Sr. No.	Particulars	Unit	Daman District	Diu District	Daman and Diu
<u>POPULATION OF WORKERS & NON WORKERS –2011 Census</u>					
1)	Total Workers	Total	Nos. 105521	15750	121271
		Rural	Nos. 14779	8524	23303
		Urban	Nos. 90742	7226	97968
2)	Main Workers	Total	Nos. 101717	14718	116435
		Rural	Nos. 13492	7943	21435
		Urban	Nos. 88225	6775	95000
i)	Cultivators	Total	Nos. 1247	402	1649
		Rural	Nos. 669	384	1053
		Urban	Nos. 578	18	596
ii)	Agricultural Labourers	Total	Nos. 302	189	491
		Rural	Nos. 139	182	321
		Urban	Nos. 163	7	170
iii)	Household industry workers	Total	Nos. 332	48	380
		Rural	Nos. 88	31	119
		Urban	Nos. 244	17	261
iv)	Other workers	Total	Nos. 99836	14079	113915
		Rural	Nos. 12596	7346	19942
		Urban	Nos. 87240	6733	93973
3)	Marginal Workers	Total	Nos. 3804	1032	4836
		Rural	Nos. 1287	581	1868
		Urban	Nos. 2517	451	2968
i)	Cultivators	Total	Nos. 598	69	667
		Rural	Nos. 538	63	601
		Urban	Nos. 60	6	66
ii)	Agricultural Labourers	Total	Nos. 179	102	281
		Rural	Nos. 128	102	230
		Urban	Nos. 51	--	51
iii)	Household industry workers	Total	Nos. 77	227	304
		Rural	Nos. 45	168	213
		Urban	Nos. 32	59	91
iv)	Other workers	Total	Nos. 2950	634	3584
		Rural	Nos. 576	248	824
		Urban	Nos. 2374	386	2760
4)	Non-workers	Total	Nos. 85652	36324	121976
		Rural	Nos. 17534	19559	37093
		Urban	Nos. 68118	16765	84883

Source : Population Census

8. Percentage Decadal variation in Population : 1900-2011

Sr. No.	Year	Unit	Daman District	Diu District	Daman and Diu
1.	1900-10		5.23	-3.04	1.45
2.	1910-21		-4.01	-2.30	-3.26
3.	1921-31	Percentage	12.38	20.54	15.98
4.	1931-40	Decadal	16.91	18.23	17.52
5.	1940-50	Growth	19.03	7.13	13.55
6.	1950-60	rate	-18.50	-32.44	-24.56
7.	1960-71		73.02	67.45	70.85
8.	1971-81		25.35	27.22	26.07
9.	1981-91		27.89	29.80	28.62
10.	1991-01		83.55	11.98	55.73
11.	2001-11		67.43	17.73	53.54

Source : Population Census



Decadal Variation In Population

9. PROJECTED POPULATION BASED ON CENSUS

Year	UT of Daman and Diu ('000)		
	Persons	Males	Females
2001	158	93	66
2002	171	100	71
2003	182	107	75
2004	194	115	79
2005	205	123	82
2006	216	131	85
2007	227	139	88
2008	238	148	89
2009	248	157	91
2010	259	166	93
2011	270	175	95
2012	281	184	97
2013	293	193	99
2014	305	203	102
2015	317	212	105
2016	330	221	109
2017	344	232	112
2018	359	243	115
2019	374	256	119
2020	391	269	122
2021	409	284	125
2022	420	293	127
2023	431	301	129
2024	439	308	131
2025	443	311	131
2026	441	310	131

Source : National Commission on Population,
Ministry of Health and family Welfare.

10. INFORMATION ON DISABILITY

Sr. No.	Particulars	Daman District		Diu District		Daman and Diu	
10.1	Population of Disabled persons						
i)	Disabled Persons	1771	1.56	1400	3.17	3171	2.00
	Total						
	Male	1065	--	714	--	1779	--
	Female	706	--	686	--	1392	--
ii)	Types of Disability						
	In seeing	1056	59.63	842	60.14	1898	59.86
	In movement	376	21.23	314	22.43	690	21.76
	Mental	152	8.58	122	8.71	274	8.64
	In speech	121	6.83	68	4.86	189	5.96
	In hearing	66	3.73	54	3.86	120	3.78
	Total	1771	100.00	1400	100.00	3171	100.00

Source : Population Census 2001

10.2	Total Number (in 000) of Disabled Persons in India for each Population category							
	No. of disabled persons (in thousands)						SC	ST
	Total	Rural	Urban	Male	Female			
Daman & Diu	3.17	1.88	1.29	1.78	1.39	0.13	0.26	
All India	21906.77	16388.38	5518.41	12605.67	9301.15	3711.11	1616.17	

Source : Population Census 2001

10.3 Number of Totally Disabled and their % distribution by type of disability in India in 1981					
	Totally disabled	% of Totally Disabled by State	%distribution of disabled persons by type of disability		
			Totally Blind	Totally Crippled	Totally Dumb
Goa, Daman & Diu	1631	0.15	28	39	32
All India	1118948	100	43	32	25

10.4 Percentage of disabled persons in the population					
	Rural	Urban	Male	Female	Person
Daman & Diu	0.9	1.4	0.9	1.3	1.1
All India	1.8	1.5	2	1.5	1.8

Source : NSSO Survey on Disability 2002.M/o MSPI, Govt. of India.

10.5 Prevalence of different types of disability per 100,000 persons							
	Mental retardation	Mental illness	Blindness	Low vision	Hearing	Speech	Locomotor
Daman & Diu	58	44	30	17	169	189	664
All India	94	105	192	77	291	204	1008

Source : NSSO Survey on Disability 2002

10.6 Percentage distribution of disabled persons of age 5 years and above by level of general education				
	not literate	literate		
		upto primary	middle	secondary & above
Daman & Diu	48	28	10	14
All India	55	25	11	9

Source : NSSO Survey on Disability 2002.M/o MSPI, Govt. of India.

11. INFORMATION OF ELDERLY POPULATION

11.1 Size of elderly population (aged 60+) and their share in total population in States and UT

	% of elderly in total population of state/U.T	Number (in thousands) of persons aged 60 & above for different sub-population				
		Persons	Females	Males	Rural	Urban
Daman & Diu	5.1	8	5	3	4	4
All India	7.4	76622	38854	37768	57445	19178

Source : Population census 2001,published in situation analysis of elderly in India, M/o MSPI, GOI.

11.2 Literacy rate for persons aged 60 & above in states

State/UT	Total	Males	Females	Rural	Urban
Daman & Diu	40	66	22	27	52
All India	36	53	20	29	58

Source : Population census 2001,published in situation analysis of elderly in India, M/o MSPI, GOI.

11.3 Percent distribution of aged females with illness or otherwise by their perception about current state of health in States /UTs.

	% aged persons reporting illness	aged person with illness own perception about current state of health				aged person with illness own perception about current state of health			
		excellent/very good	good/fair	poor	total incl. n.r.	excellent/very good	good/fair	poor	total incl. n.r.
Daman & Diu	10	0	87	13	100	4	75	19	100
All India	31	2	54	42	100	5	74	17	100

Source : National Sample Survey, 60th Round

11.4 Percent distribution of aged males with illness or otherwise by their perception about current state of health in States /UTs.

	% aged persons reporting illness	aged person with illness own perception about current state of health				aged person with illness own perception about current state of health			
		excellent/very good	good/fair	poor	total incl. n.r.	excellent/very good	good/fair	poor	total incl. n.r.
Daman & Diu	14	0	53	47	100	8	79	14	100
All India	31	2	59	37	100	8	73	13	100

Source : National Sample Survey, 60th Round

11.5 Per cent distribution of persons aged 60 years and above
by type of living arrangement for major states

	Type of living arrangement				
	Alone	With spouse only	With spouse and other members	With Children	With other relations and non-relations
Daman & Diu	21.3	3.6	31.4	40.3	1.9
All India	5.2	12	44.8	32.1	4.4

11.6 Percent distribution of aged persons living alone
or with spouse only by
location of residence of any child/grand child or sibling

	Location of residence of child/ grand child/ sibling					Estimated number of aged persons living alone or with spouse only
Daman & Diu	8.6	59.1	22.7	9.5	100	11
All India	18.5	36.9	29.4	11.9	100	113377

Source National Sample Survey Organisation, 60th Round(2004)

(C) SOCIO-ECONOMIC STATISTICS

12. SOCIO –ECONOMIC DEVELOPMENT COMPARED SINCE INCEPTION

Sr. No.	Socio-Economic Indicators	Unit	1987-88			2012-13		
			Daman	Diu	Total	Daman	Diu	Total
A)	<u>ADMINISTRATIVE STRUCTURE</u>							
1.	No. of Districts	Nos.	1	1	2	1	1	2
2.	No. of Talukas/Tehsils	Nos.	1	1	2	1	1	2
3.	No. of Blocks	Nos.	1	1	2	1	1	2
4.	No. of Municipal Councils	Nos.	1	1	2	1	1	2
5.	No. of Wards	Nos.	13	10	23	15	13	28
6.	No. of District Panchayats	Nos.	--	--	--	----	1 ----	1
7.	No. of Village Panchayats	Nos.	6	2	8	10	4	14
8.	No. of Villages	Nos.	21	2	23	21	4	25

Sr. No.	Socio-Economic Indicators	Unit	1987-88			2012-13			
			Daman	Diu	Total	Daman	Diu	Total	
B)	<u>POPULATION CHARACTERISTICS</u>								
1.	Area	Sq. Km.	72	40	112	72	40	112	
2.	No. of Residential Houses	Nos.	8305	6035	14340	--	--	59253	
3.	No. of Households	Nos.	8391	6051	14442	50376	10580	60956	
4.	Population Rural	Nos.	27557	22401	49958	32313	28083	60396	
	Urban	Nos.	21003	8020	29023	158860	23991	182851	
	Total	Nos.	48560	30421	78981	191173	52074	243247	
5.	Density	(Per Sq. Km.)	674	760	705	2655	1302	2172	
6.	Sex Ratio	Females per 1000 Males	1017	1139	1062	534	1031	618	
7.	Literacy	Male	%	62.74	56.19	59.46	91.60	91.21	91.54
	Female		%	46.55	34.29	37.92	80.98	76.05	79.54
	Total		%	52.05	48.29	48.29	88.06	83.46	87.10
8.	Percentage of SC Population		%	3.46	3.71	3.56	2.2	3.6	2.5
9.	Percentage of ST Population		%	20.23	0.66	12.70	8.0	0.2	6.3
10.	% of Workers to total population		%	36.19	28.48	33.22	55.20	30.24	49.9

Note : Figures of 1987-88 pertain to Census 1981 and 2011.

Sr. No.	Socio-Economic Indicators	Units	1987-88			# 2012-13		
			Daman	Diu	Total	Daman	Diu	Total
C) <u>VITAL STATISTICS</u>								
a)	Birth Rate	Per 1000 Population	26	29	28	---	---	18.4
b)	Death Rate	"	4	6	5	---	---	4.9
c)	Infant Mortality Rate	Per 1000 live births	13	18	15	---	---	22
D) <u>INFRASTRUCTURE</u>								
1. <u>Medical & Health services</u>								
i)	Hospital	Nos.	1	1	2	1	1	2
ii)	CHC	Nos.	0	0	0	1	1	2
iii)	PHC	Nos.	1	1	2	2	1	3
iv)	Sub Centre	Nos.	9	7	16	20	6	26
v)	No. of Doctors (Medical Officers & Specialist)	Nos.	16	8	24	58	34	92
vi)	No. of Beds	Nos.	70	30	100	172	76	248

Vital statistics for # -2012-13 is based on SRS bulletin

Sr. No.	Socio-Economic Indicators	Units	1987-88			2012-13		
			Daman	Diu	Total	Daman	Diu	Total
2.	<u>Education</u>							
	i) Primary Schools	Nos.	30	20	50	42	22	64
	ii) Middle Schools	Nos.	11	11	22	15	15	30
	iii) Secondary Schools	Nos.	9	6	15	15	13	31
	iv) Higher Sec. Schools	Nos.	1	1	2	7	6	13
	v) College	Nos.	1	0	1	1	--	1
	vi) Polytechnic	Nos.	0	0	0	1	--	1
	vii) ITI	Nos.	1	1	2	1	1	2
	viii) TTI	Nos.	1	1	2	1	1	2
	ix) B.Ed College	Nos.	0	0	0	2	0	2
	x) Dental College	Nos.	0	0	0	1	0	1
3.	<u>Power</u>							
	i) Power Consumption	MUs.	60.42	5.24	65.66	1935.00	45.58	1980.58
	ii) No. of Sub-Station							
	a) 220 KV	Nos.	0	0	0	1	0	1
	b) 66 KV	Nos.	1	0	1	7	1	8
4.	<u>Water Supply</u>							
	i) Water Treatment Plants	Nos.	--	--	--	2	1	3
	ii) Overhead Tanks	Nos.	26	3	29	44	13	57
	iii) Drinking Water Wells	Nos.	40	5	45	40	--*	40
	iv) Stand Posts	Nos.	460	65	525	686	168	854
	v) Borewells with handpump	Nos.	119	--	119	601	51	652
5.	<u>Irrigation</u>							
	i) Irrigation Wells	Nos.	68	37	105	68	--*	68
	ii) Tube Wells	Nos.	--	--	--	11	--	11

* All Wells existing during 1987-88 were turned saline.

Sr. No.	Socio-Economic Indicators	Units	1987-88			2012-13		
			Daman	Diu	Total	Daman	Diu	Total
6.	<u>Fire Service</u>							
	Fire Stations	Nos.	1	1	2	3	1	4
7.	<u>Police</u>							
i)	Police Stations	Nos.	1	1	2	2	1	3
ii)	Police Outposts	Nos.	2	3	5	5	5	10
8.	<u>Transport</u>							
i)	Length of Roads	Kms.	140	60	200	191	78	269
ii)	Motor Vehicles	Nos.	1380	460	1840	79283	17561	96844
9.	No. of Banks	Nos.	4	4	8	23	9	32
10.	No. of Branches	Nos.	8	7	15	33	16	49
11.	Coop-Societies	Nos.	20	19	39	56	47	103
12.	<u>Communication</u>							
i)	Post Office	Nos.	2	1	3	3	4	7
ii)	Telephone Exchange	Nos.	1	1	2	5	3	8

Sr. No.	Socio-Economic Indicators	Units	1987-88			2012-13		
			Daman	Diu	Total	Daman	Diu	Total
F) <u>ECONOMIC DEVELOPMENT</u>								
1.	Agricultural Land							
i)	Total Agricultural Land	Ha.	5710	3850	9560	3111	597	3708
ii)	Cultivable Land	Ha.	430	2180	2610	2832	543	3375
2.	Animal Husbandry							
i)	Dispensary	Nos.	1	1	2	1	1	2
ii)	Veterinary Aid Centre	Nos.	2	1	3	2	1	3
3.	Fisheries							
	Fish Catch	000' tons	10	9	19	1	18	19
4.	Industries							
	Small	Nos.	240	100	340	2873	38	2911
	Medium	Nos.	0	0	0	288	--	288
	Large	Nos.	40	0	40	71	--	71
	Total	Nos.	280	100	380	3232	38	3270

**13. SOCIO- ECONOMIC INDICATORS COMPARED WITH
DADRA & NAGAR HAVELI AND INDIA**

Sr. No.	Particulars	Units	Daman and Diu	Dadra & Nagar Haveli	India
A)	<u>POPULATION DATA</u>				
i)	Area	Sq. Kms	112	491	3287240
ii)	Population	Nos.	243247	343709	1210569
iii)	Urban Population	%	75.2	46.7	31.2
iv)	Density	Per Sq. Km.	2172	700	382
v)	Sex Ratio	Females/ 1000 Males	618	774	943
vi)	Literacy				
	Male	%	91.54	86.46	80.9
	Female	%	79.54	65.93	64.6
	Total	%	87.10	77.65	73.0
vii)	Population of SCs	%	2.5	1.8	16.6
viii)	Population of STs	%	6.3	52.0	8.6
ix)	Literacy of SC	%	85.13	78.25	54.32
x)	Literacy of ST	%	63.42	41.24	47.08
xi)	Decennial Growth Rate	%	53.8	55.9	17.7
xii)	Percentage of Workers	%	49.9	45.6	39.8
xiii)	Percentage of Agricultural Workers to Total Workers	%	0.6	11.3	30.0

Source : Population Census 2011.

Sr. No.	Particulars	Units	Daman and Diu	Dadra & Nagar Haveli	India
xiv)	<u>PERCENTAGE DISTRIBUTION OF CENSUS HOUSES</u>				
1.	<u>BY LIVING CONDITIONS</u>				
i)	Good	%	65.01	52.90	50.21
ii)	Livable	%	33.51	45.14	44.28
iii)	Dilapidated	%	1.48	1.96	5.51
2.	<u>BY OWNERSHIP STATUS</u>				
i)	Owned	%	56.70	68.71	86.66
ii)	Rented	%	37.59	29.05	10.54
iii)	Any other	%	5.71	2.24	2.80
3.	<u>BY SOURCE OF DRINKING WATER</u>				
i)	Tap	%	72.91	28.23	36.70
ii)	Handpump	%	15.65	42.92	35.66
iii)	Tubewell	%	7.76	5.84	5.56
iv)	Well	%	3.44	19.43	18.17
v)	Any other	%	0.24	3.59	3.91
xv)	<u>HOUSEHOLD AMENITIES</u>				
1.	Households with toilet within House	%	43.94	32.56	36.40
2.	Households with electricity	%	97.76	85.99	55.85

Source : Housing Atlas, Census of India, 2001.

Sr. No.	Particulars	Units	Daman and Diu	Dadra & Nagar Haveli	India
B)	<u>DEMORGRAPHIC DATA (2011)</u>				
i)	Birth Rate	Per 1000 Population	18.4	26.1	22.8
ii)	Death Rate	Per 1000 Population	4.9	4.6	7.1
iii)	Natural Growth Rate	Per 1000 Population	13.5	21.4	14.7
iv)	Infant Mortality Rate	Per 1000 Births	22	35	44
C)	<u>INFRASTRUCTURE</u>				
1.	HEALTH				
i)	No. of Doctors (Medical Officers & Specialist)	Per lakh Population	57	11	59
ii)	No. of Nurses	"	77	14	81
iii)	Couple Protection Rate	%	59.80	27.50	46.20
iv)	No. of Hospital Beds	Per lakh Population	153	90	101
2.	TRANSPORT				
i)	Road length	Per 100 sq.km.	240	128	74.8
ii)	Villages Electrified	%	100	100	83.8

Source : Socio Economic Development of DNH
India –Statistical Abstract : India (2007) and SRS Bulletin-2011

14. SOCIO-ECONOMIC INDICATORS COMPARED WITH GUJARAT AND MAHARASHTRA

Sr. No.	Particulars	Units	Daman and Diu	Gujarat	Maharashtra	
1.	Area	Sq. Kms.	112	196024	307713	
2.	No. of Districts	Nos.	2	25	35	
3.	Population	No.	243247	60439692	112374333	
4.	Population Density	Per Sq. Km.	2172	308	365	
5.	Urban Population	%	75.2	42.6	45.2	
6.	Decennial Growth Rate	%	53.8	19.4	15.6	
7.	Population below Poverty Line (1999-2000)	%	4.44	14.07	25.02	
8.	Sex Ratio	No. of females per 1000 males	618	919	929	
9.	Literacy	Male	%	91.5	85.8	88.4
		Female	%	79.5	69.7	75.9
		Total	%	87.1	78.0	82.3
10.	Population of SC	%	2.5	6.7	11.8	
11.	Population of ST	%	6.3	14.8	9.4	
12.	Work Force Part. Rate	%	49.9	41.0	44.0	
13.	Percentage of Agriculture Worker to total workers	%	0.6	27.6	27.3	
15.	Households with toilet within house	%	43.94	44.60	35.09	
16.	Households with electricity	%	97.76	80.41	77.49	
17.	Households with owned house	%	56.70	85.10	80.32	
18.	Census Houses according to condition	Good	%	65.01	52.25	52.61
		Livable	%	33.51	45.02	42.43
		Dilapidated	%	1.48	2.73	4.95
19.	Vital Rates #					
	i) Birth Rate		18.4	21.3	16.7	
	ii) Death Rate		4.9	6.7	6.3	
	iii) Infant Mortality Rate		22	41	25	

Note : Information from Sl. No. 1 to 17 relates to Population Census
Source:#SSR report-2011, RGI & Census Commissioner, New Delhi.

**15. STATEWISE AREA, POPULATION & LITERACY
AS PER POPULATION CENSUS : 2011**

Sl. No.	States/UTs	Area	Population	Literacy (%)		
		(Sq.Kms)	(Lakhs)	Persons	Male	Female
	INDIA	3287240	121056957 ³	73.0	80.9	64.6
	<u>STATE:</u>					
1.	Andhra Pradesh	275045	84580777	67.8	74.9	59.1
2.	Arunachal Pradesh	83743	1383727	65.4	72.6	57.7
3.	Assam	78438	31205576	72.2	77.8	66.3
4.	Bihar	94163	104099452	61.8	71.2	51.5
5.	Chhattisgarh	135191	1055450	86.0	80.3	60.2
6.	Goa	3702	1458545	88.7	92.6	84.7
7.	Gujarat	196024	60439692	78.0	85.5	69.7
8.	Haryana	44212	25351462	75.6	84.1	65.9
9.	Himachal Pradesh	55673	6864602	82.8	89.5	75.9
10.	Jammu & Kashmir	222236	12541302	67.2	76.8	56.4
11.	Jharkhand	79714	32988134	66.4	76.8	55.4
12.	Karnataka	191791	61095297	75.4	82.5	68.1
13.	Kerala	38863	33406061	94.0	96.1	92.1
14.	Madhya Pradesh	308245	72626809	69.3	78.7	59.2
15.	Maharashtra	307713	112374333	82.3	88.4	75.9
16.	Manipur	22327	2570390	79.2	86.1	72.4
17.	Meghalaya	22429	2966889	74.4	76.0	72.9
18.	Mizoram	21081	1097206	91.3	93.3	89.3
19.	Nagaland	16579	1978502	79.6	82.8	76.1
20.	Orissa	155707	41974218	72.9	81.6	64.0
21.	Punjab	50362	27743338	75.8	80.4	70.7
22.	Rajasthan	342239	68548437	66.1	79.2	52.1
23.	Sikkim	7096	610577	81.4	86.6	75.6
24.	Tamil Nadu	130058	72147030	80.1	86.8	73.4
25.	Tripura	10486	3673917	87.2	91.5	82.7
26.	Uttar Pradesh	240928	199812341	67.7	77.3	57.2
27.	Uttarakhand	53483	10086292	78.8	87.4	70.0
28.	West Bengal	88752	91276115	76.3	81.7	70.5

16. UNION TERRITORIESWISE AREA, POPULATION & LITERACY AS PER POPULATION CENSUS : 2011

Sl. No.	States/UTs	Area	Population	Literacy (%)		
		(Sq.Kms)	(Lakhs)	Persons	Male	Female
Union Territories						
1.	A. & N. Islands	8249	380581	86.6	90.3	82.4
2.	Chandigarh	114	1055450	86.0	90.0	81.2
3.	D. & N. Haveli	491	343709	76.2	85.2	64.3
4.	Daman & Diu	112	243247	87.1	91.5	79.5
5.	Delhi	1483	16787941	86.2	90.9	80.8
6.	Lakshadweep	32	64473	91.8	95.6	87.9
7.	Puducherry	479	1247953	85.8	91.3	80.7

17. HUMAN DEVELOPMENT INDEX OF SELECTED COUNTRIES

Sr. No.	Name of Country	Human Development Index (Year 2003)	Rank in the World
1.	Norway	0.963	1
2.	Australia	0.955	3
3.	Canada	0.949	5
4.	U.S.A.	0.944	10
5.	Japan	0.943	11
6.	United Kingdom	0.939	15
7.	Germany	0.930	20
8.	Russian Federation	0.795	62
9.	Sri Lanka	0.751	93
10.	India	0.602	127
11.	Pakistan	0.527	135
12.	Nepal	0.526	136
13.	Bangladesh	0.520	139

Human Development Index = [Life Expectancy Index + Education Index + Income (GDP) Index]

Source : United Nations Development Programme Human Development Report, 2005

18. ESTIMATES OF GROSS FIXED CAPITAL FORMATION FROM SUPRA-REGIONAL SECTORS OF UT OF DAMAN AND DIU

(Rs. in lakhs)

Sl. No.	Sectors/ Years	2004-05	2005-06	2007-08	2007-08	2008-09
	Gross value added at current and constant (2004-05) prices for the years 2009-10 and 2010-11					
1.	Communication	367	767	820	1191	2474
	Public	27	33	25	8	34
	Private	340	734	795	1183	2440
2.	Railways	0	0	0	0	0
3.	Banking & Insurance	134	103	190	278	346
	Public	65	54	70	103	98
	Private	69	49	119	176	248
4.	Central Government Administration	523	2227	2478	2543	5358

Source : Ministry of Stat. & Programme Implementation.

19. GROUP WISE AND GENERAL CONSUMER PRICE INDEX

General Consumer Price Index of Damam and Diu as on March 2011	Food Beverages and tobacco	Fuel and light	Clothing Housing bedding & footwear	Housing	Miscellaneous	General Index
Rural						
Damam & Diu	106	102	103	---	102	104
India	106	109	110	--	106	107
Urban						
Damam & Diu	105	102	104	100	104	104
India	105	106	111	100	104	104
Total						
Damam & Diu	106	102	104	100	103	104
India	106	108	110	100	105	106

Source : Ministry of Stat. & Programme Implementation press release dated 20th June 2011.

20. HOUSEHOLD CONSUMER EXPENDITURE ACROSS SOCIO-ECONOMIC GROUPS

Average Monthly Per Capita Expenditure (MPCE in Rs.) by social group for each sector

	Rural					Urban				
	SC	ST	OBC	Others	All	SC	ST	OBC	Others	All*
Daman & Diu	885	2157	1564	2109	1586	967	2324	1506	2277	1742
DNH	854	2275	962	1418	915	1308	1766	1723	1951	1747
India	873	929	1036	1281	1054	1797	1444	1679	2467	1984

* including n.r.

20.1 Average Monthly Per Capita Expenditure MPCE in (Rs.) by household type for each sector

	Rural						Urban				
	self-empl.in non-agr.	agr. lab	other lab.	self-empl. in agr.	other	all	Self employed	Regular wage/ salary earning	Casual labour	other	all type
Daman & Diu	1533	827	1525	1882	2008	1586	1336	2109	1816	3105	1742
DNH	1561	676	859	822	1373	915	1770	1755	1464	--	1747
India	1111	828	968	1102	1557	1054	1806	2326	1090	3012	1984

* including n.r.

20.2 Average Rural Monthly Per Capita Expenditure MPCE in (Rs.) by size class of land possessed

	Size class of land possessed (hectares)						
	<0.01	0.01-0.40	0.41-1.00	1.01-2.00	2.01-4.00	4.01+	All sizes*
Daman & Diu	1502	2034	2129	3017	--	--	1586
DNH	1081	863	1420	827	1252	--	915
India	1030	1020	1000	1058	1182	1438	1054

* including n.r. Source: NSSO 66th round MOSPI, GOI

(D) DEVELOPMENT STATISTICS

(D) DEVELOPMENT STATISTICS

21. AGRICULTURE

Number and Area of Operational Holdings by Size Class

Social Group : Institutional

Sr. No.	Size Class (in Ha)	No. of Operational Holdings				Area Operated(in Ha.)			
		Individual	Joint	Institutional	Total	Individual	Joint	Institutional	Total
1	2	3	4	5	6	7	8	9	10
1	Below 0.5	M	0	0	0	0.00	0.00	0.00	0.00
		F	0	0	0	0.00	0.00	0.00	0.00
		T	0	0	12	0.00	0.00	2.09	2.09
2	(0.5-1.0)	M	0	0	0	0.00	0.00	0.00	0.00
		F	0	0	0	0.00	0.00	0.00	0.00
		T	0	0	2	0.00	0.00	1.45	1.45
	Marginal	M	0	0	0	0.00	0.00	0.00	0.00
		F	0	0	0	0.00	0.00	0.00	0.00
		T	0	0	14	0.00	0.00	3.54	3.54
3	(1.0-2.0)	M	0	0	0	0.00	0.00	0.00	0.00
		F	0	0	0	0.00	0.00	0.00	0.00
		T	0	0	5	0.00	0.00	6.82	6.82
	Small	M	0	0	0	0.00	0.00	0.00	0.00
		F	0	0	0	0.00	0.00	0.00	0.00
		T	0	0	5	0.00	0.00	6.82	6.82
4	(2.0-3.0)	M	0	0	0	0.00	0.00	0.00	0.00
		F	0	0	0	0.00	0.00	0.00	0.00
		T	0	0	1	0.00	0.00	2.42	2.42

Source : Agriculture Census 2010-11

Totals may not tally due to rounding off (NIC)

Number and Area of Operational Holdings by Size Class

Social Group : Institutional

Sr. No.	Size Class (in Ha)	No. of Operational Holdings				Area Operated(in Ha.)				
		Individual	Joint	Institutional	Total	Individual	Joint	Institutional	Total	
1	2	3		4	5	6	7	8	9	10
5	(3.0-4.0)	M	0	0	0	0	0.00	0.00	0.00	0.00
		F	0	0	0	0	0.00	0.00	0.00	0.00
		T	0	0	1	1	0.00	0.00	3.26	3.26
	Semi Medium	M	0	0	0	0	0.00	0.00	0.00	0.00
		F	0	0	0	0	0.00	0.00	0.00	0.00
		T	0	0	2	2	0.00	0.00	5.68	5.68
6	(4.0 – 5.0)	M	0	0	0	0	0.00	0.00	0.00	0.00
		F	0	0	0	0	0.00	0.00	0.00	0.00
		T	0	0	1	1	0.00	0.00	4.67	4.67
7	(5.0-7.5)	M	0	0	0	0	0.00	0.00	0.00	0.00
		F	0	0	0	0	0.00	0.00	0.00	0.00
		T	0	0	2	2	0.00	0.00	13.24	13.24
8	(7.5-10.0)	M	0	0	0	0	0.00	0.00	0.00	0.00
		F	0	0	0	0	0.00	0.00	0.00	0.00
		T	0	0	3	3	0.00	0.00	27.12	27.12
	Medium	M	0	0	0	0	0.00	0.00	0.00	0.00
		F	0	0	0	0	0.00	0.00	0.00	0.00
		T	0	0	6	6	0.00	0.00	45.03	45.03

Number and Area of Operational Holdings by Size Class

Social Group : Institutional

Sr. No.	Size Class (in Ha)	No. of Operational Holdings				Area Operated(in Ha.)				
		Individual	Joint	Institutional	Total	Individual	Joint	Institutional	Total	
1	2	3	4	5	6	7	8	9	10	
9	(10.0-20.0)	M	0	0	0	0	0.00	0.00	0.00	0.00
		F	0	0	0	0	0.00	0.00	0.00	0.00
		T	0	0	2	2	0.00	0.00	26.88	26.88
10	(20.0 & Above)	M	0	0	0	0	0.00	0.00	0.00	0.00
		F	0	0	0	0	0.00	0.00	0.00	0.00
		T	0	0	0	0	0.00	0.00	0.00	0.00
	Large	M	0	0	0	0	0.00	0.00	0.00	0.00
		F	0	0	0	0	0.00	0.00	0.00	0.00
		T	0	0	2	2	0.00	0.00	26.68	26.88
	All Classes	M	0	0	0	0	0.00	0.00	0.00	0.00
Prev. Census Figure		F	0	0	0	0	0.00	0.00	0.00	0.00
		T	0	0	29	29	0.00	0.00	87.75	87.75
		T	0	0	52 -44.23%	52 -44.23%	0.00	0.00	114.61 -44.23%	114.61 -44.23%

Number and Area of Operational Holdings by Size Class

Social Group : Scheduled Caste

Sr. No.	Size Class (in Ha.)		No. of Operational Holdings				Area Operated(in Ha.)				
			Individual	Joint	Institutional	Total	Individual	Joint	Institutional	Total	
1	2		3	4	5	6	7	8	9	10	
1	Below 0.5	M	127	66	0	193	18.52	10.46	0.00	28.98	
		F	46	23	0	69	7.06	4.26	0.00	11.32	
		T	173	89	0	262	25.58	14.72	0.00	40.30	
2	(0.5-1.0)	M	11	8	0	19	7.87	5.01	0.00	12.88	
		F	6	3	0	9	3.91	1.78	0.00	18.57	
		T	17	11	0	28	11.78	6.79	1.45	1.45	
	Marginal		M	138	74	0	212	26.39	15.47	0.00	41.86
		F	52	26	0	78	10.97	6.04	0.00	17.01	
		T	190	100	0	290	37.36	21.51	0.00	58.87	
3	(1.0-2.0)	M	5	0	0	5	6.31	0.00	0.00	6.31	
		F	0	4	0	4	0.00	5.22	0.00	5.22	
		T	5	4	0	9	6.31	5.22	0.00	11.53	
	Small		M	5	0	0	5	6.31	0.00	0.00	6.31
		F	0	4	0	4	0.00	5.22	0.00	5.22	
		T	5	4	0	9	6.31	5.22	0.00	11.53	
4	(2.0-3.0)	M	1	0	0	1	2.07	0.00	0.00	2.07	
		F	1	0	0	1	2.36	0.00	0.00	2.36	
		T	2	0	0	2	4.43	0.00	2.42	4.43	

Number and Area of Operational Holdings by Size Class

Social Group : Scheduled Caste

Sr. No.	Size Class (in Ha)		No. of Operational Holdings				Area Operated(in Ha.)				
			Individual	Joint	Institutional	Total	Individual	Joint	Institutional	Total	
1	2		3	4	5	6	7	8	9	10	
5	(3.0-4.0)	M	0	1	0	1	0.00	3.24	0.00	3.24	
		F	0	0	0	0	0.00	0.00	0.00	0.00	
		T	0	1	0	1	0.00	3.24	0.00	3.24	
	Semi Medium		M	1	1	0	2	2.07	3.24	0.00	5.31
		F	1	0	0	1	2.36	0.00	0.00	2.36	
		T	2	1	0	3	4.43	3.24	0.00	7.67	
6	(4.0 – 5.0)	M	1	0	0	1	4.18	0.00	0.00	4.18	
		F	0	0	0	0	0.00	0.00	0.00	0.00	
		T	1	0	0	1	4.18	0.00	0.00	4.18	
7	(5.0-7.5)	M	0	0	0	0	0.00	0.00	0.00	0.00	
		F	0	0	0	0	0.00	0.00	0.00	0.00	
		T	0	0	0	0	0.00	0.00	0.00	0.00	
8	(7.5-10.0)	M	0	0	0	0	0.00	0.00	0.00	0.00	
		F	0	0	0	0	0.00	0.00	0.00	0.00	
		T	0	0	0	0	0.00	0.00	0.00	0.00	
	Medium		M	1	0	0	1	4.18	0.00	0.00	4.18
		F	0	0	0	0	0.00	0.00	0.00	0.00	
		T	1	0	0	1	4.18	0.00	0.00	4.18	

Number and Area of Operational Holdings by Size Class

Social Group : Scheduled Caste

Sr. No.	Size Class (in Ha)		No. of Operational Holdings				Area Operated(in Ha.)				
			Individual	Joint	Institutional	Total	Individual	Joint	Institutional	Total	
1	2		3	4	5	6	7	8	9	10	
9.	(10.0-20.0)	M	0	0	0	0	0.00	0.00	0.00	0.00	
		F	0	0	0	0	0.00	0.00	0.00	0.00	
		T	0	0	0	0	0.00	0.00	0.00	0.00	
10.	(20.0 & Above)	M	0	0	0	0	0.00	0.00	0.00	0.00	
		F	0	0	0	0	0.00	0.00	0.00	0.00	
		T	0	0	0	0	0.00	0.00	0.00	0.00	
		Large	M	0	0	0	0	0.00	0.00	0.00	0.00
			F	0	0	0	0	0.00	0.00	0.00	0.00
		T	0	0	0	0	0.00	0.00	0.00	0.00	
All Classes		M	145	75	0	220	38.95	18.71	0.00	57.66	
Prev. Census Figure		F	53	30	0	83	13.33	11.26	0.00	24.59	
		T	198	105	0	303	52.28	29.97	0.00	82.25	
		T	255	77	0	332	87.81	36.46	0.00	124.27	
			-22.35%	36.3%		-8.73%	-40.46%	-17.80%		-33.81%	

**Number and Area of Operational Holdings by Size Class
Social Group : Scheduled Tribe**

Sr. No.	Size Class (in Ha)		No. of Operational Holdings				Area Operated(in Ha.)			
			Individual	Joint	Institutional	Total	Individual	Joint	Institutional	Total
1	2		3	4	5	6	7	8	9	10
1	Below 0.5	M	347	95	0	442	57.78	19.62	0.00	77.40
		F	95	50	0	145	16.57	8.01	0.00	24.58
		T	442	145	0	587	74.35	27.63	0.00	101.98
2	(0.5-1.0)	M	52	30	0	82	35.70	22.12	0.00	57.82
		F	10	6	0	16	7.27	4.07	0.00	11.34
		T	62	36	0	96	42.97	26.19	0.00	69.16
	Marginal	M	399	125	0	524	93.48	41.74	0.00	135.22
		F	105	56	0	161	23.84	12.08	0.00	35.92
		T	504	181	0	685	117.32	53.82	0.00	171.14
3	(1.0-2.0)	M	21	15	0	36	26.55	22.10	0.00	48.65
		F	3	6	0	9	4.04	8.96	0.00	13.00
		T	24	21	0	45	3.69	31.06	0.00	61.65
	Small	M	21	15	0	36	26.55	22.10	0.00	48.65
		F	3	6	0	9	4.04	8.96	0.00	13.00
		T	24	21	0	45	30.59	31.06	0.00	61.65
4	(2.0-3.0)	M	5	0	0	5	12.10	0.00	0.00	12.10
		F	0	0	0	0	0.00	0.00	0.00	0.00
		T	5	0	0	5	12.10	0.00	0.00	12.10

Number and Area of Operational Holdings by Size Class

Social Group : Scheduled Tribe

Sr. No.	Size Class(in Ha)		No. of Operational Holdings				Area Operated(in Ha.)			
			Individual	Joint	Institutional	Total	Individual	Joint	Institutional	Total
1	2		3	4	5	6	7	8	9	10
5	(3.0-4.0)	M	0	0	0	0	0.00	0.00	0.00	0.00
		F	0	0	0	0	0.00	0.00	0.00	0.00
		T	0	0	0	0	0.00	0.00	0.00	0.00
	Semi Medium	M	5	0	0	5	12.10	0.00	0.00	12.10
		F	0	0	0	0	0.00	0.00	0.00	0.00
		T	5	0	0	5	12.10	0.00	0.00	12.10
6	(4.0 – 5.0)	M	0	0	0	0	0.00	0.00	0.00	0.00
		F	0	0	0	0	0.00	0.00	0.00	0.00
		T	0	0	0	0	0.00	0.00	0.00	0.00
7	(5.0-7.5)	M	0	0	0	0	0.00	0.00	0.00	0.00
		F	0	0	0	0	0.00	0.00	0.00	0.00
		T	0	0	0	0	0.00	0.00	0.00	0.00
8	(7.5-10.0)	M	1	0	0	1	9.63	0.00	0.00	9.63
		F	0	0	0	0	0.00	0.00	0.00	0.00
		T	1	0	0	1	9.63	0.00	0.00	9.63
	Medium	M	1	0	0	1	9.63	0.00	0.00	9.63
		F	0	0	0	0	0.00	0.00	0.00	0.00
		T	1	0	0	1	9.63	0.00	0.00	9.63

Number and Area of Operational Holdings by Size Class

Social Group : Scheduled Tribe

Sr. No.	Size Class (in Ha)		No. of Operational Holdings				Area Operated(in Ha.)			
			Individual	Joint	Institutional	Total	Individual	Joint	Institutional	Total
1	2		3	4	5	6	7	8	9	10
9)	(10.0-20.0)	M	0	0	0	0	0.00	0.00	0.00	0.00
		F	0	0	0	0	0.00	0.00	0.00	0.00
		T	0	0	0	0	0.00	0.00	0.00	0.00
10)	(20.0 & Above)	M	0	0	0	0	0.00	0.00	0.00	0.00
		F	0	0	0	0	0.00	0.00	0.00	0.00
		T	0	0	0	0	0.00	0.00	0.00	0.00
	Large	M	0	0	0	0	0.00	0.00	0.00	0.00
		F	0	0	0	0	0.00	0.00	0.00	0.00
		T	0	0	0	0	0.00	0.00	0.00	0.00
	All Classes	M	426	140	0	566	141.76	63.84	0.00	205
Prev. Census Figure		F	108	62	0	170	27.88	21.04	0.00	48.92
		T	534	202	0	736	171.20	84.88	0.00	254.52
		T	513	115	0	628	87.81	63.49	0.00	234.69
			-4.09%	75.65%		-17.20%	-0.91%	-33.69%		-8.45%

**Number and Area of Operational Holdings by Size Class
Social Group : Others**

Sr. No.	Size Class (in Ha)		No. of Operational Holdings				Area Operated(in Ha.)			
			Individual	Joint	Institutional	Total	Individual	Joint	Institutional	Total
1	2		3	4	5	6	7	8	9	10
1	Below 0.5	M	3499	1071	0	4570	544.17	175.93	0.00	720.10
		F	849	387	0	1236	127.15	68.05	0.00	195.20
		T	4348	1458	0	5806	671.32	243.98	0.00	915.30
2	(0.5-1.0)	M	538	186	0	724	372.24	129.56	0.00	501.80
		F	123	74	0	197	84.31	52.00	0.00	136.31
		T	661	260	0	921	456.55	181.56	0.00	638.11
	Marginal	M	4037	1257	0	5294	916.41	305.49	0.00	1221.90
		F	972	461	0	1433	211.46	120.05	0.00	331.51
		T	5009	1718	0	6727	1127.87	425.54	0.00	1553.41
3	(1.0-2.0)	M	194	118	0	312	264.16	162.61	0.00	426.77
		F	49	38	0	87	66.55	48.73	0.00	115.28
		T	243	156	0	399	330.71	211.34	0.00	542.05
	Small	M	194	118	0	312	264.16	162.61	0.00	426.77
		F	49	38	0	87	66.55	48.73	0.00	115.28
		T	243	156	0	399	330.71	211.34	0.00	542.05
4	(2.0-3.0)	M	41	33	0	74	92.20	75.85	0.00	168.05
		F	11	10	0	21	26.26	22.59	0.00	48.85
		T	52	43	0	95	118.46	98.44	0.00	216.90

Number and Area of Operational Holdings by Size Class

Social Group : Others

Sr. No.	Size Class(in Ha)		No. of Operational Holdings				Area Operated(in Ha.)				
			Indivi- dual	Joint	Institu- tional	Total	Indivi- dual	Joint	Institu- tional	Total	
1	2		3	4	5	6	7	8	9	10	
5	(3.0-4.0)	M	8	15	0	23	27.53	50.94	0.00	78.47	
		F	4	5	0	9	13.16	16.74	0.00	29.90	
		T	12	20	0	32	40.69	67.68	0.00	108.37	
	Semi Medium		M	49	48	0	97	119.73	126.79	0.00	246.52
		F	15	15	0	30	39.42	39.33	0.00	78.75	
		T	64	63	0	127	159.15	166.12	0.00	325.27	
6	(4.0 – 5.0)	M	5	3	0	8	21.60	14.84	0.00	36.44	
		F	4	1	0	5	17.53	4.80	0.00	22.33	
		T	9	4	0	13	39.13	19.64	0.00	58.77	
7	(5.0-7.5)	M	4	4	0	8	24.70	29.43	0.00	54.13	
		F	1	2	0	3	5.39	13.31	0.00	18.70	
		T	5	6	0	11	30.09	42.74	0.00	72.83	
8	(7.5-10.0)	M	0	1	0	1	0.00	7.99	0.00	7.99	
		F	3	0	0	3	27.42	0.00	0.00	27.42	
		T	3	1	0	4	27.42	7.99	0.00	35.41	
	Medium		M	9	8	0	17	46.30	52.26	0.00	98.56
		F	8	3	0	11	50.34	18.11	0.00	68.45	
		T	17	11	0	28	96.64	70.37	0.00	167.01	

Number and Area of Operational Holdings by Size Class

Social Group : Others

Sr. No.	Size Class (in Ha)	No. of Operational Holdings				Area Operated(in Ha.)				
		Individual	Joint	Institutional	Total	Individual	Joint	Institutional	Total	
1	2	3	4	5	6	7	8	9	10	
9	(10.0-20.0)	M	1	2	0	3	16.20	23.55	0.00	39.75
		F	1	0	0	1	10.71	0.00	0.00	10.71
		T	2	2	0	4	26.91	23.55	0.00	50.46
10	(20.0 & Above)	M	1	1	0	2	54.44	28.18	0.00	82.62
		F	0	0	0	0	0.00	0.00	0.00	0.00
		T	1	1	0	2	54.44	28.18	0.00	82.62
	Large	M	2	3	0	5	70.64	51.73	0.00	122.37
		F	1	0	0	1	10.71	0.00	0.00	10.71
		T	3	3	0	6	81.35	51.73	0.00	133.08
	All Classes	M	4291	1434	0	5725	1417.24	698.88	0.00	2116.12
	Prev. Census Figure	F	1045	517	0	1562	378.48	226.22	0.00	604.70
		T	5336	1951	0	7287	1795.72	925.10	0.00	2720.82
			5314 0.41 %	1297 50.42%	0	6611 10.23 %	2540.86 -29.33%	810.99 -14.07%	0.00	3351.85 -18.83%

Number and Area of Operational Holdings by Size Class
Social Group : All Social Group

Sr. No	Size Class (in Ha)		No. of Operational Holdings				Area Operated(in Ha.)			
			Individual	Joint	Institutional	Total	Individual	Joint	Institutional	Total
1	2		3	4	5	6	7	8	9	10
1	Below 0.5	M	3973	1232	0	5205	620.47	206.01	0.00	826.48
		F	990	460	0	1450	150.78	80.32	0.00	231.10
		T	4963	1692	12	6667	771.25	286.33	2.09	1059.67
2	(0.5-1.0)	M	601	224	0	825	415.81	156.69	0.00	572.50
		F	139	83	0	222	95.49	57.85	0.00	153.34
		T	740	307	2	1049	511.30	214.54	1.45	727.29
	Marginal	M	4574	1456	0	6030	1036.28	362.70	0.00	1398.98
		F	1129	543	0	1672	246.27	138.17	0.00	384.44
		T	5703	1999	14	7716	1282.55	500.87	3.54	1786.96
3	(1.0-2.0)	M	220	133	0	353	297.02	184.71	0.00	481.73
		F	52	48	0	100	70.59	62.91	0.00	133.50
		T	272	181	5	458	367.61	247.62	6.82	622.05
	Small	M	220	133	0	353	297.02	184.71	0.00	481.73
		F	52	48	0	100	70.59	62.91	0.00	133.50
		T	272	181	5	458	367.61	247.62	6.82	622.05
4	(2.0-3.0)	M	47	33	0	80	106.37	75.85	0.00	182.22
		F	12	10	0	22	28.62	22.59	0.00	51.21
		T	59	43	1	103	134.99	98.44	2.42	235.85

Number and Area of Operational Holdings by Size Class
Social Group : All Social Group

Sr. No.	Size Class (in Ha)		No. of Operational Holdings				Area Operated(in Ha.)				
			Individual	Joint	Institutional	Total	Individual	Joint	Institutional	Total	
1	2		3	4	5	6	7	8	9	10	
5	(3.0-4.0)	M	8	16	0	24	27.53	54.18	0.00	81.71	
		F	4	5	0	9	13.16	16.74	0.00	29.90	
		T	12	21	0	34	40.69	70.92	3.26	114.87	
	Semi Medium		M	55	49	0	104	133.90	130.03	0.00	263.93
			F	16	15	0	31	41.78	39.33	0.00	81.11
			T	71	64	0	137	175.68	169.36	5.68	350.72
6	(4.0 – 5.0)	M	6	3	0	9	25.78	14.84	0.00	40.62	
		F	4	1	0	5	17.53	4.80	0.00	22.33	
		T	10	4	0	15	43.31	19.64	4.67	67.62	
7	(5.0-7.5)	M	4	4	0	8	24.70	29.43	0.00	54.13	
		F	1	2	0	3	5.39	13.31	0.00	18.70	
		T	5	6	0	13	30.09	42.74	13.24	86.07	
8	(7.5-10.0)	M	1	1	0	2	9.63	7.99	0.00	17.62	
		F	3	0	0	3	27.42	0.00	0.00	27.42	
		T	4	1	0	8	37.05	7.99	27.12	72.16	
		Medium		M	11	8	0	19	60.11	52.26	0.00
			F	8	3	0	11	50.34	18.11	0.00	68.45
			T	19	11	0	36	110.45	70.37	45.03	225.85

Number and Area of Operational Holdings by Size Class

Social Group : All Social Group

Sr. No.	Size Class (in Ha)		No. of Operational Holdings				Area Operated(in Ha.)				
			Individual	Joint	Institutional	Total	Individual	Joint	Institutional	Total	
1	2		3	4	5	6	7	8	9	10	
9	(10.0-20.0)	M	1	2	0	3	16.20	23.55	0.00	39.75	
		F	1	0	0	1	10.71	0.00	0.00	10.71	
		T	2	2	2	6	26.91	23.55	26.88	77.14	
10	(20.0 & Above)	M	1	1	0	2	54.44	28.18	0.00	82.62	
		F	0	0	0	0	0.00	0.00	0.00	0.00	
		T	1	1	0	2	54.44	28.18	0.00	82.62	
	Large		M	2	3	0	5	70.64	51.73	0.00	122.37
		F	1	0	0	1	10.71	0.00	0.00	10.71	
		T	3	3	2	8	81.35	781.43	26.68	159.76	
	All Classes		M	4862	1649	0	6511	1597.95	258.52	0.00	2379.38
Prev. Census Figure		F	1206	609	0	1815	419.69	1039.95	0.00	678.21	
		T	6068	2258	29	8355	2017.64	910.94	87.75	3145.34	
		T	6082 0.0%	1489 51.6 5%	52 -44.23%	7623 -9.60%	2799.87 -27.94%	810.99 -14.16%	114.61 -23.44%	3825.42 -17.78%	

Source : Agriculture Census 2010-11

Totals may not tally due to rounding off (NIC)

22. ANIMAL HUSBANDRY

Sr. No.	Particulars	Unit	Daman District	Diu District	Daman and Diu
22.1	<u>BASIC INFRASTRUCTURE</u>				
i)	Veterinary Hospitals	Nos.	Nil	Nil	Nil
ii)	Veterinary Dispensaries	Nos.	1	1	2
iii)	Veterinary Aid Centers	Nos.	2	1	3
iv)	Veterinary Doctors	Nos.	1	1	2
v)	Veterinary Assistants	Nos.	5	3	8
vi)	Govt. Dairy Farms	Nos.	--	--	--
vii)	Govt Poultry Farm	Nos.	1	1	2
viii)	Govt. Emu Demonstration Farm	Nos.	1	0	1
ix)	No. of Slaughter Houses				
	Registered	Nos.	2	1	3
	Unregistered	Nos.	11	12	23

Sources : i) Veterinary Office, Daman and Diu

ii) Block Dev. Office

iii) Municipal Councils

Sr. No.	Particulars	Unit	Daman District	Diu District	Daman and Diu
22.2	<u>LIVESTOCK POPULATION</u>				
	<u>CATTLE</u>				
a)	<u>CROSS BRED CATTLE</u>				
	i) Male	Nos.	76	0	76
	ii) Female	Nos.	32	0	32
	Total (a)	Nos.	108	0	108
b)	<u>INDIGENOUS CATTLE</u>				
	i) Male	Nos.	1230	647	1877
	ii) Female	Nos.	1928	1371	3299
	Total (b)	Nos.	3158	2018	5176
	TOTAL CATTLE (a+b)	Nos.	3266	2018	5284
c)	<u>BUFFALOES</u>				
	i) Male	Nos.	307	45	352
	ii) Female	Nos.	920	118	1038
	Total (c)	Nos.	1227	163	1390
d)	Sheep	Nos.	0	0	0
e)	Goats	Nos.	1169	1397	2566
f)	Horse and Ponies	Nos.	9	0	9
g)	Rabbits	Nos.	0	14	14
h)	Pigs	Nos.	170	0	170
i)	Camels	Nos.	0	1	1
j)	Dogs	Nos.	149	90	239
k)	Poultry	Nos.	20728	5003	25731
	Total Live Stock	Nos.	26718	8686	35404

Source : 18th Quinquennial Live Stock Census, 2007.

Sr. No.	Particulars	Unit	Daman District	Diu District	Daman and Diu
22.3	<u>LIVE STOCK PRODUCTION</u>				
i)	Meat				
a)	Goat & Sheep				
	No. of animals slaughtered	Nos	12324	3310	15634
	Meat production	000 Tonnes	246	66	312
b)	Cattle/ Beef				
	No. of animals slaughtered	Nos	1427	Nil	1427
	Meat production	000 Tonnes	143	Nil	143
ii)	Eggs Production	Lakhs Nos	---	---	14.19
iii)	Milk production	Tonnes	---	---	888

Source : Livestock Product Survey, Daman.

23. BANKING

Sr. No.	Particulars	Unit	Daman District	Diu District	Daman and Diu
<u>BANKS AND BRANCHES</u>					
1)	No. of Banks	No.	23	9	32
	i) Scheduled Banks	No.	14	5	21
	ii) Cooperative Banks	No.	2	1	3
2)	Branches	No.	33	16	49
	i) Scheduled Banks	No.	18	9	27
	ii) Co-operative Banks	No.	6	4	10
3)	Banking Offices	No.	33	16	49
4)	Private Banks	No.	9	3	12

Source : Lead Bank Office Daman/Diu .

24. CENSUS AND SURVEYS

ACTIVITIES OF DEPARTMENT OF PLANNING & STATISTICS DURING 2012-13

24.1 PREPARATION OF PLAN

- i) Draft Annual Plan 2013-14 and 12th Five Year Plan 2012-17 for U.T of Daman and Diu

24.2 CONDUCT OF CENSUS & SURVEYS

- i) The Department has successfully completed 9th Agriculture Census 2010-11 and table No.1 has been released.
- ii) Input Survey of 9th Agriculture Census 2011-12 is under progress.
- iii) Crop Estimation Survey 2012 and livestock product survey is under progress.
- iv) Field work of 6th Economic Census has been completed .

Source : Department of Planning & Statistics, Daman.

25. CIVIL SUPPLY

Sr. No.	Particulars	Unit	Daman District	Diu District	Daman and Diu
25.1	FAIR PRICE SHOPS AND RATION CARDS				
	1. Fair Price Shops	Nos.	38	13	51
	2. Rations Cards	AAY*	1110	249	1469
		BPL*	1867	881	2727
		APL*	23202	13440	33140
		Total	26179	14570	40749
	3. Population covered				
		AAY	5418	647	6065
		BPL	9282	3996	13278
		APL	100748	55131	155879
		Total	115448	59774	175222
25.2	PDS PRICES				
	Rice	APL	Rs. per Kg.	9.30	10.13
		BPL	Rs. per Kg.	6.45	6.15
		AAY	Rs. per Kg.	3.00	3.00
	Wheat	BPL	Rs. per Kg.	4.80	4.80
		AAY	Rs. per Kg..	2.00	2.00
		APL	Rs. per Kg..	6.90	07.77
	Kerosene		Rs. per litre	14.90	15.60
25.3	QUANTITY ON RATION CARD (Per month)				
	Rice	APL	Kg/Card	2	5
		BPL	Kg/Card	34	25
		AAY	Kg/Card	33	25
	Wheat	APL	Kg/Card	5	0
		BPL	Kg/Card	3	3
		AAY	Kg/Card	2	10
	Kerosene				
	i) Without L.P.G.	Litre/ Person		1	3
	ii) With L.P. G.				
	1 Cylinder	Litre/ Card		1.5	2
	2 Cylinders	Litre/ Card		0	0
25.4	INCOME LIMIT FOR POVERTY LINE				
	Per Capita Monthly Income			Rural = Rs. 266.67	Urban = Rs. 419.98
	(As per O.M. dated 8/10/97 from Ministry of Urban Affairs & Employment).				

Source : Civil Supply Offices, Daman and Diu

* APL – Above Poverty Line

* BPL – Below Poverty Line

* AAY- Antyodaya Anna Yojana

26. COMMUNICATION

Sr. No.	Particulars	Unit	Daman District	Diu District	Daman and Diu
<u>COMMUNICATION FACILITIES</u>					
i)	Post				
	a) Post Offices	Nos.	3	4	7
	b) Branch Post Offices	Nos.	10	2	12
ii)	Telephone Offices	Nos.	5	1	6
iii)	Telephone Exchanges	Nos.	5	3	8
iv)	Telephone Connections	Nos.	4379	5866	10215
	Mobile Connections (BSNL)	Nos.	N.A	2500	2500
v)	Radio Relay Stations (AIR)	Nos.	1	1	2
vi)	T.V. Relay Stations	Nos.	1	1	2

Source : Post & Telegraph Office Daman/Diu
Telephone Exchange Daman

27. CO – OPERATION

Sr. No.	Particulars	Unit	Daman District	Diu District	Daman and Diu
27.1	<u>COOPERATIVE SOCIETIES</u>				
i)	No. of Co-operative Societies	Nos.	56	47	103
ii)	Total Membership	Nos.	25906	7675	33581
iii)	Working Capital	Rs.in lakh	717.21	220	937.21
iv)	Profit	- do -	72.86	17.40	90.26
v)	Loss	- do -	22.17	6.80	28.97
27.2	<u>OTHER SOCIETIES (REGISTERED UNDER SOCIETY REGISTRATION ACT, 1860)</u>				
	<u>CALENDAR YEAR</u>				
1.	Upto 1986	Nos.	27	0	27
2.	1987-1990	Nos.	16	0	16
3.	1991-1995	Nos.	29	0	29
4.	1996-2000	Nos.	52	0	52
5.	2001-2005	Nos.	75	20	95
6.	2006-2010	Nos.	13	4	17
	Total		212	24	236

Source : Cooperative Societies – Office of Registrar of Cooperative Societies, Daman.

28. EDUCATION

28.1 CLASS WISE ENROLMENT (AS ON 30/09/2012)

Class	Unit	Daman			Diu			Daman and Diu		
		Boys	Girls	Total	Boys	Girls	Total	Boys	Girls	Total
I	Nos.	1677	1324	3001	531	436	967	2208	1760	3968
II	Nos.	1525	1243	2768	517	488	1005	2042	1731	3773
III	Nos.	1439	1181	2620	506	489	995	1945	1670	3615
IV	Nos.	1432	1159	2591	503	504	1007	1935	1663	3598
V	Nos.	1302	1071	2373	549	572	1121	1851	1643	3494
VI	Nos.	1339	1067	2406	572	534	1106	1911	1601	3512
VII	Nos.	1171	959	2130	585	559	1144	1756	1518	3274
VIII	Nos.	1213	932	2145	591	567	1158	1804	1499	3303
IX	Nos.	947	794	1741	547	498	1045	1494	1292	2786
X	Nos.	848	795	1643	590	610	1200	1438	1405	2843
XI	Nos.	727	660	1387	418	317	735	1145	977	2122
XII	Nos.	729	640	1369	345	280	625	1074	920	1994
Total	Nos.	14349	11825	26174	6254	5854	12108	20603	17679	38282

28.2 CLASS WISE ENROLMENT OF SC STUDENTS (AS ON 30/09/2012)

Class	Unit	Daman			Diu			Total		
		Boys	Girls	Total	Boys	Girls	Total	Boys	Girls	Total
I	Nos.	49	36	85	19	13	32	68	49	117
II	Nos.	40	41	81	17	21	38	57	62	119
III	Nos.	43	37	80	23	17	40	66	54	120
IV	Nos.	44	38	82	16	14	30	60	52	112
V	Nos.	35	46	81	12	18	30	47	64	111
VI	Nos.	70	54	124	21	12	33	91	66	157
VII	Nos.	58	55	113	29	19	48	87	74	161
VIII	Nos.	59	53	112	29	15	44	88	68	156
IX	Nos.	64	59	123	18	16	34	82	75	157
X	Nos.	55	49	104	33	21	54	88	70	158
XI	Nos.	61	46	107	17	16	33	78	62	140
XII	Nos.	47	43	90	15	17	32	62	60	122
Total	Nos.	625	557	1182	249	199	448	874	756	1630

28.3 CLASS WISE ENROLMENT OF ST STUDENTS (AS ON 30/09/2012)

Class	Unit	Daman			Diu			Total		
		Boys	Girls	Total	Boys	Girls	Total	Boys	Girls	Total
I	Nos.	170	127	297	3	1	4	173	128	301
II	Nos.	151	139	290	3	1	4	154	140	294
III	Nos.	155	139	294	0	1	1	155	140	295
IV	Nos.	209	168	377	1	1	2	210	169	379
V	Nos.	198	181	379	1	0	1	199	181	380
VI	Nos.	234	193	427	2	4	6	227	190	417
VII	Nos.	187	189	376	0	1	1	182	180	362
VIII	Nos.	206	176	382	3	2	5	203	172	375
IX	Nos.	161	152	313	7	1	8	168	153	321
X	Nos.	175	138	313	2	1	3	177	139	316
XI	Nos.	125	123	248	3	1	4	128	124	252
XII	Nos.	146	109	255	2	3	5	148	112	260
Total	Nos.	2117	1834	3951	27	17	44	2144	1851	3995

28.4 CLASS WISE ENROLMENT OF MINORITY STUDENTS (AS ON 30/09/2012)

Class	Unit	Daman			Diu			Total		
		Boys	Girls	Total	Boys	Girls	Total	Boys	Girls	Total
I	Nos.	197	154	351	32	20	52	229	174	403
II	Nos.	166	158	324	43	33	76	209	191	400
III	Nos.	196	164	360	30	21	51	226	185	411
IV	Nos.	179	131	310	32	28	60	211	159	370
V	Nos.	153	117	270	36	39	75	189	156	345
VI	Nos.	157	152	309	55	36	91	212	188	400
VII	Nos.	140	120	260	49	35	84	189	155	344
VIII	Nos.	136	107	243	41	30	71	177	137	314
IX	Nos.	98	88	186	42	35	77	140	123	263
X	Nos.	80	80	160	48	20	68	128	100	228
XI	Nos.	58	45	103	30	10	40	88	55	143
XII	Nos.	45	40	85	16	9	25	61	49	110
Total	Nos.	1605	1356	2961	454	316	770	2059	1672	3731

28.5 CLASS WISE ENROLMENT OF OBC STUDENTS (AS ON 30/09/2012)

Class	Unit	Daman			Diu			Total		
		Boys	Girls	Total	Boys	Girls	Total	Boys	Girls	Total
I	Nos.	173	150	333	403	355	758	572	514	1086
II	Nos.	190	127	317	404	384	788	594	511	1105
III	Nos.	208	147	355	389	408	797	597	555	1152
IV	Nos.	210	185	395	402	429	831	612	614	1226
V	Nos.	211	176	387	440	479	919	651	655	1306
VI	Nos.	248	208	449	526	461	987	770	666	1436
VII	Nos.	229	185	406	506	481	987	729	664	1393
VIII	Nos.	301	216	511	517	508	1025	813	723	1536
IX	Nos.	274	240	514	532	561	1093	806	801	1607
X	Nos.	253	263	516	458	436	894	711	699	1410
XI	Nos.	291	263	554	335	262	597	626	525	1151
XII	Nos.	300	307	607	215	173	388	515	480	995
Total	Nos.	2888	2477	5365	5127	4937	10064	8015	7414	15429

Sr. No.	Particulars	Unit	Daman District	Diu District	Daman and Diu
28.6	<u>STRENGTH OF TEACHERS</u>				
i)	Primary Teachers	Nos.	254	172	426
ii)	Assistant Teachers	Nos.	103	117	220
iii)	Teachers Grade I	Nos.	38	45	83
iv)	Head Masters (Primary)	Nos.	28	8	36
v)	Head Masters (Middle)	Nos.	10	11	21
vi)	Head Masters (High School)	Nos.	8	5	13
vii)	Principal, Higher Secondary School	Nos.	4	2	6
viii)	Drawing Teachers	Nos.	8	7	15
ix)	P.T. Teachers	Nos.	16	13	29
x)	Music Teachers	Nos.	0	2	2
xi)	Laboratory Assistants	Nos.	12	5	17
xii)	A.D.E.I	Nos.	4	1	5
	Total	Nos.	485	388	873

Source : Department of Education, Daman.

Sr. No.	Particulars	Unit	Daman District			Diu District			Daman & Diu	
			Govt	Private		Govt	Private			Total
				Aided	Unaided		Aided	Unaided		
28.7	<u>SCHOOLS & COLLEGE</u>									
a)	<u>General</u>									
i)	Pre-Primary	Nos.	5	0	4	8	0	2	19	
ii)	Primary	Nos.	34	0	8	19	0	3	64	
iii)	Middle	Nos.	15	0	0	12	0	3	30	
iv)	Secondary	Nos.	12	5	1	11	1	1	31	
v)	Higher Secondary	Nos.	5	1	1	5	0	1	13	
iv)	Graduation	Nos.	1	0	0	0	0	0	1	
	Total	Nos.	72	6	14	55	1	10	161	
b)	<u>Other Schools</u>									
i)	Ashramshala (Tribal Boys)	Nos.	2	0	0	0	0	0	2	
ii)	Navodaya Vidyalaya	Nos.	1	0	0	0	0	0	1	
iii)	Central School	Nos.	0	0	1	1	0	0	2	
	Total	Nos.	3	0	1	1	0	0	5	
c)	<u>Technical</u>									
i)	Polytechnic	Nos.	1	0	0	0	0	0	1	
ii)	B.Ed.	Nos.	0	1	1	0	0	0	2	
iii)	P.T.C.	Nos.	0	0	2	0	0	1	3	
iv)	T.T.I.	Nos.	1	0	0	1	0	0	2	
v)	I.T.I.	Nos.	1	0	0	1	0	0	2	
vi)	Dental College	Nos.	0	0	1	0	0	0	1	
	Total	Nos.	3	1	4	2	0	0	11	

Sr. No.	Particulars	Unit	Daman District	Diu District	Daman and Diu
28.8	<u>LIBRARIES</u>				
i)	College Library	Nos.	1	0	1
ii)	Municipal Library	Nos.	2	2	4
iii)	District Library	Nos.	1	1	2
iv)	Village Library	Nos.	2	2	4

Source : Department of Education, Daman.

Sr. No.	Particulars	Unit	Daman and Diu			
28.9	EDUCATIONAL OUTPUT					
1)	Government College, Daman		Degree Courses			
	Year		B.A.	B.Sc.	B.Com.	
	2007-08		56	21	19	
	2008-09	No. of Students passed	25	5	24	
	2009-10		48	11	21	
	2010-11		227	52	80	
	2011-12		223	57	71	
			Diploma Courses			
2)	Government Polytechnic, Daman		Information Technology	Chemical Engineering	Mechanical Engineering	Civil Engineering
	2008-09	No. of	22	19	23	21
	2009-10	Students	21	18	20	23
	2010-11	passed	24	22	28	18
	2011-12		23	16	24	20
	2012-13		16	15	21	19
3)	I.T.I.		Daman	Diu	Total	
	2008-09		108	115	223	
	2009-10	No. of Students passed	124	99	223	
	2010-11		124	100	224	
	2011-12		174	84	258	
	2012-13		134	90	224	

Source : 1. Government College, Daman.
2. Government Polytechnic, Daman.
3. ITI, Daman and ITI, Diu.

29. EMPLOYMENT

Sr. No.	Particulars	Unit	Daman District	Diu District	Daman and Diu
29.1	<u>EMPLOYMENT THROUGH EMPLOYMENT EXCHANGE</u>				
a)	No. of Employment Exchanges	Nos.	1	1	2
b)	No. of persons registered				
	(i) SC	Nos.	341	279	620
	(ii) ST	Nos.	424	09	433
	(iii) General	Nos.	2989	3828	6817
	Total	Nos.	3754	4116	7870
	(iv) Skilled	No.	2241	2788	5029
	(v) Unskilled	Nos.	550	349	899
	(vi) Degree holders	Nos.	531	696	1227
	(vii) Medical Professional	Nos.	72	14	86
	(viii) Engineering	Nos.	70	47	117
	(ix) ITI trained	Nos.	180	131	311
	(x) Polytechnic diploma holders	Nos.	110	66	176

Source : Chief Inspector of Factories and Boilers, Daman and Diu.

Sr. No.	Particulars	Unit	I.T.I Daman	I.T.I Diu	Total
29.2	<u>TRADES IN ITIs</u>				
i)	Fitter	Nos.	3	2	5
ii)	Refrigeration & Air Conditioner Mechanic	Nos.	2	0	2
iii)	Electrician	Nos.	2	2	4
iv)	Wireman	Nos.	0	2	2
v)	Turner	Nos.	2	0	2
vi)	Welder	Nos.	1	1	2
vii)	Cutting and Sewing	Nos.	1	1	2
viii)	Computer Operator & Programming Assistant	Nos.	1	1	2
ix)	Information Technology and Electronics System Maintenance	Nos.	1	0	1
x)	Plastic Processing Operator Trade	Nos.	1	0	1
xi)	Electronics Mechanic	Nos.	0	1	1
xii)	Diesel Mechanic	Nos.	0	1	1

Sr. No.	Particulars	Unit	Daman and Diu
29.3	<u>EMPLOYMENT AND EMOLUMENTS IN INDUSTRIES</u>		
1)	No. of Workers employed		
	i) Directly Employed		
	a) Men	Nos.	58171
	b) Women	Nos.	10585
	Total (Directly)	Nos.	68756
	ii) Employed through Contractors	Nos.	16894
	Total (all workers)	Nos.	85650
2)	Total Mandays Employed	(in '000)	33009
3)	Wages and Salary	Rs. In lakh	103522

Source : Annual Surveys of Industries 2009-10,
Ministry of Statistics and Prog. Implementation.

30. FIRE SERVICE

Sr. No.	Category	Unit	Daman District	Diu District	Daman and Diu
1.	Fire Station	Nos.	3	1	4
2.	<u>Fire Fighters</u>				
	i) Assistant Divisional Fire Officer	Nos.	1	--	1
	ii) Station Fire Officer	Nos.	4	0	4
	iii) Asst. Station Fire Officer	Nos.	12	1	13
	iv) Leading Fireman	Nos.	12	4	16
	v) Fireman	Nos.	42	09	51
	vi) Driver Operator	Nos.	23	03	26
3.	Fire Extinguishing Vehicles				
	i) Heavy Water Tender	Nos.	3	0	3
	ii) Light Water Tender	Nos.	1	1	2
	iii) Rescue Tender	Nos.	1	0	1
	iv) Light Rescue Tender	Nos.	1	0	1
	v) Water Brouser	Nos.	1	0	1
	vi) Ambulance	Nos.	2	1	3

Source : Fire Service, Daman and Diu

31. FISHERIES

Sr. No.	Particulars	Unit	Daman District	Diu District	Daman and Diu
31.1	<u>FISHING GEARS CRAFTS</u>				
a)	Fishing Vessels				
i)	Gill Netters	Nos.	195	224	419
ii)	Traditional Crafts- Non Mechanised/	Nos.	19	234	253
iii)	Trawlers	Nos.	3	748	751
iv)	Bag Netters	Nos.	42	9	51
	Total	Nos.	259	1215	1474
b)	Fishing Gears	Nos.	48235	164130	212365
31.2	<u>FISH PRODUCTION</u>	'000 Tonnes	1.145	18.20	19.34
31.3	<u>FACILITIES FOR FISHING</u>				
i)	NOC issued for fishing (after monsoon)	Nos.	183	1215	1398
ii)	Diesel permits issued to get sales tax free diesel	Nos.	168	874	1042
iii)	Identity cards issued for active fishermen and fisherwomen	Nos.	4943	5519	10462
iv)	Movement book issued for fishing vessel	Nos.	181	1215	1396

Source :Department of Fisheries.

32. FORESTS AND WILDLIFE

Sr. No.	Particulars	Unit	Daman District	Diu District	Daman and Diu
32.1	<u>INFRASTRUCTURE</u>				
i)	No. of Divisions	Nos.	---	1	---
ii)	No. of Ranges	Nos.	1	1	2
iii)	No. of Forest Check Posts	Nos.	4	2	6
iv)	No. of Guards and Sepoys (Sanctioned posts)	Nos.	21	6	27
v)	Forest Area				
	(a) Reserved Forest	Ha.	23.90	Nil	23.90
	(b) Proposed Reserved Forest	Ha.	67.35	516.70	584.05
	Total	Ha.	91.25	516.70	607.95
vi)	Bird Sanctuaries	Nos.	-	1	1
		Area (Ha)	--	219	219

Source : Forest Department, Daman & Diu.

33. HEALTH

Sr. No.	Particulars	Unit	Daman District	Diu District	Daman and Diu
33.1	<u>HEALTH INFRASTRUCTURE</u>				
i)	Hospitals	Nos.	1	1	2
ii)	C. H. C	Nos.	1	1	2
iii)	P. H. C	Nos.	2	1	3
iv)	Sub-Centre	Nos.	20	6	26
v)	Bed Strength	Nos.	172	76	248
vi)	Ayurvedic Unit	Nos.	3	3	6
vii)	Blood Bank	Nos.	1	0	1
viii)	Tele Medicine Unit	Nos.	2	1	3
ix)	Manochikista Kendra	Nos.	1	0	1
x)	Intigrated Counseling & Testing Centre (HIV)	Nos.	3	1	4
xi)	Trauma Centre	Nos.	1	--	1
33.2	<u>HEALTH STAFF</u>				
i)	Doctors (Medical Officers & Specialist)	Nos.	58	34	92
ii)	Staff Nurses	Nos.	66	42	108
iii)	Health Workers (F)/ANM	Nos.	45	14	59
iv)	Health Workers (M)/BHW	Nos.	20	4	24
v)	Ward Sister	Nos.	10	2	13

Sr. No.	Particulars	Unit	Daman and Diu
33.3	<u>HEALTH PARAMETRES</u>		
i)	Average Population covered by Sub- Centre		10808
ii)	Average Population covered by PHC		93667
iii)	Doctor Population Ratio	Ratio	1:26
iv)	Nurses Population Ratio	Ratio	1:20
v)	Bed Population Ratio	Ratio	1:97
vi)	Couple Protection Rate	%	59.8
vii)	Institutional Delivery	%	64
viii)	Total Fertility Rate	%	1.9

33.4 Proportion of One year Olds(12-13 months) Immunised against Measles(%)

Sr. No.	Area Name	1992-93	1998-99	2000	2001	2002-04	2005	2005	2005-06	2005-06	2005-06	2007-08	2015	
		Total	Total	Total	Total	Total	Rural	Urban	Rural	Total	Urban	Total	Target	Likely Achv.
1	Daman & Diu	--	--	75.1	88.3	77.2	--	--	--	--	--	90.9	100	78.14
2	In India	42.2	50.7	50.4	55.6	56	61.8	79.4	54.2	58.8	71.7	69.6	100	96.83

Source of Data : Reports of NFHS I, II and III, DIHS I II and III, MICS ; projected figures derived for the report

33.5 Mean Prevalence of HIV among ANC Attendees

Year	2002	2003	2004	2005	2006	2007	2008	2009	2010
Daman & Diu	0.25	0.27	0.38	0.13	0.00	0.13	0.38	0.25	0.12

Source of Data : National AIDS Control Organisation, MoHFW, Govt. of India

33.6 Condom use during last sex
with non regular partner

State	2006	2001
Goa + Daman & Diu	81.7	82.7
All India	58.3	40.1

Source :Behavioural Surveillance Survey data,
NACo, Govt. of India

33.7 HIV Prevalence among ANC Clinic Attendees aged 15-24 years

	1998	1999	2000	2001	2002	2003	2004	2005	2006	2007
Daman & Diu	0.00	--	0.22	0.23	0.60	0.52	0.61	0.00	0.00	0.23
All India	91	0.83	0.99	0.73	1.46	0.81	0.86	0.89	0.57	0.49

Source : Annual Sentinel Surveillance, NACO, MoHFW, Govt. of India

33.8 HIV Prevalence among ANC Clinic Attendees aged 25-49 years

	1998	1999	2000	2001	2002	2003	2004	2005	2006	2007
Daman & Diu	0.00	--	0.00	0.28	0.66	0.00	0.00	0.29	0.00	0.00
All India	0.91	0.87	0.86	0.81	1.32	0.95	1.09	0.97	0.64	0.52

Source : Annual Sentinel Surveillance, NACo, MoHFW, GOI.

33.9 Malaria incidence rate and associated Death Rate

	2006					2007				
	Blood Slide Examination	Malaria Cases	Malaria Incidence rate(%)	Deaths	Death per 100 Malaria Cases	Blood Slide Examination	Malaria Cases	Malaria Incidence rate(%)	Malaria Incidence rate(%)	Death per 100 Malaria Cases
Daman & Diu	28897	140	0.48	0	0.00	26452	99	0.37	0	0.00
All India	10672585	178512	1.67	17	0.10	94928090	150892	1.59	13	0.09

	2008					2009				
	Blood Examination Side	Malaria Cases	Malaria Incidence rate(%)	Deaths	Death per 100 Malaria Cases	Blood Side Examination	Malaria Cases	Malaria Incidence rate(%)	Deaths	100 Malaria Cases
Daman & Diu	27155	115	0.42	0	0.00	24123	97	0.40	0	0.00
All India	9731615	15249	1.57	10	0.07	1033960	15635	1.51	11	0.07

	2004				2008				2010			
	Prevalence Rate per 100,000 population	Cure rate of new S+ve cases (%)	Success Rate among new S+ve case (%)	% died of new S+ve cases	Prevalence Rate per 100,000 population	Cure rate of new S+ve cases (%)	Success Rate among new S+ve case (%)	% died of new S+ve cases	Prevalence Rate per 100,000 population	Cure rate of new S+ve cases (%)	Success Rate among new S+ve case (%)	% died of new S+ve cases
Daman & Diu	--	--	--	--	21.5	54	58	4.2	21.7	82	82	0
All India	125.4	85	86	4.7	30.6	84	87	4.6	32.6	85	87	4.1

Source of Data : Revised National Tuberculosis Control programme Reports, MoHFW, Govt. of India

34. HOUSING

Sr. No.	Particulars	Unit	Daman District	Diu District	Daman and Diu
34.1	Govt. Housing				
a)	Existing General Pool Quarters				
i)	Bachelor Quarters	Nos.	8	16	24
ii)	Type A	Nos.	116	58	174
iii)	Type B	Nos.	120	52	172
iv)	Type C	Nos.	87	52	139
v)	Type D	Nos.	58	11	69
vi)	Type E	Nos.	18	3	21
vii)	Type F	Nos.	4	Nil	4
	TOTAL		411	192	603

Source : i) PWD, Daman and Diu.

35. INDUSTRY

Sr. No.	Particulars	Unit	Daman District	Diu District	Daman and Diu
35.1	<u>INDUSTRIES AND EMPLOYMENT</u>				
1)	No. of Industrial Estates	Nos.	36	1	37
2)	No. of Registered Enterprises *				
i)	Small Enterprises (including Micro Enterprises)	Nos.	2873	38	2911
ii)	Medium Enterprises	Nos.	288	--	288
iii)	Large Enterprises	Nos.	71	--	71
	<u>Total No. of Registered Enterprises</u>	<u>Nos.</u>	<u>3232</u>	<u>38</u>	<u>3232</u>
3)	Capital Investment	Rs. Crore	4130.95	6.58	4137.53
4)	Employment	Nos.	81365	276	81641
*	Category of Enterprise		<u>Fixed Investment</u>		
i)	Micro	Rs. in crore	Upto 0.25		
ii)	Small	Rs. in crore	Above 0.25 and upto 5.00		
iii)	Medium	Rs. in crore	Above 5.00 and upto 10.00		
iv)	Large	Rs. in crore	Above 10.00		

Source : District Industries Centre, Daman.

Sr. No.	Particulars	Unit	Daman and Diu
35.2	<u>ANNUAL SURVEY OF INDUSTRIES : 2009-10</u>		
(A)	<u>INPUT AND OUTPUT OF INDUSTRIES REGISTERED UNDER FACTORIES ACT 1948</u>		
i)	Number of Factories	Nos.	1447
ii)	Factories in Operation	Nos.	1427
ii)	Fixed Capital	Rs. Lakh	624331
iii)	Working Capital	Rs. Lakh	708867
iv)	Invested Capital	Rs. Lakh	1101919
v)	Gross Value of Addition to Fixed Capital	Rs. Lakh	129847
vi)	Value of Product and By-Product	Rs. Lakh	2889324
vii)	Total Output	Rs. Lakh	3202421
viii)	Total Inputs	Rs. Lakh	2570683
ix)	Gross Value Added	Rs. Lakh	631738
x)	Depreciation	Rs. Lakh	62753
xi)	Net Value Added	Rs. Lakh	568985
xii)	Net Fixed Capital Formation	Rs. Lakh	43449
xiii)	Gross Fixed Capital Formation	Rs. Lakh	106201
xiv)	Gross Capital Formation	Rs. Lakh	192856
xv)	Income	Rs. Lakh	503256
xvi)	Profit	Rs. Lakh	378790
(B)	Fuel Consumed		
i)	Coal	Rs. Thousand	6715
ii)	Electricity Purchase	Rs. Thousand	5121139
iii)	Petroleum Product	Rs. Thousand	926088
iv)	Other Fuels	Rs. Thousand	322130

Source : Annual Surveys of Industries 2009-10, Central Statistical Organisation, Ministry of Statistics and Programme Implementation, Govt. of India.

36. Vth ECONOMIC CENSUS : 2005
(FINAL RESULTS FOR U.T. OF DAMAN AND DIU)

Sr. No.	Particulars	Rural	Urban	Total
A)	<u>ENTERPRISES</u>			
1.	No. of Agricultural Enterprises	387	201	588
2.	No. of Non –Agricultural Enterprises	5832	3758	9590
	Total No. of Enterprises	6219	3959	10178
B)	<u>EMPLOYMENT</u>			
1.	Persons engaged in Agricultural Enterprises	1756	1063	2819
2.	Persons engaged in Non-Agricultural Enterprises	49372	10229	59601
	Total No. of Persons Employed	51128	11292	62420

Source : All India Report on 5th Economic Census : 2005 by Ministry of Statistics and Programme Implementation, Govt. of India.

36.1 Vth ECONOMIC CENSUS : 2005 (FINAL RESULTS)

ACTIVITY WISE NUMBER OF ESTABLISHMENTS AND WORKERS

Sl. No.	Type of activity	No. of Establishments			No. of Workers		
		Rural	Urban	Total	Rural	Urban	Total
A)	AGRICULTURAL ACTIVITIES						
1.	Farming of Animals	21	0	21	27	0	27
2.	Agriculture services	66	0	66	72	0	72
3.	Fishing etc.	300	201	501	1657	1063	2720
	Total (Agricultural activities)	387	201	588	1756	1063	2819
B)	NON-AGRICULTURAL ACTIVITIES						
1.	Mining & Quarrying	4	1	5	18	2	20
2.	Manufacturing	1799	450	2249	39570	1016	40586
3.	Electricity, Gas and Water Supply	16	11	27	86	71	157
4.	Construction	26	53	79	167	164	331
5.	Sale, Maintenance and Repair of motor vehicles & motorcycles	73	129	202	170	276	446
6.	Wholesale Trade	45	29	74	273	74	347
7.	Retail Trade	1906	1941	3847	3201	3100	6301
8.	Hotels and Restaurants	402	277	679	2022	1147	3169
9.	Transport, Storage	759	112	871	1560	163	1723
10.	Post & Telecommunications	250	137	387	299	234	533
11.	Financial Intermediation	15	27	42	92	176	268
12.	Real estate, renting and Business Services	68	93	161	223	169	392
13.	Public Administration and Defence ; Compulsory social security	55	103	158	413	2063	2476
14.	Education	128	101	229	725	744	1469
15.	Health and Social Work	65	58	123	135	348	483
16.	Other Community, social and personal service activities	221	236	457	418	482	900
	Total (Non-Agricultural activities)	5832	3758	9590	49372	10229	59601
	GRAND TOTAL (A+B)	6219	3969	10178	51128	11292	62420

Source : All India Report on 5th Economic Census : 2005 by Ministry of Statistics and Programme Implementation, Govt. of India.

37. POLICE

Sr. No.	Particulars	Unit	Daman District	Diu District	Daman and Diu
37.1	<u>INFRASTRUCTURE (as on 31/3/2012)</u>				
1.	Police Stations	Nos.	2	1	3
2.	Police Outposts	Nos.	5	5	10
3.	<u>Police Force</u>				
i)	DIGP/IGP	Nos.	1	--	1
ii)	Supdt. Of Police	Nos.	2	1	3
iii)	SDPO/ Dy.Supdt. of Police	Nos.	1	1	2
iv)	Police Inspector	Nos.	5	1	6
v)	Sub Inspector	Nos.	8	4	12
vi)	Assistant Sub Inspector	Nos.	11	2	13
vii)	Head Constable	Nos.	52	37	89
viii)	Constable	Nos.	98	22	120
	Total Police Force	Nos.	185	74	259

Source : Office of Sub-Divisional Police Officer, Daman.

Sr. No	Head of Crime	Daman District				Diu District				Daman and Diu			
		2011		2012		2011		2012		2011		2012	
37.2	CRIME DATA	R	D	R	D	R	D	R	D	R	D	R	D
	<u>Cognizance Crimes</u>												
1	Murder	1	--	3	3	0	0	0	0	1	0	3	3
2	Attempt to Murder	--	--	4	3	0	0	1	1	0	0	5	4
3	Culpable Homicide	--	--	--	--	0	0	0	0	0	0	0	0
4	Rape	--	--	5	5	0	0	0	0	0	0	5	5
5	Kidnapping Abduct	--	--	2	1	1	1	1	1	1	1	3	2
6	Dacoity	2	1	1	1	0	0	0	0	2	1	1	1
7	Robbery	1	--	3	2	2	1	0	0	3	1	4	2
8	Burglary	8	1	17	11	8	2	2	2	16	3	19	13
9	Theft/House theft	3	--	17	11	--	--	--	--	3	--	17	11
	Auto theft	--	--	38	10	10	5	4	3	10	5	42	13
10	Riots	3	3	6	5	4	4	4	3	7	7	10	8
11	Criminal Breach of Trust	--	--	7	4	3	0	0	0	3	0	7	4
12	Cheating	3	3	7	4	2	2	1	0	5	5	8	4
13	Counterfeit Currency	--	--	--	--	1	0	0	0	1	0	0	0
14	Arson	--	--	2	--	0	0	0	0	0	0	2	0
15	Hurt	2	2	--	--	2	2	1	1	4	4	1	1
16	Molestation	--	--	--	--	--	--	--	--	--	--	--	--
17	Cruelty by Husband	1	--	1	--	0	0	1	1	1	0	2	1
18	Non-Fatal Motor Vehicle Accidents	2	2	16	11	13	13	8	8	15	15	24	22
19	Fatal Accidents	4	3	19	11	6	3	7	5	10	6	26	16
20	Other IPC Cases	7	2	37	20	3	3	4	1	1	5	41	21
										0			
	Total	37	17	185	102	55	36	34	26	92	53	220	128

R- Reported D- Detected
Source : Supdt. Of Police, Daman

38. PRISON

Sr. No.	Particulars	Unit	Daman District	Diu District	Daman and Diu
1.	No. of Jails	Nos.	1	1	2
2.	No. of Rooms for Prisoners	Nos.	6	8	14
3.	No. of Prisoners				
i)	Convicted	Nos.	13	02	15
ii)	Under Trial	Nos.	24	02	26

Source : Jails at Daman & Diu.

39. POWER

Sr. No.	Particulars	Unit	Daman District	Diu District	Daman and Diu			
39.1	INFRASTRUCTURE							
i)	Units in Electricity Department							
	(a) Division	No.	---	1	---			
	(b) Sub Division	No.	3	1	4			
ii)	Engineers in Electricity Department		Daman		Diu			
			EE	AE	JE			
					EE	AE	JE	
							Reg	WC
	Division I		1	--	4	5	--	--
	Sub Division I		--	1	3	--	--	--
	Sub Division II		--	--	--	--	1	3
	Sub Division III		--	1	2	--	--	--
	Sub Division IV		--	1	4	--	--	--
	Total		1	3	13	5	--	1
	EE = Executive Engineer		Reg. = Regular					
	AE = Assistant Engineer		WC = Work Charge					
	JE = Junior Engineer							
iii)	Power Supply Sub – Stations							
	(a) 220/66 KV	Nos.		1	--			1
	(b) 66/11 KV	Nos.		7	1			8
iv)	Installed Capacity of Sub-Station							
	(a) 220/66KV Sub Station	MVA						
	Magarwada			250	----			250
	(b) 66/11/KV Sub Stations							
	(i) Kachigam	MVA		80	----			80
	(ii) Dalwada	MVA		80	----			80
	(iii) Dabhel	MVA		90	----			90
	(iv) Varkund	MVA		37	----			37
	(v) Magarwada	MVA		20	----			20
	(vi) Ringanwada	MVA		40	----			40
	(vii) Bhimpore	MVA		30	----			30
	(vii) Malala	MVA		----	30			30
	Total (b)			377	30			407
	Total(a) + (b)	MVA		577	20			597

Sr. No.	Category	Unit	Daman District	Diu District	Daman and Diu
v)	Distribution Lines				
	(a) 220 KV D/C Line	C.Kms.	19.25	--	19.25
	(b) 66 KV D/C Line	C.Kms.	30.00	22.00	52.00
	(c) 66 KV S/C Line	C.Kms.	9.70	19.00	28.70
	(d) 11 KV Line O/H	C.Kms.	368.83	85.68	454.54
	(e) 11KVLine U/G	C.Kms.	96.40	13.7	110.1
	(f) L.T. Line	C.Kms.	508.00	158.70	666.7
	(g) L.T. Line U/G	C.Kms.	105.20	32.77	137.97
	(h) Transformer Centre	Nos.	462.00	113	575.00
vi)	Connections Released				
	(a) LT Domestic	Nos.	54962	12937	67899
	(b) LT Commercial	Nos.	9821	1842	11663
	(c) LT Agriculture	Nos.	1674	539	2213
	(d) LT Street Light	Nos.	317	182	499
	(e) LTP Water Works	Nos.	47	24	71
	(f) LTP/Industrial	Nos.	1898	146	2044
	(g) HTC/High Tension consumers	Nos.	810	7	817
	Total	Nos.	69529	15677	85206
vii)	Electrification of Villages				
	a) Villages electrified	Nos.	22	4	26
	b) Percentage of Villages Electrified	%	100	100	100
39.2	<u>POWER SUPPLY DURING</u>				
(A)	<u>Energy Consumption</u>				
	i) Energy Purchased	MUs.	2110.00	51.70	2161.00
	ii) Energy Consumed/Sold	MUs.	1935.00	45.58	1980.58
	iii) Energy loss (T. & D.)	MUs.	175.00	4.00	179.00
	iv) Percentage of T. & D. Loss	%	8.29%	7.74%	8.78%

Sr. No.	Category	Unit	Daman District	Diu District	Daman and Diu
(B)	<u>Categorieswise Consumption of Power</u>				
a)	Domestic	MUs.	65.68	15.85	81.53
b)	Commercial	Mus.	31.00	22.00	53
c)	Industrial	Mus.	1743.00	75.00	1818
d)	Agriculture/ Irrigation	Mus.	2.10	0.7	2.8
e)	Others	Mus.	3.86	2.20	6.06
	Total	Mus.	1845.64	115.75	1961.39
(C)	<u>Revenue Generation</u>				
		<u>Unit</u>	<u>Amount</u>	(Rs. In lakhs)	
i)	Revenue from sale of energy	Rs. In lakh	72051.99		
ii)	Miscellaneous Revenue	Rs. In lakh	90.57		
iii)	Total Revenue received (i+ii)	Rs. In lakh	72142.56		
iv)	Cost of energy purchased	Rs. In lakh	72000		
v)	Gross Profit (iii-iv)	Rs. In lakh	142.56		

Source : Electricity Department, Daman.

40. PUBLIC WORKS DEPARTMENT

Sr. No.	Unit	Daman District	Diu District	Daman and Diu
40.1	<u>INFRASTRUCTURE</u>			
1.	Circle	----- 1 -----		1
2.	Division	2	1	3
3.	Sub Division	4	2	6
4.	Circuit House	3	5	8
5.	Water Treatment Plant	2	1	3

Source :Public Works Department , Daman.

Sr. No.	Unit	DAMAN				DIU			
		SE	EE	AE	JE	EE	TA	AE	JE
40.2	<u>ENGINEERS IN P.W.D.</u>								
	Circle	1	--	1	1	--	--	--	--
	Division – I	--	1	1	--	--	--	--	--
	Sub Division - I	--	--	1		--	--	--	--
					3				
	Sub Division – II	--	--	1	4	--	--	--	--
	Sub Division – III	--	--	1	4	--	--	--	--
	Sub Division - IV	--	--	1	2	--	--	--	--
	Division - II	--	--	--	--	1	--	1	--
	Sub Division – I	--	--	--	--	--	--	1	4
	Sub Division - II	--	--	--	--	--	1	1	4
	Division - III	--	--	--	1	--	--	--	---
	TOTAL	1	1	6	15	1	1	3	8

S.E. = Superintending Engineer

E.E. = Executive Engineer

Source : Public Works Department , Daman.

A.E. = Assistant Engineer

J.E. = Junior Engineer

41. RURAL DEVELOPMENT

41.1 <u>VILLAGES UNDER VILLAGE PANCHAYATS</u>			
District		Village Panchayat	Villages
Daman	1.	Marwad Panchayat	Devka Marwad
	2.	Bhimpore Panchayat	Bhimpore Janivankad
	3.	Varkund Panchayat	Dunetha Varkund
	4.	Dabhel Panchayat	Dabhel Ringanwada
	5.	Kachigam Panchayat	Kachigam
	6.	Magarwada Panchayat	Magarwada Zari Thana Pardi
	7.	Damanwada Panchayat	Damanwada
			Dholar Palhit Bhamti
	8.	Pariari Panchayat	Pariari Deva Pardi Naila Pardi Jampore
	9.	Kadaiya	Kadaiya
10.	Patlara	Patlara	
Diu	1.	Vanakbara Panchayat	Vanakbara
	2.	Bucharwada Panchayat	Bucharwada
	3.	Zolawadi Panchayat	Zolawadi
	4.	Saudwadi Panchayat	Saudwadi

Source : District Panchayat, Daman & Diu.

41.2 VILLAGE AMENITIES DIRECTORY

Sr. No.	Name of Village	Area (in ha.)	House Hold	Population	Number of Schools									
					Pre-Primary		Primary		Middle		Secondary		Higher Secondary	
					Govt	Pvt	Govt	Pvt	Govt	Pvt	Govt	Pvt.	Govt	Pvt.
a)	<u>Daman District</u>													
1.	Bhamti	52.6	205	996	--	--	1	--	--	--	--	--	--	--
2.	Bhimpore	426.8	1011	4640	--	--	2	--	1	--	1	--	--	--
3.	Dabhel	606.1	5469	20147	--	--	1	--	--	--	1	--	--	--
4.	Damanwada	72.0	348	1717	--	--	1	--	1	--	--	--	--	--
5.	Devapardi	32.3	67	319	--	--	--	--	--	--	--	--	--	--
6.	Devka	138.3	469	2363	--	--	2	--	--	--	--	--	--	--
7.	Dholar	81.6	211	1093	--	--	--	--	--	--	--	--	--	--
8.	Dunetha	753.4	1289	5661	--	--	2	--	1	--	--	--	1	--
9.	Jampore	115.8	162	770	--	--	1	--	--	--	--	--	--	--
10.	Janivankad	280.4	350	1778	--	--	1	--	1	--	--	--	--	--
11.	Kachigam	641.4	2552	9310	--	--	1	--	--	--	--	--	--	--
12.	Kadaiya	293.1	1782	6876	--	--	1	--	2	--	--	--	--	--
13.	Magarwada	659.2	1228	6408	--	--	1	--	1	--	1	--	--	--
14.	Marwad	297.9	1054	4620	1	--	2	--	2	--	--	--	--	1
15.	Nailapardi	29.9	152	700	--	--	1	--	--	--	--	--	--	--
16.	Palhit	27.2	69	295	--	--	--	--	--	--	--	--	--	--
17.	Pariari	115.5	347	1699	--	--	1	--	--	--	1	--	--	--
18.	Patlara	---	---	---	1	--	3	--	--	--	--	--	--	--
19.	Ringanwada	148.0	787	3228	--	--	1	--	--	--	--	--	--	--
20.	Thanapardi	68.8	161	805	--	--	1	--	--	--	--	--	1	--
21.	Varkund	264.6	824	3834	--	--	1	--	--	--	1	--	--	--
22.	Zari	94.0	187	960	--	--	1	--	--	--	1	--	--	--
Total (Daman)		5198.9	18724	78219	2	--	25	--	9	--	6	--	2	1
b)	<u>Diu District</u>													
1.	Bucharwada	2143.79	2123	9146	2	--	2	--	2	--	1	--	1	--
2.	Saudwadi	---	---	---	1	--	1	--	1	--	--	--	--	--
3.	Vanakbara	376.64	2357	13491	1	2	2	--	2	--	1	--	1	--
4.	Zolawadi	---	---	---	1	--	--	--	--	--	--	--	--	--
Total (Diu)		2520.3	4480	22637	5	2	5	--	5	--	2	--	2	--

Source : Population Census 2001

Note : 1. Area and Population of Patlara is included with Magarwada.

2. Population of Saudwadi is included with Vanakbara.

3. Population of Zolawadi is included with Bucharwada.

41.2 VILLAGE AMENITIES DIRECTORY (continued)

Sr. No.	Name of Village	Literacy	Health Facilities					Agriculture			
			Hospitals	CHC	PHC	Sub Centre	Dispensary	Agriculture Farm	Poultry Farm	Veterinary Sub Centre	Pond
a) Daman District											
1.	Bhamti	64.90	--	--	--	--	--	--	--	--	--
2.	Bhimpore	79.87	--	--	--	2	--	--	--	1	--
3.	Dabhel	83.42	--	--	--	2	--	--	--	--	--
4.	Damanwada	79.37	--	--	--	--	--	--	--	--	--
5.	Devapardi	51.25	--	--	--	--	--	--	--	--	--
6.	Devka	78.97	--	--	--	1	--	--	--	--	--
7.	Dholar	75.31	--	--	--	1	--	--	--	--	--
8.	Dunetha	80.08	--	--	--	1	--	--	--	--	--
9.	Jampore	73.37	--	--	--	--	--	--	--	--	--
10.	Janivankad	84.08	--	--	--	--	--	--	--	--	3
11.	Kachigam	82.07	--	--	1	2	--	1	1	--	--
12.	Kadaiya	80.37	--	--	--	2	--	--	--	--	--
13.	Magarwada	73.81	--	--	--	1	--	--	--	1	1
14.	Marwad	77.82	1	--	--	--	--	--	--	--	1
15.	Nailapardi	69.64	--	--	--	--	--	--	--	--	--
16.	Palhit	76.92	--	--	--	--	--	--	--	--	--
17.	Pariari	68.72	--	--	--	1	--	--	--	--	1
18.	Patlara	--	--	--	--	1	--	--	--	--	3
19.	Ringanwada	83.49	--	--	--	--	--	--	--	--	--
20.	Thanapardi	78.73	--	--	--	--	--	--	--	--	--
21.	Varkund	78.72	--	--	--	1	--	--	--	--	--
22.	Zari	67.89	--	--	--	1	--	--	--	--	--
Total (Daman)		80.65	1		1	16	--	1	1	2	9
b) Diu District											
1.	Bucharwada	60.92	--	--	--	2	1	--	1	1	4
2.	Saudwadi	---	--	--	--	--	--	--	--	--	2
3.	Vanakbara	60.23	--	--	1	1	--	--	--	--	--
4.	Zolawadi	---	--	--	--	--	--	--	--	--	3
Total (Diu)		71.37	--	--	1	3	1	--	1	1	9

Note : Literacy Rates are as per Population Census : 2001. Villages of Patlara, Saudwadi and Zolawadi were not in existence during 2001.

41.2 VILLAGE AMENITIES DIRECTORY (continued)

Sr. No.	Name of Village	Unit	Social Service							
			Communi-ty Centre	Fair Price Shop	Post Office	Angan-wadi Centre	Mahila Mandal	Yuvak Mand al	Police Out-post	Ban k
a) Daman District										
1.	Bhamti	Nos.	--	1	--	1	1	3	--	--
2.	Bhimpore	Nos.	1	1	1	--	--	1	1	1
3.	Dabhel	Nos.	1	2	1	4	1	2	2	4
4.	Damanwada	Nos.	1	--	--	1	1	1	--	--
5.	Devapardi	Nos.	--	--	--	--	--	--	--	--
6.	Devka	Nos.	--	1	--	3	--	2	1	--
7.	Dholar	Nos.	--	--	1	3	--	1	--	--
8.	Dunetha	Nos.	1	1	1	1	1	--	--	--
9.	Jampore	Nos.	---	1	--	4	--	2	--	--
10.	Janivankad	Nos.	--	1	--	3	1	--	--	--
11.	Kachigam	Nos.	1	1	1	6	1	2	1	1
12.	Kadaiya	Nos.	--	1	1	4	1	2	--	--
13.	Magarwada	Nos.	--	2	1	2	1	--	--	--
14.	Marwad	Nos.	1	2	1	4	1	6	--	--
15.	Nailapardi	Nos.	--	---	--	1	--	1	--	--
16.	Palhit	Nos.	--	--	--	--	--	--	--	--
17.	Pariari	Nos.	1	--	--	2	--	2	--	--
18.	Patlara	Nos.	--	1	--	--	--	2	--	--
19.	Ringanwada	Nos.	--	--	--	1	--	--	--	--
20.	Thanapardi	Nos.	--	1	--	1	--	3	--	--
21.	Varkund	Nos.	--	2	1	6	1	4	--	--
22.	Zari	Nos.	1	--	--	1	--	4	--	--
Total Daman		Nos.	8	18	9	48	10	38	5	6
b) Diu District										
	Bucharwada	Nos.	--	--	1	4	2	--	1	--
	Saudwadi	Nos.	--	--	1	6	2	--	--	--
	Vanakbara	Nos.	--	--	--	8	--	--	1	2
	Zolawadi	Nos.	--	--	--	6	--	--	1	--
Total (Diu)		Nos.	--	--	2	24	4	--	3	2

42. TOURISM

Sr. No.	Particulars	Unit	Daman District	Diu District	Daman and Diu
42.1	HOTELS & TOURISTS				
i)	Hotels & Lodges	Nos.	73	51	124
ii)	Total beds in Hotels	Nos.	5361	1939	7402
iii)	Tourists visited during	Nos.	1151038	1341261	2492299

Sr. No.	Particulars	Daman District		Diu District
42.2	PLACES OF INTEREST	MOTI DAMAN	NANI DAMAN	
1.	Forts	Fort of Moti Daman	Fort of Nani Daman.	1. Diu Fort 2. Panikota Fortress.
2.	Churches	1. Bom Jesus Church. 2. Our Lady of Remedios Church. 3. Chapel of Our Lady of Rosary 4. Chapel of our Lady of Angustias 5. Chapel of St. Anthony.	1. Our Lady of Sea Church. 2. Chapel of Holy Cross.	St. Paul's Church.
3.	Beaches	Jampore	1. Devka 2. Nani Daman (Sea Face)	1. Nagoa 2. Chakrathirth (Sunset Point) 3. Ghoghla
4.	Museums	Science Museum	--	1. Diu Museum 2. Sea Shell Museum

Source : Tourism Department , Daman & Diu.

Sr. No.	Particulars	Daman District		Diu District
Places of Interest	MOTI DAMAN	NANI DAMAN		
5. Gardens	Public Garden at Moti Daman Jetty.	1. Mirasol Lake Resort and Water Park. 2. Amusement Park, Devka. 3. Damanganga Tourist Complex, Kachigam. 4. Public Garden at Nani Daman Jetty.	1. Summer House, Diu. 2. Children's Park at Ghoghla.	
6. Temples	1. Yogeshwar Temple 2. Mahadeo Temple 3. Ranchhodji Temple 4. Hanumanji Temple	1. Satya Narayan Temple. 2. Somnath Temple. 3. Jain Derasar Jain Street 4. Jalaram Mandir, Tin Batti. 5. Jalaram Mandir, Bhimpore. 6. Mahadeo Temple. 7. Sai Baba Temple 8. Shree Ayyappa Temple 9. Limdi Mata Temple 10. Vasukinath Temple, Dalwada	1. Gangeshwar Temple 2. Nilkanth Mahadeo (Baldeoji Ki Haveli) 4. Dwarkadhish ki Haveli 5. Maha Kalshwar Temple 6. Jagdish Temple 7. Hanuman Temple (Caves)	

Sr. No.	Particulars	Daman District		Diu District
	Place of Interest	MOTI DAMAN	NANI DAMAN	
7.	Mosques	1. Jumma Masjid, Chitiawad 2. Jumma Masjid, Ghanchiwad 3. Shahi Masjid, Dholar	1. Noorani Masjid, Khariwad 2. Jumma Masjid, Kharawad 3. Shahi Masjid, Zapabar 4. Raza Masjid, Ghanchiwad 5. Ramzani Masjid, Devka 6. Madina Masjid, Ghanchiwad 7. Moorawali Masjid.	1. Jumma Masjid 2. Kharwa Masjid
8.	Memorials	1. Pargola Garden 2. Ruins of Dominican Monasty.	Shahid Smarak	INS Khukri Memorial

9. TOURIST PLACES NEARBY DAMAN

i)	Silvassa	30 Kms.
ii)	Khanvel	50 Kms.
iii)	Dudhni	70 Kms.
iv)	Valsad (Tithal)	45 Kms.
v)	Parsi Agiyari (Udwada)	16 Kms.
vi)	Parnera Fort / Temple	35 Kms.
vii)	Killa Pardi Fort	20 Kms.
viii)	Mahalaxmi Temple (Charoti)	60 Kms.
ix)	Unnai Temple (Hot Water Spill)	60 Kms.

10. TOURIST PLACES NEAR BY DIU

i)	Somnath Temple	90 Kms.
ii)	Sasan Gir Forest	128 kms.
iii)	Minarowali Maszid (Shaking Towers) Delvada	9 kms.
iv)	Tulsishyam Temple (Hot Water Spill)	45 kms.

Source : Tourism Department, Daman

43. TRANSPORT

Sr. No.	Particulars	Unit	Daman District	Diu District	Daman and Diu
43.1	<u>INFRASTRUCTURE</u>				
i)	Airports	No.	1	1	2
ii)	Bus Stand	No.	1	4	5
iii)	Mini Bus Stand	No.	1	1	2
iv)	Taxi Stand	No.	2	0	2
43.2	<u>NUMBER OF VEHICLES</u>				
i)	Articulated /Multi Axle Vehicles/HGV/MCV	Nos.	3496	269	3765
ii)	LCV	Nos.	2097	141	2238
iii)	Light Motor Vehicles/Taxies	Nos.	24467	1088	25555
iv)	Autorickshaw/Three Wheelers	Nos.	2270	502	2772
v)	Two Wheelers	Nos.	45921	15110	61031
vi)	Mini Bus / Buses	Nos.	452	90	542
vii)	Tractors	Nos.	304	195	499
viii)	Trailors	Nos.	276	127	403
ix)	Motor Cycle Pass (TR)	Nos.	0	39	39
Total Vehicles		Nos.	79283	17561	96844

Source : Transport Department, Daman.

44. WATER SUPPLY

Sr. No.	Particulars	Unit	Daman District	Diu District	Daman and Diu
a)	Villages covered with safe drinking water supply	Nos.	22	4	26
b)	Infrastructure provided :				
i)	Over Head Tanks	Nos.	44	13	57
ii)	Underground Sumps	Nos.	41	15	56
iii)	Stand Posts	Nos.	686	168	854
iv)	Borewells (hand pumps)	Nos.	601	51	652
c)	No. of Water Connections				
i)	Residential	Nos.	11742	10973	22715
ii)	Commercial	Nos.	165	109	274
iii)	Industrial	Nos.	250	7	257
d)	Water Consumption (2011-12)				
i)	Rural	Million Litres	4380	---*	4380
ii)	Urban	Million Litres	2482	---*	2482
	Total	Million Litres	6862		6862
d)	Water Treatment Plants				
i)	Dabhel	Area	Sq. Mt.	42,000	---
		Capacity	MLD	16	---
ii)	Magarwada	Area	Sq. Mt	47,400	---
		Capacity	MLD	5	---
iii)	Ghoghla		MLD	---	4.5
e)	Capacity				
	Raw Water Reservoir	MLD	200	---	200
	Dabhel	MLD	150	---	150
	Capacity				
	Magarwada				
	Capacity				

60% of water for rural area and 40% of water are received from Raval Dam

44.1 Proportion of Households having Access to improved sources of drinking water and sanitation facility(%)

Sr. No.	State/UT	Sanitation facility		Improved source of drinking water	
1	Daman & Diu	--	65.4	--	98.3
2	All India	44.6	51.0	87.9	84.4

Source of data: NFHS-III(2005-06) and DLHS-III(2007-08) of MOHFW, GOI.

44.2 Percentage of Households not using improved drinking water sources and any sanitation facility : 2008-09

State/UT	% of Household not using improved source of drinking water			% of Household without sanitation facility		
	Rural	Urban	Rural+ Urban	Rural	Urban	Rural+ Urban
Daman	0	2.7	1	31.9	6.4	23.1
All India	8.3	3.2	6.8	65.2	11.33	49.2

Source of Data : NSS Report No 535: Housing Conditions & Amenities in India

45. WOMEN AND CHILDREN

Sr. No.	Particulars	Unit	Daman District	Diu District	Daman and Diu
45.1	SOCIO-ECONOMIC INDICATORS				
(A)	Women				
1.	Female Population	%	34.79	50.76	38.21
2.	Sex Ratio	No. of Females per 1000 Males	534	1031	618
3.	Female Literacy	%	80.98	76.05	79.54
4.	Percentage of Female students to total students	Primary Middle Secondary High Sec.	44.69 44.49 46.95 74.16	48.23 50.71 49.35 43.89	45.63 46.57 47.91 46.08
5.	Female Work Participation Rate	%	16.6	10.7	14.9
(B)	Children				
	Child Sex Ratio (0-6 Years)	Females per 1000 males	897	929	904

Source :Population Census

Sr. No.	Particulars	Unit	Daman District		Diu District		Daman and Diu	
			Total Members	Women Members	Total Members	Women Members	Total Members	Women Members
45.2	<u>REPRESENTATION OF WOMEN IN ELECTED BODIES</u>							
i)	Municipal Councils	Nos.	15	5	13	4	28	9
ii)	District Panchayat	Nos.	22	9	12	5	34	14
iii)	Village Panchayats	Nos.	53	23	24	9	77	32
45.3	NO. OF MAHILA MANDALS	Nos.	10		4		14	
45.4	<u>INTEGRATED CHILD DEVELOPMENT SERVICES</u>							
i)	No. of ICDS blocks	Nos.	1		1		2	
ii)	No. of Anganwadi Centres	Nos.	62		40		102	
iii)	No. of children covered	Nos.	4563		2915		7478	
iv)	No. of women covered	Nos.	1053		997		2050	
v)	No. of adolescent girls covered	Nos.	1293		966		2259	

Source : District Panchayat, Daman & CDPO, Daman.

(E) POVERTY STATISTICS

(E) POVERTY STATISTICS

46. FAMILIES BELOW POVERTY LINE.

Sr. No.	Particulars	Unit	Daman District	Diu District	Daman and Diu
46.1	<u>FAMILIES BELOW POVERTY LINE IN RURAL AREAS</u>				
i)	Scheduled Castes	Nos.	13	56	69
ii)	Scheduled Tribes	Nos.	244	--	244
iii)	Others	Nos.	137	85	222
	Total	Nos.	394	141	535

Source : BPL Census 2002, DRDA Daman

Sr. No.	Particulars	Unit	Daman and Diu
46.2	<u>INCOME LIMIT FOR POVERTY LINE</u>		
	Per Capita Monthly Income		
	Rural	Rs.	397.93
	Urban	Rs.	601.72

Source : DRDA Daman

46.3 Proportion of population below Poverty Lines

	1987-88			1993-94			2004-05			Projected estimates		
	Rural	Urban	Total	Rural	Urban	Total	Rural	Urban	Total	Rural	Urban	Total
Daman & Diu	--	--	--	5.34	27.03	15.8	5.4	21.2	10.5	17.66	8.83	6.98
All India	39.09	38.2	38.86	37.27	32.36	35.97	28.3	25.7	27.5	37.20	18.60	22.09

States of India Report 2010(Special Edition)
Millennium Development Goals

46.4 HOUSELESS POPULATION

Sr. No.	Particulars	Area	Daman District	Diu District	Daman and Diu	%
1	Total Households	Rural	17591	4500	22019	--
		Urban	7536	4715	12251	--
		Total	25127	9215	34342	--
2	Houseless Households	Rural	130	7	135	0.56
		Urban	85	5	92	0.69
		Total	215	12	227	0.63
3	Total Population	Rural	78219	22637	100856	--
		Urban	35770	21578	57348	--
		Total	113989	44215	158204	--
4	Houseless Population	Rural	646	13	659	0.64
		Urban	377	35	412	0.66
		Total	1023	48	1071	0.65

Source: Population Census .

(F) FINANCIAL STATISTICS

(F) FINANCIAL STATISTICS
47. BUDGET UNDER PLAN AND NON PLAN

(Rs. In Crore)

Sr. No.	Plan	Allocation			Expenditure			% of Total Exp.
		Daman	Diu	Total	Daman	Diu	Total	
47.1	ALLOCATION AND EXPENDITURE UNDER PLAN							
	VII Five Year Plan (1985-90)							
	1987-1988	N.A.	N.A.	10.74	N.A.	N.A.	10.62	98.90
	1988-1989	N.A.	N.A.	12.00	N.A.	N.A.	11.64	97.00
	1989-1990	N.A.	N.A.	11.10	N.A.	N.A.	10.96	98.70
	Total	N.A.	N.A.	33.84	N.A.	N.A.	33.22	99.17
	Annual Plans (1990-92)							
	1990-1991	N.A.	N.A.	11.73	N.A.	N.A.	11.64	99.23
	1991-1992	11.08	3.98	15.06	N.A.	N.A.	15.01	99.67
	Total	N.A.	N.A.	26.79	N.A.	N.A.	26.65	99.48
	VIII Five Year Plan (1992-97)							
	1992-1993	11.34	3.11	14.45	N.A.	N.A.	14.44	99.90
	1993-1994	12.31	3.33	15.64	N.A.	N.A.	15.57	99.60
	1994-1995	16.86	4.64	21.50	N.A.	N.A.	21.48	99.90
	1995-1996	N.A.	N.A.	23.00	N.A.	N.A.	22.86	99.40
	1996-1997	19.17	4.70	23.87	N.A.	N.A.	23.83	99.80
	Total	N.A.	N.A.	98.46	N.A.	N.A.	98.18	99.81
	IX Five Year Plan (1997-02)							
	1997-1998	22.62	4.91	27.53	22.21	4.79	27.00	98.10
	1998-1999	26.03	6.78	32.81	25.40	6.46	31.86	97.10
	1999-2000	29.79	6.80	36.59	29.70	6.53	36.23	99.00
	2000-2001	32.63	7.56	40.19	31.99	7.80	39.79	99.00
	2001-2002	36.79	5.40	42.19	35.94	5.33	41.27	97.60
	Total	147.86	31.45	179.31	145.24	30.91	176.15	98.24
	X Five Year Plan (2002-07)							
	2002-2003	39.45	5.47	44.92	39.27	5.45	44.72	99.55
	2003-2004	39.42	6.04	45.46	39.22	6.03	45.25	99.54
	2004-2005	47.07	6.30	53.37	47.02	6.29	53.31	99.89
	2005-2006	48.98	10.18	59.16	48.65	10.14	58.79	99.37
	2006-2007	51.85	12.05	63.90	51.76	12.03	63.79	99.83
	Total	226.77	40.04	266.81	225.92	39.94	265.86	99.64
	XI Five Year Plan (2007-12)							
	2007-2008	74.88	12.90	87.78	74.85	12.89	87.74	99.95
	2008-2009	90.35	14.63	104.98	90.10	14.62	104.72	99.75
	2009-2010	141.67	23.42	165.09	141.64	23.33	164.97	99.93
	2010-2011	144.79	22.32	167.11	144.34	22.31	166.65	99.72
	2011-2012	264.42	60.53	324.95	268.71	56.08	324.79	99.95
	Total	716.11	133.80	849.91	719.64	129.23	848.87	99.88
	XII Five Year Plan (2012-17)							
	2012-2013	351.11	73.89	425.00	351.11	73.89	425.00	100.00
							(Anti.)	

Source : Department of Planning and Statistics, Daman.

(Rs. In Crore)

Sr. No.	Year	Allocation			Expenditure			% of total Exp.
		Daman	Diu	Total	Daman	Diu	Total	
47.2	ALLOCATION AND EXPENDITURE UNDER NON – PLAN							
	1987-1988	N.A.	N.A.	12.03	N.A.	N.A.	11.49	95.5
	1988-1989	N.A.	N.A.	12.03	N.A.	N.A.	12.03	100.0
	1989-1990	N.A.	N.A.	14.25	N.A.	N.A.	13.56	95.2
	1990-1991	N.A.	N.A.	18.82	N.A.	N.A.	18.78	99.8
	1991-1992	N.A.	N.A.	23.00	N.A.	N.A.	22.93	99.7
	1992-1993	N.A.	N.A.	24.06	N.A.	N.A.	24.05	99.9
	1993-1994	N.A.	N.A.	37.21	N.A.	N.A.	37.02	99.5
	1994-1995	N.A.	N.A.	41.87	N.A.	N.A.	41.75	99.7
	1995-1996	N.A.	N.A.	51.34	N.A.	N.A.	51.34	100.0
	1996-1997	57.92	8.46	66.38	N.A.	N.A.	66.31	99.9
	1997-1998	N.A.	N.A.	94.70	N.A.	N.A.	94.44	99.7
	1998-1999	N.A.	N.A.	123.47	N.A.	N.A.	122.19	98.9
	1999-2000	139.20	12.59	151.79	131.02	9.31	140.33	92.4
	2000-2001	156.92	13.03	169.95	156.70	12.73	169.43	99.6
	2001-2002	178.59	11.44	190.03	171.62	10.76	182.58	96.1
	2002-2003	199.98	13.32	213.30	196.52	11.93	208.45	97.7
	2003-2004	212.63	14.68	227.31	212.23	14.61	226.84	99.7
	2004-2005	215.57	16.33	231.90	215.11	16.27	231.38	99.7
	2005-2006	221.47	16.63	238.10	217.87	16.56	234.43	98.4
	2006-2007	283.23	17.07	300.30	282.75	16.94	299.69	99.8
	2007-2008	438.96	18.64	457.60	438.64	18.52	457.16	99.9
	2008-2009	573.73	24.07	597.80	573.62	24.01	597.63	99.9
	2009-2010	---	---	528.91	---	---	527.93	99.8
	2010-2011	---	---	668.14	---	---	668.00	99.9
	2011-2012	---	---	794.15	---	---	794.00	99.9
	TOTAL	---	---	5288.44	---	---	5253.74	99.3

Source : Department of Planning & Statistics, Daman.

47.3 PROPOSED OUTLAYS & CAPITAL CONTENT FOR XIITH FIVE
YEAR PLAN (2012-17)

(Rs. in lakh)

Sr. No.	SECTOR	Xii th Five Year Plan	
		Outlays	Capital Content
1.	Agriculture and Allied Activities		
i)	Crop Husbandry	2565.00	485.00
ii)	Soil and Water Conservation	8900.00	0.00
iii)	Animal Husbandry	652.50	250.00
	Diary Development	120.00	0.00
iv)	Fisheries	13573.50	12565.00
v)	Co-operation	288.03	15.00
2.	Rural Development	38150.26	0.00
3.	Irrigation and Flood Control	12000.00	4225.00
4.	Energy	55784.64	39608.64
5.	Industry and Minerals	11407.70	10000.00
6.	Transport	163087.25	124025.00
7.	Science, Tech. and Environment	21951.68	4294.65
8.	General Economic Services	346231.41	203633.29
9.	Social Services		
i)	Education	50130.38	18145.60
ii)	Medical and Public Health	54181.08	26055.86
iii)	Water Supply and Sanitation	24058.35	16565.00
iv)	Housing	7165.00	5140.00
v)	Urban Development	19464.91	0.00
vi)	Information and Publicity	600.00	0.00
vii)	Development of SC, ST & OBC	618.20	15.00
viii)	Labour and Employment	1289.20	0.00
ix)	Social Security & Social Welfare	1311.50	30.00
x)	Empowerment of Women & Dev. of Children	5015.24	0.00
10.	General Services	18656.70	8732.30
TOTAL		528898.97	278317.05

Source : Department of Planning & Statistics, Daman.

47.4 PROPOSED & APPROVED OUTLAYS FOR XITH FIVE YEAR PLAN (2007-12)
(Rs. In Crore)

Sr. No.	SECTOR	Proposed Outlay for XI Plan			Approved Outlay for XI Plan
		Daman	Diu	Total	
1.	Agriculture and Allied Activities				
i)	Crop Husbandry	5.62	2.59	8.21	8.18
ii)	Horticulture	0.28	0.06	0.34	0.33
iii)	Soil and Water Conservation	0.25	0.15	0.40	0.40
iv)	Animal Husbandry	4.23	0.37	4.60	4.58
v)	Dairy Development	0.00	0.00	0.00	0.00
vi)	Fisheries	2.47	4.90	7.37	7.34
vii)	Co-operation	0.35	0.45	0.80	0.80
2.	Rural Development	11.60	4.05	15.65	15.35
3.	Irrigation and Flood Control	20.00	8.00	28.00	27.89
4.	Energy	119.00	19.60	138.60	138.07
5.	Industry and Minerals	35.20	0.00	35.20	35.07
6.	Transport	120.80	59.60	180.40	177.02
7.	Science, Tech. and Environment	6.30	6.07	12.37	35.56
8.	General Economic Services	22.20	39.55	61.75	58.75
9.	Social Services				
i)	Education	88.13	20.88	109.01	94.84
ii)	Medical and Public Health	52.95	30.30	83.25	78.93
iii)	Water Supply and Sanitation	20.55	33.20	53.75	53.55
iv)	Housing	29.65	6.00	35.65	35.51
v)	Urban Development	44.65	6.50	51.15	50.96
vi)	Information and Publicity	0.75	0.25	1.00	1.00
vii)	Development of SC, ST & OBC	1.10	0.40	1.50	1.50
viii)	Labour and Employment	8.95	2.30	11.25	11.21
ix)	Social Security & Social Welfare	1.82	0.47	2.29	2.29
x)	Empowerment of Women & Dev. Of Children	16.58	6.57	23.15	23.06
10.	General Services	27.50	10.25	37.75	37.61
	TOTAL	640.93	262.51	903.44	900.00

Source : Department of Planning & Statistics, Daman and Planning Commission

47.5 PROPOSED OUTLAY AND CAPITAL CONTENT : 2012-13

(Rs. In lakh)

Sr. No.	SECTOR	Proposed Outlay			Capital Content		
		Daman	Diu	Total	Daman	Diu	Total
1.	Agriculture and Allied Activities						
i)	Crop Husbandry	455.00	52.00	507.00	165.00	10.00	175.00
ii)	Horticulture	34.00	0.00	34.00	0.00	0.00	0.00
iii)	Soil and Water Conservation	1200.0	300.00	1500.00	0.00	0.00	0.00
iv)	Animal Husbandry	97.70	24.90	122.60	40.00	10.00	50.00
v)	Diary Development	21.00	2.00	23.00	0.00	0.00	0.00
vi)	Fisheries	2023.0	731.50	2754.50	1946.00	606.00	2552.00
vii)	Co-operation	13.64	14.67	28.31	1.00	0.00	1.00
2.	Rural Development	4921.78	2880.8	7802.58	0.00	0.00	0.00
3.	Irrigation and Flood Control	2050.0	60.0	2110.00	800.00	60.00	860.00
4.	Energy	10176.00	1406.0	11582.00	8540.00	710.00	9250.00
5.	Industry and Minerals	2251.06	42.50	2293.56	2000.00	0.00	2000.00
6.	Transport	26775.65	6831.0	33606.65	16458.6	5602.6	22061.20
7.	Science, Tech. and Environment	7989.15	1964.06	9953.21	186.61	76.85	263.46
8.	General Economic Services	3079.10	823.50	3902.60	1303.00	450.00	1753.00
9.	Social Services						
i)	Education	8305.77	2748.86	11054.63	3813.50	658.10	4471.60
ii)	Medical and Public Health	15048.71	2531.90	17580.61	12148.0 ⁵	565.00	12713.05
iii)	Water Supply and Sanitation	7778.35	261.28	8039.63	6290.00	171.00	6461.00
iv)	Housing	931.000	497.00	1428.00	570.00	485.00	1055.00
v)	Urban Development	4134.72	350.00	4484.72	0.00	0.00	0.00
vi)	Information and Publicity	90.00	10.00	100.00	0.00	0.00	0.00
vii)	Development of SC, ST & OBC	111.00	7.00	118.00	0.00	0.00	0.00
viii)	Labour and Employment	106.00	49.00	155.00	0.00	0.00	0.00
ix)	Social Security & Social Welfare	308.50	15.70	324.20	30.00	0.00	30.00
x)	Empowerment of Women & Development of Children	526.85	317.30	844.15	0.00	0.00	0.00
10.	General Services	3844.71	419.31	4264.02	1018.00	239.00	1257.00
	TOTAL	102272.69	22340.28	124612.9	55309.7	9643.5	64953.11

5

Source : Deptt. of Planning and Statistics. Daman.

47.6 PROPOSED OUTLAYS AND CAPITAL CONTENT FOR ANNUAL PLAN : 2013-14
(Rs. In lakh)

Sr. No.	SECTOR	Proposed Outlay			Capital Content		
		Daman	Diu	Total	Daman	Diu	Total
1.	Agriculture and Allied Activities						
i)	Crop Husbandry	359.75	114.25	474.00	170.00	67.00	237.00
ii)	Horticulture	36.00	0.00	36.00	11.00	0.00	11.00
ii)	Soil and Water Conservation	850.00	150.00	1000.00	0.00	0.00	0.00
iii)	Animal Husbandry	126.00	43.00	169.00	40.00	10.00	50.00
vi)	Dairy Development	100.00	2.00	102.00	20.00	0.00	20.00
iv)	Fisheries	388.50	2776.00	3164.50	301.00	301.00	602.00
v)	Co-operation	13.54	14.67	28.21	1.00	0.00	1.00
2.	Rural Development	2416.80	560.56	2977.36	0.00	0.00	0.00
3.	Irrigation and Flood Control	504.00	146.00	650.00	403.00	137.00	540.00
4.	Energy	15138.64	6641.50	21780.14	13566.6	615.00	19718.64
5.	Industry and Minerals	310.73	32.50	343.23	200.00	0.00	200.00
6.	Transport	19005.00	6016.77	25021.77	13311.0	4240.77	17551.77
7.	Science, Tech. and Environment	2351.61	512.70	2864.31	393.00	145.00	538.00
8.	General Economic Services	1951.00	1247.	3198.15	1230.19	878.00	2108.19
9.	Social Services						
i)	Education	6689.56	3500.61	10190.17	2025.00	1300.00	3325.00
ii)	Medical and Public Health	2612.60	1188.93	3801.53	533.00	923.03	1456.03
iii)	Water Supply and Sanitation	4214.0	1218.00	5432.00	3350.00	1011.00	4361.00
iv)	Housing	641.00	243.00	884.00	553.00	213.00	766.00
v)	Urban Development	4021.00	2011.00	6032.00	850.00	10.00	860.00
vi)	Information and Publicity	90.00	80.00	170.00	0.00	0.00	0.00
vii)	Development of SC, ST & OBC	89.00	10.00	99.00	15.00	0.00	15.00
viii)	Labour and Employment	146.20	93.00	239.20	0.00	0.00	0.00
ix)	Social Security & Social Welfare	1623.00	852.20	2475.20	0.00	0.00	0.00
x)	Empowerment of Women & Development of Children	60.00	31.65	91.65	0.00	0.00	0.00
10.	General Services	3416.57	307.20	3723.77	1072.17	257.20	1329.37
	TOTAL	67880.00	28150.00	96030.00	38045.00	15645.0	53690.00

Source : Deptt. of Planning and Statistics, Daman and Planning Commission .

48. REVENUE RECEIPT

48.1 YEAR WISE REVENUE RECEIPT (U.T. OF DAMAN AND DIU)

Year	Receipts (Rs. in Crore)
1987-1988	12.19
1988-1989	20.02
1989-1990	25.10
1990-1991	33.39
1991-1992	36.92
1992-1993	37.02
1993-1994	27.50
1994-1995	37.12
1995-1996	40.20
1996-1997	55.57
1997-1998	53.54
1998-1999	62.95
1999-2000	81.00
2000-2001	100.90
2001-2002	101.51
2002-2003	132.34
2003-2004	145.19
2004-2005	213.99
2005-2006	286.30
2006-2007	334.11
2007-2008	309.30
2008-2009	298.75
2009-2010	413.22
2010-2011	455.15
2011-2012	410.00
2012-2013	517.00
2013-2014	529.40
TOTAL	4871.68

Source : Finance Department, Daman.

48.2 DETAILS OF REVENUE RECEIPTS DURING LAST FIVE YEARS

Sr. No.	Item	Receipts (Rs. In crore)				
		2007-08	2008-09	2009-10	2010-11	2011-12
48.2		2007-08	2008-09	2009-10	2010-11	2011-12
A)						
1.	Value Added Tax	214.59	211.53	216.32	251.97	220.00
2.	State Excise	38.34	54.36	58.69	114.47	97.00
3.	Stamps and Registration	11.54	11.04	9.71	12.56	12.60
4.	Taxes on Vehicles	7.82	7.48	8.35	10.47	6.80
5.	Taxes on goods and Passengers	1.39	1.38	1.66	1.35	1.40
6.	Land Revenue	2.55	1.61	1.33	0.97	2.60
	Total (Tax)	276.23	287.40	296.06	391.79	340.41
B)	<u>NON- TAX REVENUE</u>	33.07	11.35	117.16	63.53	69.59
	Total (A+B)	309.30	298.75	413.22	455.15	410.00
C)	Central Excise	1801.97	1459.79	1609.62	2348.95	---
	Grand Total	2111.27	1758.54	2022.84	2804.10	479.59

48.3 BALANCE FROM CURRENT REVENUE (BCR)

Sr. No.	Item	Amount (Rs. In Crore)				
		2009-10	2010-11	2011-12	2012-13	2013-14
1.	Expenditure under Non Plan	527.93	667.94	708.00	835.80	947.00
2.	Recoveries	417.13	566.60	602.60	722.60	802.60
3.	NET	110.80	101.40	105.40	113.20	144.40
4.	Revenue Receipts	413.22	455.15	410.00	517.00	529.40
5.	B.C.R.	302.42	353.75	304.60	403.80	385.00
6.	Plan	164.97	167.01	324.95	568.25	--

49. WAGES

MINIMUM WAGES FIXED BY ADMINISTRATION OF DAMAN AND DIU W.E.F.
01/04/2012

Sr. No.	Category	Basic	Variable DA	Total Wages
1.	Un Skilled	Rs.115.00	Rs.51.80	Rs. 166.80
2.	Semi Skilled	Rs. 121.50	Rs.51.80	Rs. 173.30
3.	Skilled	Rs.128.00	Rs.51.80	Rs. 179.80

50. TARIFF FOR GOVERNMENT SERVICES

Sr. No.	Particulars	Unit	Daman and Diu
50.1	ELECTRICAL ENERGY		
(A)	<u>LOW TENSION SUPPLY</u>		
1.	<u>Domestic Category</u>		
a)	Energy charges	Ps./unit	
	0 – 50 units	"	110
	51-200 units	"	170
	201-400 units	"	210
	401 and above	"	245
2.	<u>Non Domestic Category/ Commercial</u>		
a)	Energy charges		
	1– 100 units	Ps./unit	250
	101 units and above	"	350
3.	<u>LT Industrial category including public water works</u>		
a)	Energy charges		
	upto 20 H.P	Ps./unit	355
	For loads above 20 HP	Ps./unit	365
b)	<u>Fixed Charges</u>		
	Tariff Rs./HP/month) part thereof		
	upto 20 H.P		
	For loads above 20 HP	Per HP or part thereof	Rs. 25.00

Sr. No.	Particulars	Unit	Daman and Diu
High Tension /EHT Consumer			
i	Fixed charges (Demand charges) Up to contract demand In excess of contract demand	Rs./KVA/ Month or Part thereof	100.00 200.00
ii	Energy charges 1-50000 units 50001-500000 500001 and above	Tariff (ps./unit)	420 435 455
iii	High Tension industrial <u>Fixed charges (Demand charges)</u> Upto contract demand In excess of contract demand Energy charges First 300 units /KVA Next 200 units/ KVA Above 500 units/KVA and above	Rs./KVA/ Month	550 1100 330 400 425

Sr. No.	Particulars	Unit	Daman and Diu
iv	<u>Agriculture</u>		
	Energy charges		
	For sanctioned load up to 10 HP	Tariff ps./unit	60
	Beyond 10 Hp to 99 HP load		90
v	<u>Public lighting</u>		
	Energy charges	ps. Per unit	400
vi	<u>Schedule of other charges</u>		
	Single phase	Tariff (in Rs.)/month	Rs. 10
	Three phase	Or part	Rs. 25
	LT meter with MD indicator	thereof	Rs. 200
	Tri-vector meter		Rs. 500
vii	<u>Reconnection charges</u>	Tariff (in Rs.)	
	Single phase LT		Rs. 50
	Three phase LT		Rs.100
	HT		Rs.1000

Sr. No.	Particulars	Unit	Daman and Diu
viii	Service connection charges	Tariff (in Rs.)	
	Single phase LT		Rs. 250
	Three phase LT		Rs. 1000
	HT (First 500 KVA)		Rs.10000
	HT (Beyond 500 KVA)		Rs. 1000 /100KVA
ix	Extra length charge		
	Single phase LT	Tariff / meter in Rs.	Rs. 25/meter
	Three phase LT		Rs. 50/meter
X	Testing fee for various metering equipment		
		Fee per Unit (in Rs.)	
	Single phase		100
	Three phase		300
	Three phase tri-vector meter (0.5 class) industrial LT Consumer		500

Sr. No.	Particulars	Unit	Daman and Diu
x	Testing fee for various metering equipment		
	Three phase tri-vector meter (0.5 class) 11KV HT Consumer	Fee per Unit (in Rs.)	500
	Three phase tri-vector meter (0.2 class) 66 KV EHT Consumer		1000
	Combined CTPT unit for 11 KV Consumer		500
	66 KV CT/ PT unit		500
	Three phase CT block		300
	CT Coil		100

Sr. No.	Particulars	Unit	Daman and Diu
xi	Fees (Non-refundable) for submission of test report of wiring completion		
	Single phase lighting / domestic	Fee per test report (in rs.)	10
	Three phase lighting / domestic		25
	Single phase lighting / non domestic		50
	Three phase lighting / non domestic		100
	Three phase LT industries		250
	Single phase /three phase agriculture/streetlight / public lighting and others		50
	HT Industries upto 500 KVA		1000
	HT Industries upto 2500 KVA		5000
	HT Industries above 500 KVA		10000

Source : Electricity Department vide Order JERC Order on ARR & Tariff determination for ED-DD for FY 2012-13.

Sr. No.	Particulars	Unit	Daman and Diu
50.2	AGRICULTURE <u>HIRE CHARGES OF TRACTORS</u> <u>(W.E.F. 3/7/2007)</u>		
	i) Tilling of cultivation and leveling	Rs./hour	150
	ii) Puddling	Rs./hour	175
	iii) Ploughing	Rs./hour	200
	iv) Transportation charges of tractor alongwith Trolley	Rs. / km.	3

Source : Order No. ZAO/DMN/HCT/2007-2008/105 dated 3/7/2007 from Dy. Secretary (Agri.), Daman.

Sr.No.	Particular	Unit	Daman	Diu
50.3	<u>DRINKING WATER TARIFF</u>			
1)	Domestic and Non Domestic (Institutions)			
	(i) Consumption charge	Rs. /cu.mt.	4.00	3.00
	(ii) Minimum charge	Rs./month	40.00	25.00
2)	Commercial (Shops, Hotels etc.)			
	(i) Upto 10 cu.mt. per month	Rs./cu.mt.	10.00	8.00
	(ii) Over 10 cu.mt. per month	"	20.00	16.00
	(iii) Minimum charge	Rs./month	500.00	250.00
3)	Industries			
	(i) Consumption charge	Rs. /cu.mt.	20.00	25.00
	(ii) Minimum charge	Rs./month	500.00	450.00
4)	Fishing Jetty & Ports			
	(i) Upto 10 cu.mt. per month	Rs./cu.mt.	7.00	8.00
	(ii) Over 10 cu.mt. per month	"	12.00	16.00
	(iii) Minimum charge	Rs./month	250.00	250.00
5)	Public Tap (Municipal / Panchayat areas)	"		
	1/2" connection	"	100	50
	3/4" connection	"	175	100
	1 " connection	"	200	125
6)	Other Charges			
	(i) Delay payment charge	Per month	Compound Rate of 2%	
	(ii) Service connection charge	Rs.	50.00	50.00
	(iii) Meter Fixing Charge	Rs.	100.00	50.00
	(iv) Disconnection charge	Rs.	150.00	20.00
	(v) Reconnection charge	Rs.	100.00	50.00

Source : Order No.PWD/SE/DMN/TB/F.23(1)/2003-2004/497 dated 26/8/2003 from the Dy. Secretary (PWD), Daman.

Sr.No.	Particular	Unit	Daman	Diu
7)	Security Deposit			
a)	For Domestic	Rs.	1000.00	150.00
b)	For Bars and Restaurants	Rs.	2500.00	500.00
c)	For Defense	Rs.	1000.00	500.00
d)	For SSI, MSI, LSI, major Industries, fishing jetty & ports	Rs.	2500.00	500.00
e)	Shops/ Commercial Establishment	Rs.	1000.00	300.00
f)	A & B category Hotels with 1" dia water connection	Rs.	3500.00	3000.00
8)	Water Meter Rent per month			
a)	½"inch dia (15mm)	Rs.	10.00	5.00
b)	¾" inch (20 mm)	Rs.	15.00	7.00
c)	1" inch (25 mm)	Rs.	20.00	8.00
d)	1 ½ " inch (40 mm)	Rs.	50.00	30.00
e)	2" inch (50 mm)	Rs.	50.00	35.00
f)	3" inch (75 mm)	Rs.	100.00	60.00
g)	4" inch (100 mm)	Rs.	150.00	80.00
h)	6" inch (150 mm)	Rs.	200.00	125.00
i)	8" inch (200 mm)	Rs.	400.00	225.00
j)	10" inch (250 mm) and above	Rs.	1000.00	500.00

(G) MISCELLANEOUS INFORMATION

(G) MISCELLANEOUS INFORMATION

51. LISTS OF SC, ST AND OBC

51.1 LIST OF SCHEDULED CASTES

As per “ The constitution (Goa, Daman & Diu) Scheduled Castes Order, 1968” dated 19/02/1968 from the President of India.

SR. NO.	CASTE/RACE	SYNONYM
1	Bhangi	Hadi
2	Chambhar	---
3	Mahar	---
4	Mahyavanshi	Vankar
5	Mang	---

51.2 LIST OF SCHEDULED TRIBES

As per “ The constitution (Goa, Daman & Diu) Scheduled Tribes Order, 1968” dated 19/02/1968 from the President of India.

SR. NO.	TRIBE/ TRIBAL COMMUNITY	SYNONYM
1	Dhodia	Dhodi
2	Dubla	Halpati & Talavia
3	Nayaka	Naikda
4	Varli	---
5	Siddi	---

51.3 LIST OF OTHER BACKWARD CLASSES

- (1) As per Notification No. DC/10/201/92/2440 dated 27/01/1994, from the Assistant Secretary, Administration of Daman & Diu.

1.	Bhandari	11.	Kasar
2.	Banjara, Lambadi, Lamani, Sugali	12.	Koli
3.	Christian Chamar	13.	Kumbi
4.	Christian Mahar	14.	Mitna
5.	Dhangar	15.	Naidu
6.	Dhobi	16.	Nath, Jogi
7.	Dhor	17.	Nhavi, Nai
8.	Gauda	18.	Sagar
9.	Goggi	19.	Yadav, Gavli
10.	Gosavi		

- (2) As per Notification No. AS/SW/519(2)/02-03/260 dated 31/01/2003, from the Assistant Secretary (SW), Administration of Daman & Diu.

1.	Luhar (Panchal)	16.	Koli Khania
2.	Kansara	17.	Mali
3.	Kumbhar (Prajapati)	18.	Kasbati (Muslim)
4.	Dasnam Goswami, Gosain	19.	Mansuri (Muslim)
5.	Rana	20.	Darji
6.	Kapdi	21.	Salat
7.	Khatri (Vankar)	22.	Bhoi
8.	Khatri (Rangara)	23.	Vanza
9.	Mangela	24.	Kharva
10.	Baria	25.	Khatki (Butchar)
11.	Sorthi	26.	Kureshi (Muzavar), Mogal, Thapania – Vadhel (Muslim)
12.	Soni, Sonar	27.	Mir
13.	Koli Patel	28.	Fakir
14.	Koli Machhi	29.	Khalifa (Nai)
15.	Koli Kadia		

**52. RESERVATION QUOTA FOR SC, ST AND OBC IN
GOVERNMENT SERVICE**

GROUP	% OF RESERVATION QUOTA					
	DIRECT			PROMOTION		
	SC	ST	OBC	SC	ST	OBC
A	15	7.5	27	15	7.5	Nil
B	15	7.5	27	15	7.5	Nil
C	3	9	27	15	7.5	Nil
D	3	9	27	15	7.5	Nil

Note : Reservation quota for SC, ST and OBC for direct recruitment to group C and D posts have been fixed by Govt. of India vide O.M. No. 36017/1/2004-Estt.(Res.) dated 5th July, 2005

53. NATIONAL AND INTERNATIONAL DAYS

MONTH	DATE	DAY
JANUARY	1	NEW YEAR DAY
	12	NATIONAL YOUTH DAY
	15	ARMY DAY
	26	REPUBLIC DAY
	30	MARTYR'S DAY/ ANTI LEPROCY DAY
FEBRUARY	28	NATIONAL SCIENCE DAY
MARCH	8	INTERNATIONAL WOMEN'S DAY
	15	CONSUMERS DAY
	21	WORLD FOREST DAY
	24	WORLD T.B. DAY
APRIL	7	WORLD HEALTH DAY
	11	SAFE MOTHERHOOD DAY
	22	WORLD HABITAT DAY, EARTH DAY
	23	WORLD BOOK DAY
	25	PANCHAYAT DAY
MAY	1	WORLD LABOUR DAY
	4	WORLD LAUGHTER DAY
	21	ANTI- TERRORISM DAY
	28	WOMEN'S HEALTH DAY
	31	WORLD ANTI-TOBACCO DAY
JUNE	5	WORLD ENVIRONMENT DAY
	10	PORTUGAL NATIONAL DAY
	29	NATIONAL STATISTICS DAY
JULY	1	DOCTORS DAY AND DAUGHTERS DAY
	10	NATIONAL FISHERIES DAY
	11	WORLD POPULATION DAY
AUGUST	15	INDEPENDENCE DAY
	19	SADBHAVNA DIWAS
	26	DRUG ABUSE DAY
	29	NATIONAL SPORTS DAY

MONTH	DATE	DAY
SEPTEMBER	5 8 14 15 24 27	TEACHERS DAY WORLD LITERACY DAY HINDI DIWAS WORLD PEACE DAY WORLD HEART DAY WORLD TOURISM DAY
OCTOBER	1 2 16 31	WORLD SENIOR CITIZEN DAY INTERNATIONAL DAY OF NON VIOLENCE WORLD FOOD DAY SANKALP DIWAS
NOVEMBER	9 14	LEGAL LITERACY DAY CHILDREN'S DAY
DECEMBER	1 3 10 19	ANTI AIDS DAY WORLD DISABLED DAY HUMAN RIGHTS DAY LIBERATION DAY

54. NATIONAL AND INTERNATIONAL WEEKS AND FORTNIGHTS

MONTH	DATES	WEEK/FORTNIGHT
JANUARY	1 st to 7 th 20 th to 25 th	Road Safety Week India Tourism Week
APRIL	14 th to 20 th	Fire Service Week
JUNE	1 st to 7 th	Cleanliness Week
JULY	1 st to 7 th	Anti Malaria Week
AUGUST	1 st to 7 th	World Breast Feeding Week
SEPTEMBER	1 st to 7 th 1 st to 14 th	World Nutrition Week Hindi Pakhwara
OCTOBER	4 th to 10 th 14 th to 20 th	Mental Health Week New Born Care week
NOVEMBER	2 nd to 8 th 14 th to 20 th 19 th to 25 th	National Wild Life Week National Book Week Qaumi Ekta Week (Communal Integration Week)

55. HIGHER AUTHORITIES OF INDIA

55.1 PRESIDENTS OF INDIA

Sr. No.	Name	Period	
		From	To
1.	Shri (Dr.) Rajendra Prasad	1952	1962
2.	Shri (Dr.) Sarvepalli Radhakrishnan	1962	1967
3.	Shri (Dr.) Zakir Hussain	1967	1969 (Death)
4.	Shri (Dr.) V. V. Giri	1969	1974
5.	Shri Faqrudin Ali Ahmed	1974	1977 (Death)
6.	Shri Neelam Sanjeev Raddy	1977	1982
7.	Shri Gyani Zail Singh	1982	1987
8.	Shri Ramaswamy Venkataraman	1987	1992
9.	Shri (Dr.) Shankar Dayal Sharma	1992	1997
10.	Shri (Dr.) K. R. Narayanan	1997	2002
11.	Shri (Dr.) A. P. J. Abdul Kalam	2002	2007
12.	Smt. Pratibha Devi Singh Patil	2007	2012
13.	Shri. Pranab Mukerjee	2012	Continuing

55.2 VICE – PRESIDENTS OF INDIA

Sr. No.	Name	Period	
		From	To
1.	Shri (Dr.) Sarvepalli Radhakrishnan	1952	1962
2.	Shri (Dr.) Zakir Hussain	1962	1967
3.	Shri (Dr.) V. V. Giri	1967	1969
4.	Shri Gopal Swaroop Pathak	1969	1974
5.	Shri B. D. Jatti	1974	1979
6.	Shri M. Hidaytulla	1979	1984
7.	Shri R. Venkataraman	1984	1987
8.	Shri (Dr.) Shankar Dayal Sharma	1987	1992
9.	Shri (Dr.) K. R. Narayanan	1992	1997
10.	Shri (Dr.) Krishankant	1997	2002
11.	Shri Bhairon Singh Shekhawat	2002	2007
12.	Shri Mohd. Hamid Ansari	2007	Continuing

55.3 PRIME MINISTERS OF INDIA

Sr. No.	Name	Period	
		From	To
1.	Shri Jawahar Lal Nehru	15/08/1947	27/05/1964
2.	Shri Gulzari Lal Nanda	27/05/1964	09/06/1964
3.	Shri Lal Bahadur Shastri	09/06/1964	11/01/1966
4.	Shri Gulzari Lal Nanda	11/01/1966	24/01/1966
5.	Smt. Indira Gandhi	24/01/1966	24/03/1977
6.	Shri Morarji Desai	24/03/1977	28/07/1979
7.	Shri Charan Singh	28/07/1979	14/01/1980
8.	Smt. Indira Gandhi	14/01/1980	31/10/1984
9.	Shri Rajiv Gandhi	31/10/1984	01/12/1989
10.	Shri V. P. Singh	01/12/1989	07/11/1990
11.	Shri Chandra Shekhar	07/11/1990	27/06/1991
12.	Shri P.V. Narasimha Rao	27/06/1991	16/05/1996
13.	Shri Atal Bihari Vajpayee	16/05/1996	28/05/1996
14.	Shri H. D. Deve Gowda	28/05/1996	21/04/1997
15.	Shri I. K. Gujral	21/04/1997	19/03/1998
16.	Shri Atal Bihari Vajpayee	19/03/1998	22/05/2004
17.	Shri (Dr.) Manmohan Singh	22/05/2004	Continuing

**56. INCUMBENCY CHARTS FOR HIGHER AUTHORITIES
IN ADMINISTRATION OF DAMAN AND DIU**

Sr. No.	Name	Period	
		From	To
(A) ADMINISTRATOR			
1.	Shri K. S. Baidwan	16/03/1992	28/03/1994
2.	Shri Ramesh Chandra	28/03/1994	15/07/1995
3.	Shri S.P. Aggarwal	15/07/1995	25/06/1998
4.	Shri Ramesh Negi	25/06/1998	23/02/1999
5.	Shri Sanat Kaul	23/02/1999	23/04/1999
6.	Shri Ramesh Negi	23/04/1999	19/07/1999
7.	Shri O.P. Kelkar	19/07/1999	12/01/2002
8.	Shri Arun Mathur	12/11/2002	16/11/2005
9.	Shri V. K. Singh	16/11/2005	26/05/2006
10.	Shri Dharmendra	26/05/2006	01/06/2006
11.	Shri R. K. Verma	01/06/2006	28/1/2008
12.	Shri Satya Gopal	29/01/2008	06/03/2011
13.	Shri Narendra Kumar	07/03/2011	27/08/2012
14.	Shri B.S. Bhalla	28/08/2012	Continuing
(B) DEVELOPMENT COMMISSIONER			
1.	Smt. Sindhushree Khullar	27/11/1992	08/08/1994
2.	Smt. Meenakshi D. Ghosh	08/08/1994	31/01/1995
3.	Shri J. P. Singh	03/05/1995	12/08/1997
4.	Shri Ajoy K Paitandy	15/04/2002	01/09/2003
5.	Shri J. K. Dadoo	24/05/2004	03/06/2005
6.	Shri Dharmendra	03/06/2005	07/11/2007
7.	Shri P.K. Gupta	08/11/2007	04/05/2011
8.	Shri Mohanjeet Singh	05/05/2011	19/09/2012
9.	Shri Gyanesh Bharti	19/09/2012	18/09/2013
10.	Shri Sandeep Kumar	19/09/2013	Continuing

Sr. No.	Name	Period	
		From	To
(C) <u>FINANCE SECRETARY</u>			
1.	Shri N. Rajashekhar	19/10/1988	19/06/1991
2.	Shri Vijay Kumar	26/06/1991	10/03/1992
3.	Shri Narayan Diwakar	11/03/1992	04/02/1994
4.	Shri N. Rajashekhar	05/02/1994	22/02/1994
5.	Shri Dharmendra Sharma	23/02/1994	06/02/1996
6.	Smt. Renu Sharma	07/02/1996	14/03/1996
7.	Shri G. D. Badgaiyan	16/03/1996	21/07/1997
8.	Shri B. S. Bhalla	22/07/1997	31/07/1997
9.	Shri Ramesh Negi	01/08/1997	22/02/2001
10.	Shri R. K. Shrivastava	23/02/2001	23/05/2004
11.	Shri J. K. Dadoo	24/05/2004	17/10/2004
12.	Shri Dharmendra	18/10/2004	03/06/2005
13.	Shri S. L. Bansal	20/06/2005	31/01/2007
14.	Shri Dharmendra	01/02/2007	24/06/2007
15.	Shri P. K. Gupta	25/06/2007	10/2/2009
16.	Shri S. P. Dixit	11/02/2009	22/06/2010
17.	Shri Gyanesh Bharti	01/07/2010	Continuing
(D) <u>LAW SECRETARY</u>			
1.	Ms. Charulata Patel	01/11/1993	30/10/1995
2.	Shri Orlando Miranda (Incharge)	01/11/1995	02/02/1996
3.	Shri Rajendra M. Palhade	03/02/1996	31/12/1998
4.	Shri Dnyaneshwar W. Modak	01/01/1999	30/04/2003
5.	Shri Orlando Miranda (Incharge)	01/05/2003	30/09/2003
6.	Shri Prashant Kulkarni	01/10/2003	30/06/2007
7.	Shri P. J. Bamanian (Incharge)	01/07/2007	29/02/2008
8.	Shri Najim K Maner	01/03/2008	04/05/2009
9.	Ms. Swarnita B. Mahale	05/05/2009	31/05/2011
10.	Shri K.M. Vasave	06/06/2011	Continuing

Sr. No.	Name	Period	
		From	To
(E)(a)	INSPECTOR GENERAL OF POLICE		
1.	Shri Muktesh Chander	04/10/2010	07/12/2011
2.	Shri Rajesh Khurana	08/12/2011	Continuing
(b)	DY. INSPECTOR GENERAL		
1.	Shri Mukesh Kumar Meena	29/07/2005	05/09/2007
2.	Shri Tajendra S. Luthra	05/09/2007	12/11/2009
3.	Shri U. K. Choudhary(l/c)	13/11/2009	03/01/2010
©	ASSISTANT INSPECTOR GENERAL OF POLICE		
1.	Shri Dipak Mishra	22/02/1988	15/06/1990
2.	Shri S. Nityanand	08/08/1990	28/03/1995
3.	Shri Balaji Shrivatsav	29/03/1995	09/02/1997
4.	Shri V. P. Gupta	10/02/1997	25/05/1997
5.	Shri Manoj Kumar Lal	26/05/1997	8/09/1999
6.	Smt Garima Bhatnagar	09/09/1999	24/04/2000
7.	Shri Bhairo Singh Gurjar	25/04/2000	02/06/2000
8.	Smt. Anita Roy	03/06/2000	09/06/2003
9.	Shri R. P. Upadhyay	10/06/2003	28/07/2005
(F)	<u>CHIEF / CONSERVATOR OF FORESTS</u>		
(a)	Chief Conservator of Forest		
1.	Shri S.K. Agrawal	30/12/2009	04/06/2012
2.	Shri Yogesh	05/06/2012	Continuing
(b)	Conservator of Forests		
1.	Shri R. A. Mazalkar	31/10/1995	31/05/1997
2.	Shri A. K. Sinha	22/08/1997	27/01/2000
3.	Shri H. C. Dhawan	27/01/2000	17/05/2002
4.	Shri B. S. Sajwan	13/08/2002	30/06/2003
5.	Shri H. C. Dhawan	01/07/2003	30/09/2003
6.	Shri Richard D'souza	30/10/2003	12/12/2005
7.	Shri M.R.G. Reddy	13/12/2005	18/12/2009

Sr. No.	Name	Period	
		From	To
(G)	<u>COLLECTOR, DAMAN</u>		
1.	Shri R. Lakshmikantan	30/05/1987	29/07/1987
2.	Shri M.S. Khan	30/07/1987	11/08/1988
3.	Smt Nutan G. Biswas	12/09/1988	06/09/1990
4.	Shri Sanjay P. Singh	07/09/1990	25/09/1991
5.	Shri Vijay Dev	26/09/1991	09/06/1992
6.	Smt. Satbir Silas	10/06/1992	12/01/1994
7.	Shri Dharmendra Sharma	11/01/1994	21/02/1994
8.	Smt. Renu Sharma	21/02/1994	07/02/1995
9.	Shri Manish Gupta	08/02/1995	15/05/1995
10.	Shri Dharmendra Sharma	16/05/1995	18/03/1996
11.	Shri Manish Gupta	19/03/1996	09/06/1997
12.	Shri Bhim Singh Panwar	10/06/1997	05/08/1997
13.	Shri Raj K. Saxena	06/08/1997	14/02/2000
14.	Shri Vijay Kumar	14/02/2000	04/06/2001
15.	Shri A. K. Singh	04/06/2001	15/11/2002
16.	Shri Gyanendra Srivastava	15/11/2002	19/05/2004
17.	Shri(Dr.) M. Mudassir	19/05/2004	29/01/2007
18.	Shri Vikas Anand	29/01/2007	06/05/2008
19.	Shri J. B. Singh	06/05/2008	22/06/2010
20.	Shri Manoj Kumar Sahoo	22/06/2010	28/11/2011
21.	Shri Sanjay Goel	30/11/2011	30/04/2012
22.	Smt. Chanchal Yadav	30/04/2012	12/07/2012
23.	Shri P.S. Reddy	12/07/2012	18/04/2013
24.	Smt. Alka Diwan	18/04/2013	10/07/2013
25.	Shri. Vinod P. Kavle	10/07/2013	Continuing

Sr. No.	Name	Period	
		From	To
(H)	<u>COLLECTOR, DIU</u>		
1.	Shri M.S. Khan	30/5/1987	12/10/1988
2.	Shri Janak Digal	13/10/1988	14/06/1988
3.	Smt. Nutan G. Biswas	15/06/1988	07/09/1988
4.	Shri Sanjay P. Singh	08/09/1988	29/01/1991
5.	Shri Vijay Dev	30/01/1991	04/10/1994
6.	Shri B. S. Bhalla	05/10/1994	08/06/1996
7.	Shri O.P. Mishra	09/06/1996	13/02/1997
8.	Shri K. R. Kishore	14/02/1997	04/12/1997
9.	Shri O.P. Mishra	05/12/1997	22/11/1998
10.	Shri A. K. Singh	23/11/1998	10/06/2001
11.	Shri Vijay Kumar	11/06/2001	23/02/2003
12.	Shri B. B. Vaishya	24/02/2003	06/04/2003
13.	Shri(Dr.) M. Mudassir	07/04/2003	03/11/2004
14.	Shri Ranbir Singh	04/11/2004	20/01/2006
15.	Shri S. P. Dixit	21/01/2006	14/09/2006
16.	Shri V. C. Pandey	15/09/2006	27/10/2006
17.	Shri Vikas Anand	28/10/2006	27/01/2007
18.	Shri J. B. Singh	29/01/2007	08/08/2007
19.	Shri Neeraj Semwal	09/08/2007	01/09/2008
20.	Shri Sanjay Goel	02/09/2008	18/06/2010
21.	Smt. Alka Diwan	19/06/2010	12/08/2010
22.	Smt. Ankita Mishra Bundela	13/08/2010	25/04/2011
23.	Shri. K.J.R. Burman (I/c)	26/04/2011	11/09/2011
24.	Shri. Krishan Kumar	12/09/2011	06/08/2012
25.	Shri Sunil Kumar Saxena	07/08/2012	13/02/2013
26.	Shri. Ramesh Verma	13/02/2013	continuing

57. PUBLIC REPRESENTATIVES OF DAMAN AND DIU

Sr. No.	Name	Name of Party	Period	
			From	To
(A)	<u>MEMBER OF PARLIAMENT</u> <u>(DAMAN & DIU CONSTITUENCY)</u>			
1.	Shri Gopal Kalyan Tandel	Congress (I)	1987	1989
2.	Shri Devji Jogi Tandel	Independent	1989	1991
3.	Shri Devji Jogi Tandel	BJP	1991	1996
4.	Shri Gopal Kalyan Tandel	Congress (I)	1996	1998
5.	Shri Devji Jogi Tandel	BJP	1998	1999
6.	Shri Dahya Vallabh Patel	Congress (I)	1999	2004
7.	Shri Dahya Vallabh Patel	Congress (I)	2004	2009
8.	Shri Lalu Babu Patel	BJP	2009	Continuing

Sr. No.	Name	Name of Party	Period	
			From	To
(B)	<u>PRESIDENT, DISTRICT PANCHAYAT,</u> <u>DAMAN & DIU</u>			
1.	Shri Jayesh Patel	Independent	1995	1995
2.	Shri Dahya Vallabh Patel	Congress (I)	1995	2000
3.	Smt. Tarunaben L. Patel	Congress (I)	2000	2005
4.	Shri Ketan Dahya Patel	Congress (I)	2005	2010
5.	Smt. Tarunaben L. Patel	BJP	2010	2010
6.	Shri. Ketan Dahya Patel	Congress (I)	2011	Continuing
7.	Shri. Shashikant Maugi	Independent	2013	Continuing

Sr. No.	Name	Period	
		From	To
(C)	<u>PRESIDENT, DAMAN MUNICIPAL COUNCIL</u>		
1.	Shri Gopalbhai D. Tandel	12/11/1986	10/11/1987
2.	Shri Hirabhai M. Tandel	11/11/1987	26/02/1988
3.	Shri Gopalbhai D. Tandel	30/03/1988	29/05/1989
4.	Shri Mustafa I. Chikhaliya	14/06/1989	14/06/1990
5.	Shri Mario F. Lopes	20/06/1990	29/01/1996
6.	Shri Ganesh R. Sakheya	29/01/1996	21/12/1996
7.	Administrator	22/12/1996	26/12/1996
8.	Shri Mario F. Lopes	27/12/1996	09/07/1998
9.	Shri Narendra G. Bhatthela	17/07/1998	27/06/1999
10.	Shri Hirabhai L Tandel	15/09/1999	16/02/2000
11.	Shri Mario F. Lopes	01/03/2000	29/01/2001
12.	Shri Vishal C. Tandel	30/01/2001	03/09/2003
13.	Shri Jayanti N. Tandel	04/09/2003	24/09/2003
14.	Shri Narendra G. Bhatthela	25/09/2003	17/12/2003
15.	Shri Narendra G. Bhatthela	05/01/2004	14/01/2004
16.	Shri Vishal C. Tandel	23/01/2004	19/04/2010
17.	Shri Jayantilal Mittna	19/04/2010	11/05/2010
18.	Shri Manoj Kumar I. Naik	11/05/2010	02/02/2011
19.	Shri. Jignesh Jogui	03/02/2011	19/12/2011
20.	Shir Anilbhai D. Tandel	13/12/2011	04/02/2012
21.	Shri Manoj Kumar I. Naik	17/07/2012	27/07/2012
22.	Shri Mukesh Kanti Patel	01/08/2012	05/06/2013
23.	Shri. Shaukat Anwar Mithani	05/06/2013	15/07/2013
24.	Smt. Simple Tandel	03/08/2013	Continuing

Sr. No.	Name	Period	
		From	To
(D)	<u>PRESIDENT, DIU MUNICIPAL COUNCIL</u>		
1.	Shri (Dr.) Pushpasen B. Kapadia	16/7/1987	15/7/1992
2.	Shri (Dr.) Devjibhai S. Kamalia	16/7/1992	15/7/1997
3.	Shri (Dr.) Pushpasen B. Kapadia	16/7/1997	12/6/1998
4.	Shri Rasikbhai M. Solanki	26/6/1998	15/7/2002
5.	Shri (Dr.) Devjibhai S. Kamalia	16/7/2002	25/1/2005
6.	Shri Rasikbhai M. Solanki	26/1/2005	14/6/2005
7.	Shri Nurullah N. Jiwani	22/6/2005	15/7/2007
8.	Shri (Dr.) Pushpasen B. Kapadia	16/7/2007	22/6/2011
9.	Shri Solanki Hitesh Govind	22/6/2011	Continuing

58. CONVERSION FACTORS

A) Length	
1 Inch	25.4 millimetres
1 Mile	1.61 kilometres / 1,760 yards
1 Millimetre	0.04 inch
1 centimetre	0.393701 inch
1 Metre	1.094 Yards
1 Kilometre	0.62137 miles
1 Kilometre	1,000 metres
1 chain	22 Yards

B) Area	
1 Yard	0.9144 metres
5 ½ Yards	1 rod /pole/ erch
22 Yards	1 chain
220 yards	1 Furlong
3 Miles	1 league
1 Marla	272 sft.
1 Acre	8 Kanals
1 Hectare	20 Kanals (Approx.)
1 Hectare	2.47105 Acres
1 Hectare	10,000 sq. metres
1 sq. mile	2.5900 sq.kilometres
1 sq.mile	640 Acres, 259 Hectares
1 sq.yard	0.84 sq.metre
1 sq. kilometre	0.38610 sq.mile
1 sq. kilometre	100 hectares
1 sq. metre	1.196 sq.yards

C) Volume	
1 Cubic Yard	0.7646 cubic metre
1 Cubic metre	1.3079 Cubic yard
1 cubic feet	0.028 cubic metre

D) Capacity	
1 Imperial gallon	4.55 litres
1 litre	0.22 Imperial Gallon

E) Weight	
1 Ounce (oz)	28.3495 gram
1 Pound	0.45359 kilogram
1 Tonne	1000 kilogram = 10 quintals
1 long ton	1.01605 metric tones/0.907 tonnes
1 Short ton	0.907185 metric tones/1.016 tonnes
1 Long ton	2240 pounds
1 Short ton	2000 pounds
1 Maund	0.037324 metric tones
1 Kilogram	2.204623 pound
1 Kilogram	1,000 grams
1 Gram	0.09 tolas
1 Tola	11.664 grams
1 Ton	1.016046 metric tonne
1 Metric tonne	1000 kilogram
1 Quintal	100 kilograms