

**DISTRICT ELEMENTARY EDUCATION PROGRAMME**

**ROHTAK**

**PERSPECTIVE PLAN**

**&**

**BUDGET**

**(2003-2007)**

**A.W.P. & B.**

**(2003-2004)**



# District Core Team

## Chairman :

Sh. Sh. Rakesh Gupta I.A.S. A.D.C. Rohtak

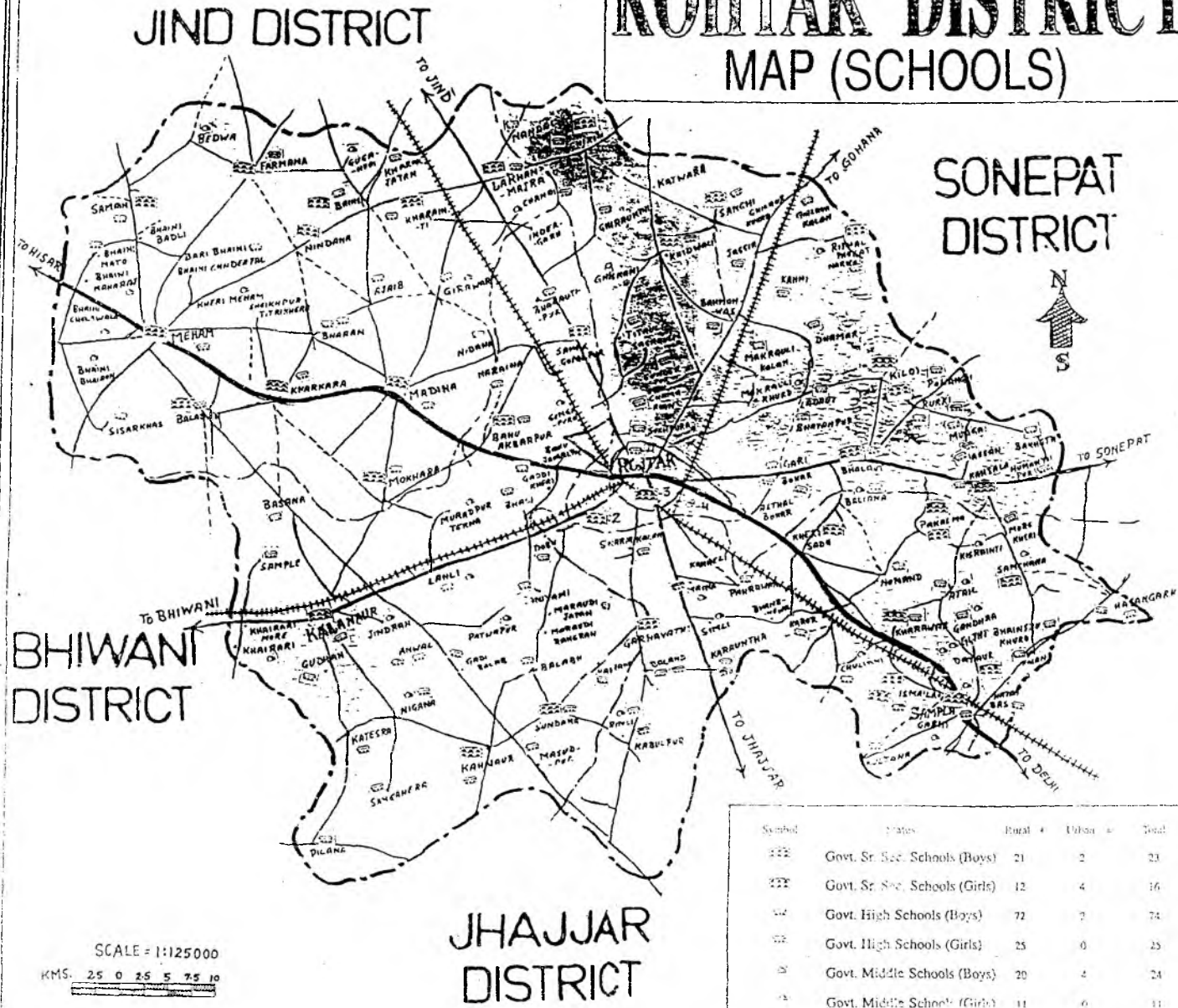
## Planning Team:

- 1) Smt. Sneh Lata, HES-I, D.E.O., Rohtak.
- 2) Sh. Subhash Malhotra, Head Teacher, G.G.P.S. Khidwali
- 3) Sh. Krishan Sawroup Sharma, J.B.T.G.P.S. Sunarian.
- 4) Sh. Satpal Singh, J.B.T. G.P.S. Kalanaur Kalan.
- 5) Sh. Sunil Dutt J.B.T. G.P.S. Bhalaut. (Additional Member)
- 6) Sh. Ved Parkash J.B.T.G.P.S Kishangarh(Additional Member)

सुनील दुट्ट  
D.E.O.,  
ROHTAK

शुभ  
D.E.O.,  
ROHTAK

# ROHTAK DISTRICT MAP (SCHOOLS)



SCALE = 1:125000  
KMS. 2.5 0 2.5 5 7.5 10

Symbol	States	Rural	Urban	Total
☐	Govt. Sr. Sec. Schools (Boys)	21	2	23
☐	Govt. Sr. Sec. Schools (Girls)	12	4	16
☐	Govt. High Schools (Boys)	72	2	74
☐	Govt. High Schools (Girls)	25	0	25
☐	Govt. Middle Schools (Boys)	20	4	24
☐	Govt. Middle Schools (Girls)	11	0	11
Grand Total		161	12	173

# INDEX

Sr. No.	PARTICULARS	PAGE NO.
1	<b>CHAPTER -1 :- DISTT. PROFILE</b>	
	• Introduction	1
	• Information of Distt.	8
	• Educational Indicators of the Distt.	18
	• Infrastructure facilities	30
	• Distt. Rohtak at a glance	32
2.	<b>CHAPTER -2 :- INTRODUCTION OF SSA</b>	35
	• Goals of SSA	36
	• Objectives of SSA	36
3	<b>CHAPTER - 3 :- PLANNING PROCESS</b>	37
	• Formulation of Distt. Core team	37
	• Orientation of Core team	38
	• Formulation of VECs/PTA/MIA & Microplanning	38
	• Meeting with different Groups	39
	• Problems Identified	41
	• Micro Planning Survey Report	43
4	<b>CHAPTER -4 :- THE PROJECT</b>	63
	• Major Components of the Project	70
	• Teacher (Pry. & U. Pry.)	70
	• Alternative Schooling	70

Sr. No.	PARTICULARS	PAGE NO.
	• Civil Works	74
	• Maintenance & Repair	77
	• Free Text Books	78
	• TLE (PS /UPS)	79
	• School Grant (PS/UPS)	79
	• Teacher Grant (PS/UPS)	80
	• Teacher Training (Pry./U.Pry.)	80-81
	• Community Training	81
	• Research & Evaluation	81
	• Innovative activity	82
	• BRC/CRC	86
	• I.E.D.	91
	• Management Cost	94
	• Monitoring & Supervision	100
<b>5</b>	<b>CHAPTER – 5 :- MAJOR INTERVENTION (2003-2007)</b>	
	• Cost Estimate & Budget Proposals (2003-2007)	113
	• Annual work Plan & Budget Estimate (2005-2007)	121
	• Status of Budget Provision	129
	• Annexure (DPIU)	130
	• Approved Budget (2003-2007)	133
	• Annexure of Proposed Pry. Schools from branch school	135
	• List of BRC/CRC	136
	• Civil works Identification	137-150

## INDEX OF TABLES

Sr. No.	Particulars	Page No.
<b>District Profile</b>		
1.	Population by Age Group	7
2.	No. of Govt. Schools C.D. Block wise	34
<b>Information of the District</b>		
1.	Demographic Characteristic Population Distribution	8
2.	Literate Population	8
3.	Schemes in the District	9
4.	Enrolment in the Distt. (Govt + Recog.) Pry. & U.Pry.	11
5.	Literacy Rate	13
6.	Sex Ratio	13
7.	Incentives in Govt. Pry Schools	14
8.	Incentives in Govt. Middle Schools	16
9.	ECCE in the District	16
10.	Enrolment in ECCE centres	17
<b>Educational Indicators of the District</b>		
1.	Educational Institutions in the Distt.	18
2.	Enrolment Govt. & Recog Pry Schools	19
3.	Enrolment in Govt + Recog. U. Pry Schools	20
4.	No. of Habitations with more than 300 Population	21
5.	Gross Access Ration	21
6.	No. of Pry School Teachers	22
7.	No. of U.Pry School Teachers	22
8.	Over all Retention & Drop out Rate (Pry)	23
9.	Over all Retention & Drop out Rate ( U. Pry)	23-24
10.	Gross Enrolment Ratio ( Pry & U.Pry Classes)	24-25
11.	Net Enrolment Ratio ( Pry & U.Pry Classes)	25-26

Sr. No.	Particulars	Page No.
12.	(a) Repetition Rate	26
	(b) Transition Rate	27
13.	Gross Achievement Ratio (Pry. & U. Pry Schools)	27-28
14.	Admission Rate	28
15.	Index of Gender Equity	29
16.	Index of Social Equity	29
17.	Infrastructure facilities	30

### **Microplanning Survey Report**

1.	Habitation level consolidated Report, Distt-Rohtak	46
2.	Habitation level consolidated Report, Block-Rohtak-I	53
3.	Habitation level consolidated Report, Block,Rohtak-II	54
4.	Habitation level consolidated Report, Block, Kalanaur	55
5.	Habitation level consolidated Report, Block, Meham	56
6.	Children Studying in Govt. & Non Govt. Schools	57
7.	Information Regarding Studying in School Children (Block wise)	58
8.	Information Regarding Studying in school Children (Category wise)	59-60
9.	House Hold Survey Report (NER, GER, R.R. & DR.)	61
10.	Identificaion of Disabled Children	62

## INDEX OF DIAGRAMES

Sr. No.	Particulars	Page No.
1.	Status of Children in Age Group 5 + to 10+ years (Over all)	47
2.	Status of Children in Age Group 5+ to 10+ years (SC)	43
3.	Status of Children in Age Group 11+ to 14 years (over all)	49
4.	Status of Children in Age Group 11+ to 14 years (SC)	50
5.	Status of Children in Age Group 5 + to 14 years (Studying, Dropouts & Non starters)	51
6.	Drop out Children in Age Group 11 + to 14 years	52
7.	Status of Budget Provision.	129



## INDEX OF ANNEXURES

Sr. No.	Particulars	Page No.
1.	District Project Implementation Unit (DPIU)	130
2.	Proposed Pry. School from Branch Schools	135
3.	List of BRC/CRC	136
4.	Civil work identification, Block wise	137-150

## CHAPTER – 1

### DISTT PROFILE, ROHTAK DISTT.

#### (1) INTRODUCTION

**History:** The Name of Rohtak belongs to Rohtash S/o Saty vadi Raja Harish chandera . In the beginning Rohtak was called Rohtas Garh. The old destructed signs of that time could be seen in the north of present city which is called now khokhra kot.

The Recognition of Rohtak as Distt. Established Since 1824 & it comes in present performance in the British period since 1912. It was a part of Hissar Distt. Till 1884: After abolishment of Hissar Division Rohtak Distt. Was transferred to Delhi Devision.

**Total Area:** The total area of Distt. Rohtak is about 1668 Sq. km. Which is 3.77% of the total area of Haryana State.

**Population :** The total population of this Distt. Is 940036, which is 4.46% of this total pupation of the state. There are 508885 males and 431151 females.

Rohtak is one of districts of Rohtak Division, which is located in the central part of Eastern Haryana. In 2001 Census, there are two Tahsils Maham (31 villages) and Rohtak (116 villages) containing 5 CD Blocks viz. maham (25 villages), Lakhan Majra (13 villages) Kalanaur (28 villages), Rohtak (57

villages), and Sampla (24 villages) in the District. There are 147 villages and three towns namely Rohtak, Maham, and Kalanaur in the district. Rohtak District has a big cotton cloth market, which supplies cotton cloth to the other districts in Haryana. It is a good place for business purpose.

Sex ratio, is calculated as number of females per 1000 males, was 849 in Rohtak in 1991 census. The sex ratio decline to 847 during 2001. The state sex ratio was 865 in 1991 which has also declined to 861. The rural sex ratio in both Tahsils of the district has increased. In Maham Tahsil it is 839 and in Rohtak 840 but the average is 867. The reason for decreasing Sex Ratio is National capital Delhi which is situated near by. In terms of Sex Ratio, the rank of Rohtak in the State is 15<sup>th</sup> and in country it is 554, such sex ratio will see many males not getting their partner which may create a social evil and is a serious matter for the society.

In Rohtak District, 0-6 age group population is 134712. In which 75016 male and 59696 females. If we see child sex ratio in 1991, it was 868, which was declined to 796 in 2001. In Haryana state, it was 879 in 1991, which declined to 820 in 2001. The 0-6 age group sex ratio of Rohtak falls in 15<sup>th</sup> rank in the state and 578<sup>th</sup> in the country. If we study this age group per 1000 boys only 796 girls are there and shortfall is of 204 (over 20%).

The density of population in Rohtak was 445 in 1991 which increased to 539 in 2001. The Rohtak District stand 8<sup>th</sup> in the state and 188<sup>th</sup> in the country.

The literacy rate of Haryana was 68.59% in which 79.25% male and 56.31% female. The literacy is higher in Rohtak District at 74.56%, of which 84.29% are male and 63.19% females. The 0-6 age group population has not been included in this. In Maham Tahsil 80.11% male and 54.14% female were literate and in Rohtak Tahsil 85.28% male, 65.32% female literate. Rohtak District stands at 4<sup>th</sup> position in literacy in the state and 140<sup>th</sup> position in the country. The rank of the district in the country is 132<sup>nd</sup> for male literacy (84.29) and 154<sup>th</sup> for female literacy (63.19). 35.06% population of the district lives in the Urban areas, of this 89.38% population lives in Rohtak Urban agglomeration because Rohtak has better facilities provided to the people in respect of education and medical facilities etc. The percentage of schedule caste populations is 18.66, which is 4.46% of the Haryana State.

**Climatic Conditions** : The Soil of this Distt. is fertile but due to lack of Nitrogen in its soil, Rohtak Distt. has been declared the dry area Zone. All the 147 villages are electrified and linked with Roads. There are 372 primary schools 65 middle schools & 244 Sec. Sec. Schools in this Distt.

The average Rain fall in this Distt. is 443 M.M. and growth rate is 20.99. The total cropped area is 213597 hect

The area is uneven and also suffers from inundation and water logging during "Monsoon" season. The district falls within the classified Arid and semi-arid Zones. Broadly 4 types of soil are available in the district viz., Loam, coarse loams, and relatively sandy loam. It is alluvial in nature and fertile. However .

the soil is deficient in Nitrogen. Hot summer, cool winter and meager rainfall are the main climatic characteristics of Rohtak district.

**Economic Status of People** : The Economy of the distt. is very much based upon agriculture, therefore maximum village population is living in middle class economic status where some of the village population of this distt. is living below poverty line. Most of the village people are divided in three categories one is agriculture farmers/labours, second is, people in govt. Jobs as well as in private jobs & the third is labour on daily wages.

The economy of the district is primarily agriculture i.e. Agrarian economy. About 64% of the total workers are engaged in Agriculture and allied activities. 3% in cottage and household industries and rest are engaged in other activities i.e. Trade, Transport, Housing, etc.

Out of total geographical area of the district 146208 hectares are under cultivation of which 91706 hectares are double/multiple cropped area. The main crops Wheat, Gram, Sugarcane, Brijra & Wheat cultivation covers the largest area of the district.

The population of towns & city proper have some business prospects & industrial capability. Over all this distt. have the average class economic status.

**Occupation Pattern** : Through, agriculture is the main activity in the distt., it does not provide sufficient income to its dependents. To supplement their meager income they are engaged in various allied activities viz. Dairying.

Poultry, Sheep/goat rearing ect. Dairying is the most important allied activity in the district because its murreh buffaloes and Haryana Buffaloes (Local breed are famous worldwide ). In order to increase the milk production the district Animal Husbandry deptt. is looking after all the important aspects of Animal Husbandary including breeding with Semen of superior bulls, veterinary facilities extension work, formation of co-operative societies and fodder development programme. The district has one Milk plant unit at Rohtak. The Milk Plant makes products like butter, ghee, milk powder etc.

Industrially, Rohtak is one among the fast developing distts. Of Haryana, having good industrial base with 13 large and medium scale industries, along with 7267 small scale units.

The distribution of industrial activities is however uneven. The majority of industrial units are concentrated at Rohtak and Sampla only. District's abundant agriculture resources, available of skilled laboures, a good net work of infrastructure facilities and various incentives offere by government couples with its close proximity to establish their industries in the district. Some new industrial centers are coming up at Meham and Sampla.

Now some more industries are expected to be shifted at district Rohtak cause of judgement of the Supreme Court to shift some category industries out Delhi.

- **Educational Profile :**

**History :** Distt Rohtak is one of the fully aware distts towards education & literacy. Some years ago Gohana , Sonapat & Jhajjar remained the Tehsil H.Q. of Rohtak Distt. There were three Gurukuls. One at Khanpur Kalan (The. Gohana), the second at Gurukul Matindu (The. Sonapat), & the third at Jhajjar called Gurukul Jhajjar.

All these institutions were organized by the Arya Vaidic Societies. The students were educated in our Historical Cultural language. Sanskrit & also with great spirit of moral education.

Some other Govt. institutions and private institution were also running with traditional & current syllabus format. As the time passed away technical & medical studies added in the current syllabus and this distt. Became the leading distt. In technical & medical studies.

Maharishi Dayanand University & Post Graduate Institute of medical sciences are the relevant & Bright Signs of advance Education in this distt.

**Litracy Rate :** The Litracy Rate of this distt. As on 2001 is as follows :

Total Litracy Rate = 74.56%

Male Litracy Rate = 84.29 %

Female Litracy Rate = 63.20%

Total No. of Litracy persons = 600,000

## POPULATION BY AGE GROUP

### TOTAL POPULATION

YEARS	BOYS	GIRLS	TOTAL
6-11 years	64494	53039	119533
11-14 year	42306	36387	78693

### GENERAL CATEGORY

YEARS	BOYS	GIRLS	TOTAL
6-11 years	49606	40480	92086
11-14 year	33743	29220	62963

### SC CATEGORY

YEARS	BOYS	GIRLS	TOTAL
6-11 years	14888	12559	27447
11-14 year	8563	7167	15730

SOURCE: HOUSEHOLD SURVEY

BPL Survey :

	Rural	Urban
Total No. of Families	22755	20143

SOURCE : D.R.D.A. ROHTAK



## INFORMATION OF THE DISTRICT

**Table : 1 Demographic Characteristic Population Distribution**

1991 CENSUS			2001 CENSUS		
MALE	FEALE	TOTAL	MALE	FEMALE	TOTAL
420253	356713	776966	508885	431151	940036

- The decadal growth rate of population during 1991-2001 was 28.06%

According to census 2001 the Rohtak District occupies 13<sup>th</sup> status in the state & place in the country.

**Table :- 2 Literate Population**

1991 CENSUS			2001 CENSUS		
MALE	FEALE	TOTAL	MALE	FEMALE	TOTAL
265984	141309	407293	365713	234740	600453

- The literate population during the decadal 1991-2001 was in ascending order. The rate of female literacy was also showing an increasing order during this period. It shows the progress in the last decade and it was also a good sign of awareness among the people of the district towards literacy.

**Table :- 3 Schemes in the District (2001- 2002)**

NAME OF THE SCHEME	Pry. Schools	M.Schools
(i) <u>Free distribution of text books</u>		
Total Expenditure	129574/-	-----
(ii) <u>Mid-day Meal Scheme</u>		
Total No. of Beneficiaries	519261 -	
(iii) <u>ECCE Scheme</u>		
Total No. of ICDS Centres	653 -	
Total No. of Beneficiaries	46720 -	
(iv) <u>OBB Scheme</u>		
Total No. of Rooms Constructed	30	
(2000-2001)		
(v) <u>PMGY Scheme</u>	7.86 Laes	
Total Expenditure		

Source :- D.P.O. Rohatki

- Free distribution of text books :- To motivate the weaker section towards Pry. Education. Free distribution of text books is one of the best intervention. The text books of different subjects and classes

worth Rs. 129574/- distributed in this distt. Under this scheme during the year 2001-02

- **Mid-day Meal Scheme** :- This scheme is being sponsored by the central Govt. The raw and dry meal @ 15 kg. Rice and 15 kg. Wheat is distributed to each student of Pvy. Class in this distt. Under this scheme. The total No. of beneficiaries during the year 2001-02. is 519261.
- **ECCE Scheme** :- These are six ICDS blocks in this distt. The total No. of ICDS centers is 653. The total No. of beneficiaries is 46720 under this scheme.
- **OBB Scheme** :- The total civil work of 30 rooms has been executed during the year 2000-01 under this scheme.
- **PMGY Scheme** :- The civil work is being executed under Prime Minister Gramin Yojna Scheme in this distt. Two class rooms in GPS Brahmanwas and one in GPS Ghillor Kalan @ Rs. 1.60 Laacs per room has been constructed. Thirty Toilets @ Rs. 10000/- each has also been constructed in different schools of this distt. It costs the total sum of Rs. 7-80 Laacs.

**Table :- 4 (A) Enrolment in the Disst.**

**(Govt.+ Recog. Pry. Schools)**

Enrolment as on		Over all students			SC Students		
		Boys	Girls	Total	Boys	Girls	Total
30-9-98	Govt.	35547	34187	69734	11231	10343	21574
	Recognised	14587	14043	28630	1486	674	2160
30-9-99	Govt.	34751	34827	69578	12116	10506	21722
	Recognised	14471	13120	27591	1512	733	2245
30-9-2000	Govt.	32584	32824	65408	11011	10459	21470
	Recognised	14866	13439	28305	1673	819	2492
30-9-2001	Govt.	30972	30967	61939	10721	10331	21052
	Recognised	15577	13660	29237	1938	851	2798
30-9-2002	Govt.	29562	30087	59649	9852	9657	19509
	Recognised	16796	14321	31117	2143	976	3119

Source D.P.E.O. Rohtak

- The decreasing trend of enrolment in Govt. Pry. School in comparison to Non Govt. Pry. School is a very serious matter for Govt. institutions. The reason must be High lighted so that the precaution measure to be taken teach eve the goal.

**Table :- 4 (b) Enrolment in the District (Middle Classes)**  
**(Govt.+ Recognised . Middle. Schools)**

Enrolment as on		Over all students			SC Students		
		Boys	Girls	Total	Boys	Girls	Total
30-9-98	Govt.	15233	15806	31039	3581	2885	6466
	Recognised	9931	6384	16315	876	571	1445
30-9-99	Govt.	12785	13471	26256	3165	2657	5822
	Recognised	10413	6555	16968	985	609	1594
30-9-2000	Govt.	12824	13447	26271	3380	2911	6322
	Recognised	11452	7168	18620	997	438	1435
30-9-2001	Govt.	14033	12267	26300	3994	2926	6920
	Recognised	19640	13555	33195	1988	1352	3340
30-9-2002	Govt.	13831	12786	26617	3768	3019	6779
	Recognised	20132	13960	34092	1778	1413	3211

Source: D.E.O. Rohtak

- The enrolment of SC Students in Govt. Schools is more than Recog./Aided/unaided Schools in Pry. And upper pry. Classes. This is due to the quality is edu and existing interventions/incentire schemes to the SC/St children in this distt.
- The enrolment of Girls is less in Recog/Aided/unaided schools than in Govt. School in Pry. Section. It also proves the better education in Govt. Schools for girls.

**Table :- 5 Literacy Rate**

State			District		
Total	Male	Female	Total	Male	Female
68.59%	79.25%	56.31%	74.56%	84.29%	63.19%
RURAL	76.13%	49.77%	RURAL	82.11%	56.29%
URBAN	86.18%	72.05%	URBAN	88.27%	75.39%

- The literacy rate of Haryana was 68.59% in which 79.25% Male and 56.31% female. The literacy is higher in Rohtak district at 74.56% of which 84.29% Male and 63.19% females. Rohtak Distt. Stands at 4<sup>th</sup> position in literacy in the state and 140 position in the country

**Table :- 6 Sex Ratio (Per 1000 males)**

	STATE	DISTRICT
TOTAL	861	847
RURAL	867	839
URBAN	847	862

Source Census-2001

- The sex ratio of Haryana was 861, in rural area 867 and in urban area 847 during the census -2001. The sex ratio of Rohtak in total was 847 in rural area 839 and in urban area it was higher i.e. 862. The reason for decreasing sex ration is national delhi which is situated near by in terms of sex ratio, the rank of Rohtak in the state is 15<sup>th</sup> and in country it is 554.

**Table :- 7 a) Incentives in Govt. Pry Schools**

**Distt.-Rohtak (2001-02)**

Sr.No.	Name of Block	No. of Beneficiaries											
		Unclean occupation			Free uniform			Stationary Prize			Attendance Prize		
		Boys	Girls	Total	Boys	Girls	Total	Boys	Girls	Total	Boys	Girls	Total
1	Rtk-I	169	198	367		1916	1916	1667	1837	3504		1155	1155
2	Rtk-II	139	165	304		2666	2666	2281	2352	4736		1272	1272
3	Kalu.	79	20	99		1129	1129	1012	2297	3309		1234	1234
4	Meh.	346	254	600		1875	1875	1826	1674	3500		1234	1234
5	G.Total	733	637	1370		7586	7586	6789	8260	15049		4946	4946

Source D.P.E.O. Rohtak

**Table :7 b)**

**Incentives in Govt Pry Schools**

**Distt Rohtak (2001-02)**

S. No.	Name of School	Rate	Total Amt. spent	To. 1 No of Beneficiaries		
				Boys	Girls	Total
1	Unclean Occupation	25/ P.A. 2500/P.A.	1027500/-	733	637	1370
2	Free Uniform	Rs. 100/P.A. To I & II class Rs. 75/- to III to V	303400 - 341400 - 644800 -			7586 7586
3	Stationary Prize	Rs. 10/- P.A.	150490 -	6789	8260	15049
4	Attendance Prize	Rs. 10 P.A. 10 M.	494600 -		4946	4946

Source : D.P.E.O. Rohtak

incentive scheme Table should be assaged in Two Table. One in Pry. Sec. U.P.

- **Unclean occupation** :- This incentive is being provided to the children working as sweeper. Or any other unclean occupation like leather processing, Carrier of dust on their heads etc. A sum of Rs. 25 - per month (maximum for 10 months ) and Rs. 500 - P.A. per child is the rate of this incentive.
- **Free Uniform** :- The SC/ST Girls or the girls belonging to the weaker section is entitle to get this incentive. A sum of Rs. 100 - per child is paid to the girls studying in Ist & purchase the school uniform.
- **Stationary Prize** :- To purchase the stationary like pen, Pencil, Paper etc., a sum of Rs. 10/- P.A. is paid to the children belonging to SC category & weaker section. The total amt. Of Rs. 150490/-is being spent upon this incentive during the year 2001-02.
- **Attendance Prize**:-This incentive is only for the SC/ST Girls but excluding the unclean occupation related girls. The rate of this incentives is Rs. 10/- per month completing 70 % attendance. Maximum for 10 months.



**Table : 8 Incentives in Govt Middle Schools****Distt. Rohtak (2001-02)**

Sr. No	Name of Scheme	Rate	Period	Total Amt	Total No. of Beneficiaries		
					Boys	Girls	Total
1	Scholar Ship/opportunity cost	30/-P.M	12 M	18 0036	2615	2386	5001
2	Stationary Prize (SC)	80/-P.A.	12 M	4 0008	2656	2386	5001
3	Free Uniform W/S & SC	75/-P.A.	12	1 679	---	2239	2239
4	Stationary Prize for W/S	50/-P.A.	12 M	0 836	---	1672	1672

Source : S.D.E.O. Rohtak

**Table :- 9 ECCE IN THE DISTRICT**

Sr. No.	Name of Block	No of Centers
1	Rothak (U)	124
2	Rothak (R)	137
3	Kalanaur	122
4	Meham	129
5	Sampla	80
6	Lakhan Majar (CHIRI)	61
	<b>Total</b>	<b>653</b>

**Table :- 10 ENROLMENT IN ECCE CENTRES**

**AS ON 30-09-01 DISTT. ROHTAK**

Sr. No.	Name of Block	Over al Students			SC Students		
		Boys	Girls	Total	Boys	Girls	Total
1	Rohtak (U)	4942	4469	9411	2663	2014	4677
2	Rothak (R)	5354	4784	10138	2209	2063	4272
3	Kalanaur	4346	4095	8459	2242	2128	4370
4	Meham	4586	4181	8767	1431	1257	2688
5	Sampla	3134	2546	5680	824	772	1596
6	Lakhan Majra (CHRI)	2285	1913	4198	784	612	1393
		24665	21988	46653	10150	8846	18996

- Early child hood education programme is organized by the P.O. Rohtak at the distt. level there are 653 ICDS centers is the six CD Blocks of the distt. The total enrolment of male children is 24665 and female children is 21988. The total enrolment of SC children is 18996 studding male & female children.

## Educational Indicators of the District

**Table :-1 Educational Institutions in the Distt. :**

	Govt. Institutions	Private Reco./ Aided/Unaided
Total No. of Pry Schools	= 240	145
Total No. of Middle Schools	= 35	28
Total No. of High Schools	= 98	113
Total No. of Sen. Sec. Schools	= 39	30
Total No. of Degree College	= 04	09
Total No. of Vocational Inst.	05	---
Total No. of I.T.I's	= 05	---
Total No. of Poly technical	= ---	02
Total No. of Engg. College	= ---	02
Total No. of Medical Colleges	= 01	01
Total No. of DIET	= 01	---
Total No. of Universities	= 01	---
Total No. of Govt. School	= 01	---
Total No. of C.T.I. for Girl	= 01	---
Total No. of Bal wadi	= 01	---

**TABLE. 2. ENROLMENT AS ON 30-09-01**

**(a) Enrolment of Govt. Pry. Schools (Grade I to V)**

Sr. No	Name of Block	Over all			General			SC		
		Boys	Girls	Total	Boys	Girls	Total	Boys	Girls	Total
1	Rothak I	6796	7099	13895	4307	4381	8688	2489	2718	5207
2	Rothak II	9963	10094	20057	7210	7569	14719	2753	2585	5338
3	Kalamaur	5836	5674	11510	3293	3399	6692	2543	2275	4818
4	Meham	8377	8100	16477	5441	5347	10788	2936	2753	5689
	G. Total	30972	30967	61939	20251	20636	40887	10721	10331	21052

Source DPEO, Rohtak

**(b) Private Reco/Aided Unaided. Pry Schools (Grade I to V)**

Sr. No	Name of Block	Over all			General			SC		
		Boys	Girls	Total	Boys	Girls	Total	Boys	Girls	Total
1	Rothak I	6367	7595	13962	5483	7407	12890	684	188	872
2	Rothak II	2670	1327	3997	2464	1223	3687	206	1048	310
3	Kalamaur	2016	1775	3791	1676	1447	3123	340	328	668
4	Meham	4524	2963	7487	3816	2732	6548	708	231	939
	G. Total	15577	13660	29237	13439	12809	26248	1938	851	2789

Source D.P.E.O., Rohtak

- The enrolment rate in Pry. Classes in Govt. Pry. Schools is higher than Private Recognised schools, but there is decreasing trend of enrolment in Govt. Pry Schools since last few years in this distt. Due to the incentive schemes for children the enrolment of SC children in Govt. Schools is more than Private Recognised schools.

**TABLE : 3 ENROLMENT OF UPPER PRY. CLASSES GRADE  
(VI TO VIII) AS ON 30-09-01 (GOVT. MIDDLE SCHOOLS)**

	Boys	Girls	Total
Over all	14033	12267	26300
General	10039	9341	19380
SC	3994	2926	6920

Source D.E.O., Rohtak

**Private /Reeo/Aided/Unaided Middle Schools**

	Boys	Girls	Total
Over all	19640	13555	33195
General	17652	12203	29855
SC	1988	1352	3340

Source D.E.O., Rohtak

- The enrolment rate in U. Pry. Classes in this distt. is lower than the private schools, but the enrolment of SC category is more than the private recognised schools. It is due to the support of incentive schemes for the SC children in this distt.
- The major cause of decreasing enrolment in Govt. U. Pry schools is lack of infrastructure and school building than Private sector especially in Urban area.

**Table :- 4 No. of Habitations with more than 300 Population**

Sr. No.	Name of C.D. Block	Total No. of Habitation	No. of Habitation with 300 population	No. of Habitation with 300 Population with school	GAR
1	Rohtak	101	101	101	100 %
2	Sampla	33	33	33	100 %
3	Meham	49	49	49	100 %
4	Kalanaur	40	40	40	100 %
5	Lakhan Majra	17	17	17	100 %
	Total	240	240	240	100 %

Source House Hold Survey

**Table – 5 Access**

$$240 \times 100$$

Gross Access Ratio = ----- = 100%

$$240$$

- There are 240 habitation including wards & sectors of Rohtak city. There is no village with out school in this distt.

TABLE : 6

## No. OF PRY. SCHOOL TEACHERS

## (a) TEACHERS POSTTION IN GOVT. PRY. SCHOOLS

Sr. No.	Name of Block	Vacant Posts	Trained Teacher	% of Trained Teacher	No. of Sanctioned posts	Teacher in Position		
						M.	F.	Total
1	Rohatk I	18	All	100 %	471	106	347	453
2	Rohatk II	27	All	100 %	682	268	387	655
3	Kalanaur	17	All	100 %	341	110	214	324
4	Meham	25	All	100 %	503	218	260	478

## (b) Teachers Position in Private /Aided Pry. School

Total Posts	Teacher in Position			Vacant Posts	Trained Teacher	% of Trained Teacher
	M.	F.	Total			
731	221	510	731	X	191	26.12 %

Table :- 7 No. of Middle School Teachers (Subject wise)

## Teacher Position G/M/Schools

Total No. of Sanctioned posts	Trs. In Position	Vacant Posts	Trained Trs.	% of Trained Tr.	
Math	247	243	04	All	100 %
SC.	241	221	20	All	100 %
Hindi	201	199	02	All	100 %
S.S	540	503	37	All	100 %
Skt.	206	205	01	All	100 %
Drg.	181	181	---	All	100 %
P.T.I.	172	172	---	All	100 %
Pb.	33	33	---	All	100 %
H.Sc	31	31	---	All	100 %
Urdu	--	--	--	All	100 %
Music	06	06	02	All	100 %
Tailoring	04	04	---	All	100 %

Source D.E.O., Rohtak

**Table :- 8 (a) OVER ALL RETENTION & DROP OUT RATE BLOCK**

**WISE GOVT. PRY. SCHOOLS (DISTT. ROHTAK)**

Name of Block	Enrolment of Class I as on 30-09-91			Enrolment of Class V as on 30-09-01			Retention Rate %			Drop out Rate %		
	B.	G.	Total	B.	G.	Total	B.	G.	Total	B.	G.	Total
Rohtak-I	2014	1910	3924	1103	1311	2414	54.76	68.63	61.51	45.24	31.37	38.49
Rohtak-II	2838	2399	5237	2035	1939	3974	71.76	80.82	75.88	28.30	19.18	24.12
Kalanaur	1473	1299	2772	1070	1275	2383	72.64	98.15	85.96	27.36	01.85	14.01
Meham	2518	2381	4899	1597	1685	3282	63.42	70.76	66.99	36.58	29.24	33.01
Total Distt	8843	7989	16832	5805	6210	12015	65.64	77.73	71.38	34.36	22.27	28.62

Source D.P.T.O., Rohtak

- The retention rate of girls in block kalanaur is highest in the distt. when lowest in Rohtak-I. It does not mean that the Rohtak-I block is unaware about the girl Edu. but the trend of migration in public schools is the cause behind this factor.

**(b) Retention Rate Middle Classes (GMS)**

	Total No. Of Students as on 30-09-99			Total No. Of Students as on 30-09-99 class VIII			Retention Rate		
	Boys	Girls	Total	Boys	Girls	Total	Boys	Girls	Total
Over all	4845	4864	9709	4256	4608	8864	87.84%	94.73%	91.29%
General	3636	3668	7307	3334	3543	6877	91.69%	96.59%	94.11%
SC	1206	1196	2402	919	1068	1987	76.20%	89.20%	82.72%

- The retention rate of Girls in each category is higher than boys. it is a good sign. of awareness towards the girl Education. The lowest retention of SC Boys is due to poverty line in such category.



**Table : 9 Drop out Rate Middle Class (GMS)**

	Drop out Rate		
	Boys	Girls	Total
Over all	12.16 %	5.27 %	8.71 %
General	8.31 %	3.41 %	5.89 %
SC	27.80 %	10.71 %	17.28 %

- The drop out rate of boys of SC category is highest in distt. This is due to the poverty line and child labour tendency among the village belt families.

**TABLE :10 (a) GROSS ENROLMENT RATIO (GER)**

**PRY. CLASSES) (GPS)**

	Total Enrolment as on 30-09-01 Govt.+ Recognised			Total No. of children 6-11 years Age group as on 31-03-01			GER		
	Boys	Girls	Total	Boys	Girls	Total	Boys	Girls	Total
Over all	66262	53449	119711	66494	53039	119533	99.65%	100.77%	100.14%
General	51349	40972	92921	51606	40480	92086	99.50%	101.21%	100.25%
SC	14913	12477	27390	14888	12559	27447	100.16%	99.34%	99.79%

Source House Hold Survey

- The gross enrolment Ration of SC Boys is highest and the SC girls category is the lowest. It means the SC Caste families hold their girls for sibling care or other house hold works etc.

(b) GROSS ENROLMENT RATIO (GER.) (MIDDLE CLASSES) (GMS)

	Total Enrolment as on 30-09-01 Govt. + Recognised			Total No. of children 11-14 years Age group on 31-03-01			GER		
	Boys	Girls	Total	Boys	Girls	Total	Boys	Girls	Total
Over all	41242	35007	76249	42306	36387	78693	97.18%	96.20%	96.89%
General	33468	28271	62229	33743	29220	22963	99.18%	98.42%	98.83%
SC	7774	6216	14020	8563	7167	15730	90.78%	87.14%	89.12%

Source House Hold Survey

- The GER in Middle classes also predicting the same trend as mentioned in the GER Pry. Classes. The reasons may be same or some different like the early age marriage of their girls.

Table :- 11 (a) NET ENROLMENT RATIO PRY. CLASSES)

(GOVT. + RECOGNISED)

	TOTAL CHILDREN 6-11 YEARS AGE GROUP AS ON 30-09-01			Total population 6-11 years age group as on 30-09-01			NER%		
	Boys	Girls	Total	Boys	Girls	Total	Boys	Girls	Total
Over all	63604	50214	113818	66494	53039	119533	96.20%	94.67%	95.21%
General	50209	39184	89589	51606	40480	92086	97.29%	96.79%	97.07%
SC	13395	11030	24425	14888	12559	27447	89.97%	87.92%	88.98%

Source House Hold Survey

- According to the above data the NER of girls in the age group 6-11 years is less than the boys. It effects the admission rate of girls as well as the repeaters rate of girls in Pry section.

**Table 11 (b) NET ENROLMENT RATIO MIDDLE CLASSES**

**(GOVT + RECOGNISED)**

	TOTAL CHILDREN 11-14 YEARS AGE GROUP AS ON 30-09-01			Total population 11-14 years age group as on 30-09-01			NER%		
	Boys	Girls	Total	Boys	Girls	Total	Boys	Girls	Total
Over all	40343	34043	74386	42306	36387	78693	95.62%	93.58%	94.68%
General	32851	28020	60871	33743	29220	62963	97.35%	95.89%	96.67%
SC	7492	6023	13515	8563	7167	15730	87.49%	84.63%	85.91%

Source House Hold Survey

- This data also proves the above mentioned concept that either there isles admission of girls in companion to boys or the pass percentage of girls is more than boys.

**Table : 12 (a) REPETITION RATE (CLASS – V)**

**GOVT. PRY. SCHOOLS AS ON 1-4-2001**

	Total no. of students Repeating in class-V			Total no. of students enrolled in Class-V			Repetition Rate		
	Boys	Girls	Total	Boys	Girls	Total	Boys	Girls	Total
Over all	431	375	806	5346	5858	11204	8.0%	6.40%	7.19%
SC	116	88	204	548	481	1229	21.16%	18.29%	19.88%
Total	547	463	1010	5894	6339	12233	9.28%	7.30%	8.25%

Source DPI O. Rohtak

- The repetition rate of SC Boys was highest in the distt. The repetition of SC Girls was also remain 18.29%. Which next to this category for improvement in Educational performance.

**Table 12 (b) Transition Rate as on 1-4-01**

Total No. of Students Enrolled in Class-V			Total No. of Students Admitted in class-VI			Transition Rate		
Boys	Girls	Total	Boys	Girls	Total	Boys	Girls	Total
5808	6210	12015	4845	4864	9709	83.46	78.38	80.80

- The transition rate of girls is lower than the boys. It shows the low enrolment of girls in upper pry. classes especially in village belt due to engagement of girls in sibling care and House Hold work etc.

**Table 13 (a) GROSS ACHIEVEMENT RATIO (2001-02)**

**GOVT + RECOGNISE (PRY. SCHOOLS)**

Sr. No.	Name of Block	No. Children Passing Class- V	No. of Children appeared in Class-V	GAMR
1	Rohtak-I	3931	4022	97.73%
2	Rohtak-II	4600	4929	93.29%
3	Kalanaur	2538	2784	91.16%
4	Meham	2622	3968	91.28%
	Total distt.	14691	15703	93.55%

Source DPEO, Rohtak

- The Gross Achievement ratio of block Rohtak-I is the highest and block Kalanaur is the lowest in the distt. block Meham also stands near by

Kalanur. The status of block Rohtak-II is very near to the distt. level i.e. 93.32% when the over all distt. Gross achievement ratio is 93.55%

**Table : 13 (b) Gross Achievement Ratio ( 2001-02)**

**Govt. + Recog. Middle Schools**

No of children Passing Class VIII	No. of Children Appeared	GAMR
4556	8151	55.89%

- The Gross Achievement ratio of class VIII in this distt. is not so good. It shows the lack of quality in Education unawareness towards Education and lack of planning about the educational system. Therefore the more attention towards above stated activities is required to achieve the target.

**Table : 14 ADMISSION RATE**

**NEW ADMISSION IN CLASS-I AS ON 30-09-02 Distt. ROHTAK**

	New Admission in class-I as on 30-09-02			Population of the age 6 years			Admission Rate		
	Boys	Girls	Total	Boys	Girls	Total	Boys	Girls	Total
Over all	5569	5301	10870	7771	511	14282	71.66%	70.57%	76.10%
SC	2004	2021	4025	3111	3117	6228	64.14%	64.83%	64.62%

Source D.P.O. Rohtak

- New admission rate of SC category is lower than other categories. Therefore it is needful to make awareness among the people of such categories.

Table : 15

**INDEX OF GENDER EQUITY****(Govt. + Recog. School) Distt Rohtak**

	Share of Girls in Enrolment	Share of Girls in corresponding population	IGE
Over all	70449	75778	92.96%
SC	15460	17307	89.32%

- The share of girls in educational enrolment is 92.96% of this distt. 7.04% girls are still out of school. The girls belonging to SC category are enrolled only 89.35. It means the creation of more awareness towards educational system of such category is needful.

Table : 16

**INDEX OF SOCIAL EQUITY ISE (SC)****(Govt. + Recog. Schools) Distt. Rohtak**

Share of SC Enrolment	Share of SC Population	ISE
34101	37658	90.48%

- The index of social equity related to SC category is 90.48%. The more awareness among the population of such categories is needful.
- The data used in the above tables regarding population is projected data of 1991. Therefore there may be a difference between the data of house hold survey. The data collected through the microplanning process by the activity of house hold survey is being presented in the chapter of microplanning.

**INFRASTRUCTURE FACILITIES :**

Sr. No.	Name of article	For Pry Schools	For Middle Schools
1	Total No. of Rooms	1534	652
2	Total No. of Class Rooms	1284	652
3	Total No. of Store/Offices	48	34
4	Total No.of Computer Rooms	----	---
5	Total No. Laboratory Rooms	----	26
6	Total No. of Staff Rooms	---	---
7	TotalNo.of Drg./Craft Rooms	----	---
8	Total No. of Library Rooms	----	12
9	Total No. of Sports Rooms	----	---
10	Total No. of Maintenance R.	----	---
a)	Needs Major Repair	136	130
b)	Needs Minor Repair	67	60
11	Total No. of other rooms if any	----	----
12-	Toilets Common	26	40
12A	Toilets Boys	21	40
12B	Toilets Girls	56	25
12C	Toilets Staff	101	30
13	Water Facility	156	28
14	Boundary wall	214	106
15	Electricity	29	44
16	MATERIAL /EQUIPMENT		
a)	Science Kit	177	28
b)	Math Kit	160	02
c)	Mini tool Kit	42	46
d)	First Aid Box	---	36

Sr. No.	Name of article	For Pry Schools	For Middle Schools
e)	Black Boards	1149	324
f)	Maps	983	553
g)	Tape Recorders	217	----
h)	T V	----	54
i)	V C R	----	----
j)	Computer	----	22
k)	Drg/Kit	----	25
l)	Sports Facility	19	67
m)	Charts	192	271
n)	Globe	259	134
o)	Other if any	---	Duster 1017 Paints 219 ltrs.
17	FURNITURE		
a)	Chairs	1950	990
b)	Tables	448	98
c)	Almirah	279	130
d)	Bench/Desk/Stools	21	384
e)	Tat Patti	1845 mtrs.	1350 mts.
f)	Darri	311	181
g)	Fans	75	66
h)	Trunk/Boxes	490	----



## DISTT. ROHTAK AT A GLANCE

1.	Area	1668.59 SQ. Kms
2.	Sub. Division	1
3.	Villages	147
4.	Towns	05
5.	C.D. Blocks	05
6.	Educational Blocks	04
7.	VEC'S + UEC'S	147 + 31
8.	Litracy Rate	74.56%
	Male	84.29%
	Female	63.19%
	Rural Litracy Rate Male	82.11%
	" " " Female	56.29%
	Urban Litracy Rate Male	88.27%
	" " " Female	75.39%
9.	Population	940036
	Male	508885

Female 431151

10. Urban Sex Ratio 862

11. Rural Sex Ratio 839

12. 0 to 6 Age Group Sex Ratio 796

13. No. of Pry. School 240

Source – Course-20001

14. No. of Upper Pry. Schools 170

15. No. of Pry Teachers 1997

16. No. of Upper Pry Teachers. 1862

## DISTT. ROHTAK AT A GLANCE

(C.D. Block Wise)

Sr. No.	Name of C.D. Block	Total No of Govt. Primary Schools	Total No. of Govt. Upper Pry. Schools.
1	ROHTAK	101	69
2	SAMPLA	33	28
3	MEHAM	49	30
4	KALANAUR	40	30
5	LAKHAN MAJRA	17	15
	TOTAL	240	172

## CHAPTER -2

### INTRODUCTION OF SSA (SARVA SHIKSHA ABHIYAN)

- A programme with an effort to universalize the elementary Education by community ownership of School System. It is a response to the demand for quality basic Edu. all over the country.
- A response to the demand for quality basic Edu. & an opportunity for promoting social justice through basic education.
- A programme with clear time frame for universal Elementary Education.
- An effort at effectively involving the Panchayati Raj institutions. School Management Committees , village & urban Slum Level Edu. Committees. P.T.A. /M.T.A. Tribal autonomous councils and other grass root level structures in the management of elementary schools.
- An expression of political will for universal elementary edu. across the country.
- A partnership between the central, state and the local Govt.
- An opportunity for states to develop their own of elementary education.

## **GOALS OF SSA**

The Sarva Shiksha Abhiyan is to provide use full and relevant elementary education for all children in the age group of 6 to 14 age group by 2010. There is also another goal bridge social, regional & gender gaps with the active participation of the community in management of schools.

### **Objectives of Sarva Shiksha Abhiyan** :

- All children in School Education Guarantee centre, Alternate School Back to School Camp by 2003.
- All children complete five years of Primary Schooling by 2007
- All Children Complete Eight yers of Elementry Schooling by 2010.
- Focus on Elementary education of satisfactory quality with emphasis on education for life.
- Bridge all gender and Social gaps at primary stage by 2007 and at elementary education level by 2010.
- Universal retention by 2010.

## CHAPTER –3

### PLANNING PROCESS

- **Formulation of Distt Core Team :** The three members core team has been formulation by the DPEO Rohtak. Following are the members of this core team.

i)	Chirman : Sh. T.K. Sharma	IAS	ADC, Rohtak
ii)	Sh. Jit Ram Khokhar	HES(I)	DPEO Rohtak
iii)	Sh. Subhash Malhotra	H. Tr.	G.G.P.S. Khidwali (Rtk-II)
iv)	Sh. Krishan Sawroup Sharma	JBT	GPS Sunarian (Rtk-I)
v)	Sh Satpal Singh	JBT	GPS Kalanur kalan (Kalanaur)

All the team members attended the training programme to prepare the perspective plan under SSA from 4<sup>th</sup> sep. to 8<sup>th</sup> Sep, 2001 at Chandigarh under the Guidelines of Dr. Balkar Singh Dy, Director HPSPP Chandigarh.

- Sh. Vinod Kumar (SIEMT) made pushing efforts to make all the present member coming from all the state very resourceful getting all the information to prepare this plan.

- Sh. Raj Dev also made best efforts to clear the matter about this plan.
- All the members of our team were in very much potential spirit when returning from Chigarh & they put best efforts to make up the work.

**Orientation of Core Team :** As described above we (the members of Core team) arrived Chandigarh with our Distt. Project co-ordinator & DEPO of our Distt. Sh J.R. Khokhar on the day 4<sup>th</sup> Sep. 2001

Our honorable host & organiser of this orientation programme Dr. Balkar Singh motivated with great moral spirit & deep interest to prepare the perspective plan under SSA.

After completing above 64500 formats supplied to our Distt. for micro planning (House & House Survey)

Our team made very much sincere efforts to do the all above.

Dr. Balkar Singh Dy. Director: HPSPP Chandigarh explained minutely about the above play with the help of transparencies through LCD projector.

### **Formulation of VEC's /PTA/MTA**

A meeting was arranged by our core team members on dated 11-9-01 at DEPO office in the presence of Sh JR Khokhar DPEO Rtk. BEO's. of each Block attend this meeting. The matter of discussion was :

- i) Micro planning Formats (House & House survey)
- ii) Formulation of VEC's /PTA/MTA

The microplanning was arranged a meeting for microplanning (House Hold) Survey purpose was held at Meham on dt. 13-09-01. All the Head Tr. Attended the meeting. The Micro planning formats distributed to the Heads & taught them how & fill these formats. The matter of Formulation of VEC's/PTA/MTA was also discussed.

The third meeting was held at BEO office Kalanaur. All the above matter was repeated before the Heads of Pry School.

The formats of micro planning were filled & the VEC's committee in different villages formed. All the members were very much exited to listen about SSA. They Assured with full cooperation to success the SSA.

### **Meeting with different Groups:**

To formulate need based meticulous perspective plan the strict microplanning activities have been observed :-

- 1) DISE survey of every schools.
- 2) Collection of information form each school.
- 3) Meeting with teachers at cluster & Block level.
  - 1) House Hold Survey (Microplanning survey) as a base of perspective plan.
- 5) Meetings with members of community Gram Shiksha Samittees and stake Holders.
- 6) Meetings with teachers union.
- 7) Meetings with BEOs/SDEO/DPEO/DEO.
- 8) Meeting with Zila Parished
- 9) Meeting with ADC, Rohtak



- 10) Meeting with ICDS office, Rohtak
- 11) Meeting with Child welfare dept., Rohtak
- 12) Meeting with DPRO, Rohtak

## PROBLEMS IDENTIFIED

Some of the problems observed by our team related with this distt. are as follows:

- i) Non correlation between teacher & Parent.
- ii) Lack of interest towards teaching methods of the teacher.
- iii) Lack of rooms, toilets & drinking water facility.
- iv) Lack of interest of parents towards the progress of their child about education.
- v) Lack of inspection work by the higher authorities.
- vi) Teachers do not work with planning just to write daily diary & work plan.
- vii) Unawareness of higher authorities to the progress & better results of education.
- viii) Poverty in villages
- ix) Consumption of time of teachers in non teaching work like election work & others survey work not related to education field.
- x) Illiteracy of parents is village belts.
- xi) Large Net work of Private instructions.
- xii) Attraction of child towards TV Channels.
- xiii) Lack of teaching Aids.
- xiv) Less interest towards cultural activities.
- xv) Wrong Ratio between teachers & students.
- xvi) False Enrolment in Govt. Schools.

- xvii) More Drops outs especially girls.
- xviii) Less accessibility of U.P.S. facility.
- xix) Ineffective library Lab. TLE etc.
- xx) Absence of essential furniture for Trs. & Students.
- xxi) No programme for drop outs and non starters.
- xxii) Non existence of I.E.D. facility.
- xxiii) Social taboos for Girls education.
- xxiv) Inactive community.
- xxv) Weak ECCE system.
- xxvi) Lack of orientations for DIET faculty.
- xxvii) Absence of innovation/Research work.
- xxviii) Inadequate facility for residential training programme for teachers.
- xxix) No DEP structure and facility.
- xxx) Less enrolment in Govt. schools in comparison to private schools.

**MICROPLANNING**

**SURVEY**

**REPORT**

**DISTT. ROHTAK**

## MICROPLANNING

Data is collected by D.P.E. office every year but this has information only the children of 6-11 years age and children enrolled in the school. This data is not sufficient for the preparation of perspective plan. Therefore Micro planning was done in rural area & urban area of this distt.

Microplanning covered 147 villages and all urban area of this distt. have total population 819363. This distt. have 119533 children 5+ to 10+ years age group out of these 113818 are enrolled in schools and 545 dropped out and 5170 non starters.

The population of 11+ to 14 years of age is 78693 out of these 74386 are enrolled, 2545 drop outs and 1762 non starters. The NER on the basis of consolidated data of this distt. is as follows

### NER/GER 5+ TO 10+ AGE GROUP CHILDREN

	Total Enrolled Children. 5 + to 10+ age Group			Total Population 5+ to 10+ age Group			NER			GER		
	Boys	Girls	Total	Boys	Girls	Total	Boys	Girls	Total	Boys	Girls	T
Over All	63604	50214	113818	66494	53039	119533	96.20	94.67	95.21	99.62	100.08	100
SC	13395	11030	24425	14888	12559	27447	89.97	87.82	88.98	100.16	99.34	99

# MICROPLANNING (HOUSE HOLD SURVEY)

## AT A GLANCE

(RURAL AREA, DISTT. ROHTAK)

TOTAL BLOCKS COVERED	:	4
TOTAL VILLAGES COVERED	:	147
TOTAL POPULATION COVERED	:	819363

No. of Children	5+ to 10+ Years age group children			11+ to 14 Years age group children		
	Boys	Girls	Total	Boys	Girls	Total
Total Enrolled	63604	50214	113818	40343	34043	74386
Total Dropped out	268	277	545	1155	130	2545
Total Non Starters	2622	2548	5170	808	954	1762
Total out of School (Dropped out of Non Starters)	2890	2825	5715	1963	2344	4307

### 5+ TO 14 YEARS AGE GROUP CHILDREN

	BOYS	GIRLS	TOTAL
Total Enrolled	103947	84257	188204
Total Dropped out	1423	1667	3090
Total Non Starters	3430	3502	6932
Total out of School (Dropped out Non Starters)	4853	5169	10022

## NER/GER 11 + TO 14 AGE GROUP CHILDREN

	Total Enrolled Children. 11 + to 14+ age Group			Total Population 11+ to 14+ age Group			NER%			GER%	
	Boys	Girls	Total	Boys	Girls	Total	Boys	Girls	Total	Boys	Girls
Over All	40343	34043	74386	42306	36387	78693	95.62	93.58	94.68	97.48	96.20
SC	7492	6023	13515	8563	7167	15730	87.49	84.03	85.91	90.78	87.14

## NER/GER 5 + TO 14 AGE GROUP CHILDREN

	Total Enrolled Children. 5 + to 14+ age Group			Total Population 5+ to 14+ age Group			NER			GER	
	Boys	Girls	Total	Boys	Girls	Total	Boys	Girls	Total	Boys	Girls
Over All	103947	84257	188204	108800	89426	198226	95.53	94.21	94.94	98.79	98.93
SC	22887	17053	39940	25451	19726	45177	87.61	84.76	86.84	89.13	94.91

All the findings are registered in the enclosed Annexure.

# District Elementary Education Programme

Distt. Rontak

5+ to 10+ Age Habitation Level Consolidated Report

11+ to 14 Age

Habitation Name .....

Revenue Village Name .....

Block Name R-I,R-II, MEHAM, KALANAUR

Social Group	Population	Studying in School		Dropped out		Non-starters		Total out of school (dropped + non starter)		Studying in school		Dropped Out		Non Starters		out of school		Grand total of out of school children			
		Boys	Girls	Boys	Girls	Boys	Girls	Boys	Girls	Boys	Girls	Boys	Girls	Boys	Girls	Boys	Girls	Boys	Girls	TOTAL	
1	2	3	4	5	6	7	8	9	10	11	12	13	14	15	16	17	18	19	20	21	
	161740	13395	11030	179	189	1314	1340	1493	1529	7492	6023	572	635	499	509	1071	1144	2564	2673	5237	
SC	113065	9150	7486	27	31	342	382	369	413	5633	4831	167	179	115	173	282	352	651	765	1416	
Other	544558	41059	31698	62	57	966	926	1028	883	27218	23189	416	576	194	272	610	848	1638	1731	3369	
Total	819363	63604	50214	268	277	2622	2548	2890	2825	40343	34043	1155	1390	608	954	1963	2344	4853	5169	10022	
Special																					

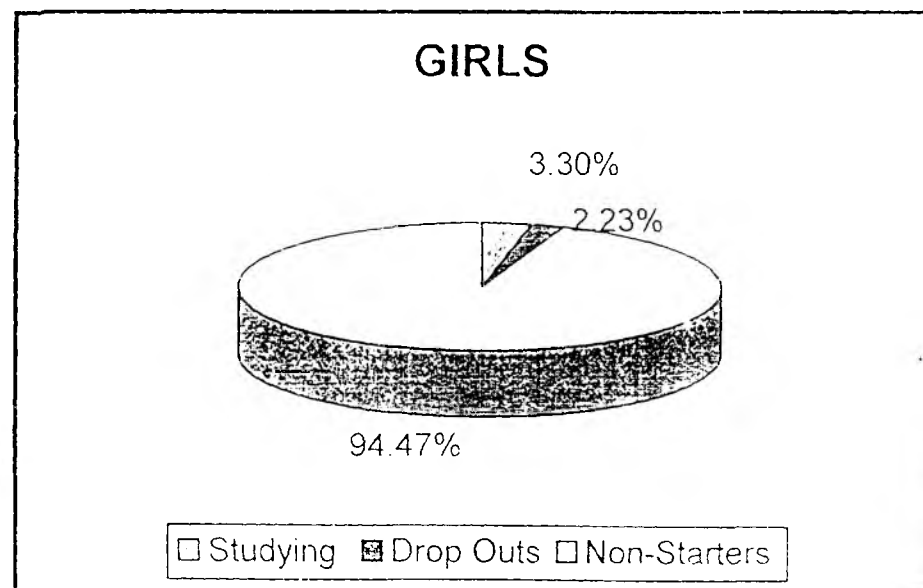
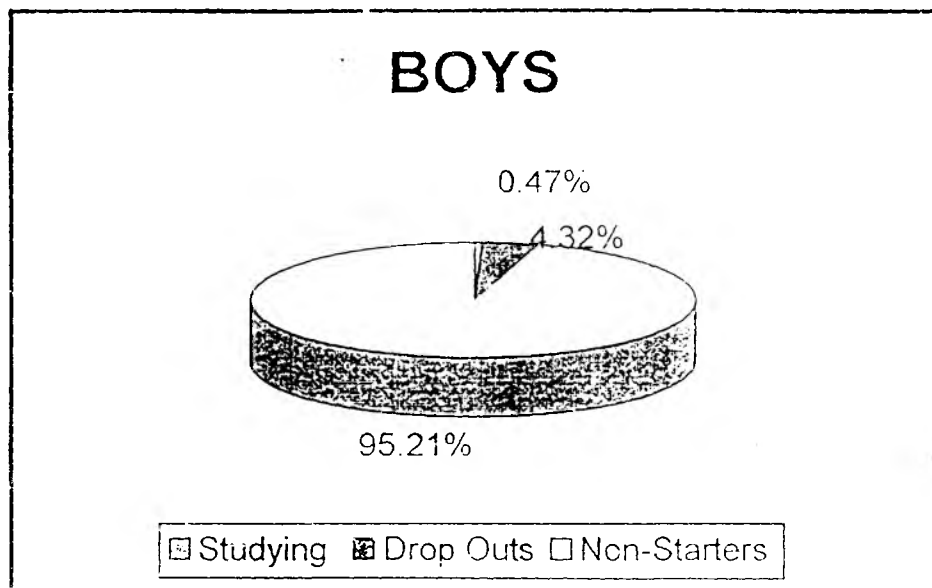
Social Group	Details of dropped out children of 11+14 years age group													
	Boys dropped out completing grade							Girls dropped out completing grade						
	I	II	III	IV	V	VI	VII	I	II	III	IV	V	VI	VII
SC	28	83	110	123	102	64	62	28	88	120	122	162	64	51
ST														
OBC	6	17	21	36	43	21	23	3	16	37	33	48	15	27
MBC														
Other	20	40	52	74	81	68	81	17	55	88	108	118	90	100
Total	54	140	183	233	226	153	166	48	159	245	263	328	169	178
Special														

No. of Disabled Children (6-14 Group)										DROPPED OUT +NON STARTERS	
V.I.		H.I.		O.D.		Dump		MR		Street Children	Labourer
B	G	B	G	B	G	B	G	B	G	6-14 year age group	6-14 year age group
14	10	7	7	118	78	20	22	26	14	1039	659
9	7	4	9	54	62	9	8	11	9	323	264
30	19	9	13	169	114	47	29	52	30	354	317
53	36	20	29	341	254	76	59	89	53	1716	1240



# STATUS OF CHILDREN IN AGE GROUP 5+ TO 10 YEARS

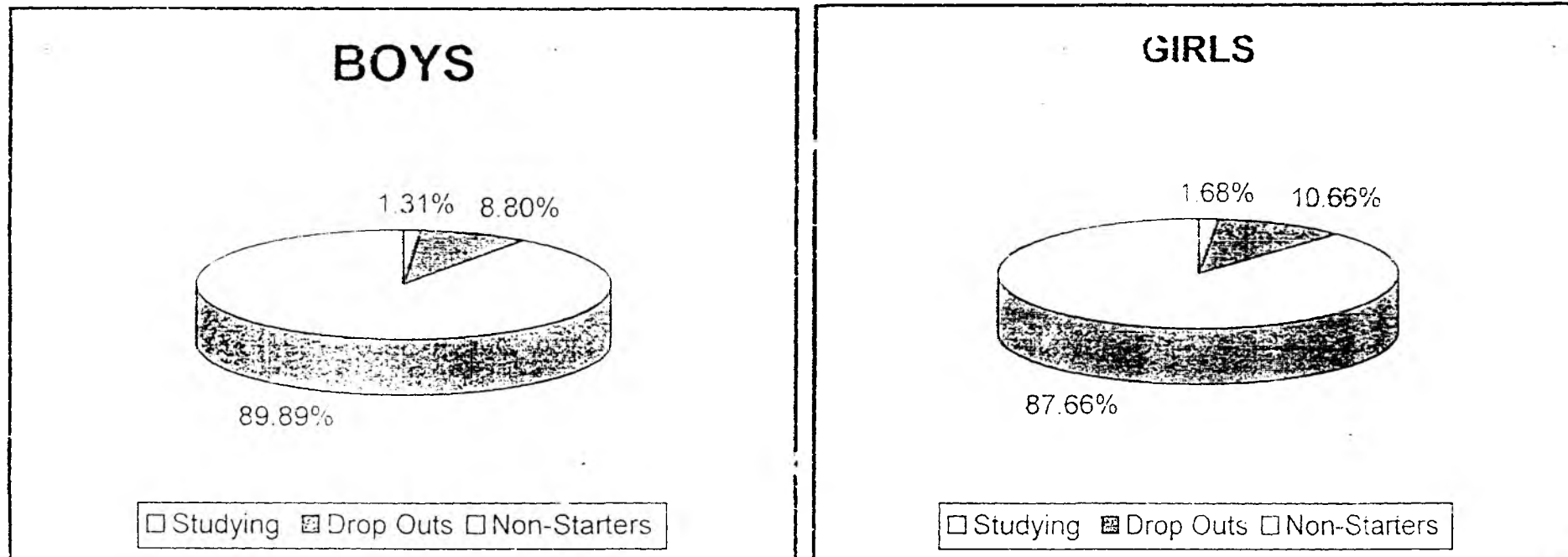
## OVER ALL



DEEP (SSA), ROHTAK

# STATUS OF CHILDREN IN AGE GROUP 5+ TO 10+ YEARS

S.C.

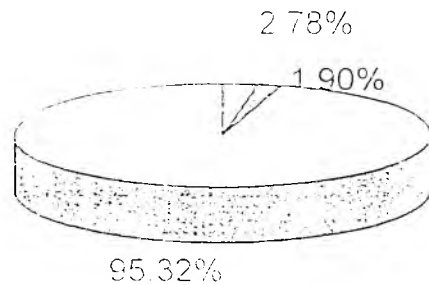


DEEP (SSA), ROHTAK

# STATUS OF CHILDREN IN AGE GROUP 11+ TO 14 YEARS

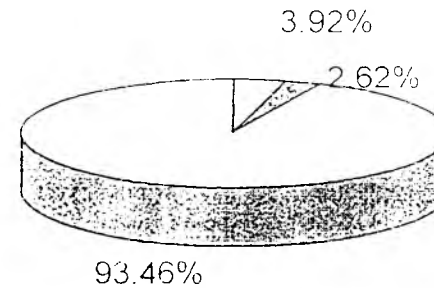
## OVER ALL

### BOYS



□ Studying   ▣ Drop Outs   □ Non-Starters

### GIRLS

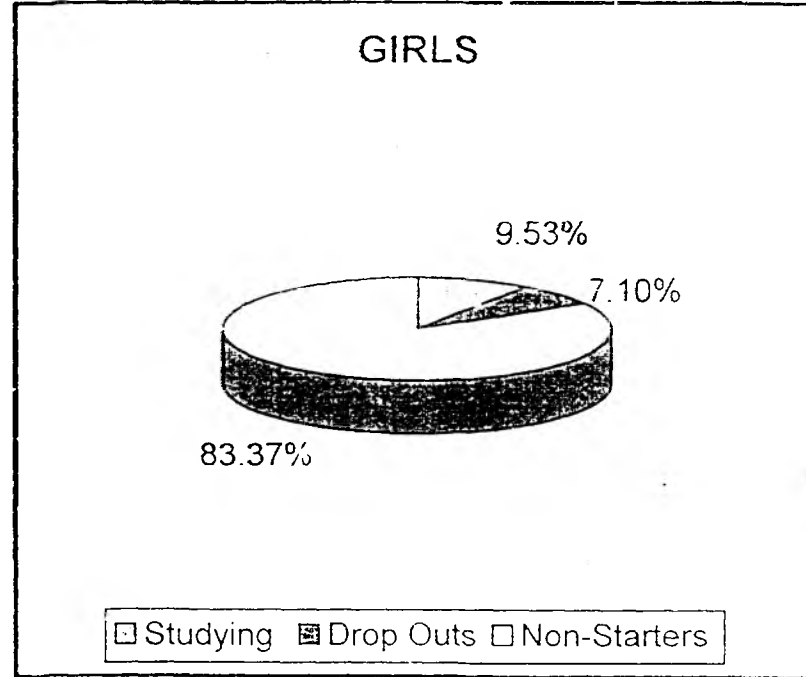
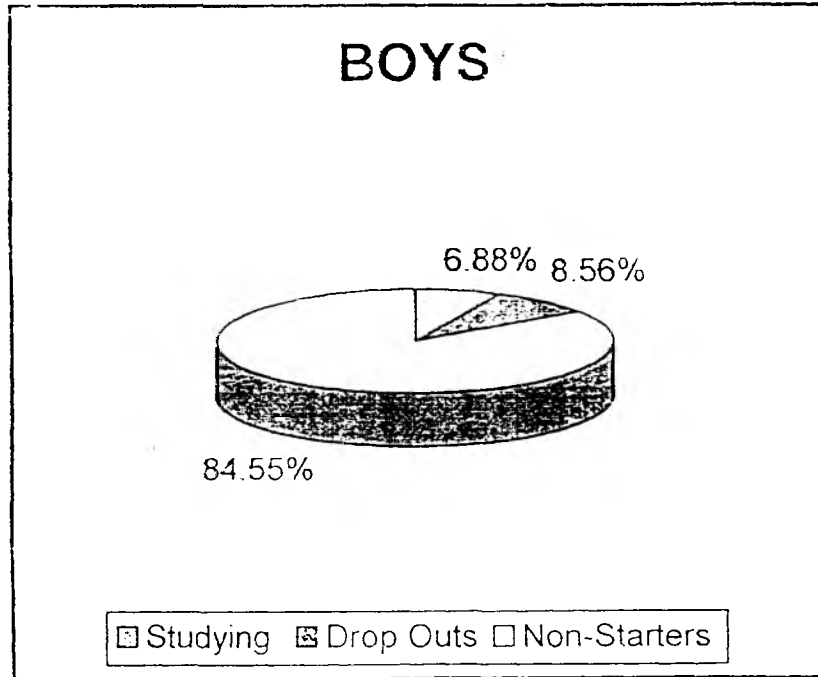


□ Studying   ▣ Drop Outs   □ Non-Starters

DEEP (SSA) ROHTAK

# STATUS OF CHILDREN IN AGE GROUP 11+ TO 14 YEARS

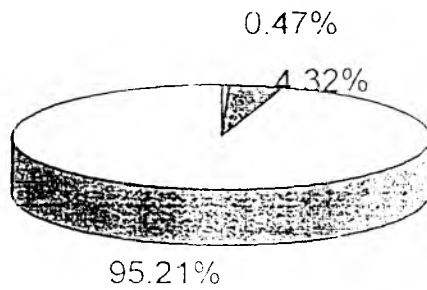
S.C.



DEEP (SSA), ROHTAK

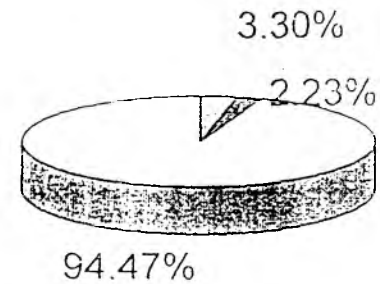
## STATUS OF CHILDREN IN AGE GROUP 5+ TO 14 YEARS

IN AGE GROUP 5 + TO 10+ YEARS



□ Studying   ■ Drop Outs   □ Non-Starters

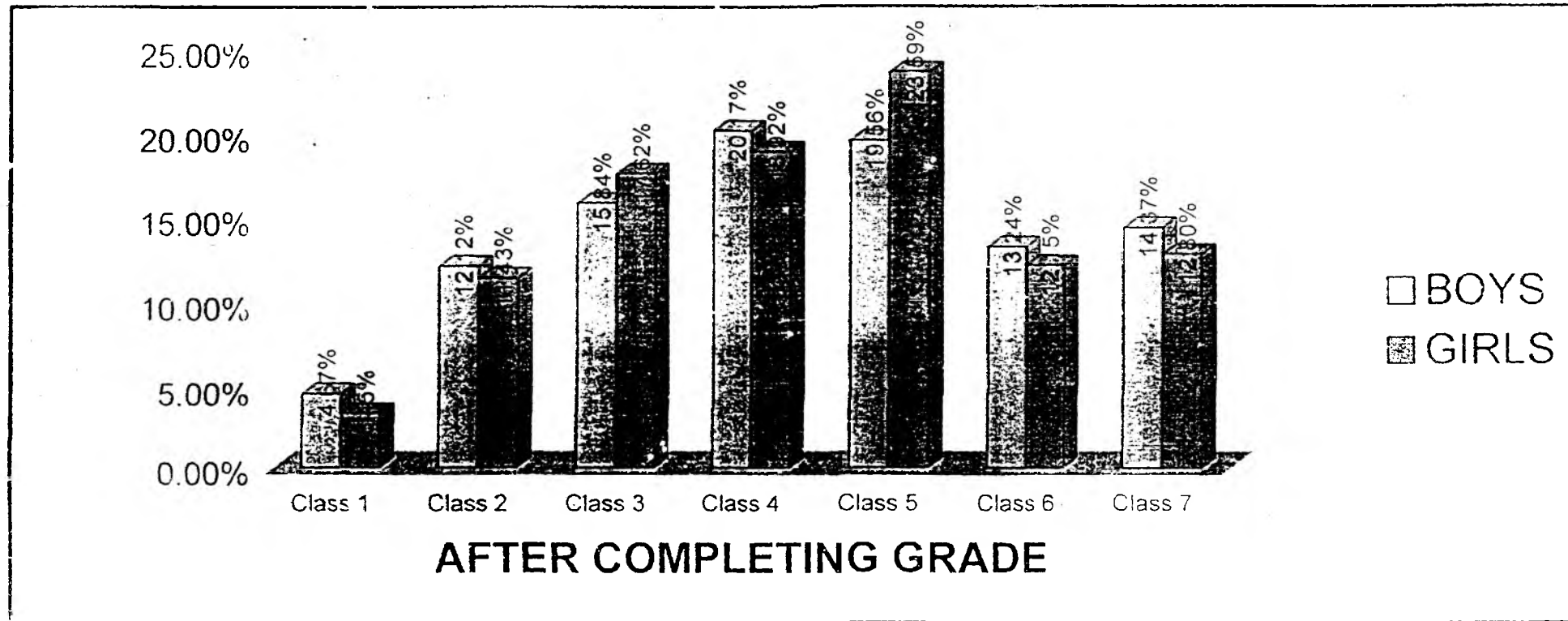
IN AGE GROUP 11 + TO 14 YEAR



□ Studying   ■ Drop Outs   □ Non-Starters

DEEP (SSA), ROHTAK

# DROPOUT CHILDREN IN AGE GROUP 11 + TO 14 YEARS



DEEP (SSA), ROHTAK

# District Elementary Education Programme

Distt. Rohtak

## Habitation Level Consolidated Report

Habitation Name

5+ to 10+ Age

Revenue Village Name

11+ to 14 Age

Block Name ROHTAK - 1

Social Group	Population	Studying in School		Dropped out		Non-starters		Total out of school (dropped + non starter)		Studying in school		Dropped Out		Non Starters		out of school		Grand total of out of school children		
		Boys	Girls	Boys	Girls	Boys	Girls	Boys	Girls	Boys	Girls	Boys	Girls	Boys	Girls	Boys	Girls	Boys	Girls	Boys
1	2	3	4	5	6	7	8	9	10	11	12	13	14	15	16	17	18	19	20	21
SC	68862	5256	4368	60	60	424	418	484	178	2836	2492	212	194	191	173	403	367	887	845	1732
ST																				
OBC	57874	4661	3715	12	18	140	170	152	188	2733	2347	74	88	61	82	135	170	287	358	645
ABC																				
Other	231886	16270	12226	21	8	125	128	146	136	10999	9550	99	99	56	54	155	153	301	289	590
Total	358622	26187	20309	93	86	689	716	782	802	16568	14389	385	381	308	309	693	690	1475	1492	2967
Special																				

Social Group	Details of dropped out children of 11+14 years age group													
	Boys dropped out completing grade							Girls dropped out completing grade						
	I	II	III	IV	V	VI	VII	I	II	III	IV	V	VI	VII
C	12	38	39	49	41	18	15	7	38	36	31	55	14	13
T														
BC	2	6	9	12	22	9	14		8	19	15	26	5	15
BC														
Other	7	7	9	17	20	15	23	2	7	16	19	21	15	19
Total	21	51	57	78	83	43	52	9	53	71	65	102	34	47
Special														

No. of Disabled Children (6-14 Group)										DROPPED OUT + NON STARTERS	
V.I.		H.I.		O.D.		Dump		MR		Street Children	Labels
B	G	B	G	B	G	B	G	B	G	6-14 year age group	6-14 year age group
2	2	2		33	24		3	14	6	478	264
2	2	1	1	19	20	2	3	4	4	143	70
9	4	2	5	52	36	17	10	24	12	105	57
13	8	5	6	104	80	25	16	42	22	731	401

# Elementary Education Programme Distt. Rohtak

## Habitation Level Consolidated Report

Habitation Name 5+ to 10+ Age Revenue Village Name 11+ to 14 Age Block Name ROHTAK - II

Social Group	Population	Studying in School		Dropped out		Non-starters		Total out of school (dropped + non starter)		Studying in school		Dropped Out		Non Starters		out of school		Grand total of out of school children		
		Boys	Girls	Boys	Girls	Boys	Girls	Boys	Girls	Boys	Girls	Boys	Girls	Boys	Girls	Boys	Girls	Boys	Girls	TOTAL
1	2	3	4	5	6	7	8	9	10	11	12	13	14	15	16	17	18	19	20	21
	37157	2884	2378	79	79	379	338	458	417	1730	1315	163	166	93	95	256	283	714	700	1414
BC	29288	2181	1872	9	10	107	117	116	127	1468	1282	54	43	37	52	91	95	207	222	429
Other	140479	10502	8388	19	21	171	141		162	6975	6137	110	177	23	53	133	230	323	392	715
Total	206924	15567	12638	107	110	657	596	764	706	10173	8734	327	408	153	200	480	608	1244	1314	2558
Special																				

Social Group	Details of dropped out children of 11+14 years age group													
	Boys dropped out completing grade							Girls dropped out completing grade						
	I	II	III	IV	V	VI	VII	I	II	III	IV	V	VI	VII
	8	19	41	37	25	16	17	14	26	30	37	46	25	10
BC	2	8	9	17	12	3	3	2	4	9	8	12	3	5
Other	3	8	11	21	22	20	25	4	16	21	28	37	36	35
Total	13	35	61	75	59	39	45	20	46	60	73	95	64	50
Special														

No. of Disabled Children (6-14 Group)										DROPPED OUT +NON STARTERS	
V.I.		H.I.		O.D.		Dump		MR		Street Children	Locurer
B	G	B	G	B	G	B	G	B	G	6-14 year age group	6-14 year age group
5	2		3	48	31	5	7	11	8	445	267
4	2		2	14	19	3	1	6	4	101	103
14	9	3	2	75	51	12	7	27	17	113	80
23	13	3	7	137	101	20	15	44	29	560	403



# District Elementary Education Programme

Distt. Rohtak

BLOCK

## Habitation Level Consolidated Report

Habitation Name

5+ to 10+ Age

Revenue Village Name

11+ to 14 Age

Block Name KALANAUR

Social Group	Population	Studying in School		Dropped out		Non-starters		Total out of school (dropped + non starter)		Studying in school		Dropped Out		Non Starters		out of school		Grand total of out of school children		
		Boys	Girls	Boys	Girls	Boys	Girls	Boys	Girls	Boys	Girls	Boys	Girls	Boys	Girls	Boys	Girls	Boys	Girls	TOTAL
1	2	3	4	5	6	7	8	9	10	11	12	13	14	15	16	17	18	19	20	21
SC	26066	2520	2091	23	20	218	233	241	253	1423	1066	83	122	74	92	157	214	398	467	865
ST																				
OBC	4259	408	330			14	10	14	10	235	210	6	7	3	6	9	13	23	23	40
ABC																				
Other	70239	6002	4776	12	15	355	308	367	323	3657	3081	73	110	55	70	128	180	495	503	998
Total	100564	8930	7197	35	35	587	551	622	586	5315	4357	162	239	132	168	294	407	916	993	1903
Special																				

Social Group	Details of dropped out children of 11+14 years age group													
	Boys dropped out completing grade							Girls dropped out completing grade						
	I	II	III	IV	V	VI	VII	I	II	III	IV	V	VI	VII
SC	4	11	9	19	15	12	13	2	8	25	24	33	12	18
BC			1	1	1	2	1			1	2	2	1	1
Other	3	10	7	16	16	10	11	2	14	21	20	27	10	16
Total	7	21	17	36	32	24	25	4	22	47	46	62	23	35
Special														

No. of Disabled Children (6-14 Group)										DROPPED OUT + NON STARTERS	
V.I.		H.I.		O.D.		Dump		MR		Street Children	Labour
B	G	B	G	B	G	B	G	B	G	6-14 year age group	6-14 year age group
3	1	1	1	20	13	3	6			28	19
1	2	1		13	11	2	3	1		26	34
2	3	2	2	16	10	6	7	1		49	28
6	6	4	3	49	34	11	16	2	0	103	81

Habitation Level Consolidated Report

Habitation Name

5+6 to 10+ Age

Revenue Village Name

11+ to 14 Age

Block Name MEHAM

Social Group	Population	Studying in School		Dropped out		Non-starters		Total out of school (dropped + non starter)		Studying in school		Dropped Out		Non Starters		out of school		Grand total of out of school children		
		Boys	Girls	Boys	Girls	Boys	Girls	Boys	Girls	Boys	Girls	Boys	Girls	Boys	Girls	Boys	Girls	Boys	Girls	Boys
1	2	3	4	5	6	7	8	9	10	11	12	13	14	15	16	17	18	19	20	21
C	29655	2735	2193	17	30	293	351	310	381	1503	1150	114	131	141	149	255	280	565	551	1226
T																				
BC	21644	1900	1569	6	3	81	85	87	88	1197	992	33	41	14	33	47	74	134	152	299
BC																				
Other	101954	8285	6308	10	13	315	249	325	262	5587	4421	134	190	60	95	194	285	519	547	1066
Total	153253	12920	10070	33	46	689	685	722	731	8287	6553	281	362	215	277	495	639	1218	1270	2588
Special																				

Social Group	Details of dropped out children of 11+14 years age group													
	Boys dropped out completing grade							Girls dropped out completing grade						
	I	II	III	IV	V	VI	VII	i	II	III	IV	V	VI	VII
C	4	15	21	18	21	18	17	5	16	29	30	28	13	10
T														
BC	2	3	2	3	6	7	5	1	4	8	8	8	6	6
BC														
Other	7	15	25	20	23	22	22	9	18	30	41	33	29	30
Total	13	33	48	44	52	47	44	15	38	67	79	69	48	46
Special														

No. of Disabled Children (6-14 Group)										DROPPED OUT - NON STARTERS	
V.I.		H.I.		O.D.		Dump		MR		Street Children	Labourer
B	G	B	G	B	G	B	G	B	G	6-14 year age group	6-14 year age group
4	5	4	3	17	10	5	6	1		57	109
2	1	2	6	8	12	2	1			43	17
5	3	2	4	26	17	12	5		1	57	139
11	9	3	13	51	39	19	12	1	1	202	305



## Information Regarding Studying in School Children

Pry & U. Pry. Classes (Govt. Non Govt. School)

Distt. Rohtak

S. No.	Name of Block	Social Group	I-V Classes (Pry.)						VI- VIII Classes (U.Pry)					
			Govt.			Non. Govt.			Govt.			Non. Govt.		
			Boys	Girls	Total	Boys	Girls	Total	Boys	Girls	Total	Boys	Girls	Total
1	Rohtak-I	SC	2256	2217	4473	3103	2585	5688	1344	1052	2396	1542	1394	2936
		BC	1047	1068	2115	3782	2905	6687	722	600	1322	2058	1838	3896
		Gen	2876	2687	5563	13611	9940	23551	2016	2919	4935	9045	6718	15763
		Total	6179	5972	12151	20496	15430	35926	4082	4571	8653	12645	9950	22595
2	Rohtak-II	SC	2771	2384	5155	641	386	1027	1483	1168	2651	319	247	566
		BC	1771	1670	3441	939	600	1539	943	991	1934	622	366	988
		Gen	5894	5977	11871	4774	2841	7615	4048	5041	9089	3083	1180	4263
		Total	10436	10031	20467	6354	3827	10181	6474	7200	13674	4024	1793	5817
3	Kalanaur	SC	2064	1949	4013	925	510	1435	1221	949	2170	297	224	521
		BC	305	314	619	195	92	287	229	239	468	75	41	116
		Gen	2396	2504	4900	3047	1929	4976	1949	2222	4171	1762	1043	2805
		Total	4765	4767	9532	4167	2531	6698	3399	3410	6809	2134	1308	3442
4	Meham	SC	2536	2143	4679	617	303	920	1273	994	2267	295	218	513
		BC	1195	1211	2406	812	486	1298	787	713	1500	463	343	806
		Gen	3739	3777	7516	4966	2971	7937	2715	3325	6040	2951	1182	4133
		Total	7470	7131	14601	6395	3760	10155	4775	5032	9807	3709	1743	5452
		G.Total	28850	27901	56751	37412	25548	62960	18730	20213	38943	22512	14794	37306

Source House Hold Survey

## Information Regarding Studying in School Children

(Govt. + Non Govt. Schools)

SC

I-V Classes (Pry.)					VI- VIII classes U. Pry								
Sr. No.	Block	Govt			Non Govt.			Govt.			Non. Govt		
		Boys	Girls	Total	Boys	Girls	Total	Boys	Girls	Total	Boys	Girls	Total
1	Rohtak -I	2256	2217	4473	3103	2585	5688	1344	1052	2396	1542	1394	2936
2	Rohtak-II	2771	2384	5155	641	386	1027	1483	1168	2651	319	247	566
3	Kalanaur	2064	1949	4013	925	510	1435	1221	949	2170	297	224	521
4	Meham	2536	2143	4679	617	303	920	1273	994	2267	295	218	513
							0			0			0
	Total Distt.	9627	8693	18320	5286	3784	9070	5321	4163	9484	2453	2083	4536

BC

I-V Classes (Pry.)					VI- VIII classes U. Pry								
Sr. No.	Block	Govt			Non Govt.			Govt.			Non. Govt		
		Boys	Girls	Total	Boys	Girls	Total	Boys	Girls	Total	Boys	Girls	Total
1	Rohtak -I	1047	1068	2115	3782	2905	6687	722	600	1322	2058	1838	3896
2	Rohtak-II	1771	1670	3441	939	600	1539	943	991	1934	622	366	988
3	Kalanaur	305	314	619	195	92	287	229	239	468	75	41	116
4	Meham	1195	1211	2406	812	486	1298	787	713	1500	463	343	806
							0			0			0
	Total Distt.	4318	4263	8581	5728	4083	9811	2681	2543	5224	3218	2588	5806

Source: House Hold Survey

## Information Regarding Studying in School Children (Govt. + Non Govt. Schools)

Over all

		I-V Classes (Pry.)						VI- VIII classes U. Pry					
Sr. No.	Block	Govt			Non Govt.			Govt.			Non. Govt		
		Boys	Girls	Total	Boys	Girls	Total	Boys	Girls	Total	Boys	Girls	Total
1	<b>Rohtak -I</b>	6179	5972	12151	20496	15430	35926	4082	4571	8653	12645	9950	22595
2	<b>Rohtak-II</b>	10436	10031	20467	6354	3627	10181	6474	7200	13674	4024	4024	8048
3	<b>Kalanaur</b>	4765	4767	9532	4167	2531	6698	3399	5410	6809	2134	2134	4268
4	<b>Meham</b>	7470	7131	14601	6395	3760	10155	4732	5032	9764	3709	3709	7418
							0			0			0
	<b>Total Distt.</b>	<b>28850</b>	<b>27901</b>	<b>56751</b>	<b>37412</b>	<b>25548</b>	<b>62960</b>	<b>18687</b>	<b>20213</b>	<b>38900</b>	<b>22512</b>	<b>19817</b>	<b>42329</b>

General

		I-V Classes (Pry.)						VI- VIII classes U. Pry					
Sr No.	Block	Govt			Non Govt.			Govt.			Non. Govt		
		Boys	Girls	Total	Boys	Girls	Total	Boys	Girls	Total	Boys	Girls	Total
1	<b>Rohtak -I</b>	2876	2687	5563	13611	9940	23551	2919	4935	7854	9045	6718	15763
2	<b>Rohtak-II</b>	5894	5977	11871	4774	2841	7615	5041	9089	14130	3038	1180	4218
3	<b>Kalanaur</b>	2396	2504	4900	3047	1929	4976	2222	4171	6393	1762	1043	2805
4	<b>Meham</b>	3739	3777	7516	4966	2971	7937	3325	6040	9365	2951	1182	4133
							0			0			0
	<b>Total Distt.</b>	<b>14905</b>	<b>14945</b>	<b>29850</b>	<b>26398</b>	<b>17681</b>	<b>44079</b>	<b>13507</b>	<b>24235</b>	<b>37742</b>	<b>16796</b>	<b>10123</b>	<b>26919</b>

Page No. \_\_\_\_\_

House Hold Survey Report Block Wise NER, GER & R.R.  
Distt. Rohtak

i) 5+ to 10+ years age Group

	NER			GER			DROP OUT RATE			RETENTION RATE		
	Boys	Girls	Total	Boys	Girls	Total	Boys	Girls	Total	Boys	Girls	Total
Rohtak- I	97.10	96.20	96.70	98.90	102.79	100.61	0.35	0.42	0.38	99.65	99.58	99.62
Rohtak-II	95.32	94.70	95.04	101.81	103.85	103.27	0.10	0.86	0.76	99.90	99.14	99.24
Kalanaur	93.48	92.47	93.03	93.50	95.05	93.62	0.39	0.48	0.43	99.61	99.52	99.57
Meham	94.70	93.23	94.05	101.63	100.83	101.28	0.25	0.45	0.34	99.75	99.55	99.65
Distt.	96.20	94.67	95.22	99.62	100.50	100.44	0.41	0.54	0.47	99.59	99.40	99.53

ii) 11+ to 14 years age Group

Block	NER			GER			DROP OUT RATE			RETENTION RATE		
	Boys	Girls	Total	Boys	Girls	Total	Boys	Girls	Total	Boys	Girls	Total
Rohtak- I	95.58	95.42	95.72	96.21	95.53	95.85	2.27	2.57	2.41	97.73	97.43	97.59
Rohtak-II	95.49	93.49	94.54	97.41	94.97	96.27	3.11	4.46	3.74	96.89	95.54	96.25
Kalanaur	94.75	91.45	93.24	98.64	99.03	98.82	3.04	5.48	4.14	96.96	94.52	95.85
Meham	94.35	91.25	92.95	96.59	94.20	95.51	3.39	5.36	4.26	96.61	94.64	95.74
Distt.	95.62	93.58	94.68	97.48	96.29	96.89	2.78	3.92	3.30	97.22	96.08	96.70

Source - House Hold Survey

**IDENTIFICATION OF DISABLED CHILDREN  
THROUGH MICROPLANNING PROCESS**

(HOUSE HOLD SURVEY)

Sr. No	Nature of Disability	Total No. of children identified
1	Visual Impairment	89
2	Hearing Impairment	49
3	Otherpedic disability	595
4	Dumbr ess	135
5	Mentally poor	142
	G. Total	1010



# CHAPTER - 4

## THE PROJECT

### SARVA SHIKSHA ABHIYAN (SSA)

Sarva shiksha abhiyan is a historic stride towards achieving the long cherished goal of Universalisation of Elementary Education (UEE) through a time bound integrated approach in partnership with states. elementary Education sector of the country, aims to provide useful and quality elementary Education to all children in the 6-14 age group by 2010.

The SSA is an effort to recognize the need for improving the performance of the school system and to provide community owned quality elementary Education in the mission mode. It also envisages bridging of gender and social gaps.

#### **OBJECTIVES OF SARVA SHIKSHA ABHIYAN**

- All children in school, Education guarantee centre, alternate school, 'Back to school' camp by 2003.
- All Children complete five years of Primary schooling by 2007.
- All Children complete eight years of schooling by 2010.
- Focus on elementary Education of satisfactory quality with emphasis on education for life.

- Bridge all gender and social category gaps at primary stage by 2007 and elementary education level by 2010.
- Universal retention by 2010.

In short, the country is yet to achieve the elusive goal of universalisation of Elementary education (UEE) which means 100 percent enrolment and retention of Children with schooling facilities in all habitations. It is to fill this gap that the government has launched the Sarva Shiksha Abhiyan.

Sarva Shiksha Abhiyan (SSA) has two aspects

- i) It Provides a wide convergent frame work for implementation of Elementary Education schemes .
- ii) It is also a programme with budget Provision for strengthening Education. Which all investments in the elementary Education sector from the state and the central plans will reflect as part of SSA framework.

The objectives are expressed nationally though it is expected that various districts and states are likely to achieve Universalisation in their own respective contexts and in their own time frame- 2010 is the outer limit for such achievement . The emphasis is on main streaming out of school children through diverse strategies , as far as possible, and on providing eight years of schooling for children in 6-14 age group. The thrust is on bridging of gender and social gaps and a total retention of all children in schools. With in this frame work it is expected that the Education system will be made relevant so that children and

parents find the schooling system useful and absorbing, according to their natural and social environment.

The Sarva Shiksha Abhiyan will not disturb existing structures in states and districts but would only try to bring convergence in all these efforts. Efforts will be made to ensure that there is functional decentralization down to the school level in order to improve community participation. Besides recognizing PRIs/Tribal councils in scheduled Areas, including the Gram Sabha, the state would be encouraged to enlarge the accountability frame work by involving NGOS, teachers, activists, women's organizations etc.

#### **STRATEGIES CENTRAL TO SSA PROGRAMME : -**

**Institutional Reforms :** - As a part of the SSA, institutional reforms in the distt. will be carried out. This distt. has made a objective assessment of the prevalent education system including educational administration, achievement level in schools, financial issues, decentralization and community ownership, review of distt education, rationalization to teacher deployment and recruitment to teachers, monitoring and evaluation, education of SC Girls and disadvantaged groups, Policy regarding private schools and ECCE. Efforts will be made to ensure that there is functional decentralization down to the school level in order to improve the delivery system for elementary education.

**Community Ownership :** The programme of this will be called for community ownership to school based interventions through effective decentralization. This will be augmented by involvement of women's groups, VEC members and

members of Panchayati Raj institutions. The VECs has been formulated in every village of this distt. in this regard to regulate this programme timely. So that we could achieve the required results with accordance to the objectives of Sarva Shiksha Abhiyan. These village education committees will look after the whole system of elementary education of their respective village.

The VCCs in many villages has also been formulated to look after the civil works executed in their village schools upto elementary level of education. this will help to improve the needbased infrastructure facilities which is the major intervention provided by the project of Sarve Shiksha Abhiyan.

**Institutional Capacity Building :** - The SSA conceives a majers capacity building role for national, and state level institutions like NIEPA/NCERT/NCTE/SCERT/SIEMAT. But some of the Districts in our state have also such types of institutions called DIETs. Improving in quality requires a sustainable support system of resource persons. Therefore strengthening of DIET is to much needful to achieve the target of quality education which is the main objective of SSA. The planning team of this distt. have put the many activities to strenthen this major the detail is given in component the major interventions section with justification.

## • **Improving Mainstream Educational**

**Administration :-** By institutional development, in fusion of new

approaches and by adoption of cost effective and efficient methods is called for improvement of main stream educational administration.

- **Community Based Monitoring with full**

**Transparency:-** The programme will have a community based monitoring system. The educational Management Information system (EMIS) will correlate school level data with community Based information from Microplanning and surveys. Besides this every school of this distt. will be encouraged to share all information with the community, including grant received. A notice board would be put up in every school for this purpose.

- **Habitation as a unit of Planning :-** The SSA works on a community based approach to planning with habitation as a unity of planning. This process has been implemented in this distt. and the activity of House Hold survey in rural areas of two educational blocks has been executed as the remaining work is improve as the remaining work is in process. The collected data has been projected into the formulation of perspective plan of this distt. In this way the plan of this distt. is based upon the Habitation as a unit of planning.

- **Accountability to Community :-** SSA envisages cooperation between teachers parents and PRIs as well as accountability

and transparency to the community. Formulation of VECs/P.T.A./M.T.A. in the distt. will perform the responsibilities in such a way so that the target of accountability and transparency to the community would be proved.

- **Priority to Education of Girls :-** Education of Girls, especially those belonging to the scheduled castes and scheduled tribes and minorities, will be one of the principal concerns in Sarva Shiksha Abhiyan as mentioned in SSA project. The distt planning team has taken special care in the provision of intervention for SC/ST Girls so that the retention rate of this sector could be improved.
- **Focus on Special Groups:-** Keeping in a view the focus on the participation of SC/ST, minority group, Urban deprived children disadvantaged groups and the children with special need, the intervention for SC/ST and disabled children has been proposed to achieve the desirable target of SSA.
- **Pre-Project Phase :-**The major pre project activity was commenced in this distt. with the formulation of core team to prepare the distt. perspective plan under SSA. The planning team worked out for house hold surveys, community based microplanning and school mapping include the formulation of VEC,s/VCCs/PTA/MTA, at pre project phase. Large number of interventions for capacity development to improve the

delivery and monitoring system, training of community leaders schools level activities, support for setting up information system, office equipment, diagnostic studies etc. has been proposed in the distt. perspective plan.

- **Thrust on Quality :** - Keeping in view to attract the children towards Govt Institutions the Quality in delivery of elementary level education is the one of the basic features of SSA. There for a special thrust has been laid on making education at the elementary level use ful and relevant for children by improving the curriculum, child-centered activities and effective teaching learning strategies.
- **Role of teachers :** - After recognizing critical and central role of teachers SSA has a special focus on their development needs. Setting up of block resource centers/cluster resource centers, recruitment of qualified teachers, opportunities for teachers development through participation in curriculum related material development, focus on class room process and exposure visits for teachers all are designed to develop the Human resource among the teachers. The interventions for the above said activities are proposed in the perspective plan of this distt.

**MAJOR**

**COMPONENTS OF**

**THE PROJECT**



# MAJOR COMPONENTS

## 1.+1.1 Teachers (PS)

Three Pry. School from branch schools have been approved during 2002-03. Three other branch schools are being proposed as regular schools during 2003-04. The salary of approved Pry. Schools & proposed Pry Schools is shown separately according to the norm. The total budget provision for this activity would cost the sum of Rs. 104.175 lacs.

## 1.2. Teachers (UPS)

The proposal of up gradation of nine UPS has been approved during the budget 2002-03. The salary of 18 Teacher(@ 2 posts per school) has also been sectioned for the year 2003-03. The above mentioned teachers would be deployed in the scale 5500/9000. Two posts in the same scale would be provided during the next year i.e. 2003-04 and one post during the year 2004-05 in the scale 4500/7000 would be provided fro drawing teacher. It would cost the total estimated sum of Rs. 196.191 lacs.

## 2. Alternate Schooling

After exercising in micro planning the colleted data shows the total No. of out of school children. Which is 5715 in 5+ to 10+ yrs. of age group & about 4307 is 11+ to 14+ yrs. of age group children.

Among these children the dropped out children in the age group of 5+ to 10+ years are 545 and the remaining 5170 are Non starters, where in the age group 11+ to 14 the dropped out children are 2545 and the remaining 1762 are non starters. Hence the total out of school No. of children in the 5+ to 14 years age group 10022. After analyzing the microplanning data we have a clear picture of tendency towards drop out of different age groups. It is understood that more No. of children of 5+ to 10+ years of age group are out of school than that of 11+ to 14 years age group children but one point is clear that dropped out no. of children in the age group of 5+ to 10+ are less than the 11+ to 14 years age group children, where the no. of non starter children are more in the 5 to 10+ years age group than the 11+ to 14 years age group children. The maximum efforts would be made to enroll these out of school children in the regular educational system but in some unserved areas there will be a need of alternate schooling also. Total 150 AS centers would be started in the initial stage the number of AS centers would be decreased after two years due to enrolment of AS children in the regular formal education stream. The following activities would be exercised under this component.

## **2.1. Instructor :**

One instructor for each center preferably a woman of that locality where these children are amassed is proposed to be appointed in each center. The instructor is proposed to be given Rs. 1000/- P.M. as honorarium. It would cost the total sum of Rs. 64.80 lacs.

**Building :** The instructor will run the as centre in his/her own rent free building.

## **2.2/2.3. Books & Work Books : -**

Book & work book is a basic need of a student. There for the amt. of Rs. 1500/- for work books for ALS students would be provided to each centre per year. There fore the sum of Rs. 16.20 lacs has been proposed for both activities.

## **2.4. Students Kits**

Equiped with TLM this kit will help every teacher to teach as well as every student to learn. Rs. 2000/- would be paid to each as centre for this essentionly purpose per year. The total budget provision for the whole be Rs. 10.80 lacs for this activity.

## **2.5. Furniture :**

A chair & table for a Instructor and Darri for the students would be provided as furniture with a trunk for keeping registers

stationary etc. after three years. The sum of Rs. 1500 would be provided to each centre & the total amt. of 0.60 lacs has been proposed for this purpose.

## **2.6. Stationary :**

Stationary like register and other material for record keeping is also a need ful thing for each centre, therefore the sum of Rs. 2000 would be provided to each centre every year. The total sum of Rs. 9.93 lacs has been proposed for the total budget provision.

## **2.7. Training:**

Every AS instructor will be imparted induction as well as refresher training for 12 days at BRC. During this training the main aspect would remain to enroll every child in elementary formal education system so that the 100 percent enrolment target of SSA could be achieved. During this training TA/DA at Govt. Norms would be paid to every instructor & training to 50 instructors would be provided in 1st year. The total budget provision for this activity would be amounting Rs. 0.83 lacs.

## **2.8. Monitoring:**

To make the education system more effective and qualitative the supervision is most essential activity. The provision of one month would be paid to every supervisor. It would cost Rs. 08.10 lacs.

**2.9. TA/DA:-** for this activity would also be provided at Rs. 500 per month for 12 months. Total out lay for this activity would be Rs. 2.70 lacs.

Hence 150 centers are proposed to be opened for each 20-25 children in this distt. The no. of centers to be reduced after two or three years as the children would be enrolled in formal education system through this process.

The total expenditure on each center would be in maximum limit of Rs. 25000/- hence the total estimated provision for this component would be Rs. 113.96 lacs.

### **3. CIVIL WORKS**

#### **3.1. Building for Schools without Building:**

After compilation of deficiency survey about infrastructure in every school of this distt. The provision of ten buildings is being proposed in this intervention. The construction work of 3 buildings has been sanctioned during the year 2002-03. The proposal of 3 buildings in the year 2003-04 and 4 in 2004-05 would be executed. One building would cost Rs. 3.00 lacs. It would cost total amt. Rs. 21.00 lacs.

#### **3.2. Building for Schools without Building (UPS): NIL.**

### **3.3 Additional Class Rooms**

According to the survey report of deficiency 563 addl. Rooms would be constructed in this distt. The proposal of the execution of 150 rooms during the year 2003-04 and 150 rooms in 2004-05 150 rooms in 2005-06 and 50 rooms has been proposed to full fill the deficiency in civil work of this distt. The balance work would be executed during the next plan. The list of deficiency survey is attached. It would cost the sum total sum of Rs. 750.00 lacs.

### **3.4 BRC (New Building) : -**

Four BRC building out of Five C.D. block has been sanctioned during the year 2002-03. One new building of BRC is being proposed for the fifth C.D. Block. It would the total sum of Rs. 6.00 lacs.

### **3.5. CRC (New Building):-**

There are 32 CRC constituted in this distt, the list of 32 CRC is attached here with. The unit cost of one CRC building is Rs. 2.00 lacs. Therefore would cost the total amt. of Rs. 64.00 lacs.

### **3.6. New School Buildings (PS) : - NIL**

### **3.7. New School Buildings (UPS) : - NIL**

### **3.8 Toilet Facility : -**

After DISE survey the deficiency of toilet facility traced out. Therefore the 100 toilets during the 2006-07 are being proposed to full fill the proposal. It would cost the sum of Rs. 8.00 lacs.

### **3.9. Boundary Walls :-**

Many schools of this distt. requires boundary wall. Five thousand running feet boundary wall is being proposed in each year from 2003-04 to 2006-07. It would cost the total amt. of Rs. 44.00 lacs.

### **3.10. Drinking Water**

There is a great problem of drinking water facility in many schools of this distt. Often we see the children with a water bottle on their shoulder and a house hold bottle with water in their school bag. During summer season one bottle water is insufficient for a child. Therefore Total 75 drinking water tanks during the year 2006-07 are being proposed under this intervention. It would cost the total sum of Rs. 9.00 lacs.

### **3.11. Salary of JE-2 : -**

Two post in the pay scale of 5500-175-8300 to 175-9000 has been proposed for JEs civil for execution of civil works in this distt. It would cost the total sum of Rs. 9.18 lacs.

Hence the total budget provision for this activity i.e. civil works would cost the sum of Rs. 911.18 lacs.

## **4. MAINTENANCE AND REPAIR**

### **4.1. Maintenance of BRC Buildings :-**

The sum of Rs. 5000/- has been proposed for maintenance of BRC buildings every year. It would cost the total sum of Rs. 0.95 lacs.

### **4.2 Maintenance of CRC Buildings :-**

To keep well the buildings of 32 CRC of this distt. the sum of Rs. 5000/- is being proposed for maintenance of 32 CRC buildings every year. During The year 2003-04 it would be Rs. 0.80 & during 2004-05 would be Rs. 0.80. It would cost the total amt. of Rs. 6.40 lacs.

### **4.3. Maintenance of Schools Buildings (PS):-**

Keep well the school building for a long time it is quite need full to maintain it is a proper way. Therefore the sum of Rs. 5000/- is being proposed every year for each school for this purpose. It would cost the total sum of Rs. 47.40 lacs.

### **4.4. Maintenance of Schools Building (UPS):-**

There are total 181 (UPS) school buildings including newly upgraded UPS of this distt. The sum of Rs. 5000/- for each school to keep the school building secure and well in position. Therefore the total amt. of Rs. 36.20 lacs is being proposed to meet out the



expenditure for this intervention. Hence the total Budget provision for this activity would cost the amt. of Rs. 88.55 lacs.

### 5. FREE TEXT BOOKS

After compilation report of House to House survey it is to be identified that most of the drop out rate in boys & girls belonging to SC/ST and disadvantaged groups is due to financial deficiency. Therefore they could not afford even the books for their children. To achieve the target of Sarve Shiksha Abhiyan the sum of Rs. 150/- has been proposed to purchase the books for such categories. The no. of girls and SC boys in Govt + Aided Pny and U.Pny. School is given as under :-

	Girls	SC Boys	Total
Pny.	34457	11081	45538
U. Pny.	15450	4138	19588

The unit cost of this activity would be the sum of Rs. 150/- per child. Therefore to would cost the sum of Rs. 68.30 lacs for pny and Rs. 29.38 lacs for U. Pny. Classes for one year i.e. 2003-04.

The state Gov. is providing the sum of Rs. 1.30 lacs for Pny. and Rs. 0.78 lacs for U. Pny. Classes in this distt. Therefore the amount is being proposed after getting minus the Govt. Provision i.e. Rs. 68.30-1.30 = 67.00 lacs for Pny. and Rs. 29.38-0.78 = 28.60

for U. Pry Classes for the year 2003-04. Such provision would be applicable for every next year up to 2006-07 also. It would cost the total sum of Rs. 392.63 lacs.

### 6. TLE (PS)

TLE for three Newly proposed pry. Schools from branch schools @ Rs. 1000/- per school would cost the total amt. of Rs. 0.30 lacs.

6.1+2. **TLE (UPS) NIL**

### 7. SCHOOL GRANT (PS)

The concentration of mind for learning about any subject is most essential and the peaceful and natural environments the base of concentration of mind. Therefore to improve the environment by plantation of trees & flower plants and hygienic activities the role of this intervention is every needful the sum of Rs. 2000/- P.A. is being proposed for 243 Govt. and 21 recognised aided Pry. schools. It would cost the total sum of Rs. 21.12 lacs.

#### **7.1. School Grant (UPS) :-**

There are 181 Govt. UPS including Newly upgrated U.Pry School and 18 recognised aided U.Pry Schools in this distt. The total provision for 199 UPS for this intervention would cost the estimated sum of Rs. 15.92 lacs.

## 8. TEACHER GRANT (PS)

A good teacher recognized by his good method of teaching and when a teacher make the lesson or teaching subject very interesting according to the I.Q. of the children, he is applying the good method of teaching. Teaching with help of required teaching learning material like charts models etc. is a most essential of good method of teaching. Therefore the sum of Rs. 500/- P.A. per teacher is being propped for this intervention. The total estimated provision for this intervention would cost the sum of Rs. 42.775 lacs.

### **8.1. Teachers Grant (UPS)**

As needfulness of this intentioned above the provision of this intervention is also being proposed for teachers of U.Pry school. There are total 1997 U.Pry. School teachers including recognized aided U.Pry. School teacher. Therefore @ Rs. 500/- P.A. per teacher would cost the total estimated amt. Rs. 40.79 lacs.

## 9. TEACHER TRAINING (PS)

Turing the teaching process a teacher has to face some problems in applying upper method of teaching according to the need of a child. In the other hand a teacher must have the right concept & knowledge upon the subject or topic which is teaching. He may be facing some problems on account of distribution of curriculum time table etc. To meet out such problems good to

enhance the knowledge of a teacher up to date teacher training is a most essential activity in the part of interventions. Therefore the provision of 20 days training in a year @ Rs. 70/- per day teacher has been proposed under this intervention. The training would be aperted to the Govt. Pry. School Teachers as well as to the recognized aided Pry. School Teacher. The total No. of teacher in Govt. Pry. School aided schools 2132. It would cost the total sum of Rs. 119.770 lacs.

### **9.2. Teacher Training (UPS) :-**

As needfulness mentioned above about this intervention the total estimated budget provision for 2042 UPS Trs. Would cost the sum of Rs. 14 226 lacs.

## **10. COMMUNITY TRAINING**

There are 147 VEC's and 31 WEC's in this distt. the training of 8 persons per VEC's+WEC for 2 days during the year would be imparted @ Rs. 30/- per day. The training of ( 147+31 = 158 ×8=1264) tota! 1264 persons would cost the amt. of Rs. 3.032 lacs upto the year 2006-07.

## **11. RESEARCH AND EVALUATION (Pry & U. Pry.)**

Research Evaluation supervision and maintaining are the activities to make a system in order. There is fore to achieve the Sarva Shiksha Abiyan the provision of R & E is to much needful.A

sharp focus of an active eye should must be remain constant. To search the problems to evaluate with reason. The solutions comes out for quality work. But without supervision and mentioning the level of quality could not be maintained for a long time. The amt. of Rs. 400/- per school per year being proposed under this activity for Pry. & U. Pry. School. It would cost the total sum of Rs. 7.456 laes.

## 12. INNOVATIVE ACTIVITY

### 12.1. Education for SC/ST Children : -

The major goal of Sarva Shiksha Abhiyan is education for all. Therefore it is necessary that keeping in view the problems of education of these children. To achieve the target the following activities are being proposed under this intervention.

S.No.	Activity	Unit Cost	Ph.	T. amt. in lac
1	Remedial Classes Competitive exam. Pry + U.Pry 264+197 = 461	0.01	461	4.61
2.	Bridge Courses	0.01	200	2.00
3.	Enrolment drive	0.01	461	4.61
	Total			11.22

Hence the total cost for this activity would be to sum of

Rs. 44.48 laes

## 12.2. Innovative Project for Girl Education :-

Education of Girls especially belonging to the SC/ST in the Prv focus in Sarva Shiksha Abhiyan. Every activity under this programme is being proposed in terms of its gender component. Besides mainstreaming special efforts like prabhat pheri, Nakad Natak, Kala Jatha, M.T.A women day wome empowerment & Maa Bet Mela are being proposed in this component. The costing fro all activities is given in following table.

S.No.	Activity	Unit Cost	Ph.	L. Amt in lac
1	Prabhat Pheri	0.005	461	2.30
2.	Nakad Natak/Kala Jatha	0.005	461	2.30
3.	M.T.A.	0.005	461	2.30
4	Women day/women empowerment week	0.005	461	2.30
5.	Maa beti Meal	0.005	461	2.30
	Total			11.50

Hence the total budget provision for this intervention would be amounting Rs. 46.00 laes.

## 12.3. Early Childhood Education (ECE) :-

The objective of Universilazation of elementary educationon under SSA cannot be achieved unless a provision of early childhood

care system is strengthened. The number of girls students out of school reflects that they are forced to work for sibling cares. Though this system yet they need to be strengthened so that they may function as a centre for pre school preparatory activities. Hence these institutions are proposed to be strengthened with the following provisions.

#### 12.4. Learning Kits :-

As the computation of micro planning & consolidation of meetings with different groups, the planning team of this district noted the lack of learning kits for ECCE children. Therefore the provision of Rs. 1000 for each ECCE centre is being proposed after every one year. It would cost the sum of Rs. 13.06 lacs. The Annexure of this kit would be as follows :-

Sr. No.	Name of Article	Estimated Cost
1.	Black Board Small with Stand @ Rs. 100 - each	100.00
2.	Bazle game per centre = 2 sets @ Rs. 50 - per set	100.00
3.	Counting frame (Salet) 20 per cent @ Rs. 15 - per set	300.00
4.	Building Blocks (Shops/color) Per centre = 3 sets @ Rs. 50/- each set	150.00
5.	Pictorial charts per centre = 5 @ Rs. 10 - each chart	50.00
6.	Note Book (Work book) English, Hindi, Math. Per centre = 25	300.00
	Total	1000.00

### 12.5-6-7. Training of Supervisors :-

Supervisors, Anganwari workders and helpers will be imparted induction as well as refresher training in child psychology, child care, pre-school activities, health and hygiene etc. It would cost Rs. 8.88 lacs.

### 12.8-9. Darri, Steel Box & Stationary :-

Provision of Dari, steel box weighing machine and stationary along with some toys and playing materials for each centre is being proposed. It would cost Rs. 9.79 lacs.

### 12.10. Furniture :-

Rs. 1000 for furniture will be provided to each centre. The total cost of this intervention would be Rs. 6.53 lacs.

All these activities are supposed to cost a sum 36.30 lacs.

### 12.11. Computer Education:-

There are five C.D. blocks in this distt. The provision of computer education in two schools of each C.D. block would be provided in the year 2003-04 to 2006-07. The budget estimate in each school for computer edu, would be as following table.

S.No.	Name of Activity	Unit	Phy	Fin	Total Amt. in lacs
1	Computer	0.60	2	1.20	1.20
2	Books	0.10	1	0.10	0.10
3.	Furnishish of computer lab	0.10	1	0.10	0.10
4	Stationary & Maintenance	0.10	1	0.10	0.10
	Total			1.50	1.50



The estimated cost for one school would be Rs. 1.50 lacs and for 10 schools would be ( 1.50 × 10 = 15.00) Rs. 15.00 lacs per year in the whole distt. therefore it would cost the total sum of 60 lacs upto 2006-07.

### **13. BLOCK RESOURCE CENTRE**

This intervention is essential to function as a continuous resource support training to teachers (Pry) mentioning limit never to the grass root co-ordinating for educational activities of the Block and Serving as a linkage between CRC and D IET as academic support CRC & DPIU as an administration unit to strengthen the organization.

This distt. has four educational block having one BEO each who requires to be supported by a person of academic experience of elementary education and who could effectively support the primary and upper pry. education system of the Block.

To attain the desirable results some activities are being proposed in this components bellow :-

**Block Resource Coordinator (I) :** - One post of BRC in Block Resource Centre has been proposed to carry out all the activities of Block Resource Centre. Block Education Officer would be eligible for this post and the salary structure would be according

to his/her previous Govt. post. No salary would be drawn on account of this post due to Ex-Officio.

### **13.1. Furniture Grant : -**

Furniture like tables, chairs etc. is most essential material for the establishment of any office. Therefore Rs. One lac once in a project period is being proposed for this intervention the total budget provision for this activity would be Rs. 5.00 lacs.

### **13.2. TLM Grant : -**

For teacher training at BRC level the remonstration and proper use of teaching livening material is to much needful. Therefore Rs. 500/- P.A. per BRC is being proposed for this intervention. The that estimated budget provision for this intervention would be the sum of Rs. 1.00 lacs.

### **13.3. Contingency for BRC : -**

For stationary T.A. Bill forms and other needful material for office use the sum of Rs. 12500/- P.A. per BRC is being proposed for this activity. It would cost the total sum of Rs. 2.50 lacs.

### **13.4. Meetings /T.A. :-**

- a) Monthly meeting of CRC's would be organized at the BRC level for the needful discussion.

b) Meetings with VEC's & Convergence with other deptt. Would also be followed at BRC level to impart the community participation in this programme. The total provision for this activity would cost the sum of Rs. 1.20 laes.

**13.5. Assistant Block Resource Co-ordinators :-**

Total Seven ABRC's for each block for Pry. & U. Pry. Being proposed to assist the BRC in all activities organized at the BRC level and CRC level like teacher training monitoring and supervision etc. The qualifications & Pay scale for this post would be as state room. It would cost the total estimated amt. of Rs. 291.648 laes.

**13.6. Computer :-**

One computer to each BRC would be provided to keep the office record well. It would cost the total sum of Rs. 3.00 laes.

**13.7. Maintenance :-**

For maintenance of computer the sum of Rs. 5000/- per year would be provided to each BRC. It would cost the amt. of Rs. 1.00 laes.

**13.8. Stationary :-**

Stationary for computer work is most essential. Therefore the sume of Rs. 10000/- per year per BRC would be provided under this activity. It would cost the total sum of Rs. 2.00 laes.

### **13.9. Accountant/Accounts Clerk :-**

One post of an accountant/Accounts clerk would be provided to each BRC to keep the account matters of the office. The qualification & pay scale for this post would be as per state norm. The total budget provision for this activity would cost the sum of Rs.24.936 Lacs.

### **13.10. Data entry operator : -**

One post of data entry operator would be provided in each BRC to make the every information file in the computer. The qualifications & pay scale for this post would be like the state norm. The total budget provision for this activity would cost the sum of Rs. 20.1894 lacs.

### **13.11. Class IV : -**

Like other offices one post of class IV would be provided to each BRC. It would cost the total amt. 17.0274 lacs.

### **13.12. Furniture Grant (CRC) :-**

For official set up to every CRC and to provide the essential furniture like tables, chairs, almirah etc. the sum of Rs. 10000/- is proposed for each CRC (once in a project period). There are 32 CRC's in this distt. The detail of CRC's is also mentioned on page no. The total estimated amt. for this activity would cost Rs. 3.20 lacs.

### **13.13. Contingency for CRC : -**

To meet out the expenditure for stationary and other essential forms like T.A./Bill forms etc. The sum of Rs. 2500 - per year CRC is being proposed this activity. It would cost the total sum of Rs. 3.20 lacs.

### **13.14. TLM Grant : -**

Teaching learning material is a most essential tool for every teacher . Therefore demonstration of TLM at CRC level also a needful activity therefore the sum of Rs. One thousand P.a. per CRC is being proposed for this intervention .It would cost the total sum Rs. 1.28 lacs.

Hence the total budget provision for this component in this perspective plan costing Rs. 370.2258 lacs. This intervention is supposed to be proved very effective and qualitative improvement of elementary school education which is an important objective of Sarva Shiksha Abhiyan .

## **14. INTEGRATED EDUCATION FOR DISABLED**

### **(IED) :-**

The objective of universal elementary Education can not be achieved unless each category of the prevailing children and their needs are catered to. There are 1010 children enrolled in our schools at present who are physically disabled and who need a special care , attention and support . More no nation can bear the under development of even a signatoilzen .hence for the shole some development and self respected life the following provision in the plan of SSA for this district are being proposed :-

#### **14.1. Identification of Disable Children :-**

Disabled children have been identified though Micro planning exercise (Household Survey ) in Distt. Rohtak during the month of Oct. & Nov. 2001.

#### **14.2. Printing of awareness material for parents & community members regarding various disabilities :-**

Folders , pamphelets etc.having details about various type of disabilities another important facts about these disabilities would be printed and distributed among parents and members of the community for awareness. An amount of Rs. 1.20 laes is proposed for this time.

### **14.3. Appointment of special teacher /resource teacher :-**

Special teachers / resource teachers would be appointed on contractual basis in the consolidated pay scale of Rs. 4500/7000, one at each block to impart specialized teaching to disabled children .He /she would also help the govt. school teachers regarding behavioural improvement and other psychological aspects of disabled students studying in govt. schools. Total outlay for the salary of these teachers is Rs. 18.55 laes.

### **14.4. Setting up of resource corners at CRC /BRC level:-**

Resource corners would be setup at each CRC and each BRC .Helpful literature , audio ,video ,cassettes and other useful items would be purchased for disabled children to be kept in these centers. Total outlay for this is Rs. 4.32.

### **14.5. Two days training for teachers and CRCs on provision of aids and appliances to disabled children:-**

Two days training would be organized for CRCs and teachers (One from each Pry. and Middle School ).Such type of training would be imparted in 2003 and 2006. It would cost Rs. 1.29 laes.

#### **14.6. Sports and cultural competitions of disabled children :-**

Sports and cultural competitions would be organized at block and district level for the disabled children every year. There is a proposal of Rs. 3.50 lacs per year for conducting these activities in this district with total sum of Rs. 8.60 lacs.

#### **14.7. Preparation of TLM (for disabled and exhibition at District level :-**

Teaching learning material for disabled children would be developed with the help of experts, school teachers and resource teachers in a workshop organized yearly. It would cost Rs. 0.30 lacs. Total outlay of this activity is Rs. 1.20 lacs.

#### **14.8. Follow up camp for disabled children :-**

Follow up camp for disabled children would be organized at CRC per year. Problems, needs and other aspects related to disabled children would be discussed in these camps by the experts in the presence of resource teacher of the concerned block.

Total cost of this activity would be :

$(1010 \text{ children} + 1010 \text{ guardians}) \times (\text{Fare @ Rs. 10} + \text{refreshment @ Rs. 5}) \times 4 = \text{Rs. 1.20 lacs.}$



#### **14.9. Aids & Appliances :-**

Aids and appliances would be provided to the needy disabled children every up to 1010. It would cost Rs. 12.12 laes.

Total expenditure of this component is Rs. 48.48 laes.

### **15. MANAGEMENT COST**

#### **(District Project Implementation Unit)**

For the implementation so SSA in the District an organization with a working system with following provisions is being proposed in the perspective plan of SSA of district Rohtak. It will function as a managerial body for all activities of elementary education in the district with a precaution of respecting decentralized approaches. It will up keep all information about elementary education in the district with the help of EMIS unit and assimilate and disseminate the information's directions helping in the achievement of objective of this project. The following activities and provisions are being proposed to strengthen this institution :

#### **15.1. Distt. Project Coordinator :-**

One DPC - working DEO of the district will hold the distt level management unit No salary on account of this post from this project would be drawn due to Ex-Officio.

#### **15.2. Asstt. Project Cordinator :-**

Two APC's experienced and well acquainted with the strategies and inputs for qualitative elementary universal education will assist the DPC to hold the management as well as Govt. Recognised institution will be eligible for tis post. The salary structure for this post will be as per SSA MORMs many be contractual or on deputation. The total budget provision for this activity would be Rs. 15.59 laes.

### **15.3. Section Officer : -**

One S.O. deputed to maintain and regulate the financial accounts and expenditures. It would cost is 5.55 laes.

### **15.4. Accountant :**

For account keeping of the whole expenditure and salary of the staff. One post of account in the scale of Rs. 5500-7850 has been proposed. The total cost of this activity would be Rs. 5.17.laes.

### **15.5. Assistant : -**

For keeping the office work in order one post of assistant scale of 5000-150-7850 is being proposed. The total cost of this activity would be Rs. 4.15 laes.

### **15.6. Head Clerk :**

A post of Head clerkis also being proposed to organize the official work well in order. It would cost the tota sum of Rs. 4.59 laes.

### **15.7. Computer Programmer : -**

To keep the system well functioning one programmer will be provided to this component. The salary structure of programmer would be in the pay scale of 6500-200-10500. It would cost the total sum of Rs. 5.55 lacs.

### **15.8. Clerk :**

Two clerks, to keep the record intact would cost Rs. 5.40 lacs.

### **15.9. Data Entry Operator : -**

For computer data processing one post of data entry operator would be provided in the scale of Rs. 4000-100-6000. It would cost the total sum of Rs. 3.38 lacs.

### **15.10-11. Peon Cum Water man & Sweeper Cum chowkidar: -**

One post of each category would be provided to for this component. The total cost of this intervention would be 2.34 lacs.

### **15.12. Computer: -**

Computer is a basic need of an office therefore the provision of two computers is being proposed for this component. It would be cost the sum of Rs. 1.20 lacs.

### **15.13. Maintenance of Computer : -**

A sum of Rs. Five thousand computer per year is being proposed for this activity. It would cost the total amt. of Rs. 0.40 lacs.

#### **15.14. Stationary for computer : -**

A provision of specific stationary for computer work is being proposed. The total estimated budget provision for four year would be 4.80 lacs.

#### **15.15. Building Rent : -**

The provision of building for this component will be a rented building. It would cost Rs. 10000 P.M. and the total budget provision for this activity would be Rs. 5.10 lacs.

#### **15.16. Furniture : -**

Provision of furniture is most essential for office establishment. It would cost Rs. 1.00 lac once in project period.

#### **15.17. Electricity & Water Charges : -**

The sum of Rs. 2.70 lacs is being proposed for this activity.

#### **15.18-19. Telephone Charges : -**

Telephone bills including the installation charges would cost the sum of Rs. 2.08 lacs for the whole project period.

#### **15.20-21. Hiring of Veehicle: -**

A jeep on hire base will be provided to this component. It would cost Rs. 15000 P.M. including POI. & Maintenance charges. The total budget provision for this intervention would cost the sum of Rs. 10.50 lacs.

#### **15.20-21. Hiring of Vehicle: -**

A jeep on hire base will be provided to this component. It would cost Rs. 15000 P.M. including POE & Maintenance charges. The total budget provision for this intervention would cost the sum of Rs. 10.50 lacs.

#### **15.22. Meetings : -**

Meeting of DARG ( Once in a month) BRC & CRC would cost Rs. 2.70 lacs.

#### **15.23-24-25. Contingency & TA/DA and Training to Mis & fied staff : -**

The total provision for this activity is being proposed amounting the sum of Rs. 9.80 lacs.

#### **15.26. Fax Machine : -**

The provision of this machine is being proposed to help in the proper functioning of this institution. It would cost Rs. 0.40 lacs.

Hence the total budget provision is being proposed for this activity the sum of Rs. 90.42 lacs.

### **16. Repair of School Buildings :-**

#### **16.1. Repair of School Buildings: -**

There are many schools in this distt having very delicate position of school building the repair work for such buildings is

needful. Therefore the repair work for 155 schools is being proposed under this activity @ Rs. 25000 per school. It would cost the total sum of Rs. 38.75 laes only.

### **16.2. Minor Repair : -**

According to the surey of deficiency in civil work 2001-02 in this distt. the minor repair work for a schools is being proposed under this activity @ Rs. 15000 per school. It would cost the total sum of Rs. 1.35 laes only.

Hence the total budget provision for this activity would cost the amt. of Rs. 40.10 laes

# **SUPERVISION AND MONITORING**

## **MECHANISM UNDER SSA**

The success of any educational system lies in its systematic, regular and effective supervision and monitoring system. The study reveals that the results could not be attained previously because of ineffectiveness of this system. It has been found that the supervision and monitoring mechanism in education is both lethargic and ineffective or beyond grassroots approach. Moreover the frequency of our supervision system is so meager that hardly any proper direction could be achieved out of it. It is considered an appropriate step under SSA that this system be strengthened and made effective with certain appropriate, effective and nearer to grass root mechanism of supervision and monitoring. In addition to it the supervision system has always been in the form of inspection, which could never put up model for the improvement and could only work as faultfinder.

SSA has focused itself on four basic pillars :

- Decentralization and area-specific :
- Quality :
- Universalisation of elementary education without any social or gender bias :

□ Community and ownership.

Again, more focus has been given on strengthening the monitoring and supervision system so that the activities under SSA may bring the desired fruits and may lead to the attainment of desired objectives within the timeframe. Hence, the Governor of Haryana, vide his letter no 21/18/2002PE ?(2) dated 11<sup>th</sup> September 2002 is pleased to constitute the following committees for proper monitoring and supervision at village, school, cluster, block district and state level.

## 1. School Level

The following bodies will work for all round improvement in school environment and cognitive & non-cognitive growth of the child :

a) **Parent Teacher Association (PTA)**

The following shall be the office bearers of the Association.

- |                     |                                 |
|---------------------|---------------------------------|
| i) President        | Elected                         |
| ii) Vice President  | Head Teacher/Head Master        |
| iii) Secretary      | Nominated                       |
| iv) Joint Secretary | Elected                         |
| v) Treasurer        | Nominated                       |
| vi) Auditor         | (Not a member of the Executive) |



The membership of the association shall be open to all the Parents/guardians of the students and members of the staff of the school.

The head of the school shall be ex-officio Vice-President of the Association. The Secretary of the association shall be nominated from amongst the members of the staff by the President in consultation with the vice-President. Except the Vice-President, the Treasurer and the Secretary all the office bearers and members of the Executive Committee shall be elected at the time of the annual meetings.

There shall be an Executive committee of the Association to carry out the day to day function of the Association. It will consist of 10 members (with at least 3 from amongst the teachers) besides office because meeting of the executive committee will be held once in a month preferably on 2<sup>nd</sup> Saturday.

The aim of the association is to encourage parents to share the responsibility along with the teachers for better educational standard and moral social & physical development of the children and overall improvement in schools.

The specific objective of the PTA will be as follows :-

- i) Creating awareness amongst the parents regarding the need and importance of inculcating the habits of punctuality, regularity in attendance & cleanliness in their wards.
- ii) Diagnosis of educational backwardness and need for adopting remedial measures in time.
- iii) Helping for making provision of physical facilities such as furniture, electric fans, building etc. to the schools.
- iv) Making improvement in the overall conduct and behaviour of the students.

The tenure of the associations would be two years.

**b) Mother Teacher Association (MTA) :-**

It is not basically different from the Parent Teacher Association. Here the membership is open only to mothers and Lady guardians of the children. The MTA will meet twice a month instead of once as in case of PTA.

The school may have either of the two or both of the Associations. From Primary Wing MTAs may be there, and for the whole school (i.e. Upper Primary Level) PTAs may also be there. The tenure of the committee would be two year.

These bodies can inspect the records (students attendance staff attendance) of the school.

## 2. Village Level :

### a) Village Education Committee (VEC) :

There will be a village Education Committee (VEC) with the following members :

Three members nominated by Gram Panchayat :- (atleast one Schedule Caste, one Lady member)	3
Head Teacher of the Primary School :- Member Secretary ( in case of more than one school, the senior –most)	1
A female Teacher : - (in case of more than 1 school not from the school of Member Secretary)	1
Female Member nominated by Mahila Mandal	1
Lady Health Worker	1
Anganwari Worker/Bal Savika	1
Two members nominated by PTA/MTA	2
Members nominated by BEO (NGO member-social worker, Retired teacher/ educationist)	1
Village Secretary/Gram Savika	1
Total	<hr/> 15 <hr/>

Out of twelve members, 6 members will be from female side.

The committee will elect its president and vice president.

The committee will function as an arm of the Panchayati Raj System and involve persons interested in the overall development of

real education in the respective village. It will meet twice in a month and send its report of the proceedings to cluster level education (CLEC) and Block level education committee (BLEC)

Its objectives include creating awareness, increasing enrolment, surveys for the purpose of Universalisation of Education. It will also create an environment for quality education discipline cleanliness beautification in the school. It will help in capacity building also.

The tenure of the Committee will be for two years.

**b) Village Construction Committee**

Village Construction Committee will have the following members:

A member (Male/Female) of VEC	President
Member-Secretary of VEC	Member-Secretary
VEC Member (Ex-serviceman/retiree/ Social worker)	Member
VEC Member belonging to Scheduled Caste	Member
Member nominated by VEC	Members
Total	<u>5 Members</u>

The main objective of this committee is to maintain, extend and improve upon the school buildings.

It will hold its meetings twice a month and send its report of the proceeding to CLEC and DLEC.

**c) Urban Education Committee (UEC) for urban areas :**

For schools in urban areas the Urban Education Committee will be constituted urban area wise on the pattern of village level education committee and will consist of the following.

Three members approved by Municipal Committee/Council  
(atleast one Scheduled Caste, One lady member)

Head teacher/Head Master of the Elementary School Member

Secretary

(in case of more than one school, the senior-most)

a female Teacher nominated by BEO

(in case of more than 1 school, not from the school

of-member secretary)

Female Member nominated by Mahila Mandal

Lady Health Workder to be nominated by Health department

Anganwari worker/bal Savika to be nominated by

ICDS department

Two members nominate by PTAs/MTAs

Member nominated by BEO (NGO member/social worker/

Retired teacher/educationist)

A nominee of the Municipal Committee/council

Total

**d) Construction Committee :-**

Construction Committee of the Urban area will consist of the following members :-

- i) A member (male/Female) of Urban Education Committee
- ii) Head Teacher/Head Master-Member Secretary
- iii) UEC member (ex-serviceman/social worker/retired teacher
- iv) UEC member belonging to scheduled caste
- v) Member nominated by UEC

Total

**3. Cluster Level Education Committee (CLEC)**

Cluster Level Education Committee (CLEC) will consist of the following members :-

1. Cluster Resource Coordinator (Member-Secretary )
2. Four Head Teachers-at least tow them ladies
3. Nominee of the Integrated Child Development Scheme  
1
4. Nominee of the Health Department
5. Nominee of the Public Health Department  
1
6. Two retired educationist (one of them a lady)
7. a prominent ex-serviceman

8. Four VEC members-not more than one from the same VEC

Total

The Head teachers and the VEC members may be opted by rotation after a period of one year so that opportunities are given to as many as possible.

The committee will function as an agency to support, co-ordinate and review the achievements of the schools in the cluster. Its aims and objectives will be as under.

- a) organizing sessions for mutual sharing of the experiences of teacher
- b) Reviewing infrastructural improvement in schools.
- c) Sharing of infrastructure/teaching learning material as and where possible.
- d) Guiding further steps for universalisation of education.
- e) Maintaining the spirit of co-operation amongst the communities for the cause of education
- f) Collecting data and keeping it updated.
- g) Following up the action on the decisions/proceedings of the VEC/VCC meetings.

The committee will meet twice a month and send the report of the proceedings to the Block level education committee (BLEC).

#### 4. Block Level Education Committee (BLEC) :

Block level education committee (BLEC) will consist of the following members : -

Block Education Officer (President)	1
Block Resource co-ordinator (Member Secretary)	1
Block Development Panchayat Officer	1
Nominee of the Integrated Child Development Scheme	1
Nominee of the Health Department	1
Nominee of the Public Health Department	1
Nominees of the Panchayat Samiti	2
Two Cluster Resource Co-ordinators-one male, one Female (to be nominated by the BEO)	2
Head of a High/Senior Secondary School (Preferable Senior most)	1
A Prominent ex-serviceman of the Block	1
Retired Educationist preferably national/State Awardee	1
VEC members from different clusters	2
Total	<hr/> 15 <hr/>

Members from CRCs & VECs will be rotated after year to give opportunity to them also.



The BLEC can be a higher level supervisory agency to further review activities in the field of the school education. Its functions will be :

- a) Supervision of the training programmes.
- b) Organising block level sessions for sharing of experiences and problems of teachers.
- c) Providing resources/teaching learning material to teachers.
- d) Collection of data and its updating for further guidance.
- e) Monitoring the reports from the clusters.
- f) Follow up action on the decision/proceedings of the VEC/VCC and CLEC meetings.
- g) Inspection of schools.

It will meet once a month and send its proceedings to the District Level Education Committee (DLEC).

## **5. District Level :**

### **District level Education Committee (DLCE)**

The District Level Education Committee will consist of the following members : -

Deputy Commissioner	Chairman
Additional Deputy Commissioner	Vice Chairman
Chief Medical Officer	
District Education Officer	

District Primary Education Officer

Principal district Institute of Education  
and Training (DIET).

District Project Co-ordinator

Block Education Officers

Members Secretary

as per number in  
the  
district.

Block Resource Co-ordinators

as per number in  
the district.

Nominee of Zila Parishad

Chairman of the Panchayat Samiti (nominated by Zila Parishad)

XEN Public Health

XEN PWD (B & R)

Nominee of the Integrated Child Development Scheme

Head of High/Sr. Sec. School (DEO)

Two prominent Social workers (One should be a lady)

Representative of the Body of Handicapped

Representative of an NGO

Due representation should be give to scheduled castes and weaker sections of the society. Members from such organizations may also be taken if otherwise not available amongst the ex-officio

members. Chairman of the Committee may persons of substance, if and when required.

The DLEC will be the major monitoring agency at the district level to see that the objectives of the Sarva Shiksha Abhiyan are being achieved in letter and spirit and all grants are being utilized for the purposes for which they are allotted. The DLEC will function under the Chairmanship of Deputy Commissioner of the respective district. It will meet once a month and send its report to the State Level Monitoring Committee (SLMC). The committee will make arrangements for :

- a) Survey of the out of school children, Drop-out cases.
- b) Finding the reasons hereof.
- c) Admission/Re-admission of the children to schools.
- d) Collection of all the data at the district level and getting it updated.
- e) Supervision of the training programme in the district.
- f) Monitoring the reports from all the blocks.
- g) Follow up action on the decisions/proceedings of the BLEC.
- h) Inspection of schools.

The committee will meet once a month and send its report to the state level Monitoring committee.

**CHAPTER -  
MAJOR INTERVENTION**

**COST ESTIMATES  
&  
BUDGET PROPOSALS  
2003-2007**

**PROPOSED BUDGET**

**MAJOR INTERVENTION:- DISTRICT ELEMENTARY EDUCATION PROGRAMME DISTT. ROHTAK**

Sr.	Heads/Subheads Activity	Unit Cost	2003-04		2004-05		2005-06		2006-07		Total Amt.
			Phy.	Fin.	Phy.	Fin.	Phy.	Fin.	Phy.	Fin.	
1	TEACHER Approved P/S	0.07	15	12.825	15	13.59	15	14.37	15	15.15	55.935
1.1	TEACHER Proposed P/S	0.07	6	5.130	15	13.59	15	14.37	15	15.150	48.240
1.2	TEACHER (UPS)	0.85	36	37.476	45	49.815	45	52.875	45	56.025	196.191
	<b>Sub Total</b>			<b>55.431</b>		<b>76.995</b>		<b>81.615</b>		<b>86.325</b>	<b>300.365</b>
2	<b>ESG (A.S.)</b>										
2.1	Honorarium for ALS @1000/- P.M. for 12 M	0.12	150	18.00	140	16.80	130	15.60	120	14.40	64.80
2.2	Books for ALS students @ Rs. 1500 per centre	0.015	150	2.25	140	2.10	130	1.95	120	1.80	9.10
2.3	Work book for ALS Students @ Rs. 1500 per centre	0.015	150	2.25	140	2.10	130	1.95	120	1.80	9.10
2.4	Student Kit @ Rs. 2000 per centre	0.02	150	3.00	140	2.80	130	2.60	120	2.40	10.80
2.5	Furniture Like, Darr Chair, Table Trunk @ Rs. 1500 per centre	0.015	0	0.00	20	0.00	20	0.30	20	0.30	0.60
2.6	Stationary, Register & Misc @ Rs. 1840 per centre	0.184	150	2.76	140	2.58	130	2.39	120	2.20	11.90
2.7	12 Days Training of As Instructor at BRC(50 in 1st year)	0.01	50	0.53	30	0.30	0	0.00	0	0.00	0.83
2.8	Supervisors for As Centre One Supervisors for 12 centres @ Rs. 1500 per Months	0.18	12	2.16	12	2.16	11	1.98	10	1.80	8.10
2.9	TA/DA for Supervisor @ Rs 500 Per Month for 12 months	0.5	12	0.72	12	0.72	11	0.66	10	0.60	2.70
	<b>Sub Total</b>			<b>31.67</b>		<b>29.56</b>		<b>27.43</b>		<b>25.30</b>	<b>113.95</b>

**PROPOSED BUDGET**

**MAJOR INTERVENTION:- DISTRICT ELEMENTARY EDUCATION PROGRAMME DISTT. ROHTAK**

Sr.	Heads/Subheads Activity	Unit Cost	2003-04		2004-05		2005-06		2006-07		Total Amt.
			Phy.	Fin.	Phy	Fin.	Phy.	Fin.	Phy.	Fin	
<b>3</b>	<b>CIVIL WORKS</b>										
3.1	Building for Schools without Building (PS)	3.00	3	9.00	4	12.00					21.00
3.2	Building for Schools without Building (u.PS)	5.00									0.00
3.3	Additional Class Rooms	1.50	150	225.00	150	225.00	150	225.00	50	75.00	750.00
3.4	BRC (NEW Buildings)	6.00	1	6.00							6.00
3.5	CRC ( New Buildings)	2.00	16	32.00	16	32.00					64.00
3.6	New School Buildings (PS)	3.00									0.00
3.7	New School Buildings (UPS)	5.00									0.00
3.8	Toilet Facility	0.08	0	0.00	0	0.00	0	0.00	100	8.00	8.00
3.9	Boundry Walls	0.0022	5000	11.00	5000	11.00	5000	11.00	5000	11.00	44.00
3.10	Drinking Water	0.12	0	0.00	0	0.00	0	0.00	75	9.00	9.00
3.11	Salary of JE-2	0.09	2	2.08	2	2.22	2	2.38	2	2.50	9.18
	<b>Sub Total</b>			<b>285.08</b>		<b>282.22</b>		<b>238.38</b>		<b>105.50</b>	<b>911.18</b>
<b>4</b>	<b>MAINTENANCE &amp; REPAIR</b>										
4.1	Maintenace of BRC Buildings	0.05	4	0.20	5	0.25	5	0.25	5	0.25	0.95
4.2	Maintenace of CRC Buildings	0.05	0	0.00	16	0.80	32	1.60	32	1.60	4.00
4.3	Maintenace of school Buildings (PS)	0.05	237	11.85	237	11.85	237	11.85	237	11.85	47.43
4.4	Maintenace of school Buildings (u.PS)	0.05	181	9.05	181	9.05	181	9.05	181	9.05	36.20
	<b>Sub Total</b>			<b>21.10</b>		<b>21.95</b>		<b>22.75</b>		<b>22.75</b>	<b>88.55</b>
<b>5</b>	<b>FREE TEXT BOOKS</b>										
5.1	Prv.	0.0015	45538	67.00	46448	68.35	47376	69.19	48323	70.24	274.78
5.2	U Prv	0.0015	19588	28.60	19979	29.16	20380	29.75	20787	30.34	117.55
	<b>Sub Total</b>			<b>95.60</b>		<b>97.51</b>		<b>98.94</b>		<b>100.58</b>	<b>392.33</b>

**PROPOSED BUDGET**

**MAJOR INTERVENTION:- DISTRICT ELEMENTARY EDUCATION PROGRAMME DISTT. ROHTAK**

Sr.	Heads/Subheads Activity	Unit Cost	2003-04		2004-05		2005-06		2006-07		Total Amt.
			Phy.	Fin.	Phy.	Fin.	Phy.	Fin.	Phy.	Fin.	
6	TLE (PS)	0.10	3	0.30							0.30
6.1	TLE (NEW UPS)	0.50									
6.2	TLE (Existing UPS)	0.50									
	<b>Sub Total</b>			<b>0.30</b>							<b>0.30</b>
7	SCHOOL GRANT (PS)	0.02	267	5.34	267	5.34	267	5.34	267	5.34	21.36
7.1	SCHOOL GRANT (UPS)	0.02	199	3.98	199	3.98	199	3.98	199	3.98	15.92
	<b>Sub Total</b>			<b>9.32</b>		<b>9.32</b>		<b>9.32</b>		<b>9.32</b>	<b>37.28</b>
8	Teacher Grant (PS)	0.005	2132	10.66	2141	10.705	2141	10.705	2141	10.705	42.775
8.1	Teacher Grant (UPS)	0.005	2033	10.16	2042	10.21	2042	10.21	2042	10.21	40.79
	<b>Sub Total</b>			<b>20.82</b>		<b>20.92</b>		<b>20.92</b>		<b>20.92</b>	<b>83.57</b>
9	Teacher Training (PS)										
9.1	Induction Training to New teachers (20 days)	0.0007									
9.2	Training to Existing teacher for Non-DPEP(20 days)	0.0007	2132	29.848	2141	29.974	2141	29.974	2141	29.974	119.776
9.3	Teacher Training (UPS)										
9.4	Induction Training to New teachers (20 days)	0.0007									
9.5	Training to Existing teacher for Non-DPEP(20 days)	0.0007	2042	28.462	2042	28.588	2042	28.588	2042	28.588	114.236
	<b>Sub Total</b>			<b>58.310</b>		<b>58.562</b>		<b>58.562</b>		<b>58.562</b>	<b>233.992</b>
10	COMMUNITY TRAINING	0.0003	1264	0.758	1264	0.758	1264	0.758	1264	0.758	3.032
	<b>SUB TOTAL</b>			<b>0.758</b>		<b>0.758</b>		<b>0.758</b>		<b>0.758</b>	<b>3.032</b>
11	RESEARCH & EVALUATION										
11.	Research & Evaluation (PS)	0.004	267	1.068	267	1.068	267	1.068	267	1.068	4.272
11.	Research & Evaluation (UPS)	0.004	199	0.796	199	0.796	199	0.796	199	0.796	3.184
	<b>Sub Total</b>			<b>1.864</b>		<b>1.864</b>		<b>1.864</b>		<b>1.864</b>	<b>7.456</b>

**PROPOSED BUDGET**

**MAJOR INTERVENTION:- DISTRICT ELEMENTARY EDUCATION PROGRAMME DISTT. ROHTAK**

Sr.	Heads/Subheads Activity	Unit Cost	2003-04		2004-05		2005-06		2006-07		Total Amt.
			Phy.	Fin.	Phy	Fin.	Phy	Fin.	Phy	Fin	
12	<b>INNOVATIVE ACTIVITY</b>										
12.1	Edu. for SC/ST Childern		1	11.22	1	11.22	1	11.22	1	11.22	44.88
12.2	Innovative Project of Girls Edu.		1	11.50	1	11.50	1	11.50	1	11.50	46.00
12.3	Early Childhood Education										
12.4	Learning Kit( after on year)	0.01	0	0.00	653	6.53	0	0.00	653	6.53	13.06
12.5	Trg. Of supervisors	0.0033	31	0.10	31	0.10	31	0.10	31	0.10	0.40
12.6	Trg. Of AWW (5 days)	0.0025	653	1.63	653	1.63	653	1.63	653	1.63	6.52
12.7	Refresher Trg AWW	0.0015	0	0.00	653	0.98	0	0.00	653	0.98	1.93
12.8	Darri to each centre	0.01	0	0.00	0	0.00	653	6.53	0	0.00	6.53
12.9	One Box for each centre	0.0005	653	3.26	0	0.00	0	0.00	0	0.00	3.26
12.10	Furniutre	0.01	653	6.53	0	0.00	0	0.00	0	0.00	6.53
	<b>Sub Total</b>										
12.11	Computer Education		1	15.00	1	15.00	1	15.00	1	15.00	60.00
	Per Month for 12 months										
	<b>Sub Total</b>			49.24		46.96		45.98		46.96	189.14







**PROPOSED BUDGET**

**MAJOR INTERVENTION:- DISTRICT ELEMENTARY EDUCATION PROGRAMME DISTT. ROHTAK**

Sr.	Heads/Subheads Activity	Unit Cost	2003-04		2004-05		2005-06		2006-07		Total Amt.
			Phy.	Fin.	Phy.	Fin.	Phy.	Fin.	Phy.	Fin.	
15	<b>MANAGEMENT COST</b>										
15.1	District Project Co-ordinator										
15.2	Assistant Project Co-ordinator-2	0.15	2	3.64	2	3.83	2	4.02	2	4.20	15.69
15.3	Section officer-1	0.12	1	1.40	1	1.49	1	1.57	1	1.66	6.11
15.4	Accountant -1	0.08	1	0.95	1	1.01	1	1.06	1	1.13	4.13
15.5	Assistant -1	0.08	1	0.95	1	1.01	1	1.06	1	1.13	4.13
15.6	Head Clerk-1	0.085	1	1.04	1	1.11	1	1.19	1	1.25	4.59
15.7	Computer Programmer -1	0.10	1	1.23	1	1.31	1	1.39	1	1.47	5.40
15.8	Clerk -1	0.05	1	0.60	1	0.63	1	0.66	1	0.69	2.58
15.9	Data Entry Operator-1	0.065	1	0.78	1	0.82	1	0.87	1	0.91	3.38
15.10	Class IV-1	0.045	1	0.54	1	0.57	1	0.60	1	0.63	2.34
15.11	Night Watchman-1	0.045	1	0.54	1	0.57	1	0.60	1	0.63	2.34
15.12	Computer	0.60	2	1.20							1.20
15.13	Maintenance of Computer	0.05	2	0.10	2	0.10	2	0.10	2	0.10	0.40
15.14	Stationary for computer	0.1	2	1.20	2	1.20	2	1.20	2	1.20	4.80
15.15	Building Rent	0.1	1	1.20	1	1.25	1	1.30	1	1.35	5.10
15.16	Furniture(once in a project period)	1.00	1	1.00	0	0.00		0.00	0	0.00	1.00
15.17	Electricity + water Charges	0.05	1	0.60	1	0.65	1	0.70	1	0.75	2.70
15.18	Telephone Instation	0.04	1	0.04							0.04
15.19	Telephone Bills	0.04	1	0.48	1	0.50	1	0.52	1	0.54	2.04
15.2	Hiring of vehicle	0.15	1	1.80	1	1.90	1	2.00	1	2.10	7.80
15.21	POL	0.05	1	0.60	1	0.65	1	0.70	1	0.75	2.70
15.22	Meeting/BRC & CRC	0.05	1	0.60	1	0.65	1	0.70	1	0.75	2.70
15.23	TA/DA to Staff	0.10	1	1.20	1	1.25	1	1.30	1	1.35	5.10
15.24	Training to MIS & field Staff	0.05	1	0.60	1	0.65	1	0.70	1	0.75	2.70
15.25	Contingency	0.5	1	0.50	1	0.50	1	0.50	1	0.50	2.00
15.26	Fax	0.4	1	0.40							0.40
	<b>Sub Total</b>			<b>23.19</b>		<b>21.65</b>		<b>22.74</b>		<b>23.84</b>	<b>91.42</b>
16	<b>Repair of School Buildings</b>										
16.1	Major Repair	0.25	50	12.50	50	12.50	55	13.75			38.75
16.2	Minor Repair	0.15	3	0.45	3	0.45	3	0.45			1.35
	<b>Sub Total</b>			<b>12.95</b>		<b>12.95</b>		<b>14.20</b>		<b>0.00</b>	<b>40.10</b>



**Annual Work Plan**

**&**

**Budget Estimates**

**2003-2004**

## DISTRICT ELEMENTARY EDUCATION PROGRAMME DISTT. ROHTAK

### TIME SCHEDULE AND IMPLEMENTING AGENCY FOR THE BUDGET 2003-04

Major Intervention

Sr. No.	NAME OF THE ACTIVITY	Unit Cost	2003-04		Implementing Agency	Time Schedule
			Phy.	Fin		
1	<b>TEACHER Approved P/S</b>	0.07	15	12.825	D.P.I.U.	Every Month Pay (2003-04)
1.1	TEACHER Proposed P/S	0.07	6	5.130	D.P.I.U.	Every Month Pay (2003-04)
1.2	TEACHER (UPS)	0.85	36	37.476		
	<b>Sub Total</b>			<b>55.431</b>		
2	<b>ESG (A.S.)</b>					
2.1	Honorarium for ALS @1000/- P.M. for 12 M	0.12	150	18.00	D.P.I.U.	Every Month Pay (2003-04)
2.2	Books for ALS students @ Rs. 1500 per centre	0.015	150	2.25	B.R.C.	1st Qtr. Or IInd Qtr.
2.3	Work book for ALS Students @ Rs. 1500 per centre	0.015	150	2.25	B.R.C.	1st Qtr. Or IInd Qtr.
2.4	Student Kit @ Rs. 2000 per centre	0.02	150	3.00	B.R.C.	1st Qtr. Or IInd Qtr.
2.5	Furniture Like, Darri Chair, Table Trunk @ Rs. 1500 per centre	0.015	0	0.00		
2.6	Stationary, Register & Misc. @ Rs. 1840 per centre	0.184	150	2.76	B.R.C.	Every Month Exp. (2003-04)
2.7	12 Days Training of As Instructor at BRC(50 in 1st year)	0.01	50	0.53	B.R.C.	1st Qtr.
2.8	Supervisors for As Centre One Supervisors for 12 centres @ Rs. 1500 per Months	0.18	12	2.16	B.R.C.	Every Month Exp. (2003-04)
2.9	TA/DA for Supervisor @ Rs.500 Per Month for 12 months	0.6	12	0.72	B.R.C.	Every Month Exp. (2003-04)
	<b>Sub Total</b>			<b>31.67</b>		

## DISTRICT ELEMENTARY EDUCATION PROGRAMME DISTT. ROHTAK

### TIME SCHEDULE AND IMPI EMMENTING AGENCY FOR THE BUDGET 2003-04

#### Major Intervention

Sr. No.	NAME OF THE ACTIVITY	Unit Cost	2003-04		Implementing Agency	Time Schedule
			Phy.	Fin		
3	<b>CIVIL WORKS</b>					
3.1	Building for Schools without Building (PS)	3.00	3	9.00	D.P.I.U.	Ist Qtr. Or IInd Qtr
3.2	Building for Schools without Building (U.PS)	5.00				
3.3	Additional Class Rooms	1.50	150	225.00	V.C.C.	Ist Qtr. to IInd Qtr
3.4	BRC (NEW Buildings)	6.00	1	6.00	D.P.I.U.	Ist Qtr. to IInd Qtr.
3.5	CRC ( New Buildings)	2.00	16	32.00	D.P.I.U.	Ist Qtr. to IInd Qtr.
3.6	New School Buildings (PS)	3.00				
3.7	New School Buildings (UPS)	5.00				
3.8	Toilet Facility	0.08	0	0.00	V.C.C.	Ist Qtr. Or IInd Qtr
3.9	Boundry Walls	0.0022	5000	11.00	V.C.C.	Ist Qtr. Or IInd Qtr
3.10	Drinking Water	0.12	0	0.00	V.C.C.	Ist Qtr. Or IInd Qtr
3.11	Salary of JE-2	0.09	2	2.08	V.C.C.	Ist Qtr. Or IInd Qtr
	<b>Sub Total</b>			<b>285.08</b>		
4	<b>MAINTENANCE &amp; REPAIR</b>					
4.1	Maintenace of BRC Buildings	0.05	4	0.20	B.R.C.	Ist Qtr. Or IInd Qtr
4.2	Maintenace of CRC Buildings	0.05	0	0.00	V.C.C.	Ist Qtr. Or IInd Qtr
4.3	Maintenace of school Buildings (PS)	0.05	237	11.85	V.C.C.	Ist Qtr. Or IInd Qtr
4.4	Maintenace of school Buildings (U.PS)	0.05	181	9.05	V.C.C.	Ist Qtr. Or IInd Qtr
	<b>Sub Total</b>			<b>21.10</b>		
5	<b>FREE TEXT BOOKS</b>					
5.1	Pry.	0.0015	45538	67.00	D.P.I.U.	Ist Qtr
5.2	U. Pry.	0.0015	19588	28.60	D.P.I.U.	Ist Qtr
	<b>Sub Total</b>			<b>95.60</b>		

**ELEMENTARY EDUCATION PROGRAMME DISTT. ROHTAK**  
**TIME SCHEDULE AND IMPLEMENTING AGENCY FOR THE BUDGET 2003-04**

Major Intervention						
Sr. No.	NAME OF THE ACTIVITY	Unit Cost	2003-04		Implementing Agency	Time Schedule
			Phy.	Fin		
6	TLE (PS)	0.10	3	0.30		
6.1	TLE (NEW UPS)	0.50				
6.2	TLE (Existing UPS)	0.50				
	<b>Sub Total</b>			<b>0.30</b>		
7	SCHOOL GRANT (PS)	0.02	267	5.34	B.R.C	1st Qtr.
7.1	SCHOOL GRANT (UPS)	0.02	199	3.98	B.R.C.	1st Qtr.
	<b>Sub Total</b>			<b>9.32</b>		
8	<b>Teacher Grant (PS)</b>	0.005	2132	10.66	B.R.C	1st Qtr
8.1	Teacher Grant (UPS)	0.005	2033	10.16	B.R.C	1st Qtr
	<b>Sub Total</b>			<b>20.82</b>		
9	<b>Teacher Training (PS)</b>					
9.1	Induction Training to New teachers (20 days)	0.0007				
9.2	Training to Existing teacher for Non-DPEP(20 days)	0.0007	2132	29.848	B.R.C	June 2003 to Jan. 2004
9.3	Teacher Training (UPS)					
9.4	Induction Training to New teachers (20 days)	0.0007				
9.5	Training to Existing teacher for Non-DPEP(20 days)	0.0007	2033	28.462	B.R.C	June 2003 to Jan. 2004
	<b>Sub Total</b>			<b>58.310</b>		
10	<b>COMMUNITY TRAINING</b>	0.0003	1264	0.758	B.R.C	June 2003 to Jan. 2004
	<b>SUB TOTAL</b>			<b>0.758</b>		
11	<b>RESEARCH &amp; EVALUATION</b>					
11.1	Research & Evaluation(PS)	0.004	267	1.068	B.R.C./C.R.C.	June 2003 to Jan. 2004
11.2	Research & Evaluation(UPS)	0.004	199	0.796	B.R.C./C.R.C.	June 2003 to Jan. 2004
	<b>Sub Total</b>			<b>1.864</b>		



## DISTRICT ELEMENTARY EDUCATION PROGRAMME DISTT. ROHTAK

### TIME SCHEDULE AND IMPLEMENTING AGENCY FOR THE BUDGET 2003-04

Major Intervention

Sr. No.	NAME OF THE ACTIVITY	Unit Cost	2003-04		Implementing Agency	Time Schedule
			Phy.	Fin		
12	<b>INNOVATIVE ACTIVITY</b>					
12.1	Edu. for SC/ST Childern		1	11.22	D.P.I.U.	Every Month Exp. (2003-04)
12.2	Innovative Project of Girls Edu.		1	11.50	D.P.I.U.	Every Month Exp. (2003-04)
12.3	Early Childhood Education					
12.4	Learning Kit( after on year)	0.01	0	0.00		
12.5	Trg. Of supervisors	0.0033	31	0.10	D.P.I.U.	May-2003
12.6	Trg. Of AWW (5 days)	0.0025	653	1.63	D.P.I.U.	May, June 2003
12.7	Refresher Trg. AWW	0.0015	0	0.00		
12.8	Darri to each centre	0.01	0	0.00		
12.9	One Box for each centre	0.0005	653	3.26	D.P.I.U.	May-2003
12.10	Furniutre	0.01	653	6.53	D.P.I.U.	May-2003
12.11	Computer Education		1	15.00		
	Per Month for 12 months					
	<b>Sub Total</b>			<b>49.24</b>		

**DISTRICT ELEMENTARY EDUCATION PROGRAMME DISTT. ROHTAK**

**TIME SCHEDULE AND IMPLEMENTING AGENCY FOR THE BUDGET 2003-04**

Major Intervention						
Sr. No.	NAME OF THE ACTIVITY	Unit Cost	2003-04		Implementing Agency	Time Schedule
			Phy.	Fin		
13	<b>Block Resource Co-ordinator ( in each Block)</b>					
13.1	Furniutre Grant BRC	1.00	1	1.00	D.P.I.U.	May-03
13.2	TLM Grant for BRC	0.05	5	0.25	D.P.I.U.	May-03
13.3	Contingency of BRC	0.13	5	0.625	D.P.I.U.	Every Month Exp. (2003-04)
13.4	Mettings TA/DA	0.005	-	0.30	D.P.I.U.	Every Month Exp. (2003-04)
13.5	Salary of Asstt. BRC'S (7 in each BRC)	0.13	42	67.28	D.P.I.U.	Every Month Exp. (2003-04)
13.6	Computer for BRC	60	5	3.00	D.P.I.U.	Ist. Qtr.
13.7	Maintenance of Computers	0.05	5	0.25	D.P.I.U.	Every Month Exp. (2003-04)
13.8	Stationery for Computer	0.10	5	0.50	D.P.I.U.	Every Month Exp. (2003-04)
13.9	Accountant/Account Clerk (in each BRC)	0.08	5	5.6988	D.P.I.U.	Every Month Pay (2003-04)
13.10	Data Entry operator(in each BRC)	0.065	6	4.6548	D.P.I.U.	Every Month Pay (2003-04)
13.11	Class IV( ineach BRC)	0.045	6	3.2604	D.P.I.U.	Every Month Pay (2003-04)
13.12	Furniture for CRC	0.10	32	3.20	D.P.I.U.	May-03
13.13	Contingency for CRC	0.025	32	0.80	D.P.I.U.	Every Month Exp. (2003-04)
13.14	TLM Grant	0.01	32	0.32	D.P.I.U.	May-03
	<b>Sub Total</b>			<b>91.14</b>		



## DISTRICT ELEMENTARY EDUCATION PROGRAMME DISTT. ROHTAK

### TIME SCHEDULE AND IMPLEMENTING AGENCY FOR THE BUDGET 2003-04

Major Intervention						
Sr. No.	NAME OF THE ACTIVITY	Unit Cost	2003-04		Implementing Agency	Time Schedule
			Phy.	Fin		
15	<b>MANAGEMENT COST</b>					
15.1	District Project Co-ordinator					
15.2	Assistant Project Co-ordinator-2	0.15	2	3.64	D.P.I.U.	Every Month Pay (2003-04)
15.3	Section officer-1	0.12	1	1.40	D.P.I.U.	Every Month Pay (2003-04)
15.4	Accountant -1	0.08	1	0.95	D.P.I.U.	Every Month Pay (2003-04)
15.5	Assistant -1	0.08	1	0.95	D.P.I.U.	Every Month Pay (2003-04)
15.6	Head Clerk-1	0.085	1	1.04	D.P.I.U.	Every Month Pay (2003-04)
15.7	Computer Programmer -1	0.10	1	1.23	D.P.I.U.	Every Month Pay (2003-04)
15.8	Clerk -1	0.05	1	0.60	D.P.I.U.	Every Month Pay (2003-04)
15.9	Data Entry Operator-1	0.065	1	0.78	D.P.I.U.	Every Month Pay (2003-04)
15.10	Class IV-1	0.045	1	0.54	D.P.I.U.	Every Month Pay (2003-04)
15.11	Night Watchman-1	0.045	1	0.54	D.P.I.U.	Every Month Pay (2003-04)
15.12	Computer	0.60	2	1.20	D.P.I.U.	1st Qtr.
15.13	Maintenance of Computer	0.05	2	0.10	D.P.I.U.	Every Month Exp. (2003-04)
15.14	Stationary for computer	0.1	2	1.20	D.P.I.U.	Every Month Exp. (2003-04)
15.15	Building Rent	0.1	1	1.20	D.P.I.U.	Every Month Exp. (2003-04)
15.16	Furniture(oncein a project period)	1.00	1	1.00	D.P.I.U.	1st Qtr.
15.17	Electricity + water Charges	0.05	1	0.60	D.P.I.U.	Every Month Exp. (2003-04)
15.18	Telephone Instation	0.04	1	0.04	D.P.I.U.	Every Month Exp. (2003-04)
15.19	Telephone Bills	0.04	1	0.48	D.P.I.U.	Every Month Exp. (2003-04)
15.2	Hiring of vehicle	0.15	1	1.80	D.P.I.U.	Every Month Exp. (2003-04)
15.21	POL	0.05	1	0.60	D.P.I.U.	Every Month Exp. (2003-04)
15.22	Meeting/BRC & CRC	0.05	1	0.60	D.P.I.U.	Every Month Exp. (2003-04)
15.23	TA/DA to Staff	0.10	1	1.20	D.P.I.U.	Every Month Exp. (2003-04)
15.24	Training to MIS & field Staff	0.05	1	0.60	D.P.I.U.	May, June - 2003
15.25	Contingency	0.5	1	0.50	D.P.I.U.	Every Month Exp. (2003-04)
15.26	Fax	0.4	1	0.40	D.P.I.U.	1st Qtr.
	<b>Sub Total</b>			<b>23.19</b>		
16	<b>Repair of School Buildings</b>					
16.1	Major Repair	0.25	50	12.50	D.P.I.U.	1st Qtr. (2003-04)
16.2	Minor Repair	0.15	3	0.45	D.P.I.U.	1st Qtr. (2003-04)
	<b>Sub Total</b>			<b>12.95</b>		

**PROPOSED BUDGET**

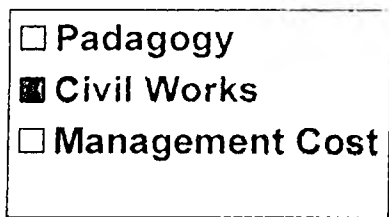
**DISTRICT ELEMENTARY EDUCATION PROGRAMME DISTT. ROHTAK**

**PROJECT COST**

**SUMMARY**

Sr.	Heads/Subheads Activity	Finacial Provision for the Period 2003-07	Finacial Provision for the Year 2003-04
1	Teacher	300.37	55.43
2	EGS(A.S.)	113.96	31.670
3	Civil Works	911.18	285.080
4	Maintance & Repair	88.55	21.10
5	Free Text Books	392.63	95.60
6	TLE	0.30	0.30
7	School Grant	37.28	9.32
8	Teacher Grant	83.56	20.82
9	Teacher Training	233.996	58.310
10	Community Training	3.032	0.758
11	Research & Evaluation	7.456	1.864
12	Innovative activity	189.14	49.245
13	BRC/CRC	370.23	91.143
14	I.E.D.	48.48	12.120
15	Management Cost	91.42	23.190
16	Repair of Schools Building	40.10	12.05
	<b>G. TOTAL</b>	<b>2911.674</b>	<b>768.896</b>

## STATUS OF BUDGET PROVISION FOR



Padagogy : 63.73%

Civil Works : 32.98%

Management Cost : 03.29%

**ANNEXURE**  
**DISTRICT PROJECT IMPLEMENTATION UNIT (DPIU)**

a) Salary of Assistant Project Co-ordinators :

Year	Basic Pay	D.A.	H.R.A.	M.A.	Leavy Salary Cont.	Pension Cont.	Total	Salary of One Year (Lakhs)	2 Persons (Lakhs)
03-04	8500	4420	345	125	935	850	15175	1.821	3.642
04-05	8700	4959	345	125	957	870	15956	1.915	3.829
05-06	8900	5518	345	125	979	890	16757	2.011	4.022
06-07	9100	6097	345	125	1001	910	17478	2.097	4.195

b) Salary of Section Officer :

Year	Basic Pay	D.A.	H.R.A.	M.A.	Leave Salary Cont.	Pension Cont.	Total	Salary of One Year (Lakhs)
03-04	6500	3380	250	125	715	650	11715	1.406
04-05	6700	3819	250	125	737	670	12396	1.488
05-06	6900	4278	250	125	759	690	13097	1.571
06-07	7100	4757	250	125	781	710	13818	1.658

c) Salary of Accountant :

Year	B. Pay	D.A.	H.R.A.	M.A.	Total	Sal. Of One Year Lakhs
03-04	5000	2600	190	125	7915	0.9498
04-05	5150	2936	190	125	8401	1.0081
05-06	5300	3286	190	125	8901	1.0681
06-07	5450	3652	190	125	9417	1.1300

d) Salary of Clerks :

Year	B. Pay	D.A.	H.R.A.	M.A.	Total	Sal. Of Oneyear (Lakhs)	2 Persons (Lakhs)
03-04	3050	1586	160	125	4921	0.5905	1.181
04-05	3125	1781	160	125	5191	0.6223	1.246
05-06	3200	1984	160	125	5469	0.6563	1.313
06-07	3275	2194	160	125	5754	0.6905	1.381

e) Salary of Head Clerk

Year	B. Pay	D.A.	H.R.A	M.A.	Total	Sal. Of One Year Lakhs
03-04	5500	2860	190	125	8675	1.041
04-05	5675	3235	190	125	9225	1.107
05-06	5850	3627	190	125	9792	1.175
06-07	6025	4036	190	125	10376	1.245

f) Salary of Computer Programmer :

Year	B. Pay	D.A.	H.R.A	M.A.	Total	Sal. Of One Year Lakhs
03-04	6500	3380	250	125	10255	1.231
04-05	6700	3819	250	125	10894	1.307
05-06	6900	4278	250	125	11553	1.386
06-07	7100	4757	250	125	12232	1.468

g) Salary of Assistant Block Resource Co-ordinator (ABCR) one

Year	Basic Pay	D.A.	H.R.A.	M.A.	Leave Salary Cont.	Pension Cont.	Total	Salary of One Year (Lakhs)
03-04	7500	3900	250	125	825	750	13350	1.602
04-05	7700	4389	250	125	847	770	14081	1.690
05-06	7900	4898	250	125	869	790	14832	1.780
06-07	8100	5427	250	125	891	810	15603	1.872

h) Salary of Two JEs (Civil)

Year	B. Pay	D.A.	H.R.A.	M.A.	Total	Sal. Of Oneyear (Lakhs)	Salary of One years Lakhs
03-04	5500	2860	190	125	8675	1.04	2.08
04-05	5675	3235	190	125	9225	1.11	2.22
05-06	5850	3627	190	125	9792	1.19	2.38
06-07	6025	4036	190	125	10377	1.25	2.50

i) Salary of Pry. School Teacher

Year	B. Pay	D.A.	H.R.A	M.A.	Total	Sal. Of One yrs.
03-04	4500	2340	160	125	7125	0.855
04-05	4625	2636	160	125	7546	0.906
05-06	4750	2945	160	125	7980	0.958
06-07	4875	3266	160	125	8426	1.011



j) Salary of Data Entry Operator

Year	B. Pay	D.A.	H.R.A	M.A.	Total	Sal. Of One yrs.
03-04	4000	2080	160	125	6465	0.7758
04-05	4100	2636	160	125	6822	0.8186
05-06	4200	2604	160	125	7189	0.8626
06-07	4300	2881	160	125	7566	0.9079

k) Salary of Class -IV

	B.Pay	D.A.	H.R.A	M.A.	W.A.	C.A.	Total
03-04	2650	1378	160	125	85	30	4528
04-05	2715	1548	160	125	85	30	4763
05-06	2780	1724	160	125	85	30	5004
06-07	2845	1906	160	125	85	30	5251

# SARVA SHIKSHA ABHIYAN

## APPROVED BUDGET 2002-2003

Rohtak

S. no	Activity	Unit cost (In lacs)	Physical	Amount (In lacs)
1.	Teachers (P.S)	0.07	6	4.20
	Teachers (U.P.S)	0.085	0	0.00
	<b>Total</b>		6	4.20
2.	EGS (A.S.)	0.21115	150	31.673
3.	Civil works			
	- Buildings for schools without school (PS) (nos)	3.00	3	} 105.92
	- Buildings for schools without school (UPS) (nos)	5.00		
	- Additional classroom (nos.)	6.00	4	
	- BRC (new building) (nos.)	2.00	0	
	- CRC (buildings new) (nos.)	3.00	3	
	- New school building (P) (nos.)	5.00	9	
	- New school building (UP) (nos.)	0.08	130	
	- Toilet facility (nos.)	0.12	71	
	- Boundary walls (nos.)			
	- Drinking water (nos)			
4.	Maintenance & repair	0.05	407	20.35
5.	Free text books	0.0015	18973	2.846
6.	TLE (PS)	0.1	3	0.30
	TLE (new UPS)	0.5	0	0.00
	TLE (existing UPS)	0.5	138	69.00
	<b>Total</b>		141	69.30
7.	School grant (PS)	0.02	261	5.22
	School grant (UPS)	0.02	50	1.00
	<b>Total</b>		311	6.22
8.	Teacher grant (PS)	0.005	2117	10.59
	Teacher grant (UPS)	0.005	1997	9.99
	<b>Total</b>		4114	20.58
9.	Teacher training (PS)			
	- Induction training to new teachers (20 days)	0.0007	6	
	- Training to existing teachers for non-DPEP (10 days)	0.0007	2111	12.82
	Teacher training (UPS)			
	- Induction training to new teachers (20 days)	0.0007	0	
- Training to existing teachers for DPEP (20 days)	0.0007	1997		
10.	Community training	0.0003	1264	0.7584
11.	R&E	0.004	410	1.640
12.	Innovative activity		4	50.00

13	<b>BRC</b>			
	- Furniture, Grant BRC	1.00	5	
	- TLM grant for BRC	0.05	5	
	- Contingency for BRC (Non-DPEP)	0.125	5	
	- Contingency for BRC (DPEP)	0.005	5	
	- Meeting travelling allowance (Non-DPEP)			
	- Meeting travelling allowance (DPEP)			
	- Salary of Block Resource Persons for PS (nos)	0.07	50	
	- Salary of Block Resource Person for UPS	0.085	50	
	<b>CRC</b>			
	- Furniture grant CRC (new CRC only)	0.1	32	} 4.90
	- Contingency for CRC (New CRC only)	0.025	32	
	- Contingency for CRC (DPEP)			
	- TLM grant (New CRC only)	0.01	32	
	- Meeting, travelling allowance (New CRC only)	0.002	32	
14	IED	0.012	1010	12.120 ✓
15	Management Cost			20.00
	<b>Total</b>			<b>516.61</b>

School wise  
 classwise strength of girls students  
 from Ist to 8th. (excluding sc)  
 Rs. 150/- per unit

## Annexure

### Proposed Pry. Schools From Branch Schools

Sr. No.	Name of the Branch School	Attached with the School	No. of Students Studying	Distance from the mother School
1.	G.P.S. Sugarmill Colony, Rohtak	G.P.S. Sunarian	More than 200	2 K.m.
2.	G.P.S. Sainik Colony Rohtak	G.P.S.L.B.S Nagar, Rohtak	More than 60	1.5 K.M.
3.	G.P.S. Nidana, Rohtak	G.P.S. Nidana Rohtak	More than 200	1.5 K.M.

Source : D.P.E.O.I

**Block Resource Centres/Cluster Resource Centres  
District - Rohtak**

Sr.	Name of the Block Resource Centres	Name of the Cluster Resource Centres
1	Rohtak - I	<ol style="list-style-type: none"> <li>1. GMS Maina</li> <li>2. GHS Bohar</li> <li>3. GHS Baland</li> <li>4. GHS Titoli</li> <li>5. GPS LBS Rohtak</li> <li>6. GHS Sukhpura Rohtak</li> <li>7. GSSS Model Town Rohtak</li> <li>8. GMS Janta Colony Rohtak</li> </ol>
2	Rohtak-II	<ol style="list-style-type: none"> <li>1. GSSS Khidwali</li> <li>2. GHS Jassia</li> <li>3. GHS Ladhot</li> <li>4. GSSS Kharawar</li> <li>5. GHS Atail</li> <li>6. GMS Sampla Mandi</li> <li>7. GHS Hassan Garh</li> <li>8. GSSS Kiloj</li> <li>9. GHS Assan</li> </ol>
3	Kalanaur	<ol style="list-style-type: none"> <li>1. GPS Kalanaur Kalan</li> <li>2. GPS Kalanaur Khurd</li> <li>3. GPS Katesra</li> <li>4. GGPS Mokhra</li> <li>5. GPS Dobh</li> <li>6. GPS Kahanaur</li> <li>7. GPS Sundana</li> </ol>
4	Meham	<ol style="list-style-type: none"> <li>1. GPS Meham</li> <li>2. GGSSS Kharkhara</li> <li>3. GSSS Farmana</li> <li>4. GGSSS Samar</li> <li>5. GSSS Nidana</li> <li>6. GSSS Lakhna Mujra</li> <li>7. GSSS Chiri</li> <li>8. GPS Madina Gidhran</li> </ol>

**CIVIL WORKS**

**IDENTIFICATION**

# SARVA SHIKSHA ABHIYAN

## (Elementary Education upto 8th Class)

Compilation of Deficiency Survey School Date Block Wise

CW-1

Block :- ROHTAK - I													District :- ROHTAK (Rs. In Lacs)	
Sr. no.	Name Of the School	NSB (3 CR)	ERSB (3 CR)	AR*	MAR	MIR	T	WT	Bdy. wall	Hand pump	CRC	BRC	TOTAL	
1	G.M.S MAINA (C.R.C-1)				1			1			1			
2	G.G.P.S MAINA				1		1	1						
3	G.P.S. SIMLI			7	1				1200'					
4	G.H.S PAHRAWAR				1									
5	G.H.S KARONTHA			8	1		1	1						
6	G.G.P.S. KARONTHA				1		1							
7	G.H.S KAROR				1			1						
8	G.H.S. BOHAR (C.R.C-2)				1						1			
9	G.G.H.S BOHAR			3	1		1	1	800					
10	G.G.P.S BOHAR			1				1						
11	G.P.S SECTOR - I													
12	G.P.S SECTOR -2			1										
13	G.P.S SECTOR -14													
14	G.H.S BALAND (C.R.C-3)			6	1						1			
15	G.H.S SUNARIAN	1	1	6	1		1	1						
16	G.G.P.S SUNARIAN			3			1	1						
17	G.G.H.S. BALAND			3	1		1							
18	G.H.S RETAULI			3	1		1							
19	G.G.M.S RETAULI KALULPUR			12	1		1							
20	G.H.S TITOLI (C.R.C-4)			2	1		1				1			
	<b>TOTAL</b>	<b>1</b>	<b>1</b>	<b>55</b>	<b>15</b>	<b>0</b>	<b>10</b>	<b>8</b>	<b>800</b>	<b>0</b>	<b>4</b>	<b>0</b>	<b>0</b>	

NSB - New School Building ; ERSB- Existing running School building ; AR - Additional single room; MAR Major repair ; MIR - Mainor repair; MIR - Minor repair

T-Toilet with gipped tiles on wall and ceramic floor tiles; W.T -Water Tank ; Bdy. Wall -Boundary Wall; CRC Cluster Resource Centre ; BRC Block Resource Centre

THE ABOVE UNIT COST IS BASED ON DESIGN OF A ROOM 21' -9"×16" -0 WITH 14'-16" WIDE VERANDAH ON HSR 2000 ANY INFLATION MAY BE CATERED

**(Elementary Education upto 8th Class)**  
**Compilation of Deficiency Survey School Date Block Wise**

CW-2

Block :- ROHTAK - I

District :- ROHTAK  
 (Rs. In Lacs)

Sr. no.	Name of the School	NSB (3 CR)	ERSB (3 CR)	AR*	MAR	MIR	T	WT	Bdy. wall	Hand pump	CRC	BRC		TOTAL
b/f		1	1	55	15	0	10	8	800	0	4	0	0	0
21	G.H.S. Sunderpur			2	1			1						
22	G.G.P.S SUNDERPUR			2	1			1						
23	G.P.S SIRROULI					1		1						
24	G.M.S. SINGH PURA KHURD				1	1	1	1						
25	G.P.S SINGHPURA KALAN					1	1	1						
26	G.S.S.S. SUMER GOPAL PUR			13	1	1	1							
27	G.H.S BHNGWATIPUR			10	1	1	1	1	700					
28	G.P.S SUMER KHURD				1	1	1	1						
29	G.P.S.L. B.S. ROHTAK (C.R.C-5)			3			1	1			1			
30	G.H.S GADDI KHERI				1	1								
31	G.P.S BAHU JAMALPUR		1	5			1	1	800					
32	G.P.S RAJENDER COLONY		1	5			1	1	800					
33	G.P.S. INDIRA COLONY RTK.													
34	G.P.S HISSAN ROAD		1	9			1	1	800					
35	G.P.S HARIYA GATE			2	1									
36	G.H.S. SUKHPURA (C.R.C.-6)			4	1			1			1			
37	G.P.S HANUMAN COLONY RTK			4		1	1	1						
38	G.P.S RONAKPURA			1			1	1						
39	G.P.S.B MANDI ROHTAK		1	5			1	1						
40	G.P.S KAYASTHAN ROHTAK		1	10			1	1	300					
	<b>TOTAL</b>	<b>1</b>	<b>6</b>	<b>130</b>	<b>24</b>	<b>8</b>	<b>23</b>	<b>24</b>	<b>4200</b>	<b>0</b>	<b>6</b>	<b>0</b>	<b>0</b>	<b>0</b>

NSB - New School Building ; ERSB- Esisting running School building ; AR - Additional single room, MAR Major repair ; MIR - Mainor repair, MIR - Minor repair

T- Toilet with glazed tiles on wall and ceraini floor tiles W.T. -Water Tank ; Bdy. Wall -Boundary Wall; CRC Cluster Resource Centre; BRC Block Resource Centre.

THE ABOVE UNIT COST IS BASED ON DESIGN OF A ROOM 21' -9"×16' -0 WITH 14'-16" WIDE VERANDAH ON HSR 2000 ANY INFLATION MAY BE CATERED





**(Elementary Education upto 8th Class)**  
**Compilation of Deficiency Survey School Date Block Wise**

CW-4

Block :- ROHTAK - II

District :- ROHTAK

(Rs. In Lacs)

Sr. no.	Name Of the School	NSB (3 CR)	ERSB (3 CR)	AR*	MAR	MIR	T	WT	Bdy. wall	Hand pump	CRC	BRC		TOTAL
1	G.P.S KHIDWALI (CRC-I)	1		5			1				1			
2	G.G.P.S KHIDWALI			5										
3	G.P.S JINDRAN													
4	GPS GHUSKANI			5	1		1	1						
5	G.P.S KATWARA				1									
6	G.P.S SANGHI			4	1		1	1						
7	G.G.P.S SANGHI			10										
8	G.P.S SAN. PUR			1			1	1						
9	G.P.S CHAMARIAN (CRC-2)			5			1	1			1			
10	G.P.S JASSIA			5	1		1	1						
11	G.P.S. GHILLOR KALAN						1	1						
12	G.G.P.S GHILLOR KALAN						1	1						
13	G.P.S. GHILLOR KHURD				1		1	1						
14	G.P.S BRAHMAN WAS			8	1		1	1	1800					
15	G.P.S KAHNI			2	1		1	1	1700					
16	G.G.P.S KAHNI			1	1			1	1300					
17	GPS RITHAL			3	1									
18	G.G.P.S. RITHAL (CRC-3)			5	1						1			
19	G.P.S. LADHOT			5	1		1	1						
20	G.G.P.S LADHOT			2	1		1	1						
21	G.P.S BHAYAPUR LADHOT						1	1						
	<b>TOTAL</b>	<b>1</b>	<b>0</b>	<b>66</b>	<b>12</b>	<b>0</b>	<b>14</b>	<b>14</b>	<b>4800</b>	<b>0</b>	<b>3</b>	<b>0</b>	<b>0</b>	<b>0</b>

NSB - New School Building : ERSB- Esisting running School building : AR - Additional single room: MAR Major repair : MIR - Mainor repair; MIR - Minor repair

T- Tolet with glazed tiles on wall and cerainl floor tiles W.T. -Water Tank : Bdy. Wall -Boundary Wall; CRC Cluster Resource Centre; BRC Block Resource Centre.

THE ABOVE UNIT COST IS BASED ON DESIGN OF A ROOM 21' -9"x16" -0 WITH 14'-16" WIDE VERANDAH ON HSR 2000 ANY INFLATION MAY BE CATERED

**SARVA SHIKSHA ABHIYAN**  
(Elementary Education upto 8th Class)  
Compilation of Deficiency Survey School Date Block Wise

cws

Block :- ROHTAK - II

District :- ROHTAK  
(Rs. In Lacs)

Sr. no.	Name Of the School	NSB (3 CR)	ERSB (3 CR)	AR*	MAR	MIR	T	WT	Bdy. wall	Hand pump	CRC	BRC		TOTAL
B/F		1	0	66	12	0	14	14	4800	0	3	0	0	0
22	G.P.S. MAKROLI KALAN			5			1	1						
23	G.G.P.S. MAKROLI KALAN			2	1		1	1	1700					
24	G.P.S. MAKROLI KALAN KHURD				1		1	1	6500					
25	G.P.S DHAMAR			4	1		1							
26	G.G.P.S DHAMAR				1		1		1600					
27	G.P.S. KHARAWAR (C.R.C.-4)			1	1		1	1			1			
28	G.G.P.S KHARAWAR				1		1							
29	G.P.S ISMAILA			9	1									
30	G.G.P.S ISMAILA			0	1			1						
31	G.P.S. KHERI SADH			3	1		1							
32	G.P.S CHULIANA			5	1		1	1						
33	G.G.P.S. CHULIANA			0	1		1							
34	G.P.S. BALIANA			6	1		1	1						
35	G.G.P.S. BALINA			3			1	1	800					
36	G.P.S ATAIL (C.R.C.-5)			0	1			1	2400		1			
37	G.G.P.S. ATAIL			2	1		1							
38	G.P.S GANDHRA				1									
39	G.G.P.S GANDHRA			1										
40	G.P.S NONAND			2	1		1	1						
41	G.P.S KISRENTI				1		1	1	1800					
	<b>TOTAL</b>	<b>1</b>	<b>0</b>	<b>109</b>	<b>29</b>	<b>0</b>	<b>29</b>	<b>25</b>	<b>19600</b>	<b>0</b>	<b>5</b>	<b>0</b>	<b>0</b>	<b>0</b>

NSB - New School Building ; ERSB- Esisting running School building ; AR - Additional single room; MAR Major repair ; MIR - Mainor repair; MIR - Mincr repair

T- Toilet with glazed tiles on wall and cerainl floor tiles W.T. -Water Tank ; Bdy. Wall -Boundary Wall; CRC Cluster Resource Centre; BRC Block Resource Centre.

THE ABOVE UNIT COST IS BASED ON DESIGN OF A ROOM 21' -9"x16' -0 WITH 14'-16" WIDE VFRANDAH ON HSR 2000 ANY INFLATION MAY BE CATERED

**Elementary Education upto 8th Class**  
**Compilation of Deficiency Survey School Date Block Wise**

CW-6

Block :- ROHTAK - II

District :- ROHTAK

(Rs. In Lacs)

Sr. no.	Name Of the School	NSB (3 CR)	ERSB (3 CR)	AR*	MAR	MIR	T	WT	Bdy. wall	Hand pump	CRC	BRC		TOTAL
		1	0	109	29	0	29	25	19600	0	5	0	0	0
42	G.P.S PAKASMA				1									
43	G.G.P.S. PAKASMA			6	1			1						
44	G.P.S SAMPLA MANDI CRC-6)				1		1		600		1			
45	G.G.P.S SAMPLA				1									
46	G.P.S SAMPLA			4			1	1	800					
47	Pre. Pry. Sampia			1			1	1						
48	G.P.S GARHI SAMPLA			2	1		1	1	1800					
49	G.P.S GIJHI				1		1	1						
50	G.G.P.S GIJHI						1	1						
51	G.P.S DATTAUR			2	1		1							
52	G.P.S KULTANA				1			1						
53	G.P.S HASSANGARH CRC-7)				1						1			
54	G.G.P.S HASSANGARH						1							
55	G.P.S BHAI SRU KALAN				1									
56	G.P.S BHAI SRU KHURD				1		1							
57	G.P.S SAMCHANA													
58	G.G.P.S. SAMCHANA													
59	G.P.S NAYA BANS			1	1		1	1						
60	G.G.P.S NAYA BANS						1	1						
61	G.P.S KILOI (CRC-8)				1			1			1			
62	G.G.P.S KILOI						1							
	<b>TOTAL</b>	<b>1</b>	<b>0</b>	<b>125</b>	<b>42</b>	<b>0</b>	<b>41</b>	<b>35</b>	<b>22800</b>	<b>0</b>	<b>8</b>	<b>0</b>	<b>0</b>	<b>0</b>

NSB - New School Building ; ERSB- Existing running School building ; AR - Additional single room, MAR Major repair ; MIR - Mainor repair; MIR - Minor repair

T- Toilet with glazed tiles on wall and ceraint floor tiles W.T. -Water Tank ; Bdy. Wall -Boundary Wall; CRC Cluster Resource Centre; BRC Block Resource Centre.

THE ABOVE UNIT COST IS BASED ON DESIGN OF A ROOM 21' -9"×16' -0 WITH 14'-16" WIDE VERANDAH ON HSR 2000 ANY INFLATION MAY BE CATERED

**SARVA SHIKSHA ABHIYAN**  
(Elementary Education upto 8th Class)  
Compilation of Deficiency Survey School Date Block Wise

CW-7

Block :- ROHTAK - II

District :- ROHTAK

(Rs. In Lacs)

Sr. no.	Name Of the School	NSB (3 CR)	ERSB (3 CR)	AR*	MAR	MIR	T	WT	Bdy. wall	Hand pump	CRC	BRC		TOTAL
B/F		1	0	125	42	0	41	35	22800	0	8	0	0	0
63	G.P.S KILI-2 PANNA				1		0	0						
64	G.P.S RURKEE			4	1			1						
65	G.G.P.S RURKEE			7				1						
66	G.P.S POLANGI				1		1	1						
67	G.G.P.S. BHALAUT													
68	G.P.S BHALAUT			2	1		1	1						
69	F.P.S ASSAN (CRC-9)			2	1		1	1			1			
70	G.G.P.S ASSAN			4		1	1	1						
71	G.G.P.S KANSALA				1		1							
72	G.G.P.S KANSALA			2	1		1							
73	G.P.S HUMAYUN PUR				1									
74	G.G.P.S HUMAYUN PUR				1		1	1	1882					
75	G.P.S BAKHETA				1									
76	G.G.P.S. BAKHETA				1									
77	G.P.S MORE KHERI (BEO-I)				1									
78	G.P.S MUNGAN (BEO-I)				1		1	1						
	BRC AT ROHTAK -II											1		
	TOTAL	1	0	S	55	1	49	43	24682	0	9	1	0	0

NSB - New School Building ; ERSB- Esisting running School building ; AR - Additional single room; MAR Major repair ; MIR - Mainor repair; MIR - Minor repair

T- Toilet with glazed tiles on wall and cerainl floor tiles ; W.T -Water Tank ; Bdy. Wall -Boundar ; Wa: CRC Cluster Resource Centre; BRC Block Resource Centre.

THE ABOVE UNIT COST IS BASED ON DESIGN OF A ROOM 21" -9"x16" -0 WITH 14'-16" WIDE VERANDAH ON HSR 2000 ANY INFLATION MAY BE CATERED

**(Elementary Education upto 8th Class)**  
**Compilation of Deficiency Survey School Date Block Wise**

CW-8

Block :- KALANAUR

District :- ROHTAK  
(Rs. In Lacs)

Sr. no.	Name Of the School	NSB (3 CR)	ERSB (3 CR)	AR*	MAR	MIR	T	WT	Bdy. wall	Hand pump	CRC	BRC		TOTAL
1	G.P.S KALANAUR KHURD (CRC NO-1)			3	1			1			1	1		
2	G.P.S JINDRAN			1			1							
3	G.P.S BASANA				1			1	800					
4	G.G.P.S. KALANAUR KHURD	1												
5	G.G.P.S LAHALI			3	1		1							
6	G.P.S LAHALI			2	1		1	1						
7	G.M.P. TAKENA (CR.C. 2)			2	1						1			
8	G.P.S KALANARU KHURD				1									
9	G.G.P.S. GUDHAN				1		1	1	800					
10	G.P.S GUDHAN			2			1	1						
11	G.P.S KHERDI			2	1		1	1						
12	F.P.S KHERDI MORE							1						
13	G.P.S SAIMPLA			1	1									
14	G.G.P.S SAIMPAL			3	1									
15	G.P.S KATERRA (C.R.C.-3)			3	1		1	1			1			
16	G.G.P.S PILANA				1			1	800					
17	G.P.S NIGANA						1	1						
18	G.G.P.S NIGANA						1	1						
19	G.G.P.S NSANGAHERA			3			1	1						
20	G.P.S SANGAHERA			2	1		1	1						
21	G.G.P.S. SANGAHERA			2	1		1	1						
	<b>TOTAL</b>	<b>1</b>	<b>0</b>	<b>29</b>	<b>14</b>	<b>0</b>	<b>12</b>	<b>14</b>	<b>2400</b>	<b>0</b>	<b>3</b>	<b>1</b>	<b>0</b>	<b>0</b>

NSB - New School Building ; ERSB- Esisting running School building ; AR - Additional single room; MAR Major repair ; MIR - Mainor repair; MIR - Minor repair

T- Toilet with glazed tiles on wall and cerainl floor tiles W.T. -Water Tank ; Bdy Wall -Boundary Wall; CRC Cluster Resource Centre; BRC Block Resource Centre.

THE ABOVE UNIT COST IS BASED ON DESIGN OF A ROOM 21" -9"×16" -0 WITH 14'-16" WIDE VERANDAH ON HSR 2000 ANY INFLATION MAY BE CATERED

**SARVA SHIKSHA ABHIYAN**  
(Elementary Education upto 8th Class)  
Compilation of Deficiency Survey School Date Block Wise

CW-9

Block :- KALANAUR

District :- ROHTAK  
(Rs. In Lacs)

Sr. no.	Name Of the School	NSB (3 CR)	ERSB (3 CR)	AR*	MAR	MIR	T	WT	Bdy. wall	Hand pump	CRC	BRC		TOTAL
B/F		1	0	29	14	0	12	14	2400	0	3	1	0	0
22	G.G.P.S MOKHERA (C.R.C. -4)			4	1		1	1			1			
23	G.P.S. MOKHERA			2	1	1	1	1	800					
24	G.G.P.S. KHERI ROZE													
25	G.P.S KHERI ROZE				1		1	1						
26	G.P.S DOBH (C.R.C.-5)						1	1			1			
27	G.G.P.S. DOBH				1		1	1	800					
28	G.P.S. BHALI ANANDPUR			1	1									
29	G.G.P.S. BHALI ANDNDPUR			3				1						
30	G.P.S. BANIANI			10	1		1	1						
31	G.P.S. PATWAPUR			1	1		1	1						
32	G.P.S. MOAREDHI JATTAN			2	1		1	1						
33	G.P.S. KAHANAUR (C.R. C.-6)			1	1		1		1700		1			
34	G.G.P.S. KHANAUR			4	1			1						
35	G.G.P.S. ANWAL			1	1			1	1500					
36	G.P.S. ANWAL			1	1		1		4000					
37	G.P.S. GADHI BALLAFF			2	1		1	1	900					
38	G.P.S. MASUDPUR			2	1		1							
39	G.P.S. SUDANA (C.R.C.-7)			4			1				1			
40	G.G.P.S. SUDANA			3	1		1	1						
41	G.P.S. JATPUR			1	1		1	1						
	<b>TOTAL</b>	<b>1</b>	<b>0</b>	<b>71</b>	<b>30</b>	<b>1</b>	<b>27</b>	<b>28</b>	<b>12100</b>	<b>0</b>	<b>7</b>	<b>1</b>	<b>0</b>	<b>0</b>

NSB - New School Building ; ERSB- Existing running School building ; AR - Additional single room ; MAR Major repair ; MIR - Mainor repair; MIR - Minor repair

T- Toilet with glazed tiles on wall and cerainl floor tiles. W.T -Water Tank ; Bdy. Wall, Boundary Wall; CRC Computer Resource Centre; BRC block Resource Centre

THE ABOVE UNIT COST IS BASED ON DESIGN OF A ROOM 21" -9"×16" -0 WITH 14'-16" WIDE VERANDAH ON HSR 2000 ANY INFLATION MAY BE CATERED





**SARVA SHIKSHA ABHIYAN**  
(Elementary Education upto 8th Class)  
Compilation of Deficiency Survey School Date Block Wise

Cwlf

Block :- MEHAM

District :- ROHTAK

(Rs. In Lacs)

Sr. no.	Name Of the School	NSB (3 CR)	ERSB (3 CR)	AR*	MAR	MIR	T	WT	Bdy. wall	Hand pump	CRC	BRC		TOTAL
1	G.P.S. MEHAM	1			1				700		1	1		
2	G.G.S.S.S. MEHAM			1					500					
3	G.M.S. BHANI BHARON			1		1		1						
4	G.M.S. BHANI MAHARAJPUR			4	1			1	400					
5	G.M.S. KHERI MEHAM			1		1			700					
6	G.P.S. IMLIGARH			2										
7	G.P.S. KISHANGARH				1		1	1						
8	G.H.S. SISAR KHAS			1	1		1							
9	G.G.P.S. SISAR KHAS													
10	G.P.S. GANGANAGAR						1							
11	G.G.S.S.S. KHARKARA			1	1				600		1			
12	G.H.S. KHARKARA			2	1		1							
13	G.H.S. BHARAN			1	1			1						
14	G.G.H.S. BHARAN			1										
15	G.G.H.S. BEHLBA			1	1			1						
16	G.S.S.S. BEHLBA			4	1		1							
17	G.P.S. BEHLBA BAZAN					1		1						
18	G.H.S. AJAIB			2	1		1	1	400					
19	G.G.P.S. AJAIB							1						
20	G.S.S.S. FARMANA (C.R.C.-3)			1	1		1		700		1			
21	G.G.H.S. FARMANA			1	1		1							
	<b>TOTAL</b>	<b>1</b>	<b>0</b>	<b>24</b>	<b>12</b>	<b>4</b>	<b>8</b>	<b>8</b>	<b>4000</b>	<b>0</b>	<b>3</b>	<b>1</b>	<b>0</b>	<b>0</b>

NSB - New School Building ; ERSB- Existing running School building ; AR - Additional single room; MAR Major repair ; MIR - Mainor repair; MIR - Minor repair

T- Toilet with glazed tiles on wall and ceramic floor tiles W.T. -Water Tank ; Bdy. Wall -Boundary Wall, CRC Cluster Resource Centre; BRC Block Resource Centre.

THE ABOVE UNIT COST IS BASED ON DESIGN OF A ROOM 21' -9"×16" -0 WITH 14'-16" WIDE VERANDAH ON HSR 2000 ANY INFLATION MAY BE CATERED

**Elementary Education upto 8th Class**  
**Compilation of Deficiency Survey School Date Block Wise**

CW-12

Block :- MEHAM

District :- ROHTAK

(Rs. In Lacs)

Sr. no.	Name of the School	NSB (3 CR)	ERSB (3 CR)	AR*	MAR	MIR	T	WT	Bdy. wall	Hand pump	CRC	BRC		TOTAL
B/F		1	0	24	12	4	8	8	4000	0	3	1	0	0
22	G.P.S. FARMANA BADSHAPUR						1							
23	G.G.P.S. FARMANA NEW						1							
24	G.M.S. BEDWA			1										
25	G.H. S. BHAINI CHANDERPAL			5										
26	G.G.S.S.S. SAMAN (C.R.C.-4)			2	1		1		700		1			
27	G.H.S. SAMAN			2										
28	G.G.P.S. SAMAN PANAKHAS				1		1		800					
29	G.G.P.S. SAMAN NEW					1	1							
30	G.M.S. BHAINI SURJAN			3	1		1							
31	G.G.P.S. BHAINI SURJAN						1							
32	G.G.H.S. BHAINI MATU			5	1		1							
33	G.S.S.S. NIDANA (C.R.C.-5)			8	1		1				1			
34	G.G.H.S. NIDANA			7	1		1		900					
35	G.G.P.S. NIDANA TIGRI						1		100					
36	G.G.S.S.S. BAINSI			7	1		1							
37	G.H.S. BAINSI			4	1		1	1						
38	G.H.S. KHARKJATIAN			3	1		1	1						
39	G.M.S. GUGAHERI			4	1		1	1						
40	G.S.S.S. LAKHANMAJRA (C.R.C-6)			6							1			
41	G.G.H.S. LAKHANA MAJARA			3	1		1	1						
	<b>TOTAL</b>	<b>1</b>	<b>0</b>	<b>84</b>	<b>24</b>	<b>5</b>	<b>24</b>	<b>12</b>	<b>6500</b>	<b>0</b>	<b>6</b>	<b>1</b>	<b>0</b>	<b>0</b>

NSB - New School Building ; ERSB- Existing running School building ; AR - Additional single room; MAR Major repair ; MIR - Mainor repair; MIR - Minor repair

T- Toilet with glazed tiles on wall and ceraini floor tiles W,T. -Water Tank ; Bdy. Wall -Boundary Wall; CRC Cluster Resource Centre; BRC Block Resource Centre

THE ABOVE UNIT COST IS BASED ON DESIGN OF A ROOM 21' -9"x16' -0 WITH 14'-16" WIDE VERANDAH ON HSR 2000 ANY INFLATION MAY BE CATERED

**SARVA SHIKSHA ABHIYAN**  
(Elementary Education upto 8th Class)  
Compilation of Deficiency Survey School Date Block Wise

CW-13

Block :- KALANAUR

District :- ROHTAK

(Rs. In Lacs)

Sr. no.	Name Of the School	NSB (3 CR)	ERSB (3 CR)	AR*	MAR	MIR	T	WT	Bdy. wall	Hand pump	CRC	BRC		TOTAL
B/F		1	0	84	24	5	24	12	6500	0	6	1	0	0
42	G.G.S.S. KHAIRENTHI			3				1						
43	G.H.S. KHAIRENTHI						1	1	700					
44	G.P.S. INDER GARH			2			1	1						
45	G.G.H.S. CHANDI			4	1				700					
46	G.M.S CHANDI			2	1									
47	G.S.S.S CHIRI (C.R.C-7)			4			1	1			1			
48	G.G.H.S. CHIRI			5	1									
49	G.P.S. CHIRI BLOCK						1							
50	G.H.S. GAROUTH				1		1	1						
51	G.P.S. GAROUTH			4			1	1						
52	G.H.S. NADAL			1	1		1							
53	G.P.S. MADINA GINDRAN(CRC-8)						1	1			1			
54	G.G.S.S.S. MADINA			6	1		1							
55	G.H.S. MADINAKORSAN			1										
56	G.P.S. MADINA NEW			1	1									
57	G.S.S.S. BAHUAKBARPUR			5	1		1	1						
58	G.G.H.S. BAHUAKBARPUR			5	1				500					
59	G.H.S. NARAINA			2										
60	G.H.S. GORAWAR			10	1		1	1						
61	G.G.M.S. GORAWAR			3	1									
	<b>TOTAL</b>	<b>1</b>	<b>0</b>	<b>142</b>	<b>35</b>	<b>5</b>	<b>35</b>	<b>21</b>	<b>8400</b>	<b>0</b>	<b>8</b>	<b>1</b>	<b>0</b>	<b>0</b>

NSB - New School Building ; ERSB- Existing running School building ; AR - Additional single room; MAR Major repair ; MIR - Mainor repair; MIR - Minor repair

T- Toilet with glazed tiles on wall and ceraint floor tiles ; W.T -Water Tank ; Bdy. Wall -Boundary Wall; CRC Cluster Resource Centre; BRC Block Resource Centre.

THE ABOVE UNIT COST IS BASED ON DESIGN OF A ROOM 21' -9"X16' -0" WITH 14'-16" WIDE VERANDAH ON HSR 2000 ANY INFLATION MAY BE CATERED

