

SARVA SHIKSHA

ABHIYAN

Distt. Elementary Education Programme

(D.E.E.P.)

(Perspective Plan)

2003-2007

Prepared by

District Core Planning Team

Distt. Faridabad – 121002

Haryana

JNK



*Dedicated to the
Children of the District
Faridabad*

DEEP (SSA) FARIDABAD

**PLANNING TEAM
DISTRICT FARIDABAD**

Sr. No.	Name	Designation
1.	Sh. Harbans Lal, HES-I <i>Harbans</i>	D.E.O., Faridabad
2.	Sh. Devi Singh Atri <i>Devi Singh</i>	Lecturer in Maths - D.I.E.T. Pali, Faridabad
3.	Sh. R.K. Ponia <i>R.K. Ponia</i>	Lecturer in Biology - D.I.E.T. Pali, Faridabad
4.	Sh. Ghanshyam Swarup <i>G.S.</i>	Lecturer in Economics - D.I.E.T. Pali, Faridabad
5.	Sh. J.N. Kataria <i>J.N. Kataria</i>	Head Teacher - G.P.S. Kheri Gujran, Faridabad

Harbans
District Education Officer
DEEP (SSA) FARIDABAD
Faridabad

INDEX

S. No.	CHAPTER – I	Page
1.	State Profile	1
	1.1 Introduction of State	1
	1.2 Climate	3
	1.3 Geographical Area	3
	1.4 Agricultural	4
	1.5 Cattle	5
	1.6 People	5
	1.7 Economy	6
	1.8 Industrialization	6
	1.9 Transport	6
	1.10 Communication	6
	1.11 Dress	6
	1.12 Festivals	6
	1.13 Tourism	7
	1.14 Registration of Births & Deaths	7

S. No.	CHAPTER – II	Page
2.	Profile of District Faridabad	8
	2.1 Area of Faridabad	8
	2.2 Demographic Characteristic Population Distribution	8
	2.3 Sex Rate	8
	2.4 Literate Population	9
	2.5 Index of Gender Equity (I.G.E.)	9
	2.6 Index of Social Equity (I.S.E.)	9
	2.7 Admission Rate	9
	2.8 Administration	9
	2.9 Villages	10
	2.10 BPL Survey	10
	2.11 Culture and Language	11
	2.12 Life of People	11
	2.13 Education	11
	2.14 Enrolment in N.F.E. as on 2001	11
	2.15 Important Cities / Religious Places	12
	2.16 Tourism	12
	2.17 Agriculture	12
	2.18 Drainage System	13
	2.19 Central-Cooperative Bank	13

	2.20	Sugar Mill	13
	2.21	Health	13
	2.22	Dairy	13
	2.23	Electricity	13
	2.24	Food and Supply	14
	2.25	Education and Literacy	14
	2.26	Employment	14
	2.27	Drinking Water	14
	2.28	Transportation	14
	2.29	Sports and Youth Welfare	14
	2.30	Female Welfare	15
	2.31	Construction Centre	15
	2.32	Child Welfare Project	15
	2.33	Welfare of Leprosy Patients	15
	2.34	Red-Cross	15
	2.35	Deaddiction cum Rehabilitation Centre	15

		CHAPTER – III	
3.		Educational Profile of the District Faridabad	
	3.1	Educational Institutions as on 31.10.2002	16
	3.2	Population as on (01.04.2001)	17
	3.3	Enrolment of Govt. Primary Schools (I to V)	18
	3.4	Gross Enrolment Ratio (G.E.R.)	19
	3.5	Enrolment in Govt. Middle Schools (VI to VIII)	20
	3.6	Gross Enrolment Ratio (GER) of Middle Schools (Age Group 11 to 14) 2002-03	21
	3.7	Net Enrolment Ratio (NER) (Age 6 to 11)	22
	3.8	Net Enrolment Ratio (NER) (Age 11 to 14)	22
	3.9	Rate of Dropout and Retention (Age 6 to 11)	23
	3.10	Rate of Dropout and Retention (Age 11 to 14)	23
	3.11	Teacher's Position Govt. Primary Schools	24
	3.12	Teacher's Position Govt. Middle Schools	25
	3.13	Incentive Scheme of Govt. Middle Schools	26
	3.14	Existing Schemes in Govt. Primary Schools	27
	3.15	Infrastructure Facilities Available	28
	3.16	Material / Equipments Available	29

		CHAPTER – IV	
4.		Planning Process	
	4.1	Formation of District Core Team	30
	4.2	Planning in the Field	30
	4.3	Consolidated House Hold Survey Report (Distt. Faridabad)	32

	4.4	House Hold Survey Report (Block : Faridabad)	33
	4.5	House Hold Survey Report (Block : Ballabgarh-I)	34
	4.6	House Hold Survey Report (Block : Ballabgarh-II)	35
	4.7	House Hold Survey Report (Block : Palwal-I)	36
	4.8	House Hold Survey Report (Block : Palwal-II)	37
	4.9	House Hold Survey Report (Block : Palwal-III)	38
	4.10	House Hold Survey Report (Block : Hodal)	39
	4.11	House Hold Survey Report (Block : Hathin)	40
	4.12	Findings of Household Survey Distt. Faridabad	41
	4.13	Sarva Shiksha Abhiyan Perspective Plan FBD	43

		CHAPTER – V	
5.	5.1	District Problems	45
	5.2	Consolidation of Meetings	46-54
	5.3	Major Issues Emerged from Participatory Meetings	55
	5.4	Microplanning Survey	56
	5.5	Household Survey	57

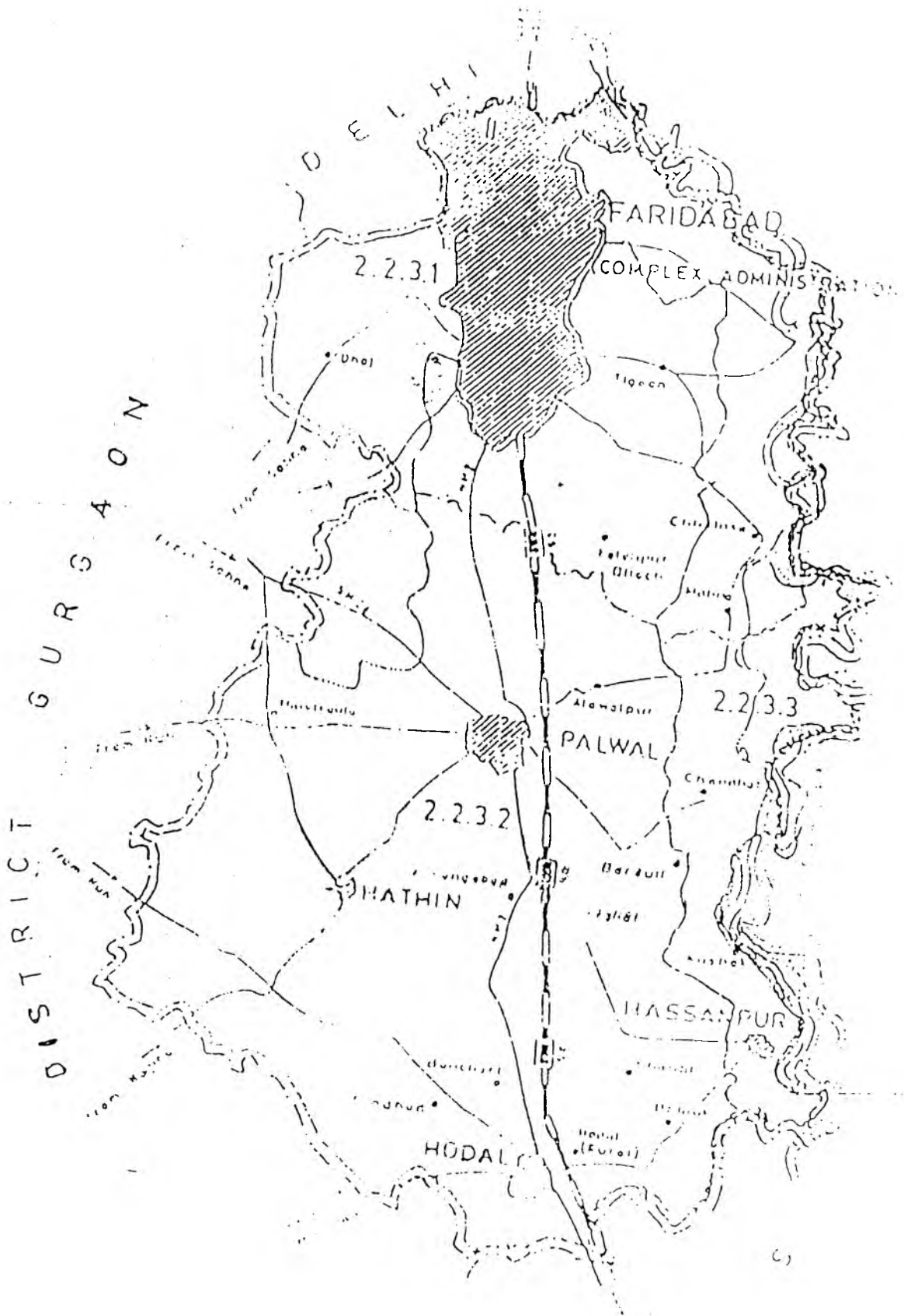
		CHAPTER – VI	
6.		Alternative Schooling (AS)	
	6.1	Major Interventions	58
	6.2	Opening of Alternative Schools	59
	6.3	Honorarium of A.S. Instructor	59
	6.4	Books / Work Books for A.S. Students	59
	6.5	Stationery and Miscellaneous	59
	6.6	Students Kits and Blackboards	59
	6.7	Trainings	59
	6.8	Block Resource Centre (BRC)	60
	6.9	Salary	60
	6.10	Furniture	60
	6.11	Equipments	61
	6.12	Library Books	61
	6.13	Newspaper and Educational Periodicals	61
	6.14	Maintenance of Building	61
	6.15	Telephone	61
	6.16	Teachers Training	61
		BRC Wise List of Clusters	63
	6.17	Cluster Resource Centre (CRC)	64
	6.18	Electricity and Water Charges	64
	6.19	Equipments	64
	6.20	Furniture	64
	6.21	Library Books	64

6.22	Newspaper and Educational Periodicals	65
6.23	Extended Teachers Training	65
6.24	Orientation of the Members of VECS	65
6.25	Talent Search Test	65
6.26	Innovative Project	65
6.27	Contingency for Lab School	66
6.28	Distt. Institute of Education and Training (DIET)	66
6.29	Action Research and Research Studies	67
6.30	Training / Orientation	67
6.31	Monitoring and Evaluation	67
6.32	Exposure Visit	67
6.33	District Project Implementation Unit (DPIU)	68
6.34	Early Childhood Care and Education (ECCE)	69
6.35	Major Interventions	69
6.36	Civil Work	71
6.37	Integrated Education for Disabled	72
6.38	Girls' Education	73
6.39	Educational Management Information System (EMIS)	75-77

	Annual Work Plan & Budget (2003-2007)	
	Budget at a Glance for the year 2003-04 Distt. Faridabad	78
	Budget at a Glance for the year 2003-07 Distt. Faridabad	79
	Project Cost Table-1(ASIE)	80
	Project Cost Table-2 (BRC)	81
	Project Cost Table-3 (CRC)	82
	Project Cost Table-4 (Civil Works)	83
	Project Cost Table-5 (DPIU)	84
	Project Cost Table-6 (ECCE)	85
	Project Cost Table-7(a) (EFE)	86
	Project Cost Table-7(b) (EFE)	87
	Project Cost Table-8 (IED)	88
	Project Cost Table-9 (EIMS)	89
	Proposed Budget 2003-04 to 2006-07	90-92

	CHAPTER – VII	
7.	Management Structure	93
	CHAPTER VIII	
8.	Monitoring & Supervision Structure	94-103

HARYANA DISTRICT FARIDABAD



CHAPTER – I

1.1 INTRODUCTION OF STATE

Haryana state came in to independent existence after carveout of Punjab on 1st November, 1966 with the Union Territory Chandigarh as its co-capital of Haryana and Punjab. It is the 15th state in the country in terms of size. This is the land where Lord Krishna imparted the lessons of pious Geeta to Arjuna. On the basis of these lessons a war between Kauravas and Pandavas was fought in the battle field of Kurukshetra which lasted for 18 days followed by three famous wars of Panipat at the battle field of Tarawadi were also fought in this region in 16th and 18th centuries. Panipat district is known for its heroic deeds of the people. Haryana state is surrounded by Delhi and Uttar Pradesh in the east, the southern and western part by Rajasthan and the northern side by Punjab and Himachal Pradesh. Haryana is also bounded by the Shivalik Hills in the north and by the Aravali Hills in the south. There are some high ridges running through out the tract from the north-west to the north-east. The ridges are known as the Morni Hills (the average elevation of about 1065 mts) and the Tipra Hills (the average elevation of about 1370 mts). These hills are separated by the valley of the Ghaggar river. The river Yamuna is also flowing to the eastern border of the state. It has 44212 sqkm of the total geographical area. Haryana state is divided into four divisions i.e Ambala, Gurgaon, Hissar and Rohtak. It is pertinent to be mentioned certain important districts of this state which are famous in India.

Panchkula :

Panchkula is a new district of Haryana state separated from Ambala in 1995.

Ambala :

Ambala district founded during the 14th century by one of Ambala Rajput. Another version is that the town has taken the name after Goddess Bhiwani Ainba whose temple still exists in the town. Ambala is famous for Textile Market all over India.

Yamuna Nagar :

Yamuna Nagar is known for whole Sale Market. of Brass work and utensil manufacturing.

Kurukshetra :

Kurukshetra district has been regarded extremely sacred. The Regvedic Aryans kindled the sacred fire and chanted the vedic hymns. On the occasion of Solar Eclipse, people from parts of India visit for holy bath in Kurukshetra Tank.

Karnal :

Karnal district, which according to legends owes the foundation to Raja Karna, who sided with Kauravas in the epic war of Mahabharata. Karnal is famous for Basmati rice and its National Dairy Research Institute has its own glory in the country.

Sirsa :

Sirsa district is the oldest place of North India and its ancient name was Sairishaka which was corrupted to Sirsa later on.

Hissar :

Hissar district has Agricultural University.

Bhiwani :

Bhiwani is one of the biggest district of Haryana state as far as area is concerned.

Rohtak :

Maharishi Dayanand University exists in Rohtak district and a big Cotton Market.

Rewari :

Rewari district is a potential Industrial Centre. The name of Rewari district has been derived from its town. Rewari was established by Raja Rewat around 1000 A.D. and named after his daughter "Rewat", in course of time the name corrupted to Rewari. It is famous for Brass ware, Pagries, Leather works and Slate Manufacturing.

Gurgaon :

Gurgaon district is also corruption of Guru Gram. Yudhishtira, donated this village to his Guru Dronacharya in whose memory a tank still exists on the west side of the road leads to Railway station. Guru Dronacharya gave schooling in Archery to Kauravas and Pandavas and at the last but not least.

Faridabad :

Faridabad is one of the districts of Gurgaon Division. It is formed after the name of spiritual the great Muslim Saint Baba Farid. in 1607. Faridabad is famous for all types of production of commodities of daily use and fabrication of various parts of machinery, Defence material, Textile, Paints, Farmaceutical Drugs, Electronic items, Tractors and Motor Cycles are manufactured here, and hence Faridabad District baggs the Tenth position in Industrialisation in India. This is the region, people from all over India have tremendous attraction for migration and permanent settlement to this District. Rural and Urban classification- is an accepted demographic

practice the world over. Haryana State is fully electrified and major cities/Towns have been connected with High-ways and all the Villages have been connected by approach roads to cities.

Seven Districts of Haryana State fall in National Capital Region (N.C.R.) containing 41.21% of the Total Population. The National Capital Region (Sub-Region Haryana) contains 40 Towns and 2496 Villages out of 106 Towns and 6955 Villages of Haryana in 2001 Census respectively. 37.74% of the Towns and 35.89% of Villages of Haryana are included in National Capital Region. It covers about 30.46% of the total area of Haryana. Out of 40 Towns which fall in National Capital Region in Haryana, 12 are Census Towns, class wise grouping of Industrial Towns in National Capital Region in Haryana explains the existence of 8 class I towns, 8 class III Towns, 17 class IV Towns, 6 class V Towns and 1 class VI Town which together claims 48.47% of the total Urban population of Haryana. The 8 class I Towns are, Panipat, Sonapat, Rohtak, Bahadur Garh, Rewari, Gurgaon, Faridabad and Palwal. All are important Industrial centres, attracting in migration.

The people of Haryana played a vital role in the struggle for Independence in 1857 such as Rao Tula Ram of Rewari, Raja Nahar Singh of Ballabgarh and Nawab Gayasuddin of Faruk Nagar and now, in the Kargil Operation, Military personnel belonging to Haryana also contributed a lot for Heroic deeds. The number of Martyrs of Haryana is highest in the country.

1.2 CLIMATE

The climate of Haryana is of a pronounced Continental character- very hot in Summer and marked by cold in Winter. The temperature during the month of May and June soars up as high as 46⁰ Celsius and it falls as low as 3⁰- 4⁰ Celsius in the month of January. The rain-fall in region is low and erratic except in parts of Karnal, Ambala and Panchkula Districts.

1.3 GEOGRAPHICAL AREA

The land of Haryana state is of three categories, (a) High land (b) Low land (c) Desert land. It is further divided into four parts:-

- (i) Shiwalik Hills Tract.
- (ii) Plain Area.
- (iii) Desert Area.
- (iv) Aravali Hills.

(i) Shiwalik Hills Tract

North-east part of Haryana state is hilly area known as Shiwalik Hills. These hills are spread over Panchkula, Ambala and Yamuna Nagar districts. The river Ghaggar, Tangari, Markandi and Sarsvati are flowing through. The Lime Stone is obtained from these hills which is further utilised for Cement manufacturing works.

(ii) Plain Area

About 2/3 of total area is covered by plain. This area is very fertile. During summer it is more hot and in the winter equally more cold. Rain-fall is less comparing to Shiwalik hills. Mango, Shisham, Neem, Pipal and Jamun trees are grown. This wood is used for building materials and furniture.

(iii) Desert Area

The Eastern and Southern part of Haryana state is Desert. This area falls in Sirsa, Fatehabad, Hissar, Bhiwani, Mahendragarh and Rewari districts. It consists of small Sand-hills all over the area. The water level is very deep. The climate during the Summer is very hot and in Winter very cold. Rain-fall is less. Thorny vegetation is seen which can grow even in less Rain-fall. The material of these vegetation is only utilised for fire works. On account of Scanty rain and less means of irrigation, the production of crops is effected hence the land is less fertile.

(iv) Aravali Hills

These are dry hills in Gurgaon, Faridabad, Rewari and Mahendragarh districts. The hills are worn torn and low elevated. Limestone, Iron, Slate stone, Stone dust is obtained. In district Rewari at Kund, there is availability of good quality of stone. In this part of Haryana state, there is much hot during summer season and very cold in winter season. There is less inchange of rain-fall. Thorny bushes & grass is grown in this area.

1.4 AGRICULTURAL

Two types of crops are grown in Haryana state namely Rabi & Kharif. Rabi crops are, Wheat, Gram, Barely, Mustard & Masoor and in Kharif Jawar, Bazra, Rice, Cotton and Arhar is grown. Due to the ample of rainfall in north-east part of Haryana, Rice is grown more. Apart from rainfall, canals are the means of irrigation, Sugar cane & maize is the major product of Haryana state.

1.5 CATTLE

There are three types of cattle according to their utility.

- (a) **Milk producing Cattle** :- like cows, buffalos, Goats, Sheep and Camels are more in Hissar & Rohtak districts with special breed of Sahiwal cows and Murrah buffalos.
- (b) **Load carrying Cattle** :- camels & bullocks are utilised in agricultural works and means of transporation. Hissar, Sirsa, Mahendragarh, Rewari and Bhiwani districts are the areas in which the camels utility is paramount. The Donkeys, Horses & Mules are also means of carrying load & transportation.
- (c) **Wool productive Cattle**:- Hissar, Mahendragarh, Rewari, Gurgaon, Bhiwani, Sirsa, Rohtak & Jind districts keep herd of sheep, woollen cloths and blankets are made out of wool.

1.6 PEOPLE

The racial, religions & cultural compositions of the people of Haryana state has under gone as incessant metamorphosis but time and again failed to write wrinkles on their brow. The Haryanvis have retained some of their tradition of traits and characteristics. It is in the folklores of Haryana that one can see the multifarious richness of emotional life of its people. These folklores have ever been preserved with the palm of tradition and passed on from one generation to the other like other aspects of cultural Heritage. Their folk dance is known as Dhamal.

Linguistically, there are three main currents: -

'Bangaru' the main dialect in the districts of Hissar, Rohtak, Sonapat, Jind, Kaithal, Bhiwani and Karnal. Mewati a local variation of Rajasthani spoken extensively in the Southern districts of Gurgaon and parts of Faridabad and 'Ahirawati' the main dialect of the people of district Mahendergarh and some parts of districts of Gurgaon, Rewari and Jhajjar. The people of Haryana are some what parochial caste-ridden and therefore lagging behind in the sphere of Education of a comparable quality. The state has yet to pick up the educationally advanced states of the country.

In general, the people of Haryana are hard-working, peace-loving and sacrificial, in times of need they have risen to the occasion. Specially, people of Haryana constitute a virile race strong and sturdy fighters and indefatigable farmers, wielding the sword with as much skill in the time of crisis as they wield the plough in the time of peace.

1.7 ECONOMY

The main sources of economy of Haryana have been Agriculture and Cattle breeding. The net sown area of state is about 3575000 hectares. Top priority has always been given to this sector, resulting in the rise of production of food grains, rice and cotton. Today Haryana amply enriched 'Granary of India' contributing a substantial chunk of agricultural produce to the central food.

1.8 INDUSTRIALIZATION

The industrial development of the state is major contribution to the national economy as various factories like Cotton mills, Cement Industries, Sugar mills, Paper mills, Cycle & Motor cycle industries, Utensil, Tyres, Refrigerator, Electrical & Glass works, Foot wears, Plastic works and some life saving medicine factories are established in Haryana.

1.9 TRANSPORT

Major Cities/Towns are inter connected with railway lines with metre and broad gauge as per the requirement and with National Highways by roads. Haryana is also locally connected with Approach roads, Buses, Carts, Scooters, Tongas, Camel carts are available as per the need of the state. In addition to the above men power is also available to run the Factories and Industries smoothly.

1.10 COMMUNICATION

All types of means of communication are available in Cities, Towns and even in some Villages. Most of the villages are extended with local Telephone facilities.

1.11 DRESS

Dhoti, Kurta, Pagri and Pant Shirt are worn by the male residents of Haryana state and females wear Suits, Salwar, Ghagra, Sarees, Blouses, Chunries with modern types of foot-wears available.

1.12 FESTIVALS

In addition to the National festivals 26th of January and 15th of August, Haryana day and Local festivals like Holi, Teej, Raksha Bandhan, Janamashtmi, Dushehra, Deepawali, Good Friday, Guru Purv, Idul-Fitre

and Idul-Juha etc are celebrated in Haryana with cordial relationship with each other.

1.13 TOURISM

Tourism has been in progress whole of state. The places are mostly named after the birds. Haryana is playing vital role in National Economy in this regard. It is a source of attraction by the foreign nationalities. Kurukshetra, Pehowa, Sohna, Badkallake, Dubchik, Sultanpur lake, Abhaypur, Dumdama lake, Pinjore garden and Surajkund are worth seeing places.

1.14 REGISTRATION OF BIRTHS AND DEATHS

Registration of births and deaths has always been made compulsory all over the country under the Registrations of Births and Deaths Act 1969. In order to raise the level of registration of births, Haryana Govt. has already made compulsory to the production of birth certificates in school admissions from present session itself.

CHAPTER – II

DISTRICT PROFILE- FARIDABAD

Faridabad separated from district Gurgaon and came into being as 12th district of Haryana state on 15th August 1979. Faridabad is surrounded by Uttar Pradesh in the east, in the west by district Gurgaon town Sohna, Nuh and Ferozpur Zhirka and its north border by Delhi. National Capital Region covers the part of Faridabad. Faridabad was named after the Great Saint Baba Farid in 1607 who was the cashier of Jahangir. A Fort, one Pond and a Masjid was also constructed during that period. Later on it remained under the administration of Ballabgarh. Administrator of Faridabad district took part in the liberation of India from British Rule as the freedom fighter. India liberated from British rule and became an Independent Country on 15th Aug, 1947 with sub-division of Pakistan as an Independent Country due to British Policy. Faridabad was undeveloped area during 1947. The residents of West-Punjab and North-West border settled here after partition of India. The residents of Faridabad put their heart and soul with sincerity and slowly a day came when Faridabad was declared 10th Industrial Area of India by establishing number of Factories having different kind of works. Right from smaller item as needle to bigger as tractor, all commodities are being manufactured and parts their of are fabricated here. Mainly Defence material, Textile, Paints, Farmaceuticals and Electronic items are the production of Faridabad district.

2.1 AREA OF FARIDABAD

Area of Faridabad district is 2760 Km, according to the Census 2001.

2.2 DEMOGRAPHIC CHARACTERISTIC POPULATION DISTRIBUTION

1991			2001		
Male	Female	Total	Male	Female	Total
808223	669017	1477240	1192537	1000739	2193276
		Rural	523685	449397	973082
		Urban	668852	557342	1220194

The population of Faridabad district is 2,193,276 in which Male population is 1,192,537 and Females population is 1,000,739.

2.3 SEX RATE

The sex rate in 1991 was 828 per thousand and in 2001 is 839 per thousand. The total growth rate in a decade is 11 per thousand.

Source: Sensus 2002

2.4 LITERATE POPULATION

1991			2001		
Male	Female	Total	Male	Female	Total
481290	222579	703869	817224	470360	1287584
74.15%	42.12%	59.77%	82.49%	56.80%	70.79%

The total population of District Faridabad was 703869 in which male 481290 and female 222579, percentage of male 74.15% and female 42.12% and 59.77% for total population as per census 1991 and as per census 2001 the total population of the District Faridabad is 1287584 in which male 817224 and female 470360. The literacy percentage of male is 82.49% and female 56.80%. The total percentage of both is 70.79%. In a decade the total literacy has been increased by 11.02%.

2.5 INDEX OF GENDER EQUITY (I.G.E.)

Age Group	Percentage
5 to 10 years	89.55%
11 to 14 years	85.88%
Primary level	89.55%
Middle Level	85.88%

2.6 INDEX OF SOCIAL EQUITY (I.S.E.)

Primary level	89.02%
Middle Level	84.37%

2.7 ADMISSION RATE

Primary level	91.18%
Middle Level	89.07%

2.8 ADMINISTRATION

Faridabad district has been divided into five sub-divisions :-

- (i) Ballabgarh
- (ii) Palwal
- (iii) Faridabad
- (iv) Hodal
- (v) Hathin

Sub-Tehsil :1
(i) Mohna

Developing Blocks :5

- (i) Faridabad
- (ii) Ballabgarh
- (iii) Palwal
- (iv) Hodal
- (v) Hathin

2.9 VILLAGES

Total number of Villages : 439
Number of In-habited Villages : 414
Number of Un-Inhabited Villages : 25

2.10 BPL SURVEY

S.No	Name of Block	No. of Villages	No. of Total Families	Families BPL.	Families S.C. BPL.
1.	Faridabad (U)	-	-	23255	4751
2.	Faridabad (R)	62	14595	1815	519
3.	Ballabgarh	72	20044	3724	1255
4.	Palwal (U)	-	-	3470	694
5.	Palwal (R)	121	26413	4815	2284
6.	Hodal (U)	-	-	1061	212
7.	Hodal (R)	70	29139	6344	2880
8.	Hathin	79	22177	5002	1114
	Grand Total	404	112368	49486	13709

Source ADC Office, Faridabad

DEEP (SSA) FARIDABAD

2.11 CULTURE AND LANGUAGE

All most half of the total area of district Faridabad is adjoining to Uttar Pradesh state and rest with Gurgaon district and Delhi. Language and Dress of the people have combination of Uttar Pradesh and Delhi. The area touching to Gurgaon district is known as Mewat. The Muslim culture can be seen in this area, even Hindus also speak Muslim language.

2.12 LIFE OF PEOPLE

Being different types of caste and creed, they lead a happy life with love and affection.

2.13 EDUCATION

Educational Institute from Post Graduate colleges to primary schools are as follows:-

S.No	Institute	Total	Government	Private
1.	Post Graduate Colleges	11	4	7
2.	High/Senior secondary Schools	245	167	78
3.	Middle Schools	155	69	86
4.	Primary Schools	1080	595	485
5.	Gurukuls	3	-----	3
6.	Sanskrit College	1	1	-----

2.14 ENROLMENT IN AWW (ECCE)

(As on 30.09.2001)

S.No	Name of Block	No of Centres	Boys	Girls	
1.	Faridabad (U)	184	3728	3586	7314
2.	Fari Jabad (R)	98	2029	1837	3866
3.	Ballabgarh	125	2586	2357	4943
4.	Palwal	181	3867	3343	7210
5.	Hodal	142	3064	2670	5734
6.	Hathin	150	3729	3586	7315
	Total	880	19003	17379	36382

Source: ADC Faridabad

DEEP (SSA) FARIDABAD

2.15 IMPORTANT CITIES / RELIGIOUS PLACES

BALLABGARH :-

It was founded by a poor farmer Ballab Singh, who later on became a rich person by the blessings of Goddess. His seven generations ruled 200 villages around Ballabgarh. The widow of Raja Bahadur Singh constructed a pucca pond and a Umbrella type building in 1818. The last, Raja Nahar Singh martyred in the struggle of Independence of India in 1857.

PALWAL :-

It is an ancient city, Pallambasur established it during Dwapar yuga. Its name further corrupted to Palwal. During their unknown exile, Pandavas stayed at this place. In this area there was a village known as Aharvan which is known as village Aharwan now. Mahatma Gandhi was arrested for the first time by the Britishers at Palwal.

HODAL :-

After Mahabaratha an Od caste established here and it named as Odal and further modified as Hodal. A pond still exists which is known as Kishori Bai Pond. At the distance of 1Km there is a Radha-Krishna Temple also.

VILLAGE SIHI :-

It is a birth place of poet Soordas. Maharaja Janmejy performed a Sarpdah Yagya to take revenge of the death of his father Parikshata caused by a snake-bite.

2.16 TOURISM

District Faridabad has following Tourist Complexes.

- (a) Badkal Lake.
- (b) Suraj Kund.
- (c) Dubchik.

2.17 AGRICULTURE

60% of the total population of Faridabad is engaged in agricultural activities. They are using new Technology in agriculture. The total cultivated area is 208 thousand hectares and irrigated sown area is 155 thousand hectares. There are 5810 tractors and 26660 tube wells exist in the district. Main crops are Wheat, Bazra and Mustard. Gurgoan canal and Agra canal irrigate this area.

2.18 DRAINAGE SYSTEM

(a) Main Drains	-	2
(b) Link Drains	-	54
(c) Ring Dams	-	7
(d) River Complex	-	37

2.19 CENTRAL -COOPERATIVE BANK

It was established on 17th Oct 1979. It has 18 branches. It provides loans to the cooperative societies. There are 395 societies which are the member of this Bank.

2.20 SUGAR MILL

There is only one sugar mill in this district situated at Palwal. It was registered on 8th Nov 1973 and started working in 1985. It has 24121 share holders. 480 villages are covered by this mill. About 15000 families are employed directly or in-directly in this mill

2.21 HEALTH

(1) General Hospitals	:	4
(2) Community Health Centres	:	2
(3) Tuberculosis Centre	:	1
(4) Primary Health Centres	:	22
(5) Sub-Health Centres	:	117
(6) E.S.I. Dispensaries	:	22
(7) Nursing Training School	:	1
(8) Urban Family Welfare Centres:	:	11

2.22 DAIRY

There are two Dairies at Palwal and Ballabgarh respectively. Ballabgarh Dairy has capacity of 50000 Litres of milk daily. It covers 15 acres of land and 16000 milkmen are employed.

2.23 ELECTRICITY

Faridabad Thermal Plant has played a vital role for providing Electricity to all the villages of the state. Its capacity is 165 megawatts. Three generating units each of capacity 25 megawatts have been established. Being an important district of the state, a special attention has been paid by Faridabad for the production of electricity. Neighbour districts are also being provided electricity. Even Rajasthan and Delhi are also benefited.

2.24 FOOD AND SUPPLY

There are 924 Depots for providing daily use ration for the common people. Out of 924 Depots, 294 Depots have been established in villages and 630 in Urban areas. These Depots provide Sugar, Wheat, Rice, Flour and Kerosene Oil.

2.25 EDUCATION AND LITERACY

In the past years, there is increase in literacy rate. It was 39.59 in 1981 and 47.64 in 1991 in which Males literacy rate was 52.87 and Females literacy rate was 23.20 and according to Census 2001 Literacy Rate is 70.79.

2.26 EMPLOYMENT

For unemployed persons there exist Employment Exchanges in Ballabgarh, Palwal, Hathin, and Tigaon . They are being given jobs according to their qualifications. Under the scheme of "One family one Employeee." 393 unemployed persons have been given unemployment D.A. and total Rs 67500 are being given. 969 candidates have been registered till now.

2.27 DRINKING WATER

Through the 117 water projects, 474 villages have been provided with drinking water facilities.

2.28 TRANSPORTATION

To facilitate the people 217 of Delux /Ordinary busses have been employed on different routes by Faridabad Depot. About 65000 passengers are using transportation facilities daily. There are 15 Queue shelters at Ballabgarh, Faribabad, Hodal and Palwal.

2.29 SPORT AND YOUTH WELFARE

A Cricket Nursery has been introduced for the training of 10-14 Years age group children. 25 children are being trained at one time. An International Sports Complex has been established in sector-12 of district Faridabad and 25 Youth Clubs have also been opened. For the benefit of whose parents have been employed for insanity works, hostel of 60 students capacity have been given. The schedule caste people have been given the grant up to the Rs. 5000 for taking loans from different banks and they are trained accordingly.

2.30 FEMALE WELFARE

Undependent women and widows are provided with temporary shelters and short stay home in Kasturba Welfare Home. They are also trained by Social Welfare Organisation for self-employment. Arrangements have also been made for re-marriage. They are awared of Literacy, Environmental sanity and their rights and duties. Red-cross Society has constructed 41 rooms hostel for about 80 women.

2.31 CONSTRUCTION CENTRE

Construction Centre of Faridabad was established on 19th Sept.1991 by Building Construction Nigam New Delhi. New technique has been given to reduce the cost-construction by these centres and 40 such schools are under construction, under the Indira Awaas Yojana, the houses are being constructed.

2.32 CHILD WELFARE PROJECT

To keep mentally and physically healthy to children of age group (0-6 years) and pregnant ladies. 880 Anganwaries have been established till now. The workers of this scheme are given training of three months duration and 11 days re-fresher training as and when required.

2.33 WELFARE OF LEPROSY PATIENTS

In Bharat Mata Ashram, 175 patients have been given Rs.150 per month and treatment facilities also have been extended.

2.34 RED-CROSS

One Red-Cross Centre has been established to provide artificial limbs to the handicapped persons in the district. It treats to Polio, Handicapped and to the patients suffering from Joint pain. To provide health facility to Jhuggi-Jhonpari areas“ Health” Project has been launched by District Red-Cross. In near future all needy persons will be provided with health treatments.

2.35 DEADDICTION CUM REHABILITATION CENTRE

By the grant of Ministry of Welfare Society of India a centre at sector-14 with provision of 15 beds has been made available in the district in which the patients of consuming illicit liquor, Smack, Opium, Tobacco, Heron and other intoxic items have been given positive treatment and they are advised to lead a happy family life.

(SOURCE-Public Relation Department of Haryana).

DEEP (SSA) FARIDABAD

CHAPTER-III

EDUCATIONAL PROFILE OF THE DISTRICT FARIDABAD

During the last decades the literacy rates have been increased i.e. 1981 the literacy rate of the district was 39.59, in 1991 it was 47.64 and now in 2001, it is 70.79.

3.1 EDUCATIONAL INSTITUTIONS AS ON 31.10.2002

S.No	Institutions	Government	Branch	Private
1.	Number of Primary Schools	595	47	485
2.	Number of Middle Schools	69		86
3.	Number of High Schools	98		95
4.	Number of Sr. Sec. Schools	63		62
5.	Number of Degree Colleges	4		7
6.	Number of Vocational Schools	3		--
7.	Number of I.T.I's	3		--
8.	Number of Polytech. Colleges	2		1
9.	Number of Engg. Colleges	1		5
10.	Number of D.I.E. F.	1		--
11.	Number of G.E.T.T.I.	1		--
12.	Number of Gurukuls	--		3
13.	Number of Sanskrit Colleges	--		1

Source: DPEO Faridabad

3.2 POPULATION (AS ON 01-04-2001)

SURVEY REPORT 6 – 11 YEARS

S.No.	Name of Block	Overall			S.C.			General		
		Girls	Boys	Total	Girls	Boys	Total	Girls	Boys	Total
1.	Faridabad	16716	18108	34824	2774	3374	6148	13942	14734	28676
2.	Ballabgarh-I	11319	13519	24838	2325	2716	5041	8994	10803	19797
3.	Ballabgarh-II	11142	13874	25016	2106	2427	4533	9036	11447	20483
4.	Paiwal-I	9408	13633	23041	2388	2692	5080	7020	10941	17961
5.	Palwai-II	9047	10657	19704	1672	2008	3680	7375	8649	16024
6.	Palwai-III	10582	11527	21809	2269	2580	4849	8313	8647	16960
7.	Hodal	10343	11062	21405	2045	2348	4393	8298	8714	17012
8.	Hathin	12155	14904	27059	2125	2671	4796	10030	12233	22263
	Total	90712	107284	197696	17704	20816	38520	73008	86168	159176

Source : DPEO, Faridabad, SDEO, Palwal & Faridabad.

3.3 ENROLMENT OF GOVT. PRIMARY SCHOOLS I-V (Age group 6 to 11)

District Faridabad

AS ON 30.09.2001

S.No.	Name of Block	Overall			General			SC		
		Girls	Boys	Total	Girls	Boys	Total	Girls	Boys	Total
1.	Faridabad	8498	9116	17614	4560	8591	13151	1959	2504	4463
2.	Ballabgarh-I	6095	8198	14293	4093	6169	10262	1901	2130	4031
3.	Ballabgarh-II	6667	5454	12121	5384	3456	8840	1484	1797	3281
4.	Palwal-I	5209	5458	10667	2486	3992	6478	2073	2116	4189
5.	Palwal-II	3721	4491	8212	2721	4352	7073	1370	1593	2963
6.	Palwal-III	5612	7972	13584	4093	5271	9364	2023	2197	4220
7.	Hodal	6251	6740	12991	5059	4260	9319	1789	1880	3672
8.	Hathin	5371	10483	15854	4340	7237	11577	2089	2188	4277
	Total	47424	59736	105336	32736	43328	76064	14688	16408	31096

Source : DPEO, Faridabad

DEEP (SSA) FARIDABAD

3.4 GROSS ENROLMENT RATIO

IN THE AGE GROUP 6-11 YRS. OF PRIMARY SCHOOLS 2001-2002

District Faridabad

S.No.	Name of Block	Overall			S.C.			General		
		Girls	Boys	Total	Girls	Boys	Total	Girls	Boys	Total
1.	Faridabad	85.29	100.05	97.12	81.72	89.89	86.20	86.00	112.20	99.47
2.	Ballabgarh-I	88.50	102.22	95.97	92.51	90.21	91.27	87.47	105.24	97.17
3.	Ballabgarh-II	97.37	94.90	96.00	81.43	90.23	86.14	101.08	95.89	98.18
4.	Palwal-I	106.55	88.13	95.65	89.23	88.03	88.60	112.45	88.16	97.66
5.	Palwal-II	92.79	92.04	92.38	88.09	91.03	91.49	93.86	92.28	93.00
6.	Palwal-III	99.35	89.31	95.41	95.77	90.19	92.80	100.33	92.15	96.16
7.	Hodal	99.01	82.84	90.65	91.39	91.95	91.69	100.89	91.44	90.39
8.	Hathin	91.98	87.62	89.57	99.24	85.77	91.74	90.44	88.04	89.11
	Total	94.23	94.30	94.27	89.74	89.58	89.66	95.32	95.45	95.39

Source : DPEO, Faridabad

3.5 ENROLMENT IN GOVT. MIDDLE SCHOOLS OF VI TO VIII AS ON 30.9.2001

S.No.	Name of Block	Overall			S.C.			General		
		Girls	Boys	Total	Girls	Boys	Total	Girls	Boys	Total
1.	Faridabad	7030	7941	14971	3037	2491	5528	3993	5450	9443
2.	Ballabgarh-I	4175	3958	8133	2073	1477	3550	2102	2481	4583
3.	Ballabgarh-II	4301	4072	8373	486	567	1053	3815	3505	7320
4.	Palwal-I	2493	2970	5463	1182	1238	2420	1311	1732	3043
5.	Palwal-II	3033	3018	6051	1809	1391	3200	1224	1627	2851
6.	Palwal-III	1957	4014	5971	641	1486	2127	1316	2528	3844
7.	Hodal	2704	3445	6149	777	1221	1998	1927	2224	4151
8.	Hathin	1907	2390	4297	731	1001	1732	1176	1389	2565
	Total	27600	31808	59408	10736	10872	21608	16864	20936	37800

Source : DEO, Faridabad, SDEO, Palwal and Faridabad

**3.6 GROSS ENROLMENT RATIO (GER) OF MIDDLE SCHOOLS (AGE GROUP 11 TO 14) 2002-03
(CLASS VI TO VIII)**

DISTRICT FARIDABAD

S.No.	Name of Block	Overall			S.C.			General		
		Girls	Boys	Total	Girls	Boys	Total	Girls	Boys	Total
1.	Faridabad	109.32	108.46	108.89	100.41	95.27	97.94	120.43	111.81	111.82
2.	Ballabgarh-I	102.71	95.64	99.08	104.64	90.50	90.29	120.04	102.19	102.12
3.	Ballabgarh-II	101.56	122.55	111.23	95.58	86.74	90.86	102.16	120.52	113.62
4.	Palwal-I	107.31	110.74	109.14	85.15	91.24	88.34	116.71	118.65	117.75
5.	Palwal-II	90.12	105.30	97.07	98.98	103.09	100.75	86.55	106.07	95.69
6.	Palwal-III	87.17	102.22	96.98	105.97	95.43	98.87	81.51	104.56	96.36
7.	Hodal	98.55	98.07	98.29	78.12	104.61	91.58	99.95	96.44	100.09
8.	Hathin	121.31	91.82	104.29	98.98	94.32	96.35	120.05	91.11	106.59
	Total	103.35	104.64	104.60	96.83	92.90	94.79	105.17	107.96	106.63

Source : DEO, Faridabad, SDEO, Palwal and Faridabad

3.7 NET ENROLMENT RATIO (NER) DISTRICT FARIDABAD
Age Group (6 to 11 Years)

Overall			SC			General		
Boys	Girls	Total	Boys	Girls	Total	Boys	Girls	Total
92.49	89.54	91.18	89.90	87.91	89.01	93.12	89.93	90.70

Source : Household Survey Report

3.8 NET ENROLMENT RATIO (NER) DISTRICT FARIDABAD
Age Group (11 to 14 Years)

Overall			SC			General		
Boys	Girls	Total	Boys	Girls	Total	Boys	Girls	Total
91.66	85.88	89.07	91.66	80.30	84.36	92.62	87.19	90.19

Source: Household Survey Report

3.9 Rate of Dropout and Retention of Distt. Faridabad
Age group (6-11 Years)

	Overall			SC			General		
	Boys	Girls	Total	Boys	Girls	Total	Boys	Girls	Total
Population	136263	109564	245827	26654	21504	48158	109609	88060	197669
Dropout	1288	1538	2826	367	469	836	921	1069	1990
Rate of Dropout	.95	1.40	1.15	1.38	2.18	1.74	.84	1.21	1.01
Retention Rate	99.05	98.60	98.85	98.62	97.82	98.26	99.16	98.79	98.99

3.10 Rate of Dropout and Retention of Distt. Faridabad
Age group (11-14 Years)

	Overall			SC			General		
	Boys	Girls	Total	Boys	Girls	Total	Boys	Girls	Total
Population	73919	59927	133846	14254	11445	25699	59665	48482	108147
Dropout	3454	4419	7873	1092	1503	2595	2362	2916	5278
Rate of Dropout	4.67	7.37	5.88	7.66	13.13	10.10	3.96	6.01	4.88
Retention Rate	95.33	92.63	94.12	92.34	86.87	89.90	96.04	93.99	95.12

3.11 TEACHER'S POSITION

GOVT. PRIMARY SCHOOLS

AS ON 30-09-2002

S.No.	Name of Block	Sanctioned Post	Teachers in Position			Vacant Post	Trained Teachers	% of Trained Teachers
			Male	Female	Total			
1.	Faridabad	470	91	379	470	69	470	100%
2.	Ballabgarh-I	318	177	141	318	78	318	100%
3.	Ballabgarh-II	371	130	241	371	48	371	100%
4.	Palwal-I	298	219	79	298	63	298	100%
5.	Palwal-II	179	119	60	179	35	179	100%
6.	Palwal-III	269	215	54	269	82	269	100%
7.	Hodal	252	210	42	252	93	252	100%
8.	Hathin	334	317	17	334	136	334	100%
	Total	2491	1478	1013	2491	604	2491	100%

Source : DPEO, Faridabad

DEEP (SSA) FARIDABAD

3.12 TEACHER'S POSITION**GOVT. MIDDLE SCHOOL DISTT. FARIDABAD****AS ON 31.10.2002**

S. No.	Name of the Block	Sc/Math	Math	SS/Math	Hindi	Sans.	Draw.	Urdu	PTI
1.	Faridabad	30	11	66	31	30	29	5	17
2.	Ballabgarh-I	34	12	49	30	32	33	1	18
3.	Bailabgarh-II	31	9	48	29	28	30	1	12
4.	Palwal-I	18	7	40	23	21	15	---	9
5.	Palwal-II	11	6	38	16	15	10	---	10
6.	Palwal-III	17	5	37	23	20	16	---	8
7.	Hodal	14	9	40	20	21	13	---	8
8.	Hathin	15	6	33	19	19	14	6	3
	Total	170	65	351	191	186	160	13	90

Source : DPEO, Faridabad

3.13 INCENTIVE SCHEME OF GOVT. MIDDLE SCHOOLS (FARIDABAD)

Sr. No.	Name of Scheme/ Incentive	No. of Beneficiaries	Amount per C
1.	Stationery Award	3900	40/-
2.	Opportunity	7402	15/-
3.	Free Uniform	1061	75/-
4.	Unclear Occupation	145	75/-

Source : DEO, Faridabad, SDEO, Palwal & Faridabad

3.14 EXISTING SCHEMES IN GOVT. PRIMARY SCHOOLS

S.No.	Name of Incentive	No. of Beneficiaries	Amount
1.	Free Text-Books		4,95,000/-
2.	Free Uniform		15,77,250/-
3.	Midday Meal		19424.085 Qtl (Wheat) 19424.085 Qtl (Rice)
4.	Stationery Award		6,59,500/-
5.	Attendance Prize		18,30,400/-*
6.	Day Scholarship		3,10,000/-**
7.	Pre-Matric Scholarship		11,06,250/-

Source : DPEO Faridabad

* Re 1/Day/S.C. Student

* Rs. 25/Month/Ghumantu Student for 10 months.

3.15 INFRASTRUCTURE FACILITIES AVAILABLE

S.No	Name of article	For Primary Schools	For Middle Schools
1.	Total No. of rooms available	1916	1069
2.	No. of classrooms	1916	567
3.	Office/Store		215
4.	Science Laboratory		122
5.	Drawing /Art & Craft Room		
6.	Library Room		61
7.	Sports room		
8.	Computer Room		
9.	Staff Room		104
10.	Maintenance		42
11.	(a) Major Repair	256	115
	(b) Minor Repair	271	
12.	Urinals		
	➤ For Staff	--	20
	➤ For Boys	180	88
	➤ For Girls	130	95
	➤ Common Toilet for Boys/Girls	--	37
13.	Drinking Water Facility	427	182
14.	Boundary Wall	290/595	89/230
15.	Electricity	80	56
16.	Any other	--	--

Source: DPEO Faridabad

3.16 MATERIAL /EQUIPMENTS AVAILABLE

S.No	Name of article	For Primary School 595 + 47 = 642		For Middle School 230	
		Yes (No. of schools/branches)	No	Yes	No
1.	Science Kit	310	285+47	210	20
2.	Math Kit	310	285+47	192	38
3.	Mini Tool Kit	310	285+47	175	55
4.	First Aid Box		595+47	140	90
5.	Black Board (Only Wooden or Cemented)	595	47	215	15
6.	Maps	395	200+47	230	
7.	Radio cum Cassette Player	584	11+47	120	110
8.	T.V.		595+47		230
9.	V.C.R.		595+47		230
10.	Computer		595+47		230
11.	Sound System		595+47	180	50
12.	Drawing Kit		595+47		230
13.	Musical Instrument		595+47		
14.	Sports Kit		595+47	60	170
15.	Globe	310	285+47	195	25
16.	Drawing Kit		595+47		
17.	Educational Charts FURNITURE	595	47	230	
18.	Chairs	455	140+47	230	
19.	Tables	455	140+47	210	20
20.	Almirahs	465	130+47	160	70
21.	Desks	2	593+47	140	90
22.	Tatpatti	115	480+47	180	50
23.	Darri	485	110+47	172	58
24.	Boxes & Trunks	310	285+47	191	39
25.	Ceiling Fan	2	593+47	132	98
26.	Any other				

Source: DPEO Faridabad and SDEO Faridabad & Palwal

CHAPTER – IV

PLANNING PROCESS

4.1 FORMATION OF DISTRICT CORE TEAM:

The Process of Plan Preparation started with the formation of the district core team. District core team includes District Education Officer, Faridabad as an incharge of team and District Primary Education Officer, Sub Divisional Education Officer, Lecturers of DIETs/Sr. Sec. Schools, BEOs, Master and Primary Teachers as members.

4.2 PLANNING IN THE FIELD

It was decided that the plan must be realistic and in accordance with the needs of the specific area. So to become acquainted with the needs, problems and probable remedies in the field of education, the members of the District Planning Team organised meetings with the govt. school teachers, community, members of VECs & PTA members of local bodies, union leaders and chair person Zila Parishad. The main issues raised during these meetings were recorded.

Hon'ble Deputy Commissioner and Additional Deputy Commissioner were briefed on District Elementary Education Programme (DEEP). Chief Medical Officer, Programme Officer ICDs, DEO, Principal DIET.

Faridabad was also visited for briefing convergence and their valuable suggestions for incorporating in perspective plan of SSA.

A format was given to the CRCs to fill it up in each & every schools to know the following:

- Student's enrolment in Primary and Middle School i.e. from class I to VIII.
- Teachers position in Primary and Middle Schools.
- Physical infrastructure such as rooms, toilets, boundary walls and other details required for formation of perspective plan for SSA.

This information helped in finding out the retention rate, drop our rate, requirements regarding infrastructure, teachers, teaching learning material etc. for the schools and hence for the district.

The State Project Director directed the planned teams to carryout the household survey for micro planning in their respective districts. District Planning Team organised a meeting with DEO, DPEO, Principal, DIET, SDEOs and BEOs to chalk out a programme for doing the micro planing exercise. The following decisions were taken:

- Block Planning Teams comprising SDEOs, Principals, BEOs, BRCs and CRCs were constituted.
- Household Survey Format was discussed with all of the heads of Govt. Schools.
- Heads of the higher level schools acted as the co-ordinators for carrying out household survey in their respective villages.
- Two or three teachers per school deputed to carry out household survey exercise.
- CRCs would collect the compilation sheets from the villages of their respective clusters.
- The BRCs would collect the compiled sheets of survey from their respective CRCs.
- After that it would be submitted to the district planning team.

After the completion of household survey the planning team compiled the habitation level sheets at the district level and got the required data.

Members of district planning team attended the meetings organised at the state level discuss and reviewing of the perspective plan from time to time. During the planning process members of the planning team conducted a meeting with DPEP officials to discuss advantages and disadvantages of the District Primary Education Programme, so that past bitter ad better experiences may be taken into account.

4.3 CONSOLIDATED HOUSE HOLD SURVEY REPORT (DISTT. FARIDABAD)

	5 + To 10+AGE GROUP									11 TO 14 AGE GROUP								
	OVERALL			SC			GENERAL			OVERALL			SC			GENERAL		
	Boys	Girls	Total	Boys	Girls	Total	Boys	Girls	Total	Boys	Girls	Total	Boys	Girls	Total	Boys	Girls	Total
1. POPULATION	136263	109564	245827	26654	21504	48158	109609	88060	197669	73919	59927	133846	14254	11445	25699	59665	48482	108147
2. ENROLMENT																		
a) STUDING IN GOVT.	58401	49650	108051	15872	13783	29655	42529	35867	78396	32977	27732	60709	8568	6742	15310	24409	20990	45399
b) STUDING IN PVT.	67629	48455	116084	8091	5123	13214	59538	43332	102870	34779	23734	58513	3923	2449	6372	30856	21285	52141
3. DROP OUT	1288	1538	2826	367	469	836	921	1069	1990	3454	4419	7873	1092	1503	2595	2362	2916	5278
4. NON-STARTERS	8945	9921	18866	2324	2129	4453	6621	7792	14413	2709	4042	6751	671	751	1422	2038	3291	5329

Source: Household Survey

4.4 HOUSE HOLD SURVEY REPORT, BLOCK: FARIDABAD

	5+ To 10+AGE GROUP									11 TO 14 AGE GROUP								
	OVERALL			SC			GENERAL			OVERALL			SC			GENERAL		
	Boys	Girls	Total	Boys	Girls	Total	Boys	Girls	Total	Boys	Girls	Total	Boys	Girls	Total	Boys	Girls	Total
1. POPULATION	24913	20087	45000	3965	3350	7315	20948	16737	37685	13954	11755	25709	2096	1748	3844	11858	10007	21865
2. ENROLMENT																		
a) STUDING IN GOVT.	7787	7011	14798	1979	1833	3812	5808	5178	10986	5355	4890	10245	1157	1055	2212	4198	3835	8033
b) STUDING IN PVT.	14853	10507	25360	1394	1011	2405	13459	9496	22955	7602	5475	13077	639	404	1043	6963	5071	12034
3. DROP OUT	195	186	381	46	46	92	149	140	289	522	531	1053	193	162	355	329	369	698
4. NON-STARTERS	2078	2383	4461	546	460	1006	1532	1923	3455	475	859	1334	107	127	234	368	732	1100

Source: Household Survey

4.5 HOUSE HOLD SURVEY REPORT BLOCK : BALLABGARH-I (DISTT. FARIDABAD)

	5+ To 10+AGE GROUP									11 TO 14 AGE GROUP								
	OVERALL			SC			GENERAL			OVERALL			SC			GENERAL		
	Boys	Girls	Total	Boys	Girls	Total	Boys	Girls	Total	Boys	Girls	Total	Boys	Girls	Total	Boys	Girls	Total
1. POPULATION	18721	15316	34037	3505	2982	6487	15216	12334	27550	10672	8674	19346	1955	1612	3567	8717	7062	15779
2. ENROLMENT																		
a) STUDING IN GOVT.	6620	6109	12729	1976	1903	3879	4644	4206	8850	4067	3384	7451	1160	1007	2167	2907	2377	5284
b) STUDING IN PVT.	10500	7396	17896	1205	757	1962	9295	6639	15934	5921	4207	10128	634	368	1002	5287	3839	9126
3. DROP OUT	164	202	366	44	60	104	120	142	262	328	404	732	91	148	239	237	256	493
4. NON-STARTERS	1437	1609	3046	280	262	542	1157	1347	2504	356	679	1035	70	89	159	286	590	876

Source: Household Survey

DEEP (SSA) FARIDABAD

4.6 HOUSE HOLD SURVEY REPORT BLOCK : BALLABGARH-II (DISTT. FARIDABAD)

	5+ To 10+AGE GROUP									11 TO 14 AGE GROUP								
	OVERALL			SC			GENERAL			OVERALL			SC			GENERAL		
	Boys	Girls	Total	Boys	Girls	Total	Boys	Girls	Total	Boys	Girls	Total	Boys	Girls	Total	Boys	Girls	Total
1. POPULATION	21071	17933	39004	3467	2964	6431	17604	14969	32573	12332	10605	22937	1940	1613	3553	10392	8992	19384
2. ENROLMENT																		
a) STUDING IN GOVT.	7193	7383	14576	2050	1935	3985	5143	5448	10591	4558	4465	9023	1231	1040	2271	3327	3425	6752
b) STUDING IN PVT.	12499	9359	21858	1140	790	1930	11359	8569	19928	6971	5123	12094	508	335	843	6463	4788	11251
3. DROP OUT	220	203	423	50	47	97	170	156	326	289	346	635	108	112	220	181	234	415
4. NON-STARTERS	1159	988	2147	227	192	419	932	796	1728	514	671	1185	93	126	219	421	545	966

Source: Household Survey

4.7 HOUSE HOLD SURVEY REPORT BLOCK : PALWAL-I (DISTT. FARIDABAD)

NAME OF THE CENTRE	5+ To 10+AGE GROUP									11 TO 14 AGE GROUP								
	OVERALL			SC			GENERAL			OVERALL			SC			GENERAL		
	Boys	Girls	Total	Boys	Girls	Total	Boys	Girls	Total	Boys	Girls	Total	Boys	Girls	Total	Boys	Girls	Total
1. POPULATION	13646	11159	24805	4276	3394	7670	9370	7765	17135	7147	5763	12910	2054	1783	3837	5033	3980	9073
2. ENROLMENT																		
a) STUDING IN GOVT.	6111	5643	11754	2255	1914	4169	3856	3729	7585	3638	3009	6647	1166	891	2057	2472	2118	4590
b) STUDING IN PVT.	5701	3490	9191	1268	704	1972	4433	2786	7219	2985	1749	4734	621	441	1062	2364	1308	3672
3. DROP OUT	99	165	264	40	68	108	59	97	156	322	626	948	147	298	445	175	328	503
4. NON-STARTERS	1735	1861	3596	713	708	1421	1022	1153	2175	202	379	581	120	153	273	82	226	308

Source: Household Survey

DEEP (SSA) FARIDABAD

4.8 HOUSE HOLD SURVEY REPORT BLOCK : PALWAL-II (DISTT. FARIDABAD)

	5+ To 10+ AGE GROUP									11 TO 14 AGE GROUP								
	OVERALL			SC			GENERAL			OVERALL			SC			GENERAL		
	Boys	Girls	Total	Boys	Girls	Total	Boys	Girls	Total	Boys	Girls	Total	Boys	Girls	Total	Boys	Girls	Total
1. POPULATION	6955	5922	12877	1934	1650	3584	5021	4272	9293	4028	3225	7253	1111	805	1916	2917	2420	5337
2. ENROLMENT																		
a) STUDING IN GOVT.	3879	3701	7580	1226	1174	2400	2653	2527	5180	2460	2022	4482	710	485	1195	1750	1537	3287
b) STUDING IN PVT.	2190	1244	3434	394	175	569	1796	1059	2865	1226	590	1816	235	103	338	991	487	1478
3. DROP OUT	64	83	147	25	34	59	39	49	88	182	396	578	88	152	240	94	244	338
4. NON-STARTERS	822	394	1716	289	267	556	533	627	1160	160	217	377	78	65	143	82	152	234

Source: Household Survey

4.9 HOUSEHOLD SURVEY REPORT BLOCK : PALWAL-III (DISTT. FARIDABAD)

	5+ To 10+AGE GROUP									11 TO 14 AGE GROUP								
	OVERALL			SC			GENERAL			OVERALL			SC			GENERAL		
	Boys	Girls	Total	Boys	Girls	Total	Boys	Girls	Total	Boys	Girls	Total	Boys	Girls	Total	Boys	Girls	Total
1. POPULATION	13759	10553	24312	3596	2815	6411	10163	7738	17901	7561	5700	13261	1913	1394	3307	5648	4306	9954
2. ENROLMENT																		
a) STUDING IN GOVT.	6196	5164	11360	2165	1711	3876	4031	3453	7484	3822	2611	6433	1214	735	1949	2608	1876	4484
b) STUDING IN PVT.	5638	3156	8794	822	436	1258	4816	2720	7536	3082	1692	4774	412	223	635	2670	1469	4139
3. DROP OUT	85	170	255	41	70	111	44	100	144	392	693	1085	183	221	404	209	472	681
4. NON-STARTERS	1840	2063	3903	568	598	1166	1272	1465	2737	265	704	969	104	215	319	161	489	650

Source: Household Survey

4.10 HOUSE HOLD SURVEY REPORT BLOCK : HODAL (DISTT. FARIDABAD)

	5+ To 10+AGE GROUP									11 TO 14 AGE GROUP								
	OVERALL			SC			GENERAL			OVERALL			SC			GENERAL		
	Boys	Girls	Total	Boys	Girls	Total	Boys	Girls	Total	Boys	Girls	Total	Boys	Girls	Total	Boys	Girls	Total
1. POPULATION	15849	13059	28908	3823	2949	6772	12026	10110	22136	9017	6961	15978	2004	1644	3648	7013	5316	12329
2. ENROLMENT																		
a) STUDING IN GOVT.	8109	7586	15695	2425	2127	4552	5684	5459	11143	3996	3369	7365	1041	1032	2073	2955	2337	5292
b) STUDING IN PVT.	6716	4502	11218	1118	537	1655	5598	3965	9563	4131	2454	6585	633	288	921	3498	2160	5658
3. DROP OUT	108	155	263	48	79	127	60	76	136	470	715	1185	169	245	414	301	470	771
4. NON-STARTERS	916	816	1732	232	206	438	684	610	1294	420	423	843	161	79	240	259	344	603

Source: Household Survey

2 HOLD SURVEY REPORT BLOCK : HATHIN (DISTT. FARIDABAD)

	5+ To 10+ AGE GROUP									11 TO 14 AGE GROUP								
	OVERALL			SC			GENERAL			OVERALL			SC			GENERAL		
	Boys	Girls	Total	Boys	Girls	Total	Boys	Girls	Total	Boys	Girls	Total	Boys	Girls	Total	Boys	Girls	Total
1. POPULATION	23084	17396	40480	2801	2108	4909	20283	15288	35571	9410	7623	17033	1301	999	2300	8109	6624	14733
2. ENROLMENT																		
a) STUDING IN GOVT.	12506	7053	19559	1796	1186	2982	10710	5867	16577	5081	3982	9063	889	497	1386	4192	3485	7677
b) STUDING IN PVT.	9532	8801	18333	750	713	1463	8782	8088	16870	2861	2444	5305	241	287	528	2620	2157	4777
3. DROP OUT	353	374	727	73	65	138	280	309	589	949	708	1657	113	165	278	836	543	1379
4. NON-STARTERS	693	1168	1861	182	144	326	511	1024	1535	519	489	1008	58	50	108	461	439	900

Source: Household Survey

DEEP (SSA) FARIDABAD

4.12 FINDINGS /OF HOUSEHOLD SURVEY DISTT. FARIDABAD

1. District Faridabad consists of eight educational blocks. The micro-planning of District Faridabad was carried out by the J.B.T. Staff of the District Faridabad in which the following points were observed to be noted for further reference.
 - (a) The overall population of the district of age group 5+ to 10+ years is 245827 in which the boys population is 136263 and girls is 109564. It indicates that the population of the boys is more than the girls.
 - (b) The same survey was carried out of the age group 11 to 14 years. The total population is 133846 in which the boys are 73910 and girls are 59927. It also highlights the same aspect that the boys students are more than the girls students.
 - (c) The survey of household also reveals the fact that the boys studying in private schools are more in both the age groups. The total population of the girls students is more in Govt. Schools than the Private Schools in the Primary Level and Upper Primary Level, the boys student enrolment is more than the girls student, which relates the fact that every village is facilitated with primary Schools in which enrolment of girls students is quite encouraging and as the Upper Primary Schools are not in access, the girls education is discouraging which invites the attention of the Govt. to open the Upper Primary Schools in each of the village so as to provide better facilities for girls in the field of education.
 - (d) Net enrolment ratio of SC boys of Primary Schools is lesser than the overall which requires more attention to be paid for bringing up their educational level. In the Upper Primary Level the percentage of N.E.R. is less. More attention is required to bring up this level of girls equal to boys by motivation of parents concerned and wide publicity for women education.
 - (e) Rate of dropout of SC boys is 1.38 in comparison of overall 0.95 and SC girls dropout is further more than the boys students in Primary Schools. The root causes of the dropout is lack of awareness, poverty and proper guidance.

- (f) The rate of retention of boys is 99.05 and girls 98.60 in the District. The retention rate of the boys is slightly more than the girls. The rate of retention of SC boys is 98.62 and girls is 97.82 which indicates that the retention of SC boys is also more than the girls.
- (g) After careful study it also highlights that the non-starters in Hathin Block are more than the other blocks which needs special vigilance for providing proper education in the block and upgrading the standard of education. It is because of Muslim Community is residing in the area in majority.
- (h) Out of 1785 disabled children the orthopedic children were 1245. It may be because of Gurgaon Canal running through the District Faridabad. The water of the canal is always stinking, which polluting the whole atmosphere. Residents of the people nearby this canal using its water for bath and washing the clothes.
- (i) The trend of retention rate is the same in the Upper Primary School as in Primary Schools.

It is concluded that the people of district Faridabad are aware of the importance of the education and progress of their life. They do not allow their words to withdraw from schools under any circumstances.

4.13 SARVA SHIKSHA ABHIYAN PERSPECTIVE PLAN FARIDABAD.

From 2003 to 2007

The success of any project lies in the meticulous planning which should be based on the strength of the implementation area i.e. Distt (as Distt. is considered a macro unit of this plan and a village is considered as a grass root of it). Faridabad has the strength, as it has been shown in Upper Primary school including recognized and non-recognized private institutions.

GER at Primary Level Total-94.20, Boys-94.34, Girls-94.23 .Drop out at Primary Level Total-6.2%, Boys -7.0%, Girls -5.4 GER at Upper Primary Level Total- 49.16, Boys -50.41, +Girls 47.81, Dropout at-Upper Primary Level Total-14.52, Boys 19.62+ Girls 7.82.

Retention rate-at Primary Level Total-93.8%, Boys -93.0%, Girls -94.6% at upper Primary Level - Total 85.48%, Boys -80.38 %, Girls - 92.18% and the dropout rate is a bit high which may be considered as a great obstacle in the achievement of our universalisation of elementary education. Again the sex ratio in the total population in the Distt. is quite disturbing in comparison to our National sex ratio. The imbalance in Haryana has been quite horrible as there has been (male) and (female). It is more horrifying in the population of this District - Faridabad. This difference in sex ratio determines some intervention in any education programme because it ultimately reflects in our future National as well as area specific set up.

Moreover the household survey of every inhabitation gives a very gloomy of (out of school children) in which more girls are found at Upper Primary, Stage in the form of " Out of school". It appeals to the planner to think over some relevant causes and reveals the possible socio-economic condition of the society in which the girls are considered as other men's properly and a liability on the parents. It suggest some interventions for girl educated in this perspective plan of SSA.

The description of the infrastructure is not very congenial and satisfying. The condition of toilet facilities especially for girls is almost non-existing. Again , as per the objective of the SSA, every child, without consideration of caste and sex must be enrolled by 2003 which requires certain specific provision for the basic facilities for girls in our schools. Hence the another type of intervention are required to be made in the perspective plan in the form of construction of rooms, toilets, drinking water, and boundary walls. There is also another social group in the society which hence forth

DEEP (SSA) FARIDABAD

comprises with could not afford education and employ themselves in financial activities. This type of population, working children, street children and the children of some special group. It requires the special provisions in educational plan like Alternative Schooling and Innovative Education, Education for Disable and certain in-built provision in our formal School system.

As it has already been described and interpreted through our present data most of the non starter at Primary level are girl children and it has been revealed that those girls have been detained out of school because they are busy in Sibling-care activities and if their education is to be catered there must be certain specific provisions, which may fulfill the requirement of their home affairs and their education. The provision of ECE along with the formal schooling and also in parallel to the formal school timing where their parents are kept engaged in certain fulfill activities and these girls are debarred from education.

Hence the perspective plan of SSA of this Distt. determines the following interventions:-

Alternative schooling and Innovative Education (for dropouts and non-starters as well as for difficult groups).

Block Resource center (funneling a linkage and as a resource centre for all and administrative activities with in the block).

Cluster Resource Centres (Co-ordinate grass root activities, in elementary education and act as a resource unit and as a centre for ETT).

Civil work (Provision for improvement if infrastructure facilities in school, CRC, BRC, DPIU's and D.I.E.T).

District Institute of Education and Training (for quality improvement through teacher training, research activities, evaluation and a nodal institute for all educational activities of the Distt. including monitoring and supervision).

District Primary Information Unit (managing and monitoring body for all activities of elementary education in the Distt.).

Early Childhood Education (Caters the need of the children as preschool activities).

CHAPTER – V**5.1 DISTRICT PROBLEMS**

Being an Industrial City, Faridabad has several problems. following are the major problems:-

- (1) Problem of Migration.
- (2) Lack of Teachers in the schools.
- (3) Employment of Teachers in non-teaching activities.
- (4) Ignorance among the parents.
- (5) Un-due delay in reaching the information in schools.
- (6) Difficulties in getting the information (data) from the schools by centres
- (7) Poor strength in Govt schools.
- (8) Difficulties of Books and Stationery.
- (9) Shortage of Classrooms.
- (10) Shortage of Tat-pattis and furniture in the schools.
- (11) Chowkidar in the Primary Schools to be appointed to avoid theft cases.

5.2 CONSOLIDATION OF MEETINGS

S.No.	Date	Venue	No. of Participants	Issue Raised
1.	4-9-2001 to 8-9-2001	Panchayat Bhawan Chandigarh	4	Orientation of Distt. Core Committee.
2.	12.9.2001	B.E.O. Ballabgarh-I	20	Briefing of S.S.A. to Head Teachers and House Hold survey forms distributed and training to fill the forms was given. T.A/D.A for attending the meetings.
3.	12.9.2001	B.E.O. Ballabgarh-II	18	Briefing of S.S.A. to Head Teachers and House Hold survey forms distributed and training to fill the forms was given.
4.	12.9.2001	B.E.O. Faridabad	19	Briefing of S.S.A. to Head Teachers and House Hold survey forms distributed and training to fill the forms was given T.A/D.A./ for teachers attending the meetings.
5.	13-9-2001	GPS Manjhawali	8	<ol style="list-style-type: none">1. Lack of drinking water facilities.2. Toilets are to be constructed.3. Tat-patties are to be provided.4. Incentives are to be extended to all children.5. Repairs of school building.

DEEP (SSA) FARIDABAD

6.	14-9-2001	GPS Dhenkola	12	<ol style="list-style-type: none"> 1. No Electricity in school. 2. More classrooms are to be constructed. 3. Shortage of Staff. 4. Need of sufficient Black boards. 5. Introduction of computer Education.
7.	15-9-2001	GPS Jasana	9	<ol style="list-style-type: none"> 1. No audio visual aids in school. 2. Shortage of staff. 3. Toilets are to be provided. 4. School to be electrified. 5. Library room to be constructed. 6. Boundary wall to be constructed.
8.	17-9-2001	GPS Mandkola	15	<ol style="list-style-type: none"> 1. Lack of teaching staff. 2. Water facilities to be provided. 3. Demand of female teachers in co-educational school. 4. Repairs of classrooms. 5. Furniture to be provided.
9.	18-9-2001	GPS Aurangabad	22	<ol style="list-style-type: none"> 1. Shortage of staff. 2. Shortage of blackboard. 3. Fans to be provided. 4. Furniture for V class to be provided. 5. About four rooms to be constructed. 6. Tat-Patties to be provided.
10.	19-9-2001	GGPS Deghot	12	<ol style="list-style-type: none"> 1. Shortage of staff. 2. Boundary wall to be constructed. 3. Two rooms for middle class required. 4. Two rooms to be repaired. 5. S.S. Math and Science masters to be appointed. 6. No almirahs.

11.	20-9-2001	GPS Bapu Nagar	5	<ol style="list-style-type: none"> 1. Boundary wall to be constructed. 2. Toilets are to be constructed. 3. At least three rooms for middle class and three four primary class to be constructed. 4. School to be electrified.
12.	21-9-2001	GGPS, Bahin	6	<ol style="list-style-type: none"> 1. No Head Teacher 2. No Toilets 3. One room to be constructed 4. One sided wall to be constructed 5. No water supply. 6. Furniture to the teaching staff to be provided.
13.	22-9-2001	GPS, Manpur (B)	8	<ol style="list-style-type: none"> 1. Five rooms to be constructed. 2. One room to be fitted with doors and windows. 3. No Tat-patties 4. No Blackboards. 5. One Big Almirah required. 6. No toilets. 7. Water supply to be provided.
14.	25-9-2001 to 26-9-2001	Haryana Panchayat Bhawan Chandigarh.	2	S.S.A. Briefing
15.	24-9-2001	GPS Deghot (B)	8	<ol style="list-style-type: none"> 1. Construction of three rooms required. 2. One Hall to be made available. 3. Major repairs of the school required. 4. Electric Bill to be paid by the Govt. 5. Water supply to be provided.

16.	25-9-2001	GBPS Hodal No. 1	6	<ol style="list-style-type: none"> 1. No Tat-patties 2. Six new rooms to be constructed. 3. No toilets 4. No electricity.
17.	26.9.2001	GGPS Hodal No.1	8	<ol style="list-style-type: none"> 1. No Tat-patties. 2. Five new rooms required. 3. No toilets. 4. No electricity.
18.	27-9-.2001	GGPS Rajiv Colony Blb., Branch	8	<ol style="list-style-type: none"> 1. Two new rooms to be constructed. 2. Toilets to be provided. 3. No electricity. 4. Fans to be provided. 5. Part time sweeper to be provided.
19.	28-9-2001	GPS Banswa	8	<ol style="list-style-type: none"> 1. No Tat-patties. 2. No Boundary wall. 3. Five new rooms required. 4. Toilets to be provided. 5. No electricity.
20.	29-9-2001	GGPS Kabulpur	2	<ol style="list-style-type: none"> 1. No boundary wall 2. No drink water. 3. No doors in the rooms. 4. No sweeper.
21.	1-10-2001	GGPS Bhuapur	10	<ol style="list-style-type: none"> 1. No water facility. 2. Repairs of building required. 3. Playground to be levelled. 4. No electricity in school.

		GHS Gharrout	13	<ol style="list-style-type: none"> 1. Lack of teachers. 2. No Tat-patties. 3. No toilets. 4. Additional rooms to be constructed.
23.	4-10-2001	GPS Saund	10	<ol style="list-style-type: none"> 1. Lack of teachers. 2. More rooms to be constructed. 3. No drinking water.
24.	6-10-2001	GPS Janauli	8	<ol style="list-style-type: none"> 1. No drinking water. 2. No sufficient teaching staff. 3. No electricity in school. <p>Computer Education required.</p>
25.	5-10-2001	B.E.O. Hodal	15	Briefing of S.S.A. to Head Teachers and House Hold survey forms distributed and training to fill the forms was given.
26.	5-10-2001	B.E.O. Palwal-I,II,III	45	Briefing of S.S.A. to Head Teachers and House Hold survey forms distributed and training to fill the forms was given.
27.	9-10-2001 to 10-10-2001	Gurjar Bhawan Chanidgarh.	03	Orientation course of SSA and intermediate compilation of House Hold schedule & to maintain village education register in the school.
28.	12-10-2001	B.E.O. Hathin	12	Briefing of S.S.A. to Head Teachers and House Hold survey forms distributed and training to fill the forms was given.

DEEP (SSA) FARIDABAD

29.	13-10-2001	GPS Banchari	7	<ol style="list-style-type: none"> 1. Computer Education to be introduced. 2. Lack of teachers. 3. Repairs of building. 4. No electricity.
30.	15-10-2001	GHS Dhatir	15	<ol style="list-style-type: none"> 1. No drinking water. 2. No rooms required. 3. Sufficient staff to be placed.
31.	16-10-2001	GPS Bhainsrawali	10	<ol style="list-style-type: none"> 1. No drinking water. 2. No electricity. 3. Toilets to be provided. 4. Computer Education required.
32.	17-10.-2001	GPS Faridpur	6	<ol style="list-style-type: none"> 1. No electricity. 2. Computer education required. 3. Computer staff to be employed.
33.	18.10.2001	GPS Reebar	10	<ol style="list-style-type: none"> 1. School to be shifted to a new location. 2. New building to be constructed. 3. Teaching staff to be placed. 4. Drinking water to be provided.
34.	19.10.2001	GPS Kakrali	5	<ol style="list-style-type: none"> 1. Toilets to be provided. 2. No drinking water. 3. To be electrified. 4. Boundary wall to be constructed. 5. To be connected with road.

35.	20.10.2001	GPS Raipur Kalan	6	<ol style="list-style-type: none"> 1. No Tat-patties. 2. No drinking water. 3. Additional rooms to be constructed. 4. Adequate Staff to be posted.
36.	23.10.2001	PSPP Office Chandigarh.	03	Reg. Extention of Incentives.to all children.
37.	25.10.2001	GPS Akbarpur	12	<ol style="list-style-type: none"> 1. Lack of Blackboards. 2. Boundary wall required. 3. Toilets to be provided. 4. Leaking roofs required minor repairs. 5. Doors and windows to be replaced
38.	26.10.2001	GPS Alipur	6	<ol style="list-style-type: none"> 1. No toilets. 2. Repairs of buildings. 3. Employment of teaching staff to other activities to be avoided.
39.	27.10.2001	GPS Gurasan	8	<ol style="list-style-type: none"> 1. Proper maintenance of building required. 2. No Tat-patties. 3. Adequate teaching staff to be posted. 4. Computer knowledge required.
40.	29.10.2001	GPS Nekpur	8	<ol style="list-style-type: none"> 1. No electricity. 2. Boundary wall to be completed. 3. Additional rooms to be constructed. 4. Govt. water supply to be extended. 5. Adequate staff to be posted.

41.	30.10.2001	GPS Teharki	22	Formation of V.E.C. and Problems of rooms & teachers. Sh. Giriraj Sharma & Santosh Tarwar Panch had opinion of satisfactory education. Part time sweeper also to be given. Lack of rooms. Lack of teachers in middle school.
42.	31.10.2001	GPS Kishorepur	12	Building problem for upper primary school & water problem. Boundary wall to be completed & toilets to be provided. Lack of teacher in middle school. Lack of Tat-patties.
43.	3.11.2001	GPS Janacholi	10	Formation V.E.C. & briefing of S.S.A. insufficiency of rooms & teachers and boundary wall to be constructed, about three acres of land is available. Water facility to be given. Two rooms to be repaired. Three new rooms to be constructed.
44.	5.11.2001	GPS Teekri Brahman	10	<ol style="list-style-type: none"> 1. No Tat-patties. 2. School to be electrified. 3. Adequate staff to be employed. 4. Maintenance of building required.
45.	6-11-2001	GPS Shahbad	10	<ol style="list-style-type: none"> 1. Drinking water facilities to be provided. 2. Tat-patties to be made available. 3. Furniture for class IV & V to be given. 4. School to be electrified.
46.	8.11.2001 to 9.11.2001	Haryana Panchayat Bhawan Chandigarh	03	Review of work & briefing of annual budget plan.

47.	12.11.2001	GPS Aharwan	10	<ol style="list-style-type: none"> 1. Computer education required. 2. Tat-Pattis to be given. 3. Maintenance of building is necessary. 4. Adequate staff to be posted.
48.	13.11.2001	GHS Shahupura	11	Accept teaching duties others were objected to Briefing of S.S.A.
49.	14.11.2001	Bal Bhawan Rohtak	02	Reviewing of work & budgeting.
50.	24.11.2001	GMS Sunped	08	<ol style="list-style-type: none"> 1. No toilets. 2. Non-teaching duties were objected to.
51.	28.10.2002	D.E.O. Office Faridabad	10	To prepare the revised perspective plan for 2003-2007.

5.3 MAJOR ISSUES EMERGED FROM PARTICIPATORY MEETINGS

1. There must be sufficient infrastructure in each and every Govt. School. Electric meters must be installed in Govt. Schools and there should be provision for payment of bills by Government.
2. Members of VEC's, local bodies should be given proper orientation regarding their duties & responsibilities towards education.
3. Curriculum must be reviewed according to the suggestions given by teachers, lecturers & other educationists.
4. Educational tours must be organized for the teachers and students to broaden their mental horizon.
5. Community needs mobilization & awareness for good co-operation and involvement with Govt. teaching staff.
6. Stress must be given on girls education & women empowerment. Measures must be taken to reduce gender bias/discrimination existing in the society.
7. There should be provision of music teacher in Govt. schools, so that the students may be prepared for cultural activities for the participation in District Level Functions.
8. Important days, annuals and sports meets must be celebrated in school campus.
9. Inspection process must be academic & effective.
10. Monthly tests should be conducted with the parents acquaintance of the performance by the students.
11. Libraries & laboratories must be installed in each and every middle schools.
12. Non-teaching work should not be allotted to the teachers, which hampers the teaching organization.
13. Heads of the schools must be oriented on staff management, cordial relations with students, staff co-operation, community participation & maintaining accounts etc.
14. Best teachers, schools & AW centres must be awarded.

15. Sanitation in the schools and AW centres must be awarded.
16. Books & other incentives be given to the poor & deprived students.
17. Sufficient sports material should be provided in the schools.
18. Computer education should be introduced in the schools.

5.4 MICROPLANNING SURVEY

Micro planning of household survey was carried out in two rural blocks i.e. Hodal & Hathin during the month of November and December 2001 with the help of Govt. Primary Teaching Staff which resulted the actual population of the Children within the age group 6 to 11 years and 11 to 14 years studying in Govt. and Private Primary/Middle Schools, highlighting the actual figures of dropout and non-starter children population of the respective age group showing the probable reasons of drop out and non starters, so as to eliminate these causes during the Sarva Shiksha Abhiyan and upgrade the quality of education to keep pace with universalisation of education. Furthermore the following points were assessed: -

1. The percentage of dropout is very low. It is 1.18 for boys and 1.73 for girls.
2. The percentage of non-starters is somewhat higher comparing to dropout i.e. 2.20 for boys and 6.51 for girls.
3. Most of the dropouts are due to poverty and literacy which are engaged in either household work or sibling cares.
4. The major girls population in the above areas is out of school.

5.5 HOUSEHOLD SURVEY

For successfully implementation of the Project Sarva Shiksha Abhiyan, it was necessary to carryout the household survey to assess the real position of the school going children within the age group of 6-14 years, dropout and non-starters.

The household survey was carried out under the directions of Core Committee of District Faridabad by arranging various meeting with J.B.I. staff and onward compilation of the survey with utmost care.

The household survey revealed the correct position of the children and made easy to project the budget incurred on Sarva Shiksha Abhiyan. The problem of dropout & non-starters was found because of non-availability of general awareness in the society and reasonably long distance between the middle schools specially for girls education and followed by poverty.

Now, it is decided to upgrade the 104 Primary Schools to Upper Primary Schools by reducing the long distance to 3 kms and providing special incentive of free text books to all girls students including SC students during 2003-2004.

It also revealed 1785 disabled children of the district with various disabilities. They will be provided special facilities under SSA.

CHAPTER – VI

ALTERNATIVE SCHOOLING (AS)

In Faridabad District there are 595 + 47 branches Primary schools. Despite an impressive growth in provision of formal schools a large number of children still remain out of school. In order to plan for them, it is important to realize the magnitude & profile of out of school children. For this micro planning exercise was carried out in the district as a pre project activity. Data was collected for ascertaining the exact number of out of school children (drop out and non-starters in the age group 5+ to 10 years and 11 to 14 years). If we examine the nature of reasons that limit access. Then the factors related to physical conditions such as schools, being far away from the residence, particularly the middle schools. Socio-economic conditions such as children being engaged in the very adult business of earning livelihood, children of migrating families, adolescent girls etc. There are 642 Primary schools and 155 Middle Schools in the district. Although there is one Middle School more than per-three Primary Schools but still there are more than hundred villages in the district which have only one primary school and no middle school. So particularly the parents of girls hesitate to send them to the middle school of nearby village lending to there drop-out after the completion of class 5th.

It is also seen that most of the school children come from the disadvantaged sections of the society. The alternative schooling programme attempts to reach out of school children in order to increase access to elementary education for them. While planning for alternative schooling experiences of literacy programme of DIET would be kept in mind. In the age of unemployment people take such type of activities as source of employment. Some people by virtue of their positions got themselves selected as instructors and supervisors of A.S. Centres.

6.1 MAJOR INTERVENTIONS

- It has been planned that to achieve the objective of bringing all children in the schools, all around efforts would be made to bring these students back to the formal schools by 2003.
- Enrolment drives would be launched with the help of members of VECs and Local Bodies.
- Bridge Courses would be started in the schools so that these children may come to the main stream.

6.2 OPENING OF ALTERNATIVE SCHOOLS

Opening of A.S. would be the last strategy to reach out of school children particularly for migrating families and disadvantaged sections of the society to increase access of elementary education for them. 88 A.S. Centres would be opened at need based places. Efforts would be made to shift the children of A.S. in the formal system and centres may be shifted to some other places but their number would not go beyond 88 every year. These schools would be of 3-4 hour duration with the principle of free pace of learning, without the concept of grades. Books/ Workbooks & stationery would be provided per year to each A.S. Centre.

6.3 HONORARIUM OF A.S. INSTRUCTOR

Persons having qualifications 10+2 or above would be selected on the recommendations of VEC. They would be paid honourarium @ Rs. 1000/- per month.

6.4 BOOKS / WORK BOOKS FOR A.S. STUDENTS

Alternative schooling programme would be based on different pedagogical principles with no compromise on quality. So books and workbooks would be developed for students at the state level. Books / Workbooks worth Rs. 2000/- per A.S. would be supplied every year.

6.5 STATIONERY AND MISCELLANEOUS

Most of the school children come from disadvantaged sections of the society so stationery worth Rs. 2000/- would be provided per year to each A.S.

6.6 STUDENTS KITS AND BLACKBOARDS

One blackboard and a student kit having teaching learning material would be supplied to each A.S.

6.7 TRAININGS

a) Induction Training

Freshly recruited A.S. Instructors would be imparted induction. Training of 12 days at BRCs.

b) Refresher Courses

Refresher Courses of 10 days would be imparted to the Instructors every year.

6.8 BLOCK RESOURCE CENTRE (BRC)

District Faridabad has been divided into five Community Development Blocks. They would remain as such under SSA to serve as centre for all academic activities going on within the block. The BRC would be provided with one Coordinator of the level of the Head Master of the High School / Lecturer and two Assistant Co-ordinators, One for Primary Schools & other for Middle Schools. Persons from the Master cadre. With 10 years teaching experience would be appointed as Assistant Block Resource Co-ordinator. The Post of Assistant Co-ordinator would be necessary. In SSA middle schools have also been included. Each CD block is having more than 100 Primary/Upper Primary Schools. Hence the BRC staff is automatically doubled.

The Training Programmes at BRC would be conducted with the help of a person from DIET faculty. It is expected that at least one faculty member from DIET would be available at BRC for this purpose. BRC can take the help of District / Block Academic Resource Group, whenever the need arises.

District Elementary Education Programme is supposed to be Block specific so BRCs have been strengthened by giving Drawing & Disbursing powers to the Block Resource Coordinator. It would help in the effective implementation of the strategies for quality elementary education.

6.9 SALARY

Salaries of BRC staff would be in the grade as follows: -

(a) Teachers (P.S.) Unit Cost 0.07 total

(b) Expenditure – Rs. 0.56

Teacher (U.P.S.) Unit Cost 0.085 total expenditure Rs. 47.60

(c) Salary of Block Resource Person for P.S. person in the grade of 6500-200-10500

Total expenditure – Rs. 44.80

6.10 FURNITURE

Furniture items such as chairs, tables, durries, lecture-stand, almirah etc. would be purchased at each BRC. There is a proposal to provide Rs. 1.00 lakh per Block for this activity.

6.11 EQUIPMENTS

Equipments such as computer set, Printer's & UPS etc. are needed at Block level, Pentium-IV, with one Terminal is required, Laser Printer, Fax Machine, Over Head Projector, Audio System, Dish Antennae, vacuum cleaner, etc. would be provided at each BRC.

6.12 LIBRARY BOOKS

Need for establishing a library, well equipped with latest editions of useful books for inculcating reading habits in the teachers is being felt. Reference books will also be purchased. There is a proposal for purchasing books would be provided at each BRC.

6.13 NEWS PAPER AND EDUCATIONAL PERIODICALS

Many educational Institutes and NGOs are publishing educational journals and periodicals, there is growth reading and helpful for references, research studies and innovation in the field of education.

An amount of Rs. 1600/- yearly to purchase newspapers and educational periodicals is proposed at each BRC.

6.14 MAINTENANCE OF BUILDING

BRCs are supposed to serve as centres for all academic activities in the blocks. They must remain well maintained with neat and clean atmosphere. So, for the maintenance of buildings, there is a proposal of Rs. 8000/- per year per BRC.

6.15 TELEPHONE

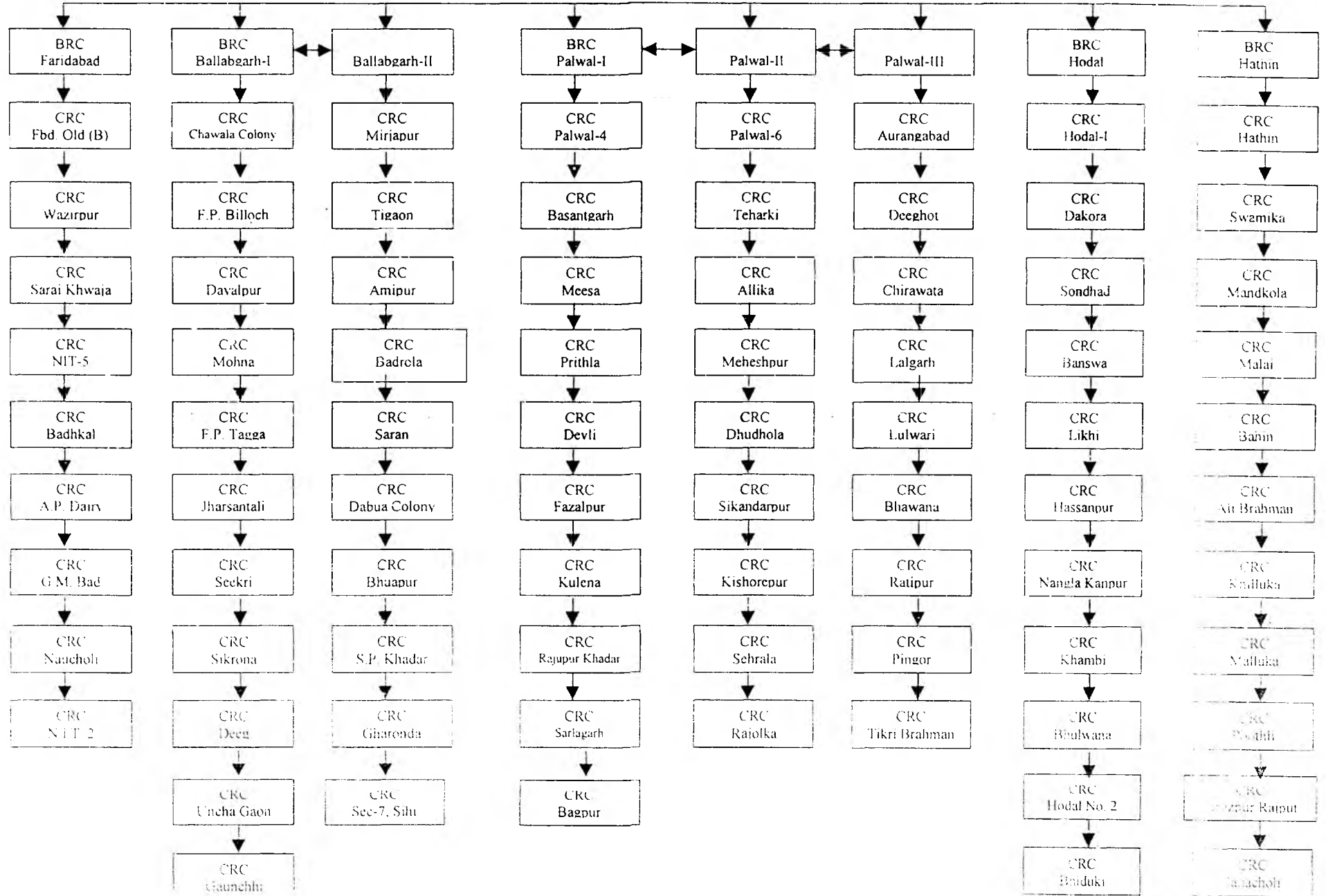
There is a proposal to provide telephone to each BRC for better communication and internet functioning.

6.16 TEACHERS TRAINING

The quality of education imparted to children depends on the competencies of the teachers. It is, therefore, necessary that the competencies of the teachers must be enhanced to achieve the qualitative aspect of Universalisation of Elementary Education. There is not even a single untrained teacher in Haryana. But even the trained require lot of orientation and refresher courses in many areas such as:

- Up to date knowledge of the contents of various subjects and their methodology.
- Training for professional growth i.e. about aspects of education.
- Women empowerment and gender sensitization.
- Multi grade teaching for head teachers and teachers.
- Training for improving communication skills.
- Training for the development of the skills children such as:
 - House hold related skills
 - Domestic maintenance
 - Accessing public services
 - Family life skills
 - Life saving skills
 - Legal literacy
 - Personal & Social competencies
 - Social life skills
 - Environmental sensitivity skills for the use of leisure
 - Skills for democracy
 - Occupational skills
- Training programmes for enhancing the competencies of the HTs/HMs such as:
 - Motivation towards duties and responsibilities (finance matters and ruling) recording of accounts, cash books etc.
 - Supervision & administration of schools / classes and staff management.
 - Convergence with community and its involvement in social activities etc.
- Training programmes for changing the attitude of teachers towards educational reforms & for improving their skills.

BRC WISE LIST OF CLUSTERS



6.17 CLUSTER RESOURCE CENTRE (CRC)

The Primary Schools of District Faridabad are divided into 80 clusters under DEUP and Cluster source of Centres will be established at each cluster for providing instructional and academic support to the schools. CRCs are supposed to assist the teachers and HTs in the Primary Schools to implement the skills and practices, they have learnt during in-service training programmes. They would serve as a centre for all educational activities going on within the cluster. The training programmes for the members of VECs would be conducted at CRCs with the help of BRCs and DIET faculty. They may take the help of District / Block Academic Resource Group, as and when required.

One Co-ordinator of the level of a primary teacher or a master, having at least 5 years of teaching experience would be appointed at each CRC.

There is a proposal for the construction of a room of size 18' x 32' (having a cabin for store & verandah) at each cluster.

6.18 ELECTRICITY AND WATER CHARGES

There is a proposal to provide Electricity and Water to each CRC.

6.19 EQUIPMENTS

Equipment such as ceiling fans, electric tubes, sound system with 2 microphones, amplifier and 2 loud speakers etc. would be provided to each CRC.

6.20 FURNITURE

Furniture items such as chairs, tables, durries, lecture-stand etc., would be purchased for each CRC. There is a proposal to provide Rs. 0.10 lac per cluster for furniture.

6.21 LIBRARY BOOKS

Need for establishing a library well equipped with latest editions of useful books to inculcate the habit of reading in the teachers is being felt. Science Literary, Reference books etc. would be purchased. For this one almirahs and one rack would be provided to each CRC. There is a proposal for purchasing books for each CRC during 1st year and then books worth Rs. 2000/- per year up to 2010.

6.22 NEWSPAPER AND EDUCATIONAL PERIODICALS

NCERT, NIEPA, NGOs etc. publish educational journals and periodicals, which are helpful for references, research studies, latest strategies and innovations in the field of education and hence worth reading.

An amount of Rs. 1.6 lac per year is proposed for each CRC office, to purchase newspapers, educational journals and periodicals.

6.23 EXTENDED TEACHERS TRAINING

Primary & Middle School teachers would take part in these trainings at their respective CRCs to be organized on every Saturday (On 1st & 3rd for Primary Teachers and on 2nd and 4th for Middle School Teachers). One lecturer from the District Institute of Education & Training Jecus or member of DARG/BARG is supposed to be there for educational support. Light refreshments would be served to the teachers during these ETTs. There is a proposal of Rs. 79.73 lacs for Primary Teachers and Rs. 47.25 lacs for Middle School Teachers to meet out the expenditure of this item.

6.24 ORIENTATION OF THE MEMBERS OF VECS

Two days Orientation Programme would be organized yearly in which eight members of each VEC would participate. It would be ensured that all of the members (VEC) attend these orientations at least once in two years. In addition to this members of Yuva Mandals / Clubs, Mahila Mandals etc. would also participate in these meetings. One lecturer from DIET Pali (FBD) would take part in these as a Resource Person, Refreshments would be served to these members during these programmes.

6.25 TALENT SEARCH TEST

This type of test would be conducted at CRC level every year for selecting brilliant students per CRC for Primary as well as Middle Classes. In this test selected students from each School would appear. These selected students would participate in Talent Search Tests to be held at each BRC. It would cost Rs. 12.8 lacs for Primary and Rs. 12.8 lacs for Middle Schools.

6.26 INNOVATIVE PROJECT

CRCs would be motivated to undertake Innovative Projects in the field of education.

6.27 CONTINGENCY FOR LAB SCHOOL

Co-ordinators of CRCs are supposed to undertake innovative projects. For these projects there is a provision for lab school in each cluster. The Primary School, where CRC is situated or the nearest Middle School would be the Lab School. For incurring sundry expenses during the activities in Lab Schools each co-ordinator would be provided 8 lacs for PS and 4 lacs for MS.

6.28 DISTT. INSTITUTE OF EDUCATION AND TRAINING (DIET)

DIETs were established after the implementation of National Policy on Education 1986 to provide academic and resource support at the grass root level for the success of the various strategies and programmes being undertaken in the field of elementary and adult education with special reference to the following objectives.

Elementary Education: Universalisation of Elementary Education.

Adult Education: National Literacy Abhiyan targets in regard to functional literacy in the 15-35 age group.

DIETs were established with a mission to play pace-setting role in the districts. They were expected to become models for other educational institutions in the district in terms of meticulous, efficient and effective planning and execution of functions harmonious and creative organizational climate, maintenance of a clean and attractive campus etc. It was thought that there would be pursuit of excellence in all activities of the DIETs i.e.,

- Helping the elementary and adult education system in the district in achieving excellence.

It was thought to provide all necessary physical and manpower resources to DIETs as far as the first aspect is concerned.

DIET of District Faridabad is working at Sector-16 and new building is being constructed at village Pali. Pre-service and In-service courses for elementary school teachers and to undertake research activities concerning the elementary education. Till now DIET was concerned with the training needs of Primary School Teachers only. But now in Sarva Shiksha Abhiyan, DIET has to cater the training needs of elementary (Middle) school teachers also. So in addition to its conceived structure would make it a pacesetter. The DIET in the district would work as a nodal agency and would provide academic leadership to SSA.

DEEP (SSA) FARIDABAD

6.29 ACTION RESEARCH AND RESEARCH STUDIES

The DIET will have to play active role in conducting research studies on educational problems in the district and periodicals studies on assessment of various interventions. At least five such studies would be carried out per year. Moreover, DIET would help the elementary school teachers to undertake Action Research Projects for the solution of academic problems.

6.30 TRAINING / ORIENTATION

- (a) **For teachers of Middle Schools:** 10 days residential training for the Masters and Head Masters of Middle Schools would be organized at DIET level per year.
- (b) **For CDPOs and AW Supervisors:** Three days training programmes would be organized for CDPO's and AW Supervisors in the beginning of the project. After that two days refresher courses would be organized every year.
- (c) **For the Members of Local Bodies:** Haryana Govt. has handed over the primary education to the Zila Parishads. The members of local bodies such as Zila Parishad, Block Samiti should have the knowledge of the implementation of Sarva Shiksha Abhiyan and other reforms in education. There is a proposal to organise three days orientation programme at DIET for the members of Zila Parishad and Block Samiti.

6.31 MONITORING AND EVALUATION

DIET will have to play an active role about ascertaining the effectiveness evaluation of the various teacher – training programmes. For this achievement tests at the end of every year would be administrated in selected schools. So for development and priority of achievement tests report writing per year would be required.

6.32 EXPOSURE VISIT

Teacher Education and pupil teachers of DIET need know the management working and functioning of some efficient / model DIET's of other states. There are many NGO's which are working in the field of education especially for rural area and weaker sections of society. These NGO's would also be visited in order to broaden the mental horizon of pupil teachers.

6.33 DISTRICT PROJECT IMPLEMENTATION UNIT (DPIU)

A Project implementation unit would be established at the district level (DPIU) for monitoring and evaluating the implementation of the District Elementary Education Programme. The main functions of District Implementation Unit will be

- To plan, help organise and co-ordinate the various activities like in-service teacher's training, orientation of VECs, members of local bodies/district functionaries, meeting of district advisory committee/district and block level functionaries.
- To provide necessary guidance and professional support to the field functionaries for the effective and successful implementation of the project.
- To plan and organise district level strategies and interventions.
- To ensure proper utilisation of funds to be provided under the project.
- To give feedback to the State Level Project Implementation Unit (SPIU) about the progress of the project.
- Overall supervision of BRCs, CRCs and various schools.

This unit would consist of the following staff: -

- Two Assistant Project Co-ordinators (on contractual, Lecturers on deputation basis). Their qualification would be M.A./M.Sc., M.Ed. with at least five years experience of teaching and working in an educational project.
- One Section Officer from Accounts and Audit Dept. Haryana in the pay scale of Rs. 6500-200-10500. He would be responsible for maintaining cash books and other accounts.
- Two clerks having required knowledge of computer in the consolidated pay scale of Rs. 5000-150-7000.
- One driver in the consolidated pay scale of Rs. 5000-250-7000.
- One Peon in the consolidated pay scale of Rs. 3500-100-4200.
- One Sweeper-cum-night watchman in the consolidated pay scale of 3500-100-4200.

DEEP (SSA) FARIDABAD

6.34 EARLY CHILDHOOD CARE AND EDUCATION (ECCE)

Early Childhood Education is a supportive programme for Universalisation of Elementary Education. The National Policy on Education (NPE), 1986, with certain modifications made in 1992, has also highlighted the need and importance of ECCE. It is an essential component of District Elementary Education Programme for the vital inputs towards.

- Preparing children, particularly first generation learners for school readiness.
- Facilitating participation of girls in Schools by relieving them from sibling care responsibilities.

It would help in solving the problems of dropout at the elementary stage.

District Faridabad has the existing infrastructure of 880 Aanganwaris under ICDs are undertaken.

It is to activate accordingly during DEEP for strengthening ECCE under SSA and to have following approaches and coordination with ICDs: -

- Providing TLM kit to strengthen ECCE component to ICDs.
- To ensure similar school timings of Schools and Aanganwari centres.
- Capacity building ICDs functionaries (CDPOs, AW Supervisors and AW Workers) at DIET/BRC level.
- Mobilising Community for supporting childcare.

6.35 MAJOR INTERVENTIONS

ECCE Kit: ECCE kit would be supplied to each Aanganwari Centre. It would include charts, picture and story books, colours, wooden and plastic blocks, material for making soft toys and instructional booklet for AW Workers etc. Such kits would be provided after every three years to each district.

Induction Training of CDPOs and AW Supervisors: There is a proposal for reorientation-cum-refresher course for CDPOs and Supervisors every year at DIET level. These course would lead to better coordination. The duration of these courses would be of two days. The financial provision for this activity has been made in DIET component.

Refresher Training of CDPOs and AW Supervisors: There is a proposal for reorientation-cum-refresher courses for CDPOs and Supervisors every year at DIET level. These courses would lead to better coordination. The financial provision for this activity has been made in DIET component.

Training of AW Workers: Three months Pre-service training, which includes the topics of Health and Nutrition Community participation and Pre-School Education is imparted to AW Workers in the beginning of their service.

Refresher Courses for AW Workers: There is a proposal of three days reorientation-cum-refresher course for AW Workers every year. It would be helpful in providing fresh inputs to AW Workers about Pre-School Education, use of ECCE kit, child health and nutrition etc.

Supply of Material to each Centre:

- There is a proposal to provide one durri for kids to each AW centre at the very onset of SSA. Total estimated cost of expenditure on this item is Rs. 13.20 lacs.

6.36 CIVIL WORK

Most of our Elementary schools are running with poor infrastructure, lack of necessary physical facilities like toilets, drinking water and electricity etc. The following budgetary provision of the activity is being proposed under the heading of Civil work :-

- Construction of new School Buildings 4 for Primary Schools – Cost Rs. 12.00 Lacs 111 schools (includes 104 schools newly proposed).
- Construction of new class – rooms – 300 – Cost Rs. 555.00 Lacs
- Construction of Boundary walls – 45, four sided walls Rs. 82.80 Lacs
- Water facilities in 8 Schools – Cost Rs. 0.96 Lacs.
- Toilets 160 in Primary and Upper Primary Schools – Cost Rs. 12.80 Lacs
- Construction of Building for 5 BRC – Cost Rs. 37.50 Lacs and Construction of Building 75 CRC – Cost Rs. 150.00 Lacs.
- Repair and Maintenance with provision of Rs. 5000/- every year per school is proposed to be allocated under SSA – Cost Rs. 157.60 Lacs.
- Repairs of school buildings (788);

A list of the schools where all above mentioned Construction work and facilities are being provided, is given in appendix.

It is Considered as an essential restriction that not less than 33% of the total cost of the Project be spent on civil work. This construction work will invariably be carried out through VECs.

Hence an amount of Rs.1455.16 Lacs is being proposed in perspective plan of this District in SSA.

6.37 INTEGRATED EDUCATION FOR DISABLED

The objective of universal elementary education can not be achieved unless each Category of the prevailing children and their needs are catered to. There are children enrolled in our schools at present who are physically disabled and who need a special care, attention and support. More over no nation can bear the under development of even a single citizen. Hence for their whole some development and self respected life the following provisions in the plan of SSA for this District are being proposed :-

- Identification of disables;
- Printing of awareness material for parents and Community.
- Appointment of special teachers (One at each Block);
- Setting up of Resource Centre at CRC and BRC level;
- Provision of special medical checkup through Medical experts;
- Preparation of need based teaching learning materials and their exhibition.
- Follow up service to these children;
- Training to teachers, CRC's., BRC's in provision of Aids and appliances of these children.
- Excursion for these children, one group at each Block level, once a year;
- Every such child wili be provided with appliances and supporting material @ Rs. 1200/- once in the project period.

These provision may be considered as an open ended support, still a budgetary provision of Rs. 85.68 Lacs is being proposed in perspective Plan of SSA of this District.

6.38 GIRLS' EDUCATION

DEEP's commitment to universalise elementary education necessarily implies equal and universal participation of all children regardless of religion, caste creed and sex etc. Thus special attention to certain disadvantaged groups of children would be imperative if the goal of USS is to be achieved. Girls' who comprise almost one half of the eligible child population fall in to this category of children requiring special attention as their participation in elementary education has been far from the desirable. Moreover, their participation level tends to decline in the case of particular social groups such as SCs, BCs, EWS etc. The deterrents to girls' education must be addressed. These deterrents are rooted in their homes and society.

Educating girls is commonly perceived as unnecessary, mainly on account of the role, they are assigned in running the house and also because they will eventually leave their parental homes after marriage, where their skills in household chores would hold them in better stead. Girls who reach the school are likely to face non-supportive environment in the classrooms and schools as these are near extensions of their own social moorings, serviced and managed by those who are part of the very social order to which they belong.

Poor retention of girls is attributable to two factors. The first is the tendency of parents to withdraw them from school after primary stage, as they become capable of fulfilling certain domestic needs like sustenance activities and sibling care or due to none availability of middle schools in the village. The second is the school environment itself, which neither encourages girls nor is able to bring out the best in them. During the season for harvest, marriages, festival etc. girls' attendance at schools suffer a setback as they are kept back at home. In the absence of any mechanism to address their needs as a result of these periods of absenteeism, their achievement suffers. This earns them the dubious distinction of being dullards. Thus begins the cycle of teachers' neglect in the classroom leading to disinterest and demotivation eventually resulting in their leaving of school.

Moreover, the status of woman and girls is not very high in the district, so some interventions are suggested for their empowerment in the light of the **National Policy of Education, 1986 and the Programme of Action**, which reiterated the need to operationalize the constitutional guarantee of equality between sexes and the protective discrimination clauses therein, by making education an effective instrument of women's equality and empowerment. The Programme of Action laid down the following parameters of women's empowerment.

- Enhance self-esteem and self confidence of women.
- Building a positive image of women by recognising their contribution to the society, policy and the economy.
- Developing the ability to think critically.
- Fostering decision making and action through collective processes, enable women to make informed choices in areas like education, employment and health (especially reproductive health).
- Ensuring equal participation in development processes.
- Providing information, knowledge and skills for economic independence, enhancing access to legal literacy and information relating to their rights and entitlement in society with a view to enhancing their participation on an equal footing in all areas.

MAJOR INTERVENTIONS

Following major interventions suggested for the empowerment of women & girls education have been incorporated in this perspective plan of District Elementary Education Programme.

- Creating awareness among the masses by carrying out Parbhat Pheries etc. in the villages and cities, distribution of printed material like pamphlets, brochures, folders about the achievements of women in different areas of life.
- Celebration of International Woman Day (8th March) in the schools every year.
- Organisation of Maa-Beti Melas for creating awareness about achievement of girls and women and child health.
- Kala jathas, Nutak, Puppet Shows etc. on women/girls issues.
- Strengthening of ECCEs by providing facilities to Aanganwaris and the capacity building of ICDS functionaries.
- Opening of AS Centres as a last strategy to reach out of school girls particularly of migrating families.
- Orientation of teachers on gender issues so that they can transact curriculum in a gender bias free manner.

DEEP (SSA) FARIDABAD

- Sensitization of parents and community regarding undifferentiated curriculum for boys and girls so that they can hold girls to choose courses according to their abilities. Schools can take such initiative for such sensitization.
- Provision of cutting and tailoring teachers in govt. schools for girls and co-educational schools.
- Provision of Music Teachers (one in each cluster) for creating interest in the cultural activities.
- Leadership and decision making qualities among girls by proposing lot of activities in the schools like celebration of days, annual functions, sports meet etc.
- Orientation of teachers on gender sensitive like skills.

6.39 EDUCATIONAL MANAGEMENT INFORMATION SYSTEM (EMIS)

In order to monitor the progress systematically in providing elementary education of desirable quality, a computerised management information system would be established at the district level so that the flow of information from the schools may be directed to the district level.

It would cover the following aspects

- Regular school statistics
- Evaluation/Assessment of various studies
- Project Scheduling
- Implementation and monitoring of outcomes.

School Statistics: Necessary arrangements would be made to transmit and receive the district level data and report at the state level. The input formats and the software for the district will be devised. The data will be collected and reported to the district implementation unit from the schools through their respective BRC's.

Evaluation and Assessment of Various Studies: MIS would provide the necessary background information and also a master list of educational institution for drawing appropriate samples.

The Project scheduling Implementation and Monitoring of Outcomes: Project specific software for scheduling of project activities and their implementation in the district would be important component of District Information System of education (DISE). Monitoring of various inputs with the project area would also form a part of this software.

It is not enough in EMIS to simply generate information. The aim of the whole exercise is on analysis, dissemination and effective use of the data generated. The following are some of the major steps in the EMIS data collection and analysis.

- I. Training for collection of data
- II. Collection of data
- III. Storage of data
- IV. Validation of data
- V. Data Compilation
- VI. Data analysis
- VII. Dissemination of information
- VIII. Integration of information for planning
- IX. Planning for additional sample surveys and studies

EMIS statistics are collected as on 30th Sept. for each school every year.

OBJECTIVES OF EMIS

The main objectives of implementing the computer based EMIS at Elementary Education are as follows :-

- To create a comprehensive database at primary and middle stage of education in the District/State and review its status every year.
- To review the data concerning the problems of dropouts and stagnation and suggest appropriate measures for improvement.
- For the monitoring of school programmes in respect of students' achievement level in general and particular for girls, in-service teacher training, education of backward communities, student welfare schemes and programmes, computer education for middle school children etc.

- For providing update information to the planners every year as and when needed for the preparation of Annual Work Plan of DEEP.

STRUCTURE

There is a proposal to appoint one Programmer having qualifications, MCA/B.Tech/B.E. (Computers) in the consolidated pay scale of RS. 8000-500-12000 and One Computer Operator having qualification, one year Diploma in Computer Application from any recognised institution in the pay scale of Rs. 6000-350-8500 for EMIS unit at the district level.

EQUIPMENTS

District Primary Education Programme will provide the equipments as per the need and stationery as usual.

ANNUAL

WORK PLAN

&

BUDGET

2003-2007

BUDGET AT A GLANCE FOR THE YEAR 2003-2004
DISTT. FARIDABAD

S. No.	HEAD ACTIVITY	2003-2004
1.	ASIE	76.64
2.	BRC	136.838
3.	CRC	11.12
4.	Civil Work	489.81
5.	DPIU	12.224
6.	ECCE	10.56
7.	EFE	753.75
8.	IED	16.985
9.	EMIS	4.52
10.	Misc.	1129.2082
	GRAND TOTAL	2641.6552

BUDGET AT A GLANCE DISTT. FARIDABAD

S. No.	HEAD ACTIVITY	2003-2004	2004-2005	2005-2006	2006-2007	TOTAL
1.	ASIE	76.64	96.696	114.56	136.456	424.352
2.	BRC	136.838	144.182	151.69	159.44	592.90
3.	CRC	11.12	11.12	11.12	11.12	44.48
4.	Civil Work	489.81	457.15	292.95	182.05	1421.96
5.	DPIU	12.224	12.628	13.068	13.466	51.386
6.	ECCE	10.56	12.98	12.98	10.56	47.08
7.	EFE	753.75	874.175	860.05	902.885	3390.86
8.	IED	16.985	16.985	16.985	16.985	67.94
9.	EMIS	4.52	4.65	4.79	4.92	18.88
10.	Miscellaneous	1129.2082	1105.7924	938.0509	838.1855	4011.237
	GRAND TOTAL	2641.6552	2736.3584	2416.2439	2276.0675	10071.075

DEEP (SSA) FARIDABAD

Table – 1

PROJECT COST
SARVA SHIKSHA ABHIYAN, FARIDABAD

MAJOR INTERVENTION – ASIE			DISTT. FARIDABAD								(IN LACS)	
S. No.	Head/Sub Heads activity	Unit Cost	2003-2004		2004-2005		2005-2006		2006-2007		TOTAL	
			Phy	Fin	Phy	Fin	Phy	Fin	Phy	Fin		
	ASIE											
1.1	Honorarium to instructor	0.12	88	10.56	176	21.12	176	21.12	260	31.20	84.00	
1.2	Opening of A.S. Centers	0.002	---	---	88	0.176	---	---	88	0.176	0.352	
1.3	TLM & Stationery	0.02	88	1.76	176	3.52	176	3.52	260	5.2	14.0	
1.4	Darries	0.015	---	---	88	1.32	---	---	88	1.32	2.64	
1.5	Student Kit	0.01	---	---	88	0.88	---	---	88	0.88	1.76	
1.6	Work Book for Students	0.02	88	1.76	176	3.52	176	3.52	260	5.20	14.0	
1.7	Books for Students	0.02	88	1.76	176	3.52	176	3.52	260	5.20	14.0	
1.8	Training to instructors											
	(i) Induction first 30 days	0.40	88	35.2	88	35.2	88	35.2	90	36.0	141.6	
	(ii) Orientation training 10 days	0.25	88	22.0	88	22.0	176	44.0	176	44.0	132.0	
1.9	Supervisors											
	(i) Honorarium	0.18	4	0.72	8	1.44	8	1.44	12	2.16	5.76	
	(ii) T.A./D.A.	0.06	4	0.24	8	0.48	8	0.48	12	0.72	1.92	
1.10	Furniture	0.02	88	1.76	88	1.76	---	---	90	1.8	5.32	
1.11	Excursion (once in a year for each center)	0.01	88	0.88	176	1.76	176	1.76	260	2.6	7.0	
	GRAND TOTAL			76.64		96.696		114.56		136.456	424.352	

PROJECT COST
SARVA SHIKSHA ABHIYAN, FARIDABAD

MAJOR INTERVENTION – BRC

DISTT. FARIDABAD (IN LACS)

S. No.	Head/Sub Heads activity	Unit Cost	2003-2004		2004-2005		2005-2006		2006-2007		TOTAL
			Phy	Fin	Phy	Fin	Phy	Fin	Phy	Fin	
	BRC										
2.1	Salary of Asstt. Block Resource Coordinator	1.602	70	112.14	70	118.30	70	124.60	70	131.04	486.08
2.2(a)	Accountant	0.9498	10	9.498	10	10.0810	10	10.6810	10	11.30	41.56
2.2(b)	Clerk cum Data Entry Operator Grade 4000-100-6000	-	10	7.90	10	8.30	10	8.70	10	9.10	34.00
2.3	Class-IV Grade 2550-55-3200	-	10	5.20	10	5.4	10	5.6	10	5.90	22.10
2.4	T.A./D.A. @ 500/- per month per center For monitoring & others	0.005	10	0.60	10	0.60	10	0.60	10	0.60	2.40
2.5	Maintenance of Building	0.05	5	0.25	5	0.25	5	0.25	5	0.25	1.00
2.6	Contingency	0.125	10	1.250	10	1.250	10	1.250	10	1.250	5.00
	GRAND TOTAL			136.838		144.182		151.69		159.44	592.90

Table – 3

**PROJECT COST
SARVA SHIKSHA ABHIYAN, FARIDABAD**

MAJOR INTERVENTION – CRC**DISTT. FARIDABAD (IN LACS)**

S. No.	Head/Sub Heads activity	Unit Cost	2003-2004		2004-2005		2005-2006		2006-2007		TOTAL
			Phy	Fin	Phy	Fin	Phy	Fin	Phy	Fin	
	CRC										
3.4	TA/DA to Staff – Rs. 200/- per month	0.024	80	1.92	80	1.92	80	1.92	80	1.92	7.68
3.5	Maintenance of Building	0.05	80	4.0	80	4.0	80	4.0	80	4.0	16.0
3.9	Contingency – Rs. 2500/- per year	0.025	80	2.00	80	2.00	80	2.00	80	2.00	8
3.11	Talent Search Test (Cluster)										
	(i) Primary	0.02	80	1.6	80	1.6	80	1.6	80	1.6	6.4
	(ii) Upper Primary	0.02	80	1.6	80	1.6	80	1.6	80	1.6	6.4
	GRAND TOTAL			11.12		11.12		11.12		11.12	44.48

**PROJECT COST
SARVA SHIKSHA ABHIYAN, FARIDABAD**

MAJOR INTERVENTION – CIVIL WORKS**DISTT. FARIDABAD****(IN LACS)**

S. No.	Head/Sub Head's activity	Unit Cost	2003-2004		2004-2005		2005-2006		2006-2007		TOTAL
			Phy	Fin	Phy	Fin	Phy	Fin	Phy	Fin	
	Civil Works										
4.1	Construction of new school building (i) Primary (ii) Upper Primary (iii) Newly Proposed UPS	3.00 5.00	1 40	3.00 200.00	1 40	3.00 200.00	1 24	3.00 120	1 7	3.00 35	12.00 555.00
4.2	Construction of new class rooms. Primary and UPS	1.50	100	150.00	100	150.00	50	75.00	50	75.00	450
4.3	Construction of boundary wall @ Rs. 220/- per running foot four sided.	1.84	20	36.80	15	27.60	10	18.4	-	-	82.80
4.4	Toilets	0.08	40	3.20	40	3.20	40	3.20	40	3.20	12.80
4.5	Water Facilities	0.12	8	0.96	-	-	-	-	-	-	0.96
4.6	Repair and Maintenance	0.05	788	39.40	788	39.40	788	39.40	788	39.40	157.60
4.7	BRC Building	7.5	3	22.5	-	-	-	-	-	-	22.50
4.8	CRC Building	1.5	20	30	20	30.00	20	30.00	15	22.5	112.5
4.9	TA/DA for J.E. (2)	0.60	2	1.2	2	1.2	2	1.2	2	1.2	4.80
4.10	POL	0.60	1	0.60	1	0.60	1	0.60	1	0.60	2.4
4.11	J.E.	1.075	2	2.15	2	2.15	2	2.15	2	2.15	8.6
	GRAND TOTAL			489.81		457.15		292.95		182.05	1421.96

DEEP (SSA) FARIDABAD

Table – 5

**PROJECT COST
SARVA SHIKSHA ABHIYAN, FARIDABAD**

MAJOR INTERVENTION – DPIU			DISTT. FARIDABAD (IN LACS)								
S. No.	Head/Sub Heads activity DPIU	Unit Cost	2003-2004		2004-2005		2005-2006		2006-2007		TOTAL
			Phy	Fin	Phy	Fin	Phy	Fin	Phy	Fin	
6.1	SALARY										
	(a) APC – 2	-	2	2.352	2	2.424	2	2.496	2	2.568	9.840
	(b) SO – 1	-	1	1.176	1	1.212	1	1.248	1	1.284	4.92
	(c) Clerk-cum-Data Entry Operator – 2	-	2	1.58	2	1.66	2	1.74	2	1.82	6.80
	(d) Accountant / Assistant – 2	-	2	2.14	1	2.26	2	2.38	2	2.50	9.28
	(e) Peon – 2	-	2	1.04	1	1.08	2	1.12	2	1.18	4.42
	(f) Sweeper cum Chowkidar – 1	-	1	.52	1	0.54	1	0.56	1	0.59	2.21
	(g) Head Clerk – 1	-	1	1.176	1	1.212	1	1.284	1	1.284	4.956
6.2	Contingency & Office expenses	0.50	1	0.50	1	0.50	1	0.50	1	0.50	2
6.3	TA/DA for Monitoring and Others	0.50	1	0.50	1	0.50	1	0.50	1	0.50	2
6.4	Telephone										
	(a) Tel Bill	0.12	-	0.12	1	0.12	1	0.12	1	0.12	0.48
6.5	New Letter	0.60	1	0.60	1	0.60	1	0.60	1	0.60	2.4
6.6	Electric cum water charges	0.12	1	0.12	1	0.12	1	0.12	1	0.12	0.48
6.7	Meetings										
	(a) DARG Once in a month (15 members)	0.02	1	0.30	1	0.30	1	0.30	1	0.30	1.20
	(b) BRC – 5	0.02	5	0.10	5	0.10	5	0.10	5	0.10	0.40
	GRAND TOTAL			12.224		12.628		13.068		13.466	51.386

PROJECT COST
SARVA SHIKSHA ABHIYAN, FARIDABAD

MAJOR INTERVENTION – ECE

DISTT. FARIDABAD

(IN LACS)

S. No.	Head/Sub Heads activity	Unit Cost	2003-2004		2004-2005		2005-2006		2006-2007		TOTAL
			Phy	Fin	Phy	Fin	Phy	Fin	Phy	Fin	
	ECE										
7.1	Kit to each ECCE Centre – 880	0.01	880	8.80	880	8.80	880	8.80	880	8.80	35.20
7.2	Refresher Training Supervisor (2 days) After 2 years	0.06	-	-	1	0.06	1	0.06	-	-	0.12
7.3	Refresher Training A.W.W. three days after two years	1.18	-	-	1	1.18	1	1.18	-	-	2.36
7.4	Stationery	0.002	880	1.76	880	1.76	880	1.76	880	1.76	7.04
7.5	Training of helpers at BRC three days	1.18	-	-	1	1.18	1	1.18	-	-	2.36
	GRAND TOTAL			10.56		12.98		12.98		10.56	47.08

Table – 7(a)

PROJECT COST
SARVA SHIKSHA ABHIYAN, FARIDABAD

MAJOR INTERVENTION – Elementary Formal Education**DISTT. FARIDABAD (IN LACS)**

S. No.	Head/Sub Heads activity EFE	Unit Cost	2003-2004		2004-2005		2005-2006		2006-2007		TOTAL
			Phy	Fin	Phy	Fin	Phy	Fin	Phy	Fin	
8.1	Free Text Books to all Girls & S.C. Boys										
	(a) Primary	0.0015	66934	100.40	68272	102.40	69680	104.45	71073	106.61	413.86
	(b) Upper Primary	0.0015	37536	56.30	38286	57.42	39051	58.57	40432	60.64	232.93
8.2	Salary of Teachers Newly proposed UPS grade 5500-175-9000 & 4500-125-7000	-	412.00	428.48	515.00	520.15	515	551.05	515	612.85	2112.53
8.5	Bridge Course										
	(i) Primary	0.05	65	3.25	65	3.25	65	3.25	65	3.25	13
	(ii) Upper Primary	0.05	65	3.25	65	3.25	65	3.25	65	3.25	13
8.6	Preparation for competitive exam										
	(i) Primary	0.005	595	2.98	595	2.98	595	2.98	595	2.98	11.92
	(ii) Upper Primary	0.01	230	2.30	230	2.30	230	2.30	230	2.30	9.2
8.7	Children Periodicals										
	(i) Primary	0.003	595	1.79	595	1.79	595	1.79	595	1.79	7.16
	(ii) Upper Primary	0.005	230	1.15	230	1.15	230	1.15	230	1.15	4.6
8.9	School Improvement Grant										
	(i) Primary (595-47) = 642	0.02	595	11.90	595	11.90	595	11.90	595	11.90	47.6
	(ii) Upper Primary 230	0.02	230	4.60	230	4.60	230	4.60	230	4.60	18.4
8.10	Teacher's Grant										
	(i) Primary	0.005	2700	13.50	2804	14.02	2910	14.55	3146	15.73	57.80
	(ii) Upper Primary	0.005	1434	7.17	1642	8.21	1746	8.73	1800	9.00	33.11
8.11	Health Grant										
	(i) Primary	0.01	595	5.95	595	5.95	595	5.95	595	5.95	23.80
	(ii) Upper Primary	0.015	230	3.45	230	3.45	230	3.45	230	3.45	13.80

Table – 7 (b)

PROJECT COST
SARVA SHIKSHA ABHIYAN, FARIDABAD

MAJOR INTERVENTION – Elementary Formal Education**DISTT. FARIDABAD****(IN LACS)**

S. No.	Head/Sub Heads activity	Unit Cost	2003-2004		2004-2005		2005-2006		2006-2007		TOTAL
			Phy	Fin	Phy	Fin	Phy	Fin	Phy	Fin	
	EFE										
	B/F			616.40		711.19		745.29		811.32	2884.2
8.12	Innovative Programs (i) Science Fair (ii) Wall Magazine (iii) Action Research	0.015	788	11.82	788	11.82	788	11.82	788	11.82	47.28
8.13	Award for best teacher in each Block (i) Primary (ii) Upper Primary	0.01 0.01	8 8	0.08 0.08	8 8	0.08 0.08	8 8	0.08 0.08	8 8	0.08 0.08	0.32 0.32
8.14	SUPW (i) Primary (ii) Upper Primary	0.01 0.01	595 230	5.95 2.30	595 230	5.95 2.30	595 230	5.95 2.30	595 230	5.95 2.30	23.80 9.20
8.15	Sports Material (i) Primary (ii) Upper Primary	0.01 0.02	- -	- -	595 230	5.95 4.60	- -	- -	595 230	5.95 4.60	11.90 9.20
8.16	Tat Patii/Dari (i) Primary (IV & V) (ii) Upper Primary	0.015 0.02	- -	- -	595 230	8.925 4.6	- -	- -	595 230	8.925 4.60	17.85 9.20
8.17	Furniture for Students (IV & V) (i) Primary (595/47) = 642 (ii) Upper Primary 230	0.24 0.36	200 100	48 36	200 100	48 36	200 30	48 10.8	42 -	10.08 -	154.08 82.8
8.18	Quiz/ Competition (iii) CRC (iv) BRC (ii) Dist.	0.02 0.05 0.05	130 8 1	2.60 0.40 0.05	130 8 1	2.60 0.40 0.05	130 8 1	2.60 0.40 0.05	130 8 1	2.60 0.40 0.05	120.40 1.60 0.20
	TOTAL			753.75		874.175		860.05		902.885	3390.86

DEEP (SSA) FARIDABAD

Table – 8

**PROJECT COST
SARVA SHIKSHA ABHIYAN, FARIDABAD**

MAJOR INTERVENTION – INTEGRATED EDUCATION FOR DISABLED CHILDREN DISTT. FARIDABAD (IN LACS)

S. No.	Head/Sub Heads activity	Unit Cost	2003-2004		2004-2005		2005-2006		2006-2007		TOTAL
			Phy	Fin	Phy	Fin	Phy	Fin	Phy	Fin	
	IED										
9.1	Identification of disableds	0.005	1785	8.92	1785	8.92	1785	8.92	1785	8.92	35.68
9.2	Printing of awareness material	0.001	1785	1.785	1785	1.785	1785	1.785	1785	1.785	7.14
9.3	Appointment of special teachers/resources teachers (Contractual & Fix @ 6000/- p.m.)	0.72	4	2.88	4	2.88	4	2.88	4	2.88	11.52
9.4	Medical check-up through medical expert.	0.10	8	0.80	8	0.80	8	0.80	8	0.80	3.2
9.5	Sports and cultural completion of disables										
	(a) CRC	0.005	80	0.40	80	0.40	80	0.40	80	0.40	1.6
	(b) BRC	0.005	80	0.40	8	0.40	8	0.40	8	0.40	1.6
	(c) Distt.	0.05	1	0.05	1	0.05	1	0.05	1	0.05	0.2
9.6	Preparation of TLM and their exhibition at Distt.	0.20	1	0.20	1	0.20	1	0.20	1	0.20	0.8
9.7	Follow-up camp for disabled children (once in a year) at BRC level.	0.10	8	0.80	8	0.80	8	0.80	8	0.80	3.2
9.8	Appliances and supporting material for disabled children.	0.0075	100	0.75	100	0.75	100	0.75	100	0.75	3
	GRAND TOTAL			16.985		16.985		16.985		16.985	67.94

**PROJECT COST
SARVA SHIKSHA ABHIYAN, FARIDABAD**

MAJOR INTERVENTION – EMIS

DISTT. FARIDABAD

(IN LACS)

S. No.	Head/Sub Heads activity	Unit Cost	2003-2004		2004-2005		2005-2006		2006-2007		TOTAL
			Phy	Fin	Phy	Fin	Phy	Fin	Phy	Fin	
	EIMS										
10.1	Programmer Salary (6500-10500)	-	1	1.27	1	1.34	1	1.42	1	1.49	5.52
10.2	Computer Operator (5500-175-9000)	-	1	1.07	1	1.13	1	1.19	1	1.25	4.64
10.3	Contingency	0.10	1	0.10	1	0.10	1	0.10	1	0.10	0.4
10.4	Equipment Upgradation of Computer & Software	0.10	1	0.10	1	1	0.10	1	1	0.10	0.4
10.5	Maintenance of Equipment	0.10	1	0.10	1	0.10	1	0.10	1	0.10	0.4
10.6	Electricity Charges	0.12	1	0.12	1	0.12	1	0.12	1	0.12	0.48
10.7	Telephone	0.12	1	0.12	1	0.12	1	0.12	1	0.12	0.48
	(a) Bills	0.12	1	0.12	1	0.12	1	0.12	1	0.12	0.48
	(b) Internet Connection & Charges	0.24	1	0.24	1	0.24	1	0.24	1	0.24	0.96
10.8	Training Workshop for data collection	1.40	1	1.40	1	1.40	1	1.40	1	1.40	5.6
	GRAND TOTAL			4.52		4.65		4.79		4.92	18.88

PROPOSED BUDGET 2003-04 to 2006-07

Sr.No.	Activity	Unit Cost in Lacs	2003-2004		2004-2005		2005-2006		2006-2007		Total Amt. in Lacs
			Physical	Amt. in Lacs	Physical	Amt. in Lacs	Physical	Amt. in Lacs	Physical	Amt. in Lacs	
1	Teachers (P.S.)	0.07	2	0.14	2	0.14	2	0.14	2	0.14	0.56
	Teachers (U.P.S.)	0.085	224	19.04	224	19.04	112	9.52	-	-	47.60
	Total			19.18		19.18		9.66		0.14	48.16
2	EGS (A.S.)	0.21115	88	18.58120	176	57.1624	176	37.1634	260	54.899	147.806
3	Civil Works										
	a) Additional class room	1.5	100	150.00	100	150.00	50	75.00	50	75.00	450.00
	b) B.R.C. (New Building)	6	6	36.00	-	-	-	-	-	-	36.00
	c) C.R.C. (New Building)	2	20	40.00	20	40.00	20	40.00	14	28.00	148.00
	d) New School Building (PS)	3	1	3.00	1	3.00	1	3.00	1	3.00	12.00
	e) New School Building (UPS)	5	40	200.00	40	200.00	24	120.00	7	35.00	555.00
	f) Toilet Facility	0.08	40	3.20	40	3.20	40	3.20	40	3.20	12.80
	g) Boundary Walls	1.84	20	36.80	15	27.60	10	18.40	-	-	82.80
	h) Drinking Water	0.12	8	0.96	-	-	-	-	-	-	0.96
3	Total			469.96		423.80		259.60		144.20	1297.56
4	Repair & Maintenance	0.05	788	39.40	788	39.40	788	39.40	788	39.40	157.60
5	Free Text Books for all girls & SC students at Primary & Middle level	0.0015	104470	156.705	106558	159.837	108731	163.0965	111505	167.2575	646.896
6	TLE (P.S.)	0.1	598	59.80	598	59.80	599	59.90	600	60.00	239.50
	TLE (New UPS)	0.5	104	52.00	104	52.00	104	52.00	104	52.00	208.00
	TLE (Existing UPS)	0.5	236	118.00	236	118.00	236	118.00	236	118.00	472.00
	Total			229.80		229.80		229.90		230.00	919.50
7	School Grant (P.S.)	0.02	598	11.96	598	11.96	599	11.98	600	12.00	47.90
	School Grant (U.P.S.)	0.02	340	6.80	340	6.80	347	6.94	350	7.00	27.54
	Total			18.76		18.76		18.92		19.00	75.44

Sr.No.	Activity	Unit Cost in Lacs	2003-2004		2004-2005		2005-2006		2006-2007		Total Amt. in Lacs
			Physical	Amt. in Lacs	Physical	Amt. in Lacs	Physical	Amt. in Lacs	Physical	Amt. in Lacs	
8	Teacher Grant (P.S.)	0.005	2700	13.50	2804	14.02	2910	14.55	3146	15.73	57.80
	Teacher Grant (U.P.S.)	0.005	1434	7.17	1642	8.21	1746	8.73	1800	9.00	33.11
	Total			20.67		22.23		23.28		24.73	90.91
9	Teacher Training (P.S.)										
	a) Induction Training to New Teacher (20 days)	0.0007	5	0.07	5	0.07	5	0.07	5	0.07	0.28
	b) Training to existing teachers for non D.P.E.P. (10 days)	0.0007	2700	18.90	2800	19.60	2850	19.950	3000	21.00	79.45
	Teacher Training ((U.P.S.)										
	c) Induction Training to New Teachers (20 days)	0.0007	16	0.224	16	0.224	16	0.224	16	0.224	0.896
d) Training to existing teachers for non D.P.E.P.	0.0007	1434	10.038	1642	11.494	1746	12.222	1800	12.60	46.354	
	Total			29.232		31.388		32.466		33.894	126.980
10	Community Training	0.0003	4050	1.215	4100	1.23	4200	1.26	4200	1.26	4.965
11	Research & Evaluation	0.015	831	12.465	831	12.465	831	12.465	831	12.465	49.86
12	Innovative Activity (50 lacs per year)	50.00 (per year)	-	50.00	-	50.00		50.00		50.00	200.00
13	B.R.C.										
	a) Furniture Grant BRC	1.00	3	3.00	-	-	-	-	-	-	3.00
	b) T.L.M. Grant for B.R.C.	0.50	8	4.00	8	4.00	8	4.00	8	4.00	16.00
	c) Contingency for B.R.C. (Non D.P.E.P.)	0.125	8	1.00	8	1.00	8	1.00	8	1.00	4.00
	d) Meeting Travelling Allowance per month non D.P.E.P.)	0.005	12	0.06	12	0.06	12	0.06	12	0.06	0.24
	e) Salary of Block Resource Person for PS in grade 6500-200-10500	-	50	5.40	50	5.55	50	5.70	50	5.75	22.40
f) Salary of Block Resource	-	50	5.40	50	5.55	50	5.70	50	5.75	22.40	

DEEP (SSA) FARIDABAD

Sr.No.	Activity	Unit Cost in Lacs	2003-2004		2004-2005		2005-2006		2006-2007		Total Amt. in Lacs
			Physical	Amt. in Lacs	Physical	Amt. in Lacs	Physical	Amt. in Lacs	Physical	Amt. in Lacs	
	Person for U.P.S. in Grade 6500-200-10500 C.R.C.										
	g) Furniture grant CRC (New CRC only)	0.1	-	-	-	-	-	-	-	-	
	h) Contingency grant for CRC (New CRC only)	0.025	80	2.00	80	2.00	80	2.00	80	2.00	8.00
	i) TLM grant New CRC only	0.01	80	0.80	80	0.08	80	0.80	80	0.80	3.20
	j) Meeting Travelling Allowance (New CRC only)	0.002	80	0.16	80	0.16	80	0.16	80	0.16	0.64
	Total			21.82		19.12		19.42		19.52	79.88
14	I.E.D.	0.012	1785	21.42	1785	21.42	1785	21.42	1785	21.42	85.68
15	Management Cost	-	-	20.00	-	20.00	-	20.00	-	20.00	80.00
	Total	-	-	1129.2082	-	1105.7924	-	938.0509	-	838.1855	4011.237

CHAPTER – VII MANAGEMENT STRUCTURE

In order to have smooth implementation of desirable quality of elementary education in the district, formation of the management structure is necessary so that the progress in the system can be monitored at different levels and positive assessment is made available for future progress in the project. The District Education Officer of District Faridabad will be Ex-officio to District Project Co-ordinator and two Assistant Project Co-ordinators in the district who will be either deputed or employed on contract basis.

However for the provision of receiving gathered information in due time the project has been organised by catering staff of BRCs level in each Block. The Block Education Officer of the concerned block will be appointed as an ex-officio and 7 Assistants in each block will be appointed on contract/deputation as Assistant Block Resource Co-ordinators and one in each block, Account/Accounts Clerk, Data Entry Operator cum Clerk and a IVth class, on contract/daily wages accordingly. The staff members will be as follows: -

S.No.	Designation of Post	Number of Posts under SSA	Mode of Recruitment
1.	Section Officer	1	Deputation
2.	SDE	6 (in all districts)	Contract/Deputation
3.	JE	2 (in district)	-do-
4.	Accountant 5000-150-7850	1	-do-
5.	Assistant 5000-150-7850	1	-do-
6.	Head Clerk 5500-175-8000	1	-do-
7.	Computer Programmer 8000-500-12000	1	-do-
8.	Clerk 3050-75-4500	1	-do-
9.	Data Entry Operator cum Clerk 6000-350-8500	1	-do-
10.	Driver	1	Contract/daily wages
11.	Class-IV	2	-do-
12.	Night Watchman cum Sweeper	1	-do-
BRC LEVEL			
13.	BRCs	One in each block	Ex-Officio
14.	Assistant Block Resource Coordinator	7 in each block	On deputation/ Contract
15.	Accountant/ Accounts Clerk	One in each block	On Contract
16.	Data Entry Operator-cum-Clerk	One in each block	Contract / Daily wages

CHAPTER – VIII

MONITORING & SUPERVISION STRUCTURE

For easy and systematically monitoring of the activities implementation in the district and proper supervision of Sarva Shiksha Abhiyan, committees at school level, village level, for urban areas; cluster level, block level, district level have been made as under: -

1. SCHOOL LEVEL

The following bodies will work for all around improvement in school environment and cognitive & non-cognitive growth of the child:

The member of the association shall be open to all the parents/guardians of the students and members of the staff of the school.

a) Parent Teacher Association (PTA)

The following shall be the office bearers of the Association:

i) President	Elected
ii) Vice-President	Head Teacher/Head Master
iii) Secretary	Nominated
iv) Joint Secretary	Elected
v) Treasurer	Nominated
vi) Auditor	(Not a member of the Executive)

The membership of the association shall be open to all the parents/guardians of the students and members of the staff of the school.

The head of the school shall be ex-office Vice-President of the Association. The Secretary of the association shall be nominated from amongst the members of the staff by the President in consultation with the Vice – President. Except the vice – President, the Treasurer and the Secretary all the office bearers and members of the Executive committee shall be elected at the time of the annual meetings.

There shall be an Executive Committee of the Association to carry out the day to day function of the Association. It will consist of 10 members (with at least 3 from amongst the teachers) beside office bearers. Meetings of the Executive Committee will be held once in a month.

The aim of the association is to encourage parents to share the responsibility alongwith the teachers for better educational standard and moral, social & physics development of the children and overall improvement in school.

The specific objective of the PTA will be as follows:-

- i) Creating awareness amongst the parents regarding the need and importance of inculcating the habits of punctuality, regularity in attendance & cleanliness in their wards.
- ii) Diagnosis of educational backwardness and need for adopting remedial measures in time.
- iii) Helping for making provision of physical facilities such as furniture, electric fans, buildings etc to the schools.
- iv) Making improvement in the overall conduct and behaviour of the students.

The tenure of the associations would be two years.

(b) **Mother Teacher Association (MTA):**

It is not basically different from the Parent Teacher Association. Here the membership is open only to mothers and Lady Guardians of the children. The MTA will meet twice a month instead of once as in case of PTA.

The school may have either of the two or both of the Associations. From Primary Wing MTAs may be there, and for the whole school (i.e. Upper Primary Level) the PTAs may also be there.

The tenure of the committee would be two years.

These bodies can inspect the records (Students attendance, staff attendance) of the school.

2. **Village Level:**

a) **Village Education committee (VEC):**

There will be a Village Education Committee (VEC) with the following members:-

Three members nominated by Gram Panchayat:- (Atleast one Scheduled Caste, one Lady Member)	3
Head Teacher of the Primary School:- Member Secretary (In case of more than one school, the senior – most)	1
A female Teacher (Inc case of more than one school , not from the school of Senior Secondary)	1
Female Member nominated by Mahila Mandal	1
Lady Health worker	1
Anganwari Worker / Bal Savika	1
Two members nominated by PTA / MTA	2
Member nominated by BEO (CGO member / social Worker/ Retired teacher/ educationist)	1
Village Secretary / Gram Savika	1
Total	<u>12</u>

Out of twelve members, 6 members will be from female side. The Committee will elect its president and vice president.

The committee will function as an arm of the Panchayati Raj System and involve persons interested in the overall development of real education in the respective village. It will meet twice in a month and send its report of the proceedings to Cluster Level Education Committee (CLEC) and Block Level Education Committee (BLEC).

Its objectives include creating awareness, increasing enrolment surveys for the purpose of Universalisation of Education. It will also create an environment for quality education, discipline, cleanliness, beautification in the school. It will help in capacity building also.

The tenure of the committee will be for two years.

(b) **Village Construction Committee:**

Village Construction Committee will have the following members:-

A Member (Male / Female) of VEC	President
Member – Secretary of VEC	Member Secretary
VBC Member (Ex- serviceman / retired/ social worker)	Member
VEC Member belonging to Scheduled Caste	Member
Member nominated by VEC	Member
Total	<u>5 Members</u>

The main objective of this committee is to maintain, extend and improve upon the school buildings.

It will hold its meetings twice a month and send its report of the proceedings to CLEC and DLEC.

(c) **Urban Education Committee (UEC) for urban areas:**

For schools in Urban areas the Urban Education Committee will be constituted urban area wise on the pattern of village Level Education Committee and will consist of the following members:-

Three members approved by Municipal Committee / Council (Atleast one Scheduled Caste, one Lady member)	3
Head Teacher/Head Master of the Elementary School-Member Secretary (in case of more than one school, the senior – most)	1
A female teacher nominated by BEO (Incase of more than 1 school not from the school of member Secretary)	1
Female Member nominated by Mahila Mandal	1
Lady Health Worker to be nominated by Health department	1

Anganwari Worker/ Bal savika to be nominated by ICDS department	1
Two members nominated by PTAs / MTAs	2
Member nominated by BEO (NGO member / social worker/ retired teacher Educationist)	1
A member of the Municipal Committee / Council	1
Total	12

(d) Construction Committee:

Construction Committee of the Urban area will consist of the following members:-

I A member (Male / Female) of Urban Education Committee	1
II Head Teacher / Head Master – Member Secretary	1
III UEC member (Ex- Serviceman social worker/ retired teacher)	1
IV UEC member belonging to scheduled caste	1
V Member nominated by UEC	1
Total	5

3. Cluster Level Education Committee (CLEC):

Cluster Level Education Committee (CLEC) will consist of the following members:-

Cluster Resource Coordinator (member-Secretary)	1
Four Head Teachers – atleast two of them ladies	4
Nominees of the Integrated Child Development Scheme	1
Nominee of the Health Department	1
Nominee of the Public Health Department	1
Two retired educationists (one of them a lady)	2

A prominent ex-serviceman	1
Four VEC members – not more than one from the same VEC	4
Total	<u>15</u>

The Head Teachers and the VEC members may be opted by rotation after a period of one year so that opportunities are given to as many as possible.

The committee will function as an agency to support co-ordinate and review the achievements of the schools in the cluster. Its aims and objectives will be as under:-

- (a) Organising sessions for mutual sharing of the experiences of teachers.
- (b) Reviewing infrastructural improvement in schools.
- (c) Sharing of infrastructure / teaching learning material as and where possible.
- (d) Guiding further steps for Universalisation of Education.
- (e) Maintaining the spirit of co-operation amongst the communities for the cause of education.
- (f) Collecting data and keeping it updated.
- (g) Following up the action on the decision/proceedings of the VEC/VCC meetings.

The Committee will meet twice a month and send the report of the proceedings to the Block Level Education Committee (BLEC).

4. Block Level Education Committee (BLEC)

Block Level Education Committee (BLEC) will consist of the following members:-

Block Education Officer (President)	1
Block Resource Co- Ordinators (Member Secretary)	1
Block Development Panchayat Officer	1

Nominee of the integrated Child Development Scheme	1
Nominee of the Health Department	1
Nominee of the Public Health Department	1
Nominee of the Panchayat Samiti	2
Two Cluster Resource Co-ordinators - one male, one female (to be nominated by the BEO)	2
Head of a High Senior Secondary School (Preferably Senior most)	1
A prominent ex-serviceman of the block	1
Retired educationist-preferably National / Sales Awarded	1
VEC members from different Cluster	2
Total	15

Members from CRCs & VECs will be rotated after one year to give opportunity to them also.

The BLEC can be a higher level supervisory agency to further review activities in the field of the school education. Its functions will be:

- (a) Supervision of the training programmes
- (b) Organising block level sessions for sharing of experiences and problems of teachers.
- (c) Providing resources teaching learning material to teachers.
- (d) Collection of data and its updating for further guidance.
- (e) Monitoring the reports from the clusters.
- (f) Follow up action on the decisions proceeding of the VEC / VCC and CLEC meetings.
- (g) Inspection of Schools.

It will meet twice a month and send its proceedings to the District Level Education Committee (DLEC).

5. District Level:

District Level Education Committee (DLEC).

The District Level Education Committee will consist of the following members.

Deputy Commissioner	Chairman
Additional Deputy Commissioner	Vice- chairman
Chief Medical Officer	
District Education Officer	
District Prima / Education Officer	
Principal District Institute of Education and Training (DIET)	
District Project Co-ordinator	Member Secretary
Block Education Officers	As per number in the district
Nominee of the Zila Parishad	1
Chairman of the Panchayat Samiti (Nominated by Zila Parishad)	1
XEN, Public Health	1
XEN, PWD (B & R)	1
Nominee of the Integrated Child Development Scheme	1

6. State Level Monitoring Committee (SLMC):

State Level Monitoring Committee (SLMC) will consist the following:-
Secretary Education--- **Chairman**

DEEP (SSA) FARIDABAD

Director Secondary Education

Director Primary Education / Elementary Education.

State Project Director----

Member Secretary

Director, SCERT, Haryana, Gurgaon

Director, SIEMT, Bhiwani

Principal, Diet – nominated by DSE

DEO – nominated by DSE

DPEO – nominated by DPE

BRC – nominated by SPD

CRC – nominated by SPD

Director State Resource Centre, Rohtak

Nominee of the Director NCERT, New Delhi

Principal of a College of Education.

Two representatives of the NGOs working for education.

Two educationists preferably National / State Awardees

The above Committee will monitor all the academic, managerial, financial, budget and Work Plan activities of the Sarva Siksha Abhiyan.

It will hold its meetings once in every quarter, ending March, June, September and December and send the report of the quarter to the National Mission by the following month.

Internal Monitoring Committee

Besides the above, there will be an Internal Monitoring Committee under the Chairmanship of State Project Director and will consist the following members: -

1. All the District Project Coordinators

DEEP (SSA) FARIDABAD

2. Director, SCERT, Haryana, Gurgaon
3. Director, SIEMT, Bhiwani
4. In-charge Components at the Head Quarters

The above committee will meet every month to review the progress of the project/s and take diagnostic and remedial measures.