

EDUCATIONAL STATISTICS

DISTRICT-WISE

1976-77

(Vol. XII)

HARYANA



NIEPA DC



D00689

PLANNING, MONITORING AND STATISTICAL DIVISION

MINISTRY OF EDUCATION & CULTURE

[DEPARTMENT OF EDUCATION]

GOVERNMENT OF INDIA

NEW DELHI

1982

EDUCATIONAL STATISTICS

DISTRICT-WISE

(VOL. XII)

H A R Y A N A

PLANNING, MONITORING & STATISTICS DIVISION
MINISTRY OF EDUCATION & CULTURE
(DEPARTMENT OF EDUCATION)
GOVERNMENT OF INDIA
NEW DELHI

1 9 8 2

Sub. National Systems Unit,
National Institute of Educational
Planning and Administration
17-B, SriAurobindo Marg, New Delhi-110016
DOC. No. D-689.....
Date..... 15/3/83

545502
370.212
IMD—E

PROJECT STAFF:-

| | | |
|----------------------|---|---------------------|
| MISS P.S. SAKUNTALA | - | DEPUTY SECRETARY |
| SHRI S.C. SEDDEY | - | DEPUTY DIRECTOR |
| MISS I. MULLICK | - | RESEARCH OFFICER |
| SHRI SUBHASH CHANDER | - | SENIOR INVESTIGATOR |
| SHRI S.C. WADHAWAN | - | COMPUTER |

P R E F A C E

This volume on District Educational Statistics for the State of Haryana is the Twelfth in the series of such volumes which will be brought out for all the States and Union Territories. The main aim is to highlight the inter-district variations in a State by giving educational data at district levels with the help of some important indices such as Enrolment Ratio, Percentages of Trained Teachers, Per Capita Expenditure, Teacher Pupil Ratio etc.

In order to ascertain whether the educational imbalances have widened or narrowed down with time the data for the year 1976-77 has been analysed and compared with that for the year 1970-71.

I take this opportunity to express my appreciation of the co-operation received from the Director of Public Instruction, Haryana State and the project staff of the Planning, Monitoring & Statistics Division who have prepared this report.

Wherever district-wise data was not available, estimated figures have been used.

NEW DELHI,
JAN. 1982.

JOINT SECRETARY
DEPARTMENT OF EDUCATION
...

I N T R O D U C T I O N

Regional imbalances do exist in the field of educational development just as in urbanisation, industrialization, distribution of income and wealth etc. With a view to highlight the regional imbalances in the educational sector, the Ministry of Education & Culture brings out the publication "Educational Statistics - District-wise", quinquennially.

2. A volume of this nature was first published by the National Council of Educational Research & Training in 1960-61. Thereafter it was decided that such reviews will be brought out in respect of each State once in every five years by the Ministry of Education & Culture. Accordingly, the reviews for the year 1965-66 were brought out by this Ministry.

3. For making inter-district comparisons possible, some important indices such as Enrolment Ratios, Percentage of Trained Teachers and Per Capita Expenditure on Education have been worked out. These indices show wide range of variations between the districts and hence the need for formulating educational plans at the district level.

II - AREA AND POPULATION

4. Haryana State, in 1971 had 7 Districts. This State was reorganised in the year 1973 and two additional Districts of Sonapat and Kurukshetra came into being. Subsequently, two more Districts of Bhiwani and Sirsa were carved out up to the year 1976, and hence it had 11 Districts in the year 1976-77. However, the area of the State remained the same i.e. 44,222 Sq. Kms. The area of various Districts shows wide variations from 6,331 Sq. Km. in Hissar to 2,200 Sq. Km. in Sonapat.

5. The population of Haryana was 100.13 Lakhs in 1971 and it is estimated to have increased to 114.28 Lakhs in 1976-77 (60.75 Lakh Males and 53.53 Lakh Females). The Gurgaon District had 13.7% of the total population of Haryana whereas Sirsa District had 5.3% of the total population.

6. The density of population per Sq. Km. for the State increased from 226 in 1970-71 to 258 in 1976-77. The density of population also varied very much among the Districts. It was highest in Mohindergarh (377) and lowest in Bhiwani (119) per Sq. Km. Table No.(I) gives general view of the extent of variations in area, population and density of population amongst the various Districts. The area, total population and density of population for different Districts for the years 1970-71 and 1976-77 are given in Statement No.(2).

7. The total population of the State as well as population of different age-groups for the years 1971 and 1977 (Statement No.3) given in the report are based on the revised population projections (as on 1st March of the year) available from the Office of Registrar General of India. District-wise population in the age-groups (6-11), (11-14) and (14-17) are based on the following formula:-

We assume that

$$\frac{P_{6-11}}{P} = \frac{P_{6-11}^i}{P_i} = K$$

$$\therefore P_{6-11}^i = K P_i$$

Where K is estimated from the equation $K = \frac{P_{6-11}}{P}$

| | | |
|--------------------------------|---|---|
| P ₆₋₁₁ | = | Denotes (6-11) age-group population of the State. |
| P | = | Total population of the State. |
| P ⁱ ₆₋₁₁ | = | (6-11) age-group population of the 'i' th District. |
| P ⁱ | = | Total population of the 'i' th District. |

To get ^{sex} -wise break-up of the total population in the various age-groups of the District, first of all the Girls population is estimated using the above equation with only difference that in the above formula total population is replaced by the Girls population. The Boys Population is obtained by the residual method i.e.:-

$$\begin{aligned} &\text{Boys population in the age-group (6-11)} &&= \\ &\text{Total population in the age-group (6-11)} &&(- \\ &\text{Girls population in the age-group (6-11)} \end{aligned}$$

Similar formulae are used for estimating the district-wise population in the age-groups (11-14) and (14-17) years.

8. Of the total estimated population of Haryana in 1977 the population of the children in the age-group (6-11) was (16.59) Lakhs consisting of 8.76 Lakh Boys and 7.83 Lakh Girls. This formed 14.5% of the total population of the State.

9. The estimated population in the age-group (11-14) in 1977 was 9.29 Lakhs consisting 4.98 Lakh Boys and 4.31 Lakh Girls. The population in this age-group formed 8.1% of the total population.

10. Similarly, the population in the age-group (14-17) was 8.59 Lakh consisting of 4.63 Lakh Boys and 3.96 Lakh Girls. This formed 7.5% of the total population of the State.

11. Thus, of the total population of 114.28 Lakhs of the State of Haryana the School going population in the age-group (6-17) was 34.47 Lakhs which consisted of 18.37 Lakh Boys and 16.10 Lakh Girls. The population in the age-group (6-17) accounted for 30.1% of the total population. The percentage for Boys was 16.0% while for Girls it formed 14.1%. District-wise details may be seen in Statement No.(3).

TABLE NO. (1) - EXTENT OF VARIATIONS IN THE AREA, POPULATION & DENSITY OF POPULATION - 1976-77

| D I S T R I C T | Percentage share of Area | Percentage share of Population | Density of Population per Sq. Km. |
|-----------------|--------------------------|--------------------------------|-----------------------------------|
| 1. Ambala | 8.7 | 10.9 | 335 |
| 2. Bhiwani | 11.5 | 7.6 | 119 |
| 3. Gurgaon | 11.0 | 13.7 | 177 |
| 4. Hissar | 14.3 | 11.2 | 247 |
| ✓ 5. Jind | 7.5 | 7.7 | 266 |
| 6. Karnal | 8.4 | 9.8 | 224 |
| 7. Kurukshetra | 8.5 | 8.6 | 335 |
| 8. Mohindergarh | 6.7 | 7.3 | 377 |
| ✓ 9. Rohtak | 8.7 | 11.0 | 256 |
| 10. Sirsa | 9.7 | 5.3 | 292 |
| 11. Sonapat | 5.0 | 6.9 | 355 |
| T O T A L | 100.0 | 100.0 | 258 |

III - LITERACY

12. According to the 1971 Census, the effective literacy rate i.e. the number of literates per hundred of the population excluding population in the age-group (0-4) years in the State was 31.7. The literacy rates for Males and Females were 43.9 and 17.6 respectively. Statement No.(7) gives the data on literates.

IV GENERAL REVIEW

(a) INSTITUTIONS

13. The total number of educational institutions in the State increased from 6,220 in 1970-71 to 8,325 in 1976-77, indicating an increase of 23.8% during the period of 6 years. In 1976-77 Gurgaon had the largest number of institutions (15.5%) followed by Ambala (12.1%) and the lowest number (5.2%) were in Sirsa. The district-wise details are given in Statement No.(1).

(b) ENROLMENT

14. The total enrolment in all the recognised educational institutions in the State increased from 14.66 Lakhs in 1970-71 to 17.87 Lakhs in 1976-77 during the period of 6 years. This shows an average exponential growth rate of 3.12% for enrolment during the period under review. Boys enrolment increased by 16.7% and Girls' enrolment increased by 36.5% during this period of six years. Rohtak accounted for 13.2% of enrolment followed by Gurgaon 12.9% and the lowest was in Sirsa 4.0%.

Table No.(2) indicates the enrolment growth for classes I-V during the years 1970-71 and 1976-77 and the percentage of Girls to total enrolment during 1976-77.

15. The percentage of Girls to total enrolment was 26.4 in 1970-71 which increased to 29.6 in 1976-77. Amongst the districts Ambala had the highest percentage of Girls i.e. 36.3% whereas Jind accounted for 11.9. 21.6% of Girls in 1976-77.

16. The total enrolment in all the recognised educational institutions as a percentage of total population increased from 14.6 in 1970-71 to 15.6 in 1976-77. The percentage of enrolment to total population in 1976-77 was the highest in Rohtak 18.8% and lowest in Sirsa district 11.8. Details may be seen in Statement No.(4).

(c) The coefficient of equality or the extent of coverage is defined as:-

$$I = \frac{\text{Percentage of enrolment of Scheduled Castes/Scheduled Tribes to total enrolment}}{\text{Percentage of population of Scheduled Castes/Scheduled Tribes to total population}} \times 100$$

TABLE NO.(2) - PROGRESS OF ENROLMENT DURING 1970-71 AND 1976-77

| D I S T R I C T | E N R O L M E N T | | | Enrolment of the District as % of total Enrolment | Age of Girls to total Enrolment in 1976-77 |
|--|-------------------|----------|-----------|---|--|
| | BOYS | GIRLS | TOTAL | | |
| 1. Ambala | 1,33,109 | 75,956 | 2,09,065 | 11.7 | 36.3 |
| 2. Bhiwani | 1,04,683 | 31,754 | 1,36,437 | 7.6 | 23.3 |
| 3. Curgaon | 1,65,775 | 64,934 | 2,30,709 | 12.9 | 28.1 |
| 4. Bissar | 1,21,611 | 45,231 | 1,66,842 | 9.3 | 27.1 |
| 5. Jind | 92,645 | 25,514 | 1,18,160 | 6.6 | 21.6 |
| 6. Farnal | 1,21,714 | 57,293 | 1,79,007 | 10.0 | 32.0 |
| 7. Furukshehra | 1,00,999 | 44,190 | 1,45,189 | 8.1 | 30.5 |
| 8. Mohindergarh | 1,13,157 | 40,247 | 1,53,404 | 8.6 | 26.2 |
| 9. Rohtak | 1,57,878 | 76,707 | 2,34,585 | 13.2 | 32.7 |
| 10. Sirsa | 48,978 | 22,508 | 71,486 | 4.0 | 31.5 |
| 11. Sonapat | 97,991 | 43,978 | 1,41,969 | 8.0 | 30.9 |
| T O T A L | 12,58,541 | 5,28,312 | 17,86,853 | 100.0 | 29.6 |
| Enrolment in 1976-77 as percentage of Enrolment in 1970-71 | 116.7 | 136.5 | 122 | | |

EXTENT OF COVERAGE OF SCHEDULED CASTES & SCHEDULED TRIBES

17. Of the total enrolment of 17,86,853 in 1976-77 only, 2,14,090 students belonged to Scheduled Castes in Haryana which works out to 12% of the total enrolment. The population of Scheduled Castes is 18.9% of the total population in Haryana. The coefficient of equality (or extent of coverage) comes to 63.5% for the State. Among the districts the coefficient of equality varied from 82.3% in Mehindargarh to 27.4 in Jind district. Details of these figures can be seen from Statement No. (8).

There is no Scheduled Tribe population/enrolment in the State.

(d) TEACHERS

18. There were 44,626 teachers in the State in 1970-71 and this number increased to 55,947 in 1976-77 showing an increase of 25.4% during the period of six years. Among the districts, Gurgaon was having the highest share of teachers (14.0%) followed by Rohtak (13.5%) and the lowest share was in Sirsa (3.5%) during 1976-77. Among the school teachers, the percentage of trained teachers was as high as 99.3 at the State level. Among the districts this percentage varied slightly from 99.7% in Rohtak (highest) to 98.8% in Sirsa (lowest). Details may be seen in Statement No. (6).

(e) EXPENDITURE (PROVISIONAL)

19. The total expenditure excluding expenditure on Directorate and Inspectorate on all recognised institutions in the State was Rs. 18.34 Crores in 1970-71 which increased to Rs. 45.70 Crores in 1976-77 showing an average annual increase of 41.5%. Of the total expenditure in 1976-77, 13.3% (highest) amount was spent in Kurukshetra and 2.5% i.e. (lowest) in Sirsa districts. The average expenditure per institution increased from Rs. 29.40 Thousands in 1970-71 to Rs. 54.93 Thousands in 1976-77. The expenditure per institution in 1976-77 varied from Rs. 134.14 Thousands in Rohtak to Rs. 26.74 Thousands in Sirsa district.

20. The average expenditure per head of population increased from Rs. 18.3 in 1970-71 to Rs. 39.9 in 1976-77. The expenditure per head of population in 1976-77, varied from Rs. 73.1 in Rohtak to Rs. 19.1 in Sirsa. The district-wise details are given in Statement No. (5).

V - PRE-PRIMARY EDUCATION

21. The number of pre-primary schools in the State was 3 in the year 1970-71 and it increased to 7 by the year 1976-77. The total enrolment in pre-primary schools increased from 111 in 1970-71 to 280 in 1976-77.

22. The total enrolment in the pre-primary classes was 111 (Boys 68 and Girls 43) in 1970-71 which increased to 1,527 (827 Boys and 700 Girls) in 1976-77 showing an average exponential growth rate of 54.52. Of the total enrolment 48.5% students were in Gurgaon district (highest) and 2.0% were in Rohtak district (lowest). Of the total number of 1527 students, only 38 (23 Boys and 15 Girls) belonged to scheduled castes which works out to 2.5% of the enrolment. The total number of teachers increased from 5 in 1970-71 to 13 in 1976-77. Details may be seen in Statement No.(9).

EXPENDITURE

The total expenditure on pre-primary schools increased from Rs.21,625 in 1970-71 to Rs.85,150 in 1976-77 showing an average increase of 48.9%. Details may be seen in Statement No.(10).

VI - PRIMARY EDUCATION

(a) INSTITUTIONS AND TEACHERS

23. The number of primary schools in Haryana increased from 4,204 in 1970-71 to 5,145 in 1976-77 showing an increase of 20.0% over the period of 6 years. The highest number of primary schools (87) was in Gurgaon and the lowest number (241) was in Sonapat districts.

24. On the average, in 1970-71 a primary school was serving an area of 10.5 Sq. Kms. Over the period of 6 years this position improved slightly and a primary school was serving an area of 8.6 Sq. Kms. The average area served by a primary school was the minimum in the case of Mohindargarh district (5.2 Sq. Kms.) and maximum in Hissar (15.8 Sq. Kms.).

25. The population served by a primary school in the State registered a decrease from 2,382 in 1970-71 to 2,221 in 1976-77. Among the districts the population served by a primary school in 1976-77 varied from 3553 in Rohtak to 1459 in Mohindargarh district. The district-wise details are given in Statement No.(11).

26. The total number of teachers in primary schools in the State increased from 13,078 in 1970-71 to 17,110 in 1976-77. This shows an average annual increase rate of 5.1%. Women teachers formed 30.7% of the total number of teachers in 1976-77. The highest percentage of teachers was in Gurgaon (16.9%) whereas the lowest percentage was in Sirsa (4.6%).

(b) ENROLMENT

27. The total enrolment in primary schools in Haryana was 5,36,146 in 1970-71 which increased to 6,89,642 in 1976-77. The enrolment in classes I-V also increased from 9,01,844 (6,37,734 Boys and 2,64,110 Girls) in 1970-71 to 11,67,530 (7,91,918 Boys and 3,75,612 Girls) in 1976-77 showing an average exponential growth rate of 4.26%. The enrolment growth rate for Boys was 3.86 and in that of Girls it was 6.12%.

28. The percentage of Girls to total enrolment was 29.3% in 1970-71 which slightly increased to 32.2% in 1976-77. Among the districts it varied from 38.9% in Ambala to 24.3% in Jind. Table indicates the progress of enrolment during the years 1970-71 and 1976-77.

29. The percentage of enrolment in classes I-V to total population in the age-group (6-11) is the enrolment ratio. The enrolment ratio is the index of the facilities created at the primary stage. In Haryana the enrolment ratio was 59.9 in 1970-71 and it increased to 70.4 in 1976-77. In 1976-77 the enrolment ratio for Boys was 90.4 and in respect of Girls it was 48.8 at the State level. The maximum enrolment ratio in respect of Girls in 1976-77 was achieved in the district of Rohtak where it was 60.6 and the minimum was as low as 31.6 in the district of Jind. Amongst various districts, taking Boys and Girls together the enrolment ratio was highest i.e. 81.7 in Mohindargarh and lowest in Sirsa 58.7. The details may be seen in Statement No.(12).

TABLE NO.(3) - PROGRESS OF ENROLMENT IN CLASSES I-V DURING 1970-71 TO 1976-77

| D I S T R I C T | 1 9 7 6 | | 7 7 | | %age of Girls to Total Enrolment |
|-----------------|----------|--------|----------|---|----------------------------------|
| | BOYS | GIRLS | TOTAL | | |
| 1 | 2 | 3 | 4 | 5 | |
| 1. Ambala | 78,120 | 49,779 | 1,27,899 | | 38.9 |
| 2. Bhiwani | 64,097 | 24,288 | 88,385 | | 27.5 |
| 3. Gurgaon | 1,10,800 | 46,487 | 1,57,287 | | 29.6 |
| 4. Hissar | 80,478 | 31,738 | 1,12,216 | | 28.3 |

TABLE NO.(3) - PROGRESS OF ENROLMENT IN CLASSES I-V DURING 1970-71 TO 1976-77

- (Concl.d.) -

| 1 | 2 | 3 | 4 | 5 |
|--|----------|----------|-----------|------|
| 5. Jind | 58,978 | 18,900 | 77,878 | 24.3 |
| 6. Karnal | 77,994 | 40,490 | 1,18,484 | 34.2 |
| 7. Kurukshetra | 64,453 | 32,867 | 97,320 | 33.8 |
| 8. Mohindargarh | 67,838 | 31,309 | 99,147 | 31.6 |
| 9. Rohtak | 94,764 | 52,765 | 1,47,529 | 35.8 |
| 10. Sirsa | 34,604 | 17,166 | 51,770 | 33.1 |
| 11. Sonapat | 59,792 | 29,823 | 89,615 | 33.3 |
| T O T A L | 7,91,918 | 3,75,612 | 11,67,530 | 32.2 |
| Enrolment in 1976-77 as percentage of Enrolment in 1970-71 | 124.2% | 142.2% | 129.5% | |

(c) ENROLMENT OF SCHEDULED CASTES

30. Of the (9,01,844) children enrolled for classes I-V, . . . 1,07,529 belonged to scheduled castes during 1970-71 which formed 11.9% of the total enrolment. Of the total enrolment of 11,67,530 students in classes I-V, 1,62,225 students belonged to scheduled castes in 1976-77 which formed 13.9% of the total enrolment. The population of scheduled castes was 18.9% of the total population, the co-efficient of equality i.e. extent of coverage of scheduled castes at the primary stage was 73.5% in 1976-77. The same may be seen in Statement No.(13).

(d) EXPENDITURE

31. The total expenditure on primary schools increased from 3.13 Crores in 1970-71 to 8.16 Crores in 1976-77 during the period under consideration. This gives an average annual growth rate of 26.8%. The total expenditure on primary schools formed 17% of the total direct expenditure on education in the State in 1970-71 which marginally increased to 17.8% in 1976-77. District-wise details may be seen in Statement No.(14).

32. The average cost incurred per student in primary schools was Rs.58.4 in 1970-71 and it increased to Rs.118.0 in 1976-77 at the State level. Among the districts the cost per student in primary schools varied from Rs.85.0 in Sirsa to Rs.138 in Gurgaon in 1976-77. There is a negative correlation between the cost per student and the teacher pupil ratio. The cost per student is the highest where the teacher pupil ratio is the lowest. At the State level, teacher pupil ratio was 41 in 1970-71 which improved to 40 in 1976-77. Table No.(4) summarises the position.

TABLE NO.(4) - EXPENDITURE ON PRIMARY SCHOOLS - 1976-77

| D I S T R I C T | Expenditure per head of population | Expenditure on Primary school as percentage to total Enrolment | Cost per student in Primary school | Teacher-Pupil Ratio |
|-----------------|------------------------------------|--|------------------------------------|---------------------|
| 1 | 2 | 3 | 4 | 5 |
| 1. Ambala | 8.1 | 22.0 | 128 | 39 |
| 2. Bhiwani | 8.5 | 18.1 | 112 | 40 |
| 3. Gurgaon | 16.8 | 28.2 | 138 | 36 |
| 4. Hissar | 4.4 | 17.2 | 108 | 45 |
| 5. Jind | 4.6 | 18.1 | 104 | 39 |
| 6. Karnal | 10.3 | 22.8 | 120 | 40 |

TABLE NO. (4) - EXPENDITURE ON PRIMARY SCHOOLS - 1976-77
-- (Contd.) --

| | 2 | 3 | 4 | 5 |
|-----------------|-----|------|-----|----|
| 7. Kurukshetra | 4.2 | 8.6 | 87 | 44 |
| 8. Mohindargarh | 7.0 | 26.8 | 120 | 42 |
| 9. Rohtak | 9.5 | 10.2 | 126 | 40 |
| 10. Sirsa | 2.4 | 26.3 | 85 | 45 |
| 11. Sonapat | 8.3 | 22.4 | 132 | 38 |
| T O T A L | 7.1 | 17.8 | 118 | 40 |

MIDDLE SCHOOL EDUCATION

(a) INSTITUTIONS AND TEACHERS

33. Total number of middle schools in Haryana decreased from 760 in 1970-71 to 754 in 1976-77 showing marginal decrease of 0.8% during the period under review. This decrease was due to up-gradation of some middle schools to high/higher secondary schools. The largest number of middle schools (106) was in the district of Hissar. The number of teachers in middle schools however increased from 7,958 in 1970-71 to 8,337 in 1976-77 showing a growth rate of 4.8% during six years. The number of Women teachers formed 31.5% of the total number of teachers in 1976-77. The highest percentage (12.7) of teachers was in Rohtak district whereas the lowest percentage (3.7%) was in Sirsa district.

34. On an average, in 1970-71 a middle school served an area of 58.2 Sq. Km. The position did not show much change in 1976-77 and a middle school was available for every 58.6 Sq. Km.

35. The population served by a Middle School in the State increased from 13,175 in 1970-71 to 15,156 in 1976-77. Among the districts the population served by a Middle School in 1976-77 varied from 21,113 in Gurgaon to 10,194 in Mohindargarh district. Statement No.(15) shows the district-wise details.

(b) ENROLMENT

36. The total enrolment in Middle Schools was 2,45,137 in 1970-71 which increased to 2,72,958 in 1976-77. The enrolment at Middle stage i.e. in classes VI to VIII increased from 3,37,310 (2,63,642 Boy and 73,668 Girls) in 1970-71 to 3,84,789 students (2,90,149 Boys and 94,640 Girls) in 1976-77 showing an exponential growth rate of 2.14 during the period under consideration.

37. The percentage of enrolment in classes VI to VIII to total population in the age-group (11-14) i.e. enrolment ratio is an index of facilities available at the Middle stage of education. In Haryana this percentage was 41.1% in 1970-71 which became 41.4% in 1976-77. In the case of Boys this ratio changed from 61.2% in 1970-71 to 58.3% in 1976-77 in the case of Girls it improved from 19.9% in 1970-71 to 22.3% in 1976-77. Enrolment ratio in 1976-77 in the case of Girls was highest 33.3% in Ambala district lowest (12.0%) in Jind district. The details may be seen in Statement No.(16).

38. The percentage of Girls to total enrolment in 1970-71 was 21.8 in Haryana which increased to 24.6 in 1976-77. Among the districts it varied from 31.8% in Ambala to 16.1% in Bhiwani. Table No.(5) indicates the growth in enrolment during 1970-71 to 1976-77 and the percentage of Girls in enrolment in 1976-77.

TABLE NO.(5) - PROGRESS OF ENROLMENT OF GIRLS DURING 1970-71 TO 1976-77 AT MIDDLE STAGE

| D I S T R I C T | 1 9 7 6 - 7 7 | | T O T A L | %age of Girls Total Enrolment |
|-----------------|---------------|--------|-----------|----------------------------------|
| | BOYS | GIRLS | | |
| 1 | 2 | 3 | 4 | 5 |
| 1. Ambala | 33,457 | 15,615 | 49,072 | 31.8 |
| 2. Bhiwani | 24,500 | 4,695 | 29,195 | 16.1 |
| 3. Gurgaon | 36,090 | 11,569 | 47,659 | 24.3 |
| 4. Hissar | 26,173 | 8,058 | 34,231 | 23.5 |

TABLE NO. (5) - PERCENTAGE OF ENROLMENT OF GIRLS DURING 1970-71 TO 1976-77 AT MIDDLE STAGE
(Household.)

| | 1 | 2 | 3 | 4 | 5 |
|--|---|-----------------|---------------|-----------------|-------------|
| 5. Jird | | 20,071 | 3,974 | 24,045 | 16.5 |
| 6. Karnal | | 27,062 | 10,431 | 37,493 | 27.8 |
| 7. Kurukshetra | | 21,633 | 7,364 | 28,997 | 25.4 |
| 8. Mohindargarh | | 28,674 | 5,775 | 34,449 | 16.8 |
| 9. Rohtak | | 38,231 | 15,094 | 53,325 | 28.3 |
| 10. Sirsa | | 9,734 | 3,621 | 13,355 | 27.1 |
| 11. Sonapat | | 24,524 | 8,444 | 32,968 | 25.6 |
| T O T A L | | 2,90,149 | 94,640 | 3,84,789 | 24.6 |
| Enrolment in 1976-77 as a Percentage of Enrolment in 1970-71 | | 110.1 | 128.5 | 114.1 | |

(i) ENROLMENT OF SCHEDULED CASTES

39. Of the total enrolment of 3,84,789 in classes VI-VIII in 1976-77, 36,551 students belonged to the Scheduled Castes which works out to 9.5% as against 8.8 in 1970-71. The population of Scheduled Castes was 11.9% of the total population. Thus the co-efficient of equality of the Scheduled Castes works out to 50.3 only in 1976-77. Details may be seen in Statement No. (17).

(d) EXPENDITURE

40. The total expenditure on Middle Schools increased from Rs.2.13 Crores in 1970-71 to 4.13 Crores in 1976-77. This gives an average annual increase rate of 15.6%.

41. The per capita expenditure on Middle Schools in Haryana was Rs.2.1 in 1970-71 which increased to Rs.3.6 by the year 1976-77. Amongst various districts in 1976-77 the per capita expenditure was 5.9% high in Sonapat and 2.2% in Sirsa lowest district.

42. The expenditure on Middle Schools in 1970-71 formed 11.6% of the total expenditure on education the State which decreased to 9.0% in 1976-77. Among the district, Sonapat spent 15.8% highest of its total direct educational expenditure on Middle Schools whereas Kurukshetra spent 5.1% lowest of their education expenditure on Middle Schools.

43. The average cost per student in Middle Schools was Rs.86.9 in 1970-71 which increased to Rs.151.00 in 1976-77. Among the districts cost per student was highest in Ambala (173.00) and the lowest in Sirsa Rs.1 in 1976-77. There is not much change in the average Teacher-Pupil Ratio during the period under review. However, among districts the Teacher Pupil Ratio was 38 in Sirsa and 28 in Gurgaon. Details of expenditure may be seen in Statement No.(18).

TABLE NO. (6) - EXPENDITURE ON MIDDLE SCHOOLS - 1976-77

| D I S T R I C T | Expenditure per head of population | Expenditure on Middle School as percentage to total Direct Expenditure | Cost per student in Middle School | Teacher-Pupil Ratio |
|-----------------|------------------------------------|--|-----------------------------------|---------------------|
| 1. Ambala | 3.3 | 8.7 | 173 | 31 |
| 2. Bhiwani | 3.8 | 11.6 | 151 | 33 |
| 3. Gurgaon | 3.1 | 9.4 | 162 | 28 |
| 4. Hissar | 3.7 | 12.0 | 137 | 33 |
| 5. Jind | 3.5 | 13.9 | 160 | 30 |
| 6. Karnal | 2.6 | 7.6 | 144 | 33 |
| 7. Kurukshetra | 3.2 | 5.1 | 151 | 36 |
| 8. Mohindargarh | 5.0 | 14.2 | 149 | 34 |
| 9. Rohtak | 4.0 | 5.4 | 146 | 32 |
| 10. Sirsa | 2.2 | 11.5 | 111 | 38 |
| 11. Sonapat | 5.9 | 15.8 | 160 | 32 |
| T O T A L | 3.6 | 9.0 | 151 | 32 |

HIGH/HIGHER SECONDARY EDUCATION

(a) INSTITUTIONS AND TEACHERS

44. The number of High/Higher Secondary Schools in Haryana increased from 975 to 1,143 during the period under consideration showing an increase of 17.2% during the period under review. Among the districts the largest number of High/Higher Secondary Schools (162) (14.3%) was in Rohtak and the smallest number was in Sirsa 3.5% (40).

45. On an average there was a High/Higher Secondary School for every 45.4 Sq. Km. in 1970-71. By 1976-77 the situation improved and High/Higher Secondary School served an area of 38.7 Sq. Km.

46. The average population served by a High/Higher Secondary School was 10,270 in 1970-71 whereas a High/Higher Secondary School was available for population of 9,998 in 1976-77. The average population served by a High/Higher Secondary School varied from 15,190 in Sirsa district to 7,721 in Rohtak district. The details may be seen in Statement No. (19).

47. The number of High/Higher Secondary School Teachers increased from 19,381 in 1970-71 to 24,843 in 1976-77 showing an average annual increase of 4.7 percent. The number of Women Teachers was 29.5% (7,336) of the total number of Teachers in 1976-77. The highest percentage of Teachers (15.4%) was in Rohtak district and the lowest percentage was in Sirsa district (2.9%).

(b) ENROLMENT

48. The enrolment in High/Higher Secondary Schools was 6,03,396 in 1970-71 which increased to 7,07,541 in 1976-77 showing an increase of 17.6% during the period under review. The enrolment at the Secondary stage i.e. in classes IX-XI which was 14,615 (1,15,172 Boys and 30,443 Girls) in 1970-71, it came down to 1,15,519 (88,186 Boys and 27,333 Girls), which may be due to the fact that after completing the High School stage of education, more students are enrolling themselves for Technical Education instated of joining Higher Secondary stage. Among districts the percentage of enrolment varied from 15,935 (13.8%) in Rohtak to 3,790 (3.3%) in Sirsa district.

49. The enrolment ratio varied from 20.7% in 1970-71 to 13.5% in 1976-77. There was wide disparity in enrolment ratio for Boys (19.4) and Girls (6.9) at the State level during 1976-77. The highest enrolment ratio for Girls (19.5) was observed in Ambala district whereas the lowest was observed in Jind (2.9). In the case of Boys the enrolment ratio was 30.4 in 1970-71 and it became 19.4 in 1976-77 while in the case of Girls it changed from 9.4 in 1970-71 to 6.9 in 1976-77. The details may be seen in Statement No.(20).

The percentage of Girls to total enrolment was 20.9 in 1970-71 which increased to 23.7 in 1976-77. Among the districts it varied from 31.6% in Ambala to 12.5% in Mohindargarh. Table No.(7) shows position of enrolment of Girls at high/higher secondary stage.

(c) ENROLMENT OF SCHEDULED CASTES

50. The scheduled caste enrolment was 11,717 (10,597 Boys and 1,120 Girls) in 1970-71 which became 9,309 (8,722 Boys and 587 Girls) in 1976-77. The percentage of enrolment of scheduled caste to total enrolment during the both the years i.e. 1970-71 and 1976-77 was 8.1% only. The scheduled caste population was 18.9% of the total population. This co-efficient of equality in respect of scheduled caste at high/higher secondary school stages was 42.9%. Details may be seen in Statement No.(21).

(d) EXPENDITURE

51. The total expenditure on high/higher secondary schools in the State increased from Rs.7.20 Crores in 1970-71 to Rs.16.00 Crores in 1976-77 showing an average annual increase of 20.4% during the period under review.

52. The per capita expenditure on high/higher secondary schools in the State was 7.2 in 1970-71 and the same increased to 14.0 in 1976-77. Among the districts, the per capita expenditure varied from Rs.20.1 in Rohtak to Rs.6.7 in Sirsa in 1976-77.

53. The total expenditure on high/higher secondary schools formed 39.2 percent of the total expenditure on education in the State in 1970-71. By 1976-77 this percentage had changed to 35.0. District-wise details may be seen in Statement No.(22).

54. The cost per student in high/higher secondary schools in 1970-71 was Rs.119.3 in 1970-71 which increased to Rs.226.1 in 1976-77. Among the districts the cost per student was the highest in Gurgaon 259.9 and the lowest in Jind 138.2. The teacher pupil ratio was 31 in 1970-71 and it became 28 in 1976-77. Table No.(8) summarises the position.

TABLE NO. (7) - PROGRESS OF ENROLMENT OF GIRLS DURING 1970-71 TO 1976-77 AT HIGH/HIGHER SECONDARY STAGE

| DISTRICT | BOYS | GIRLS | TOTAL | Percentage of Girls to total Enrolment |
|--|--------|--------|----------|---|
| 1. Ambala | 9,659 | 4,460 | 14,119 | 31.6 |
| 2. Bhiwani | 7,571 | 1,212 | 8,783 | 13.8 |
| 3. Gurgaon | 10,912 | 3,788 | 14,700 | 25.8 |
| 4. Hissar | 7,724 | 2,813 | 10,537 | 26.7 |
| 5. Jind | 5,949 | 894 | 6,843 | 13.1 |
| 6. Karnal | 8,290 | 3,165 | 11,455 | 27.6 |
| 7. Kurukshetra | 5,941 | 1,849 | 7,790 | 23.7 |
| 8. Mohindargarh | 9,646 | 1,384 | 10,030 | 12.5 |
| 9. Rohtak | 11,474 | 4,461 | 15,935 | 28.0 |
| 10. Sirsa | 2,770 | 1,020 | 3,790 | 26.9 |
| 11. Sonapat | 8,250 | 2,287 | 10,537 | 21.7 |
| TOTAL | 88,186 | 27,333 | 1,15,519 | 23.7 |
| Enrolment in 1976-77 as a percentage of Enrolment in 1970-71 | 76.6 | 89.8 | 79.3 | |

TABLE NO.(8) - EXPENDITURE ON HIGH/HIGHER SECONDARY SCHOOLS - 1976-77

| D I S T R I C T | Expenditure per head of population | Expenditure on High Cost per student Higher Secondary School as a percentage to total expenditure | Cost per student in High/Higher Secondary School | Teacher-Pupil Ratio |
|-----------------|------------------------------------|---|--|---------------------|
| 1. Ambala | 15.8 | 42.0 | 229.9 | 27 |
| 2. Bhiwani | 15.4 | 46.7 | 229.2 | 28 |
| 3. Gurgaon | 14.3 | 43.3 | 259.9 | 26 |
| 4. Hissar | 9.9 | 31.6 | 220.3 | 28 |
| 5. Jind | 12.0 | 47.7 | 138.2 | 30 |
| 6. Karnal | 14.3 | 42.7 | 210.2 | 29 |
| 7. Kurukshetra | 12.7 | 20.6 | 233.2 | 30 |
| 8. Mohindargarh | 13.8 | 39.5 | 223.6 | 27 |
| 9. Rohtak | 20.1 | 27.5 | 230.1 | 28 |
| 10. Sirsa | 6.7 | 35.3 | 195.4 | 29 |
| 11. Sonapat | 15.2 | 40.7 | 211.0 | 29 |
| T O T A L | 14.0 | 35.7 | 226.1 | 28 |

IX - PROFESSIONAL, VOCATIONAL, SPECIAL & OTHER (SCHOOL) EDUCATION

(a) INSTITUTIONS AND TEACHERS

55. A glance at Statement No.(23) shows the significant development of professional, vocational, special and other (school) education has taken place during the period 1970-71 to 1976-77. The number of schools for vocational, professional, special and other education increased from 147 in 1970-71 to 1,054 in 1976-77. Out of these maximum number of the educational units i.e. 229 were functioning in Hissar whereas 161 were in Karnal and the minimum number i.e. 8 were in Bhiwani district. Total number of teachers increased from 287 in 1970-71 to 383 (307 Men and 76 Women) in 1976-77.

(b) ENROLMENT

56. The total enrolment in these classes increased from 6,684 in 1970-71 to 21,640 in 1976-77. Of these maximum number of students i.e. 5,501 were studying in Jind only. Girls formed 18.5% of the total enrolment. Of the total number of 4,040 Girls, 23.5% were studying in Jind district.

(c) ENROLMENT OF SCHEDULED CASTES

57. The total enrolment of scheduled castes in 1970-71 was 552 (387 Boys and 165 Girls) of which 29.9% were Girls. The total enrolment of scheduled caste during 1976-77 was 1,325 (1,021 Boys and 304 Girls) of which 22.9% were Girls. Out of the total number of scheduled caste Girls in Haryana 33.2% were studying in Mohindargarh district.

(d) EXPENDITURE

58. Total expenditure on professional, vocational, special and other school education was Rs.18.65 Lakhs in 1970-71 which was 17.10 Lakhs during 1976-77. It formed 10.4% of the total expenditure on education in Haryana. Of the total expenditure on Professional, Vocational, special and other school education during 1976-77, 3.94 Lakhs were spent in Jind district and 0.66 Lakhs in each of the Gurgaon, Arba, Rohtak and Sirsa districts.

HIGHER EDUCATION

(a) INSTITUTIONS AND TEACHERS

59. The number of colleges for higher education was 131 in 1970-71 and it increased to 222 in 1976-77. Of the 222 institutions in 1976-77, 3 were universities, 128 were affiliated colleges (degree level), 90 non-affiliated colleges (below degree level) and one board of intermediate education. Out of the 128 affiliated colleges of degree level 99 were Arts & Science colleges, 4 were colleges for Agriculture, 19 were colleges for Education, 2 were colleges for Engineering, 1 for Medicine and 3 for Other education. Of the institutions for higher education, 37 were in Rohtak, 31 in Ambala, 24 each were in Fissar and Gurgaon, 21 in Karnal and between 19 to 6 in remaining districts. Details may be seen in Statement No. (24).

60. Total number of teachers in higher education increased from 3,917 in 1970-71 to 5,261 (4,208 Men and 1,053 Women) in 1976-77 which shows 5.7% annual increase during the period under review. Out of these the maximum number (876) of teachers were working in Rohtak district while minimum number (136) were working in Sirsa district. Women formed 20% of the total number of teachers in 1976-77. The details may be seen in Statement No. (24).

(b) ENROLMENT

61. The enrolment for higher education was 74,230 (58,662 Boys and 15,568 Girls) in 1970-71 which increased to 95,848 (69,831 Boys and 26,017 Girls) in 1976-77 showing average increase of 4.9% per annum. Of the total number of students in 1976-77, 71,087 (52,886 Boys and 18,201 Girls) were studying for general education whereas 24,761 (16,945 Boys and 7,816 Girls) had taken up professional education.

62. Percentage of Girls in total enrolment was 21% in 1970-71 which improved to 27.1% in 1976-77. Of the total number of Girls, 21.3% were studying in Ambala district. Detailed statistics may be seen in Statement No. (25 & 26).

(c) ENROLMENT OF SCHEDULED CASTES

63. Total number of scheduled caste students in higher education was 3,340 (3,112 Boys and 228 Girls) in 1970-71 which increased to 4,642 (4,301 Boys and 341 Girls) in 1976-77. The number of scheduled caste students formed 4.6% of the total enrolment in higher education in Mohindargarh district this percentage was 8.1% whereas in Hissar it was 2.8%. Girls formed 7.3% of the total number of scheduled caste students. Details may be seen in Statement No. (27).

(d) EXPENDITURE

64. Expenditure on higher education was Rs.569.69 Lakhs in 1970-71 and it increased to 1723.32 Lakhs in 1976-77. It formed 37.7% of the total expenditure on education in 1976-77 in Haryana. Of the total expenditure on higher education i.e. 549.25 Lakhs (maximum) were spent in Rohtak district while 30.52 Lakhs were spent in Sirsa district. District-wise expenditure data may be seen in Statement No.(28).

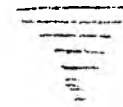
STATEMENT NO. (1) - EDUCATIONAL DATA AT A GLANCE

| Sl. No. | Name of the District | INSTITUTIONS | | | | ENROLMENT | | | |
|---------|----------------------|--------------|------------|---------|------------|-----------|------------|-----------|------------|
| | | 1970-71 | | 1976-77 | | 1970-71 | | 1976-77 | |
| | | Number | %age share | Number | %age share | Number | %age share | Number | %age share |
| 1. | 2. | 3. | 4. | 5. | 6. | 7. | 8. | 9. | 10. |
| 1. | Ambala | 839 | 13.5 | 1,006 | 12.0 | 1,82,739 | 12.5 | 2,09,065 | 11.8 |
| 2. | Bhiwani | - | - | 6,630 | 7.6 | - | - | 1,36,437 | 7.6 |
| 3. | Gurgaon | 1,095 | 17.6 | 1,291 | 15.5 | 2,47,629 | 16.9 | 2,30,709 | 12.0 |
| 4. | Hissar | 1,192 | 19.2 | 861 | 10.3 | 2,47,161 | 16.9 | 1,66,842 | 9.3 |
| 5. | Jind | 343 | 5.5 | 567 | 6.8 | 75,403 | 5.1 | 1,18,160 | 6.6 |
| 6. | Karnal | 1,176 | 18.9 | 810 | 9.8 | 2,67,540 | 18.2 | 1,79,007 | 10.0 |
| 7. | Kurukshetra | - | - | 774 | 9.3 | - | - | 1,45,189 | 8.1 |
| 8. | Mohindergarh | 603 | 9.7 | 801 | 9.6 | 1,13,411 | 7.6 | 1,53,404 | 8.6 |
| 9. | Rohtak | 972 | 15.6 | 6,812 | 8.2 | 3,31,911 | 22.8 | 2,34,585 | 13.2 |
| 10. | Sirsa | - | - | 434 | 5.2 | - | - | 71,486 | 4.0 |
| 11. | Sonepat | - | - | 460 | 5.6 | - | - | 1,41,969 | 7.8 |
| TOTAL | | 6,220 | 100.0 | 48,325 | 100.0 | 14,65,794 | 100.0 | 17,86,853 | 100.0 |

+ Included one Haryana Board of school Education located at Chandigarh.

STATISTICAL STATEMENTS

1970-71 And 1976-77



STATEMENT NO. (1) - EDUCATIONAL DATA AT A GLANCE - (Contd.) -

| Sl. No. | Name of the District | TEACHERS | | | | EXPENDITURES | | | | |
|---------|----------------------|----------|------------|---------|-----------------|--------------|-----------------|---------|------------|--|
| | | 1970-71 | | 1976-77 | | 1970-71 | | 1976-77 | | |
| | | Number | %age share | Number | %age share | Amount | %age share | Amount | %age share | |
| 1. | 2. | 11. | 12. | 13. | 14. | 15. | 16. | 17. | 18. | |
| | | | | | (Rs. in crores) | | (Rs. in crores) | | | |
| 1. | Zambala | 5,555 | 12.4 | 6,583 | 11.8 | 2.66 | 14.5 | 4.72 | 10.3 | |
| 2. | Bhiwani | - | - | 4,185 | 7.5 | - | - | 2.85 | 6.2 | |
| 3. | Gurgaon | 7,686 | 17.2 | 7,826 | 14.2 | 2.60 | 14.2 | 5.15 | 11.3 | |
| 4. | Hissar | 7,845 | 17.5 | 5,281 | 9.4 | 3.38 | 18.4 | 4.03 | 8.8 | |
| 5. | Jind | 2,326 | 5.3 | 3,575 | 6.3 | 0.92 | 5.1 | 2.21 | 4.8 | |
| 6. | Karnal | 7,958 | 17.8 | 5,631 | 10.1 | 3.23 | 17.1 | 2.21 | 8.2 | |
| 7. | Kurukshetra | - | - | 4,265 | 7.6 | - | - | 6.07 | 13.3 | |
| 8. | Mohindergarh | 3,485 | 7.9 | 4,612 | 8.3 | 1.45 | 7.8 | 2.92 | 6.4 | |
| 9. | Rohtak | 9,771 | 21.9 | 7,589 | 13.5 | 4.10 | 22.3 | 9.15 | 20.1 | |
| 10. | Sirsa | - | - | 1,966 | 3.6 | - | - | 1.16 | 2.5 | |
| 11. | Sonepat | - | - | 4,434 | 7.9 | - | - | 2.91 | 6.4 | |
| TOTAL | | 44,626 | 100.0 | 55,947 | 100.0 | 18.34 | 100.0 | 45.70+ | 100.0 @ | |

+ Total figure includes Rs.0.76 crores expenditure of the Board of Intermediate education at Chandigarh.

@ Includes 1.7% expenditure of the Board of Intermediate education at Chandigarh.

STATEMENT NO. (2) - AREA AND POPULATION

| Sl. No. | Name of the District | Area in Sq. Kms. (000) | | Population (in hundreds) | | | | | | Density of Population (per Sq. Km.) | | | |
|---------|----------------------|------------------------|---------|--------------------------|--------|---------|--------|--------|---------|-------------------------------------|--------------|--------------|--------------|
| | | 1970-71 | 1976-77 | 1971 | | | 1977 | | | 1970-71 Rank | 1976-77 Rank | 1970-71 Rank | 1976-77 Rank |
| | | | | Men | Women | Total | Men | Women | Total | | | | |
| 1. | 2. | 3. | 4. | 5. | 6. | 7. | 8. | 9. | 10. | 11. | 12. | 13. | 14. |
| 1. | Ambala | 3,833 | 3,833 | 5,893 | 5,065 | 10,958 | 6,675 | 5,832 | 12,507 | 286 | 2 | 335 | 3 |
| 2. | Bhiwani | - | 5,090 | - | - | - | 4,576 | 4,100 | 8,676 | - | - | 119 | 10 |
| 3. | Gurgaon | 6,146 | 4,889 | 9,156 | 7,877 | 17,033 | 8,399 | 7,225 | 15,624 | 277 | 3 | 177 | 9 |
| 4. | Hissar | 13,982 | 6,331 | 11,405 | 9,875 | 21,280 | 6,844 | 5,995 | 12,839 | 151 | 7 | 247 | 7 |
| 5. | Jind | 2,691 | 3,311 | 3,433 | 2,948 | 6,381 | 4,696 | 4,095 | 8,791 | 237 | 5 | 266 | 5 |
| 6. | Karnal | 8,068 | 3,725 | 10,661 | 9,105 | 19,766 | 6,021 | 5,234 | 11,255 | 245 | 4 | 224 | 8 |
| 7. | Kurukshetra | - | 3,738 | - | - | - | 5,260 | 4,565 | 9,825 | - | - | 335 | - |
| 8. | Mohindergarh | 3,459 | 2,983 | 3,631 | 3,269 | 6,900 | 4,327 | 4,032 | 8,359 | 199 | 6 | 377 | 1 |
| 9. | Rohtak | 6,043 | 3,843 | 9,467 | 8,346 | 17,813 | 6,556 | 5,952 | 12,508 | 295 | 1 | 256 | 6 |
| 10. | Sirsa | - | 4,279 | - | - | - | 3,233 | 2,843 | 6,076 | - | - | 292 | 4 |
| 11. | Sonenat | - | 2,200 | - | - | - | 4,162 | 3,660 | 7,822 | - | - | 355 | 2 |
| Total | | 44,222 | 44,222 | 53,646 | 46,465 | 100,131 | 60,749 | 53,533 | 114,282 | 226 | - | 258 | - |

As on 1st of the March of the year concerned.

STATEMENT NO.(3) - POPULATION IN THE AGE-GROUPS (6-11), (11-14) & (14-17) (IN HUNDREDS)

| Sl. No. | Name of the District | Age-Group 6-11 (in 00's) | | | | | |
|---------|----------------------|--------------------------|-------|--------|-------|-------|--------|
| | | 1971 | | | 1977 | | |
| | | Boys | Girls | Total | Boys | Girls | Total |
| 1. | 2. | 3. | 4. | 5. | 6. | 7. | 8. |
| 1. | Lambala | 886 | 761 | 1,647 | 962 | 853 | 1,815 |
| 2. | Bhiwari | - | - | - | 660 | 599 | 1,259 |
| 3. | Gurgaon | 1,376 | 1,183 | 2,259 | 1,212 | 1,056 | 2,268 |
| 4. | Hissar | 1,714 | 1,403 | 3,197 | 987 | 877 | 1,864 |
| 5. | Jind | 516 | 443 | 959 | 677 | 599 | 1,276 |
| 6. | Karnal | 1,603 | 1,367 | 2,970 | 869 | 765 | 1,634 |
| 7. | Kurukshetra | - | - | - | 759 | 667 | 1,426 |
| 8. | Mohindergarh | 546 | 491 | 1,037 | 623 | 590 | 1,213 |
| 9. | Rohtak | 1,423 | 1,253 | 2,676 | 946 | 870 | 1,816 |
| 10. | Sirsa | - | - | - | 466 | 416 | 882 |
| 11. | Sonepat | - | - | - | 600 | 535 | 1,135 |
| TOTAL | | 8,064 | 6,981 | 15,045 | 8,761 | 7,827 | 16,588 |

STATEMENT NO.(3) - POPULATION IN THE AGE-GROUP (6-11), (11-14) & (14-17) (IN HUNDREDS)
 -- (Contd.) --

| Sl. No. | Name of the District | Age-Group (11-14) (in 00's) | | | Age-Group (14-17) (in 00's) | | |
|---------|----------------------|-----------------------------|--------------|--------------|-----------------------------|--------------|--------------|
| | | 1971 | | | 1977 | | |
| 1. | 2. | Boys 9. | Girls 10. | Total 11. | Boys 12. | Girls 13. | Total 14. |
| 1. | Ambala | 473 | 402 | 875 | 547 | 469 | 1,016 |
| 2. | Bhiwani | - | - | - | 375 | 330 | 705 |
| 3. | Gurgaon | 735 | 625 | 1,360 | 688 | 582 | 1,270 |
| 4. | Hissar | 915 | 784 | 1,699 | 561 | 482 | 1,043 |
| 5. | Jind | 275 | 234 | 509 | 384 | 330 | 714 |
| 6. | Karnal | 856 | 723 | 1,579 | 494 | 421 | 915 |
| 7. | Kurukshetra | - | - | - | 432 | 367 | 799 |
| 8. | Mohindergarh | 292 | 259 | 551 | 355 | 324 | 679 |
| 9. | Rohtak | 760 | 662 | 1,422 | 538 | 479 | 1,017 |
| 10. | Sirsa | - | - | - | 265 | 229 | 494 |
| 11. | Sonepat | - | - | - | 341 | 295 | 636 |
| Total | | 4,306 | 3,689 | 7,995 | 4,980 | 4,308 | 9,288 |

STATEMENT NO. (3) - POPULATION IN THE AGE-GROUP (6-11), (11-14) & (14-17) (IN HUNDREDS)
(Contd.) -

| Sl. No. | Name of the District | Age-Group (14-17) (in 00's) | | | | | |
|---------|----------------------|-----------------------------|--------------|--------------|-------------|--------------|--------------|
| | | 1971 | | | 1977 | | |
| 1. | 2. | Boys 15. | Girls 16. | Total 17. | Boys 18. | Girls 19. | Total 20. |
| 1. | Ambala | 415 | 354 | 769 | 508 | 432 | 940 |
| 2. | Bhiwani | - | - | - | 348 | 304 | 652 |
| 3. | Gurgaon | 645 | 550 | 1,195 | 639 | 535 | 1,174 |
| 4. | Hissar | 803 | 690 | 1,493 | 521 | 444 | 965 |
| 5. | Jind | 242 | 206 | 448 | 358 | 303 | 661 |
| 6. | Karnal | 752 | 636 | 1,388 | 459 | 387 | 846 |
| 7. | Kurukshetra | - | - | - | 400 | 338 | 738 |
| 8. | Mohindergarh | 256 | 228 | 484 | 330 | 298 | 628 |
| 9. | Rohtak | 667 | 583 | 1,250 | 498 | 441 | 939 |
| 10. | Sirsa | - | - | - | 247 | 210 | 457 |
| 11. | Sonepat | - | - | - | 317 | 271 | 588 |
| Total | | 8,780 | 3,247 | 7,027 | 4,625 | 3,963 | 8,588 |

STATEMENT NO. (4) - GENERAL SUMMARY OF EDUCATIONAL INSTITUTIONS, PUPILS AND TEACHERS

| Sl. No. | Name of the District | TOTAL NUMBER OF INSTITUTIONS | | TOTAL ENROLMENT | | | | | |
|---------|----------------------|------------------------------|---------|-----------------|----------|-----------|-----------|----------|-----------|
| | | | | 1970-71 | | | 1976-77 | | |
| | | 1970-71 | 1976-77 | Boys | Girls | Total | Boys | Girls | Total |
| 1. | 2. | 3. | 4. | 5. | 6. | 7. | 8. | 9. | 10. |
| 1. | Ambala | 839 | 1,006 | 1,21,126 | 61,613 | 1,82,739 | 1,33,109 | 75,956 | 2,09,065 |
| 2. | Bhiwani | - | 630 | - | - | - | 1,04,683 | 31,754 | 1,36,437 |
| 3. | Gurgaon | 1,095 | 1,291 | 1,88,235 | 59,394 | 2,47,629 | 1,65,775 | 64,934 | 2,30,709 |
| 4. | Hissar | 1,192 | 861 | 1,86,504 | 60,657 | 2,47,161 | 1,21,611 | 45,231 | 1,66,842 |
| 5. | Jind | 343 | 567 | 59,247 | 16,156 | 75,403 | 92,646 | 25,514 | 1,18,160 |
| 6. | Karnal | 1,176 | 810 | 1,90,195 | 77,345 | 2,67,540 | 1,21,714 | 57,293 | 1,79,007 |
| 7. | Kurukshetra | - | 774 | - | - | - | 1,00,999 | 44,190 | 1,45,189 |
| 8. | Mohindergarh | 603 | 801 | 92,060 | 21,351 | 1,13,411 | 1,13,157 | 40,247 | 1,53,404 |
| 9. | Rohtak | 972 | 682 | 2,41,438 | 90,473 | 3,31,911 | 1,57,878 | 76,707 | 2,34,585 |
| 10. | Sirsa | - | 434 | - | - | - | 48,978 | 22,508 | 71,486 |
| 11. | Sonepat | - | 468 | - | - | - | 97,991 | 43,978 | 1,41,969 |
| Total | | 6,220 | + 8,325 | 10,78,805 | 3,86,989 | 14,65,794 | 12,58,541 | 5,28,312 | 17,86,853 |

+ Includes Haryana Board of School Education, Chandigarh.

STATEMENT NO.(4) - GENERAL SUMMARY OF EDUCATIONAL, PUPILS AND TEACHERS (Contd.)

| Sl. No. | Name of the District | NUMBER OF | | | | PERCENTAGE OF | | | | T E A C H E R S | |
|---------|----------------------|----------------|------|----------------|------|------------------------|------|---------|-----|-----------------|---------|
| | | PERCENTAGE OF | | PERCENTAGE OF | | ENROLMENT TO TOTAL PO- | | | | 1970-71 | 1976-77 |
| | | GIRLS TO TOTAL | | GIRLS TO TOTAL | | POPULATION | | | | | |
| | | ENROLMENT | | ENROLMENT | | 1970-71 | | 1976-77 | | | |
| 1970-71 | Rank | 1976-77 | Rank | %age | Rank | %age | Rank | 19. | 20. | | |
| 1. | 2. | 11. | 12. | 13. | 14. | 15. | 16. | 17. | 18. | 19. | 20. |
| 1. | Ambala | 33.7 | 1 | 36.3 | 1 | 16.7 | 2 | 16.7 | 4 | 5,555 | 6,503 |
| 2. | Bhiwani | - | - | 23.3 | 10 | - | - | 15.7 | 6 | - | 4,165 |
| 3. | Gurgaon | 24.0 | 5 | 28.1 | 7 | 14.5 | 4 | 14.7 | 8 | 7,686 | 7,826 |
| 4. | Hissar | 24.5 | 4 | 27.1 | 8 | 11.6 | 7 | 13.0 | 10 | 7,845 | 5,281 |
| 5. | Jind | 21.4 | 6 | 21.8 | 1 | 11.8 | 6 | 13.4 | 9 | 2,326 | 3,575 |
| 6. | Karnal | 28.9 | 2 | 32.0 | 3 | 13.5 | 5 | 15.9 | 5 | 7,958 | 5,631 |
| 7. | Kurukshetra | - | - | 30.5 | 6 | - | - | 14.8 | 7 | - | 4,265 |
| 8. | Mohindergarh | 18.8 | 7 | 26.2 | 9 | 16.4 | 3 | 18.4 | 2 | 3,485 | 4,612 |
| 9. | Rohtak | 27.2 | 3 | 32.7 | 2 | 18.6 | 1 | 18.8 | 1 | 9,761 | 7,589 |
| 10. | Sirsa | - | - | 31.5 | 4 | - | - | 11.8 | 11 | - | 1,966 |
| 11. | Sonepat | - | - | 30.9 | 5 | - | - | 18.1 | 3 | - | 4,434 |
| Total | | 26.4 | - | 29.6 | - | 14.6 | - | 15.6 | - | 44,626 | 55,947 |

STATEMENT NO. (5) - STATISTICS OF EXPENDITURE ON EDUCATIONAL INSTITUTIONS

| Sl. No. | Name of the District | Total Expenditure | | | | Expenditure per Institution (Rupees) | | Expenditure per head of Population (in Rupees) | |
|---------|----------------------|-------------------|------------|----------------|------------|--------------------------------------|---------|--|---------|
| | | 1970-71 | | 1976-77 | | 1970-71 | 1976-77 | 1970-71 | 1976-77 |
| 1. | 2. | Amount (in Lakhs) | %age Share | Amount (Lakhs) | %age Share | 7. | 8. | 9. | 10. |
| | | | | 471.90 | | | | | |
| 1. | Ambala | 266.33 | 14.5 | . | 10.3 | 32,041 | 46,908 | 24.3 | 37.7 |
| 2. | Bhiwani | - | - | 284.82 | 6.2 | - | 45,209 | - | 32.8 |
| 3. | Gurgaon | 260.05 | 14.2 | 515.14 | 11.3 | 23,783 | 39,902 | 15.3 | 32.9 |
| 4. | Hissar | 338.68 | 18.5 | 402.91 | 8.8 | 28,641 | 46,796 | 16.0 | 31.3 |
| 5. | Jind | 92.67 | 5.0 | 220.94 | 4.8 | 26,068 | 31,965 | 14.5 | 25.1 |
| 6. | Karnal | 323.58 | 17.6 | 376.44 | 8.2 | 27,192 | 45,474 | 16.4 | 33.5 |
| 7. | Kurukshetra | - | - | 607.20 | 13.3 | - | 7,449 | - | 61.8 |
| 8. | Mohindergarh | 141.89 | 7.9 | 292.38 | 6.4 | 23,329 | 36,502 | 21.0 | 35.0 |
| 9. | Rohtak | 408.14 | 22.3 | 914.83 | 20.1 | 21,998 | 114,139 | 22.9 | 73.1 |
| 10. | Sirsa | - | - | 116.04 | 2.5 | - | 16,736 | - | 19.1 |
| 11. | Sonepat | - | - | 291.12 | 6.4 | - | 52,206 | - | 37.2 |
| | Total | 1834.34 | 100.0 | 4570.31 | 100.0 | 29,396 | 54,898 | 18.3 | 39.9 |

+ Includes Rs. 70.56 lakhs expenditure on Board of Intermediate Education located at Chandigarh.

STATEMENT NO. (6) - STATISTICS OF TRAINED TEACHERS IN SCHOOL EDUCATION IN 1976-77

| Sl. No. | Name of the District | TOTAL NUMBER OF TEACHERS | | | TRAINED TEACHERS | | | UNTRAINED TEACHERS | | | %AGE OF TRAINED TEACHERS TO TOTAL NUMBER OF TEACHERS | | |
|---------|----------------------|--------------------------|--------|--------|------------------|--------|--------|--------------------|-------|-------|--|-------|-------|
| | | Men | Women | Total | Men | Women | Total | Men | Women | Total | Men | Women | Total |
| 1. | 2. | 3. | 4. | 5. | 6. | 7. | 8. | 9. | 10. | 11. | 12. | 13. | 14. |
| 1. | Zambala | 2,982 | 2,762 | 5,744 | 2,942 | 2,751 | 5,693 | 40 | 11 | 51 | 98.7 | 99.6 | 99.1 |
| 2. | Bhiwani | 3,153 | 730 | 3,883 | 3,131 | 725 | 3,856 | 22 | 5 | 27 | 99.3 | 99.3 | 99.3 |
| 3. | Gurgaon | 4,904 | 2,321 | 7,225 | 4,865 | 2,297 | 7,162 | 39 | 24 | 63 | 99.2 | 99.0 | 99.1 |
| 4. | Hissar | 3,218 | 1,317 | 4,535 | 3,197 | 1,308 | 4,505 | 21 | 9 | 30 | 99.3 | 99.3 | 99.3 |
| 5. | Jind | 2,828 | 490 | 3,318 | 2,820 | 480 | 3,300 | 8 | 10 | 18 | 99.7 | 98.7 | 99.5 |
| 6. | Karnal | 3,179 | 1,828 | 5,007 | 3,144 | 1,810 | 4,954 | 35 | 18 | 53 | 95.9 | 99.0 | 98.9 |
| 7. | Kurukshetra | 2,643 | 1,032 | 3,675 | 2,633 | 1,023 | 3,656 | 10 | 9 | 19 | 99.6 | 99.1 | 99.5 |
| 8. | Mohindergarh | 3,677 | 583 | 4,260 | 3,645 | 577 | 4,222 | 32 | 6 | 38 | 99.1 | 99.1 | 99.1 |
| 9. | Rohtak | 4,300 | 2,413 | 6,713 | 4,282 | 2,409 | 6,691 | 18 | 4 | 22 | 99.6 | 99.8 | 99.7 |
| 10. | Sirsa | 1,390 | 440 | 1,830 | 1,373 | 435 | 1,808 | 17 | 5 | 22 | 98.8 | 98.9 | 98.8 |
| 11. | Sonepat | 2,813 | 1,300 | 4,113 | 2,803 | 1,296 | 4,099 | 10 | 4 | 14 | 99.6 | 99.7 | 99.7 |
| TOTAL | | 35,087 | 15,216 | 50,303 | 34,835 | 15,111 | 49,946 | 252 | 105 | 357 | 99.3 | 99.3 | 99.3 |

STATEMENT NO. (7) - STATISTICS OF EFFECTIVE LITERACY RATES - 1970-71
(00's)

| S.L. No. | Name of the District | Total Population (Excluding 0-4 Age-Group) | | | Total Literates | | | Literacy Rates (Excluding 0-4 Age-Group) | | |
|----------|----------------------|--|---------|---------|-----------------|--------|---------|--|-------|-------|
| | | Men | Women | Total | Men | Women | Total | Men | Women | Total |
| 1. | 2. | 3. | 4. | 5. | 6. | 7. | 8. | 9. | 10. | 11. |
| 1. | Ambala | 5,08,5 | 4,33,2 | 9,41,7 | 2,55,4 | 1,32,5 | 3,87,9 | 50.2 | 30.6 | 41.2 |
| 2. | Bhiwani | - | - | - | - | - | - | - | - | - |
| 3. | Gurgaon | 7,71,9 | 6,56,7 | 14,28,6 | 3,64,2 | 1,11,8 | 4,76,0 | 47.2 | 17.0 | 33.3 |
| 4. | Hissar | 9,59,6 | 8,19,7 | 17,79,3 | 3,71,8 | 1,13,0 | 4,84,8 | 38.7 | 13.8 | 27.2 |
| 5. | Jind | 2,85,6 | 2,42,6 | 5,28,2 | 95,3 | 21,6 | 1,16,9 | 33.4 | 8.9 | 22.1 |
| 6. | Karnal | 9,08,5 | 7,63,2 | 16,71,7 | 3,52,8 | 1,34,1 | 4,86,9 | 38.8 | 17.6 | 29.1 |
| 7. | Kurukshetra | - | - | - | - | - | - | - | - | - |
| 8. | Mohindergarh | 3,06,7 | 2,74,4 | 5,81,1 | 1,48,2 | 30,0 | 1,78,2 | 48.3 | 10.9 | 30.7 |
| 9. | Rohtak | 8,02,6 | 7,02,3 | 15,04,9 | 4,05,0 | 1,39,7 | 5,44,7 | 50.5 | 19.9 | 36.2 |
| 10. | Sirsa | - | - | - | - | - | - | - | - | - |
| 11. | Sonepat | - | - | - | - | - | - | - | - | - |
| Total | | 45,43,4 | 38,92,1 | 84,35,5 | 19,92,7 | 6,82,7 | 26,75,4 | 43.9 | 17.5 | 31.7 |

STATEMENT NO. (8) - EXTENT OF COVERAGE (CO-EFFICIENT OF EQUALITY) OF SCHEDULED CASTE POPULATION,

1976-77 (C)

| Sl. No. | Name of the District | Enrolment of Scheduled Caste | | | Percentage of Scheduled Caste Enrolment to Total Enrolment | | | % of S.C. Population to Total Population | Extent of Coverage (Co-efficient of Equality) |
|---------|----------------------|------------------------------|--------|----------|--|-------|-------|--|---|
| | | Boys | Girls | Total | Boys | Girls | Total | | |
| 1. | 2. | 3. | 4. | 5. | 6. | 7. | 8. | 9. | 10. |
| 1. | Ambala | 25,543 | 8,091 | 33,634 | 19.2 | 10.7 | 16.1 | 22.4 | 71.9 |
| 2. | Bhiwani | 13,086 | 2,333 | 15,419 | 12.5 | 7.3 | 11.3 | 17.8 | 63.5 |
| 3. | Gurgaon | 22,650 | 4,825 | 27,475 | 13.7 | 7.4 | 11.9 | 15.5 | 76.8 |
| 4. | Hissar | 15,709 | 2,698 | 18,407 | 12.9 | 5.9 | 11.0 | 21.6 | 50.9 |
| 5. | Jind | 10,961 | 1,434 | 12,395 | 11.8 | 5.6 | 10.5 | 19.5 | 27.4 |
| 6. | Karnal | 15,851 | 3,674 | 19,525 | 13.0 | 6.4 | 10.9 | 17.5 | 61.9 |
| 7. | Kurukshetra | 11,347 | 2,454 | 13,801 | 11.2 | 5.6 | 9.5 | 19.9 | 47.7 |
| 8. | Mohindergarh | 16,581 | 4,139 | 20,720 | 14.6 | 10.3 | 13.5 | 16.4 | 82.3 |
| 9. | Rohatak | 21,218 | 5,956 | 27,174 | 13.4 | 7.8 | 11.6 | 17.7 | 65.5 |
| 10. | Sirsa | 6,037 | 1,489 | 7,526 | 12.3 | 6.6 | 10.5 | 24.3 | 43.2 |
| 11. | Sonepat | 14,389 | 3,625 | 18,014 | 14.7 | 8.3 | 12.7 | 17.0 | 74.7 |
| Total | | 1,73,372 | 40,718 | 2,14,090 | 13.8 | 7.7 | 12.0 | 18.9 | 63.5 |

@ There is no scheduled Tribe population in the State

STATEMENT NO. 9

STATISTICS OF PRE-PRIMARY EDUCATION

| Sl. No. | Name of the District | Number of Pre-Primary Schools | | Enrolment in Pre-Primary Schools | | Enrolment in Pre-Primary and Nursery Classes | | | | | |
|---------|----------------------|-------------------------------|---------|----------------------------------|---------|--|-------|-------|---------|-------|-------|
| | | 1970-71 | 1976-77 | 1970-71 | 1976-77 | 1970-71 | | | 1976-77 | | |
| | | | | | | Boys | Girls | Total | Boys | Girls | Total |
| 1. | 2. | 3. | 4. | 5. | 6. | 7. | 8. | 9. | 10. | 11. | 12. |
| 1. | Ambala | - | 1 | - | 18 | - | - | 37 | 37 | 22 | 59 |
| 2. | Bhiwani | - | - | - | - | - | - | - | - | - | - |
| 3. | Gurgaon | - | 1 | - | 40 | - | - | - | 419 | 322 | 741 |
| 4. | Hissar | - | 1 | - | 102 | - | - | - | 142 | 111 | 253 |
| 5. | Jind | - | 1 | - | 22 | - | - | - | 23 | 17 | 40 |
| 6. | Karnal | 1 | 1 | 50 | 40 | 32 | 18 | 50 | 39 | 41 | 80 |
| 7. | Kurukshetra | - | - | - | - | - | - | - | 102 | 115 | 217 |
| 8. | Mohindergarh | 2 | 1 | 61 | 27 | 36 | 25 | 61 | 15 | 12 | 27 |
| 9. | Rohtak | - | 1 | - | 23 | - | - | - | 15 | 15 | 30 |
| 10. | Sirsa | - | - | - | - | - | - | - | - | - | - |
| 11. | Sonepat | - | - | - | - | - | - | - | 35 | 45 | 80 |
| TOTAL | | 3 | 7 | 111 | 280 | 68 | 43 | 111 | 827 | 700 | 1,527 |

STATEMENT NO. 9

STATISTICS OF PRE-PRIMARY EDUCATION (Contd.)

| Sl. No. | Name of the District | Teachers in Pre-Primary Schools | | | | Expenditure in Pre-Primary Schools | | S.C. students in Pre-Primary Schools | | | | | | | |
|---------|----------------------|---------------------------------|-----|---------|-------|------------------------------------|---------|--------------------------------------|-------|---------|-------|-------|------|-------|-------|
| | | 1970-71 | | 1976-77 | | 1970-71 | | 1970-71 | | 1976-77 | | Total | Boys | Girls | Total |
| | | Total | Men | Women | Total | 1970-71 | 1976-77 | Boys | Girls | Boys | Girls | | | | |
| 1. | 2. | 13. | 14. | 15. | 16. | 17. | 18. | 19. | 20. | 21. | 22. | 23. | 24. | | |
| 1. | Ambala | - | - | 1 | 1 | - | 7,095 | - | - | - | 4 | 5 | 9 | | |
| 2. | Bhiwani | - | - | - | - | - | - | - | - | - | - | - | - | | |
| 3. | Gurgaon | - | - | 2 | 2 | - | 14,190 | - | - | - | 5 | 2 | 7 | | |
| 4. | Hissar | - | 1 | 2 | 3 | - | 21,285 | - | - | - | - | - | - | | |
| 5. | Jind | - | - | 1 | 1 | - | 7,007 | - | - | - | 1 | 1 | 2 | | |
| 6. | Karnal | 2 | - | 2 | 2 | 10,896 | 14,014 | NIL | - | - | 3 | 1 | 4 | | |
| 7. | Kurukshetra | - | - | - | - | - | - | - | - | - | 1 | - | 1 | | |
| 8. | Mohindergarh | 3 | - | 2 | 2 | 10,733 | 13,990 | - | - | - | - | - | - | | |
| 9. | Rohtak | - | - | 2 | 2 | - | 7,569 | - | - | - | 4 | 2 | 6 | | |
| 10. | Sirsa | - | - | - | - | - | - | - | - | - | - | - | - | | |
| 11. | Sonepat | - | - | - | - | - | - | - | - | - | - | - | - | | |
| TOTAL | | 5 | 1 | 12 | 13 | 21,629 | 85,150 | | | | 23 | 15 | 38 | | |

STATEMENT NO. 10

STATISTICS OF PRIMARY SCHOOLS AND TEACHERS

| Sl. No. | Name of the District | No. of Primary Schools | | No. of Teachers in Primary Schools | | | |
|---------|----------------------|------------------------|---------|------------------------------------|--------|---------|--------|
| | | 1970-71 | 1976-77 | 1970-71 | | 1976-77 | |
| 1. | 2. | 3. | 4. | Total | Men | Women | Total |
| | | | | 5. | 6. | 7. | 8. |
| 1. | Ambala | 594 | 691 | 1,623 | 1,115 | 952 | 2,067 |
| 2. | Bhiwani | - | 424 | - | 913 | 241 | 1,154 |
| 3. | Gurgaon | 790 | 879 | 2,675 | 2,082 | 813 | 2,895 |
| 4. | Hissar | 801 | 400 | 2,481 | 976 | 441 | 1,417 |
| 5. | Jind | 213 | 287 | 580 | 804 | 175 | 979 |
| 6. | Karnal | 816 | 462 | 2,018 | 1,150 | 621 | 1,771 |
| 7. | Kurukshetra | - | 546 | - | 965 | 393 | 1,358 |
| 8. | Mohindergarh | 414 | 573 | 1,070 | 1,319 | 234 | 1,553 |
| 9. | Rohtak | 576 | 352 | 2,631 | 1,108 | 715 | 1,823 |
| 10. | Sirsa | - | 290 | - | 573 | 219 | 792 |
| 11. | Sonepat | - | 241 | - | 859 | 442 | 1,301 |
| TOTAL | | 4,204 | 5,145 | 13,078 | 11,864 | 5,246 | 17,110 |

STATEMENT NO. 10

STATISTICS OF PRIMARY SCHOOLS AND TEACHERS (Contd.)

| Sl. No. | Name of the District | Area Served by a Primary School | | | | Population Served by a Primary School | | | |
|---------|----------------------|---------------------------------|------|------------|------|---------------------------------------|------|---------|------|
| | | 1970-71 | | 1976-77 | | 1970-71 | | 1976-77 | |
| | | In Sq.Kms. | Rank | In Sq.Kms. | Rank | Rank | Rank | Rank | Rank |
| 1. | 2. | 9. | 10. | 11. | 12. | 13. | 14. | 15. | 16. |
| 1. | Ambala | 6.5 | 1 | 5.5 | 2 | 1,845 | 6 | 1,809 | 8 |
| 2. | Bhiwani | - | - | 12.0 | 10 | - | - | 2,046 | 7 |
| 3. | Gurgaon | 7.8 | 2 | 5.6 | 3 | 2,156 | 5 | 1,777 | 10 |
| 4. | Hissar | 17.5 | 7 | 15.8 | 11 | 2,657 | 3 | 3,209 | 3 |
| 5. | Jind | 12.6 | 6 | 11.5 | 9 | 2,996 | 2 | 3,063 | 4 |
| 6. | Karnal | 9.9 | 4 | 8.1 | 6 | 2,422 | 4 | 2,436 | 5 |
| 7. | Kurukshetra | - | - | 6.8 | 4 | - | - | 1,799 | 9 |
| 8. | Mohindergarh | 8.4 | 3 | 5.2 | 1 | 1,667 | 7 | 1,459 | 11 |
| 9. | Rohtak | 10.5 | 5 | 10.9 | 8 | 3,092 | 1 | 3,553 | 1 |
| 10. | Sirsa | - | - | 7.5 | 5 | - | - | 2,095 | 6 |
| 11. | Sonepat | - | - | 9.1 | 7 | - | - | 3,246 | 2 |
| TOTAL | | 10.5 | - | 8.6 | - | 2,382 | - | 2,221 | - |

STATEMENT NO. 1E.

STATISTICS OF ENROLMENT IN CLASSES I-V.

| Sl. No. | Name of the District | Enrolment in Classes I-V. | | | %age of Enrolment in Classes I-V to total Population in the age group (6-11) | | | Ranks | | |
|---------|----------------------|---------------------------|----------|----------|--|-------|-------|---------|-------|-------|
| | | 1970-71 | | | 1970-71 | | | 1970-71 | | |
| | | Boys | Girls | Total | Boys | Girls | Total | Boys | Girls | Total |
| 1. | 2. | 3. | 4. | 5. | 6. | 7. | 8. | 9. | 10. | 11. |
| 1. | Ambala | 67,006 | 38,824 | 1,05,830 | 75.6 | 51.0 | 64.2 | 4 | 1 | 3 |
| 2. | Bhiwani | - | - | - | - | - | - | - | - | - |
| 3. | Gurgaon | 1,13,363 | 40,812 | 1,54,175 | 82.3 | 34.5 | 60.2 | 3 | 4 | 4 |
| 4. | Hissar | 1,17,965 | 43,865 | 1,61,830 | 68.8 | 29.6 | 50.6 | 7 | 6 | 6 |
| 5. | Jind | 36,351 | 11,837 | 48,188 | 70.4 | 26.7 | 50.2 | 6 | 7 | 7 |
| 6. | Karnal | 1,13,485 | 53,036 | 1,66,521 | 70.8 | 38.8 | 56.0 | 5 | 3 | 5 |
| 7. | Kurukshetra | - | - | - | - | - | - | - | - | - |
| 8. | Mohindergarh | 53,769 | 16,095 | 69,864 | 60.4 | 32.8 | 67.4 | 1 | 5 | 2 |
| 9. | Rohtak | 1,35,795 | 59,641 | 1,95,436 | 95.4 | 47.6 | 73.0 | 2 | 2 | 1 |
| 10. | Sirsa | - | - | - | - | - | - | - | - | - |
| 11. | Sonepat | - | - | - | - | - | - | - | - | - |
| TOTAL | | 6,37,734 | 2,64,110 | 9,01,844 | 79.0 | 37.8 | 59.9 | - | - | - |

STATEMENT NO. 11.

STATISTICS OF ENROLMENT IN CLASSES I-V. (Contd.)

| Sl. No. | Name of the District | Enrolment in Classes I-V. | | | %age of Enrolment in Classes I-V to total Population in the age group (6-11) | | | Ranks | | |
|---------|----------------------|---------------------------|--------------|-----------|--|-------------|-------|--------------|-----|-------------|
| | | 1976-77 | | Total | 1975-77 | | Total | 1976-77 | | |
| 1. | 2. | Boys 12. | Girls 13. | | 14. | Boys 15. | | Girls 16. | 17. | Boys 18. |
| 1. | Ambala | 78,120 | 49,779 | 1,27,899 | 81.2 | 58.4 | 70.5 | 10 | 2 | 5 |
| 2. | Bhiwani | 64,097 | 24,288 | 88,385 | 97.1 | 40.5 | 70.2 | 4 | 9 | 6 |
| 3. | Gurgaon | 1,10,800 | 46,487 | 1,57,287 | 91.4 | 44.0 | 69.3 | 5 | 7 | 7 |
| 4. | Hissar | 80,478 | 31,738 | 1,12,216 | 81.5 | 36.2 | 60.2 | 9 | 10 | 10 |
| 5. | Jind | 58,978 | 18,900 | 77,878 | 87.1 | 31.6 | 61.0 | 7 | 11 | 9 |
| 6. | Karnal | 77,994 | 40,490 | 1,18,484 | 89.8 | 52.9 | 72.5 | 6 | 5 | 4 |
| 7. | Kurukshetra | 64,453 | 32,867 | 97,320 | 84.9 | 49.2 | 68.2 | 8 | 6 | 8 |
| 8. | Mohindergarh | 67,838 | 31,309 | 99,147 | 108.9 | 53.0 | 81.7 | 1 | 4 | 1 |
| 9. | Rohtak | 94,764 | 52,765 | 1,47,529 | 100.1 | 60.6 | 81.2 | 2 | 1 | 2 |
| 10. | Sirsa | 34,604 | 17,166 | 51,770 | 74.3 | 41.3 | 58.7 | 11 | 8 | 11 |
| 11. | Sonepat | 59,792 | 29,823 | 89,615 | 99.7 | 57.7 | 78.9 | 3 | 3 | 3 |
| TOTAL | | 7,91,918 | 3,75,612 | 11,67,530 | 90.4 | 48.0 | 70.4 | - | - | - |

STATEMENT NO. 12.

STATISTICS OF S.C. IN CLASSES I-V.

| Sl. No. | Name of the District | Enrolment of S.C. children in Classes I-V, 1970-71 | | | %age of S.C. students to total enrolment in Classes I-V, 1970-71 | | |
|---------|----------------------|--|--------|----------|--|-------|-------|
| | | Boys | Girls | Total | Boys | Girls | Total |
| 1. | 2. | 3. | 4. | 5. | 6. | 7. | 8. |
| 1. | Ambala | 11,303 | 3,254 | 14,557 | 16.9 | 8.4 | 13.8 |
| 2. | Bhiwani | - | - | - | - | - | - |
| 3. | Gurgaon | 19,744 | 2,305 | 22,049 | 17.4 | 5.5 | 14.3 |
| 4. | Hissar | 15,873 | 1,938 | 17,811 | 13.5 | 4.4 | 11.0 |
| 5. | Jind | 3,991 | 611 | 4,602 | 11.0 | 5.2 | 9.5 |
| 6. | Karnal | 12,408 | 3,764 | 16,172 | 10.9 | 7.1 | 9.7 |
| 7. | Kurukshetra | - | - | - | - | - | - |
| 8. | Mohindergarh | 6,718 | 1,087 | 7,805 | 12.4 | 6.7 | 11.2 |
| 9. | Rohtak | 20,363 | 4,170 | 24,533 | 15.0 | 7.0 | 12.5 |
| 10. | Sirsa | - | - | - | - | - | - |
| 11. | Sonepat | - | - | - | - | - | - |
| TOTAL | | 90,400 | 17,129 | 1,07,529 | 14.2 | 6.5 | 11.9 |

STATEMENT NO. 12.

STATISTICS OF ENROLMENT OF S.C. IN CLASSES I-V (Contd.)

| Sl. No. | Name of the District | Enrolment of S.C. Children in Classes I-V. | | | %age of S.C. students to Total enrolment in Classes- I-V. | | |
|---------|----------------------|--|--------------|----------|---|-------------|-------|
| | | 1976-77 | | Total | 1975-77 | | Total |
| 1. | 2. | Boys 9. | Girls 10. | | 11. | Boys 12. | |
| 1. | Ambala | 18,648 | 6,977 | 25,625 | 23.9 | 14.0 | 20.0 |
| 2. | Bhiwani | 9,147 | 2,050 | 11,207 | 14.3 | 8.5 | 12.7 |
| 3. | Gurgaon | 17,247 | 4,357 | 21,604 | 15.6 | 9.4 | 13.7 |
| 4. | Hissar | 11,880 | 2,507 | 14,387 | 14.8 | 7.9 | 12.8 |
| 5. | Jind | 7,951 | 1,227 | 9,178 | 13.5 | 6.5 | 11.8 |
| 6. | Karnal | 11,708 | 3,326 | 15,034 | 15.0 | 8.2 | 12.7 |
| 7. | Kurukshetra | 8,644 | 2,247 | 10,891 | 13.4 | 6.8 | 11.2 |
| 8. | Mohindergarh | 10,961 | 3,654 | 14,615 | 16.1 | 11.7 | 14.7 |
| 9. | Rohtak | 14,928 | 5,137 | 20,065 | 15.7 | 9.7 | 13.6 |
| 10. | Sirsa | 5,015 | 1,406 | 6,421 | 14.5 | 8.2 | 12.4 |
| 11. | Sonepat | 10,093 | 3,105 | 13,198 | 16.9 | 10.4 | 14.7 |
| TOTAL | | 1,26,222 | 36,003 | 1,62,225 | 15.9 | 9.6 | 13.9 |

STATEMENT NO. 13.

STATISTICS OF EXPENDITURE ON PRIMARY SCHOOLS

| Sl. No. | Name of the District | Expenditure on Primary Schools | | Expenditure per head of Population | | | | Expenditure on Primary Schools as %age of Total Expenditure | | | |
|---------|----------------------|--------------------------------|-------------|------------------------------------|------|---------|------|---|------|---------|------|
| | | 1970-71 | 1976-77 | 1970-71 | | 1976-77 | | 1970-71 | | 1976-77 | |
| | | (Rs.) | (Rs.) | (Rs.) | Rank | (Rs.) | Rank | (Rs.) | Rank | (Rs.) | Rank |
| 1. | 2. | 3. | 4. | 5. | 6. | 7. | 8. | 9. | 10. | 11. | 12. |
| 1. | Ambala | 41,77,753 | 1,03,99,185 | 308 | 2 | 8.3 | 4 | 15.7 | 5 | 22.0 | 6 |
| 2. | Bhiwani | - | 51,67,522 | - | - | 6.0 | 7 | - | - | 18.1 | 7 |
| 3. | Gurgaon | 60,14,949 | 1,45,36,321 | 3.5 | 3 | 9.3 | 2 | 23.1 | 6 | 28.2 | 1 |
| 4. | Hissar | 70,44,269 | 69,23,731 | 3.3 | 4 | 5.4 | 8 | 20.8 | 3 | 17.2 | 9 |
| 5. | Jind | 18,13,907 | 40,16,229 | 2.8 | 5 | 4.6 | 11 | 19.7 | 4 | 18.1 | 8 |
| 6. | Karnal | 35,67,581 | 85,85,208 | 1.8 | 6 | 7.6 | 5 | 11.0 | 1 | 22.8 | 4 |
| 7. | Kurukshetra | - | 52,40,858 | - | - | 5.3 | 9 | - | - | 8.6 | 11 |
| 8. | Mohindergarh | 36,68,599 | 78,44,254 | 5.3 | 1 | 9.4 | 1 | 25.3 | 7 | 26.8 | 2 |
| 9. | Rohtak | 50,01,632 | 93,28,019 | 2.8 | 5 | 7.5 | 6 | 12.2 | 2 | 10.2 | 10 |
| 10. | Sirsa | - | 30,51,445 | - | - | 5.0 | 10 | - | - | 26.3 | 3 |
| 11. | Sonepat | - | 65,27,552 | - | - | 8.4 | 3 | - | - | 22.4 | 5 |
| TOTAL | | 3,12,88,690 | 8,16,20,324 | 3.1 | - | 7.1 | - | 17.0 | - | 17.9 | - |

STATEMENT NO. 13.

STATISTICS OF EXPENDITURE ON PRIMARY SCHOOLS (Contd.)

| Sl. No. | Name of the District | Enrolment in Primary Schools | | Cost per student in Primary Schools | | | | Pupil Teacher Ratio in Primary Schools | | | |
|---------|----------------------|------------------------------|----------|-------------------------------------|------|---------|------|--|------|---------|------|
| | | 1970-71 | 1976-77 | 1970-71 | | 1976-77 | | 1970-71 | | 1976-77 | |
| 1. | 2. | 13. | 14. | (Rs.) | Rank | (Rs.) | Rank | (Rs.) | Rank | (Rs.) | Rank |
| 1. | 2. | 13. | 14. | 15. | 16. | 17. | 18. | 19. | 20. | 21. | 22. |
| 1. | Ambala | 64,965 | 81,223 | 64.3 | 4 | 128 | 3 | 40 | 3 | 39 | 3 |
| 2. | Bhiwani | - | 46,103 | - | - | 112 | 7 | - | - | 40 | 4 |
| 3. | Gurgaon | 99,489 | 1,04,666 | 60.5 | 5 | 138 | 1 | 37 | 1 | 36 | 1 |
| 4. | Hissar | 99,167 | 64,078 | 71.0 | 3 | 108 | 8 | 40 | 3 | 45 | 7 |
| 5. | Jind | 23,334 | 38,355 | 77.7 | 2 | 104 | 9 | 40 | 3 | 39 | 3 |
| 6. | Karnal | 1,01,345 | 71,040 | 35.2 | 7 | 120 | 6 | 50 | 4 | 40 | 4 |
| 7. | Kurukshetra | - | 60,164 | - | - | 87 | 10 | - | - | 44 | 6 |
| 8. | Mohindergarh | 42,030 | 65,214 | 87.3 | 1 | 120 | 5 | 39 | 2 | 42 | 5 |
| 9. | Rohtak | 1,05,816 | 73,482 | 47.3 | 6 | 126 | 4 | 40 | 3 | 40 | 4 |
| 10. | Sirsa | - | 35,896 | - | - | 85 | 11 | - | - | 38 | 7 |
| 11. | Sonepat | - | 49,420 | - | - | 132 | 2 | - | - | 38 | 2 |
| Total | | 5,36,146 | 6,89,642 | 58.4 | - | 118 | - | 41 | - | 40 | - |

STATEMENT NO. 14.

STATISTICS OF MIDDLE SCHOOLS AND TEACHERS

| Sl. No. | Name of the District | Number of Middle Schools | | Number of Teachers | | | | Area Served by a Middle School | | | | Population Served by a Middle School | | | |
|---------|----------------------|--------------------------|---------|--------------------|--------|----------|----------|--------------------------------|--------|------------------|--------|--------------------------------------|--------|------------------|--------|
| | | 1970-71 | 1976-77 | 1970-71 | | 1976-77 | | 1970-71 | | 1976-77 | | 1970-71 | | 1976-77 | |
| 1. | 2. | 3. | 4. | 5. Total | 6. Men | 7. Women | 8. Total | 9. Kms. In Sq. Ra- | 10. nk | 11. Kms. Sq. Ra- | 12. nk | 13. Kms. Ir Sq. ka | 14. nk | 15. Kms. Sq. Ra- | 16. nk |
| 1. | Ambala | 78 | 77 | 743 | 375 | 371 | 746 | 49.1 | 3 | 49.8 | 3 | 14,049 | 4 | 16,243 | |
| 2. | Bhiwani | - | 75 | - | 518 | 136 | 654 | - | - | 67.9 | 10 | - | - | 11,568 | |
| 3. | Gurgaon | 120 | 74 | 1,438 | 595 | 428 | 1,033 | 51.2 | 4 | 66.1 | 8 | 14,194 | 5 | 21,113 | |
| 4. | Hissar | 178 | 106 | 1,545 | 783 | 271 | 1,054 | 78.5 | 7 | 59.7 | 5 | 11,955 | 3 | 12,112 | |
| 5. | Jind | 42 | 52 | 423 | 532 | 96 | 628 | 64.1 | 5 | 63.7 | 7 | 15,193 | 6 | 16,950 | |
| 6. | Karnal | 120 | 56 | 1,433 | 394 | 200 | 594 | 67.2 | 6 | 66.5 | 9 | 16,472 | 7 | 20,098 | |
| 7. | Kurukshetra | - | 59 | - | 396 | 170 | 566 | - | 6 | 63.4 | 6 | - | - | 16,653 | |
| 8. | Mohindergarh | 71 | 82 | 615 | 693 | 110 | 806 | 48.7 | 2 | 36.4 | 2 | 9,718 | 1 | 10,194 | |
| 9. | Rohtak | 151 | 70 | 1,761 | 636 | 426 | 1,062 | 48.8 | 1 | 54.9 | 4 | 11,796 | 2 | 17,869 | |
| 10. | Sirsa | - | 38 | - | 233 | 80 | 313 | - | - | 112.6 | 11 | - | - | 15,989 | |
| 11. | Sonepat | - | 65 | - | 557 | 324 | 88.1 | - | - | 33.8 | 1 | - | - | 12,033 | |
| TOTAL | | 760 | 754 | 7,958 | 5,715 | 2,622 | 8,337 | 58.2 | - | 58.6 | - | 13,175 | - | 15,136 | |

STATEMENT NO. 15.

STATISTICS OF ENROLMENT IN CLASSES VI-VIII

| Sl. No. | Name of the District | Enrolment in Classes VI-VIII | | | %age Enrolment in Classes VI-VIII to Population in the Age-Group (11-14) | | | of Rank | | |
|---------|----------------------|------------------------------|-------------|-------------|--|-------------|-------------|------------|--------------|--------------|
| | | 1970-71 | | | 1970-71 | | | 1970-71 | | |
| 1. | 2. | Boys 3. | Girls 4. | Total 5. | Boys 6. | Girls 7. | Total 8. | Boys 9. | Girls 10. | Total 11. |
| 1. | Ambala | 29,695 | 13,043 | 42,738 | 62.8 | 32.4 | 48.8 | 4 | 1 | 3 |
| 2. | Bhiwani | - | - | - | - | - | - | - | - | - |
| 3. | Gurgaon | 46,396 | 11,668 | 58,064 | 63.1 | 18.7 | 42.7 | 3 | 4 | 4 |
| 4. | Hissar | 41,240 | 9,795 | 51,035 | 45.0 | 12.5 | 30.0 | 7 | 6 | 7 |
| 5. | Jind | 14,334 | 2,563 | 16,897 | 52.1 | 11.0 | 33.2 | 6 | 7 | 6 |
| 6. | Karnal | 44,847 | 14,443 | 59,290 | 52.4 | 20.0 | 37.5 | 5 | 3 | 5 |
| 7. | Kurukshetra | - | - | - | - | - | - | - | - | - |
| 8. | Mohindergarh | 24,575 | 3,348 | 27,923 | 84.1 | 13.0 | 50.7 | 1 | 5 | 2 |
| 9. | Rohtak | 62,555 | 18,808 | 81,363 | 82.3 | 28.4 | 57.2 | 2 | 2 | 1 |
| 10. | Sirsa | - | - | - | - | - | - | - | - | - |
| 11. | Sonepat | - | - | - | - | - | - | - | - | - |
| TOTAL | | 2,63,642 | 73,668 | 3,37,310 | 61.2 | 19.9 | 42.1 | - | - | - |

STATEMENT NO. 16.

STATISTICS OF ENROLMENT OF S.C. IN CLASSES VI-VIII

| Sl. No. | Name of the District | Enrolment of S.C. students in classes VI-VIII | | | %age of S.C. students to total enrolment in classes VI-VIII | | | Enrolment of S.C. students in classes VI-VIII | | | %age of S.C. students to total enrolment in classes VI-VIII | | |
|---------|----------------------|---|-------|--------|---|-------|-------|---|-------|--------|---|-------|-------|
| | | 1970-71 | | | 1970-71 | | | 1976-77 | | | 1976-77 | | |
| | | Boys | Girls | Total | Boys | Girls | Total | Boys | Girls | Total | Boys | Girls | Total |
| 1. | 2. | 3. | 4. | 5. | 6. | 7. | 8. | 9. | 10. | 11. | 12. | 13. | 14. |
| 1. | Lambala | 3,829 | 594 | 4,423 | 12.9 | 4.3 | 10.3 | 5,046 | 890 | 5,936 | 15.1 | 5.7 | 12.1 |
| 2. | Bhiwani | - | - | - | - | - | - | 2,665 | 150 | 2,815 | 10.9 | 3.2 | 9.6 |
| 3. | Gurgaon | 5,119 | 735 | 5,854 | 11.0 | 6.3 | 10.1 | 3,973 | 399 | 4,372 | 11.0 | 3.4 | 9.2 |
| 4. | Hissar | 4,680 | 236 | 4,916 | 11.3 | 2.4 | 9.6 | 2,777 | 132 | 2,909 | 10.6 | 1.2 | 8.5 |
| 5. | Jind | 1,161 | 68 | 1,229 | 8.1 | 2.6 | 7.3 | 2,021 | 86 | 2,107 | 10.1 | 2.2 | 8.8 |
| 6. | Karnal | 2,532 | 493 | 3,025 | 5.6 | 3.4 | 5.1 | 2,969 | 253 | 3,222 | 11.0 | 2.4 | 8.6 |
| 7. | Kurukshetra | - | - | - | - | - | - | 1,913 | 169 | 2,082 | 8.8 | 2.3 | 7.2 |
| 8. | Mohindergarh | 2,651 | 101 | 2,752 | 10.8 | 3.0 | 9.8 | 3,648 | 320 | 3,968 | 12.7 | 5.5 | 11.5 |
| 9. | Rohtak | 6,782 | 848 | 7,630 | 10.8 | 4.5 | 8.8 | 4,230 | 608 | 4,838 | 11.1 | 4.0 | 9.1 |
| 10. | Sirsa | - | - | - | - | - | - | 769 | 66 | 835 | 7.9 | 1.8 | 6.3 |
| 11. | Sonepat | - | - | - | - | - | - | 3,072 | 395 | 3,467 | 12.5 | 4.7 | 10.5 |
| | TOTAL | 26,754 | 3,075 | 29,829 | 10.1 | 4.1 | 8.8 | 33,083 | 3,468 | 36,551 | 11.4 | 3.7 | 9.5 |

STATEMENT NO. : 16

STATISTICS OF ENROLMENT IN CLASSES VI-VIII. (Contd.)

| Sl. No. | Name of the District | Enrolment in Classes VI-VIII | | | %age Enrolment in Classes VI-VIII to Population in the Age-Group (11-14) | | | R a n k | | |
|---------|----------------------|------------------------------|--------------|--------------|--|--------------|--------------|-------------|--------------|--------------|
| | | 1976-77 | | | 1976-77 | | | 1976-77 | | |
| 1. | 2. | Boys 12. | Girls 13. | Total 14. | Boys 15. | Girls 16. | Total 17. | Boys 18. | Girls 19. | Total 20. |
| 1. | Ambala | 33,457 | 15,615 | 49,072 | 67.2 | 33.3 | 48.3 | 4 | 1 | 4 |
| 2. | Bhiwani | 24,500 | 4,695 | 29,195 | 65.3 | 14.2 | 41.4 | 5 | 10 | 5 |
| 3. | Gurgaon | 36,090 | 11,569 | 47,659 | 52.5 | 19.9 | 37.5 | 7 | 6 | 7 |
| 4. | Hissar | 26,173 | 8,058 | 34,231 | 46.7 | 16.7 | 32.8 | 10 | 9 | 10 |
| 5. | Jind | 20,071 | 3,974 | 24,045 | 52.3 | 12.0 | 34.3 | 8 | 11 | 9 |
| 6. | Karnal | 27,062 | 10,431 | 37,493 | 54.8 | 24.8 | 41.0 | 6 | 4 | 6 |
| 7. | Kurukshetra | 21,633 | 7,364 | 28,997 | 50.0 | 20.0 | 36.3 | 9 | 5 | 8 |
| 8. | Mohindergarh | 28,674 | 5,775 | 34,449 | 80.8 | 17.8 | 50.8 | 1 | 7 | 3 |
| 9. | Rohtak | 38,231 | 15,094 | 53,325 | 71.0 | 31.6 | 52.4 | 3 | 2 | 1 |
| 10. | Sirsa | 9,734 | 3,621 | 13,355 | 36.7 | 15.8 | 27.0 | 11 | 8 | 11 |
| 11. | Sonepat | 24,524 | 8,444 | 32,968 | 72.0 | 28.6 | 51.8 | 2 | 3 | 2 |
| TOTAL | | 2,90,149 | 94,640 | 3,84,789 | 58.3 | 22.0 | 41.4 | - | - | - |

ANNEXURE 10. 17.

STATISTICS OF EXPENDITURE ON MIDDLE SCHOOLS

| Sl. No. | Name of the District | Expenditure on Middle Schools Expenditure per head of Population | | | | Expenditure on Middle School as %age of Direct Expenditure | | | | | |
|---------|----------------------|--|------|--------------|------|--|------|---------|------|------|----|
| | | 1970-71 | | 1976-77 | | 1970-71 | | 1976-77 | | | |
| | | Rs. in Lakhs | Rank | Rs. in Lakhs | Rank | Rank | Rank | Rank | Rank | | |
| 2. | 3. | 4. | 5. | 6. | 7. | 8. | 9. | 10. | 11. | 12. | |
| 1. | Ambala | 20,14,573 | 6 | 41,35,038 | 1.8 | 3.3 | 7 | 7.5 | 7 | 8.7 | 8 |
| 2. | Bhiwani | - | - | 33,23,271 | - | 3.8 | 4 | - | - | 11.6 | 5 |
| 3. | Gurgaon | 32,66,672 | 5 | 48,63,071 | 1.9 | 3.1 | 9 | 12.5 | 4 | 9.4 | 7 |
| 4. | Hissar | 42,59,081 | 4 | 48,08,191 | 2.0 | 3.7 | 5 | 12.6 | 3 | 12.0 | 4 |
| 5. | Jind | 13,65,787 | 3 | 30,62,583 | 2.1 | 3.5 | 6 | 14.8 | 2 | 13.9 | 3 |
| 6. | Karnal | 32,90,775 | 7 | 28,83,990 | 1.7 | 2.6 | 10 | 10.2 | 6 | 7.6 | 9 |
| 7. | Kurukshetra | - | - | 31,21,195 | - | 3.2 | 8 | - | - | 5.1 | 11 |
| 8. | Mohindergarh | 21,88,061 | 1 | 41,48,522 | 3.1 | 5.0 | 2 | 15.0 | 1 | 14.2 | 2 |
| 9. | Rohtak | 49,26,796 | 2 | 50,21,151 | 2.8 | 4.0 | 3 | 12.0 | 5 | 5.4 | 10 |
| 10. | Sirsa | - | - | 13,38,381 | - | 2.2 | 11 | - | - | 11.5 | 6 |
| 11. | Sonepat | - | - | 45,99,137 | - | 5.9 | 1 | - | - | 15.8 | 1 |
| TOTAL | | 2,13,11,745 | - | 4,13,03,530 | 2.1 | 3.6 | - | 11.6 | - | 9.0 | - |

STATEMENT NO. 17

STATISTICS OF EXPENDITURE ON MIDDLE SCHOOLS

| Sl. No. | Name of the District | Enrolment in Middle School | | Cost per student in Middle School | | Pupil Teacher Ratio | | | | | |
|---------|----------------------|----------------------------|----------|-----------------------------------|----------|---------------------|----------|-----|----------|-----|----------|
| | | 1970-71 | 1976-77 | 1970-71 | 1976-77 | 1970-71 | 1976-77 | | | | |
| 1. | 2. | 13. | 14. | 15. | 16. Rank | 17. | 18. Rank | 19. | 20. Rank | 21. | 22. Rank |
| 1. | Lambala | 21,239 | 23,825 | 45 | 3 | 173 | 1 | 29 | 2 | 31 | 3 |
| 2. | Bhiwani | - | 21,907 | - | - | 151 | 5 | - | - | 33 | 6 |
| 3. | Gurgaon | 45,819 | 29,931 | 71 | 6 | 162 | 2 | 32 | 5 | 28 | 1 |
| 4. | Hissar | 44,954 | 35,065 | 95 | 3 | 137 | 10 | 29 | 2 | 33 | 6 |
| 5. | Jind | 12,789 | 19,037 | 107 | 2 | 160 | 3 | 30 | 3 | 30 | 2 |
| 6. | Karnal | 40,194 | 19,997 | 82 | 4 | 144 | 9 | 28 | 1 | 33 | 6 |
| 7. | Kurukshetra | - | 20,617 | - | - | 151 | 6 | - | - | 36 | 10 |
| 8. | Mohindergarh | 18,809 | 27,782 | 116 | 1 | 149 | 7 | 31 | 4 | 34 | 9 |
| 9. | Rohtak | 61,333 | 34,164 | 80 | 5 | 146 | 8 | 15 | 6 | 32 | 4 |
| 10. | Sirsa | - | 12,054 | - | - | 111 | 11 | . | - | 38 | 11 |
| 11. | Sonepat | - | 28,579 | - | - | 160 | 4 | . | - | 32 | 5 |
| TOTAL | | 2,45,137 | 2,72,958 | 87 | - | 151 | - | 3 | - | 32 | - |

STATEMENT NO. 18.

STATISTICS OF HIGH/HIGHER SECONDARY SCHOOLS AND TEACHERS

| Sl. No. | Name of the District | Number of High/Hr. Secondary Schools | | Number of Teachers | | | | Area served by a High/Hr. Secondary School | | | |
|---------|----------------------|--------------------------------------|---------|--------------------|--------|---------|--------|--|-------------|----------|-----|
| | | 1970-71 | 1976-77 | 1970-71 | | 1976-77 | | 1970-71 | | 1976-77 | |
| | | | | Total | Men | Women | Total | In Sq. Rank | In Sq. Rank | | |
| 1. | 2. | 3. | 4. | 5. | 6. | 7. | 8. | 9. Kms. | 10. | 11. Kms. | 12. |
| 1. | Ambala | 129 | 140 | 2,502 | 1,492 | 1,438 | 2,930 | 29.7 | 2 | 27.30 | 3 |
| 2. | Bhiwani | - | 107 | - | 1,722 | 353 | 2,075 | - | - | 47.61 | 9 |
| 3. | Gurgaon | 162 | 146 | 3,050 | 2,227 | 1,068 | 3,295 | 37.9 | 3 | 34.50 | 6 |
| 4. | Hissar | 176 | 101 | 3,067 | 1,458 | 603 | 2,061 | 79.4 | 7 | 62.70 | 10 |
| 5. | Jind | 52 | 73 | 1,188 | 1,492 | 218 | 1,710 | 51.8 | 6 | 45.40 | 8 |
| 6. | Karnal | 173 | 110 | 3,570 | 1,635 | 1,005 | 2,640 | 46.6 | 5 | 33.70 | 5 |
| 7. | Kurukshetra | - | 84 | - | 1,282 | 469 | 1,751 | - | - | 44.50 | 7 |
| 8. | Mohindergerh | 78 | 94 | 1,618 | 1,662 | 237 | 1,899 | 44.3 | 4 | 31.70 | 4 |
| 9. | Rohtak | 205 | 162 | 4,386 | 2,556 | 1,270 | 3,826 | 29.5 | 1 | 23.70 | 1 |
| 10. | Sirsa | - | 40 | - | 584 | 141 | 725 | - | - | 106.90 | 11 |
| 11. | Sonepat | - | 86 | - | 1,397 | 534 | 1,931 | - | - | 25.60 | 2 |
| TOTAL | | 975 | 1,143 | 19,381 | 17,507 | 7,336 | 24,843 | 45.4 | - | 38.7 | - |

STATEMENT NO. 18. STATISTICS OF HIGH/HIGHER SECONDARY SCHOOLS AND TEACHERS (Contd.)

| Sl. No. | Name of the District | Population served by a High/Higher Secondary School | | | |
|---------|----------------------|---|------|---------|------|
| | | 1970-71 | Rank | 1976-77 | Rank |
| 1. | 2. | 13. | 14. | 15. | 16. |
| 1. | Ambala | 8,495 | 1 | 8,934 | 4 |
| 2. | Bhiwani | - | - | 8,108 | 2 |
| 3. | Gurgaon | 10,514 | 4 | 10,701 | 7 |
| 4. | Hissar | 12,091 | 6 | 12,711 | 10 |
| 5. | Jind | 12,271 | 7 | 12,042 | 9 |
| 6. | Karnal | 11,425 | 5 | 10,231 | 6 |
| 7. | Kurukshetra | - | - | 11,696 | 8 |
| 8. | Mohindergarh | 8,846 | 3 | 8,893 | 3 |
| 9. | Rohtak | 8,689 | 2 | 7,721 | 1 |
| 10. | Sirsa | - | - | 15,190 | 11 |
| 11. | Sonepat | - | - | 9,045 | 5 |
| TOTAL | | 10,270 | - | 9,998 | - |

STATEMENT NO. 19.

STATISTICS OF ENROLMENT IN CLASSES IX-XI

| Sl. No. | Name of the District | Enrolment in Classes IX-XI | | | %age of enrolment in classes IX-XI to population in the age-group (14-17) | | | R A N K | | |
|---------|----------------------|----------------------------|--------|----------|---|-------|-------|---------|-------|-------|
| | | 1970-71 | | Total | 1970-71 | | Total | 1970-71 | | Total |
| | | Boys | Girls | | Boys | Girls | | Boys | Girls | |
| 1. | 2. | 3. | 4. | 5. | 6. | 7. | 8. | 9. | 10. | 11. |
| 1. | Bambala | 12,771 | 5,386 | 18,157 | 30.8 | 15.2 | 23.6 | 4 | 1 | 2 |
| 2. | Bhiwani | - | - | - | - | - | - | - | - | - |
| 3. | Gurgaon | 20,033 | 5,027 | 25,060 | 31.0 | 9.1 | 21.0 | 3 | 4 | 4 |
| 4. | Hissar | 18,275 | 4,289 | 22,564 | 22.7 | 6.2 | 15.1 | 7 | 5 | 7 |
| 5. | Jind | 6,027 | 994 | 7,011 | 24.9 | 4.8 | 15.7 | 6 | 6 | 6 |
| 6. | Karnal | 20,500 | 6,017 | 26,517 | 27.3 | 9.5 | 19.1 | 5 | 3 | 5 |
| 7. | Kurukshetra | - | - | - | - | - | - | - | - | - |
| 8. | Mohindergarh | 9,619 | 843 | 10,462 | 37.6 | 3.7 | 21.6 | 2 | 7 | 3 |
| 9. | Rohtak | 27,947 | 7,887 | 35,834 | 41.9 | 13.5 | 28.6 | 1 | 2 | 1 |
| 10. | Sirsa | - | - | - | - | - | - | - | - | - |
| 11. | Sonepat | - | - | - | - | - | - | - | - | - |
| TOTAL | | 1,15,172 | 30,443 | 1,45,615 | 30.5 | 9.4 | 20.7 | - | - | - |

STATEMENT NO. 19.

STATISTICS OF ENROLMENT IN CLASSES IX-XI

(Contd.)

| Sl. No. | Name of the District | Enrolment in Classes IX-XI | | | %age of enrolment in classes IX-XI to population in the age-group (14-17) | | | R A N K | | |
|---------|----------------------|----------------------------|--------------|--------------|---|--------------|--------------|-------------|--------------|--------------|
| | | 1976-77 | 1976-77 | 1976-77 | 1976-77 | 1976-77 | 1976-77 | 1976-77 | 1976-77 | |
| 1. | 2. | Boys 11. | Girls 13. | Total 14. | Boys 15. | Girls 16. | Total 17. | Boys 18. | Girls 19. | Total 20. |
| 1. | Ambala | 9,635 | 4,460 | 14,119 | 19.0 | 10.3 | 15.0 | 5 | 1 | 4 |
| 2. | Bhiwani | 7,571 | 1,212 | 8,783 | 21.7 | 4.0 | 13.5 | 4 | 9 | 5 |
| 3. | Gurgaon | 10,912 | 3,788 | 14,700 | 17.1 | 7.1 | 12.5 | 7 | 4 | 6 |
| 4. | Hissar | 7,724 | 2,813 | 10,537 | 14.8 | 6.3 | 10.9 | 10 | 5 | 7 |
| 5. | Jind | 5,949 | 894 | 6,843 | 16.6 | 2.9 | 10.4 | 8 | 10 | 9 |
| 6. | Karnal | 8,290 | 3,165 | 11,455 | 18.0 | 8.4 | 13.5 | 6 | 3 | 5 |
| 7. | Kurukshetra | 5,941 | 1,849 | 7,790 | 14.9 | 5.5 | 10.6 | 9 | 6 | 8 |
| 8. | Mohindergarh | 9,646 | 1,384 | 11,030 | 19.2 | 4.6 | 17.6 | 1 | 8 | 2 |
| 9. | Rohtak | 11,474 | 4,461 | 15,935 | 13.0 | 10.1 | 17.0 | 3 | 2 | 3 |
| 10. | Sirsa | 2,770 | 1,020 | 3,790 | 11.2 | 4.9 | 8.3 | 11 | 7 | 10 |
| 11. | Sonepat | 8,250 | 2,287 | 10,537 | 26.0 | 8.4 | 17.9 | 2 | 3 | 1 |
| TOTAL | | 88,186 | 27,333 | 1,15,519 | 19.1 | 6.9 | 13.5 | - | - | - |

FORM NO. 20

STATISTICS OF ENROLMENT OF S.C. IN CLASSES IX-XI.

| 1. District | 2. Enrolment of S.C. students in classes IX-XI, | | | 3. %age of S.C. students to total enrolment in classes IX-XI, | | | 4. Enrolment of S.C. students in Classes IX-XI, | | | 5. %age of S.C. students to total enrolment in Classes IX-XI. | | |
|-----------------|---|-------|--------|---|-------|-------|---|-------|-------|---|-------|-------|
| | 1976-77 | | | 1976-77 | | | 1976-77 | | | 1976-77 | | |
| | Boys | Girls | Total | Boys | Girls | Total | Boys | Girls | Total | Boys | Girls | Total |
| 2. | 3. | 4. | 5. | 6. | 7. | 8. | 9. | 10. | 11. | 12. | 13. | 14. |
| 1. Ambala | 1,311 | 215 | 1,526 | 10.3 | 4.7 | 8.6 | 1,158 | 142 | 1,300 | 12.0 | 3.2 | 9.2 |
| 2. Bhiwani | - | - | - | - | - | - | 746 | 34 | 780 | 9.9 | 2.8 | 8.9 |
| 3. Gurgaon | 2,882 | 463 | 3,345 | 14.2 | 9.2 | 13.3 | 1,021 | 43 | 1,064 | 9.4 | 1.1 | 7.2 |
| 4. Hissar | 1,654 | 62 | 1,716 | 9.1 | 1.4 | 7.6 | 740 | 32 | 772 | 9.6 | 1.1 | 7.3 |
| 5. Jind | 490 | 11 | 501 | 8.1 | 1.1 | 7.1 | 510 | 15 | 525 | 8.6 | 1.7 | 7.7 |
| 6. Karnal | 827 | 144 | 971 | 4.0 | 2.4 | 3.7 | 717 | 68 | 785 | 8.6 | 2.1 | 6.8 |
| 7. Kurukshetra | - | - | - | - | - | - | 388 | 17 | 405 | 6.5 | .9 | 5.2 |
| 8. Mohindergarh | 924 | 18 | 942 | 9.6 | 2.1 | 3.5 | 1,218 | 35 | 1,253 | 12.6 | 2.5 | 11.3 |
| 9. Rohtak | 2,509 | 207 | 2,716 | 9.0 | 2.6 | 7.6 | 1,145 | 122 | 1,267 | 10.0 | 2.7 | 7.9 |
| 10. Sirsa | - | - | - | - | - | - | 157 | 13 | 170 | 5.7 | 1.3 | 4.5 |
| 11. Sonapat | - | - | - | - | - | - | 922 | 66 | 988 | 11.2 | 2.9 | 9.4 |
| TOTAL | 10,597 | 1,120 | 11,717 | 9.2 | 3.8 | 8.1 | 8,722 | 587 | 2,309 | 9.9 | 2.1 | 8.1 |

STATISTICS OF EXPENDITURE ON HIGH/HIGHER SECONDARY SCHOOLS

District Expenditure on High/ Higher Secondary Schools Expenditure per head of Population Expenditure on High/Hr. Secondary Schools as %age of total Expenditure

| Sl. No. | District | 1974-75 | | 1975-76 | | 1976-77 | | 1970-71 | | 1976-77 | |
|---------|--------------|-------------|--------------|---------|------|---------|------|---------|------|---------|------|
| | | (Rs.) | (Rs.) | (Rs.) | Rank | (Rs.) | Rank | (%) | Rank | (Rs.) | Rank |
| 1. | 2. | 3. | 4. | 5. | 6. | 7. | 8. | 9. | 10. | 11. | 12. |
| 1. | Amalala | 92,25,317 | 1,97,98,971 | 8.4 | 3 | 15.8 | 2 | 34.7 | 6 | 42.0 | 5 |
| 2. | Bhiwari | - | 1,33,76,678 | - | - | 15.4 | 3 | - | - | 46.7 | 2 |
| 3. | Gurgaon | 1,23,22,898 | 2,22,95,339 | 7.2 | 5 | 14.3 | 5 | 47.4 | 3 | 43.3 | 3 |
| 4. | Hissar | 1,31,75,515 | 1,27,43,189 | 6.2 | 6 | 9.9 | 9 | 39.0 | 5 | 31.6 | 9 |
| 5. | Jind | 48,85,724 | 1,05,67,512 | 7.6 | 4 | 12.0 | 8 | 53.1 | 1 | 47.7 | 1 |
| 6. | Karnal | 86,35,137 | 1,60,72,965 | 4.3 | 7 | 14.3 | 5 | 26.7 | 7 | 42.7 | 4 |
| 7. | Kurukshetra | - | 1,24,88,866 | - | - | 12.7 | 7 | - | - | 20.6 | 11 |
| 8. | Mohindergarh | 70,58,328 | 1,15,43,687 | 10.2 | 1 | 13.8 | 6 | 48.7 | 2 | 39.5 | 7 |
| 9. | Rohtak | 1,66,74,883 | 2,51,35,093 | 9.3 | 2 | 20.1 | 1 | 40.7 | 4 | 27.5 | 10 |
| 10. | Sirsa | - | 40,96,136 | - | - | 6.7 | 10 | - | - | 35.3 | 8 |
| 11. | Sonepat | - | 1,18,61,667 | - | - | 15.2 | 4 | - | - | 40.7 | 6 |
| TOTAL | | 7,19,77,872 | 15,99,80,103 | 7.2 | - | 14.0 | - | 39.2 | - | 35.0 | - |

STATEMENT NO. 21. STATISTICS OF EXPENDITURE ON HIGH/HR. SECONDARY SCHOOLS (Contd.)

| Sl. No. | Name of the District | Enrolment in High/Hr. Secondary Schools | | Cost per student in High/Hr. Secondary Schools (in Rs.) | | | | Teacher Pupil Ratio | | | |
|---------|----------------------|---|----------|---|------|---------|------|---------------------|--------------|-----|-----|
| | | 1970-71 | 1976-77 | 1970-71 | | 1976-77 | | 1970-71 Rank | 1976-77 Rank | | |
| | | | | (Rs.) | Rank | (Ps.) | Rank | | | | |
| 1. | 2. | 13. | 14. | 15. | 16. | 17. | 18. | 19. | 20. | 21. | 22. |
| 1. | Ambala | 80,521 | 86,101 | 114.6 | 5 | 229.9 | 5 | 32 | 4 | 29 | 5 |
| 2. | Bhiwani | - | 58,353 | - | - | 229.2 | 6 | - | - | 28 | 3 |
| 3. | Gurgaon | 92,055 | 85,790 | 133.9 | 4 | 259.9 | 1 | 30 | 2 | 26 | 1 |
| 4. | Hissar | 91,308 | 57,841 | 144.3 | 3 | 220.3 | 7 | 30 | 2 | 28 | 4 |
| 5. | Jind | 35,829 | 51,388 | 136.4 | 3 | 138.2 | 11 | 30 | 2 | 30 | 6 |
| 6. | Karnal | 1,10,789 | 76,475 | 77.9 | 6 | 210.2 | 9 | 31 | 3 | 29 | 5 |
| 7. | Kurukshetra | - | 53,552 | - | - | 233.2 | 2 | - | - | 30 | 6 |
| 8. | Mohindergarh | 47,410 | 51,630 | 148.9 | 1 | 223.6 | 4 | 29 | 1 | 27 | 2 |
| 9. | Rohtak | 1,45,484 | 1,09,239 | 114.6 | 5 | 230.1 | 3 | 33 | 5 | 28 | 4 |
| 10. | Sirsa | - | 20,965 | - | - | 195.4 | 10 | - | - | 29 | 5 |
| 11. | Sonepat | - | 56,207 | - | - | 211.0 | 8 | 31 | - | 29 | 5 |
| TOTAL | | 6,03,396 | 7,07,541 | 119.3 | - | 226.1 | - | 31 | - | 28 | - |

STATEMENT NO.(22) - STATISTICS OF PROFESSIONAL, VOCATIONAL, SPECIAL & OTHER (SCHOOL) EDUCATION

| Name of the District | NUMBER OF INSTITUTIONS | | E N R O L M E N T | | | | | | SCHEDULED CASTE STUDENTS | | |
|----------------------|------------------------|--------------|-------------------|--------------|--------------|---------------|--------------|---------------|--------------------------|------------|------------|
| | 1970-71 | 1976-77 | 1970 - 71 | | | 1976 - 77 | | | 1970 - 71 | | |
| | | | BOYS | GIRLS | TOTAL | BOYS | GIRLS | TOTAL | BOYS | GIRLS | TOTAL |
| 1 | 2 | 3 | 4 | 5 | 6 | 7 | 8 | 9 | 10 | 11 | 12 |
| 1. Ambala | 17 | 66 | 600 | 548 | 1,148 | 2,522 | 520 | 3,042 | 127 | 41 | 168 |
| 2. Bhiwani | - | 8 | - | - | - | 3,026 | 444 | 3,470 | - | - | - |
| 3. Gurgaon | 6 | 167 | 312 | 208 | 520 | 1,075 | 200 | 1,275 | 13 | - | 13 |
| 4. Hissar | 11 | 229 | 403 | 274 | 677 | 468 | 118 | 586 | 26 | - | 26 |
| 5. Jind | 32 | 142 | 441 | 640 | 1,051 | 4,559 | 942 | 5,501 | 78 | 48 | 126 |
| 6. Karnal | 40 | 161 | 698 | 359 | 1,057 | 2,202 | 354 | 2,556 | 36 | 5 | 41 |
| 7. Kurukshetra | - | 65 | - | - | - | 279 | 96 | 375 | - | - | - |
| 8. Mohindargarh | 33 | 34 | 646 | 878 | 1,524 | 938 | 685 | 1,623 | 87 | 63 | 150 |
| 9. Rohtak | 8 | 60 | 427 | 280 | 707 | 1,823 | 502 | 2,325 | 20 | 8 | 28 |
| 10. Sirsa | - | 60 | - | - | - | 142 | 54 | 196 | - | - | - |
| 11. Sonapat | - | 62 | - | - | - | 596 | 95 | 691 | - | - | - |
| T O T A L | 147 | 1,054 | 3,527 | 3,157 | 6,684 | 17,630 | 4,010 | 21,640 | 387 | 165 | 552 |

STATEMENT NO. (22) - STATISTICS OF PROFESSIONAL, VOCATIONAL, SPECIAL & OTHER (SCHOOL) EDUCATION
(Conclud.)

| Name of the District | SCHEDULED CASTE STUDENTS | | | NUMBER OF TEACHERS | | | DIRECT EXPENDITURE | | |
|----------------------|--------------------------|-------|-------|--------------------|---------|-------|--------------------|--------------|--------------|
| | 1976-77 | | | 1970-71 | 1976-77 | | | 1970-71 | 1976-77 |
| | BOYS | GIRLS | TOTAL | TOTAL | BOYS | GIRLS | TOTAL | Rs. in Lakhs | Rs. in Lakhs |
| 1 | 13 | 14 | 15 | 16 | 17 | 18 | 19 | 20 | 21 |
| 1. Ambala | 5 | 4 | 9 | 50 | 59 | 13 | 72 | 2.74 | 0.66 |
| 2. Bhiwani | 205 | 72 | 277 | - | - | - | - | - | 0.74 |
| 3. Gurgaon | - | - | - | 35 | - | - | - | 1.93 | 0.66 |
| 4. Hissar | 13 | - | 13 | 38 | 152 | 17 | 169 | 3.12 | 1.78 |
| 5. Jind | 285 | 95 | 380 | 17 | 45 | 14 | 59 | 1.77 | 3.94 |
| 6. Karnal | 119 | 3 | 122 | 67 | 28 | 16 | 44 | 3.75 | 2.81 |
| 7. Kurukshetra | 22 | - | 22 | - | - | - | - | - | 0.74 |
| 8. Mohindargarh | 157 | 101 | 258 | 19 | 13 | 16 | 29 | 1.68 | 3.00 |
| 9. Rohtak | 209 | 29 | 238 | 60 | - | - | - | 3.66 | 0.66 |
| 10. Sirsa | - | - | - | - | - | - | - | - | 0.66 |
| 11. Sonapat | 6 | - | 6 | - | 10 | - | 10 | - | 1.45 |
| T O T A L | 1,021 | 304 | 1,325 | 287 | 307 | 76 | 383 | 18.65 | 17.10 |

STATEMENT NO. (28) STATISTICS OF AFFILIATED INSTITUTIONS FOR HIGHER EDUCATION & TEACHERS

| Name of the District | Univer- sity & Instt. of N.I. & R.Is. | AFFILIATED INSTITUTIONS (DEGREE LEVEL) | | | | | | | | | Total Affi- liated |
|----------------------|--|---|--|----------------------------------|----------------|-------------------------------|-----|---------------|--------|-----|--------------------------|
| | | Arts, & Commer- ce Col- leges | Agriou- lture, Fores- try Col- leges | Busi- ness Manage- ment | Educa- tion | Engg., Arch. & Tech. | Law | Medi- cine | Others | | |
| 1 | 2 | 3 | 4 | 5 | 6 | 7 | 8 | 9 | 10 | 11 | |
| 1. Ambala | - | 15 | - | - | 2 | - | - | - | - | 17 | |
| 2. Bhiwani | - | 5 | - | - | 3 | 1 | - | - | - | 9 | |
| 3. Gurgaon | - | 13 | - | - | 2 | - | - | - | - | 15 | |
| 4. Hissar | 1 | 9 | 2 | - | 1 | - | - | - | 3 | 15 | |
| 5. Jind | - | 6 | - | - | 1 | 1 | - | - | - | 8 | |
| 6. Karnal | - | 10 | 1 | - | 1 | 1 | - | - | - | 13 | |
| 7. Kurukshetra | 1 | 9 | 1 | - | 1 | - | - | - | - | 11 | |
| 8. Mohindargarh | - | 8 | - | - | 2 | - | - | - | - | 10 | |
| 9. Rohtak | 1 | 16 | - | - | 3 | - | - | 1 | - | 20 | |
| 10. Sirsa | - | 3 | - | - | - | - | - | - | - | 3 | |
| 11. Sonapat | - | 5 | - | - | 3 | - | - | - | - | 8 | |
| TOTAL | 3 | 99 | 4 | - | 19 | 2 | - | 1 | 3 | 128 | |

STATISTICS OF - 63 -
 STATEMENT NO. (23) - INSTITUTIONS FOR HIGHER EDUCATION & TEACHERS
 - (Concl.) -

| Name of the District | NON-AFFILIATED | | Board of Intermediate Education | Board of Intermediate Degree Education Junior Colleges | GRAND TOTAL | | TEACHERS | |
|----------------------|----------------|--------------|---------------------------------|--|-------------|------------|--------------|---------------|
| | Degree | Below Degree | | | 1976-77 | 1970-71 | 1970-71 | 1976-77 |
| 1 | 12 | 13 | 14 | 15 | 16 | 17 | 18 | 19 |
| 1. Ambala | - | 14 | | - | 31 | 21 | 637 | 767 |
| 2. Bhiwani | - | 7 | | - | 16 | - | - | 302 |
| 3. Gurgaon | - | 9 | | - | 24 | 17 | 488 | 601 |
| 4. Hissar | - | 8 | | - | 24 | 26 | 713 | 577 |
| 5. Jind | - | 5 | | - | 12 | 4 | 118 | 198 |
| 6. Karnal | - | 8 | | - | 21 | 26 | 868 | 580 |
| 7. Kurukshetra | 1 | 6 | | - | 19 | - | - | 590 |
| 8. Mohindargarh | - | 7 | | - | 17 | 5 | 160 | 323 |
| 9. Rohtak | 2 | 14 | | - | 37 | 32 | 933 | 876 |
| 10. Sirsa | - | 3 | | - | 6 | - | - | 136 |
| 11. Sonapat | 2 | 4 | | - | 14 | - | - | 311 |
| T O T A L | 5 | 85 | 1* | - | 222 | 131 | 3,917 | 15,261 |

*Including Haryana Board of School Education, Chandigarh.

STATEMENT NO. (24) - STATISTICS OF ENROLMENT IN HIGHER EDUCATION BY TYPE OF EDUCATION -

| Name of the District | University deemed to be Univ. Institution of N.I. & R.Is. | AFFILIATED INSTITUTIONS (DEGREE LEVEL) | | | | | | |
|----------------------|---|--|--------------------------------|---------------------|--------------|----------------------|----------|-----------|
| | | Arts, Science & Commerce Colleges | Agriculture, Forestry Colleges | Business Management | Education | Engg., Tech. & Arch. | Law | Medicine |
| 1 | 2 | 3 | 4 | 5 | 6 | 7 | 8 | 9 |
| 1. Ambala | - | 11,947 | - | - | 625 | - | - | - |
| 2. Bhiwani | - | 4,434 | - | - | 550 | 310 | - | - |
| 3. Gurgaon | - | 7,040 | - | - | 598 | - | - | - |
| 4. Hissar | - | 6,537 | 820 | - | 619 | - | - | - |
| 5. Jind | - | 3,443 | - | - | 98 | - | - | - |
| 6. Karnal | - | 6,718 | 533 | - | 488 | - | - | - |
| 7. Kurukshetra | 2,870 | 5,437 | 71 | - | 274 | 1,226 | - | - |
| 8. Mohindargarh | - | 6,011 | - | - | 534 | - | - | - |
| 9. Rohtak | 654 | 10,077 | - | - | 610 | - | - | 92 |
| 10. Sirsa | - | 1,891 | - | - | - | - | - | - |
| 11. Sonapat | - | 5,212 | - | - | 879 | - | - | - |
| T O T A L | 3,524 | 68,747 | 1,424 | - | 5,281 | 1,536 | - | 92 |

STATEMENT NO. (24) - STATISTICS OF ENROLMENT IN HIGHER EDUCATION BY TYPE OF EDUCATION
 - (Contd.) -

| Name of the District | AFFILIATED INSTITUTIONS (DEGREE LEVEL) | | NON-AFFILIATED | | Intermediate/Pre-Degree Junior Colleges | GRAND TOTAL | |
|----------------------|--|------------------|----------------|---------------|---|-----------------|---------------|
| | Others | Total Affiliated | Degree | Below Degree | | 1976-77 | 1970-71 |
| 1 | 10 | 11 | 12 | 13 | 14 | 15 | 16 |
| 1. Ambala | - | 12,572 | - | 3,589 | - | 16,203 | 15,336 |
| 2. Bhiwani | - | 5,294 | - | 1,643 | - | 6,937 | - |
| 3. Gurgaon | - | 7,638 | - | 2,664 | - | 10,282 | 10,121 |
| 4. Hissar | 414 | 8,390 | - | 1,321 | - | 9,711 | 11,578 |
| 5. Jind | - | 3,541 | - | 703 | - | 4,244 | 2,127 |
| 6. Karnal | - | 7,739 | 4 | 1,981 | - | 9,720 | 14,367 |
| 7. Kurukshetra | - | 7,008 | 324 | 505 | - | 10,707 | - |
| 8. Mohindargarh | - | 6,545 | - | 1,147 | - | 7,622 | 3,649 |
| 9. Rohtak | - | 11,685 | 731 | 2,991 | - | 16,061 | 19,610 |
| 10. Sirsa | - | 1,891 | - | 680 | - | 2,571 | - |
| 11. Sonapat | - | 6,091 | 343 | 1,296 | - | 7,730 | - |
| T O T A L | 414 | 78,394 | 1,398 | 18,542 | - | 1,01,858 | 75,788 |

STATEMENT NO. (25) - STATISTICS OF ENROLMENT OF HIGHER EDUCATION BY TYPE OF EDUCATION - 1976-77

| Name of the District | GENERAL EDUCATION(*) | | | PROFESSIONAL EDUCATION | | | GRAND TOTAL | | |
|----------------------|----------------------|--------|--------|------------------------|-------|--------|-------------|--------|--------|
| | BOYS | GIRLS | TOTAL | BOYS | GIRLS | TOTAL | BOYS | GIRLS | TOTAL |
| 1 | 2 | 3 | 4 | 5 | 6 | 7 | 8 | 9 | 10 |
| 1. Ambala | 7,606 | 4,359 | 11,965 | 1,714 | 1,195 | 2,909 | 9,320 | 5,554 | 14,874 |
| 2. Bhiwani | 3,837 | 597 | 4,434 | 1,652 | 518 | 2,170 | 5,487 | 1,115 | 6,604 |
| 3. Gurgaon | 5,076 | 2,004 | 7,080 | 1,420 | 547 | 1,967 | 6,496 | 2,551 | 9,047 |
| 4. Hissar | 4,620 | 1,766 | 6,386 | 1,942 | 691 | 2,633 | 6,562 | 2,457 | 9,019 |
| 5. Jind | 2,925 | 540 | 3,465 | 149 | 239 | 388 | 3,074 | 779 | 3,853 |
| 6. Karnal | 4,851 | 1,947 | 6,798 | 1,299 | 842 | 2,141 | 6,150 | 2,789 | 8,939 |
| 7. Kurukshetra | 5,640 | 1,515 | 7,155 | 2,951 | 384 | 3,335 | 8,591 | 1,899 | 10,490 |
| 8. Mohindargarh | 5,378 | 596 | 5,974 | 668 | 486 | 1,154 | 6,046 | 1,082 | 7,128 |
| 9. Rohtak | 7,907 | 2,820 | 10,727 | 3,674 | 1,040 | 4,714 | 11,581 | 3,860 | 15,441 |
| 10. Sirsa | 1,284 | 607 | 1,891 | 444 | 40 | 484 | 1,728 | 647 | 2,375 |
| 11. Sonapat | 3,762 | 1,450 | 5,212 | 1,032 | 1,834 | 2,866 | 4,794 | 3,284 | 8,078 |
| T O T A L | 52,826 | 18,201 | 71,027 | 16,945 | 7,816 | 24,761 | 69,831 | 26,017 | 95,848 |

(*) Minor District-wise adjustments made.

STATEMENT NO. (25) - STATISTICS OF ENROLMENT OF HIGHER EDUCATION BY TYPE OF EDUCATION- 1976-77
 - (Concl'd.) -

| Name of the District | G R A N D T O T A L | | |
|----------------------|---------------------|--------|--------|
| | BOYS | GIRLS | TOTAL |
| 1 | 11 | 12 | 13 |
| 1. Ambala | 11,026 | 3,840 | 14,866 |
| 2. Bhiwani | - | - | - |
| 3. Gurgaon | 8,131 | 1,679 | 9,810 |
| 4. Hissar | 8,621 | 2,434 | 11,055 |
| 5. Jind | 2,094 | 152 | 2,246 |
| 6. Karnal | 10,633 | 3,472 | 14,105 |
| 7. Kurukshetra | - | - | - |
| 8. Mohindergarh | 3,443 | 134 | 3,577 |
| 9. Rohtak | 14,714 | 3,857 | 18,571 |
| 10. Sirsa | - | - | - |
| 11. Sonapat | - | - | - |
| T O T A L | 58,662 | 15,568 | 74,230 |

STATEMENT NO. (26) - STATISTICS OF ENROLMENT OF SCHEDULED CASTE IN
HIGHER EDUCATION

| Name of the District | Enrolment of Scheduled Caste children in Higher Education | | | | Enrolment of Scheduled Caste Children in Classes of Higher Education | | | |
|----------------------|---|-------|---------|------|--|-------|---------|------|
| | 1970 | 1971 | 1970-71 | %AGE | 1976 | 1977 | 1976-77 | %AGE |
| | BOYS | GIRLS | TOTAL | | BOYS | GIRLS | TOTAL | |
| 1 | 2 | 3 | 4 | 5 | 6 | 7 | 8 | 9 |
| 1. Ambala | 657 | 59 | 716 | 4.8 | 682 | 73 | 755 | 4.7 |
| 2. Bhiwani | - | - | - | - | 323 | 17 | 340 | 4.9 |
| 3. Gurgaon | 464 | 39 | 503 | 5.5 | 404 | 24 | 428 | 4.0 |
| 4. Hissar | 476 | 31 | 507 | 5.6 | 299 | 27 | 326 | 2.8 |
| 5. Jind | 188 | 11 | 199 | 5.2 | 193 | 10 | 203 | 4.8 |
| 6. Karnal | 449 | 25 | 474 | 5.3 | 335 | 23 | 358 | 3.7 |
| 7. Kurukshetra | - | - | - | - | 379 | 21 | 400 | 3.7 |
| 8. Mohindargarh | 249 | 9 | 258 | 3.6 | 597 | 29 | 626 | 8.1 |
| 9. Rohtak | 629 | 54 | 683 | 4.4 | 702 | 58 | 760 | 4.7 |
| 10. Sirsa | - | - | - | - | 96 | 4 | 100 | 3.9 |
| 11. Sonapat | - | - | - | - | 291 | 55 | 346 | 4.5 |
| TOTAL | 3,112 | 228 | 3,340 | 3.5 | 4,301 | 341 | 4,642 | 4.6 |

STATEMENT NO. (27) - DIRECT EXPENDITURE ON HIGHER EDUCATION - 1976-77

| District | Name of the University 'deemed Uni- versity' 'Institute of N.I. & R. Is. | AFFILIATED INSTITUTIONS (DEGREE LEVEL) | | | | | | |
|---------------------|---|--|---------------------------------------|------------------------|------------------|------------------|----------|-------------------|
| | | Arts, Sci- ence & Com- merce Col- leges | Agriculture & Forestry Colleges | Business Management | Education | Engineer- ing | Law | Medicine |
| 1 | 2 | 3 | 4 | 5 | 6 | 7 | 8 | 9 |
| 1. Ambala | - | 87,34,767 | - | - | 2,68,510 | - | - | - |
| 2. Phiwani | - | 38,22,844 | = | - | 7,28,950 | 9,31,434 | - | - |
| 3. Gurgaon | - | 55,82,973 | - | - | 5,12,887 | - | - | - |
| 4. Eissar | - | 47,91,225 | 32,29,072 | - | 3,36,166 | - | - | - |
| 5. Jind | - | 29,28,349 | - | - | 1,21,824 | - | - | - |
| 6. Karnal | - | 48,65,541 | 17,74,762 | - | 2,03,131 | - | - | - |
| 7. Kuruk- shetra | 2,75,79,632 | 39,59,590 | 2,26,951 | - | 3,02,912 | 61,24,676 | - | - |
| 8. Mohindargarh | - | 36,73,173 | - | - | 4,83,478 | - | - | - |
| 9. Rohtak | 1,45,19,808 | 1,05,28,359 | - | - | 6,04,819 | - | - | 2,12,75,72 |
| 10. Sirsa | - | 16,26,227 | - | - | - | - | - | - |
| 11. Sonapat | - | 41,90,159 | - | - | 4,65,896 | - | - | - |
| TOTAL | 4,20,99,440 | 5,47,03,207 | 52,30,785 | - | 40,28,573 | 70,56,310 | - | 2,12,75,72 |

STATEMENT NO. (27) - DIRECT EXPENDITURE ON HIGHER EDUCATION - 1976-77
(Concl.d.)

| Name of the District | Affiliated Institutions (Degree level) | | NON-AFFILIATED | | Board of Intermediate | Intermedia- te Pre-Deg- ree Junior Colleges | GRAND TOTAL (In Lakhs) | |
|----------------------|--|--------------------|------------------|--------------------|-----------------------|---|------------------------|---------------|
| | Others | Total | Degree | Below Degree | | | 1976-77 | 1970-71 |
| 1 | 10 | 11 | 12 | 13 | 14 | 15 | 16 | 17 |
| 1. Ambala | - | 90,03,277 | - | 37,80,583 | - | - | 1,27,83,860 | 109.42 |
| 2. Bhiwani | - | 54,83,228 | - | 10,57,734 | - | - | 65,40,962 | - |
| 3. Gurgaon | - | 60,95,860 | - | 36,43,899 | - | - | 97,39,759 | 42.07 |
| 4. Hissar | 56,58,475 | 1,40,14,938 | - | 16,02,060 | - | - | 1,56,16,998 | 90.77 |
| 5. Jind | - | 30,50,173 | - | 9,96,239 | - | - | 40,46,419 | 10.24 |
| 6. Karnal | - | 68,43,434 | - | 29,63,485 | - | - | 98,06,919 | 164.80 |
| 7. Kurukshetra | - | 1,06,14,329 | 3,39,327 | 12,61,004 | - | - | 3,97,94,292 | - |
| 8. Mohindargarh | - | 41,56,651 | - | 12,30,958 | - | - | 53,87,609 | 13.95 |
| 9. Rohtak | - | 3,24,08,901 | 7,82,120 | 42,14,828 | - | - | 5,19,25,657 | 138.44 |
| 10. Sirsa | - | 16,26,227 | - | 14,25,957 | - | - | 30,52,184 | - |
| 11. Sonapat | - | 46,56,055 | 4,67,310 | 8,56,035 | - | - | 59,79,400 | - |
| TOTAL | 56,58,475 | 9,79,53,073 | 15,88,757 | 2,30,32,782 | - | 76,58,460* | 17,23,32,512 | 569.69 |

*Includes Board Expenditure. Board is situated at Chandigarh.

NIEPA DC



D00689

Director, National Institute of Educational Planning and Administration
17-B, SriAurobindo Marg, New Delhi-110016
DOC. No. D-689
15/3/89