



**National Programme  
of  
Mid Day Meal in Schools  
(MDMS)**

**Annual Work Plan & Budget  
2014-15**

**Name of the State :- BIHAR**

# Mid Day Meal Programme Annual Work Plan and Budget 2014-15

## 1. Introduction:

### 1.1 Demographic Profile of the State:

Bihar is located in the eastern part of the country (between 83° 30' to 88° 00' longitude). It is an entirely land-locked state, although the outlet to the sea through the port of Kolkata is not far away. Bihar lies mid-way between the humid West Bengal in the east and the sub humid Uttar Pradesh in the west, which provides it with a transitional position in respect of climate, economy and culture. It is bounded by Nepal in the north and by Jharkhand in the south. The Bihar plain is divided into two unequal halves by the river Ganga which flows through the middle from west to east.

<b>Physical Features</b>	
Longitude	24° 20' 10" 27° 31' 15" N
Longitude	83° 19' 50" - 88° 17' 40" E
Rural Area	92,257.51 sq. km
Urban Area	1,095.49 sq. km
Total Area	94,163.00 sq. km
Height above Sea-Level	173 Feet(52.73 Meter)
Normal Rainfall	1,105 mm
Avg. Number of Rainy Days	50 Days in a Year

### 1.2 Brief history.

#### Coverage:

The Mid-Day Meal (MDM) programme is being implemented in the State since January 2005, after the notification by the State Government on 18<sup>th</sup> December 2004 to implement the MDM in all primary schools in Bihar. Earlier in 2003-04, the State had experimented with provision of cooked meal in about 2531 schools spread over 30 blocks in 10 districts. It was later scaled up to all of 15,000 schools in these districts, covering about 30 lakh children. Since 2007-08, the programme is being implemented in all the 38 districts of Bihar. The MDM Scheme was extended to cover all the children of class VI to VIII studying in the government and government aided upper primary schools, AIE centers, government aided Sanskrit schools, NCLP from April-2008.

Currently, 14162415 children enrolled in 40518 primary schools (Table:AT-4) and 5756704 children enrolled in 30965 upper primary schools (Table:AT-4A) are covered under MDM scheme comprising government and government aided , AIE Centres, Madarsas / Maqtaba (Table:AT-3 ,AT-3A ,AT-3B). National Child Labour Project:

In 2011-12, Midday meal scheme was extended to National Child Labour Project(NCLP) residential schools aimed for education for child labour as per the direction of the Govt. of India. The children studying in NCLP were provided Mid-day Meal as per upper primary norm in 2013-14.

#### Management of Scheme:

Before 2008, the scheme was implemented from Directorate of Primary education. In 2008 to have better focus and effective implementation, the State Government formed a Society named “Bihar Rajya Madhyanha Bhojan Yojana Samiti”, to implement and supervise MDM scheme in the State. At present, Mid Day Meal Programme is being implemented in all the districts (38) of Bihar.

The main objective of the Mid-Day Meal (MDM) programme is to bring all children to primary schools with three major objectives:

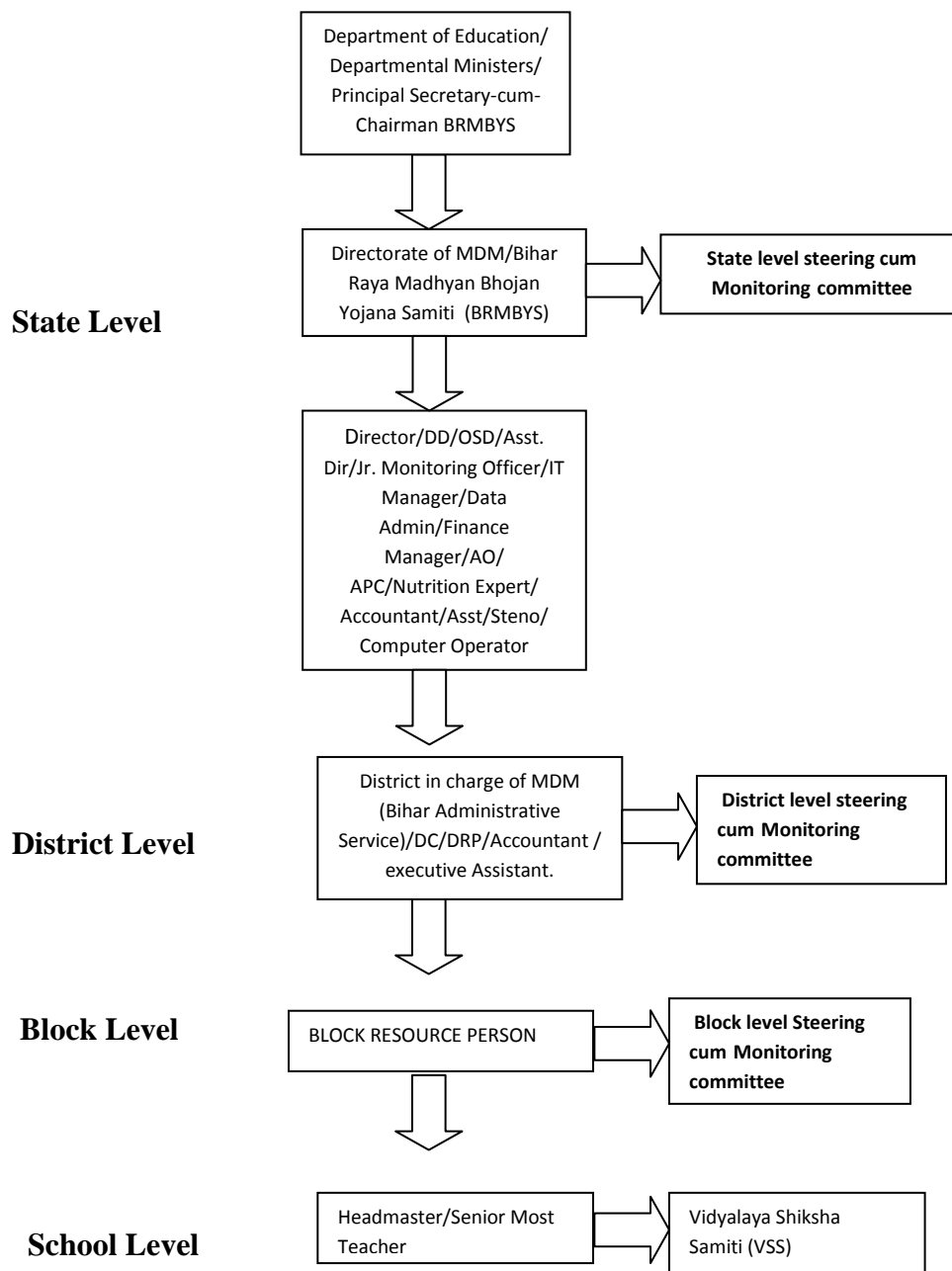
- a) Child nutrition,
- b) Educational advancement and
- c) Social equity.

And additionally aims to inculcates hygiene and sanitation practices among children.

The MDM scheme is guided by the principle that all children have Right to Life, Food, Education and Development. These fundamental human rights of the children are enshrined in the UN Convention on the Rights of the Child (CRC), the Indian Constitution and also in pronouncements of the Supreme Court. Currently, the food security act has been enacted for guarantee of food to all sections of society which also covers serving hot meals.

The State, therefore, is committed to provide food and education to all children. This is the basic philosophy behind providing mid-day meal to all children studying in primary and upper primary schools of the state, where 42% of the population live below the poverty line.

### 1.3 Management Structure



### 1.4 Process of Plan Formulation.

- (i) Schools compile data and send it to Block
- (ii) Blocks analyse and examine the data and send it to Districts
- (iii) Districts evaluate and examine the data and prepare the AWP

- (iv) Districts then send AWP to the State
- (v) State office analyses, evaluates and examines the data of the AWP provided by the districts and finalises it and then AWP is approved by the State Steering cum monitoring committee.
- (vi) Finally it is produced before the PAB of the Govt. of India for the approval.

A workshop was organised in January 2013 to train the persons responsible for preparing AWP & B at district level. After that district in-charge of MDM were called to the headquarter along with final AWP for 2014-15. All the information have been analytically processed and AWP & B finalized as per the instructions of GOI and it was proved by SSMC on 19.02.2014.

2. **Description and assessment of the programme implemented in the current year (2013-14) and proposal for next year (2014-15) with reference to:**

A lot of initiatives were taken in the financial year 2013-14 to improve the implementation of Mid-day Meal Scheme in the state. These are as follows:

- New modules have been added to make monthly MIS more effective.
- Allotment of fund and food grain has been made essential through monthly MIS.
- SMS alert directly sent to HM after generation of fund and foodgrain advice from MIS.
- Special inspection drive has been started to cover all schools of one block of each district in every month.
- The monthly state level meeting of district MDM in-charges, officers of the SFC, FCI and related banks are organised regularly to identify the problems and solve them in order to facilitate the smooth flow of fund and food grain.
- The all 38 district MDM in-charges were sent to National Productivity Council, Jaipur in two batches for Administrative and Management Training Programme for capacity building.
- A Toll free no 1800-345-6208 has been installed at directorate level .
- The monthly ranking of the district is being done regularly to assess the performance of the MDM in-charge. It has also been decided to felicitate the officers of the first three districts twice in a year to motivate them.
- The honorarium of block resource persons has been increased so as to motivate them.
- A Training programme was organized for 650 district and block level staff in 40 batch of four days from 23.10.2013 to 22.01.2014 as Master trainer of all 38 Districts of the state. All HM/VSS were given one day training on management of school's MDM accounting system .
- All cooks are giving one day training on preparation of hygienic food and cleaning of kitchen shed – For this one hour video film prepared which includes animation film.

- one day training of All 1,40,000 HM/VSS(SMC) members started and finished by end of march 30<sup>th</sup> 2014
- A Tally software has been introduced to improve financial management and to update the Accounts of Head Quarter and Districts. The C.A. firm has also been assigned the task of preparing the annual financial statement and utilization of funds. The C.A. firm will also provide training to the district level accountants so as to improve their accounting skills. The account manual of the BRMBYS has also been prepared & adopted.
- New post of District programme manager (DPM) for the districts and finance manager and I.T manager and finance manager for the head quarter have been appointed for the better management of the scheme.

#### **New initiatives for 2014-15**

- The directorate plans to provide CUG Mobile connection and tablet PC to all field officers of mid day meal scheme in 2013-14 to facilitate MIS entry, promote mutual communications and better monitoring of the scheme through implementation of mobile based inspection system.
- The computer tablet will enable our BRPs to feed school data in the monthly MIS in off line mode as well. Besides this, the computer tablet will make inspections of Mid-day meal in the schools more effective by including geo-stamped and time-stamped photos. The inspection reports would be compiled and analysed by the MIS.
- The directorate also plans to put in place a system of internal audit during 2013-14 to ensure better controls.
- The directorate also plans to shift from manual and single entry based accounting to computerized double entry system of accounting in 2013-14.
- A system of third party evaluation of the scheme is being planned to be implemented from 2013-14.
- A comprehensive training program for all level of personnel is being developed to build the capacity of the officers and staffs. This is planned to be introduced from 2013-14.
- New post of District account manager and district IT manger and additional 120 BRP post have created for the districts and block for the better management of the scheme

#### **Result of the initiatives taken in 2013-14**

- The initiatives taken in 2013-14 lead to increase in average per day beneficiaries by 5 percent in the third quarter of 2013-14 over the first quarter of 2013-14. The number of schools not serving meal also decreased from 19,233 in June 2012 to 1300 in January 2014.

2.1 In spite of our sincere efforts for uninterrupted mid day meal scheme, the scheme gets interrupted in some schools due to local problems and delay in issue of food grain at FCI and SFC. The State Food Corporation has been requested to issue the back log stocks of food grain so as to meet the necessity of food grain. The district MDM in-charge has been directed to reduce such problems and to ensure uninterrupted implementations of the scheme.

2.2 The food grain management is a key issue. The coordination among district MDM In-charge, District Manager of SFC and FCI is very essential to ensure timely lifting and issue of food grain. The regular meeting of these district level officers has been called to identify the food grain related issue and their solution.

The allocation of food grain has been made quarterly based on average per day beneficiary of the schools. To ensure adequacy, the allotment of food grain is being made through monthly MIS.

The issue, lifting, and distribution of food grain to the schools are being monitored through IVRS and monthly MIS.

The quality of food grain and timely issue of food grain by FCI has been the measure issue in some districts like Bhagalpur, gaya and saran. The responsibility is shifted on each other by FCI and SFC for supplying bad quality of food grain. Therefore stamping/stenciling the bag of the food grain before issue by FCI is essential for the identification of food grain meant for the MDM.

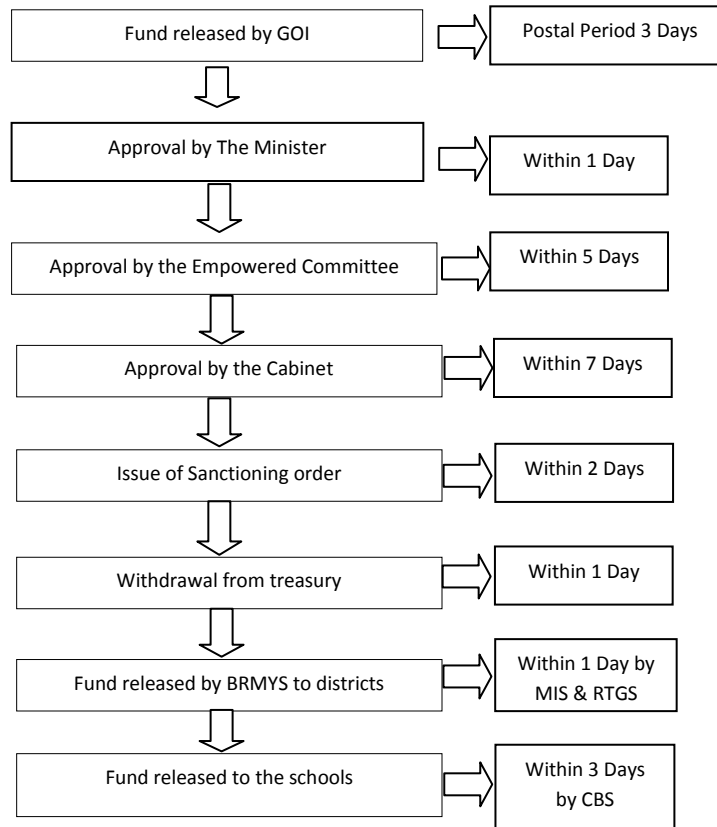
The safe and secured storing of food grain is a challenge. A lot of food grain is pilfered and damaged by dampness, moisture, insects and rodent. Therefore each school has been provided one storage bin but it is not enough. It has also been planned to provide more storage bins to each school depending on the enrollment.

2.3 The FCI is to produce bill fortnightly against the issue of food grain. But in a practice, the FCI fails to raise bills fortnightly and submits bills on quarterly basis. However, the district MDM in-charge corroborates the bills raised by FCI with the lifting report produced by SFC. After that, the district magistrate orders to pay FCI. The total amount paid against the bill raised by FCI till 31 December is 2013 is Rs. 4520.48 The rest dues of FCI is which is being processed and will be paid shortly. Till now, our district offices have not received the 3<sup>rd</sup> quarter bills from FCI.

2.4 After the release of fund from the government of India, the Central share and matching State Share are released within 20 days to the schools with the help of RTGS and core banking system.

The time lag of the fund flow from directorate to the district and from district to the school is as under :-

### Fund flow system



## 2.6 Submission of information in Mandatory Table (AT-24)

The Mid-day meal scheme in Bihar is prepared in 95 percent schools by cook-cum-helpers engaged by VSS(school management committee) and Headmaster . Only 5 percent schools situated in urban and semi urban area are covered by the NGOs as per norms laid by MHrd ,GoI. The NGOs are engaged to supply Mid day Meal through centralized kitchen in the schools situated in the urban area only in 12 districts of the state.

The schools in which cooked meals are being supplied by centralized kitchen cooks cum helper are engaged for cooking at centralized kitchen and for serving at school level in equal proportions . The Non Governmental Organisations participating in this mid day meal programme bear the expenditure in respect of construction of kitchen sheds, transportation of prepared food and other infrastructural facilities. Therefore, half of the cooks are allotted to the school and the rest half of the cooks are allotted to the centralized kitchen operated by NGOs.



The cook-cum-helpers are being paid either by cash, cheque and through CBS accounts. The Society is committed to pay all cook cum helper honorarium through Bank Accounts in 2014-15. Regular monitoring is being done for regular monthly payments.

The cooking ingredients (pulses, vegetables including leafy ones, salt, condiments, oil and fuel etc.) are purchased in the local market as per their need. The current State food corporation logistics falls short in fulfilling current demand of timely availability of foodgrain. SFC is upgrading its logistics. So, option of supply of ingredients will be taken up after setting up of robust logistic support at SFC end.

Training to all the cook-cum-helpers for preparing Mid-day Meal in a secure and hygienic manner is under process. This includes adherence to prescribed menu preparations for quantity and nutritional value of the meal, to prevent any untoward happening such as food poisoning. A refresher training was conducted for District officials, Block resource persons, VSS members and Headmasters to monitor the operations and implementation of Mid-day Meal scheme from 23-10.2013 to 22-01.2014 in 16 batches which comprises 40 persons per batch for 4 days. All cook cum helper training program will end in March 2014. In addition, a ten day training of two batches of 30 cooks each has been conducted at Institute of Hotel management, Hajipur.

The status of kitchen shed is as under :-

Total no. of Schools	No. of Schools where kitchen shed constructed/or being constructed.	No. of Schools where kitchen shed not constructed.	Remarks
70483	46140	19837	Construction of kitchen shed in schools are in progress as per plinth area norms.

The kitchen shed is being constructed as per estimate prepared for four different plinth area norm which primarily depends on the enrollment of a school.

(i) The specifications and funds for procurement of kitchen device has been made available for replacement and new purchases to the schools by district in-charge of MDM. The procurements are being done at school level by head master in camps. These camps provide platform for direct purchases from suppliers and also monitoring of quality of kitchen devices.

(ii) The Government of India has earmarked Rs, 5,000/-for each school per kitchen device but keeping in view the inflation and high enrollment this amount is not enough. The district not covered under convergence with IAP/MADP/MSDP/Innovative Fund schemes were provided with additional Rs 5000 for each school and district magistrates of districts covered by

IAP/MADP/MSDP/Innovative Fund schemes were requested to provide fund for kitchen device and utensils under these schemes.

As present, the scheme is managed and monitored by web based monthly MIS and Dopahar (IVRS). Our BRPs collect data from the schools and feed them in monthly MIS by the fifteen days.

The districts, block level Steering cum Monitoring committee and VSS have been notified and directed to summon regular meetings of them to monitor and evaluate the scheme.

To ensure adequacy and transparency in food grain management:

The generation of sub allotment of food grain is being generated through web based MIS.

It is also made essential for the Headmaster to maintain records and register regularly to ensure transparency and accountability in the procurement of ingredients in the schools.

The details of the cook cum helpers has been feed in monthly MIS and a clear direction has been issued to give priority to the women/man of the weaker and deprived sections while appointing cook cum helpers.

The guidelines, layout and the estimate of kitchen shed on the basis of plinth area taking in account the enrollment of the schools.

Measures taken to rectify:

(a) The consumption of fund and food grain has been reviewed monthly and necessary directions to the district MDM in-charge is given to improve inter district low and uneven utilization of food grains and cooking cost, intra-district mismatch in utilization of food grains and cooking cost and delay in delivering cooking cost at school level.

(b) The necessary actions have been taken in the light of evaluation report of different organizations and institutions.

(c) In some districts milk for kheer and fresh green vegetables are being made available by the villagers' to schools in some district.

(d) Although no instance of social discrimination has been found as yet though sporadic and rare instances of unhygienic food served, children falling ill and sub-standard supplies of food grain by FCI and SFC have been reported. The MDM in-charge were ordered to examine the matter and take actions against responsible persons as also communicated to MHrd GoI. But after the laboratory reports in all such cases it was found that the illness was not due to mid day meals

served in the school. To avoid misuse and diversion, joint lifting and distribution of food grain are made by BRP and contractors. Wherever the misuse of resources is found, disciplinary and necessary actions are taken. Recently, financial penalties on head masters in such case has been introduced in continuation to penal action on BRPs, contractors etc.

Direction has been given to all school after preparation of mid-day meal before serving in following order :-

1. First taste by head master before serving of MDM .
2. Second taste by cook cum helper before serving of MDM
3. Third taste by VSS before serving of MDM

A register to record daily roaster of tasting the meals at school has been introduced. Directorate is communicating with food and adulteration department for operationalising laboratory at state level.

The NGOs have been instructed strictly to follow the instructions of the department regarding the supply of food in good condition with the prescribed quantity of food grains, vegetables etc in closed containers in order to ensure safety.

The directorate are monitoring Health Programme with special focus on provision of micronutrients, Vitamin-A, de-worming medicine, iron and folic acid, Zinc, distribution of spectacles to children with refractive error and recording of height, weight etc in convergence with department of health.

State level steering cum monitoring committee headed by chief secretary holds meeting once in every six months district and block level SMCs are also constituted and meeting are hold regularly to review the implementation of the scheme in every quarter.

As per the guideline by the government of India district and block level SMCs have been provided powers to give necessary orders suggestions and instructions for better implementation of the Mid day Meal Scheme. School education committee/Vidyalaya Siksha Samiti (VSS) has been formed for every school in the right of education act 2009. The VSS has been entrusted with the management and implementation of the Mid day Meal Scheme at school level with the help of Headmaster/ Senior most teacher.

All district organized district vigilance and monitoring committee once in a quarter .

It is made essential for the district and block level officers/ BRPs to inspect schools regularly. The frequency of inspections is being counted in ranking of the officers. A special inspection drive has been formulated to inspect all school of particular block of the district by all MDM officials in a single day by end of every month. The state level officers have also been sent to the districts to inspect the implementation of the scheme in the schools. The necessary actions have been taken in the light of the inspection reports.

The necessary actions has been taken in the light of feedback/comments in respect of report of monitoring institutions designated for our state/UTs monitor implementation of MDM and action taken thereon.

A grievance redressal mechanism is being implemented in the districts and state headquarter. The grievances are being redressed regularly by taking necessary actions.

A toll free number telephone no.1800-345-6208 has been advertised for receiving and registering telephonic grievance in accordance with MHrd GoI directions. E.mail address and telephone numbers of all headmasters/BRPs/district level officers and state level officers are available on [www.dopahar.org](http://www.dopahar.org) along with data captured through interactive voice response mechanism(IVRS) for the public view and for sending grievances regarding mid day meal scheme.

After 22 Jan 2014 the same toll free had been launched statewide for general public. It shall be Painted at prominent Places on the outside wall of the school. This toll free shall be integrated with online MIS to respective level of disposal .The toll free no has equipped with complaints voice recording system for future course of action and follow up.

The news regarding the implementation of scheme covered by print and electronic media is regularly monitored at state and district level for action taken reports and better implementation of the scheme. our message to all related officers, persons and public regarding Mid day Meal schemes is conveyed by media. The directorate also plans to endorse the norms, menu and role of mothers of the children in the implementations of Mid day meal scheme.

The overall impact of the mid day meal scheme cam be summarized as under,

- (i) The children enrollment and attendance increased and the average beneficiaries per day increased by 23% in 2013-14.
- (ii) Retention of the children in the schools has increased and drops out reduced.
- (iii) The habit of hygiene and sanitation is developing in the children, head masters and parents.

- (iv) 209881 of man and women of the weaker and deprived section are working as cook cum helpers.
- (v) The sense of social equality has developed in the children in primary age.

**The Directorate of MDM, Bihar is committed and is working earnestly to achieve the goal of providing mid-day meal to each student present in every school on every working day.**

**(R. Lakshmanan)**  
Director,  
Mid-day Meal Scheme,  
Department of Education,  
Govt. of Bihar.