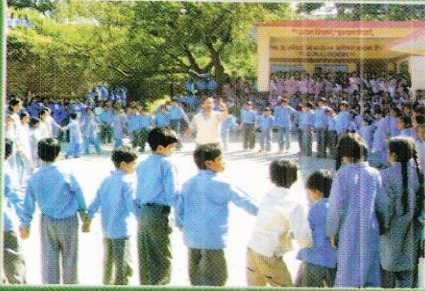


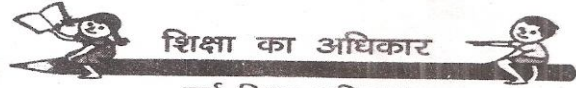


## Elementary Education Statistics Himachal Pradesh

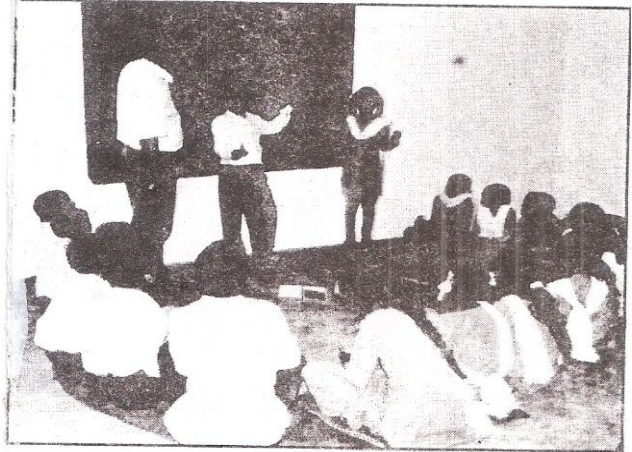
2008-09 & 2009-10



**SARVA SHIKSHA ABHIYAN  
&  
DIRECTORATE OF ELEMENTARY EDUCATION  
HIMACHAL PRADESH**



सर्व शिक्षा अभियान  
सब पढ़ें सब बढ़ें



**SARVA SHIKSHA ABHIYAN  
&  
DIRECTORATE OF ELEMENTARY EDUCATION  
HIMACHAL PRADESH**

### Contents

## PREFACE

This booklet contains imperative information about the status of Elementary Education (Class I to VIII) in Himachal Pradesh besides distinctive findings of Census-2011. Every year school statistics is collected (as on 30<sup>th</sup> September) in District Information System for Education (DISE) under Management Information System (MIS) an intervention of Sarva Shiksha Abhiyan (SSA). This information is shared with every stakeholder ranging from School /School Management Committee to National Level. This booklet provides an extremely structured synopsis of Elementary Education scenario in the state of Himachal Pradesh.

I hope that this booklet will meet the needs of teachers, researchers, planners, administrators, media personnel and general people at large.

Shimla

**K. Sanjay Murthy, IAS**  
Secretary Education-cum  
Chairman HPSES.

Sr. No	Particulars	Table Number	Page No.
1.	Himachal Pradesh at a glance	1	1
2.	Brief Summary of Education in Himachal Pradesh	2	2
3.	Brief Summary of Schools under Education Department	3	3
4.	Distribution of Population	4(i)	4
5.	Distribution of Decadal Growth Rate	4(ii)	5
6.	Distribution of Sex-Ratio and Population Density per sq.km	4(iii)	6
7.	Sex-Ratio for State and Districts: 1901-2011	4(iv)	7
8.	Population in the Age-Group 0-6 age group	4(v)	8
9.	District and State and gender wise distribution of Literates	4(vi)	9
10.	State & District Literacy Rates	4(vii)	10
11.	Proportion of Child Population in the Age-Group 0-6 to Total Population	4(viii)	11
12.	Growth of Literacy in Himachal Pradesh	4(ix)	12
13.	No of Block, Education Block, BRC&CRC	5	13
14.	District wise and category wise Number of Schools : All Management (2010-11)	6	14
15.	District wise Number of Schools :Department of Education (2010-11)	7	15
16.	Category wise Enrolment Profile : All Management (2010-11)	8	16
17.	Category wise Enrolment profile (Deptt. of Edu.) 2010-11	9	17
18.	Caste and Gender wise Enrolment of primary schools: All Management (2010-11)	10	18-22

Sr. No	Particulars	Table Number	Page No.
34.	Distribution of schools by no. of classrooms (Deptt. of Education)- Primary and Upper Primary	26	59-60
35.	Condition of classroom (Deptt. of Education) - Primary and Upper Primary	27	61-62
36.	District wise facilities available in Primary schools 2010-11 (Dept. of Education)	28	63-65
37.	District wise facilities available in Upper Primary schools 2010-11(Dept. of Education)	29	66-68
38.	GER & NER (Primary and Upper Primary) 2010-11	30	69-70
39.	Drop Out Rate for the year 2010-11	31	71
40.	Transition Rate (Primary to upper primary)	32	72
<b>DISE DATA FOR THE Year 2011-12</b>			
41.	HIMACHAL AT GLANCE in Education	1	74
42.	Brief Summary Department of Education School (2011-12)	2	75
43.	District and Category wise Number of School : All Management (2011-12)	3	76
44.	District and Category wise Number of school (2011-12) (Deptt. of Education)	4	77
45.	Enrolment (2011-12)	5	78
46.	District and social category wise enrolment 2011-12 (All Management) Primary	6	79-84
47.	District and social category wise enrolment 2011-12 (All Management) Upper Primary	7	85-90

Sr. No	Particulars	Table Number	Page No.
61.	District wise facility in Deptt. Education (2011-12) Upper Primary	21	128-131
62.	GER & NER 2011-12 - Primary and Upper Primary	22	132-133
63.	Drop Out Rate for the year 2011-12	23	134
64.	Transition Rate (Primary to upper primary)	24	135
	Connect officer at State Project Office		136-137
	Contact Officers at State Project Office and DIET Principals		138
	Abbreviations		139-140
	Note		

1. Himachal Pradesh at a Glance (2010-11)				
Sr. No.	Characteristic	Reference Year	Unit	
1	Area	2001 Census	Sq. kms.	55,673
2	Districts		Number	12
3	Tehsil			77
4	Sub Tehsil			34
5	Blocks			75
6	Sub Division			51
7	Nagar Panchayats			28
8	Gram Panchayats			3,243
9	Inhabited Villages			17,495
10	Villages			20,188
11	Population		Lakhs	68,56,509
12	Males			34,73,892
13	Females			33,82,617
14	Females per 1000 males		Number	974
19	Density of Population		Sq. Km	123 Persons
20	Decadal Rate			12.81%
23	Literacy Rate			83.78%
24	Male Literacy rate			90.83%
25	Female Literacy Rate			76.6%

## 2. Brief Summary of Education in Himachal Pradesh

No of School	Boys	Girls	Total
Primary only	14	14	11369
Upper Primary	48	59	6070
Teacher	<b>Male</b>	<b>Female</b>	<b>Total</b>
	36317	28021	64338
Enrolment	<b>Boys</b>	<b>Girls</b>	<b>Total</b>
	546341	489286	1035627
No. of Class Room	72255		
PTR	16.10		
SCR	14.33		
Primary GER	111.22	111.68	111.44
Primary NER	90.11	90.45	90.27
U. Primary GER	131.31	129.97	130.68
U. Primary NER	92.89	93.29	93.08

4 (i) Distribution of Population

3. Brief Summary of school under Department of Education (2010-11)

Particulars	Primary	Upper Primary	Total
No of School	10711	4361	15072
Teacher	26199	21859	48058
Enrolment	422760	311637	734397
No. of Class Room	31288	16667	47955
PTR	16	14	15
SCR	14	19	15

Sr. No.	District	Population		
		Person	Male	Female
1.	Bilaspur	382056	192827	189229
2.	Chamba	518844	260848	257996
3.	Hamirpur	454293	216742	237551
4.	Kangra	1507223	748559	758664
5.	Kinnaur	84298	46364	37934
6.	Kullu	437474	224320	213154
7.	L & Spiti	31528	16455	15073
8.	Mandi	999518	496787	502731
9.	Shimla	813384	424486	388898
10.	Sirmour	530164	276801	253363
11.	Solan	576670	306162	270508
12.	Una	521057	263541	257516
	<b>Total</b>	<b>6856509</b>	<b>3473892</b>	<b>3382617</b>

Source: Census 2011

3

4 (ii) Distribution of Decadal Growth Rate

State/District Name	Percentage decadal growth rate of population	
	1991-2001	2001-2011
	Himachal Pradesh	17.54
Chamba	17.19	12.58
Kangra	14.05	12.56
Lahaul & Spiti	6.17	-5.1
Kullu	26.17	14.65
Mandi	16.1	10.89
Hamirpur	11.8	10.08
Una	18.51	16.24
Bilaspur	15.4	12.08
Solan	30.94	15.21
Sirmour	20.78	15.61
Shimla	17.02	12.58
Kinnaur	9.91	7.61

Source: Census 2011

5

4

4 (iii) Distribution of Sex-Ratio and Population Density per sq.km

State/District Name	Sex- Ratio (Number of Females per 1000 Males)		Population density per sq. km	
	2001	2011	2001	2011
	Himachal Pradesh	968	974	109
Chamba	959	989	71	80
Kangra	1025	1013	233	263
Lahaul & Spiti	802	916	2	2
Kullu	927	950	69	79
Mandi	1013	1012	228	253
Hamirpur	1099	1096	369	406
Una	997	977	291	338
Bilaspur	990	981	292	327
Solan	852	884	259	298
Sirmour	901	915	162	188
Shimla	896	916	141	159
Kinnaur	857	818	12	13

Source: Census 2011

6

4 (iv) Sex-Ratio for State and Districts: 1901-2011

State/ District	Sex-ratio since (Number of females per 1000 males)											
	1901	1911	1921	1931	1941	1951	1961	1971	1981	1991	2001	2011
Himachal Pradesh	884	889	890	897	890	912	938	958	973	976	968	974
Chamba	903	897	893	910	874	894	876	945	936	949	959	980
Kangra	NA	900	930	917	916	936	964	1008	1016	1024	1025	1013
L & Spiti	992	990	993	989	920	933	786	818	767	817	802	916
Kullu	NA	1009	1015	1006	930	941	945	920	918	920	927	950
Mandi	908	924	933	917	907	971	994	964	999	1013	1013	1012
Hamirpur	NA	900	930	917	916	936	1092	1116	1149	1105	1099	1096
Una	NA	900	930	917	916	936	978	1003	1028	1017	997	977
Bilaspur	840	862	874	900	938	948	952	993	1002	1002	990	981
Solan	725	723	645	724	736	800	879	923	929	909	852	884
Sirmour	798	822	824	803	818	800	828	836	874	897	901	915
Shimla	853	881	842	886	867	875	852	869	878	894	896	916
Kinnaur	911	935	922	941	910	1070	969	887	885	856	857	818

Source: Census 2011

7

4 (vi) District and State and gender wise distribution of Literates

Sr. No.	State/District	Number of literates		
		P	M	F
	Himachal Pradesh	51,04,506	27,91,542	23,12,964
1	Chamba	3,28,940	1,89,641	1,39,299
2	Kangra	1,16,4461	6,13,281	5,51,180
3	L & Spiti	22,040	13,018	9,022
4	Kullu	3,10,487	1,76,552	1,33,935
5	Mandi	7,36,661	4,01,990	3,34,671
6	Hamirpur	3,61,909	1,82,350	1,79,559
7	Una	4,03,767	2,15,575	1,88,192
8	Bilaspur	2,91,647	1,57,835	1,33,812
9	Solan	4,33,877	2,47,323	1,86,554
10	Sirmour	3,69,651	2,09,608	1,60,043
11	Shimla	6,19,427	3,47,013	2,72,414
12	Kinnaur	61,639	37,356	24,283

Source: Census 2011

9

4 (v) Population in the Age-Group 0-6 age group.

Sr. No.	State/District	Population in age group 0-6		
		P	M	F
	Himachal Pradesh	7,63,864	4,00,681	3,63,183
1	Chamba	69409	35591	33818
2	Kangra	1,60,865	85888	74977
3	L & Spiti	2,994	1,487	1,507
4	Kullu	5004 <sup>1</sup>	25504	24537
5	Mandi	1,09,963	57496	52467
6	Hamirpur	47708	25357	22351
7	Una	58200	31117	27083
8	Bilaspur	41612	21983	19629
9	Solan	66349	34948	31401
10	Sirmour	67958	35202	32756
11	Shimla	90778	42018	38760
12	Kinnaur	7,987	4,090	3,897

Source: Census 2011

8

4 (vii) State & District Literacy Rates

Sr. No.	State/District	Literacy rates		
		P	M	F
	Himachal Pradesh	83.78	90.83	76.6
1	Chamba	73.19	84.19	62.14
2	Kangra	86.49	92.55	80.62
3	Lahaul & Spiti	77.24	86.97	66.5
4	Kullu	80.14	88.8	71.01
5	Mandi	82.81	91.51	74.33
6	Hamirpur	89.01	95.28	83.44
7	Una	87.23	92.75	81.57
8	Bilaspur	85.67	92.39	78.9
9	Solan	85.02	91.19	78.02
10	Sirmour	79.98	86.76	72.55
11	Shimla	84.55	90.73	77.8
12	Kinnaur	80.77	88.37	71.34

Source: Census 2011

10

4 (viii) Proportion of Child Population in the Age-Group 0-6 to Total Population

State /District	2001			2011		
	P	M	F	P	M	F
Himachal Pradesh	13.05	13.55	12.53	11.14	11.53	10.74
Chamba	15.1	15.13	15.06	13.38	13.64	13.11
Kangra	12.29	13.56	11.06	10.67	11.47	9.88
Lahaul & Spiti	11.03	10.13	12.15	9.5	9.04	10
Kullu	13.84	13.61	14.09	11.44	11.37	11.51
Mandi	13.31	13.96	12.66	11	11.57	10.44
Hamirpur	12.28	13.94	10.78	10.5	11.7	9.41
Una	13.32	14.48	12.16	11.17	11.81	10.52
Bilaspur	12.58	13.31	11.85	10.89	11.4	10.37
Solan	13.27	12.93	13.67	11.51	11.41	11.61
Sirmour	14.92	14.66	15.21	12.82	12.72	12.93
Shimla	11.78	11.58	12	9.93	9.9	9.97
Kinnaur	11.88	11.15	12.73	9.47	8.82	10.27

Source: Census 2011

11

5. No. of Block, Education Block, BRC & CRC

Sr. No	Name of District	CD Block /Municipal Zone	No. of Educational Blocks	No. of CRCs
1.	Bilaspur	3	5	117
2.	Chamba	7	15	214
3.	Hamirpur	6	6	105
4.	Kangra	15	19	358
5.	Kinnaur	3	3	37
6.	Kullu	5	6	130
7.	Lahaul & Spiti	2	4	41
8.	Mandi	10	20	340
9.	Shimla	10	20	321
10.	Sirmour	6	13	189
11.	Solan	5	7	149
12.	Una	5	6	101
	Total	77	124	2102

13

4 (ix) Growth of Literacy in Himachal Pradesh

Years	Male Literacy	Female Literacy	Total
1951	11.94	4.02	7.98
1961	30.94	11.12	21.03
1971	43.19	20.23	31.71
1981	53.19	31.46	42.33
1991	75.36	52.13	63.75
2001	85.30	67.40	76.50
2011(P)	90.83	76.6	83.78

Source: Census 2011

12

6. Category wise Number of School:

All Management (2010-11)

Districts	All School					Total
	Primary	Primary With Upper Primary	Pr. With Upper Pr. & Sec./H. Sec.	Upper Primary Only	Upper Primary with Sec./H. Sec.	
Bilaspur	663	64	59	126	125	1037
Chamba	1150	22	28	240	169	1609
Hamirpur	552	72	99	141	137	1001
Kangra	1894	142	282	390	411	3119
Kinnaur	200	11	10	35	49	305
Kullu	780	48	62	130	105	1125
Lahaul-Spiti	208	4	1	38	34	285
Mandi	1815	103	151	365	318	2752
Shimla	1724	87	110	351	308	2580
Sirmour	1020	44	49	206	150	1469
Solan	827	44	83	166	142	1262
Una	536	55	42	120	142	895
Total	11369	696	976	2308	2090	17439

14

7. District wise Number of School: Department of Education (2010-11)

Districts	Primary	Upper Primary Only	Upper Primary with Sec/ H Sec.	Total
Bilaspur	599	125	123	847
Chamba	1118	238	167	1523
Hamirpur	501	141	134	776
Kangra	1761	389	405	2555
Kinnaur	186	35	47	268
Kullu	743	130	104	977
Lahaul-Spiti	204	38	33	275
Mandi	1735	365	316	2416
Shimla	1610	351	305	2266
Sirmour	986	206	148	1340
Solan	763	166	138	1067
Una	505	119	138	762
<b>Total</b>	<b>10711</b>	<b>2303</b>	<b>2058</b>	<b>15072</b>

15

9. Category & Management wise Enrolment Profile  
Department of Education (2010-11)

Sr. No.	Districts	Primary	Upper Primary	Total
1.	Bilaspur	20099	16126	36225
2.	Chamba	49786	32698	82484
3.	Hamirpur	19871	17108	36979
4.	Kangra	67021	61588	128609
5.	Kinnaur	5672	3532	9204
6.	Kullu	33213	22650	55863
7.	Lahaul-Spiti	2016	1051	3067
8.	Mandi	61855	45981	107836
9.	Shimla	50795	33139	83934
10.	Sirmour	44406	30941	75347
11.	Solan	36920	24838	61758
12.	Una	31106	21985	53091
	<b>Total</b>	<b>422760</b>	<b>311637</b>	<b>734397</b>

17

Enrolment Profile  
8. Category wise Enrolment Profile  
All Management (2010-11)

Sr. No	Districts	Enrolment in All Schools		
		Primary	Upper Primary	Total
1.	Bilaspur	31635	21092	52727
2.	Chamba	56330	36046	92306
3.	Hamirpur	37960	25244	63204
4.	Kangra	120656	88592	209248
5.	Kinnaur	8089	4640	12729
6.	Kullu	44261	27902	72163
7.	Lahaul-Spiti	2659	1477	4136
8.	Mandi	86892	58188	145080
9.	Shimla	76633	46210	122843
10.	Sirmour	56921	36920	93841
11.	Solan	57986	35306	93292
12.	Una	45566	28492	74058
	<b>Total</b>	<b>625518</b>	<b>410109</b>	<b>1035627</b>

16

10 (i) Caste and Gender Wise Enrolment in the Primary schools: All Management (2010-11)

Districts	General		Total
	Boys	Girls	
Bilaspur	10805	9401	20206
Chamba	14901	13704	28605
Hamirpur	11799	9834	21633
Kangra	25704	21184	46888
Kinnaur	1226	1071	2297
Kullu	14534	13892	28426
Lahaul-Spiti	210	146	358
Mandi	26761	24707	51468
Shimla	27333	24909	52242
Sirmour	13877	12267	26144
Solan	19717	17057	36774
Una	9767	8069	17836
<b>Total</b>	<b>176634</b>	<b>156243</b>	<b>332877</b>

18

10 (ii) Caste wise and Gender Wise Enrolment in the Primary schools: All Management (2010-11)

Districts	SC		
	Boys	Girls	Total
Bilaspur	4536	4211	8747
Chamba	6304	6293	12597
Hamirpur	5182	4656	9838
Kangra	14837	13759	28596
Kinnaur	1260	1324	2584
Kullu	6935	6859	13794
Lahaul-Spiti	115	136	251
Mandi	14561	14449	29010
Shimla	11801	11576	23377
Sirmour	10705	10081	20786
Solan	8605	7853	16458
Una	6152	5484	11636
<b>Total</b>	<b>90993</b>	<b>86681</b>	<b>177674</b>

19

10 (iv) Caste wise and Gender Wise Enrolment in the Primary schools: All Management (2010-11)

Districts	OBC		
	Boys	Girls	Total
Bilaspur	897	804	1701
Chamba	483	510	993
Hamirpur	3301	2827	6128
Kangra	20359	18144	38503
Kinnaur	48	40	88
Kullu	443	454	897
Lahaul-Spiti	21	5	26
Mandi	2557	2463	5020
Shimla	105	96	201
Sirmour	4506	4393	8899
Solan	1429	1128	2557
Una	8082	6910	14992
<b>Total</b>	<b>42231</b>	<b>37774</b>	<b>80005</b>

21

10 (iii) Caste wise and Gender Wise Enrolment in the Primary schools: All Management (2010-11)

Districts	ST		
	Boys	Girls	Total
Bilaspur	510	471	981
Chamba	7163	6902	14065
Hamirpur	191	170	361
Kangra	3466	3203	6669
Kinnaur	1546	1574	3120
Kullu	623	521	1144
Lahaul-Spiti	990	1034	2024
Mandi	710	684	1394
Shimla	433	360	813
Sirmour	613	479	1092
Solan	1110	1087	2197
Una	591	511	1102
<b>Total</b>	<b>17946</b>	<b>17016</b>	<b>34962</b>

20

10 (v) Caste wise and Gender Wise Enrolment in the Primary schools: All Management (2010-11)

Districts	ALL		
	Boys	Girls	Total
Bilaspur	16748	14887	31635
Chamba	28851	27409	56260
Hamirpur	20473	17487	37960
Kangra	64366	56290	120656
Kinnaur	4080	4009	8089
Kullu	22535	21726	44261
Lahaul-Spiti	1336	1323	2659
Mandi	44539	42303	86842
Shimla	39672	36961	76633
Sirmour	29701	27220	56921
Solan	30861	27125	57986
Una	24592	20974	45566
<b>Total</b>	<b>327804</b>	<b>297714</b>	<b>625518</b>

22

11 (i) Caste wise and Gender Wise Enrolment in Upper Primary School: All Management (2010-11)

Districts	General		
	Boys	Girls	Total
Bilaspur	7111	6244	13355
Chamba	10240	8559	18799
Hamirpur	7807	6387	14194
Kangra	17631	13536	31167
Kinnaur	412	365	777
Kullu	9363	8744	18107
Lahaul-Spiti	36	31	67
Mandi	18512	16441	34953
Shimla	16244	14833	31077
Sirmour	9218	8074	17292
Solan	11957	9748	21705
Una	6161	4735	10896
<b>Total</b>	<b>114692</b>	<b>97697</b>	<b>212389</b>

11 (ii) Caste wise and Gender Wise Enrolment in the Upper Primary schools: All Management (2010-11)

Districts	SC		
	Boys	Girls	Total
Bilaspur	3023	2791	5814
Chamba	3903	3200	7103
Hamirpur	3483	3121	6604
Kangra	10868	9930	20798
Kinnaur	706	781	1487
Kullu	4338	3942	8280
Lahaul-Spiti	46	49	95
Mandi	9657	9230	18887
Shimla	7407	7022	14429
Sirmour	6307	5827	12134
Solan	5524	4913	10437
Una	3858	3352	7210
<b>Total</b>	<b>59120</b>	<b>54158</b>	<b>113278</b>

23

11 (iii) Caste wise and Gender Wise Enrolment in the Upper Primary schools: All Management (2010-11)

Districts	ST		Total
	Boys	Girls	
Bilaspur	378	329	707
Chamba	4874	4457	9331
Hamirpur	137	99	236
Kangra	2911	2662	5573
Kinnaur	1117	1205	2322
Kullu	390	352	732
Lahaul-Spiti	612	702	1314
Mandi	442	395	837
Shimla	288	183	471
Sirmour	338	218	556
Solan	820	750	1570
Una	479	397	876
<b>Total</b>	<b>12776</b>	<b>11749</b>	<b>24525</b>

25

24

11 (iv) Caste wise and Gender Wise Enrolment in the Upper Primary schools: All Management (2010-11)

Districts	OBC		Total
	Boys	Girls	
Bilaspur	625	591	1216
Chamba	413	400	813
Hamirpur	2235	1975	4210
Kangra	16525	14529	31054
Kinnaur	27	27	54
Kullu	412	371	783
Lahaul-Spiti	1	0	1
Mandi	1775	1736	3511
Shimla	133	100	233
Sirmour	3690	3248	6938
Solan	886	708	1594
Una	5227	4283	9510
<b>Total</b>	<b>31949</b>	<b>27968</b>	<b>59917</b>

26



11 (v) Caste wise and Gender Wise Enrolment in the Upper Primary schools:  
All Management (2010-11)

Districts	All		
	Boys	Girls	Total
Bilaspur	11137	9955	21092
Chamba	19430	16616	36046
Hamirpur	13662	11582	25244
Kangra	47935	40657	88592
Kinnaur	2262	2378	4640
Kullu	14493	13409	27902
Lahaul-Spiti	695	782	1477
Mandi	30386	27802	58188
Shimla	24072	22138	46210
Sirmour	19553	17367	36920
Solan	19187	16119	35306
Una	15725	12767	28492
Total	218537	191572	410109

27

12 (ii) Caste wise and Gender Wise Enrolment in the  
Primary schools: Deptt. of Education 2010-11

Districts	SC		
	Boys	Girls	Total
Bilaspur	3533	3490	7023
Chamba	6087	6172	12259
Hamirpur	3646	3556	7202
Kangra	11267	11061	22328
Kinnaur	1055	1147	2202
Kullu	6244	6416	12660
Lahaul-Spiti	103	122	225
Mandi	12282	12624	24906
Shimla	9925	10281	20206
Sirmour	9808	9475	19283
Solan	7550	7104	14654
Una	5246	4846	10092
Total	76746	76294	153040

29

12 (i) Caste wise and Gender Wise Enrolment in the Primary schools:  
Deptt. of Education 2010-11

Districts	General		
	Boys	Girls	Total
Bilaspur	5565	5517	11082
Chamba	11859	11650	23509
Hamirpur	4219	4284	8503
Kangra	7959	8038	15997
Kinnaur	839	799	1638
Kullu	9429	10019	19448
Lahaul-Spiti	190	140	330
Mandi	15581	16391	31972
Shimla	14819	15196	30015
Sirmour	8438	8778	17216
Solan	9632	9620	19252
Una	4793	4411	9204
Total	93323	94843	188166

28

12 (iii) Caste wise and Gender Wise Enrolment in the Primary schools: Deptt.  
of Education 2010-11

Districts	ST		
	Boys	Girls	Total
Bilaspur	394	382	776
Chamba	6611	6518	13129
Hamirpur	126	117	243
Kangra	2273	2362	4635
Kinnaur	816	1010	1826
Kullu	194	202	396
Lahaul-Spiti	675	760	1435
Mandi	533	560	1093
Shimla	261	218	479
Sirmour	543	420	963
Solan	690	783	1473
Una	420	407	827
Total	13536	13739	27275

30

12(iv) Caste wise and Gender Wise Enrolment in the Primary schools: Deptt. of Education 2010-11

Districts	OBC		
	Boys	Girls	Total
Bilaspur	636	582	1218
Chamba	425	464	889
Hamirpur	2004	1919	3923
Kangra	11914	12147	24061
Kinnaur	5	1	6
Kullu	342	367	709
Lahaul-Spiti	21	5	26
Mandi	1908	1976	3884
Shimla	46	49	95
Sirmour	3309	3635	6944
Solan	810	731	1541
Una	5784	5199	10983
<b>Total</b>	<b>27204</b>	<b>27075</b>	<b>54279</b>

31

13(i) Caste wise and Gender Wise Enrolment in the Upper Primary schools: Deptt. of Education 2010-11

Districts	General		
	Boys	Girls	Total
Bilaspur	4619	4692	9311
Chamba	8548	7508	16056
Hamirpur	4023	3974	7997
Kangra	7899	7200	15099
Kinnaur	285	254	539
Kullu	6832	7000	13832
Lahaul-Spiti	31	24	55
Mandi	12629	12658	25287
Shimla	9693	10090	19783
Sirmour	6501	6406	12907
Solan	6405	6385	12790
Una	3682	3090	6772
<b>Total</b>	<b>71147</b>	<b>69281</b>	<b>140428</b>

33

12(v) Caste wise and Gender Wise Enrolment in the Primary schools: Deptt. of Education 2010-11

Districts	All		
	Boys	Girls	Total
Bilaspur	10128	9971	20099
Chamba	24982	24804	49786
Hamirpur	9995	9876	19871
Kangra	33413	33608	67021
Kinnaur	2715	2957	5672
Kullu	16209	17004	33213
Lahaul-Spiti	989	1027	2016
Mandi	30304	31551	61855
Shimla	25051	25744	50795
Sirmour	22098	22308	44406
Solan	18682	18239	36920
Una	16243	14863	31106
<b>Total</b>	<b>210809</b>	<b>211951</b>	<b>422760</b>

32

13(ii) Caste wise and Gender Wise Enrolment in the Upper Primary schools: Deptt. of Education 2010-11

Districts	SC		
	Boys	Girls	Total
Bilaspur	2611	2534	5145
Chamba	3786	3117	6903
Hamirpur	2846	2695	5541
Kangra	9216	8856	18072
Kinnaur	610	707	1317
Kullu	4009	3767	7776
Lahaul-Spiti	30	37	67
Mandi	8557	8503	17060
Shimla	6492	6472	12964
Sirmour	5900	5596	11496
Solan	5073	4611	9684
Una	3433	3053	6486
<b>Total</b>	<b>52563</b>	<b>49948</b>	<b>102511</b>

34

13(iii) Caste wise and Gender Wise Enrolment in the Upper Primary schools:  
Dept. of Education 2010-11

Districts	ST		
	Boys	Girls	Total
Bilaspur	314	304	618
Chamba	4463	4491	8954
Hamirpur	73	92	165
Kangra	2282	2301	4583
Kinnaur	801	835	1636
Kullu	176	180	356
Lahaul-Spiti	429	499	928
Mandi	335	338	673
Shimla	142	86	228
Sirmour	267	222	489
Solan	574	605	1179
Una	390	375	765
<b>Total</b>	<b>10246</b>	<b>10328</b>	<b>20574</b>

13 (iv) Caste wise and Gender Wise Enrolment in the Upper Primary schools:  
Deptt. of Education 2010-11

Districts	OBC		
	Boys	Girls	Total
Bilaspur	535	517	1052
Chamba	399	386	785
Hamirpur	1739	1666	3405
Kangra	12149	11685	23834
Kinnaur	21	19	40
Kullu	358	328	686
Lahaul-Spiti	1	0	1
Mandi	1440	1521	2961
Shimla	89	75	164
Sirmour	3123	2926	6049
Solan	615	570	1185
Una	4282	3680	7962
<b>Total</b>	<b>24751</b>	<b>23373</b>	<b>48124</b>

35

13 (v) Caste wise and Gender Wise Enrolment in the  
Upper Primary schools: Deptt. of Education 2010-11

Districts	All		
	Boys	Girls	Total
Bilaspur	8079	8047	16126
Chamba	17196	15502	32698
Hamirpur	8681	8427	17108
Kangra	31546	30042	61588
Kinnaur	1717	1815	3532
Kullu	11375	11275	22650
Lahaul-Spiti	491	560	1051
Mandi	22961	23020	45981
Shimla	16416	16723	33139
Sirmour	15791	15150	30941
Solan	12667	12171	24838
Una	11787	10198	21985
<b>Total</b>	<b>158707</b>	<b>152930</b>	<b>311637</b>

36

37

14. (i) District wise & class wise enrolment of All Management 2010-11

District Name	Sex	Class I	Class II	Class III	Class IV	Class V	Total (1-5)
BILASPUR (H.P.)	B	3266	3370	3268	3323	3521	16748
	G	2904	2967	3000	3024	2992	14887
	All	6170	6337	6268	6347	6513	31635
CHAMBA	B	5931	5954	5499	5638	5829	28851
	G	5769	5891	5291	5227	5431	27409
	All	11700	11645	10790	10865	11260	56260
HAMIRPUR (H.P.)	B	4012	4012	4046	4042	4361	20473
	G	3508	3479	3407	3535	3558	17487
	All	7520	7491	7453	7577	7919	37960
KANGRA	B	12069	12678	12749	13045	13825	64366
	G	10642	11333	11482	11323	11510	56290
	All	22711	24011	24231	24368	25335	120656
KINNAUR	B	937	812	799	758	774	4080
	G	861	789	770	802	787	4009
	All	1798	1601	1569	1560	1561	8089
KULLU	B	4501	4501	4552	4398	4583	22535
	G	4405	4313	4290	4307	4411	21726
	All	8906	8814	8842	8705	8994	44261
LAHAUL & SPITI	B	317	254	263	269	233	1336
	G	280	254	272	269	248	1323
	All	597	508	535	538	481	2659
MANDI	B	8610	8772	8838	8975	9394	44589
	G	8327	8434	8496	8475	8571	42303
	All	16937	17206	17334	17450	17965	86892
SHIMLA	B	8821	8369	7360	7565	7557	39672
	G	8118	7836	6989	6998	7020	36961
	All	16939	16205	14349	14563	14577	76633

38

14. (i) District wise & class wise enrolment of All Management 2010-11

District Name	Sex	Class I	Class II	Class III	Class IV	Class V	Total (1-5)
SIRMOUR	B	6430	6128	5517	5775	5851	29701
	G	5772	5528	5211	5256	5453	27220
	All	12202	11656	10728	11031	11304	56921
SOLAN	B	6398	6205	6062	6110	6086	30861
	G	5729	5621	5427	5200	5148	27125
	All	12127	11826	11489	11310	11234	57986
UNA	B	4942	4768	4866	4973	5043	24592
	G	4144	4131	4266	4169	4264	20974
	All	9086	8899	9132	9142	9307	45566
<b>Total</b>		<b>126693</b>	<b>126199</b>	<b>122720</b>	<b>123456</b>	<b>126450</b>	<b>625518</b>

39

14. (ii) District wise & class wise enrolment of All Management 2010-11

District Name	Sex	Class VI	Class VII	Class VIII	Total (6-8)	Total (1-8)
BILASPUR (H.P.)	B	3508	3726	3903	11137	27885
	G	3152	3314	3489	9955	24842
	All	6660	7040	7392	21092	52727
CHAMBA	B	6059	6845	6526	19430	48281
	G	5378	5871	5367	16616	44025
	All	11437	12716	11893	36046	92306
HAMIRPUR (H.P.)	B	4405	4297	4960	13662	34135
	G	3741	3763	4078	11582	29069
	All	8146	8060	9038	25244	63204
KANGRA	B	14684	15269	17982	47935	112301
	G	12128	13242	15287	40657	96947
	All	26812	28511	33269	88592	209248
KINNAUR	B	738	747	777	2262	6342
	G	772	764	842	2378	6387
	All	1510	1511	1619	4640	12729
KULLU	B	4385	4874	5234	14493	37028
	G	4249	4420	4740	13409	35135
	All	8634	9294	9974	27902	72163
LAHAUL & SPITI	B	253	227	215	695	2031
	G	278	275	229	782	2105
	All	531	502	444	1477	4136
MANDI	B	9501	9843	11042	30386	74975
	G	8592	9235	9975	27802	70105
	All	18093	19078	21017	58188	145080

40

14. (ii) District wise &amp; class wise enrolment of All Management 2010-11

District Name	Sex	Class VI	Class VII	Class VIII	Total (6 - 8)	Total (1 - 8)
SHIMLA	B	7455	7984	8633	24072	63744
	G	6933	7445	7760	22138	59099
	All	14388	15429	16393	46210	122843
SIRMOUR	B	5903	6309	7341	19553	49254
	G	5109	5684	6574	17367	44587
	All	11012	11993	13915	36920	93841
SOLAN	B	5927	6418	6842	19187	50048
	G	5039	5372	5708	16119	43244
	All	10966	11790	12550	35306	93292
UNA	B	4899	5132	5694	15725	40317
	G	4043	4201	4523	12767	33741
	All	8942	9333	10217	28492	74058
Total		127131	135257	147721	410109	1035627

41

15 (i) District wise &amp; class wise enrolment of Department of Education 2010-11

District Name	Sex	Class I	Class II	Class III	Class IV	Class V	Total (1 - 5)
SHIMLA	B	5571	5327	4562	4776	4815	25051
	G	5577	5587	4726	4888	4966	25744
	All	11148	10914	9288	9664	9781	50795
SIRMOUR	B	4621	4494	4111	4358	4514	22098
	G	4647	4472	4207	4368	4614	22308
	All	9268	8966	8318	8726	9128	44406
SOLAN	B	3622	3729	3771	3747	3813	18682
	G	3578	3697	3674	3667	3622	18238
	All	7200	7426	7445	7414	7435	36920
UNA	B	2923	3100	3259	3439	3522	16243
	G	2723	2903	3042	3023	3172	14863
	All	5646	6003	6301	6462	6694	31106
Total		80971	84141	83101	85280	89267	422760

43

15 (i) District wise &amp; class wise enrolment of Department of Education 2010-11

District Name	Sex	Class I	Class II	Class III	Class IV	Class V	Total (1 - 5)
BILASPUR (H.P.)	B	1812	1983	1965	2098	2270	10128
	G	1839	1922	2030	2040	2140	9971
	All	3651	3905	3995	4138	4410	20099
CHAMBA	B	5069	5150	4775	4895	5093	24982
	G	5130	5160	4802	4739	4973	24804
	All	10199	10310	9577	9634	10066	49786
HAMIRPUR (H.P.)	B	1824	1884	1969	2018	2300	9995
	G	1809	1882	1931	2065	2189	9876
	All	3633	3766	3900	4083	4489	19871
KANGRA	B	5376	6272	6692	7107	7966	33413
	G	5515	6552	6991	7134	7416	33608
	All	10891	12824	13683	14241	15382	67021
KINNAUR	B	577	530	546	504	558	2715
	G	593	567	560	621	616	2957
	All	1170	1097	1106	1125	1174	5672
KULLU	B	3079	3188	3312	3217	3413	16209
	G	3343	3299	3352	3416	3594	17004
	All	6422	6487	6664	6633	7007	33213
LAHAUL & SPITI	B	235	188	186	202	178	989
	G	202	200	210	206	209	1027
	All	437	388	396	408	387	2016
MANDI	B	5434	5918	6026	6243	6683	30304
	G	5872	6137	6402	6509	6631	31551
	All	11306	12055	12428	12752	13314	61855

42

15 (ii) District wise &amp; class wise enrolment of Department of Education 2010-11

District Name	Sex	Class VI	Class VII	Class VIII	Total (6-8)	Total (1 - 8)
BILASPUR (H.P.)	B	2433	2678	2979	8090	18218
	G	2432	2672	2932	8036	18007
	All	4865	5350	5911	16126	36225
CHAMBA	B	5345	6136	5865	17346	42328
	G	4919	5459	4974	15352	40156
	All	10264	11595	10839	32698	82484
HAMIRPUR (H.P.)	B	2621	2675	3400	8696	18691
	G	2548	2734	3130	8412	18288
	All	5169	5409	6530	17108	36979
KANGRA	B	8982	9939	12643	31564	64977
	G	8376	9709	11939	30024	63632
	All	17358	19648	24582	61588	128609
KINNAUR	B	526	527	610	1663	4378
	G	607	573	689	1869	4826
	All	1133	1100	1299	3532	9204
KULLU	B	3295	3880	4196	11371	27580
	G	3462	3730	4087	11279	28283
	All	6757	7610	8283	22650	55863
LAHAUL & SPITI	B	175	147	153	475	1464
	G	222	188	166	576	1603
	All	397	335	319	1051	3067
MANDI	B	6943	7370	8648	22961	53265
	G	6860	7652	8508	23020	54571
	All	13803	15022	17156	45981	107836

44

15 (ii) District wise & class wise enrolment of Department of Education  
2010-11

District Name	Sex	Class VI	Class VII	Class VIII	Total (6-8)	Total (1-8)
SHIMLA	B	4781	5497	6130	16408	41459
	G	4983	5676	6072	16731	42475
	All	9764	11173	12202	33139	83934
SIRMOUR	B	4570	5140	6116	15826	37924
	G	4352	4928	5835	15115	37423
	All	8922	10068	11951	30941	75347
SOLAN	B	3668	4305	4692	12665	31347
	G	3549	4100	4524	12173	30411
	All	7217	8405	9216	24838	61758
UNA	B	3539	3824	4444	11807	28050
	G	3130	3305	3743	10178	25041
	All	6669	7129	8187	21985	53091
<b>Total</b>		<b>92318</b>	<b>102644</b>	<b>116475</b>	<b>311637</b>	<b>734397</b>

45

16 (i) Number of CWSN identified for the year 2010-11

District	LV	TB	HI	SI	OI	CP	MR	LD	MD	ASD	Total
Bilaspur	273	4	81	198	153	14	341	625	192	2	1883
Chamba	140	0	79	166	136	0	140	38	51	0	750
Hamirpur	68	0	21	49	73	26	127	10	80	0	454
Kangra	677	15	537	432	571	364	857	440	769	4	4666
Kinnaur	42	0	17	21	27	0	11	0	15	0	133
Kullu	310	0	104	129	170	0	121	0	68	0	922
Lahaul-Spiti	16	0	7	2	5	0	6	12	2	0	50
Mandi	485	31	411	302	409	29	785	1493	229	14	4188
Shimla	824	4	253	269	443	16	257	474	316	35	2891
Sirmour	169	0	89	96	160	28	140	0	103	35	820
Solan	511	0	187	41	223	25	298	190	111	6	1592
Una	280	0	91	27	110	21	36	293	22	13	893
<b>Total</b>	<b>3795</b>	<b>54</b>	<b>1877</b>	<b>1732</b>	<b>2480</b>	<b>523</b>	<b>3119</b>	<b>3575</b>	<b>1978</b>	<b>109</b>	<b>19242</b>

46

16 (ii) Enrolment of CWSN 2010-11

District	LV	TB	HI	SI	OI	CP	MR	LD	MD	ASD	Total
Bilaspur	273	0	81	198	151	0	278	625	129	0	1735
Chamba	130	0	69	114	129	0	129	29	51	0	651
Hamirpur	66	0	18	49	59	0	63	10	59	0	324
Kangra	677	0	537	432	571	364	659	440	569	0	4249
Kinnaur	42	0	17	21	20	0	8	0	13	0	121
Kullu	251	0	61	88	100	0	73	0	71	0	644
Lahaul-Spiti	16	0	7	2	5	0	6	12	2	0	50
Mandi	469	5	285	295	333	7	470	1487	136	10	3497
Shimla	798	0	217	249	394	0	208	430	223	13	2532
Sirmour	161	0	80	96	136	0	84	0	65	35	657
Solan	510	0	181	37	213	0	266	190	43	0	1440
Una	280	0	73	27	110	0	0	293	0	0	783
<b>Total</b>	<b>3673</b>	<b>5</b>	<b>1626</b>	<b>1608</b>	<b>2221</b>	<b>371</b>	<b>2244</b>	<b>3516</b>	<b>1361</b>	<b>58</b>	<b>16683</b>

47

16 (iii) CWSN covered under Home-Based Education in 2010-11

District	LV	TB	HI	SI	OI	CP	MR	LD	MD	ASD	Total
Bilaspur	0	4	0	0	2	14	63	0	63	2	148
Chamba	10	0	10	52	7	0	11	9	0	0	99
Hamirpur	2	0	3	0	14	26	64	0	21	0	130
Kangra	0	15	0	0	0	0	198	0	200	4	417
Kinnaur	0	0	0	0	7	0	3	0	2	0	12
Kullu	59	0	43	41	70	0	48	0	17	0	278
Lahaul-Spiti	0	0	0	0	0	0	0	0	0	0	0
Mandi	16	26	126	7	76	22	315	6	93	4	691
Shimla	26	4	36	20	49	16	49	44	93	22	359
Sirmour	8	0	9	0	24	28	56	0	38	0	163
Solan	1	0	6	4	10	25	32	0	68	6	152
Una	0	0	18	0	0	21	36	0	22	13	110
<b>Total</b>	<b>122</b>	<b>49</b>	<b>251</b>	<b>124</b>	<b>259</b>	<b>152</b>	<b>875</b>	<b>59</b>	<b>617</b>	<b>51</b>	<b>2559</b>

48

17. Category wise Teachers Profile & PTR Deptt. of Education 2010-11

District	Teachers			PTR (Deptt. of Edu.)		
	Primary	Upper Primary	Total	Primary	Upper Primary	Total
Bilaspur	1400	1117	2517	14	14	14
Chamba	2934	2266	5200	17	14	16
Hamirpur	1211	1235	2446	16	14	15
Kangra	4196	4040	8236	16	15	16
Kinnaur	458	364	822	12	10	11
Kullu	1973	1011	2984	17	22	19
Lahaul-Spiti	440	305	745	5	3	4
Mandi	4175	3451	7626	15	13	14
Shimla	3530	3432	6962	14	10	12
Sirmour	2492	1608	4100	18	19	18
Solan	1956	1761	3717	19	14	17
Una	1434	1269	2703	22	17	20
Total	26199	21859	48058	16	14	15

49

19. (i) Distribution of School by Number of Teacher (Department of Education ) 2010-11

District	Number of teachers (Primary)						Total
	0	1	2	3	4-6	>7	
Bilaspur	0	28	418	100	52	1	599
Chamba	0	29	650	257	176	6	1118
Hamirpur	0	26	325	87	63	0	501
Kangra	0	189	1021	343	207	1	1761
Kinnaur	0	7	111	51	17	0	186
Kullu	0	46	434	125	126	12	743
Lahaul-Spiti	0	32	114	52	6	0	204
Mandi	0	161	1062	284	226	2	1735
Shimla	0	223	1042	230	112	3	1610
Sirmour	0	52	618	173	134	9	986
Solan	0	58	453	132	109	11	763
Una	0	40	227	103	131	4	505
Total	0	891	6475	1937	1359	49	10711

51

18. Teachers in position Deptt. of Edu. 2010-11

District	Primary			Upper Primary		
	Male	Female	Total	Male	Female	Total
Bilaspur	772	628	1400	866	251	1117
Chamba	2163	771	2934	1714	552	2266
Hamirpur	556	655	1211	918	317	1235
Kangra	2221	1975	4196	2589	1451	4040
Kinnaur	252	206	458	268	96	364
Kullu	1325	648	1973	762	249	1011
Lahaul-Spiti	289	151	440	247	58	305
Mandi	2364	1811	4175	2561	890	3451
Shimla	2169	1361	3530	2480	952	3432
Sirmour	1677	815	2492	1190	418	1608
Solan	1056	900	1956	1036	725	1761
Una	590	844	1434	784	485	1269
Total	15434	10765	26199	15415	6444	21859

50

19. (ii) Distribution of School by Number of Teacher Department of Education 2010-11

District	Number of teachers (Upper Primary)						Total
	0	1	2	3	4-6	>7	
Bilaspur	0	0	8	27	207	6	248
Chamba	0	4	7	23	254	117	405
Hamirpur	0	0	2	25	248	0	275
Kangra	0	5	26	60	554	149	794
Kinnaur	0	0	0	14	68	0	82
Kullu	0	5	15	41	161	12	234
Lahaul-Spiti	0	6	3	7	52	3	71
Mandi	0	7	24	37	512	101	681
Shimla	0	8	24	66	400	158	656
Sirmour	0	19	17	48	229	41	354
Solan	0	3	7	21	176	97	304
Una	0	2	1	32	194	28	257
Total	0	59	134	401	3055	712	4361

52



20. Area wise distribution of Teacher Department of Education 2010-11

District	Rural		Urban		Total		Total
	Male	Female	Male	Female	Male	Female	
Bilaspur	1611	832	27	47	1638	879	2517
Chamba	3845	1216	32	107	3877	1323	5200
Hamirpur	1449	931	25	41	1474	972	2446
Kangra	4702	3285	108	141	4810	3426	8236
Kinnaur	520	302	0	0	520	302	822
Kullu	2063	831	24	66	2087	897	2984
Lahaul-Spiti	536	209	0	0	536	209	745
Mandi	4868	2566	57	135	4925	2701	7626
Shimla	4465	1985	184	328	4649	2313	6962
Sirmour	2842	1154	25	79	2867	1233	4100
Solan	2013	1469	79	156	2092	1625	3717
Una	1344	1241	30	88	1374	1329	2703
<b>Total</b>	<b>30258</b>	<b>16209</b>	<b>591</b>	<b>1188</b>	<b>30849</b>	<b>17209</b>	<b>48058</b>

53

22. District, Caste &amp; Area wise distribution of SC Teacher 2010-11 (Department of Education)

Districts	Rural		Urban		All Area		Total
	Male	Female	Male	Female	Male	Female	
Bilaspur	338	134	5	2	343	136	479
Chamba	598	159	5	10	603	169	772
Hamirpur	314	109	6	5	320	114	434
Kangra	968	511	18	13	986	524	1510
Kinnaur	92	27	0	0	92	27	119
Kullu	402	85	4	4	406	89	495
Lahaul-Spiti	53	26	0	0	53	26	79
Mandi	930	275	11	5	941	280	1221
Shimla	745	229	22	15	767	244	1011
Sirmour	552	166	4	6	556	172	728
Solan	417	201	10	16	427	217	644
Una	358	178	3	10	361	188	549
<b>Total</b>	<b>5767</b>	<b>2100</b>	<b>88</b>	<b>86</b>	<b>5855</b>	<b>2186</b>	<b>8041</b>

55

21. Gender and Category wise distribution of Teacher Department of Education 2010-11

Districts	Primary		Upper Primary only		Up. Primary with sec./H.sec	
	Male	Female	Male	Female	Male	Female
Bilaspur	772	628	414	105	452	146
Chamba	2163	771	830	230	883	323
Hamirpur	556	655	468	140	450	177
Kangra	2221	1975	1142	465	1447	986
Kinnaur	252	206	106	42	162	54
Kullu	1325	648	380	110	382	139
Lahaul-Spiti	289	151	121	22	126	36
Mandi	2364	1811	1224	370	1337	520
Shimla	2169	1361	1062	345	1418	607
Sirmour	1677	815	590	186	600	232
Solan	1056	900	475	230	561	495
Una	590	844	327	184	457	301
<b>Total</b>	<b>15434</b>	<b>10765</b>	<b>7139</b>	<b>2429</b>	<b>8275</b>	<b>4016</b>

54

23. Districts, Caste &amp; Area wise distribution of ST Teacher 2010-11 (Department of Education)

Districts	Rural		Urban		Total		
	Male	Female	Male	Female	Male	Female	
Bilaspur	59	15	1	0	60	15	75
Chamba	861	174	7	3	868	177	1045
Hamirpur	24	11	0	0	24	11	35
Kangra	212	85	5	5	217	90	307
Kinnaur	319	263	0	0	319	263	582
Kullu	78	115	0	11	78	127	205
Lahaul-Spiti	410	180	0	0	410	180	590
Mandi	132	57	4	2	136	59	195
Shimla	42	51	1	4	43	55	98
Sirmour	69	17	0	0	69	17	86
Solan	102	52	5	0	107	52	159
Una	24	22	0	0	24	22	46
<b>Total</b>	<b>2332</b>	<b>1043</b>	<b>23</b>	<b>25</b>	<b>2355</b>	<b>1068</b>	<b>3423</b>

56

24. District wise distribution of Class room 2010-11  
Department of Education

Districts	No. of classrooms		
	Primary	Upper Primary	Total
Bilaspur	1676	912	2588
Chamba	3330	1563	4893
Hamirpur	1880	973	2853
Kangra	5174	3123	8297
Kinnaur	509	275	784
Kullu	2248	861	3109
Lahaul-Spiti	354	231	585
Mandi	5119	2498	7607
Shimla	4381	2521	6902
Sirmour	2799	1452	4251
Solan	2198	1197	3395
Una	1620	1071	2691
<b>Total</b>	<b>31288</b>	<b>16667</b>	<b>47955</b>

57

26.(i) Distribution of schools by no. of classrooms (Primary) 2010-11  
Deptt. of Edu.

Districts	Total Schools	No. of classrooms				
		0	1	2	3	>3
Bilaspur	599	0	29	255	184	131
Chamba	1118	0	60	328	433	297
Hamirpur	501	0	3	60	161	277
Kangra	1761	0	101	598	609	453
Kinnaur	186	0	7	60	68	51
Kullu	743	0	25	260	246	212
Lahaul-Spiti	204	0	75	112	14	3
Mandi	1735	0	86	538	682	429
Shimla	1610	0	79	685	568	278
Sirmour	986	0	19	404	378	185
Solan	763	0	5	340	251	167
Una	505	0	14	156	157	178
<b>Total</b>	<b>10711</b>	<b>0</b>	<b>503</b>	<b>3796</b>	<b>3751</b>	<b>2661</b>

59

25. District wise Average classroom & school size 2010-11  
Department of Education

Districts	Average Classroom Size			Average School Size		
	Primary	Upper Primary	Total	Primary	Upper Primary	Total
Bilaspur	12	18	14	34	65	43
Chamba	15	21	17	45	81	54
Hamirpur	11	18	13	40	62	48
Kangra	13	20	16	38	78	50
Kinnaur	10	13	12	30	43	34
Kullu	15	26	18	45	97	57
Lahaul-Spiti	6	5	5	10	15	11
Mandi	12	18	14	36	68	45
Shimla	12	13	12	32	51	37
Sirmour	16	21	18	45	87	56
Solan	17	21	18	48	82	58
Una	19	21	20	62	86	70
<b>Total</b>	<b>14</b>	<b>19</b>	<b>15</b>	<b>39</b>	<b>71</b>	<b>49</b>

58

26.(ii) Distribution of schools by no. of classrooms (Upper Primary)  
Deptt. of Edu. 2010-11

Districts	Total Schools	No. of classrooms				
		0	1	2	3	>3
Bilaspur	248	0	17	17	143	71
Chamba	405	0	17	61	176	151
Hamirpur	275	0	14	18	156	87
Kangra	794	0	49	149	329	267
Kinnaur	82	0	4	11	40	27
Kullu	234	0	11	18	141	64
Lahaul-Spiti	71	0	7	4	48	12
Mandi	681	0	52	118	298	213
Shimla	656	0	28	117	272	239
Sirmour	354	0	18	16	199	121
Solan	304	0	7	20	160	117
Una	257	0	9	33	120	95
<b>Total</b>	<b>4361</b>	<b>0</b>	<b>233</b>	<b>582</b>	<b>2082</b>	<b>1464</b>

60

27.(i) Condition of classroom (Primary) Deptt. of Edu. 2010-11

Districts	Total classrooms	Good	Requires minor repairs	Requires major repairs
Bilaspur	1676	929	499	248
Chamba	3330	1975	870	485
Hamirpur	1880	1506	225	149
Kangra	5174	3293	1024	857
Kinnaur	509	330	136	43
Kullu	2248	1282	690	276
Lahaul-Spiti	354	240	85	29
Mandi	5119	3259	1270	590
Shimla	4381	2343	1493	545
Sirmour	2799	1916	594	289
Solan	2198	1431	489	278
Una	1620	1198	276	146
<b>Total</b>	<b>31288</b>	<b>19702</b>	<b>7651</b>	<b>3935</b>

61

28 (i) District wise facilities available in Primary schools 2010-11  
Dept. of Education

District	Total Schools	Boundary Wall	Drinking water	Common Toilet
Bilaspur	599	162	573	125
Chamba	1118	437	1104	465
Hamirpur	501	205	501	193
Kangra	1761	757	1749	296
Kinnaur	186	121	181	28
Kullu	743	441	713	206
Lahaul-Spiti	204	80	140	101
Mandi	1735	712	1702	546
Shimla	1610	360	1589	666
Sirmour	986	285	913	320
Solan	763	302	748	287
Una	505	340	505	291
<b>Total</b>	<b>10711</b>	<b>4202</b>	<b>10418</b>	<b>3524</b>
	<b>% age</b>	<b>39.23</b>	<b>97.26</b>	<b>32.90</b>

63

27.(ii) Condition of classroom (Upper Primary) Deptt. of Edu. 2010-11

Districts	Total classrooms	Good	Requires minor repairs	Requires major repairs
Bilaspur	912	560	265	87
Chamba	1563	971	427	165
Hamirpur	973	832	104	37
Kangra	3123	2039	678	406
Kinnaur	275	173	87	15
Kullu	861	490	282	89
Lahaul-Spiti	231	141	72	18
Mandi	2488	1604	682	202
Shimla	2521	1422	835	264
Sirmour	1452	1024	304	124
Solan	1197	778	295	124
Una	1071	766	213	92
<b>Total</b>	<b>16667</b>	<b>10800</b>	<b>4244</b>	<b>1623</b>

62

28 (ii) District wise facilities available in Primary schools 2010-11  
Dept. of Education

District	Total Schools	Girls Toilet	Electricity	Book Bank	Playground
Bilaspur	599	525	540	295	307
Chamba	1118	539	422	1009	527
Hamirpur	501	446	471	345	330
Kangra	1761	741	1338	1274	1012
Kinnaur	186	144	48	125	121
Kullu	743	524	249	664	450
Lahaul-Spiti	204	46	78	160	64
Mandi	1735	1139	326	1254	1101
Shimla	1610	500	334	1167	1056
Sirmour	986	779	483	823	541
Solan	763	635	507	518	448
Una	505	415	488	354	333
<b>Total</b>	<b>10711</b>	<b>6433</b>	<b>5264</b>	<b>7988</b>	<b>6290</b>
	<b>% age</b>	<b>60.06</b>	<b>49.15</b>	<b>74.58</b>	<b>58.72</b>

64

28 (iii) District wise facilities available in Primary schools 2010-11  
Dept. of Education

District	Total Schools	Ramps for disabled children	Medical Check-up	Computers	Black board	Kitchen
Bilaspur	599	326	406	12	599	577
Chamba	1118	477	810	3	1118	986
Hamirpur	501	283	497	3	501	493
Kangra	1761	1133	1494	16	1761	1619
Kinnaur	186	128	175	3	186	165
Kullu	743	682	625	6	743	677
Lahaul-Spiti	204	6	178	3	204	182
Mandi	1735	544	1278	22	1735	1696
Shimla	1610	694	1088	0	1610	1549
Sirmour	986	553	687	0	986	937
Solan	763	624	708	11	763	728
Una	505	258	417	20	505	464
<b>Total</b>	<b>10711</b>	<b>5708</b>	<b>8363</b>	<b>99</b>	<b>10711</b>	<b>10073</b>
	<b>% age</b>	<b>53.29</b>	<b>78.08</b>	<b>0.92</b>	<b>100.00</b>	<b>94.04</b>

65

29 (ii) District wise facilities available in Upper Primary schools 2010-11  
Dept. of Education

District	Total Schools	Girls Toilet	Electricity	Book Bank	Playground
Bilaspur	248	221	217	177	175
Chamba	405	278	246	313	221
Hamirpur	275	256	250	210	220
Kangra	794	547	693	591	547
Kinnaur	82	64	53	53	58
Kullu	234	192	127	175	140
Lahaul-Spiti	71	33	37	49	35
Mandi	681	504	439	490	493
Shimla	656	401	349	478	491
Sirmour	354	294	206	257	230
Solan	304	281	243	218	214
Una	257	233	237	203	204
<b>Total</b>	<b>4361</b>	<b>3304</b>	<b>3097</b>	<b>3214</b>	<b>3028</b>
	<b>% age</b>	<b>75.76</b>	<b>71.02</b>	<b>73.70</b>	<b>69.43</b>

67

29(i) District wise facilities available in Upper Primary schools 2010-11  
Dept. of Education

District	Total Schools	Boundary Wall	Drinking water	Common Toilet
Bilaspur	248	103	238	57
Chamba	405	151	403	137
Hamirpur	275	155	275	88
Kangra	794	430	785	182
Kinnaur	82	43	81	8
Kullu	234	136	214	67
Lahaul-Spiti	71	41	57	19
Mandi	681	339	667	213
Shimla	656	222	647	234
Sirmour	354	137	319	124
Solan	304	128	287	116
Una	257	181	255	106
<b>Total</b>	<b>4361</b>	<b>2066</b>	<b>4228</b>	<b>1351</b>
	<b>% age</b>	<b>47.37</b>	<b>96.95</b>	<b>30.98</b>

66

29 (iii) District wise facilities available in Upper Primary schools 2010-11  
Dept. of Education

District	Total Schools	Ramps for disabled children	Medical Check-up	Computers	Blackboard	Kitchen
Bilaspur	248	104	140	57	248	226
Chamba	405	145	234	135	405	291
Hamirpur	275	185	245	61	275	271
Kangra	794	475	652	142	794	661
Kinnaur	82	30	73	50	82	62
Kullu	234	171	174	69	234	204
Lahaul-Spiti	71	1	55	38	71	42
Mandi	681	189	407	131	681	677
Shimla	656	206	440	121	656	589
Sirmour	354	207	182	74	354	320
Solan	304	197	211	56	304	287
Una	257	114	118	90	257	212
<b>Total</b>	<b>4361</b>	<b>2024</b>	<b>2931</b>	<b>1024</b>	<b>4361</b>	<b>3842</b>
	<b>% age</b>	<b>46.41</b>	<b>67.21</b>	<b>23.48</b>	<b>100.00</b>	<b>88.10</b>

68

30 (i) GER & NER (Primary) 2010-11

District	GER			NER		
	Boys	Girls	Total	Boys	Girls	Total
Bilaspur	111.62	112.05	111.82	88.20	88.75	88.46
Chamba	113.10	113.72	113.40	92.79	92.78	92.78
Hamirpur	106.05	107.11	106.54	86.16	85.95	86.07
Kangra	112.01	113.32	112.62	87.74	88.51	88.10
Kinnaur	111.11	107.36	109.22	92.86	91.27	92.06
Kullu	112.97	113.91	113.43	92.33	92.68	92.50
Lahaul-Spiti	110.23	112.31	111.26	93.32	93.89	93.60
Mandi	107.48	108.28	107.87	88.06	88.56	88.30
Shimla	112.10	111.51	111.81	93.01	92.77	92.89
Sirmour	113.67	113.73	113.70	93.38	93.45	93.41
Solan	109.88	109.98	109.93	90.59	90.88	90.72
Una	114.21	114.06	114.14	90.05	90.56	90.29
Total	111.22	111.68	111.44	90.11	90.45	90.27

69

31. Drop Out Rate for the year 2010-11

District	Primary			Upper Primary		
	Boys	Girls	Total	Boys	Girls	Total
Bilaspur	0.23	0.26	0.25	0.30	0.15	0.23
Chamba	0.19	0.78	0.48	0.44	0.85	0.63
Hamirpur	0.44	0.42	0.43	0.03	0.06	0.04
Kangra	0.17	0.24	0.20	0.04	0.03	0.04
Kinnaur	0.08	0.13	0.11	0.06	0.00	0.03
Kullu	0.62	0.48	0.55	0.44	0.35	0.39
Lahaul-Spiti	0.00	0.00	0.00	0.00	0.00	0.00
Mandi	0.14	0.16	0.15	0.27	0.36	0.31
Shimla	0.04	0.05	0.05	0.15	0.10	0.12
Sirmour	0.03	0.03	0.03	0.03	0.04	0.03
Solan	0.61	0.49	0.56	0.39	0.59	0.48
Una	0.81	0.69	0.75	0.49	0.35	0.43
Total	0.28	0.32	0.30	0.22	0.26	0.24

71

30 (ii) GER & NER (Upper Primary) 2010-11

District	GER			NER		
	Boys	Girls	Total	Boys	Girls	Total
Bilaspur	137.58	135.31	136.50	96.15	96.18	96.16
Chamba	132.07	128.60	130.45	93.19	92.24	92.74
Hamirpur	135.71	134.28	135.05	97.44	97.89	97.65
Kangra	137.57	137.09	137.35	94.43	94.71	94.56
Kinnaur	126.51	132.85	129.68	92.39	92.63	92.51
Kullu	128.77	125.66	127.26	90.53	90.76	90.64
Lahaul-Spiti	124.55	119.03	121.56	92.11	93.15	92.67
Mandi	132.66	131.43	132.07	97.10	97.19	97.14
Shimla	122.56	122.58	122.57	89.04	90.02	89.51
Sirmour	130.52	128.78	129.69	89.89	90.09	89.98
Solan	125.88	125.67	125.79	89.93	91.31	90.56
Una	127.40	125.30	126.45	90.25	91.70	90.90
Total	131.31	129.97	130.68	92.89	93.29	93.08

70

32. Transition Rate (Primary to upper primary)

District	2010-11		
	Boys	Girls	Total
Bilaspur	96.23	99.59	97.79
Chamba	96.88	91.07	94.12
Hamirpur	98.40	99.08	98.71
Kangra	92.12	96.47	94.14
Kinnaur	93.43	100.77	97.01
Kullu	96.04	95.74	95.90
Lahaul & Spiti	95.28	108.16	101.86
Mandi	99.33	99.52	99.42
Shimla	97.98	98.87	98.41
Sirmour	96.69	95.84	96.29
Solan	98.84	96.07	97.56
Una	93.00	92.25	92.66
Total	96.18	96.62	96.64

72

1. HIMACHAL AT GLANCE

DISE DATA FOR THE  
YEAR 2011-12

No. of School	Boys	Girls	Total
Primary only	16	15	11214
Upper Primary	41	59	6172
Teacher	Male	Female	Total
	35913	29233	65146
Enrolment	Pry		619300
	U. Pry		386642
No. of Class Room			72003
PTR			15.44
SCR			13.97
Primary GER	110.04	110.01	110.03
Primary NER	89.64	89.84	89.73
U. Primary GER	125.09	124.42	124.77
U. Primary NER	93.19	93.65	93.41

73

2. Brief Summary Department of Education School (2011-12)

	Primary	Upper Primary	Total
No of School	10573	4372	14945
Teacher	25817	21003	46820
Enrolment	402369	280898	683267
No. of Class Room	30454	15867	46321
PTR	16	13	15
SCR	13	18	15

75

74

3. District and Category wise Number of School (2011-12)

Districts	All Management School					Total
	Primary	Primary With Upper Primary	Pr. with Upper Pr. & Sec./H. Sec.	Upper Primary Only	Upper Primary with Sec./H Sec.	
Bilaspur	644	72	61	123	126	1026
Chamba	1145	26	31	235	174	1611
Hamirpur	536	72	103	141	138	990
Kangra	1848	154	290	387	415	3094
Kinnaur	203	11	11	34	50	309
Kullu	787	46	61	128	107	1129
Lahaul-Spiti	209	3	2	37	36	287
Mandi	1785	98	185	364	325	2757
Shimla	1689	93	116	347	313	2558
Sirmour	1024	41	53	196	163	1477
Solan	820	46	82	163	145	1256
Una	524	56	50	120	142	892
<b>Total</b>	<b>11214</b>	<b>718</b>	<b>1045</b>	<b>2275</b>	<b>2134</b>	<b>17386</b>

76

4. District and Category wise Number of school (2011-12)

Districts	Department of Education					Total
	Primary	Primary With Upper Primary	Pr. With Upper Pr. & Sec./ H.Sec.	Upper Primary Only	Upper Primary with Sec./ H Sec.	
Bilaspur	591	0	0	123	125	839
Chamba	1118	0	0	233	172	1523
Hamirpur	492	0	0	141	135	768
Kangra	1714	0	0	386	408	2508
Kinnaur	186	0	0	34	48	268
Kullu	747	0	0	128	106	981
Lahaul-Spiti	204	0	0	37	34	275
Mandi	1704	0	0	363	324	2391
Shimla	1579	0	0	347	309	2235
Simour	986	0	0	196	161	1343
Solan	759	0	0	163	142	1064
Una	493	0	0	118	139	750
<b>Total</b>	<b>10573</b>	<b>0</b>	<b>0</b>	<b>2269</b>	<b>2103</b>	<b>14945</b>

77

6 (i) District and social category wise enrolment 2011-12 (All Management)  
Primary

Districts	General		
	Boys	Girls	Total
Bilaspur	10644	9367	20011
Chamba	14412	13359	27771
Hamirpur	12069	10047	22116
Kangra	25100	20529	45629
Kinnaur	1184	1023	2207
Kullu	14102	13502	27604
Lahaul-Spiti	150	126	276
Mandi	26024	24243	50267
Shimla	26593	24038	50631
Simour	13705	12083	25788
Solan	19713	16862	36575
Una	10566	8463	19029
<b>Total</b>	<b>174262</b>	<b>153642</b>	<b>327904</b>

79

5. Enrolment (2011-12)

Districts	Enrolment in All Schools			Enrolment in Schools under Deptt. of Education		
	Primary	Upper Primary	Total	Primary	Upper Primary	Total
Bilaspur	31071	20333	51404	19230	14804	34034
Chamba	55306	34224	89530	48227	30479	78706
Hamirpur	38214	24407	62621	18825	15251	34076
Kangra	121652	81337	202989	62276	52583	114859
Kinnaur	7468	4327	11795	5136	3289	8425
Kullu	43158	26329	69487	31725	20910	52635
Lahaul-Spiti	2414	1327	3741	1819	1057	2876
Mandi	85450	55348	140798	59000	42007	101007
Shimla	74331	43888	118219	48070	30047	78117
Simour	56262	33692	89954	42706	27520	70226
Solan	57905	33276	91181	35802	22729	58531
Una	46069	28154	74223	29553	20222	49775
<b>Total</b>	<b>619300</b>	<b>386642</b>	<b>1005942</b>	<b>402369</b>	<b>280898</b>	<b>683267</b>

78

6(ii) District and social category wise enrolment 2011-12 (All Management)  
Primary

Districts	SC		
	Boys	Girls	Total
Bilaspur	4353	4046	8399
Chamba	6355	6285	12640
Hamirpur	5084	4608	9692
Kangra	15069	13745	28814
Kinnaur	1148	1176	2324
Kullu	6744	6723	13467
Lahaul-Spiti	97	126	223
Mandi	14578	14326	28904
Shimla	11452	11140	22592
Simour	10424	9963	20387
Solan	8392	7856	16248
Una	6091	5370	11461
<b>Total</b>	<b>89787</b>	<b>85364</b>	<b>175151</b>

80

6 (iii) District and social category wise enrolment 2011-12 (All Management)  
Primary

Districts	ST		
	Boys	Girls	Total
Bilaspur	466	443	909
Chamba	7000	6660	13660
Hamirpur	247	227	474
Kangra	3730	3524	7254
Kinnaur	1421	1447	2868
Kullu	673	545	1218
Lahaul-Spiti	916	964	1880
Mandi	632	642	1274
Shimla	472	399	871
Sirmour	741	578	1319
Solan	1166	1121	2287
Una	675	549	1224
<b>Total</b>	<b>18139</b>	<b>17099</b>	<b>35238</b>

81

6 (v) District and social category wise enrolment 2011-12 (All Management)  
Primary

Districts	All		
	Boys	Girls	Total
Bilaspur	16384	14687	31071
Chamba	28372	26934	55306
Hamirpur	20579	17635	38214
Kangra	65027	56625	121652
Kinnaur	3785	3683	7468
Kullu	21955	21203	43158
Lahaul-Spiti	1193	1221	2414
Mandi	43816	41634	85450
Shimla	38639	35692	74331
Sirmour	29443	26819	56262
Solan	30844	27061	57905
Una	25023	21046	46069
<b>Total</b>	<b>325060</b>	<b>294240</b>	<b>619300</b>

83

6 (iv) District and social category wise enrolment 2011-12 (All Management)  
Primary

Districts	OBC		
	Boys	Girls	Total
Bilaspur	921	831	1752
Chamba	605	630	1235
Hamirpur	3179	2753	5932
Kangra	21128	18827	39955
Kinnaur	32	37	69
Kullu	436	433	869
Lahaul-Spiti	30	5	35
Mandi	2582	2423	5005
Shimla	122	115	237
Sirmour	4573	4195	8768
Solan	1573	1222	2795
Una	7691	6664	14355
<b>Total</b>	<b>42872</b>	<b>38135</b>	<b>81007</b>

82

6 (vi) District and social category wise enrolment 2011-12  
(All Management) Primary

Districts	Minority		
	Boys	Girls	Total
Bilaspur	260	240	500
Chamba	1434	1335	2769
Hamirpur	142	110	252
Kangra	596	443	1039
Kinnaur	0	0	0
Kullu	97	88	185
Lahaul-Spiti	0	0	0
Mandi	291	244	535
Shimla	444	399	843
Sirmour	1334	1179	2513
Solan	545	469	1014
Una	882	767	1649
<b>Total</b>	<b>6025</b>	<b>5274</b>	<b>11299</b>

84



7 (i) District and social category wise enrolment 2011-12  
(All Management) Upper Primary

Districts	General		
	Boys	Girls	Total
Bilaspur	6975	6078	13053
Chamba	9551	8129	17680
Hamirpur	7688	6159	13847
Kangra	16092	12180	28272
Kinnaur	426	395	821
Kullu	8648	8297	16945
Lahaul-Spiti	44	43	87
Mandi	17598	15563	33161
Shimla	15503	14141	29644
Sirmour	8276	7375	15651
Solan	11315	9288	20603
Una	6270	4667	10937
<b>Total</b>	<b>108386</b>	<b>92315</b>	<b>200701</b>

85

7 (iii) District and social category wise enrolment 2011-12  
(All Management) Upper Primary

Districts	ST		
	Boys	Girls	Total
Bilaspur	362	292	654
Chamba	4539	4201	8740
Hamirpur	145	112	257
Kangra	2799	2454	5253
Kinnaur	1057	1167	2224
Kullu	422	348	770
Lahaul-Spiti	516	650	1166
Mandi	345	374	719
Shimla	286	215	501
Sirmour	345	230	575
Solan	733	677	1410
Una	451	391	842
<b>Total</b>	<b>12000</b>	<b>11111</b>	<b>23111</b>

87

7 (ii) District and social category wise enrolment 2011-12  
(All Management) Upper Primary

Districts	SC		
	Boys	Girls	Total
Bilaspur	2749	2622	5371
Chamba	3800	3251	7051
Hamirpur	3375	2986	6361
Kangra	10071	9195	19266
Kinnaur	622	632	1254
Kullu	4122	3873	7995
Lahaul-Spiti	33	41	74
Mandi	9241	8811	18052
Shimla	6824	6694	13518
Sirmour	5884	5509	11393
Solan	5154	4580	9734
Una	3695	3320	7015
<b>Total</b>	<b>55570</b>	<b>51514</b>	<b>107084</b>

86

7 (vi) District and social category wise enrolment 2011-12  
(All Management) Upper Primary

Districts	OBC		
	Boys	Girls	Total
Bilaspur	689	566	1255
Chamba	381	372	753
Hamirpur	2074	1868	3942
Kangra	15525	13021	28546
Kinnaur	17	11	28
Kullu	307	312	619
Lahaul-Spiti	0	0	0
Mandi	1793	1623	3416
Shimla	128	97	225
Sirmour	3134	2939	6073
Solan	832	697	1529
Una	5163	4197	9360
<b>Total</b>	<b>30043</b>	<b>25703</b>	<b>55746</b>

88

7 (v) District and social category wise enrolment 2011-12  
(All Management) Upper Primary

Districts	All		
	Boys	Girls	Total
Bilaspur	10775	9558	20333
Chamba	18271	15953	34224
Hamirpur	13282	11125	24407
Kangra	44487	36850	81337
Kinnaur	2122	2205	4327
Kullu	13499	12830	26329
Lahaul-Spiti	593	734	1327
Mandi	28977	26371	55348
Shimla	22741	21147	43888
Sirmour	17639	16053	33692
Solan	18034	15242	33276
Una	15579	12575	28154
<b>Total</b>	<b>205999</b>	<b>180643</b>	<b>386642</b>

89

7 (vi) District and social category wise enrolment 2011-12  
(All Management) Upper Primary

Districts	Minority		
	Boys	Girls	Total
Bilaspur	156	125	281
Chamba	1014	612	1626
Hamirpur	74	57	131
Kangra	284	222	506
Kinnaur	0	0	0
Kullu	47	24	71
Lahaul-Spiti	0	0	0
Mandi	146	136	282
Shimla	185	167	352
Sirmour	847	557	1404
Solan	271	314	585
Una	257	210	467
<b>Total</b>	<b>3281</b>	<b>2424</b>	<b>5705</b>

90

8 (i) District and social category wise enrolment 2011-12  
(Dept. Education) Primary

Districts	General		
	Boys	Girls	Total
Bilaspur	5358	5357	10715
Chamba	11371	11226	22597
Hamirpur	3994	4074	8068
Kangra	7669	7585	15254
Kinnaur	824	772	1596
Kullu	9028	9495	18523
Lahaul-Spiti	139	115	254
Mandi	14447	15651	30098
Shimla	13893	14511	28404
Sirmour	8020	8354	16374
Solan	9581	9370	18951
Una	4683	4317	9000
<b>Total</b>	<b>89007</b>	<b>90827</b>	<b>179834</b>

91

8 (ii) District and social category wise enrolment 2011-12

(Dept. Education) Primary

Districts	SC		
	Boys	Girls	Total
Bilaspur	3305	3334	6639
Chamba	6068	6098	12166
Hamirpur	3421	3369	6790
Kangra	10539	10411	20950
Kinnaur	996	1076	2072
Kullu	5946	6183	12129
Lahaul-Spiti	82	116	198
Mandi	11838	12328	24166
Shimla	9400	9735	19135
Sirmour	9491	9272	18763
Solan	7077	6903	13980
Una	5033	4599	9632
<b>Total</b>	<b>73196</b>	<b>73424</b>	<b>146620</b>

92

8 (iii) District and social category wise enrolment 2011-12  
(Deptt. Education) Primary

Districts	ST		
	Boys	Girls	Total
Bilaspur	354	355	709
Chamba	6308	6165	12473
Hamirpur	141	146	287
Kangra	2030	2243	4273
Kinnaur	647	814	1461
Kullu	198	214	412
Lahaul-Spiti	640	692	1332
Mandi	500	547	1047
Shimla	253	196	449
Sirmour	600	502	1102
Solan	626	741	1367
Una	510	447	957
<b>Total</b>	<b>12807</b>	<b>13062</b>	<b>25869</b>

93

8 (v) District and social category wise enrolment 2011-12  
(Deptt. Education) Primary

Districts	All		
	Boys	Girls	Total
Bilaspur	9602	9628	19230
Chamba	24241	23986	48227
Hamirpur	9445	9380	18825
Kangra	30802	31474	62276
Kinnaur	2468	2668	5136
Kullu	15490	16235	31725
Lahaul-Spiti	891	928	1819
Mandi	28640	30360	59000
Shimla	23589	24481	48070
Sirmour	21252	21454	42706
Solan	18084	17718	35802
Una	15407	14146	29553
<b>Total</b>	<b>199911</b>	<b>202458</b>	<b>402369</b>

95

8 (iv) District and social category wise enrolment 2011-12  
(Deptt. Education) Primary

Districts	OBC		
	Boys	Girls	Total
Bilaspur	585	582	1167
Chamba	494	497	991
Hamirpur	1889	1791	3680
Kangra	10564	11235	21799
Kinnaur	1	6	7
Kullu	318	343	661
Lahaul-Spiti	30	5	35
Mandi	1855	1834	3689
Shimla	43	39	82
Sirmour	3141	3326	6467
Solan	800	704	1504
Una	5181	4783	9964
<b>Total</b>	<b>24901</b>	<b>25145</b>	<b>50046</b>

94

8 (vi) District and social category wise enrolment 2011-12  
(Deptt. Education) Primary

Districts	Minority		
	Boys	Girls	Total
Bilaspur	187	185	372
Chamba	1354	1290	2654
Hamirpur	93	79	172
Kangra	468	382	850
Kinnaur	0	0	0
Kullu	81	77	158
Lahaul-Spiti	0	0	0
Mandi	210	197	407
Shimla	369	350	719
Sirmour	995	945	1940
Solan	409	389	798
Una	808	718	1526
<b>Total</b>	<b>4984</b>	<b>4612</b>	<b>9596</b>

96

9 (i) District and social category wise enrolment 2011-12  
(Deptt. Education) Upper Primary

Districts	General		
	Boys	Girls	Total
Bilaspur	4281	4283	8564
Chamba	7702	7036	14738
Hamirpur	3445	3443	6888
Kangra	6568	6133	12701
Kinnaur	248	283	531
Kullu	6133	6444	12577
Lahaul-Spiti	42	42	84
Mandi	11259	11568	22827
Shimla	8635	9076	17711
Sirmour	5626	5654	11280
Solan	5989	5889	11878
Una	3299	2764	6063
<b>Total</b>	<b>63227</b>	<b>62615</b>	<b>125842</b>

9 (ii) District and social category wise enrolment 2011-12  
(Deptt. Education) Upper Primary

Districts	SC		
	Boys	Girls	Total
Bilaspur	2334	2346	4680
Chamba	3609	3143	6752
Hamirpur	2623	2492	5115
Kangra	8037	7788	15825
Kinnaur	554	583	1137
Kullu	3789	3682	7471
Lahaul-Spiti	23	34	57
Mandi	7916	7910	15826
Shimla	5887	6092	11979
Sirmour	5440	5279	10719
Solan	4606	4228	8834
Una	3170	2967	6137
<b>Total</b>	<b>47988</b>	<b>46544</b>	<b>94532</b>

97

9 (iii) District and social category wise enrolment 2011-12  
(Deptt. Education) Upper Primary

Districts	ST		
	Boys	Girls	Total
Bilaspur	307	255	562
Chamba	4294	4039	8333
Hamirpur	99	95	194
Kangra	2005	1957	3962
Kinnaur	721	883	1604
Kullu	161	181	342
Lahaul-Spiti	407	509	916
Mandi	264	306	570
Shimla	126	113	239
Sirmour	268	177	445
Solan	486	527	1013
Una	359	327	686
<b>Total</b>	<b>9497</b>	<b>9369</b>	<b>18866</b>

99

98

9 (iv) District and social category wise enrolment 2011-12  
(Deptt. Education) Upper Primary

Districts	OBC		
	Boys	Girls	Total
Bilaspur	547	451	998
Chamba	322	334	656
Hamirpur	1548	1506	3054
Kangra	10348	9747	20095
Kinnaur	11	6	17
Kullu	258	262	520
Lahaul-Spiti	0	0	0
Mandi	1391	1393	2784
Shimla	66	52	118
Sirmour	2514	2562	5076
Solan	491	513	1004
Una	3912	3424	7336
<b>Total</b>	<b>21408</b>	<b>20250</b>	<b>41658</b>

100

9 (v) District and social category wise enrolment 2011-12  
(Deptt. Education) Upper Primary

Districts	All		
	Boys	Girls	Total
Bilaspur	7469	7335	14804
Chamba	15927	14552	30479
Hamirpur	7715	7536	15251
Kangra	26958	25625	52583
Kinnaur	1534	1755	3289
Kullu	10341	10569	20910
Lahaul-Spiti	472	585	1057
Mandi	20830	21177	42007
Shimla	14714	15333	30047
Sirmour	13848	13672	27520
Solan	11572	11157	22729
Una	10740	9482	20222
<b>Total</b>	<b>142120</b>	<b>138778</b>	<b>280898</b>

9 (vi) District and social category wise enrolment 2011-12  
(Deptt. Education) Upper Primary

Districts	Minority		
	Boys	Girls	Total
Bilaspur	125	107	232
Chamba	974	587	1561
Hamirpur	52	49	101
Kangra	251	201	452
Kinnaur	0	0	0
Kullu	38	20	58
Lahaul-Spiti	0	0	0
Mandi	109	118	227
Shimla	151	153	304
Sirmour	694	484	1178
Solan	231	283	514
Una	236	200	436
<b>Total</b>	<b>2861</b>	<b>2202</b>	<b>5063</b>

101

102

10 (i) Number of CWSN identified for the year 2011-12

District	LV	TB	HI	SI	OI	CP	MR	LD	MD	ASD	Total
Bilaspur	212	3	42	145	119	15	491	299	172	2	1500
Chamba	126	53	88	152	130	5	130	248	59	3	994
Hamirpur	78	3	29	39	45	32	116	88	39	0	469
Kangra	657	20	517	415	564	348	838	435	740	4	4538
Kinnaur	66	0	26	40	27	0	17	6	23	0	205
Kullu	260	0	115	115	283	0	108	0	65	0	946
Lahaul-Spiti	16	0	1	0	2	0	4	6	7	0	36
Mandi	485	31	411	302	409	29	785	1493	229	14	4188
Shimla	50	17	51	31	50	34	73	1067	963	2	2338
Sirmour	97	21	109	87	162	25	161	102	85	1	850
Solan	401	1	144	58	178	21	247	120	67	0	1237
Una	190	0	91	27	119	24	41	193	212	13	910
<b>Total</b>	<b>2638</b>	<b>149</b>	<b>1624</b>	<b>1411</b>	<b>2088</b>	<b>533</b>	<b>3011</b>	<b>4057</b>	<b>2661</b>	<b>39</b>	<b>18211</b>

103

10 (ii) Enrolment of CWSN 2011-12

District	LV	TB	HI	SI	Oi	CP	MR	LD	MD	ASD	Total
Bilaspur	212	0	34	145	110	0	423	289	109	0	1322
Chamba	126	24	78	138	113	2	115	197	53	0	846
Hamirpur	75	2	20	10	31	0	58	82	27	0	305
Kangra	572	0	509	409	559	335	753	424	632	0	4193
Kinnaur	66	0	6	37	21	0	14	6	21	0	171
Kullu	203	0	72	76	208	0	61	0	46	0	666
Lahaul-Spiti	16	0	1	0	1	0	3	6	6	0	33
Mandi	469	5	310	295	358	7	620	1487	136	10	3697
Shimla	32	10	31	17	15	14	38	966	865	1	2029
Sirmour	73	13	100	78	141	1	97	101	47	1	652
Solan	340	0	131	52	151	18	231	111	41	0	1075
Una	131	0	65	20	110	0	30	178	168	9	711
<b>Total</b>	<b>2315</b>	<b>54</b>	<b>1357</b>	<b>1277</b>	<b>1818</b>	<b>377</b>	<b>2443</b>	<b>3867</b>	<b>2171</b>	<b>21</b>	<b>15700</b>

104

10 (iii) CWSN covered under Home-Based Education in 2011-12

District	LV	TB	HI	SI	OI	CP	MR	LD	MD	ASD	Total
Bilaspur	0	3	8	0	9	15	68	10	63	2	178
Chamba	0	29	10	14	17	3	15	51	6	3	148
Hamirpur	3	1	9	29	14	32	58	6	12	0	164
Kangra	85	20	8	6	5	13	85	11	108	4	345
Kinnaur	0	0	20	3	6	0	3	0	2	0	34
Kullu	57	0	43	39	75	0	47	0	19	0	280
Lahaul-Spiti	0	0	0	0	1	0	1	0	1	0	3
Mandi	16	26	101	7	51	22	165	6	93	4	491
Shimla	18	7	20	14	35	20	35	81	78	1	309
Sirmour	24	8	9	9	21	24	64	1	38	0	198
Solan	61	1	13	6	27	3	16	9	26	0	162
Una	59	0	26	7	9	24	11	15	44	4	199
<b>Total</b>	<b>323</b>	<b>95</b>	<b>267</b>	<b>134</b>	<b>270</b>	<b>156</b>	<b>568</b>	<b>190</b>	<b>490</b>	<b>18</b>	<b>2511</b>

105

11 (i) District wise & Class wise enrolment (All Management) 2011-12

District Name	Sex	Class I	Class II	Class III	Class IV	Class V	Total
BILASPUR (H.P.)	B	3082	3225	3390	3332	3355	16384
	G	2746	2998	2961	3016	2966	14687
	All	5828	6223	6351	6348	6321	31071
CHAMBA	B	5242	5968	5961	5524	5677	28372
	G	4967	5786	5672	5290	5219	26934
	All	10209	11754	11633	10814	10896	55306
HAMIRPUR (H.P.)	B	4112	4107	4090	4148	4122	20579
	G	3496	3500	3628	3482	3529	17635
	All	7608	7607	7718	7630	7651	38214
KANGRA	B	12786	12357	13020	13330	13534	65027
	G	11007	10732	11578	11776	11532	56625
	All	23793	23089	24598	25106	25066	121652
KINNAUR	B	756	817	775	755	682	3785
	G	726	761	741	725	730	3683
	All	1482	1578	1516	1480	1412	7468
KULLU	B	4383	4352	4397	4486	4337	21955
	G	4045	4341	4296	4251	4270	21203
	All	8428	8693	8693	8737	8607	43158

106

11 (i) District wise & Class wise enrolment (All Management) 2011-12

District Name	Sex	Class I	Class II	Class III	Class IV	Class V	Total
LAHAUL & SPITI	B	238	253	223	230	249	1193
	G	261	241	230	245	244	1221
	All	499	494	453	475	493	2414
MANDI	B	8273	8600	8924	9024	8995	43816
	G	7781	8308	8450	8553	8542	41634
	All	16054	16908	17374	17577	17537	85450
SHIMLA	B	7926	7916	8092	7262	7443	38639
	G	7404	7260	7434	6630	6964	35692
	All	15330	15176	15526	13892	14407	74331
SIRMOUR	B	5629	6319	6174	5499	5822	29443
	G	5064	5750	5533	5222	5250	26819
	All	10693	12069	11707	10721	11072	56262
SOLAN	B	6028	6193	6263	6166	6194	30844
	G	5283	5587	5641	5311	5239	27061
	All	11311	11780	11904	11477	11433	57905
UNA	B	4745	5086	5043	5078	5071	25023
	G	4069	4230	4295	4294	4158	21046
	All	8814	9316	9338	9372	9229	46069
State Total		120049	124687	126811	123629	124124	619300

107

11 (ii) District wise & Class wise enrolment (All Management) 2011-12

District Name	Sex	Class VI	Class V II	Class VIII	Total	Total class 1-8
BILASPUR (H.P.)	B	3517	3538	3720	10775	27159
	G	3020	3214	3324	9558	24245
	All	6537	6752	7044	20333	51404
CHAMBA	B	5699	5879	6693	18271	46643
	G	5119	5108	5726	15953	42887
	All	10818	10987	12419	34224	89530
HAMIRPUR (H.P.)	B	4334	4514	4434	13282	33861
	G	3552	3790	3783	11125	28760
	All	7886	8304	8217	24407	62621
KANGRA	B	14010	14853	15624	44487	109514
	G	11291	12295	13264	36850	93475
	All	25301	27148	28888	81337	202989
KINNAUR	B	756	677	689	2122	5907
	G	763	745	697	2205	5888
	All	1519	1422	1386	4327	11795
KULLU	B	4407	4280	4812	13499	35454
	G	4284	4196	4350	12830	34033
	All	8691	8476	9162	26329	69487
LAHAUL & SPITI	B	195	212	186	593	1786
	G	228	263	243	734	1955
	All	423	475	429	1327	3741

108

11 (ii) District wise &amp; Class wise enrolment (All Management) 2011-12

District Name	Sex	Class VI	Class V II	Class VIII	Total	Total class 1-8
MANDI	B	9452	9499	10026	28977	72793
	G	8549	8665	9157	26371	68005
	All	18001	18164	19183	55348	140798
SHIMLA	B	7478	7370	7893	22741	61380
	G	6905	6858	7384	21147	56839
	All	14383	14228	15277	43888	118219
SIRMOUR	B	5617	5756	6266	17639	47082
	G	5359	5054	5640	16053	42872
	All	10976	10810	11906	33692	89954
SOLAN	B	5971	5796	6267	18034	48878
	G	5024	4928	5290	15242	42303
	All	10995	10724	11557	33276	91181
UNA	B	5222	5037	5320	15579	40602
	G	4203	4107	4265	12575	33621
	All	9425	9144	9585	28154	74223
State Total		124955	126634	135053	386642	1005942

12 (a) District wise &amp; Class wise enrolment (Department of Education) 2011-12

District Name	Sex	Class I	Class II	Class III	Class IV	Class V	Total
BILASPUR (H.P.)	B	1600	1852	2039	2015	2096	9602
	G	1581	1939	1979	2056	2073	9628
	All	3181	3791	4018	4071	4169	19230
CHAMBA	B	4394	5089	5111	4765	4882	24241
	G	4310	5114	5110	4766	4686	23986
	All	8704	10203	10221	9531	9568	48227
HAMIRPUR (H.P.)	B	1684	1829	1884	1999	2049	9445
	G	1647	1794	1964	1937	2038	9380
	All	3331	3623	3848	3936	4087	18825
KANGRA	B	5298	5296	6267	6776	7165	30802
	G	5464	5404	6543	6974	7089	31474
	All	10762	10700	12810	13750	14254	62276
KINNAUR	B	467	504	526	504	467	2468
	G	469	541	536	549	573	2668
	All	936	1045	1062	1053	1040	5136
KULLU	B	2905	3005	3131	3272	3177	15490
	G	2940	3310	3278	3339	3368	16235
	All	5845	6315	6409	6611	6545	31725
LAHAUL & SPITI	B	163	193	169	175	191	891
	G	191	165	178	197	197	928
	All	354	358	347	372	388	1819



12 (a) District wise & Class wise enrolment (Department of Education) 2011-12

District Name	Sex	Class I	Class II	Class III	Class IV	Class V	Total
MANDI	B	4976	5481	5895	6105	6183	28640
	G	5273	5927	6161	6444	6555	30360
	All	10249	11408	12056	12549	12738	59000
SHIMLA	B	4660	4769	5064	4438	4658	23589
	G	4856	4011	5288	4618	4818	24481
	All	9526	9680	10332	9056	9476	48070
SIRMOUR	B	3768	4546	4504	4104	4330	21252
	G	3873	4581	4459	4212	4329	21454
	All	7641	9127	8963	8316	8659	42706
SOLAN	B	3147	3670	3777	3797	3693	18084
	G	3111	3655	3742	3595	3615	17718
	All	6258	7325	7519	7392	7308	35802
UNA	B	2504	3062	3159	3329	3353	15407
	G	2373	2829	2908	3066	2970	14146
	All	4877	5891	6067	6395	6323	29553
State Total		71664	79466	83652	83032	84555	402369

111

12 (b) District wise & Class wise enrolment (Department of Education) 2011-12

District Name	Sex	Class VI	Class VII	Class VIII	Total	Total class 1-8
BILASPUR	B	2290	2462	2717	7469	17071
	G	2198	2462	2675	7335	16963
	All	4488	4924	5392	14804	34034
CHAMBA	B	4906	5097	5924	15927	40168
	G	4605	4653	5294	14552	38538
	All	9511	9750	11218	30479	78706
HAMIRPUR	B	2371	2670	2674	7715	17160
	G	2286	2566	2684	7536	16916
	All	4657	5236	5358	15251	34076
KANGRA	B	7908	9046	10004	26958	57760
	G	7436	8412	9777	25625	57099
	All	15344	17458	19781	52583	114859
KINNAUR	B	552	488	494	1534	4002
	G	605	598	552	1755	4423
	All	1157	1086	1046	3289	8425
KULLU	B	3292	3237	3812	10341	25831
	G	3494	3407	3668	10569	26804
	All	6786	6644	7480	20910	52635

112

12 (b) District wise & Class wise enrolment (Department of Education) 2011-12

District Name	Sex	Class VI	ClassVII	ClassVIII	Total	Total class 1-8
LAHAUL & SPITI	B	163	167	142	472	1363
	G	192	213	180	585	1513
	All	355	380	322	1057	2876
MANDI	B	6658	6831	7341	20830	49470
	G	6711	6868	7598	21177	51537
	All	13369	13699	14939	42007	101007
SHIMLA	B	4678	4679	5357	14714	38303
	G	4853	4894	5586	15333	39814
	All	9531	9573	10943	30047	78117
SIRMOUR	B	4295	4457	5096	13848	35100
	G	4513	4267	4892	13672	35126
	All	8808	8724	9988	27520	70226
SOLAN	B	3699	3623	4250	11572	29656
	G	3589	3511	4057	11157	28875
	All	7288	7134	8307	22729	58531
UNA	B	3498	3478	3764	10740	26147
	G	3118	3090	3274	9482	23628
	All	6616	6568	7038	20222	49775
<b>State Total</b>		<b>87910</b>	<b>91176</b>	<b>101812</b>	<b>280898</b>	<b>683267</b>

113

13. Teachers Profile and Pupil Teacher Ratio (2011-12)

Districts	Deptt. of Education					
	Teachers			PTR (Deptt. of Edu.)		
	Primary	Upper Primary	Total	Primary	Upper Primary	Total
Bilaspur	1398	1155	2553	14	13	13
Chamba	2720	2137	4857	18	14	16
Hamirpur	1209	1229	2438	16	12	14
Kangra	4205	4263	8468	15	12	14
Kinnaur	450	335	785	11	10	11
Kullu	1959	979	2938	16	21	18
Lahaul-Spiti	420	307	727	4	3	4
Mandi	4094	3405	7499	14	12	13
Shimla	3504	2915	6419	14	10	12
Sirmour	2443	1553	3996	17	18	18
Solan	1932	1351	3283	19	17	18
Una	1483	1374	2857	20	15	17
<b>Total</b>	<b>25817</b>	<b>21003</b>	<b>46820</b>	<b>16</b>	<b>13</b>	<b>15</b>

114

14. Teachers in position Deptt. of Education (2011-12)

District	Primary			Upper Primary		
	Male	Female	Total	Male	Female	Total
Bilaspur	767	631	1398	88	267	1155
Chamba	2007	713	2720	1619	518	2137
Hamirpur	556	653	1209	908	321	1229
Kangra	2237	1968	4205	2684	1579	4263
Kinnaur	248	202	450	242	93	335
Kullu	1314	643	1959	744	235	979
Lahaul-Spiti	272	148	420	246	61	307
Mandi	2308	1786	4094	2478	927	3405
Shimla	2140	1364	3504	2163	752	2915
Sirmour	1646	797	2443	1143	410	1553
Solan	1042	890	1932	872	479	1351
Una	627	856	1483	822	552	1374
<b>Total</b>	<b>15164</b>	<b>10653</b>	<b>25817</b>	<b>14809</b>	<b>6194</b>	<b>21003</b>

115

15 (i) District wise number of school with number of teachers (2011-12)

District	Number of teachers (Primary)						Total
	0	1	2	3	4-6	>7	
Bilaspur	0	21	411	103	55	1	591
Chamba	0	123	621	223	148	3	1118
Hamirpur	0	19	318	89	66	0	492
Kangra	0	126	1006	368	213	1	1714
Kinnaur	0	14	104	51	16	1	186
Kullu	0	73	414	122	123	15	747
Lahaul-Spiti	0	44	109	46	5	0	204
Mandi	0	113	1100	294	191	6	1704
Shimla	0	195	1034	232	115	3	1579
Sirmour	0	58	630	167	123	8	986
Solan	0	71	440	132	103	13	759
Una	0	20	218	108	141	6	493
<b>Total</b>	<b>0</b>	<b>877</b>	<b>6405</b>	<b>1935</b>	<b>1299</b>	<b>57</b>	<b>10573</b>

15 (ii) District wise number of school with number of teachers (2011-12)

District	Number of teachers (Upper Primary)						Total
	0	1	2	3	4-6	>7	
Bilaspur	0	0	6	29	197	16	248
Chamba	0	4	16	33	263	89	405
Hamirpur	0	0	4	27	244	1	276
Kangra	0	0	23	54	521	196	794
Kinnaur	0	0	3	19	60	0	82
Kullu	0	2	22	34	169	7	234
Lahaul-Spiti	0	5	4	7	54	1	71
Mandi	0	12	24	56	499	96	687
Shimla	0	8	33	107	462	46	656
Sirmour	0	16	22	57	248	14	357
Solan	0	3	13	47	226	16	305
Una	0	0	3	23	185	46	257
<b>Total</b>	<b>0</b>	<b>50</b>	<b>173</b>	<b>493</b>	<b>3128</b>	<b>528</b>	<b>4372</b>

116

16 District wise Number of classroom (2011-12)

Districts	Deptt. of Education		Total
	Primary	Upper Primary	
Bilaspur	1654	803	2457
Chamba	3389	1601	4990
Hamirpur	1712	964	2676
Kangra	4944	2914	7858
Kinnaur	549	236	785
Kullu	2292	832	3124
Lahaul-Spiti	337	228	565
Mandi	4970	2600	7570
Shimla	4116	2231	6347
Sirmour	2728	1394	4122
Solan	2194	1077	3271
Una	1569	987	2556
<b>Total</b>	<b>30454</b>	<b>15867</b>	<b>46321</b>

118

117

17. District wise Average Classroom and Average School Size Deptt. of Education 2011-12

Districts	Average Classroom Size			Average School Size		
	Primary	Upper Primary	Total	Primary	Upper Primary	Total
Bilaspur	12	18	14	33	60	41
Chamba	14	19	16	43	75	52
Hamirpur	11	16	13	38	55	44
Kangra	13	18	15	36	66	46
Kinnaur	9	14	11	28	40	31
Kullu	14	25	17	42	89	54
Lahaul-Spiti	5	5	5	9	15	10
Mandi	12	16	13	35	61	42
Shimla	12	13	12	30	46	35
Sirmour	16	20	17	43	77	52
Solan	16	21	18	47	75	55
Una	19	20	19	60	79	66
<b>Total</b>	<b>13</b>	<b>18</b>	<b>15</b>	<b>38</b>	<b>64</b>	<b>46</b>

119

18 (i) Distribution of schools by no. of classrooms Deptt. of Education  
(Primary) 2011-12

Districts	Total Schools	No. of classrooms				
		0	1	2	3	>3
Bilaspur	591	0	23	253	193	122
Chamba	1118	0	65	328	395	330
Hamirpur	492	0	2	106	168	216
Kangra	1714	0	122	574	591	427
Kinnaur	186	1	10	56	65	54
Kullu	747	0	17	266	245	219
Lahaul-Spiti	204	0	84	108	12	0
Mandi	1704	2	24	643	648	387
Shimla	1579	0	89	754	514	222
Simour	986	0	29	450	331	176
Solan	759	0	8	357	230	164
Una	493	0	11	163	156	163
<b>Total</b>	<b>10573</b>	<b>3</b>	<b>484</b>	<b>4058</b>	<b>3548</b>	<b>2480</b>

120

19 (i) Condition of classroom (Primary) Deptt. of Education 2011-12

Districts	Total class rooms	Good	Requires minor repairs	Requires major repairs
Bilaspur	1654	919	480	255
Chamba	3389	2069	783	537
Hamirpur	1712	1384	182	146
Kangra	4944	3269	862	813
Kinnaur	549	362	139	48
Kullu	2292	1235	707	350
Lahaul-Spiti	337	241	71	25
Mandi	4970	3300	1099	571
Shimla	4116	2364	1192	560
Simour	2728	1836	543	349
Solan	2194	1364	536	294
Una	1569	1137	257	175
<b>Total</b>	<b>30454</b>	<b>19480</b>	<b>6851</b>	<b>4123</b>

122

18 (ii) Distribution of schools by no. of classrooms (Upper Primary) 2011-12

Districts	Total Schools	No. of classrooms				
		0	1	2	3	>3
Bilaspur	248	0	12	12	190	34
Chamba	405	0	16	43	185	161
Hamirpur	276	0	7	17	187	65
Kangra	794	0	50	131	394	219
Kinnaur	82	1	4	14	54	9
Kullu	234	0	8	14	154	58
Lahaul-Spiti	71	0	6	12	40	13
Mandi	687	0	6	139	325	217
Shimla	656	0	22	113	376	145
Simour	357	0	17	14	211	115
Solan	305	0	4	26	196	79
Una	257	0	4	27	151	75
<b>Total</b>	<b>4372</b>	<b>1</b>	<b>156</b>	<b>562</b>	<b>2463</b>	<b>1190</b>

121

19 (ii) Condition of classroom (Upper Primary) Department of Education  
(2011-12)

Districts	Total classrooms	Good	Requires minor repairs	Requires major repairs
Bilaspur	803	525	217	61
Chamba	1601	1051	405	145
Hamirpur	964	848	80	36
Kangra	2914	1984	557	373
Kinnaur	236	151	77	8
Kullu	832	484	289	59
Lahaul-Spiti	228	141	70	17
Mandi	2600	1804	607	189
Shimla	2231	1345	658	228
Simour	1394	908	330	156
Solan	1077	662	299	116
Una	987	727	170	90
<b>Total</b>	<b>15867</b>	<b>10630</b>	<b>3759</b>	<b>1478</b>

123

20 (i) District wise facility in Deptt. Education (2011-12) Primary

Districts	Total Schools	Boundary Wall	Drinking water	Common Toilet
Bilaspur	591	200	580	137
Chamba	1118	524	1118	224
Hamirpur	492	283	492	171
Kangra	1714	938	1714	176
Kinnaur	186	153	185	28
Kullu	747	447	733	142
Lahaul-Spiti	204	86	176	110
Mandi	1704	763	1704	416
Shimla	1579	523	1556	309
Sirmour	986	413	937	246
Solan	759	312	748	194
Una	493	363	492	332
Total	10573	4985	10435	2485
% age		47.15	98.70	23.50

20 (ii) District wise facility in Deptt. Education (2011-12) Primary

Districts	Total Schools	Girls Toilet	Boys Toilet	Electricity
Bilaspur	591	565	217	557
Chamba	1118	1096	624	1118
Hamirpur	492	491	447	472
Kangra	1714	1600	1154	1696
Kinnaur	186	172	161	68
Kullu	747	721	616	264
Lahaul-Spiti	204	203	37	81
Mandi	1704	1703	1275	423
Shimla	1579	1410	664	379
Sirmour	986	985	880	505
Solan	759	758	722	598
Una	493	488	465	491
Total	10573	10192	7262	6652
% age		96.40	68.68	62.91

124

125

20 (iii) District wise facility in Deptt. Education (2011-12) Primary

Districts	Total Schools	Book Bank	Playground	Ramps for disabled children
Bilaspur	591	292	314	388
Chamba	1118	1009	521	505
Hamirpur	492	341	329	284
Kangra	1714	1248	998	1229
Kinnaur	186	125	130	129
Kullu	747	664	437	693
Lahaul-Spiti	204	160	60	8
Mandi	1704	1234	1064	709
Shimla	1579	1152	1032	778
Sirmour	986	823	529	569
Solan	759	517	434	721
Una	493	349	330	294
Total	10573	7914	6168	6307
% age		74.85	58.34	59.65

126

20 (iv) District wise facility in Deptt. Education (2011-12) Primary

Districts	Total Schools	Medical Check-up	Computers	Blackboard	Kitchen	Building
Bilaspur	591	484	7	591	589	591
Chamba	1118	952	0	1118	983	1118
Hamirpur	492	482	9	492	482	492
Kangra	1714	1601	31	1714	1660	1714
Kinnaur	186	169	2	186	179	186
Kullu	747	692	6	747	719	747
Lahaul-Spiti	204	191	0	204	186	204
Mandi	1704	1497	40	1704	1696	1702
Shimla	1579	1268	8	1579	1542	1579
Sirmour	986	803	0	986	972	965
Solan	759	714	16	759	721	759
Una	493	449	38	493	470	493
Total	10573	9302	157	10573	10199	10570
% age		87.98	1.48	100.00	96.46	99.97

127

21 (i) District wise facility in Deptt. Education (2011-12) Upper Primary

Districts	Total Schools	Boundary Wall	Drinking water	Common Toilet
Bilaspur	248	123	236	65
Chamba	405	211	405	123
Hamirpur	276	168	276	87
Kangra	794	534	794	124
Kinnaur	82	49	82	6
Kullu	234	159	225	80
Lahaul-Spiti	71	35	64	23
Mandi	687	309	687	196
Shimla	656	289	650	185
Sirmour	357	150	338	128
Solan	305	129	297	95
Una	257	198	256	129
Total	4372	2354	4310	1241
% age	100	53.84	98.58	28.39

128

21 (ii) District wise facility in Deptt. Education (2011-12) Upper Primary

Districts	Total Schools	Girls Toilet	Boys Toilet	electricity
Bilaspur	248	237	179	229
Chamba	405	391	257	405
Hamirpur	276	273	245	258
Kangra	794	774	612	785
Kinnaur	82	75	68	59
Kullu	234	225	201	141
Lahaul-Spiti	71	70	23	39
Mandi	687	683	543	482
Shimla	656	634	415	383
Sirmour	357	349	305	238
Solan	305	299	293	259
Una	257	255	239	256
Total	4372	4265	3380	3534
% age	100	97.55	77.31	80.83

129

21 (iii) District wise facility in Deptt. Education (2011-12) Upper Primary

Districts	Total Schools	Book Bank	Playground	Ramps for disabled children
Bilaspur	248	177	176	152
Chamba	405	313	238	163
Hamirpur	276	210	227	198
Kangra	794	591	573	520
Kinnaur	82	54	65	33
Kullu	234	175	146	180
Lahaul-Spiti	71	49	35	0
Mandi	687	489	486	234
Shimla	656	476	499	277
Sirmour	357	257	238	212
Solan	305	213	208	294
Una	257	203	211	152
Total	4372	3212	3104	2415
% age	100	73.47	71.00	55.24

130

22 (i) GER & NER 2011-12 - Primary

District	GER			NER		
	Boys	Girls	Total	Boys	Girls	Total
Bilaspur	106.27	107.80	106.99	87.51	88.11	87.79
Chamba	111.01	110.20	110.61	91.21	90.89	91.05
Hamirpur	113.02	114.16	113.54	86.00	86.62	86.28
Kangra	111.48	112.24	111.83	88.65	89.20	88.91
Kinnaur	106.20	105.99	106.09	91.55	90.59	91.08
Kullu	113.53	112.68	113.11	92.18	92.26	92.22
Lahaul-Spiti	107.67	108.34	108.01	91.61	91.48	91.54
Mandi	104.65	105.34	104.99	86.84	87.51	87.17
Shimla	111.70	110.77	111.25	92.85	92.60	92.73
Sirmour	111.64	110.63	111.16	92.39	92.24	92.32
Solan	110.52	109.81	110.19	89.75	89.59	89.67
Una	108.13	108.21	108.17	89.18	88.81	89.01
Total	110.04	110.01	110.03	89.64	89.84	89.73

132

21 (iv) District wise facility in Deptt. of Education (2011-12) Upper Primary

Districts	Total Schools	Medical Check-up	Computers	Blackboard	Kitchen	Building
Bilaspur	248	210	59	248	240	248
Chamba	405	324	106	405	308	405
Hamirpur	276	265	72	276	269	276
Kangra	794	753	184	794	770	794
Kinnaur	82	82	52	82	74	82
Kullu	234	214	77	234	220	234
Lahaul-Spiti	71	62	48	71	62	69
Mandi	687	590	174	687	677	687
Shimla	656	523	114	656	628	656
Sirmour	357	284	87	357	346	358
Solan	305	272	80	305	281	305
Una	257	230	98	257	229	257
Total	4372	3809	1151	4372	4104	4371
% age	100	87.12	26.33	100.00	93.87	99.98

131

22 (ii) GER &amp; NER 2011-12 - Upper Primary

District	GER			NER		
	Boys	Girls	Total	Boys	Girls	Total
Bilaspur	130.67	127.97	129.39	97.50	97.79	97.64
Chamba	126.14	123.73	125.01	93.68	92.79	93.26
Hamirpur	131.08	129.30	130.26	97.68	98.21	97.92
Kangra	125.29	125.28	125.29	94.00	94.56	94.25
Kinnaur	121.88	123.60	122.75	91.84	91.54	91.69
Kullu	123.15	121.20	122.19	89.51	90.67	90.08
Lahaul-Spiti	124.06	123.78	123.90	87.87	90.89	89.54
Mandi	129.65	128.92	129.30	97.52	97.56	97.54
Shimla	119.14	118.30	118.74	89.19	89.70	89.44
Sirmour	124.00	124.87	124.41	90.54	91.85	91.06
Solan	121.12	121.42	121.26	89.78	91.21	90.43
Una	123.80	124.37	124.05	92.94	93.45	93.17
Total	125.09	124.42	124.77	93.19	93.65	93.41

133

23. Drop Out Rate for the year 2011-12

District	Primary			Upper Primary		
	Boys	Girls	Total	Boys	Girls	Total
Bilaspur	0.00	0.00	0.00	2.15	0.70	1.47
Chamba	0.39	1.69	1.02	2.86	3.17	3.00
Hamirpur	0.00	0.00	0.00	0.00	0.00	0.00
Kangra	0.00	0.00	0.00	0.68	0.39	0.55
Kinnaur	7.23	7.21	7.22	8.84	8.79	8.81
Kullu	2.27	1.21	1.75	4.35	2.96	3.68
Lahaul-Spiti	13.92	10.13	12.03	16.55	8.06	12.05
Mandi	0.00	0.00	0.00	3.26	3.68	3.46
Shimla	3.58	4.63	4.09	2.45	2.01	2.24
Sirmour	0.89	0.38	0.65	7.46	5.74	6.65
Solan	0.03	1.05	0.51	4.38	2.87	3.69
Una	0.00	0.00	0.00	0.00	0.00	0.00
Total	0.00	0.61	0.12	2.40	2.10	2.26

24. Transition Rate (Primary to upper primary)

District	2011-12		
	Boys	Girls	Total
Bilaspur	99.96	100.0	100.0
Chamba	96.40	93.54	95.02
Hamirpur	98.78	98.4	98.61
Kangra	99.55	96.63	98.22
Kinnaur	96.37	95.17	95.76
Kullu	96.17	96.81	96.49
L & Spiti	82.83	91.13	87.11
Mandi	97.36	97.70	97.52
Shimla	98.60	98.40	98.50
Sirmour	94.65	97.32	95.94
Solan	97.97	97.16	97.60
Una	100.0	97.22	99.57
Total	98.11	97.18	97.67

134

136

Contact Officers at State Project Office (Phone : 0177: 2658668, 2808624 (Fax)		
Designation	Name	Email
Director Elementary Education-cum-Mission Director (SSA)	Rajeev Sharma Ph: 0177-2812464	
State Project Director (SSA)	Sh. Rakesh Kanwar Ph.: 0177-2658668	spdssahp@gmail.com
Controller (F&A)	Sh. B.L. Shukla	bansishukla@rediffmail.com
Assistant Controller (F&A)	Sh. Prem Sagar	
Superintendent	Sh. H.R Kapila	hrkapila99@gmail.com
Pedagogy Incharge	Sh. Y.K. Sharma	sharmayadvender@yahoo.com
MIS Incharge	Sh. Satish Kaushal	kaushalsk@rediffmail.com
Lecturer SIEMAT	Sh. Surender Bisht	svashista3@gmail.com

135



137

Lecturer SIEMAT	Sh. D.R. Chauhan	<a href="mailto:Drchauhan_2007@rediffmail.com">Drchauhan_2007@rediffmail.com</a>
Lecturer SIEMAT	Ms. Seema Fari	<a href="mailto:raniseema169@gmail.com">raniseema169@gmail.com</a>
Lecturer SIEMAT	Sh. Surender Rangta	<a href="mailto:surenderrangta@gmail.com">surenderrangta@gmail.com</a>
Lecturer SIEMAT	Mrs. Sarla Thakur	<a href="mailto:sarlathakur@gmail.com">sarlathakur@gmail.com</a>
IED & DEP Coordinator	Sh. D.N. Azau	<a href="mailto:azad.dn@gmail.com">azad.dn@gmail.com</a>
R&E Coordinator	Smt. S. Banerjee	<a href="mailto:shubra_uttam@yahoo.co.yk">shubra_uttam@yahoo.co.yk</a>
Woman Development Incharge	Miss Manjula Sharma	<a href="mailto:manjulasm1@rediffmail.com">manjulasm1@rediffmail.com</a>
Media Officer	Mr. Sunil Banyal	<a href="mailto:banyalsunil@gmail.com">banyalsunil@gmail.com</a>
ECCE Coordinator	Dr. Sneh Lata	<a href="mailto:raizada@gmail.com">raizada@gmail.com</a>
IEDSS Coordinator	Sh. Manjeet Singh	<a href="mailto:manjeetgur2000@gmail.com">manjeetgur2000@gmail.com</a>
Civil Coordinator	Sh. Rupan Sehgal	

138

District Project Officers-cum-Principal DIETs				
Sr.	Distt.	Name	Email	Phone
1	Bilaspur	Sh. M.S Chandel	<a href="mailto:dietbilaspur@gmail.com">dietbilaspur@gmail.com</a>	01978-286550
2	Chamba	-	<a href="mailto:ssachambahp@gmail.com">ssachambahp@gmail.com</a>	01899-232025
3	Hamirpur	Sh. Surjit Singh Thakur	<a href="mailto:ssa_hmr2005@yahoo.co.in">ssa_hmr2005@yahoo.co.in</a>	01972-235164
4	Kangra	Sh. Satish Dhiman	<a href="mailto:ssakangra@gmail.com">ssakangra@gmail.com</a>	01892-223185
5	Kirnaur	Sh. L.R. Negi	<a href="mailto:dpossakmr@yahoo.co.in">dpossakmr@yahoo.co.in</a>	01786-223040
6	Kullu	Sh. Naresh Chopra	<a href="mailto:ssakullu@rediffmail.com">ssakullu@rediffmail.com</a>	01902-265561
7	Lahaul	-	<a href="mailto:ssatandi1@rediffmail.com">ssatandi1@rediffmail.com</a>	01900-241267
8	Spiti	-		01906-222202
9	Mandi	Sh. Mohinder Pal Thakur	<a href="mailto:ssamandi@rediffmail.com">ssamandi@rediffmail.com</a>	01905-222168
10	Shimla	Sh. K.K. Dhiman	<a href="mailto:dietshimla@yahoo.co.in">dietshimla@yahoo.co.in</a>	0177-2774899
11	Sirmour	Sh. Milap Chand Luggal	<a href="mailto:ssadiet.smr1@gmail.com">ssadiet.smr1@gmail.com</a>	01702-224023
12	Solan	Sh. R.S.Thakur	<a href="mailto:diet_solan@rediffmail.com">diet_solan@rediffmail.com</a>	01792-223827
13	Una	Sh. J.R. Kaushal	<a href="mailto:unaciet@gmail.com">unaciet@gmail.com</a>	01975-232613

Abbreviations	
DISE	- District Information System for Education
SSA	- Sarva Shiksha Abhiyan
HAS	- Himachal Administrative Services
SC	- Schedule Caste
ST	- Schedule Tribe
NER	- Net Enrolment Ratio
GER	- Gross Enrolment Ratio
PTR	- Pupil Teacher Ratio
DIET	- District Institute of Education and training
Sen.Sec.	- Senior Secondary
Tch.	- Teacher
Sanc.	- Sanctioned
T&S Wel. Deptt.	- Tribal & Social Welfare Department
LB	- Local Body
PA	- Private Aided
PU	- Private Un-aided
Popu.	- Population
Pvt.	- Private
BRC	- Block Resource Centre
CRC	- Cluster Resource Centre
Pry.Sch.	- Primary School
S.N.	- Serial Number
Pry with U.Pry	- Primary with Upper Primary
Sq Km	- Square Kilometer
Teh.	- Tehsil
S.Teh.	- Sub Tehsil
D.Blk	- Development Block
AS	- Assembly Seats
Dens	- Density
%LR	- Percentage Literacy Rates
Distt.	- District

139

Abbreviations	
OBC	- Other Backward Classes
F&A	- Finance & Accounts
MIS	- Management Information System
IED	- Integrated Education for Disabled
SIEMAT	- State Institute of Educational Management and Training

140

Information is based on the Village Education Register. In some registers are not being updated regularly. Further, the enrolment of some private schools are also not included in the data as these schools are not sharing their information. The GER/NER figures are subject to these limitations.

GER Primary	=	Total Enrolment in I-V in time year *100
		Total Population of age 6-10 in time year
GER U. Primary	=	Total Enrolment in VI-VIII in year time *100
		Total Population of age 11-13 in time year
NER Primary	=	Total Enrolment in I-V aged 6-10 in time year*100
		Total Population of age 6-10 in time year
NER U. Primary	=	Total Enrolment in I-V aged 11-13 in time year*100
		Total Population of age 6-10 in time year
Dropout	=	[( Enrolment in grade g in year 't') - (No. of
Repeaters in		grade g in year t+1) - (No. of promotees
in grade g in		year 't' to grade g+1 in year
)]/(Enrolment in grade g		in year 't') * 100

Census data is based on Provisional data of Census 2011

141

**सर्व शिक्षा अभियान**  
सब पढ़ें सब बढ़ें

State Project Office  
**Sarva Shiksha Abhiyan**  
DPEP Bhawan, Lal Pani, Shimla - 171001 (H.P.)  
E-mail: [spodpehp2@rediffmail.com](mailto:spodpehp2@rediffmail.com)  
Website: [www.hp.gov.in/ssa](http://www.hp.gov.in/ssa)  
Ph.: 0177-2658668 Fax: 2808624  
**HIMACHAL PRADESH**

Designed by New Era Ph. 0177-2628276  
Ptd By: Savitar Press Chandigarh