



**AT A GLANCE**

1	Total Number of unrecognised schools		2646
2	Number of unrecognised schools with State Syllabus		1111
3	Number of unrecognised schools with CBSE Syllabus		1208
4	Number of unrecognised schools with ICSE Syllabus		75
5	Number of unrecognised schools with Other Syllabus		172
6	Number of unrecognised schools with Laboratory Facilities		941
7	Number of unrecognised schools with Library Facilities		1599
8	Number of unrecognised schools with Playground Facilities		2126
9	Number of unrecognised schools with Drinking Water Facilities		2555
10	Number of fully electrified unrecognised schools		1961
11	Number of unrecognised schools with Hostel Facilities		129
12	Number of unrecognised schools having PTA		2339
13	Number of unrecognised schools with Transportation Facilities		1813
14	Number of unrecognised schools with English as medium of teaching		2189
15	Number of unrecognised schools with Malayalam as medium of teaching		356
16	Number of unrecognised schools with Tamil as medium of teaching		5
17	Number of unrecognised schools with Kannada as medium of teaching		1
18	Number of unrecognised schools with English and Vernacular Languages as medium of teaching		95
19	Total Students		312443
		Boys	163459
		Girls	148984
20	Total Teaching Staff		22068
		Male	2627
		Female	19441
21	Total Non teaching staff		6755
		Male	2733
		Female	4022

\*\*\*\*\*



## **SURVEY ON UNRECOGNISED SCHOOLS**

### **CHAPTER I**

#### **INTRODUCTION**

Kerala has achieved remarkable progress in social development, which is reflected in many areas like literacy, life expectancy, maternal mortality rate, infant mortality rate, etc. Literacy is a basic step towards education which is a process of life long learning and an entry point to the world of communication and information. According to 2001 census, Kerala has achieved a high literacy rate of 90.92% as against the all India literacy rate of 65.38%. People of Kerala are very much aware of education and give top priority to impart education to their children irrespective of their financial conditions.

Kerala has educational institutions run by Government and private agencies. The institutions in private sector are either aided or unaided. The unaided institutions are either recognised or unrecognised.

In Kerala there were 12650 schools in 2005. Besides these, a large number of unaided institutions are working without any recognition. The number of unaided institutions has been increasing steadily since 1980s. The number of annual entrants in Standard I in Government and aided schools have been steadily decreasing during the past three decades while the same is increasing in unaided schools.

Though schooling in unaided sector is known to be much costlier than the aided sector, the enrolment in this sector is fast increasing and this is an area which is thriving fast. Increased income of the people, parental demand for better education and perceived decline in quality of education in government and private aided schools lead to greater reliance on private unaided schools. Several educational institutions which are either aided or recognised by the Government have come into existence. Side by side with these institutions, a lot of educational institutions, which are neither aided nor recognised by the Government, also started functioning.

The parents and students who are unaware of these facts take admission in these schools. They realise the real nature about these institutions later only. After completion of L.P section or U.P section, admission to higher classes in recognised schools are very difficult. In some cases the students will not be affected, as the management of the schools will make arrangements so that the students of these institutions can appear for public examination on behalf of some other institutions. Information about such unrecognised schools is not available. To have an idea about the number of such institutions and its nature of operation, a comprehensive survey about such institutions was conducted.

## **Objectives**

- 1) To find out the number of unrecognised schools functioning in the state.
- 2) To know the strength of students and teachers in such schools.
- 3) To study the details regarding the qualification of the teachers and payment of salaries to them and to the staff of such organisations.
- 4) To know the facilities available in such institutions.
- 5) To study the examination results achieved by the students of these institutions.
- 6) To know how many of such institutions stopped functioning during the last 3 years.

## **Coverage**

The survey covered the whole area of the state. The details regarding the unrecognised schools were collected in the prescribed schedules.

## **Methodology**

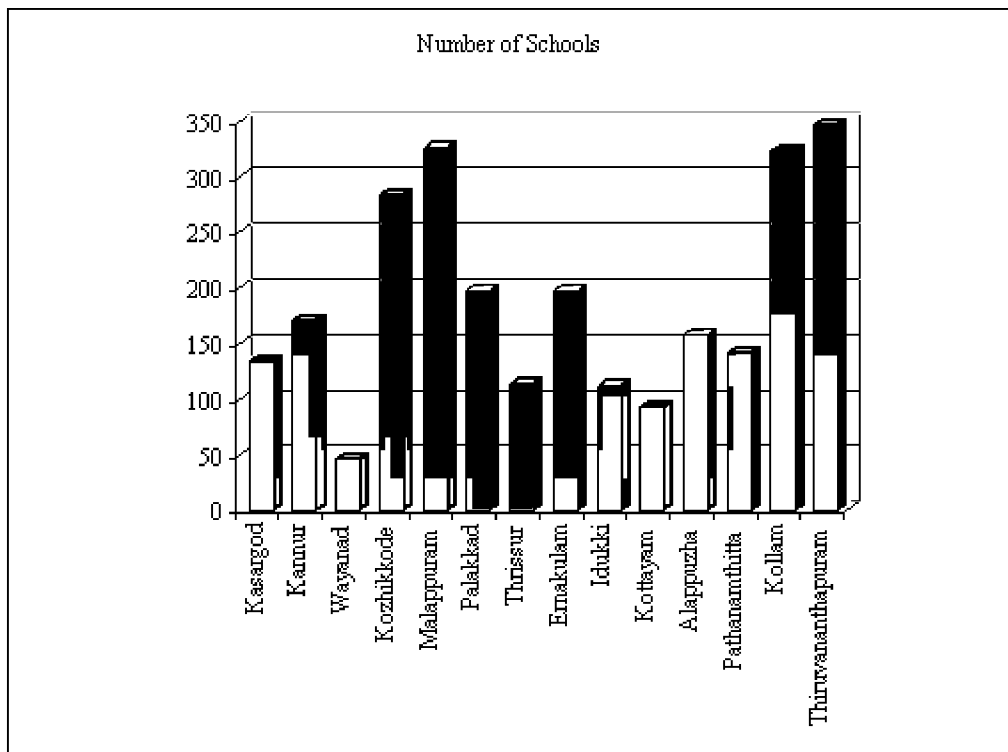
This was a census survey and the data was collected in a pre-designed schedule. The list of unrecognised schools in each local body was collected by visiting offices of Education department, other organisations, local bodies and from knowledgeable persons. Using this list and on the basis of local enquiry, the investigator collected the data from each and every school in the pre designed schedule.

## **Analysis**

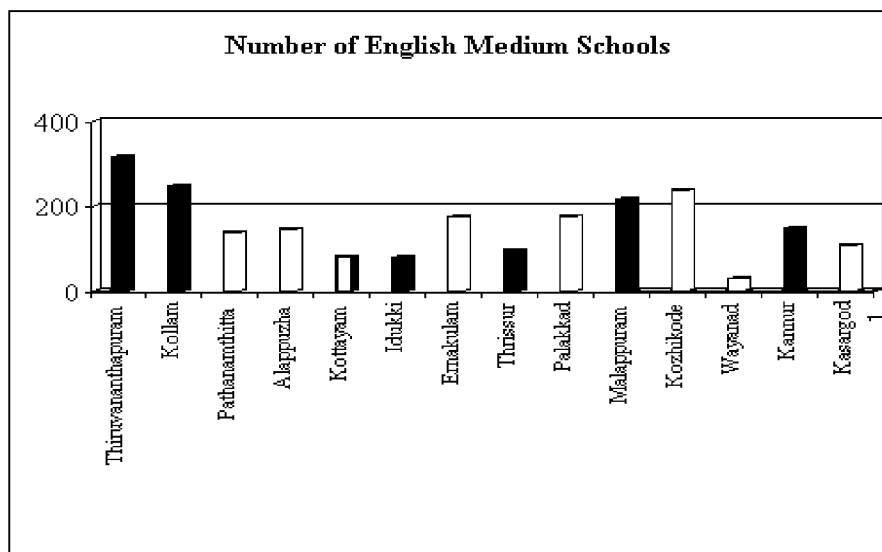
The following points are observed while analysing the results of the survey.

As per the survey, the total number of unrecognised schools functioning in the state is 2646. Out of the 2646 schools, 194 schools are working in the Municipal Corporation area, 259 schools are working in the Municipal area and 2193 schools are working in the panchayath area. It can be seen that 82.87% schools are in the panchayath area.

On analysing the district wise number of unrecognised schools, it can be seen that Thiruvananthapuram district has the highest number of schools followed by Malappuram district. Wayanad district has the least number of schools.



Out of the 2646 schools, 916 schools were started after the year 2000, in between 1996 and 2000, 733 schools were started, in between 1991-95, 469 schools were started and 528 schools were started before 1991. It can be seen that unrecognised schools are increasing every year.



In the case of ownership of the institutions, 22.67% schools are under proprietorship, 4.34% schools are under partnership, 32.46% schools are under charitable societies, 2.98% under cooperative sector, 27.13% under trusteeship, 4.64% under corporate sector and 5.74% belongs to other categories. The number of schools working under the ownership of charitable societies with a total of 859 ranks first followed by trusteeship with a total number of 718 schools. The schools working under the cooperative sector are the least in number, ie, 79 numbers.

Under the proprietorship schools, Kollam district has the largest number of schools in the state while under the charitable society schools, Malappuram district has the largest number of schools.

The present survey reveals that the number of schools having residential facilities is 111 numbers and the remaining 2535 schools do not have such facility. District wise analysis reveals that Malappuram district has the highest number of schools having the residential facility and the schools in Kottayam district do not have such facility.

The distribution of schools according to the type of building shows that 74.14% schools have pucca building, 18.36% schools have semi pucca building, 6.57% schools have other type of building and 0.91% schools have kacha building. District wise analysis reveals that out of the schools having pucca buildings, Malappuram district has the highest number of schools followed by Kollam district.

Majority of the unrecognised schools are running in own building. Out of the 2646 schools, 76.15% schools are functioning in their own buildings and 21.95 % functioning in rented buildings. Kollam district has the highest number of own building schools while Wayanad has the least. Kozhikkode district has the highest number of rented building schools while Wayanad district has the least.

The details regarding class rooms show that 45.27% of schools have concreted roof classrooms, 14.32% of schools have tiled roof classrooms, 9.71 % of schools have asbestos cement sheet as roof, 1.13% schools have thatched classrooms and 29.55% have other type of class rooms. District wise analysis reveals that Kozhikkode district has the maximum number of concrete classrooms, while Wayanad district has the least. Kozhikkode district has the maximum number of tiled classrooms and Kollam district has the maximum number of asbestos cementsheeted classrooms.

Out of the 2646 schools, 1111 schools follow state syllabus, 1208 schools follow CBSE syllabus, 75 schools follow ICSE syllabus, 172 schools follow other syllabus and 80 schools follow more than one syllabus. CBSE syllabus schools rank first in the state with a total of 1208 followed by schools following state syllabus. Kozhikkode district has the highest number of CBSE schools while Wayanad has the least. Malappuram district has the highest number of state syllabus following schools. Kollam district has the highest number of ICSE schools while Kasaragod has the least.

63% schools promote their students to the next higher class by written test. 29.40% schools promote by written test and internal assessment, 3.96% schools promote by written test and viva and 3.21% promote by written test and internal assessment and viva. 0.41% promotes their students by some other considerations.

Distribution of schools by laboratory facility reveals that 35.56% schools have laboratory facility. It can be seen that 10.73% schools have Physics laboratory, 10.20% schools have Chemistry laboratory, 7.29% schools have Zoology laboratory, 6.61% schools have Botany laboratory. Out of 2646 schools, 754 schools have set up computer lab, 60.43% schools have library facility, 80.34% schools have playground and 96.56% schools have drinking water facility. The survey also reveals that 96.18% schools have toilet facilities for boys and 96.60% schools have toilet

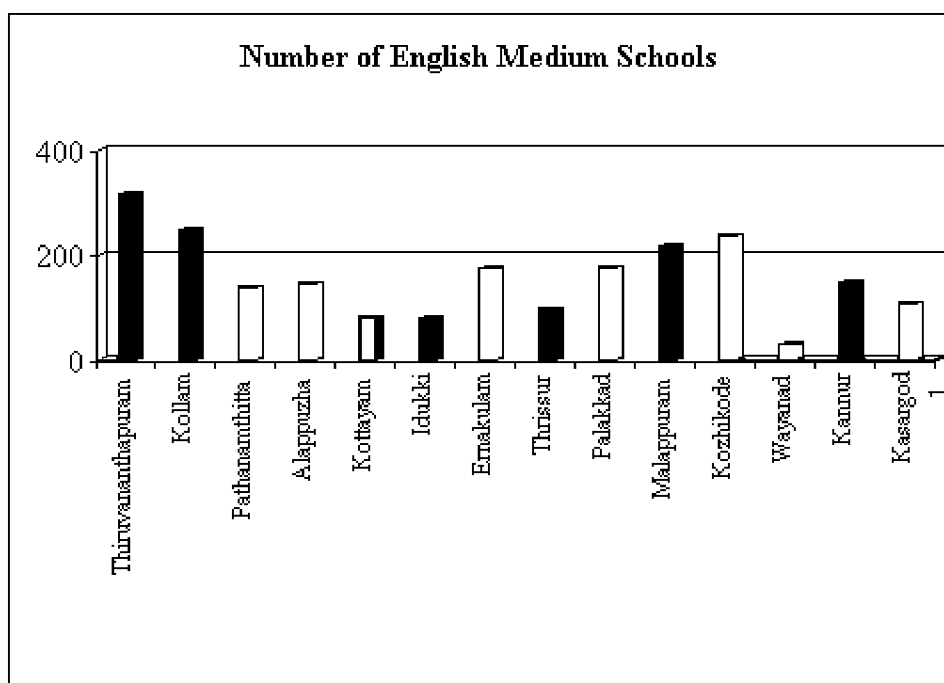
facility for girls.

It is also seen that 74.11% schools were fully electrified and 17.83% schools were partly electrified. Among the unrecognised schools 2244 schools are having facilities for extra curricular activities in arts and sports. Number of schools having hostel facility is accounted as 129. Also in 2339 schools, PTAs are working and the number of schools having transportation facility accounted as 1813.

Among the schools, which provide transportation facilities, district wise analysis reveals that Malappuram district provide maximum jeep facility. All the schools in Thiruvananthapuram district provide maximum number of tempo, bus and car facility.

The survey results reveal that Kozhikkode district, with 90 schools having some sort of registration ranks first with regard to registration. Among the 2646 unrecognised schools, 576 schools are registered with some authority.

The study reveals that among the schools, 90 schools have branches and 391 schools are working as branches of other schools.



Out of 2646 unrecognised schools, 2189 are English medium schools and 356 are Malayalam medium schools. Only 5 schools follow Tamil medium pattern, 1 followed Kannada pattern of medium and the rest 95 schools follow English and vernacular languages as their medium of teaching. Number of schools follow English medium as their medium of teaching rank first followed by Malayalam medium. District wise analysis reveals that Thiruvananthapuram district which has 315 English medium schools is in the top followed by Kollam district with a total of 247 English medium schools.

Out of the 2646 schools 2507 schools admitted students in 1<sup>st</sup> standard. Number of schools having 10<sup>th</sup> standard is only 123, 11<sup>th</sup> standard is 52 and 12<sup>th</sup> standard is the least, i.e., only 39 schools.

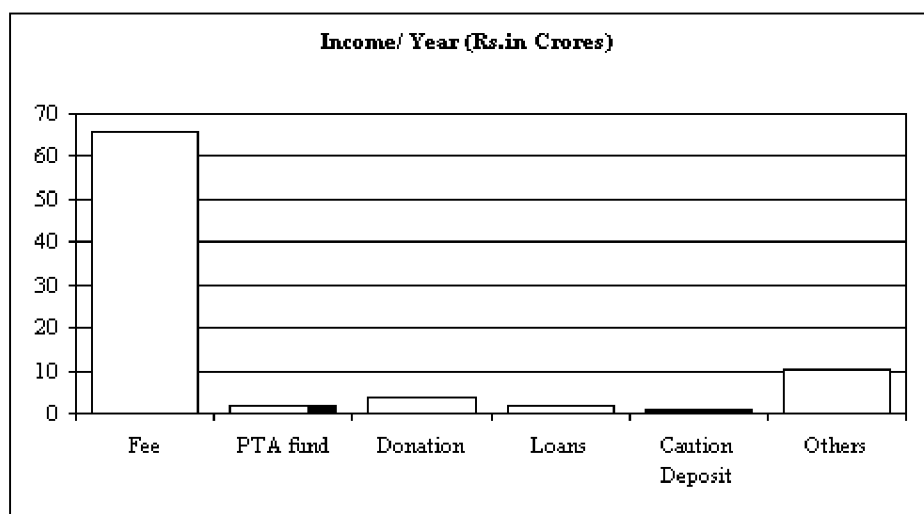
On analysing the number of students enrolled for medical and engineering course during the last 3 years, it is revealed that 186 students got admission on the basis of entrance test. Among this, Kollam district is in the top with a total number of 130 students followed by Malappuram with a total number of 43 students.

Pass percentage of schools according to standards reveals that out of the 2507 first standard running schools, 2360 schools got 100% pass, 118 schools got 90-99% pass, 22 schools got 80-89 % pass and only 3 schools got 60-79 % pass. Majority of schools got above 60% pass. Similarly for all other standards most of the schools got 100% pass.

This is a main advantage of such schools. Also performance of the students show that, for the students studying in 1<sup>st</sup> standard, 46214 students got 80% and above marks, 22115 students got 60-80 % and 7924 students got below 60% marks. For the students in the 10<sup>th</sup> and 12<sup>th</sup> standards, 1564 and 529 students got above 80% marks respectively.

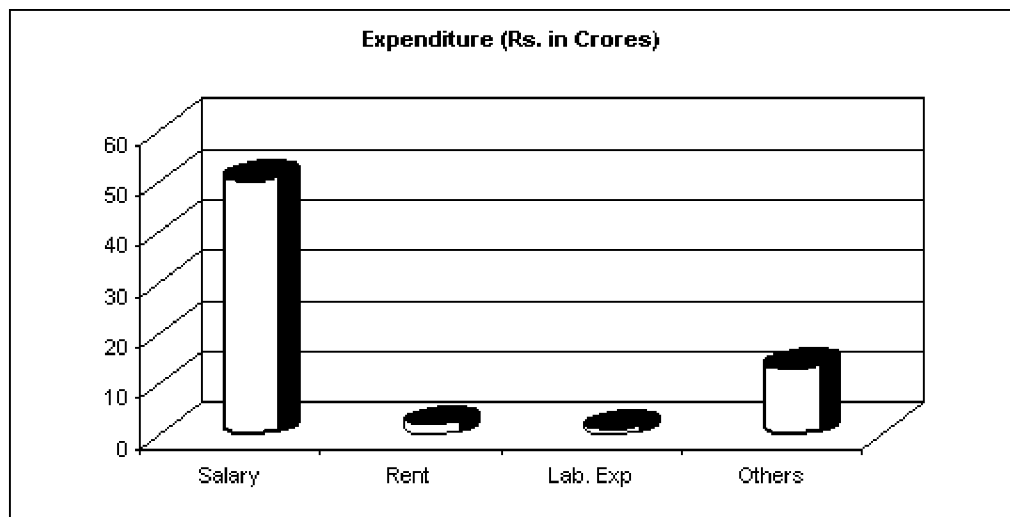
The survey results show that out of the 2646 unrecognised schools, 2287 schools are in progressing stage, 236 schools are in stagnant stage and 123 schools are running at loss. Malappuram district recorded the maximum number of schools running in loss.

In Thiruvananthapuram district 297 schools are in the progressing stage. Most of the schools are facing one or other problem. 935 schools are facing financial problems, 204 schools are facing problems from authorities, 42 schools are facing problems from public and 118 schools are facing some other problems. 1464 schools are reported to have no problems.

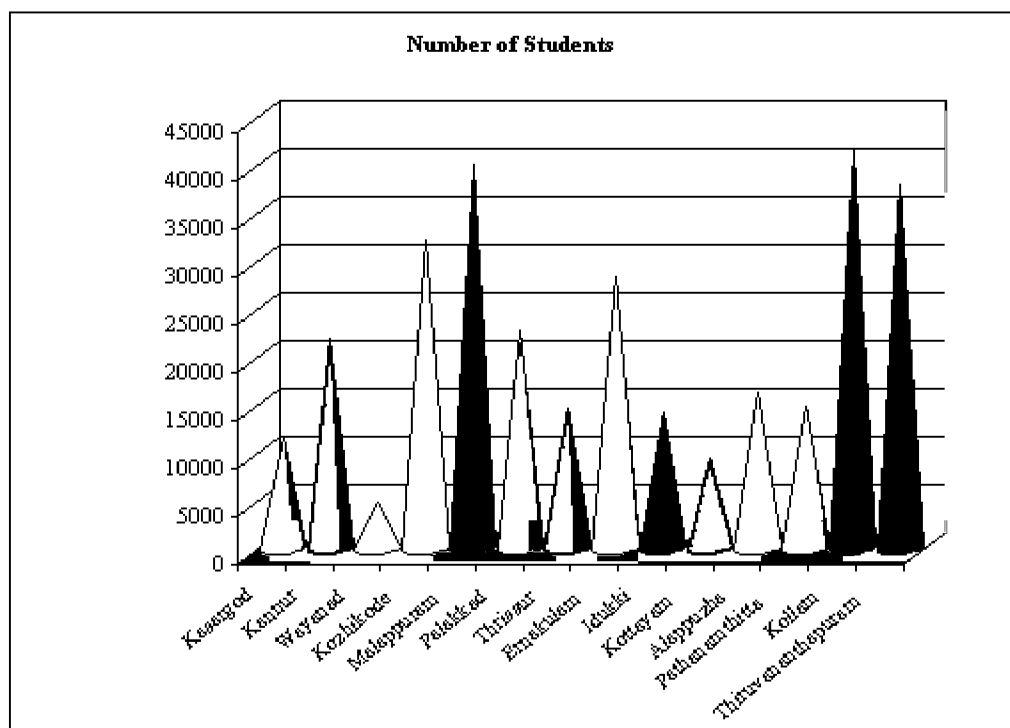


The survey results show that income received from fee collection is 65.67 crores, from PTA fund is Rs 1.89 crores. Income from donation is accounted as Rs 3.81 crores and interest free loan is Rs 1.67 crores. Income from caution deposit is accounted as Rs 72.97 lakhs and other income is accounted as Rs 10.21 crores. It can be seen that the income received from fee is the highest followed by income from other sources. On analysing details of fee collected from students it can be seen that the total tuition fee is accounted as Rs 65.67 crores and caution deposit is Rs 72.97 lakhs.

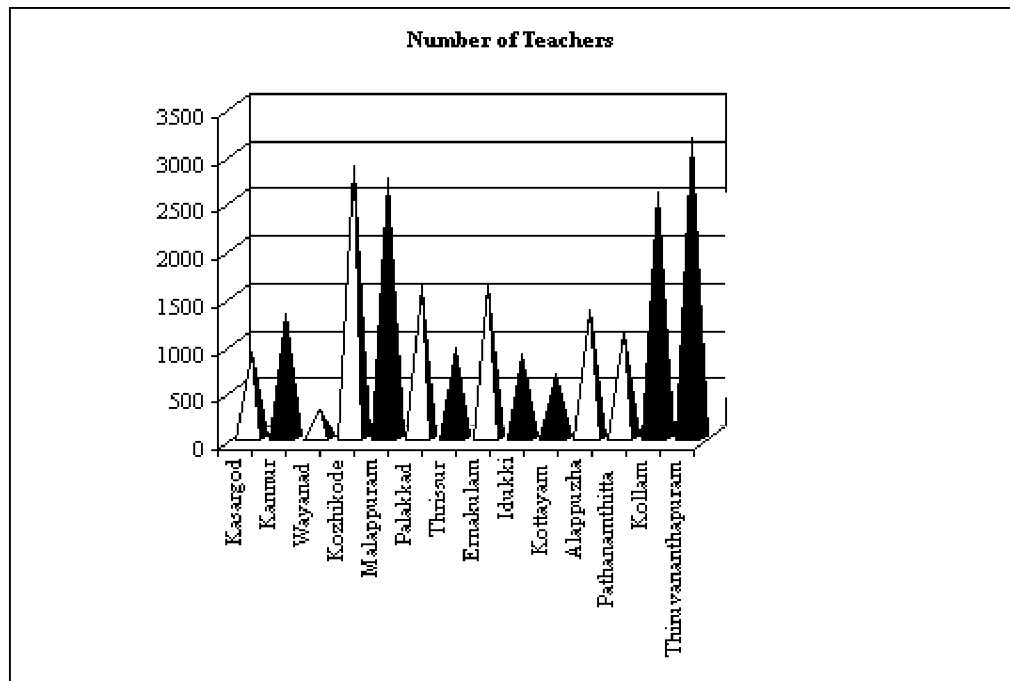
Total expenditure of 2646 unrecognised schools reported is Rs 67.01 crores. By analysing this it can be seen that salary expenditure is the highest among all expenditure followed by expenditure on other items. Liabilities of all schools are accounted as Rs 21.67 crores.



The number of students studying in the unrecognised schools is 3,12,443. Among this 163459 are male students and 148984 are female students. Distribution of students according to social group reveals that SC students are 10354, ST students are 1496 and OBC students are 164093. Standard wise analysis of students shows that for the 1<sup>st</sup> standard, there are 39813 male students and 36440 female students. This is the highest number among all standards. Number of students studying in 10<sup>th</sup> standard is 3623 and number of students studying in 11<sup>th</sup> and 12<sup>th</sup> standards is 2711 and 1728 respectively. Number of students studying in such schools according to social group reveals that ST students are very less, ie, 0.48%, whereas SC students are 3.31% and OBC students are 52.52 %.

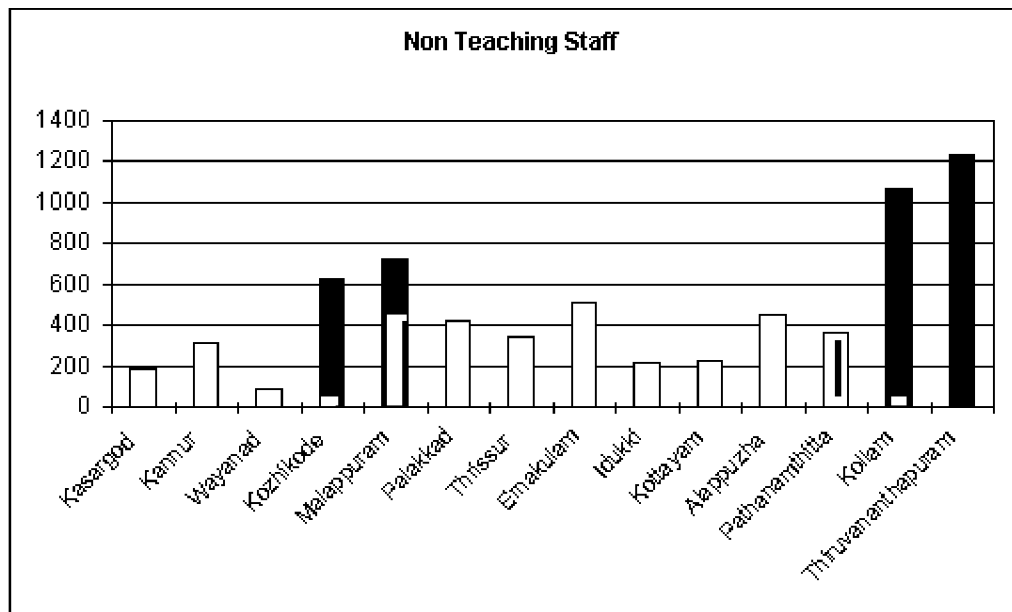






The total number of teachers among the 2646 schools is 22068. Out of that 2627 are male teachers and 19441 are female teachers. Teachers according to qualification reveals that 21 teachers are Phd holders, 44 teachers have M.Phil qualification, 4523 teachers are PG Degree holders, 14396 teachers are graduates, 2567 teachers are under graduates and 517 are matriculates. In the case of training, 2852 are TTC holders, 11397 are B.Ed holders, 225 are M.Ed holders and 7607 have other training. The qualification and training pattern of teachers show that most of the teachers are well qualified and they impart good coaching to their students. By analysing the remuneration given to the teachers, it can be seen that even though all are well qualified, they get very low salary. Only 2136 teachers got above Rs 3000/- as salary. 4480 got in between Rs 2001 and Rs 3000 as salary and 3974 teachers got up to Rs 1000/- as salary. It reveals that out of the 22068 teachers, 11478 got salary in between Rs 1001-2000.

It is seen that, the total number of office staff is 1852, 171 lab assistants, 2521 peons and 2211 other staff are also working in the unrecognized schools. Out of 1852 office staff, 769 are male staff and 1083 are female staff. Out of the 1852 office staff only 177 got above Rs 3000/- as salary. Out of 171 lab assistants, only 18 persons got above Rs 3000/- as salary. 1476 peons got up to Rs. 1000/- as salary.



## Conclusion

The survey was aimed to ascertain the number of unrecognised schools in our state and their mode of functioning. In our state there are 2646 unrecognised schools. Most of the schools attain 100 percent results. The number of students enrolled in such schools are increasing even though the expense of education is very high. Most of the schools provide all facilities for their students and they impart good education in every sense. Teachers are well educated but they got less salary compared to teachers of other recognised or aided schools. In our state some schools are working as a branch of other recognised schools and they make arrangements for the students to appear for public examination. The unrecognised school system in our state provides employment to a large number of well qualified unemployed persons as teaching and non teaching staff.

Number of such unrecognised schools are increasing day by day. As a result number of students enrolled in aided schools are decreasing and it may affect the stability of aided school system.

\*\*\*\*\*



**TABLE 1**  
**District wise Number Of Unrecognised Schools**

Sl. No.	Name Of District	Total	Municipal Corporation	Municipality	Panchayath
1	Kasargod	135		19	116
2	Kannur	171		38	133
3	Wayanad	47		2	45
4	Kozhikode	283	50	20	213
5	Malappuram	326		30	296
6	Palakkad	198		27	171
7	Thrissur	114	13	7	94
8	Eranakulam	197	26	26	145
9	Idukki	112		2	110
10	Kottayam	94		14	80
11	Alappuzha	158		27	131
12	Pathanamthitta	141		14	127
13	Kollam	323	44	11	268
14	Thiruvananthapuram	347	61	22	264
<b>Total</b>		<b>2646</b>	<b>194</b>	<b>259</b>	<b>2193</b>

**TABLE 1 A**  
**Number Of Unrecognised Schools- Educational District wise**

Sl. No.	Name Of Educational District	Total	Municipal Corporation	Municipality	Panchayath
1	Kasaragode	89		12	77
2	Kanjanad	46		7	39
3	Kanur	98		14	84
4	Thalasserry	73		24	49
5	Wayanad	47		2	45
6	Kozhikkod	103	50		53
7	Vadakara	91		20	71
8	Thamarasseri	89			89
9	Malappuram	80		17	63
10	Wandoor	106		1	105
11	Thirur	140		12	128
12	Palakkad	147		8	139
13	Ottappalam	51		19	32
14	Irinjalakkuda	37		6	31
15	Thrissur	24	13		11
16	Chavakkadu	53		1	52
17	Eranakulam	60	26	8	26
18	Muvattupuzha	39		1	38
19	Aluva	72		12	60
20	Kothamangalam	26		5	21
21	Thodupuzha	46		2	44
22	Kattappana	66			66
23	Kottayam	25		8	17
24	Pala	21		4	17
25	Kaduthuruthi	15		2	13
26	Kanjirappally	33			33
27	Mavelikkara	100		15	85
28	Alappuzha	28		10	18
29	Cherthala	17		2	15
30	Kuttanad	13			13
31	Pathanamthitta	88		7	81
32	Thiruvalla	53		7	46
33	Kollam	171	44	4	123
34	Kottarakara	76			76
35	Punalur	76		7	69
36	Neyyattinkara	141		1	140
37	Thiruvananthapuram	86	61		25
38	Attingal	120		21	99
<b>Total</b>		<b>2646</b>	<b>194</b>	<b>259</b>	<b>2193</b>

**TABLE 2**  
**Number Of Schools According To The Year Of Starting**

Sl. No.	Name Of District	Before 1991	During 91-95	During 96-2000	After 2000	Total
1	Kasargod	15	28	45	47	135
2	Kannur	33	32	48	58	171
3	Wayanad	8	8	13	18	47

4	Kozhikode	56	47	66	114	283
5	Malappuram	42	67	92	125	326
6	Palakkad	62	38	47	51	198
7	Thrissur	16	15	30	53	114
8	Eranakulam	38	25	57	77	197
9	Idukki	21	19	29	43	112
10	Kottayam	19	11	25	39	94
11	Alappuzha	36	24	49	49	158
12	Pathanamthitta	29	27	42	43	141
13	Kollam	72	57	88	106	323
14	Thiruvananthapuram	81	71	102	93	347
<b>Total</b>		<b>528</b>	<b>469</b>	<b>733</b>	<b>916</b>	<b>2646</b>

**TABLE 3**  
**Number Of Schools According To Ownership**

Sl. No.	Name of District	Proprietorship	Partnership	Charitable Society	Co-operative Sector
1	Kasargod	26	12	35	4
2	Kannur	27	9	61	3
3	Wayanad	3	4	15	
4	Kozhikode	62	15	83	7
5	Malappuram	24	15	130	7
6	Palakkad	54	9	72	5
7	Thrissur	19	11	39	5
8	Eranakulam	29	3	76	9
9	Idukki	8	4	39	2
10	Kottayam	17		27	6
11	Alappuzha	38	1	44	7
12	Pathanamthitta	47	5	38	6
13	Kollam	124	9	106	10
14	Thiruvananthapuram	122	18	94	8
<b>Total</b>		<b>600</b>	<b>115</b>	<b>859</b>	<b>79</b>

**TABLE 3 (Contd..)**

Sl. No.	Name of District	Trusteeship	Corporate	Others	Total
1	Kasargod	38	9	11	135
2	Kannur	50	6	15	171
3	Wayanad	14	5	6	47
4	Kozhikode	88	4	24	283
5	Malappuram	107	19	24	326
6	Palakkad	49	2	7	198
7	Thrissur	29	8	3	114
8	Eranakulam	58	10	12	197

9	Idukki	37	12	10	112
10	Kottayam	29	5	10	94
11	Alappuzha	53	8	7	158
12	Pathanamthitta	34	10	1	141
13	Kollam	53	13	8	323
14	Thiruvananthapuram	79	12	14	347
<b>Total</b>		<b>718</b>	<b>123</b>	<b>152</b>	<b>2646</b>

**TABLE 4**  
**Details of Residential and Non Residential Schools**

Sl. No.	Name of District	Residential	Non Residential	Total
1	Kasargod	4	131	135
2	Kannur	9	162	171
3	Wayanad	2	45	47
4	Kozhikode	2	281	283
5	Malappuram	27	299	326
6	Palakkad	6	192	198
7	Thrissur	9	105	114
8	Eranakulam	9	188	197
9	Idukki	9	103	112
10	Kottayam		94	94
11	Alappuzha	5	153	158
12	Pathanamthitta	8	133	141
13	Kollam	13	310	323
14	Thiruvananth	8	339	347
<b>Total</b>		<b>111</b>	<b>2535</b>	<b>2646</b>

**TABLE 4 A**  
**Details of Residential and Non Residential Schools - Educational District wise**

Sl. No.	Name of Educational District	Residential	Non Residential	Total
1	Kasaragode	4	85	89
2	Kanjanad		46	46
3	Kanuur	4	94	98
4	Thalasserry	5	68	73
5	Wayanad	2	45	47
6	Kozhikkod		103	103
7	Vadakara	1	90	91
8	Thamarasseri	1	88	89
9	Malappuram	11	69	80
10	Wandoor	6	100	106
11	Thirur	10	130	140
12	Palakkad	4	143	147
13	Ottappalam	2	49	51
14	Irinjalakkuda	2	35	37

15	Thrissur	1	23	24
16	Chavakkadu	6	47	53
17	Eranakulam	2	58	60
18	Muvattupuzha	1	38	39
19	Aluva	4	68	72
20	Kothamangalam	2	24	26
21	Thodupuzha	7	39	46
22	Kattappana	2	64	66
23	Kottayam		25	25
24	Pala		21	21
25	Kaduthuruthi		15	15
26	Kanjirappally		33	33
27	Mavelikkara	1	99	100
28	Alappuzha	2	26	28
29	Cherthala	2	15	17
30	Kuttanad		13	13
31	Pathanamthitta	7	81	88
32	Thiruvalla	1	52	53
33	Kollam	10	161	171
34	Kottarakara	1	75	76
35	Punalur	2	74	76
36	Neyyattinkara	3	138	141
37	Thiruvananthapuram	1	85	86
38	Attingal	4	116	120
<b>Total</b>		<b>111</b>	<b>2535</b>	<b>2646</b>

**TABLE 5**  
**Number Of Schools According To Type Of Building**

Sl. No.	Name of District	Pucca	Semi pucca	Katcha	Others	Total
1	Kasargod	124	8	1	2	135
2	Kannur	139	31		1	171
3	Wayanad	42	4		1	47
4	Kozhikode	200	54	4	25	283
5	Malappuram	255	39	1	31	326
6	Palakkad	136	51	1	10	198
7	Thrissur	87	20	2	5	114
8	Eranakulam	171	19	1	6	197
9	Idukki	90	18		4	112
10	Kottayam	79	14		1	94
11	Alappuzha	121	27		10	158
12	Pathanamthitta	116	23	1	1	141
13	Kollam	208	79	4	32	323
14	Thiruvananth	194	99	9	45	347
<b>Total</b>		<b>1962</b>	<b>486</b>	<b>24</b>	<b>174</b>	<b>2646</b>

**TABLE 6**

**Number Of Schools Functioning In Own Building and Rented Building**

Sl. No.	Name of District	Own Building	Rented Building	Others	Total
1	Kasargod	77	55	3	135
2	Kannur	109	55	7	171
3	Wayanad	40	7		47
4	Kozhikode	190	89	4	283
5	Malappuram	234	81	11	326
6	Palakkad	150	47	1	198
7	Thrissur	98	15	1	114
8	Eranakulam	176	17	4	197
9	Idukki	93	18	1	112
10	Kottayam	77	12	5	94
11	Alappuzha	131	26	1	158
12	Pathanamthitta	111	28	2	141
13	Kollam	275	47	1	323
14	Thiruvananthapuram	254	84	9	347
<b>Total</b>		<b>2015</b>	<b>581</b>	<b>50</b>	<b>2646</b>

**TABLE 7**  
**Number of Schools According to Type of Class Rooms**

Sl. No.	Name of District	Concreted	Tiled	Asbestos Cement Roof	Thatched	Mixed	Total
1	Kasargod	101	16	4	0	14	135
2	Kannur	92	33	8	1	37	171
3	Wayanad	24	7	6	0	10	47
4	Kozhikode	143	53	17	6	64	283
5	Malappuram	138	48	9	0	131	326
6	Palakkad	56	52	31	0	59	198
7	Thrissur	74	9	4	0	27	114
8	Eranakulam	123	11	16	1	46	197
9	Idukki	45	28	16	0	23	112
10	Kottayam	43	14	11	0	26	94
11	Alappuzha	53	22	22	0	61	158
12	Pathanamthitta	71	21	11	7	31	141
13	Kollam	121	42	54	7	99	323
14	Thiruvananthapuram	114	23	48	8	154	347
<b>Total</b>		<b>1198</b>	<b>379</b>	<b>257</b>	<b>30</b>	<b>782</b>	<b>2646</b>

\*\*\*\*\*





**TABLE 8**  
**Number Of Schools According To Syllabus**

Sl. No.	Name of District	State	CBSE	ICSE	Others	Mixed	Total
1	Kasargod	74	53	1	4	3	135
2	Kannur	62	87	6	12	4	171
3	Wayanad	27	16	4			47
4	Kozhikode	93	154	5	22	9	283
5	Malappuram	171	125	7	9	14	326
6	Palakkad	109	80	3	5	1	198
7	Thrissur	51	54	4	3	2	114
8	Eranakulam	91	88	4	11	3	197
9	Idukki	39	58	4	8	3	112
10	Kottayam	28	54	4	8		94
11	Alappuzha	48	80	7	17	6	158
12	Pathanamthitta	55	71	8	3	4	141
13	Kollam	117	148	11	35	12	323
14	Thiruvananth	146	140	7	35	19	347
<b>Total</b>		<b>1111</b>	<b>1208</b>	<b>75</b>	<b>172</b>	<b>80</b>	<b>2646</b>

**TABLE 8A**  
**Number Of Schools According To Syllabus - Educational District wise**

Sl. No.	Name of Educational District	State	CBSE	ICSE	Others	Mixed	Total
1	Kasaragode	54	32		1	2	89
2	Kanjanad	20	21	1	3	1	46
3	Kanur	35	50	2	8	3	98
4	Thalasserry	27	37	4	4	1	73
5	Wayanad	27	16	4			47
6	Kozhikkod	38	51	3	11		103
7	Vadakara	20	56		11	4	91
8	Thamarasseri	35	47	2		5	89
9	Malappuram	47	29	1	2	1	80
10	Wandoor	46	47	6	1	6	106
11	Thirur	78	49		6	7	140
12	Palakkad	88	53	3	3		147
13	Ottappalam	21	27		2	1	51
14	Irinjalakkuda	8	23	2	2	2	37
15	Thrissur	14	8	1	1		24
16	Chavakkadu	29	23	1			53
17	Eranakulam	32	24	1	2	1	60
18	Muvattupuzha	11	23		4	1	39
19	Aluva	41	24	3	3	1	72
20	Kothamangalam	7	17		2		26
21	Thodupuzha	15	23		6	2	46
22	Kattappana	24	35	4	2	1	66
23	Kottayam	6	16		3		25
24	Pala	5	13	3			21
25	Kaduthuruthi	3	12				15
26	Kanjirappally	14	13	1	5		33
27	Mavelikkara	32	47	3	13	5	100
28	Alappuzha	7	17		3	1	28
29	Cherthala	5	10	2			17
30	Kuttanad	4	6	2	1		13
31	Pathanamthitta	35	45	4	2	2	88
32	Thiruvalla	20	26	4	1	2	53
33	Kollam	53	84	7	21	6	171
34	Kottarakara	38	30	1	7		76
35	Punalur	26	34	3	7	6	76
36	Neyyattinkara	57	43	1	25	15	141
37	Thiruvananthapuram	24	51	2	5	4	86
38	Attingal	65	46	4	5		120
<b>Total</b>		<b>1111</b>	<b>1208</b>	<b>75</b>	<b>172</b>	<b>80</b>	<b>2646</b>

**TABLE 9**  
**Number Of Schools According To Mode of Promotion**

Sl. No.	Name of District	Written Test	Written Test and Internal Assessment	Written Test and Viva	Written Test, Internal Assessment and Viva	Others	Total
1	Kasargod	97	33	4	1		135
2	Kannur	126	36	6	3		171
3	Wayanad	31	11	3	2		47
4	Kozhikode	195	61	19	8		283
5	Malappuram	203	109	9	5		326
6	Palakkad	128	61		8	1	198
7	Thrissur	65	41	1	4	3	114
8	Eranakulam	92	91	4	6	4	197
9	Idukki	79	24	3	4	2	112

10	Kottayam	51	41		2		94
11	Alappuzha	115	40		3		158
12	Pathanamthitta	74	54	6	7		141
13	Kollam	182	87	45	8	1	323
14	Thiruvananthapuram	229	89	5	24		347
<b>Total</b>		<b>1667</b>	<b>778</b>	<b>105</b>	<b>85</b>	<b>11</b>	<b>2646</b>

**TABLE 10**  
**Number Of Schools According To Facilities**

Sl. No.	Name of District	Laboratory	Physics	Chemistry	Zoology	Botany	Computer	Others	Library	Play Ground
1	Kasargod	64	16	16	13	11	53	8	65	70
2	Kannur	39	18	17	12	13	31	3	101	128
3	Wayanad	12	4	4	3	2	9	0	25	39
4	Kozhikode	74	22	20	13	12	59	11	149	171
5	Malappuram	117	54	51	35	36	79	23	212	268
6	Palakkad	101	21	18	11	9	83	4	121	170
7	Thrissur	35	15	14	7	6	29	1	68	98
8	Eranakulam	56	22	21	18	14	42	12	123	169
9	Idukki	35	14	12	11	10	25	4	59	98
10	Kottayam	35	8	8	6	4	20	1	64	82
11	Alappuzha	45	15	14	12	11	33	5	91	138
12	Pathanamthitta	60	7	9	5	5	52	10	87	112
13	Kollam	114	42	39	31	28	99	18	201	286
14	Thiruvananthapuram	154	26	27	16	14	140	16	233	297
<b>Total</b>		<b>941</b>	<b>284</b>	<b>270</b>	<b>193</b>	<b>175</b>	<b>754</b>	<b>116</b>	<b>1599</b>	<b>2126</b>

**TABLE 10 (contd..)**

Sl. No.	Name of District	Drinking Water	Toilet-For Boys	Toilet-For Girls	Fully Electrified	Partly Electrified	Schools having extra curricular activities	Hostel facilities	PTA	Computer facility inside the institution	Computer facility outside the institution	Transportation Facilities
1	Kasargod	125	131	131	102	16	107	5	122	65	13	72
2	Kannur	163	160	157	131	22	135	10	152	86	7	105
3	Wayanad	46	46	45	30	9	43	0	43	25	4	17
4	Kozhikode	261	273	280	205	50	227	5	232	147	12	124
5	Malappuram	319	312	309	236	56	289	21	288	179	23	246
6	Palakkad	192	190	196	135	33	156	8	176	105	10	106
7	Thrissur	110	110	112	100	8	106	3	91	73	19	82
8	Eranakulam	194	194	195	173	22	181	6	174	136	11	150
9	Idukki	109	102	105	87	21	99	8	107	64	4	65
10	Kottayam	94	94	94	81	9	83	2	88	67	6	69
11	Alappuzha	154	156	158	120	31	144	5	144	89	7	131
12	Pathanamthitta	132	129	129	102	29	123	14	133	76	12	107
13	Kollam	316	312	312	224	81	259	26	285	211	18	267
14	Thiruvananthapuram	340	336	333	235	85	292	16	304	269	25	272
<b>Total</b>		<b>2555</b>	<b>2545</b>	<b>2556</b>	<b>1961</b>	<b>472</b>	<b>2244</b>	<b>129</b>	<b>2339</b>	<b>1592</b>	<b>171</b>	<b>1813</b>

**TABLE 10 A**  
**Number Of Schools According To Facilities- Educational District wise**

Sl. No.	Name Of Educational District	Laboratory	Physics	Chemistry	Zoology	Botany	Computer	Others
1	Kasaragode	47	13	13	10	10	40	5

2	Kanjanad	17	3	3	3	1	13	3
3	Kanuur	25	14	13	11	11	19	3
4	Thalasserry	14	4	4	1	2	12	0
5	Wayanad	12	4	4	3	2	9	0
6	Kozhikkod	26	7	7	4	3	21	3
7	Vadakara	19	8	8	6	6	15	3
8	Thamarasseri	29	7	5	3	3	23	5
9	Malappuram	30	14	13	9	11	20	7
10	Wandoor	29	14	12	7	6	13	10
11	Thirur	58	26	26	19	19	46	6
12	Palakkad	67	12	10	4	4	61	4
13	Ottappalam	34	9	8	7	5	22	0
14	Irinjalakkuda	15	6	5	4	3	12	1
15	Thrissur	6	2	1	0	0	5	0
16	Chavakkadu	14	7	8	3	3	12	0
17	Eranakulam	10	7	7	6	3	8	0
18	Muvattupuzha	12	8	7	8	6	9	1
19	Aluva	23	6	7	4	5	21	5
20	Kothamangalam	11	1	0	0	0	4	6
21	Thodupuzha	16	7	5	5	4	10	1
22	Kattappana	19	7	7	6	6	15	3
23	Kottayam	10	1	1	1	0	6	1
24	Pala	7	2	2	1	1	1	0
25	Kaduthuruthi	3	1	1	1	1	3	0
26	Kanjirappally	15	4	4	3	2	10	0
27	Mavelikkara	29	7	7	6	6	23	5
28	Alappuzha	9	2	2	2	2	7	0
29	Cherthala	4	3	2	2	2	1	0
30	Kuttanad	3	3	3	2	1	2	0
31	Pathanamthitta	30	7	9	5	5	25	9
32	Thiruvalla	30	0	0	0	0	27	1
33	Kollam	71	29	26	19	16	63	18
34	Kottarakara	23	5	5	4	4	20	0
35	Punalur	20	8	8	8	8	16	0
36	Neyyattinkara	47	11	11	8	5	36	9
37	Thiruvananthapuram	68	7	7	7	7	65	3
38	Attungal	39	8	9	1	2	39	4
<b>Total</b>		<b>941</b>	<b>284</b>	<b>270</b>	<b>193</b>	<b>175</b>	<b>754</b>	<b>116</b>

**TABLE 10 A (contd..)**

Sl. No.	Name Of Educational District	Library	Play Ground	Drinking Water	Toilet- For Boys	Toilet- For Girls	Fully Electrified	Partly Electrified
1	Kasaragode	43	45	84	86	86	66	13
2	Kanjanad	22	25	41	45	45	36	3
3	Kanuur	64	84	96	95	92	73	10
4	Thalasserry	37	44	67	65	65	58	12
5	Wayanad	25	39	46	46	45	30	9
6	Kozhikkod	50	49	84	101	102	90	9
7	Vadakara	50	57	89	86	90	64	16
8	Thamarasseri	49	65	88	86	88	51	25
9	Malappuram	55	61	79	74	73	61	14
10	Wandoor	54	85	101	104	97	70	21
11	Thirur	103	122	139	134	139	105	21
12	Palakkad	85	126	143	142	146	98	24
13	Ottappalam	36	44	49	48	50	37	9
14	Irinjalakkuda	29	32	34	36	37	34	3
15	Thrissur	18	24	23	23	24	21	2
16	Chavakkadu	21	42	53	51	51	45	3
17	Eranakulam	28	47	57	58	58	48	10
18	Muvattupuzha	31	39	39	38	39	37	2

19	Aluva	47	63	72	72	72	66	6
20	Kothamangalam	17	20	26	26	26	22	4
21	Thodupuzha	21	41	45	42	43	39	6
22	Kattappana	38	57	64	60	62	48	15
23	Kottayam	17	21	25	25	25	25	0
24	Pala	13	19	21	21	21	17	4
25	Kaduthuruthi	9	12	15	15	15	12	3
26	Kanjirappally	25	30	33	33	33	27	2
27	Mavelikkara	57	91	99	99	100	71	23
28	Alappuzha	19	22	26	27	28	23	5
29	Cherthala	7	15	16	17	17	15	1
30	Kuttanad	8	10	13	13	13	11	2
31	Pathanamthitta	50	71	82	80	80	60	22
32	Thiruvalla	37	41	50	49	49	42	7
33	Kollam	112	149	169	167	164	126	37
34	Kottarakara	42	68	74	75	75	48	24
35	Punalur	47	69	73	70	73	50	20
36	Neyyattinkara	90	127	138	134	133	95	31
37	Thiruvananthapuram	58	72	85	86	85	75	10
38	Attingal	85	98	117	116	115	65	44
<b>Total</b>		<b>1599</b>	<b>2126</b>	<b>2555</b>	<b>2545</b>	<b>2556</b>	<b>1961</b>	<b>472</b>

**TABLE 10 A (contd..)**

Sl. No.	Name Of Educational District	Schools having extra curricular activities	Hostel facilities	PTA	Computer facility inside the institution	Computer facility outside the institution	Transportation Facilities
1	Kasaragode	67	5	82	46	7	53
2	Kanjanad	40	0	40	19	6	19
3	Kanur	85	8	87	54	4	67
4	Thalasserry	50	2	65	32	3	38
5	Wayanad	43	0	43	25	4	17
6	Kozhikkod	73	1	78	63	2	23
7	Vadakara	80	2	80	41	3	54
8	Thamarasseri	74	2	74	43	7	47
9	Malappuram	72	9	73	47	7	65
10	Wandoor	91	6	90	48	7	85
11	Thirur	126	6	125	84	9	96
12	Palakkad	115	6	130	70	9	66
13	Ottappalam	41	2	46	35	1	40
14	Irinjalakkuda	34	1	31	27	1	27
15	Thrissur	24	0	20	16	7	15
16	Chavakkadu	48	2	40	30	11	40
17	Eranakulam	54	1	48	35	4	42
18	Muvattupuzha	37	0	37	35	2	33
19	Aluva	68	5	66	49	3	53
20	Kothamangalam	22	0	23	17	2	22
21	Thodupuzha	40	5	44	22	3	35
22	Kattappana	59	3	63	42	1	30
23	Kottayam	24	0	21	20	2	17
24	Pala	18	2	19	16	3	19
25	Kaduthuruthi	9	0	15	8	1	11
26	Kanjirappally	32	0	33	23	0	22
27	Mavelikkara	92	3	95	55	4	87
28	Alappuzha	27	0	26	20	1	23
29	Cherthala	13	1	11	6	1	13
30	Kuttanad	12	1	12	8	1	8
31	Pathanamthitta	75	8	85	44	10	65
32	Thiruvalla	48	6	48	32	2	42
33	Kollam	127	16	146	114	11	135
34	Kottarakara	67	2	72	47	3	66
35	Punalur	65	8	67	50	4	66

36	Neyyattinkara	101	9	128	108	16	109
37	Thiruvananthapuram	81	2	62	67	4	57
38	Attingal	110	5	114	94	5	106
<b>Total</b>		<b>2244</b>	<b>129</b>	<b>2339</b>	<b>1592</b>	<b>171</b>	<b>1813</b>

**TABLE 10 B**  
**Number Of Vehicles**

Sl. No.	Name of District	Schools having Transportation Facilities	Jeep	Tempo	Bus	Car	Auto	Other Vehicles
1	Kasargod	72	17	17	21	6	17	5
2	Kannur	105	34	39	30	2	20	5
3	Wayanad	17	5	7	6	1	0	2
4	Kozhikode	124	56	24	53	3	18	1
5	Malappuram	246	114	63	83	3	58	16
6	Palakkad	106	37	27	39	3	21	6
7	Thrissur	82	14	47	23	5	10	2
8	Eranakulam	150	14	57	76	5	11	5
9	Idukki	65	20	20	31	2	9	2
10	Kottayam	69	12	24	32	1	12	3
11	Alappuzha	131	11	46	68	4	24	4
12	Pathanamthitta	107	39	39	39	1	7	3
13	Kollam	267	58	127	98	12	36	6
14	Thiruvananthapuram	272	43	153	86	49	11	6
<b>Total</b>		<b>1813</b>	<b>474</b>	<b>690</b>	<b>685</b>	<b>97</b>	<b>254</b>	<b>66</b>

**TABLE 11**  
**Number Of Schools According To Registration**

Sl. No.	Name of District	Registered	Not Registered	Total
1	Kasargod	30	105	135
2	Kannur	47	124	171
3	Wayanad	1	46	47
4	Kozhikode	90	193	283
5	Malappuram	84	242	326
6	Palakkad	36	162	198
7	Thrissur	28	86	114
8	Eranakulam	59	138	197
9	Idukki	18	94	112
10	Kottayam	24	70	94
11	Alappuzha	25	133	158
12	Pathanamthitta	34	107	141
13	Kollam	40	283	323
14	Thiruvananthapuram	60	287	347
<b>Total</b>		<b>576</b>	<b>2070</b>	<b>2646</b>

**TABLE 12**  
**Number Of Schools According To Branch Details**

Sl. No.	Name of District	Total	Number of Schools Having Branches	Total Number of Branches	Working as Branch Schools
1	Kasargod	135	7	7	26
2	Kannur	171	6	13	27
3	Wayanad	47		0	9
4	Kozhikode	283	16	24	59
5	Malappuram	326	10	10	36
6	Palakkad	198	13	39	46
7	Thrissur	114	4	7	16

8	Eranakulam	197	7	17	40
9	Idukki	112		0	15
10	Kottayam	94	2	2	14
11	Alappuzha	158	5	6	17
12	Pathanamthitta	141	3	6	16
13	Kollam	323	6	10	32
14	Thiruvananthapuram	347	11	14	38
<b>Total</b>		<b>2646</b>	<b>90</b>	<b>155</b>	<b>391</b>

**TABLE 13**  
**Number Of Schools According To Medium Of Teaching**

Sl. No.	Name of District	English	Malayalam	Tamil	Kannada	English and Vernacular Languages	Total
1	Kasargod	108	20		1	6	135
2	Kannur	148	21			2	171
3	Wayanad	29	18				47
4	Kozhikode	238	33			12	283
5	Malappuram	216	100			10	326
6	Palakkad	176	22				198
7	Thrissur	96	17			1	114
8	Eranakulam	175	21			1	197
9	Idukki	78	30	4			112
10	Kottayam	80	8			6	94
11	Alappuzha	145	8			5	158
12	Pathanamthitta	138	2			1	141
13	Kollam	247	25	1		50	323
14	Thiruvananthapuram	315	31			1	347
<b>Total</b>		<b>2189</b>	<b>356</b>	<b>5</b>	<b>1</b>	<b>95</b>	<b>2646</b>

**TABLE 13 A**  
**Number Of Schools According To Medium Of Teaching- Educational District wise**

Sl. No.	Name Of Educational District	English	Malayalam	Tamil	Kannada	English and Vernacular Languages	Total
1	Kasaragode	74	13		1	1	89
2	Kanjanad	34	7			5	46
3	Kanuur	81	15			2	98
4	Thalasserry	67	6				73
5	Wayanad	29	18				47
6	Kozhikkod	95	7			1	103
7	Vadakara	70	14			7	91
8	Thamarasseri	73	12			4	89
9	Malappuram	54	24			2	80
10	Wandoor	76	28			2	106
11	Thirur	86	48			6	140
12	Palakkad	130	17				147
13	Ottappalam	46	5				51
14	Irinjalakkuda	32	4			1	37
15	Thrissur	21	3				24
16	Chavakkadu	43	10				53
17	Eranakulam	58	2				60
18	Muvattupuzha	35	3			1	39
19	Aluva	59	13				72
20	Kothamangalam	23	3				26
21	Thodupuzha	29	17				46
22	Kattappana	49	13	4			66

23	Kottayam	19	3							3			25
24	Pala	20								1			21
25	Kaduthuruthi	14	1										15
26	Kanjirappally	27	4							2			33
27	Mavelikkara	90	5							5			100
28	Alappuzha	27	1										28
29	Cherthala	16	1										17
30	Kuttanad	12	1										13
31	Pathanamthitta	86	1							1			88
32	Thiruvalla	52	1										53
33	Kollam	116	11	1						43			171
34	Kottarakara	65	7							4			76
35	Punalur	66	7							3			76
36	Neyyattinkara	121	20										141
37	Thiruvananthapuram	82	4										86
38	Attingal	112	7								1		120
<b>Total</b>		<b>2189</b>	<b>356</b>	<b>5</b>	<b>1</b>	<b>1</b>	<b>1</b>	<b>1</b>	<b>1</b>	<b>95</b>	<b>1</b>	<b>1</b>	<b>2646</b>

**TABLE 14**  
**Number Of Schools According To Standards Functioning**

Sl. No.	Name of District	Standards											
		I	II	III	IV	V	VI	VII	VIII	IX	X	XI	XII
1	Kasargod	117	99	77	61	44	41	12	27	16	9	3	2
2	Kamur	163	142	122	108	68	52	10	26	15	9	6	4
3	Wayanad	44	39	36	30	17	9	3	4	3	3	1	1
4	Kozhikode	277	251	216	193	92	73	16	48	20	13	2	2
5	Malappuram	284	245	209	167	130	109	62	86	73	50	17	12
6	Palakkad	185	168	157	143	92	67	10	48	19	8	9	6
7	Thrissur	105	89	80	70	41	33	6	18	11	3	2	1
8	Eranakulam	185	170	152	131	72	48	10	26	13	7	2	1
9	Idukki	110	105	94	88	39	33	6	16	8	3		
10	Kottayam	92	84	73	60	28	21	2	13	4			
11	Alappuzha	155	142	123	108	51	41	1	22	4		1	1
12	Pathanamthitta	138	130	115	109	57	44	4	23	8	3	1	1
13	Kollam	315	298	254	226	101	76	9	53	18	5	5	5
14	Thiruvananthapuram	337	310	278	246	155	125	10	53	14	10	3	3
<b>Total</b>		<b>2507</b>	<b>2272</b>	<b>1986</b>	<b>1740</b>	<b>987</b>	<b>772</b>	<b>161</b>	<b>463</b>	<b>226</b>	<b>123</b>	<b>52</b>	<b>39</b>

**TABLE 14 A**  
**Number Of Schools According To Standards Functioning**

Sl. No.	Name Of Educational District	Standards											
		I	II	III	IV	V	VI	VII	VIII	IX	X	XI	XII
1	Kasaragode	74	62	47	38	31	27	12	21	16	7	3	2
2	Kanjanad	43	37	30	23	13	14		6		2		
3	Kanur	93	84	70	59	45	37	7	19	9	7	4	3
4	Thalasserry	70	58	52	49	23	15	3	7	6	2	2	1
5	Wayanad	44	39	36	30	17	9	3	4	3	3	1	1
6	Kozhikkod	102	98	88	82	33	27	3	15	5	3		
7	Vadakara	89	80	73	65	32	26	8	17	8	6	2	2
8	Thamarasseri	86	73	55	46	27	20	5	16	7	4		
9	Malappuram	68	50	40	29	26	22	17	14	17	14	6	2
10	Wandoor	98	87	76	61	37	30	10	26	18	9	3	2
11	Thirur	118	108	93	77	67	57	35	46	38	27	8	8
12	Palakkad	134	122	113	102	64	45	7	33	12	5	8	6
13	Ottappalam	51	46	44	41	28	22	3	15	7	3	1	



14	Irinjalakkuda	35	29	26	22	16	13	1	5	3	1	1	
15	Thrissur	22	21	19	16	7	6		3				
16	Chavakkadu	48	39	35	32	18	14	5	10	8	2	1	1
17	Eranakulam	57	54	50	44	16	12	5	7	7	3	2	1
18	Muvattupuzha	37	36	31	25	18	10	2	7	2	2		
19	Aluva	66	58	52	47	26	17	3	8	4	2		
20	Kothamangalam	25	22	19	15	12	9		4				
21	Thodupuzha	46	43	39	35	19	16	1	9	3			
22	Kattappana	64	62	55	53	20	17	5	7	5	3		
23	Kottayam	25	24	22	16	6	4		3				
24	Pala	21	21	14	12	5	4	1	3	1			
25	Kaduthuruthi	15	12	11	10	6	5		3	1			
26	Kanjirappally	31	27	26	22	11	8	1	4	2			
27	Mavelikkara	98	87	78	71	34	27	1	14	3		1	1
28	Alappuzha	28	28	26	23	11	8		4	1			
29	Cherthala	16	14	9	7	2	2		1				
30	Kuttanad	13	13	10	7	4	4		3				
31	Pathanamthitta	86	82	73	69	40	31	4	18	7	3	1	1
32	Thiruvalla	52	48	42	40	17	13		5	1			
33	Kollam	166	158	121	107	43	38	6	27	11	4	5	5
34	Kottarakara	74	71	69	62	23	12		7	3			
35	Punalur	75	69	64	57	35	26	3	19	4	1		
36	Neyyattinkara	137	128	111	100	66	54	6	29	9	5	1	1
37	Thiruvananthapuram	85	79	75	71	47	38	2	15	2	2		
38	Attingal	114	102	91	74	42	33	2	9	3	3	1	1
<b>Total</b>		<b>2507</b>	<b>2272</b>	<b>1986</b>	<b>1740</b>	<b>987</b>	<b>772</b>	<b>161</b>	<b>463</b>	<b>226</b>	<b>123</b>	<b>52</b>	<b>39</b>

\*\*\*\*\*



**TABLE 15**  
**Number Of Students In Unrecognised Schools Enrolled For Medical And Engineering Course**  
**Through Entrance Examination In Last Three Years**

Sl. No.	Name of District	No. Of Schools	No. of Schools with Plus Two	No of students
1	Kasargod	135	2	0
2	Kannur	171	4	0
3	Wayanad	47	1	0
4	Kozhikode	283	2	8
5	Malappuram	326	12	43
6	Palakkad	198	6	0
7	Thrissur	114	1	0
8	Eranakulam	197	1	5
9	Idukki	112		0
10	Kottayam	94		0
11	Alappuzha	158	1	0
12	Pathanamthitta	141	1	0
13	Kollam	323	5	130
14	Thiruvananthapuram	347	3	0
<b>Total</b>		<b>2646</b>	<b>39</b>	<b>186</b>

**TABLE 16**  
**Pass Percentage Class wise**

Standards	Total number of Schools	Number of Schools according to pass percentage				
		100%	90-99%	80-89%	60-79%	Below 60%
01	2507	2360	118	22	3	4
02	2272	2082	162	23	3	2
03	1986	1786	172	22	3	3
04	1740	1559	155	22	2	2
05	987	872	93	21	1	
06	772	679	72	20	1	
07	463	399	54	9	1	
08	226	173	40	13		
09	161	119	31	9	1	1
10	123	96	16	4	4	3
11	52	40	6	1	3	2
12	39	22	5	3	3	6

**TABLE 17**  
**Performance of Students Class wise**

Standard	Total Schools	Number of Students with marks		
		Above 80%	60-80%	Below 60%
01	2507	46214	22115	7924
02	2272	38402	19318	7710
03	1986	31609	17213	7056
04	1740	24838	14199	6388
05	987	12516	6868	3190
06	772	8900	4812	2516
07	463	5713	3266	1696
08	226	3430	1955	1310
09	161	2590	1506	1127
10	123	1564	1091	968
11	52	846	630	1235
12	39	529	393	806

**TABLE 18**  
**Number Of Schools According To Operational Status**

Sl. No.	Name of District	Progressing	Stagnant	Loss	Total
1	Kasargod	117	10	8	135
2	Kannur	146	13	12	171
3	Wayanad	43		4	47
4	Kozhikode	219	47	17	283
5	Malappuram	265	38	23	326
6	Palakkad	172	16	10	198
7	Thrissur	101	9	4	114
8	Eranakulam	186	10	1	197
9	Idukki	100	8	4	112
10	Kottayam	90	3	1	94
11	Alappuzha	140	13	5	158
12	Pathanamthitta	130	8	3	141
13	Kollam	281	29	13	323
14	Thiruvananthapuram	297	32	18	347
<b>Total</b>		<b>2287</b>	<b>236</b>	<b>123</b>	<b>2646</b>

**TABLE 19**  
**Number Of Schools Facing Problems**

Sl. No.	Name of District	Financial	From Authority	From Public	Others	No Problem
1	Kasargod	43	6	5	14	72
2	Kannur	60	6	5	8	96
3	Wayanad	21	5	0	3	19
4	Kozhikode	93	13	4	9	175
5	Malappuram	123	57	5	21	153
6	Palakkad	74	15	6	6	108
7	Thrissur	47	6	1	1	61
8	Eranakulam	49	12	0	4	130
9	Idukki	58	3	1	10	42
10	Kottayam	30	9	1	2	54

11	Alappuzha	64	3	0	2	89
12	Pathanamthitta	41	10	0	7	83
13	Kollam	115	43	10	15	169
14	Thiruvananthapuram	117	16	4	16	213
<b>Total</b>		<b>935</b>	<b>204</b>	<b>42</b>	<b>118</b>	<b>1464</b>

**TABLE 20**  
**Total Income /Year (In Rs.)**

Sl. No.	Name of District	No. Of Schools	Fee	PTA fund	Donation	Loans	Caution Deposit	Others	Total
1	Kasargod	135	16629575	729160	865700	246550	39450	2524168	21034603
2	Kannur	171	38377448	1219770	2288330	4837500	380550	5575809	52679407
3	Wayanad	47	6641547	200330	575950	100000	87100	2882010	10486937
4	Kozhikode	283	82797055	1527306	5104200	493660	327500	6712562	96962283
5	Malappuram	326	65402303	1360110	4068650	554600	290300	11398061	83074024
6	Palakkad	198	35424443	1532260	2798795	92900	528384	5146190	45522972
7	Thrissur	114	27574830	2577504	3123350	5873050	347900	4242174	43738808
8	Eranakulam	197	61549926	2403895	5326610	1250153	433200	8469416	79433200
9	Idukki	112	29851130	1215117	581050	1250000	126690	8103940	41127927
10	Kottayam	94	20142315	905500	1099950	260000	298125	2673325	25379215
11	Alappuzha	158	41806940	918270	1192050	1111000	67895	3489018	48585173
12	Pathanamthitta	141	28573270	793475	1751500	0	2675225	5106819	38900289
13	Kollam	323	122614598	2321055	3084340	371300	1546950	15711720	145649963
14	Thiruvananthapuram	347	79333625	1198975	6294710	232200	147700	20145298	107352508
<b>Total</b>		<b>2646</b>	<b>656719005</b>	<b>18902727</b>	<b>38155185</b>	<b>16672913</b>	<b>7296969</b>	<b>102180510</b>	<b>839927309</b>

**TABLE 20 A**  
**Total Income /Year (In Rs.) - Educational District wise**

Sl. No.	Name of District	No. Of Schools	Fee	PTA fund	Donation
1	Kasaragode	89	12832240	421850	653200
2	Kanjanad	46	3797335	307310	212500
3	Kanur	98	21336988	551550	1202250
4	Thalasserry	73	17040460	668220	1086080
5	Wayanad	47	6641547	200330	575950
6	Kozhikkod	103	34269575	642621	2171950
7	Vadakara	91	32784225	467900	416050
8	Thamarasseri	89	15743255	416785	2516200
9	Malappuram	80	12369310	575625	606750
10	Wandoor	106	17148826	512575	668750
11	Thirur	140	35884167	271910	2793150
12	Palakkad	147	21993042	939135	2572895
13	Ottappalam	51	13431401	593125	225900
14	Irinjalakkuda	37	11891475	1784535	2333750
15	Thrissur	24	6186400	456740	299600
16	Chavakkadu	53	9496955	336229	490000
17	Eranakulam	60	23938890	1354100	3629750
18	Muvattupuzha	39	11188055	121475	26100
19	Aluva	72	19542468	424345	1194060

20	Kothamangalam	26	6880513	503975	476700
21	Thodupuzha	46	8457500	346340	171600
22	Kattappana	66	21393630	868777	409450
23	Kottayam	25	4780610	316250	700000
24	Pala	21	4573575	32800	68000
25	Kaduthuruthi	15	3349620	71410	57250
26	Kanjirappally	33	7438510	485040	274700
27	Mavelikkara	100	25657495	740170	442950
28	Alappuzha	28	7538770	115450	45300
29	Cherthala	17	6016005	23750	542200
30	Kuttanad	13	2594670	38900	161600
31	Pathanamthitta	88	20094550	699875	1644250
32	Thiruvalla	53	8478720	93600	107250
33	Kollam	171	94028723	1815900	2493340
34	Kottarakara	76	12972940	445780	546000
35	Punalur	76	15612935	59375	45000
36	Neyyattinkara	141	26671967	777395	2063490
37	Thiruvananthapuram	86	29192244	94045	2485200
38	Attingal	120	23469414	327535	1746020
<b>Total</b>		<b>2646</b>	<b>656719005</b>	<b>18902727</b>	<b>38155185</b>

**TABLE 20 A (contd..)**

Sl. No.	Name of District	Loans	Caution Deposit	Others	Total
1	Kasaragode	246550	26350	1683550	15863740
2	Kanjanad	0	13100	840618	5170863
3	Kanur	4719000	353100	3885044	32047932
4	Thalasserry	118500	27450	1690765	20631475
5	Wayanad	100000	87100	2882010	10486937
6	Kozhikkod	274860	167600	2476281	40002887
7	Vadakara	51000	85500	2109715	35914390
8	Thamarasseri	167800	74400	2126566	21045006
9	Malappuram	12500	69100	1736485	15369770
10	Wandoor	153000	161250	4067468	22711869
11	Thirur	389100	59950	5594108	44992385
12	Palakkad	31900	406284	2801570	28744826
13	Ottappalam	61000	122100	2344620	16778146
14	Irinjalakkuda	100000	217500	2055450	18382710
15	Thrissur	25000	45400	1010010	8023150
16	Chavakkadu	5748050	85000	1176714	17332948
17	Eranakulam	190000	38050	394530	29545320
18	Muvattupuzha	375153	263900	2083186	14057869
19	Aluva	35000	131250	1392900	22720023
20	Kothamangalam	650000	0	4598800	13109988
21	Thodupuzha	1200000	96190	3357082	13628712
22	Kattappana	50000	30500	4746858	27499215
23	Kottayam	0	94550	894300	6785710
24	Pala	200000	37600	426480	5338455
25	Kaduthuruthi	0	44000	448525	3970805
26	Kanjirappally	60000	121975	904020	9284245
27	Mavelikkara	1091000	64895	3002278	30998788
28	Alappuzha	20000	0	298030	8017550
29	Cherthala	0	3000	172460	6757415
30	Kuttanad	0	0	16250	2811420
31	Pathanamthitta	0	2301150	3466100	28205925
32	Thiruvalla	0	374075	1640719	10694364

33	Kollam	344800	1432600	4611293	104726656
34	Kottarakara	26500	54500	5694175	19739895
35	Punalur	0	59850	5406252	21183412
36	Neyyattinkara	218200	50000	6099750	35880802
37	Thiruvananthapuram	14000	7500	4208153	36001142
38	Attingal	0	90200	9837395	35470564
<b>Total</b>		<b>16672913</b>	<b>7296969</b>	<b>102180510</b>	<b>839927309</b>

**TABLE 21**  
**Total Expenditure/Year (Rs)**

Sl. No.	Name of District	No. of School	Salary	Rent	Lab. Exp	Others	Total
1	Kasargod	135	17106046	1000400	262700	2492977	20862123
2	Kannur	171	28768594	1598194	675886	10175467	41218141
3	Wayanad	47	8780351	311400	117370	1109891	10319012
4	Kozhikode	283	59367126	3681190	396181	12916995	76361492
5	Malappuram	326	67418422	2235268	1017290	15185899	85856879
6	Palakkad	198	30667539	1485050	586494	9391932	42131015
7	Thrissur	114	27863034	653939	1517444	8565427	38599844
8	Eranakulam	197	38568177	783900	817817	11705191	51875085
9	Idukki	112	20802262	786344	639035	6577018	28804659
10	Kottayam	94	18544252	198471	258400	4169901	23171024
11	Alappuzha	158	24966313	638250	1017050	7366733	33988346
12	Pathanamthitta	141	26045102	1534166	776900	5047557	33403725
13	Kollam	323	67705246	1672942	1719138	18452501	89549827
14	Thiruvananthapuram	347	68540810	4032408	802576	20639593	94015387
<b>Total</b>		<b>2646</b>	<b>505143274</b>	<b>20611922</b>	<b>10604281</b>	<b>133797082</b>	<b>670156559</b>

**TABLE 21 A**  
**Total Expenditure/Year (Rs)- Educational District Wise**

Sl. No.	Name Of Educational District	No. of School	Salary	Rent	Lab. Exp	Others	Total
1	Kasaragode	89	12861206	651600	220450	1891149	15624405
2	Kanjanad	46	4244840	348800	42250	601828	5237718
3	Kanur	98	18764743	535000	591549	7875558	27766850
4	Thalasserry	73	10003851	1063194	84337	2299909	13451291
5	Wayanad	47	8780351	311400	117370	1109891	10319012
6	Kozhikkod	103	22159311	1409900	143291	4629778	28342280
7	Vadakara	91	23521117	1608300	132500	5151158	30413075
8	Thamarasseri	89	13686698	662990	120390	3136059	17606137
9	Malappuram	80	15506525	348700	257533	3847139	19959897
10	Wandoor	106	18349795	771300	249546	4264121	23634762
11	Thirur	140	33562102	1115268	510211	7074639	42262220
12	Palakkad	147	18194477	815900	301592	3589965	22901934
13	Ottappalam	51	12473062	669150	284902	5801967	19229081
14	Irinjalakkuda	37	13063793	208023	458916	5779882	19510614
15	Thrissur	24	5043468	106000	755787	1396471	7301726
16	Chavakkadu	53	9755773	339916	302741	1389074	11787504
17	Eranakulam	60	12147226	90000	177000	2269498	14683724
18	Muvattupuzha	39	5885929	305400	156317	1460866	7808512
19	Aluva	72	14946671	318000	347000	2943146	18554817

20	Kothamangalam	26	5588351	70500	137500	5031681	10828032
21	Thodupuzha	46	9568297	625844	300685	2220955	12715781
22	Kattappana	66	11233965	160500	338350	4356063	16088878
23	Kottayam	25	5284050	110971	66000	1429051	6890072
24	Pala	21	3002582	63500	23000	420500	3509582
25	Kaduthuruthi	15	2307750	12000	15400	631810	2966960
26	Kanjirappally	33	7949870	12000	154000	1688540	9804410
27	Mavelikkara	100	15308965	480050	931700	5585649	22306364
28	Alappuzha	28	5542923	128200	54600	1159162	6884885
29	Cherthala	17	2342400	30000	26000	415350	2813750
30	Kuttanad	13	1772025	0	4750	206572	1983347
31	Pathanamthitta	88	13755465	1144766	687250	2440114	18027595
32	Thiruvalla	53	12289637	389400	89650	2607443	15376130
33	Kollam	171	44392706	1047092	1349150	9999251	56788199
34	Kottarakara	76	10410205	302700	86788	4169900	14969593
35	Punalur	76	12902335	323150	283200	4283350	17792035
36	Neyyattinkara	141	28608134	582300	230500	7178067	36599001
37	Thiruvananthapuram	86	21788872	1782072	272210	4688787	28531941
38	Attingal	120	18143804	1668036	299866	8772739	28884445
<b>Total</b>		<b>2646</b>	<b>505143274</b>	<b>20611922</b>	<b>10604281</b>	<b>133797082</b>	<b>670156559</b>

\*\*\*\*\*



**TABLE 22**  
**Total Liabilities (Rs)**

Sl.No.	Name of District	Loan	Others	Total
1	Kasargod	1964042	552000	2516042
2	Kannur	9906255	3871800	13778055
3	Wayanad	1550000	0	1550000
4	Kozhikode	16275979	608560	16884539
5	Malappuram	17031691	2681517	19713208
6	Palakkad	7461817	497500	7959317
7	Thrissur	22217931	3000000	25217931
8	Eranakulam	19750258	100000	19850258
9	Idukki	12805632	187023	12992655
10	Kottayam	6720650	1270000	7990650
11	Alappuzha	15682560	1030544	16713104
12	Pathanamthitta	10961882	928184	11890066
13	Kollam	20035091	2302500	22337591
14	Thiruvananthapuram	34263826	3119947	37383773
<b>Total</b>		<b>196627614</b>	<b>20149575</b>	<b>216777189</b>

**TABLE 22 A**  
**Total Liabilities (Rs)- Educational District Wise**



Sl. No.	Name Of Educational District	Loan	Others	Total
1	Kasaragode	741860	502000	1243860
2	Kanjanad	1222182	50000	1272182
3	Kannur	8129755	3871300	12001055
4	Thalasserry	1776500	500	1777000
5	Wayanad	1550000	0	1550000
6	Kozhikkod	2583123	502560	3085683
7	Vadakara	10284080	13000	10297080
8	Thamarasseri	3408776	93000	3501776
9	Malappuram	6554844	564800	7119644
10	Wandoor	3372000	350000	3722000
11	Thirur	7104847	1766717	8871564
12	Palakkad	4332927	12500	4345427
13	Ottappalam	3128890	485000	3613890
14	Irinjalakkuda	5747417	2675000	8422417
15	Thrissur	1356556	25000	1381556
16	Chavakkadu	15113958	300000	15413958
17	Eranakulam	1005105	0	1005105
18	Muvattupuzha	4380153	100000	4480153
19	Aluva	12010000	0	12010000
20	Kothamangalam	2355000	0	2355000
21	Thodupuzha	10086632	0	10086632
22	Kattappana	2719000	187023	2906023
23	Kottayam	222400	0	222400
24	Pala	1860250	200000	2060250
25	Kaduthuruthi	1484000	400000	1884000
26	Kanjirappally	3154000	670000	3824000
27	Mavelikkara	4582000	1004094	5586094
28	Alappuzha	4933150	26450	4959600
29	Cherthala	1260000	0	1260000
30	Kuttanad	4907410	0	4907410
31	Pathanamthitta	8525877	147750	8673627
32	Thiruvalla	2436005	780434	3216439
33	Kollam	9630216	1979500	11609716
34	Kottarakara	5382500	0	5382500
35	Punalur	5022375	323000	5345375
36	Neyyattinkara	9870310	2873637	12743947
37	Thiruvananthapuram	11448675	21310	11469985
38	Attingal	12944841	225000	13169841
<b>Total</b>		<b>196627614</b>	<b>20149575</b>	<b>216777189</b>

**TABLE 23**  
**District Wise Number Of Students According To Social Group**

Sl. No	Name of District	No. of Student		Social Group				Total
		Male	Female	SC	ST	OBC	Others	
1	Kasargod	6684	5078	128	105	8546	2983	11762
2	Kannur	11750	10414	285	76	12641	9162	22164
3	Wayanad	2744	2210	115	216	1528	3095	4954

4	Kozhikode	17288	14899	662	68	21527	9930	32187
5	Malappuram	21523	18661	414	26	35128	4616	40184
6	Palakkad	12281	10557	772	136	14097	7833	22838
7	Thrissur	7497	7327	464	47	6586	7727	14824
8	Eranakulam	14858	13746	1095	124	12153	15232	28604
9	Idukki	7196	7080	832	155	3221	10068	14276
10	Kottayam	5065	4480	310	162	2410	6663	9545
11	Alappuzha	8373	8126	701	61	6851	8886	16499
12	Pathanamthitta	7529	7411	707	19	2585	11629	14940
13	Kollam	20415	21199	1589	42	16974	23009	41614
14	Thiruvananthapuram	20256	17796	2280	259	19846	15667	38052
<b>Total</b>		<b>163459</b>	<b>148984</b>	<b>10354</b>	<b>1496</b>	<b>164093</b>	<b>136500</b>	<b>312443</b>

**TABLE 23A**  
**Number Of Students According To Social Group- Educational District wise**

Sl. No	Name Of Educational District	No. of Student		Social Group				
		Male	Female	SC	ST	OBC	Others	Total
1	Kasaragode	4790	3373	62	73	6519	1509	8163
2	Kanjanad	1894	1705	66	32	2027	1474	3599
3	Kanuur	6915	6082	208	12	7439	5338	12997
4	Thalasserry	4835	4332	77	64	5202	3824	9167
5	Wayanad	2744	2210	115	216	1528	3095	4954
6	Kozhikkod	6440	5341	248	9	8454	3070	11781
7	Vadakara	6514	5636	224	21	7946	3959	12150
8	Thamarasseri	4334	3922	190	38	5127	2901	8256
9	Malappuram	4686	3901	70	10	8189	318	8587
10	Wandoor	5695	5076	162	16	7572	3021	10771
11	Thirur	11142	9684	182	0	19367	1277	20826
12	Palakkad	8701	7617	639	129	10434	5116	16318
13	Ottappalam	3580	2940	133	7	3663	2717	6520
14	Irinjalakkuda	2420	2483	126	12	2066	2699	4903
15	Thrissur	2234	2122	120	20	1109	3107	4356
16	Chavakkadu	2843	2722	218	15	3411	1921	5565
17	Eranakulam	5727	5271	487	71	5783	4657	10998
18	Muvattupuzha	2154	1895	130	19	1747	2153	4049
19	Aluva	5194	4977	419	6	3413	6333	10171
20	Kothamangalam	1783	1603	59	28	1210	2089	3386
21	Thodupuzha	2600	2384	246	77	1242	3419	4984
22	Kattappana	4596	4696	586	78	1979	6649	9292
23	Kottayam	1342	1347	143	53	777	1716	2689
24	Pala	922	692	35	24	243	1312	1614
25	Kaduthuruthi	775	681	45	12	468	931	1456
26	Kanjiappally	2026	1760	87	73	922	2704	3786
27	Mavelikkara	4967	4533	523	21	3286	5670	9500
28	Alappuzha	1852	2165	62	5	1889	2061	4017

29	Cherthala	735	692	46	1	955	425	1427
30	Kuttanad	819	736	70	34	721	730	1555
31	Pathanamthitta	5364	5301	394	3	1899	8369	10665
32	Thiruvalla	2165	2110	313	16	686	3260	4275
33	Kollam	11380	12383	960	18	10150	12635	23763
34	Kottarakara	4466	4187	400	6	2809	5438	8653
35	Punalur	4569	4629	229	18	4015	4936	9198
36	Neyyattinkara	9108	7786	1253	106	9966	5569	16894
37	Thiruvananthapuram	5471	4502	529	39	4369	5036	9973
38	Attingal	5677	5508	498	114	5511	5062	11185
<b>Total</b>		<b>163459</b>	<b>148984</b>	<b>10354</b>	<b>1496</b>	<b>164093</b>	<b>136500</b>	<b>312443</b>

**TABLE 24**  
**Number Of Students in Each Standard According To Social Group**

Standard	No. of Schools	No. of Student		Social Group				
		Male	Female	SC	ST	OBC	Others	Total
01	2507	39813	36440	2679	395	39366	33813	76253
02	2272	33947	31483	2223	315	33124	29768	65430
03	1986	29090	26788	1926	280	27645	26027	55878
04	1740	23416	22009	1576	232	22482	21135	45425
05	987	12179	10395	637	124	12178	9635	22574
06	772	8720	7508	405	47	9264	6512	16228
07	463	5804	4871	255	33	6171	4216	10675
08	226	3603	3092	151	6	4594	1944	6695
09	161	2829	2394	146	9	3796	1272	5223
10	123	1951	1672	120	15	2644	844	3623
11	52	1312	1399	135	26	1765	785	2711
12	39	795	933	101	14	1064	549	1728

**TABLE 25**  
**Number Of Teachers According To Qualification and Training Status**

Sl. No	Name of District	According to qualification						According to training status			
		Matriculates	Under Graduates	Graduates	Post Graduates	M Phil Holders	PhD Holders	TTC	B.Ed	MEd	Others
1	Kasargod	42	159	565	129	2	0	146	379	8	364
2	Kannur	44	122	811	318	0	3	103	716	17	462
3	Wayanad	2	57	208	34	0	1	66	179	6	51
4	Kozhikode	45	475	1826	513	1	0	425	1242	19	1174
5	Malappuram	89	403	1895	346	0	3	310	1241	23	1162
6	Palakkad	69	203	1063	265	1	0	190	525	5	881
7	Thrissur	24	91	614	221	5	2	104	640	6	207
8	Eranakulam	28	133	1003	449	3	0	223	941	11	441
9	Idukki	20	120	599	146	1	0	139	428	7	312
10	Kottayam	9	64	443	169	0	1	99	364	5	218
11	Alappuzha	19	148	915	268	2	1	132	715	17	494

12	Pathanamthitta	30	52	735	296	2	1	84	737	35	262
13	Kollam	50	231	1711	594	9	8	432	1475	27	677
14	Thiruvananthapuram	46	309	2008	775	18	1	399	1815	39	902
<b>State</b>		<b>517</b>	<b>2567</b>	<b>14396</b>	<b>4523</b>	<b>44</b>	<b>21</b>	<b>2852</b>	<b>11397</b>	<b>225</b>	<b>7607</b>

**TABLE 25 A**

**Number Of Teachers According To Qualification and Training Status- Educational District Wise**

Sl. No	Name Of Educational District	According to qualification						According to training status			
		Matriculation	Under Graduate	Graduate	Post Graduate	M Phil	PhD	TTC	B.Ed	MEd	Others
1	Kasaragode	33	111	405	78	0	0	100	243	6	278
2	Kanjanad	9	48	160	51	2	0	46	136	2	86
3	Kanuur	11	61	517	206	0	2	68	460	3	266
4	Thalasserry	33	61	294	112	0	1	35	256	14	196
5	Wayanad	2	57	208	34	0	1	66	179	6	51
6	Kozhikkod	22	194	659	160	1	0	175	282	6	573
7	Vadakara	16	149	747	210	0	0	131	634	8	349
8	Thamarasseri	7	132	420	143	0	0	119	326	5	252
9	Malappuram	24	84	438	77	0	0	102	309	4	208
10	Wandoor	9	144	559	102	0	2	100	364	1	351
11	Thirur	56	175	898	167	0	1	108	568	18	603
12	Palakkad	37	133	753	210	1	0	118	375	4	637
13	Ottappalam	32	70	310	55	0	0	72	150	1	244
14	Irinjalakkuda	12	61	194	99	2	0	36	243	3	86
15	Thrissur	10	9	130	25	2	0	18	133	1	24
16	Chavakkadu	2	21	290	97	1	2	50	264	2	97
17	Eranakulam	4	28	358	103	0	0	92	259	1	141
18	Muvattupuzha	6	40	193	97	1	0	38	169	0	130
19	Aluva	15	54	322	176	2	0	70	366	8	125
20	Kothamangalam	3	11	130	73	0	0	23	147	2	45
21	Thodupuzha	11	52	249	73	0	0	37	206	4	138
22	Kattappana	9	68	350	73	1	0	102	222	3	174
23	Kottayam	4	10	110	51	0	0	18	110	0	47
24	Pala	1	6	84	44	0	1	24	76	1	35
25	Kaduthuruthi	2	19	66	14	0	0	13	51	0	37
26	Kanjirappally	2	29	183	60	0	0	44	127	4	99
27	Mavelikkara	16	105	610	151	2	0	100	444	17	325
28	Alappuzha	0	17	175	54	0	0	15	148	0	85
29	Cherthala	1	14	73	32	0	0	12	72	0	36
30	Kuttanad	2	12	57	31	0	1	5	51	0	48
31	Pathanamthitta	22	40	427	202	1	1	60	458	27	150
32	Thiruvalla	8	12	308	94	1	0	24	279	8	112
33	Kollam	40	132	897	307	8	8	342	630	22	406
34	Kottarakara	4	36	379	148	1	0	56	438	1	73
35	Punalur	6	63	435	139	0	0	34	407	4	198
36	Neyyattinkara	34	100	916	335	7	0	160	870	20	340
37	Thiruvananthapuram	4	53	565	218	7	0	121	488	6	232
38	Attingal	8	156	527	222	4	1	118	457	13	330

State	517	2567	14396	4523	44	21	2852	11397	225	7607
-------	-----	------	-------	------	----	----	------	-------	-----	------

**TABLE 25 B**  
**Number Of Teachers According To Subject and Training Status**

Sl. No	Subject	According to qualification						According to training			
		Matric-ulation	Under Grad-uate	Gra-duate	Post Gra-duate	M Phil	PhD	TTC	B.Ed	MEd	Others
1	Malayalam	84	430	1873	630	2	4	627	1549	16	832
2	English	53	308	2431	1043	8	5	423	2258	48	1126
3	Hindi	63	283	1239	323	3	0	201	877	15	819
4	Social Studies	34	207	1885	568	7	4	292	1580	35	797
5	Science	43	265	2302	639	7	0	385	1987	31	854
6	Mathematics	28	181	2234	747	5	0	334	1953	38	874
7	IT	11	97	564	152	2	3	50	170	15	594
8	Physical Education	8	32	37	4	0	0	4	7	0	70
9	Arts	12	37	75	9	0	0	5	19	1	108
10	Others	181	727	1756	408	10	5	531	997	26	1533
<b>Total</b>		<b>517</b>	<b>2567</b>	<b>14396</b>	<b>4523</b>	<b>44</b>	<b>21</b>	<b>2852</b>	<b>11397</b>	<b>225</b>	<b>7607</b>

**TABLE 26**  
**District Wise Number Of Teachers According To Remuneration Received**

Sl. No	Name of District	Total number of Teachers			Number of Teachers According to remuneration			
		Male	Female	Total	Up to 1000	1001-2000	2001-3000	Above 3000
1	Kasargod	140	757	897	135	490	206	66
2	Kannur	157	1141	1298	174	631	301	192
3	Wayanad	49	253	302	49	167	60	26
4	Kozhikode	321	2539	2860	471	1344	632	413
5	Malappuram	866	1870	2736	267	1461	691	317
6	Palakkad	147	1454	1601	606	717	162	116
7	Thrissur	89	868	957	103	486	236	132
8	Eranakulam	131	1485	1616	169	768	478	201
9	Idukki	114	772	886	183	350	190	163
10	Kottayam	33	653	686	161	288	186	51

11	Alappuzha	73	1280	1353	311	810	191	41
12	Pathanamthitta	110	1006	1116	188	693	168	67
13	Kollam	218	2385	2603	408	1273	623	299
14	Thiruvananthapuram	179	2978	3157	749	2000	356	52
<b>State</b>		<b>2627</b>	<b>19441</b>	<b>22068</b>	<b>3974</b>	<b>11478</b>	<b>4480</b>	<b>2136</b>

**TABLE 26A**

**District Wise Number Of Teachers According To Remuneration Received**

Sl. No	Name Of Educational District	Total number of Teachers			Number of Teachers According to remuneration			
		Male	Female	Total	Up to 1000	1001-2000	2001-3000	Above 3000
1	Kasaragode	117	510	627	94	311	159	63
2	Kanjanad	23	247	270	41	179	47	3
3	Kanur	105	692	797	82	346	250	119
4	Thalasserry	52	449	501	92	285	51	73
5	Wayanad	49	253	302	49	167	60	26
6	Kozhikkod	66	970	1036	159	525	201	151
7	Vadakara	162	960	1122	175	501	263	183
8	Thamarasseri	93	609	702	137	318	168	79
9	Malappuram	228	395	623	55	330	195	43
10	Wandoor	207	609	816	124	452	167	73
11	Thirur	431	866	1297	88	679	329	201
12	Palakkad	92	1042	1134	449	540	121	24
13	Ottappalam	55	412	467	157	177	41	92
14	Irinjalakkuda	30	338	368	16	194	102	56
15	Thrissur	18	158	176	1	63	76	36
16	Chavakkadu	41	372	413	86	229	58	40
17	Eranakulam	44	449	493	34	193	223	43
18	Muvattupuzha	34	303	337	35	247	39	16
19	Aluva	37	532	569	87	213	170	99
20	Kothamangalam	16	201	217	13	115	46	43
21	Thodupuzha	48	337	385	61	121	107	96
22	Kattappana	66	435	501	122	229	83	67
23	Kottayam	10	165	175	23	106	46	0
24	Pala	5	131	136	33	58	30	15
25	Kaduthuruthi	2	99	101	38	45	11	7
26	Kanjirappally	16	258	274	67	79	99	29
27	Mavelikkara	53	831	884	190	585	87	22
28	Alappuzha	9	237	246	58	113	64	11
29	Cherthala	5	115	120	35	66	19	0
30	Kuttanad	6	97	103	28	46	21	8
31	Pathanamthitta	83	610	693	133	390	111	59
32	Thiruvalla	27	396	423	55	303	57	8
33	Kollam	132	1260	1392	163	546	433	250

34	Kottarakara	27	541	568	131	307	91	39
35	Punalur	59	584	643	114	420	99	10
36	Neyyattinkara	69	1323	1392	442	849	75	26
37	Thiruvananthapuram	28	819	847	60	623	149	15
38	Attingal	82	836	918	247	528	132	11
<b>State</b>		<b>2627</b>	<b>19441</b>	<b>22068</b>	<b>3974</b>	<b>11478</b>	<b>4480</b>	<b>2136</b>

**TABLE 26 B**  
**Number Of Teachers According To Subject and Remuneration Received**

Sl. No	Subject	Total Number of Teachers			Number of Teachers According to Remuneration			
		Male	Female	Total	Up to (Rs.) 1000	1001-2000(Rs.)	2001-3000(Rs.)	Above 3000(Rs.)
1	Malayalam	264	2759	3023	612	1635	544	232
2	English	511	3337	3848	631	1991	815	411
3	Hindi	128	1783	1911	350	1024	366	171
4	Social Studies	283	2422	2705	472	1440	522	271
5	Science	266	2990	3256	538	1656	704	358
6	Mathematics	370	2825	3195	533	1611	702	349
7	IT	112	717	829	147	449	161	72
8	Physical Education	26	55	81	13	39	22	7
9	Arts	73	60	133	13	64	32	24
10	Others	594	2493	3087	665	1569	612	241
<b>Total</b>		<b>2627</b>	<b>19441</b>	<b>22068</b>	<b>3974</b>	<b>11478</b>	<b>4480</b>	<b>2136</b>

**TABLE 27**  
**District Wise Number Of Non-Teaching Staff**

Sl. No	Name of District	No. of Schools	Total Employees		
			Male	Female	Total
1	Kasargod	135	59	128	187
2	Kannur	171	105	213	318
3	Wayanad	47	32	53	85
4	Kozhikode	283	214	408	622
5	Malappuram	326	404	322	726
6	Palakkad	198	188	234	422
7	Thrissur	114	115	224	339
8	Eranakulam	197	175	335	510
9	Idukki	112	70	143	213
10	Kottayam	94	81	142	223
11	Alappuzha	158	165	285	450
12	Pathanamthitta	141	118	247	365
13	Kollam	323	520	546	1066
14	Thiruvananthapuram	347	487	742	1229
<b>State</b>		<b>2646</b>	<b>2733</b>	<b>4022</b>	<b>6755</b>

**TABLE 27(contd..)**

Sl. No	Name of District	No. of	Office staff	Lab Assistant
--------	------------------	--------	--------------	---------------

		Schools	Male	Female	Total	Male	Female	Total
1	Kasargod	135	24	34	58	2	2	4
2	Kannur	171	45	49	94	4	2	6
3	Wayanad	47	14	16	30	2	2	4
4	Kozhikode	283	89	87	176	4	6	10
5	Malappuram	326	140	56	196	16	11	27
6	Palakkad	198	52	54	106	3	3	6
7	Thrissur	114	35	81	116	4	6	10
8	Eranakulam	197	53	122	175	8	8	16
9	Idukki	112	21	42	63	0	3	3
10	Kottayam	94	37	49	86	1	3	4
11	Alappuzha	158	46	73	119	0	5	5
12	Pathanamthitta	141	26	71	97	0	8	8
13	Kollam	323	82	153	235	23	19	42
14	Thiruvananthapuram	347	105	196	301	7	19	26
<b>State</b>		<b>2646</b>	<b>769</b>	<b>1083</b>	<b>1852</b>	<b>74</b>	<b>97</b>	<b>171</b>

**TABLE 27(contd..)**

Sl. No	Name of District	Peon			Others		
		Male	Female	Total	Male	Female	Total
1	Kasargod	21	72	93	12	20	32
2	Kannur	38	98	136	18	64	82
3	Wayanad	9	24	33	7	11	18
4	Kozhikode	64	164	228	57	151	208
5	Malappuram	101	153	254	147	102	249
6	Palakkad	43	134	177	90	43	133
7	Thrissur	52	94	146	24	43	67
8	Eranakulam	51	136	187	63	69	132
9	Idukki	25	60	85	24	38	62
10	Kottayam	21	64	85	22	26	48
11	Alappuzha	38	151	189	81	56	137
12	Pathanamthitta	35	105	140	57	63	120
13	Kollam	153	258	411	262	116	378
14	Thiruvananthapuram	86	271	357	289	256	545
<b>State</b>		<b>737</b>	<b>1784</b>	<b>2521</b>	<b>1153</b>	<b>1058</b>	<b>2211</b>

**TABLE 27 A**

**District Wise Number Of Non-Teaching Staff- Educational District Wise**

Sl. No	Name Of Educational District	No. of Schools	Total Employees		
			Male	Female	Total
1	Kasaragode	89	47	88	135
2	Kanjanad	46	12	40	52
3	Kannur	98	73	125	198
4	Thalasserry	73	32	88	120
5	Wayanad	47	32	53	85
6	Kozhikkod	103	47	169	216
7	Vadakara	91	105	137	242
8	Thamarasseri	89	62	102	164
9	Malappuram	80	132	64	196
10	Wandoor	106	100	106	206
11	Thirur	140	172	152	324
12	Palakkad	147	144	167	311
13	Ottappalam	51	44	67	111



14	Irinjalakkuda	37	41	89	130
15	Thrissur	24	14	54	68
16	Chavakkadu	53	60	81	141
17	Eranakulam	60	50	89	139
18	Muvattupuzha	39	45	62	107
19	Aluva	72	64	144	208
20	Kothamangalam	26	16	40	56
21	Thodupuzha	46	30	72	102
22	Kattappana	66	40	71	111
23	Kottayam	25	34	41	75
24	Pala	21	9	21	30
25	Kaduthuruthi	15	7	23	30
26	Kanjirappally	33	31	57	88
27	Mavelikkara	100	116	182	298
28	Alappuzha	28	32	56	88
29	Cherthala	17	7	31	38
30	Kuttanad	13	10	16	26
31	Pathanamthitta	88	68	147	215
32	Thiruvalla	53	50	100	150
33	Kollam	171	298	300	598
34	Kottarakara	76	107	118	225
35	Punalur	76	115	128	243
36	Neyyattinkara	141	182	291	473
37	Thiruvananthapuram	86	148	233	381
38	Attingal	120	157	218	375
<b>State</b>		<b>2646</b>	<b>2733</b>	<b>4022</b>	<b>6755</b>

**TABLE 27 A (contd..)**

Sl. No	Name Of Educational District	No. of Schools	Office staff			Lab Assistant		
			Male	Female	Total	Male	Female	Total
1	Kasaragode	89	18	22	40	1	2	3
2	Kanjanad	46	6	12	18	1	0	1
3	Kanur	98	30	31	61	4	2	6
4	Thalasserry	73	15	18	33			
5	Wayanad	47	14	16	30	2	2	4
6	Kozhikkod	103	20	38	58	0	3	3
7	Vadakara	91	46	25	71	3	1	4
8	Thamarasseri	89	23	24	47	1	2	3
9	Malappuram	80	43	11	54	5	3	8
10	Wandoor	106	33	17	50	1	2	3
11	Thirur	140	64	28	92	10	6	16
12	Palakkad	147	41	40	81	0	2	2
13	Ottappalam	51	11	14	25	3	1	4
14	Irinjalakkuda	37	14	30	44	0	2	2
15	Thrissur	24	5	21	26	1	1	2
16	Chavakkadu	53	16	30	46	3	3	6
17	Eranakulam	60	11	39	50	4	0	4
18	Muvattupuzha	39	13	19	32	0	2	2
19	Aluva	72	23	51	74	3	5	8

20	Kothamangalam	26	6	13	19	1	1	2
21	Thodupuzha	46	3	16	19	0	2	2
22	Kattappana	66	18	26	44	0	1	1
23	Kottayam	25	15	13	28	0	2	2
24	Pala	21	4	5	9			
25	Kaduthuruthi	15	4	9	13	0	1	1
26	Kanjirappally	33	14	22	36	1	0	1
27	Mavelikkara	100	28	37	65	0	2	2
28	Alappuzha	28	12	21	33	0	2	2
29	Cherthala	17	4	8	12	0	1	1
30	Kuttanad	13	2	7	9			
31	Pathanamthitta	88	19	50	69	0	7	7
32	Thiruvalla	53	7	21	28	0	1	1
33	Kollam	171	45	92	137	15	8	23
34	Kottarakara	76	18	27	45	4	7	11
35	Punalur	76	19	34	53	4	4	8
36	Neyyattinkara	141	46	78	124	4	5	9
37	Thiruvananthapuram	86	26	50	76	0	5	5
38	Attingal	120	33	68	101	3	9	12
<b>State</b>		<b>2646</b>	<b>769</b>	<b>1083</b>	<b>1852</b>	<b>74</b>	<b>97</b>	<b>171</b>

**TABLE 27 A (contd..)**

Sl. No	Name Of Educational District	Peon			Others		
		Male	Female	Total	Male	Female	Total
1	Kasaragode	20	52	72	8	12	20
2	Kanjanad	1	20	21	4	8	12
3	Kanuur	26	52	78	13	40	53
4	Thalasserry	12	46	58	5	24	29
5	Wayanad	9	24	33	7	11	18
6	Kozhikkod	21	74	95	6	54	60
7	Vadakara	22	28	50	34	83	117
8	Thamarasseri	21	62	83	17	14	31
9	Malappuram	24	28	52	60	22	82
10	Wandoor	24	52	76	42	35	77
11	Thirur	53	73	126	45	45	90
12	Palakkad	33	93	126	70	32	102
13	Ottappalam	10	41	51	20	11	31
14	Irinjalakkuda	11	34	45	16	23	39
15	Thrissur	7	20	27	1	12	13
16	Chavakkadu	34	40	74	7	8	15
17	Eranakulam	24	38	62	11	12	23
18	Muvattupuzha	7	36	43	25	5	30
19	Aluva	15	47	62	23	41	64
20	Kothamangalam	5	15	20	4	11	15
21	Thodupuzha	6	32	38	21	22	43
22	Kattappana	19	28	47	3	16	19
23	Kottayam	11	15	26	8	11	19
24	Pala	2	15	17	3	1	4
25	Kaduthuruthi	2	9	11	1	4	5
26	Kanjirappally	6	25	31	10	10	20

27	Mavelikkara	24	110	134	64	33	97
28	Alappuzha	12	20	32	8	13	21
29	Cherthala	0	13	13	3	9	12
30	Kuttanad	2	8	10	6	1	7
31	Pathanamthitta	27	58	85	22	32	54
32	Thiruvalla	8	47	55	35	31	66
33	Kollam	96	136	232	142	64	206
34	Kottarakara	34	63	97	51	21	72
35	Punalur	23	59	82	69	31	100
36	Neyyattinkara	28	130	158	104	78	182
37	Thiruvananthapuram	31	40	71	91	138	229
38	Attingal	27	101	128	94	40	134
<b>State</b>		<b>737</b>	<b>1784</b>	<b>2521</b>	<b>1153</b>	<b>1058</b>	<b>2211</b>

**TABLE 28**  
**District Wise Number Of Non-Teaching Staff – According To Remuneration Received**

Sl. No	Name of District	No. of Schools	Total Employees				Total
			Up to 1000	1001-2000	2001-3000	Above 3000	
1	Kasargod	135	93	79	11	4	187
2	Kannur	171	134	141	37	6	318
3	Wayanad	47	42	29	12	2	85
4	Kozhikode	283	282	204	74	62	622
5	Malappuram	326	288	312	96	30	726
6	Palakkad	198	226	149	36	11	422
7	Thrissur	114	145	141	44	9	339
8	Eranakulam	197	162	236	84	28	510
9	Idukki	112	63	94	45	13	215
10	Kottayam	94	78	106	32	7	223
11	Alappuzha	158	260	155	28	7	450
12	Pathanamthitta	141	174	153	29	9	365
13	Kollam	323	360	491	181	38	1070
14	Thiruvananthapuram	347	538	499	153	39	1229
<b>State</b>		<b>2646</b>	<b>2845</b>	<b>2789</b>	<b>862</b>	<b>265</b>	<b>6761</b>

**TABLE 28(contd)**

Sl. No	Name of District	No. of Schools	Office staff				Total
			Up to 1000	1001-2000	2001-3000	Above 3000	
1	Kasargod	135	16	30	9	3	58
2	Kannur	171	27	36	25	6	94
3	Wayanad	47	8	12	8	2	30
4	Kozhikode	283	37	76	26	37	176
5	Malappuram	326	33	91	48	24	196
6	Palakkad	198	36	47	15	8	106
7	Thrissur	114	27	49	34	6	116
8	Eranakulam	197	37	80	41	17	175
9	Idukki	112	6	24	20	13	63
10	Kottayam	94	16	45	19	6	86
11	Alappuzha	158	44	58	13	4	119
12	Pathanamthitta	141	24	53	14	6	97
13	Kollam	323	53	119	49	14	235
14	Thiruvananthapuram	347	64	144	62	31	301

	<b>State</b>	<b>2646</b>	<b>428</b>	<b>864</b>	<b>383</b>	<b>177</b>	<b>1852</b>
--	--------------	-------------	------------	------------	------------	------------	-------------

**TABLE 28(contd..)**

Sl. No	Name of District	No. of Schools	Lab Assistant				Total
			Up to 1000	1001-2000	2001-3000	Above 3000	
1	Kasargod	135	1	2	1	0	4
2	Kannur	171	1	5	0	0	6
3	Wayanad	47	1	2	1	0	4
4	Kozhikode	283	4	2	1	3	10
5	Malappuram	326	3	16	5	3	27
6	Palakkad	198	0	3	2	1	6
7	Thrissur	114	2	5	0	3	10
8	Eranakulam	197	6	4	5	1	16
9	Idukki	112	0	3	0	0	3
10	Kottayam	94	0	2	2	0	4
11	Alappuzha	158	2	2	1	0	5
12	Pathanamthitta	141	1	5	0	2	8
13	Kollam	323	12	19	6	5	42
14	Thiruvananthapuram	347	11	13	2	0	26
<b>State</b>		<b>2646</b>	<b>44</b>	<b>83</b>	<b>26</b>	<b>18</b>	<b>171</b>

**TABLE 28(contd..)**

Sl. No	Name of District	No. of Schools	Peon				Total
			Up to 1000	1001-2000	2001-3000	Above 3000	
1	Kasargod	135	58	34	1	0	93
2	Kannur	171	63	66	7	0	136
3	Wayanad	47	24	8	1	0	33
4	Kozhikode	283	128	75	19	6	228
5	Malappuram	326	151	93	10	0	254
6	Palakkad	198	128	38	9	2	177
7	Thrissur	114	84	55	7	0	146
8	Eranakulam	197	90	76	18	3	187
9	Idukki	112	32	45	8	0	85
10	Kottayam	94	45	37	2	1	85
11	Alappuzha	158	145	40	4	0	189
12	Pathanamthitta	141	94	38	8	0	140
13	Kollam	323	193	176	37	5	411
14	Thiruvananthapuram	347	241	105	11	0	357
<b>State</b>		<b>2646</b>	<b>1476</b>	<b>886</b>	<b>142</b>	<b>17</b>	<b>2521</b>

**TABLE 28(contd)**

Sl. No	Name of District	No. of Schools	Other Employees				Total
			Up to 1000	1001-2000	2001-3000	Above 3000	
1	Kasargod	135	18	13	0	1	32
2	Kannur	171	43	34	5	0	82
3	Wayanad	47	9	7	2	0	18
4	Kozhikode	283	113	51	28	16	208
5	Malappuram	326	101	112	33	3	249
6	Palakkad	198	62	61	10	0	133
7	Thrissur	114	32	32	3	0	67
8	Eranakulam	197	29	76	20	7	132
9	Idukki	112	25	21	16	0	62
10	Kottayam	94	17	22	9	0	48

11	Alappuzha	158	69	55	10	3	137
12	Pathanamthitta	141	55	57	7	1	120
13	Kollam	323	102	174	89	13	378
14	Thiruvananthapuram	347	222	237	78	8	545
<b>State</b>		<b>2646</b>	<b>897</b>	<b>952</b>	<b>310</b>	<b>52</b>	<b>2211</b>

\*\*\*\*\*

---