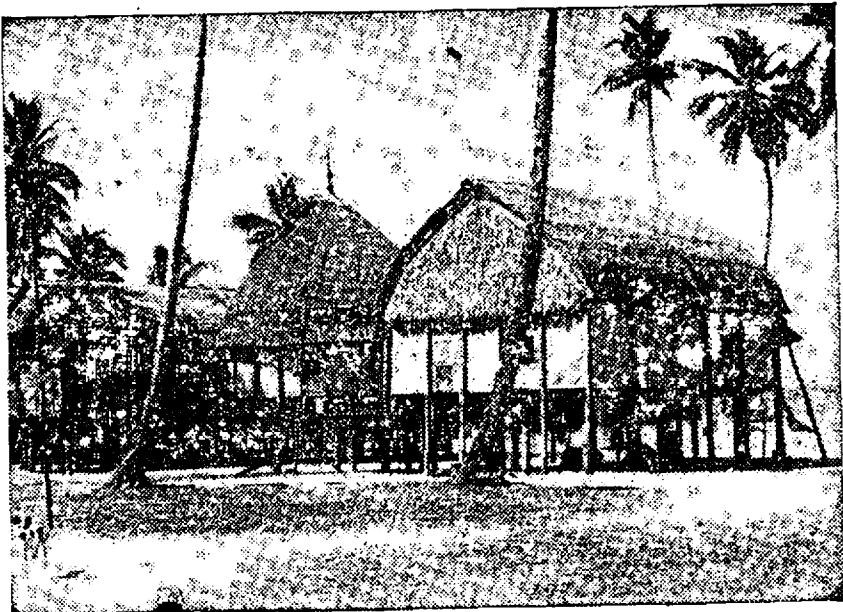




ANDAMAN AND NICOBAR ISLANDS

AT A

**GLANCE**



5488  
310  
AND - A

1990

Sub. National Systems Unit,  
National Institute of Science and  
Planning, New Delhi  
17-B SIA, Connaught Place, New Delhi 1  
DOC. No. D-5766  
Date 1-2-91

## STATISTICS

LOCATION :	—	Bay of Bengal.
Longitude :	—	Degree 92 to 94 East.
Latitude :	—	Degree 6 to 14 North.

### Altitude

Saddle Peak (Highest Point) Metres	732
Mount Harriet "	365

### Length and Breadth of Andaman Group of Islands

Total length	Kms.	467
Maximum width	"	52
Average width	"	24

### Length and Breadth of Nicobar Group of Islands

Total length	Kms.	259
Maximum width	"	58

### Climate

Normal rainfall at Port Blair	MMs.	3180
Actual rainfall during 1989	in MMs.	
Port Blair upto December, 1989	"	2483.3
No. of rainy days in Port Blair upto December, 1989	"	184
Mean maximum temperature at Port Blair (Jan. to Dec., 1989)	(C) —	29.6
Mean minimum temperature at Port Blair (Jan. to Dec., 1989)	(C) —	19.95
Mean relative humidity at Port Blair (Jan. to Dec., 1989)	% (C) —	79

## Distance by Sea

Between Port Blair and Calcutta	Kms.	—	1255
Between Port Blair and Madras	"	—	1190
Between Port Blair and Vishakhapatnam	"	—	1200

## Area (As Revised in March, 1982) :

Andamans	Sq. Kms.	—	6408
Nicobars	"	—	1841
Total	"	—	8249
Urban area	"	—	14.10
Rural area	"	—	8234.90

## Sub-Divisionwise Area

South Andaman	"	—	2994
Mayabunder	"	—	3414
Car Nicobar	"	—	136
Nancowrie	"	—	1705

## Population (1981 Census)

1. Total Population	No.	—	188741
(a) Male	"	—	107261
(b) Female	"	—	81480
2. Urban Population	"	—	49634
(a) Male	"	—	28860
(b) Female	"	—	20774
3. Rural Population	"	—	139107
(a) Male	"	—	78401
(b) Female	"	—	60706
4. Population of Andaman District	"	—	158287
(a) Male	"	—	90446
(b) Female	"	—	67841
5. Population of Nicobar District	"	—	30454
(a) Male	"	—	16815
(b) Female	"	—	13639

6. Density of Population in Andaman and Nicobar Islands (Persons per Sq. Km.)	"	—	23
7. Sex Ratio in A. & N. Islands (Female per 1000 Males)	"	—	760
8. Tribal Population	"	—	22361
9. Tahsi-wise Population			
(a) Diglipur	No.		15702
(b) Mayabunder	"		13954
(c) Rangat	"		24289
(d) Port Blair	"		76329
(e) Ferrargunj	"		28013
(f) Car Nicobar	"		15486
(g) Nancowrie	"		14968
10. Projected Population			
Andaman and Nicobar Islands No. As on 1st March, 1990			2,83,100
11. Religion-wise Population (1991 Census)			
Hindus	No.		1,21,793
Christians	"		48,274
Muslims	"		16,188
Sikhs	"		991
Buddhists	"		127
Jain	"		11
Others	"		1,357

### Administrative Units

District	Nos.	2
Sub-Division	"	4
Tahsils	"	7
Town	"	1
C.D. Block	"	5
Lok Sabha Seat	"	1
Municipal Board	"	1
Municipal Ward	"	11

Panchayat	"	45
Police Station	"	12
Police Out Post	"	18

### Islands & Villages

Inhabitate Islands	No.	33
Revenue Villages	"	192
Census Villages	"	491

### Agriculture

Cultivators (1981 Census)	No.	10207
% to working population	%	16.45
Agricultural Labourers (1981 Census)	No.	2295
% to working population	%	3.70
Agricultural operational Holding in A&N Islands (1981 Census)	No.	8094
Area operated	Hect.	24736
Average size of holdings in A&N Islands	"	3.06
Average size of holdings in Andaman District	"	2.82
Average size of holdings in Nicobar District	"	9.14
Area under paddy in 1988-89	"	12789.50
Estimated production of Paddy in 1988-89	(M Tonne)	35437.52
Estimated Production of Riee in 1988-89	(M. Tonne)	23625.00

### Animal Husbandry (As on 31-12-89)

1. Veterinary Hospital	No.	8
2. Dispensaries	"	3
3. Sub Dispensaries	"	33
4. Mobile Veterinary Dispensaries	"	7

5. Key Village Unit	"	16
6. Key Village Blocks	"	2
7. Artificial Insemination Centre	"	5
8. A.I. Sub-Centres	"	26
9. Govt. Cattle Farm	"	1
10. Govt. Poultry Farm	"	5
11. Govt. Fodder Farm	"	3
12. Animal treated in 1989 (upto Nov., '89)	"	2,43,884
13. Birds vaccinated in 1989 (upto Nov., 1989)	"	1,10,618
14. Livestock & Poultry (1987 Census)		
Livestock	"	1,58,567
Poultry	"	4,42,794

### Fisheries (January to December, '89).

Fish Landed	Tonne	14822.55
Estimated Value	Rs. in Lakhs	14.90
Fisherman Families Settled	—	Nil
Fisheries requisites distributed	Rs. in Lakhs	4.80
Fisherman engaged in Fishing	No.	3360
Fishing Craft used.		
(i) Country	No.	1010
(ii) Mechanised	"	184

### Forests

#### Area under Forests:

(a) Reserved Forests	Sq. Kms.	3059
(b) Protected Forests	"	4112
Total	"	7171
Timber extracted (1-1-89 to 31-12-89)	CM	1,03,327
Shipment of Timber to mainland (during 1989)	CM	4527
Revenue earned by Forest Depart- ment (Jan. to Dec. '89)	Rs. in Lakhs	1605.00

## Education.

1. Literacy in A & N Islands (1981 Census)	%	51.56
(a) Male	"	58.72
(b) Female	"	42.14

## Educational Institutions (As on Dec. '89).

(a) Pre-primary School	Nos.	18
(b) Ashram School	"	1
(c) Primary School	"	185
(d) Middle School	"	42
(e) Secondary School	"	28
(f) Senior Secondary School	"	35
(g) Govt. College	"	1
(h) Poly Technic	"	2
(i) B. Ed. Institute	"	1
(j) Teacher Training Institute	"	1
(k) Industrial Training Institute	"	1
(l) Vernacular School	"	10
Total:	"	329

## Medical and Public Health (As on 31-12-89)

(i) Hospitals	Nos. —	7
(ii) Dispensaries	Nos. —	13
(iii) Primary Health Centres	Nos. —	12
(iv) Primary Health Sub-Centres	Nos. —	73
(v) Bed available	Nos. —	816
(vi) Doctors	Nos. —	115
(vii) Nurses	Nos. —	207
(viii) Births Registered (Jan '89 to Dec. '89)	Nos. —	5152
(ix) Deaths Registered (Jan. '89 to Dec. '89)	Nos. —	814
(x) Sterilisation Operation Perform- ed (Jan. to Dec. 89).	Nos. —	1288
(xi) I.U.D. Insertions performed (Jan. '89 to Dec. '89)	Nos. —	1266



(xii) Tubectomy Operation Performed (Jan. '89 to Dec. '89)	Nos. —	1200
(xiii) Vasectomy operation Performed (Jan. '89 to Dec. '89)	Nos. —	88

## Transport and Communications.

### 1. State Motor Transport (As on 31-12-89).

(a) Buses on Road	Nos. —	90
(b) Routes operated	Nos. —	103
(c) Route length covered	Kms. —	2034
(d) Distance covered during 1988-89	Kms. —	4215040

### Pawans Helicopter Service.

Passenger Travelled (Jan. '88 to Dec. '88)	No. —	8136
Sorties (No. of trips)	" —	492
Passenger Travelled (Jan. '89 to Dec. '89)	" —	5060
Sorties (No. of trips)	" —	336

### 2. Road Length (As on 31-12-89)

(a) Black topped	Kms. —	755
(c) Other Roads	" —	30
(c) Roads in progress	" —	50
(d) Andaman Trunk Road	" —	246

### WATER SUPPLY

Village covered with Drinking Water No—480

### 3. Distance by Sea and Ship Fare

From	To	Distance (Nautical Miles)	Ship fares (Rs.)			
			Deluxe	Cabin	Bunk Deck	
Port Blair	Diglipur	100	131.00	65.50	29.75	17.00
Port Blair	Mayabunder	85	100.50	50.25	22.75	13.00
Port Blair	Rangat Bay	50	—	30.75	14.00	8.00
Port Blair	Hut Bay	66	73.00	36.00	15.50	9.00
Port Blair	Car Nicobar	150	145.00	72.50	31.25	18.25

Port Blair	Nancowrie	235	222.50	111.25	47.75	27.75
Port Blair	Campbell Bay	294	294.75	147.50	65.75	40.75

### Distance By Road & Bus Fares

From	To	Distance (Kms)	Fare (Rs.)
Port Blair Bus Terminus.	Chatham	5	0.60
	Hadde Jetty	5	0.60
	Buniyadabad	5	0.50
	Dairy Farm Village	5	0.50
	Shadipur School	5	0.50
	School Line	6	0.60
	Burd Line	10	1.00
	Dolly Gunj	10	1.00
	Telerabad	10	1.20
	Garacharama	10	1.00
	Calicut	14	1.40
	Sippighat	14	1.40
	Chouldari	20	2.30
	Port Mount	24	2.50
	Manjeri	24	2.30
	Namunaghar	30	2.90
	Chidiyatapu	28	2.90
	Wandoor	30	2.90
	Tirur	36	3.90
	Dandas Point	32	3.30
	Wimberly Gunj	42	4.20
	Bambooflat Jetty	46	4.60
	Jirkatang	64	5.60
	Middle Strait	90	9.80

### Motor Vehicles (As on 31-12-89)

(a) Scooters, Motor Cycles/Mopeds	No.	—	4360
(b) Lorries	"	—	319
(c) Buses	"	—	211
(d) Taxis	"	—	123
(e) Cars and Jeeps	"	—	1209
(f) Others	"	—	444

(g) Driving Licences issued (Jan. 89 to Dec. 89)	"	—	627
(h) Road Tax and other fees realised (Jan '89 to Dec '89)		Rs.	3 41,385.00

### Road Accidents (Jan '89 to Dec' 89)

(a) Bus	No	—	11
(b) Truck	"	—	25
(c) Scooter	"	—	40
(d) Car/Jeep	"	—	16
(e) Motor Cycle	"	—	13
(f) Other Vehicles	"	—	17
Total No of accidents	"	—	122
(g) Persons Killed	"	—	14
(h) Persons injured	"	—	118

### Shipping Services

(a) Passenger Ship plying between Mainland/Island	No. — 5		
(b) Passenger Capacity—	Cabin	Bunk/Deck	Dormatory.
(i) MV Harshavardhana	153	596	—
(ii) MV Najd II	256	503	—
(iii) MV Najd III	238	432	—

### Shipping Fare Per Berth

1. MV Harshavardhana	
Deluxe Cabin, Single Berth	Rs. 837.00
First Class Cabin Two Berth	Rs. 769.50
Second Class 'A' Grade	Rs. 583.50
Second Class 'B' Grade	Rs. 532.50
A/C Bunk	Rs. 125.00
2. M. V. Akbar	
	—
3. M. V. Najd II & III	
First Class Cabin	Rs. 583.50
Second Class Cabin	Rs. 375.00
Sofa	Rs. 125.00

Reclining Chair	Rs. 125 00
Floor Sitting/Sleeping space	Rs. 100.00

(d) Voyages Performed During (1-4-88 to 31-3-89)  
By Passenger Ships

(i) MV Harshavardhana	No. 23
(ii) MV Najd II	No. 37
(iii) MV Najd III	No. 23
(iv) TSS Nancowry	No. 9
(v) MV Andamans	No. 19

By Cargo Ship

(i) MV Diglipur	No. 9
-----------------	-------

(e) Passenger Traffic By Ships Between Mainland/Island  
1-4-88 to 31-3-89

(i) Passengers embarked	No. 45215
(ii) Passengers disembarked	No. 51608

(f) Cargo Traffic (Jan. '89 to Dec. '89)

	Outward DWT	Inward DWT
(i) by passenger-cum-Cargo Vessels	7420	14887
(ii) by Cargo vessels	8946	30709

(g) Cargo Handled By Stevedoring Workers At Port Blair  
(Jan. '89 to Dec. '89).

(i) Incoming	MT 62399.25
(ii) Outgoing	MT 6916.50
Total Cargo Handled	MT 69315.75

(h) Passengers Traffic By Inter Island Vessels  
(Jan. to Dec. '89)

Port Blair and other Islands No. 2,58,985

(i) Cargo Traffic By Inter Island Vessels  
(Jan. to Dec. '89).

Port Blair and other Islands MT — 28,143

Navigational Aides (As on 31-12-89)

Light House	—	Nos.	20
Radio Beacons	—	"	2

Unlighted Bouys	—	"	6
Lighted Beacons	—	"	17
Recons	—	"	2
Lighted Buoy	—	"	4
Port Signal Station	—	"	8

## Indian Airlines operations

### (i) Calcutta/Port Blair/Calcutta Sector.

(a) Air fair (One Way)	Rs. 1519
(b) Freight rate (Per Kg.)	Rs. 10.50

### (ii) Calcutta/Port Blair/Car Nicobar/Calcutta Sector.

(a) Air fare (one way) Calcutta to Port Blair	Rs. 1519
(b) Calcutta to Car Nicobar	Rs. 1883
(c) Port Blair to Car Nicobar	Rs. 451
(d) Freight rate (Port Blair to Calcutta) (per Kg.)	Rs. 10.50
(e) Freight rate (Calcutta to Car Nicobar) (Per Kg.)	Rs. 13.00
(f) Freight rate (Port Blair to Car Nicobar) (Per Kg.)	Rs. 3.30

### (iii) Madras/Port Blair/Madras Sector

(a) Air fare (One way)	Rs. 1535
(b) Freight rate (Per Kg.)	Rs. 10.60

### (iv) New Delhi/Bubneshwar/Port Blair/New Delhi Sector.

(a) Air fare (One day) New Delhi to Port Blair.	Rs. 2728
(b) Air fare New Delhi to Bubneshwar	Rs. 1455
(c) Air fare Port Blair to Bubneshwar.	Rs. 1492
(d) Freight rate (New Delhi to Port Blair) (Per Kg.)	Rs. 18.90
(e) Freight rate (Port Blair to Bubaneshwar) (Per Kg.)	Rs. 10.30
(f) Freight rate (Bubneshwar to New Delhi).	Rs. 10.05

## Posts And Telegraphs (As on 31-12-89).

(1) Head Post Office	No.	1
----------------------	-----	---

(2) Sub-Post Offices	No.	25
(3) Extra Departmental Sub-Post Offices.	No.	7
(4) Extra Departmental Branch Post Offices.	No.	61
(5) Letter Box	No.	239
(6) Telegraph Offices	No.	33
(7) Telephone Exchanges	No.	10
(8) Telephone Connections	No.	1477
(9) Telephone Extensions	No.	179
(10) Public Call Offices	No.	11
(11) Long Distance Public Call Office	No.	11

### Tourism (As on 01-01-1990)

#### (1) Place of Historical interest :

Cellular Jail National Memorial	South Andaman
Shahid Bedi	"
Ross Island	"
Viper Island	"

#### (2) CREEKS

Wrightmyo	South Andaman
Baratang,	"
Uttara	Middle Andaman.
Parangara	"
Kalighat	"
Yeratta	"

#### (3) BEACHES.

Carbyn's Cove	South Andaman.
Loha Barik	"
North Bay	"
Red Skin	"
Wandoor,	"
Madhuban	"
Jolly Buoy	"
Havelock	"
Neil Island	"
Ross Island	"
Long Island	Middle Andaman.

Guitar Island	Middle Andaman.
Smith Island	North Andaman.
Table Island	"
4. TREKKING.	
Mount Harriet	South Andaman.
Saddle Peak	North Andaman.
5. Museum/Emporium	
Anthropological Museum	Port Blair.
Cottage Industries Emporium	"
Khadi Gramodyog Emporium	"
Fisheries Museum	"
6. GARDEN/PARKS	
Haddo Zoological Garden	Port Blair
Marina Park	"
7. OTHER ATTRACTIONS.	
Chidiatapu	South Andaman
Agricultural Farm at Sippighat/Jirkatang.	"
Dhanikhari Dam.	"

8. GOVT GUEST HOUSES (As on 01-01-1990)

	Forest	APWD	Total
South Andaman.	No. 4	14	18
Middle & North Andaman	No. 2	9	11
Nicobar Group of Islands	No. —	6	6
Total :	No 6	29	35

9. TOURIST TRAFFIC.

(i) Foreign tourist arrival in Andamans (Jan'89 to Dec'89)	2,393
(ii) Domestic tourist arrival in Andamans (Jan'89 to Dec 89)	39,967

POWER

(i) Installed capacity 1988-89	K.W	15189.4
(ii) Generated during 1988-89	KWH	32698197
(iii) Consumption 1988-89	KWH	28517767
(iv) Village electrified 1988-89	No.	459

(v) Total Electricity Consumers upto 1988-89	32,953
(vi) Energy purchased from Naval Power Houses during 1988-89	1942780

### Cooperation : (As on 31-12-1989)

(i) Cooperative Societies	No.	405
(ii) Membership	Nos.	49976
(iii) Share capital	(Rs. '000)	19391
(iv) Working Capital	"	198956
(v) Reserve Fund	"	12585

### Industries (As on 31-12-89)

1. Large Industrial Units	No.	6
2. Small Industrial Units	No.	767
3. Industrial Training Centres	No.	12
4. Industrial Estates	No.	1
5. State aid to Industries during 88-89 (Rs. '000)		337.00
6. Sale proceeds by Cottage Industries Emporium (Jan 89 to Dec '89)		
(a) Shell and Wooden furniture	(Rs. '000)	766.00

### Labour (upto December, 1989)

1. Registered Factories under factories Act. 1948.	No.	42
2. Average workers employed in Registered Factories	No.	5110
3. Trade Union	No.	90
4. Industrial strikes	No.	2
5. Industrial disputes settled	No.	5
6. Works Committee functioning	No.	25
7. Factory accidents	No.	55
8. Shops and commercial establishment	No.	840
9. Theaters and Restaurants	No.	100
10. Employment in Theatres & Restaurants	No.	800

### Employment (As on 31-12-89)

1. Employment Exchange	No.	1
------------------------	-----	---



2. Employment Information and Assistance Bureau	No.	4
3. Employment on live Register (as on 31-12-89)		
(a) Male	No.	11638
(b) Female	"	4093
Total :	"	15731
4. Placements made (Jan 89 to Dec '89)		
(a) Male	"	851
(b) Female	"	275
Total	"	1126

### Civil Supplies

1. Imports from mainland by Supply Department (during Jan '89 to Dec '89).			
(i) Rice	M. Tonne		19799.907
(ii) Wheat	" "		7210.736
(iii) Sugar	" "		4830.231
2. Fair Price shop (as on 01-01-90)			
(i) Public	No.		2
(ii) Cooperative	"		70
(iii) Private	"		202
Total :	"		274

### Law And Order (As on 31-12-89)

(i) Polic Stations	No.	12
(ii) Police out posts	"	12
(iii) Police Radio Stations	"	28
(iv) Fire Stations	"	9
(v) District Jail	"	1
6. Crimes (Jan to Dec '89)		
(i) Murder Cases	No.	11
(ii) Burglary	"	103
(iii) Theft cases	"	182
(iv) Misc/IPC cases	"	848
(v) Cases under Local and Special Laws	"	1762

7. Fire calls attended (Jan to Dec '89) .. 38  
 8. Property damaged (Jan to Dec' 1989) (Rs. '000) 5165.6

9. (a) Prison population (as on 31-12-89)

	Under Trial	Lunatic	convicts.
(i) Male	110	4	59
(ii) Female	Nil	Nil	1
(iii) Total	110	4	60

(b) Prisoners under 21 years of age (as on 31-12-89)

(i) Male	No.	19
(ii) Female	No.	Nil

(c) Lunatic

(i) Male	No.	Nil
(ii) Female	No.	Nil

(d) Convicts

(i) Male	No. 6
(ii) Female	No. Nil

(e) Prisoners awaiting Trial

(i) Male	No. 110
(ii) Female	No. Nil

### Planning and Finance.

Five year Plans	Outlay	Expenditure	% of Expenditure (Rs. in Lakhs).
1st Five Year Plan	558	85	15
2nd Five Year Plan	603	365	61
3rd Five Year Plan	979	636	65
Annual Plan (1966-69)	688	529	77
4th Five Year Plan	1400	1470	105
5th Five Year Plan	3372	2121	63
6th Five Year Plan	9661	10006	104
7th Five Year Plan	28500	—	—
Annual Plan (1985-86)	3350	2257	67
Annual Plan (1986-87)	6900	3762	55
Annual Plan (1987-88)	4800	4393 (P)	92
Annual Plan (1988-89)	7100	6540.413	92
Annual Plan (1989-90)	8000	—	—

Revenue Receipt and Revenue Expenditure (Rs. in thousands)

Year	Revenue Receipts	Revenue Expenditure
1982-83	97157	469277
1983-84	90883	484608
1984-85	101267	600767
1985-86	159892	578162
1986-87	209734	555636
1987-88	202748	935855
1988-89	231500	1132703

Income Tax (As on 31-3-89).

(i) Income Tax assesses	....	1522
(ii) Total net collections (Rs. in Crores).	...	1.28

Banking and National Savings (As on Dec., 1989)

Name of Banks	No. of Offices.
(a) State Bank of India ...	16 (including 4 satellite Offices).
(b) A & N State Co-operative Bank Ltd. ...	25
(c) Syndicate Bank ...	5
(d) Canara Bank ...	1
(e) Indian Bank ...	1
(f) Punjab National Bank ...	1
(g) UCO Bank ...	1
Net collection under Small Saving Scheme of National Saving Schemes (1-4-89 to 31-12-89).	Rs. 96,44,500
Gross collection under Small Saving Scheme of National Saving Scheme (1-4-89 to 31-12-89) :	Rs. 2,65,40,000

Insurance

1. Life Insurance.

(a) L.I.C. Policy Holder (as on 1-1-90)—No.	12,000
(b) L.I.C. Policy Holder (during Jan. '89 to Dec. '89)—No.	1174

(c) Sums Insured (during Jan. '89 to Dec. '89) (Rs. in Lakhs).		400.75
(d) L.I.C Agents (As on 1-1-90)	No.	50
<b>2. General Insurance Policies and premium handled (during Jan. '89 to Dec. '89).</b>		
(a) Total Premium collected (Rs. in Lakhs)—		38.00
(b) Policies/renewal endorsements (Rs. in Lakhs).		

	No.	Premium (Rs. in Lakhs)
(i) Marine (Cargo)	305	5.00
(ii) Fire	1390	16.00
(iii) Motor	4580	11.00
(iv) Marine Hull	20	3.00
(v) Misc	325	3.00
<b>Total :</b>	<b>6620</b>	<b>38.00</b>

## Local Bodies

### 1. Municipal Board.

(a) Municipalities in A & N Islands	No.	1
(b) Location		Port Blair Town.
(c) Municipal Members	No.	15
(i) Elected	No.	11
(iii) Nominated	No.	4
(d) Revenue of Municipal Board during 1988-89 (Rs. in Lakhs)		226.25
(e) Expenditure of Municipal Board during 1988-89 (Rs. in lakhs)		303.70
(f) Entertainment tax collected by Municipal Board (1988-89) (Rs.000)		48.39

### 2) State Social Welfare Advisory Board (Jan 89 to Dec. 89.)

#### A. Border Area Project.

Project implementing	No.	5
Committee Centres.	"	25
Staff	"	105
Beneficiaries.	"	1230

B.. Grant-In-Aid		
Institutions	..	77
Amount	Rs.	296861/-
Beneficiaries.	No.	2083
C.. Social Economic Programme		
(1). Dairy Units	No.	47
Amount	Rs.	2522140
Beneficiaries	No.	770
(2)) Goatery Units.	No.	6
Amount	Rs.	2,03,880
Beneficiaries.	No.	100
(3) Self Employment	No.	15
Amount	Rs.	2,30,000
Beneficiaries.	No.	230
(4) Spices cultivation	No.	7
Amount	Rs.	17,500
Beneficiaries.	No.	70
(5) Small scale Industries.	No.	4
Amount	Rs.	1,63,910
Beneficiaries.	No.	44
(6) Poultry Unit	No.	1
Amount	Rs.	30,000
Beneficiaries	No.	20
7. Creche		
(i) Centres	No.	40
(ii) Amount Sanctioned	Rs.	5,45,289
(iii) Beneficiaries.	No.	1050

### Miscellaneous (As on 31-12-89)

1. Cinema Houses in A & N Islands	No.	5
(i) Port Blair	No.	4
(ii) - Car Nicobar	..	1
2. Low Power T. V. Transmission		
Centres (1 each at Port Blair and Car Nicobar)	No.	2
3. Very Low Power T. V. Transmission Centres.		
(D/pur, M/Bunder, Rangat, H/Bay Nancowri, and Campbellbay)	No.	6
4. All India Radio Broadcasting Station	No.	1

## 20-Point Programme Under Selected Item

Point No.	Items	Unit	Target 1989-90	Achievements April 89 to De- cember 89.	% of Achieve- ments
	1. Attack on Rural poverty				
	(a) I R D P Families Benefited.	No.	1904	951	49.94
	(b) Jawahar Rojgar Yojana	No.	4,37,000	194914	44.60
	(c) Small scale Industries established	No.	75	58	77.33
	7. Clean drinking water-village covered	No.	25	18	72
	8. Health for all-PH. Sub-Centre	No.	20	10	50
	9. Two child norm-Sterilisation	No.	2100	1225	58.33
	10. Expansion of Education				
	(a) Total (Elementary Education)	No.	3000	3008	100.26
	(b) Adult Litreacy Total	No.	6000	5174	86.23
	12. Equality for women-Enrolment of girls in school	No.	2000	1970	98.5
	14. Housing for the people-provision of house sites	No.	300	153	51.0
	16. New strategy for Forestry-Tree plantation	in lakhs	100	94.744	95.74
	18. Concern for the consumer <sup>s</sup> /FPs opened	No.	5	20	400
	19. Energy for the villages <sup>A</sup> (electrified.)	No.	34	28	82.35