



Educational Development Index Maharashtra 2011-12



December, 2012

Contents

S.No.	Subject	Page number
1.0	Background and Methodology	3
2.0	Status of Maharashtra state at National level in EDI	4
3.0	EDI calculation in Maharashtra state	7
4.0	Analysis of district wise Educational Development Index (EDI), 2011-12	8
5.0	Analysis of block wise Educational Development Index (EDI), 2011-12	14
6.0	Analysis of Municipal Corporation wise Educational Development Index (EDI), 2011-12	20
	Annex-1 : Key educational indicators by Districts, 2011-12	23
	Annex-2 : Index value and ranking by Districts, 2011-12	25
	Annex-3 : Key educational indicators by blocks, 2011-12	27
	Annex-4 : Index value and ranking by blocks, 2011-12	45
	Annex-5 : Key educational indicators by Municipal Corporations , 2011-12	57
	Annex-6 : Index value and ranking by Municipal Corporations, 2011-12	58

Educational Development Index, 2011-12, Maharashtra

1.0 Background and Methodology:

Ministry of Human Resource Development (MHRD), Government of India and the National University of Educational Planning and Administration (NUEPA), New Delhi initiated an effort to compute Educational Development Index (EDI). In year 2005-06, MHRD constituted a working group to suggest a methodology (which got revised in 2009) for computing EDI. The purpose of EDI is to summarize various aspects related to input, process and outcome indicators and to identify geographical areas that lag behind in the educational development.

EDI is an effective tool for decision making, i.e. it helps in identifying backward geographical areas where more focus is required.

Initially 23 indicators were identified for computing EDI however in the revised methodology it has been restricted to a set of 20 indicators. The details of these indicators are given in **Table-1**.

Table-1
List of indicators used for calculation of EDI

Areas	Sl.No.	Indicators
Access	1	Ratio of Primary to Upper Primary Schools/Sections
	2	Percentage of Habitations not Served by primary education facility
	3	Availability of schools per 1000 Child Population
Infrastructure	4	Schools with Student-Classroom Ratio (SCR) > 30/35
	5	Schools without drinking water facility
	6	Schools do not have separate toilet for boys
	7	Schools do not have separate toilet for girls
Teacher	8	Schools with female teacher (in schools with 2 and more teachers)
	9	Schools with Pupil Teacher Ratio (PTR) > 30/35
	10	Schools with less than 2 teachers (in schools with more than 15 students) (Primary schools only)
	11	Schools with less than 3 teachers (Upper Primary schools/sections)
	12	Teachers without professional qualification
Outcome	13	Gross Enrolment Ratio – Overall
	14	Participation of Scheduled Castes Children: Percentage SC Population (2001 Census) - Percentage SC Enrolment
	15	Participation of Scheduled Tribes Children : Percentage ST Population (2001 Census) - Percentage ST Enrolment
	16	Gender Parity Index in enrolment
	17	Repetition Rate
	18	Ratio of exit class (VII) over Class I enrolment
	19	Dropout rate in elementary classes (1-7)
	20	Transition Rate from Primary to Upper Primary level (only for Upper Primary level)

These indicators have been grouped under four areas namely Access, Infrastructure, Teachers and Outcome. A separate index has been calculated for each of the afore-mentioned four areas and EDI is a composite index of all these four indexes. Source of data for above mentioned indicators, barring indicator number two and three is District Information System for Education (DISE) and reference date is 30th September of each year.

Following methodology has been used for calculating the index and Special Package for Social Sciences (SPSS) has been used for calculation:

- Normalization of the indicator value by using following formula:

$$1 - \left\{ \frac{\text{Best Value} - \text{Observed Value}}{\text{Best Value} - \text{Worst Value}} \right\}$$

In case of a few indicators bottom /top value has been identified based on policy option instead of observed value. Normalized values range between 0 and 1.

- Assign factor loadings and Eigen value by applying Principal Component Analysis method (PCA)
- Ranking of the geographical area (District/Block/Municipal Corporation) based on index value.

2.0 Status of Maharashtra state at National level in EDI

Educational Development Index (EDI) is being calculated at national level since 2005-06 by the National University of Educational Planning and Administration (NUEPA), New Delhi and recent EDI is available for 2010-11. Year wise ranking of Maharashtra state at Primary, Upper Primary and Combined (Primary and Upper Primary) level has been shown in figure-1.

Figure-1
Year wise EDI ranking of Maharashtra state at national level

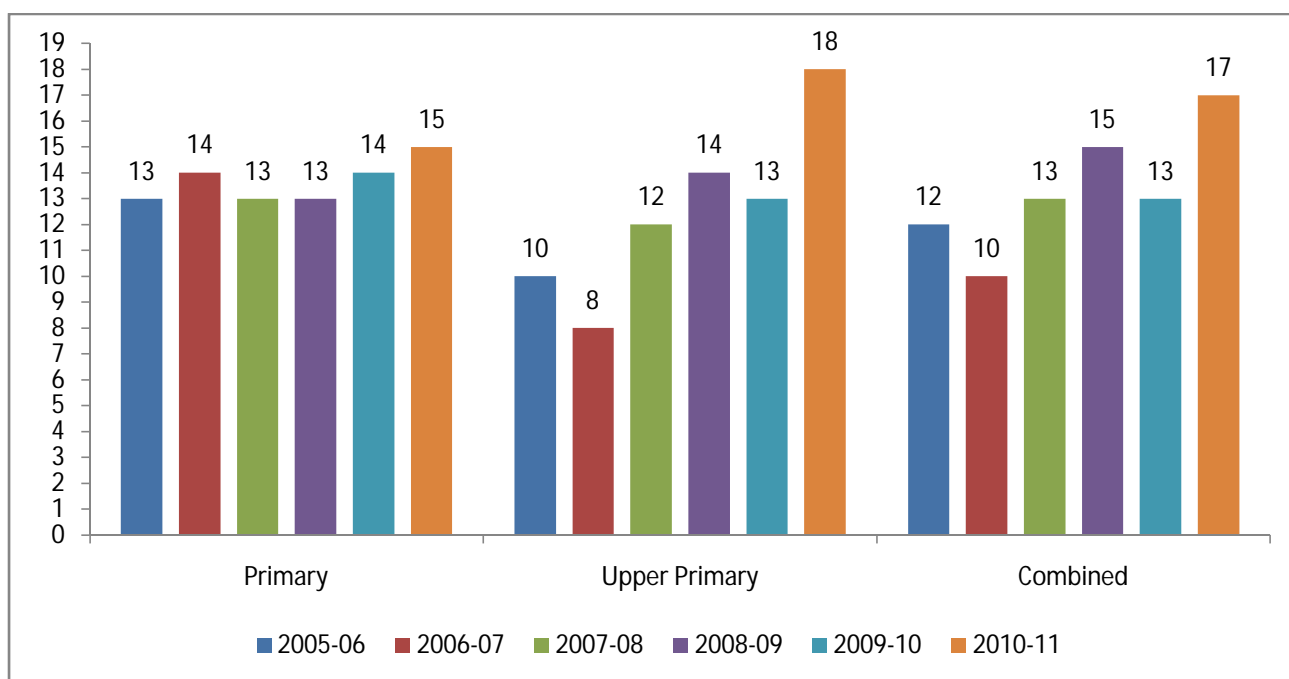
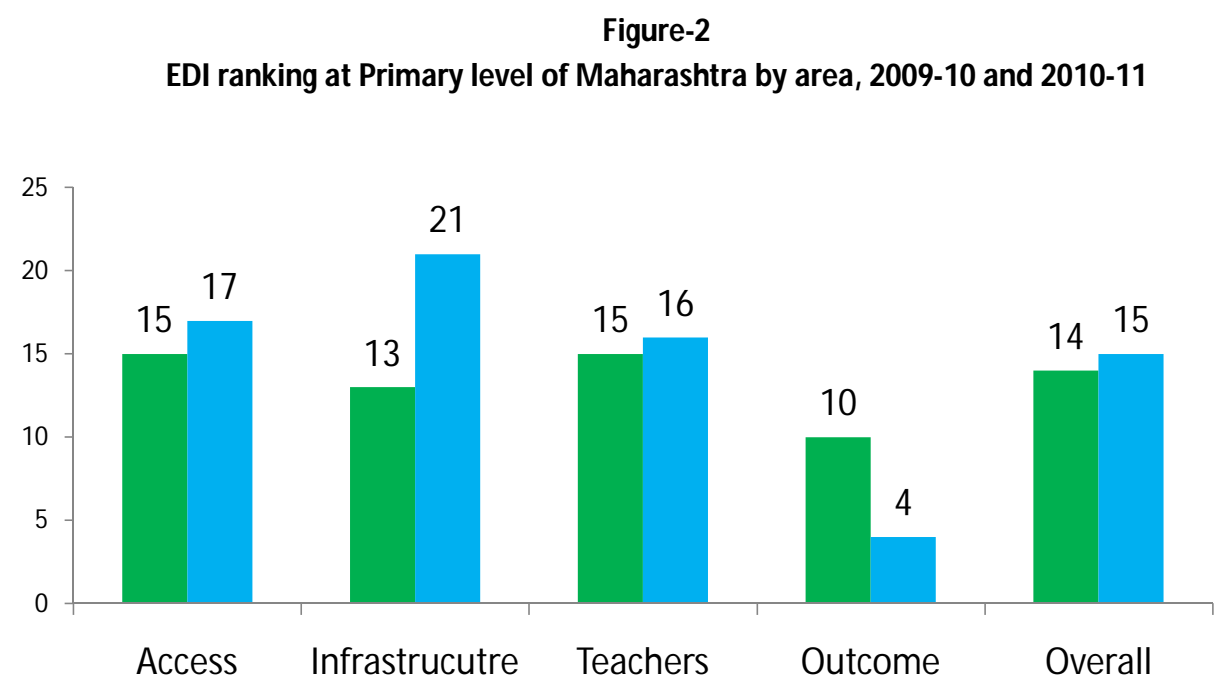


Figure-1 shows that the rank of Maharashtra state is declining. At Primary level while the state's rank was 13 in 2005-06, it declined to 15 in 2010-11. At the Upper Primary level while the state's rank was 10 in 2005-06, it declined to 18 in 2010-11. Similarly at the combined level (Primary and Upper Primary level) while the state's rank was 12 in 2005-06, it declined to 17 in 2010-11. It means that the state's rank has declined by 2 ranks at Primary level, 8 ranks at Upper Primary level and overall 5 ranks at combined level. Even, the rank has declined from 13 to 17 (4 ranks) between 2009-10 and 2010-11 at combined level.

It will be interesting to understand the reasons behind this decline of rank in Maharashtra. Declining rank means that while the state has made progress and improved indicators, the pace of the progress in the state is slow as compared to other states. If one has to compare the situation in Maharashtra with other states, one will notice that in 2009-10 the rank of Andhra Pradesh, Gujarat, Karnataka and Himachal Pradesh was lower than Maharashtra state but during 2010-11 these states made progress and improved their rank, whereas the rank of Maharashtra state declined.

Area wise rank for Primary level is shown in figure 2.



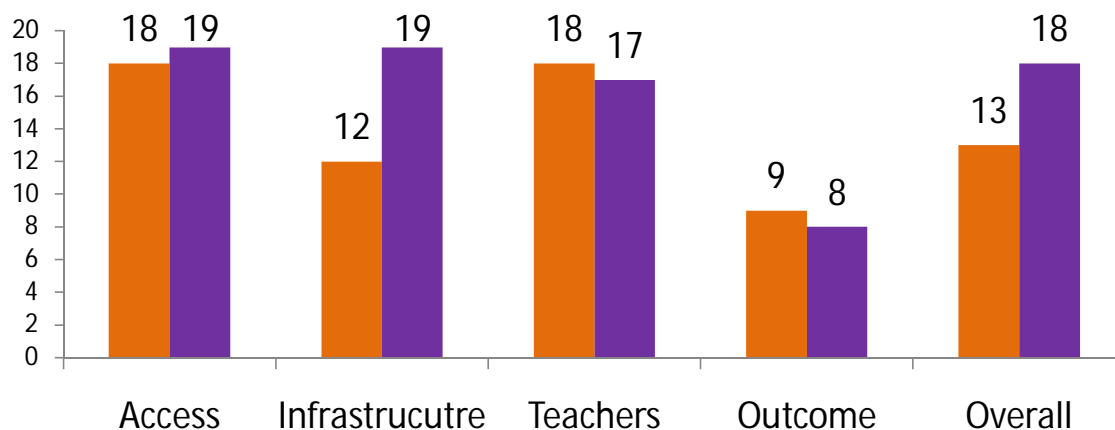
Source: Flash Statistics, 2010-11, NUEPA, Government of India

Figure- 2 shows that at Primary level state's rank is on the lower side in Access, Infrastructure and Teacher areas, i.e. it has declined between 2009-10 and 2010-12. While significant decline can be noticed in infrastructure area, it has improved in outcome area.

Area wise rank for Upper Primary level is shown in figure 3.

Figure- 3 shows that at Upper Primary level state's rank is on the lower side in Access, Infrastructure and Teacher areas, i.e. it has declined between 2009-10 and 2010-12. While significant decline can be noticed in infrastructure area, it has improved in outcome area.

Figure-3
EDI ranking at Upper Primary level of Maharashtra by area, 2009-10 and 2010-11



Source: Flash Statistics, 2010-11, NUEPA, Government of India

It is very clear from figure 2 and 3 that state is lagging behind in access, infrastructure and teacher related to areas as compared with other states.

Comparison of key indicators of Maharashtra state with some neighboring state is given in Table- 2.

Table-2
Comparison of key education indicators, 2010-11

	Percentage of Primary schools with SCR>30	Percentage of Upper Primary schools with SCR>35	Percentage of Primary schools with PTR>30	Percentage of Upper Primary schools with PTR>35
India	38.66	31.44	42.44	31.32
Maharashtra	31.37	29.96	29.90	26.33
Andhra Pradesh	29.44	20.15	17.33	6.32
Gujarat	47.96	39.53	39.99	26.28
Karnataka	20.20	20.52	22.76	21.84
Kerala	22.07	18.67	13.31	8.00
Tamil Nadu	23.53	30.78	29.85	35.22

Source: Flash Statistics, 2010-11, NUEPA, Government of India

Table-2 shows that status of Andhra Pradesh, Karnataka and Kerala is better than Maharashtra, while Gujarat and Tamil Nadu are lagging behind Maharashtra.

This analysis clearly shows that if state has to improve its ranking then it needs to focus on improving infrastructure and teacher related indicators.

3.0 EDI calculation in Maharashtra state

School Education Department, Maharashtra state decided to calculate District, Block and Municipal Corporation wise Educational Development Index (EDI) with the technical support of UNICEF, Maharashtra office. It will help state to assess District, Block and Municipal Corporation wise status of elementary education and identify geographical areas where focus is required and in which area of educational development. It will also help education department officials working at different level to draw a comparison between the status of one geographical area with another geographical area at District, Block and Municipal Corporation level.

Same methodology has been applied in this calculation as NUEPA had used for calculating state wise EDI at the national level. Based on the availability of data, 16 indicators (barring indicators number 13,14,15 and 17 of table-1) out of the total 20 indicators have been included for calculating EDI for district level, while 13 indicators (barring indicator number 1,2,3,13,14,15 and 17 of table-1) out of total 20 indicators have been included for calculating EDI for Block and Municipal Corporation level.

At the national level EDI is calculated separately for primary, upper primary and elementary level. However, in order to reduce the level of complexity, in preparing EDI it has been calculated only for combined (elementary) level.

State also decided to categorize Districts, Blocks and Municipal Corporations in four categories based on their EDI value. It will help state in identification of level of attention and on which areas attention is required. Index value has been divided in four categories, which are given in **Table-3**.

Table-3
Category of Index values

No.	Index Value	Category
1	Less than 0.500	Poor (urgent attention needed)
2	0.500-0.599	Less than average (attention is required)
3	0.600-0.699	Average (status is satisfactory)
4	0.700 or More than 0.700	Good

Source of data for indicators, barring indicator number two, is District Information System for Education (DISE) for year 2011-12 and reference date is 30th September, 2011. Source of data for indicator number two is information provided by District Education Officer during preparation of Annual Work Plan and Budget for year 2012-13.

4.0 Analysis of district wise Educational Development Index (EDI), 2011-12

Total 16 indicators have been used to calculate EDI, which belong to four areas namely Access, Infrastructure, Teacher and Outcome and separate index has been calculated for each area. Value of indicators has been given in **Annex-1**. Combined value has been given for Mumbai and Mumbai (urban) districts therefore the values of indicators for both districts are same. District wise Access, Infrastructure, Teacher, Outcome and Overall EDI index value and district's rank has been given in **Annex-2**. Districts have been ranked from 1 to 35 based on EDI value in a descending order. Rank one has been assigned to district having top rank and similarly rank 35 has been assigned to the district ranked at the bottom.

Overall EDI value of the state is **0.704**. Value of infrastructure and teacher index (0.624 and 0.628 respectively) is lower than the value of access (0.746) and outcome index (0.791).

Number of districts by EDI categories and areas has been shown in the **Table-4**.

Table-4
Number of districts by Category of index by area

Area	Poor	Below average	Average	Good	Total
Access	3	2	2	28	35
Infrastructure	5	10	10	10	35
Teacher	3	5	21	06	35
Outcome	4	3	4	24	35
EDI	1	5	13	16	35

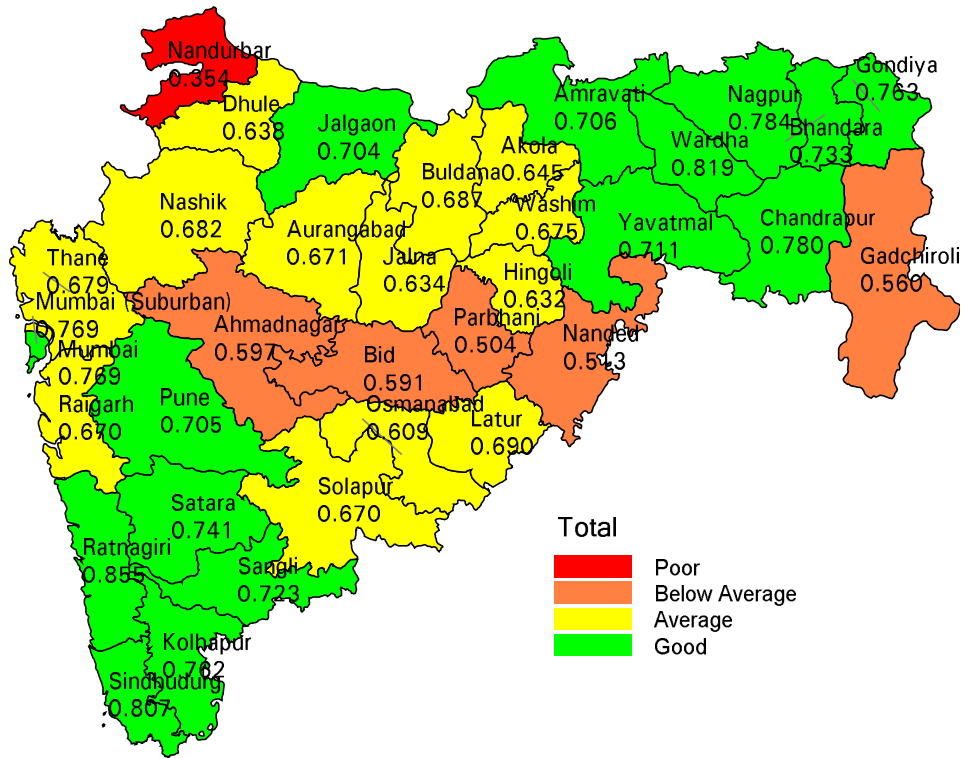
The analysis reveals that various districts are at different stage of development and they are different in each category. Table-4 shows that for access index 28 districts and for outcome index 24 districts are in good category. Similarly for infrastructure index 10 districts and for teacher index only six districts are in good category. This analysis shows that the state is lagging behind in infrastructure and teacher index.

The analysis revealed that high disparity exists between districts as well as between different areas. Index value of Ratnagiri, Wardha and Sindhudurg districts are in good category for all four areas and EDI, while four districts Gadchiroli, Parbhani, Nashik and Ahmadnagar have all four types of categories.

A. District wise overall Educational Development Index (EDI) :

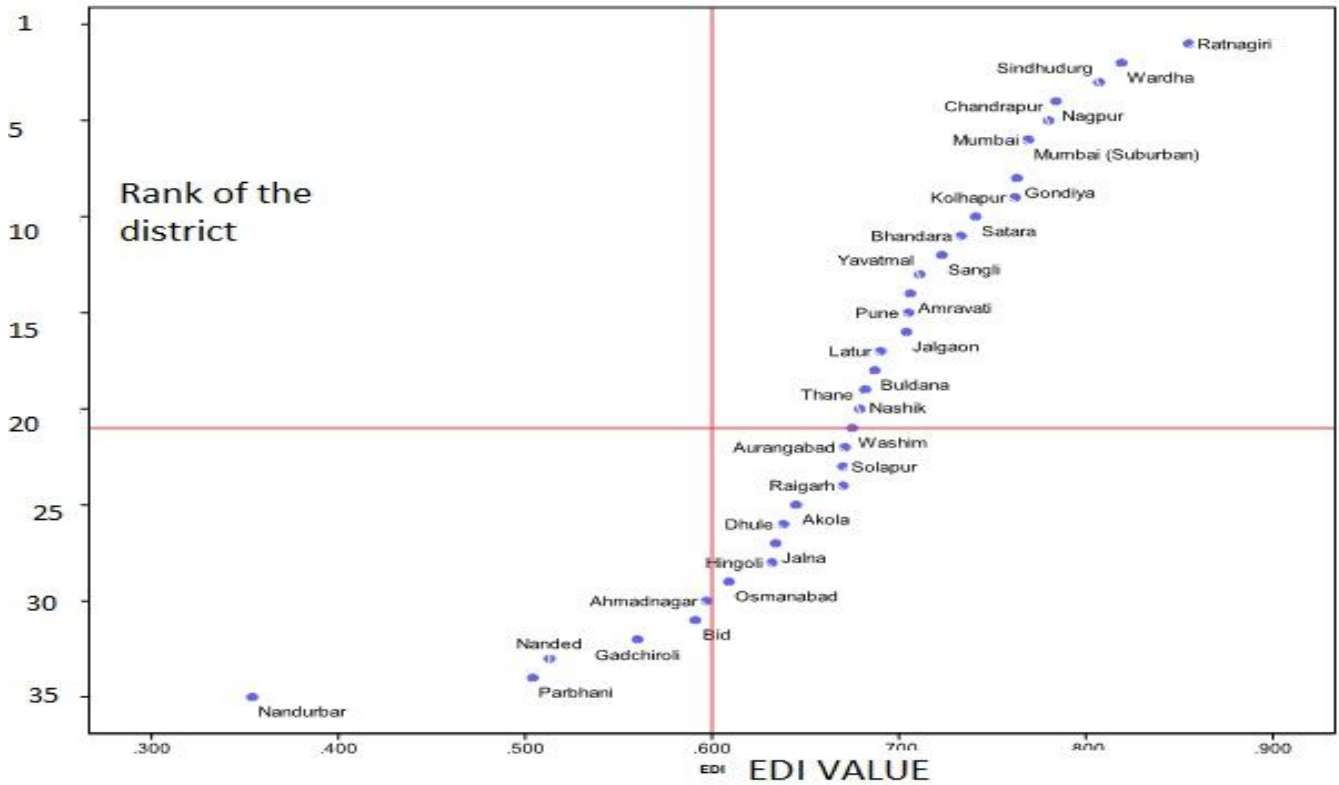
Overall Educational Development Index (EDI) value for the state is 0.704, which is in good category. District wise status of EDI has been shown in **Map-1**.

Map-1 Overall Educational Development Index (EDI) by districts



Rank of the district and EDI value has been shown in Figure-4.

Figure -4
Rank of the district and EDI value



Based on the data presented in Map-1 and Figure-4 it can be summarized that on the basis of EDI only Nandurbar district is in poor category and 16 districts are in good category. 13 districts are in average category and five districts, namely Ahmadnagar, Bid, Parbhani, Nanded and Gadchiroli are in below average category.

The details of top five and bottom five ranked districts as per the EDI value is given in **Table-5**.

Table-5
Five top and bottom ranked districts in EDI

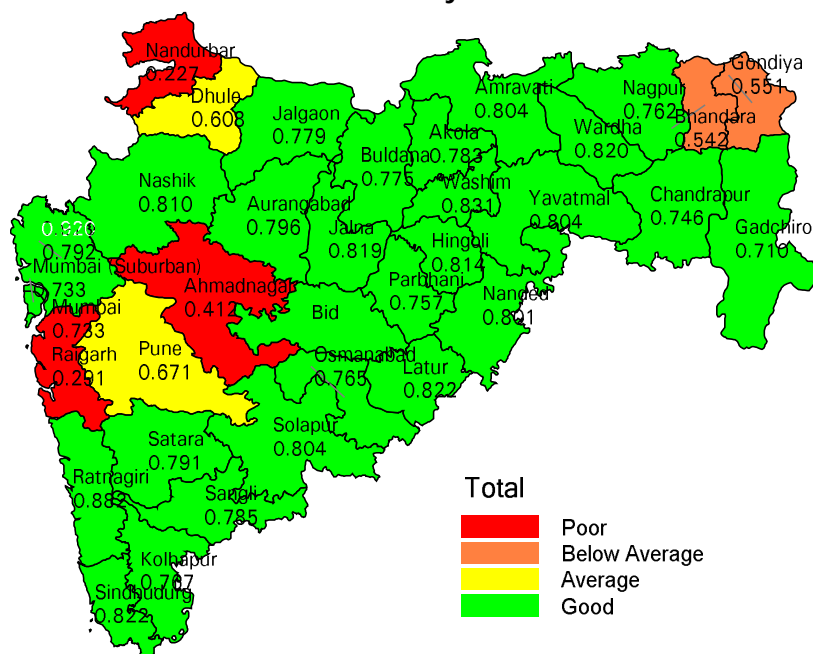
Sl.No.	Top ranked			Bottom Ranked		
	Rank	District	EDI value	Rank	District	EDI value
1	1	Ratnagiri	0.855	35	Nandurbar	0.354
2	2	Wardha	0.817	34	Parbhani	0.504
3	3	Sindhudurg	0.809	33	Nanded	0.513
4	4	Nagpur	0.784	32	Gadchiroli	0.560
5	5	Chandrapur	0.780	31	Bid	0.591

Based on the EDI Value, Ratnagiri district tops the list and Nandurbar district is ranked at the bottom of the list. There is a huge difference between bottom EDI value (0.354) for Nandurbar district and second bottom EDI value (0.504) for Parbhani district.

B. District wise Access Index :

Access index value for the state is 0.746, which is in good category. District wise status of access index has been shown in **Map-2**.

Map-2
Access Index by districts



Five top and bottom ranked districts in access index are given in **Table-6**.

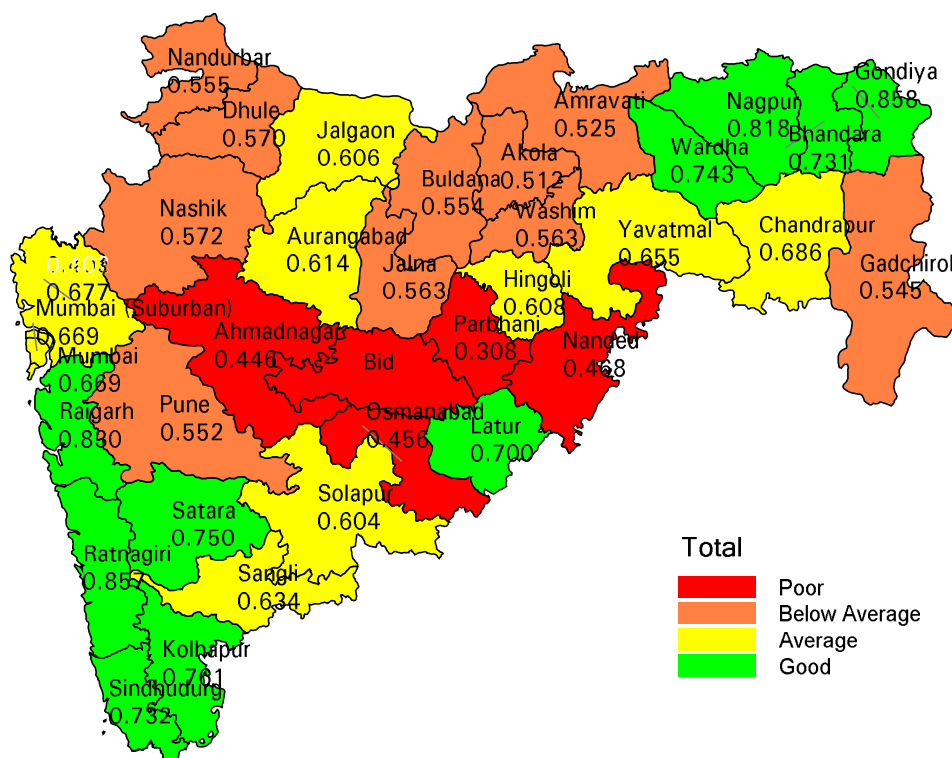
Table-6
Five top and bottom ranked districts in access index

Sl.No.	Top			Bottom		
	Rank	District	Access Index	Rank	District	Access Index
1	1	Bid	0.920	35	Nandurbar	0.227
2	2	Ratnagiri	0.882	34	Raigarh	0.291
3	3	Washim	0.831	33	Ahmadnagar	0.412
4	4	Latur	0.822	32	Bhandara	0.542
5	5	Sindhudurg	0.822	31	Gondiya	0.551

C. District wise Infrastructure Index :

Infrastructure index value for the state is 0. 624, which is in average category. District wise status of infrastructure index has been shown in **Map-3**.

Map-3
Infrastructure index by districts



Map-3 shows that five districts namely, Ahmadnagar, Bid, Osmanabad, Parbhani and Nanded, are in poor category. Ten districts each are in below average, average and good categories in access index.

Five top and bottom ranked districts in infrastructure index are given in **Table-7**.

Table-7

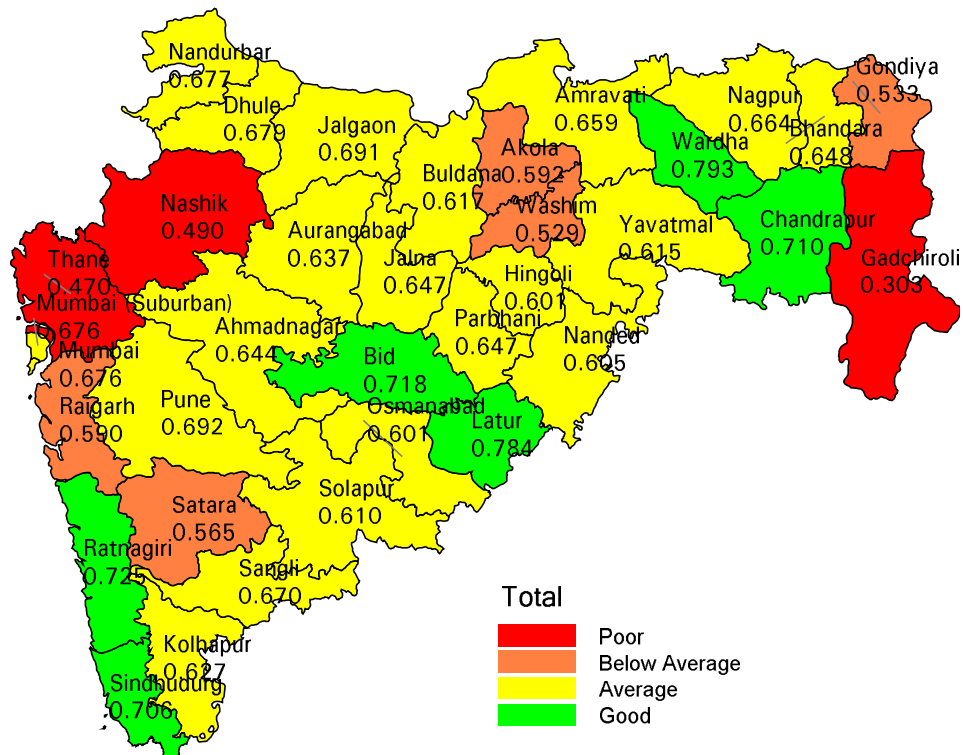
Five top and bottom ranked districts in infrastructure index

Sl.No.	Top			Bottom		
	Rank	District	Infrastructure Index	Rank	District	Infrastructure Index
1	1	Gondiya	0.858	35	Parbhani	0.308
2	2	Ratnagiri	0.857	34	Bid	0.402
3	3	Raigarh	0.830	33	Ahmadnagar	0.446
4	4	Nagpur	0.818	32	Osmanabad	0.456
5	5	Kolhapur	0.761	31	Nanded	0.468

D. District wise Teacher Index :

Teacher index value for the state is 0.628, which is in average category. District wise status of teacher index has been shown in **Map-4**.

Map-4
Teacher index by districts



Map-4 shows that three districts, namely Gadchiroli, Thane and Nashik, are in poor category; five districts are in below average and 21 districts are in average category, while six districts, namely, Chandrapur, Wardha, Bid, Latur, Ratnagiri and Sindhudurg are in good category.

Five top and bottom ranked districts in Teacher index are given in **Table-8**.

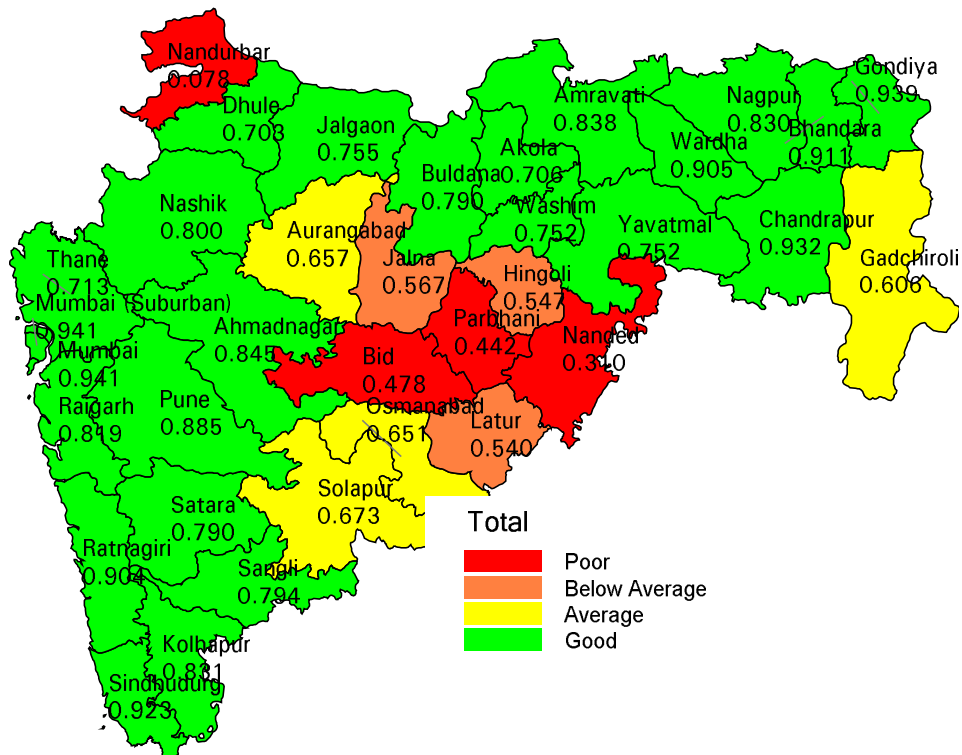
Table-8
Five top and bottom ranked districts in teacher index

Sl.No.	Top		Bottom	
	Name of the district	Teacher Index	Name of the district	Teacher Index
1	Wardha	0.793	Gadchiroli	0.303
2	Latur	0.784	Thane	0.470
3	Ratnagiri	0.725	Nashik	0.490
4	Bid	0.718	Washim	0.529
5	Chandrapur	0.710	Gondiya	0.533

E. District wise Outcome Index :

Outcome index value for the state is 0.791, which is in good category. District wise status of Outcome index has been shown in **Map-5**.

Map-5
Outcome index by districts



Map-5 shows that four districts, namely Nandurbar, Bid, Parbhani and Nanded, are in poor category, three districts namely, Jalna, Hingoli and Latur, are in below average category, four districts namely, Gadchiroli, Aurangabad, Solapur and Osmanabad, in average category, while remaining 24 districts are in good category.

Five top and bottom ranked districts in Outcome index are given in **Table-9**.

Table-9**Five top and bottom ranked districts in outcome index**

Sl.No.	Top			Bottom		
	Rank	District	Outcome Index	Rank	District	Outcome Index
1	1	Mumbai	0.941	35	Nandurbar	0.078
2	2	Mumbai (suburban)	0.941	34	Nanded	0.310
3	3	Gondiya	0.939	33	Parbhani	0.442
4	4	Chandrapur	0.932	32	Bid	0.478
5	5	Sindhudurg	0.923	31	Latur	0.540

F. Summary:

Only three districts Wardha, Ratnagiri and Sindhudurg have all indexes in good category, while four districts Gadchiroli, Parbhani, Nashik and Ahmadnagar have all four types of categories. Status of district varies from area to area, i.e. the district could be good in one area but may be performing poor or below average in other areas. Ratnagiri is top ranked district in educational development while Nandurbar is bottom ranked district. Focus is required on Nandurbar, Ahmadnagar, Parbhani, Nanded, Gadchiroli and Bid districts in educational development.

5.0 Analysis of block wise Educational Development Index (EDI), 2011-12

Total 13 indicators have been used to calculate EDI, which belong to three areas namely Infrastructure, Teacher and Outcome and separate index has been calculated for each area. Value of indicators has been given in **Annex-3**. Block wise Infrastructure, Teacher, Outcome and Overall EDI index value and block's rank has been given in **Annex-4**. Blocks have been ranked from 1 to 373 based on EDI value in a descending order. Rank one has been assigned to block having top rank and similarly rank 373 has been assigned to the block ranked at the bottom.

Number of blocks by EDI categories and areas has been shown in the **Table-10**.

Table-10**Number of blocks by Category of index by area**

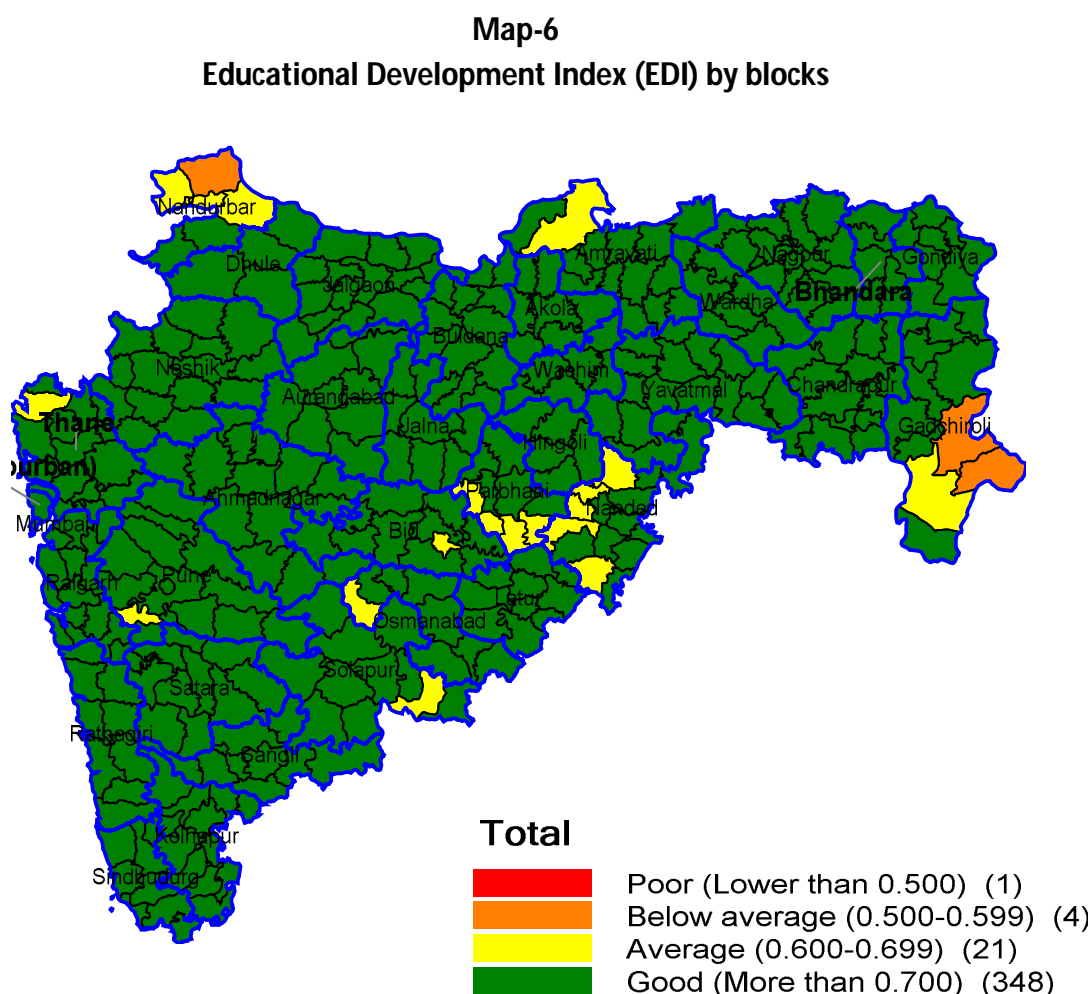
Area	Poor	Below average	Average	Good	Total
Infrastructure	7	20	74	272	373
Teacher	7	22	104	243	373
Outcome	7	2	6	361	373
Overall EDI	1	4	22	346	373

The analysis reveals that various blocks are at different stages of development and they are different in each category. Table-10 shows that for infrastructure index 272 blocks and for teacher index 243 blocks are in good category, while 361 blocks are in good category in outcome index. This analysis shows that the blocks are lagging behind in infrastructure and teacher index.

The analysis revealed that high disparity exists between blocks as well as between different areas. Index value of 182 blocks is in good category for all three areas, while in other blocks one area is in good category and other areas are either in average, below average or average category.

G. Block wise overall Educational Development Index (EDI) :

Block wise status of EDI has been shown in **Map-6**.



Note: Jiwati block of Chandrapur district and Kadegaon block of Sangli district and 20 MCs are not shown in this map.

The details of top ten and bottom ranked blocks as per the EDI value is given in **Table-11**.

Table-11
Ten top and bottom ranked blocks in EDI

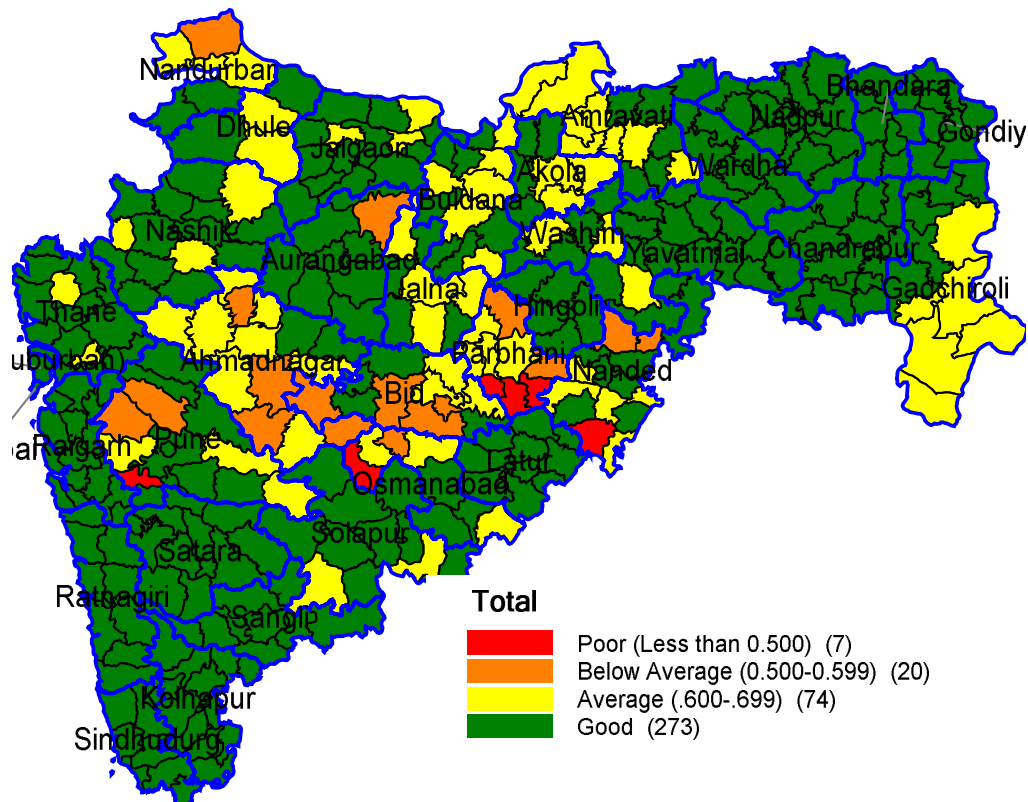
Sl.No.	Top ranked				Bottom Ranked			
	Rank	District	Block	EDI value	Rank	District	block	EDI value
1	1	Gondiya	Salekasa	0.926	373	Akola	Akola (M Corp.)	0.427
2	2	Ratnagiri	Guhagar	0.908	372	Nanded	Nanded Waghala (M Corp.)	0.508
3	3	Ratnagiri	Dapoli	0.907	371	Gadchiroli	Bhamragad	0.521
4	4	Ratnagiri	Sangameshwar	0.902	370	Nandurbar	Akrani	0.557
5	5	Ratnagiri	Mandangad	0.899	369	Gadchiroli	Etapalli	0.587
6	6	Bhandara	Lakhani	0.891	368	Pune	Velhe	0.629
7	7	Gondiya	ArjuniMorgaon	0.891	367	Nanded	Hadgaon	0.635
8	8	Chandrapur	Sawali	0.889	366	Gadchiroli	Aheri	0.641
9	9	Chandrapur	Warora	0.888	365	Nanded	Nanded	0.645
10	10	Nagpur	Katol	0.887	364	Nandurbar	Shahade	0.656

Based on the EDI Value, Saleska (Gondiya) block tops the list and Akola (M.Corp) is ranked at the bottom of the list.

H. Block wise Infrastructure Index :

Block wise status of infrastructure index has been shown in **Map-7**.

Map-7
Infrastructure Index (EDI) by blocks



Note: Jiwati block of Chandrapur district and Kadegaon block of Sangli district and 20 MCs are not shown in this map.

Ten top and bottom ranked blocks in infrastructure index are given in **Table-12**.

Table-12
Ten top and bottom ranked blocks in infrastructure index

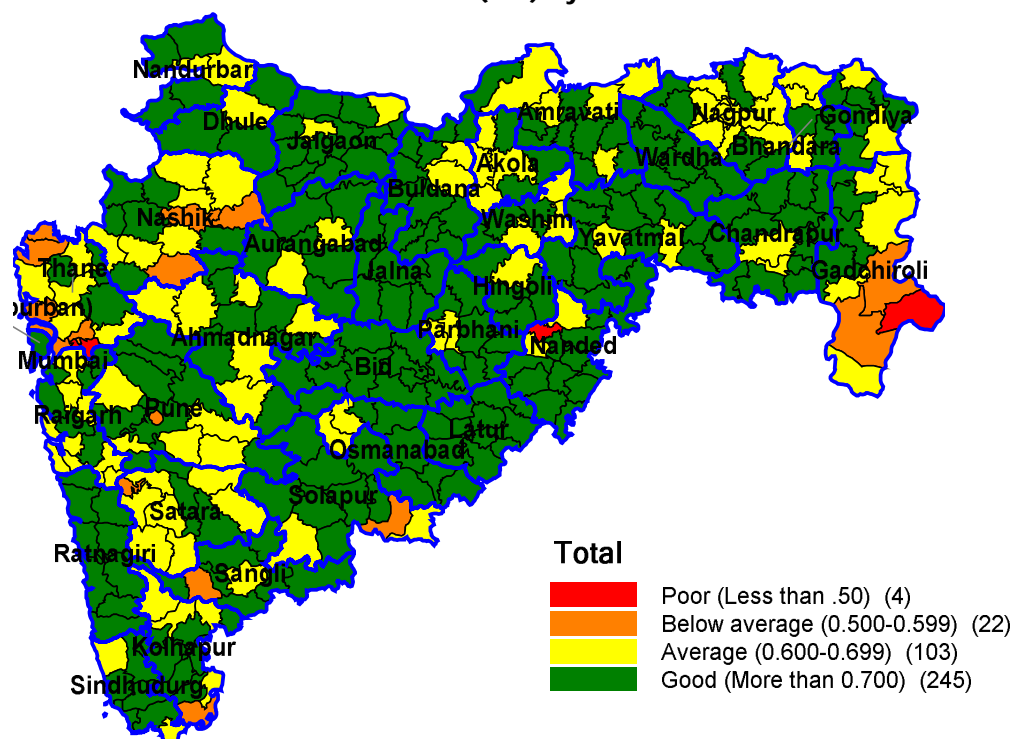
Sl.No.	Top ranked				Bottom Ranked			
	Rank	District	Block	EDI value	Rank	District	block	EDI value
1	1	Raigarh	Mangaon	0.961	373	Pune	Velhe	0.351
2	2	Ratnagiri	Dapoli	0.959	372	Parbhani	Sonpeth	0.429
3	3	Ratnagiri	Mandangad	0.959	371	Parbhani	Gangakhed	0.437
4	4	Ratnagiri	Guhagar	0.955	370	Nanded	Mukhed	0.456
5	5	Gondiya	Deori	0.953	369	Parbhani	Palam	0.470

6	6	Gondiya	Salekasa	0.953	368	Akola	Akola (M Corp.)	0.492
7	7	Raigarh	Mhasla	0.951	367	Osmanabad	Paranda	0.494
8	8	Ratnagiri	Lanja	0.949	366	Parbhani	Jintur	0.516
9	9	Gondiya	ArjuniMorgaon	0.946	365	Bid	Kaij	0.517
10	10	Gondiya	Sadak-Arjuni	0.943	364	Bid	Dharur	0.517

I. Block wise Teacher Index :

Block wise status of teacher index has been shown in **Map-8**.

Map-8
Teacher Index (EDI) by blocks



Note: Jiwati block of Chandrapur district and Kadegaon block of Sangli district and 20 MCs are not shown in this map.

Ten top and bottom ranked blocks in Teacher index are given in **Table-13**.

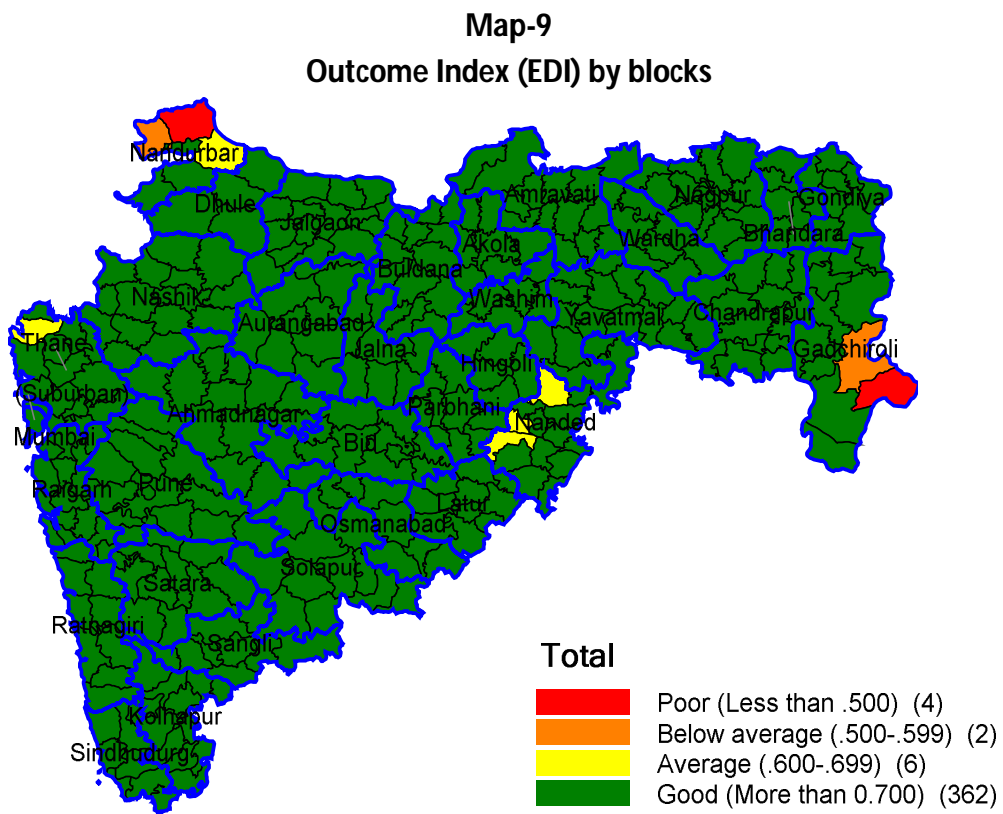
Table-13
Ten top and bottom ranked blocks in teacher index

Sl. No.	Top ranked				Bottom Ranked			
	Rank	District	Block	EDI value	Rank	District	block	EDI value
1	1	Chandrapur	Pombhurna	0.876	373	Nanded	Ardhapur	0.423
2	2	Nanded	Mahoor	0.860	372	Nashik	Malegaon (M Corp.)	0.473
3	3	Yavatmal	Zari-Jamani	0.858	371	Thane	Ambarnath	0.480

4	4	Chandrapur	Sawali	0.855	370	Gadchiroli	Bhamragad	0.483
5	5	Chandrapur	Gondpipri	0.852	369	Thane	Thane (M. corp.)	0.503
6	6	Bid	Ambejogai	0.851	368	Nashik	Nashik (M Corp.)	0.523
7	7	Bid	Bid	0.848	367	Thane	Mira-Bhayandar (M Corp.)	0.538
8	8	Parbhani	Palam	0.848	366	Sangli	Walwa	0.538
9	9	Latur	Shirur-Anantpal	0.847	365	Gadchiroli	Aheri	0.538
10	10	Latur	Ahmadpur	0.847	364	Thane	Kalyan-Dombivli (M Corp.)	0.539

J. Block wise Outcome Index :

Block wise status of outcome index has been shown in **Map-9**.



Note: Jiwati block of Chandrapur district and Kadegaon block of Sangli district and 20 MCs are not shown in this map.

Ten top and bottom ranked blocks in Outcome index are given in **Table-14**.

Table-14
Ten top and bottom ranked blocks in outcome index

Sl.No.	Top ranked				Bottom Ranked			
	Rank	District	Block	EDI value	Rank	District	block	EDI value
1	1	Ratnagiri	Sangameshwar	0.990	373	Akola	Akola (M Corp.)	0.121

2	2	Sindhudurg	Vaibhavvadi	0.987	372	Nanded	NandedWaghala (M Corp.)	0.276
3	3	Ratnagiri	Khed	0.976	371	Nandurbar	Akrani	0.392
4	4	Gondiya	Salekasa	0.975	370	Gadchiroli	Bhamragad	0.421
5	5	Chandrapur	Nagbhir	0.975	369	Gadchiroli	Etapalli	0.506
6	6	Chandrapur	Sawali	0.974	368	Nandurbar	Akkalkuwa	0.568
7	7	Gondiya	Amgaon	0.972	367	Nandurbar	Shahade	0.605
8	8	Raigarh	Mhasla	0.971	366	Nanded	Nanded	0.638
9	9	Gondiya	Tirora	0.971	365	Nanded	Loha	0.663
10	10	Gondiya	Gondiya	0.970	364	Nanded	Hadgaon	0.671

6.0 Analysis of Municipal Corporation wise Educational Development Index (EDI), 2011-12

Total 13 indicators have been used to calculate EDI, which belong to three areas namely Infrastructure, Teacher and Outcome and separate index has been calculated for each area. Value of indicators has been given in **Annex-5**. MC wise Infrastructure, Teacher, Outcome and Overall EDI index value and MC's rank has been given in **Annex-6**. MCs have been ranked from 1 to 22 based on EDI value in a descending order. Rank one has been assigned to MC having top rank and similarly rank 22 has been assigned to the MC ranked at the bottom.

Number of MCs by EDI categories and areas has been shown in the **Table-15**.

Table-15
Number of MCs by Category of index by area

Area	Poor	Below average	Average	Good	Total
Infrastructure	3	2	5	12	22
Teacher	2	4	5	11	22
Outcome	2	0	0	20	22
EDI	2	1	4	15	22

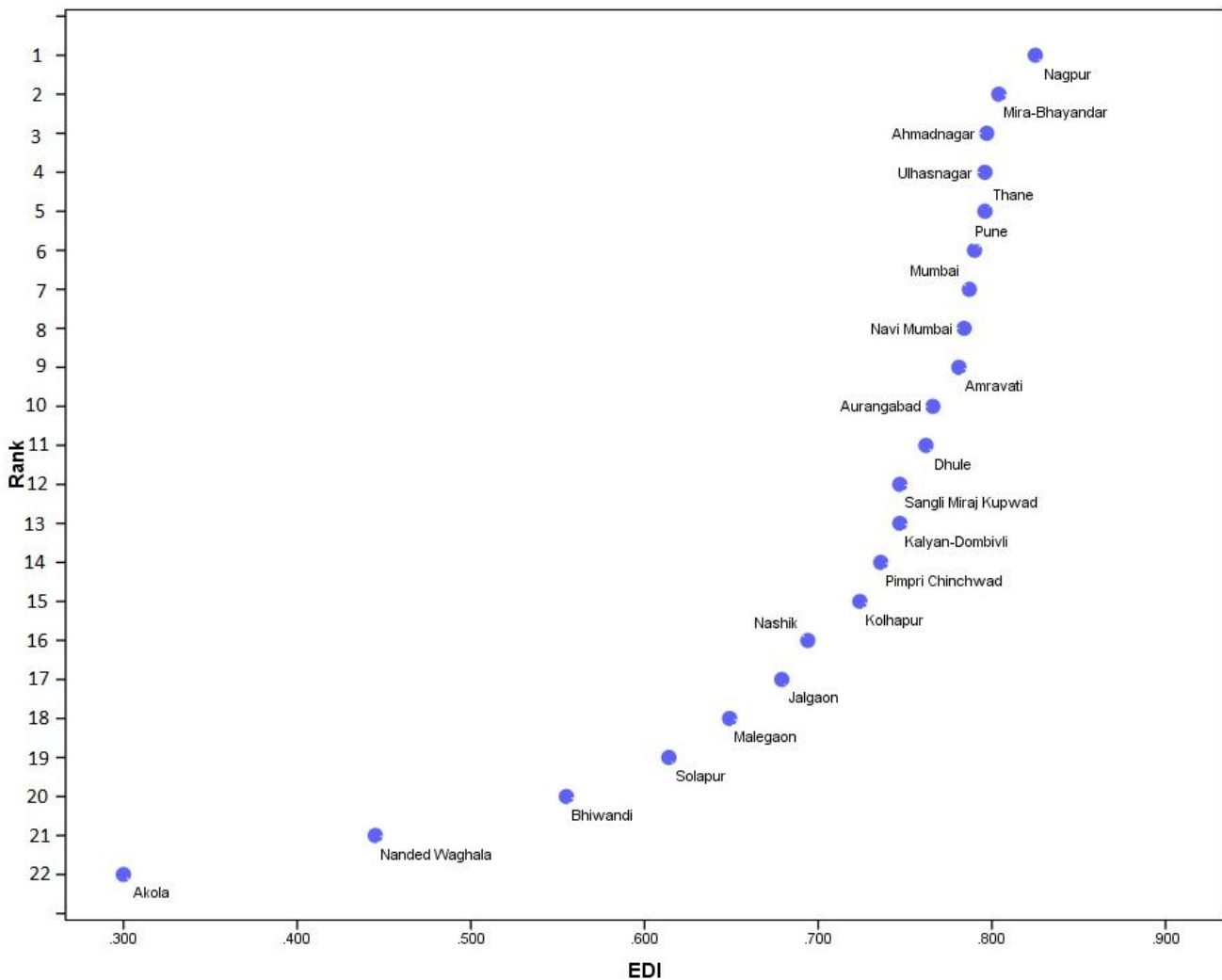
The analysis reveals that various MCs are at different stage of development and they are different in each category. Table-3 shows that for infrastructure index 12 MCs and for teacher index 11 MCs are in good category, while 20 MCs are in good category in outcome index. This analysis shows that the urban area is lagging behind in infrastructure and teacher index.

The analysis revealed that high disparity exists between MCs as well as between different areas. Index value of seven MCs namely, Nagpur, Ahemadnagar, Ulhasnagar, Thane, Pune, Navi Mumbai and Aurangabad, are in good category for all three areas and EDI, while Nashik have all four types of categories.

K. Municipal Corporation wise overall Educational Development Index (EDI) :

Rank of the MC and EDI value has been shown in **Figure-2**.

Figure -2
Rank of the MC and EDI value



Based on the data presented in Figure-2 and Annex-5 it can be summarized that on the basis of EDI only Akola and Nanded Waghala MCs are in poor category and 15 MCs are in good category. 4 MCs, namely Nashik, Jalgaon, Malegaon and Solapur, are in average category and Bhiwandi MC is in the below average category.

The details of top five and bottom ranked MCs as per the EDI value is given in **Table-16**.

Table-16
Five top and bottom ranked MCs in EDI

Sl.No.	Top ranked			Bottom Ranked		
	Rank	MC	EDI value	Rank	MC	EDI value
1	1	Nagpur	0.825	22	Akola	0.300
2	2	Mira-Bhayandar	0.804	21	Nanded Waghala	0.445
3	3	Ahmadnagar	0.797	20	Bhiwandi	0.555
4	4	Ulhasnagar	0.796	19	Solapur	0.614
5	5	Thane	0.796	18	Malegaon	0.649

Based on the EDI Value, Nagpur MC tops the list and Akola MC is ranked at the bottom of the list.

L. Municipal Corporation wise Infrastructure Index :

Annex-2 shows that three MCs namely, Bhiwandi, Nanded and Akola are in poor category and 12 MCs are in good category. Malegaon and Solapur MCs are in below average, and five MCs namely, Amravati, Sangli, Pimpri Chinchwad, Nashik and Jalgaon, are in average category in infrastructure index.

Five top and bottom ranked MCs in infrastructure index are given in **Table-17**.

Table-17
Five top and bottom ranked MCs in infrastructure index

Sl.No.	Top			Bottom		
	Rank	MC	Infrastructure Index	Rank	MC	Infrastructure Index
1	1	Mira-Bhayandar	0.866	22	Akola	0.245
2	2	Navi Mumbai	0.820	21	Bhiwandi	0.302
3	3	Nagpur	0.806	20	Nanded Waghala	0.487
4	4	Ahmadnagar	0.803	19	Malegaon	0.519
5	5	Ulhasnagar	0.790	18	Solapur	0.521

M. Municipal Corporation wise Teacher Index :

Annex-2 shows that Nashik and Bhiwandi MCs are in poor category; four MCs namely, Solapur, Malegaon, Nanded Waghala and Kolhapur, are in below average and five MCs are in average category, while 11 MCs are in good category.

Five top and bottom MCs in Teacher index are given in **Table-18**.

Table-18
Five top and bottom ranked MCs in teacher index

Sl.No.	Top			Bottom		
	Rank	Name of the MC	Teacher Index	Rank	Name of the MC	Teacher Index
1	1	Amravati	0.812	22	Nashik	0.419
2	2	Nagpur	0.804	21	Bhiwandi	0.490
3	3	Ulhasnagar	0.798	20	Solapur	0.526
4	4	Pune	0.769	19	Malegaon	0.552
5	5	Navi Mumbai	0.759	18	Nanded Waghala	0.576

N. Municipal Corporation wise Outcome Index :

Annex-3 shows that Akola and Nanded Waghala MCs are in poor category, while remaining 20 MCs are in good category.

Five top and bottom MCs in Outcome index are given in **Table-19**.

Table-19
Five top and bottom ranked MCs in outcome index

Sl.No.	Top			Bottom		
	Rank	MC	Outcome Index	Rank	MC	Outcome Index
1	1	Mumbai	0.887	22	Akola	0.095
2	2	Amravati	0.885	21	Nanded Waghala	0.322
3	3	Nashik	0.874	20	Navi Mumbai	0.761
4	4	Pune	0.872	19	Jalgaon	0.765
5	5	Bhiwandi	0.864	18	Solapur	0.766

O. Summary:

EDI is an effective tool for decision making, i.e. it helps in identifying backward MCs where more focus is required. Infrastructure, Teacher and Outcome index further contribute in identifying area of focus within the identified geographical area of focus. The above analysis reveals that high disparity exists between MCs and one area to other area. Seven MCs namely, Nagpur, Ahmadnagar, Ulhasnagar, Thane, Pune, Navi Mumbai and Aurangabad, are in good category for all three areas and EDI, while Nashik have all four types of categories.

Status of MC varies from area to area, i.e. the MC could be good in one area but may be performing poor or below average in other areas. Nagpur is top ranked MC in educational development while Akola is bottom ranked MC. Focus is required on Akola, Nanded Waghala, Bhiwandi, Solapur, Malegaon, Jalgaon and Nashik MCs in educational development.

Key educational indicators by districts, 2011-12

District	Access			Infrastructure				Teacher					Outcome			
	Ratio of Primary to Upper Primary Schools/Sections	Percentage of Habitations not Served by primary education facility	Availability of Schools per 1000 Child Population	Student Classroom Ratio (SCR) more than 30/35	Percentage of schools do not have Drinking water facility	Percentage of schools do not have separate toilet for boys	Percentage of schools do not have separate toilet for girls	Percentage of Schools with Female Teachers (in schools with 2 and more teachers)	Pupil Teacher Ratio (PTR) More than 30 /35	Single teacher school in Primary Schools and enrolment is more than 15	Less than 3 teachers in Upper Primary Schools	Teachers without Professional Qualification	Gender Parity Index	Apparent Survival Rate (Grade 1-7)	Drop out rate	Transition Rate from Primary to Upper Primary level (only for Upper Primary level)
Maharashtra	1.84	4.65	6.24	25.21	5.6	9.1	24.0	68.11	28.05	2.69	9.00	1.74	0.88	98.11	2.35	98.2
Nandurbar	2.83	18.28	8.93	36.79	2.4	12.5	27.7	57.62	30.03	0.17	6.97	1.20	0.90	67.97	7.81	83.9
Dhule	2.41	1.31	6.57	41.00	1.2	13.7	19.5	69.78	43.64	1.42	5.07	1.02	0.85	83.35	1.12	100.0
Jalgaon	1.66	0.67	5.06	47.63	2.5	9.7	12.2	67.20	47.40	0.75	4.62	0.47	0.83	94.11	0.73	98.0
Buldana	1.63	2.31	6.09	26.38	7.2	15.1	18.0	52.74	33.85	1.22	8.66	0.72	0.87	100.00	2.36	98.3
Akola	1.63	1.92	6.21	24.54	9.1	13.9	28.6	69.22	28.84	6.78	8.12	0.68	0.92	100.00	3.95	93.6
Washim	1.56	0.00	7.45	32.19	13.3	9.6	8.9	56.74	37.68	3.70	10.59	1.29	0.90	100.00	3.57	97.0
Amravati	1.64	0.59	6.36	22.76	1.7	11.2	55.7	74.80	25.86	5.29	7.44	0.67	0.92	100.00	2.72	98.3
Wardha	1.99	0.20	6.99	13.64	1.0	5.2	31.0	74.18	14.41	1.58	6.41	0.18	0.92	100.00	0.85	98.5
Nagpur	1.65	2.50	5.49	23.17	0.1	3.2	10.9	84.24	25.69	3.54	8.64	2.33	0.92	100.00	2.92	98.5
Bhandara	1.73	16.19	3.59	16.38	4.7	9.9	7.0	70.02	21.76	1.43	11.15	1.84	0.94	100.00	1.16	98.2
Gondiya	1.77	21.35	8.01	20.75	0.0	3.6	2.8	62.13	18.93	4.52	8.82	4.51	0.95	100.00	1.46	99.6
Gadchiroli	2.38	3.10	12.71	7.65	6.5	11.8	51.6	50.60	9.07	10.30	6.38	10.06	0.93	95.83	5.28	92.4
Chandrapur	1.93	5.74	7.07	13.51	3.6	5.6	36.7	62.73	16.03	1.23	4.94	2.68	0.91	100.00	0.51	99.8
Yavatmal	1.80	2.40	7.78	24.36	4.9	5.2	30.7	60.47	28.50	3.99	7.27	1.21	0.90	100.00	3.39	96.0
Nanded	1.60	1.77	7.12	26.53	8.3	16.7	31.3	56.70	31.29	2.73	3.37	3.65	0.92	75.01	7.43	90.9
Hingoli	1.44	0.61	6.93	34.10	6.4	9.8	14.3	48.88	42.05	2.11	4.33	1.39	0.92	82.52	4.06	93.6
Parbhani	1.36	4.89	7.02	30.63	22.6	14.6	32.9	57.07	30.91	0.33	5.67	2.69	0.90	81.61	6.72	95.2
Jalna	1.66	1.10	7.63	30.70	9.3	12.2	13.9	51.07	34.63	1.53	5.31	0.77	0.90	83.90	4.15	95.4
Aurangabad	1.75	1.73	6.79	28.28	13.4	2.3	21.7	68.43	29.66	1.76	2.47	5.28	0.88	91.48	4.47	98.4

District	Access			Infrastructure				Teacher					Outcome			
	Ratio of Primary to Upper Primary Schools/Sections	Percent age of Habitations not Served by primary education facility	Availab ility of Schools per 1000 Child Population	Studen t Classroom Ratio (SCR) more than 30/35	Percen tage of schools do not have Drinkin g water facility	Percen tage of schools do not have separate toilet for boys	Percen tage of schools do not have separate toilet for girls	Percentag e of Schools with Female Teachers (in schools with 2 and more teachers)	Pupil Teacher Ratio (PTR) More than 30 /35	Single teacher school in Primary Schools and enrolme nt is more than 15	Less than 3 teachers in Upper Primary Schools	Teache rs without Professional Quali fication	Gender Parity Index	Appare nt Survival Rate (Grade 1-7)	Drop out rate	Transition Rate from Primary to Upper Primary level (only for Upper Primary level)
Nashik	2.32	0.00	6.24	31.72	0.0	6.1	54.8	64.89	38.72	4.57	11.94	2.29	0.88	91.95	0.87	98.8
Thane	1.87	0.03	5.29	38.44	1.6	10.0	5.5	77.68	43.79	7.25	11.62	2.28	0.88	89.68	2.22	97.8
Mumbai and Mur	1.02	0.00	1.93	57.40	0.0	5.0	7.3	95.48	52.62	2.08	8.88	0.79	0.90	100.00	0.00	100.0
Raigarh	2.52	25.73	10.15	11.08	2.2	5.0	9.3	67.38	13.24	3.16	13.63	2.24	0.90	100.00	2.16	97.3
Pune	1.99	9.17	5.46	23.27	8.4	12.6	25.9	78.11	25.35	1.81	8.42	1.88	0.86	99.17	0.41	100.0
Ahmadnagar	2.77	4.88	7.52	22.64	10.0	9.2	58.2	68.21	29.03	0.56	12.20	0.91	0.83	100.00	0.30	99.3
Bid	1.94	5.89	16.89	22.46	19.2	13.0	32.4	56.86	21.61	1.49	4.70	0.86	0.87	83.12	5.45	95.2
Latur	1.38	0.00	6.94	20.61	4.4	9.3	12.7	66.08	22.71	0.25	3.89	0.73	0.87	90.97	5.85	95.7
Osmanabad	1.37	3.98	6.79	16.84	12.2	22.3	16.8	62.11	21.99	2.13	14.85	0.16	0.89	90.07	3.80	97.2
Solapur	1.98	1.41	6.98	23.45	3.7	12.5	26.0	61.03	26.69	1.13	12.60	0.96	0.88	95.38	3.76	95.9
Satara	2.03	2.91	8.18	12.72	6.9	5.0	14.4	72.00	14.48	3.92	17.25	1.20	0.86	100.00	1.98	98.0
Ratnagiri	1.97	1.91	11.73	5.08	3.1	2.4	14.2	66.95	7.33	1.37	9.78	1.13	0.94	100.00	0.85	97.1
Sindhudurg	2.21	0.00	12.27	4.08	7.7	4.0	28.9	78.31	4.82	2.95	10.42	2.15	0.92	100.00	0.81	99.4
Kolhapur	1.58	2.81	5.97	16.92	0.0	10.0	11.8	67.56	21.72	1.58	13.60	0.96	0.82	100.00	0.87	100.0
Sangli	1.81	1.91	6.33	20.81	11.4	8.1	13.0	72.04	25.18	1.68	11.98	0.22	0.84	100.00	1.80	98.6

Index value and ranking by districts, 2011-12

District wise Maharashtra state



District	Index Value					Ranking				
	Access	Infrastructu	Teacher	Outcome	All	Access	Infrastructu	Teacher	Outcome	All
Ratnagiri	0.882	0.857	0.725	0.904	0.855	2	2	3	8	1
Wardha	0.820	0.743	0.793	0.905	0.819	6	7	1	7	2
Sindhudurg	0.822	0.732	0.706	0.923	0.807	4	8	6	5	3
Nagpur	0.762	0.818	0.664	0.830	0.784	23	4	14	13	4
Chandrapur	0.746	0.686	0.710	0.932	0.780	25	11	5	4	5
Mumbai	0.733	0.669	0.676	0.941	0.769	26	13	11	1	6
Mumbai (Suburban)	0.733	0.669	0.676	0.941	0.769	26	13	11	1	6
Gondiya	0.551	0.858	0.533	0.939	0.763	31	1	31	3	8
Kolhapur	0.767	0.761	0.627	0.831	0.762	21	5	21	12	9
Satara	0.791	0.750	0.565	0.790	0.741	16	6	30	18	10
Bhandara	0.542	0.731	0.648	0.911	0.733	32	9	16	6	11
Sangli	0.785	0.634	0.670	0.794	0.723	17	16	13	16	12
Yavatmal	0.804	0.655	0.615	0.752	0.711	10	15	23	21	13
Amravati	0.804	0.525	0.659	0.838	0.706	11	29	15	11	14
Pune	0.671	0.552	0.692	0.885	0.705	29	27	7	9	15
Jalgaon	0.779	0.606	0.691	0.755	0.704	19	19	8	19	16
Latur	0.822	0.700	0.784	0.540	0.690	5	10	2	31	17
Buldana	0.775	0.554	0.617	0.790	0.687	20	26	22	17	18
Nashik	0.810	0.572	0.490	0.800	0.682	9	21	33	15	19
Thane	0.792	0.677	0.470	0.713	0.679	15	12	34	22	20
Washim	0.831	0.563	0.529	0.752	0.675	3	24	32	20	21
Aurangabad	0.796	0.614	0.637	0.657	0.671	14	17	20	26	22
Solapur	0.804	0.604	0.610	0.673	0.670	12	20	24	25	23
Raigarh	0.291	0.830	0.590	0.819	0.670	34	3	29	14	24
Akola	0.783	0.512	0.592	0.706	0.645	18	30	28	23	25
Dhule	0.608	0.570	0.679	0.703	0.638	30	22	9	24	26
Jalna	0.819	0.563	0.647	0.567	0.634	7	23	17	29	27

District	Index Value					Ranking				
	Access	Infrastructu	Teacher	Outcome	All	Access	Infrastructu	Teacher	Outcome	All
Hingoli	0.814	0.608	0.601	0.547	0.632	8	18	27	30	28
Osmanabad	0.765	0.456	0.601	0.651	0.609	22	32	26	27	29
Ahmadnagar	0.412	0.446	0.644	0.845	0.597	33	33	19	10	30
Bid	0.920	0.402	0.718	0.478	0.591	1	34	4	32	31
Gadchiroli	0.710	0.545	0.303	0.606	0.560	28	28	35	28	32
Nanded	0.801	0.468	0.605	0.310	0.513	13	31	25	34	33
Parbhani	0.757	0.308	0.647	0.442	0.504	24	35	18	33	34
Nandurbar	0.227	0.555	0.677	0.078	0.354	35	25	10	35	35
Maharashtra	0.746	0.624	0.628	0.791	0.704					

*Districts have been ranked from 1 to 35 based on EDI value in a descending order. Rank one has been assigned to district having top rank and similarly rank 35 has been assigned to the MC ranked at the bottom.

Key educational indicators by blocks, 2011-12

District Code	District	Block	Infrastructure				Teacher					Outcome			
			Student Classroom Ratio (SCR) more than 30/35	Percent age of schools do not have Drinking water facility	Percent age of schools do not have separate toilet for boys	Percent age of schools do not have separate toilet for girls	Percent age of Schools with Female Teachers (in schools with 2 and more teachers)	Pupil Teacher Ratio (PTR) More than 30 /35	Single teacher school in Primary Schools and enrolment is more than 15	Less than 3 teachers in Upper Primary Schools	Teachers without Professional Qualification	Gender Parity Index	Apparent Survival Rate (Grade 1-7)	Drop out rate	Transition Rate from Primary to Upper Primary level (only for Upper Primary level)
		Maharashtra	25.21	5.6	9.1	24.0	68.11	28.05	2.69	9.00	1.74	0.88	98.11	2.35	98.2
2701	NANDURBAR	Akkalkuwa	40.93	1.6	12.4	37.1	66.02	24.45	0.87	5.93	0.6	0.93	60.69	15.5	76.4
2701	NANDURBAR	Akrani	26.14	7.9	24.6	59.0	79.33	17.63	0.00	18.52	0.9	0.96	34.37	17.8	61.5
2701	NANDURBAR	Talode	44.02	2.2	20.7	23.9	26.63	39.67	0.00	15.66	0	0.88	66.79	2.3	93.6
2701	NANDURBAR	Shahade	48.36	2.2	12.6	20.8	21.92	42.90	0.00	2.44	4.2	0.89	63.42	10.7	76.3
2701	NANDURBAR	Nandurbar	43.66	0.9	3.8	9.4	21.53	40.12	0.00	3.47	0.1	0.85	84.79	3.1	96.9
2701	NANDURBAR	Nawapur	20.22	0.0	5.6	15.4	33.15	19.38	0.00	2.70	0.3	0.93	93.56	5.1	93.9
2702	DHULE	Shirpur	40.70	0.5	10.5	11.6	43.84	45.82	2.00	7.83	0.9	0.85	68.82	4.9	94.0
2702	DHULE	Sindkhede	42.58	1.6	14.8	15.8	28.81	41.94	3.47	6.25	1.7	0.81	92.38	0.0	100.0
2702	DHULE	Sakri	30.97	1.1	15.0	27.4	36.70	35.81	1.18	0.67	0.9	0.91	68.01	5.4	94.7
2702	DHULE	Dhule	50.53	1.6	17.3	22.1	19.52	48.40	0.00	3.38	1	0.83	87.28	0.0	100.0
2702	DHULE	Dhule (M Corp.)	53.63	1.1	6.7	9.5	4.55	59.22	0.00	8.46	0.7	0.84	100.00	0.0	100.0
2703	JALGAON	Chopda	59.66	0.4	5.6	10.7	33.62	51.93	0.81	2.80	0.2	0.83	82.60	1.4	96.6
2703	JALGAON	Yawal	37.96	0.9	13.4	16.2	30.05	44.91	1.56	2.41	0.3	0.89	91.87	2.3	96.7
2703	JALGAON	Raver	48.35	2.5	13.2	12.8	38.17	55.79	0.80	13.91	0.8	0.86	87.97	1.3	95.9
2703	JALGAON	Edlabad (Muktainagar)	43.48	2.9	8.0	10.9	50.00	44.93	2.60	0.00	2	0.86	94.52	5.3	92.9
2703	JALGAON	Bodvad	44.29	0.0	8.6	12.9	44.29	45.71	0.00	3.45	0.3	0.85	99.31	0.6	94.8
2703	JALGAON	Bhusawal	41.97	3.1	15.0	16.6	13.99	37.31	0.00	0.00	0.7	0.81	100.00	0.0	100.0

District Code	District	Block	Infrastructure				Teacher					Outcome			
			Student Classroom Ratio (SCR) more than 30/35	Percent age of schools do not have Drinking water facility	Percent age of schools do not have separate toilet for boys	Percent age of schools do not have separate toilet for girls	Percent age of Schools with Female Teachers (in schools with 2 and more teachers)	Pupil Teacher Ratio (PTR) More than 30 /35	Single teacher school in Primary Schools and enrolment is more than 15	Less than 3 teachers in Upper Primary Schools	Teachers without Professional Qualification	Gender Parity Index	Apparent Survival Rate (Grade 1-7)	Drop out rate	Transition Rate from Primary to Upper Primary level (only for Upper Primary level)
2703	JALGAON	Jalgaon	38.62	0.0	9.0	13.1	28.47	35.86	1.37	1.43	0.2	0.89	90.49	0.0	99.8
2703	JALGAON	Erandol	52.54	0.0	8.5	11.0	32.20	47.46	0.00	0.00	0.5	0.90	100.00	5.9	97.4
2703	JALGAON	Dharangaon	52.94	2.2	16.2	17.6	40.74	50.74	1.33	12.07	0.4	0.86	100.00	0.0	100.0
2703	JALGAON	Amalner	34.43	0.8	6.1	7.4	31.28	38.11	0.00	0.85	0	0.80	100.00	0.5	98.7
2703	JALGAON	Parola	44.02	3.3	12.0	12.0	33.88	47.83	0.00	4.94	0.4	0.84	90.96	0.5	96.4
2703	JALGAON	Bhadgaon	50.00	2.2	9.0	17.9	41.67	53.73	2.50	2.00	0.5	0.82	91.86	0.6	100.0
2703	JALGAON	Chalisingaon	52.58	9.0	4.5	4.5	33.44	60.65	0.65	3.95	0.1	0.80	84.33	0.0	100.0
2703	JALGAON	Pachora	47.33	4.1	6.6	9.5	38.43	28.40	0.00	5.50	0	0.83	100.00	3.0	100.0
2703	JALGAON	Jamner	50.74	1.5	9.9	13.2	39.48	42.28	0.00	3.74	1.6	0.79	91.00	0.0	95.3
2703	JALGAON	Jalgaon (M Corp.)	58.91	0.5	13.4	18.3	7.00	68.81	1.85	10.27	0.1	0.79	96.67	2.9	94.3
2704	BULDANA	Jalgaon (Jamod)	26.90	13.1	8.3	4.1	54.86	33.79	1.67	10.84	1.5	0.89	94.63	1.8	96.2
2704	BULDANA	Sangrapur	29.32	22.6	12.8	18.0	62.60	38.35	2.90	6.56	0.6	0.95	97.95	5.9	87.5
2704	BULDANA	Shegaon	35.25	13.9	17.2	15.6	27.50	39.34	1.85	9.52	1.7	0.89	100.00	0.5	97.8
2704	BULDANA	Nandura	29.49	3.2	16.0	17.9	46.79	36.54	0.00	9.09	0.4	0.94	100.00	0.9	97.8
2704	BULDANA	Malkapur	32.54	5.6	7.1	15.9	27.78	45.24	0.00	2.99	0	0.88	100.00	1.2	100.0
2704	BULDANA	Motala	23.57	3.8	22.3	23.6	50.64	31.21	1.27	5.41	0.7	0.91	100.00	2.7	92.4
2704	BULDANA	Khamgaon	35.25	13.1	11.5	17.6	41.98	38.93	1.10	13.51	2.3	0.89	100.00	1.5	96.4
2704	BULDANA	Mehkar	29.18	1.7	12.4	13.3	55.41	34.33	1.80	5.04	0.3	0.83	100.00	2.5	100.0
2704	BULDANA	Chikhli	22.76	1.6	19.9	28.9	47.13	28.86	0.00	12.00	0.1	0.88	100.00	2.2	100.0
2704	BULDANA	Buldana	19.83	2.1	13.1	17.3	32.91	25.32	0.00	9.35	0.1	0.78	100.00	1.8	100.0
2704	BULDANA	Deolgaon Raja	12.21	1.5	18.3	16.0	51.15	22.90	0.00	9.33	0.1	0.78	100.00	0.0	100.0

District Code	District	Block	Infrastructure				Teacher					Outcome			
			Student Classroom Ratio (SCR) more than 30/35	Percent age of schools do not have Drinking water facility	Percent age of schools do not have separate toilet for boys	Percent age of schools do not have separate toilet for girls	Percent age of Schools with Female Teachers (in schools with 2 and more teachers)	Pupil Teacher Ratio (PTR) More than 30 /35	Single teacher school in Primary Schools and enrolment is more than 15	Less than 3 teachers in Upper Primary Schools	Teachers without Professional Qualification	Gender Parity Index	Apparent Survival Rate (Grade 1-7)	Drop out rate	Transition Rate from Primary to Upper Primary level (only for Upper Primary level)
2704	BULDANA	Sindkhed Raja	21.14	8.6	16.0	22.9	58.96	31.43	0.00	5.56	0	0.90	93.81	3.7	96.6
2704	BULDANA	Lonar	26.57	10.5	21.7	16.1	58.27	41.26	6.67	6.49	1.6	0.85	95.49	4.7	93.9
2705	AKOLA	Telhara	30.26	7.2	8.6	20.4	43.26	38.82	17.54	7.41	0.2	0.96	100.00	1.8	97.0
2705	AKOLA	Akot	24.39	6.9	15.9	24.0	36.82	30.49	4.95	4.62	0.6	0.95	100.00	4.0	92.2
2705	AKOLA	Balapur	26.29	7.4	12.0	17.7	36.26	30.86	5.80	10.20	1.2	0.94	100.00	0.4	98.6
2705	AKOLA	Akola	30.04	5.9	15.1	26.7	14.83	28.78	0.65	10.16	0.8	0.91	100.00	0.7	100.0
2705	AKOLA	Murtijapur	10.76	18.4	12.6	35.0	33.33	22.42	12.66	5.26	0.9	0.89	100.00	3.2	99.7
2705	AKOLA	Patur	21.66	7.0	17.2	21.7	49.31	29.30	19.64	9.52	0.3	0.95	100.00	4.7	93.7
2705	AKOLA	Barshitakli	15.79	15.3	9.5	48.4	38.38	20.00	6.25	8.60	0.2	0.93	100.00	3.3	92.4
2705	AKOLA	Akola (M Corp.)	50.00	5.4	25.0	48.2	8.93	42.86	0.00	0.00	0.6	0.88	33.25	27.0	27.1
2706	WASHIM	Malegaon	32.24	24.0	11.5	10.9	53.63	39.34	2.94	10.91	1.8	0.92	100.00	3.7	94.0
2706	WASHIM	Mangrulpir	34.03	6.8	4.7	6.3	39.36	30.37	2.35	4.08	1.4	0.92	100.00	4.9	94.3
2706	WASHIM	Karanja	27.00	8.0	10.1	8.4	36.32	33.76	2.11	20.00	0.3	0.89	100.00	3.3	96.8
2706	WASHIM	Manora	31.77	21.4	9.4	7.8	44.57	36.98	8.43	6.52	2.5	0.95	100.00	7.2	88.0
2706	WASHIM	Washim	35.27	12.0	10.1	10.5	40.16	38.37	3.09	10.53	1.6	0.85	100.00	1.1	100.0
2706	WASHIM	Risod	32.99	9.6	11.7	9.1	48.70	47.72	4.48	9.02	0.5	0.88	100.00	1.6	100.0
2707	AMRAVATI	Dharni	34.74	3.8	5.2	64.8	54.03	38.97	3.28	2.03	0.1	0.94	100.00	3.6	95.4
2707	AMRAVATI	Chikhaldara	10.62	3.1	15.5	75.7	50.00	12.83	21.95	9.35	1.4	0.96	91.57	12.5	82.4
2707	AMRAVATI	Anjangaon Surji	19.23	0.0	15.4	59.6	25.32	28.21	0.00	6.17	0.1	0.92	100.00	2.4	100.0
2707	AMRAVATI	Achalpur	26.12	2.9	18.8	50.6	24.79	31.02	3.26	11.11	0.6	0.92	100.00	1.4	98.4
2707	AMRAVATI	Chandurbazar	26.84	0.5	7.9	53.2	20.22	28.42	2.38	6.59	1	0.94	100.00	2.0	100.0

District Code	District	Block	Infrastructure				Teacher					Outcome			
			Student Classroom Ratio (SCR) more than 30/35	Percent age of schools do not have Drinking water facility	Percent age of schools do not have separate toilet for boys	Percent age of schools do not have separate toilet for girls	Percent age of Schools with Female Teachers (in schools with 2 and more teachers)	Pupil Teacher Ratio (PTR) More than 30 /35	Single teacher school in Primary Schools and enrolment is more than 15	Less than 3 teachers in Upper Primary Schools	Teachers without Professional Qualification	Gender Parity Index	Apparent Survival Rate (Grade 1-7)	Drop out rate	Transition Rate from Primary to Upper Primary level (only for Upper Primary level)
2707	AMRAVATI	Morshi	18.79	1.2	4.2	63.0	26.25	21.82	5.36	11.70	0.9	0.96	100.00	2.0	97.3
2707	AMRAVATI	Warud	22.87	0.0	8.0	48.4	21.08	24.47	2.99	12.26	0.3	0.94	100.00	2.7	99.7
2707	AMRAVATI	Teosa	10.91	0.0	6.4	58.2	23.58	18.18	8.57	8.06	0.4	0.90	100.00	1.4	98.4
2707	AMRAVATI	Amravati	16.67	2.6	12.2	53.8	12.90	18.59	1.79	9.64	0	0.90	100.00	8.0	86.9
2707	AMRAVATI	Bhatkuli	9.46	2.0	16.2	67.6	24.65	10.14	9.09	7.25	0.2	0.95	100.00	4.1	94.2
2707	AMRAVATI	Daryapur	17.27	0.5	15.0	69.1	31.46	16.82	7.14	9.17	0.1	0.89	100.00	2.4	97.9
2707	AMRAVATI	Nandgaon-Khandeshwar	11.88	5.6	5.6	63.8	25.16	14.38	8.62	4.76	0.7	0.93	100.00	3.8	93.8
2707	AMRAVATI	Chandur Railway	17.48	4.9	4.9	60.2	21.78	21.36	3.03	12.07	0.6	0.95	100.00	1.3	100.0
2707	AMRAVATI	Dhamangaon Railway	18.40	0.0	11.2	63.2	20.49	22.40	3.85	6.06	0.7	0.90	100.00	0.0	100.0
2707	AMRAVATI	Amravati (M Corp.)	46.59	0.0	12.8	18.4	1.81	49.55	2.33	2.51	1.5	0.91	100.00	0.4	100.0
2708	WARDHA	Ashti	7.61	0.0	3.3	28.3	27.27	11.96	2.33	2.50	0	0.97	100.00	0.6	96.9
2708	WARDHA	Karanja	9.17	0.0	4.2	20.0	33.04	10.00	6.00	1.75	0.2	0.95	100.00	1.9	96.8
2708	WARDHA	Arvi	7.58	0.9	7.1	35.1	23.44	11.85	0.00	11.54	0.3	0.93	100.00	4.8	93.5
2708	WARDHA	Seloo	11.84	0.0	2.6	46.1	29.80	15.13	1.22	2.04	0.3	0.91	100.00	2.5	95.9
2708	WARDHA	Wardha	22.05	0.0	4.9	15.6	8.78	20.91	0.00	5.41	0	0.90	100.00	0.9	100.0
2708	WARDHA	Deoli	14.46	1.8	4.8	35.5	17.68	18.07	1.23	9.21	0.5	0.92	100.00	0.0	100.0
2708	WARDHA	Hinganghat	20.26	2.6	6.0	30.6	27.19	18.10	2.17	4.24	0.2	0.90	100.00	0.0	100.0
2708	WARDHA	Samudrapur	7.22	1.5	6.7	40.2	49.47	4.12	2.99	11.24	0	0.94	100.00	2.6	86.2
2709	NAGPUR	Narkhed	8.42	0.0	2.6	10.0	27.32	12.11	4.41	10.64	0.2	0.94	100.00	1.7	99.0
2709	NAGPUR	Katol	9.63	0.0	2.8	6.4	26.89	11.93	3.41	6.93	0.8	0.90	100.00	0.3	100.0
2709	NAGPUR	Kalameshwar	10.34	0.7	3.4	6.9	22.22	16.55	1.67	13.24	1.9	0.95	100.00	0.9	97.2

District Code	District	Block	Infrastructure				Teacher					Outcome			
			Student Classroom Ratio (SCR) more than 30/35	Percent age of schools do not have Drinking water facility	Percent age of schools do not have separate toilet for boys	Percent age of schools do not have separate toilet for girls	Percent age of Schools with Female Teachers (in schools with 2 and more teachers)	Pupil Teacher Ratio (PTR) More than 30 /35	Single teacher school in Primary Schools and enrolment is more than 15	Less than 3 teachers in Upper Primary Schools	Teachers without Professional Qualification	Gender Parity Index	Apparent Survival Rate (Grade 1-7)	Drop out rate	Transition Rate from Primary to Upper Primary level (only for Upper Primary level)
2709	NAGPUR	Savner	15.20	0.0	2.0	3.9	22.84	21.08	6.52	6.52	2.1	0.91	100.00	0.2	100.0
2709	NAGPUR	Parseoni	20.92	0.0	0.7	1.3	23.84	16.99	2.74	7.58	0.3	0.93	100.00	3.7	92.1
2709	NAGPUR	Ramtek	13.43	0.0	1.5	17.4	27.13	16.92	10.59	10.00	1.4	0.94	100.00	1.2	100.0
2709	NAGPUR	Mauda	21.71	0.0	2.9	22.3	18.82	12.00	6.10	12.35	0.5	0.95	100.00	1.9	95.3
2709	NAGPUR	Kamptee	21.72	0.0	5.6	6.6	8.76	26.77	4.82	4.76	2.4	0.91	96.16	2.2	93.7
2709	NAGPUR	Nagpur (Rural)	16.73	0.0	2.9	11.3	9.56	19.64	1.06	12.10	4.1	0.84	90.14	0.5	100.0
2709	NAGPUR	Nagpur (Urban)	39.04	0.0	4.3	9.7	1.75	43.42	0.75	6.78	2.6	0.93	100.00	4.5	98.7
2709	NAGPUR	Hingna	19.71	0.0	3.8	8.2	15.15	23.56	5.06	10.58	5.4	0.90	90.72	2.5	95.7
2709	NAGPUR	Umred	20.43	0.5	2.7	9.1	24.59	20.97	1.16	9.33	0.8	0.92	100.00	2.5	100.0
2709	NAGPUR	Kuhi	10.05	0.0	3.5	24.1	35.83	9.05	9.09	13.33	2.1	0.94	100.00	1.8	99.2
2709	NAGPUR	Bhiwapur	12.03	0.0	0.0	25.6	46.51	10.53	5.88	11.67	1.4	0.94	100.00	4.2	88.5
2710	BHANDARA	Tumsar	15.35	6.3	13.0	10.2	32.41	24.02	1.04	22.52	1.1	0.96	100.00	4.0	96.0
2710	BHANDARA	Mohadi	18.24	0.0	4.7	8.8	22.22	26.35	6.90	7.41	0.9	0.95	100.00	1.8	94.5
2710	BHANDARA	Bhandara	17.46	8.3	13.9	1.6	16.27	22.22	0.00	4.58	2.6	0.91	100.00	0.0	100.0
2710	BHANDARA	Sakoli	15.82	3.8	6.3	7.6	31.85	19.62	1.32	5.80	1	0.95	100.00	5.4	93.3
2710	BHANDARA	Lakhani	8.97	1.4	4.8	5.5	32.41	19.31	0.00	4.23	1.1	0.90	100.00	0.0	100.0
2710	BHANDARA	Pauni	15.90	6.2	15.4	10.3	32.64	15.38	2.17	10.98	4.6	0.97	100.00	3.0	97.8
2710	BHANDARA	Lakhandur	23.85	2.3	3.8	5.4	51.54	26.15	0.00	15.71	0.7	0.97	100.00	2.7	93.8
2711	GONDIYA	Tirora	34.02	0.0	1.5	1.0	34.21	20.62	2.78	2.70	3.5	0.94	100.00	0.4	100.0
2711	GONDIYA	Goregaon	22.67	0.0	4.7	2.7	39.73	14.00	7.41	8.75	4	0.97	100.00	2.2	97.4
2711	GONDIYA	Gondiya	29.00	0.0	8.7	9.2	20.66	28.73	4.03	8.97	8	0.94	100.00	0.6	100.0

District Code	District	Block	Infrastructure				Teacher					Outcome			
			Student Classroom Ratio (SCR) more than 30/35	Percent age of schools do not have Drinking water facility	Percent age of schools do not have separate toilet for boys	Percent age of schools do not have separate toilet for girls	Percent age of Schools with Female Teachers (in schools with 2 and more teachers)	Pupil Teacher Ratio (PTR) More than 30 /35	Single teacher school in Primary Schools and enrolment is more than 15	Less than 3 teachers in Upper Primary Schools	Teachers without Professional Qualification	Gender Parity Index	Apparent Survival Rate (Grade 1-7)	Drop out rate	Transition Rate from Primary to Upper Primary level (only for Upper Primary level)
2711	GONDIYA	Amgaon	24.83	0.0	3.4	0.7	41.10	20.13	3.23	8.70	3.8	0.98	100.00	1.6	98.9
2711	GONDIYA	Salekasa	6.80	0.0	3.4	0.0	53.47	6.80	1.75	2.70	3.2	0.96	100.00	0.4	99.5
2711	GONDIYA	Sadak-Arjuni	16.77	0.0	0.0	0.0	40.00	12.57	2.78	11.39	3.1	0.92	100.00	3.1	98.3
2711	GONDIYA	Arjuni Morgaon	15.71	0.0	0.0	0.0	42.08	17.14	3.49	11.21	0.8	0.93	100.00	1.5	100.0
2711	GONDIYA	Deori	7.35	0.0	2.5	1.5	53.01	18.14	14.06	15.63	4	1.00	100.00	4.7	95.8
2712	GADCHIROLI	Desaiganj (Vadasa)	18.07	2.4	9.6	21.7	26.51	21.69	0.00	7.84	3.2	0.97	100.00	4.0	97.8
2712	GADCHIROLI	Armorli	12.32	4.3	6.5	59.4	33.09	12.32	0.00	3.64	6	0.94	100.00	1.5	100.0
2712	GADCHIROLI	Kurkheda	4.42	3.3	4.4	35.9	47.44	4.97	15.91	4.35	6.4	0.92	100.00	2.3	100.0
2712	GADCHIROLI	Korchi	1.48	5.9	8.1	65.2	53.64	1.48	17.78	9.76	12.1	1.00	99.87	6.5	88.7
2712	GADCHIROLI	Dhanora	4.46	13.4	12.9	57.6	51.35	5.36	14.29	5.80	9.7	0.99	84.30	9.3	84.3
2712	GADCHIROLI	Gadchiroli	7.87	4.5	8.4	40.4	26.90	10.11	0.00	8.16	5.6	0.90	100.00	0.0	100.0
2712	GADCHIROLI	Chamorshi	10.11	4.0	9.0	53.8	44.16	9.03	0.00	6.78	6.6	0.93	100.00	1.5	99.5
2712	GADCHIROLI	Mulchera	7.14	5.1	18.4	51.0	47.92	5.10	5.88	1.61	13.1	0.91	100.00	0.3	100.0
2712	GADCHIROLI	Etapalli	7.01	8.4	12.6	62.6	76.22	8.88	13.92	8.77	19.1	0.93	51.64	16.6	73.0
2712	GADCHIROLI	Bhamragad	5.88	10.8	17.6	52.9	74.68	6.86	31.25	8.00	19.6	0.90	45.71	18.4	65.7
2712	GADCHIROLI	Aheri	8.47	7.3	19.8	46.8	43.75	12.90	18.18	7.06	15.2	0.90	83.07	12.0	82.2
2712	GADCHIROLI	Sironcha	8.02	5.6	14.2	58.6	72.03	12.96	17.39	6.00	14.9	0.93	93.32	6.9	87.3
2713	CHANDRAPUR	Warora	10.55	1.4	2.8	21.1	29.17	14.22	0.00	2.13	0.5	0.90	100.00	0.0	100.0
2713	CHANDRAPUR	Chimur	11.76	3.2	2.7	47.5	38.43	13.12	4.65	1.75	1.8	0.96	100.00	2.8	96.4
2713	CHANDRAPUR	Nagbhir	11.69	2.6	2.6	35.1	37.66	12.99	0.00	4.29	0.8	0.94	100.00	0.0	100.0
2713	CHANDRAPUR	Brahmapuri	17.28	0.6	1.9	27.8	31.88	23.46	1.47	12.50	1.8	0.92	100.00	0.3	100.0

District Code	District	Block	Infrastructure				Teacher					Outcome			
			Student Classroom Ratio (SCR) more than 30/35	Percent age of schools do not have Drinking water facility	Percent age of schools do not have separate toilet for boys	Percent age of schools do not have separate toilet for girls	Percent age of Schools with Female Teachers (in schools with 2 and more teachers)	Pupil Teacher Ratio (PTR) More than 30 /35	Single teacher school in Primary Schools and enrolment is more than 15	Less than 3 teachers in Upper Primary Schools	Teachers without Professional Qualification	Gender Parity Index	Apparent Survival Rate (Grade 1-7)	Drop out rate	Transition Rate from Primary to Upper Primary level (only for Upper Primary level)
2713	CHANDRAPUR	Sawali	16.38	3.4	4.3	23.3	49.12	18.10	0.00	0.00	0.9	0.96	100.00	0.0	98.2
2713	CHANDRAPUR	Sindewahi	11.63	2.3	3.9	35.7	47.66	14.73	0.00	4.84	3.1	0.92	100.00	0.7	100.0
2713	CHANDRAPUR	Bhadravati	10.73	2.8	5.6	49.2	34.10	8.47	1.45	4.49	1.6	0.92	100.00	1.6	94.4
2713	CHANDRAPUR	Chandrapur	21.27	4.1	10.8	37.1	6.37	28.57	0.00	1.73	4.5	0.88	100.00	0.3	100.0
2713	CHANDRAPUR	Mul	16.24	4.3	6.0	24.8	33.62	19.66	0.00	7.35	2	0.96	100.00	3.0	97.2
2713	CHANDRAPUR	Pombhurna	9.46	0.0	12.2	36.5	51.35	4.05	0.00	0.00	2.1	0.98	100.00	3.4	94.0
2713	CHANDRAPUR	Ballarpur	28.00	0.0	9.0	27.0	9.28	35.00	6.82	2.00	3.2	0.83	100.00	0.0	100.0
2713	CHANDRAPUR	Korpana	11.18	1.8	4.1	33.5	57.74	14.71	2.04	15.63	4.2	0.89	100.00	2.2	98.5
2713	CHANDRAPUR	Rajura	8.25	4.1	5.2	41.2	33.68	11.34	3.03	3.96	2.6	0.90	100.00	0.0	100.0
2713	CHANDRAPUR	Gondpipri	12.07	4.3	6.0	46.6	54.39	7.76	0.00	5.08	0.9	0.96	94.58	1.3	99.0
2713	CHANDRAPUR	Jiwati	5.70	17.1	8.9	55.7	84.42	5.06	0.00	8.62	8.3	0.92	74.67	11.5	82.3
2714	YAVATMAL	Ner	16.55	4.3	10.8	20.1	37.23	25.18	3.45	13.70	0.5	0.90	100.00	2.0	95.2
2714	YAVATMAL	Babulgaon	7.50	0.0	3.3	34.2	29.17	13.33	0.00	6.15	0.2	0.91	100.00	2.3	97.9
2714	YAVATMAL	Kalamb	13.66	5.0	3.1	32.9	27.04	14.91	1.49	1.33	0.6	0.93	100.00	4.1	96.4
2714	YAVATMAL	Yavatmal	23.49	9.0	8.7	25.0	18.48	26.20	0.00	4.62	1.4	0.89	100.00	2.2	99.0
2714	YAVATMAL	Darwha	20.77	2.4	5.8	19.8	31.50	28.50	5.97	6.11	0.2	0.92	100.00	2.9	97.5
2714	YAVATMAL	Digras	40.63	0.0	0.6	29.4	36.08	48.13	1.32	6.41	0.2	0.83	100.00	3.5	99.2
2714	YAVATMAL	Pusad	45.79	3.1	3.4	37.1	42.98	45.22	0.00	6.04	0.4	0.89	93.16	2.4	95.5
2714	YAVATMAL	Umarkhed	39.84	8.8	3.6	23.5	53.66	47.41	3.85	10.14	1.1	0.92	100.00	4.2	94.5
2714	YAVATMAL	Mahagaon	45.83	14.1	2.6	32.8	54.84	50.00	5.33	8.18	0.6	0.92	90.46	4.4	90.4
2714	YAVATMAL	Arni	29.73	7.0	5.9	40.0	41.01	40.54	3.33	10.84	1.2	0.90	100.00	3.5	92.6

District Code	District	Block	Infrastructure				Teacher					Outcome			
			Student Classroom Ratio (SCR) more than 30/35	Percent age of schools do not have Drinking water facility	Percent age of schools do not have separate toilet for boys	Percent age of schools do not have separate toilet for girls	Percent age of Schools with Female Teachers (in schools with 2 and more teachers)	Pupil Teacher Ratio (PTR) More than 30 /35	Single teacher school in Primary Schools and enrolment is more than 15	Less than 3 teachers in Upper Primary Schools	Teachers without Professional Qualification	Gender Parity Index	Apparent Survival Rate (Grade 1-7)	Drop out rate	Transition Rate from Primary to Upper Primary level (only for Upper Primary level)
2714	YAVATMAL	Ghatanji	11.52	3.7	14.7	31.4	44.57	14.14	14.29	6.32	2.7	0.93	100.00	3.0	96.6
2714	YAVATMAL	Kelapur	17.92	0.5	0.9	31.1	42.29	23.11	7.59	12.73	2.5	0.91	100.00	3.0	98.3
2714	YAVATMAL	Ralegaon	10.37	6.7	3.0	26.2	34.59	13.41	4.76	6.17	1.4	0.95	100.00	4.6	92.7
2714	YAVATMAL	Maregaon	5.93	0.7	4.4	25.9	46.34	12.59	16.00	3.23	1.9	0.92	100.00	1.9	98.8
2714	YAVATMAL	Zari-Jamani	5.63	3.5	2.8	40.1	70.00	7.04	9.62	1.54	0.6	0.97	100.00	2.9	92.3
2714	YAVATMAL	Wani	14.68	3.2	8.3	40.8	36.57	12.84	2.41	10.74	3.4	0.91	100.00	0.8	98.0
2715	NANDED	Mahoor	18.87	0.0	1.9	80.5	68.99	25.79	1.16	0.00	2.1	0.93	73.01	5.0	93.1
2715	NANDED	Kinwat	19.16	12.1	12.1	18.1	63.56	19.42	1.99	5.36	0.6	0.95	76.04	6.4	96.8
2715	NANDED	Himayatnagar	24.60	8.7	5.6	92.1	72.36	30.16	4.11	0.00	1.6	0.98	68.39	4.0	90.8
2715	NANDED	Hadgaon	28.16	11.0	21.6	37.6	51.46	32.24	7.41	2.74	11.2	0.92	67.63	17.4	100.0
2715	NANDED	Ardhapur	36.96	2.2	9.8	12.0	26.51	40.22	33.33	15.79	3.6	0.94	80.98	4.6	100.0
2715	NANDED	Nanded	38.94	1.9	13.2	27.9	12.13	51.91	0.00	2.80	8.5	0.87	76.46	13.6	80.2
2715	NANDED	Mudkhed	28.30	5.7	16.0	13.2	29.52	37.74	0.00	4.41	1.1	0.93	75.74	7.6	96.9
2715	NANDED	Bhokar	33.13	5.4	7.8	15.1	50.00	27.11	5.66	6.80	0.4	0.90	76.78	0.8	100.0
2715	NANDED	Umri	30.97	7.1	13.3	15.9	55.86	28.32	2.38	7.58	1.2	0.99	71.16	4.6	97.6
2715	NANDED	Dharmabad	20.55	17.8	16.4	20.5	36.99	28.77	0.00	1.82	0.4	1.00	78.28	5.3	93.8
2715	NANDED	Biloli	30.56	4.9	13.2	20.8	30.28	38.89	4.55	3.16	0.4	0.93	79.37	3.5	96.5
2715	NANDED	Naigaon (Khairgaon)	29.17	10.7	21.4	31.0	44.91	32.74	2.00	2.61	2.3	0.94	86.79	5.5	97.8
2715	NANDED	Loha	18.28	11.8	22.9	29.7	35.74	27.96	1.92	1.82	1.9	0.98	71.84	15.8	83.9
2715	NANDED	Kandhar	25.25	6.7	11.8	14.1	42.37	29.97	1.59	1.32	0.7	0.92	76.89	4.6	94.7
2715	NANDED	Mukhed	23.58	18.2	34.3	43.6	48.94	24.18	1.42	1.17	2.6	0.94	71.57	2.9	98.9

District Code	District	Block	Infrastructure				Teacher					Outcome			
			Student Classroom Ratio (SCR) more than 30/35	Percent age of schools do not have Drinking water facility	Percent age of schools do not have separate toilet for boys	Percent age of schools do not have separate toilet for girls	Percent age of Schools with Female Teachers (in schools with 2 and more teachers)	Pupil Teacher Ratio (PTR) More than 30 /35	Single teacher school in Primary Schools and enrolment is more than 15	Less than 3 teachers in Upper Primary Schools	Teachers without Professional Qualification	Gender Parity Index	Apparent Survival Rate (Grade 1-7)	Drop out rate	Transition Rate from Primary to Upper Primary level (only for Upper Primary level)
2715	NANDED	Deglur	18.72	5.0	24.7	38.4	46.79	18.72	1.47	3.60	2.9	0.97	72.47	12.0	87.2
2715	NANDED	Nanded Waghala (M Corp.	33.33	0.0	33.3	26.7	14.29	60.00	0.00	0.00	0	1.00	46.83	32.6	51.2
2716	HINGOLI	Sengaon	34.60	6.2	10.0	27.5	68.12	40.76	3.95	2.44	1.3	0.90	75.29	0.0	94.6
2716	HINGOLI	Hingoli	37.87	5.5	13.6	5.1	42.92	47.23	1.30	9.09	2.6	0.91	85.86	6.3	92.7
2716	HINGOLI	Aundha (Nagnath)	35.26	10.0	5.3	14.2	57.53	52.11	4.88	5.15	0.8	0.96	70.78	3.0	89.1
2716	HINGOLI	Kalamnuri	25.00	5.2	14.9	15.7	51.82	33.87	1.11	2.01	0.2	0.93	84.49	4.8	93.1
2716	HINGOLI	Basmath	38.31	6.0	4.4	10.5	39.11	38.71	0.00	2.72	1.8	0.92	90.65	3.5	97.2
2717	PARBHANI	Sailu	31.93	22.9	8.4	25.3	41.57	36.75	0.00	0.00	4.3	0.88	82.56	3.9	100.0
2717	PARBHANI	Jintur	34.32	23.1	18.8	38.0	54.64	36.63	0.00	4.60	1.7	0.90	77.86	4.1	96.6
2717	PARBHANI	Parbhani	35.45	10.1	12.4	22.3	23.11	38.03	0.81	3.11	3.1	0.85	83.98	10.5	92.9
2717	PARBHANI	Manwath	30.77	17.6	5.5	27.5	45.05	31.87	0.00	8.47	8.3	0.96	81.76	5.1	96.4
2717	PARBHANI	Pathri	29.86	14.6	7.6	25.0	49.30	28.47	2.63	23.53	1.5	0.92	66.08	6.5	95.1
2717	PARBHANI	Sonpeth	24.04	29.8	25.0	52.9	61.54	20.19	0.00	7.55	1.7	1.00	74.42	3.7	91.0
2717	PARBHANI	Gangakhed	26.34	36.2	19.6	47.3	45.98	23.21	0.00	6.77	0.7	0.92	86.91	4.6	98.7
2717	PARBHANI	Palam	20.53	42.4	13.9	44.4	54.97	20.53	0.00	0.00	2.2	0.89	80.27	8.7	90.3
2717	PARBHANI	Purna	29.88	22.6	17.1	25.6	40.24	24.39	0.00	3.39	2.2	0.95	90.08	6.4	95.0
2718	Jalna	Bhokardan	23.31	13.0	17.0	17.8	57.91	26.82	2.42	5.47	1.8	0.91	90.72	4.5	94.4
2718	Jalna	Jafferabad	12.63	0.5	7.9	6.3	50.54	20.53	3.23	5.04	1.4	0.90	90.45	0.0	100.0
2718	Jalna	Jalna	41.22	6.8	12.9	16.3	32.01	44.39	2.92	5.33	0.5	0.88	89.39	4.9	95.3
2718	Jalna	Badnapur	24.88	9.5	13.4	14.9	44.95	23.38	1.16	3.77	0.7	0.89	81.62	5.1	93.5
2718	Jalna	Ambad	29.63	8.5	7.4	11.1	44.57	39.26	0.85	6.29	0.1	0.91	80.07	2.9	96.0

District Code	District	Block	Infrastructure				Teacher					Outcome			
			Student Classroom Ratio (SCR) more than 30/35	Percent age of schools do not have Drinking water facility	Percent age of schools do not have separate toilet for boys	Percent age of schools do not have separate toilet for girls	Percent age of Schools with Female Teachers (in schools with 2 and more teachers)	Pupil Teacher Ratio (PTR) More than 30 /35	Single teacher school in Primary Schools and enrolment is more than 15	Less than 3 teachers in Upper Primary Schools	Teachers without Professional Qualification	Gender Parity Index	Apparent Survival Rate (Grade 1-7)	Drop out rate	Transition Rate from Primary to Upper Primary level (only for Upper Primary level)
2718	Jalna	Ghansawangi	42.18	9.5	14.7	12.3	60.48	45.02	0.00	8.06	0.9	0.96	77.85	4.2	92.7
2718	Jalna	Partur	34.12	7.6	10.0	11.2	45.88	33.53	0.00	3.74	0.1	0.88	79.42	2.6	99.2
2718	Jalna	Mantha	33.51	18.4	9.2	14.6	65.41	38.92	0.00	3.49	0.1	0.91	68.36	5.7	90.3
2719	AURANGABAD	Kannad	22.79	10.7	0.0	21.7	48.76	29.49	5.00	2.42	1.6	0.87	81.11	5.5	90.1
2719	AURANGABAD	Soegaon	37.10	0.0	0.0	42.7	70.00	46.77	7.27	7.02	2	0.88	79.68	0.0	98.8
2719	AURANGABAD	Sillod	22.46	34.3	7.8	31.2	49.65	20.57	0.00	5.00	9.4	0.89	87.47	3.0	100.0
2719	AURANGABAD	Phulambri	15.45	18.7	1.6	4.1	30.45	15.45	0.00	3.06	12.5	0.89	92.97	0.9	94.4
2719	AURANGABAD	Aurangabad	22.12	18.3	1.3	26.3	25.65	22.44	0.70	0.66	1.3	0.92	86.07	2.7	94.1
2719	AURANGABAD	Khuldabad	18.79	14.8	2.0	34.2	29.73	22.82	1.61	0.00	3.4	0.87	90.36	1.6	100.0
2719	AURANGABAD	Vaijapur	19.61	7.6	1.0	25.2	38.19	21.81	3.02	2.89	5.1	0.90	95.18	2.3	94.8
2719	AURANGABAD	Gangapur	29.12	11.2	0.0	0.0	20.65	26.18	0.00	0.53	14.6	0.85	86.95	2.4	99.8
2719	AURANGABAD	Paithan	30.24	14.1	1.2	38.6	30.93	32.34	0.66	1.18	6.4	0.89	91.14	5.5	95.6
2719	AURANGABAD	Aurangabad (M Corp.)	51.29	2.0	4.0	12.1	3.91	51.84	1.67	2.86	1	0.88	98.86	3.3	100.0
2720	NASHIK	Surgana	12.50	0.0	5.6	79.6	71.80	14.29	12.57	10.00	2.6	0.96	68.49	8.0	85.8
2720	NASHIK	Kalwan	21.69	0.0	3.7	67.6	42.47	28.31	3.13	12.79	1.1	0.90	72.59	5.0	89.5
2720	NASHIK	Deola	20.99	0.0	6.2	65.4	29.75	30.86	3.23	12.90	0.9	0.87	100.00	0.2	100.0
2720	NASHIK	Baglan	29.79	0.0	3.1	48.5	34.76	39.48	7.66	17.65	0.2	0.86	74.83	2.7	95.7
2720	NASHIK	Malegaon	36.36	0.0	7.4	56.3	31.00	39.56	2.61	10.49	2.7	0.90	85.69	4.1	90.4
2720	NASHIK	Nandgaon	28.70	0.0	7.3	45.0	39.17	38.07	8.11	18.64	5.4	0.86	90.21	3.4	93.4
2720	NASHIK	Chandvad	29.57	0.0	3.9	59.1	32.81	35.41	2.05	26.21	0.5	0.88	96.37	1.7	98.0
2720	NASHIK	Dindori	30.77	0.0	0.3	66.9	35.37	37.12	3.31	3.57	0.2	0.92	95.48	1.0	97.7

District Code	District	Block	Infrastructure				Teacher					Outcome			
			Student Classroom Ratio (SCR) more than 30/35	Percent age of schools do not have Drinking water facility	Percent age of schools do not have separate toilet for boys	Percent age of schools do not have separate toilet for girls	Percent age of Schools with Female Teachers (in schools with 2 and more teachers)	Pupil Teacher Ratio (PTR) More than 30 /35	Single teacher school in Primary Schools and enrolment is more than 15	Less than 3 teachers in Upper Primary Schools	Teachers without Professional Qualification	Gender Parity Index	Apparent Survival Rate (Grade 1-7)	Drop out rate	Transition Rate from Primary to Upper Primary level (only for Upper Primary level)
2720	NASHIK	Peint	17.65	0.0	6.3	79.2	76.06	19.46	1.64	6.76	2.3	0.93	81.40	2.2	95.4
2720	NASHIK	Trimbakeshwar	15.29	0.0	4.5	61.1	62.15	21.34	9.32	21.51	6.8	0.94	72.04	4.7	89.6
2720	NASHIK	Nashik	36.99	0.0	3.5	48.0	13.95	46.82	1.32	7.37	0.7	0.89	91.94	1.3	95.8
2720	NASHIK	Igatpuri	21.45	0.0	5.6	58.7	35.62	31.35	5.71	8.78	1	0.92	99.21	0.1	100.0
2720	NASHIK	Sinnar	33.22	0.0	2.3	58.1	31.40	39.87	2.45	23.48	1.2	0.86	100.00	0.7	98.4
2720	NASHIK	Niphad	32.14	0.0	13.7	61.9	21.56	39.29	0.53	13.19	0.8	0.85	98.28	0.0	100.0
2720	NASHIK	Yevla	28.33	0.0	2.7	60.0	30.85	34.33	2.26	7.83	0.1	0.88	100.00	0.0	100.0
2720	NASHIK	Malegaon (M Corp.)	73.60	0.0	23.9	20.3	12.77	90.86	21.21	5.10	0.1	0.96	89.03	0.0	100.0
2720	NASHIK	Nashik (M Corp.)	64.61	0.0	7.0	12.2	3.85	72.07	0.95	9.12	5.6	0.83	100.00	0.0	100.0
2721	THANE	Talasari	64.89	0.0	1.6	5.9	54.40	71.28	6.45	6.74	7.8	0.84	68.04	1.6	97.1
2721	THANE	Dahanu	44.20	0.9	17.8	1.8	45.03	51.45	4.50	13.47	6.3	0.83	59.34	4.0	92.3
2721	THANE	Vikramgad	40.00	0.4	30.0	1.5	67.34	43.85	6.32	4.48	0	0.91	69.06	2.5	91.1
2721	THANE	Jawhar	20.43	0.0	1.4	1.1	67.97	31.54	12.90	12.64	3.4	0.95	62.36	6.6	88.9
2721	THANE	Mokhada	24.29	4.0	3.4	3.4	67.84	32.20	4.85	1.85	0	0.93	68.92	5.8	87.5
2721	THANE	Vada	23.39	1.5	17.5	2.0	35.71	31.87	6.91	7.14	1.6	0.90	87.50	2.9	97.1
2721	THANE	Palghar	31.71	3.1	5.9	2.3	13.87	38.56	10.98	4.52	4.6	0.88	83.94	3.3	94.5
2721	THANE	Vasai	45.17	0.2	1.6	3.4	2.38	51.09	3.41	7.54	3.3	0.87	88.99	0.0	100.0
2721	THANE	Thane (M Corp.)	53.44	0.8	3.1	7.2	3.92	53.74	1.39	21.34	2.9	0.87	95.83	0.0	100.0
2721	THANE	Bhiwandi	27.14	0.8	24.9	7.0	16.62	36.93	4.61	4.67	0.3	0.89	84.95	1.7	97.2
2721	THANE	Shahapur	15.11	2.5	18.5	8.1	34.94	19.78	10.07	6.36	0	0.91	90.93	3.4	95.8
2721	THANE	Kalyan	30.67	2.7	25.8	4.4	8.97	34.67	3.08	16.67	2.7	0.87	82.73	1.5	98.7

District Code	District	Block	Infrastructure				Teacher					Outcome			
			Student Classroom Ratio (SCR) more than 30/35	Percent age of schools do not have Drinking water facility	Percent age of schools do not have separate toilet for boys	Percent age of schools do not have separate toilet for girls	Percent age of Schools with Female Teachers (in schools with 2 and more teachers)	Pupil Teacher Ratio (PTR) More than 30 /35	Single teacher school in Primary Schools and enrolment is more than 15	Less than 3 teachers in Upper Primary Schools	Teachers without Professional Qualification	Gender Parity Index	Apparent Survival Rate (Grade 1-7)	Drop out rate	Transition Rate from Primary to Upper Primary level (only for Upper Primary level)
2721	THANE	Ulhasnagar (M Corp.)	55.67	0.5	3.0	4.9	0.51	59.61	0.00	10.61	2.6	0.86	100.00	5.0	94.8
2721	THANE	Ambarnath	38.96	1.8	4.3	6.4	5.72	43.56	25.00	9.05	2.7	0.88	98.00	1.9	98.9
2721	THANE	Murbad	10.00	3.5	15.8	4.3	40.46	14.75	13.82	5.97	3.7	0.95	100.00	2.9	95.7
2721	THANE	Mira-Bhayandar (M Corp.)	38.71	0.0	0.7	4.7	3.65	46.59	12.00	12.80	1	0.85	97.23	1.9	98.1
2721	THANE	Navi Mumbai (M Corp.)	55.49	0.3	0.5	4.1	2.55	63.46	0.00	12.23	0	0.85	83.22	2.4	98.8
2721	THANE	Kalyan-Dombivli (M Corp.)	53.83	1.6	4.6	10.7	5.04	52.42	8.45	15.55	0.1	0.89	100.00	1.6	98.4
2721	THANE	Bhiwandi (M CI)	69.44	10.2	14.4	25.0	8.92	72.69	0.00	8.60	2.9	1.00	86.73	0.9	95.7
2722	MUMBAI MCGM	MUMBAI MCGM	57.40	0.0	5.0	7.3	95.48	52.62	2.08	8.88	0.79	0.90	100.00	0.00	100.0
2724	RAIGARH	Uran	9.22	0.0	4.5	8.0	36.67	14.33	2.44	4.95	2.7	0.90	100.00	2.1	98.2
2724	RAIGARH	Panvel	9.30	1.8	4.5	6.9	29.21	11.96	2.25	14.55	2.1	0.87	100.00	1.2	99.6
2724	RAIGARH	Karjat	15.18	2.4	3.0	8.2	25.40	14.40	0.68	7.14	2.5	0.94	100.00	3.0	96.6
2724	RAIGARH	Khalapur	4.18	4.7	13.6	23.0	40.43	7.62	0.81	15.72	1.8	0.87	100.00	1.9	97.5
2724	RAIGARH	Pen	1.71	0.0	4.0	9.3	54.60	2.86	3.45	27.42	0.4	0.92	100.00	3.4	95.1
2724	RAIGARH	Alibag	15.41	7.0	13.0	26.4	46.06	10.57	0.76	11.81	3	0.90	100.00	3.0	95.7
2724	RAIGARH	Murud	23.16	0.8	0.8	6.5	15.68	28.73	7.14	5.69	2.4	0.94	92.31	0.0	96.2
2724	RAIGARH	Roha	5.73	5.6	4.7	5.9	49.45	10.42	4.65	18.00	1.3	0.90	89.40	5.1	91.2
2724	RAIGARH	Sudhagad	14.07	2.6	4.7	4.7	35.04	19.26	2.20	24.53	0	0.89	100.00	0.9	100.0
2724	RAIGARH	Mangaon	3.68	0.8	1.6	3.8	56.49	8.09	2.53	18.84	4.2	0.95	100.00	3.5	94.6
2724	RAIGARH	Tala	28.57	0.0	0.0	8.1	10.91	29.46	2.22	7.69	0	0.93	99.01	3.4	97.3
2724	RAIGARH	Shrivardhan	6.31	0.0	4.4	10.4	48.60	6.31	24.39	14.63	2.3	0.95	100.00	2.4	97.9
2724	RAIGARH	Mhasla	4.84	0.0	2.9	4.4	25.00	8.87	0.00	20.37	0.4	0.97	100.00	1.5	99.8

District Code	District	Block	Infrastructure				Teacher					Outcome			
			Student Classroom Ratio (SCR) more than 30/35	Percent age of schools do not have Drinking water facility	Percent age of schools do not have separate toilet for boys	Percent age of schools do not have separate toilet for girls	Percent age of Schools with Female Teachers (in schools with 2 and more teachers)	Pupil Teacher Ratio (PTR) More than 30 /35	Single teacher school in Primary Schools and enrolment is more than 15	Less than 3 teachers in Upper Primary Schools	Teachers without Professional Qualification	Gender Parity Index	Apparent Survival Rate (Grade 1-7)	Drop out rate	Transition Rate from Primary to Upper Primary level (only for Upper Primary level)
2724	RAIGARH	Mahad	6.45	1.2	4.7	6.1	32.22	8.06	5.08	15.89	3.9	0.92	100.00	2.2	98.1
2724	RAIGARH	Poladpur	7.45	1.7	4.0	5.7	30.42	9.32	6.12	16.67	3.3	0.96	100.00	2.4	97.3
2725	PUNE	Junnar	11.48	3.2	11.0	18.7	30.10	12.70	0.76	6.13	0.4	0.90	100.00	1.4	99.2
2725	PUNE	Ambegaon	19.53	7.8	8.5	12.6	26.70	21.35	5.04	4.31	1.2	0.87	100.00	1.3	98.4
2725	PUNE	Shirur	4.91	13.3	8.0	11.1	56.60	4.91	0.76	25.37	0	0.84	100.00	0.0	100.0
2725	PUNE	Khed	14.68	19.5	19.3	41.4	27.39	15.67	0.89	4.89	1.1	0.81	100.00	0.0	100.0
2725	PUNE	Mawal	14.23	11.7	30.1	47.0	27.97	15.73	3.31	9.21	4.7	0.92	100.00	2.7	99.1
2725	PUNE	Mulshi	9.84	12.0	14.6	36.3	24.08	13.44	0.90	4.00	0.4	0.93	100.00	0.0	100.0
2725	PUNE	Haveli	15.26	3.2	14.0	20.0	39.05	22.50	1.78	8.26	2.3	0.80	99.05	0.0	100.0
2725	PUNE	Pune City	55.66	0.4	7.7	14.1	3.94	57.03	7.47	5.64	2.3	0.90	87.40	0.0	100.0
2725	PUNE	Daund	35.57	8.9	14.6	41.6	7.82	41.70	1.36	8.33	0.8	0.83	99.41	2.9	97.5
2725	PUNE	Purandhar	12.61	10.8	14.1	19.0	30.33	18.26	2.03	17.22	1	0.86	100.00	2.0	99.7
2725	PUNE	Velhe	45.23	36.2	14.7	68.1	1.19	42.04	6.52	6.87	2.1	0.96	97.19	3.1	97.2
2725	PUNE	Bhor	19.80	6.3	2.4	22.8	23.69	21.53	0.90	9.26	3	0.93	95.08	2.7	95.1
2725	PUNE	Baramati	6.89	5.5	12.0	15.9	31.91	8.98	0.42	24.31	1.1	0.86	100.00	3.5	98.5
2725	PUNE	Indapur	11.68	16.0	12.9	46.6	23.67	13.16	0.59	8.65	1.3	0.84	100.00	0.6	99.9
2725	PUNE	Pimpri Chinchwad (M Corp)	11.09	0.4	11.3	13.7	51.17	17.02	1.49	19.89	2.5	0.85	100.00	0.0	100.0
2726	AHMADNAGAR	Akola	20.00	6.9	9.4	68.6	42.99	23.26	3.02	17.54	2.5	0.89	100.00	1.2	99.6
2726	AHMADNAGAR	Sangamner	13.69	17.4	10.2	51.4	34.44	22.08	0.35	21.37	0.3	0.84	100.00	0.0	100.0
2726	AHMADNAGAR	Kopargaon	13.29	4.9	7.8	64.5	35.86	19.65	0.67	14.29	0.4	0.79	100.00	0.0	100.0
2726	AHMADNAGAR	Rahta	32.31	4.6	16.3	63.2	42.12	37.76	0.00	6.94	0.1	0.80	93.90	0.0	100.0

District Code	District	Block	Infrastructure				Teacher					Outcome			
			Student Classroom Ratio (SCR) more than 30/35	Percent age of schools do not have Drinking water facility	Percent age of schools do not have separate toilet for boys	Percent age of schools do not have separate toilet for girls	Percent age of Schools with Female Teachers (in schools with 2 and more teachers)	Pupil Teacher Ratio (PTR) More than 30 /35	Single teacher school in Primary Schools and enrolment is more than 15	Less than 3 teachers in Upper Primary Schools	Teachers without Professional Qualification	Gender Parity Index	Apparent Survival Rate (Grade 1-7)	Drop out rate	Transition Rate from Primary to Upper Primary level (only for Upper Primary level)
2726	AHMADNAGAR	Shrirampur	42.94	3.2	9.1	44.7	3.55	55.93	0.00	9.57	0.5	0.84	100.00	0.0	100.0
2726	AHMADNAGAR	Nevasa	11.61	3.3	4.5	74.2	37.77	18.72	0.00	17.89	0.1	0.79	100.00	0.0	100.0
2726	AHMADNAGAR	Shevgaon	27.00	19.0	9.5	7.5	30.12	31.60	0.97	8.70	3.2	0.84	100.00	0.7	98.3
2726	AHMADNAGAR	Pathardi	23.34	12.8	8.6	65.5	28.32	28.53	0.00	8.91	1.1	0.82	86.43	4.8	90.1
2726	AHMADNAGAR	Nagar	36.04	14.2	11.5	62.7	28.83	41.14	0.56	12.61	1.8	0.82	97.24	0.0	100.0
2726	AHMADNAGAR	Rahuri	35.56	2.3	11.2	55.3	20.17	48.12	0.00	3.37	0.5	0.81	100.00	2.1	95.3
2726	AHMADNAGAR	Parner	17.75	13.7	5.7	76.5	33.94	22.45	0.00	12.84	0.4	0.85	100.00	0.5	97.5
2726	AHMADNAGAR	Shrigonda	33.33	7.7	9.5	73.1	16.51	39.27	0.00	11.49	0.1	0.84	100.00	2.4	94.0
2726	AHMADNAGAR	Karjat	18.79	20.5	9.5	48.8	15.50	26.06	0.48	6.98	0.4	0.85	100.00	0.4	98.8
2726	AHMADNAGAR	Jamkhed	34.69	6.5	10.2	69.3	23.36	39.18	0.77	3.37	2.1	0.86	100.00	1.6	95.5
2726	AHMADNAGAR	Ahmadnagar (M Corp.)	18.21	0.0	5.6	6.8	31.54	21.43	3.70	8.97	0.9	0.82	90.96	2.2	100.0
2727	BID	Ashti	23.33	23.7	10.7	51.5	28.26	24.21	0.00	5.41	1.3	0.86	81.43	2.7	98.8
2727	BID	Patoda	11.84	16.2	13.1	15.3	52.02	12.28	0.00	10.34	0.2	0.90	90.10	8.6	92.9
2727	BID	Shirur (Kasar)	18.49	10.1	14.0	22.4	54.62	19.33	1.94	2.27	0.8	0.90	74.62	1.7	96.4
2727	BID	Georai	18.32	17.1	9.6	22.9	40.63	18.63	1.55	1.94	1	0.91	90.21	3.9	94.3
2727	BID	Manjlegaon	30.25	20.2	7.2	38.8	43.96	29.54	2.10	8.11	0.6	0.91	78.71	7.0	94.2
2727	BID	Wadwani	29.06	25.2	8.4	15.1	15.43	33.77	0.00	3.03	1.7	0.96	92.97	6.5	90.4
2727	BID	Bid	30.26	17.0	16.1	32.1	59.60	23.68	2.12	1.47	0.4	0.83	67.37	4.8	95.8
2727	BID	Kaij	32.32	26.1	15.8	41.6	52.53	36.12	1.37	0.94	2	0.85	76.52	3.7	100.0
2727	BID	Dharur	36.53	26.3	15.1	37.5	50.94	28.53	0.00	2.37	1.8	0.96	77.15	9.0	83.1
2727	BID	Parli	10.92	23.8	13.9	31.0	48.00	10.48	6.67	6.67	0	0.86	93.13	5.4	95.1

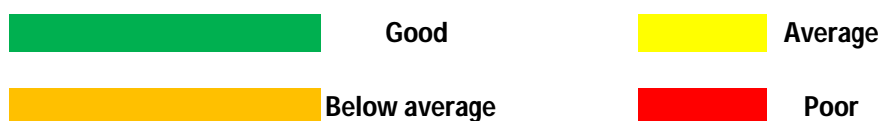
District Code	District	Block	Infrastructure				Teacher					Outcome			
			Student Classroom Ratio (SCR) more than 30/35	Percent age of schools do not have Drinking water facility	Percent age of schools do not have separate toilet for boys	Percent age of schools do not have separate toilet for girls	Percent age of Schools with Female Teachers (in schools with 2 and more teachers)	Pupil Teacher Ratio (PTR) More than 30 /35	Single teacher school in Primary Schools and enrolment is more than 15	Less than 3 teachers in Upper Primary Schools	Teachers without Professional Qualification	Gender Parity Index	Apparent Survival Rate (Grade 1-7)	Drop out rate	Transition Rate from Primary to Upper Primary level (only for Upper Primary level)
2727	BID	Ambejogai	12.11	10.7	15.0	32.5	42.82	9.01	0.00	1.83	0.7	0.83	99.26	5.2	95.9
2728	LATUR	Latur	13.79	1.1	7.5	13.6	32.41	19.31	1.30	5.13	1.7	0.82	82.89	5.5	97.2
2728	LATUR	Renapur	20.14	6.9	7.6	15.9	33.81	19.78	0.00	4.02	0.9	0.99	92.17	6.0	90.3
2728	LATUR	Ahmadpur	16.92	7.0	11.1	16.0	41.79	13.93	0.00	0.85	0.5	0.72	81.93	2.4	100.0
2728	LATUR	Jalkot	18.47	7.8	7.0	10.4	38.68	19.86	0.00	6.59	0	0.87	100.00	7.0	93.1
2728	LATUR	Chakur	9.20	5.5	11.9	10.9	48.15	17.18	0.00	13.68	0.1	0.92	98.06	6.1	96.2
2728	LATUR	Shirur-Anantpal	9.17	5.7	11.4	9.1	46.79	11.01	0.00	3.95	0	1.00	97.40	8.1	91.4
2728	LATUR	Ausa	18.03	4.3	9.4	9.0	41.12	20.98	0.00	2.90	0.5	0.96	87.38	4.4	95.5
2728	LATUR	Nilanga	18.18	4.3	8.9	13.1	51.14	15.91	0.00	9.62	0.5	0.98	84.10	5.3	93.7
2728	LATUR	Deoni	20.67	5.5	5.5	11.0	31.50	23.40	0.00	2.82	0	1.00	84.46	3.7	100.0
2728	LATUR	Udgir	22.61	3.6	11.9	13.4	57.39	24.35	0.00	7.25	0.3	0.85	89.97	10.5	89.9
2729	OSMANABAD	Paranda	19.40	24.6	36.6	15.4	38.51	21.07	5.00	19.31	0.3	0.89	91.49	1.5	98.8
2729	OSMANABAD	Bhum	14.93	22.1	19.0	22.7	33.03	16.74	0.00	19.11	0.1	0.87	83.82	2.6	100.0
2729	OSMANABAD	Washi	22.49	7.7	32.7	23.1	46.28	24.93	3.33	16.53	0.4	0.90	97.21	4.5	97.0
2729	OSMANABAD	Kalamb	19.05	12.2	19.0	24.4	40.38	25.71	0.00	12.50	0	0.91	90.83	5.9	92.8
2729	OSMANABAD	Osmanabad	14.29	3.0	24.3	18.1	47.09	21.71	3.74	14.56	0.1	0.84	97.73	3.4	100.0
2729	OSMANABAD	Tuljapur	11.54	12.0	12.7	14.7	51.96	20.19	1.15	10.94	0.3	0.90	84.65	3.9	95.5
2729	OSMANABAD	Lohara	22.84	12.4	11.4	7.6	39.39	26.72	3.33	14.19	0.3	0.91	86.62	3.9	94.2
2729	OSMANABAD	Umarga	17.57	12.5	26.3	8.6	25.82	24.59	1.27	11.11	0.1	0.92	90.82	5.3	92.8
2730	SOLAPUR	Karmala	17.09	2.4	5.4	32.2	40.71	20.55	0.68	16.56	0.4	0.87	98.46	1.4	98.3
2730	SOLAPUR	Madha	19.20	1.4	15.9	37.4	45.27	22.20	2.18	8.02	1.4	0.85	96.62	3.0	94.2

District Code	District	Block	Infrastructure				Teacher					Outcome			
			Student Classroom Ratio (SCR) more than 30/35	Percent age of schools do not have Drinking water facility	Percent age of schools do not have separate toilet for boys	Percent age of schools do not have separate toilet for girls	Percent age of Schools with Female Teachers (in schools with 2 and more teachers)	Pupil Teacher Ratio (PTR) More than 30 /35	Single teacher school in Primary Schools and enrolment is more than 15	Less than 3 teachers in Upper Primary Schools	Teachers without Professional Qualification	Gender Parity Index	Apparent Survival Rate (Grade 1-7)	Drop out rate	Transition Rate from Primary to Upper Primary level (only for Upper Primary level)
2730	SOLAPUR	Barshi	16.27	5.0	19.9	19.9	41.98	17.63	2.53	6.61	1	0.81	100.00	3.4	98.4
2730	SOLAPUR	Solapur North	19.56	2.5	16.2	17.0	30.22	26.57	0.00	13.84	0.6	0.93	96.10	6.2	93.3
2730	SOLAPUR	Mohol	21.33	3.0	11.7	10.8	49.90	23.14	0.59	13.29	0.7	0.88	100.00	2.0	95.8
2730	SOLAPUR	Pandharpur	15.59	5.2	7.0	26.6	48.58	18.02	0.62	7.91	2.1	0.88	92.24	1.5	98.9
2730	SOLAPUR	Malshiras	19.10	1.0	11.8	28.2	53.79	19.85	1.03	9.38	1.7	0.87	91.51	1.5	96.5
2730	SOLAPUR	Sangole	45.23	3.8	7.1	35.0	15.35	44.81	0.00	8.54	0.5	0.86	99.21	2.1	97.5
2730	SOLAPUR	Mangalvedhe	17.07	2.6	7.5	38.6	46.85	19.76	0.65	14.79	0.5	0.84	96.12	2.0	98.5
2730	SOLAPUR	Solapur South	57.48	5.2	16.6	14.0	5.39	65.35	2.11	16.48	0.1	0.94	86.46	1.6	98.3
2730	SOLAPUR	Akkalkot	19.11	10.6	16.3	19.8	28.81	24.93	4.72	12.37	1.6	0.90	98.53	4.9	94.3
2730	SOLAPUR	Solapur (M Corp.)	3.23	2.1	17.1	23.4	36.73	1.61	0.91	26.77	0.5	0.92	100.00	5.6	93.1
2731	SATARA	Mahabaleshwar	12.64	0.5	2.2	21.5	34.04	17.82	15.38	16.28	2.9	0.75	100.00	0.0	100.0
2731	SATARA	Wai	6.67	4.9	8.1	30.8	20.56	11.18	5.81	9.09	2	0.87	100.00	2.3	98.6
2731	SATARA	Khandala	4.84	6.2	3.1	3.1	53.85	10.75	3.03	21.62	0.5	0.80	100.00	0.3	100.0
2731	SATARA	Phaltan	18.86	6.1	8.1	8.3	15.80	21.82	2.14	16.48	0.6	0.86	100.00	3.6	94.9
2731	SATARA	Man	13.50	10.6	7.2	11.8	43.59	7.88	6.79	26.07	0.5	0.88	100.00	1.9	99.0
2731	SATARA	Khataav	10.49	4.8	6.6	10.1	18.99	13.58	4.96	9.46	1.3	0.89	100.00	2.5	95.0
2731	SATARA	Koregaon	11.64	4.1	3.0	13.4	24.31	14.63	4.81	7.04	0.9	0.88	100.00	0.7	99.5
2731	SATARA	Satara	11.74	7.2	4.0	10.4	16.74	16.60	0.00	20.00	0.5	0.82	100.00	1.2	99.6
2731	SATARA	Jaoli	18.13	4.0	2.0	32.3	15.67	22.91	0.00	11.76	1.4	0.93	100.00	3.5	96.0
2731	SATARA	Patan	10.54	14.3	2.4	11.3	31.09	11.03	5.78	15.30	2.3	0.94	99.58	2.6	96.3
2731	SATARA	Karad	11.19	3.4	6.8	16.5	21.09	14.93	3.18	14.96	1.2	0.84	100.00	1.9	96.3

District Code	District	Block	Infrastructure				Teacher					Outcome			
			Student Classroom Ratio (SCR) more than 30/35	Percent age of schools do not have Drinking water facility	Percent age of schools do not have separate toilet for boys	Percent age of schools do not have separate toilet for girls	Percent age of Schools with Female Teachers (in schools with 2 and more teachers)	Pupil Teacher Ratio (PTR) More than 30 /35	Single teacher school in Primary Schools and enrolment is more than 15	Less than 3 teachers in Upper Primary Schools	Teachers without Professional Qualification	Gender Parity Index	Apparent Survival Rate (Grade 1-7)	Drop out rate	Transition Rate from Primary to Upper Primary level (only for Upper Primary level)
2732	RATNAGIRI	Mandangad	3.55	0.5	1.0	7.2	35.63	4.73	0.00	16.75	0.7	0.96	100.00	0.6	98.1
2732	RATNAGIRI	Dapoli	6.10	0.0	0.8	5.4	41.87	6.91	0.90	9.68	2.9	0.95	100.00	0.8	99.4
2732	RATNAGIRI	Khed	2.34	5.7	3.5	28.9	36.03	6.64	1.03	4.31	2.1	0.94	100.00	0.0	100.0
2732	RATNAGIRI	Chiplun	6.78	6.5	3.2	5.4	35.41	7.91	1.18	10.17	0.9	0.92	100.00	1.6	93.7
2732	RATNAGIRI	Guhagar	3.72	3.3	0.8	2.8	38.46	4.16	0.00	11.82	0.4	0.94	100.00	0.3	97.3
2732	RATNAGIRI	Ratnagiri	1.98	3.4	3.0	27.7	37.03	3.96	2.94	4.66	1.1	0.90	100.00	0.9	95.4
2732	RATNAGIRI	Sangameshwar	4.21	2.9	2.6	11.2	31.75	6.90	0.61	9.91	0.6	0.99	100.00	0.0	98.9
2732	RATNAGIRI	Lanja	3.09	3.9	0.8	4.7	43.81	5.67	4.88	14.94	0.4	0.97	100.00	2.6	93.3
2732	RATNAGIRI	Rajapur	10.00	0.0	3.5	20.1	20.47	13.41	0.68	7.32	0.4	0.96	100.00	0.0	97.0
2733	SINDHUDURG	Devgad	0.85	13.0	2.7	15.3	36.94	0.85	4.41	23.64	2.3	0.93	100.00	1.1	97.9
2733	SINDHUDURG	Vaibhavvadi	2.48	11.5	3.1	21.5	17.76	4.97	0.00	10.00	0.5	1.00	100.00	0.0	97.3
2733	SINDHUDURG	Kankavli	4.12	4.1	1.9	40.3	17.44	3.78	1.14	10.61	2	0.90	100.00	0.0	100.0
2733	SINDHUDURG	Malwan	6.88	10.9	1.6	24.0	14.02	6.16	1.64	9.45	0.7	0.95	100.00	0.7	97.2
2733	SINDHUDURG	Vengurla	9.91	5.0	11.8	9.9	52.28	10.21	11.36	8.84	2.4	0.95	100.00	1.0	96.8
2733	SINDHUDURG	Kudal	2.71	10.0	4.1	41.6	17.53	4.26	2.15	2.78	4.9	0.90	100.00	0.4	100.0
2733	SINDHUDURG	Sawantwadi	3.85	2.9	3.3	37.3	37.21	3.85	0.00	19.61	1.4	0.87	100.00	0.0	100.0
2733	SINDHUDURG	Dodamarg	4.85	1.7	8.5	27.1	16.54	5.22	13.64	8.85	0.6	1.00	100.00	2.6	94.3
2734	KOLHAPUR	Shahuwadi	9.25	0.0	10.2	8.7	31.25	14.38	2.36	18.02	0.8	0.89	100.00	0.0	99.6
2734	KOLHAPUR	Panhala	29.57	0.0	9.2	7.2	12.16	42.71	0.00	7.21	1.1	0.74	99.91	0.1	100.0
2734	KOLHAPUR	Hatkanangle	24.91	0.0	14.6	16.4	16.43	30.18	0.60	14.37	0.5	0.80	100.00	2.3	100.0
2734	KOLHAPUR	Shirol	24.06	0.0	10.2	7.7	23.90	24.69	1.94	11.31	0.6	0.82	99.96	1.7	99.1

District Code	District	Block	Infrastructure				Teacher					Outcome			
			Student Classroom Ratio (SCR) more than 30/35	Percent age of schools do not have Drinking water facility	Percent age of schools do not have separate toilet for boys	Percent age of schools do not have separate toilet for girls	Percent age of Schools with Female Teachers (in schools with 2 and more teachers)	Pupil Teacher Ratio (PTR) More than 30 /35	Single teacher school in Primary Schools and enrolment is more than 15	Less than 3 teachers in Upper Primary Schools	Teachers without Professional Qualification	Gender Parity Index	Apparent Survival Rate (Grade 1-7)	Drop out rate	Transition Rate from Primary to Upper Primary level (only for Upper Primary level)
2734	KOLHAPUR	Karvir	6.82	0.0	8.4	9.7	57.83	9.09	0.00	13.79	1.9	0.79	100.00	1.7	96.9
2734	KOLHAPUR	Bavda	6.03	0.0	6.8	9.1	60.44	7.45	10.81	17.56	1.7	0.90	100.00	0.0	100.0
2734	KOLHAPUR	Radhanagari	17.57	0.0	9.2	9.9	25.00	18.47	0.97	9.55	1.5	0.86	100.00	2.1	97.0
2734	KOLHAPUR	Kagal	7.46	0.0	6.8	15.8	52.25	8.33	1.75	15.32	0.3	0.81	100.00	0.5	100.0
2734	KOLHAPUR	Bhudargad	6.47	0.0	12.7	12.3	35.37	7.06	1.43	7.37	0.1	0.88	100.00	1.2	100.0
2734	KOLHAPUR	Ajra	14.67	0.0	7.6	8.8	25.89	17.78	0.00	15.91	0.1	0.92	100.00	2.1	96.3
2734	KOLHAPUR	Gadhinglaj	5.45	0.0	14.2	13.3	55.89	9.09	0.00	23.75	3.7	0.87	100.00	0.0	100.0
2734	KOLHAPUR	Chandgad	36.13	0.0	5.8	6.9	6.04	51.46	1.22	17.65	0.7	0.93	100.00	0.6	97.3
2734	KOLHAPUR	Kolhapur (M Corp.)	10.21	0.0	8.0	23.4	38.53	15.32	6.56	10.26	0.2	0.80	100.00	0.9	100.0
2735	SANGLI	Shirala	22.42	11.1	4.8	27.4	21.96	20.63	1.04	9.48	0	0.83	100.00	0.0	100.0
2735	SANGLI	Walwa	46.82	2.4	9.1	14.4	4.53	57.30	2.08	19.51	0	0.80	100.00	2.8	97.9
2735	SANGLI	Palus	14.42	0.0	13.0	30.4	29.61	13.46	2.70	11.83	0	0.78	100.00	0.0	100.0
2735	SANGLI	Khanapur	21.43	7.6	11.4	8.6	18.80	30.16	2.82	4.46	2.4	0.87	100.00	2.3	98.3
2735	SANGLI	Atpadi	13.74	27.7	5.5	8.5	58.60	13.56	1.55	23.71	0	0.88	99.86	2.9	96.7
2735	SANGLI	Tasgaon	23.24	14.3	9.0	9.9	11.04	34.71	2.35	7.34	0	0.82	100.00	2.0	97.1
2735	SANGLI	Miraj	21.01	8.7	13.5	10.3	10.29	30.43	2.17	3.33	0	0.84	100.00	1.7	98.4
2735	SANGLI	Kavathe-Mahankal	17.84	20.2	11.2	13.3	23.73	20.54	0.00	11.58	1.1	0.86	100.00	1.9	98.9
2735	SANGLI	Jat	16.49	16.5	3.8	6.3	26.74	20.74	2.20	2.41	0	0.89	100.00	3.6	95.2
2735	SANGLI	Sangli Miraj Kupwad (M Co	27.59	1.5	9.7	17.2	23.48	25.86	0.00	2.08	0	0.86	100.00	1.7	100.0
2735	SANGLI	Kadegaon	25.21	10.3	3.4	12.1	31.89	28.05	0.00	9.00	0	0.88	98.11	2.4	96.2

Key educational indicators by blocks, 2011-12



Blocks are arranged in descending order of their EDI value within the districts

District Code	District	Block	Index Value				Ranking in Maharashtra (out of 373 blocks)				Ranking in district			
			Infrastructure	Teacher	Outcome	All	Infrastr ucture	Teac her	Outc ome	All	Infrastr ucture	Teac her	Outco me	All
2701	NANDURBAR	Nawapur	0.850	0.807	0.871	0.845	70	31	261	69	1	2	1	1
2701	NANDURBAR	Nandurbar	0.793	0.735	0.831	0.790	142	159	313	201	2	4	2	2
2701	NANDURBAR	Talode	0.627	0.661	0.768	0.687	338	311	345	354	5	6	3	3
2701	NANDURBAR	Akkalkuwa	0.664	0.833	0.568	0.679	307	16	368	361	4	1	5	4
2701	NANDURBAR	Shahade	0.677	0.692	0.605	0.656	294	259	367	364	3	5	4	5
2701	NANDURBAR	Akrani	0.533	0.787	0.392	0.557	362	63	371	370	6	3	6	6
2702	DHULE	Dhule (M Corp.)	0.738	0.617	0.930	0.771	209	338	107	252	2	5	1	1
2702	DHULE	Sindkhede	0.698	0.688	0.886	0.762	273	270	237	266	4	4	2	2
2702	DHULE	Sakri	0.708	0.780	0.760	0.747	258	77	346	296	3	1	4	3
2702	DHULE	Dhule	0.637	0.704	0.874	0.740	330	230	257	310	5	3	3	4
2702	DHULE	Shirpur	0.753	0.718	0.740	0.738	187	203	354	313	1	2	5	5
2703	JALGAON	Amalner	0.815	0.779	0.902	0.836	113	80	197	84	1	2	5	1
2703	JALGAON	Jalgaon	0.769	0.764	0.915	0.819	168	103	161	124	2	5	3	2
2703	JALGAON	Bodvad	0.753	0.768	0.905	0.812	186	95	188	141	3	4	4	3
2703	JALGAON	Pachora	0.743	0.782	0.898	0.809	203	74	212	149	5	1	6	4
2703	JALGAON	Erandol	0.731	0.762	0.890	0.796	216	105	229	180	6	6	7	5
2703	JALGAON	Edlabad (Muktainagar)	0.749	0.772	0.839	0.788	195	89	303	211	4	3	15	6
2703	JALGAON	Yawal	0.727	0.739	0.885	0.786	224	152	239	214	7	10	9	7
2703	JALGAON	Bhusawal	0.688	0.743	0.917	0.785	281	135	157	217	14	8	2	8
2703	JALGAON	Bhadgaon	0.705	0.739	0.886	0.779	264	148	236	238	12	9	8	9
2703	JALGAON	Parola	0.714	0.731	0.874	0.776	244	171	256	246	10	12	10	10
2703	JALGAON	Jamner	0.713	0.749	0.855	0.774	248	127	283	249	11	7	12	11
2703	JALGAON	Chalisgaon	0.725	0.709	0.853	0.766	228	221	285	257	9	13	13	12
2703	JALGAON	Chopda	0.725	0.734	0.829	0.764	226	161	314	259	8	11	16	13

District Code	District	Block	Index Value				Ranking in Maharashtra (out of 373 blocks)				Ranking in district			
			Infrastructure	Teacher	Outcome	All	Infrastr ucture	Teac her	Outc ome	All	Infrastr ucture	Teac her	Outco me	All
2703	JALGAON	Dharangaon	0.645	0.680	0.938	0.759	324	283	87	270	16	14	1	14
2703	JALGAON	Raver	0.693	0.650	0.863	0.741	280	326	268	309	13	15	11	15
2703	JALGAON	Jalgaon (M Corp.)	0.652	0.585	0.846	0.701	317	355	295	345	15	16	14	16
2704	BULDANA	Deolgaon Raja	0.778	0.792	0.905	0.827	157	59	189	105	2	3	6	1
2704	BULDANA	Mehkar	0.767	0.794	0.904	0.823	173	52	194	113	3	2	7	2
2704	BULDANA	Malkapur	0.764	0.742	0.937	0.819	175	140	91	127	4	9	3	3
2704	BULDANA	Nandura	0.720	0.752	0.955	0.812	235	121	44	140	6	6	1	4
2704	BULDANA	Buldana	0.781	0.749	0.887	0.809	153	129	234	147	1	8	10	5
2704	BULDANA	Jalgaon (Jamod)	0.764	0.740	0.899	0.805	176	145	205	156	5	10	9	6
2704	BULDANA	Sindkhed Raja	0.704	0.818	0.881	0.800	266	19	247	173	7	1	11	7
2704	BULDANA	Chikhli	0.695	0.752	0.927	0.793	278	122	128	192	8	7	4	8
2704	BULDANA	Motala	0.677	0.787	0.902	0.788	295	64	199	205	9	4	8	9
2704	BULDANA	Khamgaon	0.676	0.678	0.924	0.764	296	284	136	260	10	12	5	10
2704	BULDANA	Sangrampur	0.632	0.780	0.862	0.756	333	78	271	276	13	5	12	11
2704	BULDANA	Shegaon	0.637	0.678	0.939	0.756	329	285	82	279	12	13	2	12
2704	BULDANA	Lonar	0.653	0.732	0.847	0.745	315	169	292	300	11	11	13	13
2705	AKOLA	Balapur	0.736	0.691	0.963	0.803	210	260	20	161	2	5	1	1
2705	AKOLA	Telhara	0.740	0.651	0.952	0.789	204	325	52	202	1	8	3	2
2705	AKOLA	Akot	0.701	0.745	0.907	0.786	272	132	184	213	4	1	6	3
2705	AKOLA	Akola	0.685	0.686	0.953	0.780	286	273	48	236	5	6	2	4
2705	AKOLA	Murtijapur	0.675	0.701	0.923	0.770	298	239	138	253	6	4	4	5
2705	AKOLA	Barshitakli	0.661	0.739	0.906	0.770	309	153	186	254	7	2	7	6
2705	AKOLA	Patur	0.706	0.655	0.909	0.763	261	318	177	263	3	7	5	7
2705	AKOLA	Akola (M Corp.)	0.492	0.722	0.121	0.427	368	192	373	373	8	3	8	8
2706	WASHIM	Mangrulpir	0.795	0.760	0.896	0.821	138	109	215	120	1	1	5	1
2706	WASHIM	Risod	0.725	0.705	0.933	0.793	227	225	96	193	3	3	1	2
2706	WASHIM	Karanja	0.768	0.648	0.910	0.784	169	327	173	219	2	6	3	3
2706	WASHIM	Washim	0.711	0.693	0.926	0.782	252	257	129	225	4	4	2	4
2706	WASHIM	Malegaon	0.642	0.715	0.904	0.756	326	210	195	277	6	2	4	5
2706	WASHIM	Manora	0.682	0.692	0.861	0.748	289	258	273	294	5	5	6	6
2707	AMRAVATI	Teosa	0.761	0.700	0.935	0.805	179	244	93	157	1	9	9	1
2707	AMRAVATI	Chandur Railway	0.716	0.691	0.967	0.798	241	262	15	177	5	10	1	2

District Code	District	Block	Index Value				Ranking in Maharashtra (out of 373 blocks)				Ranking in district			
			Infrastructure	Teacher	Outcome	All	Infrastr ucture	Teac her	Outc ome	All	Infrastr ucture	Teac her	Outco me	All
2707	AMRAVATI	Morshi	0.730	0.685	0.954	0.796	218	279	46	178	3	12	5	3
2707	AMRAVATI	Warud	0.735	0.685	0.948	0.796	211	276	59	179	2	11	6	4
2707	AMRAVATI	Chandurbazar	0.706	0.711	0.955	0.796	260	219	43	182	6	7	4	5
2707	AMRAVATI	Dhamangaon Railway	0.688	0.723	0.959	0.794	282	189	25	188	9	5	2	6
2707	AMRAVATI	Nandgaon-Khandeshwar	0.716	0.731	0.909	0.789	240	170	175	203	4	3	13	7
2707	AMRAVATI	Anjangaon Surji	0.665	0.749	0.944	0.788	304	126	68	206	10	2	8	8
2707	AMRAVATI	Dharni	0.648	0.796	0.920	0.787	320	50	146	212	12	1	11	9
2707	AMRAVATI	Amravati (M Corp.)	0.701	0.652	0.958	0.778	271	324	32	241	7	15	3	10
2707	AMRAVATI	Bhatkuli	0.660	0.724	0.917	0.770	311	187	155	255	11	4	12	11
2707	AMRAVATI	Daryapur	0.646	0.723	0.920	0.765	321	190	145	258	13	6	10	12
2707	AMRAVATI	Achalpur	0.625	0.682	0.945	0.755	340	281	65	281	15	13	7	13
2707	AMRAVATI	Amravati	0.697	0.710	0.825	0.746	275	220	318	297	8	8	14	14
2707	AMRAVATI	Chikhaldara	0.633	0.667	0.756	0.687	331	303	348	355	14	14	15	15
2708	WARDHA	Ashti	0.874	0.801	0.967	0.886	53	38	16	11	2	2	1	1
2708	WARDHA	Karanja	0.885	0.799	0.947	0.882	38	44	61	14	1	3	5	2
2708	WARDHA	Wardha	0.848	0.737	0.950	0.852	73	155	55	53	3	7	4	3
2708	WARDHA	Seloo	0.817	0.806	0.922	0.851	110	32	140	55	5	1	6	4
2708	WARDHA	Hinganghat	0.791	0.774	0.956	0.845	145	86	37	71	8	5	3	5
2708	WARDHA	Deoli	0.811	0.722	0.964	0.839	121	195	18	77	7	8	2	6
2708	WARDHA	Samudrapur	0.811	0.798	0.893	0.836	120	45	218	83	6	4	8	7
2708	WARDHA	Arvi	0.824	0.740	0.899	0.826	97	147	208	106	4	6	7	8
2709	NAGPUR	Katol	0.930	0.754	0.952	0.887	12	117	50	10	1	1	6	1
2709	NAGPUR	Narkhed	0.926	0.729	0.955	0.879	13	173	41	16	2	4	4	2
2709	NAGPUR	Savner	0.923	0.696	0.957	0.870	14	250	35	27	3	6	3	3
2709	NAGPUR	Kalameshwar	0.918	0.688	0.958	0.866	20	271	28	32	5	7	2	4
2709	NAGPUR	Parseoni	0.920	0.742	0.901	0.862	18	142	201	37	4	3	10	5
2709	NAGPUR	Umred	0.884	0.726	0.942	0.859	41	180	73	40	10	5	7	6
2709	NAGPUR	Ramtek	0.897	0.673	0.962	0.855	29	295	22	47	6	11	1	7
2709	NAGPUR	Kuhi	0.876	0.685	0.953	0.848	51	277	49	59	11	9	5	8
2709	NAGPUR	Bhiwapur	0.890	0.743	0.886	0.846	35	137	235	64	8	2	12	9
2709	NAGPUR	Mauda	0.845	0.686	0.942	0.833	79	274	75	92	13	8	8	10
2709	NAGPUR	Kamptee	0.869	0.674	0.897	0.822	57	293	213	116	12	10	11	11

District Code	District	Block	Index Value				Ranking in Maharashtra (out of 373 blocks)				Ranking in district			
			Infrastructure	Teacher	Outcome	All	Infrastr ucture	Teac her	Outc ome	All	Infrastr ucture	Teac her	Outco me	All
2709	NAGPUR	Nagpur (Rural)	0.892	0.642	0.885	0.817	31	331	238	129	7	12	13	12
2709	NAGPUR	Hingna	0.884	0.618	0.878	0.805	40	336	252	155	9	14	14	13
2709	NAGPUR	Nagpur (Urban)	0.810	0.631	0.922	0.798	124	334	142	176	14	13	9	14
2710	BHANDARA	Lakhani	0.913	0.786	0.956	0.891	24	65	38	6	1	1	2	1
2710	BHANDARA	Lakhandur	0.864	0.734	0.934	0.851	58	162	94	54	3	3	5	2
2710	BHANDARA	Sakoli	0.859	0.766	0.900	0.847	63	100	203	61	4	2	7	3
2710	BHANDARA	Mohadi	0.881	0.689	0.939	0.846	44	268	83	67	2	6	4	4
2710	BHANDARA	Bhandara	0.791	0.726	0.962	0.833	146	178	21	95	6	4	1	5
2710	BHANDARA	Pauni	0.774	0.695	0.949	0.813	163	251	58	139	7	5	3	6
2710	BHANDARA	Tumsar	0.792	0.640	0.927	0.796	144	332	122	181	5	7	6	7
2711	GONDIYA	Salekasa	0.953	0.833	0.975	0.926	6	15	4	1	2	1	1	1
2711	GONDIYA	Arjuni Morgaon	0.946	0.744	0.954	0.891	9	134	45	7	3	3	6	2
2711	GONDIYA	Sadak-Arjuni	0.943	0.726	0.930	0.875	10	179	110	21	4	4	8	3
2711	GONDIYA	Tirora	0.870	0.754	0.971	0.872	56	116	9	24	7	2	3	4
2711	GONDIYA	Amgaon	0.889	0.721	0.972	0.870	36	198	7	26	5	5	2	5
2711	GONDIYA	Goregaon	0.882	0.704	0.958	0.857	42	229	33	43	6	6	5	6
2711	GONDIYA	Deori	0.953	0.635	0.938	0.856	5	333	86	46	1	7	7	7
2711	GONDIYA	Gondiya	0.815	0.607	0.970	0.810	114	342	10	145	8	8	4	8
2712	GADCHIROLI	Kurkheda	0.838	0.694	0.943	0.834	83	255	72	90	1	6	5	1
2712	GADCHIROLI	Desaiganj (Vadasa)	0.798	0.719	0.940	0.826	133	201	79	108	2	3	6	2
2712	GADCHIROLI	Gadchiroli	0.779	0.715	0.959	0.824	156	208	26	111	3	4	2	3
2712	GADCHIROLI	Armorli	0.727	0.751	0.961	0.817	223	124	24	131	6	2	1	4
2712	GADCHIROLI	Chamorshi	0.734	0.752	0.952	0.816	212	120	53	133	4	1	4	5
2712	GADCHIROLI	Mulchera	0.679	0.698	0.956	0.783	291	247	36	221	8	5	3	6
2712	GADCHIROLI	Korchi	0.728	0.601	0.891	0.749	221	346	225	290	5	9	7	7
2712	GADCHIROLI	Sironcha	0.683	0.613	0.825	0.713	287	341	319	338	7	8	8	8
2712	GADCHIROLI	Dhanora	0.662	0.663	0.779	0.704	308	307	340	344	11	7	9	9
2712	GADCHIROLI	Aheri	0.664	0.538	0.703	0.641	306	365	361	366	10	11	10	10
2712	GADCHIROLI	Etapalli	0.671	0.584	0.506	0.587	301	356	369	369	9	10	11	11
2712	GADCHIROLI	Bhamragad	0.652	0.483	0.421	0.521	318	370	370	371	12	12	12	12
2713	CHANDRAPUR	Sawali	0.831	0.855	0.974	0.889	91	4	6	8	5	2	2	1
2713	CHANDRAPUR	Warora	0.879	0.811	0.958	0.888	49	27	29	9	1	6	5	2

District Code	District	Block	Index Value				Ranking in Maharashtra (out of 373 blocks)				Ranking in district			
			Infrastructure	Teacher	Outcome	All	Infrastr ucture	Teac her	Outc ome	All	Infrastr ucture	Teac her	Outco me	All
2713	CHANDRAPUR	Nagbhir	0.832	0.813	0.975	0.877	90	24	5	19	4	4	1	3
2713	CHANDRAPUR	Sindewahi	0.823	0.800	0.958	0.864	100	40	31	33	6	7	6	4
2713	CHANDRAPUR	Pombhurna	0.783	0.876	0.933	0.863	148	1	95	35	10	1	11	5
2713	CHANDRAPUR	Gondpipri	0.766	0.852	0.944	0.854	174	5	67	49	13	3	7	6
2713	CHANDRAPUR	Rajura	0.801	0.772	0.959	0.848	131	88	27	58	8	10	4	7
2713	CHANDRAPUR	Brahmapuri	0.849	0.700	0.964	0.847	71	242	17	62	2	13	3	8
2713	CHANDRAPUR	Chimur	0.794	0.794	0.940	0.846	139	53	81	68	9	9	10	9
2713	CHANDRAPUR	Mul	0.811	0.755	0.941	0.841	122	115	76	76	7	11	9	10
2713	CHANDRAPUR	Bhadravati	0.775	0.796	0.927	0.835	162	51	124	87	11	8	12	11
2713	CHANDRAPUR	Korpana	0.832	0.720	0.925	0.833	89	199	131	94	3	12	14	12
2713	CHANDRAPUR	Chandrapur	0.728	0.691	0.943	0.794	222	261	71	191	14	14	8	13
2713	CHANDRAPUR	Ballarpur	0.768	0.656	0.927	0.792	170	317	125	194	12	15	13	14
2713	CHANDRAPUR	Jiwati	0.670	0.812	0.684	0.716	302	25	363	334	15	5	15	15
2714	YAVATMAL	Zari-Jamani	0.833	0.858	0.926	0.873	88	3	130	23	5	1	8	1
2714	YAVATMAL	Babulgaon	0.859	0.788	0.931	0.864	64	62	103	34	2	3	3	2
2714	YAVATMAL	Maregaon	0.875	0.733	0.942	0.858	52	164	74	42	1	7	2	3
2714	YAVATMAL	Kalamb	0.814	0.801	0.916	0.847	118	39	159	63	7	2	10	4
2714	YAVATMAL	Ralegaon	0.835	0.757	0.905	0.837	87	112	193	82	4	4	11	5
2714	YAVATMAL	Darwha	0.821	0.726	0.927	0.831	104	182	127	101	6	8	7	6
2714	YAVATMAL	Kelapur	0.846	0.677	0.927	0.826	77	286	121	107	3	16	6	7
2714	YAVATMAL	Wani	0.763	0.722	0.946	0.816	177	193	63	134	10	9	1	8
2714	YAVATMAL	Ner	0.789	0.702	0.919	0.810	147	236	150	144	8	14	9	9
2714	YAVATMAL	Yavatmal	0.740	0.736	0.929	0.806	206	157	113	153	12	6	4	10
2714	YAVATMAL	Ghatanji	0.751	0.705	0.928	0.801	191	227	116	169	11	13	5	11
2714	YAVATMAL	Digras	0.778	0.719	0.889	0.800	158	202	230	170	9	10	14	12
2714	YAVATMAL	Umarkhed	0.725	0.705	0.902	0.782	229	226	198	224	13	12	12	13
2714	YAVATMAL	Pusad	0.702	0.747	0.883	0.779	269	130	242	239	15	5	15	14
2714	YAVATMAL	Arni	0.709	0.691	0.893	0.769	255	263	217	256	14	15	13	15
2714	YAVATMAL	Mahagaon	0.656	0.713	0.847	0.740	314	213	293	311	16	11	16	16
2715	NANDED	Bhokar	0.760	0.762	0.856	0.795	180	106	281	183	1	11	2	1
2715	NANDED	Kinwat	0.731	0.836	0.808	0.789	215	13	326	204	4	3	8	2
2715	NANDED	Kandhar	0.754	0.799	0.806	0.786	185	43	328	215	3	6	9	3

District Code	District	Block	Index Value				Ranking in Maharashtra (out of 373 blocks)				Ranking in district			
			Infrastructure	Teacher	Outcome	All	Infrastr ucture	Teac her	Outc ome	All	Infrastr ucture	Teac her	Outco me	All
2715	NANDED	Mahoor	0.705	0.860	0.786	0.778	263	2	337	240	8	1	12	4
2715	NANDED	Umri	0.717	0.776	0.826	0.773	239	84	317	250	7	8	7	5
2715	NANDED	Biloli	0.719	0.728	0.838	0.763	237	175	307	262	6	13	4	6
2715	NANDED	Dharmabad	0.657	0.800	0.837	0.762	312	42	308	265	10	5	5	7
2715	NANDED	Mudkhed	0.722	0.739	0.788	0.751	231	150	335	286	5	12	11	8
2715	NANDED	Naigaon (Khairgaon)	0.605	0.769	0.860	0.743	346	93	275	305	13	10	1	9
2715	NANDED	Himayatnagar	0.579	0.846	0.789	0.730	355	11	334	318	16	2	10	10
2715	NANDED	Deglur	0.630	0.792	0.710	0.705	334	57	360	342	11	7	13	11
2715	NANDED	Ardhapur	0.760	0.423	0.853	0.695	181	373	287	350	2	17	3	12
2715	NANDED	Mukhed	0.456	0.806	0.826	0.688	370	33	316	352	17	4	6	13
2715	NANDED	Loha	0.629	0.771	0.663	0.682	335	91	365	357	12	9	15	14
2715	NANDED	Nanded	0.688	0.601	0.638	0.645	283	345	366	365	9	16	16	15
2715	NANDED	Hadgaon	0.587	0.652	0.671	0.635	350	322	364	367	14	15	14	16
2715	NANDED	Nanded Waghala (M Corp.)	0.580	0.704	0.276	0.508	353	231	372	372	15	14	17	17
2716	HINGOLI	Basmath	0.775	0.761	0.882	0.809	161	108	244	148	1	3	1	1
2716	HINGOLI	Kalamnuri	0.738	0.814	0.835	0.794	208	22	310	187	3	1	2	2
2716	HINGOLI	Sengaon	0.702	0.801	0.834	0.777	270	37	311	243	5	2	3	3
2716	HINGOLI	Aundha (Nagnath)	0.747	0.736	0.791	0.759	197	156	332	268	2	4	5	4
2716	HINGOLI	Hingoli	0.730	0.689	0.816	0.748	217	266	324	293	4	5	4	5
2717	PARBHANI	Sailu	0.633	0.762	0.841	0.744	332	107	297	302	4	6	4	1
2717	PARBHANI	Purna	0.579	0.785	0.859	0.738	354	68	277	314	5	5	2	2
2717	PARBHANI	Manwath	0.681	0.674	0.846	0.738	290	292	296	315	2	8	3	3
2717	PARBHANI	Parbhani	0.674	0.707	0.741	0.707	299	223	352	341	3	7	9	4
2717	PARBHANI	Jintur	0.516	0.786	0.816	0.700	366	66	325	346	6	4	6	5
2717	PARBHANI	Pathri	0.694	0.644	0.746	0.698	279	330	351	348	1	9	8	6
2717	PARBHANI	Gangakhed	0.437	0.792	0.864	0.691	371	58	267	351	8	3	1	7
2717	PARBHANI	Sonpeth	0.429	0.814	0.825	0.680	372	23	320	358	9	2	5	8
2717	PARBHANI	Palam	0.470	0.848	0.753	0.679	369	8	350	360	7	1	7	9
2718	Jalna	Jafferabad	0.881	0.793	0.920	0.869	43	56	144	28	1	4	1	1
2718	Jalna	Partur	0.739	0.798	0.840	0.792	207	47	300	195	3	3	3	2
2718	Jalna	Ambad	0.768	0.760	0.838	0.790	171	110	306	198	2	7	5	3
2718	Jalna	Badnapur	0.726	0.804	0.804	0.776	225	35	330	245	4	2	7	4

District Code	District	Block	Index Value				Ranking in Maharashtra (out of 373 blocks)				Ranking in district			
			Infrastructure	Teacher	Outcome	All	Infrastr ucture	Teac her	Outc ome	All	Infrastr ucture	Teac her	Outco me	All
2718	Jalna	Bhokardan	0.678	0.792	0.860	0.775	293	60	274	247	6	5	2	5
2718	Jalna	Ghansawangi	0.665	0.764	0.822	0.749	305	102	322	291	8	6	6	6
2718	Jalna	Jalna	0.685	0.713	0.839	0.748	285	214	304	295	5	8	4	7
2718	Jalna	Mantha	0.676	0.829	0.741	0.743	297	18	353	303	7	1	8	8
2719	AURANGABAD	Vaijapur	0.815	0.739	0.896	0.821	117	149	216	118	3	4	2	1
2719	AURANGABAD	Khuldabad	0.745	0.767	0.889	0.802	200	98	231	162	7	3	4	2
2719	AURANGABAD	Phulambri	0.818	0.671	0.891	0.801	107	300	227	166	2	8	3	3
2719	AURANGABAD	Aurangabad	0.740	0.784	0.858	0.794	205	71	278	185	8	1	8	4
2719	AURANGABAD	Soegaon	0.758	0.733	0.862	0.788	183	167	272	210	5	5	6	5
2719	AURANGABAD	Kannad	0.802	0.776	0.777	0.786	129	85	342	216	4	2	10	6
2719	AURANGABAD	Gangapur	0.836	0.622	0.859	0.782	85	335	276	222	1	10	7	7
2719	AURANGABAD	Aurangabad (M Corp.)	0.752	0.658	0.913	0.782	188	314	165	227	6	9	1	8
2719	AURANGABAD	Paithan	0.703	0.713	0.847	0.757	267	212	294	274	9	7	9	9
2719	AURANGABAD	Sillod	0.588	0.720	0.874	0.728	349	200	258	323	10	6	5	10
2720	NASHIK	Igatpuri	0.729	0.702	0.963	0.804	220	237	19	159	4	6	1	1
2720	NASHIK	Yevla	0.722	0.723	0.947	0.802	232	191	62	164	5	4	2	2
2720	NASHIK	Dindori	0.712	0.749	0.927	0.799	249	128	120	175	9	2	7	3
2720	NASHIK	Peint	0.682	0.835	0.856	0.788	288	14	280	207	14	1	11	4
2720	NASHIK	Deola	0.708	0.677	0.941	0.782	259	287	78	229	11	7	3	5
2720	NASHIK	Nashik	0.720	0.663	0.891	0.764	236	308	228	261	6	8	10	6
2720	NASHIK	Sinnar	0.714	0.588	0.927	0.753	246	352	123	283	8	14	8	7
2720	NASHIK	Chandvad	0.712	0.591	0.907	0.746	250	350	182	298	10	13	9	8
2720	NASHIK	Niphad	0.627	0.657	0.928	0.742	337	316	118	307	16	10	6	9
2720	NASHIK	Kalwan	0.718	0.708	0.757	0.729	238	222	347	320	7	5	16	10
2720	NASHIK	Nashik (M Corp.)	0.697	0.523	0.928	0.729	277	368	117	321	13	16	5	11
2720	NASHIK	Baglan	0.746	0.617	0.797	0.727	198	337	331	324	2	11	14	12
2720	NASHIK	Surgana	0.703	0.747	0.724	0.723	268	131	358	327	12	3	17	13
2720	NASHIK	Malegaon	0.672	0.662	0.819	0.721	300	309	323	329	15	9	13	14
2720	NASHIK	Nandgaon	0.729	0.562	0.841	0.720	219	362	298	330	3	15	12	15
2720	NASHIK	Trimbakeshwar	0.751	0.602	0.772	0.716	190	344	344	335	1	12	15	16
2720	NASHIK	Malegaon (M Corp.)	0.525	0.473	0.938	0.656	363	372	89	363	17	17	4	17
2721	THANE	Murbad	0.823	0.689	0.932	0.823	102	265	99	114	6	6	1	1

District Code	District	Block	Index Value				Ranking in Maharashtra (out of 373 blocks)				Ranking in district			
			Infrastructure	Teacher	Outcome	All	Infrastr ucture	Teac her	Outc ome	All	Infrastr ucture	Teac her	Outco me	All
2721	THANE	Mokhada	0.861	0.832	0.739	0.810	62	17	355	146	2	1	17	2
2721	THANE	Shahapur	0.782	0.728	0.875	0.799	152	176	255	174	10	3	8	3
2721	THANE	Vada	0.783	0.699	0.866	0.788	149	246	266	209	9	4	10	4
2721	THANE	Vasai	0.824	0.587	0.899	0.782	98	353	206	223	5	11	7	5
2721	THANE	Mira-Bhayandar (M Corp.)	0.850	0.538	0.901	0.777	68	367	202	242	3	17	6	6
2721	THANE	Jawhar	0.917	0.672	0.721	0.777	22	297	359	244	1	7	18	7
2721	THANE	Palghar	0.826	0.600	0.831	0.763	95	347	312	264	4	8	14	8
2721	THANE	Bhiwandi	0.709	0.694	0.863	0.759	257	252	270	271	16	5	11	9
2721	THANE	Ambarnath	0.809	0.480	0.918	0.752	126	371	154	284	7	19	5	10
2721	THANE	Kalyan-Dombivli (M Corp.)	0.746	0.539	0.931	0.751	199	364	105	285	14	16	2	11
2721	THANE	Thane (M Corp.)	0.771	0.503	0.929	0.750	165	369	111	287	12	18	3	12
2721	THANE	Navi Mumbai (M Corp.)	0.794	0.585	0.839	0.750	140	354	301	288	8	12	13	13
2721	THANE	Ulhasnagar (M Corp.)	0.772	0.571	0.872	0.749	164	360	259	289	11	15	9	14
2721	THANE	Vikramgad	0.646	0.779	0.778	0.731	322	81	341	317	18	2	15	15
2721	THANE	Kalyan	0.686	0.580	0.855	0.715	284	357	282	336	17	13	12	16
2721	THANE	Talasari	0.751	0.590	0.774	0.712	192	351	343	339	13	10	16	17
2721	THANE	Bhiwandi (M CI)	0.535	0.572	0.920	0.682	361	359	143	356	19	14	4	18
2721	THANE	Dahanu	0.714	0.593	0.695	0.672	247	349	362	362	15	9	19	19
2722	MUMBAI MCGM	Mumbai MCGM	0.749	0.804	0.955	0.838	194	34	39	81	1	1	1	1
2724	RAIGARH	Mhasla	0.951	0.686	0.971	0.881	7	275	8	15	2	10	1	1
2724	RAIGARH	Uran	0.915	0.768	0.931	0.878	23	96	104	18	7	1	7	2
2724	RAIGARH	Mangaon	0.961	0.706	0.922	0.874	1	224	141	22	1	6	11	3
2724	RAIGARH	Karjat	0.891	0.741	0.932	0.862	34	144	100	36	12	3	6	4
2724	RAIGARH	Pen	0.941	0.690	0.914	0.859	11	264	162	41	3	9	13	5
2724	RAIGARH	Panvel	0.908	0.697	0.930	0.855	25	249	108	48	8	7	8	6
2724	RAIGARH	Mahad	0.922	0.665	0.939	0.853	15	305	84	50	4	11	5	7
2724	RAIGARH	Poladpur	0.921	0.654	0.947	0.853	16	319	60	51	5	13	2	8
2724	RAIGARH	Tala	0.880	0.694	0.924	0.842	46	253	135	74	13	8	10	9
2724	RAIGARH	Shrivardhan	0.919	0.616	0.945	0.841	19	339	66	75	6	15	3	10
2724	RAIGARH	Murud	0.893	0.664	0.928	0.839	30	306	119	78	10	12	9	11
2724	RAIGARH	Sudhagad	0.891	0.646	0.944	0.839	33	328	70	79	11	14	4	12
2724	RAIGARH	Khalapur	0.801	0.733	0.917	0.823	130	165	156	115	14	4	12	13

District Code	District	Block	Index Value				Ranking in Maharashtra (out of 373 blocks)				Ranking in district			
			Infrastructure	Teacher	Outcome	All	Infrastr ucture	Teac her	Outc ome	All	Infrastr ucture	Teac her	Outco me	All
2724	RAIGARH	Roha	0.899	0.713	0.829	0.820	28	216	315	121	9	5	15	14
2724	RAIGARH	Alibag	0.745	0.753	0.911	0.806	202	119	170	152	15	2	14	15
2725	PUNE	Junnar	0.815	0.785	0.938	0.850	116	69	85	57	5	2	2	1
2725	PUNE	Pimpri Chinchwad (M Corp)	0.843	0.694	0.936	0.833	80	254	92	93	1	9	4	2
2725	PUNE	Shirur	0.821	0.724	0.930	0.832	105	185	109	100	2	7	5	3
2725	PUNE	Ambegaon	0.795	0.738	0.927	0.825	137	154	126	109	6	6	7	4
2725	PUNE	Mulshi	0.697	0.785	0.968	0.818	276	67	13	128	10	1	1	5
2725	PUNE	Bhor	0.818	0.700	0.905	0.815	106	241	190	136	3	8	12	6
2725	PUNE	Haveli	0.777	0.740	0.912	0.814	160	146	167	138	7	5	11	7
2725	PUNE	Baramati	0.818	0.662	0.899	0.801	108	310	209	165	4	12	14	8
2725	PUNE	Purandhar	0.745	0.680	0.919	0.788	201	282	151	208	8	11	10	9
2725	PUNE	Indapur	0.652	0.743	0.924	0.775	316	136	134	248	11	4	8	10
2725	PUNE	Khed	0.591	0.773	0.919	0.760	348	87	149	267	13	3	9	11
2725	PUNE	Pune City	0.715	0.579	0.905	0.743	242	358	191	304	9	15	13	12
2725	PUNE	Mawal	0.546	0.689	0.937	0.726	359	267	90	325	14	10	3	13
2725	PUNE	Daund	0.613	0.653	0.889	0.722	344	321	233	328	12	13	15	14
2725	PUNE	Velhe	0.351	0.604	0.929	0.629	373	343	114	368	15	14	6	15
2726	AHMADNAGAR	Ahmadnagar (M Corp.)	0.880	0.726	0.867	0.831	47	181	265	102	1	3	14	1
2726	AHMADNAGAR	Kopargaon	0.698	0.724	0.912	0.781	274	184	168	230	4	4	7	2
2726	AHMADNAGAR	Nevasa	0.710	0.712	0.908	0.781	254	217	178	233	3	8	9	3
2726	AHMADNAGAR	Shevgaon	0.712	0.694	0.918	0.779	251	256	153	237	2	10	6	4
2726	AHMADNAGAR	Karjat	0.620	0.722	0.925	0.757	341	196	132	273	9	6	4	5
2726	AHMADNAGAR	Parner	0.615	0.729	0.920	0.756	343	174	148	278	10	2	5	6
2726	AHMADNAGAR	Akola	0.641	0.671	0.940	0.755	327	299	80	280	7	11	1	7
2726	AHMADNAGAR	Sangamner	0.643	0.669	0.932	0.753	325	302	98	282	6	13	2	8
2726	AHMADNAGAR	Rahuri	0.637	0.712	0.878	0.744	328	218	251	301	8	9	13	9
2726	AHMADNAGAR	Rahta	0.578	0.758	0.891	0.741	356	111	224	308	13	1	11	10
2726	AHMADNAGAR	Shrirampur	0.650	0.616	0.929	0.739	319	340	112	312	5	15	3	11
2726	AHMADNAGAR	Jamkhed	0.586	0.715	0.907	0.737	352	209	183	316	12	7	10	12
2726	AHMADNAGAR	Shrigonda	0.578	0.670	0.884	0.713	357	301	240	337	14	12	12	13
2726	AHMADNAGAR	Nagar	0.546	0.661	0.911	0.708	360	312	169	340	15	14	8	14
2726	AHMADNAGAR	Pathardi	0.610	0.724	0.783	0.704	345	186	339	343	11	5	15	15

District Code	District	Block	Index Value				Ranking in Maharashtra (out of 373 blocks)				Ranking in district			
			Infrastructure	Teacher	Outcome	All	Infrastr ucture	Teac her	Outc ome	All	Infrastr ucture	Teac her	Outco me	All
2727	BID	Ambejogai	0.704	0.851	0.857	0.801	265	6	279	168	4	1	2	1
2727	BID	Georai	0.710	0.812	0.863	0.794	253	26	269	190	3	4	1	2
2727	BID	Shirur (Kasar)	0.720	0.837	0.824	0.791	234	12	321	197	2	3	6	3
2727	BID	Patoda	0.733	0.808	0.807	0.781	213	29	327	232	1	6	7	4
2727	BID	Parli	0.645	0.793	0.840	0.757	323	55	299	275	6	8	4	5
2727	BID	Wadwani	0.657	0.721	0.853	0.745	313	197	286	299	5	11	3	6
2727	BID	Manjlegaon	0.626	0.753	0.788	0.720	339	118	336	331	7	10	9	7
2727	BID	Bid	0.599	0.848	0.735	0.719	347	7	357	332	8	2	11	8
2727	BID	Ashti	0.571	0.756	0.837	0.718	358	113	309	333	9	9	5	9
2727	BID	Kaij	0.517	0.797	0.805	0.700	365	49	329	347	11	7	8	10
2727	BID	Dharur	0.517	0.810	0.737	0.680	364	28	356	359	10	5	10	11
2728	LATUR	Shirur-Anantpal	0.831	0.847	0.877	0.852	92	9	253	52	2	1	3	1
2728	LATUR	Deoni	0.830	0.797	0.903	0.846	93	48	196	65	3	6	1	2
2728	LATUR	Ausa	0.823	0.816	0.872	0.838	101	20	260	80	5	3	4	3
2728	LATUR	Chakur	0.824	0.767	0.883	0.828	99	99	243	103	4	9	2	4
2728	LATUR	Nilanga	0.815	0.800	0.853	0.824	111	41	288	112	6	5	6	5
2728	LATUR	Jalkot	0.815	0.793	0.849	0.821	112	54	289	119	7	7	7	6
2728	LATUR	Renapur	0.795	0.791	0.867	0.819	136	61	264	122	8	8	5	7
2728	LATUR	Latur	0.857	0.765	0.790	0.806	65	101	333	151	1	10	8	8
2728	LATUR	Ahmadpur	0.781	0.847	0.784	0.801	154	10	338	167	10	2	9	9
2728	LATUR	Udgir	0.782	0.814	0.755	0.782	151	21	349	226	9	4	10	10
2729	OSMANABAD	Tuljapur	0.763	0.779	0.839	0.794	178	82	305	186	2	1	9	2
2729	OSMANABAD	Osmanabad	0.714	0.727	0.891	0.780	243	177	226	235	4	3	4	3
2729	OSMANABAD	Lohara	0.750	0.703	0.849	0.771	193	234	290	251	3	7	6	4
2729	OSMANABAD	Kalamb	0.666	0.742	0.839	0.749	303	139	302	292	5	2	8	5
2729	OSMANABAD	Umarga	0.660	0.715	0.848	0.743	310	207	291	306	6	5	7	6
2729	OSMANABAD	Washi	0.587	0.703	0.893	0.729	351	233	220	319	8	6	3	7
2729	OSMANABAD	Bhum	0.628	0.698	0.854	0.728	336	248	284	322	7	8	5	8
2729	OSMANABAD	Paranda	0.494	0.667	0.900	0.688	367	304	204	353	9	9	2	9
2730	SOLAPUR	Karmala	0.803	0.716	0.918	0.819	128	205	152	126	1	4	1	1
2730	SOLAPUR	Pandharpur	0.796	0.781	0.898	0.828	135	75	210	104	2	1	3	1
2730	SOLAPUR	Mohol	0.798	0.750	0.912	0.825	132	125	166	110	1	5	1	2

District Code	District	Block	Index Value				Ranking in Maharashtra (out of 373 blocks)				Ranking in district			
			Infrastructure	Teacher	Outcome	All	Infrastr ucture	Teac her	Outc ome	All	Infrastr ucture	Teac her	Outco me	All
2730	SOLAPUR	Malshiras	0.770	0.780	0.879	0.811	167	79	249	142	5	2	8	3
2730	SOLAPUR	Mangalvedhe	0.770	0.742	0.891	0.805	166	138	221	154	4	6	5	4
2730	SOLAPUR	Barshi	0.722	0.778	0.879	0.794	233	83	250	189	7	3	9	5
2730	SOLAPUR	Solapur (M Corp.)	0.794	0.674	0.882	0.790	141	294	245	199	3	9	6	6
2730	SOLAPUR	Madha	0.714	0.763	0.871	0.783	245	104	262	220	8	4	10	7
2730	SOLAPUR	Solapur North	0.759	0.703	0.869	0.782	182	235	263	228	6	7	11	8
2730	SOLAPUR	Akkalkot	0.706	0.675	0.882	0.759	262	290	246	269	9	8	7	9
2730	SOLAPUR	Sangole	0.679	0.672	0.908	0.758	292	298	179	272	10	10	2	10
2730	SOLAPUR	Solapur South	0.619	0.543	0.897	0.696	342	363	214	349	11	11	4	11
2731	SATARA	Koregaon	0.880	0.733	0.941	0.859	48	166	77	39	3	1	1	1
2731	SATARA	Khandala	0.918	0.714	0.910	0.856	21	211	172	44	1	2	7	2
2731	SATARA	Khatav	0.863	0.701	0.909	0.833	59	240	174	96	4	3	8	3
2731	SATARA	Patan	0.835	0.675	0.930	0.822	86	291	106	117	7	7	2	4
2731	SATARA	Satara	0.862	0.653	0.910	0.819	61	320	171	125	5	8	6	5
2731	SATARA	Karad	0.850	0.675	0.899	0.817	69	288	207	132	6	6	9	6
2731	SATARA	Wai	0.809	0.699	0.915	0.815	125	245	160	135	11	4	5	7
2731	SATARA	Jaoli	0.814	0.686	0.920	0.815	119	272	147	137	9	5	4	8
2731	SATARA	Man	0.811	0.645	0.925	0.803	123	329	133	160	10	10	3	9
2731	SATARA	Mahabaleshwar	0.880	0.596	0.891	0.802	45	348	223	163	2	11	10	10
2731	SATARA	Phaltan	0.821	0.652	0.884	0.795	103	323	241	184	8	9	11	11
2732	RATNAGIRI	Guhagar	0.955	0.784	0.962	0.908	4	70	23	2	3	3	6	1
2732	RATNAGIRI	Dapoli	0.959	0.767	0.968	0.907	2	97	14	3	1	6	5	2
2732	RATNAGIRI	Sangameshwar	0.921	0.772	0.990	0.902	17	90	1	4	5	4	1	3
2732	RATNAGIRI	Mandangad	0.959	0.739	0.969	0.899	3	151	12	5	2	9	4	4
2732	RATNAGIRI	Khed	0.857	0.802	0.976	0.883	66	36	3	12	9	2	2	5
2732	RATNAGIRI	Lanja	0.949	0.741	0.933	0.883	8	143	97	13	4	8	7	6
2732	RATNAGIRI	Rajapur	0.887	0.755	0.970	0.878	37	114	11	17	7	7	3	7
2732	RATNAGIRI	Ratnagiri	0.878	0.807	0.931	0.876	50	30	102	20	8	1	8	8
2732	RATNAGIRI	Chiplun	0.903	0.769	0.922	0.871	27	94	139	25	6	5	9	9
2733	SINDHUDURG	Vaibhavvadi	0.846	0.751	0.987	0.868	75	123	2	29	3	1	1	1
2733	SINDHUDURG	Malwan	0.838	0.733	0.958	0.850	84	163	30	56	6	3	2	2
2733	SINDHUDURG	Kankavli	0.840	0.725	0.955	0.848	82	183	40	60	5	5	3	3

District Code	District	Block	Index Value				Ranking in Maharashtra (out of 373 blocks)				Ranking in district			
			Infrastructure	Teacher	Outcome	All	Infrastruc ture	Teac her	Outc ome	All	Infrastruc ture	Teac her	Outco me	All
2733	SINDHUDURG	Vengurla	0.828	0.732	0.954	0.845	94	168	47	70	7	4	5	4
2733	SINDHUDURG	Sawantwadi	0.847	0.716	0.946	0.844	74	206	64	73	2	6	8	5
2733	SINDHUDURG	Kudal	0.793	0.742	0.955	0.835	143	141	42	85	8	2	4	6
2733	SINDHUDURG	Devgad	0.863	0.657	0.950	0.834	60	315	57	89	1	8	7	7
2733	SINDHUDURG	Dodamarg	0.841	0.675	0.951	0.832	81	289	54	97	4	7	6	8
2734	KOLHAPUR	Bhudargad	0.855	0.798	0.938	0.868	67	46	88	30	6	1	5	1
2734	KOLHAPUR	Bavda	0.907	0.704	0.958	0.866	26	228	34	31	1	6	1	2
2734	KOLHAPUR	Kagal	0.884	0.770	0.913	0.861	39	92	164	38	3	3	7	3
2734	KOLHAPUR	Karvir	0.891	0.783	0.880	0.856	32	72	248	45	2	2	13	4
2734	KOLHAPUR	Shahuwadi	0.873	0.685	0.950	0.846	54	278	56	66	4	10	3	5
2734	KOLHAPUR	Ajra	0.873	0.704	0.932	0.845	55	232	101	72	5	7	6	6
2734	KOLHAPUR	Kolhapur (M Corp.)	0.846	0.736	0.907	0.835	76	158	185	86	8	4	9	7
2734	KOLHAPUR	Gadhinglaj	0.846	0.689	0.944	0.835	78	269	69	88	9	9	4	8
2734	KOLHAPUR	Radhanagari	0.848	0.724	0.908	0.834	72	188	180	91	7	5	8	9
2734	KOLHAPUR	Shirol	0.825	0.700	0.905	0.817	96	243	192	130	10	8	10	10
2734	KOLHAPUR	Panhala	0.815	0.672	0.889	0.800	115	296	232	172	12	11	12	11
2734	KOLHAPUR	Chandgad	0.817	0.564	0.952	0.792	109	361	51	196	11	13	2	12
2734	KOLHAPUR	Hatkanangle	0.768	0.660	0.893	0.781	172	313	219	231	13	12	11	13
2735	SANGLI	Sangli Miraj Kupwad (M Co	0.782	0.780	0.923	0.832	150	76	137	98	3	2	2	1
2735	SANGLI	Jat	0.806	0.783	0.898	0.832	127	73	211	99	1	1	9	2
2735	SANGLI	Kadegaon	0.798	0.744	0.901	0.819	134	133	200	123	2	3	8	3
2735	SANGLI	Palus	0.777	0.735	0.906	0.810	159	160	187	143	5	4	7	4
2735	SANGLI	Shirala	0.752	0.730	0.928	0.808	189	172	115	150	7	5	1	5
2735	SANGLI	Khanapur	0.780	0.701	0.913	0.804	155	238	163	158	4	9	4	6
2735	SANGLI	Miraj	0.756	0.722	0.909	0.800	184	194	176	171	6	6	5	7
2735	SANGLI	Atpadi	0.733	0.717	0.907	0.790	214	204	181	200	9	7	6	8
2735	SANGLI	Kavathe-Mahankal	0.709	0.713	0.917	0.784	256	215	158	218	11	8	3	9
2735	SANGLI	Tasgaon	0.749	0.685	0.891	0.781	196	280	222	234	8	10	10	10
2735	SANGLI	Walwa	0.723	0.538	0.877	0.724	230	366	254	326	10	11	11	11

*Blocks have been ranked from 1 to 373 at state level based on EDI value in a descending order. Rank one has been assigned to district having top rank and similarly rank 373 has been assigned to the block ranked at the bottom.

Key educational indicators by Municipal Corporations, 2011-12

S.No	Municipal Corporation	Infrastructure				Teacher					Outcome			
		Student Classroom Ratio (SCR) more than 30/35	Percentage of schools do not have Drinking water facility	Percentage of schools do not have separate toilet for boys	Percentage of schools do not have separate toilet for girls	Percentage of Schools with Female Teachers (in schools with 2 and more teachers)	Pupil Teacher Ratio (PTR) More than 30 /35	Single teacher school in Primary Schools and enrolment is more than 15	Less than 3 teachers in Upper Primary Schools	Teachers without Professional Qualification	Gender Parity Index	Apparent Survival Rate (Grade 1-7)	Drop out rate	Transition Rate from Primary to Upper Primary level (only for Upper Primary level)
1	Dhule	53.63	1.1	6.7	9.5	94.40	59.22	0.00	6.25	0.0	0.84	108.78	-0.6	110.4
2	Jalgaon	58.91	0.5	13.4	18.3	93.10	68.81	1.82	4.17	0.0	0.80	96.67	2.9	94.3
3	Akola	50.00	5.4	25.0	48.2	91.10	42.86	0.00	0.00	0.6	0.88	33.25	27.0	27.1
4	Amravati	46.59	0.0	12.8	18.4	97.90	49.55	2.27	0.00	0.0	0.91	107.59	0.4	104.4
5	Nagpur	39.04	0.0	4.3	9.7	98.26	43.42	0.74	0.83	0.7	0.93	106.81	4.5	98.7
6	Nanded Waghala	33.33	0.0	33.3	26.7	80.00	60.00	0.00	0.00	0.0	1.10	46.83	32.6	51.2
7	Aurangabad	51.29	2.0	4.0	12.1	95.80	51.84	1.64	1.29	0.7	0.89	98.86	3.3	103.4
8	Malegaon	64.61	0.0	23.9	20.3	83.20	72.07	0.94	1.44	0.0	0.83	101.95	-1.0	105.3
9	Nashik	73.60	0.0	7.0	12.2	95.90	90.86	17.50	2.68	0.8	0.96	89.03	-2.0	105.2
10	Bhiwandi	69.44	10.2	14.4	25.0	89.80	72.69	0.00	1.69	2.9	1.00	86.73	0.9	95.7
11	Thane	53.44	0.8	3.1	7.2	93.70	53.74	1.37	1.22	0.0	0.87	95.83	-1.6	101.2
12	Ulhasnagar	55.67	0.5	3.0	4.9	99.00	59.61	0.00	1.83	0.0	0.86	102.20	5.0	94.8
13	Mira-Bhayandar	38.71	0.0	0.7	4.7	96.40	46.59	10.71	4.03	0.0	0.86	97.23	1.9	98.1
14	Navi Mumbai	55.49	0.3	0.5	4.1	96.70	63.46	0.00	1.65	0.0	0.85	83.22	2.4	98.8
15	Kalyan-Dombivli	53.83	1.6	4.6	10.7	93.30	52.42	7.79	6.25	0.0	0.89	113.08	1.6	98.4
16	Mumbai	57.40	0.0	5.0	7.3	95.30	52.62	2.08	7.19	0.5	0.90	110.95	-2.3	106.5
17	Pune	45.23	0.4	7.7	14.1	98.40	42.04	6.95	0.78	0.2	0.90	97.19	0.0	101.6
18	Pimpri Chinchwad	55.66	0.4	11.3	13.7	96.10	57.03	1.47	0.00	0.9	0.86	87.40	-0.9	101.4
19	Ahmadnagar	42.94	0.0	5.6	6.8	94.90	55.93	3.57	0.00	0.0	0.83	102.88	2.2	101.7
20	Solapur	57.48	2.1	17.1	23.4	93.40	65.35	0.90	11.03	1.1	0.92	86.46	5.6	93.1
21	Kolhapur	36.13	0.0	8.0	23.4	92.30	51.46	6.15	7.89	0.0	0.81	102.23	0.9	101.2
22	Sangli Miraj	46.82	1.5	9.7	17.2	95.10	57.30	0.00	3.97	0.0	0.87	100.47	1.7	101.6

Key educational indicators by Municipal Corporations, 2011-12

Municipal Corporation of Maharashtra state



Municipal Corporation	Index Value				Ranking			
	Infrastruct ure	Teacher	Outcome	EDI	Infrastr ucture	Teacher	Outcome	EDI
Nagpur	0.806	0.804	0.859	0.825	3	2	7	1
Mira-Bhayandar	0.866	0.658	0.825	0.804	1	13	15	2
Ahmadnagar	0.803	0.740	0.826	0.797	4	7	14	3
Ulhasnagar	0.790	0.798	0.802	0.796	5	3	17	4
Thane	0.773	0.740	0.853	0.796	6	6	8	5
Pune	0.726	0.769	0.872	0.790	8	4	4	6
Mumbai	0.767	0.655	0.887	0.787	7	14	1	7
Navi Mumbai	0.820	0.759	0.761	0.784	2	5	20	8
Amravati	0.666	0.812	0.885	0.781	15	1	2	9
Aurangabad	0.712	0.732	0.844	0.766	11	9	12	10
Dhule	0.723	0.685	0.851	0.762	9	12	10	11
Sangli Miraj Kupwad	0.660	0.728	0.851	0.747	16	10	9	12
Kalyan-Dombivli	0.719	0.605	0.860	0.747	10	16	6	13
Pimpri Chinchwad	0.673	0.728	0.807	0.736	14	11	16	14
Kolhapur	0.700	0.593	0.827	0.724	12	17	13	15
Nashik	0.679	0.419	0.874	0.694	13	22	3	16
Jalgaon	0.617	0.645	0.765	0.679	17	15	19	17
Malegaon	0.519	0.552	0.847	0.649	19	19	11	18
Solapur	0.521	0.526	0.766	0.614	18	20	18	19
Bhiwandi	0.302	0.490	0.864	0.555	21	21	5	20
Nanded Waghala	0.487	0.576	0.322	0.445	20	18	21	21
Akola	0.245	0.738	0.095	0.300	22	8	22	22

*MCs have been ranked from 1 to 22 based on EDI value in a descending order. Rank one has been assigned to MC having top rank and similarly rank 22 has been assigned to the MC ranked at the bottom.