

Publication No. 1009

Evaluation Study No. 143

GOVERNMENT OF HARYANA



Evaluation Study
OF
Mid Day Meal

Issued by:
Director Department of Economic and Statistical Analysis,
Haryana, Panchkula.

Foreword

The Evaluation Study of Mid Day Meal Scheme is being implemented through Elementary Education Department in the State on sharing basis between Centre and State respectively. The main objectives of the scheme are to increase enrollment, retention, attendance and to improve the nutritional level of children.

I trust that the findings and recommendations of the study would be useful to the concerned department and contribute towards a qualitative improvement in its future implementation. I also acknowledge the work done by officers and staff of the evaluation wing of the Department of Economic and Statistical Analysis Haryana.

S.M.Mahajan
Special Secretary to Govt. Haryana
Planning Department

Preface

The Mid-day-Meal Scheme was launched by Govt. of India with the objective of giving a boost to universalisation of education by increasing enrollment, attendance and retention and simultaneously improving the nutritional status of students in primary/upper primary classes.

An evaluation study entitled “Mid-Day-Meal Scheme” has been conducted to assess the implementation and impact of the scheme. The scheme is being implemented in all the Govt., Local Bodies and Govt. Aided Primary Schools of the State from the year 2004. The scheme was also started in all upper Primary Schools from the year 2008 on 75:25 sharing basis. As many as 2218171, 2136668 and 2001570 students of primary and upper primary classes were provided benefit under the scheme during 2007-08, 2008-09 and 2009-10 respectively and an expenditure of Rs. 81.00 lakh, 103.59 lakh and 175.49 lakh was incurred during the year 2007-08, 2008-09 and 2009-10.

I am thankful to the Director, Elementary Education Department, Haryana and his staff for their cooperation in supplying the necessary information/data required for the evaluation study. It is hoped that findings and recommendations made in the evaluation study will prove useful to Elementary Education Department. I also expect that the study would be extremely useful to the planners, researchers, educationists etc.

The report has been prepared by Sh. Harjeet Singh, Research Officer with the assistance of Sh. S.N. Verma, Assistant Research Officer under the supervision of Dr. Rajvir Bhardwaj, Deputy Director and guidance of Sh. D.S. Chikkara Additional Director.

Dated:
Place: Panchkula

R.K. Bishnoi
Director, Dept. of Economic and Statistical Analysis
Haryana.

Contents

Sr. No.	Chapter	Page No.
1.	Executive Summary	1-4
2.	Introduction	5-7
3.	Programme Implementation	8-11
4.	Field Survey	12-23
5.	Summary of Findings and Recommendations	24-27
6.	Annexure-1-IV	28-29

Executive Summary

The Mid Day Meal Scheme is a Centrally Sponsored Scheme which was launched in Haryana on 15th August, 2004. The main objective of the scheme is to increase enrollment, retention and attendance of children in primary and upper primary schools and to improve the nutritional level of such children through supplementary nutrition.

Objectives of the Study:

1. To assess the extent of coverage.
2. To examine the supply chain/process in the CMDM.
3. To examine infra-structure adequacy.
4. To assess the extent to which the Scheme has resulted in achieving its.
5. Objectives of Improving enrollment, improving attendance, improving retention and improving Nutritional Status.
6. To study whether the activities of CMDM affect Teaching/Learning
7. To assess the relevance of CMDM to the target students.
8. To study implementation strategy for CMDM.
9. To suggest remedial measures for overcoming constraints, if any.

Methodology

The study is based on primary and secondary data. The secondary data was collected from the offices of Director Elementary Education and District Elementary Education Offices/District Project coordinator of Kurukshetra, Rohtak, Fatehabad and Faridabad. Besides discussion were also held with the Officers/Officials implementing this scheme. Four hundred beneficiaries were covered under the sample survey.

Main Findings of the Study

1. Out of four districts, four hundred beneficiaries were contacted/surveyed.
2. The survey revealed that 47.0% beneficiaries were from Scheduled Castes category and 29% were from backward classes.
3. 41.0% parents covered under field survey fall under Below Poverty Line category.

4. 33.2% of the sampled beneficiaries responded that they consumed milk daily. 41.8% told that they get milk once or twice in a week. 25.0% said that they get milk twice or thrice in a month.
5. About 7.8% of the sampled beneficiaries responded that they get fruits daily, 50.2% said they get fruits once or twice in a week. About 42.0% said they get fruits twice or thrice in a month at home.
6. 57.5% of the sampled beneficiaries responded that they get vegetables daily. About 42.0 percent told that they get vegetable once or twice in a week. About 0.5 percent said that they get vegetables twice or thrice in a month at home.
7. About 8.8% of the sampled beneficiaries responded that they get pulses daily. 64.2% said they get pulses once or twice in a week. 25.2% said they get pulses twice or thrice in a month. 1.8% told they do not get pulses at home.
8. Apart from above, questions were asked to the beneficiaries about the frequencies of Egg and Non Veg. consumed by them at home. 23.8% of the sampled beneficiaries responded that they get Egg. daily at home. Regarding Non-Veg., 3% told they get Non-Veg once or twice in a week and 4.3% told they get Non-Veg twice or thrice in a month at home.
9. Almost all the beneficiaries were satisfied with the quantity of meals.
10. As far as quality of meal is concerned, 17.3% of the beneficiaries responded that they are not satisfied due to its poor quality. In Faridabad district, where cooked meal is supplied, 16.3% beneficiaries complained the poor quality of meal.
11. All the beneficiaries told that recess is the right time for distribution of Mid Day Meal in the Schools.
12. 83.5% of the sampled beneficiaries were in favour of cooked meal whereas only 16.5% beneficiaries were in favour of readymade meal. The beneficiaries of Faridabad district told that readymade meal is supplied in all the schools of the district by one agency. The meal reached in schools very late and becomes tasteless/ not worth to eat at the time to serve the meal.
13. It was found during the survey that out of 36 schools covered, 26 schools (72.2%) were not having the kitchen facility.
14. Out of 36 schools covered under field survey it was found that only 15 (41.7%) schools having a store room facility.
15. Out of 36 surveyed schools, 25 (69.4%) schools were found without proper eating utensils.

16. It was observed that 32 schools out of 36 schools covered in the study were having drinking water facilities in their schools. Further only 4(11.1%) were found cooking facilities in the schools by using cooking gas facility.
17. All the posts of cooks/helpers in surveyed schools were found filled up. It was observed during survey that they were not being paid desired remuneration.
18. On an average, 2 teachers were spending an average of 1.25 hrs per day in the activities of Mid-day-Meal scheme. This was adversely effecting the teaching time of teachers.

Recommendations

On the basis of various findings and observations, the following recommendations have been made in the effective implementation of the scheme.

1. The Department of Elementary Education Haryana should review the Infrastructure development for mid day meal scheme in the meetings of Steering-cum-Monitoring Committees (SMC). The representatives of other department such as Rural Development, Health, Public Health should be invited to these meetings to sort out other related problems for smooth implementation of this scheme.
2. Meeting of SMC should be held regularly at district/block levels for effective implementation, and monitoring of the scheme. The minutes of the meetings should be sent to the Central as well as State authorities in time so that proper action could be taken for better implementation of this scheme.
3. A trained cook should be engaged at block level who can inspect prepared mid day meal with all material/ spices at least 25 schools in a week.
4. Village Education Committees should be invited in the regular meetings at block level so that their role is specified and their responsibilities are also incorporated in the guidelines.
5. To meet the challenge of shortage of ration if arises, there should be advance arrangement particularly in the beginning of academic session for raw food stock. Besides schools heads should be instructed to make arrangements at their own level or through other schools which have excess stock. It should be ensured that MDM is provided to the students on 200 working schools days in a financial year.

6. Steps are required to ensure that each school has sufficient drinking water facilities, on priority. Quality of water should be tested mandatory in every four months or more frequently, if possible.
7. The remunerations of the cook/helper should be increased.
8. A Committee should be constituted to supervise the cooking meals before serving to the students.
9. As the beneficiaries of Faridabad district told that readymade meal is supplied by one agency namely ISKON, the meal reached in schools very late and became tasteless and staled. In view of this it is suggested that the work relating to supply of readymade meal should be allotted to more agencies.

Chapter-I

Introduction

The Mid Day Meal scheme is world's largest child feeding programme. It is one of the most innovative schemes for the school children. The National Programmed of Nutritional Support to Primary Education (NP-NSPE), as this scheme is now formally known as, had its origin in Tamil Nadu, but the Central Govt. adopted it and now the programme runs all over India.

The scheme was launched in Haryana on 15th Aug., 2004 as a Centrally Sponsored Scheme. As the major share of responsibility of preparing young children to be productive citizens of the country falls on Govt. schools, the scheme is being implemented in all the Govt., Local Bodies and Govt. Aided Primary Schools in the entire State the programme was also started in all upper Primary Schools from April, 2008.

The main objective of the scheme is to increase enrollment, retention and attendance of children in primary & upper Primary Schools and to improve the nutritional level of such children through supplementary nutrition.

1.1 Evaluation Study

The Department of Economic and Statistical Analysis Haryana took up the Evaluation Study "Mid Day Meal of Elementary Education" on the recommendations of Advisory Committee for Evaluation's meeting held on 26-02-2009.

The following are the objectives of evaluation of the scheme conveyed by Elementary Education Department:

1. To assess the extent of coverage.
2. To examine the supply chain/process in the CMDM.
3. To examine infra-structure adequacy.
4. To assess the extent to which the Scheme has resulted in achieving its.
5. Objectives of improving enrollment, improving attendance, improving retention and improving Nutritional Status.
6. To study whether the activities of CMDM affect teaching/learning.
7. To assess the relevance of CMDM to the target students.
8. To study implementation strategy for CMDM.
9. To suggest remedial measures for overcoming constraints, if any.

1.2 Methodology

The study is based on primary and secondary data. The secondary data was collected from the offices of Director, Elementary Education and District Elementary Education Officer/District Project coordinator of Faridabad , Fatehabad , Kurukshetra and Rohtak districts. Besides discussions were also held with the officers/officials implementing this scheme. 400 beneficiaries were covered under the sample survey.

1.3 Sampling Design and Coverage

The following Sampling Design was adopted for the sample study keeping in view the methodology of the study:

- (i) Four Districts namely; Faridabad, Fatehabad, Kurukshetra and Rohtak were selected for conducting the study.
- (ii) Two blocks namely Faridabad and Ballabgarh were covered from Faridabad district.
- (iii) Two blocks namely Fatehabad and Bhatu kalan were covered from Fatehabad district.
- (iv) Two blocks namely Thanes and Pehowa were covered from Kurukshetra district.
- (v) Two blocks namely Rohtak and Lakhan Majra were covered from Rohtak district.
- (vi) 16 rural schools (two from each block) and 4 urban schools were covered.
- (vii) A total number of 400 beneficiaries were covered 320 beneficiaries were covered from rural area's schools of 16 blocks and 80 from urban area's schools for the interview and collection of primary data required for the study.

1.4 Tools of the Study

Five type of following schedules were designed keeping in view the objectives and methodology of the study for collecting requisite data.

1. Schedule 'A' - State level Schedule

The requisite information of this schedule was sought from the office of Director, Elementary Education Haryana.

2. Schedule 'B' -

The information of this schedule was got collected from the office of four District Elementary Education Officers/ District Project Coordinators of Faridabad, Fatehabad, Kurukshetra & Rohtak districts.

3. Schedule 'C'-

The schedule was canvassed from the Head of 36 covered schools.

4. Schedule 'D'-

It was canvassed from the beneficiary students and their parents.

5. Schedule 'E'-

View of Sarpanch/ Panch/ Nambardar/ Mahila Mandal Pardhan/ Parishad about the scheme were ascertained through this schedule

1.5 Reference Period

The requisite secondary data was collected for the year 2007-08, 2008-09, and 2009-10. The primary data was collected from the beneficiaries during the course of field survey.

1.6 Field Work

The field survey was conducted during the months of March, 2011 to May, 2011.

Chapter-II

Programme Implementation

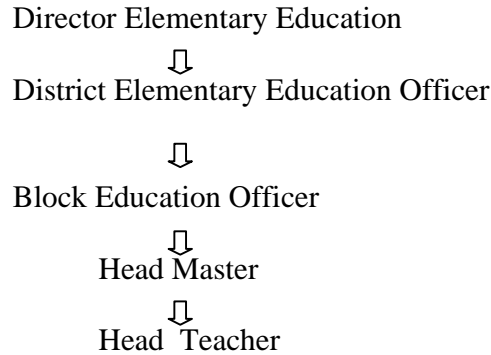
The Ministry of Human Resource Development (Department of School Education and Literacy) Govt. of India is the Nodal Agency for preparing the guidelines, release of funds, monitoring the progress of implementation etc. for the scheme at the center. At State level, the department of Elementary Education is the Nodal Agency to execute the scheme.

2.1 Implementation of the scheme:

With a view to enhancing enrollment, retention and attendance and simultaneously improving nutritional levels among children, the National Programme of Nutritional Support to Primary Education (NP-NSPE) was launched as Centrally Sponsored Scheme on 15th August, 1995. In the month of September, 2004 the Mid-Day Meal Scheme was revised and commonly came to be known as Cooked Mid-Day-Meal Scheme (CMDM) to provide hot cooked meals to Children. The scheme was further revised in 2006. The Mid Day Meal Programme was also started in all upper Primary Schools from April, 2008.

The scheme was launched in Haryana State on 15th August, 2004 as a Centrally Sponsored Scheme. The scheme was implemented in all the Govt., Local Bodies and Govt. Aided Primary Schools in the entire State. Govt. of Haryana streamlined the funds of MDM programme from November, 2008. Under this policy Joint Bank Accounts have been opened at district level in the name of Additional Deputy Commissioner and District Elementary Education Officer. Similarly Bank Accounts have been opened at school level in the near by banks. The bank accounts have been opened for Primary and Upper-Primary separately. DEEO cannot draw amount from their joint accounts and there will be no cash transaction from this account. They can only transfer the amount to the schools accounts according to their requirement.

The following system is adopted for releasing of cooking costs.



Other ingredients such as ghee, salt, oil, jeera etc. are purchased through a committee headed by ADC & thereafter supplied to schools. At school level Head teacher with the help of other teachers distributes raw material to the cook for preparing the meal, cook is engaged locally by Head teacher. The Govt. has also allotted the work of distribution of cooked meal to self help groups (SHG).

2.2 Monitoring

The programme guidelines envisaged the constitution of Steering- cum-Monitoring Committees at State/District/Block/Village level to advise, monitor, coordinate and take remedial measures for improving the implementation of the scheme.

2.3 Norms for allocation of funds and food grain

(a) Primary Schools:

Every child is to be daily given MDM having 450 gms. Calories and 12 grams proteins (as compared to earlier norm of 300 calories and 8-12 gms. proteins). The cooking cost is Rs. 2.15 per child per school day of which 57 paise is to be borne by State Govt.

(b) Upper Primary Schools:

Every child is to be daily given MDM having 750 calories and 20 grams proteins. The cooking cost of other ingredients is Rs. 2.60 out of which 50 paise is to be borne by State.

2.4 Allocation and Expenditure

The following table shows the funds allocated and amount utilized in the State during 2007-08, 2008-09 to 2009-10 under the Mid-Day-Meal Scheme.

Table 2.1
Allocation and Expenditure under
Mid-Day-Meal Scheme

Year	Allocation of funds			Expenditure		
	Centre	State	Total	Centre	State	Total
1	2	3	4	5	6	7
2007-08	5198	2472	7670	5628	2472	8100
2008-09	10000	3796	13796	9663	3696	10359
2009-10	13200	4605	17805	12791	4758	17549

(Rs. In lakh)

Source: Director Elementary Education Haryana.

The above table reveals that amount worth Rs. 8100 lakh, Rs. 10359 lakh and Rs. 17549 lakh were utilized during the year 2007-08 to 2009-10 respectively under MDM scheme.

2.5 Coverage of Schools

The number of schools availing MDM during 2007-08 to 2009-10 is presented in the following table:

Table 2.2
Number of Schools covered under
Mid-Day-Meal Scheme

Year	Number of schools			Covered under MDM scheme		
	Primary	Middle	Total	Primary	Middle	Total
1	2	3	4	5	6	7
2007-08	9448	5428	14876	9448	5428	14876
2008-09	9448	5428	14876	9448	5428	14876
2009-10	9448	5428	14876	9448	5428	14876

Source: Director Elementary Education Haryana.

The above table revealed that all the primary and middle schools were covered under Mid Day Meal scheme during the period 2007-08 to 2009-10

2.6 Coverage of Students

The following table depicts the number of students enrolled and covered under Mid Day Meal Scheme during 2007-08, 2008-09 and 2009-10.

Table 2.3
Students enrolled and covered under
Mid-Day-Meal Scheme
(Number)

Year	Total enrolment		Students availing MDM		Total
	Primary	Middle	Primary	Middle	
1	2	3	4	5	6
2007-08	1520254	697917	1520254	697917	2218171
2008-09	1466600	726412	1438751	697917	2136668
2009-10	1529978	693988	1376981	624589	2001570

The above table revealed that 2218171 students, 2136668 students and 2001570 students of primary and upper primary classes have availed the benefit of MDM scheme during the years 2007-08, 2008-09, 2009-10 respectively.

Chapter-III Field Survey

A field survey was conducted in four selected districts of the State namely Faridabad, Fatehabad, Kurukshetra and Rohtak with a view to study the adequacy of implementation, monitoring and performance of the Mid Day Meal Scheme. Samples of 400 beneficiary students were selected. 320 beneficiaries were selected from schools of rural area and 80 beneficiaries were from schools of urban areas. Besides the opinion of 4 District Elementary Education officers, heads of the schools and parents of beneficiary students were also obtained. The field survey work was carried out during the months of March to May, 2011. The main findings of the survey have been highlighted as under:-

3.1 Selection of blocks/villages/towns/beneficiaries

Two blocks and one town each from 4 selected districts were selected in consultation with the District Elementary Education Officers. Two villages from each block was selected and one city was selected from each district Further 20 beneficiaries from each block/city were selected.

**Table 3.1
List of selected district/ Blocks/ Villages covered.**

Sr.No.	District	Block/MC	Village/City
1.	Faridabad	Balabgarh Faridabad Faridabad	i) Mirtzapur ii) Munjeri i) Bhatola ii) Faridpur Faridabad(U)
2.	Fatehabad	Bhattu kalan Fatehabad Fatehabad	i)Bhattu kalan ii)Dhingsara i) Badopal ii)Dhanger Fatehabad(U)
3.	Kurukshetra	Pehowa Thanesar Kurukshetra	i) Gumthala Garho ii)Thana i)Kirmach ii)Shamshipur Kurukshetra (U)
4.	Rohtak	Lakhan Majra Rohtak Rohtak	1) Sunderpur-I ii) Sunderpur-II i) Baland ii) Sunaria Kala Rohtak (U)

3.2 Selection of Schools

From a list of all types schools provided by each District Elementary Education Officer of Faridabad, Fatehabad, Kurukshetra, and Rohtak districts, 36 schools were covered under field survey. Details are provided in Annexure-I.

3.3 Social Status

The tabulated position in this regard is as under:

Table 3.2
Social Status of Beneficiary

Sr. No.	District	Block/City	R/U	SC	BC	Other	Total
1	2	3	4	5	6	7	8
1.	Faridabad	Balabgarh	R	13	22	5	40
		Faridabad	R	20	13	7	40
		Faridabad	U	7	5	8	20
2.	Fatehabad	Fatehabad	R	11	11	18	40
		Bhattu kalan	R	18	14	8	40
		Fatehabad	U	12	7	1	20
3.	Kurukshetra	Pehowa	R	19	13	8	40
		Thanesar	R	18	15	7	40
		Kurukshetra	U	8	6	6	20
4.	Rohtak	Lakhan Majra	R	29	-	11	40
		Rohtak	R	14	10	16	40
		Rohtak	U	20	-	-	20
		Total Rural	8	142	98	80	320
		Total Urban	4	47	18	15	80
		G.Totals	12	189 (47.0)	116 (29.0)	95 (24.0)	400 (100.0)

Note: Figures in brackets are percentage to total.

R: Rural U: Urban

Out of 400 beneficiaries covered under field survey, 47.0 percent of the beneficiaries were from the SC category, 29.0 percent from BC category and 24.0 percent from the other category.

Besides information pertaining to sex wise, class wise and age wise of sampled beneficiaries are given in Annexure II,III, IV respectively

3.4 Economic Status

The occupations of parents have been of grouped into two categories i.e. above poverty line (APL) and below poverty line (BPL)

Table 3.3
Classification Occupation of Beneficiary Children's Parents

Sr. No.	District	Block/City	R/U	APL	BPL	Total
1	2	3	4	5	6	7
1.	Faridabad	Balabgarh	R	34	6	40
		Faridabad	R	20	20	40
		Faridabad	U	17	3	20
2.	Fatehabad	Fatehabad	R	30	10	40
		Bhattukala	R	21	19	40
		Fatehabad	U	5	15	20
3.	Kurukshetra	Thanesar	R	22	18	40
		Pehowa	R	24	16	40
		Kurukshetra	U	14	6	20
4.	Rohtak	Lakhan Majra	R	16	24	40
		Rohtak	R	27	13	40
		Rohtak	U	5	15	20
	Total	Rural		194	126	320
		Urban		41	39	80
	G.Total			235 (59.0)	165 (41.0)	400

Note: Figures in parenthesis are percentage to total

The above table revealed that out of 400 parents covered under field survey 41.0% parents fall under BPL category and remaining 59.0% in APL category.

3.5 Adequacy of Meals at home

Survey team asked questions to the beneficiaries/parents about the frequencies of food consumed by beneficiaries at home. The consumption pattern was categorized as daily, once or twice in a week, twice or thrice in a month and never. The data is tabulated in the following tables:

i) Milk

Table 3.4
Frequency of milk intake of beneficiaries

Sr. No.	District	No. of beneficiaries	Daily	Once or twice in a week	Twice or thrice in a month
1.	Faridabad	100	47	12	41
2.	Fatehabad	100	52	17	31
3.	Kurukshetra	100	12	60	28
4.	Rohtak	100	22	78	-
	Total	400	133 (33.2)	167 (41.8)	100 (25.0)

Note: Figures in parenthesis are percentage to total

33.2 percent of the sampled beneficiaries responded that they get milk daily. 41.8 percent told that they get milk once or twice in a week. 25.0 percent said that they get milk twice or thrice in a month.

ii) Fruits

Table 3.5
Frequency of fruits intake of beneficiaries

Sr. No.	District	No. of beneficiaries	Daily	Once or twice	Twice or thrice
1.	Faridabad	100	11	49	40
2.	Fatehabad	100	1	99	-
3.	Kurukshetra	100	19	53	28
4.	Rohtak	100	0	-	100
	Total	400	31 (7.8)	201 (50.2)	168 (42.0)

Note: Figures in parenthesis are percentage to total

About 7.8 percent of the sampled beneficiaries responded that they get fruits daily. 50.2 percent said they get fruits once or twice in a week. About 42.0 percent said they get fruits twice or thrice in a month at home.

iii) Vegetable

Table 3.6
Frequency of Vegetables intake of beneficiaries

Sr. No.	District	No. of beneficiaries	Daily	Once or twice	Twice or thrice
1.	Faridabad	100	99	1	-
2.	Fatehabad	100	92	7	1
3.	Kurukshetra	100	36	63	1
4.	Rohtak	100	3	97	-
	Total	400	230 (57.5)	168 (42.0)	2 (0.5)

Note: Figures in parenthesis are percentage to total

57.5 percent of the sampled beneficiaries responded that they get vegetables daily. About 42.0 percent told that they get vegetable once or thrice in a week. About 0.5 percent said that they get vegetables twice or thrice in a month at home.

iv) Pulses

Table 3.7
Frequency of Pulses intake of beneficiaries

Sr. No.	District	No. of beneficiaries	Daily	Once or twice	Twice or thrice	Never
1.	Faridabad	100	24	72	4	-
2.	Fatehabad	100	11	83	5	1
3.	Kurukshetra	100	-	2	92	6
4.	Rohtak	100	-	100	-	-
	Total	400	35(8.8)	257(64.2)	101(25.2)	7(1.8)

Note: Figures in parenthesis are percentage to total

About 8.8 percent of the sampled beneficiaries responded that they get pulses daily. 64.2 percent said they get pulses sometimes in a week. 25.2 percent said they get pulses sometimes in a month. 1.8 percent told that they do not get pulses at home.

Apart from above, questions were asked to the beneficiaries about the frequencies of Egg and Non-Veg. consumed by them at home. About 23.8 percent of the sampled beneficiaries responded that they get Egg. daily at home. Regarding Non-Veg., 3 percent told they get non-veg once or twice in a week and 4.3 percent told they get Non-Veg. twice or thrice in a month at home.

It was observed that all most all the beneficiaries have confirmed that the meal at home is sufficient. This indicates that hunger is not an issue with them.

3.6 Quality of Meal

Beneficiaries' opinions were sought on the quantity and quality of meals and whether they were satisfied with the meals served. The opinion of beneficiaries has been captured in the table.

Table 3.8
Quantity and quality of meals

Sr.No.	District	Beneficiaries	Quantity of meals		Quality of meals		
			Sufficient	Not sufficient	Good	Average	Poor
1.	Faridabad	100	99	1	35	36	29
2.	Fatehabad	100	100	-	100	-	-
3.	Kurukshetra	100	100	-	96	4	-
4.	Rohtak	100	100	-	100	-	-
	Total	400	399 (99.7)	1 (0.8)	331 (82.7)	40 (17.3)	29

Note: Figures in parenthesis are percentage to total

Almost all the beneficiaries were satisfied with the quantity of meals. As far as quality of meal is concerned, 17.3 percent of the beneficiaries responded that they are not satisfied due to its average/poor quality. In Faridabad districts where cooked meal is supplied 16.3 percent beneficiaries complained about the poor/average quality of meal.

Further all most all the beneficiaries told that recess is the right time for distribution of MDM.

3.7 Preference of Meals

The opinion of sampled beneficiaries about cooked meal and readymade meal is presented in the following table:

Table 3.9
Preference of Meal

Sr.No.	District	Cooked Meal	Readymade meal	Total
1	Faridabad	86	14	100
2	Fatehabad	99	1	100
3	Kurukshetra	49	51	100
4	Rohtak	100	-	100
	Total	334 (83.5)	66 (16.5)	400

Note: Figures in parenthesis are percentage to total

83.5 percent of the sampled beneficiaries were in favour of cooked meal whereas only 16.5 percent beneficiaries were in favour of readymade meal. The beneficiaries of Faridabad district told that readymade meal is supplied in all the schools of the district by ISKCON agency. The meal reached in schools very late and became tasteless/shapeless and staled.

3.8 Facilities of Infrastructure

Though the State Govt. is making all possible efforts to improve the infrastructure for the programme. The summary of availability of infrastructure and its status in surveyed schools is as follows.

i) Kitchen

Table 3.10
Availability/Condition of Kitchen

Sr.No.	District	No. of school surveyed	Availability of Kitchen	Condition of Kitchen	
				V.Good	Good
1.	Faridabad	10	2	-	2
2.	Fatehabad	10	4	-	4
3.	Kurukshetra	8	4	-	4
4.	Rohtak	8	-	-	-
	Total	36	10	-	10

It was found during the survey that out of 36 schools covered, 26 (72.2%) of the schools were not having the kitchen facility.

ii) Store room

Table 3.11
Availability/condition of store room

Sr.No.	District	No. of school surveyed	Availability of store room	Condition of store room	
				V.Good	Good
1.	Faridabad	10	2	-	2
2.	Fatehabad	10	5	-	5
3.	Kurukshetra	8	2	-	2
4.	Rohtak	8	6	-	6
	Total	36	15	-	15

Out of 36 schools covered under field survey it was found that store room facility was available only with 15 (41.7%) schools. More than fifty percent schools founds without store facilities.

iii) Utensils

Table 3.12
Availability/condition of eating Utensils

Sr.No.	District	No. of school surveyed	Availability of utensils	Condition of Utensils	
				V.Good	Good
1.	Faridabad	10	5	-	5
2.	Fatehabad	10	6	-	6
3.	Kurukshetra	8	-	-	-
4.	Rohtak	8	-	-	-
	Total	36	11	-	

Out of 36 surveyed schools, 25 (69.4%) schools were without eating utensils and 11 schools were having of eating utensils for serving mid day meal to the students.

iv) Drinking Water/Gas Based Cooking

Table 3.13
**Availability of Drinking Water facility/
Gas Based Cooking**

Sr.No.	District	No. of school survey	Availability of	
			Drinking water facility	Gas based cooking
1.	Faridabad	10	10	-
2.	Fatehabad	10	6	3
3.	Kurukshetra	8	8	-
4.	Rohtak	8	8	1
	Total	36	32	4

It was observed that 32 schools out of 36 schools covered in the study were having drinking water facility in their schools. Further only 4 (11.1%) were having gas based cooking facility.

3.9 Availability of Manpower

Table 3.14
Availability of Cook/Helpers

Sr.No.	District	No. of schools surveyed	Availability of Cook/Helper	
			<u>Posts</u>	
			Sanctioned	Filled up
1.	Faridabad	10	-	-
2.	Fatehabad	20	26	26
3.	Kurukshetra	8	14	14
4.	Rohtak	8	6	6
	Total	36	46	46

Above table revealed that all the posts of cooks/helpers in surveyed schools were filled up. Further engaged cooks/helpers demanded for better remuneration.

3.10 Time spent of teachers

Data pertaining to the surveyed schools revealed that the involvement of teachers in arrangement of cooking and serving the mid day meal is as under:.

Table 3.15
Time Spent of teachers

Sr.No.	District	Average Number of teachers per day	Average no. of hours teachers engaged in MDM activities per day
1.	Faridabad	2	1
2.	Fatehabad	2	2
3.	Kurukshetra	2	1
4.	Rohtak	2	1
		2	1.25

The above table shows that on an average 2 teachers are spending on an average of 1.25 hrs per day in the activities of Mid-day-Meal scheme. This was adversely effecting the teaching time of teachers.

3.11 View of Head of Schools

1. The recipes of ready-made meal should be changed. Children are not liking Dalia, Khichri. Instead Dal/Sabzi, Roti, Prantha should be served.
2. Fruits atleast twice in a week should be provided.
3. One month advance ration material in the beginning of academic session should be made available in the schools.
4. LPG connection along with sufficient nos. of cylinders should be provided to the schools.
5. There is a great need for sufficient utensils.
6. In Faridabad district the contract of ready made meals should be given to more organizations as due to one functioning unit the meal is reaching late in some of the schools.
7. Head of Govt. Primary School/Govt. Model School, Ashok Nagar, Fatehabad told the survey team that due to up gradation of school, there is no sufficient place for cooking the meal.

3.12 General Observations of Surveys

1. One month advance ration be supplied to avoid break days of cooked meal in the schools.
2. In view of upkeep of good meals, LPG connection along with 3-4 gas cylinders be made available in the schools.
3. Sufficient utensils be provided to each schools.
4. Towels/Soap for hand wash be provided to each schools.
5. The honorarium of cook should be increased.
6. Fruit should be given to students once in a week.
7. The scheme should also be extended upto matric standard level.
8. The State/District level officers should inspect the health of the students as well as meal served to them from time of time.
9. The students are not like Dalia, Khichri, these items should be substituted in Halwa, Pulav etc. as per the liking of students.

10. Some students had informed about the insect/concrete etc.in Rice/Dalia.Hence the material supplied should be clean and clear.

3.13 View of Knowledgeable persons

To know the involvement of local people, views of 20 knowledgeable persons were obtained during the field survey. The knowledgeable persons contacted were Sarpanch, Numberdar, MC, Panch, Member of Mahila Mandal. The view expressed by them about the implementation of the scheme are summarized as below:

1. All the knowledgeable persons were of opinion that Mid-Day-Meal scheme helped in improvement in enrolment, regularity in attendance and health of the students.
 2. One knowledgeable person complained that ration did not receive in time in schools. He also suggested that material should be supplied advance in the begging month of July.
 3. Seven knowledgeable persons desired that there should be fruits atleast twice in a week in the menu of MDM.
 4. Knowledgeable persons suggested that there should be change in the menu of MDM from time to time according to children's need and taste.
 5. One of the knowledgeable person suggested that the meal should be suddenly checked from food expert, dietcine or food inspector.
 6. One of the knowledgeable persons suggested that there should be proper infrastructure in the school.
 7. One knowledgeable person suggested that Cooked Mid Day Meal scheme should be taken up to metric level.
-

Chapter-IV

Summary of Findings and Recommendations

The Mid Day Meal Scheme is a Centrally Sponsored Scheme which was launched in Haryana on 15th August, 2004. The main objective of the scheme is to increase enrollment, retention and attendance of children in primary and upper primary schools and to improve the nutritional level of such children through supplementary nutrition.

The evaluation Study of Mid Day Meal Scheme was taken up for evaluation on the recommendations of Advisory Committee for Evaluation's meeting held on 26-02-2009.

The field survey was carried out in 36 schools of districts namely Faridabad, Fatehabad, Kurukshetra and Rohtak.

The main findings of the study are as under:

1. Out of four districts, four hundred beneficiaries were contacted/surveyed.
2. The survey revealed that 47.0% beneficiaries were from Scheduled Castes category and 29% were from backward classes.
3. 41.0% parents covered under field survey fall under Below Poverty Line category.
4. 33.2% of the sampled beneficiaries responded that they consumed milk daily. 41.8% told that they get milk once or twice in a week. 25.0% said that they get milk twice or thrice in a month.
5. About 7.8% of the sampled beneficiaries responded that they get fruits daily. 50.2% said they get fruits once or twice in a week. About 42.0% said they get fruits twice or thrice in a month at home.
6. 57.5% of the sampled beneficiaries responded that they get vegetables daily. About 42.0 percent told that they get vegetable once or twice in a week. About 0.5 percent said that they get vegetables twice or thrice in a month at home.
7. About 8.8% of the sampled beneficiaries responded that they get pulses daily. 64.2% said they get pulses once or twice in a week. 25.2% said they get pulses twice or thrice in a month. 1.8% told they do not get pulses at home.
8. Apart from above, questions were asked to the beneficiaries about the

frequencies of Egg and Non Veg. consumed by them at home. 23.8% of the sampled beneficiaries responded that they get Egg. daily at home. Regarding Non-Veg., 3% told they get Non-Veg once or twice in a week and 4.3% told they get Non-Veg twice or thrice in a month at home.

9. Almost all the beneficiaries were satisfied with the quantity of meals.
10. As far as quality of meal is concerned, 17.3% of the beneficiaries responded that they are not satisfied due to its poor quality. In Faridabad district, where cooked meal is supplied, 16.3% beneficiaries complained the poor quality of meal.
11. All the beneficiaries told that recess is the right time for distribution of Mid Day Meal in the Schools.
12. 83.5% of the sampled beneficiaries were in favour of cooked meal whereas only 16.5% beneficiaries were in favour of readymade meal. The beneficiaries of Faridabad district told that readymade meal is supplied in all the schools of the district, by one agency. The meal reached in schools very late and becomes tasteless/ not worth to eat at the time to serve the meal.
13. It was found during the survey that out of 36 schools covered, 26 schools (72.2%) were not having the kitchen facility.
14. Out of 36 schools covered under field survey it was found that only 15(41.7%) schools having a store room facility.
15. Out of 36 surveyed schools, 25 (69.4%) schools were found without proper eating utensils.
16. It was observed that 32 schools out of 36 schools covered in the study were having drinking water facilities in their school. Further only 4 (11.1%) were found cooking facilities in the schools by using cooking gas facility.
17. All the posts of cooks/helpers in surveyed schools were found filled up. It was observed during survey that they were not being paid desired remuneration.
18. On an average, 2 teachers were spending an average of 1.25 hrs per day in the activities of Mid-day-Meal scheme. This was adversely effecting the teaching time of teachers.

Recommendations

On the basis of various findings and observations, the following recommendations have been made in the effective implementation of the scheme.

1. The Department of Elementary Education Haryana should review the Infrastructure development for mid day meal scheme in the meetings of Steering-cum-Monitoring Committees (SMC). The representatives of other department such as Rural Development, Health, Public Health should be invited to these meetings to sort out other related problems for smooth implementation of this scheme.
2. Meeting of SMC should be held regularly at district/block levels for effective implementation, and monitoring of the scheme. The minutes of the meetings should be sent to the Central as well as State authorities in time so that proper action could be taken for better implementation of this scheme.
3. A trained cook should be engaged at block level who can inspect prepared mid day meal with all material/ spices at least 25 schools in a week.
4. Village Education Committees should be invited in the regular meetings at block level so that their role is specified and their responsibilities are also incorporated in the guidelines.
5. To meet the challenge of shortage of ration if arises, there should be advance arrangement particularly in the beginning of academic session for raw food stock. Besides schools heads should be instructed to make arrangements at their own level or through other schools which have excess stock. It should be ensured that MDM is provided to the students on 200 working schools days in a financial year.
6. Steps are required to ensure that each school has sufficient drinking water facilities, on priority. Quality of water should be tested mandatory in every four months or more frequently, if possible.
7. The remunerations of the cook/helper should be increased.
8. A Committee should be constituted to supervise the cooking meals before serving to the students.

9. As the beneficiaries of Faridabad district told that readymade meal is supplied by one agency namely ISKON, the meal reached in schools very late and became tasteless and staled. In view of this it is suggested that the work relating to supply of readymade meal should be allotted to more agencies.

Annexure-I
List of Schools covered under field survey

District	Name of School	
Faridabad		
	1.	Govt. Primary School, Munjeri
	2.	Govt. Middle School, Munjeri
	3.	Govt. Primary School, Mirtzapur
	4.	Govt. Middle School, Mirtzapur
	5.	Govt. Primary School, Bhatola
	6.	Govt. . Middle School, Bhatola
	7.	Govt. Primary School, Faridpur
	8.	Govt. High School, Faridpur
	9.	Govt. Primary School, Faridabad city
	10.	Govt. Sr. Secondary School, Faridabad city
Fatehabad		
	1.	Govt. Girls Primary School, Badopal
	2.	Govt. Girls High School, Badopal
	3.	Govt. Girls Primary School, Dhangar
	4.	Govt. Girls High School, Dhangar
	5.	Govt. Primary School, Bhattukalan
	6.	Govt. Girls High School, Bhattukalan
	7.	Govt. Primary School, Dhingsara
	8.	Govt. Sr. Secondary School, Dhingsara
	9.	Govt. Primary School, Fatehbad city
	10.	Govt. Middle School, Ashokanagar, Fatehbad city
Kurukshetra		
	1.	Govt. Girls Primary School, Gumthala Garhu
	2.	Govt. Girls Middle School, Gumthala Garhu
	3.	Govt. Girls Primary School, Thana
	4.	Govt. Girls Middle School, Thana
	5.	Govt. Girls Primary School, Kirmach
	6.	Govt. Girls Primary School, Samshipur
	7.	Govt. Girls Primary School, Ratgal, Kurukshetra city
	8.	Govt. Girls Middle School, Ratgal, Kurukshetra city
Rohtak		
	1.	Govt. Girls Primary School, Sunderpur I
	2.	Govt. Girls Primary School, Sunderpur II
	3.	Govt. Girls Primary School, Sumarikalan
	4.	Govt. Girls Middle School, Sumarikalan
	5.	Govt. Girls Primary School, Baland
	6.	Govt. Girls Sr. Secondary School, Baland
	7.	Govt. Primary School Distt. Jail Rohtak City
	8.	Govt. Girls Middle School, Distt. Jail Rohtak

Annexure-II
Sex wise classification of sampled beneficiaries

District	Male	Female	Total
1	2	3	4
Faridabad	55	45	100
Fatehabad	43	57	100
Kurukshtra	20	80	100
Rohtak	27	73	100
Total	145	255	400

Annexure-III
Class-wise classification of sampled beneficiaries

Classes										
District	Nursery	1 st	2 nd	3 rd	4 th	5 th	6 th	7 th	8 th	Total
Faridabad	-	4	2	9	15	19	5	20	26	100
Fatehabad	1	3	5	6	19	16	14	19	17	100
Kurukshetra	1	7	7	21	16	20	5	7	16	100
Rohtak	-	3	14	18	21	20	8	8	8	100
Total	2	17	28	54	71	75	32	54	67	400

Annexure-IV
Age-wise classification of sampled beneficiaries

Age in years													
District	4 th	5 th	6 th	7 th	8 th	9 th	10 th	11 th	12 th	13 th	14 th	15 th	Total
1	2	3	4	5	6	7	8	9	10	11	12	13	14
Faridabad	-	1	2	4	8	5	23	17	12	15	8	5	100
Fatehabad	2	-	3	3	9	13	23	8	21	14	3	1	100
Kurukshetra	1	4	6	5	17	18	18	3	12	10	4	2	100
Rohtak	-	1	10	21	14	19	17	6	9	3	-	-	100
Total	3	6	21	33	48	55	81	34	54	42	15	18	400

Government of Haryana
Department of Economic & Statistical Analysis
Evaluation Study of Mid-day Meal Scheme

Schedule A: State Level Schedule

1. Allocation of funds & Expenditure under MDM Scheme of Elementary Education:

(Rs. In lakh)

S.No.	Year	<u>Requisition of funds</u>			<u>Allocation of funds</u>			<u>Expenditure</u>			Remarks
		Centre	State	Total	Centre	State	Total	Centre	State	Total	

1	2	3	4	5	6	7	8	9	10	11	12
1.	2007-08										
2.	2008-09										
3.	2009-10										

2. Number of schools availing MDM

Year	Number of Schools			Availing MDM		
	Total	Primary	Middle	Total	Primary	Middle
1	2	3	4	5	6	7

2007-08

2008-09

2009-10

3 Year-wise information on enrolment and children availing MDM for the following years for primary stage(Classes I-V) and (Classes VI-VIII)

S.No.	Year	Total enrolment Classes I-V	No. of Children availing MDM	Total Enrolment Classes VI-VIII	No. of Children availing MDM	Reasons for not availing MDM facility in case of variations.
1	2	3	4	5	6	7
1.	2007-08					
2.	2008-09					
3.	2009-10					

4. Whether Monitoring Committee
Constituted

Yes/No

(a) If yes, year of its formation.

(b) Structure of Monitoring Committee.

(c) No. of meetings held

2007-08 2008-09 2009-10

(d) Observations/minutes of the meetings

5. (a) Improvement in enrolment

Yes/No

(b) Improvement in attendance

Yes/No

6 Do you feel that a lot of time of teaching/learning activity
is wasted in distributing
the food?

Yes/No

7. Shortcomings/problems faced in

implementation of this scheme.

- 8 . Suggestions for more effective and better implementation of this scheme in detail.

Nodal Officer
Elementary Education,
Government of Haryana

Government of Haryana
Department of Economic & Statistical Analysis
Evaluation Study of Mid-day Meal Scheme

Schedule B: District Level Schedule

Questionnaire for District Elementary Education Officer

1. Name of District
2. Total no. of children availing MDM in the district (Number)

Primary Classes(1-V)				
Year	Total schools	Total Enrolment	Schools in which MDM Served	Children availing MDM
	1	2	3	4
2007-08				
2008-09				
2009-10				
Total				

(Number)

Upper Primary Classes(V1-VIII)				
Year	Total schools	Total Enrolment	Schools in which MDM Served	Children availing MDM
	5	6	7	8
2007-08				
2008-09				
2009-10				
Total				

3. Reasons for not covering all schools under this scheme,if any(If the figure differ in col.1&3,5&7)

4. Reason for all the children not availing MDM(If the figure differ in col.2&4,6&8)

5. Funds allotted/Expenditure for the district under MDM Scheme of Elementary Education:-

Year	Requisition of Funds	Fund Allotted	Expenditure	Timely receipt of funds	Remarks
	1	2	3	4	5
2007-08				Yes/No	
2008-09				Yes/No	
2009-10				Yes/No	

6. Alternative arrangement incase the funds not received in time.

7. Total Students in the schools covered under this scheme in the whole district during the month August,2010 & January,2011

S.No.	Class level/Month	Boys	Girls	Total	SC	BC
1	2	3	4	5	6	7
	Upto Primary					
	i) Aug.10					
	ii) Jan. 11					
	Upper Primary Classes					
	i) Aug. 10					
	ii)Jan.11					

8. Reason for variation in case of difference in between Aug.2010 & Jan.2011

Dropout
Boys Girls

9. Was any food poisoning case found in MDM Scheme in any school ?

Yes/No

i) if yes,what steps has been taken by you as precautionary measures.

10. Quantity consumed (Food items and fuels) according to weekly chart menu.

S.No.	Name of Item/Fuel	Quantity			Value(Rs)	
		Unit	Last year 2009-10	During the year April.10 to Dec.10	Last year 2009-10	During the year April,10 to Dec.10
1	2	3	4	5	6	7
1.	Wheat					
2.	Rice					
3.	Oil					
4.	Ghee					
5.	Gur					
6.	Soyabin					
7.	Dal					
8.	Channa					
9.	Broken Wheat					
10.	Ground nut					
11.	Salt					
12.	Masala(Branded or not)					
13.	Vegetables					
14.	Others					

Total

- | | |
|--|--------|
| 11. Type of fuel used for cooking food. (Wood/Gas/Coal/K.Oil/Dungcake) | |
| 12. Loss of teaching time of the Staff. | Hours. |
| 13. Loss of study time of student in implementation of scheme. | Hours |
| 14. Impact of the MDM scheme | |
| a) Improvement in enrolment. | Yes/No |
| b) Regular attendance increased in school | Yes/No |
| c) Preventing Children in buying food from hawkers. | Yes/No |
| d) Affecting the socialization and manners | Yes/No |
| e) Fall in dropout rate | Yes/No |

- | | | |
|----|---|--------|
| 15 | Any shortcomings found in implementation of this Scheme?
If yes, please explain. | Yes/No |
| 16 | Give your suggestions about the improvement in implementation of this scheme | |

District Elementary Education Officer

Government of Haryana
Department of Economic & Statistical Analysis
Evaluation Study of Mid-day Meal Scheme

Schedule C: School Level Schedule

Questionnaire For Head of School

1. District
 - a) Town/Village
 - b) Rural/Urban
 - c) Block
2. Name of School
 - a) Type of School (Govt.Primary School/Govt.Middle/High School)
 - b) Type of School (Boys/Girls/Co-education)
 - c) Shift (Morning/Evening)l.
3. When MDM scheme was started in the school?
4. Kind of MDM being served ? Ready-made/ Cooked
 - i) If ready-made, name of the NGO/Supplier
 - ii) If cooked type of fuel used(Wood/Gas/Dungcaks/Others)

5. Weekly MENU of Mid-day Meal Prepared or Ready-made received.

Mon. Tues. Wed. Thu. Fri. Sat.

6. Total Students in the school.

Class	Total		Availing MDM		SC		Availing SC MDM		BC		Availing BC MDM	
	B	G	B	G	B	G	B	G	B	G	B	G
1	2	3	4	5	6	7	8	9	10	11	12	13

Nursery

I

II

III

IV

V

VI

VII

VIII

Total

B- Boys

G- Girls

7. Quantities consumed (Food items and fuels)

S.No.	Name of Item/Fuel	Unit	Quantity		Value(Rs)	
			Last year 2009-10	During the year April.10 to Dec.10	Last year 2009-10	During the year April.10 to Dec.10
1	2	3	4	5	6	7.
1.	Wheat					
2.	Rice					
3.	Oil					
4.	Ghee					
5.	Gur					
6.	Soyabin					
7.	Dal					
8.	Channa					
9.	Broken Wheat					
10.	Ground nut					
11.	Salt					
12.	Masela					
13.	Vegetables					
14.	Fuel					
15.	Other					

Total

Type	Sanctioned	Required	Filled	Vacant
------	------------	----------	--------	--------

8. a) Staff engaged in MDM Scheme Cook

Helper

(b) No. of days cook remained absent during last month

(c) No. of days helper remained absent during last month

9. a) Fund received during 2009-10

b) Total expenditure made

10. Facilities of Infrastructure such as

i) Kitchen

Yes/No

ii) Store room

Yes/No

iii) Dinning Hall

Yes/No

iv) Utensils available are sufficient.

Yes/No

v) Safety of Ration

Yes/No

vi) Availability of Drinking Water facility.

Yes/No

vii) Availability of Towels & Soaps for cleaning hands.

Yes/No

11. Whether cash book is maintained if not maintained, reasons thereof ? Yes/No
12. Whether Stock Register is maintained. if not maintained, reasons thereof ? Yes/No
13. Whether emergency stock is available in case of non receipt of food items in time ? Yes/No
14. a) Number of break days, if any, in distributions of MDM during the last year
b Breakup if any, is due to
i) Shortage of ration supply /fuel/ absence of engaged staff/others
15. School manpower used for the operation of the scheme.

Type of person	No. of persons per day	No. of hours per person per day	Remarks
1	2	3	4

Teaching staff

Non -teaching staff

Students

Others

- | | | |
|-----|--|--|
| 16. | Receipt of Food Items.
If after the school time who receives the raw material ? | During school time/ After School time |
| 17. | a) Quality of Food Items received
b) Quality of Masala received (Branded/not Branded) | Satisfactory/Un-satisfactory
Satisfactory/Un-satisfactory |
| 18. | Quality of Food Items received in | Gross Weight/Net Weight |
| 19 | Whether the food is being tasted by any officer or teacher before supply to children ?
If yes, column wise information recorded in Check Register ? | Yes/No |
| 20. | Provide the list of remarks given by District | |

Level Officers/Higher Officers regarding performance of prepared Mid-day Meal Scheme during the current year in food check register or otherwise.

21. Give disposal report of unused food
22. Whether quantity of food served to the student is same for:
Class I to class V & Yes/No
Class VI to VIII.
If no, explain the difference
23. Whether P.T.A or any other agency Yes/No
i.e. NGO, VEC, Mahila Mandal, Panchayat, SHG's etc.
are monitoring and helping to serve the food
and drinking water from time to time ?
24. How many days the food has been served.
a) During last year 2009-2010
b) During (January, 2011)
25. Impact of MDM Scheme:
a) Improvement in enrollment. Yes/No
b) Regular attendance increased in school Yes/No
c) Nutrition and health of children Yes/No
d) Preventing children in buying Yes/No
food from hawkers.
e) Affecting the socialization and manners Yes/No
26. Do you feel any shortcomings in proper Yes/No
implementation of this Scheme?
If yes, give suggestions.

(Signature of Head of School)

27. Observation of Investigator
- | | |
|--|---|
| 1. Cleanliness of Kitchen Area | V. good/Good/Bad/worse |
| 2. Cleanliness of Dinning Hall | V. good/Good/Bad/worse |
| 3. Store Room condition | V. good/Good/Bad/worse |
| 4. Food Items Storage | Organised/Un-organised |
| 5. Condition of Cooking Utensil(Patila) | V. good/Good/Bad/ worse |
| 6. Condition of Untensil used by students. | V. Good/Good/Bad/ worse |
| 7 Cleanliness of Untensil. | V. Good/Good/Bad/worse |
| 8. Personal Hygiene of cook | V. Good/ Good/Bad/ worse |
| 9. Inspection of Food check Register | 1. Format |
| | 2. Remarks given by
Checking Officer |

Government of Haryana
Department of Economic & Statistical Analysis
Evaluation Study of Mid-day Meal Scheme

Schedule D: Beneficiary/ Parents level Schedule
(VI to VIII) (For 1 to V)

1. District
 - a) Town/Village
 - b) Rural/Urban)
 - c) Block
2. Name of School
 - a) Type of School
(Govt.Primary School/Govt. Middle/High School)
 - b) Type of School
(Boys/Girls/Co-education)
 - c) Shift
(Morning/Evening)
3. Name of the beneficiary
Age Sex Boy/Girl
4. Father's/Mother's/Guardian's Name
5. Main Occupation. APL/BPL
Residential Address:
6. House hold size Male Female Total
7. How many Brother & Sister are Brother Sister
studying in the same school ?
8. Social Group(SC/BC/OBC/Other)
9. Class in which presently
Studying
10. Year in which admitted in the school
11. Is the student regular in attendance? Yes/No
12. The most important interest for regularity Study/Playing/MDM
in the school.
13. Is sufficient breakfast served regularly at home? Yes/No
14. Frequency at which the following are
taken at home by children(Daily/Sometimes in a
week/Sometimes in a month/
/Never taken so far).

- a) Milk
 b) Fruits
 c) Vegetables
 d) Pulses
 e) Eggs
 f) Non-Veg.
15. Type of Meal received on each day.

Mon.	Tue.	Wed.	Thu.	Fri.	Saturday
------	------	------	------	------	----------

-
16. Opinion about prepared MDM
- a) Is the quantity of Meal sufficient for lunch. Yes/No
- b) Quality of Meal supplied (Good/Average/Poor)
- c) What is the most suitable time for the distribution?
 (Before recess/during recess/after recess/any other time).
- e) Is the student satisfied with the scheme? Yes/No
 If no, reason thereof
- f) Name of the recipe which is liked most
- g) Name of the recipe which is liked least -----
- h) Name of the recipe which is liked most but
 not part of the recipe prescribed by the
 department.
- i) Preference of Meal. Cooked/R-made
17. Give your suggestions about the improvement
 in implementation of this scheme

Signature of Beneficiary/Parents

Signature of Investigator
 Date of Survey

Government of Haryana
Department of Economic & Statistical Analysis
Evaluation Study of Mid-day Meal Scheme

Schedule E: Village Sarpanch/Panch/Nambardar/Mahila Mandal Pardhan/Parishad
Village/Town/City Block District

1. Identification Particulars:-
 - a) Name
 - b) Designation
 - c) Age
 - d) Sex(M/F)
 - e) Education
 - f) Since how long in present capacity

2. Observation about the Mid-day Meal.
 - a) Improvement in enrolment. Yes/No
 - b) Improvement in regularity. Yes/No
 - c) Improvement in health of students. Yes/No
 - d) Help in preventing students from buying food from hawkers. Yes/No
 - e) Help in affecting the socialization and manners Yes/No
 - f) Are people liking this scheme? Yes/No
 - g) Regularity of students because of MDM. Yes/No

3. Contribution of community/society/village education committee in implementation of Mid-day Meal Scheme in Elementary Education:-
 - a) In preparation of MDM. Yes/No
 - b) In serving the Meal. Yes/No
 - c) In providing water for drinking & washing hands of children. Yes/No
 - d) In fulfilling the requirement of utensils or other materials whenever needed. Yes/No

4. Are you aware about the menu of MDM being served. Yes/No

- | | | |
|----|--|-------------------|
| 5. | Are you aware about the quality of MDM being served in the school. | Yes/No |
| 6. | Whether prescribed food quantity of MDM have been served | Yes/No |
| 7. | Whether food is ever been tasted by village Sarpanch/Elders. | Yes/No |
| 8. | What is your opinion about this scheme? | Useful/Not useful |
| 9. | Do you feel any shortcomings in implementation of this scheme ? | Yes/No |

If yes, please suggest how can the Govt.improve it.

Signature of Village Sarpanch/Panch
Nambadar/Mahila Mandal Pardhan/Parishad

10. Views of Investigator

Signature of Investigator
Date of Survey