



**SELECTED EDUCATIONAL STATISTICS
2000 – 2001**

RANGA REDDY - 15



NIEPA DC



D11571

**COMMISSIONER & DIRECTOR OF SCHOOL EDUCATION
ANDHRA PRADESH
HYDERABAD – 4**

The right place for every child is school

LIBRARY & DOCUMENTATION CENTRE

Jawahar Institute of Educational

Research and Administration.

17-B, * Surobindo Marg,

New Delhi-110016

DOC, No..... D-11571

Date..... 12-08-2008

PREFACE

The agenda for education incorporated in Vision 2020 document clearly states that the primary goal of the state will be to increase the overall literacy levels from 44% (now 61%) to 95%. The proposed 93rd Constitutional Amendment, to make education a FUNDAMENTAL RIGHT has brought the focus on to "Free and Compulsory Elementary Education".

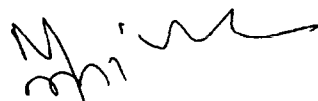
Several programmes are being implemented to convert this vision into a reality. Micro level plans are being prepared with district, as unit of planning. The need for efficient flow of information right from school/habitation level is vital in micro level planning. The effort for Universalization of Elementary Education will require not only district/mandal level data but also habitation level data. It is necessary to prepare habitation level plans and registers on all the key indicators, some of which are incorporated in this publication.

Information on important parameters like educational institutions, enrolment, teachers, Special Schools and Teacher Education Institutions are furnished in this publication. Key education indicators like gross enrolment ratios, dropout rates, teacher - pupil ratios and performance in S.S.C Examination are also included, which will enable the planners to know the efficiency of the system as well as wastage.

The mandal-wise database is created in Oracle and a text file of the documents is provided in a floppy. Users can access the data in MS-Word. The mandal-wise reports can be accessed by selecting the district name.

I hope this publication would be useful for education planners and administrators.

Hyderabad
Date: 26-02-2002


(MANMOHAN SINGH)
Commissioner and Director of School Education

Contents

<i>Table No.</i>	<i>Item</i>	<i>Page No.</i>
	An Overview	1 to 16
	1. Demography	
	District Information at a Glance (2001 Census)	17
	Ranga Reddy - District Map	18
1.11	Mandal-wise No.of Villages, Inhabited Villages & Towns	19
1.12	Mandal-wise Population & Sex Ratio – 1991 & 2001 Census	20
1.13	Mandal-wise Literacy Rates – 1991 & 2001 Census	21
1.14	Population of Scheduled Caste and Percentage of SC Population to Total Population - 1991 Census	22
1.15	Population of Scheduled Tribe and Percentage of ST Population to Total Population - 1991 Census	23
	2. Schools, Enrolment & Teachers	
2.11 - 2.13	Management-wise Institutions, Enrolment, Teachers	24
2.21 - 2.23	Management-wise Enrolment - BC, SC, ST	25
2.31 - 2.33	Management-wise Teachers - BC, SC, ST	26
2.41 - 2.43	Medium-wise Exclusive Schools - Institutions, Enrolment, Teachers	27
2.51 - 2.53	Medium-wise Parallel Schools - Institutions, Enrolment, Teachers	28
2.61	Class-wise Enrolment - All & B.C	29
2.62	Class-wise Enrolment - S.C & S.T	30
	3. Mandal-wise Information	
3.11 - 3.16	Class-wise and Stage-wise Enrolment - All	31-36
3.21 - 3.26	Class-wise and Stage-wise Enrolment - BC	37 – 42
3.31 - 3.36	Class-wise and Stage-wise Enrolment - SC	43 – 48
3.41 - 3.46	Class-wise and Stage-wise Enrolment - ST	49 – 54
3.51 - 3.55	Type-wise & Management-wise Schools	55 – 58
3.61 – 3.65	Mandal-wise Institutions, Enrolment, Teachers & Teacher-Pupil Ratio - All	59 – 62
3.71 – 3.75	Mandal Wise Enrolment - BC, SC, ST	63 – 66
3.81 – 3.85	Mandal Wise Teachers - BC, SC, ST	67- 70
	4. Special Schools	
4.21 - 4.22	School for Hearing Impaired - Enrolment, Teachers	71
4.51 - 4.52	School for Orthopaedically Handicapped - Enrolment, Teachers	72
	5. Educational Indicators	
5.11 - 5.13	Mandal-wise Projected Population, Enrolment & Gross Enrolment Ratio	73 – 75
5.21 - 5.23	Mandal-wise Drop-Out Rates Classes I – V - All, SC, ST	76 – 78
5.31	T.P. Ratio - PS, JPS & High School	79
5.41	Performance in S.S.C. Examinations	80

	6. Teachers Education Institutions	
6.11 - 6.12	District Institute of Education Training - Enrolment, Teachers	81
6.21 - 6.32	Colleges of Education – Enrolment, Teachers	82
	7. Cadre-wise Teachers	
7.11	Cadre-wise Teachers in Local Body Schools	83
7.12	Cadre-wise Teachers in Government, Local Body, Private Aided Schools Managements	84
	8. Non-Teaching Staff Particulars	
8.11	Non-Teaching Staff Particulars	85

An Overview

1. Demography

The population of the district as per 2001 Census(Provisional) comprises of 52% of males and 48% of females. Rural population constitutes 47% and urban population 53% of the total population in the district. The percentage of urban population in the district is more than rural population 53% as compared to the state figure of 27%.

Table - 1
Population Characteristics

S.No.	Variable	Andhra Pradesh		Ranga Reddy	
		1991	2001 (Provisional)	1991	2001 (Provisional)
1	Population	66508008	75727541	2551966	3506670
	a) Males	33724581	38286811	1314560	1806199
	b) % of Males	50.71	50.56	51.51	51.51
	c) Females	32783427	37440730	1237406	1700471
	d) % of Females	49.29	49.44	51.51	48.49
2	Rural Population	48620882	55223944	1346789	1638532
	% of Rural Population	73.11	72.92	52.77	46.73
3	Urban Population	17887126	20503597	1205177	1868138
	% of Urban Population	26.89	27.08	47.23	53.27
4	Scheduled Caste	10592066	N.A	439386	N.A
	% of S.C. Population	15.93	N.A	17.22	N.A
5	Scheduled Tribe	4199481	N.A	109394	N.A
	% of S.C. Population	6.31	N.A	4.29	N.A

Source:- Paper-2 of 2001, Director of Census Operations, A.P., Hyderabad.

The area of the district constitutes about 2.73% of total area of State while its population constitutes 4.63% of the total population of the State. The density of population in the District (275) is much higher than the density in the State (468). The growth rate during the decade 1991-01 is 37.41% and it is higher than the state growth rate of 13.86%.

Table - 2
Area,Density,Sex Ratio & Growth Rate

S.No.	Variable	Andhra Pradesh		Ranga Reddy	
		1991	2001 (Provisional)	1991	2001 (Provisional)
1	Area (in '000 Sq.Kms)	275	275	7.5	7.5
2	Density of Population (per Sq.Km)	242	275	340	468
3	Sex Ratio	972	978	941	941
5	Growth Rate (1991-2001)	24.2	13.86	60.32	37.41

2. Literacy Rates

The literacy rate has increased from 49.07% in 1991 to 66.31 in 2001. As per 2001 Census, there are 75.02% male literates and 57.03% female literates in the District. The literacy rates of the district as compared to the state are given below. As per the 2001 Census, the district ranks 4 in literacy among the districts in the state,

Table - 3
Literacy Rates

S.No.	Literacy	Andhra Pradesh		Ranga Reddy	
		1991	2001 (Provisional)	1991	2001 (Provisional)
1	Male	55.13	70.85	60.43	75.02
2	Female	32.72	51.17	36.91	57.03
3	Total	44.09	61.11	49.07	66.31
4	% of Increase over 1991	-	38.60	-	35.13

3. SCHOOLS

a) Primary Schools: -

In Ranga Reddy District there were 1111 Primary Schools in 1997-98. The number of schools has increased to 1438 in 2000-01 and the percentage of increase is 29.43%.

The management-wise distribution of Primary Schools has remained more or less same from 1997-98 to 2000-01. Government schools constitute 2.23% and Local Body schools constitute 93.88% of the total schools. The share of private managements is only 3.89% for the year 2000-01.

Management wise and year wise schools for the years 1997-98 to 2000-01 are given below.

Table - 4
Management-wise Primary Schools

Year		Govt.	Local Body	Private Aided	Private Un-Aided	Total
1997-98	No.	35	990	2	84	1111
	%	3.15	89.11	0.18	7.56	100.00
1998-99	No.	38	1148	2	68	1256
	%	3.03	91.40	0.16	5.41	100.00
1999-00	No.	35	1357	2	65	1459
	%	2.40	93.01	0.14	4.46	100.00
2000-01	No.	32	1350	1	55	1438
	%	2.23	93.88	0.07	3.82	100.00

During 2000-01 570 new Primary Schools have been established in the district.

b) Upper Primary Schools: -

Upper Primary Schools in the district have increased from 490 in 1997-98 to 617 in 2000-01. The upper primary schools have increased by 25.92% between 1997 to 2000.

Management - wise distribution of schools indicate that the percentage share of private upper primary schools has increased between 1997 - 2000.

The percentage share of Government schools has increased from 0.20 % in 1997-98 to 0.81% in 2000-01. Local body schools and Private aided schools have also shown declining trend in the above period. The percentage share of Private unaided schools has increased from 55.71% to 58.18 % between 1997 to 2000.

The management – wise Upper Primary Schools and their percentage between 1997-98 to 2000-01 are given below.

Table – 5
Management-wise Upper Primary Schools

Year		Govt.	Local Body	Private Aided	Private Un-Aided	Total
1997-98	No.	1	200	16	273	490
	%	0.20	40.82	3.27	55.71	100.00
1998-99	No.	1	214	16	305	536
	%	0.19	39.93	2.99	56.90	100.00
1999-00	No.	3	241	17	345	606
	%	0.50	39.77	2.81	56.93	100.00
2000-01	No.	5	238	15	359	617
	%	0.81	38.57	2.43	58.18	100.00

During 2000-01 35 Primary Schools have been upgraded into Upper Primary Schools in the district.

c) High Schools: -

The number of High Schools have increased from 484 in 1997-98 to 662 in 2000 – 01. The percentage of increase of High Schools between 1997 to 2000 is 36.78 %.

The percentage of Government schools to total schools has declined from 3.72% in 1997-98 to 3.63% in 2000-01. Between 1997 to 2000, Private unaided schools have increased from 44.83% to 50.00%. During 2000-01 Government schools constitute 3.63% and Local body schools constitute 42.75% of the total schools. The percentage share of private schools is 53.63%.

The management – wise High Schools and their percentage share are given below.

Table - 6
Management wise High Schools

Year		Govt.	Local Body	Private Aided	Private Un-Aided	Total
1997-98	No.	18	224	25	217	484
	%	3.72	46.28	5.17	44.83	100.00
1998-99	No.	18	240	25	231	514
	%	3.50	46.69	4.86	44.94	100.00
1999-00	No.	23	265	24	273	585
	%	3.93	45.30	4.10	46.67	100.00
2000-01	No.	24	283	24	331	662
	%	3.63	42.75	3.63	50.00	100.00

83 Upper Primary Schools have been upgraded to High Schools during 2000-01.

4. Enrolment by type of schools

a) Primary Schools: -

The enrolment in Primary Schools during 1997 – 98 was 1.94 lakhs. It has declined to 1.92 lakhs in 2000-01. The percentage of decrease between 1997 to 2000 is 1.03. The enrolment in Government Schools during 2000 – 01 was 1.37% of the total enrolment. Local body schools have registered about 94.29% of the enrolment. The enrolment in private schools is about 4.33%.

The year – wise, management – wise enrolment & their percentage share are given below.

Table – 7
Enrolment in Primary Schools

Year		Govt.	Local Body	Private Aided	Private Un-Aided	Total
1997-98	No.	2965	177726	356	13901	194948
	%	1.52	91.17	0.18	7.13	100.00
1998-99	No.	8644	179851	344	11303	200142
	%	4.32	89.86	0.17	5.65	100.00
1999-00	No.	3064	195507	338	9859	208768
	%	1.47	93.65	0.16	4.72	100.00
2000-01	No.	2643	181266	115	8212	192236
	%	1.37	94.29	0.06	4.27	100.00

b) Upper Primary Schools:-

The enrolment in Upper Primary Schools has increased from 1.51 lakhs in 1997 – 98 to 1.68 lakhs in 2000 – 01. The percentage of increase between 1997 – 2000 is 11.26%. The enrolment in Government schools is 0.83 % of the total enrolment in 2000-01. 40.84% of the children are enrolled in local body schools. The enrolment in private sector is 58.33% of the total enrolment.

Management – wise enrolment and their percentage share for the years 1997-98 to 2000-01 are given below:

Table – 8
Enrolment in Upper Primary Schools

Year		Govt.	Local Body	Private Aided	Private Un-Aided	Total
1997-98	No.	407	66156	5689	79558	151810
	%	0.27	43.58	3.75	52.41	100.00
1998-99	No.	482	68447	5481	86181	160591
	%	0.30	42.62	3.41	53.66	100.00
1999-00	No.	1038	73711	5842	96521	177112
	%	0.59	41.62	3.30	54.50	100.00
2000-01	No.	1401	69007	5365	93213	168986
	%	0.83	40.84	3.17	55.16	100.00

c) High Schools: -

The enrolment in High Schools during 1997-98 was 2.67lakhs and it has increased to 3.75 lakhs during 2000 – 01. The enrolment in High Schools has increased by 40.45 % from 1997 to 2000.

The percentage share of enrolment in Government High Schools has increased from 2.83% in 1997 – 98 to 3.70% in 2000 – 01. The percentage of enrolment in local body schools has decreased from 30.99% in 1997-98 to 30.53 in 2000 - '01. The enrolment in Private unaided schools has increased from 58.68% in 1997 –98 to 60.86% of the total enrolment in 2000-01.

Table – 9
Enrolment in High Schools

Year		Govt.	Local Body	Private Aided	Private Un-Aided	Total
1997-98	No.	7565	82929	20071	157008	267573
	%	2.83	30.99	7.50	58.68	100.00
1998-99	No.	14619	89718	19079	165387	288803
	%	5.06	31.07	6.61	57.27	100.00
1999-00	No.	12360	104916	19070	194489	330835
	%	3.74	31.71	5.76	58.79	100.00
2000-01	No.	13892	114583	18438	228403	375316
	%	3.70	30.53	4.91	60.86	100.00

5. Class-wise Enrolment:

The enrolment in classes I to V during 1997-98 was skewed. Efforts are made through various programmes to streamline the enrolment and retention.

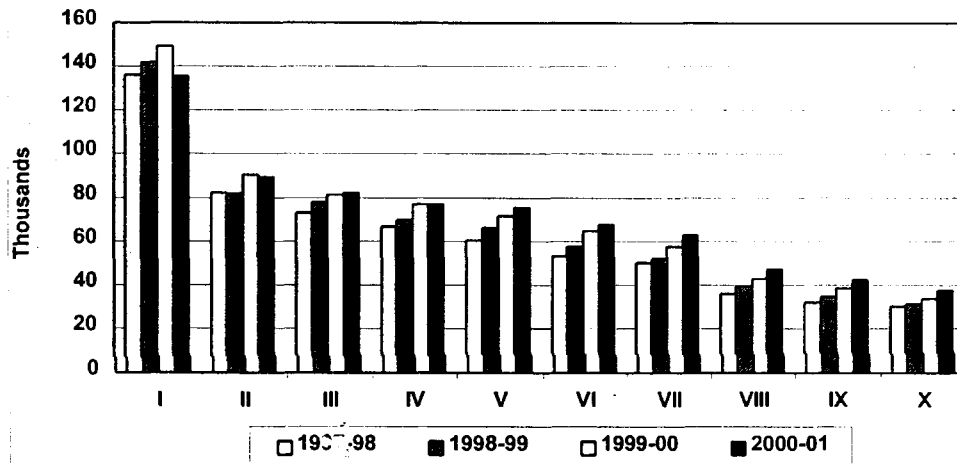
During 1997-98, the enrolment in classes I & II was 21.99% and 13.28% respectively as compared to the total enrolment. Over a period of four years, from 1997 to 2000, the enrolment has stabilized in primary stage and is more or less equal in classes I to V.

The enrolment in VI & VII classes has also increased steadily over the years.

Table - 10
Class-Wise Enrolment

Class	1997-98	% to Total	1998-99	% to Total	1999-00	% to Total	2000-01	% to Total
I	136160	21.99	142036	21.77	149189	21.13	135884	18.97
II	82217	13.28	81872	12.55	90483	12.82	89264	12.46
III	72886	11.77	77612	11.90	80973	11.47	82190	11.48
IV	66700	10.77	69653	10.68	76690	10.86	76840	10.73
V	60346	9.75	66193	10.15	71622	10.14	75252	10.51
VI	52832	8.53	57158	8.76	64555	9.14	67456	9.42
VII	49887	8.06	52243	8.01	57421	8.13	62909	8.78
VIII	35925	5.80	39453	6.05	42761	6.06	47021	6.57
IX	32145	5.19	34767	5.33	38564	5.46	42095	5.88
X	30070	4.86	31345	4.81	33733	4.78	37322	5.21
Total	619168	100.00	652332	100.00	705991	100.00	716233	100.00

Class Wise Enrolment



6. Enrolment by stages:

The stage-wise enrolment in Primary, Upper Primary & Secondary Stages is given below.

Table - 11
Enrolment by Stages

Year/ Stage	I-V			VI-VII			VIII-X		
	Boys	Girls	Total	Boys	Girls	Total	Boys	Girls	Total
1997-98	222284	196025	418309	57707	45012	102719	56193	41947	98140
1998-99	230691	206675	437366	60995	48406	109401	60130	45435	105565
1999-00	246681	222276	468957	67142	54834	121976	64738	50320	115058
2000-01	239994	219436	459430	71198	59167	130365	70309	56129	126438

The enrolment in primary stage has shown slight increase from 1997-98 to 2000-01. However the enrolment in Upper Primary and Secondary Stages has also increased.

7. Transition Rates:

a) Transition rates - Primary to Upper Primary stage:

In Upper Primary stage of education, for every 100 children enrolled in Class-V in 1997-98, only 94.72 children are retained in class-VI in 1998-99 and for every 100 children in class-VI, 98.89 children joined in class-VII during the same period.

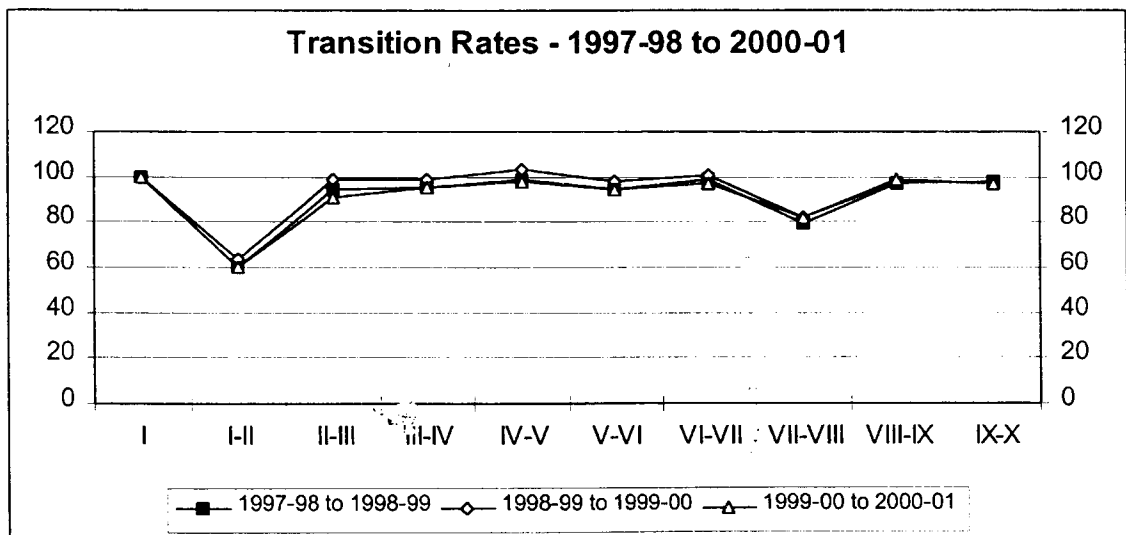
Similarly, for every 100 children enrolled in Class-V in 1998-99, 97.53 children joined in class-VI in 1999-00 and for every 100 children in class-VI, 100.46 children joined in class-VII during the same period. For every 100 children enrolled in Class-V in 1999-00, 94.18 children joined in class-VI in 2000-01 and for every 100 children in class-VI, 97.45 children joined in class-VII during the same period.

b) Transition rates - Upper Primary to Secondary stage:

In secondary stage of education, for every 100 students of class-VII in 1997-98, 79.08 children joined in class-VIII in 1998-99. In the years 1998-99 to 1999-00, for every 100 students of class-VII, 81.85 children joined in class-VIII and between 1999-00 and 2000-01, 81.89 children joined in class-VIII. The transition rates between various classes are given below.

Table - 12
Transition Rates - 1997-98 To 2000-01

Classes	1997-98 To 1998-99	1998-99 To 1999-00	1999-00 To 2000-01
I	100	100	100
I-II	60.13	63.70	59.83
II-III	94.40	98.90	90.83
III-IV	95.56	98.81	94.90
IV-V	99.24	102.83	98.12
V-VI	94.72	97.53	94.18
VI-VII	98.89	100.46	97.45
VII-VIII	79.08	81.85	81.89
VIII-IX	96.78	97.75	98.44
IX-X	97.51	97.03	96.78



8.i) Teachers

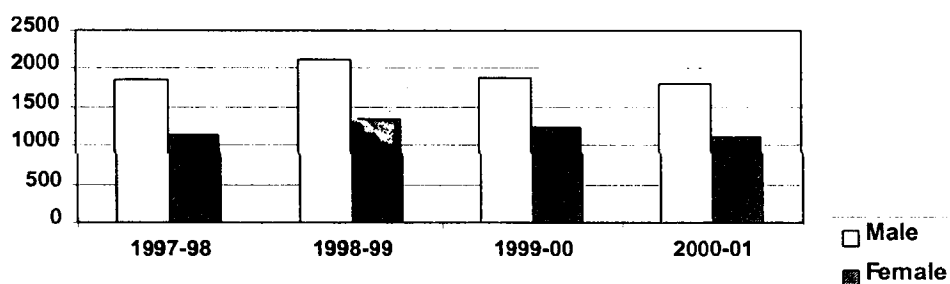
a) Primary Schools

The number of teachers in Primary Schools during the year 1997-98 was 2988 and it has increased to 3447 in 1998-99 and decreased to 3130 in 1999-2000 and it has been further decreased to 2903 in 2000-01. In 1997-98 out of 2988 teachers 1141 (38.19%) were female teachers. Similarly, in the years 1998-99, 1999-00 and 2000-01 there were 1336 (38.76%), 1242 (39.68%) and 1100 (37.89%) female teachers respectively. The female teachers constitute about 38% of the total teachers in primary schools of the district.

Table -13
Teachers in Primary Schools

Year	Male	Female	Total	% of Female Teachers
1997-98	1847	1141	2988	38.19
1998-99	2111	1336	3447	38.76
1999-00	1888	1242	3130	39.68
2000-01	1803	1100	2903	37.89

Teachers in Primary Schools



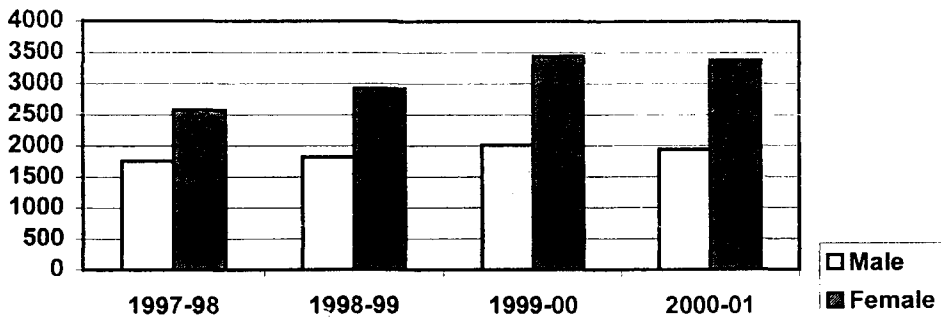
b) Upper Primary Schools

The teachers in Upper Primary Schools 4326 in 1997-98 have increased to 5307 in 2000-01. Out of 4326 teachers in 1997-98 there were 2573 (59.48%) female teachers. Similarly in the years 1998-99, 1999-00 and 2000-01 there were 2916 (61.66%), 3434 (63.09%) and 3374 (63.58%) female teachers respectively. Teachers in upper primary schools are given in the following table.

Table -14
Teachers in Upper Primary Schools

Year	Male	Female	Total	% of Female Teachers
1997-98	1753	2573	4326	59.48
1998-99	1813	2916	4729	61.66
1999-00	2009	3434	5443	63.09
2000-01	1933	3374	5307	63.58

Teachers in Upper Primary Schools



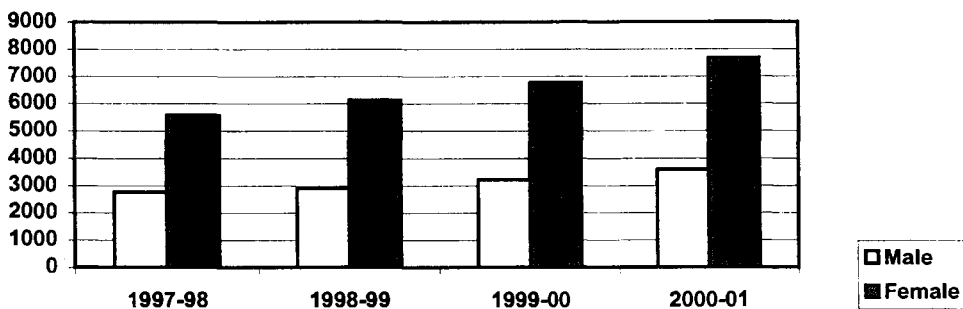
c) High Schools

During 1997-98 there were 8327 teachers in high schools in the district and among them 5567 (66.85%) were females. Similarly in 1998-99 there were 9030 teachers and of these 6121 (67.79%) were females, in 1999-00 there were 6763 (67.76%) female teachers out of 9981 total teachers and during 2000-01 out of 11262 teachers, 7672 (68.12%) were female teachers.

Table -15
Teachers in High Schools

Year	Male	Female	Total	% of Female Teachers
1997-98	2760	5567	8327	66.85
1998-99	2909	6121	9030	67.79
1999-00	3218	6763	9981	67.76
2000-01	3590	7672	11262	68.12

Teachers in High Schools



8. ii) Vidya Volunteers

Vidya Volunteers are para teachers engaged by school committees to improve the teacher pupil ratio. The number of vidya volunteers engaged during 1999-00 and 2000-01 are given below.

Table - 16
Vidya Volunteers

Type	1990-00	2000-01
Primary Schools	1172	1179
Upper Primary Schools	520	523
High Schools	630	635
Total	1172	1179

9. Trained Teachers:

a) Primary Schools

88.62% of the teachers in the primary schools of the district were trained teachers in the year 1997-98. Similarly 89.59% teachers were trained in 1998-99, 90.54% in 1999-00 and in 2000-01 92.25% of the teachers were trained.

Table - 17
Trained Teachers in primary Schools

Year	Total Teachers	Trained Teachers	% of Trained Teachers
1997-98	2988	2648	88.62
1998-99	3447	3088	89.59
1999-00	3130	2834	90.54
2000-01	2903	2678	92.25

b) Upper Primary Schools

During the year 1997-98 83.82% of the teachers in upper primary schools of the district were trained. Similarly, in the years 1998-99,1999-00 and 2000-01 78.60% , 78.78% and 78.90% of the total teachers were trained respectively.

Table - 18
Trained Teachers in Upper Primary Schools

Year	Total teachers	Trained teachers	% of Trained Teachers
1997-98	4326	3626	83.82
1998-99	4729	3717	78.60
1999-00	5443	4288	78.78
2000-01	5307	4187	78.90

c) High Schools

88.48% of the teachers in High schools of the district were trained during 1997-98. Similarly, in the years 1998-99,1999-00 and 2000-01 84.24%, 85.71% and 83.32% of the total teachers were trained respectively.

Table - 19
Trained Teachers in High Schools

Year	Total teachers	Trained teachers	% of Trained Teachers
1997-98	8327	7368	88.48
1998-99	9030	7607	84.24
1999-00	9981	8555	85.71
2000-01	11262	9383	83.32

10. Management-wise Teachers

a) Primary Schools

In 1997-98, 55(1.84%) teachers were under Government sector, 2332 (78.05%) were under Local Bodies and 601 (20.12%) teachers were under private aided and unaided Schools.

During 2000-01, 49 (1.69%) teachers were working in Government schools and 2457 (84.64%) were in Local Bodies and 397(13.68%) were under private aided and unaided managements.

Table - 20
Management Wise Teachers in Primary Schools

Year		Govt.	Local Body	Private Aided	Private Un-Aided	Total
1997-98	No.	55	2332	11	590	2988
	%	1.84	78.05	0.37	19.75	100.00
1998-99	No.	61	2881	13	492	3447
	%	1.77	83.58	0.38	14.27	100.00
1999-00	No.	57	2558	10	505	3130
	%	1.82	81.73	0.32	16.13	100.00
2000-01	No.	49	2457	4	393	2903
	%	1.69	84.64	0.14	13.54	100.00

b) Upper Primary Schools

In 1997-98, 14 (0.32%) teachers were under Government sector, 1015 (23.46%) were under Local Bodies, 3297 (76.21%) teachers were under private aided and unaided Schools.

During 2000-01, 25 (0.47%) teachers were working in Government schools and 935 (17.62%) were in Local Bodies and 4347(81.91%) were under private aided and unaided managements.

Table - 21
Management-wise Teachers in Upper Primary Schools

Year		Govt.	Local Body	Private Aided	Private Un-Aided	Total
1997-98	No.	14	1015	162	3135	4326
	%	0.32	23.46	3.74	72.47	100.00
1998-99	No.	14	1043	166	3506	4729
	%	0.30	22.06	3.51	74.14	100.00
1999-00	No.	25	1011	188	4219	5443
	%	0.46	18.57	3.45	77.51	100.00
2000-01	No.	25	935	169	4178	5307
	%	0.47	17.62	3.18	78.73	100.00

c) High Schools

During 1997-98, 332(3.99%) teachers were under Government sector, 1991(23.91%) were under Local Bodies and 6004(72.10%) teachers were under private aided and unaided Schools. During the year 2000-01, 604(5.36%) teachers were working in Government schools and 2164(19.22%) were in Local Bodies and 8494(75.42%) were under private aided and unaided managements.

Table - 22
Management Wise Teachers in High Schools

Year		Govt.	Local Body	Private Aided	Private Un-Aided	Total
1997-98	No.	332	1991	533	5471	8327
	%	3.99	23.91	6.40	65.70	100.00
1998-99	No.	681	2100	497	5752	9030
	%	7.54	23.26	5.50	63.70	100.00
1999-00	No.	542	2115	479	6845	9981
	%	5.43	21.19	4.80	68.58	100.00
2000-01	No.	604	2164	420	8074	11262
	%	5.36	19.22	3.73	71.69	100.00

11. Teacher Pupil Ratio

a) Primary Schools

The teacher pupil ratio at primary level has improved from 1:65 in 1997-98 to 1:58 in 1998-99 and in 1999-00 1:49 and 1:47 in 2000-01.

b) Upper Primary Schools

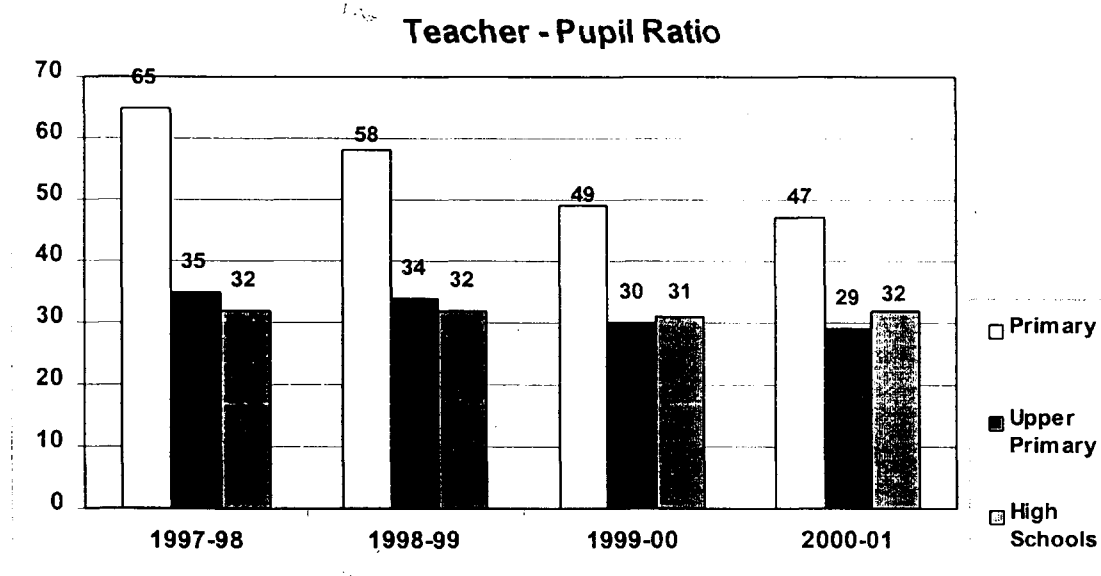
The teacher pupil ratio at upper primary level has improved from 1:35 in 1997-98 to 1:34 in 1998-99 and it has improved to 1:29 in 2000-01.

c) High Schools

The teacher pupil ratio in case of high schools has constant for two years 1:32 in 1997-98 & 1998-99 and improved to 1:31 in 1999-00.

Table - 23
Teacher Pupil Ratio

Year	1997-98	1998-99	1999-00	2000-01
Primary	65	58	49	47
Upper Primary	35	34	30	29
High Schools	32	32	31	32



12. Drop-out Rates

In 1997-98 & 1998-99 there is substantial decrease in the dropouts at Primary stage. In the year 1997-98, the dropout rate was 46.25 percent, which has come down to 43.84 percent in 2000-01. The decline in the drop out rate is due to various activities, initiatives and measures taken up by the Government in order to achieve the major goal of Universalisation of Elementary Education.

Table - 24
Drop-Out Rates

Year	I - Class	V - Class	Drop-outs	Drop-out rate
1997-98 Class I - 1993-94 Class V - 1997-98	112282	60346	51936	46.25
1998-99 Class I - 1994-95 Class V - 1998-99	115141	66193	48948	42.51
1999-00 Class I - 1995-96 Class V - 1999-00	131853	71622	60231	45.68
2000-01 Class I - 1996-97 Class V - 2000-01	133989	75252	58737	43.84

Drop-Outs 93-94 to 97-98
Classes I-V



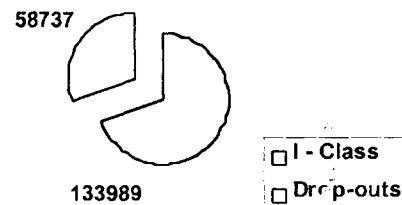
Drop-outs 94-95 to 98-99
Classes I-V



Drop-Outs 95-96 to 99-00
Classes I-V



Drop-Outs 96-97 to 2000-01
Classes I-V



13. Performance in Examinations

a) VII Class Common Examinations

In the last four years i.e., 1997-98 to 2000-01 the performance of students in VII Class Common Examination is above 89% in the district. The number of candidates appeared has increased from 46337 in 1998-99 to 51932 in 1999-00, which has been further increased to 58356 in 2000-01. There is a mixed trend in pass percentage over four years. It has increased from 88% in 1997-98 to 90% in 1998-99 and there was a decline of 88% from 1998-99 to 1999-00 and there was an increase from 88% in 1999-00 to 90% in 2000-01.

Table - 25
Performance in VII Class

Year	Nc. Appeared	No. Passed	Pass %
1997-98	45462	40118	88.25
1998-99	46337	41933	90.50
1999-00	51932	45831	88.25
2000-01	58356	52905	90.66

b) SSC Results

The number of candidates appearing for SSC examination has shown an increasing trend from 1997-98 to 2000-01. The number of passed candidates has also shown an increasing trend. In 1997-98 the pass percentage was 52% and it has substantially increased to 66% in 2000-01, which indicates that there is an increase of around 14% in pass percentage in the last four years.

Table - 26
Performance in SSC

Year	No. Appeared	No. Passed	Pass %
1997-98	26157	13678	52.29
1998-99	27265	14798	54.27
1999-00	29283	16278	55.59
2000-01	33864	22478	66.38

Pass Percentage in VII & SSC Examinations

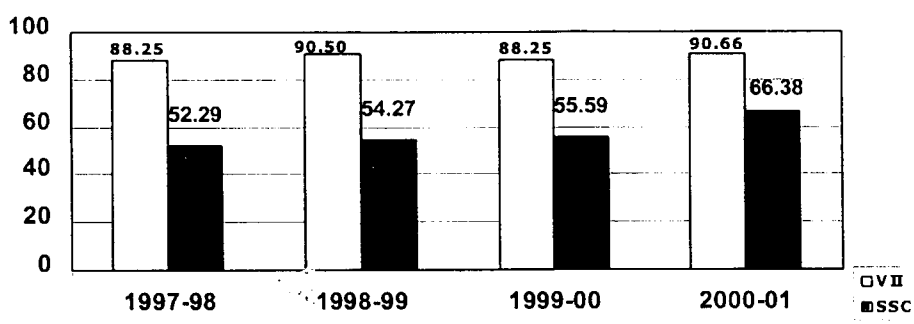


Table - 27

Management Wise & Subject Wise Pass Percentage In SSC -2001

Sl No.	Subject/ Management	First Lang.	English	Maths	Science	Social	Second Lang.
1	Government	72.21	60.63	61.26	78.32	73.26	81.47
2	Zilla Parishad	82.08	72.43	67.35	76.31	84.48	86.3
3	Residential	97.86	97.59	96.52	95.72	88.24	97.59
4	Private	92.43	90.45	85.78	88.7	93.56	95.93
All Managements		87.91	82.63	77.9	83.49	89.45	91.75

Demography

Ranga Reddy District Information At a Glance

1.	Area	7.5 Sq. Km.		
2.	No. of Revenue Mandals	37		
3.	No. of Inhabited Villages	923		
4.	No. of Towns	16		
5.	Density	468 per Sq. Km.		
6.	Population	1991	2001 <i>(Provisional)</i>	
	a) Males	1314560	1806199	
	Females	1237406	1700471	
	Total	2551966	3506670	
7.	Sex Ratio			
		1981	956	
		1991	941	
		2001	941	
8.	Growth Rate			
		1971-81	42.63	
		1981-91	61.31	
		1991-01	37.41	
9.	Scheduled Castes	Population (1991)	<i>Percentage</i>	
		Males - 224289	17.06	
		Females - 215097	17.38	
		Total - 439386	17.22	
10.	Schedules Tribes	Population (1991)	<i>Percentage</i>	
		Males - 56438	4.29	
		Females - 52956	4.29	
		Total - 109394	4.29	
11.	Literacy Rate			
		1981	1991	2001
		<i>Census</i>	<i>Census</i>	<i>Census</i> <i>(Provisional)</i>
		Males 48.58	60.43	75.02
		Females 24.04	36.91	57.03
		Total : 36.61	49.07	66.31

Ranga Reddy District

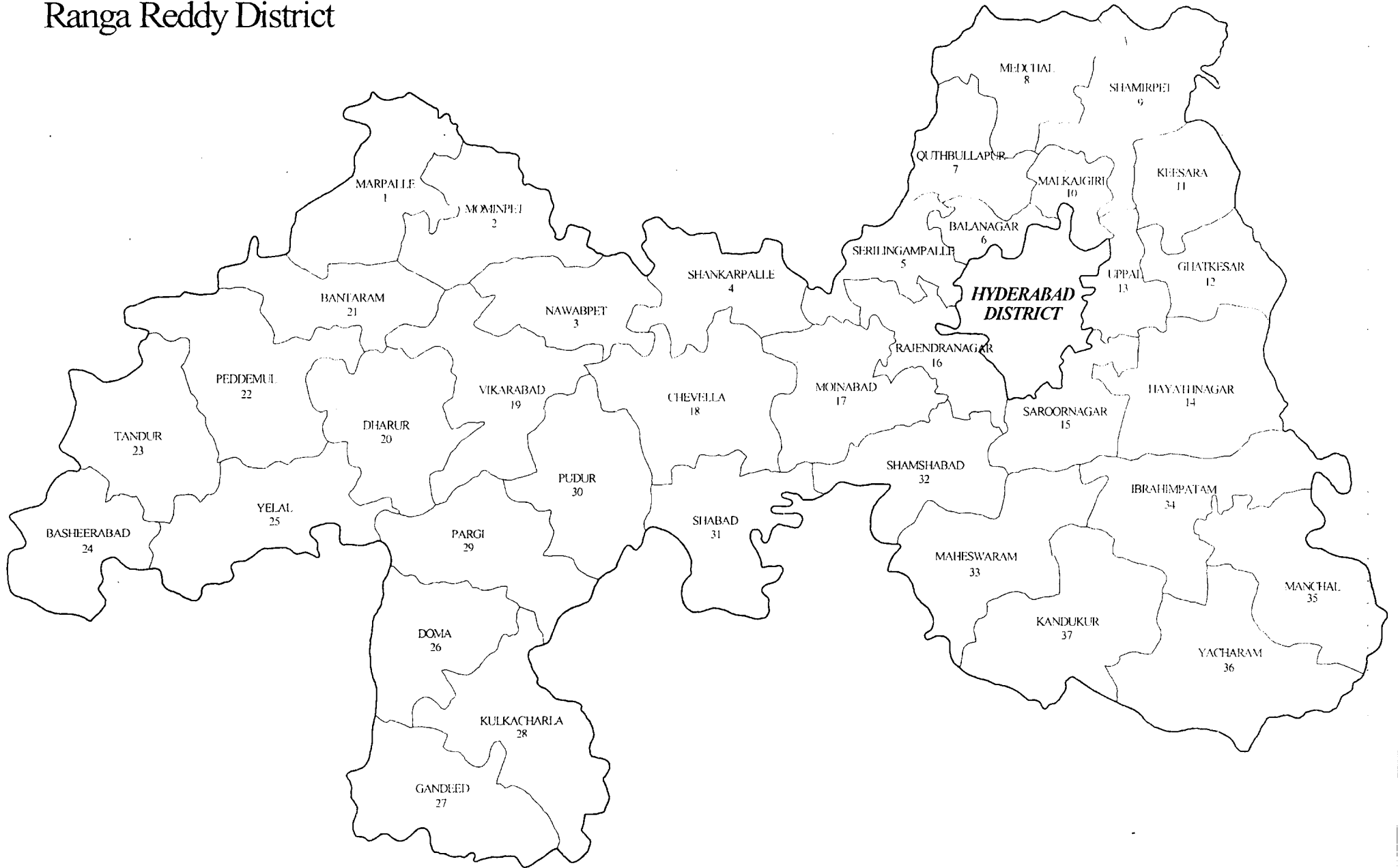


Table -1.11**MANDAL WISE NO.OF VILLAGES, INHABITED VILLAGES & TOWNS**

DISTRICT: RANGA REDDY

1991 CENSUS

SL NO	NAME OF THE MANDAL	NO.OF VILLAGES	NO.OF INHABITED VILLAGES	NO.OF TOWNS
1	MARPALLE	28	28	-
2	MOMINPET	23	23	-
3	NAWABPET	22	22	-
4	SHANKARPALLE	26	25	-
5	SERILINGAMPALLE	1	-	1
6	BALANAGAR	1	-	2
7	QUTHBULLAPUR	18	12	1
8	MEDCHAL	29	26	-
9	SHAMIRPET	30	29	-
10	MALKAJGIRI	1	-	1
11	KEESARA	16	15	1
12	GHATKESAR	21	17	1
13	UPPAL	20	4	1
14	HAYATHNAGAR	41	31	-
15	SAROORNAGAR	29	11	2
16	RAJENDRANAGAR	40	16	2
17	MOINABAD	26	26	-
18	CHEVELLA	36	36	-
19	VIKARABAD	35	24	1
20	DHARUR	38	37	-
21	BANTARAM	26	24	-
22	PEDDEMUL	34	29	-
23	TANDUR	38	34	1
24	BASHEERABAD	31	29	-
25	YELAL	34	33	-
26	DOMA	28	28	-
27	GANDEED	29	28	-
28	KULKACHARLA	30	30	-
29	PARGI	37	35	-
30	PUDUR	34	32	-
31	SHABAD	25	25	-
32	SHAMSHABAD	43	37	1
33	MAHESWARAM	33	30	-
34	IBRAHIMPATAM	28	22	-
35	MANCHAL	25	21	-
36	YACHARAM	20	19	-
37	KANDUKUR	30	27	-
TOTAL		1006	865	15

Table -1.12

MANDAL WISE POPULATION & SEX RATIO - 1991 & 2001 CENSUS
DISTRICT: RANGA REDDY

Sl No	Name of the Mandal	Population - 1991			Population - 2001			Sex Ratio	
		Male	Female	Total	Male	Female	Total	1991	2001
1	MARPALLE	21159	20072	41231	23454	22369	45823	949	954
2	MOMINPET	18779	18181	36960	20289	19747	40036	968	973
3	NAWABPET	18317	17367	35684	20256	19425	39681	948	959
4	SHANKARPALLE	25791	24291	50082	28461	26995	55456	942	948
5	SERILINGAMPALLE	37896	34424	72320	75462	75063	150525	908	995
6	BALANAGAR	146841	133577	280418	152159	138432	290591	910	910
7	QUTHBULLAPUR	71070	63690	134760	140675	128611	269286	896	914
8	MEDCHAL	23975	22672	46647	34991	33074	68065	946	945
9	SHAMIRPET	28095	26439	54534	51031	45078	96109	941	883
10	MALKAJIRI	64647	62531	127178	146562	134862	281424	967	920
11	KEESARA	59692	55272	114964	102649	94452	197101	926	920
12	GHATKESAR	23434	21544	44978	45143	42286	87429	919	937
13	UPPAL	45399	41480	86879	61770	57361	119131	914	929
14	HAYATHNAGAR	31317	28188	59505	42664	38202	80866	900	895
15	SAROORNAGAR	112909	104205	217114	190652	177418	368070	923	931
16	RAJENDRANAGAR	94187	87596	181783	95510	87696	183206	930	918
17	MOINABAD	23666	22145	45811	26619	25371	51990	936	953
18	CHEVELLA	25516	24430	49946	27603	26595	54198	957	963
19	VIKARABAD	32090	31986	65076	36836	36162	72998	967	982
20	DHARUR	18045	17729	35774	21366	21061	42427	982	986
21	BANTARAM	14915	14659	29574	17059	16916	33975	983	992
22	PEDDEMUL	20870	20797	41667	23998	23813	47811	997	992
23	TANDUR	42249	41109	83358	52162	51107	103269	973	980
24	BASHEERABAD	17287	17601	34888	19973	20600	40573	1018	1031
25	YELAL	16748	17131	33879	19471	19838	39309	1023	1019
26	DOMA	17684	17729	35413	21410	21491	42901	1003	1004
27	GANDEED	24324	24447	48771	31760	33257	65017	1005	1047
28	KULKACHARLA	23369	23181	46550	30597	29716	60313	992	971
29	PARGI	23313	22859	46172	27749	27629	55378	981	996
30	PUDUR	19244	18656	37900	20696	20369	41065	969	984
31	SHABAD	22059	21301	43360	24142	23253	47395	966	963
32	SHAMSHABAD	30805	28796	59601	36972	34048	71020	935	921
33	MAHESWARAM	24025	22838	46863	29854	27896	57750	951	934
34	IBRAHIMPATAM	29800	28096	57896	33829	32433	66262	943	959
35	MANCHAL	19071	18035	37106	21748	20394	42142	946	938
36	YACHARAM	22069	20842	42911	24332	22973	47305	944	944
37	KANDUKUR	22903	21510	44413	26295	24478	50773	939	931
TOTAL		1314750	1237406	2551966	1806199	1700471	3506670	941	941

Table -1.13

MANDAL WISE LITERACY RATES - 1991 & 2001 CENSUS

DISTRICT: RANGA REDDY

Sl No	Name of the Mandal	Literacy Rates - 1991			Literacy Rates - 2001		
		Male	Female	Total	Male	Female	Total
1	MARPALLE	35.41	11.13	23.57	58.09	34.82	46.76
2	MOMINPET	39.82	11.46	25.84	66.42	38.86	52.82
3	NAWABPET	46.06	11.58	29.32	66.99	37.26	52.46
4	SHANKARPALLE	49.69	19.77	35.20	69.28	43.24	56.61
5	SERILINGAMPALLE	70.41	50.13	60.84	47.27	46.56	46.92
6	BALANAGAR	76.79	57.23	67.53	90.28	79.34	85.08
7	QUTHBULLAPUR	68.09	44.12	56.85	82.98	68.27	75.98
8	MEDCHAL	57.96	31.36	45.11	73.57	51.41	62.83
9	SHAMIRPET	51.13	24.60	38.35	75.21	53.03	64.91
10	MALKAJGIRI	86.11	70.52	78.46	83.37	72.36	78.08
11	KEESARA	75.16	55.95	65.97	86.35	73.03	79.99
12	GHATKESAR	65.90	36.69	51.92	81.10	61.73	71.76
13	UPPAL	76.97	57.61	67.79	89.94	74.91	82.71
14	HAYATHNAGAR	52.47	21.81	38.05	75.88	54.12	65.68
15	SAROORNAGAR	79.20	61.51	70.73	88.36	76.09	82.45
16	RAJENDRANAGAR	67.29	46.75	57.45	73.16	57.38	65.65
17	MOINABAD	66.48	18.20	32.91	70.57	46.50	58.85
18	CHEVELLA	47.91	13.51	31.14	69.32	42.40	56.15
19	VIKARABAD	50.61	32.01	41.48	75.59	54.30	65.06
20	DHARUR	41.03	14.05	27.66	55.95	32.16	44.13
21	BANTARAM	37.22	11.99	24.71	56.62	33.32	45.02
22	PEDDEMUL	36.51	12.91	24.74	55.50	31.50	43.52
23	TANDUR	56.21	30.42	43.46	71.45	49.91	60.78
24	BASHEERABAD	40.23	14.15	27.01	55.86	31.06	43.17
25	YELAL	34.27	12.17	23.06	56.77	31.59	44.02
26	DOMA	34.11	9.76	21.94	53.75	29.94	41.77
27	GANDEED	37.41	13.47	25.43	68.82	38.98	54.24
28	KULKACHARLA	30.59	10.05	20.32	50.34	25.03	37.87
29	PARGI	47.22	19.35	33.50	64.83	40.84	52.83
30	PUDUR	41.34	14.39	28.12	59.31	34.30	46.88
31	SHABAD	43.51	16.66	30.30	29.46	17.02	23.33
32	SHAMSHABAD	48.59	22.65	36.14	68.65	42.80	56.28
33	MAHESWARAM	43.40	18.02	31.15	64.49	38.39	51.87
34	IBRAHIMPATAM	52.97	24.51	39.20	71.37	44.88	58.44
35	MANCHAL	46.01	17.11	31.99	64.50	34.75	50.15
36	YACHARAM	47.91	19.03	33.90	67.66	37.08	52.78
37	KANDUKUR	59.80	15.74	28.22	67.43	38.17	53.36
TOTAL		60.43	36.91	49.07	75.02	57.03	66.31

Table -1.14

**POPULATION OF SCHEDULED CASTE AND PERCENTAGE OF
SC POPULATION TO TOTAL POPULATION - 1991 CENSUS**

DISTRICT: RANGA REDDY

SL NO	NAME OF THE MANDAL	S.C. POPULATION			% OF SC POPULATION		
		MALE	FEMALE	TOTAL	MALE	FEMALE	TOTAL
1	MARPALLE	6029	5722	11751	28.49	28.51	28.50
2	MOMINPET	5442	5179	10621	28.98	28.49	28.74
3	NAWABPET	5274	5016	10290	28.79	28.88	28.84
4	SHANKARPALLE	5825	5366	11191	22.59	22.09	22.35
5	SERILINGAMPALLE	3511	3204	6715	9.26	9.31	9.29
6	BALANAGAR	14310	13760	28070	9.75	10.30	10.01
7	QUTHBULLAPUR	6516	5973	12489	9.17	9.38	9.27
8	MEDCHAL	4245	4094	8339	17.71	18.06	17.88
9	SHAMIRPET	5609	5296	10905	19.96	20.03	20.00
10	MALKAJGIRI	7560	7491	15051	11.69	11.98	11.83
11	KEESARA	8376	7960	16336	14.03	14.40	14.21
12	GHATKESAR	4610	4208	8818	19.67	19.53	19.61
13	UPPAL	4832	4735	9567	10.64	11.42	11.01
14	HAYATHNAGAR	5919	5238	11157	18.90	18.58	18.75
15	SAROORNAGAR	12096	11558	23654	10.71	11.09	10.89
16	RAJENDRANAGAR	20289	19613	39902	21.54	22.39	21.95
17	MOINABAD	5534	5074	10608	23.38	22.91	23.16
18	CHEVELLA	6153	5770	11923	24.11	23.62	23.87
19	VIKARABAD	7051	6898	13949	21.31	21.57	21.43
20	DHARUR	3703	3619	7322	20.52	20.41	20.47
21	BANTARAM	4442	4450	8892	29.78	30.36	30.07
22	PEDDEMUL	4385	4356	8741	21.01	20.95	20.98
23	TANDUR	5683	5586	11269	13.45	13.59	13.52
24	BASHEERABAD	2940	3048	5988	17.01	17.32	17.16
25	YELAL	3875	3963	7838	23.14	23.13	23.14
26	DOMA	3278	3359	6637	18.54	18.95	18.74
27	GANDEED	3732	3723	7455	15.34	15.23	15.29
28	KULKACHARLA	3584	3446	7030	15.34	14.87	15.10
29	PARGI	5247	5085	10332	22.51	22.25	22.38
30	PUDUR	5323	5263	10586	27.66	28.21	27.93
31	SHABAD	5276	5178	10454	23.92	24.31	24.11
32	SHAMSHABAD	6962	6531	13493	22.60	22.68	22.64
33	MAHESWARAM	5209	5046	10255	21.68	22.09	21.88
34	IBRAHIMPATAM	6737	6567	13304	22.61	23.37	22.98
35	MANCHAL	3562	3209	6771	18.68	17.79	18.25
36	YACHARAM	5512	5237	10749	24.98	25.13	25.05
37	KANDUKUR	5658	5276	10934	24.70	24.53	24.62
TOTAL		224289	215097	439386	17.06	17.38	17.22

Table -1.15
POPULATION OF SCHEDULED TRIBE AND PERCENTAGE OF
ST POPULATION TO TOTAL POPULATION - 1991 CENSUS

DISTRICT: RANGA REDDY

SL NO	NAME OF THE MANDAL	S.T. POPULATION			% OF ST POPULATION		
		MALE	FEMALE	TOTAL	MALE	FEMALE	TOTAL
1	MARPALLE	759	692	1451	3.59	3.45	3.52
2	MOMINPET	1105	985	2090	5.88	5.42	5.65
3	NAWABPET	73	93	166	0.40	0.54	0.47
4	SHANKARPALLE	618	545	1163	2.40	2.24	2.32
5	SERILINGAMPALLE	1096	993	2089	2.89	2.88	2.89
6	BALANAGAR	2427	2276	4703	1.65	1.70	1.68
7	QUTHBULLAPUR	1426	1318	2744	2.01	2.07	2.04
8	MEDCHAL	1395	1274	2669	5.82	5.62	5.72
9	SHAMIRPET	692	645	1337	2.46	2.44	2.45
10	MALKAJGIRI	1040	974	2014	1.61	1.56	1.58
11	KEESARA	1315	1232	2547	2.20	2.23	2.22
12	GHATKESAR	695	672	1367	2.97	3.12	3.04
13	UPPAL	750	625	1375	1.65	1.51	1.58
14	HAYATHNAGAR	420	352	772	1.34	1.25	1.30
15	SAROORNAGAR	1791	1371	3162	1.59	1.32	1.46
16	RAJENDRANAGAR	1662	1459	3121	1.76	1.67	1.72
17	MOINABAD	24	13	37	0.10	0.06	0.08
18	CHEVELLA	151	128	279	0.59	0.52	0.56
19	VIKARABAD	1474	1304	2778	4.45	4.08	4.27
20	DHARUR	1895	1844	3739	10.50	10.40	10.45
21	BANTARAM	513	471	984	3.44	3.21	3.33
22	PEDDEMUL	3659	3600	7259	17.53	17.31	17.42
23	TANDUR	1347	1144	2491	3.19	2.78	2.99
24	BASHEERABAD	3045	2931	5976	17.61	16.65	17.13
25	YELAL	1233	1193	2426	7.36	6.96	7.16
26	DOMA	2187	2131	4318	12.37	12.02	12.19
27	GANDEED	3235	3178	6413	13.30	13.00	13.15
28	KULKACHARLA	4642	4596	9238	19.86	19.83	19.85
29	PARGI	1592	1479	3071	6.83	6.47	6.65
30	PUDUR	663	590	1253	3.45	3.16	3.31
31	SHABAD	720	624	1344	3.26	2.93	3.10
32	SHAMSHABAD	2092	2239	4331	6.79	7.78	7.27
33	MAHESWARAM	3285	2905	6190	13.67	12.72	13.21
34	IBRAHIMPATAM	583	577	1160	1.96	2.05	2.00
35	MANCHAL	3524	3417	6941	18.48	18.95	18.71
36	YACHARAM	1637	1549	3186	7.42	7.43	7.42
37	KANDUKUR	1673	1537	3210	7.30	7.15	7.23
TOTAL		56438	52956	109394	4.29	4.28	4.29

*Schools, Enrolment
And Teachers*

Table - 2.11
TYPE WISE AND MANAGEMENT WISE INSTITUTIONS
DISTRICT: RANGA REDDY 2000-2001

SL. NO.	TYPE/ MANAGEMENT	PRE- PRIMARY	PRIMARY SCHOOLS	UPPER PRIMARY	HIGH SCHOOLS	HIGHER SECONDARY	TOTAL
1	CENTRAL GOVT.	-	-	-	8	11	19
2	STATE GOVT.	-	32	5	16	-	53
3	M.P./Z.P.P	-	1350	238	283	-	1871
4	MUNICIPAL	-	-	-	-	-	-
5	PVT.AIDED	-	1	15	24	-	40
6	PVT.UNAIDED	-	55	359	331	8	753
TOTAL		0	1438	617	662	19	2736

Table - 2.12
TYPE WISE AND MANAGEMENT WISE ENROLMENT
DISTRICT: RANGA REDDY 2000-2001

SL. NO.	TYPE/ MANAGEMENT	PRE- PRIMARY	PRIMARY SCHOOLS	UPPER PRIMARY	HIGH SCHOOLS	HIGHER SECONDARY	TOTAL
1	CENTRAL GOVT.	-	-	-	7269	12473	19742
2	STATE GOVT.	-	2643	1401	6623	-	10667
3	M.P./Z.P.P	-	181266	69007	114583	-	364856
4	MUNICIPAL	-	-	-	-	-	-
5	PVT.AIDED	-	115	5365	18438	-	23918
6	PVT.UNAIDED	-	8212	93213	228403	11622	341450
TOTAL		0	192236	168986	375316	24095	760633

Table - 2.13
TYPE WISE AND MANAGEMENT WISE TEACHERS
DISTRICT: RANGA REDDY 2000-2001

SL. NO.	TYPE/ MANAGEMENT	PRE- PRIMARY	PRIMARY SCHOOLS	UPPER PRIMARY	HIGH SCHOOLS	HIGHER SECONDARY	TOTAL
1	CENTRAL GOVT.	-	-	-	348	550	898
2	STATE GOVT.	-	49	25	256	-	330
3	M.P./Z.P.P	-	2457	935	2164	-	5556
4	MUNICIPAL	-	-	-	-	-	-
5	PVT.AIDED	-	4	169	420	-	593
6	PVT.UNAIDED	-	393	4178	8074	527	13172
TOTAL		0	2903	5307	11262	1077	20549

Table - 2.21
TYPE WISE AND MANAGEMENT WISE B.C. ENROLMENT

DISTRICT: RANGA REDDY

2000-2001

SL. NO.	TYPE/ MANAGEMENT	PRE- PRIMARY	PRIMARY SCHOOLS	UPPER PRIMARY	HIGH SCHOOLS	HIGHER SECONDARY	TOTAL
1	CENTRAL GOVT.	-	-	-	707	307	1014
2	STATE GOVT.	-	273	410	1347	-	2030
3	M.P.P/Z.P.P	-	88576	36994	61791	-	187361
4	MUNICIPAL	-	-	-	-	-	-
5	PVT.AIDED	-	42	2645	7374	-	10061
6	PVT.UNAIDED	-	3765	40941	74329	1299	120334
TOTAL		0	92656	80990	145548	1606	320800

Table - 2.22
TYPE WISE AND MANAGEMENT WISE S.C.ENROLMENT

DISTRICT: RANGA REDDY

2000-2001

SL. NO.	TYPE/ MANAGEMENT	PRE- PRIMARY	PRIMARY SCHOOLS	UPPER PRIMARY	HIGH SCHOOLS	HIGHER SECONDARY	TOTAL
1	CENTRAL GOVT.	-	-	-	955	1755	2710
2	STATE GOVT.	-	61	159	2635	-	2855
3	M.P.P/Z.P.P	-	48152	18026	27437	-	93615
4	MUNICIPAL	-	-	-	-	-	-
5	PVT.AIDED	-	55	1107	4631	-	5793
6	PVT.UNAIDED	-	1243	12218	21227	699	35387
TOTAL		0	49511	31510	56885	2454	140360

Table - 2.23
TYPE WISE AND MANAGEMENT WISE S.T. ENROLMENT

DISTRICT: RANGA REDDY

2000-2001

SL. NO.	TYPE/ MANAGEMENT	PRE- PRIMARY	PRIMARY SCHOOLS	UPPER PRIMARY	HIGH SCHOOLS	HIGHER SECONDARY	TOTAL
1	CENTRAL GOVT.	-	-	-	207	445	652
2	STATE GOVT.	-	2018	85	375	-	2478
3	M.P.P/Z.P.P	-	20951	3160	4569	-	28680
4	MUNICIPAL	-	-	-	-	-	-
5	PVT.AIDED	-	6	213	844	-	1063
6	PVT.UNAIDED	-	214	3478	5608	261	9561
TOTAL		0	23189	6936	11603	706	42434

Table - 2.31
TYPE WISE AND MANAGEMENT WISE B.C. TEACHERS
 DISTRICT: RANGA REDDY 2000-2001

SL. NO.	TYPE/ MANAGEMENT	PRE- PRIMARY	PRIMARY SCHOOLS	UPPER PRIMARY	HIGH SCHOOLS	HIGHER SECONDARY	TOTAL
1	CENTRAL GOVT.	-	-	-	27	16	43
2	STATE GOVT.	-	12	4	81	-	97
3	M.P.P/Z.P.P	-	893	357	812	-	2062
4	MUNICIPAL	-	-	-	-	-	-
5	PVT.AIDED	-	-	60	174	-	234
6	PVT.UNAIDED	-	151	1495	1800	-	3446
TOTAL		0	1056	1916	2894	16	5882

Table - 2.32
TYPE WISE AND MANAGEMENT WISE S.C. TEACHERS
 DISTRICT: RANGA REDDY 2000-2001

SL. NO.	TYPE/ MANAGEMENT	PRE- PRIMARY	PRIMARY SCHOOLS	UPPER PRIMARY	HIGH SCHOOLS	HIGHER SECONDARY	TOTAL
1	CENTRAL GOVT.	-	-	-	9	25	34
2	STATE GOVT.	-	6	4	26	-	36
3	M.P.P/Z.P.P	-	306	113	191	-	610
4	MUNICIPAL	-	-	-	-	-	-
5	PVT.AIDED	-	1	10	26	-	37
6	PVT.UNAIDED	-	22	292	356	-	670
TOTAL		0	335	419	608	25	1387

Table - 2.33
TYPE WISE AND MANAGEMENT WISE S.T. TEACHERS
 DISTRICT: RANGA REDDY 2000-2001

SL. NO.	TYPE/ MANAGEMENT	PRE- PRIMARY	PRIMARY SCHOOLS	UPPER PRIMARY	HIGH SCHOOLS	HIGHER SECONDARY	TOTAL
1	CENTRAL GOVT.	-	-	-	2	2	4
2	STATE GOVT.	-	7	2	10	-	19
3	M.P.P/Z.P.P	-	88	28	36	-	152
4	MUNICIPAL	-	-	-	-	-	-
5	PVT.AIDED	-	-	-	1	-	1
6	PVT.UNAIDED	-	-	35	58	-	93
TOTAL		0	95	65	107	2	269

Table - 2.41
TYPE WISE AND MEDIUM WISE INSTITUTIONS
EXCLUSIVE SCHOOLS

DISTRICT: RANGA REDDY

2000-2001

SL. NO.	TYPE/ MEDIUM	PRE- PRIMARY	PRIMARY SCHOOLS	UPPER PRIMARY	HIGH SCHOOLS	HIGHER SECONDARY	TOTAL
1	TELUGU	-	1371	282	309	-	1962
2	ENGLISH	-	44	260	283	18	605
3	URDU	-	15	7	4	-	26
4	HINDI	-	-	1	-	-	1
TOTAL		-	1430	550	596	18	2594

Table - 2.42
TYPE WISE AND MEDIUM WISE ENROLMENT
EXCLUSIVE SCHOOLS

DISTRICT: RANGA REDDY

2000-2001

SL. NO.	TYPE/ MEDIUM	PRE- PRIMARY	PRIMARY SCHOOLS	UPPER PRIMARY	HIGH SCHOOLS	HIGHER SECONDARY	TOTAL
1	TELUGU	-	182321	79889	128831	-	391041
2	ENGLISH	-	6307	61005	199296	23638	290246
3	URDU	-	1323	1736	1134	-	4193
4	HINDI	-	-	47	-	-	47
TOTAL		-	189951	142677	329261	23638	685527

Table - 2.43
TYPE WISE AND MEDIUM WISE TEACHERS
EXCLUSIVE SCHOOLS

DISTRICT: RANGA REDDY

2000-2001

SL. NO.	TYPE/ MEDIUM	PRE- PRIMARY	PRIMARY SCHOOLS	UPPER PRIMARY	HIGH SCHOOLS	HIGHER SECONDARY	TOTAL
1	TELUGU	-	2517	1379	2578	-	6474
2	ENGLISH	-	317	2754	7004	1052	11127
3	URDU	-	23	31	26	-	80
4	HINDI	-	-	3	-	-	3
TOTAL		-	2857	4167	9608	1052	17684

Table - 2.51
TYPE WISE AND MEDIUM WISE INSTITUTIONS
PARALLEL SCHOOLS

DISTRICT: RANGA REDDY

2000-2001

SL. NO.	TYPE/ MEDIUM	PRE-PRIMARY	PRIMARY SCHOOLS	UPPER PRIMARY	HIGH SCHOOLS	HIGHER SECONDARY	TOTAL
1	TELUGU & ENGLISH	-	2	62	57	1	122
2	TELUGU & URDU	-	6	4	7	-	17
3	TELUGU & HINDI	-	-	-	1	-	1
4	TELUGU & ENGLISH & URDU	-	-	1	-	-	1
5	TELUGU & URDU & TAMIL	-	-	-	1	-	1
TOTAL		-	8	67	66	1	142

Table - 2.52
TYPE WISE AND MEDIUM WISE ENROLMENT
PARALLEL SCHOOLS

DISTRICT: RANGA REDDY

2000-2001

SL. NO.	TYPE/ MEDIUM	PRE-PRIMARY	PRIMARY SCHOOLS	UPPER PRIMARY	HIGH SCHOOLS	HIGHER SECONDARY	TOTAL
1	TELUGU	-	1079	10725	20194	197	32195
2	ENGLISH	-	237	14363	23899	260	38759
3	URDU	-	969	1221	1881	-	4071
4	TAMIL	-	-	-	3	-	3
5	HINDI	-	-	-	78	-	78
TOTAL		-	2285	26309	46055	457	75106

Table - 2.53
TYPE WISE AND MEDIUM WISE TEACHERS
PARALLEL SCHOOLS

DISTRICT: RANGA REDDY

2000-2001

SL. NO.	TYPE/ MEDIUM	PRE-PRIMARY	PRIMARY SCHOOLS	UPPER PRIMARY	HIGH SCHOOLS	HIGHER SECONDARY	TOTAL
1	TELUGU	-	26	542	830	16	1414
2	ENGLISH	-	10	566	769	9	1354
3	URDU	-	10	32	49	-	91
4	TAMIL	-	-	-	4	-	4
5	HINDI	-	-	-	2	-	2
TOTAL		-	46	1140	1654	25	2865

Table - 2.61
CLASS - WISE ALL & B.C. ENROLMENT

DISTRICT: RANGA REDDY

2000-2001

CLASSES	ALL ENROLMENT			% to Total	B.C. ENROLMENT		
	BOYS	GIRLS	TOTAL		BOYS	GIRLS	TOTAL
PRE-PRIMARY	23839	18795	42634	5.61	7793	6249	14042
I	70526	65358	135884	17.86	30502	28776	59278
II	46072	43192	89264	11.74	19820	18938	38758
III	42869	39321	82190	10.81	18203	17453	35656
IV	40408	36432	76840	10.10	17526	15863	33389
V	40119	35133	75252	9.89	17372	15378	32750
I-V	239994	219436	459430	60.40	103423	96408	199831
VI	36753	30703	67456	8.87	15401	13031	28432
VII	34445	28464	62909	8.27	14956	12225	27181
VI-VII	71198	59167	130365	17.14	30357	25256	55613
VIII	26041	20980	47021	6.18	10691	8496	19187
IX	23362	18733	42095	5.53	9504	7412	16916
X	20906	16416	37322	4.91	8642	6394	15036
VIII-X	70309	56129	126438	16.62	28837	22302	51139
XI	472	371	843	0.11	37	30	67
XII	544	379	923	0.12	68	40	108
XI-XII	1016	750	1766	0.23	105	70	175
I-X	381501	334732	716233	94.16	162617	143966	306583
P.P-XII	406356	354277	760633	100.00	170515	150285	320800

Table - 2.62
CLASS - WISE S.C. & S.T. ENROLMENT

DISTRICT: RANGA REDDY

2000-2001

CLASSES	S.C. ENROLMENT			S.T. ENROLMENT		
	BOYS	GIRLS	TOTAL	BOYS	GIRLS	TOTAL
PRE-PRIMARY	2594	1998	4592	990	590	1580
I	14696	14025	28721	8205	7228	15433
II	8916	8697	17613	3752	2921	6673
III	8414	7805	16219	2953	1802	4755
IV	7780	7078	14858	2170	1165	3335
V	7542	6717	14259	1934	974	2908
I-V	47348	44322	91670	19014	14090	33104
VI	7033	5623	12656	1527	713	2240
VII	6139	4870	11009	1312	613	1925
VI-VII	13172	10493	23665	2839	1326	4165
VIII	4580	3309	7889	1027	399	1426
IX	3853	2806	6659	770	345	1115
X	3388	2335	5723	726	277	1003
VIII-X	11821	8450	20271	2523	1021	3544
XI	44	32	76	12	2	14
XII	53	33	86	24	3	27
XI-XII	97	65	162	36	5	41
I-X	72341	63265	135606	24376	16437	40813
P.P-XII	75032	65328	140360	25402	17032	42434

*Mandal-Wise
Information*

Table - 3.11
CLASS WISE ENROLMENT
ALL - BOYS

2000-2001

SL NO	MANDAL	PP	I	II	III	IV	V	VI	VII	VIII	IX	X	XI	XII
1	MARPALLE	-	1191	743	705	598	615	494	394	255	226	249	-	-
2	MOMINPET	-	988	530	527	495	463	424	408	274	219	236	-	-
3	NAWABPET	-	908	454	477	349	434	393	272	225	196	206	-	-
4	SHANKARPALLE	24	1231	826	825	830	907	791	678	564	434	348	-	-
5	SERILINGAMPALLE	1253	2509	1553	1506	1352	1387	1321	1254	845	754	585	44	56
6	BALANAGAR	3228	4458	3673	3654	3561	3752	3658	3557	2647	2328	2031	29	42
7	QUTHBULLAPUR	1284	4076	3236	3017	3022	2821	2584	2451	1627	1496	1287	61	73
8	MEDCHAL	228	1812	1292	1204	1170	1124	961	868	437	366	297	-	-
9	SHAMIRPET	452	1606	949	1015	909	930	840	811	683	611	596	38	45
10	MALKAJGIRI	4251	2639	2435	2380	2326	2379	2338	2052	1645	1558	1404	49	67
11	KEESARA	538	1677	1288	1235	1207	1152	1000	939	842	780	685	-	-
12	GHATKESAR	475	1610	1129	1138	1088	1087	1047	991	676	655	494	-	-
13	UPPAL	3535	4033	2846	2881	2900	2967	2814	2748	2019	1963	1829	58	67
14	HAYATHNAGAR	1472	2277	2162	1903	1824	1874	1624	1633	1285	1231	1020	-	-
15	SAROORNAGAR	2686	4090	3476	3423	3303	3084	2926	2993	2660	2565	2405	1	-
16	RAJENDRANAGAR	1711	3646	2509	2569	2421	2421	2367	2398	1796	1794	1606	192	194
17	MOINABAD	163	949	673	579	554	601	697	709	571	503	402	-	-
18	CHEVELLA	123	933	664	802	822	788	642	493	380	290	243	-	-
19	VIKARABAD	143	1845	1107	923	946	927	878	847	671	513	459	-	-
20	DHARUR	-	1664	626	456	383	406	312	217	137	109	91	-	-
21	BANTARAM	-	958	542	377	361	379	227	230	129	114	100	-	-
22	PEDDEMUL	-	1691	625	582	431	467	365	304	292	180	151	-	-
23	TANDUR	289	2350	1629	1373	1319	1181	926	828	660	586	466	-	-
24	BASHEERABAD	-	1159	677	595	453	378	312	231	165	89	95	-	-
25	YELAL	-	1279	723	520	395	340	314	220	210	149	143	-	-
26	DOMA	-	1209	689	638	520	438	341	369	180	172	160	-	-
27	GANDEED	79	2120	1040	836	760	682	592	645	404	383	356	-	-
28	KULKACHARLA	-	2304	1253	817	586	584	549	441	343	279	288	-	-
29	PARGI	188	1399	893	739	699	647	751	712	510	385	337	-	-
30	PUDUR	-	1548	576	547	520	495	384	307	186	136	150	-	-
31	SHABAD	220	1433	681	528	516	537	461	331	317	237	273	-	-
32	SHAMSHABAD	699	2145	1214	1070	878	892	740	652	407	323	313	-	-
33	MAHESWARAM	317	1833	895	746	631	655	526	541	382	338	302	-	-
34	IBRAHIMPATAM	131	1241	734	736	766	866	824	775	639	604	494	-	-
35	MANCHAL	168	880	389	403	430	468	392	348	272	201	220	-	-
36	YACHARAM	44	1032	494	505	495	463	422	385	324	270	289	-	-
37	KANDUKUR	138	1803	747	638	588	528	516	413	382	325	296	-	-
TOTAL		23839	70526	46072	42869	40408	40119	36753	34445	26041	23362	20906	472	544

Table - 3.12
CLASS WISE ENROLMENT
ALL - GIRLS

2000-2001

SL NO	MANDAL	PP	I	II	III	IV	V	VI	VII	VIII	IX	X	XI	XII
1	MARPALLE	-	1060	691	721	633	526	345	261	117	102	82	-	-
2	MOMINPET	-	907	631	578	479	441	342	274	142	94	135	-	-
3	NAWABPET	-	867	492	461	459	393	289	206	112	76	60	-	-
4	SHANKARPALLE	13	1306	813	854	768	796	725	530	340	258	203	-	-
5	SERILINGAMPALLE	1040	2199	1377	1316	1217	1190	1218	1100	806	691	547	27	19
6	BALANAGAR	2762	4145	3337	3296	3192	3297	3129	3072	2291	2177	1857	23	40
7	QUTHBULLAPUR	1019	3469	2896	2595	2691	2533	2199	2177	1332	1109	909	34	36
8	MEDCHAL	168	1728	1123	1024	966	947	783	747	463	377	263	-	-
9	SHAMIRPET	341	1455	885	892	810	725	651	573	447	387	358	12	26
10	MALKAJGIRI	3466	2430	2020	2082	2062	1952	1880	1773	1373	1379	1230	39	39
11	KEESARA	389	1505	1172	1148	1094	1061	943	902	742	716	624	-	-
12	GHATKESAR	337	1491	1023	996	987	914	828	763	553	502	415	-	-
13	UPPAL	2918	3785	2806	2744	2678	2658	2555	2441	1994	1787	1699	62	65
14	HAYATHNAGAR	1289	2259	1972	1708	1656	1583	1430	1406	1049	1067	889	-	-
15	SAROORNAGAR	2171	3657	3205	3152	2912	2889	2676	2567	2285	2225	2046	1	1
16	RAJENDRANAGAR	1111	3460	2564	2564	2528	2581	2421	2427	2056	1882	1729	173	153
17	MOINABAD	127	818	694	572	579	571	500	484	325	247	207	-	-
18	CHEVELLA	89	864	791	732	700	764	610	418	318	205	157	-	-
19	VIKARABAD	98	1787	948	809	827	876	886	846	706	616	533	-	-
20	DHARUR	-	1570	561	459	413	324	196	175	81	47	30	-	-
21	BANTARAM	-	940	529	386	333	314	213	177	68	44	34	-	-
22	PEDEEMUL	-	1517	624	453	387	331	254	187	130	90	62	-	-
23	TANDUR	203	2330	1537	1277	1131	1080	840	734	552	499	413	-	-
24	BASHEERABAD	-	998	726	589	453	344	244	175	83	41	37	-	-
25	YELAL	-	1157	731	514	311	273	185	173	98	61	52	-	-
26	DOMA	-	1103	603	531	362	275	197	173	80	66	48	-	-
27	GANDEED	44	2099	926	615	510	462	316	377	169	148	152	-	-
28	KULKACHARLA	-	2099	1030	611	382	307	250	232	133	84	78	-	-
29	PARGI	144	1244	866	832	682	668	538	460	226	191	171	-	-
30	PUDUR	-	1457	592	508	437	400	253	187	95	74	74	-	-
31	SHABAD	111	1266	648	540	495	437	299	216	168	157	133	-	-
32	SHAMSHABAD	530	1850	1043	883	759	783	570	523	352	284	278	-	-
33	MAHESWARAM	165	1625	849	634	554	498	354	340	252	208	171	-	-
34	IBRAHIMPATAM	84	1188	791	822	789	792	719	637	473	435	362	-	-
35	MANCHAL	55	951	426	414	356	340	268	212	164	91	104	-	-
36	YACHARAM	14	1057	540	431	382	408	267	242	187	144	127	-	-
37	KANDUKUR	107	1715	730	578	458	400	330	277	208	172	147	-	-
TOTAL		18795	65358	43192	39321	36432	35133	30703	28464	20980	18733	16416	371	379

Table - 3.13
CLASS WISE ENROLMENT
ALL - TOTAL

2000-2001

SL NO	MANDAL	PP	I	II	III	IV	V	VI	VII	VIII	IX	X	XI	XII
1	MARPALLE	-	2251	1434	1426	1231	1141	839	655	372	328	331	-	-
2	MOMINPET	-	1895	1261	1105	974	904	766	682	416	313	371	-	-
3	NAWABPET	-	1775	946	938	808	827	682	478	337	272	266	-	-
4	SHANKARPALLE	37	2537	1639	1679	1598	1703	1516	1208	904	692	551	-	-
5	SERILINGAMPALLE	2293	4708	2930	2822	2569	2577	2539	2354	1651	1445	1132	71	75
6	BALANAGAR	5990	8603	7010	6950	6753	7049	6787	6629	4938	4505	3888	52	82
7	QUTHBULLAPUR	2303	7545	6132	5612	5713	5354	4783	4628	2959	2605	2196	95	109
8	MEDCHAL	396	3540	2415	2228	2136	2071	1744	1615	900	743	560	-	-
9	SHAMIRPET	793	3061	1834	1907	1719	1655	1491	1384	1130	998	954	50	71
10	MALKAJGIRI	7717	5069	4455	4462	4388	4331	4218	3825	3018	2937	2634	88	106
11	KEESARA	927	3182	2460	2383	2301	2213	1943	1841	1584	1496	1309	-	-
12	GHATKESAR	812	3101	2152	2134	2075	2001	1875	1754	1229	1157	909	-	-
13	UPPAL	6453	7818	5652	5625	5578	5625	5369	5189	4013	3750	3528	120	132
14	HAYATHNAGAR	2761	4536	4134	3611	3480	3457	3054	3039	2334	2298	1909	-	-
15	SAROORNAGAR	4857	7747	6681	6575	6215	5973	5602	5560	4945	4790	4451	2	1
16	RAJENDRANAGAR	2822	7106	5073	5133	4949	5002	4788	4825	3862	3676	3335	365	347
17	MOINABAD	290	1767	1367	1151	1133	1172	1197	1193	896	750	609	-	-
18	CHEVELLA	212	1797	1455	1534	1522	1552	1252	911	698	495	400	-	-
19	VIKARABAD	241	3632	2055	1732	1773	1803	1764	1693	1377	1129	992	-	-
20	DHARUR	-	3234	1187	915	796	730	508	392	218	156	121	-	-
21	BANTARAM	-	1898	1071	763	694	693	440	407	197	158	134	-	-
22	PEDDEMUL	-	3208	1249	1035	818	798	619	491	422	270	213	-	-
23	TANDUR	492	4680	3166	2650	2450	2261	1766	1562	1212	1085	879	-	-
24	BASHEERABAD	-	2157	1403	1184	906	722	556	406	248	130	132	-	-
25	YELAL	-	2436	1454	1034	706	613	499	393	308	210	195	-	-
26	DOMA	-	2312	1292	1169	882	713	538	542	260	238	208	-	-
27	GANDEED	123	4219	1966	1451	1270	1144	908	1022	573	531	508	-	-
28	KULKACHARLA	-	4403	2283	1428	968	891	799	673	476	363	366	-	-
29	PARGI	332	2643	1759	1571	1381	1315	1289	1172	736	576	508	-	-
30	PUDUR	-	3005	1168	1055	957	895	637	494	281	210	224	-	-
31	SHABAD	331	2699	1329	1068	1011	974	760	547	485	394	406	-	-
32	SHAMSHABAD	1229	3995	2257	1953	1637	1675	1310	1175	759	607	591	-	-
33	MAHESWARAM	482	3458	1744	1380	1185	1153	880	881	634	546	473	-	-
34	IBRAHIMPATAM	215	2429	1525	1558	1555	1658	1543	1412	1112	1039	856	-	-
35	MANCHAL	223	1831	815	817	786	808	660	560	436	292	324	-	-
36	YACHARAM	58	2089	1034	936	877	871	689	627	511	414	416	-	-
37	KANDUKUR	245	3518	1477	1216	1046	928	846	690	590	497	443	-	-
TOTAL		42634	135884	89264	82190	76840	75252	67456	62909	47021	42095	37322	843	923

Table - 3.14
STAGE WISE ENROLMENT
ALL - BOYS

2000-2001

SL NO	MANDAL	PP	I - V	VI - VII	VIII - X	XI - XII	I - X	PP - XII
1	MARPALLE	-	3852	888	730	-	5470	5470
2	MOMINPET	-	3103	832	729	-	4664	4664
3	NAWABPET	-	2622	665	627	-	3914	3914
4	SHANKARPALLE	24	4619	1469	1346	-	7434	7458
5	SERILINGAMPALLE	1253	8307	2575	2184	100	13066	14419
6	BALANAGAR	3228	19098	7215	7006	71	33319	36618
7	QUTHBULLAPUR	1284	16172	5035	4410	134	25617	27035
8	MEDCHAL	228	6602	1829	1100	-	9531	9759
9	SHAMIRPET	452	5409	1651	1890	83	8950	9485
10	MALKAJGIRI	4251	12159	4390	4607	116	21156	25523
11	KEESARA	538	6559	1939	2307	-	10805	11343
12	GHATKESAR	475	6052	2038	1825	-	9915	10390
13	UPPAL	3535	15627	5562	5811	125	27000	30660
14	HAYATHNAGAR	1472	10040	3257	3536	-	16833	18305
15	SAROORNAGAR	2686	17376	5919	7630	1	30925	33612
16	RAJENDRANAGAR	1711	13566	4765	5196	386	23527	25624
17	MOINABAD	163	3356	1406	1476	-	6238	6401
18	CHEVELLA	123	4009	1135	913	-	6057	6180
19	VIKARABAD	143	5748	1725	1643	-	9116	9259
20	DHARUR	-	3535	529	337	-	4401	4401
21	BANTARAM	-	2617	457	343	-	3417	3417
22	PEDDEMUL	-	3796	669	623	-	5088	5088
23	TANDUR	289	7852	1754	1712	-	11318	11607
24	BASHEERABAD	-	3262	543	349	-	4154	4154
25	YELAL	-	3257	534	502	-	4293	4293
26	DOMA	-	3494	710	512	-	4716	4716
27	GANDEED	79	5438	1237	1143	-	7818	7897
28	KULKACHARLA	-	5544	990	910	-	7444	7444
29	PARGI	188	4377	1463	1232	-	7072	7260
30	PUDUR	-	3686	691	472	-	4849	4849
31	SHABAD	220	3695	792	827	-	5314	5534
32	SHAMSHABAD	699	6199	1392	1043	-	8634	9333
33	MAHESWARAM	317	4760	1067	1022	-	6849	7166
34	IBRAHIMPATAM	131	4343	1599	1737	-	7679	7810
35	MANCHAL	168	2570	740	693	-	4003	4171
36	YACHARAM	44	2989	807	883	-	4679	4723
37	KANDUKUR	138	4304	929	1003	-	6236	6374
TOTAL		23839	239994	71198	70309	1016	381501	406356

Table - 3.15
STAGE WISE ENROLMENT
ALL - GIRLS

2000-2001

SL NO	MANDAL	PP	I - V	VI - VII	VIII - X	XI - XII	I - X	PP - XII
1	MARPALLE	-	3631	606	301	-	4538	4538
2	MOMINPET	-	3036	616	371	-	4023	4023
3	NAWABPET	-	2672	495	248	-	3415	3415
4	SHANKARPALLE	13	4537	1255	801	-	6593	6606
5	SERILINGAMPALLE	1040	7299	2318	2044	46	11661	12747
6	BALANAGAR	2762	17267	6201	6325	63	29793	32618
7	QUTHBULLAPUR	1019	14184	4376	3350	70	21910	22999
8	MEDCHAL	168	5788	1530	1103	-	8421	8589
9	SHAMIRPET	341	4767	1224	1192	38	7183	7562
10	MALKAJGIRI	3466	10546	3653	3982	78	18181	21725
11	KEESARA	389	5980	1845	2082	-	9907	10296
12	GHATKESAR	337	5411	1591	1470	-	8472	8809
13	UPPAL	2918	14671	4996	5480	127	25147	28192
14	HAYATHNAGAR	1289	9178	2836	3005	-	15019	16308
15	SAROORNAGAR	2171	15815	5243	6556	2	27614	29787
16	RAJENDRANAGAR	1111	13697	4848	5677	326	24222	25659
17	MOINABAD	127	3234	984	779	-	4997	5124
18	CHEVELLA	89	3851	1028	680	-	5559	5648
19	VIKARABAD	98	5247	1732	1855	-	8834	8932
20	DHARUR	-	3327	371	158	-	3856	3856
21	BANTARAM	-	2502	390	146	-	3038	3038
22	PEDDEMUL	-	3312	441	282	-	4035	4035
23	TANDUR	203	7355	1574	1464	-	10393	10596
24	BASHEERABAD	-	3110	419	161	-	3690	3690
25	YELAL	-	2986	358	211	-	3555	3555
26	DOMA	-	2874	370	194	-	3438	3438
27	GANDEED	44	4612	693	469	-	5774	5818
28	KULKACHARLA	-	4429	482	295	-	5206	5206
29	PARGI	144	4292	998	588	-	5878	6022
30	PUDUR	-	3394	440	243	-	4077	4077
31	SHABAD	111	3386	515	458	-	4359	4470
32	SHAMSHABAD	530	5318	1093	914	-	7325	7855
33	MAHESWARAM	165	4160	694	631	-	5485	5650
34	IBRAHIMPATAM	84	4382	1356	1270	-	7008	7092
35	MANCHAL	55	2487	480	359	-	3326	3381
36	YACHARAM	14	2818	509	458	-	3785	3799
37	KANDUKUR	107	3881	607	527	-	5015	5122
TOTAL		18795	219436	59167	56129	750	334732	354277

Table - 3.16
STAGE WISE ENROLMENT
ALL - TOTAL

2000-2001

SL NO	MANDAL	PP	I - V	VI - VII	VIII - X	XI - XII	I - X	PP - XII
1	MARPALLE	-	7483	1494	1031	-	10008	10008
2	MOMINPET	-	6139	1448	1100	-	8687	8687
3	NAWABPET	-	5294	1160	875	-	7329	7329
4	SHANKARPALLE	37	9156	2724	2147	-	14027	14064
5	SERILINGAMPALLE	2293	15606	4893	4228	146	24727	27166
6	BALANAGAR	5990	36365	13416	13331	134	63112	69236
7	QUTHBULLAPUR	2303	30356	9411	7760	204	47527	50034
8	MEDCHAL	396	12390	3359	2203	-	17952	18348
9	SHAMIRPET	793	10176	2875	3082	121	16133	17047
10	MALKAJGIRI	7717	22705	8043	8589	194	39337	47248
11	KEESARA	927	12539	3784	4389	-	20712	21639
12	GHATKESAR	812	11463	3629	3295	-	18387	19199
13	UPPAL	6453	30298	10558	11291	252	52147	58852
14	HAYATHNAGAR	2761	19218	6093	6541	-	31852	34613
15	SAROORNAGAR	4857	33191	11162	14186	3	58539	63399
16	RAJENDRANAGAR	2822	27263	9613	10873	712	47749	51283
17	MOINABAD	290	6590	2390	2255	-	11235	11525
18	CHEVELLA	212	7860	2163	1593	-	11616	11828
19	VIKARABAD	241	10995	3457	3498	-	17950	18191
20	DHARUR	-	6862	900	495	-	8257	8257
21	BANTARAM	-	5119	847	489	-	6455	6455
22	PEDDEMUL	-	7108	1110	905	-	9123	9123
23	TANDUR	492	15207	3328	3176	-	21711	22203
24	BASHEERABAD	-	6372	962	510	-	7844	7844
25	YELAL	-	6243	892	713	-	7848	7848
26	DOMA	-	6368	1080	706	-	8154	8154
27	GANDEED	123	10050	1930	1612	-	13592	13715
28	KULKACHARLA	-	9973	1472	1205	-	12650	12650
29	PARGI	332	8669	2461	1820	-	12950	13282
30	PUDUR	-	7080	1131	715	-	8926	8926
31	SHABAD	331	7081	1307	1285	-	9673	10004
32	SHAMSHABAD	1229	11517	2485	1957	-	15959	17188
33	MAHESWARAM	482	8920	1761	1653	-	12334	12816
34	IBRAHIMPATAM	215	8725	2955	3007	-	14687	14902
35	MANCHAL	223	5057	1220	1052	-	7329	7552
36	YACHARAM	58	5807	1316	1341	-	8464	8522
37	KANDUKUR	245	8185	1536	1530	-	11251	11496
TOTAL		42634	459430	130365	126438	1766	716233	760633

Table - 3.21
CLASS WISE ENROLMENT
BC - BOYS

2000-2001

SL NO	MANDAL	PP	I	II	III	IV	V	VI	VII	VIII	IX	X	XI	XII
1	MARPALLE	-	447	299	265	259	301	173	184	104	106	117	-	-
2	MOMINPET	-	371	219	187	182	171	165	188	125	90	91	-	-
3	NAWABPET	-	427	223	207	155	202	207	143	113	112	104	-	-
4	SHANKARPALLE	2	568	408	383	370	430	376	320	256	208	190	-	-
5	SERILINGAMPALLE	415	1046	623	583	527	520	501	472	317	276	228	25	25
6	BALANAGAR	936	1807	1317	1389	1281	1419	1283	1294	928	839	736	-	6
7	QUTHBULLAPUR	519	1954	1490	1381	1401	1276	1152	1063	647	559	532	-	-
8	MEDCHAL	67	895	539	562	607	550	501	457	260	214	179	-	-
9	SHAMIRPET	276	872	494	508	517	483	432	395	354	351	292	-	10
10	MALKAJGIRI	1137	847	759	760	736	733	715	749	539	533	436	-	-
11	KEESARA	155	817	537	527	511	492	405	401	361	293	273	-	-
12	GHATKESAR	202	798	537	565	520	505	475	503	335	292	222	-	-
13	UPPAL	1224	1524	1093	1061	1055	1021	962	968	632	628	609	12	27
14	HAYATHNAGAR	602	1082	1068	893	901	920	753	790	591	568	463	-	-
15	SAROORNAGAR	788	1484	1264	1223	1139	1106	969	1081	838	793	808	-	-
16	RAJENDRANAGAR	355	1301	827	866	783	855	801	841	554	571	522	-	-
17	MOINABAD	73	440	342	277	269	279	277	297	238	184	170	-	-
18	CHEVELLA	48	461	336	384	437	426	323	260	213	159	138	-	-
19	VIKARABAD	75	670	416	334	356	355	298	304	221	148	137	-	-
20	DHARUR	-	760	339	249	204	211	185	101	80	52	51	-	-
21	BANTARAM	-	307	202	147	153	151	103	113	60	56	53	-	-
22	PEDDEMUL	-	563	265	242	215	235	188	146	141	89	77	-	-
23	TANDUR	122	1096	784	648	634	539	466	393	310	283	217	-	-
24	BASHEERABAD	-	464	345	286	268	203	159	124	95	59	52	-	-
25	YELAL	-	684	417	285	240	205	173	138	141	97	95	-	-
26	DOMA	-	531	318	353	249	243	180	202	109	115	99	-	-
27	GANDEED	33	1002	496	391	420	383	346	371	219	194	168	-	-
28	KULKACHARLA	-	972	615	362	301	307	283	275	209	182	187	-	-
29	PARGI	91	641	401	323	347	294	340	352	185	152	124	-	-
30	PUDUR	-	728	255	253	257	268	208	155	89	77	85	-	-
31	SHABAD	99	779	354	308	318	324	261	204	164	126	184	-	-
32	SHAMSHABAD	279	973	570	471	410	441	360	331	217	179	178	-	-
33	MAHESWARAM	149	778	417	388	339	347	290	327	212	208	152	-	-
34	IBRAHIMPATAM	72	711	376	401	426	439	376	391	322	288	253	-	-
35	MANCHAL	7	372	149	155	215	219	205	190	126	119	118	-	-
36	YACHARAM	18	489	258	250	234	231	242	210	175	138	143	-	-
37	KANDUKUR	49	841	368	336	290	288	268	223	211	166	159	-	-
TOTAL		7793	30502	19820	18203	17526	17372	15401	14956	10691	9504	8642	37	68

Table - 3.22
CLASS WISE ENROLMENT
BC - GIRLS

2000-2001

SL NO	MANDAL	PP	I	II	III	IV	V	VI	VII	VIII	IX	X	XI	XII
1	MARPALLE	-	374	284	314	273	227	154	119	45	36	39	-	-
2	MOMINPET	-	341	195	214	172	200	153	117	61	40	33	-	-
3	NAWABPET	-	417	246	226	204	170	158	108	65	36	29	-	-
4	SHANKARPALLE	2	604	373	404	319	376	379	256	159	128	85	-	-
5	SERILINGAMPALLE	361	983	558	515	462	436	430	418	248	257	190	16	15
6	BALANAGAR	766	1616	1315	1206	1141	1148	1104	1082	791	755	655	-	6
7	QUTHBULLAPUR	437	1657	1319	1193	1261	1192	1004	1024	607	494	399	-	-
8	MEDCHAL	64	857	588	538	514	510	385	403	246	230	149	-	-
9	SHAMIRPET	176	796	468	481	421	383	305	283	212	182	168	-	-
10	MALKAJGIRI	962	826	689	719	690	670	678	637	503	485	423	-	-
11	KEESARA	105	734	528	479	451	457	378	383	293	301	211	-	-
12	GHAJKESAR	168	782	497	497	470	450	450	406	290	260	224	-	-
13	UPPAL	1029	1461	1021	976	922	884	866	875	635	557	553	14	19
14	HAYATHNAGAR	532	1119	941	794	839	787	703	702	550	500	413	-	-
15	SAROORNAGAR	648	1340	1177	1131	976	991	880	903	718	682	696	-	-
16	RAJENDRANAGAR	260	1271	816	919	826	889	776	750	681	629	536	-	-
17	MOINABAD	37	390	383	324	287	303	253	274	176	118	107	-	-
18	CHEVELLA	34	457	415	375	368	391	351	235	141	113	78	-	-
19	VIKARABAD	52	659	372	323	344	363	281	257	227	182	162	-	-
20	DHARUR	-	692	318	243	243	182	106	102	33	25	11	-	-
21	BANTARAM	-	311	194	172	143	140	96	87	31	13	17	-	-
22	PEDDEMUL	-	554	282	217	197	172	125	90	62	46	29	-	-
23	TANDUR	74	1138	723	581	535	499	429	329	275	209	167	-	-
24	BASHEERABAD	-	414	352	343	272	208	146	107	62	23	23	-	-
25	YELAL	-	608	388	304	178	182	120	114	68	40	25	-	-
26	DOMA	-	485	297	312	198	172	120	109	40	38	26	-	-
27	GANDEED	16	1000	492	348	306	258	176	204	95	70	71	-	-
28	KULKACHARLA	-	923	562	357	237	187	157	166	95	62	43	-	-
29	PARGI	75	585	409	398	335	329	265	251	101	81	57	-	-
30	PUDUR	-	706	314	268	227	228	144	103	50	38	40	-	-
31	SHABAD	45	689	355	307	301	270	174	139	103	80	87	-	-
32	SHAMSHABAD	206	870	446	430	374	381	290	254	171	157	158	-	-
33	MAHESWARAM	100	652	406	321	303	296	194	212	158	116	112	-	-
34	IBRAHIMPATAM	50	666	398	430	405	403	311	311	218	223	182	-	-
35	MANCHAL	4	464	194	198	193	197	152	123	94	60	62	-	-
36	YACHARAM	3	548	337	251	214	215	149	131	93	68	53	-	-
37	KANDUKUR	43	787	386	345	262	232	189	161	99	78	81	-	-
TOTAL		6249	28776	18938	17453	15863	15378	13031	12225	8496	7412	6394	30	40

Table - 3.23
CLASS WISE ENROLMENT
BC - TOTAL

2000-2001

SL NO	MANDAL	PP	I	II	III	IV	V	VI	VII	VIII	IX	X	XI	XII
1	MARPALLE	-	821	583	579	532	528	327	303	149	142	156	-	-
2	MOMINPET	-	712	414	401	354	371	318	305	186	130	124	-	-
3	NAWABPET	-	844	469	433	359	372	365	251	178	148	133	-	-
4	SHANKARPALLE	4	1172	781	787	689	806	755	576	415	336	275	-	-
5	SERILINGAMPALLE	776	2029	1181	1098	989	956	931	890	565	533	418	41	40
6	BALANAGAR	1702	3423	2532	2595	2422	2567	2387	2376	1719	1594	1391	-	12
7	QUTHBULLAPUR	956	3611	2809	2574	2662	2468	2156	2087	1254	1053	931	-	-
8	MEDCHAL	131	1752	1227	1100	1121	1060	886	860	506	444	328	-	-
9	SHAMIRPET	452	1668	962	989	938	866	737	678	566	533	460	-	10
10	MALKAJGIRI	2099	1673	1448	1479	1426	1403	1393	1386	1042	1018	859	-	-
11	KEESARA	260	1551	1065	1006	962	949	783	784	654	594	484	-	-
12	GHATKESAR	370	1580	1034	1062	990	955	925	909	625	552	446	-	-
13	UPPAL	2253	2985	2114	2037	1977	1905	1828	1843	1267	1185	1162	26	46
14	HAYATHNAGAR	1134	2201	2009	1687	1740	1707	1456	1492	1141	1068	876	-	-
15	SAROORNAGAR	1436	2824	2441	2354	2115	2097	1849	1984	1556	1475	1504	-	-
16	RAJENDRANAGAR	615	2572	1643	1785	1609	1744	1577	1591	1235	1200	1058	-	-
17	MOINABAD	110	830	725	601	556	582	530	571	414	302	277	-	-
18	CHEVELLA	82	918	751	759	805	817	674	495	354	272	216	-	-
19	VIKARABAD	127	1329	788	657	700	718	579	561	448	330	299	-	-
20	DHARUR	-	1452	657	492	447	393	291	203	113	77	62	-	-
21	BANTARAM	-	618	396	319	296	291	199	200	91	69	70	-	-
22	PEDDEMUL	-	1117	547	459	412	407	313	236	203	135	106	-	-
23	TANDUR	196	2234	1507	1229	1169	1038	895	722	585	492	384	-	-
24	BASHEERABAD	-	878	697	629	540	411	305	231	157	82	75	-	-
25	YELAL	-	1292	805	589	418	387	293	252	209	137	120	-	-
26	DOMA	-	1016	615	665	447	415	300	311	149	153	125	-	-
27	GANDEED	49	2002	988	739	726	641	522	575	314	264	239	-	-
28	KULKACHARLA	-	1895	1177	719	538	494	440	441	304	244	230	-	-
29	PARGI	166	1226	810	721	682	623	605	603	286	233	181	-	-
30	PUDUR	-	1434	569	521	484	496	352	258	139	115	125	-	-
31	SHABAD	144	1468	709	615	619	594	435	343	267	206	271	-	-
32	SHAMSHABAD	485	1843	1016	901	784	822	650	585	388	336	336	-	-
33	MAHESWARAM	249	1430	823	709	642	643	484	539	370	324	264	-	-
34	IBRAHIMPATAM	122	1377	774	831	831	842	687	702	540	511	435	-	-
35	MANCHAL	11	836	343	353	408	416	357	313	220	179	180	-	-
36	YACHARAM	21	1037	595	501	448	446	391	341	268	206	196	-	-
37	KANDUKUR	92	1628	754	681	552	520	457	384	310	244	240	-	-
TOTAL		14042	59278	38758	35656	33389	32750	28432	27181	19187	16916	15036	67	108

Table - 3.24
STAGE WISE ENROLMENT
BC - BOYS

2000-2001

SL NO	MANDAL	PP	I - V	VI - VII	VIII - X	XI - XII	I - X	PP - XII
1	MARPALLE	-	1571	357	327	-	2255	2255
2	MOMINPET	-	1130	353	306	-	1789	1789
3	NAWABPET	-	1214	350	329	-	1893	1893
4	SHANKARPALLE	2	2159	696	654	-	3509	3511
5	SERILINGAMPALLE	415	3299	973	821	50	5093	5558
6	BALANAGAR	936	7213	2577	2503	6	12293	13235
7	QUTHBULLAPUR	519	7502	2215	1738	-	11455	11974
8	MEDCHAL	67	3253	958	653	-	4864	4931
9	SHAMIRPET	276	2874	827	997	10	4698	4984
10	MALKAJGIRI	1137	3835	1464	1508	-	6807	7944
11	KEESARA	155	2884	806	927	-	4617	4772
12	GHAATKESAR	202	2925	978	849	-	4752	4954
13	UPPAL	1224	5754	1930	1869	39	9553	10816
14	HAYATHNAGAR	602	4864	1543	1622	-	8029	8631
15	SAROORNAGAR	788	6216	2050	2439	-	10705	11493
16	RAJENDRANAGAR	355	4632	1642	1647	-	7921	8276
17	MOINABAD	73	1607	574	592	-	2773	2846
18	CHEVELLA	48	2044	583	510	-	3137	3185
19	VIKARABAD	75	2131	602	506	-	3239	3314
20	DHARUR	-	1763	286	183	-	2232	2232
21	BANTARAM	-	960	216	169	-	1345	1345
22	PEDDEMUL	-	1520	334	307	-	2161	2161
23	TANDUR	122	3701	859	810	-	5370	5492
24	BASHEERABAD	-	1566	283	206	-	2055	2055
25	YELAL	-	1831	311	333	-	2475	2475
26	DOMA	-	1694	382	323	-	2399	2399
27	GANDEED	33	2692	717	581	-	3990	4023
28	KULKACHARLA	-	2557	558	578	-	3693	3693
29	PARGI	91	2006	692	461	-	3159	3250
30	PUDUR	-	1761	363	251	-	2375	2375
31	SHABAD	99	2083	465	474	-	3022	3121
32	SHAMSHABAD	279	2865	691	574	-	4130	4409
33	MAHESWARAM	149	2269	617	572	-	3458	3607
34	IBRAHIMPATAM	72	2353	767	863	-	3983	4055
35	MANCHAL	7	1110	395	363	-	1868	1875
36	YACHARAM	18	1462	452	456	-	2370	2388
37	KANDUKUR	49	2123	491	536	-	3150	3199
TOTAL		7793	103423	30357	28837	105	162617	170515

Table - 3.25
STAGE WISE ENROLMENT
BC - GIRLS

2000-2001

SL NO	MANDAL	PP	I - V	VI - VII	VIII - X	XI - XII	I - X	PP - XII
1	MARPALLE	-	1472	273	120	-	1865	1865
2	MOMINPET	-	1122	270	134	-	1526	1526
3	NAWABPET	-	1263	266	130	-	1659	1659
4	SHANKARPALLE	2	2076	635	372	-	3083	3085
5	SERILINGAMPALLE	361	2954	848	695	31	4497	4889
6	BALANAGAR	766	6326	2186	2201	6	10713	11485
7	QUTHBULLAPUR	437	6622	2028	1500	-	10150	10587
8	MEDCHAL	64	3007	788	625	-	4420	4484
9	SHAMIRPET	176	2549	588	562	-	3699	3875
10	MALKAJGIRI	962	3594	1315	1411	-	6320	7282
11	KEESARA	105	2649	761	805	-	4215	4320
12	GHATKESAR	168	2696	856	774	-	4326	4494
13	UPPAL	1029	5264	1741	1745	33	8750	9812
14	HAYATHNAGAR	532	4480	1405	1463	-	7348	7880
15	SAROORNAGAR	648	5615	1783	2096	-	9494	10142
16	RAJENDRANAGAR	260	4721	1526	1846	-	8093	8353
17	MOINABAD	37	1687	527	401	-	2615	2652
18	CHEVELLA	34	2006	586	332	-	2924	2958
19	VIKARABAD	52	2061	538	571	-	3170	3222
20	DHARUR	-	1678	208	69	-	1955	1955
21	BANTARAM	-	960	183	61	-	1204	1204
22	PEDDEMUL	-	1422	215	137	-	1774	1774
23	TANDUR	74	3476	758	651	-	4885	4959
24	BASHEERABAD	-	1589	253	108	-	1950	1950
25	YELAL	-	1660	234	133	-	2027	2027
26	DOMA	-	1464	229	104	-	1797	1797
27	GANDEED	16	2404	380	236	-	3020	3036
28	KULKACHARLA	-	2266	323	200	-	2789	2789
29	PARGI	75	2056	516	239	-	2811	2886
30	PUDUR	-	1743	247	128	-	2118	2118
31	SHABAD	45	1922	313	270	-	2505	2550
32	SHAMSHABAD	206	2501	544	486	-	3531	3737
33	MAHESWARAM	100	1978	406	386	-	2770	2870
34	IBRAHIMPATAM	50	2302	622	623	-	3547	3597
35	MANCHAL	4	1246	275	216	-	1737	1741
36	YACHARAM	3	1565	280	214	-	2059	2062
37	KANDUKUR	43	2012	350	258	-	2620	2663
TOTAL		6249	96408	25256	22302	70	143966	150285

Table - 3.26
STAGE WISE ENROLMENT
BC - TOTAL

2000-2001

SL NO	MANDAL	PP	I - V	VI - VII	VIII - X	XI - XII	I - X	PP - XII
1	MARPALLE	-	3043	630	447	-	4120	4120
2	MOMINPET	-	2252	623	440	-	3315	3315
3	NAWABPET	-	2477	616	459	-	3552	3552
4	SHANKARPALLE	4	4235	1331	1026	-	6592	6596
5	SERILINGAMPALLE	776	6253	1821	1516	81	9590	10447
6	BALANAGAR	1702	13539	4763	4704	12	23006	24720
7	QUTHBULLAPUR	956	14124	4243	3238	-	21605	22561
8	MEDCHAL	131	6260	1746	1278	-	9284	9415
9	SHAMIRPET	452	5423	1415	1559	10	8397	8859
10	MALKAJIRI	2099	7429	2779	2919	-	13127	15226
11	KEESARA	260	5533	1567	1732	-	8832	9092
12	GHATKESAR	370	5621	1834	1623	-	9078	9448
13	UPPAL	2253	11018	3671	3614	72	18303	20628
14	HAYATHNAGAR	1134	9344	2948	3085	-	15377	16511
15	SAROORNAGAR	1436	11831	3833	4535	-	20199	21635
16	RAJENDRANAGAR	615	9353	3168	3493	-	16014	16629
17	MOINABAD	110	3294	1101	993	-	5388	5498
18	CHEVELLA	82	4050	1169	842	-	6061	6143
19	VIKARABAD	127	4192	1140	1077	-	6409	6536
20	DHARUR	-	3441	494	252	-	4187	4187
21	BANTARAM	-	1920	399	230	-	2549	2549
22	PEDDEMUL	-	2942	549	444	-	3935	3935
23	TANDUR	196	7177	1617	1461	-	10255	10451
24	BASHEERABAD	-	3155	536	314	-	4005	4005
25	YELAL	-	3491	545	466	-	4502	4502
26	DOMA	-	3158	611	427	-	4196	4196
27	GANDEED	49	5096	1097	817	-	7010	7059
28	KULKACHARLA	-	4823	881	778	-	6482	6482
29	PARGI	166	4062	1208	700	-	5970	6136
30	PUDUR	-	3504	610	379	-	4493	4493
31	SHABAD	144	4005	778	744	-	5527	5671
32	SHAMSHABAD	485	5366	1235	1060	-	7661	8146
33	MAHESWARAM	249	4247	1023	958	-	6228	6477
34	IBRAHIMPATAM	122	4655	1389	1486	-	7530	7652
35	MANCHAL	11	2356	670	579	-	3605	3616
36	YACHARAM	21	3027	732	670	-	4429	4450
37	KANDUKUR	92	4135	841	794	-	5770	5862
TOTAL		14042	199831	55613	51139	175	306583	320800

Table - 3.31
CLASS WISE ENROLMENT
SC - BOYS

2000-2001

SL NO	MANDAL	PP	I	II	III	IV	V	VI	VII	VIII	IX	X	XI	XII
1	MARPALLE	-	350	213	203	213	182	211	119	88	60	77	-	-
2	MOMINPET	-	290	191	192	177	167	156	109	80	55	56	-	-
3	NAWABPET	-	324	163	179	134	155	137	76	72	53	63	-	-
4	SHANKARPALLE	2	278	171	201	197	218	204	149	141	88	77	-	-
5	SERILINGAMPALLE	137	438	223	192	176	166	144	162	107	88	65	8	10
6	BALANAGAR	256	590	469	466	477	430	457	410	317	267	222	3	5
7	QUTHBULLAPUR	126	622	463	448	377	382	330	324	213	159	155	6	12
8	MEDCHAL	21	481	380	352	344	323	267	231	108	100	63	-	-
9	SHAMIRPET	39	370	207	231	149	149	146	141	109	71	74	-	1
10	MALKAJGIRI	447	413	331	329	314	300	309	276	178	179	156	1	-
11	KEESARA	44	311	238	195	206	181	204	148	141	138	120	-	-
12	GHATKESAR	38	365	246	211	210	221	198	183	135	129	91	-	-
13	UPPAL	454	869	482	450	470	450	405	412	278	285	246	10	8
14	HAYATHNAGAR	183	512	473	402	300	299	274	262	224	211	147	-	-
15	SAROORNAGAR	191	703	503	464	434	357	361	322	274	268	239	1	-
16	RAJENDRANAGAR	329	940	609	658	602	627	603	603	427	403	369	15	17
17	MOINABAD	27	301	184	173	154	153	228	209	152	124	96	-	-
18	CHEVELLA	26	247	193	248	229	212	187	120	78	42	39	-	-
19	VIKARABAD	37	424	248	192	236	234	216	185	157	125	93	-	-
20	DHARUR	-	317	111	108	100	103	60	57	21	24	7	-	-
21	BANTARAM	-	325	190	121	120	125	55	57	34	25	24	-	-
22	PEDDEMUL	-	342	143	155	107	109	83	73	62	26	26	-	-
23	TANDUR	12	346	200	180	170	144	87	79	64	45	41	-	-
24	BASHEERABAD	-	254	120	118	70	75	63	36	22	9	10	-	-
25	YELAL	-	295	153	123	78	65	71	41	26	15	15	-	-
26	DOMA	-	204	100	89	123	81	78	83	28	13	16	-	-
27	GANDEED	8	289	140	136	128	115	87	94	65	43	46	-	-
28	KULKACHARLA	-	221	146	117	88	96	73	59	41	25	22	-	-
29	PARGI	28	271	206	160	159	145	187	180	171	143	133	-	-
30	PUDUR	-	430	159	190	180	159	121	100	51	26	32	-	-
31	SHABAD	36	392	191	138	152	138	108	75	107	85	68	-	-
32	SHAMSHABAD	94	518	271	228	178	216	168	152	90	98	83	-	-
33	MAHESWARAM	24	372	205	153	118	157	131	117	92	64	93	-	-
34	IBRAHIMPATAM	20	285	164	172	184	222	267	215	182	170	143	-	-
35	MANCHAL	-	170	71	106	79	85	79	64	52	23	33	-	-
36	YACHARAM	5	293	130	156	154	145	121	104	97	78	88	-	-
37	KANDUKUR	10	544	229	180	193	156	157	112	96	96	60	-	-
TOTAL		2594	14696	8916	8414	7780	7542	7033	6139	4580	3853	3388	44	53

Table - 3.32
CLASS WISE ENROLMENT
SC - GIRLS

2000-2001

SL NO	MANDAL	PP	I	II	III	IV	V	VI	VII	VIII	IX	X	XI	XII
1	MARPALLE	-	331	189	177	209	185	105	58	27	28	19	-	-
2	MOMINPET	-	302	223	188	167	127	99	67	24	15	24	-	-
3	NAWABPET	-	307	176	164	176	135	86	48	18	7	8	-	-
4	SHANKARPALLE	1	339	214	253	215	232	166	110	41	36	20	-	-
5	SERILINGAMPALLE	107	378	209	185	161	156	217	217	179	149	110	1	2
6	BALANAGAR	215	561	429	423	416	419	390	397	281	256	181	-	4
7	QUTHBULLAPUR	87	559	421	390	350	334	311	302	167	139	114	4	5
8	MEDCHAL	28	482	322	241	282	268	234	194	107	74	60	-	-
9	SHAMIRPET	19	320	178	183	158	128	87	91	70	42	45	3	-
10	MALKAJGIRI	381	409	307	294	292	263	252	252	143	144	151	-	-
11	KEESARA	23	283	207	222	215	158	172	164	123	111	85	-	-
12	GHATKESAR	18	296	226	212	216	180	144	134	92	82	60	-	-
13	UPPAL	345	829	476	445	343	394	368	321	253	224	231	12	8
14	HAYATHNAGAR	165	526	407	357	296	264	243	204	132	147	97	-	-
15	SAROORNAGAR	155	649	493	412	335	372	314	283	236	221	185	1	1
16	RAJENDRANAGAR	220	841	522	601	620	653	650	643	486	476	436	11	13
17	MOINABAD	21	260	184	151	161	145	128	96	82	68	36	-	-
18	CHEVELLA	23	220	220	214	193	215	127	47	86	33	21	-	-
19	VIKARABAD	22	473	249	214	229	259	280	270	216	168	150	-	-
20	DHARUR	-	303	138	114	100	89	47	41	14	4	3	-	-
21	BANTARAM	-	313	223	113	107	98	65	43	10	4	5	-	-
22	PEDDEMUL	-	314	163	119	119	82	53	32	17	11	14	-	-
23	TANDUR	6	389	200	199	122	113	62	70	44	34	25	-	-
24	BASHEERABAD	-	207	140	102	74	54	45	19	5	6	4	-	-
25	YELAL	-	263	160	124	67	44	32	31	8	6	-	-	-
26	DOMA	-	159	105	100	55	54	27	17	2	7	4	-	-
27	GANDEED	1	302	111	86	72	85	49	51	13	6	6	-	-
28	KULKACHARLA	-	265	128	102	51	51	22	17	5	3	6	-	-
29	PARGI	18	297	192	186	179	152	133	96	34	14	22	-	-
30	PUDUR	-	405	153	133	138	102	68	42	15	9	9	-	-
31	SHABAD	18	353	159	153	123	108	67	35	25	28	13	-	-
32	SHAMSHABAD	89	459	276	222	171	204	119	108	97	87	57	-	-
33	MAHESWARAM	8	341	199	158	121	96	83	62	46	36	25	-	-
34	IBRAHIMPATAM	12	311	201	197	200	205	187	139	120	72	68	-	-
35	MANCHAL	-	172	70	98	95	70	56	49	17	8	9	-	-
36	YACHARAM	3	288	125	117	120	125	63	62	37	28	21	-	-
37	KANDUKUR	13	519	202	156	130	98	72	58	37	23	11	-	-
TOTAL		1998	14025	8697	7805	7078	6717	5623	4870	3309	2806	2335	32	33

Table - 3.33
CLASS WISE ENROLMENT
SC - TOTAL

2000-2001

SL NO	MANDAL	PP	I	II	III	IV	V	VI	VII	VIII	IX	X	XI	XII
1	MARPALLE	-	681	402	380	422	367	316	177	115	88	36	-	-
2	MOMINPET	-	592	414	380	344	294	255	176	104	70	80	-	-
3	NAWABPET	-	631	339	343	310	290	223	124	90	60	71	-	-
4	SHANKARPALLE	3	617	385	454	412	450	370	259	182	124	97	-	-
5	SERILINGAMPALLE	244	816	432	377	337	322	361	379	286	237	175	9	12
6	BALANAGAR	471	1151	898	889	893	849	847	807	598	523	403	3	9
7	QUTHBULLAPUR	213	1181	884	838	727	716	641	626	380	298	269	10	17
8	MEDCHAL	49	963	702	593	626	591	501	425	215	174	123	-	-
9	SHAMIRPET	58	690	385	414	307	277	233	232	179	113	119	3	1
10	MALKAJGIRI	828	822	638	623	606	563	561	528	321	323	307	1	-
11	KEESARA	67	594	445	417	421	339	376	312	264	249	205	-	-
12	GHATKESAR	56	661	472	423	426	401	342	317	227	211	151	-	-
13	UPPAL	799	1698	958	895	813	844	773	733	531	509	477	22	16
14	HAYATHNAGAR	348	1038	380	759	596	563	517	466	356	358	244	-	-
15	SAROORNAGAR	346	1352	996	876	769	729	675	605	510	489	424	2	1
16	RAJENDRANAGAR	549	1781	1231	1259	1222	1280	1253	1246	913	879	805	26	30
17	MOINABAD	48	561	368	324	315	298	356	305	234	192	132	-	-
18	CHEVELLA	49	467	413	462	422	427	314	167	164	75	60	-	-
19	VIKARABAD	59	897	497	406	465	493	496	455	373	293	243	-	-
20	DHARUR	-	620	249	222	200	192	107	98	35	28	10	-	-
21	BANTARAM	-	638	413	234	227	223	120	100	44	29	29	-	-
22	PEDDEMUL	-	656	306	274	226	191	136	105	79	37	40	-	-
23	TANDUR	18	735	400	379	292	257	149	149	108	79	66	-	-
24	BASHEERABAD	-	461	260	220	144	129	108	55	27	15	14	-	-
25	YELAL	-	558	313	247	145	109	103	72	34	21	15	-	-
26	DOMA	-	363	205	189	178	135	105	100	30	20	20	-	-
27	GANDEED	9	591	251	222	200	200	136	145	78	49	52	-	-
28	KULKACHARLA	-	486	274	219	139	147	95	76	46	28	28	-	-
29	PARGI	46	568	398	346	338	297	320	276	205	157	155	-	-
30	PUDUR	-	835	312	323	318	261	189	142	66	35	41	-	-
31	SHABAD	54	745	350	289	275	246	175	110	132	113	81	-	-
32	SHAMSHABAD	183	977	547	450	349	420	287	260	187	185	140	-	-
33	MAHESWARARAM	32	713	404	311	239	253	214	179	138	100	118	-	-
34	IBRAHIMPATAM	32	596	365	369	384	427	454	354	302	242	211	-	-
35	MANCHAL	-	342	141	204	174	155	135	113	69	31	42	-	-
36	YACHARAM	8	581	255	273	274	270	184	166	134	106	109	-	-
37	KANDUKUR	23	1063	431	336	323	254	229	170	133	119	71	-	-
TOTAL		4592	28721	17613	16219	14858	14259	12656	11009	7889	6659	5723	76	86

Table - 3.34
STAGE WISE ENROLMENT
SC - BOYS

2000-2001

SL NO	MANDAL	PP	I - V/	VI - VII	VIII - X	XI - XII	I - X	PP - XII
1	MARPALLE	-	11651	330	225	-	1716	1716
2	MOMINPET	-	10117	265	191	-	1473	1473
3	NAWABPET	-	9555	213	188	-	1356	1356
4	SHANKARPALLE	2	10665	353	306	-	1724	1726
5	SERILINGAMPALLE	137	11995	306	260	18	1761	1916
6	BALANAGAR	256	24332	867	806	8	4105	4369
7	QUTHBULLAPUR	126	22992	654	527	18	3473	3617
8	MEDCHAL	21	18880	498	271	-	2649	2670
9	SHAMIRPET	39	11006	287	254	1	1647	1687
10	MALKAJGIRI	447	16887	585	513	1	2785	3233
11	KEESARA	44	11331	352	399	-	1882	1926
12	GHATKESAR	38	12553	381	355	-	1989	2027
13	UPPAL	454	27221	817	809	18	4347	4819
14	HAYATHNAGAR	183	19886	536	582	-	3104	3287
15	SAROORNAGAR	191	24661	683	781	1	3925	4117
16	RAJENDRANAGAR	329	34336	1206	1199	32	5841	6202
17	MOINABAD	27	9665	437	372	-	1774	1801
18	CHEVELLA	26	11229	307	159	-	1595	1621
19	VIKARABAD	37	13334	401	375	-	2110	2147
20	DHARUR	-	7739	117	52	-	908	908
21	BANTARAM	-	8881	112	83	-	1076	1076
22	PEDDEMUL	-	8856	156	114	-	1126	1126
23	TANDUR	12	10440	166	150	-	1356	1368
24	BASHEERABAD	-	6337	99	41	-	777	777
25	YELAL	-	7714	112	56	-	882	882
26	DOMA	-	5597	161	57	-	815	815
27	GANDEED	8	8808	181	154	-	1143	1151
28	KULKACHARLA	-	6668	132	88	-	888	888
29	PARGI	28	9941	367	447	-	1755	1783
30	PUDUR	-	11118	221	109	-	1448	1448
31	SHABAD	36	10009	183	260	-	1452	1488
32	SHAMSHABAD	94	14411	320	271	-	2002	2096
33	MAHESWARAM	24	10005	248	249	-	1502	1526
34	IBRAHIMPATAM	20	10027	482	495	-	2004	2024
35	MANCHAL	-	5511	143	108	-	762	762
36	YACHARAM	5	8878	225	263	-	1366	1371
37	KANDUKUR	10	13302	269	252	-	1823	1833
TOTAL		2594	473348	13172	11821	97	72341	75032

Table - 3.35
STAGE WISE ENROLMENT
SC - GIRLS

2000-2001

SL NO	MANDAL	PP	I - V	VI - VII	VIII - X	XI - XII	I - X	PP - XII
1	MARPALLE	-	1091	163	74	-	1328	1328
2	MOMINPET	-	1007	166	63	-	1236	1236
3	NAWABPET	-	958	134	33	-	1125	1125
4	SHANKARPALLE	1	1253	276	97	-	1626	1627
5	SERILINGAMPALLE	107	1089	434	438	3	1961	2071
6	BALANAGAR	215	2248	787	718	4	3753	3972
7	QUTHBULLAPUR	87	2054	613	420	9	3087	3183
8	MEDCHAL	28	1595	428	241	-	2264	2292
9	SHAMIRPET	19	967	178	157	3	1302	1324
10	MALKAJGIRI	381	1565	504	438	-	2507	2888
11	KEESARA	23	1085	336	319	-	1740	1763
12	GHATKESAR	18	1130	278	234	-	1642	1660
13	UPPAL	345	2487	689	708	20	3884	4249
14	HAYATHNAGAR	165	1850	447	376	-	2673	2838
15	SAROORNAGAR	155	2261	597	642	2	3500	3657
16	RAJENDRANAGAR	220	3337	1293	1398	24	6028	6272
17	MOINABAD	21	901	224	186	-	1311	1332
18	CHEVELLA	23	1062	174	140	-	1376	1399
19	VIKARABAD	22	1424	550	534	-	2508	2530
20	DHARUR	-	744	88	21	-	853	853
21	BANTARAM	-	854	108	19	-	981	981
22	PEDDEMUL	-	797	85	42	-	924	924
23	TANDUR	6	1023	132	103	-	1258	1264
24	BASHEERABAD	-	577	64	15	-	656	656
25	YELAL	-	658	63	14	-	735	735
26	DOMA	-	473	44	13	-	530	530
27	GANDEED	1	656	100	25	-	781	782
28	KULKACHARLA	-	597	39	14	-	650	650
29	PARGI	18	1006	229	70	-	1305	1323
30	PUDUR	-	931	110	33	-	1074	1074
31	SHABAD	18	896	102	66	-	1064	1082
32	SHAMSHABAD	89	1332	227	241	-	1800	1889
33	MAHESWARAM	8	915	145	107	-	1167	1175
34	IBRAHIMPATAM	12	1114	326	260	-	1700	1712
35	MANCHAL	-	505	105	34	-	644	644
36	YACHARAM	3	775	125	86	-	986	989
37	KANDUKUR	13	1105	130	71	-	1306	1319
TOTAL		1998	44322	10493	8450	65	63265	65328

Table - 3.36
STAGE WISE ENROLMENT
SC - TOTAL

2000-2001

SL NO	MANDAL	PP	I - V	VI - VII	VIII - X	XI - XII	I - X	PP - XII
1	MARPALLE	-	2252	493	299	-	3044	3044
2	MOMINPET	-	2024	431	254	-	2709	2709
3	NAWABPET	-	1913	347	221	-	2481	2481
4	SHANKARPALLE	3	2318	629	403	-	3350	3353
5	SERILINGAMPALLE	244	2284	740	698	21	3722	3987
6	BALANAGAR	471	4680	1654	1524	12	7858	8341
7	QUTHBULLAPUR	213	4346	1267	947	27	6560	6800
8	MEDCHAL	49	3475	926	512	-	4913	4962
9	SHAMIRPET	58	2073	465	411	4	2949	3011
10	MALKAJGIRI	828	3252	1089	951	1	5292	6121
11	KEESARA	67	2216	688	718	-	3622	3689
12	GHATKESAR	56	2383	659	589	-	3631	3687
13	UPPAL	799	5208	1506	1517	38	8231	9068
14	HAYATHNAGAR	348	3836	983	958	-	5777	6125
15	SAROORNAGAR	346	4722	1280	1423	3	7425	7774
16	RAJENDRANAGAR	549	6773	2499	2597	56	11869	12474
17	MOINABAD	48	1866	661	558	-	3085	3133
18	CHEVELLA	49	2191	481	299	-	2971	3020
19	VIKARABAD	59	2758	951	909	-	4618	4677
20	DHARUR	-	1483	205	73	-	1761	1761
21	BANTARAM	-	1735	220	102	-	2057	2057
22	PEDDEMUL	-	1653	241	156	-	2050	2050
23	TANDUR	18	2063	298	253	-	2614	2632
24	BASHEERABAD	-	1214	163	56	-	1433	1433
25	YELAL	-	1372	175	70	-	1617	1617
26	DOMA	-	1070	205	70	-	1345	1345
27	GANDEED	9	1464	281	179	-	1924	1933
28	KULKACHARLA	-	1265	171	102	-	1538	1538
29	PARGI	46	1947	596	517	-	3060	3106
30	PUDUR	-	2049	331	142	-	2522	2522
31	SHABAD	54	1905	285	326	-	2516	2570
32	SHAMSHABAD	183	2743	547	512	-	3802	3985
33	MAHESWARAM	32	1920	393	356	-	2669	2701
34	IBRAHIMPATAM	32	2141	808	755	-	3704	3736
35	MANCHAL	-	1016	248	142	-	1406	1406
36	YACHARAM	8	1653	350	349	-	2352	2360
37	KANDUKUR	23	2407	399	323	-	3129	3152
TOTAL		4592	91670	23665	20271	162	135606	140360

Table - 3.41
CLASS WISE ENROLMENT
ST - BOYS

2000-2001

SL NO	MANDAL	PP	I	II	III	IV	V	VI	VII	VIII	IX	X	XI	XII
1	MARPALLE	-	133	76	93	12	10	15	16	11	2	11	-	-
2	MOMINPET	-	128	105	38	52	20	8	20	21	16	24	-	-
3	NAWABPET	-	12	5	7	8	4	3	-	-	-	2	-	-
4	SHANKARPALLE	-	122	54	42	39	23	15	19	12	19	11	-	-
5	SERILINGAMPALLE	33	156	80	67	63	68	51	50	30	23	15	5	3
6	BALANAGAR	47	125	108	124	96	98	103	74	79	54	56	1	-
7	QUTHBULLAPUR	16	169	100	87	98	59	71	48	37	32	33	-	2
8	MEDCHAL	-	163	85	130	86	90	69	48	19	10	15	-	-
9	SHAMIRPET	5	58	19	27	18	19	12	13	11	8	9	-	-
10	MALKAJGIRI	147	91	93	78	59	81	65	56	30	40	40	-	-
11	KEESARA	20	76	49	44	45	42	42	35	39	30	26	-	-
12	GHATKESAR	20	65	53	31	37	38	28	24	16	17	9	-	-
13	UPPAL	166	187	125	124	109	132	108	121	66	55	42	4	5
14	HAYATHNAGAR	71	66	44	52	38	49	28	25	30	33	24	-	-
15	SAROORNAGAR	74	169	136	151	132	119	79	102	75	58	65	-	-
16	RAJENDRANAGAR	41	167	55	70	69	70	57	52	41	37	22	2	14
17	MOINABAD	-	15	3	4	6	3	9	7	6	5	4	-	-
18	CHEVELLA	1	17	11	2	6	10	5	5	5	-	1	-	-
19	VIKARABAD	1	279	104	49	52	48	34	52	38	26	29	-	-
20	DHARUR	-	382	91	45	30	22	29	12	8	7	7	-	-
21	BANTARAM	-	85	35	28	7	12	2	6	5	2	2	-	-
22	PEDDEMUL	-	578	131	121	38	46	16	20	23	11	11	-	-
23	TANDUR	5	188	117	100	74	52	35	31	30	20	16	-	-
24	BASHEERABAD	-	323	159	109	66	59	49	39	26	13	20	-	-
25	YELAL	-	190	90	63	28	26	14	13	9	10	6	-	-
26	DOMA	-	356	199	115	74	60	37	22	10	13	5	-	-
27	GANDEED	18	719	290	209	133	86	71	81	59	68	59	-	-
28	KULKACHARLA	-	1064	441	294	159	154	149	60	66	34	29	-	-
29	PARGI	17	243	138	104	88	65	50	43	40	11	13	-	-
30	PUDUR	-	94	27	22	3	2	7	1	-	5	1	-	-
31	SHABAD	3	112	63	21	10	10	18	7	10	4	1	-	-
32	SHAMSHABAD	48	316	131	103	84	45	35	43	23	5	7	-	-
33	MAHESWARARAM	58	563	193	137	104	90	64	33	31	25	30	-	-
34	IBRAHIMPATAM	5	51	32	30	29	32	24	30	14	15	13	-	-
35	MANCHAL	160	300	149	125	101	129	79	63	78	40	41	-	-
36	YACHARAM	10	192	73	51	59	40	20	23	10	8	3	-	-
37	KANDUKUR	24	251	88	56	58	21	26	18	19	14	24	-	-
TOTAL		990	8205	3752	2953	2170	1934	1527	1312	1027	770	726	12	24

Table - 3.42
CLASS WISE ENROLMENT
ST - GIRLS

2000-2001

SL NO	MANDAL	PP	I	II	III	IV	V	VI	VII	VIII	IX	X	XI	XII
1	MARPALLE	-	133	51	45	2	1	1	-	4	-	1	-	-
2	MOMINPET	-	130	89	47	17	8	9	5	5	-	-	-	-
3	NAWABPET	-	15	6	4	4	-	-	-	-	-	-	-	-
4	SHANKARPALLE	-	107	64	39	22	7	9	4	2	1	-	-	-
5	SERILINGAMPALLE	34	125	68	66	54	53	46	43	27	30	16	-	-
6	BALANAGAR	40	160	93	106	78	71	83	56	43	28	29	-	-
7	QUTHBULLAPUR	7	125	83	65	80	56	35	56	27	35	16	-	1
8	MEDCHAL	1	175	68	72	42	23	31	23	12	9	7	-	-
9	SHAMIRPET	4	69	24	14	16	21	12	5	3	7	2	-	-
10	MALKAJGIRI	93	92	47	65	64	54	50	44	26	35	28	-	-
11	KEESARA	15	64	56	25	44	40	34	26	21	19	11	-	-
12	GHATKESAR	9	78	34	32	27	21	22	16	11	4	4	-	-
13	UPPAL	110	128	83	75	69	89	54	52	33	27	42	1	1
14	HAYATHNAGAR	33	69	47	40	32	32	12	12	18	17	12	-	-
15	SAROORNAGAR	51	153	95	113	78	75	69	58	52	44	35	-	-
16	RAJENDRANAGAR	34	99	54	52	55	50	41	38	30	24	27	1	1
17	MOINABAD	-	10	2	1	7	2	-	-	-	2	-	-	-
18	CHEVELLA	1	11	15	5	9	9	5	2	-	-	-	-	-
19	VIKARABAD	3	256	74	38	17	41	27	27	15	10	12	-	-
20	DHARUR	-	393	51	30	15	8	5	12	3	1	1	-	-
21	BANTARAM	-	78	29	22	-	-	-	-	-	-	-	-	-
22	PEDDEMUL	-	458	97	38	7	5	5	1	1	2	-	-	-
23	TANDUR	5	203	77	53	37	29	21	12	10	6	4	-	-
24	BASHEERABAD	-	288	146	75	41	29	16	11	3	5	3	-	-
25	YELAL	-	145	99	35	21	6	1	2	1	-	2	-	-
26	DOMA	-	362	143	44	39	15	5	4	3	-	-	-	-
27	GANDEED	15	675	235	103	56	32	17	30	13	13	1	-	-
28	KULKACHARLA	-	843	285	116	43	37	15	6	1	-	-	-	-
29	PARGI	10	155	85	96	38	25	6	6	-	4	1	-	-
30	PUDUR	-	101	29	6	3	5	2	1	-	-	-	-	-
31	SHABAD	-	95	53	11	2	1	2	-	-	-	5	-	-
32	SHAMSHABAD	32	298	112	46	18	14	11	7	1	4	1	-	-
33	MAHESWARAM	14	453	131	47	27	29	12	11	6	1	2	-	-
34	IBRAHIMPATAM	5	31	53	43	33	27	18	24	10	11	4	-	-
35	MANCHAL	50	267	132	92	47	44	29	12	16	4	10	-	-
36	YACHARAM	5	140	44	15	9	12	3	3	2	2	1	-	-
37	KANDUKUR	19	244	67	26	12	3	5	4	-	-	-	-	-
TOTAL		590	7228	2921	1802	1165	974	713	613	399	345	277	2	3

Table - 3.43
CLASS WISE ENROLMENT
ST - TOTAL

2000-2001

SL NO	MANDAL	PP	I	II	III	IV	V	VI	VII	VIII	IX	X	XI	XII
1	MARPALLE	-	266	127	138	14	11	16	16	15	2	12	-	-
2	MOMINPET	-	258	194	85	69	28	17	25	26	16	24	-	-
3	NAWABPET	-	27	11	11	12	4	3	-	-	-	2	-	-
4	SHANKARPALLE	-	229	118	81	61	30	24	23	14	20	11	-	-
5	SERILINGAMPALLE	67	281	148	133	117	121	97	93	57	53	31	5	3
6	BALANAGAR	87	285	201	230	174	169	186	130	122	82	85	1	-
7	QUTHBULLAPUR	23	294	183	152	178	115	106	104	64	67	49	-	3
8	MEDCHAL	1	338	153	202	128	113	100	71	31	19	22	-	-
9	SHAMIRPET	9	127	43	41	34	40	24	18	14	15	11	-	-
10	MALKAJGIRI	240	183	140	143	123	135	115	100	56	75	68	-	-
11	KEESARA	35	140	105	69	89	82	76	61	60	49	37	-	-
12	GHATKESAR	29	143	87	63	64	59	50	40	27	21	13	-	-
13	UPPAL	276	315	208	199	178	221	162	173	99	82	84	5	6
14	HAYATHNAGAR	104	135	91	92	70	81	40	37	48	50	36	-	-
15	SAROORNAGAR	125	322	231	264	210	194	148	160	127	102	100	-	-
16	RAJENDRANAGAR	75	266	109	122	124	120	98	90	71	61	49	3	15
17	MOINABAD	-	25	5	5	13	5	9	7	6	7	4	-	-
18	CHEVELLA	2	28	26	7	15	19	10	7	5	-	1	-	-
19	VIKARABAD	4	535	178	87	69	89	61	79	53	36	41	-	-
20	DHARUR	-	775	142	75	45	30	34	24	11	8	8	-	-
21	BANTARAM	-	163	64	50	7	12	2	6	5	2	2	-	-
22	PEDEMUL	-	1036	228	159	45	51	21	21	24	13	11	-	-
23	TANDUR	10	391	194	153	111	81	56	43	40	26	20	-	-
24	BASHEERABAD	-	611	305	184	107	88	65	50	29	18	23	-	-
25	YELAL	-	335	189	98	49	32	15	15	10	10	8	-	-
26	DOMA	-	718	342	159	113	75	42	26	13	13	5	-	-
27	GANDEED	33	1394	525	312	189	118	88	111	72	81	60	-	-
28	KULKACHARLA	-	1907	726	410	202	191	164	66	67	34	29	-	-
29	PARGI	27	398	223	200	126	90	56	49	40	15	14	-	-
30	PUDUR	-	195	56	28	6	7	9	2	-	5	1	-	-
31	SHABAD	3	207	116	32	12	11	20	7	10	4	6	-	-
32	SHAMSHABAD	80	614	243	149	102	59	46	50	24	9	8	-	-
33	MAHESWARAM	72	1016	324	184	131	119	76	44	37	26	32	-	-
34	IBRAHIMPATAM	10	82	85	73	62	59	42	54	24	26	17	-	-
35	MANCHAL	210	567	281	217	148	173	108	75	94	44	51	-	-
36	YACHARAM	15	332	117	66	68	52	23	26	12	10	4	-	-
37	KANDUKUR	43	495	155	82	70	24	31	22	19	14	24	-	-
TOTAL		1580	15433	6673	4755	3335	2908	2240	1925	1426	1115	1003	14	27

Table - 3.44
STAGE WISE ENROLMENT
ST - BOYS

2000-2001

SL NO	MANDAL	PP	I - V	VI - VII	VIII - X	XI - XII	I - X	PP - XII
1	MARPALLE	-	324	31	24	-	379	379
2	MOMINPET	-	343	28	61	-	432	432
3	NAWABPET	-	36	3	2	-	41	41
4	SHANKARPALLE	-	280	34	42	-	356	356
5	SERILINGAMPALLE	33	434	101	68	8	603	644
6	BALANAGAR	47	551	177	189	1	917	965
7	QUTHBULLAPUR	16	513	119	102	2	734	752
8	MEDCHAL	-	554	117	44	-	715	715
9	SHAMIRPET	5	141	25	28	-	194	199
10	MALKAJGIRI	147	402	121	110	-	633	780
11	KEESARA	20	256	77	95	-	428	448
12	GHATKESAR	20	224	52	42	-	318	338
13	UPPAL	166	677	229	163	9	1069	1244
14	HAYATHNAGAR	71	249	53	87	-	389	460
15	SAROORNAGAR	74	707	181	198	-	1086	1160
16	RAJENDRANAGAR	41	431	109	100	16	640	697
17	MOINABAD	-	31	16	15	-	62	62
18	CHEVELLA	1	46	10	6	-	62	63
19	VIKARABAD	1	532	86	93	-	711	712
20	DHARUR	-	570	41	22	-	633	633
21	BANTARAM	-	167	8	9	-	184	184
22	PEDDEMUL	-	914	36	45	-	995	995
23	TANDUR	5	531	66	66	-	663	668
24	BASHEERABAD	-	716	88	59	-	863	863
25	YELAL	-	397	27	25	-	449	449
26	DOMA	-	804	59	28	-	891	891
27	GANDEED	18	1437	152	186	-	1775	1793
28	KULKACHARLA	-	2112	209	129	-	2450	2450
29	PARGI	17	638	93	64	-	795	812
30	PUDUR	-	148	8	6	-	162	162
31	SHABAD	3	216	25	15	-	256	259
32	SHAMSHABAD	48	679	78	35	-	792	840
33	MAHESWARAM	58	1087	97	86	-	1270	1328
34	IBRAHIMPATAM	5	174	54	42	-	270	275
35	MANCHAL	160	804	142	159	-	1105	1265
36	YACHARAM	10	415	43	21	-	479	489
37	KANDUKUR	24	474	44	57	-	575	599
TOTAL		990	190144	2839	2523	36	24376	25402

Table - 3.45
STAGE WISE ENROLMENT
ST - GIRLS

2000-2001

SL NO	MANDAL	PP	I - V	VI - VII	VIII - X	XI - XII	I - X	PP - XII
1	MARPALLE	-	232	1	5	-	238	238
2	MOMINPET	-	291	14	5	-	310	310
3	NAWABPET	-	29	-	-	-	29	29
4	SHANKARPALLE	-	239	13	3	-	255	255
5	SERILINGAMPALLE	34	366	89	73	-	528	562
6	BALANAGAR	40	508	139	100	-	747	787
7	QUTHBULLAPUR	7	409	91	78	1	578	586
8	MEDCHAL	1	380	54	28	-	462	463
9	SHAMIRPET	4	144	17	12	-	173	177
10	MALKAJGIRI	93	322	94	89	-	505	598
11	KEESARA	15	229	60	51	-	340	355
12	GHATKESAR	9	192	38	19	-	249	258
13	UPPAL	110	444	106	102	2	652	764
14	HAYATHNAGAR	33	220	24	47	-	291	324
15	SAROORNAGAR	51	514	127	131	-	772	823
16	RAJENDRANAGAR	34	310	79	81	2	470	506
17	MOINABAD	-	22	-	2	-	24	24
18	CHEVELLA	1	49	7	-	-	56	57
19	VIKARABAD	3	426	54	37	-	517	520
20	DHARUR	-	497	17	5	-	519	519
21	BANTARAM	-	129	-	-	-	129	129
22	PEDDEMUL	-	605	6	3	-	614	614
23	TANDUR	5	399	33	20	-	452	457
24	BASHEERABAD	-	579	27	11	-	617	617
25	YELAL	-	306	3	3	-	312	312
26	DOMA	-	603	9	3	-	615	615
27	GANDEED	15	1101	47	27	-	1175	1190
28	KULKACHARLA	-	1324	21	1	-	1346	1346
29	PARGI	10	399	12	5	-	416	426
30	PUDUR	-	144	3	-	-	147	147
31	SHABAD	-	162	2	5	-	169	169
32	SHAMSHABAD	32	488	18	6	-	512	544
33	MAHESWARAM	14	687	23	9	-	719	733
34	IBRAHIMPATAM	5	187	42	25	-	254	259
35	MANCHAL	50	582	41	30	-	653	703
36	YACHARAM	5	220	6	5	-	231	236
37	KANDUKUR	19	352	9	-	-	361	380
TOTAL		590	14090	1326	1021	5	16437	17032

Table - 3.46
STAGE WISE ENROLMENT
ST - TOTAL

2000-2001

SL NO	MANDAL	PP	I - V	VI - VII	VIII - X	XI - XII	I - X	PP - XII
1	MARPALLE	-	556	32	29	-	617	617
2	MOMINPET	-	634	42	66	-	742	742
3	NAWABPET	-	65	3	2	-	70	70
4	SHANKARPALLE	-	519	47	45	-	611	611
5	SERILINGAMPALLE	67	800	190	141	8	1131	1206
6	BALANAGAR	87	1059	316	289	1	1664	1752
7	QUTHBULLAPUR	23	922	210	180	3	1312	1338
8	MEDCHAL	1	934	171	72	-	1177	1178
9	SHAMIRPET	9	285	42	40	-	367	376
10	MALKAJGIRI	240	724	215	199	-	1138	1378
11	KEESARA	35	485	137	146	-	768	803
12	GHATKESAR	29	416	90	61	-	567	596
13	UPPAL	276	1121	335	265	11	1721	2008
14	HAYATHNAGAR	104	469	77	134	-	680	784
15	SAROORNAGAR	125	1221	308	329	-	1858	1983
16	RAJENDRANAGAR	75	741	188	181	18	1110	1203
17	MOINABAD	-	53	16	17	-	86	86
18	CHEVELLA	2	95	17	6	-	118	120
19	VIKARABAD	4	958	140	130	-	1228	1232
20	DHARUR	-	1067	58	27	-	1152	1152
21	BANTARAM	-	296	8	9	-	313	313
22	PEDDEMUL	-	1519	42	48	-	1609	1609
23	TANDUR	10	930	99	86	-	1115	1125
24	BASHEERABAD	-	1295	115	70	-	1480	1480
25	YELAL	-	703	30	28	-	761	761
26	DOMA	-	1407	68	31	-	1506	1506
27	GANDEED	33	2538	199	213	-	2950	2983
28	KULKACHARLA	-	3436	230	130	-	3796	3796
29	PARGI	27	1037	105	69	-	1211	1238
30	PUDUR	-	292	11	6	-	309	309
31	SHABAD	3	378	27	20	-	425	428
32	SHAMSHABAD	80	1167	96	41	-	1304	1384
33	MAHESWARAM	72	1774	120	95	-	1989	2061
34	IBRAHIMPATAM	10	361	96	67	-	524	534
35	MANCHAL	210	1386	183	189	-	1758	1968
36	YACHARAM	15	635	49	26	-	710	725
37	KANDUKUR	43	826	53	57	-	936	979
TOTAL		1580	33104	4165	3544	41	40813	42434

Table - 3.51

TYPE WISE & MANAGEMENT WISE PRIMARY SCHOOLS

DISTRICT: RANGA REDDY

2000-2001

SL. NO.	NAME OF THE MANDAL	CENTRAL GOVT.	STATE GOVT.	MANDAL PARISHAD	MUNICIPAL	PRIVATE AIDED	PRIVATE UN-AIDED	TOTAL
1	MARPALLE	-	1	30	-	-	-	31
2	MOMINPET	-	1	35	-	-	-	36
3	NAWABPET	-	1	27	-	-	-	28
4	SHANKARPALLE	-	2	37	-	-	1	40
5	SERILINGAMPALLE	-	1	24	-	-	-	25
6	BALANAGAR	-	-	17	-	-	3	20
7	QUTHBULLAPUR	-	1	37	-	-	9	47
8	MEDCHAL	-	2	38	-	-	-	40
9	SHAMIRPET	-	-	30	-	-	2	32
10	MALKAJGIRI	-	-	12	-	-	5	17
11	KEESARA	-	-	28	-	-	2	30
12	GHATKESAR	-	-	30	-	-	4	34
13	UPPAL	-	-	21	-	-	1	22
14	HAYATHNAGAR	-	-	40	-	-	5	45
15	SAROORNAGAR	-	-	39	-	-	7	46
16	RAJENDRANAGAR	-	1	24	-	1	3	29
17	MOINABAD	-	-	31	-	-	-	31
18	CHEVELLA	-	-	39	-	-	1	40
19	VIKARABAD	-	2	40	-	-	-	42
20	DHARUR	-	-	44	-	-	-	44
21	BANTARAM	-	-	26	-	-	-	26
22	PEDDEMUL	-	1	42	-	-	-	43
23	TANDUR	-	1	39	-	-	6	46
24	BASHEERABAD	-	1	36	-	-	-	37
25	YELAL	-	-	42	-	-	-	42
26	DOMA	-	-	48	-	-	2	50
27	GANDEED	-	2	77	-	-	-	79
28	KULKACHARLA	-	3	61	-	-	-	64
29	PARGI	-	-	45	-	-	-	45
30	PUDUR	-	2	37	-	-	-	39
31	SHABAD	-	1	57	-	-	1	59
32	SHAMSHABAD	-	3	51	-	-	1	55
33	MAHESWARAM	-	1	44	-	-	1	46
34	IBRAHIMPATAM	-	-	31	-	-	1	32
35	MANCHAL	-	3	21	-	-	-	24
36	YACHARAM	-	2	27	-	-	-	29
37	KANDUKUR	-	-	43	-	-	-	43
TOTAL		-	32	1350	-	1	55	1438

Table - 3.52
TYPE WISE & MANAGEMENT WISE UPPER PRIMARY SCHOOLS
 DISTRICT: RANGA REDDY 2000-2001

SL. NO.	NAME OF THE MANDAL	CENTRAL GOVT.	STATE GOVT.	MANDAL PARISHAD	MUNICIPAL	PRIVATE AIDED	PRIVATE UN-AIDED	TOTAL
1	MARPALLE	-	-	7	-	-	-	7
2	MOMINPET	-	-	6	-	-	-	6
3	NAWABPET	-	-	7	-	-	-	7
4	SHANKARPALLE	-	-	12	-	-	4	16
5	SERILINGAMPALLE	-	-	6	-	-	18	24
6	BALANAGAR	-	-	3	-	4	52	59
7	QUTHBULLAPUR	-	-	5	-	-	42	47
8	MEDCHAL	-	-	6	-	-	14	20
9	SHAMIRPET	-	-	5	-	-	7	12
10	MALKAJGIRI	-	-	2	-	2	35	39
11	KEESARA	-	-	3	-	-	15	18
12	GHATKESAR	-	-	10	-	-	13	23
13	UPPAL	-	-	-	-	1	47	48
14	HAYATHNAGAR	-	-	5	-	-	16	21
15	SAROORNAGAR	-	-	3	-	1	25	29
16	RAJENDRANAGAR	-	1	14	-	2	19	36
17	MOINABAD	-	-	4	-	-	3	7
18	CHEVELLA	-	-	12	-	-	2	14
19	VIKARABAD	-	-	6	-	-	4	10
20	DHARUR	-	-	7	-	-	-	7
21	BANTARAM	-	-	5	-	-	-	5
22	PEDDEMUL	-	-	5	-	-	-	5
23	TANDUR	-	2	6	-	-	9	17
24	BASHEERABAD	-	-	5	-	-	-	5
25	YELAL	-	-	5	-	-	-	5
26	DOMA	-	-	7	-	-	-	7
27	GANDEED	-	-	9	-	-	2	11
28	KULKACHARLA	-	1	11	-	-	-	12
29	PARGI	-	-	9	-	-	3	12
30	PUDUR	-	-	4	-	-	-	4
31	SHABAD	-	-	5	-	-	2	7
32	SHAMSHABAD	-	-	3	-	2	9	14
33	MAHESWARAM	-	-	10	-	-	5	15
34	IBRAHIMPATAM	-	-	5	-	3	7	15
35	MANCHAL	-	1	8	-	-	2	11
36	YACHARAM	-	-	8	-	-	1	9
37	KANDUKUR	-	-	10	-	-	3	13
TOTAL		-	5	238	-	15	359	617

Table - 3.53

TYPE WISE & MANAGEMENT WISE HIGH SCHOOLS

DISTRICT: RANGA REDDY

2000-2001

SL. NO.	NAME OF THE MANDAL	C.G	S.G	APREIS	APSWRS	M.P.P/ Z.P.P	M.P.L	P.A	P.U	K.V	N.V	CBSE PVT.	ICSE PVT.	TOTAL
1	MARPALLE	-	-	-	-	6	-	-	-	-	-	-	-	6
2	MOMINPET	-	-	-	-	6	-	-	-	-	-	-	-	6
3	NAWABPET	-	-	-	-	7	-	-	-	-	-	-	-	7
4	SHANKARPALLE	-	-	-	-	9	-	-	2	-	-	-	-	11
5	SERILINGAMPALLE	-	-	-	1	4	-	-	15	-	-	4	-	24
6	BALANAGAR	-	-	-	-	6	-	1	48	1	-	2	1	59
7	QUTHBULLAPUR	-	-	-	-	11	-	-	24	1	-	1	-	37
8	MEDCHAL	-	-	-	-	9	-	-	5	-	-	-	-	14
9	SHAMIRPET	-	1	-	-	13	-	-	1	-	-	1	-	16
10	MALKAJGIRI	-	-	-	-	3	-	-	36	-	-	2	1	42
11	KEESARA	-	-	1	-	9	-	-	4	-	-	1	1	18
12	GHATKESAR	-	-	-	-	9	-	1	5	1	-	1	-	17
13	UPPAL	-	-	-	-	5	-	3	42	1	-	-	1	52
14	HAYATHNAGAR	-	-	-	-	13	-	2	25	-	-	1	-	41
15	SAROORNAGAR	-	-	-	-	9	-	1	56	-	-	3	-	71
16	RAJENDRANAGAR	-	1	-	1	17	-	4	23	-	-	1	1	48
17	MOINABAD	-	-	-	1	9	-	1	-	-	-	2	-	13
18	CHEVELLA	-	1	-	-	9	-	-	1	-	-	-	-	11
19	VIKARABAD	-	-	1	1	10	-	3	6	-	-	-	-	21
20	DHARUR	-	-	-	-	4	-	-	-	-	-	-	-	4
21	BANTARAM	-	-	-	-	3	-	-	-	-	-	-	-	3
22	PEDDEMUL	-	-	-	-	7	-	-	-	-	-	-	-	7
23	TANDUR	-	3	-	-	3	-	7	4	-	-	-	-	17
24	BASHEERABAD	-	-	-	-	6	-	-	-	-	-	-	-	6
25	YELAL	-	-	-	-	4	-	-	-	-	-	-	-	4
26	DOMA	-	-	-	-	6	-	-	-	-	-	-	-	6
27	GANDEED	-	-	-	-	10	-	-	-	-	-	-	-	10
28	KULKACHARLA	-	-	-	-	6	-	-	-	-	-	-	-	6
29	PARGI	-	-	-	1	9	-	-	3	-	-	-	-	13
30	PUDUR	-	-	-	-	6	-	-	-	-	-	-	-	6
31	SHABAD	-	-	-	-	5	-	-	-	-	-	-	-	5
32	SHAMSHABAD	-	-	-	-	8	-	1	2	-	-	-	-	11
33	MAHESWARAM	-	-	-	-	7	-	-	-	-	-	-	-	7
34	IBRAHIMPATAM	-	1	1	1	12	-	-	4	-	-	-	-	19
35	MANCHAL	-	-	-	-	8	-	-	1	-	-	-	-	9
36	YACHARAM	-	-	-	-	7	-	-	-	-	-	-	-	7
37	KANDUKUR	-	-	-	-	8	-	-	-	-	-	-	-	8
TOTAL		-	7	3	6	283	-	24	307	4	-	19	5	662

Table - 3.54
TYPE WISE & MANAGEMENT WISE Hr.SECONDARY SCHOOLS
 DISTRICT: RANGA REDDY 2000-2001

SL. NO.	NAME OF THE MANDAL	CENTRAL GOVT.	KENDRIYA VIDYALAYA	NAVODAYA VIDYALAYA	CBSE PVT.	ICSE PVT.	TOTAL
1	SERILINGAMPALLE	-	1	1	-	-	2
2	BALANAGAR	-	1	-	1	-	2
3	QUTHBULLAPUR	-	1	-	-	1	2
4	SHAMIRPET	-	1	-	1	1	3
5	MALKAJGIRI	-	-	-	2	-	2
6	UPPAL	-	1	-	2	-	3
7	SAROORNAGAR	-	1	-	-	-	1
8	RAJENDRANAGAR	-	4	-	-	-	4
TOTAL		-	10	1	6	2	19

Table - 3.55
TYPE WISE & MANAGEMENT WISE PRE-PRIMARY SCHOOLS
 DISTRICT: RANGA REDDY 2000-2001

SL. NO.	NAME OF THE MANDAL	CENTRAL GOVT.	STATE GOVT.	MANDAL PARISHAD	MUNICIPAL	PRIVATE AIDED	PRIVATE UN-AIDED	TOTAL
TOTAL		-	-	-	-	-	-	-

Table - 3.61
MANDAL WISE NO.OF INSTITUTIONS, ALL ENROLMENT &
TEACHERS - 2000 - 2001

DISTRICT: RANGA REDDY

TYPE: PRIMARY SCHOOLS

SL. NO.	NAME OF THE MANDAL	NO.OF SCHOOLS	ENROLMENT			TEACHERS		
			BOYS	GIRLS	TOTAL	MEN	WOMEN	TOTAL
1	MARPALLE	31	2751	2472	5223	56	4	60
2	MOMINPET	36	2459	2317	4776	58	16	74
3	NAWABPET	28	1790	1764	3554	30	20	50
4	SHANKARPALLE	40	2128	2505	4633	33	22	55
5	SERILINGAMPALLE	25	2018	2107	4125	11	36	47
6	BALANAGAR	20	1540	1768	3308	6	49	55
7	QUTHBULLAPUR	47	4484	4735	9219	51	93	144
8	MEDCHAL	40	2623	2700	5323	39	45	84
9	SHAMIRPET	32	3177	3088	6265	51	31	82
10	MALKAJGIRI	17	1424	1653	3077	8	54	62
11	KEESARA	30	2775	2801	5576	30	50	80
12	GHATKESAR	34	1836	1819	3655	39	48	87
13	UPPAL	22	2555	2984	5539	19	47	66
14	HAYATHNAGAR	45	3276	3424	6700	54	82	136
15	SAROORNAGAR	46	4343	4470	8813	47	85	132
16	RAJENDRANAGAR	29	2856	3052	5908	33	45	78
17	MOINABAD	31	1911	1824	3735	34	15	49
18	CHEVELLA	40	2354	2233	4587	53	18	71
19	VIKARABAD	42	2723	2786	5509	70	43	113
20	DHARUR	44	2599	2332	4931	75	7	82
21	BANTARAM	26	1843	1774	3617	37	2	39
22	PEDDEMUL	43	2850	2493	5343	59	14	73
23	TANDUR	46	3172	2913	6085	65	44	109
24	BASHEERABAD	37	2151	2098	4249	45	6	51
25	YELAL	42	2641	2602	5243	74	8	82
26	DOMA	50	2565	2129	4694	66	2	68
27	GANDEED	79	3813	3426	7239	98	13	111
28	KULKACHARLA	34	3625	2901	6526	75	3	78
29	PARGI	45	2549	2607	5156	63	12	75
30	PUDUR	39	2970	2644	5614	58	16	74
31	SHABAD	59	3030	2787	5817	53	32	85
32	SHAMSHABAD	55	3520	3257	6777	50	49	99
33	MAHESWARAM	46	3333	2700	6033	51	24	75
34	IBRAHIMPATAM	32	1769	2207	3976	67	22	89
35	MANCHAL	24	1230	1133	2363	41	9	50
36	YACHARAM	29	1849	1777	3626	39	12	51
37	KANDUKUR	43	2817	2605	5422	65	22	87
TOTAL		1438	97349	94887	192236	1803	1100	2903

Table - 3.62
MANDAL WISE NO.OF INSTITUTIONS, ALL ENROLMENT &
TEACHERS - 2000 - 2001

DISTRICT: RANGA REDDY

TYPE: UPPER PRIMARY SCHOOLS

SL. NO.	NAME OF THE MANDAL	NO.OF SCHOOLS	ENROLMENT			TEACHERS		
			BOYS	GIRLS	TOTAL	MEN	WOMEN	TOTAL
1	MARPALLE	7	1139	1208	2347	20	1	21
2	MOMINPET	6	663	797	1460	16	10	26
3	NAWABPET	7	763	812	1575	14	6	20
4	SHANKARPALLE	16	2279	2003	4282	37	28	65
5	SERILINGAMPALLE	24	3517	3175	6692	56	192	248
6	BALANAGAR	59	8773	7906	16679	180	516	696
7	QUTHBULLAPUR	47	7451	6184	13635	204	311	515
8	MEDCHAL	20	3267	2453	5720	72	127	199
9	SHAMIRPET	12	2024	1527	3551	34	78	112
10	MALKAJGIRI	39	5114	4694	9808	49	356	405
11	KEESARA	18	1961	1606	3567	45	145	190
12	GHATKESAR	23	3358	2949	6307	57	119	176
13	UPPAL	48	7320	6067	13387	181	404	585
14	HAYATHNAGAR	21	3378	3007	6385	77	145	222
15	SAROORNAGAR	29	3705	3342	7047	91	204	295
16	RAJENDRANAGAR	36	4898	4543	9441	94	215	309
17	MOINABAD	7	1159	1124	2283	36	37	73
18	CHEVELLA	14	1897	1792	3689	34	29	63
19	VIKARABAD	10	1280	996	2276	39	27	66
20	DHARUR	7	1059	1040	2099	29	1	30
21	BANTARAM	5	934	873	1807	12	1	13
22	PEDEMUL	5	623	594	1217	11	2	13
23	TANDUR	17	2698	2104	4802	68	90	158
24	BASHEERABAD	5	862	774	1636	21	-	21
25	YELAL	5	842	576	1418	16	6	22
26	DOMA	7	1007	741	1748	26	-	26
27	GANDEED	11	1649	1241	2890	40	16	56
28	KULKACHARLA	12	2180	1581	3761	44	2	46
29	PARGI	12	1508	1391	2899	41	24	65
30	PUDUR	4	692	677	1369	19	2	21
31	SHABAD	7	1054	804	1858	29	14	43
32	SHAMSHABAD	14	2933	2220	5153	58	101	159
33	MAHESWARAM	15	2111	1918	4029	41	53	94
34	IBRAHIMPATAM	15	2362	1886	4248	53	61	114
35	MANCHAL	11	1149	1145	2294	37	15	52
36	YACHARAM	9	1360	1090	2450	19	16	35
37	KANDUKUR	13	1756	1421	3177	33	20	53
TOTAL		617	90725	78261	168986	1933	3374	5307

Table - 3.63
MANDAL WISE NO.OF INSTITUTIONS, ALL ENROLMENT &
TEACHERS - 2000 - 2001

DISTRICT: RANGA REDDY

TYPE: HIGH SCHOOLS

SL. NO.	NAME OF THE MANDAL	NO.OF SCHOOLS	ENROLMENT			TEACHERS		
			BOYS	GIRLS	TOTAL	MEN	WOMEN	TOTAL
1	MARPALLE	6	1580	858	2438	29	1	30
2	MOMINPET	6	1542	909	2451	31	3	34
3	NAWABPET	7	1361	839	2200	40	3	43
4	SHANKARPALLE	11	3051	2098	5149	58	55	113
5	SERILINGAMPALLE	24	7994	6739	14733	112	433	545
6	BALANAGAR	59	25004	21709	46713	263	1234	1497
7	QUTHBULLAPUR	37	14028	11370	25398	201	593	794
8	MEDCHAL	14	3869	3436	7305	65	107	172
9	SHAMIRPET	16	2883	2284	5167	47	66	113
10	MALKAJGIRI	42	15776	13304	29080	147	883	1030
11	KEESARA	18	6607	5889	12496	129	282	411
12	GHATKESAR	17	5196	4041	9237	114	145	259
13	UPPAL	52	18042	17753	35795	246	917	1163
14	HAYATHNAGAR	41	11651	9877	21528	225	509	734
15	SAROORNAGAR	71	25068	21534	46602	461	1146	1607
16	RAJENDRANAGAR	48	14865	15323	30188	211	652	863
17	MOINABAD	13	3331	2176	5507	97	40	137
18	CHEVELLA	11	1929	1623	3552	52	22	74
19	VIKARABAD	21	5256	5150	10406	103	200	303
20	DHARUR	4	743	484	1227	18	4	22
21	BANTARAM	3	640	391	1031	25	1	26
22	PEDDEMUL	7	1615	948	2563	36	6	42
23	TANDUR	17	5737	5579	11316	158	126	284
24	BASHEERABAD	6	1141	818	1959	36	3	39
25	YELAL	4	810	377	1187	22	1	23
26	DOMA	6	1144	568	1712	25	1	26
27	GANDEED	10	2435	1151	3586	62	10	72
28	KULKACHARLA	6	1639	724	2363	35	1	36
29	PARGI	13	3203	2024	5227	103	57	160
30	PUDUR	6	1187	756	1943	31	6	37
31	SHABAD	5	1450	879	2329	37	10	47
32	SHAMSHABAD	11	2880	2378	5258	61	53	114
33	MAHESWARAM	7	1722	1032	2754	41	11	52
34	IBRAHIMPATAM	19	3679	2999	6678	123	62	185
35	MANCHAL	9	1792	1103	2895	43	12	55
36	YACHARAM	7	1514	932	2446	52	4	56
37	KANDUKUR	8	1801	1096	2897	51	13	64
TOTAL		662	204165	171151	375316	3590	7672	11262

Table - 3.64
MANDAL WISE NO.OF INSTITUTIONS, ALL ENROLMENT &
TEACHERS - 2000 - 2001

DISTRICT: RANGA REDDY

TYPE: Hr.SECONDARY SCHOOLS

SL. NO.	NAME OF THE MANDAL	NO.OF SCHOOLS	ENROLMENT			TEACHERS		
			BOYS	GIRLS	TOTAL	MEN	WOMEN	TOTAL
1	SERILINGAMPALLE	2	890	726	1616	32	49	81
2	BALANAGAR	2	1301	1235	2536	26	83	109
3	QUTHBULLAPUR	2	1072	710	1782	41	50	91
4	SHAMIRPET	3	1401	663	2064	55	60	115
5	MALKAJGIRI	2	3209	2074	5283	18	186	204
6	UPPAL	3	2743	1388	4131	41	140	181
7	SAROORNAGAR	1	496	441	937	6	29	35
8	RAJENDRANAGAR	4	3005	2741	5746	76	185	261
TOTAL		19	14117	9978	24095	295	782	1077

Table - 3.65
MANDAL WISE NO.OF INSTITUTIONS, ALL ENROLMENT &
TEACHERS - 2000 - 2001

DISTRICT: RANGA REDDY

TYPE: PRE - PRIMARY SCHOOLS

SL. NO.	NAME OF THE MANDAL	NO.OF SCHOOLS	ENROLMENT			TEACHERS		
			BOYS	GIRLS	TOTAL	MEN	WOMEN	TOTAL
TOTAL		-	-	-	-	-	-	-

Table - 3.71
MANDAL WISE B.C. ,S.C. & S.T. ENROLMENT - 2000 - 2001
 DISTRICT: RANGA REDDY TYPE: PRIMARY SCHOOLS

SL. NO.	NAME OF THE MANDAL	B.C.			S.C.			S.T.		
		BOYS	GIRLS	TOTAL	BOYS	GIRLS	TOTAL	BOYS	GIRLS	TOTAL
1	MARPALLE	1063	968	2036	919	806	1725	310	232	542
2	MOMINPET	885	883	1768	864	836	1700	316	285	601
3	NAWABPET	726	736	1462	658	631	1289	36	29	65
4	SHANKARPALLE	1040	1122	2162	541	747	1288	204	207	411
5	SERILINGAMPALLE	1071	1113	2184	503	462	965	159	161	320
6	BALANAGAR	793	884	1677	409	428	837	63	107	170
7	QUTHBULLAPUR	2493	2649	5142	867	926	1793	211	163	374
8	MEDCHAL	1256	1408	2664	837	787	1624	266	238	504
9	SHAMIRPET	1840	1858	3698	840	726	1566	116	126	242
10	MALKAJGIRI	728	845	1573	491	564	1055	67	53	120
11	KEESARA	1557	1609	3166	737	735	1472	111	119	230
12	GHATKESAR	987	1037	2024	489	434	923	31	43	74
13	UPPAL	1116	1368	2484	930	1032	1962	91	71	162
14	HAYATHNAGAR	1765	1830	3595	978	1017	1995	133	98	231
15	SAROORNAGAR	2145	2229	4374	1152	1202	2354	209	160	369
16	RAJENDRANAGAR	1345	1482	2827	917	850	1767	143	117	260
17	MOINABAD	970	1017	1987	642	527	1169	21	10	31
18	CHEVELLA	1243	1175	2418	647	587	1234	22	28	50
19	VIKARABAD	872	928	1800	822	887	1709	380	332	712
20	DHARUR	1232	1097	2329	503	482	985	513	444	957
21	BANTARAM	604	633	1237	595	590	1185	163	129	292
22	PEDDEMUL	1102	1051	2153	660	599	1259	826	587	1413
23	TANDUR	1631	1602	3233	565	588	1153	350	268	618
24	BASHEERABAD	951	999	1950	381	352	733	607	507	1114
25	YELAL	1515	1441	2956	581	598	1179	299	283	582
26	DOMA	1192	1028	2220	345	295	640	737	578	1315
27	GANDEED	1674	1619	3293	566	487	1053	1285	1065	2350
28	KULKACHARLA	1392	1313	2705	355	294	649	1775	1183	2958
29	PARGI	969	1075	2044	625	689	1314	544	372	916
30	PUDUR	1469	1420	2889	881	714	1595	136	126	262
31	SHABAD	1669	1561	3230	829	731	1560	195	155	350
32	SHAMSHABAD	1471	1474	2945	1048	975	2023	604	435	1039
33	MAHESWARAM	1509	1281	2790	683	561	1244	979	630	1609
34	IBRAHIMPATAM	1028	1189	2217	529	646	1175	62	103	165
35	MANCHAL	539	584	1123	328	245	573	297	238	535
36	YACHARAM	837	957	1794	581	494	1075	309	156	465
37	KANDUKUR	1261	1246	2507	911	778	1689	437	344	781
TOTAL		45945	46711	92656	25209	24302	49511	13007	10182	23189

Table - 3.72
MANDAL WISE B.C., S.C. & S.T. ENROLMENT - 2000 - 2001
 DISTRICT: RANGA REDDY TYPE: UPPER PRIMARY SCHOOLS

SL. NO.	NAME OF THE MANDAL	B.C.			S.C.			S.T.		
		BOYS	GIRLS	TOTAL	BOYS	GIRLS	TOTAL	BOYS	GIRLS	TOTAL
1	MARPALLE	526	524	1050	292	291	583	15	-	15
2	MOMINPET	256	252	508	199	203	402	19	6	25
3	NAWABPET	498	501	999	222	248	470	-	-	-
4	SHANKARPALLE	1210	1060	2270	524	495	1019	65	23	88
5	SERILINGAMPALLE	1638	1507	3145	538	497	1035	177	154	331
6	BALANAGAR	3807	3296	7103	1293	1186	2479	323	281	604
7	QUTHBULLAPUR	3560	2947	6507	1025	846	1871	173	131	304
8	MEDCHAL	1491	1238	2729	946	652	1598	238	108	346
9	SHAMIRPET	1206	849	2055	240	179	419	14	12	26
10	MALKAJGIRI	1976	1850	3826	1056	916	1972	287	230	517
11	KEESARA	918	709	1627	217	185	402	64	44	108
12	GHATKESAR	1633	1449	3082	613	520	1133	141	103	244
13	UPPAL	3365	2746	6111	987	817	1804	351	274	625
14	HAYATHNAGAR	1689	1429	3118	497	445	942	58	52	110
15	SAROORNAGAR	1553	1311	2864	495	369	864	143	78	221
16	RAJENDRANAGAR	1759	1705	3464	1334	1242	2576	155	112	267
17	MOINABAD	555	550	1105	224	211	435	1	-	1
18	CHEVELLA	997	1008	2005	603	501	1104	22	16	38
19	VIKARABAD	613	457	1070	300	283	583	54	37	91
20	DHARUR	623	629	1252	244	246	490	74	63	137
21	BANTARAM	448	406	854	321	298	619	5	-	5
22	PEDDEMUL	348	289	637	134	124	258	6	1	7
23	TANDUR	1255	1017	2272	319	247	566	66	32	98
24	BASHEERABAD	433	416	849	222	180	402	87	64	151
25	YELAL	429	342	771	183	91	274	116	26	142
26	DOMA	544	460	1004	278	168	446	77	25	102
27	GANDEED	1013	789	1802	229	150	379	123	31	154
28	KULKACHARLA	1312	1019	2331	332	290	622	436	150	586
29	PARGI	963	901	1864	309	268	577	44	24	68
30	PUDUR	296	303	599	205	202	407	9	12	21
31	SHABAD	627	486	1113	269	186	455	11	3	14
32	SHAMSHABAD	1423	1018	2441	376	315	691	105	52	157
33	MAHESWARAM	1137	943	2080	408	419	827	187	84	271
34	IBRAHIMPATAM	1263	935	2198	515	446	961	105	99	204
35	MANCHAL	532	581	1113	176	235	411	365	211	576
36	YACHARAM	736	620	1356	350	279	629	123	67	190
37	KANDUKUR	984	821	1805	450	355	805	63	29	92
TOTAL		43627	37363	80990	16925	14585	31510	4302	2634	6936

Table - 3.73

MANDAL WISE B.C., S.C. & S.T. ENROLMENT - 2000 - 2001

DISTRICT: RANGA REDDY

TYPE: HIGH SCHOOLS

SL. NO.	NAME OF THE MANDAL	B.C.			S.C.			S.T.		
		BOYS	GIRLS	TOTAL	BOYS	GIRLS	TOTAL	BOYS	GIRLS	TOTAL
1	MARPALLE	661	373	1034	505	231	736	54	6	60
2	MOMINPET	648	391	1039	410	197	607	97	19	116
3	NAWABPET	669	422	1091	476	246	722	5	-	5
4	SHANKARPALLE	1261	903	2164	661	385	1046	87	25	112
5	SERILINGAMPALLE	2656	2155	4811	705	979	1684	251	224	475
6	BALANAGAR	8420	7121	15541	2451	2185	4636	545	368	913
7	QUTHBULLAPUR	5909	4983	10892	1631	1353	2984	347	278	625
8	MEDCHAL	2184	1838	4022	887	853	1740	211	117	328
9	SHAMIRPET	1445	1168	2613	535	360	895	54	33	87
10	MALKAJGIRI	5192	4558	9750	1651	1393	3044	398	315	713
11	KEESARA	2297	2002	4299	972	843	1815	273	192	465
12	GHATKESAR	2334	2008	4342	925	706	1631	166	112	278
13	UPPAL	6157	5566	11723	2551	2204	4755	593	387	980
14	HAYATHNAGAR	5177	4621	9798	1812	1376	3188	269	174	443
15	SAROORNAGAR	7795	6602	14397	2398	2032	4430	784	561	1345
16	RAJENDRANAGAR	5172	5166	10338	3529	3846	7375	297	191	488
17	MOINABAD	1321	1085	2406	935	594	1529	40	14	54
18	CHEVELLA	945	775	1720	371	311	682	19	13	32
19	VIKARABAD	1824	1837	3661	1025	1360	2385	278	151	429
20	DHARUR	371	229	600	161	125	286	46	12	58
21	BANTARAM	293	165	458	160	93	253	16	-	16
22	PEDDEMUL	711	434	1145	332	201	533	163	26	189
23	TANDUR	2606	2340	4946	484	429	913	252	157	409
24	BASHEERABAD	671	535	1206	174	124	298	169	46	215
25	YELAL	531	244	775	118	46	164	34	3	37
26	DOMA	663	309	972	192	67	259	77	12	89
27	GANDEED	1336	628	1964	356	145	501	385	94	479
28	KULKACHARLA	989	457	1446	201	66	267	239	13	252
29	PARGI	1313	910	2228	849	366	1215	224	30	254
30	PUDUR	610	395	1005	362	158	520	17	9	26
31	SHABAD	825	503	1328	390	165	555	53	11	64
32	SHAMSHABAD	1515	1245	2760	672	599	1271	131	57	188
33	MAHESWARAM	961	646	1607	435	195	630	162	19	181
34	IBRAHIMPATAM	1764	1473	3237	980	620	1600	108	57	165
35	MANCHAL	804	576	1380	258	164	422	603	254	857
36	YACHARAM	815	485	1300	440	216	656	57	13	70
37	KANDUKUR	954	596	1550	472	186	658	99	7	106
TOTAL		79804	65744	145548	31466	25419	56885	7603	4000	11603

Table - 3.74
MANDAL WISE B.C. ,S.C. & S.T. ENROLMENT - 2000 - 2001
 DISTRICT: RANGA REDDY TYPE: Hr.SECONDARY SCHOOLS

SL. NO.	NAME OF THE MANDAL	B.C.			S.C.			S.T.		
		BOYS	GIRLS	TOTAL	BOYS	GIRLS	TOTAL	BOYS	GIRLS	TOTAL
1	SERILINGAMPALLE	193	114	307	170	133	303	57	23	80
2	BALANAGAR	215	184	399	216	173	389	34	31	65
3	QUTHBULLAPUR	12	8	20	94	58	152	21	14	35
4	SHAMIRPET	493	-	493	72	59	131	15	6	21
5	MALKAJGIRI	48	29	77	35	15	50	28	-	28
6	UPPAL	178	132	310	351	196	547	209	32	241
7	SAROORNAGAR	-	-	-	72	54	126	24	24	48
8	RAJENDRANAGAR	-	-	-	422	334	756	102	86	188
TOTAL		1139	467	1606	1432	1022	2454	490	216	706

Table - 3.75
MANDAL WISE B.C. ,S.C. & S.T. ENROLMENT - 2000 - 2001
 DISTRICT: RANGA REDDY TYPE: PRE-PRIMARY SCHOOLS

SL. NO.	NAME OF THE MANDAL	B.C.			S.C.			S.T.		
		BOYS	GIRLS	TOTAL	BOYS	GIRLS	TOTAL	BOYS	GIRLS	TOTAL
TOTAL		-	-	-	-	-	-	-	-	-

Table - 3.81

MANDAL WISE B.C. ,S.C. & S.T. TEACHERS - 2000 - 2001

DISTRICT: RANGA REDDY

TYPE: PRIMARY SCHOOLS

SL. NO.	NAME OF THE MANDAL	B.C.			S.C.			S.T.		
		MEN	WOMEN	TOTAL	MEN	WOMEN	TOTAL	MEN	WOMEN	TOTAL
1	MARPALLE	14	-	14	9	3	12	3	-	3
2	MOMINPET	19	6	25	12	7	19	6	-	6
3	NAWABPET	6	5	11	12	1	13	-	-	-
4	SHANKARPALLE	9	8	17	10	4	14	2	-	2
5	SERILINGAMPALLE	6	17	23	-	6	6	-	-	-
6	BALANAGAR	2	14	16	1	8	9	-	-	-
7	QUTHBULLAPUR	21	39	60	3	12	15	-	-	-
8	MEDCHAL	12	17	29	4	6	10	2	-	2
9	SHAMIRPET	17	5	22	3	5	8	1	-	1
10	MALKAJGIRI	3	22	25	2	3	5	-	-	-
11	KEESARA	8	13	21	1	8	9	-	-	-
12	GHATKESAR	15	23	38	5	3	8	1	1	2
13	UPPAL	4	17	21	1	6	7	-	-	-
14	HAYATHNAGAR	14	28	42	5	12	17	-	-	-
15	SAROORNAGAR	17	34	51	1	3	4	-	-	-
16	RAJENDRANAGAR	10	21	31	3	13	16	-	-	-
17	MOINABAD	12	7	19	5	2	7	-	-	-
18	CHEVELLA	27	9	36	4	1	5	-	-	-
19	VIKARABAD	18	10	28	13	9	22	2	-	2
20	DHARUR	32	2	34	5	2	7	2	-	2
21	BANTARAM	10	1	11	3	-	3	3	1	4
22	PEDDEMUL	19	5	24	5	4	9	3	2	5
23	TANDUR	32	19	51	2	6	8	5	-	5
24	BASHEERABAD	20	2	22	5	2	7	8	-	8
25	YELAL	33	2	35	5	1	6	6	-	6
26	DOMA	24	1	35	1	-	1	3	-	3
27	GANDEED	33	2	35	8	2	10	11	-	11
28	KULKACHARLA	38	1	39	6	-	6	9	-	9
29	PARGI	28	3	31	6	4	10	10	-	10
30	PUDUR	29	8	37	9	1	10	1	-	1
31	SHABAD	22	14	36	9	1	10	1	-	1
32	SHAMSHABAD	27	16	43	6	7	13	1	-	1
33	MAHESWARAM	11	8	19	5	4	9	2	-	2
34	IBRAHIMPATAM	17	3	20	5	2	7	-	-	-
35	MANCHAL	12	2	14	4	-	4	5	-	5
36	YACHARAM	12	2	14	1	-	1	2	-	2
37	KANDUKUR	19	8	27	7	1	8	2	-	2
TOTAL		662	394	1056	186	149	335	91	4	95

Table - 3.82

MANDAL WISE B.C., S.C. & S.T. TEACHERS - 2000 - 2001

DISTRICT: RANGA REDDY

TYPE: UPPER PRIMARY SCHOOLS

SL. NO.	NAME OF THE MANDAL	B.C.			S.C.			S.T.		
		MEN	WOMEN	TOTAL	MEN	WOMEN	TOTAL	MEN	WOMEN	TOTAL
1	MARPALLE	8	-	8	2	1	3	2	-	2
2	MOMINPET	8	2	10	2	3	5	-	-	-
3	NAWABPET	5	2	7	-	-	-	4	-	4
4	SHANKARPALLE	21	13	34	3	2	5	-	-	-
5	SERILINGAMPALLE	26	73	99	3	9	12	2	6	8
6	BALANAGAR	57	193	280	16	44	60	3	3	6
7	QUTHBULLAPUR	65	126	191	19	33	52	-	1	1
8	MEDCHAL	40	68	108	7	15	22	1	-	1
9	SHAMIRPET	12	38	50	1	4	5	-	-	-
10	MALKAJGIRI	18	90	108	2	28	30	1	-	1
11	KEESARA	20	35	55	1	7	8	-	-	-
12	GHATKESAR	16	40	56	3	8	11	-	-	-
13	UPPAL	74	105	179	15	29	44	7	7	14
14	HAYATHNAGAR	16	33	49	-	7	7	1	-	1
15	SAROORNAGAR	26	35	61	8	10	18	-	1	1
16	RAJENDRANAGAR	34	64	98	1	24	25	-	-	-
17	MOINABAD	17	20	37	4	4	8	-	-	-
18	CHEVELLA	16	8	24	7	4	11	-	1	1
19	VIKARABAD	20	12	32	4	4	8	1	1	2
20	DHARUR	14	1	15	2	-	2	1	-	1
21	BANTARAM	6	1	7	1	-	1	-	-	-
22	PEDDEMUL	2	-	2	-	-	-	1	-	1
23	TANDUR	30	42	72	7	2	9	2	1	3
24	BASHEERABAD	9	-	9	2	-	2	1	-	1
25	YELAL	8	2	10	1	2	3	-	-	-
26	DOMA	8	-	8	-	-	-	3	-	3
27	GANDEED	21	4	25	2	1	3	2	-	2
28	KULKACHARLA	21	-	21	5	1	6	4	-	4
29	PARGI	27	16	43	4	5	9	1	-	1
30	PUDUR	9	1	10	3	-	3	-	-	-
31	SHABAD	12	5	17	5	-	5	-	-	-
32	SHAMSHABAD	24	36	60	1	4	5	1	1	2
33	MAHESWARAM	15	19	34	3	5	8	1	-	1
34	IBRAHIMPATAM	23	26	49	6	4	10	-	-	-
35	MANCHAL	14	6	20	6	2	8	2	-	2
36	YACHARAM	5	6	11	5	2	7	2	-	2
37	KANDUKUR	10	7	17	3	1	4	-	-	-
TOTAL		787	1129	1916	154	265	419	43	22	65

Table - 3.83

MANDAL WISE B.C. ,S.C. & S.T. TEACHERS - 2000 - 2001

DISTRICT: RANGA REDDY

TYPE: HIGH SCHOOLS

SL. NO.	NAME OF THE MANDAL	B.C.			S.C.			S.T.		
		MEN	WOMEN	TOTAL	MEN	WOMEN	TOTAL	MEN	WOMEN	TOTAL
1	MARPALLE	14	1	15	6	-	6	1	-	1
2	MOMINPET	14	-	14	4	1	5	1	-	1
3	NAWABPET	18	2	20	3	-	3	1	-	1
4	SHANKARPALLE	22	15	37	7	5	12	3	-	3
5	SERILINGAMPALLE	30	86	116	7	16	23	2	4	6
6	BALANAGAR	59	220	289	22	60	82	3	4	7
7	QUTHBULLAPUR	67	148	215	14	27	41	2	2	4
8	MEDCHAL	34	35	69	4	15	19	-	-	-
9	SHAMIRPET	15	15	30	3	7	10	2	-	2
10	MALKAJGIRI	38	125	163	6	25	31	1	1	2
11	KEESARA	30	36	66	10	9	19	-	1	1
12	GHATKESAR	25	39	64	4	5	9	3	-	3
13	UPPAL	85	192	277	14	37	51	-	4	4
14	HAYATHNAGAR	84	137	221	5	23	28	-	3	3
15	SAROORNAGAR	136	201	337	25	40	65	6	20	26
16	RAJENDRANAGAR	71	167	238	12	51	63	1	1	2
17	MOINABAD	34	13	47	6	6	12	3	-	3
18	CHEVELLA	21	10	31	9	4	13	1	-	1
19	VIKARABAD	38	76	114	10	12	22	3	3	6
20	DHARUR	8	1	9	4	1	5	1	-	1
21	BANTARAM	16	1	17	3	-	3	-	-	-
22	PEDDEMUL	12	1	13	2	-	2	2	1	3
23	TANDUR	60	45	105	12	3	15	3	-	3
24	BASHEERABAD	18	-	18	2	1	3	2	-	2
25	YELAL	8	-	8	-	-	-	3	-	3
26	DOMA	11	1	12	1	-	1	2	-	2
27	GANDEED	27	5	32	4	1	5	3	-	3
28	KULKACHARLA	19	1	20	6	-	6	2	-	2
29	PARGI	39	19	58	8	3	11	1	-	1
30	PUDUR	13	2	15	2	1	3	-	-	-
31	SHABAD	16	4	20	3	1	4	-	1	1
32	SHAMSHABAD	36	15	51	-	5	5	-	-	-
33	MAHESWARAM	17	2	19	2	2	4	-	-	-
34	IBRAHIMPATAM	42	30	72	8	2	10	3	-	3
35	MANCHAL	16	5	21	3	1	4	3	-	3
36	YACHARAM	19	-	19	4	1	5	2	1	3
37	KANDUKUR	17	5	22	4	4	8	1	-	1
TOTAL		1239	1655	2894	239	369	608	61	46	107

Table - 3.84

MANDAL WISE B.C. ,S.C. & S.T. TEACHERS - 2000 - 2001

DISTRICT: RANGA REDDY

TYPE: Hr.SECONDARY SCHOOLS

SL. NO.	NAME OF THE MANDAL	B.C.			S.C.			S.T.		
		MEN	WOMEN	TOTAL	MEN	WOMEN	TOTAL	MEN	WOMEN	TOTAL
1	SERILINGAMPALLE	-	-	-	2	3	5	-	1	1
2	BALANAGAR	-	1	1	1	-	1	-	-	-
3	QUTHBULLAPUR	5	3	8	4	3	7	-	1	1
4	SHAMIRPET	-	-	-	-	3	3	-	-	-
5	MALKAJGIRI	-	-	-	-	-	-	-	-	-
6	UPPAL	-	-	-	-	2	2	-	-	-
7	SAROORNAGAR	-	-	-	-	-	-	-	-	-
8	RAJENDRANAGAR	4	3	7	2	5	7	-	-	-
TOTAL		9	7	16	9	16	25	-	2	2

Table - 3.85

MANDAL WISE B.C. ,S.C. & S.T. TEACHERS - 2000 - 2001

DISTRICT: RANGA REDDY

TYPE: PRE-PRIMARY SCHOOLS

SL. NO.	NAME OF THE MANDAL	B.C.			S.C.			S.T.		
		MEN	WOMEN	TOTAL	MEN	WOMEN	TOTAL	MEN	WOMEN	TOTAL
TOTAL		-	-	-	-	-	-	-	-	-

Special Schools

Table - 4.11
SCHOOLS FOR HEARING IMPAIRED
ENROLMENT

DISTRICT: RANGA REDDY

2000-2001

SL NO	NAME OF THE INSTITUTION	ALL			B.C.			S.C.			S.T.		
		Boys	Girls	Total	Boys	Girls	Total	Boys	Girls	Total	Boys	Girls	
1	EPHATHA SCHOOL FOR THE DEAF	11	5	16	-	-	-	1	-	1	-	-	-
2	MODEL SCHOOL FOR THE DEAF	32	6	38	24	2	26	1	-	1	-	-	-
3	SWEEKAAR SPECIAL SCHOOL FOR THE DEAF & DUMB	111	53	164	24	9	33	5	-	5	2	-	2
TOTAL		154	64	218	48	11	59	7	-	7	2	-	2

Table - 4.12
SCHOOLS FOR HEARING IMPAIRED
TEACHERS

DISTRICT: RANGA REDDY

2000-2001

SL NO	NAME OF THE INSTITUTION	ALL			B.C.			S.C.		S.T.			
		Men	Women	Total	Men	Women	Total	Men	Women	Total	Men		
1	EPHATHA SCHOOL FOR THE DEAF	2	3	5	-	-	-	-	-	-	-	-	-
2	MODEL SCHOOL FOR THE DEAF	4	-	4	1	-	1	1	-	1	-	-	-
3	SWEEKAAR SPECIAL SCHOOL FOR THE DEAF & DUMB	8	17	25	1	3	4	-	2	2	-	-	-
TOTAL		14	20	34	2	3	5	1	2	3	-	-	-

Table - 4.31
SCHOOLS FOR ORTHOPAEDICALLY HANDICAPPED
ENROLMENT

DISTRICT: RANGA REDDY

2000-2001

SL NO	NAME OF THE INSTITUTION	ALL			B.C.			S.C.			S.T.		
		Boys	Girls	Total	Boys	Girls	Total	Boys	Girls	Total	Boys	Girls	
1	VEGESNA PADMAVATHI SCHOOL FOR PHYSICALLY HANDICAPPED	68	45	113	36	23	59	15	8	23	5	2	7
TOTAL		68	45	113	36	23	59	15	8	23	5	2	7

Table - 4.32
SCHOOLS FOR ORTHOPAEDICALLY HANDICAPPED
TEACHERS

DISTRICT: RANGA REDDY

2000-2001

SL NO	NAME OF THE INSTITUTION	ALL			B.C.			S.C.		S.T.		
		Men	Women	Total	Men	Women	Total	Men	Women	Total	Men	
1	VEGESNA PADMAVATHI SCHOOL FOR PHYSICALLY HANDICAPPED	4	14	18	2	1	3	-	-	-	-	-
TOTAL		4	14	18	2	1	3	-	-	-	-	-

Educational Indicators

Table - 5.11
MANDAL WISE PROJECTED POPULATION 6-10 Yrs, ENROLMENT IN
CLASSES I - V & GROSS ENROLMENT RATIO

DISTRICT: RANGA REDDY

ALL

2000-2001

SL NO	NAME OF THE MANDAL	AGE GROUP POPLN (6 - 10 Years)			ENROLMENT (Classes I - V)			G.E.R (I - V)		
		BOYS	GIRLS	TOTAL	BOYS	GIRLS	TOTAL	BOYS	GIRLS	TOTAL
1	MARPALLE	2499	2384	4883	3852	3631	7483	154.14	152.31	153.25
2	MOMINPET	2162	2104	4266	3103	3036	6139	143.52	144.30	143.91
3	NAWABPET	2159	2070	4229	2622	2672	5294	121.45	129.08	125.18
4	SHANKARPALLE	5053	2877	5910	4619	4537	9156	152.29	157.70	154.92
5	SERILINGAMPALLE	8042	7999	16041	8307	7299	15606	103.30	91.25	97.29
6	BALANAGAR	16216	14753	30969	19098	17267	36365	117.77	117.04	117.42
7	QUTHBULLAPUR	14992	13706	28698	16172	14184	30356	107.87	103.49	105.78
8	MEDCHAL	3729	3525	7254	6602	5788	12390	177.04	164.20	170.80
9	SHAMIRPET	5438	4804	10242	5409	4767	10176	99.47	99.23	99.36
10	MALKAJGIRI	15619	14372	29991	12159	10546	22705	77.85	73.38	75.71
11	KEESARA	10939	10066	21005	6559	5980	12539	59.96	59.41	59.70
12	GHATKESAR	4811	4506	9317	6052	5411	11463	125.80	120.08	123.03
13	UPPAL	6583	6113	12696	15627	14671	30298	237.38	240.00	238.64
14	HAYATHNAGAR	4547	4071	8618	10040	9178	19218	220.80	225.45	223.00
15	SAROORNAGAR	20318	18907	39225	17376	15815	33191	85.52	83.65	84.62
16	RAJENDRANAGAR	10179	9346	19525	13566	13697	27263	133.27	146.55	139.63
17	MOINABAD	2837	2704	5541	3356	3234	6590	118.29	119.60	118.93
18	CHEVELLA	2942	2834	5776	4009	3851	7860	136.27	135.89	136.08
19	VIKARABAD	3926	3854	7780	5748	5247	10995	146.41	136.14	141.32
20	DHARUR	2277	2244	4521	3535	3327	6862	155.25	148.26	151.78
21	BANTARAM	1818	1803	3621	2617	2502	5119	143.95	138.77	141.37
22	PEDDEMUL	2557	2538	5095	3796	3312	7108	148.46	130.50	139.51
23	TANDUR	5559	5446	11005	7852	7355	15207	141.25	135.05	138.18
24	BASHEERABAD	2129	2195	4324	3262	3110	6372	153.22	141.69	147.36
25	YELAL	2075	2114	4189	3257	2986	6243	156.96	141.25	149.03
26	DOMA	2282	2290	4572	3494	2874	6368	153.11	125.50	139.28
27	GANDEED	3385	3544	6929	5438	4612	10050	160.65	130.14	145.04
28	KULKACHARLA	3261	3167	6428	5544	4429	9973	170.01	139.85	155.15
29	PARGI	2957	2944	5901	4377	4292	8669	148.02	145.79	146.91
30	PUDUR	2206	2171	4377	3686	3394	7080	167.09	156.33	161.75
31	SHABAD	2573	2478	5051	3695	3386	7081	143.61	136.64	140.19
32	SHAMSHABAD	3940	3628	7568	6199	5318	11517	157.34	146.58	152.18
33	MAHESWARAM	3182	2973	6155	4760	4160	8920	149.59	139.93	144.92
34	IBRAHIMPATAM	3605	3456	7061	4343	4382	8725	120.47	126.79	123.57
35	MANCHAL	2318	2173	4491	2570	2487	5057	110.87	114.45	112.60
36	YACHARAM	2593	2448	5041	2989	2818	5807	115.27	115.11	115.20
37	KANDUKUR	2802	2609	5411	4304	3881	8185	153.60	148.75	151.27
TOTAL		192490	181216	373706	239994	219436	459430	124.68	121.09	122.94

Table - 5.12
MANDAL WISE PROJECTED POPULATION 11-12 Yrs, ENROLMENT IN
CLASSES VI - VII & GROSS ENROLMENT RATIO
 DISTRICT: RANGA REDDY ALL 2000-2001

SL NO	NAME OF THE MANDAL	AGE GROUP POPLN (11 - 12 Years)			ENROLMENT (Classes VI - VII)			G.E.R (VI - VII)		
		BOYS	GIRLS	TOTAL	BOYS	GIRLS	TOTAL	BOYS	GIRLS	TOTAL
1	MARPALLE	1194	1139	2333	888	606	1494	74.37	53.20	64.04
2	MOMINPET	1033	1006	2039	832	616	1448	80.54	61.23	71.02
3	NAWABPET	1021	989	2020	665	495	1160	64.50	50.05	57.43
4	SHANKARPALLE	1419	1375	2824	1469	1255	2724	101.38	91.27	96.46
5	SERILINGAMPALLE	3843	3822	7665	2575	2318	4893	67.00	60.65	63.84
6	BALANAGAR	7748	7049	14797	7215	6201	13416	93.12	87.97	90.67
7	QUTHBULLAPUR	7163	6549	13712	5035	4376	9411	70.29	66.82	68.63
8	MEDCHAL	1782	1684	3466	1829	1530	3359	102.64	90.86	96.91
9	SHAMIRPET	2598	2295	4893	1651	1224	2875	63.55	53.33	58.76
10	MALKAJGIRI	7463	6867	14330	4390	3653	8043	58.82	53.20	56.13
11	KEESARA	5227	4809	10036	1939	1845	3784	37.10	38.37	37.70
12	GHATKESAR	2299	2153	4452	2038	1591	3629	88.65	73.90	81.51
13	UPPAL	3145	2921	6066	5562	4996	10558	176.85	171.04	174.05
14	HAYATHNAGAR	2172	1945	4117	3257	2836	6093	149.95	145.81	148.00
15	SAROORNAGAR	9708	9034	18742	5919	5243	11162	60.97	58.04	59.56
16	RAJENDRANAGAR	4863	4465	9328	4765	4848	9613	97.98	108.58	103.06
17	MOINABAD	1355	1292	2647	1406	984	2390	103.76	76.16	90.29
18	CHEVELLA	1406	1354	2760	1135	1028	2163	80.73	75.92	78.37
19	VIKARABAD	1876	1841	3717	1725	1732	3457	91.95	94.08	93.01
20	DHARUR	1088	1072	2160	529	371	900	48.62	34.61	41.67
21	BANTARAM	869	861	1730	457	390	847	52.59	45.30	48.96
22	PEDDEMUL	1222	1213	2435	669	441	1110	54.75	36.36	45.59
23	TANDUR	2656	2602	5258	1754	1574	3328	66.04	60.49	63.29
24	BASHEERABAD	1017	1049	2066	543	419	962	53.39	39.94	46.56
25	YELAL	991	1010	2001	534	358	892	53.88	35.45	44.58
26	DOMA	1090	1094	2184	710	370	1080	65.14	33.82	49.45
27	GANDEED	1617	1693	3310	1237	693	1930	76.50	40.93	58.31
28	KULKACHARLA	1558	1513	3071	990	482	1472	63.54	31.86	47.93
29	PARGI	1413	1407	2820	1463	998	2461	103.54	70.93	87.27
30	PUDUR	1054	1037	2091	691	440	1131	65.56	42.43	54.09
31	SHABAD	1229	1184	2413	792	515	1307	64.44	43.50	54.16
32	SHAMSHABAD	1883	1734	3617	1392	1093	2485	73.92	63.03	68.70
33	MAHESWARAM	1520	1420	2940	1067	694	1761	70.20	48.87	59.90
34	IBRAHIMPATAM	1723	1651	3374	1599	1356	2955	92.80	82.13	87.58
35	MANCHAL	1107	1038	2145	740	480	1220	66.85	46.24	56.88
36	YACHARAM	1239	1170	2409	807	509	1316	65.13	43.50	54.63
37	KANDUKUR	1339	1246	2585	929	607	1536	69.38	48.72	59.42
TOTAL		91970	86583	178553	71198	59167	130365	77.41	68.34	73.01

Table - 5.13
MANDAL WISE PROJECTED POPULATION 13 - 15 Yrs, ENROLMENT IN
CLASSES VIII - X & GROSS ENROLMENT RATIO

DISTRICT: RANGA REDDY

ALL

2000-2001

SL NO	NAME OF THE MANDAL	AGE GROUP POPLN (13 - 15 Years)			ENROLMENT (Classes VIII - X)			G.E.R (VIII - X)		
		BOYS	GIRLS	TOTAL	BOYS	GIRLS	TOTAL	BOYS	GIRLS	TOTAL
1	MARPALLE	1791	1709	3500	730	301	1031	40.76	17.61	29.46
2	MOMINPET	1550	1508	3058	729	371	1100	47.03	24.60	35.97
3	NAWABPET	1547	1484	3031	627	248	875	40.53	16.71	28.87
4	SHANKARPALLE	2174	2062	4236	1346	801	2147	61.91	38.85	50.68
5	SERILINGAMPALLE	5764	5733	11497	2184	2044	4228	37.89	35.65	36.77
6	BALANAGAR	11622	10573	22195	7006	6325	13331	60.28	59.82	60.06
7	QUTHBULLAPUR	10745	9823	20568	4410	3350	7760	41.04	34.10	37.73
8	MEDCHAL	2673	2526	5199	1100	1103	2203	41.15	43.67	42.37
9	SHAMIRPET	3898	3443	7341	1890	1192	3082	48.49	34.62	41.98
10	MALKAJGIRI	11194	10301	21495	4607	3982	8589	41.16	38.66	39.96
11	KEESARA	7840	7214	15054	2307	2082	4389	29.43	28.86	29.16
12	GHATKESAR	3448	3230	6678	1825	1470	3295	52.93	45.51	49.34
13	UPPAL	4718	4381	9099	5811	5480	11291	123.17	125.09	124.09
14	HAYATHNAGAR	3259	2918	6177	3536	3005	6541	108.50	102.98	105.89
15	SAROORNAGAR	14562	13551	28113	7630	6556	14186	52.40	48.38	50.46
16	RAJENDRANAGAR	7295	6698	13993	5196	5677	10873	71.23	84.76	77.70
17	MOINABAD	2033	1938	3971	1476	779	2255	72.60	40.20	56.79
18	CHEVELLA	2108	2031	4139	913	680	1593	43.31	33.48	38.49
19	VIKARABAD	2814	2762	5576	1643	1855	3498	58.39	67.16	62.73
20	DHARUR	1632	1609	3241	337	158	495	20.65	9.82	15.27
21	BANTARAM	1303	1292	2595	343	146	489	26.32	11.30	18.84
22	PEDEMUL	1833	1819	3652	623	282	905	33.99	15.50	24.78
23	TANDUR	3984	3904	7888	1712	1464	3176	42.97	37.50	40.26
24	BASHEERABAD	1526	1573	3099	349	161	510	22.87	10.24	16.46
25	YELAL	1487	1515	3002	502	211	713	33.76	13.93	23.75
26	DOMA	1635	1641	3276	512	194	706	31.31	11.82	21.55
27	GANDEED	2426	2540	4966	1143	469	1612	47.11	18.46	32.46
28	KULKACHARLA	2337	2270	4607	910	295	1205	38.94	13.00	26.16
29	PARGI	2119	2110	4229	1232	588	1820	58.14	27.87	43.04
30	PUDUR	1581	1556	3137	472	243	715	29.85	15.62	22.79
31	SHABAD	1844	1776	3620	827	458	1285	44.85	25.79	35.50
32	SHAMSHABAD	2824	2601	5425	1043	914	1957	36.93	35.14	36.07
33	MAHESWARAM	2280	2131	4411	1022	631	1653	44.82	29.61	37.47
34	IBRAHIMPATAM	2584	2477	5061	1737	1270	3007	67.22	51.27	59.42
35	MANCHAL	1661	1558	3219	693	359	1052	41.72	23.04	32.68
36	YACHARAM	1858	1755	3613	883	458	1341	47.52	26.10	37.12
37	KANDUKUR	2008	1870	3878	1003	527	1530	49.95	28.18	39.45
TOTAL		137957	129882	267839	70309	56129	126438	50.96	43.22	47.21

Table - 5.21
MANDAL WISE DROP-OUT RATES CLASSES I - V

DISTRICT: RANGA REDDY

ALL

2000-2001

SL NO	NAME OF THE MANDAL	CLASS-I 1996_97			CLASS-V 2000-01			DROP-OUT RATE		
		BOYS	GIRLS	TOTAL	BOYS	GIRLS	TOTAL	BOYS	GIRLS	TOTAL
1	MARPALLE	1673	1657	3330	615	526	1141	63.24	68.26	65.74
2	MOMINPET	1470	1438	2908	463	441	904	68.50	69.33	68.91
3	NAWABPET	1290	1268	2558	434	393	827	66.36	69.01	67.67
4	SHANKARPALLE	1774	1822	3596	907	796	1703	48.87	56.31	52.64
5	SERILINGAMPALLE	1588	1302	2890	1387	1190	2577	12.66	8.60	10.83
6	BALANAGAR	2873	2531	5404	3752	3297	7049	0.00	0.00	0.00
7	QUTHBULLAPUR	2787	2550	5337	2821	2533	5354	0.00	0.67	0.00
8	MEDCHAL	2040	1838	3878	1124	947	2071	44.90	48.48	46.60
9	SHAMIRPET	1829	1581	3410	930	725	1655	49.15	54.14	51.47
10	MALKAJGIRI	2063	1834	3897	2379	1952	4331	0.00	0.00	0.00
11	KEESARA	1564	1518	3082	1152	1061	2213	26.34	30.11	28.20
12	GHATKESAR	1571	1355	2926	1087	914	2001	30.81	32.55	31.61
13	UPPAL	2897	2850	5747	2967	2658	5625	0.00	6.74	2.12
14	HAYATHNAGAR	2634	2445	5079	1874	1583	3457	28.85	35.26	31.94
15	SAROORNAGAR	3566	3178	6744	3084	2889	5973	13.52	9.09	11.43
16	RAJENDRANAGAR	3011	3051	6062	2421	2581	5002	19.59	15.40	17.49
17	MOINABAD	1293	1079	2372	601	571	1172	53.52	47.08	50.59
18	CHEVELLA	1997	1879	3876	788	764	1552	60.54	59.34	59.96
19	VIKARABAD	2302	2209	4511	927	876	1803	59.73	60.34	60.03
20	DHARUR	1407	1346	2753	406	324	730	71.14	75.93	73.48
21	BANTARAM	1192	1103	2295	379	314	693	68.20	71.53	69.80
22	PEDDEMUL	2108	1917	4025	467	331	798	77.85	82.73	80.17
23	TANDUR	2355	2296	4651	1181	1080	2261	49.85	52.96	51.39
24	BASHEERABAD	1074	1067	2141	378	344	722	64.80	67.76	66.28
25	YELAL	1803	1722	3525	340	273	613	81.14	84.15	82.61
26	DOMA	1196	1061	2257	438	275	713	63.38	74.08	68.41
27	GANDEED	1838	1577	3415	682	462	1144	62.89	70.70	66.50
28	KULKACHARLA	2316	1757	4073	584	307	891	74.78	82.53	78.12
29	PARGI	1463	1453	2916	647	668	1315	55.78	54.03	54.90
30	PUDUR	1605	1497	3102	495	400	895	69.16	73.28	71.15
31	SHABAD	1390	1254	2644	537	437	974	61.37	65.15	63.16
32	SHAMSHABAD	2142	1748	3890	892	783	1675	58.36	55.21	56.94
33	MAHESWARAM	1721	1399	3120	655	498	1153	61.94	64.40	63.04
34	IBRAHIMPATAM	1704	1625	3329	866	792	1658	49.18	51.26	50.20
35	MANCHAL	1149	1046	2195	468	340	808	59.27	67.50	63.19
36	YACHARAM	1487	1193	2680	463	408	871	68.86	65.80	67.50
37	KANDUKUR	1869	1503	3371	528	400	928	71.73	73.39	72.47
TOTAL		70040	63949	133989	40119	35133	75252	42.72	45.06	43.84

Table - 5.22
MANDAL WISE DROP-OUT RATES CLASSES I - V
SC

DISTRICT: RANGA REDDY

2000-2001

SL NO	NAME OF THE MANDAL	CLASS-I 1996_97			CLASS-V 2000-01			DROP-OUT RATE		
		BOYS	GIRLS	TOTAL	BOYS	GIRLS	TOTAL	BOYS	GIRLS	TOTAL
1	MARPALLE	551	511	1062	182	185	367	66.97	63.80	65.44
2	MOMINPET	466	439	905	167	127	294	64.16	71.07	67.51
3	NAWABPET	478	485	963	155	135	290	67.57	72.16	69.89
4	SHANKARPALLE	457	492	949	218	232	450	52.30	52.85	52.58
5	SERILINGAMPALLE	272	194	466	166	156	322	38.97	19.59	30.90
6	BALANAGAR	363	337	700	430	419	849	0.00	0.00	0.00
7	QUTHBULLAPUR	429	387	816	382	334	716	10.96	13.70	12.25
8	MEDCHAL	557	464	1021	323	268	591	42.01	42.24	42.12
9	SHAMIRPET	356	310	666	149	128	277	58.15	58.71	58.41
10	MALKAJGIRI	329	327	656	300	263	563	8.81	19.57	14.18
11	KEESARA	352	338	690	181	158	339	48.58	53.25	50.87
12	GHATKESAR	387	333	720	221	180	401	42.89	45.95	44.31
13	UPPAL	613	562	1175	450	394	844	26.59	29.89	28.17
14	HAYATHNAGAR	647	533	1180	299	264	563	53.79	50.47	52.29
15	SAROORNAGAR	605	509	1114	357	372	729	40.99	26.92	34.56
16	RAJENDRANAGAR	842	900	1742	627	653	1280	25.53	27.44	26.52
17	MOINABAD	362	290	652	153	145	298	57.73	50.00	54.29
18	CHEVELLA	531	561	1092	212	215	427	60.08	61.68	60.90
19	VIKARABAD	549	568	1117	234	259	493	57.38	54.40	55.86
20	DHARUR	307	305	612	103	89	192	66.45	70.82	68.63
21	BANTARAM	391	403	794	125	98	223	68.03	75.68	71.91
22	PEDDMUL	437	440	877	109	82	191	75.06	81.36	78.22
23	TANDUR	437	461	898	144	113	257	67.05	75.49	71.38
24	BASHEERABAD	200	186	386	75	54	129	62.50	70.97	66.58
25	YELAL	455	457	913	65	44	109	85.75	90.37	88.06
26	DOMA	215	195	410	81	54	135	62.33	72.31	67.07
27	GANDEED	317	256	573	115	85	200	63.72	66.80	65.10
28	KULKACHARLA	328	255	583	96	51	147	70.73	80.00	74.79
29	PARGI	366	348	714	145	152	297	60.38	56.32	58.40
30	PUDUR	479	483	962	159	102	261	66.81	78.88	72.87
31	SHABAD	414	389	803	138	108	246	66.67	72.24	69.36
32	SHAMSHABAD	493	445	938	216	204	420	56.19	54.16	55.22
33	MAHESWARAM	429	320	749	157	96	253	63.40	70.00	66.22
34	IBRAHIMPATAM	511	459	970	222	205	427	56.56	55.34	55.98
35	MANCHAL	186	205	391	85	70	155	54.30	65.85	60.36
36	YACHARAM	423	377	800	145	125	270	65.72	66.84	66.25
37	KANDUKUR	520	396	916	156	98	254	70.00	75.25	72.27
TOTAL		16055	14920	30975	7542	6717	14259	53.02	54.98	53.97

Table - 5.23
MANDAL WISE DROP-OUT RATES CLASSES I - V

DISTRICT: RANGA REDDY

ST

2000-2001

SL NO	NAME OF THE MANDAL	CLASS-I 1996_97			CLASS-V 2000-01			DROP-OUT RATE		
		BOYS	GIRLS	TOTAL	BOYS	GIRLS	TOTAL	BOYS	GIRLS	TOTAL
1	MARPALLE	104	72	176	10	1	11	90.38	98.61	35.29
2	MOMINPET	167	132	299	20	8	28	88.02	93.94	45.10
3	NAWABPET	1	2	3	4	0	4	0.00	100.00	42.86
4	SHANKARPALLE	94	89	183	23	7	30	75.53	92.13	34.78
5	SERILINGAMPALLE	81	53	134	68	53	121	16.05	0.00	31.25
6	BALANAGAR	89	81	170	98	71	169	0.00	12.35	1.74
7	QUTHBULLAPUR	94	77	171	59	56	115	37.23	27.27	2.54
8	MEDCHAL	229	134	363	90	23	113	60.70	82.84	48.17
9	SHAMIRPET	79	42	121	19	21	40	75.95	50.00	13.04
10	MALKAJGIRI	77	60	137	81	54	135	0.00	10.00	29.32
11	KEESARA	52	60	112	42	40	82	19.23	33.33	21.90
12	GHATKESAR	70	56	126	38	21	59	45.71	62.50	26.25
13	UPPAL	151	111	262	132	89	221	12.58	19.82	22.18
14	HAYATHNAGAR	69	64	133	49	32	81	28.99	50.00	25.69
15	SAROORNAGAR	178	117	295	119	75	194	33.15	35.90	32.87
16	RAJENDRANAGAR	140	99	239	70	50	120	50.00	49.49	20.00
17	MOINABAD	10	13	23	3	2	5	70.00	84.62	70.59
18	CHEVELLA	16	28	44	10	9	19	37.50	67.86	52.50
19	VIKARABAD	223	197	420	48	41	89	78.48	79.19	55.50
20	DHARUR	228	163	391	22	8	30	90.35	95.09	64.71
21	BANTARAM	87	47	134	12	0	12	86.21	100.00	47.83
22	PEDDEMUL	459	368	827	46	5	51	89.98	98.64	72.43
23	TANDUR	162	144	306	52	29	81	67.90	79.86	6.90
24	BASHEERABAD	239	193	432	59	29	88	75.31	84.97	43.23
25	YELAL	255	185	440	26	6	32	89.80	96.76	57.33
26	DOMA	306	292	598	60	15	75	80.39	94.86	62.50
27	GANDEED	347	271	618	86	32	118	75.22	88.19	31.40
28	KULKACHARLA	671	353	1024	154	37	191	77.05	89.52	27.92
29	PARGI	104	86	190	65	25	90	37.50	70.93	13.46
30	PUDUR	58	42	100	2	5	7	96.55	88.10	68.18
31	SHABAD	47	12	59	10	1	11	78.72	91.67	60.71
32	SHAMSHABAD	252	123	375	45	14	59	82.14	88.62	23.38
33	MAHESWARAM	362	164	526	90	29	119	75.14	82.32	7.75
34	IBRAHIMPATAM	65	88	153	32	27	59	50.77	69.32	62.18
35	MANCHAL	420	289	709	129	44	173	69.29	84.78	40.96
36	YACHARAM	172	84	256	40	12	52	76.74	85.71	20.00
37	KANDUKUR	205	127	332	21	3	24	89.76	97.64	44.19
TOTAL		6363	4518	10881	1934	974	2908	69.61	78.44	73.27

Table - 5.31
MANDAL WISE TEACHER-PUPIL RATIO - 2000-2001
DISTRICT: RANGA REDDY

SL. NO.	NAME OF THE MANDAL	T.P.RATIO		
		PRIMARY	UPPER PRIMARY	HIGH SCHOOLS
1	MARPALLE	87	112	81
2	MOMINPET	65	56	72
3	NAWABPET	71	79	51
4	SHANKARPALLE	84	66	46
5	SERILINGAMPALLE	88	27	27
6	BALANAGAR	60	24	31
7	QUTHBULLAPUR	64	26	32
8	MEDCHAL	63	29	42
9	SHAMIRPET	76	32	46
10	MALKAJGIRI	50	24	28
11	KEESARA	70	19	30
12	GHATKESAR	42	36	36
13	UPPAL	84	23	31
14	HAYATHNAGAR	49	29	29
15	SAROORNAGAR	67	24	29
16	RAJENDRANAGAR	76	31	35
17	MOINABAD	76	31	40
18	CHEVELLA	65	59	48
19	VIKARABAD	49	34	34
20	DHARUR	60	70	56
21	BANTARAM	93	139	40
22	PEDDEMUL	73	94	61
23	TANDUR	56	30	40
24	BASHEERABAD	83	78	50
25	YELAL	64	64	52
26	DOMA	69	67	66
27	GANDEED	65	52	50
28	KULKACHARLA	84	82	66
29	PARGI	69	45	33
30	PUDUR	76	65	53
31	SHABAD	68	43	50
32	SHAMSHABAD	68	32	46
33	MAHESWARAM	80	43	53
34	IBRAHIMPATAM	45	37	36
35	MANCHAL	47	44	53
36	YACHARAM	71	70	44
37	KANDUKUR	62	60	45
TOTAL		66	32	33
	T.P. Ratio with Vidya Volunteers	47	29	32

Note: Mandal-wise figures of Vidya Volunteers in position are not available.

Table - 5.41
PERFORMANCE IN S.S.C EXAMINATION (REGULAR) - MARCH, 2001
DISTRICT: RANGA REDDY

SL. NO.	NAME OF THE MANDAL	NUMBER APPEARED	NUMBER PASSED	PASS PERCENTAGE
01	MARPALLE	360	159	44.17
02	MOMINPET	314	223	71.02
03	NAWABPET	297	0	0.00
04	SHANKARPALLE	509	145	28.49
05	SERILINGAMPALLE	877	650	74.12
06	BALANAGAR	3309	2414	72.95
07	QUTHBULLAPUR	1836	1535	83.61
08	MEDCHAL	592	251	42.40
09	SHAMIRPET	687	392	57.06
10	MALKAJGIRI	1972	1547	78.45
11	KEESARA	781	424	54.29
12	GHATKESAR	814	421	51.72
13	UPPAL	2908	2124	73.04
14	HAYATHNAGAR	1776	1258	70.83
15	SAROORNAGAR	3973	2863	72.06
16	RAJENDRANAGAR	2383	1391	58.37
17	MOINABAD	477	198	41.51
18	CHEVELLA	401	310	77.31
19	VIKARABAD	972	543	55.86
20	DHARUR	183	118	64.48
21	BANTARAM	134	117	87.31
22	PEDDEMUL	211	172	81.52
23	TANDUR	874	486	55.61
24	BASHEERABAD	175	150	85.71
25	YELAL	195	149	76.41
26	DOMA	208	184	88.46
27	GANDEED	508	389	76.57
28	KULKACHARLA	359	303	84.40
29	PARGI	478	293	61.30
30	PUDUR	224	150	66.96
31	SHABAD	337	251	74.48
32	SHAMSHABAD	544	172	31.62
33	MAHESWARAM	473	375	79.28
34	IBRAHIMPATAM	882	453	51.36
35	MANCHAL	401	271	67.58
36	YACHARAM	418	268	64.11
37	KANDUKUR	370	291	78.65
99	***	1652	1038	62.83
TOTAL		33864	22478	66.38

*** School database is linked with SSC database. 35 schools (1652 Candidates) could not be matched with any mandal in school database.

Teacher Education Institutions

Table - 6.11
DISTRICT INSTITUTION OF EDUCATION TRAINING
ENROLMENT

DISTRICT: RANGA REDDY

2000-2001

SL NO	NAME OF THE INSTITUTION	ALL			B.C.			S.C.			S.T.		
		Boys	Girls	Total	Boys	Girls	Total	Boys	Girls	Total	Boys	Girls	Total
1	D.I.E.T VIKARABAD R.R.DISTRICT VIKARABAD	106	105	211	47	30	77	18	10	28	3	-	3
	TOTAL	106	105	211	47	30	77	18	10	28	3	-	3

Table - 6.12
DISTRICT INSTITUTION OF EDUCATION TRAINING
TEACHERS

DISTRICT: RANGA REDDY

2000-2001

SL NO	NAME OF THE INSTITUTION	ALL			B.C.			S.C.			S.T.		
		Men	Women	Total	Men	Women	Total	Men	Women	Total	Men	Women	Total
1	D.I.E.T VIKARABAD R.R.DISTRICT VIKARABAD	10	2	12	4	-	4	-	-	-	-	-	-
	TOTAL	10	2	12	4	-	4	-	-	-	-	-	-

Table - 6.21
COLLEGES OF EDUCATION (B.Ed)
ENROLMENT

DISTRICT: RANGA REDDY

2000-2001

SL NO	NAME OF THE INSTITUTION	ALL			B.C.			S.C.			S.T.		
		Boys	Gir's	Total	Boys	Girls	Total	Boys	Girls	Total	Boys	Girls	Total
1	NAVA BHARATHI COLLEGE OF EDUCATION MALKAJGIRI	79	34	113	41	13	54	15	4	19	6	-	6
2	PANINEEYA COLLEGE OF EDUCATION SAROOR NAGAR	-	160	160	-	60	60	-	32	32	-	-	-
TOTAL		79	194	273	41	73	114	15	36	51	6	-	6

Table - 6.22
COLLEGES OF EDUCATION (B.Ed)
TEACHERS

DISTRICT: RANGA REDDY

2000-2001

SL NO	NAME OF THE INSTITUTION	ALL			B.C.			S.C.			S.T.		
		Men	Women	Total	Men	Women	Total	Men	Women	Total	Men	Women	Total
1	NAVA BHARATHI COLLEGE OF EDUCATION MALKAJGIRI	10	6	16	2	-	2	1	1	2	-	-	-
2	PANINEEYA COLLEGE OF EDUCATION SAROOR NAGAR	2	10	12	2	-	2	-	-	-	-	-	-
TOTAL		12	16	28	4	-	4	1	1	2	-	-	-

Cadre-Wise Teachers

Table - 7.11
PARTICULARS OF TEACHERS UNDER THE CONTROL OF LOCAL BODIES MANagements

DISTRICT: RANGA REDDY

2000-2001

SL. NO.	CADRE	MANDALA PRASIHAD			ZILLA PARISHAD			MUNICIPALITIES			TOTAL		
		NO.OF POSTS SANCTI-ONED	NO.IN POSITION	NUMBER VACANT	NO.OF POSTS SANCTI-ONED	NO.IN POSITION	NUMBER VACANT	NO.OF POSTS SANCTI-ONED	NO.IN POSITION	NUMBER VACANT	NO.OF POSTS SANCTI-ONED	NO.IN POSITION	NUMBER VACANT
1	HEAD MASTER (HIGH SCHOOLS)	0	0	0	114	110	4	0	0	0	114	110	4
2	HEAD MASTER (U.P.SCHOOLS)	366	244	122	0	0	0	0	0	0	366	244	122
3	SCHOOL ASSISTANT	260	235	25	508	484	24	0	0	0	768	719	49
4	LANGUAGE PANDITS (GRADE -I)	4	4	0	215	209	6	0	0	0	219	213	6
5	PHYSICAL DIRECTOR	0	0	0	33	27	6	0	0	0	33	27	6
6	LANGUAGE PANDITS (GRADE -II)	58	43	15	277	272	5	0	0	0	335	315	20
7	S.G.T	4643	3958	685	869	833	36	0	0	0	5512	4791	721
8	P.E.Ts	0	0	0	95	95	0	0	0	0	95	95	0
9	MUSIC	0	0	0	7	6	1	0	0	0	7	6	1
10	CRAFT INSTRUCTOR	0	0	0	70	43	27	0	0	0	70	43	27
11	OTHER TEACHERS	0	0	0	32	20	12	0	0	0	32	20	12
TOTAL		5331	4484	847	2220	2099	121	0	0	0	7551	6583	968

Table - 7.12

PARTICULARS OF TEACHERS UNDER THE CONTROL OF GOVERNMENT/LOCAL BODY/PRIVATE AIDED MANagements
 DISTRICT: RANGA REDDY 2000-2001

SL. NO.	CADRE	GOVERNMENT (Under the control of Dept.of School Education)			LOCAL BODY			PRIVATE AIDED			TOTAL		
		NO.OF POSTS SANCTI-ONED	NO.IN POSITION	NUMBER VACANT	NO.OF POSTS SANCTI-ONED	NO.IN POSITION	NUMBER VACANT	NO.OF POSTS SANCTI-ONED	NO.IN POSITION	NUMBER VACANT	NO.OF POSTS SANCTI-ONED	NO.IN POSITION	NUMBER VACANT
1	HEAD MASTER (HIGH SCHOOLS)	5	5	0	114	110	4	16	10	6	135	125	10
2	HEAD MASTER (U.P.SCHOOLS)	12	3	9	366	244	122	0	0	0	378	247	131
3	SCHOOL ASSISTANT	43	37	6	768	719	49	96	82	14	907	838	69
4	LANGUAGE PANDITS (GRADE -I)	10	10	0	219	213	6	35	25	10	264	248	16
5	PHYSICAL DIRECTOR	4	4	0	33	27	6	0	0	0	37	31	6
6	LANGUAGE PANDITS (GRADE -II)	9	9	0	335	315	20	59	49	10	403	373	30
7	S.G.T	96	91	5	5512	4791	721	361	281	80	5969	5163	806
8	P.E.Ts	4	4	0	95	95	0	18	17	1	117	116	1
9	MUSIC	0	0	0	7	6	1	0	0	0	7	6	1
10	CRAFT INSTRUCTOR	3	2	1	70	43	27	10	7	3	83	52	31
11	OTHER TEACHERS	3	2	1	32	20	12	5	3	2	40	25	15
TOTAL		189	167	22	7551	6583	968	600	474	126	8340	7224	1116

Non-Teaching Staff Particulars

Table - 8.11
NON TEACHING STAFF AND FIELD FUNCTIONARIES PARTICULARS
AS ON 1-1-2001

DISTRICT: RANGA REDDY

SL. NO	NAME OF THE POST	NO.OF POSTS SANCTIONED	NO.IN POSITION	NO. VACANT
I. FILED FUNCTIONARIES				
1	Deputy Inspector os Schools	4	4	-
2	Mandal Educational Officers	33	32	1
3	Project Officers (NFE)	8	8	-
4	Add.Dy Inspector of School	-	-	-
5	Jr.Dy.Inspector of School	-	-	-
II. NON-TEACHING STAFF				
6	Superintandants	5	5	-
7	Auditors	1	1	-
8	Senior Assts.	23	23	-
9	U.D.Stenos	-	-	-
10	Jr.Asst.	30	25	5
11	L.D.Stenos	1	-	1
12	Typists	7	4	3
13	Record Asst.	3	3	-
14	Class IV Posts	35	34	1
TOTAL		150	139	11

NIEPA DC



D11571

LIBRARY & DOCUMENTATION Centre
National Institute of Educational
Planning and Administration.
17-B, Ari Aurobindo Marg,
New Delhi-110016
 DOC, No..... D-11571
 Date..... 19-08-2002.