

**SARVA SHIKSHA ABHIYAN**

**5th REVIEW MISSION**

**JHARKHAND STATE REPORT**

**(January 17-23, 2007)**



# Implementation report for 5<sup>th</sup> JRM

## Content

Sl.No	Subject	Page No.
A)	<b>Progress against SSA Goals and development outcomes</b>	<b>1-3</b>
	<b>1. Improving Access and Enrolment</b>	<b>1</b>
	<b>2. Reducing Gender and Social Disparity</b>	<b>2</b>
	<b>3. Enhancing Quality</b>	<b>3</b>
B)	<b>Progress on functional areas</b>	<b>4-20</b>
	<b>1. Civil Works</b>	<b>4</b>
	<b>2. EGS and AIE</b>	<b>5-6</b>
	<b>3. Community Mobilization</b>	<b>6</b>
	<b>4. Pedagogical Renewal</b>	<b>6-11</b>
	<b>5. Intervention for socially disadvantage group</b>	<b>12-16</b>
	<b>6. Management Information System (MIS)</b>	<b>16-17</b>
	<b>7. Planning</b>	<b>17-18</b>
	<b>8. Institutional Development</b>	<b>18-20</b>
C)	<b>Financial and Procurement Procedure</b>	<b>20-21</b>
D)	<b>Provision and Release of State Share 2006-07</b>	<b>21</b>
E)	<b>State and district-wise outlay and expenditure 2006-07</b>	<b>21-22</b>
F)	<b>Category-wise physical and financial progress 2006-07</b>	<b>Annexure-I</b>
G)	<b>Monitoring Indicator</b>	<b>22</b>
	<b>Annex 2(b)</b>	<b>Annexure-II</b>
	<b>Annex 2(C)</b>	<b>Annexure-III</b>
	<b>Annex 2(D)</b>	<b>Annexure-IV</b>

**SARVA SHIKSHA ABHIYAN (SSA)**  
**5th REVIEW MISSION**  
**JHARKHAND STATE REPORT (JANUARY 17-23, 2007)**

**Introductory**

As a part of the review mission two members committee visited Jharkhand State during the period from January 17-23, 2007 to review the progress of the SSA Programme against the objectives and outcomes in regard to enhancing access and equity, reducing social and general disparity, elevating quality and strengthening Programme management and capacity to deliver the services.

Following were of the review committee members -

1. Shri K.P. Singh (Planning commission, New Delhi)
2. Dr. Hemlata Parasnas (retired Prof. Pune, Maharashtra)

Jharkhand is a State newly established in 2000 separated from Bihar. It comprises of 22 districts out of which 9 districts were included in DPEP. SSA Programme is being implemented in all the districts.

The mission members had an opportunity to interact with the State Project Director, the State Project Officers, the Assistant Project Coordinators and staff also. The members held intensive discussions with Deputy Commissioner and District Project Coordinator and several other staff at District, Block and Cluster levels in Ranchi & Jamshedpur (East Singhbhum). The Mission Members were very much impressed by the dynamic approach of the SPD and DCs in terms of vision, knowledge and leadership. The Mission members visited different Programmes in Ranchi & Jamshedpur districts in urban and in rural areas as well. From the meetings, discussions and visits it is quite evident that the staff at all level is engaged in achieving target of universal elementary education at the earliest. Their commitments and missionary zeal observed specially in tribal area is worth mentioning. The members visited primary and upper primary schools in urban and rural area, BRC & CRC, DIET, EGS, AIE Centres, KGBV, NPEGEL, Camp Schools & public private partnership academic venture.

The observations of the Mission members are presented below-

**2. Present Status**

**i. Demographic profile of Jharkhand State**

As per 2001 census, Literacy rate of male is 67.3 percent, whereas in SC and ST category 51.09 percent and 53.98 percent respectively. Overall literacy rate of female is 38.87 percent whereas in SC and ST category it is 22.55 percent and 27.21 percent respectively. This shows that female literacy rate is lower than the male literacy rate. The male as well as the female literacy rate in ST & SC category is lower than the general category literacy rate. ST category literacy rate is higher than the SC category literacy rate.

**ii. Accesses and equity**

As on March 31, 2006 there is a primary school or EGS center within a radius of 1 KM catering to the needs of the children of age group 6-11 in that area. This has resulted in achieving the coverage of

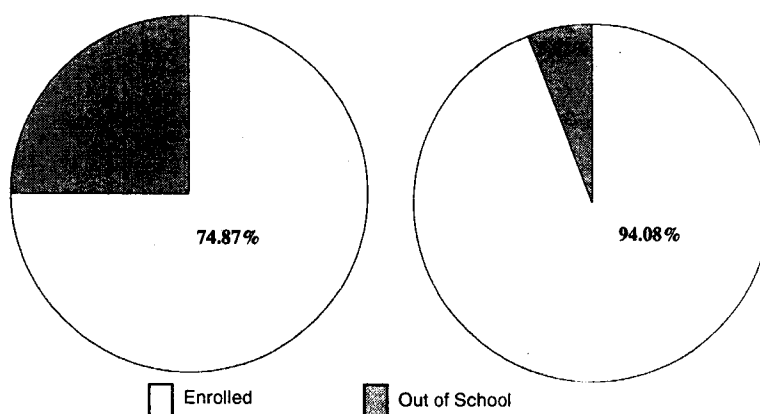
all the habitations for primary education as per SSA norms. Number of primary schools increased from 16,322 (as on 1.4.2001) to 24,776 primary schools (as on 31.3.2006). The number of upper primary schools also increased during the same period from 4,055 to 8,454.

**iii. Enrolment**

The following table shows the enrolment of children in the schools as on 30.09.2005.

State Total		Class I - V		Class VI-VIII		Class I-VIII	
General	Boys	214833	51.38%	63177	53.79%	278010	51.91%
	Girls	203255	48.62%	54278	46.21%	257533	48.09%
	Total	418088		117455		535543	
SC	Boys	359692	54.03%	56305	59.78%	415997	54.75%
	Girls	305997	45.97%	37885	40.22%	343882	45.25%
	Total	665689		94190		759879	
ST	Boys	802238	53.06%	126527	56.66%	928765	53.53%
	Girls	709573	46.94%	96800	43.34%	806373	46.47%
	Total	1511811		223327		1735138	
OBC	Boys	983026	51.80%	208348	55.17%	1191374	52.36%
	Girls	914580	48.20%	169329	44.83%	1083909	47.64%
	Total	1897606		377677		2275283	
Total	Boys	2359789	52.52%	454357	55.91%	2814146	53.04%
	Girls	2133405	47.48%	358292	44.09%	2491697	46.96%
	Total	4493194		812649		5305843	

The above table reveals that in general and for each category the percentage of the girls enrolment is less than the boys, however gap is slowly reducing.



The enrolment of children ( 6-14 age group) increased from 74.87% (as on 1.4.2001) to 94.08% ( as on 1.4.2006).

#### iv. Out of school children

From the enrolment data it is evident that 5.92% children are still out of schools. The total number of the out of school children is 3,66,498. Out of targeted 2,74,194 children (75%) belong to age group 9-14 years and 92,304 (25%) children belong to age group 6-8 years.

The State had undertaken a special drive towards increasing enrolment. An enrolment campaign named "School Chalein Hum Abhiyan 2006" was organized involving people representatives, tribal leaders. More than 7 lakh children were enrolled as a result of this campaign. Of the total out of school children the girls account approximately 54.3% and SC 22%, ST 35.2% and minority 12%.

42% out of school children is located in the Garhwa, Godda, Palamu, Pakur, Dumka districts. 27% out of school children do not attend schools as they remain pre-occupied in domestic work in their own houses. 17% out of school children are wage-earners.

There is an ongoing drive to enroll these out of school children through various strategies and Programmes.

#### **Proposed interventions to address out of school children -**

Non residential bridge course :	51432 (girls) 109812 (boys) <b>161244 (total)</b>
Residential camps for girls :	23650
Alternative learning centres :	5000 (girls) 16300 (boys) <b>21300 (total)</b>
KGBV :	<b>9574 (girls) (SC-16.46%), (ST-46.27%) &amp; (OBC, Minority &amp; Others-37.27%)</b>
NPEGEL bridge course :	<b>59900</b>

- ❖ This shows that out of 3,66,498 out of school children, 2,74,194 children were to be covered under the above mentioned interventions. The remaining 25% students are admitted in regular schools.

#### **Progress achieved against the proposed interventions-**

In case of out of school children in actual practice -

- 45,761 (28 %) enrolled in Non residential Bridge Course Centers.
- 4,662 (19.7%) girls enrolled in residential girls' camps
- 6,180 (29 %) children enrolled in alternative learning centres.
- 4,673 (57.69 %) girls enrolled in KGBVs.
- 12,750 (21.29 %) girls enrolled in NPEGEL Bridge Course Centres.

- ❖ The progress indicates that only 74,026 (27%) out of school children have been facilitated by the proposed plan for enrollment upto December 2006. The progress rate is slow & needs to be improved. This requires special attention.

v. **Dropout Rate**

The State level dropout rate for the primary section (I–V) is 44.76 %. In 13 districts the dropout rate is higher than the State level dropout rate. At State level the girls dropout rate is higher than that of the boys and similar picture is seen in case of SC & ST categories. In the Simdega district the dropout rate including all the categories is highest (73.59%) whereas it is the lowest (20.30%) in Giridih district. In case of SC category the highest dropout rate (77.36%) is again found in Simdega district whereas it is the lowest (10.33%) in the Saraikela district. 12 districts are showing dropout rate higher than the state level SC category dropout rate (47.59%). In case of ST category the highest dropout rate (73.59%) is again attributed to Simdega district whereas the lowest dropout rate (18.96) is seen in Palamu district. 14 districts are showing dropout rate higher than the state level dropout rate (46.10%). Detailed district wise information is attached in **Annexure**, however the information with regard to upper primary classes was not available.

In order to encourage the dropout children to come back to school various strategies and interventions are implemented such as KGBV, CAMP schools, NPEGEL. For the children enrolled in these Programmes a Bridge Course has been designed and pertaining to that a course book for the teachers and a workbook for the students also has been prepared. NGOs are also mobilized for mainstreaming the dropout children.

vi. **Achievement Level**

As per State Elementary Education report card, 2005 the percentage of students passed with greater than 60% in primary classes (V) in the state for boys and girls was 23.05% and 22.34% respectively while this was 19.15% and 19.16% respectively at upper primary level-(Class VIII). This shows that achievement level of students at primary and upper primary level both was poor.

As per the State policy all the students are promoted to next std. in primary school without detaining in any class. As a result of this even the students showing poor performance are also getting entry to next class upto class V. This creates a very heterogeneous group of students in class V and onwards which can be termed as a multilevel class.

vii. **Attendance in schools**

At the time of visit by the Mission members Tussu festival was going on. Due to this, the attendance of the Students in classes was less especially in EGS centers. But from the attendance register of the students maintained in the schools and also from the weekly record display on the board, it could be concluded that the average daily attendance of the students at all levels was within the range of 70-75% in the schools visited.

viii. **Reduction in Gender and Social Disparity**

For the State of Jharkhand the gender gap at primary level is found as 5.04%, on the contrary at upper primary level it is comparatively higher i.e. 11.8%. Focused efforts have been taken in the form of gender sensitization among the parents through VECs, cultural Programmes performed by various NGOs under the guidance of BRC & CRC.

At upper primary level even after adjusting the sex ratio the gender gap was above 20% in 6 districts of Jharkhand State.

NPEGEL Programme is being conducted to promote the education of girls in remote areas and for over age girls.

## Social Disparity

Category	Enrollment		
	I-V	VI-VIII	I-VIII
General	9.3%	14.45%	10.09%
SC	14.8%	11.59%	14.32%
ST	33.64%	27.48%	32.7%
OBC	42.23%	46.47%	42.88%

The population percentage of SCs & STs in the State are 12% and 26% respectively. It may be seen from the above table that enrollment percentage of SCs & STs are in line with their population percentage in the State.

### ix. Inclusive Education for CWSN

In the State 36376 children have been identified as children with special needs (CWSN). During the year 2006-07 out of these many children, 25272 children have been enrolled in formal education system and 1,034 children are provided aids and appliances. In order to bring the children with special needs (physically handicapped, mentally retarded children) into the formal school system 7,271 teachers are given five days training. The construction of ramp forms an integral feature of all the new school buildings.

### x. Teacher position

At present the sanctioned number of teachers in government schools is 64,898 whereas only 53,706 teachers have been appointed and 11,192 posts are still vacant generating pupil-teacher ratio as 48. Because of the new interventions the number of schools (or centres conducting bridge courses) there is a huge demand of teachers. In order to comply with this, para teachers have been appointed since 2003-04. The total number of para teachers is now 64,243 against the target number of para teachers 82,994. During the academic year 2006-07 the number of para teachers appointed is 14,725 against the proposed number 34,725. Rest appointment of para teachers is proposed to be completed by end of this financial year. In appointing the para teachers though the reservation is not followed preference is given to women teachers.

### xi. Teacher Training

#### Training of Govt. Teachers

- 20 days in-service training

#### *Contents*

- Science, Maths, English, Language, Tribal language

- Inclusive Education
- Evaluation & Remedial Teaching
- Value education / Yoga

**Number of teachers**

- 19,574 teachers trained in 20 days training in 2006-07
- Competency Building Courses for teachers
  - Certificate in Guidance (CIG) – 10,540 teachers trained
  - Certificate in Teaching of Primary School Mathematics (CTPM) – 7,898 teachers trained
  - Certificate in Teaching of English (CTE) – 3,359 teachers trained

**Training of Para Teachers**

- No. of Para Teachers – 64,243 teachers
- Number of untrained para teachers - 62,425 teachers
- Professional Training for Untrained (62,425) Para teachers
  - Enrolled in 2 years Diploma In Primary Education (DPE) in collaboration with IGNOU - 30,253 para teachers (in lieu of 60 days training).
- 30 days Training for given to – 4,926 para teachers.
- 27,064 para teachers training are going on.

**Bridge Course Academic package**

Training modules – Prepared and distributed to the district.

<u>In house master trainers</u>	(16 days)
<u>Block resource Persons' &amp; Cluster Resource person</u>	(20 days)
<u>Bridge course teachers</u>	(30 days)

Para teachers are exposed only to in-service training 20 days in parts after the school starts.

- ❖ Training of teachers is conducted by the BRCs. The BRC is under the Block Education Officer (BEO). Three more staff members called as BRP are appointed having post graduate qualification in Science/Mathematics/English. Similarly the CRC is under the Headmaster of the school and three more staff members called as CRP graduate in Science/Mathematics/English are appointed. As these newly appointed resource persons are not adequately trained they are not suitable to conduct the training in pedagogy (teaching methods, preparing teaching aids etc.), child psychology and educational philosophy.

**xii. Textbooks**

In the Jharkhand State it is the practice to use the NCERT textbooks at school level. During the academic year 2006-07, 1,71,22,757 textbooks were distributed to students from std. I to VIII. The textbooks were received by the students very late in the month of December 2006 on account of delay in getting the textbooks printed at the State level. The textbooks henceforth will be printed at the State level as directed by the NCERT.



- Though the textbooks under SSA programme are to be distributed to all the girls and SC/ST boys, in addition to this the State government distributed textbooks free of cost to general and OBC category boys child in age group 6-14 years bearing its expenditure on its own.

**xiii. Up-gradation**

Out of 17,842 EGS centres 16,201 centres have been upgraded to primary school till Dec. 2006. Total 5,824 Primary schools have been upgraded to Upper Primary school.

**xiv. Civil Works**

Civil works (2002-03 to 2005-06)

Activity	Additional Class Room	New School Building	Toilet	Hand Pump
<b>Target</b>	18705	2160	7018	5708
<b>Completed</b>	17085	1505	6344	5201
<b>In progress</b>	1513	597	360	386

Civil works (2006-07)

Activity	Additional Class Room	New School Building
<b>Target</b>	11415	5949
<b>Completed</b>	6	1
<b>In progress</b>	2835	1286

**Third Party Evaluation**

- Quality testing of materials & work done on sample basis is being executed through technical institutions like BIT Mesra.
- Proposal for taking the consultancy of UNICEF for Third Party Evaluation is under process.

**xv. NPEGEL**

This programme was launched in 2003. The Capacity built up in Mahila Samakhya has been utilized for implementation especially in preparing teaching material and training the resource persons. As on today total 2,108 mata samittee have been formed and about 31,720 women involved in mata samittee. In the NPEGEL centres pre school activities also conducted. Total 930 additional class rooms are to be constructed out of which 340 are under construction. For TLE one time grant is provided to 1,252 model cluster schools. Gender sensitization programmes are conducted for 5,330 teachers even the girls students also are provided gender sensitization inputs every week. Vocational training is imparted to the girls enrolled in this programme. To attract them the emphasis is given on vocational training (sewing, knitting etc).

- Physical progress during 2006-07 under NPEGEL is not available.

**xvi. KGBV**

In the State of Jharkhand except the Simdega district all other districts are sanctioned KGBV. Of 212 blocks in 187 blocks are sanctioned with Kasturba Gandhi Balika Vidyalaya one in each block and 155 blocks are equipped with KGBV. The building construction at all places is in progress. In every KGBV four teachers and three non teaching staff are appointed. One of the teachers is the Head and the Warden as well.

- Developed 15 days training module
  - 15 days training conducted for wardens of 112 KGBVs
  - Resource Persons were from JEPIC, NGOs, UNICEF
- Highlights of the 15 days training module
  - SSA & its components, overview of KGBV in the context of SSA
  - adolescent issues (health, behavior), life skills, counseling
  - academic aspects
    - \* curriculum/ syllabi/ text books, competencies, learning gaps, how to address learning gaps – bridging the gap,
    - \* multi level /grade teaching learning techniques- grouping, teaching techniques, sitting arrangement etc.
    - \* subject wise – Hindi, English, Maths, EVS
    - \* evaluation
  - management issues
    - \* hostel management
    - \* financial issues
    - \* procurement

**xvii. Alternative and Innovative Education (AIE)**

**Camp schools**

Drop out girls in the age group 11-14 years have been mainstreamed through residential bridge course. The number of girls so mainstreamed till today is 10,131.

**Innovative Education**

Very specific and flexible strategies (multigrade/multilevel) have been adopted for heterogeneous groups of children such as street children, children living on platform, in slums, at construction sites, working in shops, dhabhas etc. Number of children enrolled in these activities is 15,099.

**Back to school**

To bring the children back to the school after long duration absence, repeaters, or the drop outs a public private partnership is going on for the standards KG to VIII in urban big school settings with the mutual support of the school management for utilizing the infrastructure free of cost when the regular school timings are over.

## **Computer Aided Education**

- Computer Aided Education Project is being implemented in Middle School covering class VI, VII, VIII through M/s Everonn System India Limited, Chennai on BOOT basis from last year (2005-06).
  - Total no of schools covered - 206
  - Total districts covered - 22
  - Total no of Blocks covered - 122
  - Total no of Instructors engaged - 455
  - Total no of children benefited - 96850
- Every year 11 days Residential Training and 3 day Refresher Training in each quarter is being imparted to 3 teachers from each schools (Total 547 teachers covered).  
In addition to this some districts implemented computer aided learning education in schools on their own.
- All these innovative endeavors are well settled and very much appreciated by the Mission members.

## **xviii. Mid Day Meal**

Mid day meal is being provided in all the govt./govt. aided primary schools and EGS centres with requisite care and cleanliness. The food provided is in adequate quantity and good in quality. It is observed that there is variety in the food provided. The Mata Samiti is very well trained in this task and managing it with utmost positive attitude. The students are taking the advantage of these facilities in a disciplined manner.

## **xix. Research Study going on through external agencies**

- Study on effectiveness of BRC, CRC and its remedial measures and the functional evaluation of BRPs & CRPs
- Study of transition status from class V to class VI reason and solution to low transition
- Evaluation of Bridge Course Centre with mainstream children
- Study on evaluation of EGS upgraded in to Primary Schools
- Study on CWSN children
- Cohort Study
- Study on effectiveness of Mid Day Meal
- Study on the role of KGBV in the educational development of ST girls in Jharkhand.

### **3. Observations**

#### **Strengths**

- Capacity building – Gram Shiksha Samitee members and office staff (Accounts, Administration) trained.
- At district and state level the officers & staff are given refresher training regarding programme management from time to time.
- At district level every month 2 days reflection cum planning meeting is conducted.
- MDM – Mata Samitee takes care of it very effectively.
- 95% of the children (age group 6-11) are in schools now.
- The tribal area is traditionally women dominated.
- There is a shift from just 'monitoring' to 'programme monitoring'.
- Within the radius of 1 km there is a school – leading to zero unserved habitation.
- It is proposed upto March 31, 2007 all EGS (1641) will be upgraded to formal schools, already 16201 are upgraded.
- 'Computer literacy' programme is going on in all the blocks in selected schools on BOOT model.
- Bal Sansad working very well in all the schools enhancing leadership qualities of the students.
- Campus Development Programme – Convergence with SWASTH PLUS (UNICEF) for water supply & sanitation facility, cleanliness, gardening, health of children and child element in the schools is visible.
- An Appeal was made to the MLA and MP of the concerned region to donate from their funds for the compound wall etc. which has been materialized in many schools.
- KGBV programme is very well understood and organized.
- VECs are strongly motivated and involved in the development of the schools. At some places women are not only the members but the chairpersons also.

#### **Weak Points**

- The textbooks were distributed late during 2006-07, however action is being taken to get the books printed well in advance for the coming academic year.
- No action research is undertaken by the teachers.
- No measures/provision for urban migrant children / hard to reach children.
- Though social disparity is reducing in tribal area language (communication) is a barrier and teachers are unwilling to go to remote places.
- No special efforts taken for educating CWSN.
- TLM not of good quality and not available in all the schools.
- Remedial teaching is not implemented in its proper spirit.
- The NCERT textbooks are found difficult by the students and the para teachers as well.
- All DIETs are not involved in pre service teacher training programmes and providing resource support.
- There are many vacancies of teachers in govt. schools.

## Best Practices

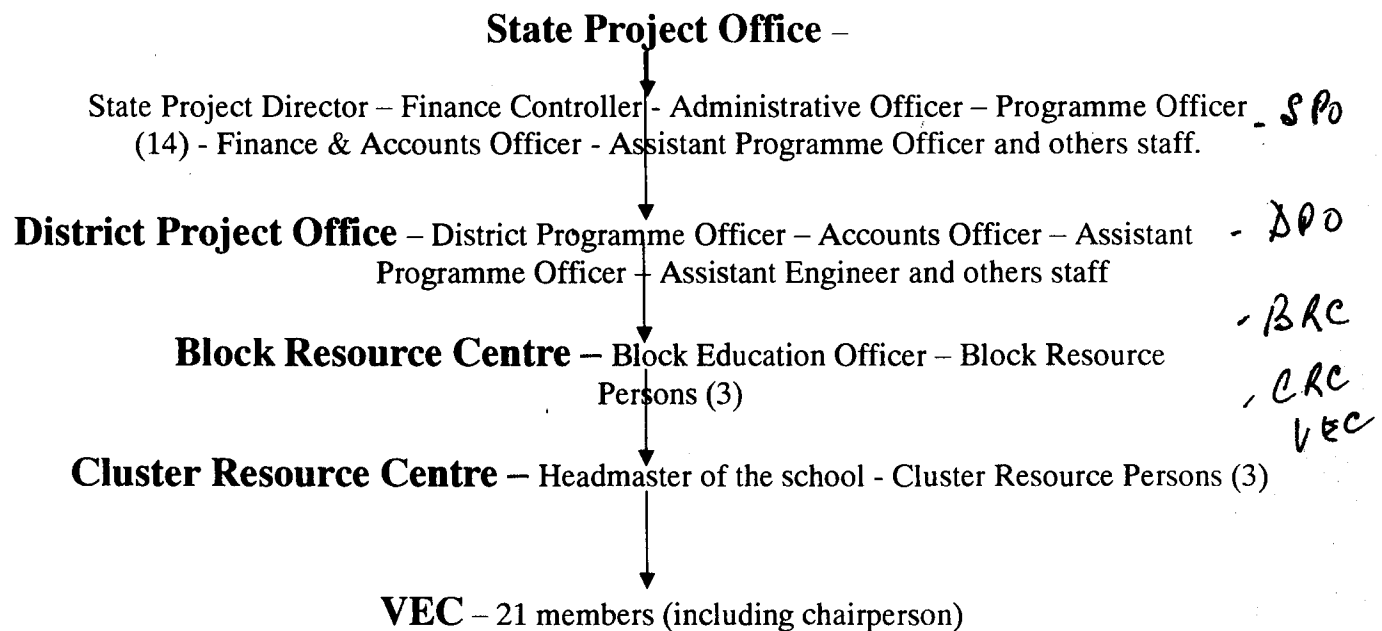
- Para teachers being trained through IGNOU course.
- Textbooks – Given by the State to 'General & OBC' category boys also.
- Large no. of private schools have good infrastructure which is under utilized. Hence it is used for conducting courses for out of school children, meetings etc. (Public - Private Partnership) some children are given admission in such parallel schools to complete their elementary education at minimum cost.
- For tribal children resource books for std. I-V are prepared in their language (mother tongue) but in devnagari script parallel to NCERT syllabus.
- Within 7 days grant is credited to VEC account directly from the Bank at State Level.
- Video conferencing is being organized for 22 districts for different purposes such as monitoring, feedback etc.
- The govt. authorities have provided on its own one good quality plate and a glass to each beneficiary student under MDM.
- In order to tackle the Multi-grade and Multi-level situation in the classrooms UNICEF has extended support to prepare hand books for teachers in three subjects namely Mathematics, Hindi and English.

## Barriers

- The Jharkhand State is a newly born State hence it possesses very limited facilities leading to effective educational processes.
- It is time consuming task to acquire land for new schools in tribal area.

## 4. Roles and relations of various agencies

- The following diagram depicts the hierarchical position of the staffing pattern connected with SSA programme –



Because for last 20 years panchayat elections are not held, the VECs are constituted by the villagers through nominations (in Aam Sabha). VECs are reconstituted after every three years. Recently VECs are formed in all the schools. VECs are empowered by the four days training to execute the functions such as recruitment of Para teachers, financial management and supervision of the academic activities and MDM scheme. So far during the present academic year 87,123 VEC members are exposed to training. The VECs are in real sense a boost to the progress of the SSA. VECs are extending full cooperation and supporting (in cash and kind) to the schools.

## **Organizational Structure at State Level**

### ***Jharkhand Education Project Council***

{Jharkhand Education Project Council (JEPC) is a body registered under the Societies Registration Act, 1860. It has its own service regulations and financial rules.} The council is the implementing agency for programmes like District Primary Education Programme (DPEP), {Sarva Shiksha Abhiyan (SSA), } National Programme for Education of Girls at Elementary Level (NPEGEL), Kasturba Gandhi Balika Vidyalya (KGBV) and GOI-UN assisted programme. All these programmes aim at universalization of Primary/Elementary Education. The JEPC is guided by the General Body and the State Executive.

### ***General Body***

The General Body is the apex body of the Jharkhand Education Project Council. The Honorable Chief Minister of Jharkhand is the Ex-officio Chairman of JEPC. The Honorable Minister, Department of Human Resource Development, Jharkhand and the State Project Director are the Ex-officio Vice-Chairman and Member-Secretary of the council respectively.

### ***State Executive***

The State Executive with adequate enabling powers help resolve the policy issues and oversee the implementation of the programme undertaken by the JEPC. The Chief Secretary, Jharkhand Government is the Ex-officio Chairman of the Executive committee. The State Project Director (SPD) is the Ex-officio Member-Secretary of the Executive Committee.

### ***State Project office (SPO)***

State Project Director is the Chief Executive Officer of the Jharkhand Education Project Council. State level office has strength of 74 posts.

## Organizational Structure at District Level

At the district level, there is a Zila Karyakarini to monitor the implementation of programmes. It provides necessary direction consistent with approved guidelines and facilitates convergence with other departments of the State Government to ensure implementation of the programme in time. The Deputy Commissioner is the Ex-officio Chairman of Zila Karyakarini. The Zila Karyakarini comprises of district level officers of the Education, Health, Public Health Engineering & Welfare departments besides representatives from Teachers, Parents, Village Education Committees and NGOs.

### *District Project Office (DPO)*

The district level office is headed by an ex-officio officer of the education department like District Superintendent of Education (DSE)/District Education Officer(DEO). In DPO 11 posts have been sanctioned under SSA for non-DPEP district and DPEP structure was kept remain in 6 DPEP for SSA.

### *Block Project Office (BPO)*

The block level activities are co-ordinated by the Block Education Extension Officer-cum-Co-ordinator, Block Resource Centre. Under SSA, 5 posts have been created at the block level to implement the activities approved under the work plan and budget. In addition provision for three resource person one each from three subject area as English, Mathematics and Science has been sanctioned by GOI for block resource centre. At the cluster level, the activities are co-ordinated by three Cluster Resource Persons.

At the village/tola/school level, the programmes are implemented and supervised by community institutions like Village Education Committee, Parent Teacher Committee, Mata Samittee etc.

## Staffing Position

Staff Position (Key personnel):

State Project Office	:	Sanctioned	-	74
		In position	-	35
District Project Office	:	Sanctioned	-	399
		In position	-	159
Block Project Office	:	Sanctioned	-	1060
		In position	-	224

Structures have been created right from school level to state level. State resource group, District resource group, Block resource group and Cluster resource groups are support-structures created under SSA to institutionalize academic support respectively at State, District, Block and Cluster levels.

## Community Mobilization

- Special sensitization Programme organized for people's representatives
  - Speaker, Chief Minister, Ministers, Leader of the opposition, MLAs
- Sensitization of DCs on SSA & review of Workplan 2006-07.
- Exposure Visit of VECs being organised.
- NGOs active support sought.

## Monitoring Indicator

### Management Information System-Developments under MIS

- **On-line System** for
  - **Monitoring the Physical & Financial Inputs / Outputs.**
  - **Child Tracking (under process).**
  - **Web enabled DISE (under process).**
- **Schools are being Mapped on GIS** with relevant information.
- All districts and State Project Office are linked with teleconferencing facility.

### BRCs & CRCs

- The following table gives information regarding the BRCs and CRCs

Category	State Total (Under SSA Only)			
	2003-04	2004-05	2005-06	2006-07 (upto Dec.,06)
No. of BRC sanctioned	109	116	212	212
No. of BRC operational	109	115	212	212
% of BRC operational	100%	99%	100%	100%
No. of CRC sanctioned	91	1133	1827	2079
No. of CRC operational	91	1059	1827	2079
% of CRC operational	100%	93%	100%	100%

- In the following 9 districts DIETs are functioning for purpose of conducting pre-service elementary education – Simaria (Chatra), Gamharia (Saraikela), Pabia (Jamtara), Jasidih (Deoghar), Bagodar (Giridih), Gumla, Latehar, Gumma (Godda) & Govindpur (Dhanbad). The DIET at Ratu in Ranchi district is operational only in the area of teacher training (in service) without having regular faculty members. This DIET was established under DPEP.
- The Mission Members observed that all the concerned officers were quite familiar with their job profile and were performing with quite noticeable understanding. The staff at the state office and



the district office works as an extended family with great responsibility and accountability. They are fully aware of the significance of the SSA programme and they are trying to give justice to their assumed roles.

## **ADEPTS (Advancement of Educational Performance Through Teacher Support)**

- State Core team constituted.
- Participated in 1st regional consultation meeting at Kolkata.
- Organised regional field teams orientation programme at Ranchi.
- Cross state field visit to Assam by core team
- Participated in 3rd regional consultation meeting at Bhubaneswar.
- Finalization of performance standard for teacher, trainer, CRC, BRC underway.

## **5. Financial Management and Procurement**

- **Status on implementation of FMP Manual-** Manual on Financial Management and procurement was duly adopted by the State Executive Committee, its copies circulated among all concerned in all districts and State headquarters of Jharkhand and is being implemented or followed in to.
- **Progress against procurement plan for 2006-07-** First installment of Central share (Rs. 32732.00 lakhs) against AWP&B for 2006-07 was released by MHRD in Nov., 2006 only. Similarly, First installment of State share (Rs. 10000.00 lakhs) was received on 28<sup>th</sup> July, 2006. Out of total fund available (Rs. 48804.75 lakhs) expenditure incurred on SSA including NPEGEL till 31.12.2006 worked out to Rs. 25295.82 lakhs is 52% approx of fund available. This included implementation and achievement of progress in respect of all activities including procurement plan for 2006-07.
- **Status of audit reports-** Statutory audit of accounts for 2005-06 was completed and, without obtaining approval of State Executive Committee, audit reports (SSA/NPEGEL/KGBV) were submitted to MHRD as so desired. Some inconsistencies/irregularities are indicated in the said report. The State govt. is supposed to take action on the recommendations on the audit report at the earliest.
- **Status of accounts staffing/training-** Accounts staffing structure is deficient and posts vacant in almost all the district offices as well as SPO. Recruitment thereof (Grade I & II posts through Ed.Cil & Grade III & IV posts of SPO at SPO level and those of district offices at district level) is in process.

Training of existing accounts staff of districts is imparted/updated/refreshed every month when they are called with monthly expenditure reports etc. in the first week of each succeeding month.

## Provision and Release of State Share 2006-07

The details pertaining to release of Central and State Share is given in the table below-

Programme	Budget (2006-07)	Shares against AWP& B (2006-07)		Fund Receive (200-07)		Opening Balance (as on 01.04.06)	Total Funds Available (upto 31.12.2006)	Expenditure (upto 31.12.2006)
		Central Share	State Share	Central Share	State Share			
		(Rs. In Lakh)						
SSA	98196.32	73647.24	24549.08	33303.00	10000.00	5300.30	48603.30	24561.04
NPEGEL	6088.84	4566.65	1522.22	0.0	0.0	201.45	201.45	734.78
Total	104285.16	78213.89	26071.3	33303.00	10000.00	5501.75	48804.75	25295.82

State and district-wise outlay and expenditure 2006-07 is at Annexure-  
Category-wise physical and financial progress 2006-07 is at Annexure-  
The progress report against AWP&B 2006-07 is placed at Annexure-

## 6. Recommendations

### Teachers

- Although a large number of schools have been opened the positions of teachers are not filled. Vacancies in govt. schools should be filled immediately. Teachers should be appointed in requisite number to reduce the pupil teacher ratio to 40:1.
- Teachers should be encouraged to undertake action research in order to improve the present status.
- Resource Persons and teachers should be given proper training to face the prevailing multi-grade teaching situations.
- Separate and focused training for preparing TLM and conducting remedial teaching should be conducted.
- The project officers and the teachers should be offered opportunity to visit other schools in the same State as well as in other States to study the best practices under the SSA Programme to enrich their experience and to enable them to replicate in their own schools.
- Finalization of performance standard for teachers, trainers, CRCs & BRCs should be expedited.

## **Students**

- The achievement level of students in Mathematics and English is found poor. Hence, it is quite pertinent that immediate steps (appropriate teaching methods, use of proper Teaching Learning Material and use of remedial Programme etc.) are taken in right direction.
- In KGBV, students in class VIII are quite confident. They expressed their anxiety about continuation of their education. They have ambition to complete the school education and further become self supporting. In view of this it is of paramount importance to see that they are not left half way without reaching the destination. They are quite aware if they return to their respective homes then that will be full stop of their education. So some further arrangement needs to be planned well in advance by the State Government.

## **State Project Office**

- The State should take initiative in framing the school curriculum and syllabi and writing the textbooks pertaining to the new syllabi to cater to the local needs.
- As far as possible Anganwadi or Pre primary class should be opened in those schools where these facilities are not available. Wherever these facilities are available, students of std.-I are found very much involved and interested in school activities.
- As most of the NPEGEL activities are not visible/conducted at the respective centres priority should be given to implement this programme in the sprit with immediate effect.
- DIETs should be made functional in all its expected / perceived roles.
- SCERT & SIEMAT should be established to take care of training and research components on continuous basis.
- Immediate measures need to be exercised in districts like Simdega, Bokaro and Deoghar where dropout rate is alarming, for increase in retention of children at elementary level.
- There is need for speedy construction of classrooms with close monitoring arrangements to increase the enrollment and reduce out of school children, as the progress of classroom construction activity is very slow (57%) upto 2006-07.
- Frequent transfers of officers should be avoided as this hampers the overall quality of education.

## **State Government**

- The State Government need to focus on quality aspect especially at the upper primary level by way of incorporating various measures such as mentioned above.
- Sustainability aspects of the SSA programme has to be taken care of by the State Govt.

## **7. Future Plan**

### **Facilitating the Urban Deprived Children**

A workshop was held on 20<sup>th</sup> January, 2007 to prepare a comprehensive plan to bring with urban, migrant / hard to reach / deprived children to schools with the help of partner NGOs and Mother NGOs. A proposal will be prepared up to February 15, 2007 indicating the habitations, tolas and pockets

where this programme needs to be implemented. The NGOs will be encouraged to give their detailed proposals and they will be supported financially and technically to implement the plan.

- For the migrant children to reduce the migration number of children to zero, residential camps will be setup in advance so that their parents can admit them to these camps and academic is not disturbed.
  - Focus on quality – Hence for not just the enrollment but quality education will be the mandate. Training, teaching will be focusing or will be concentrated around this mandate
- 

The Mission members have prepared the report regarding SSA progress on the basis of observations of actual site visits and the data made available by the state and district project offices.

Mission members are pleased to bring on record their sincere thanks to MHRD office, New Delhi for giving an opportunity to visit the Jharkhand State. Subsequently thanks are due to all the State and district personnel for extending full cooperation and making our visit a success.

\*\*\*\*\*

**ANNEXURE-I**

S.N	Recommendations	Action Taken
<b>1</b>	<b>Closing the Equity and Infrastructure Gap</b>	
1(i)	Shifting focus from Access & enrolment to Universal Retention	<ul style="list-style-type: none"> <li>* Improving Holding capacity of schools by way of -</li> <li>- Providing Building &amp; Classrooms</li> <li>- Providing basic amenities like Drinking Water &amp; Toilet facility</li> <li>- Cooked meal in Govt./Govt. aided school/alternate schools( EGS, Bridge courses)</li> <li>* Capacity Building of VECs through Training &amp; Workshops</li> <li>* Constitution of Bal-Sansad in each school</li> </ul>
1(ii)	Framework of Action for Urban Deprived children	<ul style="list-style-type: none"> <li>* State level Workshop being organized from 20th - 21st January, 2007</li> <li>* Theme of the Workshop is to <b>Prepare guideline &amp; Plan Of Action for Urban deprived Children &amp; Migrating children.</b></li> </ul>
1(iii)	Addressing the Multiple deprivation in focused districts	<ul style="list-style-type: none"> <li>* To address the Multiple deprivation in special focused districts the managerial capacity has been str by providing -</li> <li>- 3 Resource persons in each Block</li> <li>- 3 Resource persons in each CRC</li> <li>- Gender Co-ordinators at district, Block &amp; Cluster level</li> <li>* Tribal &amp; Minority Co-ordinators being placed soon at State &amp; District level</li> </ul>
1(iv)	Greater use of Innovation Funds	Plan of Action is being Prepared.
<b>2</b>	<b>Quality &amp; Learning Achievement</b>	
2(i)	Identifying verifiable indicators of Quality	<p>Process initiated at National level in partnership with states for developing Indicators of Quality at District, Block, Cluster, School &amp; Teacher level.</p> <ul style="list-style-type: none"> <li>*State Core team constituted.</li> <li>* Participated in 1st regional consultation meeting at Kolkata.</li> <li>* Organised regional field teams orientation programme at Ranchi.</li> <li>* Cross state field visit to Assam by core team</li> <li>* Participated in 3rd regional consultation meeting at Bhubaneswar.</li> <li>* Finalization of performance standard for teacher, trainer, CRC, BRC underway.</li> </ul>
2(ii)	Special focus to Grade I & II in terms of teachers & other provisions to ensure basic literacy and numeracy skills by	<ul style="list-style-type: none"> <li>* Plan being Chocked out to give Special focus to Grade I &amp; II students</li> </ul>

	grade II	
2(iii)	Capacity building at District & Sub district level	Steps initiated for capacity building at District & Sub district level through- - Workshops at Divisional level - Training of BRPs & CRPs at State level - Vertual Training & Orintation via Video Conferencing & Statewide Classroom is being planned.
2(iv)	Evaluation of BRCs & CRCs	* Modalities being worked out.
<b>3</b>	<b>Programme Implementation &amp; Financial Management</b>	
3(i)	Quality Improvement in all aspects of education service delivery	* Being Taken care
3(ii)	Third party evaluation of Civil Works	* Process Underway
3(ii)	Analysis of Performance Indicators	* Being done.

**Table 3.2.4 Principal out comes**

Class wise number of children enrolled in primary and upper primary schools

State: Jharkhand

*Source DISE 2003-04*

Enrolment		Class								Total		
		I	II	III	IV	V	VI	VII	VIII	I-V	VI-VIII	I-VIII
<b>State Total</b>												
General	Boys	68041	45355	39538	32796	28679	21906	18498	10900	214409	51304	265713
	Girls	63464	41800	35220	28859	24912	17899	15669	9508	194255	43076	237331
	Total	131505	87155	74758	61655	53591	39805	34167	20408	408664	94380	503044
SC	Boys	73060	47652	39987	29943	23791	15669	11696	6022	214433	33387	247820
	Girls	62916	36569	27984	20450	15076	9121	6461	3520	162995	19102	182097
	Total	135976	84221	67971	50393	38867	24790	18157	9542	377428	52489	429917
ST	Boys	164560	109982	92248	71429	55636	34837	25420	14406	493855	74663	568518
	Girls	144066	87218	70289	52116	40061	23790	16877	9237	393750	49904	443654
	Total	308626	197200	162537	123545	95697	58627	42297	23643	887605	124567	1012172
OBC	Boys	214681	144932	127172	101622	83274	59188	44950	23766	671681	127904	799585
	Girls	199886	129537	106487	81876	64220	41705	32241	16742	582006	90688	672694
	Total	414567	274469	233659	183498	147494	100893	77191	40508	1253687	218592	1472279
Total	Boys	520342	347921	298945	235790	191380	131600	100564	55094	1594378	287258	1881636
	Girls	470332	295124	239980	183301	144269	92515	71248	39007	1333006	202770	1535776
	Total	990674	643045	538925	419091	335649	224115	171812	94101	2927384	490028	3417412

**Table 3.2.4 Principal out comes**

Class wise number of children enrolled in primary and upper primary schools

**Source DISE 2004-05**

Enrolment		Class								Total		
		I	II	III	IV	V	VI	VII	VIII	I-V	VI-VIII	I-VIII
<b>State Total</b>												
General	Boys	50967	35701	31683	28306	24662	20092	16022	13670	171319	49784	221103
	Girls	48732	33550	28714	25195	21796	16773	13752	10406	157987	40931	198918
	Total	99699	69251	60397	53501	46458	36865	29774	24076	329306	90715	420021
SC	Boys	82909	55009	47368	38587	29984	19310	14199	8494	253857	42003	295860
	Girls	73220	44706	35648	26146	19671	11559	8495	5258	199391	25312	224703
	Total	156129	99715	83016	64733	49655	30869	22694	13752	453248	67315	520563
ST	Boys	169526	112782	101001	83917	65788	38410	27736	18137	533014	84283	617297
	Girls	152702	95201	78250	62063	46901	26093	18605	12525	435117	57223	492340
	Total	322228	207983	179251	145980	112689	64503	46341	30662	968131	141506	1109637
OBC	Boys	243404	165254	144453	125080	102580	74097	56431	34808	780771	165336	946107
	Girls	232684	154617	127860	104677	82157	55528	41869	25836	701995	123233	825228
	Total	476088	319871	272313	229757	184737	129625	98300	60644	1482766	288569	1771335
Total	Boys	546806	368746	324505	275890	223014	151909	114388	75109	1738961	341406	2080367
	Girls	507338	328074	270472	218081	170525	109953	82721	54025	1494490	246699	1741189
	Total	1054144	696820	594977	493971	393539	261862	197109	129134	3233451	588105	3821556



**Table 3.2.4 Principal out comes**

Class wise number of children enrolled in primary and upper primary schools

*Source DISE 2005-06*

Enrolment		Classes								Total		
		I	II	III	IV	V	VI	VII	VIII	I-V	VI-VIII	I-VIII
<b>State Total</b>												
General	Boys	60185	45612	41639	35020	32377	24994	21250	16933	214833	63177	278010
	Girls	58412	43797	39466	32281	29299	21611	18639	14028	203255	54278	257533
	Total	118597	89409	81105	67301	61676	46605	39889	30961	418088	117455	535543
SC	Boys	113745	80951	70639	51828	42529	25977	18655	11673	359692	56305	415997
	Girls	106026	71237	57077	40336	31321	17440	12691	7754	305997	37885	343882
	Total	219771	152188	127716	92164	73850	43417	31346	19427	665689	94190	759879
ST	Boys	257667	171899	154193	119805	98674	59496	40768	26263	802238	126527	928765
	Girls	242863	158530	134353	97565	76262	45438	30500	20862	709573	96800	806373
	Total	500530	330429	288546	217370	174936	104934	71268	47125	1511811	223327	1735138
OBC	Boys	297949	212150	189090	152747	131090	91754	69928	46666	983026	208348	1191374
	Girls	289171	203829	175609	135161	110810	74529	56597	38203	914580	169329	1083909
	Total	587120	415979	364699	287908	241900	166283	126525	84869	1897606	377677	2275283
<b>TOTAL</b>	<b>Boys</b>	<b>729546</b>	<b>510612</b>	<b>455561</b>	<b>359400</b>	<b>304670</b>	<b>202221</b>	<b>150601</b>	<b>101535</b>	<b>2359789</b>	<b>454357</b>	<b>2814146</b>
	<b>Girls</b>	<b>696472</b>	<b>477393</b>	<b>406505</b>	<b>305343</b>	<b>247692</b>	<b>159018</b>	<b>118427</b>	<b>80847</b>	<b>2133405</b>	<b>358292</b>	<b>2491697</b>
	<b>Total</b>	<b>1426018</b>	<b>988005</b>	<b>862066</b>	<b>664743</b>	<b>552362</b>	<b>361239</b>	<b>269028</b>	<b>182382</b>	<b>4493194</b>	<b>812649</b>	<b>5305843</b>

## Dropout Rate (DR)

(Source-DISE)

Sl. No.	Name of District	Dropout Rate (DR)= 100 - (CR + ARR)								
		I-V								
		All			SC			ST		
		Boys	Girls	Total	Boys	Girls	Total	Boys	Girls	Total
1	Bokaro	51.59	58.07	54.66	54.02	64.60	58.93	64.89	72.87	68.44
2	Chatra	54.00	56.00	55.00	64.00	70.00	66.00	52.00	62.00	56.00
3	Deoghar	58.10	55.90	57.00	58.70	56.30	57.50	59.50	59.80	59.60
4	Dhanbad	51.20	53.56	52.37	56.42	61.90	59.18	54.01	58.56	56.28
5	Dumka	42.07	50.30	46.02	48.38	58.44	53.14	48.99	53.68	51.21
6	East Singhbhum	20.65	32.04	26.15	21.97	27.75	24.74	23.11	27.48	25.17
7	Garhwa	43.56	51.33	49.20	45.51	52.99	48.68	47.10	52.25	49.28
8	Giridih	23.08	17.32	20.30	24.30	23.06	23.63	27.39	29.52	28.50
9	Godda	35.69	35.96	32.92	24.16	32.01	27.25	40.79	51.41	45.18
10	Gumla	54.46	53.33	53.90	54.38	57.92	56.15	55.95	55.14	55.55
11	Hazaribagh	50.11	51.41	50.76	55.26	55.43	55.35	23.57	20.79	22.18
12	Jamtara	48.80	52.00	50.40	39.24	50.64	44.55	44.11	52.05	47.72
13	Kodarma	27.46	31.78	29.63	31.05	35.11	33.08	34.31	36.57	35.44
14	Latehar	31.69	36.37	33.58	48.02	56.08	51.24	34.61	36.65	35.34
15	Lohardaga	74.07	39.40	56.74	46.12	38.20	42.27	41.47	46.10	33.57
16	Pakur	51.56	55.84	53.49	39.57	47.70	43.38	55.19	60.56	57.53
17	Palamu	33.38	37.27	35.04	39.54	47.34	42.64	16.10	23.24	18.96
18	Ranchi	51.21	51.57	51.38	48.92	48.05	48.61	56.44	55.73	56.12
19	Sahibganj	26.60	41.40	34.70	48.30	62.30	55.30	29.20	43.50	36.70
20	Saraikela	24.98	31.39	28.05	6.20	14.47	10.33	41.20	58.66	49.93
21	Simdega	55.00	63.66	59.47	76.10	78.68	77.36	72.62	74.57	73.59
22	West Singhbhum	51.68	56.22	53.95	66.30	69.19	67.75	50.13	53.89	52.01
<b>District Total</b>		<b>43.68</b>	<b>46.01</b>	<b>44.76</b>	<b>45.29</b>	<b>50.37</b>	<b>47.59</b>	<b>44.21</b>	<b>49.32</b>	<b>46.10</b>

Result indicators for each objective	Base Year (2003-04)		Year 1 (2004/05)		Year 2 (2005-06)		Year 3 (2006-07)	
	In moving toward UEE, reduce out-of-school children and increase enrollment.	% of classrooms constructed against sanctioned	99.87%	% of classrooms built against sanctioned	97.41%	% of classrooms built against sanctioned	74.98%	% of classrooms built against sanctioned
% of schools sanctioned becoming operational		75.59%	% of schools sanctioned becoming operational	NT	% of schools sanctioned becoming operational	70.62%	% of schools sanctioned becoming operational	0.02%
% of teachers sanctioned appointed		58.70%	% of teachers sanctioned appointed (Including spill over)	96.34%	% of teachers sanctioned appointed (Including spill over)	77.78%	% of teachers sanctioned appointed (including spill over)	42.40%
% of schools with drinking water facility constructed against sanctioned		99.45%	% of schools with drinking water facility constructed against sanctioned	89.86%	% of schools with drinking water facility constructed against sanctioned	87.00%	% of schools with drinking water facility constructed against sanctioned	NT
% of schools with toilet for girls constructed against sanctioned		#####	% of schools with toilet for girls constructed against sanctioned	89.78%	% of schools with toilet for girls constructed against sanctioned	80.93%	% of schools with toilet for girls constructed against sanctioned	NT
% of children in enrolled in EGS/AS compared to plan target		NT	% of children in enrolled in EGS/AS compared to plan target	NT	% of children in enrolled in EGS/AS compared to plan target	NT	% of children in enrolled in EGS/AS compared to plan target	NT
Narrow existing gender and social gaps	% of girls, % of SC, % of ST students received free textbooks	100%	% of girls, % of SC, % of ST students received free textbooks	100%	% of girls, % of SC, % of ST students received free textbooks	Not Provided	% of girls, % of SC, % of ST students received free textbooks	Distribution is under process
	% of female teachers service in the school system	25.21%	% of female teachers	28.62%	% of female teachers	28.81%	% of female teachers	DISE under compilation
Provision of quality inputs to improve learning	Pupil-teacher ratio is 43:1	56.75%	Average PTR	54.35%	Average PTR	48.10%	Average PTR	DISE under compilation
	% of BRC sanctioned becoming operational	100%	% of BRC sanctioned become operational	99%	% of BRC sanctioned become operational	100%	% of BRC sanctioned become operational	100%
	% of CRC sanctioned becoming operational	100%	% of CRC sanctioned become operational	93%	% of CRC sanctioned become operational	100%	% of CRC sanctioned become operational	100%
	% of teachers trained against sanctioned	57%	% of teachers trained against sanctioned	77%	% of teachers trained against sanctioned	47%	% of teachers trained against sanctioned	27%
	Student attendance rate is 67% in public schools and 75% in private schools	NA		NA	Survey of student absenteeism implemented	NA	Results reported	NA
	Teacher attendance rate is 76%	NA		NA	Survey of teacher absenteeism implemented (same survey as above)	NA	Results reported	NA
Quality of language and mathematics test scores						Reliability, validity and comparability of tests over time		

**Table 3.3.1 Monitoring Indicators**

Reduce out of school children and increase enrollment

SSA cumulative (2002-03 to 2006-07) (as on 31.12.2006)

Category	State Total Cumulative up to 2006-07		
	Sanc.	Comp	% of comp
Classroom Constructions	30120	17091	57%
Opening of New Primary Schools	17842	16201	91%
Opening of New Upper Primary Schools	6158	5824	95%
Appointment of Teachers	82994	64243	77%
Provision of Drinking Water Facilities	5708	5201	91%
Toilets Including Girls Toilets	7018	6344	90%

### Monitoring Indicators Annex 2(c)

Indicator : Narrowing existing gender and social gaps

State: Jharkhand

Category	State Total			
	2003-04	2004-05	2005-06	2006-07
No. of girls enrolled at class I-VIII	1535776	1741189	2491697	DISE under compilation
No. of girls having free text books #	All	All		
% of girls students having free text books #	100%	100%		
No. of SC enrolled at class I-VIII	429917	520564	759879	DISE under compilation
% of SC students having free text books #	100%	100%		
No. of ST enrolled at class I-VIII	1012172	1109638	1735138	DISE under compilation
% of ST students having free text books #	100%	100%		
No. of male teacher	44249	49933	73718	DISE under compilation
No. of female teacher	14913	20019	29840	
% of female teachers serving in the system	25.21	28.62	28.81	

**# Book not provided in 2005-06 & distribution is under process for 2006-07**

**Monitoring Indicators Annex 2(d)**

Provision of quality inputs to improve learning

State: Jharkhand

Category	State Total			
	(Under SSA Only)			
	2003-04	2004-05	2005-06	2006-07
Pupil teacher ratio (Source DISE)	56.75	54.35	48.10	DISE under compilation
No. of BRC sanctioned	109	116	212	212
No. of BRC operational	109	115	212	212
% of BRC operational	100%	99%	100%	100%
No. of CRC sanctioned	91	1133	1827	2079
No. of CRC operational	91	1059	1827	2079
% of CRC operational	100%	93%	100%	100%
No. of teachers targeted for training	51210	75715	181245	122002
No. of teachers unit trained	29331	58364.6	84746	32402
% of teachers trained against sanctioned	57%	77%	47%	27%
Students attendance rate*				
Teachers attendance rate*				
<b>* Survey Under Process</b>				

**Table 3.2.5 Principal out comes**

Share of Sc, ST and Disabled children as a share students enrolled at primary and upper primary schools

State: Jharkhand

Disaggregation	State Total *					
	Primary			Upper Primary		
	2003-04	2004-05	2005-06	2003-04	2004-05	2005-06
Total enrollment	2927384	3233451	4493194	490028	588105	812649
Girls enrollment	1333006	1494490	2133405	202770	246999	358292
% Share of Girls enrollment	45.54%	46.22%	47.48%	41.38%	42.00%	44.09%
SC enrollment	377428	453248	665689	52489	129775	94190
% Share of SC enrollment	12.89%	14.02%	14.82%	10.71%	22.07%	11.59%
ST enrollment	887605	968131	1511811	124567	141507	223327
% Share of ST enrollment	30.32%	29.94%	33.65%	25.42%	24.06%	27.48%
Disabled enrollment	24441	23627	27676	2451	3206	6477
% Share of Disabled enrollment	0.83%	0.73%	0.62%	0.50%	0.55%	0.80%

## Expenditure Outlay

(Rs. in lakhs)

Sl. No.	Name of Districts	Approved Budget	Total Funds	Expenditure upto 31.12.2006
1	Hazaribag	5013.83	2293.01	932.01
2	Kodarma	2022.97	907.7	400.97
3	Chatra	3800.68	1722.12	861.65
4	Bokaro	3547.52	1619.95	971.39
5	Dhanbad	3907.8	1763.48	939.97
6	Giridih	8821.22	3539.88	741.13
7	Ranchi	4997.76	2497.13	1881.24
8	Gumla	4398.21	2007.39	682.16
9	Simdega	2916.94	1662.97	738.83
10	Lohardagga	2383.03	1052.99	497.16
11	East Singhbhum	3419.08	1870.15	1212.94
12	West Singhbhum	4956.84	2282.1	1470.76
13	Saraikela-Kharsawan	3451	1578.6	890.9
14	Deoghar	6141.54	2605.95	1946.45
15	Dumka	3997.79	1803.51	1367.05
16	Jamtara	3221.11	1483.55	768.08
17	Godda	5675.59	2570.68	1770.32
18	Pakur	3860.35	1745.25	1323.68
19	Sahebganj	4801.8	2218.52	1450.37
20	Palamu	8083.88	3731.83	866.87
21	Latehar	3258.26	1494.67	1262.54
22	Garhwa	5147.05	2359.32	1478.21
23	State Project Office	372.13	3792.55	106.39
<b>Total (State)</b>		<b>98196.32</b>	<b>48603.29</b>	<b>24561.04</b>



Quarterly Progress Statement

Annexure-I

(Rs. in lakhs)

State : JHARKHAND  
Quarter Ending: December, 2006

S. No.	Activity	Unit	Cumulative progress from the beginning of the programme till the end of the previous year		Approved AWP&B including spill over (2006-07)		Quarterly Progress (2006-07)								Total for this year till the end of the quarter (2006-07)		Balance available for the year	Cumulative progress from the beginning of the Programme till the end of the quarter		Remarks	
			Phy	Fin	Phy	Fin	Quarter 1		Quarter 2		Quarter 3		Quarter 4		Phy	Fin	Fin	Phy	Fin		
							Phy	Fin	Phy	Fin	Phy	Fin	Phy	Fin							
1	2	3	4	5	6	7	8	9	10	11	12	13	14	15	16	17	18	19	20	21	
1	PRIMARY																				
1.1	New Primary School (Phy)	No. of schools	11368		6474		0		3807		1026				4833				16201		
	Salary																				
1.2	New Teacher ( Regular)	No. of teachers																			
	(a) Male																				
	(b) Female																				
	Sub Total			0.00		0.00		0.00		0.00		0.00		0.00		0.00		0.00		0.00	
1.3	New Para Teacher	No. of teachers																			
	(a) Male				12040	2347.80			4168	347.90	3393	156.79			7561	504.69	1843.11	7561	504.69		
	(b) Female																				
	Sub Total			0.00	2347.80		0.00	347.90	156.79	0.00	504.69	1843.11		504.69	1843.11		504.69		504.69		
1.4	Additional Teacher ( Regular)	No. of teachers																			
	(a) Male																				
	(b) Female																				
	Sub Total			0.00	0.00		0.00	0.00	0.00		0.00	0.00		0.00		0.00		0.00		0.00	
1.5	Additional Teacher ( Para)	No. of teachers																			
	(a) Male				54.00	9966	1195.92		3335	118.42	1707	112.14			5042	230.56	965.36	5042	284.56		
	(b) Female																				
	Sub Total			54.00	1195.92		0.00	118.42	112.14		0.00	230.56	965.36		230.56	965.36		284.56		284.56	
1.6	Previous years sanctioned teachers (Regular)	No. of teachers																			
	(a) Male																				
	(b) Female																				
	Sub Total			0.00	0.00		0.00	0.00	0.00		0.00	0.00		0.00		0.00		0.00		0.00	
1.7	Previous years sanctioned teachers (Para)	No. of teachers																			
	(a) Male			40235	9357.98	43229	10374.96	40235	285.43	40235	3348.55	40235	875.28		40235	4509.26	5865.70	40235	13867.24		40235 Para teachers have already been appointed till 2005-06
	(b) Female																				
	Sub Total			9357.98	10374.96		285.43	3348.55	875.28		0.00	4509.26	5865.70		4509.26	5865.70		13867.24			
	Total			9411.98	13918.68		285.43	3814.87	1144.21		0.00	5244.51	8674.17		5244.51	8674.17		14656.49			

Quarterly Progress Statement

Annexure-I

(Rs. in lakhs)

State : JHARKHAND  
Quarter Ending: December, 2006

S. No.	Activity	Unit	Cumulative progress from the beginning of the programme till the end of the previous year		Approved AWP&B including spill over (2006-07)		Quarterly Progress (2006-07)								Total for this year till the end of the quarter (2006-07)		Balance available for the year	Cumulative progress from the beginning of the Programme till the end of the quarter		Remarks	
			Phy	Fin	Phy	Fin	Quarter 1		Quarter 2		Quarter 3		Quarter 4		Phy	Fin	Fin	Phy	Fin		
							Phy	Fin	Phy	Fin	Phy	Fin	Phy	Fin							
1	2	3	4	5	6	7	8	9	10	11	12	13	14	15	16	17	18	19	20	21	
2	<b>UPPER PRIMARY</b>																				
2.1	New Upper Primary School (phy)	No. of schools	4286		1872		8		1058		472				1538				5824		
2.2	New Teacher ( Regular)	No. of teachers																			
	(a) Male																				
	(b) Female																				
	<b>Sub Total</b>			0.00		0.00		0.00		0.00		0.00		0.00		0.00		0.00		0.00	
2.3	New Para Teacher	No. of teachers																			
	(a) Male				5568	890.88		0.00	999	4.24	1123	20.27			2122	24.51	866.37	2122	24.51		
	(b) Female																				
	<b>Sub Total</b>			0.00		890.88		0.00		4.24		20.27		0.00		24.51		866.37		24.51	
2.4	Additional Teacher ( Regular)	No. of teachers																			
	(a) Male																				
	(b) Female																				
	<b>Sub Total</b>			0.00		0.00		0.00		0.00		0.00		0.00		0.00		0.00		0.00	
2.5	Additional Teacher ( Para)	No. of teachers																			
	(a) Male																				
	(b) Female																				
	<b>Sub Total</b>			0.00		0.00		0.00		0.00		0.00		0.00		0.00		0.00		0.00	
2.6	Previous years sanctioned teachers (Regular)	No. of teachers																			
	(a) Male																				
	(b) Female																				
	<b>Sub Total</b>			0.00		0.00		0.00		0.00		0.00		0.00		0.00		0.00		0.00	
2.7	Previous years sanctioned teachers (Para)	No. of teachers																			
	(a) Male			9283	2074.59	12906	3097.44	9283	33.01	9283	402.60	9283	106.26		9283	541.87	2555.57	9283	2616.46		
	(b) Female																				
	<b>Sub Total</b>			2074.59		3097.44		33.01		402.60		106.26		0.00		541.87		2555.57		2616.46	
	<b>Total</b>			2074.59		3988.32		33.01		406.84		126.53		0.00		566.38		3421.94		2640.97	

9283 Teachers have already been appointed till 2005-06

State : JHARKHAND  
Quarter Ending: December, 2006

S. No.	Activity	Unit	Cumulative progress from the beginning of the programme till the end of the previous year		Approved AWP&B including spill over (2006-07)		Quarterly Progress (2006-07)								Total for this year till the end of the quarter (2006-07)		Balance available for the year	Cumulative progress from the beginning of the Programme till the end of the quarter		Remarks	
			Phy	Fin	Phy	Fin	Quarter 1		Quarter 2		Quarter 3		Quarter 4		Phy	Fin		Fin	Phy		Fin
							Phy	Fin	Phy	Fin	Phy	Fin	Phy	Fin			Phy				
1	2	3	4	5	6	7	8	9	10	11	12	13	14	15	16	17	18	19	20	21	
3	Free Text Book to Focus Group Children	No. of children																			
3.1	Primary			5881.88	2877388	4316.07			0.00		0.00	3913513	357.22			3913513	357.22	4775.62	3913513	6239.10	During academic year 2006-07, 23731010 books were printed and delivered for 3913513 children out of which 15829860 Books have so far been distributed.
3.2	Upper Primary				544516	816.77															
	<b>Sub Total</b>				<b>5881.88</b>		<b>5132.84</b>		<b>0.00</b>		<b>0.00</b>		<b>357.22</b>	<b>0.00</b>			<b>357.22</b>	<b>4775.62</b>		<b>6239.10</b>	
4	Repair & Maint. Grant to Schools	No. of Schools																			
4.1	Primary		3479698	2913.34	12958	647.90	0	0.00	11521	576.03	243	12.15			11764	588.18	59.72		3511031	4864.10	
4.2	Upper Primary				7869	786.90	0	0.00	7683	768.26					7683	768.26	18.64				
4.3	Upper Primary Sec. in High School				787	39.35	0	0.00	123	6.14					123	6.14	33.21				
	<b>Sub Total</b>		<b>3479698</b>	<b>2913.34</b>	<b>21614</b>	<b>1474.15</b>	<b>0</b>	<b>0.00</b>	<b>11521</b>	<b>576.03</b>	<b>243</b>	<b>12.15</b>	<b>0</b>	<b>0.00</b>	<b>19569</b>	<b>1362.58</b>	<b>111.57</b>	<b>3511031</b>	<b>4864.10</b>		
5	TLE	No. of Schools																			
5.1	New Primary		11141	1114.99	7029	697.41	101	10.10	650	65.00	2805	280.50			3556	355.60	341.81	14697	1470.585		
	<b>Sub Total</b>		<b>11141</b>	<b>1114.99</b>	<b>7029</b>	<b>697.41</b>	<b>101</b>	<b>10.10</b>	<b>650</b>	<b>65.00</b>	<b>2805</b>	<b>280.50</b>	<b>0</b>	<b>0.00</b>	<b>3556</b>	<b>355.60</b>	<b>341.81</b>	<b>14697</b>	<b>1470.59</b>		
6	TLE	No. of Schools																			
6.1	New Upper Primary		3983	1991.28	1924	1120.05	0	0.00	249	124.50	990	495.00			1239	619.50	500.55	5222	2610.780		
6.2	Existing UPS not covered under OBB		4354	1888.42	434	387.00	0	0.00	0	0.00					0	0.00	387.00	4354	1888.420		
	<b>Sub Total</b>		<b>8337</b>	<b>3879.70</b>		<b>1507.05</b>	<b>0</b>	<b>0.00</b>	<b>249</b>	<b>124.50</b>	<b>990</b>	<b>495.00</b>	<b>0</b>	<b>0.00</b>		<b>619.50</b>	<b>887.55</b>		<b>4499.20</b>		
7	Schools Grant	No. of Schools																			
7.1	Primary		47752	955.03	24908	498.16	523	10.46	21715	434.29	1283	25.66			23521	470.41	27.75	71272	1425.44		
7.2	Upper Primary		6585	263.41	8496	339.84	293	11.72	7472	298.87					7765	310.59	29.25	14350	574.00		
7.3	Upper Primary Sec. in High School		0	0.00	907	18.14	0	0.00	87	1.74					87	1.74	16.40	87	1.74		
	<b>Sub Total</b>		<b>54337</b>	<b>1218.44</b>		<b>856.14</b>	<b>523</b>	<b>22.18</b>	<b>29273.3</b>	<b>734.90</b>		<b>25.66</b>	<b>0</b>	<b>0.00</b>	<b>31372</b>	<b>782.74</b>	<b>73.40</b>	<b>85709</b>	<b>2001.18</b>		
8	Teacher Grant	No. of Teachers																			
8.1	Primary		98982	494.91	61511	307.56	0	0.00	36004	180.02					36004	180.02	127.54	134986	674.93		
8.2	Upper Primary		55158	275.79	76347	381.74	0	0.00	61054	305.27					61054	305.27	76.47	116212	581.06		
	<b>Sub Total</b>		<b>154140</b>	<b>770.70</b>	<b>137858</b>	<b>689.30</b>	<b>0</b>	<b>0.00</b>	<b>97058</b>	<b>485.29</b>	<b>0</b>	<b>0.00</b>	<b>0</b>	<b>0.00</b>	<b>97058</b>	<b>485.29</b>	<b>204.01</b>	<b>251198</b>	<b>1255.99</b>		
9	Teachers Training (Primary)	No. of teachers																			
9.1	In-service (Govt. Teacher)		54582	534.20	54981	384.89		14.24	3176	42.18	16398	98.36			19574	154.78	230.11	74156	688.98		
9.2	New Recruit (Para Teacher)		20141	251.18	43968	461.65		1.40	1558	43.30	3368	27.62			4926	72.32	389.33	25067	323.50		
9.3	Untrained		13176	262.14	23053	975.24		10.09	5746	164.88	2156	115.64			7902	290.61	684.63	21078	552.75		
9.4	Distance Education		28973	327.43	12167	262.23		5.79	408	0.52	0	14.38			408	20.69	241.54	29381	348.12		
	<b>Sub Total</b>			<b>1374.95</b>		<b>2084.01</b>		<b>31.52</b>		<b>250.88</b>		<b>256.00</b>	<b>0.00</b>		<b>538.40</b>	<b>1545.61</b>		<b>1913.35</b>			

State : JHARKHAND  
Quarter Ending: December, 2006

S. No.	Activity	Unit	Cumulative progress from the beginning of the programme till the end of the previous year		Approved AWP&B including spill over (2006-07)		Quarterly Progress (2006-07)								Total for this year till the end of the quarter (2006-07)		Balance available for the year	Cumulative progress from the beginning of the Programme till the end of the quarter		Remarks	
			Phy	Fin	Phy	Fin	Quarter 1		Quarter 2		Quarter 3		Quarter 4		Phy	Fin		Fin	Phy		Fin
							Phy	Fin	Phy	Fin	Phy	Fin	Phy	Fin							
1	2	3	4	5	6	7	8	9	10	11	12	13	14	15	16	17	18	19	20	21	
<b>10</b>	<b>Teachers Training (Upper Primary)</b>	No. of teachers																			
10.1	In-service course 20 days																				
10.2	Orientation for freshly trained Recruits - 30 days																				
10.3	Refresh course for untrained teachers - 60 days																				
10.4	DRG/BRG/CRG																				
	<b>Sub Total</b>			<b>0.00</b>		<b>0.00</b>		<b>0.00</b>		<b>0.00</b>		<b>0.00</b>		<b>0.00</b>		<b>0.00</b>		<b>0.00</b>		<b>0.00</b>	
<b>11</b>	<b>SIEMAT</b>																				
	<b>Sub Total</b>			<b>0.00</b>		<b>0.00</b>		<b>0.00</b>		<b>0.00</b>		<b>0.00</b>		<b>0.00</b>		<b>0.00</b>		<b>0.00</b>		<b>0.00</b>	
<b>12</b>	<b>Training of community leaders</b>																				
12.1	Training of community leaders as per village	No. of community leaders	186111	198.99	263822	158.28		3.54	30071	12.47	57052	19.49			87123	35.50	122.78	273234	234.49		
12.2	Training of School Management Committee as per school																				
	<b>Sub Total</b>			<b>198.99</b>		<b>158.28</b>		<b>3.54</b>		<b>12.47</b>		<b>19.49</b>		<b>0.00</b>		<b>35.50</b>	<b>122.78</b>		<b>234.49</b>		
<b>13</b>	<b>Interventions for Disabled Children</b>				36376	389.26											362.20				
13.1	Total CWSN enrolled	No. of children	20568						12426		12846				25272	0.00		45840	0.00		
13.2	No. of CWSN actually provided assistive devices		5836						479		555				1034	0.00		6870	0.00		
13.3	Teachers training	No. of teachers	5989	143.13				0.09	1097	23.24	185	3.73			1282	27.06		7271	170.19		
13.4	Training of teacher educators	No. of educators																			
13.5	Barrier Free Access	No. of schools																			
13.6	Others																				
	<b>Sub Total</b>			<b>143.13</b>		<b>389.26</b>		<b>0.09</b>		<b>23.24</b>		<b>3.73</b>		<b>0.00</b>		<b>27.06</b>	<b>362.20</b>		<b>170.19</b>		
<b>14</b>	<b>Research, Evaluation, Supervision and Monitoring</b>																				
14.1	Research & Evaluation	No. of schools		319.95	34311	480.37		30.37		14.09		12.18				56.64	423.73		376.59		
14.2	Supervision & Monitoring																				
	<b>Sub Total</b>			<b>319.95</b>	<b>30812</b>	<b>480.37</b>		<b>30.37</b>		<b>14.09</b>		<b>12.18</b>		<b>0.00</b>		<b>56.64</b>	<b>423.73</b>		<b>376.59</b>		
<b>15</b>	<b>Management &amp; MIS</b>																				
15.1	Management & MIS-District	No. of districts		1028.91		1891.89		110.32		300.51		214.81				625.640	1266.25		1654.550		
15.2	Management & MIS-SPO	No. of SPO		122.79		211.20		24.17		50.80		28.99				103.960	107.24		226.750		
	<b>Sub Total</b>			<b>1151.70</b>		<b>2103.09</b>		<b>134.49</b>		<b>351.31</b>		<b>243.80</b>		<b>0.00</b>		<b>729.60</b>	<b>1373.49</b>		<b>1881.30</b>		

S. No.	Activity	Unit	Cumulative progress from the beginning of the programme till the end of the previous year		Approved AWP&B including spill over (2006-07)		Quarterly Progress (2006-07)								Total for this year till the end of the quarter (2006-07)		Balance available for the year	Cumulative progress from the beginning of the Programme till the end of the quarter		Remarks
			Phy	Fin	Phy	Fin	Quarter 1		Quarter 2		Quarter 3		Quarter 4		Phy	Fin	Fin	Phy	Fin	
							Phy	Fin	Phy	Fin	Phy	Fin	Phy	Fin						
1	2	3	4	5	6	7	8	9	10	11	12	13	14	15	16	17	18	19	20	21
<b>16</b>	<b>Innovative Activity</b>																			
16.1	ECCE	No. of districts		98.06		330.00		1.43		11.11		15.03				27.57	302.43		125.63	
16.2	Girls Education			105.44		220.00		7.09		6.59		14.55				28.23	191.78		133.67	
16.3	SC/ST			81.50		220.00		2.74		4.32		2.10				9.16	210.85		90.66	
16.4	Computer Education for upper primary level			237.41		635.61		0.07		0.00		102.25				102.32	533.29		339.73	
	<b>Sub Total</b>		63.9100		<b>522.41</b>		<b>1405.61</b>		<b>11.32</b>		<b>22.02</b>		<b>133.93</b>		<b>0.00</b>		<b>167.27</b>	<b>1238.34</b>		<b>689.68</b>
<b>17</b>	<b>Block Resource Centre</b>																			
17.1	Salary of Resource Persons - 1	No. of RP	150	54.57	212	190.80	185	4.82	185	32.79	185	14.25			185	51.86	138.94	705	106.43	
17.2	Salary of Resource Persons - 2		135	33.66	212	190.80	143	1.34	143	15.12	143	12.43			143	28.89	161.91	564	62.55	
17.3	Salary of Resource Persons - 3		129	28.89	212	190.80	160	0.63	160	16.22	160	13.37			160	30.22	160.58	609	59.11	
17.4	Furniture Grant	No. of BRC		116.00	50	64.00		0.00		0.00		0.00			0	0.00	64.00	0	116.00	
17.5	Contingency Grant			37.51	212	26.55		0.92		4.07		2.85			0	7.84	18.71	0	45.35	
17.6	Meeting, TA			15.92	212	12.72		0.67		1.50		1.14			0	3.31	9.41	0	19.23	
17.7	TLM Grant			13.44	212	10.60		0.56		1.37		0.95			0	2.88	7.72	0	16.32	
	<b>Sub Total</b>			<b>299.99</b>		<b>686.27</b>		<b>8.94</b>		<b>71.07</b>		<b>44.99</b>		<b>0.00</b>		<b>125.00</b>	<b>561.27</b>		<b>424.99</b>	
<b>18</b>	<b>Cluster Resource Centre</b>																			
18.1	Salary of Resource Persons	No. of RP	4207	627.19	4845	2907.00	4638	56.29	4638	315.99	4638	276.50			4638	648.78	2258.22	18121	1275.97	
18.2	Furniture Grant	No. of CRC		82.31	959	118.87		0.00		0.00		7.40			0	7.40	111.47	0	89.71	
18.3	Contingency Grant			70.12	2079	52.02		1.25		3.53		8.91			0	13.69	38.33	0	83.81	
18.4	Meeting, TA			54.65	2079	49.90		1.20		3.42		8.55			0	13.17	36.73	0	67.82	
18.5	TLM Grant			25.60	2079	20.79		0.50		1.41		3.55			0	5.46	15.33	0	31.06	
	<b>Sub Total</b>			<b>859.87</b>		<b>3148.58</b>		<b>59.24</b>		<b>324.35</b>		<b>304.91</b>		<b>0.00</b>		<b>688.50</b>	<b>2460.08</b>		<b>1548.37</b>	
<b>19</b>	<b>Interventions for Out of School Children</b>																			
19.1	EGS (Primary)	No. of Centres	17001	4462.32	33229	265.83		0.07	27836	23.53		28.76			27836	52.36	213.47	44837	4514.68	6542 EGS centres are operational till Dec.,05
19.2	EGS (Upper Primary)		310	37.35	27859	334.31		2.00		41.08		12.39			0	55.47	278.84	310	92.82	
19.3	Back to School	No. of Children	3753	38.08	23450	187.60		4.72	6833	1.86	75	0.11			6908	6.69	180.91	10661	44.77	
19.4	Bridge Course New (6-11) Non-res.		5089	139.87	110748	886.01	135	6.45	30239	5.63	15387	26.89			45761	38.97	847.04	50850	178.84	
19.5	Bridge Course New (11-14) Non-res.		346002	1072.27	123296	1479.57		0.33		5.86		72.82			0	79.01	1400.56	346002	1151.28	
19.6	Remedial Teaching		38968	78.74	214369	214.37		0.00	33585	1.17	47696	5.89			81281	7.06	207.31	120249	85.80	
19.7	Residential Camp		2730	41.09	28608	1945.34		2.16	3681	18.07	2181	2.36			5862	22.59	1922.76	8592	63.67	
19.8	Innovative Education		12109	79.34	21300	659.00		8.98	3501	9.66	2679	5.37			6180	24.01	635.00	18289	103.34	
19.9	Others		6821	0.03	0	0.00		0.00		0.00		0.00			0	0.00	0.00	6821	0.03	
	<b>Sub Total</b>			<b>5949.08</b>		<b>5972.03</b>		<b>24.70</b>		<b>106.86</b>		<b>154.59</b>		<b>0.00</b>		<b>286.15</b>	<b>5685.88</b>		<b>6235.23</b>	

State : JHARKHAND  
Quarter Ending: December, 2006

S. No.	Activity	Unit	Cumulative progress from the beginning of the programme till the end of the previous year		Approved AWP&B including spill over (2006-07)		Quarterly Progress (2006-07)								Total for this year till the end of the quarter (2006-07)		Balance available for the year	Cumulative progress from the beginning of the Programme till the end of the quarter		Remarks
			Phy	Fin	Phy	Fin	Quarter 1		Quarter 2		Quarter 3		Quarter 4		Phy	Fin		Fin	Phy	
							Phy	Fin	Phy	Fin	Phy	Fin	Phy	Fin			Phy			
1	2	3	4	5	6	7	8	9	10	11	12	13	14	15	16	17	18	19	20	21
20	<b>NPEGEL</b>																			
20.1	Model Cluster Schools for girls	No. of Clusters	486	2187.19	1865	3773.56	14	74.39	379	2.52	51	360.59			444	437.50	3336.06	930	2624.69	
20.2	TLE, library, sports, vocational training etc.		1163	341.39	1747	548.72		10.80		0.00	220	105.49			220	116.29	432.43	1383	457.68	
20.3	Recurring grant to model cluster schools		437	225.41	2995	424.70		0.00		4.80		79.30			0	84.10	340.60	437	309.51	
20.4	Awards to schools / teachers		0	31.32	2995	106.18		0.00		0.00		9.10			0	9.10	97.08	0	40.42	
20.5	Student evaluation, remedial teaching, bridge courses, alternative schools		0	83.23	2995	424.71		0.47		0.74		0.00			0	1.21	423.50	0	84.44	
20.6	Learning through open schools		187	16.94	2995	106.18		0.41		1.04		1.07			0	2.52	103.66	187	19.46	
20.7	Teacher Training		0	12.91	2995	84.94		0.22		0.30		4.13			0	4.65	80.29	0	17.56	
20.8	Child Care Centre		1672	96.09	5990	254.82		0.44		8.33	1115	9.90			1115	18.67	236.16	2787	114.76	
20.9	Additional Incentives	No. of girl students	0	0.00				0.00		0.00				0	0.00	0.00	0	0.00		
20.10	Community Mobilization and Management Cost	No. of clusters	0	130.57		365.03		4.86		35.60		20.28		0	60.74	304.29	0	191.31		
	<b>Sub Total</b>			<b>3125.05</b>		<b>6088.84</b>		<b>91.58</b>		<b>53.33</b>		<b>589.86</b>	<b>0.00</b>		<b>734.77</b>	<b>5354.07</b>		<b>3859.82</b>		
21.1	Civil Works			38812.21		53504.93		516.77		2313.67		9330.12	0.00		12160.56	41344.37		50972.77		
	<b>Grand Total</b>			<b>80022.95</b>		<b>104285.16</b>		<b>1263.28</b>		<b>9750.72</b>		<b>13534.87</b>	<b>0.00</b>		<b>25323.27</b>	<b>78961.89</b>		<b>105934.40</b>		

