



GOVERNMENT OF ASSAM
DEPARTMENT OF SCHOOL EDUCATION
EXECUTIVE SUMMARY
GUNOTSAV 2023

SAMAGRA SHIKSHA, ASSAM
KAHILIPARA, GUWAHATI-781019



GUNOTSAV- 2023, ASSAM:

Gunotsav is a programme designed for qualitative improvement in schools education which includes learning outcomes of children as well as co-scholastic activities, use of resources and community participation as a whole.

Quality education is a major concern of the State. Over the years, various efforts and initiatives have been taken for improvement of Children's Learning Outcome across the State. It is earnestly felt that several grey areas are still there in the State of Assam in the school education sector, such as decline in enrolment, achievement level of every learner, utilisation of available resources, adequacy in infrastructure availability, accountability of teacher fraternity, etc. which require immediate attention and supportive measures as well.

With an objective to evaluate school education in the state and grade the schools accordingly so as to formulate specific strategy to achieve visible and measurable positive change in Elementary and Secondary Schools in the State, the programme of Gunotsav has been designed and implemented in the academic year, 2017, 2018,2022 and 2023.

The entire Govt machinery including Hon'ble Chief Minister, Ministers, Hon'ble MLAs, Chief Secretary to the GOA, senior IAS, IPS and IFS officers, class I & II officers of the state are engaged as External Evaluator of Gunotsav and visited schools.

All Government/ Provincialised, Tea Garden Management Schools, Tea Garden Model Schools, Adarsha Vidyalayas, Kasturba Gandhi Balika Vidyalayas (KGBVs) and Residential Schools are covered in three phases. Scholastic evaluation was done for class I to IX.

Phase	Date of self-evaluation	Date of external evaluation	Total districts
I	18th January,2023	19th to 21st January,2023	11
II	1stFebruary,2023	2nd to 4th February,2023	13
III	15th February,2023	16th to 18th February,2023	09

Coverage, Gunotsav 2023:

District	No of Schools Evaluated	Target Children	Children Appeared	No of External Evaluator	No of Liaison Officer	% of Children Appeared
33	44531	42,76,881	41,35,163	18,097	4609	96.69%

DISTRICT WISE STATUS OF COVERAGE:

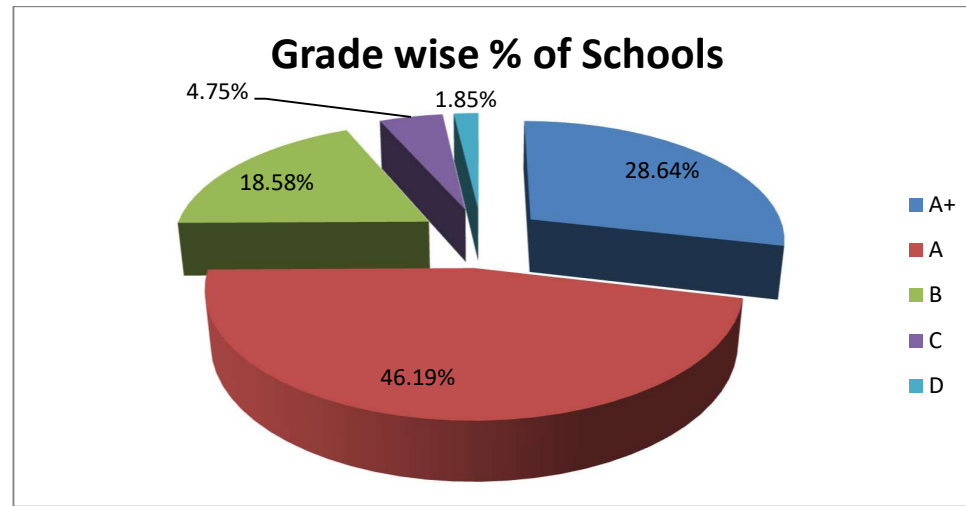
Sl No	District	No of Schools Evaluated	Target Children	Children Appeared	No of External Evaluator	No of Liaison Officer	% of Children Appeared	Phase
1	BAKSA	1725	112156	107341	665	160	95.71%	2
2	BARPETA	2215	262536	250795	928	236	95.53%	1
3	BISWANATH	1066	102369	98653	432	105	96.37%	3
4	BONGAIGAON	962	116916	112615	396	106	96.32%	3
5	CACHAR	2163	250387	240962	911	227	96.24%	3
6	CHARAIDEO	740	57552	57294	304	70	99.55%	2
7	CHIRANG	916	70405	65476	368	77	93.00%	2
8	DARRANG	1193	140274	133396	497	126	95.10%	3
9	DHEMAJI	1431	99151	97782	581	158	98.62%	2
10	DHUBRI	1960	299335	287104	841	233	95.91%	2
11	DIBRUGARH	1652	135550	129857	645	157	95.80%	3
12	DIMA HASAO	857	21417	21038	344	108	98.23%	3
13	GOALPARA	1630	180059	178351	682	167	99.05%	3
14	GOLAGHAT	1449	121100	120258	571	147	99.30%	2

SI No	District	No of Schools Evaluated	Target Children	Children Appeared	No of External Evaluator	No of Liaison Officer	% of Children Appeared	Phase
15	HAILAKANDI	1306	110679	107550	511	131	97.17%	2
16	HOJAI	941	137601	133761	407	84	97.21%	2
17	JORHAT	1222	86355	85316	521	134	98.80%	2
18	KAMRUP-METRO	615	76737	71875	269	69	93.66%	2
19	KAMRUP-RURAL	2129	189911	187375	854	221	98.66%	1
20	KARBI ANGLONG	1342	77963	75271	510	153	96.55%	1
21	KARIMGANJ	1860	208421	201336	747	173	96.60%	1
22	KOKRAJHAR	1616	125432	119663	637	157	95.40%	1
23	LAKHIMPUR	2099	157262	149223	817	221	94.89%	1
24	MAJULI	540	24647	24530	204	57	99.53%	1
25	MORIGAON	1399	164172	161353	585	142	98.28%	3
26	NAGAON	2128	285410	278304	902	222	97.51%	1
27	NALBARI	1104	93443	90923	440	121	97.30%	3
28	SIBSAGAR	1266	73532	73452	497	123	99.89%	1
29	SONITPUR	1145	143985	135902	478	120	94.39%	2
30	SOUTH SALMARA-MANKACHAR	406	64580	62465	182	50	96.72%	1
31	TINSUKIA	1367	149480	145011	565	136	97.01%	2
32	UDALGURI	1336	94733	91143	522	124	96.21%	1
33	WEST KARBI ANGLONG	751	43331	39788	284	94	91.82%	2
TOTAL		44,531	42,76,881	41,35,163	18,097	4609	96.69%	

SCHOOL GRADING:

GRADE	Number of Schools	%
	GUNOTSAV 2023	
A+ (86.50 %- and above)	11886	28.64 %
A (73.50% - 86.49%)	19172	46.19 %
B (60.50% - 73.49%)	7710	18.58 %
C (48.50% - 60.49%)	1972	4.75 %
D (0 - 48.49%)	767	1.85 %
ALL GRADES	41507	

**Schools having enrolment less than 15 have not been considered for grading like previous year Gunotsav.*



District wise Grading-GUNOTSAV2023[Includes 90% Scholastic, 5% Co-Scholastic and 5% Community Participation]

Sl No	District Name	Number of School					TOTAL SCHOOL	% of School				
		A+	A	B	C	D		A+	A	B	C	D
1	BAKSA	324	753	362	90	29	1558	20.80	48.33	23.23	5.78	1.86
2	BARPETA	517	1079	412	98	36	2142	24.14	50.37	19.23	4.58	1.68
3	BISWANATH	314	471	182	44	15	1026	30.60	45.91	17.74	4.29	1.46
4	BONGAIGAON	156	507	194	50	13	920	16.96	55.11	21.09	5.43	1.41
5	CACHAR	720	877	359	117	27	2100	34.29	41.76	17.10	5.57	1.29
6	CHARAIDEO	377	276	47	7	1	708	53.25	38.98	6.64	0.99	0.14
7	CHIRANG	79	329	254	92	34	788	10.03	41.75	32.23	11.68	4.31
8	DARRANG	335	513	226	48	15	1137	29.46	45.12	19.88	4.22	1.32
9	DHEMAJI	514	576	185	39	15	1329	38.68	43.34	13.92	2.93	1.13
10	DHUBRI	563	901	388	75	23	1950	28.87	46.21	19.90	3.85	1.18
11	DIBRUGARH	404	742	320	65	43	1574	25.67	47.14	20.33	4.13	2.73
12	DIMA HASAO	66	222	75	21	8	392	16.84	56.63	19.13	5.36	2.04
13	GOALPARA	455	775	253	47	11	1541	29.53	50.29	16.42	3.05	0.71
14	GOLAGHAT	677	592	90	14	2	1375	49.24	43.05	6.55	1.02	0.15
15	HAILAKANDI	378	570	230	65	16	1259	30.02	45.27	18.27	5.16	1.27
16	HOJAI	251	497	147	32	7	934	26.87	53.21	15.74	3.43	0.75
17	JORHAT	399	543	134	34	7	1117	35.72	48.61	12.00	3.04	0.63
18	KAMRUP	732	939	221	33	14	1939	37.75	48.43	11.40	1.70	0.72
19	KAMRUP METRO	98	260	158	54	24	594	16.50	43.77	26.60	9.09	4.04
20	KARBI ANGLONG	135	507	355	102	66	1165	11.59	43.52	30.47	8.76	5.67
21	KARIMGANJ	492	849	383	84	25	1833	26.84	46.32	20.89	4.58	1.36
22	KOKRAJHAR	178	706	420	124	44	1472	12.09	47.96	28.53	8.42	2.99
23	LAKHIMPUR	412	816	445	162	88	1923	21.42	42.43	23.14	8.42	4.58
24	MAJULI	223	183	40	3	0	449	49.67	40.76	8.91	0.67	-
25	MORIGAON	270	705	319	72	15	1381	19.55	51.05	23.10	5.21	1.09

SI No	District Name	Number of School					TOTAL SCHOOL	% of School				
		A+	A	B	C	D		A+	A	B	C	D
26	NAGAON	726	1011	275	47	16	2075	34.99	48.72	13.25	2.27	0.77
27	NALBARI	348	492	149	30	18	1037	33.56	47.44	14.37	2.89	1.74
28	SIVASAGAR	800	288	20	3	2	1113	71.88	25.88	1.80	0.27	0.18
29	SONITPUR	253	500	245	82	30	1110	22.79	45.05	22.07	7.39	2.70
30	SOUTH SALMARA MANKACHAR	93	230	67	13	2	405	22.96	56.79	16.54	3.21	0.49
31	TINSUKIA	395	650	217	44	23	1329	29.72	48.91	16.33	3.31	1.73
32	UDALGURI	166	594	325	87	25	1197	13.87	49.62	27.15	7.27	2.09
33	WEST KARBI ANGLONG	36	219	213	94	73	635	5.67	34.49	33.54	14.80	11.50
Grand Total		11886	19172	7710	1972	767	41507	28.64	46.19	18.58	4.75	1.85

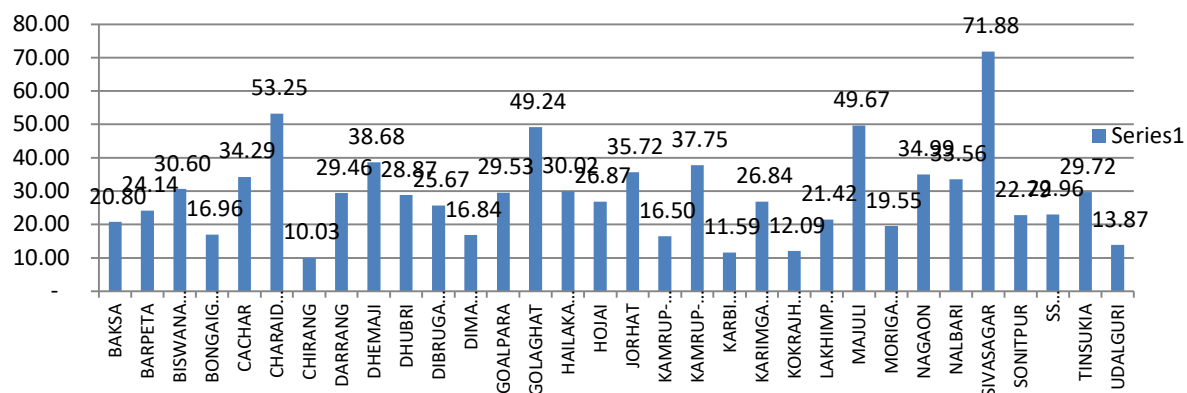
**Infrastructure has not been taken into consideration for school grading as like as previous year.*

District wise Ranking :

SI No	District Name	Number of School						Weightage					Total	Rank
		A+	A	B	C	D	Total	A+ (0.4)	A (0.3)	B (0.15)	C (0.10)	D (0.05)		
1	SIVASAGAR	800	288	20	3	2	1113	0.2875	0.0776	0.0027	0.0003	0.0001	0.3682	1st
2	CHARAIDEO	377	276	47	7	1	708	0.2130	0.1169	0.0100	0.0010	0.0001	0.3410	2nd
3	GOLAGHAT	677	592	90	14	2	1375	0.1969	0.1292	0.0098	0.0010	0.0001	0.3370	3rd
4	MAJULI	223	183	40	3	0	449	0.1987	0.1223	0.0134	0.0007	0.0000	0.3350	4th
5	KAMRUP	732	939	221	33	14	1939	0.1510	0.1453	0.0171	0.0017	0.0004	0.3154	5th
6	JORHAT	399	543	134	34	7	1117	0.1429	0.1458	0.0180	0.0030	0.0003	0.3101	6th
7	DHEMAJI	514	576	185	39	15	1329	0.1547	0.1300	0.0209	0.0029	0.0006	0.3091	7th
8	NAGAON	726	1011	275	47	16	2075	0.1400	0.1462	0.0199	0.0023	0.0004	0.3087	8th
9	NALBARI	348	492	149	30	18	1037	0.1342	0.1423	0.0216	0.0029	0.0009	0.3019	9th

Sl No	District Name	Number of School						Weightage					Total	Rank
		A+	A	B	C	D	Total	A+ (0.4)	A (0.3)	B (0.15)	C (0.10)	D (0.05)		
10	GOALPARA	455	775	253	47	11	1541	0.1181	0.1509	0.0246	0.0030	0.0004	0.2970	10th
11	HOJAI	251	497	147	32	7	934	0.1075	0.1596	0.0236	0.0034	0.0004	0.2945	11th
12	CACHAR	720	877	359	117	27	2100	0.1371	0.1253	0.0256	0.0056	0.0006	0.2943	12th
13	TINSUKIA	395	650	217	44	23	1329	0.1189	0.1467	0.0245	0.0033	0.0009	0.2943	13th
14	BISWANATH	314	471	182	44	15	1026	0.1224	0.1377	0.0266	0.0043	0.0007	0.2918	14th
15	SOUTH SALMARA MANKACHAR	93	230	67	13	2	405	0.0919	0.1704	0.0248	0.0032	0.0002	0.2905	15th
16	HAILAKANDI	378	570	230	65	16	1259	0.1201	0.1358	0.0274	0.0052	0.0006	0.2891	16th
17	DHUBRI	563	901	388	75	23	1950	0.1155	0.1386	0.0298	0.0038	0.0006	0.2884	17th
18	DARRANG	335	513	226	48	15	1137	0.1179	0.1354	0.0298	0.0042	0.0007	0.2879	18th
19	KARIMGANJ	492	849	383	84	25	1833	0.1074	0.1390	0.0313	0.0046	0.0007	0.2829	19th
20	BARPETA	517	1079	412	98	36	2142	0.0965	0.1511	0.0289	0.0046	0.0008	0.2819	20th
21	DIBRUGARH	404	742	320	65	43	1574	0.1027	0.1414	0.0305	0.0041	0.0014	0.2801	21st
22	DIMA HASAO	66	222	75	21	8	392	0.0673	0.1699	0.0287	0.0054	0.0010	0.2723	22nd
23	MORIGAON	270	705	319	72	15	1381	0.0782	0.1531	0.0346	0.0052	0.0005	0.2718	23rd
24	BONGAIGAON	156	507	194	50	13	920	0.0678	0.1653	0.0316	0.0054	0.0007	0.2709	24th
25	BAKSA	324	753	362	90	29	1558	0.0832	0.1450	0.0349	0.0058	0.0009	0.2697	25th
26	SONITPUR	253	500	245	82	30	1110	0.0912	0.1351	0.0331	0.0074	0.0014	0.2682	26th
27	LAKHIMPUR	412	816	445	162	88	1923	0.0857	0.1273	0.0347	0.0084	0.0023	0.2584	27th
28	UDALGURI	166	594	325	87	25	1197	0.0555	0.1489	0.0407	0.0073	0.0010	0.2534	28th
29	KAMRUP METRO	98	260	158	54	24	594	0.0660	0.1313	0.0399	0.0091	0.0020	0.2483	29th
30	KOKRAJHAR	178	706	420	124	44	1472	0.0484	0.1439	0.0428	0.0084	0.0015	0.2450	30th
31	KARBI ANGLONG	135	507	355	102	66	1165	0.0464	0.1306	0.0457	0.0088	0.0028	0.2342	31st
32	CHIRANG	79	329	254	92	34	788	0.0401	0.1253	0.0484	0.0117	0.0022	0.2275	32nd
33	WEST KARBI ANGLONG	36	219	213	94	73	635	0.0227	0.1035	0.0503	0.0148	0.0057	0.1970	33rd
Grand Total		11886	19172	7710	1972	767	41507							

District Wise % of A+ School in Gunotsav 2023



Class Wise Performance in Subjects for Lower Primary:

CLASS	Number of Students					Total	% of Students				
	A+ (86.50 % - and above)	A (73.50% - 86.49%)	B (60.50% - 73.49%)	C (48.50% - 60.49%)	D(0 - 48.49%)		A+ (86.50 % - and above)	A (73.50% - 86.49%)	B (60.50% - 73.49%)	C (48.50% - 60.49%)	D (0 - 48.49%)
I	422742	64558	27919	12275	9438	536932	78.73%	12.02%	5.20%	2.29%	1.76%
II	389381	72119	32148	14268	19530	527446	73.82%	13.67%	6.10%	2.71%	3.70%
III	188810	180284	71968	32442	42517	516021	36.59%	34.94%	13.95%	6.29%	8.24%
IV	211943	167507	57740	25471	33751	496412	42.69%	33.74%	11.63%	5.13%	6.80%
V	176533	193122	67732	26772	28318	492477	35.85%	39.21%	13.75%	5.44%	5.75%
LP TOTAL	1389409	677590	257507	111228	133554	2569288	54.08%	26.37%	10.02%	4.33%	5.20%

Class Wise Performance in Subjects for Upper Primary:

CLASS	Number of Students					Total	% of Students				
	A+ (86.50 % - and above)	A(73.50% - 86.49%)	B(60.50% - 73.49%)	C(48.50% - 60.49%)	D(0 - 48.49%)		A+ (86.50 % - and above)	A(73.50% - 86.49%)	B(60.50% - 73.49%)	C(48.50% - 60.49%)	D (0 - 48.49%)
VI	73691	171111	96935	40078	41573	423388	17.41%	40.41%	22.90%	9.47%	9.82%
VII	23035	155525	134981	48737	40230	402508	5.72%	38.64%	33.53%	12.11%	9.99%
VIII	65446	181317	95433	30866	25012	398074	16.44%	45.55%	23.97%	7.75%	6.28%
UP TOTAL	162172	507953	327349	119681	106815	1223970	13.25%	41.50%	26.74%	9.78%	8.73%

Class Wise Performance in Subjects for Secondary:

CLASS	Number of Students					Total	% of Students				
	A+ (86.50 % - and above)	A (73.50% - 86.49%)	B (60.50% - 73.49%)	C (48.50% - 60.49%)	D (0 - 48.49%)		A+ (86.50 % - and above)	A (73.50% - 86.49%)	B (60.50% - 73.49%)	C (48.50% - 60.49%)	D (0 - 48.49%)
IX	26385	158645	100516	32680	23679	341905	7.72%	46.40%	29.40%	9.56%	6.93%

CLASS AND SUBJECT WISE GRADING FOR LOWER PRIMARY SCHOOLS:

CLASS -I

CLASS	SUBJECT	Number of Student					Student Total	% of Students				
		A+	A	B	C	D		A+	A	B	C	D
I	L1	439257	49663	22507	18362	7143	536932	81.81%	9.25%	4.19%	3.42%	1.33%
I	L2	427952	50196	23150	22406	13228	536932	79.70%	9.35%	4.31%	4.17%	2.46%
I	MATHS	349004	84905	55258	33431	14334	536932	65.00%	15.81%	10.29%	6.23%	2.67%

CLASS-II

CLASS	SUBJECT	Number of Student					Student	% of Students				
		A+	A	B	C	D	Total	A+	A	B	C	D
II	L1	407190	57480	26274	19372	17130	527446	77.20%	10.90%	4.98%	3.67%	3.25%
II	L2	374443	69386	32025	27162	24430	527446	70.99%	13.16%	6.07%	5.15%	4.63%
II	MATHS	344293	86267	40388	31727	24771	527446	65.28%	16.36%	7.66%	6.02%	4.70%

CLASS -III

CLASS	SUBJECT	Number of Student					Student	% of Students				
		A+	A	B	C	D	Total	A+	A	B	C	D
III	L1	275644	109798	58970	31032	40577	516021	53.42%	21.28%	11.43%	6.01%	7.86%
III	L2	217655	85121	60967	77216	75062	516021	42.18%	16.50%	11.81%	14.96%	14.55%
III	MATHS	231687	122883	85176	26141	50134	516021	44.90%	23.81%	16.51%	5.07%	9.72%
III	EVS	193419	158532	76674	36992	50404	516021	37.48%	30.72%	14.86%	7.17%	9.77%

CLASS -IV

CLASS	SUBJECT	Number of Student					Student	% of Students				
		A+	A	B	C	D	Total	A+	A	B	C	D
IV	L1	272756	104923	55488	28630	34615	496412	54.95%	21.14%	11.18%	5.77%	6.97%
IV	L2	241401	77950	52633	69767	54661	496412	48.63%	15.70%	10.60%	14.05%	11.01%
IV	MATHS	252375	109959	73276	21372	39430	496412	50.84%	22.15%	14.76%	4.31%	7.94%
IV	EVS	226104	135259	66167	28852	40030	496412	45.55%	27.25%	13.33%	5.81%	8.06%

CLASS -V

CLASS	SUBJECT	Number of Student					Student	% of Students				
		A+	A	B	C	D	Total	A+	A	B	C	D
V	L1	285748	108613	49798	22401	25917	492477	58.02%	22.05%	10.11%	4.55%	5.26%
V	L2	201946	89562	65291	77116	58562	492477	41.01%	18.19%	13.26%	15.66%	11.89%
V	MATHS	230976	118224	84063	24476	34738	492477	46.90%	24.01%	17.07%	4.97%	7.05%
V	EVS	141293	188163	89436	37499	36086	492477	28.69%	38.21%	18.16%	7.61%	7.33%

CLASS AND SUBJECT WISE GRADING FOR UPPER PRIMARY SCHOOLS:

CLASS -VI

CLASS	SUBJECT	Number of Student					Student	% of Students				
		A+	A	B	C	D	Total	A+	A	B	C	D
VI	L1	147336	146209	50156	39283	40404	423388	34.80%	34.53%	11.85%	9.28%	9.54%
VI	L2	194066	77763	49421	54844	47294	423388	45.84%	18.37%	11.67%	12.95%	11.17%
VI	L3	230428	61740	53072	33581	44567	423388	54.42%	14.58%	12.54%	7.93%	10.53%
VI	MATHS	114083	133426	56865	51203	67811	423388	26.95%	31.51%	13.43%	12.09%	16.02%
VI	SCIENCE	77054	149738	72493	61607	62496	423388	18.20%	35.37%	17.12%	14.55%	14.76%
VI	SOCIAL SCIENCE	62998	153464	76976	64141	65809	423388	14.88%	36.25%	18.18%	15.15%	15.54%

CLASS -VII

CLASS	SUBJECT	Number of Student					Student	% of Students				
		A+	A	B	C	D	Total	A+	A	B	C	D
VII	L1	120782	147829	54721	42912	36264	402508	30.01%	36.73%	13.60%	10.66%	9.01%
VII	L2	106486	74410	65093	87785	68734	402508	26.46%	18.49%	16.17%	21.81%	17.08%
VII	L3	271677	59122	28815	15594	27300	402508	67.50%	14.69%	7.16%	3.87%	6.78%
VII	MATHS	117954	135175	53376	43993	52010	402508	29.30%	33.58%	13.26%	10.93%	12.92%

CLASS	SUBJECT	Number of Student					Student	% of Students				
		A+	A	B	C	D	Total	A+	A	B	C	D
VII	SCIENCE	21705	94812	87381	105157	93453	402508	5.39%	23.56%	21.71%	26.13%	23.22%
VII	SOCIAL SCIENCE	19430	102232	90732	101865	88249	402508	4.83%	25.40%	22.54%	25.31%	21.92%

CLASS -VIII

CLASS	SUBJECT	Number of Student					Student	% of Students				
		A+	A	B	C	D	Total	A+	A	B	C	D
VIII	L1	113844	158529	58156	39470	28075	398074	28.60%	39.82%	14.61%	9.92%	7.05%
VIII	L2	204304	69120	43807	45376	35467	398074	51.32%	17.36%	11.00%	11.40%	8.91%
VIII	L3	255224	70452	33233	15473	23692	398074	64.11%	17.70%	8.35%	3.89%	5.95%
VIII	MATHS	102601	138740	60421	48641	47671	398074	25.77%	34.85%	15.18%	12.22%	11.98%
VIII	SCIENCE	89123	149622	65815	50691	42823	398074	22.39%	37.59%	16.53%	12.73%	10.76%
VIII	SOCIAL SCIENCE	47488	151253	85584	66024	47725	398074	11.93%	38.00%	21.50%	16.59%	11.99%

Class Wise Performance in Subjects for Secondary:

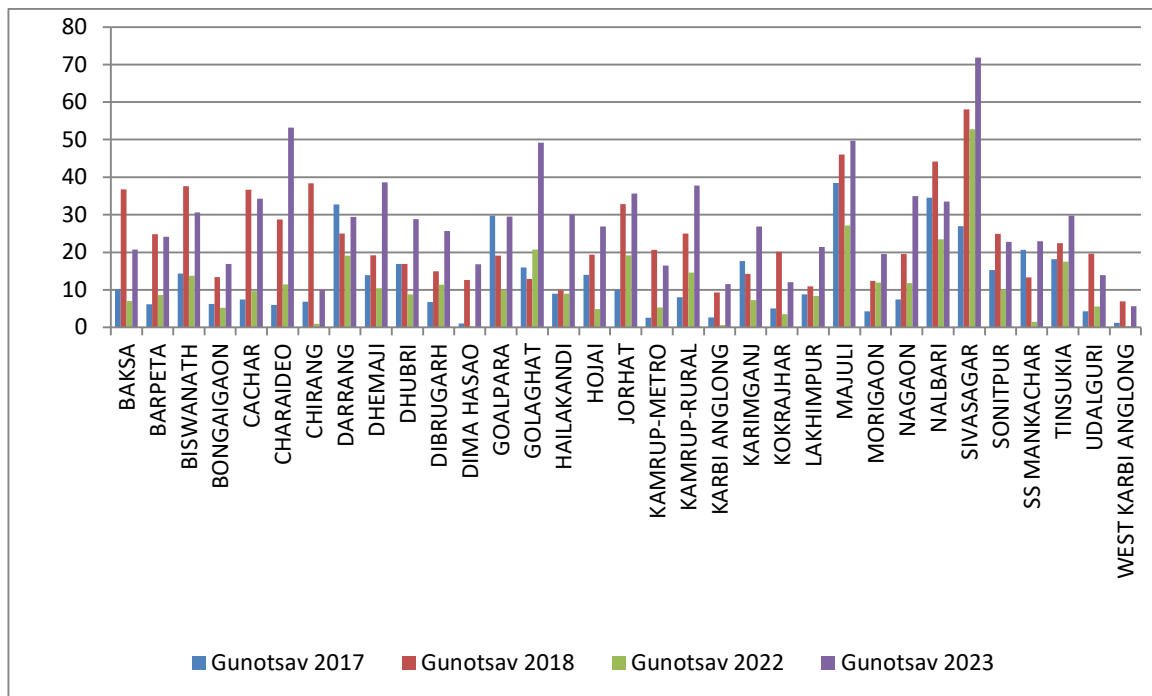
CLASS -IX

CLASS	SUBJECT	Number of Student					Student	% of Students				
		A+	A	B	C	D	Total	A+	A	B	C	D
IX	MIL	95089	137771	50413	33064	25568	341905	27.81%	40.30%	14.74%	9.67%	7.48%
IX	ENGLISH	46486	135547	70375	52081	37416	341905	13.60%	39.64%	20.58%	15.23%	10.94%
IX	Math	94326	124245	49617	38604	35113	341905	27.59%	36.34%	14.51%	11.29%	10.27%
IX	SCIENCE	50038	128285	68790	53260	41531	341904	14.64%	37.52%	20.12%	15.58%	12.15%
IX	SOCIAL SCIENCE	39301	119148	70856	64402	48197	341904	11.49%	34.85%	20.72%	18.84%	14.10%

District Wise Comparison of A+ Schools in 2017, 2018 ,2022 and 2023

SI No	District	Gunotsav 2017	Gunotsav 2018	Gunotsav 2022	Gunotsav 2023
1	BAKSA	10.19	36.79	6.98	20.80
2	BARPETA	6.23	24.9	8.58	24.14
3	BISWANATH	14.35	37.59	13.71	30.60
4	BONGAIGAON	6.31	13.41	5.27	16.96
5	CACHAR	7.52	36.61	9.63	34.29
6	CHARAIDEO	5.96	28.7	11.46	53.25
7	CHIRANG	6.85	38.4	1	10.03
8	DARRANG	32.81	25.02	19.12	29.46
9	DHEMAJI	13.87	19.16	10.43	38.68
10	DHUBRI	16.9	16.9	8.87	28.87
11	DIBRUGARH	6.74	14.97	11.3	25.67
12	DIMA HASAO	1.07	12.58	0.3	16.84
13	GOALPARA	29.73	19.09	10.08	29.53
14	GOLAGHAT	15.96	12.91	20.7	49.24
15	HAILAKANDI	8.98	9.93	8.98	30.02
16	HOJAI	14.05	19.37	4.91	26.87

SI No	District	Gunotsav 2017	Gunotsav 2018	Gunotsav 2022	Gunotsav 2023
17	JORHAT	9.97	32.86	19.19	35.72
18	KAMRUP-METRO	2.57	20.63	5.32	16.50
19	KAMRUP-RURAL	8.02	25.02	14.63	37.75
20	KARBI ANGLONG	2.69	9.29	0.63	11.59
21	KARIMGANJ	17.7	14.28	7.24	26.84
22	KOKRAJHAR	5.06	20.12	3.56	12.09
23	LAKHIMPUR	8.83	10.94	8.39	21.42
24	MAJULI	38.46	46.02	27.15	49.67
25	MORIGAON	4.32	12.38	11.96	19.55
26	NAGAON	7.5	19.6	11.8	34.99
27	NALBARI	34.59	44.15	23.5	33.56
28	SIVASAGAR	26.92	58.07	52.77	71.88
29	SONITPUR	15.22	24.92	10.1	22.79
30	SOUTH SALMARAMANKACHAR	20.63	13.32	1.48	22.96
31	TINSUKIA	18.26	22.43	17.48	29.72
32	UDALGURI	4.28	19.67	5.53	13.87
33	WEST KARBI ANGLONG	1.26	6.94	0.38	5.67



District Wise No. of Schools obtained A+ in both Gunotsav 2022 and 2023

SI No	District	No of Schools
1	BAKSA	69
2	BARPETA	127
3	BISWANATH	99
4	BONGAIGAON	21
5	CACHAR	135
6	CHARAIDEO	64
7	CHIRANG	6
8	DARRANG	146
9	DHEMAJI	107
10	DHUBRI	132
11	DIBRUGARH	113
12	DIMA HASAO	0
13	GOALPARA	95
14	GOLAGHAT	211
15	HAILAKANDI	74
16	HOJAI	33
17	JORHAT	128
18	KAMRUP METRO	19
19	KAMRUP	215
20	KARBI ANGLONG	3
21	KARIMGANJ	90
22	KOKRAJHAR	31
23	LAKHIMPUR	107

SI No	District	No of Schools
24	MAJULI	89
25	MORIGAON	81
26	NAGAON	170
27	NALBARI	140
28	SIVASAGAR	486
29	SONITPUR	63
30	SOUTH SALMARA MANKACHAR	3
31	TINSUKIA	134
32	UDALGURI	41
33	WEST KARBI ANGLONG	1
TOTAL		3233

A+ grade schools of in Gunotsav 2022 but de-graded to A ,B,C or D in Gunotsav 2023

SI No	District	GRADE				Total
		A	B	C	D	
1	BAKSA	33	4	0	0	37
2	BARPETA	44	7	1	0	52
3	BISWANATH	36	3	0	0	39
4	BONGAIGAON	25	2	1	0	28
5	CACHAR	48	14	4	1	67
6	CHARAIDEO	12	2	0	0	14
7	CHIRANG	2	0	0	0	2
8	DARRANG	63	5	0	0	68
9	DHEMAJI	26	3	0	0	29
10	DHUBRI	35	5	0	1	41

SI No	District	GRADE				Total
		A	B	C	D	
11	DIBRUGARH	48	5	1	1	55
12	DIMA HASAO	1	0	0	0	1
13	GOALPARA	54	5	0	0	59
14	GOLAGHAT	63	2	0	0	65
15	HAILAKANDI	34	4	1	0	39
16	HOJAI	9	1	0	1	11
17	JORHAT	78	5	3	0	86
19	KAMRUP METRO	10	2	0	0	12
18	KAMRUP	67	1	0	1	69
20	KARBI ANGLONG	3	0	0	0	3
21	KARIMGANJ	39	2	0	0	41
22	KOKRAJHAR	16	2	1	0	19
23	LAKHIMPUR	40	4	5	1	50
24	MAJULI	22	0	0	0	22
25	MORIGAON	69	10	3	0	82
26	NAGAON	60	10	3	0	73
27	NALBARI	80	8	0	2	90
28	SIVASAGAR	87	3	0	0	90
29	SONITPUR	37	9	1	0	47
30	SOUTH SALMARA MANKACHAR	3	0	0	0	3
31	TINSUKIA	75	11	3	1	90
32	UDALGURI	20	4	0	0	24
33	WEST KARBI ANGLONG	1	0	0	0	1
Total		1240	133	27	9	1409

No. of A , B, C & D grade schools of Gunotsav2022 upgraded to A+ in Gunotsav2023.

SI No	District	Grade in Gunotsav 2022				Grade in Gunotsav 2023
		A	B	C	D	A+
1	BAKSA	167	50	12	6	235
2	BARPETA	256	81	21	24	382
3	BISWANATH	152	45	7	5	209
4	BONGAIGAON	77	30	3	19	129
5	CACHAR	397	146	28	5	576
6	CHARAIDEO	181	104	17	4	306
7	CHIRANG	36	30	4	1	71
8	DARRANG	130	41	11	2	184
9	DHEMAJI	255	101	37	8	401
10	DHUBRI	313	90	13	12	428
11	DIBRUGARH	180	74	21	6	281
12	DIMA HASAO	5	30	16	2	53
13	GOALPARA	219	106	22	7	354
14	GOLAGHAT	341	80	22	2	445
15	HAILAKANDI	209	73	12	3	297
16	HOJAI	149	59	6	3	217
17	JORHAT	197	47	9	5	258
18	KAMRUP	332	119	29	17	497
19	KAMRUP METRO	53	18	5	3	79
20	KARBI ANGLONG	43	32	24	16	115

SI No	District	Grade in Gunotsav 2022				Grade in Gunotsav 2023
		A	B	C	D	A+
21	KARIMGANJ	231	117	38	10	396
22	KOKRAJHAR	92	42	4	7	145
23	LAKHIMPUR	223	52	14	4	293
24	MAJULI	99	19	2	2	122
25	MORIGAON	131	39	5	13	188
26	NAGAON	341	144	52	14	551
27	NALBARI	160	20	9	3	192
28	SIVASAGAR	257	27	2	4	290
29	SONITPUR	137	45	6	0	188
30	SOUTH SALMARA MANKACHAR	44	35	11	0	90
31	TINSUKIA	202	47	7	3	259
32	UDALGURI	92	23	7	1	123
33	WEST KARBI ANGLONG	11	7	7	1	26
Total		5712	1973	483	212	8380

D grade schools in Gunotsav 2022 but upgraded to A+,A B or C in Gunotsav 2023

SI No	District Name	Grade in Gunotsav 2023			
		A+	A	B	C
1	BAKSA	6	9	13	10
2	BARPETA	24	51	25	7
3	BISWANATH	5	11	18	18

SI No	District Name	Grade in Gunotsav 2023			
		A+	A	B	C
4	BONGAIGAON	19	64	44	17
5	CACHAR	5	19	12	13
6	CHARAIDEO	4	9	2	0
7	CHIRANG	1	13	39	22
8	DARRANG	2	8	6	3
9	DHEMAJI	8	18	14	4
10	DHUBRI	12	14	12	3
11	DIBRUGARH	6	28	34	12
12	DIMA HASAO	2	17	4	1
13	GOALPARA	7	31	21	7
14	GOLAGHAT	2	2	2	0
15	HAILAKANDI	3	9	8	5
16	HOJAI	3	14	9	5
17	JORHAT	5	6	4	4
18	KAMRUP	17	41	11	1
19	KAMRUP METRO	3	11	13	7
20	KARBI ANGLONG	16	95	94	45
21	KARIMGANJ	10	42	37	14
22	KOKRAJHAR	7	30	35	19
23	LAKHIMPUR	4	30	26	14
24	MAJULI	2	5	2	0
25	MORIGAON	13	30	29	7

SI No	District Name	Grade in Gunotsav 2023			
		A+	A	B	C
26	NAGAON	14	35	33	4
27	NALBARI	3	8	6	0
28	SIVASAGAR	4	0	0	0
29	SONITPUR	0	5	14	9
30	SOUTH SALMARA MANKACHAR	0	6	4	1
31	TINSUKIA	3	11	7	8
32	UDALGURI	1	4	13	6
33	WEST KARBI ANGLONG	1	16	38	26
Total		212	692	629	292

Comparative Statement of District Wise Result of Gunotsav 2022 & 2023

Sl No	District	NUMBER OF SCHOOL					TOTAL SCHOOL	% of School					NUMBER OF SCHOOL					TOTAL SCHOOL	% of School				
		A+	A	B	C	D		A+	A	B	C	D	A+	A	B	C	D		A+	A	B	C	D
		GUNOTSAV 2022												GUNOTSAV 2023									
1	BAKSA	106	672	534	159	47	1518	6.98	44.27	35.18	10.47	3.1	324	753	362	90	29	1558	20.80	48.33	23.23	5.78	1.86
2	BARPETA	182	885	737	207	110	2121	8.58	41.73	34.75	9.76	5.19	517	1079	412	98	36	2142	24.14	50.37	19.23	4.58	1.68
3	BISWANATH	143	403	324	113	60	1043	13.71	38.64	31.06	10.83	5.75	314	471	182	44	15	1026	30.60	45.91	17.74	4.29	1.46
4	BONGAIGAON	50	345	313	89	151	948	5.27	36.39	33.02	9.39	15.93	156	507	194	50	13	920	16.96	55.11	21.09	5.43	1.41
5	CACHAR	211	1109	646	175	51	2192	9.63	50.59	29.47	7.98	2.33	720	877	359	117	27	2100	34.29	41.76	17.10	5.57	1.29
6	CHARAIDEO	84	334	240	60	15	733	11.46	45.57	32.74	8.19	2.05	377	276	47	7	1	708	53.25	38.98	6.64	0.99	0.14
7	CHIRANG	8	176	344	176	95	799	1	22.03	43.05	22.03	11.89	79	329	254	92	34	788	10.03	41.75	32.23	11.68	4.31
8	DARRANG	225	449	355	126	22	1177	19.12	38.15	30.16	10.71	1.87	335	513	226	48	15	1137	29.46	45.12	19.88	4.22	1.32
9	DHEMAJI	144	573	464	151	48	1380	10.43	41.52	33.62	10.94	3.48	514	576	185	39	15	1329	38.68	43.34	13.92	2.93	1.13
10	DHUBRI	175	915	669	167	46	1972	8.87	46.4	33.92	8.47	2.33	563	901	388	75	23	1950	28.87	46.21	19.90	3.85	1.18
11	DIBRUGARH	175	594	499	184	96	1548	11.3	38.37	32.24	11.89	6.2	404	742	320	65	43	1574	25.67	47.14	20.33	4.13	2.73
12	DIMA HASAO	1	43	168	93	28	333	0.3	12.91	50.45	27.93	8.41	66	222	75	21	8	392	16.84	56.63	19.13	5.36	2.04
13	GOALPARA	160	634	537	186	71	1588	10.08	39.92	33.82	11.71	4.47	455	775	253	47	11	1541	29.53	50.29	16.42	3.05	0.71
14	GOLAGHAT	282	737	274	63	6	1362	20.7	54.11	20.12	4.63	0.44	677	592	90	14	2	1375	49.24	43.05	6.55	1.02	0.15
15	HAILAKANDI	114	584	428	113	30	1269	8.98	46.02	33.73	8.9	2.36	378	570	230	65	16	1259	30.02	45.27	18.27	5.16	1.27
16	HOJAI	46	414	340	105	32	937	4.91	44.18	36.29	11.21	3.42	251	497	147	32	7	934	26.87	53.21	15.74	3.43	0.75
17	JORHAT	227	582	271	82	21	1183	19.19	49.2	22.91	6.93	1.78	399	543	134	34	7	1117	35.72	48.61	12.00	3.04	0.63
18	KAMRUP-METRO	32	206	219	103	41	601	5.32	34.28	36.44	17.14	6.82	98	260	158	54	24	594	16.50	43.77	26.60	9.09	4.04
19	KAMRUP-RURAL	291	846	562	207	83	1989	14.63	42.53	28.26	10.41	4.17	732	939	221	33	14	1939	37.75	48.43	11.40	1.70	0.72
20	KARBI ANGLONG	7	125	331	326	320	1109	0.63	11.27	29.85	29.4	28.85	135	507	355	102	66	1165	11.59	43.52	30.47	8.76	5.67
21	KARIMGANJ	135	647	685	279	118	1864	7.24	34.71	36.75	14.97	6.33	492	849	383	84	25	1833	26.84	46.32	20.89	4.58	1.36

Sl No	District	NUMBER OF SCHOOL					TOTAL SCHOOL	% of School					NUMBER OF SCHOOL					TOTAL SCHOOL	% of School				
		A+	A	B	C	D		A+	A	B	C	D	A+	A	B	C	D		A+	A	B	C	D
		GUNOTSAV 2022										GUNOTSAV 2023											
22	KOKRAJHAR	52	498	590	218	104	1462	3.56	34.06	40.36	14.91	7.11	178	706	420	124	44	1472	12.09	47.96	28.53	8.42	2.99
23	LAKHIMPUR	163	771	640	276	92	1942	8.39	39.7	32.96	14.21	4.74	412	816	445	162	88	1923	21.42	42.43	23.14	8.42	4.58
24	MAJULI	123	214	93	13	10	453	27.15	47.24	20.53	2.87	2.21	223	183	40	3	0	449	49.67	40.76	8.91	0.67	-
25	MORIGAON	169	609	437	113	85	1413	11.96	43.1	30.93	8	6.02	270	705	319	72	15	1381	19.55	51.05	23.10	5.21	1.09
26	NAGAON	252	811	722	256	95	2136	11.8	37.97	33.8	11.99	4.45	726	1011	275	47	16	2075	34.99	48.72	13.25	2.27	0.77
27	NALBARI	254	509	226	74	18	1081	23.5	47.09	20.91	6.85	1.67	348	492	149	30	18	1037	33.56	47.44	14.37	2.89	1.74
28	SIBSAGAR	591	450	68	7	4	1120	52.77	40.18	6.07	0.63	0.36	800	288	20	3	2	1113	71.88	25.88	1.80	0.27	0.18
29	SONITPUR	114	485	378	114	38	1129	10.1	42.96	33.48	10.1	3.37	253	500	245	82	30	1110	22.79	45.05	22.07	7.39	2.70
30	SS-MANKACHAR	6	151	180	56	12	405	1.48	37.28	44.44	13.83	2.96	93	230	67	13	2	405	22.96	56.79	16.54	3.21	0.49
31	TINSUKIA	236	708	303	71	32	1350	17.48	52.44	22.44	5.26	2.37	395	650	217	44	23	1329	29.72	48.91	16.33	3.31	1.73
32	UDALGURI	66	502	446	147	33	1194	5.53	42.04	37.35	12.31	2.76	166	594	325	87	25	1197	13.87	49.62	27.15	7.27	2.09
33	WEST KARBI ANGLONG	2	64	185	158	118	527	0.38	12.14	35.1	29.98	22.39	36	219	213	94	73	635	5.67	34.49	33.54	14.80	11.50
Total		4826	17045	13208	4667	2132	41878	11.52	40.70	31.54	11.14	5.09	11886	19172	7710	1972	767	41507	28.64	46.19	18.58	4.75	1.85

Comparative Statement of Grading of Students in Gunotsav: 2022 and Gunotsav :2023

GUNOTSAV 2022												GUNOTSAV 2023										
CLASS	Number of Students					Total	% of Students					Number of Students					Total	% of Students				
	A+ (86.50 %- and above)	A (73.50% - 86.49%)	B (60.50% - 73.49%)	C (48.50% - 60.49%)	D (0 - 48.49%)		A+ (86.50 %- and above)	A(73.50 %- 86.49%)	B(60.50 %- 73.49%)	C(48.50 %- 60.49%)	D(0 - 48.49%)	A+ (86.50 %- and above)	A (73.50% - 86.49%)	B (60.50% - 73.49%)	C (48.50% - 60.49%)	D (0 - 48.49%)		A+ (86.50 %- and above)	A (73.50% - 86.49%)	B (60.50% - 73.49%)	C (48.50% - 60.49%)	D (0 - 48.49 %)
I	323840	85410	60510	34018	82640	586418	55.20%	14.60%	10.30%	5.80%	14.10%	422742	64558	27919	12275	9438	536932	78.73%	12.02%	5.20%	2.29%	1.76%
II	300637	83429	56735	30345	66926	538072	55.90%	15.50%	10.50%	5.60%	12.40%	389381	72119	32148	14268	19530	527446	73.82%	13.67%	6.10%	2.71%	3.70%
III	105363	157796	85481	49403	85927	483970	21.80%	32.60%	17.70%	10.20%	17.80%	188810	180284	71968	32442	42517	516021	36.59%	34.94%	13.95%	6.29%	8.24%
IV	76584	163826	96241	54527	76321	467499	16.40%	35.00%	20.60%	11.70%	16.30%	211943	167507	57740	25471	33751	496412	42.69%	33.74%	11.63%	5.13%	6.80%
V	69246	157585	97862	55403	68440	448536	15.40%	35.10%	21.80%	12.40%	15.30%	176533	193122	67732	26772	28318	492477	35.85%	39.21%	13.75%	5.44%	5.75%
VI	17181	90789	98538	78269	89830	374607	4.60%	24.20%	26.30%	20.90%	24.00%	73691	171111	96935	40078	41573	423388	17.41%	40.41%	22.90%	9.47%	9.82%
VII	5554	71359	126578	82070	92348	377909	1.50%	18.90%	33.50%	21.70%	24.40%	23035	155525	134981	48737	40230	402508	5.72%	38.64%	33.53%	12.11%	9.99%
VIII	20688	107887	105819	52742	51999	339135	6.10%	31.80%	31.20%	15.60%	15.30%	65446	181317	95433	30866	25012	398074	16.44%	45.55%	23.97%	7.75%	6.28%
IX	8393	81562	98569	53749	39889	282162	3.00%	28.90%	34.90%	19.00%	14.10%	26385	158645	100516	32680	23679	341905	7.72%	46.40%	29.40%	9.56%	6.93%
Total	927486	999643	826333	490526	654320	3898308	23.79%	25.64%	21.20%	12.58%	16.78%	1577966	1344188	685372	263589	264048	4135163	38.16%	32.51%	16.57%	6.37%	6.39%

Distribution and Sharing of Report Card, Item wise responses and Block and Cluster wise Performance in Subject Areas:

- Individual Report Cards have been generated which will be provided to each child. The Report Card will be provided in a meeting to be attended by parents, teachers, SMC members and community members. However, Individual Report Cards will not be made public. They would be shared with Teachers, Parents/Guardians of each child.
- Report Card of each school will be shared amongst the key stakeholders' i.e Teachers, Parents, SMCs and Community members.
- The printed Student and School Report Cards will be distributed to School by 31st May/2023.
- Each School will share the individual student's result and school report card within 7 days from the receipt of the result. All schools have to convene a Parent Teacher Meet (PTM) and distribute individual Report Card on the day of PTM. On the same day, the School Report Card should be shared with the parents and SMC members.

The schedule of PTM will be as follows:

Time	Activity
9-00 A.M to 11-00 A.M	Student Report Card distribution by teacher to all parents parents/guardians individually for each child.
11-00 A.M to 12-00 Noon.	Sharing of Remedial Plan of each child.
12-00 Noon to 1-00 P.M	Parents and SMC meet to share School Report Card.

Distribution and Sharing of Item wise responses of Individual Student, Block and Cluster wise Performance in Subject Areas:

- **Item wise responses of each child of the school will be provided within 15th May/2023 and school will provide remedial support on poor areas accordingly.**
- Block wise performance in the Subject areas and cluster wise number of students falling in "C" and "D" Grades in the subject areas will also be shared with districts for necessary improvement on the areas.

Remedial Support Plan:

- Remedial support will be provided on poor learning outcomes with a focus on 'C' and 'D' grade schools. SMC will monitor the Remedial Programme.
- Mapping of learning outcomes have already been done. UNICEF Assam has already been engaged for analysis of poor learning outcomes.As peranalysis of learning gaps, training etc.on different areas will be designed and implemented.

- SCERT Assam and SEBA will be involved for designing of Redial Package, Training etc. At district level District Resource Group and DIETwill be involved in remedial support programme.
- Teachers will be trained onremedial package. The training will be imparted by Groups comprising of DRG members and DIET faculty.
- Teachers will provide remedial support to the children.
- The remedial support will be provided after or before school hours.
- The record of attendance of children in the remedial programme will be maintained.
- Continuous support and follow up will be done from cluster to state level.

An Analysis of Gunotsav 2023

The overall Grade wise % of schools of Gunotsav, 2017, 2018 ,2022and 2023 is as follows:

GRADE	Number of Schools	%	Number of Schools	%	Number of Schools	%	Number of Schools	%
	GUNOTSAV 2017		GUNOTSAV 2018		GUNOTSAV 2022		GUNOTSAV 2023	
A+	6,037	12.35	10,678	23.01	4841	11.56	11886	28.64
A	12,927	26.45	21,801	46.98	17041	40.69	19172	46.19
B	13,636	27.9	10,935	23.56	13207	31.54	7710	18.58
C	9,163	18.75	2,299	4.95	4660	11.13	1972	4.75
D	7,105	14.54	691	1.49	2129	5.08	767	1.85
All Grades	48,868		46,404				41507	

The % of schools obtaining **A + and A Grades** increase and “D” Grade decrease in 2023 from 2022.

The overall Grade wise % of students of Gunotsav,2022 and 2023 is as follows:

Grade	Gunotsav 2022		Gunotsav 2023	
	Number of Students	% of students	Number of Students	% of students
A+ (86.50 %- and above)	9,27,486	23.79%	15,77,966	38.16%
A (73.50% - 86.49%)	9,99,643	25.64%	13,44,188	32.51%
B (60.50% - 73.49%)	8,26,333	21.20%	6,85,372	16.57%
C (48.50% - 60.49%)	4,90,526	12.58%	2,63,589	6.37%
D (0 - 48.49%)	6,54,320	16.78%	2,64,048	6.39%
Total	3898308		4135163	

The overall % of A+ & A Grade students of Gunotsav, 2023 is increased from 2022. Similarly, “B”, “C” & “D” Grade students are decreased in 2023 from 2022.

Number of A , B, C & D grade schools of Gunotsav2022 upgraded to A+ in Gunotsav2023: A total of 8380 A , B, C & D grade schools of Gunotsav 2022 upgraded to A+ in Gunotsav2023.

The break up is as follows:

Grade in Gunotsav 2022				Grade in G 2023
A	B	C	D	A+
5712	1973	483	212	8380

D grade schools in Gunotsav 2022 but upgraded to A+,A, B, & C in Gunotsav 2023: A total of 1825 “D” grade schools of Gunotsav 2022 upgraded to A+, A, B & C in Gunotsav2023.

The break up is as follows:

A+	212
A	692
B	629
C	292
Total	1825

A+ grade schools of Gunotsav 2022 de-graded to A ,B,C & D in Gunotsav 2023:

A	1240
B	133
C	27
D	9
Total	1409

*Excluded following school

- A. 133 no of schools which are merged in 2023
- B. 66 no of schools who get A+ in both 2022 & 2023, but enrolment less than 15 in Gunotsav 2023.

SOME MAJOR IMPROVEMENT IN GUNOTSAV 2023:

- No. of A+ Schools increase to 28.64% from 11.52%. The increase % is 17.12
- No. of A+ students increase to 38.16% from 23.79%. The increase % is 14.37
- No. of total A+ and A grade schools increase to 74.83% from 52.22%. The increase % is 22.61
- No. of C grade schools decrease to 4.75% from 11.14%

- No. of D grade schools decrease to 1.85% from 5.09%.
- No. of C grade students decrease to 6.37% from 12.58%
- No. of D grade students decrease to 6.39% from 16.78%.
- 3233 schools obtained A+ in both Gunotsav 2022 and 2023.
- A total of 8380 A , B, C & D grade schools of Gunotsav 2022 upgraded to A+ in Gunotsav 2023.
- A total of 1825 “D” grade schools of Gunotsav 2022 upgraded to A+, A, B & C in Gunotsav2023.
- Increase attendance of students to 96.69% from 91.72%. For grading of school, number of absentee students were also considered in Gunotsav 2023.

