



**National Programme
of
Mid Day Meal in Schools
(MDMS)**

**Annual Work Plan & Budget
2021-22**

Name of the State/UT : Lakshadweep

**Administration of the
Union Territory of Lakshadweep
Kavaratti-682 555**

Mid Day Meal Programme Annual Work Plan and Budget 2021-22

1. Introduction:

The Union Territory of Lakshadweep is the smallest and a single district Union Territory of the Indian Union. The entire territory consists of 27 islands and a number of sunken banks, open reefs and sand banks. 10 islands are inhabited. Other islands are very small and majority of them exist as satellites of the inhabited islands.

The area, population, density, literacy and growth rate of population as per population census in 2011 is shown in table below. The total population of the Lakshadweep is 64473. Male population is 33123 and female population is 31350. Total literacy rate is 91.65% and growth rate of population is 6.30% when compared to the previous census in 2001.

AREA, POPULATION, DENSITY, LITRACY AND GROWTH RATE OF POPULATION

Name of island	Area in Square Kilometers		Total population			Density	Literacy in percentage to total population and gender gap			Growth rate of population 2001-2011
	Lagoon area	Land area	Total	Male	Female		Total	Male	female	
Agatti	1750	2.71	7566	3894	3672	1970	92.17	95.11	91.57	6.96
Amini	150	2.59	7661	3829	3832	2947	88.95	95.68	82.10	4.19
Androth	0.00	4.84	11191	5500	5691	2284	90.27	94.89	85.89	4.33
Bitra	45.61	0.10	271	154	117	2710	96.14	97.04	94.90	1.50
Chetlat	1.60	1.04	2347	1172	1175	1676	91.73	94.77	88.72	2.44
Kadmat	37.50	3.12	5404	2690	2714	1689	95.16	97.64	92.72	1.31
Kalpeni	25.60	2.28	4419	2324	2095	1584	94.62	96.75	92.19	2.27
Kavaratti	4.96	3.63	11221	6182	5039	2659	91.43	95.24	86.68	10.89
Kiltan	3.96	1.63	3946	2012	1934	1794	89.03	92.17	85.39	7.55
Minicoy	30.60	4.37	10447	5366	5081	2176	92.65	94.99	90.24	10.03
Bangaram	21.50	0.58	0	0	0		0	0	0	0
Lakshadweep	2071.33	26.89	64473	33123	31350	2013	91.65	95.35	87.76	6.30

1.1 Brief history

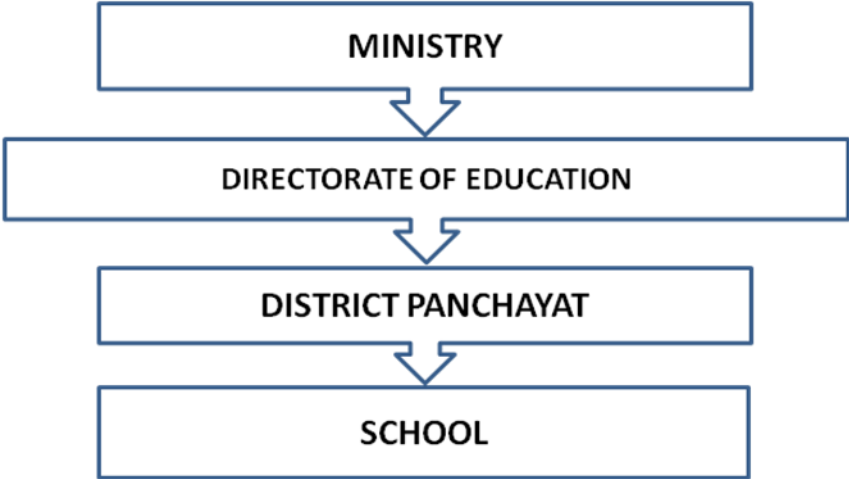
The Union Territory of Lakshadweep has implemented the Mid Day Meal Scheme in all the islands, providing hot & cooked meal to all children from primary to VII standard in all the schools since mid-fifties. Considering the economic and social backwardness of the Lakshadweep citizens, Govt. of India declared the entire population as Scheduled Tribes. The main objectives of declaring them as Scheduled Tribes was to bring them close to the extremely dynamic developments and

modernization that is taking place in the other parts of the country. Govt. of India has also initiated several programs to impart proper education to the natives of Lakshadweep. In order to lure children of various age groups, the Lakshadweep Administration had decided to implement the Mid Day Meal Scheme in the Lakshadweep islands. As such, UTL Administration has been able to successfully attain its goal, and there is no dropout in schools. The Mid Day Meal Scheme has contributed to achieve the goals in Lakshadweep.

Society in Lakshadweep is homogeneous by type. There are no much social strata among the people of Lakshadweep. All local inhabitants follow and practice a single religion i.e. Islam. This religious homogeneity made whatever social differences those were there earlier, insignificant. The economy of Lakshadweep depends mainly on fish and coconut. Fishing is the basic economic activity and all the islanders have some amount of land and possess a certain number of coconut trees from which they get yearly income. In addition, government employment also adds to their income sources. In Lakshadweep, all the groceries, vegetables and other food items are brought from mainland due to their scarcity in the islands. Therefore, there are no nutritional problems in Lakshadweep due to non-availability of any particular food item as all the required items are being procured from the mainland. In schools, no regular nutritional quality checkups over the mid day meals served in schools up to 12th class are performed and no cases of malnutrition have been reported so far.

1.2 Management structure

The District Panchayat is the implementing authority of the Mid Day Meal Programme in schools and the Directorate of Education closely monitors the implementation of the scheme. The management structure of the MDM scheme in U.T.of Lakshadweep is given below.



1.3 Process of Plan Formulation at State and District level.

Plan formulations of Mid Day Meal programme in Lakshadweep are carried out as bottom-to-top approach. Two tier system like Village (Dweep) Panchayat and District Panchayat exist in Panchayati Raj system, Lakshadweep being a small U.T., plan process are carried out in the first stage by the involvement of schools and village level, second stage with district level by the implementing agency District Panchayat and third level by the Directorate of Education.

2. Description and assessment of the programme implemented in the current year (2020-21) and proposal for next year (2021-22) with reference to:

Till 2006-07, the MDM scheme has continued as a UT Administration scheme and Administration has been releasing required funds for running the scheme to the District Panchayat through Education Department from its own Annual Budget. The MDM Scheme has been transferred to District Panchayat in the year 1999 in compliance of orders of devolution of power under Panchayati Raj Act. The Mid Day Meal is served to children from Pre-Primary to Senior Secondary level in all schools under the Administration. In Lakshadweep, hot cooked Mid Day Meal is served to the children covering the food items liked by the local inhabitants and as per the eating habits of the islanders. Generally the food items like Dhal, Green gram, Fish, Egg, Meat and Chicken are served along with rice, the staple diet to the students. In fact, the food served is not put to any nutritional tests want of approved lab, but the food served is nutritional, hygienic and basically liked by the children. So far, no complaints have been registered about the food served to the children under Mid Day Meal Programme.

An amount of Rs.141.87 lakhs was approved by PAB for the year 2020-21 and an amount of Rs.141.87 lakhs was released by the Ministry as three installments of recurring grant and Rs.141.87 lakhs was released to District level. The proposal under National Programme of Mid Day Meal in schools for the year 2021-22 is Rs.117.13 lakhs and an amount of Rs. 28.94 lakh for summer vacation total budget is Rs. 146.07 lakh . As a part of strengthening the monitoring mechanism, post of Project Manager (MDM) and MIS coordinator (MDM), on contract basis is proposed to continue in 2021-22.

2.1 Regularity and wholesomeness of mid - day meals served to children; interruptions if any and the reasons therefore problem areas for regular serving of meals and action taken to avoid interruptions in future.

The serving of MDM to the school children in the history of Lakshadweep started way back in mid fifties. The MDM are served to the school children studying from pre-primary classes to Upper Primary classes from that time onwards without any interruptions. From the year 2007-2008, the UTL Administration extended the scheme up to X standard. From the academic year 2008-09 onwards, the MDM Scheme was again

extended up to XII standard. Due to the advent of National Programme of MDM in schools during 2004 by the GOI, UTL Administration also participated in the National Scheme and Central Assistance received was utilized for implementation of MDM in primary and upper primary level.

The following table explains the island-wise total of educational institutions in Lakshadweep from nursery stage to degree level education as on 30.9.2020.

Island	Pre-Primary Schools	Junior Basic Schools	Senior Basic Schools	Secondary Schools	Senior Secondary Schools	Total
Agatti	2	3	1	0	1	7
Amini	2	4	0	1	1	8
Androth	2	4	2	0	2	10
Bitra	1	0	1	0	0	2
Chetlet	2	1	0	0	1	4
Kadmat	3	3	0	1	1	8
Kalpeni	2	1	1	0	1	5
Kavaratti	2	2	1	0	2	7
Kiltan	2	2	1	0	1	6
Minicoy	2	2	1	0	1	6
Lakshadweep	20	22	8	2	11	63

In addition to above 63 schools, there is one Jawahar Navodhaya Vidyalaya (at Minicoy), one Kendriya Vidhyalaya (at Kavaratti) in UT of Lakshadweep.

Stage-wise and sex-wise enrolment for the year 2020-21 from pre-primary classes to Senior Secondary classes as on 30.09.2020 are shown below.

Class	Boys	Girls	Total
Pre-Primary	588	521	1109
Primary (I-V)	2602	2503	5105
Upper Primary(VI-VIII)	1197	1165	2362
Secondary(IX-X)	1103	1055	2158
Senior Secondary (XI-XII)	1105	892	1997
Total	6577	6136	12731

There is no dropout rate during 2020-21 in primary and upper primary classes and this is one of the biggest achievements of implementing MDM in Lakshadweep.

2.2 System for cooking, serving and supervising mid-day meals in the schools

In Lakshadweep, there are 63 schools in which the MDM Scheme is implemented. Total 12731 children from Pre-Primary classes to XII classes are being served MDM.

Preparation of MDM are carried out in the kitchen attached to schools and cooks are appointed on regular basis. In addition, helpers are additionally engaged by the Headmasters through concerned Village (Dweep) Panchayat, wherever the requirement is necessitated. In Lakshadweep, practically the Headmasters and SMC of the schools run the MDM programme. After receiving the required fund from the District Panchayat, they procure the required food articles and get them cooked by the cooks available in the schools. Headmasters, VDP members of concerned ward, SMC, MPTA monitor the running of the scheme in their respective schools.

2.3 Details about weekly Menu.

2.3.1 Weekly Menu - Day wise

The weekly menu under MDM scheme for the academic year 2020-2221 is given below.

Sl .No	Days	Food Items
1	Monday	Rice ,Dhal, fish, green gram, fruits
2	Tuesday	Rice, Dhal ,Egg ,green gram
3	Wednesday	Rice, Dhal ,green gram ,fish, fruits
4	Thursday	Rice,Dhal,Green gram,chicken
5	Saturday	Rice, Dhal ,Green gram, egg, fruits/Dry fruits
6	Sunday	Rice,Dhal ,Green gram, meat.

Note: Above items are served according to the availability of items in the local market.

The UTL, modified the menu with the approval of SCMC held on 27.01.2021 and same as proposed for the academic year 2021-22 as follows:

Sl .No	Days	Food Items
1	Monday	Rice ,Dhal, fish, green gram, fruits
2	Tuesday	Rice, Dhal ,Egg ,green gram
3	Wednesday	Rice, Dhal ,green gram ,fish, fruits
4	Thursday	Rice, Dhal, Green gram, Egg/fish
5	Saturday	Rice, Dhal ,Green gram, egg, fruits/Dry fruits
6	Sunday	Rice, Dhal ,Green gram, Egg/Fish

Note: Above items are served according to the availability of items in the local market.

2.3.2 Additional Food items provided (fruits/milk/any other items), if any from State/UT resources. Frequency of their serving alongwith per unit cost per day.

Egg, Fish, Fruits etc. are served as additional items in Mid Day Meal according to the availability of items in the local market.

2.3.3 Usage of Double Fortified Salt,

Double fortified iodized salt is used for the preparation of Mid Day Meal in Schools and direction to use Double fortified salt is issued time to time.

2.3.4 At what level menu is being decided / fixed,

The Menu is decided/fixed by the School Management Committee and School authority jointly according to liking of children.

2.3.5 Provision of local variation in the menu, Inclusion of locally available ingredients/items in the menu as per the liking/taste of the children

In Lakshadweep groceries, Vegetable etc is brought from Kochi, Calicut and Mangalore. According to the availability of items in the local market and liking of children menu is decided.

2.3.6 Time of serving Mid Day Meal .

Mid Day Meal is served from 12:30 pm to 01:30 pm.

2.4 Fund Flow Mechanism - System for release of funds (Central share and State share).

2.4.1 Existing mechanism for release of funds up to school/ implementing agency levels.

The Department of Education is releasing Central and State funds to the District Panchayat for implementing the Mid Day Meal Scheme. The funds are released on the basis of requirements submitted by the District Panchayat. Funds are released in two to three installments after obtaining expenditure and Utilization Certificate.

2.4.2 Mode of release of funds at different levels,

Fund released by Ministry under the NPMDM is released to Lakshadweep District Panchayath (Implementing Agency)/Schools on electronic mode only.

2.4.3 Dates when the fund released to State Authority / Directorate / District / Block / Gram Panchayat and finally to the Cooking Agency / School.

The table below shows the details of fund released from the Ministry to State/Directorate and Directorate to implementing agency and implanting agency to schools.

Mid Day Meal Central/State Share	Amount released and date of release in 2020-21					
	Ministry to State		Directorate to implementing agency		Implanting agency to schools	
	Amount	released	Amou nt	released	Amount	released
Central Assistance						
Adhoc Grant(25%)	25.12	27.04.2020	25.12	03.06.2020	25.12	20.06.2020
1 st installment& summer vacation	55.79	16.11.2020	55.79	06.01.2021	55.79	30.01.2021
2 nd installment	53.09	18.12.2021	53.09	26.03.2021	53.09	15.04.2021
Additional	7.87	12.03.2021	7.87	22.03.2021	7.87	15.04.2021

2.4.4 Reasons for delay in release of funds at different levels.

In 2020-21 no delay was occurred to release funds from any level and UTL ensure interrupted serving of MDM in all Island

2.4.5 & 2.4.6 In case of delay in release of funds from State/ Districts, how the scheme has been implemented by schools/ implementing agencies and Initiatives taken by the State for pre-positioning of funds with the implementing agencies in the beginning of the year.

There is no interruption in the implementation of Mid Day Meal Scheme. All provisions required for the implementation of Mid Day Meal Scheme is provided on credit basis by the Cooperative Societies in islands and bills are adjusted later on receipt of funds. Normally no delay/ transferring of funds to implementing agency was not occurred.

2.5 Food grains management,

The food grains allotted was not lifted from year 2009-10 onwards due to complaints received from the public & school authorities because of the inferior taste of rice received under NPMDMS. To settle this issue, the matter was taken in the PAB meeting held on 2012-13 and it was suggested to supply Grade A rice to resolve the problem. Accordingly Grade A rice was supplied to Lakshadweep. The Department of

Food and Civil Supplies, Lakshadweep lifted 185.85MT of foodgrains allocated for 2020-21. Cost of food grains was fully paid to FCI through the Department of Food & Civil Supplies, Lakshadweep. Storage facility is available with Food & Civil Supplies Department in all islands. Schools also have the storage facility for food grains but with limited capacity. Year-wise allocation of Food Grains under MDM Scheme is given below:

Year	Allocated (in MTs)	Lifted (in MTs)	Lifted during	Period of Utilization
2006-07	183.56	183.56	April,2007	2007-08
2007-08	183.56	183.56	April,2008	2008-09
2008-09	228.68	33.14	March 2009	2009-10
2009-10	278.83	0.00	--	--
2010-11	265.00	0.00	--	--
2011-12	245.30	0.00	--	--
2012-13	255.20	0.00	--	--
2013-14	353.67	353.67	March 2014	2013-14
2014-15	177.51	177.51	2014-15	2014-15
2015-16	181.26	181.26	2015-16	2015-16
2016-17	150.53	150.53	2016-17	2016-17
2017-18	128.93	128.93	2017-18	2017-18
2018-19	179.96	145.29	2018-19	2018-19
2019-20	139.20	139.20	2019-20	2019-20
2020-21	185.85	185.85	2020-21	2020-21

Foodgrain requirement for 2020-21 was 185.85 MT and 185.85 MT was released by the Ministry during 2020-21 and 185.85 MT unutilized with UTL as on 31.03.2021.

2.5.1 & 2.5.2 Time lines for lifting of foodgrains from FCI Depot- District wise lifting calendar of foodgrains & System for ensuring lifting of FAQ foodgrains (Joint inspections at the time of lifting etc.).

The Department of Food and Civil Supply, Lakshadweep lifts the Foodgrains allocated under Mid Day Meal Programme from FCI Mangalore on remitting of cost of foodgrains according to availability of Cargo Barges. Inspectors of Department of Food and Civil Supply, Lakshadweep posted at Mainland ensure the lifting and quality foodgrains.

2.5.3 Is there any incident when FAQ food grain was not provided by FCI. If so, the action taken .by the State/District to get such foodgrain replaced with FAQ food grain. How the food grain of FAQ was provided to implementing agencies till replacement of inferior quality of food grain from FCI was arranged.

No incident seems reported.

2.5.4 System for transportation and distribution of food grains

Based on the Foodgrains released by the Ministry, Department of Food and Civil Supply, Lakshadweep lift and distribute foodgrains to each Island and stored in their godown. School authority lift the required foodgrains monthly/bimonthly basis from the godown under Department of Food & Civil Supplies, Lakshadweep.

2.5.5 Whether unspent balance of foodgrains with the schools is adjusted from the allocation of the respective implementing agencies (Schools/SHGs/Centralised Kitchens) Number of implementing agencies receiving foodgrains at doorstep level.

Foodgrains are lifted by School Authority from the Godown of Food and Civil Supply, Lakshadweep situated in the respective Island based on Monthly/bimonthly basis as per requirement.

2.5.6 Storage facility at different levels in the State/District/Blocks/Implementing agencies after lifting of food grains from FCI depot.,

Foodgrains lifted from FCI are transported to FCI godown situated in Androth Island or godowns of the Department of Food and Civil Supply, Lakshadweep based on the availability of transport facility is from Mainland to Islands.

2.5.7 System of fortification of foodgrains and their costing and logistics arrangement.

No fortification of foodgrains is done in UTL.

2.5.8 Challenges faced and plan to overcome them.

Transportation of foodgrains from FCI godown Mangalore and distribution to Islands in the monsoon by cargo barges is the biggest challenge and there is no other facility to overcome.

2.6 Payment of cost of foodgrains to FCI.

2.6.1 System for payment of cost of foodgrains to FCI; whether payments made at district level or State level

2.6.2 Status of pending bills of FCI of the previous year(s) and the reasons for pendency.

2.6.3 Timelines for liquidating the pending bills of previous year(s).

- 2.6.4 Whether meetings are held regularly in the last week of the month by the District Nodal Officers with FCI as per guidelines dated 10.02.2010 to resolve the issues relating to lifting, quality of food grains and payment of bills.
- 2.6.5 Whether the District Nodal Officers are submitting the report of such meeting to State Head quarter by 7th of next month.
- 2.6.6 The process of reconciliation of payment with the concerned offices of FCI.
- 2.6.7 Relevant issues regarding payment to FCI.
- 2.6.8 Whether there is any delay in payment of cost of food groups to FCI and steps taken to rectify the same.

2.6.1 to 2.6.8 Cost of Foodgrains to FCI is paid through Department of Food and Civil Supply, Lakshadweep on raising of bills and there is no previous pending bills with Department of Education, Lakshadweep. No meeting of State Nodal Officer with FCI has been taken so far due to non- availability of FCI Office in Kavaratti. The qualities of foodgrains are ensured by the officers of Department of Food & Civil Supplies, Lakshadweep.

2.7 Cook-cum-helpers

2.7.1 Whether the State follows the norms prescribed by MHRD for the engagement of cook-cum-helpers or it has its own norms.

State is not following the norms prescribed by the MHRD for the engagement of CCH.

2.7.2 In case, the State follows different norms, the details of norms followed may be indicated.

The engagements of cooks under MDM are presently done based on the following norms.

Sl.No	Enrolment	No.of cooks permissible
1	Students from 1-50	1
2	Students from 51-200	2
3	Students from 201- 300	3

2.7.3 Is there any difference in the number of cook-cum-helpers eligible for engagement as per norms and the CCH actually engaged.

Cooks Cum Helpers are engaged on daily wages basis in the time of inception of the scheme by the State by 1950 and number of CCH are engaged less than that of central norms. Wage to CCH are paid as per the rate fixed under minimum Wage Act of GOI.

2.7.4 System and mode of payment, of honorarium to cook-cum-helpers and implementing agencies viz. NGOs / SHGs / Trust / Centralized kitchens etc.

Honorarium to CCH is paid in electronic mode only.

2.7.5 Whether the CCH were paid on monthly basis.

CCH were paid the remuneration on last working day of every month.

2.7.6 Whether there was any instance regarding irregular payment of honorarium to cook-cum-helpers and reason thereof. Measures taken to rectify the problem.

No instance regarding irregular payment of honorarium reported in this UT so far.

2.7.7 Rate of honorarium to cook-cum-helpers,

In Lakshadweep an amount of Rupees 300/- is paid to a cook in a working day from State fund in addition to central share.

2.7.8 Number of cook-cum-helpers having bank accounts,

All cook cum helper enrolled under Mid Day Meal Programme is having Saving Bank Account in the Branches of Nationalized Bank & Payment of honorarium to cook cum helpers are paid through their Bank Account only.

2.7.9 Number of cook-cum-helpers receiving honorarium through their bank accounts,

All cook cum helper under Mid Day Meal Programme are receiving honorarium through their respective bank accounts only.

2.7.10 Provisions for health check-ups of Cook-cum-Helpers,

Health checkup of cook cum helper in all Schools are mandatory for getting license under FSSAI to MDM Kitchen.

2.7.11 Whether cook-cum-helpers are wearing head gears and gloves at the time of cooking of meals.

It is mandatory to wear head gears, apron, and gloves in the time of cooking of Meal and also wash hands with soap before and after preparation of Mid Day Meal.

2.7.12 Modalities for apportionment of cook-cum-helpers engaged at school level and working at centralized kitchens, in case of schools being served through centralized kitchens,

The Principal/Headmaster of the concern Schools place the annual requirement of cook cum helper to the concern Village Panchayath and based on the roasted maintain in the Village the Panchayath cook cum helpers are appoint. There is no Centralized kitchen in any of the Islands in Lakshadweep.

2.7.13 Mechanisms adopted for the training of cook cum helpers. Total number of trained cook cum helpers engaged in the cooking of MDMs. Details of the training modules; Number of Master Trainers available in the State; Number of trainings organized by the Master Trainers for training cook-cum-helpers.

In absence of training Institute in Lakshadweep, Cooks working under Mid Day Meal Programmes are deputed to Institution in the neighbor state Kerala.

5 days Master Training to 19 regular cooks under MDM was given during June 2019 at Institute of Hotel Management & Catering Technology, Kovalam. Soon after completion of their training at Kovalam, 5 days Island Level training programme was also arranged to all cooks working in each Island details as follows:

Name of Island	No. of cooks attended in Island Level training
Amini	12
Agatti	10
Andrott	14
Chetlat	6
Kadmat	9
Kalpeni	6
Kavaratti	13
Kiltan	11
Minicoy	10
Total	91

The objective of master training programme is knowledge disseminated regarding cleaning raw material and vegetables, recipes practice of various Indian Menus with the guidance of instructor, various cooking process, hygiene and sanitation practice in kitchen, serving skills, cost control and time management stock maintenance etc. and all cooks working under MDM Prgramme have been trained with the help of Master training during 2019-20.

However during 2020-21, training for cook cum helper was proposed and same has not carried out due to pandemic situation of covid19 in the world.

2.7.14 Whether any steps have been taken to enroll cook-cum-helpers under any social security schemes i.e Pradhan Mantri Jan Dhan Yojana, Pradhan Mantri

Suraksha Bima Yojana, Pradhan Mantri Jeevan Jyoti Bima Yojana etc. and number of cooks benefitted through the same.

CCH engaged are working on daily wage and no CCH has come forward to enroll their name under any social security scheme.

2.8 Procurement and storage of cooking ingredients and condiments

2.8.1 System for procuring good quality (pulses, vegetables including leafy ones, salt, condiments, oil etc. and other commodities.

All kinds of cooking ingredients are procured by the respective schools from Cooperative Societies available in islands.

2.8.2 Whether pulses are being procured from NAFED or otherwise.

Pulses are procured from Cooperative Societies run by the UTL Administration only.

2.8.3 Whether First In and First Out (FIFO) method has been adopted for using MDM ingredients such as pulses, oil/fats, condiments salt etc. or not.

Pulses and condiments etc. procured and cooked based on first come first served basis and seeing the date of expiry also.

2.8.3 Arrangements for safe storage of ingredients and condiments in kitchens.

All MDM kitchens have been provided with storing bin with lid for storage of foodgrains, pulses, condiments etc. and storing bins are labeled with name of item stored in the bin.

2.8.4 Steps taken to ensure implementation of guidelines dated 13.02.2015 on food safety and hygiene in school level kitchens under Mid Day Meal Scheme.

All implementing officers have been directed to ensure the guidelines dated 13.02.2015 on food safety and hygiene in school level kitchens on implementation of Mid Day Meal Scheme in schools.

2.8.5 Information regarding dissemination of the guidelines up-to school level.

Printed as well as softcopy of guidelines are provided to school authority implementing Mid Day Meal Scheme and same has been placed in the web portal: mdmlakshadweep.utl.gov.in.

2.9 Type of fuel used for cooking of Mid Day Meals – LPG, smokeless chulha, firewood etc.

2.9.1 Number of schools using LPG for cooking MDM

2.9.1 Steps taken by State to provide LPG as fuel in MDM in all schools.

2.9.2 Expected date by which LPG would be provided in all schools.

2.9.1 to 2.9.3 Firewood is mode of cooking MDM in all schools and installation of smokeless chulla in all MDM kitchen attached to school is on priority after getting approved design and it is proposed to renovate the kitchen to maintain the standard FSSAI 2006 and all MDM Kitchen attached to schools have been registered under FSSAI 2006.

In Lakshadweep cooking gas is available in 5 islands and proposal has been submitted to competent authority for converting MDM Kitchen to LPG in islands having LPG facilities. Proposal for Providing LPG to MDM Kitchen in schools at Kavaratti, Minicoy, Kadmat, Amini, and Androth has approved by Honorable Administrator and GAS based cooking in these 5 Islands are ongoing process and soon will be convert LPG based cooking in the above 5 Islands.

2.10 Kitchen-cum-stores.

2.10.1 Procedure for construction of kitchen-cum-store,

So far, no fund for construction of kitchen sheds has been requested under central share of MDM Scheme or any other schemes. However, kitchen sheds are available in all the schools in Lakshadweep. The funds required for the construction of Kitchen-cum-store are met under UT Budget and the construction works are being done by the LPWD on request from the Department of Education. In certain schools, reconstructions/maintenance of kitchen shed is required and the proposal for the same has already been submitted to the LPWD.

2.10.2 Whether any standardized model of kitchen cum stores is used for construction.

No any standardize model of Kitchen cum stores is used for construction

2.10.3 Details of the construction agency and role of community in this work.

2.10.4 Kitchen cum stores constructed through convergence, if any

2.10.3 & 2.10.4 The Lakshadweep public works department carried out all construction work related to kitchen cum store and there is no community participation in this work. Budgetary provisions for construction of kitchen cum store are made from state budget only.

2.10.5 Progress of construction of kitchen-cum-stores and target for the next year.

2.10.6 The reasons for slow pace of construction of kitchen cum stores, if applicable

2.10.5 & 2.10.6 Due to limited space no new constructions of kitchen cum are carried out except renovations.

2.10.7 How much interest has been earned on the unutilized central assistance lying in the bank account of the State/implementing agencies

No central assistance for construction of kitchen is allocated under AWP&B of previous years.

2.10.8 Details of the kitchen cum stores constructed in convergence. Details of the agency engaged for the construction of these kitchens cum stores.

No kitchen were constructed in convergence.

2.11 Kitchen Devices

2.11.1 Procedure of procurement of kitchen devices from funds released under the Mid Day Meal Programme

Rs.5.45 lakhs received as Non-Recurring central assistance for Procurement of Kitchen Devices for 26 schools and an amount of Rs. 2.05 lakh received as Non-Recurring central assistance for replacement of Kitchen Devices for 13 schools during the year 2020-21. The total Rs.7.50 lakh received as Non-Recurring central assistance for Procurement/replacement of Kitchen Devices and same has been released to the District Panchayath for utilizing replacement of kitchen device. The District panchayath Lakshadweep have utilized Rs.7.50 lakhs during 2020-21.

2.11.2 Status of procurement of kitchen devices

2.11.3 Procurement of kitchen devices through convergence or community/CSR

2.11.4 Availability of eating plates in the schools. Source of procurement of eating plates.

Required Kitchen Devices, eating plates etc. are procured by the District Panchayath from the fund released by Department of Education from State Budget.

2.12 Measures taken to rectify

2.12.2 Inter-district low and uneven utilization of food grains and cooking cost

2.12.3 Intra-district mismatch in utilization of food grains and cooking cost.

2.12.4 Mismatch of data reported through various sources (QPR, AWP&B, MIS etc)

Measures have been taken to rectify the above points. There is no uneven or mismatch in utilization of food grains and cooking cost. Intake of food grains by children's in Primary and Upper Primary are less than that of norms and food grains are utilized as per the requirement to avoid the wastage of food.

2.13 Quality of food

- 2.13.2 System of Tasting of food by teachers/community. Maintenance of tasting register at school level.
- 2.13.3 Maintenance of roster of parents, community for the presence of atleast two parents in the school on each day at the time of serving and tasting of mid day meal.
- 2.13.4 Testing of food sample by any recognized labs for prescribed nutrition and presence of contaminants such as microbes, e-coli. Mechanism to check the temperature of the cooked MDM.
- 2.13.5 Engagement of / recognized labs for the testing of Meals.
- 2.13.6 Details of protocol for testing of Meals, frequency of lifting and testing of samples.
- 2.13.7 Details of samples taken for testing and the results thereof.
- 2.13.8 Steps taken to ensure implementation of guidelines issued with regard to quality of food.

Foods prepared are tasted by teachers before serving to children from the time of introduction of MDM programme. In compliance to the Ministry guidelines food tasting records are maintained in all schools. Due to absence of National Accreditation Lab in Lakshadweep no food samples are tested so far.

2.14 Involvement of NGOs / Trusts/ Tempes/ Gruduvras/ Jail etc

- 2.14.1 Modalities for engagement of NGOs/ Trusts for serving of MDM through centralized kitchen.
- 2.14.2 Whether NGOs/ Trusts are serving meal in rural areas
- 2.14.3 Maximum distance and time taken for delivery of food from centralized kitchen to schools
- 2.14.4 Measures taken to ensure delivery of hot cooked meals to schools
- 2.14.5 Responsibility of receiving cooked meals at the schools from the centralized kitchen,
- 2.14.6 Whether sealed containers are used for supply of meals to schools,
- 2.14.7 Tentative time of delivery of meals at schools from centralized kitchen.
- 2.14.8 Availability of weighing machines for weighing the cooked MDM at school level prepared at centralized kitchen
- 2.14.9 Testing of food samples at centralized kitchens.
- 2.14.10 Whether NGO is receiving grant from other organizations for the mid day meal. If so, the details thereof.

There is no involvement of NGOs/Trust in the implementation of MDM scheme. There is no centralized kitchen in Lakshadweep and all schools are having kitchen attached for serving MDM in all Island and District Panchayat is the implanting agency of MDM in Lakshadweep. Weighing machines are available at kitchen attached to schools.

2.15 Systems to ensure transparency and accountability in all aspects of programme implementation,

- 2.15.1 Display of logo, entitlement of children and other information at a prominent visible place in school
- 2.15.2 Dissemination of information through MDM website
- 2.15.3 Provisions for community monitoring at school level i.e. Mother Roaster, Inspection register,
- 2.15.4 Tasting of meals by community members,

In Lakshadweep, as mentioned at many places in the previous paras, the MDM scheme has been operational since a very long time. The scheme is not been functioning under any private hands. From the beginning, the required funds for providing MDM to the children has been released to the Principal, GSSS in respective islands from the Directorate of Education through Dist. Panchayat and the programme is monitored by the Directorate level by the officers. From 1999 onward the scheme has been transferred to the District Panchayat, even though the basic system of MDM Scheme functioning has not changed at all. As the scheme has been shifted to the District Panchayat, the fund released by the Education Department is being further provided to the Principals by the District Panchayat. The needed food articles are procured by the Principals/Headmasters from the Government controlled Cooperative societies in islands. The cooking and serving process are attended by cooks and teachers appointed by the Administration. Kitchen sheds are constructed by the department through LPWD. Therefore, there is complete transparency in the functioning of the scheme in Lakshadweep. On the above mentioned Panchayat authorities, SMC and Mother PTA of schools oversee and observe the process of implementation and provide required suggestions to the School Principals/Headmasters and the Directorate of Education in time to time.

2.15.5 Conducting Social Audit

- 2.15.5.1 Whether Social Audit has been carried out or not
- 2.15.5.2 If no, in 2.15.5.1, reasons thereof.
- 2.15.5.3 Details of action taken by the State on the findings of Social Audit.
- 2.15.5.4 Impact of social audit in the schools
- 2.15.5.5 Action plan for Social Audit during 2019-20.

Social Audit was not conducted want of reputed intuitions in Lakshadweep. The Department of Education has approached to Department of Rural Development,

Lakshadweep for conducting Social Audit and informed that there is no independent body/setup for conduct of Social Audit in the Department of Rural Development

2.16 Capacity building and training for different stakeholders

- 2.16.1 Details of the training programme conducted for cook-cum-helpers, State level officials, SMC members, school teachers and others stakeholders
- 2.16.2 Details about Modules used for training, Master Trainers, Venues etc.
- 2.16.3 Targets for the next year.

There is no Food Craft Institution or reputed institution in the UTL to provide training to CCH. However the SMC members and stakeholders are provided training in 2019-20 with the help of trained master cooks.

2.17 Management Information System at School, Block, District and State level and its details.

- 2.17.1 Procedure followed for data entry into MDM-MIS Web portal
- 2.17.2 Level (State/ District/ Block/ School) at which data entry is made
- 2.17.3 Availability of manpower for web based MIS
- 2.17.4 Mechanism for ensuring timely data entry and quality of data
- 2.17.5 Whether MIS data is being used for monitoring purpose and details thereof.

There is no separate MIS portal at State Level. MIS developed by the Ministry is helpful to manage the information of MDM in Primary and Upper Primary levels. Data received through e-mail/Post are consolidated at State/District level and data are entered MDM-MIS portal. Lakshadweep being a single District Union Territory, data entry is made from State/District Level only

2.18 Automated Monitoring System (AMS) at School, Block, District and State level and its details.

- 2.18.1 Status of implementation of AMS
- 2.18.2 Mode of collection of data under AMS (SMS/IVRS/Mobile App/Web enabled)
- 2.18.3 Tentative unit cost for collection of data.
- 2.18.4 Mechanism for ensuring timely submission of information by schools
- 2.18.5 Whether the information under AMS is got validated.
- 2.18.6 Whether AMS data is being used for monitoring purpose and details thereof.
- 2.18.7 In case, AMS has not been rolled out, the reasons thereof may be indicated along with the time lines by which it would be rolled out.

UT of Lakshadweep implemented AMS w.e.f July.2016. Lakshadweep being a single District Union Territory with only one service provider, BSNL, which is having poor mobile connectivity in remote islands, and is not in a position to implement Mobile

phone based operation of the above system in these islands. The 'School Suit' developed by National Informatics Centre, Lakshadweep is used for capturing the data of the school children and as advised by NIC, Lakshadweep modification in 'School Suit' programme has been made to arrive data from schools and xml file generated are uploaded to central database of the Ministry daily. No cost is involved for collection of data other than the training of data entry operators.

2.19 Details of Evaluation studies conducted by State/UT and summary of its findings.

No evaluation studies on implementation of MDM have been conducted so far.

2.20 Caste studies/ Write up on best/ innovative practices followed in the State along with some high resolution photographs of these best / innovative practices.

UTL Administration contribute more than mandatory share and cooks are provided Rs.300/- per working day. Egg, fish, fruits etc are provided as additional items in Mid Day Meal. Ingredients and other articles required to MDM implementation are provided by the Cooperative Society in Islands on credit basis and credit bills are settled on the time of release of money from the Ministry. All Cook-Cum Helpers are having bank account and their honorarium is provided through E-Transfer only. Capacity building programme to Principals, Headmaster and MDM teachers have been organized to update their knowledge on time to time instructions, guidelines, FSSAI etc received from the Ministry to improve the implementation of MDM programme in schools.

2.21 Untoward incidents

- 2.21.1 Instances of unhygienic food served, children falling ill
- 2.21.2 Sub-standard supplies,
- 2.21.3 Diversion/ misuse of resources,
- 2.21.4 Social discrimination
- 2.21.5 Action taken and safety measures adopted to avoid recurrence of such incidents. Whether Emergency Plan exists to tackle any untoward incident.

Food served under MDM Scheme is prepared in hygienic environments in the kitchens attached. No cases of children falling ill, instances of misuse of resources and social discrimination have been reported so far. The Headmasters, SMC, Panchayat ward members and MPTA closely monitor the implementation of the MDM programme in all stages. Orders have been issued to all schools for maintaining hand washing before and after MDM, based on the direction received from the Ministry.

2.22 Status of Rastriya Bal Swasthya Karyakram (School Health Programme)

- 2.22.1 Provision of micro- nutrients, de-worming medicine, Iron and Folic acid (WIFS).
- 2.22.2 Distribution of spectacles to children with refractive error,

2.22.3 Recording of height, weight etc.

2.22.4 **Number of visits made by the RBSK team for the health check-up of the children.**

Hospitals/Community Health Centres / Primary Health Centres, available in all the islands to provide health checkup in schools and whenever they find any deficiencies, corrective measures are taken with the help of SMC/MPTA and other departments/organizations. Issuing of health cards for all school going children under NRHM is completed. Distribution of Vitamim-A, de-worming, iron and folic acid tablet, etc during 2020-21 has been completed in all schools. Recording of height and weight etc and children have been refractive error has been deputed to nearby Govt Hospital for further investigation and spectacles are provided according to advice of Doctors. Number of visits made by RBSK team for health checkup given below

During 01.04.20 to 31.12.2021

Block / Taluka / Mandal	No. of schools covered under RBSK	No. of children covered under RBSK	Health Check -ups		Weekly Iron & Folic Acid Supplementation (WIFS)		Deworming tablets distributed		Distribution of spectacles	
			No. of schools	No. of children covered	No. of schools	No. of children covered	No. of schools	No. of children covered	No. of schools	No. of children covered
2	3	4	5	6	7	8	10	11	12	13
Lak.dep	39	7423	39	1998	39	887	39	7423	39	353
Note: The coverage of Health Checkup is less in this current academic year due to pandemic situation of covid-19.										

2.23 Present monitoring structure at various levels. Strategy for establishment of monitoring cell at various levels viz. Block, District and State level for effective monitoring of the scheme.

The setup of monitoring mechanism of MDM exist in Lakshadweep is given in below table.

Sl. No	Levels	Involvement of Officers/PRIs/SMC's etc...
1	Island level	DC/SDO, Principal(GSSS) and HM, GHS(Bitra), MO,LMO,HI CHC/PHC in islands, Secretary, Co-op. Societies,OIC W&C, CP(VDP), HM GSBS& GJBS, President SMC& Mother forum, TIC of Nursery, HM/AHM(Member Secretary).
2	Distric t level	CEO(DP), DMHS, Director(W&C),Director(F&CS), EO, MS(IGH), SLMO (IGH), Senior Lady teacher, Sr. PST & HM (GSSS,KVT), AEO(DP), President SMC& Mother Forum (GSSS,KVT)VPCC & one DP member from all islands, Education Officer(MDM) (Member Secretary).
3	UT level	CDC, MP, PCC, VCC, Secretary (Edn/Health/F&CS/W&C/Planning/Finace), CEO(DP), Physician & Pediatrition (IGH), CP(LSSWB), President Mother Forum & Principal (GSSS,KVT),Medical Practitioner (Private) and DE (Member Secretary)

2.24 Meetings of Steering cum Monitoring Committees at the Block, District and State level

2.24.1 Number of meetings held at various level and gist of the issues discussed in the meeting,

Lakshadweep Administration constituted UT/District/Island level steering-cum-Monitoring committees to oversee the implementation of MDM Scheme at different levels on 27.10.2009 with members consist of DP Members, VDP Chairperson, Vice Chair Person, SMC Members, Headmaster and senior teachers of concerned schools. The State/District Level Steering & Monitoring Committee was held at Kavaratti on 11.11.2020 & 27.01.2021 in the academic year 2020-21.

2.24.2 Action taken on the decisions taken during these meetings.

Meetings at different level	Number of Meeting	Date of Meeting	Gist of the Meeting
State Level Streaming cum Monitoring Committee	Two	11.11.2020 & 27.01.2021	1. Conduct of Health checkup in schools 2. Providing LPG to MDM Kitchen at Kavaratti, Kadmat, Androth, Amini, Minicoy were LPG available
District task force(DTF) on MDM	Two	11.11.2020 & 27.01.2021	3. Release of MME fund for setting up of Kitchen Garden, repair of utensils etc 4. Consider approval of AWP&B 2021-22.
Island Level Streaming cum Monitoring Committee	2 each meeting in every Island	June/Sep/Dec	1. Maintaining of Hygiene in all level for implementation of MDM 2. Health Checkup 3. Estt. Kitchen Garden.

2.25 Frequency of meeting of District Level Committee held under the chairmanship of senior most MP of the District to monitor the scheme. Gist of the issues discussed and action taken thereon.

The UTL Administration constituted District Vigilance & Monitoring Committee under chairmanship of Member of Parliament vide Notification F.No.227/6/2012-EdnMDM (AW) Part-1 Dated 13.8.2013. No meeting of DV&MC held so far.

2.26 Arrangement for official inspections to MDM centers/schools and percentage of schools inspected and summary of findings and remedial measures taken.

Inspection of State /District level officer level officers held during the period of reporting and also island level officers, SMC etc.

2.27 Details of the Contingency Plan to avoid any untoward incident. Printing of important phone numbers (eg. Primary health center, Hospital, Fire brigade etc) on the walls of school building.

Contingency plan is placed in all schools with telephone numbers of Primary Health Centre, Hospital, Fire Brigade etc on the prominent place to avoid untoward incidents.

2.28 Grievance Redressal Mechanism

2.28.2 Details regarding Grievance Redressal at all levels,

The two-tier Grievances Redressal system is functioning in Lakshadweep and is given below.

Sl. No.	Level	Grievances Redressal Officers
1	UT/District level	Director of Education, U.T. of Lakshadweep
2	Island level	Principals/Headmasters of GSSS,Agatti, Amini, Chetlat, Kalpeni, Kavaratti, Kiltan and Minicoy/GHS,Andrott, Kadmat and SBS, Bitra

Toll Free Telephone number have been installed in the District Level Grievances Redressal Cell w.e.f.5.4.2018 and details of Telephone number connected is given below.

Telephone No. of Grievances Redressal Mechanism

A. Island Level

S.No	Island	Designation of Grievances Redressal Officers	Telephone Numbers
1	Agatti	Principal, GSSS	04894 242253
2	Amini	Principal, GSSS	04891 273255
3	Andrott	Principal, GSSS	04893 232323
4	Bitra	Headmaster, GSBS	04890 275222
5	Chetlat	Principal, GSSS	04899 276256
6	Kadmat	Principal, GSSS	04897 274223
7	Kalpeni	Principal, GSSS	04895 252225
8	Kavaratti	Principal, GSSS	04896 262218
9	Kiltan	Principal, GSSS	04898 272239
10	Minicoy	Principal, GSSS	04892 222251

B.State/UT Level

State/UT	Designation of Grievances Redressal Officers	Toll Free Telephone Number
Lakshadweep	Directorate of Education	1800-425-2344

2.28.3 Details of complaints received i.e. Nature of complaints etc.

2.28.4 Time schedule for disposal of complaints,

2.28.5 Details of action taken on the complaints.

So far, no complaints on MDM have been registered on the implementation of MDM scheme and complaints if any on implementation of MDM will be disposed in the day of receipt of complaint or within a week time.

2.29 Details regarding Awareness Generation & Information, Education and Communication (IEC) activities and Media campaign, carried out at State/district/block/school level.

MDM programme is very popular among the people of Lakshadweep and there has never been a situation to do any type of media campaigning to promote this further.

2.30 Overall assessment of the manner in which implementation of the programme is contributing to the programme objectives and an analysis of strengths and weaknesses of the programme implementation.

MDM scheme is extended from pre-primary to 12th standard under the state share. Central share covers primary and upper Primary. Funds allocated under central share and state share is released to Implementation Agency, District Panchayat and then they distribute the fund to schools. Implementation of the MDM programme is very transparent and successful due to the involvement of PRIs, SMC Mother PTA and community participation at all levels.

Hot cooked Mid Day Meal is served to the students covering the food items liked by the local inhabitants and as per the eating habits of the islanders. Generally, the food items like Dhal, Green gram, Fish, and Egg are served along with rice to the students. In fact, the food served is not put to any nutritional tests but the food served is completely hygienic, nutritional and basically liked by the students. The required calorific/protein value is assured in the meals served to the students. As such, U.T Administration has been able to attain success, full retention of the school students and dropout rates in Lakshadweep are negligible. Thus, the Mid Day Meal Scheme has contributed to achieve the set objectives in Lakshadweep.

2.31 Action Plan for ensuring enrolment of all school children under Aadhaar before the stipulated date.

Aadhaar enrolment of children was arranged through CSC centers of IT Department. 95 % of children are having Aadhaar number, 3% children's applied for Aadhaar and 2% students do not have Aadhaar as on 31.09.2020. 100% could not achieve due to poor internet connectivity.

2.32 Contribution by community in the form of Tithi Bhojan or any other similar practices in the State/ UT etc.

Lakshadweep is being a very remote area; Tithi bhojan is not popular in the islands as such situation normally doesn't arise. However the UTL contribute more than mandatory share under Primary and Upper Primary and hence meals of liking of children provided every day.

2.33 Kitchen Garden

- 2.9.1 Status of availability of kitchen gardens in the schools. (Please furnish school wise details in the table given at *Annexure - W 1*)
- 2.9.2 Mapping of schools with the corresponding Krishi Vigyan Kendras (KVK)
- 2.9.3 Details of the mechanisms adopted for the setting up and Maintenance of kitchen gardens.
- 2.9.4 Whether the produce of these kitchen gardens is used in MDM.

2.9.5 Action plan for setting up of kitchen gardens in all schools.

Out of 39 schools 20 schools are having land/terrace for setting up on Kitchen garden and Kitchen garden in 20 schools have been established in 2020-21. Due to scarcity of land and non availability of potable water in islands setting up of Kitchen garden do not have much scope. Children are maintaining Kitchen garden with the supervision of teacher in charge of Kitchen Garden in schools. Details are given in *Annexure - W 1*.

2.34 Details of action taken to operationalize the MDM Rules, 2015.

The Principals and Headmasters were provided the MDM Rule, 2015 with direction to adhere in compliance to the instruction of Ministry and also organize awareness programme to stakeholders to familiarize the MDM Rule.

2.35 Details of payment of Food Security Allowances and its mechanism.

In all school working days MDM are served to children and no such incidents has been occurred not providing MDM in schools.

2.36 Cooking Competition

2.36.1 Whether cooking competitions have been organized at different levels in 2020-21,

2.36.2 if yes in 2.36.1,

2.36.2.1 the number of participants in these competitions

2.36.2.2 Details of judges

2.36.2.3 How many participants were awarded

2.36.2.4 Was the awarded participants given any cash prizes

2.36.2.5 Whether the awarded recipes have been shared with schools

2.36.3 Details of action plan for year 2021-22.

Cooking competition to Cooks was organized during 2019-20.

2.37 Details of minor modifications from the existing guidelines carried out by District Level Committee chaired by the District Magistrate.

No modifications in the existing guidelines have been carried out.

2.38 Details of new interventions envisaged under 5% flexi funds - For each intervention, please provide details of information in the below templates

2.38.1 Background Note

2.38.2 Objectives

2.38.3 Rationale for intervention

2.38.4 Time lines

2.38.5 Coverage

- 2.38.5.1 Number of Districts
- 2.38.5.2 Number of Schools
- 2.38.5.3 Number of Children
- 2.38.5.4 Number of working days
- 2.38.6 Requirement of Funds
- 2.38.7 Monitoring
- 2.38.8 Outcome measurement
- 2.38.9 Impact assessment
 - No new intervention is proposed

- 2.39 Details about provision of Food Security Allowance during closure of schools on account of COVID Pandemic
 - The UT of Lakshadweep has proposed to provide Cost of Foodgrains and Cooking Cost under Mid-Day-Meal to the enrolled students of Primary & Upper Primary Level for 13 days covering the period of 17th March 2020 to 31st March 2020

- 2.39.1 Methodology adopted for distribution of Food Security Allowance
- 2.39.2 Mechanism followed for management and monitoring
 - 2.39.1 to 2.39.2 In the UT of Lakshadweep, 7354 no. of children covered under National Programme of Mid Day Meal. The required fund for meeting the expenditure of FSA during the summer vacation 2020-21 has been sanctioned to concerned Principals in all Islands and directed to provide a Ration KIT to the number of children covered under NP-MDM. Ration KIT contained Foodgrains & ingredients i.e pulses, oil etc in lieu of cooking cost.
 - The Principal GSSS in all Islands are directed to hand over ration Kits to parents directly.
- 2.39.3 Items provided as Food Security Allowance
 - In the UT of Lakshadweep, the Ration-KIT under MDMS contained Foodgrains & ingredients i.e pulses, oil etc in lieu of cooking cost and 52.06MT of Foodgrains and 10.90MT of Dal along with pulses, oil etc in lieu of Cooking Cost is required to provide the Food Security Allowance to Children of 7354 covered under MDM during the closure of School due to covid-19 and summer vacation 2020-21.
- 2.40 Any other issues and Suggestions.**
 1. Provide space in mdm portal (mdm.nic.in) to upload the Letter of Authority (LOA) of fund released to States/UTs.
 2. In the Management Monitoring & Evaluation(MME) plan allocation was brought down to 2.7% over the ceiling of Rs.30.00 lakhs and Rs.3 lakh recommended under MME the component during 2020-21, it is not sufficient to implement the scheme in this UT level. It is requested to provide the enhancement in MME overall budget percentage for smooth implementation of Scheme in this UTL.

School wise information on kitchen garden

S. No	Name of District	Name of Block	Name of school	Type of Kitchen field(open field, terrace containers)	Size of Kitchen garden (approx Sqm)	Main Produce	Quantity of produce (in Kg)	Participating agencies(KVK, Horticulture Dept. Community, School's own initiative)
1	Lakshadweep	Amini	GJBS(N), Kadmat	open field	280	Banana, Drumstick, Tapioca	12 kg	School's own initiative
2			GJBS(C), Kadmat	open field	120	Banana, Tomato, Chilly, Curry leaves	6 Kg	School's own initiative
3			GJBS(S), Kiltan	open field	100	Banana, Drumstick, Tapioca	4KG	School's own initiative
4			GSBS, Kiltan	terrace containers	405	Tomato, brinjal. Cheera	6 Kg	School's own initiative
5			GJBS , Chetlat	terrace containers	252	Banana, Drumstick, Tapioca, Curry leaves	9Kg	School's own initiative
6			GSSS, Chetlat	terrace containers	400	Tomato, Brinjal, Chilly, Banana	6 Kg	School's own initiative
7			GJBS(S), Amini	open field	200	T Brinjal, Curry leaves, Tomato, Chilly	10 kg	School's own initiative
8			GJBS(NW) , Amini	open field	150	Tomato, Brinjal, Chilly,	9 kg	School's own initiative
9		Andrott	GGSSS, Andrott	terrace containers	100	Brinjal, Curry leaves, Tomato, Chilly, capsicum, carrot, cabbage, ladies figure	15 Kg	School's own initiative
10			MGSSS, Andrott	terrace containers	800	Tomato, Chilly, Ladies finger & Cheera	10kg	School's own initiative
11			JBS Moola, Andrott	terrace containers	200	Banana, Drumstick, Tapioca, Curry leaves	13 kg	School's own initiative
12			GSBS, Kalpeni	terrace containers	200	Tomato, Brinjal,	14 Kg	School's own initiative

						Chilly, Ladies finger		
13		GJBS, Kalpeni	terrace containers	205	Tomato, Brinjal, Chilly,	6 Kg	School's own initiative	
14		GSSS, Minicoy	open field	525	Tomato, Chilly, Ladies finger , Brinjal,	12kg	School's own initiative	
15		JBS, Minicoy	open field	195	Tomato, Chilly, Ladies finger , Brinjal,		School's own initiative	
16		Kavaratti	GJBS(N), Kavaratti	terrace containers	90	Tomato, Chilly, Ladies finger	5 kg	School's own initiative
17			GJBS(E), Kavaratti	terrace containers	110	Tomato, Brinjal, Chilly,	3kg	School's own initiative
18			GSSS, Kavaratti	open field	200	Tomato, Brinjal, Chilly,	10kg	School's own initiative
19			GJBS(S), Agatti	open field	100	Chilly, Ladies finger	5kg	School's own initiative
20			GSBS, Bitra	open field	80	Tomato, Chilly,brinjal	3kg	School's own initiative
