



National Programme
of
Mid Day Meal in Schools
(MDMS)
Annual Work Plan & Budget

2021-22

MEGHALAYA

Tables of Content

INDEX	PAGE NO
<p>1. <u>Introduction:</u></p> <p>1.1 Brief history</p> <p>1.2 Management structure</p> <p>1.3 Process of Plan Formulation at State and District level.</p>	1 - 8
<p>2. <u>Description and assessment of the programme implemented in the current year (2020-21) and proposal for next year (2021-22) with reference to:</u></p> <p>2.1 Regularity and wholesomeness of mid-day meals served to children; interruptions if any and the reasons therefore, problem areas for regular serving of meals and action taken to avoid Interruptions in future.</p> <p>2.2 System for cooking, serving and supervising mid-day meals in the schools</p> <p>2.3 Details about weekly Menu.</p> <p>2.3.1 Weekly Menu – Day wise</p> <p>2.3.2 Additional Food items provided (fruits/milk/any other items), if any from State/UT resources. Frequency of their serving along with per unit cost per day.</p> <p>2.3.3 Usage of Double Fortified Salt and Fortified Edible Oil; their availability and constraints, if any, for procuring these items.</p> <p>2.3.4 At what level menu is being decided / fixed,</p> <p>2.3.5 Provision of local variation in the menu, Inclusion of locally available ingredients/items in the menu as per the liking/taste of the children</p> <p>2.3.6 Time of serving meal.</p> <p>2.4 Fund Flow Mechanism - System for release of funds (Central share and State share).</p> <p>2.4.1 Existing mechanism for release of funds up to school/ implementing agency levels.</p> <p>2.4.2 Mode of release of funds at different levels,</p> <p>2.4.3 Dates when the fund were released to State Authority/Directorate/District/Block /Gram Panchayat and finally to the Cooking</p>	8 - 38

<p>Agency/School.</p> <p>2.4.4 Reasons for delay in release of funds at different levels.</p> <p>2.4.5 In case of delay in release of funds from State/ Districts, how the scheme has been implemented by schools/ implementing agencies.</p> <p>2.4.6 Initiatives taken by the State for pre-positioning of funds with the implementing agencies in the beginning of the year, like creation of corpus funds, adoption of green channel scheme, advance release of State share etc.</p> <p>2.5 Foodgrains management</p> <p>2.5.1 Time lines for lifting of foodgrains from FCI Depot- District wise lifting calendar of foodgrains.</p> <p>2.5.2 System for ensuring lifting of FAQ foodgrains (Joint inspections at the time of lifting etc.).</p> <p>2.5.3 Is there any incident when FAQ food grain was not provided by FCI. If so, the action taken by the State/District to get such foodgrain replaced with FAQ food grain. How the food grain of FAQ was provided to implementing agencies till replacement of inferior quality of food grain from FCI was arranged.</p> <p>2.5.4 System for transportation and distribution of food grains</p> <p>2.5.5 Whether unspent balance of foodgrains with the schools is adjusted from the allocation of the respective implementing agencies (Schools/SHGs/Centralised Kitchens). Number of implementing agencies receiving foodgrains at doorstep level.</p> <p>2.5.6 Storage facility at different levels in the State/District/Blocks/Implementing agencies after lifting of food grains from FCI depot.</p> <p>2.5.7 System of fortification of foodgrains and their costing and logistics arrangement.</p> <p>2.5.8 Challenges faced and plan to overcome them.</p> <p>2.6 Payment of cost of foodgrains to FCI.</p> <p>2.6.1 System for payment of cost of foodgrains to FCI; whether payments made at district level or State</p>	
--	--

<p>level</p> <p>2.6.2 Status of pending bills of FCI of the previous year(s) and the reasons for pendency.</p> <p>2.6.3 Timelines for liquidating the pending bills of previous year(s).</p> <p>2.6.4 Whether meetings are held regularly in the last week of the month by the District Nodal Officers with FCI as per guidelines dated 10.02.2010 to resolve the issues relating to lifting, quality of food grains and payment of bills.</p> <p>2.6.5 Whether the District Nodal Officers are submitting the report of such meeting to State Head quarter by 7th of next month.</p> <p>2.6.6 The process of reconciliation of payment with the concerned offices of FCI.</p> <p>2.6.7 Relevant issues regarding payment to FCI.</p> <p>2.6.8 Whether there is any delay in payment of cost of food grains to FCI. If so, the steps taken to overcome the delay.</p> <p>2.7 Cook-cum-helpers</p> <p>2.7.1 Whether the State follows the norms prescribed by MHRD for the engagement of cook-cum-helpers or it has its own norms.</p> <p>2.7.2 In case, the State follows different norms, the details of norms followed may be indicated.</p> <p>2.7.3 Is there any difference in the number of cook-cum-helpers eligible for engagement as per norms and the CCH actually engaged.</p> <p>2.7.4 System and mode of payment, of honorarium to cook-cum-helpers and implementing agencies viz. NGOs/SHGs/Trust/Centralized kitchens etc.</p> <p>2.7.5 Whether the CCH were paid on monthly basis.</p> <p>2.7.6 Whether there was any instance regarding irregular payment of honorarium to cook-cum-helpers and reason there of Measures taken to rectify the problem.</p> <p>2.7.7 Rate of honorarium to cook-cum-helpers,</p> <p>2.7.8 Number of cook-cum-helpers having bank accounts,</p> <p>2.7.9 Number of cook-cum-helpers receiving honorarium through their bank accounts,</p> <p>2.7.10 Provisions for health check-ups of Cook-cum-Helpers,</p> <p>2.7.11 Whether cook-cum-helpers are wearing head gears and gloves at the time of cooking of meals.</p>	
--	--

- 2.7.12 Modalities for apportionment of cook-cum-helpers engaged at school level and working at centralized kitchens, in case of schools being served through centralized kitchens,
- 2.7.13 Mechanisms adopted for the training of cook cum helpers. Total number of trained cook cum helpers engaged in the cooking of MDMs. Details of the training modules; Number of Master Trainers available in the State; Number of trainings organized by the Master Trainers for training cook-cum-helpers.
- 2.7.14 Whether any steps have been taken to enroll cook-cum-helpers under any social security schemes i.e Pradhan Mantri Jan Dhan Yojana, Pradhan Mantri Suraksha Bima Yojana, Pradhan Mantri Jeevan Jyoti Bima Yojana etc. and number of cooks benefitted through the same.

2.8 Procurement and storage of cooking ingredients and condiments

- 2.8.1 System for procuring good quality pulses, vegetables including leafy ones, salt, condiments, oil etc. and other commodities.
- 2.8.2 Whether pulses are being procured from NAFED or otherwise.
- 2.8.3 Whether 'First-in:First-out' (FIFO) method has been adopted for using MDM ingredients such as pulses, oil/fats, Condiments
- 2.8.4 salt etc. or not.
- 2.8.5 Arrangements for safe storage of ingredients and condiments in kitchens.
- 2.8.6 Steps taken to ensure implementation of guidelines dated 13.02.2015 on food safety and hygiene in school level kitchens under Mid-Day Meal Scheme.
- 2.8.7 Information regarding dissemination of the guidelines up-to school level.

2.9 Type of Fuel used for cooking of Mid-Day Meals –LPG,

<p>Smokeless Chulha, Fire wood etc.</p> <p>2.9.1 Number of schools using LPG for cooking MDM</p> <p>2.9.2 Steps taken by State to provide LPG as fuel in MDM in all schools.</p> <p>2.9.3 Expected date by which LPG would be provided in all schools.</p> <p>2.10 Kitchen-cum-stores.</p> <p>2.10.1 Procedure for construction of kitchen-cum-store,</p> <p>2.10.2 Whether any standardized model of kitchen cum stores is used for construction.</p> <p>2.10.3 Details of the construction agency and role of community in this work.</p> <p>2.10.4 Kitchen cum stores constructed through convergence, if any</p> <p>2.10.5 Progress of construction of kitchen-cum-stores and target for the next year.</p> <p>2.10.6 The reasons for slow pace of construction of kitchen cum stores, if applicable.</p> <p>2.10.7 How much interest has been earned on the unutilized central assistance lying in the bank account of the State/implementing agencies.</p> <p>2.10.8 Details of the kitchen cum stores constructed in convergence. Details of the agency engaged for the construction of these kitchen-cum-stores.</p> <p>2.11 Kitchen Devices</p> <p>2.11.1 Procedure of procurement of kitchen devices from funds released under the Mid-Day Meal Programme</p> <p>2.11.2 Status of procurement of kitchen devices</p> <p>2.11.3 Procurement of kitchen devices through convergence or community/CSR</p> <p>2.11.4 Availability of eating plates in the schools. Source of procurement of eating plates.</p> <p>2.12 Measures taken to rectify</p> <p>2.12.1 Inter-district low and uneven utilization of foodgrains and cooking cost</p>	
--	--

<p>2.12.2 Intra-district mismatch in utilization of foodgrains and cooking cost.</p> <p>2.12.3 Mismatch of data reported through various sources (QPR, AWP&B, MIS etc)</p> <p>2.13 Quality of food</p> <p>2.13.1 System of Tasting of food by teachers/community. Maintenance of tasting register at school level.</p> <p>2.13.2 Maintenance of roster of parents, community for the presence of at least two parents in the school on each day at the time of serving and tasting of mid day meal.</p> <p>2.13.3 Testing of food sample by any recognized labs for prescribed nutrients and presence of contaminants such as microbe' se-coli. Mechanism to check the temperature of the cooked MDM.</p> <p>2.13.4 Engagement of / recognized labs for the testing of Meals.</p> <p>2.13.5 Details of protocol for testing of Meals, frequency of lifting and testing of samples.</p> <p>2.13.6 Details of samples taken for testing and the results thereof.</p> <p>2.13.7 Steps taken to ensure implementation of guidelines issued with regard to quality of food.</p> <p>2.14 Involvement of NGOs / Trusts / Temples / Gurudwara / Jails etc.</p> <p>2.14.1 Modalities for engagement of NGOs/ Trusts/ Temples / Gurudwara / Jails etc. for serving of MDM through centralized kitchen.</p> <p>2.14.2 Whether NGOs / Trusts/ Temples / Gurudwara / Jails etc. are serving meal in rural areas</p> <p>2.14.3 Maximum distance and time taken for delivery of food from centralized kitchen to schools</p> <p>2.14.4 Measures taken to ensure delivery of hot cooked meals to schools</p> <p>2.14.5 Responsibility of receiving cooked meals at the schools from the centralized kitchen,</p> <p>2.14.6 Whether sealed/insulated containers are used for supply of meals to schools,</p> <p>2.14.7 Tentative time of delivery of meals at schools from centralized kitchen.</p> <p>2.14.8 Availability of weighing machines for weighing the</p>	
---	--

<p>cooked MDM at school level prepared at centralized kitchen.</p> <p>2.14.9 Testing of food samples at centralized kitchens.</p> <p>2.14.10 Whether NGOs / Trusts/ Temples / Gurudwara / Jails etc. is receiving grant from other organizations for the mid day meal. If so, the details thereof.</p> <p>2.15 Systems to ensure transparency and accountability in all aspects of programme implementation,</p> <p>2.15.1 Display of logo, entitlement of children and other information at a prominent visible place in school</p> <p>2.15.2 Dissemination of information through MDM website</p> <p>2.15.3 Provisions for community monitoring at school level i.e. Mother Roaster, Inspection register,</p> <p>2.15.4 Tasting of meals by community members,</p> <p>2.15.5 Conducting Social Audit</p> <p>2.15.5.1 Whether Social Audit has been carried out or not</p> <p>2.15.5.2 If no, in 2.15.5.1, reasons thereof.</p> <p>2.15.5.3 Details of action taken by the State on the findings of Social Audit.</p> <p>2.15.5.4 Impact of social audit in the schools</p> <p>2.15.5.5 Action plan for Social Audit during 2021-22.</p> <p>2.16 Capacity building and training for different stakeholders</p> <p>2.16.1 Details of the training programme conducted for State level officials, SMC members, school teachers and others stakeholders</p> <p>2.16.2 Details about Modules used for training, Master Trainers, Venues etc.</p> <p>2.16.3 Targets for the next year.</p> <p>2.17 Management Information System at School, Block, District and State level and its details.</p> <p>2.17.1 Procedure followed for data entry into MDM-MIS Web portal</p>	
---	--

<p>2.17.2 Level (State/ District/ Block/ School) at which data entry is made</p> <p>2.17.3 Availability of manpower for web based MIS</p> <p>2.17.4 Mechanism for ensuring timely data entry and quality of data</p> <p>2.17.5 Whether MIS data is being used for monitoring purpose and details thereof.</p> <p>2.18 Automated Monitoring System (AMS) at School, Block, District and State level and its details.</p> <p>2.18.1 Status of implementation of AMS</p> <p>2.18.2 Mode of collection of data under AMS (SMS/IVRS/Mobile App/Web enabled)</p> <p>2.18.3 Tentative unit cost for collection of data.</p> <p>2.18.4 Mechanism for ensuring timely submission of information by schools</p> <p>2.18.5 Whether the information under AMS is got validated.</p> <p>2.18.6 Whether AMS data is being used for monitoring purpose and details thereof.</p> <p>2.18.7 In case, AMS has not been rolled out, the reasons therefore may be indicated along with the time lines by which it would be rolled out.</p> <p>2.19 Details of Evaluation studies conducted by State/UT and summary of its findings.</p> <p>2.20 Case Studies / Write up on best/ innovative practices followed in the State along with some high resolution photographs of these best / innovative practices.</p> <p>2.21 Untoward incidents</p> <p>2.21.1 Instances of unhygienic food served, children falling ill</p> <p>2.21.2 Sub-standard supplies,</p> <p>2.21.3 Diversion/ misuse of resources,</p> <p>2.21.4 Social discrimination</p> <p>2.21.5 Action taken and safety measures adopted to avoid recurrence of such incidents. Whether Emergency Plan exists to tackle any untoward incident.</p> <p>2.22 Status of Rastriya Bal Swasthya Karyakram.</p> <p>2.22.1 Provision of micro- nutrients, de-worming medicine, Iron and Folic acid (WIFS).</p>	
--	--

<p>2.22.2 Distribution of spectacles to children with refractive error,</p> <p>2.22.3 Recording of height, weight etc.</p> <p>2.22.4 Number of visits made by the RBSK team for the health check- up of the children (Please ensure to upload at least two photographs of the visit of the medical team in each school on MDM-MIS portal).</p> <p>2.23 Present monitoring structure at various levels. Strategy for establishment of monitoring cell at various levels viz. Block, District and State level for effective monitoring of the scheme.</p> <p>2.24 Meetings of Steering cum Monitoring Committees at the Block, District and State level</p> <p>2.24.1 Number of meetings held at various level and gist of the issues discussed in the meeting,</p> <p>2.24.2 Action taken on the decisions taken during these meetings.</p> <p>2.25 Frequency of meeting of District Level Committee held under the chairmanship of senior most MP of the District to monitor the scheme. Gist of the issues discussed and action taken thereon.</p> <p>2.26 Arrangement for official inspections to MDM centers/schools and percentage of schools inspected and summary of findings and remedial measures taken.</p> <p>2.27 Details of the Contingency Plan to avoid any untoward incident. Printing of important phone numbers (eg. Primary health center, Hospital, Fire brigade etc) on the walls of school building.</p> <p>2.28 Grievance Redressal Mechanism</p> <p>2.28.1 Details regarding Grievance Redressal at all levels,</p> <p>2.28.2 Details of complaints received i.e. Nature of complaints etc.</p> <p>2.28.3 Time schedule for disposal of complaints,</p> <p>2.28.4 Details of action taken on the complaints.</p> <p>2.29 Details regarding Awareness Generation & Information, Education and Communication (IEC) activities and Media</p>	
---	--

<p>campaign, carried out at State/district/block/school level.</p> <p>2.30 Overall assessment of the manner in which implementation of the programme is contributing to the programme objectives and an analysis of strengths and weaknesses of the programme implementation.</p> <p>2.31 Action Plan for ensuring enrolment of all school children under Aadhaar before the stipulated date.</p> <p>2.32 Contribution by community in the form of TithiBhojan or any other similar practices in the State/ UT.</p> <p>2.33 Kitchen Gardens</p> <p>2.33.1 Status of availability of kitchen gardens in the schools. (Please furnish school wise details for all districts in the table given at Annexure – W 1 Page No.35-38.)</p> <p>2.33.2 Mapping of schools with the corresponding Krishi Vigyan Kendras (KVK)</p> <p>2.33.3 Details of the mechanisms adopted for the setting up and Maintenance of kitchen gardens.</p> <p>2.33.4 Whether the produce of these kitchen gardens is used in MDM.</p> <p>2.33.5 Action plan for setting up of kitchen gardens in all schools.</p> <p>2.34 Details of action taken to operationalize the MDM Rules, 2015.</p> <p>2.35 Details of payment of Food Security Allowances and its mechanism.</p> <p>2.36 Cooking Competition</p> <p>2.36.1 Whether cooking competitions have been organized at different levels in 2020-21,</p> <p>2.36.2 if yes in 2.36.1,</p> <p>2.36.2.1 the number of participants in these competitions</p> <p>2.36.2.2 Details of judges</p> <p>2.36.2.3 How many participants were awarded</p>	
--	--

<p>2.36.2.4 Was the awarded participants given any cash prizes</p> <p>2.36.2.5 Whether the awarded recipes have been shared with schools</p> <p>2.36.3 Details of action plan for year 2021-22</p> <p>2.37 Details of minor modifications from the existing guidelines carried out by District Level Committee chaired by the District Magistrate.</p> <p>2.38 Details of new interventions (preferably for areas affected with malnutrition, anemia etc, aspirational districts) envisaged under 5% flexi funds – For each intervention, please provide detailed information in the below template</p> <p>2.38.1 Background Note</p> <p>2.38.2 Objectives</p> <p>2.38.3 Rationale for the intervention</p> <p>2.38.4 Time lines</p> <p>2.38.5 Coverage</p> <p>2.38.5.1 Number of Districts</p> <p>2.38.5.2 Number of schools</p> <p>2.38.5.3 Number of children</p> <p>2.38.5.4 Number of working days</p> <p>2.38.6 Requirement of Funds</p> <p>2.38.7 Monitoring</p> <p>2.38.8 Outcome measurement</p> <p>2.38.9 Impact assessment</p> <p>2.39 Details about provision of Food Security Allowance during closure of schools on account of COVID Pandemic</p> <p>2.39.1 Methodology adopted for distribution of Food Security Allowance</p> <p>2.39.2 Mechanism followed for management and monitoring</p> <p>2.39.3 Items provided as Food Security Allowance</p> <p>2.40 Detailed MME plan alongwith Annual plan of activities to be undertaken thereunder.</p> <p>2.41 Any other issues and Suggestions.</p>	
--	--

3. <u>Management Monitoring & Evaluation (MME) Plan 2021-22</u>	39
4. <u>AWP&B 2021-22 Tables</u>	

1. INTRODUCTION

1.1. Brief History:

Mid Day Meal Scheme was implemented in the State of Meghalaya for almost 26 years, by providing dry ration to LP schools only which was extended to Upper Primary schools at a later stage. In compliance with the Supreme Court order from the year 2004-05, cooked meal was served to all Government and Government Aided LP and UP schools.

The main objectives of Mid Day Meal Scheme is to attract children to attend schools and boost universalization of elementary education in the State thereby increase enrolment, attendance and retention and reduce down drop-out rates. Mid Day Meal Scheme also helps improve the nutritional status of children and encourages poor children to attend school regularly.

The cost of conversion of food grain into hot cooked meal is met jointly by the Centre and State Government as per norms shown below:

	<u>Central</u>	<u>State</u>	<u>Total</u>
L.P school	4.47	0.50	4.97 per child/day (April 2020 onwards)
U.P. school	6.70	0.75	7.45 per child/day (April 2020 onwards)

Food grain is provided free of cost through Food Corporation of India (FCI) by Government of India and the transportation charges is met by Government of India as per PDS Rate of the State.

Cooked Mid Day Meal containing 480 calories and 13 grams of proteins per child per day for a minimum of 200 days in a year for Lower Primary Schools and 700 calories and 20 grams of proteins per child per day for 220 days for Upper Primary Schools.

Schools are instructed to see that all Government and Government aided LP and UP schools where cooked Mid Day Meal is served have the required calories and proteins.



The State covers a total area of 22,429 sq. kms comprising of 11 (Eleven) districts. The population of the state according to 2011 census is 2,966,889. The Area and Population of the districts are shown below.

Table 1: District Wise Area and Population

Sl. No.	District	Area in sq. kms	Population
1.	East Khasi Hills	2,748	825,922
2.	Ri Bhoi	2,448	258,840
3.	West Khasi Hills	3,906	273,309
4.	South West Khasi Hills	1,341	110,152
5.	East Jaintia Hills	2,126	124,772
6.	West Jaintia Hills	1,693	270,352
7.	East Garo Hills	1,490	199,592
8.	West Garo Hills	3,677	643,291
9.	North Garo Hills	1,113	118,325
10.	South West Garo Hills	822	1,70,794
11.	South Garo Hills	1,887	142,334

Source –Statistical Handbook Meghalaya, 2019, Directorate of Economics & Statistics, Government of Meghalaya, Shillong

Democratic profile of the State

Meghalaya emerged as a full-fledged State within the Union of India on 21st January 1972. ‘Meghalaya’ meaning ‘abode of clouds’ reflects the salubrity of its climate. The wettest places in the world are also located here. The State has an area of 22429 sq. km. and is located between 24°57’ and 26°10’ North latitudes and 89°46’ and 92°53’ East longitudes. The temperature varies from 2 degrees Celsius to 35 degree Celsius depending upon the altitude which varies in hills from 300 metres to 2000 metres above mean sea level. It has predominantly hilly terrain with foothills as plains and flood-prone areas. It is bounded by the Brahmaputra valley of Assam in the North and Northwest and Cachar area of Assam in

the East; the Surma valley (Bangladesh) borders in the South and partly in the Southwest. Meghalaya has about 443 Kms. of international border with Bangladesh. The capital of Meghalaya is Shillong and the population is predominantly tribal, the main tribes are the Khasis, the Jaintias and the Garos besides other plain tribes such as Koch, Rabhas and Bodos etc. The Khasis and the Jaintias predominantly inhabiting the Districts towards eastern part of Meghalaya, belong to the Proto Austroloid Monkhmer race. The western part of the State, the Garo Hills, is predominantly inhabited by the Garos. The Garos belong to the Bodo family of the Tibeto-Burman race said to have migrated from Tibet. The Garos are also called Achiks. The Garo, Khasi and Jaintia societies have a matrilineal system.

Literacy rate :

The literacy rate of the State over the years has increased tremendously from 62.6 % (2001 Census) to 75.48 %. as per 2011 Census (Provisional). The district-wise break-up is given below :-

Table 2: District Wise Literacy Rates

Literacy Rate as per Provisional 2011 Census				
S. No	Districts	Male %	Female %	Total %
1	East Khasi Hills	84.51	83.81	85.35
2	Ri-Bhoi	76.79	74.49	77.53
3	West Khasi Hills	79.53	77.19	80.30
4	Jaintia Hills	58.14	65.06	58.79
5	East Garo Hills	77.72	70.05	78.42
6	West Garo Hills	72.39	62.7	73.02
7	South Garo Hills	76.23	66.9	76.90

School Data

Table 3(a) : Number of L.P. Schools (Govt+SSA, Govt-aided and Special Training Centre

S. No.	Name of District	No. of Institutions			
		(Govt + SSA) Schools	GA Schools	Special T raining Centers	Total (col 3+ 4+ 5+ 6)
1	2	3	4	5	6
1	East Khasi Hills	588	707	27	1322
2	Ri Bhoi	473	170	20	663
3	West Khasi Hills	502	492	7	1001
4	South West Khasi Hills	244	218	71	533
5	West Jaintia Hills	524	174	108	806
6	East Jaintia Hills	344	95	7	446
7	East Garo Hills	373	78	0	451
8	North Garo Hills	424	158	25	607
9	West Garo Hills	1051	184	125	1360
10	South West Garo Hills	374	106	45	525
11	South Garo Hills	547	112	9	668
Total		5444	2494	444	8382

Source : UDISE 2018-19

Table 3 (b) : Enrolment

S.No.	Name of District	Enrolment (As on 31.12.2019)				
		(Govt+LB)	GA	Special Training Centers	Madarsa/ Maqtab	Total (col 3+4+5+6)
1	2	3	4	5	6	7
1	East Khasi Hills	31474	45551	1240	0	78265
2	Ri Bhoi	25305	13074	1039	0	39418
3	West Khasi Hills	27078	22835	40	0	49953
4	South West Khasi Hills	12525	9855	363	0	22743
5	West Jaintia Hills	26819	10892	1237	0	38948
6	East Jaintia Hills	16139	3771	164	0	20074
7	East Garo Hills	21786	4647	0		26433
8	North Garo Hills	20549	7196	1182	0	28927
9	West Garo Hills	51105	9253	921	0	61279
10	South West Garo Hills	14473	3966	123	0	18562
11	South Garo Hills	18149	5045	122		23316
Total		265402	136085	6431	0	407918

Source – UDISE 2019-20

Table 4 (a) :Number of U.P. Schools (Government, Government aided, SSA).

S. No.	Name of District	No. of Institutions			
		(Govt + SSA) Schools	GA Schools	Special Training Centers	Total (col 3+ 4+ 5+ 6)
1	2	3	4	5	6
1	East Khasi Hills	444	203	20	667
2	Ri Bhoi	193	83	11	287
3	West Khasi Hills	282	112	1	395
4	South West Khasi Hills	183	79	21	283
5	West Jaintia Hills	179	63	19	261
6	East Jaintia Hills	90	34	1	125
7	East Garo Hills	143	30	0	173
8	North Garo Hills	135	70	4	209
9	West Garo Hills	304	196	38	538
10	South West Garo Hills	119	55	8	182
11	South Garo Hills	236	58	14	308
Total		2308	983	137	3428

Source : UDISE 2019-20

Table 4 (b) : Enrolment

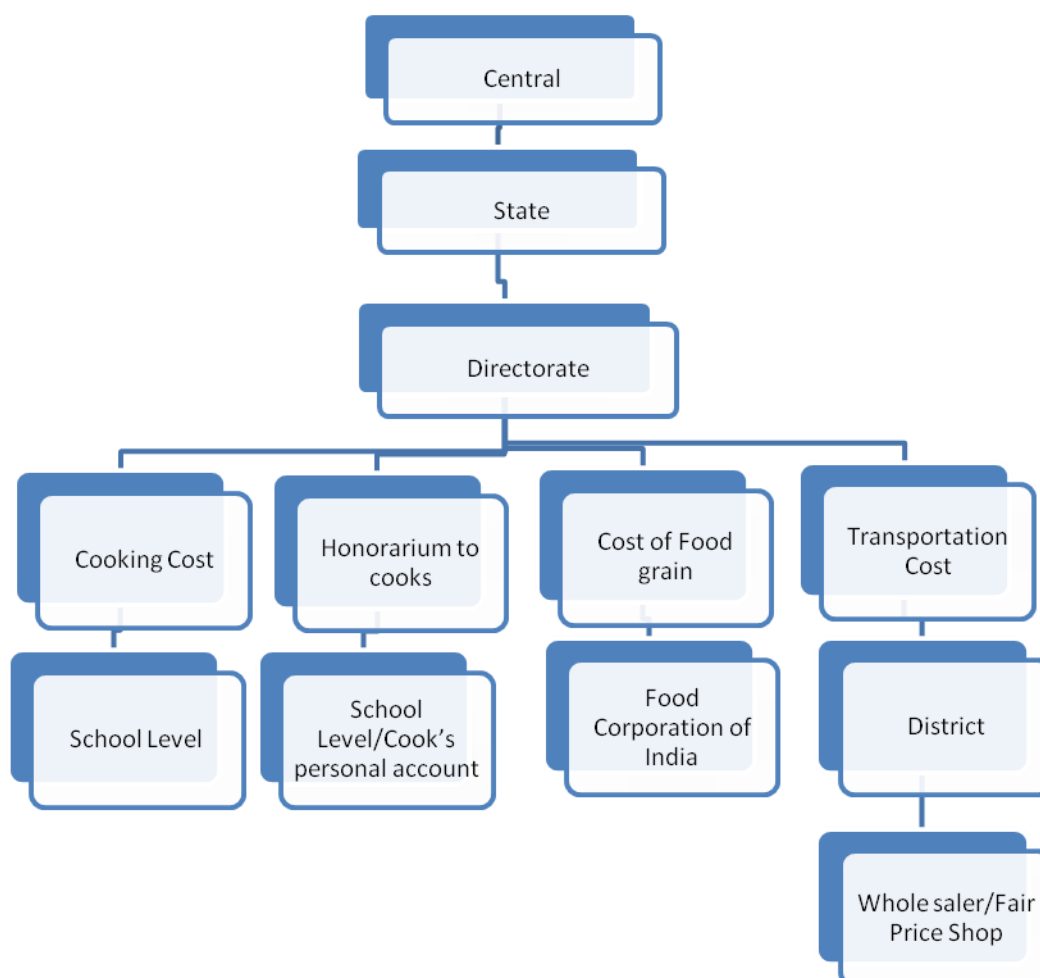
S.No.	Name of District	Total Enrolment (As on 31.12.2019)				
		(Govt+L B)	GA	Special Training Centers	Madars a/Maqt ab	Total (col (3+4+5+6))
1	2	3	4	5	6	7
1	East Khasi Hills	19587	15354	471	-	35412
2	Ri Bhoi	8930	8250	369	-	17549
3	West Khasi Hills	11537	8842	22	-	20401
4	South West Khasi Hills	5375	3422	417	-	9214
5	West Jaintia Hills	9892	6678	549	-	17119
6	East Jaintia Hills	4900	3415	21	-	8336
7	East Garo Hills	5345	3491	0	-	8836
8	North Garo Hills	7739	7209	240	-	15188
9	West Garo Hills	13502	14096	328	-	27926
10	South West Garo Hills	5032	3854	42	-	8928
11	South Garo Hills	7426	3688	88	-	11202
Total		99265	78299	2547	-	180111

Source : UDISE 2019-20

1.2 Management structure-

The Mid Day Meal Cell under the Directorate of School Education & Literacy consist of 1Monitoring Officer, 1MIS-Coordinator, 1Account Assistant, 1 Consultant, 1 Project Manager (ARMS), 1 Data Entry Operator and 1 Grade IV at the State Level and at the District level it consist of 3 MIS Co-ordinators in East Khasi Hills, Jaintia Hills, Garo Hills and 1 each Data Entry operators-*Cum*-Office Assistant in all the 15(Fifteen) and 16 Asst. Data Entry Operators in Sub-Divisional Offices.

Fund Flow Chart



1.3. Process of Plan Formulation.

For preparing the AWP&B 2021-22, the following steps have been taken up :

1. Information was collected right from the grassroot level.
2. Authenticity and correctness of enrolment and number of schools.
3. For preparation of the District Plan, the District/School Education Officers, should take into consideration the records maintained at the school level and UDISE data should be used.

2. Description and assessment of the programme implemented in the current year (2020-21) and proposal for next year (2021-22) with reference to :

2.1. **Regularity and wholesomeness of mid day meals served to children; interruptions, if any and the reasons therefore, problem areas for regular serving of meals and action taken to avoid interruptions in future.**

All Government and Government Aided LP and UP Schools in the State are serving Mid Day Meal for 200 days for Primary Schools and 220 days for Upper Primary Schools in a year. Due to Covid-19 Pandemic during the year of 2020-21, foodgrains and cooking cost were given as Food Security Allowance to the parents of the school children through the School Managing Committee/Schools concerned as per norms so that there is no interruption in providing mid day meals to the schools children so as to improve the nutritional status of the school children.

2.2. **System for cooking, serving and supervising mid day meals in the schools**

All Govt. and Govt. Aided LP and UP schools are provided with cook-cum-helpers for cooking mid day meals and also to serve to the school children during school hours. Supervision of mid day meal in the schools is being done by the District /Sub-Divisional School Education Officers, Inspecting staff, Officers of the Education Department, SSA functionaries, Village Education Committees and School Managing Committees.

2.3 Details about Weekly Menu

2.3.1 *Weekly Menu – Day wise–*

A Weekly Menu Plan has been prepared by the Directorate of School Education & Literacy taking into consideration the inclusion of local and seasonal vegetables available in the different districts.

2.3.2 *Additional Food items provided (fruits/milk/any other items), if any from State/UTs resources. Frequency of their serving along with per unit cost per day*

Additional food items like locally available seasonal fruits like oranges, guava, pineapples, bananas etc. are also provided.

2.3.3 *Usage of Double Fortified Salt and Fortified Edible Oil; their availability and constraint, if any, for procuring these items.*

All schools have been instructed to use Double Fortified Salt and fortified oil for cooking of mid day meals.

2.3.4 *At what level menu is being decided / fixed*

Menu is being decided/fixed by the State Level, but sometimes schools can also decide the menu taking into consideration the inclusion of local and seasonal vegetable available.

2.3.5 *Provision of local variation in the menu, inclusion of locally available ingredients/items in the menu as per the liking/taste of the children*

Some schools especially in rural areas use local vegetables like pumpkin, squash, yam, gourd, green papaya, mustard leaves, etc.

2.3.6 *Timings for serving of meal.*

Mid Day Meal is being served to the school children during recess time.

2.4 Fund Flow Mechanism – System for release of funds (Central Share and State share)

2.4.1 *Existing mechanism for release of funds up to school/implementing agency*

Levels

Fund for Mid Day Meal Scheme is sanctioned and released by the MHRD, Govt. of India to the State through the Finance Department for Central Share. The Finance Department releases the Central Share including State Share to the Education Department and from the Education Department to the Directorate of School Education & Literacy.

2.4.2 Mode of release of funds at different levels

Once funds for Mid Day Meal are received in the Directorate, it is released to the schools / districts by E-transfer. For cooking cost fund is released to the schools bank account directly from the State, for cost of Transportation Assistance to the Dy. Commissioners' Bank account, for Cost of foodgrain to FCI Bank Account and Honorarium to cook-cum-helpers to their personal Bank Accounts of cook-cum-helper.

2.4.3 Dates when the fund released to the District/Block/Gram Panchayat and finally to the Cooking Agency/School

The Dates in which funds were released is at Table AT –2A of the AWP & B 2021-22.

2.4.4 Reasons for delay in release of funds at different levels

During the year 2020-21, there is no delay in releasing of funds to the various levels.

2.4.5 In case of delay in release of funds from State/Districts, how the scheme has been implemented by schools/implementing agencies

In case of delay in release of funds from the State/District, a Corpus Fund of Rs. 10 crores is being provided by Finance Department is being utilized.

2.4.6 Initiatives taken by the State/District for pre-positioning of funds with the implementing agencies in the beginning of the year, like creation of corpus funds, adoption of green channel scheme, advance release of State Share etc.

The State has taken the initiatives for pre-positioning of funds through a Corpus Fund provided by the State Finance Department.

2.5 Foodgrain management

2.5.1 *Time lines for lifting of foodgrains from FCI Depot- lifting calendar of foodgrains.*

The Dy. Commissioner (Supply) through the Govt. nominees i.e., Wholesalers/Fair Price Shop Dealers lifted food grains from FCI Godown and distributed the same to the doorsteps of the schools either quarterly/monthly.

2.5.2 *System for ensuring lifting of FAQ foodgrains (Joint inspections at the time of lifting etc.)*

The Inspecting officer / staff of the Dy. Commissioners (Supply) along with the inspecting staff of the Education Dept. working at the District level jointly inspect the lifting of food grains and see that FAQ food grains are being supplied to the schools.

2.5.3 *Is there any incident when FAQ food grain was not provided by FCI. If so, the action taken by the State/District to get such food grain replaced with FAQ food grain. How the food grain of FAQ was provided to implementing agencies till replacement of inferior quality of food grain from FCI was arranged.*

No reports were received from any quarters regarding incident that FAQ food grain was not provided by FCI.

2.5.4 *System for transportation and distribution of food grains*

Transportation and distribution of Food grains are being taken up by the respective Dy. Commissioners (Supply).

2.5.5 *Whether unspent balance of foodgrains with the schools is adjusted from the allocation of the respective implementing agencies (School/SHGs/Centralised Kitchens) Number of implementing agencies receiving food grains at doorstep level.*

The unspent balance of food grains with the schools is being adjusted with the next allocation.

2.5.6 *Storage facility at different levels in the District/Blocks implementing agencies after lifting of food grains from FCI depot.*

Almost all the schools implementing Mid Day Meal Scheme are being provided with kitchen –cum- store rooms where food grains lifted from FCI depot are being kept and stored.

2.5.7 *System of fortification of food grain and their costing and logistics arrangement*

Regarding fortification of food grain and their costing and logistics arrangement, the same will be taken up in consultation with the concerned Department.

2.5.8 *Challenges faced and plan to overcome them.*

For proper implementation of Mid Day Meal Scheme, there are challenges faced in most of the districts regarding transportation and distribution of food grains by the wholesalers. The main cause is due to the fact that wholesalers do not distribute food grains up to the door steps of the schools and in time.

2.6. *Payment of cost of foodgrains to FCI.*

2.6.1 *System for payment of cost of foodgrains to FCI. Whether payments made at district level or State level.*

Payment of cost of food grains to FCI is being made by the State through E-transfer.

2.6.2 *Status of pending bills of FCI of the previous year(s) and the reasons for pendency*

There is no pending bills to FCI during the previous years.

2.6.3 *Timelines for liquidating the pending bills of previous year(s).*

Nil

2.6.4 *Whether meetings are held regularly in the last week of the month by the District Nodal Officers with FCI as per guidelines dated 10.02.2010 to resolve the issues relating to lifting, quality of food grains and payment of bills.*

Due to Covid-19 Pandemic in 2020-21, meetings could not be held regularly.

2.6.5 *Whether District Nodal Officers are submitting the report of such meeting to the State Head Quarter by 7th of next month.*

Whenever meetings are held at the Districts, the District Nodal Officers used to submit the reports of such meeting to the State.

2.6.6 *The process of reconciliation of payment with the concerned offices of FCI*

The process of reconciliation of payment to FCI is based on the reports received from the Dy. Commissioner (Supply) with the bills of FCI.

2.6.7 *Relevant issues regarding payment to FCI*

Nil

2.6.8 *Whether there is any delay in payment of cost of food grains to FCI . If so, the steps taken to overcome the delay.*

Nil.

2.7. Cook – cum – helpers

2.7.1 *Whether the State follows the norms prescribed by MHRD for the engagement of cook-cum-helpers or it has its own norms.*

Engagement of Cook-Cum-Helpers is based on the norms prescribed by MHRD.

2.7.2 *In case, the State follows different norms, the details of norms followed may be indicated.*

Nil.

2.7.3 *Is there any difference in the number of cook-cum-helpers eligible for engagement as per norms and the CCH actually engaged.*

All schools serving mid day meals are provided with Cook-cum-Helpers, but there are differences in the number of cook-cum-helpers approved and the number of cooks engaged due to fact that most of the cooks appointed left for a better job at the later stage due to low honourarium.

2.7.4 System and mode of payment, of honorarium to cook-cum-helpers and implementing agencies viz. NGOs/SHGs/Trust/Centralized kitchens etc.

Honorarium to cook-cum-helpers are being paid by E-Transfer to their respective personal bank account. For those cooks who have not submitted their personal bank account, the same is being transferred to the school bank account which in turn make payment to cook-cum-helpers.

2.7.5 Whether the CCH were paid on monthly basis.

Yes, the honorarium to Cook-Cum-Helpers is paid on a monthly/quarterly basis.

2.7.6 Whether there was any instance regarding irregular payment of honorarium to cook-cum-helpers and reason thereof. Measures taken to rectify the problems.

At present, there are instances regarding irregular payment of honorarium to Cook-Cum-Helpers because of the wrong bank account number submitted by the cook-cum-helpers. Instruction were issued to all the district officers concerned to direct the schools concerned to see that cook-cum-helpers are submitting the correct personal bank account.

2.7.7 Rate of honorarium to cook-cum-helpers

The rate of honorarium to Cook-Cum-Helpers is Rs. 1000/- per month (900 Central Share + 100 State Share).

2.7.8 Number of cook-cum-helpers having bank accounts.

The number of cook-cum-helpers having Bank Accounts is 14737.

2.7.9 Number of cook-cum-helpers receiving honorarium through their bank accounts.

Till date 14737 cook-cum-helper receiving honorarium through their bank account.

2.7.10 Provisions for health check-ups of Cook-cum-helpers.

There is no provision for health check-ups for cook-cum-helpers.

2.7.11 Whether cook-cum-helpers are wearing head gears and gloves at the time of cooking meals.



Instructions have been issued to all the schools that cook-cum-helpers should wear head gears and gloves at the time of cooking Mid Day Meal.

2.7.12 Modalities for appointment of cook-cum-helpers engaged at school level and working at centralized kitchens, in case of schools being served through centralized kitchens.

Appointment of cook-cum-helpers is being done by the School Managing Committees and the State has not taken up Centralized kitchen.

2.7.13 Mechanisms adopted for the training of cook-cum-helpers. Total number of trained cook-cum-helpers engaged in the cooking of MDMs. Details of the training modules; Number of Master Trainers available in the District; Number of trainings organized by the Master Trainers for training of cook-cum-helpers.

During 2020-21, training of cook-cum-helpers could not be organized due to Covid-19 Pandemic.

2.7.14 Whether any steps have been taken to enroll cook-cum-helpers under any social security schemes i.e Pradhan Mantri Jan Dhan Yojana, Pradhan Mantri Suraksha Bima Yojana, Pradhan Mantri Jeevan Jyoti Bima Yojana etc. and number of cooks benefitted through the same.

Nil.

2.8. Procurement and storage of cooking ingredients and condiments

2.8.1 System of procuring good quality (pulses, vegetables including leafy ones, salt, condiments, etc and other commodities.

All the SDSEOs are instructed to inform the schools to follow the prescribed cost of meal per child per day as per State Nutrition/Expenditure norms and also to see that condiments/other commodities are procured of good quality :

LPS :

Sl. No.	Food item	Quantity (in gms)	Cost of Qty	Calories	Protein content (in gms)
			(in Rs.)		
1	2	3	4	5	6
1	Foodgrains (Wheat/Rice)	100	Supplied free	340	8
2	Pulses	20	1.65	70	5
3	Vegetables (in leafy)	50	1.05	25	-
4	Oil & fat	5	0.70	45	-
5	Salt & Condiments	-	0.60	-	-
6	Fuel	-	0.97	-	-
7	any other items	-	0	-	-
	Total	175	4.97	480	13

UPS :

Sl. No.	Food item	Quantity (in gms)	Cost of Qty (in Rs.)	Calories	Protein content (in gms)
1	2	3	4	5	6
1	Foodgrains (Wheat/Rice)	150	Supplied free	510	12
2	Pulses	30	2.25	90	8
3	Vegetables	75	1.5	40	-
4	Oil & fat	8	0.91	60	-
5	Salt & Condiments	-	1.02	-	-
6	Fuel	-	1.77	-	-
7	Any other items	-	0	-	-
	Total	263	7.45	700	20

2.8.2 Whether Pulses are being procured from NAFED or otherwise

Pulses are not procured from NAFED but purchased from the local market.

2.8.3 Whether First In and First Out (FIFO) method has been adopted for using MDM ingredients such as pulses, oil/fats, condiments, salt etc. or not

FIFO method has been adopted in most of the districts of the State.

2.8.4 Arrangements for safe storage of ingredients and condiments in kitchens.

Ingredients and condiments are being stored and kept in air tight containers in the kitchen –cum- store room.

2.8.5 Steps taken to ensure implementation of guidelines dated 13.2.2015 on Food Safety and Hygiene in school levels kitchens under Mid Day Meal Scheme.

Instruction were issued to all the Sub Divisional School Education Officers to instruct all schools under their jurisdiction to strictly follow the guidelines on Food Safety and Hygiene for School Level Kitchens under Mid Day Meal Scheme and also on Mid Day Meal Rules, 2015 under National Food Security Act, 2013.

2.8.6 Information regarding dissemination of the guidelines up-to school level.

Same as 2.8.5

2.9. Type of Fuel used for cooking of Mid Day Meals – LPG, smokeless chulha, firewood and others.

Firewood is mainly used for cooking of Mid Day Meals and in some schools in the Urban areas, LPG and Solar cooker is being used.

2.9.1. Number of schools using LPG for cooking MDM –

Number of schools where LPG is used for cooking mid day meal is 580.

2.9.2 Steps taken by State to provide LPG as fuel in MDM in all schools

Due to shortage of fund, LPG connection and procurement of cylinder could not be taken up.

2.9.3 *Expected date by which LPG would be provided in all schools.*

Due to shortage of supply of LPG in the State especially in the rural areas, the date for which LPG would be provided to all schools could not be fixed.

2.10. Kitchen –cum- stores

2.10.1 *Procedure of construction of kitchen –cum-store*

Kitchen sheds under Mid Day Meal Scheme is being constructed based on the approved Plinth Area norms.

2.10.2 *Whether any standardized model of kitchen- cum- stores is used for construction*

There is no standardized model for construction of kitchen-cum-stores.

2.10.3 *Details of the construction agency and role of community in this work*

Construction of kitchen sheds is being taken up by the School Managing Committees. The District officers/community and the general public inspect the construction works in the schools.

2.10.4 *Kitchen cum stores constructed through convergence, if any*

All newschools constructed under SSA have kitchen shed –cum-store room.

2.10.5 *Progress of construction of kitchen-cum-store rooms and target for the next year.*

9758 units of kitchen sheds sanctioned during the year 2006-07 to 2018-19 have completed construction.

2.10.6 *The reasons for slow pace of construction of kitchen cum stores, if applicable*

Nil

2.10.7 *How much interest has been earned on the unutilized central assistance lying in the bank account of the State/implementing agencies.*

Nil

2.10.8. Details of the kitchen cum stores constructed in convergence. Details of the agency engaged for the construction of these kitchen cum store.

Nil

2.11. Kitchen Devices.

2.11.1 Procedure of procurement of kitchen devices from funds released under the Mid Day Meal Programme

Funds for kitchen devices sanctioned by Govt. of India is released to the respective Sub Divisional School Education Officers by e-transfer which in turn releases to the schools availing Mid Day Meal for procurement of kitchen devices etc.

2.11.2 Status of procurement of kitchen devices

Detailed status of procurement of kitchen devices is at Table AT – 12 and AT-12A of the AWP & B 2021-22.

2.11.3 Procurement of kitchen devices through convergence or community/CSR

NIL

2.11.4 Availability of eating plates in the schools. Source of procurement of eating plates.

At present there is no separate fund for procurement of eating plates but in some schools, the school managing committees procure eating plates out of the school management funds.

2.12. Measures taken to rectify

2.12.1 Inter-district low and uneven utilization of food grains and cooking cost.

No reports regarding inter-district low and uneven utilization of food grains and cooking cost receive from any districts.

2.12.2 Intra-district mismatch in utilization of food grains and cooking cost.

NIL

2.12.3 Mismatch of data reported through various sources (QPR, AWP & B, MIS etc).

Nil

2.13 Quality of food

2.13.1 System of Tasting of food by teachers/community. Maintenance of tasting register at school level.

Instructions were issued to all the schools where cooked meal is being served to see that 1 or 2 teachers taste the food before serving to the school children. Parents are also encouraged to taste the food before serving. All the schools have a tasting register to record the observations.

2.13.2 Maintenance of roster of parents, community for the presence of atleast two parents in the school on each day at the time of serving and tasting of mid day meal.

Every efforts are being taken up to see that 1 or 2 parents preferably present in the school in all school working days to see and taste that food served to the school children are of good quality.

2.13.3 Testing of food sample by any recognized labs for prescribed nutrient ion and presence of contaminants such as microbes, e-coli. Mechanism to check the temperature of the cooked MDM.

Direction has been given from the Government of Meghalaya, Education Department to await the commissioning of the Food Testing Laboratory in Pasteur Hills, Shillong as no Mid Day Meal is being served in schools in Meghalaya as they are still closed in view of the COVID-19 pandemic. This is vide letter No. EDN.276/2015/509, Dated 20.10.20 (copy enclosed). A request has also been made to the Joint Commissioner of Food Safety, Meghalaya, Shillong vide letter No. DSEL/ABP/MDM/72/2013/Pt/358, Dated 15.04.21 (copy enclosed) whether the commissioning of the Food Testing Laboratory, Pasteur Hills, Shillong is completed or not so that further necessary action may be taken regarding testing of cooked Mid Day Meal samples. Reply awaited.

2.13.4 Engagement of / recognized labs for the testing of Meals.

The State has identified Pasteur Institute, Shillong for Testing of food samples.

2.13.5 Details of protocol for testing of Meals, frequency of lifting and testing of samples.

NIL

2.13.6 Details of samples taken for testing and the results thereof.

NIL

2.13.7 Steps taken to ensure implementation of guidelines issued with regard to quality of food.

Same as 2.8.5.

2.14 Involvement of NGOs/Trusts/Temples/Gurudwara/Jails etc.

2.14.1 Modalities for engagement of NGOs/Trusts/ Temples/Gurudwara/Jails for serving of MDM through centralized kitchen

Engagement of NGOs/Trusts/Temples/Gurudwara/Jails for serving of MDM have not been taken up by the State.

2.14.2 Whether NGOs/Trusts are serving meal in rural areas

Does not arise

2.14.3 Maximum distance and time taken for delivery of food from centralized kitchen to schools

Does not arise

2.14.4 Measures taken to ensure delivery of hot cooked meals to schools

Does not arise

2.14.5 Responsibility of receiving cooked meals at the schools from the centralized kitchen

Does not arise

2.14.6 Whether sealed/insulated containers are used for supply of meals to schools.

Does not arise



2.14.7 Tentative time of delivery of meals at schools from centralized kitchen

Does not arise

2.14.8 Availability of weighing machines for weighing the cooked MDM at school level prepared at centralized kitchen.

Does not arise

2.14.9 Testing of food samples at centralized kitchens.

Does not arise

2.14.10 Whether NGO is receiving grant from other organizations for the mid day meal. If so, the details thereof.

Does not arise

2.15 Systems to ensure transparency and accountability in all aspects of programme implementation

2.15.1 Display of logo, entitlement of children and other information at a prominent visible place in school.

All Govt. and Government Aided LP and UP schools availing Mid Day Meal in the State have displayed the MDM Logo, entitlement of each children, MDM Menu etc at a prominent place to enable the general public to see the norms of Mid Day Meal Scheme.

2.15.2 Dissemination of information through MDM website

Information of Mid Day Meal Scheme is available in the MDM State Website. www.mdmsmeghalaya.gov.in.

2.15.3 Provisions for community monitoring at school level i.e. Mother Roaster, Inspection register.

All schools availing Mid Day Meal are instructed to maintain the inspection register to enable the community/Mother Roaster, general public to record during their visit to the schools regarding Mid Day Meal Scheme.

2.15.4 Tasting of meals by community members

Mid Day Meal is being tasted by any member of the community present in the schools at the time of serving mid day meal to the school children.

2.15.5 Conducting Social Audit

2.15.5.1 Whether Social Audit has been carried out or not

During the financial year 2020-21, Social audit could not be conducted due to Covid – 19 Pandemic as all the schools were closed.

2.15.5.2 If no, in 2.15.5.1, reasons thereof.

As all the schools were closed due to Covid – 19 Pandemic.

2.15.5.3 Details of action taken by the State on the findings of Social

Audit.

Does not arise.

2.15.5.4 Impact of social audit in the schools

Does not arise.

2.15.5.5 Action plan for Social Audit during 2021-22.

As social audit could not be conducted during 2020-21, proposed action plan has been prepared to conduct social audit in two districts namely South West Khasi Hills and South Garo Hills for the year 2021-2022.

2.16 Capacity Building and training for different stakeholders.

2.16.1 Details of the training programme conducted for State level officials, SMC members, school teachers and other stakeholders.

Due to Covid -19 Pandemic, training programmes could not be conducted.

2.16.2 Details about Modules used for training, Master Trainers, Venues etc.

Nil

2.16.3 Targets for the next year.

4500 cooks will be trained during 2021-22

2.17. Management Information System at School, Block, District and State level and its details.

2.17.1 Procedure followed for data entry into MDM-MIS Web Portal

For data entry into MIS-Web Portal, information is collected from all the schools in the prescribed Data Captured Format provided by the MHRD and the same is being collected by the CRCs/BRCS and is submitted to the District offices for feeding the information into the MIS Portal.

2.17.2 Level (State/District/Block/School) at which data entry is made

The data entry is made by the Data Entry Operator in their respective Sub Divisional Offices or at the District Headquarters of the NIC. At the State level, the data entry is done by the State MIS Co-ordinator of Mid Day Meal Scheme.

2.17.3 Availability of manpower for web based MIS

At the Sub-Divisional Level, 1 (one) Office Assistant Data-Cum-Data entry operator in each of the Sub Divisional Offices is appointed and at present, the appointment of 1 (one) Asst. Data Entry Operator in each Sub-Division is under process for doing the work of data entry into the Web Portal.

2.17.4 Mechanism for ensuring timely data entry and quality of data

For ensuring data entry and quality of data entered into the portal, instructions are issued from time to time to all the Sub-Divisional School Education Offices to check the accuracy of data before uploading and to submit the required information regularly.

2.17.5 Whether MIS data is being used for monitoring purpose and details thereof.

The MIS State Co-ordinator at the State level and District MIS Co-ordinator at the District level does the monitoring purpose and details of the data entered into the MIS Web Portal.

2.18. Automated Monitoring System (AMS) at School, Block, District and State level and its details.

2.18.1 Status of implementation of ARMS

The Mobile numbers of teachers from all 11 Districts have been uploaded in the portal. Training to all teachers on how to report the data to the portal has been conducted at some Districts and Blocks. The training to other remaining Districts and Blocks has been halted due to Covid-19. Training will be conducted as soon as Covid-19 Protocols are relaxed.

2.18.2 Mode of collection of data under AMS (SMS/IVRS/Mobile App/Web enabled)

Mode of collection of data under ARMS is being done manually. The Data Entry Operators at the district level collect the phone numbers from the teacher in charge of MDM and uploads the data into the system directly or they send the details to the Project Manager (ARMS) at the Directorate level and the same is uploaded into the portal.

2.18.3 Tentative unit cost of collection of data

The tentative unit cost of collection of data, at present is not required as it is being collaborated with State NIC and NIC Himachal Pradesh.

2.18.4 Mechanism for ensuring timely submission of information by schools

Training of teachers for uploading of information into the ARMS Portal is still in progress. Necessary steps will be taken to ensure timely submission of information by the Schools.

2.18.5 Whether the information under AMS got validated.

Information is not available.

2.18.6 Whether AMS data is being used for monitoring purpose and details thereof.

Yes, ARMS data is being used for monitoring purposes.

2.18.7 *In case, AMS has not been rolled out, the reasons therefore may be indicated along with the time lines by which it would be rolled out*

Some Districts have already started sending data to the ARMS portal, others will be sending as soon as training on ARMS is completed.

2.19. Details of Evaluation studies conducted by State/UT and summary of its findings.

Nil

2.20 Case studies/Write up on best/innovative practices followed in the District along with some high resolution photographs of these best / innovative practices.

During 2020-21, best/innovative practices could not be carried out in the schools as all the schools were closed due to Covid-19 pandemic.

2.21. Untoward incidents.

2.21.1 *Instances of unhygienic food served, children falling ill,*

No reports were received from any districts regarding instances of unhygienic food served and children falling ill.

2.21.2 *Sub-standard supplies,*

Till date, no sub-standard supplies of foodgrains etc. is detected.

2.21.3 *Diversion/misuse of resources,*

There is no diversion or misuse of MDM fund.

2.21.4 *Social discrimination*

All section of children are treated equally and there is no social discrimination in the State.

2.21.5 *Action taken and safety measures adopted to avoid recurrence of such incidents. Whether Emergency Plan exists to tackle any untoward incident.*

Does not arise in view of No. 2.21.1 above.

2.22. Status of Rastriya Bal SwasthyaKaryakram (School Health Programme)

2.22.1 Provision of micro- nutrients, Vitamin-A, de-worming medicine, Iron and Folic acid (WIFS), Zinc.

Weekly Iron & Folic Acid tablet is being given to 42172 school children from April 2020 to March 2021. There is low coverage due to the Covid – 19 pandemic.

2.22.2 Distribution of spectacles to children with refractive error,

No reports received

2.22.3 Recording of height, weight etc.

The height and weight of children recorded under RBSK from April 2020 to March 2021 is 38309. There is low coverage due to the pandemic.

2.22.4 Number of visits made by the RBSK team for the health check- up of the children.

Health check-ups have been carried out for 38309 children till March, 2021.

2.23. Present monitoring structure at various levels. Strategy for establishment of monitoring cell at various levels viz. Block, District and State level for effective monitoring of the scheme.

Instruction were issued to all concerned officers and inspecting staff to monitor the proper implementation of Mid Day Meal scheme.

2.24. Meetings of Steering cum Monitoring Committees at the Block, District and Statelevel

2.24.1 Number of meetings held at various level and gist of the issues discussed in the meeting,

Number of meetings held at: State Level – 1

Meetings of District level committee headed by the senior most Member of Parliament of Loksabha - 2

District Level – 5

Block Level – No reports available.

2.24.2 Action taken on the decisions taken during these meetings.

At the State Level, action were taken on the decisions of the meetings such as School Working Days, Management Monitoring and Evaluation (MME), Engagement of Cook-cum-helpers (CCH) and Honorarium, Kitchen-cum-stores (construction as well as Repair), Kitchen Devices, School Nutrition (Kitchen Garden), School Health Programm, Supplementary Nutrition, Testing of Meals, Cooking Competitions, Training of Cooks-cum-helper, Data Entry on MDM-MIS Web Portal, ARMS, Social Audit, for MDM.

2.25. Frequency of meeting of District Level Committee held under the chairmanship of senior most MP of the District to monitor the scheme. Gist of the issues discussed and action taken thereon.

At the District level, meeting is held once a month for monitoring the scheme. Some of the issues discussed in the meetings are: Appointment of Cook-Cum-Helpers, Construction of Kitchen Shed, School Health Programme (SHP), provision of toilets and drinking water, Status of data entry into MIS Portal, Evaluation study by IHM, Transfer of MDM Funds, Social Audit, Training of Cook cum Helpers, Emergency Plan, Transport Assistance, NFS Act 2013, LPG provision in School, etc.

2.26. Arrangement for official inspections to MDM centres/schools and percentage of schools inspected and summary offindings and remedial measures taken.

All district officers including officials/inspecting staff are to inspect at least 10 schools per month to see that cooked meal is being served to the school children regularly.

2.27 Details of the Contingency Plan to avoid any untoward incident. Printing of important phone numbers (eg. Primary health center, Hospital, Fire brigade etc) on the walls of school building.

The State Government has prepared a Contingency Plan which includes all necessary instructions to avoid any untoward incidents while serving meals such as food poisoning safety, clean and portable water, waste disposals, kitchen sheds and storage safety, fire accident safety, personal hygiene of CCHs, emergency contact numbers, etc. has been circulated to all the schools.

2.28. Grievance Redressal Mechanism

2.28.1 *Details regarding Grievance Redressal at all levels,*

A Grievance Redressal Cell have been set up in all Deputy Commissioners and Sub-Divisional Officer (Civil) with a toll free telephone number with a Nodal Officer in position for receiving complaints and feed-backs concerning Mid Day Meal Scheme.

2.28.2 *Details of complaints received i.e. Nature of complaints etc.*

During the current year, no reports have been received from any districts regarding complaints.

2.28.3 *Time schedule for disposal of complaints,*

Does not arise.

2.28.4 *Details of action taken on the complaints.*

Does not arise.

2.29. **Details regarding Awareness Generation & IEC activities and Media campaign, carried out at State/district/block/school level.**

The Mid Day Meal Cell under the Directorate of School Education & Literacy, Meghalaya, Shillong, has taken the initiative to broadcast Mid Day Meal Scheme in the Reliance Broadcast Network Limited. 98.3 Big FM Shillong and in the *All India Radio Shillong, Tura and Jowai* and in *AIR FM Jongphi 103.6 Mhz*. The Broadcast is being done in English, Khasi and Garo (Local language).

2.30. **Overall assessment of the manner in which implementation of the programme is contributing to the programme objectives and an analysis of strengths and weaknesses of the programme implementation.**

The overall assessment on the implementation of Mid Day Meal Programme in the State has to a great extent achieved the objective of the Programme like universalization of elementary education, improved the nutritional status of the children.

2.31. Action Plan for ensuring enrolment of all school children under Aadhaar before the stipulated date.

Aadhaar enrolment of all school children is still under process.

2.32. Contribution by community in the form of TithiBhojan or any other similar practices in the State/ UT etc.

The State has not taken up the practice of TithiBhojan.

2.33. Kitchen Gardens

2.33.1 Status of availability of kitchen gardens in the schools. (please furnish school wise details for all districts in the table given at Annexure – W1).

Instructions were issued to all the schools availing Mid Day Meal to start kitchen garden in the schools depending on the availability of land. Some of the Schools which have submitted the Report on Kitchen garden is at Annexure –A-W1 and most of the schools have not submitted their report on Kitchen Garden though they are practicing kitchen garden at Schools.

2.33.2 Mapping of schools with the corresponding Krishi Vigyan Kendras (KVK).

NIL

2.33.3 Details of the mechanisms adopted for the setting up and maintenance of kitchen gardens.

At present, no proper mechanism adopted by the schools for kitchen garden. However, kitchen garden is being done by the schools authorities including maintenance.

2.33.4 Whether the produce of these kitchen gardens is used in MDM.

Yes

2.33.5 Action plan of setting up of kitchen gardens in all schools.

Same as 2.33.1.

2.34. Details of action taken to operationalize the MDM Rules, 2015.

To make Mid Day Meal (MDM) Rules, 2015 a meeting was held with all the Sub Divisional School Education Officers and those involved in the implementation of

the Scheme. During the discussion, all SDSEOs were instructed to issue these Rules to all the schools availing mid day meal to create awareness that cooked meals should be served to all the school children on all school working days failing which action will be taken on those schools with a penalty.

2.35. Details of payment of Food Security Allowances and its mechanism.

During the year 2020-21, food grains and cooking cost were given to the parents of the school children as per norms per child per day as mid day meal could not be served in the schools due to Covid-19.

2.36. Cooking competition

2.36.1 Whether cooking competition have been organized at different levels in 2021-22

Nil.

2.36.2 If yes in 2.36.1,

2.36.2.1. the number of participants in these competitions

Does not arise

2.36.2.2. Details of judges

Does not arise

2.36.2.3. How many participants were awarded

Does not arise

2.36.2.4. Was the awarded participants given any cash prizes

Does not arise

2.36.2.5. Whether the awarded recipes have been shared with schools

Does not arise.

2.36.3 Details of action plan for 2021-22

During 2021-22, the proposed tentative action plan includes training of remaining cook-cum-helpers, awareness campaign and best practices exploration regarding the implementation of Mid Day Meal Scheme.

2.37 Details of minor modifications from the existing guidelines carried out by District Level Committee chaired by the District Magistrate.

No reports were received regarding minor modifications from the existing guidelines carried out by the District Level Committee.



2.38 Details of new interventions envisaged under 5% flexi funds – For each intervention, please provide detailed information in the below template.

2.38.1 Nil

2.38.2. Objectives

2.38.3. Rationale for the intervention - Nil

2.38.4. Time lines - Nil

2.38.5. Coverage

2.38.5.1. Number of Districts - Nil

2.38.5.2. Number of Schools - Nil

2.38.5.3. Number of children - Nil

2.38.5.4. Number of working days–Nil

2.38.6 Requirement of funds- Nil

2.38.7 Monitoring - Nil

2.38.8 Outcome measurement - Nil

2.38.9 Impact assessment

2.39 Details about provision of Food Security Allowance during closure of schools on account of COVID Pandemic

2.39.1.1 Methodology adopted for distribution of Food Security Allowance

During closure of schools due to COVID19, foodgrains and cooking cost is given to the parents of the school children to provide nutritional food. Parents are asked to collect foodgrains and cooking cost from the respective schools. The School Managing Committees are directed to issue foodgrain and cooking cost as per entitlement per child per day. Registers for disbursement of the above, are to be maintained at the schools and also reports of the same should be submitted to the respective District School Education Officers, Sub Divisional School Education officers and to the Directorate of School Education and Literacy.

2.39.2 Mechanism followed for management and monitoring

All District School Education Officers, Sub Divisional School Education officers and inspecting staffs are to monitor and inspect that all Government and Government Aided Schools including SSA Schools availing Mid Day Meal abide by the instructions. The Inspecting staffs are also directed to instruct the parents of the school children to come and collect the entitlement of foodgrain and cooking cost from the



schools for the entire period of closure of schools. The inspecting staff should also see that the parents of the school children are getting foodgrains and cooking cost as per entitlement.

2.39.3 Items provided as Food Security Allowance

Food grain and Cooking Cost was provided as Food Security Allowance.

2.40 Detailed MME Plan alongwith Annual Plan of activities to be undertaken thereunder

The detail MME Plan alongwith Annual Plan of activities to be undertaken in 2021-22 is at Annexure-A

2.41 Any other issues and suggestions.

The main issues of the Mid Day Meal scheme are low honorarium to cook-cum-helper i.e., Rs. 1000/- per month for 10 months in a year. It is proposed that honourarium to cook cum helpers be enhanced from Rs. 1000/- to 3000/- per month so as to retain their services in the schools.

**Annexure A-W1**

S. No.	Name of District	Name of Block	Name of school	Type of kitchen field (open field, terrace, containers)	Size of kitchen garden (approx. sq mt)	Main produce	Quantity of produce (in Kg)	Participating agencies (KVK, Horticulture Dept., Community, School's own initiative)	
1	East Jaintia Hills	Khliehriat	Iakyntulang SSA LPS, Lad Sutnga	Open field	-	lettuce, cabbage, carrot, beats, Squash, pumpkin, yam, etc.	-	School's own initiative	
2		Khliehriat	Sham Sham UPS	Open field	-	lettuce, cabbage, carrot, beats, pumpkin, cucumber, yam, ginger, etc.	-	School's own initiative	
3		Saipung	Jalaphat UPS	Open field		Cabbage, carrot, beats, lettuce, pumpkin, cucumber, yam, radish, etc.	-	School's own initiative	
4				Khulu Malang Memo LPS			Local vegetables	-	
5				Lakasein UPS			Local vegetables	-	School's own initiative



6			Moopala Govt. LPS			Local vegetables	-	School's own initiative
7			Moopala UPS			Local vegetables	-	School's own initiative
8			Samasi Presbyterian UPS			Local vegetables	-	School's own initiative
9			Sham Sham UPS			Local vegetables	-	School's own initiative
10	Ri Bhoi District	Umsning	Lumblei LPS	Open field		Yam, lettuce, cabbage, beans, beats, etc.	-	School's own initiative
11	East Khasi Hills	Shillong Municipal Cantontment	Providence LPS & UPS	Open field		Local vegetables	-	School's own initiative
12		Mylliem	Umrynjah presbyterian LPS	Open field		Local vegetables	-	School's own initiative
13		Mylliem	Nikabansan LPS	Open field		Local vegetables	-	School's own initiative
14	East Garo Hills	Samanda	Williamnagar Girls' UPS	Open field		Local vegetables	-	Assistance from Soil and Water Conservation Department
15			Samanda UPS	Open field		Local vegetables	-	Assistance from Soil and Water Conservation Department
16			Educere LPS	Open field		Local vegetables	-	Assistance from Soil and Water Conservation Department
17				Holy Family LPS	Open field		Local vegetables	-



								Conservation Department
18	West Khasi hills	Nongstoin	Nongklung Govt. LPS	Open field		Local vegetables		School's own initiative
19			Nongkynjang Govt. LPS	Open field		Local vegetables		School's own initiative
20			St. Anthony's UPS	Open field		Local vegetables		School's own initiative
21			Domkohsam RCL PS	Open field		Local vegetables		School's own initiative
22			Shohphria Govt.LPS	Open field		Local vegetables		School's own initiative
23			Mawlangkhar UPS	Open field		Local vegetables		School's own initiative
24			Pariong Govt.UPS	Open field		Local vegetables		School's own initiative
25			Ri Khasi Freemorning UP School	Open field		Local vegetables		School's own initiative
26			Mairang	Sohtyngkhur Upper Primary School	Open field		Local vegetables	
27		Sohtyngkhur Ch. (day) Lower Primary school		Open field		Local vegetables		School's own initiative
28		Sawlad Lower Primary School (Sohtyngkhur)		Open field		Local vegetables		School's own initiative
29		Laitdom Pres. (DAY) Lower Primary School		Open field		Local vegetables		School's own initiative
30		Laitdom Bah Govt. Lower Primary School		Open field		Local vegetables		School's own initiative
31		Pyndengdombah Govt Lower Primary School		Open field		Local vegetables		School's own initiative
32		Sohtyngkhur Govt. Lower Primary School		Open field		Local vegetables		School's own initiative
33		St. Thomas Higher Secondary School		Open field		Local vegetables		School's own initiative
34		Mairang Pres Higher Secondary School		Open field		Local vegetables		School's own initiative



35			Mairang Vidyajoti Inclusive School	Open field		Local vegetables		School's own initiative
36			Rosario RCLPS (Kynrud)	Open field		Local vegetables		School's own initiative
37			Rosario RCUPS (Kynrud)	Open field		Local vegetables		School's own initiative
38			Uming RCLPS	Open field		Local vegetables		School's own initiative
39			Umsakhlaw myriaw RCLPS	Open field		Local vegetables		School's own initiative
40			Lumiew Shillong RCUP School	Open field		Local vegetables		School's own initiative
41			Lumiew Shillong RCLP School	Open field		Local vegetables		School's own initiative
42			Jakhong RCLPS	Open field		Local vegetables		School's own initiative
43			St John RCUPS	Open field		Local vegetables		School's own initiative
44			Dombah RCUPS	Open field		Local vegetables		School's own initiative
45	South West Khasi hills	Markyrwat	Rangblang Pombriew Govt LPS	Open field		Local vegetables		School's own initiative
46			Langwarai Pres LPS	Open field		Local vegetables		School's own initiative