



मध्याह्न भोजन योजना  
Mid Day Meal Scheme

**National Programme  
of  
Mid Day Meal in Schools  
(MDMS)  
Annual Work Plan & Budget  
2016-17**

**Name of the State/UT Lakshadweep**

Administration of the  
Union Territory of Lakshadweep  
Kavaratti-682 555

## 1. Introduction

The Union Territory of Lakshadweep is the smallest and a single district Union Territory of the Indian Union. The entire territory consists of 27 islands and a number of sunken banks, open reefs and sand banks. 11 islands are inhabited. Other islands are very small and majority of them exist as satellites of the inhabited islands.

The area, population, density, literacy and growth rate of population as per population census in 2011 is shown in table below. The total population of the Lakshadweep is 64473. Male population is 33123 and female population is 31350. Total literacy rate is 91.65% and growth rate of population is 6.30% when compared to the previous census in 2001.

### AREA, POPULATION, DENSITY, LITRACY AND GROWTH RATE OF POPULATION

Name of island	Area in Square Kilometers		Total population			Density	Literacy in percentage to total population and gender gap			Growth rate of population 2001-2011
	Lagoon area	Land area	Total	Male	Female		Total	Male	female	
Agatti	1750	2.71	7566	3894	3672	1970	92.17	95.11	91.57	6.96
Amini	150	2.59	7661	3829	3832	2947	88.95	95.68	82.10	4.19
Androth	0.00	4.84	11191	5500	5691	2284	90.27	94.89	85.89	4.33
Bitra	45.61	0.10	271	154	117	2710	96.14	97.04	94.90	1.50
Chetlat	1.60	1.04	2347	1172	1175	1676	91.73	94.77	88.72	2.44
Kadmat	37.50	3.12	5404	2690	2714	1689	95.16	97.64	92.72	1.31
Kalpeni	25.60	2.28	4419	2324	2095	1584	94.62	96.75	92.19	2.27
Kavaratti	4.96	3.63	11221	6182	5039	2659	91.43	95.24	86.68	10.89
Kiltan	3.96	1.63	3946	2012	1934	1794	89.03	92.17	85.39	7.55
Minicoy	30.60	4.37	10447	5366	5081	2176	92.65	94.99	90.24	10.03
Bangaram	21.50	0.58	0	0	0		0	0	0	0
<b>Lakshad weep</b>	<b>2071.33</b>	<b>26.89</b>	<b>64473</b>	<b>33123</b>	<b>31350</b>	<b>2013</b>	<b>91.65</b>	<b>95.35</b>	<b>87.76</b>	<b>6.30</b>

### 1.1. Brief history

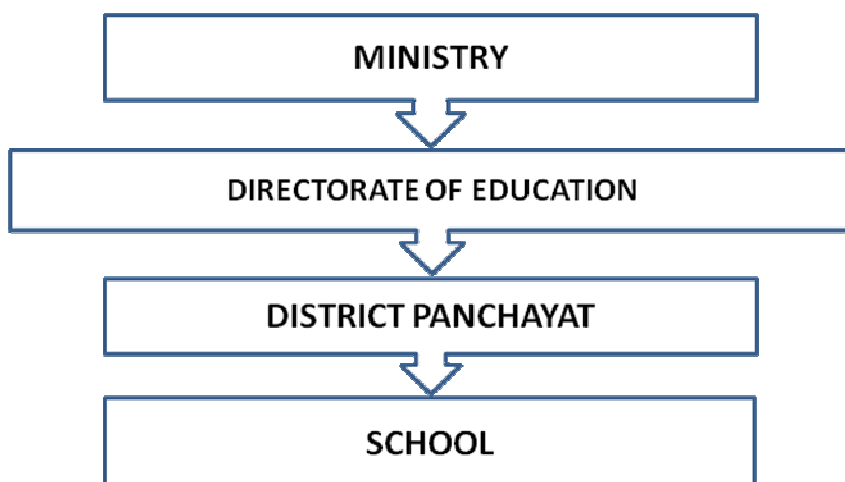
The Union Territory of Lakshadweep has implemented the Mid Day Meal Scheme in all the islands, providing hot & cooked meal to all children from primary to VII standard in all the schools since the mid-fifties. Considering the economic and social backwardness of the Lakshadweep citizens, Govt. of India declared the entire population as Scheduled Tribes. The main objectives of declaring them as Scheduled Tribes was to bring them close to the extremely dynamic developments and modernization that is taking place in the other parts of the country. Govt. of India has also initiated several programs to impart proper education to the natives of Lakshadweep. In order to lure children of various age groups, the Lakshadweep

Administration had decided to implement the Mid Day Meal Scheme in the Lakshadweep islands. As such, UTL Administration has been able to successfully attain its goal, and there is no dropout in schools. The Mid Day Meal Scheme has contributed to achieve the goals in Lakshadweep.

Society in Lakshadweep is homogeneous by type. There are no much social strata among the people of Lakshadweep. All local inhabitants follow and practice a single religion i.e. Islam. This religious homogeneity made whatever social differences those were there earlier, insignificant. The economy of Lakshadweep depends mainly on fish and coconut. Fishing is the basic economic activity and all the islanders have some amount of land and possess a certain number of coconut trees from which they get yearly income. In addition, government employment also adds to their income sources. In Lakshadweep, all the groceries, vegetables and other food items are brought from mainland due to their scarcity in the islands. Therefore, there are no nutritional problems in Lakshadweep due to non-availability of any particular food item as all the required items are being procured from the mainland. In schools, no regular nutritional quality checkups over the mid day meals served in schools up to 12<sup>th</sup> class are performed and no cases of malnutrition have been reported so far.

### **1.2. Management Structure**

The District Panchayat is the implementing authority of the Mid Day Meal Programme in schools and the Directorate of Education closely monitors the implementation of the scheme. The management structure of the MDM scheme in UTL is given below.



### **1.3. Process of Plan Formulation**

Plan formulations of Mid Day Meal programme in Lakshadweep are carried out as bottom-to-top approach. Two tier system like Village (Dweep) Panchayat and District Panchayat exist in Panchayati Raj system, Lakshadweep being a small U. T.,

plan process are carried out in the first stage by the involvement of schools and village level, second stage with district level by the implementing agency District Panchayat and third level by the Directorate of Education.

## **2. Description and assessment of the programme implemented in the current year (2015-16) and proposal for next year (2016-17) with reference to:**

Till 2006-07, the MDM scheme has continued as a UT Administration scheme and Administration has been releasing required funds for running the scheme to the District Panchayat through Education Department from its own Annual Budget. The MDM Scheme has been transferred to District Panchayat in the year 1999 in compliance of orders of devolution of power under Panchayati Raj Act. The Mid Day Meal is served to children from pre-primary to XII standard in all schools under the Administration. In Lakshadweep, hot cooked Mid Day Meal is served to the students covering the food items liked by the local inhabitants and as per the eating habits of the islanders. Generally the food items like Dhal, Green gram, Fish, Egg, Meat, and Chicken are served along with rice, the staple diet to the students. In fact, the food served is not put to any nutritional tests but the food served is nutritional, hygienic and basically liked by the students. So far, there hasn't been any kind of complaints about the food served to the students.

An amount of Rs.129.43 lakhs was approved by PAB for the year 2015-16 and an amount of Rs.22.41 lakhs was received from the Ministry as adhoc recurring grant and was released to District level on 18.6.2015. Rs.46.63 lakhs received as balance of first installment released to District Level on 30.11.2015 and release of second installment is pending with Ministry to release. Delay occurs in release the funds is timely receipt of Letter of Authority (LOA) from the Ministry. An amount of Rs.59.61 lakhs was incurred as expenditure under NP-MDMS up to 31.12.2015. The proposal under central share for the year 2016-17 is Rs.135.66 lakhs. As a part of strengthening the monitoring mechanism, appointment of a Project Manager (MDM) and MIS coordinator (MDM), purely on contract basis is completed. Capacity building programme for Principals, Headmasters and MDM Teachers were organized during 2<sup>nd</sup> and 3<sup>rd</sup> November, 2015 at Kavaratti. In MME Plan 2016-17 it is propose to organize capacity building programme to Island Level Officials to enhance the quality of implementation of the scheme and training to cooks cum helpers.

### **2.1 Regularity and wholesomeness of MDM served to children; reasons for programme interruptions, if any**

The serving of MDM to the school children in the history of Lakshadweep started way back in mid fifties. The MDM are served to the school children studying from pre-primary classes to VII classes from that time onwards without any interruptions. From the year 2007-2008, the UTL Administration extended the scheme up to X standard. From the academic year 2008-09 onwards, the MDM Scheme was again extended up to XII standard. Due to the advent of national programme of MDM in schools during 2004 by the GOI, UTL Administration also participated in the National Scheme and Central Assistance has been received which was utilized for primary and upper primary level.

The following table explains the island-wise total of educational institutions in Lakshadweep from nursery stage to degree level education as on 30.9.2015

Island	Pre-Primary Schools	Junior Basic Schools	Senior Basic Schools	Secondary Schools	Senior Secondary Schools	Total
Agatti	2	3	1	0	1	7
Amini	2	4	1	0	1	8
Androth	2	4	2	0	2	10
Bitra	1	0	1	0	0	2
Chetlet	2	1	0	0	1	4
Kadmat	2	3	1	0	1	7
Kalpeni	2	1	1	0	1	5
Kavaratti	2	2	1	0	2	7
Kiltan	2	2	1	0	1	6
Minicoy	2	2	1	0	1	6
<b>Lakshadweep</b>	<b>19</b>	<b>22</b>	<b>10</b>	<b>0</b>	<b>11</b>	<b>62</b>

In addition to above 62 schools, there is Jawahar Navodhaya Vidyalaya (at Minicoy), Kendriya Vidhyalaya (at Kavaratti) and three University Study Centres (at Kadmat, Androth & Kavaratti) that are functioning under the UT of Lakshadweep.

Stage-wise and sex-wise enrolment for the year 2015-16 from pre-primary classes to Senior Secondary classes as on 30<sup>th</sup> September, 2015 are shown below.

Class	Boys	Girls	Total
Pre-Primary	445	495	940
Primary (I-V)	2169	2068	4237
Upper Primary(VI-VIII)	1532	1531	3063
Secondary(IX-X)	1199	1235	2434
Senior Secondary (XI-XII)	1030	1328	2358
<b>Total</b>	<b>6375</b>	<b>6657</b>	<b>13032</b>

There is no dropout rate during 2014-15 in primary and upper primary classes and this is one of the biggest achievements of implementing MDM in Lakshadweep.

## 2.2. Details about weekly Menu

### 2.2.1 Weekly Menu – Day wise

The weekly menu under MDM scheme is given below.

SI .No	Days	Food Items
1	Monday	Rice /Dhal/fish, green gram

2	Tuesday	Rice/ Dhal /Egg / green gram
3	Wednesday	Rice/ Dhal / green gram / meat
4	Thursday	Rice/Dhal/Green gram/chicken
5	Saturday	Rice/Dhal /Green gram/meat.
6	Sunday	Rice/Dhal / Green gram/egg.

Note: Above items are served according to the availability of items in the local market.

#### 2.2.2. Additional food items provided

Egg, Fish, Chicken, Fruits etc. are served as additional items in Mid Day Meal according to the availability of items in the local market.

#### 2.2.3. Usage of Double Fortified Salt

Double fortified iodized salt is used for the preparation of Mid Day Meal in Schools and direction to use Double fortified salt is issued time to time.

#### 2.2.4. At What Level Menu is being is decided/fixed

The Menu is decided/fixed by the School Management Committee and School Authority jointly according to liking of children.

#### 2.2.5 Provision of local variation in the Menu

In Lakshadweep groceries, Vegetable etc is brought from Kochi, Calicut and Mangalore. Variation in the Menu is carried out according to the availability of items in the local market.

#### 2.2.6 Timing for serving of Mid Day Meal at School level

Mid Day Meal is served from 12:30pm to 01:30pm.

### 2.3. Foodgrains Management

The food grains allotted was not lifted from year 2009-10 onwards due to complaints received from the public & school authorities because of the inferior taste of rice. To settle this issue, the matter was taken in the PAB meeting held on 2012-13 and it was suggested to supply Grade A rice to resolve the problem. Accordingly Grade A rice was supplied to Lakshadweep. The Department of Food and Civil Supplies, Lakshadweep lifted 177.51 MT up to the end of March 2015. In 2015-16 total foodgrains of 181.26 MT food grains allocated was lifted as on March 2016. Cost of food grains and transportation charges was fully paid to FCI through the Department of Food & Civil Supplies, Lakshadweep. Storage facility is available with Food & Civil Supplies Department in all islands. Schools also have the storage facility for

food grains but with limited capacity. Year-wise allocation of Food Grains under MDM Scheme is given below:

Year	Allocated (in MTs)	Lifted (in MTs)	Lifted during	Period of Utilization
2006-07	183.56	183.56	April,2007	2007-08
2007-08	183.56	183.56	April,2008	2008-09
2008-09	228.68	33.14	March 2009	2009-10
2009-10	278.83	0.00	--	--
2010-11	265.00	0.00	--	--
2011-12	245.30	0.00	--	--
2012-13	255.20	0.00	--	--
2013-14	353.67	353.67	March 2014	2013-14
2014-15	177.51	177.51	2014-15	2014-15
2015-16	181.26	181.26	2015-16	2015-16

#### 2.3.1&2.3.2. Timeframe for lifting, District wise lifting calendar for Foodgrains& System for ensuring lifting of FAQ Foodgrains

The Department of Food and Civil Supply, Lakshadweep lifts the Foodgrains allocated under Mid Day Meal Programme from FCI Mangalore on remitting of cost of foodgrains according to availability of Cargo Barges. Inspectors of Department of Food and Civil Supply, Lakshadweep posted at Mainland ensure the lifting and quality foodgrains.

#### 2.3.3. Transportation and Distribution

Based on the Foodgrains requirement provided by the Department of Education, Department of Food and Civil Supply, Lakshadweep distributes foodgrains to each Island and stored in their godown. School authority lift the required foodgrains monthly/bimonthly basis.

#### 2.3.4. Whether unspent balance of foodgrains with the Schools is adjusted from the allocation of the respective schools.

Foodgrains are lifted by School Authority from the Godown of Food and Civil Supply, Lakshadweep situated in the respective Island based on Monthly/bimonthly basis as per requirement.

#### 2.3.5. Number of Schools receiving foodgrains at doorstep of School.

Godown of Food and Civil Supply in Islands is situated within the vicinity of 1-2 kms from each School and there is no difficulty faced by the School Authority getting foodgrains when required to Schools.

### 2.3.6 Storage facility at different Levels.

Foodgrains lifted from FCI are transported to FCI godown situated in Androth Island or godowns of The Department of Food and Civil Supply, Lakshadweep based on the availability of transport facility is from Mainland to Islands.

### 2.3.7. Challenges faced and Plan to overcomes them

Transportation of foodgrains from FCI godown Mangalore and distribution to Islands in the monsoon is the biggest challenge and there is no other facility to overcome.

## 2.4. Payment of Cost of Foodgrain to FCI

2.4.1. System for Payment of Cost of Foodgrains to FCI

2.4.2. Status of pending of Bills of FCI of the previous year.

2.4.3. Status of Monthly Meeting by the State Nodal Officer with the FCI

2.4.4. The Process of reconciliation of Payment with the concerned Officer of FCI

2.4.5. Relevant issues regarding Payment to FCI

2.4.1 to 2.4.5 Cost of Foodgrains to FCI is paid through Department of Food and Civil Supply, Lakshadweep on raising of Bills and there is no previous pending Bills with Department of Education, Lakshadweep. No meeting of State Nodal Officer with FCI has been taken so far due to non- availability of FCI Office in Kavaratti. The fund released by the Ministry under the Component Cost of Foodgrains, Transportation Assistance could not release from Pay and Accounts timely due to non-receipt of Letter of Authority from The Ministry.

## 2.5. Fund Flow Mechanism-System for release of Funds (Centre and State)

The Department of Education is releasing Central and State funds to the District Panchayat for implementing the Mid Day Meal Scheme. The funds are released on the basis of requirements submitted by the District Panchayat. Funds are released in two to three installments after obtaining expenditure and Utilization Certificate.

2.5.1. Mode of release of Funds at different Levels (E-transfer of Funds directly from State to Schools/Implementing Agency)

Fund released from Ministry is released to Lakshadweep District Panchayath (Implementing Agency). Lakshadweep District Panchayath released Fund to School Bank Account after accessing requirement of each School.

2.5.2. Date When the Fund released State Authority/Directorate/District/Block/Gram Panchayath and finally to the cooking Agency/Schools.

The table below shows the details of fund released from the Ministry to State/Directorate and Directorate to implementing agency and implanting agency to schools.



Mid Day Meal Central/State Share	Amount released and date of release in 2014-15					
	Ministry to State		Directorate to implementing agency		Implanting agency to schools	
	Amount	released	Amount	released	Amount	released
<b>Central Share</b>						
Adhoc Grant(25%)	22.41	8.5.2015	22.41	18.6.2015	22.41	1.7.2015
Balance of 1 <sup>st</sup> installment	46.63	1.9.2015	46.63	30.11.2015	46.63	10.12.2015
Kitchen Device	0		0		0	

### 2.5.3. Reason for delay in released of Funds at different Levels

Released order of funds received to the Directorate of Education timely without Letter of Authority, Pay and Account, Lakshadweep deny in honoring the bill without LOA and this delay create delay in releasing fund to District/School Level.

## 2.6. Cook –cum-helpers

2.6.1. System and mode of payment of honorarium, of honorarium to cook cum helpers and implementing agencies viz.NGOs/SHGs/Trust/Centralized kitchens etc.

The necessary funds for payment of honorarium to cook-cum-helpers are released under State/Central fund and implanting agency of MDM is making payment to cook-cum-helper through bank accounts only. In Lakshadweep, the MDM kitchens are attached to schools. The School Authority Pay the honorarium the cook-cum-helpers to their respective Bank Account only.

2.6.2. Rate of honorarium to cook cum helpers.

In Lakshadweep an amount or Rupees 300/- is paid to a cook in a working day.

2.6.3.& 2.6.4 Number of cook cum helper having bank accounts.

All cook cum helper enrolled under Mid Day Meal Programme is having Saving Bank Account in the Nationalized Bank & Payment of honorarium to cook cum helpers are paid through their Bank Accounts only.

2.6.5. This selection should also include the details of cook cum helpers like eligibility as per norms, approval of cook cum helpers, engaged and the strategy to fill the gap(if any)

The Principal/Headmaster of the schools place their annual requirement of cooks cum helper to the concern Village Panchayath and based on the roaster maintained in the Village Panchayath cook cum helpers are selected.

2.6.6. Provisions for health check up of cook cum helpers,

Health checkup of cook cum helper in all Schools are carried out along with health check up of Schools children. Now the health checkup of cook cum helpers in schools are mandatory for getting license under FSSAI.

2.6.7. Whether cook cum helpers are wearing head gears and gloves at the time of cooking of meals.

It is mandatory to wear head gears, apron, and gloves at the time of cooking of Meal and also they are encourage washing hand with soap before preparation of Mid Day Meal

2.6.8. Modalities for apportionment of cook cum helpers engaged at school level and working at centralized kitchens, in case of schools being served through centralized kitchens,

The Principal/Headmaster of the concern Schools place the annual requirement of cook cum helper to the concern Village the Panchayath and based on the roasted maintain in the Village the Panchayath cook cum helpers are appoint. There is no Centralized kitchen in any of the Islands in Lakshadweep

## **2.7 Procurement and storage of cooking ingredients and condiments**

2.7.1. System for procuring (good quality Agmark/FRO) pulses, vegetables including leafy ones, salt condiments etc and other commodities.

All kinds of cooking ingredients are procured by the respective schools from Cooperative Societies available in islands. The firewood is procured through tender process. The MDM rate under state share is given below.

Stage/Classes	MDM Rate per child per day
For Nursery classes	Rs.13/-
Primary( I to V)	Rs.8/-
Upper Primary( VI to VIII)	Rs.9/-
Secondary(IX to X)	Rs.11/-
Senior Secondary( XI to XII)	Rs.12/-

2.7.2. Whether FIFO method has been adopted in usage of pulses and condiments etc or not.

Pulses and Condiments etc procured and cooked based on first come first served basis and seeing the date of expiry also.

2.7.3. Arrangements for safe storage of ingredients and condiments in kitchens.

All MDM kitchen have been provided with storing bin with lid for storage of foodgrains, pulses, condiments etc and storing bins are labeled with name of item stored in the bin.

## **2.8 System for cooking, serving and supervising Mid Day Meal in the schools and measure to prevent any untoward happening.**

In Lakshadweep, there are 62 schools in which the MDM Scheme is implemented. Total 13353 children from Pre-Primary classes to XII classes are being served MDM. Preparation of MDM are carried out in the kitchen attached to schools and cooks are appointed on regular basis. In addition, helpers are additionally engaged by the Headmasters through concerned Village (Dweep) Panchayat, wherever the requirement is necessitated. In Lakshadweep, practically the Headmasters and SMC of the schools run the MDM programme. After receiving the required fund from the District Panchayat, they procure the required food articles and get them cooked by the cooks available in the schools. Headmasters, VDP members of concerned ward, SMC, MPTA monitor the running of the scheme in their respective schools.

## **2.9. Mode of Cooking of Mid Day Meals\_LPG, smokeless chullha, firewood & others.**

Firewood is mode of cooking MDM in all schools and installation of smokeless chulla in all MSM kitchen attached to school is on priority after getting approved design and it is proposed to renovate the kitchen to maintain the standard FSSA 2006 and 95% of MDM Kitchen attached to schools have been registered under FSSA 2006.

## **2.10. Kitchen-Cum-stores.**

### **2.10.1 Procedure and status of construction of kitchen- cum store.**

So far, no fund for construction of kitchen sheds has been requested under central share of MDM Scheme or any other schemes. However, kitchen sheds are available in all the schools in Lakshadweep. The funds required for the construction of Kitchen-cum-store are met under UT Budget and the construction works are being done by the LPWD on request from the Department of Education. In certain schools, reconstructions/maintenance of kitchen shed is required and the proposal for the same has already been submitted to the LPWD.

### **2.10.2 The reasons for slow pace construction of Kitchen cum stores, if applicable.**

Kitchen cum stores this attached to all Schools and land availability is limited in the premises and there is no further possibility of extensions/construction of kitchen

### **2.10.3 Whether any standardize model of Kitchen cum stores is used for construction.**

No any standardize model of Kitchen cum stores is used for construction

### **2.10.4 Details of the construction agency and role of community in this work**

### **2.10.5 Kitchen Cum store constructed through convergence, if any**

2.10.4 & 2.10.5 The Lakshadweep public works department carried out all construction work related to kitchen cum store and there is no community

participation in this work. Budgetary provision for construction of kitchen cum store are made from state budget only & Kitchen cum store construction through convergence, if any

2.9.6 Progress of construction of kitchen-cum-stores during this year and target for the next year.

Due to limited space no new construction of kitchen cum are carried out except renovations.

## **2.11. Kitchen Devices**

2.11.1. Procedure of procurement of kitchen devices from Funds released from Mid-Day Meal programme.

Rs.0.65 lakhs received as Non-Recurring central assistance for procurement of Kitchen Devices during the year 2014-15 and the same has been released to the District Panchayath for procurement of kitchen device. The District panchayath Lakshadweep have utilized Rs.0.55 lakhs during 2014-15 and remaining Rs.0.10 lakhs will be utilized during 2015-16.

2.11.2.& 2.11.3 Procedure of procurement of kitchen devices from funds released under the Other sources & availability of eating plates. Source of funding eating plates.

Required Kitchen Devices, Eating Plates etc. are procured by the District Panchayath on released of funds from Department of Education.

## **2.12. Capacity building and training for different stakeholders**

Capacity building programme to Principals, Headmaster and MDM Staff working under MDM were provided during November, 2015 at Kavaratti and training for different stakeholders were also arranged during 2015-16.

2.12.1 Details of the training programme conducted for cook-cum-helpers, State level officials, SMC members, schools teachers and other stakeholders

Training to daily waged cook cum helpers were trained with the help of regular cooks trained from Food Craft Institution Kalmassery Kochi during 2014-15. SMC members, School teachers and other stake holders also given training in all Island during 2015-16 with the help of Principal and Headmasters of respective islands.

2.12.2 Details about modules used for training, Master Trainers, Venu etc.

The 59 Regular Cooks trained will be like master trainer to train other cook cum helper in schools in respective Islands. Module used for training was the preparation of food with nutrition value, health and hygiene, Hospitality Development etc.

### 2.12.3 Target for the next year.

It is propose to organize capacity building to MDM officials of Island Level, SMC members, teachers, stake holders and Cook cum helpers.

### **2.13 Management Information System at School, Block, District and State level and its details.**

There is no MIS portal at State Level. It is expected the MIS system developed by the Ministry will help to manage the information of MDM in Primary and Upper Primary levels.

#### 2.13.1. &2.13.2 Procedure followed for date entry into MDM-MIS web portal and Level (State/District/Block/School) at which data entry is made

Data received through e-mail/Post are consolidated at State/District level and data are entered MDM-MIS portal. Lakshadweep being a single District Union Territory, data entry is made from State/District Level only.

#### 2.13.3 Availability of manpower for web based MIS

For maintenance of MDM-MIS web portal one MIS coordinator on contract basis has been appoint and Service of MIS Coordinator will be extended to the next academic year 2016-17.

#### 2.13.4 Mechanism for ensuring timely data entry and quality of data

To ensure timely data flow, data entry and quality of data one Project Manager on Contract basis have been engaged to for all over supervision of implementation of Mid Day Meal Programme.

#### 2.13.5 Whether MIS data is being used for monitoring purpose and details thereof.

MDM are served at Lakshadweep from Pre Primary to Senior Secondary Level and State does not have any MIS to manage data. The MIS developed by Minister for handling data of centre share is very useful monitoring and evaluation purpose of Primary and Upper Primary stages.

### **2.14. System to ensure transparency, accountability and openness in all aspects of programme implementation.**

In Lakshadweep, as mentioned at many places in the previous paras, the MDM scheme has been operational since a very long time. The scheme is not been functioning under any private hands. From the beginning, the required funds for providing MDM to the students has been released to the school Headmasters from the Directorate of Education through Dist. Panchayat and the programme is monitored by the Directorate level through the officers. From 1999 onward the scheme has been transferred to the District Panchayat, even though the basic system of MDM Scheme functioning has not changed at all. As the scheme has been

shifted to the District Panchayat, the fund released by the Education Department is being further provided to the school Headmasters by the District Panchayat. The needed food articles are procured by the Headmasters from the Government controlled Cooperative societies in islands. The cooking and serving process are attended by cooks and teachers appointed by the Administration. Kitchen sheds are constructed by the department through LPWD. Therefore, there is complete transparency in the functioning of the scheme in Lakshadweep. On the above mentioned Panchayat authorities, SMC and MPTA of school children oversee and observe the process and providing required suggestions to the School Headmasters and the Directorate of Education in time to time.

2.14.1. Display of logo, entitlement of children and other information at a prominent visible place in school

In the prominent place in all schools and MDM kitchen MDM logo, entitlement of children, Menu etc. has been displayed to know the stakeholders.

2.14.2 Dissemination of information through MDM website

There is no separate website for MDM in Lakshadweep to disseminate information of MDM. However information related to MDM is placed in the State Portal of U.T.L for information of general public and stake holders.

2.14.3& 2.14.4 Provisions for community monitoring at school level i.e. Mother Roaster, Inspection register, & Tasting of Meal by community members.

Stake holders are aware about entitlement of children under State and Central Share, SMC members and mother PTA taste food before serving MDM to children from the time of inception of MDM Programme. Incompliance to the Ministry Guideline food taste register is maintained in all school.

2.14.5 Conducting Social Audit.

Lakshadweep is very small and single District Union Territory and Stake Holders aware about Mid Day Meal Programme implemented in Govt. Schools, SMC and Community members are involve in the implementation of the Programme. Department of Education has approach Society for Social Audit, Accountability & Transparent (SSAAT), Hyderabad and required information desired by the organization have been submitted and awaiting for their reply.

## **2.15. Measures taken to rectify**

2.14.1 Inter-district low and uneven utilization of food grains and cooking cost.

2.14.2 Intra-district mismatch in utilization of food grains and cooking cost.

2.14.3 Delay in delivering cooking cost at school level.

2.14.4 Delay in payment to FCI

2.14.5 Mismatch of date reported through various source (QPR,AWP&B,MIS etc)

Measures has been already taken to rectify the above points. There is no uneven or mismatch in utilization of food grains and cooking cost. The cooking cost and other financial requirements are released in time without any delay.

## **2.16 Details of Evaluation studies conducted by the State/UTs and summary of its findings**

No evaluation studies on implementation of MDM have been conducted so far.

## **2.17. Write-ups on best practices followed in the State.**

UTL Administration contribute more than mandatory share and cooks are provided Rs.300/- per working day. Egg, fish, chicken, fruits etc are provided as additional items in Mid Day Meal. Ingredients and other articles required to MDM implementation are provided by the Cooperative Society in Islands on credit bills and credit bills are settled on the time of release of money from the Ministry. All Cook-Cum Helpers are having bank account and their Honorarium is provided through E-Transfer. Capacity building programme to Principals, Headmaster and MDM teachers have been organized to update their knowledge on time to time instructions, guidelines, FSSA etc received from the Ministry to improve the implementation of MDM programme in schools.

## **2.18. Untoward incidents**

2.18.1 Instance of unhygienic food served, children falling ill

2.18.2 Sub-standard supplies,

2.18.3 Diversion/misuse of resources,

2.18.4 Social discrimination

2.18.5 Action taken and safety measures adopted to avoid recurrence of such incidents.

Food served under MDM Scheme is prepared in hygienic environments in the kitchens attached. No cases of children falling ill, instances of misuse of resources and social discrimination have been reported so far. The Headmasters, SMC, Panchayat ward members and MPTA closely monitor the implementation of the MDM programme in all stages. Orders have been issued to all schools for maintaining hand washing before and after MDM, based on the direction received from the Ministry.

## **2.19. Quality of Food**

2.19.1. System of Tasting of food by teachers/community. Maintenance of testing register at school level

2.19.2. Testing of food sample by any reputed labs for the presence of nutrients and presence of microbes, if any, as per norms of Mid Day Meals.

2.19.3. Engagement of NABL labs for the testing of Meals.

2.19.4 Details of protocol for testing of Meals, frequency of lifting and testing of samples.

2.19.5 Details of samples taken for testing and the results thereof.

2.19.1 to 2.19.5 Foods prepared are tasted by teachers before serving to children from the time of introduction of MDM programme. In compliance to the Ministry guidelines food tasting records are maintained in all schools. Due to absence of National Accreditation Lab in Lakshadweep no food samples are tested so far.

## **2.20. Involvement of NGOs/Trusts**

2.20.1. Modalities for engagement of NGOs/Trusts for serving of MDM through centralized kitchen.

2.20.2. Whether NGOs/Trusts are serving meal in rural areas

2.20.3. Maximum distance and time taken for delivery of food from centralized kitchen and school

2.20.4. Measure taken to ensure delivery of hot cooked meals to schools

2.20.4.1 Responsibility of receiving cooked meals at the schools from the centralized kitchen.

2.20.4.2. Whether the containers are sealed at the time of supply of meals to schools,

2.20.4.3. Tentative time of delivery of meals at schools from centralized kitchen.

2.20.5. Testing of food samples at centralized kitchens

There is no involvement of NGOs and CBOs for the implementation of MDM scheme. There is no centralized kitchen in Lakshadweep and all schools are having kitchen attached for serving MDM in all Island and District Panchayat is the implanting agency of MDM in Lakshadweep.

## **2.21. Status of Rastriya Bal Swasthya (School Health Programme)**

2.21.1. Provision of micro-nutrients, Vitamins-A, de-worming medicine, iron and Folic acid (WIFS), Zinc.

2.21.2. Distribution of spectacles to children with refractive error.

2.21.3 Recording of height, weight etc.

2.21.4. Number of visits made by the RBSK team for the health check-up of the children.

Hospitals/Community Health Centres / Primary Health Centres, available in all the islands to provide health checkup in schools and whenever they find any deficiencies, corrective measures are taken with the help of SMC/MPTA and other departments/organizations. Issuing of health cards for all school going children under NRHM is completed. Distribution of Vitamin-A, de-worming, iron and folic acid tablet, etc during 2014-15 has been completed in all schools. Recording of height and weight etc and children have been refractive error has been deputed to nearby Govt Hospital for further investigation and spectacles will be provided according to advice of Doctors. Number of visits made by RBSK team for health checkup given below



During 01.04.14 to 31.12.14

Block / Taluka / Mandal	No. of schools covered under RBSK	No. of children covered under RBSK	Health Check-ups		Weekly Iron & Folic Acid Supplementation (WIFS)		Vitamin 'A' Distributed		Deworming tablets distributed		Distribution of spectacles	
			No. of schools	No. of children covered	No. of schools	No. of children covered	No. of schools	No. of children covered	No. of schools	No. of children covered	No. of schools	No. of children covered
2	3	4	5	6	7	8	9	10	11	12	13	14
Amini	16	4343	16	4343	16	4343	16	0	16	4343	16	0
Androth	14	3230	14	3230	14	3230	14	0	14	3230	14	0
Kavaratti	11	7573	11	7573	11	7573	11	0	11	7573	11	0
Lak.dep	41	7573	41	7573	41	7573	41	0	41	7573	41	0

**2. 22. Present monitoring structure at various levels. Strategy for establishment of monitoring cell at various levels viz. Block District and State level for effective monitoring of the scheme.**

The setup of monitoring mechanism of MDM exist in Lakshadweep is given in below table.

Sl. No	Levels	Involvement of Officers/PRIs/SMC's etc...
1	Island level	DC/SDO, Principal(GSSS) and HM, GHS(Bitra), MO,LMO,HI CHC/PHC in islands, Secretary, Co-op. Societies,OIC W&C, CP(VDP), HM GSBS& GJBS, President SMC& Mother forum, TIC of Nursery, HM/AHM(Member Secretary).
2	District level	CEO(DP), DMHS, Director(W&C),Director(F&CS), EO, MS(IGH), SLMO (IGH), Senior Lady teacher, Sr. PST & HM (GSSS,KVT), AEO(DP), President SMC& Mother Forum (GSSS,KVT)VPCC & one DP member from all islands, Education Officer(MDM) (Member Secretary).
3	UT level	CDC, MP, PCC, VCC, Secretary (Edn/Health/F&CS/W&C/Planning/Finace), CEO(DP), Physician & Peditrition (IGH), CP(LSSWB), President Mother Forum & Principal (GSSS,KVT),Medical Practitioner (Private) and DE (Member Secretary)

**2. 23. Meeting of Streaming cum Monitoring Committee at the Block, District and State level**

Lakshadweep Administration constituted UT/District/Island level steering-cum-Monitoring committees to oversee the implementation of MDM Scheme at different levels. Members consist of DP Members, VDP Chairperson, Vice Chair Person, SMC Members, Headmaster and senior teachers of concerned schools. The first meeting of the District Level Steering & Monitoring Committee was held at Kavaratti on 20<sup>th</sup> November, 2013 and Second Meeting on 6.3.2014. Representative of the Ministry and monitoring institution could not participate the meeting due to non-availability of conveyance and short notice.

2.23.1. Number of meetings held at various level and gist of the issues discussed in the meeting,

Number of Streaming cum Monitoring Committee meetings held at Island, District and State level are given below.

Meetings at different level	Number of Meeting	Date of Meeting	Gist of the Meeting
State Level Streaming cum Monitoring Committee	Two		1.Strengthening of Monitoring Mechanism 2. Engagement of Project Manager and MIS coordinator 3. Enhancement of MDM State share
District task force(DTF) on MDM	Two		The strengthening of Monitoring Mechanism District and Island Level
Island Level Streaming cum Monitoring Committee	2 each meeting in every Island	Sep/Dec	1.Ensure the quality of item procure under MDM programme 2.Stengthening of Hand Wash 3.Enhasment of cost of fire wood 4.Ensuring the proper storing of MDM items

2.23.2. Action taken on the decisions taken during these meetings.

Based on the meeting of Island, District, State Level necessary instruction have been issued at all level for strengthening of monitoring mechanisms on implementation of MDM.

**2.24. Frequency of meeting of District Level Committee held under the chairmanship of senior most MP of the District to monitor the scheme. Gist of the issues discussed and action taken thereon.**

The UTL Administration constituted District Vigilance & Monitoring Committee under chairmanship of Member of Parliament vide Notification F.No.227/6/2012-EdnMDM (AW) Part-1 Dated 13.8.2013. The Chairman of the DV&MC has been requested to provide a convenient date to hold the meeting and reply is waiting.

**2.25. Arrangement for Official Inspections to MDM Centers and percentage of schools inspected and summary of findings and remedial measures.**

Annual inspection is conducted in every school by the Education Officer and team along with academic supervision. 99% of schools have been inspected as on 31.03.2015.

**2.26. Feedback/comments in respect of reports of Monitoring Institutions designated for your State/UTs to monitor implementation of MDM and action taken thereon.**

MI reports have not received so far.

**2.27. Details of the Contingency Plan to avoid any untoward incident. Printing of important phone numbers (eg.Primary health center, Hospital, fire brigade etc) on the walls of school building.**

Contingency plan is placed in all schools with Phone numbers of Primary Health centre, hospital fire brigade etc on the prominent place to avoid untoward incidents

Instructions have been issued to all schools to maintain the Contingency Plan in a prominent place.

**2.28. Grievances Redressal Mechanism**

**2.28.1. Details regarding Grievance Redressal at all Levels,**

The two-tier Grievances Redressal Cells in Lakshadweep is functioning and is given below. So far, no complaints on MDM have been registered on the implementation of this scheme.

Sl. No.	Level	Grievances Redressal Officers
1	UT/District level	Director of Education, U.T. of Lakshadweep
2	Island level	Principals/Headmasters of GSSS,Agatti, Amini, Chetlat, Kalpeni, Kavaratti, Kiltan and Minicoy/GHS,Andrott, Kadmat and SBS, Bitra

Installation of toll free telephone is pending with BSNL authority and telephone number of concerned officer-in-charge of Grievances Redressal Cell is functioning at Island and State/UT level to receive the grievances is below.

**Telephone No. of Grievances Redressal Mechanism**

**A. Island Level**

S.No	Island	Designation of Grievances Redressal Officers	Telephone Numbers
1	Agatti	Principal, GSSS	04894 242253
2	Amini	Principal, GSSS	04891 273255

3	Andrott	Principal, GSSS	04893 232323
4	Bitra	Headmaster, GSBS	04890 275222
5	Chetlat	Principal, GSSS	04899 276256
6	Kadmat	Principal, GSSS	04897 274223
7	Kalpeni	Principal, GSSS	04895 252225
8	Kavaratti	Principal, GSSS	04896 262218
9	Kiltan	Principal, GSSS	04898 272239
10	Minicoy	Principal, GSSS	04892 222251

#### **B.State/UT Level**

<b>State/UT</b>	<b>Designation of Grievances Redressal Officers</b>	<b>Telephone Numbers</b>
Lakshadweep	Directorate of Education	04896 262318

2.28.2. Details of complaints received i.e. Nature of complaints etc.

No complaints received in any level regarding implementation of MDM programme in Lakshadweep.

2.28.3 & 2.28.4. Time scheduled for disposal of complaints& Details of action taken on the complaints

Time scheduled for disposal of complaints on the day of receipt of complaints and not more than a week.

#### **2.29. Details regarding Awareness Generation & IEC activities and Media campaign, carried out at State/district/school level.**

MDM programme is very popular among the people of Lakshadweep and there has never been a situation to do any type of media campaigning to promote this further.

#### **2.30. Overall assessment of the manner in which implementation of the programme is contributing to the programme objectives and an analysis of strengths and weakness of the programme implementation.**

MDM scheme is extended from pre-primary to 12<sup>th</sup> standard under the state share. Central share covers primary and upper Primary. Funds allocated under central share and state share is released to Implementation Agency, District Panchayat and then they distribute the fund to schools. Implementation of the MDM programme is very transparent and successful due to the involvement of PRIs, SMC Mother PTA and community participation at all levels.

Hot cooked Mid Day Meal is served to the students covering the food items liked by the local inhabitants and as per the eating habits of the islanders. Generally, the food items like Dhal, Green gram, Fish, Egg, Meat, and Chicken are served along with rice to the students. In fact, the food served is not put to any nutritional

tests but the food served is completely hygienic, nutritional and basically liked by the students. The required calorific/protein value is assured in the meals served to the students. As such, U.T Administration has been able to attain success, full retention of the school students and dropout rates in Lakshadweep are negligible. Thus, the Mid Day Meal Scheme has contributed to achieve the set objectives in Lakshadweep.

### **2.31. Contribution by community in the form of Tithi Bhojan or any other similar practices in the State/UT etc.**

Lakshadweep is being a very remote area; Tithi bhojan is not popular in the islands as such situation normally doesn't arise. However the UTL contribute more than mandatory share under Primary and Upper Primary and hence meals of liking of children provided every day.

### **2.32. Details of action taken to operationalize the MDM Rule, 2015**

The Principals and Headmaster were provided the MDM Rule, 2015 with direction to adhere in compliance to the instruction of Ministry and also organize awareness programme to stakeholders to familiarize the MDM Rule.

### **2.33. Details of payment of Food Security Allowances and its mechanism.**

In all school working days MDM are served to children and no such incidents has been occurred not providing MDM in schools.

### **2.31. Any other issues and Suggestions**

Release orders of central assistance are placed in the MDM portal (mdm.nic.in) arrangements may be made to upload the Letter of Authority (LOA) in mdm portal so that time taken for receiving LOA may be avoided and ensure release of central assistance from State/UT to District level.

\*\*\*\*