



मध्याह्न भोजन योजना  
Mid Day Meal Scheme

**National Programme  
of  
Mid Day Meal in Schools  
(MDMS)  
Annual Work Plan & Budget  
2014-15**

**Name of the State/UT Lakshadweep**

Administration of the  
Union Territory of Lakshadweep  
Kavaratti-682 555

## 1. Introduction

The Union Territory of Lakshadweep is the smallest and a single district Union Territory of the Indian Union. The entire territory consists of 27 islands and a number of sunken banks, open reefs and sand banks. 11 islands are inhabited. Other islands are very small and majority of them exist as satellites of the inhabited islands.

The area, population, density, literacy and growth rate of population as per population census in 2011 is shown in table below. The total population of the Lakshadweep is 64473. Male population is 33123 and female population is 31350. Total literacy rate is 92.28% and growth rate of population is 6.23% when compared to the previous census in 2001.

### AREA, POPULATION, DENSITY, LITRACY AND GROWTH RATE OF POPULATION

Name of District	Area in Square Kilometers		Total population			Density	Literacy in percentage to total population			Growth rate of population 2001-2011
	Lagoon area	Area	Total	Male	Female		Total	Male	female	
Lakshadweep	2071.33	26.89	64473	33123	31350	2013	91.80	95.60	87.90	6.23

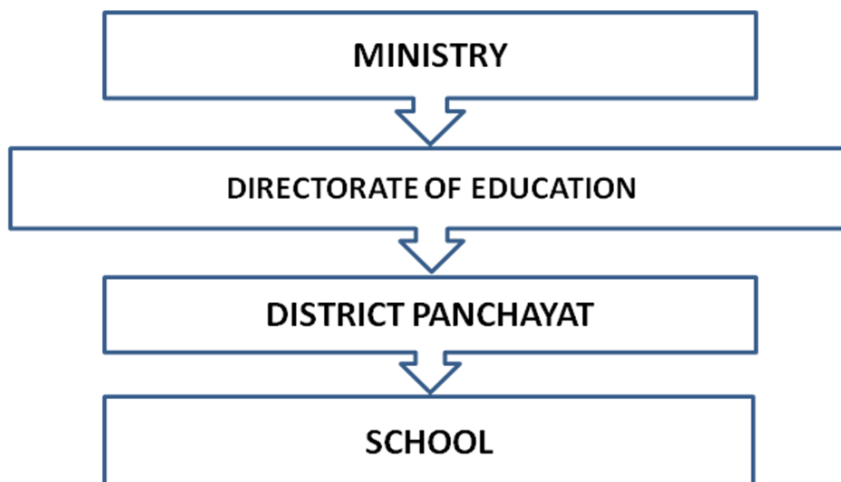
### 1.1. Brief history

The Union Territory of Lakshadweep has implemented the Mid Day Meal Scheme in all the islands, providing hot & cooked meal to all children from primary to VII standard in all the schools since the mid-fifties. Considering the economic and social backwardness of the Lakshadweep citizens, Govt. of India declared the entire population as Scheduled Tribes. The main objectives of declaring them as Scheduled Tribes was to bring them close to the extremely dynamic developments and modernization that is taking place in the other parts of the country. Govt. of India has also initiated several programs to impart proper education to the natives of Lakshadweep. In order to lure children of various age groups, the Lakshadweep Administration had decided to implement the Mid Day Meal Scheme in the Lakshadweep islands. As such, UTL Administration has been able to successfully attain its goal, and the dropout rates in schools has considerably decreased. The Mid Day Meal Scheme has contributed to achieve the goals in Lakshadweep.

Society in Lakshadweep is homogeneous by type. There are no much social strata among the people of Lakshadweep. All local inhabitants follow and practice a single religion i.e. Islam. This religious homogeneity made whatever social differences those were there earlier, insignificant. The economy of Lakshadweep depends mainly on fish and coconut. Fishing is the basic economic activity and all the islanders have some amount of land and possess a certain number of coconut trees from which they get yearly income. In addition, government employment also adds to their income sources. In Lakshadweep, all the groceries, vegetables and other food items are brought from mainland due to their scarcity in the islands. Therefore, there are no nutritional problems in Lakshadweep due to non-availability of any particular food item as all the required items are being procured from the mainland. In schools, no regular nutritional quality checkups over the mid day meals served in schools up to 12<sup>th</sup> class are performed and no cases of malnutrition have been reported so far.

## 1.2. Management Structure

The District Panchayat is the implementing authority of the Mid Day Meal Programme in schools and the Directorate of Education closely monitors the implementation of the scheme. The management structure of the MDM scheme in UTL is given below.



## 1.3. Process of Plan Formulation

Plan formulations of Mid Day Meal programme in Lakshadweep are carried out as bottom-to-top approach. Two tier system like Village (Dweep) Panchayat and District Panchayat exist in Panchayati Raj system, Lakshadweep being a small U. T., plan process are carried out in the first stage by the involvement of schools and village level, second stage with district level by the implementing agency District Panchayat and third level by the Directorate of Education.

## **2. Description and assessment of the programme implemented in the current year (2013-14) and proposal for next year (2014-15) with reference to:**

Till 2006-07, the MDM scheme has continued as a UT Administration scheme and Administration has been releasing required funds for running the scheme to the District Panchayat through Education Department from its own Annual Budget. The MDM Scheme has been transferred to District Panchayat in the year 1999 in compliance of orders of devolution of power under Panchayati Raj Act. The Mid Day Meal is served to children from pre-primary to XII standard in all schools under the Administration. In Lakshadweep, hot cooked Mid Day Meal is served to the students covering the food items liked by the local inhabitants and as per the eating habits of the islanders. Generally the food items like Dhal, Green gram, Fish, Egg, Meat, and Chicken are served along with rice, the staple diet to the students. In fact, the food served is not put to any nutritional tests but the food served is nutritional, hygienic and basically liked by the students. So far, there hasn't been any kind of complaints about the food served to the students. The weekly menu under MDM scheme is given below.

### **Weekly Menu under MDM scheme**

<b>Sl .No</b>	<b>Days</b>	<b>Food Items</b>
1	Monday	Rice /Dhal/fish, green gram
2	Tuesday	Rice/ Dhal /Egg / green gram
3	Wednesday	Rice/ Dhal / green gram / meat
4	Thursday	Rice/Dhal/Green gram/chicken
5	Saturday	Rice/Dhal /Green gram/meat.
6	Sunday	Rice/Dhal / Green gram/egg.

Note: Above items are served according to the availability of items in the local market

An amount of Rs.115.50 lakhs was approved by PAB for the year 2013-14 and an amount of Rs.22.02 lakhs was received from the Ministry as adhoc recurring grant and was released to District level on 20.7.2013. Rs.47.02 lakhs received as balance of first installment and Rs.46.02 lakhs second and final installment received to the UT is pending to release to the District Level. Delay occur in release is timely receipt of Letter Of Authority(LOA) from the Ministry and above amount is likely released before the end of Financial Year 2013-14. An amount of Rs.33.77 lakhs was incurred as cooking cost expenditure under primary and upper primary up to 31.3.2013. The proposal under central share for the year 2014-15 is Rs.102.35 lakhs. As a part of strengthening the monitoring mechanism, appointment of a Project Manager (MDM) and MIS coordinator(MDM), purely on contract basis is completed appointment will be after the Lok Sabha election. Training to Cook-Cum-Helper on health and hygiene was organized in all islands with the help of the Health Department. There is no Hotel Management Institution in Lakshadweep and the Food Craft Institute, Kochi has agreed to provide training to CCH under MDM and the file has been submitted to competent authority for approval.

## 2.1 Regularity and wholesomeness of MDM served to children; reasons for programme interruptions, if any

The serving of MDM to the school children in the history of Lakshadweep started way back in mid fifties. The MDM are served to the school children studying from pre-primary classes to VII classes from that time onwards without any interruptions. From the year 2007-2008, the UTL Administration extended the scheme up to X standard. From the academic year 2008-09 onwards, the MDM Scheme was again extended up to XII standard. Due to the advent of national programme of MDM in schools during 2004 by the GOI, UTL Administration also participated in the National Scheme and Central Assistance has been received which was utilized for primary and upper primary level.

The following table explains the island-wise total of educational institutions in Lakshadweep from nursery stage to degree level education as on 31<sup>st</sup> December, 2013.

Island	Pre-Primary Schools	Junior Basic Schools	Senior Basic Schools	Secondary Schools	Senior Secondary Schools	Total
Agatti	2	3	1	0	1	7
Amini	2	4	1	0	1	8
Androth	2	5	2	0	2	11
Bitra	1	0	1	0	0	2
Chetlet	2	1	0	0	1	4
Kadmat	2	3	1	0	1	7
Kalpeni	2	1	1	0	1	5
Kavaratti	2	2	1	0	2	7
Kiltan	2	2	1	0	1	6
Minicoy	2	2	1	0	1	6
<b>Lakshadweep</b>	<b>19</b>	<b>23</b>	<b>10</b>	<b>0</b>	<b>11</b>	<b>63</b>

In addition to above 63 schools, there is Jawahar Navodhaya Vidyalaya (at Minicoy), Kendriya Vidhyalaya (at Kavaratti) and three University Study Centres (at Kadmat, Androth & Kavaratti) that are functioning under the UT of Lakshadweep.

Stage-wise and sex-wise enrolment for the year 2013-14 from pre-primary classes to Senior Secondary classes as on 30<sup>th</sup> September, 2013 are shown below.

Class	Boys	Girls	Total
Pre-Primary	543	534	1077
Primary (I-V)	2340	2204	4544
Upper Primary(VI-VIII)	1663	1808	3471

Secondary(IX-X)	1331	1575	2906
Senior Secondary (XI-XII)	1062	907	1969
<b>Total</b>	<b>6939</b>	<b>7028</b>	<b>13967</b>

There is no dropout rate during 2012-13 in primary and upper primary classes and this is one of the biggest achievements of implementing MDM in Lakshadweep.

**2.2 Coverage of children of NCPL schools as per Upper Primary norms. NCPL schools are primary schools but eligible for benefit as per upper primary norms.**

In Lakshadweep there are only Govt. Schools and no NCPL school exist.

**2.3 to 2.4. Food grains management, including adequacy of allocation, timeliness of lifting, transportation and distribution, suitability of storage at different levels. System for payment of cost for food grains to FCI. Status of pending bills of FCI of the previous years.**

The food grains allotted was not lifted from year 2009-10 onwards due to complaints received from the public & school authorities because of the inferior taste of rice. The Ministry released 353.67MT rice for 2013-14. To settle this issue, the matter was taken in the PAB meeting held on 2012-13 and it was suggested to supply Grade A rice to resolve the problem. Accordingly Grade A rice was supplied to Lakshadweep. The Department of Food and Civil Supplies, Lakshadweep lifted 353.67 MT up to the end of March 2014. Cost of food grains and transportation charges was fully paid by the Department of Food & Civil Supplies, Lakshadweep and amount paid by them to be reimbursed. Storage facility is available with Food & Civil Supplies Department in all islands. Schools also have the storage facility for food grains but with limited capacity. Year-wise allocation of Food Grains under MDM Scheme is given below:

Year	Allocated (in MTs)	Lifted (in MTs)	Lifted during	Period of Utilisation
2006-07	183.56	183.56	April,2007	2007-08
2007-08	183.56	183.56	April,2008	2008-09
2008-09	228.68	33.14	March 2009	2009-10
2009-10	278.83	0.00	--	--
2010-11	265.00	0.00	--	--
2011-12	245.30	0.00	--	--
2012-13	255.20	0.00	--	--
2013-14	353.67	353.67	March 2014	2013-14

## 2.5. System of release of fund provided under MDM (Centre and State).

Please indicate the dates when the fund was released to State Authority/Directorate/District/Block/Gram Panchayat and finally to the cooking Agency/School.

The Department of Education is releasing Central and State funds in the form of Grant in Aid to the District Panchayat for implementing the Mid Day Meal Scheme. The Grant in Aid released on the basis of requirements submitted by the District Panchayat. The Grant in Aid is released in two to three installments after obtaining expenditure and Utilization Certificate. The table below shows the details of fund released from the Ministry to State/Directorate and Directorate to implementing agency and implating agency to schools.

Mid Day Meal Central/State Share	Amount released and date of release in 2013-14					
	Ministry to State		Directorate to implementing agency		Implanting agency to schools	
	Amount	released	Amount	released	Amount	released
<b>Central Share</b>						
Adhoc Grant(25%)	22.02	15.7.2013	22.02	20.07.2012	22.02	27.7.2013
Balance of 1 <sup>st</sup> installment	47.02					
2 <sup>nd</sup> Installment	46.02		Release pending with Accounts			
State Share	148.26	3.4.2013	148.26	15.4.2013 & 24.9.2012	148.26	19.4.2013 & 29.9.2013

## 2.6 Submission of Information in Mandatory Table (AT-24)

Table – AT 24 is attached along with other format of AWP & Budget 2014-15

## 2.7 System and mode of payment of honorarium to cook-cum-helpers and implementing agencies viz NGOs/SHGs/trust/Centralized kitchens etc.

The necessary funds for payment of honorarium to cook-cum-helpers are released in the form of GIA under State/Central fund and implating agency of MDM is making payment to cook-cum-helper through bank accounts only. In Lakshadweep, the MDM kitchens are attached with schools only.

## 2.8 System for procuring cooking ingredients (Pulses, vegetables including leafy ones, salt, condiments, oil and fuel etc), Commodities, which are centrally purchased and supplied to schools or locally purchased at school level.

All kinds of cooking ingredients are procured by the respective schools from Cooperative Societies available in islands. The firewood is procured through tender process. The MDM rate under state share is given below.

Stage/Classes	MDM Rate per child per day
For Nursery classes	Rs.13/-
Primary( I to V)	Rs.8/-
Upper Primary( VI to VIII)	Rs.9/-
Secondary(IX to X)	Rs.11/-
Senior Secondary( XI to XII)	Rs.12/-

## **2.9 System for cooking, serving and supervising Mid Day Meal in the schools and measure to prevent any untoward happening.**

In Lakshadweep, there are 63 schools in which the MDM Scheme is implemented. Total 14774 children from Pre-Primary classes to XII classes are being served MDM. Preparation MDM are done in the kitchen attached to schools and cooks are appointed on regular basis. In addition, helpers are additionally engaged by the Headmasters through concerned Village (Dweep) Panchayat, wherever the requirement is necessitated. In Lakshadweep, practically the Headmasters of the schools run the MDM programme. After receiving the required fund from the District Panchayat, they procure the required food articles and get them cooked by the cooks available in the schools and serve them with the team of government officials (both teaching and non-teaching staff) chosen by the Headmasters. Headmasters, VDP members of concerned ward, SMC, MPTA monitor the running of the scheme in their respective schools.

## **2.10 Procedure and status of construction of kitchen- cum store.**

So far, no fund for construction of kitchen sheds has been requested under central share of MDM Scheme or any other schemes. However, kitchen sheds are available in all the schools in Lakshadweep. The funds required for the construction of Kitchen-cum-store are met under UT Budget and the construction works are being done by the LPWD on request **from** the Department of Education. In certain schools, reconstructions/maintenance of kitchen shed is required and the proposal for the same has already been submitted to the LPWD. .

## **2.11. Procedure of procurement of kitchen devices from (i) Funds released from Mid-Day Meal programme (ii) Other sources.**

Rs.0.66 lakhs was received as central assistance for procurement of Kitchen Devices during the year 2006-07 and the same has been released to the District Panchayat. The DP authority submitted UC for the same and this was already forwarded to MHRD. It is proposed to replace the kitchen devices during 2013-14 and Rs.2.10 lakhs has been proposed under AWP&B 2013-14.

## **2.12 Capacity building and training conducted for different categories of persons involved Mid-Day Meals programme under programme.**

Due to non availability of reputed Institutions in Lakshadweep, training could not be arranged during 2012-13 and The Food Craft Institution, Kalamassery, Kochi has agreed to provide training to Cook Cum Helpers under MDM and proposal has been



submitted to the competent authority for financial and final approval to conduct the programme in the month of April, 2014 .

### **2.13 Management Information System at School, Village/ Gram Panchayat, Block, District and State level.**

There is no MIS system at State Level. It is expected that the MIS system developed by the Ministry will help to manage the information of MDM in Primary and Upper Primary levels.

### **2.14. System to ensure transparency, accountability and openness in all aspects of programme implementation, including inter alias, food grain management, ingredients procurement, cooking and serving, appointment of cooking staff, construction of kitchen-cum-store and procurement of cooking devices.**

In Lakshadweep, as mentioned at many places in the above paras, the MDM scheme has been operational since a very long time. The scheme is not been functioning under any private hands. From the beginning, the required funds for providing MDM to the students has been released to the school Headmasters from the Directorate of Education and the programme is monitored from the Directorate level through the officers. From 1999 onward the scheme has been transferred to the District Panchayat, even though the basic system of MDM Scheme functioning has not changed at all. As the scheme has been shifted to the District Panchayat, the GIA released by the Education Department is being further provided to the school Headmasters by the District Panchayat. The needed food articles are procured by the Headmasters from the Government controlled Cooperative societies in islands. The cooking and serving process are attended by cooks and teachers appointed by the Administration. Kitchen sheds are constructed by the department through LPWD. Therefore, there is complete transparency in the functioning of the scheme in Lakshadweep. On the above mentioned Panchayat authorities, SMC and MPTA of school children oversee and observe the process and providing required suggestions to the School Headmasters and the Directorate of Education in time to time.

### **2.15. Measures taken to rectify**

- a) Inter-district low and uneven utilization of food grains and cooking cost.
- b) Intra-district mismatch in utilization of food grains and cooking cost.
- c) Delay in delivering cooking cost at school level.

Measures are already taken to rectify the above three points. There is no uneven or mismatch in utilization of food grains and cooking cost. The cooking cost and other financial requirements are released on time without any delay.

### **2.16 Details of Evaluation studies conducted by the State/UTs and summary of its findings**

No evaluation studies on implementation of MDM have been conducted so far.

### **2.17. Brief write-ups on best practices followed in the State.**

In Lakshadweep, the system best practiced methods for ensuring transparency and openness in all aspects of MDM programme implementation are food grain management, ingredients procurement, cooking and serving of meals. All the Coop. Societies in the islands provide all ingredients required for MDM on credit basis without any stoppages. The headmasters of the concerned schools are responsible for the smooth implementation of MDM at the school level. Panchayat authorities, PTA and a group of govt. officials (both teachers and other employees) are also involved in this implementation process and the cooked meal is tasted by mothers and SMC members before the same are distributed to the students.

**2.18. Instance of unhygienic food served, children falling ill, sub-standard supplies, diversion/misuse of resources, social discrimination and safety measures adopted to avoid recurrence of such incidents.**

Food served under MDM Scheme are prepared in hygienic environments / kitchens that are attached to the schools and the best quality food as per the menu given in previous para 2 are provided. No cases of children falling ill, instances of misuse of resources and social discrimination have been reported so far. The Headmasters, SMC, Panchayat ward members and MPTA closely monitor the implementation of the MDM programme in all stages. Orders have been issued to all schools for insisting hand washing before and after MDM, based on the direction received from the ministry.

**2. 19. System of Tasting of food by teachers and testing of food sample by any reputed labs.**

Foods prepared are tasted by teachers before serving to children from the time of introduction of MDM programme. In compliance to the Ministry guidelines food testing records are maintained in all schools. Due to non availability of National Accreditation Lab for food testing, Department have approached a Lab in the neighboring State Kerala and waiting for their rates, approval etc.

**2.20. Extend of involvement of NGOs and Civic Body Organizations (CBOs)/ PRIs in the implementation and monitoring of the scheme.**

There is no involvement of NGOs and CBOs for the implementation of MDM scheme. District Panchayat is the implanting agency of MDM in Lakshadweep.

**2.21. Status of School Health Programme with special focus on provision of micro-nutrients, Vitamin-A, De-worming medicine, Iron and Folic Acid, Zinc and recording of height, Weight etc.**

Hospitals/Community Health Centres / Primary Health Centres, are available in all the islands, take necessary measures to provide health checkup in schools and whenever they find any deficiencies, corrective measures will be taken with the help of SMC/MPTA and other departments/organizations. Issuing of health cards for all school going children under NRHM is in progress. Screening of school children with refractive errors in 2011-12 is completed and screening of new admissions is in progress. Department of Health has provided spectacles to the children having

refractive errors. Distribution of Vitamim-A, de-worming, iron and folic acid tablet, etc during 2013-14 has been completed in all schools. Screening for Hepatitis-B in all schools have been completed from Primary to Senior Secondary students in all islands. Out of the children screened 7 positive cases have been reported and Department of Health is provided required treatment to the effected children.

**2. 22. Present monitoring structure at various levels. Strategy for establishment of monitoring cell at various levels viz. Block District and State level for effective monitoring of the scheme.**

The setup of monitoring mechanism of MDM exist in Lakshadweep is given in below table.

Sl. No	Levels	Involvement of Officers/PRIs/SMC's etc...
1	Island level	DC/SDO, Principal(GSSS) and HM, GHS(Bitra), MO,LMO,HI CHC/PHC in islands, Secretary, Co-op. Societies,OIC W&C, CP(VDP), HM GSBS& GJBS, President SMC& Mother forum, TIC of Nursery, HM/AHM(Member Secretary).
2	District level	CEO(DP), DMHS, Director(W&C),Director(F&CS), EO, MS(IGH), SLMO (IGH), Senior Lady teacher, Sr. PST & HM (GSSS,KVT), AEO(DP), President SMC& Mother Forum (GSSS,KVT)VPCC & one DP member from all islands, Education Officer(MDM) (Member Secretary).
3	UT level	CDC, MP, PCC, VCC, Secretary (Edn/Health/F&CS/W&C/Planning/Finace), CEO(DP), Physician & Peditrition (IGH), CP(LSSWB), President Mother Forum & Principal (GSSS,KVT),Medical Practitioner (Private) and DE (Member Secretary)

**2. 23. Steps taken to strengthen the monitoring mechanism in the Village, Block, District and State level and status of constitution of SMCs at these levels. Status of formation on School Management Committee at Village/School/Cooking agency level in the light of Right to Education Act, 2009.**

Lakshadweep Administration constituted UT/District/Island level steering-cum-Monitoring committees to oversee the implementation of MDM Scheme at different levels. Members consist of DP Members, VDP Chairperson, Vice Chair Person, SMC Members, Headmaster and senior teachers of concerned schools. The first meeting of the District Level Steering & Monitoring Committee was held at Kavaratti on 20<sup>th</sup> November, 2013 and Second Meeting on 6.3.2014. Representative of the Ministry and monitoring institution could not participate the meeting due to non-availability of conveyance and short notice.

**2.24. Frequency of meeting of District Vigilance & Monitoring Committee held under the chairmanship of senior most MP of the District to monitor the scheme. Gist of the issues discussed and action taken thereon.**

The UTL Administration constituted District Vigilance & Monitoring Committee under chairmanship of Member of Parliament vide Notification F.No.227/6/2012-EdnMDM(AW) Part-1 Dated 13.8.2013. The Chairman of the DV&MC have been requested to provide a convenient date to hold the meeting and reply is awaiting.

**2.25. Arrangement for Official Inspections to MDM Centers and percentage of schools inspected and summary of findings and remedial measures.**

Annual inspection is conducted in every school once in a year by the Education Officer and team along with academic supervision. 99% of schools have been inspected as on 31.12.2013.

**2.26. Feedback/comments in respect of reports of Monitoring Institutions designated for your State/UTs to monitor implementation of MDM and action taken thereon.**

Visit of Monitoring Institute appointed for MDM by the Ministry is due in 2013-14.

**2.27. Details of the Contingency Plan to avoid any untoward incident.**

Instructions have been issued to all schools to maintain the Contingency Plan in a prominent place.

**2.28 Grievances Redressal Mechanism if any, used by the State/UTs. Details of complaints received, nature of complains and time schedule for disposal of complaints.**

The two-tier Grievances Redressal Cells in Lakshadweep are given below. So far, no complaints on MDM have been registered on the implementation of this scheme.

Sl. No.	Level	Grievances Redressal Officers
1	UT/District level	Director of Education, U.T. of Lakshadweep
2	Island level	Principals/Headmasters of GSSS, Agatti, Amini, Chetlat, Kalpeni, Kavaratti, Kiltan and Minicoy/GHS, Andrott, Kadmat and SBS, Bitra

Installation of toll free telephone is pending with BSNL authority and telephone number of concerned officer-in-charge of Grievances Redressal Cell is functioning at Island and State/UT level to receive the grievances is below.

**Telephone No. of Grievances Redressal Mechanism**

**A. Island Level**

S.No	Island	Designation of Grievances Redressal Officers	Telephone Numbers
1	Agatti	Principal, GSSS	04894 242253
2	Amini	Principal, GSSS	04891 273255
3	Andrott	Principal, GSSS	04893 232323

4	Bitra	Headmaster, GSBS	04890 275222
5	Chetlat	Principal, GSSS	04899 276256
6	Kadmat	Principal, GSSS	04897 274223
7	Kalpeni	Principal, GSSS	04895 252225
8	Kavaratti	Principal, GSSS	04896 262218
9	Kiltan	Principal, GSSS	04898 272239
10	Minicoy	Principal, GSSS	04892 222251

#### **B.State/UT Level**

<b>State/UT</b>	<b>Designation of Grievances Redressal Officers</b>	<b>Telephone Numbers</b>
Lakshadweep	Directorate of Education	04896 262318

#### **2.29. Awareness Generation / Media campaign, if any**

MDM programme is very popular among the people of Lakshadweep and there has never been a situation to do any type of media campaigning to promote this further.

#### **2.30. Overall assessment of the manner in which implementation of the programme is contributing to the programme objectives and an analysis of strengths and weakness of the programme implementation.**

In Lakshadweep, MDM scheme is extended from pre-primary to 12<sup>th</sup> standard under the state share. Central share covers primary and upper Primary. Funds allocated under central share and state share is released in the form of GIA to Implementation Agency, District Panchayat and then they distribute this fund to the schools. Implementation of the MDM programme is very transparent and successful due to the involvement of PRIs, SMC and Mother PTA in all levels.

In Lakshadweep, hot, cooked Mid Day Meal is served to the students covering the food items liked by the local inhabitants and as per the eating habits of the islanders. Generally, the food items like Dhal, Green gram, Fish, Egg, Meat, and Chicken are served along with rice to the students. In fact, the food served is not put to any nutritional tests but the food served is completely hygienic, nutritional and basically liked by the students. The required calorific/protein value is assured in the meals served to the students. As such, U.T Administration has been able to attain success, full retention of the school students and dropout rates in Lakshadweep are negligible. Thus, the Mid Day Meal Scheme has contributed to achieve the set objectives in Lakshadweep.

\*\*\*\*

**Administration of the  
Union Territory of Lakshadweep  
(Directorate of Education)  
Kavaratti-682 555**

F.No.227/6/2012-Edn.(AW)

Dated 12.3.2014

To

The Joint Secretary  
Govt. of India,  
Ministry of HRD  
101-D Wing  
Department of School Education & Literacy  
Shastri Bhavan  
New Delhi -110 001

Sub:- Request to carry forward the MME fund received in the FY 2013-14 to 2014-15-  
Regarding

Ref:- 1. Release order F.No1-8/2013-EE.5(MDM 1-2) Dated 6<sup>th</sup> August, 2013

2. Release order F.No1-8/2013-EE.5(MDM 1-2) Dated 25<sup>th</sup> February, 2013

Sir,

Kind reference is invited the release order of Central Assistance under National Programme of Mid Day Meal mentioned above. The release orders of Central Assistance for 2013-14 for Union Territory of Lakshadweep received timely except Letter of Authority from the Pay & Accounts Department of the Ministry. The Finance Department of this Administration object to honour releases made by the Ministry without Letter of Authority for the amount released. The Central Assistance of balance of 1<sup>st</sup> instalment and 2<sup>nd</sup> & final instalment cited could be released only on March 2014 and Credit bills of Cooking cost, cost of food grains etc can be utilised except the MME component and details of MME fund received and utilized is given below:

Sl.No	Release order	Fund received under MME (in lakhs)	Expenditure
	Release order F.No1-8/2013-EE.5(MDM 1-2) Dated 22 <sup>nd</sup> April, 2013	0.64	0.64
	Release order F.No1-8/2013-EE.5(MDM 1-2) Dated 6 <sup>th</sup> August, 2013	17.36	0.00
	Release order F.No1-8/2013-EE.5(MDM 1-2) Dated 25 <sup>th</sup> February, 2013	12.00	0.00
	Total	30.00	0.64

As per the MME Plan 2013-14 proposals, appointment of Project Manager and MIS Coordinator has been finalised and appointment orders could not be served due to declaration of 16<sup>th</sup> Lok Sabha Election. The Food Craft Institute has agreed to provide training to CCH and the proposal is with Finance Department for clearance. Computer, Scanner, Furniture, Steam boiler




PTC

etc to be procured by calling tender and could not processed due to non receipt of fund from the Ministry.

Therefore it is requested that permission may be accorded to utilise/carry forward the fund received under MME Plan for 2013-14 to next financial year 2014-15

Sl.No	Component	Unit	Physical	Finance (in Lakhs)
1	Project Manager(MDM) and MIS Coordinator (contract basis)	Post	2	3.60
2	Training	Nos	1	4.00
3	Internal and External Evaluation	Studies	2	2.00
4	Computer, scanner etc to Dist.Office & Island level	Nos	12	8.00
5	Furniture, stationeries, soap etc	As per requirement		8.40
6	Steam boiler for MDM Kitchen	Nos	1	4.00
	Total			30.00

Yours faithfully

  
(A.Hamza)  
Director of Education

- Copy to:1.The Director(MDM), Govt. of India, Ministry of HRD, 105-C Wing, Department of School Education & Litaracy, Shastri Bhavan, New Delhi -110 001  
2. The Consultant(MDM) Lakshadweep for information