

மதிய உணவு திட்டம்

**NATIONAL PROGRAMME OF MID DAY MEAL IN
SCHOOLS (MDMS)**

**ANNUAL WORK PLAN AND BUDGET
2014 – 2015**

1.Introduction:

1.1 Brief history

The UT of Puducherry consists of two Districts viz. Puducherry & Karaikal. The District of Puducherry consists of Puducherry, Mahe and Yanam regions while the Karaikal region has been carved out as a separate District in the year 2006. The total area of the UT is 479 Kms. The Pondicherry is the largest region with a total area of 290 Sq.Km while the area of Karaikal is 161 Sq.Km. Puducherry is 179 Km south of Chennai and the Karaikal is sandwiched in the Nagapattinam District of Tamil Nadu. The Mahe region which is 757 Kms. from Puducherry lies in between Calicut and Kannanore District of Kerala. Mahe is the smallest unit of the UT with a total area of 9 Sq.Kms. Yanam which lies amidst the East Godavari District of Andhra Pradesh is the third largest region with a total area of 20 Sq.Kms.

The UT gives topmost priority for the Education Sector and 8.5% of the total budget is earmarked for this sector. Pondicherry is the only UT which has achieved almost 100% literacy. Having been emerged as the Education Hub of the South India, the UT has the distinction of being adjudged as the best State in the country which promotes Education. Though the UT is small in size, it has a strong network of 718 Schools under Government as well as Private Sector. There are 431 schools under the administrative control of the Directorate of School Education while 287 Schools of various categories are run by the Private Sector. The break up of the Primary and Middle Schools are as shown below:

NUMBER OF INSTITUTIONS

Sl. No	Regions	Govt. Schools	Primary		Upper primary			Upper primary without primary		
			G A	Total	Govt. Schools	GA	Total	Govt. Schools	GA	Total
1.	Puducherry	160	1	161	56	20	76	63	0	63
2.	Karaikal	63	1	64	28	5	33	13	0	13
3.	Mahe	10	0	10	3	0	3	4	0	4
4.	Yanam	15	0	15	2	1	3	6	0	6
Total		248	2	250	89	26	115	86	0	86
Grand Total		451								

The UT Government implements various Schemes to distribute Free Uniforms, Textbooks, Dictionaries, Chappals, School Bags, Cycles, Transport facilities (Free Bus) and all Stationery materials for the Students from I to XII Std. As a result of the measures taken by the Government, the enrolment of the Students has increased considerably over the years.

Year	Enrolment of Boys	Enrolment of Girls	Total Enrolment
2009-2010	129104	124188	253252
2010-2011	129702	124632	254334
2011-2012	129979	125933	255912
2012-2013	129469	125927	255396
2013-2014	128844	124935	253779

Also the UT Government has taken steps to ensure that the retention level is maintained at optimum level and aims to achieve 0% dropout of the students. The dropout of students is only 0.30% for Primary and 0.44% for Upper Primary in the UT Government has also taken steps to ensure that the Teachers of different categories are posted in the schools according to requirements. The Pupils Teacher Ratio of the UT is the best in the country with 1:22 against the National Norms of 1:30 for Primary and 1:35 for Upper Primary. The UT has also taken steps to provide necessary infrastructure to

all the Government Schools. All the Schools are functioning in pucca buildings and no school functions in thatched shed. And it has been ensured that basic facilities including toilets and safe drinking water are provided to all the students. As a result of all the measures the schools under government compete with the Private Schools in achieving results. The percentage of pass in SSLC and HSC in the last five years is shown below and it may be noted that the performance of the Government Schools is one of the best in the country.

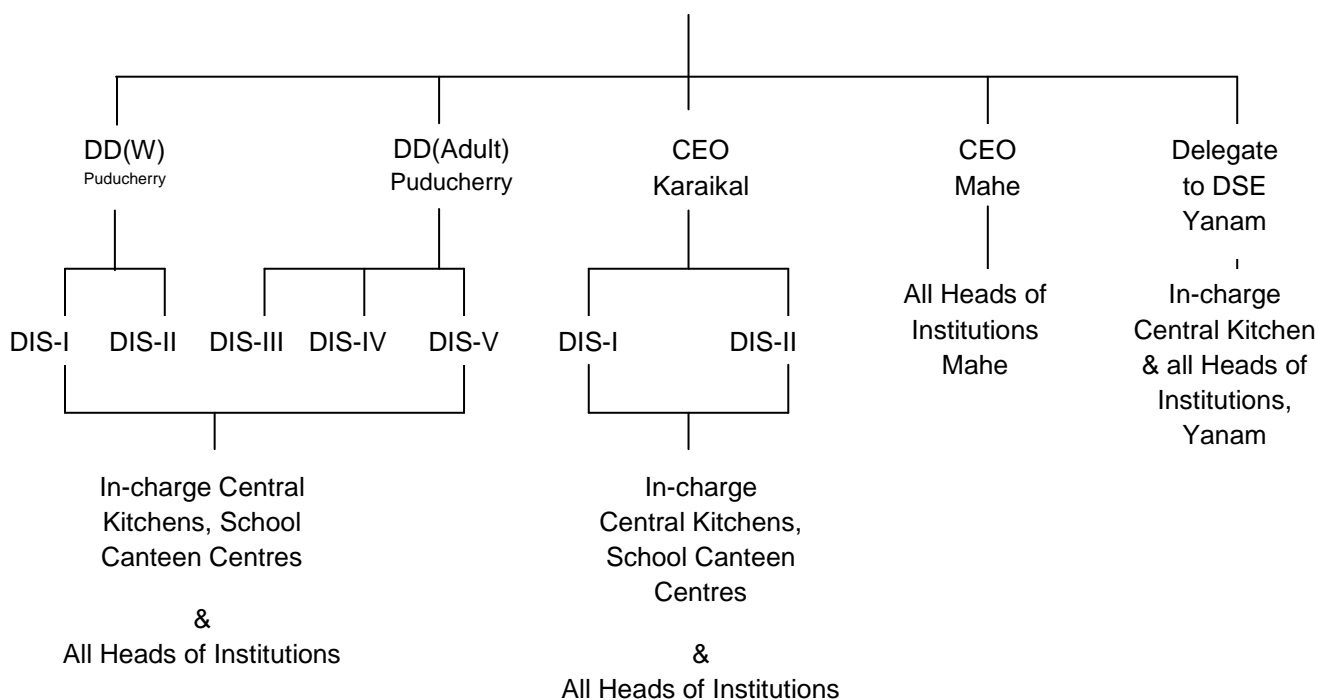
PERFORMANCE CHART IN SSLC / HSC PUBLIC EXAMINATIONS

Year	SSLC PUBLIC EXAMINATION			HIGHER SECONDARY EXAMINATION		
	Total No. of Students Appeared	Total No. of Students Passed	Percentage	Total No. of Students Appeared	Total No. of Students Passed	Percentage
2009	15792	13086	82.86%	10889	8873	81.49%
2010	15843	15680	98.97%	12473	9309	74.63%
2011	15946	13983	87.69%	11428	9548	83.55%
2012	17979	16519	91.88%	12013	10153	84.52%
2013	18562	17528	94.43%	12588	11072	88.17%

The Midday Meal Scheme is being implemented in this Union Territory of Puducherry since the days of French Administration i.e. from the year 1930. Nearly 1.04 lakhs students are covered under the Midday Meal Scheme studying from I to XII standard in 451 Government/Government Aided Private Schools besides Pre-primary children. The Midday Meal Programme is being implemented under Central Assistance as well as under State Plan.

1.2 MANAGEMENT STRUCTURE FOR THE IMPLEMENTATION OF THE PROGRAMME

DIRECTOR OF SCHOOL EDUCATION



DSE - Director of School Education,

CEO- Chief Educational Officer,

DD(W)- Deputy Director of Education (Women),

DD(Adult)- Deputy Director of Adult Education

DIS - Deputy Inspector of Schools

1.3 PLAN FORMULATION AND IMPLEMENTATION STRUCTURE

There are 451 number of Govt. and Govt. aided schools in Puducherry. 34671 number of students are studying in lower primary schools while 32208 number of students are studying in upper primary schools. To ensure accuracy of data the department relies upon the UDISE data for making assessment of requirements of rice and other requirements. This UT is preparing food for the students in 13 centralized kitchens and 52 school based kitchens. Accordingly, the requirements of rice, diet articles and other items

are arrived as per the norms prescribed by the MHRD centrally at the directorate. As far as implementation of the MDM programme is concerned, Directorate of School Education is the nodal department and as such the programme is implemented under the overall supervision of the Director of School Education. In Pondicherry region, food is prepared in 10 central kitchens and 5 number of school based kitchens and is directly monitored by the Director of School Education (DSE). There is one Deputy Director level officer who is given the exclusive responsibility of monitoring the programme Besides inspecting officers including Chief Educational Officer, and Inspector of schools also inspect both the kitchens and the schools to ensure that the programme is implemented hassle free. In Karaikal district, the programme is implemented under the supervision of the District Collector, and down the line Inspecting Officers including the Chief Educational Officer and Inspector of Schools monitor the scheme. There are 2 central kithens and 34 number of school based kitchens from where food is prepared for distribution to schools. In Mahe region, the regional administrator monitors the scheme and the Chief Educational Officer assumes the overall responsibility of the implementation of the scheme. And in the Yanam region, the regional administrator monitors the scheme under the supervision of delegate to the director of school education.

2.1 REGULARITY AND WHOLESOMENESS OF MID DAY MEALS SERVED TO CHILDREN

As stated elsewhere Midday Meals is served to the students from pre-primary to Higher Secondary in all working days. As it may be seen from the Table No.AT-1 130 and 160 grams of rice is utilized respectively for lower primary and upper primary students and food is prepared by utilizing other diet articles as per the norms. As it was felt that the nutritional requirements of the students were not completely met within the erstwhile menu and as the sensorial palatability of the menu was not very appealing, a Committee was constituted with the representatives of Dept. of Food science and technology Pondicherry University and the chief dietician of Health Department. After detailed study and survey the Committee recommended for the modified menu as detailed below:

DAYS	PROPOSED AND IMPLEMENTED
Monday	Sambar Rice, Potato, Whole Bengal Gram Poriyal & Egg
Tuesday	Tomato Rice, Mixed Vegetable Poriyal with Whole Gram
Wednesday	Sambar Rice, Raw Plantain Poriyal & Egg
Thursday	Vegetable Rice, Carrot, Potato & Whole Bengal Gram Poriyal
Friday	Sambar Rice, Cabbage & Green Peas Poriyal

The modified menu has since been implemented from the Academic Year of 2013-14. The new menu has been well received by the students and it is reported that the wastage of food has been reduced considerably after the new menu is introduced. A copy of the news item appeared in the English daily 'The Hindu' is attached to the report for kind perusal. And it has been decided in the State Feeding cum Monitoring Committee meeting held on 28-3-2014, that eggs will be provided to the students on all working days meeting the funds requirements from the state budget.

Food was served to the students without any interruption during 2013-14 and it will be ensured that it is repeated in 2014-15 also.

2.2 COVERAGE OF CHILDREN OF NCLP SCHOOLS AS PER UPPER PRIMARY NORM.

There is no NCLP school functioning at Puducherry.

2.3 FOOD GRAINS MANAGEMENT:

As mentioned elsewhere, during 2013-14 26299 students were covered at Primary level and 27368 students at Upper Primary level. And therefore 1455.41 Metric tons of rice was required to prepare food for the students in all the schools for which an amount of Rs.82.23 Lakhs was required to be paid to M/S. Food Corporation of India (FCI). After ensuring the release of funds and getting allocation from the MHRD this Department lifted rice from the respective godown of the FCI in all the four regions and payment made thereafter. Elaborate arrangements have been made at the central kitchens itself to store the rice lifted. Normally, rice is lifted from the FCI every month. As the rice lifted from FCI is not of superior quality, a tie up arrangement is made with the Marketing Society, a registered Co-operative Society, Govt. of Puducherry to polish the rice so that the food prepared for the students is of good quality. As mentioned above, this UT consists of four regions and rice is lifted for Puducherry and Karaikal regions from Cuddalore whereas the rice required for Mahe and Yanam is being lifted from Cannore and Kakinada respectively and the payment for rice lifted is paid to the respective Divisional Office in the form of Demand Draft. For the year 2014-15, projections have been made based on the actual consumption during 2013-14.



Ensuring the Quality of Food grains (FCI Rice) Hon'ble Chief Minister & Hon'ble Education Minister with the Director of School Education.

Grocery items and Vegetables required for the preparation of food is being purchased from fully owned Government corporations of M/s PAPSCO. Grocery items are purchased on monthly basis and payment made accordingly, whereas supply of vegetables on daily basis. Care has been taken to ensure that vegetables of high nutritional value are purchased. Also, some of the non-diet articles are purchased from 37 self-help groups functioning in this UT. The Mahe Employees co-op. society and Yanam co-op. society Ltd. Supplies diet and non-diet articles required for Mahe and Yanam respectively.

The JRM which reviewed the implementation of MDM in 2013 has also observed that the JRM found good storage facilities for the food grains and ingredients at school level and centralized kitchens with separate almirah and racks for each item with proper labels. And as observed by the JRM cooking oil is kept in separate container. As vegetables are procured on daily basis, elaborate storage for vegetables does not warrant. However, the recommendations of the JRM, regarding procurement of branded and Agmark certified diet articles, the issue has been placed before the SMC and it has been decided that the condition shall be fulfilled from the academic year 2014-15. At present, there are 13 Centralized Kitchens and 52 school based kitchens catering to the needs of the children. And as mentioned above, rice

is lifted on monthly basis and the rice required for centralized kitchens and the schools directly by the Marketing Society after getting it polished for the enrichment of its quality. Regarding the supply of diet articles, M/s. PAPSCO, a State PSU, makes supply directly to the Centralized Kitchens and the schools and so far no interruption in the supply of rice or other diet articles has occurred. An amount of Rs.529.45 lakhs was released by MHRD and the entire amount has been utilized for the purpose for which it has been released. For the year 2014-15, an amount of Rs.727.46 is claimed based on the consumption during 2013-14.

2.4 SYSTEM FOR PAYMENT OF COST OF FOODGRAINS TO FCI :

The payment of cost of food grains to FCI is being made by the Nodal Officer, Puducherry for all the four regions in a centralized manner and 1030.524 MTs of rice was lifted during the period from 01.04.2013 to 31.12.2013 and an amount of Rs.50.83 lakhs was paid to the Food Corporation of India and an amount of Rs.7.90 lakhs being the balance amount is to be paid to FCI till 31.12.2013. In Puducherry, there is no undue delay in the payment of cost of food grains to FCI and the payments are being made punctually. There is no pending bill pertaining to the year 2012-13.

2.5 SYSTEM FOR RELEASE OF FUNDS PROVIDED UNDER MDM (CENTRAL AND STATE). PLEASE INDICATE THE DATES WHEN THE FUND WAS RELEASED TO STATE AUTHORITY:

The Government of Puducherry provided an amount of Rs.1,82,94,800/- being the 25% of the State share in the outlay 2013-14 in April 2013 itself. The Central share of Rs.1,97,88,000/- being the adhoc grant was released on 07.05.2013 and the first installment of Rs.87,44,800/- was released on 24.12.2013 and the second installment of Rs.1,16,19,200/- was released on 14.03.2014 besides an amount of Rs.2,44,12,378/- was the unspent balance amount available on 01.04.2013 which was also utilized for the implementation of the scheme. In this context it is stated that the UT of Puducherry being an enclave of 4 regions, with a total population of 12,47,953 is placed in a peculiar geographical arrangement. Moreover, out of the 4

regions Puducherry, Mahe and Yanam form part of the district of Puducherry. And the Collector cum District Magistrate of Puducherry district is not the Administrative Head of the District unlike in other states. And the administrative arrangement in the outlying regions of Mahe and Yanam is also different with the Regional Administrator being the Administrative head of the region. As stated elsewhere, the Midday Meals is being served to the students studying upto 12th Std. Whereas there is no unified administrative structure for both secondary and as well as higher secondary levels of education, in the Nodal Department. Also, the Midday Meals programme is implemented only in fully owned Govt. and Govt. Aided schools and there is no school functioning under local bodies. For the reasons explained above, the UT has been following the centralized system of purchase and settlement of bills accordingly. Therefore, the funds released by the Govt. of India is deposited with the Govt. Account and is drawn on different dates for the settlement of the bills after it is raised by the M/s FCI and other suppliers. In Puducherry, the procurement is made from the co-operative institutions / Govt. undertakings by the respective Nodal Officers and the settlement of bills is also being made only by the Nodal Officers as the concept of cooking the midday meals in centralized kitchens is being followed in Puducherry.

2.6 SUBMISSION OF INFORMATION IN MANDATORY TABLE (AT-24):

The required particulars are duly furnished in the mandatory table AT-24 of the AWP&B 2014-15.

2.7 SYSTEM AND MODE OF PAYMENT OF HONORARIUM TO COOK-CUM-HELPERS AND IMPLEMENTING AGENCIES:

There are 451 number of lower and upper primary schools with an enrolment of 66879 number of students. As per the norms prescribed for the engagement of cook cum helpers. This administration is entitled to engage 1083 cook cum helpers. Whereas 295 cooks of different categories have been engaged in 13 Central Kitchens and 52 School Based Kitchens. In addition 736 helpers to cooks have been engaged and are used in schools for serving food to students and to attend to the post lunch works. The break up

of cooks and helpers to cooks engaged by the administration are as furnished below:

(Rs. in lakhs)

Sl. No	Description	No. of individual engaged	Wages / Honorarium paid / per month
1	Daily Rated Cook	86	75
2	Part Time Cook	209	103
3	Staff Engaged for the Transportation / Distribution of food	736	7.36
GRAND TOTAL		1031	24.38

2.8 SYSTEM FOR PROCURING COOKING INGREDIENTS (PULSES, VEGETABLES INCLUDING LEAFY ONES, SALT, CONDIMENTS, OIL AND FUEL ETC.):

The diet and non-diet articles in respect of Puducherry, Karaikal, Mahe and Yanam regions are being supplied by M/s. Puducherry Agro Service and Industries Corporation Limited, Puducherry Agro Products Food And Civil Supplies Corporation Limited, Puducherry Central Co-operative Processing Supply and Marketing Society, Karaikal Central Co-operative Processing Supply and Marketing Society and Mahe Employees Co-operative Society and Yanam Co-operative Stores Ltd., respectively on limited tender basis. In addition to the above, diet and non-diet articles are being supplied by 37 Self Help Women Groups in Puducherry region to the School Canteen Centres whose feeding strength is less than 600 students. The supplies are made on monthly basis as per the requirement of the concerned central kitchens / school canteen centres and it is also ensured that adequate quantities of diet articles are kept in the central kitchens. Each central kitchen is equipped with a store room where adequate stock for one month can be stored safely.

2.9 SYSTEM FOR COOKING, SERVING AND SUPERVISING MID DAY MEALS IN THE SCHOOL AND MEASURES TO PREVENT ANY UNTOWARD HAPPENING:



The concept of cooking the midday meal in modernized Central Kitchens is being followed in Puducherry and 13 Central Kitchens are functioning at present besides 52 School Canteen Centres. Food is prepared in all centralized kitchens in Puducherry, Karaikal and Yanam in diesel/LPG driven boilers. Separate arrangements have been made for the preparation of vegetables, cooking and cleaning. Food is prepared by experienced cook cum helpers who are on the job for more than 15 years. 295 No. of cook cum helpers have been engaged in all the centralized kitchens. In the case of preparation of food in 52 school based kitchens, food is prepared in conventional method. There is a proposal to construct 2 more Central Kitchens so that all the school which has school based kitchens could be served by Central Kitchens. The foods prepared in the central kitchens are transported by vehicles. Utensils covered with lids are used to transport food meant for students. At present there is no dining hall facility in schools in Puducherry, Karaikal and Yanam. However it is proposed to construct dining hall in schools where sufficient space is available by dovetailing funds available under MPLAD scheme. The distribution of MDM is supervised at

present by the Head Teachers and Inspecting Officers, besides a dedicated officer has been appointed with clear mandate to make surprise inspection of central kitchens and the distribution of MDM. Steps have been taken to install fire extinguisher in three of the 13 central kitchens and the remaining central kitchens will be covered in this financial year. Food is prepared under direct supervision of a teacher who assumes the role on rotation basis. As stated above, the prepared food is transported from central kitchen to schools in duly covered vessels which is tasted by the teachers on rotation before it is served to the students. Elaborate instructions have been issued to all the schools vide circular dt.24.07.2013 as to how the food is to be tasted and the mode of maintenance of roasters.

2.10 PROCEDURE AND STATUS OF CONSTRUCTION OF KITCHEN-CUM-STORE:

At present there are 13 central kitchens in the UT of Puducherry 10 in Puducherry 2 in Karaikal and 1 in Yanam, catering to the needs of 1,04,000 students. In addition, there are 52 number of school based kitchens in Puducherry, Karaikal and Mahe. As sufficient space is not available there is no scope for construction of central kitchen in Mahe. And all the schools in Mahe have pucca school based kitchens. In the year 2006-07 an amount of Rs.55.20 lakhs was released to the UT to construct 92 No. of kitchen cum stores. As the experiment of preparing food in central kitchen has proved to be a successful one more and more no. of central kitchens were constructed in the UT the latest being the Central Kitchen at Lawspet with a capacity of preparing food for 20,000 students per day. In view of the above, the issue was placed before the 2013-14 PAB and it was requested to allow this UT to utilize the funds released for the construction of Kitchen cum Stores to construct two more central kitchens in Puducherry and Karaikal to replace the existing school based kitchens. The proposal for construction of the central kitchens could not be taken up as proposed, due to paucity of funds during the last financial year. The proposed construction of the central kitchens will be taken up during this financial year.

2.11 PROCEDURE OF PROCUREMENT OF KITCHEN DEVICES:

No central assistance was received for the procurement of kitchen devices for the year 2010-11 and 2011-12. However, an amount of Rs.7.55 lakhs was received as central assistance for the procurement of kitchen devices for the year 2012-13. Entire funds have been utilized for the procurement of kitchen devices. The central assistance for the year 2013-14 for an amount of Rs.11.55 lakhs is yet to be received. The Kitchen devices were procured as per norms.

2.12 CAPACITY BUILDING AND TRAINING:

The Midday Meal Scheme is being implemented in this U.T. of Puducherry in accordance with the Guidelines vide circular No.6566/Edn/DE/PA/2002-03, dated 04.03.2003 of the Director of School Education, Puducherry. In the past, training programmes were organized for the cook cum helpers under the aegis of Food and Nutrition Board, Ministry of Women and Child Development. Now, it was proposed to train the cook cum helpers by the Pondicherry Institute of Hospitality Crafts. The institute has also submitted a proposal for the conduct of training. As elections were notified before the finalization of training module, the training could not be organized as proposed. Training programmes will be organized for all 1031No. of cook cum helpers in such a way that the personnel undergo at least 2 training sessions in a year.

2.13 MANAGEMENT INFORMATION SYSTEM AT SCHOOL, VILLAGE /GRAM PANCHAYAT, BLOCK DISTRICT AND STATE LEVEL AND ITS DETAILS:

As discussed in the foregoing paras, purchases are made in a centralized manner as food is prepared in the centralized kitchens covering major portion of schools. And there is also a proposal to construct 2 more central kitchens to replace the remaining school based kitchens. Therefore there is no data base available with the school except the details of students who avail MDM. However it is proposed to connect all the central kitchens and the school based kitchens of Mahe with the Directorate as the No. of school based kitchens is insignificant maintaining data base at different level

will not be of much use. Moreover, as there is no elected local bodies and as effective devolution of functions has not taken place in this UT, there is no scope for maintaining database of MDM at gram panchayat and panchayat level.

2.14 SYSTEMS TO ENSURE TRANSPARENCY, ACCOUNTABILITY AND OPENNES IN ALL ASPECTS OF PROGRAMME IMPLEMENTATION:

The Midday Meal Scheme is being implemented in this U.T. of Puducherry in accordance with the Guidelines issued in this regard. The diet and non-diet articles in respect of Puducherry, Karaikal, Mahe and Yanam regions are being supplied by M/s. Puducherry Agro Service And Industries Corporation Limited, Puducherry Agro Products Food And Civil Supplies Corporation Limited, Puducherry Central Co-operative Processing Supply and Marketing Society, Karaikal Central Co-operative Processing Supply and Marketing Society and Mahe Employees Co-operative Society and Yanam Co-operative Stores Ltd., respectively on limited tender basis. In addition to the above, diet and non-diet articles are being supplied by 37 Self Help Women Groups in Puducherry region to the School Canteen Centres whose feeding strength is less than 600 students. As the procurement of all articles are only through co-operative institutions, transparency and openness in all aspects of programme is ensured. And it is decided in the last meeting of SMC that the PSUs/Co-operative societies who make supply for MDM shall adopt e-procurement. The weekly menu has been displayed in all the central kitchens. A circular has been issued to all the schools to display the entitlements of the students in the schools. In the training organized for the members of School Management Committee, they have been impressed upon the need to get themselves involved in the implementation of MDM. A toll number of 1967 has been installed to facilitate the general public to register their grievances about the implementation of MDM.

2.15 MEASURES TAKEN TO RECTIFY UNEVEN UTILIZATION:

There is no report of uneven utilisation of food grains in any of the four regions in this U.T. of Puducherry. Similarly there is no mismatch of utilization

of foodgrains and cooking cost in Puducherry as far as the year 2013-14 is concerned. As the scheme is being implemented directly by the Department of School Education through central kitchens / school canteen centres, delivering of cooking cost at school level does not arise.

2.16 DETAILS OF EVALUATION STUDIES CONDUCTED BY STATE/UT AND SUMMARY OF ITS FINDINGS:

No evaluation study was done by the UT administration. However, the Joint Review Mission visited this UT during the December 2013 and has submitted its report to the MHRD. The independent monitoring agency conducts evaluation study independently and submits report directly to MHRD.

2.17 BRIEF WRITES UP ON BEST PRACTICES FOLLOWED IN THE STATE:

- For the year 2013-14 the UT ought to have earmarked Rs.182 lakhs being the 25% of the State Share whereas the UT administration spent Rs.1098 lakhs, for the implementation of MDM as the MDM is extended to the students studying upto 12th Standard.
- In addition to MDM, the UT administration implements the Rajiv Gandhi Break Fast scheme under which 100ml of milk and 35gm of biscuits are given to students.
- Food is prepared in mechanized central kitchens in a hygienic atmosphere.
- Egg was given to students twice in a week and it has now been decided to provide egg to students on all working days.
- Safe drinking water has been ensured by installing auro system with multiple water systems for hand washing.
- Purchase of diet articles is made only through Govt. organizations.

2.18 INSTANCES OF UN-HYGIENIC FOOD SERVED:

No instance of unhygienic food served, children falling ill, substandard supplies, diversion / misuse of resources and social discrimination reported in this U.T. of Puducherry. The scheme is implemented effectively in an error free manner and in accordance with the Guidelines issued in this regard.

2.19 SYSTEM OF TASTING OF FOOD BY TEACHERS AND TESTING OF FOOD SAMPLE BY ANY REPUTED LABS:

A circular has been issued on 24th July 2013 directing the teachers to taste the food meant to be served to the students on rotation and in all schools a roaster is being maintained for the posting of teachers to taste the food before distribution. There is no accredited lab in Puducherry. However, food samples are proposed to be sent King Institute, Guindy, Chennai to ensure the quality of diet articles as well as food served to the students.

2.20 EXTENT OF INVOLVEMENT OF NGOS:

The Midday Meal Scheme is being implemented in Puducherry directly by the Department of School Education and there is no involvement of NGOs \ Civic Body\ Private Agencies.

2.21 STATUS OF SCHOOL HEALTH PROGRAMME:

The Modified Students' Health Programme is implemented in all 4 regions of the UT under Rashtripal Swasthiya Karyakram by National Rural Health Mission. Under this programme, 4 teams have been formed in Puducherry 3 in Karaikal while 1 team each in Mahe and Yanam has been constituted. Each dedicated team is comprised of 2 doctors 1 nurse and 1 counselor. The medical team visits schools and screen students to diagnose 30 diseases among the children. The team also diagnoses developmental disorders and prescribe appropriate treatment for them. The mission fixed a target of 66946 students to be covered during 2013-14 against which 60077 students were screened in 247 schools. In total 25067 Boys and 35010 Girls were screened for 30 diseases divided into 4 groups of diseases. Students' Health Card is maintained for all students in the school and vital parameters of height, weight, BMI and other findings are recorded for follow up action. So far 32208 number of students have been provided with Iron folic tablets.

2.22 PRESENT MONITORING STRUCTURES AT VARIOUS LEVELS:

The Nodal Officers viz. the Deputy Director of Adult Education, the Deputy Director of Education (women), the Chief Educational Officer and Deputy Inspector of Schools used to inspect the schools and the central

kitchens to ensure that the quality of food prepared are of good quality and samples of diet articles are collected at random and get it tested as per the provisions of Prevention of Food Adulteration Act 1954. Such testing is being done periodically at the Public Health Laboratory, Govt. of Puducherry. So far no adverse reporting is received from the said Laboratory. The stock position available in the central kitchen is verified by the Store Superintendent of this department periodically. Also surprise inspection is carried out by officers of different level to avoid pilferage and proper accounting of the materials. In order to strengthen the existing system of monitoring, the School Management Committee will be involved in monitoring the implementation of MDM. Also to make the system more transparent, the standards of diet and non-diet articles used in the preparation of food is displayed in all the central kitchens. There is a Toll Free number available to the General Public to register their complaint on the implementation of the Midday Meal Scheme.

2.23 STEPS TAKEN TO STRENGTHEN THE MONITORING MECHANISM:

The State level Steering-cum Monitoring Committee has already been constituted and it reviews the implementation of the scheme. The District Vigilance Committee will be constituted shortly. In addition, School level Management Committee will be involved to monitor the programme .

2.24 FREQUENCY OF MEETING OF DISTRICT VIGILANCE & MONITORING COMMITTEE:

The District Vigilance and Monitoring Committee is yet to be constituted. Steps will be taken to constitute the same and convening the meeting immediately the election process is over.

2.25 ARRANGEMENT FOR OFFICIAL INSPECTIONS TO MDM CENTRES AND PERCENTAGES OF SCHOOLS INSPECTED AND SUMMARY OF FINDINGS AND REMEDIAL MEASURES:

The Deputy Director in-charge of MDM, CEO and other inspecting officers inspect the quality of food served to the students. Being a small UT with less number of schools the Inspecting Officers cover all the schools. However, there is no prescribed format in which the inspecting officers should

submit their report on the implementation of MDM. It will be ensured that from the academic year 2014-15 instructions will be given to the inspecting officers to submit periodic reports and bring to the notice of the competent authority if any adverse things have been noticed by them.

2.26 FEEDBACK/COMMENT IN RESPECT OF REPORT OF MONITORING INSTITUTIONS DESIGNATED FOR YOUR STATE/UTS TO MONITOR IMPLEMENTATION OF MDM AND ACTION TAKEN THEREON:

Findings of the Monitoring Institutes:

4th Half Yearly Monitoring Report of Pondicherry University

Period: 1st April 2012 to 30th September 2012. Districts Covered: Yanam and submitted before PAB 2013-14.

SN	ISSUE	ACTION TAKEN
1	No display board of weekly menu of the meals were found in the central kitchen notice board	Weekly menu has been displayed in all central kitchens.
2	Micro nutrients are supplied to needy children only	Micro Nutrients are given to all students
3	Water tanks are not being Inspected regularly	Instruction has been issued to the incharge of the central kitchens to ensure that water tanks are cleaned periodically



Joint Review Mission Committee Interaction with the Students about the Midday Meals

2.27 DETAILS OF THE CONTINGENCY PLAN TO AVOID ANY UNTOWARD INCIDENT:

The Standard Operating Procedures (SOP) finalized by the Department of Revenue and Disaster Management is adopted at present. However an exclusive contingency plan will be prepared shortly.

2.28 GRIEVANCE REDRESSAL MECHANISM IF ANY, USED BY THE STATES / UTs. DETAILS OF COMPLAINTS RECEIVED NATURE OF COMPLAINTS AND TIME SCHEDULE FOR DISPOSAL OF COMPLAINTS:

A Toll free Number of 1800-425-1967 has been installed to receive complaints from public regarding the implementation of Midday Meals. A separate register is being maintained to make entry of the complaints received and also record the remedial action taken on the complaints.

2.29 AWARENESS GENERATION / MEDIA CAMPAIGN, IF ANY:

MDM Logo / Daily Menu are being displayed in all the schools. As the MDM programme is being implemented in this UT from time immemorial adequate awareness has been created among the general public about the programme. However, to create awareness about the entitlements of the children under the MDM programme, a media campaign will be taken up utilizing the funds released under MME component.



Joint Review Mission Committee Submitted Report Implementation on MDM Programme in the U.T of Puducherry

2.30 OVERALL ASSESSMENT AND AN ANALYSIS OF THE PROGRAMME IMPLEMENTATION:

The UT of Puducherry has been implementing various welfare programmes to increase the enrolment of students in Govt. Schools. As a part of it, even though funds are released under the programme of MDM to provide food only for the students from 1 to 8th standard, the UT of Puducherry provides fund to implement MDM programme for the pre-primary and the students studying in 9th to 12th Standards. Under this programme the UT of Puducherry has allocated Rs.1298 lakhs including the committed funds of 25% State Share under the MDM programme. In the year 1991, this UT

constructed one central kitchen on experimental basis to prepare food through diesel driven boilers in hygienic atmosphere. As it was proved to be a successful model, it was further extended and at present there are 13 centralized kitchens where food is prepared for about 94000 No. of students. UT is one of the few pioneering States/UTs which provide eggs to the students

in addition to the milk and biscuits being provided to the students. It has now been decided to provide eggs on all working days. As mentioned elsewhere, drinking water facilities have been installed in all Govt. schools. The RO facility is installed in 135 number of schools. In order to make the food being supplied to the students protein rich, the menu has been completely modified in consultation with the experts. This UT has arranged to procure diet articles in a transparent manner in a Govt. owned PSUs and the quality of the articles supplied by them has been appreciated by the JRM. Though the quality of the rice being supplied by the FCI is not upto the mark, this administration arranges to get the rice polished before it is used for cooking. And so far, the department has never received any complaints or untoward incidents in the implementation of MDM.

However, being a small UT, having its enclaves lying kilometers away suffers from certain weaknesses. In view of its smallness of size, a dedicated Management Structure could not be brought in place. Though food is prepared hygienically, it is expected that there should be involvement of the community so as to further improve the quality. But, in reality we find it hard to get the parents involved in the implementation of MDM.

Proposal for the year 2014-15:

After detailed discussions and after going through the fact on record on the issues discussed above, the state level steering cum monitoring committee approved the proposal furnished below for the year 2014-15 (Table Enclosed)



(E.VALLAVAN)
DIRECTOR OF SCHOOL EDUCATION
PUDUCHERRY

Minutes of the State Level Steering- cum- Monitoring Committee

The Meeting was chaired by the Chief Secretary-cum-Chairman of the committee. During the meeting, the Department placed before the Committee the draft Annual Work Plan for an amount of Rs.727.46 lakhs for the year 2014-15 for consideration and approval.

1. After detailed discussions the Committee approved the Annual Work plan & Budget as approved proposed by the Department.
2. During the course discussions the Chief Secretary directed that, from the academic year 2014-15 boiled eggs should be provided to all the students on all working days and to this effect the department should move a proposal. This was especially since milk was stopped and eggs cost much less.
3. It was informed that due to non availability of milk, M/s. Ponlait has stopped supply of milk to students. As it may not be possible for M/s. Ponlait to resume the milk supply, the department shall explore the feasibility of procuring milk from private agencies or co-operative agency like Avin. However the Department shall put in place a system to ensure the quality of milk to be procured.
4. To make the procurement of diet article cost effective, the Chief Secretary directed that the short listed public sector undertakings shall be asked to adopt transparent method of procurement.

5. It was informed that Joint Review mission from MHRD visited the U.T of Puducherry during the month of December 2013, and has made certain recommendations for the better implementation of Midday Meals Scheme programme in the U.T of Puducherry. Each one of the recommendations of Joint Review Mission was discussed in detail and the Chairperson cum Chief Secretary instructed the Department to take appropriate steps for implementation of the recommendations.

6. At the end, as recommended by the Joint Review Mission, it was decided to convene the SMC once in three months.

7. The Chairperson thanked all the members and with that meeting came to an end.



(E.VALLAVAN)
DIRECTOR OF SCHOOL EDUCATION
PUDUCHERRY

To
All concerned
Copy to:

- i) Private Secretary to Chief Secretary
- ii) P.A to Secretary (Education)

Changes to midday meals make for tastier experience

Children appreciate introduction of pulses to their lunch at school

Kavita Kishore

PUDUCHERRY: Till a year back, the School Education Department served eggs on a daily basis as its protein supplement, in the midday meal scheme. Once the price of eggs became high, the Department was forced to change its tack. Its new ideas, however, seem to have encouraged the children to eat more. Sumitra, who studies in Class VII in one of the rural schools felt that the tomato rice, which is being served since recently, was very tasty. "Even the sambhar and poriyal taste much better. Till last year, I used to waste a lot of food, but now since it is so tasty, I eat more," she said.

Now, the menu includes a number of pulses to provide the protein input. This has been a welcome change for most students, since the eggs that they were given were not



DELICIOUS OPTIONS: Most children welcome the replacement of eggs in the midday meal scheme in Puducherry — PHOTO: T. SINGARAVELOU

always well received.

"The eggs that were served used to be in the boiled format, and many of the children did not like the yolk or the white. Some times, the eggs that were boiled would be really old and would smell and

the children would not eat them. Now, that problem is not there," one of the lunch ladies said.

For sometime now, the tomato rice has been stopped because the quality of rice is not good enough to make

mixed rice, but even the sambhar and the *kuruma* are quite popular with the students. Compared to a couple of years back, there is very little food wasted, she added.

The new menu was designed using the help of the Pondicherry University's Department of Food Science and Technology to provide nutritious alternatives for students, assuming that they received a bulk of their nutrition from the midday meals. As a result, the recipes are well balanced to provide maximum nutrition, with a number of vegetables and pulses added into the mix, an official said. Unlike in other States, the midday meals scheme in Puducherry comes under the School Education Department and not the Welfare Department.

(This story has been facilitated under the One World-POSHAN fellowship grant)