

# Chapter - 1

## Uttarakhand A land of Opportunities

The new State of Uttaranchal came into existence on November 9, 2000. Census of 2001 places its population at 84.89 lakh spread over an area of 53,483 square kilometers, with an average density of 159 persons per sq. km. in 2001. Population density in the 13 districts of the State varies from a high of 612 per sq. km. in Haridwar to a low of 37 per sq. km. in Uttarkashi. Different districts of Uttarakhand also recorded diverse population growth rates during the decade 1991-2001, from a strong 32.88% in Nainital to practical stagnation at 3.87% in Almora.

### Population figures at a glance

S.No	Description		1991	2001
1	Population	Male Female Total	NA NA 70.50 Lakhs	43.26 Lakhs 41.63 Lakhs 84.89 Lakhs
2	Population Density		NA	159 per sq.km
3	Sex ratio		NA	962
4	Decennial population growth		13.67 Lakhs (absolute) / 19.34 %	

*Source: Directorate of Economic & Statistics, Uttarakhand*

Land utilization data shows that forest cover in the State is very extensive. It is the largest land utilization category covering almost 63% of the total area of the State. The next important category is net sown area, which covers about 14% of the State's reporting area. In individual districts forest area varies from a low of 23% (Haridwar) to a high of 89% (Uttarkashi), while net sown area varies from a low of 4 to 5% of the total area of Uttarkashi & Chamoli to 63% of Haridwar.

8 out of the 13 districts show high sex-ratios (number of females per 1000 males) in the range 1017 to 1047. However, access to the railway network is very limited, as only 24 block headquarters out of 95 in the State are within a distance of 0-49 km of a railhead. Awareness and literacy levels are uniformly high across all the districts. Administratively, the State has the following constitution:

### Administrative constitution of State

✧ 02 Administrative divisions	✧ 670 Nyaya panchayats
✧ 13 districts	✧ 7227 Gram panchayats
✧ 78 tehsils	✧ 16826 revenue villages
✧ 95 development blocks	✧ 15761 inhabited villages
✧ 34 Cities	✧ 1065 uninhabited villages
✧ 84 Towns	

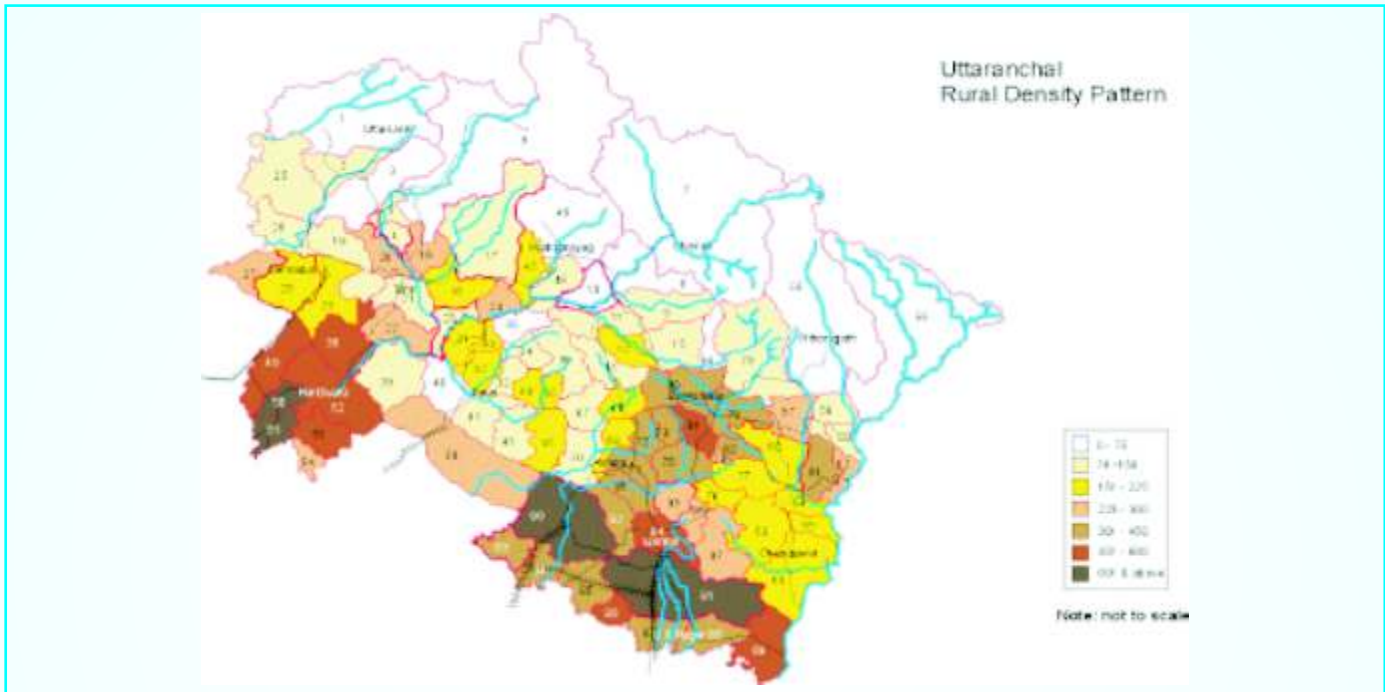
*Source: Department of Panchayat, Government of Uttarakhand*

### Town/Urban Agglomeration

- ◆ 01 Municipal Corporation
- ◆ 30 Nagar Panchayats
- ◆ 12 Census Towns
- ◆ 32 Nagar Palika Parishads
- ◆ 09 Cantonment Boards
- ◆ 02 Industrial Townships

Source: Directorate of Economics and Statistics, Uttarakhand

### Rail and Road connectivity in 13 districts



### Geography, distribution of population & issues of development :

Distribution of rural population in Uttarakhand is rather uneven. The highest density of rural population is concentrated in the southern half of the State, encompassing the districts of Dehradun (the Doon Valley), Haridwar, Udham Singh Nagar and parts of Nainital, where the population density is 451 persons per sq. km. and more. The reason for high population density in these districts is quite obviously their location in the fertile plains areas of the Upper Doab, Terai-Bhabar, and the Doon Valley. In the inner Himalayas, there are many Blocks of medium population density (between 151 and 300 persons per sq. km.) in Nainital, Almora, Pithoragarh, Champawat and Bageshwar districts and a few isolated pockets in Pauri Garhwal, Tehri Garhwal, Chamoli and Rudraprayag districts located in the Lesser Himalayas.

For understandable reasons, population is especially sparsely distributed in the Greater Himalayas spanning Uttarkashi, Rudraprayag, Chamoli and Pithoragarh districts, large parts of which are snow-bound, barren and inhospitable. Housing Municipalities in most of the towns are located either in the densely populated areas of the State located in the Upper Doab, Terai-Bhabar and Doon Valley regions or along major rivers, especially in Garhwal. The latter also happen to be important tourist centres and halting places along the pilgrimage route to the Himalayan shrines.

### District Wise Distribution of Sub-district Units

Districts	% rural population (2001 census)	No. of Kshetra Panchayats	% Urban population (2001 census)	Number of local bodies
Uttarkashi	92.21	6	7.79	3
Chamoli	86.57	9	13.43	6
Rudraprayag	98.8	3	1.2	2
Tehri	90.33	9	9.67	6
Dehradun	47.06	6	52.94	6
Pauri	87.05	15	12.95	4
Pithoragarh	87.86	8	12.14	3
Champawat	85.42	4	14.58	3
Almora	91.44	11	8.56	2
Bageshwar	96.87	3	3.13	1
Nainital	64.64	8	35.36	7
U.S.Nagar	67.35	7	32.65	14
Hardwar	69.14	6	30.86	6
<b>Total</b>	<b>74.41</b>	<b>95</b>	<b>25.59</b>	<b>63</b>

#### Economic Conditions :

Uttarakhand is pre-dominantly rural with population usually concentrated in the valleys and mountain slopes, with a typical village/habitation consisting of 30-40 families who share common resources. In the rural areas, the Socio-economic condition is primarily based on horticulture, sheep rearing and tourism. Agriculture has been adopted as means of livelihood. Paddy is the major crop in irrigated areas where as white Maize is grown in higher un-irrigated slopes. Other locally grown cereals and millets are Bhatt, Gahat and Mandua. Villages are heavily dependent on the surrounding forests for compost and water. Individual landholdings are small and scattered. Animal draught power is utilized to plough the land wherever possible. Other alternative is human labour which is used for the purpose; mechanized farming is not in practice in the hill regions.

#### Infrastructure :

Infrastructure in terms of power and road connectivity, health and drinking water facility is developing at fast pace since the formation of the State. 94% of the State has drinking water facility. Villages are being connected with the help of massive rural roads programme and other schemes, while power situation is being addressed through a combination of various solutions.

## Uttarakhand- A land of Opportunities

Uttarakhand is one of the cradles of ancient Indian culture bestowed with Chardham, Wildlife, Adventurous Tourism and immense hydro power potential. Vast, vivid and wonderful, Uttarakhand is a small yet an unforgettable destination hosting nearly everything which a thirsty pilgrim, casual tourist, a weekend trekker, a seasoned mountaineer, a true devotee, a knowledge seeker, a nature lover or a sage, seer and a sanyasi may not dare forget forever. And there is every possible walk in the area of Antiquity, Adventure Tourism, Eco-Tourism & Education that is why the people say- "Uttarakhand is simply heaven".

### Literacy Status :

In terms of literacy levels Uttarakhand has 14th position in the country. With the help of various government interventions there has been significant progress in the field of education in the State. Literacy percentage of the state is 71.60% against all India average of 65.38%. Census data of 2001 shows that the gender gap is still an issue to be addressed in Uttarakhand, with male and female literacy rates being 83.30% and 59.60 % respectively.

### Vital Statistics of the State

S.No.	Parameters	Details
1	Area	53,483 Sq. Km
2	Population	84.89 Lakh (2001 Census)
3	SC Population	15.17 Lakhs
4	ST Population	2.56 Lakhs
5	Male Population	43.26 Lakhs
6	Female Population	41.63 Lakhs
7	Sex Ratio	962 female per 1000 Males
8	Crude Birth Rate	21.0 per 1000 Population
9	Decennial growth rate	19.34%
10	Density of population	159 persons per sq. Km.
11	Population (6-14 age children)	1830256 (according to HHS)
12	Number of village/wards	16826 (village + wards)
13	Total inhabited villages	15761 (including forest villages)

*Source: Directorate of Economics and Statistics, Uttarakhand*

## Chapter-2

### Secondary Education at a glance

Indicators	2008-09	2009-10
Gross Enrolment Ratio	68.83%	70.25%
Net Enrolment Ratio	33.18%	39.00%
Repetition Rate	14.49%	14.40%
Dropout Rate	8.34%	7.80%
Transition Rate	82.33%	92.09%
Promotion Rate	84.05%	84.22%
Pupil Teacher Ratio(PTR) (Govt. Secondary School)	13.01%	12.01%
Gross Access Rate	83.65%	85.93%

Source: AWP&B, 2009-10

### School and Colleges (Category wise)

S. No.	Name of the District	Secondary Schools	Higher Secondary Schools	Degree Colleges	Post Graduation Universities	Total Schools
1	Almora	107	166	0	0	273
2	Bageshwar	45	51	1	0	97
3	Chamoli	96	102	1	3	202
4	Champawat	46	46	0	1	93
5	Dehradun	130	223	0	2	355
6	Haridwar	67	111	0	1	179
7	Nainital	104	144	0	0	248
8	Pauri Garhwal	151	225	0	0	376
9	Pithoragarh	86	108	0	0	194
10	Rudraprayag	42	74	1	3	120
11	Tehri	98	159	1	0	258
12	Udhamsinghnagar	106	130	0	1	237
13	Uttarkashi	50	64	1	1	116
<b>Total</b>		<b>1128</b>	<b>1603</b>	<b>5</b>	<b>12</b>	<b>2748</b>

Source: SEMIS - :2009-10

### Secondary Schools according to the funding sources

S. No.	Name of district	State Govt.	Local bodies	Central Govt.	Recognized with grant-in-aid	Recognized without grant-in-aid	Secondary and Higher Secondary (Sections without grant-in-aid)	Total
1	Almora	209	1	4	36	18	5	273
2	Bageshwar	69	0	2	17	9	0	97
3	Chamoli	159	0	4	19	17	3	202
4	Champawat	69	0	4	6	14	0	93
5	Dehradun	139	1	12	56	147	0	355
6	Haridwar	51	5	5	30	63	25	179
7	Nainital	159	0	4	23	51	11	248
8	Pauri Garhwal	273	1	2	75	21	4	376
9	Pithoragarh	154	0	4	9	20	7	194
10	Rudraprayag	91	0	1	17	10	1	120
11	Tehri	220	1	0	12	19	6	25
12	U.S. Nagar	95	0	2	24	98	18	237
13	Uttarkashi	98	0	2	2	13	1	116
<b>Total</b>		<b>1786</b>	<b>9</b>	<b>46</b>	<b>326</b>	<b>500</b>	<b>81</b>	<b>2748</b>

Source: SEMIS - :2009-10

### Student Enrolment and Teachers

S. No.	Name of district	Total Schools	Enrolment		Regular Teacher		Total
			Boy	Girl	Male	Female	
1	Almora	273	20372	18737	1523	545	2068
2	Bageshwar	97	7930	7014	559	107	666
3	Chamoli	202	11244	9630	1247	289	1536
4	Champawat	93	7104	5651	545	174	719
5	Dehradun	355	31395	27667	1841	1976	3805
6	Haridwar	179	31655	25514	853	543	1383
7	Nainital	248	23749	20178	1562	959	2523
8	Pauri Garhwal	376	19342	17988	2310	704	3002
9	Pithoragarh	194	15624	13019	1327	376	1704
10	Rudraprayag	120	6234	5384	846	128	977
11	Tehri	258	16682	15408	1746	436	2178
12	U.S. Nagar	237	35805	29606	1548	892	2410
13	Uttarkashi	116	8750	8070	837	162	1000
<b>Total</b>		<b>2748</b>	<b>235886</b>	<b>203866</b>	<b>16744</b>	<b>7291</b>	<b>23971</b>

Source: SEMIS - :2009-10



# Chapter-3

## Rashtriya Madhyamik Shiksha Abhiyan

### Introduction

- National Programme for universalisation and quality improvement in secondary education.
- Declaration by Hon'ble Prime Minister on the Independence Day, 2007.
- Planning Commission of India in the Mid Term Appraisal of the Tenth Five Year plan recommended setting up of a new mission for secondary education, on the lines of SSA.

### Vision

- The vision is to make good quality secondary education available, accessible and affordable along with universalization of secondary education.

### Objectives

- Good quality secondary education to all young people in the age group of 14-18 years.
- To provide a secondary school within a reasonable distance of any habitation which should be 5 Km for secondary schools and 7-10 Km for higher secondary schools.
- Ensure Gross enrolment (GER) of 70% by 2012 and universal access to secondary education by 2017 (GER of 100%).
- Universal retention by 2020.
- Providing access to secondary education with special reference to economically weaker sections of the society, the educationally backward, the girls and the disabled children residing in rural areas and other marginalised categories like SC,ST, OBC & educationally backward minorities.

### Target Group

- All the young people in the age group of 14-18 who have completed primary education up to class 8th.
- In the first phase for class 9th and 10th of Government schools.

### Financial Pattern

- Central government aided scheme in which-
  - ◆ During the 11th Five Year Plan (2007-12) the Central Govt. will bear 75% and the State Govt. will bear the rest 25%.
  - ◆ For the 12th Five Year Plan, the sharing pattern between the Centre and States will change to 50:50.

### Approach and Strategy

In the context of universalisation of secondary education, large scale inputs in terms of additional schools, additional class rooms, teachers and facilities need to be provided to meet the challenge of numbers, credibility and quality. The strategy for universalizing access to secondary education and improving its quality are as follows:



- Access,
- Quality,
- Equity,
- Institutional reforms and strengthening of Resource institutions.

### Access

- Up-gradation of upper primary schools/secondary schools (as per requirement and the State norms).
- Establishment of new secondary and higher secondary schools in unserved areas.
- The existing schools will be made disabled friendly and rain harvesting systems will be installed.
- New schools will also be set up in PPP mode.

### Quality

- Providing required infrastructure like black boards, furniture, libraries, science and mathematics laboratories, computer labs, toilet cluster etc.
- Appointment of additional teachers,
- In-service training of Principals,
- Leadership training of Principals,
- Reviewing curriculum to meet the NCF 2005 norms,
- Reforms in examinations systems,
- Residential accommodation for teachers in rural and difficult hilly areas. Preference to be given to female teachers.

### Equity

- Free lodging/boarding facilities for students belonging to SC,ST, OBC and minority communities,
- Hostels/residential schools, cash incentive, uniforms, books, separate toilets for girls,
- Providing scholarships to meritorious/needy students at secondary level,
- Inclusive education will be the hall mark of all the activities,
- Expansion of open and distance education.

### Institutional Reforms & Strengthening of Resource Institutions

- Reforms in school governance-decentralizing their management and accountability,
- Rational policy of teacher recruitment, deployment, training, remuneration and career advancement,
- Under taking reforms in educational administration including modernization/e-governance and delegation/de-centralization,
- Maximum use of allotted physical and financial resources,
- Strengthening of SCERT, State Open School, SIEMAT and other institutions,
- Involvement of Panchayati Raj Institutions, teachers and parents in school management.

### Pre Project Activities

- For effective implementation of the Scheme at the State level, a Society- "Uttarakhand Sabhi Ke Liye Madhyamik Shiksha Parishad" formed,
- For the functioning and monitoring of the activities under RMSA, different committees constituted at the State and district levels,

- For the functioning and monitoring of the activities under RMSA, School Management and Development committee and its two subcommittees namely Academic committee and Construction committee constituted at school level,
- Secondary Education Management Information System (SEMIS) established,
- Collection of data in SEMIS format from school,
- Strengthening of District Education Office and Block Education Office,
- Availability of infrastructure in District Education Office and Block Education Office,
- School mapping for establishment/up gradation of secondary schools,
- Identification of schools for up gradation,
- Base line survey of schools and districts,
- Formation/training of District Core Team,
- Environment Building Programme for awareness of the scheme,
- Separate bank accounts for RMSA in schools, districts and the State level.

### Major Interventions

- Physical Resources,
- Construction of class rooms,
- Construction of library rooms,
- Construction of science laboratories,
- Construction of computer rooms,
- Construction of art- craft room,
- Construction of Headmaster/Principal's room,
- Construction of office room,
- Separate toilet blocks and drinking water facilities for girls and boys,
- Strengthening of sports fields,
- Major repair as per need of the schools,
- To provide residential facility for teachers in remote areas,
- Arrangement of library, science laboratory and computers in schools,
- Arrangement of furniture in schools,
- To make all schools disabled friendly,
- Arrangement of educational equipment in schools.

### Human resources

- To provide human resources in New/Upgraded schools as per the State Norms.
  - Headmaster/Principal,
  - Regular trained teachers,
  - Part time teachers,
  - Office assistant/Duftery,
  - Laboratory assistant,
  - New sections in existing schools,
  - Arrangement of trained regular teachers as per student teacher ratio i.e. 1:1.5.

## Other Issues

- Annual recurring school grant of Rs. 50,000.00 (Rs. Fifty thousand only) for equipment/ goods of educational activity, sports, music and recurring charges for school development, electricity, telephone internet, water etc.,
- Annual grant for subscription of news papers & magazines, buying of books etc.,
- Annual grant for Laboratory apparatuses,
- Annual grant of Rs 25000 (Rs. Twenty five thousand only) for maintenance & repair,
- Five days residential training for all regular working teachers,
- Arrangement of educational excursion tours and science exhibitions for children,
- Programme for dropout/out of school children to bring back and attach them in main stream of education,
- Arrangement of different incentives for special target groups viz. SC/ST/OBC/minority /girls,
- Strengthening of SCERT, State Open School , SIEMAT and other institutions,
- Establishment of guidance and counseling bureau at the State level.

## Project Operational Support

Uttarakhand Sabhi Ke Liye Madhyamik Shiksha Parishad has been constituted under Societies Registration Act, 1960 on 7<sup>th</sup> February 2009 with reference to the chapter 8 sub section 8.2 of the guidelines as prescribed by Govt. of India. The main objective of the formation of the Society is for functioning, monitoring and quality education in school education with regard to different schemes assisted by the State and the Central Govt. like Rastriya Madhyamik Shiksha Abhiyan (RMSA), Information and Communication Technology (ICT), Inclusive Education for Disabled at Secondary Stage (IEDSS), Girls hostel etc.

To achieve the goal of the Society following committees have been constituted-



## General Assembly

1	Chief Minister, Uttarakhand	Chairman (Ex-officio)
2	School Education Minister, Uttarakhand	Vice chairman (Ex-officio)
3	Minister of Finance and Planning, Uttarakhand	Member
4	Minister of Social Welfare, Woman Empowerment and Child Development, Uttarakhand	Member
5	Chief Secretary, Uttarakhand	Member (Ex-officio)
6	Secretary School Education, Uttarakhand	Member (Ex-officio)
7	Secretary Social Welfare, Uttarakhand	Member
8	Secretary Development and Panchayati Raj, Govt. of Uttarakhand	Member
9	Additional Secretary School Education	Member
10	Director SCERT	Member
11	Additional Project Director, RMSA	Member
12	Three members of Nongovernmental organization working in the field of education in state nominated by state govt. (minimum one woman and one from SC/ST category).	Member
13	Head of the academic and technical institution working in the field of resource development nominated by state govt. (Maximum 05)	Member
14	(a) Well deserve and dedicated three teacher nominated by state govt. (minimum are woman and one from SC/ST category).	Member
	(b) Three principals with outstanding dedication and fame in secondary education nominated by state government, minimum one woman and one from SC/ST category.	Member
15	Other Ex-officio member of state govt.	
	(a) Head of the committee from selected district	Member
	(b) Three Head of Department of elementary/secondary education from SCERT.	Member
	(c) Working Head of District Task Force.	Member
16	(a) Representative of Govt. of India Nominated representative from MHRD	Member
	(b) Director NCERT, New Delhi	Member
	(c) Director NUPA, New Delhi	Member
	(d) Two educationists of famous for their experience and teaching aptitude nominated by Govt. of India and State Govt.	Member
	(e) Director National education council, New Delhi	Member
	(f) Vice-Chancellor Garhwal and Kumou University	Member
17	Director School Education/ State Project Director RMSA.	Member Secretary (Ex-officio)

<b>Executive Committee</b>		
1	Chief Secretary Uttarakhand Govt.	Chairman (Ex-officio)
2	Secretary School Education Uttarakhand Govt.	Vice Chairman (Ex-officio)
3	Secretary of Finance and Planning Uttarakhand Govt. or representative	Member
4	Secretary, Rural Development and Panchayati Raj, Govt. of Uttarakhand	Member
5	Additional Secretary School Education, Uttarakhand Govt.	Member
6	Additional Director School Education	Member
7	Director Women empowerment and child development or representative.	Member
8	Two selected head of district task force nominated by chairman (cyclic order)	Member
9	Two Directors/representatives of state level academic and technical resource agencies nominated by the state govt.	Member
10	One educationist with out standing teaching aptitude and experience nominated by state and central govt.	Member
11	Female chairman, with specific capacity in formal and innovative education.	Member
12	Person from non governmental organization with specific quality to work with SC/ST communities nominated by chairman.	Member
13	Director SCERT Uttarakhand	Member
14	Secretary Uttarakhand Pariksha Parishad	Member
15	Director School Education / State Project Director	Member Secretary (Ex-officio)

### **State Programme Committee**

1	Additional State Project Director	Chairman
2	Representatives of NEUPA, NCERT, SCERT, SIEMAT, Garhwal and Kumaon Universities	Members
3	Joint State Project Director (RMSA)	Member Secretary

### **Sub-committees of the Executive Committee**

The manual of the Society vide section 44 confers the Executive Committee, the right to constitute different sub-committees to conduct the different programmes and delegate the powers to these committees. Hence, the Finance Committee and the Programme Monitoring Committees have been constituted as sub-committees by the Executive Committee-



### Finance Committee

1	Principal Secretary Finance, Govt. of Uttarakhand	Chairman
2	Secretary School Education, Govt. of Uttarakhand	Member
3	One representative of the Finance Deptt. nominated by Principal Secretary /Secretary, Finance	Member
4	Additional Secretary (Secondary Education)	Member
5	Additional Secretary (Basic Education)	Member
6	Additional Secretary (Planning)	Member
7	State Project Director, SSA	Member
8	Additional Director, SCERT	Member
9	Additional Director, SIEMAT	Member
10	Additional Director, School Education	Member
11	Finance Controller, SSA	Member
12	Finance Controller, RMSA	Member
13	Finance Controller, School Education	Member
14	Additional State Project Director, RMSA	Member
15	One Representative to be nominated by Govt. of India	Member
16	Education Director/State Project Director, RMSA	Secretary Member

The main objective of the Finance Committee is to scrutinize the proposals financially, financial approval for new programmes to be under taken, advising the Executive Committee on financial matters and all other duties as assigned by the Chairman of the Executive Committee.

### Programme Monitoring Committee

1	Secretary School Education Govt. of Uttarakhand	Chairman
2	Additional Secretary Finance Govt. of Uttarakhand	Member
3	Additional Secretary (Secondary Education)	Member
4	Additional Secretary (Basic Education)	Member
5	Additional Secretary (Planning)	Member
6	State Project Director, SSA	Member
7	Additional Director, SCERT	Member
8	Additional Director, SIEMAT	Member
9	Additional Director, School Education	Member
10	Additional State Project Director, RMSA	Member
11	Additional State Project Director, SSA	Member
12	Secretary, Uttarakhand School Education Shiksha Parishad, Ramnagar	Member
13	One District Project Officer (RMSA) nominated by the Secretary School Education	Member
14	One Block Education Officer nominated by the Secretary School Education	Member

15	Representative of Non-Governmental Organizations working in the field of education nominated by the Chairman.	Member
16	Representative of recognized Govt. Teachers Association.	Member
17	Representative of recognized Secondary Teachers Tssociation.	Member
18	Director of Education/State Project Director, RMSA	Member Secretary

~~The main objective of the programme monitoring committee is to prepare the plan and ensure functioning and monitoring as per the rights and duties delegated by the Chairman of the Executive Committee. The Chairman of programme monitoring committee has been delegated the right to take the prompt decision in favour of the project under instantaneous needs and get the decisions endorsed in the forthcoming meeting of Executive Committee.~~

### District Project Committee

District Project Committee of RMSA has been constituted at the District level under the chairmanship of the concerned District Magistrate.

1	District Magistrate	Chairman
2	District Education Officer	Vice Chairman
3	Finance and Account Officer (Secondary Education)	Member
4	Additional District Education Officer (Basic)	Member
5	District Social Welfare Officer	Member
6	Chief Medical Officer	Member
7	District- in-charge of National Informatics Centre	Member
8	Assistant Finance and Accounts Officer (Secondary Education) related district	Member
9	Representative of Non Governmental Organization nominated by the Chairman	Member
10	One Educationist nominated by the Chairman	Member
11	Representative of social activist working in the field of education nominated by the Chairman	Member
12	One District Panchayat Member nominated by the Chairman, District Panchyat (Cyclic order)	Member
13	One Block Panchyat Pramukh nominated by the Chairman	Member
14	One representative of SC/ST/OBC nominated by the Chairman	Member
15	One chairman of SMDC/PTA nominated by District Education Officer	Member
16	One representative nominated by the State Project Director	Member
17	Two Principals/Headmasters, Intermediate/High School nominated by the DEO of which one must be a female	Member
18	Representative of recognized Govt. Teacher/Secondary Teacher Association	Member
19	Addition District Education Officer (Secondary)/District Project Officer	Member Secretary

### School Level Committee



### School Management and Development Committee

At the school level, a School Management and Developments Committee (SMDC) will be constituted, which will be responsible for making the perspective and annual work plans at the school level. A savings bank account will be opened in the name of the concerned SMDC of every school in the nearby branch of any nationalized bank. The following structure is proposed for SMDC at the school level-

1	Principal	Chairman
2	Senior-most teacher	Member Secretary
3	Teacher (Social Science)	Member
4	Teacher (Science)	Member
5	Teacher (Mathematics)	Member
6	Male Guardian	Member
7	One Female Guardian	Member
8	Two Panchayat Members/Ward Members	Member
9	One representative of SC/ST Category	Member
10	One representative of Educationally backward community	Member
11	One Member of Mahila Dal	Member
12	One Member of Education Development Committee of every village serviced by the school	Member
13	Three members with science, art and cultural background, nominated by the concerned DPO/DEO	Member
14	One Education Officer, nominated by the DEO	Member
15	One representative of Finance and Accounts	Member

The meeting of SMDC will be held minimum once in every three month. SMDC will comprised by two sub-committees-

- (1) School Construction Monitoring Committee
- (2) Educational Committee.

These committee will be constituted as follows-

1. School Construction & Monitoring Committee- the Committee will take stock of the School Planning, estimates, management inspections, monitoring, reporting, maintenance of accounts, and presentation of accounts in the meetings of SMDC and village education committee. The committee will be as follows-

1	Principal	Chairman
2	Member Panchayat(nominated by Gram Pradhan/ward member(urban area)	Member
3	One Guardian nominated by PTA	Member
4	Junior Engineer(expertise in construction work)	Member Secretary
5	One member of Finance and Accounts cadre	Member



The meeting of school construction committee will be held once in every three months. The committee will monitor the different construction works being under taken in the school regularly. After the start of construction work, the evaluation will be done by third party technical institute/ institution which will give its report after completion of 25%, 50%, & 75% of the work respectively. Construction work will be done by the construction agency in school.

1. Educational Committee- The committee will be responsible for all educational activities, planning, management, monitoring, supervision, SEMIS, quality education, equity, children with special needs, student-teacher attendance, teacher training, guidance & Counseling, student achievement and curricular activities. The members of the committee are as follows-

1	Principal	Chairman
2	Guardian of one student amongst all students studying in secondary classes	Member
3	Astt. Teacher, one each from the following subjects: Science/Maths, Social Science, Language(Hindi/English),Art/Physical Education	Member
4	One member to be nominated by the Principal	Member Secretary

1. **Parent-Teacher Association-** Parents teacher association will be constituted in every school. The meeting of this association will be held minimum once in every month. Every teacher will have a register in which suggestions and complaints of the guardians will be registered and the principal will see and insure that actions are taken as per suggestions and complaints, regularly. This register will be produced in the monthly meetings of SMDC.

2. **Pre Project Activity-** The Govt. of India has sanctioned and released Rs. 173.34 Lakh for pre project activities under RMSA to the State Govt. in which the central and the state share amount to Rs.130 Lakh and Rs. 43.34 Lakhs respectively. The amount have been released to the district as follows-

S.No.	Name of the district	Distributed money (in Rs.)
1	Pauri Garhwal	15.21
2	Rudraprayag	11.00
3	Chamoli	12.86
4	Tehri	13.49
5	Uttarkashi	11.66
6	Dehradun	12.04
7	Haridwar	11.14
8	Udhamsingh Nagar	11.78
9	Nainital	12.69
10	Almora	13.80
11	Bageshwar	10.80
12	Champawat	10.99
13	Pithoragarh	12.64
14	State office	13.24
	<b>Total</b>	<b>173.34</b>





Three main activities under taken during the Pre-Project activity are as follows -

S. No.	Activity	Programme
1	Strengthening of district and state level offices	purchase of computers, photocopier, office furniture, fax machine, telephone, stationary items etc.
2	Strengthening of human resources	appointment of employees at the State and district offices through outsourcing, salary of experts and advisors.
3	Workshops, seminars, training, research, survey and SEMIS work	to organise district and state level workshops, printing and feeding of SEMIS formats.

**Rastriya Madhyamic Shiksha Abhiyan** under the project activity SEMIS data has been collected and analysed. According to analysis of data, the districts have prepared quick indicative plan for the year 2009-10. For this purpose district planning team at the district level and School Management Development Committee at the school level have been constituted. At the block level all principals have been given training to prepare school development scheme. State Institute of Educational Management and Training (SIEMAT) organised training for Principals, Block Education Officers for planning and development of school development plans. After the development of school development plans, the physical and academic needs have been identified. Upgradation of upper primary schools has been identified through school mapping. The main intervention of RMSA for year 2009-10 is as follows-

- 1- Access- To access the secondary school, the upgradation of schools as per norm.
- 2- Govt. upper primary school which have no secondary school within the periphery of 5km.
- 3- The no. of expected students in class IXth should be 30 in upgraded schools.

In every upgraded school, the physical and human resources which have been sanctioned are as follows-

### Physical Resources

S.No.	Physical resources	Qty.
1	Classroom	
	(i) one section school	02
	(ii) two section school	04
2	Laboratory room	01
3	Principal room	01
4	office room	01
5	Library room	01
6	Computer room	01
7	Art and craft room	01
8	Bathroom	01

## Human Resources

S.No.	Human resources	Qty.
1	Principal	01
2	Astt. teacher	
	(i) Language	01
	(ii) Science	01
	(iii) Maths	01
	(iv) Social science	01
	(v) English	01
	(vi) Art and craft room	01
	(vii) Physical education	01
3	Others	
	(i) Office Astt.	01
	(ii) Laboratory astt.	01
	(iii) Peon	01
	(iv) Watchman	01

In year 2009-10, 23 Upper Primary Schools have upgraded into High School. The details of upgraded school district wise as follows:-



S.No.	Name of the district	Name of the block	Name of the upgraded school
1	Udhamsingh nagar	Kashipur	Secondary school, Dhakia-1
2	Haridwar	Narsan	Secondary school, Harjaolijatt
3		Bhagwanpur	Secondary school, Badiwala
4	Almora	Takula	Secondary school, Lakhnadi
5		Dhauladevi	Secondary school, Maniagar
6		Salt	Secondary school, Bhyadi
7		Bhainsiachana	Secondary school, Khatwe
8	Rudraprayag	Agastyamuni	Secondary school, Kwili Kurjhan
9	Bageshwar	Garud	Secondary school, Kot Fulwadi
10		Bageshwar	Secondary school, Junayal
11	Dehradun	Raipur	Secondary school, Dwara
12		Chakrata	Secondary school, Mayawata
13		Kalsi	Secondary school, Hyotgari
14	Tehri Garhwal	Thauldhar	Secondary school, Kaushal
15		Jaunpur	Secondary school, Rautu ki Beli
16		Bhilangana	Secondary school, Raunsaal
17	Nainital	Haldwani	Secondary school, Khuriakhatta
18	Pithoragarh	Vin	Secondary school, Nainisaini
19			Secondary school, Bajethi
20	Pauri Garhwal	Thailisand	Secondary school, Paland
21	Chamoli	Gairsand	Secondary school, Pungaun
22		Joshimath	Secondary school, Jakhola
23	Uttarkashi	Chinyalisaur	Secondary school, kandai Indra

### Human Resources in 23 Upgraded School

S. No.	District	Upgraded school	Post created					
			Principal	Astt. Teacher	Office Astt.	Laboratory Attendent	Peon	Watch-man
1	Almora	04	04	28	04	04	04	04
2	Bageshwar	02	02	14	02	02	02	02
3	Champawat	0	0	0	0	0	0	0
4	Chamoli	02	02	14	02	02	02	02
5	Dehradun	03	03	21	03	03	03	03
6	Haridwar	02	02	14	02	02	02	02
7	Nainital	01	01	07	01	01	01	01
8	Tehri	03	03	21	03	03	03	03
9	Pithoragarh	02	02	14	02	02	02	02
10	Pauri	01	01	07	01	01	01	01
11	Rudraprayag	01	01	07	01	01	01	01
12	Udhamsingh nagar	01	01	07	01	01	01	01
13	Uttarkashi	01	01	07	01	01	01	01
<b>Total</b>		<b>23</b>	<b>23</b>	<b>161</b>	<b>23</b>	<b>23</b>	<b>23</b>	<b>23</b>

### Physical Resources

S.No.	Resources	Per School	Sanctions (2009-10)	
			No. of schools	No. of resources
1	Class room	02/04	23	60
2	Principal room	01	23	23
3	Office room	01	23	23
4	Library room	01	23	23
5	Computer room	01	23	23
6	Science laboratory	01	23	23
7	Art and Craft room	01	23	23
8	Toilets	01	23	23
9	Laboratory equipments	01	23	23

**Construction work and unit cost norm :-** Govt. of India fixed the unit cost for upgraded school building and other construction work. For year 2009-10 the sanctioned amount by the Govt. of India for one section schools and 02 section schools are Rs 46.86 and Rs. 58.12 Lakh respectively but due to the geographical condition of the State it is not possible to undertake construction work at the same unit cost in the plane and hilly areas. So the State Govt. has taken the decision that as per the schedule of State Public Works Department per unit cost and the area of class room for hill and plane areas are separately shown as follows-

### Unit Cost as per State Norms (Hilly Area)

S. No.	Name of work	State ' (l×b	Measurement of the room in per sqmt	Circulation Area(20%+w all area 15%) in per sqmt.	Total Plinth area (sq.mt.)	Construction work sanctioned by Public construction department (sqmt.)	Unit cost of construction work	Furniture cost	Total estimated unit cost
1	Class room	6mt× 6mt	36	12.60	48.60	13,813.00	6,71,311.80	1,00,000.00	7,71,311.80
2	Science Laboratory	9mt× 6mt	54	18.90	72.90	13,813.00	10,06,967.70	1,50,000.00	11,56,967.70
3	Principal room	4mt× 3mt	12	4.20	16.20	13,813.00	2,23,770.60	40,000.00	2,63,770.60
4	Office room	4mt× 3mt	12	4.20	16.20	13,813.00	2,23,770.60	40,000.00	2,63,770.60
5	Computer room	9mt× 6mt	54	18.90	72.90	13,813.00	10,06,967.70	40,000.00	10,46,967.70
6	Library room	8mt× 6mt	48	16.80	64.80	13,813.00	8,95,082.40	1,00,000.00	9,95,082.40
7	Art and craft room	6mt×56mt	30	10.50	40.50	13,813.00	5,59,426.50	40,000.00	5,99,426.50
8	Toilet			0.00			2,75,000.00		2,75,000.00
9	Laboratory equipment								1,00,000.00



**Unit Cost as per State Norms (Plain Area)**

S. No.	Name of work	State ' (l×b	Measur ement of the room in per sqmt	Circula tion Area(2 0%+w all area 15%) in per sqmt.	Total Plinth area (sq.mt.)	Constructi on work sanctione d by Public constructi on departme nt (sqmt.)	Unit cost of construction work	Furniture cost	Total estimated unit cost
1	Class room	8mt× 6mt	48	16.80	64.80	11,629.00	7,53,559.20	1,00,000.00	8,53,559.20
2	Science Laboratory	9mt× 6mt	54	18.90	72.90	11,629.00	8,47,754.10	1,50,000.00	9,97,754.10
3	Principal room	4mt× 3mt	12	4.20	16.20	11,629.00	1,88,389.80	40,000.00	2,28,389.80
4	Office room	4mt× 3mt	12	4.20	16.20	11,629.00	1,88,389.80	40,000.00	2,28,389.80
5	Computer room	9mt× 6mt	54	18.90	72.90	11,629.00	8,47,754.10	40,000.00	8,87,754.10
6	Library room	8mt× 6mt	48	16.80	64.80	11,629.00	7,53,559.20	25,000.00	7,28,559.20
7	Art and craft room	6mt×56mt	30	10.50	40.50	11,629.00	4,70,974.50	40,000.00	5,10,974.50
8	Toilet			0.00	0.00		2,25,000.00		2,25,000.00
9	Laboratory equipment								1,00,000.00

**Unit Cost of (One Section School) Upgraded School (Hilly Area)**

S. No.	Name of work	Unit cost	Qty	Total unit cost	furniture cost	Total estimated unit cost
1	Class room	6,71,311.80	02	13,42,623.60	2,00,000.00	15,42,623.60
2	Science Laboratory	10,06,967.70	01	10,06,967.70	1,50,000.00	11,56,967.70
3	Principal room	2,23,770.60		2,23,770.60	40,000.00	2,63,770.60
4	Office room	2,23,770.60	01	2,23,770.60	40,000.00	2,63,770.60
5	Computer room	10,06,967.70	01	10,06,967.70	40,000.00	10,46,967.70
6	Library room	8,95,082.40	01	8,95,082.40	25,000.00	9,20,082.40
7	Art and craft room	5,59,426.50	01	5,59,426.50	40,000.00	5,99,426.50
8	Toilet	2,75,000.00	01	2,75,000.00	0.00	2,75,000.00
<b>Total cost</b>		<b>55,33,609.10</b>				<b>60,68,609.10</b>
<b>Laboratory equipment</b>						<b>1,00,000.00</b>
<b>Total cost (02 section school)</b>						<b>61,68,609.10</b>

**Unit Cost of (Two Section School) Upgraded School (Hilly Area)**

S. No.	Name of work	Unit cost	Qty	Total unit cost	furniture cost	Total estimated unit cost
1	Class room	6,71,311.80	04	26,85,247.20	4,00,000.00	30,85,247.20
2	Science Laboratory	10,06,967.70	01	10,06,967.70	1,50,000.00	11,56,967.70
3	Principal room	2,23,770.60		2,23,770.60	40,000.00	2,63,770.60
4	Office room	2,23,770.60	01	2,23,770.60	40,000.00	2,63,770.60
5	Computer room	10,06,967.70	01	10,06,967.70	40,000.00	10,46,967.70
6	Library room	8,95,082.40	01	8,95,082.40	25,000.00	9,20,082.40
7	Art and craft room	5,59,426.50	01	5,59,426.50	40,000.00	5,99,426.50
8	Toilet	2,75,000.00	01	2,75,000.00	0.00	2,75,000.00
<b>Total cost</b>				<b>68,76,232.70</b>		<b>76,11,232.70</b>
<b>Laboratory equipment</b>						<b>1,00,000.00</b>
<b>Total cost (02 section school)</b>						<b>77,11,232.70</b>

**Unit Cost of (One Section School) Upgraded School (Plain Area)**

S. No.	Name of work	Unit cost	Qty	Total unit cost	furniture cost	Total estimated unit cost
1	Class room	7,53,559.20	02	15,07,118.40	2,00,000.00	17,07,118.40
2	Science Laboratory	8,47,754.10	01	8,47,754.10	1,50,000.00	9,97,754.10
3	Principal room	1,88,389.80		1,88,389.80	40,000.00	2,28,389.80
4	Office room	1,88,389.80	01	1,88,389.80	40,000.00	2,28,389.80
5	Computer room	8,47,754.10	01	8,47,754.10	40,000.00	8,87,754.10
6	Library room	7,53,559.20	01	7,53,559.20	25,000.00	7,78,559.20
7	Art and craft room	4,70,974.50	01	4,70,974.50	40,000.00	5,10,974.50
8	Toilet	2,25,000.00	01	2,25,000.00	0.00	2,25,000.00
<b>Total cost</b>				<b>50,28,939.90</b>		<b>55,63,939.90</b>
<b>Laboratory equipment</b>						<b>1,00,000.00</b>
<b>Total cost (01 section school)</b>						<b>56,63,939.90</b>

**Unit Cost of (Two Section School) Upgraded School (Plain Area)**

S. No.	Name of work	Unit cost	Qty	Total unit cost	furniture cost	Total estimated unit cost
1	Class room	7,53,559.20	04	30,14,236.80	4,00,000.00	34,14,236.80
2	Science Laboratory	8,47,754.10	01	8,47,754.10	1,50,000.00	9,97,754.10
3	Principal room	1,88,389.80		1,88,389.80	40,000.00	2,28,389.80
4	Office room	1,88,389.80	01	1,88,389.80	40,000.00	2,28,389.80
5	Computer room	8,47,754.10	01	8,47,754.10	40,000.00	8,87,754.10
6	Library room	7,53,559.20	01	7,53,559.20	25,000.00	7,78,559.20
7	Art and craft room	4,70,974.50	01	4,70,974.50	40,000.00	5,10,974.50
8	Toilet	2,25,000.00	01	2,25,000.00	0.00	2,25,000.00
	<b>Total cost</b>			<b>65,36,058.30</b>		<b>72,71,058.30</b>
	<b>Laboratory equipment</b>					<b>1,00,000.00</b>
	<b>Total cost (01 section school)</b>					<b>73,71,058.30</b>

Strengthening of School- Under RMSA ,for strengthening of secondary schools physical, human and academic resources are being provided. In the year 2009-10, total 393 secondary schools were provided with physical resources and Rs. 1.00lakh per school for laboratory equipment was sanctioned to 808 secondary schools. Districtwise details as follows-

**Strengthening of Schools (2009-10)**

S. No.	Name of the district	No of schools	Class room	Science lab	Computer room	Art and craft room	Library room	Toilet
1	Almora	53	22	11	11	7	11	11
2	Bageshwar	12	6	3	3	1	3	6
3	Chamoli	36	0	0	0	0	0	36
4	Champawat	20	6	4	4	0	0	6
5	Dehradun	54	16	12	6	0	6	36
6	Haridwar	6	12	6	0	0	6	6
7	Nainital	46	20	8	6	8	8	8
8	Pauri Garhwal	44	19	15	15	15	15	30
9	Pithoragarh	38	0	0	0	0	4	36
10	Rudraprayag	17	6	3	3	3	3	6
11	Tehri	7	14	0	0	0	0	0
12	Udhamsingh nagar	45	11	7	7	7	7	21
13	Uttarkashi	15	5	6	0	0	6	0
	<b>Total</b>	<b>393</b>	<b>137</b>	<b>75</b>	<b>55</b>	<b>41</b>	<b>69</b>	<b>202</b>

In Uttarakhand the State Rural Engineering Service and State Irrigation Department have been appointed as working agency for RMSA. For this purpose a Memorandum of Understanding has been signed by the Society with the above mentioned two working agencies. These working agencies will visit all construction sites and produce maps and estimates. After the submission thereof the construction work will start.

### School Academic Committe-

A total recurring grant of Rs. 222.00 lakh was released by the Central Govt. as against the total sanction of Rs. 891.82 lakhs (75% central share) for the year 2009-10 in the month of March 2010. The state share to the tune of Rs.74.00 lakhs was also released in the same month. So, RMSA Uttarakhand had to prioritise the components towards which this grant was to be utilised. The priority was accorded to School Annual Grant for 1760 Government secondary schools and for in service training for 3502 Government secondary level teachers.

### School Grant

Accordingly, the School Annual Grant to 1760 Government secondary schools were released in the month of March 2010, the details of which are given below:-

S. No	District	No. of Schools	Amount Alloted (Rs. in Lakh)	Approved Amount (Rs. in Lakh)	Total Released (Rs. in Lakh)
1	Pauri Garhwal	271	0.14	108.04	37.94
2	Rudrapryag	90	0.14	36.00	12.60
3	Chamoli	156	0.14	62.40	21.84
4	Tehri	219	0.14	87.60	30.66
5	Uttarkashi	96	0.14	38.40	13.44
6	Dehradun	134	0.14	53.60	18.76
7	Haridwar	44	0.14	17.60	6.16
8	U.S. Nagar	88	0.14	35.20	12.32
9	Nainital	159	0.14	63.60	22.26
10	Almora	210	0.14	84.00	29.40
11	Bageshwar	70	0.14	28.00	9.80
12	Champawat	69	0.14	27.60	9.66
13	Pithoragarh	154	0.14	61.60	21.56
	<b>Total</b>	<b>1760</b>		<b>704.00</b>	<b>246.40</b>

## Teacher Training

SCERT Uttarakhand, Narendra Nagar, Tehri Garhwal is designated as the Key agency for training under RMSA, Uttarakhand. A grant of Rs.35.02 lakh was released to the SCERT Uttarakhand for the in-service training for 3502 Government secondary school teachers (One principal and one senior teacher per school). Since 2009-10 corresponds to the initial year of RMSA so the following contents are included in the training:

The key training contents to be incorporated in these trainings are:-

1. Role and responsibilities of different committees constituted under RMSA.
2. Secondary Education Management and Information System (SEMIS)
3. Rashtriya Madhyamik Shiksha Abhiyan and Financial Management
4. Teacher's Diary
5. Subject Specific Project Work
6. National Curriculum Framework 2005
7. Key Points of School Functioning.
8. Measurement, Evaluation (CCE) and Action Research.
9. Direction for Educational Evaluation

## Training Methodology

The training methods visualized to be adopted in the teacher trainings would be based on adult learning principles (Andragogy) suitable to the adult trainees. It would focus on the use of those methods which involve participants and seek their contributions. Discussions and individual & group presentations will be used to make the sessions participatory.

## Time Indications for the Trainings

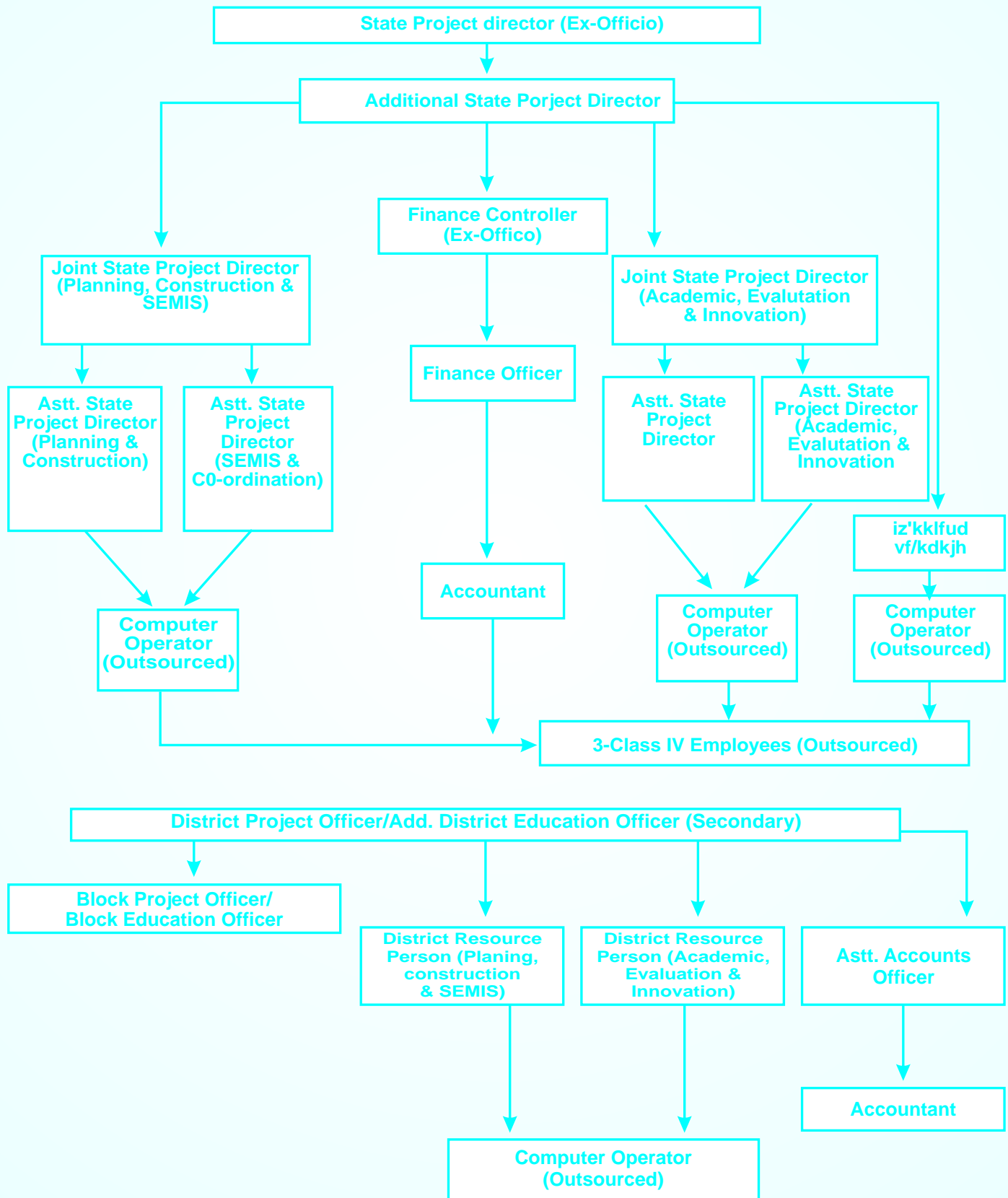
The duration of each training batch will be of 05 working days which is in consonance with the RMSA norms.

## Venues

Since Uttarakhand belongs to a difficult hilly terrain so it is very difficult to carry out non-residential training in the State. Hence, residential trainings seem to be a compulsion in Uttarakhand. This will not only decentralise training but also reduce the cost of training. For this, gradual development of training venues at 53 places is also visualized. In other words RMSA Uttarakhand is visualising to bring trainings closer to the schools so that the absence cost of the teachers is minimized.

### Project Management

For better implementation of RMSA at School, Block, District & State level the following Structure has been sanctioned-





**RAJIV JINDAL & ASSOCIATES**  
**CHARTERED ACCOUNTANTS**

9/1, Rajpur Road, Opp. Abner Petrol Pump,  
Dehra Dun - 248 001 (Uttarakhand)  
Tel : 0135-2659064, 6450721  
E - mail : jindatr1@rediffmail.com

AUDITORS REPORT

सं.सं.सं. - 2

To,  
The State Project Director,  
Uttarakhand Sabhi Ke Liye Madhyamic Shiksha Parisad,  
Rastriya Madhyamic Shiksha Abhiyan,  
Nanur Khera,  
Dehradun, Uttarakhand.

Dear Members,

We have examined the Balance Sheer including Income and Expenditure Account and Receipts and Payment Account for the year ended 31<sup>st</sup> march, 2010 i.e. financial year ended 2009-2010 pertaining to **RASTRIYA MADHYAMIC SHIKSHA ABHIYAN** implemented by **UTTRAKHAND SABHI KE LIYE MADHYAMIC SHIKSHA PARISAD, NANUR KHERA, DEHRADUN, UTTRAKHAND** hereinafter referred to as "The Project". The Balance Sheet along with Income and Expenditure Account and Receipts and Payment Account as prepared by the Project is annexed herewith after auditing of the same on the basis of records and documents submitted by the project...

These Financial Statements are the responsibility of the Concern's Management. Our responsibility is to express an opinion on these financial statements based on our audit. We have conducted our audit in accordance with the accounting standards generally accepted in India. Those standards require that we plan and perform the audit to obtain reasonable assurance about whether the financial statements are free of material misstatements. An audit includes examining on test basis, evidence supporting the amounts and disclosures in the financial statements. An audit also includes assessing the accounting principles and significant estimates made by the management, as well as evaluating the overall financial statement presentation. We believe that our audit provides a reasonable basis of our opinion. We have obtained all the information and explanation, which to the best of our knowledge and belief were necessary for the purpose of our audit.





## **RAJIV JINDAL & ASSOCIATES CHARTERED ACCOUNTANTS**

9/1, Rajpur Road, Opp. Abner Petrol Pump,  
Dehra Dun - 248 001 (Uttarakhand)  
Tel : 0135-2659064, 6450721  
E - mail : jindalr1@rediffmail.com

We report, that:

1. We have obtained all the information and explanations which to the best of our knowledge and belief were necessary for the purpose of our audit.
2. In our opinion, proper books of accounts have been kept by the State Project Office, so far as appear from the examination of the books of accounts.
3. The statements of accounts deal with this report are in agreement with the books of accounts.
4. In our opinion and to the best of our information and according to the explanations given to us, the said accounts give the information in the manner so required and give a true and fair view of:
  - a) In the case of the Consolidated Balance Sheet of the State of Affairs of the above named Project as at 31<sup>st</sup> March 2010.
  - b) In the case of Consolidated Income & Expenditure Account of the income of the above named Project for the year ended on 31<sup>st</sup> March 2010.
  - c) In the case of Consolidated Receipts & Payments of the income of the above named Project for the year ended on 31<sup>st</sup> March 2010.

**For RAJIV JINDAL & ASSOCIATES,  
CHARTERED ACCOUNTANTS**



**(RAJIV JINDAL)  
FCA PROPRIETOR  
M.NO-077980**

**DATED: 11.05.2011  
PLACE: DEHRADUN**

**RAJIV JINDAL & ASSOCIATES**  
**CHARTERED ACCOUNTANTS**

9/1, Rajpur Road, Opp. Abner Petrol Pump,  
 Dehra Dun - 248 001 (Uttarakhand)  
 Tel : 0135-2659064, 6450721  
 E - mail : jindalr1@rediffmail.com

**STATE PROJECT OFFICE**  
**RASTRIYA MADHYAMIC SHIKSHA ABHIYAN (RMSA) PROJECT**  
**UTTARAKHAND SABHI KE LIYE MADHYAMIC SHIKSHA PARISHAD**  
**UTILIZATION CERTIFICATE**  
**FOR THE YEAR ENDED 31<sup>ST</sup> MARCH-2010**

S.No	Sanction Letter No. and Date	AMOUNT
	Opening Balance with Advance as on 1 <sup>st</sup> April-2009	NIL
	Grant From Govt. of India	
1.	NO.F.1-47/2009 Sch.1 DT. 12.03.2010	2,22,00,000.00
	<b>TOTAL ( Government of India)</b>	<b>2,22,00,000.00</b>
	Grant From State Govt.	
2.	NO.558/XXIV-03/10/02 (32) 2009 DT. 30.03 2010	74,00,000.00
	<b>TOTAL ( Government of Uttarakhand)</b>	<b>74,00,000.00</b>
	<b>SUB-TOTAL (Govt. of India &amp; Govt. of Uttarakhand)</b>	<b>2,96,00,000.00</b>
3.	Interest on Savings Accounts	NIL
	<b>Grand Total ( Total Fund)</b>	<b>2,96,00,000.00</b>
	Actual Expenditure	NIL
	<b>Closing Balances with Advances as on 31<sup>st</sup> March-2010</b>	<b>2,96,00,000.00</b>

1). Certified that out of Rs.2,96,00,000/- of grants-in-aid sanctioned during the year 2009-2010 in favor of Rastriya Madhyamic Shiksha Abhiyan, State Utrakhand from Government of India and Government of Utrakhand for Rastriya Madhyamic Shiksha Abhiyan, Utrakhand Sabhi Ke Liya Madhyamic Shiksha Parishad, Nanur Khara, Tapovan Road, Dehradun Utrakhand vide Letter No noted against each grant Rs.NIL on account of interest income earned during the period 1<sup>st</sup> April 2009 to 31<sup>st</sup> March 2010 and sum of Rs. NIL on account of unspent Balance of the previous year, a sum of Rs.NIL has been utilized for the purpose for which it was sanctioned and that the balance of Rs.2,96,00,000/- remain unutilized at the end of the year, which will be adjusted towards the grants-in-aid payable during the year 2010-2011.





## RAJIV JINDAL & ASSOCIATES CHARTERED ACCOUNTANTS

9/1, Rajpur Road, Opp. Abner Petrol Pump,  
Dehra Dun - 248 001 (Uttarakhand)  
Tel : 0135-2659064, 6450721  
E - mail : jindalr1@rediffmail.com

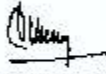
2). Certified that I have satisfied myself that the condition on which the grants- in-aid was sanctioned have been fully fulfilled and that I have exercised the following checks to see that the money was actually utilized for the purpose for which it was sanctioned.


Kinds of Checks exercised

- 1). Audited Statements of Accounts
- 2). Utilization Certificates
- 3). Audit Report

For Uttarakhand Sabhi Ke Liye Madhyamic Shiksha  
Parishad

DATED: 11.05.2011  
PLACE: DEHRADUN

  
(Finance Controller)

  
(State Project Director)

### Auditors Certificate

We have verified the above statement with the books and records produced before us for our verification and found the same has been drawn in accordance therewith.

For RAJIV JINDAL & ASSOCIATES,  
CHARTERED ACCOUNTANTS



(RAJIV JINDAL)  
FCA PROPRIETOR  
M.NO-077980

DATED : 11.05.2011.  
PLACE: DEHRADUN

**RAJIV JINDAL & ASSOCIATES**  
**CHARTERED ACCOUNTANTS**

9/1, Rajpur Road, Opp. Abner Petrol Pump,  
 Dehra Dun - 248 001 (Uttarakhand)  
 Tel : 0135-2659064, 6450721  
 E - mail : jindalr1@rediffmail.com

**STATE PROJECT OFFICE, DEHRADUN**  
**(RMSA) UTTARAKHAND SABHI KE LIYE MADHYAMIC SHIKSHA PARISAD**  
**CONSOLIDATED (PROJECT) BALANCE SHEET AS ON 31ST MARCH-2010**

LIABILITIES	AMOUNT	AMOUNT	ASSETS	AMOUNT	AMOUNT
<b>GENERAL FUND</b>			<b>CURRENT ASSETS AND</b>		
Unutilized Grant			<b>LOANS &amp; ADVANCES</b>		26,098,000
Project	29,806,000	29,806,000	a) Cash & Bank Balances		
			(As per annexure "A")		
			b) Advance to S.C.E.R.I		2,500,000
<b>TOTAL</b>		<b>29,806,000</b>	<b>TOTAL</b>		<b>29,806,000</b>

**AUDITOR'S REPORT**

"As per our separate report of even date annexed"

FOR RAJIV JINDAL & ASSOCIATES  
 CHARTERED ACCOUNTANTS

FOR UTTARAKHAND SABHI KE LIYE  
 MADHYAMIC SHIKSHA PARISAD



(RAJIV JINDAL)  
 FCA PROPRIETOR  
 M.NO-077980

FINANCE CONTROLLER

STATE PROJECT DIRECTOR

DATED: 11.05.2011  
 PLACE: DEHRADUN

# RAJIV JINDAL & ASSOCIATES CHARTERED ACCOUNTANTS

9/1, Rajpur Road, Opp. Abner Petrol Pump,  
Dehra Dun - 248 001 (Uttarakhand)  
Tel : 0135-2659064, 6450721  
E - mail : jindalr1@rediffmail.com

**STATE PROJECT OFFICE, DEHRADUN**  
**(RMSA) UTTARAKHAND SABHI KE LIYE MADHYAMIC SHIKSHA PARISAD**  
**CONSOLIDATED (PROJECT) RECEIPTS AND PAYMENTS ACCOUNTS FOR THE YEAR ENDED 31ST MARCH 2011**

RECEIPTS	AMOUNT	AMOUNT	PAYMENTS	AMOUNT	AMOUNT
Opening Balances Cash & Bank Balances			Advances S.C.B.R.T		1,502,000
Grants Received From Central Govt.	11,200,000		Closing Balances Cash & Bank Balances (As per annexure "A")		26,098,000
Received From State Govt.	7,400,000	29,600,000			
		29,600,000			

**AUDITOR'S REPORT**

"As per our separate report of even date annexed"

FOR RAJIV JINDAL & ASSOCIATES  
CHARTERED ACCOUNTANTS

FOR UTTARAKHAND SABHI KE LIYE  
MADHYAMIC SHIKSHA PARISAD



(RAJIV JINDAL)  
FCA PROPRIETOR  
M.NO-07/980

FINANCE CONTROLLER

STATE PROJECT DIRECTOR

DATED: 11.05.2011  
PLACE: DEHRADUN

**RAJIV JINDAL & ASSOCIATES**  
**CHARTERED ACCOUNTANTS**

9/1, Rajpur Road, Opp. Abner Petrol Pump,  
 Dehra Dun - 248 001 (Uttarakhand)  
 Tel : 0135-2659064, 6450721  
 E - mail : jindalr1@rediffmail.com

**ANNEXURE "A" ADVANCES AND CASH & BANK BALANCES**

NAME OF DISTRICTS	AMOUNT
DPO Almora	3,010,000
DPO Chamoli	2,284,000
DPO Dehradun	1,976,000
DPO Nainital	2,326,000
DPO Pauri	3,894,000
DPO Rudrapur	1,360,000
DPO US Nagar	1,332,000
DPO Bageshwar	1,080,000
DPO Champawat	1,066,000
DPO Haridwar	716,000
DPO Pithoragarh	2,256,000
DPO Tehri	3,166,000
DPO Uttarkashi	1,444,000
State Project Office	358,000





**RAJIV JINDAL & ASSOCIATES**  
**CHARTERED ACCOUNTANTS**

9/1, Rajpur Road, Opp. Abber Petrol Pump,  
Dehra Dun - 248 001 (Uttarakhand)  
Tel: 0135-2659004, 6450723  
E - mail: jindair1@rediffmail.com

AUDITORS REPORT

To,  
The State Project Director,  
Uttarakhand Sabhi Ke Liye Madhyamic Shiksha Parisad,  
Rastriya Madhyamic Shiksha Abhiyan,  
Nansi Kheta,  
Dehradun, Uttarakhand.

Dear Members,

We have examined the Pre Project Balance Sheet including Pre Project Income and Expenditure Account and Receipts and Payment Account for the year ended 31<sup>st</sup> March, 2010 i.e. financial year ended 2009-2010 pertaining to **RASTRIYA MADHYAMIC SHIKSHA ABHIYAN** implemented by **UTTARAKHAND SABHI KE LIYE MADHYAMIC SHIKSHA PARISAD, NANUR KHERA, DEHRADUN, UTTARAKHAND** hereinafter referred to as "The Project". The Pre Project Balance Sheet along with Pre Project Income and Expenditure Account and Receipts and Payment Account as prepared by the Project is annexed herewith after auditing of the same on the basis of records and documents submitted by the project..

These Financial Statements are the responsibility of the Concern's Management. Our responsibility is to express an opinion on these financial statements based on our audit. We have conducted our audit in accordance with the accounting standards generally accepted in India. Those standards require that we plan and perform the audit to obtain reasonable assurance about whether the financial statements are free of material misstatements. An audit includes examining, on test basis, evidence supporting the amounts and disclosures in the financial statements. An audit also includes assessing the accounting principles and significant estimates made by the management, as well as evaluating the overall financial statements presentation. We believe that our audit provides a reasonable basis of our opinion. We have obtained all the information and explanation, which to the best of our knowledge and belief were necessary for the purpose of our audit.

The financial statements annexed herewith incorporate the accounts of 13 District Offices.





**RAJIV JINDAL & ASSOCIATES**  
**CHARTERED ACCOUNTANTS**

9/1, Rajpur Road, Opp. Abner Petrol Pump,  
Dehra Dun - 248 001 (Uttarakhand)  
Tel : 0135-2659064, 6450721  
E - mail : jindalr1@rediffmail.com

2). Certified that I have satisfied myself that the condition on which the grants-in-aid was sanctioned have been fully fulfilled and that I have exercised the following checks to see that the money was actually utilized for the purpose for which it was sanctioned.

Kinds of Checks exercised

- 1). Audited Statements of Accounts
- 2). Utilization Certificates
- 3). Audit Report

For Uttarakhand Sabhi Ke Liye Madhyamic Shiksha  
Parishad

DATED: 11.05.2011  
PLACE: DEHRADUN

  
(Finance Controller)

  
(State Project Director)

**Auditors Certificate**

We have verified the above statement with the books and records produced before us for our verification and found the same has been drawn in accordance therewith.

For **RAJIV JINDAL & ASSOCIATES,**  
**CHARTERED ACCOUNTANTS**



(RAJIV JINDAL)  
FCA PROPRIETOR  
M.NO-077980

DATED : 11.05.2011.  
PLACE: DEHRADUN

**RAJIV JINDAL & ASSOCIATES**  
**CHARTERED ACCOUNTANTS**

9/1, Rajpur Road, Opp. Abner Petrol Pump,  
 Dehra Dun - 248 001 (Uttarakhand);  
 Tel : 0135-2659054, 6450721  
 E - mail : jindalr1@rediffmail.com

**STATE PROJECT OFFICE, DEHRADUN**  
**(RMSA) UTTARAKHAND SABHI KE LIYE MADHYAMIC SHIKSHA PARISAD**  
**CONSOLIDATED (PRE PROJECT) BALANCE SHEET AS ON 31ST MARCH 2010**

ACCOUNT HEADS	AMOUNT	AMOUNT	ASSETS	AMOUNT	AMOUNT
<b>CAPITAL FUND</b>			<b>FIXED ASSETS</b>		
Opening Balance			(As per annexure "A")		4,702,717
Add: Additions during the year	4,702,717	4,702,717			
<b>GENERAL FUND</b>			<b>CURRENT ASSETS AND</b>		
Unutilized Grant			<b>LOANS &amp; ADVANCES</b>		
-Pre Project		9,242,638	a) Cash & Bank Balances		9,242,638
			(As per annexure "B")		

**AUDITOR'S REPORT**

"As per our separate report of even date annexed"

FOR RAJIV JINDAL & ASSOCIATES  
 CHARTERED ACCOUNTANTS

FOR UTTARAKHAND SABHI KE LIYE  
 MADHYAMIC SHIKSHA PARISAD



(RAJIV JINDAL)  
 FCA PROPRIETOR  
 M.NO-077980

FINANCE CONTROLLER

STATE PROJECT DIRECTOR

DATE: 11.05.2011  
 PLACE: DEHRADUN

**RAJIV JINDAL & ASSOCIATES  
CHARTERED ACCOUNTANTS**

9/1, Rajpur Road, Opp. Abner Petrol Pump,  
Dehra Dun - 248 001 (Uttarakhand)  
Tel : 0135-2659064, 6450721  
E-mail : jindalr1@rediffmail.com

**STATE PROJECT OFFICE, DEHRADUN  
(RMSA) UTTARAKHAND SABHI KE LIYE MADHYAMIC SHIKSHA PARISAD  
CONSOLIDATED (PRE-PROJECT) INCOME AND EXPENDITURE ACCOUNTS FOR THE YEAR ENDED 31ST MARCH 2010**

<b>Revenue Expenses</b>			<b>Grants</b>		
Building Maintenance	372,586		Received from Central Govt.	13,300,000	
Telephone Expenses	29,560		Received from State Govt.	4,234,000	
Printing & Stationery	81,635		Less: Grant Utilized	17,334,000	
Wages & Electricity Charges	1,03,848			9,242,038	9,091,363
Office Concessions	623,202		<b>Interest</b>		
Salary to computer operator	1,15,888		Received from Saving Accounts		42,346
L.A. & Work Shop Traving	1,200,767				
Advertisement	73,190	2,428,091			
Excess of Income Over Expenditure		4,702,717			

**AUDITOR'S REPORT**

"As per our separate report of even date annexed"

FOR RAJIV JINDAL & ASSOCIATES  
CHARTERED ACCOUNTANTS

FOR UTTARAKHAND SABHI KE LIYE  
MADHYAMIC SHIKSHA PARISAD



(RAJIV JINDAL)  
FCA PROPRIETOR  
M.NO-077980

FINANCE CONTROLLER

STATE PROJECT DIRECTOR

DATED: 11.05.2010  
PLACE: DEHRADUN



# RAJIV JINDAL & ASSOCIATES CHARTERED ACCOUNTANTS

B/1, Rajpur Road, Opp. Abner Petrol Pump,  
Dehra Dun - 248 001 (Uttarakhand)  
Tel 0135-2659064, 6450721  
E - mail : jindalr1@rediffmail.com

STATE PROJECT OFFICE, DEHRADUN  
: (RMSA) UTTARAKHAND SABHI KE LIYE MADHYAMIC SHIKSHA PARISAD  
CONSOLIDATED (PRE PROJECT) RECEIPTS AND PAYMENTS ACCOUNTS FOR THE YEAR ENDED 31/1 MARCH 2010

RECEIPTS	AMOUNT	T. AMOUNT	PAYMENTS	AMOUNT	T. AMOUNT
<b>Opening Balances</b>			<b>Capital Expenses</b>		
Cash & Bank Balances			Computer Purchased	743,373	
			Computer Purchased	2,84,471	
<b>Grants</b>			Photo Copier Ink Purchased	916,511	
Accred From Central Govt.	1,00,000		IT-IT Program Purchased	650,825	
Accred From State Govt.	4,04,200	5,04,200	Telephone Exp Purchased For BPO	1,40,541	4,92,117
<b>Interest</b>			<b>Revenue Expenses</b>		
Accred From Savings Accounts		8,346	Building Maintenance	272,786	
			Transport Expenses	29,580	
			Printing & Stationery	207,035	
			Water & Electricity Charges	103,548	
			Office Contingencies	514,312	
			Salary to computer operator	1,41,828	
			IT & Work Shop Training	208,292	
			Administration	705,390	3,42,670
			<b>Closing Balances</b>		
			Cash & Bank balances		92,16,638
			(As per annexure "B")		
<b>TOTAL</b>		<b>5,04,200</b>	<b>TOTAL</b>		<b>5,04,200</b>

**AUDITOR'S REPORT**

"As per our separate report of even date annexed"

FOR RAJIV JINDAL & ASSOCIATES  
CHARTERED ACCOUNTANTS



(RAJIV JINDAL)  
FCA PROPRIETOR  
M.NO-077980

FINANCE CONTROLLER

FOR UTTARAKHAND SABHI KE LIYE  
MADHYAMIC SHIKSHA PARISAD

STATE PROJECT DIRECTOR

DATED: 11.05.2011  
PLACE: DEHRADUN

**RAJIV JINDAL & ASSOCIATES**  
**CHARTERED ACCOUNTANTS**

9/1, Rajpur Road, Opp. Abner Petrol Pump,  
 Dehra Dun - 248 001 (Uttarakhand)  
 Tel: 0135-2659064, 6450721  
 E-mail: jindalr1@rediffmail.com

ANNEXURE "A" OF FIXED ASSETS

PARTICULARS	BALANCE AS ON 31.03.2009	ADDITIONS	DECREAS	TOTAL
Furniture Purchased	-	743,053	743,053	743,053
Coomputer Purchased	-	958,471	958,471	958,471
Photo Copier/Fax Purchased	-	146,917	146,917	146,917
LCD Projector Purchased	-	650,865	650,865	650,865
Telephone/Fax Purchased for BEO	-	1,403,411	1,403,411	1,403,411
<b>TOTAL</b>		<b>4,702,717</b>	<b>4,702,717</b>	<b>4,702,717</b>



## RAJIV JINDAL & ASSOCIATES CHARTERED ACCOUNTANTS

9/1, Rajpur Road, Opp. Abner Petrol Pump,  
Dehra Dun - 248 001 (Uttarakhand)  
Tel : 0135-2659064, 6450721  
E - mail : jindalr1@rediffmail.com

### ANNEXURE "B" ADVANCES AND CASH & BANK BALANCES

NAME OF DISTRICTS	AMOUNT
DPO Almora	1,039,653
DPO Chamoli	400,720
DPO Dehradun	505,383
DPO Nainital	373,394
DPO Pauri	1,070,713
DPO Rudrapur	415,932
DPO US Nagar	953,439
DPO Bageshwar	515,886
DPO Champawat	280,437
DPO Haridwar	394,573
DPO Pithoragarh	1,089,961
DPO Tehri	578,256
DPO Uttarkashi	830,618
State Project Office	793,273
<b>TOTAL</b>	<b>9,342,638</b>





**RAJIV JINDAL & ASSOCIATES**  
**CHARTERED ACCOUNTANTS**

9/4, Rajpur Road, Opp. Abner Petrol Pump,  
 Dehra Dun - 248 001 (Uttarakhand)  
 Tel : 0135-2659064, 6450721  
 E-mail : jindalr1@rediffmail.com

**AUDITORS REPORT**

To,  
 The State Project Director,  
 Uttarakhand Sabhi Ke Live Madhyamic S. Parisad,  
 Rastriya Madhyamic Shiksha Abhiyan,  
 Nanur Kheta,  
 Dehradun, Uttarakhand.

Dear Members,

We have examined the Pre Project Balance Sheet including Pre Project Income and Expenditure Account and Receipts and Payment Account for the year ended 31<sup>st</sup> March, 2011 i.e. financial year ended 2010-2011 pertaining to **RASTRYA MADHYAMIC SHIKSHA ABHIYAN** implemented by **UTTRAKHAND SABHI KE LIVE MADHYAMIC SHIKSHA PARISAD, NANUR KHERA, DEHRADUN, UTTRAKHAND** hereinafter referred to as "The Project". The Pre Project Balance Sheet along with Pre Project Income and Expenditure Account and Receipts and Payment Account as prepared by the Project is annexed herewith after auditing of the same on the basis of records and documents submitted by the project...

These Financial Statements are the responsibility of the Concern's Management. Our responsibility is to express an opinion on these financial statements based on our audit. We have conducted our audit in accordance with the accounting standards generally accepted in India. Those standards require that we plan and perform the audit to obtain reasonable assurance about whether the financial statements are free of material misstatements. An audit includes examining on test basis, evidence supporting the amounts and disclosures in the financial statements. An audit also includes assessing the accounting principles and significant estimates made by the management, as well as evaluating the overall financial statement presentation. We believe that our audit provides a reasonable basis of our opinion. We have obtained all the information and explanation, which to the best of our knowledge and belief were necessary for the purpose of our audit.

The financial statements annexed herewith incorporate the accounts of 13 District Offices.



## RAJIV JINDAL & ASSOCIATES CHARTERED ACCOUNTANTS

9/1, Rajpur Road, Opp. Abner Petro? Pump,  
Dehra Dun - 248 001 (Uttarakhand)  
Tel : 0135 2659064, 6450721  
E - mail : jindalr1@rediffmail.com

We report, that:

1. We have obtained all the information and explanations which to the best of our knowledge and belief were necessary for the purpose of our audit.
2. In our opinion, proper books of accounts have been kept by the State Project Office, so far as appear from the examination of the books of accounts.
3. The statements of accounts deal with this respect are in agreement with the books of accounts.
4. In our opinion, and to the best of our information and according to the explanations given to us, the said accounts give the information in the manner so required and give a true and fair view of:
  - a) In the case of the Consolidated Pre Project Balance Sheet of the State of Affairs of the above named Project as at 31<sup>st</sup> March 2011.
  - b) In the case of Consolidated Pre Project Income & Expenditure Account, of the income of the above named Project for the year ended on 31<sup>st</sup> March 2011.
  - c) In the case of Consolidated Pre Project Receipts & Payments of the income of the above named Project for the year ended on 31<sup>st</sup> March 2011.

For RAJIV JINDAL & ASSOCIATES,  
CHARTERED ACCOUNTANTS

(RAJIV JINDAL)  
FCA PROPRIETOR  
M.NO-077980

DATED: 11.05.2011  
PLACE: DEHRADUN

**RAJIV JINDAL & ASSOCIATES**  
**CHARTERED ACCOUNTANTS**

9/1, Rajpur Road, Opp. Abner Petrol Pump,  
 Dehra Dun - 248 001 (Uttarakhand)  
 Tel : 0135-2659064, 6450721  
 E - mail : jindalr1@rediffmail.com

**STATE PROJECT OFFICE**  
**RASTRIYA MADHYAMIC SHIKSHA ABHIYAN (RMSA) PROJECT**  
**UTTARAKHAND SABHI KE LIYE MADHYAMIC SHIKSHA PARISHAD**  
**PRE PROJECT UTILIZATION CERTIFICATE**  
**FOR THE YEAR ENDED 31<sup>ST</sup> MARCH-2011**

S.No	Sanction Letter No. and Date	AMOUNT
	Opening Balance with Advance as on 1 <sup>st</sup> April-2010	92,42,638.00
1.	Grant From Govt. of India	
	TOTAL ( Government of India)	NIL
2.	Grant From State Govt.	
	TOTAL ( Government of Uttarakhand)	NIL
3.	SUB-TOTAL (Govt. of India & Govt. of Uttarakhand)	NIL
4.	Interest on Savings Accounts	NIL
	Grand Total ( Total Fund)	92,42,638.00
5.	Actual Expenditure	52,86,194.00
	Unspent Balances ( (Ann-B) )	39,56,444.00

1). Certified that out of Rs. NIL of grants-in-aid sanctioned during the year 2010-2011 in favor of Rastriya Madhyamic Shiksha Abhiyan, State-Uttarakhand from Government of India and Government of Uttarakhand for Rastriya Madhyamic Shiksha Abhiyan, Uttarakhand Sabhi Ke Liye Madhyamic Shiksha Parishad, Nanur Khara, Tapovan Road, Dehradun Uttarakhand vide Letter No. noted against each grant Rs. NIL on account of interest income earned during the period 1<sup>st</sup> April 2010 to 31<sup>st</sup> March 2011 and sum of Rs.92,42,638/- on account of unspent Balance of the previous year, a sum of Rs.52,86,194/- Has been utilized for the purpose for which it was sanctioned and that the balance of Rs.39,56,444/- remain unutilized at the end of the year, which will be adjusted towards the grants-in-aid payable during the year 2011-2012.





## RAJIV JINDAL & ASSOCIATES CHARTERED ACCOUNTANTS

9/1, Rajpur Road, Opp. Abner Petrol Pump,  
Dehra Dun - 248 001 (Uttarakhand)  
Tel : 0135-2659064, 6450721  
E - mail : jindalr1@rediffmail.com

2). Certified that I have satisfied myself that the condition on which the grants- in-aid was sanctioned have been fully fulfilled and that I have exercised the following checks to see that the money was actually utilized for the purpose for which it was sanctioned.

Kinds of Checks exercised

- 1). Audited Statements of Accounts
- 2). Utilization Certificates
- 3). Audit Report

For Uttarakhand Sabhi Ke Liye Madhyamic Shiksha  
Parishad

DATED: 11.05.2011  
PLACE: DEHRADUN

  
(Finance Controller)

  
(State Project Director)

### Auditors Certificate

We have verified the above statement with the books and records produced before us for our verification and found the same has been drawn in accordance therewith.

For RAJIV JINDAL & ASSOCIATES,  
CHARTERED ACCOUNTANTS



(RAJIV JINDAL)  
FCA PROPRIETOR  
M.NO-077980

DATED : 11.05.2011.  
PLACE: DEHRADUN

**RAJIV JINDAL & ASSOCIATES**  
**CHARTERED ACCOUNTANTS**

9/1, Rajpur Road, Opp. Abner Petrol Pump,  
 Dehra Dun - 248 001 (Uttarakhand)  
 Tel : 0135-2659064, 6450721  
 E - mail : jindalr1@rediffmail.com

**STATE PROJECT OFFICE, DEHRADUN**  
**(भारतीय उत्तराखण्ड सभ्य के लिये माध्यमिक शिक्षा समिति)**  
**CONSOLIDATED PRE-PROJECT BALANCE SHEET AS ON 31ST MARCH 2011**

LIABILITIES	AMOUNT	AMOUNT	ASSETS	AMOUNT	AMOUNT
<b>CAPITAL FUND</b>			<b>FIXED ASSETS</b>		
Opening Balance	4,792,717		(As per annexure "A")		7,315,173
Ad. A/c during the year	2,617,456	7,315,173			
<b>GENERAL FUND</b>			<b>CURRENT ASSETS AND</b>		
Unutilized Grant			<b>LOANS &amp; ADVANCES</b>		
Pre-Project		3,956,444	(Cash & Bank Balance)		1,956,444
			(As per annexure "B")		
<b>TOTAL</b>	<b>7,410,173</b>	<b>7,410,173</b>	<b>TOTAL</b>	<b>7,410,173</b>	<b>7,410,173</b>

**AUDITOR'S REPORT**

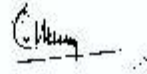
"As per our separate report of even date annexed"

FOR RAJIV JINDAL & ASSOCIATES  
 CHARTERED ACCOUNTANTS

FOR UTTARAKHAND SABHI KE LIYE  
 MADHYAMIK SHIKSHA PARISAD



(RAJIV JINDAL)  
 FCA PROPRIETOR  
 M NO-077950



FINANCE CONTROLLER



STATE PROJECT DIRECTOR

DATED: 11.05.2011  
 PLACE: DEHRADUN



**RAJIV JINDAL & ASSOCIATES**  
**CHARTERED ACCOUNTANTS**

9/1, Rajpur Road, Opp. Abner Petrol Pump,  
 Dehra Dun - 248 001 (Uttarakhand)  
 Tel : 0135-2659064, 6450721  
 E-mail : jindalr1@rediffmail.com

STATE PROJECT OFFICE, DEHRADUN  
 (KMSA) UTTARAKHAND SABHI KE LIYE MADHYAMIC SHIKSHA PARISAD  
 CONSOLIDATED (PIL) PROJECT INCOME AND EXPENDITURE ACCOUNTS FOR THE YEAR ENDED 31<sup>ST</sup> MARCH 2011

EXPENDITURE	AMOUNT	AMOUNT	INCOME	AMOUNT	AMOUNT
Revenue Expenses			<b>Grants</b>		
Building Maintenance	399,385		Previous year unutilised grant	9,242,638	
Telephone Expenses	84,022		Less Grant Utilised	3,956,444	5,286,194
Printing & Stationery	55,939				
Water & Electricity Charges	30,855				
Office Contingencies	146,991				
Salaries to computer operator	18,7570				
Meeting Expenses	1,61,116				
Advertisement	674,309	2,575,938			
Excess of Revenue Over Expenditure		1,01,2450			
<b>TOTAL</b>	<b>1,496,457</b>	<b>3,587,894</b>	<b>TOTAL</b>	<b>9,242,638</b>	<b>5,286,194</b>

**AUDITOR'S REPORT**

"As per our separate report of even date annexed"

FOR RAJIV JINDAL & ASSOCIATES  
 CHARTERED ACCOUNTANTS



(RAJIV JINDAL)  
 TCA PROPRIETOR  
 M.NO-077980

FOR UTTARAKHAND SABHI KE LIYE  
 MADHYAMIC SHIKSHA PARISAD

FINANCE CONTROLLER

STATE PROJECT DIRECTOR

DATED: 11.05.2011  
 PLACE: DEHRADUN

**RAJIV JINDAL & ASSOCIATES**  
**CHARTERED ACCOUNTANTS**

9/1, Rajpur Road, Opp. Abner Petrol Pump,  
 Dehra Dun - 248 001 (Uttarakhand)  
 Tel : 0135-2659064, 6450721  
 E - mail : jindalr1@rediffmail.com

STATE PROJECT OFFICE, DEHRADUN  
 (RMSA) UTTARAKHAND SABHI KE LIYE MADHYAMIC SHIKSHA PARISAD  
 CONSOLIDATED (PRE-PROJECT) RECEIPTS AND PAYMENTS ACCOUNTS FOR THE YEAR ENDED 31ST MARCH 2011

Particulars	2009-10	2008-09	Particulars	2009-10	2008-09
<b>Opening Balances</b> Cash & Bank Balances	9,242,638	9,242,638	<b>Capital Expenses</b>		
			Expenses Purchased	648,925	
			Computer Purchased	404,745	
			Photo Copier/Prs. Purchased	416,726	
			C.D. Printer Purchased	64,368	
			Telephone, Fax Purchased for MCO	506,267	2,612,455
			<b>Revenue Expenses</b>		
			Building Maintenance	309,289	
			Telephone Expenses	85,022	
			Training & Seminar	53,039	
			Water & Electricity Charges	23,555	
			Office Consumables	246,061	
			Salary on computer operator	187,076	
			Printing & A. Expenses	7,146,116	
			Advertisement	624,449	1,673,38
			<b>Closing Balances</b>		
			Cash & Bank Balances		9,956,494
			(As per annexure "B")		

**AUDITOR'S REPORT**

"As per our separate report of each date annexed"

00166411 JINDAL & ASSOCIATES  
 CHARTERED ACCOUNTANTS

(RAJIV JINDAL)  
 FCA, PROPRIETOR  
 M.NO-0779980

FOR UTTARAKHAND SABHI KE LIYE  
 MADHYAMIC SHIKSHA PARISAD

  
 FINANCE CONTROLLER

  
 STATE PROJECT DIRECTOR

DATED: 11.03.2011  
 PLACE: DEHRADUN

**RAJIV JINDAL & ASSOCIATES**  
**CHARTERED ACCOUNTANTS**

9/3, Rajpur Road, Opp. Abner Petrol Pump,  
 Dehra Dun - 248 001 (Uttarakhand)  
 Tel : 0135-2659064, 6450721  
 E - mail : jindalr1@rediffmail.com

**ANNEXURE "A" OF FIXED ASSETS**

PARTICULARS	BALANCE AS ON 01.03.2010	ADDITIONS	TOTAL	BALANCE AS ON 31.03.2011
Furniture Purchased	143,053	648,925	1,391,978	1,391,978
Computer Purchased	958,471	401,770	1,360,241	1,360,241
Photo Copier/Fax Purchased	948,910	16,720	1,065,630	1,065,630
LCD Projector Purchased	670,867	641,068	1,292,533	1,292,533
Telephone/Fax Purchased for BLO	1,103,411	500,367	1,603,778	1,603,778
<b>TOTAL</b>	<b>4,702,712</b>	<b>2,612,456</b>	<b>7,315,173</b>	<b>7,315,173</b>



**RAJIV JINDAL & ASSOCIATES**  
**CHARTERED ACCOUNTANTS**

9/1, Rajpur Road, Opp. Abner Petrol Pump,  
 Dehra Dun - 248 001 (Uttarakhand)  
 Tel : 0135-2659064, 6450721  
 E - mail : jindalr1@rediffmail.com

**ANNEXURE "B" CASII & BANK BALANCES**

NAME OF DISTRICTS	AMOUNT
DPO Almora	410,214
DPO Chamoli	190,006
DPO Dehradun	372,286
DPO Nainital	373,594
DPO Pauri	391,092
DPO Rudrapur	228,280
DPO US Nagar	346,301
DPO Bageshwar	222,076
DPO Champawat	280,437
DPO Haridwar	242,139
DPO Pithoragarh	187,742
DPO Teori	259,143
DPO Uttarkashi	110,095
State Project Office	543,039
<b>TOTAL</b>	<b>3,616,277</b>

